

Pyrocarbon optical properties in reflected light

Jean-Marie Vallerot^a and Xavier Bourrat^b,

^aUniversity Bordeaux 1, Laboratoire des composites Thermo-Structuraux, 3 allée de La Boétie, F-33 600 Pessac, France

^b ISTO CNRS-Université d'Orléans, Institut des Sciences de la Terre d'Orléans, Geosciences BP 6759, 45067 Orléans cedex 2, France

Keywords: Pyrolytic carbon; Optical microscopy; Modeling; Optical properties

Abstract

A new accurate method is presented for measuring the extinction angle of pyrocarbons and their related anisotropy. The method permits also the extraction of the main optical parameters. Firstly, it established that the wavelength of the measurement must be controlled. Secondly, the origin of the optical phase shift when a polarized beam is reflected by such an absorbing media is derived. Then, the physical meaning of the extinction angle is discussed on the basis of calculations in an ideal case. The optical phase shift, as well as the ordinary and extraordinary reflectance were obtained by fitting the experimental data to the theoretical model. The reflectance coefficients obtained are very close to those measured by a more common method. Finally, the extinction angle A_e and phase shift are proposed to distinguish the various families of pyrocarbons.

1. Introduction

Carbon materials are usually observed through reflection with an optical microscope, because of their high absorption coefficients in the visible wavelengths. Hence, most of the optical studies on carbon/carbon composites are using reflection on polished samples. When a transverse cut of a single fiber with its pyrocarbon coating is observed through crossed Nicols, a Maltese's cross appears in the pyrocarbon. By rotation of the analyser anticlockwise, the quadrant at 45° is extinguished and then becomes bright again [1]. Bourrat et al. [2] defined the extinction angle A_e as the angle value for the minimum of intensity; it is expressed in degrees. A_e depends on the anisotropy of the pyrocarbon. The extinction angle technique is a fast way to distinguish a large numbers of pyrocarbons on the basis of their optical anisotropy. However, the accuracy of the method is limited because of two main reasons. Firstly, the minima in intensity is difficult for the human eye to determine. Secondly, optical indices of graphitic materials are not constant throughout the visible range, so results will change if the illuminant is a cold (xenon) or a hot lamp (halogen).

A new experimental method using a PARISSTM Spectrophotometer coupled with a NIKONTM Eclipse polarized microscope is described, which permits an increase in the spatial resolution,

the selection of one wavelength for the measurement and eliminates human operator's variability.

The physical meaning of this method was questioned by Oberlin [3] with calculations based on an approximation, neglecting the phase shift, which leads to a theoretical value of 16.4° at 550 nm for graphite. The experimental measurement by eye usually is more than 20° . Calculations are presented in this work which relate much more precisely the experimental measurements and the physical phenomenon. Optical phase shift, ordinary and extraordinary reflectances can be also deduced from this procedure, and will be compared to those determined by a more usual way. Accurate value of A_e will be given and discussed for the pyrocarbons studied. A large set of pyrocarbon samples (made with different processes) was gathered for this work.

This publication is the full paper from the proceeding of Vallerot and Bourrat at Carbon'03 [4].

2. Theoretical considerations

The formalism exposed in this part was already developed in the literature for different applications (see for example [5] and [6]). Nevertheless, it seems important to recall briefly the background as it applies in the precise case of the extinction angle procedure.

Let us consider a graphitic material concentrically deposited around a fiber. Experiments and a model are developed for polished cross-sections observed normally to the beam. In this theoretical section, we want to express the intensity of the reflecting beam in the region at 45° of the polarizer when the analyzer is un-crossed from the polarizer with a variable θ angle.

The angle between the c axis and the direction of polarization, noted P , is equal to 45° . A linearly polarized beam will be reflected through the two principle directions of the material: in the basal plane and parallel to the c axis. The two reflected waves have different amplitudes and a phase shift. These two waves will interfere after projection in the plane of the analyzer (A) as shown Fig. 1.

From the Fresnel's equations of a plane polarized wave reflected by an absorbing material, one finds the reflection factor between the incident (E_i) and the reflected (E_r) beams:

$$r = \frac{E_r}{E_i} = \frac{\bar{n}_1 - \bar{n}_2}{\bar{n}_1 + \bar{n}_2},$$

where \bar{n}_1 and \bar{n}_2 are the complex indices of the incident and reflective media. If the polarization is perpendicular to the c axis of graphite, if the incident media is air and if n_o and k_o are the ordinary coefficients of refraction and absorption, Eq. (1) leads to the ordinary reflectance coefficient R_o and to the optical phase shift ϕ_o between the incident and the reflected beam:

$$R_o = \|r\|^2 = \frac{(1 - n_o)^2 + k_o^2}{(1 + n_o)^2 + k_o^2} \quad \text{and}$$

$$\tan(\varphi) = \arg(r) = \frac{2k_o}{1 - n_o^2 - k_o^2}.$$

If the polarization is parallel to the c axis, one finds:

$$R_e = \|r\|^2 = \frac{(1 - n_e)^2}{(1 + n_e)^2} \quad \text{and} \quad \tan(\varphi) = 0,$$

where n_e is the extraordinary indice of refraction.

In fact, in the visible, the extraordinary coefficient of absorption is equal to zero. Thus, the phase shift between the ordinary and extraordinary reflected waves is equal to Φ_o . This is the *optical phase shift* observed when a graphite-like material is observed under crossed Nicols.

If I_o is the amplitude of the incident beam of pulse ω , y_e and y_o the reflected beams in the two directions and z_1 and z_2 the projections of y_e and y_o in the plane of the analyzer, one finds:

$$y_e = \sqrt{R_e \cdot I_o} \cdot \cos(45) \cdot e^{j\omega t} \quad \text{and} \quad y_o = \sqrt{R_o \cdot I_o} \cdot \sin(45) \cdot e^{j\omega t} \cdot e^{j\varphi},$$

$$z_1 = y_e \cdot \sin(45 - \theta) \quad \text{and} \quad z_2 = y_o \cdot \cos(45 - \theta),$$

$$z = z_1 - z_2 = \frac{\sqrt{2I_o}}{2} \cdot e^{j\omega t} \cdot (\sqrt{R_e} \cdot \sin(45 - \theta) - \sqrt{R_o} e^{j\varphi} \cdot \cos(45 - \theta)).$$

Finally, from Eq. (4) the amplitude $I(\theta) = z \cdot z^*$ is found to be

$$I(\theta) = \frac{I_o}{2} \cdot [R_e \cdot \sin^2(45 - \theta) + R_o \cdot \cos^2(45 - \theta) - 2$$

$$\times \sqrt{R_e \cdot R_o} \cdot \sin(45 - \theta) \cdot \cos(45 - \theta) \cdot \cos(\varphi)],$$

where R_e and R_o are the extraordinary and ordinary reflectances; I_o , the absolute incident intensity; θ , the rotating angle of the analyzer from the crossed polarization position; λ , the wavelength of the measurement; and δ , the optical phase shift, between the ordinary and extraordinary reflected waves.

From this equation, the theoretical curve of extinction ($2I/I_o$) can be plotted for several wavelengths, using the optical indices of graphite measured by Greenaway et al. [7]. Focusing on the 22–28° window, the first minimum of the extinction curve, corresponding to the angle of extinction, is shifted toward higher values as the wavelength increases ($A_e = 24^\circ$ at 450 nm and 26° at 750 nm), Fig. 2.

The value of the extinction angle for graphite or pyrocarbons will therefore vary whether the light source is a halogen or a xenon lamp. This discrepancy has been solved using a spectrometer mounted on the microscope, allowing the measurement of the extinction curve at 550 nm. All the curves were recorded at 550 nm, since many optical indices of graphitic materials have been measured at this wavelength, for instance by Greenaway et al. [7] and Ergun et al. [8].

An accurate value of A_e is therefore obtained after a fit of the complete curve, A_e corresponding to the first minimum of the function $I = f(\theta)$.

Other parameters, R_e , R_o and ϕ can also be deduced from the extinction curve fit, the absolute intensity I_o being calibrated beforehand.

In order to prevent intensity fluctuations from the light source, I_o was calibrated using an hexagonal-SiC monocrystal orientated along the (0 0 0 1) direction before the analysis of each sample. The reflected intensity was recorded from the SiC specimen from $\theta = 0$ (crossed polars) to $\theta = \pi$ with a $\pi/36$ step. The absolute intensity value I_o at 550 nm was then given by

$$I_{0(550\text{nm})}(\theta) = \frac{I_{\text{SiC}}(\theta)}{R_{\text{SiC}(550\text{nm})} \cdot (\sin(\theta))^2},$$

where $I_{\text{SiC}}(\theta)$ is the intensity measured at θ , R_{SiC} is the reflectance coefficient for SiC at 550 nm.

3. Experimental

Various carbon/carbon composites with different kinds of pyrocarbons were studied. These carbons were made by chemical vapor deposition (CVD) and thermal gradient chemical vapor infiltration industrial (TGCVD) or laboratory processes. Transverse cuts of these composites were polished with a semi-automatic polishing machine from STRUERS. The ultimate step was completed with a 1 μm diamond abrasive. Table 1 gathers the origin of each sample. Depending on their reflectance and the aspect of their Maltese cross, pyrocarbons were called rough laminar (RL), regenerative laminar (ReL), smooth laminar (SL) or dark laminar (DL), according to the works of Granoff [9] and Lieberman and Pierson [10] completed by Bourrat et al. [11].

The system used consisted of a NIKON ECLIPSE microscope mounted with a X100 objective (air), an infra-red filter, an halogen light source, and two rotating polarizer/analyzer. The photo-spectrometer is a PARISSTM system, with a Peletier cooled CCD detector. The resolution was about 0.1 nm at the wavelength, and the analyzed area was $0.162 \times 0.255 \mu\text{m}^2$.

A uniform cylindrical layer of pyrocarbon deposited on an isolated fiber is examined from the cross-section of a composite. The selected area of the coating is taken at an angle of $\pi/4$ between the growth direction and the incident light polarization (P). The linearly polarized beam is reflected along the two main directions of the material, i.e., parallel, \mathbf{y}_o and perpendicular, \mathbf{y}_e to the basal planes (Fig. 1). The two reflected waves have different amplitude and phase shift. They both interfere after projection ($\mathbf{y}_e \rightarrow \mathbf{z}_1$, $\mathbf{y}_e \rightarrow \mathbf{z}_2$) onto the plane of the analyzer, rotated by an angle θ from the crossed polarization position (Fig. 1).

Ordinary and extraordinary reflectance coefficients were determined on the transverse cut with the incident beam polarized parallel and perpendicular to the anisotropy plane. The polarization of the incident beam is north–south, so ordinary and extraordinary reflectance coefficients were measured, respectively, at $\theta = 90^\circ$ and 0° . The experimental validation is conducted with an objective characterized by a high numerical opening. In these conditions some off axis light can enter the objective. That amount of light was neglected in the calculation.

In addition, the orientation angle of each matrix will be given. These values were obtained by transmission electron microscopy (TEM) using the selected area diffraction technique (SAD), with a $0.1 \mu\text{m}$ diameter selected on the sample [2]. The angle increases from 25° for the rough laminar up to 90° for the dark laminar pyrocarbon. This value is considered as the reference anisotropy.

4. Results

The normalized extinction curves ($I(\theta)/I_0$) at 550 nm of the various pyrocarbon materials are reported in Fig. 3.

The optical parameters were determined from the fit of the $I(\theta)/I_0$ functions, i.e., the extinction angle Ae_{550} ($^\circ$), the phase shift δ (nm), the ordinary and extraordinary reflectances R_o and R_e (%). They are listed in Table 2 together with the corresponding OA value (as measured by SAD). All the extinction curves have a similar shape, in agreement with Eq. (5). However, the positions of the maxima and minima vary from one pyrocarbon to another, as well as the absolute intensity value (higher for ReL than for the other materials).

The extinction angles measured at 550 nm are lower than these visually assessed ones (Ae_c usually reaches 20° for anisotropic materials, as shown by Bourrat et al. [2]). The calculated extinction angles increase with the wavelength because of the variation of the optical indices of graphite within the visible range (e.g., the optical indices measured by Greenaway et al. [7]). In the present case, Ae_c was obtained by means of an Halogen lamp, i.e., at wavelengths higher than that used for the spectroscopic measurements. This feature indicates that the optical indices of pyrocarbons vary similarly to those of graphite throughout the visible spectrum and that the extinction angle measurement of pyrocarbons should be done at a precise wavelength.

Since the extraordinary absorption coefficient of graphite is equal to zero in the visible [7] and [8], the theoretical optical phase shift of graphite can be calculated thanks to Eq. (6) and expressed as δ , the retardation:

$$\varphi = \arctan \left(\frac{-2n_i k_o}{n_i^2 - n_o^2 - k_o^2} \right) \quad \text{and} \quad \delta = \frac{\varphi \lambda}{2\pi},$$

where λ is the wavelength, n_i is the index of the medium above the sample (air, water, oil, etc.) and n_o and k_o are the ordinary refraction and absorption coefficients of graphite or pyrocarbons.

Optical phase shifts obtained from the extinction curves agree well with the theoretical values for graphite at 550 nm (29 nm in air, when considering the optical indices determined by Greenaway et al. [7], or 41 nm after Ergun et al. [8], see Table 3). Moreover, the experimental values are very close to the optical phase shift measured by Fitz Gerald et al. [12] in mesophase and graphite using a Berek compensator (48 and 58 nm, respectively). On the other hand, they are significantly lower than the values (270–300 nm) given for pyrocarbons by Oberlin [3] using a λ retarder plate and the Michel-Levy standard table method usually applicable in transmission.

Results from Ae_{550} , Fig. 4a, show three main groups of pyrocarbons.

- $14 < Ae_{550} < 19^\circ$ rough and regenerative laminars from different processes all belong to the anisotropic pyrocarbons, even if their OA values can reach almost 40° .
- $7 < Ae_{550} < 10$ smooth laminars fulfill this condition. Their OA vary from 40° up to 80° .
- $Ae_{550} \approx 5^\circ$ dark laminar exhibits the lowest anisotropy of all the pyrocarbons of this study.

Even if values are lower than with the classical technique (Ae_c) the results are in complete agreement with previous ones from Bourrat et al. [2]. The traditional way overestimates the value of Ae , but the physical meaning is not questionable: the discrepancy is well understood.

The optical phase shift (δ) is also found to vary approximately linearly with the anisotropy as measured by electron diffraction. As δ is the phase shift between the beams reflected along and perpendicular to the graphene planes, its value must decrease, as the anisotropy is decreasing, from that for graphite down to zero for isotropic materials. This is experimentally verified in Fig. 4b.

Ordinary and extraordinary reflectance coefficients deduced from the extinction curves (R_o e.c. and R_e e.c.) are found to be equivalent to the ones measured by a classical way (R_o cl. and R_e cl.), Fig. 5.

While it must be noted that all regenerative pyrocarbons exhibit a higher ordinary reflectance coefficient, Fig. 5a, there exists no gap in the R_e values, Fig. 5b. The gap in the ordinary reflectance coefficient might explain the $Ae = f(OA)$ step-like diagram of Fig. 4a. ReL pyrocarbons would normally be expected from their OA values, (higher than RL), to exhibit intermediate Ae values from 10° to 14° . However, their high ordinary reflectance coefficients make the extinction angle values greater than 14° . This creates a step in the $Ae = f(OA)$ diagram which suggests that the extinction angle might not be an exclusive function of anisotropy. Complementary works on electronic properties and Raman spectroscopy on the same pyrocarbons [13] indicate that this effect could be related to a $sp^{2+\epsilon}$ rehybridization effect of a great amount of carbon atoms in ReL. R_o is an objective measure for distinguishing among rough- and regenerative-laminar microstructures that both possess a high Ae value (high anisotropy). Interestingly, rough and regenerative laminar microstructures can be differentiated by measuring the retardation which can be easily measured with a compensator attachment on a regular microscope (Fig. 6 and the discussion in the last part of this paper).

5. Discussion and conclusions

(1) An accurate method for the determination of the extinction angle of pyrocarbons is described, which is based on the modeling and the fitting of the extinction curve. A theoretical upper limit of 24.8° for the measure is derived from the calculation of the extinction curve of graphite. This agrees with the measurement as the experimental extinction angles reach $18\text{--}19^\circ$, taking into account the experimental limitations (e.g., the high numerical opening necessary to collect the signal).

(2) There exists a good correlation between the classical measurement with the eyes (Ae_c) and the precise measure at $\lambda = 550\text{ nm}$ with the extinction curve and the spectrometer:

$Ae_c = 1.27 * Ae_{550}$. The classical way overestimates the value of Ae but the discrepancy is well understood. So the classic measure of Ae can be now established as an accurate method with the advantage of being very rapid and obtained on any episcopic microscope equipped with a rotating analyzer.

(3) Three other parameters can be deduced from the extinction curves:

- The ordinary and extraordinary reflectance coefficients. They were found to be close to the values measured by the conventional method.
- The optical phase shift of pyrocarbons. The values obtained are consistent with the theoretical values for graphite and also consistent with those measured on mesophase with a Berek compensator [12]. It is linearly related to the anisotropy as measured by TEM (OA).

(4) Taking into account both the extinction angle, Ae , and phase shift, δ , it is possible to distinguish the main pyrocarbon families, i.e., dark laminar, smooth laminar, regenerative laminar and rough laminar as shown on the plot of Fig. 6. This plot includes all the different processes and pyrocarbons produced at low temperature known up to date. The results show that the different regenerative (ReL) and rough laminars (RL) obtained by different processes and which have a high anisotropy (high Ae) do not all have the same optical retardation δ . Two families can be well distinguished on the basis of their retardation. This is attributed to the nature of the lattice defects present in ReL and well identified by Raman spectroscopy [11] and [13]. Their nature is in line with the different growth mechanisms observed among low-temperature-pyrocarbons [14].

Acknowledgements

The authors thank Snecma Propulsion Solide and CNRS for their grant to JMV, and the ‘Conseil Régional d’Aquitaine’ for financial support for the PARISS™ system acquisition. Professor R. Judd Diefendorf from Clemson University is warmly acknowledged for his teaching us the basis of his technique and a decisive support in this project.

References

- [1] Diefendorf RJ, Tokarsky WE. The relationships of structure to properties in graphite fibers Part I. US Air Force report; AFML-TR-72-133, 1972.
- [2] X. Bourrat, B. Trouvat, G. Limousin, G. Vignoles and F. Doux, Pyrocarbon anisotropy as measured by electron diffraction and polarized light, *J Mater Res* **15** (2000), pp. 92–101.
- [3] A. Oberlin, Pyrocarbons, *Carbon* **40** (2002) (1), pp. 7–24.
- [4] J.M. Vallerot and X. Bourrat, Optical anisotropy measurement of pyrocarbons. In: A. Linares-Solano and D. Cazorla-Amoros, Editors, *Proc of CARBON'03 (International Conference on Carbon) Oviedo Spain 6–10 July 2003*, Grupo Espanol del Carbon Publisher (2003) CD: ISBN 84-607-8305-7.
- [5] E.N. Cameron, Ore microscopy, John Wiley Publisher (1961) [chapter 5].
- [6] J. Woodrow, B.W. Mott and H.R. Hayes, Analysis of polarized light reflected from absorbing materials at normal incidence, *Proc Phys Soc B* **56** (1952) (8), pp. 603–615.
- [7] D.L. Greenaway, G. Harbeke, F. Bassani and E. Tosatti, Anisotropy of the optical constants and the band structure of graphite, *Phys Rev* **178** (1969) (3), pp. 1340–1348.
- [8] S. Ergun, J.B. Yasinsky and J.R. Townsend, Transverse and longitudinal optical properties of graphite, *Carbon* **5** (1967), pp. 403–408.
- [9] B. Granoff, Microstructures of carbon-felt/carbon-matrix composites, *Carbon* **12** (1974), pp. 681–683.
- [10] M.L. Lieberman and H.O. Pierson, Effect of gas phase conditions on resultant matrix pyrocarbons, *Carbon* **12** (1974), pp. 233–242.
- [11] X. Bourrat, A. Fillion, R. Naslain, G. Chollon and M. Brendlé, Regenerative laminar pyrocarbon, *Carbon* **40** (2002), pp. 2931–2945.
- [12] J.D. Fitz Gerald, G.H. Taylor and G.M. Pennock, Microstructure of hydrogenated coal-tar pitches, *Carbon* **32** (1994), pp. 1389–1395.
- [13] Vallerot JM, Bourrat X, Mouchon A, Chollon G. Quantitative structural and textural assessment of laminar pyrocarbons through Raman spectroscopy, electron diffraction and few other techniques. *Carbon*, in press.
- [14] H. Le Poche, X. Bourrat, M.A. Dourges, G.L. Vignoles and F. Langlais, Influence of the gas phase maturation on the CVD/CVI process and the micro-texture of laminar pyrocarbon from propane. In: M. Singh *et al.*, Editors, ACS, Westerville (OH) (2004), pp. 81–86.

Figures

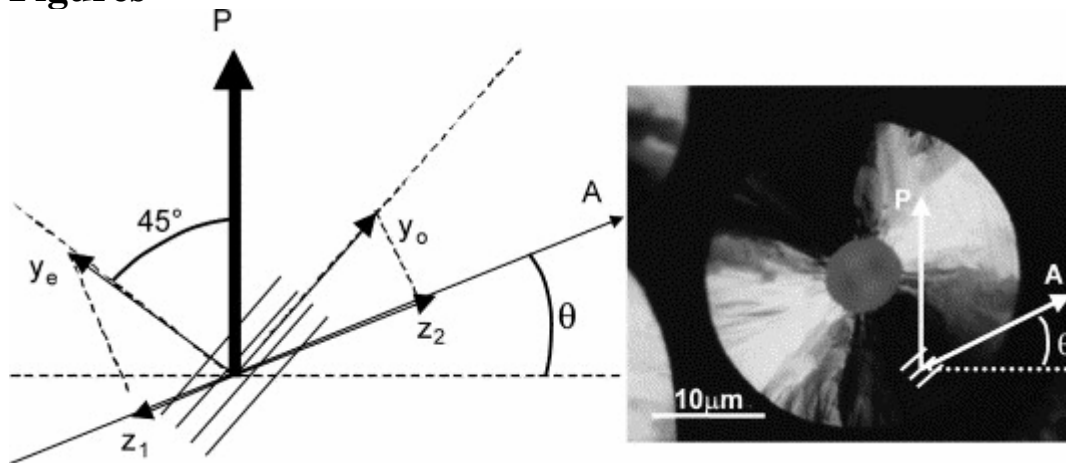


Fig. 1. The incident polarized wave P is reflected in two waves along the two main directions of the graphite. These two waves will interfere onto the plane of the analyzer, rotated by an angle θ from its crossed position.

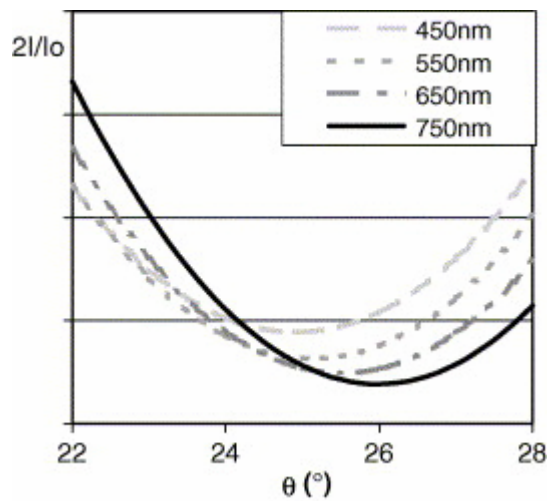


Fig. 2. Shift of the extinction curves and its minimum, A_e , with the increasing wavelength.

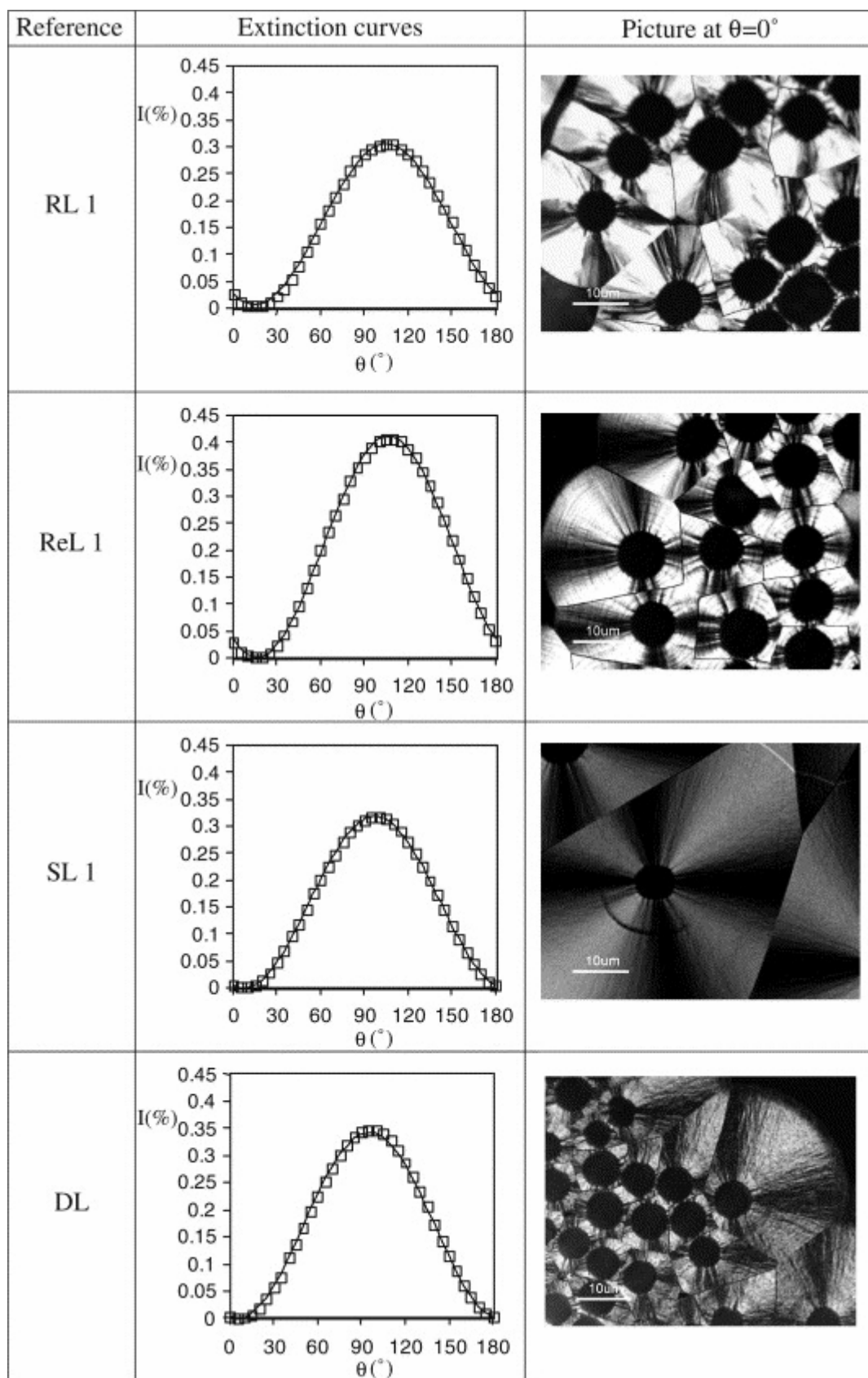


Fig. 3. Normalized extinction curves of the four main types of pyrocarbons. Experimental points (full squares) are fitted by the full-line curves. Corresponding pictures of the pyrocarbons under crossed polars are also presented.

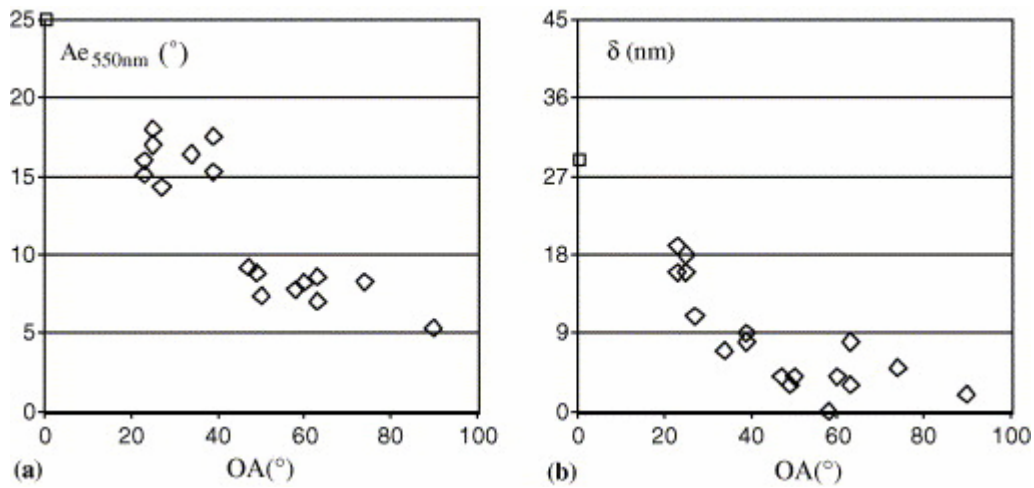


Fig. 4. Variation (a) of the extinction angle and (b) of the optical phase shift versus the orientation angle. Values of graphite, at $OA = 0^\circ$, are deduced from the optical constants of Greenaway et al.

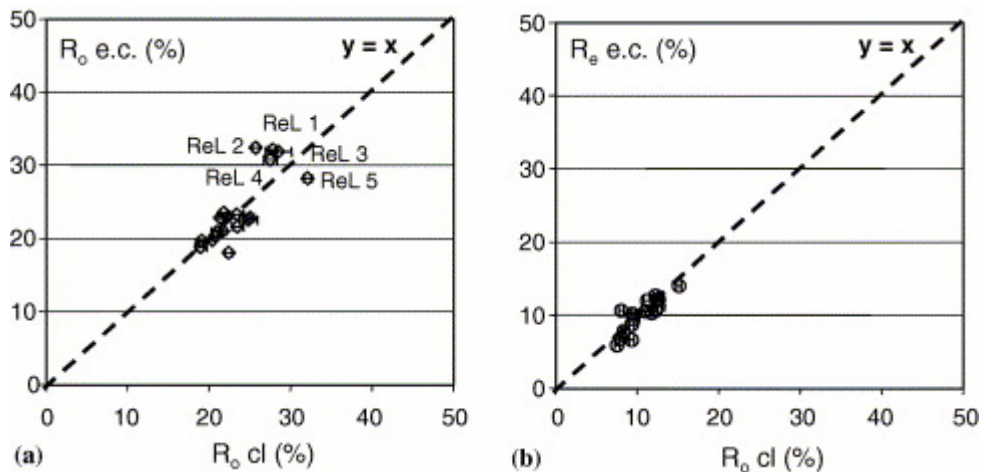


Fig. 5. Relations between (a) the ordinary and (b) the extraordinary reflectance coefficients determined at 550 nm by means of the extinction curves (e.c.) or by the classical method (cl).

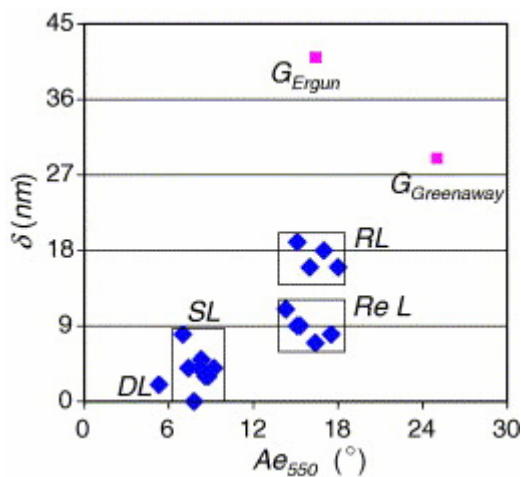


Fig. 6. Plot of the optical phase shift, δ , versus extinction angle Ae_{550} for the different pyrocarbons.

Tables

Table 1. : Name and production process of the samples

Sample	Process
ReL 1	CVD/CVI
ReL 2	CVD/CVI
ReL 3	CVD/CVI
ReL 4	TGCVD
ReL 5	CVD/CVI
SL 1	CVD/CVI
SL 2	CVD/CVI
SL 3	CVD/CVI
SL 4	CVD/CVI
SL 5	CVD/CVI
SL 6	CVD/CVI
SL 7	CVD/CVI
SL 8	CVD/CVI
RL 1	CVD/CVI
RL 2	CVD/CVI
RL 3	CVD/CVI
RL 4	CVD/CVI
DL	CVD/CVI

Table 2. : A_{e550} , δ , R_o and R_e , are deduced from the extinction curves

Sample	A_{e_c} (°)	A_{e550} (°)	δ (nm)	R_o (%)	R_e (%)	OA (°)
ReL 1	19–20	17.5	8	32.1	8.7	39
ReL 2	19–20	15.3	9	32.4	10.6	39
ReL 3	19–20	16.4	7	31.9	9.5	34
ReL 4	19–20	15.1	9	30.8	10.2	?
ReL 5	19–20	14.3	11	28.2	10.1	27
SL 1	10–11	8.8	3	20.9	11.2	49
SL 2	10–11	8.2	4	18.8	10.5	60
SL 3	10–11	9.2	4	23.5	12.2	47
SL 4	10–11	7.8	0	21.0	12.1	58
SL 5	10–11	7.4	4	18.0	10.6	50
SL 6	10–11	7.0	8	19.7	12.0	63
SL 7	10–11	8.3	5	22.8	12.6	74
SL 8	10–11	8.6	3	19.8	10.3	63
RL 1	19–20	17.0	18	22.8	6.6	25
RL 2	19–20	15.1	19	23.3	7.8	23
RL 3	19–20	18.0	16	22.5	5.9	25
RL 4	19–20	16.0	16	21.6	6.8	23
DL	5–6	5.3	2	20.3	14.0	90

A_{e_c} is the classical extinction angle value (visually measured) and OA the orientation angle (reference anisotropy determined by TEM-SAD).

Table 3. : Retardation δ (nm) calculated for different media in the case of graphite, using absorption coefficients given by Ergun and Greenaway

Media	n_i index	Ergun's indices	Greenaway's indices
Air	1	41	29
Water	1.334	59	41
Glycerin	1.456	65	45