



**HAL**  
open science

## **Posteucritic magmatism on Vesta: Evidence from the petrology and thermal history of diogenites**

A. Yamaguchi, Jean-Alix J-A Barrat, Ito Motoo, Marcel Bohn

### ► **To cite this version:**

A. Yamaguchi, Jean-Alix J-A Barrat, Ito Motoo, Marcel Bohn. Posteucritic magmatism on Vesta: Evidence from the petrology and thermal history of diogenites. *Journal of Geophysical Research*, 2011, 116, pp.E08009. <10.1029/2010JE003753>. <insu-00617210>

**HAL Id: insu-00617210**

**<https://insu.hal.science/insu-00617210v1>**

Submitted on 26 Feb 2012

HAL is a multi-disciplinary open access archive for the deposit and dissemination of scientific research documents, whether they are published or not. The documents may come from teaching and research institutions in France or abroad, or from public or private research centers.

L'archive ouverte pluridisciplinaire HAL, est destinée au dépôt et à la diffusion de documents scientifiques de niveau recherche, publiés ou non, émanant des établissements d'enseignement et de recherche français ou étrangers, des laboratoires publics ou privés.



HAL Authorization

## Posteucritic magmatism on Vesta: Evidence from the petrology and thermal history of diogenites

Akira Yamaguchi,<sup>1,2</sup> Jean-Alix Barrat,<sup>3,4</sup> Motoo Ito,<sup>5,6,7</sup> and Marcel Bohn<sup>4</sup>

Received 7 October 2010; revised 5 May 2011; accepted 1 June 2011; published 26 August 2011.

[1] We report on the petrology and the thermal histories of 13 diogenites in order to constrain the formation processes of the Vestan crust. We classify diogenites into unequilibrated and equilibrated diogenites in a scheme similar to that for basaltic eucrites. Pyroxenes in unequilibrated diogenites are chemically zoned, indicating that they crystallized rapidly from melts and escaped from global crustal metamorphism. The presence of unequilibrated diogenites casts doubt on the fact that all the diogenites formed at depth in the parent body, as commonly thought. Some diogenites probably crystallized in shallow intrusions or were extruded on the surface. These facts strengthen the geochemical evidence that diogenites and eucrites are not directly cogenetic and suggest that at least some diogenites have intruded the early formed eucritic crust. Thus, diogenites are certainly not the products of the crystallization of the magma ocean that triggered the differentiation of Vesta but are more likely cumulates associated with a later stage of magmatism. Furthermore, the intrusion of diogenites could have significantly thickened the early formed crust, making it difficult to excavate deep-seated olivine mantle by moderate impact events.

**Citation:** Yamaguchi, A., J.-A. Barrat, M. Ito, and M. Bohn (2011), Posteucritic magmatism on Vesta: Evidence from the petrology and thermal history of diogenites, *J. Geophys. Res.*, 116, E08009, doi:10.1029/2010JE003753.

### 1. Introduction

[2] In September 2007, the Dawn spacecraft was launched to the asteroid belt and will begin studying the asteroid 4 Vesta in July 2011 [Russell *et al.*, 2007]. Vesta is not just one more small body that will be studied by a spacecraft. This asteroid is thought to be the parent body of the largest group of achondrites, the so-called HED (howardites, eucrites and diogenites) meteorites [McCord *et al.*, 1970; Binzel and Xu, 1993]. Infrared spectroscopy indicates that Vesta displays a basaltic surface with some ultramafic spots, but unfortunately the Earth-based observations have insufficient resolution to accurately describe the various lithologic units or to precisely define their relationships [Binzel *et al.*, 1997; Gaffey, 1997; Shestopalov *et al.*, 2010]. Indeed, the planned remote sensing studies that will be undertaken by the Dawn spacecraft should allow the identification of mineralogically distinct areas on Vesta, and may well provide a geological framework for the various types of HED meteorites.

[3] At present, the differentiation history of Vesta has been mostly inferred from petrological, geochemical and geochronological studies of HED meteorites, but no consensus model has yet emerged. Depletions of siderophile elements in HED meteorites and homogeneous oxygen isotopic compositions suggest that igneous portions of HED meteorites are products of extensive melting and crystallization in a magma ocean [Hewins and Newsom, 1988; Righter and Drake, 1997; Greenwood *et al.*, 2005]. Eucrites are considered to be residual basaltic liquids that extruded onto the surface whereas diogenites are orthopyroxene-rich ultramafic cumulates whose parental magmas are not well constrained. Earlier studies suggest that diogenites are cumulate rocks directly crystallized from a magma ocean [e.g., Mason 1962; Righter and Drake, 1997; Takeda, 1997; Warren, 1997]. However, the bulk chemical data and major and trace elements compositions of diogenitic pyroxenes indicate much more complex petrogenetic histories. Several workers have pointed out that eucrites and diogenites cannot be comagmatic on the basis of these bulk data. Mittlefehldt [1994] and Fowler *et al.* [1995] proposed that diogenites crystallized from multiple magmas. The parental melts of diogenites could have formed from the remelting of the magma ocean cumulates [Barrat, 2004; Barrat *et al.*, 2008]. Moreover, rare earth element variations (and particularly the deep negative Eu anomalies) of many diogenites can be explained in terms of interaction of the parental magmas and early formed eucritic crust [Barrat *et al.*, 2010].

[4] To better understand the geologic processes that operated on the Vestan crust, detailed investigations on the geochemistry and thermal histories of diogenites are required. Here, we report on the textures and mineralogy of 13 di-

<sup>1</sup>National Institute of Polar Research, Tokyo, Japan.

<sup>2</sup>Department of Polar Science, School of Multidisciplinary Science, Graduate University for Advanced Sciences, Tokyo, Japan.

<sup>3</sup>Université Européenne de Bretagne, Brest, France.

<sup>4</sup>Domaines Océaniques, UMR 6538, Université de Brest, CNRS, IUEM, Plouzané, France.

<sup>5</sup>Robert M Walker Laboratory for Space Science, NASA Johnson Space Center, Houston, Texas, USA.

<sup>6</sup>Lunar and Planetary Institute, Houston, Texas, USA.

<sup>7</sup>Now at Kochi Institute for Core Sample Research, JAMSTEC, Nankoku, Japan.

**Table 1.** Characteristics of Samples Used in This Study<sup>a</sup>

	Pyroxene Mg'	Type		Eq/Uneq	Pyroxene	
					Fe-Mg Zoning	Ca Zoning
A-87147	75.1	Dio	Breccia	Eq	no	no
A-880785	73.4–74.8	Dio	Breccia	Eq	no	no
A-880936	71.2–75.0	Dio	Breccia	Eq	no	no
A-881239	74.1–75.2	Dio	Breccia	Eq	no	no
A-881377	74.8–75.4	Ol D	Breccia	Intermediate	no	yes
A-881526	75.4	Dio	Breccia	Eq	no	no
A-881548	78.0	Ol D	Breccia	Eq	no	no
A-881838	70.3–70.5	Dio	Breccia	Eq	no	no
A-881839	69.8–70.5	Dio	Breccia	Eq	no	no
A-881944	70.8–71.2	Dio	Breccia	Eq	no	no
Dho 700	69.1–69.8	Dio	Unbrecciated	Uneq	yes	yes
NWA 1877	75.6–75.9	Ol D	Breccia	Eq	no	no
Y-74097	74.7–74.9	Dio	Recrystallized	Uneq	yes	yes

<sup>a</sup>Mg' = molar Mg/(Mg + Fe) × 100. Dio, diogenite, Ol D, olivine-bearing diogenite. Eq, equilibrated diogenite; Uneq, unequilibrated diogenite.

genites and demonstrate that some of them have certainly not formed in a deep plutonic setting, as commonly thought. These data have profound implications for the history of the parent body, and imply that diogenites, at least in part, could be among the most recent magmatic rocks formed on Vesta. This paper is a companion work to the paper by *Barrat et al.* [2010].

## 2. Samples and Analytical Procedures

[5] We studied Dhofar (Dho) 700, northwest Africa (NWA) 1877, two hot desert diogenites, and 11 other diogenites from Antarctica. The polished thin sections (PTSs) of Asuka and Yamato diogenites (Asuka (A)-87147,71-1, A-880785,51-1, A-880936,51-1, A-881239,51-1, A-881377,63-1, A-881526,51-1 and, 59-1, A-881548,31-1 and, 51-2, A-881838,32-1, A-881839,51-1, A-881944,51-2, Yamato (Y)-74097,64-1) were supplied from the National Institute of Polar Research, Tokyo (NIPR). Two PTSs were made from different portions of the main mass of A-881548 (110.2 g) to ensure the distribution of olivine was understood. These samples were also allocated for companion geochemical studies [*Barrat et al.*, 2008, 2010]. Characteristics of the samples studied are presented in Table 1.

[6] PTSs of these diogenites were examined using an optical microscope equipped with both transmitted and reflected light, a scanning electron microscope (SEM) (JSM5900LV) equipped with an energy dispersive spectrometer (EDS) (Oxford Link-ISIS), and an electron microprobe analyzers (EPMA) (JXA8200) at NIPR, and SX-100 at IUEM in Brest). Mineral compositions are presented in Tables 2–4. Mineral modes were determined by X-ray mapping. Silica polymorphs were identified using a laser micro-Raman spectrometer (JASCO NRS-1000) at NIPR.

## 3. Results

### 3.1. Textures

#### 3.1.1. Dhofar 700

[7] Dho 700 is one of the rare unbrecciated diogenites and displays a granular texture composed of pyroxene (~99 vol %) with minor phases such as plagioclase, chromite, olivine, silica minerals (cristobalite and tridymite), Fe-FeS, and weathering products (Figure 1a). Pyroxene grains (~3 mm in the largest dimension) generally are elongated with irregular

outlines. Elongated, wedge-shaped crystals of plagioclase and silica minerals (<100 μm thick) occur interstitially between the pyroxene grains (Figure 2a). Fe-FeS occur as tiny inclusions (<a few to several μm) in the orthopyroxene grain and as isolated inclusions (20–30 μm in size), and are in many cases replaced by weathering products. Chromite occurs as chains of tiny grains (<3–4 μm) along healed fractures, as small irregular grains (<3–4 μm), and exceptionally as larger grains (~200 × 80 μm) surrounded by thin plagioclase rims. The weathering products (carbonate?) occur along cracks and fractures pervasively. One thin section contains pore spaces.

[8] The rims of granular pyroxenes have thin (~1–2 μm thick) discontinuous lamellae or wormy blebs of augite along (100) (Figure 1b). The rims in many cases have sharp streaks under crossed polarized light. The orthopyroxene cores are dusty due to the presence of fine (<a few μm) inclusions of Fe-FeS. The orthopyroxene grains contain sparse mafic-rich inclusions (~100–200 μm in size) which are rounded, subrounded, and in some cases irregular.

#### 3.1.2. Ferroan Diogenites A-881838 and A-881839

[9] A-881838 and A-881839 are brecciated ferroan diogenites (Mg' (= molar Mg/(Mg + Fe) × 100) = 69.8–70.5). They are probably paired because their textures and mineral compositions are similar (Figure 1c). These diogenites are composed of pyroxenes (~96–97 vol %) with minor amounts of plagioclase, silica minerals, chromite, and FeS. The A-881839 section contains a greater abundance of plagioclase (3 vol %) in contrast to that of A-881838 (~1 vol %). Clasts and fragments are often >4 mm. A-881839 PTS contains areas (~1.5 mm in size) of brecciated domains composed of plagioclase grains (<0.2 mm) and elongated plagioclase (~0.1 × 0.2 mm). A-881838 contains a large isolated grain of chromite (1.4 × 0.6 mm) attached to thin films of plagioclase.

[10] Some grains of orthopyroxene contain fine (less than several microns) blebs and fine (less than a few microns) augite lamellae concentrated along the grain boundaries (Figure 1d). Occasionally, rare grains of augite (several tens of microns) can be found. The pyroxene textures are similar to that of inverted pigeonite in Y-75032 type diogenite [e.g., *Takeda and Mori*, 1985; *Saiki et al.*, 2001].

#### 3.1.3. Olivine-Bearing Diogenites A-881548 and NWA 1877

[11] A-881548 and NWA 1877 are slightly brecciated diogenites mainly composed of pyroxene and olivine (i.e.,

**Table 2.** Bulk Chemical Compositions (wt %) of Pyroxene of Diogenites Studied Here<sup>a</sup>

Pyroxene Number of analyses	A-87147		A-880785		A-880936		A-881239		A-881377		A-881377		A-881548		A-881838		A-881839	
	Pyx1	Clast1	Pyx2	Clast2	Pyx1	Pyx2	Pyx1	Pyx2	Clast1	Clast2	Clast3	Pyx1	Pyx1	Pyx2	Clast1	Clast2	Pyx1	Pyx2
SiO <sub>2</sub>	53.9(2)	54.7(2)	54.6(3)	54.6(2)	54.5(6)	54.1(7)	54.1(3)	54.3(3)	53.7(5)	53.7(5)	54.3(3)	54.3(3)	54.5(4)	54.6(2)	53.4(2)	53.5(3)	54.0(4)	54.0(4)
Al <sub>2</sub> O <sub>3</sub>	1.09(5)	0.57(3)	0.32(1)	0.38(1)	0.66(3)	0.60(5)	1.27(15)	1.06(3)	1.34(4)	1.34(4)	1.03(4)	1.06(3)	0.96(5)	1.00(7)	1.03(10)	1.13(8)	0.98(6)	0.98(6)
CaO	1.41(3)	1.05(2)	1.01(4)	1.11(3)	0.98(3)	0.99(8)	1.44(22)	1.23(8)	1.49(22)	1.49(22)	1.29(14)	1.23(8)	1.23(24)	1.21(28)	2.02(17)	1.99(17)	1.99(19)	1.99(19)
FeO	15.4(3)	16.0(2)	18.2(5)	16.7(3)	15.8(3)	16.4(5)	15.4(2)	15.3(2)	15.6(5)	15.6(5)	15.5(2)	14.0(3)	14.0(3)	13.9(4)	17.9(2)	17.9(2)	18.0(3)	18.0(3)
MgO	26.1(2)	26.6(2)	25.3(4)	25.9(1)	26.9(3)	26.6(3)	26.2(2)	26.3(2)	25.9(4)	25.9(4)	26.6(2)	26.6(2)	27.6(3)	27.6(3)	23.8(2)	24.0(2)	24.1(2)	24.1(2)
MnO	0.50(1)	0.53(1)	0.63(2)	0.58(1)	0.50(1)	0.50(1)	0.49(1)	0.49(1)	0.48(1)	0.48(1)	0.49(1)	0.49(1)	0.48(1)	0.48(1)	0.62(1)	0.61(1)	0.62(2)	0.62(2)
Cr <sub>2</sub> O <sub>3</sub>	0.58(7)	0.42(5)	0.38(5)	0.45(3)	0.42(6)	0.40(19)	0.72(7)	0.69(2)	0.71(8)	0.71(8)	0.58(6)	0.44(10)	0.44(10)	0.42(9)	0.69(4)	0.64(8)	0.67(8)	0.67(8)
TiO <sub>2</sub>	0.13(1)	0.07(1)	0.03(1)	0.04(1)	0.09(1)	0.09(1)	0.12(2)	0.11(1)	0.13(2)	0.13(2)	0.12(1)	0.11(1)	0.11(1)	0.11(1)	0.12(2)	0.11(2)	0.14(2)	0.14(2)
Total	99.2	99.9	100.5	99.8	99.8	99.6	99.7	99.5	99.3	99.3	99.9	99.2	99.2	99.3	99.7	99.9	99.9	100.5
Si	1.97	1.98	1.99	1.99	1.97	1.97	1.96	1.97	1.96	1.96	1.97	1.97	1.97	1.97	1.97	1.97	1.97	1.97
Al	0.05	0.02	0.01	0.02	0.03	0.03	0.05	0.05	0.06	0.06	0.04	0.05	0.04	0.04	0.04	0.05	0.04	0.04
Ca	0.06	0.04	0.04	0.04	0.04	0.04	0.06	0.05	0.06	0.06	0.05	0.06	0.06	0.04	0.08	0.08	0.08	0.08
Fe	1.47	0.48	0.55	0.51	0.48	0.51	0.47	0.46	0.47	0.47	0.44	0.48	0.42	0.42	0.55	0.55	0.55	0.55
Mg	1.42	1.44	1.37	1.41	1.45	1.44	1.42	1.42	1.41	1.41	1.44	1.48	1.48	1.49	1.31	1.31	1.31	1.31
Mn	0.02	0.02	0.02	0.02	0.02	0.02	0.02	0.02	0.01	0.01	0.01	0.01	0.01	0.01	0.02	0.02	0.02	0.02
Cr	0.02	0.01	0.01	0.01	0.01	0.01	0.02	0.02	0.02	0.02	0.02	0.01	0.01	0.01	0.02	0.02	0.02	0.02
Ti	0.00	0.00	0.00	0.00	0.00	0.00	0.00	0.00	0.00	0.00	0.00	0.00	0.00	0.00	0.00	0.00	0.00	0.00
Total	4.00	4.00	4.00	4.00	4.00	4.01	4.00	3.99	4.00	4.00	4.00	4.00	4.00	4.00	4.00	4.00	4.00	3.99
Wo	2.8	2.1	1.9	2.2	1.9	2.0	2.9	2.5	3.0	3.0	2.6	2.4	2.4	2.4	4.1	4.0	4.0	4.0
En	73.0	73.3	73.5	71.8	73.8	72.9	73.0	73.6	72.5	72.5	73.4	75.9	75.9	76.1	67.4	67.6	67.6	67.6
Fs	24.2	24.7	24.6	26.0	24.3	25.2	24.1	24.0	24.5	24.5	24.0	21.7	21.7	21.5	28.5	28.3	28.4	28.4
Pyroxene Number of analyses	A-881839	A-881839	A-881839	A-881839	A-881944	A-881944	A-881944	A-881944	A-881944	A-881944	A-881944	A-881944	A-881944	A-881944	NWA 1877	NWA 1877	Y-74097	Y-74097
SiO <sub>2</sub>	53.5(7)	53.4(3)	53.6(4)	53.6(4)	53.4(2)	53.8(2)	53.8(3)	53.7(3)	53.3(2)	53.2(4)	53.2(4)	53.4(4)	54.7(8)	54.5(9)	54.5(9)	54.5(3)	54.5(2)	54.5(2)
Al <sub>2</sub> O <sub>3</sub>	0.84(13)	0.92(10)	1.04(6)	1.04(6)	0.98(17)	1.04(6)	0.92(10)	0.51(17)	0.68(17)	0.72(24)	0.57(2)	0.57(2)	0.31(2)	0.29(1)	0.29(1)	0.60(20)	0.48(13)	0.48(13)
CaO	1.99(78)	2.04(38)	2.02(12)	2.02(12)	2.09(86)	1.96(14)	1.93(17)	1.48(44)	1.71(25)	1.93(33)	1.70(68)	1.70(68)	0.74(2)	0.74(2)	0.74(2)	1.12(15)	1.01(9)	1.01(9)
FeO	18.1(5)	18.1(4)	18.0(4)	18.0(4)	17.5(8)	17.8(3)	17.6(2)	18.5(3)	18.5(4)	19.0(2)	18.7(4)	18.7(4)	15.5(6)	15.9(1.0)	15.9(1.0)	15.9(2)	15.8(1)	15.8(1)
MgO	23.8(6)	23.9(3)	24.1(2)	24.1(2)	24.1(5)	24.2(1)	24.4(2)	24.7(5)	24.2(4)	23.8(5)	24.1(8)	24.1(8)	27.5(5)	27.6(4)	27.6(4)	26.4(3)	26.5(2)	26.5(2)
MnO	0.62(2)	0.61(1)	0.62(1)	0.62(1)	0.60(3)	0.62(1)	0.62(1)	0.67(1)	0.67(1)	0.66(1)	0.66(1)	0.66(2)	0.53(2)	0.53(1)	0.53(1)	0.53(1)	0.53(1)	0.53(1)
Cr <sub>2</sub> O <sub>3</sub>	0.52(12)	0.66(7)	0.68(6)	0.68(6)	0.71(4)	0.73(7)	0.68(7)	0.56(11)	0.57(12)	0.61(10)	0.56(10)	0.56(10)	0.24(4)	0.21(4)	0.21(4)	0.67(11)	0.60(10)	0.60(10)
TiO <sub>2</sub>	0.15(2)	0.14(2)	0.13(1)	0.13(1)	0.13(2)	0.12(1)	0.13(1)	0.04(2)	0.04(2)	0.05(2)	0.04(2)	0.04(2)	0.04(1)	0.04(1)	0.04(1)	0.06(1)	0.06(1)	0.06(1)
Total	99.5	99.7	100.1	100.1	99.8	100.2	100.0	100.1	99.6	100.0	99.6	99.8	99.6	99.8	99.8	99.7	99.4	99.4

Oxygen = 6



**Table 3.** Representative Analyses of Pyroxene, Olivine, and Chromite in Diogenites Studied Here

	Pyroxene <sup>a</sup>		Olivine <sup>b</sup>				
	Dho700 <sup>c</sup>	Dho700 <sup>d</sup>	A881377	A881548	Dho 700 <sup>c</sup>	NWA1877	
SiO <sub>2</sub>	55.0	54.5	38.2	38.6	38.3	37.6	
Al <sub>2</sub> O <sub>3</sub>	0.59	0.25	0.04	<0.01	<0.01	<0.01	
CaO	1.13	1.51	0.04	0.01	0.08	0.03	
FeO	15.4	19.0	25.8	21.8	25.8	25.0	
MgO	26.9	24.5	36.3	40.0	36.6	37.0	
MnO	0.69	0.64	0.52	0.47	0.75	0.51	
Cr <sub>2</sub> O <sub>3</sub>	0.34	0.27	<0.02	0.02	0.04	<0.02	
TiO <sub>2</sub>	0.05	<0.02	<0.02	0.02	<0.02	0.01	
V <sub>2</sub> O <sub>3</sub>	0.03	<0.02	<0.01	<0.01	<0.01		
Total	100.2	100.7	100.8	100.9	101.5	100.1	
Si	1.98	1.99	2.00	1.98	2.00	1.98	
Al	0.03	0.01	0.00	0.00	0.00	0.00	
Ca	0.04	0.06	0.00	0.00	0.00	0.00	
Fe	0.46	0.58	1.13	0.94	1.12	1.10	
Mg	1.45	1.33	2.83	3.07	2.84	2.91	
Mn	0.02	0.02	0.02	0.02	0.03	0.02	
Cr	0.00	0.00	0.00	0.00	0.00	0.00	
Ti	0.01	0.00	0.00	0.00	0.00	0.00	
V	0.00	0.00	0.00	0.00	0.00	0.00	
Total	3.99	4.00	6.00	6.01	6.00	6.02	
Wo <sup>c</sup>	2.2	3.0	Mg'	71.5	76.6	71.7	72.5
En <sup>c</sup>	74.0	67.5					
Fs <sup>c</sup>	23.7	29.5					

	Chromite <sup>b</sup>								
	A-87147	A-880785	A-880936	A-881239	A-881377	A-881377	A-881548	A-881838	A-881838
SiO <sub>2</sub>	<0.02	0.05	0.04	0.03	0.19	0.16	<0.02	0.17	<0.02
Al <sub>2</sub> O <sub>3</sub>	9.96	10.0	10.1	12.3	6.97	15.9	14.3	6.42	15.0
CaO	0.02	0.01	0.02	<0.01	0.18	0.05	<0.01	0.09	0.01
FeO	29.5	28.8	28.8	28.5	30.5	30.9	28.3	32.3	31.0
MgO	2.83	3.54	3.40	3.91	1.88	2.87	4.08	1.51	2.40
MnO	0.61	0.58	0.61	0.56	0.70	0.65	0.65	0.66	0.64
Cr <sub>2</sub> O <sub>3</sub>	55.8	55.9	55.7	54.1	56.8	47.4	51.1	56.5	49.3
TiO <sub>2</sub>	0.69	0.75	0.61	0.82	0.50	0.81	0.69	1.08	0.70
V <sub>2</sub> O <sub>3</sub>	0.34	0.57	0.56	0.56	0.56	0.40	0.62	0.62	0.48
Total	99.7	100.2	99.2	100.3	98.3	99.0	99.1	99.4	99.5
Si	0.00	0.00	0.00	0.00	0.01	0.01	0.00	0.01	0.00
Al	0.82	0.82	0.82	0.99	0.59	1.28	1.15	0.55	1.21
Ca	0.00	0.00	0.00	0.00	0.01	0.00	0.00	0.01	0.00
Fe	1.72	1.66	1.67	1.63	1.85	1.77	1.62	1.95	1.78
Mg	0.29	0.36	0.35	0.40	0.20	0.29	0.42	0.16	0.25
Mn	0.04	0.03	0.04	0.03	0.04	0.04	0.04	0.04	0.04
Cr	3.08	3.06	3.06	2.92	3.25	2.56	2.76	3.22	2.67
Ti	0.04	0.04	0.03	0.04	0.03	0.04	0.04	0.06	0.04
V	0.02	0.03	0.03	0.03	0.03	0.02	0.04	0.04	0.03
Total	6.01	6.01	6.01	6.00	6.02	6.02	6.01	6.03	6.01
Usp	1.8	2.0	1.6	2.1	1.4	2.1	1.8	3.0	1.8
Sp	20.6	20.7	20.9	24.7	15.2	32.6	28.9	14.1	30.6
Chm	77.5	77.4	77.5	73.1	83.4	65.3	69.4	82.9	67.5

	A-881944	A-881944	Dho 700	Dho 700 <sup>c</sup>	NWA 1877	Y-74097	Y-74097
SiO <sub>2</sub>	0.11	0.03	0.05	0.07	<0.02	0.03	0.06
Al <sub>2</sub> O <sub>3</sub>	5.53	19.1	14.0	14.1	7.04	7.83	14.7
CaO	0.06	0.01	0.06	0.02	<0.01	0.01	<0.01
FeO	31.0	30.7	27.5	26.9	28.8	24.8	24.9
MgO	1.49	2.86	4.66	4.84	2.88	5.98	6.49
MnO	0.67	0.59	0.58	0.73	0.67	0.58	0.52
Cr <sub>2</sub> O <sub>3</sub>	58.9	45.1	51.0	50.6	59.2	58.9	51.8
TiO <sub>2</sub>	0.72	0.77	0.97	0.49	0.50	0.77	0.73
V <sub>2</sub> O <sub>3</sub>	0.58	0.49	0.47	0.63		0.66	0.50
Total	98.5	99.2	99.3	98.4	99.0	99.6	99.7

**Table 3.** (continued)

	A-881944	A-881944	Dho 700	Dho 700 <sup>e</sup>	NWA 1877	Y-74097	Y-74097
Si	0.01	0.00	0.00	0.00	0.00	0.00	0.00
Al	0.47	1.51	1.12	1.14	0.59	0.64	1.15
Ca	0.00	0.00	0.00	0.00	0.00	0.00	0.00
Fe	1.88	1.72	1.56	1.54	1.71	1.43	1.38
Mg	0.16	0.28	0.47	0.49	0.31	0.62	0.64
Mn	0.04	0.03	0.03	0.04	0.04	0.03	0.03
Cr	3.37	2.39	2.74	2.74	3.33	3.22	2.73
Ti	0.04	0.04	0.05	0.03	0.03	0.04	0.04
V	0.03	0.03	0.03	0.03		0.04	0.03
Total	6.01	6.00	6.01	6.02	6.01	6.01	6.01
Usp	2.0	1.9	2.5	1.3	1.3	2.0	1.9
Sp	12.0	38.0	28.3	29.0	14.9	16.2	29.2
Chm	86.0	60.1	69.2	69.7	83.8	81.8	69.0

<sup>a</sup>Oxygen = 6.<sup>b</sup>Oxygen = 8.<sup>c</sup>Type 1 (Mg-rich) inclusion.<sup>d</sup>Type 2 inclusion.<sup>e</sup>Wo, En, Fs refer only to pyroxenes.

Lindstrom [1993]. These diogenites are characterized by granoblastic textures mostly composed of pyroxene with traces of chromite, silica minerals, and Fe-FeS (Figure 3). The Yamato-A type diogenites show a macroscopic structure where fine-grained areas up to 3 cm rimmed by the coarse-grained area [Takeda *et al.*, 1981]. In the Y-74097 section (64-1) we have examined, there are large domains (more than several millimeters) of fine-grained area surrounded by veins of clear coarser-grained area (Figure 3a). Pyroxenes in the coarse-grained areas are clear whereas fine-grained pyroxenes are dusty due to the presence of tiny (<1–2  $\mu\text{m}$ ) FeS inclusions. Large isolated chromite grains (about 0.5 mm) are surrounded by rims of clear pyroxene, and contain fine inclusions of FeS and Fe metal. Tiny chromite grains (about a few microns) are scattered throughout the section. Thin irregular grains of silica minerals (<100  $\mu\text{m}$ ) occur interstitially along the coarse-grained veins. Cristobalite and tridymite were identified by Raman spectroscopy. Troilite and minor Fe metal occur as fine inclusions in pyroxene in the fine-grained areas and coarser grains (~50–200  $\mu\text{m}$ ) in the coarse-grained veins.

### 3.1.6. A-87147, A-880785, A-880936, A-881239, A-881526, and A-881944

[16] These diogenites are typical brecciated monomict diogenites consisting of clasts of orthopyroxenes (up to several mm) set in a clastic matrix. Minor minerals (<a few %) include chromite, Fe-FeS, augite, plagioclase, and silica minerals. Chromite and Fe-FeS occur as isolated grains and tiny crystals along healed cracks. Silica minerals occur as tiny inclusion in orthopyroxene.

## 3.2. Mineral Chemistry of Pyroxenes, Olivine, and Spinel Minerals

[17] The Mg' values of bulk pyroxenes in diogenites studied here vary from 69.8 to 78.1 covering the range of reported diogenites [e.g., Fowler *et al.*, 1994; Beck and McSween., 2010; Shearer *et al.*, 2010] (Figure 4). The ferroan diogenites (Mg' = 69.8–70.5) (A-881838 and A-881839) contain orthopyroxene with blebs and thin lamellae of augites indicating that these crystals were inverted from

low-Ca pigeonites [Takeda and Mori, 1985]. Minor element abundances ( $\text{Al}_2\text{O}_3$ ,  $\text{TiO}_2$ , and  $\text{Cr}_2\text{O}_3$ ) are within the range of diogenites (Figure 5) but slightly lower than those of Y-75032 diogenites. The olivine compositions in A-881377, and olivine diogenites, A-881538 and NWA 1877 are limited within individual meteorites. The Mg' of olivine in these diogenites (A-881377: 71.2; A-881548: 76.2; NWA 1877: 71.2) are in the range of known olivine-bearing diogenites (Mg' = 73–63) [e.g., Shearer *et al.*, 2010]. Chromites in A-881388/89, A-881377 and A-881944 have large ranges of Al/Cr ratios (Figure 6).

[18] Three diogenites, Dho 700, A-881377 and Y-74097 have pyroxenes which are chemically zoned. The orthopyroxene grains in Dho 700 display a normal igneous zoning (~ $\text{Wo}_2\text{En}_{69}\text{Fs}_{29}$  to ~ $\text{Wo}_4\text{Mg}_{66}\text{Fe}_{30}$ ). The Mg' values increase gradually toward the cores from the rims (~68 to ~71). The CaO abundances decrease toward the cores from ~2 wt% to ~1 wt%. The  $\text{Al}_2\text{O}_3$  and  $\text{TiO}_2$  are slightly enriched in the rims compared to the cores ( $\text{Al}_2\text{O}_3$  from 0.3 to 0.4 wt% to 0.9–1.0 wt% and  $\text{TiO}_2$  from <0.01–0.03 wt% to 0.1 wt%) (Figure 7). In Y-74097 pyroxenes, we found prominent chemical zoning (Mg', CaO,  $\text{Al}_2\text{O}_3$ ) in the large fine/coarse domains in our section (Figure 3). Takeda *et al.* [1981] reported the chemical zoning only in the coarse-grained areas. The chemical zoning extends over the entire recrystallized orthopyroxene crystals. The abundances of these elements continuously increase toward the cores with no gaps except near the rims. The presence of chemical zoning indicates that the fine-grained areas were originally single crystals before recrystallization. Original grain boundaries are more fractured than the interiors causing rapid grain growth forming clear coarse-grained rims. The wavy profiles observed near the rims in Dho 700 and Y-74097 pyroxenes could be due to the presence of small augite grains exsolved from the host pyroxene and minor brecciation and recrystallization (for Y-74097) (Figure 3a). Except these features, the Mg' values and minor element abundances of Dho 700 and Y-74097 pyroxenes are broadly correlated. In contrast, in A-881377, minor elements show the same kind of zoning as Dho 700 or Y-74097, but the Mg-Fe zoning is not clear.

**Table 4.** Chemical Compositions of Plagioclase and Silica Minerals in Diogenite Studied Here

	Plagioclase				
	A-881377	A-881377	A-881838	Dho 700	Dho 700
SiO <sub>2</sub>	45.2	51.0	46.3	45.0	48.3
Al <sub>2</sub> O <sub>3</sub>	34.6	31.2	34.0	35.4	32.6
K <sub>2</sub> O	0.02	0.12	0.02	0.01	0.08
Na <sub>2</sub> O	0.95	2.88	1.15	0.45	1.29
CaO	18.4	15.0	18.3	19.5	17.2
FeO	0.35	0.21	0.31	0.54	0.77
MgO	0.03	0.09	0.03	0.08	0.21
MnO	0.05	<0.03	<0.03	<0.03	0.04
Cr <sub>2</sub> O <sub>3</sub>	0.03	<0.03	<0.03	<0.03	0.03
TiO <sub>2</sub>	0.03	<0.03	0.03	<0.03	<0.03
Total	99.6	100.5	100.1	100.9	100.5
Oxygen = 8					
Si	2.09	2.31	2.13	2.06	2.21
Al	1.89	1.67	1.84	1.91	1.75
K	0.00	0.01	0.00	0.00	0.00
Na	0.08	0.25	0.10	0.04	0.11
Ca	0.91	0.73	0.90	0.96	0.84
Fe	0.01	0.01	0.01	0.02	0.03
Mg	0.00	0.01	0.00	0.01	0.01
Mn	0.00	0.00	0.00	0.00	0.00
Cr	0.00	0.00	0.00	0.00	0.00
Ti	0.00	0.00	0.00	0.00	0.00
Total	5.00	4.98	5.00	5.00	4.97
Or	0.1	0.7	0.1	0.1	0.5
Ab	8.5	25.5	10.2	4.0	11.9
An	91.3	73.8	89.7	95.9	87.6
Silica Minerals					
	A-881377	A-881838	Dho 700	Y-74097	
SiO <sub>2</sub>	99.2	99.2	99.4	98.8	
Al <sub>2</sub> O <sub>3</sub>	0.36	0.39	0.17	0.58	
K <sub>2</sub> O	0.08	0.02	0.04	0.03	
Na <sub>2</sub> O	<0.02	<0.02	<0.02	0.21	
CaO	0.16	0.20	0.06	0.15	
FeO	0.46	0.35	0.38	0.44	
MgO	<0.01	<0.01	<0.01	0.01	
MnO	0.03	<0.03	<0.03	<0.03	
Cr <sub>2</sub> O <sub>3</sub>	<0.03	0.12	<0.03	0.04	
TiO <sub>2</sub>	0.05	0.09	0.08	0.06	
Total	100.4	100.4	100.1	100.3	
Oxygen = 8					
Si	3.97	3.97	3.98	3.96	
Al	0.02	0.02	0.01	0.03	
K	0.00	0.00	0.00	0.00	
Na	0.00	0.00	0.00	0.00	
Ca	0.00	0.00	0.00	0.00	
Fe	0.00	0.00	0.00	0.02	
Mg	0.01	0.01	0.00	0.01	
Mn	0.02	0.01	0.01	0.01	
Cr	0.00	0.00	0.00	0.00	
Ti	0.00	0.00	0.00	0.00	
Total	4.02	4.02	4.01	4.03	

### 3.3. Inclusions in Dho 700 Pyroxenes

[19] Two types of inclusions can be defined (types 1 and 2) (Figures 2b and 2c). Type 1 (Mg-rich) inclusions are mainly composed of olivine and pyroxene with higher Mg' values than those of the host granular orthopyroxene. We found only two type 1 inclusions in two PTSs. One of them (A1M1),

200 × 160 μm in size, is composed of olivine (~40 vol %), pyroxene (~40 vol %), chromite, Fe metal, FeS, holes (plucked out during PTS preparation?), and weathering products. The Mg' values of olivine in type 1 inclusions are relatively constant at ~71–72 (Figure 8). The pyroxene inside the A1M1 inclusion has relatively constant compositions of Mg' (~75), CaO (1.2 wt%) but the abundances of Al<sub>2</sub>O<sub>3</sub> (0.6 wt%) and Cr<sub>2</sub>O<sub>3</sub> (0.17–0.4 wt%) increase toward the rim. The FeO/MnO ratios (~23–24) of these inclusions are slightly lower than those of the host pyroxene (~25–28). The type 1 (Mg-rich) inclusions and the host granular pyroxenes are not equilibrated. The Mg' values of pyroxene increase toward the center of the inclusions (up to ~77.9). There is steep compositional gradient across the boundaries between inclusions and the pyroxene host due to partial equilibration (Figure 8). The compositional gradients of Mg and Fe in contact with the host pyroxene are anisotropic because the diffusion rates are controlled by crystallographic orientation. The CaO, Al<sub>2</sub>O<sub>3</sub> and Cr<sub>2</sub>O<sub>3</sub> contents (~1.05–1.15, < 0.03, < 0.03 wt%, respectively) of the inclusions are lower than those of the host pyroxene. The TiO<sub>2</sub> contents (~0.05 wt%) are similar to those of the host pyroxene.

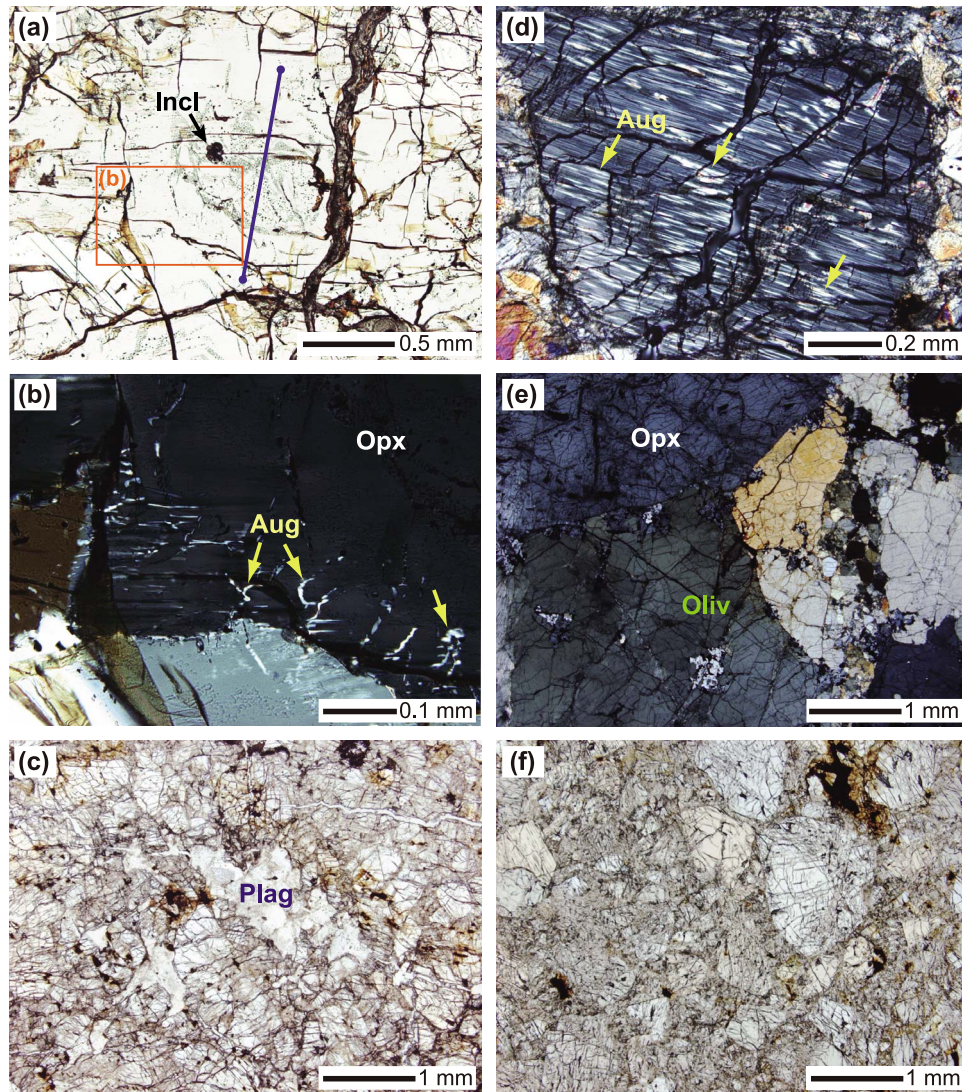
[20] The type 2 inclusions mainly consist of low-Ca pyroxene with lesser amounts of augite, Fe metal, FeS, silica minerals, and weathering products. We found three type 2 inclusions in one PTS. Type 2 inclusions have low-Ca pyroxene with similar Mg' to the host orthopyroxene. The Mg' values and CaO contents of low-Ca pyroxene are almost identical to those of the host pyroxenes. The contents of Cr<sub>2</sub>O<sub>3</sub> and Al<sub>2</sub>O<sub>3</sub> are 0.1–0.8 and 0.2–1.0 wt% respectively and mostly lower than in the host orthopyroxene. The TiO<sub>2</sub> contents (~0.05 wt%) are similar to those of the host pyroxene and Mg-rich inclusions. On an Al<sub>2</sub>O<sub>3</sub> and TiO<sub>2</sub> diagram, four inclusions plot on the trend of Dho 700 host pyroxene, but some of them have lower Al<sub>2</sub>O<sub>3</sub> and TiO<sub>2</sub> (Figure 5). Augite compositions are Wo<sub>42.9–43.5</sub>En<sub>43.8–44.4</sub>.

[21] The chemical similarities indicate that these inclusions and the host pyroxene are genetically related. The type 1 inclusions are more likely crystals formed from more primitive diogenitic melts (which were certainly genetically linked with Dho 700). It is likely that these inclusions were fragments of early phases from that melt that was parental to this diogenite or were those of diogenites seated in the deep crust.

## 4. Discussion

### 4.1. Unequilibrated and Equilibrated Diogenites

[22] Our observations demonstrate that the subsolidus thermal history of diogenites is variable, and two petrologic types of diogenites can be defined: equilibrated diogenites have homogeneous pyroxenes with respect to major and minor elements whereas unequilibrated diogenites preserve igneous zoning that formed during initial crystallization. Most diogenites are equilibrated in agreement with plutonic origin [e.g., *Mittlefehldt, 1994; Beck and McSween, 2010; Shearer et al., 2010*]. However, there are at least five diogenites that have chemically zoned pyroxenes: Garland [*Fowler et al., 1994*], NWA 4215 [*Barrat et al., 2006*], Dho 700, and Y-74097 (this work). A-881377 pyroxene lacks Mg-Fe zoning but has Ca zoning, indicating this meteorite is an intermediate type. The occurrence of diogenites containing



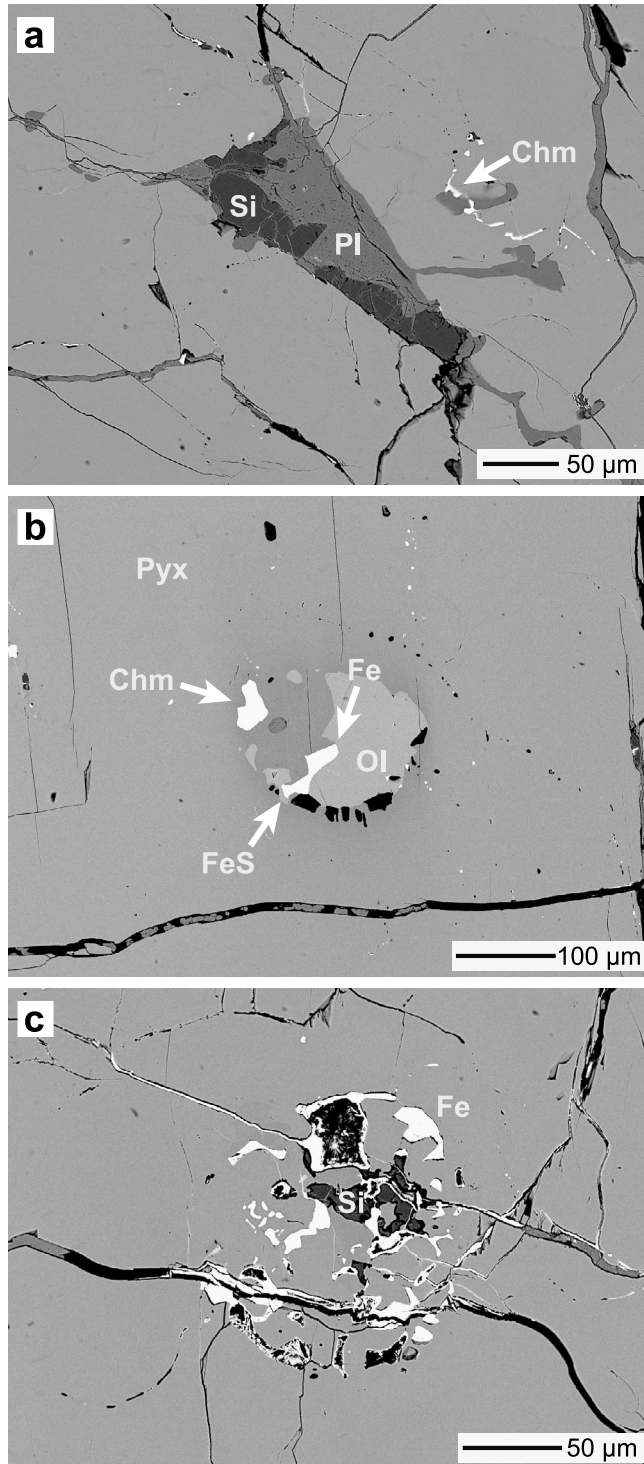
**Figure 1.** Photomicrographs of diogenites studied here. (a) Overview of Dho 700 showing a granular texture. Note the presence of Mg-rich inclusion (Incl). Blue line refers to locations for compositional profiles in Figure 7a. Plane light. (b) Enlarged view in the orange box in Figure 1a. Thin worms and blebs of augite (Aug) located the rim of orthopyroxene (Opx). Crossed polarized view. (c) Overview of A-881839. There are assemblages of plagioclase grains (the middle). (d) Inverted pigeonite in A-881839. Blebs and lamellae of augite (Aug) set in orthopyroxene host. Crossed polarized view. (e) Olivine diogenite, A-881548. Crossed polarized view. (f) Overview of A-881377. Plane light.

zoned pyroxenes argues against a very slow cooling at depth as expected for the magma ocean cumulates.

[23] Pyroxenes in Dho 700 and Y-74097 have prominent chemical zoning of Mg', CaO, and Al<sub>2</sub>O<sub>3</sub> from cores to rims (Figures 3 and 7). A-881377 has similar zonings of CaO and Al<sub>2</sub>O<sub>3</sub> in pyroxene while the Mg' zoning is not clear. There are three possible causes of the chemical zoning: Fe metasomatism [Mittlefehldt and Lindstrom, 1997; Barrat *et al.*, 2011], interaction with trapped liquid, and rapid cooling during initial crystallization of magma [e.g., Fowler *et al.*, 1994]. Correlation among Mg', CaO, and Al<sub>2</sub>O<sub>3</sub> rules out the possibility that Dho 700 and Y-74097 suffered from Fe metasomatism as seen in unequilibrated eucrites [Barrat *et al.*, 2011]. Interaction of trapped liquid seems unlikely. The composition profiles are continuous with no diffusion

bands near the rims (Figure 7). The scarcity of plagioclase (in Dho 700, Y-74097 and A-881377) and the bulk trace element abundances of these diogenites indicate almost no trapped liquids in these diogenites [Barrat *et al.*, 2008, 2010; this study]. Thus, we suggest that the chemical zonings in pyroxene were produced during crystallization from the melts. The relationships between Ca, Al and Mg' values are consistent with igneous crystallization; similar chemical zonings are observed in unequilibrated basaltic eucrites [Pun and Papike, 1996]. The presence of the Mg-rich inclusions with steep compositional gradient in the cores of pyroxenes (Figures 2 and 7) strongly argues that Dho 700 cooled rapidly.

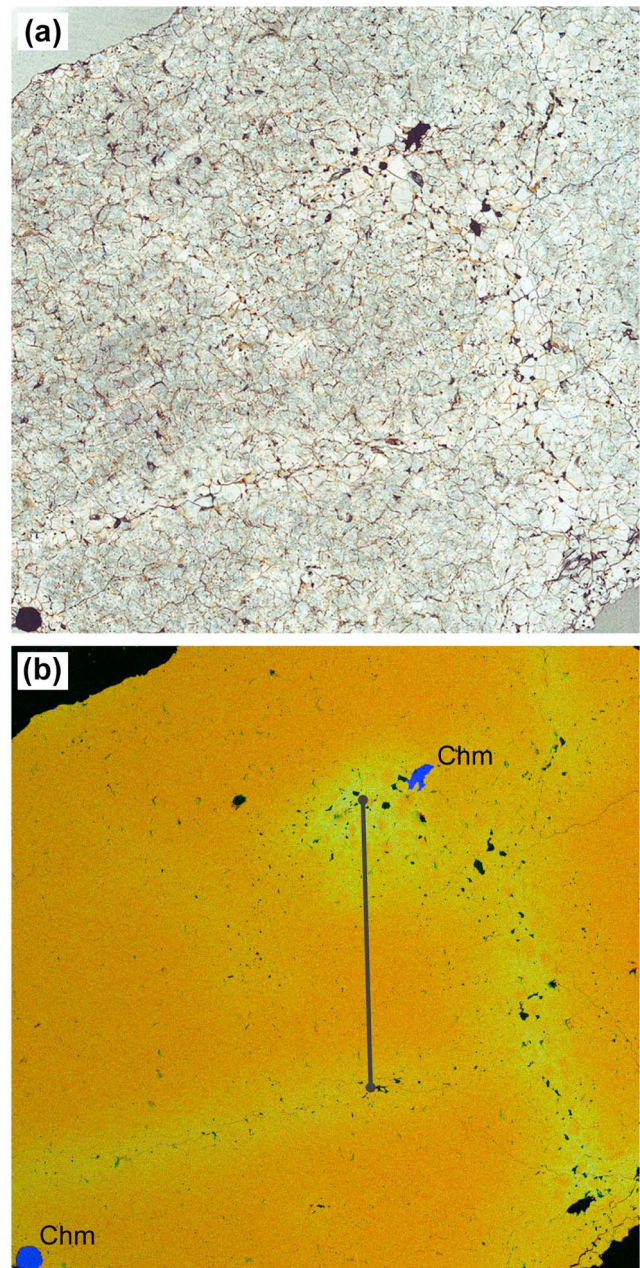
[24] Although Y-74097 was crushed by shock and recrystallized, this meteorite still preserves the evidence of original igneous texture. We found continuous, chemical



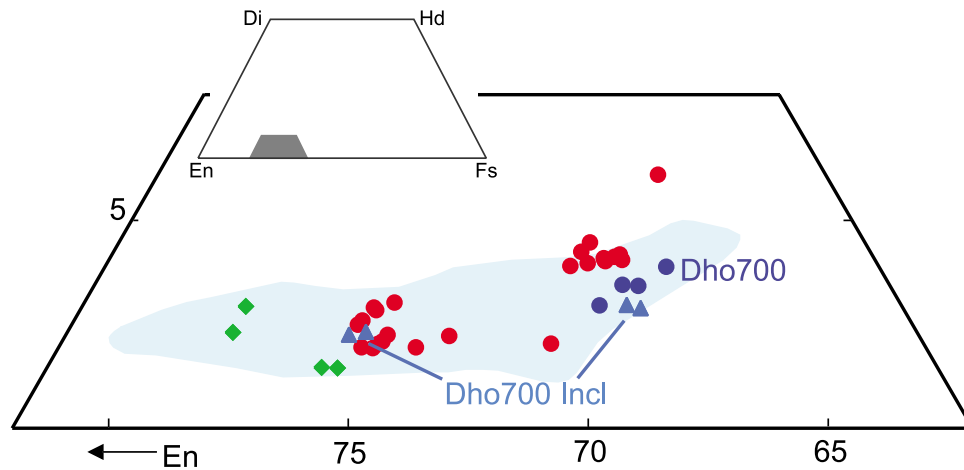
**Figure 2.** Backscattered electron images of Dho 700. (a) Silica minerals (tridymite and cristobalite) (Si) and plagioclase (Pl) interstitially occur between pyroxene grains. Tiny elongated inclusions of chromite (Chm) occur. (b) Type 1 (Mg-rich) inclusion (see Figure 1a) composed of olivine (Ol), pyroxene, chromite (Chm), FeS, and Fe metal. (c) Type 2 inclusion in Dho 700, composed of pyroxene, Fe metal, and silica minerals.

zoning from the center of the fine-grained portions to clear veins of coarse-grained material (Figures 3 and 7b). The zoning pattern is similar to that found in Dho 700 pyroxenes. The observed chemical zoning indicates that the domains are relicts of large zoned single pyroxene crystals. The shock and thermal events that recrystallized orthopyroxenes were not strong enough to wipe out the original igneous zoning.

[25] The cooling rates of the unequilibrated diogenites are not easy to constrain. In the case of Dho 700, an estimation is possible from the compositional profiles of Mg' across the



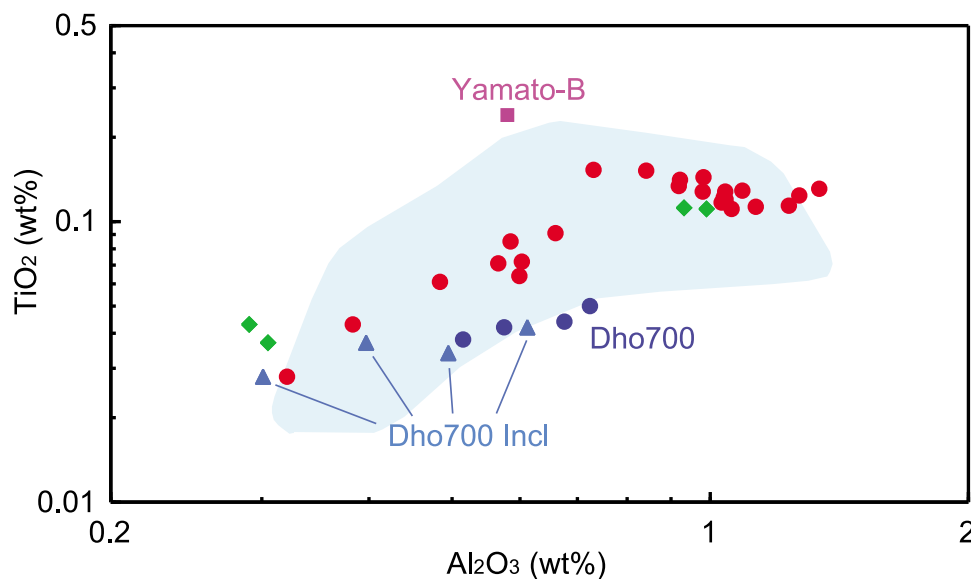
**Figure 3.** (a) Photomicrograph and (b) combined X-ray map of Y-74097 of the same area. Mg, red; Ca, green; and Al, blue. Y-74097 is a finely recrystallized rock (Figure 3a) but has clear remnant igneous zoning (Figure 3b). Black line in Figure 3b refers to locations for compositional profiles in Figure 7b. Width is 1 cm.



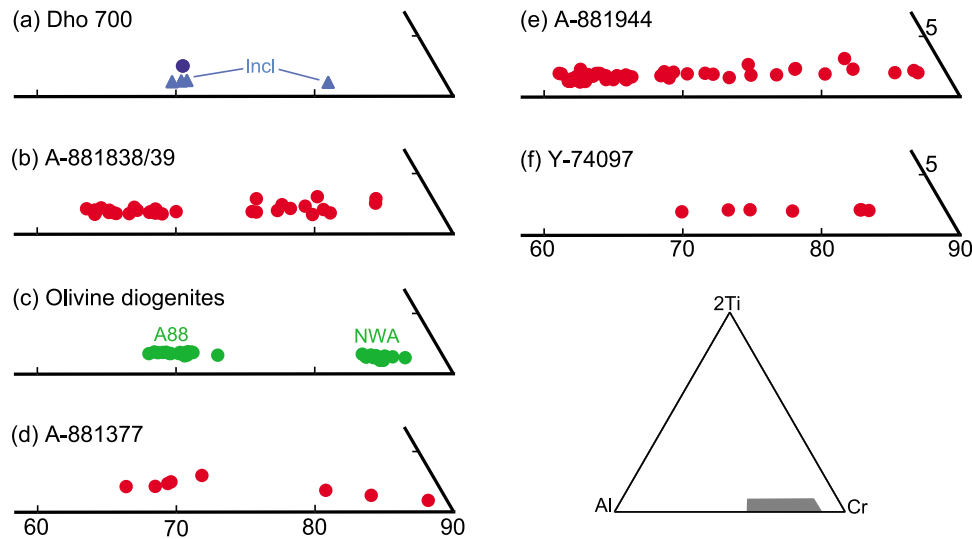
**Figure 4.** Portion of pyroxene quadrilateral for average compositions of pyroxene. Blue circles and triangles, Dho 700; green diamonds, olivine diogenites; and red circles, other diogenites studied here. Shaded area (light blue) represents the compositional range of other diogenites [Mittlefehldt, 1994; Fowler *et al.*, 1994; Beck and McSween, 2010; Shearer *et al.*, 2010].

boundary between the Mg-rich inclusion and host pyroxene (Figure 9). Since the Mg-rich inclusion is located near the core of the host pyroxene, the inclusion was trapped at the early stage of initial crystallization from the melt. Thus, the cooling rates estimated from the profile provide the lower limit of the initial cooling rate. Cooling rate calculations were made assuming a homogeneous sphere in a compositional homogeneous medium [Crank, 1975]. We used the interdiffusion coefficients of Fe-Mg in orthopyroxene along the *c* and *b* directions [Ganguly and Tazzoli, 1994]. We chose the initial temperature of 1250°C that corresponds to the approximate liquidus temperature of eucrites [e.g., Stolper, 1977; Righter and Drake, 1997]. It should be noted that the

nature of parent melts is not well known and the liquidus temperatures could have been higher in inferred parent magmas of diogenites (e.g., highly pyroxene-normative magmas or boninitic magmas [Mittlefehldt, 1994; Barrat, 2004; Barrat *et al.*, 2008]). The cooling rate of Dho 700 is estimated to be several hundred °C/yr (Figure 9). The cooling rate is slower than that of an unequilibrated diogenite, NWA 4215 (10–50°C/yr from ~1200°C) using a different technique [Barrat *et al.*, 2006]. Cooling rates of other unequilibrated diogenites can be estimated by comparison with the chemical zoning in Dho 700 pyroxene. The original crystal sizes of Y-74097 pyroxene are several times larger than those of Dho 700. Using a relationship  $x^2 = Dt$  [Crank, 1975], the



**Figure 5.**  $\text{Al}_2\text{O}_3$  versus  $\text{TiO}_2$  for average pyroxenes from diogenite studied here. Blue circles and triangles, Dho 700; green diamond, olivine diogenites; and red circle, other diogenites studied here. Shaded area (light blue) represents the compositional range of other diogenites [Mittlefehldt, 1994; Fowler *et al.*, 1994; Beck and McSween, 2010]. “Yamato-B” refers to a composition of Yamato-75032 type diogenites (Type B) [Mittlefehldt and Lindstrom, 1993].

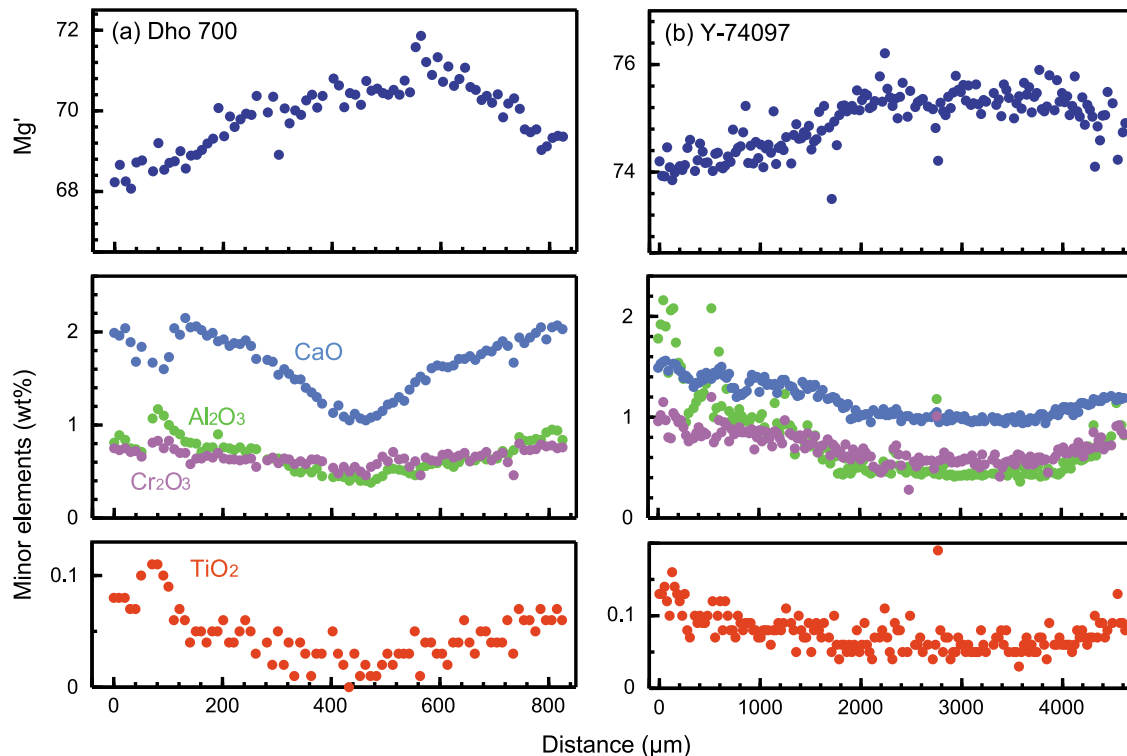


**Figure 6.** Spinel compositions plotted in part of the spinel triangle.

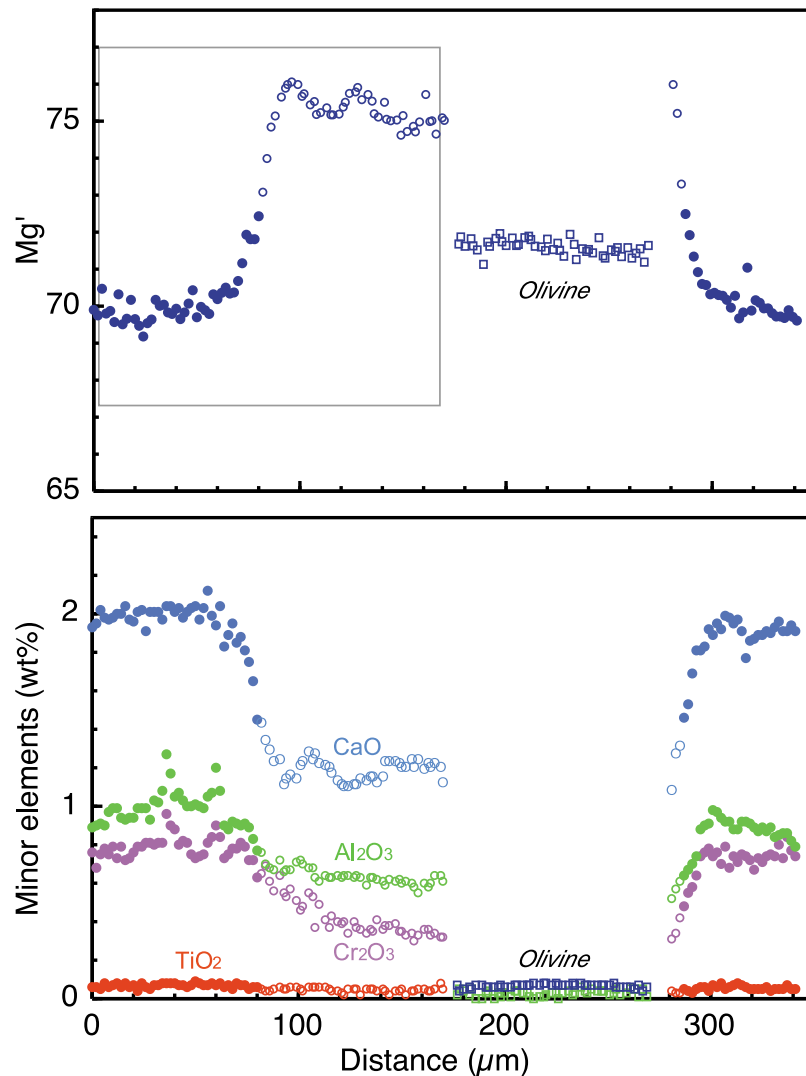
cooling rates of Y-74097 during initial crystallization would have been an order of magnitude slower. These estimated cooling rates are much faster than those expected for cumulate rocks (e.g.,  $1.6\text{--}6 \times 10^{-4} \text{C/yr}$  [Miyamoto and Takeda, 1994]).

[26] Thus, the thermal histories of diogenites are similar to those of the basaltic eucrites which display some unequilibrated specimens and others well equilibrated [e.g., Reid and Barnard, 1979; Takeda and Graham, 1991;

Yamaguchi *et al.*, 1996]. The presence of Fe-Mg zoning in pyroxene indicates that metamorphic grades of Dho 700, Y-74097, NWA 4215 and Garland could be comparable to those of type 1–3 basaltic eucrites (type 1–3) but certainly lower than those of type 5–6 eucrites [Takeda and Graham, 1991]. The A-881377 pyroxene shows Ca zoning but lacks Fe-Mg zoning, indicating the metamorphic degree comparable to type 4 eucrites (e.g., Stannern) [Takeda and Graham, 1991]. Thus, the subsolidus cooling rates of these diogenites



**Figure 7.** Compositional profiles of chemically zoned pyroxenes from (a) Dho 700 and (b) Y-74097. Pyroxenes from these diogenites show similar chemical zoning. The locations of these profiles of Figures 7a and 7b are shown in Figure 1b and 3b, respectively.



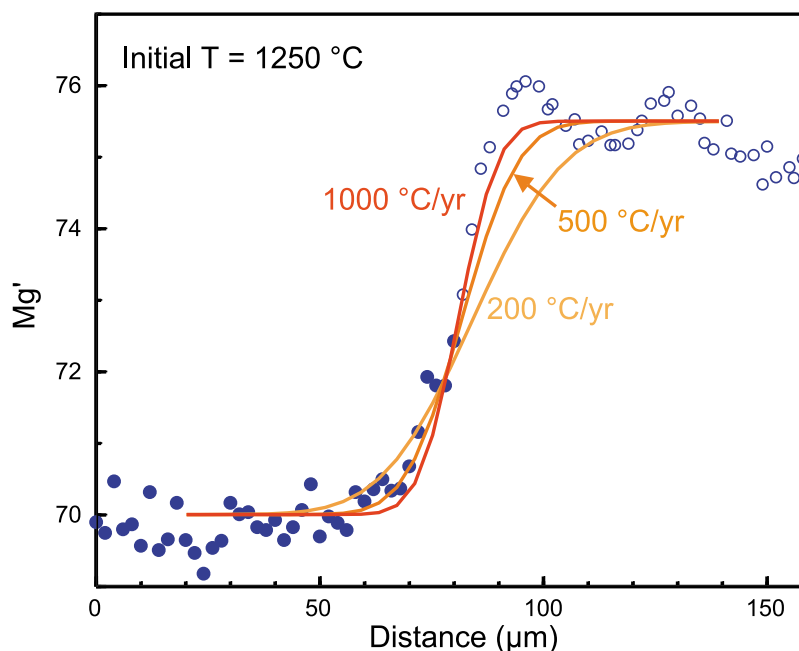
**Figure 8.** Compositional profiles across the type 1 (Mg-rich) inclusion (A1-M1) (see Figure 2b). Solid circles, pyroxene in the host; open circles, pyroxene in the inclusion; open squares, olivine in the inclusion.

are much faster than those of type 5–6 eucrites. The rapid cooling rates imply that these diogenites were emplaced in a crust or extruded on the surface. On the other hand, cooling rates of equilibrated diogenites during crystallization are not known, but certainly much slower than those of unequilibrated eucrites and diogenites.

[27] The subsolidus equilibration temperatures were estimated from two-pyroxene and spinel-orthopyroxene geothermometers which can be applied for most of the diogenites studied here. The lowest Ca contents in orthopyroxenes in the equilibrated diogenites imply very low equilibration temperatures at  $\sim 600\text{--}700^\circ\text{C}$  [Lindsley, 1983]. The closure temperatures of  $\text{Fe}^{2+}$ -Mg exchange between spinel and orthopyroxene [Hermann and Ganguly, 2001] of unequilibrated diogenites (Dho 700 and Y-74097) are relatively high from  $870$  to  $1190^\circ\text{C}$  probably suggesting rapid cooling from the melts. In contrast, the temperatures of equilibrated diogenites range from  $480$  to  $920^\circ\text{C}$  which is similar to those of other diogenites [e.g., Mittlefehldt 1994; Hermann and Ganguly, 2001; Shearer et al., 2010]. The wide range of

the equilibration temperatures of the equilibrated diogenites suggests excavation of diogenites after slow cooling in the depths [e.g., Hermann and Ganguly, 2001]. The subsolidus thermal history of diogenite is similar to that of basaltic eucrites [e.g., Yamaguchi et al., 1996, 2001].

[28] Our data show that and the thermal histories, the textural features, and the chemical features are certainly not linked. Barrat et al. [2008, 2010] classified the diogenites studied here into distinct chemical groups. An unequilibrated diogenite, Y-74013 and equilibrated diogenites, A-880785 and A-880936 are in the same chemical group. Although A-87147 and A-881377 have similar REE patterns, their textures and mineralogy are very different. A-87147 is a typical brecciated and equilibrated diogenite. A-881377 is an olivine-bearing, unequilibrated diogenite. A-881548 is an olivine diogenite but displays a REE pattern similar to the Johnstown diogenite. We suggest that diogenite plutons with variable chemical compositions were emplaced at various depths in the eucritic crust.



**Figure 9.** Enlarged view of box in Figure 8 (top) across the boundary between host pyroxene and inclusion. The calculated diffusion profiles are compared (see the text for more details).

#### 4.2. Formation of Vestan Crust: Postmagma Ocean Magmatism

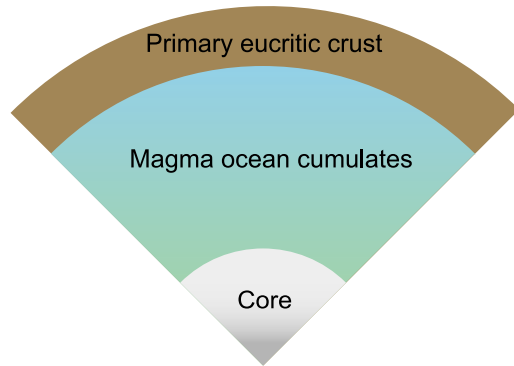
[29] Several lines of geochemical and isotopic evidence strongly suggest that the differentiation of Vesta was triggered by a magma ocean in its early history [Hewins and Newsom, 1988; Richter and Drake, 1997; Greenwood et al., 2005]. In the magma ocean model, eucrites were residual liquids after extensive fractional crystallization, and diogenites were cumulate rocks accumulated beneath the magma ocean [e.g., Richter and Drake, 1997; Takeda, 1997; Warren, 1997]. If this view is correct, at least three conditions should be fulfilled by the various eucritic and diogenitic lithologies: first, crystallization ages of diogenites should be as old or slightly older than those of eucrites; second, eucrites and diogenites should have formed from the same parental melts; third, all the diogenites should have been located in the parent body at a deep structural level, certainly below the eucritic crust, and consequently should display metamorphic reequilibration at least as severe as those of the most metamorphosed eucrites.

[30] The compositional trends of pyroxenes from HED cumulates form a single line for major elements, and have been interpreted as an evidence of crystallization of the various HED lithologies from a single magma (magma ocean) [Takeda, 1997]. On the other hand, the increasing diversity of diogenites revealed by recent finds from hot or cold deserts has challenged this point of view. First, the minor and trace element abundances indicate that diogenites crystallized from multiple magmatic bodies [Mittlefehldt, 1994; Fowler et al., 1994; Barrat et al., 2008, 2010; Shearer et al., 2010]. Interestingly, some diogenites (e.g., Tatahouine) formed from heavy rare earth element enriched melts which could have been produced by the remelting of some cumulates lithologies [e.g., Fukuoka et al., 1977] likely some magma ocean

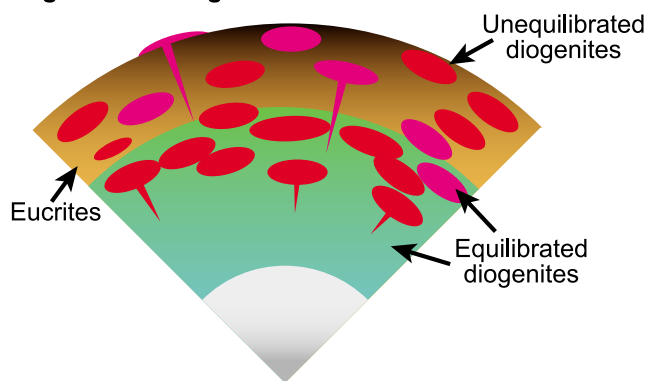
cumulates [Barrat, 2004; Barrat et al., 2008]. Furthermore, the deep negative Eu anomalies displayed by some diogenitic orthopyroxenes suggest that the parental magmas of some diogenites were contaminated by melts derived by partial melting of eucrites [Barrat et al., 2010]. Thus, it can be inferred that parental melts of some diogenites intruded the eucritic crust, and consequently are younger than eucrites.

[31] The presence of unequilibrated diogenites strengthens this conclusion. Unequilibrated diogenites crystallized rapidly and escaped from the later global crustal metamorphism [Yamaguchi et al., 1996, 1997]. Thus, these rocks are not explained by a simple layered model of the Vestan crust [e.g., Takeda, 1997]. The presence of these diogenites supports the model that diogenites represent lithologies from multiple plutons in the crust [Mittlefehldt, 1994, 2000; Shearer et al., 2010]. It is possible that diogenites and eucrites occur as neighbors in the crust consistent with the fact that diogenites and eucrites occur together in the same breccias. Furthermore, the unequilibrated diogenites provide an additional hint to the relative chronology of diogenites. If all the types of eucrites and diogenites formed in similar crustal settings, crystallization of unequilibrated diogenites has necessarily postdated the formation of equilibrated eucrites. Thus, the view that diogenites are magma ocean cumulates cannot be maintained. Petrological and geochemical data strongly suggest that diogenitic magmatism was posteucritic (Figure 10), and could have caused significant effects on the early formed eucritic crust with respect to its composition, thermal history and structure. Indeed, multiple intrusions of diogenitic plutons could have supplied heat for global crustal metamorphism of the Vestan crust, and possibly locally the partial melting of the crust [Yamaguchi et al., 1996, 1997, 2001, 2009; Barrat et al., 2007, 2010]. These intrusions caused perturbations of the trace element geochemistry of the

### Stage I. Formation of layered structure



### Stage 2. Post-magma ocean volcanism



**Figure 10.** Temporal evolution of the structure of the Vestan crust. Vesta was initially covered by a magma ocean. Its oldest crust is eucritic and formed chiefly from an accumulation of lava flows and related intrusions. The diogenitic magmatism is younger and was probably generated by the remelting of the magma ocean cumulates. The cause of the remelting is not yet understood (overturn of the cumulate pile?). Multiple batches of diogenitic parental melts intruded the early formed eucritic crust. Whereas many diogenites formed intrusions or plutons in the lower eucritic crust, some of diogenitic parental melts intruded near the surface or possibly extruded on the parent body surface to form unequilibrated diogenites (e.g., Dho 700).

country rocks as well as widespread resetting of some radiogenic ages [e.g., Yamaguchi *et al.*, 2001].

[32] Our model (as well as that of Barrat *et al.* [2010]) predicts that Vestan geology is more complicated than inferred from a simple layered crust model [e.g., Takeda, 1979, 1997]. In addition, intrusions of diogenites would have significantly reorganized the primary eucritic crust. Using the mass balance of FeO, MgO and Al<sub>2</sub>O<sub>3</sub> abundances, Delaney [1995] estimated the thicknesses of layers of eucrites and diogenites are 25 km and 40 km respectively. Although these values are strongly model dependent, we suggest that the crust of Vesta is a complicated combination of eucrites and diogenites, that could be much thicker than 60 km if all diogenites formed in intrusions located within the primary eucritic crust. Subsequently, the crust was heavily cratered by impacts. Thus, we infer that diogenite spots appear as the centers of

impact craters as well as exposed rocks on the surface, and that the deep-seated dunite layer assumed by the geochemical models [Richter and Drake, 1997; Ruzicka *et al.*, 1997] would thus hardly be excavated by impacts, even by the event that produced the large South Pole basin.

### 5. Conclusions

[33] We studied petrology and geochemistry of 13 diogenites to better understand the formation processes of Vestan crust. Diogenites are here classified into two petrologic types: equilibrated and unequilibrated diogenites. Unequilibrated diogenites preserve original chemical zoning produced by initial crystallization; they cooled rapidly from melts and escaped metamorphism; in contrast, equilibrated diogenites have pyroxene with homogeneous major element compositions. They crystallized rapidly and were subsequently strongly metamorphosed, or alternatively they cooled slowly in the deep crust. The degrees of metamorphism in unequilibrated diogenites are lower than those of equilibrated eucrites. The thermal history of diogenites supports the idea that diogenitic parental melts formed later and intruded the early formed eucritic crust. The diogenitic magmatism may have caused chemical alteration of eucrites and diogenite magmas, and bring additional heat for global crustal metamorphism. Diogenite intrusions into the eucritic crust significantly thickened the crust, which made it difficult to excavate olivine mantle of Vesta by moderate impacts.

[34] **Acknowledgments.** This research was partly supported by a Grant-in-Aid for Scientific Research from the Ministry of Education, Science, and Technology, Japan, 19540511 (A.Y.) and NIPR, Research Project Funds, KP-6 and was initiated while one of the authors (A.Y.) visited UBO in Brest. We thank the Associate Editor, D.W. Mittlefehldt, and an anonymous reviewer for constructive reviews, and R. Hewins for discussion and improvement of the English.

### References

- Barrat, J. A. (2004), Determination of the parental magmas of HED cumulates: The effects of interstitial melts, *Meteorit. Planet. Sci.*, *39*, 1767–1779, doi:10.1111/j.1945-5100.2004.tb00074.x.
- Barrat, J. A., P. Beck, M. Bohn, J. Cotten, P. Gillet, R. C. Greenwood, and I. A. Franchi (2006), Petrology and geochemistry of the fine-grained, unbrecciated diogenite northwest Africa 4215, *Meteorit. Planet. Sci.*, *41*, 1045–1057, doi:10.1111/j.1945-5100.2006.tb00503.x.
- Barrat, J. A., A. Yamaguchi, R. C. Greenwood, M. Bohn, J. Cotten, M. Benoit, and I. A. Franchi (2007), The Stannern trend eucrites: Contamination of main-group eucritic magmas by crustal partial melts, *Geochim. Cosmochim. Acta*, *71*, 4108–4124, doi:10.1016/j.gca.2007.06.001.
- Barrat, J. A., A. Yamaguchi, M. Benoit, J. Cotten, and M. Bohn (2008), Geochemistry of diogenites: Still more diversity in their parental melts, *Meteorit. Planet. Sci.*, *43*, 1759–1775, doi:10.1111/j.1945-5100.2008.tb00641.x.
- Barrat, J. A., A. Yamaguchi, B. Zanda, C. Bollinger, and M. Bohn (2010), Relative chronology of crust formation on asteroid Vesta: Insights from the geochemistry of diogenites, *Geochim. Cosmochim. Acta*, *74*, 6218–6231, doi:10.1016/j.gca.2010.07.028.
- Barrat, J. A., A. Yamaguchi, T. E. Bunch, M. Bohn, C. Bollinger, and G. Ceuleneer (2011), Possible fluid-rock interactions on differentiated asteroids recorded in eucritic meteorites, *Geochim. Cosmochim. Acta*, *75*, 3839–3852, doi:10.1016/j.gca.2011.04.013.
- Beck, A. W., and H. Y. McSween (2010), Diogenites as polymict breccias composed of orthopyroxene and harzburgite, *Meteorit. Planet. Sci.*, *45*, 850–872, doi:10.1111/j.1945-5100.2010.01061.x.
- Binzel, R. P., and S. Xu (1993), Chips off of asteroid 4 Vesta: Evidence for the parent body of basaltic achondrite meteorite, *Science*, *260*, 186–191, doi:10.1126/science.260.5105.186.
- Binzel, R. P., M. J. Gaffey, P. C. Thomas, B. H. Zellner, A. D. Storrs, and E. N. Wells (1997), Geological mapping of Vesta from 1994 Hubble

- Space Telescope images, *Icarus*, 128, 95–103, doi:10.1006/icar.1997.5734.
- Crank, J. (1975), *The Mathematics of Diffusion*, 414 pp., Oxford Univ. Press, New York.
- Delaney, J. S. (1995), 4 Vesta: A thick-skinned parent for basaltic achondrite, *Lunar Planet. Sci.*, XXVI, 329–330.
- Fowler, G. W., J. J. Papike, C. K. Shearer, and M. N. Spilde (1994), Diogenites as asteroidal cumulates. Insights from orthopyroxene major and minor element chemistry, *Geochim. Cosmochim. Acta*, 58, 3921–3929, doi:10.1016/0016-7037(94)90371-9.
- Fowler, G. W., J. J. Papike, M. N. Spilde, and C. K. Shearer (1995), Diogenites as asteroidal cumulates: Insights from orthopyroxene trace element chemistry, *Geochim. Cosmochim. Acta*, 59, 3071–3084, doi:10.1016/0016-7037(95)00196-4.
- Fukuoka, T., W. V. Boynton, M. S. Ma, and R. A. Schmitt (1977), Genesis of howardites, diogenites and eucrites, *Proc. Lunar Sci. Conf.*, 8, 187–210.
- Gaffey, M. J. (1997), Surface lithologic heterogeneity of asteroid 4 Vesta, *Icarus*, 127, 130–157, doi:10.1006/icar.1997.5680.
- Ganguly, J., and V. Tazzoli (1994), Fe<sup>2+</sup>-Mg interdiffusion in orthopyroxene: Retrieval from the data on intracrystalline exchange reaction, *Am. Mineral.*, 79, 930–937.
- Greenwood, R. C., I. A. Franchi, A. Jambon, and P. C. Buchanan (2005), Widespread magma oceans on asteroidal bodies in the early solar system, *Nature*, 435, 916–918, doi:10.1038/nature03612.
- Hermann, H.-P., and J. Ganguly (2001), Compositional properties of coexisting orthopyroxene and spinel in some Antarctic diogenites: Implications for thermal history, *Meteorit. Planet. Sci.*, 36, 155–166, doi:10.1111/j.1945-5100.2001.tb01816.x.
- Hewins, R. H., and H. E. Newsom (1988), Igneous activity in the early solar system, in *Meteorites and the Early Solar System*, edited by J. F. Kerrige and M. S. Matthews, pp. 73–101, Univ. of Ariz. Press, Tucson.
- Lindsley, D. H. (1983), Pyroxene thermometry, *Am. Mineral.*, 68, 477–493.
- Mason, B. (1962), *Meteorites*, John Wiley, New York.
- McCord, T. B., J. B. Adams, and T. V. Johnson (1970), Asteroid Vesta: Spectral reflectivity and compositional implications, *Science*, 168, 1445–1447, doi:10.1126/science.168.3938.1445.
- Mittlefehldt, D. W. (1994), The genesis of diogenites and HED parent body petrogenesis, *Geochim. Cosmochim. Acta*, 58, 1537–1552, doi:10.1016/0016-7037(94)90555-X.
- Mittlefehldt, D. W. (2000), Petrology and geochemistry of the Elephant Moraine A79002 diogenite: A genomics breccia containing a magnesian harzburgite component, *Meteorit. Planet. Sci.*, 35, 901–912, doi:10.1111/j.1945-5100.2000.tb01479.x.
- Mittlefehldt, D. W., and M. M. Lindstrom (1993), Geochemistry and petrology of a suite of ten Yamato HED meteorites, *Proc. NIPR Symp. Antarct. Meteorites*, 6, 268–292.
- Mittlefehldt, D. W., and M. M. Lindstrom (1997), Magnesian basalt clasts from the EET 92014 and Kapoeta howardites and a discussion of alleged primary magnesian HED clasts, *Geochim. Cosmochim. Acta*, 61, 453–462, doi:10.1016/S0016-7037(96)00357-2.
- Miyamoto, M., and H. Takeda (1994), Evidence for excavation of deep crustal material of a Vesta-like body from Ca compositional gradients in pyroxene, *Earth Planet. Sci. Lett.*, 122, 343–349, doi:10.1016/0012-821X(94)90007-8.
- Pun, A., and J. J. Papike (1996), Unequilibrated eucrites and the equilibrated Juvinas eucrite: Pyroxene REE systematics and major, minor, and trace element zoning, *Am. Mineral.*, 81, 1438–1451.
- Reid, A. M., and B. M. Barnard (1979), Unequilibrated and equilibrated eucrites, *Lunar Planet. Sci.*, X, 1019–1021.
- Righter, K., and M. J. Drake (1997), A magma ocean on Vesta: Core formation and petrogenesis of eucrites and diogenites, *Meteorit. Planet. Sci.*, 32, 929–944, doi:10.1111/j.1945-5100.1997.tb01582.x.
- Russell, C. T., et al. (2007), Dawn mission to Vesta and Ceres, *Earth Moon Planets*, 101, 65–91, doi:10.1007/s11038-007-9151-9.
- Ruzicka, A., G. A. Snyder, and L. A. Taylor (1997), Vesta as the howardite, eucrite and diogenite parent body: Implications for the size of a core and for large-scale differentiation, *Meteorit. Planet. Sci.*, 32, 825–840, doi:10.1111/j.1945-5100.1997.tb01573.x.
- Saiki, K., H. Takeda, and T. Ishii (2001), Mineralogy of Yamato-791192, HED breccia and relationship between cumulate eucrites and ordinary eucrites, *Antarct. Meteorite Res.*, 14, 28–46.
- Shearer, C. K., P. Burger, and J. J. Papike (2010), Petrogenetic relationships between diogenites and olivine diogenites: Implication for magmatism on the HED parent body, *Geochim. Cosmochim. Acta*, 74, 4865–4880, doi:10.1016/j.gca.2010.05.015.
- Shestopalov, D. I., L. A. McFadden, L. F. Golubeva, and L. O. Orujova (2010), About mineral composition of geologic units in the northern hemisphere of Vesta, *Icarus*, 209, 575–585, doi:10.1016/j.icarus.2010.04.012.
- Stolper, E. (1977), Experimental petrology of eucritic meteorites, *Geochim. Cosmochim. Acta*, 41, 587–611, doi:10.1016/0016-7037(77)90300-3.
- Takeda, H. (1979), A layered crust model of a howardite parent body, *Icarus*, 40, 455–470, doi:10.1016/0019-1035(79)90039-3.
- Takeda, H. (1997), Mineralogical records of early planetary processes on the howardite, eucrite, diogenite parent body with reference to Vesta, *Meteorit. Planet. Sci.*, 32, 841–853, doi:10.1111/j.1945-5100.1997.tb01574.x.
- Takeda, H., and A. L. Graham (1991), Degree of equilibration of eucritic pyroxenes and thermal metamorphism of the earliest planetary crust, *Meteoritics*, 26, 129–134.
- Takeda, H., and H. Mori (1985), The diogenite-eucrite like and the crystallization history of crust of their parent body, *Proc. Lunar Planet. Sci. Conf.*, 15th, part 2, *J. Geophys. Res.*, 90, C636–C648.
- Takeda, H., H. Mori, and K. Yanai (1981), Mineralogy of the Yamato diogenites as possible pieces of a single stone, *Mem. Natl. Inst. Polar Res.*, 20, 81–99.
- Warren, P. H. (1997), Magnesium oxide-iron oxide mass balance constraints and a more detailed model for the relationship between eucrites and diogenites, *Meteorit. Planet. Sci.*, 32, 945–963, doi:10.1111/j.1945-5100.1997.tb01583.x.
- Yamaguchi, A., G. J. Taylor, and K. Keil (1996), Global crustal metamorphism of the eucrite parent body, *Icarus*, 124, 97–112, doi:10.1006/icar.1996.0192.
- Yamaguchi, A., G. J. Taylor, and K. Keil (1997), Metamorphic history of the eucritic crust of 4 Vesta, *J. Geophys. Res.*, 102, 13,381–13,386, doi:10.1029/97JE00519.
- Yamaguchi, A., et al. (2001), Post-crystallization reheating and partial melting of eucrite EET90020 by impact into the hot crust of asteroid 4Vesta ~4.50 Ga ago, *Geochim. Cosmochim. Acta*, 65, 3577–3599, doi:10.1016/S0016-7037(01)00681-0.
- Yamaguchi, A., J. A. Barrat, R. C. Greenwood, N. Shirai, C. Okamoto, T. Setoyanagi, M. Ebihara, I. A. Franchi, and M. Bohn (2009), Crustal partial melting on Vesta: Evidence from highly metamorphosed eucrites, *Geochim. Cosmochim. Acta*, 73, 7162–7182, doi:10.1016/j.gca.2009.07.037.

J.-A. Barrat and M. Bohn, Domaines Océaniques, UMR 6538, Université de Brest, CNRS, IUEM, Place Nicolas Copernic, F-29280 Plouzané CEDEX, France.

M. Ito, Kochi Institute for Core Sample Research, JAMSTEC, B200 Monobe, Nankoku, Kochi 783-8502, Japan.

A. Yamaguchi, National Institute of Polar Research, Tachikawa, Tokyo 190-8518, Japan. (yamaguch@nipr.ac.jp)