



**HAL**  
open science

## A millennial multi-proxy reconstruction of summer PDSI for Southern South America

E. Boucher, Joel Guiot, Emmanuel Chapron

► **To cite this version:**

E. Boucher, Joel Guiot, Emmanuel Chapron. A millennial multi-proxy reconstruction of summer PDSI for Southern South America. *Climate of the Past*, 2011, 7, pp.957-974. 10.5194/cp-7-957-2011 . insu-00643480

**HAL Id: insu-00643480**

**<https://insu.hal.science/insu-00643480>**

Submitted on 22 Nov 2011

**HAL** is a multi-disciplinary open access archive for the deposit and dissemination of scientific research documents, whether they are published or not. The documents may come from teaching and research institutions in France or abroad, or from public or private research centers.

L'archive ouverte pluridisciplinaire **HAL**, est destinée au dépôt et à la diffusion de documents scientifiques de niveau recherche, publiés ou non, émanant des établissements d'enseignement et de recherche français ou étrangers, des laboratoires publics ou privés.

# A millennial multi-proxy reconstruction of summer PDSI for Southern South America

É. Boucher<sup>1</sup>, J. Guiot<sup>1</sup>, and E. Chapron<sup>2</sup>

<sup>1</sup>Centre Européen de Recherche et d'Enseignement des Géosciences de l'Environnement (CEREGE), UMR6635, CNRS – Europôle Méditerranéen de l'Arbois, 13545 Aix-en-Provence cedex 4, France

<sup>2</sup>ISTO UMR6113 Université d'Orléans, 1A rue de la Férollerie, 45071 Orléans cedex 2, France

Received: 21 December 2010 – Published in Clim. Past Discuss.: 17 January 2011

Revised: 9 August 2011 – Accepted: 11 August 2011 – Published: 30 August 2011

**Abstract.** We present the first spatially explicit field reconstruction of the summer (DJF) Palmer Drought Severity Index (PDSI) for the Southern Hemisphere. Our multi-proxy reconstruction focuses on Southern South America (SSA, south of 20° S) and is based on a novel spectral analogue method that aims at reconstructing low PDSI frequencies independently from higher frequencies. The analysis of past regimes and trends in extreme wet spells and droughts reveals considerable geographical and temporal variations over the last millennium in SSA. Although recent changes are in some cases notorious, most were not exceptional at the scale of the last thousand years. Our reconstruction highlights that low frequency water availability fluctuations in Patagonia were generally in antiphase with the rest of the subcontinent. Providing the fact that modern patterns of changes are transferable to the past, we show that such antiphases within SSA's hydroclimate could be attributed to the spatially contrasted response of summer PDSI to the Antarctic Oscillation (AAO). However, El Niño Southern Oscillation (ENSO) and Pacific Decadal Oscillation (PDO) signals are also embedded within the PDSI series during the 20th century. All these ocean-atmospheric forcings acted synergically, but the dominant influence appeared highly compartmentalized through space, highlighting clear AAO- (e.g. South Patagonia) and ENSO- (e.g. the Pampas) dominated regions. Our results therefore emphasize the complexity of water-availability fluctuations in SSA and their important dependence on external ocean-atmospheric forcings.

## 1 Introduction

Numerous evidences exist to support an increasing trend in the severity and intensity of both extremely dry and wet spells over the last century in Southern South America (SSA) (Trenberth et al., 2007; Magrin et al., 2007). These episodes have among the costliest impacts on the economy, society, and natural environment in the area. However, the analysis of present-day climate has shown that an important geographical variability also exists regarding these trends. Indeed, some parts of SSA like northeastern Argentina, southern Brazil, Paraguay, and Uruguay are actually experiencing a wetter climate by comparison to the conditions that prevailed at the beginning of the 20th century (Dai et al., 2004; Magrin et al., 2007). By contrast, southern Chile, south-west Argentina, and southern parts of Peru recorded a clear decline in the amount of precipitation. A general rise in summer temperatures is also superimposed in most regions, except in central Argentina where a cooling of maximum temperatures has been observed during the second part of the 20th century (Magrin et al., 2007). These contrasted climatological trends all impact water resources. Moreover, a large part of the variability associated with these changes originates from the influence of tropical (El Niño Southern Oscillation, ENSO) and high-latitude (Antarctic Oscillation, AAO) ocean-atmospheric climate forcings over the area (Garreaud, 2007). From a geographical point of view, the influence of these forcings is modulated by the presence of the Andes that create strong W–E climatic gradients over the continent, resulting in considerable climatological inhomogeneities through time and space in SSA. Given the number of factors involved and the heterogeneous spatio-temporal trends, it becomes crucial to place the recent hydro-climatic fluctuations in a broader perspective in order to better identify the long term and large scale patterns associated with these changes.



Correspondence to: É. Boucher  
(boucher.etienne@uqam.ca)

Whereas instrumental records are usually too short and scarce to perform such an analysis, highly resolved multi-proxy reconstructions can be useful to place recent climatic trends in a larger spatio-temporal perspective. Most notably, they allow comparison of recent trends with well-known climatic periods such as the Medieval Warm Period (MWP) or the Little Ice Age (LIA) and placement of local patterns of change into a continental, hemispheric or even global perspective. Yet, most efforts have focused on reconstructing past temperatures in the Northern Hemisphere (Bradley and Jones, 1993; Jones et al., 1998; Mann et al., 1998, 1999; Briffa et al., 2002; Moberg et al., 2005), owing to the number of available proxies and the density of high quality instrumental data. While local reconstructions have existed since the 1970s in SSA (see Boninsegna et al., 2009, for a review), spatial reconstructions are relatively new. The first highly resolved multi-proxy climate field reconstructions were performed recently (Neukom et al., 2010a,b). The summer temperature reconstruction showed that the MWP (9th to 14th century) was generally warmer than the last century's average. Complementarily, the precipitation reconstruction covered the last 500 yr and showed that summer and winter precipitation behaved in opposite directions over the last centuries (summer precipitations increased since the LIA, while winter precipitations decreased). However, despite these findings, it remains clear that the continental hydrological balance itself (i.e. the linkages between water inputs, storage, and outputs) is affected by all these parameters synergically. Thus, the reconstruction of an individual parameter (either temperature or precipitation) does not yield a full representation of past water availability fluctuations. Moreover, moisture conditions depend not only on precipitation and temperatures occurring during the season of interest, but also on previous moisture conditions. Thus, to better describe water availability fluctuations, one has to take into account both water supply and demand at the earth's surface and evaluate the changes considering prior conditions.

The Palmer Drought Severity Index (PDSI, Palmer, 1965) is a prominent index that incorporates antecedent moisture conditions and has been extensively used to monitor past droughts and wet spells in the US and elsewhere (Apipatanavis et al., 2009). It has also commonly been reconstructed from dendrochronology mostly in North-America (Cook et al., 1999, 2004; Woodhouse and Overpeck, 1998; Woodhouse and Brown, 2001) and in the Mediterranean basin (Nicault et al., 2008). In SSA, Christie et al. (2009) have successfully reconstructed high frequency variations of the PDSI in the Temperate Mediterranean Transition in the Andes (TMT) back to the 14th century. However, as for temperature and precipitation, the PDSI also needs to be reconstructed at larger spatial (i.e. sub-continental) and temporal (i.e. millennial) scales in order to place the recent changes in water availability into a broader perspective. Our work therefore focuses on reconstructing austral summer (DJF) PDSI in SSA from a multi-proxy approach. We particularly aim at

reconstructing the full spectra of PDSI variations and at analyzing the possible role of ocean-atmosphere forcings (AAO, ENSO, PDO) on large-scale and long-term PDSI variations in SSA.

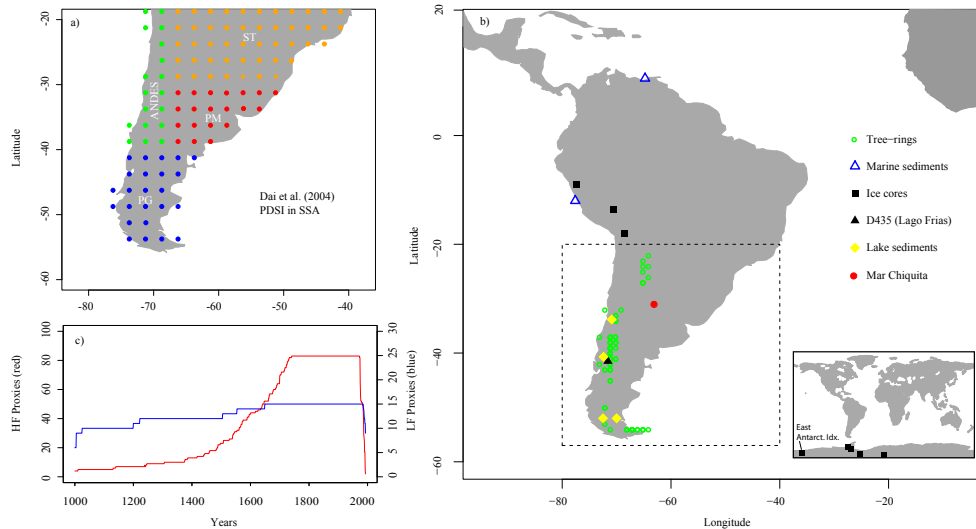
## 2 Data and modeling approach

### 2.1 PDSI

Our aim is to produce a millennial gridded reconstruction of the Palmer Drought Severity Index (PDSI, Palmer, 1965) in SSA (south of 20° S, the northern limit of most tree ring records in the area). The PDSI is a climatic metric that measures the departure from abnormally dry or wet conditions (relative to average local conditions). Three input variables are required to calculate the PDSI: monthly precipitation, monthly temperatures, and the available water content of soils. Within the calculation of the PDSI, moisture supply and demand are approximated in a simple hydrological accounting model that evaluates evapotranspiration, soil recharge, runoff, and moisture losses from the surface layer (see Palmer, 1965 for original equations). The PDSI produces monthly indexes of meteorological droughts that account for both contemporary and antecedent climatic conditions. The PDSI fluctuates between  $-10$  (extremely dry) and  $+10$  (extremely wet), with 0 corresponding to the local average conditions. The PDSI should be regarded as an approximation for dryness or wetness conditions rather than as an absolute value, as many factors like solar irradiation or aerosol concentrations are not considered explicitly. In the present paper, we use the gridded ( $2.5^\circ \times 2.5^\circ$ ) PDSI dataset computed by Dai et al. (2004) (Fig. 1a) and extended it to the last millennium in SSA. This dataset covers the 1870–2004 period and was calculated from long temperature (CRUTEM2, Jones and Moberg, 2003) and precipitation (Dai et al., 1997; Chen et al., 2002) series. We provide reconstructions of summer (DJF) PDSI for each pixel in SSA. Summer PDSI better integrates the effects of summer temperatures and precipitation along with lagged effects from previous seasons. We finally provide regional reconstructions for four regions similar to those identified by Neukom et al. (2010a) (Fig. 1a): Patagonia (PG), the Pampas (PM), Sub-Tropical SSA (ST), and the Andes (ANDES). Although climatic conditions and trends are not always uniform within these regions (e.g. PG, ANDES), the coarse source grid used here does not allow subdivision into smaller subsets.

### 2.2 Proxies

To achieve the PDSI reconstructions, we adopted a frequency-dependent approach similar to the one used by Moberg et al. (2005) where each proxy is used only to reconstruct the periodicities for which it provides reliable information (see Sect. 2.4 for details). A large proxy dataset



**Fig. 1.** Proxy and PDSI data used in this analysis. Position of Dai et al. (2004)’s  $2.5 \times 2.5$  degrees PDSI in SSA (a). Location and type of proxies used in this reconstruction (b). Evolution of the number of LF ( $0 < f < 0.08$ ) and HF ( $0.08 < f < 0.5$ ) series used for the reconstruction (c).

was compiled from high- and low-resolution proxies (Table 1, Fig. 1b,c). High-resolution proxies are mostly tree rings, most of which are available on the International Tree Ring Data Bank (ITRDB). We kept only the mean tree ring chronologies that were longer than 250 yr, giving a total of 82 tree ring predictors. In order to circumvent the well known problems associated with the standardization of tree ring series and the problematic interpretation of medium to low frequency variations (Esper et al., 2002, 2004), we retained only the high frequency variations contained within these series. Low frequencies were removed in each tree ring chronology using a low-pass filter (based on the Fast Fourier Transform procedure). Basically, we removed all periodicities below a 12-yr threshold ( $f \leq 0.08$ ). In order to avoid the over-representation of tree ring series in the multi-proxy reconstruction, we selected (after infilling with the AM method, see next section) the first 7 PC explaining about 30 % of the variance of the high frequency tree ring series. Low-resolution proxies included marine sediments, lake sediments, and ice cores from the Andes and Antarctica (Table 1). The Frías sequence (Chapron, unpublished) is a new sedimentary record from a varved proglacial lake (Ariztegui et al., 2007) draining the Frías River Valley. The Frías sequence consists of a detailed record of goethite content measured every 0.5 cm by sediment diffuse reflectance on a 187 cm long core retrieved in 2008 within Lago Frías main basin. The chronology (Fig. A1) has been established back to AD 1649 by varve counting on digital core images and by the identification of three mass wasting deposits induced by historical large earthquakes in AD 1960; AD 1751, and AD 1737. Goethite content in these annually laminated fine-grained sediments reflects soil erosion after rainfall.

### 2.3 Analogue method (AM)

The analogue method (Guiot et al., 2005) is commonly used to infill proxy-climate matrix containing missing values. The AM procedure aims at identifying, for each year  $i$  in the past where no PDSI value exists, the year  $k$  within the instrumental record that has the most “similar” proxy vector. Here, similarity ( $d_{ik}^2$ ) is measured as an Euclidian distance (Guiot et al., 2005):

$$d_{ik}^2 = m_{ik}^{-2} \sum_{j=1}^m \left( \frac{(x_{ij} - x_{kj})^2}{(x_{Mj} - x_{mj})^2} \delta_{ik}^j \right) \quad (1)$$

where  $x_{ij}$  represents the value of proxy  $j$  at year  $i$ ,  $x_{kj}$  corresponds to the value of proxy  $j$  at year  $k$ ,  $M$  and  $m$  refer to the maximum and minimum value of the proxy  $j$ .  $\delta_{ik}^j$  is an index equal to 1 if a value is available for proxy  $j$  at year  $i$  and  $k$ , and equals 0 otherwise.

In the present paper, the AM was first used to infill both proxy and PDSI matrices (Fig. 2[1]). Since most available tree rings series terminated before  $\sim 1993$  (Table 1), we chose not to infill the proxy matrix up to the present in order to reduce the possible bias associated with the use of an infilling method during the calibration period. Additionally, Dai et al. (2004)’s PDSI dataset presented some irregularities (in both mean and variance) before  $\sim 1930$  in SSA. These irregularities are most likely associated with the very low number and poor quality of temperature and precipitation records in the early 20th century in that area. We therefore defined the 1930–1993 period for calibration. A total of 101 PDSI series were retrieved from Dai et al. (2004)’s dataset. We selected the first 12 PC explaining 77 % of the variance of the original PDSI series (Fig. 2[2]).

**Table 1.** The proxies used to reconstruct summer PDSI in SSA. HF = Proxies used to reconstruct the high frequency component ( $0.08 < f < 0.5$ ). LF = Proxies used to reconstruct the low frequency component ( $0 < f < 0.08$ ).

Name	Type	SP	Start	End	Length	Lat	Long	Reference	HF	LF
Lago Yehuín	Tree rings	NOPU	1731	1986	255	54	67	Boninsegna et al. (1989)	X	
Pampa Del Toro	Tree rings	AUCH	1736	1991	255	41	71	Villalba and Veblen (1997)	X	
Angostura Lago Alumine	Tree rings	ARAR	1717	1974	257	38	71	LaMarche et al. (1979)	X	
Pilcaniyeu	Tree rings	AUCH	1733	1991	258	41	70	Villalba and Veblen (1997)	X	
Estancia Carmen Camino T. Del Fuego	Tree rings	NOPU	1726	1986	260	54	67	Boninsegna et al. (1989)	X	
Puerto Parry T. Del Fuego	Tree rings	NOBE	1726	1986	260	54	64	Boninsegna et al. (1989)	X	
Estancia San Justo, T Del Fuego	Tree rings	NOPU	1723	1985	262	54	68	Boninsegna et al. (1989)	X	
Confluencia 2	Tree rings	AUCH	1723	1989	266	37	71	Villalba and Veblen (1997)	X	
Bahía Crossley Isla De Los Estados	Tree rings	NOBE	1715	1986	271	54	65	Boninsegna et al. (1989)	X	
Paso De Las Nubes 3	Tree rings	NOPU	1718	1991	273	40	71	Villalba et al. (1997)	X	
Río Kilca	Tree rings	ARAR	1700	1974	274	38	70	LaMarche et al. (1979)	X	
Laguna Terrapién	Tree rings	AUCH	1700	1974	274	43	71	LaMarche et al. (1979)	X	
Lago Rucachoroi	Tree rings	AUCH	1700	1974	274	39	71	LaMarche et al. (1979)	X	
Lago Terraplén	Tree rings	AUCH	1700	1974	274	43	71	Villalba and Veblen (1997)	X	
Buenos Aires, Santa Cruz	Tree rings	NOPU	1706	1984	278	50	72	ITRDB series arge066	X	
Río Malenguena T. Del Fuego	Tree rings	NOPB	1705	1986	281	54	66	Boninsegna et al. (1989)	X	
El Maitén	Tree rings	AUCH	1690	1974	284	41	71	LaMarche et al. (1979)	X	
Estancia Harberton T. Del Fuego	Tree rings	NOBE	1700	1985	285	54	67	Boninsegna et al. (1989)	X	
Paso De Las Nubes 4	Tree rings	NOPU	1701	1991	290	40	71	Villalba et al. (1997)	X	
Río Bolsas, Piedra Parada, Jujuy	Tree rings	JUAU	1688	1981	293	23	65	Villalba et al. (1992)	X	
Monte Grande, Magallanes	Tree rings	NOPU	1677	1988	311	53	72	ITRDB series arge049	X	
Volcán Lonquimay	Tree rings	ARAR	1664	1975	311	38	71	LaMarche et al. (1979)	X	
Paso Del Viento	Tree rings	AUCH	1679	1991	312	40	71	Villalba and Veblen (1997)	X	
Lago Quillén	Tree rings	AUCH	1676	1989	313	39	71	Villalba and Veblen (1997)	X	
Aserradero Isla Grande T. Del Fuego	Tree rings	NOPB	1666	1986	320	54	67	Boninsegna et al. (1989)	X	
Estación Microondas	Tree rings	NOPU	1664	1984	320	54	67	Boninsegna et al. (1989)	X	
Paso Gari Baldi	Tree rings	NOPB	1662	1985	323	54	71	Boninsegna et al. (1989)	X	
Lago Rucachoroi	Tree rings	ARAR	1650	1975	325	39	71	LaMarche et al. (1979)	X	
Península Brunswick	Tree rings	NOPU	1662	1988	326	40	71	Boninsegna et al. (1989)	X	
El Chacay	Tree rings	AUCH	1650	1976	326	37	71	LaMarche et al. (1979)	X	
Copahue	Tree rings	ARAR	1640	1974	334	37	71	LaMarche et al. (1979)	X	
Paso Cordova, Neuquén	Tree rings	NOPU	1652	1986	334	40	71	ITRDB series arge050	X	
Lago Fontana, Chubut	Tree rings	NOPU	1647	1985	338	45	71	ITRDB series arge037	X	
Bahía York	Tree rings	NOBE	1647	1986	339	54	65	ITRDB series arge023	X	
Aserradero Isla Grande Montículo	Tree rings	NOPB	1639	1986	347	54	67	Boninsegna et al. (1989)	X	
Castano Overo Maduro	Tree rings	NOPD	1626	1982	356	41	71	ITRDB series arge027	X	
El Mirador, Traful	Tree rings	AUCH	1635	1991	356	40	71	Villalba and Veblen (1997)	X	
Santa Isabel De Las Cruces	Tree rings	AUCH	1600	1970	370	34	70	LaMarche et al. (1979)	X	
Lago Moquehue	Tree rings	ARAR	1601	1974	373	38	71	LaMarche et al. (1979)	X	
Lago Tromén	Tree rings	ARAR	1600	1978	378	54	67	LaMarche et al. (1979)	X	
Glaciar Frías	Tree rings	NOPU	1595	1985	390	41	71	LaMarche et al. (1979)	X	
Estancia Collun-Co, Cañadón De Arriba	Tree rings	AUCH	1596	1989	393	39	71	Villalba and Veblen (1997)	X	
Estancia Pulmari	Tree rings	ARAR	1589	1989	400	39	71	LaMarche et al. (1979)	X	
Río Minero	Tree rings	AUCH	1589	1991	402	40	71	Villalba and Veblen (1997)	X	
Lago Escondido	Tree rings	NOPB	1575	1984	409	54	67	Boninsegna et al. (1989)	X	
Castano Overo 8	Tree rings	NOPU	1572	1991	419	41	71	Villalba et al. (1997)	X	
Huinganco	Tree rings	AUCH	1550	1975	425	37	70	LaMarche et al. (1979)	X	
Nahuel – Pan	Tree rings	AUCH	1567	1992	425	42	71	Villalba and Veblen (1997)	X	
Norquinco	Tree rings	AUCH	1562	1989	427	39	71	Villalba and Veblen (1997)	X	
Castano Overo 7	Tree rings	NOPU	1562	1991	429	41	71	Villalba et al. (1997)	X	
Cuyin Manzano	Tree rings	AUCH	1543	1974	431	40	71	LaMarche et al. (1979)	X	
Piuchue, Isla De Chiloe	Tree rings	PIUV	1554	1987	433	33	70	Roig (1991)	X	
Estancia Teresa	Tree rings	AUCH	1540	1974	434	42	71	LaMarche et al. (1979)	X	
Cerro Los Leones	Tree rings	AUCH	1539	1974	435	41	71	LaMarche et al. (1979)	X	
Cerro Diego De Leon	Tree rings	NOPU	1546	1991	445	41	71	Schmelter (2000)	X	
Castano Overo 6	Tree rings	NOPU	1539	1991	452	41	71	Villalba et al. (1997)	X	
Río Moat T. Del Fuego	Tree rings	NOBE	1528	1986	458	54	66	Boninsegna et al. (1989)	X	
Cerro La Hormiga Estancia Collun-Co	Tree rings	AUCH	1508	1989	481	40	71	Villalba and Veblen (1997)	X	
Puente Del Agrio	Tree rings	ARAR	1486	1974	488	42	71	LaMarche et al. (1979)	X	
Rahue	Tree rings	AUCH	1483	1974	491	39	70	LaMarche et al. (1979)	X	
Cerro Del Guanaco	Tree rings	AUCH	1497	1991	494	41	70	Villalba and Veblen (1997)	X	
Lago Quillén	Tree rings	AUCH	1676	1989	495	40	71	Villalba and Veblen (1997)	X	
Caramavida	Tree rings	ARAR	1479	1976	497	34	70	LaMarche et al. (1979)	X	
Santa Lucía, Chiloe Continental	Tree rings	PIUV	1489	1986	497	43	72	Roig and Boninsegna (1992)	X	
Santa Lucía	Tree rings	PIUV	1489	1986	497	43	72	Roig and Boninsegna (1992)	X	
El Centinela	Tree rings	AUCH	1491	1989	498	40	71	Villalba and Veblen (1997)	X	

Table 1. Continued.

Name	Type	SP	Start	End	Length	Lat	Long	Reference	HF	LF
Pino Hachado	Tree rings	AUCH	1459	1974	515	42	71	LaMarche et al. (1979)	X	
Caviahue	Tree rings	ARAR	1444	1974	530	37	71	LaMarche et al. (1979)	X	
Nalcas	Tree rings	ARAR	1386	1975	589	38	71	LaMarche et al. (1979)	X	
Tiuchue, Isla De Chiloe	Tree rings	FICU	1386	1987	601	42	73	LaMarche et al. (1979)	X	
Río Cisne, Chubut	Tree rings	FICU	1338	1974	636	42	71	Lara et al. (2000)	X	
Lonco Luan	Tree rings	ARAR	1306	1974	668	38	65	LaMarche et al. (1979)	X	
Chenque Pehuen	Tree rings	ARAR	1246	1974	728	38	70	LaMarche et al. (1979)	X	
Piedra Del Aguila	Tree rings	ARAR	1200	1975	775	37	73	LaMarche et al. (1979)	X	
Primeros Pinos De Alumine	Tree rings	ARAR	1140	1974	834	38	70	LaMarche et al. (1979)	X	
San Gabriel	Tree rings	AUCH	1131	1975	844	33	70	LaMarche et al. (1979)	X	
El Asiento, Aconcagua	Tree rings	AUCH	1010	1976	966	37	71	LaMarche et al. (1979)	X	
Puerto Cafè	Tree rings	FICU	311	1992	1681	42	71	Lara et al. (2000)	X	
La Esperanza	Tree rings	FICU	-342	1995	2337	41	71	Lara et al. (2000)	X	
Andes (TMT)	PDSI reconstruction (from tree rings)	AUCH	1346	2002	646	37	71	Christie et al. (2009)	X	
Cariaco Basin	Marine sediments		1222	1990	768	11	65	Black et al. (2007)	X	X
East Pacific-Peru	Marine sediments		1000	2000	1000	12	78	(Rein, 2007)	X	X
East Antarctica isotopic index	Ice cores		1200	1993	793	73	159	Goosse et al. (2004) and reference therein		X
Andean Glaciers-Huascarán	Ice cores		1000	1984	984	9	77	Vimeux et al. (2009), Thompson et al. (1995)		X
Andean Glaciers -Sajama	Ice cores		1000	1984	984	18	68	Vimeux et al. (2009), Thompson et al. (1998)		X
Andean Glaciers-Quelcaya	Ice cores		1000	1984	984	14	71	Vimeux et al. (2009), Thompson et al. (1985)		X
Antarctica-DML	Ice cores		1025	1997	972	75	65	Graf et al. (2002)	X	X
Antarctica-Berkner Island	Ice cores		1000	1992	992	80	46	Mulvaney et al. (2002)	X	X
Thompson-Dyer	Ice cores		1505	1988	483	70	68	Thompson et al. (1994)	X	X
Lago Guanaco	Lake sediments		821	2007	1186	52	72	Moy et al. (2008)		X
laguna Aculeo	Lake sediments		857	1997	1140	34	71	von Gunten et al. (2009)	X	X
Lago Frías	Lake sediments		1649	2006	357	42	72	Chapron, (unpublished)		X
Puyehue	Lake sediments		1388	2000	612	40	72	Boës and Fagel (2008)	X	X
Potrok lake	Lake sediments		414	2000	1586	52	70	Haberzettl et al. (2005)		X

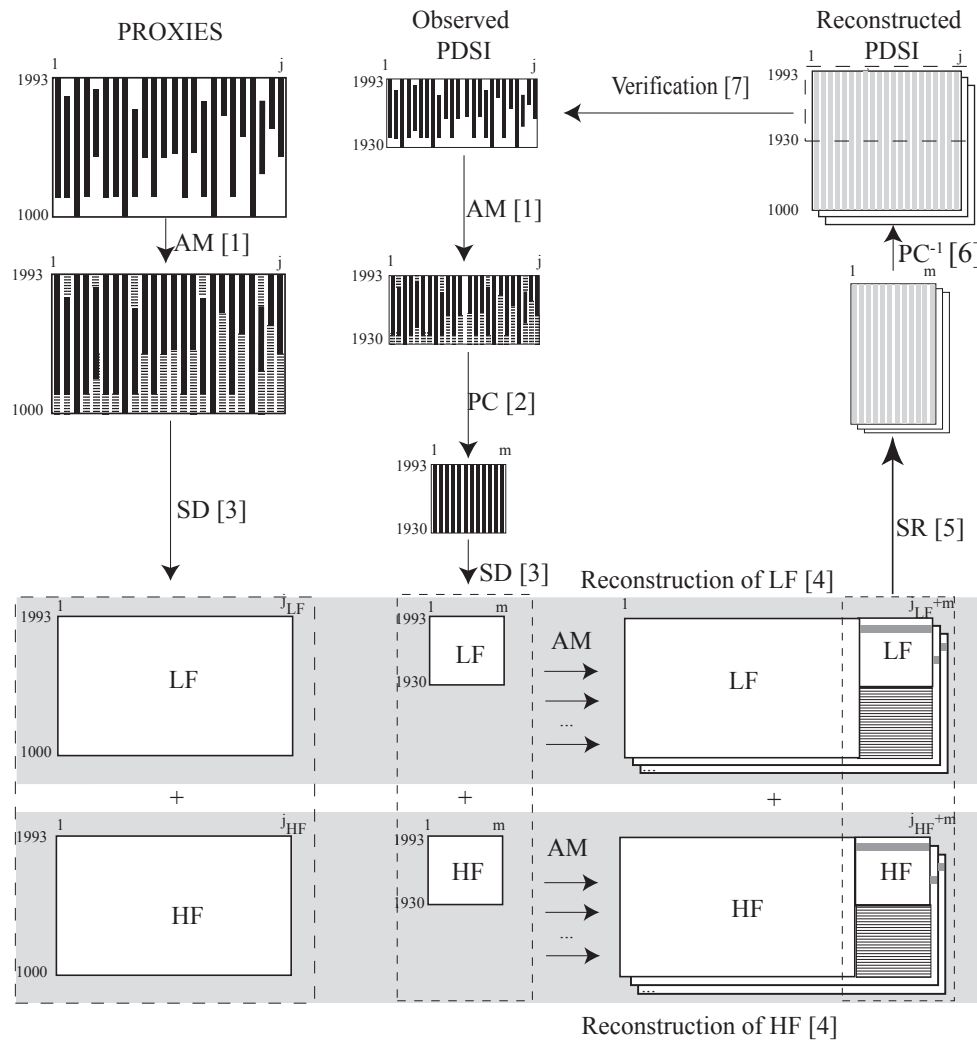
## 2.4 Spectral analogue method (SAM)

The reconstruction of the 12 PC of PDSI is also based on the AM, but it is performed separately for each frequency band using a spectral analogue method (SAM). The SAM (Guiot et al., 2010) is a combination of the AM with a spectral decomposition procedure that aims at achieving the reconstruction separately for each frequency band (HF: high frequency band, LF: low frequency band). We defined the LF band as all periodicities below  $f = 0.08$  (or  $T < 12$  yr, fixed by experimentation) and the HF band as all periodicities comprised between 0.08 and 0.5 ( $12 \text{ yr} > T > 2 \text{ yr}$ ). While it is assumed that all frequency bands are present in the PDSI series ( $0 < f < 0.5$ ), the SAM method allowed choosing, for each frequency band, which proxies are the most reliable predictors. The decomposition of both proxy and PDSI series into their LF and HF component is achieved through a spectral decomposition algorithm (SD, Fig. 2[3]) based on the Fast Fourier Transform (FFT). The FFT first transforms each series into the frequency domain. Then, all frequencies outside the band are set to zero. Finally, the residual spectrum is back-transformed into the time domain using the inverse FFT. LF and HF bands are complementary because their summation restitutes the original series. Thus,

for each frequency component, the AM is used to reconstruct the corresponding band of the PDSI PCs over the last millennium (Fig. 2[4]). The LF and HF bands of each PC are reconstructed independently from one another. Finally, the two bands are restituted into one single band (SR) and back-transformed into the original gridded PDSI data using an inverse PC ( $PC^{-1}$ ) procedure (Fig. 2[5,6]).

## 2.5 Uncertainty assessment

In the present paper, steps 4 to 6 on Fig. 2 were repeated iteratively (100 times here) and allowed for the implementation of an  $h$ -block jackknife procedure (Guiot et al., 2010), which provided independent validation statistics and confidence intervals for the reconstructed values. At each iteration, a randomly selected year  $t$  was removed from each frequency band, and a training dataset defined after the exclusion of year  $t$  along with the four preceding and following years ( $h = 9$ ). The AM was then used to predict the left-out year  $t$  from the training dataset in each band. This adaptation of the traditional jackknife method has proven to be particularly useful with series (like LF series) that present a high degree of autocorrelation (Guiot et al., 2010). In our case, it forbade that the best analogue for year  $t$  could be found

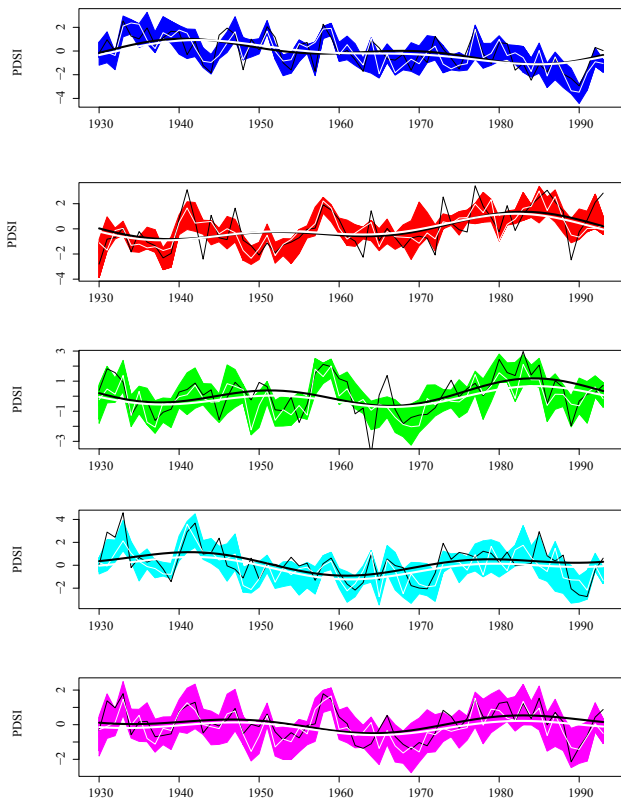


**Fig. 2.** Summary of the spectral analogue method. Missing values in the proxy and summer PDSI matrix are filled with the analogue method (AM[1]). The PDSI are reduced to  $m$  principal components. (PC [2]). Proxy and PDSI (PC) series are decomposed into their LF ( $0 < f < 0.08$ ) and HF ( $0.08 < f < 0.5$ ) components using a Fast Fourier Transform procedure (SD [3]). The reconstruction for each band is achieved using the AM [4]. This is done iteratively 100 times, and at each iteration, a random year  $t$  is removed for the calculation of validation statistics. Around year  $t$ , the  $[t-4, t+4]$  surrounding years are excluded as potential analogues. This  $h$ -block procedure is particularly useful in situations, like LF series, where there exists a large autocorrelation between years, causing the best analogues to be systematically located before or after year  $t$ . At each iteration, the reconstructed HF and LF bands are summed up to recompose (SR [5]) the full spectra of each PC. The PC are back-transformed into the original PDSI series using an inverse PC procedure (PC-1, [6]). The reconstructed series are finally verified against observations (Verification [7]).

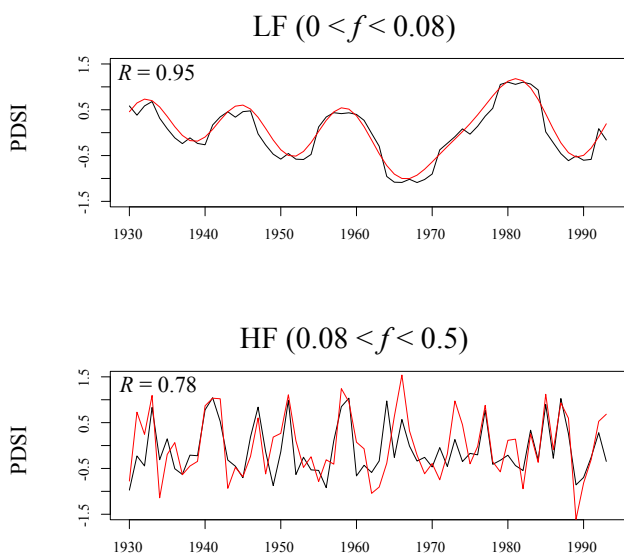
between year  $t-4$  to  $t+4$ . An analysis of the autocorrelation structure within summer PDSI series revealed that the years located immediately outside the block had less than 30% of variance in common with year  $t$ . Such an  $h$ -block jackknife procedure was performed 100 times with different randomly chosen years and allowed for the calculation of the RE statistic (Reduction of Error); a validation statistic (Fig. 2[7]) commonly used in dendroclimatology (Fritts, 1976). A check of the autocorrelation structure of residuals was also performed using the Durbin-Watson (DW) statistic (Durbin and Watson, 1950). Moreover, the information pro-

duced at each iteration allowed for the computation of 95% confidence intervals around reconstructed values.

As a further validation for our reconstructions, we used a published sedimentological record of Mar Chiquita's lake levels fluctuations (Piovano et al., 2002). Mar Chiquita is a large Sub-Tropical lake (about 6000 km<sup>2</sup> in size) that drains a vast area (about 127 000 km<sup>2</sup>). It is reasonable to assume that the fluctuations of such a vast hydrosystem are controlled by parameters (temperature and precipitation) that are similar to those that also influence summer PDSI in the area. Thus, this record might be adequate to evaluate the quality



**Fig. 3.** Comparison between observed (white) and reconstructed (black) summer PDSI series for each region of SSA during the calibration period (1930–1993). Bold lines are loess smoothings. The 95 % confidence intervals correspond to the colored zones. This color code will prevail in the next figures.



**Fig. 4.** The 1930–1993 LF and HF components of the summer PDSI in SSA. Observed and reconstructed values are in red and black, respectively.

**Table 2.** Mean calibration and validation statistics for each region of SSA. Median values were averaged and the minimum and maximum are given in parentheses.

Region	$R$	$R^2$	RE	DW
PG	0.67 (0.57, 0.83)	0.40 (0.21, 0.63)	0.36 (−0.01, 0.56)	1.90 (1.58, 2.30)
PM	0.61 (0.46, 0.78)	0.37 (0.17, 0.59)	0.30 (0.01, 0.57)	1.93 (1.67, 2.17)
ST	0.65 (0.53, 0.76)	0.39 (0.26, 0.56)	0.30 (0.03, 0.49)	1.96 (1.43, 2.44)
ANDES	0.63 (0.53, 0.78)	0.32 (0.19, 0.54)	0.25 (−0.12, 0.56)	1.92 (1.51, 2.37)
SSA	0.64 (0.52, 0.78)	0.37 (0.19, 0.58)	0.30 (0.06, 0.55)	1.93 (1.49, 2.36)

of our reconstruction, at least the long-term trends. Finally, despite the fact that a number of proxies are shared between the studies, we compared our PDSI reconstructions with the precipitation and temperature reconstructions of Neukom et al. (2010a, 2010b). This was done to analyze which climatic parameter ( $P$  or  $T$ ) is the best related, over time and space, to summer PDSI in SSA.

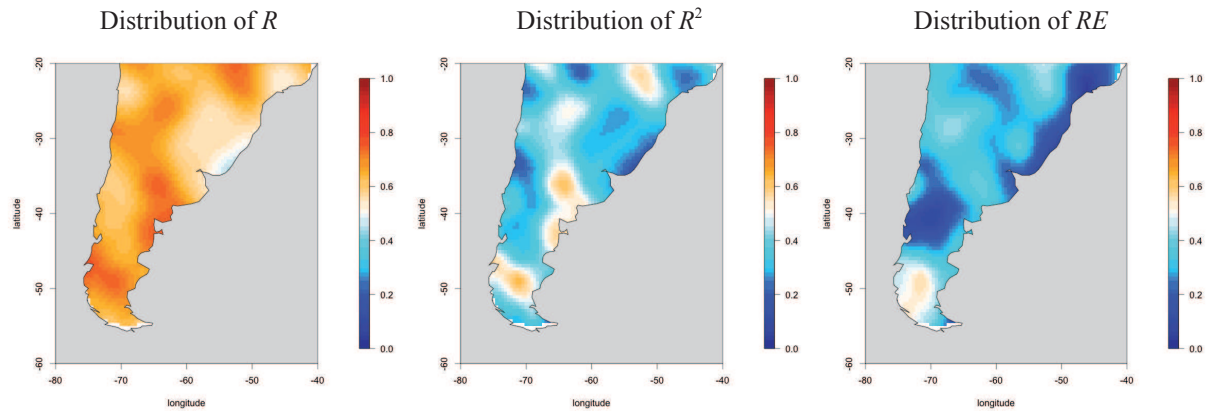
### 3 Results and discussion

#### 3.1 Calibration and validation statistics of the SAM

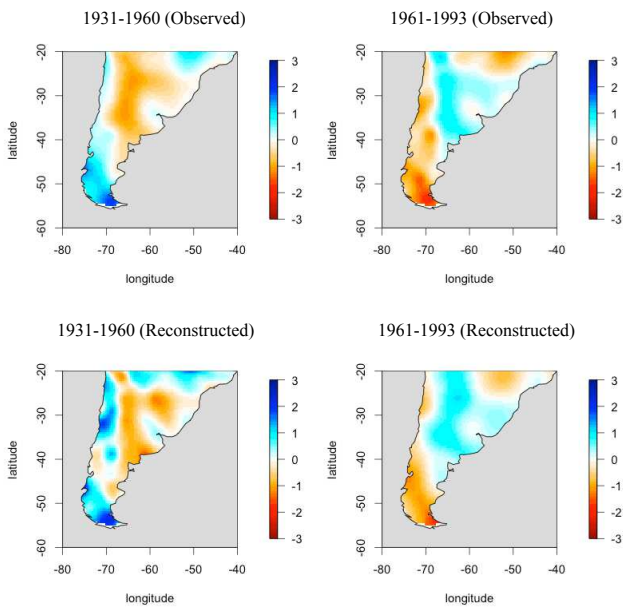
The SAM yields satisfying results and suggests that the PDSI can be reconstructed in most areas of SSA. A good fit exists between observations and predictions for the full calibration period (1930–1993) (Fig. 3), and this fit is reasonably good in each frequency band (Fig. 4). The mean correlation coefficient ( $R$ ) for SSA is 0.64 and ranges from 0.52 (minimum) to 0.78 (maximum) (Table 2) for the full spectra. The average correlation coefficient is also very similar between the studied regions, with the lowest  $R$  value found in PM (0.61) and the highest in the PG region (0.67). On average, the SAM reconstructs about 37 % of the variance of the PDSI in SSA (Table 2). The percentage of variance accounted for by the model (coefficient of determination,  $R^2$ ) varied between 19 % and 58 %. Figure 5 shows the spatial distribution of these calibration statistics. In general, the relationships between observations and predictions tend to be slightly weaker in the southern part of the Andes. A possible reason could be that the observed PDSI values might be less well estimated in this region of high climatological variability and altitudinal contrasts, a situation that would result in locally spurious trends. A second reason could be that the proxies themselves, although numerous in that area, do not cover the full range of variability within these pixels.

A property of the spectral analogues method, by comparison to other regression-based methods, is to preserve a large





**Fig. 5.** Distribution of  $R$ ,  $R^2$ , and  $RE$  statistics in SSA. These calibration and validation statistics were calculated on the full set of proxies, and the data was interpolated with a thin-plate spline regression.



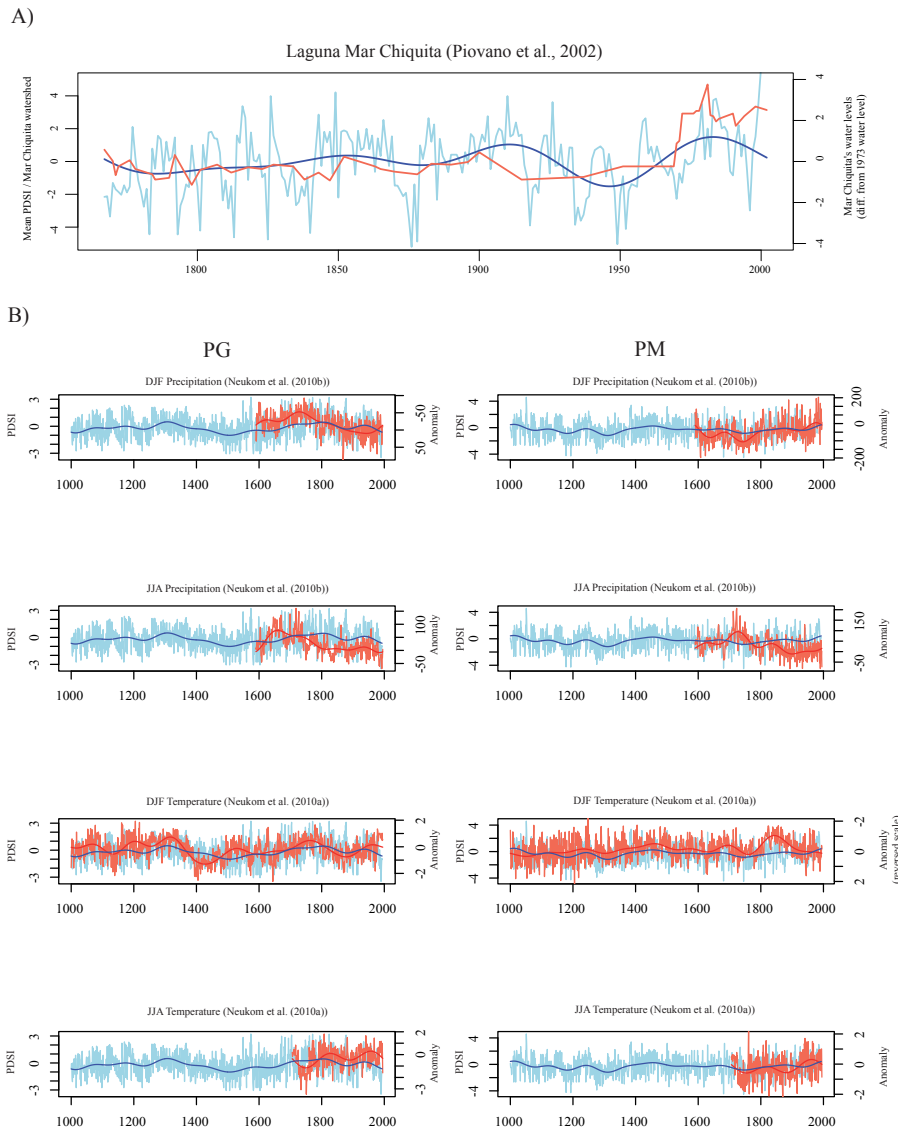
**Fig. 6.** Spatial comparison between observed (upper panel) and reconstructed (lower panel) summer PDSI values for two contrasted  $\sim 30$  yr periods: 1931–1960 (left) and 1961–1993 (right).

amount of the original variance within the series if the reference period is sufficiently diversified. In other words, when a regression technique is used, the proportion of reconstructed variance decreases with the  $R^2$ . This attenuation effect becomes even more exaggerated in the past because the number of proxies, and then the  $R^2$ , diminishes with time. Yet spectral analogues are less sensitive to these effects since they are similarity-based and consequently they are able to reproduce all the variance contained in the reference period. To illustrate this effect in SSA, we calculated the ratio of standard deviations between reconstructed and observed PDSI series in each region and observed that the former corresponds to

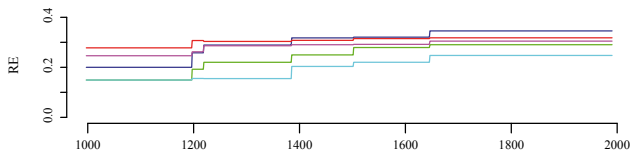
about 85 to 95 % of the latter. Therefore, we conclude that this property facilitates the analysis of extremes.

Validation statistics confirm the predictive skills of our model.  $RE$  is generally positive over SSA (Table 2), suggesting that the SAM provides better estimates of the PDSI than the climatology. Moreover, the DW statistic is always very close to 2, an indication that there is no significant first-order autocorrelation structure in the residuals (Durbin and Watson, 1950). The mean  $RE$  value was, on average, around 0.30 in all sub-regions except the Andes (0.25) but generally oscillated between 0 and 0.55 (taking into account the 95 % confidence intervals over all SSA). These performances are comparable to the  $RE$  values obtained with the same method applied in Europe to reconstruct growing season temperatures (Guiot et al., 2010). They are below the average  $RE$  (0.73) obtained by Neukom et al. (2010a) in a principal component reconstruction of summer DJF temperatures in SSA, but they are comparable to those found in the precipitation reconstruction (average  $RE$  around 0.27 in both seasons, Neukom et al., 2010b). Our  $RE$  values in the Mediterranean region of the Andes (around 0.35) are also comparable to the  $RE$  calculated by Christie et al. (2009) in a tree-ring reconstruction of PDSI in this area (around 0.45). However, Christie et al. (2009)'s reconstruction focused on high frequencies, while our multi-proxy reconstruction aims at reconstructing the full spectra of PDSI variations. Therefore, the comparison between  $RE$  statistics should be interpreted with care, as errors propagate differently when HF and LF bands are reconstructed simultaneously.

The capacity of the SAM to reproduce modern spatial patterns of variations of the PDSI in SSA is another indication of the performance and usefulness of our modeling approach. Figure 6 presents the maps of the average observed and reconstructed PDSI values for two consecutive 30-yr windows (1931–1961 and 1961–1993). The first period (1931–1961) is marked by wet conditions in PG and the ANDES and a drier climate in PA and ST. This pattern is also very clearly



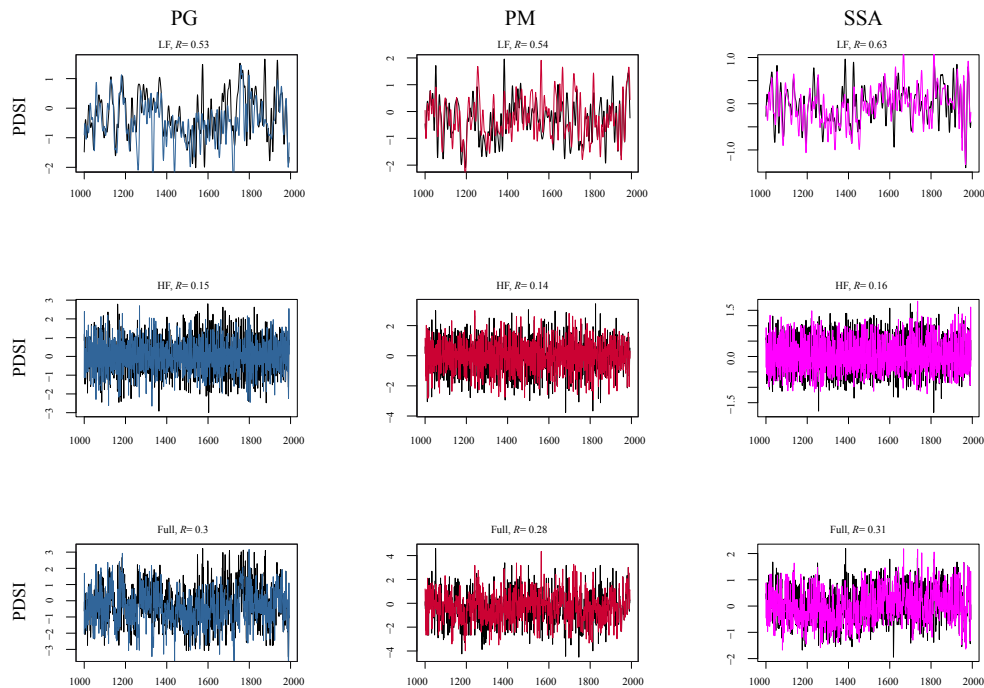
**Fig. 7.** Comparison with (A) Mar Chiquita (Piovano et al., 2002) and (B) Neukom et al. (2010a, b) temperature and precipitation reconstructions. The summer PDSI reconstruction is always in blue, and the other works are in red. We present only the comparison for PG and PM to emphasize the contrasts. Bold (red and blue) lines represent 50 yr smoothings.



**Fig. 8.** Evolution of RE statistics for the nested reconstructions in each region of SSA. RE values were updated each time a new low frequency proxy was added to the reconstruction. Colors are the same as in Fig. 3.

seen in our reconstruction. The second period (1961–1993) has the opposite pattern: a wet climate in PM and ST and drier conditions in PG and the ANDES. This spatial inversion of PDSI trends was well captured in our reconstruction.

As an independent validation for our work, we checked the correspondence between our reconstruction and the 1767–2002 reconstruction of Laguna Mar Chiquita water-levels fluctuation (Piovano et al., 2002). We used the average PDSI within the lake’s watershed for a comparison (60–65° W; 20–25° S). The agreement between the two series is fairly good (Fig. 7), at least in the mid to low frequency domains, considering that both reconstructions were performed from totally independent proxies. The abrupt rise of Mar Chiquita’s lake



**Fig. 9.** Comparison between the reconstructions made from the full proxy dataset (colored lines, same colors as in Fig. 3) and the reconstructions performed from only the proxies that go back to AD 1000 (black lines). The top and middle rows present the LF and HF components, respectively, while the lower row depicts the comparison over the full spectra. Correlation coefficients ( $R$ ,  $N = 994$ ) are shown in the title, for each frequency band and for each region. Not shown here: ANDES ( $R = 0.28$ , for the full spectra) and ST ( $R = 0.57$ , for the full spectra).

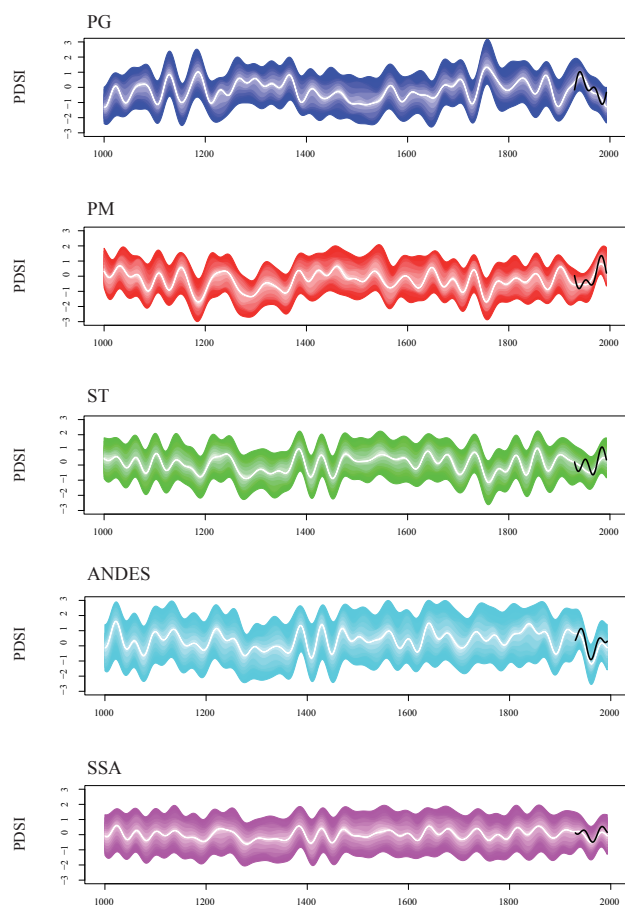
levels during the 1970s also corresponds to a rise in summer PDSI, although the latter has a smaller amplitude. It is worth mentioning that a recent modeling of Mar Chiquita's water levels has shown that the recent rise is attributable to an increase in runoff in the northern sub-basin (Troin et al., 2010), evoking an increasingly dominant tropical influence in the area. Thus, since the PDSI is a value that is standardized to reflect departures from local mean conditions, the average PDSI within the mar Chiquita watershed may not adequately reflect this possible flow redistribution.

Before exploring millennial summer PDSI fluctuations, it is important to establish that our reconstruction is reliable over the full period. To do so, we provide a series of nested reconstructions and their corresponding verification (RE) statistics. Nested reconstructions were computed exclusively from subsets of proxies that are older than AD: 1000, 1025, 1200, 1222, 1388, 1505, 1649 respectively corresponding to the calendar dates to which a new LF proxy is added to the reconstruction. We present the evolution of RE statistics in each sub-region on Fig. 8. Even with a limited number of proxies at the beginning of the last millennium, the RE statistics remains positive in all regions, meaning that the spectral analogues have good predictive skills over the last thousand years. As an example, we graphically compare the full reconstruction and the AD 1000 nested reconstruction (Fig. 9) for two regions: PG and PM. Our analysis

shows that LFs are comparable between reconstructions over the last thousand years. However, HFs are less similar and this probably relates to the fact that higher frequencies contain a lot of the local climatic signal (i.e. noise) that cannot be adequately reconstructed from a very limited number of HF proxies. In conclusion, the correlations for the full spectra remain acceptable, suggesting that the long-term trends can be interpreted since AD 1000.

### 3.2 PDSI fluctuations over the last millennium in SSA

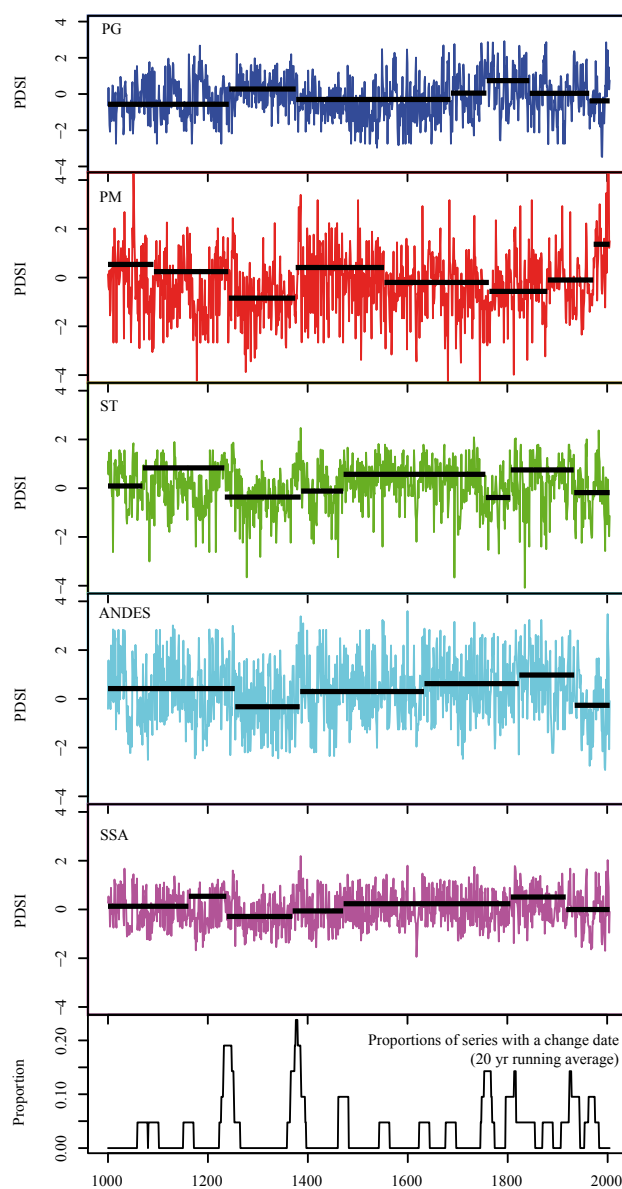
Summer PDSI reconstructions (1000–1993) and regime shift detection analysis (extended until AD 2005 using Dai et al. (2004)'s PDSI data) are presented in Figs. 10 and 11. The period between 1000 and  $\sim 1250$  clearly appears as a distinct regime in all areas of SSA. Breakpoints corresponding to the end of the latter period were identified in 1242 (PG) 1241 (PM), 1234 (ST), and 1255 (ANDES) (Fig. 11). In most regions except PG, the first part of the millennium was probably slightly wetter than today. This period corresponds to the end of the MWP that extended until 1200–1350 in the Northern Hemisphere (Jansen et al., 2007; Mann et al., 2009; Guiot et al., 2005, 2010; DahlJensen et al., 1998), and until about 1200–1250 in the Southern Hemisphere (Cook et al., 2002). In SSA, the MWP seemed to have persisted until about  $\sim 1350$  (Neukom et al., 2010a). The



**Fig. 10.** Millennial summer PDSI reconstructions for each region of SSA. 30-yr filtered chronologies are presented. Observations are in black and reconstructions are in white. Colored shadings correspond to 95 % confidence intervals (darker at each 5 % increment). The color code is the same as in Fig. 3.

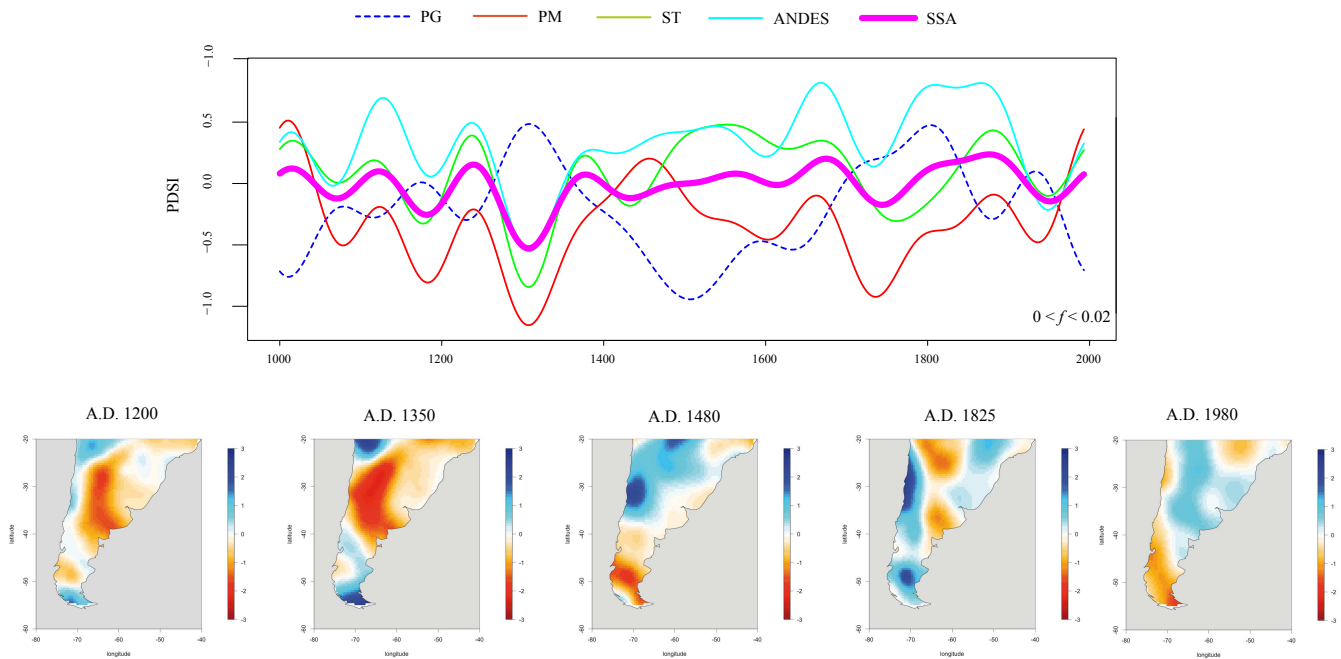
100-yr lag between our PDSI reconstruction and Neukom et al. (2010a) summer temperature reconstruction needs further investigation but could possibly be explained by changes in precipitation patterns that are not present in temperature reconstructions. It is interesting to note, however, that from the perspective of PDSI, the first part of the millennium in SSA was probably a period of important geographical contrasts rather than a widespread drought.

The ~1250–~1380 period is also clearly distinct in all regions of SSA and is characterized by drier than normal conditions (Figs. 10 and 11), except in PG where wetter conditions prevailed. Again, regime-ending dates cluster in time: 1376 (PG), 1375 (PM), 1386 (ST), 1384 (ANDES), and 1369 (SSA). Interestingly, this well-defined regime corresponds to the Wolf Minimum (Eddy, 1976), the first period of the LIA with an extremely low solar activity. The physical link between solar irradiation and the PDSI in SSA, however, needs to be substantiated by modeling studies in order to clarify the processes and forcings involved. Additionally, the possible climatic impact of volcanic eruptions should be investigated,



**Fig. 11.** Regime shift detection in summer PDSI series in SSA. The analysis was performed using the Rodionov (2004) method. Regime shift detection is based on a sequential a *t*-test algorithm. To be detected, a regime needs to be at least 50 yr long. If a regime has less than 50 yr, the method can still allow for its detection; however, the significance required to determine that a date corresponds to a changepoint is adjusted to be inversely related to the length of the regime. The bottom panel corresponds to the 20 yr running proportion of the number of series, recording a changepoint at year *t*. It gives a general idea of where these changepoints cluster in time. Color code from Fig. 3 is used here.

as a series of major eruptions occurred during that period (Wanner et al., 2008). The physical processes driving these changes are currently being examined through a model-data comparison study.



**Fig. 12.** Smoothed summer PDSI reconstruction for each region of SSA emphasizing the antiphase between SP and the rest of the continent. Smooth lines correspond to 50-yr low pass filters ( $f \leq 0.02$ ). Example maps of 30-yr periods centered on AD 1200, 1350, 1690, 1825, and 1980 are shown.

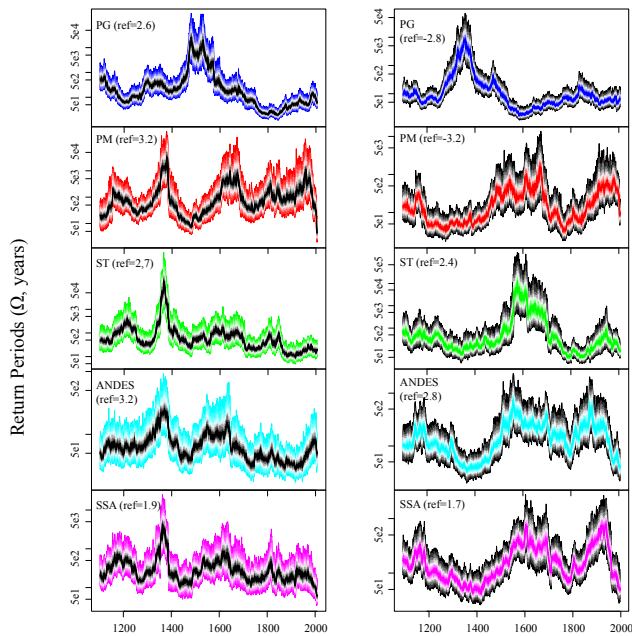
The 1780–1820 is also an important regime change period (Figs. 10 and 11) and corresponds to the Dalton minimum (Eddy, 1976), though its spatial extent is less marked than the two previously described periods. Wetter than normal conditions were recorded in PG, while drier conditions were reconstructed in PM and ST.

Although important regime changes occurred over the last centuries, most fell within the bounds of the last millennium variability (Fig. 11). The best example is the drying episode that occurred in PG since  $\sim 1880$ . Similar regime conditions could be found between 1400 and 1750 in the area, and even before  $\sim 1250$ . We must point out that, while individual years within the regimes are reconstructed by analogy using the SAM, regimes drier or wetter than today can actually be reconstructed if, for example, extreme years (either wet or dry) cluster in a given past period. This was rarely the case in our analysis. Nevertheless, several exceptions exist. The recent wet regime in PM seems rare (if not exceptional) at the scale of the last millennium; so is the dry regime observed in the ANDES since the 1930s that has very few (if no) equivalent in the past.

A striking feature of our reconstruction is an antiphase between PG and the rest of the subcontinent. A comparison of 50-yr-filtered reconstructions (Fig. 12) reveals that SSA's summer PDSI evolution, rather than being uniform over all the studied area, was characterized by an important geographical contrast, especially between the northeast and the southernmost part of the continent. That contrast can be most

easily perceived in the low frequency domain ( $f < 0.03$ ), but it characterizes, typically, all frequency bands below 0.2 ( $T = 5\text{yr}$ ). In order to better interpret that antiphase, we compared our reconstructions of contrasted PG and PM regions to those of Neukom et al. (2010a and 2010b) (Fig. 7). In PG, summer PDSI seemed to be more responsive to temperatures than to precipitation. In this area, warm summers and winters were associated with a wet climate (positive relationship). By contrast, in PM, PDSI seemed closely linked to DJF precipitation. Moreover, DJF and JJA temperatures related differently to summer PDSI. Warm summers were associated with a dry climate while warm winters were generally coupled to wet summer conditions. These contrasting dynamics underline the fact that the PDSI might not have responded similarly to precipitation or temperature in every region, but instead that variations in the drought index were probably driven by different parameters whose importance are likely to vary through space.

A frequency analysis was performed to determine whether or not extremely wet (or dry) spells have been more common (or rarer) in the past. For each region, a reference PDSI value was defined. That value corresponded to the 50-yr wet spell and drought identified for the 1930–1993 period. Then, past return periods  $\Omega$  ( $\Omega = 1/\text{probability to exceed the reference PDSI value}$ ) were retrieved after fitting a log-normal distribution to the 100 yr preceding each year  $t$ . The results are presented on Fig. 13 along with their bootstrap confidence intervals. Events equivalent in magnitude to the reference



**Fig. 13.** Past return periods ( $\Omega$ ) (and their 95 % bootstrap confidence interval) of events equivalent in magnitude to the reference 50-yr wet spell (left panel) or drought (right panel). The reference 50-yr event (value indicated in parenthesis for each region) was calculated for the 1930–1993 period. All return periods were obtained after fitting a log-normal distribution to the 100 yr preceding year  $t$ . Color codes for each region are the same as in Fig. 3. Return period values on the y axis are exponential values i.e.  $5ek$  years =  $5 \times 10^k$  years. Thus  $k$  values of 1, 2 and 3 respectively yield 50-yr, 500-yr and 5000-yr return periods. Confidence intervals are incremented at each 5reversed color directions for wet spells and droughts.

50-yr wet spell generally had a larger  $\Omega$  between 1250 and 1400 ( $\Omega > 500$  yr), except in PG where their  $\Omega$  was closer to the modern value ( $\Omega \sim 100$  yr). Between 1400 and 1600, a tendency towards shorter  $\Omega$  ( $< 100$  yr) can be observed everywhere except in PG where very rare occurrences are noted ( $\Omega > 500$  yr). From 1600 to the 20th century, wet events progressively became more common, except in PM where they were rarer. The latter tendency reversed after 1900 in some regions: the ANDES (wet spells were rarer after 1970), PM (wet spells were more common after 1970), and PG (wet spells were rarer after 1900).

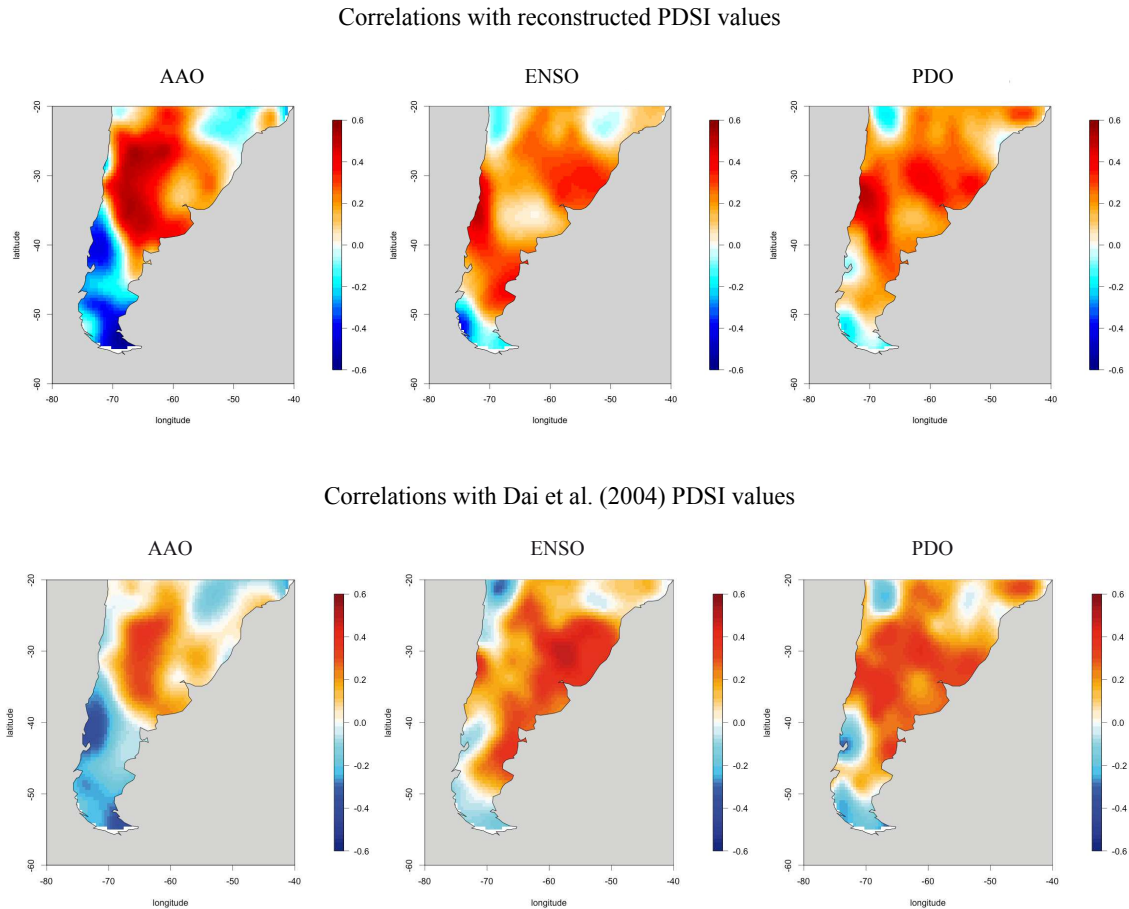
The frequency analysis of droughts revealed the antiphase as well (Fig. 13). In general, extreme droughts were common before 1400 in most regions ( $\Omega < 100$  yr), except in PG where they were clearly rarer between 1250 and 1400 ( $\Omega > 500$  yr). Between 1450–1700, extremely dry events were rarer than today ( $\Omega > 500$  yr) almost everywhere in SSA, except in PG where an opposite trend can be observed. An interesting point is that although the antiphase between PG and SSA seems symmetrical for both droughts and wet spells, the behaviour of droughts with respect to their wet

spell counterparts is not necessarily symmetrical in each region, possibly indicating a relative independency between the two phenomena. A good example of that independency is found in PM after 1400. While wet spells became less frequent in PM during that period (possibly indicating drier conditions in the area), extreme droughts also became less frequent between 1400 and 1600. Afterwards, severe droughts in PM became more common ( $20 < \Omega < 100$  yr) until about 1900, while wet spells were still quite rare ( $200 < \Omega < 1000$ ). This asymmetry highlights the fact that, regardless of the long-term trends in the mean of summer PDSI series, extremely dry and/or wet spells can still occur isolatedly in small clusters and independently from the regime conditions. In other words, the driest (wettest) years do not systematically occur during the driest (wettest) regimes.

### 3.3 Links with ocean-atmosphere forcings (AAO, ENSO, PDO)

The climate of SSA is under the influence of high latitude and tropical ocean-atmospheric forcings, but the magnitude and the direction of this influence varies considerably between regions. To explore the teleconnections between summer PDSI and the dominant indices in the area (summer means for AAO, ENSO, and PDO, all retrieved from the Climate Diagnostics Center (NOAA) at <http://www.esrl.noaa.gov/psd/data/>), we first used standard Pearson correlation analysis. The AAO index is estimated by the first PC of the 850 hPa geopotential height anomalies south of  $20^\circ$  S (Thompson and Wallace, 2000). The ENSO index corresponds to the mean SST anomalies from the N3.4 Pacific region and is a common proxy for the ENSO phenomenon (Trenberth, 1997). The PDO (Zhang et al., 1997) is an ENSO-like phenomenon that exhibits decadal to interdecadal variability (at least 20 to 30 yr). The estimation of the PDO interdecadal variability remains poorly known because very few stations in South America are century-long. In order to evaluate our reconstruction's ability to reproduce climatic patterns driven by the major indices in SSA, reconstructed PDSI values were used as predictands. However, we also tested the relationships with instrumental PDSI values and the results are comparable (Fig. 14).

Over the common period (1950–1993), AAO is well correlated to summer PDSI in SSA. In PG and the ANDES, the correlation is negative and reaches  $R = -0.53$ , while in PM and ST, the correlation is positive (Fig. 14) and reaches  $R = 0.5$ . Thus, over the last 50 yr, AAO fluctuations have been associated with important climatic contrasts in SSA. Positive AAO indices are clearly associated with wet conditions in western PM and ST and with dry conditions in PG and the ANDES. Negative AAO values show the opposite trend: wet PG and dry PM/ST. This latitudinally contrasted response of summer PDSI to the AAO might have some important implications for the interpretation of millennial PDSI trends in SSA. We showed earlier that low-frequency



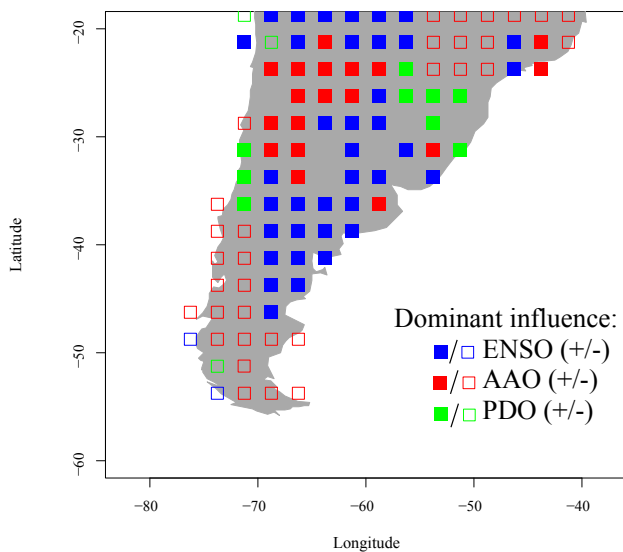
**Fig. 14.** Correlations of reconstructed (upper panel) and Dai et al. (2004) (lower panel) summer PDSI with the main ocean-atmosphere indices: AAO, ENSO, and PDO. All correlations were computed on the common 1950–1993 period.

variations (Fig. 12) and trends in the extremes (Fig. 13) of summer PDSI in PG have been in antiphase with those on the rest of the sub-continent. It is now possible to argue that these antiphases could have been driven by past low-frequency variations in the AAO, since this index is the only one that can be associated to such a contrasted PDSI response. As underlined by Garreaud et al. (2009), the AAO is the leading pattern of tropospheric circulation variability south of 20° S. Its influence on temperature over the recent period is unequivocal over the recent period (Gillett et al., 2006; Garreaud et al., 2009). The most striking aspect is a contrasted response of annual surface temperatures with a clear summer warming south of 40° S and a cooling elsewhere during positive phase of the AAO (Garreaud et al., 2009). These results highlight the fact that summer PDSI variations in SSA are responsive to AAO-induced temperature fluctuations at the continental scale, a result that is also supported by the comparison with Neukom et al. (2010a)'s temperature reconstruction.

Summer PDSI is also related to the ENSO phenomena in SSA (1951–1993). However, the response is far less con-

trasted than with AAO and mostly positive throughout the studied area (Fig. 14). The strongest correlations are found in the Mediterranean area of the Andes and along the eastern part of Argentina. Positive (negative) ENSO years typically generate conditions that are wetter (drier) than the normal in SSA. PDO is also related to the fluctuations of summer PDSI (1930–1993). This index has a general positive influence, but the highest correlations ( $R = 0.5$ ) are found in the Mediterranean Andes region. Much like with ENSO, positive (negative) PDO years generate conditions that are wetter (drier) than the normal almost everywhere in SSA.

Finally, it is clear that all these ocean-atmosphere forcings act synergically to influence summer PDSI in SSA. In order to better understand the interactions between AAO and ENSO, model-data comparison studies will be necessary. Here, we simply underline the fact that SSA's summer PDSI can be compartmentalized according to the dominant ocean-atmosphere forcing. To determine which index has a predominant influence over the 1950–2005 period, we performed a regression analysis using each index as a predictor. For each  $2.5^\circ \times 2.5^\circ$  pixel in SSA, the equation had the



**Fig. 15.** Map of the magnitude and direction of the dominant influence, (measured as the magnitude and sign of the largest regression coefficient in the following equation:  $PDSI = a(AAO) + b(ENSO) + c(PDO)$ ). Red symbols represent a dominant AAO influence while blue and green symbols indicate a dominant ENSO or PDO influence, respectively. Filled (empty) squares denote a positive (negative) influence on summer PDSI. The regression was performed for the longest common period (1950–1993). Spots with no symbols had a negative RE value.

form  $PDSI = a(AAO) + b(ENSO) + c(PDO) + \text{noise}$ , where  $a$ ,  $b$ , and  $c$  are coefficients. For each regression, we retained the largest coefficient (absolute value) and noted its sign (Fig. 15). Interestingly, this figure clearly shows that the various regions of SSA are under the influence of different dominant indexes. In PG and northeastern ST, the dominant process is clearly the negative and spatially coherent influence of AAO. A positive influence of AAO is also dominant west of  $70^\circ$  W in PM and in lower ST. Both PDO and ENSO are both dominant in the Mediterranean ANDES, in western PM, and in ST. The dominant influences appear to be spatially coherent (points with a common influence tend to cluster in space), suggesting a true physical link between PDSI variations and these atmospheric circulation modes. The question remains whether or not these influences have been stationary through time and how did they interacted through time. Data-model comparison studies over the whole millennium are necessary to clarify these issues.

#### 4 Conclusions

This study presents the first spatially explicit summer PDSI reconstruction in the Southern Hemisphere. We provide a  $2.5^\circ \times 2.5^\circ$  gridded reconstruction that extends the Dai et al. (2004) PDSI dataset over the last millennium at the sub-continental scale, south of  $20^\circ$  S in SSA. Calibration and ver-

ification statistics, along with the spatial analysis of modern patterns of changes, show that in most areas of SSA (PG, PM, ST, ANDES), the summer PDSI is well reconstructed using the SAM. Over the last millennium, SSA has experienced considerable PDSI variations, some of which might have been at least as important as those recently observed in the area. The temporally well-defined 1000–1250 period possibly associated with the MWP was characterized by wetter than normal conditions in most studied regions, except in PG where the climate was clearly drier than the normal. This regime terminated very abruptly around  $\sim 1250$ , as indicated by the regime shift detection and the analysis of extremes.

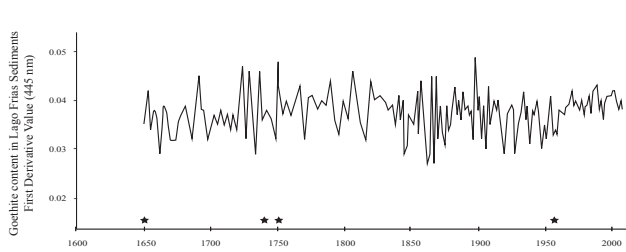
In most regions, the climatic spatial pattern reversed between 1250 and  $\sim 1400$ . SSA's climate became much drier, except in PG where the climate humidified during the austral summer. Afterwards, SSA slowly humidified to approach conditions somewhat closer to the normal (although with some important discrepancies between regions, e.g. in PM the climate dried up).

The analysis of recent PDSI fluctuations in the context of the last millennium reveals analogous patterns for the modern period over the last thousand years, especially between 1000 and 1400. Our reconstruction also shows that PG's fluctuations were generally in antiphase with the rest of the continent. Such an antiphase could be driven by the Antarctic Oscillation (AAO), providing that modern patterns of response are transferable to the past. We reveal evidences that the AAO has a contrasted effect on the PDSI in SSA over the calibration period. During its positive phase, the climate tends to be humid in the northeastern part of SSA and much drier in the south. During its negative phase, the latter situation reverses. However, AAO has never acted alone to modulate fluctuations in the mean and extremes of PDSI. Nevertheless, in some regions like PG, AAO clearly is the dominant driver (at least during the calibration period), while in others it plays a smaller role.

Our analysis finally shows that past low-frequency PDSI variations can be reconstructed quite successfully in most regions of SSA. We have shown that even with a reduced number of proxies, low frequencies reconstructed using the SAM remain quite similar to the low frequencies reconstructed from the full dataset. However, we have also shown that high frequency PDSI variations are less well reconstructed from a reduced set of proxies. In order to better reconstruct high frequency variations of PDSI in SSA, more highly resolved proxies are needed, as stated by Villalba et al. (2009), especially in proxy-lacking areas such as ST area and eastern PM.

Finally, future analysis should focus on studying the interactions between ocean-atmosphere forcings (e.g. interactions between AAO and ENSO) in order to better identify how they can modulate SSA's climate in both time and space. Such work should preferentially be achieved through climate models.





**Fig. A1.** Goethite (derivative 445 nm) chronology of Lago Frías varved lake sediments. Stars represent some well-known earthquakes in the area (AD 1960; AD 1751, and AD 1737).

## Appendix A

### A Complementary figure

Figure A1 represents the Goethite (derivative 445 nm) varved chronology of Lago Frías sediments (1645–2008). This sedimentary proxy reflects the amount of precipitation-induced erosion in the watershed. The dating of these sediments was confirmed by three well-known earthquakes (1737, 1751, and 1960) also shown on the figure.

**Acknowledgements.** This paper is a contribution to the ESCARSEL project funded by the French National Agency of Research (program VMC, project ANR-06-VULN-010). We also thank the post-doctoral fellowship program of the FQRNT (Fonds Québécois de Recherche sur la Nature et les Technologies) that provided the grant to the first author. The comments from the two reviewers (R. Neukom and R. Villalba) and the editor (M. Masiokas) were much appreciated and contributed to improving the content of this manuscript. Dai Palmer Drought Severity Index data was provided by the NOAA/OAR/ESRL PSD, Boulder, Colorado, USA, and downloaded from their Web site at <http://www.esrl.noaa.gov/psd/>. Françoise Chalié, Edouardo Piovano Françoise Vimeux, Florence Sylvestre, Raphael Neukom, E. M. Thompson, B. Rein, Duncan Christie, Nathalie Fagel, Marie-France Loutre, Xavier Boës, Christopher Moy, Christophe Corona, Myriam Khodri, Francisco Da Cruz, Georg Hoffmann provided data and/or helpful discussions.

The publication of this article is financed by CNRS-INSU.

Edited by: M. H. Masiokas



The publication of this article is financed by CNRS-INSU.

## References

- Apipattanavis, S., McCabe, G. J., Rajagopalan, B., and Gangopadhyay, S.: Joint spatiotemporal variability of global sea surface temperatures and global Palmer Drought Severity Index values, *J. Climate*, 22, doi:10.1175/2009JCLI2791.1171, 6251–6267, 2009.
- Ariztegui, D., Bosch, P., and Davaud, E.: Dominant ENSO frequencies during the Little Ice Age in Northern Patagonia: the varved record of proglacial Lago Frías, Argentina, *Quatern. Int.*, 161, 46–55, doi:10.1016/J.Quaint.2006.10.022, 2007.
- Black, D. E., Abahazi, M. A., Thunell, R. C., Kaplan, A., Tappa, E. J., and Peterson, L. C.: An 8-century tropical Atlantic SST record from the Cariaco Basin: baseline variability, twentieth-century warming, and Atlantic hurricane frequency, *Paleoceanography*, 22, PA4204, doi:10.1029/2007PA001427, 2007.
- Boës, X. and Fagel, N.: Relationships between southern Chilean varved lake sediments, precipitation and ENSO for the last 600 years, *J. Paleolimnol.*, 39, 237–252, 2008.
- Boninsegna, J. A., Villalba, R., Amarilla, L., and Ocampo, J.: Studies on tree rings, growth-rates and age-size relationships of tropical tree species in Misiones, Argentina, *Iawa Bull.*, 10, 161–169, 1989.
- Boninsegna, J. A., Argollo, J., Aravena, J. C., Barichivich, Christie, D. J., Ferrero, M. E., Lara, A., Le Quesne, C., Luckman, B. H., Masiokas, M., Morales, M., Oliveira, J. M., Roig, F., Srur, A., and Villalba, R.: Dendroclimatological reconstructions in South America: a review, *Palaeogeogr. Palaeoecol.*, 281, 210–228, 2009.
- Bradley, R. S. and Jones, P. D.: “Little Ice Age” summer temperature variations: their nature and relevance to recent global warming trends, *Holocene*, 3, 367–376, 1993.
- Briffa, K. R., Osborn, T. J., Schweingruber, F. H., Jones, P. D., Shiyatov, S. G., and Vaganov, E. A.: Tree-ring width and density data around the Northern Hemisphere: Part 1, local and regional climate signals, *Holocene*, 12, 737–757, 2002.
- Chen, M., Xie, P., Janowiak, J. E., and Arkin, P. A.: Global land precipitation: A 50-yr monthly analysis based on gauge observations, *J. Hydrometeorol.*, 3, 249–266, 2002.
- Christie, D. A., Boninsegna, J. A., Cleaveland, M. K., Lara, A., Le Quesne, C. M. S. M., Mudelsee, M., Stahle, D. W., and Villalba, R.: Aridity changes in the Temperate-Mediterranean transition of the Andes since AD 1346 reconstructed from tree-rings, *Clim. Dynam.*, 36(7–7), 1505–1521, doi:10.1007/s00382-009-0723-4, 2009.
- Cook, E. R., Meko, D. M., Stahle, D. W., and Cleaveland, M. K.: Drought reconstructions for the continental United States, *J. Climate*, 12, 1145–1162, 1999.
- Cook, E. R., Palmer, J. G., and D’Arrigo, R. D.: Evidence for a Medieval Warm Period in a 1100 year tree-ring reconstruction of past austral summer temperatures in New Zealand, *Geophys. Res. Lett.*, 29, 1667, doi:10.1029/2001gl014580, 2002.
- Cook, E. R., Woodhouse, C. A., Eakin, C. M., Meko, D. M., and Stahle, D. W.: Long-term aridity changes in the Western United States, *Science*, 306, 1015–1018, doi:10.1126/science.1102586, 2004.
- DahlJensen, D., Mosegaard, K., Gundestrup, N., Clow, G. D., Johnsen, S. J., Hansen, A. W., and Barring, N.: Past temperatures directly from the Greenland Ice Sheet, *Science*, 282, 268–271, 1998.

- Dai, A., Fung, I. Y. and Del Genio, A. D.: Surface observed global land precipitation variations during 1900–88, *J. Climate*, 10, 2943–2962, 1997.
- Dai, A., Trenberth, K. E., and Quian, T.: A global dataset of Palmer Drought Severity Index for 1870–2002: relationship with soil moisture and effects of surface warming, *J. Hydrometeorol*, 5, 1117–1130, 2004.
- Durbin, J. and Watson, G. S.: Testing for serial correlation in least squares regression, *Biometrika* 37, 409–428, 1950.
- Eddy, J. A.: Maunder minimum, *Science*, 192, 1189–1202, 1976.
- Esper, J., Cook, E. R., and Schweingruber, F. H.: Low-frequency signals in long tree-ring chronologies for reconstructing past temperature variability, *Science*, 295, 2250–2253, 2002.
- Esper, J., Frank, D. C., and Wilson, R. J. S.: Climate reconstructions: low-frequency ambition and high-frequency ratification, *Eos*, 85, p. 113, 2004.
- Fritts, H. C.: *Tree Rings and Climate*, Academic Press, New York, 1976.
- Garreaud, R. D.: Precipitation and circulation covariability in the extratropics, *J. Climate*, 20, 4789–4797, doi:10.1175/Jcli4257.1, 2007.
- Garreaud, R. D., Vuille, M., Compagnucci, R., and Marengo, J.: Present-day South American climate, *Palaeogeogr. Palaeoclimatol.*, 281, 180–195, 2009.
- Gillett, N. P., Kell, T. D., and Jones, P. D.: Regional climate impacts of the southern annular mode, *Geophys. Res. Lett.*, 33, L23704, doi:10.1029/2006gl027721, 2006.
- Goosse, H., Masson-Delmotte, V., Renssen, H., Delmotte, M., Fichefet, T., Morgan, V., van Ommen, T., Khim, B. K., and Stenni, B.: A late medieval warm period in the Southern Ocean as a delayed response to external forcing?, *Geophys. Res. Lett.*, 31, L06203, doi:10.1029/2003gl019140, 2004.
- Graf, W., Oerter, H., Reinwarth, O., Stichler, W., Wilhelms, F., Miller, H. and Mulvaney, R.: Stable-isotopes records from Dronning Maud Land, Antarctica. *Ann. Glaciol.*, 35, 195–201, 2002.
- Guiot, J., Nicault, A., Rathgeber, C., Edouard, J. L., Guibal, F., Pichard, G., and Till, C.: Last-millennium summer-temperature variations in Western Europe based on proxy data, *Holocene*, 15, 489–500, 2005.
- Guiot, J., Corona, C., and Escarsel, M.: Growing season temperatures in Europe and climate forcings over the past 1400 years, *Plos. Biol.*, 5, e9972, doi:10.1371/journal.pone.0009972, 2010.
- Haberzettl, T., Fey, M., Lucke, A., Maidana, N., Mayr, C., Ohlendorf, C., Schabitz, F., Schleser, G. H., Wille, M., and Zolitschka, B.: Climatically induced lake level changes during the last two millennia as reflected in sediments of Laguna Potrok Aike, Southern Patagonia (Santa Cruz, Argentina), *J. Paleolimnol.*, 33, 283–302, doi:10.1007/S10933-004-5331-Z, 2005.
- Jansen, E., Overpeck, J., Briffa, K. R., Duplessy, J. C., Joos, F., Masson-Delmotte, V., Olago, D., Otto-Bliesner, B., Peltier, W. R., Rahmstorf, S., Ramesh, R., Raynaud, D., Rind, D., Solomina, O., Villalba, R., and Zhang, D.: Palaeoclimate, in: *Climate Change 2007: The Physical Science Basis*, Contribution of Working Group I to the Fourth Assessment Report of the Intergovernmental Panel on Climate Change, edited by: Solomon, S., Qin, D., Manning, M., Chen, Z., Marquis, M., Averyt, B., Tignor, M., and Miller, H. L., UK and New York, NY, USA, 2007.
- Jones, P. D. and Moberg, A.: Hemispheric and large-scale surface air temperature variations: An extensive revision and an update to 2001, *J. Climate*, 16, 206–223, 2003.
- Jones, P. D., Briffa, K., Barnett, T. P., and Tett, S. F. B.: High-resolution palaeoclimatic records for the last millennium: interpretation, integration and comparison with general circulation model control-run temperatures, *Holocene*, 8, 455–471, 1998.
- LaMarche, V. C., Holmes, R. L., Dunwiddie, P. W., and Drew, L. G.: Argentina and Chile, in: *Tree-Ring Chronologies of the Southern Hemisphere*, Vol. 12, University of Arizona, Tucson, Arizona, USA, 1979.
- Lara, A., Villalba, R., and Aravena, J. C.: Desarrollo de una red de cronologías de Fitzroya cupressoides (Alerce) para Chile y Argentina, in: *Dendrochronologia en America Latina*, edited by: Roig, F., Mendoza, Universidad Nacional de Cuyo, Mendoza, Argentina, 217–244, 2000.
- Magrin, G., Gay Garcia, C., Cruz Choque, D., Giménez, J. C., Moreno, A. R., Nagy, G. J., Nobre, C., and Villamizar, A.: Latin America, in: *Climate Change 2007: Impacts, Adaptation and Vulnerability*, Contribution of Working Group II to the Fourth Assessment Report of the Intergovernmental Panel on Climate Change, edited by: Parry, M. L., Canziani, O. F., Palutikof, J. P., van der Linden, P. J., and Hanson, C. E., Cambridge University Press, Cambridge, 581–615, 2007.
- Mann, M. E., Bradley, R. S., and Hughes, M. K.: Global-scale temperature patterns and climate forcing over the past six centuries, *Nature*, 392, 779–787, 1998.
- Mann, M. E., Bradley, R. S., and Hughes, M. K.: Northern Hemisphere temperatures during the past millennium: inferences, uncertainties, and limitations, *Geophys. Res. Lett.*, 26, 759–762, 1999.
- Mann, M. E., Zhang, Z. H., Rutherford, S., Bradley, R. S., Hughes, M. K., Shindell, D., Ammann, C., Faluvegi, G., and Ni, F. B.: Global signatures and dynamical origins of the Little Ice Age and medieval climate anomaly, *Science*, 326, 1256–1260, doi:10.1126/Science.1177303, 2009.
- Moberg, A., Sonechkin, D. M., Holmgren, K., Datsenko, N. M., and Karlen, W.: Highly variable Northern Hemisphere temperatures reconstructed from low- and high-resolution proxy data, *Nature*, 433, 613–617, doi:10.1038/Nature03265, 2005.
- Moy, C. M., Dunbar, R. B., Moreno P. I., Francois, J.-P., Villamartinez, R., Mucciarone, D. M., Guilderson, T. P., and Garreaud, R. D.: Isotopic evidence for hydrologic change related to the westerlies in SW Patagonia, Chile, during the last millennium., *Quat. Sci. Rev.*, 27, 1335–1349, 2008.
- Mulvaney, R., Oerter, H., Peel, D. A., Graf, W., Arrowsmith, C., Pasteur, E. C., Knight, B., Littot, G. C., and Minners, W. D.: 1000 year ice-core records from Berkner Island, Antarctica. *Ann. Glaciol.*, 35, 45–51, 2002.
- Neukom, R., Luterbacher, J., Villalba, R., Küttel, M., Frank, D., Jones, P., Grosjean, M., Wanner, H., Aravena, J.-C., Black, D., Christie, D., D'Arrigo, R., Lara, A., Morales, M., Soliz-Gamboa, C., Srur, A., Urrutia, R., and von Gunten, L.: Multiproxy summer and winter surface air temperature field reconstructions for Southern South America covering the past centuries, *Clim. Dynam.*, 37(1–2), 35–51, doi:10.1007/s00382-00010-00793-00383, 2010a.
- Neukom, R., Luterbacher, J., Villalba, R., Küttel, M., Frank, D., Jones, P. D., Grosjean, M., Esper, J., Lopez, L., and Wanner, H.: Multi-centennial summer and winter precipitation variability in Southern South America, *Geophys. Res. Lett.*, 37, L14708,

- doi:10.1029/2010gl043680, 2010b.
- Nicault, A., Alleaume, S., Brewer, S., Carrer, M., Nola, P., and Guiot, J.: Mediterranean drought fluctuation during the last 500 years based on tree-ring data, *Clim. Dynam.*, 31, 227–245, doi:10.1007/s00382-007-0349-3, 2008.
- Palmer, W. C.: Meteorological drought. Research Paper No. 45, US Department of Commerce Weather Bureau, Washington, DC, 58 pp., 1965
- Piovano, E. L., Ariztegui, D., and Moreira, S. D.: Recent environmental changes in Laguna Mar Chiquita (Central Argentina): a sedimentary model for a highly variable saline lake, *Sedimentology*, 49, 1371–1384, 2002.
- Rein, B.: How do the 1982/83 and 1997/98 El Niños rank in a geological record from Peru?, *Quat. Int.*, 161, 56–66, 2007.
- Roig, F.: Dendrochronologia y dendroclimatología del bosque de *Pilgerodendron uviferum* en su area norte de dispersion, *Bol. Soc. Arg. Bot.*, 27, 217–234, 1991.
- Roig, F. A. and Boninsegna, J. A.: Chiloe Island summer precipitation constructed for 426 years from *Pilgerodendron uviferum* tree rings chronologies. *Tree Rings and Environment: Proceedings of the International Dendrochronology Symposium: Lundqua report*, 34, 277–280, 1990.
- Schmelter, A.: Climatic response and growth trends of *Nothofagus pumilio* along altitudinal gradients from arid to humid sites in Northern Patagonia, in: *Dendrochronologia en America Latina*, edited by: Roig, F., Mendoza, Universidad Nacional de Cuyo, Mendoza, Argentina, 193–215, 2000.
- Trenberth, K. E., Jones, P. D., Ambenje, P., Bojariu, R., Easterling, D., Klein Tank, A., Parker, D., Rahimzadeh, F., Renwick, J. A., Rusticucci, M., Soden, B., and Zhai, P.: *Climate Change 2007: The Physical Science Basis*, Contribution of Working Group I to the Fourth Assessment Report of the Intergovernmental Panel on Climate Change, edited by: Solomon, S., Qin, D., Manning, M., Chen, Z., Marquis, M., Averyt, K. B., Tignor, M., and Miller, H. L., Cambridge, 2007.
- Thompson, D. W. J., and Wallace, J. M.: Annular modes in the extratropical circulation. Part I: Month-to-month variability, *J. Climate*, 13, 1000–1016, 2000.
- Thompson, L. G., Mosley-Thompson, E., Bolzan, J. F., and Koci, B. R.: A 1500-year record of tropical precipitation in ice core from the Quelccaya ice cap, Peru. *Science*, 229, 971–973, 1985.
- Thompson, L. G., Mosley-Thompson, E., Mulvaney, R., Dai, J., Lin, P. N., Davis, M. E., and Raymond, C. F.: Climate Since AD 1510 on Dyer Plateau, Antarctic Peninsula: Evidence for Recent Climate Change, *Ann. Glaciol.*, 20, 420–426, 1994.
- Thompson, L. G., Mosley-Thompson, E., Davis, M. E., Lin, P.-N., Henderson, K. A., Cole-Dai, J., Bolzan, J. F., and Lui, K.-B.: Late glacial stage and Holocene tropical ice core records from Huascarán, Peru, *Science*, 269, 46–50, 1995.
- Thompson, L. G., Davis, M. E., Mosley-Thompson, E., Sowers, T. A., Henderson, K. A., Zagorodnov, V. S., Lin, P.-N., Mikhalevko, V. N., Campen, R. K., Bolzan, J. F., Cole-Dai, J., and Francou, B.: A 25 000-year tropical climate history from Bolivian ice cores, *Science*, 282, 1858–1864, 1998.
- Trenberth, K. E.: The definition of El Niño, *Bull. Am. Meteorol. Soc.*, 78, 2771–2777, 1997.
- Troin, M., Vallet-Coulomb, C., Sylvestre, F., and Piovano, E.: Hydrological modelling of a closed lake (Laguna Mar Chiquita, Argentina) in the context of the 20th century climatic changes, *J. Hydrol.*, 393, 233–244, doi:10.1016/j.jhydrol.2010.1008.1019, 2010.
- Villalba, R., Holmes, R. L., and Boninsegna, J. A.: Spatial patterns of climate and tree growth variations in subtropical Northwestern Argentina, *J. Biogeogr.*, 19, 631–649, 1992.
- Villalba, R., Grosjean, M., and Kiefer, T.: Long-term multi-proxy climate reconstructions and dynamics in South America (LOTRED-SA): State of the art and perspectives, *Palaeogeogr. Palaeoecol.*, 281, 175–179, 2009.
- Villalba, R., Boninsegna, J. A., Veblen, T. T., Schmelter, A., and Rubulis, S.: Recent trends in tree-ring records from high elevation sites in the Andes of Northern Patagonia, *Climatic Change*, 36, 425–454, 1997.
- Villalba, R. and Veblen, T. T.: Spatial and temporal variation in *Austrocedrus* growth along the forest – steppe ecotone in Northern Patagonia, *Can. J. Forest Res.*, 27, 580–597, 1997.
- Vimeux, F., Ginot, P., Schwikowski, M., Vuille, M., Hoffmann, G., Thompson, L. G., and Schotterer, U.: Climate variability during the last 1000 years inferred from Andean ice cores: a review of methodology and recent results, *Palaeogeogr. Palaeoecol.*, 281, 229–241, 2009.
- von Gunten, L., Grosjean, M., Rein, B., Urrutia, R., and Appleby, P.: A quantitative high resolution summer temperature reconstruction based on sedimentary pigments from Laguna Aculeo, Central Chile, back to AD 850, *Holocene*, 19, 873–881, 2009.
- Wanner, H., Beer, J., Butikofer, J., Crowley, T. J., Cubasch, U., Fluckiger, J., Goosse, H., Grosjean, M., Joos, F., Kaplan, J. O., Kuttel, M., Muller, S. A., Prentice, C., Solomina, O., Stocker, T. F., Tarasov, P., Wagner, M., and Widmann, M.: Mid- to Late Holocene climate change: an overview, *Quat. Sci. Rev.*, 27, 1791–1828, 2008.
- Woodhouse, C. A. and Brown, P. M.: Tree-Ring evidence for great plains drought, *Tree-Ring Res.*, 57, 89–103, 2001.
- Woodhouse, C. A. and Overpeck, J. T.: 2000 years of drought variability in the Central United States, *B. Am. Meteorol. Soc.*, 79, 2693–2714, 1998.
- Zhang, Y., Wallace, J. M., and Battisti, D. S.: ENSO-like interdecadal variability: 1900–93, *J. Climate*, 10, 1004–1020, 1997.