



**HAL**  
open science

# The Neoproterozoic-Early Paleozoic tectonic evolution of the South China Block: An overview

Jacques Charvet

► **To cite this version:**

Jacques Charvet. The Neoproterozoic-Early Paleozoic tectonic evolution of the South China Block: An overview. *Journal of Southeast Asian earth sciences*, 2013, 74, pp.198-209. 10.1016/j.jseaes.2013.02.015 . insu-00796995

**HAL Id: insu-00796995**

**<https://insu.hal.science/insu-00796995v1>**

Submitted on 15 Mar 2013

**HAL** is a multi-disciplinary open access archive for the deposit and dissemination of scientific research documents, whether they are published or not. The documents may come from teaching and research institutions in France or abroad, or from public or private research centers.

L'archive ouverte pluridisciplinaire **HAL**, est destinée au dépôt et à la diffusion de documents scientifiques de niveau recherche, publiés ou non, émanant des établissements d'enseignement et de recherche français ou étrangers, des laboratoires publics ou privés.

The Neoproterozoic-Early Paleozoic tectonic evolution of the South China Block: An overview.

Jacques Charvet

Institut des Sciences de la Terre d'Orléans (ISTO), UMR 7327, 1A rue de la Férellerie, 45100 Orléans, France

E-mail address: [jacques.charvet@univ-orleans.fr](mailto:jacques.charvet@univ-orleans.fr)

**Abstract.** This paper gives a brief review of what I consider as the state of the art regarding the largely accepted data and ideas concerning the Proterozoic to Early Paleozoic tectonic evolution of South China. The South China craton was built by the welding of the Yangtze and Cathaysia blocks, with a different previous history giving a different pre-Neoproterozoic basement composition, due to the Jiangnan (Jinning, Sibao) orogeny. This Jiangnan orogeny was a collisional event, induced by the consumption of an intervening oceanic domain by subduction beneath the Yangtze plate. The evolution involved a volcanic arc on the Yangtze active margin, active from ca. 980 Ma to ca. 850 Ma, the subsequent collision beginning at around 870-860 Ma and responsible for the emplacement of thrust sheets of ophiolitic mélange (dated around 1000-900 Ma) and blueschists (900-870 Ma), followed by late- to post-collisional granitic plutonism (840-800 Ma). The newly amalgamated South China craton suffered from rifting, starting around 850 Ma, marked by mafic-ultramafic magmatism until ca. 750 Ma. The Nanhua rift basin evolved with a thick sedimentation in its middle part until the Ordovician. South China was affected by the early Paleozoic orogeny (mainly Silurian), characterized by a strong quasi-symmetrical intracontinental shortening, involving the sedimentary cover of the rift and its margins as well as the basement, leading to crustal thickening. This crustal thickening induced an important anatexis and emplacement of

peraluminous granites during the Silurian. Unlike the Jiangnan orogeny, which was of collisional type, the Early Paleozoic one was a bit similar to a Pyrenean intracontinental type. Some pending problems need further research for clarification, for example: the location and timing of integration of South China within Rodinia, the triggering factor of the Early Paleozoic orogeny, the mapping of the contacts bounding the Lower Paleozoic thrust sheets responsible for the crustal thickening.

**Keywords** South China, Yangtze block, Cathaysia block, Jiangnan orogeny, Early Paleozoic orogeny, tectonic evolution.

## 1. Introduction

The Asian continent was formed by the amalgamation of several major blocks (e.g. Chen et al., 1993; Ren et al., 1999, 2012). One of them is the South China Block. It is generally accepted that this block is in turn composed of two main tectonic units: the Yangtze block to the north and the Cathaysia one to the south (Fig. 1). The present boundary between the Yangtze Block and Cathaysia is a big fault: the Yichun-Shaoxing fault (Wang, 1986; Zhao and Cawood, 1999). Although the Jiangnan (or Sibao) belt, on the southern border of Yangtze Block (Fig. 1), is now commonly regarded as the result of the welding of the two blocks, the precise age and geodynamic interpretation of this Jiangnan orogeny, as well as the later evolution during the Phanerozoic, especially the Early Paleozoic, have been subject of big debates until the last decade (e.g. review in Charvet et al., 1996, 2010).

Although the Triassic and Cretaceous events reworked the South China area (e.g. Li, 1998; Xiao and He, 2005; Li and Li, 2007; Shu et al., 2008a, 2009, 2012; Lepvrier et al., 2011; Shu, 2012), this paper will deal with the Precambrian and Early Paleozoic history,

reviewing the main ideas now advocated for this evolution and raising some pending questions deserving further research.

## **2. Two distinct Precambrian Blocks**

The basement of the Yangtze and Cathaysia blocks that form the South China craton (Fig. 1) both experienced a different evolution during the Precambrian.

The Yangtze block comprises Neo-Archean metamorphic rocks, but the outcrops of pre-Neoproterozoic basement rocks are rare, appearing sporadically in Yunnan, Guizhou, and Hubei. It shows an old core consisting of granitic gneiss of ca. 2.90–2.95 Ga in its northern part, with the oldest being the Kongling complex near the Yangtze Gorge Dam, comprising Archean to Paleoproterozoic high-grade metamorphic TTG (tonalite, trondhjemite and granodiorite) gneisses, metasedimentary rocks and amphibolites (e.g. Gao et al., 1999; Qiu et al., 2000; Zhang et al., 2006; Yu et al., 2008). The Archean basement is also detected beneath Proterozoic upper-crustal rocks (Zheng et al., 2006). Within the latter, the lower part (Lengjiaxi Group) once considered as Mesoproterozoic is in fact mostly Neoproterozoic, according to SHRIMP datings, with a top limit at 0.82Ga (Gao et al., 2008, 2010, 2011). The Neoproterozoic strata are, in ascending order, divided into the Lengjiaxi Group (1.0?–0.82Ga), Banxi Group (0.82—0.75Ga), Nanhuan System (0.75–0.635Ga) and Sinian (Ediacaran) System (0.635–0.542Ga) (Ren et al., 2012). The dating of the top boundary of the Lengjiaxi Group at 0.82Ga suggests that the basement of the Yangtze craton was formed 0.2 Ga later than the Rodinia supercontinent (Ren et al., 2012).

In the Cathaysia block the basement metamorphic rocks, most of which are Neoproterozoic to early Paleozoic in age, are mainly found in the northeastern part (southern Zhejiang – northern and western Fujian – eastern Jiangxi, i.e. Wuyishan area), in the central part (Nanling Mts), and the southwestern part (Yunkai area) (Fig. 1). The Precambrian

basement is also partially present in the area (Nansha) of the southern China sea and eastern China sea (Ren and Chen, 1989; Ren et al., 1990) forming a South China sea-East China sea block (Shu, 2012). The oldest rocks in Cathaysia are about 1.9–1.8 Ga in age and are limited to the southern Zhejiang-northwestern Fujian area (Hu, 1994; Gan et al., 1995; Yu et al., 2009) and Nanling area (Yu et al., 2009; Yao et al., 2011). But the analysis of detrital zircons from Ordovician-Devonian sandstones of southern Jiangxi suggests the presence of Archean basement of ca. 2.46 Ga age (Yao et al., 2011). If the Neoproterozoic rocks (schist and gneiss) are widespread, the Mesoproterozoic ones are very rare. However, in detail, the Precambrian crust of the Cathaysia Block can be divided into two distinct tectonic domains, the Wuyishan terrane to the northeast and the Nanling-Yunkai terrane to the southwest; the basement rocks of the two terranes are comprised of different components. The Wuyishan terrane is characterized by dominant Paleoproterozoic (1.86 Ga) and lesser Neoproterozoic magmatism. In contrast, the Nanling-Yunkai terrane contains abundant Neoproterozoic and Grenvillian zircons, some evidence of Mesoproterozoic activity and rare Paleo- to Meso-Archean and Neoproterozoic zircons (Yu et al., 2010).

The sedimentary cover goes from the Nanhua system (0.75—0.635Ga, Ren et al., 2012) to the Ordovician, before the Devonian unconformity.

Therefore the two blocks seem to have been constructed of different Precambrian crustal components. They could be juxtaposed only after ca.1.0 Ga (Chen et al., 1991; Li et al., 1994; Shi et al., 1994; Shu et al., 1995, 2006, 2011; Charvet et al., 1996; Li, 1999; Wang et al., 2006, 2007a; Yu et al., 2008).

### **3. The collisional welding of Yangtze and Cathaysia Blocks**

Through time, the formation of the South China Block by welding of the Yangtze and Cathaysia Blocks was controversial. It was still a hot matter of debate in the 1990s, as

recorded in Charvet et al. (1996). Some authors (e.g. Ren, 1991) argued for a unique block since the Early Precambrian, without any suture zone in it. Since the 1980s, however, the Jiangnan belt (Fig. 1) was considered as the result of the amalgamation of the Yangtze and Cathaysia blocks (Guo et al., 1980, 1985) but the advocated timing and process varied: collisional events in the Middle-Late Proterozoic (Guo et al., 1980, 1985; Rowley et al., 1989; Chen et al., 1991), early Neoproterozoic ca. 900 Ma (Guo et al., 1989; Chen et al., 1991; Xu et al., 1992; Shu et al., 1994; Shu and Charvet, 1996; Charvet et al., 1996; Li, 1998; Ye et al., 2007; Li et al., 2008a; Chen et al., 2009); Ordovician-Silurian (Haynes, 1988), and Late Paleozoic-Mesozoic (Hsü et al., 1988, 1990; Li, 1998; Xiao and He, 2005; Li and Li, 2007).

But recent works documented the age of amalgamation to be Neoproterozoic and most researchers now believe that the two blocks amalgamated during the Proterozoic Sibao orogeny (also called the “Jiangnan” or “Jinning” orogeny in the literature). However, several processes were proposed, differing in details, and the tectonic calendar varies according to authors; so the timing and evolution of this orogeny are still controversial. In general, the main geodynamic scheme is admitted by authors: an oceanic closure, during the Neoproterozoic, after a northward subduction of the oceanic domain beneath the Yangtze active margin and the subsequent collision with the Cathaysia passive margin, giving rise to the Jiangnan belt. The suture zone is located in the area of the present NE-trending Jiangshang-Shaoxing fault.

Regarding the calendar, some researchers suggested that the Sibao orogen was a part of the worldwide mid-late Mesoproterozoic-early Neoproterozoic Grenvillian-aged orogenic system associated with the assembly of Rodinia (e.g. Li Z.X et al., 1995, 2002, 2007, 2008; Rivers et al., 2002; Greentree et al., 2006; Li X.H. et al., 2006; Ye et al., 2007; Li W.X. et al., 2008a).

In contrast, other workers considered that the Sibao orogeny lasted between ca. 1 and 0.8 Ga, thus was post-Grenville with respect to the timing in the type belt of eastern North America, with an amalgamation completed around 900 Ma (Guo et al., 1985, 1989; Chen et al., 1991; Xu et al., 1992; Shu et al., 1994; Shu and Charvet, 1996; Charvet et al., 1996; Li, 1998; Ye et al., 2007; Li et al., 2008; Chen et al., 2009; Li W.X. et al., 2008a; Li X.H. et al., 2009), between 900 and 830 Ma (Wu et al., 2006; Li XH et al, 2008), between 860-870 and 800 Ma (Wang et al., 2004; Wang et al., 2006, 2007a, 2008), before 820 Ma (e.g., Li, 1999; Zhao and Cawood, 1999; Zheng et al., 2007), or even younger, around 800 Ma (Li et al., 1997; Zhou et al., 2002, 2004; Wang et al., 2008). A diachronous oceanic closure has been suggested by Li et al. (2007, 2009): >1000 Ma to the west and ca. 900-880 Ma at the eastern part of the orogen. Rocks deformed and metamorphosed during the Jiangnan event are unconformably covered by the metasediments of the Nanhua System which is sealing the orogeny.

The development of the Jiangnan orogeny is recorded by: Neoproterozoic magmatic arc, Neoproterozoic ophiolites, HP metamorphism, ductile deformation.

### *3-1. Neoproterozoic magmatic arc.*

Several geochemical studies indicate a magmatic arc setting for volcanic and plutonic rocks, suggesting a subduction beneath the SE border of the Yangtze Block (e.g. Cheng, 1993; Wang et al., 2006; Ye et al., 2007; Li et al., 2009, and ref. therein).

The magmatic arc is mainly represented by: I-type granite, basalt, andesite, rhyolite, tuff and tuffaceous breccias. Those rocks crop out mainly in the Huaiyu area, in the eastern segment of the Jiangnan belt and in western Zhejiang, southern Anhui, and northeastern Jiangxi; at a less extent in Guangdong province. Recent isotopic dating (Fig. 2) yielded ages of:  $996 \pm 29$  Ma (gneissic granite, zircon U-Pb, Liu et al., 2001),  $972 \pm 8$  Ma (rhyolite, SHRIMP zircon U-Pb, Shu et al., 2008b),  $913 \pm 15$  Ma and  $905 \pm 14$  Ma (hornblende-granite, SHRIMP

zircon U-Pb, Ye et al., 2007), LA-ICPMS Pb/Pb zircon age of  $965 \pm 12$  Ma on basalt of the Pingshui Formation, (Chen et al., 2009);  $893 \pm 6$  Ma (granodiorite, SHRIMP zircon U-Pb, Yao et al., 2012) and  $891 \pm 12$  Ma (rhyolite, SHRIMP zircon U-Pb, Li et al., 2009). Older age data are:  $978 \pm 44$  Ma by Sm–Nd internal isochron on basalt (Zhang et al., 1990),  $846 \pm 4$  Ma by U-Pb on zircon (Liu et al., 1995).

Regarding the initiation of arc magmatism, the oldest ages are around 970–980 Ma (Zhang et al., 1990; Chen et al., 2009; Gao et al., 2009). But Li et al. (2009) argue that the Tianli schists, considered as a part of the arc, were metamorphosed as early as  $1042 \pm 7$  Ma (Li et al., 2007) and that the NE Jiangxi ophiolites formed in back-arc basin, are dated at ca. 1.0 Ga (Chen et al., 1991); therefore the arc magmatism (and the subduction) started no later than 1.0 Ga. The arc magmatism lasted until ca. 880–905 Ma (Li et al., 2009) to about ca. 840–850 Ma (Liu et al., 1995).

Subduction in the back-arc basin started from at least  $968 \pm 23$  Ma, as suggested by the occurrence of the Xiwan adakitic granites (Li and Li, 2003; Li et al., 2009), and continued until ca. 880 Ma, time of the Xiwan ophiolite obduction onto the continent leading to formation of the  $880 \pm 19$  Ma obduction-type biotite granites (Li W.X. et al., 2008a; Li et al., 2009).

### 3-2. *Ophiolitic mélange*

An ophiolitic mélange is present in the NE Jiangnan area (Fig. 2), represented by the NE Jiangxi ophiolites. Another one has been advocated near the Jiangshan-Shaoxing Fault, but the related mafic-ultramafic rocks, once regarded as possible Neoproterozoic ophiolitic relics initially linked to the Yangtze–Cathaysia collision history (e.g. Charvet et al., 1999; Shu, 2006; Shu et al., 2006; Wang and Shu, 2007), are now considered as linked to a rifting episode younger than the collision and with a geochemistry different from ophiolites (Li et al., 2009; Charvet et al. 2010; Shu et al., 2011; Shu, 2012).



The NE Jiangxi ophiolitic rocks yielded a SHRIMP zircon U-Pb age of  $968 \pm 23$  Ma (Li et al., 1994) and  $970 \pm 21$  (Gao et al., 2009), Sm-Nd isochron ages of  $930 \pm 34$  Ma (Xu and Qiao, 1989),  $935 \pm 10$  Ma (Chen et al., 1991),  $1034 \pm 24$  Ma (Chen et al., 1991), and  $1024 \pm 30$  Ma (Zhou et al., 1989). The mélangé is crosscut by the Shiershan granite that yielded a zircon U-Pb age of  $825 \pm 3$  Ma, providing an upper limit for the ophiolitic mélangé (Liu et al., 1995).

### *3-3. HP metamorphism*

A string of glaucophane schists was reported in an amphibolite-facies metamorphic belt of Xiwan area, near Dexing, in Jiangxi Province. From samples collected near Maoqiao and Raoer of Dexing, pressure and temperature were estimated at 0.9-1.3 GPa and 250-450°C (Zhou and Zhou, 1996). K-Ar dating on glaucophane yielded a  $866 \pm 14$  Ma age (Shu et al., 1994; Shu and Charvet, 1996). But, as pointed already by Charvet et al. (1996), this age is likely a bit rejuvenated. Another older age of  $901 \pm 19$  Ma has been determined by  $^{40}\text{Ar}/^{39}\text{Ar}$  dating on amphibole (Xu et al., 1992), with resetting events at around 860 and 790 Ma. Although limited, those HP/LT relics are also arguing in favour of a pre-existing subduction.

### *3-4. Deformation and greenschist metamorphism.*

The ophiolitic mélanges are cropping out within a major shear zone: the NE Jiangxi shear zone. The Northeastern Jiangxi shear zone is 5-10 km wide and shows a NE-trending linear extension along about 250 km. A second one, the Jiangshan-Shaoxing zone, is 20-30 km wide, extending E-W for more than 800 km. Both shear zones show different kinds of mylonite (felsic, granitic, phyllitic) showing usually clear stretching lineation and asymmetric kinematic indicators. The latter suggest two successive phases of deformation: an early top-to-the-SE thrusting and a late sinistral strike-slip shearing (Wang and Mo, 1995; Shu and Charvet, 1996).

The first phase pre-dates the post-collisional granitic plutonism (Shu and Charvet, 1996; Shu, 2012). The second phase, affecting the amalgamated blocks, was accompanied by a widespread regional metamorphism responsible for a very large area of low-grade metamorphic rocks, of greenschist facies, including slate, phyllite, meta-volcanic-rocks, and locally for higher grade garnet biotite schist, amphibole schist and orthogneiss. This sinistral shearing involved the mylonitization of the post-collisional cordierite-bearing Shiersan granite (Shu and Charvet, 1996), dated at  $825 \pm 3$  Ma by zircon U-Pb method (Liu et al. 1995). This deformation is post-dated by the unconformity of the Nanhuan basal conglomerate, which is now estimated at 750 Ma (Ren et al., 2012).

#### **4. Neoproterozoic collisional to post-collisional events**

The oceanic closure and initial thrusting (ophiolitic mélanges) were followed by several events including: syn-collisional to post-collisional magmatism, intra-continental deformation, rifting and general unconformity of the Nanhua system.

##### *4-1. Syn- to post-collisional magmatism*

Along the boundary between the Yangtze and Cathaysia blocks, more than 20 granitic plutons occur: Daolinshan of eastern Zhejiang, Xiuning, Shiersan of Western Zhejiang, Xucun of southern Anhui, Jiulingshan of northern Jiangxi, Bendong, Sanfang, Motianling of northern Guizhou (Fig. 2). These granites include frequently cordierite, muscovite, belong to the peraluminous S-type granites, and are dated between 840 and 800 Ma (Liu et al., 1995; Li, 1999; Zeng et al, 2005; Zheng et al., 2007; Zhong et al., 2006). As mentioned above, some of them, like the Shiersan granite, were affected by the ductile sinistral strike-slip shearing along discrete shear zones, suggesting that the last stage of collision was transpressive or the initial stage of collapse occurred in a transtensional regime.

##### *4-2. Rifting*

A rifting event, after the South China Block consolidation, is documented by magmatism and sedimentary deposits. The Neoproterozoic is a significant initial rifting period proposed the first time by Gilder et al. (1991).

The magmatic evidence comes firstly from mafic-ultramafic bodies distributed mainly near the Zhenghe-Dapu Fault, in the area of Longquan, Qingyuan, Zhenghe, Sunhchang, Jian'ou, Jianyang (Fig. 2). The wall rocks are quartz schist, gneiss and migmatite. The rock types include: gabbro, diabase, basalt, andesite, and also serpentinite and pyroxenite. According to Shu et al. (2011), the mafic rocks show geochemical characteristics of continental rift basalts and zircon SHRIMP U-Pb analyses yielded rather similar Neoproterozoic ages of  $836\pm 7$  Ma (gabbro),  $841\pm 12$  Ma (gabbro),  $847\pm 8$  Ma (gabbro) and  $857\pm 7$  Ma (basalt). Those data are in agreement with some previous ones: SHRIMP zircon U-Pb age of  $858\pm 11$  Ma on gabbro (Shu et al., 2006),  $841\pm 6$  Ma zircon SHRIMP U-Pb on the Lipu diorite (Li et al., 2010),  $832\pm 7$  Ma by  $40\text{Ar}/39\text{Ar}$  on amphibole grains of mafic schists (Kong et al. 1995), SHRIMP U-Pb zircon age of  $795\pm 7$  Ma on the diabase of Zhenghe (Shu et al., 2008a), SHRIMP U-Pb zircon ages of  $857\pm 0.2$  Ma and  $853\pm 4$  Ma on Jian'ou metabasalt and tuff (Shu et al., 2008b), SHRIMP U-Pb zircon age of  $818\pm 9$  Ma on an alkaline rhyolite of Mamianshan near Zhenghe (Li et al., 2005).

In summary, the ages of such rocks cluster within the range 860-800 Ma. One can notice that there is an overlap in time between the S-type post-collisional granitic intrusions within the core of the belt (840-800 Ma), linked with the collapse of the thickened crust, and the initiation of rifting in South China. The beginning of the process might have included some strike-slip component, in a transpressive to transtensional regime, as suggested by the sinistral shearing affecting the Shiersan granite.

Secondly, several bimodal dykes: diabase and fined-grained granite, crosscut the post-collisional peraluminous plutons, for instance in eastern Zhejiang and northeastern Jiangxi. In

the Nanhua rift basin, bimodal volcanic rocks are interlayered with coarse-grained deposits. Basic dykes, trending E-W, intrude the Jiulingshan and yielded zircon U-Pb age of  $812 \pm 5$  Ma (Wang et al., 2006). In Fuyang (eastern Zhejiang), zircon U-Pb ages of  $794 \pm 9$  Ma and  $792 \pm 5$  Ma have been obtained from basalt and rhyolite respectively (Wang and Li, 2003). The bimodal magmatism seems to have stopped at around 760 Ma (Wang and Li, 2003; Li et al., 2005; Shu et al., 2008b; Shu, 2012).

The rifting episode is also recorded in the sedimentary sequences deposited in two different basins: the NE trending Nanhua rift and the N-S trending Kangdian rift basin (Ren and Chen, 1989; Li et al., 2002). For instance, along the suture zone, continental rifting occurred in the Jiangshan-Shaoxing fault zone, leading to the Nanhua rift filled with a thick Nanhua-Sinian-Lower Paleozoic sequence. There is a conspicuous difference between the litho-tectonic units of this age to the north and to the south of this fault. On the northern side, the sedimentary pile is dominated by shallow sea carbonate-siliceous rocks. On the southern side, a thicker sequence is dominated by sandy slate with limestone lenses (Shu, 2012).

## **5. Summary of the Neoproterozoic evolution**

The evolution from about 1 Ga to ca. 750 Ma can be schematically summarized by the Fig. 3, modified after Charvet et al. (1996) and Shu (2012).

At 1-0.9 Ga, the Yangtze and Cathaysia blocks are separated by an oceanic domain: the South China Ocean, which is consumed by a northwestward subduction beneath the Yangtze block, leading to the Ganzhewan island arc (Shu, 2012) and the Huaiyu back-arc basin.

At ca. 870-860 Ma, the subsequent collision led to the closure of the South China Ocean and the Huaiyu back-arc basin, leading to the emplacement of thrust sheets including ophiolitic mélanges and HP metamorphic rocks.

Between 840 and 800 Ma, late- to post-collisional granitic plutonism took place. The final compressive deformation was partly accommodated by sinistral ductile strike-slip shear. Rifting-linked mafic magmatism began.

Lastly, at around 750 Ma, the rift basin was created and began to be filled with the sedimentary sequence starting with the Nanhuan system.

## **6. The Early Paleozoic orogeny**

The Cathaysia comprises a NE–SW trending orogen, stretching for ca. 2000 km (e.g. Ren et al., 1997, 1999) and possibly extending to the Korean peninsula (e.g. Cluzel et al., 1991; Kim et al., 2006) and to the Indochina Block (Ren, 1991; Carter et al., 2001; Nagy et al., 2001; Roger et al., 2007; Lepvrier et al., 2008; Sajeev et al., 2010; Charvet et al., 2010). This orogen, firstly assigned to the Kwanghsian orogeny (Ting, 1929), and then called South China Caledonian Fold Belt (e.g. Huang, 1978), Cathaysian or Huanan Caledonides (e.g. Ren, 1991; Chang, 1996; Charvet et al., 1999), Wuyishan-Yunkaidashan belt (e.g. Zhang et al., 1984), Wuyi-Yunkai tectonic zone (Zhang et al., 1991), Early Paleozoic Orogen of the South China Block (Faure et al., 2009) or Wuyi-Yunkai orogen (Li et al., 2010) in the literature, has been recognized as Early Paleozoic in age due to the angular unconformity, visible in China, between pre-Devonian deformed rocks and Devonian strata (Grabau, 1924; Ting, 1929; Ren, 1964, 1991; Huang et al., 1980; Zhao et al., 1996). It includes Neoproterozoic–Lower Paleozoic non-metamorphic or low grade metamorphic sediments, Paleoproterozoic to Lower Neoproterozoic (Li, 1997; Li Z.X. et al., 2002) high grade metamorphic rocks, migmatites and granitoids. The high grade metamorphic rocks occur mainly in the northeastern segment, including northern Fujian and southern Zhejiang provinces, and in the Nanling zone (e.g. FBGMR, 1985; Shui et al., 1988; Li, 1988, 1989; ZBGMR, 1989; Hu et al., 1991; Gan et al., 1993, 1995; Li et al., 1993; Zhao and Cawood, 1999; Yu et al., 2006).

### *6-1. Tectonic development: folding and thrusting in an intracontinental orogen*

The tectonic history of this Early Paleozoic belt led to controversies in the last two decades, with various interpretations proposed by different workers (see review in Charvet et al., 2010; Shu et al., 2011), distributed basically, since the beginning, within two groups of models: intracontinental orogen (e.g. Ren, 1991, Li, 1998; Charvet et al. 1999, Li and Powell, 2001; Wang et al., 2007b) versus collisional belt (e.g. Wang et al., 1988; Guo et al., 1989; Hsü et al. 1990; Li, 1993). Recently, several authors have provided various robust lines of evidence supporting the interpretation of this belt as an intracontinental orogen, based on structural and petrological studies (Shu, 2006; Shu et al., 2008a; Faure et al., 2009; Li et al., 2010; Charvet et al., 2010; Xu et al., 2011) or independently on detrital zircon U-Pb geochronology (Wang et al., 2010).

Among the subjects of debate, three questions were particularly addressed by workers: i) What was the sedimentary environment in South China during Early Paleozoic, did an oceanic realm exist before the orogeny? ii) What was the geodynamic process that caused the Early Paleozoic tectonic deformation, metamorphism and magmatism, and iii) what was the vergence of structures?

Regarding the first point, new results show that, in continuity with the Sinian (i.e. 0.64-0.54 Ga) deposits, the Cambrian-Ordovician sedimentary sequences suggest a shallow sea environment in South China, although different from the carbonate platform of the Jiangnan domain (Shu, 2012); and the water depth and width of basin during Early Paleozoic show a gradual increase from northeast (Wuyishan) to southwest (Guangxi-Yunnan region) (Shu, 2012). However, for Chen et al. (2012), the timing difference in change of facies during the Ordovician may imply a northward progression of the Kwangsian Orogeny. In addition, the northwestward and westward paleo-current direction suggests that the provenances were located on the eastern and southeastern sides of Cathaysia, supporting the existence of the

South China sea-east China sea continental domain (Shu, 2012). The sedimentological study unravels also the tendency to uplift at the end of the Ordovician, in agreement with the tectono-magmatic history. On the western side, Yangtze foreland, the detrital zircon age spectrum indicates a derivation from the southeast with Precambrian grains derived from the basement of Cathaysia Block and the Early Neoproterozoic Jiangshan-Shaoxing suture (Xu et al., 2012). The restriction of Paleozoic detritus to the latter phases of the Kwangsi orogeny suggests progressive exhumation of the Cathaysia Block, perhaps due to thrusting over the Yangtze Block; the latter remained a site of active sedimentation during orogenesis (Xu et al., 2012).

The sedimentary record argues against the existence of a deep sea environment in the Zhejiang-Fujian-Jiangxi area and, together with the absence of arc volcanic rocks and ophiolitic remnants, against the presence of a Lower Paleozoic oceanic domain in this area.

Regarding the second and third points, structural studies brought new insights on the tectonic development, particularly in the Wuyishan and surrounding areas (Charvet et al., 2010, and ref. therein). The deformation involved the sedimentary sequence from Upper Neoproterozoic to Ordovician strata. But the basement of Cathaysia suffered also intensive reworking through folding, thrusting and magmatism during Early Paleozoic, with large scale anatexis and emplacement of granitoids during the Silurian. This event is well recorded in the Wuyi and Nanling areas (Shu, 2006; Shu et al., 2008b; Faure et al., 2009; Li et al., 2010; Charvet et al., 2010; Zhang et al., 2011; Xu et al., 2011) with the widespread development of slate-phyllite, gneiss, and gneissic granites dated at 440-400 Ma (Shu, 2006; Shu et al., 2008b; Zhang et al., 2009, 2010a,b; Faure et al., 2009; Li et al., 2010; Charvet et al., 2010; Zhang et al., 2011).

Divergent structures were built during the Silurian, verging to the south in the southern part and to the north or northwest in the northern part, together with the development of a

regional metamorphism, from low greenschist to locally amphibolites facies and even granulite facies (Yu et al., 2007); the regional metamorphism developed since ca. 453 Ma and reached a peak at around 442 Ma in NW Fujian (Liu et al., 2010). In the Wuyishan, the kinematic indicators (stretching lineation and asymmetric fabrics), suggest a ductile thrusting mainly directed southward, in the low grade meta-sedimentary rocks and in the higher grade reworked basement as well (Charvet et al., 2010). But to the north of the Jiangshan-Shaoxing fault, or to the west of the Ganjiang fault, the folds and thrusts are verging towards the north or northwest (Charvet et al., 2010), Therefore, there is a rather symmetrical geometry, like a fan-like or flower-structure (Charvet et al., 2010; Rong et al., 2010; Shu, 2012). This feature has implications for the geodynamic process responsible for the orogeny.

#### *6-2. Syn- to post-tectonic peraluminous plutonism*

Well over 100 post-tectonic granitic bodies were emplaced during the Silurian-Early Devonian (Fig. 4). Most of them belong to peraluminous S-type. The recent geochronological data show that they were intruded mainly between 440 and 390 Ma (Wan et al., 2007, 2010; Wang et al., 2007b; Shu et al., 2008c; Faure et al., 2009; Charvet et al., 2010; Zhang et al., 2010, 2011; Liu et al., 2010; Wang et al., 2011). Some of them show a ductile deformation on their border, with a gneissic to mylonitic fabrics (Shu et al., 1999; Charvet et al., 2010; Xu et al., 2011) suggesting a late tectonic emplacement, possibly synchronous with a general strike-slip environment (Charvet et al., 2010). Their genesis might be due to dehydration melting of Proterozoic crust during the post-crustal thickening relaxation phase of the pre-Devonian orogeny (Li et al., 2010).

#### *6-3. Geodynamic model*

If the intracontinental shortening seems to be likely, it may be accommodated in various ways.



Faure et al. (2009) suggested that a possible mechanism could be an intracontinental subduction. However, their very asymmetrical model is facing two difficulties: i) the northward deformation of the northwestern area, the upper plate in the model, is ignored; ii) the metamorphic evolution, of Barrovian type with a pressure peak of 11-12 kb at a temperature of 600°C (Zhao and Cawood, 1999), does not support a subduction setting with some induced HP metamorphism due to a plate going down into the asthenosphere, but rather a crustal thickening due to thrusting. Therefore, a Pyrénées-like model, involving the almost symmetrical shortening of a previous rift, seems preferable (Charvet et al., 2010; Shu, 2012). However some questions remain, regarding for instance the modalities of this crustal thickening and the geodynamic event triggering this intracontinental shortening (see below).

Therefore, the preferred geodynamic evolutionary model, to which I refer the reader, accounting for the Early Paleozoic belt of South China is the one advocated by Charvet et al. (2010), corresponding to a quasi symmetrical shortening of the previous Nanhua rift, involving the inversion of some previous normal faults. Recent works suggest that this geometry could be extended towards the east (Shu, 2012), assuming the existence of a wider continental block including the South China sea-East China sea continental basement.

## **7. Some pending problems**

If the general reconstructions proposed above for the Jiangnan and Early Paleozoic orogenies are compatible with the presently known data set, several questions remain so far unsolved and need further research. I will mention only a few of them.

### *7-1. Timing and location of the integration of South China into Rodinia.*

Several workers argue that the welding of Yangtze and Cathaysia occurred within the general frame of Rodinia assembly (e.g. Li et al., 1995, 1996, 2007, 2008; Ling et al., 2003; Greentree et al., 2006; Xiang and Shu, 2010).

However, there is firstly a problem of timing. If on the western side of Yangtze block, one may find some relics of an event dated at around 1.0 Ga and possibly linked to a Grenville-type orogeny (Yu et al., 2008), the welding of Yangtze and Cathaysia post-dates the Rodinia building by 0.2-0.3 Ga (Ren et al., 2012). Wang et al. (2007a) pointed out also that the termination (after 860 Ma) of the Jinning (Jiangnan) orogeny was significantly younger than the typical Grenvillian orogeny at 1.3–1.0 Ga.

A second problem is the uncertainty about the continents which were the neighbours of South China. Some argue in favour of Australia on the western side (Li et al., 2009) and Siberia on the eastern side (e.g. Li, 1999; Li Z. X. et al., 2008); some others advocate a position between India to the west and Australia to the east (Yu et al., 2008). This issue needs more data.

### *7-2. Geodynamic process triggering the Early Paleozoic orogeny*

If the interpretation of the Early Paleozoic orogeny is correct, corresponding to the intracontinental shortening of the Nanhua rift area, one may wonder about the triggering factor. Was it due to a remote collision of the South China Block with another continent, for instance a greater Indochina or an unknown one now partly represented by some relics in Japan, or more likely the initial Silurian-Devonian collision between South and North China along the Qinling-Dabie suture (Wang et al., 2007b), or the far-field response to the assembly of the Australian–Indian plate with the Cathaysia Block during middle Paleozoic time (Wang et al., 2011)? Was the Nanhua rift a sphenochasm extending to the SW into an oceanic domain allowing a partial deformation in the northeastern part and the continuity of the marine sedimentation from early to Late Paleozoic in the Yunnan area (Ren, 1990; Shu, 2012)? All those points remain unclear for the moment.

### *7-3. Lower Paleozoic nappes*

The existence of thrust sheets has been proposed in many models in order to explain the crustal thickening (Wang et al., 1988; Charvet et al., 1999; Zhao and Cawood, 1999; Shu et al., 2006, 2008b; Li et al., 2010) but poorly documented. Charvet et al. (2010) suggested their existence on a few examples. But, so far, partly due to the outcrop conditions, there is no detailed mapping of such structures. Recognition of superimposition of metamorphic units and mapping of the ductile contacts in areas like the Wuyishan are an important challenge for further understanding of the structural framework.

## **8. Conclusions**

This brief review of the Proterozoic to Early Paleozoic tectonic evolution of South China leads to the following main conclusions.

- 1) The Jiangnan (Jinning, Sibao) orogeny led to the welding of the Yangzte and Cathaysia blocks, which had previously a different history giving a different pre-Neoproterozoic basement composition.
- 2) This Jiangnan orogeny was a collisional event, induced by the consumption of an intervening oceanic domain by subduction beneath the Yangzte plate. The evolution involved a volcanic arc on the Yangtze active margin, active from ca. 1000 Ma to ca. 850 Ma, the subsequent collision beginning at around 870-860 Ma and responsible for the emplacement of thrust sheets of ophiolitic mélangé (dated around 900 Ma) and blueschists (900-870 Ma), followed by late- to post-collisional granitic plutonism (840-800 Ma).
- 3) The newly amalgamated South China continental block suffered from rifting, starting around 850 Ma, marked by mafic-ultramafic magmatism until ca. 750 Ma.
- 4) The Nanhua rift basin evolved with a thick sedimentation in its middle part until the Ordovician.

- 5) South China was affected by the early Paleozoic orogeny (mainly Silurian), characterized by a strong quasi-symmetrical intracontinental shortening, involving the sedimentary cover of the rift and its margins as well as the basement, leading to crustal thickening.
- 6) This crustal thickening induced an important anatexis and emplacement of peraluminous granites during the Silurian.
- 7) Unlike the Jiangnan orogeny, which was of collisional type, the Early Paleozoic one is a bit similar to a Pyrenean intracontinental type.
- 8) Some pending problems need further research for clarification, for example: the location and timing of integration of South China within Rodinia, the triggering factor of the Early Paleozoic orogeny, the mapping of the contacts bounding the Lower Paleozoic thrust sheets responsible for the crustal thickening.

### **Acknowledgements**

I sincerely thank Professor Ruchen Wang for his kind invitation to present a review paper in this special issue of the Journal of Asian Earth Sciences. Prof. Koen de Jong and an anonymous reviewer are thanked for their constructive comments which greatly helped improving the manuscript.

### **References**

- Carter, A., Roques, D., Bristow, C., Kinny, P., 2001. Understanding Mesozoic accretion in Southeast Asia: significance of Triassic thermotectonism (Indosinian orogeny) in Vietnam. *Geology* 29 (3), 211–214.
- Chang, E.Z., 1996. Collisional orogene between north and south China and its eastern extension in the Korean Peninsula. *Journal of Southeast Asian Earth Sciences* 13 (3–5), 267–277.

Charvet, J., Cluzel, D., Faure, M., Caridroit, M., Shu, L.S., Lu, H.F., 1999. Some tectonic aspects of the pre-Jurassic accretionary evolution of East Asia. In: Metcalfe, I., Ren, J.S., Charvet, J., Hada, S. (Eds.), *Gondwana Dispersion and Asian Accretion*, IGCP 321 Final Results Volume. Balkema, pp. 37–65.

Charvet, J., Shu, L.S., Faure, M., Choulet, F., Wang, B., Lu, H.F., Le Breton, N., 2010. Structural development of the Lower Paleozoic belt of South China: Genesis of an intracontinental orogen. *Journal of Asian Earth Sciences* 39, 309–330.

Charvet, J., Shu, L.S., Shi, Y.S., Guo, L.Z., Faure, M., 1996. The building of South China: collision of Yangzi and Cathaysia blocks, problems and tentative answers. *Journal of Southeast Asian Earth Sciences* 13, 223–235.

Chen, J.F., Foland, K.A., Xing, F., Xu, X., Zhou, T., 1991. Magmatism along the southeastern margin of the Yangtze block: Precambrian collision of the Yangtze and Cathaysia block of China. *Geology* 19, 815–818.

Chen, X., Zhang, Y.D., Fan, J.X., Tang, L., Sun, H.Q., 2012. Onset of the Kwangsi Orogeny as evidenced by biofacies and lithofacies. *Science China Earth Sciences* 55(10), 1592–1600; doi: 10.1007/s11430-012-4490-4.

Chen, Y., Courtillot, V., Cogné, J.P., Besse, J., Yang, Z.Y., Enkin, R., 1993. The configuration of Asia prior to collision of India: Cretaceous paleomagnetic constraints. *Journal of Geophysical Research* 98 (B12), 21,927–21,941.

Chen, Z.H., Xing, G.F., Guo, K.Y., Dong, Y.G., Chen, R., Zeng, Y., Li, L.M., He, Z.Y., Zhao, L., 2009. Petrogenesis of the Pingshui keratophyre from Zhejiang: Zircon U–Pb age and Hf isotope constraints. *Chinese Science Bulletin* 54, 610–617 (in Chinese).

Cheng, H., 1993. Geochemistry of Proterozoic island-arc volcanic rocks in Northwest Zhejiang. *Geochimica* 22, 18–27 (in Chinese with English abstract).

Cluzel, D., Jolivet, L., Cadet, J.P., 1991. Early Middle Paleozoic intraplate orogeny in Ogcheon belt (South Korea): A new insight on the Paleozoic build-up of East Asia. *Tectonics* 10, 1130–1151.

Faure, M., Shu, L.S., Wang, B., Charvet, J., Choulet, F., Monié, P., 2009. Intracontinental subduction: a possible mechanism for the Early Palaeozoic Orogen of SE China. *Terra Nova* 21, 360-368.

FBGMR (Fujian Bureau of Geology and Mineral Resources), 1985. Regional Geology of Fujian Province. Geological Publishing House, Beijing, China, 671 p (in Chinese with English abstract).

Gan, X., Li, H., Sun, D., Jin, W., Zhao, F., 1995. A geochronological study on early Proterozoic granitic rocks, southwestern Zhejiang. *Acta Petrologica Mineralogica* 14, 1–8 (in Chinese with English abstract).

Gan, X., Li, H., Sun, D., Zhuang, J., 1993. Geochronology of the Precambrian basement in northern Fujian. *Geology of Fujian* 12 (1), 17–32 (in Chinese with English abstract).

Gao, J., Klemd, R., Long L.G., Xiong, X.M., Qian, Q., 2009. Adakitic signature formed by fractional crystallization: An interpretation for the Neo-Proterozoic meta-plagiogranites of the NE Jiangxi ophiolitic mélangé belt, South China. *Lithos* 110, 277–293.

Gao, L.Z., Chen, J., Ding, X.Z., Liu, Y.R., Zhang, C.H., Zhang, H., Liu, Y.X., Pang, W.H., Zhang, Y.H., 2011. Zircon SHRIMP U-Pb dating of the tuff bed of Lengjiayi and Banxi groups, northeastern Hunan: constraints on the Wuling Movement. *Geological Bulletin of China* 30, 1001-1008.

Gao, L.Z., Dai, C.G., Liu, Y.X., Wang, M., Wang, X.H., Chen, J.S., Ding, X.Z., 2010. Zircon SHRIMP U-Pb dating of the tuffaceous bed of Xiajiang Group in Guizhou Province and its stratigraphic implication. *Geology in China* 37, 1071-1082.

Gao, L.Z., Yang, M.G., Ding, X.Z., Liu, Y.X., Liu, X., Ling, L.H., Zhang, C.H., 2008. SHRIMP U-Pb zircon dating of tuff in the Shuangqiaoshan and Heshangzhen groups in South China-constraints on the evolution of the Jiangnan Neoproterozoic orogenic belt. *Geological Bulletin of China* 27, 1744-1751.

Gao, S., Ling, W.L., Qiu, Y.M., Lian, Z., Hartmann, G., Simon, K., 1999. Contrasting geochemical and Sm–Nd isotopic compositions of Archean metasediments from the Kongling high-grade terrain of the Yangtze craton: evidence for cratonic evolution and redistribution of REE during crustal anatexis. *Geochimica Cosmochimica Acta* 63, 2071–2088.

Gilder, S. A., Keller, G. R., Luo, M., 1991. Eastern Asia and the western Pacific timing and spatial distribution of rifting in China. *Tectonophysics* 197, 225-243.

Grabau, A.W.. 1924. *Stratigraphy of China, Part I, Paleozoic and older*. The Geological Survey of Agriculture and Commerce, Peking 528, 1-6.

Greentree, M.R., Li, Z.X., Li, X.H., Wu, H., 2006. Late Mesoproterozoic to earliest Neoproterozoic basin record of the Sibao orogenesis in western South China and relationship to the assembly of Rodinia. *Precambrian Research* 151, 79–100.

Guo, L.Z., Shi, Y.S., Ma, R.S., 1980. The geotectonic framework and crustal evolution of South China. In: *Scientific papers on geology for International Exchange* 1, 109-116.

Guo, L.Z., Shi, Y.S., Ma, R.S., Lu, H.F., Ye, S., Ding, Y., Chen, S., Xia, B., 1985. Plate movement and crustal evolution of the Jiangnan Proterozoic mobile belt, Southeast China. *Earth Science (Chikyu Kagaku)* 39 (2), 156–166.

Guo, L.Z., Shi, Y.S., Lu, H.F., Dong, H.G., Yang, S.F., 1989. The pre-Devonian tectonic patterns and evolution of South China. *Journal of Southeast Asian Earth Sciences* 3 (1-4), 87–93.

Haynes, S.J., 1988. Structural reconnaissance of the Jiangnan geanticline: a suspect terrane of compressional tectonic character. In: Howell, D.G., Wiley, T.J., Eds., Proceedings of the 4<sup>th</sup> International tectonostratigraphic terrane conference, U.S. Geological Survey, Menlo Park, California, 31-33.

Hsü, K.J., Sun, S., Li, J.L., Chen, H.H., Peng, H.P., Sengör, A.M.C., 1988. Mesozoic overthrust tectonics in South China. *Geology* 16, 418–421.

Hsü, K.J., Li, J., Chen, H.H., Wang, Q., Sun, S., Sengör, A.M.C., 1990. Tectonics of South China: key to understanding West Pacific geology. *Tectonophysics* 183, 9–39.

Hu, X., 1994. Geochronology of lower Proterozoic Badu Group, southwestern Zhejiang Province. *Geochimica* 23 (Suppl.), 18–24 (in Chinese with English abstract).

Hu, X., Xu, J., Tong, C., Chen, C., 1991. The Precambrian Geology of Southwestern Zhejiang Province. Geological Publishing House, Beijing, 278 p. (in Chinese with English abstract).

Huang, J., Ren, J., Jiang, C., Zhang, Z., Qin, D., 1980. The Tectonic Evolution of China. Science Press, Beijing. 124 p.

Huang, T.K., 1978. An outline of the tectonic characteristics of China. *Eclogae Geologicae Helveticae* 71, 611–635.

Kim, S.W., Oh, C.W., Williams, I.S., Rubatto, D., Ryu, L.C., Rajesh, V.J., Kim, C.B., Guo, J., Zhai, M., 2006. Phanerozoic high-pressure eclogite and intermediate-pressure granulite facies metamorphism in the Gyeonggi Massif, South Korea: implications for the eastward extension of the Dabie-Sulu continental collision zone. *Lithos* 92 (3–4), 357–377.

Kong, X.S., Li, Z.F., Feng, C.G., Gu, M.G. and Ma, J.P., 1995, The Precambrian geology of Chencai region in Zhejiang Province: Beijing, Geological Publishing House, Beijing, 921 p. (in Chinese with English abstract).



Lepvrier, C., Faure, M., Van, V.N., Tich, V.V., Lin, W., Trong, T.T., Hoa, P.T., 2011. North directed Triassic nappes in Northeastern Vietnam (East Bac Bo). *Journal of Asian Earth Sciences* 41(1), 56-68.

Lepvrier, C., Nguyen, V.V., Maluski, H., Phan, T.T., Tich, V.V., 2008. Indosinian tectonics in Vietnam. *Comptes Rendus Geoscience* 340, 94–111.

Li, G.K., 1988. A discussion on the basement rocks in Fujian Province. *Fujian Geology* 7, 80–118.

Li, G.K., 1989. Isotopic ages of the basement rocks in Fujian Province and their implications for the regional tectonic evolution. *Fujian Geology* 8, 159–168 (in Chinese).

Li, J.L., 1993. Tectonic framework and evolution of southeastern China. *Journal of Southeast Asian Earth Sciences* 8, 219–223.

Li, S.G., Nie, Y.H., Ge, N.J., Liu, D.L., Hu, J.X., 1993. Trace element geochemistry of volcanic rocks of Badu Group in the West of Zhejiang: a possible Early Proterozoic ophiolitic belt and the tectonic implications. In: Li, J.L. (Ed.), *Crustal Structure and Geochemical Evolution of the Southeast Continents*. Publishing House of Metallurgy and Industry, p. 98-117 (in Chinese).

Li, W.X., Li, X.H., Li, Z.X., Lou, F.S., 2008. Obduction-type granites within the NE Jiangxi Ophiolite: implications for the final amalgamation between the Yangtze and Cathaysia Blocks. *Gondwana Research* 13, 288–301.

Li, W.X., Li, X.H., 2003. Adakitic granites within the NE Jiangxi ophiolites, South China: geochemical and Nd isotopic evidence. *Precambrian Research* 122, 29–44.

Li, W.X., Li, X.H., Li, Z.X., 2005. Neoproterozoic bimodal magmatism in the Cathaysia Block of South China and its tectonic significance. *Precambrian Research* 136, 51–66.

- Li, X.H., 1997. Timing of the Cathaysia Block formation: constraints from SHRIMP U–Pb zircon geochronology. *Episodes* 20 (3), 188–192.
- Li, X.H., 1998. The SHRIMP U–Pb zircon geochronology of Paleoproterozoic plagioclase-amphibolite in the Zhejiang-Fujian area. *Journal of Geochemistry* 27 (4), 327–334.
- Li, X.H., 1999. U–Pb zircon ages of granites from the southern margin of the Yangtze block: timing of Neoproterozoic Jinning Orogeny in SE China and implications for Rodinia assembly. *Precambrian Research* 97, 43–57.
- Li, X.H., Li, W.X., Li, Z.X., Liu, Y., 2008. 850–790 Ma bimodal volcanic and intrusive rocks in northern Zhejiang, South China: a major episode of continental rift magmatism during the breakup of Rodinia. *Lithos* 102, 341–357.
- Li, X.H., Li, W.X., Li, Z.X., Lo, C.H., Wang, J., Ye, M.F., Yang, Y.H., 2009. Amalgamation between the Yangtze and Cathaysia Blocks in South China: Constraints from SHRIMP U–Pb zircon ages, geochemistry and Nd–Hf isotopes of the Shuangxiwu volcanic rocks. *Precambrian Research* 174, 117–128.
- Li, X.H., Li, Z.X., Sinclair, J.A., Li, W.X., Carter, G., 2006. Revisiting the “Yanbian Terrane”: implications for Neoproterozoic tectonic evolution of the western Yangtze Block, South China. *Precambrian Research* 151, 14–30.
- Li, X.H., Li, Z.X., Zhou, H., Liu, Y., Kinny, P.D., 2002. U–Pb zircon geochronology, geochemistry and Nd isotopic study of Neoproterozoic bimodal volcanic rocks in the Kangdian Rift of South China; implications for the initial rifting of Rodinia. *Precambrian Res.* 113, 135–154.
- Li, X.H., Zhao, J.X., McCulloch, M.T., Zhou, G.Q., Xing, F.M., 1997. Geochemical and Sm–Nd isotopic study of Neoproterozoic ophiolites from southeastern China: petrogenesis and tectonic implications, *Precambrian Research* 81, 129–144.

Li, X.-H., Zhou, G., Zhao, J., Fanning, C.M., Compston, W., 1994. SHRIMP ion microprobe zircon U–Pb age of the NE Jiangxi ophiolite and its tectonic implications. *Geochimica* 23 (2), 125–131 (in Chinese with English abstract).

Li, Z.X., 1998. Tectonic history of the major East Asian lithospheric block since the mi-Proterozoic – a synthesis. In: Flower M.J., Chung, S.L., Lo, C.H., Lee T.Y. (eds) *Mantle dynamics and plate interactions in East Asia*. Geodynamic Series 27, Washington DC, American Geophysical Union, 221-243.

Li, Z.X., Li, X.H., Zhou, H.W., Kinny, P.D., 2002. Grenvillian continental collision in South China: new SHRIMP U–Pb zircon results and implications for the configuration of Rodinia. *Geology* 30 (2), 163–166.

Li, Z.X., Bogdanova, S.V., Collins, A.S., Davidson, A., De Waele, B., Ernst, R.E., Fitzsimons, I.C.W., Fuck, R.A., Gladkochub, D.P., Jacobs, J., Karlstrom, K.E., Lu, S., Natapov, L.M., Pease, V., Pisarevsky, S.A., Thrane, K., Vernikovskiy, V., 2008. Assembly, configuration, and break-up history of Rodinia: A synthesis. *Precambrian Research* 160, 179–210.

Li, Z.X., Li, X.H., 2007. Formation of the 1300 km-wide intracontinental orogen and postorogenic magmatic province in Mesozoic South China: a flat-slab subduction model. *Geology* 35, 179-182, doi: 10.1130/G23193A.1.

Li, Z.X., Li, X.H., Wartho, J.A., Clark, C., Li, W.X., Zhang, C.L., Bao, C.M., 2010. Magmatic and metamorphic events during the Early Paleozoic Wuyi-Yunkai Orogeny, southeastern South China: New age constraints and P-T conditions. *Geological Society of America Bulletin* 122 (516), 772-793.

Li, Z.X., Li, X., Zhou, H., Kinny, P.D., 2002. Grenvillian continental collision in South China: new SHRIMP U–Pb zircon results and implications for the configuration of Rodinia. *Geology* 30, 163–166.

- Li, Z.X., Powell, C.M., 2001. An outline of the Palaeogeographic evolution of the Australasian region since the beginning of the Neoproterozoic. *Earth-Science Reviews* 53(3-4), 237-277.
- Li, Z.X., Wartho, J.-A., Occhipinti, S., Zhang, C.L., Li, X.H., Wang, J., and Bao, C., 2007. Early history of the eastern Sibao orogen (South China) during the assembly of Rodinia: New mica  $^{40}\text{Ar}/^{39}\text{Ar}$  dating and SHRIMP U-Pb detrital zircon provenance constraints. *Precambrian Research* 159 (1–2), 79–94.
- Li, Z.X., Zhang, L., Powell, C.M., 1995. South China in Rodinia: part of the missing link between Australia–East Antarctica and Laurentia? *Geology* 23, 407–410.
- Li, Z.X., Zhang, L., Powell, C.M., 1996. Positions of the East Asian cratons in the Neoproterozoic supercontinent Rodinia. *Australian Journal of Earth Sciences* 43, 593–604.
- Ling, W., Gao, S., Zhang, B., Li, H., Liu, Y., Cheng, J., 2003. Neoproterozoic tectonic evolution of the northwestern Yangtze craton South China: implications for amalgamation and break-up of the Rodinia Supercontinent. *Precambrian Res.* 122, 111-140.
- Liu, B.G., Zheng, G.C., Chen, S.M., and Tang H.F., 1995. The breakup of the Songmuwu Group in western Zhejiang: evidence from isotope dating. *Geological Review* 41, 457–462.
- Liu, B.X., Liu, C.G., Qiu, Y.Q., 2001. The Pb- Pb isotopic ages and geologic significance of gneissic granite in Hezi, Jiangxi. *Volcanology and mineral resources*, 22 (4), 264-268 (in Chinese with English abstract).
- Liu, R., Zhou, H.W., Zhang, L., Zhong, Z.Q., Zeng, W., Xiang, H., Jin, X., Lu, X.Q., Li, C.Z., 2010. Zircon U–Pb ages and Hf isotope compositions of the Mayuan migmatite

complex, NW Fujian Province, Southeast China: Constraints on the timing and nature of a regional tectonothermal event associated with the Caledonian orogeny. *Lithos* 119, 163–180.

Nagy, E.A., Maluski, H., Lepvrier, C., Scharer, U., Thi, P.T., Leyreloup, A., Thich, V.V., 2001. Geodynamic significance of the Kontum massif in central Vietnam: composite  $^{40}\text{Ar}/^{39}\text{Ar}$  and U–Pb ages from Paleozoic to Triassic. *Journal of Geology* 109 (6), 755–770.

Qiu, Y., Gao, S., McNaughton, N.J., Groves, D.I., Ling, W., 2000. First evidence of >3.2 Ga continental crust in the Yangtze craton of south China and its implications for Archean crustal evolution and Phanerozoic tectonic. *Geology* 28, 11–14.

Ren, J.S., 1964. A preliminary study on pre-Devonian geotectonic problems of southeastern China. *Acta Geologica Sinica* 44 (4), 418–431.

Ren, J.S., 1991. On the geotectonics of southern China. *Acta Geologica Sinica* 4 (2), 111–130.

Ren, J.S., Niu B.G., Wang J., Jin X.C., Zhao L., Liu R.Y., 2013. Advances in research of Asian geology - A summary of 1:5 M International Geological Map of Asia project. *Journal of Asian Earth Sciences*, in press.

Ren, J.S., Chen, T., 1989. Tectonic evolution of the continental lithosphere in eastern China and adjacent areas. *Journal of Southeast Asian Earth Sciences* 3, 17–27.

Ren, J.S., Chen, T.Y., Niu, B.G., 1990. The tectonics and mineralization of continental lithosphere in the East China and adjacent region. Science Press, Beijing, 205p. (in Chinese with English abstract).

Ren, J., Wang, Z., Chen, B., Jiang, C.F., Niu, B.G., 1997. Tectonic Map of China and Adjacent Regions. Geological Publishing House. Scale 1:5000000.

Ren, J.S., Wang, Z.X., Chen, B.W., Jiang, C.F., Niu, B.G., Li, J.Y., Xie, G.L., He, Z.J., Liu, Z.G., 1999. The tectonics of China from a global view—a guide to the tectonic map of China and adjacent regions. Geological Publishing House, Beijing, 1–32.

Rivers, T., Ketchum, J., Indares, A., Hynes, A., 2002. The High Pressure belt in the Grenville province: Architecture, timing, and exhumation. *Canadian Journal of Earth Sciences* 39(5), 867-893, doi: 10.1139/e02-025.

Roger, F., Maluski, H., Leyreloup, A., Lepvrier, C., Thi, P.T., 2007. U–Pb dating of high temperature metamorphic episodes in the Kon Tum Massif (Vietnam). *Journal of Asian Earth Sciences* 30 (3–4), 565–572.

Rong, J.Y., Zhan, R.B., Xu, H.G., Huang, B., Yu, G.H., 2010. Expansion of the Cathaysia Oldland through the Ordovician-Silurian transition: emerging evidence and possible dynamics. *Science in China (D)* 53, 1-17.

Rowley, D.B., Ziegler, A.M., Gyou, N., 1989. Comment on: Mesozoic overthrust tectonics in South China. *Geology* 17, 384-386.

Sajeev, K., Jeong, H., Kwon, S., Kee, W.S., Kim, S.W., Komiya, T., Itaya, T., Jung, H.S., Park, Y., 2010. High P-T granulite relicts from the Imjingang belt, South Korea: Tectonic significance. *Gondwana Research* 17, 75-86.

Shi, Y.S., Shu, L.S., Brewer, R.C., Charvet, J., Guo, L.Z., 1994. Late Proterozoic terrane tectonics in the central Jiangnan belt, Southeast China. *Journal of South American Earth Sciences* 7, 367-375.

Shu, L.S., 2006. Pre-Devonian tectonic evolution of South China: from Cathaysian Block to Caledonian period folded Orogenic Belt. *Geological Journal of China Universities (Earth Sci.)* 12 (4), 418–431 (in Chinese with English abstract).

Shu, L.S., 2012. An analysis of principal features of tectonic evolution in South China Block. *Regional Geology of China* 2012(7), 1035-1053.

Shu L.S., Charvet J., 1996. Kinematics and geochronology of the Proterozoic Dongxiang-Shexian ductile shear zone (Jiangnan region, South China): with HP

metamorphism and ophiolitic mélange (Jiangnan Region, South China). *Tectonophysics* 267, 291–302.

Shu, L.S., Zhou, G.Q., Shi, Y.S., and Yin, J., 1994. Study of the high-pressure metamorphic blueschist and its Late Proterozoic age in the Eastern Jiangnan belt: *Chinese Science Bulletin* 39, 1200–1204.

Shu, L.S., Shi, Y.S., Guo, L.Z., Charvet, J., Sun, Y., 1995. The Late Proterozoic plate tectonics and collisional kinematics in the middle part of the Jiangnan belt. Nanjing University Publishing House, Nanjing, 174 p.

Shu, L.S., Lu, H.F., Jia, D., Charvet, J., Faure, M., 1999. Study of the  $^{40}\text{Ar}/^{39}\text{Ar}$  isotopic age for the early Paleozoic tectonothermal event in the Wuyishan region, South China. *Journal of Nanjing University (Natural Sciences)* 35 (6), 668-674.

Shu, L.S., Faure, M., Jiang, S.Y., Yang, Q., Wang, Y.J., 2006. SHRIMP zircon U–Pb age, litho- and biostratigraphic analyses of the Huaiyu Domain in South China - evidence for a Neoproterozoic orogen, not Late Paleozoic–Early Mesozoic collision. *Episodes* 29, 244–252.

Shu, L.S., Faure, M., Wang, B., Zhou, X.M., Song, B., 2008a. Late Paleozoic–Early Mesozoic Geological Features of South China: Response to the Indosinian Collision Event in Southeast Asia. *Comptes Rendus Geosciences* 340 (2-3), 151—165.

Shu L S, Deng P, Yu J H, Wang Y B and Jiang S Y., 2008b. The age and tectonic environment of the rhyolitic rocks on the western side of Wuyi Mountain, South China. *Science in China (D)*, 1053-1063.

Shu, L.S., Yu, J.H., Jia, D., Wang, B., Shen, W.Z., Zhang, Y.Q., 2008c. Early Paleozoic orogenic belt in the eastern segment of South China. *Geological Bulletin of China* 27 (10), 1581–1593.

- Shu, L.S., Zhou, X.M., Deng, P., Wang, B., Jiang, S.Y., Yu, J.H., Zhao, X.X., 2009. Mesozoic tectonic evolution of the southeast China block: New insights from basin analysis. *Journal of Asian Earth Sciences* 34, 376-391.
- Shu, L.S., Faure, M., Yu, J.H., Jahn, B.M., 2011. Geochronological and geochemical features of the Cathaysia Block (South China): new evidence for the Neoproterozoic breakup of Rodinia. *Precambrian Research* 187, 263-276.
- Shui, T., Xu, B.T., Liang, R.H., Qiu, Y.S., 1988. *Geology of Metamorphic Basement in Zhejiang–Fujian Region, China*. Science Press, Beijing, 1-94 (in Chinese).
- Ting, W.K., 1929. The orogenic movement in China. *Bulletin of the Geological Society of China* 8 (1), 151–170.
- Wan, Y.S., Liu, D.Y., Xu, M.H., Zhuang, J.M., Song, B., Shi, Y.R., Du, L.L., 2007. SHRIMP U–Pb zircon geochronology and geochemistry of metavolcanic and metasedimentary rocks in northwestern Fujian, Cathaysia Block, China: tectonic implications and the need to redefine lithostratigraphic units. *Gondwana Research* 12 (1–2), 166–183.
- Wan, Y.S., Liu, D.Y., Wilde, S.A., Cao, J., Chen, B., Dong, C., Song, B., Du, L.L., 2010. Evolution of the Yunkai Terrane, South China: evidence from SHRIMP zircon U–Pb dating geochemistry and Nd isotope. *Journal of Asian Earth Sciences* 37 (2), 140–153.
- Wang, J., Li, Z.X., 2003. History of Neoproterozoic rift basins in South China: implications for Rodinia break-up. *Precambrian Research* 122 (1-4), 141-158.
- Wang, H.Z., 1986. Geotectonic development of China. In: Yang, Z.Y., Cheng, Y.Q., Wang, H.Z., (Eds.), *The Geology of China*. Oxford monographs of Geology and Geophysics 3, 235-275.
- Wang, H.Z., Mo, X.X., 1995. An outline of the tectonic evolution of China. *Episodes* 18 (1-2), 6~16.
- Wang, M., Shu, L.S., 2007. Rock geochemical characteristics of the Neoproterozoic



Wuyishan ophiolite mélange. *Geology in China* 34 (4), 572–583 (in Chinese with English abstract).

Wang, X., Yang, S.F., Shi, J.N., Guo, L.Z., Shi, Y.S., Lu, H.F., Dong, H.G., Xu, J.K., Kong, H.N., Hu, X.J., 1988. Discovery of collision mélange in Longquan, Zhejiang Province and its significance for studying collision orogenic belt in southeastern China. *Journal of Nanjing University (Natural Sciences)* 24 (3), 367–378 (in Chinese with English abstract).

Wang, X.L., Zhao, G., Zhou, J.C., Liu, Y., Hu, J., 2008. Geochronology and Hf isotopes of zircon from volcanic rocks of the Shuangqiaoshan Group, South China: implications for the Neoproterozoic tectonic evolution of the eastern Jiangnan orogen. *Gondwana Research* 14, 355–367.

Wang, X.L., Zhou, J.C., Griffin, W.L., Wang, R.C., Qiu, J.S., O'Reilly, S.Y., Xu, X.S., Liu, X.M., Zhang, G.L., 2007a. Detrital zircon geochronology of Precambrian basement sequences in the Jiangnan orogen: dating the assembly of the Yangtze and Cathaysia blocks. *Precambrian Research* 159 (1-2), 117–131.

Wang, X.L., Zhou, J.C., Qiu, J.S., Gao, J.F., 2004. Geochemistry of the Meso- to Neoproterozoic basic-acid rocks from Hunan Province, South China: implications for the evolution of the western Jiangnan orogen. *Precambrian Research* 135, 79–103.

Wang, X.L., Zhou, J.C., Qiu, J.S., Zhang, W., Liu, X., Zhang, G., 2006. LA-ICP-MS U–Pb zircon geochronology of the Neoproterozoic igneous rocks from Northern Guangxi, South China: implications for tectonic evolution. *Precambrian Research* 145, 111–130.

Wang, Y.J., Fan, W.M., Zhao, G.C., Ji, S.C., Peng, T.P., 2007b. Zircon U–Pb geochronology of gneissic rocks in the Yunkai Massif and its implications on the Caledonian event in the South China Block. *Gondwana Research* 12 (4), 404–416.

Wang, Y.J., Zhang, F.F., Fan, W.M., Zhang, G.W., Chen, S.Y., Cawood, P.A., Zhang, A.M., 2010. Tectonic setting of the South China Block in the early Paleozoic: Resolving intracontinental and ocean closure models from detrital zircon U-Pb geochronology. *Tectonics* 29, TC6020, doi: 10.1029/931 2010TC002750.

Wang, Y.J., Zhang A.M., Fan W.M., Zhao G.C., Zhang G.W., Zhang Y.Z., Zhang F.F., Sanzhong Li S.Z., 2011. Kwangian crustal anatexis within the eastern South China Block: Geochemical, zircon U–Pb geochronological and Hf isotopic fingerprints from the gneissoid granites of Wugong and Wuyi–Yunkai Domains. *Lithos* 127, 239–260.

Wu, R.X., Zheng, Y.F., Wu, Y.B., Zhao, Z.F., Zhang, S.B., Liu, X.M., Wu, F.Y., 2006. Reworking of juvenile crust: element and isotope evidence from Neoproterozoic granodiorite in South China. *Precambrian Research* 146, 179–212.

Xiang, L., Shu, L.S., 2010. Pre-Devonian tectonic evolution of the eastern South China Block: Geochronological evidence from detrital zircons. *Science China Earth Sciences* 53 (10), 1427–1444.

Xiao, W.J., He, H.Q., 2005. Early Mesozoic thrust tectonics of the NW Zhejiang region (Southeast China). *Geological Society of America Bulletin* 117, 945–961, doi: 10.1130/25417.

Xu, B., Guo, L.Z., Shi, Y.S., 1992. Proterozoic terranes and multiphase collision orogens in Anhui-Zhejiang-Jiangxi area. Geological publishing House, Beijing, 112 p.

Xu, B., Qiao, G.S., 1989. Sm-Nd isotopic age and tectonic setting of the Late Proterozoic ophiolites in Northeastern Jiangxi Province: *Journal of Nanjing University (Earth Science)* 3, 108–114 (in Chinese with English abstract).

Xu, X.B., Zhang, Y.Q., Shu, L.S., Jia, D., 2011. La-ICP-MS U-Pb and  $^{40}\text{Ar}/^{39}\text{Ar}$  geochronology of the sheared metamorphic rocks in the Wuyishan: Constraints on the timing of Early Paleozoic and Early Mesozoic tectono-thermal events in SE China. *Tectonophysics*

501 (1-4), 71-86.

Xu, Y.J., Du, Y.S., Cawood, P.A., Zhu, Y.H., Li, W.C., Yu, W.C., 2012. Detrital zircon provenance of Upper Ordovician and Silurian strata in the northeastern Yangtze Block: Response to orogenesis in South China. *Sedimentary Geology* 267, 63-72.

Yao, J.L., Shu, L.S., Santosh, M., 2011. Detrital zircon U-Pb geochronology, Hf-isotopes and geochemistry—New clues for the Precambrian crustal evolution of Cathaysia Block, South China. *Gondwana Research* 20, 553–567.

Yao, J.L., Shu, L.S., Santosh, M., Li, J.Y., 2012. Precambrian crustal evolution of the South China Block and its relation to supercontinent history: Constraints from U-Pb ages, Lu-Hf isotopes and REE geochemistry of zircons from sandstones and granodiorite. *Precambrian Research* 208-211, 19-48.

Ye, M.F., Li, X.H., Li, W.X., Liu, Y., Li, Z.X., 2007. SHRIMP zircon U–Pb geochronological and whole-rock geochemical evidence for an early Neoproterozoic Sibaoan magmatic arc along the southeastern margin of the Yangtze Block. *Gondwana Research* 12, 144–156.

Yu, J.H., O'Reilly, S. Y., Wang, L.J., Griffin, W.L., Zhang, M., Wang, R.C., Jiang, S.Y., Shu, L.S., 2008. Where was South China in the Rodinia supercontinent? Evidence from U–Pb geochronology and Hf isotopes of detrital zircons. *Precambrian Research* 164, 1–15.

Yu, J.H., O'Reilly, S.Y., Wang, L.J., Griffin, W.L., Zhou, M.F., Zhang, M., Shu, L.S., 2010. Components and episodic growth of Precambrian crust in the Cathaysia Block, South China: Evidence from U–Pb ages and Hf isotopes of zircons in Neoproterozoic sediments. *Precambrian Research* 181, 97–114.

Yu, J.H., Wang, L.J., O'Reilly, S.Y., Griffin, W.L., Zhang, M., Li, C.Z., Shu, L.S., 2009. A Paleoproterozoic orogeny recorded in a long-lived cratonic remnant (Wuyishan terrane), eastern Cathaysia Block, China. *Precambrian Research* 174, 347-363.

Yu, J.H., Wang, L.J., Wei, Z.Y., Sun, T., Shu, L.S., 2007. Phanerozoic metamorphic episodes and characteristics of Cathaysia Block. *Geological Journal of China Universities* 13 (3), 474–483 (in Chinese with English abstract).

Yu, J.H., O'Reilly, S.Y., Wang, L.J., Griffin, W.L., Zhou, M.F., Zhang, M., Shu, L.S., 2010. Components and episodic growth of Precambrian crust in the Cathaysia Block, South China: Evidence from U–Pb ages and Hf isotopes of zircons in Neoproterozoic sediments. *Precambrian Research* 181 (2010) 97–114.

Yu, J.H., Wei, Z., Wang, L., Shu, L.S., Sun, T., 2006. Cathaysia Block: a young continent composed of ancient materials. *Geological Journal of China Universities* 12, 440–447.

ZBGMR (Zhejiang Bureau of Geology and Mineral Resources), 1989. *Regional Geology of Zhejiang Province*. Geological Publishing House, Beijing, 688 p. (in Chinese with English abstract).

Zeng, W., Zhou, H.W., Zhong, Z.Q., Zeng, S.G., Li, H.M., 2005. Single zircon U- Pb ages and their tectonic implications of Neoproterozoic magmatic rocks in southeastern Guizhou, China. *Geochimica* 34 (6), 548-556 (in Chinese with English abstract).

Zhang, B.T., Ling, H.F., Shen, W.Z., Liu, J.S., Yang, J.D., Tao, X.C., 1990. Sm–Nd isochronic age of spilite-keratophyre of Shuangxiwu Group in Xiqiu, Shaoxing, Zhejiang Province. *Journal of Nanjing University (Earth Science)* 2, 9–14 (in Chinese with English abstract).

Zhang, D.B., Liang, J.T., Buo, Z.H., 1991. Study of the tectonic deformation and evolution in the northern segment of Wuyi–Yunkai tectonic zone. *Bulletin of the Nanjing Institute of Geology and Mineral Resources. Chinese Academy of Geological Sciences* 12 (3), 37–48.

Zhang, F.R., Shu, L.S., Wang, D.Z., Shen, W.Z., 2009. Discussions on the tectonic setting of Caledonian granitoids in the eastern segment of South China. *Earth Science Frontiers* 16(1), 247-259 (in Chinese with English abstract).

Zhang, F.R., Shu, L.S., Wang, D.Z., Shen, W.Z., Yu, J.H., Xie, L., 2010a. Study on geochronological, geochemical features and genesis of the Fufang granitic pluton in the Jiangxi Province, South China. *Geological Journal of China Universities* 16 (2), 161-176 (in Chinese with English abstract).

Zhang, F.R., Shen, W.Z., Shu, L.S., 2010b. Geochemical features of Early Paleozoic granites in Jiangxi Province and their geological significances. *Acta Petrologica Sinica* 26 (12), 3456-3468. (in Chinese with English abstract).

Zhang, S.-B., Zheng, Y.-F., Wu, Y.-B., Zhao, Z.-F., Gao, S., Wu, F.-Y., 2006. Zircon U–Pb age and Hf isotope evidence for 3.8 Ga crustal remnant and episodic reworking of Archean crust in South China. *Earth and Planetary Science Letters* 252, 56–71.

Zhang, Y., Shu, L.S., Chen, X.Y., 2011. Study of geochemistry, geochronology and petro-genesis of the Early Paleozoic granitic plutons in the central-southern Jiangxi Province. *Science in China (Earth Sciences)* 54 (10), 1492-1510.

Zhang, Z.M., Liou, J.G., Coleman, R.C., 1984. An outline of the plate tectonics of China. *Geological Society of America Bulletin* 95, 295–312.

Zhao, G., Cawood, P., 1999. Tectonothermal evolution of the Mayuan assemblage in the Cathaysia Block: implications for neoproterozoic collision-related assembly of the South China Craton. *American Journal of Science* 299, 309–339.

Zhao, X., Allen, M.B., Whitham, A., Price, S., 1996. Rift-related Devonian sedimentation and basin development in South China. *Journal of Southeast Asian Earth Sciences* 14, 37–52.

- Zheng, J.P., Griffin, W.L., O'Reilly, S.Y., Zhang, M., Pearson, N., Pan, Y., 2006. Widespread Archaean basement beneath the Yangtze craton. *Geology* 34, 417–420.
- Zheng, Y.F., Zhang, S.B., Zhao, Z.F., Wu, Y.B., Li, X.H., Li, Z.X., Wu, F.Y., 2007. Contrasting zircon Hf and O isotopes in the two episodes of Neoproterozoic granitoids in South China: implications for growth and reworking of continental crust. *Lithos* 96, 127–150.
- Zhong, Y.F., Ma, C.Q., Lin, G.C., Wang, R.J., 2005. SHRIMP U-Pb Zircon Geochronology of the Jiuling Granitic Complex Batholith in Jiangxi. *Geosciences* 30 (6), 685-691 (in Chinese with English abstract).
- Zhou, G.Q., Zhou, H. B., 1996. Precambrian high-pressure metamorphic rocks within the collision zone of the Yangtze and Cathaysia blocks, China: jadeite/glaucophane-type facies. *International Geology Review* 38, 87-93.
- Zhou, J.C., Wang, X.L., Qiu, J.S., Gao, J.F., 2004. Geochemistry of Meso- and Neoproterozoic mafic-ultramafic rocks from northern Guangxi, China: arc or plume magmatism? *Geochemical Journal* 38, 139–152.
- Zhou, M.F., Yan, D.P., Kennedy, A.K., Li, Y., Ding, J., 2002. SHRIMP U–Pb zircon geochronological and geochemical evidence for Neoproterozoic arc magmatism along the western margin of the Yangtze Block, South China. *Earth and Planetary Science Letters* 196, 51–67.
- Zhou, X.M., Zhou, H.B., Yang, J.D., Wang, Y.X., 1989. Sm-Nd isochron age of the ophiolite suite in Shexian County, Anhui Province and its geological significance: *Chinese Science Bulletin* 35, p.208–212.

## Figure captions

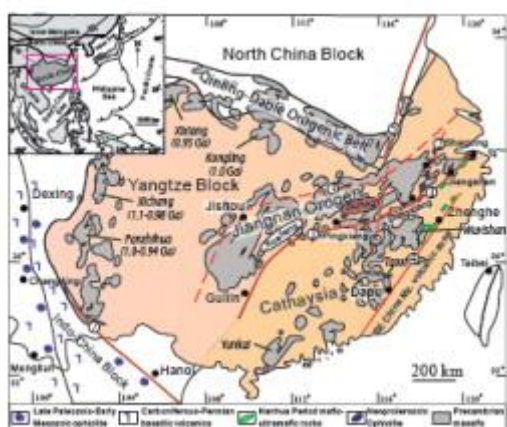


Figure 1. Simplified tectonic framework of South China (after Yu et al., 2008, and Shu, 2012). The outcropping Precambrian metamorphic rocks in the South China Block are represented in grey. The presence of some igneous and metamorphic rocks of Grenville age along the western side of Yangtze block is emphasized. 1, Shaoxing-Jiangshan-Pingxiang fault zone; 2, Dongxiang-Dexing fault zone; 3, The buried fault zone of the northern Jiangnan belt; 4, Zhenghe-Dapu fault zone; 5, Tan-Lu fault zone; 6, Jiangxi River fault zone; 7, Songma fault zone.

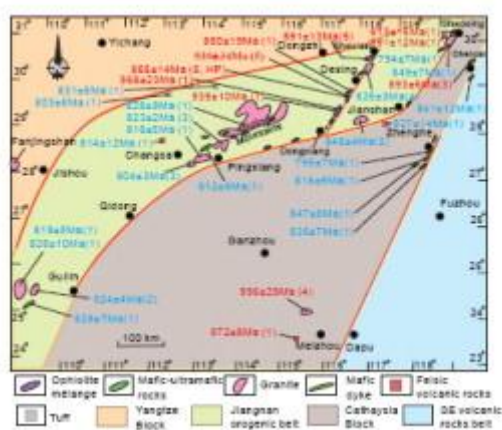


Figure 2. Distribution map of Neoproterozoic igneous rocks and their isotopic dating data (modified after Shu, 2012). The numbers in brackets indicate the isotopic dating methods: 1, SHRIMP zircon U-Pb; 2, SIMS zircon U-Pb; 3, LA-ICPMS zircon U-Pb; 4, ablating zircon

U-Pb; 5, Sm-Nd; 6, K-Ar. Data sources: Xu and Qiao (1989); Zhou et al. (1989); Chen et al. (1991, 2009), Xu et al. (1992); Li et al. (1994, 2005, 2009, 2010); Shu et al. (1994, 2006, 2008a,b, 2011); Kong et al. (1995); Liu et al. (1995, 2001); Shu and Charvet (1996); Li (1999); Wang and Li (2003); Zeng et al (2005); Wang et al. (2006); Zhong et al. (2006); Ye et al. (2007); Zheng et al. (2007); Gao et al. (2009); Yao et al. (2012).

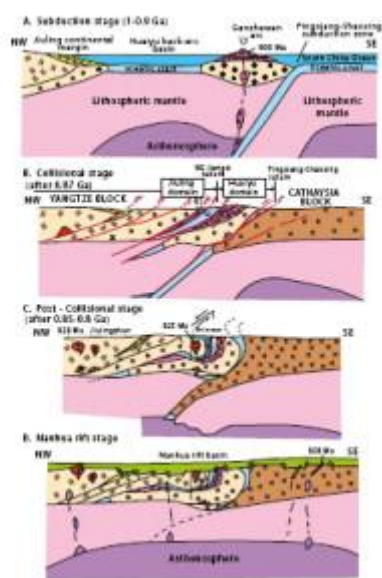


Figure 3. Tectonic evolutionary model of the South China craton during the Neoproterozoic (modified after Charvet et al., 1996, and Shu, 2012 ).



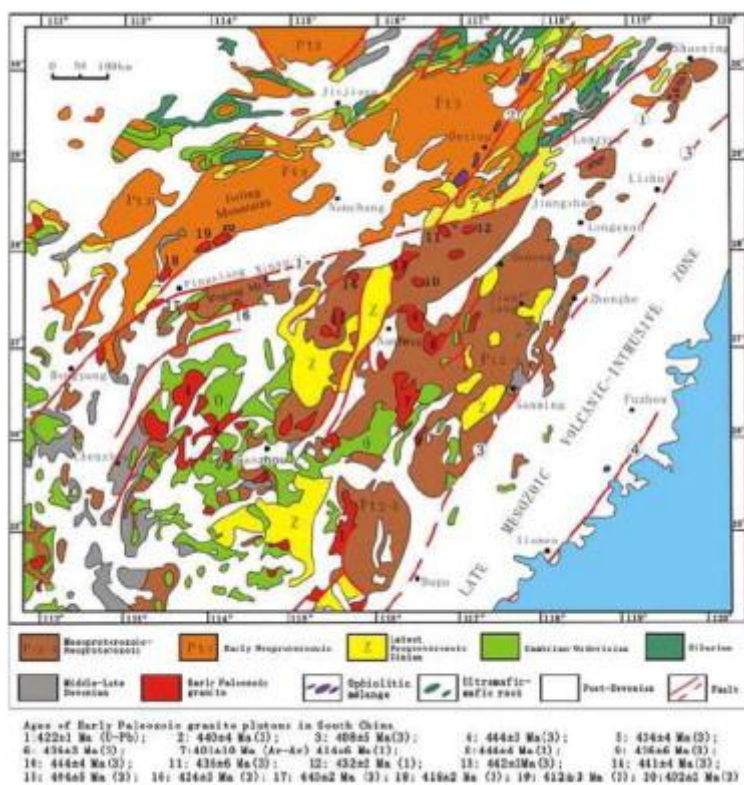


Figure 4. Distribution map of the strata from Neoproterozoic Nanhua Period to Early Paleozoic and of the Early Paleozoic granitoids with isotopic dating data (modified after Shu, 2012). The numbers in brackets indicate the isotopic dating methods as in Fig. 2. Data sources: Shu (2006); Wang Y.J. et al. (2007); Shu et al. (2008c); Wan et al. (2007, 2010); Zhang et al. (2009, 2010a,b, 2011); Faure et al. (2009); Charvet et al. (2010); Li et al. (2010); Liu et al. (2010).