



**HAL**  
open science

## **Synchrotron infrared confocal microscope: Application to infrared 3D spectral imaging**

Frédéric Jamme, B. Lagarde, G. Giuliani, Ga Garcia, Lionel Mercury

### ► **To cite this version:**

Frédéric Jamme, B. Lagarde, G. Giuliani, Ga Garcia, Lionel Mercury. Synchrotron infrared confocal microscope: Application to infrared 3D spectral imaging. 11 Conference on Synchrotron Radiation Instrumentation International C, Jul 2012, Lyon, France. pp.142002, <10.1088/1742-6596/425/14/142002>. <insu-00805857>

**HAL Id: insu-00805857**

**<https://insu.hal.science/insu-00805857v1>**

Submitted on 29 Mar 2013

HAL is a multi-disciplinary open access archive for the deposit and dissemination of scientific research documents, whether they are published or not. The documents may come from teaching and research institutions in France or abroad, or from public or private research centers.

L'archive ouverte pluridisciplinaire HAL, est destinée au dépôt et à la diffusion de documents scientifiques de niveau recherche, publiés ou non, émanant des établissements d'enseignement et de recherche français ou étrangers, des laboratoires publics ou privés.



Distributed under a Creative Commons CC BY 4.0 - Attribution - International License

# Synchrotron infrared confocal microscope: Application to infrared 3D spectral imaging

F Jamme<sup>1,2</sup>, B Lagarde<sup>1</sup>, A Giuliani<sup>1,2</sup>, GA Garcia<sup>1</sup> and L Mercury<sup>3</sup>

1 Synchrotron SOLEIL, L'Orme des Merisiers, Gif sur Yvette, France

2 INRA, UAR 1008 CEPIA, Rue de la Géraudière, F-44316 Nantes, France

3 Institut des Sciences de la Terre d'Orléans, UMR 7327 CNRS-INSU/ Universités d'Orléans, F-45071 Orléans Cedex, France

E-Mail: frederic.jamme@synchrotron-soleil.fr

**Abstract.** The brightness of a synchrotron source coupled to an infrared microscope allows imaging at the so-called diffraction limit. Thus, numerous infrared beamlines around the world have been developed for infrared chemical imaging. Infrared microscopes employ Schwarzschild objectives, which are based on two spherical mirrors centered on a common optical axis. A common drawback of the latter design comes with the central obscuring of the incident beam and the corresponding diffraction effects. However, in this work we are taking advantage of the “shadow” below the primary mirror in order to “vertically” probe our sample and record depth profiling images. We recorded infrared confocal images of liquid water occluded inside a quartz micro-cavity and reconstructed a 3D infrared image based on the OH stretching vibrational bands. Although only a restricted sample size can be analyzed, we demonstrate here the feasibility of a 3D confocal infrared measurement. The chemical profiles have been calculated along the Z-axis of the water inclusion to study its heterogeneity and water-solid interfaces.

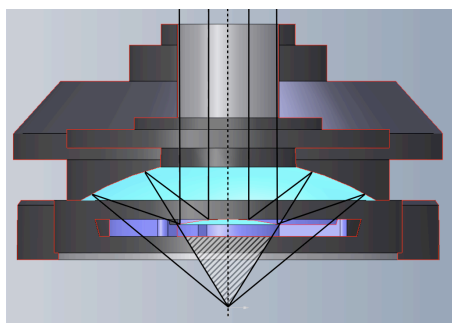
## 1. Introduction

### 1.1 Infrared microspectroscopy at a synchrotron facility

Since the early 90s, infrared microspectroscopy at synchrotron facilities has been largely developed [1-6]. Nowadays there are many applications in a large number of scientific domains (biology, geology, chemistry, soft matter, high pressure). The brightness of the synchrotron source coupled to infrared microscope allows imaging at the diffraction limit ( $\approx\lambda/2$ ). Thus, nowadays, 23 infrared beamlines around the world are accessible for infrared chemical imaging at the diffraction limit. More recently with the development of focal plane array (FPA) detectors, few beamlines are now developing infrared synchrotron source extraction in order to perform rapid data acquisition and improve the image resolution by point spread function (PSF) deconvolution [7, 8].

### 1.2 The Schwarzschild objective

Schwarzschild objectives have a catoptric design based on two spherical mirrors centered on a common optical axis. Schwarzschild objectives are available with finite back conjugates and can be “infinity-corrected” design; see figure 1. Infinity correction refers to the collimation of both visible and infrared beams in the microscope. Therefore, the image of the aperture comes to focus at the focal length of the objective. Spherical aberration, comatic aberration and field curvature are minimized by infinity corrected objectives, which results in a high quality visible image and infrared sampling precision. In addition, the infinity corrected systems are relatively insensitive to optical component insertion into the collimated beam. A common drawback of the design comes with the central obscuring (primary mirror) of the incident beam and the corresponding diffraction effects [5, 6]. However, in this work we are taking advantage of the “shadow” below the primary mirror in order to “vertically” probe our sample and record depth profiling images.



**Figure 1. Schematic of an** infinity corrected Schwarzschild type objective. The hatch area represents the “shadow” below the primary mirror (light blue). The working distance of this 32x Schwarzschild infinity corrected objective (Nicolet Reffachromat™) is 7 mm and its numerical aperture (N.A) is 0.65.

### 1.3 Dual confocal apertures

Several studies have demonstrated that the spatial resolution is controlled by the diffraction specific to the Schwarzschild objectives [1, 5]. The best way to limit the first-order diffraction is to use a dual confocal aperturing optical arrangement. Indeed, it is well known that the implementation of dual apertures at the confocal image provides higher spatial resolution [5]. Thus, by setting up the aperture dimensions equal to the wavelength of interest one can expect to reach a spatial resolution at the diffraction limit. In the work presented, in order to obtain the best performance at  $3 \mu\text{m}$  ( $3400 \text{ cm}^{-1}$ ), a dual mask aperture has been used in transmission mode geometry coupled with the high brightness of the synchrotron source (SMIS beamline, SOLEIL synchrotron, Gif sur Yvette, France).

### 1.4 Vertical profiling

For a restricted sample geometry and transparent sample environment, the infrared confocal microscope is very sensitive to vertical variations along the optic axis (Z-axis). As mentioned previously, Schwarzschild objectives produce a “shadow” caused by the primary mirror of the objective. Therefore, in transmission geometry, shadows are present above and below the specimen placed at the confocal plan. By scanning the sample (Z direction) into the shadows, the infrared beam allows probing the sample along the Z-axis. It is then possible to record 2D images at different vertical positions of the sample to obtain vertical depth profiling of the specimen studied.

## 2. Experimental set-up

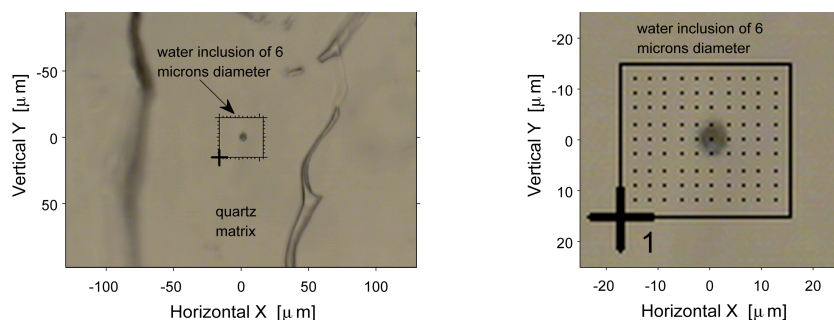
### 2.1 Sample preparation

Quartz samples hosting water-filled inclusions, synthesized in internally heated pressure vessels (IHPV), were selected for analysis [8]. The hydrothermal synthesis was performed at 300 MPa and  $626^\circ\text{C}$  over 4 days. The IHPV was loaded with Au-capsules filled with a piece of quartz, the selected liquid (pure water) and amorphous silica. Hydrothermal healing restores a massive solid containing cavities filled with the liquid present in the synthesis capsules. The water inclusion studied is shown in figure 2. The OH-stretching band of water is very sensitive to minute amount and solid interfaces, and has been closely studied in 2D plane [9].

### 2.2 Infrared microscopy at the SMIS beamline

Infrared experiments were performed at SOLEIL Synchrotron (Gif sur Yvette, France, SMIS beamline). The SMIS beamline is equipped with a Continuum XL microscope (Thermo Scientific, USA) coupled to a Nicolet 5700 FT-IR spectrometer (Thermo Scientific, USA). The microscope comprises a motorized sample stage and a liquid nitrogen cooled mercury cadmium telluride (MCT-A) detector ( $50 \mu\text{m}$ ). The microscope operates in confocal mode, using a  $32 \times$  infinity corrected Schwarzschild objective (NA= 0.65) and a matching  $32 \times$  condenser. All spectra were obtained using a double path single masking aperture of size  $6 \mu\text{m} \times 6 \mu\text{m}$ . The spectra were collected in the  $6000 - 2000 \text{ cm}^{-1}$  mid-infrared range at a spectral resolution of  $8 \text{ cm}^{-1}$  with 64 co-added scans. The profiles

were calculated by using the OMNIC software (Thermo Scientific, USA). The term "profile" is used to refer to the integrated absorbance intensity of a specified spectral region for each sample point. The 2D profiles analysis (XZ, YZ and 3D slices) was carried out using Matlab software (Matlab V7.10, MathWorks, USA).



**Figure 2.** Visible image of a water inclusion ( $6\ \mu\text{m}$  diameter) in quartz. The mapping area is  $36$  by  $33\ \mu\text{m}^2$  with a step size of  $3\ \mu\text{m}$  (map size 12 by 11 points)..

### 3. Results and discussion

#### 3.1 2D images at fixed Z position

The sample was laterally rastered through the focused infrared beam ( $Z=0$ ) with spectra collected at each scanning point ( $3\ \mu\text{m}$ ). The confocal point was found using both the visible image and the maximum absorbance intensity of the OH vibration band. The 2D chemical images were produced by area calculation of the OH stretching water band ( $4000\text{-}3000\ \text{cm}^{-1}$ ) using a linear baseline correction.

#### 3.1 3D stacks of spectral images

Figure 3 shows the infrared profiles (slices) recorded along the Z-axis. The microscope stage allows high precision displacements along the Z-axis. The OMNIC software indicated the position in microns along the X and Y axis. For the Z direction the corresponding value (a.u) given by OMNIC software has been calibrated. Therefore, we recorded 11 infrared maps from  $-50$  to  $50$  microns with a step size of  $10$  microns. During the experiment the 32X objective and 32X condenser were kept fixed without the use of the compensation rings. Thus, the sample was scanned along the Z-axis above and below the focal point.

#### 3.2 Vertical resolution

By assuming a negligible first order diffraction effect and no scattering of the incident light, the beam energy distribution at the sample plane can be approximated by a Gaussian beam. Therefore, the Rayleigh range for Gaussian beam propagation is  $\lambda/\pi\theta^2$ , with  $\theta$  the divergence angle, which dominates the Z depth resolution. Thus, the Z depth resolution is estimated to be twice the X, Y plane spatial resolution. The vertical resolution is therefore much poorer than the lateral one.

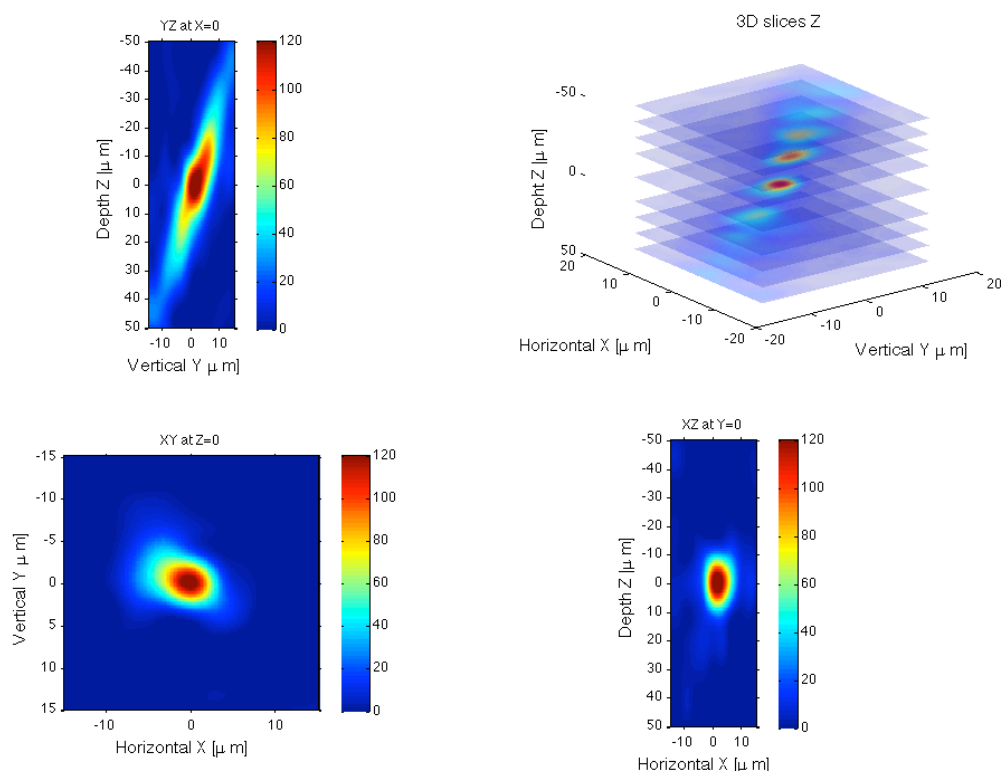
#### 3.3 2D profiles images (ZY, XY XZ)

A 3D matrix has been generated in the Matlab software by using all the 2D profiles calculated at each Z position. Therefore, it is possible to plot the 2D profiles of the water inclusion studied. A spline interpolation has been used between each Z plane. One can note the diagonal distortion of the inclusion studied, which could be attributed to an asymmetrical filling of the microscope objective.

### 4. Conclusion and future horizon

The results presented in this work have shown, for the first time, that it is possible to carry out "confocal" infrared microspectroscopy and obtain vertical profile information. Due to the beam waist

( $\lambda/\pi\theta$ ) only restricted samples can be analyzed; however we demonstrate here the feasibility of 3D infrared measurement by studying a water inclusion in a quartz sample. The calculated profiles show heterogeneity along the Z-axis of the water inclusion, which may represent the geometry of the inclusion but could also be due to infrared beam misalignment.



**Figure 3.** Absorbance 2D profiles ZY, XY XZ and 3D vertical slices along Z-axis.

- [1] Martin M, Schade U, Lerch P and Dumas P 2010 *Trends In Anal. Chem.* **29** 453-63
- [2] Miller LM, Dumas P 2006 *Biochim. Biophys. Acta.* **1758** 846–57
- [3] Carr GL 1999 *Vib. Spectrosc.* **19** 53–60
- [4] Dumas P, Polack F, Lagarde B, Chubar O, Giorgetta J and Lefrancois S 2006 *Infrared Phys. Tech.* **49** 52–60
- [5] Carr GL 2001 *Rev. Sci. Instrum* **72** 1613
- [6] Carr GL, Reffner JA and Williams GP 1995 *Rev. Sci. Instrum.* **66** 1490
- [7] Carr GL, Miller LM and Dumas P 2011 Synchrotron Radiation as a Source for Infrared Microspectroscopic Imaging with 2D Multi-Element Detection *Biomedical Applications of Synchrotron Infrared Microspectroscopy* vol 11 ed D Moss (Royal Society of Chemistry) pp 226-259
- [8] Mattson EC, Nasse MJ, Rak M, Gough KM and Hirschmugl CJ 2012 *Anal. Chem.* **84** 6173-6180
- [9] Mercury L, Jamme F, Dumas P 2012 *Phys. Chem. Chem. Phys.* **14** 2864

#### Acknowledgments

The authors wish to acknowledge Paul Dumas (SMIS Beamline, Synchrotron SOLEIL) and G. Lawrence Carr (NSLS, Brookhaven National Laboratory) for fruitful discussions and encouragement. We thank Bruno Beccard (Thermo Fisher Scientific) for invaluable help and assistance.