



HAL
open science

European ornithomimosaur (Dinosauria, Theropoda): an undetected record

R. Allain, Romain Vullo, Jean Le Loeuff, Jean-François Tournepiche

► To cite this version:

R. Allain, Romain Vullo, Jean Le Loeuff, Jean-François Tournepiche. European ornithomimosaur (Dinosauria, Theropoda): an undetected record. *Geologica Acta*, 2014, 12 (2), pp.127-135. 10.1344/105.000002083 . insu-01010562

HAL Id: insu-01010562

<https://insu.hal.science/insu-01010562>

Submitted on 18 Aug 2023

HAL is a multi-disciplinary open access archive for the deposit and dissemination of scientific research documents, whether they are published or not. The documents may come from teaching and research institutions in France or abroad, or from public or private research centers.

L'archive ouverte pluridisciplinaire **HAL**, est destinée au dépôt et à la diffusion de documents scientifiques de niveau recherche, publiés ou non, émanant des établissements d'enseignement et de recherche français ou étrangers, des laboratoires publics ou privés.

European ornithomimosaur (Dinosauria, Theropoda): an undetected record

R. ALLAIN¹ R. VULLO² J. LE LOEUFF³ J.-F. TOURNEPICHE⁴

¹Muséum National d'Histoire Naturelle, Centre de Recherche sur la Paléobiodiversité et les Paléoenvironnements, CNRS/MNHN/Paris6-UPMC

CP 38, 57 rue Cuvier F-75231 Paris cedex 05, France. E-mail: rallain@mnhn.fr

²Rennes 1, Géosciences, CNRS UMR 6118

Campus de Beaulieu bat. 15, 263 avenue du Général Leclerc, F-35042 Rennes cedex, France. E-mail: romain.vullo@univ-rennes1.fr

³Musée des Dinosauries

F-11260 Espéraza, France. E-mail: jean.leloeuff@dinosauria.org

⁴Musée d'Angoulême

1 rue Friedland, F-16000 Angoulême, France. E-mail: Jftbill@aol.com.

ABSTRACT

Early Cretaceous ornithomimosaurian theropod dinosaurs have been reported from various localities in Asia, whereas they remain poorly represented and extremely rare in North America, Africa and Europe. So far, the only known European ornithomimosaur is *Pelecanimimus* from the Barremian of Spain. The recent discovery in southwestern France of a lignitic bone bed in Angeac, which has yielded several hundred ornithomimosaur bones, sheds new light on the ornithomimosaurian fossil record. Based on this new material, we re-evaluate here the systematic position of various isolated theropod bones from the Wealden of England, including historical taxa of uncertain affinities. Based on a unique combination of derived characters, *Thecocoelurus* and *Valdoraptor* are linked to the Angeac taxon but are considered to be *nomina dubia*. *Valdoraptor* from the Valanginian of West Sussex appears to be the oldest known ornithomimosaur together with the contemporaneous *Nqwebasaurus* from South Africa. Ornithomimosaurians were a common component of the Early Cretaceous European dinosaur fauna. Their presence in Spain, France and England further strengthens the palaeobiogeographic affinities of the European fossil biota with that of Asia during this period.

KEYWORDS | Dinosauria. Theropoda. Ornithomimosauria. Early Cretaceous. Europe. Palaeogeography.

INTRODUCTION

Since their discovery in 2008, the lignitic deposits from the Hauterivian–Barremian locality of Angeac-Charente (southwestern France) have yielded a rich and diverse vertebrate assemblage. Besides micro-remains of

fishes, several reptilian taxa, including three turtles, one plesiosaur, four crocodylians and six dinosaurs have been identified (Allain *et al.*, 2011; Néraudeau *et al.*, 2012). The excavations conducted during the summers of 2010 to 2012 revealed that this bone bed was abundant in ornithomimosaur remains. In April 2013, more than 850

well-preserved but disarticulated elements, including cranial material, and representing at least 20 individuals, were unearthed from a surface of about 80 square meters. Other dinosaur bones pertain to a gigantic sauropod or to iguanodont and stegosaur ornithischians, which are clearly distinct from those of small theropods.

Based on their overall morphology and on numerous synapomorphies, including an edentulous and downturned dentary, flexed cervical prezygapophyses, a sigmoid ischial shaft and ventrally flattened pedal unguis (Rauhut, 2003; Senter, 2007; Makovicky *et al.*, 2010), the referral of the theropod bones from the Early Cretaceous of Angeac to ornithomimosaurs is definitive (Allain *et al.*, 2011). Some primitive coelurosaur pelvic features observed in the Angeac theropod, such as the squared postacetabular ala of the ilium, the propubic pubis, and the presence of a distal boot on the ischium exclude them from the maniraptorans. According to this preliminary anatomical study, the ornithomimosaur from Angeac belongs to a new taxon (Allain *et al.*, 2011), the complete, formal description of which is beyond the scope of this paper. Currently, the only unambiguous record of an European ornithomimosaur is *Pelecanimimus*, from the Barremian locality of Las Hoyas in Spain. This primitive toothed form known by a single, incomplete but articulated specimen (Pérez-Moreno *et al.*, 1994) is preserved on a limestone slab and counter-slab, and has never been described in detail. Thanks to the discovery of the ornithomimosaur-dominated bone-bed from the Early Cretaceous of Angeac-Charente, bones of uncertain or controversial affinity from the Wealden group of the Isle of Wight can confidently be referred to ornithomimosaurs. We draw attention here to the biased fossil record of European ornithomimosaurs. The discovery of ornithomimosaurs from the Early Cretaceous of France and England sheds new light on the palaeobiogeography of this group of herbivorous theropods (Kobayashi *et al.*, 1999; Barrett, 2005; Zanno and Makovicky, 2010).

Institutional Abbreviations: ANG: Angeac-Charente Collection, Musée d'Angoulême, Angoulême, France; NHMUK: Collection of the Natural History Museum, London, UK; MIWG: Museum of Isle of Wight Geology, Sandown, UK; UOP: University of Portsmouth, Portsmouth, UK; ZPAL: Institute of Palaeobiology, Polish Academy of Sciences, Warsaw, Poland.

Anatomical Nomenclature: a.pl: anterior pleurocoel; cn: cnemial crest; fc: fibular crest; lc: lateral condyle; lm: lateral malleolus; mc: medial condyle; mm: medial malleolus; ns: neural spine; pa: parapophysis; pdf: pedicular fossa; pf: pneumatic foramen; poz: postzygapophysis; p.pl: posterior pleurocoel; prsf: prespinal fossa; prz: prezygapophysis; vr: ventrolateral ridges; vs: ventral sulcus.

DESCRIPTION

Cervical vertebra

An incomplete cervical vertebra (NHMUK PV R181) was discovered in the Wessex Formation (Early Cretaceous, Barremian) of the Isle of Wight during the late nineteenth century by the Reverend William Fox. It was first described under the name *Thecospondylus daviesi* (Seeley, 1888; Fig. 1C, D, F). Huene (1923) recognized that the referral of NHMUK PV R181 to *Thecospondylus*, a taxon based on the uninformative internal natural cast of a sacrum, was dubious and coined the new genus *Thecocoelurus* for the specimen. Naish and Martill (2002) regarded *Thecocoelurus daviesi* as a *nomen dubium*, but referred the vertebra to the Oviraptorosauria based on “a number of features unique to oviraptorosaurian coelurosaurs” including a U-shaped space between the prezygapophyses and an hour-glass-shaped centrum with a ventral sulcus and ventrolateral ridges. Kirkland *et al.* (2004) recognized the relationships between NHMUK PV R181 and the oviraptorosaur-therizinosauroid clade but referred the vertebra to the Therizinosauroidea. Most recently, Naish (2011) noticed that the “unique oviraptorosaurian characters” of NHMUK PV R181 are also present in a possible noasaurid cervical vertebra (MACN-PV 622; Agnolin and Martinelli, 2007) from Argentina and referred the Wealden cervical vertebra to the Abelisauroidea. Several ornithomimosaur cervical vertebrae were found at Angeac, one of which, ANG 10-175 (described below), is morphologically identical to NHMUK PV R181.

Cervical vertebra ANG 10-175 is exquisitely preserved and complete except for the incomplete right parapophysis, diapophysis and postzygapophysis. Based on the posterior extension of the postzygapophyses and the position of the parapophyses, the cervical vertebra is from the anterior half of the neck. The centrum is low, narrow and 66 cm long with slightly concave, subrectangular anterior and posterior articular surfaces. While MACN-PV 622 is slightly opisthocelous (Agnolin and Martinelli, 2007), ANG 10-175 and NHMUK PV R181 are not. Two oval pneumatic fossae are located on the lateral side of the centrum (Fig. 1A). The anterior fossa contains a pneumatic foramen, but the posterior fossa is very shallow and not pierced by a foramen. The parapophyses are located on the anteroventral corners of the centrum and face lateroventrally. In lateral view, the centrum is concave ventrally. The ventral surface of the centrum is nearly flat except in its most anterior part, where two ventrolateral ridges merge anteriorly with the parapophyses and border a shallow sulcus, as in NHMUK PV R181. The neural arch is characterized by a low and anteroposteriorly elongate neural spine, which is 40% of the neural arch length. The spine is located over the mid-portion of the centrum. The prespinal

fossa is deep and narrow, with lateral margins defined by distinct spinoprezygapophyseal laminae. Epiphyses are very weakly developed. The diapophysis is positioned near the anterior end of the neural arch. Four well-developed diapophyseal laminae radiate from it. The postzygapophyses are slightly longer than the prezygapophyses and extend slightly beyond the posterior intervertebral articular surface of the centrum. Prezygapophyseal and postzygapophyseal facets are directed dorsomedially and ventrolaterally respectively, with their major axes oriented anteroposteriorly. In dorsal view, the bases of the prezygapophyses are widely separated by a U-shaped space. Anterior pedicular fossae are shallow but present dorsolateral to the neural canal, as in NHMUK PV R181. In anterior view, just above these fossae and lateral to the prespinal fossa, a pair of foramina connects with neural arch pneumatic cavities. These lateral pneumatic recesses are rare among theropods. They have been reported in NHMUK PV R181 and in modified form in *Masiakasaurus knopfleri* (Carrano *et al.*, 2002), but are unknown in abelisaurids (O'Connor, 2007) and oviraptorosaurs (Sues, 1997; Agnolin and Martinelli, 2007).

Tibia

A small and slender right tibia (NHMUK PV R186), also discovered by William Fox, is known from the Wessex Formation on the southwestern coast of the Isle of Wight. It has long held the attention of palaeontologists, and has been in turn referred to the ornithomimid dinosaur

Hypsilophodon foxii (Lydekker, 1888), to the small coelurosaurs *Calamosaurus foxi* and *Aristosuchus pusillus* (Lydekker, 1891; Galton, 1973), to the Ornithomimidae (Welles and Long, 1974), or considered to be an indeterminate coelurosaur (Norman, 1990; Kirkland *et al.*, 1998; Long and Molnar, 1998). More recently, Naish *et al.* (2001) incorrectly re-identified NHMUK PV R186 as a “highly unusual” left tibia, confusing the anterior face with the posterior one. Galton and Molnar (2005) noticed the mistake and reasserted the close relationships between NHMUK PV R186 and the tibia of the basal coelurosaur *Coelurus*. We refer to the Galton and Molnar (2005) study for a complete and detailed description of the tibia and we agree with the conclusion that it belongs to a coelurosaur, on the basis of derived characters such as the lack of a medial buttress to accommodate the ascending process of the astragalus (Norman, 1990; Kirkland *et al.*, 1998; Long and Molnar, 1998; Galton and Molnar, 2005).

Tibiae recovered at Angeac include 49 fragmentary specimens and five complete bones, representing at least 16 individuals. An almost complete right tibia (ANG 10-158) is described here. The measurements of a second smaller right tibia (ANG 10-24) are provided in Table 1, along with those of tibiae from other coelurosaurs. Both Angeac tibiae are substantially longer than NHMUK PV R186, but their relative measurements are nearly identical. The PI/TI and Dw/TI ratio in NHMUK PV R186 are approximately the same as those of other ornithomimosaurs, while the same

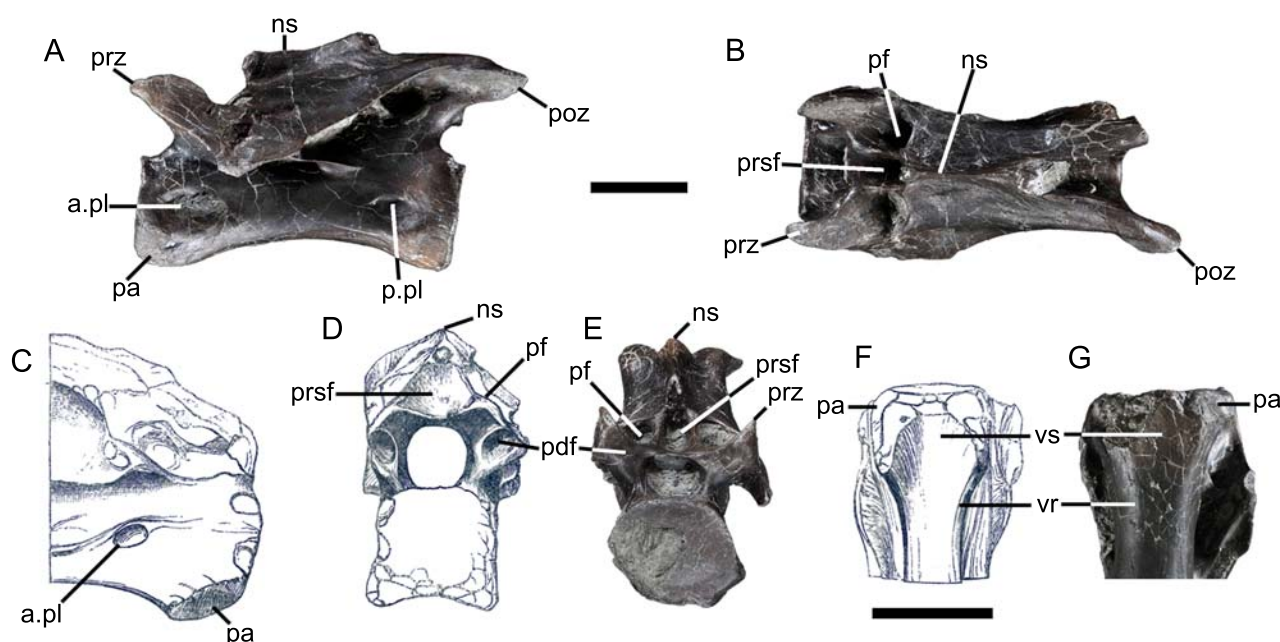


FIGURE 1. Cervical vertebrae of European ornithomimosaurs. Cervical vertebra (ANG 10-175) of the Early Cretaceous ornithomimid from Angeac in A) left lateral, B) dorsal, E) anterior and G) ventral views. Cervical vertebra (NHMUK PV R181) of an ornithomimid from the Wealden of the Isle of Wight in C) right lateral, D) anterior and F) ventral views (modified from Seeley, 1888). See Anatomical Nomenclature for abbreviations. Scale bars: 2cm.

TABLE 1. Measurements (mm) and ratios for tibiae of various coelurosaurs. TI: length; PI: anteroposterior length of the proximal end; Dw: width of the distal end. Values indicated with an "e" are estimated

	TI	PI	Dw	PI/TI	Dw/TI
<i>Isle of Wight</i>					
NHMUK PV R186	160	28.5	25.3	0.18	0.16
<i>Angeac</i>					
ANG 10-24	320	54	45	0.17	0.14
ANG 10-158	385	80	60	0.21	0.16
ANG 11-1000	402	76	-	0.18	-
ANG 11-1357	349	60	48	0.17	0.14
ANG 12-1893	462	88e	76	0.19e	0.16
ANG 12-1808	279	47	41	0.17	0.15
<i>Kinnareemimus</i>					
PW5A-110	255	47	33	0.18	0.13
PW5A-111	252	41	32	0.16	0.13
<i>Archaeornithomimus</i>					
AMNH 6565	401	81.3	65	0.20	0.16
<i>Gallimimus</i>					
Z.pal.No.Mg.D-I/94	290	56	45	0.19	0.16
Z.pal.No.Mg.D-I/1	380	70	58	0.18	0.15
GI DPS 100/11	710	163	120	0.23	0.17
<i>Deinonychus</i>					
AMNH 3015	312	74	63	0.24	0.20
MCZ 4371	368	84	73	0.23	0.20
<i>Gigantoraptor</i>					
LH V0011	1100e	?	245e	-	0.22e
<i>Tyrannosaurus</i>					
FMNH PR2081	1143	410	346	0.36	0.30
<i>Gorgosaurus</i>					
NMC 350	842	183	266	0.22	0.32

ratios are quite different in dromaeosaurs, tyrannosaurs and oviraptorosaurs (Table 1). A portion of the medial condyle is broken off, and the posterior surface of the distal end is slightly crushed, but the bone is otherwise undistorted and remarkably well preserved (Fig. 2C-E, G, H). The proximal surface is nearly flat to slightly concave, with a medial condyle more elevated than the lateral condyle (Fig. 2D). In proximal view, both condyles have a subrectangular shape, and they are separated by a narrow notch posteriorly that extends onto the posterior surface of the shaft (Fig. 2H, I). The medial condyle extends posteriorly beyond the lateral condyle. The latter is strongly offset from the cnemial crest by the incisura tibialis. The cnemial crest curves laterally to the level of the lateral condyle so that the tibia has a hooked profile in proximal view. The apex of the cnemial crest is not higher than the level of the proximal articular surface, unlike the condition in ceratosaurs, basal tetanurans and tyrannosauroids. The fibular crest is well developed on the proximal third of the lateral surface of the shaft. It has a rugose posterior surface with a nutrient foramen at its base. The fibular crest is clearly separated from the proximal articular surface of the tibia. It extends to 56 mm from the proximal end and has a length of 65mm. The shaft of the

tibia is straight and long. It is convex posteriorly, nearly flat anteriorly, and deeper anteroposteriorly medially than laterally. The anterior surface preserves a long and flattened facet that marks the contact with the fibular shaft. More distally, the shaft also preserves the faint but clearly visible impression of the ascending process of the astragalus, which is thus not fused with the distal end of the tibia. The dorsal tip of the astragalus was located about 61 mm from the distal end of the tibia. As in all coelurosaurs, there is no medial buttress to accommodate the ascending process of the astragalus. The astragalar facet is not completely flat but exhibits two longitudinal concavities which are also present in NHMUK PV R186. The distal end of the right tibia is slightly humpy to flat anteriorly and strongly convex posteriorly. In distal view, the concave articular surface is expanded both medially and laterally and has a subtriangular outline (Fig. 2G). In anterior view, the lateral malleolus slightly projects farther distally than the medial malleolus (Fig. 2C). The latter is angular as defined by Galton and Molnar (2005), a condition that is also present in some basal tetanurans and in basal coelurosaurs.

The most noticeable difference between NHMUK PV R186 and the Angeac tibiae involves the shape of the cnemial crest. In the Angeac specimens, the cnemial crest is longer than the condyles, and its anteriormost portion is sharper. In contrast, NHMUK PV R186 does not present the same rounded-off square outline (Fig. 2H, I; Galton and Molnar, 2005, fig. 1.6g). A second difference is seen in the distal end of the lateral malleolus, which projects only slightly in NHMUK PV R186, but more distally in the Angeac material. Such a distal projection seems to be highly variable in the ornithomimosaur from Charente and is not observed in any of the 21 distal ends of tibiae recovered at Angeac. Except for these slight dissimilarities, of which the first is probably magnified by the incomplete preservation of the condyles of both the French and English specimens, the tibiae are nearly identical. We therefore can confidently refer NHMUK PV R186 to the Ornithomimosauria. Galton and Molnar (2005, p15) previously noticed the great similarities between the proximal tibia of NHMUK PV R186 and that of *Gallimimus*. But, following the character description of Rauhut (2003), they argued that the distal articular surface of the tibia of NHMUK PV R186 was rectangular in shape and more than three times wider transversely than anteroposteriorly, therefore regarding it as being closer to *Coelurus*. We disagree with these interpretations. According to Rauhut (2003, text-fig. 45c, d), the distal articular surface of the tibia from the Isle of Wight is more triangular than rectangular. Also according to the original figure of Lydekker (1891; Fig. 2F), the distal articular surface of the tibia has the same proportion as ANG 10-158 (Fig. 2G) and its transverse to anteroposterior width ratio is only 2.6. The right tibia (UOP-C002-2004), which is, according to Naish (2011), morphologically

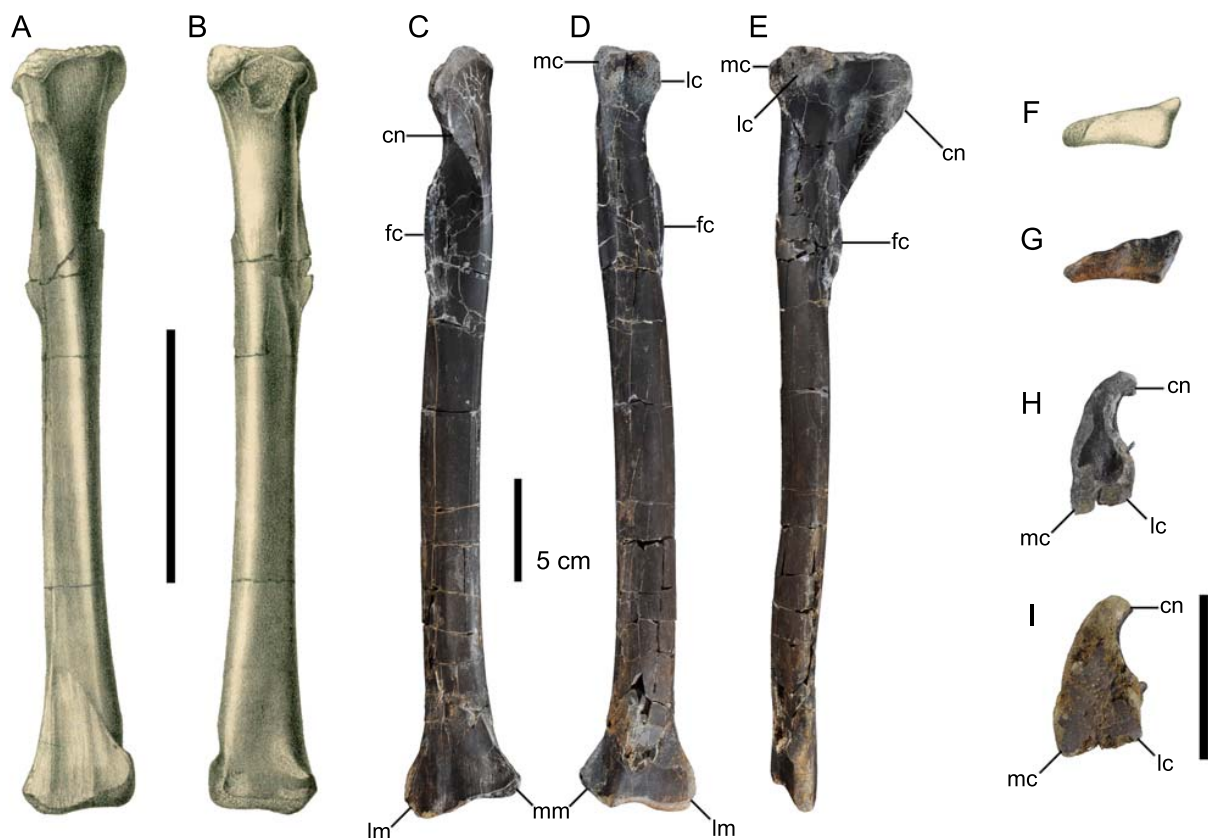


FIGURE 2. Tibiae of European ornithomimosaur. Right tibia (NHMUK PV R186) of a Wealden ornithomimosaur from the Isle of Wight in A) anterior, B) posterior and F) distal views (modified from Lydekker, 1891). Right tibia (ANG 10-158) of the Early Cretaceous ornithomimosaur from Angeac in C) anterior, D) posterior, E) lateral, G) distal and H) proximal views. I) Right tibia (ANG 10-24) of the Early Cretaceous ornithomimosaur from Angeac in proximal view. See Anatomical Nomenclature for abbreviations. Scale bars: 5cm.

identical but 34% larger than NHMUK PV R186, is also regarded as belonging to an ornithomimosaur.

Metatarsals

Valdoraptor oweni is one of numerous Wealden taxa based on isolated and incomplete material (Fig. 3A), and whose phylogenetic position has long been debated. The material consists of a partial left metatarsus (NHMUK PV R2559) which was originally assumed to belong to the ankylosaur *Hylaeosaurus* by Owen (1858), then referred to a new species of *Megalosaurus*, *M. oweni* by Lydekker (1889), before being designated the holotype of a new allosaurid, *Valdoraptor oweni* by Olshevsky (1991). *Valdoraptor* is currently considered to be an indeterminate neotetanuran theropod (Holtz, 2004; Naish and Martill, 2007; Naish, 2011).

Numerous metatarsals have been recovered at Angeac, but all are broken either proximally or distally. Left metatarsals II (ANG 10-240), III (ANG 10-237) and IV (ANG 10-07) do not belong to the same individual but are nonetheless similar in size and have been chosen to illustrate the very close affinities between the metatarsus of the

enigmatic *Valdoraptor* and that of the new ornithomimosaur from Charente (Fig. 3). Naish (2011) listed three characters as diagnostic of *Valdoraptor*: a mediolaterally compressed metatarsal II, a medially projected distal end of the metatarsal II and the distal extension of the metatarsal III beyond the distal end of the metatarsal II. All these characters have been recognized in the metatarsals of the ornithomimosaur from Angeac. In the latter, the more complete metatarsal IV is compressed mediolaterally as well, as in *Nqwebasaurus* (De Klerk *et al.*, 2000; Choiniere *et al.*, 2012), and is D-shaped in cross-section. Its distal end projects laterally to metatarsal III (Fig. 3D). As in many theropods, the medial ligament fossa is much deeper than the lateral ligament fossa. Because the metatarsals from Angeac are morphologically almost identical to those of *Valdoraptor*, and share with them a derived feature unknown in other theropods, the latter taxon is assumed here to be an ornithomimosaur. However, the chronological gap existing between the occurrences of *Valdoraptor* and the Angeac taxon suggests that the two species are very likely distinct. The mediolaterally compressed metatarsal II might be a potential synapomorphy of some Early Cretaceous ornithomimosaur. The isolated metatarsal II (NHMUK PV R2661) collected by Mantell from Cuckfield

and referred to *Valdoraptor* (Naish, 2011) is also regarded as belonging to an ornithomimosaur.

DISCUSSION

Taxonomic implications

Based on derived features, both *Thecocoelurus* and *Valdoraptor* can be confidently linked to the ornithomimosaur from Angeac and then referred to the Ornithomimosauria. This referral nevertheless raised the problem of the taxonomic status and the possible synonymisation of the French and the two English taxa. If the three taxa could be proved to be synonymous, then *Thecocoelurus daviesi* (Seeley, 1888) would have the priority over *Valdoraptor oweni* (Olshevsky, 1991).

Thecocoelurus daviesi has been considered as a *nomen dubium* by Naish and Martill (2002). The U-shaped space between cervical prezygapophyses and the hour-glass-shaped cervical centra with a ventral sulcus and ventrolateral ridges are not diagnostic of this taxon. Indeed, these characters have been observed in the Angeac taxon, and also in *Gallimimus bullatus* (RA personal observation, ZPAL Mg-DI-94), oviraptorosaurs and abelisauroids (Naish, 2011). The pneumatic recesses located laterally to the prespinal fossa are a synapomorphy shared by *Thecocoelurus* and the Angeac taxon. However, since pneumatic recesses are also present in modified form in some cervical vertebrae of *Masiakasaurus* (Carrano *et al.* 2002), this character must be used with caution. For these

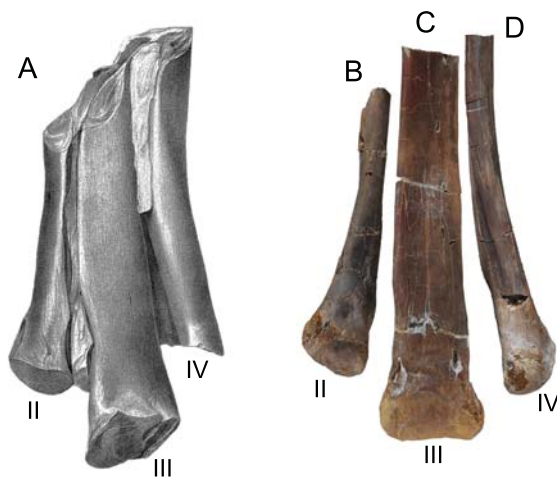


FIGURE 3. Metatarsals of European ornithomimosaur. A) Left metatarsus (NHMUK PV R2559) of the Wealden ornithomimosaur *Valdoraptor oweni* from the West Sussex in anterior view (modified from Owen, 1858). Reconstructed left metatarsus of the Early Cretaceous ornithomimosaur from Angeac in anterior view based on B) the left metatarsal II ANG 10-240, C) the left metatarsal III ANG 10-237 and D) the left metatarsal IV ANG 10-07. Not to scale.

reasons, and given the very limited amount of material (half a vertebra) known for *Thecocoelurus*, we agree here with the conclusion of Naish and Martill (2002).

As stated above, *Valdoraptor oweni* has been recently diagnosed by three characters, two of which have a broader distribution among theropods. The medially projected distal end of the metatarsal II, and the distal extension of the metatarsal III beyond the distal end of the metatarsal II are observed not only in numerous ornithomimosaur including *Gallimimus*, *Kinnareemimus*, *Struthiomimus*, *Sinornithomimus* and the Angeac ornithomimosaur, but also in other coelurosaurs such as *Tyrannosaurus* (Brochu 2003). In contrast, the mediolaterally compressed metatarsal II observed in both *Valdoraptor* and the French ornithomimosaur is unknown in other coelurosaurs. However, this feature is present in at least three noasaurid ceratosaurs: *Noasaurus*, *Masiakasaurus* and *Velocisaurus* (Bonaparte, 1996; Carrano *et al.*, 2002). Therefore, the diagnosis of *Valdoraptor oweni* is based on homoplastic characters and we consider this taxon to be a *nomen dubium*.

In conclusion, and pending a complete cladistic analysis including European taxa, we regard here *Valdoraptor oweni* and *Thecocoelurus daviesi* as *nomina dubia*, but we refer their holotypic material to the Ornithomimosauria based on comparisons with the abundant and associated material from the Angeac locality.

Early Cretaceous ornithomimosaurian fossil record and biogeography

The right tibiae NHMUK PV R186 and UOP-C002-2004, the cervical vertebra NHMUK PV R181 which is the holotype of *Thecocoelurus daviesi*, and the partial left metatarsus, NHMUK PV R2559, representing the holotype of *Valdoraptor oweni*, as well as the left right metatarsal II NHMUK PV R2661 are significant for being the first ornithomimosaur bones known from England and among the earliest records of this group in the world. According to a preliminary study of the femora from Angeac, the left femur MIWG.6214 (Naish, 2000; 2011) is also tentatively referred here to an ornithomimosaur. All these specimens come from the upper Wessex Formation and are Barremian in age, except *Valdoraptor*, which was recovered from the Valanginian Grinstead Clay Formation (Naish, 2011). Their presence confirms that ornithomimosaur were a common component of the Early Cretaceous European dinosaur fauna, as they are now recorded from the Valanginian–Barremian interval in Spain, France and England. *Valdoraptor* represents one of the oldest known ornithomimosaur, although the exact age of the Asian forms *Kinnareemimus* from the Early Cretaceous of Thailand (Buffetaut *et al.*, 2009) and the recently described *Hexing* from the Chinese Liaoning

Province (Jin *et al.*, 2012) has not been firmly established. Moreover, the small coelurosaur *Nqwebasaurus* from the Early Cretaceous (mid-upper Valanginian according to Gomez *et al.*, 2002) Kirkwood Formation of South Africa (De Klerk, 2002), which was first thought to belong to the Compsognathidae (Makovicky *et al.*, 2010), has been more recently referred to the Ornithomimosauria (Choiniere *et al.*, 2012). However, the clade surely had a longer history prior to the Early Cretaceous as it is apparent from the Angeac specimen, which already exhibits derived characters such as the loss of teeth in the dentary. The anatomical data of the French ornithomimosaur might be of great value in resolving the phylogenetic relationships of some Late Jurassic coelurosaurs of uncertain affinities, and will be essential for a better understanding of the early evolutionary history of ornithomimosaur.

So far, most of the Early Cretaceous ornithomimosaur have been recorded from Asia, where five genera have been described from the Barremian–Albian interval in China (Ji *et al.*, 2003; Makovicky *et al.*, 2010; Jin *et al.*, 2012), Mongolia (Barsbold and Perle, 1984) and Thailand (Buffetaut *et al.*, 2009) (Fig. 4). In addition, the presence of ornithomimosaur in the eastern part of North America may be attested by the few foot bones coming from the Aptian Arundel Formation in Maryland described as “*Ornithomimus affinis*” (Gilmore, 1920).

The discovery of the Angeac assemblage, as well as some recent finds in South-East Asia, suggests a complex palaeobiogeographic pattern for the Early Cretaceous and more specifically contacts between Europe and Asia well before the Aptian (which is the time when iguanodonts seem to diversify in Asia: see Russell, 1993; Le Loeuff, 1997). Indeed, there are now many elements in common between European

and Asian assemblages in the mid Early Cretaceous, including several dinosaur groups such as the Baryonychinae (Asia: Buffetaut *et al.*, 2005; Allain *et al.*, 2012; Europe: Charig and Milner, 1997), the Ornithomimosauria (see above), various basal Titanosauriformes and Carcharodontosauria, but also trigonoidoid non-marine bivalves (Sha, 2010; Delvene *et al.*, 2011), goniopholidid and atoposaurid crocodyliforms (Lauprasert *et al.*, 2007, 2011), istiodactylid pterosaurs (Andres and Ji, 2006) and gobiconodontid mammals (Cuenca-Bescós and Canudo, 2003). These rather uniform assemblages may be linked to the very low sea-levels of the earliest Cretaceous which would have allowed faunal exchanges between Euramerica and Asia. The palaeogeographic importance of this distribution, however, is compromised by the absence of well-preserved skeletal remains of “mid” Early Cretaceous (pre-Aptian) age from Africa (Le Loeuff *et al.*, 2012). The close relationships between the Early Cretaceous small South African theropod *Nqwebasaurus* and other basal Ornithomimosauria (Choiniere *et al.*, 2012) suggest that the latter were biogeographically widespread before Pangaeon breakup, as it has been assumed for many coelurosaurian clades (Makovicky *et al.*, 2005). If ornithomimosaur seem to be quite widespread in the Early Cretaceous, they have a much more restricted distribution in the Late Cretaceous. They are among the most common dinosaurs in the Late Cretaceous of western North America and Asia, but so far no definitive ornithomimosaur remains are known from the Late Cretaceous of Europe (to date, only a humerus fragment and an ungual phalanx have been tentatively ascribed to this group; see Mateus *et al.*, 2010) or Gondwana.

ACKNOWLEDGMENTS

We are indebted to Jean-Marie, Philippe and Vincent Audoin and the technical help of the Audoin Company for their useful collaboration. We are greatly indebted to Dominique Augier and Renaud Vacant who have prepared much of the material collected and contributed in the field works; to Philippe Loubry and Lilian Cazes for the photographs; to Jeffrey A. Wilson, Darren Naish and José Luis Sanz for providing valuable comments on different versions of the manuscript. Christopher J. Duffin is warmly thanked for improving the English style. We are grateful to Adam Halamsky and Magdalena Borsuk-Bialynicka for access to specimens in their care at the Institute of Palaeobiology of the Polish Academy of Sciences. Finally, we thank all the colleagues, students and amateur palaeontologists who have participated in the excavations during the summers of 2010 to 2012.

REFERENCES

Agnolin, F.L., Martinelli, A.G., 2007. Did oviraptorosaurs (Dinosauria; Theropoda) inhabit Argentina? Cretaceous Research, 28, 785-790.

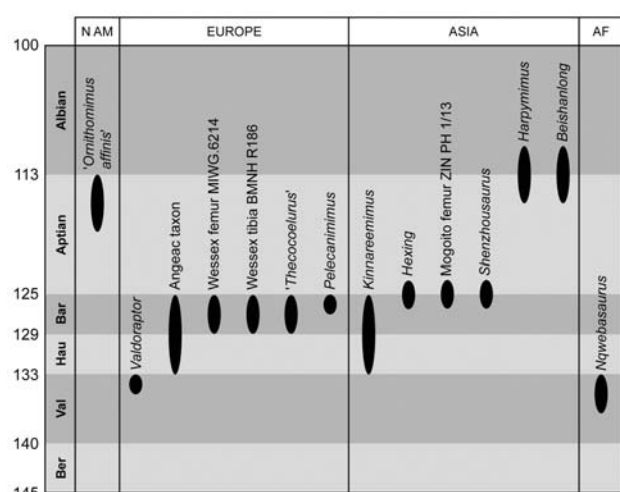


FIGURE 4. Temporal and spatial distribution of Early Cretaceous ornithomimosaur. Ber: Berrisian; Val: Valanginian; Hau: Hauterivian; Bar: Barremian; N AM: North America; AF: Africa.

- Allain, R., Vullo, R., Leprince, A., Néraudeau, D., Tournepiche, J.-F., 2011. An ornithomimosaur-dominated bone bed from the Early Cretaceous of southern France. 71st Meeting of the Society of Vertebrate Paleontology, Las Vegas, Program and Abstracts. *Journal of Vertebrate Paleontology* (Supplement online), 61.
- Allain, R., Xaisnavong, T., Richir, P., Khentavong, B., 2012. The first definitive Asian spinosaurid (Dinosauria: Theropoda) from the Early Cretaceous of Laos. *Naturwissenschaften*, 99, 369-377.
- Andres, B., Ji, Q., 2006. A new species of *Istiodactylus* (Pterosauria, Pterodactyloidea) from the Lower Cretaceous of Liaoning, China. *Journal of Vertebrate Paleontology*, 26, 70-78.
- Barrett, P.M., 2005. The diet of ostrich dinosaurs (Theropoda: Ornithomimosauria). *Palaeontology*, 48, 347-358.
- Barsbold, R., Perle, A., 1984. On first new find of a primitive ornithomimosaur from the Cretaceous of the MPR. *Paleontologicheskii Zhurnal*, 2, 121-123.
- Bonaparte, J.F., 1996. Cretaceous tetrapods of Argentina. *Münchner Geowissenschaftliche Abhandlungen, Reihe A* 30, 73-130.
- Brochu, C., 2003. Osteology of *Tyrannosaurus rex*: Insights from a nearly complete skeleton and high-resolution computed tomographic analysis of the skull. *Society of Vertebrate Paleontology Memoir*, 7, 1-138.
- Buffetaut, E., Suteethorn, V., Le Loeuff, J., Khansubha, S., Tong, H., Wongko, K., 2005. The Dinosaur fauna from the Khok Kruat Formation (Early Cretaceous) of Thailand. *Proceedings of the International Conference on Geology, Khon Kaen (Thailand), Geotechnology and Mineral Resources of Indochina (GEOINDO)*, 575-581.
- Buffetaut, E., Suteethorn, V., Tong, H., 2009. An early 'ostrich dinosaur' (Theropoda: Ornithomimosauria) from the Early Cretaceous Sao Khua Formation of NE Thailand. In: Buffetaut, E., Cuny, G., Le Loeuff, J., Suteethorn, V. (eds.). *Late Palaeozoic and Mesozoic Ecosystems in SE Asia*. London, Geological Society, 315 (Special Publications), 229-243.
- Carrano, M.T., Sampson, S.D., Forster, C.A., 2002. The osteology of *Masiakasaurus knopfleri*, a small abelisauroid (Dinosauria: Theropoda) from the Late Cretaceous of Madagascar. *Journal of Vertebrate Paleontology*, 22, 510-534.
- Charig, A.J., Milner, A.C., 1997. *Baryonyx walkeri*, a fish-eating dinosaur from the Wealden of Surrey. *Bulletin of the Natural History Museum London*, 53, 11-70.
- Choiniere, J.N., Forster, C.A., De Klerk, W.J., 2012. New information on *Nqwebasaurus thwazi*, a coelurosaurian theropod from the Early Cretaceous Kirkwood Formation in South Africa. *Journal of African Earth Sciences*, 71-72, 1-17.
- Cuenca-Bescós, G., Canudo, J.I., 2003. A new gobiconodontid mammal from the Early Cretaceous of Spain and its palaeogeographic implications. *Acta Palaeontologica Polonica*, 48, 575-582.
- De Klerk, W.J., Forster, C.A., Sampson, S.D., Chinsamy, A., Ross, C.F., 2000. A new coelurosaurian dinosaur from the Early Cretaceous of South Africa. *Journal of Vertebrate Paleontology*, 20, 324-332.
- Delvene, G., Munt, M., Sender, L.M., 2011. *Iberanaia iberica*: The first record of the Trigonioidoidea Bivalvia: Unionoida from the Lower Cretaceous of Teruel, Spain. *Cretaceous Research*, 32, 591-596.
- Galton, P.M., 1973. A femur of a small theropod dinosaur from the Lower Cretaceous of England. *Journal of Paleontology*, 47, 996-997.
- Galton, P.M., Molnar, R.E., 2005. Tibiae of small theropod dinosaurs from Southern England: from the Middle Jurassic of Stonesfield near Oxford and the Lower Cretaceous of the Isle of Wight. In: Carpenter, K. (ed.). *The carnivorous dinosaurs*. Bloomington and Indianapolis, Indiana University Press, 3-22.
- Gilmore, C.W., 1920. Osteology of the carnivorous Dinosauria in the United States National Museum, with special reference to the genera *Antrodemus* (*Allosaurus*) and *Ceratosaurus*. *Bulletin of the American National Museum*, 110, 1-154.
- Gomez, B., Bamford, M., Martínez-Delclòs, X., 2002. Lower Cretaceous plant cuticles and amber (Kirkwood Formation, South Africa). *Comptes Rendus Palevol*, 1, 83-87.
- Holtz, T.R., Molnar, R.E., Currie, P.J., 2004. Basal Tetanurac. In: Weishampel, D.B., Dodson, P., Osmólska, H. (eds.). *The Dinosauria*. Berkeley, University of California Press, 2nd edition, 71-110.
- Huene, F. von, 1923. Carnivorous Saurischia in Europe since the Triassic. *Bulletin of the Geological Society of America*, 34, 449-458.
- Ji, Q., Norell, M.A., Makovicky, P.J., Gao, K.-Q., Ji, S., Yuan, C., 2003. An early ostrich dinosaur and implications for ornithomimosaur phylogeny. *American Museum Novitates*, 3420, 1-19.
- Jin, L., Chen, J., Godefroit, P., 2012. A new basal ornithomimosaur (Dinosauria: Theropoda) from the Early Cretaceous Yixian Formation, Northeast China. In: Godefroit, P. (ed.). *Bernissart dinosaurs and Early Cretaceous terrestrial ecosystems*. Bloomington, Indiana University Press Association, 466-487.
- Kirkland, J.I., Britt, B.B., Whittle, C.H., Madsen, S.K., Burge, D.L., 1998. A small coelurosaurian theropod from the Yellow Cat Member of the Cedar Mountain Formation (Lower Cretaceous, Barremian) of eastern Utah. *Bulletin of the New Mexico Museum of Natural History and Science*, 14, 239-248.
- Kirkland, J., Zanno, L., Deblieux, D., Smith, D., Sampson, S., 2004. A new, basal-most therizinosauroid (Theropoda: Maniraptora) from Utah demonstrates a Pan-Laurasian distribution for Early Cretaceous (Barremian) therizinosauroids. *Journal of Vertebrate Paleontology*, 24 (supplement to 3), 78A.
- Kobayashi, Y., Lu, J.-C., Dong, Z.-M., Barsbold, R., Azuma, Y., Tomida, Y., 1999. Herbivorous diet in an ornithomimid dinosaur. *Nature*, 402, 480-481.
- Lauprasert, K., Cuny, G., Buffetaut, E., Thirakhupt, K., Suteethorn, V., 2007. *Siamosuchus phuphokensis*, a new goniopholidid from the Early Cretaceous (ante-Aptian) of

- northeastern Thailand. *Bulletin de la Société Géologique de France*, 178, 201-216.
- Lauprasert, K., Laojumpon, C., Saenphala, W., Cuny, G., Thirakhupt, K., Suteethorn, V., 2011. Atoposaurid crocodyliforms from the Khorat Group of Thailand: first record of *Theriosuchus* from Southeast Asia. *Paläontologische Zeitschrift*, 85, 37-47.
- Le Loeuff, J., 1997. Biogeography. In: Currie, P.J., Padian, K. (eds.). *Encyclopedia of Dinosaurs*, Academic Press, 51-56.
- Le Loeuff, J., Läng, E., Cavin, L., Buffetaut, E., 2012. Between Tendaguru and Bahariya: on the age of the Early Cretaceous Dinosaur sites from the Continental Intercalaire and other African formations. *Journal of Stratigraphy*, 36, 486-502.
- Long, J.A., Molnar, R.E., 1998. A new Jurassic theropod dinosaur from Western Australia. *Records of the Western Australian Museum*, 19, 121-129.
- Lydekker, R., 1888. *Catalogue of the fossil Reptilia and Amphibia in the British Museum*. London, British Museum Natural History, 309pp.
- Lydekker, R., 1889. Note on some points in the nomenclature of fossil reptiles and amphibians, with preliminary notices of two new species. *Geological Magazine (Decade 3)*, 6, 325-326.
- Lydekker, R., 1891. On certain ornithosaurian and dinosaurian remains. *Quarterly Journal of the Geological Society of London*, 47, 41-44.
- Makovicky, P.J., Apesteguía, S., Agnolin, F.L., 2005. The earliest dromaeosaurid theropod from South America. *Nature*, 437, 1007-1011.
- Makovicky, P.J., Li, D., Gao, K.-Q., Lewin, M., Erickson, G.M., Norell, M.A., 2010. A giant ornithomimosaur from the Early Cretaceous of China. *Proceedings of the Royal Society B*, 277, 191-198.
- Mateus, O., Dyke, G.J., Motchurova-Dekova, N., Kamenov, G.D., Ivanov, P., 2010. The first record of a dinosaur from Bulgaria. *Lethaia*, 43, 88-94.
- Naish, D., 2000. A small, unusual theropod (Dinosauria) femur from the Wealden Group (Lower Cretaceous) of the Isle of Wight, England. *Monatshefte, Neues Jahrbuch für Geologie und Paläontologie*, 2000, 217-234.
- Naish, D., 2011. Theropod dinosaurs. In: Batten, D.J. (ed.). *English Wealden Fossils*. London, The Palaeontological Association, 526-559.
- Naish, D., Martill, D.M., 2002. A reappraisal of *Thecocoelurus daviesi* (Dinosauria: Theropoda) from the Early Cretaceous of the Isle of Wight. *Proceedings of the Geologists' Association*, 113, 23-30.
- Naish, D., Martill, D.M., 2007. Dinosaurs of Great Britain and the role of the Geological Society of London in their discovery: basal Dinosauria and Saurischia. *Journal of the Geological Society*, 164, 493-510.
- Naish, D., Hutt, S., Martill, D.M., 2001. Saurischian dinosaurs 2: theropods. In: Martill, D.M., Naish, D. (eds.). *Dinosaurs of the Isle of Wight*. London, The Palaeontological Association, 242-309.
- Néraudeau, D., Allain, R., Ballèvre, M., Batten, D.J., Buffetaut, E., Colin, J.-P., Dabard, M.-P., Daviero-Gomez, V., El Albani, A., Gomez, B., Grosheny, D., Le Loeuff, J., Leprince, A., Martín-Closas, C., Masure, E., Mazin, J.-M., Philippe, M., Pouech, J., Tong, H., Tournepiche, J.-F., Vullo, R., 2012. The Hauterivian-Barremian lignitic bone bed of Angeac (Charente, SW France): stratigraphical, palaeobiological and palaeogeographical implications. *Cretaceous Research*, 37, 1-14.
- Norman, D.B., 1990. Problematic Theropoda: "Coelurosaurs". In: Weishampel, D.B., Dodson, P., Osmolska, H. (eds.). *The Dinosauria*. Berkeley, University of California Press, 280-305.
- O'Connor, P.M., 2007. The postcranial axial skeleton of *Majungasaurus crenatissimus* (Theropoda: Abelisauridae) from the Late Cretaceous of Madagascar. In: Sampson, S.D., Krause, D.W. (eds.). *Majungasaurus crenatissimus* (Theropoda: Abelisauridae) from the Late Cretaceous of Madagascar. *Society of Vertebrate Paleontology*, 8 (Memoir), 127-162.
- Olshevsky, G., 1991. A Revision of the Parainfraclass Archosauria Cope, 1869, Excluding the Advanced Crocodylia. San Diego (California), Publications Requiring Research, 196pp.
- Owen, R., 1858. *Monograph on the fossil Reptilia of the Wealden and Purbeck Formations. Part IV. Dinosauria (Hylaeosaurus)*. *Palaeontological Society Monographs*, 10, 1-26.
- Pérez-Moreno, B.P., Sanz, J.L., Buscalioni, A.D., Moratalla, J.J., Ortega, F.J., Rasskin-Gutman, D., 1994. A unique multitoothed ornithomimosaur dinosaur from the Lower Cretaceous of Spain. *Nature*, 370, 363-367.
- Rauhut, O.W.M., 2003. The interrelationships and evolution of basal theropod dinosaurs. *Special Papers in Palaeontology*, 69, 1-215.
- Russell, D.A., 1993. The role of Central Asia in dinosaurian biogeography. *Canadian Journal of Earth Sciences*, 30, 2002-2012.
- Seeley, H.G., 1888. On *Thecospondylus daviesi* (Seeley), with some remarks on the classification of the Dinosauria. *Quarterly Journal of the Geological Society of London*, 44, 79-86.
- Senter, P., 2007. A new look at the phylogeny of Coelurosauria (Dinosauria: Theropoda). *Journal of Systematic Palaeontology*, 5, 429-463.
- Sha, J., 2010. Historical distribution patterns of trigonioidids (non-marine Cretaceous bivalves) in Asia and their palaeogeographic significance. *Proceedings of the Royal Society B*, 277, 277-283.
- Sues, H.D., 1997. On *Chirosstenotes*, a Late Cretaceous oviraptorosaur (Dinosauria, Theropoda) from the western North America. *Journal of Vertebrate Paleontology*, 17, 698-716.
- Welles, S.P., Long, R.A., 1974. The tarsus of theropod dinosaurs. *Annals of the South African Museum*, 64, 191-218.
- Zanno, L.E., Makovicky, P.J., 2010. Herbivorous ecomorphology and specialization patterns in theropod dinosaur evolution. *Proceedings of the National Academy of Sciences*, 108, 232-237.

Manuscript received May 2013;
revision accepted May 2014;
published Online May 2014.

