



HAL
open science

Time scales of regional circulation of saline fluids in continental aquifers (Armorican massif, Western France)

Antoine Armandine Les Landes, Luc Aquilina, Philippe Davy, Virginie Vergnaud, Christian Le Carlier de Veslud

► To cite this version:

Antoine Armandine Les Landes, Luc Aquilina, Philippe Davy, Virginie Vergnaud, Christian Le Carlier de Veslud. Time scales of regional circulation of saline fluids in continental aquifers (Armorican massif, Western France). *Hydrology and Earth System Sciences Discussions*, 2014, 11 (6), pp.6599-6635. 10.5194/hessd-11-6599-2014 . insu-01018956

HAL Id: insu-01018956

<https://insu.hal.science/insu-01018956>

Submitted on 7 Jul 2014

HAL is a multi-disciplinary open access archive for the deposit and dissemination of scientific research documents, whether they are published or not. The documents may come from teaching and research institutions in France or abroad, or from public or private research centers.

L'archive ouverte pluridisciplinaire **HAL**, est destinée au dépôt et à la diffusion de documents scientifiques de niveau recherche, publiés ou non, émanant des établissements d'enseignement et de recherche français ou étrangers, des laboratoires publics ou privés.



This discussion paper is/has been under review for the journal Hydrology and Earth System Sciences (HESS). Please refer to the corresponding final paper in HESS if available.

Time scales of regional circulation of saline fluids in continental aquifers (Armorican massif, Western France)

A. Armandine Les Landes, L. Aquilina, P. Davy, V. Vergnaud, and C. le Carlier

Geosciences Rennes (CNRS – UMR 6118), University of Rennes 1, Bâtiment 14B, Campus Beaulieu, 263 Avenue du Général Leclerc, 35042 Rennes, France

Received: 20 April 2014 – Accepted: 13 June 2014 – Published: 23 June 2014

Correspondence to: A. Armandine Les Landes
(antoine.armandineleslandes@univ-rennes1.fr)

Published by Copernicus Publications on behalf of the European Geosciences Union.

HESSD

11, 6599–6635, 2014

Time scales of
regional circulation
of saline fluids

A. Armandine Les
Landes et al.

Title Page

Abstract

Introduction

Conclusions

References

Tables

Figures



Back

Close

Full Screen / Esc

Printer-friendly Version

Interactive Discussion



Abstract

In recent decades, saline fluids have been sampled worldwide at great depths in continental basements. Although some of them have been attributed to marine transgressions the mechanisms allowing their circulation is not understood. In this paper, we describe the horizontal and vertical distribution of moderately saline fluids (60 to 1400 mg L⁻¹) sampled at depths ranging from 41 to 200 m in aquifers at the regional scale of the Armorican Massif (northwestern France). The horizontal and vertical distributions of high chloride concentrations are in good agreement with both the altitudinal and vertical limits and succession of the three major transgressions between the Mio-Pliocene and Pleistocene ages. The mean chloride concentration for each transgression area is exponentially related to the time spanned until present. It defines the potential laws of leaching of marine waters by fresh meteoric waters. The results of the Armorican aquifers provide the first observed constraints for the time scales of sea-water circulation in the continental basement and the subsequent leaching by fresh meteoric waters. The general trend of increasing chloride concentration with depth and the time frame for the flushing process provide useful information to develop conceptual models of the paleo-functioning of Armorican aquifers.

1 Introduction

In recent decades, saline fluids have been sampled at great depths (0.5–5 km) in continental basements (Bucher and Stober, 2010; Frape et al., 2003). In several places, these fluids have been considered as old seawater introduced in aquifers during marine transgressions (Aquilina and Dreuzy, 2011; Beaucaire et al., 1999; Bottomley et al., 1994, 1999; Douglas et al., 2000; Greene et al., 2008; Louvat et al., 1999; Négrel and Casanova, 2005). Two alternative origins related either to glacial recharge of brines due to cryogenic mechanisms (Starinsky and Katz, 2003), or to anthropogenic sources (Kelly et al., 2008; Mullaney et al., 2009; Panno et al., 2006; Perera et al., 2013) have

HESSD

11, 6599–6635, 2014

Time scales of regional circulation of saline fluids

A. Armandine Les Landes et al.

Title Page

Abstract

Introduction

Conclusions

References

Tables

Figures



Back

Close

Full Screen / Esc

Printer-friendly Version

Interactive Discussion



Time scales of regional circulation of saline fluids

A. Armandine Les Landes et al.

Title Page

Abstract

Introduction

Conclusions

References

Tables

Figures



Back

Close

Full Screen / Esc

Printer-friendly Version

Interactive Discussion



also been proposed. These three hypotheses have led to extremely different estimates of the saline fluid residence time (Devonian or Pleistocene for the Canadian brines, for example) and thus of the paleohydrogeology of the continental aquifers. Although thorough investigations have been carried out in several places, the origin and fate of the salinity are still issues. We have almost no field observations identifying the potential mechanisms leading to marine fluid introduction and conservation in hard rock aquifers, as well as the influence of glacial recharge at various depths in these aquifers remain. Furthermore, the time-scales of these mechanisms are unknown.

In this study, we investigated the effects of marine transgressions in the spatial (both horizontal and vertical) distribution of chloride concentrations at a regional scale. Since the transgression characteristics differ from one event to another, we expect to find higher concentrations in the areas flooded by the later. The decrease of chloride concentrations with time potentially provides constraints for fluid circulation time-scales in the basement.

The study focuses on the Armorican basement (western France), where several authors have reported evidence of saline fluids (Ayraud et al., 2008; Pauwels et al., 2010). Three main transgressions were recorded during Mio-Pliocene to Pleistocene times, the latest being the highest. This is a particularly favorable context since a large part of the area flooded by the oldest and highest transgression remains unaffected by later transgression events.

2 Geological background

The Armorican basement extends over an area of 68 500 km² in the northwestern part of France. The Armorican massif is a crystalline basement localized between the English Channel and the Bay of Biscay. The northern part corresponds to the Cadomian orogenic belt (Chantraine et al., 2001). The central and southern zones belong to the European Variscan belt (Le Corre et al., 1991). The Armorican massif is a basement made of Upper Proterozoic to Paleozoic formations mainly composed of low and

Time scales of regional circulation of saline fluids

A. Armandine Les Landes et al.

Title Page

Abstract

Introduction

Conclusions

References

Tables

Figures



Back

Close

Full Screen / Esc

Printer-friendly Version

Interactive Discussion



layer 20 to 30 m thick is present in many places, and likely ubiquitously (Brault, 2002; Dewandel et al., 2006). Roques (2013) has studied the influence of fault zones for sites characterized by high groundwater yields at the scale of the Armorican massif. At this scale, groundwater resources in the shallower part (<20 m) are widespread but limited in term of productivity. Conversely, high groundwater productivities are associated to fault zones below the weathered zone. Indeed, groundwater resources at significant depth have been found in the Armorican bedrock (Le Borgne et al., 2006; Leray et al., 2013; Roques et al., 2014) and it can be considered that the fractured system constitutes a water reservoir in the continental basement. Free groundwater circulation in crystalline environments has been reported from several studies (Banks et al., 1996; Larsson, 1987). Several studies have shown that basement is generally characterized by an interconnected fracture system at several km depth (Aquilina and Dreuzy, 2011; Edmunds and Savage, 1991; Stober et al., 2002). Hydrodynamic properties of crystalline rock aquifers of the Armorican basement have been intensively investigated in several research sites (Ploemeur and St-Brice-en-Cogles sites, Fig. 2) (Le Borgne et al., 2004, 2006; Dorn et al., 2012; Leray et al., 2013; Roques, 2013; Roques et al., 2014; Touchard, 1999) (Fig. 2). Moreover, previous studies in the Armorican basement have identified a compartmentalization of these crystalline rock aquifers from hydrological, geochemical, geological and geophysical data (Ayraud et al., 2008; Roques, 2013; Roques et al., 2014), and from regional-scale numerical modeling (Goderniaux et al., 2013). Geochemical studies also showed specific chemical compositions of the water in the deep fractured aquifer, potentially including saline groundwaters (Aquilina et al., 2013; Ayraud et al., 2008; Pauwels et al., 2013).

4 Chloride database

The quantity supplied and the quality of the main groundwater resources in the Armorican massif are monitored through a public well network (ADES: “banque nationale d’Accès aux Données sur les Eaux Souterraines”, National database for groundwater

Time scales of regional circulation of saline fluids

A. Armandine Les Landes et al.

Title Page

Abstract

Introduction

Conclusions

References

Tables

Figures



Back

Close

Full Screen / Esc

Printer-friendly Version

Interactive Discussion



resources, <http://www.adeseaufrance.fr/>). For most of these wells hydrogeological informations (geographical location, altitude, depth, drilling log, borehole parameters, water inflow points, etc. . .) are available through a second public database of drillings (BSS: “Base de données du Sous-Sol”, <http://infoterre.brgm.fr/>). The precise location of water inflows is not described for each well, and it has been considered that the water inflow corresponds to the base of the well. This assumption is valid taking into account the drilling goal which is to stop the well drilling when a sufficient water inflow is found.

The network of wells investigated covers the whole Armorican basement and includes more than 1800 drillings with an average depth of approximately 40 m. Chemical records, such as chloride or nitrate concentrations, are available for each drilling. We first preprocessed the database of 1874 chloride measurements and removed wells that are potentially not representative of natural chloride concentrations. We removed wells close to a potential anthropic pollution source (industrial estate, garbage dump, mill pond. . .), and wells with a large variability through time large (standard deviation of chloride concentration higher than 30 %). We also did not consider the wells at a distance less than one kilometer from the current coastline, whose concentration may be directly influenced by current saltwater intrusion. 716 of the 1874 wells have been excluded from the database, i.e. 38 % of the total. The vertical distribution of the chloride concentrations for the remaining values was analyzed by intervals of 10 m from an altitude of 350 m a.s.l. to –125 m. The average chloride concentration and the 90th percentile were calculated for each 10 m interval.

5 Marine transgression characteristics

Chlorides of marine origin that are not brought by rainfall (i.e. concentrations higher than 40 mg L^{-1}) are likely related to marine transgressions that flooded the Armorican massif from times to times. The likely scenario is that a fairly large amount of chlorides is injected during each transgression in submerged regions, and that the salt

concentration decreases from the end of the transgression event due to dilution or leaching by meteoric waters. If the leaching/dilution is efficient enough, for instance if the time lag between two successive transgressions is larger than the leaching time, the system is fully reset by the last event (i.e. the amount of chloride injected during the last event is much larger than the residual of formers). The objective of this part is to characterize the last transgressions that have flooded the Armorican massif.

According to stratigraphic record studies in the Armorican Massif and, to the eustatic sea-level fluctuations (Hardenbol et al., 1998), three main transgressions can be identified since the Mio-Pliocene. The oldest of Messinian age has been identified in several places (Néraudeau et al., 2003; Van Vliet-Lanoe et al., 1998), and dated between 6 and 4.6 Myr by several methods (ESR: Electron Spin Resonance Spectroscopy on quartz, $^{87}\text{Sr}/^{86}\text{Sr}$ on shells and bones in “Redonian” shelly sands or “Faluns” (Mercier et al., 2000; Néraudeau et al., 2002). These sediments would attest of the maximum transgression of the late Neogene in northwestern France (Néraudeau et al., 2010). This transgression corresponds to a high sea level of +90 m according to Hardenbol et al. (1998). The second transgression is mostly characterized by the deposition of clays, which contains few bioclastic constituents (Morzadec-Kerfourn, 1997, 1977). The so-called Redon clays formation are dated as Pliocene: Piacenzian (Reuverian, $\sim 2.7 \pm 0.3$ Myr) from a pollen analysis (Morzadec-Kerfourn, 1982, 1997). The corresponding sea level is around +60 m according to the chart (Hardenbol et al., 1998). The last known transgression in the area is characterized by clay deposits that cover the Redon clays (Morzadec-Kerfourn, 1997). According to pollen analysis of the Lanrinou clay at Landerneau (Morzadec-Kerfourn, 1982, 1997), these sediments can be correlated with the lower Pleistocene around 1.6–2 Myr (Gelasian/Calabrian). The corresponding event coincide with the high sea-level stand of +30 m (Hardenbol et al., 1998).

Thus, at least three marine transgressions, with three different paleocoastlines, must be considered for the Armorican massif: the oldest, which is also the highest, is Mio-Pliocene: Messinian ($\sim 5.3 \pm 0.8$ Myr) with sea level +90 m a.s.l., the second is

Time scales of regional circulation of saline fluids

A. Armandine Les Landes et al.

Title Page

Abstract

Introduction

Conclusions

References

Tables

Figures

⏪

⏩

◀

▶

Back

Close

Full Screen / Esc

Printer-friendly Version

Interactive Discussion



Pliocene: Reuverian ($\sim 2.7 \pm 0.3$ Myr) with sea level +60 m a.s.l.; and the most recent is Pleistocene: Gelasian/Calabrian ($\sim 1.8 \pm 0.2$ Myr) with sea level +30 m a.s.l.

Using local studies on the large-scale relief development and the paleotopographic evolution of the Armorican basement (Bonnet et al., 1998, 2000; Brault et al., 2004; Guillocheau et al., 2003; Lague et al., 2000; Lenôtre et al., 1999; Morzadec-Kerfourn, 1997; Van Vliet-Lanoe et al., 1998), a paleotopography was reconstructed for the whole area.

Globally, the topography evolution is the result of tectonic movements, climate and eustatic variations since the Mio-Pliocene. The modern topography is characterized by of incised valleys with an incision average depth of 60–100 m and significant topographic variations. The onset of the current incised and dense hydrological network is probably not older than 1 Ma (Bonnet et al., 1998, 2000; Lefebvre et al., 1994). This topography contrasts with the smooth planation surface of the Mio-Pliocene (Brault et al., 2004). The development of the Pleistocene topography of the Armorican massif is explained by vertical movements due to the N160 compression generated by the Alpine collision (Bonnet et al., 1998; Müller et al., 1992; Nicolas et al., 1990). This differential tectonic uplift has been estimated from geomorphological studies (Bonnet et al., 1998, 2000; Lague et al., 2000). Incision is measured using a digital elevation model analysis. A distributed field of incised quantities is produced for each individual drainage basin (Jost, 2005). Moreover, relief induced by fluvial incision partly reflects continental movements and can be used to estimate uplift. Indeed, considering that the drainage networks adjust to sea level, the induced incision has the same magnitude in different basins. Thus the difference of incision is used to estimate the relative amounts of differential uplift between basins. The estimation of differential uplift for each basin has been grouped by zone due to the regional organization. A differential tectonic uplift has been observed for the western part compared to the eastern part, along the Quessoy/Nort-sur-Erdre fault (Brault et al., 2004; Jost, 2005).

From these previous work, to reconstruct the paleotopography of the whole area, we first used a digital elevation model (DEM, 100 m resolution) given by the Institut

Time scales of regional circulation of saline fluids

A. Armandine Les Landes et al.

Title Page

Abstract

Introduction

Conclusions

References

Tables

Figures



Back

Close

Full Screen / Esc

Printer-friendly Version

Interactive Discussion



chloride concentration for each area is inversely related to the time elapsed since the last corresponding marine transgression.

This relationship shown in Fig. 7 can be fitted by a simple exponential function of the general form:

$$c = c_{\text{in}} \exp -\frac{t_e}{\tau} + c_o, \quad (1)$$

where c is the current chloride concentration, t_e is the age of the last transgression event, τ a characteristic time scale, c_o a background concentration, and c_{in} an additional concentration injected at the time t . Equation (1) is the solution of the differential equation:

$$\frac{dc}{dt} = -\frac{(c - c_o)}{\tau} + c_{\text{in}}\delta(t_e), \quad (2)$$

$\delta(t)$, the delta function, simulates quasi-instantaneous injection of chlorides at transgression times. The background chloride concentration c_o can be measured in places not influenced by past marine transgression; it is estimated to $21.5 \pm 0.3 \text{ mg L}^{-1}$. The regression fit leads to a time constant τ of $2.3 \pm 0.1 \text{ Myr}$, and an injected concentration of $100 \pm 14 \text{ mg L}^{-1}$. This residence-time order of magnitude is consistent with the residence time of several million years suggested by (Thury et al., 1994) for deep water as well as several studies supporting long residence times required by “fossil” seawater (Stober and Bucher, 1999). It can be noticed that these studies of fluids containing a paleoseawater end-member have chloride concentrations with an order of magnitude similar to those presented here.

Time scales of regional circulation of saline fluids

A. Armandine Les Landes et al.

Title Page

Abstract

Introduction

Conclusions

References

Tables

Figures

⏪

⏩

◀

▶

Back

Close

Full Screen / Esc

Printer-friendly Version

Interactive Discussion



7 Discussion

7.1 General trend of increasing salinities with depth

The main results of this paper present clear evidences on the origin and the age of saline fluids in the continental crust at the scale of the Armorican massif. We report the vertical distribution of chloride concentration which presents a concentration increase with depth at the Armorican massif scale. Such a trend has already been observed in several places throughout the world in continental crust.

Highly saline brines have been found in various geological environments in the Canadian Shield (Frape et al., 1984; Fritz and Frape, 1982; Gascoyne and Kamineni, 1994), in the crystalline basement of Europe (Black Forest in Germany, Soultz-sous-forêt in France) (Aquilina et al., 1997; Pauwels et al., 1993; Stober and Bucher, 1999), in the Fennoscandian shield (Fritz, 1997; Nordstrom et al., 1989) and in the England Carnmenellis Granite (Edmunds et al., 1985). Saline fluids sampled in these sites report a wide range of chloride concentrations. At the surface, chloride concentration ranges from around ten to hundred mg L^{-1} , at much greater depth around 500 m concentration values are between one hundred to thousands mg L^{-1} and below 1 km depth concentrations range from hundreds to tens of thousands mg L^{-1} .

For all these sites chloride concentration have been analyzed by intervals of depth where the average chloride concentration is calculated in order to define the concentration gradient until approximately 1 km of depth (Fig. 8). The Armorican data are also plotted on this graph (Fig. 8). All the studies show a general increase of salinity with depth. In the first three hundred meters a high gradient of salinity is observed and between 350 and about 700 m, another gradient is observed. Below this depth, a stabilization seems to be observed although there are relatively few data (Fig. 8). However the main difference between all studies relies in chloride concentrations of groundwater samples at shallow depths. In fact, chloride concentration can vary by one order of magnitude, with concentrations around ten to hundred mg L^{-1} , as for the Armorican basement and the Canadian Shields, respectively (Fig. 8).

HESSD

11, 6599–6635, 2014

Time scales of regional circulation of saline fluids

A. Armandine Les Landes et al.

Title Page

Abstract

Introduction

Conclusions

References

Tables

Figures



Back

Close

Full Screen / Esc

Printer-friendly Version

Interactive Discussion



Time scales of regional circulation of saline fluids

A. Armandine Les Landes et al.

Title Page

Abstract

Introduction

Conclusions

References

Tables

Figures



Back

Close

Full Screen / Esc

Printer-friendly Version

Interactive Discussion



All previous studies have been realized in the framework of nuclear repository, geothermal or scientific programs with the aim to investigate the deep continental crust at depth ranging from several hundred meters to several kilometers. In this study we made a synthesis of a large number of wells in a much shallower part of the crystalline basement (41 to 200 m). Despite the different purposes, we report similarities, specifically the distribution of chloride with depth which suggests common hydrogeological mechanisms. The salinity gradient from surface to greater depth and the smoothing of the evolution below a certain depth suggest two hydrodynamic behaviors. Such information can be useful to develop conceptual models of basement aquifers functioning. In addition, in this study we provide a time frame constraint of these processes in order to contribute to a better understanding.

7.2 Chloride releasing rate

Figure 7 shows that the relationship between concentration and transgression age can be fitted by a decreasing exponential function, whose parameters give three different characteristics: the background concentration c_o which can be independently evaluated in places that have not been flooded by marine transgressions, c_{in} the additional concentration injected in the system during a transgression, and τ the “dilution” time scale. Note that even if the choice of the exponential function is rather arbitrary considering the small number of constraints, both c_{in} , the curve extrapolation for an event of age 0, and τ , the time to achieve a significant decrease, are rather well determined.

According to the fitting values, the average chloride concentration likely increased by about 100 mg L^{-1} after each transgression. This is a rather low value compared to the seawater concentration of $\sim 19 \text{ g L}^{-1}$, which indicates that the original seawater has replaced only part of the freshwater initially present. Note that this value corresponds to the increase of the average chloride concentration in the sampling zone that is mostly below 100 m of the current topography. If there is a systematic increase of chloride concentration with depth, as observed in the upper section, the average will increase as well. A deeper sampling could then give higher c_{in} values. The fit also indicates

that chloride flushing from the aquifers is a process requiring approximately 2.3 Myr to return to initial conditions. Despite uncertainties on paleocoastlines and the exponential function arbitrarily chosen, the essential point is the clear evidence of past marine transgression during the last millions years and thus leaching processes being active during a similar duration. We use these characteristic time of hydrodynamic processes to constraint the conceptualization of basement aquifers functioning in the two next sections.

7.3 Conceptualization of Armorican aquifers paleohydrogeology

The Armorican massif presents clear evidences of a marine origin of the saline component in the fluids at the massif scale. The general trend of increasing chloride concentration with depth supports the seawater introduction by gravity-driven flow at depth in the basement during past marine transgressions followed by a flushing phase with freshwater. Moreover, the chloride releasing rate provides a time frame for the flushing process which has been estimated in the order (of magnitude) of a few million years. Such information can be used to develop conceptual models of the paleo-functioning of Armorican aquifers. The objective of this section is thus to propose conceptual models that may account for the chloride increase with depth on one hand and for the chloride concentration increase fit with time presented above.

The crystalline basement of the Armorican massif presents aquifers with a high transmissivity associated to fault zones (Roques et al., 2014). Considering the current topography of the Armorican massif including three domains of higher elevation above 200 m, the groundwater flow system is driven gravitationally which leads to both local and regional circulation loops (Toth, 1963). Considering the modern situation and constraints provided by the distribution of chloride discussed previously, two main possibilities may explain the distribution of saline fluids in Armorican aquifers.

Time scales of regional circulation of saline fluids

A. Armandine Les Landes et al.

[Title Page](#)

[Abstract](#)

[Introduction](#)

[Conclusions](#)

[References](#)

[Tables](#)

[Figures](#)



[Back](#)

[Close](#)

[Full Screen / Esc](#)

[Printer-friendly Version](#)

[Interactive Discussion](#)



7.3.1 First conceptual model: perfectly mixed aquifer

First, the crystalline rock aquifers are considered as a perfectly mixed reactor where the time constant of millions of years is also the residence time of chlorides in the system. The chloride contained in the system is slowly flushed out by freshwater under the influence of topography-driven groundwater flow (Toth, 1963). This model requires that chlorides are located in a compartment of the groundwater system whose recharge is far lower than the current recharge rate (around 200 mm yr^{-1}) at the top boundary of the system (see Appendix A). This does not necessarily mean that this conceptual model is not consistent with data. On the contrary, it seems consistent with the flow partitioning between local and regional flow systems initially presented (Toth, 1963) and precised more recently (Cardenas, 2007; Goderniaux et al., 2013). The characteristics of the partitioning between shallow aquifers and deep aquifers have been studied using the topography of Brittany and assuming a constant permeability with depth (Goderniaux et al., 2013). This study shows four interesting results about the partitioning between shallow (short circulations related to first-order basins) and deep (more regional circulations) aquifers: (i) the “deep” compartment can be quite shallow depending on local topography characteristics; (ii) the residence time of particles is well fitted by an exponential function, which means that the concentration flushing should behave similarly; (iii) the partitioning depends on the total recharge; (iv) the recharge flow in the deep aquifer is 2–5 times smaller than the total recharge. These recharge values are not small enough to explain the 2.3 Myr residence time observed for chlorides, which could mean either that the first model is inconsistent with data, or that the assumption of Goderniaux et al. (2013) is unrealistic. A permeability decrease with depth, may be observed in the continental crust with a likely factor of 100 within the first kilometer (Ingebritsen and Manning, 1999; Saar and Manga, 2004; Stober and Bucher, 2007). Such decrease could account for a much smaller recharge of the deep groundwater system and thereby a flushing process less efficient. Through modeling is ongoing to further test this hypothesis.

7.3.2 Second conceptual model: deep reservoir

In the second case, the presumption is that chlorides could be localized in a deep reservoir i.e. in the deeper part of the aquifer. Then chlorides would be leached out from the aquifer system after diffusion from the deep reservoir towards the active part of the crystalline rock aquifers where leaching is efficient. Calculations for this conceptual model (see Appendix 8), lead to a “salt” layer thickness of 40 m that does not seem unrealistic as regards the chloride evolution with depth observed. However this conceptual model would predict very high concentrations at depth that are not yet observed in the Armorican basement in the absence of very deep drillings. But, this could be in agreement with highly saline fluids sampled in various geological environments at great depths worldwide (Fig. 8). As in the crystalline basement of the Black Forest where Stober and Bucher (1999) suggest that the deep salt water discharges is related to the upwelling of deep water which may bring up chloride from a deep reservoir. However, it can certainly be affirmed that the salt contained in the deepest part is not solid due to the chloride to bromide relationships which excludes this possibility.

The next step of this study will be to test these two functioning hypothesis with numerical modeling in order to provide more realistic models. The objective is to provide some constraints on the saline fluid circulation at the regional scale as well as to understand if the heterogeneity and hydrodynamic conditions may induce a wide range of leaching rates which could explain the large range of chloride concentrations observed.

8 Conclusions

Chloride concentrations in groundwater were investigated in the Armorican basement at shallow depth (from +350 to -150 m a.s.l.). The high concentrations observed in some places (from 60 to 1400 mg L⁻¹) are shown to originate from marine transgressions. The distributions of high chloride concentrations are in good agreement with both the altitudinal and vertical limits and succession of the three major transgressions

HESSD

11, 6599–6635, 2014

Time scales of regional circulation of saline fluids

A. Armandine Les Landes et al.

Title Page

Abstract

Introduction

Conclusions

References

Tables

Figures



Back

Close

Full Screen / Esc

Printer-friendly Version

Interactive Discussion



Time scales of regional circulation of saline fluids

A. Armandine Les Landes et al.

Title Page

Abstract

Introduction

Conclusions

References

Tables

Figures



Back

Close

Full Screen / Esc

Printer-friendly Version

Interactive Discussion



between the Mio-Pliocene and Pleistocene ages. During each of the last transgressions, seawater was introduced by gravity-driven flow at great depth in the basement. This seawater end-member has only partially been flushed by meteoric waters (over 1 to 2 million yr) between successive marine transgressions, and since the last one. Considering the paleocoastlines, three zones have been affected by the transgressions. The average chloride concentration calculated for each area is inversely related to the time elapsed since last marine transgression. This relationship between concentration and transgression age can be fitted by a decreasing exponential function which indicates that chloride flushing from the aquifers is a process requiring approximately 2 Myr. The fate of chloride is conceptualized using two main models: a dilution or leaching of a deep reservoir. Both models provide information on the history of the saline fluids in fractured aquifers. The first model requires a drastic partitioning between shallow and deep aquifers. In the second model, chlorides are supposed to be released by diffusion from a deep reservoir, leached by fresh groundwater flow and bringing up to the shallower aquifer. The model supposes a deep reservoir, which has not yet been identified in the Armorican massif, but could exist. This study thus provides important constraints on the seawater circulation in hardrock aquifers at a continental-scale area.

Appendix A:

The objective of this section is to develop simple calculations that aim at figuring out the meaning of the data and fit presented before. We first assume that the average of chloride concentrations measured is related to the average chloride concentration in the aquifer used in the model. Because of the increase of chloride concentration with depth and because of the limited sampling depth, it is unreasonable to pretend that the average of the measurements equals the chloride average concentration in the entire aquifer. Thus, we just guess that the chloride average in the entire aquifer evolves with a similar time scale to the measured averages, which occur for instance if the depth dependency function is similar in different places. Regardless of the model, the general

evolution of the chloride concentration is given by a mass balance equation of the type:

$$\frac{d(V\bar{c})}{dt} = -Q_c + Q_{in} \quad (\text{A1})$$

where V is the system volume, \bar{c} the average chloride concentration in the system, Q_c the total flow at the system discharge boundary, and Q_{in} the total flow at the system recharge boundary. The “system” can be the entire aquifer or any part of it. Q_{in} represents a potential chloride inflow from the recharge boundary. If we assume a background concentration c_o , Q_{in} can be written as:

$$Q_{in} = \iint_{S_r} r(s) \cdot c_o ds = c_o \cdot A_r \cdot \bar{r} \quad (\text{A2})$$

where S_r is the system recharge boundary, $r(s)$ the recharge at any point s of the boundary, A_r the recharge boundary surface, and \bar{r} the average recharge flow.

We then define two end-member models that may explain the chloride evolution in basement aquifers.

A1 The perfectly mixed aquifer

In the first model, the chloride contained in the deeper part of the aquifer is slowly flushed out from the system along the discharge at a rate Q_c such as:

$$Q_c = \iint_{S_d} q(s) \cdot c(s) \cdot ds \quad (\text{A3})$$

where S_d is the system discharge boundary, $q(s)$ the flow discharge at any point s of the boundary, and $c(s)$ the chloride concentration. In a perfectly-mixed reactor, the total concentration at the boundary is equal to the concentrations average. Even if this approximation is certainly unlikely in highly heterogeneous aquifers, we assume that

HESSD

11, 6599–6635, 2014

Time scales of regional circulation of saline fluids

A. Armandine Les Landes et al.

Title Page

Abstract

Introduction

Conclusions

References

Tables

Figures

⏪

⏩

◀

▶

Back

Close

Full Screen / Esc

Printer-friendly Version

Interactive Discussion



h' , which is a reasonable assumption if the aquifer thickness is small compared to its horizontal extent Q_c is defined as :

$$Q_c = O' \cdot A \cdot D \cdot \frac{(\bar{c} - c_o)}{h'} \quad (\text{A6})$$

with O' an "order-of-magnitude" constant similar to O . The influx Q_{in} is now nil and the general equation writes as:

$$\frac{d\bar{c}}{dt} = \frac{(c_o - \bar{c})}{\tau'} \quad (\text{A7})$$

with $\tau' = O'^{-1} \cdot \frac{h'^2}{D}$.

The molecular diffusion D_m of chloride in water is of the order of $2 \times 10^{-9} \text{ m}^2 \text{ s}^{-1}$ (Li and Gregory, 1974; Wang et al., 1953). Considering a porosity of 1 %, the diffusion D of chloride is of the order of $2 \times 10^{-11} \text{ m}^2 \text{ s}^{-1}$. A time constant of 2.3 Myr is thus consistent with a salt layer thickness of about 40 m.

References

- Aquilina, L. and De Dreuzy, J.-R.: Relationship of present saline fluid with paleomigration of basinal brines at the basement/sediment interface (Southeast basin – France), *Appl. Geochemistry*, 26, 1933–1945, doi:10.1016/j.apgeochem.2011.06.022, 2011.
- Aquilina, L., Pauwels, H., Genter, A., and Fouillac, C.: Water-rock interaction processes in the Triassic sandstone and the granitic basement of the Rhine Graben: geochemical investigation of a geothermal reservoir, *Geochim. Cosmochim. Acta*, 61, 4281–4295, doi:10.1016/S0016-7037(97)00243-3, 1997.
- Aquilina, L., Armandine Les Landes, A., Ayraud-Vergnaud, V., Labasque, T., Roques, C., Davy, P., Pauwels, H., and Petelet-Giraud, E.: Evidence for a saline component at shallow depth in the crystalline armorican basement (W France), *Procedia Earth Planet. Sci.*, 7, 19–22, doi:10.1016/j.proeps.2013.03.157, 2013.

Time scales of regional circulation of saline fluids

A. Armandine Les Landes et al.

Title Page

Abstract

Introduction

Conclusions

References

Tables

Figures



Back

Close

Full Screen / Esc

Printer-friendly Version

Interactive Discussion



Time scales of regional circulation of saline fluids

A. Armandine Les Landes et al.

Title Page

Abstract

Introduction

Conclusions

References

Tables

Figures

⏪

⏩

◀

▶

Back

Close

Full Screen / Esc

Printer-friendly Version

Interactive Discussion

- Ayraud, V., Aquilina, L., Labasque, T., Pauwels, H., Molenat, J., Pierson-Wickmann, A.-C., Durand, V., Bour, O., Tarits, C., Le Corre, P., Fourre, E., Merot, P., and Davy, P.: Compartmentalization of physical and chemical properties in hard-rock aquifers deduced from chemical and groundwater age analyses, *Appl. Geochemistry*, 23, 2686–2707, doi:10.1016/j.apgeochem.2008.06.001, 2008.
- Banks, D., Odling, N., Skarphagen, H., and Rohr-Torp, E.: Permeability and stress in crystalline rocks, *Terra Nova*, 8, 223–235, 1996.
- Beaucaire, C., Gassama, N., and Tresonne, N.: Saline groundwaters in the hercynian granites (Chardon Mine, France): geochemical evidence for the salinity origin, *Appl. Geochemistry*, 14, 67–84, doi:10.1016/S0883-2927(98)00034-1, 1999.
- Bonnet, S., Guillocheau, F., and Brun, J. P.: Relative uplift measured using river incisions: the case of the Armorican basement (France), *Surf. Geosci.*, 327, 245–251, 1998.
- Bonnet, S., Guillocheau, F., and Brun, J.: Large-scale relief development related to Quaternary tectonic uplift of a Proterozoic-Paleozoic basement, *J. Geophys. Res.*, 105, 19273–19288, 2000.
- Le Borgne, T., Bour, O., de Dreuzy, J. R., Davy, P., and Touchard, F.: Equivalent mean flow models for fractured aquifers: insights from a pumping tests scaling interpretation, *Water Resour. Res.*, 40, W03512, doi:10.1029/2003WR002436, 2004.
- Le Borgne, T., Bour, O., Paillet, F. L., and Caudal, J.-P.: Assessment of preferential flow path connectivity and hydraulic properties at single-borehole and cross-borehole scales in a fractured aquifer, *J. Hydrol.*, 328, 347–359, doi:10.1016/j.jhydrol.2005.12.029, 2006.
- Bottomley, D. J., Gregoire, D. C., and Ravens, K. G.: Saline groundwaters and brines in the Canadian Shield: geochemical for a residual evaporite brine component and isotopic evidence, *Geochim. Cosmochim. Acta*, 58, 1483–1498, 1994.
- Bottomley, D. J., Katz, A., Chan, L. H., Starinsky, A., Douglas, M., Clark, I. D., and Raven, K. G.: The origin and evolution of Canadian Shield brines: evaporation or freezing of seawater? New lithium isotope and geochemical evidence from the Slave craton, *Chem. Geol.*, 155, 295–320, doi:10.1016/S0009-2541(98)00166-1, 1999.
- Brault, N.: Ressources du sous-sol et environnement en Bretagne. Génèse, géométrie et propriétés de différents types d'aquifères, Ph.D., University of Rennes 1, Rennes, 240 pp., 2002.
- Brault, N., Bourquin, S., Guillocheau, F., Dabard, M.-P., Bonnet, S., Courville, P., Estéoule-Choux, J., and Stepanoff, F.: Mio-Pliocene to Pleistocene paleotopographic evolution of

Time scales of regional circulation of saline fluids

A. Armandine Les Landes et al.

[Title Page](#)

[Abstract](#)

[Introduction](#)

[Conclusions](#)

[References](#)

[Tables](#)

[Figures](#)

[⏪](#)

[⏩](#)

[◀](#)

[▶](#)

[Back](#)

[Close](#)

[Full Screen / Esc](#)

[Printer-friendly Version](#)

[Interactive Discussion](#)



Edmunds, W., Kay, R. L. F., and McCartney, R.: Origin of saline groundwaters in the Carnmenellis granite (Cornwall, England): natural processes and reaction during hot dry rock reservoir circulation, *Chem. Geol.*, 49, 287–301, 1985.

Frape, S., Fritz, P., and Blackmer, A.: Saline groundwater discharges from crystalline rocks near Thunder Bay, Ontario, Canada, *Balanc. Freshw. Syst.*, available at: <http://iahs.info/redbooks/a150/150034.pdf> (last access: 15 March 2013), 1984.

Frape, S. K., Blyth, A., Blomqvist, R., McNutt, R. H., and Gascoyne, M.: Deep fluids in the continents: II. Crystalline rocks, edited by: Drever, J. I., Holland, H. D., and Turekian, K. K.. *Treatise on Geochemistry*, Vol. 5, Surface and Groundwater, Weathering, and Soils, Elsevier-Pergamon, Oxford, p. 560, 2003.

Freeman, J. T.: The use of bromide and chloride mass ratios to differentiate salt-dissolution and formation brines in shallow groundwaters of the Western Canadian Sedimentary Basin, *Hydrogeol. J.*, 15, 1377–1385, 2007.

Fritz, P.: Saline groundwater and brines in crystalline rocks: the contributions of John Andrews and Jean-Charles Fontes to the solution of a hydrogeological and geochemical problem, *Appl. Geochemistry*, 12, 851–856, doi:10.1016/S0883-2927(97)00074-7, 1997.

Fritz, P. and Frape, S. K.: Saline groundwaters in the Canadian Shield – a first overview, *Chem. Geol.*, 36, 179–190, 1982.

Gascoyne, M. and Kamineni, D. C.: The hydrogeochemistry of fractured plutonic rocks in the Canadian Shield, *Hydrogeol. J.*, 2, 43–49, doi:10.1007/s100400050044, 1994.

Goderniaux, P., Davy, P., Bresciani, E., de Dreuzy, J.-R., and Le Borgne, T.: Partitioning a regional groundwater flow system into shallow local and deep regional flow compartments, *Water Resour. Res.*, 49, 2274–2286, doi:10.1002/wrcr.20186, 2013.

Greene, S., Battye, N., Clark, I., Kotzer, T., and Bottomley, D.: Canadian Shield brine from the Con Mine, Yellowknife, NT, Canada: noble gas evidence for an evaporated Palaeozoic seawater origin mixed with glacial meltwater and Holocene recharge, *Geochim. Cosmochim. Acta*, 72, 4008–4019, doi:10.1016/j.gca.2008.05.058, 2008.

Gros, Y. and Limasset, O.: Déformation récente dans les socles cristallins. Exemple du Massif Armoricaïn, BRGM, Orléans-la-Source, 1984.

Guillocheau, F., Brault, N., Thomas, E., Barbarand, J., Bonnet, S., Bourquin, S., Estéoulet-Choux, J., Guennoc, P., Menier, D., Néraudeau, D., Proust, J.-N., and Wyns, R.: Histoire géologique du Massif Armoricaïn depuis 140MA (Crétacé-Actuel)-Geological history of the Armorican Massif since 140 My (Cretaceous-Present Day), *Bull. Inf.*, 40, 13–28, 2003.

Time scales of regional circulation of saline fluids

A. Armandine Les Landes et al.

[Title Page](#)[Abstract](#)[Introduction](#)[Conclusions](#)[References](#)[Tables](#)[Figures](#)[⏪](#)[⏩](#)[◀](#)[▶](#)[Back](#)[Close](#)[Full Screen / Esc](#)[Printer-friendly Version](#)[Interactive Discussion](#)

- Gumiaux, C., Gapais, D., Brun, J. P., Chantraine, J., and Ruffet, G.: Tectonic history of the Hercynian Armorican Shear belt (Brittany, France), *Geodin. Acta*, 17, 289–307, 2004.
- Hardenbol, J. A. N., Thierry, J., Farley, M. B., Cnrs, U. R. A., and Vail, P. R.: Mesozoic and Cenozoic sequence chronostratigraphic framework of European basins. The chronostratigraphic charts presented in this paper are the result of an initiative by Peter Vail and Thierry Jacquin in 1990 to analyze and document depositional sequence, *SEPM Special Publication*, 60, 3–13, 1998.
- Ingebritsen, S. and Manning, C. E.: Geological implications of a permeability-depth curve for the continental crust, *Geology*, 27, 1107–1110, 1999.
- Jost, A.: Caractérisation des forçages climatiques et géomorphologiques des cinq derniers millions d'années et modélisation de leurs conséquences sur un système aquifère complexe: le bassin de Paris, Ph.D., University of Pierre and Marie Curie, Paris, 344 pp., 2005.
- Kelly, V. R., Lovett, G. M., Weathers, K. C., Findlay, S. E. G., Strayer, D. L., Burns, D. J., and Likens, G. E.: Long-term sodium chloride retention in a rural watershed: legacy effects of road salt on streamwater concentration, *Environ. Sci. Technol.*, 42, 410–415, doi:10.1021/es071391l, 2008.
- Lague, D., Davy, P., and Crave, A.: Estimating uplift rate and erodibility from the area-slope examples from Brittany (France) and numerical modelling relationship, *Phys. Chem. Earth*, 25, 543–548, 2000.
- Larsson, I.: Les eaux souterraines des roches dures du socle: Projet 8.6 du Programme Hydrologique International, Report, Paris: UNESCO (Eds), collection Etudes et rapports d'hydrologie, 33, 282 pp., 1987.
- Lefebvre, D., Antoine, P., Auffret, J. P., Lautridou, J. P., and Lécalle, F.: Réponses de la Seine et de la Somme aux événements climatiques, eustatiques et tectoniques du Pléistocène moyen et récent?: rythmes et taux d'érosion (The responses of the river Seine and of the river Somme to the climatic, eustatic and tectonic controls), *Quaternaire*, 5, 165–172, doi:10.3406/quate.1994.2028, 1994.
- Lenôtre, N., Thierry, P., Blanchin, R., and Brochard, G.: Current vertical movement demonstrated by comparative levelling in Brittany (northwestern France), *Tectonophysics*, 301, 333–344, 1999.
- Leray, S., de Dreuzy, J.-R., Bour, O., and Bresciani, E.: Numerical modeling of the productivity of vertical to shallowly dipping fractured zones in crystalline rocks, *J. Hydrol.*, 481, 64–75, doi:10.1016/j.jhydrol.2012.12.014, 2013.

Time scales of regional circulation of saline fluids

A. Armandine Les Landes et al.

Title Page

Abstract

Introduction

Conclusions

References

Tables

Figures

⏪

⏩

◀

▶

Back

Close

Full Screen / Esc

Printer-friendly Version

Interactive Discussion



- Li, Y.-H. and Gregory, S.: Diffusion of ions in sea water and in deep-sea sediments, *Geochim. Cosmochim. Acta*, 38, 703–714, 1974.
- Louvat, D., Michelot, J.-L., and Aranyosy, J. F.: Origin and residence time of salinity in the Asp ground-water system, *Appl. Geochemistry*, 14, 917–925, 1999.
- 5 Martin, C., Aquilina, L., Gascuel-Oudou, C., Molénat, J., Faucheu, M., and Ruiz, L.: Seasonal and interannual variations of nitrate and chloride in stream waters related to spatial and temporal patterns of groundwater concentrations in agricultural catchments, *Hydrol. Process.*, 18, 1237–1254, 2004.
- Mercier, D., Brulhet, J., Beaudoin, B., Cahuzac, B., Laurent, M., Lauriat-Rage, A., Margerel, J. P., Moguedet, G., Moritz, R., Sierra, P., Thiry, M., Turpin, L., Van Vliet-Lanoë, B., and Vauthier, S.: Le Redonien de l'Ouest de la France: enregistrement des événements (climatiques, eustatiques) messiniens et pliocènes sur la façade atlantique, 1res journées GFEN-APF, Rennes, 6–7 December, 12–13, 2000.
- 10 Morzadec-Kerfourn, M.-T.: La limite Pliocene–Pleistocene en Bretagne, *Boreas*, 6, 275–283, 1977.
- Morzadec-Kerfourn, M. T.: Datation pollinique et conditions de sédimentation de l'argile plio-pléistocène de Lanrinou en Landerneau, *Bull. l'Association française pour l'étude du Quat.*, 19, 179–184, 1982.
- Morzadec-Kerfourn, M. T.: Dinoflagellate cysts and the paleoenvironment of late Pliocene early-Pleistocene deposits of Brittany, *Quat. Sci. Rev.*, 16, 883–898, 1997.
- 20 Mullaney, J. R., Lorenz, D. L., and Arntson, A. D.: Chloride in Groundwater and Surface Water in Areas Underlain by the Glacial Aquifer System, Northern United States Scientific Investigations Report 2009–5086, USGS, New-York, 2009.
- Müller, B., Zoback, M. L., Fuchs, K., Mastin, L., Gregersen, S., Pavoni, N., Stephansson, O., and Ljunggren, C.: Regional patterns of tectonic stress in Europe, *J. Geophys. Res.*, 97, 11783–11803, 1992.
- 25 Négrel, P. and Casanova, J.: Comparison of the Sr isotopic signatures in brines of the Canadian and Fennoscandian shields, *Appl. Geochemistry*, 20, 749–766, doi:10.1016/j.apgeochem.2004.11.010, 2005.
- 30 Négrel, P. and Pauwels, H.: Interaction between different groundwaters in Brittany catchments (France): characterizing multiple sources through strontium- and sulphur isotope tracing, *Water, Air, Soil Pollut.*, 151, 261–285, doi:10.1023/B:WATE.0000009912.04798.b7, 2004.

Time scales of regional circulation of saline fluids

A. Armandine Les Landes et al.

[Title Page](#)[Abstract](#)[Introduction](#)[Conclusions](#)[References](#)[Tables](#)[Figures](#)[Back](#)[Close](#)[Full Screen / Esc](#)[Printer-friendly Version](#)[Interactive Discussion](#)

Néraudeau, D., Mercier, D., Van Vliet-Lanoë, B., and Lauriat-Rage, A.: Les faluns redoniens stratotypiques, enregistrement partiel du Messinien atlantique, 1res journées GFEN-APF, 2002.

Néraudeau, D., Barbe, S., Mercier, D., and Roman, J.: Signatures paléoclimatiques des échinides du Néogène final atlantique à faciès redonien, *Ann. Paléontologie*, 89, 153–170, doi:10.1016/S0753-3969(03)00023-5, 2003.

Néraudeau, D., Dudicourt, J.-C., Boutin, F., Ceulemans, L., and Nicolleau, P.: Les Spatangus du Miocène et du Pliocène de l'Ouest de la France, *Ann. Paléontologie*, 96, 159–170, doi:10.1016/j.annpal.2011.05.001, 2010.

Nicolas, M., Santoire, J. P., and Delpech, P. Y.: Intraplate seismicity: new seismotectonic data in Western Europe, *Tectonophysics*, 179, 27–53, doi:10.1016/0040-1951(90)90354-B, 1990.

Nordstrom, D. K., Olsson, T., Carlsson, L., Fritz, P., Survey, U. S. G., Road, M., and Park, M.: Introduction to the hydrogeochemical investigations within the International Stripa Project, *Geochim. Cosmochim. Acta*, 53, 1717–1726, 1989.

Panno, S. V., Hackley, K. C., Hwang, H. H., Greenberg, S. E., Krapac, I. G., Landsberger, S., and O'Kelly, D. J.: Characterization and identification of Na-Cl sources in ground water, *Ground Water*, 44, 176–87, doi:10.1111/j.1745-6584.2005.00127.x, 2006.

Pauwels, H., Fouillac, C., and Fouillac, A.: Chemistry and isotopes of deep geothermal saline fluids in the Upper Rhine Graben: origin of compounds and water-rock interactions, *Geochim. Cosmochim. Acta*, 57, 2737–2749, 1993.

Pauwels, H., Ayraud-Vergnaud, V., Aquilina, L., and Molénat, J.: The fate of nitrogen and sulfur in hard-rock aquifers as shown by sulfate-isotope tracing, *Appl. Geochemistry*, 25, 105–115, doi:10.1016/j.apgeochem.2009.11.001, 2010.

Pauwels, H., Aquilina, L., Negrel, P., Bour, O., Perrin, J., and Ahmed, S.: Groundwater salinization in hard-rock aquifers: impact of pumping and vertical transfers, *Procedia Earth Planet. Sci.*, 7, 660–664, doi:10.1016/j.proeps.2013.03.189, 2013.

Perera, N., Gharabaghi, B., and Howard, K.: Groundwater chloride response in the Highland Creek watershed due to road salt application: a re-assessment after 20 years, *J. Hydrol.*, 479, 159–168, doi:10.1016/j.jhydrol.2012.11.057, 2013.

Roques, C.: Hydrogéologie des zones de faille du socle cristallin: implications en terme de ressources en eau pour le Massif Armoricaïn, Ph.D., University of Rennes 1, Rennes, 266 pp., 2013.

Time scales of regional circulation of saline fluids

A. Armandine Les Landes et al.

[Title Page](#)

[Abstract](#)

[Introduction](#)

[Conclusions](#)

[References](#)

[Tables](#)

[Figures](#)

[⏪](#)

[⏩](#)

[◀](#)

[▶](#)

[Back](#)

[Close](#)

[Full Screen / Esc](#)

[Printer-friendly Version](#)

[Interactive Discussion](#)



- Roques, C., Bour, O., Aquilina, L., Dewandel, B., Leray, S., Schroetter, J., Longuevergne, L., Le Borgne, T., Hochreutener, R., Labasque, T., Lavenant, N., Vergnaud-Ayraud, V., and Mougin, B.: Hydrological behavior of a deep sub-vertical fault in crystalline basement and relationships with surrounding reservoirs, *J. Hydrol.*, 509, 42–54, 2014.
- 5 Saar, M. O. and Manga, M.: Depth dependence of permeability in the Oregon Cascades inferred from hydrogeologic, thermal, seismic, and magmatic modeling constraints, *J. Geophys. Res.*, 109, B04204, doi:10.1029/2003JB002855, 2004.
- Starinsky, A. and Katz, A.: The formation of natural cryogenic brines, *Geochim. Cosmochim. Acta*, 67, 1475–1484, doi:10.1016/S0016-7037(02)01295-4, 2003.
- 10 Stober, I. and Bucher, K.: Deep groundwater in the crystalline basement of the Black Forest region, *Appl. Geochemistry*, 14, 237–254, doi:10.1016/S0883-2927(98)00045-6, 1999.
- Stober, I. and Bucher, K.: Hydraulic properties of the crystalline basement, *Hydrogeol. J.*, 15, 213–224, doi:10.1007/s10040-006-0094-4, 2007.
- Stober, I., Richter, A., Brost, E., and Bucher, K.: The Ohlsbach Plume – discharge of deep saline water from the crystalline basement of the Black Forest, Germany, *Hydrogeol. J.*, 7, 273–283, doi:10.1007/s100400050201, 2002.
- 15 Thomas, E.: Evolution Cenozoïque d'un domaine de socle: Le Massif Armoricaïn, Ph.D., University of Grenoble, Grenoble, 250 pp., 1999.
- Thury, M., Gautschi, A., Mazurek, M., Müller, W. H., Naef, H., Pearson, F. J., Vomvoris, S., and Wilson, W.: Geology and Hydrogeology of the Crystalline Basement of Northern Switzerland. Synthesis of Regional Investigations 1981–1993 within the Nagra Radioactive Waste Disposal Programme, Technical Report, Nagra, 1994.
- 20 Toth, J.: A theoretical analysis of groundwater flow in small drainage basins, *J. Geophys. Res.*, 68, 4795–4812, 1963.
- Touchard, F.: Caractérisation hydrogéologique d'un aquifère de socle fracturé: site de Ploemeur (Morbihan), 1999.
- Van Vliet-Lanoe, B., Laurent, M., Hallégouët, B., Margerel, J.-P., Chauvel, J., Michel, Y., Moguedet, G., Trautman, F., and Vauthier, S.: Le Mio-Pliocene of the Armorican Massive. Données nouvelles (The Mio-Pliocene of the Armorican Massive. New data), *Surf. Geosci.*, 326, 333–340, 1998.
- 30 Wang, J., Robinson, C., and Edelman, I.: Self diffusion and structure of liquid water with 2H, 3H and 18O as tracers, *J. Am. Chem. Soc.*, 75, 466–470, 1953.

Wyns, R., Baltassat, J., Lachassagne, P., and Legchenko, A.: Application of proton magnetic resonance soundings to groundwater reserve mapping in weathered basement rocks, Bull. Société Géologique Fr., 21–34, 2004.

Ziegler, P. A.: Geological atlas of Western and Central Europe, Shell International Petroleum Mij. B.B 2e Edn., Geol. Soc. Publ. House, Bath, 239 pp., 1990.

5

HESSD

11, 6599–6635, 2014

Time scales of regional circulation of saline fluids

A. Armandine Les Landes et al.

Title Page

Abstract

Introduction

Conclusions

References

Tables

Figures



Back

Close

Full Screen / Esc

Printer-friendly Version

Interactive Discussion



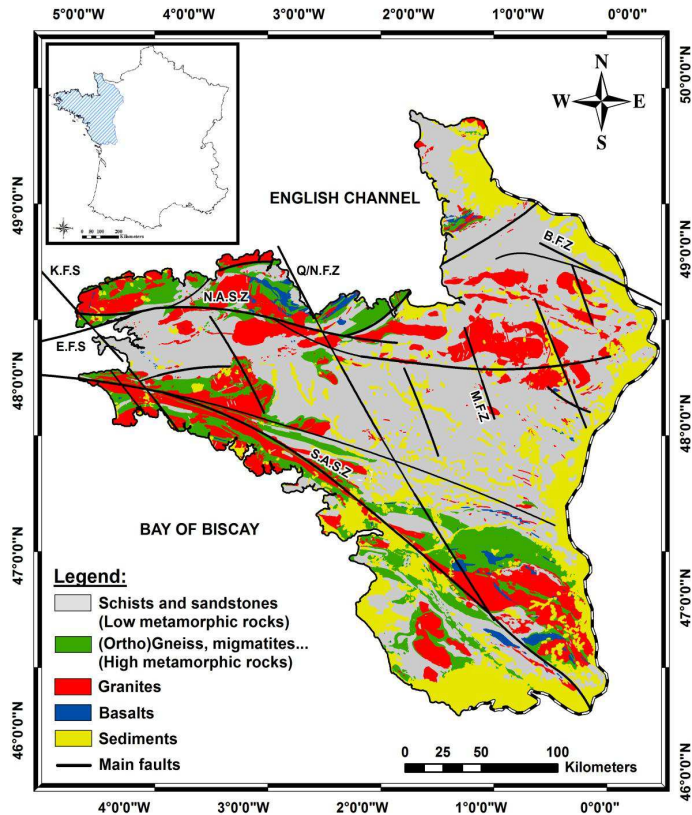


Figure 1. Simplified geological map of the main lithological units and main geological structures of the Armorican Massif: NASZ: North American Shear Zone; SASZ: South Armorican Shear Zone; Q/NFZ: Quessoy/Nort-sur-Erdre Fault Zone; MFS: Mayenne fault System; KFS: Kerforne Fault System and EFS: Elorne Fault system (according to Bonnet et al., 2000).

Time scales of regional circulation of saline fluids

A. Armandine Les Landes et al.

Discussion Paper | Discussion Paper | Discussion Paper | Discussion Paper | Discussion Paper

Title Page

Abstract Introduction

Conclusions References

Tables Figures

◀ ▶

◀ ▶

Back Close

Full Screen / Esc

Printer-friendly Version

Interactive Discussion



Time scales of regional circulation of saline fluids

A. Armandine Les Landes et al.

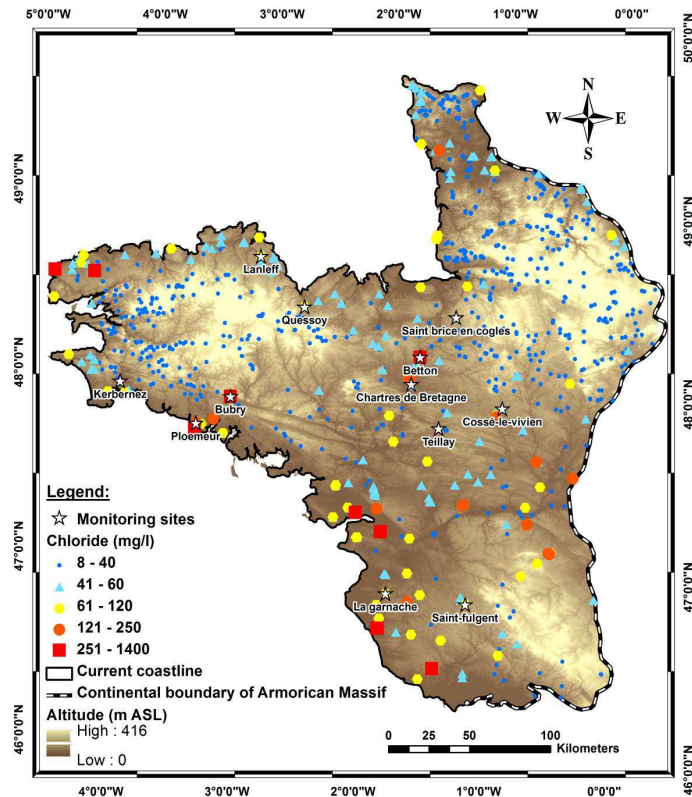


Figure 2. Map of the Armorican Massif including the distribution of chloride concentration for the whole area (from preprocessed chloride database) and the location of the 12 sites investigated.

Title Page

Abstract

Introduction

Conclusions

References

Tables

Figures



Back

Close

Full Screen / Esc

Printer-friendly Version

Interactive Discussion



Time scales of regional circulation of saline fluids

A. Armandine Les Landes et al.

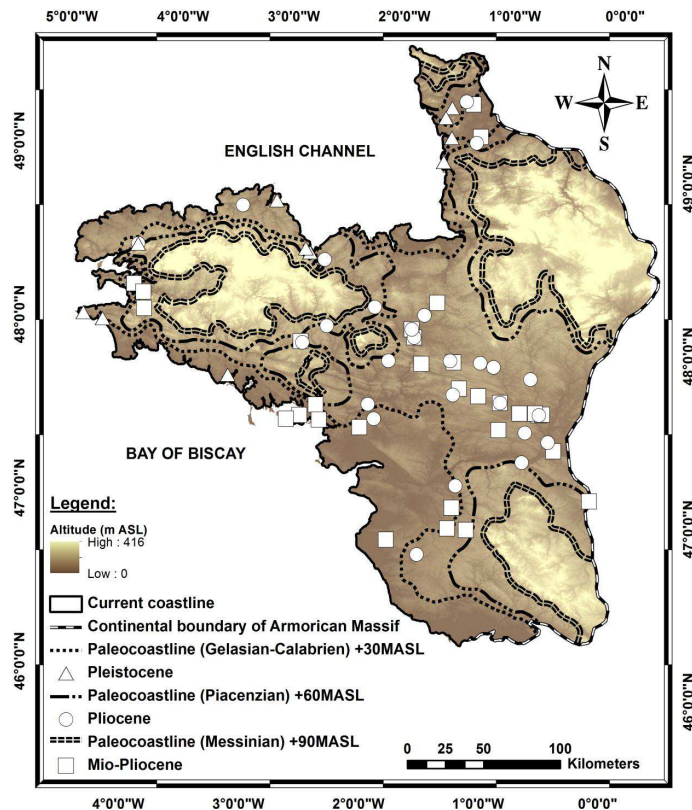


Figure 3. Localization of paleocoastlines on the current topography for past marine transgressions since the Mio-Pliocene time and characteristic sediments associated for each flooding period.

Title Page

Abstract

Introduction

Conclusions

References

Tables

Figures



Back

Close

Full Screen / Esc

Printer-friendly Version

Interactive Discussion



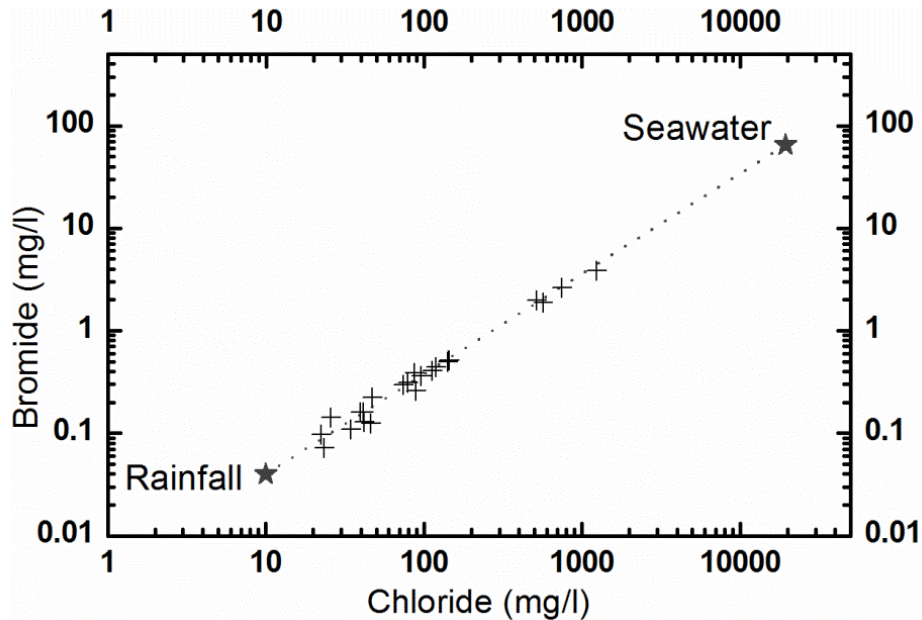


Figure 4. Br vs. Cl concentrations of groundwater in the 12 sites investigated.

Time scales of regional circulation of saline fluids

A. Armandine Les Landes et al.

Title Page

Abstract

Introduction

Conclusions

References

Tables

Figures

◀

▶

◀

▶

Back

Close

Full Screen / Esc

Printer-friendly Version

Interactive Discussion



Time scales of regional circulation of saline fluids

A. Armandine Les Landes et al.

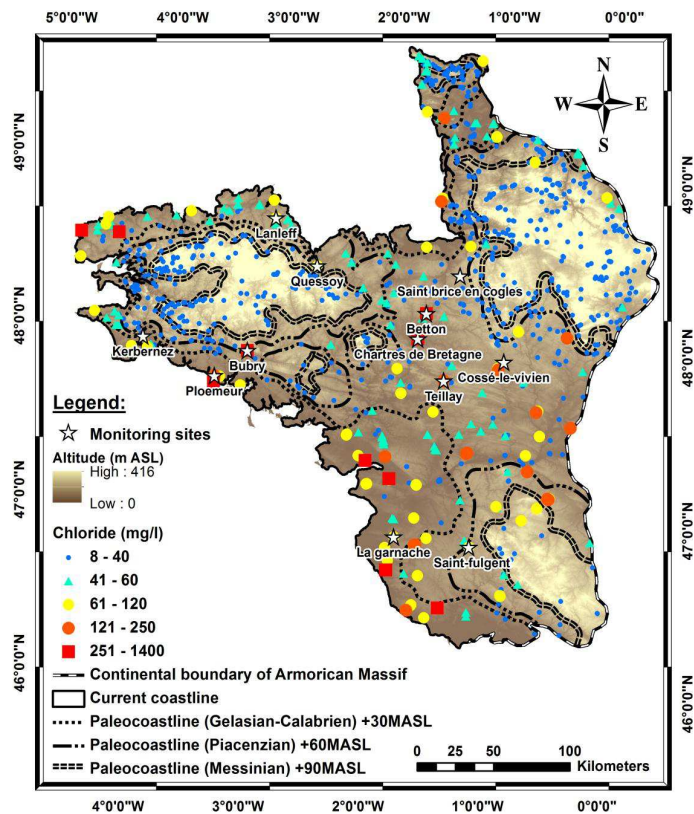


Figure 5. Distribution of paleocoastlines on the current topography for the three transgressions.

Title Page

Abstract

Introduction

Conclusions

References

Tables

Figures

⏪

⏩

◀

▶

Back

Close

Full Screen / Esc

Printer-friendly Version

Interactive Discussion



Time scales of regional circulation of saline fluids

A. Armandine Les Landes et al.

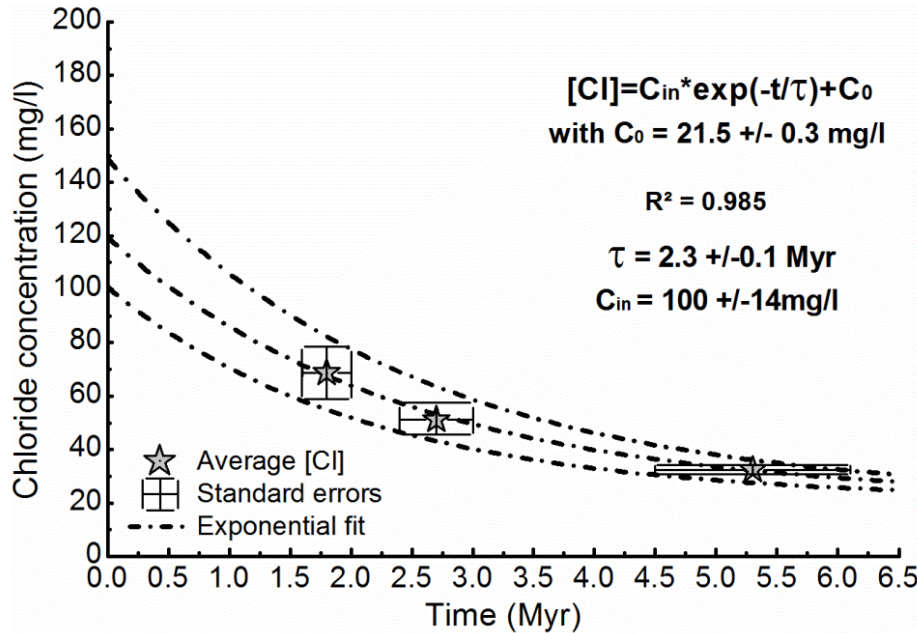


Figure 7. Average chloride concentration for each transgression zone vs. the elapsed time since the transgression.

Title Page

Abstract

Introduction

Conclusions

References

Tables

Figures

⏪

⏩

◀

▶

Back

Close

Full Screen / Esc

Printer-friendly Version

Interactive Discussion



Time scales of regional circulation of saline fluids

A. Armandine Les Landes et al.

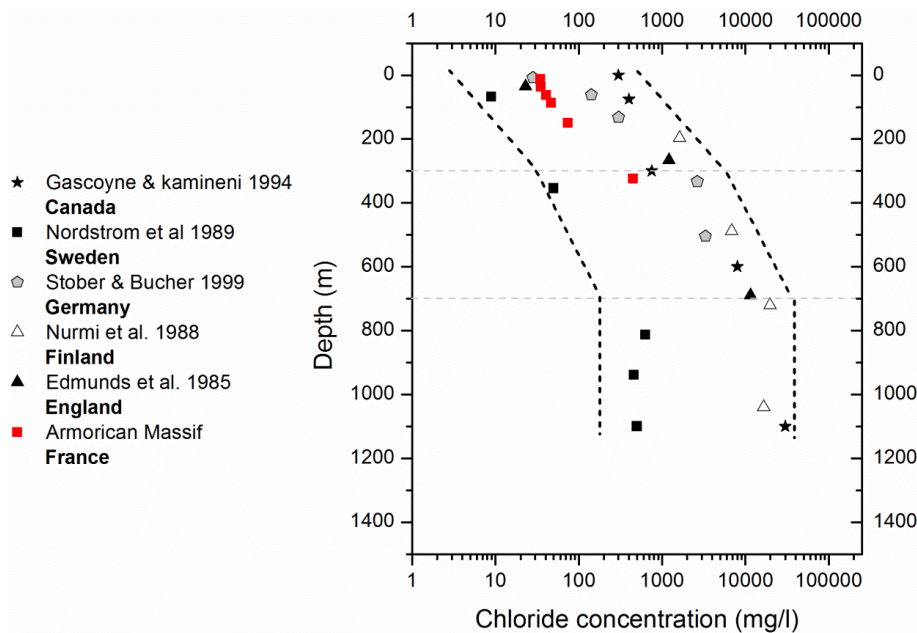


Figure 8. Chloride concentration (mgL^{-1}) vs. depth (m) recorded in continental basement around the world compared with the data of the current study.

Title Page

Abstract

Introduction

Conclusions

References

Tables

Figures



Back

Close

Full Screen / Esc

Printer-friendly Version

Interactive Discussion

