



HAL
open science

Extension of the ESA CCI Total Ozone Climate Data Record with the Application of the GODFITv3 Algorithm to OMI Observations

Christophe Lerot, Thomas Danckaert, Michel van Roozendael, Robert Spurr, Diego Loyola, Melanie Coldewey-Egbers, Mariliza Koukouli, Irene Zyrichidou, Dimitris Balis, Jean-Christopher Lambert, et al.

► To cite this version:

Christophe Lerot, Thomas Danckaert, Michel van Roozendael, Robert Spurr, Diego Loyola, et al.. Extension of the ESA CCI Total Ozone Climate Data Record with the Application of the GODFITv3 Algorithm to OMI Observations. *ATMOS 2015. Advances in Atmospheric Science and Applications*, Jun 2015, Heraklion, Greece. 41, Paper 115, 2015. insu-01162162

HAL Id: insu-01162162

<https://insu.hal.science/insu-01162162>

Submitted on 15 Aug 2018

HAL is a multi-disciplinary open access archive for the deposit and dissemination of scientific research documents, whether they are published or not. The documents may come from teaching and research institutions in France or abroad, or from public or private research centers.

L'archive ouverte pluridisciplinaire **HAL**, est destinée au dépôt et à la diffusion de documents scientifiques de niveau recherche, publiés ou non, émanant des établissements d'enseignement et de recherche français ou étrangers, des laboratoires publics ou privés.



Extension of the ESA CCI total ozone climate data record with the application of the GODFITv3 algorithm to OMI observations

C. Lerot^(1,✉), T. Danckaert⁽¹⁾, M. Van Roozendael⁽¹⁾, R. Spurr⁽²⁾, D. Loyola⁽³⁾,
M. Coldewey-Egbers⁽³⁾, M. Koukoulis⁽⁴⁾, I. Zyrichidou⁽⁴⁾, D. Balis⁽⁴⁾, J.-C. Lambert⁽¹⁾,
J. Granville⁽¹⁾, F. Goutail⁽⁵⁾, J.P. Pommereau⁽⁵⁾, and C. Zehner⁽⁶⁾



(1) BIRA-IASB, (2) RT Solutions, Inc., (3) DLR-IMF, (4) AUTH, (5) LATMOS, (6) ESA/ESRIN, ✉: christl@oma.be

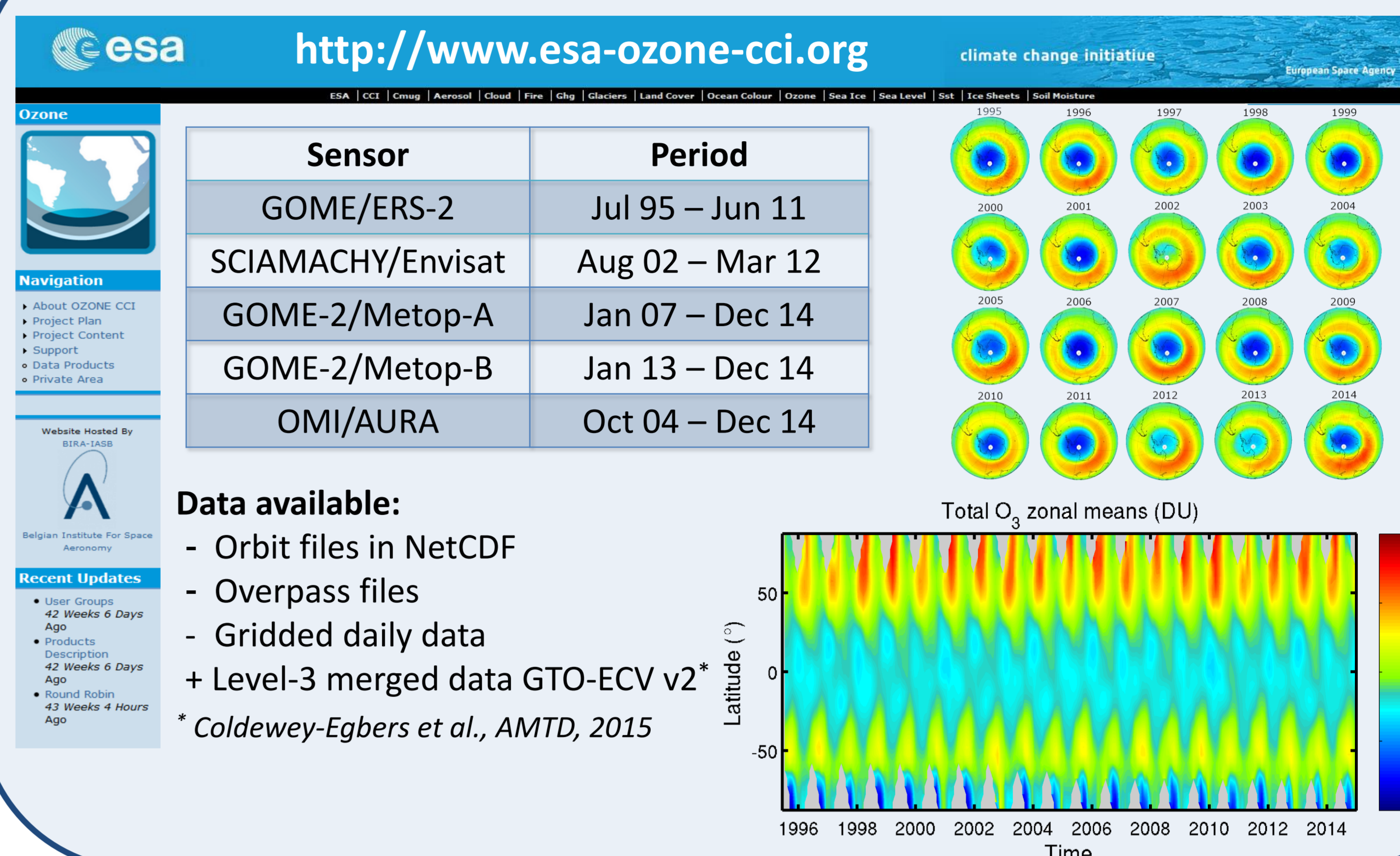
Abstract

One of the great achievements of the first phase of the ESA Ozone Climate Change Initiative has been the release of new level-2 total ozone data sets from GOME, SCIAMACHY and GOME-2/Metop-A reprocessed with the latest GODFIT-3 algorithm. These data sets are characterized by unprecedented standards of consistency, stability and accuracy.

Recently, GODFIT has been adapted in order to analyze backscattered light spectra measured by the Ozone Monitoring Instrument (OMI). In particular, a new look-up table version of GODFIT has been developed to process the massive OMI level-1 data set in a timely and fast manner. This approach maintains a level of accuracy similar to that of the on-line GODFIT version, in addition to providing accelerated performance by a factor of 10. This fast algorithm has been used to reprocess the entire OMI time series, thus extending the ESA CCI Climate data record for total ozone. Here, we compare the OMI GODFITv3 total ozone product to the two operational products OMI-TOMS and OMI-DOAS, and also to the historical multi-sensor CCI data set.

We show that an optimization of the pre-flight instrumental slit functions has been necessary in the ozone fitting window (325-335 nm) in order to completely eliminate any row dependence in the product. Such an optimization of the pre-flight slit functions has also the potential to enhance the consistency between total ozone data sets from different sensors as demonstrated here with GOME-2A and -2B.

ESA CCI total ozone data sets



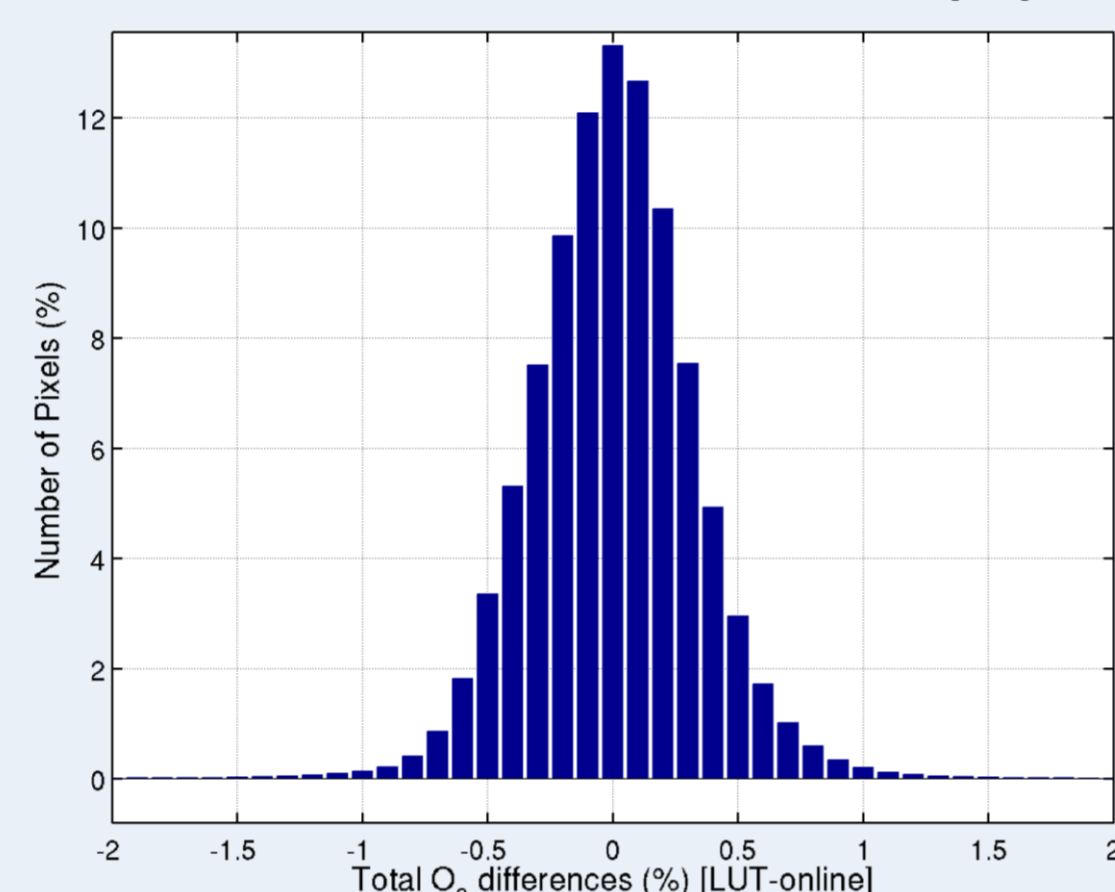
The GODFITv3 algorithm¹

Main features

- Direct fitting of measured radiances in the Huggins bands (325-335 nm).
- State vector includes a.o. total ozone, effective temperature and albedo.
- O₃ cross-section: Brion, Malicet, Daumont et al.²
- A priori profiles: total column-classified climatology TOMSv8³ combined with the tropospheric column climatology from OMI/MLS⁴
- Simulated spectra are computed on-the-fly with LIDORT or extracted from pre-calculated tables. The latter option is faster by a factor of 10, while maintaining a very high level of accuracy.
- Optional Brewer-based soft-calibration of level-1 reflectances to reduce the impact of calibration limitations. This procedure is not necessary for OMI.

¹ Lerot et al., JGR, 2014; ² Malicet et al., J. Atmos. Chem., 1995; ³ Mc Peters et al., JGR, 2007; ⁴ Ziemke et al., ACP, 2011;

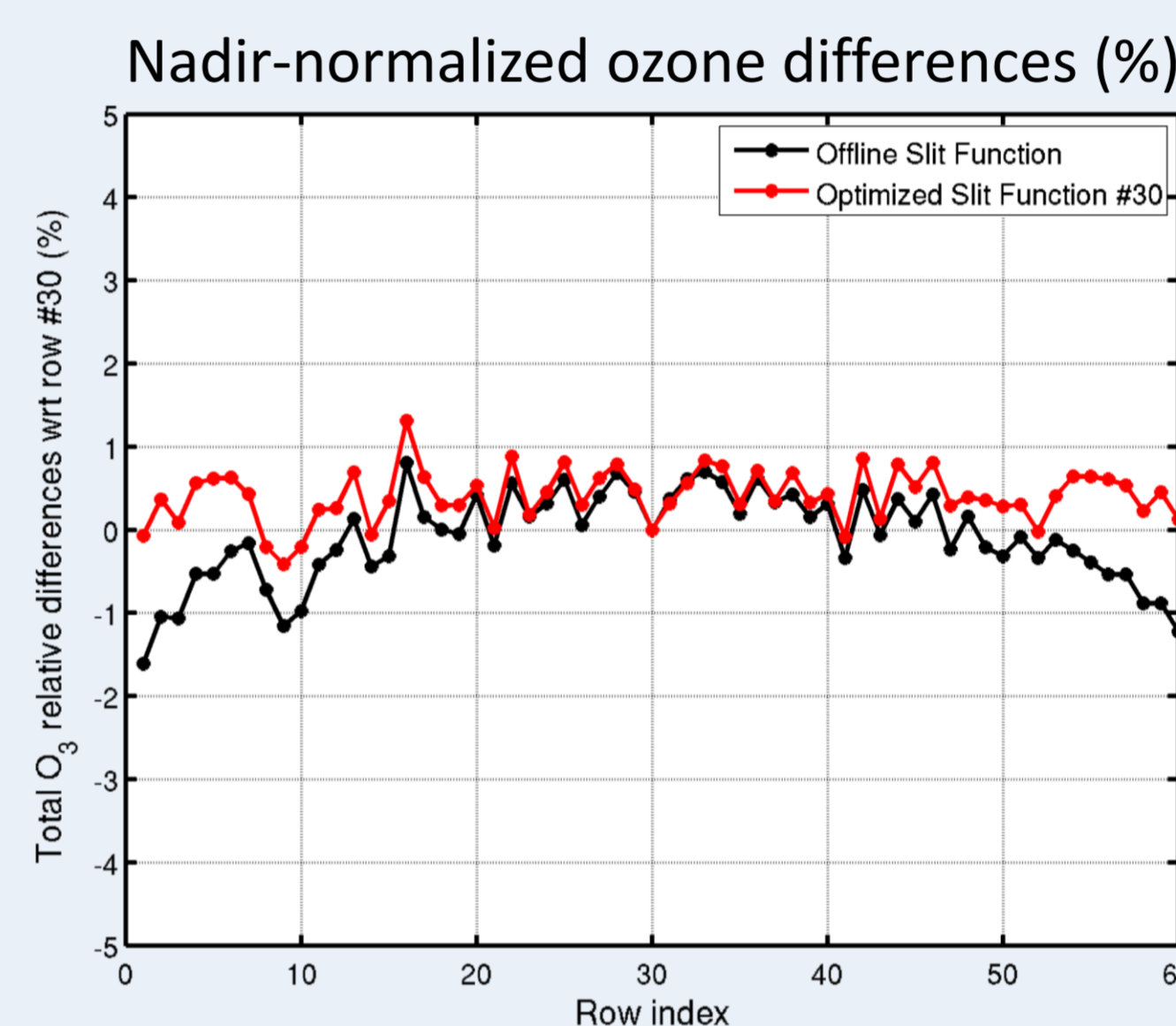
LUT – online difference (%)



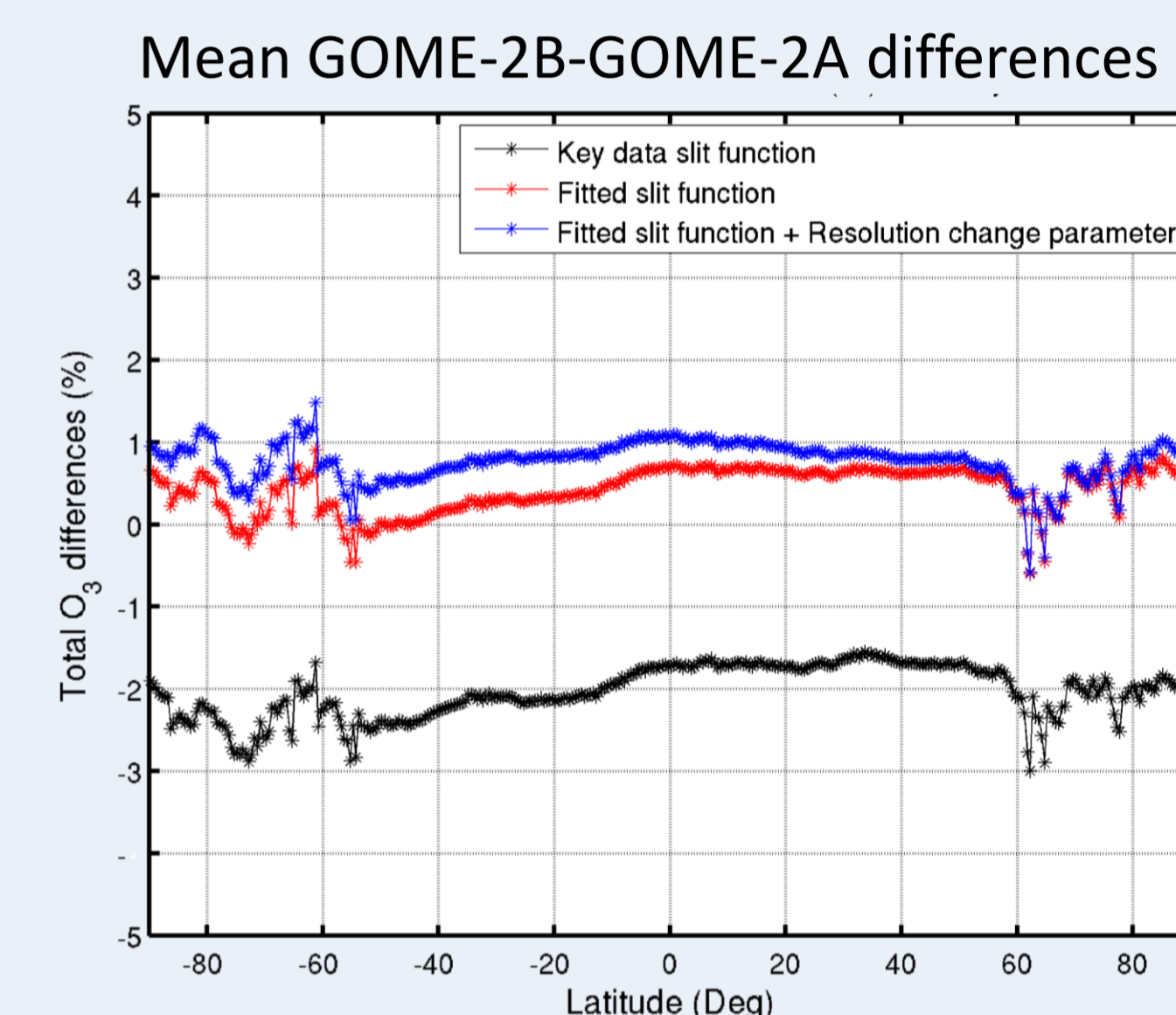
Optimization of instrumental slit functions

GODFIT has the capability to optimize instrumental slit functions and to account for resolution change along the orbit. This may impact significantly the product quality.

1. Row dependence of the OMI data set

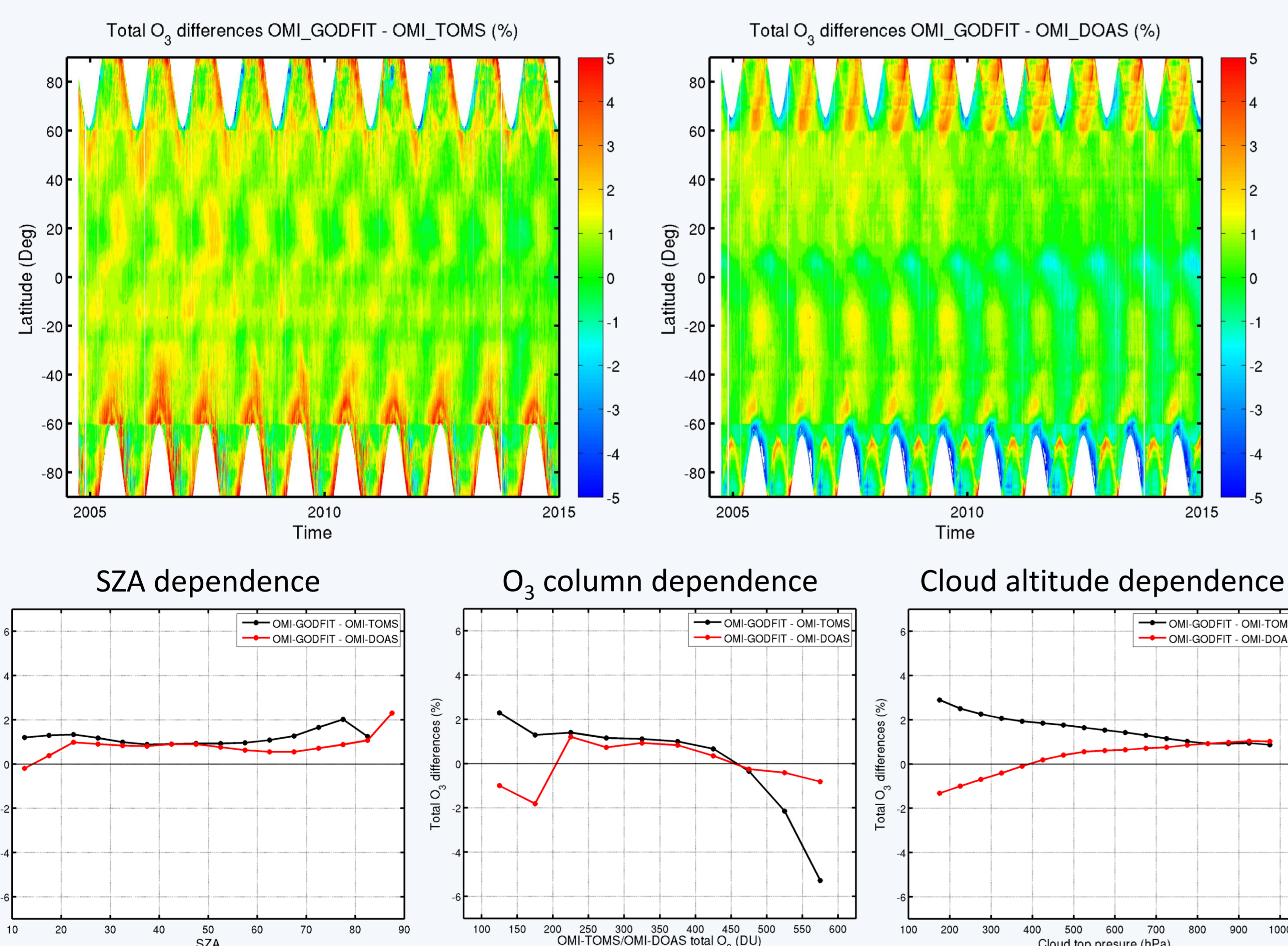


2. GOME-2B/-2A consistency

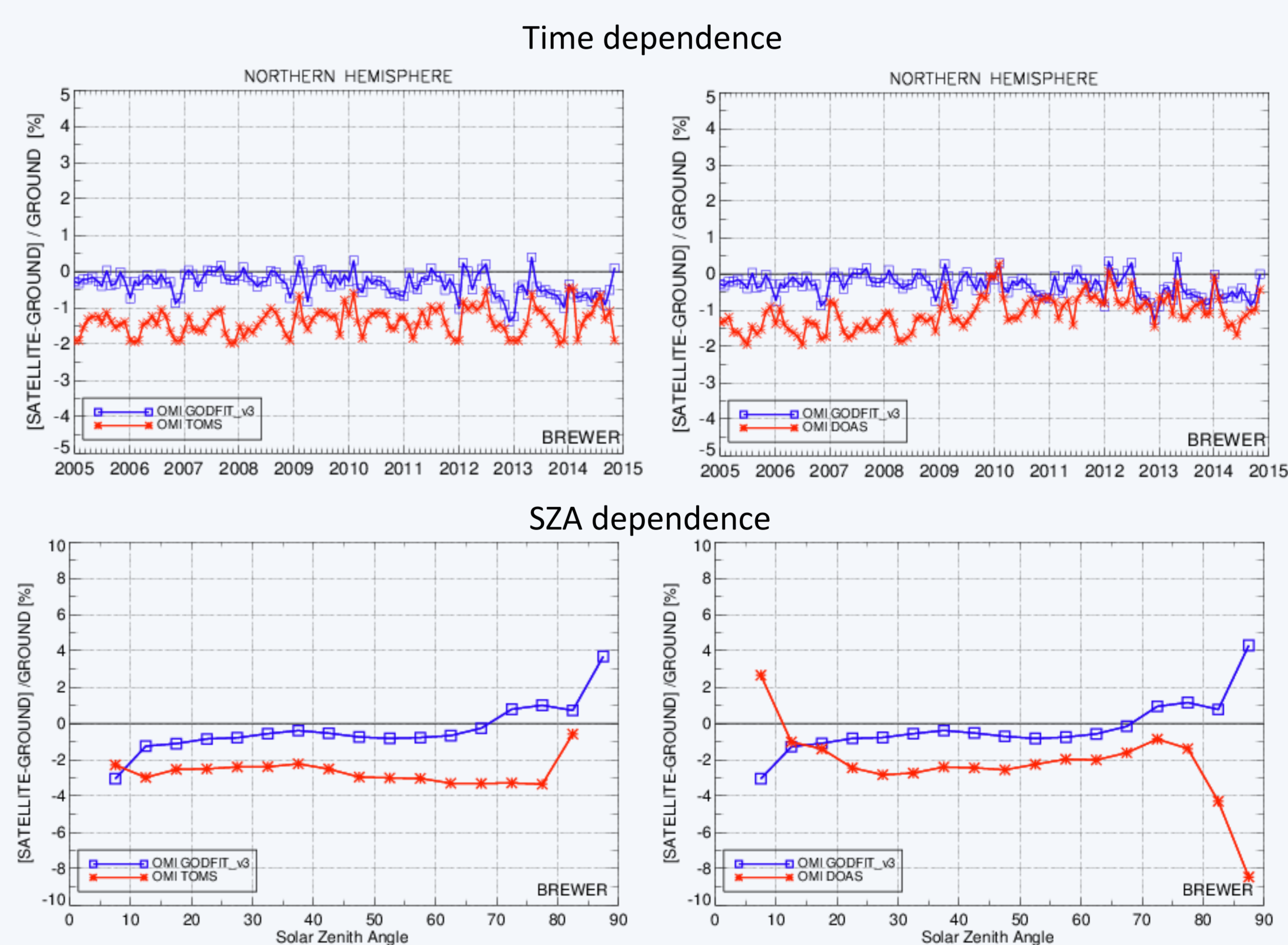


The OMI_GODFIT product: inter-sensor comparison

Comparison with OMI_TOMS and OMI_DOAS

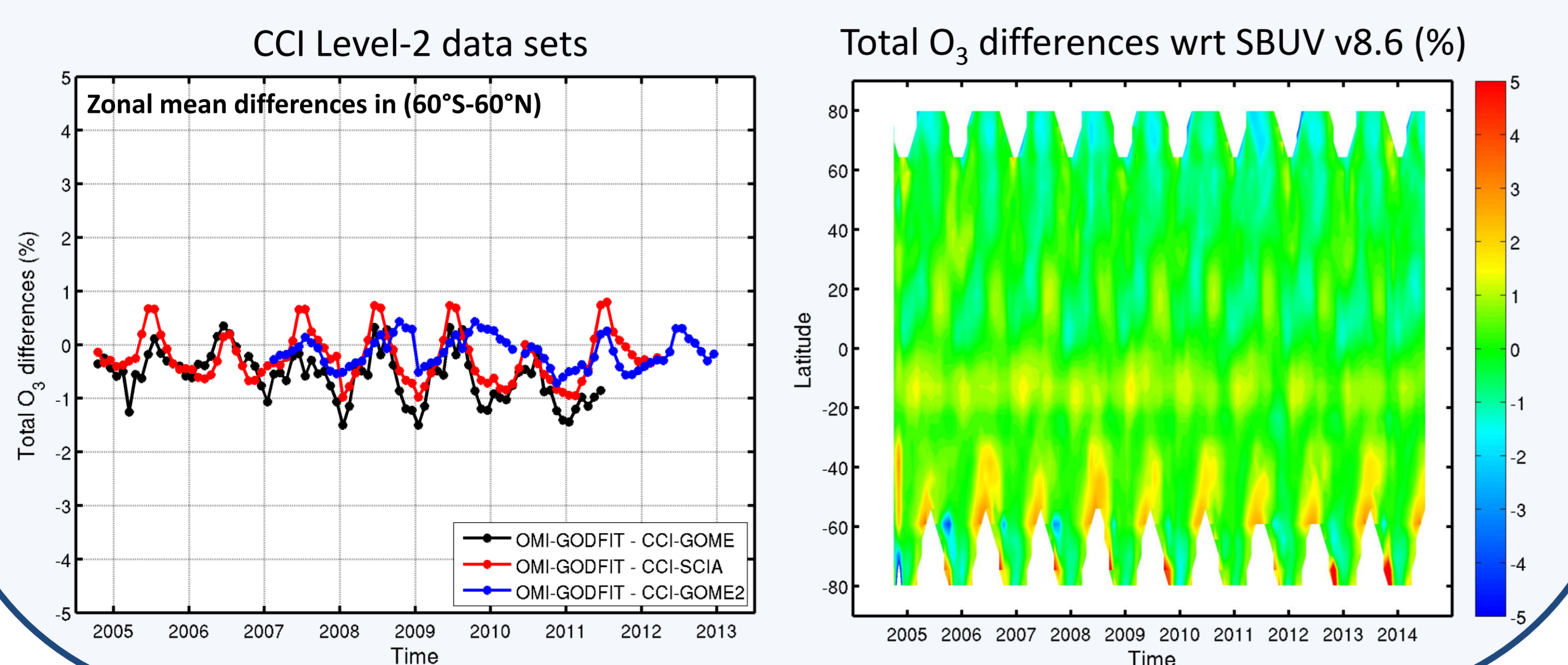


The OMI_GODFIT product: first validation results



More details provided in Poster #89 by M. Koukoulis et al.

Comparison with standard climate total O₃ records



Conclusions

- The algorithm GODFITv3, selected to generate the total ozone ECV as part of the Ozone_CCI project, has been adapted to handle the OMI data. The full mission has been recently reprocessed using a fast look-up table version of the algorithm and is available to the public on www.esa-ozone-cci.org, along with the other CCI data sets.
- A proper characterization of the instrumental slit functions is essential to have products of good quality and may help to enhance the inter-sensor consistency. In particular, using an optimized OMI slit function in the O₃ fitting window led to a significant reduction of the row dependence in the OMI_GODFIT product.
- In general, the three total ozone products OMI_GODFIT, OMI-TOMS and OMI-DOAS are very consistent. However, larger differences appear in extreme conditions (high SZAs, extreme O₃ columns, high clouds, ...). Also, OMI_GODFIT agrees very well with the other CCI data sets as well as with the US golden standard long-term record SBUV v8.6.
- Validation shows that the time stability of GODFIT-OMI is excellent (<0.5%/decade) and meets the CCI user requirements. In future CCI activities, this product will be used as the long-term reference for soft-calibrating other sensors.