



**HAL**  
open science

## Analyzing high resolution topography for advancing the understanding of mass and energy transfer through landscapes: A review

Paola Passalacqua, Patrick Belmont, Dennis M. Staley, Jeffrey D. Simley, J. Ramon Arrowsmith, Collin A. Bode, Christopher Crosby, Stephen B. Delong, Nancy F. Glenn, Sara A. Kelly, et al.

### ► To cite this version:

Paola Passalacqua, Patrick Belmont, Dennis M. Staley, Jeffrey D. Simley, J. Ramon Arrowsmith, et al.. Analyzing high resolution topography for advancing the understanding of mass and energy transfer through landscapes: A review. *Earth-Science Reviews*, 2015, 148, pp.174-193. 10.1016/j.earscirev.2015.05.012 . insu-01164979

**HAL Id: insu-01164979**

**<https://insu.hal.science/insu-01164979>**

Submitted on 18 Jun 2015

**HAL** is a multi-disciplinary open access archive for the deposit and dissemination of scientific research documents, whether they are published or not. The documents may come from teaching and research institutions in France or abroad, or from public or private research centers.

L'archive ouverte pluridisciplinaire **HAL**, est destinée au dépôt et à la diffusion de documents scientifiques de niveau recherche, publiés ou non, émanant des établissements d'enseignement et de recherche français ou étrangers, des laboratoires publics ou privés.

# Analyzing high resolution topography for advancing the understanding of mass and energy transfer through landscapes: A review

Paola Passalacqua<sup>a,\*</sup>, Patrick Belmont<sup>b</sup>, Dennis M. Staley<sup>c</sup>, Jeffrey D. Simley<sup>c</sup>, J Ramon Arrowsmith<sup>d</sup>, Collin A. Bode<sup>e</sup>, Christopher Crosby<sup>f</sup>, Stephen B. DeLong<sup>g</sup>, Nancy F. Glenn<sup>i</sup>, Sara A. Kelly<sup>b</sup>, Dimitri Lague<sup>j</sup>, Harish Sangireddy<sup>a</sup>, Keelin Schaffrath<sup>b</sup>, David G. Tarboton<sup>k</sup>, Thad Wasklewicz<sup>l</sup>, Joseph M. Wheaton<sup>b</sup>

<sup>a</sup>*Department of Civil, Architectural, and Environmental Engineering and Center for Research in Water Resources, The University of Texas at Austin, 301 E. Dean Keeton St. STOP C1700 Austin, TX 78712-2100, USA*

<sup>b</sup>*Department of Watershed Sciences, Utah State University, 5210 Old Main Hill, NR 350 Logan, UT 84322-5210, USA*

<sup>c</sup>*U.S. Geological Survey, Golden CO, USA*

<sup>d</sup>*School of Earth and Space Exploration, Arizona State University, 1151 S. Forest Ave., Tempe, AZ 85281 USA*

<sup>e</sup>*Department of Integrative Biology, University of California Berkeley, Valley Life Sciences Bldg 3140, Berkeley CA 94720-3140 USA*

<sup>f</sup>*UNAVCO, 6350 Nautilus Drive, Boulder, CO 80301-5394 USA*

<sup>g</sup>*U.S. Geological Survey, 345 Middlefield Road, Menlo Park, CA 94025-3561 USA*

<sup>h</sup>*Department of Geosciences, Boise State University, 1910 University Drive Boise, ID 83725-1535 USA*

<sup>i</sup>*Department of Geosciences, Boise State University, 1910 University Drive Boise, ID 83725-1535 USA*

<sup>j</sup>*Géosciences Rennes, Université Rennes 1, UMR6118 CNRS, Campus de Beaulieu, 35042 Rennes Cedex, France*

<sup>k</sup>*Department of Civil and Environmental Engineering, Utah State University, 5210 Old Main Hill, NR 350, Logan, UT 84322-5210, USA*

<sup>l</sup>*Department of Geography, A-204 Brewster Hall, East Carolina University, Greenville, NC 27858, USA*

---

## Abstract

The study of mass and energy transfer across landscapes has recently evolved to comprehensive considerations acknowledging the role of biota and humans as geomorphic agents, as well as the importance of small-scale landscape features. A contributing and supporting factor to this evolution is the emergence over the last two decades of technologies able to acquire High Resolution Topography

---

\*Corresponding author

*Email address: paola@austin.utexas.edu (Paola Passalacqua)*

(HRT) (meter and sub-meter resolution) data. Landscape features can now be captured at an appropriately fine spatial resolution at which surface processes operate; this has revolutionized the way we study Earth-surface processes.

The wealth of information contained in HRT also presents considerable challenges. For example, selection of the most appropriate type of HRT data for a given application is not trivial. No definitive approach exists for identifying and filtering erroneous or unwanted data, yet inappropriate filtering can create artifacts or eliminate/distort critical features. Estimates of errors and uncertainty are often poorly defined and typically fail to represent the spatial heterogeneity of the dataset, which may introduce bias or error for many analyses. For ease of use, gridded products are typically preferred rather than the more information-rich point cloud representations. Thus many users take advantage of only a fraction of the available data, which has furthermore been subjected to a series of operations often not known or investigated by the user. Lastly, standard HRT analysis work-flows are yet to be established for many popular HRT operations, which has contributed to the limited use of point cloud data.

In this review, we identify key research questions relevant to the Earth-surface processes community within the theme of mass and energy transfer across landscapes and offer guidance on how to identify the most appropriate topographic data type for the analysis of interest. We describe the operations commonly performed from raw data to raster products and we identify key considerations and suggest appropriate work-flows for each, pointing to useful resources and available tools. Future research directions should stimulate further development of tools that take advantage of the wealth of information contained in HRT data and address present and upcoming research needs such as the ability to filter out unwanted data, compute spatially variable estimates of uncertainty and perform multi-scale analyses. While we focus primarily on HRT applications for mass and energy transfer, we envision this review to be relevant beyond the Earth-surface processes community for a much broader range of applications involving the analysis of HRT.

*Keywords:* lidar, geomorphic features, change detection, point cloud, InSAR, IfSAR, bathymetry, Structure from Motion, filtering

---

## 1. Introduction

One of the fundamental principles for understanding Earth-surface processes is *conservation* (Anderson and Anderson, 2010); the total rate of change of a quantity, such as mass or energy, within a control volume equals the rate of change of the quantity stored within the control volume plus the quantity net outflow across the control surface. Rates of change depend on sources and sinks of the quantity of interest and on spatial gradients in transport rates. Many problems of interest to geomorphologists and hydrologists can be cast in these terms (Kirkby, 1971). Development of a sediment budget of a watershed, for example, requires the identification of sediment sources and sinks, and the understanding of how sediment is transformed and transported from one point of the watershed to another.

The ability to predict water, sediment, and nutrient transfer, map natural hazards, perform a radiation balance, and understand biophysical feedbacks that control landscape form and function is of great value to Earth-surface scientists and natural resources managers. This ability relies on the understanding of how mass and energy are transferred through watersheds and landscapes. Contributions on this topic have populated the geomorphologic and hydrologic literature for over a century (Gilbert and Dutton, 1880; Davis, 1892; Gilbert, 1909; Gilbert and Murphy, 1914; Strahler, 1952; Culling, 1960; Kirkby, 1971; Smith and Bretherton, 1972; Willgoose et al., 1991a,b,c; Anderson, 1994; Howard, 1994; Tucker and Slingerland, 1994, 1997; Dietrich et al., 2003) which also account for the effect of biota and humans on landscapes. A large set of field observations and models, in fact, supports the knowledge that biological productivity affects directly and indirectly landscape evolution (e.g., Drever, 1994; Butler, 1995; Gabet, 2000; Lucas, 2001; Sidle et al., 2001; Bond et al., 2002; Meysman et al., 2006; Yoo et al., 2005; Phillips, 2009; Foufoula-Georgiou et al.,

2010). Humans, long recognized as geomorphic agents (Marsh, 1869, 1882), have now significantly impacted landscapes and their ecosystems (Hooke, 1994, 2000; 30 Foley et al., 2005; Ellis et al., 2006; Montgomery, 2007; Syvitski and Saito, 2007; Wilkinson and McElroy, 2007; Ellis, 2011; Sidle and Ziegler, 2012; Tarolli et al., 2014). Roads, for example, can play an important role in a watershed sediment budget as they constitute a significant source of sediment (Sidle and Ziegler, 2012) and disrupt ecosystem connectivity (Riitters and Wickham, 2003).

35 The evolution in mass and energy transfer studies is also reflected in mathematical modeling approaches. From the employment of classic mass and energy conservation laws (Eagleson, 1986; Lane, 1998; Trimble, 1999; Dietrich et al., 2003), recent years have also seen the development of *nonlocal* constitutive laws expressing the material flux at a point (e.g., sediment flux) as a function of the 40 conditions in some neighborhood around this point in space and/or in time (e.g., Bradley et al., 2010; Fofoula-Georgiou et al., 2010; Ganti et al., 2010; Tucker and Bradley, 2010; Fofoula-Georgiou and Passalacqua, 2013; Furbish and Roering, 2013). The nonlocal approach allows incorporating the heterogeneity and complexity typical of geomorphic systems and the wide range of spatial and temporal 45 scales that characterizes geomorphic processes.

Topographic gradients are a key factor in the transport of mass and energy. Whether computed at the location of interest or over a domain of influence as in nonlocal approaches, topographic attributes, such as slope, curvature, and roughness, play a fundamental role in the transport of mass and energy through 50 landscapes. In the past, however, the representation of the Earth-surface was possible only at coarse spatial resolutions (i.e.,  $\geq 10 m$ ). Data collected during the Shuttle Radar Topography Mission (SRTM data), for example, were a major breakthrough in the early 2000s, but are quite coarse (30 *m* resolution) compared to today's standards. SRTM data do not capture many of the small 55 scale features and perturbations, both natural and anthropogenic, that combine to exhibit significant control over mass and energy transfer. This applies also to the US Geological Survey's National Elevation Dataset that has traditionally only been available at 10 *m* and 30 *m* resolutions.

The explosion of availability of high resolution topography (HRT) over the  
60 last two decades is revolutionizing the way we study mass and energy transfer  
through landscapes. We define HRT as any topographic dataset, which in its raw  
form consists of location (x,y) and elevation (z) measurements that collectively  
comprise a point cloud, and which have average spatial resolutions greater than  
or equal to one point per square meter (needed to achieve at least meter scale  
65 representation of the terrain). Thus, features in the landscape can be accurately  
characterized and quantified at the fine spatial resolutions at which many hy-  
drologic, geomorphic, and ecologic processes occur. HRT data can be obtained  
remotely from various mobile platforms (e.g., planes, boats, vehicles) or static  
platforms (e.g., a tripod on the ground), using different techniques (e.g., Light  
70 Detection and Ranging (LIDAR), Synthetic Aperture Radar (SAR), Structure  
from Motion (SfM), SOund Navigation And Ranging (SONAR)).

While remotely sensed HRT data are not a substitute for other forms of  
field observations (Roering et al., 2013), they do markedly enhance our ability  
to study Earth-surface processes quantitatively (Tarolli, 2014); an example is  
75 the emergence of characteristic scales of geomorphic processes (Perron et al.,  
2009; Gangodagamage et al., 2011, 2014). In addition to the characterization  
of landscape structure through feature detection, identification, and extraction,  
HRT data allow capturing kinematic and dynamic changes of the Earth's sur-  
face through differencing of data sets acquired at different times. An example is  
80 the ability to measure surface displacements and rotations due to earthquakes  
(Nissen et al., 2012; Oskin et al., 2012; Glennie et al., 2014). The variability  
and complexity of landscapes, particularly at large scales (Rhoads, 2006) and  
over time can be fully embraced with HRT data. Preliminary mapping can be  
performed over vast areas from a personal computer and can be used to identify  
85 specific locations of interest to be subsequently field surveyed. The completeness  
of HRT also offers the opportunity to advance process-understanding through  
change measurement (e.g., vegetation development, sedimentation, bank ero-  
sion) and heterogeneity characterization (e.g., vegetation, rockfall size distribu-  
tion).

90 In addition to these substantial advantages, working with HRT data presents significant challenges. Given that numerous combinations of platforms and techniques for HRT acquisition exist, users often have little basis for determining which platforms are best for their specific application (Bangen et al., 2014). For many applications (e.g., fluvial environments), no single HRT platform or  
95 technique paints a complete topographic picture and instead multiple techniques are combined (Williams et al., 2014). Raw HRT data post processing techniques and related parameters are often not known to the earth scientist end-user and frequently not made available from the data provider. What operations are performed on raw data to create a usable point cloud? What further operations are  
100 needed to create a Digital Terrain Model (DTM)? Can geomorphic features be extracted automatically and objectively? How does one quantify change over time from point cloud or rasterized data? Despite the rapidly growing availability of HRT data, scientific discovery and applications of HRT data analyses to directly inform natural resource policy and management have been limited.  
105 Tools for extracting useful information from HRT data have been developed and new ones are under development, but the Earth Sciences community lacks guiding principles and standard analysis work-flows as well as best practices for determining and reporting HRT data quality. These factors have resulted in a knowledge gap that separates HRT *viewers* and HRT *analysts*.

110 With this review, we wish to reduce this knowledge gap. In the material that follows, we offer an overview of available data types and guidance on how to choose the most appropriate HRT data platform for the application at hand. We identify sources of error and work-flows to account for uncertainty. We discuss the operations that are commonly, or should be, performed in convert-  
115 ing raw data to point clouds to raster products and how the analysis of mass and energy transfer through landscapes has changed with HRT data. It is not our goal to provide a comprehensive review of HRT acquisition and HRT-based research, which have been recently provided by Glennie et al. (2013b), Roering et al. (2013), and Tarolli (2014). We also narrow our focus to the anal-  
120 ysis of mass and energy transfer across landscapes, but many of the ideas and

tools presented in this review will be relevant to other facets of the Earth-surface processes community and beyond.

The paper is organized in four main sections. The ‘Ask’ section (Section 2) covers HRT data sources, how to choose the most appropriate data type, critical  
125 questions to ask when acquiring a new HRT dataset or attempting to determine the quality of an existing HRT dataset, and key considerations to account for uncertainty. The ‘Do’ section (Section 3) is focused on the operations performed from raw data to point clouds to raster products, work-flows for feature and change detection, and broad considerations on mass and energy transfer studies  
130 with HRT. The ‘Next’ section (Section 4) explores the next generation of HRT data, opportunities for development of appropriate analysis tools, and needs to further our understanding of mass and energy transfer through landscapes. Finally, we offer guiding principles for HRT analysis in Section 5.

## **2. ASK: Considerations for planning HRT acquisition or working 135 with previously collected HRT data**

Use of HRT data poses challenges for the Earth science community; however, these can be mitigated with a fuller understanding of data characteristics, formats, provenance, and by identification of proper tools to measure data quality, manipulate and analyze data and address the scientific question of interest.  
140 In this section, we address important factors to consider when acquiring new data, including what should be standard requirements for new data acquisition, whether you are acquiring the HRT data yourself or requesting from a commercial vendor, as well as what information is needed to assess the quality of data previously collected by someone else. We offer an overview of the types of  
145 available HRT, their characteristics, and guidance on how to choose the most appropriate HRT for the application at hand. We then discuss sources of uncertainty and present strategies for uncertainty assessment of data and data processing. The main steps to obtain derived products (workable point clouds and rasters) from raw data will be presented in Section 3.



150 *2.1. How to identify the proper data to address scientific questions*

When acquiring new HRT data, the selection of the most appropriate HRT platforms and methods is best driven by the science application. Often in the Earth sciences, leveraging of HRT data has been more opportunistic based on what already exists (Erwin et al., 2012), particularly due to cost considerations, 155 but this frequently results in significant effort and attention explaining *fixes* to overcome inadequate data resolution, incomplete coverage, datum offsets and inconsistent control networks. Ideally, deliberate and pragmatic decisions should be made about the HRT platform and method to use that are best suited to the science application. What spatial resolution, extent and accuracy are needed 160 will largely be determined by the scope of the analysis and the characteristics of the system being studied (Bowen and Waltermire, 2002; Lane and Chandler, 2003; Bangen et al., 2014). There are 4 main factors that control the identification of the most appropriate HRT platform and method: (i) spatial extent of the area to be acquired; (ii) point density needed to accurately represent the sur- 165 face in analysis (and thus, horizontal and vertical measurement accuracy with respect to typical spatial or temporal gradients to be captured); (iii) need for detailed representation versus elimination of vegetation and other above-ground features; (iv) capability to penetrate water and acquire bathymetry. The characteristics of common HRT data with respect to these factors are summarized 170 in Fig. 1 and Table 1. When existing data are available for the area in analysis, these factors can guide the assessment of whether or not the existing data are appropriate for the analysis being planned. Additional factors that contribute to the choice of HRT platform are cost and flexibility. While these are not scientific factors per se, they do affect the decision process, particularly in the case 175 of analyses requiring repeated surveys.

*2.2. Available platforms and system components*

Lidar sensors have been deployed from both airborne (typically called Airborne Laser Scanning ALS) and ground-based platforms (typically called ground based lidar or Terrestrial Laser Scanning TLS). ALS is the only technique that can

180 effectively penetrate the canopy to obtain information on the ground, which is the main advantage of ALS with respect to other platforms. Conventional lidar systems (airborne and terrestrial) operate in the near infrared (NIR) part of the light spectrum, which is rapidly attenuated or reflected by water and therefore provides limited information in wet areas.

185 Airborne acquisition allows the ability to cover large areas (Fig. 1, Table 1, Fig. 2 (a)) in small amounts of time (hours). Tripod base (TLS) is instead used when a higher resolution and more flexibility in the scanning angle are needed (Fig. 2 (b)). The spatial extent of TLS is much smaller than ALS (Table. 1, Fig. 1) and the feasible extents vary by instrument (long-range versus short-  
190 range) and geometry of the area of interest.

Vegetation can be very difficult to remove from ALS and TLS data and may in fact be the largest source of uncertainty in locations with moderate to high vegetation density. There are not many comparable alternatives that provide the spatial extent and point density that can be attained with ALS data  
195 (Table 1, Fig. 1), so imperfect removal of vegetation (when needed) may be an acceptable cost for obtaining the HRT data of interest. On relatively small spatial scales, however, conventional rtkGPS or theodolite surveys may provide a more accurate representation of the ground surface compared with TLS.

Recently developed mobile lidar systems (MLS) include sensors mounted on  
200 mobile vehicles (including boats) (Alho et al., 2009; Vaaja et al., 2011; Williams et al., 2013, 2014), compact systems portable in backpacks (Brooks et al., 2013; Glennie et al., 2013a), and mounted on Unpiloted Aerial Vehicles (UAV), kites, and blimps. Such systems blend some of the greatest benefits of ALS and TLS. The main advantages of these units are the capability of responding much faster to geo-  
205 morphic and hydrologic events and of accessing steep or challenging areas where tripod-based surveying may not be possible.

Bathymetric lidar (green Airborne Laser Scanning gALS) uses the green-blue portion of the light spectrum which can penetrate water. However, even within the green-blue portion of the spectrum, the capability of detecting channel bed  
210 topography varies with water depth and turbidity (Glennie et al., 2013b). A

good rule of thumb is that data will be acquired down to approximately the depth that can be visually seen, although recently developed systems are expected to reach twice the visible depth.

Given that channels are often the most dynamic 1% of the landscape and play critical roles in mass and energy transfer in landscapes, it may be desirable to utilize sonar instruments to capture bathymetry and subsequently stitch those data into HRT data covering the terrestrial surface. Single-beam SONAR (SBS) and multibeam bathymetric SONAR (MBS) are mounted on boats or on small floating devices (preferred when navigation is limited by shallow water and/or presence of vegetation). The primary advantages of SBS are cost, relatively low (easily manageable) data density and ease of operation in shallow water. SBS surveys tend to be adequate for monitoring relatively large geomorphic change and coarse bathymetric surveys for 1D hydrologic modeling. MBS provides a much higher data density and captures many more of the fine-scale features (ripples, dunes, boulders, etc.), which may or may not be necessary depending on the question at hand. Because of the sparser data density, SBS surveys often require interpolation between survey lines, which can introduce error into the bathymetric dataset. Another emergent bathymetric technology is interferometric sonar, which has the benefits of much wider swath width, lower sensitivity to vessel roll and wave action, and lower cost, compared to MBS.

Synthetic Aperture Radar (SAR) is a class of side-looking radar systems that are deployed from airborne platforms, typically mounted on an aircraft or spacecraft (Doerry and Dickey, 2004; Oliver and Quegan, 2004). SAR systems can create HRT data (with  $m$  to  $cm$  precision) using advanced echo timing techniques (Doppler processing). Interferometric SAR (IfSAR or InSAR) uses the parallax (phase shift) in two different SAR images collected at different radar antenna elevation angles to generate a 3D surface with vertical resolution typically less than 1  $m$ . Advantages of SAR include the ability to collect data during the day or night and penetrate weather and dust that might limit other remote sensing techniques.

The latest generation of Very High Resolution (VHR) satellite imagery ( $< 1$

$m$  pixel resolution; e.g., WorldView-2, Pleiades, Geoeye-1) can also be used to reconstruct digital surface models (DSM) down to 1  $m$  spatial resolution and vertical accuracy as good as 0.5  $m$  in the best conditions (Table 1). The  
 245 current limitations in using SAR and VHR comes from the relatively high level of expertise needed to process the imagery into a high quality surface model.

Recent photogrammetric techniques, such as Structure from Motion (SfM) (James and Robson, 2012) and Multi-View Stereo (MVS), can be mounted on UAVs and represent a low-cost option for acquiring HRT (Fig. 2 (c)). Such  
 250 approaches require relatively little training and are extremely inexpensive, and thus potentially represent a methodological leap in ad hoc HRT data collection (Fonstad et al., 2013). Point cloud densities with vertical and horizontal error on the order of  $cm$  can be achieved, although the resulting datasets may be subject to large errors due to incorrect flight plans or lens calibration  
 255 (James and Robson, 2014).

Comprehensive reviews on each platform can be found in the literature, such as Mallet and Bretar (2009), Petrie and Toth (2009c), and Glennie et al. (2013b) (ALS including full waveform), James and Robson (2012) and Westoby et al. (2012) (SfM), Heritage and Hetherington (2007), Petrie and Toth (2009a), Petrie and Toth  
 260 (2009b), Day et al. (2013a), and Day et al. (2013b) (TLS), Brooks et al. (2013), Glennie et al. (2013a), and Williams et al. (2014) (MLS), Hobi and Ginzler (2012) and Stumpf et al. (2014) (VHR), Bangen et al. (2014) (SBS, MBS), and Wasklewicz et al. (2013) for an overview on ALS, TLS, photogrammetry, and SAR.

### *2.3. Sources of uncertainty, error modeling and error propagation*

265 Regardless of the HRT platform, uncertainty assessments of raw HRT data and subsequent post processing into point clouds, terrain and surface models should be completed and reported with any scientific study. For both the investigator and the audience, the most important question to address is whether or not the uncertainty is significant to the question or purposes for which the HRT  
 270 is being used (Wheaton et al., 2008). The type of assessment and the extent to which one explores uncertainty should be driven by the research question(s)

one is answering. A comprehensive uncertainty analysis or full error budget can be challenging (Joerg et al., 2012) and is not always necessary. We advocate focusing the uncertainty analysis on whether the signal sought from HRT data and analyses is larger than the noise inherent in the HRT data (i.e., signal to noise ratio; see following sections).

Data inventory and exploration are first steps to an uncertainty assessment. For example, in addition to the point cloud information, are there independent ancillary data such as Ground Control Points (GCPs) of elevation and vegetation heights available? Visual analysis of the data, either in 2D or 3D (with an immersive environment) and ideally with ancillary data such as topographic or vegetation information, may reveal both obvious (e.g., data corduroy) and subtle errors in the data (e.g., power lines confused with tree tops). In addition, assessing the topographic complexity and the distribution and species of vegetation across the site will provide information about the potential spatial distribution and magnitude of uncertainty in the point cloud and/or raster data (Hopkinson et al., 2005; Hodgson et al., 2005; Spaete et al., 2011). This assessment may include parameters such as slope, surface roughness (bare earth and vegetation), and/or vegetation height and cover derived from the point cloud and/or raster data.

### *2.3.1. Scope of uncertainties*

The scope of uncertainties with respect to HRT can be overwhelming and a full accounting is beyond the scope of this paper. However, we can usefully identify three primary types of uncertainties specific to HRT data that span the full scope (Table 2): i) positional uncertainties, ii) classification uncertainties, and iii) surface representation uncertainties.

HRT positional uncertainties describe the uncertainty in both the horizontal and vertical location of individual topographic points in a point cloud. The source of positional uncertainties are the sensor's precision and accuracy, the geometry of acquisition (e.g., range and angle of incidence), and the position of the sensor (Lichti and Skaloud, 2010). Mobile and airborne systems require a

combination of GPS and inertial measurement unit (IMU) systems to position and orient the sensor and yield directly globally georeferenced point clouds. Ground-based surveys from a static position (e.g., TLS or TS) can be kept in a local coordinate system with high accuracy (e.g., using fixed targets) before  
305 being globally georeferenced (e.g., by knowing the GPS position of the targets). Beyond the actual precision of the sensors, this difference in georeferencing translates into a position accuracy that is an order of magnitude better for TLS (sub-*cm*) compared to ALS ( $\approx 5\text{-}10\text{ cm}$ ). Quite importantly, the georeferencing error is unlikely to be spatially uniform due to variations in the quality of the  
310 GPS/IMU positioning during a survey (Lichti and Skaloud, 2010) and actual distribution and number of targets in a static TLS survey (e.g., Bae and Lichti, 2008). Data delivered by commercial providers rarely provide the means to propagate the georeferencing errors into a spatially variable uncertainty such  
315 that a uniform georeferencing error is systematically used.

Beyond the georeferencing error, error inherent to the instrument (in particular the angular accuracy and range accuracy/precision) and error introduced during calibration (e.g., boresight), it is important to understand that the position uncertainty of any given point obtained by a lidar system (fixed or mobile)  
320 will depend on the scanning geometry, that is the range to the ground and the incidence angle (e.g., Schaer et al., 2007; Soudarissanane et al., 2011). In the absence of a simple model to account for these effects, most studies assume a uniform position uncertainty related to instrument error and scanning geometry. For high accuracy requirements it is however possible to filter out points of high  
325 incidence angle to only keep the best measurements in the subsequent point cloud analysis (e.g., Schaer et al., 2007). To our knowledge, there is no way at present to directly derive a spatially explicit error model for SfM-derived point clouds. Estimates of the accuracy of SfM point clouds have been based on a comparison with higher quality data (numerous GCPs or lidar) and have shown  
330 that the position uncertainty is of the order of  $1/1000$  the camera distance (e.g., James and Robson, 2012). Recent work has shown that incorrect survey organization can introduce large scale deformation of the surface (James and Robson,

2014).

HRT classification uncertainties depend on quality of the detection of bare  
335 earth and method of classification (see Section 3.2). For simple scenes without  
vegetation, without objects obstructing the view of the surface (e.g., tripods,  
people, etc.), and flat ground, no uncertainty is introduced at this stage. How-  
ever, for more typical cases of interest to Earth scientists, with different types  
of vegetation (e.g., trees and grass), significant roughness (e.g., debris, pebbles)  
340 and complex topography (e.g., steep slopes, vertical surfaces such as channel  
banks), the detection and classification of the point cloud into ground and  
non-ground elements can be difficult and may require significant manual val-  
idation/correction. The first issue is to know if the ground has actually been  
sampled by the sensor, or if vegetation or other objects were obscuring the  
345 measurement of the ground. In that case, characterizing uncertainty in ground  
detection requires an estimate of vegetation height. A second issue is that many  
algorithms for bare earth detection have been developed for 2.5D geometry typ-  
ical of ALS surveys (e.g., Sithole and Vosselman, 2004; Tinkham et al., 2011)  
and can fail when applied in steep landscapes, or cannot be applied on ver-  
350 tical surfaces documented by TLS (e.g., cliffs, overhangs, and undercut river  
banks) where only 3D methods can be used (Brodu and Lague, 2012). Another  
issue specific to change detection is the fact that rough surfaces will never be  
sampled identically by a scanning instrument, which means that a change will  
always be measured even if the surface was not modified. This change is however  
355 not significant when compared to the surface roughness (e.g., Wheaton et al.,  
2010; Lague et al., 2013). A local measure of point cloud roughness (such as  
the detrended standard deviation (Brasington et al., 2012)) is thus a first order  
estimate of the uncertainty in the ground position in the context of change de-  
tection. Point density also impacts the quality of bare earth detection as the  
360 denser the point cloud, the more likely that one can correctly classify vegetation  
and ground.

HRT surface representation uncertainties are related to the transformation  
of the unorganized point cloud into a continuous elevation surface. The most

commonly used representation is a raster digital elevation model (DEM), but  
365 TINs, 2.5D meshes, and fully 3D meshing algorithms are being used with in-  
creasing prevalence. For simple (smooth) 2D environments without vegetation  
and that have been densely sampled, this operation introduces very little un-  
certainty beyond a loss of horizontal accuracy. In complex scenes with vertical  
features (channel banks, cliffs), rough surfaces (debris (Schurch et al., 2011),  
370 gravel (Wheaton et al., 2010)) and wetted zones, DEM creation introduces sev-  
eral uncertainties. First, for TLS, the more complex and rough the surface, the  
more likely it is that occlusion occurs such that the surface will be incompletely  
sampled and inappropriately interpolated during the DEM creation. This is also  
the case for ALS data for which wetted surfaces cannot be surveyed and typical  
375 standard interpolation by triangulation approach can result in severe artifacts  
(e.g., Williams et al., 2014). Second, DEM creation increases horizontal uncer-  
tainty (up to the pixel size) and vertical uncertainty for sharp features, which  
results in a loss of accuracy for horizontal measures (e.g., channel width), hori-  
zontal change detection (e.g., channel bank erosion), and vertical change detec-  
380 tion in steep slopes (e.g., hillslope erosion). Surface representation uncertainty  
can be avoided by working directly on point clouds, especially in the context of  
accurate change detection on complex geometries (Lague et al., 2013).

### *2.3.2. Accounting for uncertainty: simple to complex*

The most basic approach to HRT uncertainty accounting for Earth science ap-  
385 plications is to start simple and conservative and add complexity and sophisti-  
cation in the error analysis only as warranted by the question of interest. For  
example, if HRT is to be used for geomorphic change detection of a very large  
magnitude signal (e.g., massive lateral retreat of a cliff face), a simple and con-  
servative error model may suffice because the signal will be much greater than  
390 the estimated noise. If by contrast, the geomorphic change detection is of a very  
small magnitude (e.g., shallow sheets of deposition across a floodplain) a less  
conservative and more sophisticated model of error may be warranted to see if  
the signal can be detected and if/how the pattern varies spatially.



A second principle of HRT uncertainty accounting and error estimation is  
395 that a more sophisticated model of error cannot reduce the uncertainty, just  
more accurately quantify it (Wheaton et al., 2010). That is, it makes sense  
to invest time in a more sophisticated model when there is reason to believe  
that the data is fundamentally of high enough quality and accuracy to reveal  
the HRT-derived signal of interest. This is not necessarily known a priori,  
400 but general rules of thumb as highlighted in the best case error magnitudes of  
Table 2 can give some lower plausible bounds on what is possible depending on  
the survey technique. However, a more accurate estimate of HRT errors may  
simply highlight locations where the signal is indistinguishable from noise. This  
in itself may be helpful for identifying primary sources of error worth attempting  
405 to constrain or rectify in future HRT data acquisition or post processing, but for  
any existing HRT dataset or derivative it cannot convert poor quality data to  
good quality data. For example, if the signal is obscured by noise, considering  
the classification uncertainty or positional uncertainty in more detail may help  
identify if fundamental problems exist in the raw data (e.g., GPS positioning  
410 was inaccurate) or in what was surveyed (e.g., are there any ground shots in the  
TLS survey?) that cannot be rectified, or if they may be other problems that  
more sophisticated post-processing may rectify (e.g., flight line misalignment or  
incorrect vegetation versus ground classification).

Finally, it is important to remember that the estimation of HRT error needs  
415 to be done independently for each survey. Many HRT analyses are based entirely  
off a single survey, at one point in time, with one acquisition/platform/method.  
It goes without saying that the uncertainty in subsequent HRT analyses are  
a function of the errors in that survey. However, some HRT models may be  
a hybrid product of multiple types of HRT surveys, or a composite of HRT  
420 surveys from multiple points in time (e.g., an ALS survey of hillslopes and  
valley bottom from one point in time with a more recent MBS survey of the  
channel bathymetry). Similarly, any geomorphic change detection problem in-  
volves HRT surveys from at least two points in time, and the subsequent un-  
certainty will be based on independently estimated errors for each HRT survey

425 that are propagated into each other. Most use simple error propagation methods  
 (Taylor, 1997) which propagate independently estimated errors for each survey  
 (in case of change detection) using the square root of sum of errors in quadrature  
 (Lane et al., 2003; Brasington et al., 2003). For example, to estimate the total  
 propagated error in a DEM of Difference calculation ( $\sigma_{DoD}$ ), the estimates of  
 430 errors in the new DEM ( $\sigma_{DEM_{new}}$ ) and the old DEM ( $\sigma_{DEM_{old}}$ ) are combined  
 using:

$$\sigma_{DoD} = \sqrt{\sigma_{DEM_{old}}^2 + \sigma_{DEM_{new}}^2} \quad (1)$$

Below we highlight five situations using HRT data that span from the sim-  
 plest error modeling to full error budgeting. The examples primarily apply to  
 the estimation of vertical errors in a surface model, but the principles are the  
 435 same whether describing horizontal or vertical errors for cells in a surface or  
 individual points in a point cloud.

1. *Situations where spatially uniform may be enough*

A spatially uniform error estimate assumes that  $\sigma$  is not a function of lo-  
 cation and is constant in space. A spatially uniform error assessment may  
 440 be sufficient where the signal that one aims to obtain is large relative to  
 the uncertainty. As an example, a study in which an ALS dataset is used  
 to differentiate target features on the order of meters, a spatially uniform  
 accounting of the error may be sufficient. In this example, visual exam-  
 ination of the data for offset between flight lines, analyzing independent  
 445 GCPs of the data, and analyzing the topographic and vegetation complex-  
 ity may be sufficient to assume the reported error by the vendor (e.g., +/-  
 15 cm). Note that spatially uniform error estimates that are derived from  
 independent check point data that span the whole range of conditions sur-  
 veyed are strongly preferable to those just done in the simplest and easiest  
 450 conditions (e.g., check points on the airport runway). If independent check  
 points were not surveyed, but the HRT survey overlaps a previous survey,  
 which used the same ground control network and coordinate system, us-

ing fiducial (or reference) surfaces in areas that have not changed (e.g., bedrock outcrops) can be used as an alternative (Klapinski et al., 2014).

455 2. *Situations where simple zonal spatially uniform may suffice*

There are a variety of situations where using a single spatially uniform value to estimate vertical surface representation errors will be overly conservative in some areas and overly liberal in other areas (Wheaton et al., 2008). A simple improvement can come from defining regions (i.e., polygons) within which it is reasonable to assume  $\sigma$  is constant. For example, Lane and Chandler (2003) identified differences in  $\sigma$  on the basis of whether the surface was wet or dry. Others have differentiated ALS DEM errors on the basis of vegetated or unvegetated. Klapinski et al. (2014) differentiated regions in hybrid HRT surveys on the basis of survey methods and roughness (e.g., TS, MBS - rough, MBS - smooth, ALS).

465 3. *Situations where statistical error models make sense*

Statistical error modeling of both surface representation uncertainty and point clouds are possible when HRT point clouds are sufficiently dense to calculate meaningful statistics. Such statistics can be calculated for all the points that fall within a moving window centered on sample points (i.e., point-cloud based), or within a grid cell (i.e., surface representation uncertainty). For elevation statistics to be meaningful, they should be calculated only where 4 or more points exist in the sample window or cell. Typical statistics include zMin, zMax, zMean, zRange and zStdDev. Such statistics can be heavily skewed by local surface slope. Brasington et al. (2012) developed a method to fit a mean surface through each grid cell and then recalculate detrended statistics. For example on a reasonably sloping surface comprised of cobbles and/or boulders, the standard deviation of elevation may be more a reflection of the relief and slope across that cell, whereas the detrended standard deviation is a proxy for the surface roughness. In fact Brasington et al. (2012) found a tight correlation between grain size, surface roughness, and standard deviation. For HRT survey

485 methods like TLS, SfM, and MBS, individual point accuracy is generally very high and surface roughness is often the dominant driver of surface representation uncertainties and is a reasonable first cut itself as an error model. Brasington et al. (2012) developed the ToPCAT (Topographic Point Cloud Analysis Tool) to facilitate these calculations.

490 In very dense point clouds, it is not uncommon to have 100's to 1000's of coincident points (points that have different  $z$ 's but share the same  $x$  and  $y$  coordinates). Hensleigh (2014) used the overlap in MBS boat passes (analogous to ALS flight lines) to calculate coincident points as a proxy for measurement uncertainty.

495 Another approach to statistical estimation of errors is bootstrapping. Using this approach, an elevation surface is built with some random fraction of the data (e.g., 90% of points) and the remaining points (e.g., 10%) are used to calculate residual errors between the interpolated surface and measured points (Wheaton et al., 2008). Those residual error value points can be interpolated to approximate an error surface. The process can be repeated multiple times with different random samples to increase the density of points in the interpolated error surface. Note that the resulting distribution of residual errors is sometimes used to estimate spatially uniform errors across an entire surface or within zones.

500  
505  
510  
4. *Situations where more complicated spatially variable error models are warranted*

Although the statistical error models described above are spatially variable, there may be other factors important in determining the surface uncertainties than just simple elevation statistics. For example, angle of incidence, footprint size, topographic complexity of the surface, sampling density, positional point quality, and interpolation error may all trump surface roughness as the primary driver of error in certain localities within an HRT survey. In these cases, spatially variable error models are warranted. For these studies, one can expand upon the error analysis above. Assum-

ing the point cloud data are available, assessing the spatial relationship  
between slope, roughness, and vegetation height and cover may be nec-  
515 essary. This can be completed by developing statistical relationships be-  
tween independent GCPs and these parameters, using a machine learning  
approach such as RandomForest (Breiman, 2001). Milan et al. (2011) re-  
viewed some of the approaches available for estimating spatially variable  
errors. For example, fuzzy inference systems provide a convenient way of  
520 combining multiple lines of evidence and the outputs can be calibrated to  
independent statistical models of error (Wheaton et al., 2010). All of the  
above methods are supported in the Wheaton et al. (2010) Geomorphic  
Change Detection Software (GCD: <http://gcd.joewheaton.org>).

#### 5. *Situations where full error budgets are warranted*

525 Sometimes, if none of the cases described above applies, full error bud-  
gets may be warranted and additional information will be needed. For  
example, complete metadata, including SBET (Smoothed Best Estimate  
of Trajectory) information of the data collection, will allow for analysis of  
error in relation to flight parameters such as scan angle, and use of inten-  
530 sity data to identify the relationship between error and ground/vegetation  
targets (Glennie, 2007; Streutker et al., 2011). Spatially distributed inde-  
pendent GCPs should be collected and used to estimate the error in dif-  
ferent slopes and vegetation types. Perhaps one of the most mature exam-  
ples of full error budgeting comes from the multi-beam sonar community,  
535 where TPE (total propagated error) is used in the CUBE (Combined Un-  
certainty Bathymetric Estimator) tools (Calder and Mayer, 2003) to esti-  
mate uncertainties and minimize user subjectivity when data are cleaned  
and filtered. The TPE estimates attempt to quantify all sources of er-  
rors leading to point-based estimates of uncertainty as well as surface-  
540 based estimates of uncertainties. The TPE estimates frequently result  
in overly conservative estimates of total error, but they are none-the-less  
useful in reliably defining the spatial pattern of those errors, their rela-

tive magnitudes and revealing the key sources. The downside of full error budgeting is that it requires a considerable amount of extra input data that is often not available (with the notable exception of hydrography surveys in MBS). These methods are supported in most of the industry-standard MBS manufacture post-processing software (e.g., HPACK and HYSWEEP: <http://www.hypack.com/>).

In the context of change detection, simple tests should be performed on various parts of one of the surveys to make sure that the uncertainty model is consistent with the change detection method used. For instance, comparing two different decimations of the same point cloud should not yield a statistically detectable change given the uncertainty estimated locally as a function of point density and point cloud roughness (Lague et al., 2013). These methods are supported in the M3C2 algorithm within the CloudCompare software (<http://www.danielgm.net/cc/>)

#### *2.4. Summary of common sources of error in HRT analysis and questions one should ask*

In Table 3 we list several common sources of error in HRT analysis and provide recommendations for each. As seen from the previous sections, there are numerous sources of uncertainty that are commonly unknown to the user. To help designing the acquisition of new HRT data or planning the analysis of existing HRT data, we provide in Box 1 and Box 2 questions that any user should ask prior to the beginning of the project. Information on how to address most of these questions is provided in the sections that follow. Some of these questions are too specific to the project at hand to be properly addressed in this review. We recommend users to collect the information needed to address each question before starting the analysis of data.

#### *2.5. Metadata and reproducibility of scientific results*

New data acquisition should follow basic criteria for data storing and sharing. Specifications on the instrument used for acquisition, point density, horizontal

and vertical accuracy must be stored with the data as well as information on how the data were further processed (e.g., point cloud decimation and classification). While some vendors prefer to keep this information proprietary and inaccessible, it is fundamental to allow reproducibility of scientific results. Helpful reviews on this topic with specific rules to follow for storing and sharing data have been recently provided by White et al. (2013) and Goodman et al. (2014) and include (i) sharing data; (ii) provide metadata; (iii) provide an unprocessed form of the data; (iv) use standard format; (v) perform basic quality control.

### 3. DO: Working effectively with HRT data, from raw point clouds to usable data and derivative products

In this section we discuss research questions of interest to the understanding of how mass and energy are transferred through landscapes and how their analysis has changed with the availability of HRT data. We also discuss important considerations in data processing, including segmentation and filtering, and present general work-flows for feature detection and change detection, which are among the most recurrent operations performed on HRT data. While we refrain from listing available software for each operation (as software is in constant evolution), we refer the reader to the OpenTopography Tool Registry where an updated list of available tools is maintained as well as comments and feedback from the tool users (<http://www.opentopography.org/>).

#### 3.1. Science with HRT data

Viewing HRT as simply a higher resolution version of its coarser predecessors (e.g., 30 m SRTM data) greatly understates the value of these data for two primary reasons. First, HRT is typically collected at a resolution that permits identification and measurement of the fine-scaled features that inform our understanding of the rates and mechanisms of eco-hydro-geomorphological and earthquake processes. The fact that fine-scaled features can be resolved, changes our approach for analysis and calls for a suite of new techniques and tools for

600 data analysis. Secondly, most HRT datasets contain valuable information beyond the bare earth surface elevations (e.g., above ground vegetation density, variability in surface reflectance). Such information can be immensely useful for characterization of the landscape and modeling Earth surface processes.

### 3.1.1. *HRT provides new approaches to answer fundamental questions*

605 In the material that follows, we discuss some high level questions currently being pursued by the Earth Surface and Critical Zone communities and discuss how HRT provides opportunities for entirely new approaches to answer these questions.

#### 1. *How are mass and energy transported through landscapes?*

610 This question encompasses a wide range of studies, from understanding stress and strain fields in tectonically active environments (Frankel and Dolan, 2007; Oskin et al., 2012), to using HRT-derived canopy models to estimate radiative transfer (Lefsky et al., 2002; Vierling et al., 2008; Morsdorf et al., 2009), to constraining sediment, carbon and nutrient budgets and predicting fluxes at the reach or watershed scale (Paola et al., 2006; Belmont et al., 615 2011; Hudak et al., 2012; Tarolli et al., 2012). Regardless of the specific application, HRT substantially enhances our capacity to answer this question by offering precise quantification of critical features distributed throughout a large spatial domain (e.g., geometry and location of fault 620 scarps, tree canopy, channel heads, river banks, detention basins, see Pike et al. (2009)). Directing budgeting of mass redistribution provides constraints on the magnitude and spatial patterns of geomorphic and ecologic processes. Further, HRT provides a much more detailed and reliable boundary condition for eco-hydro-morphodynamic models, especially insofar as it allows direct coupling with the built environment 625 (Priestnall et al., 2000) and explicit representation of surface roughness (typically dominated by vegetation) (McKean and Roering, 2004; Glenn et al., 2006; Cavalli et al., 2008; McKean et al., 2014), which, for example, has



allowed for vast improvement in flood inundation prediction (NRC, 2007).  
630 Since HRT allows users to derive higher dimensional information about  
the surface (e.g., surface cover, roughness), it provides an opportunity to  
directly link hydraulics, geomorphology, and ecology. In this way, HRT  
improves the accuracy, spatial extent and response time for hazard assess-  
ment and risk mitigation, as well as restoration and conservation planning  
635 (Farrell et al., 2013). In cases where it is not feasible or desirable to in-  
clude all of the detailed information in a model, HRT provides a basis for  
upscaling localized measurements and generating sub-grid scale parame-  
terizations (Casas et al., 2010; Helbig and Lowe, 2012; Ganti et al., 2012).  
For many such applications, it is useful to utilize 3D point cloud data to  
640 retain information about the above-ground features.

2. *What are the patterns on the Earth's surface that can inform our understanding of ecologic, hydrologic, and geomorphic processes and coupling thereof?*

Understanding how topography and biota are organized at the micro-,  
645 meso-, and macro-scales has been a long standing question in Earth sur-  
face science (e.g., Gilbert and Dutton, 1880; Dietrich and Perron, 2006;  
NRC, 2010). Quantifying the organization of landscape features brings  
us one step closer to understanding the mechanisms of landscape change  
(Chase, 1992; Roering, 2008; Hilley and Arrowsmith, 2008; Perron et al.,  
650 2009; Roering et al., 2010). Certain features can only be represented and  
measured accurately/precisely at HRT scales. Therefore, we have only  
recently acquired the capability to answer this question over large spa-  
tial scales. For example, HRT provides a more detailed representation  
of micro-climates and micro-habitats and a bridge between atmospheric  
655 boundary layer and highly localized features/characteristics (e.g., temper-  
ature, soil moisture, snow depth) (Molotch et al., 2004; Galewsky et al.,  
2008; Galewsky, 2009; Deems et al., 2013). HRT data also allows for cou-  
pled 3D mapping and modeling of vegetation, hydrology, and topography

(Ivanov et al., 2008) and in some cases captures the influence/signature of  
660 bioturbation (e.g., plants, gophers) (Yoo et al., 2011; Reed and Amundson,  
2012; Hugenholtz et al., 2013). Lastly, HRT allows for direct identifica-  
tion and quantification of human imprints on the landscape, permitting  
distinction between the effects of natural and anthropogenic processes  
(Passalacqua et al., 2012).

665 3. *How do processes in one location influence processes or rates in another  
part of the landscape?*

One of the most intriguing opportunities presented by HRT data is the  
ability to predict non-localized effects of processes (Anderson et al., 2012).  
For example, initiation of a landslide near a ridge crest is likely to cause  
670 deposition of a slug of sediment in the valley bottom. Bank erosion at one  
or many individual locations throughout a watershed is likely to influence  
turbidity and sediment flux at the mouth of the watershed. Such pre-  
dictions can only be reliable if the critical features can be identified and  
the transport mechanisms between the points of interest are known. HRT  
675 provides a new mechanism for satisfying the inputs needed for detailed  
models of mass and energy transfer and takes us a step closer to robust  
spatially-distributed modeling over large domains.

Improved algorithms to quantify landscape topology and conduct ensem-  
ble feature mensuration enable analysis of spatial relationships, from sim-  
680 ple metrics such as distance, height, and volume to more complex evalu-  
ations of feature proximity and transport pathways (Huang et al., 2011;  
May et al., 2013; Tomer et al., 2013). Such analyses require the ability to  
recognize discrete objects whose scale may range between slightly larger  
than the data resolution and something smaller than the extent of the  
685 entire dataset.

### 3.1.2. Fully utilizing HRT requires new approaches, tools, and techniques

The fact that in HRT we can resolve many of the fine-scale features that are critical for eco-hydro-geomorphic processes changes our analytical approach and demands a new set of tools and techniques. HRT contains an immense amount of information, much of which is not easily extracted with conventional tools. The analysis challenges shift from relatively simple operations performed either on individual pixels or the entire dataset, to the realm of image processing, where the richness of the image can be deconstructed into more meaningful components and manipulated accordingly. For example, coarse topographic datasets that have been prevalent for the past few decades were limited to evaluating macro-scale features, such as basin hypsometry, slope and relief, using pixel-based approaches. Watershed and channel network delineation could only be automated using algorithms that mapped pixel-to-pixel paths of steepest descent and channel heads would be somewhat arbitrarily located at some average/uniform value of upstream contributing area. Small order channels were not identifiable and the boundaries of large channels were poorly resolved. The presence of fine-scaled features in the HRT landscape does not entirely circumvent the need for such approaches, but does open the door to entirely new approaches that are able to take advantage of the wealth of information provided by HRT.

For example, preservation of sharp landscape features, those which are characterized as abrupt changes in topography (e.g., streambanks or fresh fault scarps), requires the use of anisotropic filters (such as nonlinear filters) for cleaning and analysis of HRT. Conventional topographic filters (e.g., Gaussian) have a tendency to diffuse or altogether eliminate such features (Passalacqua et al., 2010b). Another important shift in tools and techniques between conventional topography data and HRT is the use of object-based image (Bian, 2007; Blaschke, 2010). Object-based techniques have been used extensively since the 1980s and 1990s in the industrial and

medical fields, but have only recently emerged as useful tools for Earth surface science, as the resolution of satellite imagery and topographic datasets has come to exceed the scale of many of the objects, or features, of interest. While it is not the goal of this paper to comprehensively review all of these emerging approaches, it is important to acknowledge their growing use.

Some common object based techniques include segmentation, edge-detection, and feature extraction (Alharthy and Bethel, 2002; Suárez et al., 2005; Brennan and Webster, 2006). Segmentation involves identification of distinct objects by one or more homogeneous criteria in one or more dimensions of feature space. Clearly, objects exist across a variety of scales in HRT, and so segmentation often requires a multi-scale analysis (Hay et al., 2001; Burnett and Blaschke, 2003; Hay et al., 2003; Schmidt and Andrew, 2005; Brodu and Lague, 2012). Other techniques, such as artificial neural networks (Nguyen et al., 2005; Priestnall et al., 2000), fuzzy set methods (Schmidt and Hewitt, 2004; Cao et al., 2011; Hofmann et al., 2011; Hamedianfar et al., 2014), genetic algorithms (Li et al., 2013; Garcia-Gutierrez et al., 2014), machine learning (Zhao et al., 2008, 2011; Gleason and Im, 2012b,a), and support vector machines (Mountrakis et al., 2011; Zhao et al., 2011; Brodu and Lague, 2012) also show great promise to represent discrete features within complex and heterogeneous environments, but applications of such approaches for HRT analysis have been relatively few. Such approaches can greatly expand our capacity to extract useful information from HRT and we thus expect them to become more prevalent in the near future.

### *3.2. Getting the data right: From raw to derivative products*

Currently, the vast majority of HRT users begin their analysis work-flows with a gridded product (i.e., DEM) that has previously been subjected to extensive cleaning and filtering and perhaps manual editing (Fisher, 1997). In some cases this is an appropriate starting point for the task at hand, although users should

be aware of the operations previously performed on the data and associated potential for bias/error, as discussed above. In other cases users may start from this point because upstream versions of the data (raw, classified, or filtered point cloud) are not made available from the data provider, a situation that is becoming less common as vendors and users recognize the value of such data. In yet other cases, many users simply start with the gridded dataset because the common software packages are ill-equipped to deal with point cloud data, or are perceived to require an unwarranted investment of time and effort to utilize. However, tools for cleaning and analyzing point clouds have been improved considerably and, for a variety of applications, the general HRT analysis community has much to gain by beginning their analysis workflow further upstream.

In the material that follows, we cover the operations that are commonly performed from raw data to the creation of derivative products (such as usable point cloud and DEM). Users should require specifics on these operations from the data providers. If new HRT are collected, this information should be compiled and released with the data to facilitate data reuse and reproducibility of scientific results and allow for problems to be rectified in the future as tools for data cleaning and interpolation are improved.

### 3.2.1. Georeferencing

During the georeferencing operation raw data are converted from a local coordinate frame to a geodetic coordinate frame using direct and indirect methods.

Direct methods imply that geodetic coordinates have been collected and assigned to positions on the ground at the time of data acquisition. A terrestrial example is ground-based rtkGPS surveying where topographic points are assigned  $x, y, z$  coordinates in real time. Accuracy of such surveys is greatly enhanced when users post-process the data to obtain differentially corrected static GPS measurements. This can be achieved using, for example, the Online Positioning User Service (OPUS) to tie GPS positions collected using an antenna and local base station to the U.S. National Spatial Reference System from nearby Continuously Operating Reference Stations (<http://www.ngs.noaa.gov/OPUS/>).

Similar post-processing tools are freely available from a variety of other sources on the web.

Aerial and mobile direct methods are based on the exterior orientation of the sensor relative to the Earth, which can be obtained using GPS and an  
780 Internal Navigation System (INS) (Legat, 2006). Geodetic coordinates of positions in the scene are extrapolated from sensor  $x$ - $y$  positions and altitudes. This method is most common for ALS and mobile mapping systems as well as stereo-photogrammetry flown by a manned-aircraft.

Sensors, such as cameras or lasers, fixed to UAVs typically do not have on-  
785 board navigation systems sufficient for accurate geodetic positioning. Therefore, indirect georeferencing methods that rely on GCPs are common. GCPs are on-the-ground features (natural or artificial) with known coordinates that are identifiable in the collected point cloud or imagery. Typically, the positions of GCPs are surveyed close to the time of data acquisition using GPS. Georeferencing occurs after data acquisition and can be performed easily in common  
790 spatial data programs. Both error and distortion need to be considered when applying spline and polynomial georeferencing transformations.

The georeferencing operation for SfM is discussed in the next section as part of the work-flow from raw data to PC generation. For a discussion on the  
795 uncertainty associated with georeferencing see Section 2.3.1. We refer the reader to Shan and Toth (2009), Vosselmann and Maas (2010), and Renslow (2012) for further reading on georeferencing.

### *3.2.2. Processing raw data to create a usable point cloud*

In some cases it may be required to combine multiple point clouds into a single  
800 point cloud, for example in HRT surveys with point clouds obtained from multiple positions on a landscape. This requires bringing multiple point clouds into the same coordinate system, which may be global or local. These point clouds may be from the same HRT platform or from some combination of ALS acquisition, multiple TLS scans, sonar and/or cameras. Merging these point clouds  
805 into a unified dataset is achieved through a *registration* operation performed by

either relying on points common to multiple clouds (minimum 3 points shared) or setting up targets during the acquisition that can then be used as reference points during the registration operation (some targets can reoccupy exactly the same position during subsequent surveys for high accuracy local georeferencing (Lague et al., 2013)). In natural scenes the latter approach is preferred as it is commonly difficult to identify common points in multiple clouds and surfaces are generally rough which reduces the accuracy of cloud matching techniques (e.g., Schurch et al., 2011; Lague et al., 2013) (unlike engineering applications where features such as structure corners can be used). A lack of common targets can significantly diminish the quality of the data acquired.

In the case of SfM, camera pose and scene geometry are reconstructed simultaneously using the automatic identification of recurrent features in multiple images that have been taken from different angles (Snavely, 2008; Westoby et al., 2012). Although only 3 images per recurrent feature are needed, it is usually recommended to take as many photographs as possible. The point cloud is created in a relative ‘image-space’ coordinate system. GCPs or physical targets are commonly employed to align the ‘image-space’ to an ‘object-space’ coordinate system. The georeferencing operation consists of a Helmert Transformation (7 parameters: 1 scale parameter, 3 translation parameters, and 3 rotation parameters) (Turner et al., 2012). Example applications can be found in Westoby et al. (2012), James and Robson (2012), Javernick et al. (2014), and Johnson et al. (2014).

### *3.2.3. Point cloud processing, filtering, and classification*

Once the point cloud has been created, several processing operations may be needed before analysis of the point cloud or creation of raster products can be performed. These operations are performed to reduce the size of the point cloud, distinguish ground points from off-ground points, and classify the point cloud into homogeneous portions.

No matter what the data source is, the generated point cloud can be extremely dense. In these cases the number of points often needs to be reduced

in order to analyze the point cloud. This operation is called *decimation*. Procedures for decimation include point removal, refinement, and cloud segmentation approaches (Wasklewicz et al., 2013).

Filtering and classification are needed to distinguish ground and off-ground  
840 points and further classify the off-ground points. There are 4 main categories  
of filtering approaches (Sithole and Vosselman, 2004; Pfeifer and Mandlbürger,  
2009) and they are different in the assumption they make about the structure of  
the ground points: (i) morphological filters (often slope-based), (ii) progressive  
densification filters starting from seeds (e.g., lowest points), (iii) surface-based  
845 filters (progressive removal of points that do not fit the surface model), (iv) seg-  
mentation and clustering (operates within homogeneous segments rather than  
individual points). Many of these filters operate directly on the point cloud,  
but others require gridding to take full advantage of image processing tech-  
niques (e.g., segmentation). Sithole and Vosselman (2004) report results for a  
850 filter comparison on 12 different landscapes and concluded that while all filters  
are successful in landscapes with low complexity level, the presence of urban  
structures or steepness influenced the performance of the filters resulting in  
surface-based filters (filters that rely on a parameterization of the local surface  
and an above buffer within which ground points are expected to be found) be-  
855 ing more successful than others. As noted by Pfeifer and Mandlbürger (2009),  
when this analysis was performed segmentation strategies had not been fully  
developed yet, while they have been found particularly successful in landscapes  
modified by humans. Further work by Meng et al. (2010) identified three types  
of terrain for which filtering algorithms do not work optimally: (i) rough terrains  
860 or landscapes with discontinuous slopes, (ii) areas with dense vegetation where  
the laser cannot penetrate sufficiently, and (iii) areas with short vegetation.

The classification of the point cloud, including vegetation classification, can  
be one of the most critical operations, particularly in natural and complex land-  
scapes due to the multi-scale nature of the features present. The method pro-  
posed by Brodu and Lague (2012) exploits this aspect by probing the surface  
865 with spheres of varying diameter, achieving accuracy  $> 98\%$  in distinguishing,



for example, vegetation from ground points and classifying a mountain stream in several classes (vegetation, rock, gravel, water surface). Other vegetation classification approaches have been proposed by Streutker and Glenn (2006),  
870 specifically for arid landscapes, and by Evans and Hudak (2007) (the multi-scale curvature algorithm MCC designed for high biomass areas). The two latter methods were compared by Tinkham et al. (2011) in a semi-arid landscape. The authors found both methods accurate and suggested specific applications for each.

875 Information on which decimation, filtering, and classification operations were performed on the point cloud should always be required from the data provider and reported when distributing the collected data.

The operations needed to create a raster and derived raster products are covered in the next section. Before presenting this material, we note that many  
880 HRT analyses can (and should) be performed directly on the point cloud. Gridded data are often perceived as the more ‘convenient’ or easy option to users. Point clouds are more difficult to analyze and are seen as less intuitive than gridded data. These suppositions are further supported by the limitations of commonly used geospatial software, such as ArcGIS, which are so far limited when  
885 it comes to point cloud analysis tools. There are, however, many advantages in working directly with the point cloud and it should not be discarded too early. The further into a work-flow the point cloud is carried leads to preservation of the 3D point uncertainty, greater control on 2D products and multidimensional analysis, and a congruent representation of field data collection. Point  
890 clouds offer opportunities for the exploration and extraction of more detailed information (e.g., vegetation classification (Brodu and Lague, 2012)) and higher level modeling (segmentation, textures, machine learning), while also achieving accurate estimates of geometric properties of the 3D environment, particularly relevant to the estimation of 3D change and 3D oriented deformation measurements (e.g., Teza et al., 2007; Nissen et al., 2012; Lague et al., 2013). Gridding  
895 data involves interpolation which reduces the information originally contained

in the point cloud.

#### 3.2.4. Raster generation and derived raster products

Interpolation algorithms are applied to estimate unknown elevation from elevation data at known location. This operation may be needed to obtain a gridded surface or interpolate over regions that present shadows or data voids to limit their effect on the final gridded surface. It may also be necessary to change the resolution of the raster for the application at hand.

Commonly used interpolation approaches can be distinguished into three categories (Wasklewicz et al., 2013): (i) local neighborhood (e.g., nearest neighbors, inverse distance, creation of Triangular Irregular Network (TIN)), (ii) geostatistical methods (rely on the spatial correlation structure; kriging), and (iii) spline methods (e.g., thin plate spline). Each method has its strengths and weaknesses and an appropriate range of applicability (Chaplot et al., 2006; Erdogan, 2009; Heritage and Large, 2009), although differences among interpolation approaches are reduced with increasing point density. Interpolation and estimation errors are associated to each approach (Wheaton et al., 2010).

Raster users need to carefully consider the sources of uncertainty mentioned in Section 2.3 as they affect DEMs (Fisher and Tate, 2006) and derived topographic attributes (Sofia et al., 2013).

#### 3.2.5. Filtering rasters to remove small scale variability and enhance features of interest

No matter what the specific analysis entails, operations involving derivatives should be performed after small scale variability (e.g., due to local terrain roughness or to vegetation removal operations) has been removed and features of interest enhanced (Passalacqua et al., 2010a,b). Several filters have been proposed in the literature, most of which have been developed within the image processing community. The most common options include Gaussian filtering, nonlinear Perona-Malik filtering, and Wiener filtering.

Gaussian filtering is most often used to smooth noise from data with the

aid of a spatially uniform smoothing operation. The scale of the features removed depends on the size of the kernel employed for smoothing. The wider the standard deviation of the kernel, the coarser the filtered landscape will be. Considering as an example a high resolution DEM  $h_0(x, y) : R^2 \rightarrow R$ , the filtered landscape  $h(x, y, t)$  is obtained through a convolution operation with a Gaussian filter  $G(x, y, t)$  of standard deviation  $t$ :

$$h(x, y, t) = h_0(x, y) * G(x, y, t) \quad (2)$$

where the Gaussian kernel of standard deviation  $t$  is defined as:

$$G_{x,y,t}(u, v) = \frac{1}{2\pi t} \exp\left[-\frac{(u-x)^2 + (v-y)^2}{2t}\right] \quad (3)$$

The employment of Gaussian filtering is at the core of the channel network extraction method proposed by Lashermes et al. (2007) which uses the convolution with the first and second derivative of the Gaussian to calculate landscape slope and curvature on regularized gridded data.

A feature of Gaussian filtering that may be problematic is the lack of feature localization; the filter is spatially uniform resulting in landscapes uniformly diffused in all directions. This can be problematic in landscapes containing sharp features (e.g., fault scarps, stream banks, roads, etc.) as illustrated by Passalacqua et al. (2010a) (see Fig. 3) and Passalacqua et al. (2010b), who proposed the use of a nonlinear (anisotropic) filter (Perona and Malik, 1990; Catté et al., 1992) able to achieve preferential smoothing of the landscape:

$$\partial_t h(x, y, t) = \nabla \cdot [p(|\nabla h|)\nabla h] \quad (4)$$

where the edge-stopping function  $p(\cdot)$  allows preferential smoothing of small scale variability and enhancement of features of interest. In the application of Passalacqua et al. (2010a), the edge-stopping function has the form:

$$p(|\nabla h|) = \frac{1}{1 + (|\nabla h|/\lambda)^2} \quad (5)$$

Locations with gradients smaller than  $\lambda$  are smoothed out, while locations with gradients above  $\lambda$  are enhanced. The parameter  $\lambda$  is computed as the 90th quantile of the probability density function (pdf) of the elevation gradients (Passalacqua et al., 2010a). The main advantage of the Perona-Malik filter is the capability of enhancing features of interest, while preserving feature localization and removing small scale variability.

The Wiener filter (Wiener, 1949) distinguishes small scale noise from other image features based on the analysis of a radially averaged power spectrum. Its use was recently proposed by Pelletier (2013) to smooth small scale variability in elevation data. The filter operates in the frequency domain through a transfer function defined as:

$$\Phi(\nu) = \frac{|H(\nu)|^2}{|H(\nu)|^2 + |N(\nu)|^2} \quad (6)$$

where  $|H(\nu)|^2$  represents the spectrum of the signal and  $|N(\nu)|^2$  the spectrum of noise, determined by fitting the radially averaged power spectrum of the landscape for lower and higher frequencies. At low frequencies, where  $|H(\nu)|^2 > |N(\nu)|^2$ , the transfer function  $\Phi(\nu)$  is approximately equal to 1 and no modification is made to the data, while at high frequencies, where  $|H(\nu)|^2 \ll |N(\nu)|^2$ , the amplitude of the noise is reduced in a measure proportional to noise to signal amplitude ratio. The main advantage of the Wiener filter is that if the spectrum is fitted correctly, the appropriate smoothing threshold emerges from the data itself.

### 3.3. HRT analysis work-flows

We focus on two operations commonly performed on HRT data: *feature extraction* (the identification of geomorphic features from a data set acquired at a certain time), and *change detection* (the quantification of differences between data sets acquired at different times). These are two of the most common and mature analyses attempted with HRT and are presented as examples for similar work-flows that might be developed to standardize other HRT analysis practices.

### 3.3.1. Feature extraction work-flow

975 HRT offers a valuable view of the near surface environment. However, the dense  
3D point clouds simply sample the entire exposed surface, while all science and  
engineering applications require the extraction or identification of specific fea-  
tures represented by a sub-set of points within these data. The feature iden-  
tification work-flow (Fig. 4) begins with the point cloud and the question of  
980 interest (e.g., identification of channel elements or canopy characteristics, or  
feature changes over multiple measurement epochs). A usual first step is to se-  
lect or segment points in the relevant time and/or space window. Points can be  
selected based on some attribution from the initial measurement process (e.g.,  
return number, intensity) or from post-processing (e.g., classification). This op-  
985 eration may produce a continuous representation of a surface or field, irregularly  
sampled or gridded (e.g., classified point cloud, DTM, DSM, canopy character-  
istics, relief, feature probability), or vectorize and delineate discrete objects  
(e.g., channel elements including heads, geomorphic units, boulders, vegetation,  
structures). Further iterative operations may be needed on fields or objects if  
990 the extraction method used is not fully automatic. Other data such as addi-  
tional remote sensing (e.g., Infrared imagery) or field observations (e.g., from  
sensors or mapping-derived) can be integrated to refine the identified features.  
The ensemble of identified features forms a near surface model which is the ba-  
sis for an empirical or biogeochemical/physics-based interpretation. The near  
995 surface model may be further generalized, extrapolated, or idealized and rep-  
resented by visualizations or derived products (e.g., statistical characterization  
of the extracted features and relevant metrics). Feature changes over time can  
be identified by comparing near surface models (or relevant metrics) computed  
over multiple epochs of interest.

1000 A variety of features can be extracted from HRT, including channel net-  
works and channel heads (Lashermes et al., 2007; Passalacqua et al., 2010a,b;  
Sofia et al., 2011; Pelletier, 2013), channel morphology (Passalacqua et al., 2012;  
Fisher et al., 2013), fluvial terraces (Stout and Belmont, 2014), landslides (Booth et al.,

2009; Roering et al., 2009; Tarolli et al., 2012), river bed and floodplain mor-  
1005 phology (Marcus and Fonstad, 2010; Belmont, 2011), and vegetation character-  
istics (Lefsky et al., 2002; Brandtberg, 2007; Breidenbach et al., 2010; Gleason and Im,  
2012b,a).

### 3.3.2. Change detection work-flow

The change detection work-flow starts with a distinction of the type of geometric  
1010 change of interest (Fig. 5). As discussed above, the two datasets must be simi-  
larly georeferenced and uncertainty in each dataset must be quantified to develop  
an error model that would be used to report the most probable real change. In  
the case of ground movements displacing topographic features (e.g., landslid-  
ing, earthquakes), change can be captured as a 2D-3D displacement field, while  
1015 when interested in geomorphic processes changing topographic features (e.g.,  
bank erosion, patterns of erosion and deposition), change can be quantified in  
terms of distance and volume. In all cases, the analysis starts with point cloud  
data acquired at different epochs that capture the change of interest (e.g., before  
and after an event). After removal of vegetation and other erroneous points,  
1020 a 2D-3D displacement field can be obtained directly with a 3D piecewise Iter-  
ative Closest Point (ICP) operation (Besl and McKay, 1992; Teza et al., 2007;  
Nissen et al., 2012), point cloud cross-correlation (Borsa and Minster, 2012), or  
with 2D correlation techniques (PIV) applied to a 2.5D DTM (Aryal et al., 2012;  
Mukoyama, 2012). Distance and volume can be quantified directly with a 3D  
1025 cloud to cloud distance calculation (Lague et al., 2013), or with cloud to mesh  
comparisons (Rosser et al., 2005; Day et al., 2013a), or vertical subtraction of  
gridded data (Lane and Chandler, 2003; Wheaton et al., 2010; Schurch et al.,  
2011; Wheaton et al., 2013; Pelletier and Orem, 2014).

For change detection completed on regularized (gridded) data, one additional  
1030 requirement is to ensure that the two grids have the same resolution and are  
concurrent and orthogonal. This means that each pixel being differenced shares  
the same center point. Operations based on meshed or gridded data are simple  
to run, but can result in a reduction of accuracy and resolution that should be

evaluated with respect to the amplitude and spatial characteristics of the topographic signal to be detected (see Section 2.3). In general, for high accuracy application in complex environments, point cloud based methods are more suitable. However, these methods are still in their infancy and key building blocks are still missing (e.g., simple volume computation directly on 3D point clouds).

As HRT is increasingly collected, standards and best practices have improved. Legacy data, or the dataset collected first in time, have likely been collected under different standards and using different practices. These data may contain errors and subsequently produce systematic errors, especially in a differencing analysis. Glennie et al. (2014) describe legacy data issues and a near-field earthquake displacement example for which they used original GPS/IMU and laser measurement data to recalibrate. When those data are not available, others have tried to match some kind of surface or infrastructure in overlapping areas to calculate the alignment (Bretar et al., 2004; Alka, 2010). Another technique used local slope and local elevation difference between adjacent points in the overlap area to more accurately re-align flightlines (Streutker et al., 2011). Others have corrected the final product (a differential DEM in both cases) using a fast Fourier transform filter (Goodwell, 2014).

#### **4. NEXT: Learning from the present and directions of further development**

This is an important time for HRT research; technology supporting HRT acquisition has seen major developments in the last two decades resulting in the current availability of significant amounts of data. Numerous papers based on the analysis of HRT data have been published up to present, corresponding to an increased understanding of mass and energy transfer through landscapes and of Earth-surface processes in general. From the identification of landscape characteristic scales, to earthquake assessment, to landslide dynamics, the availability of HRT has advanced scientific understanding of Earth-surface processes in terms of both static and dynamic processes. Notably, these scientific ad-

vancements have been accompanied by the development and release of broadly applicable open source tools. Sharing open source software requires the commitment of the scientist to overcome several challenges (Easterbrook, 2014) to benefit the community at large.

Too often, however, data analysis tools are not integrated in the same platforms used for visualization, favoring a net separation between a large number of HRT *viewers*, and a much smaller number of HRT *analysts* that actively manipulate and query the data in more sophisticated and quantitative ways and develop new open source analysis tools. Development of a framework that supports visualization while facilitating higher level filtering, segmentation, and analysis is needed. Given the immense amount of multi-scale information contained in HRT and the challenges involved in manipulating such large datasets, the HRT community has much to gain by implementing practices and standardized work-flows that have been developed by the image processing and Big Data analytics communities, among others.

HRT data represent the common ground among a variety of disciplines; the atmospheric, surface, biological, anthropogenic, and subsurface processes communities all rely on these data (Paola et al., 2006; Reinhardt et al., 2010). We can thus think of HRT as an interdisciplinary means for achieving a deeper understanding of Earth-surface processes and as a platform to facilitate collaboration across disciplines (Bond et al., 2007). Training of students, researchers, and practitioners has to continue and further develop along this direction to make sure computational, technological, scientific, and engineering aspects of HRT analysis are taught across disciplines. Research centers such as the NSF-funded OpenTopography, National Center for Earth-Surface Dynamics (NCED), and the network of Water, Sustainability and Climate (WSC) and Critical Zone Observatories (CZO) have facilitated an interdisciplinary approach to research and education, including the collection and distribution of HRT data, the development of open source software, and the organization of training workshops and summer schools for junior scientists.

As we witness the development of newer technologies such as mobile li-



dar, photon counting, hyperspectral lidar, and bathymetric lidar (Glennie et al.,  
1095 2013b), we note that challenges posed by current technologies still have to be  
overcome. For example, better acquisition of multi-temporal data is needed for  
accurate differential topography analysis. The El Mayor Cucapah 2010 earth-  
quake is an important event for which pre- and post-event lidar data are available  
(Oskin et al., 2012) and pre-event data required re-processing to improve the  
1100 estimation of coseismic surface displacement (Glennie et al., 2014). Nissen et al.  
(2014) applied topographic differencing on Japanese HRT to characterize two  
M6-7 earthquakes in Japan to produce new understanding of near-field coseismic  
deformation. However, the coverage was limited to just a few  $km^2$ .

Community standards are still not identified creating considerable problems  
1105 for data and tools sharing. While existing groups and resources (e.g., NSF  
SI2, NSF ISEES, OpenTopography, GitHUB, Figshare, HydroShare, CSDMS)  
have worked significantly in this direction, the effort has to be embraced by  
the community at large and a broader swath of researchers must be trained to  
use and further develop such tools. We need to achieve better understanding  
1110 of the multi-scale dynamics at finer spatial and temporal scales with broader  
extent. At the global scale we still rely on coarser resolution data such as SRTM;  
increased access to HRT data globally should be promoted.

As the availability of full waveform hyperspectral, bathymetric, photon count-  
ing data becomes common (Glennie et al., 2013b), tools are needed to take  
1115 advantage of these data sets and integrate HRT data collected on multiple plat-  
forms. The point cloud community has a strong basis to build from (e.g., Cloud-  
Compare <http://www.danielgm.net/cc/> and <http://pointclouds.org/>), but more  
documentation and further development are needed.

HRT can also be fundamental for tool and model testing. The development  
1120 of sets of examples and applications would be particularly useful to show the  
performance of existing and new tools on the same landscape. As such, we see  
the need to identify a set of benchmarking examples to be used for testing models  
and tools. HRT represent the perfect source for such benchmarking examples,  
but specific landscapes need to be identified for each modeling task (e.g., sedi-

1125 ment transport at hillslope scale versus landslide modeling) and collected on the  
same platform. The Oregon Coast Range, the Eel River Basin, and Tennessee  
Valley, for example, are excellent validation cases for hillslope transport model-  
ing (e.g., Roering et al., 1999; Foufoula-Georgiou et al., 2010) and for channel  
initiation detection (e.g., Montgomery and Dietrich, 1989; Passalacqua et al.,  
1130 2010a).

We need to work together as a community towards implementing software  
and making computational resources available to analyze full resolution datasets  
for entire watersheds. Hubs of HRT related information exist (OpenTopogra-  
phy, NCALM, UNAVCO, CSDMS, CUAHSI, CZO, NCED, NCEAS, NEON),  
1135 but better coordination and communication is needed to integrate expertise  
and content (e.g., centralized tutorials and training). The HRT community also  
needs to be more proactive in developing and borrowing techniques that main-  
tain the integrity of the data and function on multiple scales, as discussed in  
Section 3.1.2.

1140 Finally, HRT should be integrated into education at all levels: from K-12, to  
undergraduate, graduate, and professionals. We note that NCALM facilitates  
HRT-based graduate research through their Seed Program. More initiatives in  
this direction are needed at every level. The availability of place-based virtual  
exploration resources (e.g., <http://www.earthscope.org/information/publications/newsletters/2012/summer/p>  
1145 based-education) would be particularly useful. The availability of HRT data  
local to where students are would substantially enhance the integration of HRT  
and field-based educational resources.

## 5. Conclusions: Guiding principles for HRT analysis

As we look forward to the next decade of HRT technology development and  
1150 HRT-based scientific discoveries, we offer the following guiding principles:

1. Promote an environment conducive to data intensive exploration. Existing  
examples are Hubble Space Telescope, EarthScope, and NEON. This will  
favor unanticipated and broader uses of the data;

2. Distribute open and well documented data. This is very important for  
1155 data reuse, particularly relevant to enable unanticipated applications;
3. Develop and distribute open source software coupled with benchmark test  
cases to facilitate reproducible science by the community at large;
4. Promote better integration of visualization and higher level processing and  
analysis tools;
- 1160 5. Support community coordination and optimal overlap among facilities,  
groups, and funding agencies;
6. Compile data to be most useful (scale, sampling) for conceptual and phys-  
ical model and analytical tool testing and enable widespread data integra-  
tion (e.g., gage data, material properties, historic, subsurface);
- 1165 7. Incorporate HRT data and related technical skills (programming, image  
processing, etc.) in education at all levels (K-12, public, higher education).

### Acknowledgments

This manuscript represents the work of the Powell Center Working Group on  
High Resolution Topography funded by the National Science Foundation and the  
1170 USGS John Wesley Powell Center for Analysis and Synthesis. The authors also  
gratefully acknowledge support from the National Science Foundation (grants  
CAREER/EAR-1350336, GSS/BCS-1063228, and FESD/EAR-1135427 to PP;  
ENG-1209448 to PB; EAR-1225810 to JRA). Comments from the Editor, Paolo  
Tarolli, Francis Rengers, and an anonymous reviewer have helped improve this  
1175 manuscript.

### References

Alharthy A, Bethel J. Heuristic filtering and 3d feature extraction from LIDAR  
data. In: Proc. ISPRS Comm. III Symp. Photogramm. Comput. Vis. 2002.  
p. 29–34.

- 1180 Alho P, Kukko A, Hyyppä H, Kaartinen H, Hyyppä J, Jaakkola A. Co-registration of surfaces by 3D least squares matching. *Photogramm Eng Rem S* 2009;76:307–18. doi:10.14358/PERS.76.3.307.
- Alka D. Co-registration of surfaces by 3D least squares matching. *Photogramm Eng Rem S* 2010;76:307–18. doi:10.14358/PERS.76.3.307.
- 1185 Anderson RS. Evolution of the santa cruz mountains, california, through tectonic growth and geomorphic decay. *J Geophys Res* 1994;99 (20):161–74.
- Anderson RS, Anderson SP. *Geomorphology: The Mechanics and Chemistry of Landscapes*. Cambridge, UK: Cambridge University Press, 2010. 640 pp.
- Anderson SP, Anderson RS, Tucker GE. Landscape scale linkages in critical  
1190 zone evolution. *Comptes Rendus Geoscience* 2012;344(11):586–96.
- Aryal A, Brooks BA, Reid ME, Bawden GW, Pawlak GR. Displacement fields from point cloud data: Application of particle imaging velocimetry to landslide geodesy. *J Geophys Res* 2012;117:F01029. doi:10.1029/2011JF002161.
- Bae K, Lichti DD. A method for automated registration of unorganised point  
1195 clouds. *ISPRS J Photogramm* 2008;63(1):36–54.
- Bangen SG, Wheaton JM, Bouwes N, Bouwes B, Jordan C. A methodological intercomparison of topographic survey techniques for characterizing wadeable streams and rivers. *Geomorphology* 2014;206:343–61.
- Belmont P. Floodplain width adjustments in response to rapid baselevel fall  
1200 and knickpoint migration. *Geomorphology* 2011;128:92–102.
- Belmont P, Gran KB, Schottler S, Wilcock PR, Day SS, Jennings C, Lauer JW, Viparelli E, Willenbring JK, Engstrom DR, Parker G. Large shift in source of fine sediment in the Upper Mississippi River. *Env Sci Tech* 2011;45:8804–18810.
- 1205 Besl PJ, McKay ND. A method for registration of 3D shapes. *IEEE T Pattern Anal* 1992;14(2):239–56.

- Bian L. Object-oriented representation of environmental phenomena: Is everything best represented as an object? *Ann Assoc Am Geogr* 2007;97(2):267–81.
- Blaschke T. Object based image analysis for remote sensing. *ISPRS J Photogramm* 2010;65:2–16. doi:10.1016/j.isprsjprs.2009.06.004. 1210
- Bond BJ, Jones JA, Moore G, Phillips N, Post D, McDonnell JJ. The zone of vegetation influence on baseflow revealed by diel patterns of streamflow and vegetation water use in a headwater basin. *Hydrol Process* 2002;16:1671–7. doi:10.1002/hyp.5022.
- 1215 Bond CE, Shipton ZK, Jones RR, Butler RWH, Gibbs A. Knowledge transfer in a digital world: Field data acquisition, uncertainty, visualization, and data management. *Geosphere* 2007;3(6):568–76.
- Booth A, Roering JJ, Perron T. Automated landslide mapping using spectral analysis and high-resolution topographic data: Puget sound lowlands, washington, and portland hills, oregon. *Geomorphology* 2009;109:132–47. 1220
- Borsa A, Minster JB. Rapid determination of near-fault earthquake deformation using differential lidar. *Bull Seismol Soc Am* 2012;102:1335–47.
- Bowen ZH, Waltermire RG. Evaluation of light detection and ranging (Lidar) for measuring river corridor topography. *J Am Water Res Assoc* 2002;38:33–41.
- 1225 Bradley DN, Tucker GE, Benson DA. Fractional dispersion in a sand bed river. *J Geophys Res* 2010;115:F00A09. doi:10.1029/2009JF001268.
- Brandtberg T. Classifying individual tree species under leaf-off and leaf-on conditions using airborne lidar. *ISPRS J Photogramm* 2007;61:325–40.
- Brasington J, Langham J, Rumsby B. Methodological sensitivity of morphometric estimates of coarse fluvial sediment transport. *Geomorphology* 2003;53(3–4):299–316. doi:10.1016/S0169-555X(02)00320-3. 1230

- Brasington J, Vericat D, Rychkov I. Modeling river bed morphology, roughness, and surface sedimentology using high resolution terrestrial laser scanning. *Water Resour Res* 2012;48:W11519. doi:10.1029/2012WR012223.
- 1235 Breidenbach J, Naesset E, Lien V, Gobakken T, Solberg S. Prediction of species specific forest inventory attributes using a nonparametric semi-individual tree crown approach based on fused airborne laser scanning and multispectral data. *Remote Sens Environ* 2010;114:911–24.
- Breiman L. Random forests. *Mach Learn* 2001;45:5–32.
- 1240 Brennan R, Webster TL. Object-oriented land cover classification of lidar-derived surfaces. *Ca J Remote Sensing* 2006;32(2):162–72.
- Bretar F, Pierrot-Deseilligny M, Roux M. Solving the strip adjustment problem of 3d airborne lidar data. In: *IEEE International Geoscience and Remote Sensing Symposium*. 2004. p. 4734–7. doi:10.1109/IGARSS.2004.1370216.
- 1245 Brodu N, Lague D. 3D Terrestrial LiDAR classification of complex natural scenes using a multi-scale dimensionality criterion: applications in geomorphology. *ISPRS J Photogramm* 2012;68:121–34. doi:10.1016/j.isprsjprs.2012.01.006.
- Brooks B, Glennie CL, Hudnut K, Ericksen T, Hauser D. Mobile laser scanning applied to the Earth Sciences. *EOS* 2013;94(36):313–5.
- 1250 Burnett C, Blaschke T. A multi-scale segmentation/object relationship modelling methodology for landscape analysis. *Ecol Model* 2003;168:233–49.
- Butler DR. *Zoogeomorphology: Animals as geomorphic agents*. New York: Cambridge University Press, 1995. 239 p.
- 1255 Calder BR, Mayer LA. Automatic processing of high-rate, high-density multibeam echosounder data. *Geochem Geophys Geosy* 2003;4(6):1048. doi:10.1029/2002GC000486.

- 1260 Cao Y, Zhao H, Li N, Wei H. Land-cover classification by airborne LIDAR data fused with aerial optical images. In: Multi-Platform/Multi-Sensor Remote Sensing and Mapping (M2RSM),. 2011. p. 1–6.
- Casas A, Lane SN, Yu D, Benito G. A method for parameterising roughness and topographic sub-grid scale effects in hydraulic modelling from LiDAR data. *Hydrol Earth Syst Sci* 2010;14:1567–79. doi:10.5194/hess-14-1567-2010.
- 1265 Catté F, Lions PL, Morel JM, Coll T. Image selective smoothing and edge detection by nonlinear diffusion. *SIAM J Numer Anal* 1992;29 (1):182–93.
- Cavalli M, Tarolli P, Marchi L, Fontana GD. The effectiveness of airborne lidar data in the recognition of channel bed morphology. *Catena* 2008;73:249–60. doi:10.1016/j.catena.2007.11.001.
- 1270 Chaplot V, Darboux F, Bourennane H, Leguédois S, Silvera N, Phachomphon K. Accuracy of interpolation techniques for the derivation of digital elevation models in relation to landform types and data density. *Geomorphology* 2006;77:126–41. doi:10.1016/j.geomorph.2005.12.010.
- Chase C. Fluvial landsculpting and the fractal dimension of topography. *Geomorphology* 1992;5:39–57.
- 1275 Culling W. Analytical theory of erosion. *J Geol* 1960;68:336–44.
- Davis WM. The convex profile of badland divides. *Science* 1892;20:245.
- Day SS, Gran KB, Belmont P, Wawrzyniec T. Measuring bluff erosion part 1: terrestrial laser scanning methods for change detection. *Earth Surf Proc Land* 2013a;38:1055–67. doi:10.1002/esp.3353.
- 1280 Day SS, Gran KB, Belmont P, Wawrzyniec T. Measuring bluff erosion part 2: pairing aerial photographs and terrestrial laser scanning to create a watershed scale sediment budget. *Earth Surf Proc Land* 2013b;38:1068–82. doi:10.1002/esp.3359.

- 1285 Deems JS, Painter TH, Finnegan DC. Lidar measurement of snow depth: a  
review. *J Glaciology* 2013;59(215):467–79.
- Dietrich W, Bellugi D, Heimsath A, Roering J, Sklar L, Stock J. Geomorphic  
transport laws for predicting landscape form and dynamics. In: *Prediction  
in Geomorphology, Geophysical Monograph Series* (edited by P. Wilcock and  
R. Iverson). Washington D.C.: AGU; 2003. p. 103–23.
- 1290 Dietrich W, Perron JT. The search for a topographic signature of life. *Nature*  
2006;439(7075):411–8.
- Doerry AW, Dickey FM. Synthetic aperture radar. *Opt Photonics News*  
2004;15(11):28–33.
- Drever JI. The effect of land plants on weathering rates of sili-  
1295 cate minerals. *Geochimica et Cosmochimica Acta* 1994;58:2325–32.  
doi:10.1016/0016-7037(94)90013-2.
- Eagleson PS. The emergence of global-scale hydrology. *Water Resour Res*  
1986;22(9):6S–14S.
- Easterbrook SM. Open code for open science? *Nat Geosci* 2014;7:779–81.  
1300 doi:10.1038/ngeo2283.
- Ellis EC. Anthropogenic transformation of the terrestrial biosphere. *Phil TRans  
R Soc A* 2011;369:1010–35.
- Ellis EC, Wang H, Xiao H, Peng K, Liu XP, Li SC, Ouyang H, Cheng X, Yang  
LZ. Measuring long-term ecological changes in densely populated landscapes  
1305 using current and historical high resolution imagery. *Remote Sens Environ*  
2006;100:457–73.
- Erdogan S. A comparison of interpolation methods for producing digital eleva-  
tion models at the field scale. *Earth Surf Process Landforms* 2009;34:366–76.  
doi:10.1002/esp.1731.



- 1310 Erwin SO, Schmidt JC, Wheaton JM, Wilcock PR. Closing a sediment budget  
for a reconfigured reach of the Provo River, Utah, United States. *Water  
Resour Res* 2012;48:W10512. doi:10.1029/2011WR011035.
- Evans JS, Hudak AT. A multiscale curvature algorithm for classifying discrete  
return lidar in forested environments. *IEEE Trans Geosci Remote Sens*  
1315 2007;45:1029–38. doi:doi:10.1109/TGRS.2006.890412.
- Farrell SL, Collier BA, Skow KL, Long AM, Campomizzi AJ, Morrison ML,  
Hays KB, Wilkins RN. Using Lidar-derived vegetation metrics for high-  
resolution, species distribution models for conservation planning. *Ecosphere*  
2013;4(3):art42. doi:10.1890/ES12-000352.1.
- 1320 Fisher GB, Bookhagen B, Amos CB. Channel planform geometry and slopes  
from freely available high-spatial resolution imagery and DEM fusion: Im-  
plications for channel width scalings, erosion proxies, and fluvial signa-  
tures in tectonically active landscapes. *Geomorphology* 2013;194:46–56.  
doi:10.1016/j.geomorph.2013.04.011.
- 1325 Fisher P. The pixel: a snare and a delusion. *Int J Rem Sens* 1997;18(3):679–85.
- Fisher PF, Tate NJ. Causes and consequences of error in digital elevation  
models. *Prog Phys Geog* 2006;30:467–89. doi:10.1191/0309133306pp492ra.
- Foley JA, DeFries R, Asner GP, Barford C, Bonan G, Carpenter SR. Global  
consequences of land use. *Science* 2005;309:570–4.
- 1330 Fonstad MA, Dietrich JT, Courville BC, Jensen JL, Carbonneau PE. To-  
pographic structure from motion: a new development in photogram-  
metric measurement. *Earth Surf Process Landforms* 2013;38:421–30.  
doi:10.1002/esp.3366.
- 1335 Foufoula-Georgiou E, Ganti V, Dietrich WE. A non-local theory for  
sediment transport on hillslopes. *J Geophys Res* 2010;115:F00A16.  
doi:10.1029/2009JF001280.

- Foufoula-Georgiou E, Passalacqua P. Nonlocal transport theories in geomorphology: mathematical modeling of broad scales of motion. In: Shroder J, Baas ACW, editors. *Treatise on Geomorphology*. San Diego, CA: Academic Press; volume 2; 2013. p. 98–116.
- 1340
- Frankel KL, Dolan JF. Characterizing arid region alluvial fan surface roughness with airborne laser swath mapping digital topographic data. *J Geophys Res Earth Surf* 2007;112:F02025. doi:10.1029/2006JF000644.
- Furbish DJ, Roering JJ. Sediment disentrainment and the concept of local versus nonlocal transport on hillslopes. *J Geophys Res Earth Surf* 2013;118:937–52. doi:10.1002/jgrf.20071.
- 1345
- Gabet EJ. Gopher bioturbation: Field evidence for non-linear hillslope diffusion. *Earth Surface Processes and Landforms* 2000;25:1419–28.
- Galewsky J. Rain shadow development during the growth of mountain ranges: An atmospheric dynamics perspective. *J Geophys Res Earth Surf* (2003–2012) 2009;114(F1):F01018. doi:10.1029/2008JF001085.
- 1350
- Galewsky J, Roe G, Anderson R, Meyer G, Flowers G. *Climate Over Landscapes: Workshop on Atmospheric Sciences and Surface Processes*; Boulder, Colorado, 13 October 2007. *EOS* 2008;89(16):151.
- Gangodagamage C, Belmont P, Foufoula-Georgiou E. Revisiting scaling laws in river basins: New considerations across hillslope and fluvial regimes. *Water Resour Res* 2011;47:W07508. doi:10.1029/2010WR009252.
- 1355
- Gangodagamage C, Foufoula-Georgiou E, Belmont P. River basin organization around the mainstem: Self-similarity in tributary branching and the incremental area function. *J Geophys Res-Earth* 2014;in press.
- 1360
- Ganti V, Meerschaert MM, Foufoula-Georgiou E, Viparelli E, Parker G. Normal and anomalous diffusion of gravel tracer particles in rivers. *J Geophys Res* 2010;115:F00A12. doi:10.1029/2008JF001222.

- 1365 Ganti V, Passalacqua P, Fofoula-Georgiou E. A subgrid scale closure for non-linear hillslope sediment transport models. *J Geophys Res-Earth* (2003–2012) 2012;117(F2).
- Garcia-Gutierrez J, Gonzalez-Ferreiro E, Riquelme-Santos JC, Miranda D, Dieguez-Aranda U, Navarro-Cerillo RM. Evolutionary feature selection to estimate forest stand variables using LiDAR. *Int J Appl Earth Obs* 2014;26:119–1370 31.
- Gilbert GK. The complexity of hilltops. *J Geol* 1909;17:344–50.
- Gilbert GK, Dutton CE. Report on the Geology of the Henry Mountains (Utah). Technical Report; U.S. Geological Survey; 1880.
- Gilbert GK, Murphy EC. The transportation of debris by running water. Technical Report; U.S. Geological Survey; 1914. 1375
- Gleason CJ, Im J. Forest biomass estimation from airborne LiDAR data using machine learning approaches. *Remote Sens Environ* 2012a;125:80–91. doi:10.1016/j.rse.2012.07.006.
- Gleason CJ, Im J. A fusion approach for tree crown delineation from LiDAR 1380 data. *Photogramm Eng Rem S* 2012b;78:679–92.
- Glenn NF, Streutker DR, Chadwick DJ, Tahckray GD, Dorsch SJ. Analysis of lidar-derived topography information for characterizing and differentiating landslide morphology and activity. *Geomorphology* 2006;73:131–48.
- Glennie CL. Rigorous 3D error analysis of kinematic scanning LIDAR systems. 1385 *J Geodesy* 2007;1:147–57. doi:10.1515/JAG.2007.
- Glennie CL, Brooks B, Ericksen T, Hauser D, Hudnut K, Foster J, Avery J. Compact multipurpose mobile laser scanning system - Initial tests and results. *Remote Sens* 2013a;5:521–38. doi:10.3390/rs5020521.

- 1390 Glennie CL, Carter WE, Shresta RL, Dietrich WE. Geodetic imaging with air-  
borne LiDAR: the Earth's surface revealed. *Rep Prog Phys* 2013b;76:086801.  
doi:10.1088/0034-4885/76/8/086801.
- Glennie CL, Hinojosa-Corona A, Nissen E, Kusari A, Oskin ME, Arrow-  
smith JR, Borsa A. Optimization of legacy lidar data sets for measuring  
near-field earthquake displacements. *Geophys Res Lett* 2014;41:3494–501.  
1395 doi:10.1002/2014GL059919.
- Goodman A, Pepe A, Blocker AW, Borgman CL, Cranmer K, Crosas M,  
Di Stefano R, Gil Y, Groth P, Hedstrom M, Hogg DW, Kashyap V, Ma-  
habal A, Siemiginowska A, Slavkovic A. Ten Simple Rules for the Care  
and Feeding of Scientific Data. *PLoS Comput Biol* 2014;10(4):e1003542.  
1400 doi:10.1371/journal.pcbi.1003542.
- Goodwell AE. Assessment of floodplain vulnerability during extreme  
Mississippi River flood 2011. *Environ Sci Technol* 2014;48:2619–25.  
doi:10.1021/es404760t.
- Hamedianfar A, Shafri HZM, Mansor S, Ahmad N. Improving detailed rule-  
1405 based feature extraction of urban areas from WorldView-2 image and lidar  
data. *Int J Remote Sensing* 2014;35(5):1876–99.
- Hay GJ, Blaschke T, Marceau DJ, Bouchard A. A comparison of three image-  
object methods for the multiscale analysis of lanscape structure. *ISPRS J*  
*Photogramm* 2003;57:327–45.
- 1410 Hay GJ, Marceau DJ, Dubè P, Bouchard A. A multiscale framework for  
landscape analysis: Object-specific analysis and upscaling. *Landscape ecol*  
2001;16:471–90.
- Helbig N, Lowe H. Shortwave radiation parameterization scheme for subgrid  
topography. *J Geophys Res-Atmos* 2012;117(D3):1984–2012.
- 1415 Hensleigh J. Geomorphic Change Detection Using Multi-Beam SONAR. Tech-  
nical Report; Utah State University; 2014.

- Heritage G, Hetherington D. Towards a protocol for laser scanning in fluvial geomorphology. *Earth Surf Proc Land* 2007;32:66–74. doi:10.1002/esp.1375.
- Heritage G, Large A. *Laser Scanning for the Environmental Sciences*. Wiley-Blackwell, 2009. 1420
- Hilley GE, Arrowsmith JR. Geomorphic response to uplift along the Dragons Back Pressure Ridge, Carrizo Plain, California. *Geology* 2008;36:367–70.
- Hobi ML, Ginzler C. Accuracy assessment of digital surface models based on WorldView-2 and ADS80 stereo remote sensing data. *Sensors* 2012;12(5):6347–68. doi:10.3390/s120506347. 1425
- Hodgson ME, Jensen J, Raber G, Tullis J, Davis BA, Thompson G, Schuckman K. An evaluation of lidar-derived elevation and terrain slope in leaf-off conditions. *Photogramm Eng Rem S* 2005;71(7):817–23.
- Hofmann P, Blaschke T, Strobl J. Quantifying the robustness of fuzzy rule sets in object-based image analysis. *Int J Remote Sensing* 2011;32(22):7359–81. 1430
- Hooke RL. On the efficacy of humans as geomorphic agents. *GSA Today* 1994;4(9).
- Hooke RL. On the history of humans as geomorphic agents. *Geology* 2000;28:843–6.
- Hopkinson C, Chasmer LE, Sass G, Creed IF, Sitar M, Kalbfleisch W, Treitz P. Vegetation class dependent errors in lidar ground elevation and canopy height estimates in a boreal wetland environment. *Ca J Remote Sens* 2005;31(2):191–206. 1435
- Howard A. A detachment-limited model of drainage basin evolution. *Water Resour Res* 1994;30 (7):2261–85. 1440
- Huang S, Young C, Feng M, Heidemann K, Cushing M, Mushet DM, Liu S. Demonstration of a conceptual model for using LiDAR to improve the esti-

- mation of floodwater mitigation potential of Prairie Pothole Region wetlands. *J Hydrol* 2011;405(3):417–26.
- 1445 Hudak AT, Strand EK, Vierling LA, Byrne JC, Eitel JU, Martinuzzi S, Falkowski MJ. Quantifying aboveground forest carbon pools and fluxes from repeat LiDAR surveys. *Remote Sens Environ* 2012;123:25–40.
- Hugenholtz CH, Whitehead K, Brown OW, Barchyn TE, Moorman BJ, LeClair A, Riddell K, Hamilton T. Geomorphological mapping with a small un-  
1450 manned aircraft system (sUAS): Feature detection and accuracy assessment of a photogrammetrically-derived digital terrain model. *Geomorphology* 2013;194:16–24.
- Ivanov VY, Bras RL, Vivoni ER. Vegetation-hydrology dynamics in complex terrain of semiarid areas: I. A mechanistic approach to modeling dynamic  
1455 feedbacks. *Water Resour Res* 2008;44:W03429.
- James MR, Robson S. Straightforward reconstruction of 3d surfaces and topography with a camera: Accuracy and geoscience application. *J Geophys Res* 2012;117:F03017. doi:10.1029/2011JF002289.
- James MR, Robson S. Mitigating systematic error in topographic models derived from uav and ground-based image networks. *Earth Surf Proc Land*  
1460 2014;39:1413–20. doi:10.1002/esp.3609.
- Javernick L, Brasington J, Caruso B. Modeling the topography of shallow braided rivers using structure-from-motion photogrammetry. *Geomorphology* 2014;213:166–82. doi:10.1016/j.geomorph.2014.01.006.
- 1465 Joerg PC, Morsdorf F, Zemp M. Uncertainty assessment of multi-temporal airborne laser scanning data: A case study on an Alpine glacier. *Remote Sens Environ* 2012;127:118–29. doi:10.1016/j.rse.2012.08.012.
- Johnson K, Nissen E, Saripalli S, Arrowsmith JR, McGarey P, Scharer K, Williams P, Blisniuk K. Rapid mapping of ultrafine fault zone

- 1470 topography with structure from motion. *Geosphere* 2014;10(5):1–18.  
doi:10.1130/GES01017.1.
- Kirkby M. Hillslope process-response models based on the continuity equation.  
*Inst Brit Geogr, Spec Publ* 1971;3:15–30.
- Klapinski M, Hazel JE, Grams PE, Davis PA. Monitoring Fine-Sediment Vol-  
1475 ume in the Colorado River Ecosystem. Arizona Construction and Analysis  
of Digital Elevation Models Open File Report 2014-1052; U.S. Geological  
Survey; Grand Canyon Monitoring Research Center, Flagstaff, AZ; 2014.  
doi:10.3133/ofr20141052; 29pp.
- Lague D, Brodu N, Leroux J. Accurate 3D comparison of com-  
1480 plex topography with terrestrial laser scanner: Application to the  
Rangitikei canyon (N-Z). *ISPRS J Photogramm* 2013;82:10–26.  
doi:10.1016/j.isprsjprs.2013.04.009.
- Lane SN. Hydraulic modelling in hydrology and geomorphology: a review of  
high resolution approaches. *Hydrol Process* 1998;12:1131–50.
- 1485 Lane SN, Chandler JH. Editorial: the next generation of high quality topo-  
graphic data for hydrology and geomorphology: new data sources, new appli-  
cations and new problems. *Earth Surf Process Landforms* 2003;28:229–30.
- Lane SN, Westaway RM, Hicks DM. Estimation of erosion and deposition  
volumes in a large, gravel-bed, braided river using synoptic remote sensing.  
1490 *Earth Surf Process Landforms* 2003;28:249–71. doi:10.1002/esp.483.
- Lashermes B, Foufoula-Georgiou E, Dietrich WE. Channel network extrac-  
tion from high resolution topography using wavelets. *Geophys Res Lett*  
2007;34:L23S04. doi:10.1029/2007GL031140.
- Lefsky MA, Cohen WB, Parker GG, Harding DJ. Lidar remote sensing for  
1495 ecosystem studies. *Bioscience* 2002;52(1):19–30.

- Legat K. Approximate direct georeferencing in national coordinates. *ISPRS J Photogramm* 2006;60:239–55. doi:10.1016/j.isprsjprs.2006.02.004.
- Li J, Hu B, Noland TL. Classification of tree species based on structural features derived from high density LiDAR data. *Agr Forest Meteorol* 2013;171:104–14.
- 1500 Lichti DD, Skaloud J. Registration and calibration. In: *Airborne and Terrestrial laser scanning* (edited by G. Vosselman and H.-G. Maas). CRC Press Inc; 2010. p. 83–133.
- Lucas Y. The role of plants in controlling rates and products of weathering: Importance of biological pumping. *Annual Review of Earth and Planetary*  
1505 *Sciences* 2001;29:135–63. doi:10.1146/annurev.earth.29.1.135.
- Mallet C, Bretar F. Full-waveform topographic lidar: State-of-the-art. *ISPRS J Photogramm* 2009;64:1–16.
- Marcus WA, Fonstad MA. Remote sensing of rivers: the emergence of a subdiscipline in the river sciences. *Earth Surf Process Landforms* 2010;35:1867–72.
- 1510 Marsh GP. *Man and nature, or Physical geography as modified by human action*. New York: C. Scribner & Co., 1869. 577 pp.
- Marsh GP. *The Earth as modified by human action*. New York: C. Scribner & Co., 1882. 674 pp.
- May C, Roering JJ, Eaton LS, Burnett KM. Controls on valley width in mountainous landscapes: The role of landsliding and implications for salmonid  
1515 habitat. *Geology* 2013;41(4):503–6.
- McKean J, Roering JJ. Objective landslide detection and surface morphology mapping using high-resolution airborne laser altimetry. *Geomorphology* 2004;57:331–51. doi:10.1016/S0169-555X(03)00164-8.
- 1520 McKean J, Tonina D, Bohn C, Wright CW. Effects of bathymetric lidar errors on flow properties predicted with a multi-dimensional hydraulic model. *J Geophys Res-Earth* 2014;119(3):644–64.



- Meng X, Currit N, Zhao K. Ground filtering algorithms for airborne LiDAR data: a review of critical issues. *Rem Sens* 2010;2:833–60. doi:10.3390/rs2030833. 1525
- Meysman FJR, Middelburg JJ, Heip CHR. Bioturbation: a fresh look at darwin's last idea. *Trends in Ecology and Evolution* 2006;21:688–95. doi:10.1016/j.tree.2006.08.002.
- Milan DJ, Heritage GL, Large ARG, Fuller IC. Filtering spatial error from DEMs: Implications for morphological change estimation. *Geomorphology* 2011;125(1):160–71. doi:10.1016/j.geomorph.2010.09.012. 1530
- Molotch NP, Painter TH, Bales RC, Dozier J. Incorporating remotely-sensed snow albedo into a spatially-distributed snowmelt model. *Geophys Res Lett* 2004;31(3):L03501. doi:10.1029/2003GL019063.
- Montgomery DR. Soil erosion and agricultural sustainability. *Proc Nat Acad Sci* 2007;104:13268–72. 1535
- Montgomery DR, Dietrich WE. Channel initiation, drainage density and slope. *Water Resour* 1989;25 (8):1907–18.
- Morsdorf F, Nichol C, Malthus T, Woodhouse IH. Assessing forest structural and physiological information content of multi-spectral LiDAR waveforms by radiative transfer modelling. *Remote Sens Environ* 2009;113(10):2152–63. 1540
- Mountrakis G, Im J, Ogole C. Support vector machines in remote sensing: A review. *ISPRS J Photogramm* 2011;66:247–59. doi:10.1016/j.isprsjprs.2010.11.001.
- Mukoyama S. Estimation of ground deformation caused by the earthquake (Mw7.2) in Japan, 2008, from the geomorphic image analysis of high resolution LiDAR DEMs. *J Mt Sci* 2012;8:239–45. 1545
- Nguyen MQ, Atkinson PM, Lewis HG. Superresolution mapping using a Hopfield neural network with LIDAR data. *IEEE Geosci Remote S* 2005;2(3):366–70. 1550

- Nissen E, Krishnan AK, Arrowsmith JR, Saripalli S. Three-dimensional surface displacements and rotations from differencing pre- and post-earthquake lidar point clouds. *Geophys Res Lett* 2012;39:L16301. doi:10.1029/2012GL052460.
- Nissen E, Maruyama T, Arrowsmith JR, Elliott J, Krishnan A, Oskin M, Saripalli S. Coseismic fault zone deformation revealed with differential lidar: examples from japanese Mw7 intraplate earthquakes. *Earth Planet Science Lett* 2014;in review.
- NRC . Elevation data for floodplain mapping. Washington, DC: The National Academies Press, 2007.
- 1560 NRC . Landscapes on the edge. Washington, DC: The National Academies Press, 2010.
- Oliver C, Quegan S. Understanding synthetic aperture radar images. SciTech Publishing, 2004. 512 pp.
- Oskin ME, Arrowsmith JR, Corona AH, Elliott AJ, Fletcher JM, Fielding EJ, Gold PO, Gonzalez Garcia JJ, Hudnut KW, Liu-Zeng J, Teran OJ. Near-field deformation from the El Mayor-Cucapah earthquake revealed by differential lidar. *Science* 2012;335:702–5. doi:10.1126/science.1213778.
- Paola C, Fofoula-Georgiou E, Dietrich WE, Hondzo M, Mohrig D, Parker G, Power ME, Rodriguez-Iturbe I, Voller V, Wilcock P. Toward a unified science of the Earth's surface: opportunities for synthesis among hydrology, geomorphology, geochemistry, and ecology. *Water Resour Res* 2006;42(3):W03S10. doi:10.1029/2005WR004336.
- Passalacqua P, Belmont P, Fofoula-Georgiou E. Automatic geomorphic feature extraction from lidar in flat and engineered landscapes. *Water Resour Res* 1575 2012;48:W03528. doi:10.1029/2011WR010958.
- Passalacqua P, Tarolli P, Fofoula-Georgiou E. Testing space-scale methodologies for automatic geomorphic feature extraction from lidar in a

- complex mountainous landscape. *Water Resour Res* 2010b;46:W11535.  
doi:10.1029/2009WR008812.
- 1580 Passalacqua P, Trung TD, Foufloula-Georgiou E, Sapiro G, Dietrich WE.  
A geometric framework for channel network extraction from lidar: Non-  
linear diffusion and geodesic paths. *J Geophys Res* 2010a;115:F01002.  
doi:10.1029/2009JF001254.
- Pelletier JD. A robust, two-parameter method for the extraction of drainage  
1585 networks from high-resolution digital elevation models (dems): Evaluation  
using synthetic and real-world networks. *Water Resour Res* 2013;49:1–15.  
doi:10.1029/2012WR012452.
- Pelletier JD, Orem CA. How do sediment yields from post-wildfire debris-laden  
flows depend on terrain slope, soil burn severity class, and drainage basin  
1590 area? Insights from airborne-LiDAR change detection. *Earth Surf Process  
Landforms* 2014;doi:10.1002/esp.3570.
- Perona P, Malik J. Scale-space and edge detection using anisotropic diffusion.  
*IEEE-PAMI* 1990;12:629–39.
- Perron JT, Kirchner JW, Dietrich WE. Formation of evenly spaced ridges and  
1595 valleys. *Nature* 2009;460:502–5. doi:10.1038/nature08174.
- Petrie G, Toth CK. Introduction to laser ranging, profiling and scanning. In:  
Shan J, Toth CK, editors. *Topographic Laser Ranging and Scanning: Princi-  
ples and Processing*. Boca Raton, FL: CRC Press; 2009a. p. 1–27.
- Petrie G, Toth CK. Terrestrial laser scanners. In: Shan J, Toth CK, editors.  
1600 *Topographic Laser Ranging and Scanning: Principles and Processing*. Boca  
Raton, FL: CRC Press; 2009b. p. 87–127.
- Petrie G, Toth CK. Airborne and spaceborne laser profilers and scanners. In:  
Shan J, Toth CK, editors. *Topographic Laser Ranging and Scanning: Princi-  
ples and Processing*. Boca Raton, FL: CRC Press; 2009c. p. 29–85.

- 1605 Pfeifer N, Mandlburger G. LiDAR data filtering and DTM generation. In: Shan J, Toth CK, editors. *Topographic Laser Ranging and Scanning: Principles and Processing*. Boca Raton, FL: CRC Press; 2009. p. 308–33.
- Phillips JD. Biological energy in landscape evolution. *American Journal of Science* 2009;309:271–89. doi:10.2475/04.2009.01.
- 1610 Pike RJ, Evans IS, Hengl T. Geomorphometry: a brief guide. In: Hengl T, Reuter H, editors. *Geomorphometry: concepts, software, applications*. Elsevier; volume 33; 2009. p. 3–30.
- Priestnall G, Jaafar J, Duncan A. Extracting urban features from LIDAR digital surface models. *Comput Environ Urban* 2000;24:65–78.
- 1615 Reed S, Amundson R. Using LIDAR to model Mima mound evolution and regional energy balances in the Great Central Valley, California. *Geol S Am S* 2012;490:21–41.
- Reinhardt L, Jerolmack D, Cardinale BJ, Vanacker V, Wright J. Dynamic interactions of life and its landscape: feedbacks at the interface of geomorphology and ecology. *Earth Surf Process Landforms* 2010;35(1):78–101.
- 1620 Renslow M. *Manual of Airborne Topographic LiDAR*. Bethesda, MD: American Society for Photogrammetry and Remote Sensing, 2012. 504 pp.
- Rhoads BL. The Dynamic Basis of Geomorphology Reenvisioned. *Annals of the Association of American Geographers* 2006;96(1):14–30.
- 1625 Riitters KH, Wickham JD. How far to the nearest road? *Front Ecol Environ* 2003;1(3):125–9.
- Roering J. How well can hillslope evolution models ‘explain’ topography? simulating soil transport and production with high-resolution topographic data. *Geol Soc Am Bull* 2008;120 (9):1248–62.

- 1630 Roering J, Kirchner J, Dietrich W. Evidence for nonlinear, diffusive sediment transport on hillslopes and implications for landscape morphology. *Water Resour Res* 1999;35:853–70.
- Roering J, Mackey BH, Marshall JA, Sweeney KE, Deligne NI, Booth AM, Handwerger AL, Cerovski-Darriau C. You are HERE: Connecting the dots with airborne lidar for geomorphic fieldwork. *Geomorphology* 2013;200:172–  
1635 83.
- Roering J, Marshall J, Booth AM, Mort M, Jin Q. Evidence for biotic controls on topography and soil production. *Earth Planet Sci Lett* 2010;298(1):183–90.
- Roering J, Stimely LL, Mackey BH, Schmidt DA. Using DInSAR, airborne Li-  
1640 DAR, and archival air photos to quantify landsliding and sediment transport. *Geophys Res Lett* 2009;36:L19402. doi:10.1029/2009{GL}040374.
- Rosser NJ, Petley DN, Lim M, Dunning SA, Allison RJ. Terrestrial laser scanning for monitoring the process of hard rock coastal cliff erosion. *Q J Eng Geol Hydroge* 2005;38:363–75.
- 1645 Schaer P, Skaloud J, Landtwig S, Legat K. Accuracy estimation for laser point cloud including scanning geometry. In: *Proc. of the 5th international symposium on Mobile Mapping Technology*. Padua, Italy; 2007. .
- Schmidt J, Andrew R. Multi-scale landform characterization. *Area* 2005;37(3):341–50.
- 1650 Schmidt J, Hewitt A. Fuzzy land element classification from dtms based on geometry and terrain position. *Geoderma* 2004;121(3):243–56.
- Schurch P, Densmore AL, Rosser NJ, Lim M, McArdell BW. Detection of surface change in complex topography using terrestrial laser scanning: application to the Illgraben debris-flow channel. *Earth Surf Process Landforms*  
1655 2011;36:1847–59. doi:10.1002/esp.2206.

- Shan J, Toth C. Topographic Laser Ranging and Scanning. New York, NY: CRC Press, 2009. 504 pp.
- 1660 Sidle RC, Noguchi S, Tsuboyama Y, Laursen K. A conceptual model of preferential flow systems in forested hillslopes: evidence of self-organization. *Hydrol Process* 2001;15:1675–92. doi:10.1002/hyp.233.
- Sidle RC, Ziegler AD. The dilemma of mountain roads. *Nature Geoscience* 2012;5:437–8.
- 1665 Sithole G, Vosselman G. Experimental comparison of filter algorithms for bare-Earth extraction from airborne laser scanning point clouds. *ISPRS J Photogramm* 2004;59:85–101.
- Smith T, Bretherton F. Stability and the conservation of mass in drainage basin evolution. *Water Resour Res* 1972;8:1506–29.
- Snaveley N. Scene reconstruction and visualization from Internet photo collections. Ph.D. thesis; University of Washington, USA; 2008.
- 1670 Sofia G, Pirotti F, Tarolli P. Variations in multiscale curvature distribution and signatures of LiDAR DTMs errors. *Earth Surf Proc Land* 2013;38(10):1116–34. doi:10.1002/esp.3363.
- Sofia G, Tarolli P, Cazorzi F, Dalla Fontana G. An objective approach for feature extraction: distribution analysis and statistical descriptors for scale choice and channel network identification. *Hydrol Earth Syst Sc* 2011;15:1387–402. doi:10.5194/hess-15-1387-2011.
- 1675 Soudarissanane S, Lindenbergh R, Menenti M, Teunissen P. Scanning geometry: Influencing factor on the quality of terrestrial laser scanning points. *ISPRS J Photogramm* 2011;66(4):389–99. doi:10.1016/j.isprsjprs.2011.01.005.
- 1680 Spaete L, Glenn N, Derryberry D, Sankey T, Mitchell J, Hardegree S. Vegetation and slope effects on accuracy of a LiDAR-derived DEM in the sagebrush steppe. *Remote Sens Lett* 2011;2(4):317–26.

- Stout J, Belmont P. TerEx Toolbox for semi-automated selection of fluvial terrace and floodplain features from lidar. *Earth Surf Proc Land* 2014;39(5):569–80. doi:10.1002/esp.3464. 1685
- Strahler AN. Dynamic basis of geomorphology. *Bulletin of the Geological Society of America* 1952;63:923–38.
- Streutker D, Glenn N. Lidar measurement of sagebrush steppe vegetation heights. *Remote Sens Environ* 2006;102:135–45. doi:10.1016/j.rse.2006.02.011. 1690
- Streutker D, Glenn N, Shrestha R. A slope-based method for matching elevation surfaces. *Photogramm Eng Rem S* 2011;77(7):743–50.
- Stumpf A, Malet J, Allemand P, Ulrich P. Surface reconstruction and landslide displacement measurements with pléiades satellite images. *ISPRS J Photogramm* 2014;95:1–12. doi:10.1016/j.isprsjprs.2014.05.008. 1695
- Suárez JC, Ontiveros C, Smith S, Snape S. Use of airborne LiDAR and aerial photography in the estimation of individual tree heights in forestry. *Comp Geosci* 2005;31:253–62. doi:10.1016/j.cageo.2004.09.015.
- Syvitski JPM, Saito Y. Morphodynamics of deltas under the influence of humans. *Glob Planet Change* 2007;57:261–82. 1700
- Tarolli P. High-resolution topography for understanding Earth surface processes: Opportunities and challenges. *Geomorphology* 2014;216:295–312.
- Tarolli P, Preti F, Romano N. Terraced landscapes: from an old best practice to a potential hazard for soil degradation due to land abandonment. *Anthropocene* 2014;doi:10.1016/j.ancene.2014.03.002. 1705
- Tarolli P, Sofia G, Dalla Fontana G. Geomorphic features extraction from high-resolution topography: landslide crowns and bank erosion. *Nat Hazards* 2012;61:65–83. doi:10.1007/s11069-010-9695-2.

- 1710 Taylor J. An Introduction to Error Analysis: the Study of Uncertainties in  
Physical Measurements, Second Edition. Sausalito, California: University  
Science Books, 1997. 327 pp.
- Teza G, Galgaro A, Zaltron N, Genevois R. Terrestrial laser scanner to de-  
tect landslide displacement fields: a new approach. *Int J Remote Sens*  
2007;28(16):3425–46. doi:10.1080/01431160601024234.
- 1715 Tinkham WT, Huang H, Smith AMS, Shresta R, Falkowski MJ, Hudak  
AT, Link TE, Glenn NF, Marks DG. A comparison of two open  
source lidar surface classification algorithms. *Remote Sens* 2011;3:638–49.  
doi:doi:10.3390/rs3030638.
- Tomer MD, Crumpton WG, Bingner RL, Kostel JA, James DE. Estimating  
1720 nitrate load reductions from placing constructed wetlands in a HUC-12 wa-  
tershed using LiDAR data. *Ecol Eng* 2013;56:69–78.
- Trimble SW. Decreased rates of alluvial sediment storage in the  
Coon Creek Basin, Wisconsin, 1975–93. *Science* 1999;285:1244–6.  
doi:10.1126/science.285.5431.1244.
- 1725 Tucker GE, Bradley DN. Trouble with diffusion: reassessing hillslope ero-  
sion laws with a particle-based model. *J Geophys Res* 2010;115:F00A10.  
doi:10.1029/2009JF001264.
- Tucker GE, Slingerland RL. Erosional dynamics, flexural isostasy, and long-lived  
escarpments: a numerical modeling study. *J Geophys Res* 1994;99 (12):229–  
1730 12.
- Tucker GE, Slingerland RL. Drainage basin responses to climate change. *Water  
Resour Res* 1997;33:2031–47.
- Turner D, Lucieer A, Watson C. An automated technique for generating geo-  
rectified mosaics from ultra-high resolution Unmanned Aerial Vehicles (UAV)  
1735 imagery, based on Structure from Motion (SfM) point clouds. *Remote Sens*  
2012;4:1392–410. doi:10.3390/rs4051392.



- Vaaja M, Hyyppä J, Kukko A, Kaartinen H, Hyyppä H, Alho P. Mapping topography changes and elevation accuracies using a mobile laser scanner. *Remote Sens* 2011;3(3):587–600. doi:10.3390/rs3030587.
- 1740 Vierling KT, Vierling LA, Gould WA, Martinuzzi S, Clawges RM. Lidar: shedding new light on habitat characterization and modeling. *Front Ecol Environ* 2008;6(2):90–8.
- Vosselmann G, Maas HG. *Airborne and Terrestrial Laser Scanning*. New York, NY: CRC Press, 2010. 318 pp.
- 1745 Wasklewicz T, Staley DM, Reavis K, Oguchi T. Digital terrain modeling. In: Shroder J, Bishop MP, editors. *Treatise on Geomorphology*. San Diego, CA: Academic Press; volume 3; 2013. p. 130–61.
- Westoby MJ, Brasington J, Glasser NF, Hanbrey MJ, Reynolds JM. ‘Structure-from-Motion’ photogrammetry: a low-cost, effective tool for geoscience applications. *Geomorphology* 2012;179:300–14. doi:10.1016/j.geomorph.2012.08.021.
- 1750 Wheaton JM, Brasington J, Darby SE, Kasprak A, Sear DA, Vericat D. Morphodynamic signatures of braiding mechanisms as expressed through change in sediment storage in a gravel-bed river. *J Geophys Res Earth Surf* 2013;118:759–79. doi:10.1002/jgrf.20060.
- 1755 Wheaton JM, Brasington J, Darby SE, Sear DA. Accounting for uncertainty in DEMs from repeat topographic surveys: improved sediment budgets. *Earth Surf Process Landforms* 2010;35:136–56. doi:10.1002/esp.1886.
- Wheaton JM, Darby SE, Sear DA. The scope of uncertainties in river restoration. In: Darby SE, Sear D, editors. *River Restoration: Managing the Uncertainty in Restoring Physical Habitat*. Chichester, U.K.: John Wiley and Sons; 2008. p. 21–39. doi:10.1002/9780470867082.ch3.
- 1760

- White EP, Baldrige E, Brym ZT, Locey KJ, McGlenn DJ, Supp SR. Nine simple ways to make it easier to (re)use your data. *PeerJPrePrints* 2013;1:e7v2.  
1765 [Http://dx.doi.org/10.7287/peerj.preprints.7v2](http://dx.doi.org/10.7287/peerj.preprints.7v2).
- Wiener N. *Extrapolation, Interpolation, and Smoothing of Stationary Time Series*. New York: Wiley, 1949.
- Wilkinson BH, McElroy BJ. The impact of humans on continental erosion and sedimentation. *Geol Soc Am Bull* 2007;119:140–56.
- 1770 Willgoose G, Bras R, Rodriguez-Iturbe I. A coupled channel network growth and hillslope evolution model; 1, theory. *Water Resour Res* 1991a;27:1671–84.
- Willgoose G, Bras R, Rodriguez-Iturbe I. A coupled channel network growth and hillslope evolution model; 2, nondimensionalization and application. *Water Resour Res* 1991b;27:1685–96.
- 1775 Willgoose G, Bras R, Rodriguez-Iturbe I. A physical explanation of an observed link area-slope relationship. *Water Resour Res* 1991c;27:1697–702.
- Williams K, Olsen MJ, Roe GV, Glennie C. Synthesis of transportation applications of mobile lidar. *Remote Sens* 2013;5:4652–92. doi:doi:10.3390/rs5094652.
- 1780 Williams RD, Brasington J, Vericat D, Hicks DM. Hyperscale terrain modelling of braided rivers: fusing mobile terrestrial laser scanning and optical bathymetric mapping. *Earth Surf Process Landforms* 2014;39:167–83. doi:doi:10.1002/esp.3437.
- Yoo K, Amundson R, Heimsath AM, Dietrich WE. Process-based model linking  
1785 pocket gopher (*Thomomys bottae*) activity to sediment transport and soil thickness. *Geology* 2005;33(11):917–20. doi:10.1130/G21831.1.
- Yoo K, Weinman B, Mudd SM, Hurst M, Attal M, Maher K. Evolution of hillslope soils: The geomorphic theater and the geochemical play. *Appl Geochem* 2011;26:S149–53.

1790 Zhao K, Popescu SC, Meng X, Pang Y, Agca M. Characterizing forest canopy  
structure with lidar composite metrics and machine learning. *Remote Sens  
Environ* 2011;115:1978–96. doi:10.1016/j.rse.2011.04.001.

Zhao K, Popescu SC, Zhang X. Bayesian learning with gaussian processes  
for supervised classification of hyperspectral data. *Photogramm Eng Rem S*  
1795 2008;74(10):1223–34.

HRT	Spatial extent [ $km^2$ ]	Typical point density [pts/ $m^2$ ]	Best georeferenced or measurement accuracy (vert/horiz) [m]	Smallest footprint [m]	Vegetation penetration	Shallow bathymetry
ALS	10-100s	1-30	0.05/0.2-0.2/0.6	0.2	Yes	Yes (green only)
MLS	1-100	100-10000	0.05	0.003-0.01	Yes	No
VHR Stereo satellite imagery	100-15000	0.1-1	0.5/0.5 with GCP* > 3-5 without GCP	0.5	No	Indirect (multispectral)
SFM/MVS Aerial imagery	0.1-100	1-1000	0.02-0.2** Georef set by GCP	0.05	No	Indirect (multispectral)
TLS	0.1-10	1000-100000	0.002-0.01 Georef set by GCP	0.003-0.01	Yes if FW	No
rtkGPS	0.1-10	1-10	0.002-0.01 Georef set by GCP	0.003-0.01	Yes	Yes
Theodolite			Georef set by GCP			

Table 1: HRT types and relative information. \*: for VHR imagery. \*\*: vertical accuracy is of the order 1 : 1000 the viewing distance (James and Robson, 2012).

	Error Sources	Best Case Error Magnitude ( $1\sigma$ )	Spatial Error Model	Recommendations
Positional Uncertainty	Sensor Precision + GPS/IMU + Scan Geometry <i>Range, incidence angle, assembly calibration</i>	ALS case	500 m altitude	Complex. Requires direct propagation of georeferencing errors and scanning geometry effects (e.g., incidence angle) <sup>a</sup>
		3000 m altitude		
TLS case	Sensor Precision + Scan Geometry <i>Range, incidence angle, shadowing</i>	Vertical <sup>a</sup>	0.06 m	Simple for range error. Complex for incidence angle <sup>b</sup>
		Horizontal <sup>a</sup>	0.20 m	
TLS case	Registration <i>Local: Fixed Targets, ICP</i> <i>Georeferencing: GPS</i>	Short Range: 2 mm		Generally taken as spatially uniform, but depends on target and survey organization. Complex to evaluate <sup>b</sup>
		Long Range: > 10 mm		
Point Cloud	Bare Earth Extraction <i>Made complex by vegetation, steep slope, roughness, artifacts</i>	Local	0.002 m	Inference from surface type and classification quality <sup>c</sup> (e.g., point density, roughness <sup>d</sup> ). Use external information (imagery)
		Global	0.05-0.10 m	
Surface Representation	Resolution + Interpolation Method <i>Made complex by vegetation, water, 3D elements, and steep slopes</i>	Extremely variable; negligible (i.e., $10^{-3}$ to $10^{-2}$ m) in densely sampled, smooth surfaces, large (i.e., $10^0$ to $10^1$ m) in topographically complex areas with coarse resolution and poor interpolation areas (wetted or occluded parts) and on rough/steep		Statistical error models and/or fuzzy inference from sub-pixel characteristics <sup>e,f</sup> (e.g., point density, roughness, locally detrended standard deviation) and external information (imagery)
		DEM		
Classification Uncertainty				Filter out points that are less accurate (e.g., high incidence angle) Attempt direct error propagation for high accuracy cases
				Filter point clouds by range and incidence angle to keep the best points
				Select registration method depending on required level of change detection
				Use Full Waveform and external information to improve classification (e.g., intensity, imagery)
				Avoid using DEM in complex environment for high accuracy applications

Table 2: Schematic of error sources and recommendations for ALS/mobile and TLS error budget. a: Glennie (2007); b: Lichti and Skaloud (2010); c: Brodu and Lague (2012); d: Lague et al. (2013); e: Wheaton et al. (2010); f: Brasington et al. (2012)

Source of error	Further reading and existing solutions
Lack of alignment among coordinate systems, datums, geoids	Require relevant metadata
Unawareness of factors influencing computational efficiency: unnecessary data precision and density, local versus global calculations, landscape characteristics	Estimate computational cost on a small data set and proceed with tiling, parallel computing, or decimation if needed. Work on local coordinates rather than global to maintain accuracy.
Inappropriate data resampling strategy	Consider strengths and weaknesses of each interpolation method including associated errors (Wheaton et al., 2010).
Coregistration error	Legacy ALS data and flight lines (Glennie et al., 2014). Visual checks: flight lines, offset among datasets (change detection).
Filtering impacts on feature sharpness (isotropic filters and loss of feature localization)	Nonlinear and Wiener filtering, breaklines
Classification method	Require information on classification method used. Visual checks: vegetation above or below ground, create TINs to visualize data gaps
Data cleaning and manual alteration of data	Employ classification methods and limit manual alteration. If manual intervention is performed, maintain data versions and collect metadata
Mismatched resolution among analysis, tools, data	Know scale that matters for analysis at hand and choose data and tools consistent with that scale requirement

Table 3: Common sources of error in HRT data analysis and references for further reading and existing solutions. See also text for additional discussion on each point.

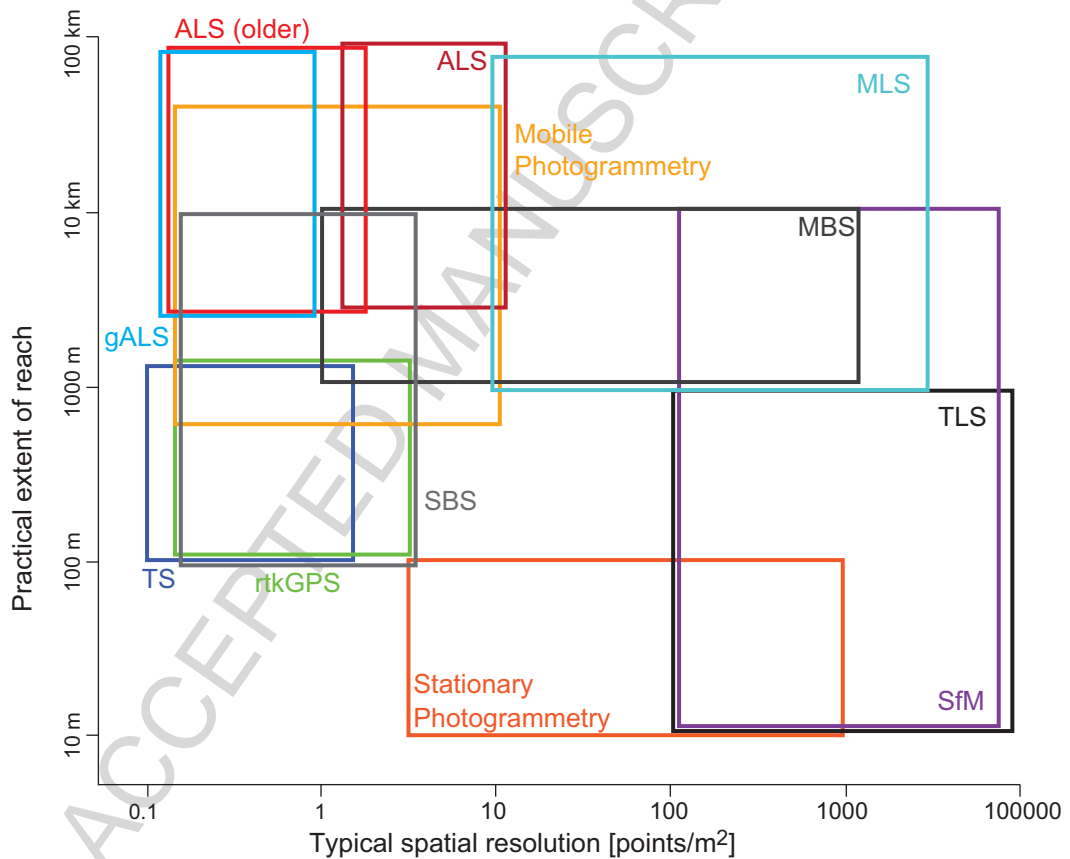


Figure 1: Diagram of typical spatial resolution versus practical extent of analysis reach for Airborne Laser Scanning (ALS), green ALS (gALS), Mobile Laser Scanning (MLS), Total Station (TS), real time kinematic GPS (rtkGPS), single-beam SONAR (SBS), multibeam SONAR (MBS), stationary and mobile photogrammetry, Structure from Motion (SfM), and Terrestrial Laser Scanning (TLS). Figure modified from Bangen et al. (2014).

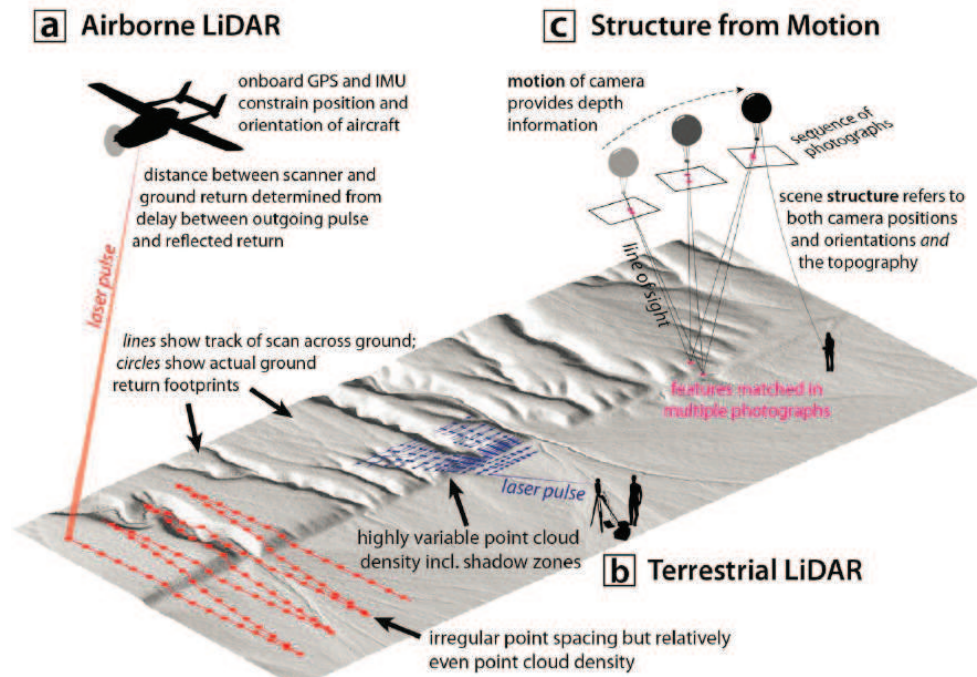


Figure 2: Comparison of raw data acquisition from ALS (a), TLS (b), and SfM (c). Figure reproduced from Johnson et al. (2014).



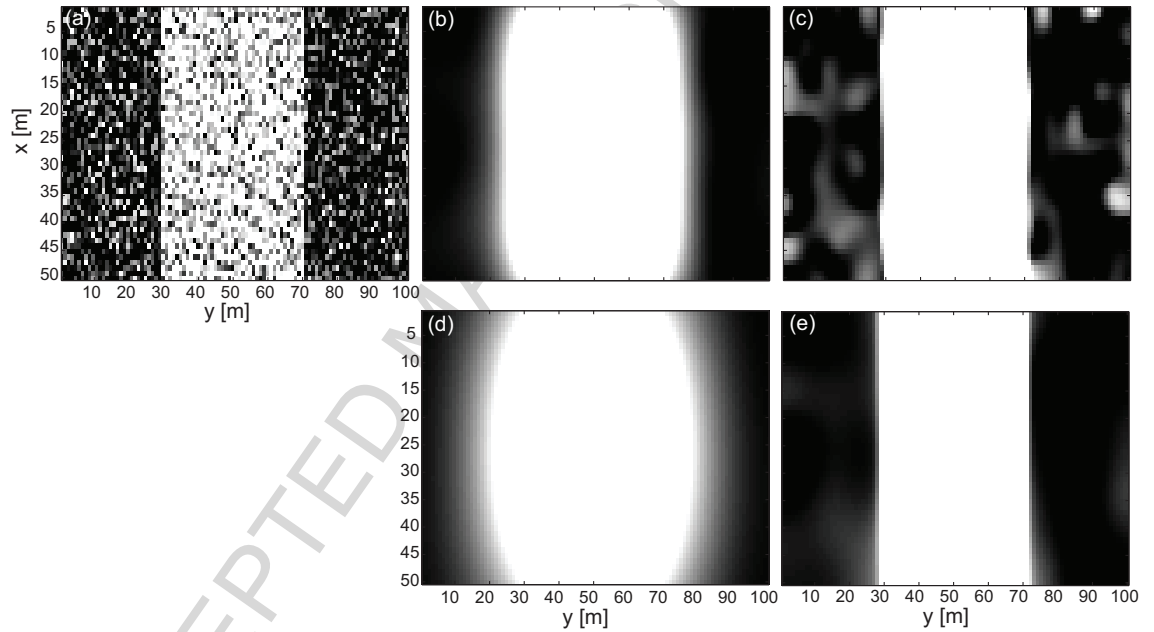


Figure 3: Comparison of the performance of Gaussian (linear) and Perona-Malik (nonlinear) filtering on an idealized landscape with added noise. The white portion is at higher elevation (ridge) than the surrounding landscape. (a) Original noisy image; (b) Noise reduction achieved by Gaussian filtering (standard deviation of the kernel 7 m) at the expense of the boundaries localization; (c) Noise reduction achieved by Perona-Malik filtering (number of iterations  $t = 50$ ). The filter is able to preserve feature localization by avoiding diffusion across its boundaries; (d) Further noise reduction with Gaussian filtering (14 m) results in complete blurring of the ridge; (e) Further Perona-Malik filtering ( $t = 200$ ) results in more noise reduction without affecting the feature and its localization. Figure adapted from Passalacqua et al. (2010a).

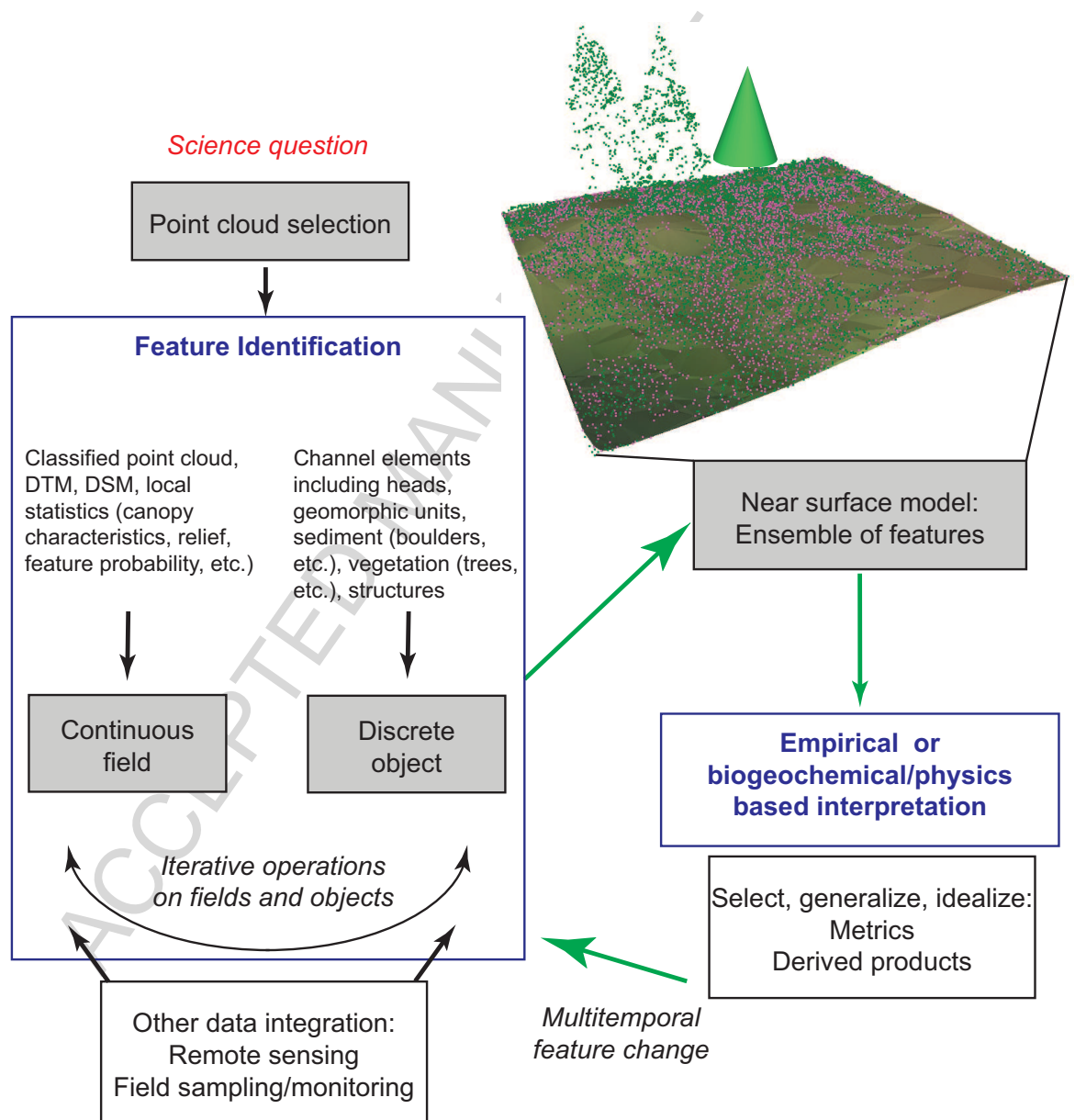


Figure 4: Feature identification work-flow. Principal tasks are to progressively add meaning to a segmented point cloud by identifying continuous fields or discrete objects. The ensemble of identified features is the near surface model and is the basis for scientific interpretation or engineering application. Changes in the near surface model may further indicate process. See text for additional explanation.

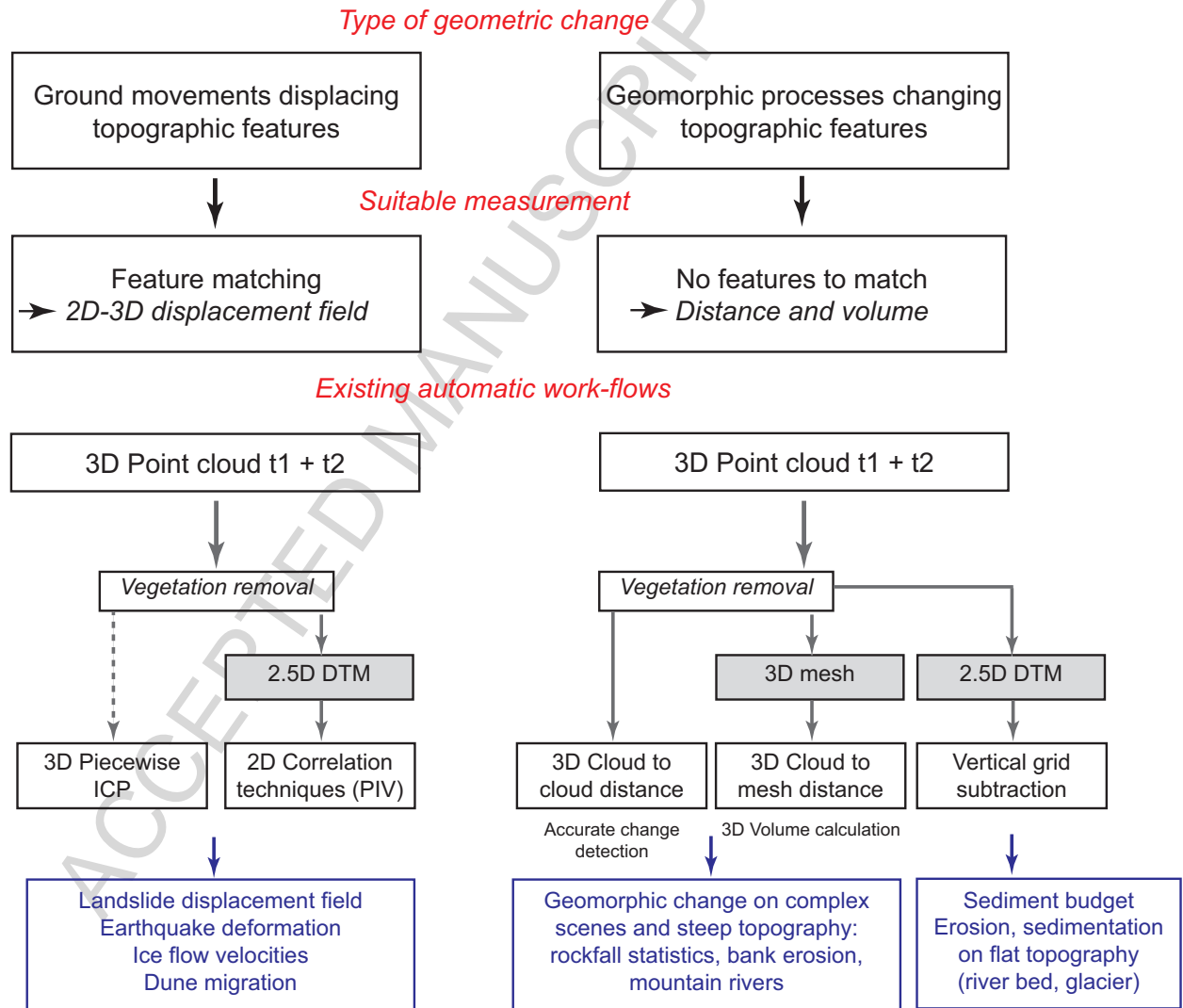


Figure 5: Schematic of work-flows for change detection. Solid gray arrows indicate operations for which fully open source solutions exist; dashed gray arrows indicate operations that require at least one commercial software; blue boxes show examples of products obtainable with each work-flow. Gray filled boxes indicate operations producing a product easier to handle but interpolated resulting in potential accuracy and resolution loss.

**Box 1: Questions to consider before acquiring HRT**

- 1) **Specification Document:** Should a specification document be written to define minimum requirements, deliverables, and answers to the following questions?
- 2) **HRT Method:** What HRT acquisition method(s) would allow collection of the data?
- 3) **Who acquires HRT:** Will a vendor be employed, will you be responsible for data collection, or will the responsibility be shared?
- 4) **Acquisition Timing:** When should acquisition be scheduled to maximize likelihood of successful and useful data collection? Considerations include: season, antecedent moisture or flow levels (rivers), vegetative cover (e.g., leaf on vs. leaf off)
- 5) **Hybrid Data:** Will the HRT dataset need to be meshed with other topographic data to paint a complete picture of the study area? How will continuity among datasets be ensured?
- 6) **Acquisition Perspective:** How will scans (e.g., flight lines, TLS scans, photo orientation, boat paths) be oriented relative to features of interest?
- 7) **Overlapping Coverage:** How much overlap is needed between scans to obtain the needed point cloud density? Does increased density from overlapping coverage constrain HRT models or present conflicting evidence uncertainties?
- 8) **Accuracy Assessment:** What independent data (e.g., check points, check surfaces, other methods of acquisition, air photos) are available in the area or should be collected concurrently for verification and accuracy assessment?
- 9) **Accuracy and Precision Specifications:** What point cloud density or vertical and horizontal accuracy are needed to answer the question of interest?
- 10) **Cost-Benefit:** Are there inflections in the cost/data characteristics relationships that would make additional data collection feasible with current project budget?
- 11) **Features of Interest:** What are the features of interest where the best quality information is needed? Is penetration through water or dense vegetation needed?
- 12) **Breaklines:** How and where will breaklines be used to ensure that critical features/boundaries are well defined?
- 13) **Coordinate Systems and Control Network:** Do data need to be referenced to a local or global coordinate system (i.e. georeferenced)? Is an adequate existing control network in place to facilitate this or does one need to be established or modified? Is it necessary to hire a professional surveyor to establish and improve the network?
- 12) **Repeat Survey Planned or Plausible:** Will the data be compared to future surveys? Even if not planned, but plausible future use by others, is the control network sufficiently redundant to facilitate future repeat occupation of the control network?
- 13) **Uncertainty:** What factors contribute to spatially variable uncertainty of the dataset (e.g., shadows, angle of incidence)?
- 14) **Output Formats:** What are the required end product deliverable format(s) for the post-processed HRT data (e.g., classified point cloud, bare earth point cloud, TIN, raster)?
- 15) **Reporting and Data Sharing:** What level of metadata documentation and reporting will be necessary to make the data useful for its current purposes and to other potential end-users? Do deliverable outputs need to be shared with others and how will this be achieved?
- 16) **Post-Processing:** What post-processing steps will be needed for the data to be useful for your purposes (e.g., filtering, interpolation)? Will the vendor or user complete those steps? If performed by

**Box 2: Questions to consider before analyzing new or existing HRT**

- 1) **Metadata Report:** Does a metadata report exist that documents answers to the following questions?
- 2) **Acquisition Timing:** When were the data collected?
- 3) **Coordinate Systems:** If comparing to other data, are coordinate systems and reference GEOIDS consistent? In which datum, coordinate system, and GEOID were the data originally collected? Is re-projection of the data required? If so, is re-projecting the point cloud instead of the derivative surfaces desirable?
- 4) **Hybrid Dataset:** Do the data contain multiple HRT types that have been stitched together?
- 5) **Format:** What data formats are available (e.g., LAS, raw point cloud, classified point cloud, TIN, DEM)?
- 6) **Post-Processing:** What filters, corrections, and modifications were applied to the data to convert it from raw data to its current state?
- 7) **Blunders and Busts:** Are there artifacts in the dataset? How to deal with them? Are there portions of the dataset that are of especially high or low quality?
- 8) **Validation/Verification:** Are validation/verification data available? Is information available for constraining vertical and horizontal error? Is the collection of additional verification data needed to determine whether the quality of the data is sufficient to answer the question of interest?
- 9) **Analysis Methods:** What are the most appropriate methods and protocols for processing and analyzing the data? Is the implementation of these methods and associated computational costs within