



HAL
open science

The competitive impacts of global SST warming and CO₂ increase on Sahelian rainfall: results from CMIP5 idealized simulations

Marco Gaetani, Cyrille Flamant, Frédéric Hourdin, Sophie Bastin, P. Braconnot, Sandrine Bony

► To cite this version:

Marco Gaetani, Cyrille Flamant, Frédéric Hourdin, Sophie Bastin, P. Braconnot, et al.. The competitive impacts of global SST warming and CO₂ increase on Sahelian rainfall: results from CMIP5 idealized simulations. *Our Common Future Under Climate Change*, International Scientific Conference, Jul 2015, Paris, France. , pp.P-3330-29, 2015. insu-01183130

HAL Id: insu-01183130

<https://insu.hal.science/insu-01183130v1>

Submitted on 6 Aug 2015

HAL is a multi-disciplinary open access archive for the deposit and dissemination of scientific research documents, whether they are published or not. The documents may come from teaching and research institutions in France or abroad, or from public or private research centers.

L'archive ouverte pluridisciplinaire **HAL**, est destinée au dépôt et à la diffusion de documents scientifiques de niveau recherche, publiés ou non, émanant des établissements d'enseignement et de recherche français ou étrangers, des laboratoires publics ou privés.

The competitive impacts of global SST warming and CO2 increase on Sahelian rainfall: results from CMIP5 idealized simulations

Marco Gaetani (1,2), Cyrille Flamant (1), Frederic Hourdin (2), Sophie Bastin (1), Pascale Braconnot (3), Sandrine Bony (2)

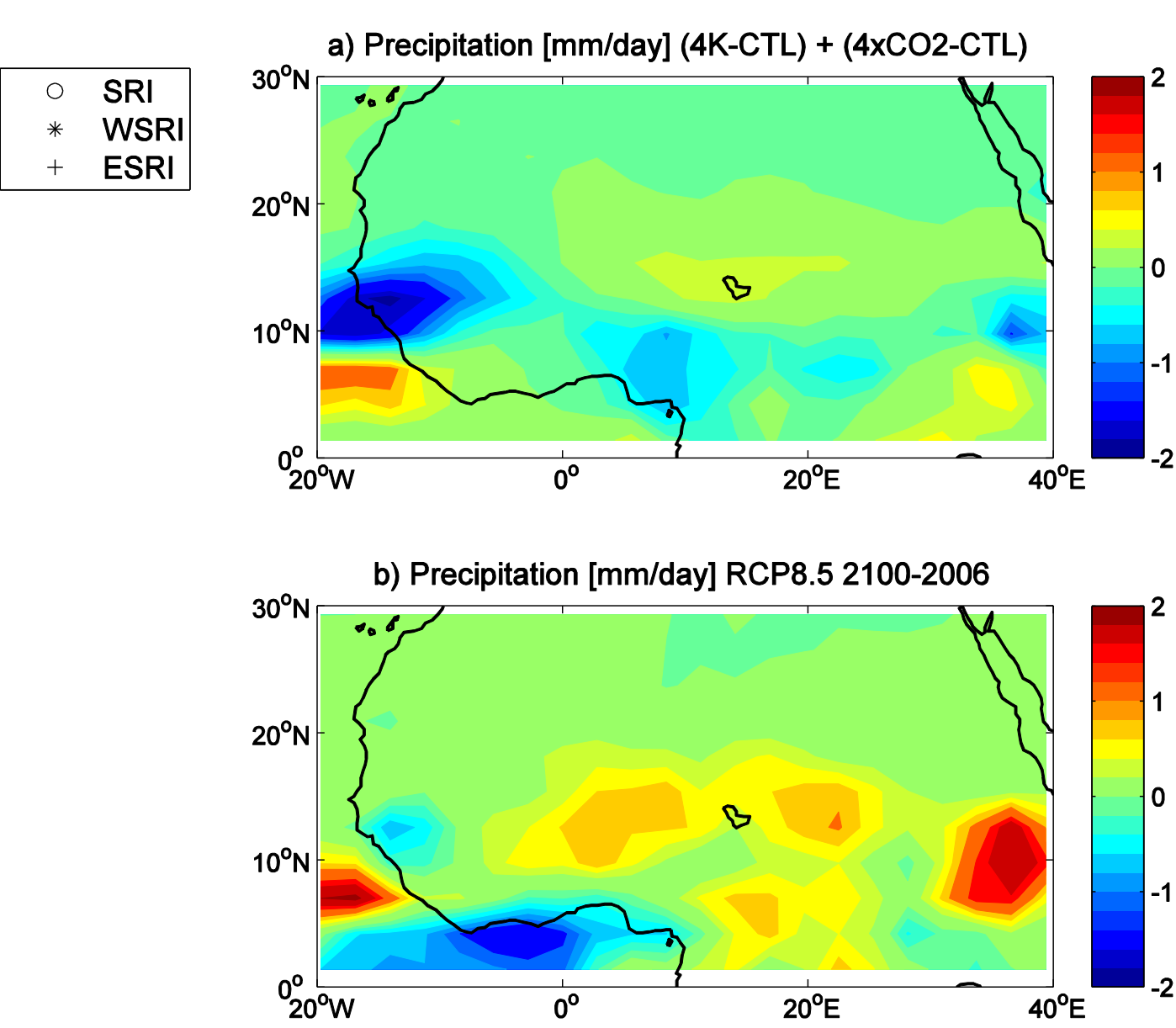
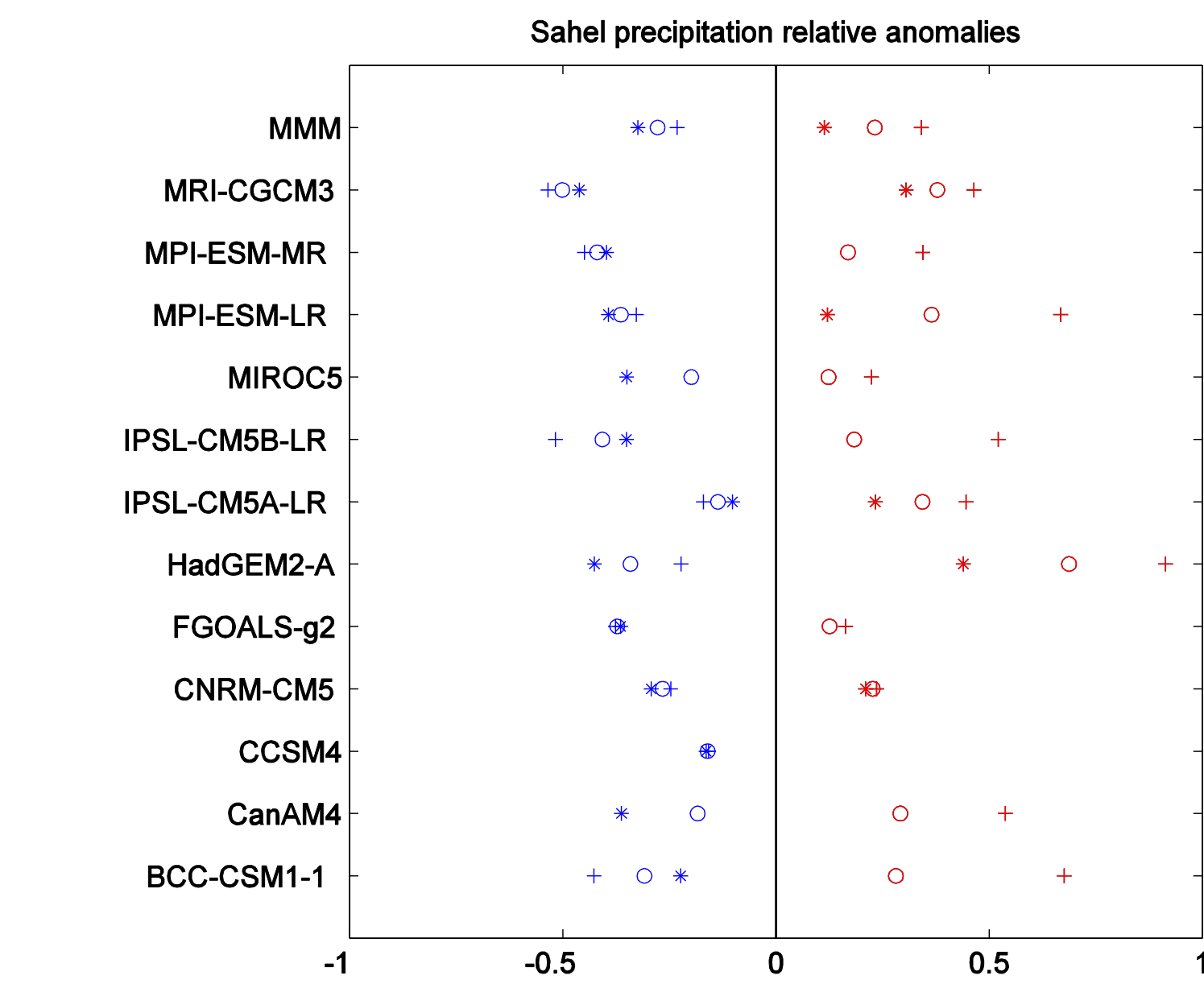
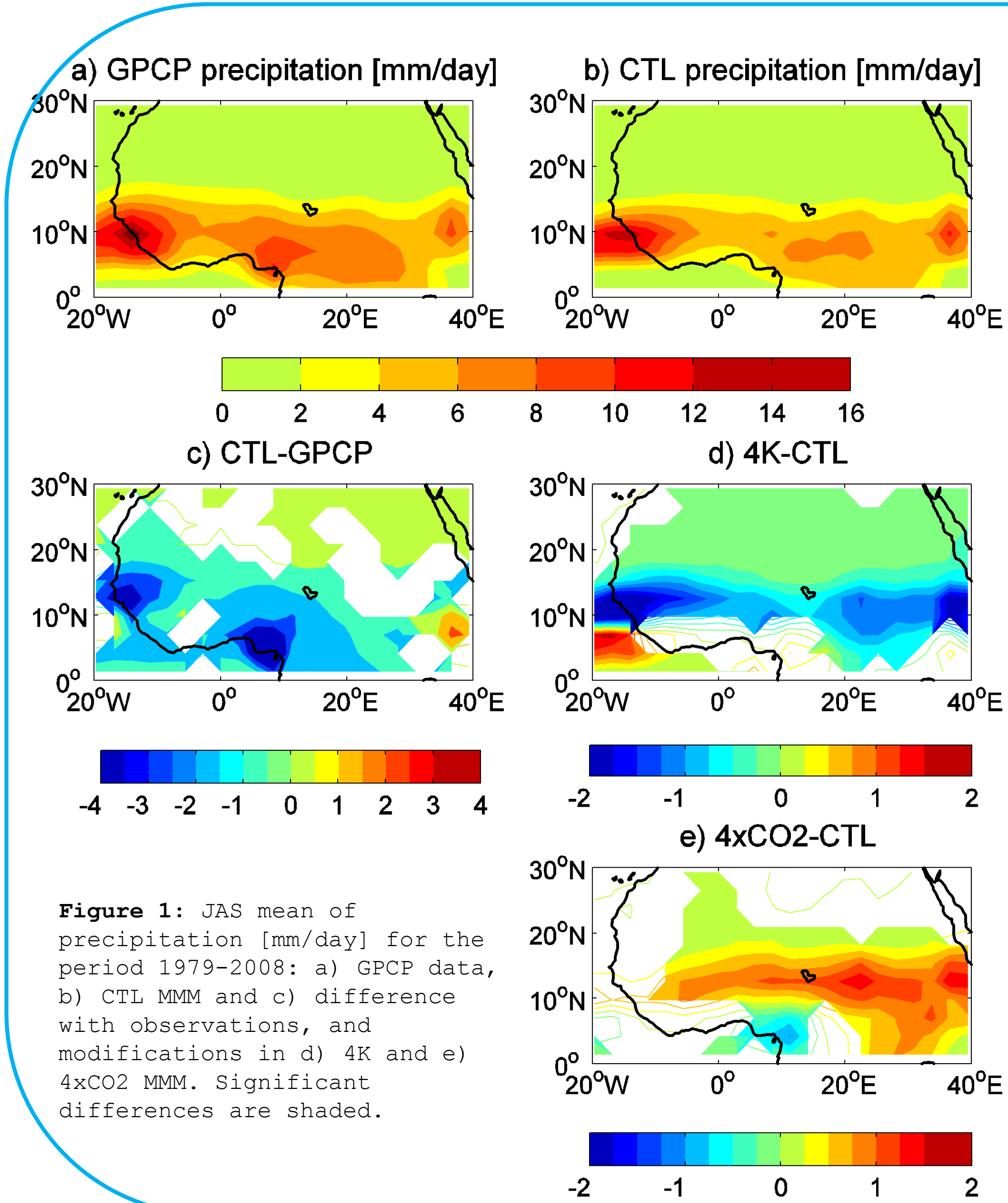
(1) LATMOS-IPSL, CNRS, Paris, France; (2) LMD-IPSL, CNRS, Paris, France; (3) LSCE-IPSL, CNRS, Gif-sur-Yvette, France

Background
West Africa is affected by large climate variability at different timescales, from interannual to multidecadal, with consequent strong environmental and socio-economic impacts, especially in the Sahelian countries, where the economy is mainly sustained by rainfed agriculture. The annual precipitation in the Sahel is limited to the boreal summer season, from July to September (JAS), and it is strongly linked to the **West African monsoon (WAM)** dynamics. After a wet period during the 50s-60s, Sahel has undergone a severe (large scale and long-lasting) **drought in the 70s-80s**, and a partial **recovery of precipitation is observed at the turn of the 21st century**.

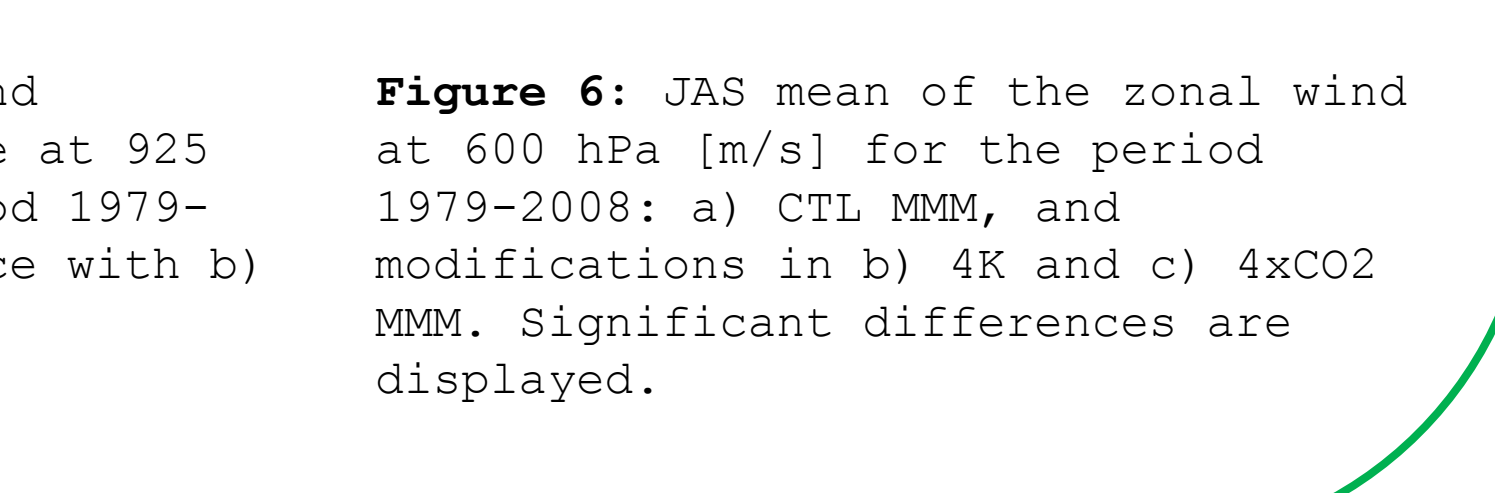
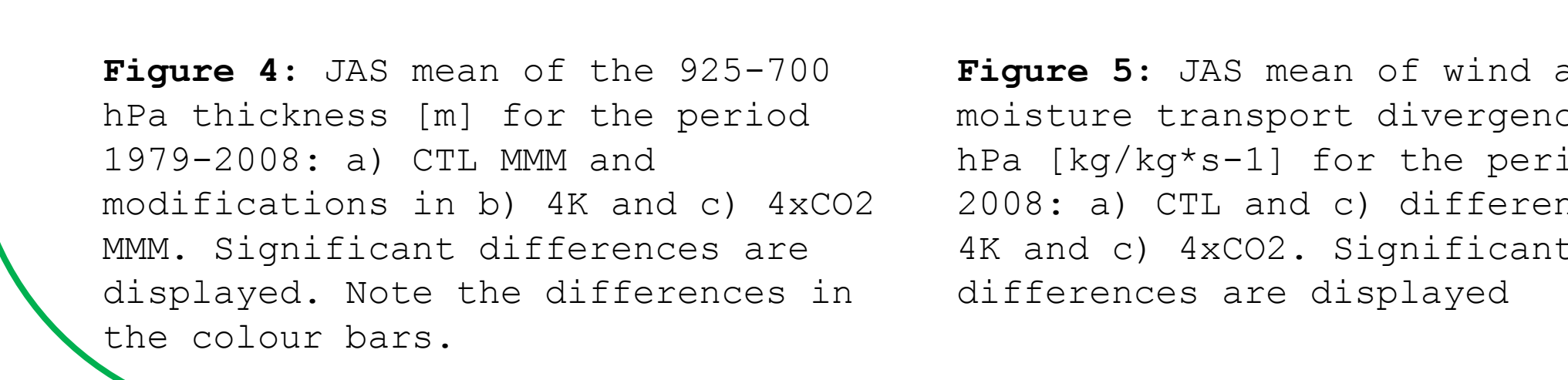
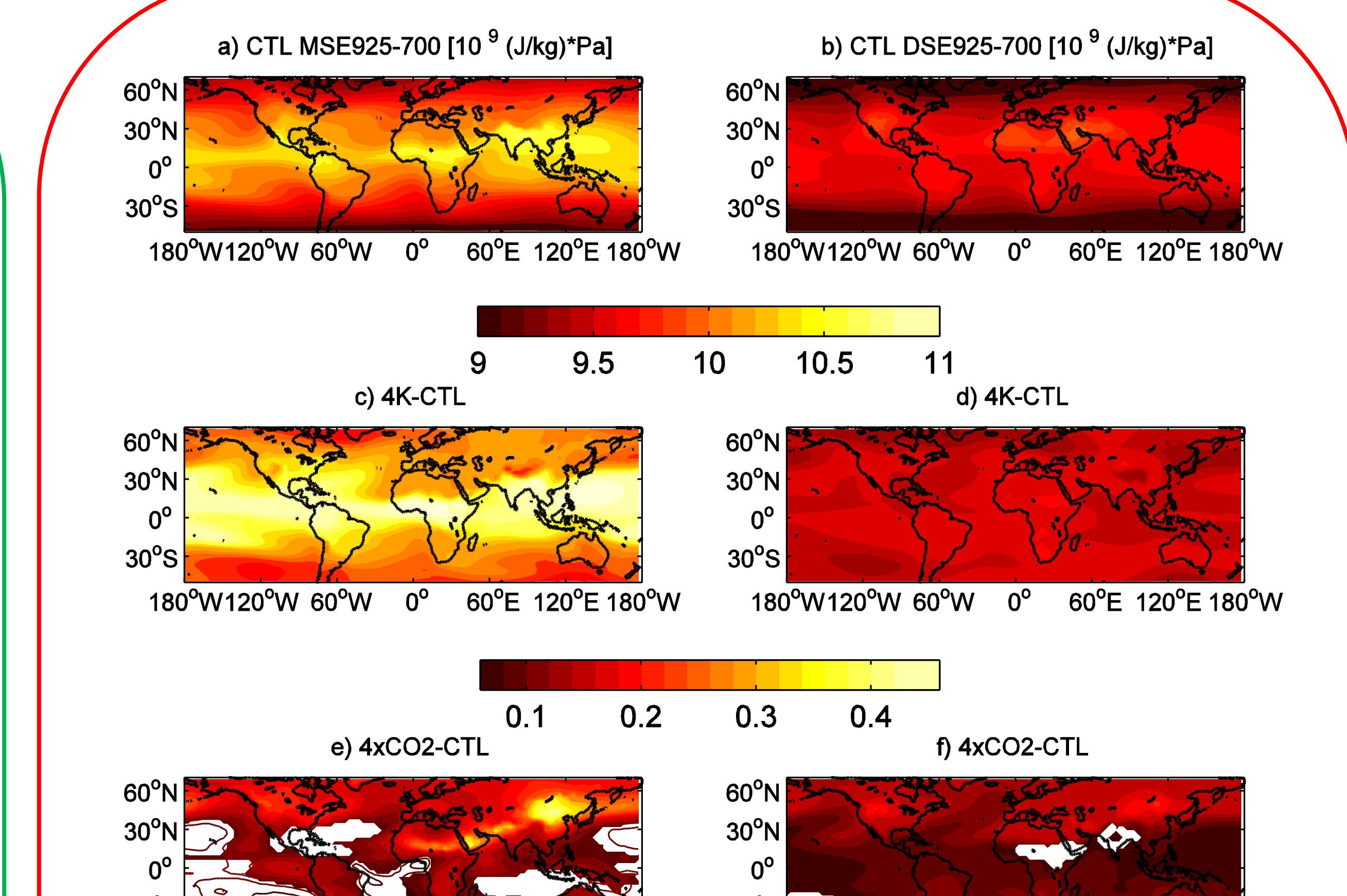
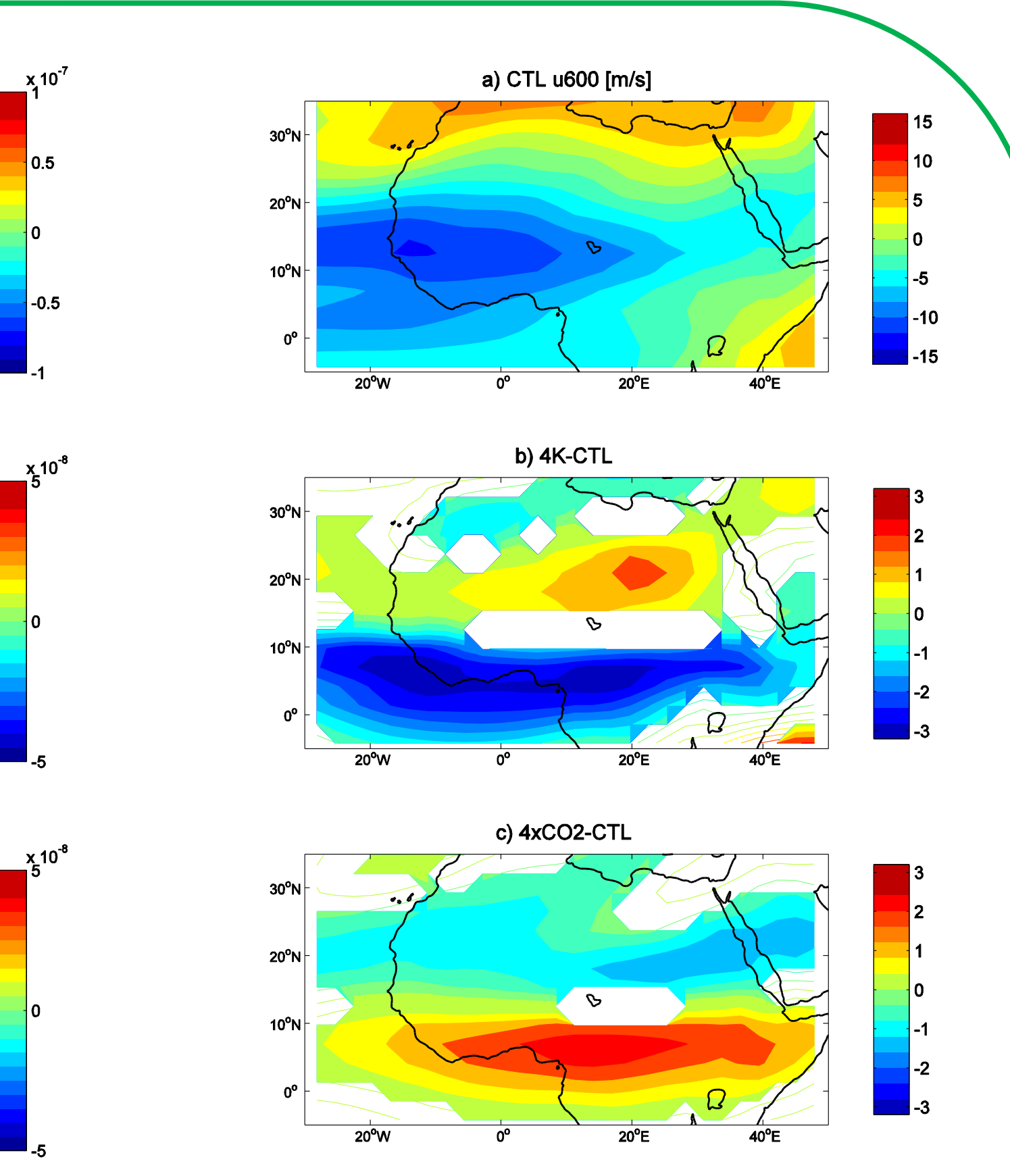
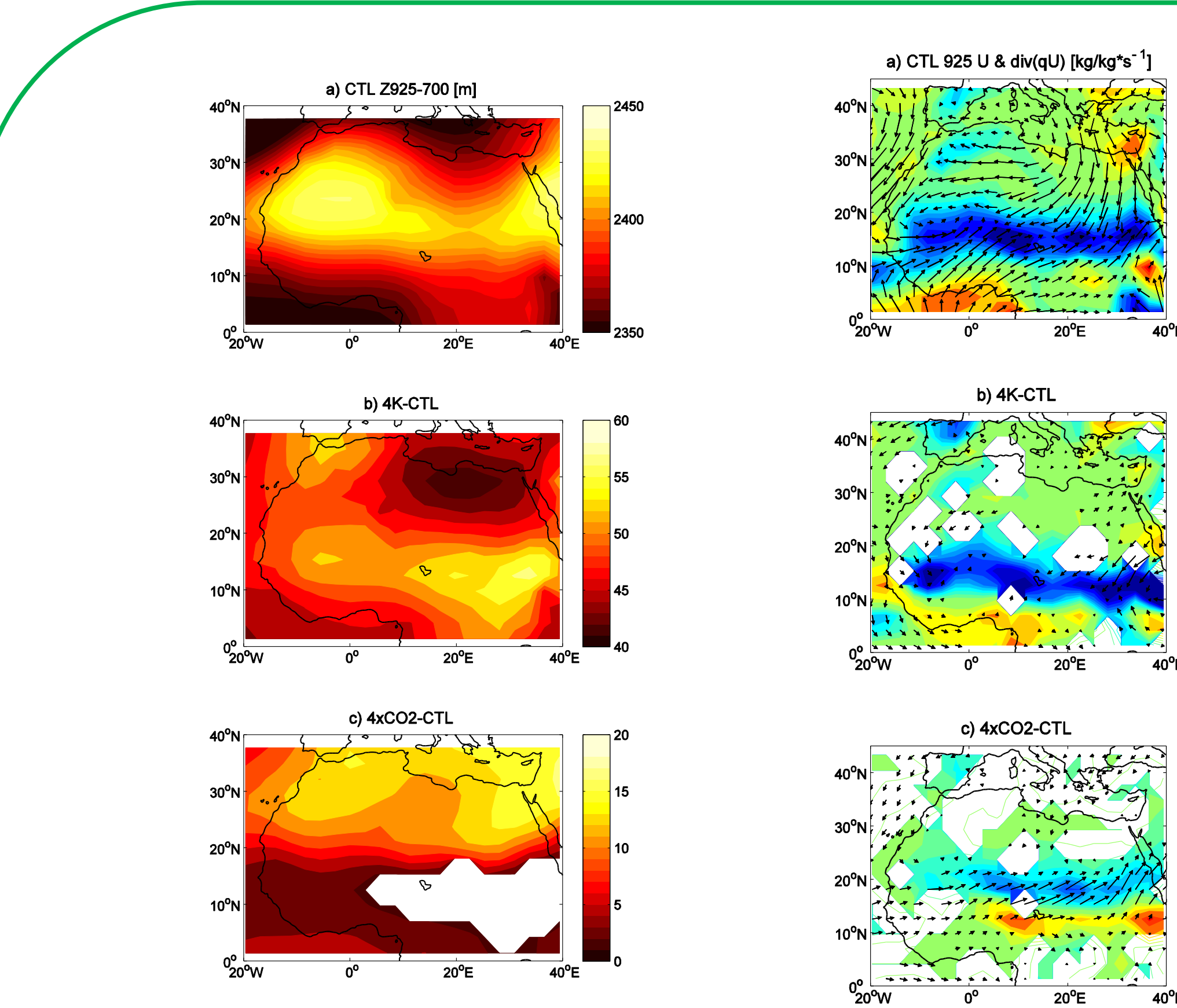
Objective
- To study the effects of CO2 concentration increase and global SST warming on the WAM variability in July-September (JAS);
- focusing on the regional-versus-global aspects of the WAM dynamics and drivers.

Motivation
A number of studies tackled the problem of the simulation and interpretation of the climate variability and change in the Sahel, pointing out the importance of the global SST variability and GHG concentrations, which produce opposite effects on the monsoonal precipitation. A consensus exists on the drying effect of the global SST, and the positive effect of the increasing GHG concentration, which appear therefore in competition. In this context, **state-of-the-art coupled climate models still show poor ability in correctly simulating the WAM historical variability and also a large spread is observed in future climate projections**.

Experiment	Forcing	
	SST	CO2
CTL	Observed 1979-2008	Observed 1979-2008
4K	Observed 1979-2008 + uniform 4 K increase	Observed 1979-2008
4xCO2	Observed 1979-2008	4x increased concentration



Country	Model
China	BCC-CSM1-1
Canada	CanAM4
USA	CCSM4
France	CNRM-CM5
China	FGOALS-g2
UK	HadGEM2-A
France	IPSL-CM5A-LR
	IPSL-CM5B-LR
Japan	MIROC5
Germany	MPI-ESM-LR
	MPI-ESM-MR
Japan	MRI-CGCM3



Conclusions
Competition between the global SST warming and the CO2 increase in driving the WAM variability:
SST warming -> Dry Sahel (reinforced evaporation in the global Tropics -> reduced MSE meridional gradient over West Africa -> inhibition of the monsoonal flow and the ITCZ northward migration);
CO2 increase -> Wet Sahel (atmospheric radiative warming -> enhanced evaporation over the Sahel and warmer Sahara -> reinforced MSE meridional gradient -> more intense monsoonal circulation and precipitation).
! Comprehension of the mechanisms linking the WAM variability to SST and CO2 forcings;
! Ability of the climate models in reproducing these mechanisms, for reliable simulations of the past, present and future variability.

