



Generation of 2D rain maps with realistic properties: methodology and results

Nawal AKROUR⁽¹⁾, Cécile MALLET , Laurent BARTHES, Aymeric CHAZOTTES,
LATMOS-IPSL/ UVSQ, CNRS/INSU, Guyancourt, France

(1) akrou@latmos.ipsl.fr



Context

- Rainfall is a very complex naturally occurring phenomenon.
- It is highly variable in time and space especially for high resolutions
- Variability relies on some characteristics namely intermittency, rain extremes, high rain rate variability and multiple scaling regimes
- Multiple domains are concerned by rainfall maps modeling (hydrology, meteorology, Impact studies ...)

Objective

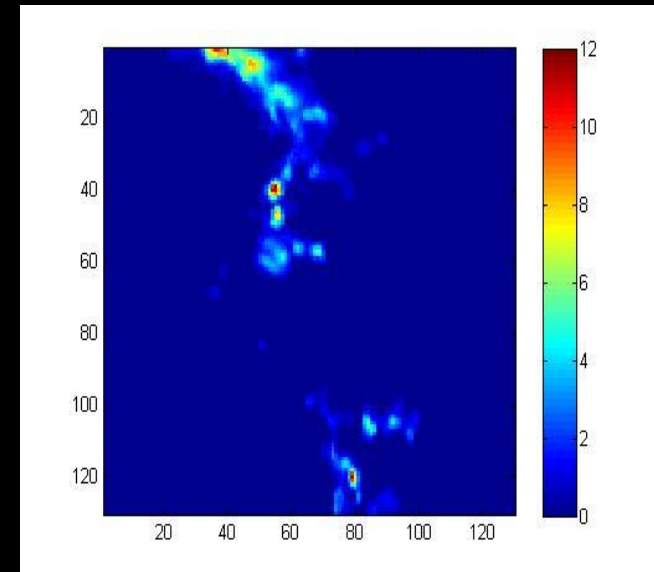
- generating five minutes water sheet maps with 1Km spatial resolution
- Realistic statistical properties :
 - Rain support:
 - ✓ Intermittency (rain/no rain occurrence frequency)
 - ✓ Spatial structure (Variogram)
 - Water sheet :
 - ✓ Scale invariance properties (Power spectrum)
 - ✓ Non-Gaussian heavy tail distribution (Extreme rain) (Realistic CDF).

Plan

- ***Rain maps data set***
 - Data set properties
- ***Rain maps modeling (generator)***
 - Step1: Generate rain supports
 - Stet 2: Generate normalize water sheet (using multifractal model)
 - Step 3: Re-normalization of water sheet
 - Step 4: rain /no rain transition
- ***Validation***
- ***Conclusion and perspectives***

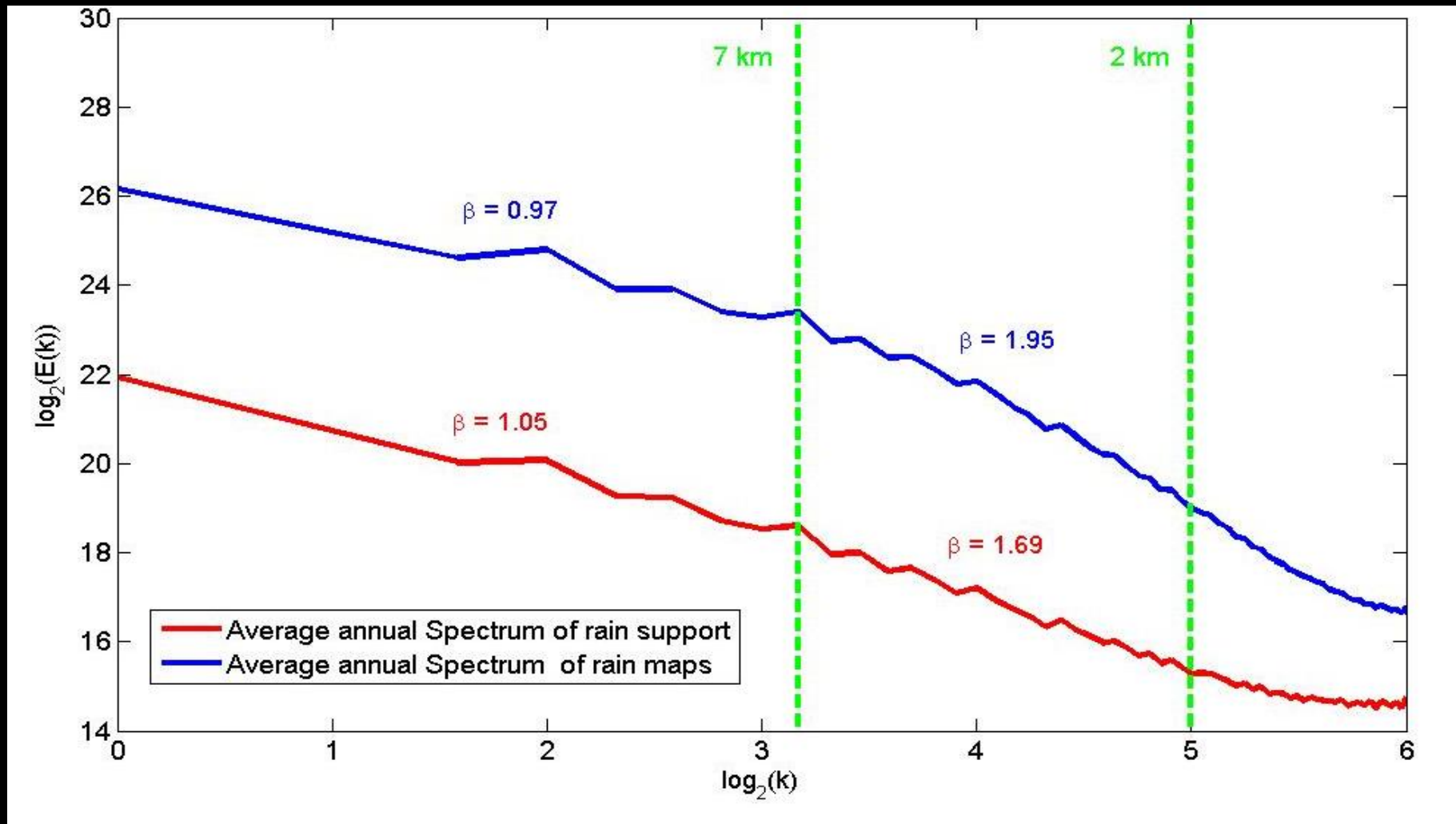
Data set (What are we trying to model?)

- METEO FRANCE data set is used
 - 100 000 radar maps collected for 1 year (2012) : 5 minute water sheet
 - spatial resolution : 1km×1km
 - Location: Trappes
 - 42 000 rain maps having percentage of rain occurrence exceeding 15% are used in our study.
 - Radar maps size : 130*130 km²

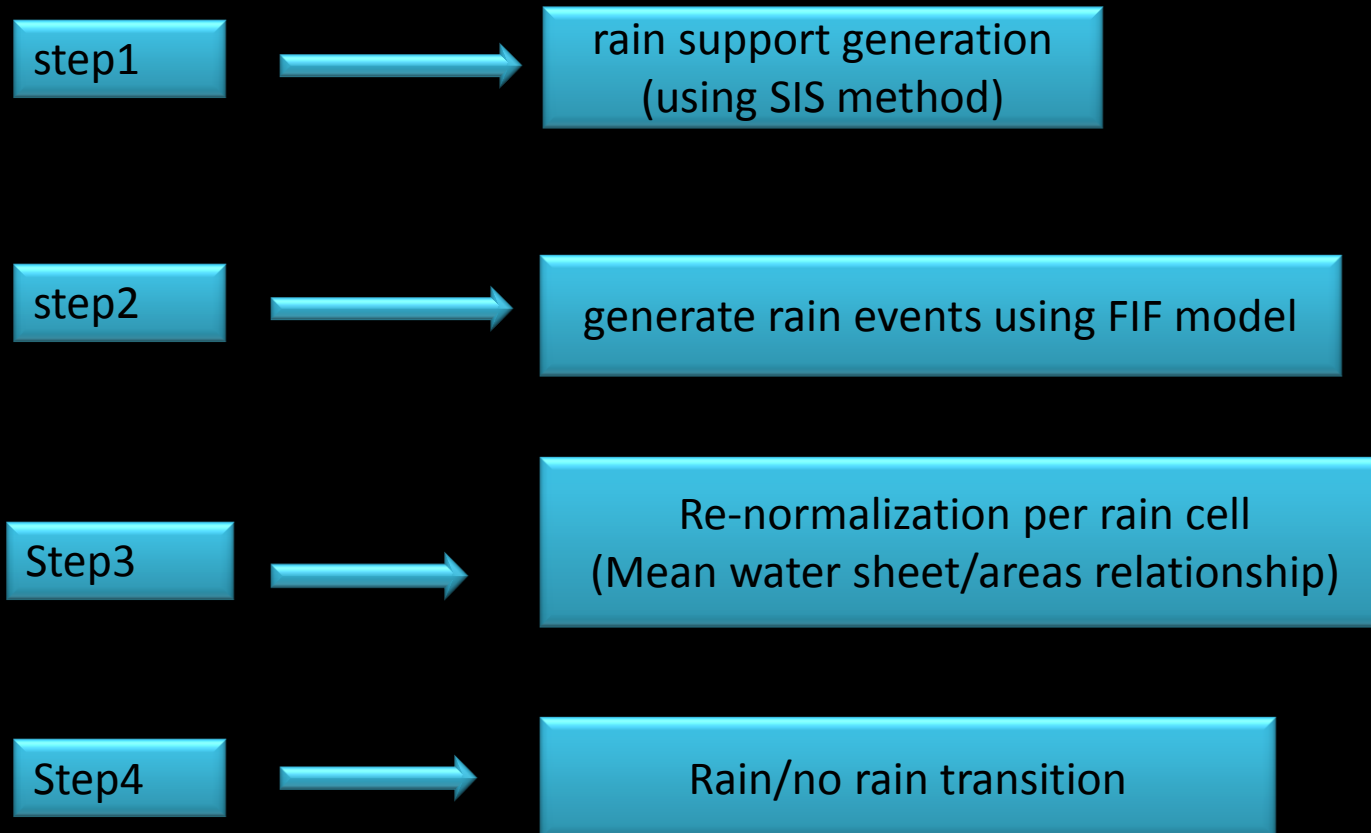


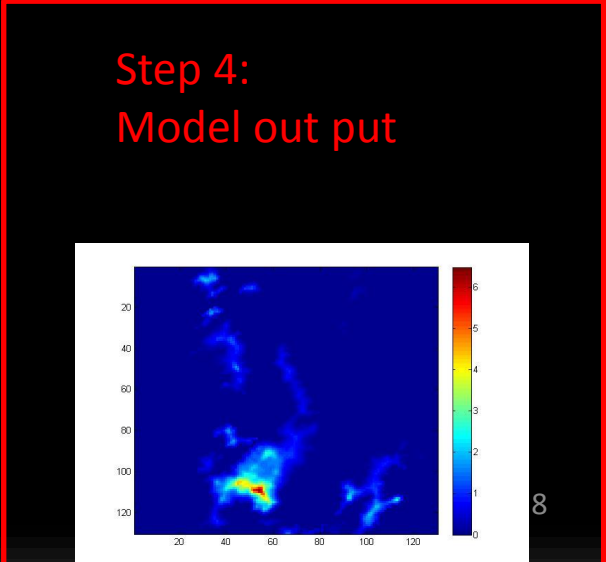
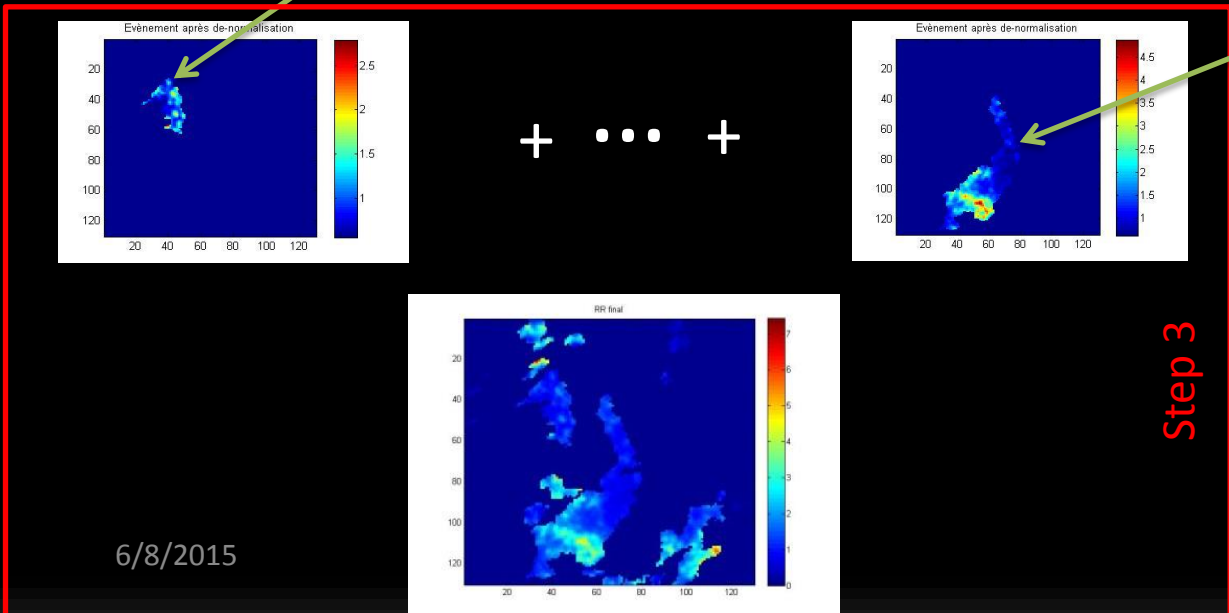
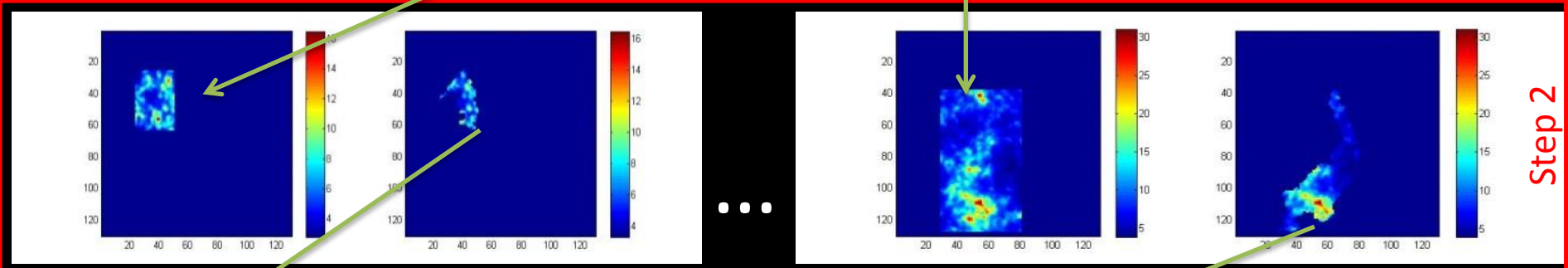
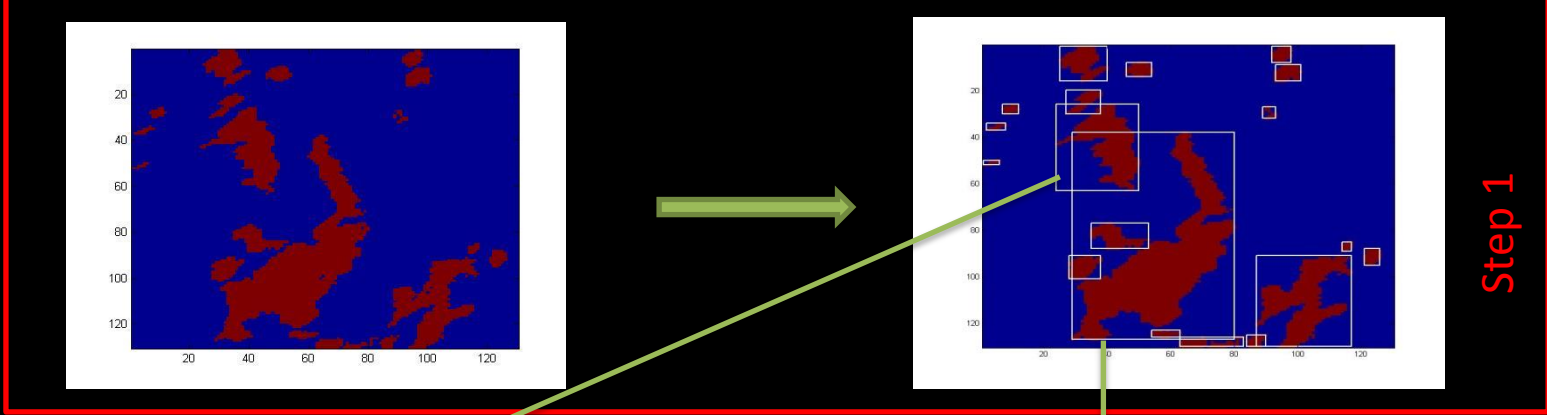
$$\text{Rain Support} = \begin{cases} 0 & \text{if water sheet} < 0,48\text{mm} \\ 1 & \text{else} \end{cases}$$

Data set properties: Multiple scaling regime



Methodology :





6/8/2015

Rain support generation (Step1) :

Rain support is simulated map by map using a Sequential Indicator Simulation (SIS) algorithm (Ripley 1987).

Assumptions : isotropy and stationnarity

Variogram (spherical model : 3 parameters)

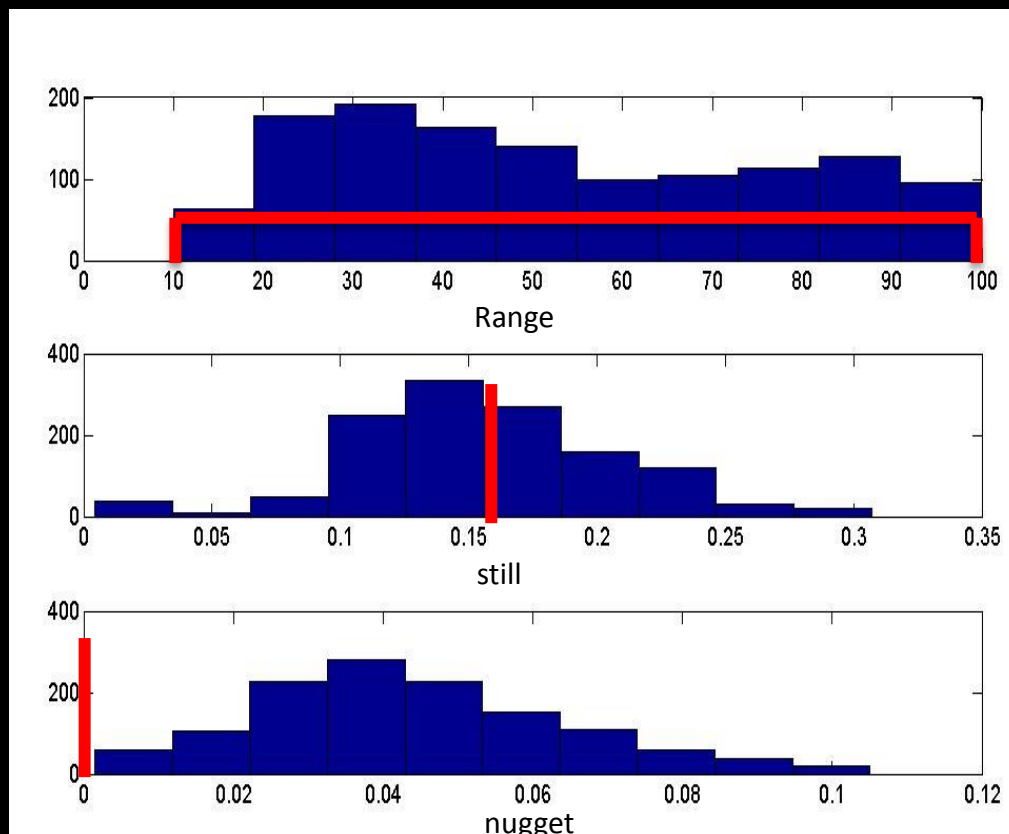
Occurrence probability drawn uniformly between $[0.15 \quad 1]$.

Principle :

- Point by point sequential simulation
- Sequentially draw the support (Bernoulli law)
- Parameter of the Bernoulli law conditioned by neighboring values (calculated by kriging)

Rain support (Step1) :

Variogram analysis of MF maps: → Strong variability



Spherical variogram model :

- Range drawn uniformly between [10 100] km
- Still = mean (estimated stills) = 0.17
- Nugget = 0 (theorique value)

Normalized rain events generation (Step2) :

Multifractal (FIF) model is used (Schertzer et al. 1987)

- ✓ Multiplicative cascades
- ✓ Scale invariance properties.
- ✓ Non- conservativity
- moment scaling function : $K(q) = \frac{C_1}{\alpha-1} (q^\alpha - q)$
- Structure function : $\langle |R_\lambda(\Delta t)| \rangle \sim \lambda^H$

→ 3 parameters: $\alpha=1.6$ $C_1=0.10$ $H=0.4$

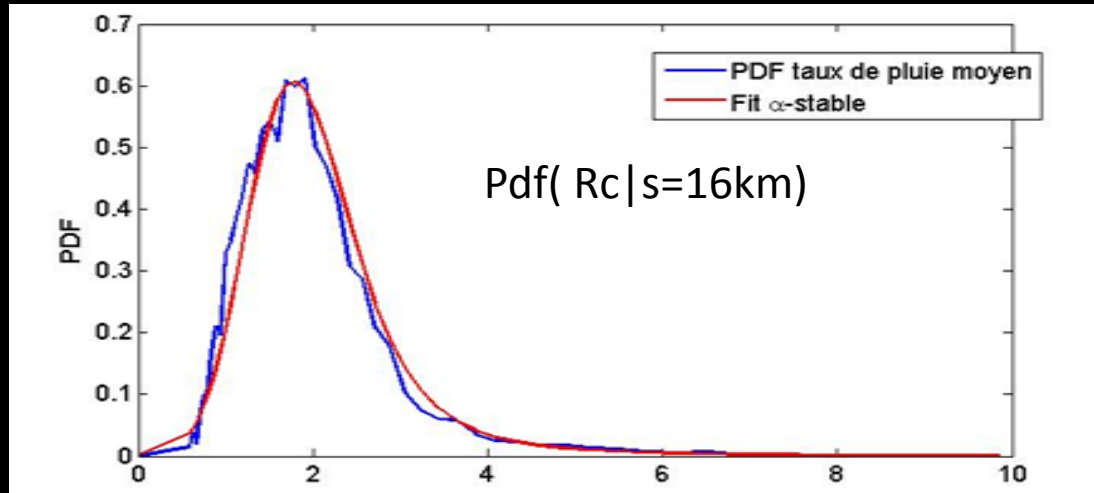
Re-normalization per rain cell (Step3):

Mean water sheet/areas relationship:

The average water sheet for a rain cell is conditioned by its size s : $\langle R_c | s \rangle$

s = square root of the rain cell area

→ each $\langle R_c | s \rangle$ has a distribution : Pdf($\langle R_c | s \rangle$)

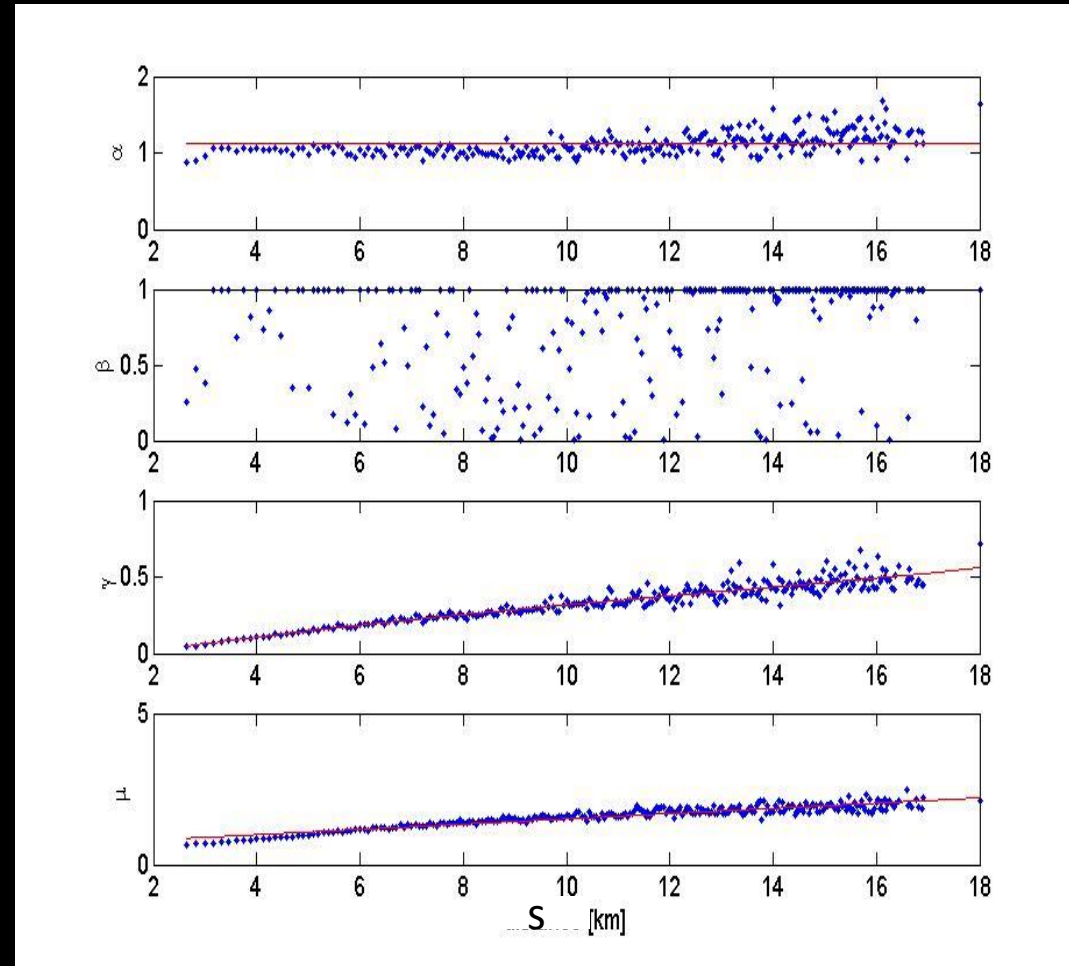


- α -stable distributions are used to model mean water sheet

Renormalization : Events mean rain rate/rain cell areas relationship(Step3) :

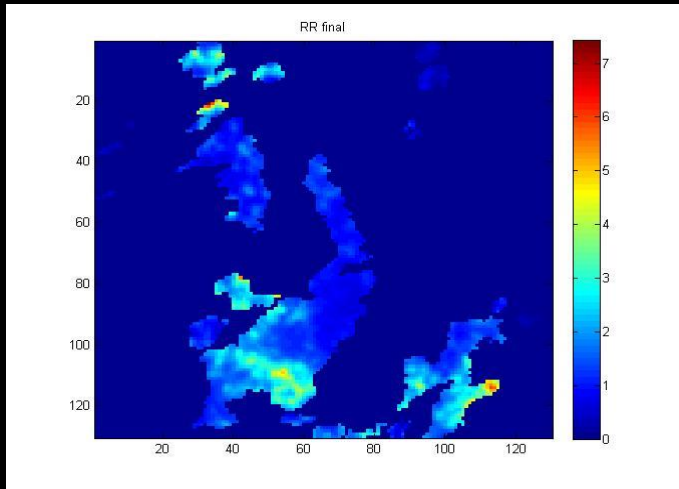
- Pdf($\langle R_c \rangle | s$) : α -stable distribution parameters :
 - Stability parameter: $\alpha = 1,18$
 - Asymmetry Parameter: $\beta = 1$
 - Scale parameter :
 $\gamma = 0.03 \times s$
 - Location parameter:
 $\mu = 0.09 \times s + 0.65$

→ 5 parameters



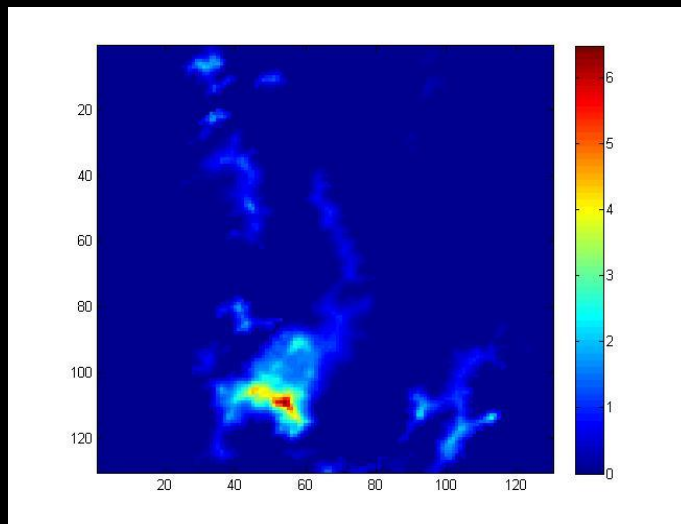
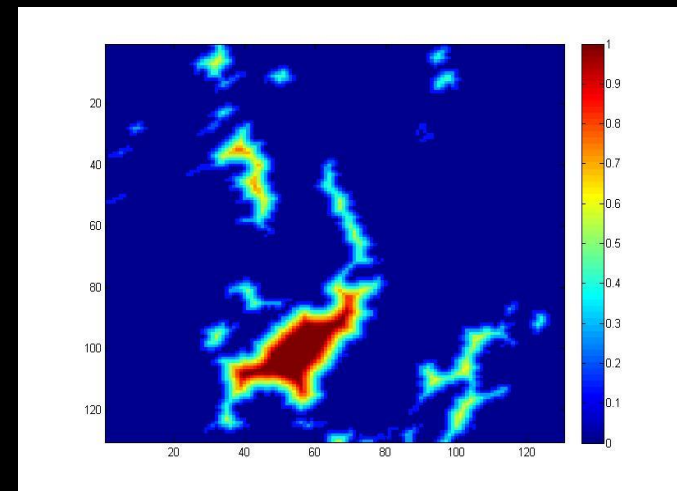
Rain/no rain transition (step 4) :

Step 3 output water shet



×

Transition map $d(z)$



$$d(z) = \begin{cases} \min f(\|z - y\|) \\ 10 \text{ if } (\|z - y\|) > 10 \end{cases}$$

$d(z)$ is normalized between 0 and 1

$z \in \{x, I(x) = 1\}$

et $y \in \{x, I(x) = 0\}$

Inspired from [Schliess et al, 2014]

Generator output water sheet map

Validation :

Observed data : 42 000 radar maps

Simulated data 4 years dataset :

→ 42 000 * 4 water sheet maps

It remains to verify the global properties of the simulated rain maps:

- multifractal analysis
- Power spectrum
- Water sheet distribution.

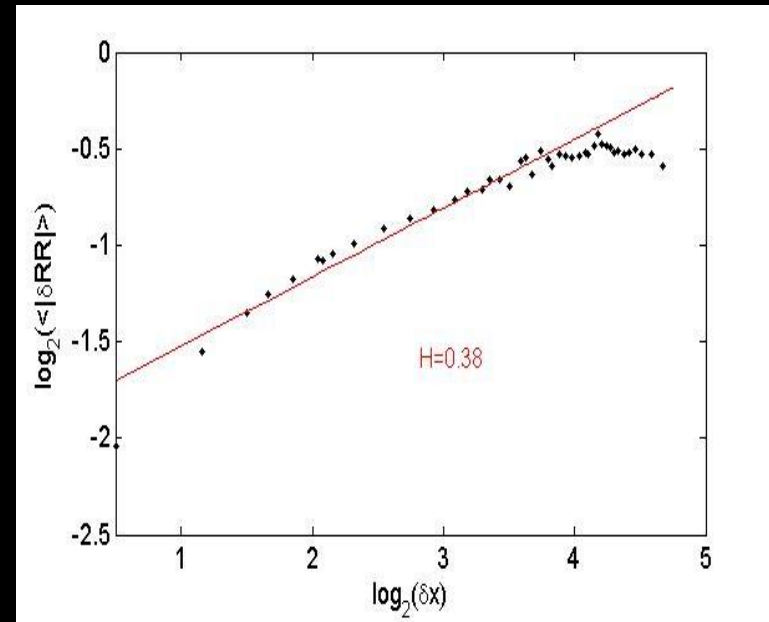
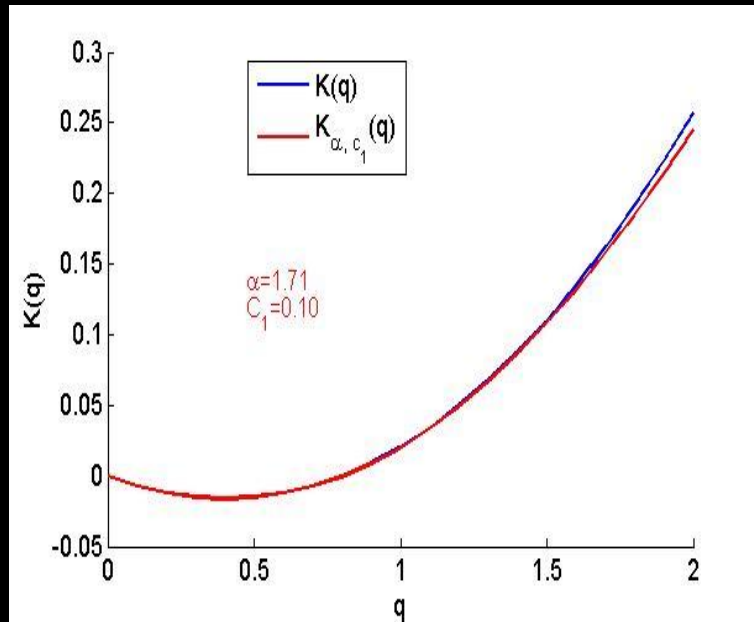
Multifractal analysis :

- Selected simulated sub maps with 100% of rain having size equal to 40 Km * 40 Km

→ Model parameters: $\alpha=1.6$

$C1=0.10$

$H=0.4$



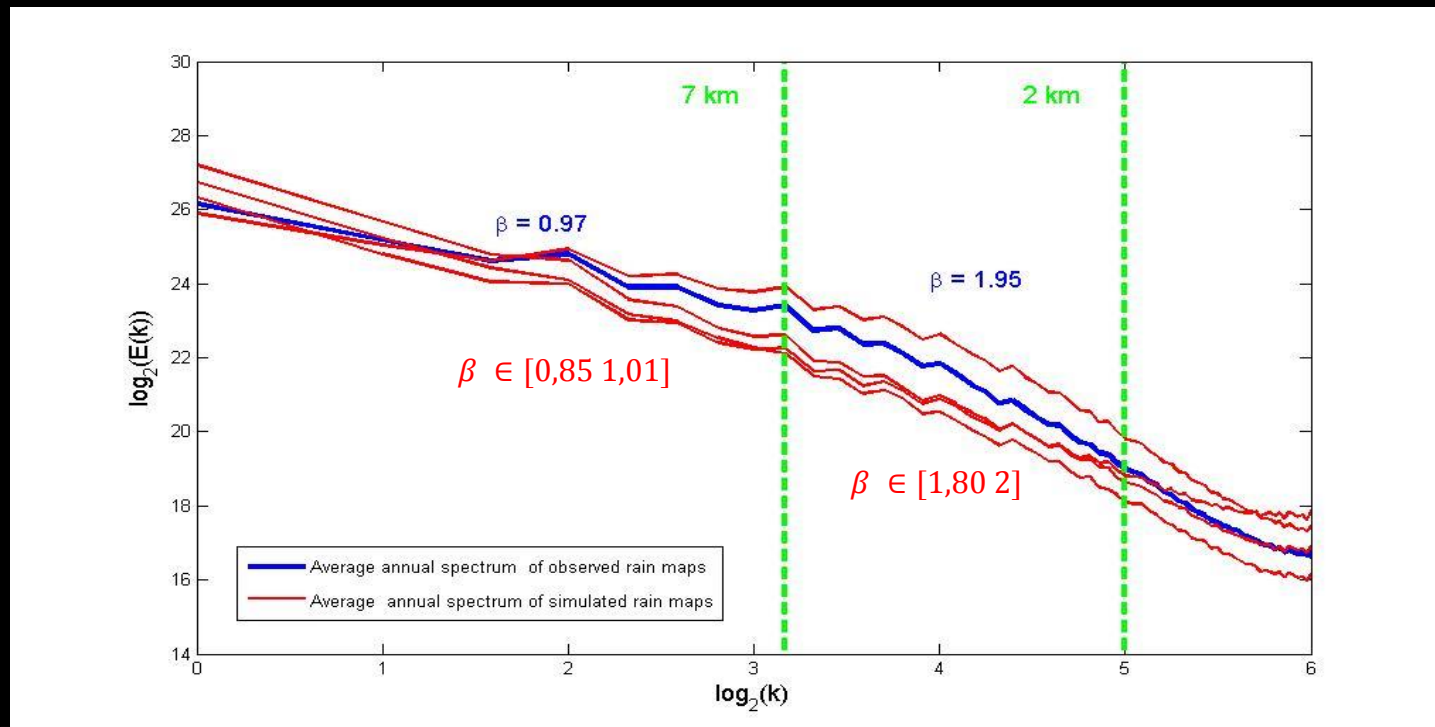
→ Average estimated parameters: $\alpha=1.71$

$C1=0.10$

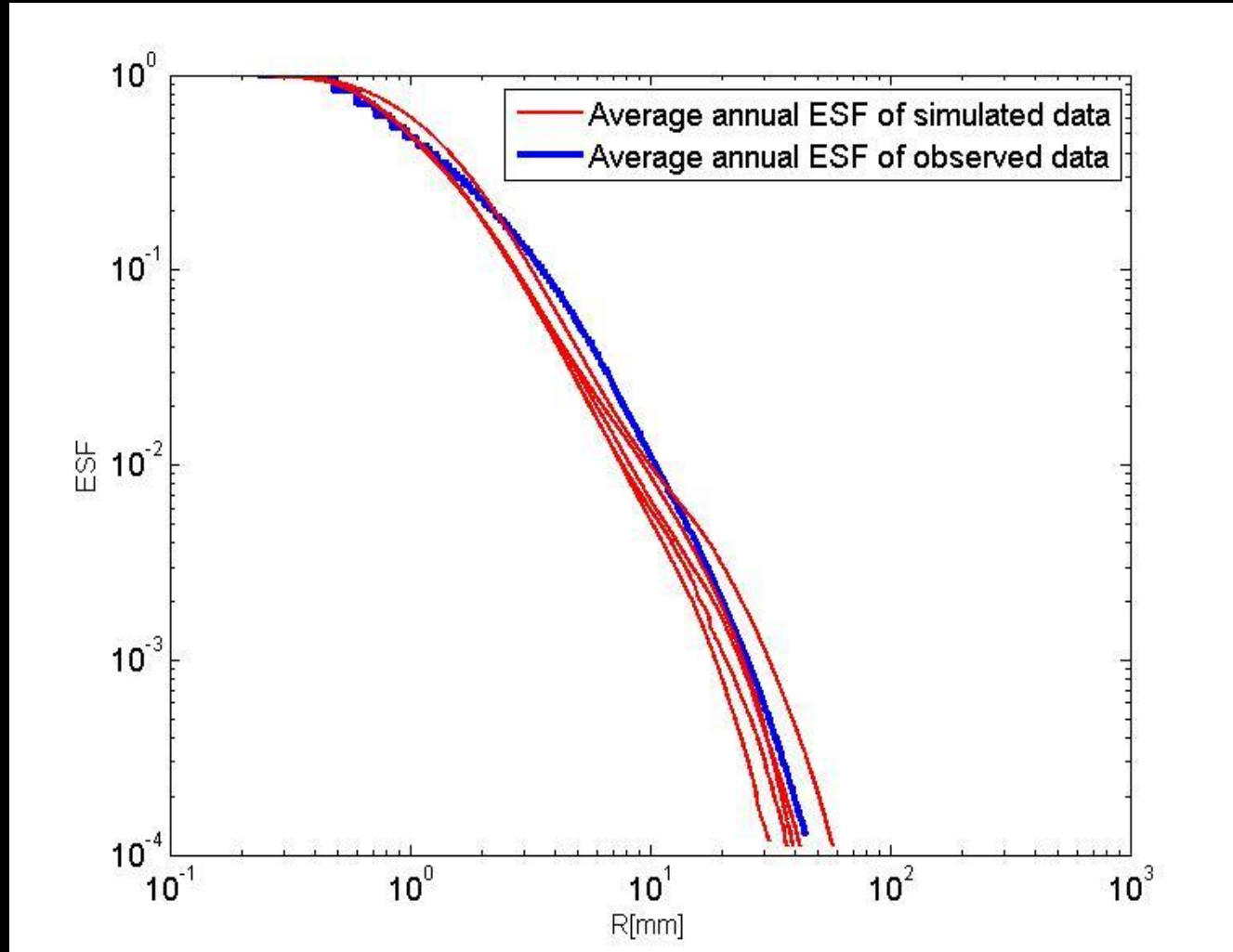
$H=0.38$

Rain rate power spectrum:

- Red curve: average spectrum of 42000 simulated water sheet maps.
- Bleu curve : average annual spectrum of observed data (42000 rain maps)



Survival function (ESF) of water sheet:



Conclusion:

■ Our model simulates

in agreement with the collected data , and it is able to restore various aspect (intensity, support, variability ...):

- Simulate water sheet maps of 250*250 km with 1km resolution

*Rain support
properties
(1 parameter)*



Intra events
Scale invariance properties
+ water sheet distribution
(8 parameters)

Global properties

- ✓ Simulated & observed power spectrum show the same regime of scaling.
- ✓ Simulated & observed rain rate distribution are coherent

Perspectives:

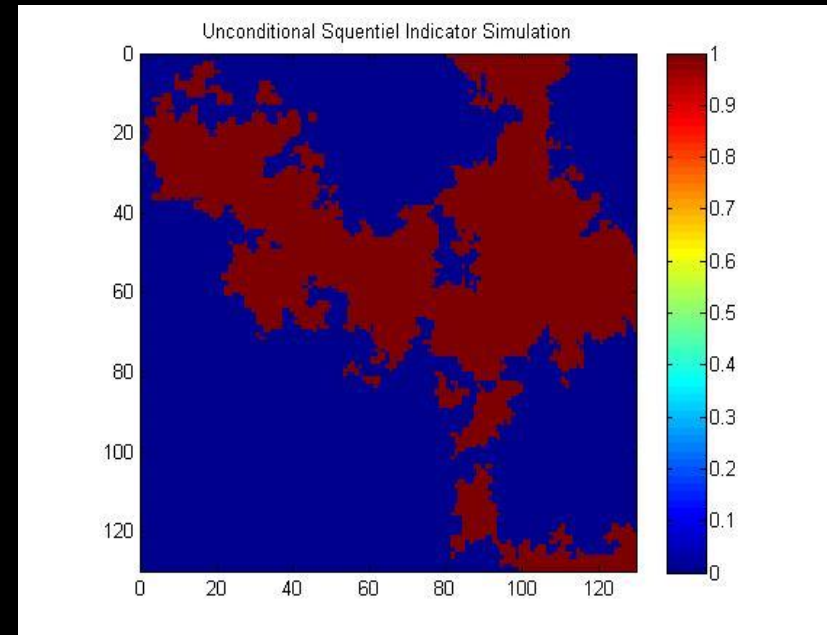
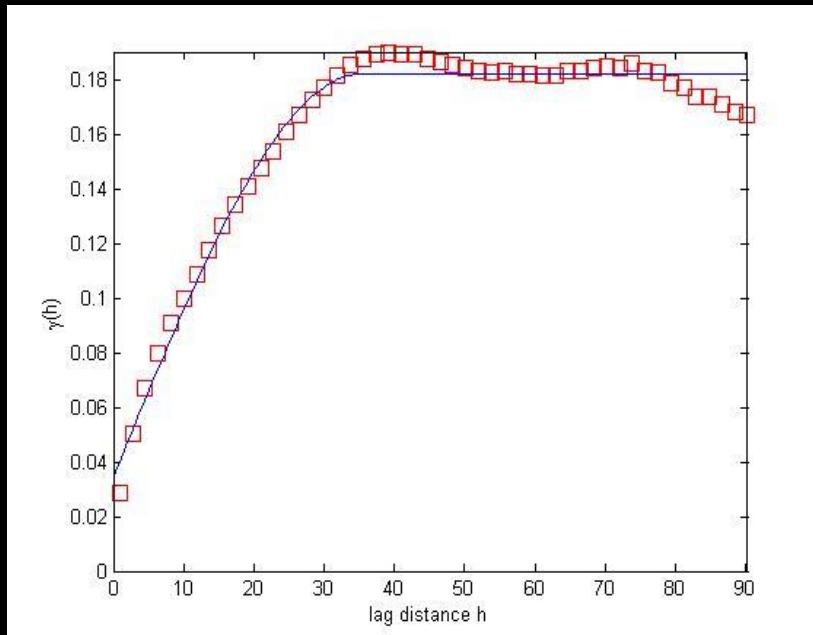
- The break in the rain scaling properties are well reproduced via support model:
 - Improvement of rain support mode needs the use of finer spatial resolution observations (250 m)
- The rain properties and structure observed in a particular location are well reproduced using 9 parameters model
 - observations performed in other climate area has to be analysis
 - A generator able to simulate different climatic area has to be developed
 - Study about what are the global parameters (properties) and what is specific to local rain properties.

Thank you for your attention

generate rain support (Step1) :

Example of simulated support :

Occurrence probability = 0,25 Range = 31.44 , Still = 0.17, Nugget= 0



Occurrence probability = 0.29, Range = 30.02, Still = 0.16 et Nugget = 0.02