



Fluids drainage along detachments: the West Cycladic Detachment System and synkinematic skarns on Serifos Island (Cyclades, Greece) Maxime Ducoux

Maxime Ducoux, Laurent Jolivet, Laurent Arbaret, Yannick Branquet,
Aurélien Rabillard

► To cite this version:

Maxime Ducoux, Laurent Jolivet, Laurent Arbaret, Yannick Branquet, Aurélien Rabillard. Fluids drainage along detachments: the West Cycladic Detachment System and synkinematic skarns on Serifos Island (Cyclades, Greece) Maxime Ducoux. EGU. EGU General Assembly 2014, Apr 2014, Vienne, Austria. insu-01291330

HAL Id: insu-01291330

<https://insu.hal.science/insu-01291330>

Submitted on 11 Oct 2017

HAL is a multi-disciplinary open access archive for the deposit and dissemination of scientific research documents, whether they are published or not. The documents may come from teaching and research institutions in France or abroad, or from public or private research centers.

L'archive ouverte pluridisciplinaire **HAL**, est destinée au dépôt et à la diffusion de documents scientifiques de niveau recherche, publiés ou non, émanant des établissements d'enseignement et de recherche français ou étrangers, des laboratoires publics ou privés.

Fluids drainage along detachments: the West Cycladic Detachment System and synkinematic skarns on Serifos Island (Cyclades, Greece)

M. Ducoux (1,2,3), L. Jolivet (1,2,3), L. Arbaret (1,2,3), Y. Branquet (1,2,3), A. Rabillard (1,2,3)

(1) Université d'Orléans, ISTO, UMR 7327, 45071, Orléans, France (maxime.ducoux@univ-orleans.fr),
(2) CNRS/INSU, ISTO, UMR 7327, 45071 Orléans, France,
(3) BRGM, ISTO, UMR 7327, BP 36009, 45060 Orléans, France

Introduction

The Aegean back-arc domain results from the collapse of the Hellenides, driven by an acceleration of slab retreat at 30-35 Ma (Jolivet and Faccenna, 2000). During this extensional period, exhumation of metamorphic core complexes and emplacement of syn-tectonic plutons occurred below large crustal-scale shallow dipping shear zones and **detachments**, in their footwall such as **the West Cycladic Detachment System** (WCDS) (Jolivet et al., 2010; Lecomte et al., 2011; Grasemann et al., 2012).

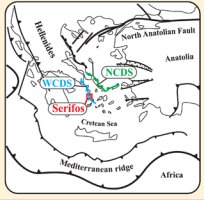
Isotopic studies have shown that the **fluids** present in the **detachments** and their footwall contain a large proportion of **surface-derived fluids** that invade the crust along these **preferential drains** (Famin 2003). Associated with magmatic events, the drainage of fluids can cause the formations of mineralization, including **skarns**.

Skarns can form during contact metamorphism and from a variety of metasomatic processes involving fluids of magmatic, metamorphic, meteoric or marine origin. They are found adjacent to plutonic intrusions, along faults and major shear zones (Meinert, 1992).

In general, regional tectonics is often neglected of the mineralogical and metamorphic study of skarns and rare are the studies including the dynamic part of the emplacement history. Because of its exceptional outcrops, Serifos is a good example to study links between skarns, intrusions, and detachments.

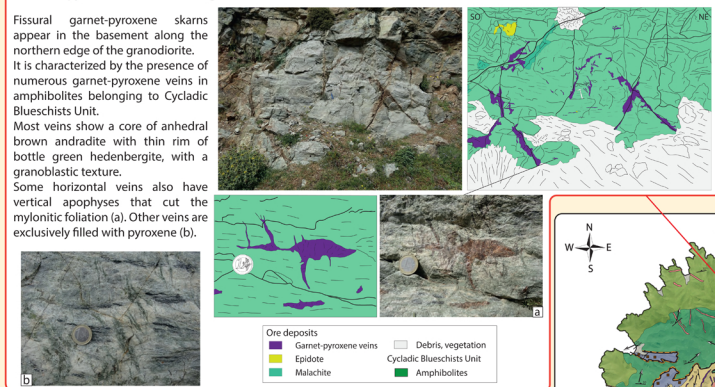
I. Geological settings

- Serifos is located in the **Aegean Sea** in the western part of the Cyclades archipelago, 100km SSE of Athens
- The island of Serifos is interpreted as an **MCC** exhumed below the **WCDS** (Grasemann and Petrakakis, 2007), intruded by a **I-type granodiorite intrusion**.
- The magmatic body is hosted in three tectono-metamorphic units:
 - (1) the **Cycladic Continental Basement** composed of gneiss and massive mylonitic schists, less than 200 m thick, covered with calcite and dolomite mylonitic marbles.
 - (2) the **Cycladic Blueschists Unit** is composed of amphibolites at the base overlain by green-schist with marble intercalations.
 - (3) the **Upper Cycladic Unit** is composed of marble and ankeritised protocatclastic shales. In the peninsula of Kavos Kiklopas in the SW of Serifos a 10 meters thick serpentinite lense is exposed.
- These units are separated by **two detachments** which both show **top-to-the SSW kinematics**. The Continental Cycladic Basement Unit-Cycladic Blueschists Unit contact crops out very well around Meghalo Livadhi Bay and Cycladic Blueschists Unit-Upper Cycladic Unit interface intersects the Kavos Kiklopas and Platy Yialos peninsulas

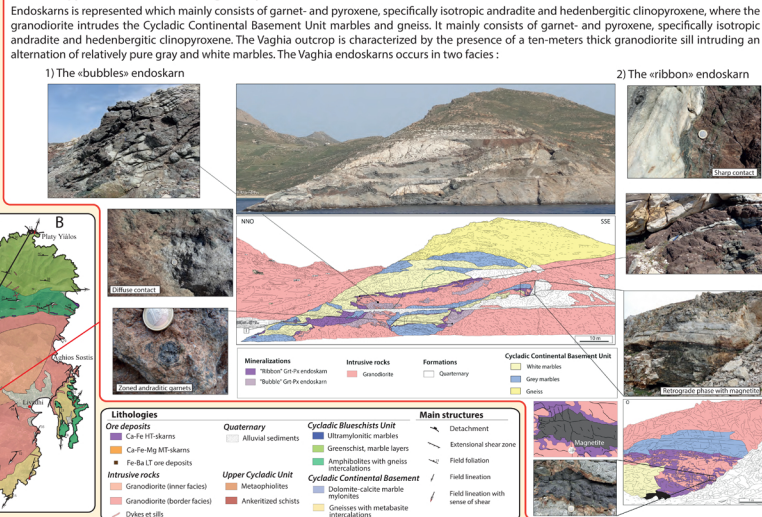


II. Petro-structural study of skarns

2) Garnet-pyroxene exoskarns at Plaghia

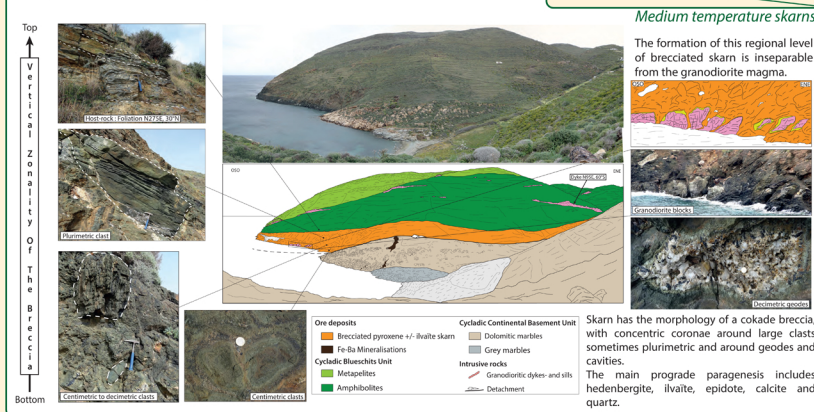


3) Garnet-pyroxene endoskarns at Vaghia Bay

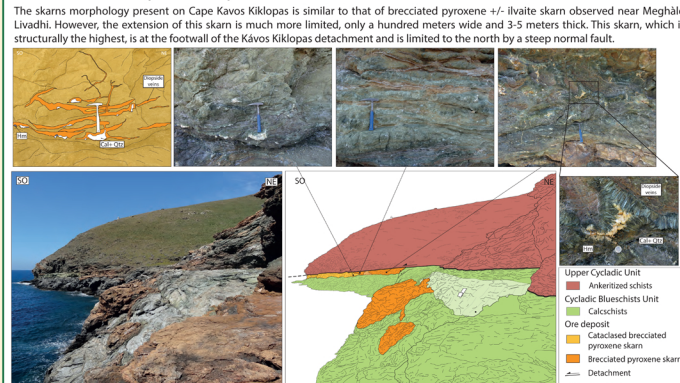


4) Regional level of brecciated pyroxene +/- ilvaite skarn in Meghalo Livadhí Bay

The brecciated pyroxene +/- ilvaite skarn outcrops at the hanging wall of Meghalo Livadhi detachment at the Cycladic Blueschists Unit amphibolites - Cycladic Continental Basement Unit marbles interface. It has the characteristics of a breccia with blocks of various sizes, up to several meters, and reaches a thickness of up to 30 m.



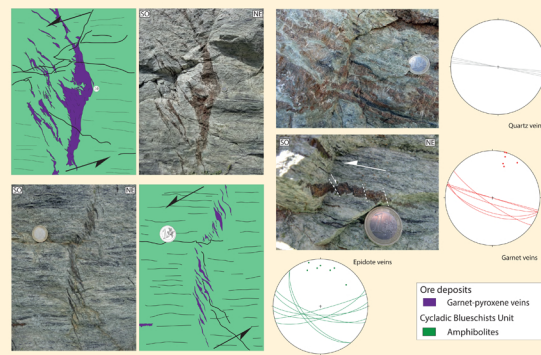
4) Brecciated skarn at Cape Kavos Kiklopas



III. Deformation of Serifos skarns

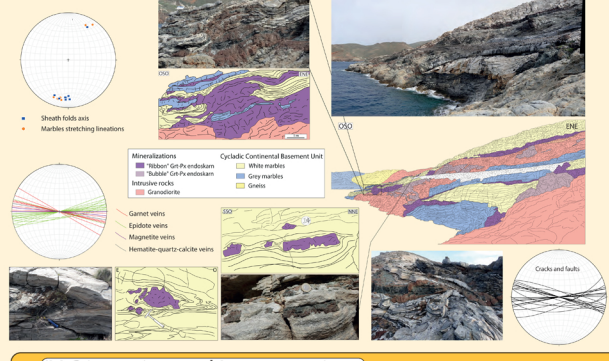
1) Plaghia, north of the granodiorite

Some veins show a systematic en-echelon pattern, antithetic shearing and vertical cracks compatible with NNE-SSW extension.



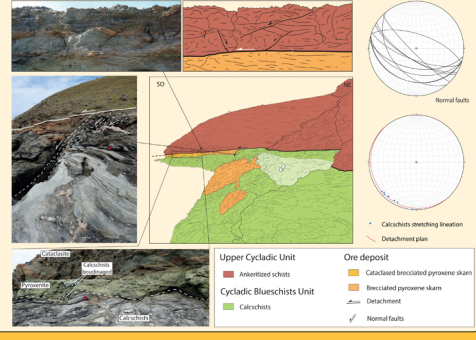
2) Cape Vaghia

The Vaghia outcrop characterized the presence of the endoskarn is one of the most deformed outcrops on the island, compatible with NNE-SSW extension.



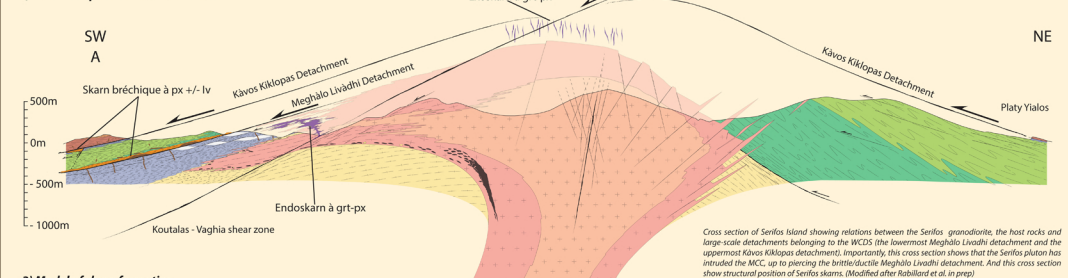
3) Kavos Kiklopás cape

The detachment is marked by deformation evolving from ductile-brittle to brittle. It is characterized by a low dip of 5° to the SW. Calcshists and ultramylonitic marbles present just below the detachment exhibit an intense stretching lineation trending NE-SW, with top-to-the SW kinematic indicators.

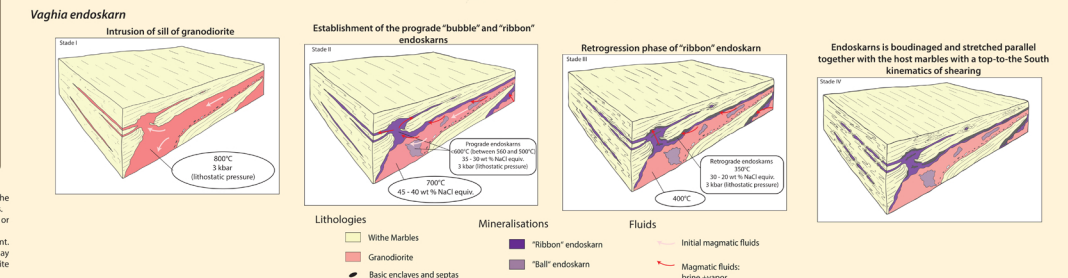


IV. Discussion and Interpretations

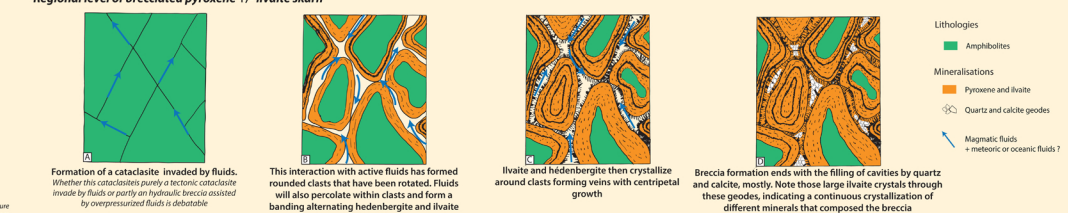
1) Structural position of Serifos skarns



3) Model of skarn formation



Regional level of brecciated pyroxene +/- ilvaite skarn



Conclusion

- Skarns of Serifos are synchronous with the extensional deformation that persists after their formation.
- The entire skarn formation process is coeval with the activity of the two detachments and shearing of the pluton with a continuum of top-to-the SW kinematics.
- Detachments play a significant role in providing and drainage of surface fluid.
- The formation of skarns originates from magmatic fluids, with a slight contamination of the host-rock metamorphic fluids, or in the case of regional brecciated skarn, probably a mix of magmatic and meteoric or marine waters.
- Skarns of Serifos is an good example of structurally controlled skarn.

References

- Grasemann, K., & Faccenna, G. (2007). The Aegean back-arc domain: a review of the tectonic and magmatic evolution. *Journal of the Geological Society of London*, 164, 1-15.
- Jolivet, M., & Faccenna, G. (2000). The Aegean back-arc domain: a review of the tectonic and magmatic evolution. *Journal of the Geological Society of London*, 157, 1-15.
- Jolivet, M., & Faccenna, G. (2000). The Aegean back-arc domain: a review of the tectonic and magmatic evolution. *Journal of the Geological Society of London*, 157, 1-15.
- Jolivet, M., & Faccenna, G. (2000). The Aegean back-arc domain: a review of the tectonic and magmatic evolution. *Journal of the Geological Society of London*, 157, 1-15.
- Jolivet, M., & Faccenna, G. (2000). The Aegean back-arc domain: a review of the tectonic and magmatic evolution. *Journal of the Geological Society of London*, 157, 1-15.
- Jolivet, M., & Faccenna, G. (2000). The Aegean back-arc domain: a review of the tectonic and magmatic evolution. *Journal of the Geological Society of London*, 157, 1-15.
- Jolivet, M., & Faccenna, G. (2000). The Aegean back-arc domain: a review of the tectonic and magmatic evolution. *Journal of the Geological Society of London*, 157, 1-15.
- Jolivet, M., & Faccenna, G. (2000). The Aegean back-arc domain: a review of the tectonic and magmatic evolution. *Journal of the Geological Society of London*, 157, 1-15.
- Jolivet, M., & Faccenna, G. (2000). The Aegean back-arc domain: a review of the tectonic and magmatic evolution. *Journal of the Geological Society of London*, 157, 1-15.
- Jolivet, M., & Faccenna, G. (2000). The Aegean back-arc domain: a review of the tectonic and magmatic evolution. *Journal of the Geological Society of London*, 157, 1-15.