



HAL
open science

Gyre-driven decay of the Earth's magnetic dipole

Christopher C Finlay, Julien Aubert, Nicolas Gillet

► **To cite this version:**

Christopher C Finlay, Julien Aubert, Nicolas Gillet. Gyre-driven decay of the Earth's magnetic dipole. Nature Communications, 2016, 7, pp.10422. 10.1038/ncomms10422 . insu-01308357

HAL Id: insu-01308357

<https://insu.hal.science/insu-01308357>

Submitted on 25 May 2017

HAL is a multi-disciplinary open access archive for the deposit and dissemination of scientific research documents, whether they are published or not. The documents may come from teaching and research institutions in France or abroad, or from public or private research centers.

L'archive ouverte pluridisciplinaire **HAL**, est destinée au dépôt et à la diffusion de documents scientifiques de niveau recherche, publiés ou non, émanant des établissements d'enseignement et de recherche français ou étrangers, des laboratoires publics ou privés.

ARTICLE

Received 30 Apr 2015 | Accepted 10 Dec 2015 | Published 27 Jan 2016

DOI: 10.1038/ncomms10422

OPEN

Gyre-driven decay of the Earth's magnetic dipole

Christopher C. Finlay¹, Julien Aubert² & Nicolas Gillet³

Direct observations indicate that the magnitude of the Earth's magnetic axial dipole has decreased over the past 175 years; it is now 9% weaker than it was in 1840. Here we show how the rate of dipole decay may be controlled by a planetary-scale gyre in the liquid metal outer core. The gyre's meridional limbs on average transport normal polarity magnetic flux equatorward and reverse polarity flux poleward. Asymmetry in the geomagnetic field, due to the South Atlantic Anomaly, is essential to the proposed mechanism. We find that meridional flux advection accounts for the majority of the dipole decay since 1840, especially during times of rapid decline, with magnetic diffusion making an almost steady contribution generally of smaller magnitude. Based on the morphology of the present field, and the persistent nature of the gyre, the current episode of dipole decay looks set to continue, at least for the next few decades.

¹Division of Geomagnetism, DTU Space, Technical University of Denmark, Lyngby DK-2800, Denmark. ²Dynamique des Fluides Géologiques, Institut de Physique du Globe de Paris, 75238 Paris CEDEX 05, France. ³ISTerre, Université Grenoble 1, CNRS, 38041 Grenoble CEDEX 9, France. Correspondence and requests for materials should be addressed to C.C.F. (email: cfinlay@space.dtu.dk).

A long-standing problem in geophysics is the origin of the ongoing decay in the strength of the dipolar part of the Earth's magnetic field^{1–3}. Direct measurements of the field intensity, available since the time of Gauss^{4,5}, indicate that the dominant axial component of the dipole field, parallel to the planetary rotation axis, has been decreasing at a mean rate⁶ of 16 nT yr^{-1} —see Fig. 1. The decay rate exhibits surprisingly large fluctuations on relatively short decadal time scales; the field was decaying twice as fast in 1980 as it is today. The physical process responsible for the dipole decay must, therefore, also evolve on fast decadal time scales. The Earth's magnetic field is generated by a dynamo operating within the liquid metal outer core. Here fluid motions stretch, twist, and transport magnetic field lines^{7–9} converting kinetic energy into magnetic energy, driving the evolution of the field and maintaining it against Ohmic dissipation. Improved understanding of the mechanism of dipole decay thus requires study of the motions taking place within the core and determining how these produce the observed diminishing.

The obvious explanation of a free Ohmic decay process, resulting from the finite electrical conductivity of the core, is untenable as it is about 20 times too slow. Free decay of the dipole

would take $\sim 55,000$ years based on the latest estimates of core conductivity^{10,11}, whereas if the mean decay rate⁶ between 1840 and 2010 of 16 nT yr^{-1} were to continue, the axial dipole would reach zero within 1,900 years. Furthermore, free decay is incompatible with the accelerations in the rate of decay observed during the past 2,000 years¹². Two alternative mechanisms, both driven by fluid motions within the core, have therefore been proposed. The first is the growth by magnetic diffusion of reversed flux features at the core–mantle boundary via toroidal flux expulsion^{2,13}. It is, however, difficult to conclusively demonstrate that growth of reversed flux patches is occurring at the rate required to explain the observed dipole decay and its fluctuations¹⁴. A second possibility is that flow in the core acts, on average, to transport normal magnetic flux towards the equator¹² and reversed flux poleward^{2,15}. This meridional flux advection mechanism operates even in the absence of magnetic diffusion, and involves the transfer of magnetic energy from the axial dipole to other field components, rather than a direct loss to heat via Ohmic dissipation.

The detailed morphology of the large-scale geomagnetic field and its rate of change is now well established thanks to 15 years of magnetic observations from low-Earth orbit satellites¹⁶.

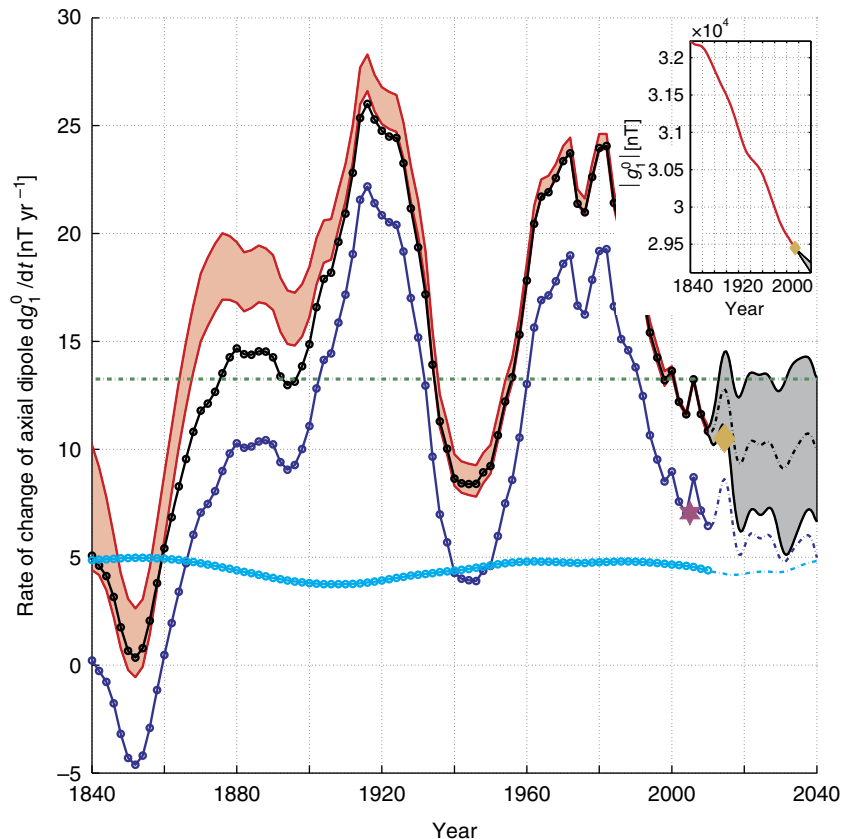


Figure 1 | Observed and modelled decay of the geomagnetic axial dipole. Axial dipole magnitude $|g_1^0|$ since 1840 (inset, red line, units: nT) and its rate of decay dg_1^0/dt (red shaded area shows one standard deviation uncertainties, units: nT yr^{-1}), from the COV-OBS⁶ geomagnetic field reconstruction. Comparable dipole decay rates are produced by a prototype gyre acting on an asymmetric field (green dot-dashed line, see also Fig. 2a), and by a more realistic filtered gyre flow, acting on the observed field averaged over 2000–2010 (purple star, see also Methods section and Fig. 2c). The solid black line with dots is the retrieved axial dipole decay rate from a series of 3D inversions for the field and flow within the core, based on geodynamo model multivariate statistics²² (see also Methods section and Figs 3 and 4). Each dot represents an independent inversion for the core state; these inversions are equally spaced in time. For the 3D inversion results, the dipole decay rate can be decomposed into its advective (dark blue line with dots) and diffusive (light blue line with dots) components. The grey area shows the 1 s.d. spread of an ensemble of 40 geodynamo model forward calculations, initialized using the estimated core state²² in 2010, with randomized realizations of small scales; the ensemble mean is shown by the black dot-dash line. Corresponding ensemble mean advective and diffusive contributions are given by the dark and light blue dot-dashed lines. The latest values for the axial dipole and its decay rate in 2014, as determined using the data from ESA's Swarm satellite constellation³⁹, are marked by the gold diamonds.

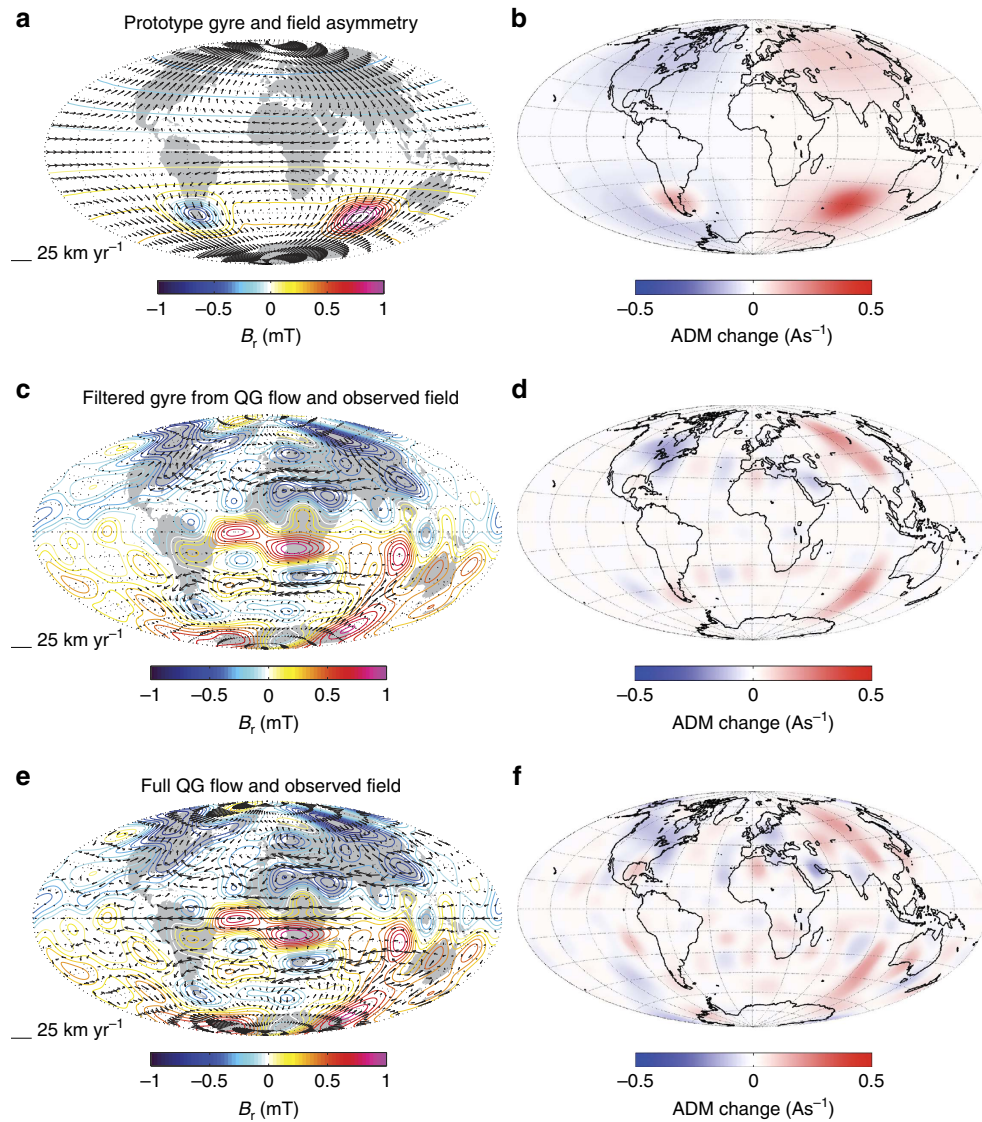


Figure 2 | Gyre-driven dipole decay mechanism. Maps of the core surface showing (a) a prototype example of gyre-driven dipole decay, with a single core surface flow harmonic (arrows) acting on an axial dipole field with an imposed asymmetry in the southern hemisphere (reversed flux in the west and strong normal flux in the east); contours show the geometry of the imposed radial magnetic field B_r (units: mT) and (b) the associated map of advective contributions to axial dipole moment (ADM) change from core surface meridional flux transport $-3/2\mu_0 u_\theta \sin\theta B_r$ (units As^{-1}) see equation (2). When integrated over the core surface, this gives the ADM change. Red indicates contributions to axial dipole decay, blue indicates contributions to axial dipole growth. (c) Here we see a more realistic case with a filtered gyre flow (arrows), extracted from an observation-based quasi-geostrophic core flow inversion^{6,19} (see e) acting on the known core surface field⁶ (contours), where both field and flow have been averaged over 2000–2010. (d) The associated map of meridional flux transport contributions to ADM change. (e,f) The same quantities for the full quasi-geostrophic core flow inversion¹⁹ which was filtered to obtain the flow in (c).

At the same time, there has been progress in core flow inversion techniques that now better account for unresolved small scales^{17–19}, more fully incorporate information on the expected rotation-dominated structure of flows^{17,20} and include the effects of magnetic diffusion^{21,22}. The resulting maps of flow within the core have highlighted the importance of a planetary-scale gyre^{17,19,22,23} consisting of generally equatorward flow around longitude 100° E , westward flow under the Atlantic hemisphere and generally poleward flow around 90° W (Fig. 2), that is remarkably persistent^{19,22,24} during the time interval for which core flows can be reliably determined.

Here, we describe the role played by this planetary gyre in historical geomagnetic dipole decay, and provide new estimates of the relative contributions of advection and magnetic diffusion to the dipole decay process. Changes in the Earth’s dipole moment

m are caused by changes in the electrical current density **J** within the core and hence, via Ampère’s law, owing to changes of the magnetic flux density **B** within the core⁷

$$\frac{d\mathbf{m}}{dt} = \frac{1}{2} \int \hat{\mathbf{r}} \times \frac{\partial \mathbf{J}}{\partial t} dV = \frac{3}{2\mu_0} \int \frac{\partial \mathbf{B}}{\partial t} dV, \quad (1)$$

where μ_0 is the magnetic permeability of free space. Working in spherical polar coordinates (r, θ, ϕ) and substituting from the magnetic induction equation, $\partial \mathbf{B} / \partial t = \nabla \times (\mathbf{u} \times \mathbf{B}) + \eta \nabla^2 \mathbf{B}$, where \mathbf{u} is the fluid velocity and η is the magnetic diffusivity, taking the cylindrical axial component $\hat{\mathbf{z}}$ and re-arranging, the change in the Earth’s axial dipole moment (ADM) may be

written as^{12,25,26}

$$\frac{dm_z}{dt} = -\frac{3}{2\mu_0} \int u_\theta \sin\theta B_r dS + \frac{3\eta}{2\mu_0} \int \hat{z} \cdot \nabla^2 \mathbf{B} dV. \quad (2)$$

The first term on the right denotes the contribution from the meridional transport of flux by advection, while second describes the contribution from magnetic diffusion. By mapping $-3/2\mu_0 u_\theta \sin\theta B_r$, it is therefore possible to pinpoint locations where advective processes contribute most to axial dipole moment changes^{12,26}.

Results

Simple illustrations of gyre-driven dipole decay. In Fig. 2a,b, we present a prototype example of our proposed gyre-driven mechanism for dipole decay. The essential ingredients are a departure of the field from axial symmetry and meridional flows that, on average, transport normal flux equatorward and reversed flux poleward. In Fig. 2a, starting with a negative axial dipole field as for the Earth today, this is achieved by placing strong normal field where there is equatorward flow and reversed field where there is poleward flow. Fig. 2b shows the resulting map of $-3/2\mu_0 u_\theta \sin\theta B_r$, which has a net positive value when integrated over the core surface, indicating the magnitude of the (negative) axial dipole is decaying. The maximum flow speed in this example is 19 km yr^{-1} , the assumed magnitude of the axial dipole field at Earth's surface is $-30,000 \text{ nT}$, the imposed radial field asymmetries are $\pm 0.8 \text{ mT}$ at the core surface, and the resulting rate of axial dipole decay is 13.6 nT yr^{-1} (green line, Fig. 1). Despite its simplicity, this demonstrates how a gyre with an Earth-like flow speed²⁷, acting on a reasonable field asymmetry, can produce the observed magnitude of axial dipole decay.

Fig. 2c,d presents a more realistic scenario involving the known large-scale radial field at the core surface⁶, acted on by a recent

observation-based quasi-geostrophic core flow¹⁹, that has been filtered to leave only the planetary gyre structure (see Methods section). Both this filtered gyre flow and the earlier prototype flow from Fig. 2a are equatorially symmetric, as required by the Taylor–Proudman theorem for rotation-dominated flows¹⁷. Both field and flow in Fig. 2c have been averaged over the decade 2000–2010 during which there are excellent observational constraints, thanks to the availability of magnetic data from the CHAMP and Ørsted satellites and an extensive network of ground observatories. The integrated value of $-3/2\mu_0 u_\theta \sin\theta B_r$, mapped in Fig. 2d is again positive, so meridional flux transport once more causes dipole decay (purple star, Fig. 1). In this case there is little net contribution to dipole decay from the northern hemisphere, where intense normal flux is advected both poleward (under North America) and equatorward (under Asia). The dipole decay instead originates in the southern hemisphere, in agreement with the findings of previous observational studies^{2,28}, due to the vigorous equatorward transport of intense normal flux south-west of Australia that is not balanced as there is a lack of intense normal flux (and presence of some reversed flux) in the region beneath South America where the flow is poleward. It is this asymmetry in the southern hemisphere magnetic field, that also results in the South Atlantic Anomaly²⁹ at Earth's surface, which enables the gyre to drive the present dipole decay. Fluctuations of the meridional flow, particularly in the eastern equatorward limb of the gyre, can in this configuration easily generate rapid fluctuations in the dipole decay rate. Fig. 2e presents the quasi-geostrophic flow averaged over 2000–2010 without filtering; as shown in Fig. 2f, it produces similar patterns of meridional flux transport.

Three-dimensional core state inversions. If meridional flux advection is capable of producing the observed rate of dipole

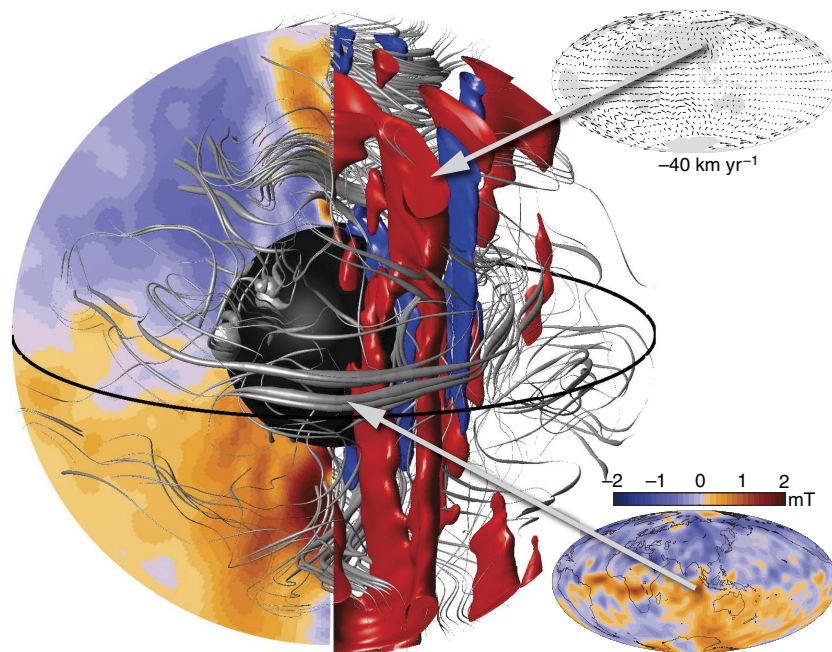


Figure 3 | Estimated field and flow within the core in 2015. Volume visualization of the estimated magnetic field and flow within Earth's core in 2015 from a numerical geodynamo³¹ model forward run initialized with an inferred core state²² for 2010. Orange and blue contours show the intensity of the radial magnetic field, azimuthally averaged in a meridional plane within the shell, and at the core surface in the inset. The red and dark blue iso-surfaces are of constant axial flow velocity and illustrate intense columnar convection at the eastern meridional limb of the gyre, as also seen in the inset core surface flow plot. Field lines within the shell have thickness proportional to their magnetic energy. The inner core is black and the core-mantle boundary is transparent. The 3D view faces longitude 90° E , with a cutaway between 90° and 180° E .

decay, what then is the role of the magnetic diffusion that we have neglected in the above simple examples? Determining the role of diffusion in geomagnetic field evolution is challenging as it requires knowledge of the magnetic field structure within the core. In numerical geodynamo models⁸, the equations of conservation of momentum, magnetic induction and heat transport are time-stepped throughout the core, for prescribed values of control parameters. Since the magnetic fields and velocity fields are completely known, the role of magnetic diffusion can be fully assessed; whether or not the resulting kinematic processes are relevant to the Earth depends largely on the magnetic Reynolds number $R_m = UL/\eta$, whether U is a typical velocity, L is a typical length scale and η is again the magnetic diffusivity; typical estimates^{11,30} for the Earth's core are in the range 1000–1500.

It has recently been demonstrated that multivariate statistics (linear correlations between fields) collected during a numerical dynamo forward calculation may be used as prior information in an inversion to estimate a complete field and flow state within the core that is consistent both with geomagnetic observations and that numerical dynamo²². We have examined a series of such inversions²² based on the COV-OBS⁶ geomagnetic field model and taking prior information from a specific numerical dynamo, hereafter referred to as the coupled earth or CE dynamo³¹, with a relatively large $R_m = 942$ that generates a planetary gyre similar to that indicated by the observations. Fig. 1 presents the axial dipole rate of change obtained from these three-dimensional (3D) inversions (black line with dots), including a decomposition into the respective advective (dark blue line with

dots) and diffusive (light blue line with dots) contributions. The fluctuations in the observed rate of dipole decay are closely tracked by fluctuations of the advective component. The contribution of magnetic diffusion to dipole decay is on the other hand almost constant at about 5 nT yr^{-1} . We conclude that meridional advection of flux is usually responsible for majority of the dipole decay, especially when the rate of decay is rapid. For example in 1980 more than 80% of the decay rate can be attributed to advective processes, with maps of $-3/2\mu_0 u_\theta \sin\theta B_r$ showing an enhanced contribution to dipole decay by very strong equatorward flux transport south-west of Australia. In addition to the decrease in the magnitude of the axial dipole over the past 170 years, the dipole tilt angle has also simultaneously decreased²⁹, meaning that the equatorial dipole is decreasing even faster than the axial dipole; this is also likely to be a primarily advection-driven process²⁶.

Geodynamo model forward calculations. In a further step, we started an ensemble of numerical dynamo forward runs starting from the inferred core state²² in 2010 (see Methods section). The resulting predictions are delimited by the grey region in Fig. 1 and show a continuing decay of the geomagnetic axial dipole. A visualization of an example of the 3D field and flow estimated within the core in 2015, from one of these dynamo forward calculations, is presented in Fig. 3. Strong equatorward flow in the eastern limb of the gyre at the core surface is seen to be connected with vigorous underlying columnar convection. The estimated magnetic field within the core is arranged into large-

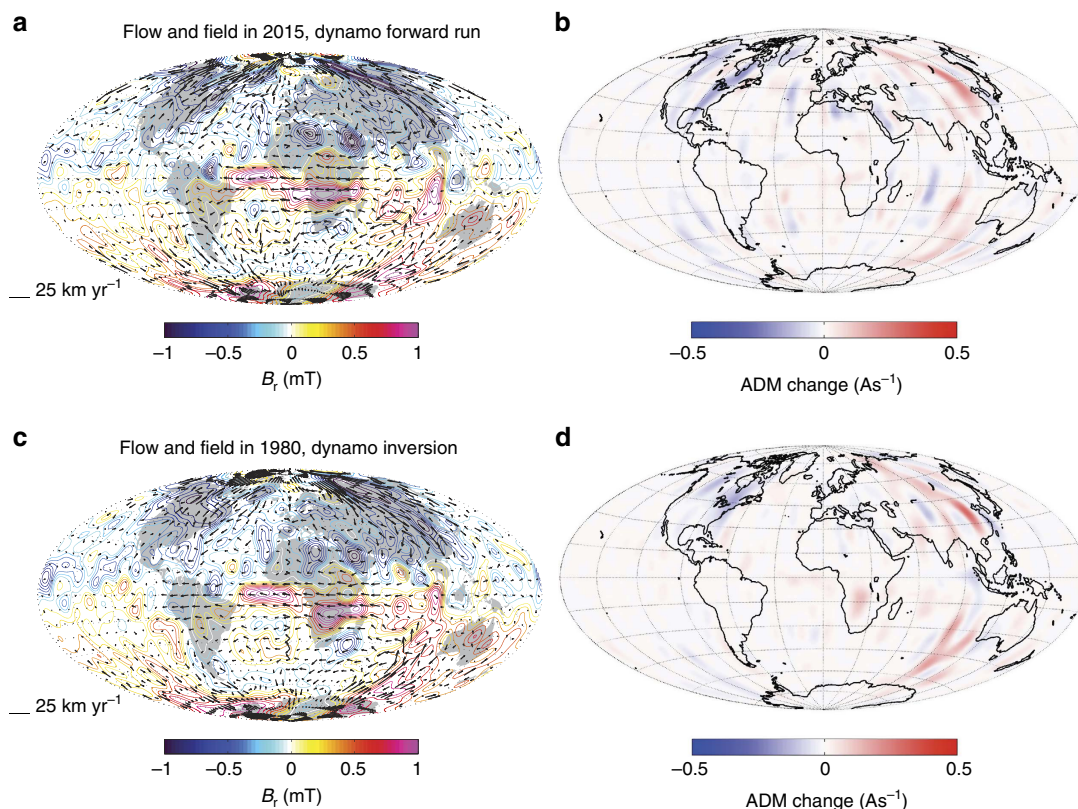


Figure 4 | Gyre-driven dipole decay as inferred using the CE dynamo. Maps of the core surface showing (a,c) core surface flow (arrows) acting on the radial magnetic field B_r (units: mT) and (b,d) the associated maps of contributions to axial dipole moment (ADM) change from core surface meridional flux transport $-3/2\mu_0 u_\theta \sin\theta B_r$, units As^{-1} . (a,b) Here the situation in 2015 is shown, for the same 3D state presented in Fig. 3, derived from a forward run of the CE dynamo model³¹ estimated from the inverted core state²² in 2010. (c,d) The same quantities for the inverted 3D core state in 1980 are shown, when the magnitude of dipole decay was twice as large as in 2015. Note that magnetic diffusion has been taken into account when deriving the flows presented here, which was not the case for the results presented in Fig. 2.

scale loops, with toroidal field in some locations being pushed out towards the core–mantle boundary. Flux expulsion therefore does take place in this dynamo, particularly at low latitudes, but it is not the dominant process driving the dipole decay or producing changes in the dipole decay rate.

The core surface flow, radial magnetic field and the resulting advective contributions to ADM change, from the estimated core state in 2015 displayed in Fig. 3, are presented in Fig. 4a,b. Large-scale characteristics of this flow are found to be similar to those of the frozen-flux quasi-geostrophic flows of Fig. 2e, even though magnetic diffusion has now explicitly been taken into account. Furthermore, the map of the advective contributions to ADM change in Fig. 4b also shows similar major features to the maps obtained in our earlier simplified experiments (Fig. 2b,d,f), particularly in the eastern hemisphere. Comparing with maps of the estimated 3D core state²² in 1980 (Fig. 4c,d), we find that the advective contribution to dipole decay from the region south-west of Australia has notably decreased between 1980 and 2015, resulting in a decrease in the dipole decay rate from 24 to 10.5 nT yr⁻¹. Examining the ensemble of dynamo forward calculations shown in Fig. 1, we find a continuing decrease in the dipole decay rate between 2010 and 2040.

Analysis of the dipole decay process. In all the presented examples, the vast majority of positive and negative contributions from meridional flux advection to ADM change cancel on integration over the core surface; it is a small unbalanced remainder that is responsible for driving the dipole decay. In 1980, the ratio of $\int u_{\theta} \sin \theta B_r dS / \int |u_{\theta} \sin \theta B_r| dS$ from the map in Fig. 4d is 0.17 indicating that, even in this case of relatively strong dipole decay, there was a rather large degree of cancellation in the meridional flux transport. The same ratio calculated from the map in Fig. 4b for 2015 is only 0.04 making the origin of the unbalanced contribution difficult to diagnose. One consequence of this finely balanced situation is that even minor changes in the meridional flux transport can cause relatively large changes in the dipole decay rate. The advective mechanism for dipole decay is certainly more clearly seen at times when the dipole decay rate is large, such as in 1980 (see Fig. 4c,d) when a large-scale imbalance is evident. On the other hand, the small length-scale structure of B_r and u_{θ} apparently play a more important role when the dipole decay rate is smaller (see Fig. 4a,b).

An alternative perspective on the origin of the dipole decay comes from examining the evolution of the magnetic energy per spherical harmonic degree at the core surface. First considering the COV-OBS⁶ field model, we find that between 1970 (when global satellite magnetic measurements were first available) and 2010, the percentage of the total energy (up to spherical harmonic degree 12) in the dipole field decreased from 45 to 42%, while the energy of the non-dipole core field increased from 55 to 58%, with the total energy remaining essentially constant. This is consistent with an advective transfer of energy from the dipole to the non-dipole field³². Since a decrease in the energy of some non-dipolar degrees (particularly 4 and 6) was also observed, it seems that the transfer of energy is not a simple forward cascade³³. Turning to the CE dynamo forward runs initialized from the inverted core state²² in 2010, we also find an increase in the energy of the large-scale non-dipole magnetic field during dipole decay, lending further support to the hypothesis that the presently observed dipole decay is primarily an advection-driven process.

Discussion

In a long, 130,000 years, forward run of the CE dynamo, we find that episodes of intense (20 nT yr⁻¹ or greater) dipole decay are correlated to increased contributions from advective processes to

the decay rate. During this long forward run, diffusion on average contributes 3 nT yr⁻¹ towards dipole decay but it varies only weakly (standard deviation 2.9 nT yr⁻¹). On the other hand, advective processes on average contribute 3 nT yr⁻¹ to dipole growth (the CE dynamo is quasi-steady averaging over 130,000 years), but with a standard deviation of 6.1 nT yr⁻¹, more than twice that of the diffusive processes. Fluctuations in meridional flux transport by advection are thus the most important kinematic mechanism for producing dipole growth and decay in the CE dynamo. On the other hand, we find no evidence for systematic increases in magnetic diffusion during the transient rapid dipole decay events exhibited by the model. It should, however, be remembered that the CE dynamo is designed to mimic the morphology of the present geomagnetic field and the historically observed patterns of secular variation, and not to study variations on the hundreds of kyr time scales relevant to reversals and excursions. Since it does not exhibit polarity reversals or sustained dipole collapse events, care is needed when interpreting the implications of our results for longer time scales. It remains possible that more dramatic events, not captured in the CE dynamo, may require a sustained increase in magnetic diffusion^{15,34}. Despite these caveats, our results indicate that the presence of large-scale field asymmetries such as the South Atlantic Anomaly, together with fluctuations of meridional core flows, may turn out to be central to the time-dependent nature of the geodynamo. Issues of great interest for palaeomagnetic studies are now whether field asymmetries such as the South Atlantic Anomaly were always present during previous dipole decay episodes, and whether or not there is any evidence for the long-term persistence of the planetary gyre and its associated patterns of secular variation.

Our CE dynamo model assumes a well-mixed outer core. It has recently been argued that the outermost core may be stably stratified³⁵, and that periodic, axisymmetric, flow oscillations of such a stratified layer may be responsible for fluctuations in the axial dipole³⁶. The planetary gyre central to our proposed dipole decay mechanism is large scale and fairly steady, so it is expected to penetrate any such stratified layer³⁷ and would in this scenario still produce dipole decay by the mechanism described above. In both the models, dipole variations result from fluctuations of the meridional flow at the core surface. The differences are that in our model the meridional flow variations are not periodic or axisymmetric (they are driven by convective fluctuations, especially in the eastern hemisphere) and that the zonal part of our flows naturally reproduce the observed decadal changes in the length of day^{19,22}, whereas flow oscillations in a thin-stratified layer require additional coupling to unknown deeper flows.

Can the above insights shed any light on how long the present episode of dipole decay may continue? The necessary ingredients appear to be field asymmetry and meridional flows in appropriate locations. The South Atlantic Anomaly has been present throughout the era of direct geomagnetic observations (since 1840) and it continues to deepen²⁹. Moreover, core flow inversions indicate that the planetary gyre and its meridional limbs have been rather stable over at least the past 175 years^{19,22,24}. We therefore anticipate that the gyre will continue to drive geomagnetic dipole decay, at least for the next few decades. Going beyond this statement is presently difficult, as illustrated by the divergence of our ensemble of dynamo forward runs in Fig. 1. Better knowledge of small-scale fluctuations of the meridional flow, and their interactions with the small-scale magnetic field^{28,38}, are necessary for improved prognostic models of the dipole decay process. High-quality magnetic observations now being collected by ESA's Swarm satellite constellation³⁹, in combination with improved dynamic models and time-dependent data assimilation systems⁴⁰, promise a more complete means of testing of these ideas.

Methods

Geomagnetic observations and field models. The geomagnetic dipole change between 1840 and 2010 is here taken from the COV-OBS time-dependent geomagnetic field model⁶. COV-OBS is derived from direct field measurements between 1840 and 2010 from ground observatories (annual means), collected by satellites (POGO, Magsat, Ørsted, SAC-C and CHAMP) and from ground surveys. The data compilation is the same as that previously used for the *gufm1* field model³ but with updated observatory and satellite data sets. COV-OBS was determined via a stochastic inversion, with a second-order auto-regressive stochastic process prior in time, permitting jerk events and time spectra in agreement with observatory data. The model includes spherical harmonics up to degree and order 14, and consists of both a mean model and second-order statistics in the form of a model covariance matrix. Fig. 1 also presents the axial dipole and its rate of change in 2014 as determined from initial data collected by the Swarm satellite constellation³⁹.

Quasi-geostrophic core flows. The quasi-geostrophic core flow model presented in Fig. 2e was obtained by a frozen-flux inversion of the COV-OBS field model, with the flow restricted to an equatorially symmetric, columnar basis¹⁹. Time-correlated modelling errors owing to interactions between unresolved core surface motions and magnetic fields (from degree and order 15 to 30) were accounted for by recursive estimation of an ensemble of flows, updating at each iteration the covariance matrix for the flow coefficients. Quasi-geostrophic flows up to spherical harmonic degree and order 20 were produced at yearly intervals. Here, we used the time average between 2000 and 2010 of the ensemble average of these flows, up to degree and order 15. The filtered gyre flow of Fig. 2c was obtained by gridding this flow in physical space, removing flow from the polar regions, the Pacific region, the equatorial region and in the gyre centre and then projecting back onto the divergence-free poloidal-toroidal basis. The resulting filtered gyre flow was renormalized so the maximum amplitude of westward flow was identical before and after filtering.

Geodynamo inverse and forward modelling. Estimates of the magnetic field and flow within the core were also derived from the COV-OBS field model, but utilizing *a priori* statistics from a 3D numerical dynamo simulation via the inverse geodynamo modelling procedure^{20,22}. This involves first performing a stochastic inversion for the magnetic field throughout the core to spherical harmonic degree 30, from the COV-OBS poloidal field to degree 13, utilizing an *a priori* covariance matrix derived from a large collection of geodynamo model states^{18,22,41}. Next, the core surface flow is inferred from the observed poloidal secular variation (again provided by COV-OBS), with diffusive effects included via the 3D core field estimated in the previous step²². Finally, the flow throughout the core is estimated by an additional stochastic inversion, again using *a priori* covariances from the geodynamo model states.

The numerical geodynamo model providing the prior information attempts to simulate as best as possible observed patterns of geomagnetic secular variation, in particular the westward drift and the Pacific–Atlantic dichotomy. Known as the CE dynamo model³¹, it solves for Boussinesq convection, buoyancy transport and magnetic induction in a spherical shell (inner/outer shell radii ratio 0.35) of electrically conducting liquid. This is coupled to a solid inner core with the same electrical conductivity and to an insulating solid outer spherical shell (mantle). Electrically conducting and no-slip boundary conditions are applied at the inner-core boundary. Electrically insulating and free-slip boundary conditions are applied at the core–mantle boundary. The mass anomaly flux at the inner-core boundary has a longitudinal hemispheric heterogeneity, which is maximum at longitude 90° E. while the core–mantle boundary has a heterogeneity motivated by lower-mantle seismic tomography³¹. The Ekman number $Ek = \nu/\Omega D = 3 \times 10^{-5}$ (where ν is the fluid viscosity and D the fluid shell depth), the mass anomaly flux Rayleigh number is $Ra = g_0 \beta \rho \Omega^3 D^2 = 9.3 \times 10^{-5}$ (where g_0 is the gravity at the core–mantle boundary and ρ is the fluid density). The Prandtl and magnetic Prandtl ratios between the fluid viscosity, thermal and magnetic diffusivities ν , κ , λ are set to $Pr = \nu/\kappa = 1$ and $Pr_m = \nu/\lambda = 2.5$. The numerical scheme involved a second-order finite differencing scheme in radius with 160 non-uniformly distributed points, and horizontally used spherical harmonics up to degree and order 133. Time-stepping was of second-order, semi-implicit type. The *a priori* statistics needed for the inverse geodynamo modelling were obtained from a model run of length half a magnetic diffusion time, where 800 complete state snapshots were stored at a spacing of 100 years.

Regarding the forward runs started in 2010, an ensemble of 40 states, each derived using the inverse geodynamo technique applied to the COV-OBS field model in 2010 (but with randomized realizations of the small-scale field and flow, compatible with the prior multivariate statistics) were used as the initial conditions for a series of short forward runs of the CE dynamo model.

References

- Bauer, L. A. The physical decomposition of the Earth's permanent magnetic field, no. III. *Terr. Magn. Atmos. Electr.* **8**, 97–129 (1903).
- Gubbins, D. Mechanism for geomagnetic polarity reversals. *Nature* **326**, 167–169 (1987).
- Jackson, A., Jonkers, A. R. T. & Walker, M. R. Four centuries of geomagnetic secular variation from historical records. *Phil. Trans. R. Soc. Lond. A* **358**, 957–990 (2000).
- Gauss, C. F. *Allgemeine Theorie des Erdmagnetismus* (Göttinger Magnetischer Verein, 1839).
- Gubbins, D., Jones, A. & Finlay, C. C. Fall in Earth's magnetic field is erratic. *Science* **312**, 900–902 (2006).
- Gillet, N., Jault, D., Finlay, C. C. & Olsen, N. Stochastic modelling of the Earth's magnetic field: inversion for second-order statistics over the observatory era. *Geochem. Geophys. Geosyst.* **14**, 766–786 (2013).
- Moffatt, H. K. *Magnetic field generation in electrically conducting fluids* (Cambridge Univ. Press, 1978).
- Christensen, U. R. & Wicht, J. in *Treatise on Geophysics*. (ed. Olson, P.) Vol. **8**, 245–282 (Elsevier Science, 2007).
- Roberts, P. H. & King, E. M. On the genesis of the Earth's magnetism. *Rep. Prog. Phys.* **76**, 096801 (2013).
- Pozzo, M., Davies, C. J., Gubbins, D. & Alfé, D. Thermal and electrical conductivity of iron at Earth's core conditions. *Nature* **109**, 355–358 (2012).
- Davies, C. J., Pozzo, M., Gubbins, D. & Alfé, D. Constraints from material properties on the dynamics and evolution of Earth's core. *Nat. Geosci.* **8**, 678–687 (2015).
- Olson, P. & Amit, H. Changes in Earth's dipole. *Naturewissenschaften* **93**, 519–542 (2006).
- Gubbins, D. A formalism for the inversion of geomagnetic data for core motions with diffusion. *Phys. Earth Planet. Int.* **98**, 193–206 (1996).
- Jackson, A., Constable, C. G., Walker, M. R. & Parker, R. L. Models of Earth's main magnetic field incorporating flux and radial vorticity constraints. *Geophys. J. Int.* **171**, 133–144 (2007).
- Olson, P., Driscoll, P. & Amit, H. Dipole collapse and reversal precursors in a numerical dynamo. *Phys. Earth Planet. Int.* **173**, 121–140 (2009).
- Finlay, C. C., Olsen, N. & Tøffner-Clausen, L. DTU candidate field models for IGRF-12 and the CHAOS-5 geomagnetic field model. *Earth Planets Space* **67** (2015).
- Pais, A. & Jault, D. Quasi-geostrophic flows responsible for the secular variation of the Earth's magnetic field. *Geophys. J. Int.* **173**, 421–443 (2008).
- Fournier, A., Aubert, J. & Thébault, E. Inference on core surface flow from observations and 3-D dynamo modelling. *Geophys. J. Int.* **186**, 118–136 (2011).
- Gillet, N., Jault, D. & Finlay, C. C. Planetary gyre and time-dependent midlatitude eddies at the Earth's core surface. *J. Geophys. Res.* **120**, 39914013 (2015).
- Aubert, J. Flow throughout the Earth's core inverted from geomagnetic observations and numerical dynamo models. *Geophys. J. Int.* **192**, 537–556 (2013).
- Amit, H. & Christensen, U. R. Accounting for magnetic diffusion in core flow inversions from geomagnetic secular variation. *Geophys. J. Int.* **175**, 913–924 (2008).
- Aubert, J. Earth's core internal dynamics 1840–2010 imaged by inverse geodynamo modelling. *Geophys. J. Int.* **197**, 119–134 (2014).
- Amit, H. & Pais, M. A. Differences between tangential geostrophy and columnar flow. *Geophys. J. Int.* **194**, 145–157 (2013).
- Pais, M. A., Morozova, A. L. & Schaeffer, N. Variability modes in core flows inverted from geomagnetic field models. *Geophys. J. Int.* **200**, 402–420 (2015).
- Voorhies, C. V. Coupling an inviscid core to an electrically insulating mantle. *J. Geomagn. Geoelectr.* **43**, 131–156 (1991).
- Amit, H. & Olson, P. Geomagnetic dipole tilt changes induced by core flow. *Phys. Earth Planet. Int.* **166**, 226–238 (2008).
- Holme, R. in *Treatise on Geophysics*. (ed. Olson, P.) Vol. **8**, 107–130 (Elsevier Science, 2007).
- Finlay, C. C., Jackson, A., Gillet, N. & Olsen, N. Core surface magnetic field evolution 2000–2010. *Geophys. J. Int.* **189**, 761–781 (2012).
- Finlay, C. C. *et al.* International geomagnetic reference field: the eleventh generation. *Geophys. J. Int.* **183**, 1216–1230 (2010).
- Christensen, U. R. & Tilgner, A. Power requirement of the geodynamo from Ohmic losses in numerical and laboratory dynamos. *Nature* **429**, 169–171 (2004).
- Aubert, J., Finlay, C. C. & Fournier, A. Bottom-up control of geomagnetic secular variation by the Earth's inner core. *Nature* **502**, 219–223 (2013).
- Amit, H. & Olson, P. A dynamo cascade interpretation of the geomagnetic dipole decrease. *Geophys. J. Int.* **181**, 1411–1427 (2010).
- Huguet, L. & Amit, H. Magnetic energy transfer at the top of the earth's core. *Geophys. J. Int.* **190**, 856–870 (2012).
- Liu, L. & Olson, P. Geomagnetic dipole moment collapse by convective mixing in the core. *Geophys. Res. Lett.* **36**, L10305 (2009).
- Helffrich, G. & Kaneshima, S. Outer-core compositional stratification from observed core wave speed profiles. *Nature* **468**, 807–810 (2010).
- Buffett, B. A. Geomagnetic fluctuations reveal stable stratification at the top of the Earth's core. *Nature* **507**, 484–487 (2014).

37. Takehiro, S. & Lister, J. R. Penetration of columnar convection into an outer stably stratified layer in rapidly rotating spherical fluid shells. *Earth Planet. Sci. Lett.* **187**, 357–366 (2001).
38. Christensen, U. R., Wardinski, I. & Lesur, V. Timescales of geomagnetic secular acceleration in satellite field models and geodynamo models. *Geophys. J. Int.* **190**, 243–254 (2012).
39. Olsen, N. *et al.* The Swarm Initial Field Model for the 2014 geomagnetic field. *Geophys. Res. Lett.* **42**, 1092–1098 (2015).
40. Fournier, A. *et al.* An introduction to data assimilation and predictability in geomagnetism. *Space Sci. Rev.* **155**, 247–291 (2010).
41. Aubert, J. & Fournier, A. Inferring internal properties of Earth's core dynamics and their evolution from surface observations and a numerical geodynamo model. *Nonlin. Proc. Geophys.* **18**, 657–674 (2011).

Acknowledgements

C.C.F. acknowledges support by the Danish Council For Independent Research—Natural Sciences (grant DFF 4002-00366). J.A. and N.G. acknowledge support from French Agence Nationale de la Recherche (grant ANR-2011-BS56-011). N.G. was partially supported by the French Centre National d'Etudes Spatiales (CNES) for the study of Earth's core dynamics in the context of the Swarm mission of ESA, and ISTERre is part of Labex OSUG@2020 (ANR10 LABX56). Numerical computations were performed at S-CAPAD, IGP, France, and using HPC resources from GENCI-IDRIS, France (grant 2015-042122) and also at the Froggy platform of the CIMENT infrastructure (<https://ciment.ujf-grenoble.fr>) supported by the Rhône-Alpes region (GRANT CPER07_13 CIRA), the OSUG@2020 labex (reference ANR10 LABX56) and the Equip@Meso project (reference ANR-10-EQPX-29-01). We thank the International Space Science Institute for

providing support for the workshops of international team no. 241. We thank R. Holme and two anonymous referees for helpful comments.

Author contributions

C.C.F. designed the project, analysed the model results and led the writing of the manuscript. J.A. designed and carried out the numerical dynamo model runs, as well as related 3D inversions for the core state. N.G. derived the underlying geomagnetic field model COV-OBS and produced the quasi-geostrophic core flows. All the authors discussed the results and commented on the manuscript.

Additional information

Competing financial interests: The authors declare no competing financial interests.

Reprints and permission information is available online at <http://npg.nature.com/reprintsandpermissions/>

How to cite this article: Finlay, C. C. *et al.* Gyre-driven decay of the Earth's magnetic dipole. *Nat. Commun.* **7**:10422 doi: 10.1038/ncomms10422 (2016).



This work is licensed under a Creative Commons Attribution 4.0 International License. The images or other third party material in this article are included in the article's Creative Commons license, unless indicated otherwise in the credit line; if the material is not included under the Creative Commons license, users will need to obtain permission from the license holder to reproduce the material. To view a copy of this license, visit <http://creativecommons.org/licenses/by/4.0/>