



**HAL**  
open science

## Supporting Mars exploration: BIOMEX in Low Earth Orbit and further astrobiological studies on the Moon using Raman and PanCam technology

Jean-Pierre de Vera, Ute Boettger, Rosa de La Torre Noetzel, Francisco J Sánchez, Dana Grunow, Nicole Schmitz, Caroline Lange, Heinz-Wilhelm Hübers, Daniela Billi, Mickael Baqué, et al.

### ► To cite this version:

Jean-Pierre de Vera, Ute Boettger, Rosa de La Torre Noetzel, Francisco J Sánchez, Dana Grunow, et al.. Supporting Mars exploration: BIOMEX in Low Earth Orbit and further astrobiological studies on the Moon using Raman and PanCam technology. *Planetary and Space Science*, 2012, 74 (1), pp.103-110. 10.1016/j.pss.2012.06.010 . insu-01337134

**HAL Id: insu-01337134**

**<https://insu.hal.science/insu-01337134>**

Submitted on 6 Mar 2024

**HAL** is a multi-disciplinary open access archive for the deposit and dissemination of scientific research documents, whether they are published or not. The documents may come from teaching and research institutions in France or abroad, or from public or private research centers.

L'archive ouverte pluridisciplinaire **HAL**, est destinée au dépôt et à la diffusion de documents scientifiques de niveau recherche, publiés ou non, émanant des établissements d'enseignement et de recherche français ou étrangers, des laboratoires publics ou privés.

## Supporting Mars exploration: BIOMEX in Low Earth Orbit and further astrobiological studies on the Moon using Raman and PanCam technology

Jean-Pierre de Vera<sup>a,n</sup>, Ute Boettger<sup>a</sup>, Rosa de la Torre Noetzel<sup>b</sup>, Francisco J Sánchez<sup>b</sup>, Dana Grunow<sup>a</sup>, Nicole Schmitz<sup>a</sup>, Caroline Lange<sup>c</sup>, Heinz-Wilhelm Hübers<sup>a,d</sup>, Daniela Billi<sup>e,1</sup>, Mickael Baqué<sup>e,1</sup>, Petra Rettberg<sup>f,1</sup>, Elke Rabbow<sup>f,1</sup>, Günther Reitz<sup>f,1</sup>, Thomas Berger<sup>f,1</sup>, Ralf Möller<sup>f,1</sup>, Maria Bohmeier<sup>f,1</sup>, Gerda Horneck<sup>f,1</sup>, Frances Westall<sup>g,1</sup>, Jochen Jänchen<sup>h,1</sup>, Jörg Fritz<sup>i,1</sup>, Cornelia Meyer<sup>i,1</sup>, Silvano Onofri<sup>j,1</sup>, Laura Selbmann<sup>j,1</sup>, Laura Zucconi<sup>j,1</sup>, Natalia Kozyrovska<sup>k,1</sup>, Thomas Leya<sup>l,1</sup>, Bernard Foing<sup>m,1</sup>, René Demets<sup>m,1</sup>, Charles S. Cockell<sup>n,1</sup>, Casey Bryce<sup>n,1</sup>, Dirk Wagner<sup>o,1</sup>, Paloma Serrano<sup>p,1</sup>, Howell G.M. Edwards<sup>q,1</sup>, Jasmin Joshi<sup>r,1</sup>, Björn Huwe<sup>r,1</sup>, Pascale Ehrenfreund<sup>s,1</sup>, Andreas Elsaesser<sup>s,1</sup>, Sieglinde Ott<sup>t,1</sup>, Joachim Meessen<sup>t,1</sup>, Nina Feyh<sup>u,1</sup>, Ulrich Szewzyk<sup>u,1</sup>, Ralf Jaumann<sup>a</sup>, Tilman Spohn<sup>a</sup>

<sup>a</sup> German Aerospace Center (DLR) Berlin, Institute of Planetary Research, Rutherfordstr. 2, 12489 Berlin, Germany

<sup>b</sup> Instituto Nacional de Técnica Aeroespacial (INTA), Ctra. de Ajalvir km. 4, 28850 Torrejón de Ardoz, Madrid, Spain

<sup>c</sup> German Aerospace Center (DLR) Bremen, Germany

<sup>d</sup> Technische Universität Berlin, Institut für Optik und Atomare Physik, Hardenbergstr. 36, 10623 Berlin, Germany

<sup>e</sup> University Tor Vergata, Rome, Italy

<sup>f</sup> DLR, Cologne, Germany

<sup>g</sup> University of Orléans, France

<sup>h</sup> TFH Wildau, Germany

<sup>i</sup> Museum für Naturkunde, Berlin, Germany

<sup>j</sup> University della Tuscia, Viterbo, Italy

<sup>k</sup> Academy of Science, Kiev, Ukraine

<sup>l</sup> Fraunhofer IBMT, Potsdam, Germany

<sup>m</sup> ESA/ESTEC, Noordwijk, Netherlands

<sup>n</sup> University of Edinburgh, UK

<sup>o</sup> GFZ Potsdam, Germany

<sup>p</sup> AWI, Potsdam, Germany

<sup>q</sup> University of Bradford, UK

<sup>r</sup> University of Potsdam, Germany

<sup>s</sup> Leiden University, Leiden, Netherlands

<sup>t</sup> Heinrich-Heine-University, Institute of Botany, Düsseldorf, Germany

<sup>u</sup> TU Berlin, Germany

The Low Earth Orbit (LEO) experiment *Biology and Mars Experiment* (BIOMEX) is an interdisciplinary and international space research project selected by ESA. The experiment will be accommodated on the space exposure facility EXPOSE-R2 on the International Space Station (ISS) and is foreseen to be launched in 2013. The prime objective of BIOMEX is to measure to what extent biomolecules, such as pigments and cellular components, are resistant to and able to maintain their stability under space and Mars-like conditions. The results of BIOMEX will be relevant for space proven biosignature definition and for building a biosignature data base (e.g. the proposed creation of an international Raman library). The library will be highly relevant for future space missions such as the search for life on Mars. The secondary scientific objective is to analyze to what extent terrestrial extremophiles are able to survive in space and to determine which interactions between biological samples and selected minerals (including terrestrial, Moon- and Mars analogs) can be observed under space and Mars-like conditions. In this context, the Moon will be an additional platform for performing similar experiments with negligible magnetic shielding and higher solar and galactic irradiation compared to LEO. Using the

Moon as an additional astrobiological exposure platform to complement ongoing astrobiological LEO investigations could thus enhance the chances of detecting organic traces of life on Mars. We present a lunar lander mission with two related objectives: a lunar lander equipped with Raman and PanCam instruments which can analyze the lunar surface and survey an astrobiological exposure platform. This dual use of testing mission technology together with geo- and astrobiological analyses will significantly increase the science return, and support the human preparation objectives. It will provide knowledge about the Moon's surface itself and, in addition, monitor the stability of life-markers, such as cells, cell components and pigments, in an extraterrestrial environment with much closer radiation properties to the surface of Mars. The combination of a Raman data base of these data together with data from LEO and space simulation experiments, will lead to further progress on the analysis and interpretation of data that we will obtain from future Moon and Mars exploration missions.

## 1. Introduction

The search for life or fossil remnants of life on other planets is a prime goal of future space missions due to its high scientific and philosophical relevance. The possibility that organisms could survive in harsh environments outside the Earth was investigated in previous experiments (Horneck et al., 2010), see also (Table 1). Spaceflight and ground based experiments have shown that especially micro-colonies of bacteria, meristematic black fungi and symbiotic associations of microorganisms such as lichens are able to survive and to be reactivated after space experiments (de la Torre et al., 2007, 2010; de Vera et al., 2003, 2004a,b, 2007, 2008, 2009; de Vera, 2005; Horneck et al., 1994; Kordyum et al., 1983; Olsson-Francis et al., 2009; Onofri et al., 2008, 2009; Sancho et al., 2007; Tarasenko et al., 1990). Bacteria strains, such as *Bacillus subtilis* and *Deinococcus radiodurans*, are radiation and vacuum tolerant (Horneck, 1993; Horneck et al., 1994, 2001; Moeller et al., 2007a,b,c). Gram-negative endophytic bacteria and cyanobacteria survived during a 14 day-shuttle flight and their co-existence with plants exposed to microgravity showed enhanced plant colonizing activity (Tarasenko et al., 1990). During the BIOPAN 5 and 6 experiments the lichens *Rhizocarpon geographicum*, *Xanthoria elegans* and *Aspicilia fruticulosa* (renamed as *Circinaria gyrosa*) were analyzed after an exposure time to space conditions of about 10–16 day and parallel ground based tests were performed. The results after flight and simulation experiments lead to the conclusion that the tested symbiotic eukaryotic associations of alga and fungi in the lichen were not seriously damaged and nearly 70%–90% of the tested lichens have survived. They were physiologically active and able to germinate and grow. Some investigations on the mutation rate expressed by photoproducts produced in the DNA

have also shown that the fungus was practically not affected by UV radiation but the algal symbiont was more sensitive (de la Torre et al., 2007, 2010; de Vera et al., 2003, 2004a,b, 2007, 2008, 2009, 2010b; de Vera, 2005; de Vera and Ott, 2010a; Sancho et al., 2007). Cyanobacteria were also able to survive Low Earth Orbit (LEO) environment and simulated extraterrestrial conditions, as shown by analysis of the akinetes (resting-state cells of cyanobacteria, Olsson-Francis et al., 2009). Vegetative cells of *Chroococciopsis* sp. CCME 029 survived prolonged desiccation (Billi, 2009) and a few minutes of exposure to unattenuated martian UV flux (Cockell et al., 2005). The cells also survived, shielded by 3 mm of sandstone, in real space as well as simulated martian conditions representing 1.5 years exposure in LEO (Billi et al., 2011). Moreover, these same vegetative cells associated with an epilithic microbial community survived 548 day on the EXPOSE-E facility (Cockell et al., 2011). Numerous species mentioned here are even able to survive simulated asteroid impacts (Horneck et al., 2001, 2008; Meyer et al., 2011; Stöffler et al., 2007). Mars simulation tests on methanogenic archaea have also shown a remarkable level of survival (Morozova and Wagner 2007; Morozova et al., 2007). The same has been observed for meristematic black fungi during a ground based experiment in the space simulation facilities at DLR Cologne named EVT (Experiment Verification Test), performed in preparation for the recent and completed EXPOSE experiments (Onofri et al., 2008). They survived also further exposure to real space conditions on the ISS with a total exposure time of 1.5 years (Onofri et al., 2012). In other ground-based experiments, we were able to demonstrate that *Paenibacillus* sp. IMBG221 caused bio-corrosion of an anorthosite rock—a Moon analog (Lytvynenko et al., 2006). This brief overview shows that a wide variety of different microorganisms, including evolved ones, is able to resist and to survive space conditions for certain periods of time.

**Table 1**  
Survival in Mars and space environment

Tested organisms	Mars atmosphere	Vacuum	UV/space radiation	Shock experiments
Archaea				
<i>Methanosarcina</i>	+	+	+/-	n.d.
Bacteria				
<i>Bacillus subtilis</i>	+	+	+	+
<i>Deinococcus radiodurans</i>	+	+	+	n.d.
Endophytic gram <sup>-</sup> bacteria	+	+	+	n.d.
Cyanobacteria (e.g. <i>Chroococciopsis</i> )	+/-	+/-	+/-	+/-
Lichens				
<i>Aspicilia fruticulosa</i> (renamed: <i>Circinaria gyrosa</i> )	+	+	+	n.d.
<i>Rhizocarpon geographicum</i>	+	+	+	n.d.
<i>Xanthoria elegans</i>	+	+	+	+
Meristematic black fungi				
<i>Cryomyces antarcticus</i>	+	+	+	n.d.

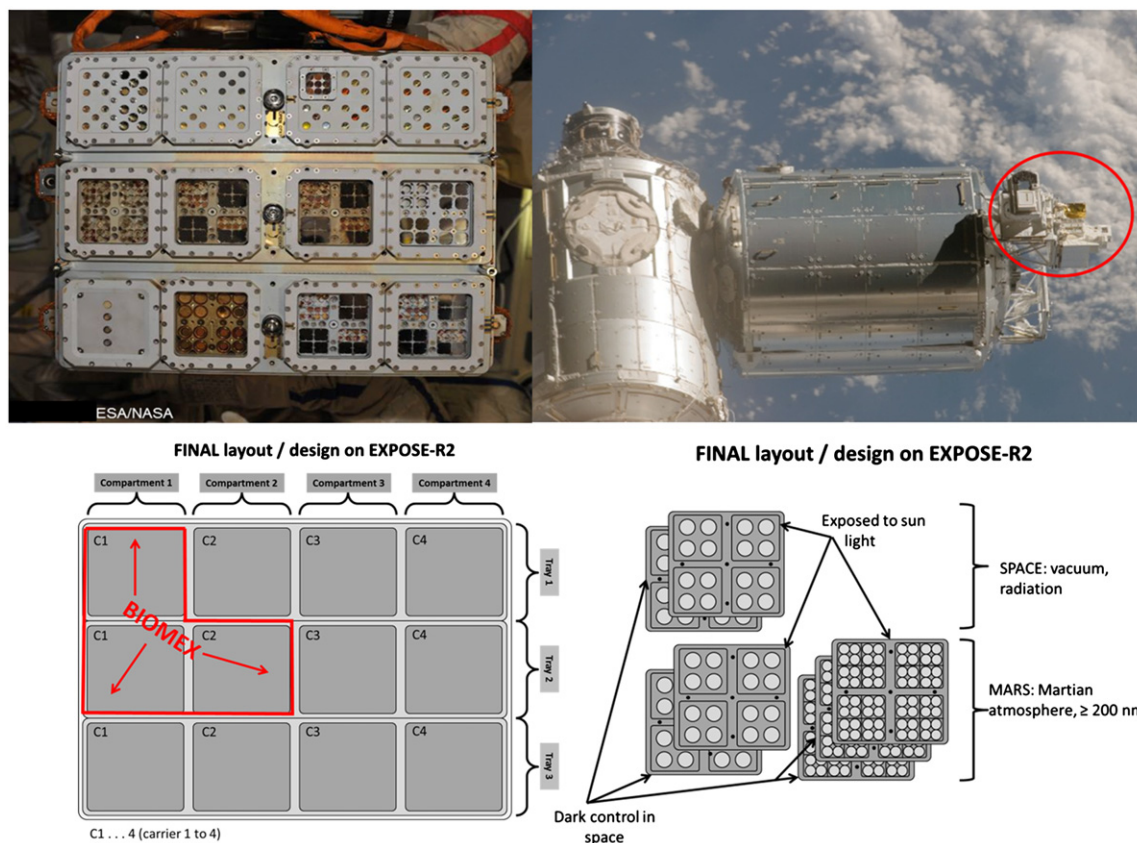
(+) Positive survival; (-) No survival; (n.d.) Not determined.

## 2. Experimental approach of BIOMEX—a step further

BIOMEX is an exposure experiment which will be performed on the exposure facility EXPOSE-R2 attached to the Russian Zvezda module of the International Space Station (ISS). The Launch is foreseen for mid-2013. The planned exposure duration is expected to be in maximum 1.5 years. EXPOSE-R2 is a hardware payload built by Kayser-Threde, where the samples can be placed into sample holders and exposed outside the module (Fig. 1). The concept of this experiment is an improvement on the previously executed experiments in Section 1.

### 2.1. First scientific objective of BIOMEX

Its primary objective is to pay more attention to the structure and stability of most of the biological components, especially to the protecting surface coats, membranes, proteins, pigments or secondary metabolite deposits on cell surfaces. In previous exposure experiments, these investigations were incomplete with respect to the identification of space-resistant biosignatures, although the



**Fig. 1.** EXPOSE R (Zvezda module/ top left) and EXPOSE-E on racks of Columbus module (top right, red circle); position of BIOMEX experiment in the EXPOSE-R2 hardware (bottom left) and sample holders (bottom right).

results we might get by such a systematic analysis are of high relevance for the characterization and detection of potential biosignatures of recent/extant microorganisms on future missions to Mars. Another reason for using the BIOMEX experiment is to deepen these investigations and to analyze the effect of space environment by using the biological samples in contact with Lunar Regolith analog rocks, such as anorthosite (Mytrokhyn et al., 2003) and two Mars regolith analog mixtures with the characteristics of phyllosilicatic Mars Regolith soils (P-MRS) and sulfatic Mars Regolith soils (S-MRS) reflecting alteration minerals formed during different environmental conditions of the Noachian and Hesperian/Amazonian, respectively (Böttger et al., 2012). These two Mars analog mineral mixtures have been developed by the Naturkundemuseum Berlin in the framework of the Helmholtz-Alliance “Planetary Evolution and Life”. The production of the analogs is based on recent Mars data and publications (Bibring et al., 2005, 2006; Chevrier and Mathé, 2007; Poulet et al., 2005). The effects of space conditions, together with simulated lunar conditions and Mars-like environment, on rock and mineral analogs is an important parameter for optimizing exploration procedures focusing on the detection of mineral composition as a context for biological investigations. Hence space exposure experiments, such as presented by the concept of BIOMEX, might help to avoid possible pitfalls which might occur due to possible overlapping of signals during spectroscopic detection procedures. The influence of interfering mineralogical features or changes in the molecular conformation of biological substances after exposure to the space environment on the ISS may be identified. Such experiments will greatly aid to identify if signatures of extinct or extant life are present on another planet.

As mentioned above, a number of pigments and membrane components, representing bio-relevant substances extracted from

cells and embedded in the Mars and Lunar regolith analog mineral pellets are also part of the experiment. This will provide valuable information about the stability of the pigments before and after space exposure and might also help to determine the location of protected bio-signatures in Mars-like soils.

## 2.2. Second scientific objective of BIOMEX

The BIOMEX space experimental platform provides an ideal opportunity to pursue a second objective: the samples used can also test the viability and space resistance of microorganisms in the context of (Litho-)Panspermia (Arrhenius, 1903, 1908, 1918; Chyba and Sagan, 1992; Martins et al., 2008). This concept was tested in space experiments on FOTON/BIOPAN (Sancho et al., 2007; de la Torre et al., 2010) and more recently on the latest EXPOSE missions on the ISS. Replicates are needed, as well as data during different phases of the sun’s activity for a re-evaluation of the Lithopanspermia theory. In addition to replicates, a new set of microorganisms, representing species of all three main branches of the tree of life have been chosen (Fig. 2), in particular microorganisms which are known to be relevant for Mars (e.g. methane producing archaea, cyanobacteria and iron bacteria/ Fig. 3).

Currently, a number of space simulation experiments, the Experiment Verification Tests (EVTs) and Scientific Verification Tests (SVTs), are being performed and are in continuation at the space simulation facilities at DLR Cologne to aid sample preparation and the selection processes of the best samples to be sent to space. The preliminary results indicate a high survival rate of the investigated organisms and the stability of their pigments. Therefore the final arrangement of the sample distribution in the space hardware will not differ much from the layout presented in Figs. 2 and 3.

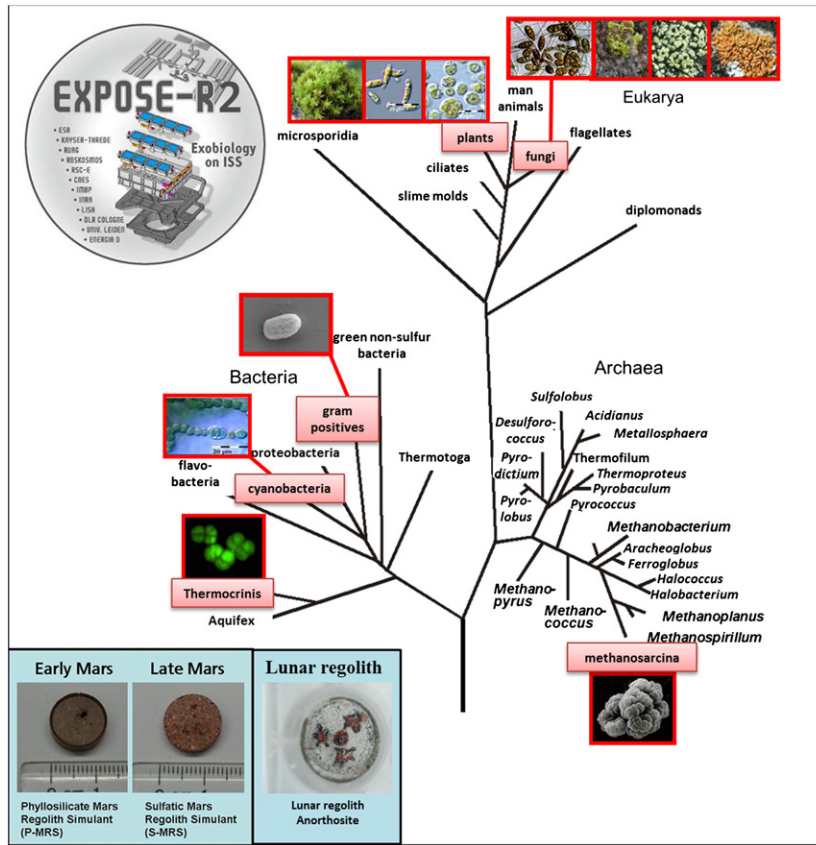


Fig. 2. The rRNA analysis-based phylogenetic tree of terrestrial life including the selected organisms for the BIOMEX space experiments onboard the ISS. Bottom left: mineral pellets selected for BIOMEX.

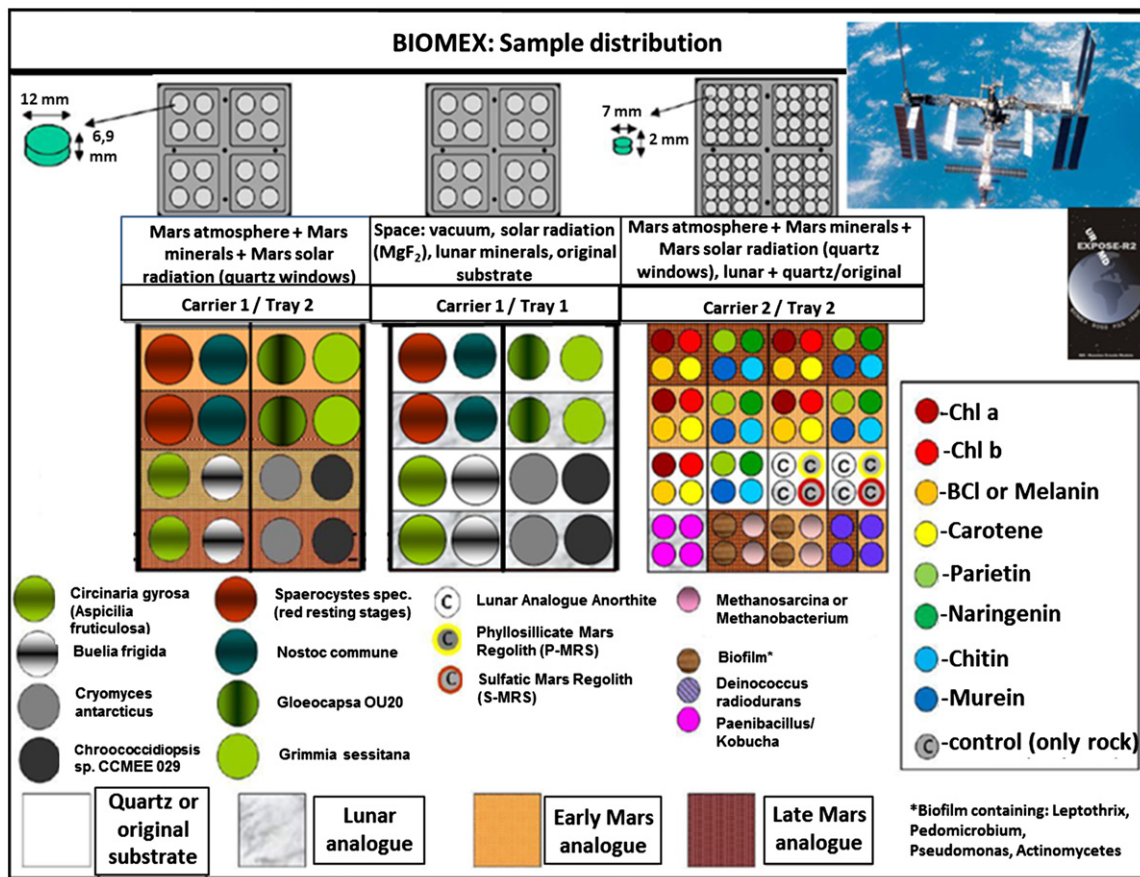


Fig. 3. Sample positions in hardware and parameter description.

### 3. The relevance of exposure experiments on the Moon

BIOMEX is designed as a precursor experiment for follow-on geo-biological studies on the Moon and as preparation and support for future Mars exploration missions as described in the original proposal (ILSRA-2009-0834).

In response to ESA's call for letters of interest and proposals for a Lunar Lander, the national and international HGF-Alliance "Planetary Evolution and Life" and its cooperating teams have submitted a proposal, named LOGOS (Lunar-Organisms and Geology Operation Sciences), emphasizing research on space weathering on organisms and rocks.

The LOGOS-Cube is designed as a package which has a closely connected context to the present BIOMEX experiment in LEO. It is intended to serve as an exposure platform on the Moon for organisms, organics and mineral surfaces of different rocks with the same scientific focus as described for the BIOMEX experiment. The LOGOS-Cube will obtain information on the effect of space weathering on organisms and rocks and the degradation or resistance of organics produced by life forms, thus contributing to our understanding of relevant life markers/bio-signatures as a reference to the search for life on other planets. The Moon is a natural vantage platform with an enhanced radiation exposure due to the absence of both, an own magnetic field and an atmosphere. The data expected from the present BIOMEX project on the ISS will facilitate identification of the most suitable samples for lunar orbiter or lander experiments and will provide reference data for future Moon experiments. These data will be extremely useful in support of future missions to Mars to search for biosignatures as evidence for remnant or fossil and therefore extinct life and for the search of extant life on other Solar System bodies.

### 4. Our proposal: biosignature analysis combining PanCam and Raman in situ measurement devices on one exposure-platform

For a new lander with multifunctional technology tests and additional scientific outcome, our suggestion is to combine existing and space proved exposure platforms and technologies with a Technical Readiness Level (TRL) of about 6–9. We propose to use a small version of the EXPOSE platform, as used on the ISS, with a maximum of 3 carriers in a compartment which could serve as a sample holder for geo-biological samples as shown in Fig. 1. One additional sensor carrier will be used to collect temperature and radiation data. This particular exposure device is space proven and its TRL level is almost 9 (Rabbow et al., 2009). In addition, *in situ*

measurements in the visible and multispectral wavelength are required. Therefore, instruments such as a multispectral camera, sensitive in the visible (VIS) and near infrared (NIR) range, as well as fluorescence, Raman and IR spectrometers are needed for detection of the spectral characteristics of life forms and biosignatures and for the observation of their behavior during the exposure time (e.g. position and possible changes of specific detected peaks in different spectral ranges previously determined as specific bio-relevant fingerprints of, for example, unaffected pigments can indicate changes and destruction of the molecular structure during space exposure (Dartnell et al., 2012)).

#### 4.1. Panoramic wide angle multispectral Stereo Camera (PanCam) combined with IR and Raman spectroscopy

One of the proposed instruments which can be helpful to support this task is a panoramic wide-angle multispectral stereo camera (PanCam, Coates et al., 2012; Griffiths et al., 2006) with TRL 6–7 that has been selected as part of the ExoMars rover (Vago and Kmínek, 2007; Cousins et al., 2010). A similar device is also already a part of the model payload of ESA's Lunar Lander (Carpenter, 2011).

This camera system (1) delivers the geological context of the landing site (cf. Bell et al., 2004; Smith et al., 1997) and (2) helps to identify the best locations for further study via multi-level analyses (Vago, 2005). Further capabilities of this system include multi-spectral analysis in the VIS/NIR (400–1000 nm) range that provides compositional information. The final optical characterization is done by a close-up imager inspection of surfaces at mm- or sub mm-scale (such as ExoMars PanCam HRC) or microscopically (Clupi on ExoMars (Josset et al., 2012), MAHLI (Edgett et al., 2005) on MSL). For ExoMars, the PanCam (Fig. 4A and B) consists of two wide angle cameras (WACs), which form a stereo pair and a narrow angle high resolution camera (HRC). Its first and foremost task in any payload is the delivery of geological context information. Geological information that can be gathered from greyscale WAC and HRC images includes outcrop context, structure, morphology, and brightness. Such knowledge can be used to make a preliminary classification of rock type and its weathered state. Additionally, the WACs are equipped with 3 wideband RGB filters and 11 narrow band (30–40 nm) geological filters to provide color and visible and near infrared spectral data, respectively. This provides both mineralogical and compositional information, which, in combination with morphology, structure and context helps for interpretation of the lithology of the landing site. In the context of life detection missions,

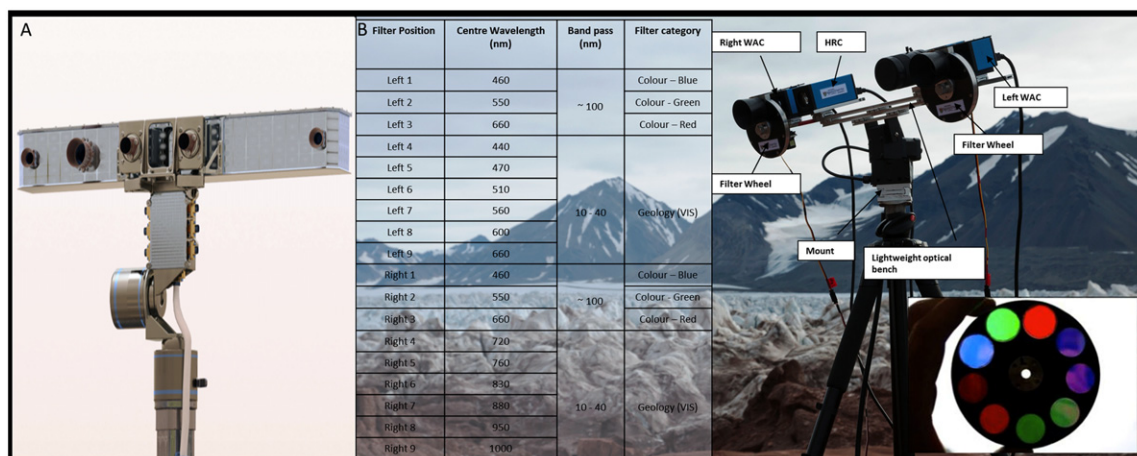


Fig. 4. (A) Drawing of the ExoMars PanCam instrument accommodated on a Pan-Tilt Unit on top of the ExoMars rover for multiple use. (B) Field Model of the ExoMars Panoramic Camera, as used during the Arctic Mars Analog Svalbard Expeditions (AMASE), with a range of VIS/NIR filters for multispectral composition analysis.

such as ExoMars, the utilization of recorded VIS/NIR spectra is especially important to assess astrobiological objectives such as habitability condition like detection of hydrated minerals that might indicate past aqueous activity (Fig. 4A and B). In addition, the same instrument can be utilized for visible and multispectral monitoring of samples on an EXPOSE-like exposure platform.

Multiple spectrometers can be mounted on the mast in addition to PanCam including IR- and Raman-spectrometers; which could be used for (3) *in situ* measurements of the exposed geo-bio-samples (see Fig. 5), as well as geological investigations of the Moon's surface.

## 5. Operation scenarios

We have envisaged three different scenarios for operations during the lander mission (Fig. 5):

- Option (1) is a movable, *i.e.* in- and out-side gliding exposure platform which exposes the geo-biological samples to the lunar environment (vacuum, radiation) and upon which the samples can be analyzed by a PanCam (outside) and a Raman/LIBS-spectrometer accommodated inside the lander (TLR 6–9, ISS and ExoMars techniques).

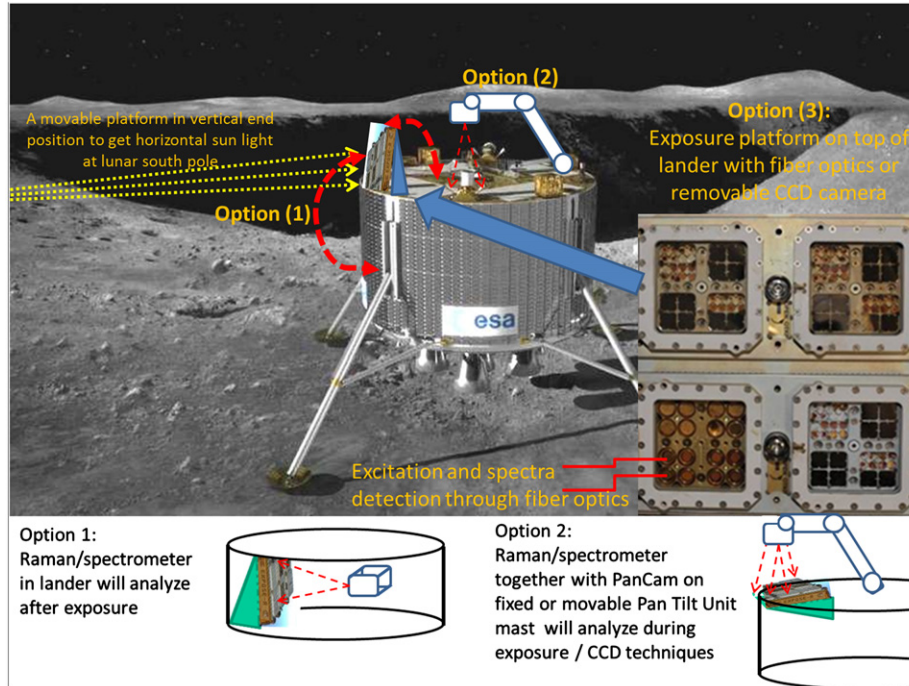


Fig. 5. The 3 options of operation scenarios to combine remote and *in situ* measurements.

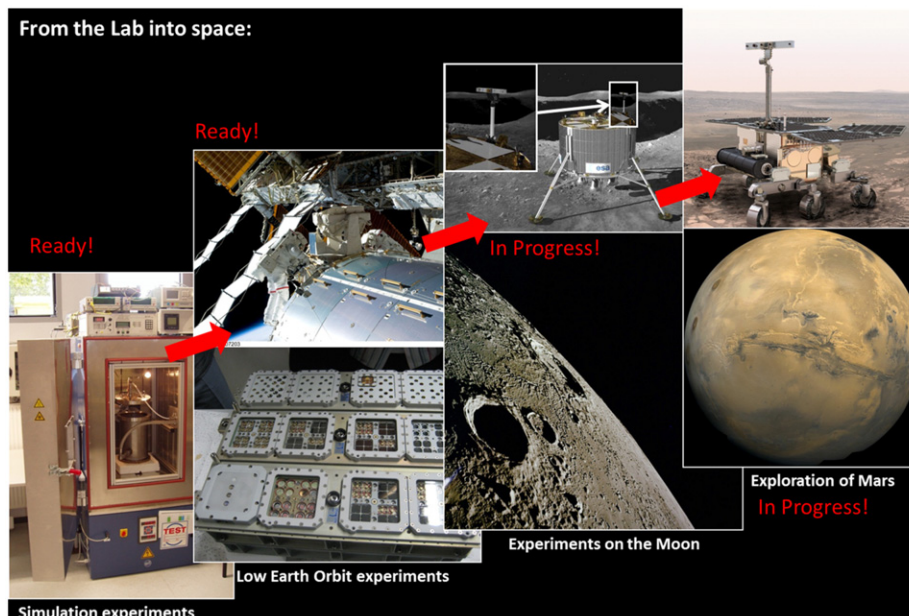


Fig. 6. The way to Mars exploration: the necessity and relevance of technology improvement and science tests in simulation facilities, in Low Earth Orbit and on the Moon.

- Option (2) is the use of the PanCam instrument combined with different spectrometers including Raman and IR on top of a tiltable mast (Fig. 4A and Fig. 5) that can analyze the landing site geology as well as monitor changes in the geo-biological samples on the exposure platform during the mission, as previously described (TLR 6–9, ISS and ExoMars techniques).
- Option (3) is an exposure platform (TRL 9) on the top of the lander which has fiber optics in the exposure sample holders or a removable CCD camera with a connection to an internal data logger. But this option needs further investigation and the present TRL is at 5–6.

Our preferred option is (2) because of its multi-functionality and the high expected scientific outcome. Another advantage is the possibility of using a similar but smaller version of the exposure platform, as used on the ISS, because the carriers with the samples are also easily removable. This might be relevant for future lunar manned space missions, where astronauts can remove or exchange the carriers from the lander to transfer the samples back to Earth for further investigations. Additional techniques that would not be possible to be conducted on the Moon during the lander mission because of technical and mass restrictions can be applied in ground-based laboratories.

## 6. Conclusion

The presented technology is available and the individual components have a high level of TRL. The new combination of existing and already applied techniques in LEO, as well as tested instruments for other space missions comparable to Mars missions, together with new innovative instrumentation, will support the ESA lunar lander objectives to prepare for human lunar exploration and will lead to high and valuable scientific outcome including astro-/exo-biology investigations.

In particular, data from the BIOMEX experiment obtained from spectrometers, such as Raman technology, will serve as reference for future exposure experiments on the Moon surface. By comparing data from LEO with data obtained on the surface of the Moon, we will improve our knowledge regarding the stability of selected biosignature spectra in high radiation environments similar to those expected on the surface of Mars. For such a proposed lunar lander mission we do not have to reinvent the wheel but can use resources, know-how and knowledge already available due to innovative enterprises in LEO and developed for Mars exploration studies (see Fig. 6).

## References

Arrhenius, S., 1903. Die Verbreitung des Lebens im Weltraum. Die Umschau 7, 481–485, Reprinted in Donald Goldsmith, ed., The Quest for Extraterrestrial Life, q.v. Arrhenius, S. Panspermy: The Transmission of Life from Star to Star, Scientific American, 196, 196 (1997).

Arrhenius, S., 1908. Worlds in the Making: The Evolution of the Universe. Harper and Row, New York.

Arrhenius, S., 1918. The Destinies of Stars (J.E. Fries, Trans). G. P. Putnam's Sons, New York.

Bell, J.F., et al., 2004. PanCam multispectral imaging results from the Spirit rover at Gusev Crater. Science 305, 800–806.

Bibring, J.-P., Langevin, Y., et al., 2005. Mars surface diversity as revealed by the OMEGA/Mars express observations. Science 307 (5715), 1576–1581.

Bibring, J.-P., Squyres, S.W., et al., 2006. Merging views on Mars. Science 313, 1899–1901.

Billi, D., 2009. Subcellular integrities in *Chroococcidiopsis* sp. CCME 029 survivors after prolonged desiccation revealed by molecular probes and genome stability assays. Extremophiles 13, 49–57.

Billi, D., Viaggiu, E., Cockell, C.S., Rabbow, E., Horneck, G., Onofri, S., 2011. Damage escape and repair in dried *Chroococcidiopsis* spp. from hot and cold deserts exposed to simulated space and Martian conditions. Astrobiology 11, 65–73.

Böttger, U., de Vera, J.-P., Fritz, J., Weber, I., Hübers, H.-W., Schulze-Makuch, D., 2012. Optimizing the detection of carotene in cyanobacteria in a martian

regolith analogue with a Raman spectrometer for the ExoMars mission. Planetary and Space Science 60, 356–362.

Carpenter, J., 2011. The European Lunar Lander: surface phase objectives and payload. ESA-ESTEC.

Chevrier, V., Mathé, P.E., 2007. Mineralogy and evolution of the surface of Mars: a review. Planetary and Space Science 55 (3), 289–314.

Coates, A.J., Griffiths, A.D., Leff, C.E., Schmitz, N., Barnes, D.P., Josset, J.-L., Hancock, B.K., Cousins, C.R., Jaumann, R., Paar, G., Bauer, A., Crawford, I.A., the Pan Cam team. Lunar PanCam—adapting for the ESA Lunar Lander. Planetary and Space Science, this issue.

Chyba, C., Sagan, C., 1992. Endogenous production, exogenous delivery and impact-shock synthesis of organic molecules: an inventory for the origins of life. Nature 355, 125–132.

Cockell, C.S., Schuerger, A.C., Billi, D., Friedmann, E.I., Panitz, C., 2005. Effects of a simulated martian UV flux on the cyanobacterium, *Chroococcidiopsis* sp. 029. Astrobiology 5, 127–140.

Cockell, C.S., Rettberg, P., Rabbow, E., Olsson-Francis, K., 2011. Exposure of phototrophs to 548 day in low Earth orbit: microbial selection pressures in outer space and on early earth. The ISME Journal, 1–12.

Cousins, C.R., Griffiths, A.D., Crawford, I.A., Prosser, B.J., Storrer-Lombardi, M.C., Davis, L.E., Gunn, M., Coates, A.J., Jones, A.P., Ward, J.M., 2010. Astrobiological considerations for the selection of the geological filters on the ExoMars PanCam instrument. Astrobiology 10, 933–951, <http://dx.doi.org/10.1089/ast.2010.0517>.

Dartnell, L.R., Page, K., Jorge-Villar, S.E., Wright, G., Munshi, T., Scowen, I.J., Ward, J.M., Edwards, H.G.M., 2012. Destruction of Raman biosignatures by ionising radiation and the implications for life detection on Mars. Analytical and Bioanalytical Chemistry 403, 131–144.

de la Torre Noetzel, R., Sancho, L.G., Pintado, A., Rettberg, P., Rabbow, E., Panitz, C., Deutschmann, U., Reina, M., Horneck, G., 2007. BIOPAN experiment LICHENS on the Foton M2 mission: Preflight verification tests of the *Rhizocarpon geographicum*-granite ecosystem. Advances in Space Research 40, 1665–1671.

de la Torre, R., Sancho, L.G., Horneck, G., Ascaso, C., de los Ríos, A., Olsson-Francis, K., Cockell, C.S., Rettberg, P., Berger, T., de Vera, J.P.P., Ott, S., Frías, J.M., Wierzos, J., Reina, M., Pintado, A., Demets, R., 2010. Likelihood of interplanetary transfer of rock inhabiting microbial communities: Results from the space experiment Lithopanspermia. Icarus 208, 735–748.

de Vera, J.P., Horneck, G., Rettberg, P., Ott, S., 2003. The potential of lichen symbiosis to cope with extreme conditions of outer space I: influence of UV radiation and space vacuum on the vitality of lichen symbiosis and germination capacity. International Journal of Astrobiology 1, 285–293.

de Vera, J.P., Horneck, G., Rettberg, P., Ott, S., 2004a. The potential of lichen symbiosis to cope with the extreme conditions of outer space II: germination capacity of lichen ascospores in response to simulated space conditions. Advances in Space Research 33, 1236–1243.

de Vera, J.-P., Horneck, G., Rettberg, P., Ott, S., 2004b. In the Context of Panspermia: may lichens serve as shuttles for their bionts in space? In: Proceedings of the III European Workshop on Exo-Astrobiology. Mars: The Search for Life, Madrid, Spain, 18–20 November 2003 (ESA SP 545, March 2004), pp. 197–198.

de Vera, J.-P., 2005. Grenzen des Überlebens: Flechten als Modellsystem für das Potential von Adaptationsmechanismen eines Symbioseorganismus unter Extrembedingungen. Inaugural-Dissertation at the Heinrich-Heine-University, ULB Düsseldorf, p. 1–180.

de Vera, J.-P., Tilmes, F., Heydenreich, T., Meyer, C., Horneck, G. and Ott, S., 2007. Potential of prokaryotic and eukaryotic organisms in a Mars like environment and as reference system for the search of life on other planets. In: Proceeding of DGLR International Symposium: To the Moon and Beyond, March 2007.

de Vera, J.-P., Rettberg, P., Ott, S., 2008. Life at the limits: capacities of isolated and cultured lichen symbionts to resist extreme environmental stresses. Origin of Life and Evolution of Biosphere 38, 457–468.

de Vera, J.P., Ott, S., de la Torre, R., Sancho, L.G., Horneck, G., Rettberg, P., Ascaso, C., de los Ríos, A., Wierzos, J., Cockell, C., Olsson, K., Frías, J.M., Demets, R., 2009. ESA experiment BIOPAN-6—germination and growth capacity of Lichen symbiont cells and ascospores after space exposure. Origins of Life and Evolution of the Biosphere 39, 359–360, Special issue: Abstracts from the 2008 ISSOL Meeting.

de Vera, J.P., Ott, S., 2010a. Resistance of symbiotic eukaryotes to simulated space conditions and asteroid impact catastrophes. Contribution to a book—Cellular Origins, Life in Extreme Habitats and Astrobiology: Symbioses and Stress (chapter), pp. 595–611.

de Vera, J.P., Möhlmann, D., Butina, F., Lorek, A., Wernecke, R., Ott, S., 2010b. Survival potential and photosynthetic activity of lichens under Mars-like conditions: a laboratory study. Astrobiology 10, 215–227.

Edgett, K.S., Bell III, J.F., Herkenhoff, K.E., Heydari, E., Kah, L.C., Miniti, M.E., Olson, T.S., Rowland, S.K., Schieber, J., Sullivan, R.J., Yingst, R.A., Ravine, M.A., Caplinger, M.A., Maki, J.N., 2005. The Mars Hand Lens Imager (MAHLI) for the 2009 Mars science laboratory. Abstract from Lunar and Planetary Science XXXVI.

Griffiths, A.D., et al., 2006. Context for the ESA ExoMars rover: the Panoramic Camera (PanCam) instrument. International Journal of Astrobiology 5, 269–275.

Horneck, G., 1993. Responses of *Bacillus subtilis* spores to space environment: results from experiments in space. Origins of Life 23, 37–52.

Horneck, G., Bücker, H., Reitz, G., 1994. Long term survival of bacterial spores in space. Advances in Space Research 14, 41–45.



- Horneck, G., Stöffler, D., Eschweiler, U., Hornemann, U., 2001. Bacterial spores survive simulated meteorite impact. *Icarus* 149, 285–290.
- Horneck, G., Stöffler, D., Ott, S., Hornemann, U., Cockell, C.S., Möller, R., Meyer, C., de Vera, J.P., Fritz, J., Schade, S., Artemieva, N., 2008. Microbial rock inhabitants survive hypervelocity impacts on Mars like host planets: first phase of Lithopanspermia experimentally Tested. *Astrobiology* 8, 17–44.
- Horneck, G., Klaus, D.M., Mancinelli, R.L., 2010. Space microbiology. *Microbiology and Molecular Biology Reviews* 74, 121–156.
- Josset, J.-L., Westall, F., Hofmann, B.A., Spray, J.G., Cockell, C., Kempe, S., Griffiths, A.D., De Sanctis, M.C., Colangeli, L., Koschny, D., Pullan, D., Föllmi, K., Diamond, L., Josset, M., Javaux, E., Esposito, F., Barnes, D., 2012. CLUPI, a high-performance imaging system on the ESA-NASA rover of the 2018 ExoMars mission to discover biofabrics on Mars. *Geophysical Research Abstracts* 14, EGU2012-PREVIEW, EGU General Assembly, Vienna.
- Kordyum, V.A., Man'ko, V.G., Popova, A.F., Mashinsky, A.L., Shcherbak, O.H., Nguen, H.T., 1983. Changes in symbiotic and associative interrelations in a higher plant-bacterial system during space flight. *Advances in Space Research* 3, 265–268.
- Lytvynenko, T., Zaetz, I., Voznyuk, T., Kovalchuk, M., Rogutskyy, I., Mytrokhyn, O., Estrela-Lopis, V., Borodinova, T., Mashkovska, S., Foing, B., Kozyrovska, N., 2006. A rationally assembled microbial community for growing *Tagetes patula* L. in a lunar greenhouse. *Research in Microbiology* 157, 87–92.
- Martins, Z., Botta, O., Fogel, M., L., Sephton, M.A., Glavin, D.P., Watson, J.S., Dworkin, J.P., Schwartz, A.W., Eherenfreund, P., 2008. Extraterrestrial nucleobases in the Murchison meteorite. *Earth and Planetary Science Letters* 270, 130–136.
- Meyer, C., et al., 2011. Shock experiments in support of the Lithopanspermia theory: The influence of host rock composition, temperature, and shock pressure on the survival rate of endolithic and epilithic microorganisms. *Meteoritics and Planetary Science* 46, 701–718.
- Moeller, R., Stackebrandt, E., Reitz, G., Berger, T., Rettberg, P., Doherty, A.J., Horneck, G., Nicholson, W.L., 2007a. Role of DNA repair by non-homologous end joining (NHEJ) in *Bacillus subtilis* spore resistance to extreme dryness, mono- and polychromatic UV and ionizing radiation. *Journal of Bacteriology* 189, 3306–3311.
- Moeller, R., Douki, T., Cadet, J., Stackebrandt, E., Nicholson, W.L., Rettberg, P., Reitz, G., Horneck, G., 2007b. UV radiation induced formation of DNA bipyrimidine photoproducts in *Bacillus subtilis* endospores and their repair during germination. *International Microbiology* 10, 39–46.
- Moeller, R., Stackebrandt, E., Douki, T., Cadet, J., Rettberg, P., Mollenkopf, H.-J., Reitz, G., Horneck, G., 2007c. DNA bipyrimidine photoproduct repair and transcriptional response of UV-C irradiated *Bacillus subtilis*. *Archives of Microbiology* 188, 421–431, <http://dx.doi.org/10.1007/s00203-0070263-4>.
- Morozova, D., Möhlmann, D., Wagner, D., 2007a. Survival of methanogenic archaea from Siberian permafrost under simulated Martian thermal conditions. *Origins of Life and Evolution of the Biosphere* 37, 189–200.
- Morozova, D., Wagner, D., 2007b. Stress response of methanogenic archaea from Siberian permafrost compared with methanogens from nonpermafrost habitats. *FEMS Microbiology Ecology* 61, 16–25.
- Mytrokhyn, O.V., Bogdanova, S.V., Shumlyansky, L.V., 2003. Anorthosite rocks of Fedorivskyy suite (Korosten Pluton, Ukrainian Shield). In: *Current Problems in Geology*. Kyiv National University, Kyiv, pp. 53–57.
- Olsson-Francis, K., de la Torre, R., Towner, M., Cockell, C.S., 2009. Survival of Akinetes (resting-state cells of Cyanobacteria in Low Earth Orbit and simulated extraterrestrial conditions. *Origins of Life and Evolution of the Biosphere* 39, 565–579.
- Onofri, S., Barreca, D., Agnoletti, A., Rabbow, E., Horneck, G., de Vera, J.P.P., Selbmann, L., Zucconi, L., Hatton, J., 2008. Resistance of Antarctic black fungi and cryptoendolithic communities to simulated space and Mars conditions. *Studies in Mycology* 61, 99–109.
- Onofri, S., Selbmann, L., Barreca, D., Isola, D., Zucconi, L., 2009. Fungal survival in space conditions: new insights for lithopanspermia. *Plant Biosystems* 143, S85–S87.
- Onofri, S., de la Torre, R., de Vera, J.-P., Ott, S., Zucconi, L., Selbmann, L., Scalzi, G., Venkateswaran, K.J., Rabbow, E., Sanchez Iñigo, F.J., Horneck, G., 2012. Survival of rock-colonizing organisms after 1.5 years in outer space. *Astrobiology* 12 (5), 508–516.
- Poulet, F., Bibring, J.P., et al., 2005. Phyllosilicates on Mars and implications for early martian climate. *Nature* 438 (7068), 623–627.
- Rabbow, E., Horneck, G., Rettberg, P., Schott, J.-U., Panitz, C., L'Afflitto, A., von Heise-Rotenburg, R., Willnecker, R., Baglioni, P., Hatton, J., Dettmann, J., Demets, R., Reitz, G., 2009. EXPOSE, an astrobiological exposure facility on the international space station—from proposal to flight. *Origins of Life and Evolution of the Biosphere*, <http://dx.doi.org/10.1007/s11084-009-9173-6>.
- Sancho, L.G., de la Torre, R., Horneck, G., Ascaso, C., de los Rios, A., Pintado, A., Wierzbos, J., Schuster, M., 2007. Lichens survive in space: results from the 2005 LICHENS experiment. *Astrobiology* 7, 443–454.
- Smith, P.H., et al., 1997. Results from the Mars Pathfinder camera. *Science* 278, 1758–1765.
- Stöffler, D., Horneck, G., Ott, S., Hornemann, U., Cockell, C.S., Möller, R., Meyer, C., de Vera, J.P., Fritz, J., Artemieva, N.A., 2007. Experimental evidence for the impact ejection of viable microorganisms from Mars-like planets. *Icarus* 186, 585–588.
- Tarasenko, V.A., Kozyrovska, N., Nechitailo, G.P., Ngo Ke, Syong, Tarnavskaja, E.B., 1990. Cytological aspects of relationships of eucaryotes and nitrogen-fixing eu- and cyanobacteria in artificial association under microgravity. In: *Abstracts of the XXIII COSPAR 1990*, The Hague, The Netherlands, p. 55.
- Vago, J.L., 2005. ExoMars Science Management Plan, EXM-MS-PLESA-00002.
- Vago, J.L., Kminek, G., 2007. Putting together an exobiology mission: the ExoMars example. In: Horneck, G., Rettberg, P. (Eds.), *Complete Course in Astrobiology*. Wiley-VCH Verlag GmbH & Co. KGaA, Weinheim, pp. 321–351.