



# Modelling of the outburst on 2015 July 29 observed with OSIRIS cameras in the Southern hemisphere of comet 67P/Churyumov–Gerasimenko

Adeline Gicquel, Martin Rose, Jean-Baptiste Vincent, Björn Davidsson, Dennis Bodewits, Michael F. A'Hearn, Jessica Agarwal, Nicolas Fougere, Holger Sierks, Ivano Bertini, et al.

## ► To cite this version:

Adeline Gicquel, Martin Rose, Jean-Baptiste Vincent, Björn Davidsson, Dennis Bodewits, et al.. Modelling of the outburst on 2015 July 29 observed with OSIRIS cameras in the Southern hemisphere of comet 67P/Churyumov–Gerasimenko. *Monthly Notices of the Royal Astronomical Society*, 2017, 469 (Suppl\_2), pp.S178 - S185. 10.1093/mnras/stx1441 . insu-01574314

**HAL Id: insu-01574314**

**<https://insu.hal.science/insu-01574314>**

Submitted on 13 Nov 2020

**HAL** is a multi-disciplinary open access archive for the deposit and dissemination of scientific research documents, whether they are published or not. The documents may come from teaching and research institutions in France or abroad, or from public or private research centers.

L'archive ouverte pluridisciplinaire **HAL**, est destinée au dépôt et à la diffusion de documents scientifiques de niveau recherche, publiés ou non, émanant des établissements d'enseignement et de recherche français ou étrangers, des laboratoires publics ou privés.

# Modelling of the outburst on 2015 July 29 observed with OSIRIS cameras in the Southern hemisphere of comet 67P/Churyumov–Gerasimenko

A. Gicquel,<sup>1,2★</sup> M. Rose,<sup>3★</sup> J.-B. Vincent,<sup>4★</sup> B. Davidsson,<sup>2</sup> D. Bodewits,<sup>5</sup>  
M. F. A’Hearn,<sup>5</sup> J. Agarwal,<sup>1</sup> N. Fougere,<sup>6</sup> H. Sierks,<sup>1</sup> I. Bertini,<sup>7</sup> Z.-Y. Lin,<sup>8</sup>  
C. Barbieri,<sup>9</sup> P. L. Lamy,<sup>10</sup> R. Rodrigo,<sup>11,12</sup> D. Koschny,<sup>13</sup> H. Rickman,<sup>14,15</sup>  
H. U. Keller,<sup>16</sup> M. A. Barucci,<sup>17</sup> J.-L. Bertaux,<sup>18</sup> S. Besse,<sup>13</sup> S. Boudreault,<sup>1</sup>  
G. Cremonese,<sup>19</sup> V. Da Deppo,<sup>20</sup> S. Debei,<sup>21</sup> J. Deller,<sup>1</sup> M. De Cecco,<sup>22</sup> E. Frattin,<sup>19</sup>  
M. R. El-Maarry,<sup>23</sup> S. Fornasier,<sup>17</sup> M. Fulle,<sup>24</sup> O. Groussin,<sup>10</sup> P. J. Gutiérrez,<sup>25</sup>  
P. Gutiérrez-Marquez,<sup>1</sup> C. Güttler,<sup>1</sup> S. Höfner,<sup>1,16</sup> M. Hofmann,<sup>1</sup> X. Hu,<sup>1</sup>  
S. F. Hviid,<sup>4</sup> W.-H. Ip,<sup>8</sup> L. Jorda,<sup>10</sup> J. Knollenberg,<sup>4</sup> G. Kovacs,<sup>1,26</sup> J.-R. Kramm,<sup>1</sup>  
E. Kührt,<sup>4</sup> M. Küppers,<sup>27</sup> L. M. Lara,<sup>25</sup> M. Lazzarin,<sup>9</sup> J. J. Lopez Moreno,<sup>25</sup>  
S. Lowry,<sup>28</sup> F. Marzari,<sup>9</sup> N. Masoumzadeh,<sup>1</sup> M. Massironi,<sup>7</sup> F. Moreno,<sup>25</sup> S. Mottola,<sup>4</sup>  
G. Naletto,<sup>7,29,22</sup> N. Oklay,<sup>4</sup> M. Pajola,<sup>30</sup> F. Preusker,<sup>4</sup> F. Scholten,<sup>4</sup> X. Shi,<sup>1</sup>  
N. Thomas,<sup>23</sup> I. Toth<sup>10,31</sup> and C. Tubiana<sup>1</sup>

*Affiliations are listed at the end of the paper*

Accepted 2017 June 7. Received 2017 June 1; in original form 2017 April 3

## ABSTRACT

Images of the nucleus and the coma (gas and dust) of comet 67P/Churyumov–Gerasimenko have been acquired by the OSIRIS (Optical, Spectroscopic and Infrared Remote Imaging System) cameras since 2014 March using both the wide-angle camera and the narrow-angle camera (NAC). We use images from the NAC camera to study a bright outburst observed in the Southern hemisphere on 2015 July 29. The high spatial resolution of the NAC is needed to localize the source point of the outburst on the surface of the nucleus. The heliocentric distance is 1.25 au and the spacecraft–comet distance is 186 km. Aiming to better understand the physics that led to the outgassing, we used the Direct Simulation Monte Carlo method to study the gas flow close to the nucleus and the dust trajectories. The goal is to understand the mechanisms producing the outburst. We reproduce the opening angle of the outburst in the model and constrain the outgassing ratio between the outburst source and the local region. The outburst is in fact a combination of both gas and dust, in which the active surface is approximately 10 times more active than the average rate found in the surrounding areas. We need a number of dust particles  $7.83 \times 10^{11}$  to  $6.90 \times 10^{15}$  (radius 1.97–185  $\mu\text{m}$ ), which correspond to a mass of dust  $(220\text{--}21) \times 10^3$  kg.

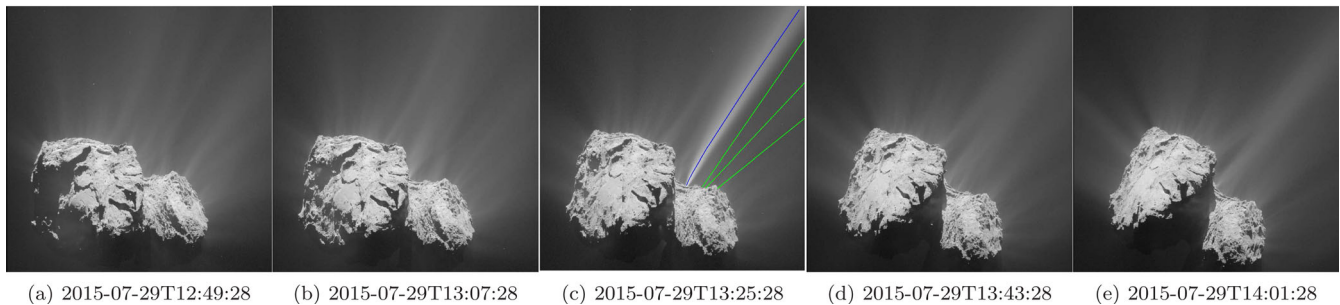
**Key words:** methods: data analysis – methods: numerical – methods: observational – comets: individual: 67P/Churyumov–Gerasimenko.

## 1 INTRODUCTION

The European Space Agency (ESA) *Rosetta* spacecraft was launched on 2014 March 2 and reached comet 67P/Churyumov–

Gerasimenko (67P) in 2014 August. Since then, images of the nucleus and the coma have been acquired by the OSIRIS (Optical, Spectroscopic and Infrared Remote Imaging System) camera system (Keller et al. 2007) using both the wide-angle camera (WAC) and the narrow-angle camera (NAC). Close to perihelion in 2015 August, a display of outbursts on 67P, known as the summer fireworks, was observed (Vincent et al. 2016a). The ESA’s *Rosetta* spacecraft had the unique opportunity to follow the

\* E-mail: [adeline.gicquel@jpl.nasa.gov](mailto:adeline.gicquel@jpl.nasa.gov) (AG); [Martin.Rose@pi-dsmc.com](mailto:Martin.Rose@pi-dsmc.com) (MR); [jean-baptiste.vincent@dlr.de](mailto:jean-baptiste.vincent@dlr.de) (J-BV)



**Figure 1.** The OSIRIS NAC images, the radial profile for the jet (blue) and the radial profile for the background coma (green).

activity and morphology of comet 67P during its journey towards Sun.

Many studies have presented the activity of the nucleus, such as localized dust and gas jets (Lara et al. 2015; Lin et al. 2015, 2016; Gicquel et al. 2016). During the 3 months surrounding the comet's perihelion passage in 2015 August, Vincent et al. (2016a) reported the detection of 34 outbursts with one on average every 2.4 nucleus rotations (30 h). On 2016 February 19, an outburst of gas and dust was monitored simultaneously by instruments onboard *Rosetta* and ground-based telescopes (Grün et al. 2016). On 2016 July 3, another outburst was observed by many instruments onboard *Rosetta* (Agarwal et al. 2017). Vincent et al. (2016a) defined an outburst as a bright event having a very short duration with respect to the rotation period of the nucleus. The increase in the brightness of the coma is due to the release of gas and dust, and it is typically one order of magnitude brighter than the usual jets. Also, due to the short lifetime, the outburst might be observable in one image only, depending on the observing cadence.

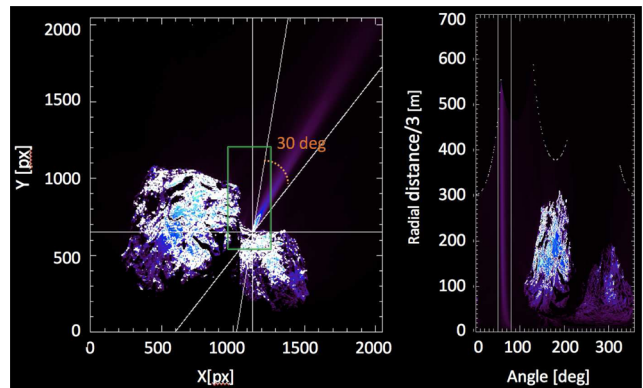
The present work analysed if the opening angle of an outburst observed with the OSIRIS data could be reproduced using a Direct Simulation Monte Carlo (DSMC) method. We analysed the outburst observed in the Southern hemisphere of comet 67P on 2015 July 29 with the NAC 2 weeks before perihelion on 2015 August 13. We studied the brightness distribution of the outburst ( $B$  [ $\text{W m}^{-2} \text{nm}^{-1} \text{sr}^{-1}$ ]) as a function of the distance from the nucleus ( $D$  [km]). We presented the observations obtained with the OSIRIS cameras and described the method used to reproduce the opening angle of the outburst, by first simulating just the gas (water) and then adding the dust. Finally, we compared the NAC image with the synthetic images.

## 2 OBSERVATIONS

### 2.1 Data with the OSIRIS cameras

The OSIRIS cameras, composed of the WAC and NAC, were dedicated to mapping the nucleus of comet 67P and characterizing the evolution of the comet's gas and dust (Keller et al. 2007). The WAC (230–750 nm) was mainly used to study the coma of dust and gas, while the NAC (250–1000 nm) was used to investigate the structure of the nucleus.

We chose the monitoring observations on UT 13:25:28 2015 July 29 utilizing the NAC orange filter (F22, centre wavelength =  $\lambda = 649.2$  nm, FWHM = 84.5 nm). At the end of July and in August, the timeline was densely covered with observations and the gaps in outburst detection could not be explained by a lack of imaging. As shown in Fig. 1, with a cadence imaging around 16 min, the outburst was detectable in Fig. 1(c) but not in Figs 1(a), (b), (d) and

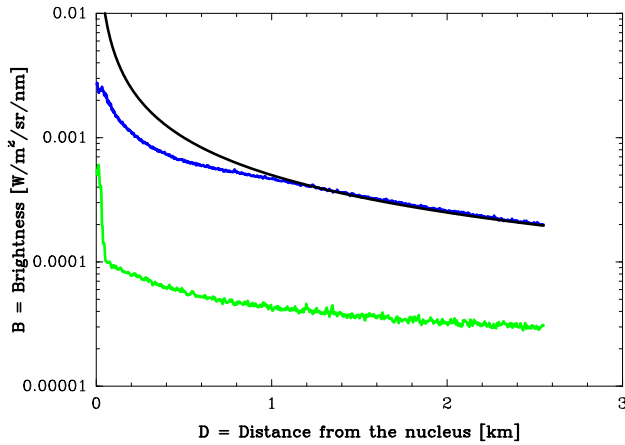


**Figure 2.** Size of NAC images (px), opening angle (30 deg) and length ( $\approx 2.5$  km) of the outburst on 2015-07-29T13:25:28 in Cartesian (left) and Polar coordinates (right). The green box represents the size (315  $\times$  585 pixels) and position of the synthetic images.

(e). This bright outburst was emerging from the side of the comet's neck, in the Sobek region between two hills (Fig. 7 b; Vincent et al. 2016a). We refer the reader to Thomas et al. (2015) and El-Marry et al. (2016) for the nucleus map that indicates the regions. The outburst was observed 3.69 h after sunrise (around local mid-day).

The outburst is classified as Type A by Vincent et al. (2016a), having a very collimated outburst where the dust and gas are ejected at high velocity. The high spatial resolution is needed to localize the source point of the outburst on the surface of the nucleus. The source location of the outburst, latitude =  $-37$  deg and longitude =  $300$  deg, is given by Vincent et al. (2016a) in the standard 'Cheops' frame (Preusker et al. 2015). The outburst probably originates from a small and confined area. The heliocentric distance is  $R_h = 1.256$  au, the spacecraft–comet distance is  $\Delta_{S/C} = 186$  km and the resolution is  $1.87 \times 10^{-5}$  rad pixel $^{-1}$ . The pixel scale is  $3.42$  m px $^{-1}$  and the NAC field of view is (FOV) =  $7 \times 7$  km. No binning was used in collecting or downlinking the images. Only one other outburst, no. 34, was observed approximately 2 months later by the NAVCAM in the Sobek region on 2015-09-26T12:03:32 at latitude =  $-40$  deg and longitude =  $+307$  deg (Vincent et al. 2016a).

As shown in Fig. 2, the size of the NAC image observed with the NAC camera on 2015 July 29 is  $2048 \times 2048$  pixels. In order to constrain the opening angle of the outburst, we switched from a Cartesian to Polar coordinate system. In Fig. 2, the Cartesian coordinates are on the left side and the polar coordinates are on the right. On the left side of the figure, where we used Cartesian coordinates, there are two white lines with an opening angle of  $30$  deg. You can see that the opening angle and the whole of the outburst are within these two lines. This corresponds to the vertical



**Figure 3.** 2015-07-29T13:25:28. In blue is the radial profile for the outburst and in green is the radial profile for the coma background. In black is the radial profile over a cone.

white line on the right side of Fig. 2, where polar coordinates were used. In both cases, you can see that the outburst is collimated.

## 2.2 Radial profiles

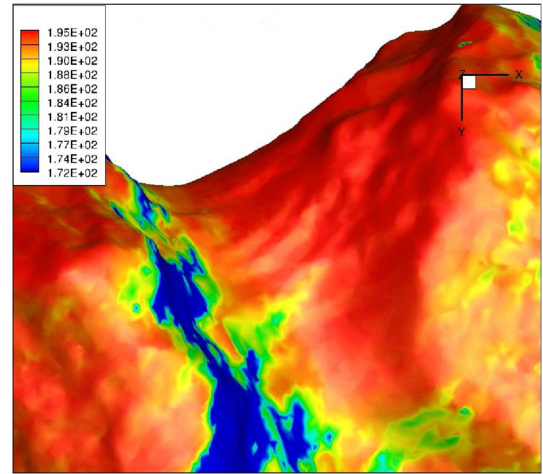
In the present section, we aim to study the brightness distribution of the outburst as a function of distance from the nucleus. As explained by Gicquel et al. (2016), we average three radial profiles of the background coma in the same area as the outburst, as shown in Fig. 1(c) (in blue). The radial profile is taken from the individual pixels along the centre line of the outburst, as shown in Fig. 1(c) (in green). The coma background is subtracted from the radial profile of the outburst.

Fig. 3 shows the radial brightness of the outburst (after subtraction of the background coma) and the background coma. In comparison, we added the dispersion of the gas and dust as a function of the distance from the nucleus. As explained by Gicquel et al. (2016), we assume  $B \propto D^\beta$ , where  $B$  is the brightness,  $D$  is the radial distance from the surface of the nucleus and  $\beta$  is the slope of  $\log B$  versus  $\log D$ . For  $D > 1$  km, the brightness profile of the outburst,  $\beta = 0.94$ , is much steeper than the brightness profile of the background coma,  $\beta = 0.41$ . The outburst seems to follow a divergent pattern for a distance from the nucleus of  $D > 1$  km. However, we can see a bump in the radial profile of the outburst and the coma background at  $D \approx 50$  m. Consequently, we anticipated that the outburst was a combination of gas and dust.

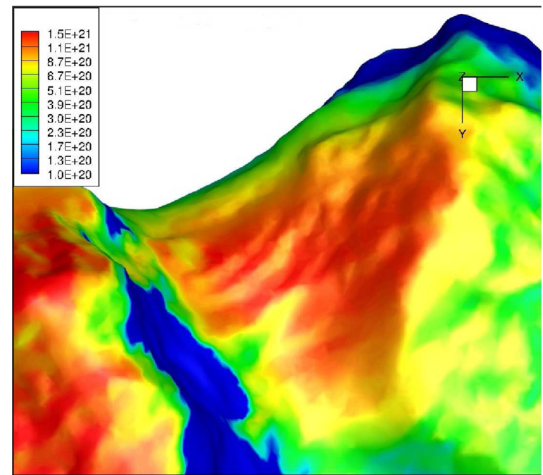
## 3 MODEL

We used the DSMC method implemented in PI-DSMC ([www.pi-dsmc.com](http://www.pi-dsmc.com)) to study the gas flow close to the nucleus and the dust trajectories. The DSMC method is typically the preferred method to study the gas flow in the coma due to its applicability over a large range of Knudsen numbers. Our model produces artificial images for a wide range of parameters, including the gas production rate at the surface, the surface temperature and the properties of the dust grains. In detail, the model uses the velocity field and the density field obtained with the DSMC to compute the drag force acting on the moving dust particles. The drag force  $F_{\text{drag}}$  is defined as

$$F_{\text{drag}}(r) = \frac{1}{2}(v_{\text{gas}}(r) - v_{\text{particle}})^2 \rho_r \sigma_{\text{CS}} C_D, \quad (1)$$



(a) Blackbody Temperature (K)



(b) Water production rate ( $\text{s}^{-1}\text{m}^{-2}$ )

**Figure 4.** The blackbody temperature and the water production rate at the surface of the comet (Fougere et al. 2016).

where  $v_{\text{gas}}$  is the gas velocity along the radial distance from the nucleus  $r$ ,  $v_{\text{particle}}$  is the grain velocity,  $\rho_r$  is the gas density,  $\sigma_{\text{CS}}$  is the particle cross-section and  $C_D$  is the drag coefficient of grains. Trajectories are obtained by integration of the equation of motion that also contains the gravitational force around the nucleus taking into account the complex shape. The comet is modelled as two masses with a bulk density of the nucleus  $532 \pm 7 \text{ kg m}^{-3}$  (Jorda et al. 2016). The mass of the small lobe and the big lobe are  $2.7 \times 10^{12} \text{ kg}$  and  $6.6 \times 10^{12} \text{ kg}$ , respectively. The contribution of a single trajectory to the dust density field is obtained by computing the time a dust particle spends in a volume cell. The final dust field is computed from trajectories of particles starting at selected surface triangles. The final image is obtained by integrating the density of the dust field in columns parallel to the line of sight. In the case of an optically thin environment, the intensity of the image is assumed to be proportional to the integrated density.

We used the DSMC method implemented in PI-DSMC to study the outburst on 2015 July 29. The outgassing rate and the temperature at the surface, from the model described in Fougere et al. (2016), are shown in Fig. 4. We assumed a temperature at the surface of  $T_{\text{surf}} = 190 \text{ K}$  (Fig. 4a) and a water production rate at the surface of  $Q_{\text{H}_2\text{O}} = 3 \times 10^{-5} \text{ kg s}^{-1} \text{ m}^{-2}$  (Fig. 4b). Then, we defined an



active region on the surface of 67P at the source location of the outburst. In the case of the active region, we assumed a gas production rate of  $Q_{\text{active}} = \alpha Q_{\text{H}_2\text{O}}$ , an outgassing ratio between the outburst source and the local region of either 10 or 100 and a temperature of  $T_{\text{active}} = 230$  K. Under this model, the change in temperature had no effect on the opening of the outburst. The topography is also taken into account in the model, as Höfner et al. (2016) has shown that fractures can be a heat trap, within specific illumination conditions.

The simulation uses a Cartesian mesh from which the collision cells and the sampling cells are built up. The collisions between gas molecules are computed using the hard sphere model (Bird 1994). The colliding molecules are the nearest neighbours, and the size of the simulated domain is  $600 \times 600 \times 1.100$  m. In the case of  $\alpha = 10$ , the number of collision cells is 21 096 584 and the size of each individual cell is 2.42 m. In the case of  $\alpha = 100$ , the number of collision cells is 10 481 915 and the size of each individual cell is 3.05 m. Also, particles hitting the surface are reflected with a velocity distribution corresponding to the surface temperature.

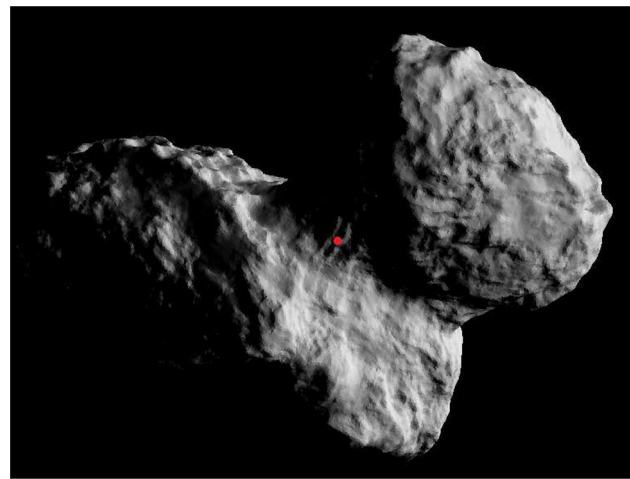
#### 4 RESULTS

Our model was used to simulate the mechanisms that produced the outburst on 2015 July 29. The source location of the outburst is shown in Fig. 5(a). Using the shape model shap5-v1.5-cheops-800k developed by Jorda et al. (2016), we examined a region around the outburst, as shown in Fig. 5(b). The surface temperature and water production rate at the surface of the nucleus are given in Fig. 4. We created an active surface with a higher gas production rate at the localization of the outburst, as shown in Fig. 5(c). The model, as described in Section 2, produced a series of synthetic images and we then compared them with the OSIRIS observations.

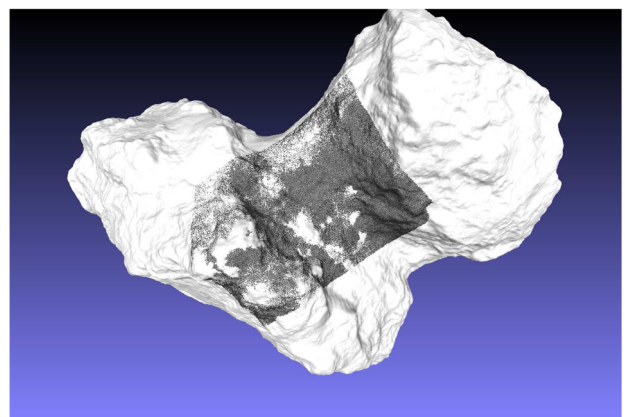
For purposes of this paper, we assumed that the outburst is composed of only gas (water) and dust. Because the dust is brighter than the gas, the OSIRIS cameras captured brighter images of the dust. In order to simulate the entire outburst, we needed to first simulate only the gas. We then incorporated the dust into the same model that was used to create the simulated images. Combi et al. (2012) explained that the gas and the dust have very different behaviour, notably regarding their expansion when they are released from an active area. Dust particles receive most of their acceleration by the gas just above the small active area and are accelerated to much larger terminal velocities.

Throughout Figs 6 and 7, we used the velocity and number density of only the gas to verify the point of convergence in the gas field. The size ( $315 \times 585$  pixels) and the position in the WAC FOV of the images from the simulation are shown in Fig. 2 (green box). As shown in the corresponding Figs 6(a), 6(b), 7(a) and 7(b), we plotted the velocity and the number density in the  $Y$ - $Z$  plane. The coordinate system that we used in the model was aligned with the coordinate system from the shape model. In the case of  $\alpha = 10$  (Fig. 6) and  $\alpha = 100$  (Fig. 7), the maximum outflow velocity was 650 and 730  $\text{m s}^{-1}$ , respectively. The number density reached a maximum around  $3.6 \times 10^{19}$  and  $4.2 \times 10^{20} \text{ m}^{-3}$  for  $\alpha = 10$  and  $\alpha = 100$ , respectively. We then integrated the number density along the line of sight to derive the column density, which is shown in Figs 6(c) and 7(c). The high column density close to the nucleus can explain the bump seen in the radial profile  $D \approx 50$  m (Fig. 3).

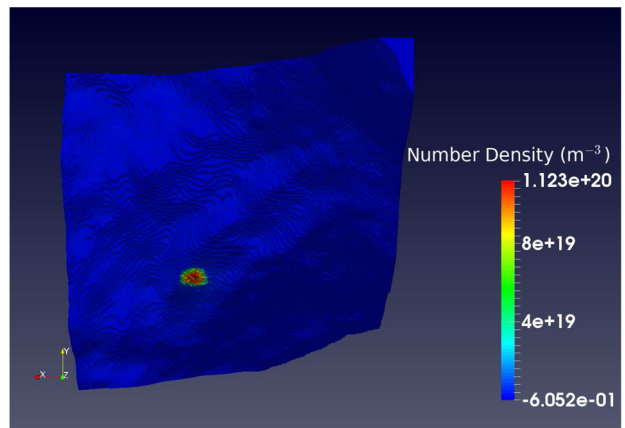
The results of the simulations that incorporated the dust are shown in Figs 8 and 9. We know that there are multiple contributions to the brightness, for example the sunlight is scattered by the dust and the light is generated by physical and chemical processes occurring in the gas. The dust was introduced in the simulation to model



(a) Source location of the outburst in red



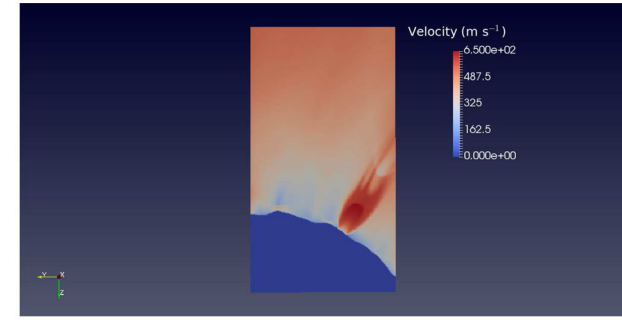
(b) Region around the outburst in black



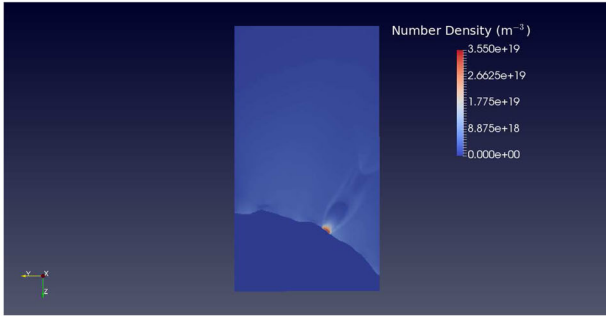
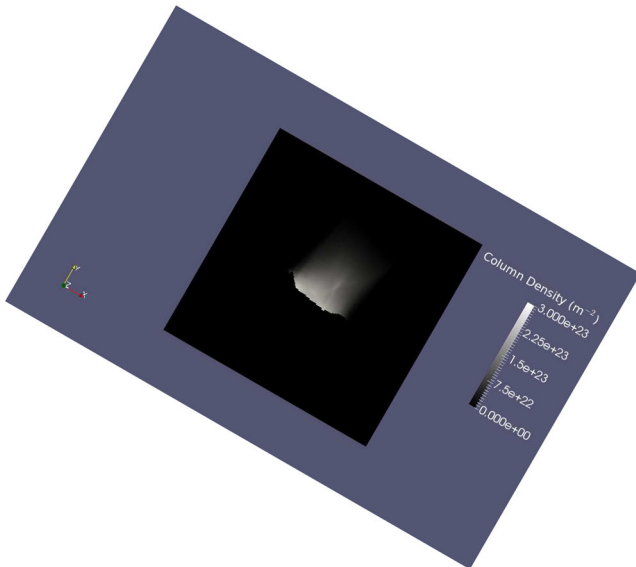
(c) Number density on surface of the nucleus ( $\text{m}^{-3}$ )

**Figure 5.** The method and results for the DSMC model.

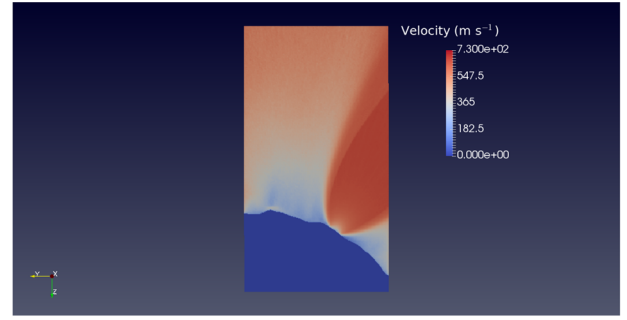
the light scattered by the dust particles. This included not only the region close to the nucleus but also the region far away from the nucleus. The brightness in the image corresponded to the column density of dust particles. The assumption was that each dust particle scatters light from the sun into the camera. The intensity in the image was assumed to be proportional to the integrated dust density. In this particular study, the radius of the dust particles are 1.97 (Figs 8a and



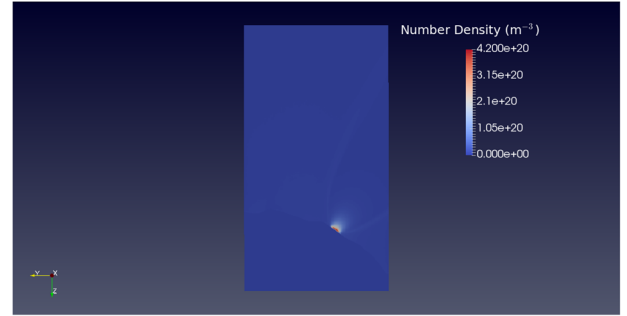
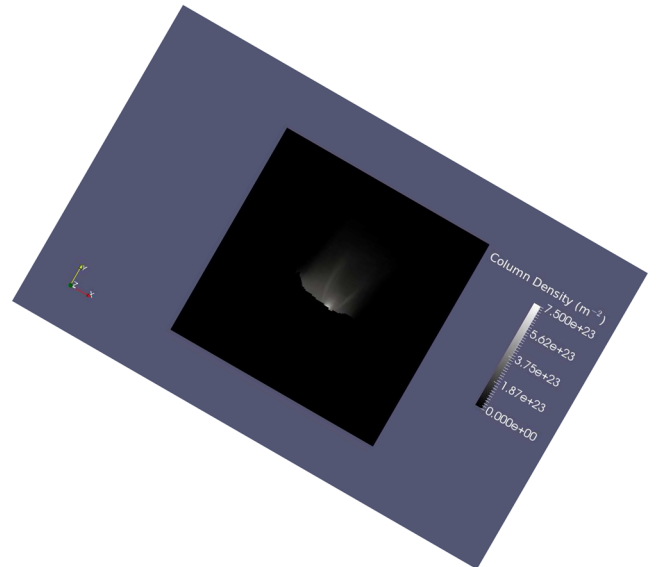
(a) Velocity

(b) Number density ( $m^{-3}$ )(c) Column density ( $m^{-2}$ )**Figure 6.** The results of the DSMC model for water gas at  $\alpha = 10$ .

9a) and  $185 \mu\text{m}$  (Figs 8b and 9b) according to Müller (1999). This is in the size range obtained by Grün et al. (2016) and by Lin et al. (2017). In the case of this model, the synthetic images show little dependence on the particle size. The simulations that included the dust produced images were even more similar to the actual images obtained with the NAC camera. In Fig. 8, the active surface was set at a gas production rate 10 times higher than the base rate for the other parts of the surface of the nucleus. In this case, the dust was even more collimated, the opening angle was within 30 deg and the dust projected further out from the surface of the comet. This shape and opening angle correspond to the images obtained by the NAC camera on 2015 July 29. In Fig. 9, we set the gas production rate at



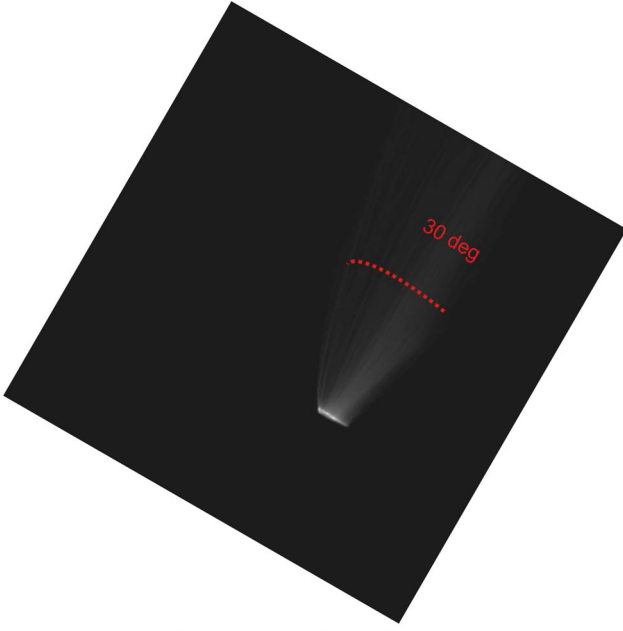
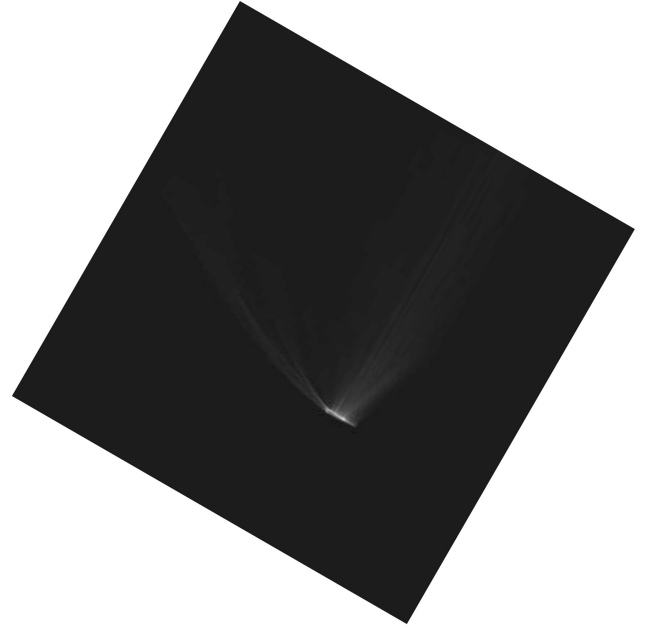
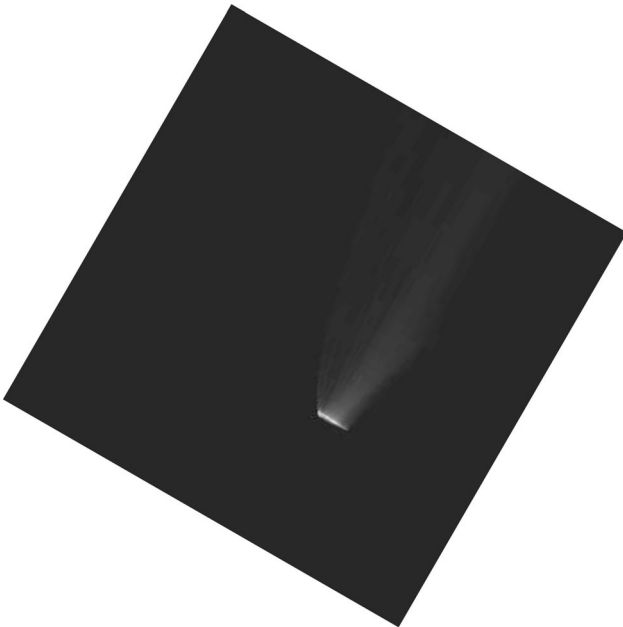
(a) Velocity

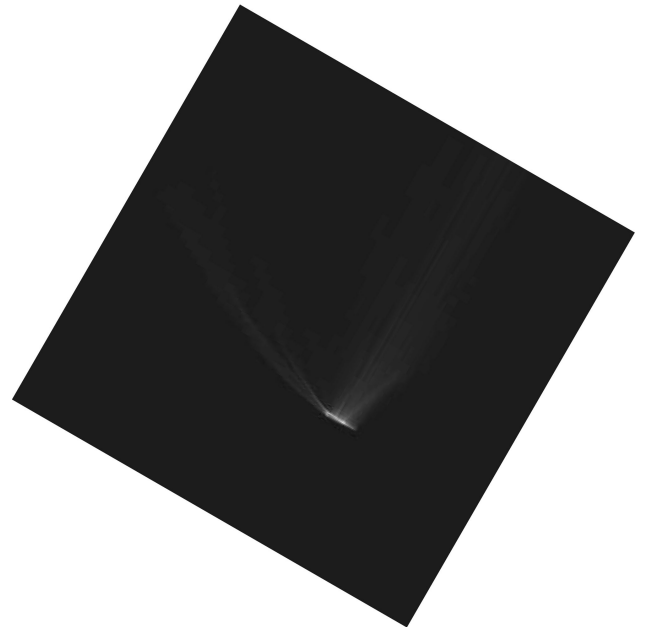
(b) Number density ( $m^{-3}$ )(c) Column density ( $m^{-2}$ )**Figure 7.** The results of the DSMC model for water gas at  $\alpha = 100$ .

100 times the base rate. At this rate, the model did not reproduce the shape of the outburst; instead, the opening angle on the dust is much wider.

At this wavelength, the NAC is more sensitive to the dust. As a result, we concluded that the outburst was in fact a combination of both gas and dust, in which the active surface was generating dust at a gas production of approximately 10 times higher than the base rate found at the nucleus.

The comparison between the model and the OSIRIS image gives us an indication of the number of dust particles ( $N_{\text{dust}}$ ) that we need to reproduce the observed brightness flux,  $B$ , in the OSIRIS image. The theoretical brightness for a dust particle  $I$  ( $\text{W m}^{-2} \text{nm}^{-1} \text{sr}^{-1}$ )


 (a) Trajectories of the dust (radius 1.97  $\mu\text{m}$ )

 (a) Trajectories of the dust (radius 01.97  $\mu\text{m}$ )

 (b) Trajectories of the dust (radius 185  $\mu\text{m}$ )

**Figure 8.** The results of the DSMC model for the dust at  $\alpha = 10$ .

 (b) Trajectories of the dust (radius 185  $\mu\text{m}$ )

**Figure 9.** The results of the DSMC model for the dust at  $\alpha = 100$ .

is given as

$$I = \frac{A\phi(\alpha)}{\pi} \frac{F_{\text{Sun},\lambda_{\text{VIS}}}}{R_h^2} \frac{1}{\Delta_{\text{S/C}}^2} \pi a^2 \frac{1}{A_{\text{px}}}, \quad (2)$$

where  $A = 6.5 \times 10^{-2}$  is the geometric albedo,  $\alpha = 90$  deg is the phase angle,  $\phi(90) = 0.02$  is the phase function (Fornasier et al. 2015),  $F_{\text{Sun},\lambda_{\text{ORANGE}}} = 1.5650 \text{ W m}^{-2} \text{ nm}^{-1}$  is the flux of Sun at the central wavelength of the orange filter and  $A_{\text{px}} = 3.5 \times 10^{-10}$  steradian is the solid angle of a single pixel.

The number of dust particles that we need to reproduce the observed brightness flux in Fig. 3 is  $N_{\text{dust}} = B \times L_{\text{px}}/I$ , where  $L_{\text{px}} = 1000$  px is the length of the outburst. The total mass of dust (kg) is given by  $M_{\text{dust}} = (4/3) \pi a^3 \rho N_{\text{dust}}$ , where  $\rho = 1000 \text{ kg m}^{-3}$  is

the bulk density (Grün et al. 2016). To reproduce the data, we need  $7.83 \times 10^{11} < N_{\text{dust}} < 6.90 \times 10^{15}$  for  $1.97 \mu\text{m} < a < 185 \mu\text{m}$ . The total mass of dust particles corresponds to  $220 \text{ kg} < M_{\text{dust}} < 21$  tonnes. This number is in good agreement with the mass estimated by Vincent et al. (2016a), Grün et al. (2016) and Lin et al. (2017).

## 5 DISCUSSION AND CONCLUSION

The mechanisms that produce the outbursts observed on bodies throughout the Solar system are still not fully understood. For this study, we examined one outburst out of many from a group known as the ‘summer fireworks’, which were observed on the

surface of comet 67P/Churyumov–Gerasimenko around the perihelion (Vincent et al. 2016a).

We reviewed a number of images taken on 2015 July 29 by the OSIRIS NAC camera in order to precisely determine the source of this outburst on the surface of the comet. The outburst location was in the Sobek region, at a latitude =  $-37$  deg and longitude =  $300$  deg (Vincent et al. 2016a). As a number of mechanisms including the morphology of the surface of the comet were likely responsible for the production of the outburst, we decided to use a shape model including the topography. In this particular case, the localization of the outburst was between two hills (Vincent et al. 2016b). Skorov et al. (2016) developed a model to explain the outbursts from fractured terrains based on the thermophysics, morphology and composition of the surface. They concluded that close to perihelion the stresses on the nucleus led to a release of gas and dust. Additionally, the sublimation of icy grains on the surface almost certainly plays a role. Because of the insolation, the temperature increases, possibly creating the jet (Keller et al. 2015; Gicquel et al. 2016; Lin et al. 2016).

Using the DSMC method, we generated a number of artificial images in an attempt to recreate the outburst seen on 2015 July 29 with a gas production rate at the source point of the outburst about 10 times the background production. When accounting only for the gas flow, we were not able to reproduce the observed outburst. It was not until the dust field was integrated into the model that we were able to simulate images that approximate the shape and angle of the outburst, including a noticeable bump in the radial profile at  $D \approx 50$  m. To reproduce the data, we need a number of dust particles  $7.83 \times 10^{11}$  to  $6.90 \times 10^{15}$  (radius  $1.97\text{--}185$   $\mu\text{m}$ ), which correspond to a mass of dust  $(220\text{--}21) \times 10^3$  kg.

This is the first publication using this specific model and technique. The ability to successfully reproduce the opening angle and the overall shape of the outburst is useful. More significant is the ability to simulate the potential role of both the gas and the dust in the formation of an observed outburst. Future simulations using this model and other models can better our understanding of observed events. In the future, we should compare these initial results to future simulations to answer several basic questions: Which models best reproduce the observed event? What are the differences if any exist? What other assumptions can be made? This technique can have broad applicability not only to outbursts on comets but also potentially similar phenomenon observed on icy bodies in the Solar system. Well formulated assumptions are critical to our understanding of observed events; however, it is also important to develop new techniques and tools to test our assumptions. In this paper, we can provide an estimate for the mass of the ejected dust and for the first time explain the mechanisms producing a single outburst by comparing a model with observation.

## ACKNOWLEDGEMENTS

OSIRIS was built by a consortium of the Max-Planck- Institut für Sonnensystemforschung, Göttingen, Germany, CISAS University of Padova, Italy, the Laboratoire d'Astrophysique de Marseille, France, the Instituto de Astrofísica de Andalucía, CSIC, Granada, Spain, the Research and Scientific Support Department of the European Space Agency, Noordwijk, The Netherlands, the Instituto Nacional de Técnica Aeroespacial, Madrid, Spain, the Universidad Politécnica de Madrid, Spain, the Department of Physics and Astronomy of Uppsala University, Sweden, and the Institut für Da-

tentechnik und Kommunikationsnetze der Technischen Universität Braunschweig, Germany. The support of the national funding agencies of Germany (DLR), France (CNES), Italy (ASI), Spain (MEC), Sweden (SNSB) and the ESA Technical Directorate is gratefully acknowledged. We thank the Rosetta Science Ground Segment at ESAC, the Rosetta Mission Operations Centre at ESOC and the Rosetta Project at ESTEC for their outstanding work enabling the science return of the Rosetta Mission.

The research was carried out at the Jet Propulsion Laboratory, California Institute of Technology under a contract with the National Aeronautics and Space Administration.

## REFERENCES

- Agarwal J. et al., 2017, MNRAS, in press
- Bird G. A., 1994, *Molecular Gas Dynamics and the Direct Simulation of Gas Flows*. Clarendon Press, Oxford; Oxford Univ. Press, New York
- Combi M. R., Tennishev V. M., Rubin M., Fougere N., Gombosi T. I., 2012, ApJ, 749, 29
- El-Maarry M. R. et al., 2016, A&A, 593, A110
- Fornasier S. et al., 2015, A&A, 583, A30
- Fougere N. et al., 2016, A&A, 588, A134
- Gicquel A. et al., 2016, MNRAS, 462, S57
- Grün E. et al., 2016, MNRAS, 462, S220
- Höfner S. et al., 2016, A&A, in press
- Jorda L. et al., 2016, Icarus, 277, 257
- Keller H. U. et al., 2007, SSRv, 128, 433
- Keller H. U. et al., 2015, A&A, 583, A34
- Lara L. M. et al., 2015, A&A, 583, A9
- Lin Z.-Y. et al., 2015, A&A, 583, A11
- Lin Z.-Y. et al., 2016, A&A, 588, L3
- Lin Z.-Y. et al., 2017, MNRAS, in press
- Müller M., 1999, PhD Thesis, Universität Heidelberg
- Preusker F. et al., 2015, A&A, 583, A33
- Skorov Y. V., Rezac L., Hartogh P., Bazilevsky A. T., Keller H. U., 2016, A&A, 593, A76
- Thomas N. et al., 2015, Science, 347, 6620
- Vincent J.-B. et al., 2016, MNRAS, 462, S184
- Vincent J.-B. et al., 2016, A&A, 587, A14

<sup>1</sup>Max-Planck Institut für Sonnensystemforschung, Justus-von-Liebig-Weg 3, D-37077 Göttingen, Germany

<sup>2</sup>Jet Propulsion Laboratory/California Institute of Technology, 4800 Oak Grove Dr., Pasadena, CA 91109, USA

<sup>3</sup>Ingenieurbüro Dr.-Ing. Martin Rose, Goldmühlestr. 6, D-71065 Sindelfingen, Germany

<sup>4</sup>Institute of Planetary Research, DLR, Rutherfordstrasse 2, D-12489 Berlin, Germany

<sup>5</sup>Department for Astronomy, University of Maryland, College Park, MD 20742-2421, USA

<sup>6</sup>Department of Climate and Space Sciences and Engineering, University of Michigan, Ann Arbor, MI 48109, USA

<sup>7</sup>Centro di Ateneo di Studi ed Attività Spaziali Giuseppe Colombo (CISAS), University of Padova, Via Venezia 15, I-35131 Padova, Italy

<sup>8</sup>Institute for Space Science, National Central University, 32054 Chung-Li, Taiwan

<sup>9</sup>Department of Physics and Astronomy G. Galilei, University of Padova, Vic. Osservatorio 3, I-35122 Padova, Italy

<sup>10</sup>Aix Marseille Université, CNRS, LAM (Laboratoire d'Astro-physique de Marseille) UMR 7326, F-13388, Marseille, France

<sup>11</sup>Centro de Astrobiología (INTA-CSIC), European Space Agency, European Space Astronomy Centre (ESAC), PO Box 78, E-28691 Villanueva de la Canada, Madrid, Spain

<sup>12</sup>International Space Science Institute, Hallerstrasse 6, CH-3012 Bern, Switzerland



<sup>13</sup>Research and Scientific Support Department, European Space Agency, NL-2201 Noordwijk, The Netherlands

<sup>14</sup>Department of Physics and Astronomy, Uppsala University, Box 516, SE-75120 Uppsala, Sweden

<sup>15</sup>PAS Space Research Center, Bartycza 18A, PL-00716 Warszawa, Poland

<sup>16</sup>Institute for Geophysics and Extraterrestrial Physics, TU Braunschweig, D-38106 Braunschweig, Germany

<sup>17</sup>LESIA, Observatoire de Paris, CNRS, UPMC Univ Paris 06, Univ. Paris-Diderot, 5 Place J. Janssen, F-92195 Meudon Principal Cedex, France

<sup>18</sup>LATMOS, CNRS/UVSQ/IPSL, 11 Boulevard d'Alembert, F-78280 Guyancourt, France

<sup>19</sup>INAF Osservatorio Astronomico di Padova, Vicolo dell'Osservatorio 5, I-35122 Padova, Italy

<sup>20</sup>CNR-IFN UOS Padova LUXOR, Via Trasea 7, I-35131 Padova, Italy

<sup>21</sup>Department of Industrial Engineering University of Padova Via Venezia, 1, I-35131 Padova, Italy

<sup>22</sup>University of Trento, via Sommarive, 9, I-38123 Trento, Italy

<sup>23</sup>Physikalisches Institut, Sidlerstrasse 5, University of Bern, CH-3012 Bern, Switzerland

<sup>24</sup>INAF - Osservatorio Astronomico di Trieste, via Tiepolo 11, I-34143 Trieste, Italy

<sup>25</sup>Instituto de Astrofísica de Andalucía-CSIC, Glorieta de la Astronomía, E-18008 Granada, Spain

<sup>26</sup>Budapest University of Technology and Economics, Department of Mechatronics, Optics and Engineering Informatics, Muegyetem rkp 3, Budapest, Hungary

<sup>27</sup>ESA/ESAC, PO Box 78, E-28691 Villanueva de la Cañada, Spain

<sup>28</sup>Centre for Astrophysics and Planetary Science, School of Physical Sciences, The University of Kent, Canterbury CT2 7NH, United Kingdom

<sup>29</sup>Department of Information Engineering, University of Padova, Via Gradenigo 6/B, I-35131 Padova, Italy

<sup>30</sup>NASA Ames Research Center, Moffett Field, CA 94035, USA

<sup>31</sup>Observatory of the Hungarian Academy of Sciences, PO Box 67, 1525 Budapest, Hungary

This paper has been typeset from a  $\text{\LaTeX}$  file prepared by the author.