



HAL
open science

Estimation of a coronal mass ejection magnetic field strength using radio observations of gyrosynchrotron radiation

Eoin Carley, Nicole Vilmer, Paulo Simões, Brían Ó Ferraigh

► **To cite this version:**

Eoin Carley, Nicole Vilmer, Paulo Simões, Brían Ó Ferraigh. Estimation of a coronal mass ejection magnetic field strength using radio observations of gyrosynchrotron radiation. *Astronomy & Astrophysics - A&A*, 2017, 608 (A137), 14 p. <10.1051/0004-6361/201731368>. <insu-01701187>

HAL Id: insu-01701187

<https://insu.hal.science/insu-01701187v1>

Submitted on 9 Dec 2019

HAL is a multi-disciplinary open access archive for the deposit and dissemination of scientific research documents, whether they are published or not. The documents may come from teaching and research institutions in France or abroad, or from public or private research centers.

L'archive ouverte pluridisciplinaire **HAL**, est destinée au dépôt et à la diffusion de documents scientifiques de niveau recherche, publiés ou non, émanant des établissements d'enseignement et de recherche français ou étrangers, des laboratoires publics ou privés.



HAL Authorization

Estimation of a coronal mass ejection magnetic field strength using radio observations of gyrosynchrotron radiation

Eoin P. Carley^{1,2}, Nicole Vilmer^{2,3}, Paulo J. A. Simões⁴, and Brían Ó Ferraigh¹

¹ Astrophysics Research Group, School of Physics, Trinity College Dublin, Dublin 2, Ireland
e-mail: eoin.carley@tcd.ie

² LESIA, Observatoire de Paris, PSL Research University, CNRS, Sorbonne Universités, UPMC Univ. Paris 06, Univ. Paris Diderot, Sorbonne Paris Cité, 5 place Jules Janssen, 92195 Meudon, France

³ Station de Radioastronomie de Nançay, Observatoire de Paris, PSL Research University, CNRS, Univ. Orléans, 18330 Nançay, France

⁴ SUPA School of Physics and Astronomy, University of Glasgow, Glasgow G12 8QQ, UK

Received 14 June 2017 / Accepted 14 September 2017

ABSTRACT

Coronal mass ejections (CMEs) are large eruptions of plasma and magnetic field from the low solar corona into interplanetary space. These eruptions are often associated with the acceleration of energetic electrons which produce various sources of high intensity plasma emission. In relatively rare cases, the energetic electrons may also produce gyrosynchrotron emission from within the CME itself, allowing for a diagnostic of the CME magnetic field strength. Such a magnetic field diagnostic is important for evaluating the total magnetic energy content of the CME, which is ultimately what drives the eruption. Here, we report on an unusually large source of gyrosynchrotron radiation in the form of a type IV radio burst associated with a CME occurring on 2014-September-01, observed using instrumentation from the Nançay Radio Astronomy Facility. A combination of spectral flux density measurements from the Nançay instruments and the Radio Solar Telescope Network (RSTN) from 300 MHz to 5 GHz reveals a gyrosynchrotron spectrum with a peak flux density at ~ 1 GHz. Using this radio analysis, a model for gyrosynchrotron radiation, a non-thermal electron density diagnostic using the *Fermi* Gamma Ray Burst Monitor (GBM) and images of the eruption from the GOES Soft X-ray Imager (SXI), we were able to calculate both the magnetic field strength and the properties of the X-ray and radio emitting energetic electrons within the CME. We find the radio emission is produced by non-thermal electrons of energies >1 MeV with a spectral index of $\delta \sim 3$ in a CME magnetic field of 4.4 G at a height of $1.3 R_{\odot}$, while the X-ray emission is produced from a similar distribution of electrons but with much lower energies on the order of 10 keV. We conclude by comparing the electron distribution characteristics derived from both X-ray and radio and show how such an analysis can be used to define the plasma and bulk properties of a CME.

Key words. Sun: coronal mass ejections (CMEs) – Sun: flares – Sun: magnetic fields – Sun: radio radiation – Sun: particle emission

1. Introduction

Coronal mass ejections (CME) are large eruptions of plasma and magnetic field from the low solar atmosphere into the heliosphere, representing the most energetic eruptions ($>10^{32}$ erg) in the solar system. Despite many years of study, the trigger and driver of such eruptions is still under investigation. Observational studies have indicated that CME magnetic energy represents the largest part of the total energy budget of the eruption (Emslie et al. 2004, 2012). The magnetic field is also the dominant driver of the eruption early in its evolution (Vourlidis et al. 2000; Carley et al. 2012). However, despite having such a dominant influence on CME dynamics, little is known about CME magnetic field strength. This is due to the scarcity of measurements of the magnetic field strength of such eruptions. Therefore, any new measurement of this quantity represents a rare and important diagnostic that is essential for gaining a complete picture of eruption evolution.

Magnetic field strength measurements of coronal ejecta have historically been performed in the radio domain, taking place in the era before white-light CME observations. Radio imaging of moving sources of synchrotron emission (known as a moving

type IV radio burst) first provided a field strength diagnostic of 0.8 G at a height¹ of $2R_{\odot}$ (Boischot & Daigne 1968). The analysis of moving type IVs lead authors to propose that these radio sources are from energetic electrons trapped in the magnetic field of ejected plasmoids in the corona (Dulk & Altschuler 1971; Smerd & Dulk 1971; Riddle 1970). While these studies have mainly concentrated on source morphology, kinematics, and associated flare, some studies analysed the emission process in detail, identifying Razin suppressed gyrosynchrotron emission, allowing a magnetic field diagnostic of 6 G at a height of $2R_{\odot}$ (Bhonsle & Degaonkar 1980). Studies during this era showed that the emission process for type IVs can be (gyro-)synchrotron in nature, although Duncan (1980) showed it can also be due to plasma emission. This highlighted that moving type IVs can provide a variety of diagnostics of the erupting plasmoid, either density or magnetic field diagnostics, depending on the emission mechanism.

Although these studies initially concluded that type IV radio bursts belonged to some form of ejected material, it was later

¹ “Height” here means heliocentric distance for example, solar surface is $1R_{\odot}$.

realised that these radio bursts were associated with the newly discovered white-light coronal transients (or CMEs; [Kosugi 1976](#)). [Gopalswamy \(1987\)](#) identified a moving type IV burst in association with a CME to be from gyrosynchrotron radiation produced by >350 keV electrons in a 2 G magnetic field at $2.3 R_{\odot}$. [Stewart et al. \(1982\)](#) and [Gary et al. \(1985\)](#) also showed a CME to be closely associated with a moving type IV burst produced from plasma emission. The former study equated thermal to magnetic energy to estimate CME magnetic field strengths of >0.6 G at a height of $2.5 R_{\odot}$.

Perhaps, the most famous case of a radio source associated with a CME was during the SOL1998-04-20 event ([Bastian et al. 2001](#)). Observed by the Nançay Radioheliograph (NRH; [Kerdran & Delouis 1997](#)) at 164 MHz, the flux density spectrum of this “radio CME” allowed the authors to conclude that this emission process was Razin suppressed synchrotron radiation from 0.5–5 MeV electrons in a CME magnetic field of ~ 0.3 – 1.5 G at a height of 3 – $4 R_{\odot}$. A similar case of a radio CME was reported in both [Maia et al. \(2007\)](#) and [Démoulin et al. \(2012\)](#), with the former deriving a field strength on the order of ~ 0.1 – 1 G at $\sim 2 R_{\odot}$. The most recent observations have corroborated these findings, showing that gyrosynchrotron sources (type IV bursts) can be associated with a CME core, giving a field strength diagnostic of 1.4 – 2.2 G at ~ 1.9 – $2.2 R_{\odot}$ ([Sasikumar Raja et al. 2014](#)). [Bain et al. \(2014\)](#) studied a type IV source in a CME core finding a field strength of ~ 3 – 5 G at $\sim 1.5 R_{\odot}$, while [Tun & Vourlidis \(2013\)](#) found a field strength as high as 5 – 15 G for the same event. The discrepancy between the two results is possibly due to the different electron energy ranges and spectral slopes assumed in each analysis.

It is clear from the above studies that moving type IVs can be used as a useful diagnostic of CME magnetic field strength. However, moving type IVs are a rare phenomenon, with only about 5% of CMEs being associated with such a radio burst ([Gergely 1986](#)). And amongst the many tens of thousands of CMEs observed since their discovery, the above studies represent relatively few events that have provided a means to estimate CME magnetic field strength. Despite, the lack of observational studies of CME magnetic field, theoretical investigations have concluded that the magnetic field is both the trigger and driver of the eruption. The models describe CME eruption using the free energy in a complex non-potential magnetic field, usually in the form of a flux rope ([Aulanier et al. 2010](#); [Zuccarello et al. 2014](#)). The magnetic forces acting on this flux rope, whether expressed in the form of toroidal instability, magnetic pressures and tensions or Lorentz forces, are ultimately responsible for the eruption (see [Chen 2011](#), for a review). This highlights the importance and need for further observations of CME magnetic field strength, yet it remains one of its most elusive properties.

In our observations we report on another rare case of magnetic field measurement from non-thermal gyrosynchrotron radiation from a CME. We also highlight that at the same plane-of-sky (POS) position we observe plasma radiation as well as a source of soft and hard X-rays. Such a rare set of observations allows us to explore the relationship between radio and X-ray emitting electrons associated within the CME, ultimately allowing the eruption non-thermal electron properties and the magnetic field strength to be calculated. In Sect. 2 we describe observations, in Sect. 3 we describe methods, including flux density measurements from NRH and Radio Solar Telescope Network (RSTN; [Guidice 1979](#)), in Sect. 4 we discuss how these are used to obtain magnetic field measurements and in Sect. 5 we discuss the results in the context of CME plasma properties and conclude.

2. Observations

The SOL2014-09-01 event was associated with a flare occurring 36° beyond the east solar limb at N14E126, observed by the Extreme Ultraviolet Imager (EUVI; [Wuelser et al. 2004](#)) on board the Solar Terrestrial Relations Observatory behind spacecraft, with an estimated GOES class of X2.4 ([Ackermann et al. 2017](#)). Given this was a behind the limb flare, no increase in X-ray flux was recorded by the GOES spacecraft, see Fig. 1. The event was associated with a fast CME with a speed of ~ 2000 km s $^{-1}$, which first appeared in the Large Angle Spectroscopic Coronagraph (LASCO; [Brueckner et al. 1995](#); C2) at 11:12 UT (see [Pesce-Rollins et al. 2015](#); [Ackermann et al. 2017](#), for a description of the latter part of this event not studied here, including gamma ray observations with *Fermi*-LAT).

Beginning at 11:00 UT, a variety of solar radio bursts were observed by the Nançay Decametric Array (NDA; [Lecacheux 2000](#)) and the Orfées spectrograph between 10–1000 MHz, see Fig. 1. The radio event begins with a type II radio burst at 11:00 UT at ~ 40 MHz in the NDA spectrograph, followed by a complex and bursty emission which lasts for ~ 30 min. In the Orfées frequency range between 11:01–11:06 UT, we observe bursty emission extending up to ~ 200 – 300 MHz, with a faint, smooth, and broad band emission at higher frequencies which we label here as a type IV radio burst. We concentrate on this radio burst for the remainder of this paper.

At the time of the type IV burst, an eruption can be seen developing from the east limb using the Atmospheric Imaging Assembly (AIA; [Lemen et al. 2012](#)) 193 Å filter and the Sun Watcher using Active Pixel (SWAP; [Berghmans et al. 2006](#)) 174 Å passband as shown in Fig. 2. The eruption is first seen as disturbed loops beginning to emerge at $\sim 10:59$ UT which then develop into an EUV “bubble” with a strong and sharply defined EUV wave propagating towards the north pole, a snapshot of which is shown in Fig. 2b.

At the same location as the eruption, we observe large radio sources using multiple frequencies of the Nançay Radioheliograph (NRH; [Kerdran & Delouis 1997](#)), see Fig. 2a. The NRH contours are 150, 327 and 432 MHz scaled between 50% and 100% of the maximum brightness temperature for each source individually. Initially, at 150 MHz the sources have a full-width-half-maximum (FWHM) in the southeast-northwest direction of $\sim 0.7 R_{\odot}$. All other NRH frequencies show a large source at a similar location, with the source having FWHM of $\sim 0.5 R_{\odot}$ at 327 MHz and reducing to $\sim 0.45 R_{\odot}$ at 408 MHz and above. After 11:05 UT, the lower frequency sources (150 MHz) have disappeared, while the high frequency sources move to the southern flank of the eruption, as seen in Fig. 2b – just 327 MHz is shown for simplicity, the higher frequency sources are smaller but at a similar position.

Figure 2c shows the positions of the radio source maxima at 150, 327, and 432 MHz over time between 11:01 UT and 11:05:30 UT, overlaid on an AIA 193 Å running ratio image at 11:02:01 UT. The shading of the points from dark to light represents change in position with time. All of the points are generally clustered around the same area at the centre of the eruption. Each source shows a consistent progression southwards at a speed of ~ 1500 km s $^{-1}$, which is close to the speed of the CME southern flank of ~ 1200 km s $^{-1}$ at an altitude of $\sim 0.2 R_{\odot}$ in the southerly direction. A closer study of the relationship between CME and radio source expansion is shown in Fig. 3. This is a distance-time (dt) map produced from intensity traces taken from 171, 193, and 211 Å passbands along the orange circle

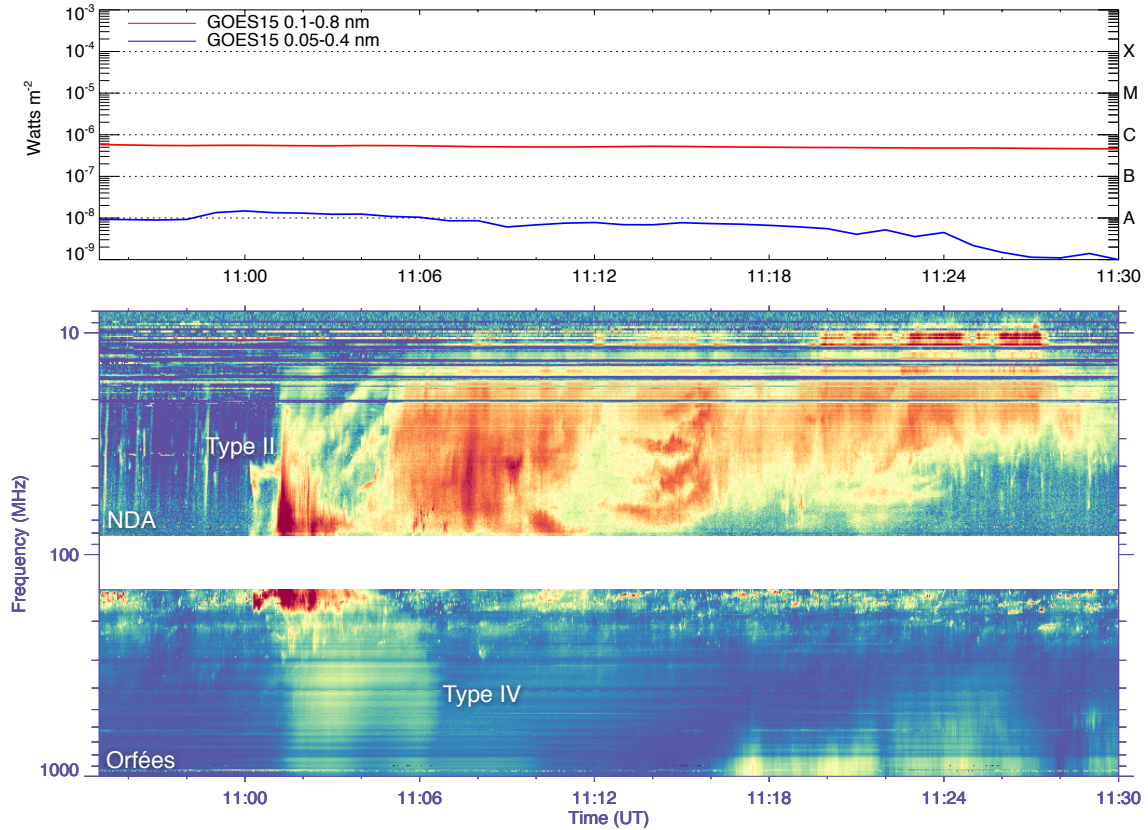


Fig. 1. *Panel a:* GOES soft X-ray (SXR) time profile between 10:55–11:30 UT, showing no significant emission as the event occurred $\sim 36^\circ$ beyond the east limb. *Panel b:* NDA and Orféés dynamic spectra from 10–1000 MHz. A variety of radio bursts occur during the event, beginning with a type II radio burst observed in NDA (as indicated), followed by a series of complex emissions. In Orféés a weak, broad band and smoothly varying emission is observed from 200–1000 MHz between $\sim 11:01$ – $11:06$ UT, which we label here as a type IV burst. The analysis in this paper concentrates on this time range and radio burst.

of fixed radius of $\sim 1.2 R_\odot$ in Fig. 2a. Each intensity trace was normalised in brightness and summed across the three pass-bands. The upper and lower CME flanks are indicated on the dt -map, along with the expanding inner loops of the CME. In the figure we indicate the position angles of the upper and lower lateral extent of the 408, 445 and 432 MHz radio sources. For example, we show the upper and lower lateral extents of the 432 MHz source for a single time in Fig. 2a. Figure 3 shows that both the CME and radio sources have a common lateral broadening. This is particularly noticeable in the expansion of the southern internal loop of the CME, which is followed closely by the southern extent of the radio sources, for example the radio source expands to the south at the same rate as the internal CME loops. This provides good evidence that the radio sources belong to these internal loops, possibly in the core of the CME. We discuss further the possible locations of the radio sources in Sect. 4.2.

In Fig. 2c we demarcate the average positions of an individual set of frequency points, showing that the 150, 327 and 432 MHz sources are closely spaced (all NRH frequencies from 228–445 MHz are clustered around this position). The majority of frequencies being located at the same position is an indicator that the origin of at least some of these sources is not plasma emission, that is, with plasma emission we expected to see some stratification in frequency, due to the stratification in density of the environment from which the emission comes. If sources generally have the same position, there is a possibility that they may be from a gyrosynchrotron source. To better distinguish the

nature of the radio emission sources and emission mechanisms, in the following we investigate both the brightness temperatures and flux densities as a function of time and frequency, employing the use of both NRH and the RSTN.

2.1. Brightness temperature: NRH observations

The peak brightness temperature of the radio sources as a function of time is shown in Fig. 4. It shows that the 150 and 173 MHz sources peak in brightness temperature at 1.5×10^9 K and 5×10^8 K, respectively. Frequencies above 228 MHz show brightness temperatures over an order of magnitude lower than this, with most peaking at 1×10^7 K. Also, similar to the dynamic spectrum, the variation of brightness temperature in time of the 150 and 173 MHz sources is more bursty and sporadic than the smoothly increasing and decreasing time profiles of the higher frequency sources. This difference in brightness temperature variation and time profile, as well as the association of the high frequency sources with the much smoother type IV in Orféés, is suggestive of the different emission mechanisms between low frequency and higher frequency sources, that is, low frequencies (< 170 MHz) are bursty and intense while higher frequencies are smoothly varying and weaker.

2.2. Flux density: NRH observations

To further investigate the difference between high and low frequencies in NRH, we calculated the flux density of the sources

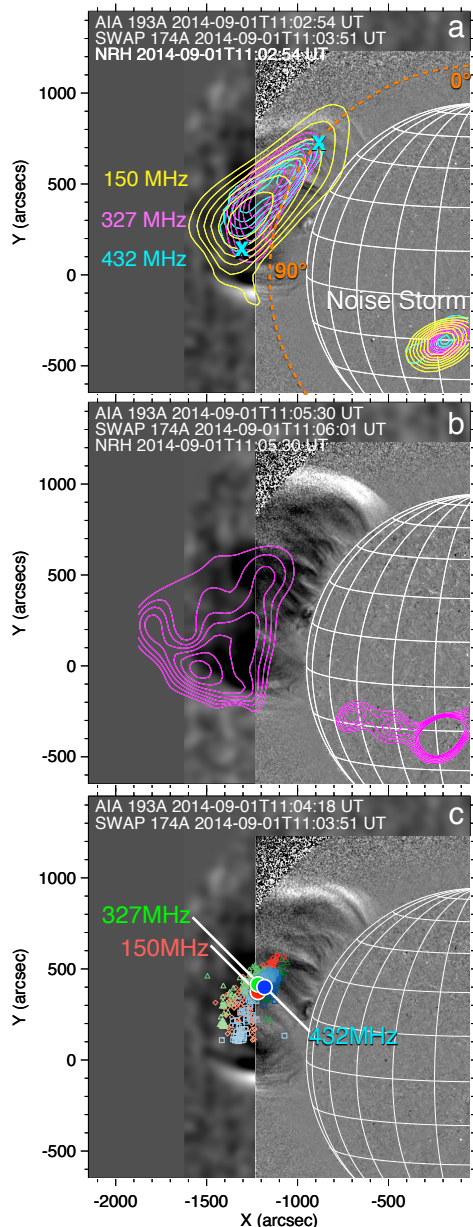


Fig. 2. *Panel a:* eruption from the east limb observed using an AIA 193 Å and SWAP 174 Å ratio images, superimposed with NRH 150, 327 and 432 MHz contours. By 11:01 UT an EUV “bubble” can be seen developing from the east limb. At the same location in the plane of sky, large radio sources appear at all NRH frequencies (just three are shown here). The sources remain at this position until ~11:05 UT. The radio source on disk is a type I noise storm, unrelated to the event in question. *Panel b:* At 11:05:30 UT, the lower frequency sources (150 MHz) decrease in intensity and the remaining higher frequencies are situated to the southern flank of the eruption (just 327 MHz is shown here). At this time a strong and sharply defined EUV front can be seen propagating towards the north pole. The noise storm on disk is elongated due to the side-lobes of the telescope beam. *Panel c:* location of sources through time, colours indicate frequency and dark-to-light shading in colour indicates progression through time. The indicated circles are the centroids of each frequency cluster separately.

as a function of time and compared them directly to the Orféus flux (arbitrary units). The results are shown in Fig. 5, with NRH flux density profiles shown in black and the Orféus flux profiles in orange. At each frequency the NRH and Orféus flux density profiles are directly comparable, showing that the sources

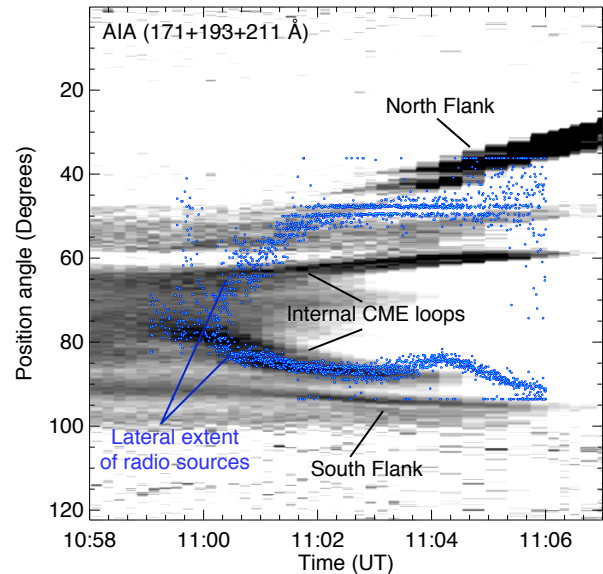


Fig. 3. Distance-time map (reverse colour) produced from intensity traces extracted from the orange circle in Fig. 2a. The map is produced from a normalisation then addition of AIA 211 Å, AIA 193 Å, and AIA 171 Å passbands. The upper and lower CME flanks are indicated, along with the expanding inner loops of the CME. The blue points mark the position angles of the upper and lower lateral extent of the 408, 445 and 432 MHz radio sources – the dark blue “x” symbols in Fig. 2a mark these two points on the 432 MHz source for a single time. The radio source expansion follows the CME expansion quite closely. The southern extent of the radio sources in particular follow the expansion of the CME southern internal loop.

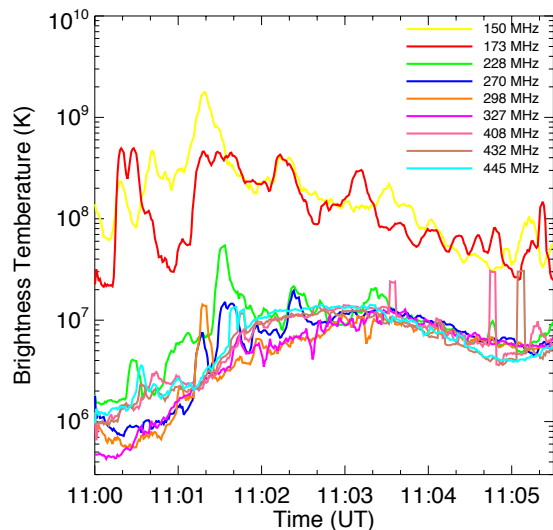


Fig. 4. Maximum brightness temperature as a function of time for the radio sources at all NRH frequencies. The 150 MHz and 173 MHz sources show much higher brightness temperatures than 228 MHz and above.

imaged off the east limb were responsible for the radio bursts in the spectrogram. As expected, the flux density of the 150 and 173 MHz reach higher values, at well above 300 SFU and are almost two orders of magnitude larger than the remaining NRH frequencies for example, at 270 MHz and above, the flux density peaks just above 10 SFU.

The flux density profiles over time, particularly above 270 MHz, appear to be composed of roughly two components; the smoothly varying rise and fall of flux density over approximately five minutes (with peak at ~11:03 UT) and more sporadic

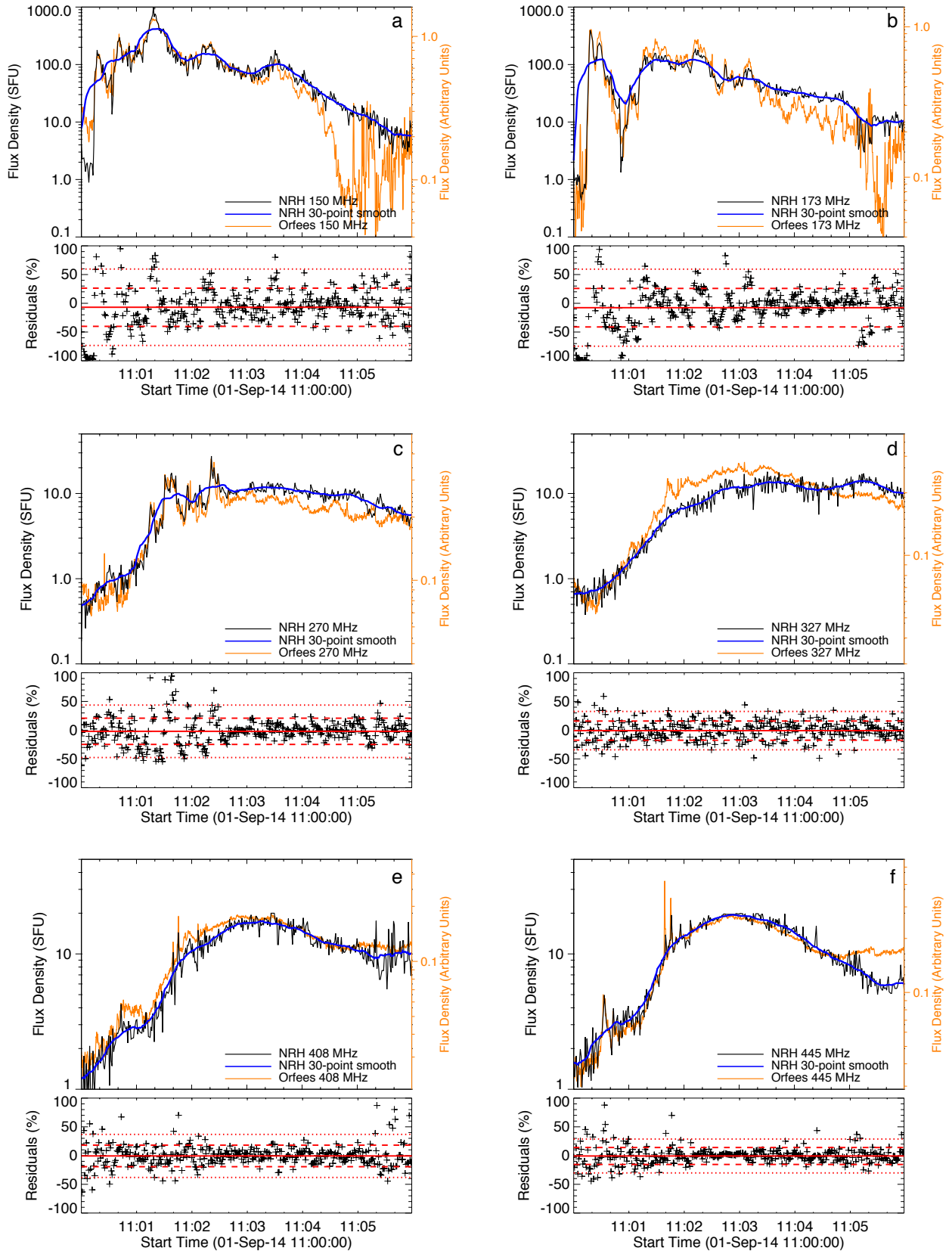


Fig. 5. Flux densities of the large radio source for all NRH frequencies (black; units of SFU) and flux density from Orféus at the same frequency (orange; arbitrary units). The blue line is a 30-point box-car smooth of the NRH time profiles. The difference between the black and blue curves provides the residuals over time for each panel. Residuals larger than 2σ are indicative of sporadic radio bursts. The 150–173 MHz sources have much larger flux densities and are also more bursty in nature (larger residual spread). At 228 MHz and above the flux densities are much weaker, while at 300 MHz and above the flux is weaker and much more smoothly varying in time, that is, the residuals mainly varying by less than 2σ , indicative of flux variation due Gaussian noise only (very few sporadic radio bursts) above these frequencies.

and sharply defined bursts which appear on timescales of seconds. Sporadic bursts amongst the smoothly varying profiles may either be fluctuation due to statistical noise or an actual signal from a short time interval radio burst. In order to distinguish between the two possibilities, we perform a 30-point box-car smooth on the flux profile and subtract this from the original unaltered profile. This allowed us to examine the residuals due to this subtraction, that is, the size of the short-duration bursts as a function of time.

The residuals are shown in the panels below each flux density profile. On the figure we represent the mean residual values, as well as ± 1 and 2 standard deviations (σ), respectively. For the low frequencies, as expected, the residuals show a large spread in values and frequently show bursts larger than 2σ , due to the bursty nature of the plasma emission at these frequencies. At frequencies of 327 MHz and above the residuals have a narrower range, showing only brief intervals of bursty emission above 2σ ; any short duration variation is mainly due to statistical noise only. Hence in the following analysis we consider the NRH frequencies at 327 MHz and above to be observation of the smoothly varying radiation (gyrosynchrotron, as will be shown) only.

2.3. Flux density: RSTN observations

Above 600 MHz we use flux density observations of the San Vito and Sagamore Hill sites of the RSTN network. The San Vito observatory recorded increase in flux at three separate frequencies of 1.4, 2.7, and 5.0 GHz, as shown in Fig. 6a. Sagamore Hill provided a flux density measurement at the same frequencies² and a extra flux density measurement at 610 MHz.

Our time of interest is clearly indicated in Fig. 6a. The smooth rise and fall is again observed between 11:00–11:05 UT, after which the flux density starts to rise again to larger values (this rise in flux is from a second part of the event not associated with the type IV in question; for discussion on this second part of the event see Ackermann et al. 2017). Throughout the day, RSTN recorded a steady background prior to the event. This enabled a background subtraction (mean flux density between 10:30–10:50 UT) such that the only flux density increase is from our radio sources of interest. In the 615 MHz and 1415 MHz there is a rise in flux above the background before our time of interest. This initial rise could be the start of flux from the type IV, but may also be the beginning of the radio emission which peaks after our time of interest (after 11:05 UT). Due to this ambiguity, the flux density uncertainties at 615 and 1415 MHz include this extra flux rise of ~ 13 SFU and ~ 6 SFU, respectively, in the analysis below.

The background-subtracted RSTN flux density profiles are shown in Fig. 6b, and are directly comparable to the NRH and Orféès profiles. Together, NRH and RSTN then provided measurement of the flux density from 150 MHz to 5 GHz, allowing the construction of a flux density spectrum.

2.4. Flux density spectrum

Figure 7a shows the NRH and RSTN flux density values as a function of frequency for three different time intervals. The NRH error bars are from the 2σ values of the residuals at each

² The fluxes from the different RSTN sites generally matched to within 15–20%; this shows that the flux calibration from each site is reasonable and fluxes amongst the common frequencies between the two sites were averaged.

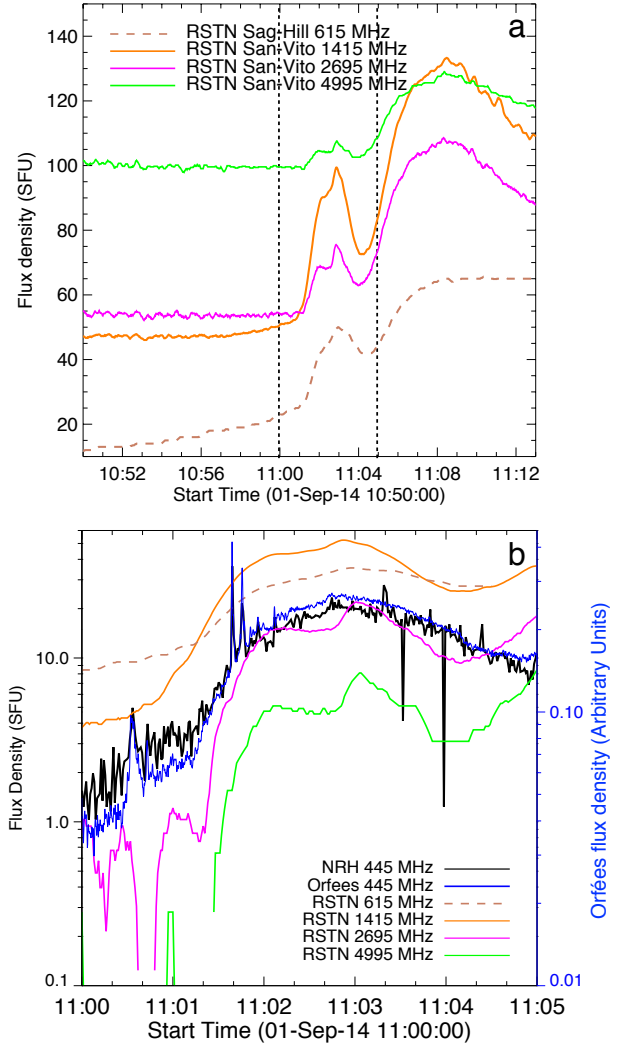


Fig. 6. Panel a: flux densities at 615 MHz from Sagamore Hill site and 1.4, 2.7 and 5.0 GHz from the San-Vito site of the RSTN network. Each of the flux density curves has a steady background which lasts for several hours prior to the event. We used this to perform a background subtraction on each frequency (the rise in flux of 615 and 1415 MHz before the time of interest is taken into account in the flux uncertainty at these frequencies in the analysis below). The dashed lines represent the region of interest (the type IV burst). Panel b: magnification of the RSTN flux density spectrum (between the dashed lines demarcated in (a)) with the NRH and Orféès 445 MHz flux density curve for comparison. The flux densities from all three instruments show a good relationship of flux density variation with time.

frequency as a measure of statistical variation in the signal, as described above. We have added to this a 20% absolute calibration uncertainty on the NRH flux density values. The RSTN uncertainty is set to 21%, which takes into account a 20% flux density calibration uncertainty plus 1% variation in the background due to statistical noise. We note that the 615 and 1415 MHz negative uncertainty bars are larger because they take into account the initial rise in background flux before 11:00 UT at these frequencies, as stated above.

From Fig. 7a, the flux density spectrum is high at low frequencies, falls to a minimum at ~ 300 MHz and reaches a maximum again at ~ 1 GHz. Such a spectrum is characteristic of previous results showing plasma emission at low frequencies and gyrosynchrotron emission at larger frequencies (Dauphin et al. 2005), and is described in detail in

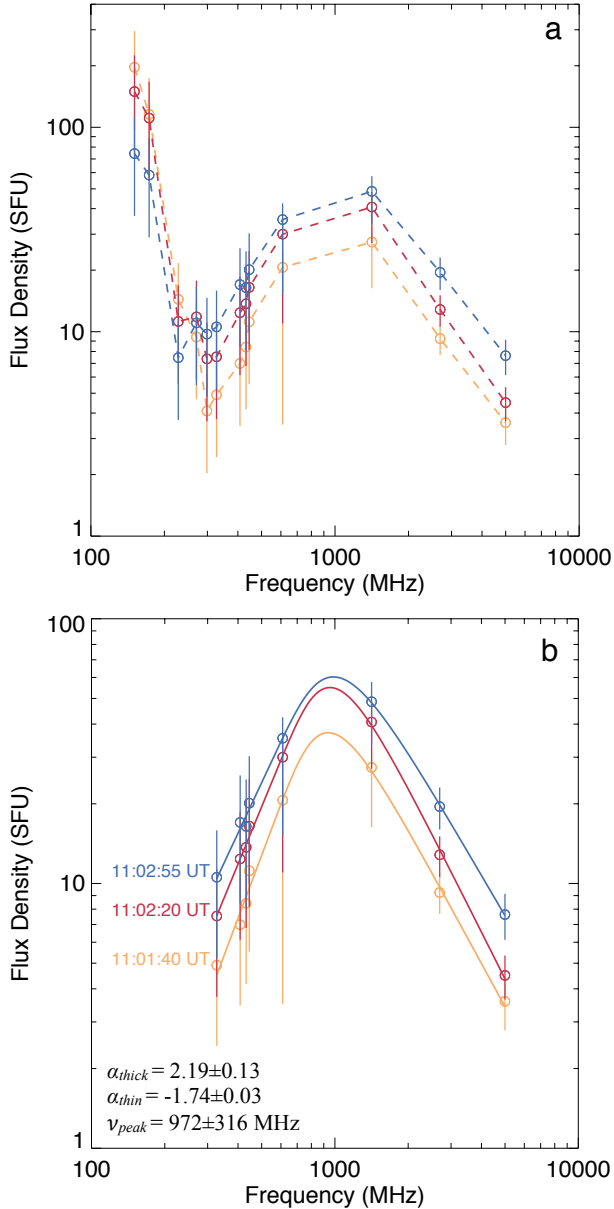


Fig. 7. *Panel a:* flux density spectrum of NRH data below 445 MHz and RSTN data above 615 MHz, at three separate times between 11:01:40 UT to 11:03:10 UT (times indicated in bottom panel). The flux densities are high at 150 and 173 MHz, fall to a minimum at ~ 300 MHz, reach a peak ~ 1 GHz and fall again. This is characteristic of a gyrosynchrotron spectrum at frequencies higher than ~ 300 MHz with plasma emission dominating at lower frequencies. *Panel b:* parametric fit of a gyrosynchrotron spectrum from 298 MHz to 4.5 GHz at three separate times.

Nita et al. (2002). This corroborates the analysis of the flux density time-profile residuals above, that is, below 300 MHz we are likely observing a mixture of bursty plasma emission and gyrosynchrotron emission, while at higher frequencies we observe only gyrosynchrotron emission.

3. Calculating magnetic field in the radio source

The construction of a flux density spectrum of the type IV burst using NRH and RSTN from 300–5000 MHz allowed us to estimate the CME magnetic field strength in the radio source using two methods; firstly, we used the approximations to

gyrosynchrotron radiation theory from Dulk & Marsh (1982). This analysis requires a calculation of non-thermal electron properties from the coronal X-ray emission at the time of our event. This lead to useful comparisons of the X-ray and radio emitting electron populations associated with the CME. In the second method we used a full gyrosynchrotron numerical model (Simões & Costa 2006) to estimate a more accurate value for the CME magnetic field strength as well as the characteristics of the non-thermal electron distribution responsible for the radio emission.

3.1. Magnetic field estimate from the Dulk & Marsh approximations

As outlined above, it is only at 300 MHz and above that we observe gyrosynchrotron emission. We therefore, chose data points above this frequency to which a parametric fit of a gyrosynchrotron spectrum was applied. Gyrosynchrotron flux density spectra can be approximated with a generic parametric equation in the form of

$$S_\nu = S_{\text{peak}} \left(\frac{\nu}{\nu_{\text{peak}}} \right)^{\alpha_{\text{thick}}} \left\{ 1 - \exp \left[- \left(\frac{\nu}{\nu_{\text{peak}}} \right)^{\alpha_{\text{thin}} - \alpha_{\text{thick}}} \right] \right\}, \quad (1)$$

(Stahli et al. 1989) where S_ν is flux density as a function of frequency ν , S_{peak} is the peak flux density, ν_{peak} is the frequency at which the peak flux density occurs. For $\nu \gg \nu_{\text{peak}}$, the expression reduces to $S_\nu = S_{\text{peak}} (\nu/\nu_{\text{peak}})^{\alpha_{\text{thin}}}$, where α_{thin} is the spectral index on the optically thin side of the spectrum (the negative slope). For $\nu \ll \nu_{\text{peak}}$ it reduces to $S_\nu = S_{\text{peak}} (\nu/\nu_{\text{peak}})^{\alpha_{\text{thick}}}$, where α_{thick} is the spectral index on the optically thick side of the spectrum (positive slope). Although the expression is parametric, it takes into account the general behaviour of gyrosynchrotron spectra in optically thin and thick regimes.

The equation was fit to our data for flux density spectra every second between 11:01:40–11:03:10 UT (the time during which RSTN reaches flux values above background, see Fig. 6); three spectra throughout this interval are shown in Fig. 7b. The resulting fits give average spectral indices of $\alpha_{\text{thick}} = 2.19 \pm 0.13$ and $\alpha_{\text{thin}} = -1.74 \pm 0.03$. These spectral indices fall close to the range of those expected for gyrosynchrotron emission, that is, $\alpha_{\text{thick}} = 2.9 \pm 0.1$ and range of $\alpha_{\text{thin}} = [-4, -1.5]$ (Dulk 1973, 1985). Our results also agree with a more recent statistical study of gyrosynchrotron spectral slopes of $\alpha_{\text{thin}} = -2.51^{+0.75}_{-0.90}$ and $\alpha_{\text{thick}} = 1.79^{+1.04}_{-0.53}$ (Nita et al. 2004). Also, the average peak frequency we find here is $\nu_{\text{peak}} = 972 \pm 316$ MHz, which is smaller than the median peak frequency of 6.6 GHz in the Nita et al. (2004) study³.

From Dulk & Marsh (1982) it is possible to make empirical approximations which relate the peak frequency in the flux density spectrum to the magnetic field via

$$\nu_{\text{peak}} \approx 2.72 \times 10^3 10^{0.27\delta} (\sin \theta)^{0.41+0.03\delta} (NL)^{0.32-0.03\delta} \times B^{0.68+0.03\delta}, \quad (2)$$

where θ is the angle between the radiation k vector and the magnetic field direction, N is the number density of non-thermal electrons, L is the length of the radiating region along the line of sight and B is the magnetic field; δ is the spectral index

³ However the authors noted that a small subset of radio events (only 5% of 412 events) had peak frequencies below 1.2 GHz. Our event then seems to belong to this rare subset.

of the electrons in the power-law distribution and is related to the optically thin spectral index of the flux density spectrum by

$$\delta = |-1.1(\alpha_{\text{thin}} - 1.2)|, \quad (3)$$

as given in [Dulk & Marsh \(1982\)](#); in our case this results in $\delta_{\text{radio}} = 3.2 \pm 0.3$ (we note that this is positive, but represents a negative slope in the spectrum; we used the subscript “radio” here to distinguish it from the same parameter derived from X-ray below). We may therefore use our value for peak frequency and δ_{radio} to calculate the magnetic field strength, provided we know θ , L and N . Firstly, we assumed a complicated magnetic structure along the line of site, which would give an average viewing angle to the magnetic field of $\theta \sim 45^\circ$; such a complicated structure would also lead to the low levels of polarisation ($<5^\circ$) that we see in NRH. For L we took the emission region along the line of site to be no greater than the average source size in the plane of the sky between 327–445 MHz in NRH ($L \sim 0.45 R_\odot$). Perhaps the most uncertain of these properties is N , which cannot be estimated directly from the radio data. However, we may derive an estimate of N using X-ray observations from *Fermi* Gamma-ray Burst Monitor (GBM; [Meegan et al. 2009](#)) at the time of the event. We may only use such a value for N provided we can show the population of electrons emitting X-ray is the same or has a relationship with the population emitting radio. In the following we test for such a relationship.

3.1.1. Energetic electron properties deduced from radio and X-ray observations

The soft X-ray (SXR) emission for this event was imaged by GOES Soft X-ray Imager (SXI; [Lemen et al. 2004](#)), shown in Figs. 8a–c overlaid with NRH 445 MHz contours from 50–100% of max brightness temperature. The eruption appears over the east limb at $\sim 11:01$ UT, with the radio emission concentrated in two lobes, the southerly of which is in the same region as the SXR emission. The extended SXR emission grows, with the radio emission covering mainly the upper half of the eruption. As the eruption develops the radio emission becomes more fragmented and concentrates towards the centre and south of the eruption. It is clear that at least part of the radio and SXR emission overlap, which indicates some relationship between the two.

The HXR activity was also observed by *Fermi* GBM detector 5⁴, the counts of which begin to increase at 10:57 UT in channels with energies from 4.3–50.5 keV, reaching a peak at $\sim 10:59$ –11:00 UT, see Fig. 8d. The Orféees 445 MHz flux is shown with arbitrary flux scaling for comparison. The radio flux starts to rise at 10:58 UT, but peaks approximately three minutes after the X-ray flux. However, at the time of the radio peak flux, a second small enhancement may be observed in the X-ray flux at $\sim 11:01$ –11:03:30 UT, which is particularly noticeable in the 19–30 keV channel (the differences in the X-ray and radio peaks are discussed in Sect. 4.1). The fact that the thermal SXR emission and radio emission show some spatial correspondence in Figs. 8a–c and also show some temporal relationship in panel (d) lead us to investigate and compare the properties of X-ray and radio emitting CME electrons.

Figure 8e shows the X-ray photon energy spectrum at $\sim 11:03$ UT (time of the second peak). Since the flare was $\sim 36^\circ$ behind the limb, we assumed that this photon spectrum

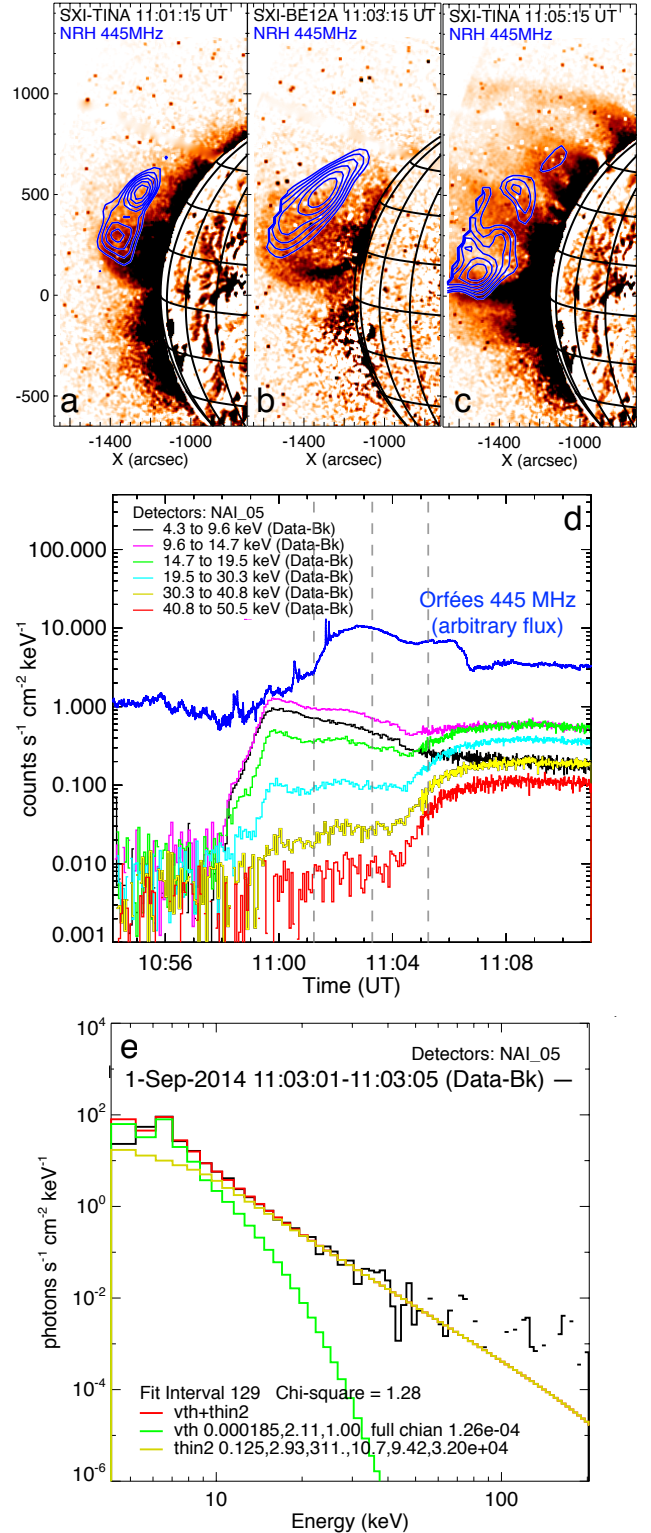


Fig. 8. Panels a–c: GOES SXI images showing the evolution of the eruption in soft X-rays, with NRH 445 MHz contours for comparison. Panel d: *Fermi* GBM counts from 4.2–50.5 keV channels. An increase in counts can be seen in the channels between 4.2–40.8 keV at the time of the event. A 445 MHz flux density curve (with arbitrary flux) from Orféees is shown in blue for comparison. Although the radio and X-ray start to rise at similar times, the radio peak is ~ 3 min after the X-ray peak. The vertical dashed lines are times of the images above. Panel e: the photon energy spectrum fit with a thermal and thin-target model, given that that the flare was beyond the limb (assumption of no observed thick-target source).

⁴ See [Ackermann et al. \(2017\)](#) for further X-ray observations, including *Konus-WIND* 20–78 keV flux.

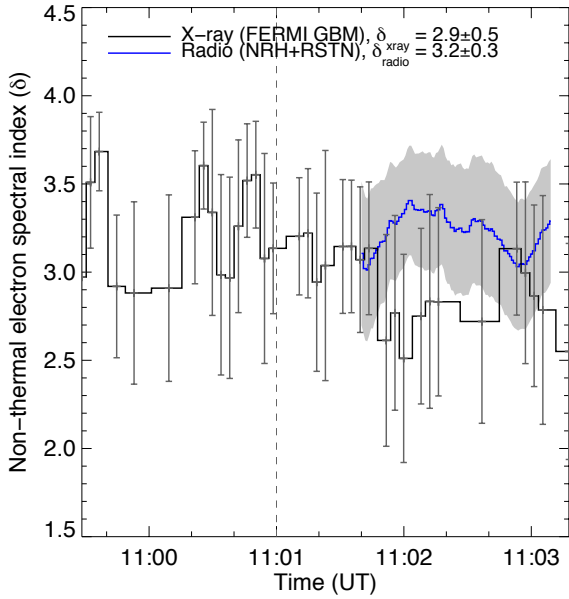


Fig. 9. Non-thermal electron spectral indices derived from both X-ray energy spectra (black) and radio flux density spectra (blue) over time. The average values is taken during the time of the second X-ray peak after 11:01 UT (after the dashed line). This gives mean values of $\delta_{\text{radio}} = 3.2 \pm 0.3$ and that from X-ray being $\delta_{\text{Xray}} = 2.9 \pm 0.5$. This is indicative of both radio and X-ray emission being produced from electron populations with similar characteristics for example, the electrons producing thin-target X-ray emission may be closely related to those which produce radio.

is from a coronal thin-target X-ray source, similar in observation to Kane et al. (1992), Krucker et al. (2010), Simões & Kontar (2013). We therefore, fitted the X-ray flux spectrum with a model for optically thin thermal component combined with a thin-target bremsstrahlung radiation spectrum from an isotropic electron flux density distribution (non-thermal component). We produced this fit for all intervals between 11:01:00–11:03:30 UT (around the second peak in the X-ray flux) and computed average values of all fitted parameters, resulting in mean thermal plasma temperature of 29 MK and emission measure of $\xi = 2.0 \times 10^{45} \text{ cm}^{-3}$. The fit also gives a non-thermal low energy cut-off of $E_0 \sim 9 \text{ keV}$ and an integrated electron flux of $[n_0 V_0 \bar{F}] = 7.2 \times 10^{53} \text{ electrons cm}^{-2} \text{ s}^{-1} \text{ keV}^{-1}$, where n_0 is the ambient electron density, V_0 is the thermal emitting volume, and $\bar{F} = \int F dE$ that is, the integrated electron flux density over energy.

Most interestingly, the non-thermal electron power law index derived using X-ray observation δ_{Xray} (from the fit of the thin-target model) may be directly compared to that derived from radio δ_{radio} ; Fig. 9 shows these spectral indices over time. They remain relatively constant, with the average values between 11:01:00–11:03:30 UT (after the dashed line, around the second small peak in X-rays) being $\delta_{\text{Xray}} = 2.9 \pm 0.5$ and radio resulting in $\delta_{\text{radio}} = 3.2 \pm 0.3$. The similarity of these two spectral indices is evidence that both radio and thin-target X-rays came from a similar non-thermal electron population. Generally, the two populations are not thought to be the same for example, spectral indices derived from the two emission mechanisms tend to differ (Silva et al. 2000; White et al. 2011). However, in our case the similar indices and the spatio-temporal relationship between the X-ray and radio emission provide an opportunity of estimating the number density of non-thermal electrons (N) from X-ray and exploring the use of this value in Eq. (2).

3.1.2. Estimating X-ray emission volumes, electron densities, and magnetic field strength

As mentioned, the goal is to find an estimate of the non-thermal density of electrons N from the X-ray analysis, and use this value in Eq. (2) to estimate the magnetic field strength (we reiterate that this is based on the assumption that N from an X-ray analysis can be used in the Dulk & Marsh (1982) formulation, which we discuss in Sect. 4.1). The electron number density for both the thermal and non-thermal thin-target components of the X-ray emission can be estimated, respectively, from

$$n_0 = \sqrt{\frac{\xi}{V_0}} \text{ [cm}^{-3}\text{]}, \quad (4)$$

$$N = \frac{[n_0 V_0 \bar{F}]}{n_0 V_{\text{nth}}} \frac{\delta_{\text{Xray}} - 1}{\delta_{\text{Xray}} - 0.5} E_{\text{min}}^{-1/2} \sqrt{\frac{m}{2}} \left(\frac{E_0}{E_{\text{min}}} \right)^{\delta_{\text{Xray}} - 1} \text{ [cm}^{-3}\text{]}, \quad (5)$$

(Musset et al. in review) where ξ is the emission measure, V_0 and V_{nth} are thermal and non-thermal X-ray source volumes, respectively, N is non-thermal electron number density, $[n_0 V_0 \bar{F}]$ and δ_{Xray} are as above, E_0 is the energy above which there is a power-law distribution, E_{min} is the energy above which the electron density is to be calculated, and m is electron rest mass expressed in keV/c^2 . $[n_0 V_0 \bar{F}]$, δ_{Xray} , and E_0 are known from the above thermal and thin-target fit to the X-ray flux spectrum. We set $E_0 = E_{\text{min}}$ so as to calculate the electron number density in the entire power law distribution.

The remaining unknown values are the volume V_{nth} and V_0 of the thin-target and thermal sources, respectively. Fortunately, GOES SXI provides us with the opportunity to make an initial estimate of the thermal X-ray emission volume. The SXR extended source radius is $\sim 0.25 R_{\odot}$; assuming a simple spherical volume for this source we find $V_0 \sim 2.2 \times 10^{31} \text{ cm}^3$. This is quite large, and we chose this to represent an upper limit on the source size. As for the non-thermal source, we chose standard HXR source volumes in previous results. For example, non-thermal X-ray sources from electron acceleration regions at coronal looptops have been studied by Xu et al. (2008), showing source size can be up to $15''$ ($5 \times 10^{27} \text{ cm}^3$, assuming a spherical acceleration region). Jeffrey et al. (2014) showed that the observed length (or volume) of a non-thermal source can be modelled assuming an electron acceleration region width of $23''$ (on the order of 10^{27} cm^3 , assuming a spherical geometry). Krucker et al. (2010) and Krucker & Battaglia (2014) observed an above the looptop HXR source from an electron acceleration region and found the source volume to be $0.8 \times 10^{27} \text{ cm}^3$ and $0.7 \times 10^{27} \text{ cm}^3$, assuming a cylindrical and spherical volume, respectively. X-ray imaging observations have also observed thermal X-ray sources in solar flares to be up to 10^{27} – 10^{28} cm^3 (Simões & Kontar 2013; Warmuth & Mann 2013a,b). Because we did not know the exact volumes of the thermal and non-thermal sources, we explored a range of physically reasonable values of $V_0 = V_{\text{nth}} = 10^{27}$ – 10^{32} cm^3 , motivated by a lower limit based on previous estimates of HXR volumes and an upper limit based on what we observe in GOES SXI. The range in volumes results in a range for the ambient thermal and non-thermal electron densities (n_0 and N from Eqs. (4) and (5)). This range for N was then used in Eq. (2) to calculate a range of magnetic field strengths.

Since the calculated magnetic field strength ultimately depends on both the thermal and non-thermal volumes, we are left with a two-dimensional space of magnetic field solutions,

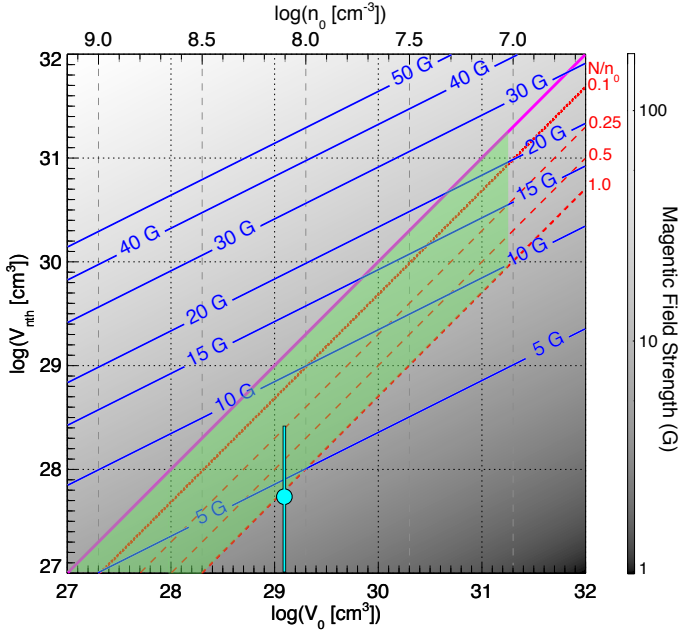


Fig. 10. Parameter space of magnetic field strength as a function of thermal and non-thermal X-ray volumes, with the blue contours indicating specific magnetic field strength. The pink line indicates equal thermal and non-thermal source volumes. The top x-axis indicates n_0 values, which depend directly on V_0 (via Eq. (4)). The red lines indicate the volumes at which specific ratios of thermal to non-thermal electron densities (N/n_0) occur (as indicated). The green shaded area shows the range of magnetic fields possible, given particular constraints on the volumes and ratios of N/n_0 . The blue circle with the error bar is the magnetic field strength calculated from the numerical model below.

as plotted in Fig. 10. In the figure we show the magnetic field strength as a function of thermal and non-thermal volumes. The upper x-axis indicates the thermal electron densities calculated from Eq. (4), and volumes at which the ratio of non-thermal to ambient thermal electron density has values of $N/n_0 = 0.1, 0.25, 0.5,$ and 1.0 , are indicated. This allowed us to explore a reasonable estimate for the magnetic field strength as a function of thermal and non-thermal volume, subject to constraints on relative volume sizes, and realistic ratios of N/n_0 . For example, we would not expect the non-thermal volume to exceed the thermal volume by a great extent, especially when both ambient thermal and non-thermal electrons are within a singular eruptive structure. Hence values of magnetic field above the line of equal thermal and non-thermal source volumes may be excluded as unreasonable. As well as this, previous studies have indicated ratios of $N/n_0 < 0.1$ (Gary et al. 1985; Bain et al. 2014). In extreme cases values as high as $N/n_0 = 1.0$ have been found (Krucker & Battaglia 2014), but values in excess of this are likely to be physically unreasonable; hence magnetic field strengths below the $N/n_0 = 1.0$ line are also ruled out. Hence, the values of reasonable volumes and ratios of N/n_0 define a range in this space of reasonable magnetic field strengths. Given $V_0 = V_{\text{nth}} = 1 \times 10^{27} - 2.2 \times 10^{31} \text{ cm}^3$, $V_{\text{nth}} \leq V_0$ and a typical value of $N/n_0 \leq 1$, we find a range of magnetic field estimates of $\sim B = 4 - 25 \text{ G}$, as indicated by the shaded green region in Fig. 10. While this range is quite large, it nonetheless falls close to the ranges of 1–15 G from previous estimates in CMEs $\sim 1.5 R_\odot$ (Bain et al. 2014; Tun & Vourlidis 2013).

In summary of Sect. 3.1, the goal was to estimate a value for magnetic field strength from Eq. (2) using estimates of ν_{peak} ,

δ_{radio} , θ , L and N as defined above. These parameters were estimated as follows:

1. Values for $\delta_{\text{radio}} \sim 3.2$ and $\nu_{\text{peak}} \sim 1 \text{ GHz}$ were estimated from fits of Eqs. (1) and (3) to the radio flux density spectrum constructed from NRH and RSTN.
2. A value for $L \sim 0.45 R_\odot$ was estimated from average source size in radio images $> 327 \text{ MHz}$ and a value of $\theta \sim 45^\circ$ was assumed given the low polarisation of the type IV (and given that this would be the average angle along the LOS when looking through a complicated magnetic structure; generally, changing θ by a large amount did not affect the results significantly).
3. To calculate the number density of non-thermal electrons N (the remaining unknown in Eq. (2)), Eq. (5) was used. The inputs into this equation were from a fit of a thin target model to the *Fermi* GBM spectrum, that is, $\xi \sim 2.0 \times 10^{45} \text{ cm}^{-3}$, $E_0 \sim E_{\text{min}} \sim 9 \text{ keV}$, $\delta_{\text{Xray}} \sim 2.9$, and $n_0 V_0 \bar{F} \sim 7.2 \times 10^{53} \text{ electrons cm}^{-2} \text{ s}^{-1} \text{ keV}^{-1}$. The input thermal and non-thermal volumes were given a range of $V_0 = V_{\text{nth}} = 1 \times 10^{27} - 2.2 \times 10^{31} \text{ cm}^3$; this gave a range for N .
4. Using the range for N and values δ_{radio} , ν_{peak} , L , and θ , a range of B was then calculated from Eq. (2). Because N depends on ranges of V_0 and V_{nth} the possible values for B is represented as a 2D space in Fig. 10. From reasonable assumptions that $V_{\text{nth}} \leq V_0$ and $N/n_0 \leq 1$, B is then restricted to $B \sim 4 - 25 \text{ G}$, as indicated by the green shaded region. We show in the appendix why the contours of constant B have a slope of 0.5 in the log-log space of V_{nth} versus V_0 .

Ultimately, this result depends on the estimate of the non-thermal electron density N derived from X-ray observations, which in turn depends on the estimate of X-ray source volumes; this assumes that both radio and X-ray emissions are from the same population of electrons within the CME, and that the CME plasma environment is homogenous in each property. The analysis provides the rare possibility of comparing X-ray and radio emitting CME electrons, which we discuss further in Sect. 4. We next tested the validity of the B -field values calculated in this way by comparing such results to a numerical model for gyrosynchrotron radiation.

3.2. Magnetic field and non-thermal electron property estimates from a numerical model of gyrosynchrotron radiation

In the previous section, we used a parametric fit to the radio flux density spectrum and the Dulk & Marsh (1982) approximations to estimate the magnetic field strength of the CME. In order to check the validity of these results, and also estimate a more accurate value for the magnetic field, we next tried numerical modelling of the gyrosynchrotron flux density spectrum.

We employed full gyrosynchrotron numerical calculations based on the formalism originally outlined in Ramaty (1969). We use the numerical code developed by Simões & Costa (2006) and improved for speed by Costa et al. (2013). The code solves for the gyrosynchrotron emission j_ν and self-absorption κ_ν coefficients, and radiative transfer for the ordinary and extraordinary magneto-ionic modes and includes the effects of Razin suppression, considering a uniform cylindrical flare source. The model takes a variety of parameters as input including the characterisation of the source and the distribution of the non-thermal electrons. The source is characterised by its magnetic field strength B , source angular diameter size Λ and length

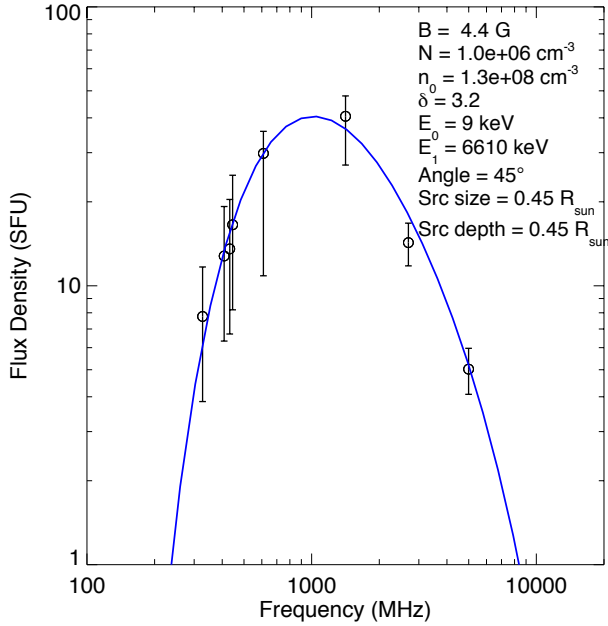


Fig. 11. Gyrosynchrotron model fit to the average flux density data from RSTN and NRH between 11:01:10–11:03:40 UT. The model parameters are indicated in the legend.

Table 1. Resulting parameters and uncertainties from a fit of the numerical model to the flux density spectrum.

B_f (G)	N_f (cm^{-3})	$n_{0,f}$ (cm^{-3})	$E_{1,f}$ (MeV)
4.4 ± 2.7	$(1.0 \pm 0.7) \times 10^6$	$(1.3 \pm 0.2) \times 10^8$	6.6 ± 0.2

along the line-of-sight (LOS) L , background density of thermal electrons n_0 , angle between the line-of-sight and the magnetic field θ ; the non-thermal electron populations is defined as a power-law distribution with a number density N , energy spectral index δ , and electron energy range $[E_0, E_1]$. In using this model we assume that all parameters are homogenous throughout the medium.

Since the model has a large number of parameters, and we have a small number of data points, we choose to fix some of the parameters to avoid over-fitting the spectrum. We fixed the source size and LOS length fixed at $\Lambda = L = 0.45 R_\odot$ that is, the average width of the semi-major axis of the sources between 327–445 MHz throughout their lifetime. As before, the angle between our LOS and B -field is unknown so we fix it an average of 45° . From Sect. 3.1, we set the lower cut-off energy of $E_0 = 9$ keV and choose a $\delta = 3.2$. The remaining fit parameters are B , N , n_0 , E_1 . We used the Levenberg-Marquardt least-squares method to fit the parameterised gyrosynchrotron model to the average flux density spectrum between 11:01:10–11:03:40 UT. We used starting parameters of $B = 5$ G, $n_0 \sim 10^8 \text{ cm}^{-3}$ (this is assuming the plasma frequency source in Fig. 2a comes from a similar location to the gyro-emission source), $N(>E_0) = 0.1n_0 = 1 \times 10^7 \text{ cm}^{-3}$ and $E_1 = 7$ MeV. The fitted spectrum is plotted in Fig. 11, with the fit values listed in Table 1 (the uncertainties are the 1σ errors from the fit). The resulting magnetic field strength is 4.4 ± 2.7 G.

Interestingly we can make a direct comparison between the numerical model and the above analysis from the Dulk & Marsh (1982) approximations. The position of $\sim 4.4 \pm 2.7$ G at $n_0 = 1.3 \times 10^8 \text{ cm}^{-3}$ is marked in Fig. 10 and falls close the magnetic

field range as calculated by the Dulk & Marsh (1982) approximations above (the green shaded region in the figure). Despite the first method giving only a range of magnetic field estimates, there is some level of consistency between the results. However, the numerical model requires a value for N an order of magnitude lower than that used in the Dulk & Marsh (1982) formulation, we discuss this further in Sect. 4.1

4. Discussion

The observations of simultaneous radio and X-ray emissions from a behind the limb event are relatively rare, providing an opportunity to diagnose the magnetic field strength in a radio source which we assumed to be within the CME (see below). This was done using both the Dulk & Marsh (1982) approximations and a numerical model. While the Dulk & Marsh (1982) formulation combined with analysis of *Fermi* GBM gave a range of possible values of $B = 4\text{--}25$ G, use of the more accurate numerical model gave values of 4.4 ± 2.7 G. These methods also provide a rare opportunity to compare the properties of the radio and X-ray emitting CME electrons, which we discuss here.

4.1. Comparison of electron distribution properties from X-ray and radio observations

In general, radio and X-ray emissions are thought to be from separate populations of energetic electrons. This is mainly due to the fact that electron spectral indices derived from X-ray and radio observations may differ (Silva et al. 2000). This is interpreted as the two types of emission belonging to spatially separated electron populations (Lee & Gary 1994) and/or electron populations at different energy ranges (White et al. 2011; Marschhäuser et al. 1994; Trotter et al. 1998, 2015), with the radio emission generally coming from higher energy electrons than the X-ray. However, several authors find similarities in the X-ray and microwave emitting electrons properties of solar flares (Nitta & Kosugi 1986; Klein et al. 1986; Wang et al. 1994). In a study similar to ours, Krucker et al. (2010) presented a behind the limb event associated with a coronal thin-target HXR source at 16–80 keV and gyrosynchrotron spectrum with low turnover frequency of 2 GHz. They found both types of emission could be produced from a single power-law population of electrons of spectral index 3.4 in coronal flare loops.

In this study we find that the electron spectral indices derived from radio and X-ray are similar, with values of $\delta_{\text{radio}} = 3.2 \pm 0.3$ and $\delta_{\text{Xray}} = 2.9 \pm 0.5$, see Fig. 9 (we note that they represent a negative slope). This provided evidence that both emissions were produced by similar electron populations. However, as mentioned, it is likely that the two emission types come from different electron energy ranges. Indeed we can explicitly test such an assertion here.

The numerical model allows us to explore the possible energy ranges of the non-thermal electron distribution which produce a reasonable model fit to our radio data. The gyrosynchrotron model fit to our data shows the electron energy range to be from $E_0 = 9$ keV to $E_1 = 6.6$ MeV, however the observed spectrum can also be fit with a minimum energy cutoff as high as $E_0 = 1$ MeV, indicating that it may only be electrons above this energy range which contribute to the radio emission. For $E_0 > 1$ MeV the flux in the optically thick part of the spectrum starts to decrease and fails to match the observed values; for $E_1 < 6.6$ MeV again the calculated flux in the optically thin part of the spectrum begins to fall below the observed values. Moreover, the Razin suppression (Ramaty 1969) is quite strong,

as indicated by the Razin parameter $\alpha_R = 1.5v_B/v_p = 0.21$ using the values for B and n_0 from the model. The gyrosynchrotron emission from an electron with a Lorentz factor γ is strongly suppressed at the lower frequencies if $\alpha_R\gamma < 1$. Thus, for $\alpha_R = 0.21$, the lower frequency radiation from electrons with $\gamma \lesssim 4.8$ (i.e. $E < 1.9$ MeV) is strongly suppressed, indicating that non-relativistic electrons may not be important in producing the gyrosynchrotron emission in this event. These energies are an order of magnitude larger than the electrons that produce the X-rays (on the order of ~ 10 keV).

We were also able to make a comparison of the number densities of radio and X-ray electrons. Using $E_0 = 1$ MeV as the minimum energy of the non-thermal electrons that produce the radio emission, the model gives a non-thermal number density of $N(>1 \text{ MeV}) \approx 50 \text{ cm}^{-3}$. This would suggest that the number density of radio emitting electrons is far lower than those emitting X-ray for example, we calculated $N(>1 \text{ MeV}) \approx 50 \text{ cm}^{-3}$ for radio emitting electrons, and in Sect. 3.1.2 a reasonable ratio of $N/n_0 \sim 0.1$ would give a range of $N(>9 \text{ keV}) \approx 10^6\text{--}10^8 \text{ cm}^{-3}$ for the X-ray emitting electrons. So how do we justify the use of the values of $N(>9 \text{ keV})$ from X-ray analysis in the [Dulk & Marsh \(1982\)](#) radio formulation? This is because this radio formulation accounts for electrons with energies as low as ~ 10 keV, a refractive index of unity and no Razin suppression, that is, it takes into account radio radiation from all energetic electrons. While the large $N \sim 10^7 \text{ cm}^{-3}$ (which includes electrons as low as 9 keV) may also be input into the numerical model, the results of the model show that such electrons contribute a negligible amount of radiation when a full treatment of Razin suppression is accounted for. If the [Dulk & Marsh \(1982\)](#) formulation accounted for such effects, $N(>9 \text{ keV})$ calculated from X-rays could not be used in such a radio formulation (Eq. (2)).

In total, the above analysis suggests that the radio and X-ray emission in this event come from a similar population of electrons of spectral index $\delta \sim 3$, with the X-rays originating in the lower energy part of the distribution (on the order of ~ 10 keV), and the radio originating in the higher energy part of the distribution (on the order of ~ 1 MeV).

4.2. Location and lifetime of energetic electrons in the CME

Figure 3 provides good evidence that the expansion of the radio source closely follows the expansion of the internal structure of the CME, especially towards the south. This suggests that the radio sources (and energetic electrons) are located on the internal magnetic field of the eruption. Figures 8a–c also shows that the radio emitting region is always contained in the SXR emitting region as it grows, which likely demarcates at least part of the erupting structure. Therefore, given the similar kinematics and morphology seen between radio and both the EUV and SXR signatures of the CME, we reason that the energetic electrons are located on the internal magnetic field of the eruption.

As for the lifetime of the energised electrons within the CME, knowledge of energy ranges for electrons producing radio emission also allows us to analyse the electron thermalisation time and determine if the radio emission diminishes due to thermalisation alone. If the energetic electrons are trapped in the magnetic field of the CME, their collisional lifetime can be estimated by assuming that they will thermalise after crossing a column depth of $N_{\text{stop}} = 10^{17} E^2 \text{ cm}^{-2}$, where E is expressed in keV ([Tandberg-Hanssen & Emslie 2009](#)). Making $N_{\text{stop}} = n_0 L$, this results in the thermalisation time of $t = L/v = 10^{17} E^2 / n_0 v$.

With $n_0 = 1.3 \times 10^8 \text{ cm}^{-3}$ from the gyrosynchrotron analysis and $E = 1000 \text{ keV}$ ($v \approx 0.94c$), we find $t \approx 7.6$ h. The energy dependent Coulomb collisional loss rate from [Vilmer et al. \(1982\)](#), their Eq. (4)) gives a thermalisation time of 5.6 h for 1 MeV electrons in a background plasma of electron density of $n_0 = 1.3 \times 10^8 \text{ cm}^{-3}$. Both methods give consistent results, and such times are of course much longer than the duration of the type IV radio burst in Orfées (~ 5 min), suggesting that the radio emission decreases due to (i) the electrons escaping the radio emitting environment to regions of lower magnetic field strength, meaning they no longer emit gyrosynchrotron emission efficiently⁵; or (ii) the electrons remain trapped in the expanding CME, and thus the number density of the non-thermal electrons reduces as the CME expands, making the gyrosynchrotron emission less efficient. Given that the radio sources expands simultaneously with the CME, as shown in Fig. 3, effect (ii) is a possibility.

Finally, during the lifetime of the radio burst there is no frequency change of the type IV radio burst. In general, observations of type IVs do not necessarily show a frequency drift ([Pick 1986](#)). This is despite the fact that Eq. (2) would suggest that changing N and B in the CME environment would result in changing ν_{peak} . However, given the small amount of free magnetic energy (5–20% of total magnetic energy budget) used in driving the initial CME launch ([Forbes 2000](#); [DeVore & Antiochos 2005](#); [Roussev et al. 2012](#)), the total magnetic field strength (free energy plus potential) may not decrease by a large amount during launch, resulting in only small changes in ν_{peak} due to magnetic energy expenditure (especially during the 5 min window of our observation). Furthermore, ν_{peak} is relatively insensitive to large changes in N and also has a dependency on L and θ , which can change in various ways and lead to an increasing or decreasing ν_{peak} . Therefore, constant ν_{peak} does not necessarily imply constant conditions in the CME plasma.

4.3. CME magnetic and mechanical energies

If we assume that the magnetic field strength of the CME is 4.4 G throughout its volume, then we may estimate the total magnetic energy content from $E_{\text{mag}} = V_{\text{cme}} B^2 / 8\pi$. With a spherical volume given by $V_{\text{cme}} = 4/3\pi L_{\text{cme}}^3$, where $L_{\text{cme}} = 0.6 R_{\odot}$ for example, the approximate diameter of the CME seen in AIA images at the time of observation of the radio sources (this size is larger than the gyro-emission radio sources). We then find the magnetic energy to be $E_{\text{mag}} = 6.4 \times 10^{32}$ erg. While the assumption of homogenous magnetic field in the CME is quite a simplified one, the value is similar to the magnetic energies (calculated from non-potential field extrapolations) reported in [Emslie et al. \(2012\)](#). It is also a more direct estimate of the magnetic energy than that provided in [Vourlidis et al. \(2000\)](#), in which the authors used in-situ measurements for magnetic clouds to estimate the field strength low in the corona.

This magnetic energy may then be compared to the mechanical energy (kinetic and potential). From [Pesce-Rollins et al. \(2015\)](#), the CME mass is $M_{\text{cme}} = 1 \times 10^{16}$ g, and with a velocity of 2000 km s^{-1} , giving a kinetic energy is 2.0×10^{32} erg. Similarly, the CME potential energy at a distance approaching infinity is 2.0×10^{31} erg, giving a total mechanical energy of 2.2×10^{32} erg. The calculation of total mechanical energy firstly assumes the CME has a constant mass from the time of launch at the solar surface (as in [Aschwanden et al. 2009](#)),

⁵ This idea would be consistent with energetic particles precipitating to the solar surface, as outline in [Ackermann et al. \(2017\)](#).

and also propagates radially from the solar surface ($1 R_{\odot}$) to infinity, as in Vourlidas et al. (2000). This CME was particularly massive and fast, so the mechanical energy represents 34% of the total magnetic energy of the CME in the corona, that is, a large amount of the CME magnetic energy is expended in lifting the CME from the gravitational potential of the sun and accelerating it to 2000 km s^{-1} . We emphasise here that this calculation includes both the non-potential and potential magnetic energy content of the CME, since we have no information of the proportionality between the two for example, the non-potential energy may represent just a small amount of the total magnetic energy (between 5–20%, Forbes 2000; DeVore & Antiochos 2005; Roussev et al. 2012), but of course must be at least as large as total mechanical energy. The magnetic energy dominating the total energy content of the CME has been found in previous observations (Vourlidas et al. 2000; Emslie et al. 2012; Carley et al. 2012).

5. Conclusion

This study detailed the observation of a large behind the limb flare and CME associated with an extended radio type IV source observed by NRH and RSTN, being identified as a mixture of both plasma and gyrosynchrotron emission below 300 MHz and gyrosynchrotron radiation above this frequency. The event was also associated with HXR observations from *Fermi* GBM and X-ray imaging observations of the eruption using GOES SXI. This unique set of X-ray and radio observations allowed us to diagnose both the CME magnetic field strength and a variety of energetic electron properties including number density, spectral index and energy ranges which contribute separately to the radio and X-ray emission. The magnetic field strength and various other properties were diagnosed through two main methods:

1. Parametric fitting and the Dulk & Marsh (1982) approximations: using a parametric fit to the radio flux density spectrum and analysis of X-ray emissions from *Fermi* GBM we showed that both the radio and X-ray emission came from a similar population of non-thermal electrons with a spectral index of $\delta \sim 3$. The X-ray analysis was used to estimate a range for the number density of non-thermal electrons N , and this was used in the Dulk & Marsh (1982) approximations to calculate a range of possible magnetic field strengths of 4–25 G. This large range was ultimately due to the unknown source size and volume (and hence unknown N) of the X-ray emission, highlighting the importance and future necessity of X-ray imaging observations in coronal plasma diagnostics.
2. Simões & Costa (2006) numerical model: In this second method we used a full numerical model for gyrosynchrotron radiation to fit our flux density spectrum and estimate a magnetic field of $\sim 4.4 \text{ G}$, a much more accurate measurement of the field compared to the Dulk & Marsh (1982) approximations. This method also allowed an estimate of the electron energy ranges involved in the gyrosynchrotron emission, placing them in the range of $\sim 1 \text{ MeV}$ to 6.6 MeV .

A magnetic field strength of $\sim 4.4 \text{ G}$ at a CME core height of $\sim 1.3 R_{\odot}$ is similar to the values of CME magnetic field previously found at a CME core for example, Bain et al. (2014). Such diagnostics are an important part of CME dynamics and what ultimately drives the eruption.

In general, in both methods the NRH and RSTN observations were essential to this analysis, with RSTN providing a critical measurement of the non-thermal electron spectral index and

NRH providing a measure of source size (and of course position relative to the CME). Further instrumentation should provide sensitive and calibrated flux density and imaging observations in a continuous frequency range from decimeter to millimeter wavelengths in order to provide the possibility of further observing CME gyrosynchrotron spectra with improved accuracy. Such future instrumentation should also be capable of a large dynamic range, given that gyrosynchrotron flux densities can be orders of magnitudes below plasma emission flux densities.

Overall, gyrosynchrotron emission from radio bursts associated with CMEs is still relatively rare, possibly due to a lack of sensitivity and dynamic range. A frequent and regular imaging of gyro-emission from CMEs in the future will be invaluable in investigating the magnetic field of these eruptive events on a routine basis. Further effort should also be made in investigating the relationship between radio and X-ray emitting electron populations in flare and/or CME events. This may be possible in the observing synergies between future X-ray imagers such as the Spectrometer Telescope for Imaging X-rays (STIX) on board Solar Orbiter and future radio interferometers such as the Square Kilometre Array (SKA) and the Low Frequency Array (LOFAR; van Haarlem et al. 2013).

Finally, while all studies to date give some suggestion as to the location of the magnetic field strength measurement within the CME for example, front, core, or flank, no information exists about the spatial distribution and relative strengths of the magnetic fields in different parts of a CME. Future observations or instrumentation should aspire to such measurements. For the moment, magnetic field measurements in CMEs remain the most important yet elusive diagnostic in CME physics.

Acknowledgements. E.P.C. is supported by ELEVATE: Irish Research Council International Career Development Fellowship – co-funded by Marie Curie Actions. P.J.A.S. acknowledges support from STFC Consolidated Grant ST/L000741/1. P.J.A.S. and N.V. would like to thank ISSI for the support of the team “Energetic Ions: The Elusive Component of Solar Flares”. We are grateful to the SDO, *Fermi*, RSTN and GOES teams for open access to their data. The NRH is funded by the French Ministry of Education and the Région Centre. Orféus is part of the FEDOME project, partly funded by the French Ministry of Defense. The authors acknowledge the Nançay Radio Observatory/Unité Scientifique de Nançay of the Observatoire de Paris (USR 704-CNRS, supported by Université d’Orléans, OSUC, and Région Centre in France) for providing access to NDA observations accessible online at <http://www.obsnancay.fr>. N.V. would like to acknowledge the support of CNES and of the French Program on Solar-Terrestrial Physics of INSU (PNST). We would like to thank Sam Krucker for some useful discussions about the interpretation of the X-ray data. We would also like to thank the referee for their useful comments and suggestions on improving our analysis and the paper.

References

- Ackermann, M., Allafort, A., Baldini, L., et al. 2017, *ApJ*, **835**, 219
 Aschwanden, M. J., Nitta, N. V., Wuelsel, J.-P., et al. 2009, *ApJ*, **706**, 376
 Aulanier, G., Török, T., Démoulin, P., & DeLuca, E. E. 2010, *ApJ*, **708**, 314
 Bain, H. M., Krucker, S., Saint-Hilaire, P., & Raftery, C. L. 2014, *ApJ*, **782**, 43
 Bastian, T. S., Pick, M., Kerdraon, A., Maia, D., & Vourlidas, A. 2001, *ApJ*, **558**, L65
 Berghmans, D., Hochedez, J. F., Defise, J. M., et al. 2006, *Adv. Space Res.*, **38**, 1807
 Bhonsle, R. V., & Degaonkar, S. S. 1980, *Sol. Phys.*, **68**, 339
 Boisot, A., & Daigne, G. 1968, *Ann. Astrophys.*, **31**, 531
 Brueckner, G. E., Howard, R. A., Koomen, M. J., et al. 1995, *Sol. Phys.*, **162**, 357
 Carley, E. P., McAteer, R. T. J., & Gallagher, P. T. 2012, *ApJ*, **752**, 36
 Chen, P. F. 2011, *Liv. Rev. Sol. Phys.*, **8**, 1
 Costa, J. E. R., Simões, P. J. d. A., Pinto, T. S. N., & Melnikov, V. F. 2013, *PASJ*, **65**, 5
 Dauphin, C., Vilmer, N., Lüthi, T., et al. 2005, *Adv. Space Res.*, **35**, 1805
 Démoulin, P., Vourlidas, A., Pick, M., & Bouteille, A. 2012, *ApJ*, **750**, 147

- DeVore, C. R., & Antiochos, S. K. 2005, *ApJ*, **628**, 1031
- Dulk, G. A. 1973, *Sol. Phys.*, **32**, 491
- Dulk, G. A. 1985, *ARA&A*, **23**, 169
- Dulk, G. A., & Altschuler, M. D. 1971, *Sol. Phys.*, **20**, 438
- Dulk, G. A., & Marsh, K. A. 1982, *ApJ*, **259**, 350
- Duncan, R. A. 1980, *PASA*, **4**, 67
- Emslie, A. G., Kucharek, H., Dennis, B. R., et al. 2004, *J. Geophys. Res. (Space Physics)*, **109**, A10104
- Emslie, A. G., Dennis, B. R., Shih, A. Y., et al. 2012, *ApJ*, **759**, 71
- Forbes, T. G. 2000, *J. Geophys. Res.*, **105**, 23153
- Gary, D. E., Dulk, G. A., House, L. L., Illing, R., & Wagner, W. J. 1985, *A&A*, **152**, 42
- Gergely, T. E. 1986, *Sol. Phys.*, **104**, 175
- Gopalswamy, N. 1987, *Sol. Phys.*, **114**, 347
- Guidice, D. A. 1979, in *BAAS*, **11**, 311
- Jeffrey, N. L. S., Kontar, E. P., Bian, N. H., & Emslie, A. G. 2014, *ApJ*, **787**, 86
- Kane, S. R., McTiernan, J., Loran, J., et al. 1992, *ApJ*, **390**, 687
- Kerdraon, A., & Delouis, J.-M. 1997, in *Coronal Physics from Radio and Space Observations*, ed. G. Trottet, Lect. Notes Phys. (Berlin Springer Verlag), 483, 192
- Klein, K.-L., Trottet, G., & Magun, A. 1986, *Sol. Phys.*, **104**, 243
- Kosugi, T. 1976, *Sol. Phys.*, **48**, 339
- Krucker, S., & Battaglia, M. 2014, *ApJ*, **780**, 107
- Krucker, S., Hudson, H. S., Glesener, L., et al. 2010, *ApJ*, **714**, 1108
- Lecacheux, A. 2000, *Washington DC American Geophysical Union Geophysical Monograph Series*, **119**, 321
- Lee, J. W., & Gary, D. E. 1994, *Sol. Phys.*, **153**, 347
- Lemen, J. R., Duncan, D. W., Edwards, C. G., et al. 2004, in *Telescopes and Instrumentation for Solar Astrophysics*, eds. S. Fineschi, & M. A. Gummin, *Proc. SPIE*, **5171**, 65
- Lemen, J. R., Title, A. M., Akin, D. J., et al. 2012, *Sol. Phys.*, **275**, 17
- Maia, D. J. F., Gama, R., Mercier, C., et al. 2007, *ApJ*, **660**, 874
- Marschhäuser, H., Rieger, E., & Kanbach, G. 1994, in *High-Energy Solar Phenomena – a New Era of Spacecraft Measurements*, eds. J. Ryan, & W. T. Veststrand, *AIP Conf. Ser.*, **294**, 171
- Meegan, C., Lichti, G., Bhat, P. N., et al. 2009, *ApJ*, **702**, 791
- Musset, S., Kontar, R., & Vilmer, N. 2017, *A&A*, submitted
- Nita, G. M., Gary, D. E., Lanzerotti, L. J., & Thomson, D. J. 2002, *ApJ*, **570**, 423
- Nita, G. M., Gary, D. E., & Lee, J. 2004, *ApJ*, **605**, 528
- Nitta, N., & Kosugi, T. 1986, *Sol. Phys.*, **105**, 73
- Pesce-Rollins, M., Omodei, N., Petrosian, V., et al. 2015, *Proc. 34th International Cosmic Ray Conference*, 128
- Pick, M. 1986, *Sol. Phys.*, **104**, 19
- Ramaty, R. 1969, *ApJ*, **158**, 753
- Riddle, A. C. 1970, *Sol. Phys.*, **13**, 448
- Roussev, I. I., Galsgaard, K., Downs, C., et al. 2012, *Nature Phys.*, **8**, 845
- Sasikumar Raja, K., Ramesh, R., Hariharan, K., Kathiravan, C., & Wang, T. J. 2014, *ApJ*, **796**, 56
- Silva, A. V. R., Wang, H., & Gary, D. E. 2000, *ApJ*, **545**, 1116
- Simões, P. J. A., & Costa, J. E. R. 2006, *A&A*, **453**, 729
- Simões, P. J. A., & Kontar, E. P. 2013, *A&A*, **551**, A135
- Smerd, S. F., & Dulk, G. A. 1971, in *Solar Magnetic Fields*, ed. R. Howard, *IAU Symp.*, **43**, 616
- Stahli, M., Gary, D. E., & Hurford, G. J. 1989, *Sol. Phys.*, **120**, 351
- Stewart, R. T., Dulk, G. A., Sheridan, K. V., et al. 1982, *A&A*, **116**, 217
- Tandberg-Hanssen, E., & Emslie, A. G. 2009, *The Physics of Solar Flares* (UK: Cambridge University Press)
- Trottet, G., Vilmer, N., Barat, C., et al. 1998, *A&A*, **334**, 1099
- Trottet, G., Raulin, J.-P., Mackinnon, A., et al. 2015, *Sol. Phys.*, **290**, 2809
- Tun, S. D., & Vourlidas, A. 2013, *ApJ*, **766**, 130
- van Haarlem, M. P., Wise, M. W., Gunst, A. W., et al. 2013, *A&A*, **556**, A2
- Vilmer, N., Kane, S. R., & Trottet, G. 1982, *A&A*, **108**, 306
- Vourlidas, A., Subramanian, P., Dere, K. P., & Howard, R. A. 2000, *ApJ*, **534**, 456
- Wang, H., Gary, D. E., Lim, J., & Schwartz, R. A. 1994, *ApJ*, **433**, 379
- Warmuth, A., & Mann, G. 2013a, *A&A*, **552**, A86
- Warmuth, A., & Mann, G. 2013b, *A&A*, **552**, A87
- White, S. M., Benz, A. O., Christe, S., et al. 2011, *Space Sci. Rev.*, **159**, 225
- Wuelser, J.-P., Lemen, J. R., Tarbell, T. D., et al. 2004, in *Telescopes and Instrumentation for Solar Astrophysics*, eds. S. Fineschi, & M. A. Gummin, *Proc. SPIE*, **5171**, 111
- Xu, Y., Emslie, A. G., & Hurford, G. J. 2008, *ApJ*, **673**, 576
- Zuccarello, F. P., Seaton, D. B., Mierla, M., et al. 2014, *ApJ*, **785**, 88

Appendix A

We wish to show that contours of constant B in the log-log space of V_{nth} versus V_0 have a slope of 0.5. Firstly, the dependency of B on the volumes is via the dependency of N . Equation (4) indicates that $n_0 \propto V_0^{-1/2}$, and Eq. (5) gives

$$N \propto \frac{1}{n_0 V_{\text{nth}}} = \frac{V_0^{1/2}}{V_{\text{nth}}} \quad (\text{A.1})$$

We note that in Eq. (5), the property $[n_0 V_0 \bar{F}]$ is a constant so V_0 in this expression does not enter the proportionality. Now, Eq. (2) indicates that $B^{0.68-0.03\delta} \propto N^{-0.32+0.03\delta}$. Using a value of $\delta = 3$ and the expression for N in Eq. (A.1) we obtain

$$B \propto \left(\frac{V_{\text{nth}}}{V_0^{1/2}} \right)^{0.4} = \frac{V_{\text{nth}}^{0.4}}{V_0^{0.2}} \quad (\text{A.2})$$

Taking \log_{10} of all sides gives

$$\log_{10}(B) = 0.4 \log_{10}(V_{\text{nth}}) - 0.2 \log_{10}(V_0) \quad (\text{A.3})$$

This means along lines of constant B Eq. (A.3) gives

$$\log_{10}(V_{\text{nth}}) = 0.5 \log_{10}(V_0) + C, \quad (\text{A.4})$$

where C is a arbitrary constant. Hence in the log-log space of Fig. 10, lines of constant B have a slope of approximately 0.5.