



HAL
open science

The color of refractory organic carbon

Maxime Debret, Yoann Copard, Antonin van Exem, Geneviève Bessereau,
Frank Haeseler, Jean-Noël Rouzaud

► **To cite this version:**

Maxime Debret, Yoann Copard, Antonin van Exem, Geneviève Bessereau, Frank Haeseler, et al.. The color of refractory organic carbon. Bulletin de la Société Géologique de France, 2018, 189 (2), pp.9. 10.1051/bsgf/2018008 . insu-01806459

HAL Id: insu-01806459

<https://insu.hal.science/insu-01806459>

Submitted on 14 Dec 2018

HAL is a multi-disciplinary open access archive for the deposit and dissemination of scientific research documents, whether they are published or not. The documents may come from teaching and research institutions in France or abroad, or from public or private research centers.

L'archive ouverte pluridisciplinaire **HAL**, est destinée au dépôt et à la diffusion de documents scientifiques de niveau recherche, publiés ou non, émanant des établissements d'enseignement et de recherche français ou étrangers, des laboratoires publics ou privés.



Distributed under a Creative Commons Attribution 4.0 International License

The color of refractory organic carbon

Maxime Debret^{1,*}, Yoann Copard¹, Antonin Van Exem^{1,2}, Geneviève Bessereau³, Frank Haeseler³ and Jean-Noël Rouzaud⁴

¹ Laboratoire Morphodynamique Continentale et Côtière, UMR CNRS 6143 M2C, Université de Rouen, 76821 Mont-Saint-Aignan, France

² Institut des Sciences de la Terre d'Orléans, UMR CNRS 7327 ISTO, 45071 Orléans, France

³ IFP Energies nouvelles, 92852 Rueil-Malmaison, France

⁴ Laboratoire de Géologie de l'École Normale Supérieure, UMR CNRS 8538, 75231 Paris, France

Received: 31 October 2017 / Accepted: 24 April 2018

Abstract – Organic matter studies find an echo within different topics such as biogeochemical cycles, processes occurring in continental surfaces, anthropogenic activities, climate science, earth and planetary sciences, etc. Today's challenges include finding and developing the most appropriate method(s) supporting the differentiation and characterisation of various types of recalcitrant organic matter in modern environments. In this study, we focus on combustion residues and coals as these two types of organic matter contain a significant amount of so-called recalcitrant organic carbon (black carbon and fossil organic carbon). Both these materials are ubiquitous, broadly stem from the same living organisms and have similar polyaromatic structures. In this respect, we tested a spectrophotometry method, classically used for sedimentology, as a very fast method for preliminary investigations. Analyses were performed with a wide range of standards and referenced samples. The results discriminate three different spectral signatures related to the degree of transformation of organic matter related to the degree of aromaticity (*i.e.* carbonisation). Using calibration curves, total organic carbon content can be estimated in experimental mixes with mineral matter and in a real context using subsurface sample (Gironville 101 borehole, Paris Basin, France). This method has particularly high sensitivity to very low organic matter content and is shown to be promising for a rapid evaluation of the organic carbon content.

Keywords: black carbon / fossil organic carbon / spectrophotometry / carbonisation / total organic carbon

Résumé – **La couleur du carbone organique réfractaire.** Les études sur la matière organique trouvent un écho dans différents sujets tels que les cycles biogéochimiques, les processus sur les surfaces continentales, les activités anthropiques, les sciences du climat, les sciences de la Terre et des planètes, etc. Les défis actuels comprennent la recherche de méthodes de différenciation et de caractérisation de divers types de matière organique réfractaire dans les environnements modernes. Dans cette étude, nous nous concentrons sur les résidus de combustion et les charbons géologiques car ces deux types de matières organiques contiennent une quantité importante de carbone organique dit réfractaire (black carbon et carbone organique fossile). Ces deux matériaux omniprésents, proviennent en grande partie des mêmes organismes vivants et ont des structures polyaromatiques similaires. À cet égard, nous avons testé une méthode de spectrophotométrie, classiquement utilisée pour la sédimentologie, comme méthode très rapide pour les investigations préliminaires. Les analyses ont été effectuées avec un large éventail d'échantillons standards et référencés. Les résultats discriminent trois signatures spectrales différentes liées au degré de transformation de la matière organique en rapport avec le degré d'aromaticité (c'est-à-dire la carbonisation). En utilisant des courbes d'étalonnage, la teneur en carbone organique total peut être estimée dans des mélanges expérimentaux avec des matières minérales et dans un contexte réel en employant des échantillons souterrains (forage Gironville 101, bassin de Paris, France). Cette méthode est particulièrement sensible à la très faible teneur en matière organique et s'avère prometteuse pour une évaluation rapide de la teneur en carbone organique.

*Corresponding author: maxime.debret@univ-rouen.fr

1 Introduction

In continental surfaces, organic matter (OM) exhibits various origins such as recent OM (*e.g.* soil OM, aquatic OM), combustion residues (in this study referred to as black carbon materials, BCM, *i.e.* derived from plants (wild) fire and fuel combustion, Kuhlbusch, 1998) and fossil organic matter (FOM) released by erosion and weathering of outcropping sedimentary rocks (Copard *et al.*, 2007). Among these three OM categories, BCM and FOM can contain a significant amount of organic carbon (OC), called black carbon (BC) and fossil OC (FOC), respectively, which is assumed roughly to be highly resistant to weathering; hence they are ubiquitous in a number of environments (for BCM, see Schmidt and Noack, 2000; for FOM, see Copard *et al.*, 2007). On the whole and whatever the OM carbonisation processes (diagenesis or incomplete combustion), the resistant character of OC increases with the enrichment in C content associated with a loss of heteroatoms, mainly oxygen and hydrogen (*e.g.* Durand, 1980; Hedges *et al.*, 2000; Masiello, 2004) leading to a progressive aromatisation (*i.e.* carbonisation) of OM. Accordingly, for the combustion residue, the resistant nature of OC increases with the intensity of combustion and ranges from charcoal to condensed particles (*i.e.* soot; Kuhlbusch, 1998). The resistance of OC increases with the maturity of FOM, which depends of the geodynamic context (burial, geothermal gradient), and of the kerogen origins (I, II, III) controlling the FOM chemistry and its further transformation (*e.g.* rate) during thermal processes. As a consequence, each kerogen type shows a thermal trend as seen in a Van Krevelen diagram (Fig. 1) and their transformations tend towards an enrichment in some polyaromatic materials depleted in H and O, previously released into CO₂, H₂O and hydrocarbons during heating (*i.e.* from diagenesis (*s.s.*) to methagenis, *e.g.* Durand, 1980). For the lower degrees of thermal evolution (diagenesis), FOM resistance toward weathering is governed by its chemical composition, inherited from the biological precursors and modified by processes undergone before burial.

The more recalcitrant is the OM, the more likely is OM preservation and storage in recent sediments or soils. FOM and BCM can hold some useful but different information such as anthropogenic activities (Goldberg, 1985), climatic changes (Knicker, 2011), the biogeochemical C cycle (Lehmann *et al.*, 2008; Graz *et al.*, 2012), as well as erosion and weathering processes (Noël *et al.*, 2001). In sediments or soils, although it is assumed that recent OM can be easily discriminated from FOM using bulk geochemical (*e.g.* Copard *et al.*, 2006), isotopic (*e.g.* Raymond and Bauer, 2001) and optical (*e.g.* Graz *et al.*, 2010) methods, part of this recent and non-carbonized OM still remains uncharacterised (*e.g.* Hedges *et al.*, 2000; Burdige, 2007) and could potentially mimic BCM and FOM signatures (*e.g.* Hammes *et al.*, 2008). Likewise, deciphering the signatures of each OM source also requires isolating BCM from FOM, which together are characterised as recalcitrant and show a similar geochemical signature (*e.g.* Hedges *et al.*, 2000). As a consequence, discrepancies may arise during the characterisation and quantification of BCM

in soils and sediments (*e.g.* Dickens *et al.*, 2004). The main reason for this confusion is that:

- part of BCM and coals (FOM) frequently have the same biological precursor (terrestrial plants);
- both these materials experienced a carbonisation process leading to a progressive aromatisation of the carbonaceous residue.

From a qualitative point of view, some optical techniques such as palynofacies are used to isolate pyrogenic particles (*e.g.* charcoal seen as an opaque debris with devolatilisation vacuoles) from an organic mixture within sediment or soil (Vannière *et al.*, 2008). From a quantitative viewpoint, complex methods such as (i) chemo-thermal oxidation (ii) acid dichromate oxidation, (iii) sodium chlorite oxidation, (iv) thermogravimetry coupled with differential scanning calorimetry, (v) UV photo-oxidation, (vi) benzene polycarboxylic acids (BPCAs), (vii) thermal/optical transmittance and reflectance (from (i) to (vii) see Hammes *et al.*, 2007 and references therein), (viii) ruthenium tetroxide oxidation (Quénéa *et al.*, 2005) and (ix) radiocarbon analysis (*e.g.* Dickens *et al.*, 2004) are used to isolate BCM and quantify the BC borne by this material. However, data from measurements using these different techniques are difficult to compare (Hammes *et al.*, 2008). Recently, new but complex methods have arisen for the characterisation of BC, such as transmitted electron microscopy (TEM) coupled with an EDX probe (Kuo *et al.*, 2013), recoupled long-range dipolar dephasing solid-state ¹³C-NMR (Ding and Rice, 2012) or hydrolysis (Meredith *et al.*, 2012). Other studies have also attempted to combine certain spectroscopic and thermal methods to differentiate soot from char particles with highly limited FOC characterisation (Roth *et al.*, 2012). More recently, molecular (BPCAs), spectroscopic (FTIR) and pyrolysis (Rock-Eval 6 pyrolysis) methods have been coupled in order to differentiate BC sources in a soil (Wolf *et al.*, 2013). However, with the exception of trials on Rock-Eval pyrolysis (Poot *et al.*, 2009), the complexity of these methods prevents their use as routine methods to distinguish BC and FOC from other OC.

To this end, we explored a spectrophotometry method and related developments as a useful tool for a rapid identification of carbon components. Indeed, spectrophotometry is a very useful and promising tool, classically used on board research vessels and for land-based measurement to quantify sediment colour (see Debret *et al.*, 2011 for a review). This device allows rapid and non-destructive measurements directly on sediment. A few studies have already attempted to apply the colour measurement for carbon quantification and characterisation purposes, but the results were not conclusive because they were restricted to the classical colour parameter. For example, Deaton *et al.* (1996) address the problem of OM maturity by evaluating conodont (microfossils) colour by spectrophotometry. Hammes *et al.* (2008) used the L* parameter (black/white) to distinguish different kinds of BC, but this method remains inconclusive. In a recent publication, Van Exem *et al.* (2018) propose to evaluate the presence of black carbon with hyperspectral imaging. Here we propose powerful method, based on the pioneering publication of Debret *et al.* (2011) especially designed for this type of study. Indeed, these authors

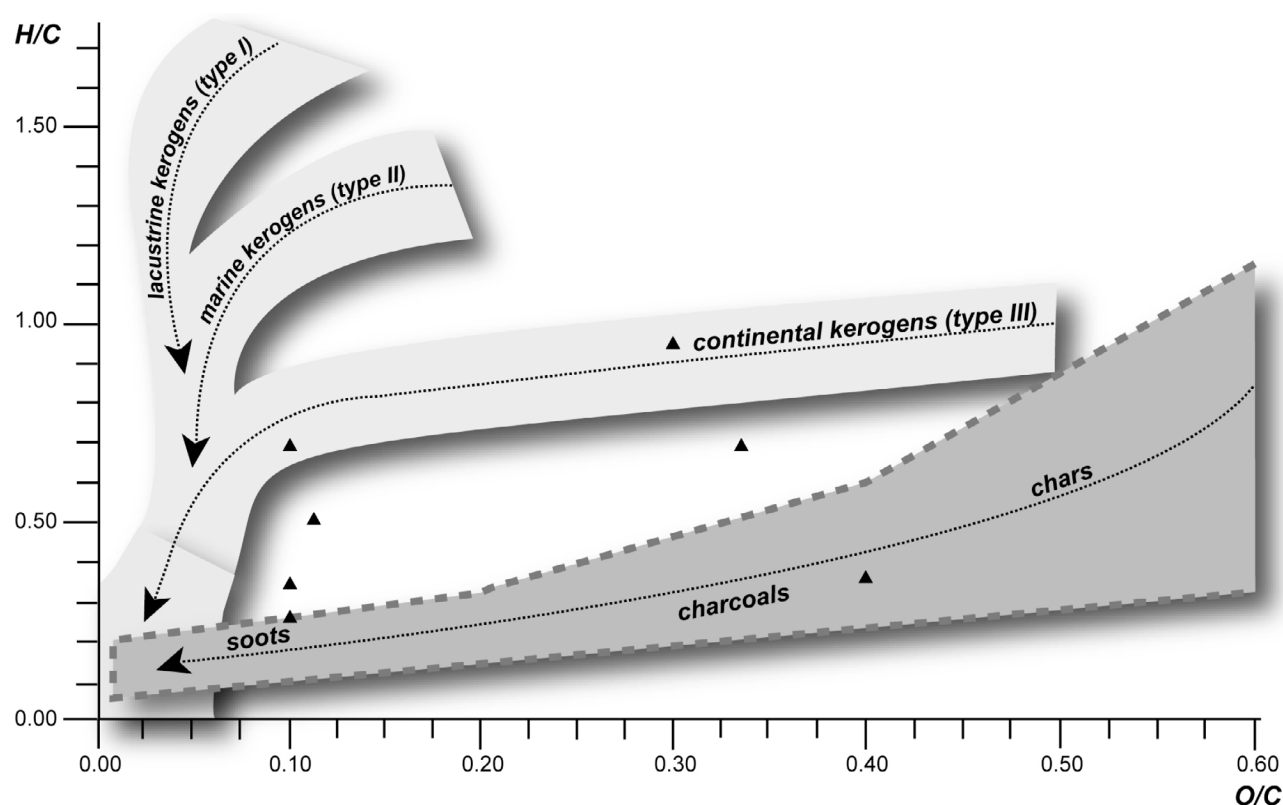


Fig. 1. Kerogens limits within the Van Krevelen diagram. In dash, approximative limits currently admitted for $(H/C)_{at.}$ and $(O/C)_{at.}$ ratio values of BCM: $(H/C)_{at.}$ ratio values ($0.02 < \text{soot} < 0.30 < \text{charcoals} < 0.60 < \text{chars} < 1.00$, Hammes *et al.*, 2007), $(O/C)_{at.}$ ratio values ($0.10 < \text{soot} < 0.20 < \text{charcoals} < 0.40 < \text{chars} < 0.60$, Godlberg, 1985 in Hedges, 2000, Hammes *et al.*, 2007). In black triangle: various natural or experimental charcoals, fossil charcoals (Kuhlbusch, 1998). Black arrows direction indicates the elemental composition change with increasing thermal processes (during burial and during combustion).

produced a Q7/4 diagram taking into account the slope of the visible spectrum (VIS) *versus* brightness (L^* white/black) for a given sample. Combined with first derivative spectra (FDS) of the raw spectra, six end-members related to sediment composition can be identified. Among them, three describe mineralogical composition (iron-rich deposits, clear deposits, clayey deposits) and the three others designate organic end-members: chlorophyll a and by-products, melanoidin type and altered organic matter. Samples from coals, charcoals and soot are located in the altered organic matter end-member but, until now, it is impossible to discriminate them using the raw spectrum. Based on a high number of standards, we address this problem by developing a new method to disentangle the complexity of these recalcitrant organic matter signatures. Among them, coal samples covering a large range of maturity (from lignite to meta-anthracite), BCM samples covering a large range of combustion (from charcoal to soot), samples previously recommended by the International Steering Committee for Black Carbon Reference Materials and natural or synthetic samples for which geochemical characteristics have already been published, were analysed in this study.

After a calibration of the method on standards, the spectral signature of the fossil organic matter in various mineral matrices was investigated. We followed the recommendations of Hammes *et al.* (2008) to test the reliability of the methods, indicating that future studies dealing with BC should use the

same materials for future methodological improvements and development of novel analytical approaches.

2 Material and methods

2.1 Samples and sample processes

In order to develop, test and validate our methodology, various natural (30 coals, 1 graphite, 1 charcoal) and synthetic previously crushed samples (14 charcoals, 1 coke, 1 soot, 1 graphite, 1 pyrolysed coal) were selected. Geochemical (atomic ratio) and optical characteristics (vitrinite reflectance) and experimental conditions (for synthetic samples) of some of these samples have already been published (Tab. 1 and associated references). Five samples correspond to standards that have been previously recommended by the International Steering Committee for Black Carbon Reference Materials (<http://www.geo.uzh.ch/en/units/2b/Services/BC-material.html>) and others come from two combustion experiments on eucalyptus wood (12 samples; see Trompowsky *et al.*, 2005, for further details). Natural humic coal samples encompass a wide range of thermal maturity, from lignite to the meta-anthracite rank from La Mure coalfield (Tab. 1). Three sets of samples have particularly retained our attention. The first concerns the A23/A23-590 combination where A23 was picked up at outcrop in the Ales coalfield (Airoilles seam,

Table 1. Main characteristics of samples. Atomic ratios for Upper Carboniferous coals from France are given in Copard (2002), for *Eucalyptus* chars in Trompowsky *et al.* (2005). Vitrinite reflectance and atomic ratios values of coal samples from Gironville (GIR) are calculated from the compilation of Rouzaud *et al.* (1991).

Sample	Type	Sampling, location, age (natural samples) – production (synthetic samples)	R _O (in %), rank (natural samples) – experimental conditions (synthetic samples)	(H/C) _{at.}	(O/C) _{at.}
RB1	Coal	Outcrop, Saint-Etienne coalfield (Fr.), Upper Carboniferous	0.94 ¹ , H.V.B. to M.V.B.	0.70	0.08
RB2	–	–	0.91 ¹ , H.V.B.	0.76	0.08
RB3	–	–	0.85 ¹ , H.V.B.	0.80	0.09
SCM1	–	–	0.79 ¹ , H.V.B.	0.80	0.09
G51	–	–	1.51 ⁴ , M.V.B. to L.V.B.	0.60	0.04
Se3	–	Outcrop, Graissessac coalfield (Fr.), Upper Carboniferous	1.30 ² , M.V.B.	0.61	0.05
Se42	–	–	1.40 ² , M.V.B.	0.63	0.05
Se43	–	–	1.46 ² , M.V.B.	0.50	0.05
Se5	–	–	1.46 ² , M.V.B.	0.59	0.05
SCM3	–	Outcrop, Saint-Etienne coalfield (Fr.), Upper Carboniferous	1.39 ¹ , M.V.B.	0.48	0.10
PN1	–	–	1.82 ¹ , L.V.B.	0.52	0.04
A20	–	Outcrop, Alès / Gard coalfield (Fr.), Upper Carboniferous	1.72 ³ , L.V.B	0.53	0.03
A21	–	–	1.72 ³ , L.V.B.	0.67	0.03
A22	–	–	1.72 ³ , L.V.B.	0.53	0.03
A23	–	–	1.67 ³ , L.V.B.	0.56	0.11
A24	–	–	1.70 ³ , L.V.B.	0.50	0.05
A30	–	–	1.83 ³ , L.V.B.	0.62	0.03
A31	–	–	1.79 ³ , L.V.B.	0.56	0.03
A32	–	–	1.76 ³ , L.V.B.	0.54	0.04
A33	–	–	1.95 ³ , semi Anthracite	0.54	0.03
Beulah	–	Mine, Beulah-Zap seam, Mercer County, North Dakota (USA), Paleocene ¹⁴	0.25 ⁶ , Lignite	0.80 ⁵	0.20 ⁵
Poca	–	Mine, Pocahontas seam, Buchanan County, Virginia (USA), Upper Carboniferous ⁵	1.68 ⁶ , L.V.B.	0.60 ⁵	0.02 ⁵
Mure	–	Mine, La Mure coalfield (Fr.), Upper Carboniferous	4.91 ⁷ , Anthracite	0.21 ⁷	0.02 ⁷
GIR 3580	–	3580 m depth, Gironville borehole 101, Sarro-Lorrain Basin (Fr.), Upper Carboniferous ¹¹	2.13, Semi-Anthracite	0.49	0.03
GIR 3610	–	3610 m depth, (see GIR1)	2.16, Semi-Anthracite	0.49	0.03
GIR 3726	–	3726 m depth, (see GIR1)	2.29, Semi-Anthracite	0.47	0.03
GIR 4259	–	4259 m depth, (see GIR1)	2.99, Anthracite	0.43	0.02
GIR 4262	–	4262 m depth, (see GIR1)	2.99, Anthracite	0.43	0.02
GIR 4933	–	4933 m, depth, (see GIR1)	4.18, Anthracite	0.37	0.02
GIR 5221	–	5221 m, depth, (see GIR1)	4.83, Anthracite	0.35	0.02
A23 – 590	Coal residue	Residue of A23 sample from off-line pyrolysis under nitrogen ¹	590 °C held 1 h ¹	0.40	0.04
Ceylan	Graphite natural	Vein graphite from the Bogala and Kahatagaha-Kolongaha mines, Sri Lanka, historical reference of graphite ¹⁵	nc	nc	nc
SLX 50HT	Graphite synthetic	Petroleum coke pyrolyzed	3000 °C	nc	nc
Sacc	Coke	Saccharose pyrolyzed,	1000 °C held 1 h	0.15 ¹²	0.04 ¹²
Soot	Soot (synthetic)	Produced by open <i>n</i> -hexane flame and collected from the top of the flame on an inverted funnel surface ¹²	527–538 °C, air ¹³	0.18 ⁹	0.07 ⁹

Table 1. (continued).

Sample	Type	Sampling, location, age (natural samples) – production (synthetic samples)	R _O (in %), rank (natural samples) – experimental conditions (synthetic samples)	(H/C) _{at.}	(O/C) _{at.}
CB3	Char (natural)	<i>Betula pendula</i> hardwood char, produced by combustion in a chimney	600 °C held 45 min	0.36	0.14
LC-Char	Char (synthetic)	<i>Castanea sativa</i> hardwood char, pyrolyzed under nitrogen atmosphere ⁸	450 °C for 5 h	0.70 ⁹	0.30 ⁹
Grass-Char	Char (synthetic)	<i>Oryza sativa</i> straw char pyrolyzed under nitrogen atmosphere ⁸	450 °C held 5 h	0.71 ⁹	0.29 ⁹
ES1	Char (synthetic)	<i>Eucalyptus saligna</i> char, produced in a kiln with an oxygen free environment ¹⁰	300 °C held 8 h	0.69	0.30
ES2	–	–	350 °C held 8 h	0.60	0.26
ES3	–	–	400 °C held 8 h	0.46	0.19
ES4	–	–	450 °C held 8 h	0.45	0.15
ES5	–	–	500 °C held 8 h	0.41	0.07
ES6	–	–	550 °C held 8 h	0.36	0.06
EG1	–	<i>Eucalyptus grandis</i> char, produced in a kiln with an oxygen free environment ¹⁰	300 °C held 8 h	0.63	0.29
EG2	–	–	350 °C held 8 h	0.58	0.27
EG3	–	–	400 °C held 8 h	0.46	0.21
EG4	–	–	450 °C held 8 h	0.43	0.17
EG5	–	–	500 °C held 8 h	0.38	0.08
EG6	–	–	550 °C held 8 h	0.37	0.10

References related to samples (measurements, experimental conditions):

1: Copard (2002); 2: Copard *et al.* (2000); 3: Copard *et al.* (2002); 4: Copard *et al.* (2004); 5: Vorres (1990); 6: Busch *et al.* (2003); 7: Duber *et al.* (2000); 8 Hammes *et al.* (2007); 9: Hammes *et al.* (2008); 10: Trompowsky *et al.* (2005); 11: Rouzaud *et al.* (1991); 12: Rouzaud and Oberlin (1990); 13: Akhter *et al.* (1985); 14: Nichols (1999); 15: Bernal (1924).

Sainte-Barbe beam, France), where 590 indicates the pyrolysis temperature (in °C) held for 1 h (Copard, 2002). The second pair, SCM1/SCM3, involves outcropping samples from the Saint Etienne coalfield (Assises d’Avaize, Grande Couche Béraudière, France) where the SCM3 sample was taken in the same layer as SCM1 but exhibits a significantly higher rank (R_O = 1.39%) than its counterpart SCM1 (R_O = 0.79%). The most probable assumption explaining this difference in degree of maturity is that SCM3 was submitted to a pit fire at outcrop (*i.e.* after its coalification; Copard, 2002). The last set corresponds to seven coals from the Gironville 101 borehole (Sarro-Lorrain basin, France) sampled at 3580 to 5221-m depths. These samples were previously subjected to acid attacks (HCl/HF) before analyses. Atomic ratios and vitrinite reflectance values are adopted from Alpern (1966) and samples range from semi-anthracite to meta-anthracite (Tab. 1).

The detection limits of spectrophotometric signatures were evaluated using an experimental design consisting of a signal dilution of the refractory OM within two mineral-based matrices (chalk and illite) showing contrasting colours (white *versus* dark green). These matrices are frequently mixed with OM in sediments (*i.e.* carbonate *vs.* detrital end members). Because of the amount of samples available, we focused on the A20 sample (rank: low volatile bituminous; Tab. 1) from the Ales coalfield. Each sample was reduced to very fine powder, to avoid a possible effect of particle size and mixed with the matrix to obtain carbon concentrations ranging from 1 to ca. 80 wt.%. For the method’s implementation phase, we used a

series of samples from the Gironville 101 borehole (Sarro-Lorrain basin) stored at the French Institute of Petroleum New Energy (IFPEN) and then powdered. These samples have also been used as a reference for the study of diagenesis, catagenesis and metagenesis of humic coals (Alpern, 1966; Rouzaud *et al.*, 1991). Thirty-two samples of raw rock corresponding to a depth between 1160 and 3440 m, and for which TOC values were already measured at IFPEN with a Rock-Eval 2 pyrolyzer (unpublished data), were used for this purpose.

2.2 Spectrophotometry

A handled Minolta CM 2600d spectrophotometer was used to measure the samples’ reflectance intensity of visible wavelengths between 400 and 700 nm, at 10-nm intervals. The spectrophotometer is composed of a sphere with a surface coated with barium sulphate. The light source is positioned at the entrance of the sphere (5 or 8 mm in diameter) and the light emitted is reflected in all directions. This sphere is called an integrating sphere because it projects light onto the sample in all directions at a constant rate. This eliminates any measurement irregularities due to shadow zones and surface faults. The wavelengths considered belong to the extended visible domain (from 400 to 700 nm). In addition, the sensitivity of the device allows breaking down the wavelength spectrum into 10-nm steps. The light emitted by the light source can be set to different types of illuminants; we used

D65, which corresponds to a temperature of 6504 K, *i.e.* daylight. We adopted Specular Component Excluded mode CIE L* a* b* analysis in order to avoid biasing data with specular reflection. The L* a* b* mode covers the entire spectrum perceptible to the human eye and it includes every colour mode (RGB and CMYK). L* corresponds to brightness (white/black), a* is the red/green axis and b* is the blue/yellow axis. The aperture of the instrument was 8 mm. Contrary to the methodology of Chapman and Shackleton (1998), who recommend covering the instrument to be calibrated by the white standard with polyethylene film, we calibrated the spectrophotometer without the film as the instrument expects specific reflectance values that are stored in its internal memory (Balsam *et al.*, 1997; Debret *et al.*, 2006; 2011).

Each sample was measured three to five times on different locations to ensure reproducible measurements and their representativeness. The measurements were taken on a previously powdered sample. In order to avoid possible atmospheric pollution (dust), a protective windowpane that does not change the spectrum signal (provided by Konica Minolta), was systematically used. The spectra presented in this study correspond to an average of the measurements processed on the samples.

2.3 Rock Eval pyrolysis

The geochemical signature of the samples was acquired using Rock-Eval 6 pyrolysis (RE6, Vinci Technologies). Previously developed for petroleum purposes and the analysis of sedimentary rocks (*e.g.* Lafargue *et al.*, 1998), the method has now been successfully tested for recent OM in matrices such as soils (Di-Giovanni *et al.*, 1998; Noël *et al.*, 2001) and suspended sediments in rivers (Copard *et al.*, 2006).

RE6 pyrolysis comprises two successive analytical stages performed with a heating rate of 25 °C min⁻¹. The first step consists of pyrolysis of 30 mg of previously crushed sample in an oven under an inert atmosphere. Pyrolysis effluents are carried by nitrogen. Hydrocarbons and oxygenate compounds yielded over a temperature range of 200–650 °C are quantified with flame ionisation and infrared detectors, respectively. The second step consists of the oxidation, in a second oven, of the pyrolysed carbonaceous residue between 400 °C and 750 °C in air (N₂/O₂; 80/20).

Among the parameters delivered by this analytical method, we focused both on the hydrogen index (HI, in mg HC g⁻¹ TOC), defined as an indicator of the hydrogen richness and on the oxygen index (OI RE6, in mg O₂ g⁻¹ TOC), defined as an indicator of the oxygen richness of the analysed sample. The amount of organic carbon is given by the total organic carbon (TOC, expressed in wt.%), equal to the sum of the pyrolysed OC and the residual organic carbon provided by the oxidation step. Uncertainties in HI, OI and TOC values are ± 5, 17 and 3%, respectively (Noël, 2001).

2.4 Elemental analyses

Elemental analyses of C, H, O essential to obtain H/C ((H/C)_{at.}) and O/C ((O/C)_{at.}) atomic ratios were performed at the Department of Central Analysis Service of the CNRS (SCA, UMR 5280, Lyon). Classic comparison of these two ratios in a

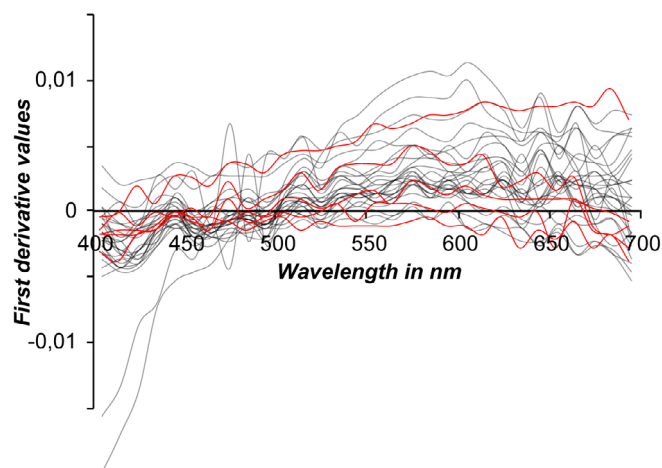


Fig. 2. First derivative spectra (FDS) of the samples used in this study, red spectra correspond to BC signal, Black spectra to FOC.

Van Krevelen diagram leads to the recognition of the main types of OM (lacustrine, marine, terrestrial). This diagram also makes it possible to follow the chemical changes of OM during thermal and/or oxidative processes (Durand, 1980). These two atomic ratios may be respectively correlated with HI and OI from RE6 pyrolysis (Bordenave *et al.*, 1993).

Analyses of C and H is a complete combustion of sample at 1080 °C under helium and oxygen. These two elements are converted into CO₂ and H₂O, respectively, which are then separated on a chromatographic column and measured using a thermal conductivity detector. These gases are quantified with specific IR detectors for CO₂ and H₂O. Oxygen was quantified by pyrolysis at 1080 °C under a nitrogen purge in which oxygen is converted to CO by passage over activated carbon at 1120 °C. CO is then quantified using a specific IR CO detector. For each of these thermal degradations, a few milligrams of powdered sample are sufficient. Uncertainties (absolute %) on the measurement of C, H and O are 0.4, 0.2 and 0.3%, respectively.

3 Results and discussion

3.1 OM spectral signature

3.1.1 First derivative spectra (FDS)

Typical values of CIELab referential, L*, a* and b* cannot be used here to identify the origin of organic matter because the samples are mainly Pure Organic Matter (POM) and The L* values result from mixing functions integrating different wavelengths not necessarily specific to OM (600–700 nm; Balsam *et al.*, 1997). However L* is very helpful to consider the quantify the TOC as shown in Figure 7, Section 3.3. A classically used method in colour analysis consists in taking the first derivative values of raw colour spectra (FDS) to identify the origin of colour in measured materials (*e.g.* Ji *et al.*, 2005). With this mathematical method, it is possible to amplify variations of raw spectra (Fig. 2). Thus, between 600 and 700 nm, the OM region (Balsam *et al.*, 1997), we observed:

- spectra with positive first derivative values: increasing raw spectra (reflectance increases as wavelength increases) (*e.g.* Grass-char, Beulah, Poca);

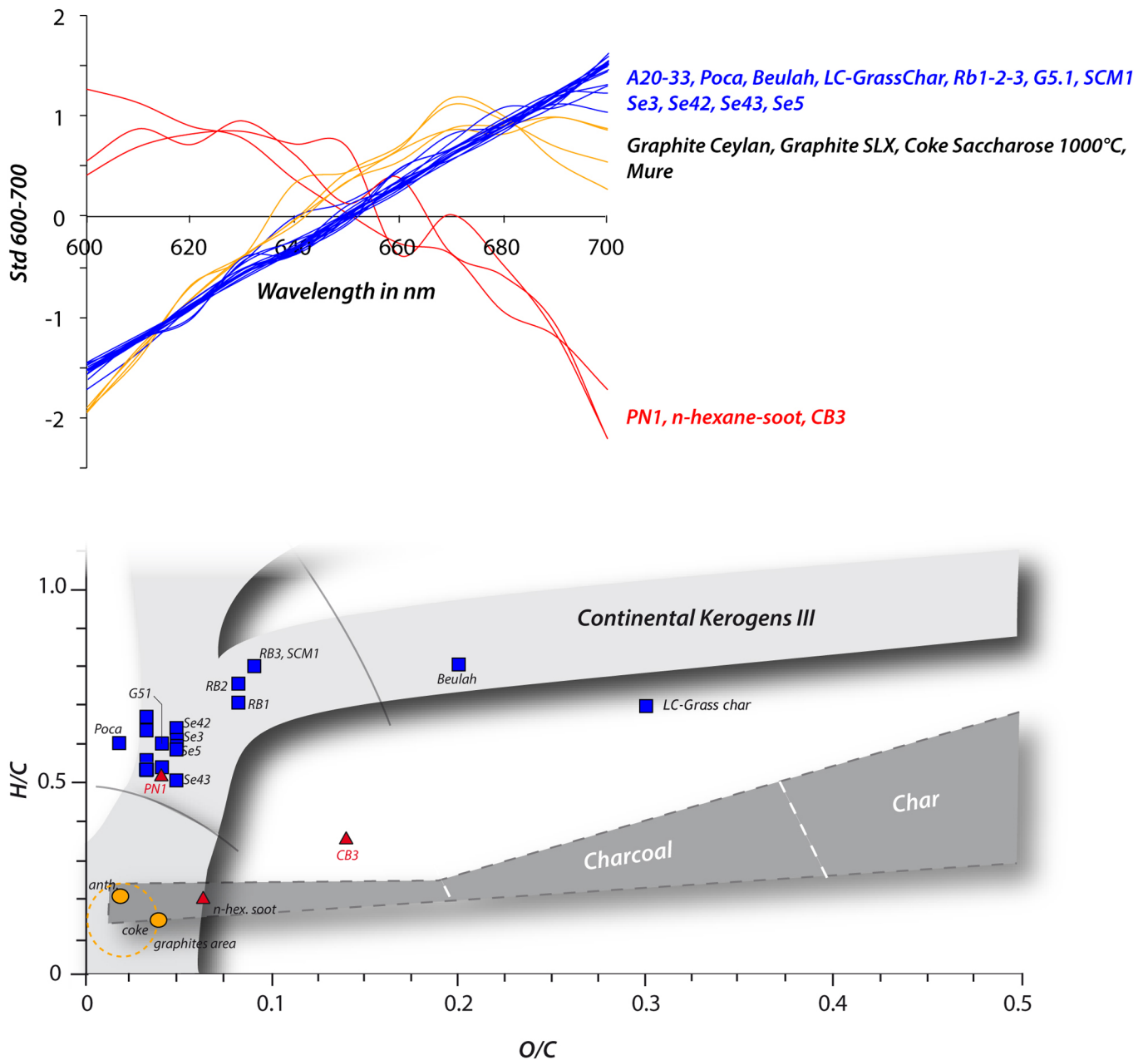


Fig. 3. Standardized spectra reveal three signatures (upper part) visible in the Van Krevelen diagram (lower part) with a singular limit for $(H/C)_{at}$ ratio value of 0.50. Upper this limit (with an unknown $(O/C)_{at}$ limit value, in blue signals), the Std spectra systematically increase while decrease when lower than 0.50 (red signals). A third signature (orange signals) with increasing and decreasing slope is also evidenced between the region 670–700 nm and corresponds to samples with very low $(H/C)_{at} - (O/C)_{at}$ ratio values.

- spectra with negative values and therefore decreasing FDS: decreasing raw spectra (reflectance decreases as wavelength decreases) (*e.g.* LC Char, SCM3);
- spectra with intermediate values with variable slopes (*e.g.* Rb1, PN1).

Clearly, the FDS method does not discriminate BCM from FOM signatures. However, the signals can be differentiated according to their slope in the 600- to 700-nm range (Fig. 2).

3.1.2 Standardized (Std) signals

To emphasise the slope differences of colour spectra in the OM spectral range, the spectra were standardized between 600 and 700 nm. This signal treatment highlights three types of signals (Fig. 3):

- a population characterised by a increasing spectrum (*e.g.* Beulah, Poca, most samples from Alès and Saint Etienne coalfields, LC Char, Char-Grass);
- a population characterised by a decreasing spectrum (*e.g.* n-hexane soot, CB3, SCM3, PN1);

- a population characterised by a growing spectrum between 600 and 670 nm and then gradually showing a negative slope between 670 and nm (*e.g.* natural graphite from Ceylon, SLX 50HT synthetic graphite, saccharose-based coke, anthracite from La Mure coalfield): the common feature of these samples is their high aromaticity.

The first case includes a majority of coal samples showing a lower rank (*cf.* vitrinite reflectance value threshold of 1.80–1.85%, [Tab. 1](#), for details about this threshold, see [Sect. 4.1](#)) than that of the PN1 sample and two BCM samples (Grass Char, LC Char). The second concerns a majority of samples subjected to combustion and a high rank coal (PN1, see [Tab. 1](#)). The last group encompasses a number of highly mature samples either experienced metagenesis (an anthracite sample from La Mure coalfield) or to a slight metamorphism (natural graphite sample from Ceylon) and to pyrolysis performed at a high temperature (saccharose-based coke and SLX 50HT samples carbonised at 1000 and 3000 °C respectively; see [Tab. 1](#)). Regarding the samples' origin and their distribution into these three clusters, this method is not fully adequate to discriminate BC from FOC. However, the position of the samples in the van Krevelen diagram ([Fig. 3](#)) reveals further arguments for discussion. Indeed, although centring and reducing the spectra do not discriminate BC from FOC, this method can differentiate samples which have a $(H/C)_{at}$ ratio close to 0.50 (with PN1 showing a value of 0.52). Above this limit, the standardized spectra are strictly increasing, while below, two other types of decreasing signatures are observed. As a consequence, this limit may distinguish some samples derived from a severe combustion or thermal degradation ($(H/C)_{at} < 0.50$) during metagenesis (anthracite from the La Mure coalfield), metamorphism (Ceylon graphite) and pyrolysis (*e.g.* saccharose-based coke, SLX 50HT), from other samples subjected to a lower thermal degradation during diagenesis/catagenesis ($(H/C)_{at} > 0.50$) and to a low to medium pyrolysis temperature (450 °C) held for a short time (LC and Grass-Char samples). In detail, the atomic ratios ([Fig. 3](#)) of the *n*-hexane soot sample are close to those produced by saccharose-based coke, contrary to their spectral signature. The origin of this difference could be inherited from the combustion temperature undergone by these samples, where a lower temperature was applied to *n*-hexane soot (*i.e.* between 500 and 800 °C; [Akhter et al., 1985](#)) while reaching 1000 °C for the coke sample (with the duration of pyrolysis to consider).

The Std method can therefore discriminate different OM signals not directly based on the type heating process (combustion or maturation during burial) but rather on the time and temperature conditions of the carbonisation process. These conditions control the OM chemistry, highlighted in spectrophotometry by a change in slope of Std signals, corresponding to a $(H/C)_{at}$ ratio close to 0.50. This value is remarkable as it corresponds to the boundary between oil and gas windows, at the level called “semi-coke” or semi-natural coke for pyrolyzates and highly evolved coal, respectively ([Rouzaud and Oberlin, 1990](#)).

3.2 Thermal transformation of OM and spectrophotometric signals

Among the measured samples, two pairs of samples were used to test the change of spectral signatures according to the

degree of thermal transformation recorded by OM. These are (SCM1/SCM3) for the combustion process and (A23/A23-590) for pyrolysis (see [Tab. 1](#) for details and [Sect. 2.2](#)).

Among the measured samples, two pairs of samples were used to test the change of spectral signatures according to the degree of thermal transformation recorded by OM. These are (SCM1/SCM3) for the combustion process and (A23/A23-590) for pyrolysis (see [Tab. 1](#) for details and [Sect. 2.2](#)) ([Fig. 3](#)).

For the (SCM1; SCM3) pair, SCM3 corresponds to the SCM1 sample (*i.e.* the same coal seam from the Saint Etienne coalfield), which was subjected to a partial combustion at high temperatures during a natural pit fire. The Std method applied to spectrophotometric spectra clearly highlights this natural combustion process where the SCM1 signal is increasing and SCM3 decreasing ([Fig. 4](#)). The only difference between these two samples is that SCM3 has recorded a higher temperature and consequently a change in chemical composition and structure accompanied by a higher vitrinite reflectance value than SCM1. This is in perfect agreement with the values of the $(H/C)_{at}$ ratio, which are on both sides of the 0.50 limit ([Figs. 3 and 5](#)). For the (A23; A23-590) pair, the A23-590 sample is the residue of an off-line pyrolysis of the A23 sample at 590 °C held for 20 min under nitrogen flux ([Copard, 2002](#)). Here again, the spectrophotometry method shows a change in the slope of the Std spectra subsequent to a change in the chemistry of A23 samples after pyrolysis ([Fig. 4](#)). As seen for the previous pair, this is in perfect agreement with the $(H/C)_{at}$ ratio of these samples in the van Krevelen diagram ([Figs. 3 and 5](#)). These results confirm that there is a major change in reflectance measurements in relation to the degree of carbonisation recorded by the kerogen.

If these two pairs highlight the effect of temperature on the shape of the Std signals, the key moment of change in the spectral signature would be verified with the seven samples from the Gironville 101 borehole submitted to an increasing metagenesis, and with two series of samples submitted to a progressive increase in temperature pyrolysis. For the seven coals, the Std signals grow at a 3610-m depth but decrease at 3580 m, meaning that for these two “shallower” samples, the shift in Std signal slopes is probably already reached with an $(H/C)_{at}$ ratio close to 0.50 ([Tab. 1](#), [Figs. 3 and 5](#)). Deeper, the Std signals systematically decrease ([Figs. 3 and 5](#)). Here again, for this natural and ideal example (*i.e.* samples buried without significant further deformation; see [Rouzaud et al., 1991](#)), the moment of this shift occurring for an $(H/C)_{at}$ ratio value close to 0.50 is in perfect agreement with the shift from oil to gas windows and the natural “semi-coke” state ([Rouzaud and Oberlin, 1990](#)). In addition, two sets of *Eucalyptus grandis* and *Eucalyptus saligna* samples were also used for which experimental conditions of carbonisation have been already described ([Trompowsky et al., 2005](#); [Tab. 1](#)). Whatever the series, the spectrophotometry shows Std signatures strictly increasing for temperatures ranging from 300 to 350 °C and then the signal decreases between 670 and 700 nm at 450 °C ([Fig. 5](#)). This change is reflected in the Van Krevelen diagram by a $(H/C)_{at}$ ratio close to 0.50 and an $(O/C)_{at}$ ratio around 0.22. This change reinforces our previous assumption about the limit at 0.50 for the $(H/C)_{at}$ ratio. All things being equal, it is therefore possible to coincide this change in reflectance properties with a major physico-chemical rearrangement

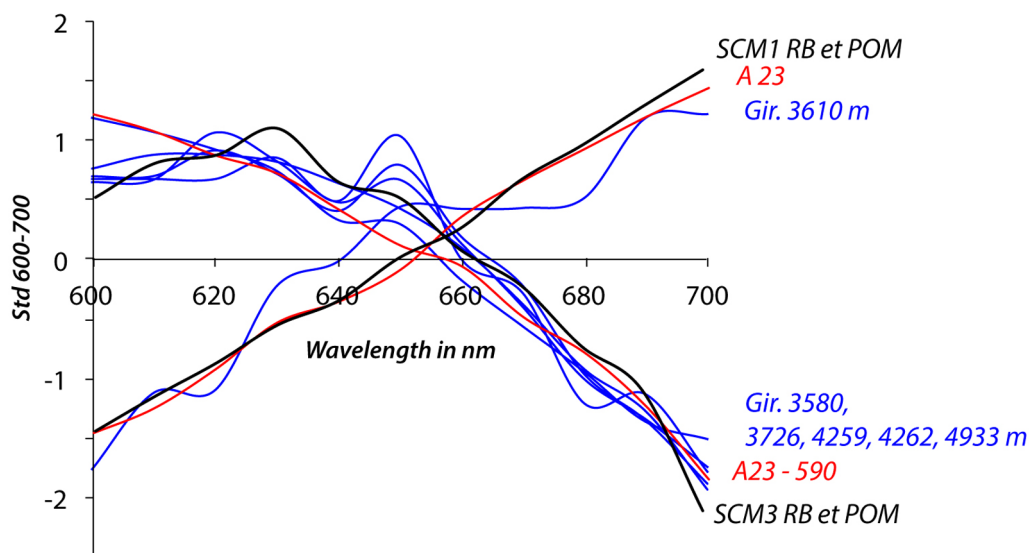


Fig. 4. Increasing Std spectra for coal samples from Ales (A23), Saint-Etienne (SCM1) and Sarro-Lorraine (GIR 3610) coalfields. After a considered carbonisation process (pyrolysis for A23, pit-fire for SCM1 and thermal degradation during burial for GIR 3580), decreasing Std spectra are well evidenced. Colour codes (accompanied by specified symbols) are referred to Figure 3.

within the sample occurring in the neighbourhood of the $(H/C)_{at}$ ratio value of 0.50. This rearrangement is an important step during the carbonisation stage, commonly called “semi-coke”, occurring just after the maximum liquid hydrocarbons release and corresponding to the onset of the preferential orientation of basic structural units (*i.e.* stacks of a few nanometre-sized aromatic sheets, Rouzaud and Oberlin, 1989). Depending on the chemical nature of the precursors, the semi-coke stage starts between 400 and 500 °C (Oberlin *et al.*, 1980).

Along with the change of heating conditions, this explains why the LC and Grass-Char standards, produced after a pyrolysis not exceeding 450 °C for 5 h (Hammes *et al.*, 2007), show a strictly increasing signature identical to that of samples carbonised at temperatures less than 450 °C from the two series of *Eucalyptus*. From spectrophotometric and geochemical points of view (Fig. 1), the signature of these two standards is rather close to immature coals such as lignite.

A parallel between this change in Std slope signals and previous results from FTIR performed on coals may be drawn for low wavenumbers (900–700 cm^{-1}). Although this region also contains deformations related to CH_2 rocking vibrations (*e.g.* at 772 and 834 cm^{-1} , Kuehn *et al.*, 1982; Guilliano *et al.*, 1988), this range is classically assigned to aromatic CH out-of-plane bending modes, which can shift according to the number of adjacent hydrogens indicating the substitution degree of aromatic rings (*e.g.* Guilliano *et al.*, 1988). In particular, deformations occurring at less than 800 cm^{-1} are assigned to the CH vibrations of low substituted aromatic rings (three to four adjacent hydrogens), while those observed between 900 and 800 cm^{-1} correspond to a higher degree of substitution of aromatic rings (one to two adjacent hydrogens; *e.g.* Sobkowiak *et al.*, 1984; Guilliano *et al.*, 1988). Studies have shown a positive correlation between the thermal evolution of coal and the intensity of absorbance peaks in the 900- to 700- cm^{-1} region (*e.g.* Kuehn *et al.*, 1982; Sobkowiak *et al.*, 1984; Galvez *et al.*, 2002) followed by a progressive decrease in the degree of substitution of polyaromatic cycles (Guilliano *et al.*, 1988).

This increase is also concomitant to that of the ratio of aromatic/aliphatic CH (*i.e.* hydrogen linked by aromatic rings vs. aliphatic molecules; Riesser *et al.*, 1984). When TOC values exceed 90.0 wt.%, it is assumed that hydrogen is mainly distributed on the aromatic planes (Riesser *et al.*, 1984) and vitrinite reflectance measurements reach 1.80–2.00% (see Tab. 1). For these vitrinite reflectance values and therefore an $(H/C)_{at}$ ratio close to 0.50, these chemical changes due to temperature are also accompanied by a major microtextural change in coal related to the loss of heteroatoms and causing a preferential molecular orientation of poly-aromatic layers (*i.e.* the basic structural unit (BSU) of coals and cokes; see Rouzaud and Oberlin, 1990). This suggests that the change of spectrophotometric signal slope in the 600- to 700-nm region, which occurs in the vicinity of a $(H/C)_{at}$ ratio close to 0.50, can be explained by the increase in aromaticity, the loss of substitution degree of aromatic rings and the local orientation in parallel of BSU within all carbonaceous materials.

3.3 Matrix effect

Applied to the total sediment, spectrophotometry incorporates all colour variations in the visible range, so not only changes in organic matter (see above), but also in mineral matter. We tested the matrix effect on OM spectrophotometry signals by performing a series of dilutions of the A20 coal sample in chalk and illite for TOC ranging from 80.0 to 0.1 wt.% (Fig. 6).

When the A20 sample is diluted in illite, the FDS signature shows an overall decline of the spectrum as the concentration of coal increases. This decrease in the slope of the spectra is not linear since spectrophotometry sensitivity is greater when concentrations of OM are low (Fig. 6). Std spectra show that the increasing imprint of FOC signature is acquired up to the TOC value of 40.0 wt.%, *i.e.* for low to moderate dilutions. For higher dilutions, the OM occurrence is attested in FDS signatures, but the type of OM cannot be determined (*i.e.* the three populations identified above).

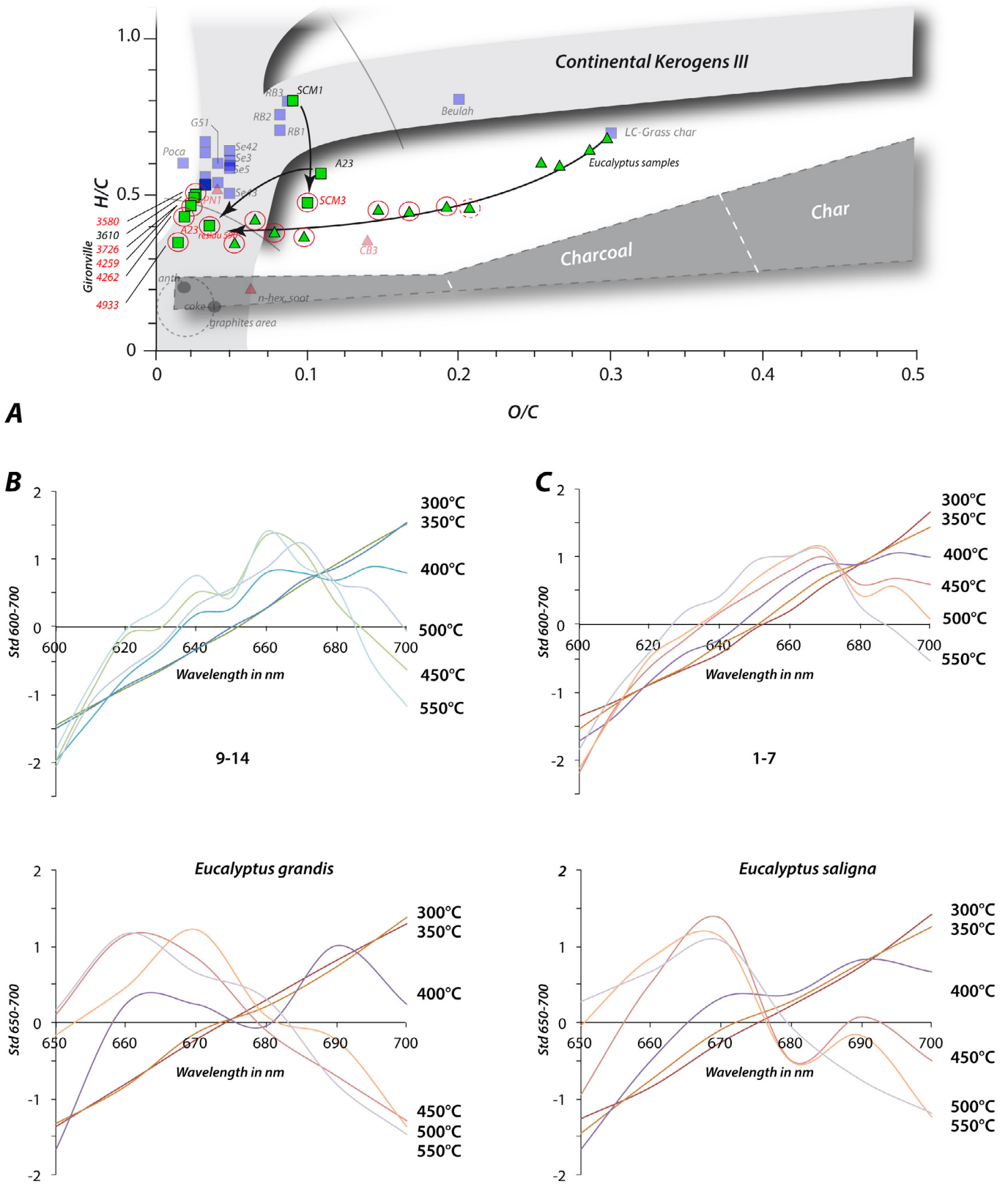


Fig. 5. Upper part: Distribution of the three sets of samples and the experimental samples from Trompovski *et al.* (2005) in a Van Krevelen diagram. Red circles correspond to samples characterised by a decreasing Std signals, green triangles corresponds to samples from Trompovski *et al.* (2005), green squares to the three sets of samples discussed in text. These later samples were subjected to a progressive pyrolysis as highlighted by the lowering of $(H/C)_{at}$ and $(O/C)_{at}$ ratio values. A) 1-7 samples correspond to the *Eucalyptus grandis* species and B) 9-14 to *Eucalyptus saligna*. Both species show a transition in Std signatures in the Std600/750 (upper part) that is more distinguishable in CR650/700 (Lower part) with a shift that occurs around 400 °C where the spectra increasing trend disappears.

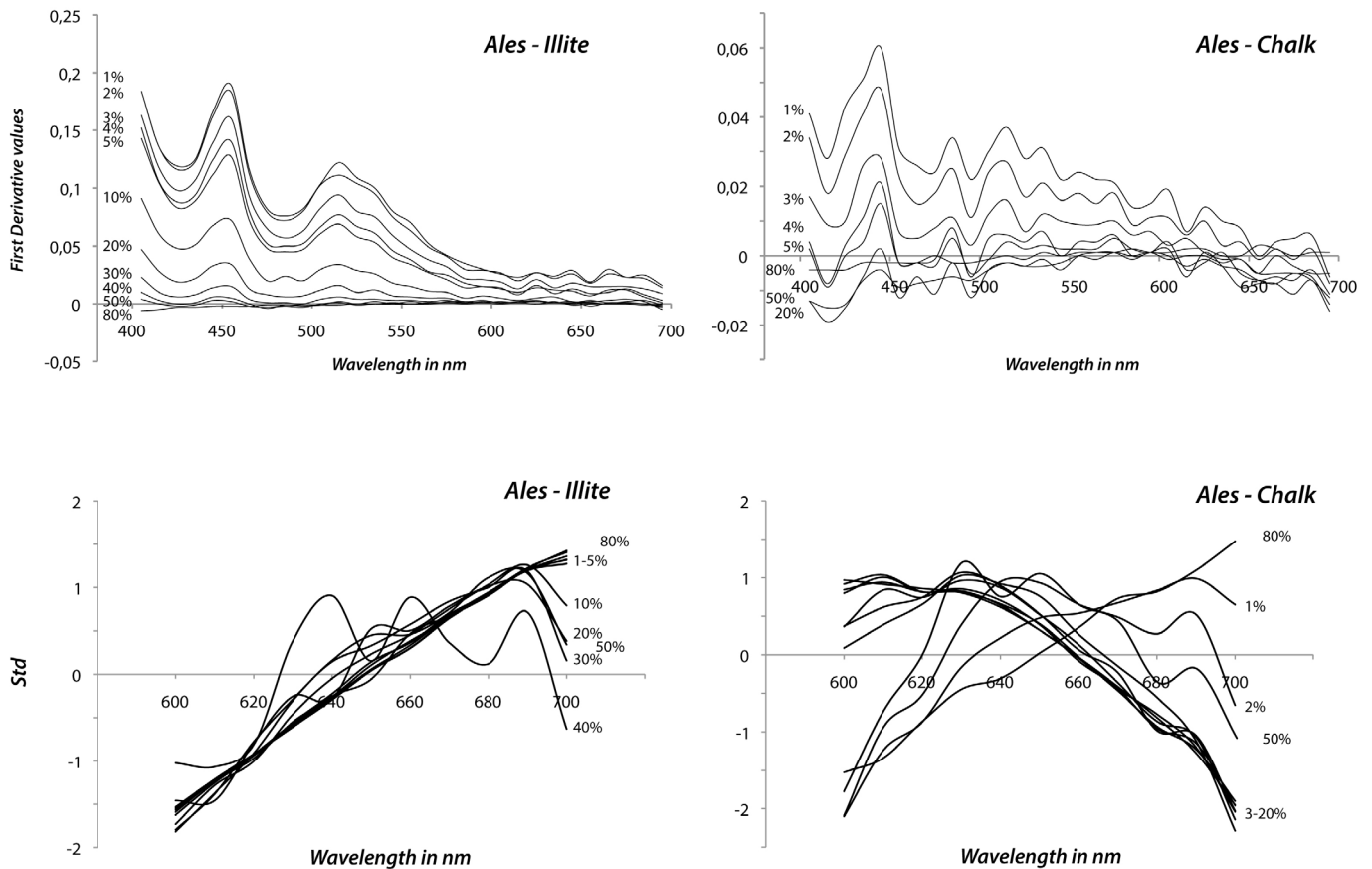


Fig. 6. Evolution of dilutions highlighted by FDS (upper part) and Std (lower part) for A20 sample (Ales coalfield) in illite (left) and chalk (right) matrix.

When the A20 sample is diluted in chalk, the FDS signature is more complex than that seen with illite. The sensitivity of spectrophotometry is greater at low coal concentrations, while when the concentrations increase, the amplitude variations diminish. The Std spectrum decreases in amplitude until a TOC equal to 20.0 wt.%, then the pattern changes to emphasise the detection of OM. In turn, Std spectra indicate that the FOC signature becomes important in the signal around 20.0 wt.%.

These results clearly indicate that the effect of the matrix is very important and depends on its nature. For type III OM, the amplitudes of the FDS or CStd spectra are complex and cannot be used to identify the origin of the OM or to evaluate their concentration. Other OM need to be tested. However, it is important to note that the influence of FOM and certainly BCM on spectrophotometric signatures is detected very quickly, especially for TOC lower than 5 wt.% for illite, but still varies according to the matrix. The sensitivity of the spectrophotometric signatures is less when the FOC is included in the illite matrix.

3.4 New perspectives for TOC calibration

Although FDS and Std are complex to analyse, the L^* parameter, conventionally used as greyscale (black/white), quantifies the brightness (expressed in %) of sediments. This parameter is particularly interesting in the context of a binary

mixture (*i.e.* OM + mineral). Correlated with TOC, it is possible to establish calibration curves in order to predict the TOC content. For the A20 coal sample, the diagram shows two different dilution curves according to illite and chalk matrices (Fig. 7). These curves confirm the obvious link between the colour variations and the change in TOC values for a given matrix. Thus, for low TOC values, coal diluted in illite is 15% darker than when diluted in chalk. However, this difference between the calibration curves is not constant and decreases even more as the TOC content of a sample tends towards the pole of organic matter (carbon, *i.e.* lower L^* values, see Debret *et al.*, 2011). Calibration curves show that this method is particularly accurate for low TOC content (8% in material reflectance equivalent to a TOC of 4.0 wt.% for chalk and illite; see Fig. 7), but remains less accurate for high concentrations, especially when the matrix is darker. This means that the L^* parameter is a good indicator of the TOC content, especially for low TOC values and clear matrices such as chalk.

These matrix effects (colour, dilution) were also validated by Westphalian coal samples taken from the Gironville 101 borehole (samples from cuttings, Paris Basin). The distribution of points in Figure 7 confirms the L^* parameter as a reliable proxy of TOC, especially when values are lower than 20.0 wt.%. This 20% threshold of TOC disappears once the mixture contains a clear matrix ($L^* = 75\%$). However, when the study concerns a natural sample, such as those from a sedimentary core, the limit conditions to use these calibration curves is that

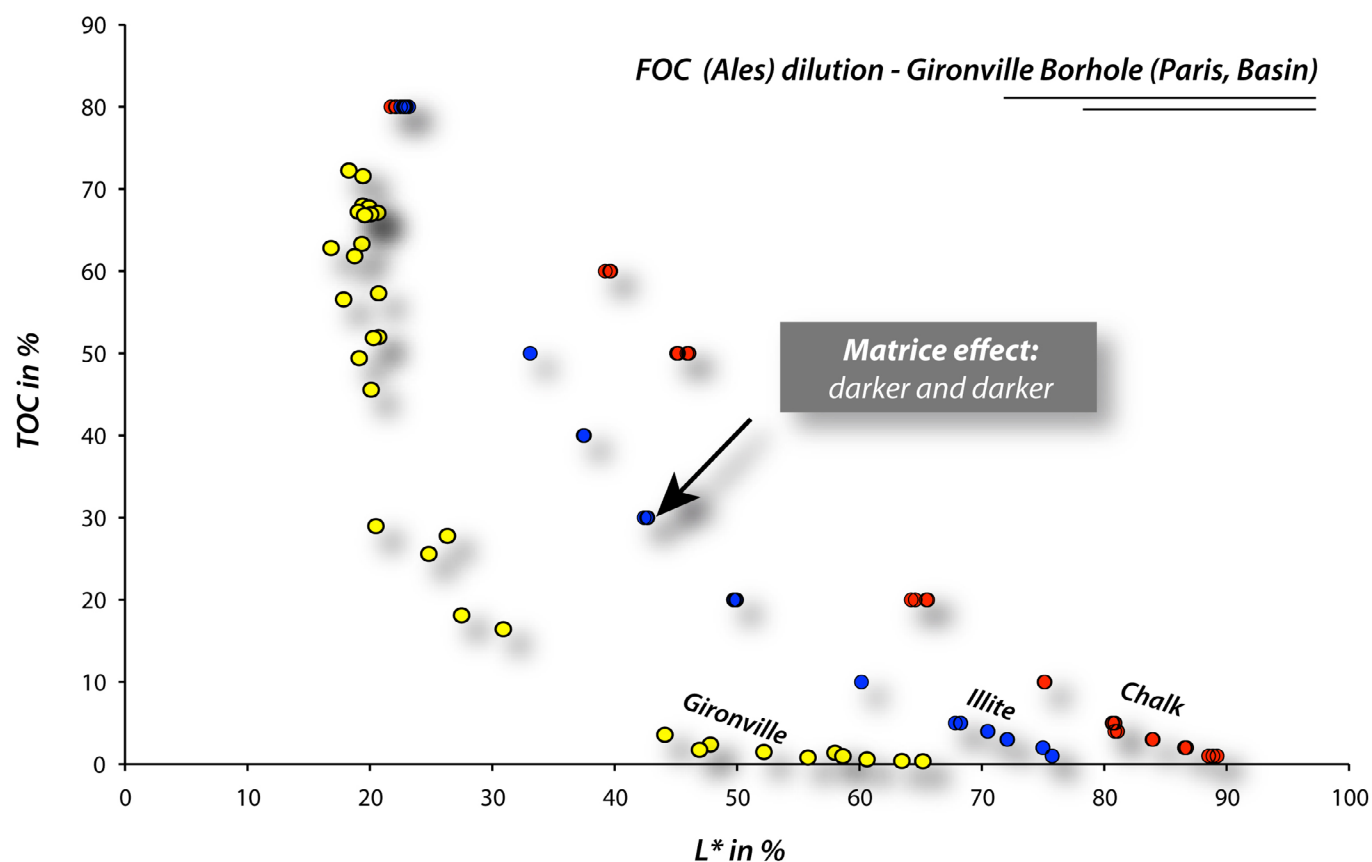


Fig. 7. L^* (black/white) vs. TOC: experimental dilution of Ales FOC in illite and chalk matrix and natural dilution of a serie of westphalian coals from Gironville borehole 101 (Paris Basin)

the mineral matrix remains constant throughout the examined section, as for this core. In the case of non-homogeneous matrices, the FDS could distinguish different lithological facies which each have their own calibration curve.

4 Conclusion

Spectrophotometry is non-destructive and allows fast data acquisition. This method has been tested on standards, artificial and natural samples of geological coals and charred materials of anthropogenic origin. Spectral signatures have been highlighted by the Standardized method and characterised by the intensity of the carbonisation process recorded either naturally during burial (from diagenesis to metagenesis, or even slight metamorphism), during combustion or experimentally during pyrolysis. Under experimental conditions (laboratory oven), a maximum temperature of roughly 450 °C marks the change of the Std spectral signature (with respect to pyrolysis duration). In a Van Krevelen diagram, this signature shift corresponds to an $(H/C)_{at}$ ratio value close to 0.50, related to the increase in aromaticity consecutive to a loss of heteroatoms. For synthetic carbon samples, this step of carbonization is known as semi-coke stage. For geological samples (FOM), this limit corresponds to the end of the oil window.

Dilutions between FOM (coal) and the mineral matrix (chalk and illite) emphasise the impact of FOM on spectrophotometric signatures. This impact is detected more

easily (*i.e.* when TOC values are low) if the matrix is clear, whatever methods are used (FDS, Std).

In a natural context, involving Paleozoic coals and dark mineral matrix (Gironville 101 borehole), it is finally possible to provide calibration curves connecting the L^* parameter and the TOC content where the value of L^* is extremely sensitive to low TOC values. Although in the case of dark matrix, the L^*/TOC relation is limited to TOC values less than 20.0 wt.%, this threshold disappears quickly when the matrices are lighter. The production of these charts seems promising for a rapid assessment of the TOC content in thick sedimentary sequences provided that the mineral matrix, previously identified by the FDS, are homogeneous. After further calibrations, spectrophotometry would be a very simple, fast and attractive method to detect low concentrations of TOC in rocks and sediments and can be useful in selecting samples for further geochemical analyses.

Acknowledgement. The spectrophotometer was financed by Haute-Normandie region through the CNRS Research Federation 3730 SCALE (Sciences Appliquées à L'Environnement). M. Desmet is acknowledged for technical support and valuable advice. Authors would also thank the International Steering Committee of Black Carbon References Materials (in particular Pr. MWI Schmidt, Univ. Zurich, Switzerland and Dr. DM Smith, Univ. Denver, USA) and VM Benites (Embrapa Solos, Rio Janeiro, Brazil) who have provided the two series of carbonised samples of *Eucalyptus*.

References

- Akhter MS, Chughtai AR, Smith DM. 1985. The structure of hexane soot I: spectroscopic studies. *Appl Spectrosc* 39: 143–153.
- Alpern B. 1966. Un exemple intéressant de houillification dans le bassin Lorrain et ses prolongements. In: *Advances in Organic Geochemistry, 1964*. London: Pergamon Press, pp. 129–146.
- Balsam WL, Damuth JE, Schneider RR. 1997. Comparison of shipboard vs. shorebased spectral data from Amazon Fan cores: implications for interpreting sediment composition. *Ocean Drilling Program Science* 155s: 193–215.
- Bernal JD. 1924. The structure of graphite. *Proceedings of the Royal Society of London. Series A, Containing Papers of a Mathematical and Physical Character* 106(740): 749–773.
- Bordenave ML, Espitalié J, Leplat P, Oudin JL, Vandenbroucke M. 1993. Screening techniques for source rock evaluation. In: Bordenave, eds. *Applied petroleum geochemistry*. Paris: Technip, pp. 217–278.
- Burdige DJ. 2007. Preservation of organic matter in marine sediments: controls, mechanisms, and an imbalance in sediment organic carbon budgets? *Chem Rev* 107: 467–485.
- Busch A, Gensterblum Y, Krooss BM. 2003. Methane and CO₂ sorption and desorption measurements on dry Argonne premium coals: pure components and mixtures. *Int J Coal Geol* 55: 205–224.
- Chapman MR, Shackleton NJ. 1998. What level of resolution is attainable in a deep-sea core: results of a spectrophotometer study. *Paleoceanography* 13: 311–315.
- Copard Y. 2002. Altération diagénétique et post-diagénétique (thermicité, oxydation) des charbons carbonifères du Massif Central français (Saint Étienne, Graissessac et autres lieux). Doctoral thesis, University of Orléans, 306 p.
- Copard Y, Disnar JR, Becq-Giraudon JF, Boussafir M. 2000. Evidence and effects of fluid circulation on organic matter in intramontane coalfields (Massif Central, France). *Int J Coal Geol* 44: 49–68.
- Copard Y, Disnar JR, Becq-Giraudon JF. 2002. Erroneous maturity assessment given by Rock-Eval parameters (Tmax and HI) on highly mature weathered coals. *Int J Coal Geol* 49: 57–65.
- Copard Y, Disnar JR, Becq-Giraudon JF, Laggoun-Défarge F. 2004. Erroneous coal maturity assessment caused by low temperature oxidation. *Int J Coal Geol* 58: 171–180.
- Copard Y, Di-Giovanni C, Martaud T, Albéric P, Olivier JE. 2006. Using rock-eval 6 pyrolysis for tracking fossil organic carbon in modern environments: Implications for the roles of erosion and weathering. *Earth Surf Proc Land* 31: 135–153.
- Copard Y, Amiotte-Suchet P, Di-Giovanni C. 2007. Storage and release of fossil organic carbon related to weathering of sedimentary rocks. *Earth Planet Sci Lett* 258: 345–357.
- Deaton BC, Nestell M, Balsam WL. 1996. Spectral reflectance of conodonts: a step toward quantitative colour alteration and thermal maturity indexes. *AAPG Bulletin* 80(7): 999–1007.
- Debret M, Desmet M, Balsam W, Copard Y, Francus P, Laj C. 2006. Spectrophotometer analysis of holocene sediments from an anoxic fjord: Saanich Inlet, British Columbia, Canada. *Mar Geol* 229(1–2): 15–28. DOI: [10.1016/j.margeo.2006.01.005](https://doi.org/10.1016/j.margeo.2006.01.005).
- Debret M, Sebagn D, Desmet M, Balsam W, Copard Y, Mourier B, *et al.* 2011. Spectrocolorimetric interpretation of sedimentary dynamics: The new “Q7/4 diagram”. *Earth Sci Rev* 109(1–2): 1–19.
- Di-Giovanni C, Disnar JR, Bichet V, Campy M. 1998. Sur la présence de matières organiques méso-cénozoïques dans des humus actuels (bassin de Chaillexon, Doubs, France). *C R Acad Sci Paris* 326: 553–559.
- Dickens AF, Gélinas Y, Masiello CA, Wakeham SG, Hedges JJ. 2004. Reburial of fossil organic carbon in marine sediments. *Nature* 427: 336–339.
- Ding G, Rice JA. 2012. Black carbon evaluation in natural organic matter samples using recoupled long-range dipolar dephasing solid-state ¹³C NMR. *Geoderma* 189–190: 381–387.
- Duber S, Pusz S, Kwiecińska BK, Rouzaud JN. 2000. On the optically biaxial character and heterogeneity of anthracites. *Int J Coal Geol* 44: 227–250.
- Durand B. 1980. Kerogen. Paris: Technip.
- Galvez A, Herlin-Boime N, Reynaud C, Clinard C, Rouzaud JN. 2002. Carbon particles from laser pyrolysis. *Carbon* 40: 2775–2789.
- Graz Y, Di-Giovanni C, Copard Y, Laggoun-Défarge F, Boussafir M, Lallier Vergès E, *et al.* 2010. Quantitative palynofacies analysis as a new tool to study transfers of fossil organic matter in recent terrestrial environments. *Int J Coal Geol* 84: 49–62.
- Graz Y, Di Giovanni C, Copard Y, Mathys N, Cras A, Marc V. 2012. Annual mechanical and chemical fluxes of fossil organic carbon exported by marly badlands areas: Example of the Draix experimental watersheds (Alpes-de-Haute-Provence, France). *Earth Surf Proc Land* 37: 1263–1277.
- Goldberg ED. 1985. Black carbon in the environment. New York: John Wiley.
- Guilliano M, Mille G, Kister J, Muller JF. 1988. Étude des spectres IRTF de charbons français déminéralisés et de leurs macéraux. *J Chim Phys* 85(10): 963–970.
- Hammes K, Schmidt MWI, Smernik R, Currie LA, Ball WP, Nguyen TH, *et al.* 2007. Comparison of quantification methods to measure fire-derived (black / elemental) carbon in soils and sediments using reference materials from soil, water, sediment and the atmosphere. *Global Biogeochem Cycles* 21: GB3016. DOI: [10.1029/2006GB002914](https://doi.org/10.1029/2006GB002914).
- Hammes K, Smernik RJ, Skjemstad JO, Schmidt MWI. 2008. Characterisation and evaluation of reference materials for black carbon analysis using elemental composition, colour, BET surface area and ¹³C NMR spectroscopy. *App Geochem* 23: 2113–2122.
- Hedges JJ, Eglinton G, Hatcher PG, Kirchman DL, Arnosti C, Derenne S, *et al.* 2000. The molecularly-uncharacterized component of nonliving organic matter in natural environments. *Org Geochem* 31: 945–958.
- Ji J, Shen J, Balsam W, Chen J, Liu L, Liu X. 2005. Asian Monsoon oscillations in the northeastern Qinghai-Tibet Plateau since the late glacial as interpreted from visible reflectance of Qinghai Lake sediments. *Earth Planet Sci Lett* 233, 61–70.
- Knicker H. 2011. Pyrogenic organic matter in soils: its origin and occurrence, its chemistry and survival in soil environments. *Quat Inter* 243: 251–263.
- Kuehn DW, Snyder DW, Davis A, Painter PC. 1982. Characterization of vitrinites concentrates, 1. Fourier transform infrared spectra of coal. *Fuel* 61: 682–694.
- Kuhlbusch TAJ. 1998. Black carbon in soils, sediments and ice cores. In: Meyers, ed. *Encyclopedia of Environmental Analysis and Remediation*. New York: John Wiley, pp. 813–823.
- Kuo DTF, Van der Sande JB, Gschwend PM. 2013. Characterization of black carbon in geosorbents at the nanometer scale by STEM-EDX elemental mapping. *Org Geochem* 56: 81–93. DOI: [10.1016/j.orggeochem.2012.12.012](https://doi.org/10.1016/j.orggeochem.2012.12.012).
- Lafargue E, Marquis F, Pillot D. 1998. Rock-Eval 6 applications in hydrocarbon exploration, production and soil contamination studies. *Rev I Fr Pétrol* 53(4): 421–437.

- Lehmann J, Skjemstad J, Sohi S, Carter J, Barson M, Falloon P, *et al.* 2008. Australian climate-carbon cycle feedback reduced by soil black carbon. *Naturegeoscience* 1: 832–835.
- Masiello CA, 2004. New directions in black carbon organic geochemistry. *Mar Chem* 92: 201–213.
- Meredith W, Ascough PL, Bird MI, Large DJ, Snape CE, Sun Y, *et al.* 2012. Assessment of hydrolysis as a method for the quantification of black carbon using standard reference materials. *Geochim Cosmochim Acta* 97: 131–147.
- Nichols JD. 1999. Resource assessment of selected Tertiary coal beds and zones in the Northern Rocky Mountains and Great Plains region. U.S. Geological Survey, Professional Paper, 1625-A, chapter WB, 14 p.
- Noël H. 2001. Caractérisation et calibration des flux organiques sédimentaires dérivant du bassin versant et de la production aquatique (Annecy, le Petit Lac) – Rôles respectifs de l'Homme et du Climat sur l'évolution des flux organiques au cours des 6000 dernières années. Doctoral thesis. University of Orléans, 279 p.
- Noël H, Garbolino E, Brauer A, Lallier-Vergès E, De Beaulieu JL, Disnar JR. 2001. Human impact and soil erosion during the last 5000 yrs as recorded in lacustrine sedimentary organic matter at Lac d'Annecy, the French Alps. *J Paleolim* 25: 229–244.
- Oberlin A, Villey M, Combaz A. 1980. Influence of elemental composition on carbonization – pyrolysis of kerosene shale and kuckersite. *Carbon* 18: 347–353.
- Poot A, Quika JTK, Veld H, Koelmans AA. 2009. Quantification methods of Black Carbon: Comparison of Rock-Eval analysis with traditional methods. *J Chromato A* 1216: 613–622.
- Quénéa K, Derenne S, Gonzalez-Vila FJ, Mariotti A, Rouzaud JN, Largeau C. 2005. Study of the composition of the macromolecular refractory fraction from an acidic sandy forest soil (Landes de Gascogne, France) using chemical degradation and electron microscopy. *Org Geochem* 36: 1151–1162.
- Raymond PA, Bauer JE. 2001. Riverine export of aged terrestrial organic matter to the North Atlantic Ocean. *Nature* 409: 497–500.
- Riesser B, Starsinic M, Squires E, Davis A, Painter PC. 1984. Determination of aromatic and aliphatic CH groups in coal by FT-i.r. 2. Studies of coals and vitrinite concentrates. *Fuel* 63: 1253–1261.
- Roth PJ, Lehndorff E, Brodowski S, Bornemann L, Sanchez-García L, Gustafsson O, *et al.* 2012. Differentiation of charcoal, soot and diagenetic carbon in soil: Method comparison and perspectives. *Org Geochem* 46: 66–75.
- Rouzaud JN, Oberlin A. 1989. Structure, microtexture and optical properties of anthracene and saccharose-based carbons. *Carbon* 27: 517–529.
- Rouzaud JN, Oberlin A. 1990. The characterization of coals and cokes by transmission electron microscopy. In: H Charcosset, B Nickel-Pepin-Donat, eds. *Advanced methodologies in coal characterization. Coal Science and Technology* 15: 311–355, Elsevier.
- Rouzaud JN, Guechati N, Kister J, Conard J. 1991. Structural Characterization of coalification: example of Gironville borehole. *Bull Soc géol Fr* 162(2): 201–209.
- Schmidt MWI, Noack AG. 2000. Black carbon in soils and sediments: analysis, distribution, and current challenges. *Global Biogeochem. Cycles* 14: 777–794.
- Sobkowiak M, Reisser E, Given P, Painter PC. 1984. Determination of aromatic and aliphatic CH groups in coal by FT-i.r. 1. Studies of coal extracts. *Fuel* 63: 1245–1252.
- Trompowsky PM, Benites VM, Madari BE, Pimenta AS, Hockaday WC, Hatcher PG. 2005. Characterization of humic like substances obtained by chemical oxidation of eucalyptus charcoal. *Org Geochem* 36: 480–489.
- Van Exem A, Debret M, Copard Y, Vannière B, Sabatier P, Marcotte S, *et al.* 2018. Hyperspectral core logging for fire reconstruction studies. Available from <https://doi.org/10.1007/s10933-017-0009-5>.
- Vannière B, Colombaroli D, Chapron E, Leroux A, Tinner W, Magny M. 2008. Climate *versus* human-driven fire regimes in Mediterranean landscapes: the Holocene record of Lago dell'Accesa (Tuscany, Italy). *Quat Sci Rev* 27(11): 1181–1196.
- Vorres KS. 1990. The Argonne premium coal sample program. *Energy & Fuel* 4: 420–426.
- Wolf M, Lehndorff E, Wiesenberger GLB, Stockhausen M, Schwark L, Amelung W. 2013. Towards reconstruction of past fire regimes from geochemical analysis of charcoal. *Org Geochem* 55: 11–21.

Cite this article as: Debret M, Copard Y, Van Exem A, Bessereau G, Haeseler F, Rouzaud J-N. 2018. The color of refractory organic carbon, *BSGF - Earth Sciences Bulletin* 189: 9.