



HAL
open science

Reworked restite enclave: Petrographic and mineralogical constraints from the Tongshanling intrusion, Nanling Range, South China

Xu-Dong Huang, Jian-Jun Lu, Stanislas Sizaret, Ru-Cheng Wang, Jin-Wei Wu, Dong-Sheng Ma

► To cite this version:

Xu-Dong Huang, Jian-Jun Lu, Stanislas Sizaret, Ru-Cheng Wang, Jin-Wei Wu, et al.. Reworked restite enclave: Petrographic and mineralogical constraints from the Tongshanling intrusion, Nanling Range, South China. *Journal of Asian Earth Sciences*, 2018, 166, pp.1-18. 10.1016/j.jseaes.2018.07.001 . insu-01856863

HAL Id: insu-01856863

<https://insu.hal.science/insu-01856863>

Submitted on 10 Dec 2019

HAL is a multi-disciplinary open access archive for the deposit and dissemination of scientific research documents, whether they are published or not. The documents may come from teaching and research institutions in France or abroad, or from public or private research centers.

L'archive ouverte pluridisciplinaire **HAL**, est destinée au dépôt et à la diffusion de documents scientifiques de niveau recherche, publiés ou non, émanant des établissements d'enseignement et de recherche français ou étrangers, des laboratoires publics ou privés.

Reworked restite enclave: Petrographic and mineralogical constraints from the Tongshanling intrusion, Nanling Range, South China

Xu-DongHuang^{ab} Jian-JunLu^a StanislasSizaret^b Ru-ChengWang^a Jin-WeiWu^a Dong-ShengMa^a

A : State Key Laboratory for Mineral Deposits Research, School of Earth Sciences and Engineering, Nanjing University, Nanjing 210023, China

B : Institut des Sciences de la Terre d'Orléans, UMR 7327-CNRS/Université d'Orléans/BRGM, Orléans 45071, France

Abstract

Microgranular enclaves, which can provide important petrogenetic indications for the host granitoids, are commonly observed in the Middle-Late Jurassic Cu-Pb-Zn-bearing granodiorites in the Nanling Range of South China. The origin of these Cu-Pb-Zn-bearing granodiorites is still controversial, with two different hypotheses: crust-mantle mixing and partial melting of the mafic lower crust, primarily based on geochemistry and geochronology. Detailed petrographic and mineralogical studies have been carried out on the Tongshanling granodiorite and its microgranular enclaves to provide new textural and compositional constraints on the petrogenesis. The microgranular enclaves have dioritic compositions with a mineralogy dominated by plagioclase, amphibole, and biotite. Abundant residual materials, such as mafic mineral clots, inherited and metamorphic zircon, and Ca-rich core plagioclase, occur in the enclaves and are in favor of a restite origin. The amphibole-rich clots are considered as vestiges of residual pyroxene-rich precursors from the source. Three different types of amphibole, i.e., magmatic, metamorphic, and magma reworked metamorphic amphibole, have been recognized in the granodiorite and its enclaves. The magmatic amphibole occurs as enclosed and idiomorphic isolated crystals in the granodiorite with Al and Si contents of 1.34–2.12 apfu (atoms per formula unit) and 6.25–6.88 apfu, respectively, and a Σ REE content of 307–764 ppm. The metamorphic amphibole, with a granoblastic triple-junction texture, occurs as aggregated crystals dominantly in the enclaves and a few in the granodiorite. It has actinolitic compositions (Al: 0.31–0.81 apfu, Si: 7.33–7.72 apfu) and distinctly lower contents of incompatible elements (Σ REE: 99–146 ppm). The magma reworked amphibole has intermediate compositions (Al: 0.81–1.59 apfu, Si: 6.71–7.35 apfu, Σ REE: 317–549 ppm) between the magmatic and metamorphic amphibole. The zonal amphibole-rich clots exhibit increasing Al and decreasing Si contents from interior amphibole to exterior amphibole and also from core to rim in amphibole grains, and the outer parts of enclave magmatic zircon have higher ThO₂ + UO₂ contents and lower Zr/Hf ratios than the inner parts, showing the process of magma reworking of the restite enclaves. Based on the textural and compositional evidence, these microgranular enclaves are thought to be reworked restite enclaves. This is also supported by thermobarometric calculation. A model illustrating the formation process of reworked restite enclave has been proposed. Combined with previous experimental studies of partial melting, the Tongshanling granodiorite is deduced to be derived from dehydration melting of amphibolite in the mafic lower crust. The fertile amphibolitic source is beneficial to the formation of Cu-Pb-Zn-bearing granodiorites in the Nanling Range.

Keywords : Amphibole, Textural feature, Mineral composition, Microgranular enclave, Cu-Pb-Zn-bearing granodiorite, Nanling range

1. Introduction

Microgranular enclaves in granitoids have long been studied, as they can provide significant information for the petrogenetic mechanism of their host granitoids. Various models have been proposed to explain the origin of microgranular enclaves, including magma mixing, restite after partial melting, accidental xenolith, and disrupted cumulate (autolith) (Didier, 1973, Didier and Barbarin, 1991), among which magma mixing (Vernon, 1984, Dorais et al., 1990, Poli and Tommasini, 1991, Blundy and Sparks, 1992, Yang et al., 2004, Yang et al., 2007, Barbarin, 2005, Zhao et al., 2010, Cheng et al., 2012, Perugini and Poli, 2012, Fu et al., 2016, Zhang et al., 2016) and restite (White and Chappell, 1977, Chappell et al., 1987, Chen et al., 1989, Chen et al., 1990, Chen et al., 1991, Chappell and White, 1991, Chappell, 1996, White et al., 1999, Chappell and Wyborn, 2012) were the most hotly debated hypotheses. In recent years, mixing of mafic and felsic magmas was the most popular petrogenetic interpretation for dark microgranular enclaves and their host granitoids which show juvenile and evolved isotopic signatures, respectively (e.g., Yang et al., 2004, Yang et al., 2007, Zhao et al., 2010, Cheng et al., 2012, Fu et al., 2016). This interpretation was also frequently cited for those granitoids and enclaves with similar isotopic compositions (e.g., Jiang et al., 2009, Liu et al., 2013, Luo et al., 2015). However, it is noteworthy that magma mixing is primarily controlled by the viscosities of different end-members, and a low viscosity interval between mafic and felsic magmas favors their mixing (Sato and Sato, 2009, Perugini and Poli, 2012, Laumonier et al., 2014a, Laumonier et al., 2014b, Laumonier et al., 2015). Under experimental conditions of 300 MPa and relatively slow strain rates (10^{-5} – 10^{-3} s⁻¹), the rheological threshold for mixing of basaltic and haplotonalitic magmas under water-absent and water-saturated conditions occurs at 1160–1170 °C (Laumonier et al., 2014a) and around 1000 °C (Laumonier et al., 2015), respectively. It is inconceivable for most natural granitic magmas to keep such high temperatures to have a large-scale mixing with mafic magmas. Wu et al. (2007) pointed out that the existence of magmatic enclaves is indicative of a limited magma mixing.

In the Nanling Range of South China, dark microgranular enclaves are commonly observed in the Middle-Late Jurassic Cu-Pb-Zn-bearing granodiorites, such as the Tongshanling (Jiang et al., 2009) and Baoshan (Xie et al., 2013) granodiorites. Previous studies interpreted these enclaves as a result of mantle-derived mafic magma and crust-derived felsic magma mixing (Jiang et al., 2009, Xie et al., 2013), and it was widely considered that the Middle-Late Jurassic Cu-Pb-Zn-bearing granodiorites have an origin of crust-mantle mixing (e.g., Wang et al., 2003a, Jiang et al., 2009, Li et al., 2012, Xie et al., 2013, Zhao et al., 2016). However, another hypothesis, partial melting of the mafic lower crust, has been proposed in recent years (Yang et al., 2016, X.D. Huang et al., 2017), and gave rise to a reconsideration of the origin of the Cu-Pb-Zn-bearing granodiorites. The arguments for these two different interpretations were both primarily based on geochemistry and geochronology, but petrographic and mineralogical evidence was absent.

The Tongshanling intrusion, which is a typical Cu-Pb-Zn-bearing granodiorite containing microgranular enclaves and has been intensely studied in terms of geochronology and geochemistry, was chosen as the research target. In this study, detailed petrographic and mineralogical researches have been carried out on the Tongshanling granodiorite and its microgranular enclaves to better constrain the genesis of microgranular enclaves and provide

petrogenetic implications for the Middle-Late Jurassic Cu-Pb-Zn-bearing granodiorites in the Nanling Range.

2. Geological setting

The Yangtze and Cathaysia Blocks construct the South China Craton (Fig. 1) by a Neoproterozoic amalgamation. South China is a world famous large granitic province, especially characterized by the widespread Late Mesozoic granites, which have a total exposure area of 114,400 km² (Sun, 2006). Economically significant rare, precious, and base metal mineralization is genetically associated with these Late Mesozoic granites. Palaeo-Pacific plate subduction models have been proposed (Zhou and Li, 2000, Li and Li, 2007, Zhao et al., 2017) and widely applied to interpret the geodynamic mechanism of the Late Mesozoic granitic magmatism and related polymetallic mineralization in South China (e.g., Jiang et al., 2009, Liu et al., 2013, Yang et al., 2016, Zhao et al., 2016, X.D. Huang et al., 2017, Zhao and Zhou, 2018). Previous studies suggested that, under an extensional tectonic background which was induced by the palaeo-Pacific plate subduction, crust-mantle interaction played an important role in petrogenetic and metallogenic process (Zhou and Li, 2000), particularly for the Late Mesozoic Cu-polymetallic deposits (e.g., Wang et al., 2011, Li et al., 2012, Zhou et al., 2013, Zhao et al., 2016, Hu et al., 2017).

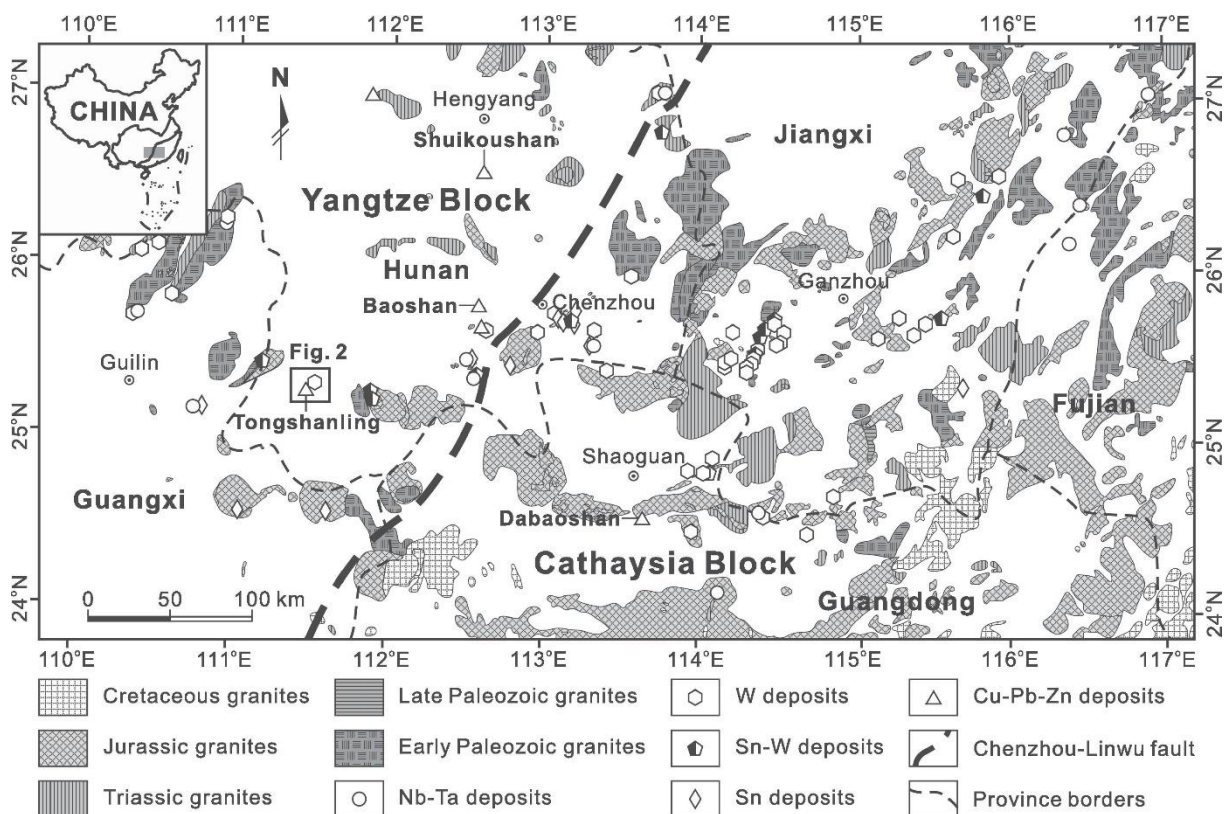


Fig. 1. Distribution of multiple-aged granites and related mineral deposits in the Nanling Range of South China (modified after Chen et al., 2008, Chen et al., 2013).

The Nanling Range of South China is the most important W, Sn, and rare metals ore district in China. In spite of the distribution of multiple-aged granites and related deposits (Fig. 1), Middle-Late Jurassic is the most important magmatic and metallogenic epoch in the Nanling Range. The Middle-Late Jurassic ore-bearing granites in the Nanling Range can be divided into W-, Sn-, Nb-Ta-, and Cu-Pb-Zn-bearing granites (Fig. 1; Chen et al., 2008, Chen et al., 2013, X.D. Huang et al., 2017). The Cu-Pb-Zn-bearing granites are mainly metaluminous, high-K calc-alkaline and weakly evolved granodiorites, which show features of I-type granites, such as the Shuikoushan, Baoshan, Tongshanling, and Dabaoshan granodiorites (Fig. 1; Wang et al., 2003a, Wang, 2010, Xie et al., 2013, Yang et al., 2016, X.D. Huang et al., 2017).

The Tongshanling area is located in the western Nanling Range and in southern Hunan Province (Fig. 1). Devonian and Carboniferous carbonate rocks constitute the predominant stratigraphy of this area (Fig. 2). The regional structures are dominated by north-south- to northeast-southwest-striking folds and faults (Fig. 2). As the main intrusive rocks in this area, the Tongshanling granodiorite and Weijia granite are genetically associated with Cu-Pb-Zn and W mineralization, respectively (Fig. 2; X.D. Huang et al., 2017).

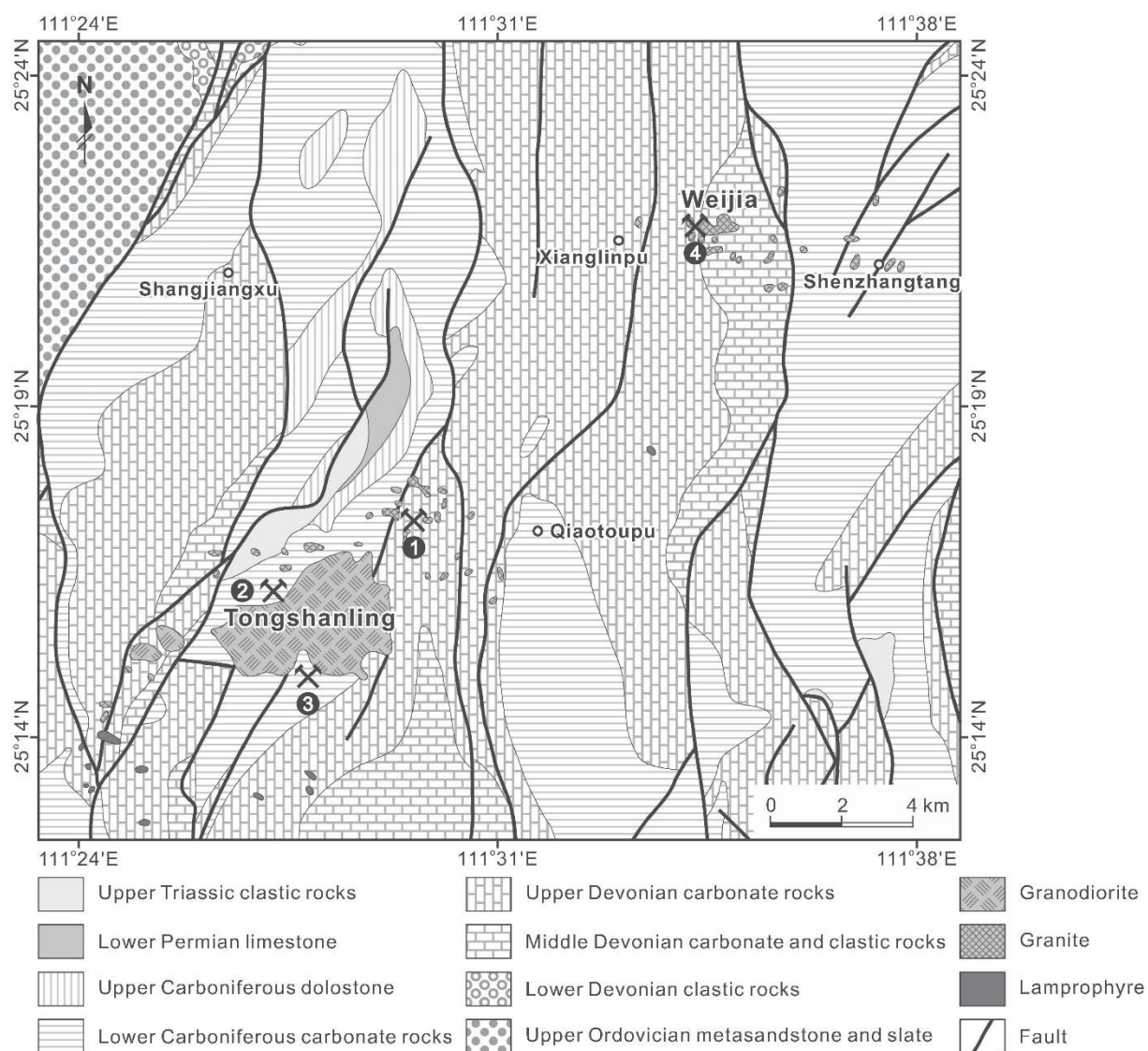


Fig. 2. Geological map of the Tongshanling area in southern Hunan Province (modified after Regional Geological Survey Team of Hunan Geology Bureau, 1975a, Regional Geological Survey Team of Hunan Geology Bureau, 1975b). 1: Tongshanling Cu-Pb-Zn deposit; 2: Jiangyong Pb-Zn-Ag deposit; 3: Yulong Mo deposit; 4: Weijia W deposit.

3. Tongshanling granodiorite and its microgranular enclaves

The Tongshanling intrusion as stock with a total exposure area of 12 km² (Fig. 2) has an approximately homogeneous composition of amphibole-bearing biotite granodiorite (Fig. 3a) and does not show obvious lithological zonation except for local variation of mineral granularity. It has SiO₂ contents of 63.7–70.1 wt% and is metaluminous (aluminum saturation index: 0.9–1.0), high-K calc-alkaline and weakly fractionated [CaO/(Na₂O + K₂O): 0.3–0.6; Rb/Sr: 0.5–1.3], and shows characteristics of I-type granites (X.D. Huang et al., 2017). Three deposits, the Tongshanling Cu-Pb-Zn deposit, Jiangyong Pb-Zn-Ag deposit, and Yulong Mo deposit, are distributed around this intrusion (Fig. 2). These deposits occur in the concealed contact zone between granodiorite and carbonate rocks, and its peripheral zone. By zircon U-Pb and molybdenite Re-Os dating, it was revealed that the Tongshanling granodiorite (164–160 Ma; Jiang et al., 2009, Zhao et al., 2016, X.D. Huang et al., 2017) and its surrounding deposits (162–160 Ma; Huang and Lu, 2014, Lu et al., 2015, Zhao et al., 2016) were formed contemporaneously.

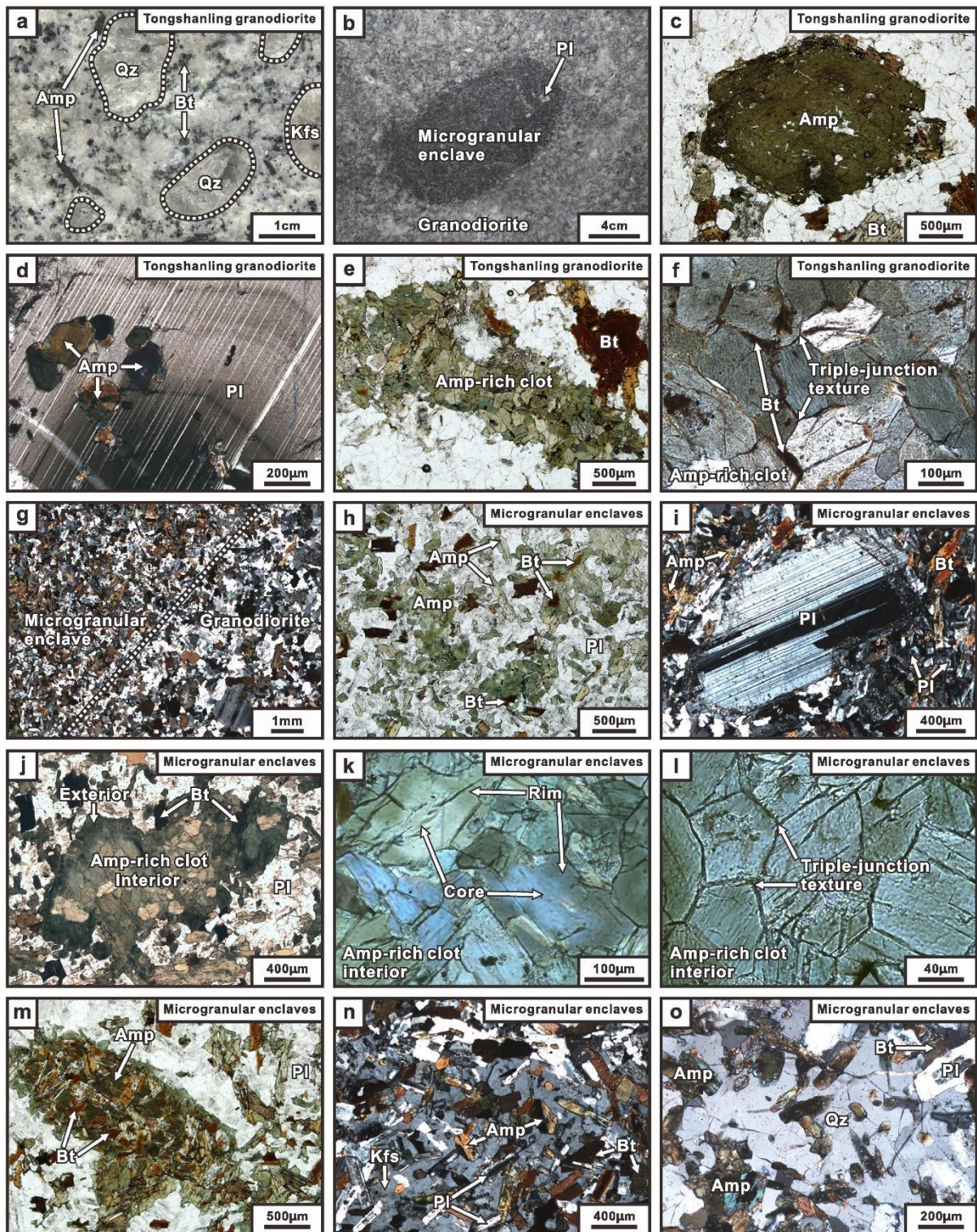


Fig. 3. Petrographic photographs of the Tongshanling granodiorite and its microgranular enclaves. (a) Medium- to coarse-grained and porphyritic texture of the amphibole-bearing biotite granodiorite at specimen scale. (b) An ellipsoidal dark enclave in the granodiorite, which contains a few plagioclase phenocrysts, shows a gradational contact with the host, and does not have a chilled margin with magmatic flow foliation. (c) Idiomorphic and isolated amphibole in the granodiorite, plane-polarized light. (d) Enclosed amphibole in the granodiorite, crossed-polarized light. (e) Amphibole-rich clot in the granodiorite, which is

mainly comprised of aggregated fine-grained amphibole with a few biotite and plagioclase, plane-polarized light. (f) Granoblastic triple-junction texture of the amphibole-rich clot with a few interstitial anhedral biotite crystals, in the granodiorite, plane-polarized light. (g) Gradational transition from an enclave to the host granodiorite with increasing mineral granularity and decreasing proportion of mafic minerals, crossed-polarized light. (h) The enclaves are mainly composed of plagioclase, amphibole, and biotite, the mafic minerals are anhedral to subhedral and are dominated by amphibole with a few biotite, the amphibole occurs dominantly as aggregated with fewer isolated crystals, plane-polarized light. (i) Reaction rim of a plagioclase phenocryst which does not have a Ca-rich core, in the enclaves, crossed-polarized light. (j) Amphibole-rich clot in the enclaves, which has a pale-green to colorless interior and a green colored exterior, plane-polarized light. (k) Zonal amphibole crystals in the amphibole-rich clot interior with paler colored cores and deeper colored rims, in the enclaves, plane-polarized light. (l) Granoblastic triple-junction texture of the amphibole-rich clot interior without interstitial biotite, in the enclaves, plane-polarized light. (m) Intergrowth of biotite and amphibole in an amphibole-biotite clot which does not show zonal feature and granoblastic triple-junction texture, in the enclaves, plane-polarized light. (n) Poikilitic texture of a large-grained K-feldspar crystal in the enclaves, crossed-polarized light. (o) Poikilitic texture of a large-grained quartz crystal in the enclaves, crossed-polarized light. Amp = amphibole, Bt = biotite, Kfs = K-feldspar, Pl = plagioclase, Qz = quartz.

Dark microgranular enclaves are commonly found scattered throughout the Tongshanling granodiorite. They occur as separate individuals, which are several to dozens of centimeters in size and generally have round to ellipsoid shapes (Fig. 3b). The contact of the enclaves with the host rock is gradational (Fig. 3b), and chilled margin and magmatic flow foliation are absent. Most enclaves are fine-grained and homogeneous, and some contain a few plagioclase phenocrysts (Fig. 3b). Previous zircon U-Pb geochronology showed that they were formed at 163–160 Ma (Jiang et al., 2009, X.D. Huang et al., 2017), which is identical to that of the host granodiorite. These enclaves mostly have dioritic compositions (53.4–59.4 wt% SiO₂), and show similar Mg/(Mg + Fe) ratios (0.4–0.5) and HREE-depleted REE patterns with the host rock, but higher ΣREE contents and larger negative Eu anomalies (X.D. Huang et al., 2017).

4. Petrography

4.1. Tongshanling granodiorite

The Tongshanling granodiorite is medium- to coarse-grained, porphyritic (Fig. 3a), and consists primarily of plagioclase (ca. 45 vol%), K-feldspar (ca. 22 vol%), quartz (ca. 20 vol%), biotite (ca. 10 vol%), and amphibole (ca. 3 vol%). The phenocrysts are mainly 1–5 cm sized, except for some local plagioclase megacrysts with a size up to 10 cm. Plagioclase is primarily euhedral to subhedral oligoclase to andesine with zonal texture, and occasionally includes a sericitized core which has an embayed margin and generally occupies less than 30 vol% of the whole plagioclase (Fig. 4a). Amphibole is green colored and mostly occurs as euhedral (Fig. 3c) to subhedral isolated crystals, and occasionally as mineral inclusions (i.e., enclosed amphibole) in plagioclase (Fig. 3d) and K-feldspar. Besides the isolated and enclosed amphibole, another rare but remarkable amphibole is aggregated crystals which constitute millimetric polycrystalline amphibole-rich clots together with a few biotite and plagioclase (Fig. 3e). The aggregated amphibole is obviously finer grained (<300 μm) than the isolated ones and is generally connected by a granoblastic triple-junction texture (Fig. 3f).

Biotite is brown and dominantly distributes in the matrix as euhedral to subhedral crystals. A few anhedral biotite crystals are distributed as interstitial along the boundary between the aggregated amphibole grains (Fig. 3f). Accessory minerals include zircon, apatite, titanite, allanite, rutile, sulfide, and Fe-Ti oxide minerals. The Fe-Ti oxide minerals are dominated by magnetite.

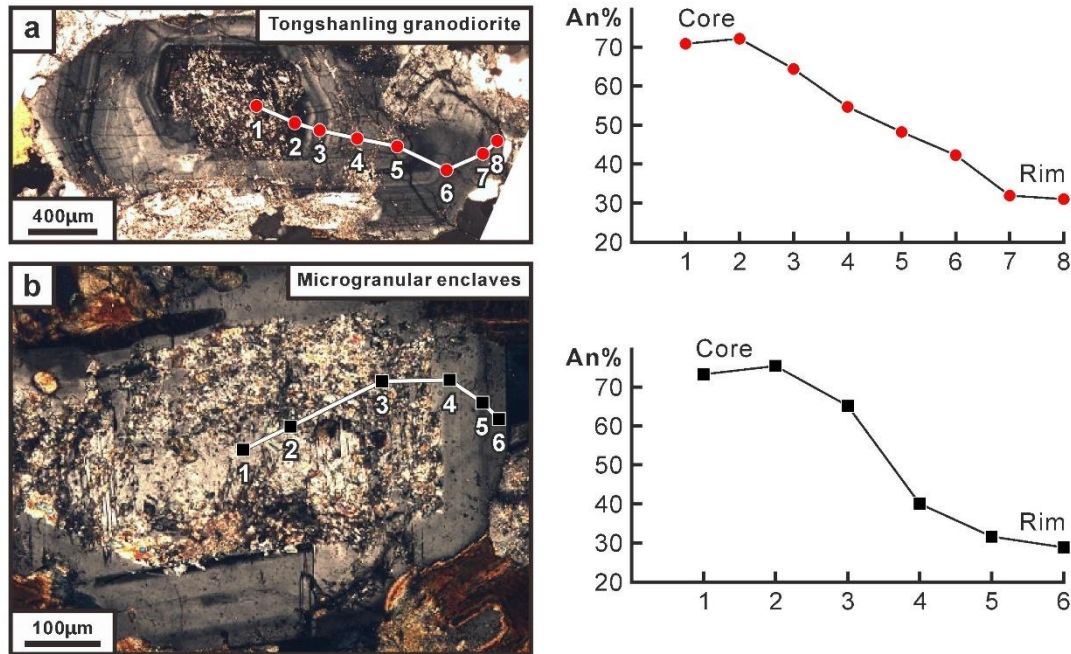


Fig. 4. Compositional zonation of plagioclase with a Ca-rich core (analysis was performed on the unaltered part) from the Tongshanling granodiorite and its microgranular enclaves.

4.2. Microgranular enclaves

The fine-grained (Fig. 3g) dioritic dark enclaves have the same minerals, even accessory minerals, as their host granodiorite but in different proportions. They generally have a plagioclase content of 50–60 vol%, and 30–50 vol% of mafic minerals (Fig. 3g and h), with a few K-feldspar and quartz. The mafic minerals of most enclaves are dominated by amphibole (Fig. 3h), with the exception of some dominated by biotite. At the contact between the enclaves and their host rock, the mineral granularity and proportion of mafic minerals change gradually rather than sharply (Fig. 3g). Plagioclase is mainly subhedral to anhedral and sometimes euhedral crystals which mostly consist of a sericitized core with an irregular margin and a fresh rim with zonal texture (Fig. 4b). The sericitized core accounts for at least 60 vol% of the whole plagioclase (Fig. 4b). Notably, the quantity of core-bearing plagioclase and the proportion of sericitized core in the enclaves are much more than those in the host granodiorite. The plagioclase phenocrysts with a reaction rim and no sericitized cores (Fig. 3i) appear occasionally. Biotite is brown and occurs primarily as anhedral to subhedral crystals. Compared with the host granodiorite, the majority of amphibole in the enclaves occurs as aggregated rather than isolated crystals (Fig. 3h). The ratio of the aggregated and isolated amphibole contents is about 5:1. The aggregated amphibole, which mainly constitutes amphibole-rich clots together with a few biotite, is anhedral and has a similar grain size (<300 μm) with the most other enclave minerals (Fig. 3h and j). The isolated amphibole is

mostly anhedral to subhedral (Fig. 3h) and never appears as idiomorphic as that in the host granodiorite (Fig. 3c). Nearly half of the amphibole-rich clots are several millimeters sized and are zoned with a pale-green to colorless interior and a deep-green colored exterior (Fig. 3j); the another half is smaller in size and does not show a color zonation (Fig. 3h). Although not always, the interior amphibole grains in the zonal clots also show a zonal feature, with the core being paler colored than the rim (Fig. 3k). However, the clot exterior amphibole grains do not show a color zonation. A granoblastic triple-junction texture can be commonly observed in the clot interior where only amphibole appears but no interstitial biotite does (Fig. 3l), whereas the clot exterior shows an anhedral granular texture of dominant amphibole and a few biotite crystals (Fig. 3j). The biotite in the clot exterior occupies no more than 5 vol% of the clot. Besides the amphibole-rich clots, some rarely-occurred mafic mineral clots are composed of amphibole and abundant biotite with an intergrowth texture, and do not have zonal feature and granoblastic triple-junction texture (Fig. 3m). In these amphibole-biotite clots, the content of biotite is about 40–50 vol%. A few large-grained K-feldspar and quartz have a poikilitic texture and include the fine-grained amphibole, biotite, and plagioclase (Fig. 3n and o).

5. Analytical methods

Major element analyses of plagioclase, amphibole, and biotite were carried out with a CAMECA SX50 electron microprobe (EMP) at Institut des Sciences de la Terre d'Orléans (ISTO), France. Zircon was analyzed by a JEOL JXA-8100 M EMP at the State Key Laboratory for Mineral Deposits Research (LAMDR), Nanjing University (NJU), China. The analytical conditions included an accelerating voltage of 15 kV, a beam current of 10 nA (CAMECA, ISTO) or 20 nA (JEOL, LAMDR, NJU) with beam diameter of 1 μm , and counting times of 10 s for all elements and 5 s for background. The collected data were corrected by the ZAF procedures. Calibration was performed using natural minerals and synthetic compounds.

Trace element contents of amphibole and biotite were determined by an Agilent 7700 \times inductively coupled plasma mass spectrometry coupled to an Excite 193 nm Photon Machines laser ablation system (LA-ICP-MS) at Nanjing FocuMS Technology Co. Ltd. Each analysis was performed by a 25–50- μm ablating spot at 5–8 Hz with energy of 5–5.5 mJ (transmittance 80%) for 40 s after measuring the gas blank for 15 s. USGS standard reference materials BIR-1G, BHVO-2G, and BCR-2G, NIST standard reference material 610, and Chinese Geological Standard Glasses CGSG-1 and CGSG-2 were used as external standards to plot calibration curve. GSE-1G was analyzed for quantity control of the time-dependent calibration for sensitivity drift. The off-line data processing was performed using a program called ICPMSDataCal (Liu et al., 2008).

6. Analytical results

6.1. Plagioclase

Representative microprobe analyses of plagioclase from the Tongshanling granodiorite and its microgranular enclaves are listed in Supplementary Table S1. In the granodiorite, most plagioclase crystals show an anorthite range from An_{21} to An_{48} (Fig. 5). The plagioclase with a sericitized core has an anorthite content of An_{71} – An_{72} and An_{31} – An_{64} at the core and rim, respectively (Fig. 4a). In the enclaves, the plagioclase rims have an anorthite content of An_{22} – An_{45} , similar to that of the core-free plagioclase in the host granodiorite, whereas, the sericitized cores show an anorthite range from An_{65} to An_{76} (Fig. 5). Thus, the enclave plagioclase shows a discontinuous compositional change from core to rim (Fig. 4b). The Ca-

rich plagioclase cores of both the granodiorite and its enclaves are almost uniform in composition without obvious zonation (Fig. 4).

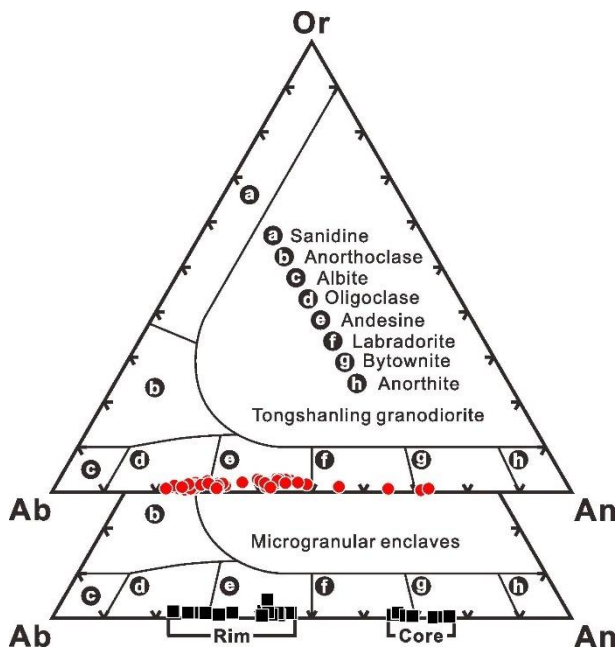


Fig. 5. Composition of plagioclase from the Tongshanling granodiorite and its microgranular enclaves.

6.2. Amphibole

The different occurrences of amphibole (i.e., enclosed, isolated, and aggregated) in the Tongshanling granodiorite and its enclaves are all calcium amphibole, and show a large compositional variation, but have quite consistent $Mg/(Mg + Fe)$ ratios (0.44–0.58) (Fig. 6; Supplementary Table S2). In the classification of Hawthorne et al. (2012), for the granodiorite, the enclosed and most isolated crystals plot in the pargasite field; some isolated ones plot in the magnesio-hornblende field; the core and rim of aggregated amphibole grains plot in the transition field from tremolite to magnesio-hornblende and in the magnesio-hornblende field, respectively (Fig. 6a). For the enclaves, the core and rim of clotted interior amphibole grains plot in the tremolite and in the transition field from tremolite to magnesio-hornblende, respectively; both the clotted exterior amphibole and the isolated amphibole plot in the magnesio-hornblende field (Fig. 6a).

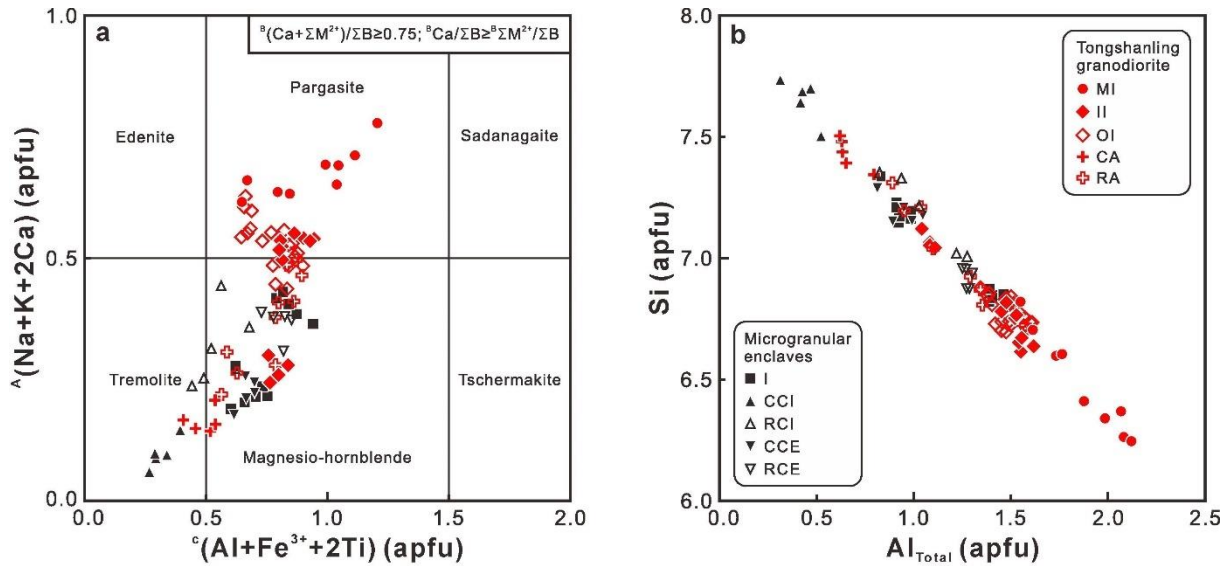


Fig. 6. Mineral chemistry of amphibole from the Tongshanling granodiorite and its microgranular enclaves. (a) Classification diagram of amphibole (General formula: $A_{0-1}B_2C_5T_8O_{22}(OH, F, Cl)_2$, after Hawthorne et al., 2012), when $Mg/(Mg + Fe^{2+}) < 0.9$, the tremolite field represents an actinolitic composition (according to Leake et al., 1997). (b) Si (apfu)- Al_{Total} (apfu) diagram. MI: mineral inclusion; II: inner of isolated amphibole; OI: outer of isolated amphibole; CA: core of aggregated amphibole grains; RA: rim of aggregated amphibole grains; I: isolated amphibole; CCI: core of clot interior amphibole grains; RCI: rim of clot interior amphibole grains; CCE: core of clot exterior amphibole grains; RCE: rim of clot exterior amphibole grains.

Among all the different occurrences of amphibole, the enclosed amphibole in the granodiorite has the highest Al [1.55–2.12 apfu (atoms per formula unit)] and lowest Si (6.25–6.82 apfu) contents (Fig. 6b). Most isolated amphibole crystals in the granodiorite have Al contents of 1.34–1.62 apfu and Si contents of 6.62–6.88 apfu and a few have obviously lower Al (1.04–1.11 apfu) and higher Si (7.04–7.12 apfu) contents (Fig. 6b). The aggregated amphibole of both the granodiorite and its enclaves shows distinctly lower Al and higher Si contents than the enclosed and dominant isolated amphibole in the granodiorite (Fig. 6b). The core of aggregated amphibole grains in the granodiorite has lower Al contents (0.63–0.81 apfu) and higher Si contents (7.33–7.49 apfu) than the rim (Al: 0.90–1.59 apfu; Si: 6.71–7.31 apfu) (Fig. 6b). Particularly, the core of clot interior amphibole grains in the enclaves shows actinolitic compositions [$Mg/(Mg + Fe^{2+}) < 0.9$; Fig. 6a; Supplementary Table S2] with the lowest Al (0.31–0.52 apfu) and highest Si (7.49–7.72 apfu) contents and the rim has higher Al (0.82–1.28 apfu) and lower Si (7.01–7.35 apfu) contents than the core (Fig. 6b). Notably, although the clot exterior amphibole grains do not show a color zonation, they have zoned compositions, with the core having lower Al contents (0.81–1.05 apfu) and higher Si contents (7.16–7.30 apfu) than the rim (Al: 1.25–1.30 apfu; Si: 6.88–6.97 apfu) (Fig. 6b). At clot scale, the exterior of zonal amphibole-rich clots shows more Al-enriched and Si-depleted amphibole compositions than those of the interior (Fig. 6b). The isolated amphibole in the enclaves can be divided into two different groups with low-Al, high-Si and high-Al, low-Si compositions, respectively (Fig. 6).

Trace element compositions of amphibole are listed in Supplementary Table S3. The isolated amphibole in the granodiorite has flat REE patterns with weak LREE depletions and obvious Eu negative anomalies (Fig. 7a). The ΣREE contents are 307–764 ppm and the mean δEu [$\delta Eu = 2Eu_N/(Sm_N + Gd_N)$] value is 0.05. The rim of clot interior amphibole grains and the

isolated amphibole in the enclaves, with Σ REE contents of 485–525 ppm and 317–549 ppm, respectively, have the similar REE patterns and mean δ Eu value (0.06) (Fig. 7b and c) to the isolated amphibole in the granodiorite. In contrast, although the core of zonal interior amphibole grains in the enclaves also shows flat REE patterns with weak LREE depletions, it has distinctly lower Σ REE contents (99–146 ppm) and a slightly higher mean δ Eu value (0.09) (Fig. 7b). In the trace element binary diagrams (Fig. 8), it is clearly separated from the other occurrences of amphibole by lower contents of Rb, Sr, Cs, Ba, Zr, Hf, Nb, Ta, Th, U, Σ REE, Y, Zn, Pb, Sn, W, V, Sc, Ga, and In.

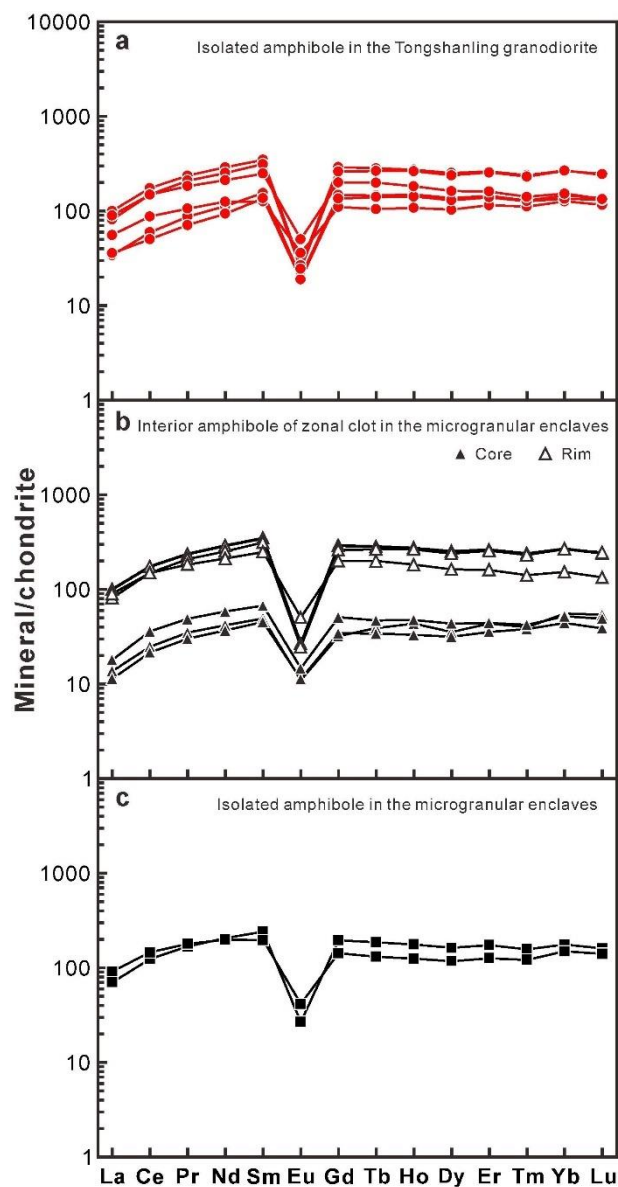


Fig. 7. Chondrite-normalized (Boynnton, 1984) REE patterns of amphibole from the Tongshanling granodiorite and its microgranular enclaves.

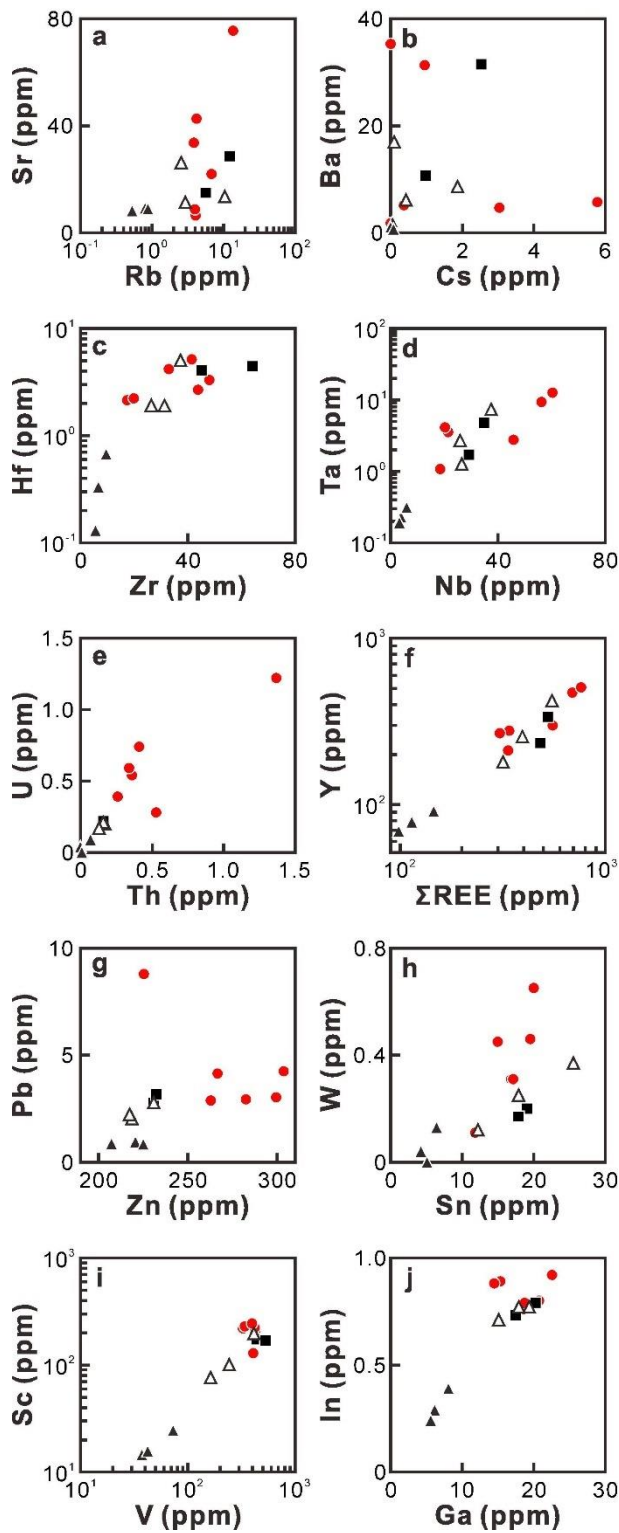


Fig. 8. Trace element binary diagrams of amphibole from the Tongshanling granodiorite and its microgranular enclaves. Legends are the same as Fig. 7.

6.3. Biotite

Biotite crystals of the Tongshanling granodiorite and its microgranular enclaves have similar major element compositions (Supplementary Table S4). Their Mg/(Mg + Fe) ratio varies in a

narrow range of 0.39–0.48. In the classification of Tischendorf et al. (1997), they plot dominantly in the Fe biotite field and some in the Mg biotite field (Fig. 9). However, they show some differences in the trace element compositions (Supplementary Table S3). The enclave biotite has lower Sr, Ba, Σ REE, Y, Zn, Pb, W, Sc, Co, Ni, Ga, and In contents, and higher Sn and V contents than that of the granodiorite (Fig. 10, Fig. 11).

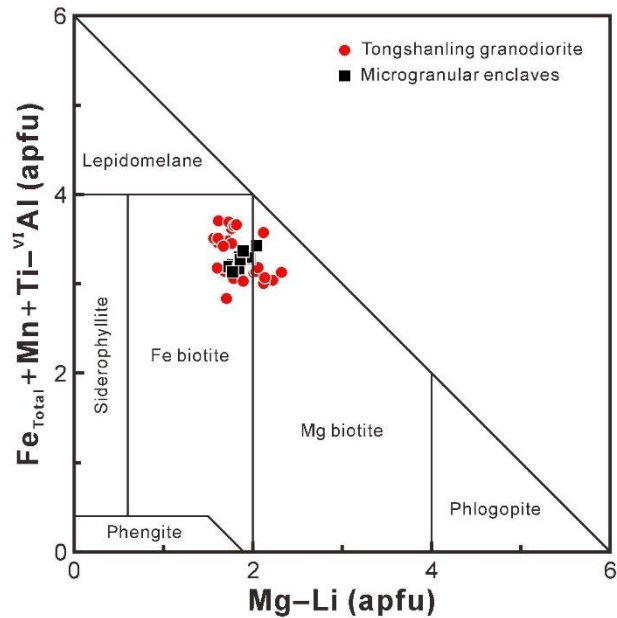


Fig. 9. Classification diagram of biotite (after Tischendorf et al., 1997) from the Tongshanling granodiorite and its microgranular enclaves.

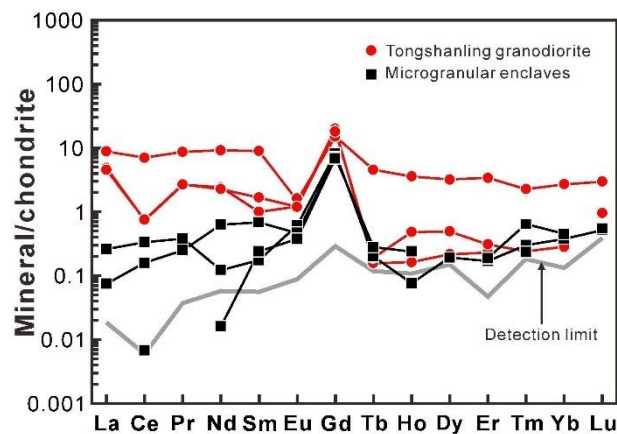


Fig. 10. Chondrite-normalized (Boynnton, 1984) REE patterns of biotite from the Tongshanling granodiorite and its microgranular enclaves.

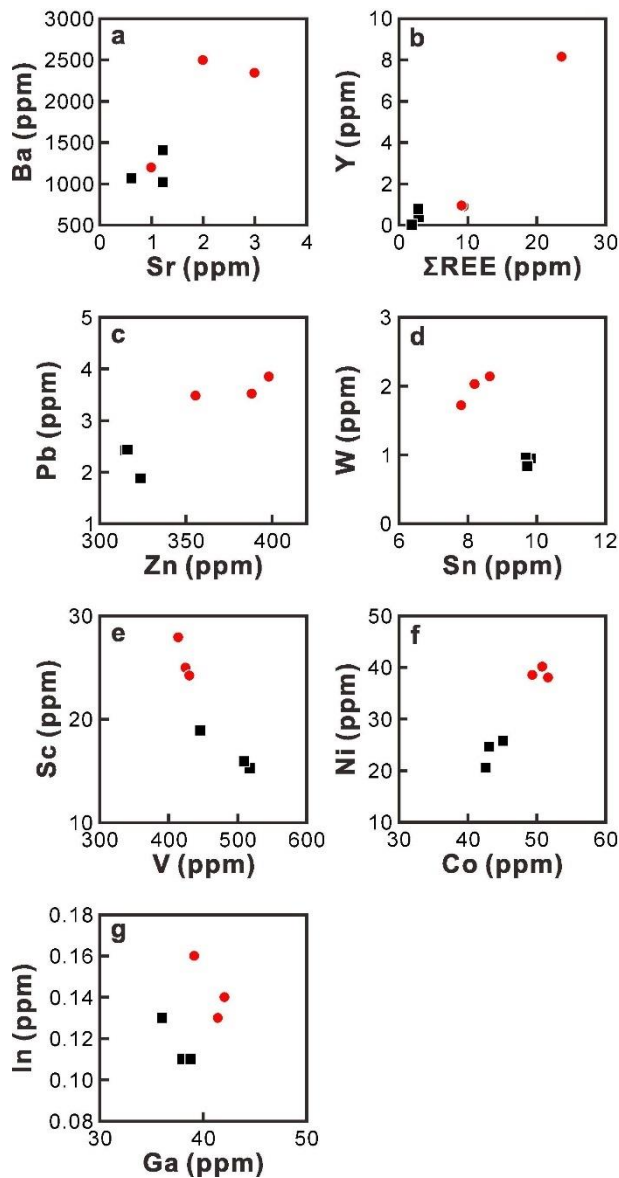


Fig. 11. Trace element binary diagrams of biotite from the Tongshanling granodiorite and its microgranular enclaves. Legends are the same as Fig. 9, Fig. 10.

6.4. Zircon

Magmatic zircon of the granodiorite shows well-developed oscillatory zoning, and generally includes an inherited core (Fig. 12a). Their $\text{ThO}_2 + \text{UO}_2$ contents and Zr/Hf ratios are 0.01–0.44 wt% and 68–94, respectively (Fig. 12b; Supplementary Table S5). In the enclaves, inherited zircon cores are also present (Fig. 12c). The magmatic zircon generally comprises an inner part with bright cathodoluminescence (CL) image and an outer part with dark CL image (Fig. 12c). The outer parts have higher $\text{ThO}_2 + \text{UO}_2$ contents and lower Zr/Hf ratios than the inner parts and are compositionally more similar to the magmatic zircon in the host granodiorite (Fig. 12b; Supplementary Table S5). It is worth noting that about 80% of the enclave zircon grains show chaotic internal textures without oscillatory zoning (Fig. 12d and e), and sometimes are surrounded by an oscillatory-zoned magmatic rim (Fig. 12f).

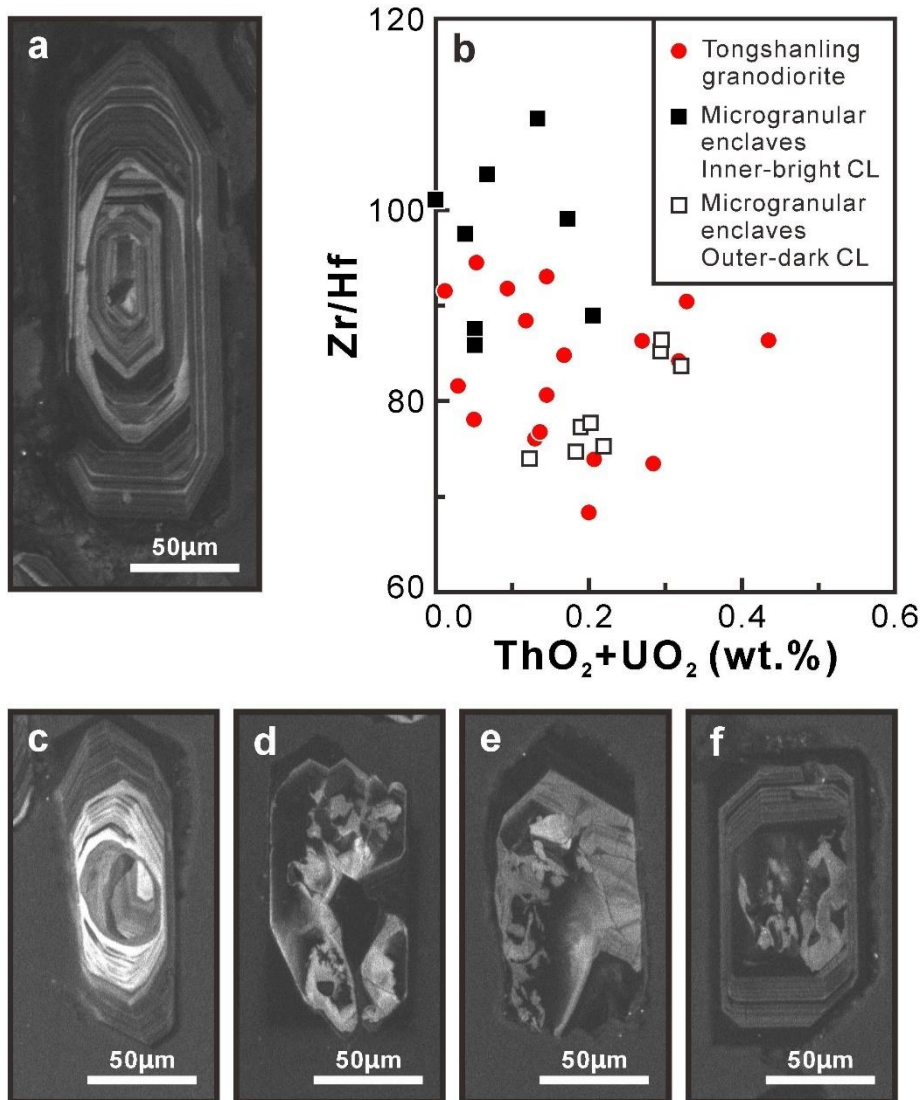


Fig. 12. Texture and mineral chemistry of zircon from the Tongshanling granodiorite and its microgranular enclaves. (a) CL image of a magmatic zircon with an inherited core from the granodiorite. (b) Zr/Hf-ThO₂ + UO₂ (wt.%) diagram of magmatic zircon from the granodiorite and its enclaves. (c) CL image showing the compositional zonation of a magmatic zircon with an inherited core from the enclaves. (d and e) Chaotic internal textures of metamorphic zircon in the enclaves. (f) Metamorphic zircon with a magmatic rim in the enclaves.

7. Discussion

7.1. Textural evidence

7.1.1. Residual materials

The restite model was mostly discussed and developed by the studies of granites and their enclaves in the Lachlan Fold Belt (White and Chappell, 1977, Chappell et al., 1987, Chen et al., 1989, Chen et al., 1990, Chen et al., 1991, Chappell and White, 1991, Chappell, 1996, White et al., 1999, Chappell and Wyborn, 2012). Restite microgranular enclaves in calc-alkaline I-type granitoids generally have some diagnostic textural features as follows: (1) remnants of refractory materials, such as Ca-rich plagioclase, inherited zircon, and possibly

pyroxene produced by dehydration melting reactions; (2) mafic mineral clots coexisted with Ca-rich plagioclase; (3) residual metamorphic texture inherited from the source.

In the enclaves of the Tongshanling granodiorite, mafic mineral clots are widely scattered (Fig. 3h, j, and m). These clots are comprised of anhedral to subhedral crystals and do not exhibit the typical texture of serial crystallization as in magmatic rocks. The metamorphogenic granoblastic triple-junction texture in the interior of zonal amphibole-rich clots (Fig. 3l) directly reflects the restite information from the metamorphic source (Castro and Stephens, 1992, Sial et al., 1998). The commonly occurred old zircon cores (Fig. 12c; X.D. Huang et al., 2017) are also indicative of an inheritance from the crustal source. The chaotic internal texture of the dominant enclave zircon grains (Fig. 12d and e) is different from the magmatic oscillatory-zoned texture and is similar to the convoluted zoning and recrystallization texture of zircon formed by high-temperature metamorphism (Hoskin and Black, 2000, Corfu et al., 2003, Wu and Zheng, 2004, Harley et al., 2007). In all probability, this kind of zircon is metamorphic zircon maintained from the source after partial melting. With an irregular margin and almost uniform composition without zonation (Fig. 4b), the sericitized Ca-rich plagioclase cores are distinctly different from the fresh zonal magmatic plagioclase. The confined sericitization only in the core rather than in the rim (Fig. 4b) may indicate that the core plagioclase was an early existed phase which has been altered by magmatic fluids before the crystallization of rim plagioclase. Therefore, these plagioclase cores are thought to be of a restite origin. They are analogous to the residual plagioclase described by Chappell et al. (1987). The existence of these residual minerals implicates that the temperature of partial melting was insufficient to thoroughly melt the source materials. Thus, these microgranular enclaves are restite enclaves and show the same petrographic features as the restite enclaves of I-type granites in the Lachlan Fold Belt (e.g., Chen et al., 1990, Chen et al., 1991).

7.1.2. Vestiges of magma reworking

The textural vestiges of restite enclaves reworked by the host magma are evident in the microgranular enclaves. The plagioclase phenocrysts in the enclaves show identical features to the matrix plagioclase in the host granodiorite with a similar granularity and composition ($An_{30} - An_{40}$, measured by optical microscope) and without Ca-rich cores (Fig. 3i). They were probably formed by transfer of accidental crystals from the host magma. White et al. (1999) emphasized that the restite enclaves could contain a melt phase which has been produced during partial melting but is insufficient to disaggregate the enclave into the magma. The reaction rim of plagioclase phenocryst (Fig. 3i) could be formed by reaction of the accidental plagioclase with the initial melt in the enclaves. Vernon (1991) pointed out that poikilitic texture results from magmatic crystallization with relatively low nucleation rates and high growth rates. Thus, the poikilitic texture of K-feldspar (Fig. 3n) and quartz (Fig. 3o) in the enclaves in all probability reflects an input of late-stage silica-rich melt from the host magma. There is a progressive change of texture and mineral proportion from the zonal amphibole-rich clot interior to exterior (Fig. 3j-l) and then to the amphibole-biotite clot (Fig. 3m), with gradually obscurer granoblastic triple-junction texture and elevated biotite content, showing a progressive reaction process of the restite with the accidental melt from the host magma. This accidental melt was also probably responsible for the formation of the magmatic rims of residual plagioclase (Fig. 4b) and zircon (Fig. 12c and f). The process of magma reworking is also reflected by the gradational contact between the enclaves and the host granodiorite (Fig. 3g).

7.2. Compositional evidence

7.2.1. Magmatic amphibole

Both natural amphibole (Duan and Jiang, 2017) and experimental studies (Schmidt, 1992, Ernst and Liu, 1998) have revealed that, during magmatic crystallization with decreasing pressure and temperature, the early-crystallized amphibole is more Al-enriched and Si-depleted than the late-crystallized amphibole. The dominant idiomorphic isolated amphibole in the Tongshanling granodiorite shows normal magmatic growth zonation (Supplementary Table S2) and was evidently formed by magmatic crystallization. With higher Al and lower Si contents than the isolated amphibole (Fig. 6b), the enclosed amphibole is also of magmatic origin but was crystallized earlier than the isolated one. In the plot of the generalized tschermakite vs. edenite components (Fig. 13), the magmatic amphibole is distributed away from the tremolite end-member and is obviously separated from the other occurrences of amphibole. Assuming that the whole-rock composition of the Tongshanling granodiorite is similar to the melt composition from which the magmatic amphibole was crystallized, the REE distributions of model magmatic amphibole calculated by partition coefficients in felsic (dacitic to rhyolitic) melts (Arth, 1976) are consistent with those of the isolated amphibole (Fig. 14), further demonstrating its magmatic origin.

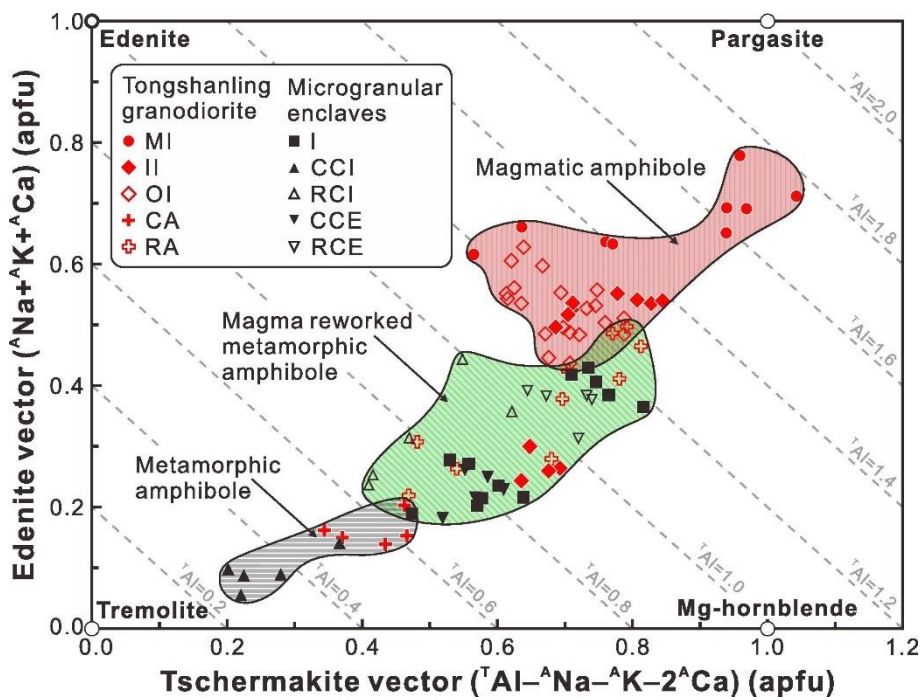


Fig. 13. Plot of the generalized tschermakite [$(^T\text{Al}-^A\text{Na}-^A\text{K}-2^A\text{Ca})$ (apfu)] vs. edenite [$(^A\text{Na} + ^A\text{K} + ^A\text{Ca})$ (apfu)] components for amphibole from the Tongshanling granodiorite and its microgranular enclaves (after Schumacher, 2007). Legends are the same as Fig. 6.

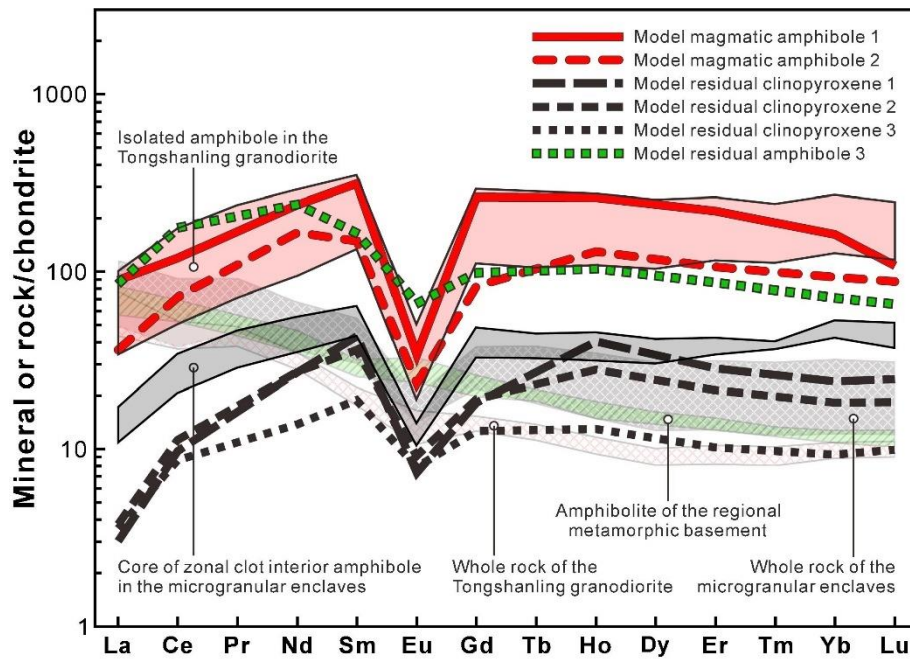


Fig. 14. REE distribution modelling of magmatic amphibole and residual clinopyroxene and amphibole. Model magmatic amphibole 1 and 2 are calculated by partition coefficients in felsic melts with rhyolitic and dacitic compositions (Arth, 1976), respectively, assuming that the whole-rock composition of the Tongshanling granodiorite is similar to the melt composition in which magmatic amphibole has been crystallized. Model residual clinopyroxene 1, 2, and 3 are calculated by partition coefficients in dacitic melt (Arth, 1976, Fujimaki et al., 1984) in terms of 10% partial melting with a restite comprised of 30% clinopyroxene + 70% plagioclase (model 1), 50% clinopyroxene + 50% plagioclase (model 2), and 45% clinopyroxene + 45% plagioclase + 10% amphibole (model 3), respectively, using the amphibolite of the regional metamorphic basement (Li, 1997) as the source rock. Model residual amphibole 3 is calculated by the restite model 3. The whole-rock REE compositions of the Tongshanling granodiorite and its microgranular enclaves are from X.D. Huang et al. (2017). The REE concentrations of all model residual minerals and natural samples are normalized by chondrite (Boynnton, 1984).

7.2.2. Metamorphic amphibole

It is notable that, compared with the magmatic amphibole, the amphibole grains in the enclave zonal clots show a contrary compositional zonation and distinctly lower Al and higher Si contents (Fig. 6b; Supplementary Table S2), indicating that they were not formed by magmatic crystallization. The clot interior amphibole has a granoblastic triple-junction texture (Fig. 31) and the grain core is compositionally close to the tremolite end-member (Fig. 13), thus the actinolitic core amphibole is considered to be of a metamorphic origin. A study of analogous amphibole-rich clots in granodiorite by Castro and Stephens (1992) argued that the actinolitic core amphibole is actually a pseudomorph after a primary pyroxene-rich precursor, which is expected to be relatively poor in Al and has been transformed into amphibole by a complex reaction. They supposed that this reaction may have occurred by hydrogenation of the primary pyroxene with a magnesio-hornblende armor [pyroxene + fluids (OH, etc.) → actinolite] or may also have occurred as a direct discontinuous reaction of the pyroxene with the melt (pyroxene + melt₁ → hornblende + melt₂). Martin (2007) considered that the former hypothesis is more dependable. The actinolitic core amphibole in the Tongshanling microgranular enclaves contains significantly lower REE contents than the magmatic amphibole (Fig. 7a and b). It is consistent with the hypothesis that the actinolitic core amphibole was transformed from primary residual pyroxene which has significantly

lower REE partition coefficients than amphibole in felsic melt (Arth, 1976, Fujimaki et al., 1984). This is also responsible for the distinctly lower contents of the other incompatible elements in the actinolitic core amphibole (Fig. 8a–h). It is reasonable that the incompatible elements tend to concentrate in melt during partial melting and give rise to a depleted remnant. The obvious Eu negative anomalies and weak LREE depletions of the actinolitic core amphibole (Fig. 7b) indicate the coexistence of plagioclase in residual materials (Stephens, 2001). This has been further demonstrated by the occurrence of abundant residual Ca-rich plagioclase cores in the enclaves. As revealed by previous experimental studies, dehydration melting of amphibolite at crustal pressure and temperature usually produces a pyroxene- and plagioclase-rich restite in which the pyroxene is dominated by clinopyroxene (Beard and Lofgren, 1991, Wolf and Wyllie, 1994, Johannes and Holtz, 1996). Using the amphibolite of the regional metamorphic basement (Li, 1997) as the source rock of the Tongshanling granodiorite, the REE distributions of model residual clinopyroxene calculated in terms of 10% partial melting with a model restite comprised of different proportions of clinopyroxene, plagioclase and amphibole are similar to the actinolitic core amphibole but with lower REE contents especially when residual amphibole occurs (Fig. 14). However, the model residual amphibole contains distinctly higher REE contents than the actinolitic core amphibole (Fig. 14). Thus, the results of REE distribution modeling indicate that the actinolitic core amphibole was transformed from primary residual pyroxene by hydrogenation, during which the REE contents had increased due to its higher REE partition coefficients, rather than directly preserved as residual amphibole.

7.2.3. Magma reworked metamorphic amphibole

The increasing Al and decreasing Si contents from core to rim of the clot interior amphibole grains and also from interior to exterior of the whole zonal clot (Fig. 6b), with a trend from metamorphic amphibole to magmatic amphibole (Fig. 13), show the process of magma reworking of the restite enclaves. In consideration of the consistent REE patterns with the magmatic amphibole (Fig. 7a and b), the rim of clot interior amphibole grains may have been formed by reaction of the actinolitic amphibole with the host magma. Castro and Stephens, 1992, Stephens, 2001 considered that this reaction was induced dominantly by diffusive exchange along the grain boundaries. With a similar compositional zonation to the clot interior amphibole but higher Al and lower Si contents (Fig. 6), the clot exterior amphibole was formed by a more intense magma reworking than the clot interior amphibole. The isolated enclave amphibole has magma reworked compositions (Fig. 13) and consistent REE patterns with the magmatic amphibole (Fig. 7a and c), suggesting that it is also magma reworked amphibole and is deduced to be transformed from isolated residual pyroxene. The high-Al and low-Si isolated amphibole may result from a more intense reworking by a late and evolved host melt than the low-Al and high-Si isolated amphibole.

7.2.4. Zircon and plagioclase

The composition zonation of enclave magmatic zircon (Fig. 12c) has recorded two different melts existed in the enclaves. X.D. Huang et al. (2017) reported that both the inner parts and outer parts of enclave magmatic zircon have consistent U-Pb ages and Hf isotopic compositions with the magmatic zircon in the host granodiorite, indicating that they were sequentially crystallized from different melts with the same origin. The outer parts have higher ThO₂ + UO₂ contents and lower Zr/Hf ratios than the inner parts, and are more similar to those of the magmatic zircon in the host granodiorite (Fig. 12b), suggesting that the outer magmatic zircon was crystallized from a late and more evolved host melt, whereas, the inner

parts with lower $\text{ThO}_2 + \text{UO}_2$ contents and higher Zr/Hf ratios (Fig. 12b) may be crystallized from the initial melt retained in restite. The magmatic rims of enclave plagioclase may have been crystallized from the initial melt or the evolved host melt. However, the consistent compositions of magmatic plagioclase in the enclaves and their host granodiorite (Fig. 5) and the discontinuous compositional change within the enclave plagioclase from core to rim (Fig. 4b) indicate that the magmatic rim plagioclase in the enclaves was in all probability dominantly crystallized from the evolved host melt.

7.2.5. Biotite

The temperature of biotite dehydration melting is much lower than that of amphibole dehydration melting (Johannes and Holtz, 1996). Therefore, the enclave biotite should not be a residual phase when amphibole broke down. However, it has lower contents of ΣREE and some other incompatible elements such as Sr, Ba, Y, Zn, Pb, and W than the magmatic biotite in the host granodiorite (Fig. 10, Fig. 11), reflecting some residual information. The consistent major element compositions of biotite in the granodiorite and its enclaves (Fig. 9) indicate an intense reworking of the restite by the host magma.

7.2.6. Residual materials in the granodiorite

There are also some residual materials in the host granodiorite, such as the old zircon cores (Fig. 12a), the Ca-rich plagioclase cores (Fig. 4a), and the rarely-occurred amphibole-rich clots (Fig. 3e). These residual materials can be directly inherited from the source after partial melting or can be derived from disaggregation of the restite enclaves reworked by the host magma. The amphibole-rich clots also have a metamorphic triple-junction texture (Fig. 3f) and mainly consist of granoblastic amphibole with an actinolitic core surrounded by a magnesio-hornblende rim (Fig. 6a), which are similar to those in the enclaves. In the amphibole-rich clots, the amphibole rim has distinctly higher Al and lower Si contents than the core (Fig. 6b), showing a magma reworked signature (Fig. 13). The low-Al and high-Si magma reworked isolated amphibole (Fig. 6, Fig. 13) may be derived from the disaggregation of amphibole-rich clots or transformed from isolated residual pyroxene just as in the enclaves.

7.2.7. Geochemical signatures

The Harker plots of the Tongshanling granodiorite and its microgranular enclaves show excellent linearities (Fig. 15). This phenomenon coincides with the restite model and was explained to be result from progressive separation of melt and restite (White and Chappell, 1977, Chappell et al., 1987). Previous studies showed that the microgranular enclaves have quite consistent evolved Sr-Nd and zircon Hf isotopic compositions with their host granodiorite, with both the enclaves and granodiorite having respective $(^{87}\text{Sr}/^{86}\text{Sr})_i$ ratios of 0.710–0.711 and 0.709–0.711, $\epsilon_{\text{Nd}}(t)$ values of –6.7 to –5.0 and –6.9 to –4.2, and zircon $\epsilon_{\text{Hf}}(t)$ values of –11.5 to –6.9 and –12.2 to –6.9 (Jiang et al., 2009, Zhao et al., 2016, X.D. Huang et al., 2017). They are distinct from those mantle-derived enclaves which have more juvenile isotopic signatures than the host granitoids (e.g., Yang et al., 2004, Yang et al., 2007, Zhao et al., 2010, Cheng et al., 2012, Fu et al., 2016). The almost contemporaneous mantle-derived mafic rocks adjacent to the Tongshanling intrusion show notably more juvenile isotopic compositions than the Tongshanling granodiorite and its enclaves, such as the Huziyan high-Mg basalt [ca. 150 Ma, $(^{87}\text{Sr}/^{86}\text{Sr})_i$: 0.705–0.706, $\epsilon_{\text{Nd}}(t)$: –1.3 to +0.7], Huilongxu lamprophyre [ca. 170 Ma, $(^{87}\text{Sr}/^{86}\text{Sr})_i$: 0.704–0.705, $\epsilon_{\text{Nd}}(t)$: –1.7 to –1.3], and Ninyuan alkaline basalt [ca. 170 Ma, $(^{87}\text{Sr}/^{86}\text{Sr})_i$: 0.704–0.705, $\epsilon_{\text{Nd}}(t)$: +5.4 to +6.1] (Wang et al.,

2003b, Li et al., 2004, Jiang et al., 2009). It was impossible to produce these enclaves with the same isotopic signatures as their host granodiorite by crust-mantle magma mixing. These isotopic features are suggestive of a crustal origin for the enclaves and preclude the possibility of mantle-derived mafic magmatic crystallization, which further support the interpretation of the enclaves as reworked restite.

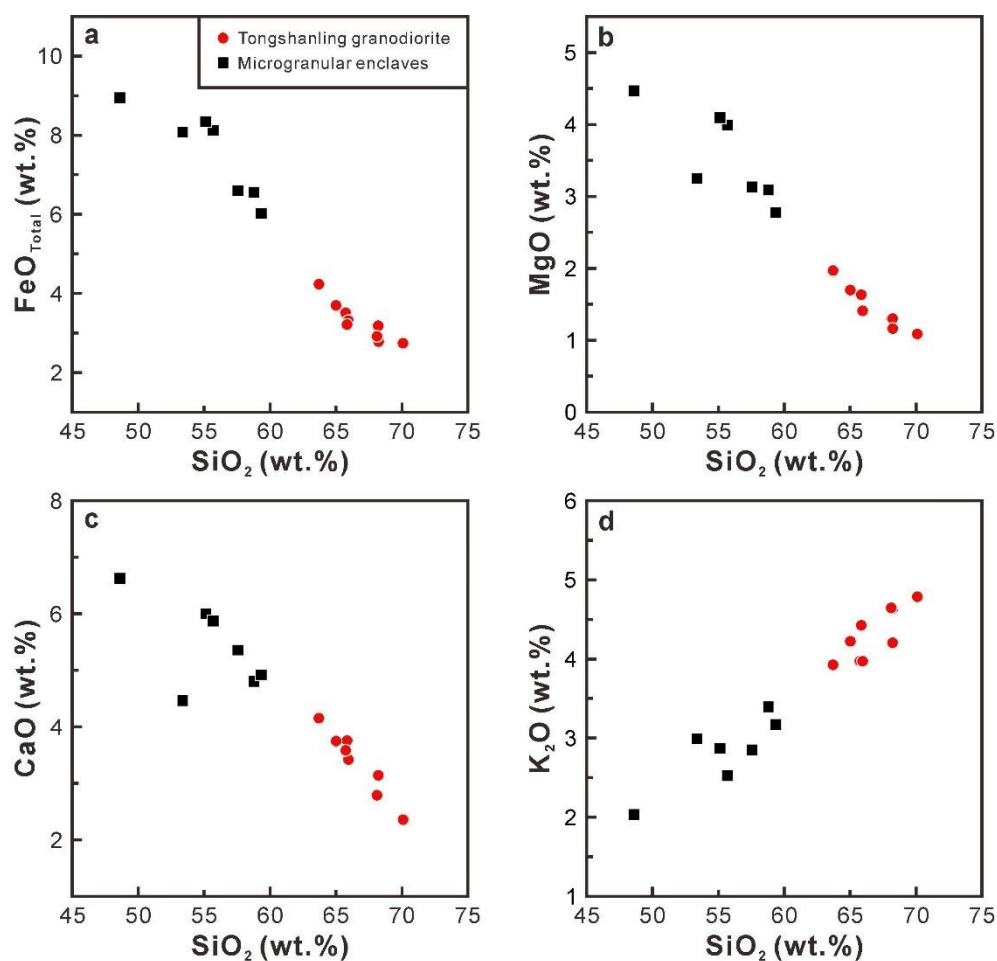


Fig. 15. Harker plots for (a) $\text{FeO}_{\text{Total}}$, (b) MgO , (c) CaO , and (d) K_2O of the Tongshanling granodiorite and its microgranular enclaves showing excellent linearities. The data are from X.D. Huang et al. (2017).

7.3. Geothermobarometry

7.3.1. Temperature

Numerous mineral thermometers, include amphibole, plagioclase, and biotite, have been proposed to estimate the temperature conditions of magmatic process (e.g., Holland and Blundy, 1994, Henry et al., 2005, Putirka, 2005, Putirka, 2008, Putirka, 2016, Ridolfi and Renzulli, 2012). Various thermometers (Table 1) were applied for temperature calculation to test the interpretation for enclave origin. Most magma reworked amphibole crystals, except for the intensely reworked high-Al and low-Si isolated amphibole and the rim of clot exterior amphibole grains in the enclaves, were not used for calculation due to their distinct compositional disequilibrium (low Al and high Si contents) with the host melt which would

inevitably lead to an underestimation of temperature. The detailed results are listed in Table 1. Although there are some differences between different calculation methods and some thermometers yielded overestimated (Ridolfi et al., 2010, Molina et al., 2015, Putirka, 2005; Eq. (4a) of Putirka, 2016) and underestimated (Eq. (4b) of Putirka, 2016) temperatures (Table 1), several general regularities are evident. The temperature recorded by magmatic amphibole decreases progressively from the enclosed ones through the inner and to the outer of isolated ones (Table 1; Fig. 16a and b). This is in accordance with their petrographic crystallization sequence. The actinolitic core amphibole and the Ca-rich core plagioclase record distinctly higher temperatures than the isolated magmatic amphibole and the magmatic rim plagioclase, respectively (Table 1). This is consistent with the restite origin of the actinolitic core amphibole and the Ca-rich core plagioclase. The magmatic rim plagioclase and biotite in the enclaves show consistent temperatures with those in the host granodiorite, respectively (Table 1; Fig. 16c), suggesting that during the process of magma reworking the enclave plagioclase and biotite were in equilibrium with the host melt. The high-Al and low-Si isolated amphibole and the rim of clotted exterior amphibole grains in the enclaves have similar temperatures which are slightly lower than that of the isolated magmatic amphibole (Table 1; Fig. 16a and b), indicating that the intensely reworked enclave amphibole was nearly in equilibrium with the host melt. However, they show notably lower temperatures than the early enclosed magmatic amphibole (Table 1; Fig. 16a and b), reflecting that an evolved host melt was responsible for the reworking of restite enclaves. The prediction of SiO₂ in coexisting model melt with magmatic amphibole and intensely reworked enclave amphibole (Eqs. (10) and (5) of Putirka, 2016) yielded SiO₂ contents of 65.3–70.1 wt% and 68.4–69.7 wt%, respectively, which match the whole-rock composition of the Tongshanling granodiorite (63.7–70.1 wt%, X.D. Huang et al., 2017) (Fig. 16b). It means that these amphibole crystals were basically in equilibrium with the host granodioritic magma and the temperature calculation is meaningful.

Table 1. Geothermometry based on mineral chemical compositions of amphibole, plagioclase, and biotite from the Tongshanling granodiorite and its microgranular enclaves.

Geothermometer	Temperature ^a (°C)		Reference
	Tongshanling granodiorite	Microgranular enclaves	
Amphibole	MI: 740–840; II: 700–770; OI: 690–760	I: 700–750; RCE: 690–720	<u>Ernst and Liu (1998)</u>
Amphibole	MI: 828–931; II: 818–844; OI: 801–842	I: 803–809; RCE: 783–795	<u>Ridolfi et al. (2010)</u>
Amphibole ^b	MI: 751–807; II: 683–744; OI: 663–780	I: 654–726; RCE: 662–698	<u>Ridolfi and Renzulli (2012)</u>
Amphibole-liquid ^c	MI: 962–998; II: 976–984; OI: 971–989	I: 976–984; RCE: 969–974	<u>Molina et al. (2015)</u>
Amphibole-liquid	MI: 897–919; II: 903–908; OI: 893–910	I: 879–886; RCE: 871–887	Eq. (4a) of <u>Putirka (2016)</u>
Amphibole-liquid	MI: 598–616; II: 596–603; OI: 594–609	I: 595–603; RCE: 593–602	Eq. (4b) of <u>Putirka (2016)</u>
Amphibole	MI: 769–867; II: 771–792; OI: 758–789	I: 753–759; RCE: 739–751	Eq. (5) of <u>Putirka (2016)</u>

Geothermometer	Temperature ^a (°C)		Reference
	Tongshanling granodiorite	Microgranular enclaves	
Amphibole	MI: 772–865; II: 769–787; OI: 757–788	I: 753–760; RCE: 740–752	Eq. (6) of <u>Putirka (2016)</u>
Amphibole	MI: 764–858; II: 774–793; OI: 763–784	I: 755–763; RCE: 748–764	Eq. (8) of <u>Putirka (2016)</u>
Amphibole-liquid	MI: 786–877; II: 796–809; OI: 788–803	I: 784–788; RCE: 774–785	Eq. (9) of <u>Putirka (2016)</u>
Amphibole- plagioclase ^d	MI: 729–896; II: 710–782; OI: 698–764	I: 703–740; RCE: 682–728	<u>Blundy and Holland (1990)</u>
Amphibole- plagioclase (A)	MI: 709–863; II: 700–801; OI: 682–789	I: 682–729; RCE: 679–737	<u>Holland and Blundy (1994)</u>
Amphibole- plagioclase (B)	MI: 700–849; II: 676–775; OI: 661–770; CA: 819– 847	I: 660–739; RCE: 662–751; CCI: 764–848	<u>Holland and Blundy (1994)</u>
Plagioclase-liquid	Core: 1017–1030; Intermediate: 990–999; Rim: 956–972	Core: 1025–1031; Intermediate: 994–995; Rim: 960–973	<u>Putirka (2005)</u>
Biotite	680–726	694–733	<u>Henry et al. (2005)</u>

Notes

A : MI: mineral inclusion; II: inner of isolated amphibole; OI: outer of isolated amphibole; CA: core of aggregated amphibole grains; I: isolated amphibole; CCI: core of clot interior amphibole grains; RCE: rim of clot exterior amphibole grains. The low-Al and high-Si isolated amphibole was excluded for temperature calculation.

B : The pressure used for those pressure-dependent thermometers was 3 kbar for the II, OI, I, and RCE amphibole, 5 kbar for the MI amphibole, and 8 kbar for the CA and CCI amphibole.

C : The model liquid used the averaged whole-rock composition of the Tongshanling granodiorite based on the data reported by X.D. Huang et al. (2017).

D : For the amphibole-plagioclase thermometers, the II, OI, I, and RCE amphibole, the MI amphibole, and the CA and CCI amphibole were supposed to be in equilibrium with the rim, intermediate, and core plagioclase, respectively.

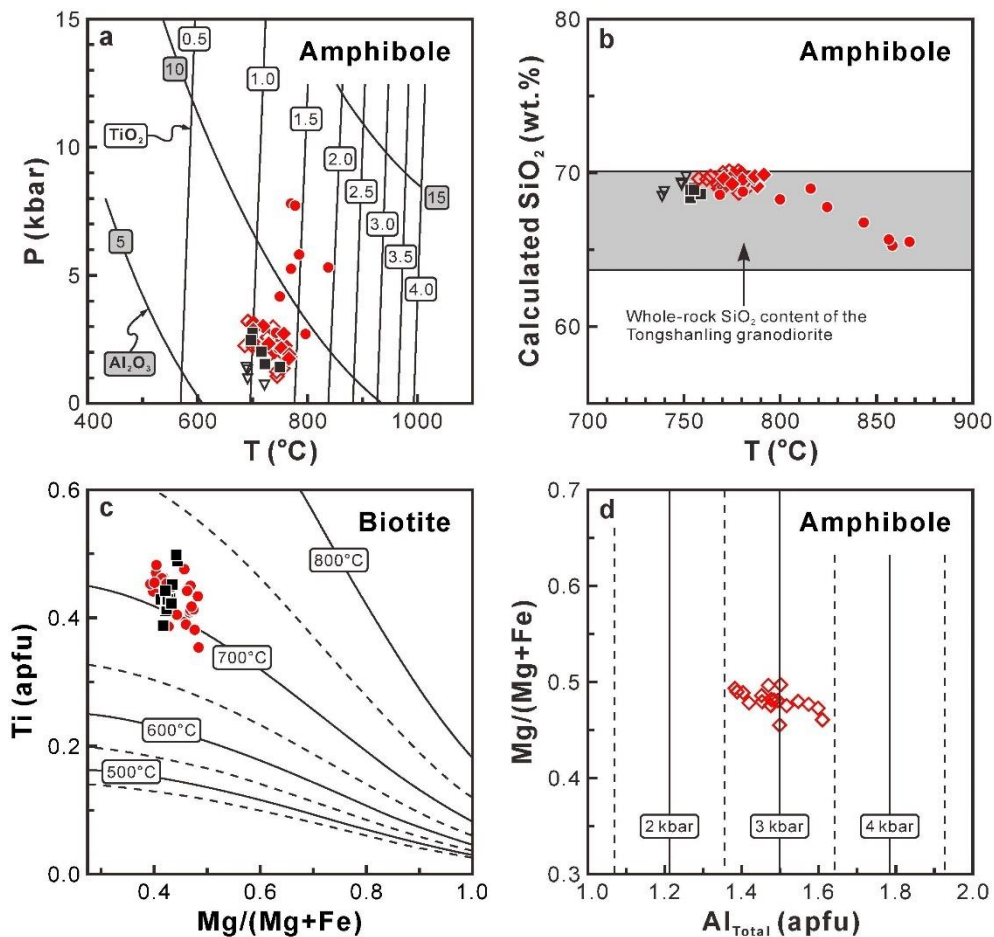


Fig. 16. Physicochemical conditions estimated by mineral chemical compositions of amphibole and biotite from the Tongshanling granodiorite and its microgranular enclaves. (a) Semiquantitative thermobarometer of amphibole based on Al₂O₃ and TiO₂ contents (after Ernst and Liu, 1998). (b) Temperature and SiO₂ content in coexisting model melt calculated by amphibole composition based on the Eqs. (5) and (10) of Putirka (2016). (c) Temperature calculated by the Ti-in-biotite geothermometer according to Henry et al. (2005), the dashed curves represent intermediate 50 °C interval isotherms. (d) Pressure calculated by the Al-in-hornblende geobarometer according to Anderson and Smith (1995), the dashed curves represent intermediate 0.5 kbar interval isobars. Legends of amphibole and biotite are the same as Fig. 6 and Fig. 9, Fig. 10, respectively.

7.3.2. Pressure

Al-in-hornblende barometer can provide an effective approach to estimate the magma emplacement depth of near-solidus granitic systems with highly restrictive conditions (Schmidt, 1992, Anderson and Smith, 1995, Ridolfi and Renzulli, 2012, Mutch et al., 2016, Putirka, 2016). The Tongshanling granodiorite contains all the necessary equilibrium phases, i.e., hornblende + biotite + plagioclase + orthoclase + quartz + titanite + Fe-Ti oxide + melt + fluid. Based on the calibration proposed by Anderson and Smith (1995), the rim compositions of magmatic isolated amphibole [$Mg/(Mg + Fe) > 0.35$] in the granodiorite give a pressure of 2.6–3.4 (3.0 ± 0.4) kbar (calculated with $T = 750$ °C) (Fig. 16d), corresponding to a deep emplacement depth of 8.6–11.2 km (3.3 km/kbar) with an average value of ca. 10 km. This result is consistent with those calculated by the calibration of Mutch et al. (2016) and the Eq. (7a) of Putirka (2016) on the whole, which are 2.7–3.6 kbar and 2.5–3.3 kbar, respectively.

The Tongshanling granodiorite belongs to low-temperature granites in terms of the relatively low zircon saturation temperature (Table 2) and the occurrence of inherited zircon (Chappell et al., 2000, Miller et al., 2003). The low-temperature and deep-emplaced granodioritic magma is indicative of a relatively high viscosity to a certain extent which is favorable for carrying some residual materials from the source. Different from volcanic rocks in which the anhydrous primary residual minerals, such as pyroxene, can be commonly preserved as phenocrysts, the deep-emplaced magma is beneficial to drive an intense reworking of the residual materials during slow cooling (Chappell et al., 1987). Thus, the residual pyroxene might have been totally transformed into amphibole in such a deep-emplaced magma. This could account for the absence of residual pyroxene in the Tongshanling granodiorite and its microgranular enclaves.

Table 2. Main features of the major Middle-Late Jurassic Cu-Pb-Zn-bearing granodiorites in the Nanling Range, South China.

Intrusion	Shuikoushan	Baoshan	Tongshanling	Dabaoshan
Metal association	Pb-Zn-Au-Ag	(Cu, Mo)-Pb-Zn-Ag	Cu(Mo)-Pb-Zn-Ag	Mo(W)-Cu-Pb-Zn-Fe
Lithology	Porphyritic to equigranular biotite granodiorite with a dominant mineralogy of plagioclase + K-feldspar + quartz + biotite ± amphibole			
Accessory minerals	Apatite, zircon, titanite, allanite, rutile, sulfide minerals, and Fe-Ti oxide minerals (mainly magnetite)			
Dark enclaves	Have not been reported	Observed	Observed	Have not been reported
Zircon U-Pb age (Ma)	156.0 ± 1.0, 158.8 ± 1.8, 158.3 ± 1.2	158.0 ± 2.0, 156.7 ± 1.4, 157.7 ± 1.1	163.6 ± 2.1, 160.7 ± 0.5, 160.5 ± 0.9, 159.7 ± 0.8, 162.5 ± 1.0	167.0 ± 2.5, 162.2 ± 0.7, 161.0 ± 0.9, 160.2 ± 0.9, 166.3 ± 2.0, 166.2 ± 2.7, 162.1 ± 1.6
Metallogenic age (Ma) (Molybdenite Re-Os dating)	157.8 ± 1.4	160 ± 2	161.8 ± 1.7, 160.1 ± 0.8, 161 ± 1, 162.2 ± 1.6	163.9 ± 1.3, 164.8 ± 0.8
Evolutionary degree	Low	Low	Low	Low
SiO ₂ (wt.%)	59.6–65.2	62.6–68.8	63.7–70.1	64.4–72.9
ASI ^a	0.9–1.1	0.8–1.0	0.9–1.0	1.0–1.1
CaO/(Na ₂ O + K ₂ O)	0.3–0.8	0.3–0.9	0.3–0.7	0.2–0.8
Mg/(Mg + Fe)	0.4–0.6	0.4–0.6	0.4–0.5	0.3–0.7
Rb/Sr	0.2–0.4	0.5–2.9	0.4–1.3	1.2–2.1

Intrusion	Shuikoushan	Baoshan	Tongshanling	Dabaoshan
$\delta\text{Eu}^{\text{b}}$	0.8–1.0	0.6–0.8	0.6–1.0	0.6–0.8
LREE/HREE	8.7–16.1	7.0–10.6	5.1–11.3	10.3–18.0
ΣREE (ppm)	120–234	124–271	82–189	134–236
HFSE ^c (ppm)	229–267	198–282	165–264	175–284
T_{Zr}^{d} (°C)	726–775	722–760	738–772	739–774
$(^{87}\text{Sr}/^{86}\text{Sr})_i$	0.710–0.711	0.710–0.712	0.709–0.711	0.704–0.714
$\varepsilon_{\text{Nd}}(t)$ value	–6.6 to –5.9	–7.3 to –5.0	–6.9 to –4.2	–8.2 to –6.8
Zircon $\varepsilon_{\text{Hf}}(t)$ value	–10.8 to –7.9	–12.0 to –9.2	–12.2 to –6.9	–11.8 to –7.5
References	Huang et al., 2015, Wang et al., 2003a, Yang et al., 2016, Zuo et al., 2014	Lu et al., 2006, Wang et al., 2003a, Xie et al., 2013	Huang and Lu, 2014, Jiang et al., 2009, Lu et al., 2015, Wang et al., 2003a, X.D. Huang et al., 2017, Zhao et al., 2016	Li et al., 2012, Mao et al., 2013, Qu et al., 2014, W.T. Huang et al., 2017, Wang, 2010, Wang et al., 2011

Notes

A : Aluminum saturation index, $\text{ASI} = n(\text{Al}_2\text{O}_3)/n(\text{CaO} + \text{Na}_2\text{O} + \text{K}_2\text{O})$.

B : $\delta\text{Eu} = 2\text{Eu}_N/(\text{Sm}_N + \text{Gd}_N)$.

C : High field strength elements, $\text{HFSE} = \text{Zr} + \text{Nb} + \text{Ce} + \text{Y}$.

D : Zircon saturation temperature, T_{Zr} was calculated by the method of Miller et al. (2003).

7.4. The model for reworked restite enclave

Based on the nature of reworked restite enclaves with distinct textural and compositional features described above, the formation process of the microgranular enclaves in the Tongshanling granodiorite is deduced as follows (Fig. 17).

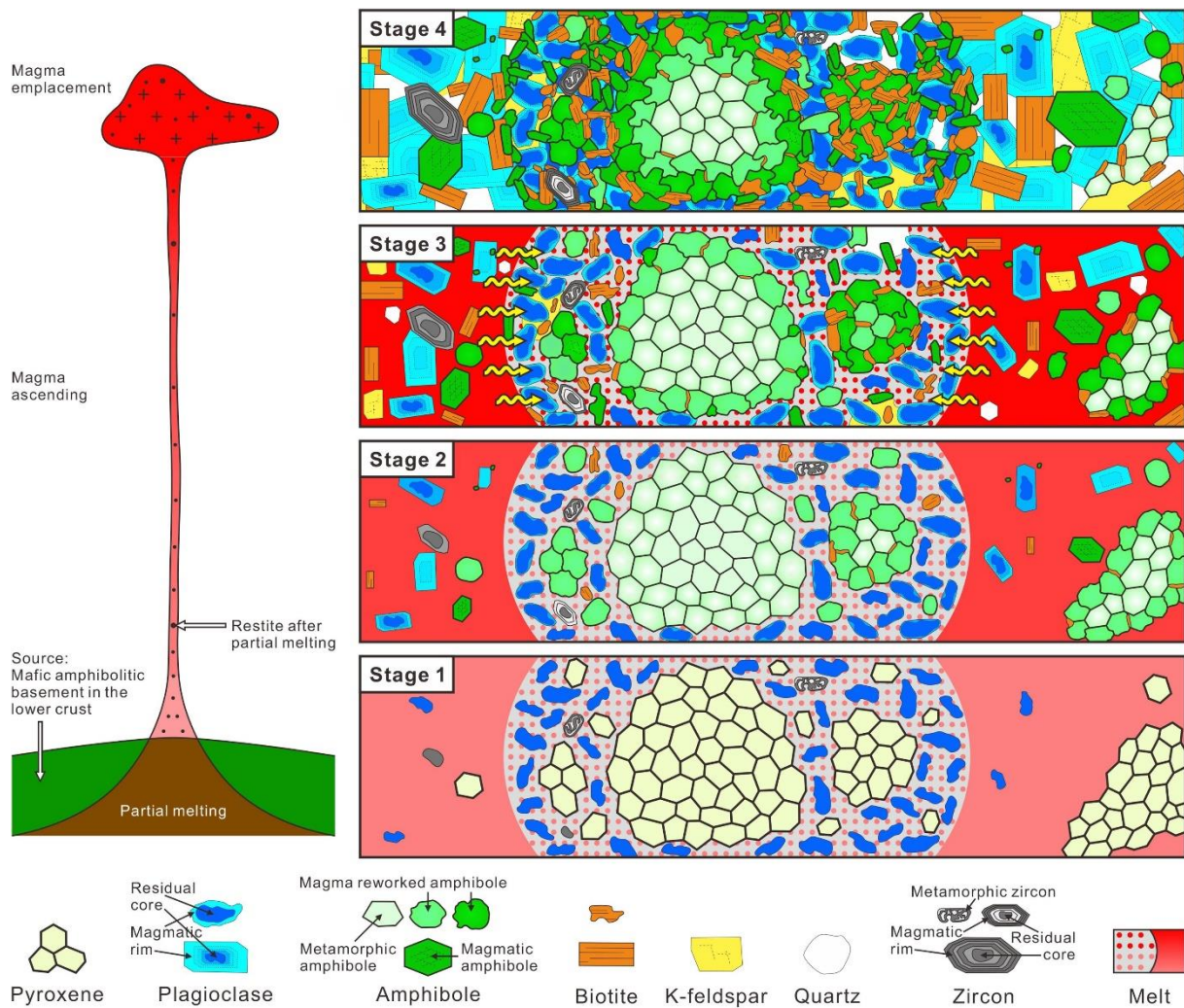


Fig. 17. Schematic model illustrating the formation process of reworked restite enclave (see detailed description in the text). In the right diagram, the center and the surrounding parts show the evolutionary processes of the restite enclave and the host granodioritic magma, respectively. To better explain this model, the melt content in the enclave (spots in the center part of the right diagram) and the zircon size have been magnified. For the magma reworked amphibole, the deeper colored ones have a more intense reaction with the melt and higher Al contents than the paler colored ones.

Stage 1: Formation of granodioritic melt and restite during partial melting. Partial melting of the mafic amphibolitic basement in the lower crust produced a metaluminous and high-K calc-alkaline granodioritic melt coexisting with a primary pyroxene-rich restite that mainly comprised of pyroxene, plagioclase, and also refractory accessory minerals, such as zircon. Most melt was extracted and constituted a granodioritic magma with a few residual materials. There were still a few initial melts maintained in the restite due to its high viscosity.

Stage 2: Preliminary reaction of the restite enclave with the initial melt. Some fragments of restite were carried by the ascending host magma. With the cooling of magma, the inner parts of magmatic zircon were firstly crystallized from the initial melt in the restite enclaves. The pyroxene-rich precursors were transformed into actinolite by progressive hydrogenation from exterior to interior. Some small clots had a more intense reaction with the initial melt and

formed magnesio-hornblende and a few biotite in the exteriors. The isolated residual pyroxene was also transformed into magnesio-hornblende with low Al and high Si contents.

Stage 3: Further reaction of the restite enclave with the evolved host melt. The composition of the host melt was gradually evolved with crystallization. Progressive input of the evolved host melt led to a further reaction of the restite enclaves with the melt. This resulted in the formation of the outer parts of magmatic zircon and the magmatic rims around residual Ca-rich plagioclase. The exteriors of most clots had been transformed into magnesio-hornblende. The small clots showed more Al-enriched and Si-depleted compositions of magnesio-hornblende and might have a higher biotite content than the large ones due to the more intense reaction with the melt. Some low-Al and high-Si isolated amphibole crystals were transformed into high-Al and low-Si ones.

Stage 4: Formation of the reworked restite enclave. With the reaction between the restite enclaves and the host magma, the zonal amphibole-rich clots had been formed. The small clots might have been transformed into non-zoning amphibole-rich clots or amphibole-biotite clots. The input of late-stage silica-rich melt from the host magma led to the formation of the poikilitic texture of K-feldspar and quartz in the restite enclaves. After the granodioritic magma had been completely solidified, the reworked restite enclaves were survived as dark microgranular enclaves in the host granodiorite.

8. Petrogenetic implications

Restite may provide an important indication for the source nature of the host granitoids since it is remnant of refractory material after partial melting of the source rocks. Because the Tongshanling microgranular enclaves are restite which has been partially modified by the host granodioritic magma, the primary restite should be more mafic than the dioritic compositions. The pyroxene-rich precursors of the amphibole-rich clots, which have silica-poor compositions and mainly consist of pyroxene and Ca-rich plagioclase, may represent the primary restite from the source after partial melting. To produce such a composition of primary restite and a granodioritic magma showing I-type features, the source should have a relatively mafic composition, such as amphibolite (e.g., Chen et al., 1990, Sial et al., 1998, Stephens, 2001).

Dehydration melting of amphibolite can generate metaluminous granodioritic melts with a pyroxene-rich restite at pressure lower than 10 kbar (Beard and Lofgren, 1991, Johannes and Holtz, 1996), whereas, water-saturated melting of amphibolite will produce strongly peraluminous melts with a restite dominated by amphibole (Beard and Lofgren, 1991). A pressure estimation of granulitic mafic xenoliths (8.8–12.4 kbar; Dai et al., 2008) in the Huziyan basalt (ca. 150 Ma), which occurs at 20 km north-northeast to the Tongshanling intrusion, suggests that the mafic amphibolitic basement should be located at a depth corresponding to a pressure lower than 8.8 kbar. Therefore, dehydration melting of amphibolite at pressure lower than 8.8 kbar was in all probability responsible for the origin of the metaluminous Tongshanling granodiorite. The zircon Hf model ages of the Tongshanling granodiorite and its microgranular enclaves (1.5–2.1 Ga and 1.6–2.0 Ga, respectively, both with a peak value of 1.75 Ga; Jiang et al., 2009, Zhao et al., 2016, X.D. Huang et al., 2017) indicate that the amphibolitic basement was mainly formed in Paleoproterozoic. The occurrence of the Tianjinping amphibolite (1766 ± 19 Ma; Li, 1997) from the basement of the Cathaysia Block confirms the existence of the Paleoproterozoic amphibolitic basement in the Nanling Range.

It is noteworthy that, the lower crust of South China, especially the mafic amphibolitic basement, has fertile ore-forming metals. For instance, the amphibolites of the Tianjinping Formation and the Mayuan Group have Cu contents of 57.7 ppm and 66.5 ppm, and Zn contents of 119 ppm and 118 ppm, respectively (Li, 1997), which are distinctly higher than those of the middle and upper crusts in South China (Gao et al., 1998) and are also higher than those of the lower crust reported by Rudnick and Fountain (1995). Such a fertile source is beneficial to the formation of Cu-Pb-Zn-bearing granodiorites in the Nanling Range.

The Middle-Late Jurassic Cu-Pb-Zn-bearing granodiorites in the Nanling Range have similar mineralogical and geochemical features (Table 2). They are generally hornblende-bearing, metaluminous and high-K calc-alkaline rocks with high Mg/(Mg + Fe) ratios and low evolutionary degrees, and show characteristics of I-type granites (Table 2). They also have similar evolved Sr-Nd and zircon Hf isotopic compositions (Table 2). With regard to the previously proposed two different genetic models for these Cu-Pb-Zn-bearing granodiorites, i.e., crust-mantle mixing and partial melting of the mafic lower crust, our research stands by the latter and provides inspiration for the further study.

Acknowledgements

We sincerely thank Ida Di Carlo at ISTO, Jian-Feng Gao and Liang Li at Nanjing FocuMS Technology Co. Ltd. for their technical assistance with EMP and LA-ICP-MS analyses, respectively. Rong-Qing Zhang is thanked for providing the critical references. We are grateful to Editor-in-Chief Prof. Mei-Fu Zhou, two anonymous reviewers, and Dr. Wen Winston Zhao for their efficient handling and valuable comments. This work was supported by the China Geological Survey Program (grant number 12120113067300), the French Labex Voltaire Project (grant number ANR-10-LABX-100-01), and the Sino-French Cai Yuanpei Program of China Scholarship Council.

References

Anderson and Smith, 1995

J.L. Anderson, D.R. Smith **The effects of temperature and f_{O_2} on the Al-in-hornblende barometer**

Am. Mineral., 80 (1995), pp. 549-559

Arth, 1976

J.G. Arth **Behaviour of trace elements during magmatic processes—a summary of theoretical models and their applications**

J. Res. U.S Geol. Surv., 4 (1976), pp. 41-47

Beard and Lofgren, 1991

J.S. Beard, G.E. Lofgren **Dehydration melting and water-saturated melting of basaltic and andesitic greenstones and amphibolites at 1, 3, and 6.9 kb**

J. Petrol., 32 (1991), pp. 365-401

Blundy and Holland, 1990

J.D. Blundy, T.J.B. Holland **Calcic amphibole equilibria and a new amphibole-plagioclase geothermometer**

Contrib. Miner. Petrol., 104 (1990), pp. 208-224

Blundy and Sparks, 1992

J.D. Blundy, R.S.J. Sparks **Petrogenesis of mafic inclusions in granitoids of the Adamello Massif, Italy**

J. Petrol., 33 (1992), pp. 1039-1104

Boynton, 1984

W.V. Boynton **Cosmochemistry of the rare earth elements: meteorite studies**

P. Henderson (Ed.), Rare Earth Element Geochemistry, Elsevier, Amsterdam (1984), pp. 63-114

Castro and Stephens, 1992

A. Castro, W.E. Stephens **Amphibole-rich polycrystalline clots in calc-alkaline granitic rocks and their enclaves**

Can. Mineral., 30 (1992), pp. 1093-1112

Chappell, 1996

B.W. Chappell **Magma mixing and the production of compositional variation within granite suites: evidence from the granites of southeastern Australia**

J. Petrol., 37 (1996), pp. 449-470

Chappell et al., 1987

B.W. Chappell, A.J.R. White, D. Wyborn **The importance of residual source material (restite) in granite petrogenesis**

J. Petrol., 28 (1987), pp. 1111-1138

Chappell and Wyborn, 2012

B.W. Chappell, D. Wyborn **Origin of enclaves in S-type granites of the Lachlan Fold Belt**

Lithos, 154 (2012), pp. 235-247

Chappell and White, 1991

B.W. Chappell, A.J.R. White **Restite enclaves and the restite model**

J. Didier, B. Barbarin (Eds.), Enclaves and Granite Petrology, Elsevier, Amsterdam (1991), pp. 375-381

Chappell et al., 2000

B.W. Chappell, A.J.R. White, I.S. Williams, D. Wyborn, L.A.I. Wyborn **Lachlan Fold Belt granites revisited: high- and low-temperature granites and their implications**

Aust. J. Earth Sci., 47 (2000), pp. 123-138

Chen et al., 2008

J. Chen, J.J. Lu, W.F. Chen, R.C. Wang, D.S. Ma, J.C. Zhu, W.L. Zhang, J.F. Ji **W-Sn-Nb-Ta-bearing granites in the Nanling Range and their relationship to metallogenesis**

Geol. J. China Univ., 14 (2008), pp. 459-473
(in Chinese with English abstract)

Chen et al., 1989

Y.D. Chen, R.C. Price, A.J.R. White **Inclusions in three S-type granites from southeastern Australia**
J. Petrol., 30 (1989), pp. 1181-1218

Chen et al., 1990

Y.D. Chen, R.C. Price, A.J.R. White, B.W. Chappell **Mafic inclusions from the Glenbog and Blue Gum granite suites, southeastern Australia**
J. Geophys. Res., 95 (1990), pp. 17757-17785

Chen et al., 1991

Y.D. Chen, B.W. Chappell, A.J.R. White **Mafic enclaves of some I-type granites of the Palaeozoic Lachlan Fold Belt, southeastern Australia**
J. Didier, B. Barbarin (Eds.), *Enclaves and Granite Petrology*, Elsevier, Amsterdam (1991), pp. 113-124

Chen et al., 2013

J. Chen, R.C. Wang, J.C. Zhu, J.J. Lu, D.S. Ma **Multiple-aged granitoids and related tungsten-tin mineralization in the Nanling Range, South China**
Sci. China Earth Sci., 56 (2013), pp. 2045-2055

Cheng et al., 2012

Y.B. Cheng, C. Spandler, J.W. Mao, B.G. Rusk **Granite, gabbro and mafic microgranular enclaves in the Gejiu area, Yunnan Province, China: a case of two-stage mixing of crust- and mantle-derived magmas**
Contrib. Miner. Petrol., 164 (2012), pp. 659-676

Corfu et al., 2003

F. Corfu, J.M. Hanchar, P.W.O. Hoskin, P. Kinny **Atlas of zircon textures**
Rev. Mineral. Geochem., 53 (2003), pp. 469-500

Dai et al., 2008

B.Z. Dai, S.Y. Jiang, Y.H. Jiang, K.D. Zhao, D.Y. Liu **Geochronology, geochemistry and Hf-Sr-Nd isotopic compositions of Huziyuan mafic xenoliths, southern Hunan Province, South China: Petrogenesis and implications for lower crust evolution**
Lithos, 102 (2008), pp. 65-87

Didier, 1973

J. Didier **Granites and Their Enclaves**
Elsevier, Amsterdam (1973)

Didier and Barbarin, 1991

J. Didier, B. Barbarin **Enclaves and Granite Petrology**
Elsevier, Amsterdam (1991)

Dorais et al., 1990

M.J. Dorais, J.A. Whitney, M.F. Roden **Origin of mafic enclaves in the Dinkey Creek pluton, Central Sierra Nevada Batholith, California**
J. Petrol., 31 (1990), pp. 853-881

Duan and Jiang, 2017

D.F. Duan, S.Y. Jiang **In situ major and trace element analysis of amphiboles in quartz monzodiorite porphyry from the Tonglvshan Cu–Fe (Au) deposit, Hubei Province, China: insights into magma evolution and related mineralization**
Contrib. Miner. Petrol., 172 (2017), p. 36

Ernst and Liu, 1998

W.G. Ernst, J. Liu **Experimental phase-equilibrium study of Al- and Ti-contents of calcic amphibole in MORB—a semiquantitative thermobarometer**
Am. Mineral., 83 (1998), pp. 952-969

Fu et al., 2016

L.B. Fu, J.H. Wei, J. Tan, M. Santosh, D.H. Zhang, J.J. Chen, Y.J. Li, S.Q. Zhao, L.N. Peng **Magma mixing in the Kalaqin core complex, northern North China Craton: Linking deep lithospheric destruction and shallow extension**
Lithos, 260 (2016), pp. 390-412

Fujimaki et al., 1984

H. Fujimaki, M. Tatsumoto, K.-I. Aoki **Partition coefficients of Hf, Zr, and REE between phenocrysts and groundmasses**
J. Geophys. Res., 89 (suppl) (1984), pp. B662-B672

Gao et al., 1998

S. Gao, T.C. Luo, B.R. Zhang, H.F. Zhang, Y.W. Han, Z.D. Zhao, Y.K. Hu **Chemical composition of the continental crust as revealed by studies in East China**
Geochim. Cosmochim. Acta, 62 (1998), pp. 1959-1975

Harley et al., 2007

S.L. Harley, N.M. Kelly, A. Möller **Zircon behaviour and the thermal histories of mountain chains**
Elements, 3 (2007), pp. 25-30

Hawthorne et al., 2012

F.C. Hawthorne, R. Oberti, G.E. Harlow, W.V. Maresch, R.F. Martin, J.C. Schumacher, M.D. Welch **IMA report: Nomenclature of the amphibole supergroup**
Am. Mineral., 97 (2012), pp. 2031-2048

Henry et al., 2005

D.J. Henry, C.V. Guidotti, J.A. Thomson **The Ti-saturation surface for low-to-medium pressure metapelitic biotites: implications for geothermometry and Ti-substitution mechanisms**
Am. Mineral., 90 (2005), pp. 316-328

Holland and Blundy, 1994

T. Holland, J. Blundy **Non-ideal interactions in calcic amphiboles and their bearing on amphibole-plagioclase thermometry**
Contrib. Miner. Petrol., 116 (1994), pp. 433-447

Hoskin and Black, 2000

P.W.O. Hoskin, L.P. Black **Metamorphic zircon formation by solid-state recrystallization of protolith igneous zircon**
J. Metamorph. Geol., 18 (2000), pp. 423-439

Hu et al., 2017

R.Z. Hu, W.T. Chen, D.R. Xu, M.F. Zhou **Reviews and new metallogenic models of mineral deposits in South China: an introduction**
J. Asian Earth Sci., 137 (2017), pp. 1-8

W.T. Huang et al., 2017

W.T. Huang, H.Y. Liang, J. Wu, Y.Q. Zou, J. Zhang **Formation of porphyry Mo deposit in a deep fault zone, example from the Dabaoshan porphyry Mo deposit in northern Guangdong, South China**
Ore Geol. Rev., 81 (2017), pp. 940-952

Huang and Lu, 2014

X.D. Huang, J.J. Lu **Geological characteristics and Re-Os geochronology of Tongshanling polymetallic ore field, South Hunan, China**
Acta Geol. Sin. (English Edition), 88 (suppl. 2) (2014), pp. 1626-1629

X.D. Huang et al., 2017

X.D. Huang, J.J. Lu, S. Sizaret, R.C. Wang, D.S. Ma, R.Q. Zhang, X. Zhao, J.W. Wu **Petrogenetic differences between the Middle-Late Jurassic Cu-Pb-Zn-bearing and W-bearing granites in the Nanling Range, South China: a case study of the Tongshanling and Weijia deposits in southern Hunan Province**
Sci. China Earth Sci., 60 (2017), pp. 1220-1236

Huang et al., 2015

J.C. Huang, J.T. Peng, J.H. Yang, B.L. Zhang, C.X. Xu **Precise zircon U-Pb and molybdenite Re-Os dating of the Shuikoushan granodiorite-related Pb-Zn mineralization, southern Hunan, South China**
Ore Geol. Rev., 71 (2015), pp. 305-317

Jiang et al., 2009

Y.H. Jiang, S.Y. Jiang, B.Z. Dai, S.Y. Liao, K.D. Zhao, H.F. Ling **Middle to late Jurassic felsic and mafic magmatism in southern Hunan province, southeast China: Implications for a continental arc to rifting**
Lithos, 107 (2009), pp. 185-204

Johannes and Holtz, 1996

W. Johannes, F. Holtz **Petrogenesis and Experimental Petrology of Granitic Rocks**
Springer, Berlin (1996)

Laumonier et al., 2014b

M. Laumonier, B. Scaillet, M. Pichavant, R. Champallier, J. Andujar, L. Arbaret **On the conditions of magma mixing and its bearing on andesite production in the crust**
Nat. Commun., 5 (2014), p. 5607

Laumonier et al., 2014a

M. Laumonier, B. Scaillet, L. Arbaret, R. Champallier **Experimental simulation of magma mixing at high pressure**
Lithos, 196–197 (2014), pp. 281-300

Laumonier et al., 2015

M. Laumonier, B. Scaillet, L. Arbaret, J. Andújar, R. Champallier **Experimental mixing of hydrous magmas**
Chem. Geol., 418 (2015), pp. 158-170

Leake et al., 1997

B.E. Leake, A.R. Woolley, C.E.S. Arps, W.D. Birch, M.C. Gilbert, J.D. Grice, F.C. Hawthorne, A. Kato, H.J. Kisch, V.G. Krivovichev, K. Linthout, J. Laird, J.A. Mandarino, W.V. Maresch, E.H. Nickel, N.M.S. Rock, J.C. Schumacher, D.C. Smith, N.C.N. Stephenson, L. Ungaretti, E.J.W. Whittaker, Y.Z. Guo **Nomenclature of amphiboles: Report of the subcommittee on amphiboles of the International Mineralogical Association, Commission on New Minerals and Mineral Names**
Can. Miner., 35 (1997), pp. 219-246

Li, 1997

X.H. Li **Timing of the Cathaysia Block formation: Constraints from SHRIMP U-Pb zircon geochronology**
Episodes, 20 (1997), pp. 188-192

Li et al., 2004

Li, X.H., Chung, S.L., Zhou, H.W., Lo, C.H., Liu, Y., Chen, C.H., 2004. Jurassic intraplate magmatism in southern Hunan-eastern Guangxi: ⁴⁰Ar/³⁹Ar dating, geochemistry, Sr-Nd isotopes and implications for tectonic evolution of SE China. In: Malpas, J., Fletcher, C.J.N., Ali, J.R., Aitchison, J.C. (Eds.), Aspects of the tectonic evolution of China. Geological Society, London, Special Publications, vol. 226, pp. 193–216.

Li et al., 2012

C.Y. Li, H. Zhang, F.Y. Wang, J.Q. Liu, Y.L. Sun, X.L. Hao, Y.L. Li, W.D. Sun **The formation of the Dabaoshan porphyry molybdenum deposit induced by slab rollback**
Lithos, 150 (2012), pp. 101-110

Li and Li, 2007

Z.X. Li, X.H. Li **Formation of the 1300-km-wide intracontinental orogen and postorogenic magmatic province in Mesozoic South China: a flat-slab subduction model**
Geology, 35 (2007), pp. 179-182

Liu et al., 2008

Y.S. Liu, Z.C. Hu, S. Gao, D. Günther, J. Xu, C.G. Gao, H.H. Chen **In situ analysis of major and trace elements of anhydrous minerals by LA-ICP-MS without applying an internal standard**
Chem. Geol., 257 (2008), pp. 34-43

Liu et al., 2013

L. Liu, J.S. Qiu, Z. Li **Origin of mafic microgranular enclaves (MMEs) and their host quartz monzonites from the Muchen pluton in Zhejiang Province, Southeast China: implications for magma mixing and crust-mantle interaction**
Lithos, 160–161 (2013), pp. 145-163

Lu et al., 2015

Y.Y. Lu, J.M. Fu, S.B. Cheng, S.S. Liu, C.B. Li, L.G. Zhang, L.Y. Ma **Rock-forming and ore-forming ages of Tongshanling copper polymetallic ore-field in southern Hunan Province**
Geotecton. Metallogen., 39 (2015), pp. 1061-1071
(in Chinese with English abstract)

Lu et al., 2006

Y.F. Lu, L.Y. Ma, W.J. Qu, Y.P. Mei, X.Q. Chen **U-Pb and Re-Os isotope geochronology of Baoshan Cu-Mo polymetallic deposit in Hunan province**
Acta Petrol. Sin., 22 (2006), pp. 2483-2492
(in Chinese with English abstract)

Luo et al., 2015

B.J. Luo, H.F. Zhang, W.C. Xu, L. Guo, F.B. Pan, H. Yang **The Middle Triassic Meiwu batholith, West Qinling, Central China: implications for the evolution of compositional diversity in a composite batholith**
J. Petrol., 56 (2015), pp. 1139-1172

Mao et al., 2013

W. Mao, X.F. Li, F.C. Yang **Zircon LA-ICP-MS U-Pb ages of granites at Dabaoshan polymetallic deposit and its geological significance, Guangdong, South China**
Acta Petrol. Sin., 29 (2013), pp. 4104-4120
(in Chinese with English abstract)

Martin, 2007

R.F. Martin **Amphiboles in the igneous environment**
Rev. Mineral. Geochem., 67 (2007), pp. 323-358

Miller et al., 2003

C.F. Miller, S. Meschter McDowell, R.W. Mapes **Hot and cold granites? Implications of zircon saturation temperatures and preservation of inheritance**
Geology, 31 (2003), pp. 529-532

Molina et al., 2015

J.F. Molina, J.A. Moreno, A. Castro, C. Rodríguez, G.B. Fershtater **Calcic amphibole thermobarometry in metamorphic and igneous rocks: new calibrations based on plagioclase/amphibole Al-Si partitioning and amphibole/liquid Mg partitioning**
Lithos, 232 (2015), pp. 286-305

Mutch et al., 2016

E.J.F. Mutch, J.D. Blundy, B.C. Tattitch, F.J. Cooper, R.A. Brooker **An experimental study of amphibole stability in low-pressure granitic magmas and a revised Al-in-hornblende geobarometer**

Contrib. Miner. Petrol., 171 (2016), p. 85

Perugini and Poli, 2012

D. Perugini, G. Poli **The mixing of magmas in plutonic and volcanic environments: analogies and differences**
Lithos, 153 (2012), pp. 261-277

Poli and Tommasini, 1991

G.E. Poli, S. Tommasini **Model for the origin and significance of microgranular enclaves in calc-alkaline granitoids**
J. Petrol., 32 (1991), pp. 657-666

Putirka, 2005

K.D. Putirka **Igneous thermometers and barometers based on plagioclase + liquid equilibria: tests of some existing models and new calibrations**
Am. Mineral., 90 (2005), pp. 336-346

Putirka, 2008

K.D. Putirka **Thermometers and barometers for volcanic systems**
Rev. Mineral. Geochem., 69 (2008), pp. 61-120

Putirka, 2016

K. Putirka **Amphibole thermometers and barometers for igneous systems and some implications for eruption mechanisms of felsic magmas at arc volcanoes**
Am. Mineral., 101 (2016), pp. 841-858

Qu et al., 2014

H.Y. Qu, M.H. Chen, F.C. Yang, Z.H. Gao, Y.W. Wang, H.J. Zhao, Z.F. Yu
Metallogenic chronology of the stratiform Cu orebody in the Dabaoshan Cu polymetallic deposit, northern Guangdong Province and its geological significance
Acta Petrol. Sin., 30 (2014), pp. 152-162
(in Chinese with English abstract)

Regional Geological Survey Team of Hunan Geology Bureau, 1975a

Regional Geological Survey Team of Hunan Geology Bureau, 1975a. Geology Map of the People's Republic of China: Daoxian (G-49-XXII, scale 1:200000) (in Chinese).

Regional Geological Survey Team of Hunan Geology Bureau, 1975b

Regional Geological Survey Team of Hunan Geology Bureau, 1975b. Geology Map of the People's Republic of China: Jiangyong (G-49-XXVIII, scale 1:200000) (in Chinese).

Ridolfi et al., 2010

F. Ridolfi, A. Renzulli, M. Puerini **Stability and chemical equilibrium of amphibole in calc-alkaline magmas: an overview, new thermobarometric formulations and application to subduction-related volcanoes**
Contrib. Miner. Petrol., 160 (2010), pp. 45-66

Ridolfi and Renzulli, 2012

F. Ridolfi, A. Renzulli **Calcic amphiboles in calc-alkaline and alkaline magmas: thermobarometric and chemometric empirical equations valid up to 1,130 °C and 2.2 GPa**

Contrib. Miner. Petrol., 163 (2012), pp. 877-895

Rudnick and Fountain, 1995

R.L. Rudnick, D.M. Fountain **Nature and composition of the continental crust: a lower crustal perspective**

Rev. Geophys., 33 (1995), pp. 267-309

Sato and Sato, 2009

E. Sato, H. Sato **Study of effect of magma pocket on mixing of two magmas with different viscosities and densities by analogue experiments**

J. Volcanol. Geoth. Res., 181 (2009), pp. 115-123

Schmidt, 1992

M.W. Schmidt **Amphibole composition in tonalite as a function of pressure: an experimental calibration of the Al-in-hornblende barometer**

Contrib. Miner. Petrol., 110 (1992), pp. 304-310

Schumacher, 2007

J.C. Schumacher **Metamorphic amphiboles: composition and coexistence**

Rev. Mineral. Geochem., 67 (2007), pp. 359-416

Sial et al., 1998

A.N. Sial, V.P. Ferreira, A.E. Fallick, M.J.M. Cruz **Amphibole-rich clots in calc-alkalic granitoids in the Borborema province, northeastern Brazil**

J. S. Am. Earth Sci., 11 (1998), pp. 457-471

Stephens, 2001

W.E. Stephens **Polycrystalline amphibole aggregates (clots) in granites as potential I-type restite: an ion microprobe study of rare-earth distributions**

Aust. J. Earth Sci., 48 (2001), pp. 591-601

Sun, 2006

T. Sun **A new map showing the distribution of granites in South China and its explanatory notes**

Geol. Bull. China, 25 (2006), pp. 332-335

(in Chinese with English abstract)

Tischendorf et al., 1997

G. Tischendorf, B. Gottesmann, H.-J. Förster, R.B. Trumbull **On Li-bearing micas: estimating Li from electron microprobe analyses and an improved diagram for graphical representation**

Miner. Mag., 61 (1997), pp. 809-834

Vernon, 1984

R.H. Vernon **Microgranitoid enclaves in granites-globules of hybrid magma quenched in a plutonic environment**

Nature, 309 (1984), pp. 438-439

Vernon, 1991

R.H. Vernon **Interpretation of microstructures of microgranitoid enclaves**
J. Didier, B. Barbarin (Eds.), *Enclaves and Granite Petrology*, Elsevier, Amsterdam
(1991), pp. 277-291

Wang et al., 2003a

Y.J. Wang, W.M. Fan, F. Guo **Geochemistry of early Mesozoic potassium-rich diorites-granodiorites in southeastern Hunan Province, South China: petrogenesis and tectonic implications**
Geochem. J., 37 (2003), pp. 427-448

Wang et al., 2003b

Y.J. Wang, W.M. Fan, F. Guo, T.P. Peng, C.W. Li **Geochemistry of Mesozoic mafic rocks adjacent to the Chenzhou-Linwu fault, South China: implications for the lithospheric boundary between the Yangtze and Cathaysia blocks**
Int. Geol. Rev., 45 (2003), pp. 263-286

Wang et al., 2011

L. Wang, M.A. Hu, Z. Yang, W.J. Qu, J.L. Xia, K.X. Chen **U-Pb and Re-Os geochronology and geodynamic setting of the Dabaoshan polymetallic deposit, northern Guangdong Province, South China**
Ore Geol. Rev., 43 (2011), pp. 40-49

Wang, 2010

L. Wang **Metallogenic Model and Prospecting Potential in Dabaoshan Molybdenum Polymetallic Ore Deposit, North Guangdong Province**
(Ph.D. thesis)
China University of Geosciences, Wuhan (2010), pp. 1-119
(in Chinese with English abstract)

White and Chappell, 1977

A.J.R. White, B.W. Chappell **Ultrametamorphism and granitoid genesis**
Tectonophysics, 43 (1977), pp. 7-22

White et al., 1999

A.J.R. White, B.W. Chappell, D. Wyborn **Application of the restite model to the Deddick granodiorite and its enclaves—a reinterpretation of the observations and data of Maas et al. (1997)**
J. Petrol., 40 (1999), pp. 413-421

Wolf and Wyllie, 1994

M.B. Wolf, P.J. Wyllie **Dehydration-melting of amphibolite at 10 kbar: the effects of temperature and time**
Contrib. Miner. Petrol., 115 (1994), pp. 369-383

Wu et al., 2007

F.Y. Wu, X.H. Li, J.H. Yang, Y.F. Zheng **Discussions on the petrogenesis of granites**
Acta Petrol. Sin., 23 (2007), pp. 1217-1238
(in Chinese with English abstract)

Wu and Zheng, 2004

Y.B. Wu, Y.F. Zheng **Genesis of zircon and its constraints on interpretation of U-Pb age**
Chin. Sci. Bull., 49 (2004), pp. 1554-1569

Xie et al., 2013

Y.C. Xie, J.J. Lu, D.S. Ma, R.Q. Zhang, J.F. Gao, Y. Yao **Origin of granodiorite porphyry and mafic microgranular enclave in the Baoshan Pb-Zn polymetallic deposit, southern Hunan Province: Zircon U-Pb chronological, geochemical and Sr-Nd-Hf isotopic constraints**
Acta Petrol. Sin., 29 (2013), pp. 4186-4214
(in Chinese with English abstract)

Yang et al., 2004

J.H. Yang, F.Y. Wu, S.L. Chung, S.A. Wilde, M.F. Chu **Multiple sources for the origin of granites: Geochemical and Nd/Sr isotopic evidence from the Gudaoling granite and its mafic enclaves, northeast China**
Geochim. Cosmochim. Acta, 68 (2004), pp. 4469-4483

Yang et al., 2007

J.H. Yang, F.Y. Wu, S.A. Wilde, L.W. Xie, Y.H. Yang, X.M. Liu **Tracing magma mixing in granite genesis: in situ U-Pb dating and Hf-isotope analysis of zircons**
Contrib. Miner. Petrol., 153 (2007), pp. 177-190

Yang et al., 2016

J.H. Yang, J.T. Peng, Y.F. Zheng, R.Z. Hu, X.W. Bi, J.H. Zhao, J.C. Huang, B.L. Zhang **Petrogenesis of the Mesozoic Shuikoushan peraluminous I-type granodioritic intrusion in Hunan Province, South China: Middle-lower crustal reworking in an extensional tectonic setting**
J. Asian Earth Sci., 123 (2016), pp. 224-242

Zhang et al., 2016

J.J. Zhang, T. Wang, A. Castro, L. Zhang, X.J. Shi, Y. Tong, Z.C. Zhang, L. Guo, Q.D. Yang, L.M. Iaccheri **Multiple mixing and hybridization from magma source to final emplacement in the Permian Yamatu pluton, the Northern Alxa Block, China**
J. Petrol., 57 (2016), pp. 933-980

Zhao et al., 2010

K.D. Zhao, S.Y. Jiang, J.C. Zhu, L. Li, B.Z. Dai, Y.H. Jiang, H.F. Ling **Hf isotopic composition of zircons from the Huashan-Guposhan intrusive complex and their mafic enclaves in northeastern Guangxi: Implication for petrogenesis**
Chin. Sci. Bull., 55 (2010), pp. 509-519

Zhao et al., 2016

P.L. Zhao, S.D. Yuan, J.W. Mao, M. Santosh, C. Li, K.J. Hou **Geochronological and petrogeochemical constraints on the skarn deposits in Tongshanling ore district, southern Hunan Province: Implications for Jurassic Cu and W metallogenic events in South China**

Ore Geol. Rev., 78 (2016), pp. 120-137

Zhao et al., 2017

W.W. Zhao, M.F. Zhou, Y.H.M. Li, Z. Zhao, J.F. Gao **Genetic types, mineralization styles, and geodynamic settings of Mesozoic tungsten deposits in South China**
J. Asian Earth Sci., 137 (2017), pp. 109-140

Zhao and Zhou, 2018

W.W. Zhao, M.F. Zhou **Mineralogical and metasomatic evolution of the Jurassic Baoshan scheelite skarn deposit, Nanling, South China**
Ore Geol. Rev., 95 (2018), pp. 182-194

Zhou et al., 2013

Q. Zhou, Y.H. Jiang, H.H. Zhang, S.Y. Liao, G.D. Jin, P. Zhao, R.Y. Jia, Z. Liu **Mantle origin of the Dexing porphyry copper deposit, SE China**
Int. Geol. Rev., 55 (2013), pp. 337-349

Zhou and Li, 2000

X.M. Zhou, W.X. Li **Origin of Late Mesozoic igneous rocks in Southeastern China: implications for lithosphere subduction and underplating of mafic magmas**
Tectonophysics, 326 (2000), pp. 269-287

Zuo et al., 2014

C.H. Zuo, R. Lu, Z.X. Zhao, Z.W. Xu, J.J. Lu, R.C. Wang, J.Q. Chen **Characterization of element geochemistry, LA-ICP-MS zircon U-Pb age, and Hf isotope of granodiorite in the Shuikoushan deposit, Changning, Hunan Province**
Geol. Rev., 60 (2014), pp. 811-823
(in Chinese with English abstract)