



**HAL**  
open science

# The Diurnal Cycles of Cloud Profiles and Water Vapor over Land and Ocean seen by the CATS Spaceborne Lidar and Megha-Tropiques Sensors

Vincent Noël, H  l  ne Chepfer, Marjolaine Chiriaco, H  l  ne Brogniez, John  
Yorks, Patrick Raberanto

► **To cite this version:**

Vincent No  l, H  l  ne Chepfer, Marjolaine Chiriaco, H  l  ne Brogniez, John Yorks, et al.. The Diurnal Cycles of Cloud Profiles and Water Vapor over Land and Ocean seen by the CATS Spaceborne Lidar and Megha-Tropiques Sensors. *ATMOS 2018*, Nov 2018, Salzburg, Austria. insu-01979657

**HAL Id: insu-01979657**

**<https://insu.hal.science/insu-01979657>**

Submitted on 28 Feb 2022

**HAL** is a multi-disciplinary open access archive for the deposit and dissemination of scientific research documents, whether they are published or not. The documents may come from teaching and research institutions in France or abroad, or from public or private research centers.

L'archive ouverte pluridisciplinaire **HAL**, est destin  e au d  p  t et    la diffusion de documents scientifiques de niveau recherche, publi  s ou non,   manant des   tablissements d'enseignement et de recherche fran  ais ou   trangers, des laboratoires publics ou priv  s.

# **Diurnal Cycles of Cloud Profiles and Water Vapor seen by the CATS Lidar and Megha-Tropiques Spaceborne Sensors**

---

- V. Noel - LA, CNRS
- H. Chepfer - LMD, UPMC
- M. Chiriaco - LATMOS, UVSQ
- H. Brogniez - LATMOS, UVSQ
- J. Yorks - NASA Goddard
- P. Raberanto - LMD, CNRS

# Spaceborne lidars and clouds

- Since 2006 the spaceborne lidar CALIPSO maps the 3D distribution of clouds on a near-global scale with a high vertical resolution
- Many important and useful results
- CALIPSO and almost all spaceborne lidars - ADM-Aeolus, IceSAT 1 and 2, Earth-CARE...
  - follow a sun-synchronous orbit
  - always sample a given location at the same local time
  - capture a single moment of the diurnal cycle
- CATS is an exception

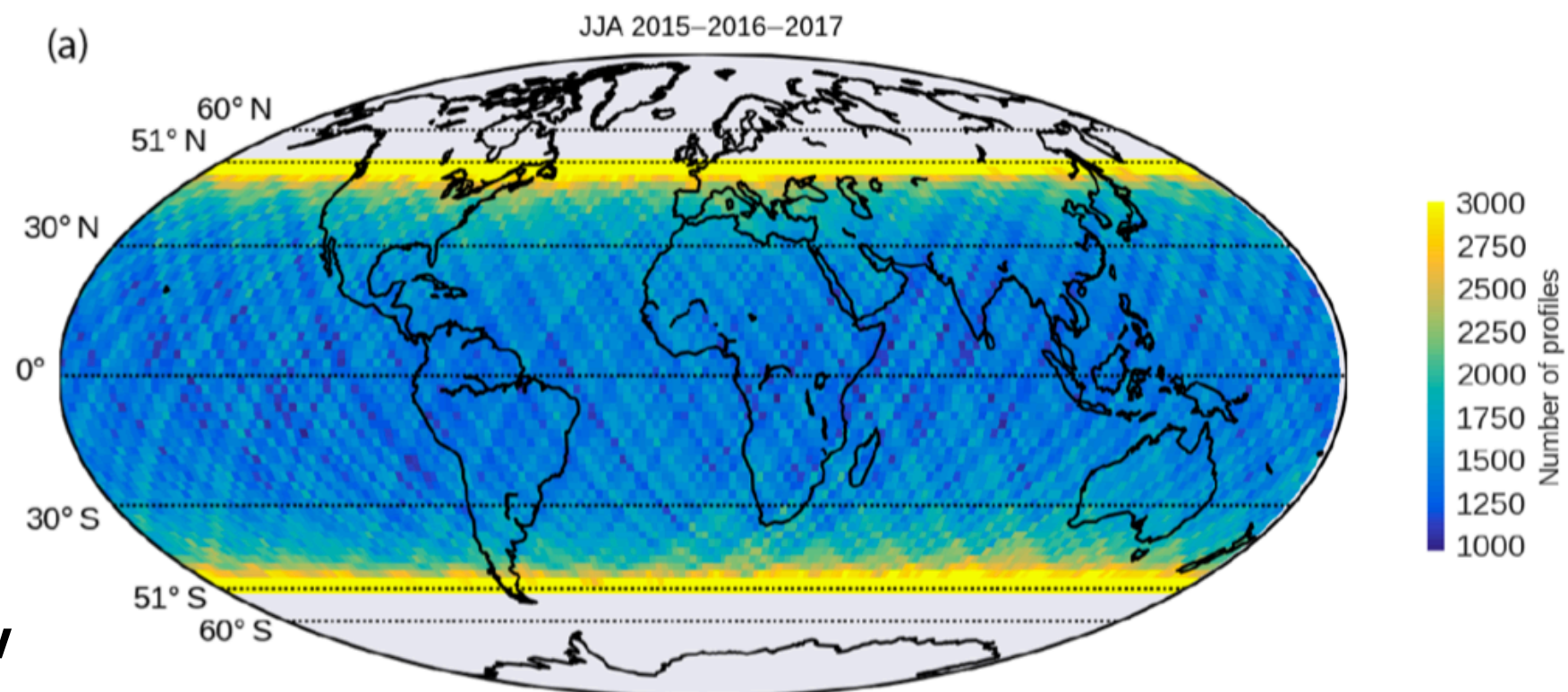
# CATS

## The Cloud-Aerosol Transport System

- The CATS lidar operated on the ISS from Feb 2015 to Oct 2017 (NASA mission)
- ISS orbits  $\pm 51^\circ$  latitudes = samples 78% of the Earth
- data :mostly 1064nm
- 350m between profiles, 60m vertical resolution, 5kHz



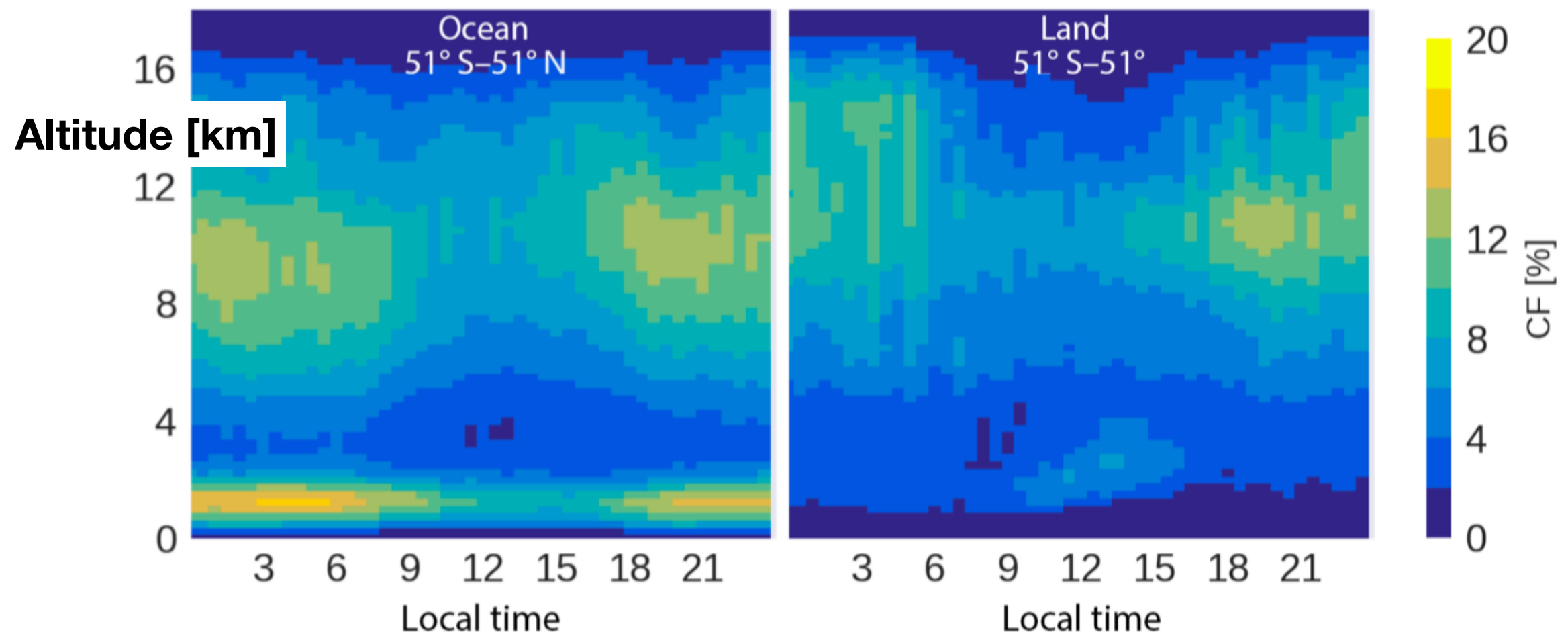
<https://cats.gsfc.nasa.gov>



# From single overpasses to the diurnal cycle

By aggregating overpasses along local time, we can reconstruct the diurnal cycle with vertical variability

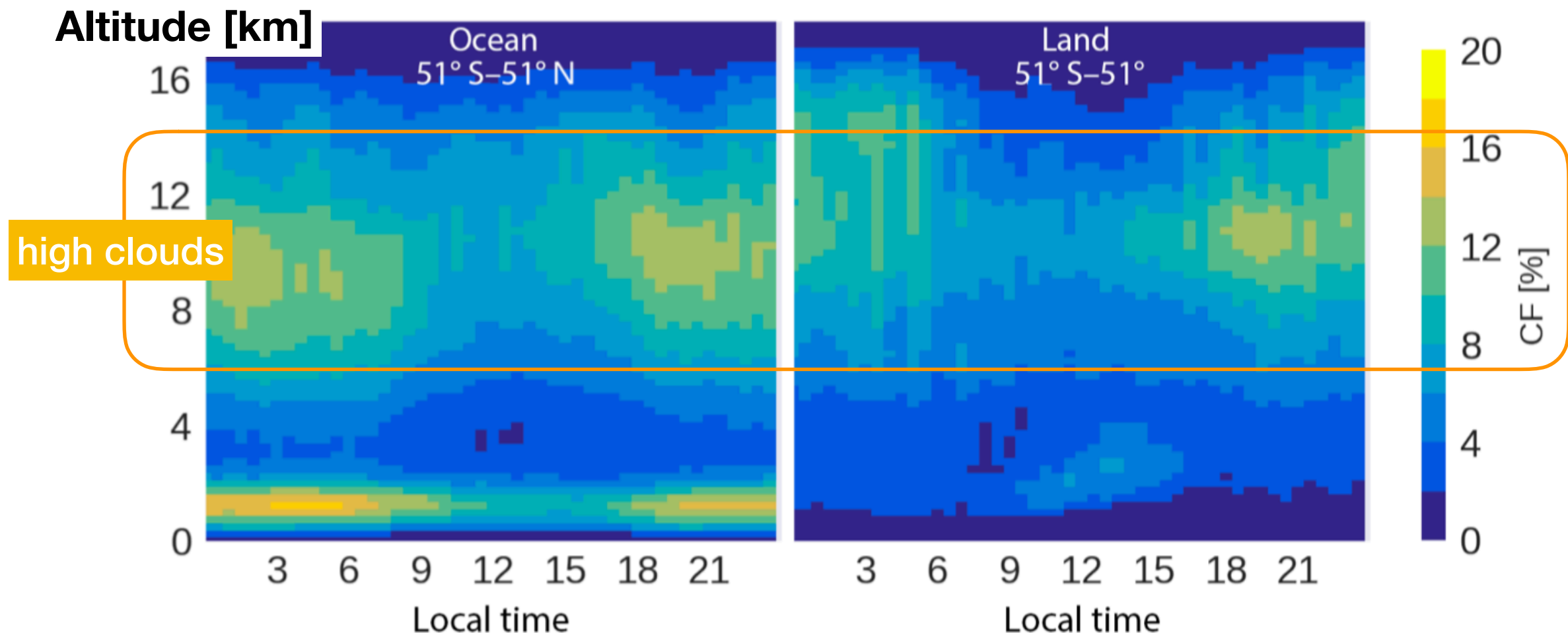
## JJA 2015-2017 $\pm 51^\circ$



# From single overpasses to the diurnal cycle

By aggregating overpasses along local time, we can reconstruct the diurnal cycle with vertical variability

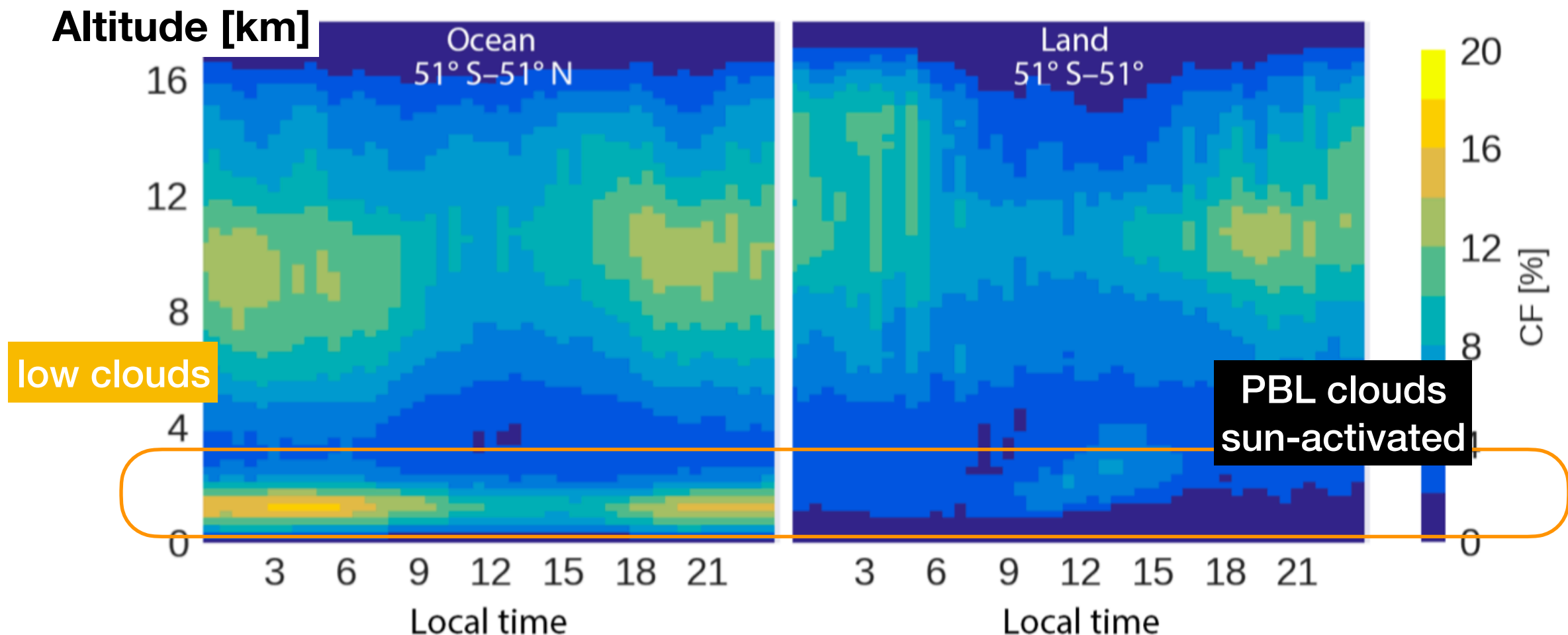
## JJA 2015-2017 $\pm 51^\circ$



# From single overpasses to the diurnal cycle

By aggregating overpasses along local time, we can reconstruct the diurnal cycle with vertical variability

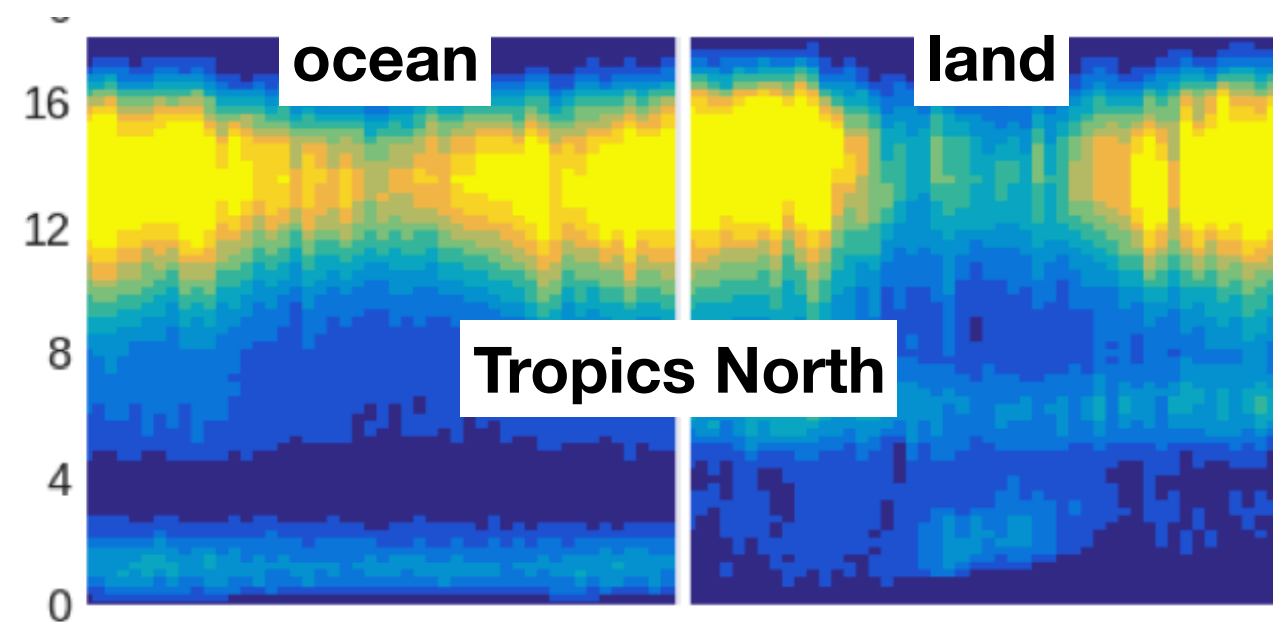
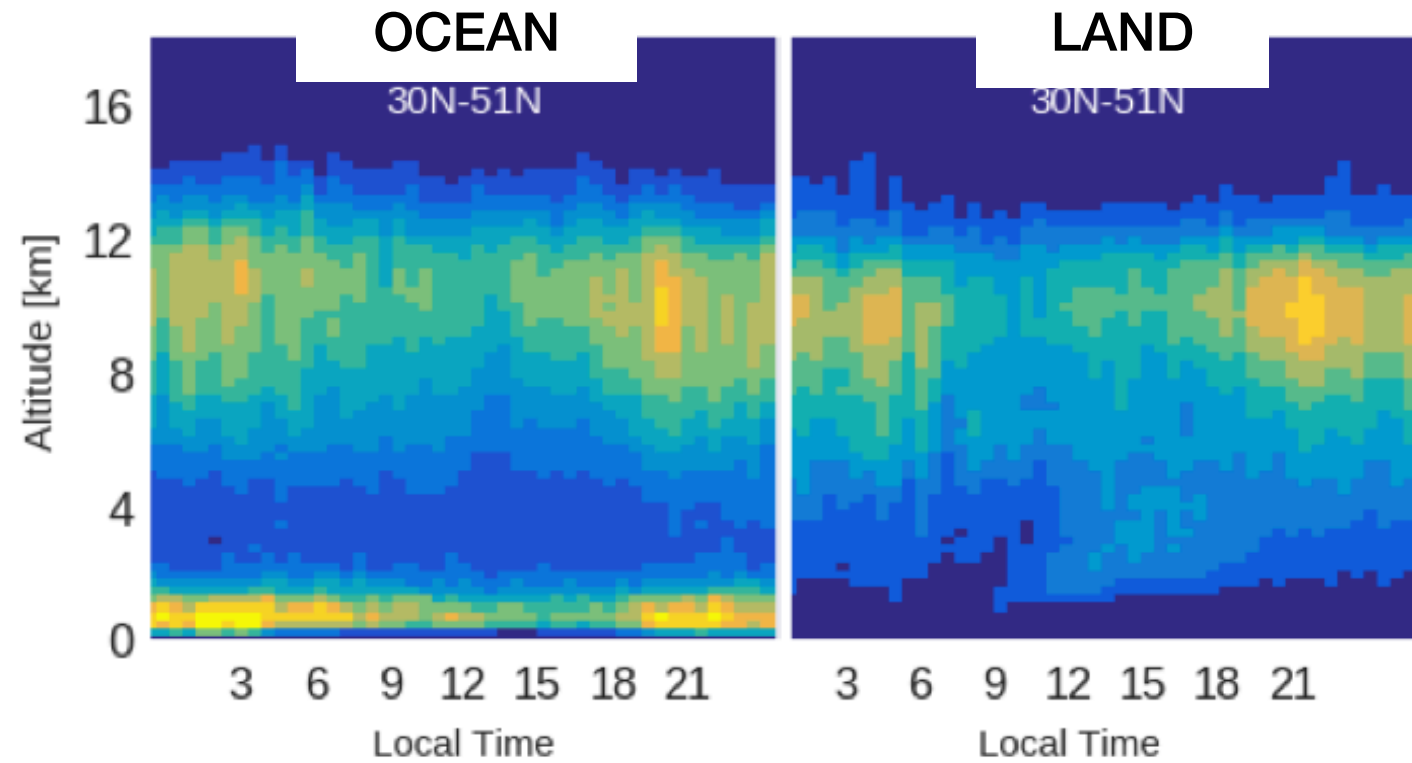
## JJA 2015-2017 $\pm 51^\circ$



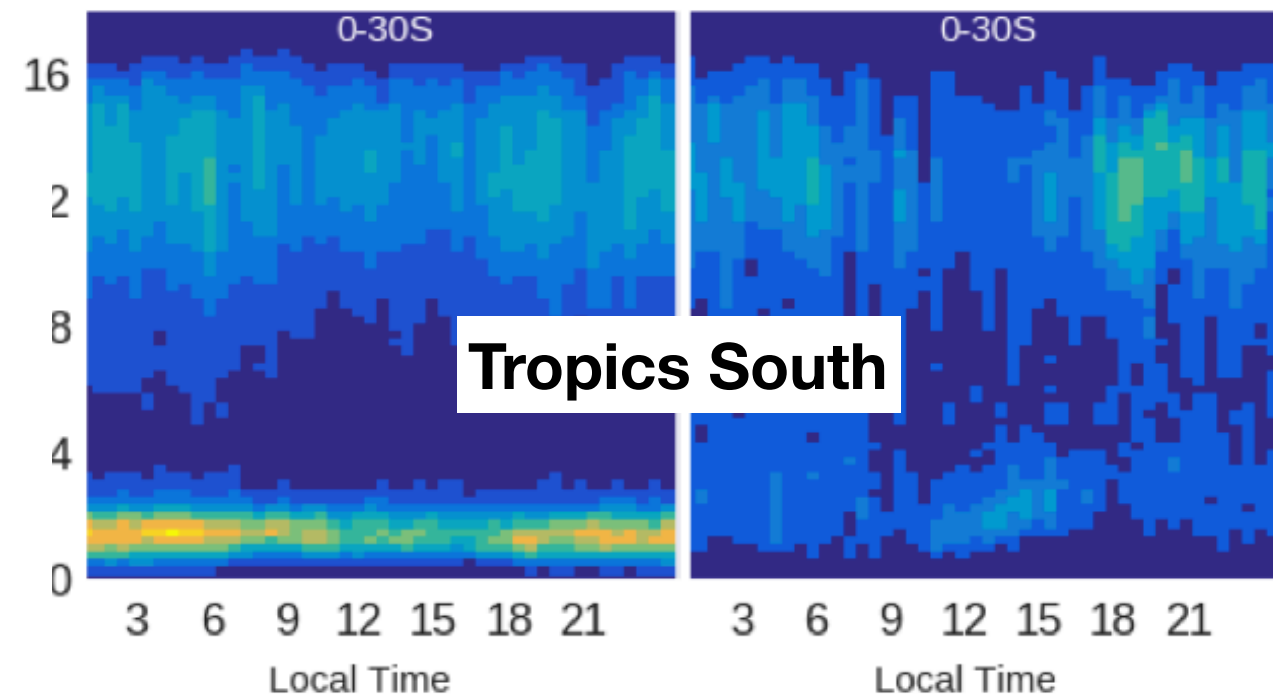
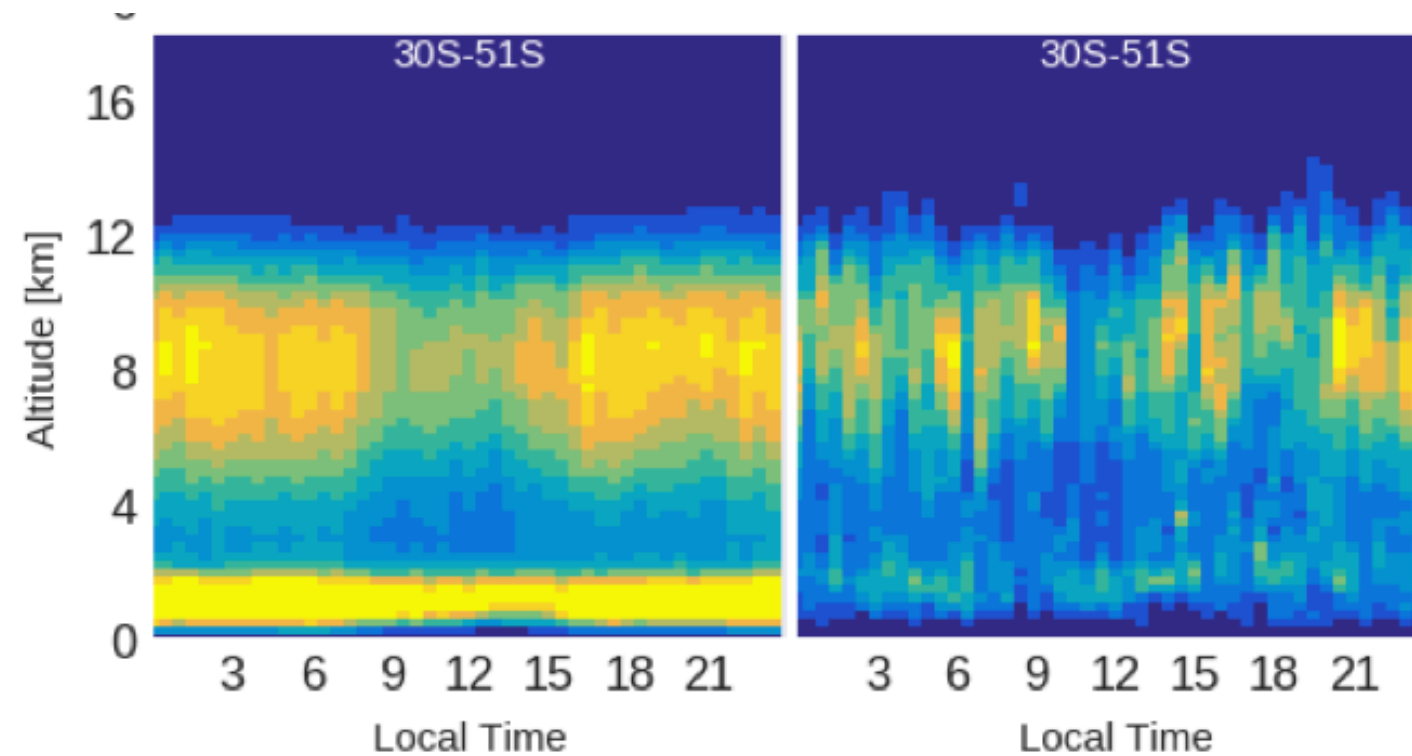
# Diurnal cycles in smaller regions

## Midlat North

JJA 2015-2017

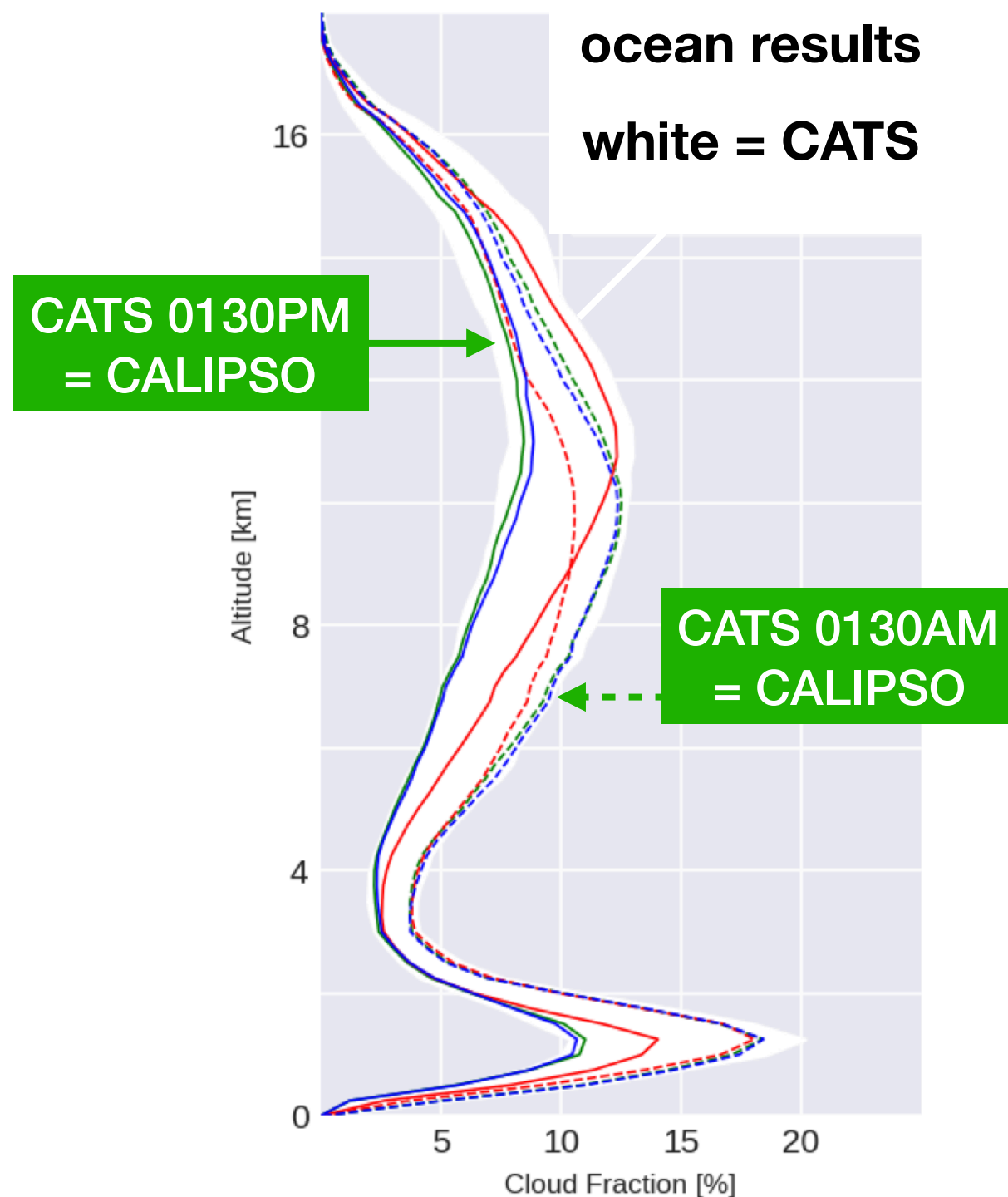


## Midlat South



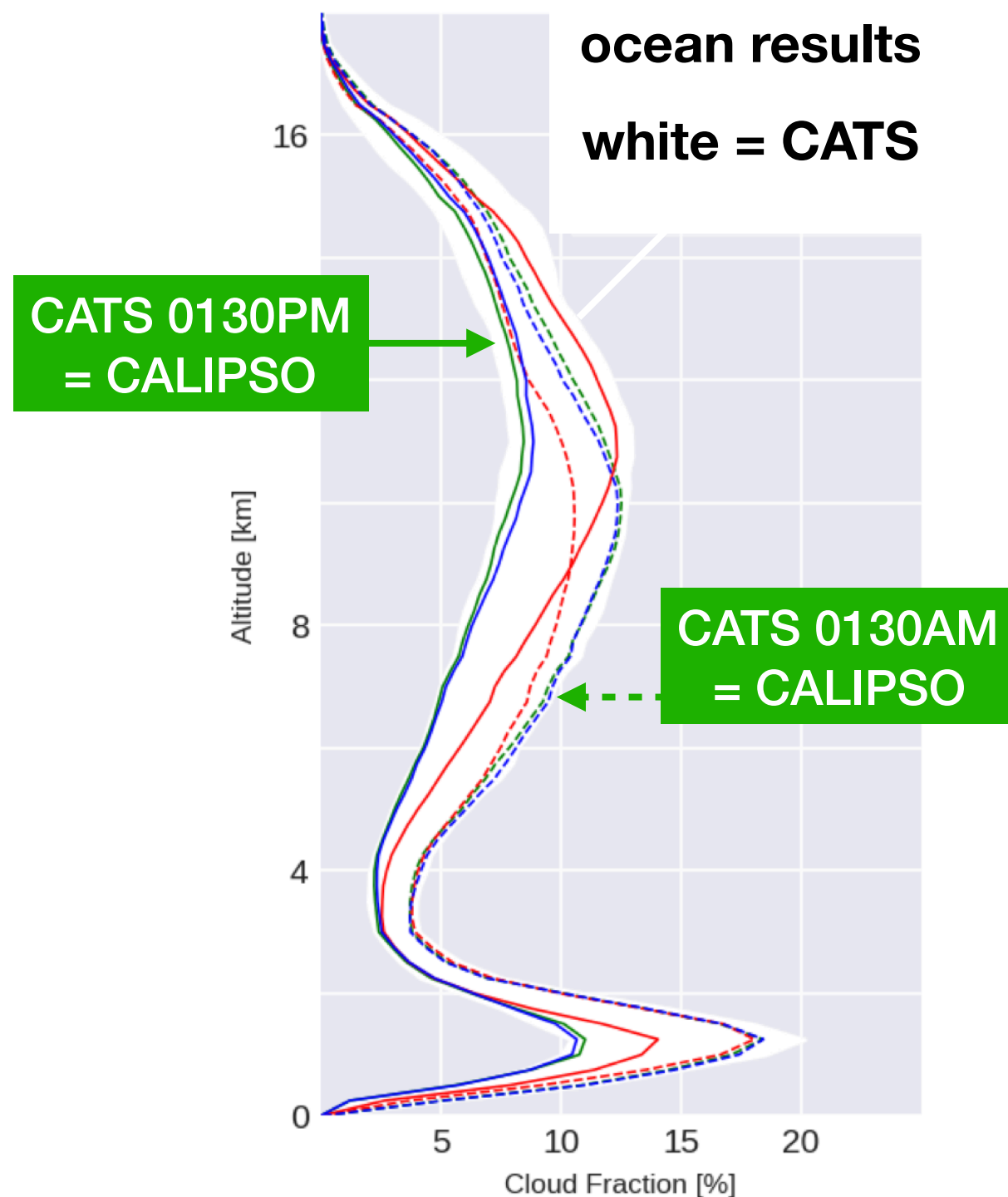


# Implications of CATS results for CALIPSO & sun-synchronous missions



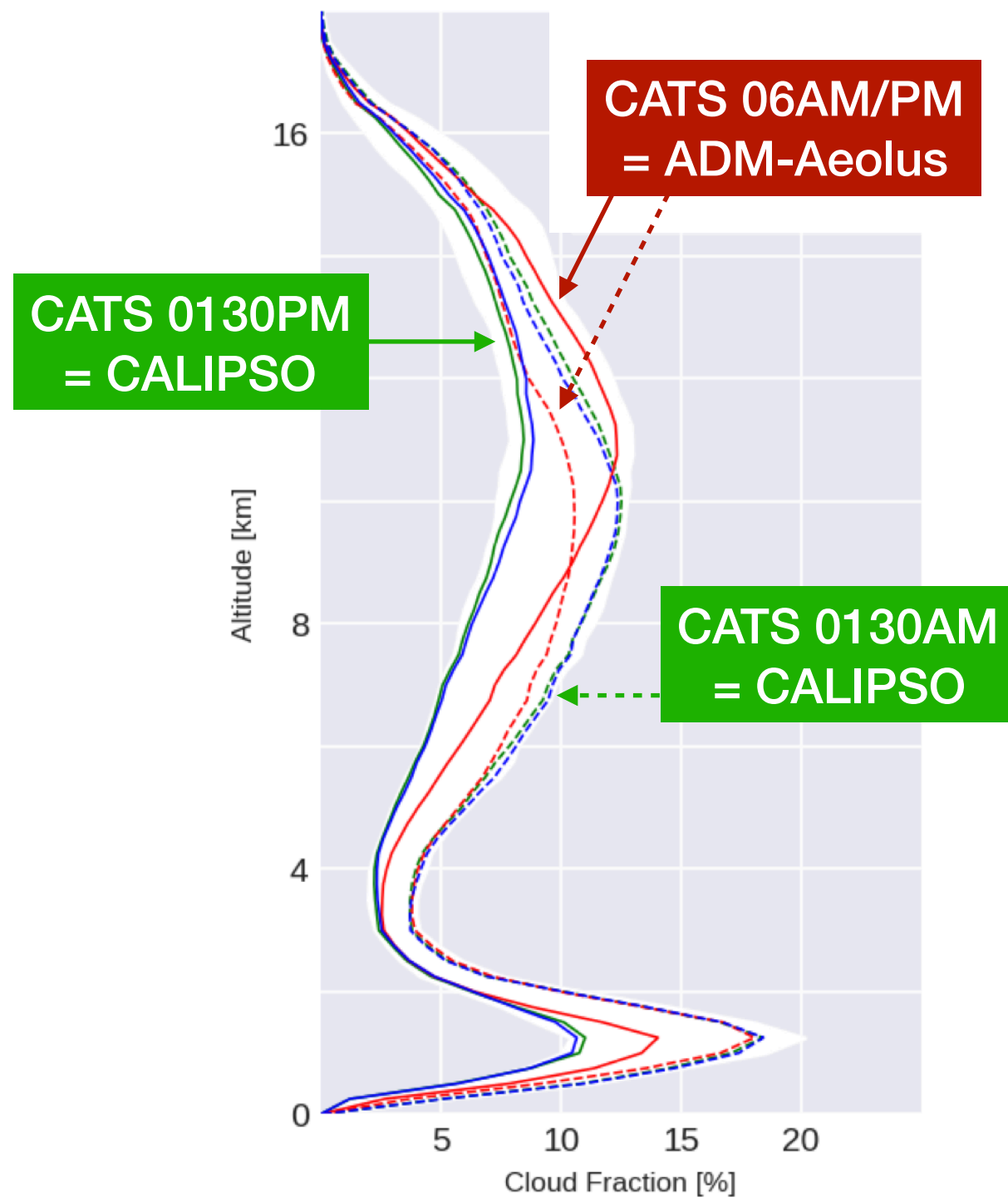
- CATS at 0130PM ~ CF daily min = CALIPSO daytime overpass
- CATS at 0130AM ~ CF daily max = CALIPSO nighttime overpass
- **CALIPSO = daily extremes of the cloud fraction profiles over ocean, especially below 10km ASL**

# Implications of CATS results for CALIPSO & sun-synchronous missions



- CATS at 0130PM ~ CF daily min = CALIPSO daytime overpass
- CATS at 0130AM ~ CF daily max = CALIPSO nighttime overpass
- **CALIPSO = daily extremes of the cloud fraction profiles over ocean, especially below 10km ASL**
- **Also works for Earth-CARE (0200LT) & A-Train instruments**

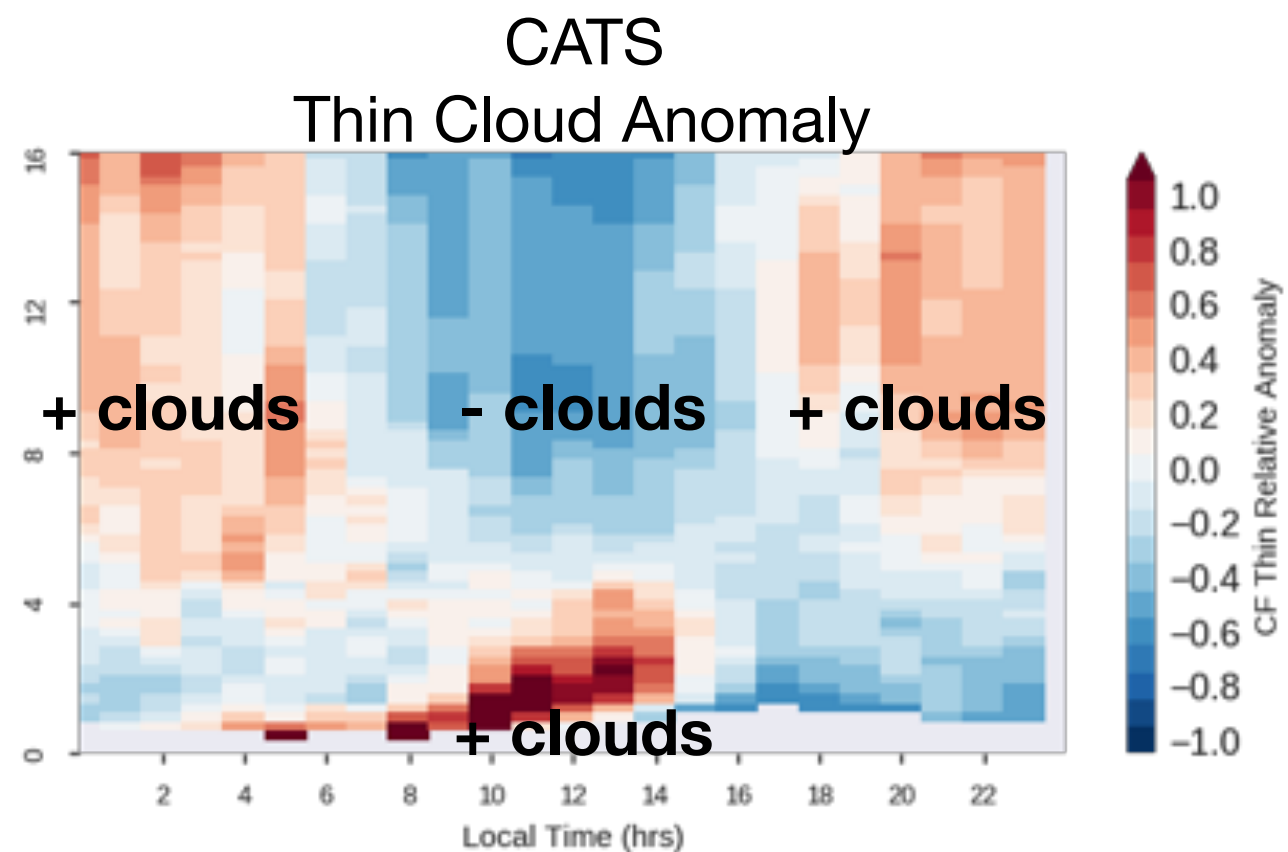
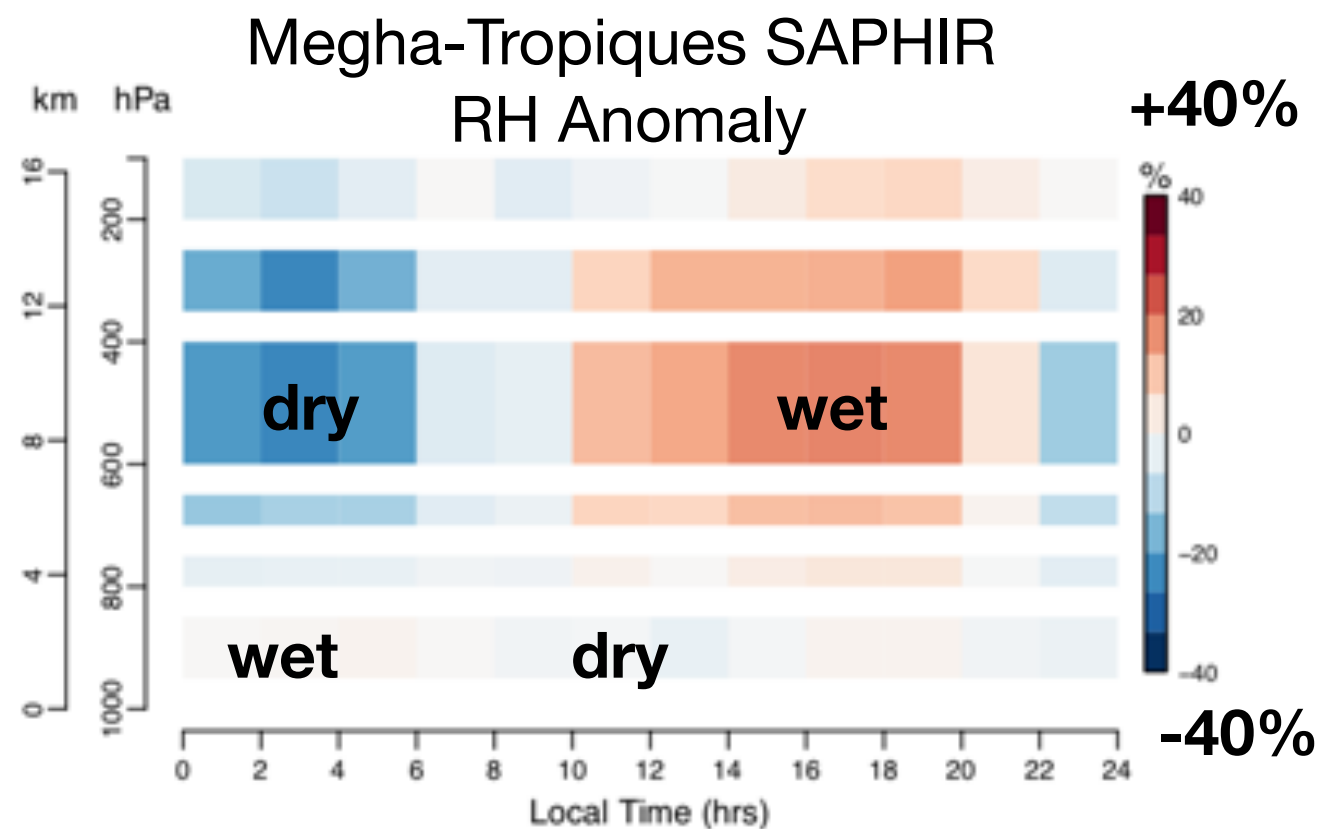
# Implications of CATS results for CALIPSO & sun-synchronous missions



- CATS at 06AM/PM :  
intermediate CF profiles  
= ADM-Aeolus overpasses

# diurnal cycles: clouds and water vapour

**LAND - w500 < 0 (convection) - JJA 2015-2017**



# Takeaway Points

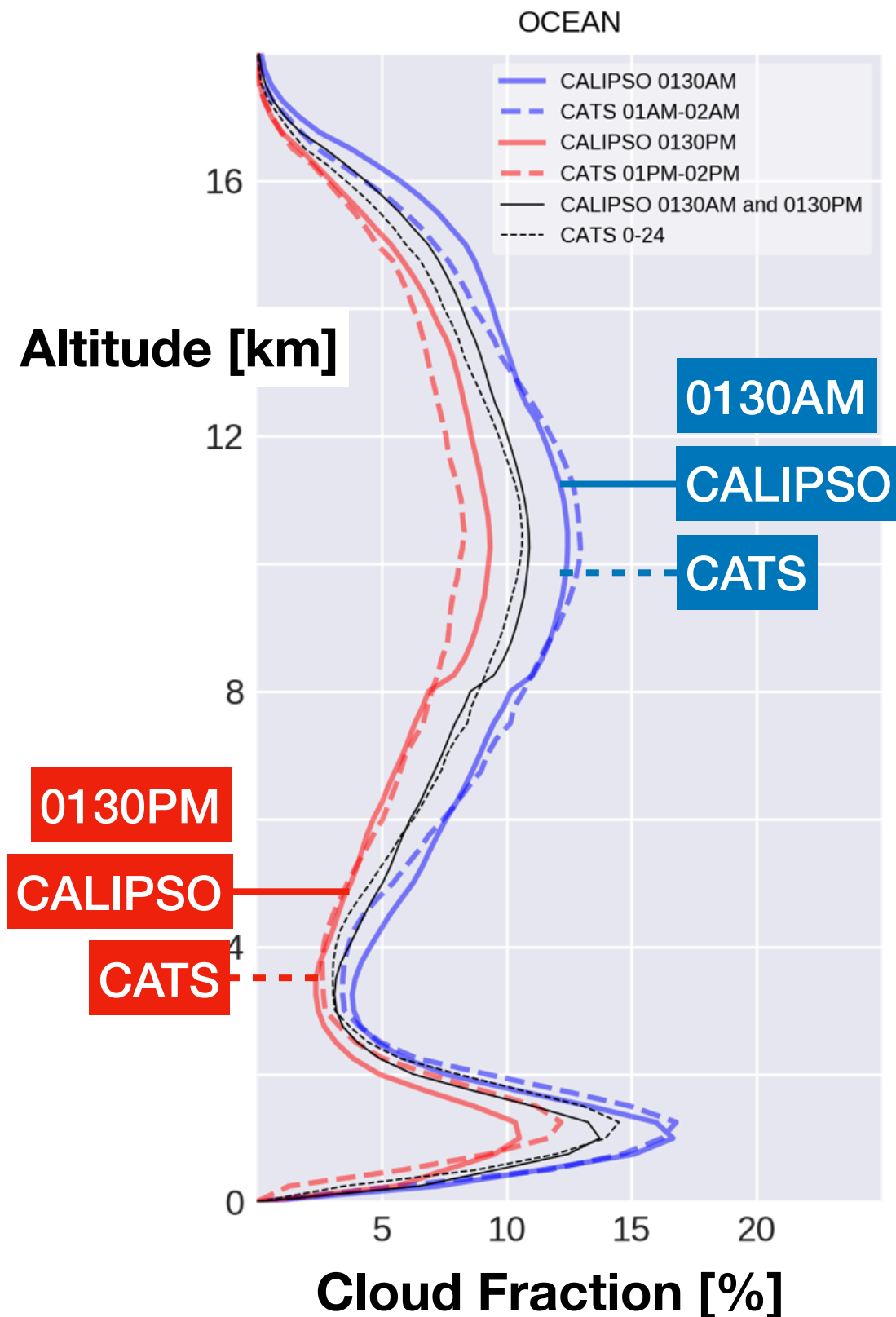
- CATS and Megha-Tropiques can describe **the diurnal cycle of vertical profiles of clouds and water vapor** in the Tropics
  - CATS data shows CALIPSO, Earth-CARE data **document extremes of Cloud Fraction** profiles over ocean
- 
- Other factors will impact agreement between instruments, eg wavelength — cf. talk from M. Chiriaco, next

Noel, V., H. Chepfer, M. Chiriaco, and J. Yorks, 2018: The diurnal cycle of cloud profiles over land and ocean between 51°S and 51°N, seen by the CATS spaceborne lidar from the International Space Station, **Atmos. Chem. Phys.** **18**, 9457–9473

Chepfer, H., H. Brogniez, V. Noel, P. Raberanto, 2018: Influence of water vapor and cloud profiles on temperature diurnal variation across the tropics. submitted.

**backup slides**

# CATS at CALIOP local times



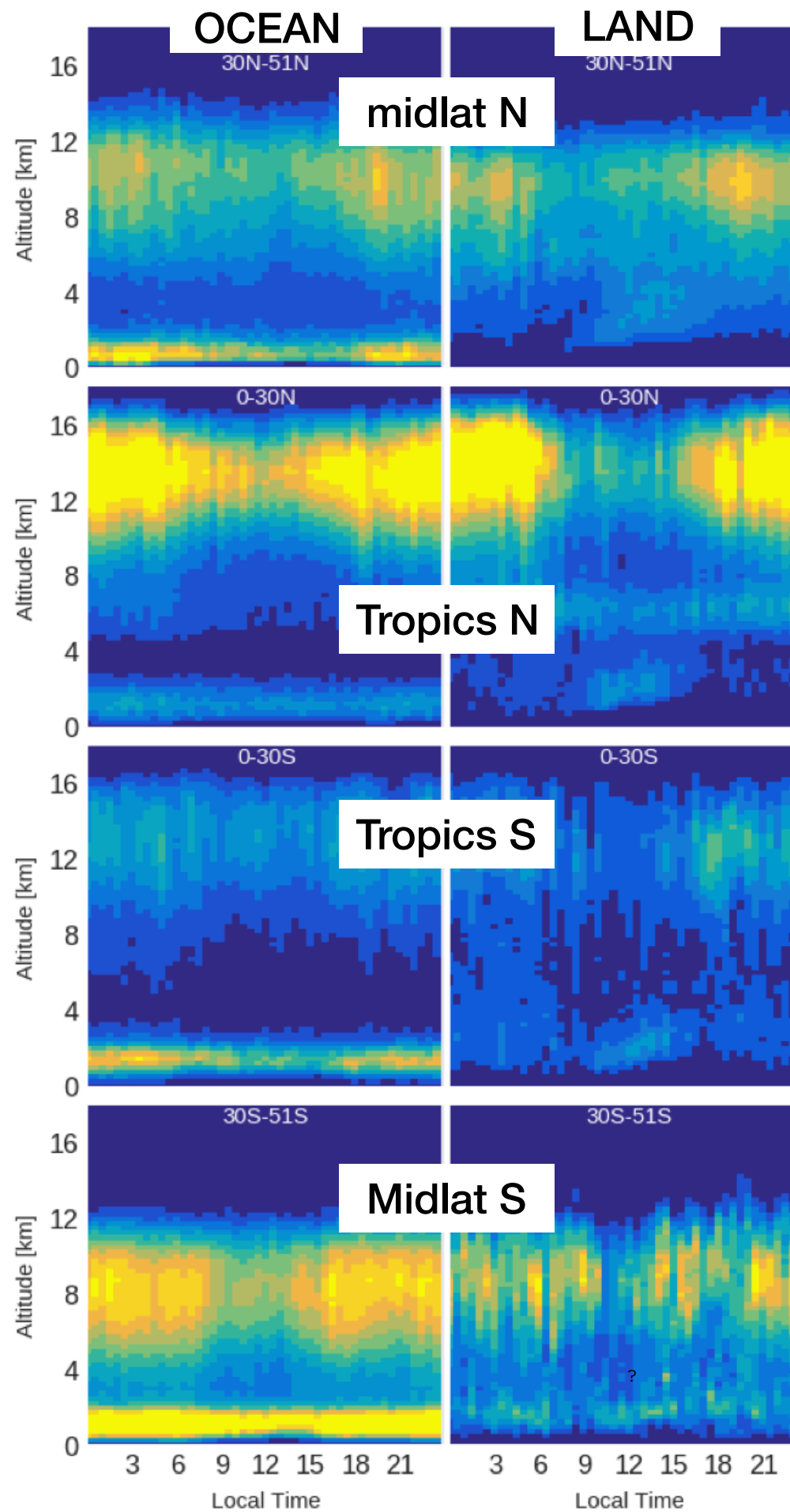
CALIOP overpasses any location at 0130AM or 0130PM local times

CATS overpasses at those local times are **consistent with those derived from CALIPSO**

Comparisons of CATS with ground-based lidar/radar data and ISCCP are also consistent (cf. [Noel et al. 2018](#))

**CATS clouds are reliable**

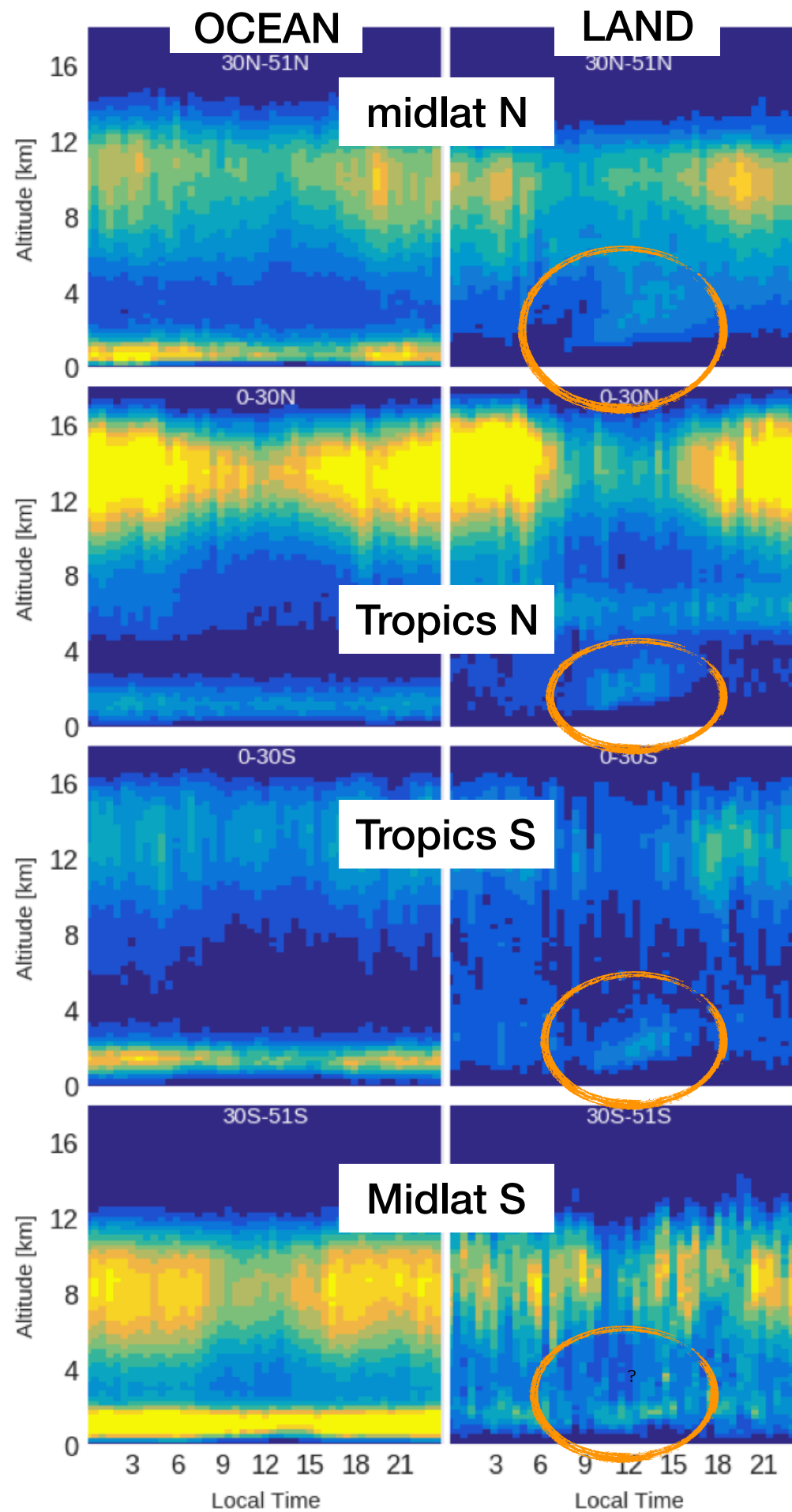
# JJA Results by latitude band



- low/high separation everywhere
- different cycles at different latitudes



# JJA Results by latitude band

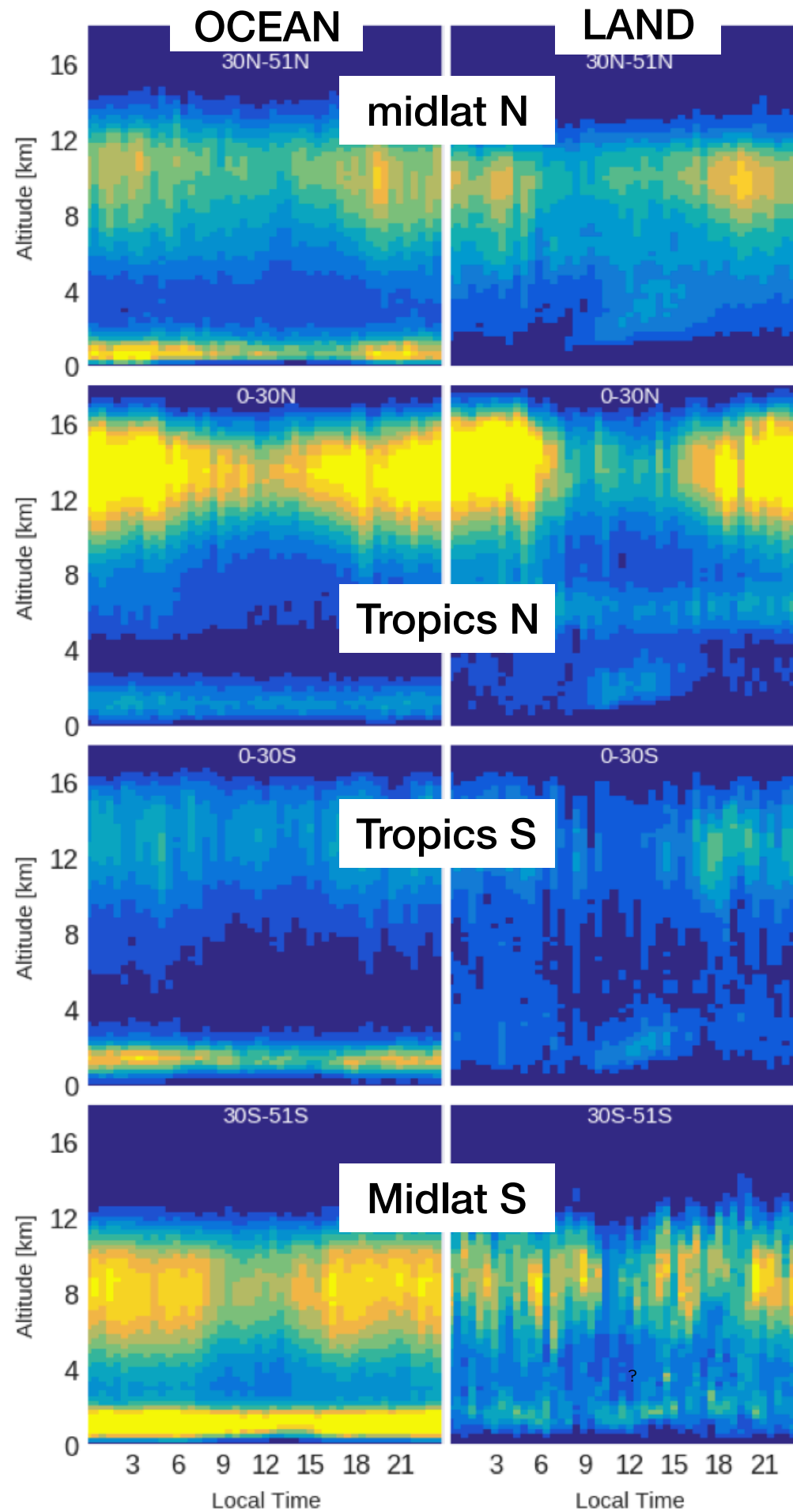


**PBL clouds  
sun-activated**

# JJA Results by latitude band

Summer Tropics

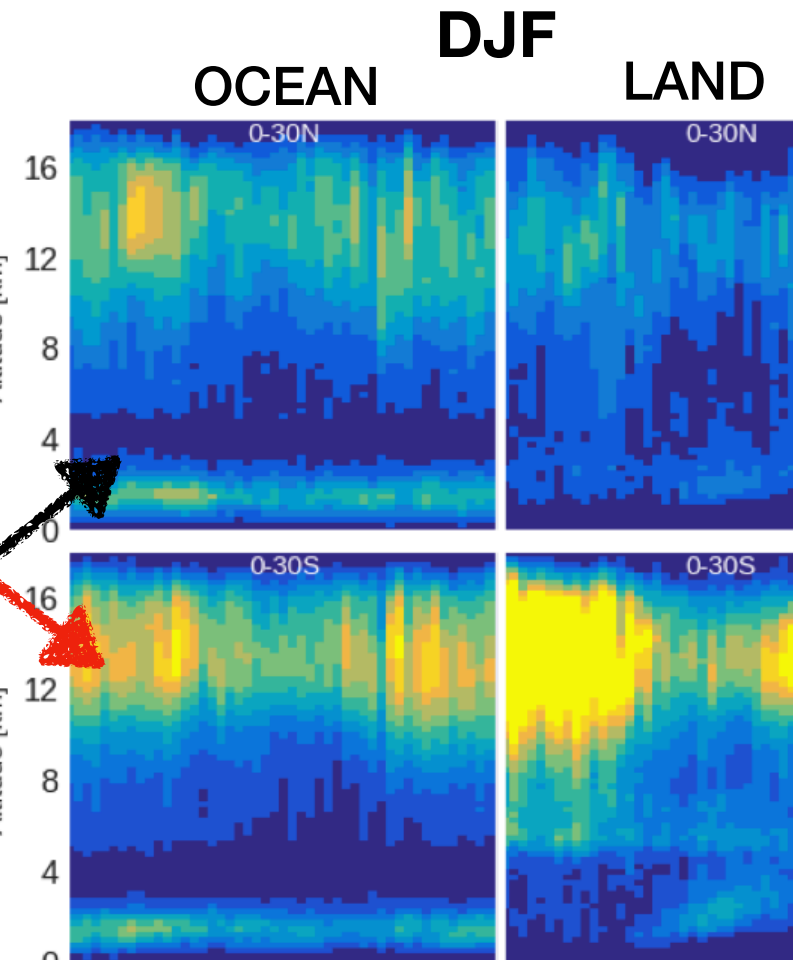
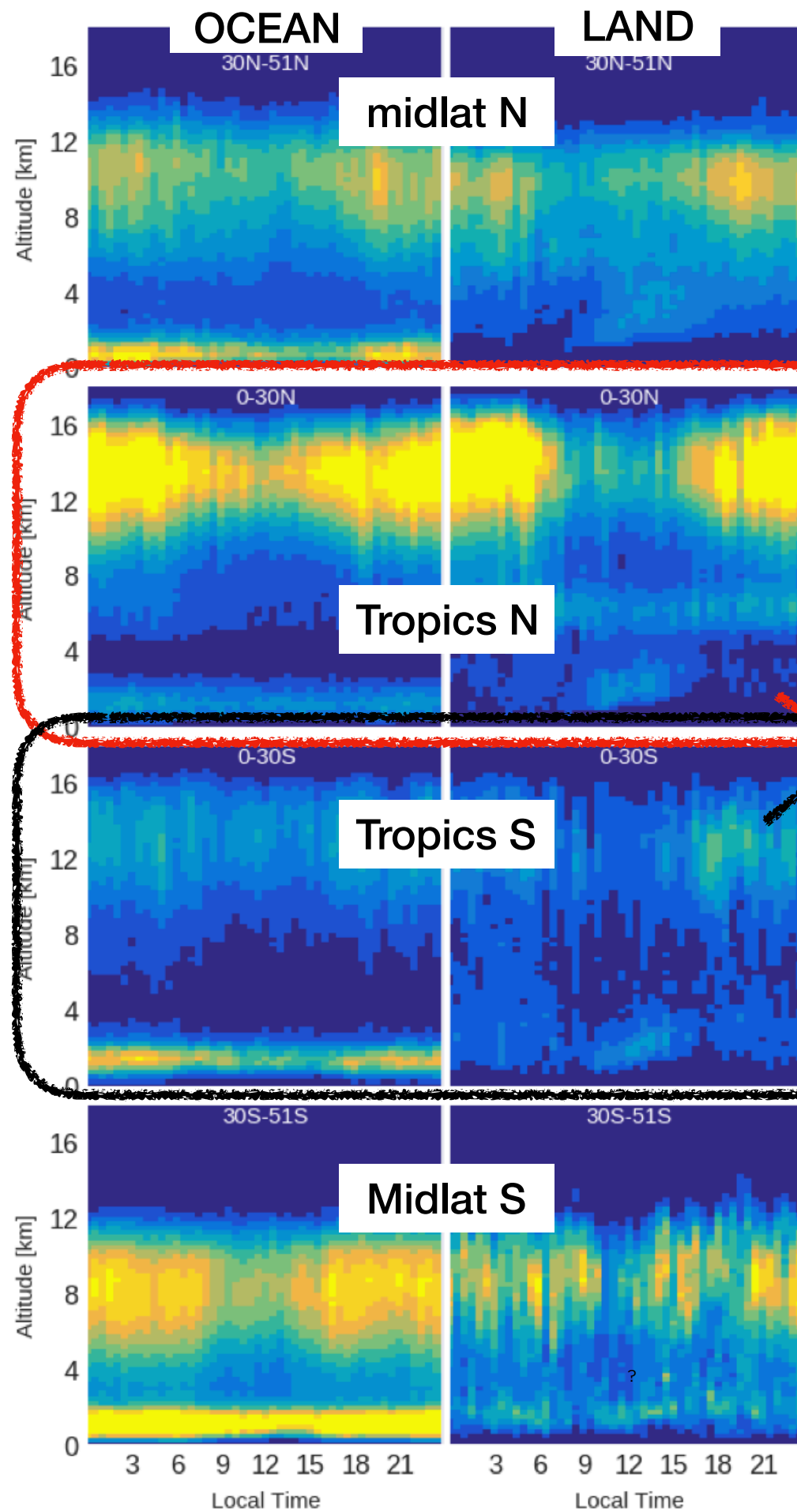
Winter Tropics



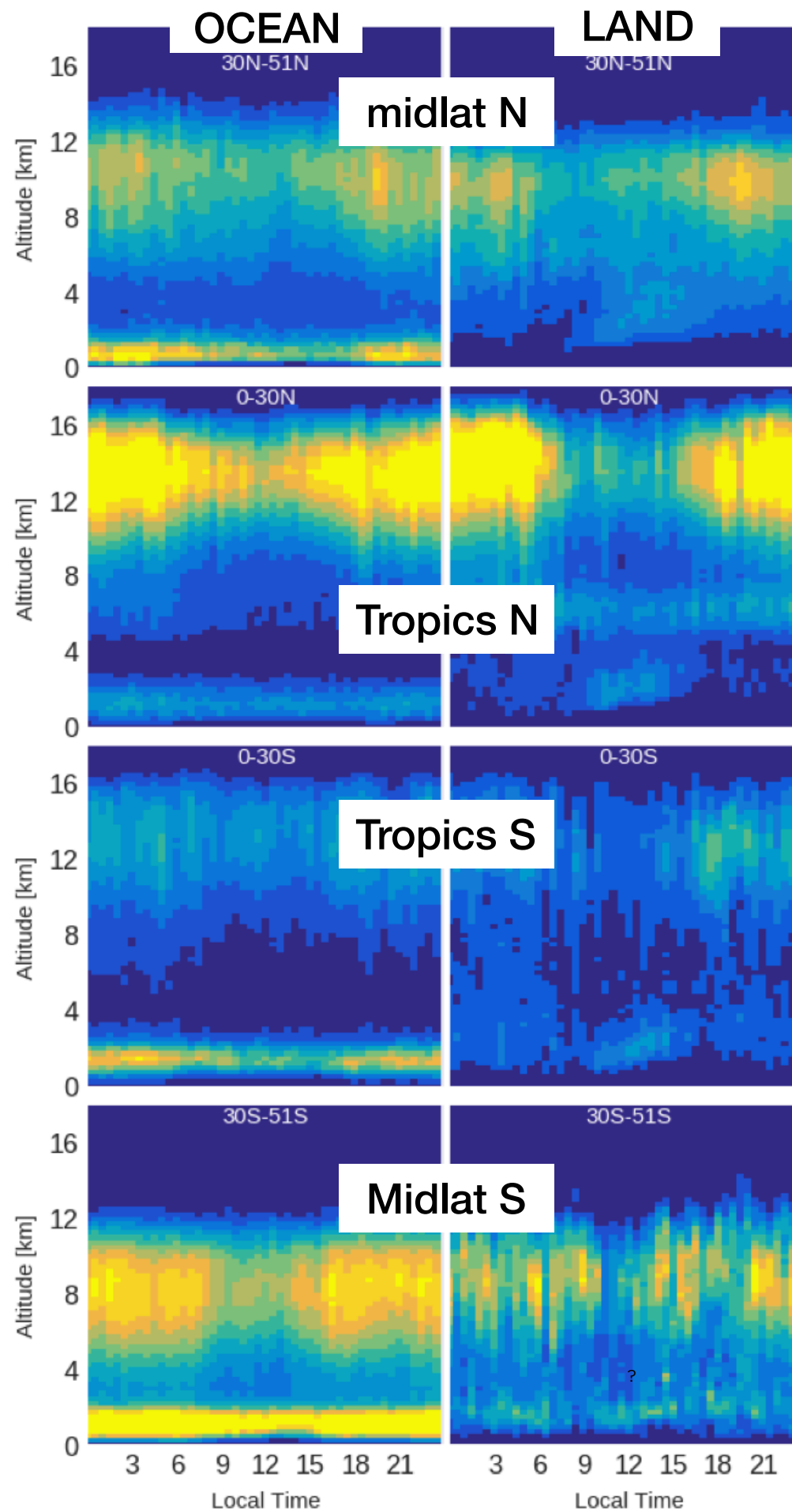
# JJA Results by latitude band

Summer Tropics

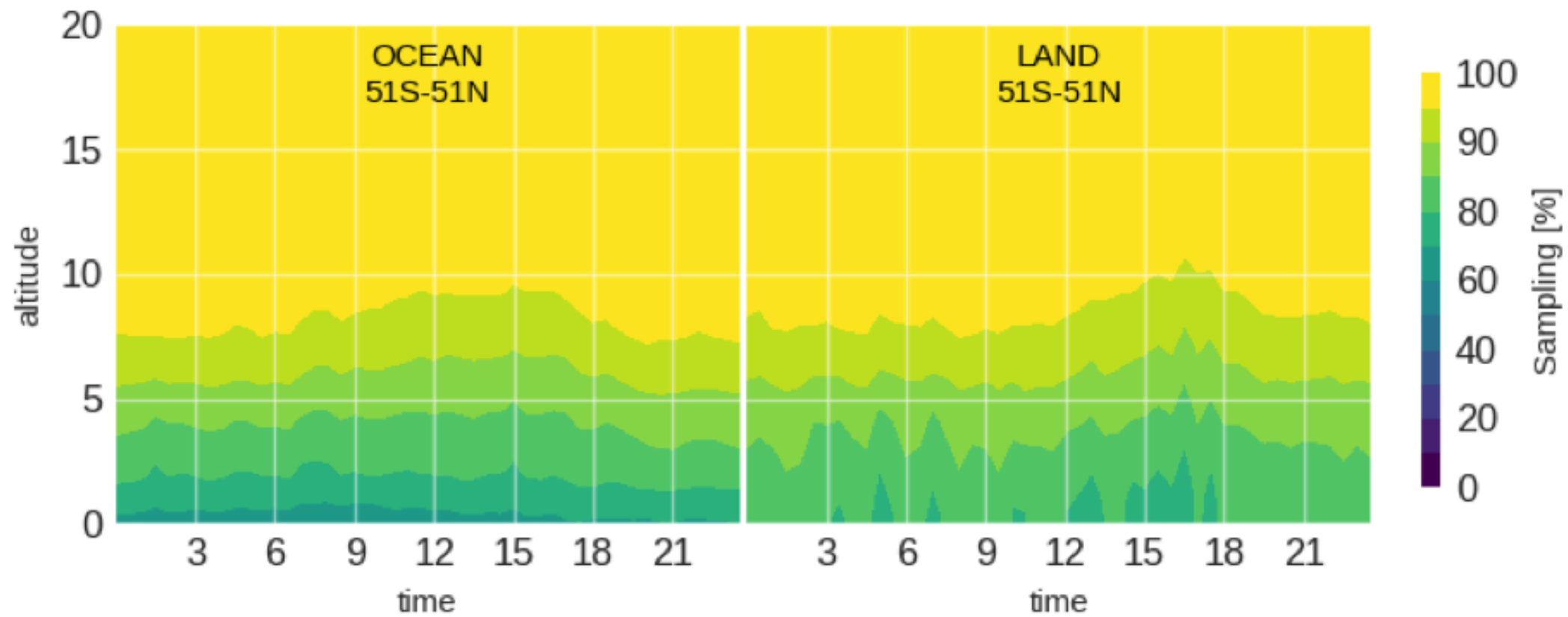
Winter Tropics



# JJA Results by latitude band



Southern  
Ocean



Even though some profiles get fully attenuated by atmospheric components, sampling is better than 80% at most altitudes, and ~100% above 7km except late in the afternoon

