



# Active and fossil mantle flows in the western Alpine region unravelled by seismic anisotropy analysis and high-resolution P wave tomography

Simone Salimbeni, Marco Malusà, Liang Zhao, Stéphane Guillot, Silvia Pondrelli, Lucia Margheriti, Anne Paul, Stefano Solarino, Coralie Aubert, Thierry Dumont, et al.

## ► To cite this version:

Simone Salimbeni, Marco Malusà, Liang Zhao, Stéphane Guillot, Silvia Pondrelli, et al.. Active and fossil mantle flows in the western Alpine region unravelled by seismic anisotropy analysis and high-resolution P wave tomography. *Tectonophysics*, 2018, 731-732, pp.35-47. 10.1016/j.tecto.2018.03.002 . insu-02124473

**HAL Id: insu-02124473**

**<https://insu.hal.science/insu-02124473>**

Submitted on 5 Mar 2021

**HAL** is a multi-disciplinary open access archive for the deposit and dissemination of scientific research documents, whether they are published or not. The documents may come from teaching and research institutions in France or abroad, or from public or private research centers.

L'archive ouverte pluridisciplinaire **HAL**, est destinée au dépôt et à la diffusion de documents scientifiques de niveau recherche, publiés ou non, émanant des établissements d'enseignement et de recherche français ou étrangers, des laboratoires publics ou privés.

1 Pre-print

2 Salimbeni, S., Malusà, M. G., Zhao, L., Guillot, S. et al. (2018).

3 Active and fossil mantle flows in the  
4 western Alpine region unravelled by  
5 seismic anisotropy analysis and high-  
6 resolution P wave tomography.

7 Tectonophysics, 731, 35-47.

8 <https://doi.org/10.1016/j.tecto.2018.03.002>

# Active and fossil mantle flows in the western Alpine region unravelled by seismic anisotropy analysis and high-resolution *P* wave tomography

Simone Salimbeni<sup>1\*</sup>, Marco G. Malusà<sup>2\*</sup>, Liang Zhao<sup>3,4</sup>, Stéphane Guillot<sup>5</sup>, Silvia Pondrelli<sup>1</sup>, Lucia Margheriti<sup>6</sup>, Anne Paul<sup>5</sup>, Stefano Solarino<sup>7</sup>, Coralie Aubert<sup>5</sup>, Thierry Dumont<sup>5</sup>, Stéphane Schwartz<sup>5</sup>, Qingchen Wang<sup>3</sup>, Xiaobing Xu<sup>3</sup>, Tianyu Zheng<sup>3</sup>, Rixiang Zhu<sup>3</sup>

<sup>1</sup> Istituto Nazionale di Geofisica e Vulcanologia, Sez. Bologna, Bologna, Italy

<sup>2</sup> Department of Earth and Environmental Sciences, University of Milano-Bicocca, Milan, Italy

<sup>3</sup> State Key Laboratory of Lithospheric Evolution, Institute of Geology and Geophysics, Chinese Academy of Sciences, Beijing, China

<sup>4</sup> CAS Center for Excellence in Tibetan Plateau Earth Sciences, Beijing, China

<sup>5</sup> Univ. Grenoble Alpes, Univ. Savoie Mont Blanc, CNRS, IRD, IFSTTAR, ISTerre, 38000 Grenoble, France

<sup>6</sup> Istituto Nazionale di Geofisica e Vulcanologia, Centro Nazionale Terremoti, Rome, Italy

<sup>7</sup> Istituto Nazionale di Geofisica e Vulcanologia, Centro Nazionale Terremoti, c/o DICCA University of Genoa, Genoa, Italy

\*Authors for correspondence: M.G. Malusà and S. Salimbeni (marco.malusa@unimib.it; simone.salimbeni@ingv.it)

## Abstract.

The anisotropy of seismic velocities in the mantle, when integrated with high-resolution tomographic models and geologic information, can be used to detect active mantle flows in complex plate boundary areas, providing new insights on the impact of mantle processes on the topography of mountain belts. Here we use a densely spaced array of temporary broadband seismic stations to analyze the seismic anisotropy pattern of the western Alpine region, at the boundary between the Alpine and Apenninic slabs. Our results are supportive of a polyphase development of anisotropic mantle fabrics, possibly starting from the Jurassic to present. Geophysical data presented in this work, and geologic evidence taken from the literature, indicate that: (i) fossil fabrics formed during Tethyan rifting may be still preserved within the Alpine and Apenninic slabs; (ii) mantle deformation during Apenninic slab rollback is not compensated by a complete toroidal flow around the northern tip of the retreating slab; (iii) the previously observed continuous trend of anisotropy fast axes near-parallel to the western Alpine arc is confirmed. We observe that this arc-parallel trend of fast axes is located in correspondence to a low velocity anomaly in the European upper mantle, beneath regions of the Western and Ligurian Alps showing the highest uplift rates. We propose that the progressive rollback of the Apenninic slab, in the absence of a counterclockwise toroidal flow at its northern tip, induced a suction effect at the scale of the supraslab mantle. The resulting mantle flow pattern was characterized by an asthenospheric counterflow at the rear of the unbroken Western Alps slab and around its southern tip, and by

44 an asthenospheric upwelling, mirrored by low  $P$  wave velocities, that would have favored the  
45 topographic uplift of the Alpine belt from the Mont Blanc to the Mediterranean sea.

46 **Keywords:** Alpine subduction; Apenninic subduction; seismic anisotropy; fossil mantle flow; asthenospheric  
47 counterflow; topographic uplift

## 48 **1. Introduction**

49 The anisotropy of seismic velocities in the mantle, mainly controlled by the lattice-  
50 preferred-orientation of olivine crystals (Savage, 1999; Mainprice et al., 2000), is widely used  
51 to constrain the asthenospheric flow pattern around lithospheric slabs (e.g., Long and Becker,  
52 2010). However, seismic fast-axis directions may mark either active or fossil mantle flows  
53 (e.g., Savage and Sheehan, 2000; Piromallo et al. 2006; Audet, 2013; Eakin et al., 2016).  
54 Active mantle flows have an impact on present-day topography of continents and mountain  
55 belts (Cloetingh and Willett, 2013; Faccenna et al., 2014), and can be further investigated by  
56 numerical models of mantle dynamics (e.g., Becker et al., 2006; Faccenda and Capitanio, 2012).

57 In the Central Mediterranean, the slab structure is particularly complex, and a number of  
58 studies have already analyzed the seismic anisotropy pattern around the Alpine and Apenninic  
59 slabs separately (e.g., Barruol et al., 2004, 2011; Lucente et al., 2006; Salimbeni et al., 2008,  
60 2013; Qorbani et al., 2015). A major counterclockwise asthenospheric flow has been  
61 proposed to the west of the Alpine slab from the Western Alps to the Tyrrhenian sea (Barruol  
62 et al., 2004, 2011), whereas another counterclockwise toroidal flow has been proposed by  
63 several authors around the northern tip of the Apennines (Vignaroli et al., 2008; Faccenna and  
64 Becker, 2010; Salimbeni et al., 2013). However, the scarcity of seismic anisotropy data at the  
65 boundary between the Alpine and Apenninic slabs, and the uncertainties in the determination  
66 of the slab structure (e.g. Lippitsch et al., 2003; Piromallo and Morelli, 2003; Kissling et al.,  
67 2006; Giacomuzzi et al., 2011; Zhao et al., 2016), have so far precluded a full understanding  
68 of the asthenospheric flow pattern and the potential dynamic topography implications in this  
69 complex plate-boundary area.

70 In order to fill this gap, we present here new seismic anisotropy data from the western  
71 Alpine region, based on the recordings of a densely spaced array of temporary broadband  
72 seismic stations deployed from the European foreland to the Po Plain (CIFALPS experiment;  
73 Zhao et al., 2016b). The new observations of birefringence of core-refracted shear waves  
74 (SKS phase) are integrated with data from previous work (Barruol et al., 2004, 2011;  
75 Salimbeni et al., 2008, 2013) and interpreted in the light of the upper mantle structure  
76 provided by the recent high-resolution  $P$  wave tomography model by Zhao et al. (2016a).

77 Results are discussed within the framework of available geologic constraints and recent  
78 geodynamic reconstructions of the Cenozoic Adria-Europe plate boundary area (e.g.,  
79 Vignaroli et al., 2008; Malusà et al., 2015), providing new insights on the potential impact of  
80 mantle processes on the topographic growth of orogenic belts.

## 81 **2. Tectonic and geodynamic setting**

82 The Central Mediterranean area includes several slabs interacting with the  
83 asthenospheric mantle at the boundary between the European and African plates (Jolivet and  
84 Faccenna, 2000; Handy et al., 2010). The upper mantle structure beneath the Alpine region is  
85 particularly complex (Fig. 1a) due to the presence of a S- to E-dipping European slab beneath  
86 the Central and Western Alps, and of two slabs dipping in opposite directions (SW and NE)  
87 that belong to the Adriatic microplate beneath the Apennines and the Dinarides (Lucente et  
88 al., 1999; Piromallo and Morelli, 2003; Giacomuzzi et al., 2011; Zhao et al., 2016a; Hua et  
89 al., 2017). The Alpine, Apenninic and Dinaric subduction zones accommodated the broadly  
90 N-S post-Jurassic convergence between Europe and Adria/Africa, leading to the progressive  
91 closure of the Alpine Tethys in between (Jolivet and Faccenna, 2000; Malusà et al., 2015).  
92 After the final exhumation of the thick subduction complex of the Western Alps in the late  
93 Eocene (Lardeaux et al., 2006; Dumont et al., 2012; Zhao et al., 2015), the Apenninic slab  
94 progressively translated northward beneath the Alpine orogenic wedge, and possibly started  
95 interacting with the Alpine slab by the end of the Oligocene (Malusà et al., 2015, 2016a). The  
96 rollback of the Apenninic slab during the Neogene (green arrow in Fig. 1b) led to the scissor-  
97 type opening of the Ligurian-Provençal basin and associated counterclockwise rotation of  
98 Corsica-Sardinia in the Apenninic backarc, followed by the opening of the Tyrrhenian basin  
99 since the Tortonian (Jolivet and Faccenna, 2000; Faccenna et al., 2001). The resulting crustal  
100 and upper-mantle structures at the boundary between the Alps and the Apennines are thus  
101 particularly complex (Zhao et al., 2015, 2016a; Malusà et al., 2017; Solarino et al., 2018) and  
102 such a complexity is possibly mirrored by the pattern of vertical motions derived from GPS  
103 data (e.g., Serpelloni et al., 2013; Walpersdorf et al., 2015). Topographic uplift in the Western  
104 Alps is greatest in the westernmost part of the Alpine metamorphic wedge (Briançonnais  
105 units) and in the External Massifs farther west (e.g., Mont Blanc and Pelvoux, Fig. 1b), with  
106 rates generally  $>1\text{mm/yr}$  (Walpersdorf et al., 2015; Nocquet et al., 2016). Ongoing  
107 topographic uplift also characterizes the Ligurian Alps (Serpelloni et al., 2013), as also  
108 attested by the progressive northward tilting of strath terraces and sedimentary strata of the  
109 overlying Tertiary Piedmont Basin (TPB in Fig. 1b). Moreover, the timing of topographic

uplift in these areas is apparently unrelated to the timing of subduction (Cretaceous to Paleogene) and backarc basin opening (latest Oligocene to Miocene): the Western Alps show a strong increase in exhumation rate over the last 2 Myr (Fox et al., 2015), the Ligurian Alps were progressively tilted and uplifted since the Messinian, and the Northern Apennines where rapidly uplifted during the Pliocene (Malusà and Balestrieri, 2012).

Figure 1

### 3. Methods and dataset

The temporary network of the CIFALPS experiment (China-Italy-France Alps Seismic survey, Zhao et al. 2016b) includes 46 broadband seismic stations deployed along a linear WSW-ENE transect from SE France to NW Italy, and 9 additional stations installed to the north and to the south of the main profile (Fig. 2 and Table S1). Stations utilized for our analysis operated from July 2012 to September 2013. Spacing between stations along the main profile ranges from ~5 km in the Western Alps mountain range to ~10 km in the European foreland and in the western Po Plain. The seismic anisotropy properties of the upper mantle beneath each single station were analyzed using the azimuth of the fast axis ( $\phi$ ) and the delay time (dt) as a proxy for the preferred orientation of olivine  $a$  axes and for the thickness of the anisotropic layer (Silver et al., 1999). Starting from the whole recordings of the CIFALPS experiment, we extracted the waveforms of 40 teleseismic events with  $M > 5.8$  (Table S2), selected within an epicentral window between  $80^\circ$  and  $120^\circ$  to enhance the SKS pulse, and rejecting those pulses affected by preceding S phases.

The analysis of the SKS pulse was performed in two steps. As a first step, an automated SKS-splitting method based on energy minimization on the transverse waveform component (Silver and Chan, 1991) was applied on the entire array to the 9 earthquakes with the highest Signal-to-Noise ratio (SNR). We used the same time window and bandpass filter (5-50 sec) for each stations-event pair, obtaining 90 new SKS splitting measurements (marked by a “A” in Table S3), mostly for stations in the western part of the profile, and 15 for stations in the eastern part of the profile or off-profile. Then, we manually analyzed 31 additional events using the SplitLab software (Wüstefeld et al., 2008) to fill the gap in back-azimuthal coverage and homogenize the dataset for all of the stations. The SplitLab software allows estimating the splitting parameters by using two different techniques, the cross-correlation and the minimization of the energy on the transverse component (see Wüstefeld et al., 2008 for details), under the assumption that SKS rays cross through a horizontal anisotropy (Silver and Chan, 1991). We considered only measurements showing consistent results using both

143 techniques, according to the indications of Wüstefeld and Bokelmann (2007). In particular,  
144 we selected those measurements with SNR  $>3$  and delay time  $<3$  s, and sufficiently high  
145 quality to satisfy the visual inspection performed by operators during manual revision. Null  
146 measurements were only considered in case of no energy on the transverse component or  
147 when splitting was precluded (e.g., in the case of fast axes oriented perpendicular or parallel  
148 to the back-azimuth of analyzed earthquakes). Differently from the automatic method, the  
149 manual analysis was performed considering, for each station-event pair, the proper time  
150 window (seconds before and after the SKS arrivals) and filter (bandpass with corner  
151 frequency between 1 and 100 sec) performing the highest SNR of the measurement. The  
152 complete set of utilized filters is summarized in Tables S3 and S4.

153 Manual analysis was further extended to 13 permanent stations, belonging to the Italian  
154 National Seismic Network and to the Regional Seismic Network of northwestern Italy, that  
155 are located near the eastern termination of the CIFALPS array leading to a total of 2380  
156 results. After the application of the selection criteria described above, we obtained a final  
157 dataset of 506 new SKS splitting measurements (Table S3) and 169 new null measurements  
158 (Table S4) that will be considered for interpretation.

159 We analyzed the vertical and lateral variations in anisotropy properties beneath selected  
160 stations based on the analysis of the Fresnel zone, taking into account the seismic ray paths at  
161 various depths (50, 100, 150 and 200 km) for a SKS phase with dominant period of 10 s  
162 (Alsina and Snieder, 1995; Margheriti et al., 2003). We used the formulation of Pearce and  
163 Mittlemann (2002) and a shear wave velocity for S-phase as defined in the IASP91 model  
164 (4.48 km/s at 50 km depth, 4.49 km/s at 100 km depth, 4.45 km/s at 150 km depth and 4.51  
165 km/s at 200 km of depth). By retrieving the ray paths of two teleseismic events arriving at the  
166 same station from opposite back-azimuths and sampling different fast-axis directions, we thus  
167 determined the minimum depth of lateral anisotropic variations.

168 

Figure 2
----------

#### 169 **4. Results**

170 Results of our single SKS splitting measurements along the CIFALPS profile, and in  
171 the Po Plain farther east, are shown in Figure 2. Measurements are projected at the 150 km  
172 piercing point depth, and are plotted as shades-of-blue segments parallel to the fast axis and  
173 scaled with the delay time, according to a color scale indicating the back-azimuth of the  
174 event, i.e. the incoming direction of the seismic ray at the station. Shear wave splitting data  
175 from previous works are plotted in yellow for comparison (Barruol et al., 2004, 2011;

176 Salimbeni et al., 2008, 2013). Measurements lying within a 60-km-wide swath parallel to the  
177 CIFALPS profile (indicated in green in Figure 2) are additionally plotted along the cross  
178 section of Figure 3a.

179 Along the western part of the CIFALPS transect, teleseismic events yielded good  
180 quality results from all available back-azimuths. Fast-axes show NW-SE to WNW-ESE  
181 directions, and are part of a continuous trend of fast axes that follows the shape of the Alpine  
182 arc in the northern and western parts of the map of Figure 2, from NE-SW in the Central  
183 Alps, to N-S in the northern Western Alps, and NW-SE in the southern Western Alps. This  
184 trend was first described by Barruol et al. (2004, 2011), and finds its prolongation along the  
185 French Mediterranean coast and the Ligurian Alps, where fast-axes have WNW-ESE to E-W  
186 trends. Our new measurements in the Ligurian Alps, north of Genoa, show NE-SW and NW-  
187 SE fast-axis directions in agreement with previous data.

188 Along the eastern part of the CIFALPS transect, and more generally in the whole  
189 central part of the map of Figure 2, measurements show variable fast-axis directions, and NE-  
190 SW, E-W and NW-SE directions are all equally frequently sampled (see rose diagrams in Fig.  
191 3c). The percentage of good quality results is lower than in the western part of the map, due  
192 to the impact of the thick sedimentary cover of the Po Plain on the quality of the waveforms  
193 (see Fig. S2). In the southeastern part of the map, corresponding to the Northern Apennines  
194 (Fig. 2), the fast-axis directions define a broadly N-S trend north of Florence, and a NW-SE  
195 trend between Florence and Genoa, where our new data are consistent with those published  
196 by Salimbeni et al. (2008, 2013).

197 Variations in shear wave splitting parameters are clearer when data are projected onto a  
198 cross section parallel to the CIFALPS profile (Fig. 3). This allows to distinguish three  
199 different parts of the profile, labelled as western, central and eastern segments in Figure 3a.  
200 The western segment of the profile (stations 1-17) shows quite homogeneous fast-axis  
201 directions in the range of  $-80^{\circ} \pm 20^{\circ}$  (pale to dark blue marks in Fig. 3a), with minor  
202 differences depending on the back-azimuth of analyzed events (see Fig. 3c). The distribution  
203 of single fast-axis directions is also confirmed by the distribution of average fast-axis  
204 directions calculated for stations having at least 6 splitting measurements (red stars in Fig.  
205 3a). Ray paths coming from the west (dark blue marks in Fig. 3a) show a trend of delay time  
206 that increases from 1-1.5 s in the westernmost 100 km to 2.4 s at ~140 km, and linearly  
207 decreases farther east.

208 In the central segment of the profile (stations 18-31), ray paths coming from the west  
209 sample a dominant NW-SE direction, whereas those coming from the east sample fast-axis



210 directions with more dispersed trends, not only E-W to NW-SE, but also NNE-SSW (see Fig.  
211 3c). Ray paths coming from the west (dark blue marks in Fig. 3a) define a trend of linearly  
212 decreasing delay times, from 2.4 s at 140 km, to 1.0 s at 220 km. This trend is not observed  
213 farther east.

214 In the eastern segment of the profile (stations 32-46), the fast-axis directions are even  
215 more dispersed (see also the average values marked by red stars in Fig. 3a), and show  
216 dominant N-S and NE-SW directions depending on the back-azimuth (Fig. 3c). Delay time is  
217 strongly scattered in the range from <1 s to 2.8 s. Teleseismic events coming from the west  
218 mainly capture a N-S trend, whereas those coming from the east yield a maximum frequency  
219 of NNE-SSW fast-axis directions (see Fig. 3c). Null measurements (empty dots in Fig. 3a)  
220 are quite common in the central and eastern segments of the CIFALPS profile, as well as  
221 farther east in the Po Plain (see Table S4). A few null measurements are also found along the  
222 western segment of the CIFALPS profile, between abscissae 50 and 100 km (Fig. 3a).

223 The results of Fresnel zone analysis for stations CT30 and CT33 are shown in Figure 4.  
224 In both stations, rays coming from NE have a 30° fast-axis direction, whereas rays coming  
225 from SW have a -50° fast-axis direction. At station CT30, the Fresnel zones around the ray  
226 piercing points partly overlap at 50 km depth (orange circles in Fig. 4b), whereas they are  
227 fully separated at greater depths, pointing to an anisotropy source located at depth >50 km. At  
228 station CT33, the Fresnel zones partly overlap at 50 and 100 km depth (orange and green  
229 circles in Fig. 4c), pointing to a source of anisotropy at depth > 100 km. The same  
230 considerations can be made for stations CT29, CT31, CT32 and CT35 (see Supplementary  
231 Fig. S1b) where we have enough information to calculate the Fresnel Zone, and where we  
232 obtained similar results. These results are in agreement with the Fresnel zone analysis  
233 performed by Barruol et al. (2011) from two stations (see their Fig. 6), and confirm that the  
234 change in seismic anisotropy pattern observed between the central and eastern segments of  
235 the CIFALPS profile is due to the sampling of different mantle regions and does not reflect a  
236 crustal contribution, as also suggested by the high values of delay time. Farther east in the Po  
237 Plain, Fresnel zone analysis from two stations (CT41 and CT43) is supportive of an  
238 additional lithospheric contribution to the observed anisotropy pattern, from depths shallower  
239 than 50 km (see Supplementary Figure S1a). However, SKS measurements, for their  
240 characteristics and the strong heterogeneity of the measured anisotropy directions in the Po  
241 Plain, do not allow to locate this shallower contribution more precisely.

242

Figures 3, 4
--------------

## 5. Comparison with *P* wave tomography data

Seismic anisotropy data are plotted in Figure 5a onto the high-resolution *P* wave tomography model of Zhao et al. (2016a). Colours in the 150 km depth slice of the tomography model indicate low-velocity (red to yellow) and high-velocity (light to dark blue) anomalies, the latter corresponding to the traces of the Central and Western Alps slabs (CS and WS) and Apenninic (Adriatic) slab (AS) at 150 km depth. The location of the high-velocity anomalies in the tomography model of Zhao et al. (2016a) shows no major variation in the whole depth range relevant for our seismic anisotropy study. In fact, both the Alpine and the Adriatic slabs dip almost vertically in the upper mantle of the study region. Any depth slice would thus show the same relationships between velocity anomalies and anisotropy as those shown in Figure 5a.

Two main low-velocity anomalies are imaged in the map of Figure 5a, the first one located to the west of the Alpine slab, running from western Switzerland to SE France and the Ligurian coast, and the second one located in the eastern part of the map, to the north of the Apenninic slab. The low-velocity anomaly located to the west of the Alpine slab is particularly evident at 100–250 km depth (see cross section in Figure 3b) and can be recognized, with lower amplitudes, down to the mantle transition zone (Zhao et al. 2016a). A comparison between *P* wave tomography and anisotropy data was already performed by Barruol et al. (2011) using the tomography model of Piromallo and Morelli (2003) and a dataset of 644 anisotropy measurements for the European mantle. When compared to the tomography model of Zhao et al. (2016a), the tomography model of Piromallo and Morelli (2003) shows major differences that may influence the interpretation of the anisotropy pattern of the study area. In the Piromallo and Morelli (2003)’s model: (i) the low-velocity anomaly imaged to the west of the Alpine slab is discontinuous, unlike shown in our Figure 5; (ii) the high-velocity anomaly corresponding to the Alpine slab would have a southwestern tip along the French Mediterranean coast, which implies that the slab would be crosscut by the continuous trend of fast axes running to the west of the Alpine arc (cf. Barruol et al. (2011), their Fig. 4b); (iii) the Alpine and Apenninic slabs would be separated by a major low-velocity gap, which is not observed in Zhao et al. 2016a (see Fig. 5a). All of these features, as well as other features such as the broken Alpine slab proposed by Lippitsch et al. (2003), were dismissed by the higher-resolution tomography model used in this work, and the interpretation of the mantle flow pattern was consequently improved.

When our seismic anisotropy dataset is compared with the tomography model of Zhao et al. (2016a), the majority of null measurements observed in the Po Plain are clustered within

the high-velocity anomalies corresponding to the Alpine and Apenninic slabs (blue areas in Fig. 5a). These regions of high-velocity anomaly also show slab-parallel and oblique fast-axis directions, the former mainly in correspondence to the Western Alps and Apenninic slabs, and the latter mainly in correspondence to the Central Alps slab. The complexity of the anisotropy pattern in these blue regions may result from the complexity of the medium traversed by the SKS waves: for example, waves recorded in the Po Plain stations may have crossed the Alpine slab as well as the overlying and underlying mantle (Figs. 3 and 4). A large number of nulls may thus result from such a complex path. Moreover, seismic anisotropy in the blue regions of Figure 5a may also reflect fossil fabrics in the lithospheric mantle of the Alpine and Apenninic slabs, possibly acquired during mantle exhumation prior to the opening of the Tethyan ocean in the Jurassic (Lemoine et al., 1986; Vissers et al., 1995; Piccardo and Vissers, 2007). This hypothesis is discussed in detail in Section 6.1.

The fast-axis directions observed north of Florence mainly range from NNW-SSE to NE-SW (see rose diagram Fig. 5b). According to the tomography model of Zhao et al. (2016a), they lay within the low-velocity anomaly located north of the Apenninic slab. Figure 5a also shows that the continuous trend of fast axes following the Alpine arc from the Central Alps to the Ligurian coast (large red arrow in the map) lays in correspondence with a continuous low-velocity anomaly unravelled by *P* wave tomography to the west of the Alpine slab. This trend of fast-axis directions does not cut the Alpine slab.

Finally, the abrupt change in seismic anisotropy pattern observed between the central and eastern segments of the CIFALPS profile occurs in close correspondence with the transition between the Alpine slab and the western low velocity anomaly. Null measurements are common in both segments of the profile, but may have different origin as they reflect different situations at depth. The lateral changes in anisotropy parameters, unravelled by Fresnel zone analysis beneath stations CT30 and CT33 at depth >50-100 km (as well as beneath stations CT29, CT31, CT32 and CT35, see Supplementary Fig. S1b), are consistent with the presence of a steeply dipping slab beneath the eastern part of the CIFALPS profile (Fig. 4a). In the western and central segments of the CIFALPS profile, delay time variations for ray paths coming from the west (Fig. 3a) fit the pattern of *P* wave velocity perturbations (Fig. 3b). Lower delay times are found at abscissae 0-100 km and 150-200 km where the low-velocity anomaly in the mantle is stronger, whereas delay times are stronger at ~140 km where the low-velocity anomaly in the mantle is weaker (Fig. 3).

Figure 5

## 6. Discussion

### 6.1. Potential preservation of fossil fabrics within the Alpine and Apenninic slabs

Common patterns of trench-parallel fast directions along active margins, evidenced by shear-wave splitting measurements, are generally interpreted as the evidence of alignment of olivine crystals induced by mantle flow around downgoing slabs, whereas fossil fabrics within the slab are generally considered as a negligible source of anisotropy (Long and Silver, 2008, 2009; Audet, 2013). However, a fossil fabric defined by olivine crystallographic preferred orientation (CPO) can be preserved in the oceanic lithosphere since the time of plate formation (Mercier et al., 2008). This fossil fabric is generally aligned with the direction of plate spreading (Shinohara et al., 2008), and may either survive subduction-induced deformation (Audet et al., 2013), or be overprinted if the slab is sufficiently weak to undergo internal deformation. Along-strike extension during flattening of the slab may lead to trench-parallel olivine CPO (Eakin et al., 2016), whereas the bending of the slab entering the trench may form vertically-aligned serpentinized faults in the uppermost slab portion (Faccenda et al., 2008). This would lead to trench-parallel fast directions resulting from both serpentine strong CPO (Bezacier et al. 2010) and larger-scale shape preferred orientation (SPO) determined by the alternation of dry and hydrated sections of mantle rocks (Faccenda et al. 2008).

When seismic anisotropy data of the western Alpine region are plotted onto the high-resolution *P* wave tomography model of Zhao et al. (2016a) (Fig. 5a), the regions of high-velocity anomaly that are interpreted as slabs include a number of slab-parallel and oblique fast-axis directions. Here, we use available geologic and geodynamic constraints to explore the possibility that these fast-axis directions may reflect fossil fabrics in the lithospheric mantle of the Alpine and Apenninic slabs.

Fossil fabrics acquired during Tethyan rifting have long been recognized in mantle slivers accreted in orogenic belts of the Cenozoic Adria-Europe plate boundary (e.g., Nicolas et al., 1972; Vissers et al., 1995) (Fig. 6a). These mantle slivers mainly consist of coarse-grained spinel lherzolite tectonites displaying well-developed olivine CPO, consistent with deformation by dislocation creep (Tommasi et al., 1999; Vauchez et al., 2012). This tectonite fabric, developed at 900°-1000°C and ~1.4 GPa (corresponding to depths of 40–45 km), is the result of low-angle simple shearing during Jurassic asymmetric rifting (Hoogerduijn Strating et al., 1993), and is expected to characterize a thick section of the slab. The tectonite fabric of exhumed spinel lherzolites is generally overprinted by spinel-, plagioclase-,

hornblende- and chlorite-bearing mylonites, developed as a result of strain localization during progressive mantle exhumation towards the Tethys seafloor (Piccardo and Vissers, 2007). Serpentine gently dipping mylonites overprint these rocks during the latest stages of mantle exhumation, at temperature  $< 500^{\circ}\text{C}$ , and are only expected in the uppermost portions of the slab (e.g. Guillot et al., 2015 for a review). Pervasive serpentized faults, crosscutting perpendicularly these tectonite and mylonitic fabrics, and pre-dating subduction as postulated by Faccenda et al. (2008), are not documented in the geologic record of the Alps and the Apennines.

Because fabrics developed during Tethyan rifting are still preserved in rock slivers that underwent major deformation at eclogitic depths within the Alpine subduction channel (e.g., the Erro-Tobbio unit; Scambelluri et al., 1995; Hermann et al., 2000), we can infer that these fabrics are likely preserved within low-strain domains of the Alpine and Apenninic slabs, too. The attitude of these fabrics within the slab is of primary importance for the interpretation of shear-wave splitting measurements in the western Alpine region, and depends on: (i) the direction of plate spreading in the Jurassic, (ii) the trench orientation relative to the paleomargin, and (iii) the present-day slab dip.

The direction of plate spreading in the Jurassic was likely perpendicular to the trend of the European and Adriatic paleomargins of the Tethys, which are independently constrained by a wealth of tectonic, stratigraphic and thermochronologic data (e.g., Winterer and Bosellini, 1981; Lemoine et al., 1986; Guillot et al., 2009; Fantoni and Franciosi, 2010; Malusà et al., 2016b). Available data consistently point to a NNW-SSE plate-spreading trend, with a progressive counterclockwise rotation from NNW-SSE to NW-SE in the Adriatic microplate accomplished during post-Jurassic Adria-Europe convergence (Fig. 6b). The orientations of the Alpine and Apenninic trenches are well constrained by *P* wave tomography models (Piromallo and Morelli, 2003; Zhao et al., 2016a) and paleotectonic reconstructions. In the Western Alps segment of the Alpine trench, subduction was strongly oblique relative to the European paleomargin (Malusà et al., 2015), and the direction of plate spreading is consequently at low-angle to the trend of the trench (Fig. 6c). In the Central Alps segment of the Alpine trench, subduction was near-parallel to the trend of the European paleomargin, and the direction of plate spreading is consequently near-perpendicular to the trench (Fig. 6c). Subduction in the Apennines was initially near-parallel to the Adriatic paleomargin (see Fig. 1b). However, during Neogene rollback of the Apenninic slab, the Apenninic trench progressively rotated towards its present-day NW-SE trend (Jolivet and Faccenna, 2000), which is parallel to the direction of plate spreading inferred for the Adriatic

microplate (Fig. 6c). According to *P* wave tomography models (Zhao et al., 2016a), both the Alpine and Apenninic slabs are now plunging near-vertically in the upper mantle.

Figure 6c illustrates the expected attitude, within the steeply-dipping Alpine and Apenninic slabs, for the olivine CPOs of spinel lherzolite tectonites and for the larger-scale SPOs determined by the alternation between dry mantle rocks and serpentine mylonites formed during Tethyan rifting. Both in the Western Alps and Apenninic slabs, the fast *a* axes of A-type olivine should be near-parallel to the trench (Fig. 6c), in agreement with the trench-parallel fast directions derived from shear-wave splitting measurements (Fig. 5a). In the uppermost part of the slab, a similar polarization of seismic waves would be favored by the near-vertical attitude of tilted serpentine mylonites initially formed during Tethyan extension. Within the Central Alps slab, serpentine mylonites are still inferred to be near-vertical, but the different attitude of the olivine *a* axes may explain the more oblique fast-axis directions, relative to the slab, derived from shear-wave splitting measurements in the Central Alps area. Notably, part of the measurements reported in Figure 5a may reflect not only the complex fossil fabric of the slab, but also the mantle structure below and above the slab (Fig. 3, 4). The resulting complex anisotropy signature may thus explain part of the null measurements of Fig. 5a.

In summary, based on available geologic and geodynamic constraints, preserved fossil fabrics within the Alpine and Apenninic slabs may satisfactorily explain the seismic anisotropy patterns documented within the areas of high-velocity anomaly in Figure 5a. At the eastern termination of the CIFALPS transect, in the light of the relationships among fossil fabrics summarized in Figure 6c, the transition from dominant NE-SW fast axes (to the west) to dominant NW-SE axis (to the east) may mark the boundary between the Alpine and Apenninic slabs (Fig. 5a).

## **6.2 No toroidal mantle flow north of the Apenninic slab**

Several previous papers dealing with the geodynamics of the Central Mediterranean have postulated a counterclockwise toroidal mantle flow around the northern tip of Apenninic slab (e.g., Vignaroli et al., 2008; Faccenna and Becker, 2010). Such a toroidal flow would compensate the effects of Apenninic slab retreat on the adjoining asthenospheric mantle, by transferring mantle material from the rear of the retreating Apenninic slab towards a supraslab position in front of the SE-dipping Alpine slab (Vignaroli et al., 2008; Salimbeni et al., 2013). However, the seismic anisotropy data provided in this work are not supportive of an efficient toroidal flow in the study region. This is particularly clear when considering the

area of low-velocity anomaly located north of the Apenninic slab (Fig. 5a). This area, under the hypothesis of a toroidal flow, should be characterized by dominant slab-parallel NW-SE fast-axis directions, progressively rotating around the northern tip of the Apenninic slab to yield dominant E-W to ENE-WSW fast-axis directions. As shown in the rose diagram of Figure 5b, these directions are instead the least represented in the area to the north of the Apenninic slab, ruling out the hypothesis of a counterclockwise toroidal mantle flow around its northern tip. The only few measurements with a direction perpendicular to the Apenninic slab are located north of Genoa, exactly at the boundary between the two slabs, where the high-velocity anomaly in the tomography model of Zhao et al. (2016a) is slightly weaker (Fig. 5a).

The typical distribution of seismic anisotropy directions in the case of toroidal flow in the asthenospheric mantle has been successfully described in various segments of the Apenninic slab that show evidence of a major slab window or a slab tear (Civello and Margheriti, 2004; Baccheschi et al., 2011). The tomography model of Figure 5a, unlike previous models (e.g., Piromallo and Morelli, 2003), shows no evidence of a major gap in the slab structure between the Alps and the Apennines at upper mantle depths, in line with independent geologic evidence (Malusà et al., 2016a). The absence of space between the two slabs, as a result of Africa-Eurasia collision that put the system under compression and the two slabs in contact, may have precluded any flows around the northern tip of the Apenninic slab, with major implications, discussed in detail in Section 6.3, also for the asthenospheric flow pattern imaged to the west of the Alpine slab (Barruol et al., 2004, 2011).

Notably, the dominant NNW-SSE to NE-SW fast-axis directions in the region of low-velocity anomaly to the north of the Apenninic slab (Fig. 5a) are largely consistent with the direction of relative Adria-Europe plate motion inferred from magnetic anomalies since the Late Cretaceous (Fig. 5b) (Dewey et al., 1989; Jolivet and Faccenna, 2000). This suggests that the anisotropic fabric unravelled by shear-wave splitting measurements may have formed during post-Jurassic Adria-Europe convergence, and possibly before the onset of Apenninic slab rollback. The observation that WNW-ESE fast axes are poorly represented beneath the Adriatic microplate is in agreement with the asymmetric configuration of the Tethyan rifting long-recognized from geologic evidence (Lemoine et al., 1986; Manatschal, 2004; Manatschal and Muntener, 2009; Malusà et al., 2015). Asymmetric rifting implies that tectonite fabrics, during lithospheric extension, are best developed within the Tethyan oceanic lithosphere and within the European subcontinental mantle, but are not expected to be

widespread within the Adriatic subcontinental mantle, in line with the results of our SKS splitting measurements.

### **6.3 Insights on the asthenospheric flow around the Western Alps slab**

Our seismic anisotropy analysis confirms the occurrence of a continuous trend of fast axes that follows, to the west of the Alpine slab, the whole arc of the Western Alps down to the Ligurian coast, where this trend merges with a WNW-ESE trend in part already described by Barruol et al. (2004) along the Mediterranean coast of SE France. Such seismic anisotropy pattern shows different directions compared to the azimuthal anisotropy from noise and surface waves in the same region, which sample a maximum depth of 120-125 km (Fry et al., 2010; Zhu and Tromp, 2013), and from the  $P_n$  anisotropy that samples the shallow lithospheric mantle (Diaz et al., 2013). Along the CIFALPS profile, the azimuthal anisotropy from surface waves invariably shows an E-W trend (see Zhu and Tromp, 2013, their Fig. 2), whereas the fast polarization directions of  $P_n$  anisotropy show a N-S trend along the western and central segments of the profile, and an E-W trend along the eastern segment of the profile (see Diaz et al., 2013, their Fig. 9). Therefore, the seismic anisotropy pattern that we obtain to the west of the Alpine slab can be safely ascribed to a re-orientation of the olivine fast axis within the European asthenospheric mantle.

Since its first detection, the seismic anisotropy pattern described along the Mediterranean coast of SE France was readily interpreted as an effect of asthenospheric flow due to the eastward retreat of the Apenninic slab (Barruol et al., 2004; Lucente et al., 2006; Jolivet et al., 2009), whereas the belt-parallel trend of fast axes around the Alpine arc was tentatively ascribed, in the absence of high-resolution tomographic images of the Alpine area, to a range of different geodynamic processes (Barruol et al., 2011), i.e.: (i) a possible toroidal flow induced by the keel effect of the Alpine slab during the motion of the European plate; (ii) a mantle flow around the sinking Alpine slab after slab detachment; or (iii) an effect of Alpine and Apenninic slab rollback. The hypothesis of a mantle flow around the detached Alpine slab is ruled out by the slab continuity attested by  $P$  wave tomography (Zhao et al., 2016a), whereas the hypothesis of Alpine slab rollback is ruled out by independent geologic and paleomagnetic evidences (Handy et al., 2010; Malusà et al., 2015).

The observed correspondence between the continuous trend of fast axes parallel to the trend of the Alpine arc (large red arrow in Fig. 5a) and the low velocity anomaly in the European upper mantle (yellow to red background colors in Fig. 5a) allows a refined interpretation of the mantle flow pattern to the west and beneath the Western Alps. The



westward-plunging low-velocity anomaly may be generated by the presence of fluids, or may have a thermal origin. The former hypothesis can be excluded in the light of the location and the depth of the anomaly with respect to the nearby slabs. A potential thermal origin may be due to asthenospheric upwelling, possibly related to a counterflow induced by the retreat of the Apenninic slab in the absence of an adequate mass compensation by a toroidal mantle flow (Fig. 7). The mantle upwelling hypothesis is consistent with the delay-time pattern observed in the western and central segments of the CIFALPS profile. In fact, the shorter time delays are found where the low-velocity anomaly is stronger (Fig. 3), which may indicate that the anisotropy is not fully confined within the horizontal plane (e.g., Savage and Sheenan, 2000). The same relationships between delay times and velocity structure based on finite-frequency *P* wave tomography is also observed in map view in Figure 5a. Moving from the western to the central segment of the CIFALPS profile, the number of null measurements increases drastically, and the fast-axis directions start to become more scattered, all clues pointing to the presence of a possible vertical component of the mantle flow in that area (Long and Becker, 2010; Diaz et al., 2013). A better characterization of the inferred vertical component of the mantle flow around the Western Alps slab would require a combined analysis of Love and Rayleigh waves that is beyond the aims of this work. Its magnitude is probably much smaller than the magnitude of the long-recognized horizontal component, but anyway of great consequence. We speculate that such vertical mantle-flow component, progressively propagating towards the east during the Neogene rollback of the Apenninic slab (Fig. 1b), determined a temperature increase in the vicinity of the retreating slab that may be responsible for the low-velocity anomaly imaged by *P* wave tomography (Zhao et al., 2016a).

#### ***6.4. Hypothesis of a linkage between asthenospheric counterflow and topographic uplift***

The Western Alps include the highest summits in Europe, but factors controlling their topographic uplift still remain poorly understood. Convergence rates in the western Alpine area are below the detection limit (Calais et al., 2002), ruling out a primary control of horizontal plate motion on topography development. GPS and levelling measurements (e.g. Walpersdorf et al., 2015) unravel a pattern of rock uplift with rates locally >2 mm/yr that are only partly explained by the isostatic response to erosion and glaciation (Chéry et al., 2016; Nocquet et al., 2016; Nguyen et al., 2016). Thermochronologic data (e.g. Fox et al., 2015) show that the areas with highest uplift rates have also experienced the highest long-term erosion rates during the Neogene, ruling out the hypothesis of a crustal-scale collapse of the mountain range previously suggested on the basis of structural analysis and earthquake focal

mechanisms (Champagnac et al., 2004; Selverstone, 2005). In the absence of active convergence, recent works suggested that the highest rates of rock uplift and erosion in the Western Alps might be a surficial response to European slab breakoff (Sue et al., 1999; Fox et al., 2015; Nocquet et al., 2016). However, this latter hypothesis is ruled out by the down-dip continuity of the European slab documented by recent high-resolution tomographic images of the upper mantle beneath the Alpine region (Zhao et al., 2016a). Toroidal flow has been also suggested as a potential player controlling topography development and mantle upwelling next to retreating slab edges (e.g., Piromallo et al., 2006; Zandt and Humphreys, 2008; Schellart, 2004; 2010; Faccenna and Becker, 2010; Long et al., 2012). Data presented in this work are not supportive of a complete toroidal mantle flow around the northern edge of the retreating Apenninic slab. However, our data may suggest an alternative mantle driver for Alpine topography. The map of Figure 5a shows a good correspondence not only between the asthenospheric counterflow inferred from seismic anisotropy analysis and the low velocity anomaly imaged by *P* wave tomography, but also with the area of faster topographic uplift in the core of the Western Alps (green contour lines in Fig. 5a) and with the area of anomalous uplift in the Ligurian Alps, which are flanked to the south by a Neogene backarc basin. The observed uplift rates beneath the External Massifs and the Briançonnais units cannot be simply explained by tectonic shortening or by an isostatic response to erosion and deglaciation (Calais et al., 2002; Chéry et al., 2016; Nocquet et al., 2016). Moreover, the Ligurian Alps were neither affected by glaciations, nor by major tectonic shortening (Malusà et al., 2015). Our results suggest that Apenninic slab rollback, in the absence of a toroidal flow around the northern tip of the Apenninic slab, may have induced not only a suction effect and an asthenospheric counterflow at the rear of the unbroken Western Alps slab and around its southern tip, but also an asthenospheric upwelling in the same region, leading to a temperature increase in the upper mantle. As already discussed by Nocquet et al. (2016), the replacement of a dense and cold mantle material by hot and buoyant asthenospheric mantle at the base of the European lithosphere (estimated at 100 km depth, Lyu et al., 2017) would induce uplift. Furthermore, the weakening of the lithosphere and the lower crust by asthenospheric heat advection, as documented in the cross-section of Fig. 3b, can also foster Alpine uplift (Chéry et al., 2016). The occurrence of hot springs in the core of the Western and Ligurian Alps (Marty et al., 1992), right above the low-velocity anomaly, are also supportive of a focused thermal anomaly.

A deep control of Alpine topography, in the light of the inferred thermal origin for the low-velocity anomaly detected by *P* wave tomography, may explain the higher average

elevation of the Western Alps compared to other segments of the Alpine belt located farther east (i.e., the central and eastern Alps). However, it is unlikely that the elevated topography of the External Massifs and the Briançonnais is exclusively due to a mantle driver. A first-order estimate of the relative impact of mantle vs surface processes in determining topographic uplift can be attempted by comparing the present-day uplift rates in the glaciated and rapidly eroded Western Alps areas with those of the Ligurian Alps, where tilting of the overlying Tertiary Piedmont strata is associated to minor erosion, and the impact of glaciations is minor. In the Ligurian Alps, cosmogenic data (Wittmann et al., 2016) point to uplift rates not greater than ~0.4 mm/yr that are likely ascribed to a mantle driver. A full understanding of the impact of mantle processes in shaping the Alpine topography, compared to surface processes and crustal-scale tectonic processes, would now require a numerical modelling of dynamic topography based on the recent high-resolution *P* wave tomography of the Alpine region and the pattern of active mantle flow highlighted in this work.

Figures 6, 7

## 7. Conclusion

The seismic anisotropy pattern in the western Alpine region, when interpreted within the framework of the upper mantle structure unravelled by high-resolution *P* wave tomography complemented with available geologic and geodynamic constraints, unravels a polyphase development of anisotropic fabrics in the mantle of the western Alpine area. Fossil fabrics formed during Tethyan rifting are possibly preserved within the Alpine and Apenninic slabs, which would suggest that these slabs are sufficiently stiff and did not undergo major internal deformation during the Cenozoic. The Neogene rollback of the Apenninic slab was not compensated by a complete toroidal flow in the upper mantle around the northern tip of the retreating slab. This finding has major implications for the asthenospheric flow pattern imaged to the west of the Alpine slab. The continuous trend of seismic anisotropy fast axes, which follows the whole arc of the Western Alps down to the Ligurian coast, marks the horizontal component of an asthenospheric flow developed as a response to Apenninic slab rollback, and recognized from the fore-arc side of the Alpine slab to the backarc of the Apenninic slab. The low-velocity anomaly detected by *P* wave tomography in the upper mantle beneath the Western Alps can be ascribed to a temperature increase due to the vertical component of such asthenospheric flow, which may have favored the topographic uplift of the overlying lithosphere thus explaining the higher average elevation of the Western Alps compared to the central and eastern segments of the Alpine belt. Our results suggest that the

576 impact of mantle flow in response to active subduction may foster the topographic uplift of  
577 distant orogenic belts, where subduction processes have been inactive for several millions of  
578 years.

## 579 **Acknowledgments and data**

580 The CIFALPS experiment was funded by the State Key Laboratory of Lithospheric Evolution, China, the National  
581 Natural Science Foundation of China (Grant 41350001), and a grant from LabEx OSUG@2020 (Investissements  
582 d'avenir; ANR10 LABX56, France). All data for this study are presented in the manuscript or may be acquired  
583 through sources cited. Seismic data utilized in this work are archived at the data centers RESIF (French seismic  
584 and geodetic network, CIFALPS dataset, doi:10.15778/RESIF.YP2012), INGV Italian National Seismic Network  
585 (RSN, doi:10.13127/SD/X0FXnH7QfY) and Regional Seismic Network of North Western Italy (RSNI,  
586 doi:10.7914/SN/GU). The manuscript benefited from constructive comments by Rob Govers and two anonymous  
587 reviewers.

## 588 **References**

- 589 Alsina, D., Snieder R., 1995. Small-scale sublithospheric continental mantle deformation;  
590 constraints from SKS splitting observations. *Geophys. J. Int.* 123, 431-448.
- 591 Audet, P., 2013. Seismic anisotropy of subducting oceanic uppermost mantle from fossil  
592 spreading. *Geophys. Res. Lett.* 40(1), 173-177.
- 593 Baccheschi, P., Margheriti, L., Steckler, M. S., Boschi, E. 2011. Anisotropy patterns in the  
594 subducting lithosphere and in the mantle wedge: A case study—The southern Italy  
595 subduction system. *J. Geophys. Res.* 116, B08306, doi:10.1029/2010JB007961.
- 596 Barruol, G., Deschamps, A., Coutant, O., 2004. Mapping upper mantle anisotropy beneath  
597 SE France by SKS splitting indicates a Neogene asthenospheric flow induced by the  
598 Apenninic slab rollback and deflected by the deep Alpine roots. *Tectonophysics* 394,  
599 125–138.
- 600 Barruol, G., Bonnín, M., Pedersen, H., Bokelmann, G., Tiberi C., 2011. Belt-parallel mantle  
601 flow beneath a halted continental collision: The Western Alps. *Earth Planet. Sci. Lett.*  
602 302, 429–438.
- 603 Becker, T.W., Chevrot, S., Schulte-Pelkum, V., Blackman, D. K., 2006. Statistical properties  
604 of seismic anisotropy predicted by upper mantle geodynamic models. *J. Geophys. Res.*  
605 *Solid Earth*, 111(B8).
- 606 Bezacier, L., Reynard, B., Bass, J. D., Sanchez-Valle, C., Van de Moortèle, B., 2010.  
607 Elasticity of antigorite, seismic detection of serpentinites, and anisotropy in subduction  
608 zones. *Earth Planet. Sci. Lett.* 289(1), 198-208.
- 609 Calais, E., Nocquet, J.M., Jouanne, F., Tardy, M., 2002. Current strain regime in the Western  
610 Alps from continuous Global Positioning System measurements, 1996–2001. *Geology*  
611 30, 651-654.

- 612 Champagnac, J.D., Sue, C., Delacou, B., Burkhard, M., 2004. Brittle deformation in the  
613 inner NW Alps: From early orogen-parallel extrusion to late orogen-perpendicular  
614 collapse. *Terra Nova* 16, 232-242.
- 615 Chéry, J., Genti, M., Vernant, P., 2016. Ice cap melting and low-viscosity crustal root explain  
616 the narrow geodetic uplift of the Western Alps. *Geophys. Res. Lett.* 43,  
617 doi:10.1002/2016GL067821.
- 618 Civello, S., Margheriti, L., 2004. Toroidal mantle flow around the Calabrian slab (Italy) from  
619 SKS splitting. *Geophys. Res. Lett.* 31, L10601, doi:10.1029/2004GL019607.
- 620 Cloetingh, S., Willett, S.D., 2013. TOPO-EUROPE: Understanding of the coupling between  
621 the deep Earth and continental topography. *Tectonophysics* 602, 1-14.
- 622 Dewey, J.F., Helman, M.L., Turco, E., Hutton, D.H.W., Knott, S.D., 1989. Kinematics of the  
623 western Mediterranean, in: Coward, M.P., Dietrich, D., Park, R.G. (Eds.), *Alpine*  
624 *tectonics*. *Geol. Soc. London Spec. Publ.* 45, pp. 265–283.
- 625 Díaz, J., Gil, A., Gallart, J., 2013. Uppermost mantle seismic velocity and anisotropy in the  
626 Euro-Mediterranean region from *Pn* and *Sn* tomography. *Geophys. J. Int.* 192, 310-325.
- 627 Long, M. D., Till, C. B., Druken, K. A., Carlson, R. W., Wagner, L. S., Fouch, M. J., ... &  
628 Kincaid, C. (2012). Mantle dynamics beneath the Pacific Northwest and the generation  
629 of voluminous back-arc volcanism. *Geochemistry, Geophysics, Geosystems*, 13(8).
- 630 Dumont, T., Schwartz, S., Guillot, S., Simon-Labric, T., Tricart, P., Jourdan, S., 2012.  
631 Structural and sedimentary records of the Oligocene revolution in the Western Alps. *J.*  
632 *Geodyn.* 56-57, 18-38.
- 633 Eakin, C. M., Long, M. D., Scire, A., Beck, S. L., Wagner, L. S., Zandt, G., Tavera, H., 2016.  
634 Internal deformation of the subducted Nazca slab inferred from seismic anisotropy. *Nat.*  
635 *Geosci.* 9(1), 56-59.
- 636 Faccenda, M., Capitanio, F. A., 2012. Development of mantle seismic anisotropy during  
637 subduction-induced 3-D flow. *Geophys. Res. Lett.*, 39(11), L11305.
- 638 Faccenda, M., Burlini, L., Gerya, T. V., Mainprice, D., 2008. Fault-induced seismic  
639 anisotropy by hydration in subducting oceanic plates. *Nature*, 455, 1097-1100.
- 640 Faccenna, C., Becker, T.W., 2010. Shaping mobile belts by small scale convection. *Nature*  
641 465, 602-505, doi:10.1038/nature09064.
- 642 Faccenna, C., Becker, T.W., Lucente, F.P., Jolivet, L., Rossetti, F., 2001. History of  
643 subduction and back arc extension in the Central Mediterranean. *Geophys. J. Int.* 145,  
644 809-820.
- 645 Faccenna, C., Becker, T.W., Auer, L., Billi, A., Boschi, L., Brun, J.P., Capitanio, F.A.,  
646 Funiciello, F., Horvath, F., Jolivet, L., Piromallo, C., Royden, L., Rossetti, F.,  
647 Serpelloni, E., 2014. Mantle dynamics in the Mediterranean. *Rev. Geophys.* 52, 283–  
648 332.
- 649 Fantoni, R., Franciosi, R., 2010. Tectono-sedimentary setting of the Po Plain and Adriatic  
650 foreland. *Rend. Lincei*, 21(1), 197-209.

651 Fox, M., Herman, F., Kissling, E., Willett, S.D., 2015. Rapid exhumation in the Western Alps  
652 driven by slab detachment and glacial erosion. *Geology* 43(5), 379-382.

653 Fry, B., Deschamps, F., Kissling, E., Stehly, L., Giardini, D., 2006. Layered azimuthal  
654 anisotropy of Rayleigh wave phase velocities in the European Alpine lithosphere  
655 inferred from ambient noise. *Earth Planet. Sci. Lett.* 297, 95–102.

656 Giacomuzzi, G., Chiarabba, C., De Gori, P., 2011. Linking the Alps and Apennines  
657 subduction systems: New constraints revealed by high-resolution teleseismic  
658 tomography. *Earth Planet. Sci. Lett.* 301, 531–543.

659 Guillot, S., di Paola, S., Ménot, R. P., Ledru, P., Spalla, M. I., Gosso, G., Schwartz, S., 2009.  
660 Suture zones and importance of strike-slip faulting for Variscan geodynamic  
661 reconstructions of the External Crystalline Massifs of the western Alps. *Bull. Soc. Géol.*  
662 *Fr.* 180(6), 483-500.

663 Guillot S., Schwartz S., Agard P., Renard B., Prigent C., 2015. Tectonic significance of  
664 serpentinites. *Tectonophysics*, 646, 1-19.

665 Handy, M.R., Schmid, S.M., Bousquet, R., Kissling, E., Bernoulli, D., 2010. Reconciling  
666 plate-tectonic reconstructions of Alpine Tethys with the geological–geophysical record  
667 of spreading and subduction in the Alps. *Earth Sci. Rev.* 102, 121–158.

668 Hermann, J., Müntener, O., Scambelluri, M., 2000. The importance of serpentinite mylonites  
669 for subduction and exhumation of oceanic crust. *Tectonophysics* 327, 225–238.

670 Hoogerduijn Strating, E., Rampone, E., Piccardo, G. B., Drury, M. R., Vissers, R. L. M.,  
671 1993. Subsolidus emplacement of mantle peridotites during incipient oceanic rifting  
672 and opening of the Mesozoic Tethys (Voltri Massif, NW Italy). *J. Petrol.*, 34(5), 901-  
673 927.

674 Hua, Y., Zhao, D., Xu, Y., 2017. P-wave anisotropic tomography of the Alps. *J. Geophys.*  
675 *Res.* 122, 4509–4528.

676 Jolivet, L., Faccenna, C., 2000. Mediterranean extension and the Africa-Eurasia collision.  
677 *Tectonics* 19, 1095–1106.

678 Lardeaux, J.M., Schwartz, S., Tricart, P., Paul, A., Guillot, S., Béthoux, N., Masson, F., 2006.  
679 A crustal-scale cross-section of the south-western Alps combining geophysical and  
680 geological imagery. *Terra Nova* 18, 412–422.

681 Lemoine, M., Bas, T., Arnaud-Vanneau, A., Arnaud, H., Dumont, T., Gidon, M., Bourdon,  
682 M., de Graciansky, P.C., Rudkiewicz, J.L., Megard-Galli, J., Tricart, P., 1986. The  
683 continental margin of the Mesozoic Tethys in the Western Alps. *Mar. Petrol. Geol.*, 3,  
684 179–199.

685 Lippitsch, R., Kissling, E., Ansorge, J., 2003. Upper mantle structure beneath the Alpine  
686 orogen from high-resolution teleseismic tomography. *J. Geophys. Res.* 108(B8).

687 Long, M.D., Becker, T.W., 2010. Mantle dynamics and seismic anisotropy. *Earth Planet. Sci.*  
688 *Lett.* 297, 341-354.

689 Long, M. D., Till, C. B., Druken, K. A., Carlson, R. W., Wagner, L. S., Fouch, M. J., James,  
690 D. E., Grove, T. L., Schmerr, N., Kincaid, C., 2012. Mantle dynamics beneath the  
691 Pacific Northwest and the generation of voluminous back-arc volcanism. *Geochem.*  
692 *Geophys. Geosys.* 13, Q0AN01.

693 Lucente, F.P., Margheriti, L., Piromallo, C., Barruol, G., 2006. Seismic anisotropy reveals  
694 the long route of the slab through the western-central Mediterranean mantle. *Earth*  
695 *Planet. Sci. Lett.* 241, 517-529.

696 Lucente, F.P., Chiarabba, C., Cimini G.B., Giardini, D., 1999. Tomographic constraints on  
697 the geodynamic evolution of the Italian region, *J. Geophys. Res.* 104, 20,307–20,327.

698 Lyu, C. Pedersen, H.E., Paul, A., Zhao, L., Solarino, S., and the CIFALPS Working Group,  
699 2017. Shear wave velocities in the upper mantle of the Western Alps: new constraints  
700 using array analysis of seismic surface waves. *Geophys. Res. Lett.* 210, 321–331.

701 Marty, B., O’Nions, R.K., Oxburgh, E.R., Martel, D., Lombardi, S., 1992. Helium isotopes  
702 in Alpines regions. *Tectonophysics* 206, 71-78.

703 Mainprice, D., Barruol, G., Ismail, W.B., 2000. The seismic anisotropy of the Earth's mantle:  
704 from single crystal to polycrystal. *Earth's Deep Interior: Mineral physics and*  
705 *tomography from the atomic to the global scale*, 237-264.

706 Malusà, M.G., Balestrieri, M.L., 2012. Burial and exhumation across the Alps-Apennines  
707 junction zone constrained by fission-track analysis on modern river sands. *Terra Nova*  
708 24, 221–226.

709 Malusà, M.G., Faccenna, C., Baldwin, S.L., Fitzgerald, P.G., Rossetti, F., Balestrieri, M.L.,  
710 Danišík, M., Ellero, A., Ottria, G., Piromallo, C., 2015. Contrasting styles of (U)HP  
711 rock exhumation along the Cenozoic Adria-Europe plate boundary (Western Alps,  
712 Calabria, Corsica). *Geochem. Geophys. Geosyst.* 16, 1786-1824.

713 Malusà, M.G., Anfinson, O.A., Dafov, L.N., Stockli, D.F., 2016a. Tracking Adria indentation  
714 beneath the Alps by detrital zircon U-Pb geochronology: Implications for the  
715 Oligocene–Miocene dynamics of the Adriatic microplate. *Geology* 44, 155-158.

716 Malusà, M.G., Danišík, M., Kuhlemann, J., 2016b. Tracking the Adriatic-slab travel beneath  
717 the Tethyan margin of Corsica-Sardinia by low-temperature thermochronometry.  
718 *Gondwana Res.* 31, 135–149.

719 Malusà, M.G., Zhao, L., Eva, E., Solarino, S., Paul, A., Guillot, S., Schwartz, S., Dumont, T.,  
720 Aubert, C., Salimbeni, S., Pondrelli, S., Wang Q., Zhu, R., 2017. Earthquakes in the  
721 western alpine mantle wedge. *Gondwana Res.* 44, 89-95.

722 Manatschal, G., 2004. New models for evolution of magma-poor rifted margins based on a  
723 review of data and concepts from West Iberia and the Alps. *Int. J. Earth Sci.* 93(3), 432-  
724 466.

725 Manatschal, G., Müntener, O., 2009. A type sequence across an ancient magma-poor ocean–  
726 continent transition: the example of the western Alpine Tethys ophiolites.  
727 *Tectonophysics*, 473, 4–19.

728 Margheriti, L., Lucente, F.P., Pondrelli, S., 2003. SKS splitting measurements in the  
729 Apenninic-Tyrrhenian domain (Italy) and their relation with lithospheric subduction  
730 and mantle convection. *J. Geophys. Res.*, 108, 2218 B4.

731 Mercier, J. P., Bostock, M. G., Audet, P., Gaherty, J. B., Garnero, E. J., Revenaugh, J., 2008.  
732 The teleseismic signature of fossil subduction: Northwestern Canada. *J. Geophys. Res.*  
733 *Solid Earth*, 113(B4).

734 Nguyen, H. N., Vernant, P., Mazzotti, S., Khazaradze, G., Asensio, E., 2016. 3-D GPS  
735 velocity field and its implications on the present-day post-orogenic deformation of the  
736 Western Alps and Pyrenees. *Solid Earth*, 7(5), 1349-1363.

737 Nicolas, A., Bouchez, J. L., Boudier, F., 1972. Interprétation cinématique des déformations  
738 plastiques dans le massif de lherzolite de Lanzo (Alpes piémontaises) - comparaison  
739 avec d'autres massifs. *Tectonophysics*, 14(2), 143-171.

740 Nocquet, J.M., Sue, C., Walpersdorf, A., Tran, T., Lenôtre, N., Vernant, P., Cushing, M.,  
741 Jouanne, F., Masson, F., Baize, S., Chéry, J., van der Beek, P.A., 2016. Present-day  
742 uplift of the western Alps. *Scientific Reports* 6, 28404.

743 Pearce, J., Mittleman, D., 2002. Defining the Fresnel zone for broadband radiation. *Phys.*  
744 *Rev. E* 66, 056602.

745 Piccardo, G. B., Vissers, R. L. M., 2007. The pre-oceanic evolution of the Erro-Tobbio  
746 peridotite (Voltri Massif, Ligurian Alps, Italy). *J. Geodyn.* 43(4), 417-449.

747 Piromallo, C., Morelli, C., 2003. P wave tomography of the mantle under the Alpine–  
748 Mediterranean area. *J. Geophys. Res.* 108 (B2).

749 Piromallo, C., Becker, T. W., Funiciello, F., & Faccenna, C., 2006. Three-dimensional  
750 instantaneous mantle flow induced by subduction. *Geophys. Res. Lett.*, 33(8).

751 Qorbani, E., Bianchi, I., Bokelmann, G., 2015. Slab detachment under the Eastern Alps seen  
752 by seismic anisotropy. *Earth Planet. Sci. Lett.* 409, 96-108.

753 Salimbeni S, Pondrelli, S., Margheriti, L., Park, J., Levin, V., 2008. SKS splitting  
754 measurements beneath Northern Apennines region: a case of oblique trench retreat.  
755 *Tectonophysics* 462, 68-82.

756 Salimbeni, S., Pondrelli, S., Margheriti, L., 2013. Hints on the deformation penetration  
757 induced by subductions and collision processes: Seismic anisotropy beneath the Adria  
758 region (Central Mediterranean). *J. Geophys. Res.* 118, 5814–5826.

759 Savage, M.K., 1999. Seismic anisotropy and mantle deformation: what have we learned  
760 from shear wave splitting? *Rev. Geophys.* 37, 65–106.

761 Savage, M.K., Sheehan, A.F., 2000. Seismic anisotropy and mantle flow from the Great  
762 Basin to the Great Plains, western United States. *J. Geophys. Res.* 105, 13,715-13,734.

763 Scambelluri, M., Müntener, O., Hermann, J., Piccardo, G. B., Trommsdorff, V., 1995.  
764 Subduction of water into the mantle: history of an Alpine peridotite. *Geology*, 23(5),  
765 459-462.

766 Schellart, W. P., 2004. Kinematics of subduction and subduction-induced flow in the upper  
767 mantle. *J. Geophys. Res. Solid Earth*, 109(B7).

768 Schellart, W. P., 2010. Mount Etna–Iblean volcanism caused by rollback-induced upper  
769 mantle upwelling around the Ionian slab edge: an alternative to the plume model.  
770 *Geology*, 38(8), 691-694.

771 Selverstone, J., 2005. Are the Alps collapsing? *Annu. Rev. Earth Planet. Sci.* 33, 113-132.

772 Serpelloni, E., Faccenna, C., Spada, G., Dong, D., Williams, S.D., 2013. Vertical GPS  
773 ground motion rates in the Euro-Mediterranean region: New evidence of velocity  
774 gradients at different spatial scales along the Nubia-Eurasia plate boundary. *J. Geophys.*  
775 *Res.* 118, 6003-6024.



776 Shinohara, M., Fukano, T., Kanazawa, T., Araki, E., Suyehiro, K., Mochizuki, M.,  
777 Nakahigashi, K., Yamada, T., Mochizuki, K., 2008. Upper mantle and crustal seismic  
778 structure beneath the Northwestern Pacific Basin using a seafloor borehole broadband  
779 seismometer and ocean bottom seismometers. *Phys. Earth Planet. Int.*, 170(1), 95-106.

780 Silver, P.G., Chan, W.W., 1991. Shear wave splitting and subcontinental mantle deformation.  
781 *J. Geophys. Res.* 96, 16,429–16,454.

782 Silver, P. G., Mainprice, D., Ismail, W.B., Tommasi, A., Barruol, G., 1999. Mantle structural  
783 geology from seismic anisotropy. *Spec. Publ. Geochem. Soc.* 6, 79-103.

784 Solarino, S., Malusà, M.G., Eva, E., Guillot, S., Paul, A., Schwartz, S., Zhao, L., Aubert, C.,  
785 Dumont, T., Pondrelli, S., Salimbeni, S., Wang, Q., Xu, X., Zheng, T., Zhu, R., 2018.  
786 Mantle wedge exhumation beneath the Dora-Maira (U)HP dome unravelled by local  
787 earthquake tomography (Western Alps). *Lithos* 296-299, 623-636.

788 Sue, C., Thouvenot, F., Fréchet, J., Tricart, P., 1999. Widespread extension in the core of the  
789 western Alps revealed by earthquake analysis. *J. Geophys. Res.* 104, 25611–25622.

790 Tommasi, A., Tikoff, B., Vauchez, A., 1999. Upper mantle tectonics: three-dimensional  
791 deformation, olivine crystallographic fabrics and seismic properties. *Earth Planet. Sci.*  
792 *Lett.* 168(1), 173-186.

793 Vauchez, A., Tommasi, A., Mainprice, D., 2012. Faults (shear zones) in the Earth's mantle.  
794 *Tectonophysics*, 558, 1-27.

795 Vignaroli, G., Faccenna, C., Jolivet, L., Piromallo, C., Rossetti, F., 2008. Subduction polarity  
796 reversal at the junction between the Western Alps and the Northern Apennines, Italy.  
797 *Tectonophysics* 450, 34–50.

798 Vissers, R. L. M., Drury, M. R., Hoogerduijn Strating, E., Spiers, C. J., Van der Wal, D.,  
799 1995. Mantle shear zones and their effect on lithosphere strength during continental  
800 breakup. *Tectonophysics*, 249(3-4), 155-171.

801 Walpersdorf, A., Sue, C., Baize, S., Cotte, N., Bascou, P., et al. 2015. Coherence between  
802 geodetic and seismic deformation in a context of slow tectonic activity (SW Alps,  
803 France). *J. Geodyn.* 85, 58-65.

804 Winterer, E. L., Bosellini, A., 1981. Subsidence and sedimentation on Jurassic passive  
805 continental margin, Southern Alps, Italy. *AAPG Bull.*, 65(3), 394-421.

806 Wittmann, H., Malusà, M. G., Resentini, A., Garzanti, E., Niedermann, S. 2016. The  
807 cosmogenic record of mountain erosion transmitted across a foreland basin: Source-to-  
808 sink analysis of in situ <sup>10</sup>Be, <sup>26</sup>Al and <sup>21</sup>Ne in sediment of the Po river catchment. *Earth*  
809 *Planet. Sci. Lett.*, 452, 258-271.

810 Wüstefeld, A., Bokelmann, G., 2007. Null detection in shear-wave splitting measurements.  
811 *Bull. Seism. Soc. Am.*, 97(4), 1204-1211.

812 Wüstefeld, A., Bokelmann, G., Zaroli, C., Barruol, G., 2008. SplitLab: A shear-wave  
813 splitting environment in Matlab. *Comput. Geosci.* 34, 515–528.

814 Zandt, G., Humphreys, E., 2008. Toroidal mantle flow through the western US slab window.  
815 *Geology*, 36(4), 295-298.

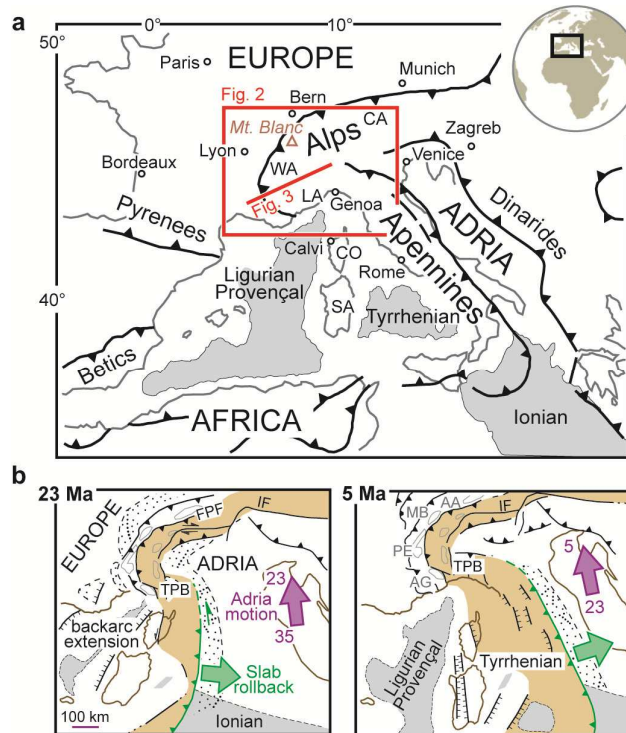
816 Zhao, L., Paul, A., Guillot, S., Solarino, S., Malusà, M.G., Zheng, T., Aubert, C., Salimbeni,  
817 S., Dumont, T., Schwartz, S., Zhu, R., Wang, Q., 2015. First seismic evidence for  
818 continental subduction beneath the Western Alps. *Geology* 43, 815-818.

819 Zhao, L., Paul, A., Malusà, M.G., Xu, X., Zheng, T., Solarino, S., Guillot, S., Schwartz, S.,  
820 Dumont, T., Salimbeni, S., Aubert, C., Pondrelli, S., Wang, Q., Zhu, R., 2016a.  
821 Continuity of the Alpine slab unraveled by high-resolution P-wave tomography. J.  
822 Geophys. Res. DOI:10.1002/2016JB013310.

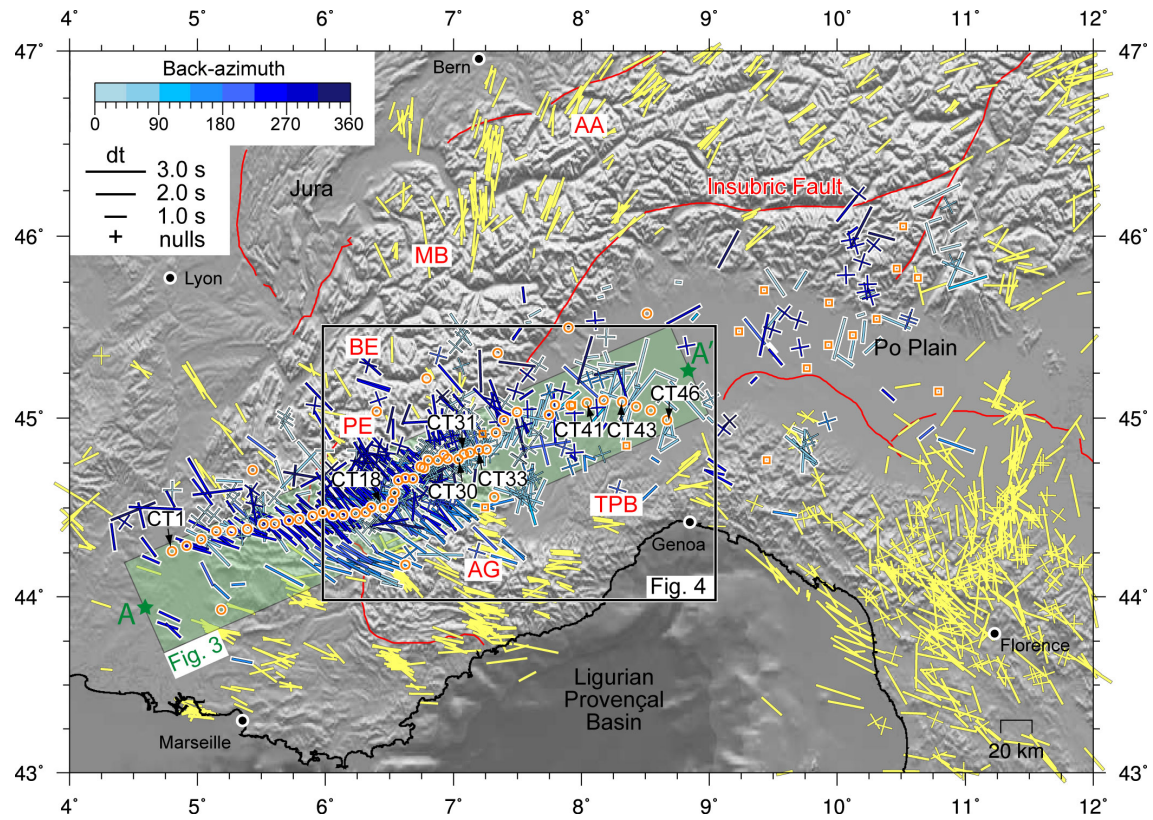
823 Zhao, L., Paul, A., Solarino S., 2016b. Seismic network YP: CIFALPS temporary experiment  
824 (China-Italy-France Alps seismic transect). RESIF - Réseau Sismologique et  
825 géodésique Français. Seismic Network. doi:10.15778/RESIF.YP2012.

826 Zhu, H., Tromp, J., 2013. Mapping tectonic deformation in the crust and upper mantle  
827 beneath Europe and the North Atlantic Ocean. Science 341, 871-875.

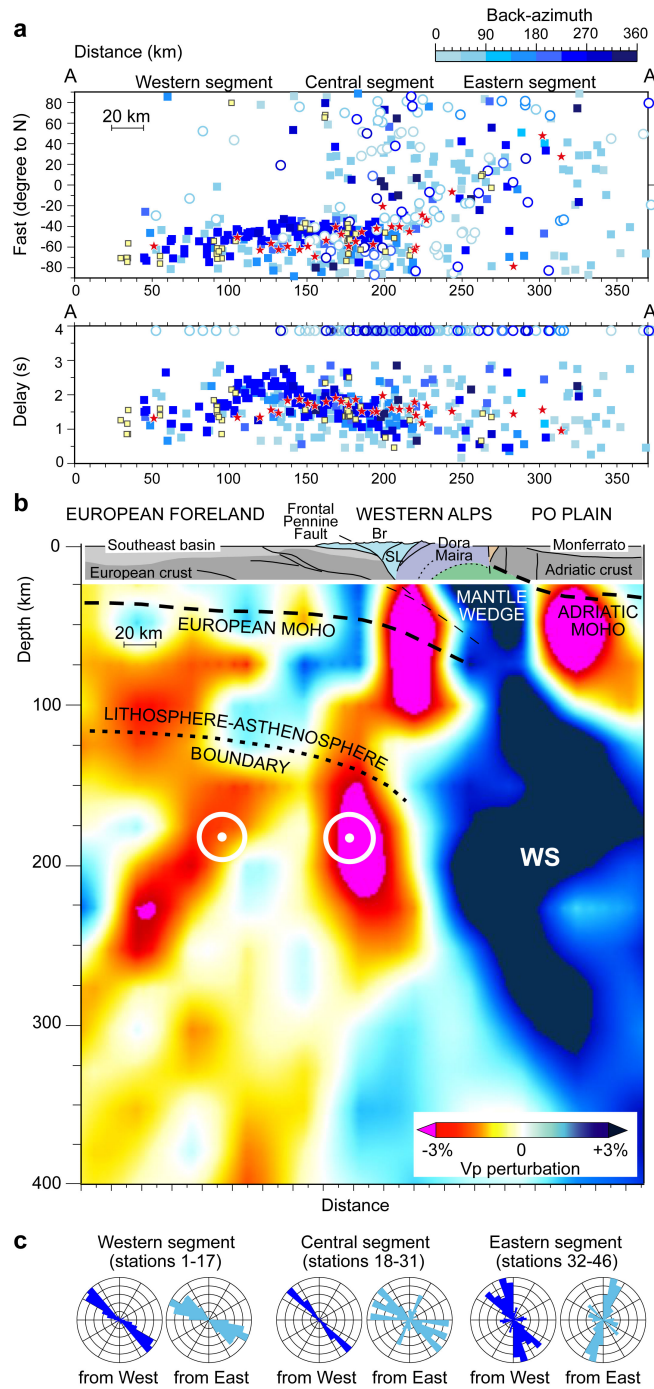
828



**Fig. 1. a)** Tectonic sketch map of the western Mediterranean, and location of the study area (in red; acronyms: CA, Central Alps; CO, Corsica; LA, Ligurian Alps; SA, Sardinia; WA, Western Alps). **b)** Neogene evolution of Alpine and Apenninic subductions (simplified after Malusà et al., 2015). Brown areas mark the metamorphic Alpine wedge and the Apenninic accretionary wedge; purple arrows indicate Adria trajectories relative to Europe (numbers = age in Ma); acronyms indicate the External Massifs (AA, Aar; AG, Argentera; MB, Mont Blanc; PE, Pelvoux), major faults (IF, Insubric Fault; FPF, Frontal Pennine Fault) and the Tertiary Piedmont Basin (TPB).



**Fig. 2.** Map of single SKS splitting measurements (blue = this work; yellow = previous works). Each measurement is plotted at 150 km depth as a segment parallel to the fast axis and scaled with delay time; null measurements are plotted as a cross with segments oriented parallel and perpendicular to the back-azimuth (see colour scale for the back-azimuth of analysed events). Seismic stations from the CIFALPS experiment (orange circles) and additional stations from permanent networks utilized in this work (orange squares) are also shown. Literature data are from Barruol et al. (2004, 2011) and Salimbeni et al. (2008, 2013) (datasets from Barruol et al., 2004, 2011 do not include null measurements). Acronyms: AA, Aar; AG, Argentera; BE, Belledonne; MB, Mont Blanc; PE, Pelvoux; TPB, Tertiary Piedmont Basin.

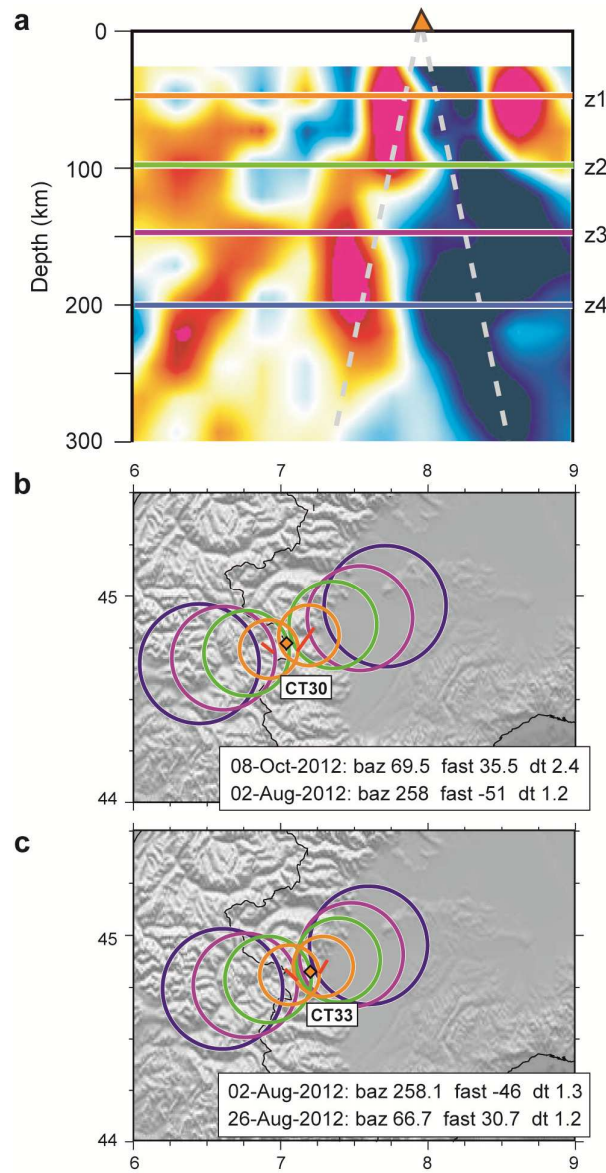


851

852 **Fig. 3. a)** Distribution of fast axes and delay times along a 60-km-wide swath following the  
 853 CIFALPS transect (see location in Fig. 2). Full squares are splitting measurements from this  
 854 work (in blue) and previous works (in yellow; from Barruol et al. 2004, 2011, Salimbeni et  
 855 al., 2008, 2013); empty circles are null measurements, plotted as fast axes parallel to the  
 856 back-azimuth and dt equal to 4s. The colour of markers depends on the event back-azimuth.  
 857 Red stars indicate average fast-axis directions calculated for stations having at least 6

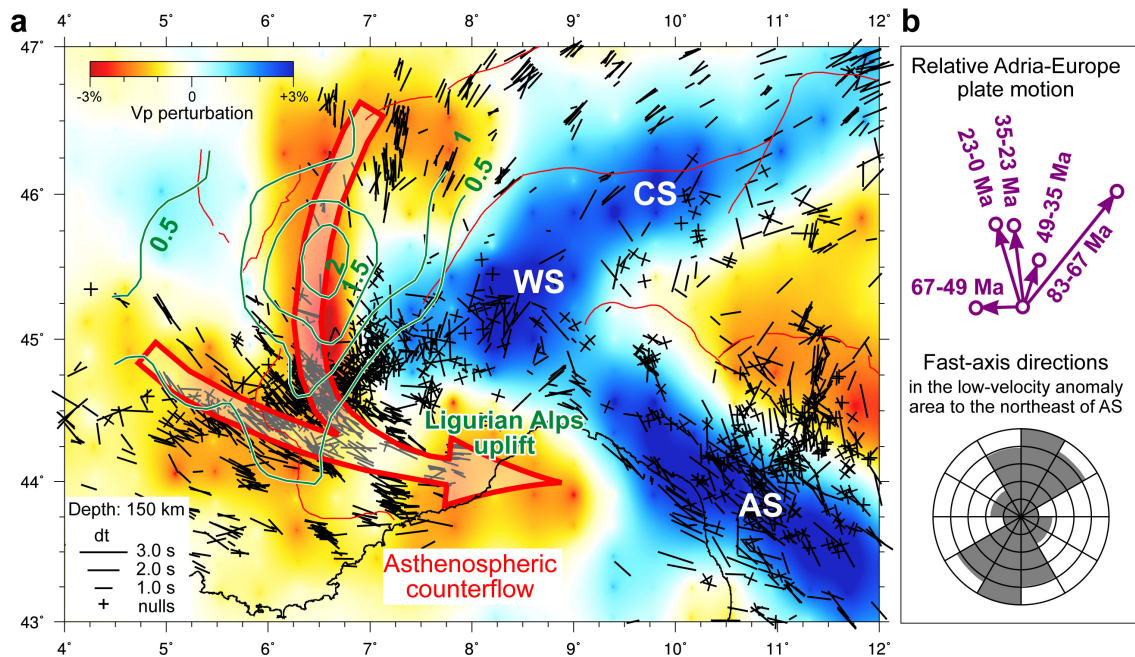
858 splitting measurements. Note the sharp change in fast axis orientation and delay time beneath  
859 the Western Alps, in the central segment of the CIFALPS profile. **b)** From top to bottom: (i)  
860 geologic cross-section along the CIFALPS transect (Br, Briançonnais; SL, Schistes lustrés);  
861 (ii) depth and geometry of the European and Adriatic Mohos based on receiver-function  
862 analysis (from Zhao et al., 2015), depth of the lithosphere-asthenosphere boundary based on  
863 array analysis of surface waves (from Lyu et al., 2017), and exhumed mantle wedge beneath  
864 the Dora-Maira based on local earthquake tomography (from Solarino et al., 2018); (iii)  
865 velocity structure of the underlying upper mantle based on finite-frequency *P* wave  
866 tomography (from Zhao et al., 2016a). Low velocity anomalies (yellow to red) are located to  
867 the west of the Western Alps slab (WS), beneath the core of the Western Alps and the  
868 European foreland. White circles correspond to the asthenospheric counterflow illustrated in  
869 Figure 5. **c)** Rose diagrams of fast-axis directions in the western, central and eastern  
870 segments of the CIFALPS profile (west and east back-azimuths).  
871





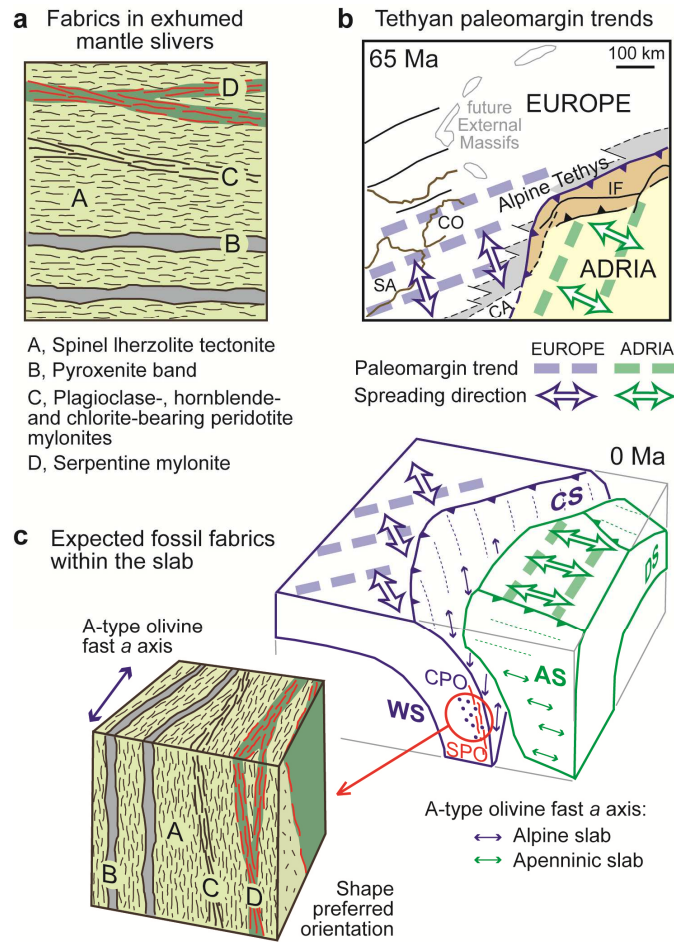
872

873 **Fig. 4:** Results of Fresnel zone analysis for ray paths emerging at the boundary between the  
874 Western Alps slab and the European asthenospheric mantle. **a)** Idealized ray paths for stations  
875 CT30 and CT33 (orange triangle) plotted on the tomographic cross section of Zhao et al.  
876 (2016a). Lines in color show the depths (z1 to z4) analyzed in map view. **b-c)** Map views  
877 showing the Fresnel zones of analyzed ray paths at depths of 50 km (orange), 100 km (green),  
878 150 km (purple) and 200 km (blue). Circles are scaled with the diameter of the Fresnel zone.  
879 The anisotropic parameters for each station-event pair (in red, details in map inset) are  
880 projected at 50 km depth.  
881



**Fig. 5. a)** Single shear wave splitting measurements (in black, projected to 150 km depth), and location of topographic uplift in the Western Alps (green contour lines = rates in mm/yr, after Nocquet et al., 2016) and in the Ligurian Alps, plotted onto the 150 km depth slice of the P-wave tomographic model of Zhao et al. (2016a). Null measurements in the Po Plain are clustered within the slabs (blue background colors), which also show dominantly slab-parallel fast axes (AS, Apenninic slab; CS, Central Alps slab; WS, Western Alps slab). Major faults (red lines) as in Figure 2. Note the correspondence between (i) the low velocity anomaly in the European upper mantle (yellow to red background colors in the western region of the map), (ii) the asthenospheric counterflow inferred from the orientation of fast axes (large red arrow), and (iii) the area of faster topographic uplift in the core of the Alps (green contour lines), which merges with the area of anomalous uplift in the Ligurian Alps (see text). **b)** Rose diagram of fast-axis directions, based on shear-wave splitting measurements in the area corresponding to the low-velocity anomaly north of the Apennines, attesting no toroidal flow around the northern tip of the Apenninic slab. Relative Adria-Europe plate motion after Dewey et al. (1989) (arrows are scaled with distance, numbers indicate the age in Ma).

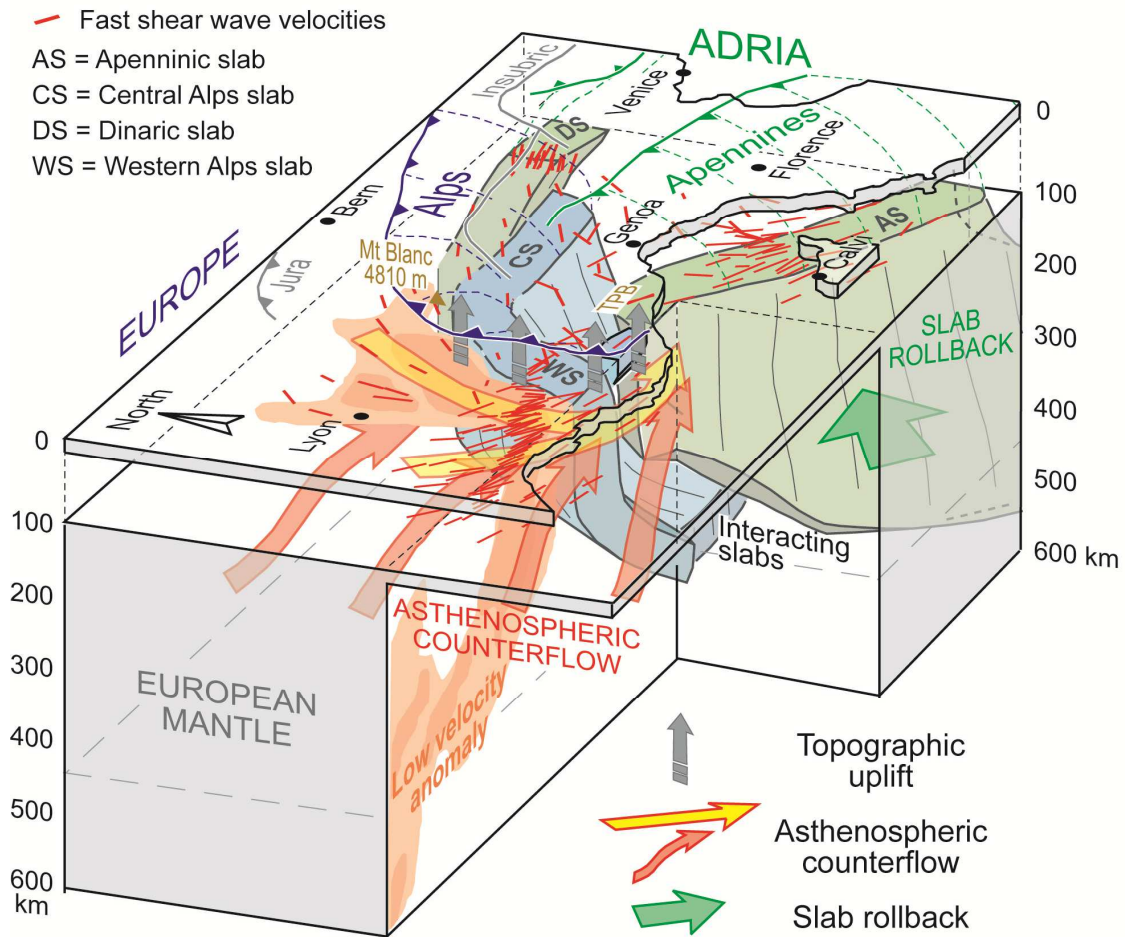




899

**Fig. 6. a)** Anisotropic fabrics inherited from the Tethyan rifting as observed in outcrops of exhumed mantle rocks within the Alpine orogenic wedge (Erro-Tobbio unit, e.g., Piccardo and Vissers, 2007 and references therein). **b)** Palinspastic reconstruction of the Cenozoic Adria-Europe plate boundary at 65 Ma (based on Malusà et al., 2015, 2016b) showing the trends of the European and Adriatic paleomargins and the inferred directions of Tethyan spreading (CA, Calabria; CO, Corsica; IF, Insubric Fault; SA, Sardinia). **c)** Expected attitude of fossil anisotropic fabrics within the Alpine and Apenninic slabs, based on the direction of plate spreading, trench orientation and slab dip (AS, Apenninic slab; CS, Central Alps slab; DS, Dinaric slab; WS, Western Alps slab). CPO = crystallographic preferred orientation; SPO = shape preferred orientation.

910



911

912 **Fig. 7.** Interpretive 3D model showing the relationships between slab structure, active mantle  
913 flow and topographic uplift in the Western and Ligurian Alps regions. The progressive  
914 rollback of the Apenninic slab, in the absence of a toroidal flow around its northern tip,  
915 induces a suction effect and asthenospheric counterflow at the rear of the unbroken Western  
916 Alps slab and around its southern tip. The temperature increase due to asthenospheric  
917 upwelling, mirrored by a low velocity anomaly in the European mantle (detected by *P* wave  
918 tomography), may have favored the topographic uplift from the Mt Blanc to the Ligurian  
919 coast. Station-averaged shear wave splitting measurements are in red; slab structure and low  
920 velocity anomalies are after Zhao et al. (2016a); TPB = Tertiary Piedmont basin.

## 921 **Supplementary material**

- 922 • **Table S1:** List of temporary and permanent stations used for the analysis.
- 923 • **Table S2:** Teleseismic earthquakes analyzed in this work.
- 924 • **Table S3:** Shear wave splitting data obtained at the end of the analysis.
- 925 • **Table S4:** Nulls shear wave splitting data obtained at the end of the analysis.

- 926       • **Figure S1:** Results of Fresnel zone analysis for ray paths emerging in the Po Plain  
927       beneath stations CT41 and CT43 (a), and beneath stations CT29, CT31, CT32 and CT35  
928       at the boundary between the Po Plain and the Alpine mountain range (b). Circles show  
929       the Fresnel zone of analyzed ray paths at depths of 50 km (orange), 100 km (green), 150  
930       km (purple) and 200 km (blue). The anisotropic parameters for each station-event pair (in  
931       red) are projected at 50 km depth.
- 932       • **Figure S2:** Examples of waveform quality in different parts of the transect