



**HAL**  
open science

## Active Long-Lived Faults Emerging Along Slow-Spreading Mid-Ocean Ridges

Deborah Smith, Javier Escartin, Hans Schouten, Johnson R Cann

► **To cite this version:**

Deborah Smith, Javier Escartin, Hans Schouten, Johnson R Cann. Active Long-Lived Faults Emerging Along Slow-Spreading Mid-Ocean Ridges. *Oceanography*, 2012, 25 (1), pp.94-99. <10.5670/oceanog.2012.07>. <insu-02296917>

**HAL Id: insu-02296917**

**<https://insu.hal.science/insu-02296917v1>**

Submitted on 25 Sep 2019

HAL is a multi-disciplinary open access archive for the deposit and dissemination of scientific research documents, whether they are published or not. The documents may come from teaching and research institutions in France or abroad, or from public or private research centers.

L'archive ouverte pluridisciplinaire HAL, est destinée au dépôt et à la diffusion de documents scientifiques de niveau recherche, publiés ou non, émanant des établissements d'enseignement et de recherche français ou étrangers, des laboratoires publics ou privés.



HAL Authorization

THE OFFICIAL MAGAZINE OF THE OCEANOGRAPHY SOCIETY

# Oceanography

CITATION

Smith, D.K., J. Escartín, H. Schouten, and J.R. Cann. 2012. Active long-lived faults emerging along slow-spreading mid-ocean ridges. *Oceanography* 25(1):94–99, <http://dx.doi.org/10.5670/oceanog.2012.07>.

DOI

<http://dx.doi.org/10.5670/oceanog.2012.07>

COPYRIGHT

This article has been published in *Oceanography*, Volume 25, Number 1, a quarterly journal of The Oceanography Society. Copyright 2012 by The Oceanography Society. All rights reserved.

USAGE

Permission is granted to copy this article for use in teaching and research. Republication, systematic reproduction, or collective redistribution of any portion of this article by photocopy machine, reposting, or other means is permitted only with the approval of The Oceanography Society. Send all correspondence to: [info@tos.org](mailto:info@tos.org) or The Oceanography Society, PO Box 1931, Rockville, MD 20849-1931, USA.



# Active Long-Lived Faults Emerging Along Slow-Spreading Mid-Ocean Ridges

BY DEBORAH K. SMITH, JAVIER ESCARTÍN, HANS SCHOUTEN, AND JOHNSON R. CANN

## OCEANIC DETACHMENT FAULTS AND CORE COMPLEX FORMATION

In the classic mid-ocean ridge model, new seafloor is generated through a combination of magmatic diking feeding lava flows at the spreading axis, and the formation of short-offset, high-angle normal faults that dip toward the axis. These processes lead to the formation of a layered magmatic crust and linear, ridge-parallel abyssal hills on both ridge flanks. This model of ocean crust generation applies well

to fast-spreading mid-ocean ridges (i.e.,  $> 80 \text{ mm yr}^{-1}$ ), but it is not always valid at slower-spreading ridges. Instead, at slow-spreading ridges such as the Mid-Atlantic Ridge (MAR), which is opening at about  $25 \text{ mm yr}^{-1}$ , the formation of long-lived faults (called detachments) on one flank of the ridge axis is an important process in seafloor formation (Cann et al., 1997; Karson, 1999; MacLeod et al., 2009; Schroeder et al., 2007; Smith et al., 2008; Tucholke et al., 1998). In fact, active detachment faults have been identified along nearly half

of the MAR axis between  $12^\circ$  and  $35^\circ\text{N}$  (Escartín et al., 2008).

Continued extension on a single fault leads to significant flexural rotation of the fault block (Garcés and Gee, 2007; MacLeod et al., 2011; Morris et al., 2009; Schouten et al., 2010). If extension continues for more than about 5 km, continued rotation means that the exhumed fault surface becomes near horizontal from its initial dip of about  $60^\circ$  beneath the axis, and the seafloor domes as a result of regional isostatic compensation (e.g., Buck,

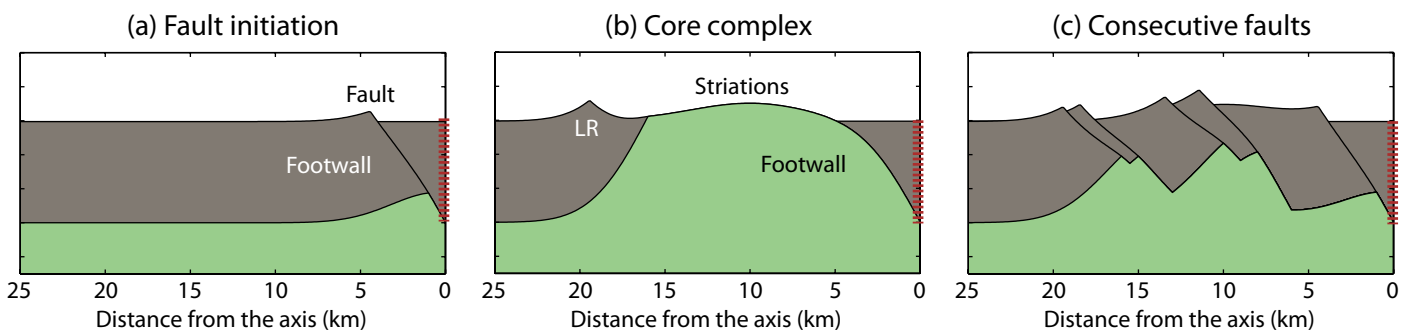


Figure 1. Cartoon showing two styles of faulting at a slow-spreading ridge. Faults are shown as subsurface black lines, and the footwall is marked. A normal fault forms, dipping at  $60^\circ$  beneath the axis. (a) In this panel, fault offset is 1 km, and the fault block has rotated outward away from the ridge axis by  $18^\circ$  to form an outward-facing scarp. (b) Continued faulting and extension brings lower crustal rocks to the seafloor and forms a “core complex.” In this panel, the fault offset is 16 km, and outward rotation of the top of the fault has increased to  $36^\circ$  to create a narrow linear ridge (LR) that marks the breakaway where the fault initially formed. The exposed footwall may be striated. (c) In this panel, no long-lived faults have formed. Instead, consecutive short-lived faults cut the lithosphere on the ridge flank to form classic abyssal hill topography. Red dashed line = spreading axis. Brown shading = crust that predates faulting. Green shading = material below the crust that is brought to the surface during core-complex formation.

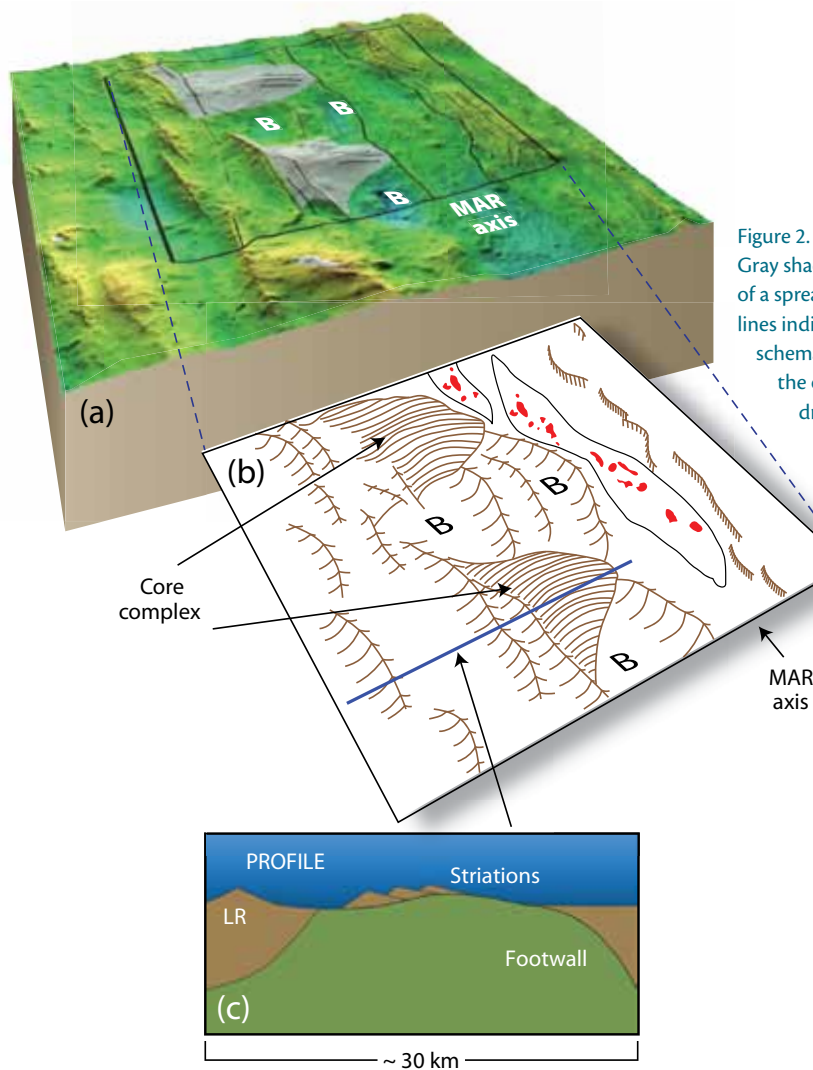


Figure 2. (a) Bathymetry from the 13°N region of the Mid-Atlantic Ridge. Gray shading indicates two core complexes that have formed in the middle of a spreading segment. The box is the region interpreted in (b). Black lines indicate borders of the MAR axis, the tops of rotated faults, and schematic striations on core complexes. Basins that have formed during the outward rotation of the tops of the faults are marked B. (b) Line drawing of the bathymetry in the box in (a) showing striated core complexes and the tops of rotated faults. B's indicate basins as in (a). At the spreading axis, axial volcanic ridges are outlined in black. Red areas indicate that volcanism occurs along the axis. The blue line locates the profile shown below. (c) Schematic profile across the southern core complex similar to the profiles shown in Figure 1. Striations on the exposed footwall are labeled. LR = linear ridge created by the outward rotation of the top of a fault. Faulted sections of brown-shaded material on the top of the core complex surface are rafted blocks of the median valley floor.

1988) to form a “core complex massif” (Figure 1). Core complex massifs expose lower crustal and upper mantle rocks at the seafloor (e.g., Dick et al., 1981; Cann et al., 1997; Blackman et al., 1998; Tucholke et al., 1998; Escartín and Cannat, 1999; Karson, 1999; Cannat et al., 2006; Ildefonse et al., 2007). The surfaces capping core complexes often show distinctive striations that run parallel to the spreading direction (Figure 2). The detachment fault associated with an active core complex dips beneath the seafloor < 5 km from the spreading axis and roots beneath the axis

(e.g., deMartin et al., 2007).

Rather than forming only at the ends of spreading segments near fracture zones and other ridge-axis discontinuities, as had been thought, several core complexes have been identified in the middle of spreading segments (Figure 2). Adjacent mid-segment core complexes may have resulted from movement along a single detachment fault (e.g., Smith et al., 2006, 2008; MacLeod et al., 2009; Reston and Ranero, 2011). Detachment faulting and the formation of core complexes may continue in a region for many millions of years, producing

large fields of core complexes off axis (e.g., Okino et al., 2004; Cannat et al., 2006; Smith et al., 2006, 2008; Schroeder et al., 2007; Reston and Ranero, 2011).

The controls on the formation of oceanic detachment faults and core complexes remain poorly understood, but must differ significantly from those controlling extension when seafloor spreading occurs in the “classic” manner. It has been argued that detachment faults and associated core complexes begin as high-angle (dipping about 60°) faults beneath the spreading axis, just as classic shorter-offset faults do (e.g., Tucholke

et al., 1998; Morris et al., 2009; Schouten et al., 2010; MacLeod et al., 2011). But why does one fault continue to extend for millions of years, rolling over to form a core complex, while another stops after extending for a relatively short time? Models examining the relationship

systems with associated mineral deposits and ecosystems. And, detachment faults and core complexes contribute substantially to the formation of major expanses of the seafloor. For example, if close to 50% of the northern MAR spreading axis (12°–35°N) is experiencing detachment

The improved detection capability and earthquake location accuracy of the hydrophone array, compared to land-based teleseismic networks, provided new insights into the overall spatial and temporal patterns in ridge-axis tectonic and magmatic processes. In particular, the seismicity data from the hydrophones indicated that regions along the axis with persistent hydrophone seismicity were most likely correlated with regions of active detachment faulting and core complex formation (Figure 3b; e.g., Escartín et al., 2008; Smith et al., 2008).

Figure 4 shows the multibeam bathymetry collected at 13°N and 16°N with the location of hydrophone-recorded earthquakes plotted. Seismicity occurring within the axial valley is probably associated with the high-angle portion of the detachment faults deep beneath the axis, such as observed at the TAG detachment fault at 26° along the MAR (deMartin et al., 2007). There is also seismicity within the core complexes themselves, suggesting deformation associated with flexing and bending of the detachment footwall both across and along the axis.

### THE WAY FORWARD

Hydrophones are currently being deployed for two years in the equatorial Atlantic (Figure 3a). This region is especially interesting because of its tectonic

## “ THE ULTIMATE GOAL OF ALL OF THESE STUDIES WILL BE TO IDENTIFY THE MAGMATIC AND RHEOLOGICAL CONDITIONS THAT ARE REQUIRED FOR THE INITIATION AND SUSTAINED EVOLUTION OF THESE LARGE-OFFSET NORMAL FAULTS. ”

between magma supply to the ridge axis and detachment fault formation have been put forward, many of which suggest that detachment faults form when magma supply is low (e.g., Buck et al., 2005; Escartín et al., 2008; Tucholke et al., 2008; MacLeod et al., 2009; Olive et al., 2010; Schouten et al., 2010). This low magma supply model is still a matter of debate, however, because observations suggest that melt extraction from the mantle beneath the axis may be high during the evolution of detachment faulting (e.g., Dick et al., 2000; Grimes et al., 2008).

Detachment faults and core complexes are especially important because they expose at the seafloor deep-seated rocks formed beneath mid-ocean ridges, permitting investigation of oceanic lithosphere structure. They sustain both long-lived, high-temperature hydrothermal circulation and low-temperature, hydrogen-rich, serpentinite-related

faulting (Escartín et al., 2008), then up to 25% of new seafloor there may be composed of core complexes. In addition, ocean detachment faults provide important comparisons for those who study the formation of continental core complexes (e.g., John and Cheadle, 2010).

### SEISMICITY AND ACTIVE DETACHMENT FAULTS

Between 1999 and 2003, six autonomous hydrophones were moored in the North Atlantic from 15°–35°N (North MAR study area marked on Figure 3a) to record the seismicity of the slow-spreading MAR (Smith et al., 2002).

---

**Deborah K. Smith** ([dsmith@whoi.edu](mailto:dsmith@whoi.edu)) is Senior Scientist, Geology and Geophysics Department, Woods Hole Oceanographic Institution (WHOI), Woods Hole, MA, USA.

**Javier Escartín** is Senior Research Scientist, Groupe de Géosciences Marines, Centre National de la Recherche Scientifique/Institut de Physique du Globe, Paris, France. **Hans Schouten** is Senior Scientist, Geology and Geophysics Department, WHOI, Woods Hole, MA, USA.

**Johnson R. Cann** is Emeritus Professor of Oceanography, School of Earth and Environment, University of Leeds, Leeds, UK.

history associated with the opening of the Atlantic Ocean. A strongly segmented MAR, with limited magma supply, is offset on some of the longest transform faults in the ocean (e.g., the > 900 km Romanche Transform Fault). Using the data collected by the equatorial hydrophone array, it will be possible to identify regions of high hydroacoustic seismicity at the ridge axis and, thus, probable regions of active detachment faulting. It is expected that detachment faults will

be common along the equatorial Atlantic MAR because of the thicker and colder-than-normal oceanic lithosphere as well as an inferred mantle thermal minimum in the region resulting in overall low melt production (e.g., Bonatti et al., 2001). Of interest will be whether the patterns in seismicity change along the axis, and whether the patterns are different north and south of the very long-offset Romanche Transform Fault, which likely separates geochemically distinct

regions of the Atlantic.

Along with continued acoustic monitoring of the mid-ocean ridges, a next step is the collection of near-bottom geophysical and geological data. These data, combined with results from numerical models, will provide the most complete view of the mechanisms that operate and interact throughout an oceanic detachment fault system and, in particular, of the links between the distribution and nature of deformation,

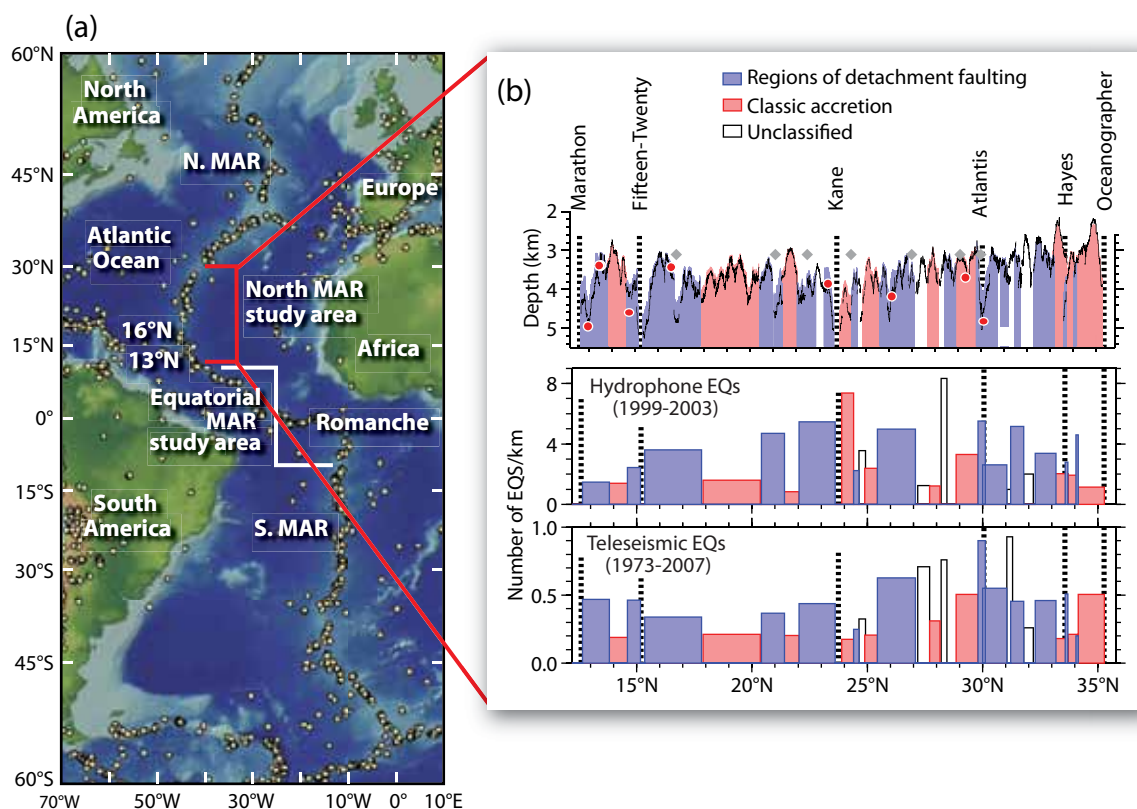


Figure 3. (a) Map of the Atlantic Ocean. Yellow dots show locations of teleseismic earthquakes from the National Earthquake Information Center (NEIC) catalog with  $M > 4.5$  between 1976 and 2009. Within the North MAR study area, high rates of hydroacoustically recorded seismicity were correlated to active detachment faults as shown in (b) (Smith et al., 2006, 2008; Escartin et al., 2008). A new study area in the equatorial Atlantic will yield information on ridge-axis detachment faulting in this region of large-offset transform faults. The Romanche Transform Fault is marked. Figure 4 shows the details of the 13°N and 16°N areas. (b) Histogram showing a bathymetric profile along the ridge axis in the top panel, number of hydrophone-recorded earthquakes (EQs) per kilometer of ridge in the middle panel, and number of teleseismically recorded earthquakes per kilometer of ridge in the bottom panel. Dashed lines indicate the locations of transform faults. Rose shading shows regions of the ridge axis that spread by classic magmatic accretion, and blue shading shows regions of the axis that spread by detachment faulting on one flank. Note the correlation of high rates of seismicity with active detachment faulting. Red circles = known hydrothermal fields. Gray diamonds = known hydrothermal plumes. There also is an association of hydrothermal activity and active detachments. Histogram modified from Escartin et al. (2008)

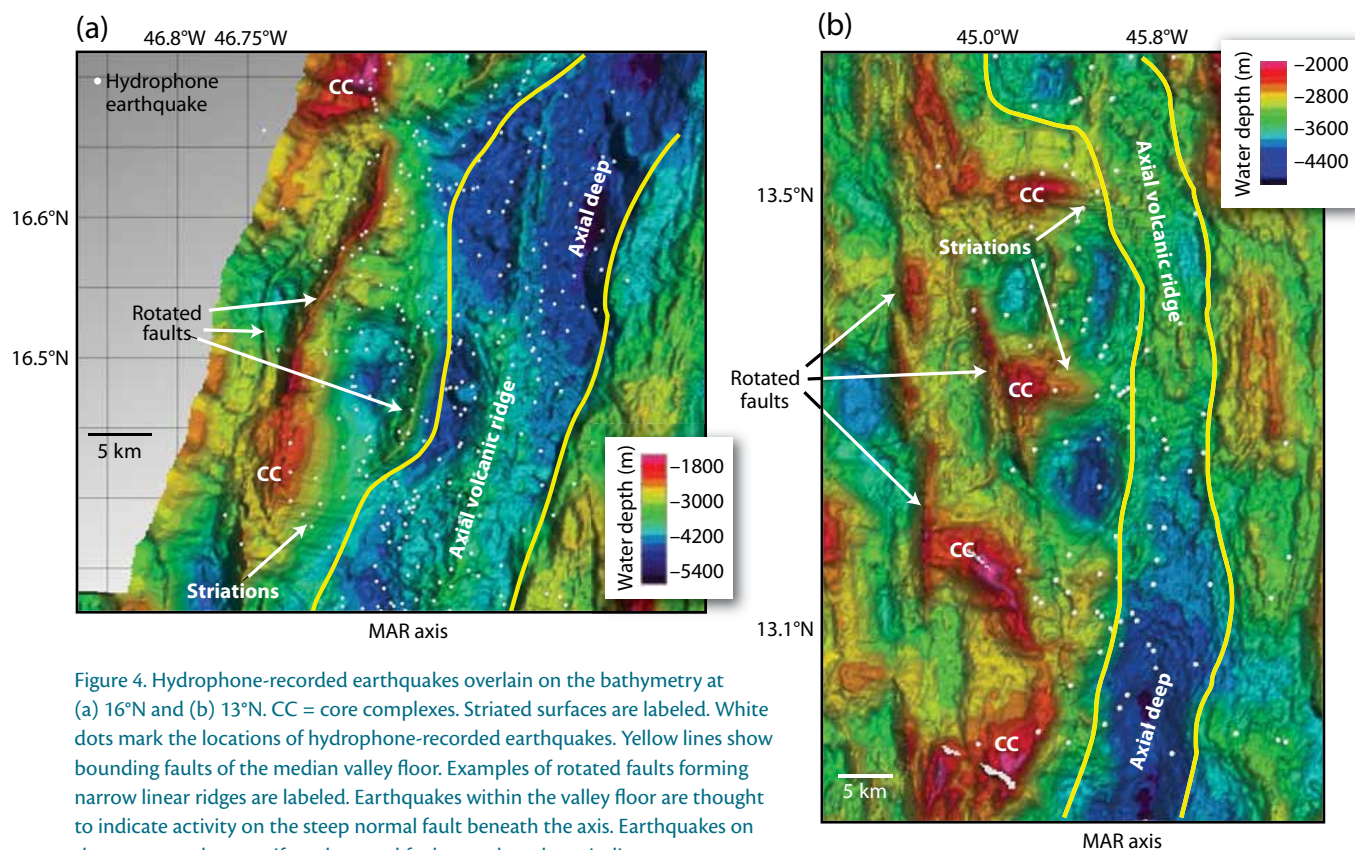


Figure 4. Hydrophone-recorded earthquakes overlain on the bathymetry at (a) 16°N and (b) 13°N. CC = core complexes. Striated surfaces are labeled. White dots mark the locations of hydrophone-recorded earthquakes. Yellow lines show bounding faults of the median valley floor. Examples of rotated faults forming narrow linear ridges are labeled. Earthquakes within the valley floor are thought to indicate activity on the steep normal fault beneath the axis. Earthquakes on the core complex massifs and rotated faults are thought to indicate stress associated with the flexing of faults both along and across the axis.

lithospheric alteration, and magmatic activity at the axis (e.g., Escartín and Canales, 2011).


Sampling of rocks is also an important piece of the puzzle because the composition of basalts from the ridge axis can be used to estimate the magmatic budget at a ridge segment and, hence, to test current models relating magma supply and detachment fault formation (e.g., Buck et al., 2005; Tucholke et al., 2008; MacLeod et al., 2009; Olive et al., 2010; Schouten et al., 2010). To evaluate the models, it will be essential to study a number of different detachment faults and associated volcanic systems at the ridge axis, representing a spectrum of magmatic activity.

The ultimate goal of all of these studies

will be to identify the magmatic and rheological conditions that are required for the initiation and sustained evolution of these large-offset normal faults. Knowledge of these conditions will help us to understand how the oceanic lithosphere is constructed in settings where detachment faulting occurs.

#### ACKNOWLEDGEMENTS

This study was undertaken with US National Science Foundation (NSF) support to HS and DKS, and Centre National de la Recherche Scientifique support to JE. The authors would like to thank J. Cook in the Woods Hole Oceanographic Institution graphics department for his help in preparing Figures 2 and 3, and the Ridge 2000

Office for support to make the figures. Ridge 2000 Program support came from NSF grant OCE-0838923. The authors would also like to thank B. John and D. Geist for very constructive reviews of this article. 

#### REFERENCES

- Blackman, D.K., J.R. Cann, B. Janssen, and D.K. Smith. 1998. Origin of extensional core complexes: Evidence from the Mid-Atlantic Ridge at Atlantis Fracture Zone. *Journal of Geophysical Research* 103:21,315–21,333, <http://dx.doi.org/10.1029/98JB01756>.
- Bonatti, E., D. Brunelli, P. Fabretti, M. Ligi, R.A. Portaro, and M. Seyler. 2001. Steady-state creation of crust-free lithosphere at cold spots in mid-ocean ridges. *Geology* 29:979–982, [http://dx.doi.org/10.1130/0091-7613\(2001\)029<0979:SSCOCF>2.0.CO;2](http://dx.doi.org/10.1130/0091-7613(2001)029<0979:SSCOCF>2.0.CO;2).
- Buck, R.W. 1988. Flexural rotation of normal faults. *Tectonics* 7:959–973, <http://dx.doi.org/10.1029/TC007i005p00959>.

- Buck, W.R., L.L. Lavier, and A.N.B. Poliakov. 2005. Modes of faulting at mid-ocean ridges. *Nature* 434:719–723, <http://dx.doi.org/10.1038/nature03358>.
- Cann, J.R., D.K. Blackman, D.K. Smith, E. McAllister, B. Janssen, S. Mello, E. Avgerinos, A.R. Pascoe, and J. Escartin. 1997. Corrugated slip surfaces formed at North Atlantic ridge-transform intersections. *Nature* 385:329–332.
- Cannat, M., D. Sauter, V. Mendel, E. Ruellan, K. Okino, J. Escartin, V. Combiér, and M. Baala. 2006. Modes of seafloor generation at a melt-poor ultraslow-spreading ridge. *Geology* 34:605–608, <http://dx.doi.org/10.1130/G22486.1>.
- deMartin, B.J., R.A. Reves-Sohn, J.P. Canales, and S.E. Humphris. 2007. Kinematics and geometry of active detachment faulting beneath the TAG hydrothermal field on the Mid-Atlantic Ridge. *Geology* 35:711–714, <http://dx.doi.org/10.1130/G23718A.1>.
- Dick, H.J.B., J.H. Natland, J.C. Alt, W. Bach, D. Bideau, J.S. Gee, S. Haggas, J.G.H. Hertogen, G. Hirth, P.M. Holm, and others. 2000. A long in situ section of the lower ocean crust: Results of ODP Leg 176 drilling at the Southwest Indian Ridge. *Earth and Planetary Science Letters* 179:31–51, [http://dx.doi.org/10.1016/S0012-821X\(00\)00102-3](http://dx.doi.org/10.1016/S0012-821X(00)00102-3).
- Dick, H.J.B., G. Thompson, and W.B. Bryan. 1981. Low angle faulting and steady-state emplacement of plutonic rocks at ridge-transform intersections (abstract). *Eos, Transactions, American Geophysical Union* 62:406.
- Escartin, J., and J.P. Canales. 2011. Detachments in oceanic lithosphere: Deformation, magmatism, fluid flow and ecosystems. *Eos, Transactions, American Geophysical Union* 92:31, <http://dx.doi.org/10.1029/2011EO040003>.
- Escartin, J., and M. Cannat. 1999. Ultramafic exposures and the gravity signature of the lithosphere near the Fifteen-Twenty Fracture Zone (Mid-Atlantic Ridge, 14°–16.5°N). *Earth and Planetary Science Letters* 171:411–424.
- Escartin, J., D.K. Smith, J. Cann, H. Schouten, C.H. Langmuir, and S. Escrig. 2008. Central role of detachment faults in accretion of slow-spread oceanic lithosphere. *Nature* 455:790–794, <http://dx.doi.org/10.1038/nature07333>.
- Garcés, M., and J.S. Gee. 2007. Paleomagnetic evidence of large footwall rotations associated with low-angle faults at the Mid-Atlantic Ridge. *Geology* 35:279–282, <http://dx.doi.org/10.1130/G23165A.1>.
- Grimes, C.B., B.E. John, M.J. Cheadle, and J.L. Wooden. 2008. Protracted construction of gabbroic crust at a slow spreading ridge: Constraints from <sup>206</sup>Pb/<sup>238</sup>U zircon ages from Atlantis Massif and IODP Hole U1309D (30°N, MAR). *Geochemistry Geophysics Geosystems* 9, Q08012, <http://dx.doi.org/10.1029/2008GC002063>.
- Ilddefonse, B., D.K. Blackman, B.E. John, Y. Ohara, D.J. Miller, C.J. MacLeod, and Integrated Ocean Drilling Program Expeditions 304/305 Science Party. 2007. Oceanic core complexes and crustal accretion at slow-spreading ridges. *Geology* 35:623–626, <http://dx.doi.org/10.1130/G23531A.1>.
- John, B.E., and M.J. Cheadle. 2010. Deformation and alteration associated with oceanic and continental detachment fault systems: Are they similar? Pp. 175–205 in *Diversity of Hydrothermal Systems on Slow Spreading Ocean Ridges*. P.A. Rona, C.W. Devey, J. Dymant, and B.J. Murton, eds, Geophysical Monograph Series, vol. 188, American Geophysical Union, Washington, DC, <http://dx.doi.org/10.1029/2008GM000772>.
- Karson, J.A. 1999. Geological investigation of a lineated massif at the Kane Transform Fault: Implications for oceanic core complexes. *Philosophical Transactions of the Royal Society of London* 357:713–740, <http://dx.doi.org/10.1098/rsta.1999.0350>.
- MacLeod, C.J., J. Calut, J. Escartin, H. Horen, and A. Morris. 2011. Quantitative constraint on footwall rotations at the 15°45'N oceanic core complex, Mid-Atlantic Ridge: Implications for oceanic detachment fault processes. *Geochemistry Geophysics Geosystems* 12, Q0AG03, <http://dx.doi.org/10.1029/2011GC003503>.
- MacLeod, C.J., R.C. Searle, B.J. Murton, J.F. Casey, C. Mallows, S.C. Unsworth, K.L. Achenbach, and M. Harris. 2009. Life cycle of oceanic core complexes. *Earth and Planetary Science Letters* 287:333–344, <http://dx.doi.org/10.1016/j.epsl.2009.08.016>.
- Morris, A., J.S. Gee, N. Pressling, B.E. John, C.J. MacLeod, C.B. Grimes, and R.C. Searle. 2009. Footwall rotation in an oceanic core complex quantified using reoriented Integrated Ocean Drilling Program core samples. *Earth and Planetary Science Letters* 287:217–228, <http://dx.doi.org/10.1016/j.epsl.2009.08.007>.
- Okino, K., K. Matsuda, D.M. Christie, Y. Nogi, and K. Koizumi. 2004. Development of oceanic detachment and asymmetric spreading at the Australian-Antarctic Discordance. *Geochemistry Geophysics Geosystems* 5, Q12012, <http://dx.doi.org/10.1029/2004GC000793>.
- Olive, J.-A., M.D. Behn, and B.E. Tucholke. 2010. The structure of oceanic core complexes controlled by the depth distribution of magma emplacement. *Nature Geoscience* 3:491–495, <http://dx.doi.org/10.1038/NGEO888>.
- Reston, T.J., and C.R. Ranero. 2011. The 3-D geometry of detachment faulting at mid-ocean ridges. *Geochemistry Geophysics Geosystems* 12, Q0AG05, <http://dx.doi.org/10.1029/2011GC003666>.
- Schouten, H., D.K. Smith, J.R. Cann, and J. Escartin. 2010. Tectonic versus magmatic extension in the presence of core complexes at slow-spreading ridges from a visualization of faulted seafloor topography. *Geology* 38:615–618, <http://dx.doi.org/10.1130/G30803.1>.
- Schroeder, T., M. Cheadle, H.J.B. Dick, U. Faul, J.F. Casey, and P.B. Kelemen. 2007. Non-volcanic seafloor spreading and corner-flow rotation accommodated by extensional faulting at 15°N on the Mid Atlantic Ridge: A structural synthesis of ODP Leg 209. *Geochemistry Geophysics Geosystems* 8, Q06015, <http://dx.doi.org/10.1029/2006GC001567>.
- Smith, D.K., J.R. Cann, and J. Escartin. 2006. Widespread active detachment faulting and core complex formation near 13°N on the Mid-Atlantic Ridge. *Nature* 442:440–443, <http://dx.doi.org/10.1038/nature04950>.
- Smith, D.K., J. Escartin, H. Schouten, and J.R. Cann. 2008. Fault rotation and core complex formation: Significant processes in seafloor formation at slow-spreading mid-ocean ridges (Mid-Atlantic Ridge, 13–25°N). *Geochemistry Geophysics Geosystems* 9, Q03003, <http://dx.doi.org/10.1029/2007GC001699>.
- Smith, D.K., M. Tolstoy, C.G. Fox, D.R. Bohnenstiehl, H. Matsumoto, and M.J. Fowler. 2002. Hydroacoustic monitoring of seismicity at the slow-spreading Mid-Atlantic Ridge. *Geophysical Research Letters* 29(11), 1518, <http://dx.doi.org/10.1029/2001GL013912>.
- Tucholke, B., M.D. Behn, W.R. Buck, and J. Lin. 2008. Role of melt supply in oceanic detachment faulting and formation of megamullions. *Geology* 36:455–458, <http://dx.doi.org/10.1130/G24639A.1>.
- Tucholke, B.E., J. Lin, and M.C. Kleinrock. 1998. Megamullions and mullion structure defining oceanic metamorphic core complexes on the Mid-Atlantic Ridge. *Journal of Geophysical Research* 103:9,857–9,866, <http://dx.doi.org/10.1029/98JB00167>.