



HAL
open science

Positive Ion Chemistry in an N₂-CH₄ Plasma Discharge: Key Precursors to the Growth of Titan Tholins

David Dubois, Nathalie Carrasco, Lora Jovanovic, Ludovic Vettier, Thomas
Gautier, Joseph Westlake

► To cite this version:

David Dubois, Nathalie Carrasco, Lora Jovanovic, Ludovic Vettier, Thomas Gautier, et al.. Positive Ion Chemistry in an N₂-CH₄ Plasma Discharge: Key Precursors to the Growth of Titan Tholins. *Icarus*, 2020, 338 (1 March), pp.art. 113437. 10.1016/j.icarus.2019.113437 . insu-02305252

HAL Id: insu-02305252

<https://insu.hal.science/insu-02305252>

Submitted on 4 Oct 2019

HAL is a multi-disciplinary open access archive for the deposit and dissemination of scientific research documents, whether they are published or not. The documents may come from teaching and research institutions in France or abroad, or from public or private research centers.

L'archive ouverte pluridisciplinaire **HAL**, est destinée au dépôt et à la diffusion de documents scientifiques de niveau recherche, publiés ou non, émanant des établissements d'enseignement et de recherche français ou étrangers, des laboratoires publics ou privés.

Positive Ion Chemistry in an N₂-CH₄ Plasma Discharge: Key Precursors to the Growth of Titan Tholins

David Dubois^{a,*}, Nathalie Carrasco^a, Lora Jovanovic^a, Ludovic Vettier^a, Thomas Gautier^a, Joseph Westlake^b

^aLATMOS/IPSIL, UVSQ Université Paris-Saclay, UPMC Univ. Paris 06, CNRS, Guyancourt, France

^bJohns Hopkins University Applied Physics Laboratory, Laurel, MD, USA

Abstract

Titan is unique in the solar system as it hosts a dense atmosphere mainly made of molecular nitrogen N₂ and methane CH₄. The Cassini-Huygens Mission revealed the presence of an intense atmospheric photochemistry initiated by the photo-dissociation and ionization of N₂ and CH₄. In the upper atmosphere, Cassini detected signatures compatible with the presence of heavily charged molecules which are precursors for the solid core of the aerosols. These observations have indicated that ion chemistry has an important role for organic growth. However, the processes coupling ion chemistry and aerosol formation and growth are still mostly unknown. In this study, we investigated the cation chemistry responsible for an efficient organic growth that we observe in Titan's upper atmosphere, simulated using the PAMPRE plasma reactor. Positive ion precursors were measured by *in situ* ion mass spectrometry in a cold plasma and compared with INMS observations taken during the T40 flyby. A series of positive ion measurements were performed in three CH₄ mixing ratios (1%, 5% and 10%) showing a variability in ion population. Low methane concentrations result in an abundance of amine cations such as NH₄⁺ whereas aliphatic compounds dominate at higher methane concentrations. In conditions of favored tholin production, the presence of C₂ compounds such as HCNH⁺ and C₂H₅⁺ is found to be consistent with copolymeric growth structures seen in tholin material. The observed abundance of these two ions particularly in conditions with lower CH₄ amounts is consistent with modeling work simulating aerosol growth in Titan's ionosphere, which includes mass exchange primarily between HCNH⁺ and C₂H₅⁺ and negatively charged particles. These results also confirm the prevalent role of C₂ cations as precursors to molecular growth and subsequent mass transfer to the charged aerosol particles as the CH₄ abundance decreases towards lower altitudes.

Keywords: Titan, Atmospheres, chemistry, Experimental techniques

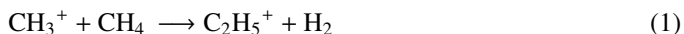
*Present addresses: NASA Ames Research Center, Space Science & Astrobiology Division, Astrophysics Branch, Moffett Field, CA, USA, Bay Area Environmental Research Institute, Moffett Field, CA, USA.

Email address: david.f.dubois@nasa.gov (David Dubois)

1. Introduction

Titan is Saturn's largest satellite. It hosts a dense atmosphere mainly made up of molecular nitrogen N_2 and methane CH_4 , with a surface pressure of 1.5 bar. Early seminal studies (Khare and Sagan, 1973; Sagan, 1973; Hanel et al., 1981) showed how Titan's reducing atmosphere is also composed of complex and heavy organic molecules and aerosols. This chemistry is initiated at high altitudes and participates in the formation of solid organic particles (Waite et al., 2007; Hörst, 2017). At these altitudes, the atmosphere is under the influence of energy deposition such as solar ultraviolet (UV) radiation, solar X-rays, galactic cosmic rays, Saturn's magnetospheric energetic electrons and solar wind (Krasnopolsky, 2009, 2014; Lavvas et al., 2011; Sittler et al., 2009).

In Titan's upper atmosphere, Cassini's Ion and Neutral Mass Spectrometer (INMS) detected neutral and positive ion signatures (Waite et al., 2007). Subsequently, the Cassini Plasma Spectrometer electron spectrometer (CAPS-ELS) unveiled the existence of negative ion-molecules well over the detection range of INMS (> 100 u) consistent with the presence of heavy molecules (over 10,000 u in mass) which are presumably precursors for the solid core of the aerosols (Coates et al., 2007; Desai et al., 2017; Dubois et al., 2019a). Furthermore, Lavvas et al. (2013) modeled the photochemistry and microphysics in the ionosphere, characterizing the interaction between the aerosols and charged particles. They showed the dusty nature of the ionosphere (where the charged aerosol population dominates the overall gas phase/aerosol particles charge balance), and found that the aerosol growth in the ionosphere, notably below 1,000 km, occurs as negatively charged particles collide with background positive ions. This in turn, leads to a rapid and important growth in mass (e.g. ~ 500 u at 1,000 km). Ion-molecule reactions are thought to produce most of the positive ions present in Titan's ionosphere, and are thus controlled by the two initial neutral main constituents, N_2 and CH_4 . The direct ionization of N_2 and CH_4 and formation of the N^+ and N_2^+ primary ions make CH_3^+ readily available which is predicted to participate in the production of the first light hydrocarbons such as $C_2H_5^+$, one of the major ions produced (Reaction 1). The ionization rate peaks at the ionospheric peak, at about 1,150 km. Ip (1990) determined, using the Chapman layer theory, the electron density peak to be at an altitude of 1,200 km, while Keller et al. (1992) found it at an altitude of 1,175 km. Later, Fox and Yelle (1997) predicted it to be at 1,040 km with a solar zenith angle of 60° . They also predicted that $HCNH^+$ would be the major ion, which included a model with over 60 species and 600 reactions. Keller et al. (1998), with an improved model, estimated the major m/z 28 peak to consist of $HCNH^+$ at 75%. Some other major ion species include CH_5^+ , $C_3H_3^+$ and $C_3H_5^+$. Based on Yung et al. (1984) and Toublanc et al. (1995), Keller et al. (1998) predicted higher masses than previous models, to be detected by Cassini, of up to C_6 species in the ionospheric peak region.



Since the Cassini era, extended models based on Keller et al. (1998) have been used to predict ion densities and mass distributions, and construct a more cohesive view of neutral-ion interactions in Titan's ionosphere. Photochemical models (e.g. Vuitton et al., 2007; Carrasco et al., 2008b; Vuitton et al., 2008) have provided insight on the chemical species involved in ion-molecule, proton transfer or ionization reactions to produce positive ions. In recent years, e.g. Ågren et al. (2009); Shebanits et al. (2013, 2017); Vigren et al. (2014, 2015) have explored

electron number densities with Solar Zenith Angle (SZA) dependencies and dayside/nightside ion charge densities with EUV flux correlations. This has shown how the positive ion and dust grain charge densities are diurnally sensitive to EUV fluctuations and thus impact ion density distributions. Furthermore, the gas-to-solid conversion at these high altitudes coexists in a fully coupled ionic and neutral chemistry (e.g. Lavvas et al., 2013; Vuitton et al., 2019). However, the processes coupling ion and neutral chemistry and aerosol production are still mostly unknown at the moment. Using laboratory simulations with different gas mixtures, it is possible to influence the chemistry and thus constrain species. In this way, laboratory results can for example, provide potential new species, rule out some, or probe masses with a higher resolution that were out of reach of the Cassini instruments, while improving understanding of chemical pathways. Detecting these ions (positive or negative) in Titan-like conditions in the laboratory remains challenging. Sciamma-O'Brien et al. (2014) used Time-of-Flight mass spectrometry to study neutrals and positive ions produced in a pulsed plasma jet expansion at low temperatures (~ 150 K). In such an apparatus, the ions are not fragmented by any kind of internal ionization. In that study, the authors focused on the first chemical stages before tholin (Titan aerosol analogs produced in the laboratory) production, by studying simple binary gas mixtures to more complex ones with light hydrocarbons and benzene. With comparisons to CAPS-IBS data, they suggested for example that some of the ions of larger masses ($m/z > 100$) could correspond to aromatic compounds.

In the present study, we have used PAMPRE for the first time to study cations directly inside our radiofrequency capacitively coupled (RF-CC) plasma discharge with an ion mass spectrometer. We have used different $N_2:CH_4$ initial gas mixtures ranging from 1% to 10% CH_4 to address the complexity of the precursor gas phase chemistry which controls the complexity of tholins and pathway trends towards their formation. Finally, we have compared our experimental results with INMS measurements obtained during the T40 flyby.

2. Materials and methods

We used the cold plasma reactor PAMPRE (Szopa et al. (2006) and Figure 1) to reach analogous conditions to Titan's ionosphere using various initial CH_4 conditions. This plasma reactor has previously been used to characterize the gas and solid phase particles produced in the discharge (e.g. Carrasco et al., 2012; Gautier et al., 2012; Dubois et al., 2019a,b). A newly acquired ion mass spectrometer was fitted to the existing chamber, in order to detect the ions directly within the plasma *in situ*. Different experimental conditions were tested and are detailed hereafter. The plasma chamber and mass spectrometry techniques are presented in the following sections, respectively.

2.1. The PAMPRE cold plasma experiment

The PAMPRE plasma reactor delivers electrons with an energy distribution function comparable to that of the solar spectrum (Szopa et al., 2006). The plasma discharge is delivered through a radiofrequency (13.56 MHz) generator. $N_2:CH_4$ gas influx is monitored with mass flow controllers at 55 sccm (standard cubic centimeters per minute) in standard conditions, tuned from CH_4 mixing ratios from 1% to 10%. This corresponds to a working pressure of ~ 0.9 mbar. High purity ($> 99.999\%$) cylinders of N_2 and $N_2:CH_4$ were used. Plasma power was kept constant throughout the experiment at 30 W.

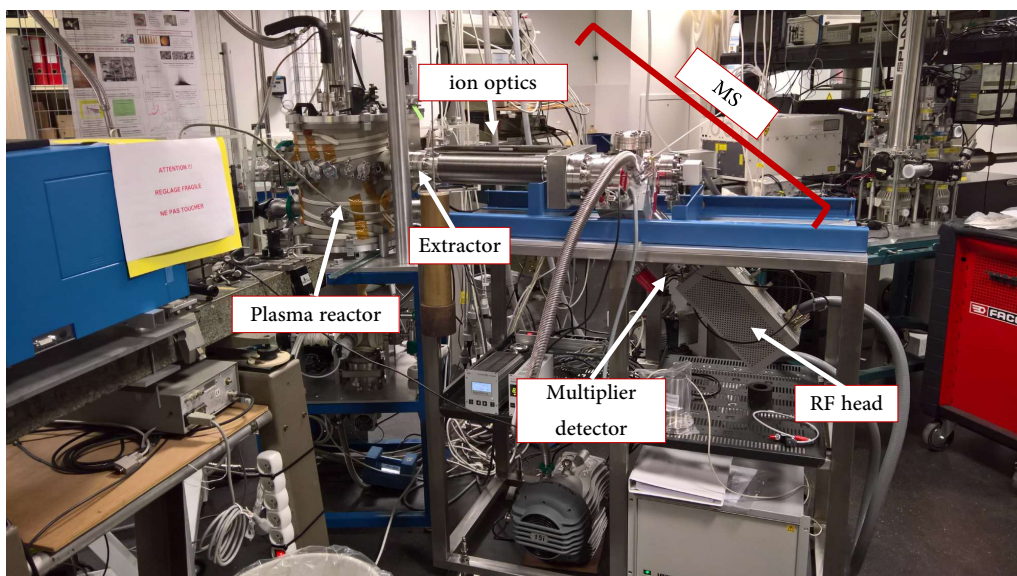


Figure 1: The PAMPRE cold plasma chamber, along with its suite of instruments. In particular, the ion and neutral mass spectrometer is visible to the right of the chamber. The chamber and mass spectrometer are separated by a VAT valve, enabling a residual gas pressure within the transfer tube of 10^{-9} mbar. The residual pressure in the PAMPRE chamber is 10^{-6} mbar.

The plasma operates between a polarized electrode (anode) and a grounded electrode (Szopa et al., 2006). The showerhead-shaped anode of PAMPRE can be configured in two different ways: with cage or cage-free. Previous studies using this reactor have analyzed the plasma parameters with a fitted cage (e.g. Wattieaux et al., 2015) ensuring a controlled geometry of the discharge, but preventing ion collection. Without this cage, an expanded plasma operates between the polarized electrode and a grounded plate at the bottom of the reactor, 10 cm from each other (Figure 2).

2.2. Positive ion mass spectrometry

A new Hiden Analytical EQP 200 quadrupole mass spectrometer (Figure 3), coupled with a Pfeiffer turbo pump, has been fitted to PAMPRE. Its mass range goes up to 200 u. The turbo pump enables us to reach secondary vacuum of 10^{-9} mbar inside the MS chamber, and $\sim 4 \times 10^{-5}$ mbar during ion extraction. Different extraction apertures can be fitted to the extractor, depending on the pressure in the reactor. The extractor, where a negative potential is applied, directly extracts ions from the plasma. A gate valve was placed between the chamber and the spectrometer to enable the 10^{-9} mbar vacuum inside the spectrometer and reduce the CO_2 and H_2O contaminations as much as possible. However, an accumulation of tholins within the instrument is possible over time. To mitigate accumulation of tholins, which will contaminate the experiment, we both isolate the extractor and perform an ultrasound bath and/or an O_2 plasma before and after each experiment.

A 0.1 u mass increment is used throughout the entire mass range for all experiments. The ion extractor, in contact with the plasma, delivers ions from the plasma to the mass spectrometer for analysis (Figure 2). This proved to be efficient enough to have a high count detection ($\sim 10^6$

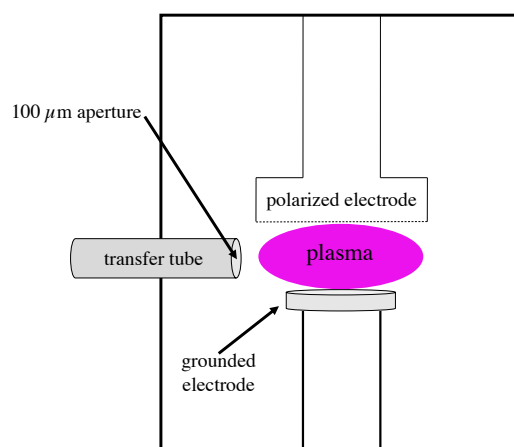


Figure 2: Schematics of the mass spectrometer in contact with the plasma inside the reactor. The plasma is contained between the polarized and grounded electrodes. In this study we have used a 100 μm aperture, providing a reasonable balance between measurement integration time and signal count.

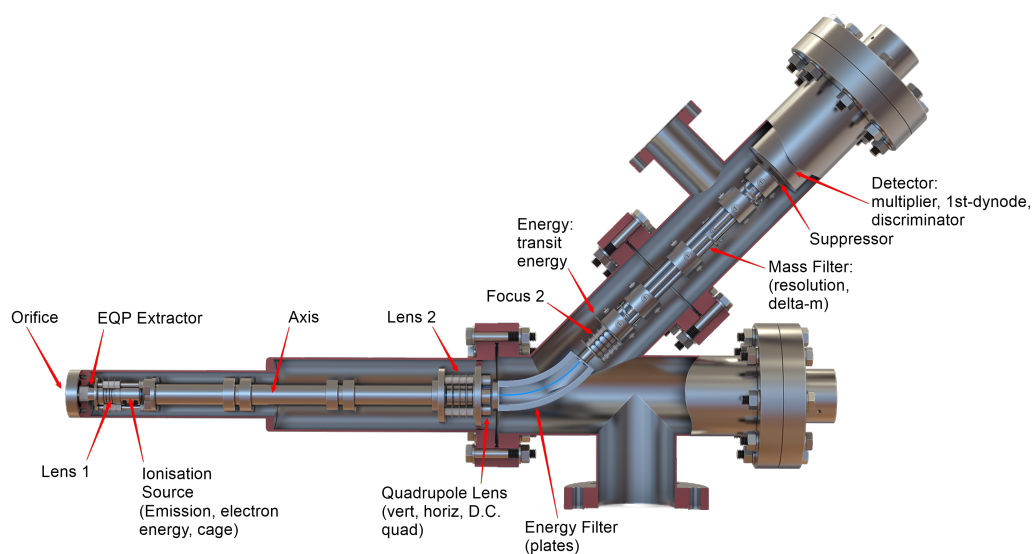


Figure 3: Schematic diagram of the EQP by Hiden Analytics. The ions are extracted from the plasma by the transfer tube on the left-hand side. The extractor's floating potential enables the extraction of the positive ions. Then, the ions are guided by a series of lenses until they hit the multiplier detector. We set the multiplier to 1800 V. The RF head analyzes the impacted particles and sends the counts to a computer. Credit: Hiden Analytics

c/s), while staying outside of the inter-electrode space. The spectrometer unit converts signal into a number of counts-per-second, over an integration period called hereafter *dwell time* . The *dwell time* is user-defined, and set to 100 ms. Once enough signal has been accumulated, the measurement starts. With a 0.1 u mass step and a dwelling time of 100 ms over a 100 u range, a scan typically takes $(100u)/0.1u \times 100ms = 100$ s/scan. Any signal < 10 c/s corresponds to instrumental and electrical background noise. Limiting air and water contamination in the plasma and spectrometer chambers is essential in avoiding over-interpreting spectra (e.g. masses 18 and 32). A motorized Z-drive is mounted to the ion extractor, giving a 300 mm stroke in order to approach the plasma closely (< 2 cm) and measure the ion composition. This Z-drive system consists of a coil-shaped structure enclosing the transfer tube and is prone to water condensation in the gap of each spiral. Water contamination can be evaluated from the contribution of its main ion in the discharge, which is H_3O^+ at m/z 19. As seen on Figure 5, the peak at m/z 19 is two orders of magnitude lower than the main ions in the C₁ block, confirming a weak water contamination in our experiment. Indeed before each experiment, we ensured an efficient degassing of water in the plasma reactor by a first bake-out of the transfer tube enclosure and reactor at 110°C, followed by a pure N₂ discharge removing residual adsorbed molecules on the walls. Once the extractor has been inserted into the plasma, a scan is completed, satisfying both mass range detection and ion count intensity. The intensity limit for this instrument is $\sim 10^7$ c/s. For further experimental details, the reader is referred to the Supplementary Material.

3. Results

We present here the positive ion mass spectra obtained in conditions ranging from $[CH_4]_0 = 1\%$ to $[CH_4]_0 = 10\%$ covering Titan methane conditions and staying consistent with previous studies (Sciamma-O'Brien et al., 2010; Dubois et al., 2019b). Firstly, three $[CH_4]_0$ conditions are presented, showing the diversity in ion population. We used 1%, 5% and 10% methane mixing ratios. Then, we show the disparity in ion distributions and compare our results with INMS measurements taken during the Cassini T40 flyby.

3.1. Ion diversity

As explained in the Supplementary Material, all spectra are normalized to m/z 28 and units are expressed in arbitrary units (A.U.). Figure 4 shows a large variability (e.g. C₈ blocks) in the spectra. Here, we tentatively assign positively charged species to the measured peaks. These assignments are listed in Table 1. We focus on the first four groups ($m/z < 55$) as it becomes speculative to attribute higher masses beyond this limit (influence of polymers, aromatics...). These group comparisons for three different initial methane mixing ratios are shown in the box plots Figures 5 through 8. Plotted values correspond to averaged normalized values taken from four data sets in each initial methane concentration. Lower and upper limits of the boxes represent the 1st and 3rd quartiles, respectively, of the minima and maxima experimental values (black whiskers), indicating the variability in intensity displayed in all four spectra. The spectra in green, black and red correspond to measurements carried out with 1%, 5% and 10% CH₄, respectively.

- C₁ - In Figure 5, the major ion detected at 5% and 10% CH₄ is at m/z 15, which can be attributed to the NH⁺ radical or the methyl CH₃⁺ cation. Other CH₄ fragments, consistent with a CH₄ fragmentation pattern are also visible in all conditions at m/z 14 and 13, corresponding to CH₂⁺ and CH⁺. The N⁺ fragment also contributes to m/z 14. CH₅⁺ and NH₃⁺

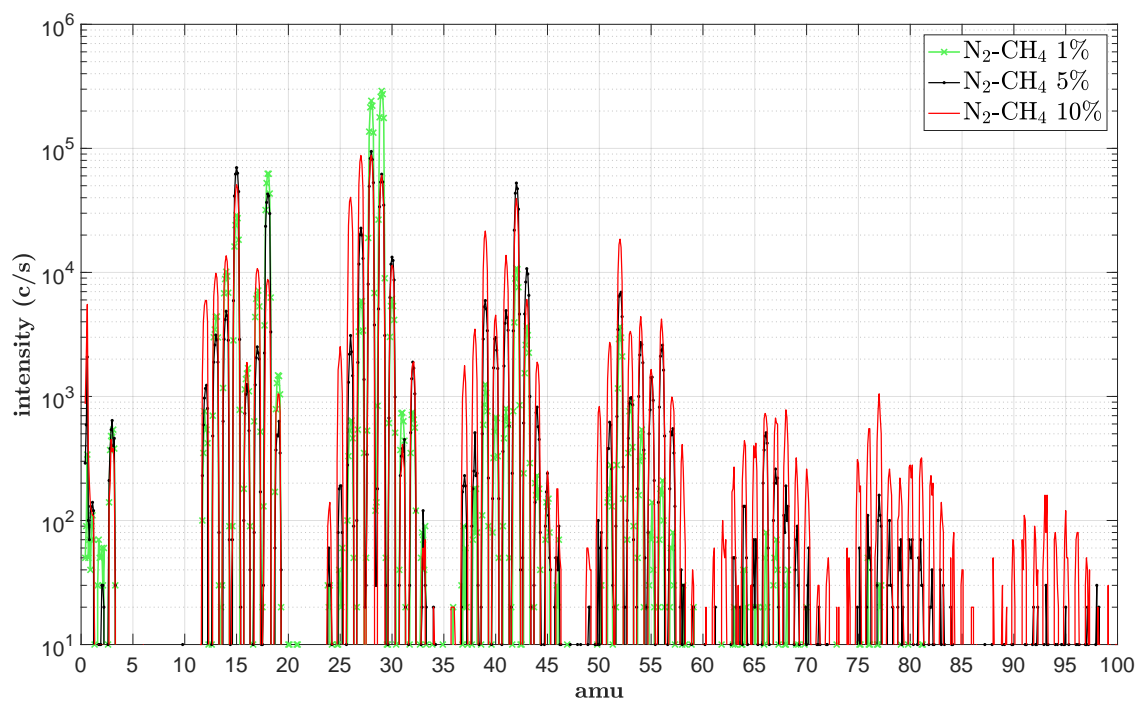


Figure 4: Mass spectra for $[N_2-CH_4]_0 = 1\%, 5\%$ and 10% mixing ratio, in green, black and red, respectively. The energy filter was settled at 2.2, 2.2 and 1.2 V for the experiments at 1%, 5% and 10%, respectively.

Table 1: Tentative attributions of several species from the C₁, C₂, C₃ and C₄ groups. These attributions are based on INMS observations and model-dependent calculated ion densities from Vuitton et al. (2007). We give the presumed ions possible for each mass. Water ions are also included, the main one being H₃O⁺ at m/z 19. Its signal is two orders of magnitude lower than the rest of the other ions in the C₁ block, confirming the weak water contamination in the experiment (see section 2.2).

Group	m/z	Species
C ₁	14	N ⁺ /CH ₂ ⁺
	15	CH ₃ ⁺ /NH ⁺
	16	CH ₄ ⁺ /NH ₂ ⁺
	17	CH ₅ ⁺ /NH ₃ ⁺
	18	NH ₄ ⁺ /H ₂ O ⁺
	19	H ₃ O ⁺
C ₂	26	C ₂ H ₂ ⁺ /CN ⁺
	27	C ₂ H ₃ ⁺ /HCN ⁺
	28	HCNH ⁺ /N ₂ ⁺ /C ₂ H ₄ ⁺
	29	C ₂ H ₅ ⁺ /N ₂ H ⁺ /CH ₂ NH ⁺
	30	CH ₂ NH ₂ ⁺ /C ₂ H ₆ ⁺
C ₃	38	CNC ⁺ /C ₃ H ₂ ⁺
	39	C ₃ H ₃ ⁺ /HC ₂ N ⁺
	40	HC ₂ NH ⁺ /C ₃ H ₄ ⁺
	41	CH ₃ CN ⁺ /C ₃ H ₅ ⁺
	42	CH ₃ CNH ⁺ /N ₃ ⁺ /C ₃ H ₆ ⁺
	43	C ₃ H ₇ ⁺ /C ₂ H ₃ NH ₂ ⁺
	44	C ₃ H ₈ ⁺ /CO ₂ ⁺
	45	C ₃ H ₉ ⁺
C ₄	51	HC ₃ N ⁺ /C ₄ H ₃ ⁺
	52	HC ₃ NH ⁺ /C ₂ N ₂ ⁺ /C ₄ H ₄ ⁺
	53	C ₄ H ₅ ⁺ /HC ₂ N ₂ ⁺ /C ₂ H ₃ CN ⁺ and m/z 52 isotopes
	54	C ₂ H ₃ CNH ⁺ /C ₄ H ₆ ⁺
	55	C ₄ H ₇ ⁺ /C ₂ H ₅ CN ⁺
	56	C ₄ H ₈ ⁺ /C ₂ H ₅ CNH ⁺
	57	C ₄ H ₉ ⁺

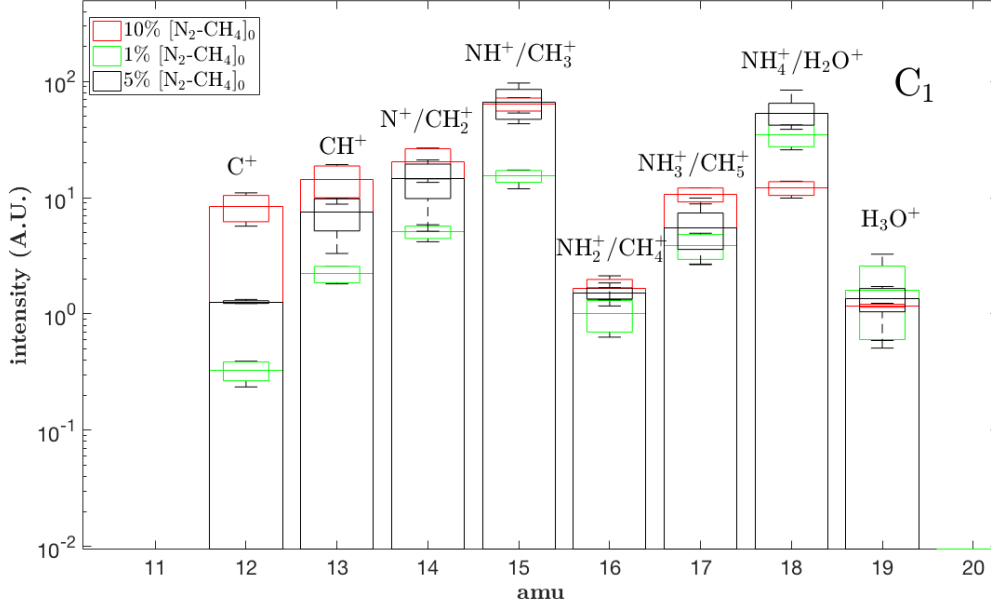


Figure 5: C_1 group in a $[N_2-CH_4]_0 = 1\%$ $[N_2-CH_4]_0 = 5\%$ and $[N_2-CH_4]_0 = 10\%$ mixing ratio.

may contribute to m/z 17. There is a strong discrepancy between the 1% and 10% conditions, in particular regarding the m/z 15 and m/z 18 peak inversions. In a $[N_2-CH_4]_0 = 10\%$ mixing ratio, m/z 15 dominates the rest of the grouping, presumably due to the methane influence along with CH^+ , CH_2^+ and CH_3^+ . Carrasco et al. (2012) discussed the influence between the methyl ion and the favored production of ammonia with increasing methane. Mutsukura (2001), also using a CH_4/N_2 RF plasma albeit with much higher methane concentrations ($>50\%$), found that the m/z 15 and m/z 18 ions were dominant in methane-rich conditions. This is confirmed by our results (Figure 5), showing the importance of CH_3^+ in methane-rich mixtures. However, in a nitrogen-rich plasma with a mixing ratio of $[N_2-CH_4]_0 = 1\%$, m/z 18 NH_4^+ becomes the most abundant ion. At 5% CH_4 , m/z 18 is also important along with m/z 15. Water contamination cannot be ruled out and is included in Table 1.

- C_2 - Figure 6 shows the C_2 species detected in the three conditions. This group is overall more intense than the C_1 group. The most abundant ions are at m/z 28 and 29 with intensities of $3 \times 10^1 - 10^2$ a.u. There is a strong increase in masses on the left tail of the red distribution, i.e. with 10% CH_4 (m/z 24–27), as compared to the other two spectra. These species consistently increase well apart from the repeatability error bars with increasing methane. Presumably, these simple aliphatics such as $C_2H_2^+$ and $C_2H_3^+$ (m/z 26 and 27, respectively) increase by an order of magnitude from the black to red curve. m/z 29 is not as unambiguous, and N_2H^+ shares the same peak as $C_2H_5^+$. This peak is the most intense at 1% CH_4 . As such, where m/z 28 dominates with a 10% CH_4 mixing ratio, the m/z 29 peak inversion occurs with decreasing CH_4 . Therefore, N-bearing species such as N_2H^+/CH_2NH^+ are good candidates at this mass. Due to the limiting amount of CH_4 in

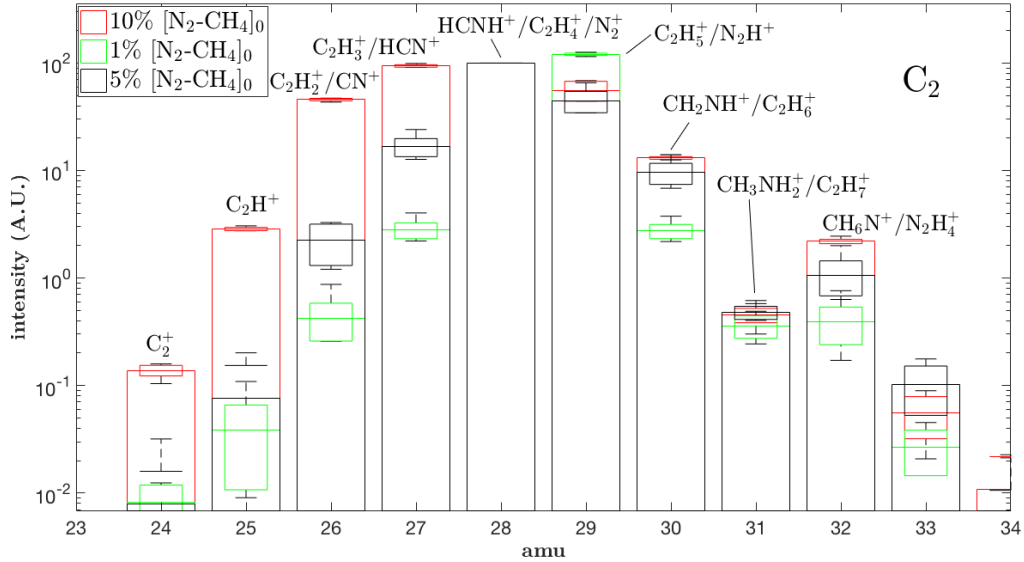


Figure 6: C_2 group in a $[N_2-CH_4]_0 = 1\%$ $[N_2-CH_4]_0 = 5\%$ and $[N_2-CH_4]_0 = 10\%$ mixing ratio.

the green spectrum, the ion at m/z 29 in this condition is likely to be N_2H^+ . However, with higher methane amounts, $C_2H_5^+$ formation prevails and becomes the dominant ion at m/z 29, as predicted by Vuitton et al. (2007). $C_2H_5^+$ formation partly depends on the presence of C_2H_4 , indicating its presence in the plasma, as suspected in Dubois et al. (2019b). $CH_2NH_2^+/C_2H_6^+$ at m/z 30 increases with higher methane concentrations. It can thus most likely be attributed to $C_2H_6^+$.

- C_3 - This cluster is dominated by m/z 42 (Figure 7), whose overall intensity seems to be favored with increasing methane. The black and red curves reach intensities similar to the C_1 group (almost 10^2). Except in the 10% CH_4 condition, the second most abundant volatile is at m/z 43, which can be attributed to the protonated form of propene, $C_3H_7^+$, or ethylenimine $C_2H_3NH_2^+$. With 10% CH_4 , the intensity of the m/z 39 peak, attributed to $C_3H_3^+$ or HC_2N^+ , increases by almost two orders of magnitude. The production of this ion seems to be favored with a richer methane mixing ratio. Similar to the sharp increase seen in Figure 6 (red bars) in signal on the left-half of the C_2 block, an important contribution of species present between m/z 36 and m/z 39 accompanies higher methane concentrations. This is consistent with proton addition reaction from hydrocarbon compounds.
- C_4 - This block is dominated by the ion at m/z 52, which can correspond to HC_3NH^+ , $C_4H_4^+$ or $C_2H_3CN^+$ (Figure 8). We observe an overall increase in intensity of these species with increasing methane. Similar to the C_3 case, this increase is especially relevant for the species between m/z 49 and 52 in the 10% CH_4 condition. In addition, the increase in intensity at m/z 52 with 10% CH_4 suggests that $C_4H_4^+$ contributes significantly at this

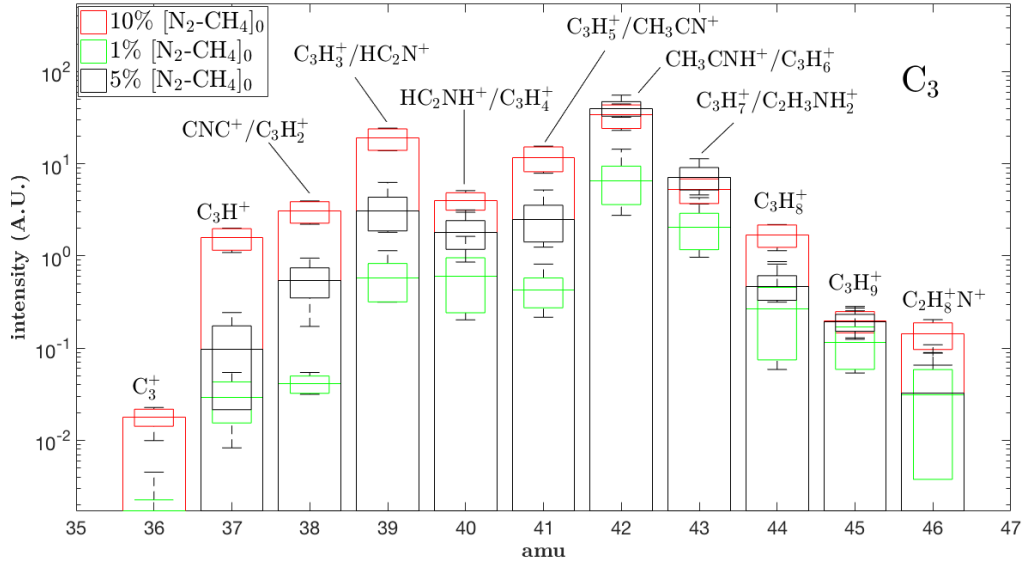


Figure 7: C_3 group in a $[N_2-CH_4]_0 = 1\%$ $[N_2-CH_4]_0 = 5\%$ and $[N_2-CH_4]_0 = 10\%$ mixing ratio.

mass. Ions produced in the plasma with a 1% CH_4 mixing ratio remain overall less intense than in the other two CH_4 conditions. To better characterize this observation among the different blocks, we represent these general trends as pie charts (Figure 9) as a function of initial methane concentration.

Each pie chart is color coded (horizontally and vertically) and is normalized over the sum of the mean values of all of the other masses (noted *misc.* in gray color). This representation helps to draw the relative weights of each C_x group and better visualize their relative contributions. Vertical color coding is represented according to the delta values of each m/z using the ion series analysis technique (McLafferty and Turecek, 1993; Canagaratna et al., 2007). Each m/z is assigned a Δ value, where $\Delta = m/z - 14n + 1$ and n is the grouping number. Thus, $\Delta = 2$ corresponds to linear saturated hydrocarbons (light blue), $\Delta > 2$ corresponds to heteroatomic compounds (yellow, green and brown) and $\Delta < 2$ corresponds to unsaturated and branched hydrocarbons (dark blue, aquamarine, red, orange and purple). Therefore, the Δ value informs on the probable functional groups for each mass (the reader is referred to Figure 5 of the Supplementary Material for further information on the delta value determination).

The C_1 species are dominated by the peak at m/z 18, which represents $\sim 11\%$ normalized over the entire spectrum in the 1% CH_4 condition, $\sim 13\%$ at 5% CH_4 and decreases to $\sim 2\%$ with 10% CH_4 . As we can see in the last condition, ions at m/z 15 accounts for the same contribution as m/z 18 does at 1% CH_4 . In the intermediate methane condition, both ions at m/z 15 and m/z 18 can be considered major ions. The C_2 compounds in a 1% CH_4 mixing ratio are significant, and represent almost 75% in intensity of the entire spectrum. This group is mainly represented by the ions at m/z 28 and m/z 29. This C_2 influence decreases slightly at 5% CH_4 while still contributing to $\sim 44\%$ of all species detected. We observe that with increasing initial methane,

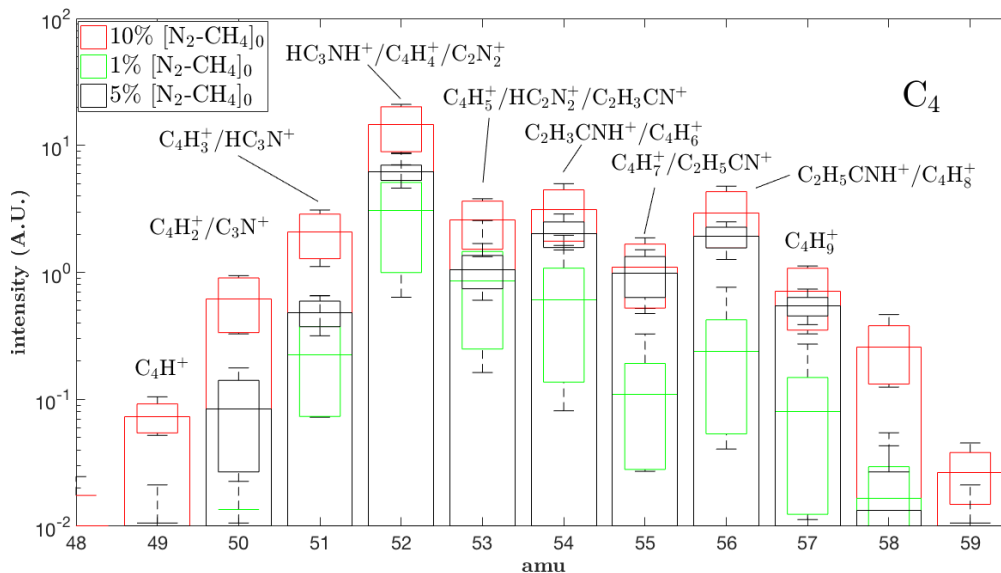


Figure 8: C₄ group in a [N₂-CH₄]₀ = 1% [N₂-CH₄]₀ = 5% and [N₂-CH₄]₀ = 10% mixing ratio.

the C₂ distribution gets wider and more populated, with eventually a more intense signature of peaks at m/z 26, m/z 29 and m/z 30, at 8%, 10% and 2%, respectively. This pattern is also seen in the C₃ pie charts, and to a lesser extent, the C₄ group. The C₃ compounds are dominated by ions at m/z 42 in all three conditions. It is significant in particular at 5% CH₄ (~ 10% normalized), a favorable condition for efficient tholin formation. As seen in Table 1, the peak at m/z 42 can either be attributed to protonated acetonitrile CH₃CNH⁺ or the cyclopropane positive ion C₃H₆⁺.

It is noteworthy to point out the 5% initial methane concentration charts (middle column, Figure 9). At this concentration, tholins are efficiently produced in our chamber. The presence of the C₁ (at m/z 15 and 18) and C₂ (at m/z 28 and 29) ions in this condition (CH₃⁺/NH₄⁺ and HCNH⁺/C₂H₅⁺, respectively) is significant. This comes in agreement with the copolymeric HCN/C₂H₄ and poly-(CH₂)_{*m*}(HCN)_{*n*}-based structure found in the solid tholin material (Pernot et al., 2010; Gautier et al., 2014; Maillard et al., 2018). As the tholins are negatively charged, they may react with these major ions to nucleate and polymerize. These results could suggest that HCNH⁺ and C₂H₅⁺ are important contributors to the polymeric growth of tholins.

3.2. Comparison between neutral and cation species

In order to see the interactions between the neutral and positive ion species, we show in Figures 10 and 11 comparisons between the averaged normalized spectra in positive ion and residual gas analyzer (RGA) neutral modes at 1% and 10% CH₄, respectively. The neutral mode setting used a 70 V electron energy using a filament emission of 5 μA. Dubois et al. (2019b) had previously studied neutral volatile products released after being cryotrapped in the chamber, combining mass spectrometry and IR analysis for identification of major neutral products.

- The ions at m/z 28 and 29 in Figure 10 (a), dominate the spectrum as seen previously in Figure 9. In the neutral spectrum (gray bar graph), m/z 28 corresponds to contributions

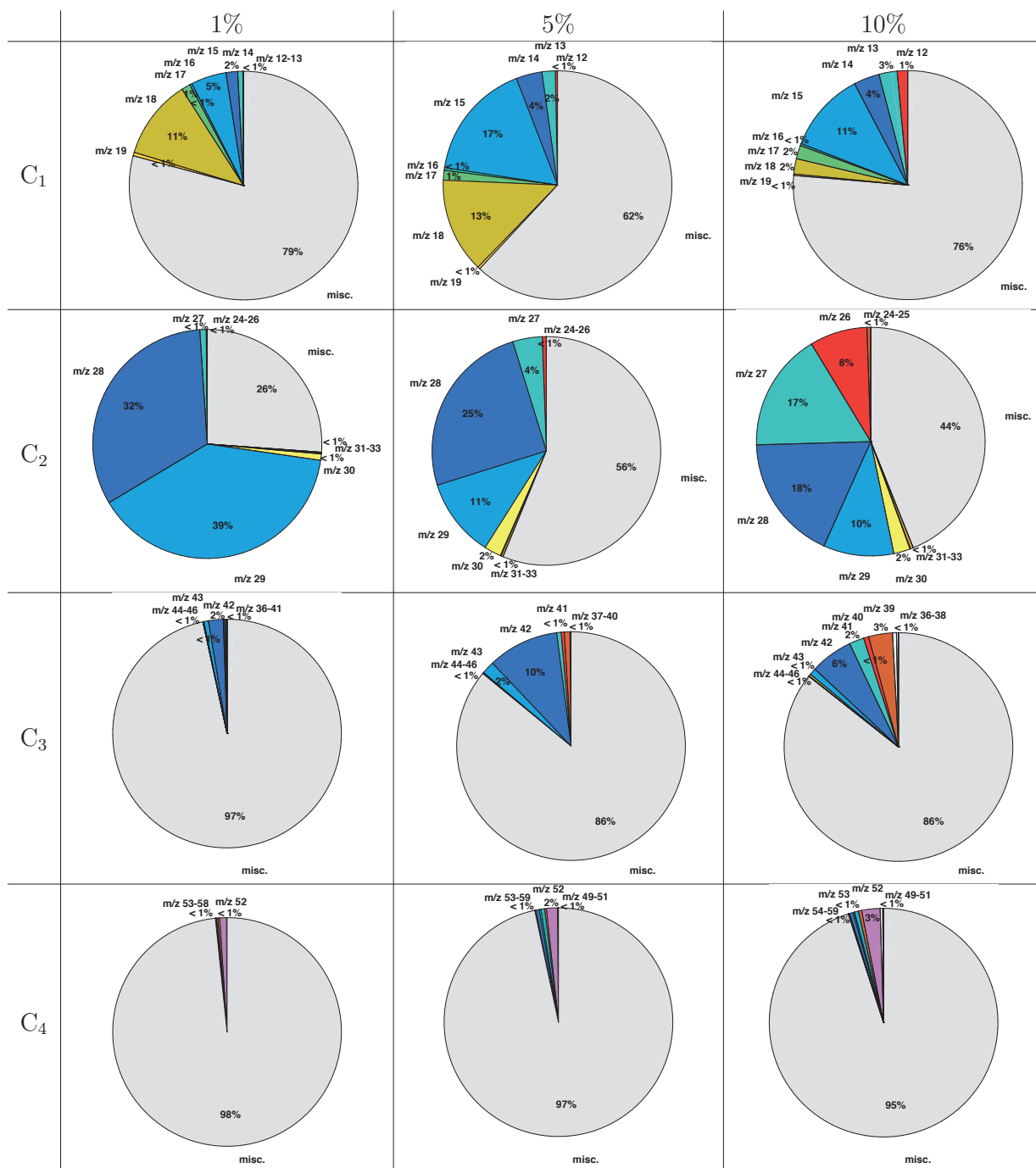


Figure 9: Pie charts representing the normalized mean intensities, for the C₁₋₄ molecular groups, as a function of the methane initial concentration (%). Each chart is normalized by the total sum of all mean normalized intensities detected from 0-100 amu. Colored slices are the relative contributions in intensities of each respective peak over the summed intensities of all peaks of the spectrum. The rest of the peaks (1-C₁₋₄) are categorized in the gray slices (noted *misc.*). Vertical color coding is based off ion series delta values (the reader is referred to Figure 5 of the Supplementary Material for further information).

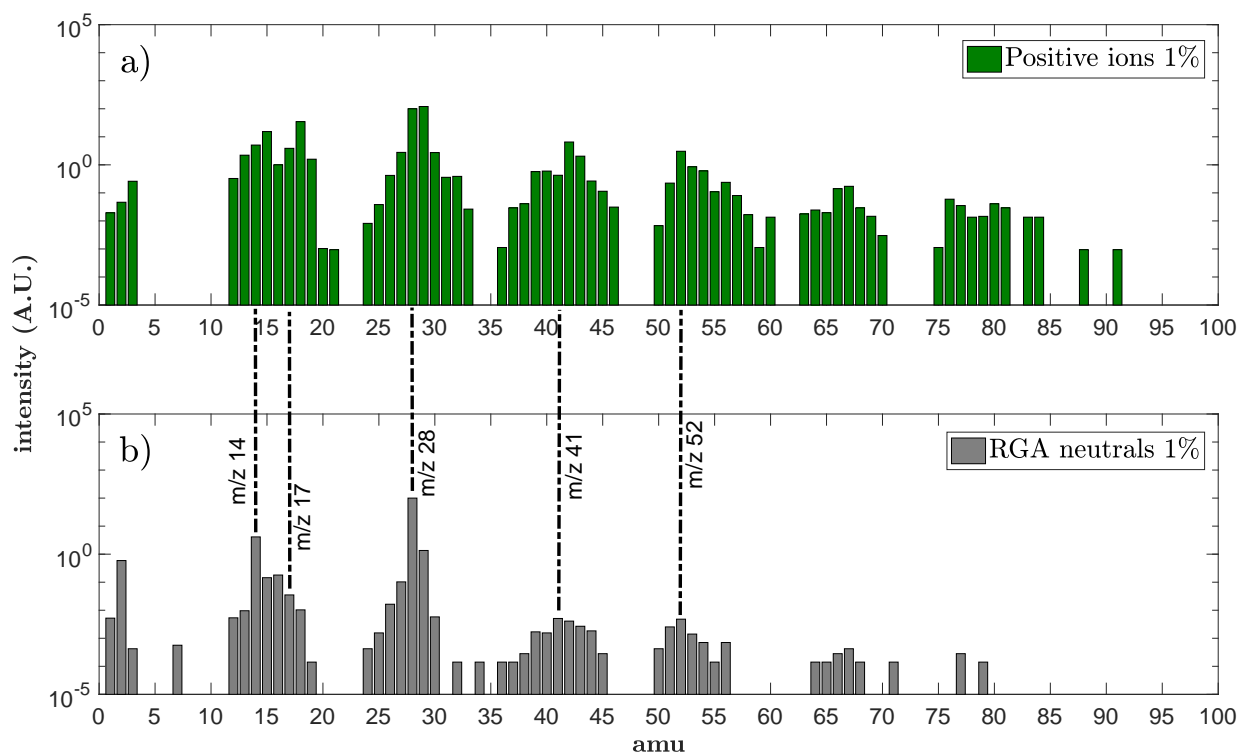


Figure 10: Comparison of two normalized mass spectra taken with 1% CH₄ and degraded at the same resolution of 1 amu. a) shows the entire normalized averaged spectrum in positive ion mode of Figures 5–8, while b) was taken with the plasma discharge on in RGA neutral mode, with an electron energy of 70 V and filament emission of 5 μ A in the same conditions.

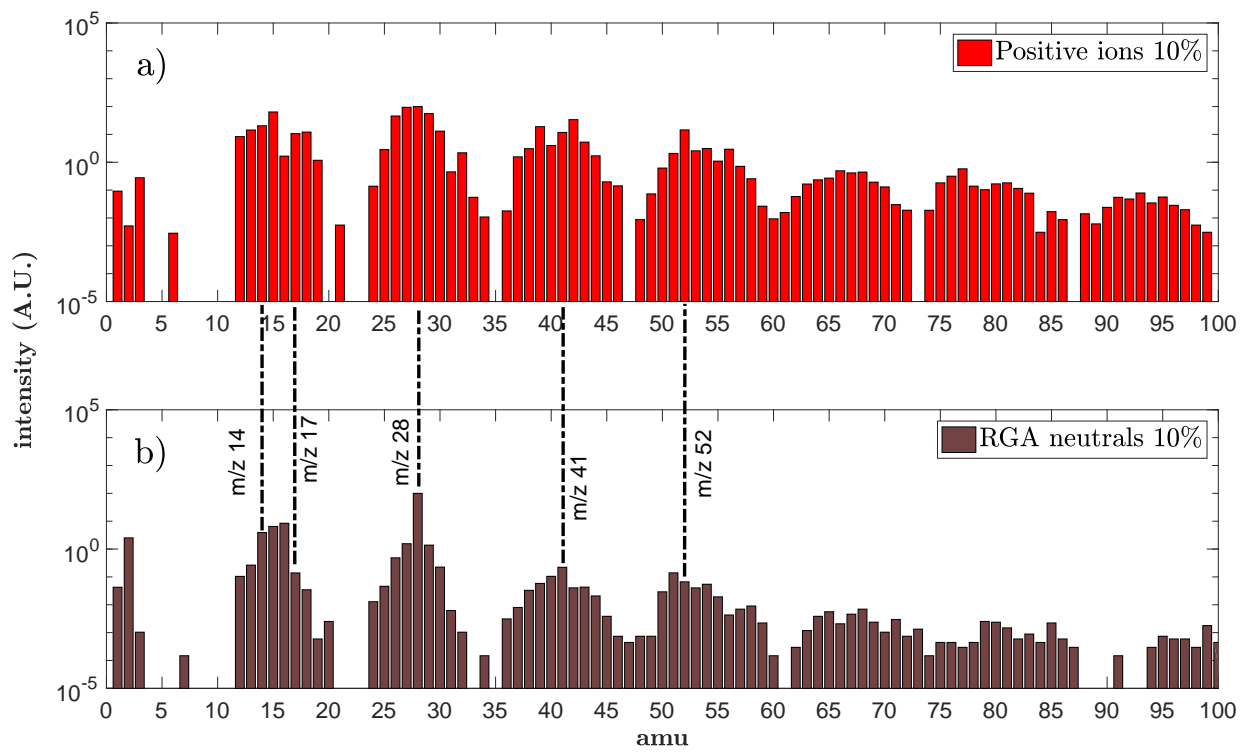


Figure 11: Same as Figure 10, with 10% CH_4 . Comparison of two normalized mass spectra taken with 10% CH_4 and degraded at the same resolution of 1 amu. a) shows the entire normalized averaged spectrum in positive ion mode of Figures 5–8, b) the spectrum was taken in RGA neutral mode with the plasma discharge on, with an electron energy of 70 V and filament emission of $5 \mu\text{A}$ under the same conditions.

from N_2 and C_2H_4 . In the cryogenic study (Dubois et al., 2019b), m/z 28 was attributed to C_2H_4 , while the major m/z 17 peak was assigned to NH_3 . In the middle plot, the ions at m/z 14, corresponding to the nitrogen atom or methylene CH_2 , is the main C_1 fragment. In positive ion mode however, the C_1 group is much more populated, as are all of the other groups. In addition, the ions at m/z 15 and m/z 18 become the two major ions, coupled with a relatively richer spectrum on the right hand side of the group compared with the RGA spectrum. This 1 u shift is consistent with reactions involving H^+ addition (see Discussion Section). This pattern is also seen in the C_2 and C_3 groups with m/z 28 to 29 and m/z 41 to 42 shifts. The C_4 shows no inversions in the m/z 52 peak. This molecule could be 1-buten-3-yne C_4H_4 or cyanogen C_2N_2 , which were both identified in Gautier et al. (2011). Their cation counterparts $C_4H_4^+$ and $C_2N_2^+$, along with propiolonitrile HC_3NH^+ could explain the intense m/z 52 signature at ~ 2.5 a.u.

- As seen at the beginning of this section and in Figure 9, the 10% CH_4 is marked by broader blocks, notably for the first three. The ions at m/z 12 to 16 of methane fragments in the (b) plot of Figure 11 are visible along with the corresponding methylene and methyl cations (red plot). C_2 species are dominated by the peak at m/z 28 surrounded by m/z 26, 27 and 29. In our cryogenic study (Dubois et al., 2019b), the peak at m/z 28 was attributed to C_2H_4 . N_2 was absent from the chamber and so was ruled out. In the middle plot (b), N_2 was also present in the plasma and can also contribute to this peak. Furthermore, the cryogenic analysis in Dubois et al. (2019b) showed a higher HCN production at 10% than at 1% CH_4 , indicating that HCN must significantly contribute to the C_2 group with 10% CH_4 . There is a mass shift between the most intense peaks of the C_3 group, i.e. from m/z 41 to 42 (in the brown and red plots, respectively), similar to that at 1% CH_4 (gray and green spectra, respectively), and again from m/z 51 in the neutral spectrum to m/z 52 only seen at 10% CH_4 . However, unlike in the 1% CH_4 condition, the increase in intensity of the peak at m/z 42 is accompanied by the increase in intensity of the m/z 39 peak, which represent 6% and 3% in relative intensity to the rest of the spectrum, respectively (Figure 9). To a lesser extent, this is also visible with the increase in intensity at m/z 39 relative to m/z 41 from the neutral (Figure 10b) to the ion spectra (Figure 10a) at 1% CH_4 .

This comparison between spectra taken in neutral and positive ion mode shows discrepancies and mass shifts between both datasets. Notably, mass shifts and sometimes peak inversions are visible in the first four C_x groups, which could be due to an enrichment of hydrogenated ion species, indicative of different chemistry. To go further in this inter-comparison and better understand specific chemical processes, future work will focus on modeling the neutral/cation interaction in the plasma.

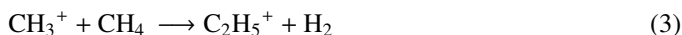
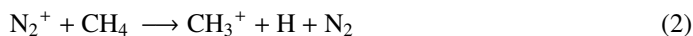
4. Discussion

4.1. Chemical pathways contributing to the major precursors

The abundant reservoir of neutral species in Titan's upper atmosphere is an important source for ion-molecule reactions. Ion chemistry is initialized by dissociative and ionizing processes of major neutral compounds forming N_2^+ and N^+ , and CH_4^+ , CH_3^+ , CH_2^+ and CH^+ (see Introduction). These simple and primary cations are essential for further ion-neutral reactions (Reaction

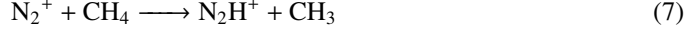
1). Thanks to photochemical models (see Introduction and references therein), many of the positive ions have been shown to be products resulting from proton exchange reactions between neutrals and ions. In this section, we will discuss potential pathways to explain some of our main ions detected in our three methane mixing ratios. These pathways are detailed in order to constrain our understanding of the cation gas phase reactivity in our plasma.

The ion variability observed in our PAMPRE reactor has shown to be highly methane-dependent. Few peak inversions exist (e.g. m/z 15 and 18). However, the decreasing slope after C_2 is much higher at 1% CH_4 than at 10%, and higher amounts of CH_4 lead to larger *wings* with respect to the INMS spectra. As the neutral and ion chemistry are tightly coupled, comparing these two sets of data can shed light on protonation-driven chemical pathways, if any. We will first focus on the very light ions of the C_1 group. The two major C_1 ions are represented by m/z 15 and m/z 18 (Figure 5), respectively. The production of CH_3^+ at m/z 15 comes from the direct ionization of methane or by charge transfer with N_2^+ with a branching ratio (*br*) of 0.89 (Reaction 2), as proposed by Carrasco et al. (2008a). CH_3^+ can react with other neutrals (Reaction 3), and thus decreases with higher methane mixing ratios.



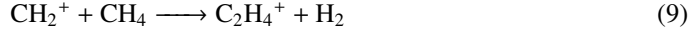
In our chamber, CH_3^+ might form according to Reaction 2, the same way the ammonium ion NH_4^+ can form via Reactions 4 or 5 by proton attachment (Vuitton et al., 2007; Carrasco et al., 2008a). Initially, Keller et al. (1998) predicted the peak at m/z 18 to be dominated by H_2O^+ . After the early T5 Titan flyby, Cravens et al. (2006) and Vuitton et al. (2006) first suggested NH_4^+ to be a good candidate for the detected peak at m/z 18, which was confirmed by Vuitton et al. (2007) and Carrasco et al. (2008a). Note that in our experiment, a small H_2O^+ contribution from residual air in the chamber cannot be ruled out, given the m/z 19 peak detection at $< 1\%$ (Figure 5 and Figure 9). At 1% and 5% CH_4 , NH_4^+ is a major precursor, representing 11% and 13% in intensity (Figure 9), respectively. Reactions 4 and 5 require an ammonia reservoir. Pathways for NH_3 production in our chamber were detailed in Carrasco et al. (2012). The formation of ammonia (Reaction 6) relies on an NH radical reservoir, which can come from (i) radical chemistry through $N + H \longrightarrow NH$, or (ii) ion-neutral chemistry with Reaction 7, and its subsequent recombination, Reaction 8. Note however that in the reaction volume (i.e. the plasma volume), wall effects can act as a catalyzer to adsorbed N and H, and contribute to Reaction 6, as described in Touvelle et al. (1987); Carrasco et al. (2012).





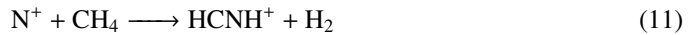
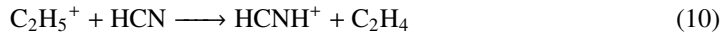
When increasing the methane concentration, ammonia production also increases, thanks to the available NH radicals. However, primary aliphatics also become more abundant. So, at 10% CH₄, NH₄⁺ no longer becomes significant, representing only 2% in intensity (Figure 9). The NH₄⁺ contribution at 5% CH₄ is still important (13%), notwithstanding the peak at *m/z* 15 already dominating the C₁ group. At least at 1% and 5% CH₄, the ammonium ion NH₄⁺ is a major gas phase precursor, and its formation couples ion and neutral chemistry. This ion seems to be a relevant primary precursor for the formation of tholins with a 5% CH₄ mixing ratio (Sciamma-O'Brien et al., 2010). Further studies should explore intermediate conditions between 1% and 5% and examine the evolution of NH₄⁺

As seen in the previous section, the C₂ group prevails in all spectra. Comparing the neutral and ion mass spectra (Figures 10 and 11) gives us a clear evolution of the peaks. In the neutral spectrum at 1% CH₄, the ratio between signal intensities at *m/z* 28 and at *m/z* 29 was ~ 2 orders of magnitude. In positive ion mode, *m/z*_{28/29} ~ 82% (Figure 9). Mass 28 can be attributed to HCNH⁺, C₂H₄⁺ or N₂⁺. Carrasco et al. (2012) showed that an increase in the peak at *m/z* 28 for neutral species with increasing CH₄ initial concentration was not necessarily due to N₂, but mainly C₂H₄. The formation of C₂H₄⁺ depends on methane, and occurs through the rearrangement reaction as given in Carrasco et al. (2008a):



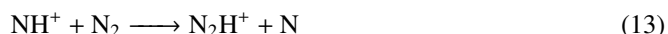
However, according to Vuitton et al. (2007), HCNH⁺ had a density over an order of magnitude greater than C₂H₄⁺ in Titan's ionosphere. Therefore, HCNH⁺ is likely a prevailing contributing ion at this mass in our plasma conditions, too. Further modeling of the plasma conditions will be needed in order to evaluate contributions of these species.

HCNH⁺ is mainly formed by proton attachment, by Reaction 10, but can also directly depend on a reaction with methane (Reaction 11),

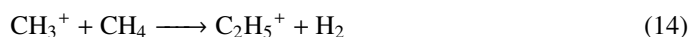


Mass 29 can be C₂H₅⁺ or N₂H⁺. As noted previously, N₂H⁺ might be dominant at 1% CH₄, whereas C₂H₅⁺ is the main ion at higher initial methane concentrations. Yelle et al. (2010) propose a mechanism where N⁺ reacts with hydrogen by proton transfer (Reaction 12), and the

formed NH^+ reacts with neutral N_2 (Reaction 13).

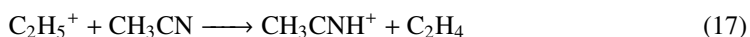


Two possible reactions can form C_2H_5^+ , according to Vuitton et al. (2007) and Carrasco et al. (2008a):



Regarding the formation of H_2 relevant to Reaction 12, Lebonnois et al. (2003), and later Krasnopolsky (2009) presented a scheme where H_2 is linked to the amount of methane following $\text{H} + \text{CH}_2 \longrightarrow \text{H}_2 + \text{CH}$. Ongoing work in our laboratory focuses on $\text{N}_2:\text{H}_2$ mixtures, avoiding the carbon contribution from methane. We find that N_2H^+ is the dominant ion for H_2 mixing ratios $>5\%$ (A. Chatain, private communication). So, given an abundant enough H_2 reservoir, N_2H^+ should not be neglected compared to C_2H_5^+ . N_2H^+ is therefore most likely more abundant relative to C_2H_5^+ in CH_4 -poor conditions. With increasing CH_4 concentration, C_2H_5^+ production is largely facilitated thanks to CH_4 and other hydrocarbons (Reactions 14 and 15), although N_2H^+ might still be an important precursor at this mass (even with $\text{H}_2 >5\%$ without the presence of carbon in the mixture).

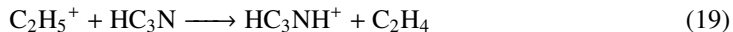
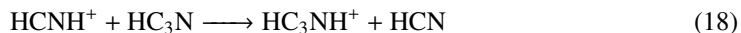
The C_3 group is mainly represented by the peak at m/z 42 (e.g. $\sim 10\%$ at 5% CH_4 , see Figure 9), and can be attributed to CH_3CNH^+ in agreement with the neutral acetonitrile already detected in abundance in Gautier et al. (2011). In our case, the peak at m/z 42 is largely the main peak detected. It can follow two protonation reactions:



Sciamma-O'Brien et al. (2014) examined the first products formed by $\text{N}_2:\text{CH}_4$ mixtures. They also find their highest m/z 42 intensity. Note that C_3H_6^+ is also likely present at this mass. In another similar study by Thissen et al. (2009), analogous conditions to Titan's ionosphere were simulated using synchrotron radiation of a small gas cell. In that study, no more than C_2 ions were effectively detected in $\text{N}_2\text{-CH}_4$ mixtures. After adding hydrocarbons such as C_2H_2 and C_2H_4 , only then were some C_3 and C_4 observed. Depending on the mixture, HCNH^+ , C_2H_5^+ and

N_2H^+ were dominant C_2 precursors, confirming experimentally the importance of C_2 unsaturated hydrocarbons to promote ion growth, in agreement with observations of Titan’s large ions by the Cassini CAPS instrument (Westlake et al., 2014). Depending on the mixture HCNH^+ , C_2H_5^+ and N_2H^+ were dominant C_2 precursors.

Finally, the most abundant C_4 ion is the one at m/z 52, which increases with increasing methane concentration. Sciamma-O’Brien et al. (2014) noticed an increase of this ion only when injecting C_6H_6 to their 10% $\text{N}_2:\text{CH}_4$ mixture, and attributed it to the C_4H_4^+ benzene fragment. In our case, we detect it in all three methane conditions. Benzene may be a hydrocarbon aromatic product in our plasma, although its detection has been inconclusive (Gautier et al., 2011; Carrasco et al., 2012). Therefore, a C_4H_4^+ attribution is ambiguous here. The cyanogen C_2N_2^+ and propionitrile HC_3NH^+ cations are the two other potential candidates. Gautier et al. (2011) noted the presence of neutral cyanogen using gas chromatography coupled with mass spectrometry, especially at 1% CH_4 . Carrasco et al. (2012) firmly confirmed its presence. C_2N_2 can form from two recombining CN radicals, or from the reaction between HCN and a CN radical (Yung, 1987; Seki et al., 1996), and can be an important ion in particular, at 1% CH_4 . Protonated propionitrile HC_3NH^+ forms via two proton transfer reactions (Reactions 18 and 19), and are consistent with higher methane amounts, and a shift in peaks from m/z 51 to m/z 52 (Figure 11). This absence of peak shift in the 1% CH_4 neutral and ion spectra (Figure 10) and m/z 52 being the most intense to begin with, confirms the attribution of C_2N_2^+ for m/z 52 in the positive ion spectrum at 1% CH_4 .



4.2. Contribution of aliphatic, amine and nitrile positive ion precursors for tholin growth

The gas phase precursors present in the plasma form an extensive population of cations, whose ion-molecule reactions appear to mainly rely on protonation processes. These ions consist of nitriles (HCNH^+ , C_2N_2^+), amine (NH_4^+), aliphatics (e.g. CH_5^+ , C_2H_3^+ , C_2H_5^+ , C_3H_3^+) and some imines (e.g. CH_2NH_2^+). Constraining the major ion tholin precursors is critical in understanding pathways to their formation in the laboratory, as analogs of Titan’s aerosols.

Infrared absorption of film solid phase material produced in the PAMPRE reactor was performed by Gautier et al. (2012). They found that changing the methane mixing ratio from 1% to 10% significantly impacted the absorption coefficient of tholins, particularly that of primary and secondary amine, aliphatic methyl and $-\text{CN}/-\text{NC}$ regions. At low CH_4 concentration, the amine signature is most intense while the aliphatic bands are hardly present. The saturated and unsaturated nitriles are abundant, and the saturated ones mostly remain up to 5% CH_4 . This amine influence at 1% and 5% CH_4 , mostly represented by NH_4^+ in the current gas phase study, is consistent with the solid phase infrared analysis by Gautier et al. (2012). Future experiments probing intermediate methane conditions would be interesting in order to evaluate the sensitivity of main ions like CH_3^+ , NH_4^+ , HCNH^+ , N_2H^+ to a broader range of methane mixing ratios. Aliphatic

cations are especially important at 10% CH₄, where we detect the most ions with wider block distributions. This is in agreement with neutral gas phase studies Gautier et al. (2011); Carrasco et al. (2012); Dubois et al. (2019b) that found an increased production of volatiles with high methane concentrations. Cation pathways that might occur in these conditions rely on the efficient production of e.g. CH₃⁺, C₂H₂⁺, C₂H₄⁺, C₂H₅⁺ (see Section 4.1). On the contrary, a small methane concentration was shown by Carrasco et al. (2012) to produce almost exclusively nitrogen-bearing volatile compounds. Our results show 1% CH₄ spectra largely dominated by the two m/z 28 and m/z 29 C₂ species, attributed to N₂⁺/HCNH⁺ and N₂H⁺, respectively. As a result, ion-molecule reaction schemes for the production of tholins involving species such as NH₄⁺, N₂H⁺ and HCNH⁺ might be favored.

Sciamma-O'Brien et al. (2010) found an optimum tholin production for a 3-5% initial methane concentration. At 5% CH₄, the C₂ represents ~44% of all species, and are mainly supported by HCNH⁺ and C₂H₅⁺. Our results agree with previous studies by Pernot et al. (2010); Gautier et al. (2014); Maillard et al. (2018) which indicated copolymeric HCN/C₂H₄ and poly-(CH₂)_m(HCN)_n structure found in the tholin material. These patterns also seem to be found as cation precursors.

The contribution of m/z 42 attributed to CH₃CNH⁺ is more intense than some of the C₁ and C₂ species. As seen in the previous section, its production is favored by increasing methane, specifically by HCNH⁺ and C₂H₅⁺. Protonated acetonitrile could be a key positive ion precursor in the peak tholin production region of 5% CH₄. A model where aliphatic chain precursors, along with some amine and nitrile cations are significant at 5% CH₄, is consistent with the solid phase analysis by Gautier et al. (2012).

4.3. Comparisons with the INMS T40 measurements and group patterns

One of the Ion and Neutral Mass Spectrometer's (INMS) goals was to probe and analyze the neutral and ion chemistry of Titan's upper atmosphere, and thus characterize the gas composition (for a more detailed review on the scientific objectives of INMS, see Waite et al., 2004a)). It was also possible to determine the gas number density thanks to the closed source mode. The mass range of INMS was from 1 u to 99 u, while the energy range was from 0 eV to 100 eV and a mass resolution of $\frac{m}{\Delta m} = 100$ at 10% of mass peak height. This instrument consisted of two mechanical subsystems, (i) the closed ion source mode and (ii) the open ion source mode. The open ion source mode was used to analyze reactive neutral species and positive ions. The ions were guided through four focusing lenses and then through a set of four quadrupole switching lenses (QL). These switching lenses deflected the ions by 90° and subsequently directed them to a quadrupole mass analyzer. The QL essentially acted as an energy filter in open source mode, similar to our energy filter plates (3). Thus, it was possible to select specific masses (with their specific kinetic energies) and determine their ion energy distributions (range of 1–100 eV).

We compared our laboratory spectra with positive ion measurements taken by Cassini-INMS during the T40 flyby. This encounter with Titan took place on January 5, 2008 at 13.0 h, just after Saturn local noon (sunward) with a closest approach at 1010 km above the surface (Figure 12). The passage occurred at 11.7 S latitude and 130.4 W longitude at closest approach. Cassini had a speed of 6.3 km.s⁻¹, with a 37.6° solar phase angle. During this flyby, four other instruments (VIMS, UVIS, ISS and CIRS) were also in operation. The INMS operated in open source ion mode, enabling a detection of positive ions with energies < 100 eV. The integration period was ~ 34 ms, which corresponds to the sum of the set up/read out cycle and the sample integration

period (Waite et al. (2004b)). Therefore, it took INMS ~ 2.3 s to acquire an entire scan.

The fact that this flyby was entirely on the dayside of Titan and measured an important quantity of ions makes it a valuable source for the investigation of positive ions, as well as comparing it with plasma discharge laboratory simulations like PAMPRE. Solar radiation and solar photoionization was thus dominant. Furthermore, Magee et al. (2009) derived a globally averaged methane mixing ratio between 1000 and 1100 km of ~ 2.17 % which T40 was part of. The steady-state methane concentrations used in this study (from ~ 0.5 % to 5 %) fall into or near this value (Sciamma-O'Brien et al., 2010). Previous studies have specifically focused on this T40 flyby, which, incidentally, occurred during a solar minimum activity (Lavvas et al., 2011; Richard et al., 2015) with an $F_{10.7}$ index of 77.1. Westlake et al. (2011) found that the neutral average temperature during this flyby was 141 K. The plasma environment surrounding Titan during this encounter was unique. The measured electron distribution was categorized as bimodal by Rymer et al. (2009), using CAPS Electron Spectrometer (ELS) and MIMI Low Energy Magnetospheric Measurements System (LEMMS) data. They proposed that this unusual distribution, also observed at T26, T31, T46 and T47, may have been the result of two sources: the more energetic ($\gtrsim 5$ keV) electrons coming from the plasma sheet, while the less energetic electrons ($\lesssim 0.2$ keV) may be local pick-up electrons from the inner magnetosphere and interactions with Enceladus water group neutrals.

A T40 spectrum taken at an altitude of 1097 km in the outbound leg of the pass is plotted in Figure 13, on top of our normalized experimental 1%, 5% and 10% CH₄ spectra (the reader is also referred to Figure 6 of the Supplementary Material for the reference spectrum). The INMS spectrum is represented as a histogram, with mass bins of 1 u. All are normalized to the intensity at m/z 28. The T40 spectrum is made of seven clusters, each separated by about 6-8 u. The main C₁ compounds are at m/z 15 and m/z 17, which have been attributed to CH₃⁺ and CH₅⁺ by Vuitton et al. (2007). The presumed HCNH⁺ and C₂H₅⁺ are an order of magnitude higher in intensity. Our 1% spectrum reproduces fairly well the distributions of the grouping patterns of the lighter ions, up to the C₄ species (Figure 13a). However, the subsequent intensities decrease by orders of magnitude with each new block, with no detection beyond m/z 84. Moreover, NH₄⁺ is overrepresented in the experimental spectrum (11% of the entire spectrum, Figure 9), although the efficient formation of ammonia and CH₄⁺ may be facilitated by wall catalysis effects (Touville et al., 1987; Carrasco et al., 2012). Note that a water presence in the reactor with the H₂O⁺ ion cannot be ruled out. The distribution of C₂ compounds is faithfully reproduced by our experimental spectra, suggesting that they at least partially play a key role in reactions with primary ions as precursors to tholin formation. As indicated in Figure 9, C₂ species represent $\sim 44\%$ to $\sim 74\%$ of the spectrum, depending on the CH₄ condition. The equivalent charts for the T40 spectrum at 1097 km are shown in Figure 14. The C₂ species account for $\sim 47\%$ of this spectrum, led by ions at m/z 28 at 35%, and m/z 29 at 10%. This distribution is similar to the one we find at 5% CH₄, i.e. 25% for m/z 28 and 11% for m/z 29 (Figure 13b) and Figure 14). The overall average C₂ contribution is $\sim 44\%$ in the experimental case (Figure 9), comparable with the $\sim 47\%$ in the INMS spectrum (Figure 14). In the experimental spectra, increasing the methane concentration favors the production of different heavier ions, e.g. at m/z 39, m/z 51, m/z 55 and species larger than the C₅ group.

The 10% methane-rich condition (Figure 13c) displays the widest population of ions. We also see a rightward drift of the blocks, especially for higher masses. This is consistent with the rich presence of hydrogenated species. The major ions coincide with INMS' for the C₁, C₂ and

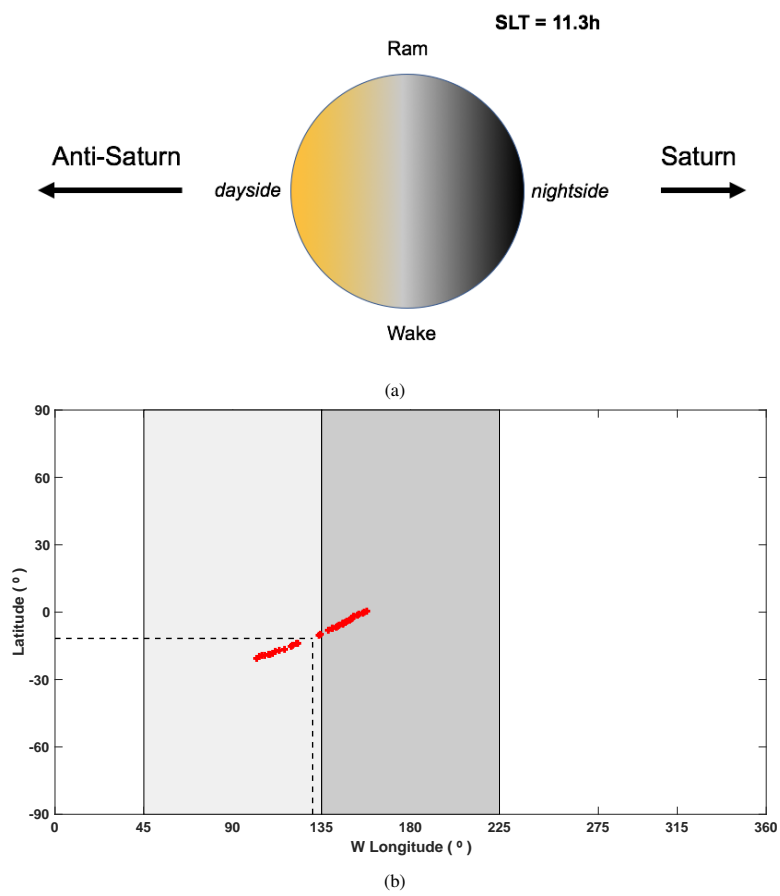


Figure 12: (a) Titan, solar and plasma configuration during closest approach of the T40 dayside flyby on January 5, 2008. Closest approach occurred at 1010 km, at 11.7 S latitude, 130.4 W longitude, at 11.3h Saturn Local Time (SLT). (b) Flyby geometry (red) adapted from (Westlake et al., 2011). Wake region is represented in light gray and anti-Saturn region in darker gray. The dashed line represents closest approach.

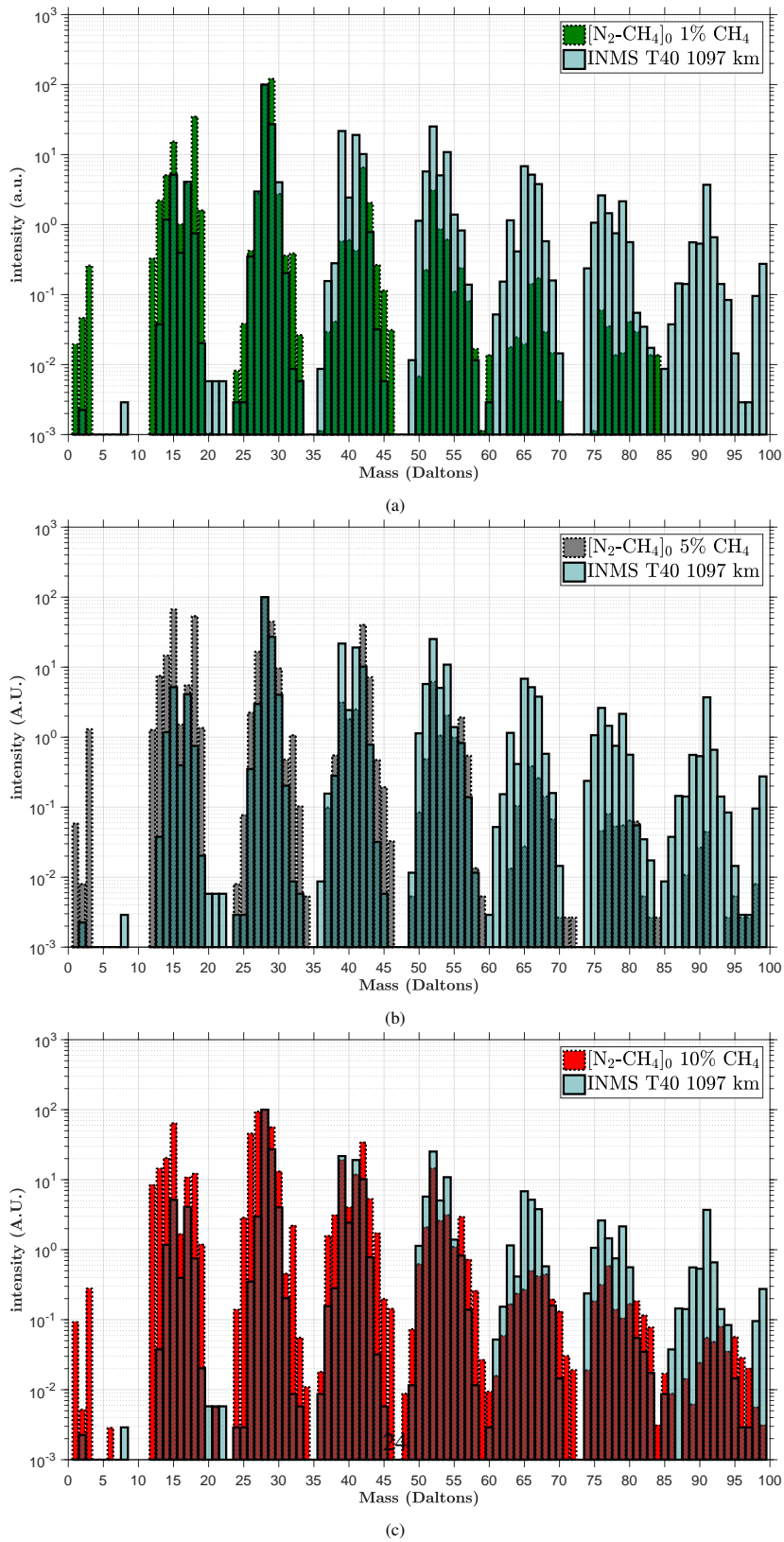


Figure 13: Inter-comparison between mass spectrum taken during the outbound leg of the T40 flyby by INMS (in blue), at 1097 km, compared with our experimental averaged spectra obtained in 1% CH_4 (a), 5% CH_4 (b), and 10% CH_4 (c). The mass plots are separated in 1 u bins.

C₄ groups. As seen previously, the $\frac{I_{42}}{I_{39}}$ ratio in normalized intensities reaches ~ 2 , when it was ~ 12 with 1% CH₄. Nonetheless, m/z 42 remains the most abundant C₃ ion in all three conditions we have studied, in particular with higher methane amounts. This coincidence with the main INMS cations is particularly noticeable for masses 15, 28, 39, 41, 42 and 52. C_x groups from the INMS and experimental data are asymmetrical and their respective mass ranges vary. The groups from the PAMPRE spectra obtained with 10% of methane are wider and more species are generally detected to the right hand side of each group. These right wings are consistent with a higher contribution of saturated species in our conditions with a high methane amount. Generally, we note that fewer higher mass ions are detected in all experimental spectra (with a noticeable decrease in intensity after $m/z \sim 60$) compared to the INMS spectra. In the plasma discharge, the residence time of light and heavy neutral products is short (i.e. ~ 28 s at 55 sccm with a pressure of 0.9 mbar) while the gas flow is fast. This lower contribution of large ions in our experiment compared to Titan’s ionosphere might also be due to surface recombination of radicals occurring on the walls of the chamber, limiting their lifetime and further growth chemistry. Modeling work by Alves et al. (2012) did indeed previously show an efficient wall loss process of N radicals in the case of a pure N₂ discharge.

The INMS measurements are characterized by a repetition of block patterns separated by 11-13 u, and 10-14 u in the PAMPRE spectra. The INMS data shows a significant contribution of the C₂ group, $\sim 47\%$ at 1097 km. Vuitton et al. (2007) determined that at the ionospheric peak during T5, the primary ions formed by ionization are quickly converted into higher mass hydrocarbons, such as C₂H₅⁺ and c-C₃H₃⁺. The few nitrogen-bearing compounds are led by HCNH⁺, CH₃CNH⁺ and HC₃NH⁺, with densities of 4.6×10^2 , 7.3×10^1 and 1.4×10^2 cm⁻³, respectively. We find overlaps between the experimental and T40 spectra, for our 5% and 10% CH₄ spectra, with one discrepancy at m/z 39 and 41. The C₃ ions detected during T40 are dominated by the peaks at m/z 39, m/z 41 and m/z 42, the latter being the most intense peak in our experimental spectra. The peak at m/z 39 is most intense with a 10% CH₄ mixing ratio, which confirms the attribution of C₃H₃⁺. Comparing these findings with neutral spectra is essential for interpretation. Acetonitrile was unambiguously attributed to m/z 41 by Gautier et al. (2011); Carrasco et al. (2012) in their neutral gas phase studies, and correlated with methane concentration. Protonation of acetonitrile seems therefore likely to explain its significant presence, notably at 5% CH₄ (Figure 9), following Reaction 16.

Westlake et al. (2012) used a 1-D photochemical model which was able to reproduce the ion-molecule chemistry between the primary ion products, using retrieved INMS data from the same T40 flyby. They deduced that among the two major nitrogen-bearing species in the C₃ group, i.e. HC₂NH⁺ and CH₃CNH⁺, the latter had a higher density by a factor of ~ 4 at the ionospheric peak. Overall, the 5% experimental spectrum appears to match well the INMS spectra of the first four groups, as the intensity decreases for higher masses. The 10% CH₄ spectra also reproduce some of the higher mass features, although the group distributions present large wings, which is most likely due to unsaturated hydrocarbons. According to Westlake et al. (2012), the three *major* ions, CH₅⁺, C₂H₅⁺ and HCNH⁺ are connected through the following reactions:



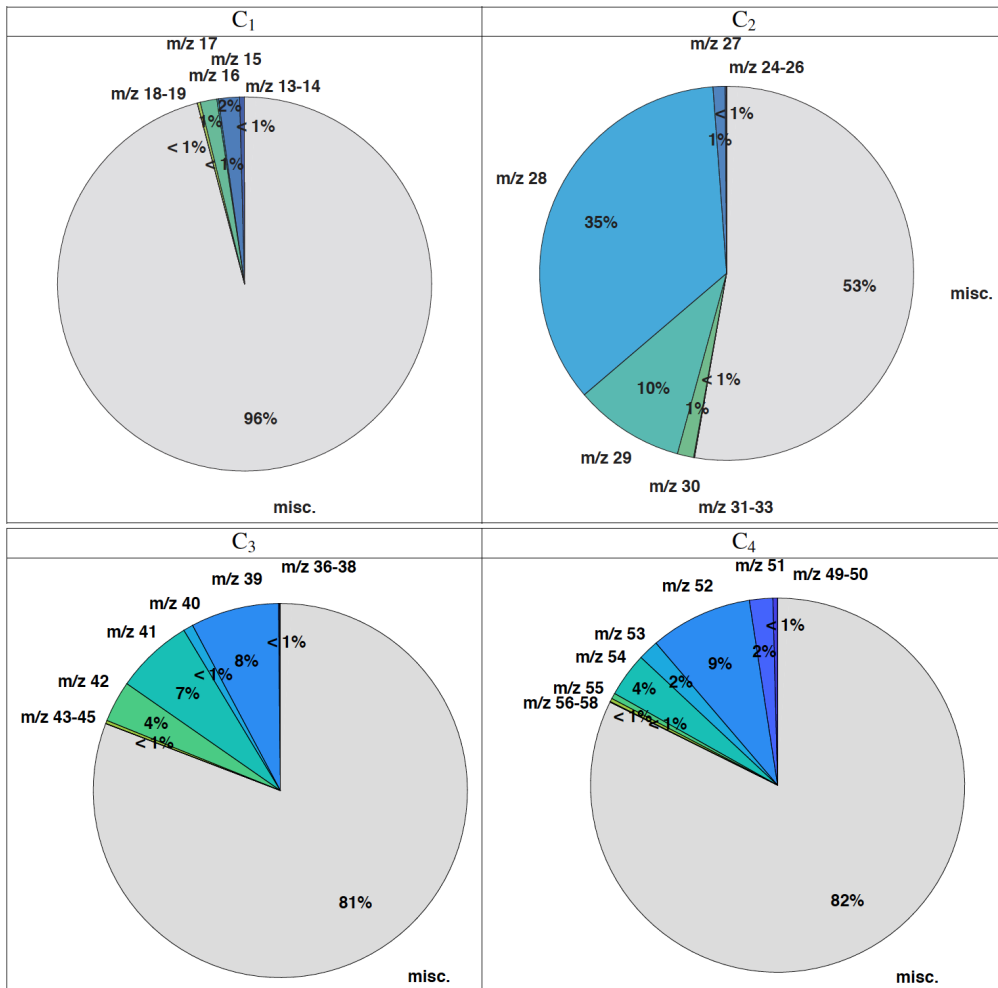


Figure 14: Pie charts of the first four C_xH_yN_z groups of the T40 INMS spectrum taken at 1097 km, normalized by m/z 28, showing the contributions of the major ions relative to the entire spectrum.

Table 2: Relative contributions of the major ions CH_5^+ , C_2H_5^+ and HCNH^+ in all three initial methane concentrations, taken from Figure 9. The last row corresponds to the values from Figure 14, compared with the ones from Westlake et al. (2012), denoted W2012. The m/z 29 contribution attributed to N_2H^+ at 39% is only given in a nitrogen-rich mixture. Other values correspond to the C_2H_5^+ attributions.

$[\text{CH}_4]_0$	CH_5^+ m/z 17	N_2H^+ — C_2H_5^+ m/z 29	HCNH^+ m/z 28	Σ	
1%	1%	39%	-	33%	74%
5%	1%	-	11%	25%	37%
10%	2%	-	10%	18%	30%
Σ_{W2012}	2%	-	14%	50%	66%
$\Sigma_{T40,1097km}$	1%	-	10%	35%	46%

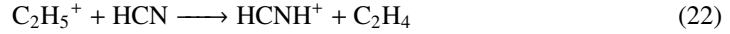


Figure 14 and Table 2 show a comparison of these three major ions between our experimental normalized intensities from Figure 9 and their signal from the T40 flyby near the ionospheric peak ($\Sigma_{T40,1150km}$ row) taken from Westlake et al. (2012) (Σ_{W2012} row). On average the 1% and 5% CH_4 row values for these three ions match with the intensities of T40, except for C_2H_5^+ which is much higher at 1% CH_4 . Note however that, at 1% CH_4 in particular, N_2H^+ may also be an important ion at m/z 29 in our experimental spectra, as explained in Section 4.1.

5. Conclusions

We have conducted the first positive ion analysis in our PAMPRE plasma chamber using an ion mass spectrometer, aimed at analyzing the gas phase cation precursors to the formation of Titan tholins. This setup enables us to approach the extracting tube in direct contact with the plasma and analyze the positive ions *in situ*. We used three initial methane concentrations, 1%, 5% and 10%, which showed a wide variability in peak distribution and size among the different conditions.

Furthermore, spectra taken in a 1% CH₄ mixing ratio condition are mostly dominated by nitrogen-bearing ions, such as NH₄⁺, HCNH⁺ and N₂H⁺/C₂H₅⁺. We also found that the spectra using this methane concentration are largely dominated by two C₂ species, at *m/z* 28 and *m/z* 29, representing ~ 72% of the entire spectrum. A 1% CH₄ condition also corresponds to the most efficient gas-to-solid carbon conversion, i.e. the amount of carbon converted into the tholin product as opposed to the gas phase products (Sciamma-O'Brien et al., 2010). The ammonium ion NH₄⁺ is the third major ion with an N₂:CH₄ (99:1) mixing ratio. Positive ions in a methane-rich mixture of 10% CH₄ are more diverse and abundant in hydrocarbon cations. Primary methane ions (CH⁺, CH₂⁺, CH₃⁺) dominate the C₁ group. This aliphatic contribution in the gas phase agrees with aliphatic absorption present in the solid phase of 10% CH₄ tholins. The intermediate 5% methane concentration that we chose falls in the optimum of tholin production in our plasma discharge. Here, the ion precursors are composed of protonated nitrile and aliphatic species. HCNH⁺ and C₂H₅⁺ are major ions. C₂ cations thus seem to play an important role as a gas phase precursor to tholin formation. Their dominating presence is in agreement with the HCN/C₂H₄ copolymerization patterns found in tholins. The largest contribution of the heavier CH₃CNH⁺ ion is seen in this condition.

A majority of attributed ions seems to form via proton transfer reactions, consistent with methane injection. The primary ions of the C₁ group are most abundant with a 5% CH₄ mixing ratio, suggesting that at least in this condition, these species are a key precursor reservoir, available to react with larger ions. Our preliminary comparisons with INMS measurements performed near the ionospheric peak during the T40 flyby show promising overlaps, particularly with the 1% and 5% CH₄ spectra. Future work should thus explore intermediate concentrations to constrain the importance of the primary ions as key precursors involved in the reaction schemes leading to the formation of Titan tholins combined with modeling work investigating the ion-neutral coupling in the N₂:CH₄ discharge. Finally, while ground-based detections of cations in Titan's upper atmosphere have yet to surface, their measurements would enhance Cassini's legacy, especially since Titan passed aphelion in April of 2018 entering an 8-year southern winter, which could potentially impact the volatile distribution in the upper atmosphere. Relatively abundant species such as HCNH⁺, C₂H₅⁺ or CH₂NH₂⁺, potentially involved in hydrogenation processes with prebiotic interest, would make good targets for observations in synergy with theoretical predictions.

Acknowledgements

The authors are indebted to two anonymous reviewers whose insightful comments substantially improved the quality of the manuscript. We acknowledge financial support from the European Research Council Starting Grant (grant agreement no. 636829), and data provided by the Cassini INMS instrument available through the PDS. We are also grateful for discussions on cation chemistry with Dr. Jérémy Bourgalais.

Supplementary Material

Appendix A. Materials and methods

Appendix A.1. Positive ion mass spectrometry

The multiplier potential is set at 1800 V. Within the transfer tube, in positive ion mode, two guiding lenses are set at -19 V and -102 V, respectively.

Table A.3 lists all the intrinsic parameters pertaining to the spectrometer's optics used for our positive ion measurements. The different components can be seen in more detail in Figure 3. The detector consists of the multiplier (Figure 3). It is connected with (i) the 1st dynode which sets the voltage on the front of the detector and (ii) the discriminator setting a threshold on the pulse output of the multiplier. The Extraction group controls the gating system. This gating is only switched on and operational if the RF head is connected through a transistor-transistor logic (TTL) system, which was not the case in this study. The flight-focus mainly controls the guiding of the ions. The energy filter (described in the next section) is tunable along with a set of other lenses downstream of the flight-focus. The emission source is only set in neutral mode. Ion extraction was made possible by applying a negative polarity to the aperture, thus directly extracting said ions from the first chemical steps of the expanding plasma. The main relevant varying parameters here are the *lens1* and *extractor* potentials. The latter has a negative value for positive ion extraction. As we will see in the following section, the energy variable part of the Sector component determines the energy filtering which will be fine-tuned for each gas mixture.

Appendix A.2. Ion filter energy profiles

Ion energy studies in plasma discharges have previously shown their dependences to experimental setups and plasma compositions. Field et al. (1991) first reported on the energy profile of certain ions (e.g. O_2^+) derived from theoretical calculations and compared with experimental results in a radiofrequency plasma discharge. Further studies examined the role of plasma rf sheaths and pressure-dependence on ion energy distributions (Gudmundsson et al., 1999; Kawamura, 1999; Wang and Olthoff, 1999). In this setup, it is possible to measure and quantify the Energy Distribution (ED) at the energy filtering plate, for specific masses in different plasma conditions. The energy parameter from the Sector group (Table A.3) corresponds to the energy filter (plates) of Figure 3 and controls the energy of the ions which are mass analyzed by the Quadrupole Mass Spectrometer (QMS) detector later on. Therefore, a lens optimization is crucial before each mass analysis. For Titan, as stated in the previous section, different ions may have different kinetic energies during detection by INMS. This variation may be due to atmospheric composition, plasma flow composition, spacecraft velocity, (Waite et al., 2004b; Lavvas et al., 2013). In our experiments, the main fluctuating parameter is the N_2 - CH_4 mixing ratio. Corresponding mass spectra with an optimized energy filter will be presented in the following section.

Table A.3: Global Environment Editor example for a given positive ion mass spectrum acquisition using the MASoft Hiden Analytics software. The Group column corresponds to the different components of the Electrostatic Quadrupole Plasma system, as shown in Figure 3. The second column represents all of the tunable variables, and their respective values, either fixed after a tune, or changed by the user.

Group	Name	Value	Units
Detector	1st dynode	-3500	V
	discriminator	-10	%
	multiplier	1800	V
Extraction	extractor	-191	V
	gate delay	0.1	μS
	gate width	0.0	μS
	lens 1	-19	V
Flight-focus	flight-focus	-69	V
	delta-m	0	%
	focus2	-176	V
Quad	resolution	0	%
	suppressor	-200	V
	transit-energy	0.0	V
	D.C. quad	22	%
	axis	-40.0	V
Sector	energy	2.2	V
	horiz	-5	%
	lens2	-102	V
	plates	7.4	V
	vert	-20	%
	cage	0.0	V
Source	electron-energy	70.0	V
	emission	100.0	μA
Other	CRV-range	7	c/s
	CRV-resolution	6	bits
	gating	0	(1=on, 0=off)
	gating-invert	0	(0=normal, 1=invert)
	mass	28.0	u
	mode-change	1000	ms

Appendix A.3. Protocol

As stated previously, the analysis of cations in the plasma discharge requires that (i) the spectrometer not be obstructed by incoming tholins to provide accurate intensity measurements and not interfere with the optics potentials in the transfer tube, and (ii) the mass analysis be optimized to the corresponding energy distribution of the highest mass (m/z 28); the latter being significant in most methane mixing ratios. A set of four experiments is carried out for each chosen mixing ratio. Every other experiment, we "calibrate" our measurement by carrying out an O_2 plasma in specific conditions for a given steady distance from the plasma. This critical step in controlled conditions assures us that the extractor is not obstructed by tholins, by setting a reference intensity value at m/z 32 (i.e. O_2^+ at $\sim 10^5$ c/s and $< 10^2$ c/s when the aperture is obstructed). If the intensity of the latter mass has not decreased from one mixing ratio to another, this means tholins have not accumulated on the extractor. Thus, measurements from one experiment to the next are reliable. This is an important step to take into account, given how efficient the setup is to produce tholins (Sciamma-O'Brien et al., 2010). Furthermore, energy distributions are measured through energy filter plates and optimized before each experimental run, in order to tune the filter system for mass analysis.

Appendix B. Results

Appendix B.1. Energy Filter Distributions of selected species

The energy filter (Figure 3) scans the entirety of available potentials (< 100 V) for selected masses. This parameter represents the potential applied to the energy filter plate, between the *focus2* lens and the QMS. Consequently, one can obtain fairly reproducible energy distributions for different ions which are part of the same gas mixture and at the same pressure. Hence it is possible to get such a distribution for any given plasma discharge condition. To get a good estimate of these energy distributions (EDs) and to make sure the energy distributions for specific ions are representative of the entire plasma, we chose six different ions: m/z 14, 16, 17, 18, 28 and 29, which are expected to be present and detected in our plasma. Figure B.15 shows the EDs measured at the energy filter electrode. The m/z 28 and m/z 29 distributions are likely the most representative of two major compounds given their high count intensities. Nonetheless, these EDs are consistent in their distribution for one given condition, as well as for ions of different masses. The distribution for m/z 14 is affected by low intensity counts, but all other five have Maxwellian distributions, centered at 2.2 V for 1% CH_4 , 2.2 V for 5% CH_4 and 1.2 V for 10% CH_4 (Table B.4). These differences imply a difference in chemistry and ion composition in the plasma. Figure B.16 shows the ED taken at m/z 28 for $[CH_4]_0=1\%$, 5% and 10% mixtures.

EDs can sometimes be bi-modal, as can be slightly seen for m/z 17. This bi-modal distribution could be an instrumental artifact (lens coating, re-acceleration of ions in the skimmer) or attributed to plasma sheath effects (Kawamura, 1999). Figure B.16 shows the superimposed EDs for m/z 28 in all conditions. The tail of the Maxwellian starts decreasing by at least an order of magnitude after ~ 3 V, with peaks between 1 and 3 V.

We acquired four spectra in each condition (Figures B.17 and B.18). We see a temporal signal variability, attributed to the potential instabilities between the extractor and the plasma. For example, the m/z 28 intensity at 10% (Figure B.18) varies from 8.82×10^4 to 1.62×10^5 c/s, and from 8.67×10^3 to 3.12×10^4 c/s for m/z 52 (33,958 and 10,636 standard deviation, respectively). At 1% CH_4 , the m/z 28 and m/z 52 intensities vary from 1.83×10^4 to 2.65×10^5 c/s, and 1.41×10^3 to 3.66×10^3 c/s, respectively (standard deviations of 186,000 and 1229).

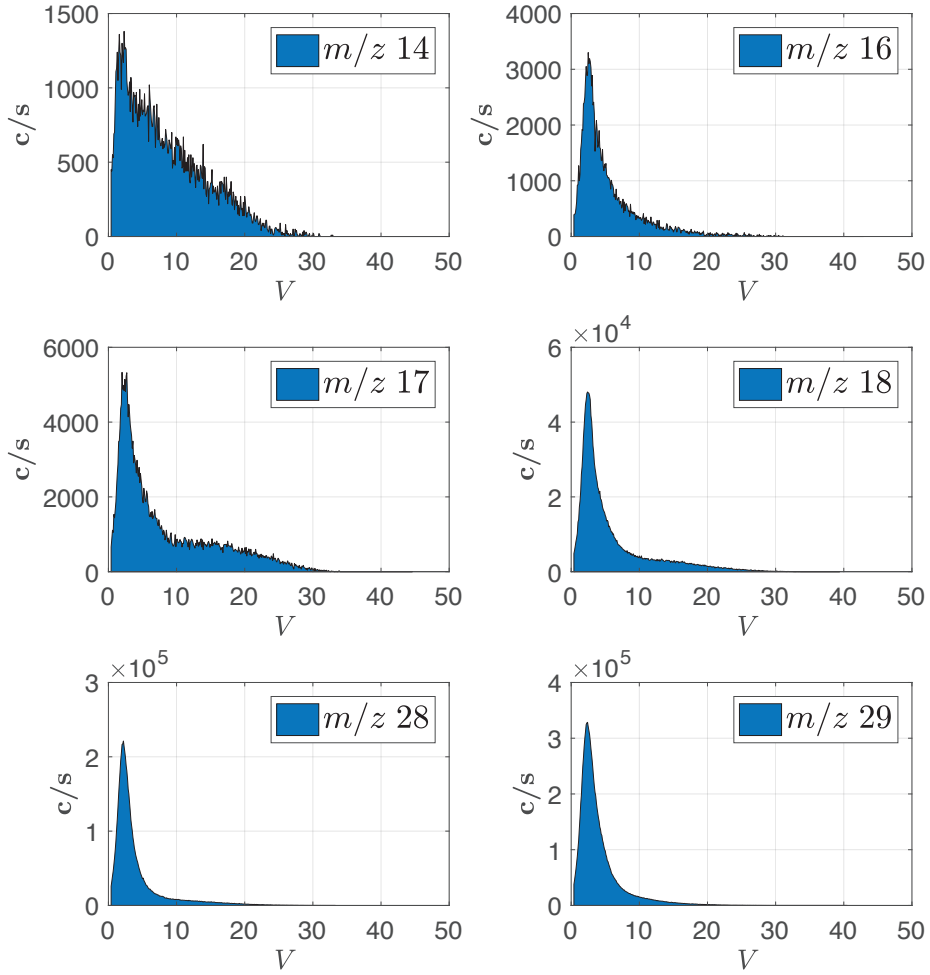


Figure B.15: Energy filter distributions in an $[\text{N}_2\text{-CH}_4]_0 = 1\%$ mixing ratio for selected ions m/z 14, 16, 17, 18, 28 and 29.

Table B.4: Energy distribution maxima for $[\text{CH}_4]_0=1\%$, 5% and 10%.

$[\text{CH}_4]_0$ (%)	energy (V)
1	2.2
5	2.2
10	1.2

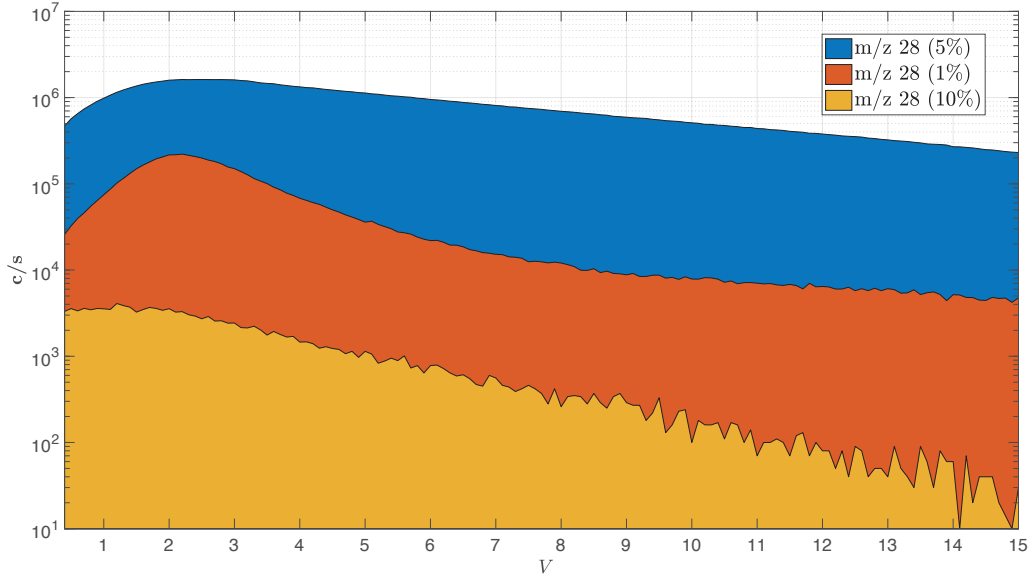


Figure B.16: Energy filter distributions in three $[N_2-CH_4]_0$ concentrations, 1%, 5% and 10% for ions at m/z 28.

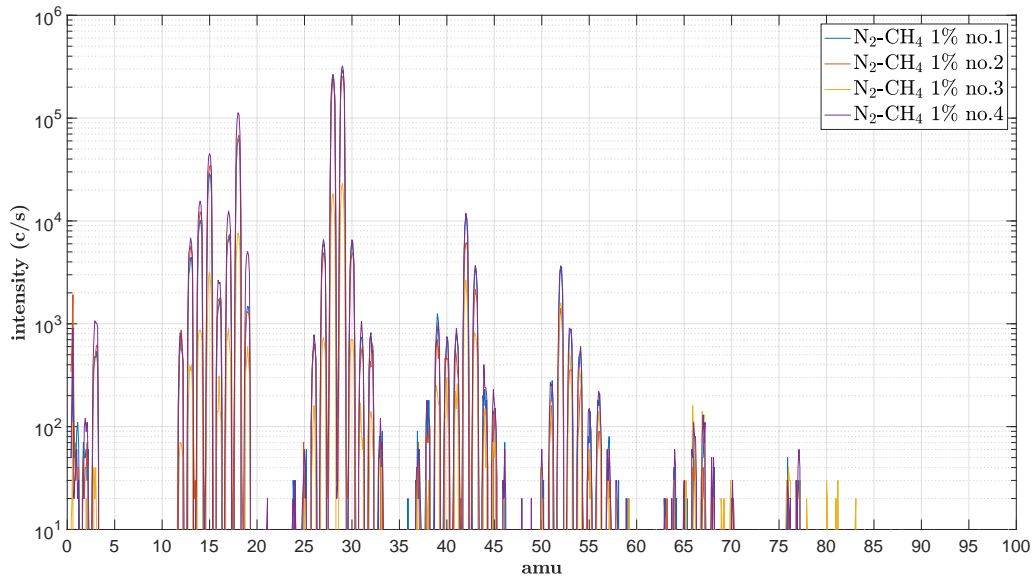


Figure B.17: Mass spectra for a $[N_2-CH_4]_0 = 1\%$ mixing ratio, with the positive ion energy filter set at 2.2 eV, i.e. the maximum energy for m/z 28 (see Figure B.16). Four spectra are shown here and were taken in the same experimental conditions (plasma pressure, gas mixture).

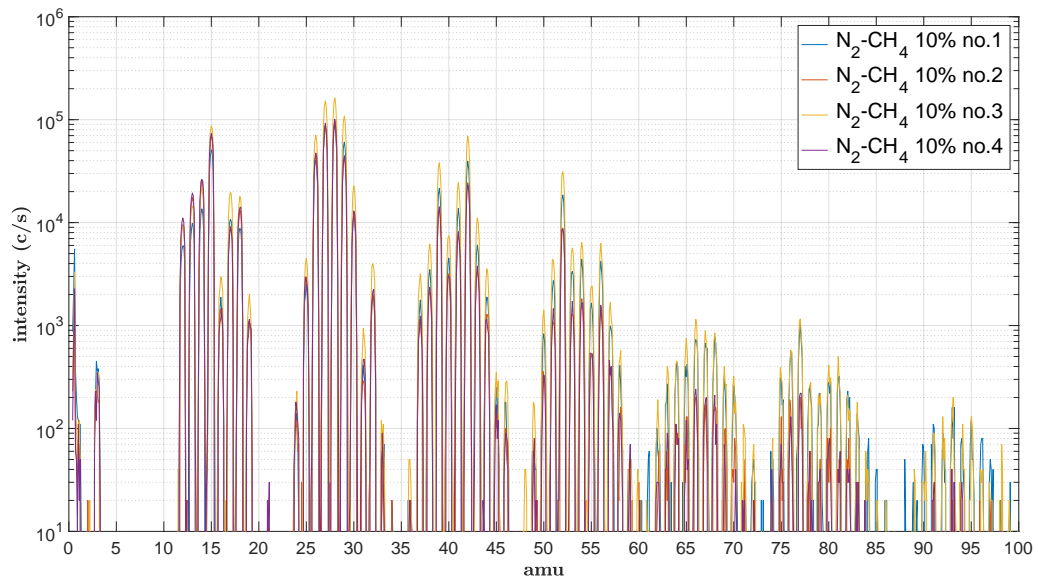


Figure B.18: Mass spectra for a $[\text{N}_2\text{-CH}_4]_0 = 10\%$ mixing ratio, with the the positive ion energy filter set at 1.2 V, i.e. the maximum energy for m/z 28 (see Figure B.16). Four spectra are shown here and were taken in the same experimental conditions (plasma pressure, gas mixture).

Other factors such as tholin coating on the extractor or intrinsic plasma variations may also play a role in these fluctuations. This is why we will henceforth normalize all spectra at m/z 28, and units will be expressed as arbitrary units (A.U.).

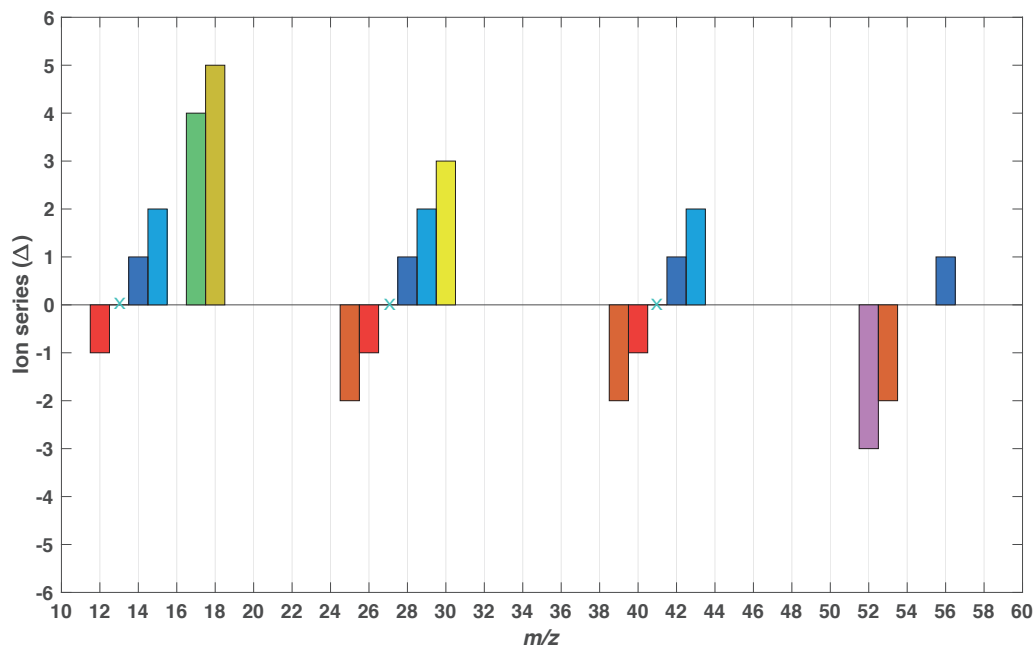


Figure B.19: Delta (Δ) values for 20 selected masses covering the C_{1-4} groups shown in Figure 9 and using the same color code. As per the analyses in Canagaratna et al. (2007) and McLafferty and Turecek (1993), each mass of the spectra is assigned a Δ value, where $\Delta = m/z - 14n + 1$ (n corresponds to the grouping number). Typically, $\Delta = 2$ corresponds to linear saturated hydrocarbons, $\Delta > 2$ corresponds to heteroatomic compounds and $\Delta < 2$ corresponds to unsaturated and branched hydrocarbons. Therefore, the Δ value informs on the probable functional groups at each mass. Note that $\Delta = 0$ values are indicated as blue crosses.

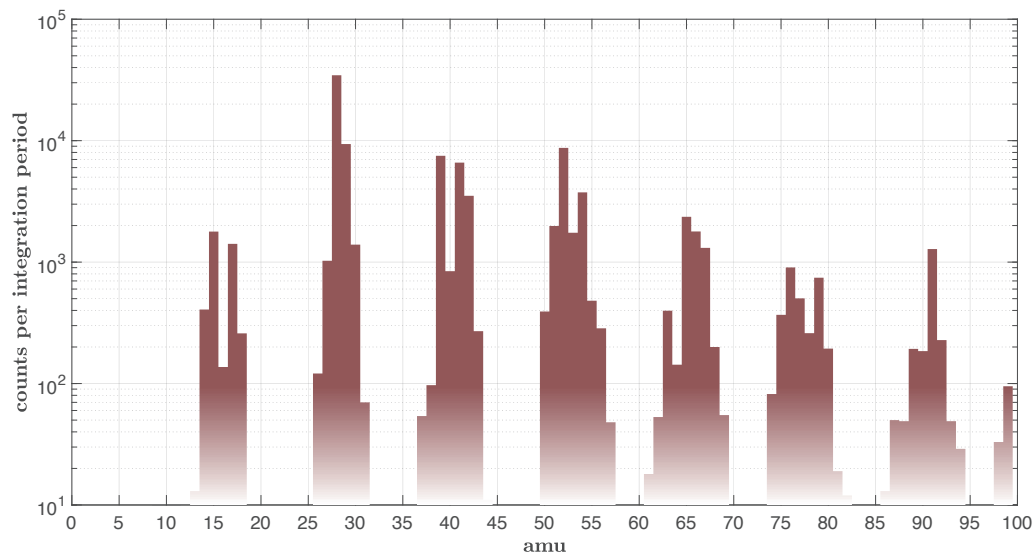


Figure B.20: Mass spectrum taken by INMS during the outbound leg of the T40 flyby, at 1097 km. The mass plot is separated in 1 u bins and plotted against raw IP counts. The INMS operated in open source ion mode during this flyby in order to detect low energy ions (< 100 eV).

References

- Ågren, K., Wahlund, J., Garnier, P., Modolo, R., Cui, J., Galand, M., Mu, I., 2009. On the ionospheric structure of Titan. *Planetary and Space Science* 57, 1821–1827. doi:10.1016/j.pss.2009.04.012.
- Alves, L.L., Marques, L., Pintassilgo, C.D., Wattiaux, G., Es-sebbar, E., Berndt, J., Kovacević, E., Carrasco, N., Boufendi, L., Cernogora, G., 2012. Capacitively coupled radio-frequency discharges in nitrogen at low pressures. *Plasma Sources Science and Technology* 21, 045008. doi:10.1088/0963-0252/21/4/045008.
- Canagaratna, M.R., Jayne, J.T., Jimenez, J.L., Allan, J.D., Alfarra, M.R., Zhang, Q., Onasch, T.B., Drewnick, F., Coe, H., Middlebrook, A., Delia, A., Williams, L.R., Trimborn, A., Northway, M., DeCarlo, P., Kolb, C., Davidovits, P., Worsnop, D., 2007. CHEMICAL AND MICROPHYSICAL CHARACTERIZATION OF AMBIENT AEROSOLS WITH THE AERODYNE AEROSOL MASS SPECTROMETER. *Mass Spectrometry Reviews* 26, 185–222. URL: <https://apps.who.int/iris/bitstream/handle/10665/254610/WHO-MSD-MER-2017.2-eng.pdf?sequence=1> http://apps.who.int/iris/bitstream/handle/10665/254610/WHO-MSD-MER-2017.2-eng.pdf;jsessionid=F9A3B620D10ECFAF8498AC0E08EFCBC8?sequence=1 http://apps.who.int/, doi:10.1002/mas, arXiv:NIHMS150003.
- Carrasco, N., Alcaraz, C., Dutuit, O., Plessis, S., Thissen, R., Vuitton, V., Yelle, R., Pernot, P., 2008a. Sensitivity of a Titan ionospheric model to the ion-molecule reaction parameters. *Planetary and Space Science* 56, 1644–1657. URL: <http://www.sciencedirect.com/science/article/pii/S0032063308001025>, doi:10.1016/j.pss.2008.04.007.
- Carrasco, N., Gautier, T., touhami Es-sebbar, E., Pernot, P., Cernogora, G., 2012. Volatile products controlling Titan's tholins production. *Icarus* 219, 230–240. URL: <http://dx.doi.org/10.1016/j.icarus.2012.02.034>, doi:10.1016/j.icarus.2012.02.034.
- Carrasco, N., Plessis, S., Pernot, P., 2008b. Towards a reduction of the bimolecular reaction model for Titan ionosphere. *International Journal of Chemical Kinetics* 40, 699–709. URL: <http://dx.doi.org/10.1002/kin.20374>, doi:10.1002/kin.
- Coates, A.J., Crary, F.J., Young, D.T., Szego, K., Arridge, C.S., Bebese, Z., Jr, E.C.S., Hartle, R.E., Hill, T.W., 2007. Ionospheric electrons in Titan's tail : Plasma structure during the Cassini T9 encounter. *Geophysical Research Letters* 34, 1–6. doi:10.1029/2007GL030919.
- Cravens, T.E., Robertson, I.P., Waite, J.H., Yelle, R.V., Kasprzak, W.T., Keller, C.N., Ledvina, S.A., Niemann, H.B., Luhmann, J.G., McNutt, R.L., Ip, W.H., De La Haye, V., Mueller-Wodarg, I., Wahlund, J.E., Anicich, V.G., Vuitton, V., 2006. Composition of Titan's ionosphere. *Geophysical Research Letters* 33, 8–11. doi:10.1029/2005GL025575.
- Desai, R.T., Coates, A.J., Wellbrock, A., Vuitton, V., Crary, F.J., González-Caniulef, D., Shebanits, O., Jones, G.H., Lewis, G.R., Waite, J.H., Taylor, S.A., Kataria, D.O., Wahlund, J.E., Edberg, N.J.T., Sittler, E.C., 2017. Carbon chain anions and the growth of complex organic molecules in Titan's ionosphere. *The Astrophysical Journal Letters* 844, 1–8. URL: <http://arxiv.org/abs/1706.01610>, doi:10.3847/2041-8213/aa7851, arXiv:1706.01610.
- Dubois, D., Carrasco, N., Bourgalais, J., Vettier, L., Desai, R.T., Wellbrock, A., Coates, A.J., 2019a. Nitrogen-containing Anions and Tholin Growth in Titan's Ionosphere : Implications for Cassini CAPS-ELS Observations. *The Astrophysical Journal Letters* 872, L31. URL: <http://dx.doi.org/10.3847/2041-8213/ab05e5>, doi:10.3847/2041-8213/ab05e5.
- Dubois, D., Carrasco, N., Petrucciani, M., Vettier, L., Tigrine, S., Pernot, P., 2019b. In situ investigation of neutrals involved in the formation of Titan tholins. *Icarus* 317. doi:10.1016/j.icarus.2018.07.006.
- Field, D., Klemperer, D.F., May, P.W., Song, Y.P., 1991. Ion energy distributions in radio-frequency discharges. *Journal of Applied Physics* 70, 82–92. doi:10.1063/1.350247.
- Fox, J.L., Yelle, R.V., 1997. Hydrocarbon ions in the ionosphere of Titan. *Geophysical Research Letters* 24, 2179–2182. doi:10.1029/97GL02051.
- Gautier, T., Carrasco, N., Buch, A., Szopa, C., Sciamma-O'Brien, E., Cernogora, G., 2011. Nitrile gas chemistry in Titan's atmosphere. *Icarus* 213, 625–635. doi:10.1016/j.icarus.2011.04.005.
- Gautier, T., Carrasco, N., Mahjoub, A., Vinatier, S., Giuliani, A., Szopa, C., Anderson, C.M., Correia, J.J., Dumas, P., Cernogora, G., 2012. Mid- and far-infrared absorption spectroscopy of Titan's aerosols analogues. *Icarus* 221, 320–327. URL: <http://dx.doi.org/10.1016/j.icarus.2012.07.025>, doi:10.1016/j.icarus.2012.07.025.
- Gautier, T., Carrasco, N., Schmitz-Afonso, I., Touboul, D., Szopa, C., Buch, A., Pernot, P., 2014. Nitrogen incorporation in titan's tholins inferred by high resolution orbitrap mass spectrometry and gas chromatography-mass spectrometry. *Earth and Planetary Science Letters* 404, 33–42. URL: <http://dx.doi.org/10.1016/j.epsl.2014.07.011>, doi:10.1016/j.epsl.2014.07.011.
- Gudmundsson, J.T., Kimura, T., Lieberman, M., 1999. Experimental studies of O₂/Ar plasma in a planar inductive discharge. *Plasma Sources Science and Technology* 8, 22–30. URL: <http://stacks.iop.org/0963-0252/8/i=1/a=003?key=crossref.47514f9adf2b7c80d343b6ddf2104a36>, doi:10.1088/0963-0252/8/1/003.
- Hanel, R., Conrath, B., Flasar, F.M., Kunde, V.G., Maguire, W.C., Pearl, J., Pirraglia, J., Samuelson, R.E., Herath, L., Allison, M., Cruikshank, D., Gautier, D., Gierasch, P., Horn, L., Koppany, R., Ponnampereuma, C., 1981. Infrared

- Observations of the Saturnian System from Voyager 1. *Science* 212, 192–200. URL: <http://www.sciencemag.org/cgi/doi/10.1126/science.212.4491.192>, doi:10.1126/science.212.4491.192.
- Hörst, S.M., 2017. Titan's Atmosphere and Climate. *Journal of Geophysical Research: Planets*, 432–482 URL: <http://arxiv.org/abs/1702.08611>, doi:10.1002/2016JE005240, arXiv:1702.08611.
- Ip, W.H., 1990. Titan's upper ionosphere. *The Astrophysical Journal*, 354–363.
- Kawamura, E., 1999. Ion energy distributions in rf sheaths; review, analysis and simulation. *Plasma Sources Science and Technology* 8, R45–R64.
- Keller, C.N., Anicich, V.G., Cravens, T.E., 1998. Model of Titan's ionosphere with detailed hydrocarbon ion chemistry. *Planet. Space Sci.* 46, 1157–1174. doi:10.1016/s0032-0633(98)00053-1.
- Keller, C.N., Cravens, T.E., Gan, L., 1992. A model of the ionosphere of Titan. *Journal of Geophysical Research*, [Space Physics] 97, 12117–12135.
- Khare, B., Sagan, C., 1973. Red clouds in reducing atmospheres. *Icarus* 20, 311–321. URL: <http://www.sciencedirect.com/science/article/pii/0019103573900080>, doi:10.1016/0019-1035(73)90008-0.
- Krasnopolsky, V.A., 2009. A photochemical model of Titan's atmosphere and ionosphere. *Icarus* 201, 226–256. URL: <http://www.sciencedirect.com/science/article/pii/S0019103509000062>, doi:10.1016/j.icarus.2008.12.038.
- Krasnopolsky, V.A., 2014. Chemical composition of Titan's atmosphere and ionosphere: Observations and the photochemical model. *Icarus* 236, 83–91. URL: <http://dx.doi.org/10.1016/j.icarus.2014.03.041>, doi:10.1016/j.pss.2006.04.019.
- Lavvas, P., Galand, M., Yelle, R.V., Heays, A.N., Lewis, B.R., Lewis, G.R., Coates, A.J., 2011. Energy deposition and primary chemical products in Titan's upper atmosphere. *Icarus* 213, 233–251. URL: <http://dx.doi.org/10.1016/j.icarus.2011.03.001>, doi:10.1016/j.icarus.2011.03.001.
- Lavvas, P., Yelle, R.V., Koskinen, T., Bazin, A., Vuitton, V., Vigren, E., Galand, M., Wellbrock, A., Coates, A.J., Wahlund, J.E., Crary, F.J., Snowden, D., 2013. Aerosol growth in Titan's ionosphere. *Proceedings of the National Academy of Sciences* 110, 2729–2734. URL: <http://www.pnas.org/cgi/doi/10.1073/pnas.1217059110>.
- Lebonnois, S., Bakes, E.L., McKay, C.P., 2003. Atomic and molecular hydrogen budget in Titan's atmosphere. *Icarus* 161, 474–485. doi:10.1016/S0019-1035(02)00039-8.
- Magee, B.A., Waite, J.H., Mandt, K.E., Westlake, J., Bell, J., Gell, D.A., 2009. INMS-derived composition of Titan's upper atmosphere: Analysis methods and model comparison. *Planetary and Space Science* 57, 1895–1916. URL: <http://dx.doi.org/10.1016/j.pss.2009.06.016>, doi:10.1016/j.pss.2009.06.016.
- Maillard, J., Carrasco, N., Schmitz-afonso, I., Gautier, T., Afonso, C., 2018. Comparison of soluble and insoluble organic matter in analogues of Titan's aerosols. *Earth and Planetary Science Letters* 495, 185–191. URL: <https://doi.org/10.1016/j.epsl.2018.05.014>, doi:10.1016/j.epsl.2018.05.014.
- McLafferty, F.W., Turecek, F., 1993. *Interpretation of Mass Spectra*, 4th Edition. University Science Books.
- Mutsukura, N., 2001. Deposition of Diamondlike Carbon Film and Mass Spectrometry Measurement in CH₄/N₂ RF Plasma 21, 265–277.
- Pernot, P., Carrasco, N., Thissen, R., Schmitz-Afonso, I., 2010. Tholinomics—Chemical Analysis of Nitrogen-Rich Polymers. *Analytical Chemistry* 82, 1371–1380. URL: <http://pubs.acs.org/doi/abs/10.1021/ac902458q>, doi:10.1021/ac902458q.
- Richard, M.S., Cravens, T.E., Wylie, C., Webb, D., Chediak, Q., Perryman, R., Mandt, K., Westlake, J., Waite, J.H., Robertson, I., Magee, B.A., Edberg, N.J.T., 2015. An empirical approach to modeling ion production rates in Titan's ionosphere I: Ion production rates on the dayside and globally, 1–17 doi:10.1002/2014JA020343. *An.*
- Rymer, A.M., Smith, H.T., Wellbrock, A., Coates, A.J., Young, D.T., 2009. Discrete classification and electron energy spectra of Titan's varied magnetospheric environment. *Geophysical Research Letters* 36, 1–6. doi:10.1029/2009GL039427.
- Sagan, C., 1973. The greenhouse of Titan. *Icarus* 18, 649–656. doi:10.1016/0019-1035(73)90068-7.
- Sciama-O'Brien, E., Carrasco, N., Szopa, C., Buch, A., Cernogora, G., 2010. Titan's atmosphere: An optimal gas mixture for aerosol production? *Icarus* 209, 704–714. URL: <http://www.sciencedirect.com/science/article/pii/S0019103510001570>, doi:10.1016/j.icarus.2010.04.009.
- Sciama-O'Brien, E., Ricketts, C.L., Salama, F., 2014. The Titan haze simulation experiment on cOsmic: Probing Titan's atmospheric chemistry at low temperature. *Icarus* 243, 325–336. URL: <http://dx.doi.org/10.1016/j.icarus.2014.08.004>, doi:10.1016/j.icarus.2014.08.004.
- Seki, K., Yagi, M., He, M., Halpem, J., Okabe, H., 1996. Reaction rates of the CN radical with diacetylene and dicyanoacetylene. *Chemical Physics Letters* 4, 0–5.
- Shebanits, O., Vigren, E., Wahlund, J.E., Holmberg, M.K., Morooka, M., Edberg, N.J., Mandt, K.E., Waite, J.H., 2017. Titan's ionosphere: A survey of solar EUV influences. *Journal of Geophysical Research: Space Physics* 122, 7491–7503. doi:10.1002/2017JA023987.
- Shebanits, O., Wahlund, J.E., Mandt, K., Ågren, K., Edberg, N.J., Waite, J.H., 2013. Negative ion densities in the ionosphere of Titan-Cassini RPWS/LP results. *Planetary and Space Science* 84, 153–162. URL: <http://dx.doi.org/10.1016/j.pss.2013.03.011>, doi:10.1016/j.pss.2013.03.011.

- org/10.1016/j.pss.2013.05.021, doi:10.1016/j.pss.2013.05.021.
- Sittler, E., Ali, A., Cooper, J., Hartle, R., Johnson, R., Coates, A., Young, D., 2009. Heavy ion formation in Titan's ionosphere: Magnetospheric introduction of free oxygen and a source of Titan's aerosols? *Planetary and Space Science* 57, 1547–1557. URL: <http://www.sciencedirect.com/science/article/pii/S0032063309002268>, doi:10.1016/j.pss.2009.07.017.
- Szopa, C., Cernogora, G., Boufendi, L., Correia, J.J., Coll, P., 2006. PAMPRE: A dusty plasma experiment for Titan's tholins production and study. *Planetary and Space Science* 54, 394–404. URL: <http://www.sciencedirect.com/science/article/pii/S003206330600002X>, doi:10.1016/j.pss.2005.12.012.
- Thissen, R., Vuitton, V., Lavvas, P., Lemaire, J., Dehon, C., Dutuit, O., Smith, M.A., Turchini, S., Catone, D., Yelle, R.V., Pernot, P., Somogyi, A., Coreno, M., 2009. Laboratory studies of molecular growth in the titan ionosphere. *Journal of Physical Chemistry A* 113, 11211–11220. doi:10.1021/jp9050353.
- Toublanc, D., Parisot P., Brillet, J., Gautier, D., Raulin, F., McKay, C.P., 1995. Photochemical modelling of Titan's atmosphere.
- Touvelle, M., Licea, J.L.M., Venugopalan, M., Mufioz Licea, J.L., Venugopalan, M., 1987. Plasma Chemical Synthesis. II. Effect of Wall Surface on the Synthesis of Ammonia. *Plasma Chemistry and Plasma Processing* 7, 101.
- Vigren, E., Galand, M., Shebanits, O., Wahlund, J.E., Geppert, W.D., Lavvas, P., Vuitton, V., Yelle, R.V., 2014. Increasing positive ion number densities below the peak of ion-electron pair production in titan's ionosphere. *Astrophysical Journal* 786. doi:10.1088/0004-637X/786/1/69.
- Vigren, E., Galand, M., Yelle, R.V., Wellbrock, A., Coates, A.J., Snowden, D., Cui, J., Lavvas, P., Edberg, N.J., Shebanits, O., Wahlund, J.E., Vuitton, V., Mandt, K., 2015. Ionization balance in Titan's nightside ionosphere. *Icarus* 248, 539–546. doi:10.1016/j.icarus.2014.11.012.
- Vuitton, V., Yelle, R.V., Anicich, V.G., 2006. The Nitrogen Chemistry of Titan's Upper Atmosphere Revealed. *The Astrophysical Journal* 647, L175–L178. URL: <http://iopscience.iop.org/article/10.1086/507467>, doi:10.1086/507467.
- Vuitton, V., Yelle, R.V., Cui, J., 2008. Formation and distribution of benzene on Titan. *Journal of Geophysical Research E: Planets* 113, 1–18. doi:10.1029/2007JE002997.
- Vuitton, V., Yelle, R.V., Klippenstein, S.J., Hörst, S.M., Lavvas, P., 2019. Simulating the density of organic species in the atmosphere of Titan with a coupled ion-neutral photochemical model. *Icarus* 324, 120–197. URL: <https://doi.org/10.1016/j.icarus.2018.06.013>, doi:10.1016/j.icarus.2018.06.013.
- Vuitton, V., Yelle, R.V., McEwan, M.J., 2007. Ion chemistry and N-containing molecules in Titan's upper atmosphere. *Icarus* 191, 722–742. doi:10.1016/j.icarus.2007.06.023.
- Waite, J.H., Lewis, W.S., Kasprzak, W.T., Anicich, V.G., Block, B.P., Cravens, T.E., Fletcher, G.G., Ip, W.H., Luhmann, J.G., McNutt, R.L., Niemann, H.B., Parejko, J.K., Richards, J.E., Thorpe, R.L., Walter, E.M., Yelle, R.V., 2004a. The Cassini Ion and Neutral Mass Spectrometer (INMS) investigation 114, 113–231. doi:10.1007/s11214-004-1408-2.
- Waite, J.H., Lewis, W.S., Kasprzak, W.T., Anicich, V.G., Block, B.P., Cravens, T.E., Fletcher, G.G., Luhmann, J.G., McNutt, R.L., Niemann, H.B., Parejko, J.K., Richards, J.E., Thorpe, R.L., Walter, E.M., Yelle, R.V., 2004b. The Cassini Ion and Neutral Mass Spectrometer (INMS) Investigation. *Space Science Reviews*, 113–231.
- Waite, J.H., Young, D., Cravens, T.E., Coates, A.J., Crary, F.J., Magee, B., Westlake, J., 2007. The Process of Tholin Formation in Titan's Upper Atmosphere. *Science* 316, 1139–1142. doi:10.1126/science.1139727.
- Wang, Y., Olthoff, J.K., 1999. Ion energy distributions in inductively coupled radio-frequency discharges in argon, nitrogen, oxygen, chlorine, and their mixtures. *Journal of Applied Physics* 85, 6358. URL: <http://link.aip.org/link/JAPIAU/v85/i9/p6358/s1>{&Agg=doi}, doi:10.1063/1.370138.
- Wattiaux, G., Carrasco, N., Henault, M., Boufendi, L., Cernogora, G., 2015. Transient phenomena during dust formation in a N₂–CH₄ capacitively coupled plasma. *Plasma Sources Science and Technology* 24, 015028. URL: <http://stacks.iop.org/0963-0252/24/i=1/a=015028?key=crossref.c0350fef26eea5c69b4714e0fbc95b20>, doi:10.1088/0963-0252/24/1/015028.
- Westlake, J.H., Bell, J.M., Jr, J.H.W., Johnson, R.E., Luhmann, J.G., Mandt, K.E., Magee, B.A., Rymer, A.M., 2011. Titan's thermospheric response to various plasma environments 116, 1–12. doi:10.1029/2010JA016251.
- Westlake, J.H., Waite, J.H., Carrasco, N., Richard, M., Cravens, T., 2014. The role of ion-molecule reactions in the growth of heavy ions in Titan's ionosphere. *Journal of Geophysical Research: Space Physics* 119, 5951–5963. doi:10.1002/2014JA020208.
- Westlake, J.H., Waite, J.H., Mandt, K.E., Carrasco, N., Bell, J.M., Magee, B.A., Wahlund, J.E., 2012. Titan's ionospheric composition and structure: Photochemical modeling of Cassini INMS data. *Journal of Geophysical Research E: Planets* 117, 1–21. doi:10.1029/2011JE003883.
- Yelle, R.V., Vuitton, V., Lavvas, P., Klippenstein, S.J., Smith, M.a., Hörst, S.M., Cui, J., 2010. Formation of NH₃ and CH₂NH in Titan's upper atmosphere. *Faraday Discussions* 147, 31. URL: <http://xlink.rsc.org/?DOI=c004787m>, doi:10.1039/c004787m.
- Yung, Y.L., 1987. An update of nitrile photochemistry on Titan. *Icarus* 72, 468–472. doi:10.1016/0019-1035(87)

90186-2.

Yung, Y.L., Allen, M., Pinto, J., 1984. Photochemistry of the atmosphere of Titan: Comparison between model and observations. *The Astrophysical Journal* 212, 465-506.