



**HAL**  
open science

## **Fostering multidisciplinary research on interactions between chemistry, biology, and physics within the coupled cryosphere-atmosphere system**

Jennie L. Thomas, Jochen Stutz, Markus M. Frey, Thorsten Bartels-Rausch, Katye Altieri, Foteini Baladima, Jo Browse, Manuel Dall'osto, Louis Marelle, Jeremie Mouginitot, et al.

### **► To cite this version:**

Jennie L. Thomas, Jochen Stutz, Markus M. Frey, Thorsten Bartels-Rausch, Katye Altieri, et al.. Fostering multidisciplinary research on interactions between chemistry, biology, and physics within the coupled cryosphere-atmosphere system. *Elementa: Science of the Anthropocene*, 2019, 7 (1), art. 58 (16 p.). <10.1525/elementa.396>. <insu-02427862>

**HAL Id: insu-02427862**

**<https://insu.hal.science/insu-02427862v1>**

Submitted on 5 Jan 2020

HAL is a multi-disciplinary open access archive for the deposit and dissemination of scientific research documents, whether they are published or not. The documents may come from teaching and research institutions in France or abroad, or from public or private research centers.

L'archive ouverte pluridisciplinaire HAL, est destinée au dépôt et à la diffusion de documents scientifiques de niveau recherche, publiés ou non, émanant des établissements d'enseignement et de recherche français ou étrangers, des laboratoires publics ou privés.



HAL Authorization

**COMMENTARY**

# Fostering multidisciplinary research on interactions between chemistry, biology, and physics within the coupled cryosphere-atmosphere system

Jennie L. Thomas<sup>\*†</sup>, Jochen Stutz<sup>‡,§</sup>, Markus M. Frey<sup>||</sup>, Thorsten Bartels-Rausch<sup>¶</sup>, Katye Altieri<sup>\*\*</sup>, Foteini Baladima<sup>\*</sup>, Jo Browse<sup>††</sup>, Manuel Dall'Osto<sup>‡‡</sup>, Louis Marelle<sup>\*†</sup>, Jeremie Mougnot<sup>\*§§</sup>, Jennifer G. Murphy<sup>|||</sup>, Daiki Nomura<sup>¶¶,\*\*\*</sup>, Kerri A. Pratt<sup>†††,‡‡‡</sup>, Megan D. Willis<sup>§§§</sup>, Paul Zieger<sup>||||,¶¶¶</sup>, Jon Abbatt<sup>|||</sup>, Thomas A. Douglas<sup>\*\*\*\*</sup>, Maria Cristina Facchini<sup>††††</sup>, James France<sup>||,‡‡‡</sup>, Anna E. Jones<sup>||</sup>, Kitae Kim<sup>§§§§</sup>, Patricia A. Matraj<sup>|||||</sup>, V. Faye McNeill<sup>¶¶¶¶</sup>, Alfonso Saiz-Lopez<sup>\*\*\*\*\*</sup>, Paul Shepson<sup>††††,‡‡‡‡,§§§§</sup>, Nadja Steiner<sup>|||||||</sup>, Kathy S. Law<sup>†</sup>, Steve R. Arnold<sup>¶¶¶¶¶</sup>, Bruno Delille<sup>\*\*\*\*\*</sup>, Julia Schmale<sup>†††††,‡‡‡‡‡</sup>, Jeroen E. Sonke<sup>§§§§§</sup>, Aurélien Dommergue<sup>\*</sup>, Didier Voisin<sup>\*</sup>, Megan L. Melamed<sup>|||||||</sup> and Jessica Gier<sup>¶¶¶¶¶</sup>

The cryosphere, which comprises a large portion of Earth's surface, is rapidly changing as a consequence of global climate change. Ice, snow, and frozen ground in the polar and alpine regions of the planet are known to directly impact atmospheric composition, which for example is observed in the large influence of ice and snow on polar boundary layer chemistry. Atmospheric inputs to the cryosphere, including aerosols, nutrients, and contaminants, are also changing in the anthropocene thus driving cryosphere-atmosphere feedbacks whose understanding is crucial for understanding future climate. Here, we present the Cryosphere and ATmospheric Chemistry initiative (CATCH) which is focused on developing new multidisciplinary research approaches studying interactions of chemistry, biology, and physics within the coupled cryosphere – atmosphere system and their sensitivity to environmental change. We identify four key science areas: (1) micro-scale processes in snow and ice, (2) the coupled cryosphere-atmosphere system, (3) cryospheric change and feedbacks, and (4) improved decisions and stakeholder engagement. To pursue these goals CATCH will foster an international, multidisciplinary research community, shed light on new research needs, support the acquisition of new knowledge, train the next generation of leading scientists, and establish interactions between the science community and society.

**Keywords:** Cryosphere; Atmospheric chemistry; Science coordination

\* Institut des Géosciences de l'Environnement (UMR 5001), CNRS/UGA/Grenoble-INP/IRD, Grenoble, FR

† Laboratoire Atmosphères, Milieux et Observations Spatiales (LATMOS)/IPSL, Sorbonne Université, UVSQ, CNRS, Paris, FR

‡ Department of Atmospheric and Oceanic Sciences, University of California Los Angeles, Los Angeles, California, US

§ Joint Institute for Regional Earth System Science and Engineering, University of California Los Angeles, Los Angeles, California, US

|| British Antarctic Survey, Natural Environment Research Council, High Cross Madingley Road, Cambridge, UK

¶ Laboratory of Environmental Chemistry, Paul Scherrer Institut, Villigen, CH

\*\* Department of Oceanography, University of Cape Town, Cape Town, ZA

†† Centre for Geography and Environmental Science, University of Exeter, Penryn, Cornwall, UK

‡‡ Biologia Marina i Oceanografia, Institut de Ciències del Mar, CSIC, Barcelona, Catalonia, ES

§§ Department of Earth System Science, University of California, Irvine, CA, US

||| University of Toronto, Department of Chemistry, Toronto, Ontario, CA

¶¶ Faculty of Fisheries Sciences, Hokkaido University, Hakodate, JP

\*\*\* Arctic Research Center, Hokkaido University, Sapporo, JP

††† Department of Chemistry, University of Michigan, Ann Arbor, Michigan, US

‡‡‡ Department of Earth and Environmental Sciences, University of Michigan, Ann Arbor, Michigan, US

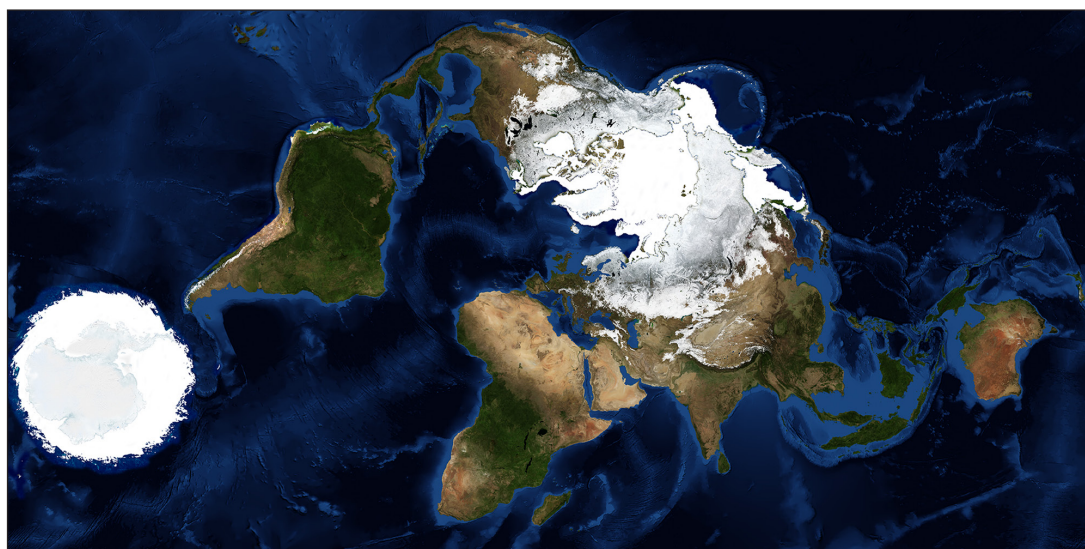
§§§ Lawrence Berkeley National Laboratory, Berkeley, California, US

## Introduction and context

A large portion of Earth's surface is covered by frozen water including seasonal snow; sea, river, and lake ice; alpine and high latitude glaciers; ice sheets and ice shelves; and permafrost. These regions are collectively referred to as the *cryosphere*. Glaciers and ice caps in polar regions and high mountains cover 10% of the land area on Earth (730,000 km<sup>2</sup>) (National Snow and Ice Data Center – a, 2019). A much larger area of 17 million to 27 million km<sup>2</sup>, equivalent to approximately 15% of the world's oceans, is covered by sea ice on average during the year (Spreen and Kern, 2017). Seasonal snow, the most dynamic single component of the cryosphere, covers up to ~20% of the Northern Hemisphere land surface (National Snow and Ice Data Center – b, 2019). In addition, permanently frozen ground (permafrost) covers a significant portion of

the Arctic as well as some parts of Antarctica and some mountains (9–12% of global land surface, Vaughan et al., 2013). The extent of snow and ice covering the Earth's surface is shown in **Figure 1**, which combines winter-time ice and snow cover in both the Southern and Northern Hemisphere. Finally, the atmosphere contains ice particles in clouds and fog, which are chemically and physically similar to snow and ice at the Earth's surface (e.g. Bartels-Rausch et al., 2014).

The cryosphere is rapidly changing as a consequence of global and regional climate change (Vaughan et al., 2013). Both the spatial extent and thickness of Arctic sea ice has drastically declined in the past 40 years. The large polar ice sheets and lower-latitude glaciers are losing mass at unprecedented rates (Vaughan et al., 2013). The spatial extent and duration of seasonal snow cover in the Arctic



**Figure 1:** Map of snow and ice covered surfaces (white) on Earth during Northern and Southern Hemisphere winters combined from NASA's Blue Marble collection, with Northern Hemisphere sea ice extent from the National Snow and Ice Data center. The map projection is described in Grieger (2019), which shows Antarctica and the Arctic region with only small spatial distortions. DOI: <https://doi.org/10.1525/elementa.396.f1>

|||| Department of Environmental Science and Analytical Chemistry, Stockholm University, Stockholm, SE

||||| Bolin Centre for Climate Research, Stockholm University, Stockholm, SE

\*\*\*\* U.S. Army Cold Regions Research & Engineering Laboratory, Fort Wainwright, Alaska, US

||||| Institute of Atmospheric Sciences and Climate – National Research Council (ISAC-CNR), Bologna, IT

\*\*\*\* Department of Earth Sciences, Royal Holloway University of London, Egham, UK

ssss Korea Polar Research Institute, Incheon, KR

||||| Bigelow Laboratory for Ocean Sciences, Boothbay, Maine, US

||||| Department of Chemical Engineering, Columbia University, New York, US

\*\*\*\* Department of Atmospheric Chemistry and Climate, Institute of Physical Chemistry Rocasolano, CSIC, Madrid, ES

||||| Department of Chemistry, Purdue University, West Lafayette, Indiana, US

\*\*\*\* Department of Earth, Atmospheric, and Planetary Sciences,

Purdue University, West Lafayette, Indiana, US

ssss School of Marine and Atmospheric Sciences, Stony Brook University, Stony Brook, New York, US

||||| Institute of Ocean Sciences, Department of Fisheries and Ocean Canada, Sidney, British Columbia, CA

||||| Institute for Climate and Atmospheric Science, School of Earth and Environment, University of Leeds, Leeds, UK

\*\*\*\* Unité d'Océanographie Chimique, Université de Liège, Liège, BE

||||| Laboratory of Atmospheric Chemistry, Paul Scherrer Institute, Villigen, CH

||||| School of Architecture, Civil and Environmental Engineering, École Polytechnique Fédérale de Lausanne, Lausanne, CH

ssss Geosciences Environnement Toulouse, CNRS/OMP/Université de Toulouse, Toulouse, FR

||||| IGAC, University of Colorado/CIRES, Boulder, Colorado, US

||||| SOLAS, GEOMAR Helmholtz Centre for Ocean Research Kiel, Kiel, DE

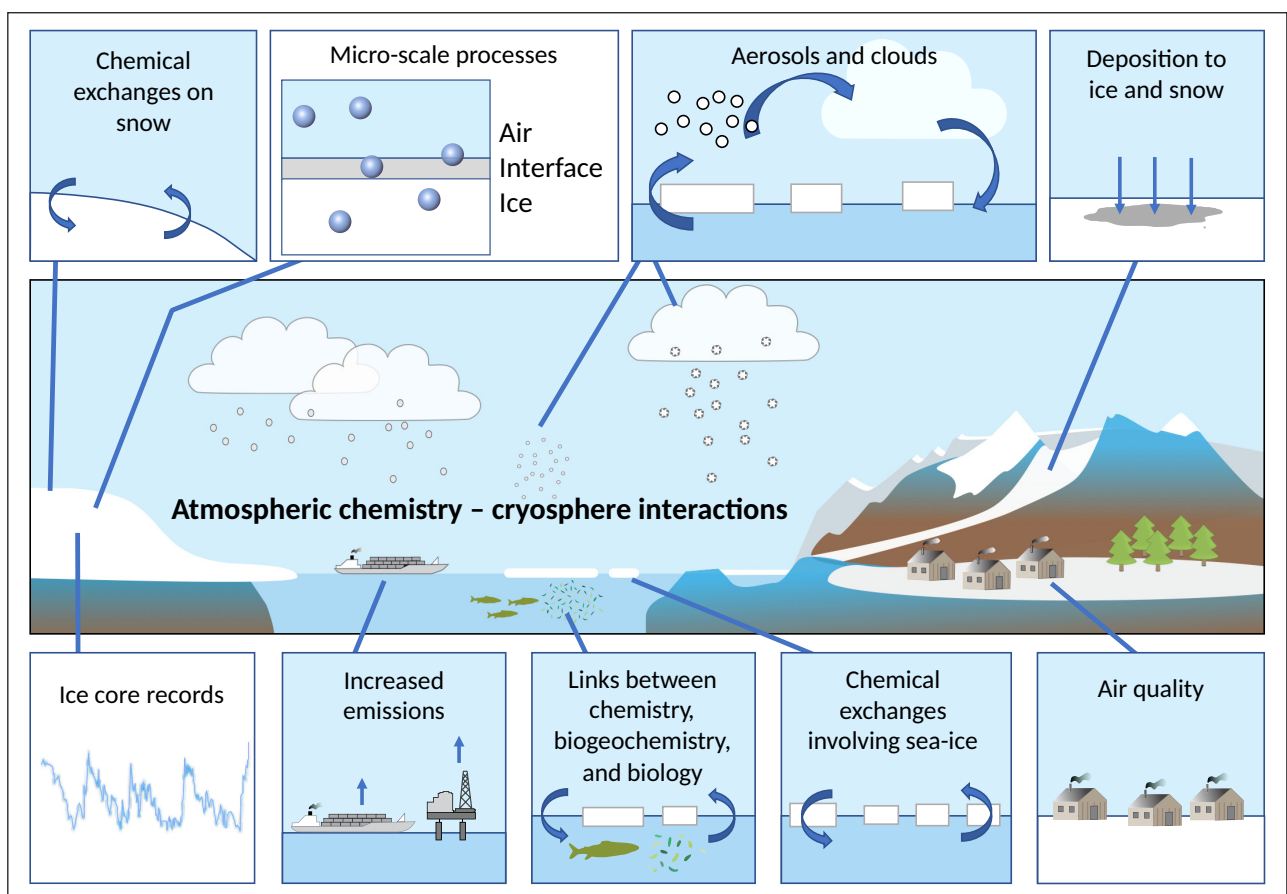
Corresponding author: Jennie L. Thomas (jennie.thomas@univ-grenoble-alpes.fr)

and mountain regions is also substantially declining (e.g. Bormann et al., 2018). These changes are expected to continue in the next decades, with important implications for the physics, chemistry, and biology of the coupled cryosphere-atmosphere system.

Over the past decades, many chemical and physical processes that link the cryosphere and atmosphere in the Arctic, Antarctica, high latitude oceans, and low-latitude mountain regions (shown as white in **Figure 1**) have been identified (e.g. Dominé and Shepson, 2002; Grannas et al., 2007; Vancoppenolle et al., 2013; Gabric et al., 2018; Abbatt et al., 2019). **Figure 2** summarizes a range of ways in which the atmosphere, cryosphere, and polar oceans are interconnected through chemical, biological, and physical processes. For example, deposition of both natural and anthropogenic aerosols formed locally or transported from distant biomass burning, industrial, and dust emissions impact the cryosphere by introducing light absorbing impurities, nutrients, and toxic contaminants to snow, sea ice, glaciers, and ice sheets. The extent of the Earth's surface potentially impacted by these processes is highlighted in white in **Figure 1**. Transport in the atmosphere within meteorological systems determines the vertical distribution of gases and aerosols as well as wet and dry removal rates (Monks et al., 2015; Eckhardt et al., 2015; Qi et al., 2017). The presence of snow and ice also profoundly modifies atmospheric boundary layer

dynamics (Anderson and Neff, 2008), including surface inversions and stable layers (e.g. Mayfield and Fochesatto, 2012) that can trap any emitted chemical species near the surface. Ice and snow have important roles in determining both local and large-scale atmospheric circulation as well as climate processes through a complicated chain of large-scale feedbacks. There is also a need to understand spatial and temporal heterogeneity using observations and process studies in order to upscale knowledge to the regional and global scale. Therefore, atmospheric chemistry and dynamics, and their uncertainties, are inherently coupled at the surface.

Biological and (photo)chemical processes in snow, sea ice, and polar oceans emit gases and aerosols that influence the cloud life cycle, the lifetime of greenhouse gases (such as CH<sub>4</sub>) and atmospheric pollutants, as well as the radiative budget (e.g. Levasseur et al., 1994; Leck and Bigg, 2005; Grannas et al., 2007; Chang et al., 2011; Orellana et al., 2011; McNeill et al., 2012; Sipila et al., 2016; Giamarelou et al., 2016; Mungall et al., 2016; Kim et al., 2017; Park et al., 2017; Abbatt et al., 2019). A warming cryosphere with large ice losses will also alter sea ice ecosystems with poorly known impacts on food webs (Tedesco et al., 2019), air-ice chemical exchange fluxes, and ultimately climate. These interactions represent multiple coupled systems that connect the atmosphere and cryosphere throughout the globe from the most remote areas, such as Antarctica



**Figure 2:** Schematic of selected cryosphere-atmosphere interactions relevant to understanding current, past, and future atmospheric composition and feedbacks including processes involving the polar oceans, snow, biology, biogeochemistry, and physics. DOI: <https://doi.org/10.1525/elementa.396.f2>

and the high Arctic, to polluted urban/industrial regions. These are only a few examples of the many ways that atmospheric composition is fundamentally linked to the cryosphere. Human-caused environmental change and activities are already influencing these coupled systems in snow and ice dominated environments through ice and snow loss as well as through increasing anthropogenic inputs to snow/ice covered regions.

The intrinsically interconnected chemical, physical, and biological processes involving the atmosphere and cryosphere create a complex multi-scale, multi-compartment system that is currently not well understood. Knowledge gaps remain that limit our ability to develop accurate models at process, regional, and global scales (for example as discussed in Thomas et al., 2011; Domine et al., 2013; Grannas et al., 2013; Bartels-Rausch et al., 2014; Toyota et al., 2014; Murray et al., 2015; Steiner et al., 2016; Bock et al., 2016; Falk and Sinnhuber, 2018). This limited knowledge also impacts our understanding of ice core records as a critical tool to determine past atmospheric composition (recent examples: Kunasek et al., 2010; Wolff et al., 2010; Yeung et al., 2019). Most importantly, we lack the knowledge to extrapolate our knowledge of atmospheric composition-cryosphere interactions to make short and long-term projections.

To foster a multidisciplinary international community we have established the Cryosphere and ATmospheric CHEMistry (CATCH) initiative. The central focus of CATCH is **to understand the fundamental interactions within the coupled cryosphere-atmosphere chemical system and the two way connections with environmental change**. We have identified four themes as part of CATCH, which together provide a framework for understanding these interlinked systems.

### 1. Micro-scale processes on snow and ice

Chemical transformations on ice are known to have widespread impacts on atmospheric composition. However, at present the nature of cryospheric chemistry and physics at the molecular level are poorly understood (Abbatt et al., 2014; Burkholder et al., 2017). For example, the distribution and migration of chemicals in snow and ice reservoirs such as: brine, dissolved impurities, crystalline deposits, and aerosol deposits are still largely unknown (Obbard et al., 2009; Hullar and Anastasio, 2016; Morenz and Donaldson, 2017; Eichler et al., 2017). There are major uncertainties in our fundamental understanding of cryospheric chemical mechanisms and kinetics under a wide variety of environmental conditions. Of particular significance is chemistry at the surface of ice and snow that is in contact with the surrounding air, because it is at this air-ice interface where the exchange of chemicals takes place (Kahan and Donaldson, 2008; Ye et al., 2016; McFall et al., 2018; Hullar et al., 2018). Properties of ice surfaces, such as acidity, are important to understand many chemical processes that are currently uncertain (e.g. Abbatt et al., 2012; Wren and Donaldson, 2012; Krepelova et al., 2013; Kong et al. 2017).

Laboratory studies using advanced analytical techniques can provide unique insights into these processes (e.g. Ammann et al., 2018). For example, identification of the

location of chemicals in the complex multi-phase system of environmental ice and snow (Grannas et al., 2007; Bartels-Rausch et al., 2014) would considerably advance our ability to describe the system at a micro-scale level. Improved understanding of the chemical reactions, combined with existing knowledge, would allow for better quantitative descriptions of the evolution of the system with time. Translating this micro-scale knowledge to improved modeling capabilities is essential for determining how the cryosphere impacts atmospheric chemistry on longer time scales. To accomplish this, we need to develop models at different scales, including small scale models that are fully explicit and larger scale models that include simplified descriptions or parameterizations of the underlying micro-scale chemical and physical processes occurring.

### 2. The coupled cryosphere-atmosphere system

(Photo)chemical and biological processing of trace species (defined as gases and aerosols) occur simultaneously in the atmosphere, ocean, and ice/snow. This, together with synoptic scale meteorology, small scale atmospheric mixing, as well as ice/snow physical processes, creates a complex interconnected system (e.g. Dominé and Shepson, 2002). While we have a basic understanding of some processes, full system understanding has been elusive. It is now clear that (photo-)chemistry in and on the snow-pack plays an active role in atmospheric chemistry (Grannas et al., 2007). Unequivocal evidence for some of these processes come from direct observations of active chemistry in snowpack interstitial air (Van Dam et al., 2015) and fluxes of reactive nitrogen (Honrath et al., 1999; Jones et al., 2001; Frey et al., 2015), halogen species (Simpson et al., 2007; Saiz-Lopez et al., 2007; Abbatt et al., 2012; Pratt et al., 2013; Raso et al., 2017), and other species (Erbland et al., 2013; Hutterli et al., 2001). Emissions of halogen species from snow and ice lead to well-known polar ozone and mercury depletion events (Barrie et al., 1988; Steffen et al., 2008; Oltmans et al., 2012; Helmig et al., 2012), significantly altering atmospheric chemistry. In contrast, snow emissions of reactive nitrogen in the Antarctic lead to episodic ozone production (Jones et al., 2000; Crawford et al., 2001; Helmig et al., 2008).

Transport processes that connect the various compartments (ocean, snow, ice, atmosphere, etc.) to each other and as well as transport within compartments require further study. Knowledge gaps in our understanding of surface-atmosphere exchange processes, boundary layers over snow/ice, synoptic scale meteorology, and snow/ice/ocean physics lead to uncertainties in our understanding of chemical cycling. For example, the presence of open leads (large fractures exposing open water within sea ice) is known to directly influence both atmospheric mercury and ozone depletion events (Moore et al., 2014). Cryospheric processes also impact the lifetime of atmospheric mercury, by emitting species that convert elemental mercury to more reactive forms that are readily deposited to the cryosphere and oceans (Angot et al., 2016). Another example involves the role of solar radiation in determining photochemistry and oxidation processes, which is often influenced by the presence of clouds.

Accurate quantitative, and in cases qualitative, descriptions of many coupled cryosphere-atmosphere chemical processes have still not been achieved. Often, the controlling processes, such as emissions, recycling on surfaces, replenishment of reactive species from aloft, and the relationship with the physical and chemical state cryosphere are still not fully understood. This is due to uncertain micro-scale processes (see section 1) as well as lack of knowledge of transport of chemical species between the atmosphere, oceans, and snow/ice via both deposition (Petroff and Zhang, 2010) and wind-driven transport (Domine et al., 2004; Huwald et al., 2012). We also highlight that there is very limited knowledge of the chemical processes occurring during polar night, hindering understanding during this season (Jones et al., 2014; Abrahamsson et al., 2018; Simpson et al., 2018).

Biological activity in snow, sea ice, and oceans releases atmospheric sulfur, volatile organic species, sea-spray (containing organics and inorganic salts), and other aerosols (see recent examples in Salter et al., 2016; Willis et al., 2017; Mungall et al., 2017; Steiner and Stefels, 2017; Burkart et al., 2017; Willis et al., 2018; Gilgen et al., 2018; Giordano et al., 2018; Abbatt et al., 2019; Frey et al., 2019; Wex et al., 2019). Once in the atmosphere, aerosols in the polar regions participate in reactive atmospheric chemistry through, for example, uptake of gases and heterogeneous chemical transformations (Thomas et al., 2011, 2012; Peterson et al., 2017; Giordano et al., 2018; Yang et al., 2019; Frey et al., 2019). Snow also hosts microorganisms that participate in coupled atmosphere-cryosphere reactive nitrogen cycling (Amoroso et al., 2010; Larose et al., 2013). Aerosols are clearly linked with clouds and precipitation, but the sources and impacts of aerosols that act as cloud condensation nuclei (CCN) and ice nucleating particles (INP) at high latitudes and altitudes remain poorly understood (e.g. Orellana et al., 2011; Leck and Svensson, 2015; Croft et al., 2016; Burkart et al., 2017; Willis et al., 2017; Irish et al., 2019; McCluskey et al., 2018; Creamean et al., 2018; Si et al., 2019; Schmale et al., 2019). In the Southern Hemisphere (including the Antarctic region) models have a significant sea surface temperature warm bias caused by poor predictions of clouds (Hyder et al., 2018), which is in part due to lacking knowledge of aerosol sources and their impacts on clouds over the Southern Ocean. Many additional interconnected processes have been proposed and more are likely active, but we still lack the ability to quantify combined cryosphere-atmosphere chemistry, transport, and radiation interactions. A full understanding of the cryosphere-atmosphere system requires a multidisciplinary approach that considers the full complexity of these interconnected physical, chemical, and biological processes.

### 3. Cryospheric change and feedbacks

The cryosphere is one of the most rapidly changing domains within the Earth system. Consequently, we expect major changes in cryosphere-atmosphere interactions (Miller et al., 2019; Boy et al., 2019, and references therein). Sea ice decline defines the Arctic, including a shift to younger, thinner, and more widespread first-year

sea ice (Stroeve et al., 2012; Meier et al., 2014; Lindsay and Schweiger, 2015; Granskog et al., 2018), more similar to Antarctic ice conditions. The increased first year sea ice fraction is thinner, more dynamic, and is associated with more open leads and greater surface water exposure. This, in turn, means future Arctic sea ice will provide more saline surfaces to promote lower atmospheric and snow/ice surface chemical reactions (Douglas et al., 2017, and references therein). Even the Antarctic, which has had stable or growing sea ice for decades, experienced the smallest observed sea ice extent ever recorded in 2017 (Turner and Comiso, 2017). The effects of sea ice loss on atmospheric composition including gas, aerosol, clouds, and elemental exchanges between the ocean and atmosphere are uncertain. For example, recent evidence demonstrates that more open water due to reduced sea ice may result in increasing sources of climate relevant aerosols and aerosol precursors (e.g. Heintzenberg et al., 2015; Dall'Osto et al., 2017, 2018; Mungall et al., 2017).

Understanding the potential impacts of sea ice change on cloud properties is currently limited by uncertainties in the relationship between sea ice and aerosol (CCN and INP), including disagreement in both the sign and magnitude of possible feedbacks (Struthers et al., 2011; Mauritsen et al., 2011; Liu et al., 2012; Browse et al., 2014; Gilgen et al., 2018; Morrison et al., 2018). Changing sea ice conditions may influence under-ice, ice, and ocean ecology (i.e. phenology, biomass, and community structure, see for example Yool et al. (2015); Assmy et al. (2017); Granskog et al. (2018)), with implications for emissions to the atmosphere and the fate of contaminants in the polar oceans. First year sea ice and snow on top of it are more saline than multi year sea ice, with implications for chemical air-snow exchanges. Deposition of atmospheric aerosols to snow and ice can trigger albedo reductions and feedbacks that accelerate snowmelt (Skiles et al., 2018). Deposited aerosols and gases provide nutrients to feed snow microbial communities that may further reduce snow albedo (Benning et al., 2014; Nicholes et al., 2019). Warmer temperatures, more frequent rain events, and shorter snow seasons also influence the composition, morphology, and optical properties of snow and influence the role of snow in the climate system. Knowledge of processes that link the atmosphere (aerosols, clouds, contaminants, nutrients) to the changing cryosphere must be established in order to quantify and predict atmospheric inputs to changing glaciers, ice, and snowpacks. Changing large-scale atmospheric dynamics and atmospheric boundary layers (e.g. Graham et al., 2019) are important because they influence chemical emissions, atmospheric processing, and the fate of gases and aerosols. Understanding these links is also key for establishing the relationships between the cryosphere and atmospheric chemistry via ice core records, for example for establishing past tropospheric ozone concentrations (Yeung et al., 2019). The interconnections between climate change, changing temperatures, sea ice and snow properties, chemical and biological processes, and the composition of the overlying atmosphere must be explored to fully understand how this coupled system will evolve in the coming decades and beyond.

#### 4. Improved decisions and stakeholder engagement

Future changes in the physics, chemistry, and biology of the cryosphere also must be viewed in the context of human activities, decisions, and policies. There are many local and regional examples of human activities impacting the cryosphere-atmosphere system that are resulting in unique processes we are only now beginning to understand. One example is the observation that the presence of snow amplifies the negative effects of emissions from oil and gas extraction activities, leading to ozone levels comparable to those in some of the most polluted cities in summer (Edwards et al., 2014). It is also increasingly recognized that human populations living in high-latitude cities face the highest pollution levels during winter, when the complex interplay between human emissions, boundary layer meteorology over snow, and chemistry in the presence of snow and ice lead to a unique, but thus far poorly understood, urban air quality problem (Ariya et al., 2018). Anthropogenic activities will also increase in newly ice/snow free regions including: ship traffic, exploration of natural resources, and associated human population changes (Schmale et al., 2018; Arnold et al., 2016). Climate adaptation and mitigation strategies will influence these coupled systems by protecting ice in the environment or by further causing anthropogenic cryospheric change.

It is well known that persistent organic pollutants and mercury are present at toxic levels in polar biota, despite the limited local anthropogenic emission sources (e.g. Campbell et al., 2005; Braune et al., 2005; Dietz et al., 2009; Letcher et al., 2010; Fort et al., 2016). These pollutants are known to bioaccumulate in food webs, negatively impacting humans, especially in the Arctic region. There is also ongoing debate regarding the role of the oceans, tundra, and snow cover in controlling emissions, deposition, and methylation of toxic mercury within the Arctic (Heimbürger et al., 2015; Obrist et al., 2017; Douglas et al., 2017; Sonke et al., 2018; Douglas and Blum, 2019). There are many outstanding questions as to how these contaminant cycles will be impacted by climate change (Stern et al., 2012). Atmospheric contaminants deposited to glaciers, ice, and snow (discussed in Sections 2 and 3) may also negatively influence downstream water quality and influence nutrient availability upon melting (e.g. Kwok et al., 2013; Douglas et al., 2017; Bourgeois et al., 2018).

Despite progress in the last decades, at present links between atmospheric processes (aerosols, clouds, etc.) tied to cryospheric change poses a challenge in understanding, projecting, and managing environmental change. Shortcomings in knowledge of the aerosol and cloud life-cycles also influence our ability to understand and predict precipitation, which is important for the livelihood of local and indigenous populations. Specifically, the fraction of wet to dry precipitation in the Arctic is projected to increase as the summer season lengthens (Bintanja and Andry, 2017). Establishing the natural background atmospheric composition and its link to cryospheric change is needed to provide a baseline to understand the influence of anthropogenic pollution and to evaluate the effectiveness of climate and air quality protection policy options.

National and international environmental legislation consistent with scientific recommendations are needed including: emission rules for ships, laws for mineral extraction including oil drilling, and plans for urbanization. Diverse stakeholders impacted by these decisions must be included in the scientific process to make this possible. In addition, research on the future state of the cryosphere and atmosphere must also consider the ongoing social and economic changes in these areas, such as environmental policies regulating emissions from shipping, mining and urbanization. This requires close collaborations among people with diverse backgrounds to optimize environmental management strategies that protect ecosystems, humans, and the natural environment.

#### The CATCH initiative

In order to develop transformational understanding, CATCH aims to support and develop research and outreach activities that focus on the interconnected and multidisciplinary cryosphere-atmosphere system.

#### *Fostering an international, multidisciplinary research community*

CATCH aims to foster a community that brings together scientific disciplines to address the research challenges detailed in Sections 1–4. We aim to connect researchers from atmospheric chemistry, cryospheric sciences, oceanography, marine biology/biogeochemistry, atmospheric sciences (including meteorology and climate science), and other disciplines to address these research problems together. CATCH supports this goal by hosting and participating in workshops, conferences, and informal meetings as well as establishing a culture of multidisciplinary research. CATCH supports the creation of international, multidisciplinary and transdisciplinary teams that collaboratively address science, society, and stakeholder needs.

#### *Developing knowledge*

CATCH develops and supports new and existing projects that simultaneously characterize system behavior including the physical, chemical, biological, and biogeochemical state of the atmosphere and the changing cryosphere. Process understanding is needed at molecular to global scales and from microsecond to greater than 100 year time scales. Of particular interest is linking knowledge of micro-scale processes (lab and theoretical studies) to understanding of processes occurring at larger scales. CATCH will contribute to the development of new observational technologies, harmonizing existing experimental techniques in the lab and field, and support the development/linking of multidisciplinary datasets. CATCH will contribute to the development of models at different temporal and spatial scales, including detailed regional/process models and improved descriptions of cryosphere-atmosphere processes in global scale Earth System Models.

#### *Shedding light on research needs*

Now is a critical moment to support integrating the expertise from disparate science communities to achieve a step change in understanding of the cryosphere-atmosphere system.

phere system. The CATCH community will work together to identify overarching research needs and communicate those to the research community, stakeholders, and funding agencies. Through developing the cryosphere-atmosphere community, CATCH will aid in identifying current gaps in funding streams that inhibit research progress.

#### **Training the next generation of leading scientists**

CATCH scientists aim to engage, mentor, and train the next generation of diverse scientists including researchers in scientifically emerging countries by integrating Early Career Researchers (ECR) into all levels of CATCH activities. This will be accomplished by training ECRs as part of interdisciplinary research projects, helping to develop scientists that naturally cross traditional disciplinary boundaries. In addition, CATCH will offer both formal and informal training opportunities to scientists from all career levels.

#### **Societal impacts**

CATCH will foster interactions between the science community and society through science communication including cross-disciplinary dialogues and public engagement. We will address these issues together with existing science communities, including *air Pollution in the Arctic: Climate, Environment and Societies* (PACES, pacesproject.org) and *Biogeochemical exchanges at Sea Ice Interfaces* (BEPSII, bepsii.org), who have also recognized the importance of many of these issues. CATCH encourages researchers to engage stakeholders impacted by the coupled cryosphere-atmosphere system in order to deliver the knowledge needed for effective environmental management.

In summary, the main objective of CATCH is to understand the fundamental principles of the interlinked cryosphere-atmosphere composition system with the goal to better describe its behavior under continued global change. To find out more about CATCH and our sponsors, we encourage members of the scientific community to visit our website [catchscience.org](http://catchscience.org) and contribute to achieving the CATCH goals. Researchers from diverse backgrounds are welcome to join the mailing list, participate in our meetings and workshops, and to help build the CATCH initiative. It is through engagement and participation of scientists and stakeholders that we can unite disparate research communities, develop knowledge, identify outstanding research needs, train new scientists, engage society, and understand the societal relevance of the atmosphere-cryosphere system.

#### **Acknowledgements**

We also thank Cort Anastasio and Lisa Miller (SOLAS chair) for their contribution to developing the CATCH initiative. We also thank Samuël Weber for editing Figure 2.

#### **Funding information**

CATCH is sponsored by the International Global Atmospheric Chemistry (IGAC) project [igacproject.org](http://igacproject.org), the International Surface Ocean – Lower Atmosphere Study

(SOLAS) project [solas-int.org](http://solas-int.org), and the International Arctic Science Committee (IASC, [iasc.info](http://iasc.info)). Support for CATCH activities has been provided by the French Chantier Arctique Project Pollution in the Arctic System (PARCS). This work was supported by the H2020 ERA-PLANET (689443) iCUPE project.

#### **Competing interests**

The authors have no competing interests to declare.

#### **Author contributions**

JLT, JPS, TBR, and MF wrote the manuscript. JM prepared Figure 1. JLT, JPS, TBR, and LM prepared Figure 2. All co-authors contributed to drafting manuscript text, developing CATCH, and editing the manuscript.

#### **References**

- Abbatt, JPD, George, C, Melamed, M, Monks, PS, Pandis, SN and Rudich, Y.** 2014. New directions: Fundamentals of atmospheric chemistry: Keeping a three-legged stool balanced. *Atmos Environ* **84**: 390–391. DOI: <https://doi.org/10.1016/j.atmosenv.2013.10.025>
- Abbatt, JPD, Leaitch, WR, Aliabadi, AA, Bertram, AK, Blanchet, JP, Boivin-Rioux, A, Bozem, H, Burkart, J, Chang, RYW, Charette, J, Chaubey, JP, Christensen, RJ, Cirisan, A, Collins, DB, Croft, B, Dionne, J, Evans, GJ, Fletcher, CG, Galí, M, Ghahremaninezhad, R, Girard, E, Gong, W, Gosselin, M, Gourdal, M, Hanna, SJ, Hayashida, H, Herber, AB, Hesaraki, S, Hoor, P, Huang, L, Hussherr, R, Irish, VE, Keita, SA, Kodros, JK, Köllner, F, Kolonjari, F, Kunkel, D, Ladino, LA, Law, K, Lévassieur, M, Libois, Q, Liggio, J, Lizotte, M, Macdonald, KM, Mahmood, R, Martin, RV, Mason, RH, Miller, LA, Moravek, A, Mortenson, E, Mungall, EL, Murphy, JG, Namazi, M, Norman, AL, O'Neill, NT, Pierce, JR, Russell, LM, Schneider, J, Schulz, H, Sharma, S, Si, M, Staebler, RM, Steiner, NS, Thomas, JL, von Salzen, K, Wentzell, JJB, Willis, MD, Wentworth, GR, Xu, JW and Yakobi-Hancock, JD.** 2019. Overview paper: New insights into aerosol and climate in the Arctic. *Atmos Chem Phys* **19**(4): 2527–2560. <https://www.atmos-chem-phys.net/19/2527/2019/>. DOI: <https://doi.org/10.5194/acp-19-2527-2019>
- Abbatt, JPD, Thomas, JL, Abrahamsson, K, Boxe C, Granfors, A, Jones, AE, King, MD, Saiz-Lopez, A, Shepson, PB, Sodeau, J, Toohey, DW, Toubin, C, von Glasow, R, Wren, SN and Yang, X.** 2012. Halogen activation via interactions with environmental ice and snow in the polar lower troposphere and other regions. *Atmos Chem Phys* **12**(14): 6237–6271. <https://www.atmos-chem-phys.net/12/6237/2012/>. DOI: <https://doi.org/10.5194/acp-12-6237-2012>
- Abrahamsson, K, Granfors, A, Ahnoff, M, Cuevas, CA and Saiz-Lopez, A.** 2018. Organic bromine compounds produced in sea ice in Antarctic winter. *Nat Commun* **9**(1): 5291. DOI: <https://doi.org/10.1038/s41467-018-07062-8>

- Ammann, M, Artiglia, L, Bartels-Rausch, T, Faust, JA and House, JE.** 2018. in *Chapter 6 – X-Ray Excited Electron Spectroscopy to Study Gas–Liquid Interfaces of Atmospheric Relevance*, 135–166. Elsevier. ISBN 978-0-12-813641-6. <http://www.sciencedirect.com/science/article/pii/B9780128136416000066>. DOI: <https://doi.org/10.1016/B978-0-12-813641-6.00006-6>
- Amoroso, A, Domine, F, Esposito, G, Morin, S, Savarino, J, Nardino, M, Montagnoli, M, Bonneville, JM, Clement, JC, Ianniello, A and Beine, HJ.** 2010. Microorganisms in Dry Polar Snow Are Involved in the Exchanges of Reactive Nitrogen Species with the Atmosphere. *Environ Sci Technol* **44**(2): 714–719. PMID: 20000750. DOI: <https://doi.org/10.1021/es9027309>
- Anderson, P and Neff, W.** 2008. Boundary layer physics over snow and ice. *Atmos Chem Phys* **8**(13): 3563–3582. <https://www.atmos-chem-phys.net/8/3563/2008/>. DOI: <https://doi.org/10.5194/acp-8-3563-2008>
- Angot, H, Dastoor, A, De Simone, F, Gårdfeldt, K, Gencarelli, CN, Hedgecock, IM, Langer, S, Magand, O, Mastromonaco, MN, Nordstrøm, C, Pfaffhuber, KA, Pirrone, N, Ryjkov, A, Selin, NE, Skov, H, Song, S, Sprovieri, F, Steffen, A, Toyota, K, Travnikov, O, Yang, X and Dommergue, A.** 2016. Chemical cycling and deposition of atmospheric mercury in polar regions: review of recent measurements and comparison with models. *Atmos Chem Phys* **16**(16): 10735–10763. <https://www.atmos-chem-phys.net/16/10735/2016/>. DOI: <https://doi.org/10.5194/acp-16-10735-2016>
- Ariya, PA, Dastoor, A, Nazarenko, Y and Amyot, M.** 2018. Do snow and ice alter urban air quality? *Atmos Env* **186**: 266–268. DOI: <https://doi.org/10.1016/j.atmosenv.2018.05.028>
- Arnold, SR, Law, KS, Brock, CA, Thomas, JL, Starkweather, SM, von Salzen, K, Stohl, A, Sharma, S, Lund, MT, Flanner, MG, Petäjä, T, Tanimoto, H, Gamble, J, Dibb, JE, Melamed, M, Johnson, N, Fidel, M, Tynkkynen, V-P, Baklanov, A, Eckhardt, S, Monks, SA, Browse, J and Bozem, H.** 2016. Arctic air pollution: Challenges and opportunities for the next decade. *Elementa*. DOI: <https://doi.org/10.12952/journal.elementa.000104>
- Assmy, P, Fernández-Méndez, M, Duarte, P, Meyer, A, Randelhoff, A, Mundy, CJ, Olsen, LM, Kauko, HM, Bailey, A, Chierici, M, Cohen, L, Doulgeris, AP, Ehn, JK, Fransson, A, Gerland, S, Hop, H, Hudson, SR, Hughes, N, Itkin, P, Johnsen, G, King, JA, Koch, BP, Koenig, Z, Kwasniewski, S, Laney, SR, Nicolaus, M, Pavlov, AK, Polashenski, CM, Provost, C, Rösel, A, Sandbu, M, Spreen, G, Smedsrud, LH, Sundfjord, A, Taskjelle, T, Tatarek, A, Wiktor, J, Wagner, PM, Wold, A, Steen, H and Granskog, MA.** 2017. Leads in Arctic pack ice enable early phytoplankton blooms below snow-covered sea ice. *Sci Rep* **7**: 40850. DOI: <https://doi.org/10.1038/srep40850>
- Barrie, LA, Bottenheim, JW, Schnell, RC, Crutzen, PJ and Rasmussen, RA.** 1988. Ozone destruction and photochemical reactions at polar sunrise in the lower Arctic atmosphere. *Nature* **334**(6178): 138–141. DOI: <https://doi.org/10.1038/334138a0>
- Bartels-Rausch, T, Jacobi, HW, Kahan, TF, Thomas, JL, Thomson, ES, Abbatt, JPD, Ammann, M, Blackford, JR, Bluhm, H, Boxe, C, Domine, F, Frey, MM, Gladich, I, Guzmán, MI, Heger, D, Huthwelker, T, Klán, P, Kuhs, WF, Kuo, MH, Maus, S, Moussa, SG, McNeill, VF, Newberg, JT, Pettersson, JBC, Roeselová, M and Sodeau, JR.** 2014. A review of air-ice chemical and physical interactions (AICI): liquids, quasi-liquids, and solids in snow. *Atmos Chem Phys* **14**(3): 1587–1633. <https://www.atmos-chem-phys.net/14/1587/2014/>. DOI: <https://doi.org/10.5194/acp-14-1587-2014>
- Benning, LG, Anesio, AM, Lutz, S and Tranter, M.** 2014. Biological impact on Greenland's albedo. *Nat Geosci* **7**(10): 691–691. DOI: <https://doi.org/10.1038/ngeo2260>
- Bintanja, R and Andry, O.** 2017. Towards a rain-dominated Arctic. *Nat Clim Change* **7**: 263. DOI: <https://doi.org/10.1038/nclimate3240>
- Bock, J, Savarino, J and Picard, G.** 2016. Air–snow exchange of nitrate: A modelling approach to investigate physicochemical processes in surface snow at Dome C, Antarctica. *Atmos Chem Phys* **16**(19): 12531–12550. <https://www.atmos-chem-phys.net/16/12531/2016/>. DOI: <https://doi.org/10.5194/acp-16-12531-2016>
- Bormann, KJ, Brown, RD, Derksen, C and Painter, TH.** 2018. Estimating snow-cover trends from space. *Nat Clim Change* **8**(11): 924–928. DOI: <https://doi.org/10.1038/s41558-018-0318-3>
- Bourgeois, I, Savarino, J, Caillon, N, Angot, H, Barbero, A, Delbart, F, Voisin, D and Clément, JC.** 2018. Tracing the Fate of Atmospheric Nitrate in a Subalpine Watershed Using  $\Delta^{17}\text{O}$ . *Environ Sci Technol* **52**(10): 5561–5570. DOI: <https://doi.org/10.1021/acs.est.7b02395>
- Boy, M, Thomson, ES, Acosta Navarro, JC, Arnalds, O, Batchvarova, E, Bäck, J, Berninger, F, Bilde, M, Brasseur, Z, Dagsson-Waldhauserova, P, Castarède, D, Dalirian, M, de Leeuw, G, Dragosics, M, Duplissy, EM, Duplissy, J, Ekman, AML, Fang, K, Gallet, JC, Glasius, M, Gryning, SE, Grythe, H, Hansson, HC, Hansson, M, Isaksson, E, Iversen, T, Jonsdottir, I, Kasurinen, V, Kirkevåg, A, Korhola, A, Krejci, R, Kristjansson, JE, Lappalainen, HK, Lauri, A, Leppäranta, M, Lihavainen, H, Makkonen, R, Massling, A, Meinander, O, Nilsson, ED, Olafsson, H, Pettersson, JBC, Prisle, NL, Riipinen, I, Roldin, P, Ruppel, M, Salter, M, Sand, M, Seland, Ø, Seppä, H, Skov, H, Soares, J, Stohl, A, Ström, J, Svensson, J, Swietlicki, E, Tabakova, K, Thorsteinsson, T, Virkkula, A, Weyhenmeyer, GA, Wu, Y, Zieger, P and Kulmala, M.** 2019. Interactions between the atmosphere, cryosphere, and ecosystems at northern high latitudes. *Atmos Chem Phys*

- 19(3): 2015–2061. <https://www.atmos-chem-phys.net/19/2015/2019/>. DOI: <https://doi.org/10.5194/acp-19-2015-2019>
- Braune, BM, Outridge, PM, Fisk, AT, Muir, DCG, Helm, PA, Hobbs, K, Hoekstra, PF, Kuzyk, ZA, Kwan, M, Letcher, RJ, Lockhart, WL, Norstrom, RJ, Stern, GA and Stirling, I.** 2005. Persistent organic pollutants and mercury in marine biota of the Canadian Arctic: An overview of spatial and temporal trends. *Sci Total Environ* **351–352**: 4–56. <http://www.sciencedirect.com/science/article/pii/S0048969705004389>. DOI: <https://doi.org/10.1016/j.scitotenv.2004.10.034>
- Browse, J, Carslaw, KS, Mann, GW, Birch, CE, Arnold, SR and Leck, C.** 2014. The complex response of Arctic aerosol to sea-ice retreat. *Atmos Chem Phys* **14**(14): 7543–7557. <https://www.atmos-chem-phys.net/14/7543/2014/>. DOI: <https://doi.org/10.5194/acp-14-7543-2014>
- Burkart, J, Hodshire, AL, Mungall, EL, Pierce, JR, Collins, DB, Ladino, LA, Lee, AKY, Irish, V, Wentzell, JJB, Liggio, J, Papakyriakou, T, Murphy, J and Abbatt, J.** 2017. Organic Condensation and Particle Growth to CCN Sizes in the Summertime Marine Arctic is Driven by Materials More Semivolatile than at Continental Sites. *Geophys Res Lett* **44**(20): 10,725–10,734. ISSN 1944-8007. DOI: <https://doi.org/10.1002/2017GL075671>
- Burkholder, JB, Abbatt, JP, Barnes, I, Roberts, JM, Melamed, ML, Ammann, M, Bertram, AK, Cappa, CD, Carlton, AG, Carpenter, LJ, Crowley, JN, Dubowski, Y, George, C, Heard, DE, Herrmann, H, Keutsch, FN, Kroll, JH, McNeill, VF, Ng, NL, Nizkorodov, SA, Orlando, JJ, Percival, CJ, Picquet-Varrault, B, Rudich, Y, Seakins, PW, Surratt, JD, Tanimoto, H, Thornton, JA, Tong, Z, Tyndall, GS, Wahner, A, Weschler, CJ, Wilson, KR and Ziemann, PJ.** 2017. The essential role for laboratory studies in atmospheric chemistry. *Environ Sci Technol* **51**(5): 2519–2528. DOI: <https://doi.org/10.1021/acs.est.6b04947>
- Campbell, LM, Norstrom, RJ, Hobson, KA, Muir, DC, Backus, S and Fisk, AT.** 2005. Mercury and other trace elements in a pelagic Arctic marine food web (Northwater Polynya, Baffin Bay). *Sci Total Environ* **351**: 247–263. DOI: <https://doi.org/10.1016/j.scitotenv.2005.02.043>
- Chang, RYW, Sjostedt, SJ, Pierce, JR, Papakyriakou, TN, Scarratt, MG, Michaud, S, Lefebvre, M, Leaitch, WR and Abbatt, JP.** 2011. Relating atmospheric and oceanic DMS levels to particle nucleation events in the Canadian Arctic. *J Geophys Res* **116**(D17). DOI: <https://doi.org/10.1029/2011JD015926>
- Crawford, JH, Davis, DD, Chen, G, Buhr, M, Oltmans, S, Weller, R, Mauldin, L, Eisele, F, Shetter, R, Lefer, B, Arimoto, R and Hogan, A.** 2001. Evidence for photochemical production of ozone at the South Pole surface. *Geophys Res Lett* **28**(19): 3641–3644. DOI: <https://doi.org/10.1029/2001GL013055>
- Creamean, JM, Kirpes, RM, Pratt, KA, Spada, NJ, Maahn, M, de Boer, G, Schnell, RC and China, S.** 2018. Marine and terrestrial influences on ice nucleating particles during continuous springtime measurements in an Arctic oilfield location. *Atmos Chem Phys* **18**(24): 18023–18042. <https://www.atmos-chem-phys.net/18/18023/2018/>. DOI: <https://doi.org/10.5194/acp-18-18023-2018>
- Croft, B, Martin, RV, Leaitch, WR, Tunved, P, Breider, TJ, D'Andrea, SD and Pierce, JR.** 2016. Processes controlling the annual cycle of Arctic aerosol number and size distributions. *Atmos Chem Phys* **16**(6): 3665–3682. DOI: <https://doi.org/10.5194/acp-16-3665-2016>
- Dall'Osto, M, Beddows, DCS, Tunved, P, Krejci, R, Ström, J, Hansson, HC, Yoon, YJ, Park, KT, Becagli, S, Udusti, R, Onasch, T, O'Dowd, CD, Simó, R and Harrison, RM.** 2017. Arctic sea ice melt leads to atmospheric new particle formation. *Sci Rep* **7**(1): 3318. DOI: <https://doi.org/10.1038/s41598-017-03328-1>
- Dall'Osto, M, Geels, C, Beddows, DCS, Boertmann, D, Lange, R, Nojgaard, JK, Harrison, RM, Simo, R, Skov, H and Massling, A.** 2018. Regions of open water and melting sea ice drive new particle formation in North East Greenland. *Sci Rep* **8**(1): 6109. DOI: <https://doi.org/10.1038/s41598-018-24426-8>
- Dietz, R, Outridge, PM and Hobson, KA.** 2009. Anthropogenic contributions to mercury levels in present-day Arctic animals—A review. *Sci Total Environ* **407**(24): 6120–6131. <http://www.sciencedirect.com/science/article/pii/S0048969709008043>. DOI: <https://doi.org/10.1016/j.scitotenv.2009.08.036>
- Domine, F, Bock, J, Voisin, D and Donaldson, DJ.** 2013. Can We Model Snow Photochemistry? Problems with the Current Approaches. *J Phys Chem A* **117**(23): 4733–4749. DOI: <https://doi.org/10.1021/jp3123314>
- Dominé, F and Shepson, PB.** 2002. Air-snow interactions and atmospheric chemistry. *Science* **297**(5586): 1506–1510. DOI: <https://doi.org/10.1126/science.1074610>
- Domine, F, Sparapani, R, Ianniello, A and Beine, HJ.** 2004. The origin of sea salt in snow on Arctic sea ice and in coastal regions. *Atmos Chem Phys* **4**(9/10): 2259–2271. <https://www.atmos-chem-phys.net/4/2259/2004/>. DOI: <https://doi.org/10.5194/acp-4-2259-2004>
- Douglas, TA and Blum, JD.** 2019. Mercury Isotopes Reveal Atmospheric Gaseous Mercury Deposition Directly to the Arctic Coastal Snowpack. *Environ Sci Technol Lett* **6**(4): 235–242. DOI: <https://doi.org/10.1021/acs.estlett.9b00131>
- Douglas, TA, Sturm, M, Blum, JD, Polashenski, C, Stuefer, S, Hiemstra, C, Steffen, A, Filhol, S and Prevost, R.** 2017. A Pulse of Mercury and Major Ions in Snowmelt Runoff from a Small Arctic Alaska Watershed. *Environ Sci Technol* **51**(19): 11145–11155. DOI: <https://doi.org/10.1021/acs.est.7b03683>

- Eckhardt, S, Quennehen, B, Olivie, DJL, Berntsen, TK, Cherian, R, Christensen, JH, Collins, W, Crepinsek, S, Daskalakis, N, Flanner, M, Herber, A, Heyes, C, Hodnebrog, O, Huang, L, Kanakidou, M, Klimont, Z, Langner, J, Law, KS, Lund, MT, Mahmood, R, Massling, A, Myriokefalitakis, S, Nielsen, IE, Nojgaard, JK, Quaas, J, Quinn, PK, Raut, JC, Rumbold, ST, Schulz, M, Sharma, S, Skeie, RB, Skov, H, Uttal, T, von Salzen, K and Stohl, A. 2015. Current model capabilities for simulating black carbon and sulfate concentrations in the Arctic atmosphere: a multi-model evaluation using a comprehensive measurement data set. *Atmos Chem Phys* **15**(16): 9413–9433. DOI: <https://doi.org/10.5194/acp-15-9413-2015>
- Edwards, PM, Brown, SS, Roberts, JM, Ahmadov, R, Banta, RM, deGouw, JA, Dubé, WP, Field, RA, Flynn, JH, Gilman, JB, Graus, M, Helmig, D, Koss, A, Langford, AO, Lefer, BL, Lerner, BM, Li, R, Li, SM, McKeen, SA, Murphy, SM, Parrish, DD, Senff, CJ, Soltis, J, Stutz, J, Sweeney, C, Thompson, CR, Trainer, MK, Tsai, C, Veres, PR, Washenfelder, RA, Warneke, C, Wild, RJ, Young, CJ, Yuan, B and Zamora, R. 2014. High winter ozone pollution from carbonyl photolysis in an oil and gas basin. *Nature* **514**: 351. DOI: <https://doi.org/10.1038/nature13767>
- Eichler, J, Kleitz, I, Bayer-Giraldi, M, Jansen, D, Kipfstuhl, S, Shigeyama, W, Weikusat, C and Weikusat, I. 2017. Location and distribution of micro-inclusions in the edml and neem ice cores using optical microscopy and in situ raman spectroscopy. *Cryosphere* **11**(3): 1075–1090. DOI: <https://doi.org/10.5194/tc-11-1075-2017>
- Erbland, J, Vicars, WC, Savarino, J, Morin, S, Frey, MM, Frosini, D, Vince, E and Martins, JMF. 2013. Air-snow transfer of nitrate on the East Antarctic Plateau – Part 1: Isotopic evidence for a photolytically driven dynamic equilibrium in summer. *Atmos Chem Phys* **13**(13): 6403–6419. <https://www.atmos-chem-phys.net/13/6403/2013/>. DOI: <https://doi.org/10.5194/acp-13-6403-2013>
- Falk, S and Sinnhuber, BM. 2018. Polar boundary layer bromine explosion and ozone depletion events in the chemistry–climate model EMAC v2.52: Implementation and evaluation of AirSnow algorithm. *Geosci Model Dev* **11**(3): 1115–1131. <https://www.geosci-model-dev.net/11/1115/2018/>. DOI: <https://doi.org/10.5194/gmd-11-1115-2018>
- Fort, J, Grémillet, D, Traisnel, G, Amélineau, F and Bustamante, P. 2016. Does temporal variation of mercury levels in Arctic seabirds reflect changes in global environmental contamination, or a modification of Arctic marine food web functioning? *Environ Pollut* **211**: 382–388. <http://www.sciencedirect.com/science/article/pii/S026974911530275X>. DOI: <https://doi.org/10.1016/j.envpol.2015.12.061>
- Frey, MM, Norris, SJ, Brooks, IM, Anderson, PS, Nishimura, K, Yang, X, Jones, AE, Nerentorp Mastro Monaco, MG, Jones, DH and Wolff, EW. 2019. First direct observation of sea salt aerosol production from blowing snow above sea ice. *Atmos Chem Phys Discuss* **2019**: 1–53. <https://www.atmos-chem-phys-discuss.net/acp-2019-259/>. DOI: <https://doi.org/10.5194/acp-2019-259>
- Frey, MM, Roscoe, HK, Kukui, A, Savarino, J, France, JL, King, MD, Legrand, M and Preunkert, S. 2015. Atmospheric nitrogen oxides (NO and NO<sub>2</sub>) at Dome C, East Antarctica, during the OPAL campaign. *Atmos Chem Phys* **15**(14): 7859–7875. <https://www.atmos-chem-phys.net/15/7859/2015/>. DOI: <https://doi.org/10.5194/acp-15-7859-2015>
- Gabric, A, Matrai, P, Jones, G and Middleton, J. 2018. The Nexus between Sea Ice and Polar Emissions of Marine Biogenic Aerosols. *Bull Am Meteorol Soc* **99**(1): 61–81. DOI: <https://doi.org/10.1175/BAMS-D-16-0254.1>
- Giamarelou, M, Eleftheriadis, K, Nyeki, S, Tunved, P, Torseth, K and Biskos, G. 2016. Indirect evidence of the composition of nucleation mode atmospheric particles in the high Arctic. *J Geophys Res* **121**(2): 965–975. DOI: <https://doi.org/10.1002/2015JD023646>
- Gilgen, A, Huang, WTK, Ickes, L, Neubauer, D and Lohmann, U. 2018. How important are future marine and shipping aerosol emissions in a warming Arctic summer and autumn? *Atmos Chem Phys* **18**(14): 10521–10555. <https://www.atmos-chem-phys.net/18/10521/2018/>. DOI: <https://doi.org/10.5194/acp-18-10521-2018>
- Giordano, MR, Kalnajs, LE, Goetz, JD, Avery, AM, Katz, E, May, NW, Leemon, A, Mattson, C, Pratt, KA and DeCarlo, PF. 2018. The importance of blowing snow to halogen-containing aerosol in coastal Antarctica: Influence of source region versus wind speed. *Atmos Chem Phys* **18**(22): 16689–16711. <https://www.atmos-chem-phys.net/18/16689/2018/>. DOI: <https://doi.org/10.5194/acp-18-16689-2018>
- Graham, RM, Itkin, P, Meyer, A, Sundfjord, A, Spreen, G, Smedsrud, LH, Liston, GE, Cheng, B, Cohen, L, Divine, D, Fer, I, Fransson, A, Gerland, S, Haapala, J, Hudson, SR, Johansson, AM, King, J, Merkouriadi, I, Peterson, AK, Provost, C, Randelhoff, A, Rinke, A, Rösel, A, Sennéchaël, N, Walden, VP, Duarte, P, Assmy, P, Steen, H and Granskog, MA. 2019. Winter storms accelerate the demise of sea ice in the Atlantic sector of the Arctic Ocean. *Sci Rep* **9**(1): 9222. DOI: <https://doi.org/10.1038/s41598-019-45574-5>
- Grannas, AM, Bogdal, C, Hageman, KJ, Halsall, C, Harner, T, Hung, H, Kallenborn, R, Klán, P, Klánová, J, Macdonald, RW, Meyer, T and Wania, F. 2013. The role of the global cryosphere in the fate of organic contaminants. *Atmos Chem Phys* **13**(6): 3271–3305. ISSN 1680-7324. DOI: <https://doi.org/10.5194/acp-13-3271-2013>
- Grannas, AM, Jones, AE, Dibb, J, Ammann, M, Anastasio, C, Beine, HJ, Bergin, M, Bottenheim, J, Boxe, CS, Carver, G, Chen, G, Crawford, JH, Dominé, F, Frey, MM, Guzmán, MI, Heard, DE, Helmig, D, Hoffmann, MR, Honrath, RE, Huey, LG, Hutterli, M, Jacobi, HW, Klán, P, Lefer, B, McConnell, J, Plane,

- J, Sander, R, Savarino, J, Shepson, PB, Simpson, WR, Sodeau, JR, von Glasow, R, Weller, R, Wolff, EW and Zhu, T.** 2007. An overview of snow photochemistry: Evidence, mechanisms and impacts. *Atmos Chem Phys* **7**(16): 4329–4373. <https://www.atmos-chem-phys.net/7/4329/2007/>. DOI: <https://doi.org/10.5194/acp-7-4329-2007>
- Granskog, MA, Fer, I, Rinke, A and Steen, H.** 2018. Atmosphere-Ice-Ocean-Ecosystem Processes in a Thinner Arctic Sea Ice Regime: The Norwegian Young Sea ICE (N-ICE2015) Expedition. *J Geophys Res* **123**(3): 1586–1594. DOI: <https://doi.org/10.1002/2017JC013328>
- Grieger, B.** 2019. The Quincuncial Adaptive Closed Kohonen (QuACK) map for the irregular shaped comet 67P/Churyumov-Gerasimenko. *Astron Astrophys*. DOI: <https://doi.org/10.1051/0004-6361/201834841>
- Heimbürger, LE, Sonke, JE, Cossa, D, Point, D, Lagane, C, Laffont, L, Galfond, BT, Nicolaus, M, Rabe, B and Van Der Loeff, MR.** 2015. Shallow methylmercury production in the marginal sea ice zone of the central Arctic Ocean. *Sci Rep* **5**: 10318. DOI: <https://doi.org/10.1038/srep10318>
- Heintzenberg, J, Leck, C and Tunved, P.** 2015. Potential source regions and processes of aerosol in the summer Arctic. *Atmos Chem Phys* **15**(11): 6487–6502. <https://www.atmos-chem-phys.net/15/6487/2015/>. DOI: <https://doi.org/10.5194/acp-15-6487-2015>
- Helmig, D, Boylan, P, Johnson, B, Oltmans, S, Fairall, C, Staebler, R, Weinheimer, A, Orlando, J, Knapp, DJ, Montzka, DD, Flocke, F, Frieß, U, Sihler, H and Shepson, PB.** 2012. Ozone dynamics and snow-atmosphere exchanges during ozone depletion events at Barrow, Alaska. *J Geophys Res* **117**(D20). DOI: <https://doi.org/10.1029/2012JD017531>
- Helmig, D, Johnson, B, Oltmans, SJ, Neff, W, Eisele, F and Davis, DD.** 2008. Elevated ozone in the boundary layer at South Pole. *Atmos Env* **42**(12): 2788–2803. ISSN 1352-2310. Antarctic Tropospheric Chemistry Investigation (ANTCI) 2003. <http://www.sciencedirect.com/science/article/pii/S1352231006012660>. DOI: <https://doi.org/10.1016/j.atmosenv.2006.12.032>
- Honrath, R, Peterson, MC, Guo, S, Dibb, JE, Shepson, P and Campbell, B.** 1999. Evidence of NO<sub>x</sub> production within or upon ice particles in the Greenland snowpack. *Geophys Res Lett* **26**(6): 695–698. DOI: <https://doi.org/10.1029/1999GL900077>
- Hullar, T and Anastasio, C.** 2016. Direct visualization of solute locations in laboratory ice samples. *Cryosphere* **10**(5): 2057–2068. <https://www.the-cryosphere.net/10/2057/2016/>. DOI: <https://doi.org/10.5194/tc-10-2057-2016>
- Hullar, T, Magadia, D and Anastasio, C.** 2018. Photodegradation rate constants for anthracene and pyrene are similar in/on ice and in aqueous solution. *Environ Sci Technol*. DOI: <https://doi.org/10.1021/acs.est.8b02350>
- Hutterli, MA, McConnell, JR, Stewart, RW, Jacobi, HW and Bales, RC.** 2001. Impact of temperature-driven cycling of hydrogen peroxide (H<sub>2</sub>O<sub>2</sub>) between air and snow on the planetary boundary layer. *J Geophys Res* **106**(D14): 15395–15404. DOI: <https://doi.org/10.1029/2001JD900102>
- Huwald, H, Selker, JS, Tyler, SW, Calaf, M, van de Giesen, NC and Parlange, MB.** 2012. Carbon monoxide as a tracer of gas transport in snow and other natural porous media. *Geophys Res Lett* **39**(2). DOI: <https://doi.org/10.1029/2011GL050247>
- Hyder, P, Edwards, JM, Allan, RP, Hewitt, HT, Bracegirdle, TJ, Gregory, JM, Wood, RA, Meijers, AJS, Mulcahy, J, Field, P, Furtado, K, Bodas-Salcedo, A, Williams, KD, Copsey, D, Josey, SA, Liu, C, Roberts, CD, Sanchez, C, Ridley, J, Thorpe, L, Hardiman, SC, Mayer, M, Berry, DI and Belcher, SE.** 2018. Critical Southern Ocean climate model biases traced to atmospheric model cloud errors. *Nat Commun* **9**(1): 3625. DOI: <https://doi.org/10.1038/s41467-018-05634-2>
- Irish, VE, Hanna, SJ, Willis, MD, China, S, Thomas, JL, Wentzell, JJB, Cirisan, A, Si, M, Leaitch, WR, Murphy, JG, Abbatt, JPD, Laskin, A, Girard, E and Bertram, AK.** 2019. Ice nucleating particles in the marine boundary layer in the Canadian Arctic during summer 2014. *Atmos Chem Phys* **19**(2): 1027–1039. <https://www.atmos-chem-phys.net/19/1027/2019/>. DOI: <https://doi.org/10.5194/acp-19-1027-2019>
- Jones, AE, Brough, N, Anderson, PS and Wolff, EW.** 2014. HO<sub>2</sub>NO<sub>2</sub> and HNO<sub>3</sub> in the coastal Antarctic winter night: A “lab-in-the-field” experiment. *Atmos Chem Phys* **14**(21): 11843–11851. <https://www.atmos-chem-phys.net/14/11843/2014/>. DOI: <https://doi.org/10.5194/acp-14-11843-2014>
- Jones, AE, Weller, R, Anderson, PS, Jacobi, HW, Wolff, EW, Schrems, O and Miller, H.** 2001. Measurements of NO<sub>x</sub> emissions from the Antarctic snowpack. *Geophys Res Lett* **28**(8): 1499–1502. DOI: <https://doi.org/10.1029/2000GL011956>
- Jones, AE, Weller, R, Wolff, EW and Jacobi, HW.** 2000. Speciation and rate of photochemical NO and NO<sub>2</sub> production in Antarctic snow. *Geophys Res Lett* **27**(3): 345–348. DOI: <https://doi.org/10.1029/1999GL010885>
- Kahan, TF and Donaldson, DJ.** 2008. Heterogeneous ozonation kinetics of phenanthrene at the air-ice interface. *Environ Res Lett* **3**(4): 045006. DOI: <https://doi.org/10.1088/1748-9326/3/4/045006>
- Kim, MJ, Novak, GA, Zoerb, MC, Yang, M, Blomquist, BW, Huebert, BJ, Cappa, CD and Bertram, TH.** 2017. Air-sea exchange of biogenic volatile organic compounds and the impact on aerosol particle size distributions. *Geophys Res Lett* **44**(8): 3887–3896. DOI: <https://doi.org/10.1002/2017GL072975>
- Kong, X, Waldner, A, Orlando, F, Artiglia, L, Huthwelker, T, Ammann, M and Bartels-Rausch, T.** 2017. Coexistence of Physisorbed and Solvated HCl at Warm Ice Surfaces. *J Phys Chem Lett*, 4757–4762. <http://pubs.acs.org/doi/abs/10.1021/acs.jpcclett>

- 7b01573. DOI: <https://doi.org/10.1021/acs.jpcclett.7b01573>
- Krepelova, A, Bartels-Rausch, T, Brown, MA, Bluhm, H and Ammann, M.** 2013. Adsorption of Acetic Acid on Ice Studied by Ambient-Pressure XPS and Partial-Electron-Yield NEXAFS Spectroscopy at 230–240 K. *J Phys Chem A* **117**(2): 401–409. DOI: <https://doi.org/10.1021/jp3102332>
- Kunasek, S, Alexander, B, Steig, E, Sofen, E, Jackson, T, Thiemens, M, McConnell, J, Gleason, D and Amos, H.** 2010. Sulfate sources and oxidation chemistry over the past 230 years from sulfur and oxygen isotopes of sulfate in a West Antarctic ice core. *J Geophys Res* **115**(D18). DOI: <https://doi.org/10.1029/2010JD013846>
- Kwok, KY, Yamazaki, E, Yamashita, N, Taniyasu, S, Murphy, MB, Horii, Y, Petrick, G, Kallerborn, R, Kannan, K, Murano, K and Lam, PKS.** 2013. Transport of Perfluoroalkyl substances (PFAS) from an arctic glacier to downstream locations: Implications for sources. *Sci Total Environ* **447**: 46–55. <http://www.sciencedirect.com/science/article/pii/S0048969712013915>. DOI: <https://doi.org/10.1016/j.scitotenv.2012.10.091>
- Larose, C, Dommergue, A and Vogel, TM.** 2013. Microbial nitrogen cycling in Arctic snowpacks. *Env Res Lett* **8**(3): 035004. DOI: <https://doi.org/10.1088/1748-9326/8/3/035004>
- Leck, C and Bigg, EK.** 2005. Biogenic particles in the surface microlayer and overlying atmosphere in the central Arctic Ocean during summer. *Tellus B* **57**(4): 305–316. DOI: <https://doi.org/10.1111/j.1600-0889.2005.00148.x>
- Leck, C and Svensson, E.** 2015. Importance of aerosol composition and mixing state for cloud droplet activation over the Arctic pack ice in summer. *Atmos Chem Phys* **15**(5): 2545–2568. <https://www.atmos-chem-phys.net/15/2545/2015/>. DOI: <https://doi.org/10.5194/acp-15-2545-2015>
- Letcher, RJ, Bustnes, JO, Dietz, R, Jenssen, BM, Jørgensen, EH, Sonne, C, Verreault, J, Vijayan, MM and Gabrielsen, GW.** 2010. Exposure and effects assessment of persistent organohalogen contaminants in arctic wildlife and fish. *Sci Total Environ* **408**(15): 2995–3043. <http://www.sciencedirect.com/science/article/pii/S0048969709010195>. DOI: <https://doi.org/10.1016/j.scitotenv.2009.10.038>
- Levasseur, M, Gosselin, M and Michaud, S.** 1994. A new source of dimethylsulfide (DMS) for the arctic atmosphere: Ice diatoms. *Marine Biology* **121**(2): 381–387. DOI: <https://doi.org/10.1007/BF00346748>
- Lindsay, R and Schweiger, A.** 2015. Arctic sea ice thickness loss determined using subsurface, aircraft, and satellite observations. *Cryosphere* **9**(1): 269–283. <https://www.the-cryosphere.net/9/269/2015/>. DOI: <https://doi.org/10.5194/tc-9-269-2015>
- Liu, Y, Key, JR, Liu, Z, Wang, X and Vavrus, SJ.** 2012. A cloudier Arctic expected with diminishing sea ice. *Geophys Res Lett* **39**(5): L05705. DOI: <https://doi.org/10.1029/2012GL051251>
- Mauritsen, T, Sedlar, J, Tjernström, M, Leck, C, Martin, M, Shupe, M, Sjogren, S, Sierau, B, Persson, POG, Brooks, IM and Swietlicki, E.** 2011. An Arctic CCN-limited cloud-aerosol regime. *Atmos Chem Phys* **11**(1): 165–173. <https://www.atmos-chem-phys.net/11/165/2011/>. DOI: <https://doi.org/10.5194/acp-11-165-2011>
- Mayfield, JA and Fochesatto, GJ.** 2012. The Layered Structure of the Winter Atmospheric Boundary Layer in the Interior of Alaska. *J Appl Meteorol Climatol* **52**(4): 953–973. DOI: <https://doi.org/10.1175/JAMC-D-12-01.1>
- McCluskey, CS, Hill, TCJ, Humphries, RS, Rauker, AM, Moreau, S, Stratton, PG, Chambers, SD, Williams, AG, McRobert, I, Ward, J, Keywood, MD, Harnwell, J, Ponsonby, W, Loh, ZM, Krummel, PB, Protat, A, Kreidenweis, SM and DeMott, PJ.** 2018. Observations of ice nucleating particles over Southern Ocean waters. *Geophys Res Lett* **45**(21): 11–989. DOI: <https://doi.org/10.1029/2018GL079981>
- McFall, AS, Edwards, KC and Anastasio, C.** 2018. Nitrate photochemistry at the air-ice interface and in other ice reservoirs. *Environ Sci Technol* **52**(10): 5710–5717. DOI: <https://doi.org/10.1021/acs.est.8b00095>
- McNeill, VF, Grannas, AM, Abbatt, JPD, Ammann, M, Ariya, P, Bartels-Rausch, T, Domine, F, Donaldson, DJ, Guzman, MI, Heger, D, Kahan, TF, Klán, P, Masclin, S, Toubin, C and Voisin, D.** 2012. Organics in environmental ices: sources, chemistry, and impacts. *Atmos Chem Phys* **12**(20): 9653–9678. <https://www.atmos-chem-phys.net/12/9653/2012/>. DOI: <https://doi.org/10.5194/acp-12-9653-2012>
- Meier, WN, Hovelsrud, GK, van Oort, BE, Key, JR, Kovacs, KM, Michel, C, Haas, C, Granskog, MA, Gerland, S, Perovich, DK, Makshtas, A and Reist, JD.** 2014. Arctic sea ice in transformation: A review of recent observed changes and impacts on biology and human activity. *Rev Geophys* **52**(3): 185–217. DOI: <https://doi.org/10.1002/2013RG000431>
- Miller, LA, Domine, F, Frey, MM and Trombotto Liudat D.** In press (accepted 7.11.19). In: Shepson, P and Domine, F (eds.), *Chemistry in the Cryosphere, Advances in Atmospheric Chemistry, American Chemical Society. The Future? Big Questions about Feedbacks between Anthropogenic Change in the Cryosphere and Atmospheric Chemistry.*
- Monks, SA, Arnold, SR, Emmons, LK, Law, KS, Turquety, S, Duncan, BN, Flemming, J, Huijnen, V, Tilmes, S, Langner, J, Mao, J, Long, Y, Thomas, JL, Steenrod, SD, Raut, JC, Wilson, C, Chipperfield, MP, Diskin, GS, Weinheimer, A, Schlager, H and Ancellet, G.** 2015. Multi-model study of chemical and physical controls on transport of anthropogenic and biomass burning pollution to the Arctic. *Atmos Chem Phys* **15**(6): 3575–3603. DOI: <https://doi.org/10.5194/acp-15-3575-2015>
- Moore, CW, Obrist, D, Steffen, A, Staebler, RM, Douglas, TA, Richter, A and Nghiem, SV.** 2014.

- Convective forcing of mercury and ozone in the Arctic boundary layer induced by leads in sea ice. *Nature* **506**: 81. DOI: <https://doi.org/10.1038/nature12924>
- Morenz, KJ and Donaldson, DJ.** 2017. Chemical morphology of frozen mixed nitratesalt solutions. *J Phys Chem A* **121**(10): 2166–2171. DOI: <https://doi.org/10.1021/acs.jpca.6b12608>
- Morrison, AL, Kay, JE, Chepfer, H, Guzman, R and Yettella, V.** 2018. Isolating the Liquid Cloud Response to Recent Arctic Sea Ice Variability Using Spaceborne Lidar Observations. *J Geophys Res* **123**(1): 473–490. DOI: <https://doi.org/10.1002/2017JD027248>
- Mungall, EL, Abbatt, JPD, Wentzell, JJB, Lee, AKY, Thomas, JL, Blais, M, Gosselin, M, Miller, LA, Papakyriakou, T, Willis, MD and Liggio, J.** 2017. Microlayer source of oxygenated volatile organic compounds in the summertime marine Arctic boundary layer. *Proc Natl Acad Sci USA* **114**(24): 6203–6208. ISSN 0027-8424. <https://www.pnas.org/content/114/24/6203>. DOI: <https://doi.org/10.1073/pnas.1620571114>
- Mungall, EL, Croft, B, Lizotte, M, Thomas, JL, Murphy, JG, Lévasseur, M, Martin, RV, Wentzell, JJB, Liggio, J and Abbatt, JPD.** 2016. Dimethyl sulfide in the summertime Arctic atmosphere: Measurements and source sensitivity simulations. *Atmos Chem Phys* **16**(11): 6665–6680. <https://www.atmoschem-phys.net/16/6665/2016/>. DOI: <https://doi.org/10.5194/acp-16-6665-2016>
- Murray, KA, Kramer, LJ, Doskey, PV, Ganzeveld, L, Seok, B, Dam, BV and Helmig, D.** 2015. Dynamics of ozone and nitrogen oxides at Summit, Greenland. II. Simulating snowpack chemistry during a spring high ozone event with a 1-D process-scale model. *Atmos Environ* **117**: 110–123. ISSN 1352-2310. <http://www.sciencedirect.com/science/article/pii/S135223101530203X>. DOI: <https://doi.org/10.1016/j.atmosenv.2015.07.004>
- National Snow and Ice Data Center – a.** 2019. Facts about glaciers. <https://nsidc.org/cryosphere/glaciers/quickfacts.html>.
- National Snow and Ice Data Center – b.** 2019. Snow and Climate. <https://nsidc.org/cryosphere/snow/climate.html>.
- Nicholes, MJ, Williamson, CJ, Tranter, M, Holland, A, Poniecka, E, Yallop ML, Bloom Group, TB, Anesio, A, Tranter, M, Anesio, A, Yallop, M, Williamson, C, Poniecka, E, Nicholes, M, Holland, A, Benning, L, McQuaid, J, Lutz, S, Mc-Cutcheon, J, Hodson, A, Hanna, E, Irvine-Fynn, T, Cook, J, Bamber, J, Tedstone, A, Box, J and Stibal, M.** 2019. Bacterial Dynamics in Supraglacial Habitats of the Greenland Ice Sheet. *Front Microbiol* **10**: 1366. ISSN 1664-302X. <https://www.frontiersin.org/article/10.3389/fmicb.2019.01366>. DOI: <https://doi.org/10.3389/fmicb.2019.01366>
- Obbard, RW, Troderman, G and Baker, I.** 2009. Imaging brine and air inclusions in sea ice using micro-X-ray computed tomography. *J Glaciol* **55**(194): 1113–1115. DOI: <https://doi.org/10.3189/002214309790794814>
- Obrist, D, Agnan, Y, Jiskra, M, Olson, CL, Colegrove, DP, Hueber, J, Moore, CW, Sonke, JE and Helmig, D.** 2017. Tundra uptake of atmospheric elemental mercury drives Arctic mercury pollution. *Nature* **547**: 201. DOI: <https://doi.org/10.1038/nature22997>
- Oltmans, SJ, Johnson, BJ and Harris, JM.** 2012. Spring-time boundary layer ozone depletion at Barrow, Alaska: Meteorological influence, year-to-year variation, and long-term change. *J Geophys Res* **117**(D14). DOI: <https://doi.org/10.1029/2011JD016889>
- Orellana, MV, Matrai, PA, Leck, C, Rauschenberg, CD, Lee, AM and Coz, E.** 2011. Marine microgels as a source of cloud condensation nuclei in the high Arctic. *Proc Natl Acad Sci USA* **108**(33): 13612–13617. DOI: <https://doi.org/10.1073/pnas.1102457108>
- Park, KT, Jang, S, Lee, K, Yoon, YJ, Kim, MS, Park, K, Cho, HJ, Kang, JH, Udusti, R, Lee, BY and Shin, KH.** 2017. Observational evidence for the formation of DMS-derived aerosols during Arctic phytoplankton blooms. *Atmos Chem Phys* **17**(15): 9665–9675. DOI: <https://doi.org/10.5194/acp-17-9665-2017>
- Peterson, PK, Pöhler, D, Sihler, H, Zielcke, J, General, S, Frieß, U, Platt, U, Simpson, WR, Nghiem, SV, Shepson, PB, Stirm, BH, Dhaniyala, S, Wagner, T, Caulton, DR, Fuentes, JD and Pratt, KA.** 2017. Observations of bromine monoxide transport in the Arctic sustained on aerosol particles. *Atmos Chem Phys* **17**(12): 7567–7579. <https://www.atmoschem-phys.net/17/7567/2017/>. DOI: <https://doi.org/10.5194/acp-17-7567-2017>
- Petroff, A and Zhang, L.** 2010. Development and validation of a size-resolved particle dry deposition scheme for application in aerosol transport models. *Geosci Model Dev* **3**(2): 753–769. <https://www.geosci-model-dev.net/3/753/2010/>. DOI: <https://doi.org/10.5194/gmd-3-753-2010>
- Pratt, KA, Custard, KD, Shepson, PB, Douglas, TA, Pöhler, D, General, S, Zielcke, J, Simpson, WR, Platt, U, Tanner, DJ, Gregory Huey, L, Carlsen, M and Stirm, BH.** 2013. Photochemical production of molecular bromine in Arctic surface snowpacks. *Nat Geosci* **6**: 351. DOI: <https://doi.org/10.1038/ngeo1779>
- Qi, L, Li, Q, Henze, DK, Tseng, HL and He, C.** 2017. Sources of springtime surface black carbon in the Arctic: An adjoint analysis for April 2008. *Atmos Chem Phys* **17**(15): 9697–9716. <https://www.atmoschem-phys.net/17/9697/2017/>. DOI: <https://doi.org/10.5194/acp-17-9697-2017>
- Raso, ARW, Custard, KD, May, NW, Tanner, D, Newburn, MK, Walker, L, Moore, RJ, Huey, LG, Alexander, L, Shepson, PB and Pratt, KA.** 2017. Active molecular iodine photochemistry in the Arctic. *Proc Natl Acad Sci USA* **114**(38): 10053–10058. ISSN 0027-8424. <https://www.pnas.org/content/114/38/10053>. DOI: <https://doi.org/10.1073/pnas.1702803114>

- Saiz-Lopez, A, Mahajan, AS, Salmon, RA, Bauguitte, SJB, Jones, AE, Roscoe, HK and Plane, JMC.** 2007. Boundary Layer Halogens in Coastal Antarctica. *Science* **317**(5836): 348–351. ISSN 0036-8075. <https://science.sciencemag.org/content/317/5836/348>. DOI: <https://doi.org/10.1126/science.1141408>
- Salter, ME, Hamacher-Barth, E, Leck, C, Werner, J, Johnson, CM, Riipinen, I, Nilsson, ED and Zieger, P.** 2016. Calcium enrichment in sea spray aerosol particles. *Geophys Res Lett* **43**(15): 8277–8285. DOI: <https://doi.org/10.1002/2016GL070275>
- Schmale, J, Arnold, SR, Law, KS, Thorp, T, Anenberg, S, Simpson, WR, Mao, J and Pratt, KA.** 2018. Local Arctic Air Pollution: A Neglected but Serious Problem. *Earth's Future* **6**(10): 1385–1412. DOI: <https://doi.org/10.1029/2018EF000952>
- Schmale, J, Baccharini, A, Thurnherr, I, Henning, S, Efraim, A, Regayre, L, Bolas, C, Hartmann, M, Welti, A, Lehtipalo, K, Aemisegger, F, Tatzelt, C, Landwehr, S, Modini, RL, Tummon, F, Johnson, J, Harris, N, Schnaiter, M, Toffoli, A, Derkani, M, Bukowiecki, N, Stratmann, F, Dommen, J, Baltensperger, U, Wernli, H, Rosenfeld, D, Gysel-Beer, M and Carslaw, K.** 2019. Overview of the Antarctic Circumnavigation Expedition: Study of Preindustrial-like Aerosols and Their Climate Effects (ACE-SPACE). *Bull Am Meteorol Soc*. DOI: <https://doi.org/10.1175/BAMS-D-18-0187.1>
- Si, M, Evoy, E, Yun, J, Xi, Y, Hanna, SJ, Chivulescu, A, Rawlings, K, Veber, D, Platt, A, Kunkel, D, Hoor, P, Sharma, S, Leaitch, WR and Bertram, AK.** 2019. Concentrations, composition, and sources of ice-nucleating particles in the Canadian High Arctic during spring 2016. *Atmos Chem Phys* **19**(5): 3007–3024. <https://www.atmos-chem-phys.net/19/3007/2019/>. DOI: <https://doi.org/10.5194/acp-19-3007-2019>
- Simpson, WR, Frieß, U, Thomas, JL, Lampel, J and Platt, U.** 2018. Polar Nighttime Chemistry Produces Intense Reactive Bromine Events. *Geophys Res Lett* **45**(18): 9987–9994. DOI: <https://doi.org/10.1029/2018GL079444>
- Simpson, WR, von Glasow, R, Riedel, K, Anderson, P, Ariya, P, Bottenheim, J, Burrows, J, Carpenter, LJ, Frieß, U, Goodsite, ME, Heard, D, Hutterli, M, Jacobi, HW, Kaleschke, L, Neff, B, Plane, J, Platt, U, Richter, A, Roscoe, H, Sander, R, Shepson, P, Sodeau, J, Steffen, A, Wagner, T and Wolff, E.** 2007. Halogens and their role in polar boundary-layer ozone depletion. *Atmos Chem Phys* **7**(16): 4375–4418. <https://www.atmos-chem-phys.net/7/4375/2007/>. DOI: <https://doi.org/10.5194/acp-7-4375-2007>
- Sipila, M, Sarnela, N, Jokinen, T, Henschel, H, Junninen, H, Kontkanen, J, Richters, S, Kangasluoma, J, Franchin, A, Perakyla, O, Rissanen, MP, Ehn, M, Vehkamäki, H, Kurten, T, Berndt, T, Petaja, T, Worsnop, D, Ceburnis, D, Kerminen, VM, Kulmala, M and O'Dowd, C.** 2016. Molecular-scale evidence of aerosol particle formation via sequential addition of HIO<sub>3</sub>. *Nature* **537**(7621): 532–534. DOI: <https://doi.org/10.1038/nature19314>
- Skiles, SM, Flanner, M, Cook, JM, Dumont, M and Painter, TH.** 2018. Radiative forcing by light-absorbing particles in snow. *Nat Clim Change* **8**(11): 964–971. DOI: <https://doi.org/10.1038/s41558-018-0296-5>
- Sonke, JE, Teisserenc, R, Heimbürger-Boavida, LE, Petrova, MV, Maruschak, N, Le Dantec, T, Chupakov, AV, Li, C, Thackray, CP, Sunderland, EM, Tananaev, N and Pokrovsky, OS.** 2018. Eurasian river spring flood observations support net Arctic Ocean mercury export to the atmosphere and Atlantic Ocean. *Proc Natl Acad Sci USA* **115**(50): E11586–E11594. ISSN 0027-8424. <https://www.pnas.org/content/115/50/E11586>. DOI: <https://doi.org/10.1073/pnas.1811957115>
- Spreen, G and Kern, S.** 2017. Chap. Methods of satellite remote sensing of sea ice. *Sea Ice*, 239–260. West Sussex, PO19 8SQ, UK: John Wiley & Sons. DOI: <https://doi.org/10.1002/9781118778371.ch9>
- Steffen, A, Douglas, T, Amyot, M, Ariya, P, Aspmo, K, Berg, T, Bottenheim, J, Brooks, S, Cobbett, F, Dastoor, A, Dommergue, A, Ebinghaus, R, Ferrari, C, Gardfeldt, K, Goodsite, ME, Lean, D, Poulain, AJ, Scherz, C, Skov, H, Sommar, J and Temme, C.** 2008. A synthesis of atmospheric mercury depletion event chemistry in the atmosphere and snow. *Atmos Chem Phys* **8**(6): 1445–1482. <https://www.atmos-chem-phys.net/8/1445/2008/>. DOI: <https://doi.org/10.5194/acp-8-1445-2008>
- Steiner, N, Deal, C, Lannuzel, D, Lavoie, D, Massonnet, F, Miller, LA, Moreau, S, Popova, E, Stefels, J and Tedesco, L.** 2016. What sea-ice biogeochemical modellers need from observers. *Elementa* **4**: 81. DOI: <https://doi.org/10.12952/journal.elementa.000084>
- Steiner, N and Stefels, J.** 2017. Commentary on the outputs and future of Biogeochemical Exchange Processes at Sea-Ice Interfaces (BEPsII). *Elementa* **5**: 81. DOI: <https://doi.org/10.1525/elementa.272>
- Stern, GA, Macdonald, RW, Outridge, PM, Wilson, S, Chetelat, J, Cole, A, Hintelmann, H, Loseto, LL, Steffen, A, Wang, F and Zdanowicz, C.** 2012. How does climate change influence arctic mercury? *Sci Total Environ* **414**: 22–42. DOI: <https://doi.org/10.1016/j.scitotenv.2011.10.039>
- Stroeve, JC, Serreze, MC, Holland, MM, Kay, JE, Malanik, J and Barrett, AP.** 2012. The Arctic's rapidly shrinking sea ice cover: A research synthesis. *Climatic Change* **110**(3-4): 1005–1027. DOI: <https://doi.org/10.1007/s10584-011-0101-1>
- Struthers, H, Ekman, AML, Glantz, P, Iversen, T, Kirkevåg, A, Martensson, EM, Seland, O and Nilsson, ED.** 2011. The effect of sea ice loss on sea salt aerosol concentrations and the radiative balance in the Arctic. *Atmos Chem Phys* **11**(7): 3459–3477. DOI: <https://doi.org/10.5194/acp-11-3459-2011>

- Tedesco, L, Vichi, M and Scoccimarro, E.** 2019. Sea-ice algal phenology in a warmer Arctic. *Sci Adv* **5**(5). <https://advances.sciencemag.org/content/5/5/eaav4830>. DOI: <https://doi.org/10.1126/sciadv.aav4830>
- Thomas, JL, Dibb, JE, Huey, LG, Liao, J, Tanner, D, Lefer, B, Glasow, RV and Stutz, J.** 2012. Modeling chemistry in and above snow at Summit, Greenland – Part 2: Impact of snowpack chemistry on the oxidation capacity of the boundary layer. *Atmos Chem Phys* **12**(14): 6537–6554. DOI: <https://doi.org/10.5194/acp-12-6537-2012>
- Thomas, JL, Stutz, J, Lefer, B, Huey, LG, Toyota, K, Dibb, JE and von Glasow, R.** 2011. Modeling chemistry in and above snow at Summit, Greenland – Part 1: Model description and results. *Atmos Chem Phys* **11**(10): 4899–4914. <https://www.atmos-chem-phys.net/11/4899/2011/>. DOI: <https://doi.org/10.5194/acp-11-4899-2011>
- Toyota, K, McConnell, JC, Staebler, RM and Dastoor, AP.** 2014. Air-snowpack exchange of bromine, ozone and mercury in the springtime Arctic simulated by the 1-D model PHANTAS – Part 1: In-snow bromine activation and its impact on ozone. *Atmos Chem Phys* **14**(8): 4101–4133. <https://www.atmos-chem-phys.net/14/4101/2014/>. DOI: <https://doi.org/10.5194/acp-14-4101-2014>
- Turner, J and Comiso, J.** 2017. Solve Antarctica's sea-ice puzzle. *Nature News* **547**(7663): 275–277. DOI: <https://doi.org/10.1038/547275a>
- Van Dam, B, Helmig, D, Toro, C, Doskey, P, Kramer, L, Murray, K, Ganzeveld, L and Seok, B.** 2015. Dynamics of ozone and nitrogen oxides at Summit, Greenland: I. Multi-year observations in the snowpack. *Atmos Env* **123**: 268–284. <http://www.sciencedirect.com/science/article/pii/S1352231015304027>. DOI: <https://doi.org/10.1016/j.atmosenv.2015.09.060>
- Vancoppenolle, M, Meiners, KM, Michel, C, Bopp, L, Brabant, F, Carnat, G, Delille, B, Lannuzel, D, Madec, G, Moreau, S, Tison, JL and der Merwec, P.** 2013. Role of sea ice in global biogeochemical cycles: Emerging views and challenges. *Quat Sci Rev* **79**: 207–230. DOI: <https://doi.org/10.1016/j.quascirev.2013.04.011>
- Vaughan, DG, Comiso, J, Allison, I, Carrasco, J, Kaser, G, Kwok, R, Mote, P, Murray, T, Paul, F, Ren, J, Rignot, E, Solomina, O, Steffen, K and Zhang, T.** 2013. Chap. Observations: Cryosphere. *Climate Change 2013: The Physical Science Basis. Contribution of Working Group I to the Fifth Assessment Report of the Intergovernmental Panel on Climate Change*, 317–382. Cambridge, United Kingdom and New York, NY, USA: Cambridge University Press. DOI: <https://doi.org/10.1017/CBO9781107415324.012>
- Wex, H, Huang, L, Zhang, W, Hung, H, Traversi, R, Becagli, S, Sheesley, RJ, Moffett, CE, Barrett, TE, Bossi, R, Skov, H, Hünerbein, A, Lubitz, J, Löffler, M, Linke, O, Hartmann, M, Herenz, P and Stratmann, F.** 2019. Annual variability of icenucleating particle concentrations at different Arctic locations. *Atmos Chem Phys* **19**(7): 5293–5311. <https://www.atmos-chem-phys.net/19/5293/2019/>. DOI: <https://doi.org/10.5194/acp-19-5293-2019>
- Willis, MD, Köllner, F, Burkart, J, Bozem, H, Thomas, JL, Schneider, J, Aliabadi, AA, Hoor, PM, Schulz, H, Herber, AB, Leaitch, WR and Abbatt, JPD.** 2017. Evidence for marine biogenic influence on summertime Arctic aerosol. *Geophys Res Lett.* DOI: <https://doi.org/10.1002/2017GL073359>
- Willis, MD, Leaitch, WR and Abbatt, JP.** 2018. Processes Controlling the Composition and Abundance of Arctic Aerosol. *Rev Geophys* **56**(4): 621–671. <https://agupubs.onlinelibrary.wiley.com/doi/abs/10.1029/2018RG000602>. DOI: <https://doi.org/10.1029/2018RG000602>
- Wolff, EW, Barbante, C, Becagli, S, Bigler, M, Boutron, CF, Castellano, E, de Angelis, M, Federer, U, Fischer, H, Fundel, F, Hansson, M, Hutterli, M, Jonsell, U, Karlin, T, Kaufmann, P, Lambert, F, Littot, GC, Mulvaney, R, Röthlisberger, R, Ruth, U, Severi, M, Siggaard-Andersen, ML, Sime, LC, Steffensen, JP, Stocker, TF, Traversi, R, Twarloh, B, Udisti, R, Wagenbach, D and Wegner, A.** 2010. Changes in environment over the last 800,000 years from chemical analysis of the EPICA Dome C ice core. *Quat Sci Rev* **29**(1): 285–295. <http://www.sciencedirect.com/science/article/pii/S027737910900208X>. DOI: <https://doi.org/10.1016/j.quascirev.2009.06.013>
- Wren, SN and Donaldson, DJ.** 2012. How does deposition of gas phase species affect pH at frozen salty interfaces? *Atmos Chem Phys* **12**(21): 10065–10073. <https://www.atmos-chem-phys.net/12/10065/2012/>. DOI: <https://doi.org/10.5194/acp-12-10065-2012>
- Yang, X, Frey, MM, Rhodes, RH, Norris, SJ, Brooks, IM, Anderson, PS, Nishimura, K, Jones, AE and Wolff, EW.** 2019. Sea salt aerosol production via sublimating wind-blown saline snow particles over sea ice: Parameterizations and relevant microphysical mechanisms. *Atmos Chem Phys* **19**(13): 8407–8424. <https://www.atmos-chem-phys.net/19/8407/2019/>. DOI: <https://doi.org/10.5194/acp-19-8407-2019>
- Ye, C, Gao, H, Zhang, N and Zhou, X.** 2016. Photolysis of nitric acid and nitrate on natural and artificial surfaces. *Environ Sci Technol* **50**(7): 3530–3536. DOI: <https://doi.org/10.1021/acs.est.5b05032>
- Yeung, LY, Murray, LT, Martinerie, P, Witrant, E, Hu, H, Banerjee, A, Orsi, A and Chappellaz, J.** 2019. Isotopic constraint on the twentieth century increase in tropospheric ozone. *Nature* **570**(7760): 224–227. DOI: <https://doi.org/10.1038/s41586-019-1277-1>
- Yool, A, Popova, EE and Coward, AC.** 2015. Future change in ocean productivity: Is the Arctic the new Atlantic? *J Geophys Res* **120**(12): 7771–7790. DOI: <https://doi.org/10.1002/2015JC011167>

**How to cite this article:** Thomas, JL, Stutz, J, Frey, MM, Bartels-Rausch, T, Altieri, K, Baladima, F, Browse, J, Dall'Osto, M, Marelle, L, Mouginot, J, Murphy, JG, Nomura, D, Pratt, KA, Willis, MD, Zieger, P, Abbatt, J, Douglas, TA, Facchini, MC, France, J, Jones, AE, Kim, K, Matrai, PA, McNeill, VF, Saiz-Lopez, A, Shepson, P, Steiner, N, Law, KS, Arnold, SR, Delille, B, Schmale, J, Sonke, JE, Dommergue, A, Voisin, D, Melamed, ML and Gier, J. 2019. Fostering multidisciplinary research on interactions between chemistry, biology, and physics within the coupled cryosphere-atmosphere system. *Elem Sci Anth*, 7: 58. DOI: <https://doi.org/10.1525/elementa.396>

**Domain Editor-in-Chief:** Detlev Helmig, Institute of Alpine and Arctic Research, University of Colorado Boulder, US

**Associate Editor:** Armin Wisthaler, Department of Chemistry, University of Oslo, NO

**Knowledge Domain:** Atmospheric Science

**Submitted:** 30 July 2019    **Accepted:** 15 November 2019    **Published:** 30 December 2019

**Copyright:** © 2019 The Author(s). This is an open-access article distributed under the terms of the Creative Commons Attribution 4.0 International License (CC-BY 4.0), which permits unrestricted use, distribution, and reproduction in any medium, provided the original author and source are credited. See <http://creativecommons.org/licenses/by/4.0/>.