



HAL
open science

First Mesozoic amphipod crustacean from the Lower Cretaceous of SE England

Edmund A Jarzembowski, Cédric Chény, Yan Fang, Bo Wang

► **To cite this version:**

Edmund A Jarzembowski, Cédric Chény, Yan Fang, Bo Wang. First Mesozoic amphipod crustacean from the Lower Cretaceous of SE England. *Cretaceous Research*, 2020, 112, pp.104429. 10.1016/j.cretres.2020.104429 . insu-02495739

HAL Id: insu-02495739

<https://insu.hal.science/insu-02495739v1>

Submitted on 2 Mar 2020

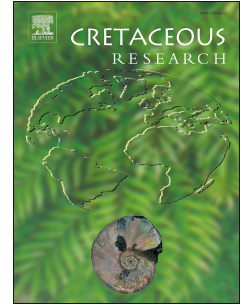
HAL is a multi-disciplinary open access archive for the deposit and dissemination of scientific research documents, whether they are published or not. The documents may come from teaching and research institutions in France or abroad, or from public or private research centers.

L'archive ouverte pluridisciplinaire **HAL**, est destinée au dépôt et à la diffusion de documents scientifiques de niveau recherche, publiés ou non, émanant des établissements d'enseignement et de recherche français ou étrangers, des laboratoires publics ou privés.

Journal Pre-proof

First Mesozoic amphipod crustacean from the Lower Cretaceous of SE England

Edmund A. Jarzembowski, Cédric Chény, Yan Fang, Bo Wang



PII: S0195-6671(19)30532-4

DOI: <https://doi.org/10.1016/j.cretres.2020.104429>

Reference: YCRES 104429

To appear in: *Cretaceous Research*

Received Date: 14 December 2019

Revised Date: 8 February 2020

Accepted Date: 18 February 2020

Please cite this article as: Jarzembowski, E.A., Chény, C., Fang, Y., Wang, B., First Mesozoic amphipod crustacean from the Lower Cretaceous of SE England, *Cretaceous Research*, <https://doi.org/10.1016/j.cretres.2020.104429>.

This is a PDF file of an article that has undergone enhancements after acceptance, such as the addition of a cover page and metadata, and formatting for readability, but it is not yet the definitive version of record. This version will undergo additional copyediting, typesetting and review before it is published in its final form, but we are providing this version to give early visibility of the article. Please note that, during the production process, errors may be discovered which could affect the content, and all legal disclaimers that apply to the journal pertain.

© 2020 Elsevier Ltd. All rights reserved.



1 First Mesozoic amphipod crustacean from the Lower Cretaceous of SE England

2 Edmund A. Jarzembowski ^{a,b*}, Cédric Chény ^{a,c}, Yan Fang ^a, Bo Wang ^a

3 ^a*State Key Laboratory of Palaeobiology and Stratigraphy, Nanjing Institute of Geology and*
4 *Palaeontology and Center for Excellence in Life and Palaeoenvironment, Chinese Academy of*
5 *Sciences, Nanjing 210008, China*

6 ^b*Department of Earth Sciences, Natural History Museum, Cromwell Road, London SW7 5BD,*
7 *UK*

8 ^c*Géosciences Rennes, UMR 6118, CNRS, Université de Rennes, Rennes 3500, France*

9 * Corresponding author. *E-mail address:* jarzembowski2@live.co.uk (E. A. Jarzembowski) [*Tel.*
10 *+86 025 83282244*]

11 **ABSTRACT**

12 Long predicted but not found, a Mesozoic amphipod is finally reported from the lower Weald
13 Clay Formation (late Hauterivian) of the County of Surrey in Southeast England, UK. Occurring
14 in non-marine Wealden deposits, and sideswimmer-like, this lilliputian is referred to a new
15 senticaudatan collective group and named *Gammaroidorum vonki* gen. et sp. nov. Future search
16 should focus on finer-grained insect beds to elucidate the history of small, little-known, but
17 significant crustaceans.

18 *Keywords:* amphipod; earliest; gammaroid; Wealden; new taxa; palaeoenvironment.

19

20 **1. Introduction**

21 The Amphipoda are brooding peracaridans and one of the largest orders of the Crustacea
22 with nearly 10K described species, the great majority of which are marine or brackish, the
23 remainder fresh water and even terrestrial (Lowry and Myers, 2017). They are almost worldwide
24 in distribution (mainly extra-tropical) and are often significant in aquatic food webs, conveying
25 nutrients and energy to higher trophic levels sustaining vertebrates (Väinölä et al., 2008). There
26 is no special common name for amphipodan shrimps: some more familiar ones, like gammarids,
27 are sometimes called sidewimmers (and scuds, USA) or sandhoppers (talitrids). The amphipod
28 body is distinctive being segmented throughout (lacking a carapace) and usually laterally
29 compressed, with a more or less curved or hook-like profile. Fossil amphipod crustaceans are
30 rarely recorded (about 30 described species) and should occur back to the Carboniferous
31 (Bousfield and Poinar, 1994), but so far only tertiary ones have been confirmed, mainly as amber
32 inclusions (Jazdzewski and Kupryjanowicz, 2010). This is not for lack of trying (McMenamin et
33 al., 2013 versus Starr et al., 2015) and their scarcity is often attributed to their fragility (thin
34 cuticle), a familiar complaint about the insect fossil record. Here we report the first definite
35 amphipod from the Mesozoic Era based on rock fossils associated with abundant insect remains
36 from the Wealden Group of Southeast England of Early Cretaceous age (Hopson et al., 2008),
37 thus extending the record of amphipods by nearly 100 Ma. The Wealden Group is essentially
38 non-marine (Radley and Allen, 2012), so that the discovery of a *Gammarus*-like form is
39 significant and discussed herein.

40

41 **2. Geological setting**

42 The finds are from the lower Weald Clay Formation in the English county of Surrey; they
43 were made during processing of siltstone scour fills from mudstones below British Geological

44 Survey beds 3/3a of late Hauterivian age at Clockhouse brickworks, near Capel (Jarzembowski,
45 1991; Rasnitsyn et al., 1998; Batten and Austen, 2011). Li et al. (2019: fig. 1) give a map of the
46 locality (National Grid Reference TQ 175385; latitude 51 deg. 8 min. N., longitude 0 deg. 19.5
47 min. W.) and Jarzembowski and Soszyńska-Maj (2018: fig. 1) a view of the quarry pit. The
48 Weald Clay is considered to have been deposited 130 m. y. ago (Cohen et al., 2019) in a wetland
49 with rivers, lakes and lagoons under a Mediterranean-like climate and the remains of aquatic
50 crustaceans occur as well as terrestrial insects (Jarzembowski, 1995; Jarzembowski et al., 2014).
51 Thus the amphipods are associated with insect body parts and wings of beetles (e.g. *Zygadenia*
52 Handlirsch, 1906), dragonflies (Odonata), cockroaches (Blattodea), and termites (*Valditermes*
53 Jarzembowski, 1981), as well as other aquatic crustaceans (clam shrimps (spinicaudatans),
54 isopods, and ostracods), plus fish and snail remains, charcoal, plant debris, and possible rootlets.
55 The specimens are preserved with some relief as mineralised impressions (brown-weathered
56 pyrite coating calcareous fill; Figs S1, S2).

57

58 3. Material and method

59 The material is in the Natural History Museum, London (NHMUK) specimen nos prefixed
60 IC; original field numbers are given for continuity (ex Jarzembowski coll.). The specimens were
61 examined under a Nikon SMZ 1000 binocular microscope with camera lucida drawing tube and
62 fiberoptic illumination. They were photographed with a Zeiss Axiocam 512 digital camera
63 mounted on a Zeiss Stereo Discovery V16 microscope also with fiberoptic illumination and
64 operated with Zen 2.3 pro software. Electron microscopy was undertaken using a Gemini LEO-
65 1530VP S. E. M. Standard terminology is used with other terminology (as in cited literature)
66 given in parenthesis. Drawings were prepared from both photographs and specimens by hand

67 (EAJ). Drawing conventions are solid line, distinct margin; dashed line, indistinct or damaged;
68 dotted line, extrapolated. All taxonomic acts established in the present work have been registered
69 in ZooBank (see new taxonomic LSIDs below) together with the electronic publication
70 urn:lsid:zoobank.org:pub:4D453889-F93B-4FF6-8FEB-0354134F4CE8.

71

72 **4. Systematic palaeontology**

73 Class MALACOSTRACA Latreille, 1802

74 Subclass EUMALACOSTRACA Grobben, 1892

75 Superorder PERACARIDA Calman, 1904

76 Order AMPHIPODA Latreille, 1816

77 Suborder SENTICAUDATA Lowry & Myers, 2013

78 Superfamily GAMMAROIDEA Latreille, 1802

79 Family Uncertain

80 Collective group *Gammaroidorum* nov.

81 *Remarks.* A collective group is effectively a form genus and is treated like a natural genus but
82 without the requirement of a type species under ICZN (1999).

83 urn:lsid:zoobank.org:act:29548CEC-A17C-4169-84F3-0B07C8EE0CB9

84 *Derivation of name.* From gammaroid and latin suffix –orum; gender masculine.

85 *Included species.* *Gammaroidorum vonki* sp. nov.

86 *Description.* Gammaridean or senticaudatan amphipod with rounded head, long antennae, short
87 accessory flagellum, broad second gnathopod, curved abdomen, and on last (third) uropod,
88 ramus longer than peduncle with inner ramus only slightly reduced.

89 *Gammaroidorum vonki* sp. nov.

90 urn:lsid:zoobank.org:act:D7629D55-E7AC-4DAE-96B2-71C68E764875

91 Figs 1A–D, 2A–D, 3

92 *Derivation of name.* After Dr Ronald Vonk (Naturalis), gender masculine.

93 *Holotype.* Forebody in lateral aspect IC CH879ii, xii.

94 *Paratypes.* Other specimens from same horizon and locality as holotype: IC CH864ixa, xiii,
95 probably moulting as minus head and coxae; CH864r³, nearly upright body showing dorsal
96 aspect; IC CH879liib¹, abdomen (pleon) with uropods in lateral aspect.

97 *Other material.* See Appendix.

98 *Locality and horizon.* Clockhouse brickworks, Surrey, UK; lower Weald Clay Formation
99 (mudstones below BGS beds 3/3a), late Hauterivian.

100 *Diagnosis.* Small, comma- or hook- shaped species of *Gammaroidorum* with ramus on last
101 (third) uropod well over 1.5 times longer than peduncle.

102 *Description.* Body curled, hook-like, 2–3.5 mm long.

103 Head rounded anteriorly, antenna (antennule) 1 (At1) not shortened with small accessory
104 flagellum and peduncle with three elongate segments (articles: A1–3) especially distal one (A3);
105 antenna 2 (At2) not reduced with distal segments of peduncle (A3–5) discernible, three short and
106 four and five elongate, especially 4. Gland cone present.

107 Thorax (seven-segmented pereon) more or less curled inwards with slightly elongate, broad,
108 rounded coxal plates on anterior body segments (pereonites) and apparently transverse second
109 gnathopod (G2, pincer or nipper).

110 Abdomen (six-segmented pleon) tapered and slightly curled outwards distally; pleosome
111 (pleonites: pleosomites P11-3) with epimera (epimeral plates) developed; urosome (pleonites:
112 urosomites Ur1-3) with short peduncle on third uropod (U3) and elongate rami over twice as
113 long as peduncle with slightly reduced inner ramus; other uropods with long peduncles and rami
114 reaching latter on U3 at about mid length; telson (T) gently pointed and reaching rami of U3.

115 *Remarks.* The forebody is only comparatively well preserved in the holotype. In the moulted
116 paratype, G2 is only visible up to the penultimate article (propodus) and appears to emanate from
117 pereonite 4 (not 2) but was probably originally elbowed posteriorly. The large size of G2
118 suggests the moult is a male.

119

120 **5. Discussion**

121 Mesozoic tanaids and decapods have been mistaken for amphipods in the past (Vonk and
122 Schram, 2007; Starr et al., 2015). Both, however, possess a cephalothorax or carapace, e.g.
123 Quayle (2016), unlike the fossils described herein. Amphipods are, nevertheless, a diverse group
124 although comparison of the Wealden species with recent non-marine forms shows that it can be
125 excluded from the fresh water pseudingsollideans because they are vermiform (Lowry and
126 Myers, 2012). The amphilochean amphipods include several non-marine groups with surface
127 (epigean) as well as subterranean species. The epigeans include eusiroids, oedicerotoids,
128 pontoporeiids, lyssianassoids and haustoriids (Väänölä et al., 2008). These, however, differ from

129 the Wealden species in that the first three have more or less rostrate heads, the fourth has a
130 mitten-shaped rather than transverse gnathopod 2 (and a short antenna 1), and the last have a
131 decurved abdomen (urosome; Chapman, 2007). This leaves the largest non-marine group for
132 comparison, the senticaudatans, especially the gammaroids and crangonyctoids, but also
133 corophioids and talitroids, all included in this group (Väinölä et al., 2008). In contrast to the
134 Wealden fossils, corophioids have a simple or basket-shaped gnathopod and talitroids a
135 shortened Antenna 1. Crangonyctoids are related to but differ from gammaroids in possessing a
136 greatly reduced (versus slightly reduced) inner ramus (endopod/endopodite) of the third uropod
137 (U3) on the posterior end (urosome) of the abdomen (pleon; Chapman, 2007). Significantly, the
138 inner ramus is only slightly reduced in the Wealden moult. In fact, *G. vonki* sp. nov. resembles a
139 typical gammaroid except for lacking a subchelate gnathopod 2 and a considerably larger size
140 (Macan, 1959: fig. 80). *Gammarus* Fabricius, 1775, however, is considered to have the most
141 plesiomorphic amphipod body form despite being considered no older than the tertiary (Hou and
142 Sket, 2016). Senticaudatans are, nevertheless, considered to have invaded non-marine waters by
143 the Triassic (Lowry and Meyers, 2013). On the older (and paraphyletic) classification of marine
144 amphipods, the Wealden fossils key out as gammaridean group iii, especially iiie, with the rami
145 much longer than the peduncle on U3 (Kozloff, 1996). These gammarideans include haustoriids
146 and eusiroids discussed (and excluded) above but also the saltwater gammaroid species. We
147 therefore place the Wealden fossils provisionally in a new collective, tentatively gammaroid,
148 pending a family classification when finer morphological detail becomes available (such as setae
149 to facilitate chaetotaxy which defines the Senticaudata).

150 The Wealden is essentially non-marine although the basin was linked to the Boreal Sea
151 (around the now eroded uplands of Londinia) and the Tethys (via the Paris Basin), and a

152 brackish-marine (brachyhaline) band underlies low salinity (oligohaline) strata at Clockhouse
153 (Kilenyi and Allen, 1968). Examination of the matrix shows that *G. vonki* is not from the more
154 saline beds there, notably lacking any shell inclusions of the characteristic and abundant
155 cassiopid gastropod found in that band. To date, however, Wealden amphipods have been found
156 only occasionally at the type locality of *G. vonki* (Clockhouse brickworks) and a brief
157 mesohaline interlude cannot be excluded; the wide salinity tolerances, however, of recent
158 *Gammarus* from fully marine to freshwater (Fitter and Manuel, 1986: 226), augmented by an
159 osmoregulatory antennal gland (see cone above), means that a freshwater interlude is equally
160 likely. In this connection, more material of *G. vonki* showing the second antennal article on
161 antenna 2 (which hosts the gland) is needed. Recent *Gammarus* requires more oxygenated water
162 than *Crangonyx* Bate, 1859 (loc. cit.: p. 227) and prefers calcareous (alkaline) streams (Whitton,
163 1979: 44). Radley and Allen (2012) concur with the latter as present in the Wealden on
164 geological grounds and crangonyctoids have been excluded above from the Wealden on
165 morphological grounds.

166

167 **6. Conclusion**

168 The first Mesozoic amphipod, *Gammaroidorum vonki*, found in the Early Cretaceous Wealden
169 of the Weald, is morphologically somewhat similar to a diminutive recent gammaroid
170 sideswimmer. It probably lived benthically in a non-marine environment (like a well-
171 oxygenated, calcareous stream) with the male displaying his sizeable posterior (second)
172 gnathopod (Hume et al., 2005). More material, however, is needed to classify the species more
173 precisely, showing additional appendages and fine detail (such as hairs, spines, teeth and glands).
174 *G. vonki* is a small species, but could turn up as the search continues for new insects in Wealden

175 sideritic and phosphatic concretions as well as siltstones in which *G. vonki* was found. Our
176 understanding of Early Cretaceous marsupial crustaceans is at an early stage and like other
177 crustaceans, amphipods are important in the marine realm. Our find shows, however, that the
178 non-marine realm also has a role to play and insect beds may yet prove as rewarding as crab or
179 lobster beds in uncovering new fossil crustaceans, especially small and delicate forms that are
180 often under-reported.

181

182 **Acknowledgements**

183 We thank Fred Clouter (UK) for help with imaging, two anonymous reviewers and the editors
184 for their time and comments, and GA members for help with fieldwork, especially Richard Agar
185 (Reading).

186 This research (grant numbers in parentheses) was supported by the Strategic Priority Research
187 Program-of the Chinese-Academy of Sciences (XDA XDB26000000 and XDB XDA19050101),
188 State Key Laboratory of Palaeontology & Stratigraphy (Nanjing Institute of Geology &
189 Palaeontology, CAS 183101), a Leverhulme Emeritus Fellowship [EAJ], and the National
190 Natural Science Foundation of China (41622201, 41688103).

191

192 **References**

193 Bate, C. S., 1859. On the genus *Niphargus* (Schlödte). Proceedings of the Dublin University
194 Zoological and Botanical Association 1, 237–240.

- 195 Batten, D. J., Austen, P. A., 2011. The Weald of south-east England. In: Batten, D. J. (Ed.),
196 English Wealden fossils. Palaeontological Association Field Guide to Fossils 14, 15–51.
- 197 Bousfield, E. L., Poinar, G. O., 1994. A new terrestrial amphipod from Tertiary amber deposits
198 of Chiapas Province, southern Mexico. *Historical Biology* 7, 105–114.
- 199 Calman, W. T., 1904. On the classification of the Crustacea Malacostraca. *Annals and Magazine*
200 *of Natural History* (13) 74, 144–158.
- 201 Chapman, J. W., 2007. Amphipoda: Gammaridea. In: Carlton, J. D. (Ed.) *The Light and Smith*
202 *manual: intertidal invertebrates from central California to Oregon*. University of California
203 Press, Berkeley, pp. 545–611.
- 204 Cohen, K. M., Harper, D. A. T., Gibbard, P. L., Fan, J.-X., 2019. The ICS international
205 chronostratigraphic chart. *Episodes* 36, 199–204.
- 206 Fabricius, J. C., 1775. *Systema entomologiae, sistens insectorum classes, ordines, genera,*
207 *species, adiectis synonymis, locis, descriptionibus, observationibus*. Kortii, Flensburgi et
208 Lipsiae, 832 pp.
- 209 Fitter, R., Manuel, R., 1986. *Collins field guide to the freshwater life of Britain and North-West*
210 *Europe*. Collins, London, 382 pp., 332 pls.
- 211 Grobben, C., 1892. Zur Kenntnis des Stammbaumes und des Systems der Crustaceen.
212 *Sitzungsberichte der Kaiserlichen Akademie der Wissenschaften Wien. Mathematisch-*
213 *Naturwissenschaftliche Classe* 101, 237–274.
- 214 Handlirsch, A., 1906–1908. *Die fossilen Insekten und die Phylogenie der Rezenten Formen*.
215 Engelmann, Leipzig, Germany, ix + 1430 pp., xl + 51 pls.

- 216 Hopson, P. M., Wilkinson, I. P., Woods, M. A. 2008. A stratigraphical framework for the Lower
217 Cretaceous of England. Research Report RR/08/03. British Geological Survey. Keyworth,
218 Nottingham, vi + 77 pp.
- 219 Hou, Z., Sket, B., 2016. A review of Gammaridae (Crustacea: Amphipoda): the family extent, its
220 evolutionary history, and taxonomic redefinition of genera. *Zoological Journal of the*
221 *Linnean Society* 176, 323–348.
- 222 Hume, K. O., Elwood, R. W., Dick, J. T. A., Morrison, J., 2005. Sexual dimorphism in
223 amphipods: the role of male posterior gnathopods revealed in *Gammarus pulex*. *Behavioral*
224 *Ecology and Sociobiology* 58 (3), 84–89.
- 225 Jarzembowski, E. A., 1981. An early Cretaceous termite from southern England (Isoptera:
226 Hodotermitidae). *Systematic Entomology* 6, 91–96.
- 227 Jarzembowski, E. A., 1991. The Weald Clay of the Weald: report of 1988/89 field meetings.
228 New insects from the Weald Clay of the Weald. *Proceedings of the Geologists' Association*
229 102 (2), 83–88.
- 230 Jarzembowski, E. A., 1995. Early Cretaceous insect faunas and palaeoenvironment. *Cretaceous*
231 *Research* 16, 681–693.
- 232 Jarzembowski, E., Soszyńska-Maj, A., 2018. The first orthophlebiid scorpionfly (Insecta:
233 Mecoptera) from the Wealden (Lower Cretaceous) of southern England. *Earth and*
234 *Environmental Science Transactions of the Royal Society of Edinburgh*, 1–4.
- 235 Jarzembowski, E. A., Wang, B., Fang, Y., Zhang, H., 2014. A new aquatic crustacean (Isopoda:
236 Cymothoida) from the early Cretaceous of southern England and comparison with the
237 Chinese and Iberian biotas. *Proceedings of the Geologists' Association* 125, 446–451.

- 238 Supplementary data (3 files).
- 239 Jażdżewski, K., Kupryjanowicz, J., 2010. One more fossil niphargid (Malacostraca:
240 Amphipoda) from Baltic amber. *Journal of Crustacean Biology* 30(3), 413–416.
- 241 Kilenyi, T. I., Allen, N. W., 1968. Marine-brackish bands and their microfauna from the lower
242 part of the Weald Clay of Sussex and Surrey. *Palaeontology* 11 (1), 141–162, pls 29, 30.
- 243 Kozloff, E. N., 1996. *Marine invertebrates of the Pacific North-West*. University of Washington
244 Press, Seattle, xi + 539 pp.
- 245 Latreille, P. A., 1802–03. *Histoire naturelle, générale et particulière des crustacés et des insectes*.
246 Dufart, Paris, 468 pp.
- 247 Latreille, P. A. 1816. Amphipoda. In: *Société de Naturalistes et d'Agriculteurs. Nouveau*
248 *Dictionnaire d'histoire naturelle, appliquée aux Arts, à l'Agriculture, à l'Économie rurale et*
249 *domestique, à la Médecine, etc.* 2nd edition. Volume 1. Deterville, Paris, pp. 467–469.
- 250 Li, Y., Jarzembowski, E., Chen, J., Wang, B., 2019. New Palaeontinidae (Insecta: Hemiptera)
251 from the Lower Cretaceous of southern England. *Cretaceous Research* 95, 297–301.
- 252 Lowry, J. K., Myers, A. A. 2012. New, mainly southern hemisphere, freshwater families of
253 Amphipoda (Crustacea), together with a description of the first freshwater calliopiid,
254 *Lutriwita bradburyi* gen. nov. et sp. nov. *Zootaxa* 3499, 27–45
- 255 Lowry, J. K., Meyers, A. A., 2013. A phylogeny and classification of the Senticaudata subord.
256 nov. (Crustacea: Amphipoda). *Zootaxa* 3610 (1), 1–80.
- 257 Lowry, J. K., Myers, A. A., 2017. A phylogeny and classification of the Amphipoda with the
258 establishment of the new order Ingolfiellida (Crustacea: Peracarida). *Zootaxa* 4265 (1), 1–
259 89.

- 260 Macan, T. T., 1959. A guide to freshwater invertebrate animals. Longman, London, x + 118 pp.
- 261 McMenemy, M. A. S., Zapata, L. P., Hussey, M. C., 2013. A Triassic giant amphipod from Nevada,
262 USA. *Journal of Crustacean Biology* 33 (6), 751–759.
- 263 Quayle, W. J., 2016. A new fossil record of a tanaidacean (Crustacea, Peracarida) from the
264 Eocene Barton Clay Formation of the Hampshire Basin. *Bulletin of the Mizunami Fossil
265 Museum* 42, 29–37.
- 266 Radley, J. D., Allen, P., 2012. The non-marine Lower Cretaceous Wealden strata of southern
267 England. *Proceedings of the Geologists' Association* 123 (2), 235–244.
- 268 Rasnitsyn, A. P., Jarzembowski, E. A., Ross . A. J., 1998. Wasps (Insecta: Vespida, =
269 Hymenoptera) from the Purbeck and Wealden (Lower Cretaceous) of southern England and
270 their biostratigraphical and palaeoenvironmental significance. *Cretaceous Research*
271 19(3/4), 329–391.
- 272 Starr, H. W., Hegna, T. A., McMenemy, M. A. S., 2015. Epilogue to the tale of the Triassic
273 amphipod: *Rosagammarus* is a decapod tail (Luning Formation, Nevada). *Geological
274 Society of America Abstracts with Programs*, Montana 47(5), 96 (only).
- 275 Väinölä, R., Witt, J. D. S., Grabowski, M., Bradbury, J. H., Jazdzewski, K., Sket, B., 2008.
276 Global diversity of amphipods (Amphipoda; Crustacea) in freshwater. *Hydrobiologia* 59,
277 241–255.
- 278 Vonk, R., Schram, F. R., 2007. Three new tanaid species (Crustacea, Peracarida, Tanaidacea)
279 from the Lower Cretaceous Álava amber in northern Spain. *Journal of Paleontology* 81(6),
280 1502–1509.
- 281 Whitton, B., 1979. Rivers, lakes and marshes. Hodder and Stoughton, London, 224 pp.

282

283 Figure captions

284 Figure 1. *Gammaroidorum vonki* sp. nov., Clockhouse, late Hauterivian, holotype (IC CH879xii)285 A, S.E.M. of lateral view; B, interpretive drawing of lateral view; paratype (IC CH879liib¹) C,

286 S.E.M. of lateral view; D, interpretive drawing of lateral view. Scale bars = 0.5 mm (A, B), 1.0

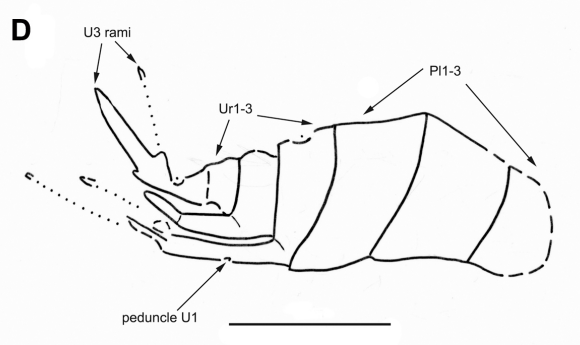
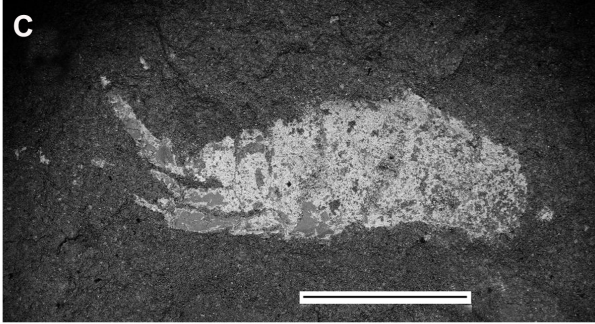
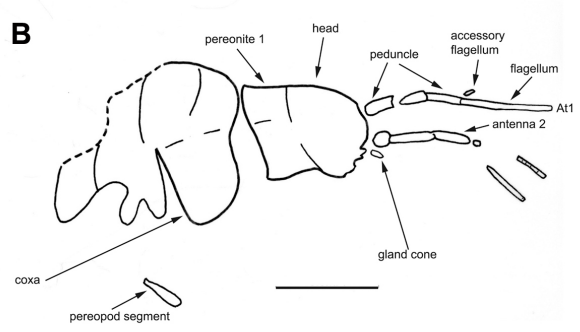
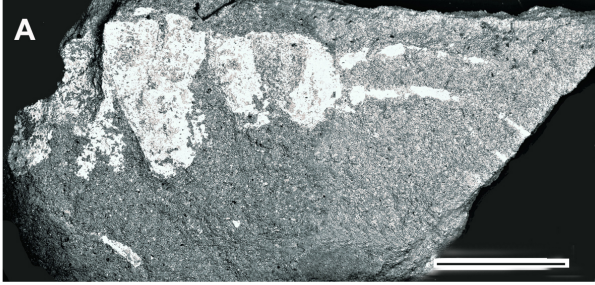
287 mm (C, D).

288 Figure 2. *Gammaroidorum vonki* sp. nov., Clockhouse, late Hauterivian, paratype (IC CH864ixa)289 A, S.E.M. of lateral view; B, interpretive drawing of lateral view; paratype (IC CH864r³) C,

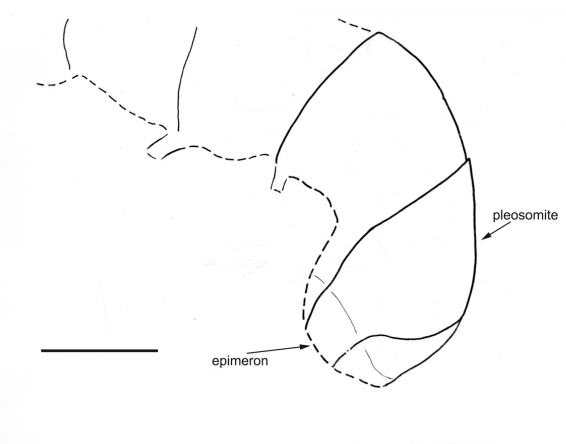
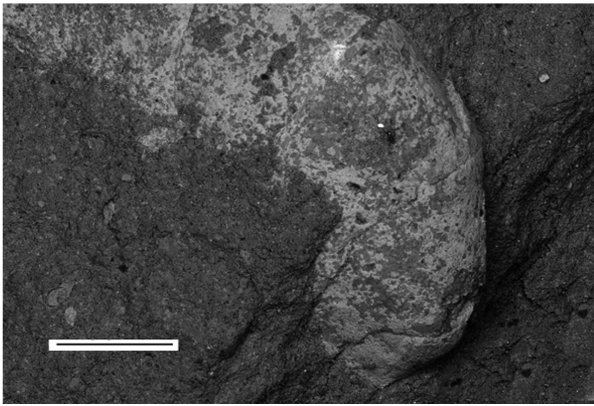
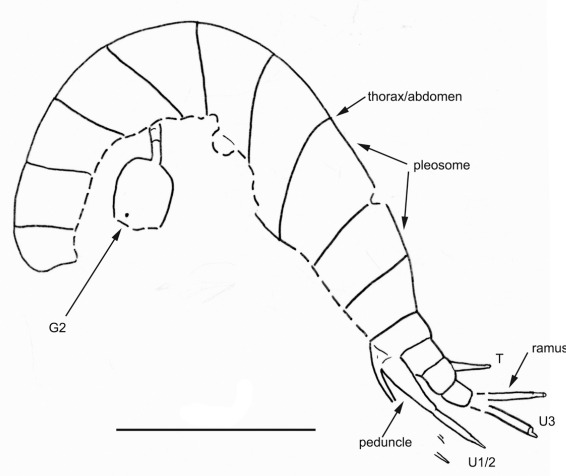
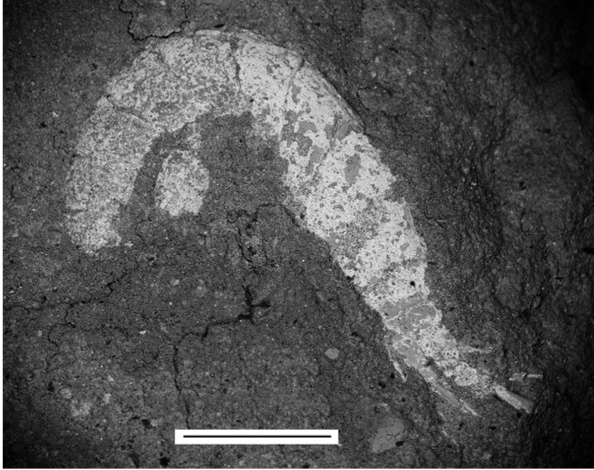
290 S.E.M. of dorsal view; D, interpretive drawing of dorsal view. Scale bars = 1.0 mm (A, B), 0.5

291 mm (C, D).

292 Figure 3. Artist's conception of a pair of *Gammaroidorum vonki* sp. nov. (B. Jarzembowski).



Journal Pre-proof



Journal



Journal

Authors' Statement

All authors have contributed to the Conceptualization, Methodology, Investigation, Visualization, and Writing of the manuscript, and approved the final version.

Journal Pre-proof

Declaration of interests

The authors declare that they have no known competing financial interests or personal relationships that could have appeared to influence the work reported in this paper.

The authors declare the following financial interests/personal relationships which may be considered as potential competing interests:

Journal Pre-proof