



**HAL**  
open science

## The Seismic Signature of Upper-Mantle Plumes: Application to the Northern East African Rift

Chiara Civiero, John Armitage, Saskia Goes, James Hammond

► **To cite this version:**

Chiara Civiero, John Armitage, Saskia Goes, James Hammond. The Seismic Signature of Upper-Mantle Plumes: Application to the Northern East African Rift. *Geochemistry, Geophysics, Geosystems*, 2019, 20 (12), pp.6106-6122. 10.1029/2019GC008636 . insu-02919773

**HAL Id: insu-02919773**

**<https://insu.hal.science/insu-02919773>**

Submitted on 29 Mar 2021

**HAL** is a multi-disciplinary open access archive for the deposit and dissemination of scientific research documents, whether they are published or not. The documents may come from teaching and research institutions in France or abroad, or from public or private research centers.

L'archive ouverte pluridisciplinaire **HAL**, est destinée au dépôt et à la diffusion de documents scientifiques de niveau recherche, publiés ou non, émanant des établissements d'enseignement et de recherche français ou étrangers, des laboratoires publics ou privés.

# Geochemistry, Geophysics, Geosystems

## RESEARCH ARTICLE

10.1029/2019GC008636

### Key Points:

- Multiple upper-mantle upwellings rise as Rayleigh Taylor instabilities at different evolutionary stages below Afar and Main Ethiopian Rift
- A 200 °C excess temperature source layer near the top of the lower mantle explains the upper-mantle structure below the East African Rift
- Hotspot volcanic centers spaced by few hundred km are likely fed by hot material which has stagnated at the base of the transition zone

### Supporting Information:

- Supporting Information S1

### Correspondence to:

C. Civiero,  
cciviero@cp.dias.ie

### Citation:

Civiero, C., Armitage, J. J., Goes, S., & Hammond, J. O. S. (2019). The seismic signature of upper-mantle plumes: application to the northern east african rift. *Geochemistry, Geophysics, Geosystems*, 20, 6106–6122. <https://doi.org/10.1029/2019GC008636>

Received 23 AUG 2019

Accepted 4 DEC 2019

Accepted article online 6 DEC 2019

Published online 20 DEC 2019

Corrected 14 AUG 2020

This article was corrected on 14 AUG 2020. See the end of the full text for details.

## The Seismic Signature of Upper-Mantle Plumes: Application to the Northern East African Rift

Chiara Civiero<sup>1</sup>, John J. Armitage<sup>2</sup>, Saskia Goes<sup>3</sup>, and James O. S. Hammond<sup>4</sup>

<sup>1</sup>Dublin Institute for Advanced Studies (DIAS), Dublin, Ireland, <sup>2</sup>Institut de Physique du Globe, Université de Paris, Paris, France, <sup>3</sup>Department of Earth Science and Engineering, Imperial College London, London, UK, <sup>4</sup>Department of Earth and Planetary Sciences, Birkbeck, University of London, London, UK

**Abstract** Several seismic and numerical studies proposed that below some hotspots upper-mantle plumelets rise from a thermal boundary layer below 660 km depth, fed by a deeper plume source. We recently found tomographic evidence of multiple upper-mantle upwellings, spaced by several 100 km, rising through the transition zone below the northern East African Rift. To better test this interpretation, we run 3-D numerical simulations of mantle convection for Newtonian and non-Newtonian rheologies, for both thermal instabilities rising from a lower boundary layer, and the destabilization of a thermal anomaly placed at the base of the box (700–800 km depth). The thermal structures are converted to seismic velocities using a thermodynamic approach. Resolution tests are then conducted for the same *P* and *S* data distribution and inversion parameters as our traveltimes tomography. The Rayleigh Taylor models predict simultaneous plumelets in different stages of evolution rising from a hot layer located below the transition zone, resulting in seismic structure that looks more complex than the simple vertical cylinders that are often anticipated. From the wide selection of models tested, we find that the destabilization of a 200 °C, 100 km thick thermal anomaly with a non-Newtonian rheology, most closely matches the magnitude and the spatial and temporal distribution of the anomalies below the rift. Finally, we find that for reasonable upper-mantle viscosities, the synthetic plume structures are similar in scale and shape to the actual low-velocity anomalies, providing further support for the existence of upper-mantle plumelets below the northern East African Rift.

### 1. Introduction

Volcanic rifting is undoubtedly related to the thermal state of the mantle during extension and decompression melting (e.g., White & McKenzie, 1989), and the thermal state of the mantle can be estimated from seismic wave speeds derived from inverse models. The East African Rift (EAR) is the largest active volcanic rift zone on the planet. However, despite the clear evidence for decompression melting, there have been conflicting interpretations of the thermal state of the mantle below Afar and the Main Ethiopian Rift (MER). Low seismic velocities in the shallow mantle below the rift obtained from surface-wave inversion require a hotter than average mantle of 1450 °C or roughly 100 °C hotter than normal mantle (Armitage et al., 2015). This estimate is consistent with the lower bound of the thermal range 100–200 °C derived from the tomographic velocity models in Civiero et al. (2015, 2016), receiver function estimates (50–100 °C) of Rychert et al. (2012), and analyses of primitive magmas, which suggest low thermal excess for mantle today (Ferguson et al., 2013; Rooney et al., 2012).

Interpretations of inverse seismic velocity models, such as the presence of melt, the shape of the rising plume, or the location of the upwelling source, are rarely tested quantitatively. Older tomographic models for Africa suggested that a broad low-velocity layer was present throughout the whole upper mantle beneath the EAR, interpreted as a large-scale upwelling named the African Superplume (Benoit et al., 2006; Hansen et al., 2012; Ritsema et al., 1999). However, as data and resolution have improved, this structure has been shown to be made up of smaller-scale features (e.g., Chang & Van der Lee, 2011; Emry et al., 2019; Hammond et al., 2013). The body-wave tomographic models of Civiero et al. (2015, 2016) found that the seismic velocity structure below the northern EAR is complex in shape and scale. However, the EAR is not unique in terms of complexity. Recent tomographic studies found evidence of plume branching (Rickers et al., 2016) or, based on the complexity of the imaged seismic structure, proposed the existence of secondary small-scale upper-mantle plumes, or *plumelets*, rising from a larger thermal anomaly in the lower mantle

(Civiero et al., 2018; Saki et al., 2015). Such a scenario is appealing given that secondary plumes have been shown to occur within laboratory experiments (e.g., Davaille & Vatteville, 2005; Kumagai et al., 2007); however, the hypothesis that follows from the interpretation of seismic tomographic models needs to be numerically tested.

Only a few previous studies have tested the tomographic results against dynamic models to understand the nature of mantle plumes, with very few using resolution tests. Boschi et al. (2007) and Styles et al. (2011) did a comparison of global and regional plume models against global tomography to get an overview of how many plumes might exist. Davaille et al. (2005) looked over a large region encompassing the African and surrounding hotspots below the Atlantic and Indian Oceans and qualitatively compared plume styles predicted from analog models. Structures from dynamic plume models have been used by Hwang et al. (2011) and Maguire et al. (2016) to illustrate how wavefront healing may mask the traveltime signatures of plumes below 1,000 km depth. A more recent study of Maguire et al. (2018) carried out synthetic tomography experiments to understand plume resolution given the limitations of network design. Ballmer et al. (2013) performed a regional study focusing on Hawaii and found that numerical models of a complex thermochemical plume are compatible with the tomographic images of the upper mantle below the islands.

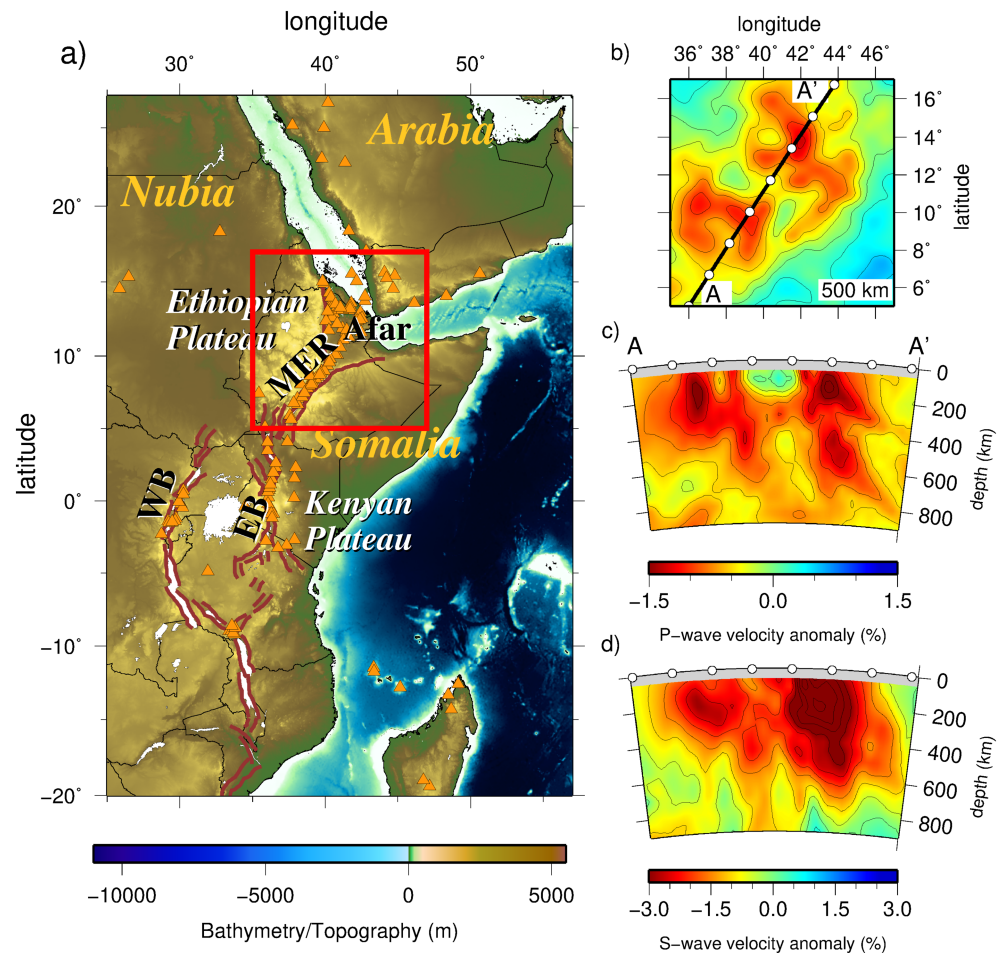
In this study, we explore if plumelets are consistent with seismic observations focusing our analysis on the northern EAR. We develop a workflow to model physically plausible plumelet scenarios based on regional mantle flow. We first analyze plume scales and strength in the numerical models as a function of Rayleigh number and temperature contrast across the hot thermal boundary layer. These physical structures are then converted to seismic structures using thermodynamic methods that account for the effects of temperature, pressure, phase, composition, and anelasticity (Cobden et al., 2008; Goes et al., 2004; Styles et al., 2011). We then use these seismic structures as input for synthetic resolution tests using the same data distribution and inversion scheme and parameters as in Civiero et al., 2015 (2015, 2016). Finally, we compare the simulated convective instabilities with the tomography from our seismic observations. This allows us to test the hypothesis that the apparent complexity in seismic tomographic images is due to multiple plume-like structures at distinct stages of evolution within the upper mantle.

### 1.1. Tomography on the Northern EAR

The *P* and *S* wave tomography performed by Civiero et al. (2015, 2016) imaged the mantle structure below the northern EAR using seismic stations deployed along the rift (Figure 1). The study region comprises Afar and the MER. This area is characterized by a topographic swell (the Ethiopian Plateau), 30 Myr old flood basalts, and currently active volcanism and extensional faulting (Figure 1a). Seismic stations that were used are from 26 different temporary and permanent arrays that span the region from Saudi Arabia to Madagascar (supporting information Figure S1). This wide aperture allows for high resolution (100–200 km) from 50 km below the study area in the box in Figure 1a down to between 700 and 800 km depth.

Civiero et al. (2015, 2016) applied teleseismic traveltime tomography using the method of VanDecar et al. (1995), on a data set of 16,420 relative *P* traveltimes and 16,569 relative *S* and SKS traveltimes. The tomographic models were obtained with regularization parameters that provide a balance between misfit reduction and not overfitting the data beyond the data error estimates (using flattening = 4,800, smoothing = 153,600). We will refer to the *P* wave model as NEAR-P15 and the *S*/SKS-wave model as NEAR-S16.

As illustrated in Figures 1b–1d, the tomographic inversion recovered two clusters of low-velocity anomalies, below Afar and MER, that extend from about 200 km depth to the topmost lower mantle. The models clearly illustrate that the two clusters are separate features and are required to extend through the transition zone. The sublithospheric low velocities have been attributed to the spreading of plume material below the lithosphere, with local contributions from melt (Civiero et al., 2015, 2016). The deeper structures (300–660 km depth) were interpreted as plume tails. Below 700 km depth, the structure changes and appears different in the *P* and *S* wave models, in particular below the Afar where the NEAR-S16 shows a high-velocity anomaly while the NEAR-P15 images a low-velocity feature. This is due to the fact that in the topmost lower mantle, the resolving power is weak, especially in the *S* wave tomography where the resolution does not extend as deep as in the *P* wave model.



**Figure 1.** Study area and tomography. (a) The East African Rift region comprising the Afar region, the Main Ethiopian Rift (MER), and eastern and western branches (EB, WB) south of the study area (red box). Orange triangles represent Holocene volcanoes. Brown lines delineate active fault zones. Stations used were distributed all across the area shown (see Figure S1 for station locations), providing good resolution in the study area within the red box. (b) Horizontal slice at 500 km depth through the undamped *P* model, NEAR-P15. The black line indicates the orientation of the cross sections in (c) and (d). (c) Vertical cross section through the undamped NEAR-P15. (d) Vertical cross section through the undamped NEAR-S16. The cross section reveals two clusters of low-velocity anomalies below Afar and MER extending down to the base of the transition zone.

## 1.2. Constraints on Plume Spacing

Various studies have suggested that hotspot or volcanic clusters may share the same root zone. Kumagai et al. (2007) proposed that the French Polynesian hotspots (Tahiti-Macdonald-Pitcairn), the Canaries-Cape Verde-Azores-Great Meteor hotspots, and the Marion-Crozet hotspots share a source comprising ponded material below the 660 km depth seismic discontinuity. Saki et al. (2015), based on the analysis of transition-zone discontinuity topography from PP/SS precursors, proposed that the Canaries-Cape Verde and Azores share a source layer below the transition zone. The recent tomographic models of Civiero et al. (2018, 2019) also suggested that the source of the Canaries' upwelling is a deep Central Atlantic plume region. Tomographic images by Rickers et al. (2016) indicate that Iceland and Jan Mayen are two branches of a common plume below 1,300 km. In all these cases, the spacing between hotspots is around 1,000–1,500 km. Chang and Van der Lee (2011) imaged possible plume conduits below Afar, Kenya, and Saudi Arabia that are separate down to at least 1,500 km depth. Again, spacing between these proposed plumes is about 1,500 km.

Other examples suggest a plume spacing of hundreds of km. These include our inferred Afar and MER plumelets, which are separated by 400–600 km (Civiero et al., 2015, 2016), and the proposed *baby plumes* (Eifel, Massif Central, Bohemian Massif, upper Rhine Graben, and Brest Graben) below Europe (Goes

et al., 1999; Granet et al., 1995)), which are spaced 250–400 km apart. Furthermore, spacing between active volcanoes within the Canaries, Cape Verde, and Society Islands is between 50 and 300 km.

### 1.3. Dynamic Controls on Plume Spacing

The spacing of thermal plumes that form naturally in laboratory experiments of Rayleigh Bénard convection, where the strongly temperature-dependent viscous fluid is heated from the base and cooled from the top, is a function of the aspect ratio of the rectangular tank and the local Rayleigh number (Androvandi et al., 2011). For fluids that have a viscosity that is an exponential function of temperature, the wavelength, or plume spacing, is observed to decrease with  $Ra$  as  $\lambda/H \propto Ra^{1/3}$ , where  $H$  is the height of the experimental tank (Androvandi et al., 2011). In numerical experiments, where the fluid is assumed to be isoviscous, the reduction in wavelength takes the form  $\lambda/H \propto Ra^{1/6}$  (Galsa & Lenkey, 2007; Zhong, 2005). If we assume that the plumes initiate at  $\sim 1,000$  km depth, then the spacing of the plumes would be of the order of 1,000 km or less, for a local  $Ra > 10^5$  (Androvandi et al., 2011). Therefore, it follows that if the stagnation of large mantle plumes at shallow depth leads to the formation of plumelets due to the increased temperature at the boundary (e.g., Kumagai et al., 2007), then the spacing will be a function of the depth at which the stagnation occurs.

For the destabilization of a layer of hot material or the development of Rayleigh Taylor instabilities, the growth of the instability should be largest for the characteristic wavelength defined by the aspect ratio of the domain. From linear scaling analysis of the destabilization of a layer equal to one tenth of the height of the region,  $H$ , the characteristic wavelength is  $\lambda = 0.37H$  (Schmelting, 1987). This calculation is for two materials of the same viscosity. It was subsequently demonstrated that in 2-D systems, the final dominant wavelength is not necessarily equal to the characteristic wavelength if there was an initial perturbation to the system (Schmelting, 1987). That aside, if we assume a thin layer 100 km thick of hot mantle material ponds at the 660 km depth discontinuity, then the characteristic wavelength of the plumelets would be on the order of 200 km. Given the impact of the initial configuration on the estimate of plume wavelength, we will numerically model both Rayleigh Bénard and Rayleigh Taylor instabilities for Newtonian and non-Newtonian rheologies.

## 2. Dynamic Models Methods

### 2.1. Numerical Models Setup

We jointly solve the Stokes and energy equations using the numerical code Stag3D (Tackley, 1998) for the flow of a highly viscous fluid within a Cartesian domain of aspect ratios  $3 \times 3 \times 1$ ,  $4 \times 4 \times 1$ , and  $6 \times 6 \times 1$ , and the model is 700 or 800 km deep. Mechanical boundary conditions are free slip on all sides and of fixed temperature at the top and bottom. Temperatures are fixed at the top and bottom, and the sides are insulating. Tracers are used to make material at the top—between 0 and 0.14H depth—buoyant, by assigning them a buoyancy number,  $B$ , which equals the thermal over chemical density anomaly:  $B = \Delta\rho_c/\Delta\rho_T = 0.5$  (Fourel, 2009). This depth range will comprise most of the upper thermal boundary layer that forms as the model evolves. This minimizes lithospheric participation in the convection pattern and allows us to focus on plume scales and geometry.

Temperature in the asthenosphere is initially set to 1350 °C, the assumed background mantle potential temperature (Armitage et al., 2015). At between 0 and 100 km depth, temperature increases linearly from 0 to 1350 °C. At the bottom of the model, we explore two setups:

- A hot lower boundary condition of 1350 °C +  $\Delta T_e$ , where  $\Delta T_e$  is the excess temperature.
- A basal hot layer, 100 km thick, of excess temperature  $\Delta T_e$  is included in the initial condition, and the lower boundary temperature is held at 1350 °C.

The former lower boundary condition will lead to Rayleigh Bénard convection, while the latter initial condition will destabilize in the form of Rayleigh Taylor instabilities.

The form of the convective instabilities will be determined by the rheology of the upper mantle. We test two different dominant mechanisms for mantle creep, diffusion, and dislocation creep, which can be expressed as a Newtonian and a non-Newtonian rheology. The first rheology we take is an idealized temperature-dependent Newtonian material written as

$$\eta = \eta_0 A_{\text{ref}} \exp\left(\frac{E}{RT}\right), \quad (1)$$

**Table 1**  
List of Models

Name	Type	Ra	$\Delta T_e$ (°C)	Newtonian	Non-Newtonian	Aspect ratio (resolution)
N1	Rayleigh Bénard	$6.000 \times 10^5$	100	x		$6 \times 6 \times 1$ ( $384 \times 384 \times 64$ )
N2	Rayleigh Bénard	$2.000 \times 10^6$	100	x		$6 \times 6 \times 1$ ( $384 \times 384 \times 64$ )
N3	Rayleigh Bénard	$6.000 \times 10^6$	100	x		$6 \times 6 \times 1$ ( $384 \times 384 \times 64$ )
N4	Rayleigh Bénard	$6.000 \times 10^7$	100	x		$6 \times 6 \times 1$ ( $384 \times 384 \times 64$ )
N5	Rayleigh Bénard	$6.000 \times 10^5$	100		x	$6 \times 6 \times 1$ ( $384 \times 384 \times 64$ )
N6	Rayleigh Bénard	$6.000 \times 10^6$	100		x	$6 \times 6 \times 1$ ( $384 \times 384 \times 64$ )
N7	Rayleigh Taylor	$4.000 \times 10^6$	100		x	$4 \times 4 \times 1$ ( $512 \times 512 \times 128$ )
N8	Rayleigh Taylor	$4.000 \times 10^6$	200		x	$4 \times 4 \times 1$ ( $512 \times 512 \times 128$ )
N9	Rayleigh Taylor	$4.000 \times 10^6$	400		x	$4 \times 4 \times 1$ ( $512 \times 512 \times 128$ )
N10	Rayleigh Taylor	$4.825 \times 10^6$	200		x	$4 \times 4 \times 1$ ( $512 \times 512 \times 128$ )

where  $\eta_0$  is the scaling viscosity,  $A_{\text{ref}} = 2.2 \times 10^{-5}$  is the prefactor,  $E = 120 \text{ kJ mol}^{-1}$  is the activation energy,  $R = 8.31$  is the ideal gas constant, and  $T$  is mantle potential temperature. The activation energy, which was determined empirically for the upper mantle to achieve agreement between calculations and observations of lithosphere plate flexure, is a factor of 3 lower than experimentally derived estimates (Korenaga & Karato, 2008; Watts & Zhong, 2000). However, as shown by Christensen (1984) and Jaupart and Mareschal (2011), a small value for the activation energy may be regarded as a convenient way to approximate nonlinear diffusion creep with a Newtonian analog.

The second rheology we consider is a strain weakening non-Newtonian temperature and pressure-dependent creep law

$$\eta = \eta_0 A_{\text{ref}}^{\frac{1}{n}} \exp\left(\frac{E + pV}{nRT}\right) \dot{I}_2^{\frac{1-n}{n}}, \quad (2)$$

where the prefactor  $A_{\text{ref}} = 1.47 \times 10^{-16}$  for a reference strain rate of  $10^{-15} \text{ s}^{-1}$ ,  $E = 523 \text{ kJ mol}^{-1}$ , activation volume  $V = 4 \text{ cm}^3 \text{ mol}^{-1}$ , stress exponent  $n = 3.6$  (Korenaga & Karato, 2008), and  $\dot{I}_2$  is the second invariant of the deviatoric strain rate tensor. Finally, in both models, the scaling viscosity,  $\eta_0$ , is set by the initial Rayleigh number

$$Ra = \frac{\alpha g \rho_m \Delta T H^3}{\kappa \eta_0}, \quad (3)$$

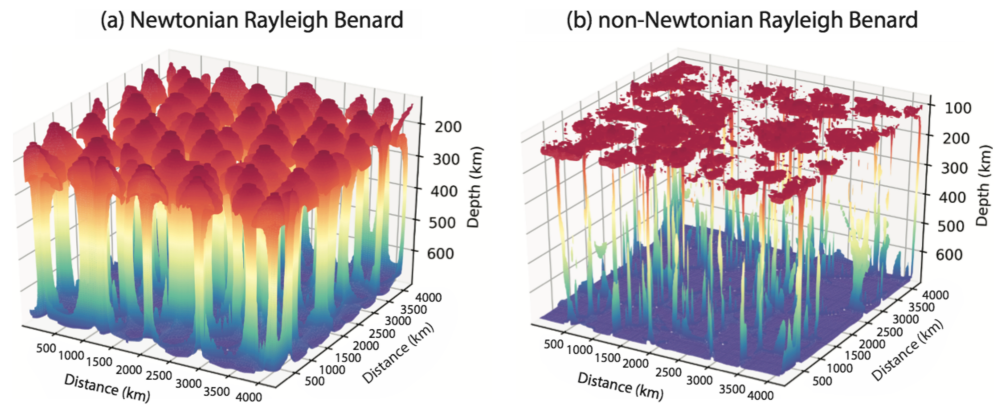
where  $H$  is the height of the model domain and  $\Delta T = 1350 \text{ °C}$ . The remaining constants are listed in Table S1. We explore initial  $Ra$  of  $10^5$  to  $10^7$ . The various models are listed in Table 1.

### 3. Dynamic Models—Plume Scales and Styles

For the Rayleigh Bénard experiments, the model generates regularly spaced plumes for both the Newtonian and non-Newtonian rheologies (Figure 2). These plumes grow uniformly across the model domain, and the spacing is a function of the initial  $Ra$  (Figure S2). For the temperature-dependent Newtonian rheology (Models N1 to N4; Table 1), rather, classic mushroom-shaped plumes are generated (Figure 2a). These plumes eventually impinge on the buoyant lithosphere. The non-Newtonian model plumes (Models N5 and N6; Table 1) are significantly thinner, with plume heads that rapidly flatten out under the lithosphere (Figure 2b). Using the definition of Labrosse (2002) for finding the plume wavelength, we search for the distance between temperature anomalies of

$$T > \bar{T} + f (T_{\text{max}} - T_{\text{min}}), \quad (4)$$

where  $\bar{T}$  is the mean temperature,  $T_{\text{max}}$  is maximum temperature,  $T_{\text{min}}$  is the minimum temperature, and  $f = 0.2$ . As in previous studies, we find that the wavelength of the plumes is a function of the  $Ra$  number (Androvandi et al., 2011; Galsa & Lenkey, 2007; Zhong, 2005). The trend in reduction in wavelength follows  $\lambda/H \propto Ra^{1/6}$ ; however, given the range in measured wavelengths, we cannot rule out the possibility that  $\lambda/H \propto Ra^{1/3}$ , as found for laboratory experiments using fluids with a strongly temperature-dependent viscosity (Androvandi et al., 2011; Figure S2a). The two data points for the non-Newtonian rheology



**Figure 2.** Surface plots of the 1% thermal anomaly (corresponding to a temperature of 1363.5 °C) colored by depth. The models represent Models N3 and N6 in Table 1 and have the same  $Ra = 6 \times 10^6$ . (a) Rayleigh Bénard convection for a Newtonian rheology showing equally spaced plumes that developed uniformly in time. (b) Rayleigh Bénard convection for a non-Newtonian rheology. In this case the strain rate dependence creates thin plumes with flat heads that rapidly impinge on the lithosphere. Note that the aspect ratio is distorted.

(Models N5 and N6) would suggest a stronger dependence of wavelength on  $Ra$  when compared to the Newtonian models (Figure S2b).

If we scale the dimensionless wavelength by the depth to the 660 km depth discontinuity, we find that the possible EAR plumelets could be explained by Newtonian plumes with an upper mantle of  $Ra > 10^6$  (Figure S2a). This corresponds to a scaling viscosity,  $\eta_0 < 5 \times 10^{20}$  Pa s. For non-Newtonian plumes, the wavelength of EAR plumelets corresponds to a  $Ra$  for the upper mantle of  $\sim 10^6$  or a reference viscosity of  $\eta_0 < 5 \times 10^{20}$  Pa s. However, these plumes are very likely too thin to be seismically visible.

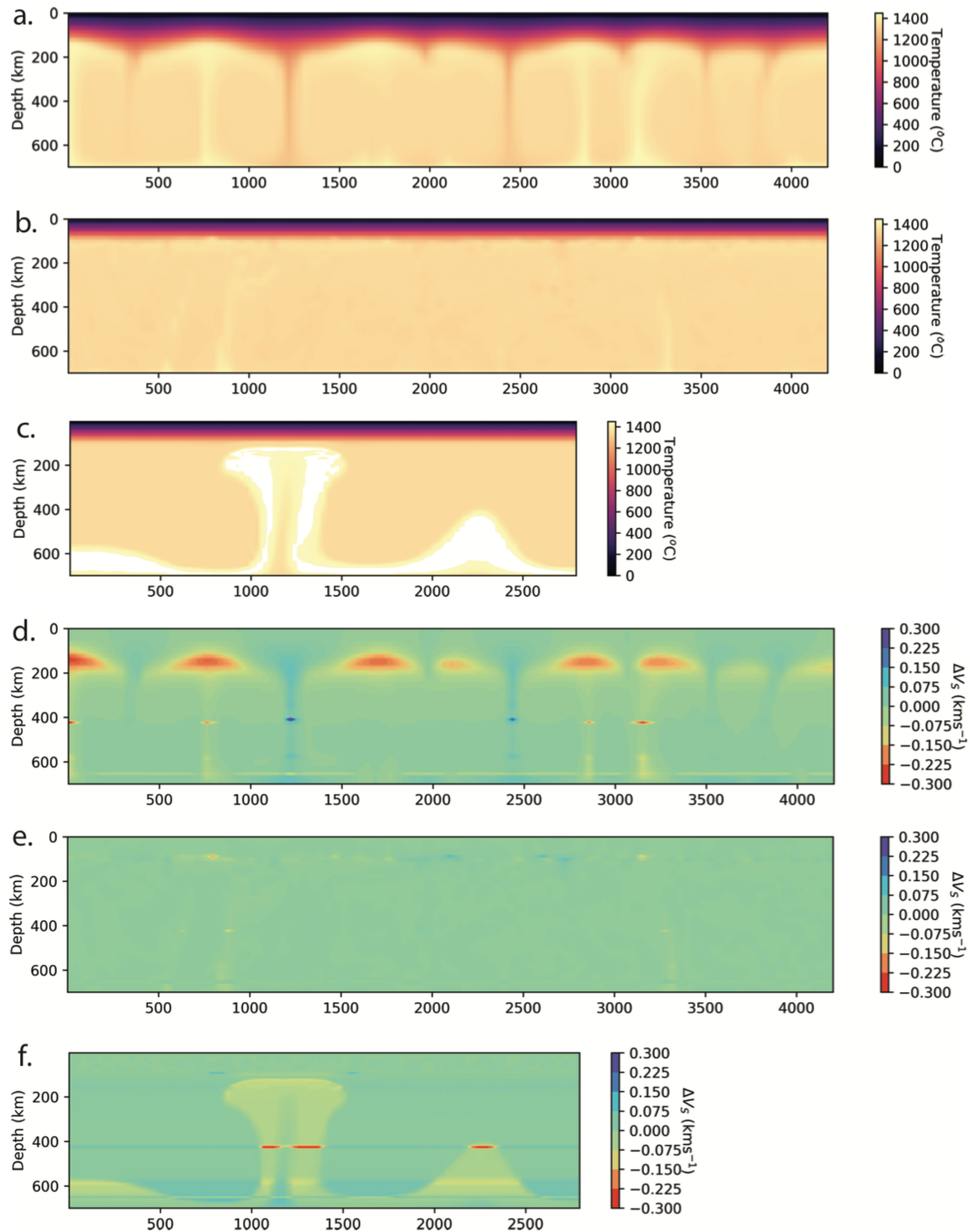
The Rayleigh Bénard convection develops uniformly. The Rayleigh Taylor destabilization of a hot layer of material is however not uniform in time. In Figure S3, we show two models with different aspect ratios,  $3 \times 3 \times 1$  and  $4 \times 4 \times 1$ , respectively, where early- to late-stage plume (LS)-like structures can be detected within the same snapshot. The spacing of these instabilities is of the order  $\lambda = 0.5H$  to  $\lambda = H$  depending on the aspect ratio of the model domain and the stage at which the plume forms (Figure S3). The first instability always forms at a corner of the model, and this subsequently leads to a destabilization of the hot layer that propagates outward from the corner. The wavelength of the plume-like structures was found to be independent of the temperature of the hot layer, as this did not significantly affect the initial  $Ra$  number. Furthermore, the contrast in temperature is high for these plumes when compared to the Newtonian Rayleigh Bénard convection (Figures 3a–3c). This high contrast is due to the non-Newtonian rheology, which leads to a sharper viscosity contrast between the cold and hot material, therefore keeping the sharp thermal gradient. The strong temperature contrast is thus important in the experiments.

When calculated seismic structures are converted to synthetic tomography, the inverted magnitude of  $V_S$  or  $V_P$  diminishes (e.g., Goes et al., 2012; Maguire et al., 2018). Therefore, a strong temperature contrast might be required to match the significantly low seismic velocities observed below Afar and the MER (Figures 1b–1d). This would suggest that the Rayleigh Taylor structures would more likely correspond to the observed tomography. The wavelength of the plumelet spacing is however in this case dependent on the model aspect ratio. For Models N7 through to N9, the spacing is closer to 1,000 km as shown in Figure S3. Given that the Rayleigh Taylor plumelets can (i) match the observed spacing, (ii) have a stronger temperature contrast, and (iii) generate instabilities at different stages of evolution, we will explore how they are transformed when viewed as seismic anomalies.

## 4. Synthetic Tomography Methods

### 4.1. Conversion to Seismic Anomalies

To convert the thermal plume structures into velocities and density, we follow the approach of Cobden et al. (2008) and Styles et al. (2011). We use the thermodynamic code PerPlex (Connolly, 2005) with the NCFMAS data base “stx08” (Xu et al., 2008) to calculate the elastic parameters (bulk modulus  $K$  and shear modulus  $G$ ) and density as a function of pressure, temperature, and composition. For the basic conversions,



**Figure 3.** (a–c) Cross sections through the Newtonian Rayleigh Bénard Model N3 (a), the non-Newtonian Rayleigh Bénard Model N6 (b), and the non-Newtonian Rayleigh Taylor Model N7 (c) illustrating the potential temperature in °C. Note the stronger temperature contrast for the Rayleigh Taylor Model N7. (d–f) Cross sections of the  $S$  wave seismic velocity anomaly (in km/s) relative to the reference velocity taken from an unperturbed region for the Newtonian Rayleigh Bénard Model N3 (d), the non-Newtonian Rayleigh Bénard Model N6 (e), and the non-Newtonian Rayleigh Taylor Model N7 (f). Note that the anomaly range on (e) is smaller than on (d) and (f).



we assume a pyrolite composition, except for the continental lithosphere which is taken to be harzburgitic (both compositions from Xu et al., 2008). A constant adiabatic temperature gradient of  $0.45 \text{ K km}^{-1}$  (a reasonable upper-mantle average, according to Styles et al., 2011) is added to the potential temperatures from the Boussinesq model. The velocities have further been corrected for the effects of temperature, pressure, and hydration-dependent anelasticity using composite model  $Q_g$  (Goes et al., 2012; van Wijk et al., 2008) for a frequency of 1 Hz (which is good for the  $P$  waves but on the high side for the  $S$  waves). The mantle is assumed to contain a slight amount of water as estimated for the MORB-source (1,000 H/Si), and the continental lithosphere is dry (50 H/Si) (Goes et al., 2012). Anomalies are calculated relative to a part of the model without plumelets and where the boundary layers are least perturbed. We subtract our synthetic reference model from the 3-D synthetic velocities as our inversion is not sensitive to the reference model (Cammarano et al., 2005). The uncertainties involved in the calculation of elastic and anelastic parameters lead to uncertainties in  $V_p$  and  $V_s$  anomalies of around  $\pm 0.1\%$  and  $\pm 0.15\%$ , respectively (Cammarano et al., 2003; Styles et al., 2011).

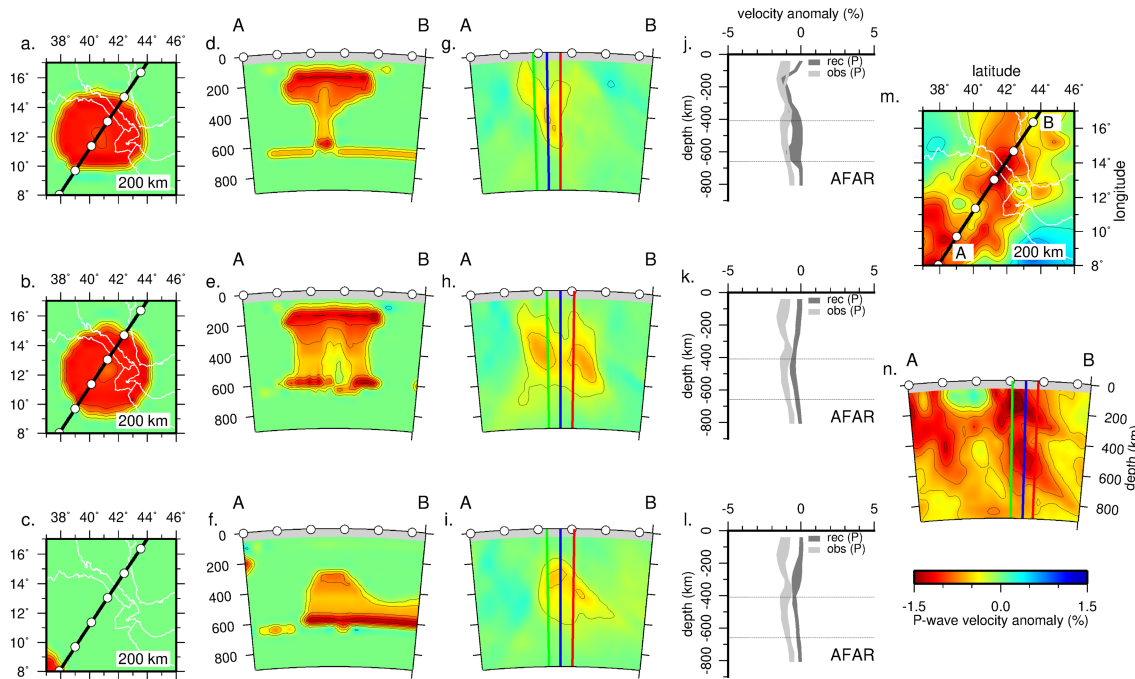
The plumelets can be seen in the seismic velocity anomalies to varying degrees depending on the model rheology and if they are due to Rayleigh Bénard convection (Models N1 to N6; Figures 3d and 3e) or if they form due to the destabilization of a hot layer (Models N7 to N10; Figure 3f).

#### 4.2. Tomographic Method

We test how the synthetic structure is imaged using the tomographic relative traveltimes inversion for  $P$  and  $S$  wave velocity following the method of VanDecar et al. (1995). This technique retrieves velocity anomalies relative to the average regional background. We perform a linear inversion and use ray theory, which leaves some uncertainties in the determination of the magnitude of the velocity anomaly, but should not change the overall anomaly patterns with depth (Montelli et al., 2004). We calculate the arrival times by applying full 3-D ray tracing (Julian & Gubbins, 1977) through the synthetic models and add Gaussian random noise to the synthetic data, respectively, 0.07 and 0.37 s for  $P$  and  $S$  wave data, that is, of similar magnitude as the estimated errors in the real data. We invert for these synthetic velocity structures using the same model parameterization, regularization parameters, and raypaths (calculated through the iasp91 1-D velocity model) as used in the tomography models of Civiero et al. (2016, 2015).

The resolution in the shallow upper mantle (0–200 km depth) is low due to a lack of crossing rays at this depth range. In the inversion of seismic observations (Civiero et al., 2016, 2015), we investigated both models that were solely constrained by the traveltimes, as well as models where the 3-D structure obtained from the surface-wave model of Fishwick (2010) was imposed as a starting model that the inversion was damped to, as an additional constraint on the shallow mantle structure (see Civiero et al., 2015, for further details). Without adding an a priori constraint on shallow structure, horizontally extensive anomalies, such as the high-velocity lid and low-velocity plume material spread below it, are poorly resolved, but the traveltimes provide the main constraints on the plumelet tails and lateral variations in structure that reflect plume shapes. We first focus on such undamped cases but then run additional inversions where we mimic the effect of damping in the synthetic tomography, by moderately damping the model (damping = 35) toward the synthetic structure down to 300 km. This is an optimistic test, as surface-wave tomography will not retrieve the exact seismic structure; therefore, the damped version for the observed tomography is likely somewhere between the undamped and damped synthetic cases.

To perform the resolution tests, the numerical models need to be projected onto the tomographic grid. This is done by preserving slowness within each nodal volume. Because the tomographic grid is coarser than the numerical one, some of the finer-scale features are smoothed when the numerical model is resampled onto the tomographic grid. The volume of the whole tomographic model spans the range  $28^\circ \text{ N}$  to  $25.40^\circ \text{ S}$  in latitude,  $25\text{--}57.20^\circ \text{ E}$  in longitude and 0–2,000 km in depth (the black box in Figure S4), with a node spacing, respectively, of  $0.5^\circ$ ,  $0.4^\circ$ , and 50 km. We focus our interpretation within the region ( $5\text{--}17^\circ \text{ N}$  and  $35\text{--}47^\circ \text{ E}$ ) comprising the Afar and MER regions (blue box in Figure S4, area outlined in Figure 1a), where we have the highest density of crossing rays. The numerical models vary their size depending on the case and extend from the surface up to  $\sim 700\text{--}800$  km depth (red box in Figure S4 shows the approximate volume that they span). Depending on the features we analyze, we rotate the model to position the different synthetic plume anomalies in the locations of the two main low-velocity anomalies found in the observed  $P$  and  $S$  wave tomography, below Afar and the MER.



**Figure 4.** Horizontal slices and vertical cross sections through the *P* wave Model N7 with a 100 °C hot layer, focused below Afar. The orientation of the cross sections (black line) is shown in each 200 km depth slice. (a–c) Horizontal slices at 200 km depth through the synthetic models of LS (a), MS (b), and ES (c) phases. (d, g) Synthetic and resolved images of the LS plume phase; (e, h) synthetic and resolved images of the MS plume phase; (f, i) synthetic and resolved images of the ES plume phase. (j–l) Input and retrieved *P* wave velocity anomaly envelopes (%) along the green, blue, and red profiles drawn in the cross sections. (m) The 200 km depth slice through the NEAR-P15 model. (n) Vertical cross section through the NEAR-P15 model. The spacing between the contours is 0.25 %. White points indicate the distance every 2°. The color scale is the same for all the panels.

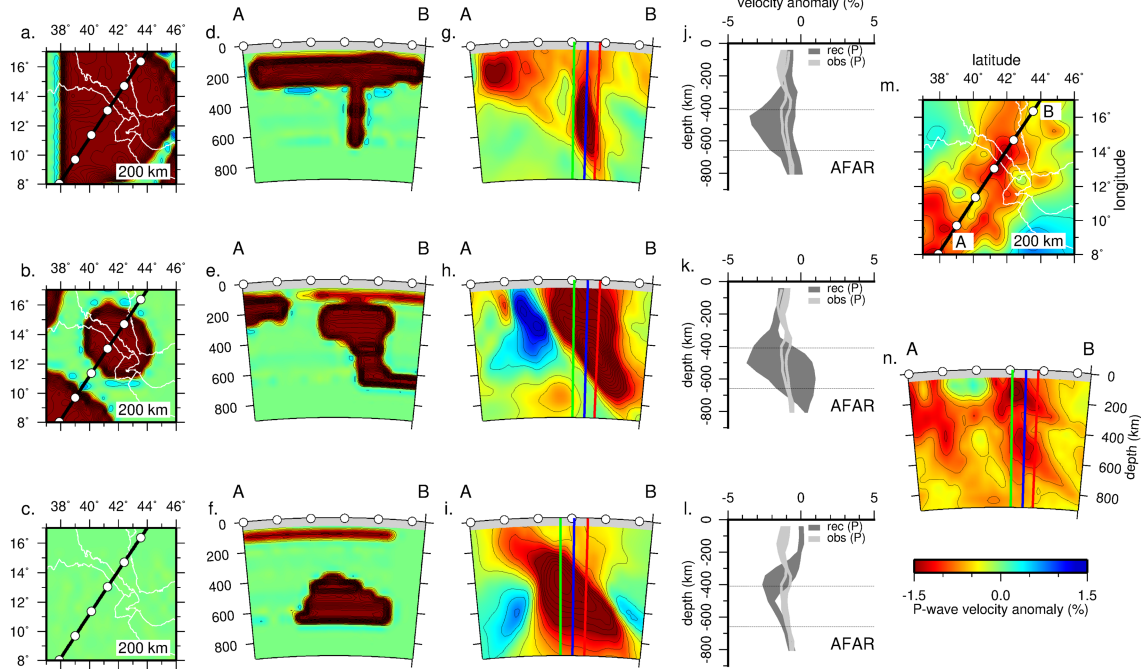
## 5. Synthetic Tomography Results

We focus on the Rayleigh Taylor instabilities given that they have a strong temperature contrast (Figure 3) and have widths that are similar to those inferred from the tomographic inversion of the observations. We will first use models with an aspect ratio  $4 \times 4 \times 1$  and  $Ra=4 \times 10^6$  (Models N7 to N9; Table 1) to test which plume style and thermal anomaly are required below Afar and the MER to match the seismic observations. Models N7 to N9 have a wide plumelet spacing, due to their large aspect ratio. This large aspect ratio was chosen to achieve the required numerical resolution to solve for the destabilization of a hot layer with temperatures ranging from 100 to 400 °C (Table 1) while efficiently spreading the numerical model across compute nodes. With these models, we will explore how different individual plumelets potentially match the observed tomography in terms of shape and temperature, and we do this by positioning them in turn below Afar and the MER. Next we use the synthetic model with the thermal anomaly that best matches the observed anomalies but with a higher  $Ra$  (Model N10) to try to obtain the spacing of the plumelets below the Afar and MER.

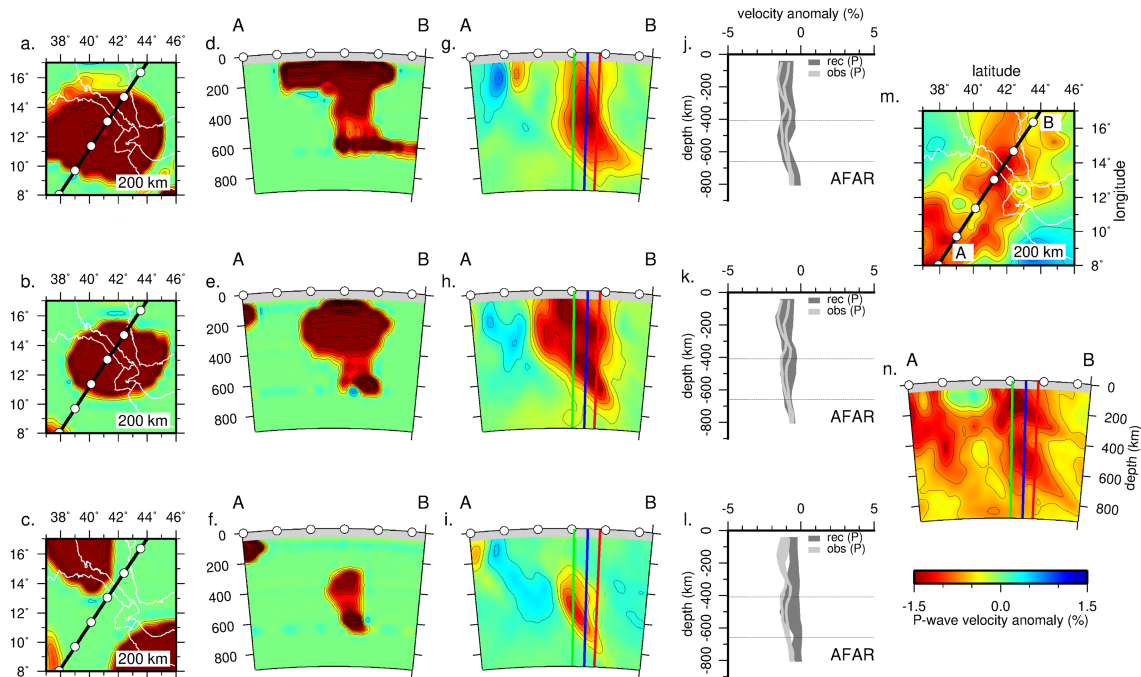
### 5.1. Plume Temperature and Geometry

To test how the different plume geometries corresponding to different stages of plume evolution might be resolved by traveltime tomography, we identify three distinct evolutionary phases from Models N7 to N9 (labeled in Figure S3). The first is an early-stage plume (ES) that is ascending from the thermal boundary layer and penetrating into the upper mantle without a well-defined head. The second structure is a middle-stage plume (MS) with one or more thinner feeder columns of  $\sim 150$  km diameter and a pronounced blob-like head, which has developed in the upper mantle but has not reached the surface yet. The third is a LS, which shows the classical mushroom-type structure with a head spreading at the base of the lithosphere, fed by a thinner tail.

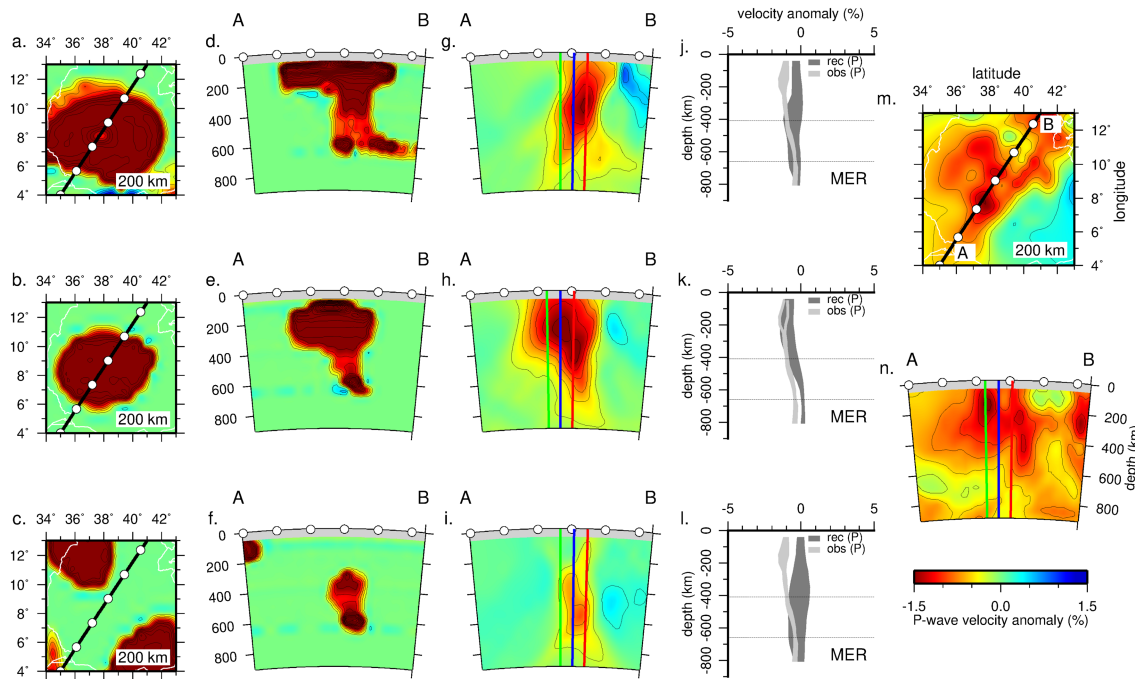
We then place the ES, MS, and LS plumes in turn below the Afar and MER regions to compare the amplitude of the recovered and actual velocity anomalies for the three models (N7 to N9) having different thermal boundary layers (100, 200, and 400 °C). The velocity amplitudes for the temperature anomaly in Model



**Figure 5.** Same as Figure 4 but for the *P* wave Model N9 with a 400 °C hot layer, focused below Afar.



**Figure 6.** Horizontal slices and vertical cross sections through the *P* wave Model N8 with a 200 °C hot layer, focused below Afar. The orientation of the cross sections (black line) is shown in each 200 km depth slice. (a–c) Horizontal slices at 200 km depth through the synthetic models of LS (a), MS (b), and ES (c) phases. (d, g) Synthetic and resolved images of the LS plume phase; (e, h) synthetic and resolved images of the MS plume phase; (f, i) synthetic and resolved images of the ES plume phase. The resolved LS plume (g) lost its head due to the lack of resolution at shallow upper-mantle depths. The MS phase (h) is well resolved because the head of the input model (b) is relatively strong and laterally confined. Although some smearing, the ES structure (i) is quite well recovered. (j–l) Input and retrieved *P* wave velocity anomaly envelopes (%) along the green, blue, and red profiles drawn in the cross sections. Within the transition zone the retrieved and observed velocity anomalies of the MS and LS plumes overlap. (m) The 200 km depth slice through the NEAR-P15 model. (n) Vertical cross section through the NEAR-P15 model. The spacing between the contours is 0.25%. White points indicate the distance every 2°. The color scale is the same for all the panels.



**Figure 7.** Same as Figure 6 but focused below MER. The LS plume shows the best matching between the retrieved and observed velocity anomalies at transition-zone depths.

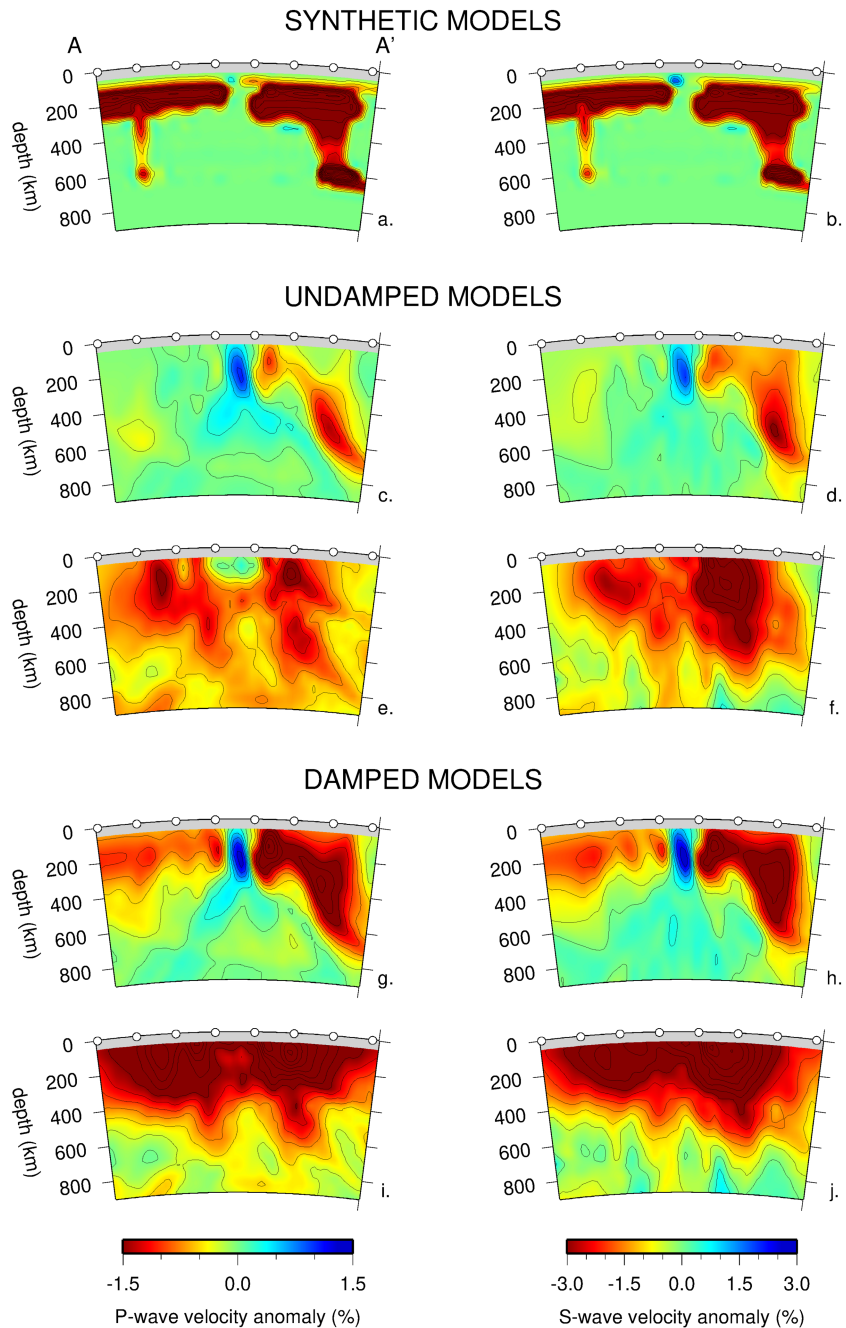
N7 are low relative to the observed structures (Figure 4), and the velocity amplitudes for the temperature anomaly in Model N9 are almost double the observed seismic velocity anomalies (Figure 5). Similar results are obtained for the MER regions and are shown in Figures S5 (Model N7) and S6 (Model N9). Instead, the retrieved plumes in Model N8 correlate quite well with the tomography-imaged features in terms of magnitude (see Figures 6 for Afar and 7 for MER). It would appear therefore that the destabilization of a 200 °C anomaly best matches the velocity magnitudes.

We now explore how the different plume phases LS, MS, and ES are tomographically resolved below the northern EAR. The recovered images for each plume stage are complex and not straightforward to interpret. All the plume stems are resolved through the whole upper mantle; however, without additional constraints on shallow structure, the retrieved image of the LS plume does not resolve the head above 300 km depth, and in absence of smearing, it can be mistaken for a plume in a less evolved phase. The synthetic MS plume image is more distinct from the ES and LS plumes, as the upper-mantle head of the plume is broader and can be resolved laterally (Figures 6 and 7).

The velocity anomalies of both the LS and MS phases overlap in the upper mantle below Afar and are in the range 0.5–1.5% (Figures 6g and 6h) although visually, the MS anomaly is closer to the observed structure in terms of geometry. Below the MER, the LS plume shows the best match between the observed and recovered velocities at transition-zone depths, of around 0.5–1% (Figures 7g and 7h). In turn, the MS phase best matches the elongated shape of the plume. In the uppermost mantle, the imaged velocity anomaly appears more similar to that of the retrieved MS plume (Figure 6h). Note that the tomography below Afar requires significant low-velocity anomalies throughout the depth range of the upper mantle, while below the MER, anomalies in the shallow mantle above 400 km need to be more pronounced than those in the transition zone.

### 5.2. Plume Scale and Spacing

Figure S7 shows a 3-D perspective plot of the plume model N10 with a destabilization of a 200 °C hot layer, aspect ratio of  $4 \times 4 \times 1$ , and  $Ra = 4.8 \times 10^6$  (Table 1). The isosurface of the 1% excess temperature relative to the surroundings illustrates the number, size, and the morphologies of the upwellings that form. By keeping the same model aspect ratio as Models N7–N9 and slightly increasing  $Ra$ , the plumelet spacing is reduced, on the order of 500 km, and this allows us to rotate two plumes into a position that matches the two low seismic anomalies found below Afar and the MER. We rotated the model to place a MS plume



**Figure 8.** (a, b) Input *P* (a) and *S* wave (b) velocity anomalies (%) along a vertical cross section through the Model N10 oriented such that the two plumes are positioned approximately under Afar and MER. The location of the cross sections (black line) is shown in Figure 1b. The structure on the right represents the synthetic MS plume and the structure on the left the LS plume. (c, d, g, h) Vertical cross sections through the recovered undamped *P* (c) and *S* wave (d) models and the damped *P* (g) and *S* wave (h) models. (e, f, i, j) Vertical cross sections through the undamped (e) and damped (i) NEAR-P15 model and the undamped (f) and damped (j) NEAR-S16 model. The spacing between the contours is 0.25 % for *P* wave models and 0.50 % for *S* wave models. The undamped recovered models (c, d) image the tail of the MS plume, but the LS plume recovery is almost completely lost. The damped recovered models (f, g) are able to resolve the MS plume structure and the head of the LS plume but with relatively subdued amplitudes. The scale of the recovered structures is quite similar to that of the imaged features.

with a broad head and a thick stem below Afar and a LS plume with a head spread at the base of the lithosphere and a narrow tail below MER. Synthetic cross sections of the same orientation as the section through Models NEAR-P15 and NEAR-S16 in Figure 1 are shown in Figures 8a and 8b. Model N10 is able to reasonably match both scales and amplitudes of the anomalies in the tomography of the actual data (Figure 8).

In the undamped case, details of the MS plume located below Afar, such as a partially folded head and a tail influenced by phase-boundary topography, are not identifiable in the  $P$  wave inversion (Figure 8c). In the  $S$  wave model, the head and the tail are slightly better resolved (Figure 8d). The recovery of the plume geometries can be enhanced if constraints on the shallow structure and damping toward it are added (Civiero et al., 2016, 2015). In fact, when considering the damped case, the MS anomaly is generally well recovered in both  $P$  and  $S$  wave tests (Figures 8g and 8h). The anomaly from the LS upwelling located below the MER is recovered less clearly, where the plume head is almost fully unresolved in both the  $P$  wave (Figure 8c) and  $S$  wave models (Figure 8d). Again, when adding constraints on the shallow structure and damping toward it, the recovery of the anomaly improves significantly and better resembles the observed structure below the MER (Figures 8g and 8h). Some of the differences between the recovery of the two plumes may be due to different resolution below Afar and the MER as the data coverage is slightly higher in the first region than in the latter.

Although a Cartesian model of the destabilization of a 200 °C hot layer cannot be expected to match the actual imaged structures in detail, the scale and spacing of the modeled plumes, after accounting for the seismic resolution, is similar to the observed features. Only the low velocities at shallow depths, in particular below the MER, are not as widespread in the synthetic tomography compared to the observed tomography, but the effects of melt retention or local lithospheric thinning, which were not considered, may contribute to these shallow anomalies. The similarity suggests that small upper-mantle plumelets are a plausible explanation for the seismic anomalies beneath East Africa, which can also explain the surface expressions of volcanism and rifting.

Interestingly, NEAR-P15 and NEAR-S16 have some differences in relative  $P$  wave over  $S$  wave anomaly amplitude and structure of the low-velocity anomalies below Afar and the MER (Figures 8e and 8f; Civiero et al., 2016). For example, the tomographic  $S$  wave anomaly below Afar in NEAR-S16 is much stronger in amplitude compared to that beneath the MER. This feature is not recovered in the synthetic tomography tests. In addition, some localized strong low-velocity bodies appear in the upper mantle of our tomographic model below the MER. The fact that the differences between synthetic and tomographic amplitudes are more pronounced in  $S$  than  $P$  wave models could indicate that other nonthermal effects play a role. It has been demonstrated that excess temperatures of around 100 °C may be enough to produce melt volumes below a rift (Armitage et al., 2015). Indeed, a signature of partial melt within the asthenosphere has previously been invoked as additional contribution to the  $S$  wave anomalies below Afar (e.g., Bastow et al., 2005; Hammond et al., 2013; Rooney et al., 2012; Thompson et al., 2015). Receiver function studies from Thompson et al. (2015) image a distinct low-velocity zone just on top of the transition zone beneath Afar, which has been interpreted to be a melt layer caused by the release of volatiles from an upwelling. Rooney et al. (2012) also proposed a contribution of deep  $CO_2$ -assisted melting to the low-velocity features in the asthenosphere below Afar. The presence of melt at the lithospheric depths (<80 km) and/or lithospheric thinning would further enhance shallow low-velocity anomalies (e.g., Rychert et al., 2012; Hammond et al., 2013; Benoit et al., 2006; Kendall et al., 2005). However, the observed  $dV_P/dV_S$  ratios are also affected by differences in spatial resolution for the two data sets, for example, due to the added lateral resolution supplied to the  $S$  wave velocity inversion by the SKS-wave traveltimes (Civiero et al., 2016). These uncertainties preclude distinguishing thermal from chemical effects with the  $dV_P/dV_S$  ratios from this type of traveltime tomography (Civiero, 2016).

## 6. Discussion

### 6.1. Different or Similar Evolutionary Stage Plumes Below Afar and MER

Comparing forward models with observed tomography to find a good match between synthetic and observed features is not straightforward. Tomographic resolution is spatially variable and highly nonlinear, making

it difficult to assess (Rawlinson et al., 2010). However, from our set of resolution tests for each plume stage of evolution, we recognize that models with a strong tail and no head, like ES plumes, do not match our observations well in character or amplitude at upper-mantle depths as both the seismic anomalies below Afar and the MER are much stronger in magnitude (Figures 6 and 7). Generally, plumes in a late phase (LS) and middle phase (MS) of evolution with a broad head and a quite thick tail seem to best explain the evolutionary stage of both the upper-mantle structures below Afar and the MER.

A MS plume below Afar matches well the amplitude of both the *P* and *S* wave low-velocity anomalies within the transition zone and above. Moreover, the similarity between the retrieved and observed tomographic plume geometries is encouraging, especially for the *S* waves (Figure 8). Due to the poorer resolution moving to the SW, identifying the exact stage of evolution of the plume below MER is more difficult. As the observed low-velocity anomaly within the transition zone is narrower compared to that below Afar, we suggest that the plume below MER could be in a slightly more advanced stage, with a head spreading at the base of the lithosphere and a thinner tail. However, the stem of the LS plume shown in Figure 8 is likely too narrow, and a plausible diameter may be closer to that of the LS plume in Figure 7, around 200 km.

The resolution tests also strongly indicate that the source layer of the plumelets lies below 660 km depth but not much deeper. Calculations of the vertical correlation of the NEAR-P15 and NEAR-P16 structures as a function of depth show that correlations are high in the transition zone ( $>0.6$ ) down to 700 km and decrease strongly below (Civiero, 2016). Similar decreases are found in synthetic tests where the boundary layer is located below this depth, while the decrease in correlation would be significantly more subdued if the boundary layer was located even deeper (e.g., 1,000 km). The dynamic models also indicate that the plume scale and spacing of several hundred km inferred from the seismic images below the EAR is in the range expected for a source layer at the base of the upper mantle and reasonable upper-mantle rheologies. We would therefore suggest that hotspot volcanic centers clustered on the scale of a few hundred km, such as within the Canaries and within western Europe, are likely rooted in hot material that has accumulated just below the transition zone, while the larger spacing of 1,000–1,500 km as imaged for example by Rickers et al. (2016) may be due to the accumulation of hot buoyant material deeper in the lower mantle or plume branching in the lower mantle which occurs in some dynamic models (e.g., Davies & Davies, 2009).

## 6.2. Secondary Plumes or Destabilization of Ponded Plume Material

We infer that a source layer with a temperature excess of  $\sim 200$  °C from a thermal boundary layer is needed to match the amplitude of the upper-mantle low-velocity anomalies imaged in our observed tomography. Yet, it is difficult to reconcile the seismic signatures with a steady-state thermal boundary layer. The Rayleigh Bénard instabilities either are too diffuse (Newtonian Models N1 to N4; Figure S2a) or create anomalies that are too thin (non-Newtonian Models N5 and N6; Figure S2b), such that the thermal anomalies are seismically invisible or relatively weak (e.g., Goes et al., 2004). It is only for the Rayleigh Taylor models (N7 to N10) that thermal anomalies are sufficiently strong such that the seismic velocity anomaly is resolved in the synthetic tomography. Furthermore, only the Rayleigh Taylor models produce simultaneous plumes at different stages of their evolution as may be required by the complexity of the imaged structures.

This is a strong statement, as it implies that the plumelets are more time dependent than secondary instabilities that can rise from a regional boundary layer that gradually grows by a deeper plume flux. For example, in models like those by Kumagai et al. (2007, 2008), Tosi and Yuen (2011), and Bossmann and Van Keken (2013), the density contrast between the lower and upper mantle that would be due to the endothermic phase transition can lead to the stagnation of plume material below the boundary. This results in the heating of the boundary between the two layers and the generation of secondary plumes (Kumagai et al., 2007). This process is therefore similar to the Rayleigh Bénard numerical models in Figures 2 and 3, which are either too diffuse or thin to be seismically imaged. Thermal-chemical plumes will stagnate if the compositional buoyancy is such that they become of equal density with the surrounding mantle. The chemical component of the plume will subsequently fall down back into the lower mantle (Kumagai et al., 2008). It is possible that some of the chemical heterogeneity become entrained within the thermal upwellings, but again, these plumes are not the equivalent of the Rayleigh Taylor numerical models that more closely match the seismic observations.

What we require is the arrival of some distinct buoyant material at between 800 and 660 km depth below the EAR. This material would either already be intrinsically unstable or transform to a relatively buoyant mass (e.g., by phase transitions or internal heating) to subsequently spawn the plumelets observed within

the tomographic images. A contribution of chemical heterogeneity to the plume may be required to generate such complex and time-dependent behavior (e.g., Kumagai et al., 2008) and has been proposed to explain the complexity of low-velocity structures in global tomographic images (e.g., Cottaar & Lekic, 2016; Davaille et al., 2005). The scenario of Rayleigh Taylor instabilities could occur if the large-scale thermochemical plumes are also internally heated (Fourel et al., 2017). In this case, the large-scale plume rises until it becomes neutrally buoyant. As it stagnates, internal heating will increase its temperature allowing for further destabilization. The tomographic images of the upper mantle are in agreement with relatively flat, thermal anomalies, as in models that include distinct density layers and internal heating (Fourel et al., 2017; Limare et al., 2019).

## 7. Conclusions

We find that the seismic structure seen in the upper mantle below the EAR is similar in character, scale, and amplitude to predictions from dynamic models for mantle plumelets originating from a 200 °C excess temperature layer near the top of the lower mantle. This suggests that lower-mantle plume material rising upward toward the upper mantle may stabilize in the shallow lower mantle. Subsequently, for example, due to a combination of chemical heterogeneity and internal heating, the structure will destabilize into upper-mantle plumelets with a spacing that is a function of the depth at which the structure stabilizes and its width. Below the EAR, it would appear that African Superplume material accumulated at ~800 to 660 km depth and subsequently destabilized into several Rayleigh Taylor-style instabilities rising beneath Afar and the MER.

The synthetic tomography generated from the 3-D models of Rayleigh Taylor instabilities highlights that plumes have complex signatures in tomographic images. This suggests that checkerboard tests and simple vertical cylindrical features used as model inputs are insufficient to test interpretations of tomographic images. In particular, if several plumelets are active below a region and they are in different stages of evolution, as predicted in our dynamic models, there will be complexities in both geometry and amplitude of the recovered synthetic tomography. This may explain the upper-mantle low-velocity anomalies that differ in shape from simple near-vertical cylindrical structures under a wide number of hotspot regions on scales of several 100 km, for example, in the central Atlantic (Azores, Canaries, Cape Verde, Madeira, and Great Meteor) where an irregularly shaped anomaly of low *P* wave velocities in the shallowest 200 km, which slants northeast and downward to the top of the transition zone is imaged (Vinnik et al., 2012; Yang et al., 2006), beneath Central Europe where the low-speed anomalies show more than one branch in the upper mantle (Massif Central/Eifel; Granet et al., 1995; Ritter et al., 2001), and Indian Ocean (Marion/Crozet) where several tilted upper-mantle upwellings are suggested to rise from transition-zone depths (Davaille et al., 2005; Montelli et al., 2004). Given that other regions exhibit similarly complex upper-mantle structure and/or spacing between volcanic centers, it would be worthwhile reanalyzing some previously published tomographic images below hotspots in this light.

## References

- Androvandi, S., Davaille, A., Limare, A., Fouquier, A., & Marais, C. (2011). At least three scales of convection in a mantle with strongly temperature-dependent viscosity. *Physics of the Earth and Planetary Interiors*, *188*, 132–141. <https://doi.org/10.1016/j.pepi.2011.07.004>
- Armitage, J. J., Ferguson, D. J., Goes, S., Hammond, J. O. S., Calais, E., Rychert, C. A., & Harmon, N. (2015). Upper mantle temperature and the onset of extension and break-up in Afar, Africa. *Earth and Planetary Science Letters*, *418*, 78–90. <https://doi.org/10.1016/j.epsl.2015.02.039>
- Ballmer, M. D., Ito, G., Wolf, C. J., & Solomon, S. C. (2013). Double layering of a thermochemical plume in the upper mantle beneath Hawaii. *Earth and Planetary Science Letters*, *376*, 155–164. <https://doi.org/10.1016/j.epsl.2013.06.022>
- Bastow, I. D., Stuart, G. W., Kendall, J. M., & Ebinger, C. J. (2005). Upper-mantle seismic structure in a region of incipient continental breakup: Northern Ethiopian rift. *Geophysical Journal International*, *162*, 479–493. <https://doi.org/10.1111/j.1365-246X.2005.02666.x>
- Benoit, M. H., Nyblade, A. A., & VanDecar, J. C. (2006). Upper mantle P-wave speed variations beneath Ethiopia and the origin of the Afar hotspot. *Geology*, *34*, 329–332. <https://doi.org/10.1130/G22281.1>
- Boschi, L., Becker, T. W., & Steinberger, B. (2007). Mantle plumes: Dynamic models and seismic images. *Geochemistry Geophysics Geosystems*, *8*, Q10006. <https://doi.org/10.1029/2007GC001733>
- Bossmann, A. B., & Van Keken, P. E. (2013). Dynamics of plumes in a compressible mantle with phase changes: Implications for phase boundary topography. *Physics of the Earth and Planetary Interiors*, *224*, 21–31. <https://doi.org/10.1016/j.pepi.2013.09.002>
- Cammarano, F., Deuss, A., Goes, S., & Giardini, D. (2005). One-dimensional physical reference models for the upper mantle and transition zone: Combining seismic and mineral physics constraints. *Journal of Geophysical Research*, *110*, B01306. <https://doi.org/10.1029/2004JB003272>

### Acknowledgments

The authors would like to thank the two reviewers and the Editor, Maureen Long, for constructive, helpful suggestions. C. C. was supported by a Janet Watson Fellowship from the Department of Earth Science and Engineering at Imperial College London and by the Project SPIDER (PTDC/GEO- FIQ/2590/2014) from the Fundação para a Ciência e a Tecnologia. J. A. is funded by ANR Accueil de Chercheurs de Haut Niveau grant InterRift. J. H. was supported for this work by NERC fellowship NE/I020342/1. The tomographic models NEAR-P15 and NEAR-S16 are available online from the IRIS Earth Model Collaboration (<http://ds.iris.edu/ds/products/emc-near-p15near-s16>). The numerical model Stag3D code is available from Paul Tackley (ETH) by request. C. C. and J. A. contributed equally to this work. We thank Loïc Fourel for discussions. GMT Wessel and Smith (1995) software was used to plot Figures 1 and 4 to 8.



- Cammarano, F., Goes, S., Vacher, P., & Giardini, D. (2003). Inferring upper-mantle temperatures from seismic velocities. *Physics of the Earth and Planetary Interiors*, 138, 197–222. [https://doi.org/10.1016/S0031-9201\(03\)00156-0](https://doi.org/10.1016/S0031-9201(03)00156-0)
- Chang, S. J., & Van der Lee, S. (2011). Mantle plumes and associated flow beneath Arabia and East Africa. *Earth and Planetary Science Letters*, 302, 448–454. <https://doi.org/10.1016/j.epsl.2010.12.050>
- Christensen, U. R. (1984). Convection with pressure and temperature-dependent non-Newtonian rheology. *Geophysical Journal of the Royal Astronomical Society*, 77, 343–384.
- Civiero, C. (2016). Understanding the nature of mantle upwelling beneath East Africa (Doctoral dissertation), Imperial College London, London, UK. [urlhttp://hdl.handle.net/10044/1/33345](http://hdl.handle.net/10044/1/33345).
- Civiero, C., Custódio, S., Rawlinson, N., Strak, V., Silveira, G., Arroucau, P., & Corela, C. (2019). Thermal nature of mantle upwellings below the Ibero-western Maghreb region inferred from teleseismic tomography. *Journal of Geophysical Research: Solid Earth*, 124, 1781–1801. <https://doi.org/10.1029/2018JB016531>
- Civiero, C., Goes, S., Hammond, J. O. S., Fishwick, S., Ahmed, A., Ayele, A., et al. (2016). Small-scale thermal upwellings under the northern East African Rift from S travel time tomography. *Journal of Geophysical Research: Solid Earth*, 121, 7395–7408. <https://doi.org/10.1002/2016JB013070>
- Civiero, C., Hammond, J. O. S., Goes, S., Fishwick, S., Ahmed, A., Ayele, A., et al. (2015). Multiple mantle upwellings in the transition zone beneath the northern East-African Rift system from relative P-wave travel-time tomography. *Geochemistry, Geophysics, Geosystems*, 16, 2949–2986. <https://doi.org/10.1002/2015GC005948>
- Civiero, C., Strak, V., Custódio, S., Silveira, G., Rawlinson, N., Arroucau, P., & Corela, C. (2018). A common deep source for upper-mantle upwellings below the Ibero-western Maghreb region from teleseismic P-wave travel-time tomography. *Earth and Planetary Science Letters*, 499, 157–172. <https://doi.org/10.1016/j.epsl.2018.07.024>
- Cobden, L., Goes, S., Cammarano, F., & Connelly, J. A. D. (2008). Thermochemical interpretation of one-dimensional seismic reference models for the upper mantle: Evidence for bias due to heterogeneity. *Geophysical Journal International*, 175, 627–648. <https://doi.org/10.1111/j.1365-246X.2008.03903.x>
- Connolly, J. A. D. (2005). Computation of phase equilibria by linear programming: A tool for geodynamic modelling and its application to subduction zone decarbonation. *Earth and Planetary Science Letters*, 236, 524–541. <https://doi.org/10.1016/j.epsl.2005.04.033>
- Cottaar, S., & Lekic, V. (2016). Morphology of seismically slow lower-mantle structures. *Geophysical Journal International*, 207, 1122–1136. <https://doi.org/10.1093/gji/ggw324>
- Davaillé, A., Stutzmann, E., Silveira, G., Besse, J., & Courtillot, V. (2005). Convective patterns under the Indo-Atlantic “box”. *Earth and Planetary Science Letters*, 239, 233–252. <https://doi.org/10.1016/j.epsl.2005.07.024>
- Davaillé, A., & Vatteville, J. (2005). On the transient nature of mantle plumes. *Geophysical Research Letters*, 32, L14309. <https://doi.org/10.1029/2005GL023029>
- Davies, D. R., & Davies, J. H. (2009). Thermally-driven mantle plumes reconcile multiple hot-spot observations. *Earth and Planetary Science Letters*, 278, 50–54. <https://doi.org/10.1016/j.epsl.2008.11.027>
- Emry, E. L., Shen, Y., Nyblade, A. A., Flinders, A., & Bao, X. (2019). Upper mantle earth structure in Africa from full-wave ambient noise tomography. *Geochemistry, Geophysics, Geosystems*, 20, 120–147. <https://doi.org/10.1029/2018GC007804>
- Ferguson, D. J., MacLennan, J., Bastow, I. D., Pyle, D. M., Jones, S. M., Keir, D., et al. (2013). Melting during late-stage rifting in Afar is hot and deep. *Nature*, 499, 70–73. <https://doi.org/10.1038/nature12292>
- Fishwick, S. (2010). Surface wave tomography: Imaging of the lithosphere–asthenosphere boundary beneath central and southern Africa?. *Lithos*, 120, 63–73. <https://doi.org/10.1016/j.lithos.2010.05.011>
- Fourel, L. (2009). Stabilité et instabilité de la lithosphere continentale (Doctoral dissertation), Institut de Physique du Globe de Paris, Paris, France.
- Fourel, L., Limare, A., Jaupart, C., Surdudan, E., Farnetani, C. G., Kamniski, E. C., et al. (2017). The Earth’s mantle in a microwave oven: Thermal convection driven by a heterogeneous distribution of heat sources. *Experiments in Fluids*, 58(90), 16. <https://doi.org/10.1007/s00348-017-2381-3>
- Galsa, A., & Lenkey, L. (2007). Quantitative investigation of physical properties of mantle plumes in three-dimensional numerical models. *Physics of Fluids*, 19(116601). <https://doi.org/10.1063/1.2794284>
- Goes, S., Armitage, J. J., Harmon, N., Huisman, R., & Smith, H. (2012). Low seismic velocities below mid-ocean ridges: Attenuation vs. melt retention. *Journal of Geophysical Research*, 117, B12403. <https://doi.org/10.1029/2012JB009637>
- Goes, S., Cammarano, F., & Hansen, U. (2004). Synthetic seismic signature of thermal mantle plumes. *Earth and Planetary Science Letters*, 218, 403–419. [https://doi.org/10.1016/S0012-821X\(03\)00680-0](https://doi.org/10.1016/S0012-821X(03)00680-0)
- Goes, S., Spakman, W., & Bijwaard, H. (1999). A lower mantle source for central European volcanism. *Science*, 286, 1928–1931. <https://doi.org/10.1126/science.286.5446.1928>
- Granet, M., Wilsona, M., & Achauer, U. (1995). Imaging a mantle plume beneath the French Massif Central. *Earth and Planetary Science Letters*, 136, 281–296. [https://doi.org/10.1016/0012-821X\(95\)00174-B](https://doi.org/10.1016/0012-821X(95)00174-B)
- Hammond, J. O. S., Kendall, J.-M., Stuart, G. W., Ebinger, C. J., Bastow, I. D., Keir, D., et al. (2013). Mantle up-welling and initiation of rift segmentation beneath the Afar depression. *Geology*, 41, 635–638. <https://doi.org/10.1130/G33925.1>
- Hansen, S. E., Nyblade, A. A., & Benoit, M. H. (2012). Mantle structure beneath Africa and Arabia from adaptively parameterized P-wave tomography: Implications for the origin of Cenozoic Afro-Arabian tectonism. *Earth and Planetary Science Letters*, 319–320, 23–34. <https://doi.org/10.1016/j.epsl.2011.12.023>
- Hwang, Y. K., Ritsema, J., van Keken, P. E., Goes, S., & Styles, E. (2011). Wavefront healing renders deep plumes seismically invisible. *Geophysical Journal International*, 187, 273–277. <https://doi.org/10.1111/j.1365-246X.2011.05173.x>
- Jaupart, C., & Mareschal, J.-C. (2011). *Heat generation and transport in the Earth*. Cambridge, UK: Cambridge University Press.
- Julian, B. R., & Gubbins, D. (1977). Three dimensional seismic ray tracing. *Journal of Geophysics*, 43, 95–114.
- Kendall, J., Stuart, G. W., Ebinger, C. J., Bastow, I. D., & Keir, D. (2005). Magma-assisted rifting in Ethiopia. *Nature*, 433, 146–148. <https://doi.org/10.1038/nature03161>
- Korenaga, J., & Karato, S.-I. (2008). A new analysis of experimental data on olivine rheology. *Journal of Geophysical Research*, 113, B02403. <https://doi.org/10.1029/2007JB005100>
- Kumagai, I., Davaillé, A., & Kurita, K. (2007). On the fate of thermally buoyant mantle plumes at density interfaces. *Earth and Planetary Science Letters*, 254, 180–193. <https://doi.org/10.1016/j.epsl.2006.11.029>
- Kumagai, I., Davaillé, A., Kurita, K., & Stutzmann, E. (2008). Thin, fat, successful, or failing? Constraints to explain hot spot volcanism through time and space. *Geophysical Research Letters*, 35, L16301. <https://doi.org/10.1029/2008GL035079>
- Labrosse, S. (2002). Hotspots, mantle plumes and core heat loss. *Earth and Planetary Science Letters*, 199, 147–156. [https://doi.org/10.1016/S0012-821X\(02\)00537-X](https://doi.org/10.1016/S0012-821X(02)00537-X)

- Limare, A., Jaupart, C., Kaminski, E., Fourel, L., & Farnetani, C. G. (2019). Convection in an internally heated stratified heterogeneous reservoir. *Journal of Fluid Mechanics*, 870, 67–105. <https://doi.org/10.1017/jfm.2019.243>
- Maguire, R., Ritsema, J., Bonnín, M., van Keken, P. E., & Goes, S. (2018). Evaluating the resolution of deep mantle plumes in teleseismic traveltimes tomography. *Journal of Geophysical Research: Solid Earth*, 123, 384–400. <https://doi.org/10.1002/2017JB014730>
- Maguire, R., Ritsema, J., van Keken, P. E., Fichtner, A., & Goes, S. (2016). P- and S-wave delays caused by thermal plumes. *Geophysical Journal International*, 206, 1169–1178. <https://doi.org/10.1093/gji/ggw187>
- Montelli, R., Nolet, G., Dahlen, F., Masters, G., Engdahl, E. R., & Hung, S. H. (2004). Finite-frequency tomography reveals a variety of plumes. *Science*, 303, 338–343. <https://doi.org/10.1126/science.1092485>
- Montelli, R., Nolet, G., Masters, G., Engdahl, E. R., & Hung, S. H. (2004). Global P and PP traveltimes tomography: Rays versus waves. *Geophysical Journal International*, 158, 637–654. <https://doi.org/10.1111/j.1365-246X.2004.02346.x>
- Rawlinson, N., Pozgay, S., & Fishwick, S. (2010). Seismic tomography: A window into deep Earth. *Physics of the Earth and Planetary Interiors*, 178, 101–135. <https://doi.org/10.1016/j.pepi.2009.10.002>
- Rickert, R., Fichtner, A., & Trampert, J. (2016). The Iceland-Jan Mayen plume system and its impact on mantle dynamics in the North Atlantic region: Evidence from full-waveform inversion. *Earth and Planetary Science Letters*, 367, 39–51. <https://doi.org/10.1016/j.epsl.2013.02.022>
- Ritsema, J., Heijst, H. J. v., & Woodhouse, J. H. (1999). Complex shear wave velocity structure imaged beneath Africa and Iceland. *Science*, 286(5446), 1925–1928. <https://doi.org/10.1126/science.286.5446.1925>
- Ritter, J. R. R., Jordan, M., Christensen, U. R., & Achauer, U. (2001). A mantle plume below the Eifel volcanic fields, Germany. *Earth and Planetary Science Letters*, 186, 7–14. [https://doi.org/10.1016/S0012-821X\(01\)00226-6](https://doi.org/10.1016/S0012-821X(01)00226-6)
- Rooney, T. O., Herzberg, C., & Bastow, I. D. (2012). Elevated mantle temperature beneath East Africa. *Geology*, 40, 27–30. <https://doi.org/10.1130/G32382.1>
- Rychert, C. A., Hammond, J. O. S., Harmon, N., Kendall, J. M., Keir, D., Ebinger, C., et al. (2012). Volcanism in the Afar Rift sustained by decompression melting with minimal plume influence. *Nature Geoscience*, 5, 406–409. <https://doi.org/10.1038/ngeo1455>
- Saki, M., Thomas, C., Nippres, S. E. J., & Lessing, S. (2015). Topography of upper mantle seismic discontinuities beneath the North Atlantic: The Azores, Canary and Cape Verde plumes. *Earth and Planetary Science Letters*, 409, 193–202. <https://doi.org/10.1016/j.epsl.2014.10.052>
- Schmelting, H. (1987). On the relation between initial conditions and late stages of Rayleigh-Taylor instabilities. *Tectonophysics*, 133, 65–80. [https://doi.org/10.1016/0040-1951\(87\)90281-2](https://doi.org/10.1016/0040-1951(87)90281-2)
- Styles, E., Davies, D. R., & Goes, S. (2011). Mapping spherical seismic into physical structure: Biases from 3-D phase-transition and thermal boundary-layer heterogeneity. *Geophysical Journal International*, 184, 1371–1378. <https://doi.org/10.1111/j.1365-246X.2010.04914.x>
- Styles, E., Goes, S., van Keken, P. E., Ritsema, J., & Smith, H. (2011). Synthetic images of dynamically predicted plumes and comparison with a global tomographic model. *Earth and Planetary Science Letters*, 311(3), 351–363. <https://doi.org/10.1016/j.epsl.2011.09.012>
- Tackley, P. J. (1998). Self-consistent generation of tectonic plates in three-dimensional mantle convection. *Earth and Planetary Science Letters*, 157, 9–22. [https://doi.org/10.1016/S0012-821X\(98\)00029-6](https://doi.org/10.1016/S0012-821X(98)00029-6)
- Thompson, D. A., Hammond, J. O. S., Kendall, J. M., Stuart, G. W., Helffrich, G., Keir, D., et al. (2015). Hydrous upwelling across the mantle transition zone beneath the Afar Triple Junction. *Geochemistry Geophysics Geosystems*, 16, 834–846. <https://doi.org/10.1002/2014GC005648>
- Tosi, N., & Yuen, D. A. (2011). Bent-shaped plumes and horizontal channel flow beneath the 660 km discontinuity. *Earth and Planetary Science Letters*, 312, 348–359. <https://doi.org/10.1016/j.epsl.2011.10.015>
- van Wijk, J., van Hunen, J., & Goes, S. (2008). Small-scale convection during continental rifting: Evidence from the Rio Grande rift. *Geology*, 36, 575–578. <https://doi.org/10.1130/G24691A.1>
- VanDecar, J. C., James, D. E., & Assumpcao, M. (1995). Seismic evidence for a fossil mantle plume beneath South America and implications for plate driving forces. *Nature*, 378, 25–31. <https://doi.org/10.1038/378025a0>
- Vinnik, L., Silveira, G., Kiselev, S., Farra, V., Weber, M., & Stutzmann, E. (2012). Cape Verde hotspot from the upper crust to the top of the lower mantle. *Earth and Planetary Science Letters*, 319–320, 259–268. <https://doi.org/10.1016/j.epsl.2011.12.017>
- Watts, A. B., & Zhong, S. (2000). Observations of flexure and the rheology of oceanic lithosphere. *Geophysical Journal International*, 142, 855–875.
- Wessel, P., & Smith, H. F. (1995). New version of the generic mapping tools. *EOS*, 76, 329–336. <https://doi.org/10.1029/95EO00198>
- White, R. S., & McKenzie, D. P. (1989). Magmatism at rift zones: The generation of volcanic continental margins and flood basalts. *Journal of Geophysical Research*, 94, 7685–7729.
- Xu, W., Lithgow-Bertelloni, C., Sixtrude, L., & Ritsema, J. (2008). The effect of bulk composition and temperature on mantle seismic structure. *Earth and Planetary Science Letters*, 275, 70–79. <https://doi.org/10.1016/j.epsl.2008.08.012>
- Yang, T., Shen, Y., van der Lee, S., Solomon, S. C., & Hung, S. H. (2006). Upper mantle structure beneath the Azores hotspot from finite-frequency seismic tomography. *Earth and Planetary Science Letters*, 250, 11–26. <https://doi.org/10.1016/j.epsl.2006.07.031>
- Zhong, S. (2005). Dynamics of thermal plumes in three-dimensional isoviscous thermal convection. *Geophysical Journal International*, 162, 289–300. <https://doi.org/10.1111/j.1365-246X.2005.02633.x>

## Erratum

Due to a typesetting error, “Rayleigh Bénard” was incorrectly printed in the “Type” column of Table 1 for model N7 in the originally published version of this article. This error has been corrected, and this may be considered the official version of record.