



HAL
open science

Depositional evolution of an extinct sinter mound from source to outflow, El Tatio, Chile

Dylan T. Wilmeth, Sami Nabhan, Kimberly D. Myers, Silvina Slagter, Stefan Lalonde, Pierre Sansjofre, Martin Homann, Kurt O Konhauser, Carolina Munoz-Saez, Mark A. van Zuilen

► To cite this version:

Dylan T. Wilmeth, Sami Nabhan, Kimberly D. Myers, Silvina Slagter, Stefan Lalonde, et al.. Depositional evolution of an extinct sinter mound from source to outflow, El Tatio, Chile. *Sedimentary Geology*, 2020, 406, pp.105726. 10.1016/j.sedgeo.2020.105726 . insu-02943000v1

HAL Id: insu-02943000

<https://insu.hal.science/insu-02943000v1>

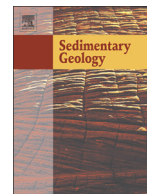
Submitted on 18 Sep 2020 (v1), last revised 6 Jan 2021 (v2)

HAL is a multi-disciplinary open access archive for the deposit and dissemination of scientific research documents, whether they are published or not. The documents may come from teaching and research institutions in France or abroad, or from public or private research centers.

L'archive ouverte pluridisciplinaire **HAL**, est destinée au dépôt et à la diffusion de documents scientifiques de niveau recherche, publiés ou non, émanant des établissements d'enseignement et de recherche français ou étrangers, des laboratoires publics ou privés.



Distributed under a Creative Commons Attribution - NoDerivatives 4.0 International License



Depositional evolution of an extinct sinter mound from source to outflow, El Tatio, Chile

Dylan T. Wilmeth^{a,*}, Sami Nabhan^a, Kimberly D. Myers^a, Silvina Slagter^{a,b}, Stefan V. Lalonde^c, Pierre Sansjofre^d, Martin Homann^e, Kurt O. Konhauser^f, Carolina Munoz-Saez^g, Mark A. van Zuilen^a

^a Equipe Géomicrobiologie, Université de Paris, Institut de Physique du Globe de Paris, CNRS, 75005 Paris, France

^b Department of Earth and Planetary Sciences, Yale University, New Haven, CT 06511, USA

^c Laboratoire Géosciences Océan, Institut Universitaire Européen de la Mer, 29280 Plouzané, France

^d Muséum National d'Histoire Naturelle, Sorbonne Université, CNRS UMR 7590, IMPMC, 75005 Paris, France

^e Department of Earth Sciences, University College London, WC1E 6BT London, United Kingdom

^f Department of Earth and Atmospheric Sciences, University of Alberta, T6G 2E3 Edmonton, Alberta, Canada

^g Department of Geology and Andean Geothermal Center of Excellence (CEGA), FCFM, Universidad de Chile, Plaza Ercilla 803, Santiago, Chile.

ARTICLE INFO

Article history:

Received 15 June 2020

Received in revised form 15 July 2020

Accepted 16 July 2020

Available online 22 July 2020

Editor: Dr. Brian Jones

Keywords:

Siliceous sinter

Hot springs

El Tatio

Microbialites

Microfossils

ABSTRACT

Siliceous sinter deposits from El Tatio, Chile, preserve a wide variety of depositional environments and biosignatures, from high-temperature (~85 °C) vent-proximal facies to distal deposits dominated by silicified microbial mats. Four cores were drilled into an El Tatio sinter mound and associated distal apron to investigate changes in hydrothermal environments over geologic timescales. Sedimentary and geochemical analysis of multiple sinter cores records the initiation and accretion of diverse depositional features still observed today in El Tatio. Facies adjacent to hydrothermal vents are dominated by laminated sinter crusts on the steep margins of a high-temperature pool, with sparse microbial preservation. Outer margins of the same pool contain extensive sinter columns up to ten centimeters in length, precipitated during repeated cycles of pool overflow and subsequent evaporation. Low-relief hydrothermal pools also form minor deposits within distal debris aprons, and analogous pools are still active close to sampling locations. Debris aprons are dominated by palisade, tufted, and arborescent microbial fabrics, with distinct mat textures revealing well preserved microfossils. Surficial deposits in all cores feature detrital-rich and microbially-influenced sinters overlying higher-temperature facies, indicating a relative decrease in hydrothermal activity over time. Geochemical proxies for hydrothermal fluids and detrital input match depositional interpretations based on sedimentary structures. ¹⁴C ages from core deposits extend the mound's history by 11,000 years, recording at least three thousand years of sinter deposition on top of glacial sandstones (13,337–10,232 y. cal. BP). Importantly, this work provides a detailed depositional model unavailable through surficial sedimentology alone.

© 2020 The Author(s). Published by Elsevier B.V. This is an open access article under the CC BY license (<http://creativecommons.org/licenses/by/4.0/>).

1. Introduction

Siliceous sinter deposits form when amorphous silica (opal-A) precipitates in terrestrial hydrothermal environments, such as geysers and hot springs. Water temperatures in hot springs decrease from near-boiling vents to distal outflow channels (<30 °C), often within several meters. Thermal gradients along geothermal springs produce lateral variations in aqueous geochemistry, biological communities, and physical depositional processes. The complex relationships between these parameters produce an extraordinarily diverse range of micro-environments within localized areas. Silica precipitation within sinters preserves microscopic features in exquisite detail, especially microbial

cells and their extracellular polymeric substances (EPS) (Walter, 1976a; Schultze-Lam et al., 1995; Cady and Farmer, 1996; Konhauser and Ferris, 1996; Jones et al., 1997, 1998, 2004, 2005; Konhauser et al., 2001, 2003; Handley et al., 2005; Campbell et al., 2015; Gong et al., 2019; Sriaporn et al., 2020). Hydrothermal siliceous sinters therefore have the potential to record fine-scale transitions in sedimentology, biology, and geochemistry over relatively short distances. Early sedimentary deposits (>3 billion-years-old (Ga)) on Earth and Mars contain the oldest observed sinters (Ruff and Farmer, 2016; Djokic et al., 2017; Ruff et al., 2020). On Earth, such deposits include the earliest evidence for life in non-marine environments (Djokic et al., 2017), making work on modern hot springs highly relevant for investigating ancient sedimentology and biosignatures in paleo- and astrobiology.

Lateral gradients in sinter architecture are preserved in modern and ancient hydrothermal systems (Cady and Farmer, 1996; Walter et al.,

* Corresponding author.

E-mail address: wilmeth@ipgp.fr (D.T. Wilmeth).

1996; Guidry and Chafetz, 2003a; Lowe and Braunstein, 2003; Hinman and Walter, 2005). Despite variations in local geochemistry and climate, consistent patterns of biogenic and abiogenic textures are present across multiple localities, forming a well-established model for sinter depositional facies. The stratigraphic evolution of hydrothermal sinters over geologic timeframes has also been studied in deposits of various ages (Trewin, 1993; Walter et al., 1996; Campbell et al., 2001), including drill cores through recently active localities (Jones et al., 1998; Guidry and Chafetz, 2003b; Lynne et al., 2008; Campbell et al., 2020). However, compared with clastic and carbonate environments, several aspects of sinter stratigraphy remain poorly constrained. For example, recent sinter cores only record cooler vent-distal environments such as outflow channels and debris aprons, with primary water temperatures interpreted around 30 °C (Jones et al., 1998; Guidry and Chafetz, 2003b; Lynne et al., 2008; Campbell et al., 2020). In contrast, only one study in Devonian strata interprets long-term stratigraphy of higher-temperature sinter facies (>60 °C) closer to vent sources (Walter et al., 1996). The study of vent-proximal sinters is especially relevant to the field of geobiology, as higher-temperature zones are often inhabited by different microbial communities than cooler outflow deposits. Temperatures extremely close to vents in certain environments can be too hot for life, and distinguishing which sinters are actively mediated by microbes, passively preserving traces of life, or are completely abiogenic, has been a continuing topic of research for decades (Walter, 1976a, 1976b; Jones et al., 1997; Konhauser et al., 2001, 2003; Lowe and Braunstein, 2003; Handley and Campbell, 2011; Campbell et al., 2015).

Here, we present sedimentary, geochemical, and geochronological data from four cores drilled within an extinct sinter mound in El Tatio, Chile, including the first stratigraphic profiles of cores from vent-proximal sinters. Facies changes and the preservation of biological communities were observed on various scales using stratigraphic logs, petrographic analyses, and scanning electron microscopy (SEM). Shifts in siliciclastic input and primary silica precipitation were studied using geochemical signatures of sinters and underlying sandstone. The detailed sedimentology and stratigraphy of multiple cores provides the basis for a depositional model of the sinter mound, spanning thousands of years in an arid, high elevation geothermal setting.

2. Geological setting

The El Tatio geothermal field is located in the Andes Mountains of northern Chile, 10 km west of the Chile-Bolivia border and 80 km north of San Pedro de Atacama (Fig. 1A). El Tatio contains the world's highest geyser field (~4300 m a.s.l.), and the largest geyser field (~30 km²) in the Southern Hemisphere (Zeil, 1959; Trujillo, 1969; Jones and Renaut, 1997; Glennon and Pfaff, 2003; Tassi et al., 2005; Munoz-Saez et al., 2018). The extreme altitude of El Tatio produces a different environment compared with many sinter locations. At 4300 m elevation, atmospheric pressure is 0.58 atm, oxygen partial pressure is 0.12 atm, and the boiling temperature of water is 86 °C. Daily temperatures have been measured between -5 and 25 °C during spring (Munoz-Saez et al., 2015), and drop to -30 °C in winter (Fernandez-Turiel et al., 2005), resulting in frequent freeze-thaw cycles (Nicolau et al., 2014). Wind speeds also follow daily cycles, increasing to 7 km/h several hours after sunrise (Slagter et al., 2019). El Tatio is located in the arid Chilean Altiplano, receiving a mean annual precipitation of 44 mm/y, with a maximum of 160 mm/yr over the last 40 years (DGA, 2017). Ultraviolet radiation levels are also elevated at the extreme altitudes of El Tatio, with maximum UV-A and UV-B levels at 33 and 6 W/m², respectively (Phoenix et al., 2006). Many environmental factors at El Tatio are analogous to conditions modelled on early Earth and Mars, including high ultra-violet radiation and lower atmospheric pressure (Cockell, 2000; Som et al., 2012, 2016; Ruff and Farmer, 2016).

El Tatio occurs above the Altiplano-Puna Magma Body (Ward et al., 2014), which had an extensive explosive phase of eruption during the Miocene-Pleistocene (10–1 Ma) (De Silva, 1989; Leidig and Zandt,

2003; De Silva et al., 1994). Surficial hydrothermal activity in El Tatio primarily occurs in the hanging wall of a northeast trending half graben, which is filled with ~1 km of sub-horizontal Miocene and Pliocene ignimbrites, tuffs, and lavas, and covered by Pleistocene/Holocene alluvial, glacial and sinter deposits (Healy and Hochstein, 1973; Lahsen and Trujillo, 1976). Hydrothermal waters are sourced from meteoric precipitation in the Bolivian Andes at >5000 m elevation, ~15 km east of El Tatio (e.g., Giggenschbach, 1978; Cortecchi et al., 2005; Munoz-Saez et al., 2018). Meteoric waters enter the subsurface and are heated by the Altiplano-Puna Magma Body as they flow westward (Healy and Hochstein, 1973); heated water interacts with the surrounding host rock to generate the fluids in the El Tatio reservoir, at an equilibrium temperature >200 °C (e.g., Tassi et al., 2010; Munoz-Saez et al., 2018). The residence time of reservoir water is still unknown, but the lack of tritium sets a boundary >60 years (e.g., Cortecchi et al., 2005; Munoz-Saez et al., 2018). Surface geothermal activity initiated within the peripheral margins of El Tatio in the late Pleistocene (~27 ka, Munoz-Saez et al., 2020), with continuous activity during the Holocene (~11 ka, Slagter et al., 2019).

3. Methods

3.1. Sedimentology & petrography

Four cores (A, C, D, E) were drilled along a vent-proximal (A, C) to vent-distal terrace (D, E) transect on an extinct sinter mound (22° 19' 40.41" S, 68° 0' 23.81" W, Figs. 1B–E, 2) in the Upper Basin of El Tatio, referred to in Slagter et al., 2019 as "Mound 502". The cores were drilled vertically, with the exception of core D which was drilled at 27° from vertical, using a modified portable Shawtool Drill machine (diamond bit, 41 mm diameter) lubricated by cooled spring water from an adjacent spring. The cores were sawed in half using a diamond-edged tungsten carbide rotary saw to measure sedimentary features and stratigraphy; the working half of each core was used for petrographic and geochemical sample collection, while the corresponding archival halves were used for non-destructive analyses and stored at the National Museum of Natural History of Paris. Thin-sections were made from 27 core samples (Institut Universitaire Européen de la Mer, Brest, France; Thin Section Lab, Toul, France), with standard petrographic techniques used to interpret primary micro-scale fabrics and secondary alteration. Detailed photomosaics of all thin-sections were created using a Zeiss Axio Zoom V16 Microscope equipped with Zeiss Zen imaging software (Institut de Biologie Paris-Seine).

3.2. Scanning electron microscopy

Scanning electron microscopy (SEM) was performed on rough, unpolished surfaces of 14 core samples fractured into 3–5 mm chunks. Samples were placed directly on aluminium stages with carbon glue, air-dried, and sputter-coated with gold before imaging. SEM images were obtained at the IPGP PARI analytical platform with a Zeiss EVO MA-10, at 15 kV and 12-mm working distance on SE mode. ¹⁴C dating.

Five sinter samples (10 g each) were cut, cleaned, and ground down: two samples from Core C and four samples from Core E (Table 1, Fig. 2). The fine-grained samples were later treated with 1 N HCl for 24 h and rinsed with ultrapure water. All samples were subsequently digested in 40% hydrofluoric acid (HF). The remaining carbonaceous (non-soluble) material was rinsed with ultrapure water and centrifuged. All samples, along with ¹⁴C-free wood and coal blanks, were dried, combusted, and cryogenically purified before being converted to graphite and measured by accelerator mass spectrometry at the UC Irvine Keck-CCAMS facility, using OX-I as the primary standard. The ages are reported in Table 1 as years before present (y. BP), where present is 1950 CE (Stuiver and Polach, 1977). Calibrated ages obtained on CALIB (<http://calib.qub.ac.uk>) using the SHCal13 dataset (Hogg et al., 2013) are also reported as mean ages according to a 2σ confidence interval. Ages in the text are reported as calibrated years before present (y. cal. BP). δ¹³C values for samples

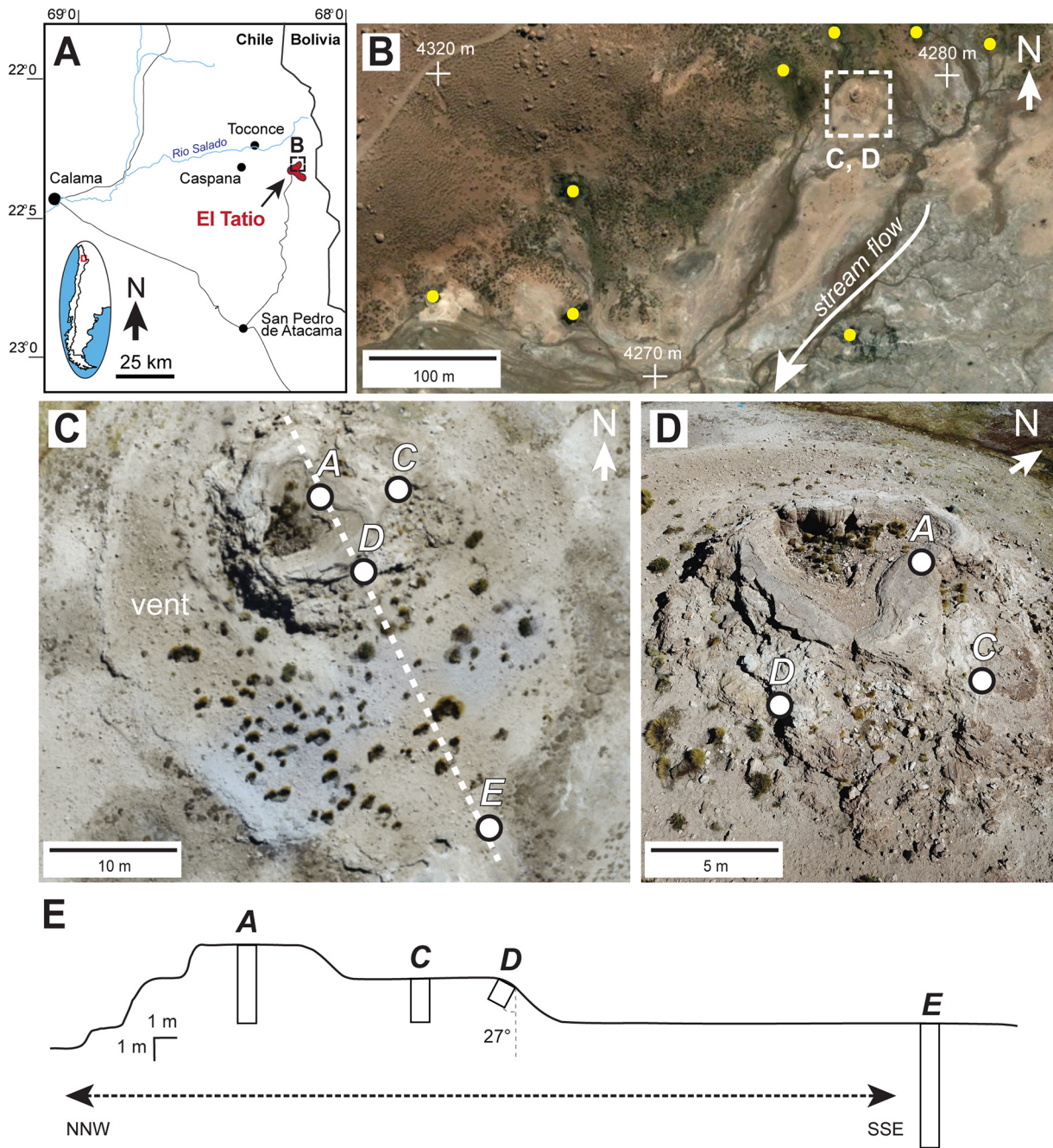


Fig. 1. Sampling location. A: Map showing general location of El Tatio in Chile. B: Aerial view of El Tatio's North Basin. Yellow dots represent significant hydrothermal outflow sources. Dashed outline represents the area shown in C and D. C: Aerial view of extinct sinter mound and drill locations. D: Oblique view of extinct sinter mound, highlighting topography of the sinter mound, interior pit, and drill locations. E: Profile of extinct sinter mound along transect in panel C.

were measured to a precision of $<0.1\%$ relative to PDB, using a Thermo Finnigan Delta Plus IRMS with Gas Bench input at UC Irvine (Table 1).

3.3. Major and trace element analysis

Powders from 76 core samples (~150 mg each) were analyzed at the Institut Universitaire Européen de la Mer (IUEM, Brest). All weighing and preparation of sample powders for solution mode ICP-MS and ICP-OES was carried out in a class 1000 clean lab at IUEM. PFA vials were acid washed internally and externally overnight in near-boiling, concentrated nitric acid (HNO_3), rinsed three times with $18.2 \text{ M}\Omega\text{-cm}$

ultrapure water, then dried at room temperature and stored under clean conditions.

For major element analyses, 150–250 mg of powder was weighed into 30 mL PFA vials to which 3 mL of analytical-grade concentrated HF, 3 mL of concentrated HNO_3 , and 1 mL of concentrated HCl were added. Samples were digested completely overnight at 90°C , with kero-gen as the only residue, and upon cooling in closed beakers, were diluted rapidly with 97 mL of concentrated H_3BO_3 solution to neutralize HF and prevent loss of Si as SiF_4 , following the method of Cotten et al. (1995). Diluted samples were analyzed for major elements using a Yvon Joriba Ultima 2 ICP-OES at the Pôle Spectrométrie Océan (PSO) at IUEM in Brest, France. Samples were calibrated against 8 similarly

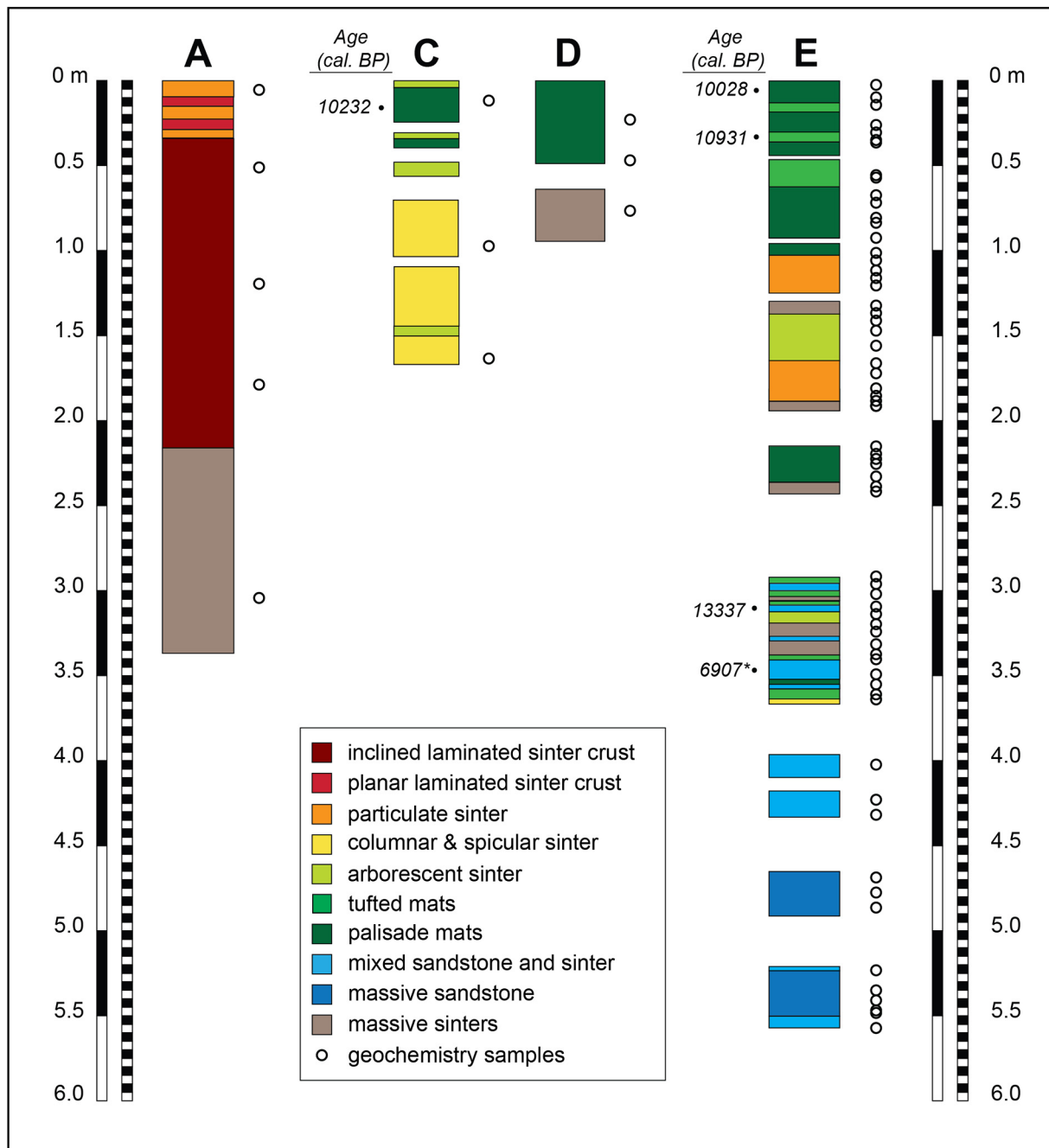


Fig. 2. Generalized sedimentary facies in El Tatio cores. Scale represents core depth below surface, see Fig. 1 for relative core positions within sinter mound. Asterisks by age dates represent secondary influence on ^{14}C data. Table 1 lists specific depths for ^{14}C samples. Specific sample depths for all other chemistry samples are listed in the Supplementary Information.

Table 1

Radiocarbon ages from Mound 502. Ages referenced in-text represent the median probability in y. cal. BP, as shown in the final column.

Core	Depth cm	Sample Code	Lab Code	Powder weight g	Fraction modern	\pm	$\delta^{13}\text{C}$ ‰	\pm	^{14}C age y. BP	\pm	cal age ^a y. cal. BP	Median probability y. cal. BP	
C	12	18ETC12	218925	10.1	0.3213	0.0007	-19.7	0.1	9,120	20	10,196	10,256	10,232
E	6	18ETE6	218933	10.2	0.3294	0.0009	-24.5	0.1	8,920	25	9,887	10,175	10,028
E	33	18ETE33	218934	10.0	0.3017	0.0007	-20.8	0.1	9,625	20	10,760	11,097	10,931
E	310.5	18ETE310.5	218938	11.0	0.2380	0.0007	-22.3	0.1	11,530	25	13,263	13,423	13,337
E	347	18ETE347	218939	10.0	0.4684	0.0008	-25.0	0.1	6,095	15	6,841	6,983	6,907

^a Using the SHCal13 dataset (Hogg et al., 2013). Calibrated ages are presented as mean ages with 2 sigma (95%) confidence limits.

prepared international geostandards (CB, BELC, JB, BEN, ACE, WSE, ME, and GSN) using the recommended values of Govindaraju (1995), with pure quartz as a high-SiO₂ standard.

For trace element analyses, powders were completely digested with a three-step, heated HF-HNO₃-HCl attack, with kerogen as the only residue, using ultra-pure acids distilled in sub-boiling stills under clean lab conditions. First, approximately 100–150 mg of powder was placed in an acid-cleaned PFA vial. 1.5 mL of 16 M HNO₃ and 1.5 mL of 22 M HF were added. Samples were then capped and left to react overnight at 80 °C. Samples were then uncapped and left to evaporate to dryness for 24 h. 3 mL of freshly mixed aqua regia was added to each residue, samples were capped and allowed to react for 6 h at room temperature to avoid excessive gas buildup. After 6 h, caps were removed, and the sample was evaporated overnight at 80 °C to dryness. Finally, 3 mL of 6 M HCl was added to each residue and samples were heated for ~24 h at 80 °C. Prior to analysis, 100 mL of each sample was diluted to 5 mL with 2% HNO₃, and 1.5 mL of each sample was archived. International geostandards IF-G, BCR-2, and BHVO-2 were prepared in duplicate in the same batch and treated as unknowns to monitor precision.

Diluted samples were measured in solution mode on a Thermo Element2 HR-ICP-MS at the PSO. Samples were calibrated by gravimetrically-prepared multi-element standards at concentrations of 0.5, 5, and 50 ng/g that were measured repeatedly throughout the session. Additionally, a 5 ng/g In (Indium) standard was added to each sample, standard, and rinse, and was used to monitor signal stability and to correct for instrumental drift across the session. Each sample and standard were bracketed by a rinse for which data was also acquired to determine the method detection limit.

Rare earth element (REE) concentrations were normalized against background clastic deposition at Mound 502, as well as traditional standards such as chondritic meteorites and post-Archean Australian shale (PAAS). REE concentrations in Mound 502 clastic deposits were measured from a sinter-free massive sandstone sample from the lowest half-meter of Core E (Fig. 2). REE data shown and discussed below are clastic-normalized, for easier interpretation of clastic vs. hydrothermal influence in sinter deposits. Chondrite- and PAAS-normalized REE values are present in the Supplementary Information.

Eu anomalies were calculated using the clastic-normalized REE data to compare the relative influence of hydrothermal fluids between samples in relation to detrital input (Michard, 1989; Lewis et al., 1997; Feng et al., 2014). Eu anomalies represent enrichments or depletions of Eu compared with Sm and Gd within samples, and are typically calculated in a given sample using the equation:

$$\text{Eu anomaly} = 2 * \text{Eu} / (\text{Sm} + \text{Gd})$$

Anomaly values greater than 1 represent Eu enrichment, and are typically interpreted as evidence for higher hydrothermal influence (Michard, 1989; Lewis et al., 1997; Feng et al., 2014).

4. Depositional facies

Ten sedimentary facies were identified during core analysis, each representing a different depositional environment (Fig. 2, Table 2). All facies described have modern equivalents within active El Tatio hydrothermal systems. Fig. 2 illustrates the progression of sedimentary facies and interpreted environments over time, and Table 2 contains diagnostic features for each facies.

Mound 502 rises 2–3 m above surrounding topography, and is 20 m in diameter, with a roughly circular outline (Fig. 1C). Western margins are fairly steep, while eastern margins gradually slope into a debris apron. The mound's interior is dominated by a debris-filled pit 1.5 m deep and five meters wide which represents the inactive former vent, surrounded by a one-meter wide flat-topped sinter rim. As with exterior mound slopes, inner pit margins are steeper on the western face, surrounding the pit's deepest surface in the south-western corner (Fig. 1C, D).

Mound 502 is bordered to the north by a low-lying marsh with geothermal and meteoric water sources, bordered by vegetated hills further north and west (Fig. 1B). Relatively flat, barren plains border the mound to the south and east (Fig. 1B). While the mound itself contains minimal visible hydrothermal activity, adjacent plains within ten meters to the south and east contain several active pools and widespread fumaroles. Boiling pool margins contain small columnar and spicular sinters (see Section 4.4), but do not form mounds above the surrounding flat topography.

Core A (3.38 m long) was drilled within the eastern sinter rim, adjacent to the inner pit margin (Fig. 1C, D). Cores C (1.94 m long) and D (0.98 m long) were drilled ~1.5 m below the top of Core A along the outer eastern and southern margins, respectively. Core D was drilled 27° from vertical (Fig. 1E). Core E (5.57 m long) was drilled in a flat debris apron 15 m away from the sinter margin.

4.1. Inclined laminated sinter crust

Laminated sinter crusts are defined by dense, surface-normal fabrics of amorphous silica, forming mm-scale laminae of consistent thickness (Fig. 3). Similar deposits in Yellowstone siliceous sinters have been labeled “vent-proximal facies” and “laminated crusts” (Guidry and Chafetz, 2003a, 2003c), as well as “dendritic sinter facies” (Lowe and Braunstein, 2003). The term “dendritic” is avoided in this study to prevent confusion with branching arborescent sinter elsewhere in El Tatio cores (see Section 4.5).

Laminated crusts are divided into two separate facies in Mound 502 based on bed orientation and depositional interpretation: inclined crusts and planar crusts (Section 4.2). Inclined crusts are only observed in Core A, between 34 and 217 cm depth, with a shift in textural preservation at 164 cm depth (see below). The inclination of laminae and bedding varies between 45° and nearly vertical, with most areas around 70 °C or higher inclination (Fig. 3). Well-preserved zones are composed of silica laminae 1–2 mm thick, alternating between pale surface-normal fabrics and thinner (<1 mm), darker layers of more massive silica (Fig. 3A–C). No microbial textures or cells are observed, and detrital grains are rare or absent.

Below 164 cm depth in Core A, inclined crusts are gray or light green and have little to no porosity. Detailed fabrics are only visible in thin sections, where individual laminae contain surface-normal clusters of amorphous silica, which flare and diverge away from bedding planes (Fig. 3D). Preservation varies between individual laminae, with more altered layers only exhibiting faint layering (Fig. 3D). Samples also contain dark, linear cross-cutting features occurring 1–3 cm apart (Fig. 3B). Cross-cutting textures disrupt and propagate through several centimeters of inclined crusts, independent of textural preservation.

Above 164 cm, inclined crusts are more well-preserved, and surface-normal fabrics become increasingly visible in hand samples (Fig. 3A–C). In the uppermost facies (34–51 cm depth), inclined crusts are white, extremely friable, and contain very few detrital grains (Fig. 3C). Inclination decreases upward from 70 to 45°, with rare cross-cutting textures present. In SEM images of the uppermost inclined facies, surface-normal fabrics are composed of elongated tubes of silica ~50 μm wide and up to 1 mm in length (Fig. 3E, F). Closer examination of individual tubes reveals irregularly porous cores with scalloped circular textures, surrounded by μm-scale laminae around the outermost tube margins (Fig. 3F). Rare sili-fied filaments are also present within individual laminae, comprising less than 5% of inclined textures (Fig. 3G, H). Filaments are smaller than surrounding surface-normal tubes (10–20 μm wide, <200 μm long), and are not consistently oriented (Fig. 3G, H). Instead, filaments more closely resemble preserved cells in microbial facies (Figs. 8, 10, 11, see Sections 4.5–4.7).

Laminated sinter crusts are observed in subaqueous hydrothermal environments where silica precipitation typically outpaces microbial mat formation, such as vent-proximal pools (Guidry and Chafetz, 2003a; Lowe and Braunstein, 2003). SEM images most closely resemble

Table 2
Sedimentary facies and depositional interpretations in Mound 502.

Facies	Features	T (°C)	Environment
Inclined laminated sinter crust	Angled/near-vertical bedding, surface-normal textures, low detritus, sparse microfossils	>70 °C	Steep-walled hot pools
Planar laminated sinter crust	Flat-bedded, surface-normal textures, low detritus, no microfossils	>70 °C	Flat-bottomed hot pools
Particulate sinter	Diffuse wavy laminae of silica spheres, rare detrital layers, no microfossils	>70 °C	Flat-bottomed hot pools
Columnar & spicular sinter	Clustered elongate silica protrusions, convex lamination, low detritus, no microfossils	~70 °C	Splash/spray zones around geysers and pools
Arborescent sinter	Vertically branching structures, variable detritus, microfossils present	15–80 °C	Outflow channels, higher discharge than palisade or tufted mat facies
Fenestral palisade sinter	Highly-porous, abundant microfossils alternately oriented surface-normal and parallel, low detritus	40–45 °C	Low-temperature microbial mats in distal outflow aprons
Tufted mat sinter	Porous laminae forming sharp peaks and cones, abundant microfossils, low detritus	45–60 °C	Mid-temperature microbial mats in distal outflow aprons
Massive sinter	Featureless in hand sample, petrography, and SEM, fractured with secondary minerals	>70 °C?	Subsurface alteration
Laminated sinter & sandstone	Alternating bedded sandstone and laminated sinter	<35 °C	Distal outflow channels, silica-saturated
Massive sandstone	No bedding, no sinter layers, grain-supported	<20 °C	Distal outflow channels, little to no hydrothermal influence

“shrub columns” with abundant porous silica structures described by Jones and Renaut (2003) from vent-proximal deposits in New Zealand. Internal porosity within branches of shrub columns are attributed to secondary dissolution, which can replace microbial cells or abiogenic mineral dendrites (Jones and Renaut, 2003). While porous surface-normal textures are ambiguously biogenic, the occasional presence of filamentous microfossils indicates that microbial communities were present.

The high angle of lamination over nearly 2 m suggests extensive precipitation on steep surfaces, most likely the inner subaqueous surfaces of a large high-temperature pool. The interpretation fits with Mound 502's current near-vent architecture, which consists of a 5-meter-wide steep-sided pit. The darker surface-normal lineations which disrupt laminae are potentially the propagations of corrugated or “rilled” bedforms commonly seen on vent walls (Braunstein and Lowe, 2001; Guidry and Chafetz, 2003a; Lowe and Braunstein, 2003). Therefore, the inclined fibrous facies in Core A are interpreted as the margins of a steep-walled pool immediately above a hydrothermal vent, most likely above 70 °C.

4.2. Planar laminated sinter crusts

Planar laminated crusts contain thin layers of surface-normal silica fabrics (Fig. 4), similar to inclined sinter crusts (see Section 4.1), but exhibit consistently horizontal bedding. Planar crusts are only present in Core A from 11 to 34 cm depth, immediately above inclined crust facies. Planar and inclined crusts are separated from each other by a sharp unconformity. As with inclined crusts, laminae in planar facies are 1–2 mm thick, containing pale surface-normal fabrics separated by thin, darker massive laminae (Fig. 4A). Boundaries between light and dark layers are more distinct in planar than inclined fibrous facies. Detrital sinter pieces and siliclastic material are rare, but more abundant in darker laminae (Fig. 4A). Porosity in both light and dark layers is low on mm-to cm-scales.

SEM imaging of planar sinter crusts reveals two distinct styles of preservation (Fig. 4B,C). Light laminae are composed of adjacent vertical chains of silica spherules ~100 µm in diameter (Fig. 4B). Vertical textures in light laminae superficially resemble surface-normal textures within inclined sinters, but notably lack porous, scalloped cores (Figs. 3E, F, 4B). By contrast, dark laminae contain linear highly-porous zones 20 µm wide, surrounded by rinds of amorphous silica (Fig. 4C). Pores in planar crusts lack consistent orientation, and are typically smaller and less interconnected than in inclined facies.

As with inclined sinter crusts, planar facies are observed within vent-proximal high-temperature deposits (Guidry and Chafetz, 2003a; Lowe and Braunstein, 2003). In Mound 502, planar laminated crusts are only observed within the flat-topped inner rim which lines the inner pit (Fig. 1D). While inclined crusts were most likely deposited on the steep subaqueous margins of the main inner pit, planar crusts potentially represent adjacent, shallower flat-bottomed pools.

Lowe and Braunstein, 2003 described scattered microfossil filaments in Yellowstone sinter crusts (“dendritic sinter facies”), though many more samples contained no trace of microbial presence. Similarly, planar crusts in El Tatio cores contain no definitive microfossils, instead sharing similarities with ambiguously biogenic “shrub columns” described by Jones and Renaut, 2003. The lack of biosignatures does not preclude a microbial presence in planar sinter crusts, but supports a silica precipitation patterns less conducive to microfossil preservation (Walter, 1976b; Lowe and Braunstein, 2003; Hinman and Walter, 2005).

4.3. Particulate sinter

Particulate sinters are defined as beds of “botryoidal grains and chains” over 5 µm in diameter, frequently associated with detrital grains (Braunstein and Lowe, 2001; Lowe and Braunstein, 2003; Watts-Henwood et al., 2017). Particulate sinter facies occur at the top of Core A, and in two zones within Core E (103–125 cm, 165–195 cm depth). Particulate beds are typically gray with brown detrital material (Fig. 5A), and are closely associated with laminated sinter crusts, arborescent sinters (see Section 4.5), and massive sinters (see Section 4.8).

Particulate sinters are defined by diffuse planar to wavy laminae between 1 and 5 mm thick, comprised of rounded 50–100 µm-wide agglomerates of opal spherules surrounded by pore space (Fig. 5B–E). Well-preserved hand samples of particulate facies show similar textures to associated thin sections (Fig. 5A), though many others are difficult to discern from massive sinter facies prior to microscopic analysis (see Section 4.8). Detrital material is abundant in specific layers as individual sand grains (Fig. 5C). No microfossils or preserved microbial mat textures are visible using petrographic or scanning electron microscopy.

Particulate facies are interpreted as high-temperature deposits along the bases of non-boiling hydrothermal pools, which occur both proximal and distal to vent sources. Spherical silica particles precipitate onto various substrates such as microbial cells and wind-blown detrital sediments, forming a sticky, laminar ooze comprised of amorphous, wetted silica and thin biofilms (Rimstidt and Cole, 1983; Lowe and Braunstein, 2003; Braunstein and Lowe, 2001; Watts-Henwood et al., 2017). Microbial cells can form a major component of particulate

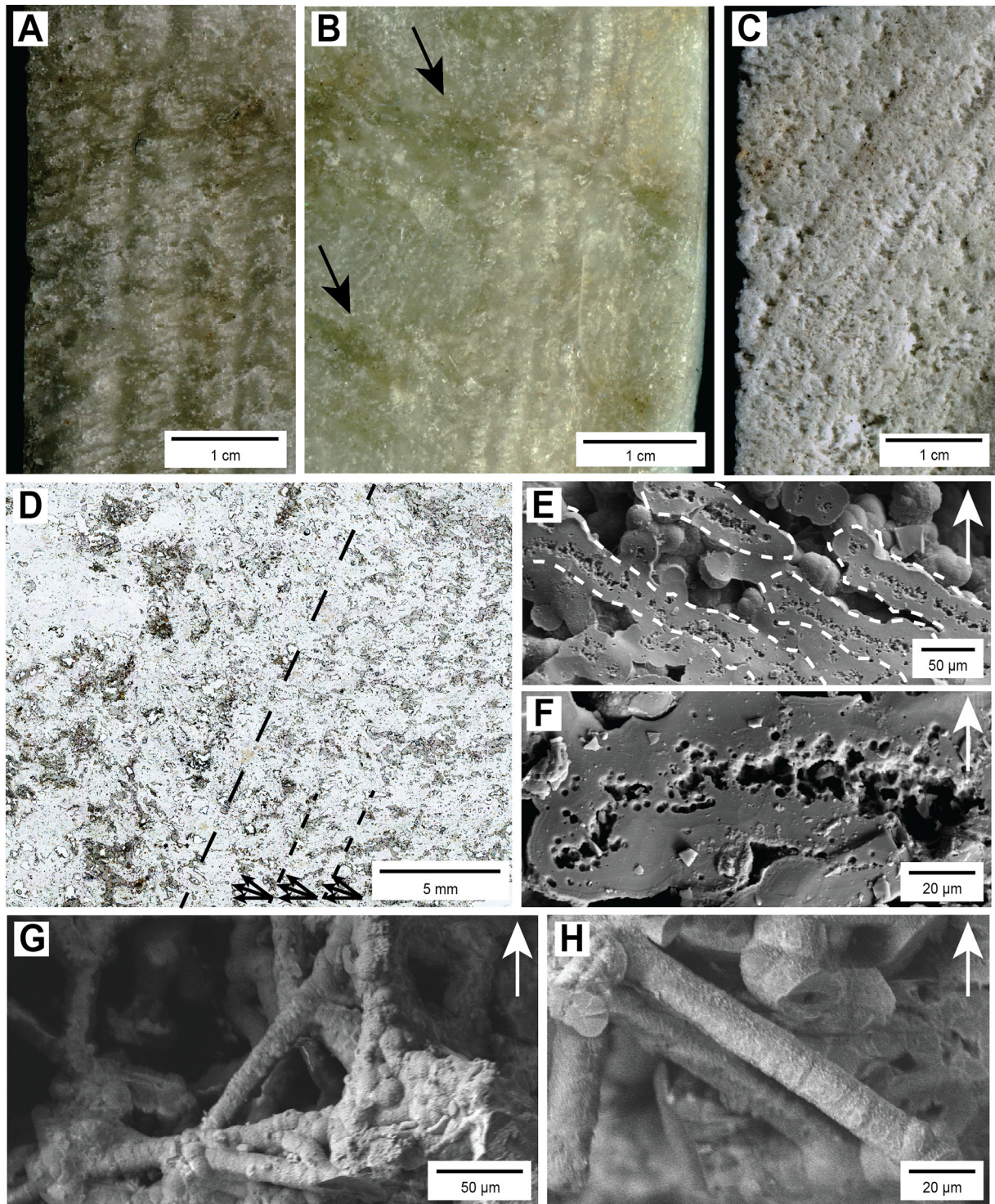


Fig. 3. Inclined sinter crust. A, B and C are hand specimen photographs. A, B: Nearly vertical sinter crusts in Core A at 1.4 m (A) and 1.6 m depth (B). Arrows in B highlight darker surface-normal lineations which transect through sinter crusts. C: Core A, 0.4 m depth. Lower-angle laminations at the top of inclined beds. Note paler, more porous textures compared with deeper fabrics. D: Photomicrograph showing the boundary between well-preserved sinter crusts in the lower right and more altered textures in the upper left, marked by dashed line. Arrows highlight layers with surface normal fabrics flaring upward and to the left. Core A, 2 m depth. E–H: SEM images of Core A, 0.4 m depth. E: Cross-section of surface-normal fabric, composed of silica tubes growing from right to left, highlighted by dashed lines. F: Detail of surface-normal silica tube, highlighting scalloped porous core surrounded by a thinly-laminated cortex of silica. G, H: Filamentous microfossils within inclined sinter. Note the difference in size and preservation between microfossils and surface-normal fabrics in E and F.

sinters, preserving silicified cells or cell fragments of microbes from various temperature regimes (Jones and Renaut, 1996; Braunstein and Lowe, 2001). Sediments are agitated by wind and hydrothermal currents, forming sinuous, ripple-like bedforms on pool floors (Lowe and Braunstein, 2003; Watts-Henwood et al., 2017). Similar textures are

observed in extinct sinter mounds elsewhere in El Tatio, bearing irregular surfaces of low-relief ridges (Sanchez-Garcia et al., 2019). Modern high-temperature pools are present within debris aprons several meters downhill from Core E, providing a useful analogue for distal pool environments indicated by particulate facies.

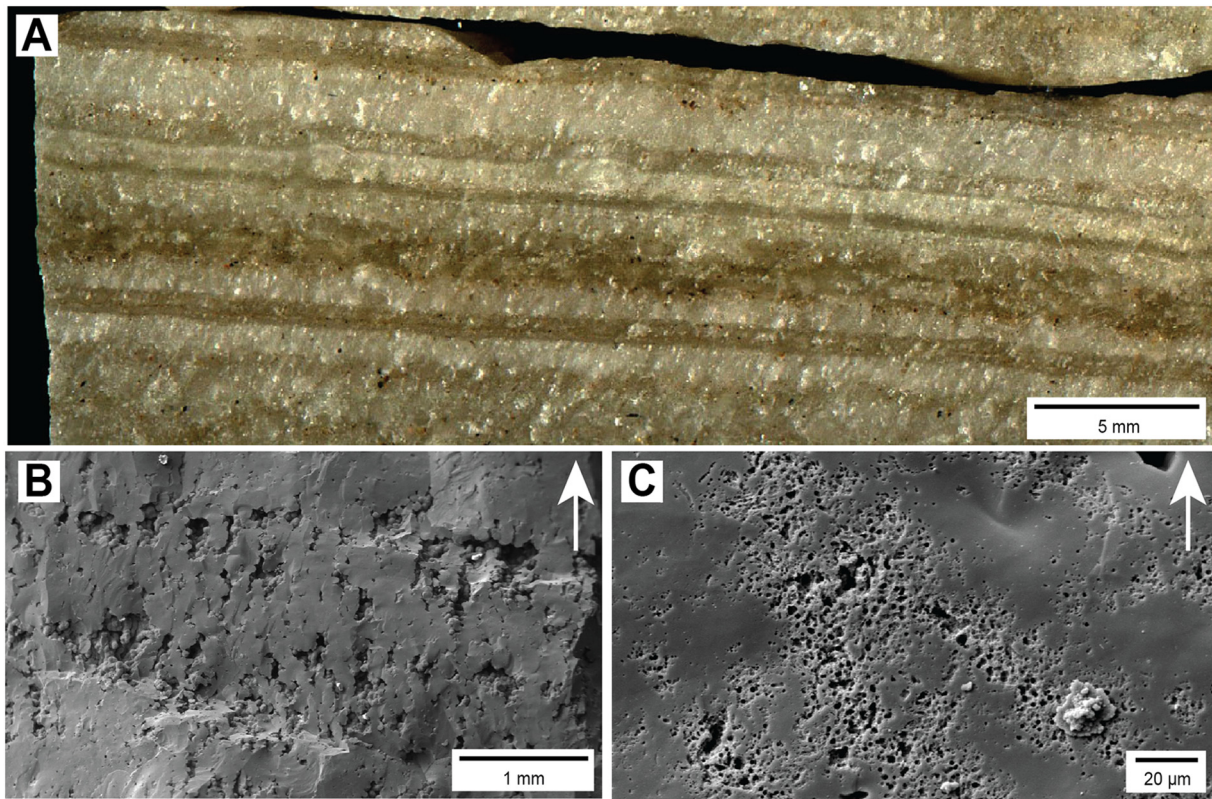


Fig. 4. Planar sinter crust. A: Hand specimen photograph, Core A, 0.2 m depth. Note the presence of fine detrital grains in darker layers. B, C: SEM images of Core A, 0.25 m depth. B: Light layer, comprised of vertical chains of silica spheres separated by interstitial pore space. C: Dark layer, highlighting porous zones surrounded by massive silica rinds.

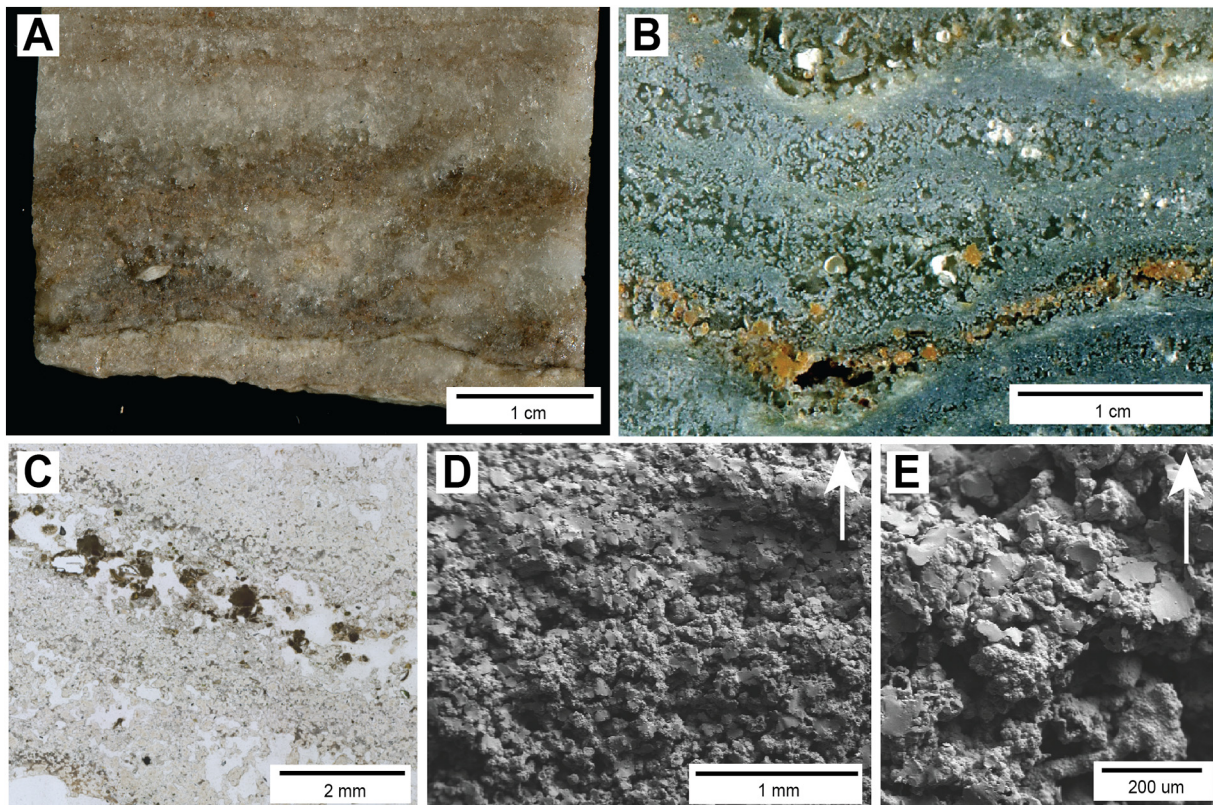


Fig. 5. Particulate sinter. A, B: Hand specimen photographs of particulate facies in Core A, 0.1 m depth (A), and Core E, 1.1 m depth, highlighting diffuse, wavy layering. Orange areas are secondary mineral phases. C: Photomicrograph from Core E, 1.2 m depth. Particulate microfacies. Lighter, rounded textures are opal-A spherules, accompanied by larger detrital grains. D, E: SEM images from Core E, 1.2 m depth, showing a cross-section of particulate sinter layers. Note the absence of microbial filaments or well-defined laminae.

4.4. Columnar and spicular sinter

Cores C and E contain several distinct facies dominated by clusters of elongate sinter protrusions with convex laminae, which can be classified as columns and spicules (Figs. 6, 7). Columns are between 0.1 and 1 cm wide, and can exceed 5 cm in length (Walter, 1976b). Spicules are less than 1 mm in diameter, reaching up to 1 cm long (Walter, 1976b). The internal structure of spicules and columns are nearly identical, with

definitions for each based on size (Walter, 1976b), though terminology varies slightly between studies (Jones and Renaut, 1997, 2003, 2006; Braunstein and Lowe, 2001).

Columnar sinter is most prevalent in Core C, from 70 to 167.5 cm. Individual columns are 0.5–1 cm wide, and 1–5.5 cm long (Fig. 6C–E). Core C often truncates column lengths, but surface exposures of columnar facies verify the observed size ranges (Fig. 6A, B). In transverse cross-section, columns are typically circular to oval in shape (Fig. 6E). Columns

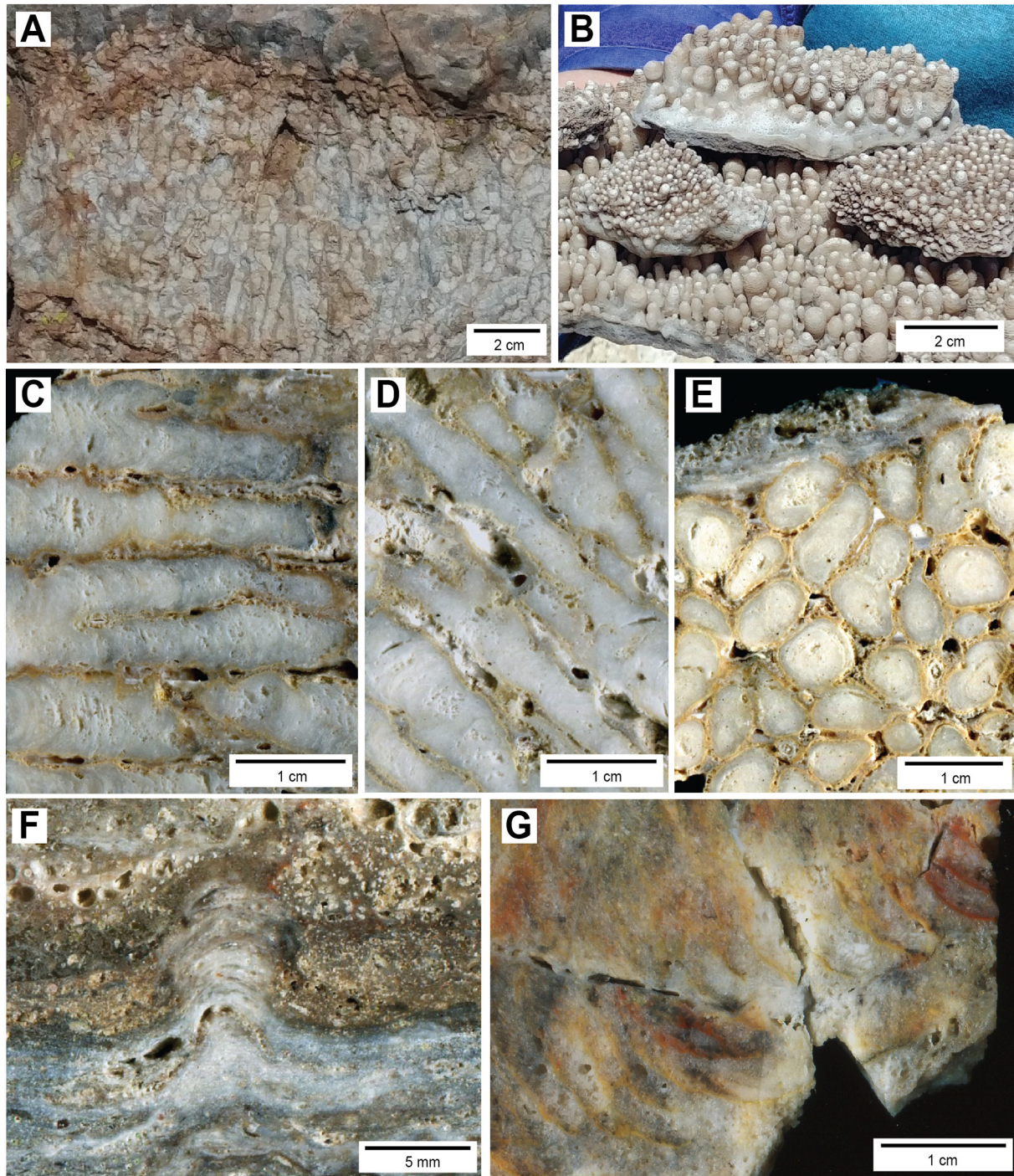


Fig. 6. Macroscale features of columnar and spicular sinter. A: Surficial exposure of columnar sinter growing upwards. Exposure location is on the outer margin of the cored sinter, 5 m northwest of Core A (Fig. 1C). B: Recent columnar sinter fragments adjacent to active boiling pools in El Tatio, ~40 m southeast of Core E. C: Horizontal columns with various stages of branching, Core C, 1.6 m depth. D: Angled branching columns, Core C, 1.1 m depth. E: Cross-section through horizontal columns, Core C, 1.5 m depth. Planar sinter laminae immediately overlying columns mark the boundary between lower horizontal columns and upper angled columns. F: Vertical column showing convex laminae, overlain by tufted microbial sinter. Core E, 3.65 m depth. G: Curved spicules. Note the size difference between spicules and columns. Core C, 1.7 m depth.

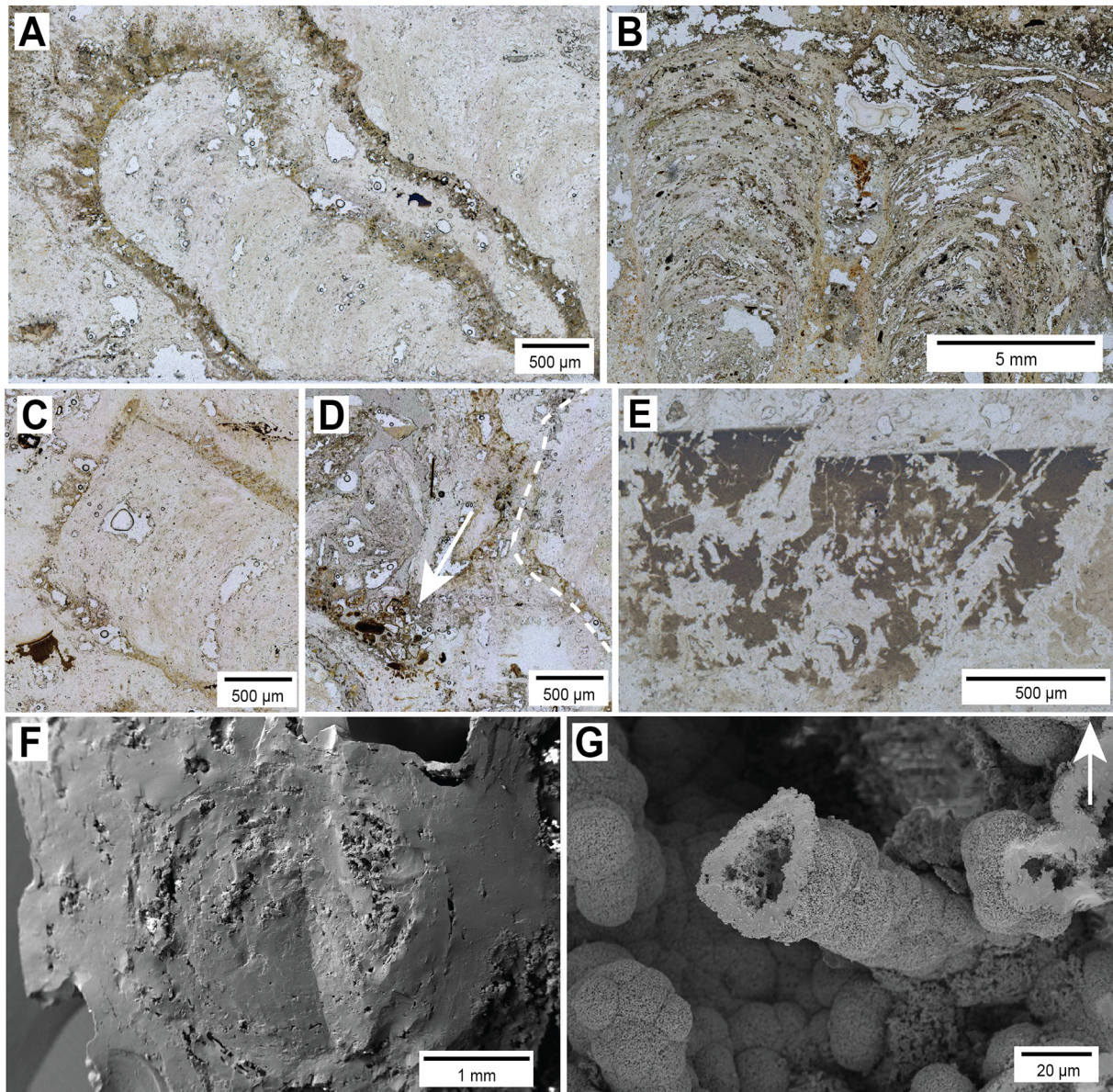


Fig. 7. Petrography of columnar sinter. A: Rounded termination of laminated sinter column, Core C, 1 m depth. B: Two adjacent columns showing coarser, more porous laminae than Core C, from Core E, 3.65 m depth. C–E: Core C, 1 m depth. C: Broken termination of sinter column. Note the faint convex laminations within the column, as well as thin yellow minerals present around all margins, including broken surfaces. D: Boundary between finely-laminated column and surrounding porous, detrital-rich interstitial sinter. A detrital-rich geopetal feature is highlighted by the white arrow. E: Fine geopetal silts located between columns, extensively cross-cut and separated by secondary silica veins. F, G: Core C, 1.8 m depth. F: Cross-section from the top down of an individual column, showing multiple generations of silica precipitation. G: Hollow silicified tube extending from a columnar surface, potentially representing a rare preserved microfossil.

frequently exhibit branching morphologies, with individual branches reaching no more than 30° of inclination from parent columns (Fig. 6C, D). The only change in column morphology occurs at 123.5 cm in Core C, where column orientation switches from horizontal to 60° inclination. The change in angle occurs above an unconformity with planar laminated sinter (Fig. 6E).

Sinter columns in Core C are internally laminated, with laminations visible in longitudinal and transverse cross-sections (Figs. 6, 7). Laminae are convex in the direction of growth, either upwards in angled columns, or laterally in horizontal columns (Figs. 6C, D, 7A, C, D). The synoptic relief of individual layers within columns is relatively low, between 0.5 and 2.0 mm (Fig. 7A, C, D). Layers have low porosity, with sub-mm pores scattered throughout columns. SEM imaging also reveal column layers (Fig. 7F), with the rare presence of hollow silica tubes on the outer surfaces of columns (Fig. 7G). Interstitial gaps

between columns are porous, with coarse or fine sediments on the bottom of pores serving as geopetal, or way-up, indicators (Fig. 7D, E). Fine geopetal sediments are often cross-cut with secondary silica veins (Fig. 7E). Other mineral phases include rims of yellow and brown oxidized crusts pervasively surrounding columnar edges (Fig. 7A, C, D). The presence of crusts on the ends of broken columns indicates secondary precipitation after initial column growth (Fig. 7C).

Columnar sinter is also present at 364 cm depth in Core E (Figs. 6F, 7B), within a 3 cm thick bed. Core E columns are vertical features ~0.5 cm in width and 1 cm in height, occurring in isolated clusters of one to three structures. Internal morphology closely resembles Core C columns, bearing convex-upwards laminae with 0.5 mm relief (Figs. 6F, 7B). Laminae in Core E columns are thicker than Core C (0.25–0.5 mm), and contain higher amounts of detrital material. Lower columnar margins have minor yellow mineral crusts, lacking dendritic textures

observed in Core C. Columns are immediately overlain by tufted microbial sinters, but no evidence of significant microbial communities is present at the time of column deposition.

Spicular sinter occurs in a 5 cm thick bed immediately below columnar sinters in Core C, at 175 cm depth. Spicules are 1 mm wide and up to 1 cm long, with individual structures curving upwards from 30 to 70° inclination (Fig. 6G). As with Core C columnar sinters, spicules are tightly packed and bordered by yellow and red mineral crusts. Laminae are not observed in spicule cross-sections. The spicule layer is immediately and unconformably overlain by horizontal columnar sinters.

Columnar and spicular sinters are commonly observed around boiling pools and geysers, in zones which exhibit frequent wetting and drying (Walter, 1976b; Jones et al., 1997, 1998; Jones and Renaut, 1997, 2003, 2006; Braunstein and Lowe, 2001; Guidry and Chafetz, 2003a; Lowe and Braunstein, 2003; Boudreau and Lynne, 2012). Splashes and surges of hot, silica-rich water evaporate on nearby surfaces, precipitating opal-A. Over time, silica precipitation produces micro-scale topography that progresses into columnar morphologies, with capillary motion of water within columns providing silica over time (Walter, 1972, 1976b; Braunstein and Lowe, 2001; Jones and Renaut, 1997, 2003, 2006; Mountain et al., 2003). Splash zones close to pools and vents form spicular textures, while larger columns occur further away in surge and overflow environments (Walter, 1972, 1976b; Braunstein and Lowe, 2001). The upward increasing angle of columnar growth in Core C is likely due to local topography, with horizontal columns growing on nearly-vertical mound faces, and increasing angles of growth on progressively flatter surfaces closer to the tops of sinter rims. Incipient growth of vertical columns in El Tatio occurs around modern boiling pools several meters south of Core E (Fig. 6B). The modern pool-margin textures are nearly identical in size and orientation to Core E columns. Therefore, columnar sinters from Cores C and E are interpreted as silica precipitates that formed in the former splash and surge zones of boiling pools.

Columnar sinters frequently preserve microbial communities, both within columnar laminae and interstitial spaces between columns (Cady and Farmer, 1996; Jones et al., 1997, 1998; Guidry and Chafetz, 2003a, 2003b, 2003c; Jones and Renaut, 2003, 2006; Handley et al., 2005, 2008). In other columnar sinter locations, biosignatures are less apparent (Walter, 1976b; Braunstein and Lowe, 2001; Lowe and Braunstein, 2003). Most columnar facies are interpreted as forming via biogenic and abiogenic silicification, with capillary forces, surge events, and precipitation within microbial communities dominating at different points in time (Jones et al., 1997; Jones and Renaut, 2003, 2006). In El Tatio cores, microbial textures in columnar sinter are obscured by diagenesis, with only isolated, putative microfossils within inter-columnar spaces (Fig. 7G). The columnar sinters examined are conservatively interpreted as forming through capillary forces after periodic surge events, with microbial communities likely present in cooler, moist areas between columns.

4.5. Arborescent sinter

Arborescent sinter is defined in this study as horizontal beds composed of surface-normal, extensively branching siliceous textures up to 1 cm in height (Fig. 8). The same textures are nearly identical to “siliceous shrubs” described in detail by Guidry and Chafetz, 2003c. However, the term “shrub” has been used to describe various different sinter textures such as laminated sinter crusts (“dendritic sinter facies” in Lowe and Braunstein, 2003), microbial palisade fabrics (Cady and Farmer, 1996; Walter et al., 1998; Campbell et al., 2001; see Section 4.6), and geyser-associated facies (Jones and Renaut, 2003). Similarly, the term “dendritic” is commonly applied to branching amorphous or mineral phases, and has been used in various sinter fabrics, such as laminated crusts, spicules, and microbial mats (Jones and Renaut, 2003; Lowe and Braunstein, 2003; Hinman and Walter, 2005), as well as phases other than amorphous silica, including quartz, calcite, and manganese (Bargar and Beeson, 1981; Jones et al., 1998; Walter

et al., 1998; Guidry and Chafetz, 2003b). By contrast, the term “arborescent” is only applied to siliceous shrubs as described in Guidry & Chafetz, 2003a & c, the previously published descriptions which most closely resemble the El Tatio sinter facies presented here.

Various horizons in Cores C and E (Fig. 2) contain arborescent sinter. In Core C (0–3, 30–34 cm depth) and deeper in Core E (310–320 cm depth), arborescent sinters form minor units of 1 cm-thick beds interspersed between sandstones, microbial, and massive sinter facies (Fig. 8A–B). Arborescent layers higher in Core E form persistent beds between 142 and 187 cm (Fig. 8C) and are closely associated with particulate sinters (see Section 4.3). In Cores C and E, arborescent sinter contains individual branching structures that reach up to 1 cm high, with individual branches less than 1 mm in diameter (Fig. 8A–C). Arborescent zones form highly porous areas compared with over- and underlying facies, and are often separated by mm-scale interstitial layers of less porous sinter (Fig. 8B, C). Interstitial sinter layers also contain higher abundances of detrital grains, often appearing darker in colour than white or light gray arborescent layers (Fig. 8B, C).

Petrographic analysis of arborescent structures reveals branching chains of amalgamated siliceous spheres up to ~100 µm in diameter (Fig. 8D). Individual arborescent features and branches are often separated by pore space, with more extensive silica precipitation resulting in smaller interstitial voids. SEM images show similar branching textures as observed in thin sections (Fig. 8E), as well as the presence of silicified microfossils and higher quantities of detrital material at the top of individual arborescent beds (Fig. 8E–G). Microbial filaments are 10–20 µm wide and over 200 µm long, resembling cells preserved in palisade mat and tufted mat facies (see Sections 4.6 & 4.7). Microfossils are found in clusters within and around larger branching features at lower densities than other microbial facies in El Tatio cores (Figs. 10, 11).

In active hydrothermal systems, arborescent sinters form within discharge channels as hydrothermal waters flow away from vent sources (Guidry and Chafetz, 2003a, 2003c). Within such depositional environments, arborescent facies appear to be temperature-independent, forming in subaqueous zones between 15 and 80 °C (Guidry and Chafetz, 2003c). Microbial communities preserved in El Tatio arborescent facies corroborate findings from similar Yellowstone sinters (Guidry and Chafetz, 2003c). Guidry and Chafetz, 2003c noted the presence of branching “siliceous shrubs” in discharge channels with higher outflow volume, while laminated microbial mats were abundant in lower outflow zones. Based on these observations, arborescent sinters in El Tatio cores are interpreted as silicified microbial communities in high-volume discharge channels, both in vent-proximal zones and distal aprons.

4.6. Fenestral palisade sinter

Palisade sinters are defined by silicified filamentous microfossils alternating between layers of surface-normal and surface-parallel orientation (Cady and Farmer, 1996; Walter et al., 1996; Campbell et al., 2001; Gong et al., 2019). Similar textures are observed, but not specifically labeled as palisades, in hydrothermal stromatolites (Jones et al., 1997, 1998, 2005; Konhauser et al., 2004; Berelson et al., 2011), with a variety of terms applied to microfossil orientation (erect vs. prostrate, U- vs. P-laminae, and upright vs. flat-lying). Palisades occur in the top 50 cm of Cores C, D, and E, and between 215 and 244 cm depth in Core E. Most El Tatio core palisades contain high abundances of fenestrae (Figs. 9, 10), defined as primary pore spaces preserved within microbial textures (Tebbutt et al., 1965; Mata et al., 2012).

Fenestral porosity alternates between individual laminae, resulting in light-dark layering within hand samples and thin sections. Lighter, more porous laminae are 2–5 mm thick, while darker laminae are less than 2 mm thick and contain fewer fenestrae. Detrital grains are present but not abundant throughout light and dark palisade laminae (Fig. 9E, G). Both styles of lamination contain filamentous microfossils visible in thin-section and SEM imaging (Figs. 9D–G, 10A–E). Filaments in less-porous laminae are oriented parallel to bedding planes. In contrast,

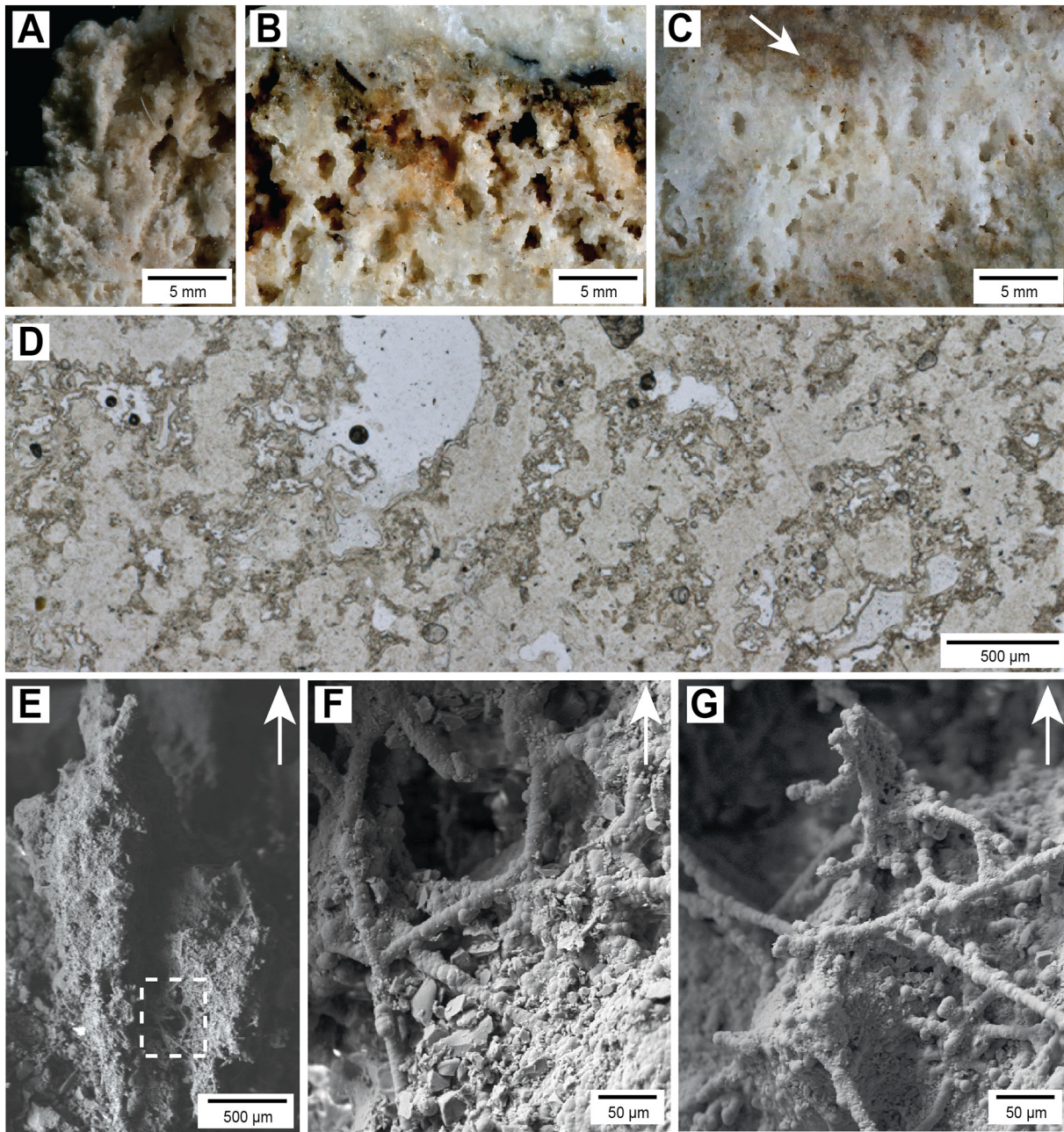


Fig. 8. Arborecent sinter. A–C: hand specimen photographs. A: Arborecent facies at the top of Core C, with textures branching upward into open air. B: Pronounced cm-scale arborecent facies, over- and underlain by layers of dense, less porous sinter. Core E, 3.15 m depth. Note the branching textures in individual “shrubs”. C: Upper branches of arborecent structures extend into detrital-rich darker overlying sinter, noted by a white arrow. Core E, 1.5 m depth. D: Photomicrograph of arborecent facies, showing branching chains of silica spherules separated by pore space. Core E, 1.4 m depth. E–G: SEM images from Core E, 3.15 m depth. E: Individual branching structure, highlighting the presence of microbial filaments. F: Magnified image of highlighted area in E, showing microbial filaments with associated angular detrital material. G: Microbial filaments without detrital material present.

filaments in porous laminae contort around curved fenestral margins in various orientations.

Palisades in Cores C, D, and E differ in fenestral size and morphology (Fig. 9A–C). Fenestrae in Cores C and E are sub-mm in scale, with sub-circular margins in cross-section (Fig. 9A, C). By contrast, Core D fenestrae have elongated oval or lobate morphologies between 0.5 and 5 mm in diameter (Fig. 9B, D). Elongate fenestrae are especially prevalent in thicker porous layers of Core D. Long axes of such fenestrae are oriented normal to bedding planes, separated by thin vertical columns of silicified microbial filaments (Fig. 9D). Darker layers of Core D contain smaller, more circular fenestrae comparable to morphologies observed in Cores C and E.

Filamentous microfossils are abundant in all fenestral palisades (Fig. 10A–C). In SEM images, Cores C and D exhibit round voids lined

with 5-μm wide filaments up to 100 μm in length (Fig. 10A, B). Filaments retain equal diameter throughout their length, terminating with rounded, untapered ends. Individual microfossils frequently form bridges across fenestral pore spaces. While most sinters between fenestrae only preserve microfossils on exterior surfaces, exquisitely preserved regions reveal columnar bundles of filaments stretching across pore spaces (Fig. 10D, E). Secondary overprinting is especially prevalent in Core E, where microfossils are still abundant, but rounded fenestral textures are less distinct (Fig. 10C).

Palisades and similar microbial fabrics are globally present in hydrothermal sinter deposits of various ages (Walter, 1976a; Walter et al., 1996, 1998; Jones et al., 1997, 1998, 2005; Campbell et al., 2001, 2015; Konhauser et al., 2004; Fernandez-Turiel et al., 2005; Berelson et al.,

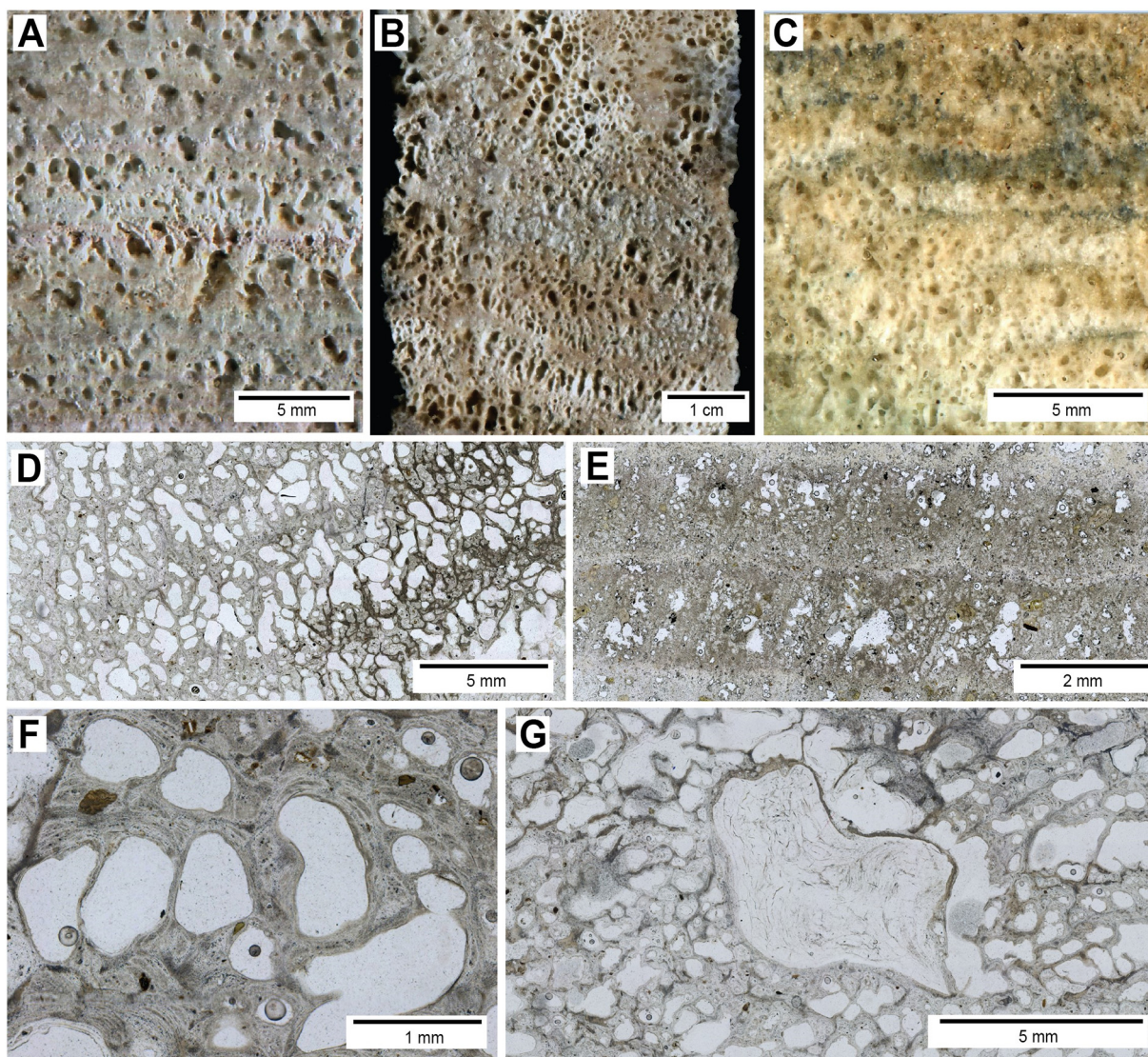


Fig. 9. Palisade mat sinter. A-C: Hand specimen photographs. A: Core C, 0.1 m depth. B: Core D, 0.2 m depth. Note that fabrics at the top of the sample maintain fenestral qualities, but lose distinct lamination. C: Core E, 2.2 m depth. D-G: Photomicrographs of palisade sinters. D: Palisade fabric alternating between darker, less porous laminae and lighter, more porous zones with extensive fenestrae. Core D, 0.1 m depth. E: Palisade sinter with alternating low- and high-porosity laminae, with fewer fenestrae compared to Cores C and D. Low-porosity laminae are lighter in thin-sections, but darker in hand samples (see panel C). Core E, 2.35 m depth. F: Fenestrae within a light porous lamina, Core D, 0.2 m depth. G: Detrital sinter fragment (most likely columnar or spicular) embedded in palisade fabric. Core D, 0.1 m depth.

2011; Gong et al., 2019). Variations in filament orientation are interpreted differently in various locations, including seasonal growth patterns (Walter, 1976a; Jones et al., 1998, 2005), pulses in hydrothermal sheet-flow (Campbell et al., 2015), and quasi-daily shifts in water temperatures (Berelson et al., 2011). On steeper surfaces such as the edges of sinter mounds, palisade formation is driven by cycles of wetting and drying (Gong et al., 2019).

Palisade sinters closely resemble cyanobacterial communities living at or below 40–45 °C, typically interpreted as *Calothrix* (Walter, 1976a; Cady and Farmer, 1996; Campbell et al., 2001, 2015), though similar textures have been noted in communities of *Fischerella*, *Phormidium*, and *Leptolyngbya* (Jones et al., 2005; Pepe-Ranney et al., 2012; Gong et al., 2019). In active El Tatio geyser terraces, morphological and molecular evidence show a predominance of *Leptolyngbya*, and an absence of *Calothrix* or its more halotolerant sister genus, *Rivularia* (Gong et al., 2019). Due to the robust structures of *Calothrix*-type organisms, their absence is not likely due to a preservation bias, but rather interpreted as absence from the characterized terraces.

In many sinter localities, erect palisade filaments are often tightly packed together, leaving no space for mm-scale fenestrae. However, several locations contain more porous fenestral palisades in distal sinter aprons and terraces, including other zones in El Tatio (Jones et al., 1998; Munoz-Saez et al., 2016). One environmental exception occurs in Obsidian Pool Prime in Yellowstone National Park (Berelson et al., 2011; Mata et al., 2012), where fenestral textures occur in stromatolites around higher-temperature pool margins (>45 °C). However, Obsidian Pool Prime fenestrae have distinctly different morphologies from El Tatio cores, forming sub-spherical voids less than 1 mm in diameter. Instead, fenestrae in core samples more closely resemble elongate pores observed in cooler, distal settings elsewhere in El Tatio and New Zealand (Jones et al., 1998; Munoz-Saez et al., 2016).

4.7. Tufted mat sinter

Tufted mat sinters are defined as filamentous microbial mat textures with sharp peaks and cones irregularly separated by 1–2 mm concave

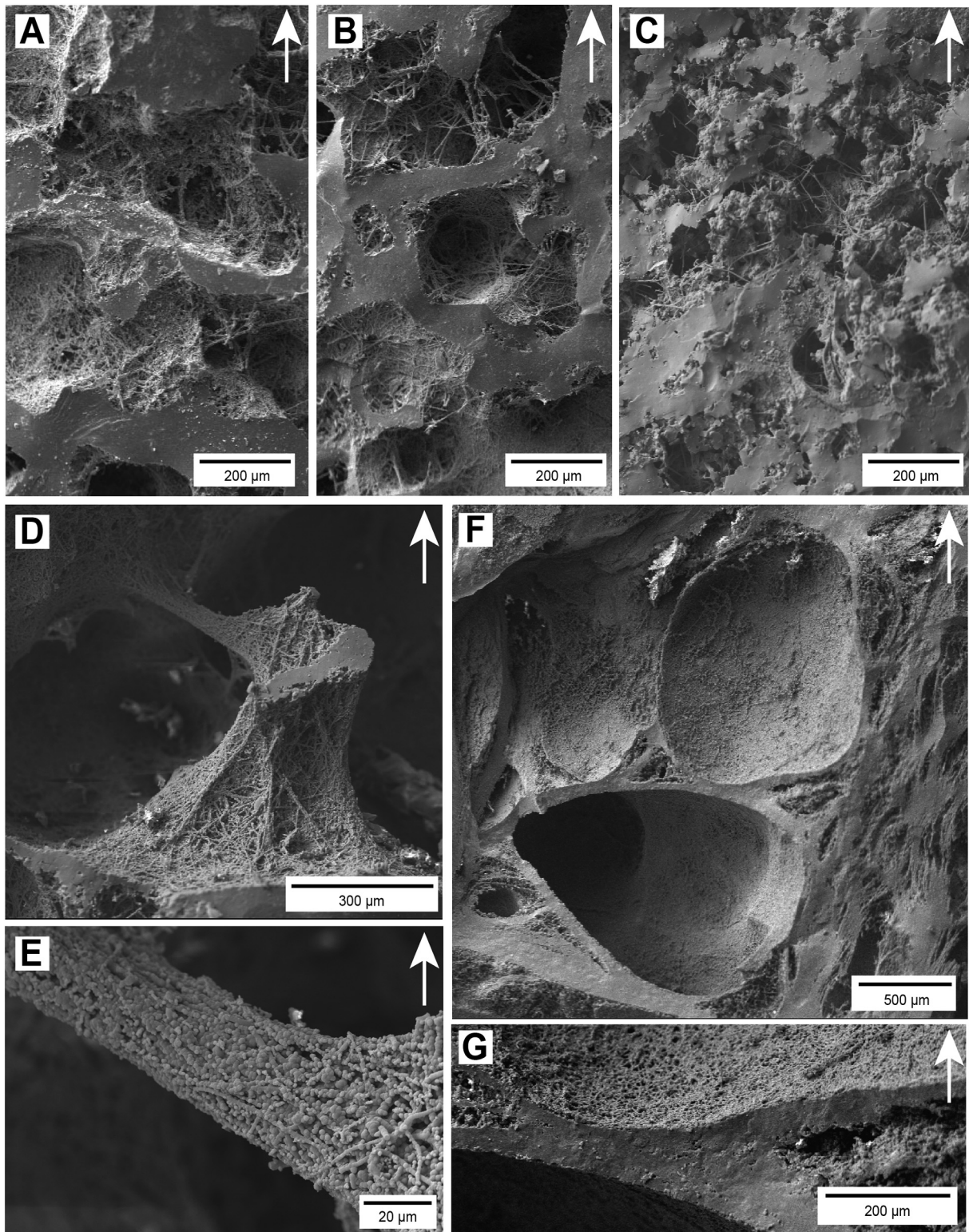


Fig. 10. SEM imagery of different microbial sinters. A–C: Palisade fabrics from (A) Core C, 0.1 m depth, (B) Core D, 0.2 m depth, (C) Core E, 2.2 m depth. Fenestrae are less abundant in C than A or B. D: Filamentous microfossils separating palisade fenestrae. Core D, 0.2 m depth. E: Detailed view of filaments in D. F: Rounded fenestrae in tufted mat sinters, Core E, 3.6 m depth. G: Detailed view of microbial sinter separating fenestrae in F, showing well-preserved microbial filaments on top of more silicified zones.

depressions (Cady and Farmer, 1996; Walter et al., 1996, 1998; Campbell et al., 2001; Jones et al., 2005), most notable in thin-section (Fig. 11A, B). Tufted facies occur within two zones of Core E (0–103 cm, 289–367 cm depth), interspersed as individual beds up to 15 cm thick. The top meter of Core E contains tufted beds interspersed

between palisade fabrics, while lower units briefly occur between thicker units of arborescent sinters and laminated sandstone deposits. Individual tufted layers are ~100 µm thick, and are difficult to discern in hand samples. Laminae laterally increase in thickness to 200 µm at tufted peaks, and diminish to 50 µm in interstitial depressions. Textures

immediately below tufts vary between layers. Most laminae do not preserve additional microbial textures below tufts (Fig. 11B), while some laminae contain relict microbial filaments (Fig. 11A). Occasionally, both highly circular and elongate fenestrae are preserved, bounded by thin pillars of filamentous sinter (Fig. 11C).

SEM imaging of tufted sinters shows exquisite preservation of microbial mat textures. Three-dimensional tufts are composed entirely of microbial filaments between 2 and 5 μm in diameter (Fig. 11D–F). Filaments form diffuse meshwork textures at the base of tufts, while sharp peaks exhibit denser accumulations, reflecting differences in thickness

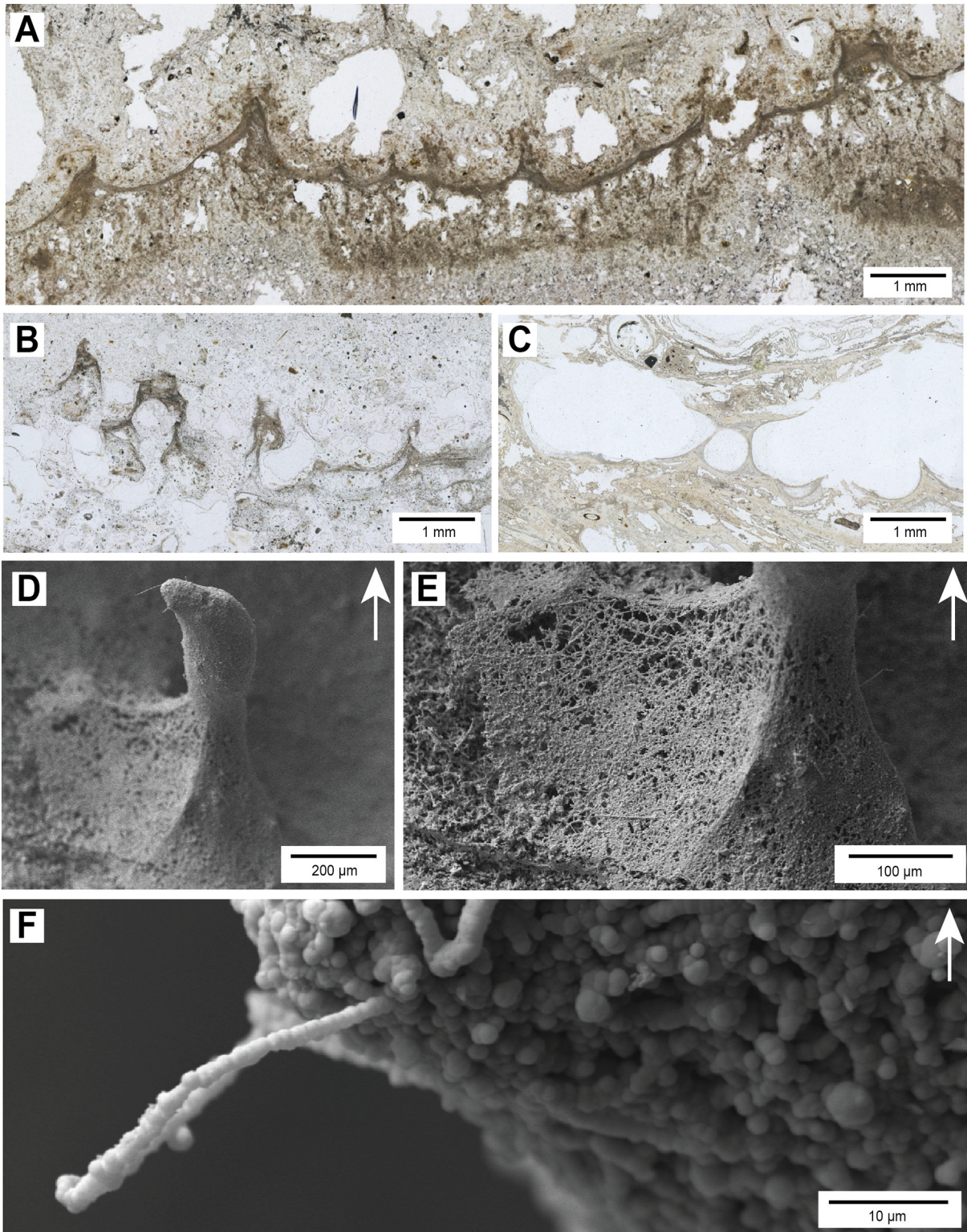


Fig. 11. Tufted mat sinter. A–C: Photomicrographs of microbial tufts from (A) Core E, 0.3 m depth (B) Core E, 0.5 m depth. C: Core E, 3.6 m depth. Rounded fenestrae separated by filamentous hourglass structures (see Fig. 10 for SEM of similar features). D–F: SEM images from Core E, 3.6 m depth. Single microbial tuft, highlighting (D) the entire tuft, (E) the basal meshwork of filamentous microfossils, and (F) individual filaments near the tufted tip.

and density observed in thin-sections (Fig. 11A, B). Large rounded fenestrae are also present, bounded and separated from each other by silicified filaments (Fig. 10F, G). Fenestrae are less frequent in tufted facies than palisades, but are larger and more spherical.

Tufted facies closely resemble modern mats dominated by the cyanobacterial taxa *Phormidium* and *Leptolyngbya* (Walter, 1976a; Campbell et al., 2001; Fernandez-Turiel et al., 2005; Lau et al., 2005; Bosak et al., 2012; Reyes et al., 2013; Bradley et al., 2017). Many tufted mats grow between 45 and 60 °C (Walter, 1976a; Campbell et al., 2001; Lau et al., 2005; Bradley et al., 2017), though tufted *Leptolyngbya* mats are also reported between 17 and 45 °C (Bosak et al., 2012; Reyes et al., 2013). Large rounded fenestrae below tufts are also distinct from fenestral palisade textures, more closely resembling spherical gas bubbles preserved within tufted hydrothermal mats (Lynne and Campbell, 2003; Bosak et al., 2009, 2010; Mata et al., 2012). Tufted facies are interspersed with palisade fabrics in the top meter of Core E, with changes in mat morphology potentially facilitated by changes in water temperatures or hydrochemistry.

4.8. Massive sinter

Massive sinters exhibit either obscured or no primary features such as laminae, bedding, detrital grains, or microfossils (Fernandez-Turiel et al., 2005; Walter et al., 1996). Massive sinter facies occur at various depths in Cores A, D, and E. The lowest meter of Core A consists of green and gray low-porosity sinter with pale yellow and orange minerals along secondary fissures (Fig. 12A). While massive Core A sinter contains vertically oriented lineations in hand sample similar to inclined sinter crusts, all traces of vertical fabric are obscured in thin section (Fig. 12B). Sinters at the base of Core D (72–97 cm) have similarly low porosity, and lack bedding, vertical lineation, or clear laminae in hand sample or thin section (Fig. 12C). Massive sinters occur in 5-cm thick beds at various depths in Core E (130–135 cm, 320–325 cm, 330–335 cm). Core E facies are lighter in colour than in Cores A and D, and have gradational contacts with particulate and arborescent sinters. Microscopy of massive sinters and adjacent facies also shows extensive growth of secondary silica phases within pore spaces (Fig. 12D, E).

Massive sinter fabrics are present in modern and ancient sinter deposits (Walter, 1976a; Walter et al., 1996; Guidry and Chafetz, 2003a). The lack of primary fabrics in hand samples and thin-sections implies secondary alteration, such as recrystallization and overgrowth of original sinter deposits, most likely by high temperature silica-rich subsurface fluids. Adjacent primary facies in Cores A and E support a high-temperature alteration hypothesis. Massive sinter in Core A is overlain by more than 2 m of inclined and planar sinter crusts, representing the sides and floors of vent-proximal pools respectively. In Core E, massive sinters are associated with particulate sinters, also interpreted as subaqueous deposits near secondary hydrothermal vents distal to Mound 502. In contrast, facies at the base of Core D are not associated with high-temperature pool or vent facies. Based on high-temperature associations elsewhere, massive sinters in Core D are interpreted as former microbial mat sinters which were secondarily altered by subsurface fluid flow and recrystallization.

4.9. Laminated sandstone and sinter

Laminated sandstone and sinter (LSS) deposits are defined as interbedded siliciclastic and sinter layers between 0.1 and 5 cm thick. The LSS facies is only observed in the lower 2.5 m of Core E. Sandstones are medium- to coarse-grained, and are composed of sub-rounded to sub-angular volcanoclastic grains and occasionally detrital sinter pieces (Fig. 13A, C, E). No evidence of cross-bedding is observed in sandstone beds, while sinters contain millimeter-scale planar laminae lacking fenestrae or filaments. Laminated sinters often have irregular, unconformable contacts with overlying sandstones.

The ratio of sinter to sandstone in LSS facies varies in different areas of Core E. Below 4 m depth, sandstone layers are thicker, containing isolated,

centimeter-scale sinter deposits. Unconformities separate lower LSS facies from intervening massive sandstones lacking sinter in Core E (described below). LSS facies above 4 m in Core E are dominated by planar sinter, punctuated with sub-centimeter sandy layers. Upper LSS facies in Core E are typically less than 5 cm thick and are often under- or overlain by tufted microbial textures, distinguished by filamentous fabrics.

LSS facies in Core E are interpreted as distal sheet-flow deposits, with sinter layers representing relative lulls in siliciclastic input. Beds below 4 m depth indicate higher-energy environments where clastic sedimentation prevented persistent sinter deposition. In contrast, LSS facies above 4 m depth exhibit minor pulses of siliciclastic deposition in a calmer, sinter-dominated regime. In both zones, sinter deposits were consistently eroded by subsequent sandstone deposition, forming irregular upper contacts.

4.10. Massive sandstone

Massive sandstones contain no bedding textures or interstitial sinter deposits, and are only found in the lowest meter of Core E. Similar to LSS facies, sands are medium to coarse-grained, and are composed of sub-rounded and sub-angular volcanoclastic grains (Fig. 13B, D, F). The majority of siliciclastic material is composed of volcanic lithic fragments, feldspar, mica and minor portions of redeposited sinter material. The sandstone is notably free of detrital quartz, but largely cemented by siliceous material such as opal and chalcedony (Fig. 13F).

Massive sandstone units have unconformable boundaries with adjacent sinter and sandstone beds, and occasionally contain unconformities within otherwise homogenous units. One notable unconformity occurs at 538 cm depth in Core E. Sandstones containing 1–2 cm wide matrix-supported rounded green clasts are conformably overlain by planar beds of sands fining upward from coarse to medium-grained. Both units are eroded by an unconformably overlying homogenous, coarse-grained sandstone. Vitreous brown cements follow the unconformity, cross-cutting into over- and underlying sediments (Fig. 13B). No other sedimentary structures are apparent in massive sandstones.

Massive sandstones are interpreted as debris flows with little to no hydrothermal influence. The only hydrothermal silica precipitation present (538 cm) occurs as secondary precipitation following unconformities and cross-cutting primary lithologies in a narrow zone.

5. Core geochemistry

Sinters in Cores A, C, D, and the upper 4 m of Core E are largely composed of siliceous material with more than 94 wt% of SiO₂ (Fig. 14). Cores closer to the vent source (A, C, D) are especially enriched in SiO₂, with all measured values above 98.5 wt%. SiO₂ concentrations in Cores A and C decrease towards surface deposits, with higher values in sinter crusts and columnar sinters, and lower values in mat and particulate sinter facies. Core D shows little variability between massive sinters and palisade mat facies, while sandstones at the base of Core E are relatively SiO₂-depleted (70–85 wt%), with a sharp increase to >90 wt% at 361 cm depth. SiO₂ concentrations in Core E increase to ~99 wt% in arborescent, particulate and massive sinters between 1 and 2 m depth before slightly decreasing within the uppermost meter of mat facies, in a similar fashion to Cores A and C (Fig. 14).

Other major elements are anti-correlated to SiO₂ concentrations in all cores (Fig. 14, Supplementary Information). For example, Al₂O₃, Fe₂O₃, TiO₂, etc. increase upwards in Cores A and C as SiO₂ decreases. In Core E, sandstones below 4 m depth have different geochemical signatures than overlying sinters. Many elements are several orders of magnitude more abundant in Core E sandstone deposits (Fig. 14), including Al₂O₃ concentrations above 10 wt%. In Core E sinter facies above 4 m depth, elemental abundances reach minimum values at ~2 m (e.g., Al₂O₃ concentrations at 0.1 wt%) before slowly increasing within the top meter of mat sinter facies. While certain elements are

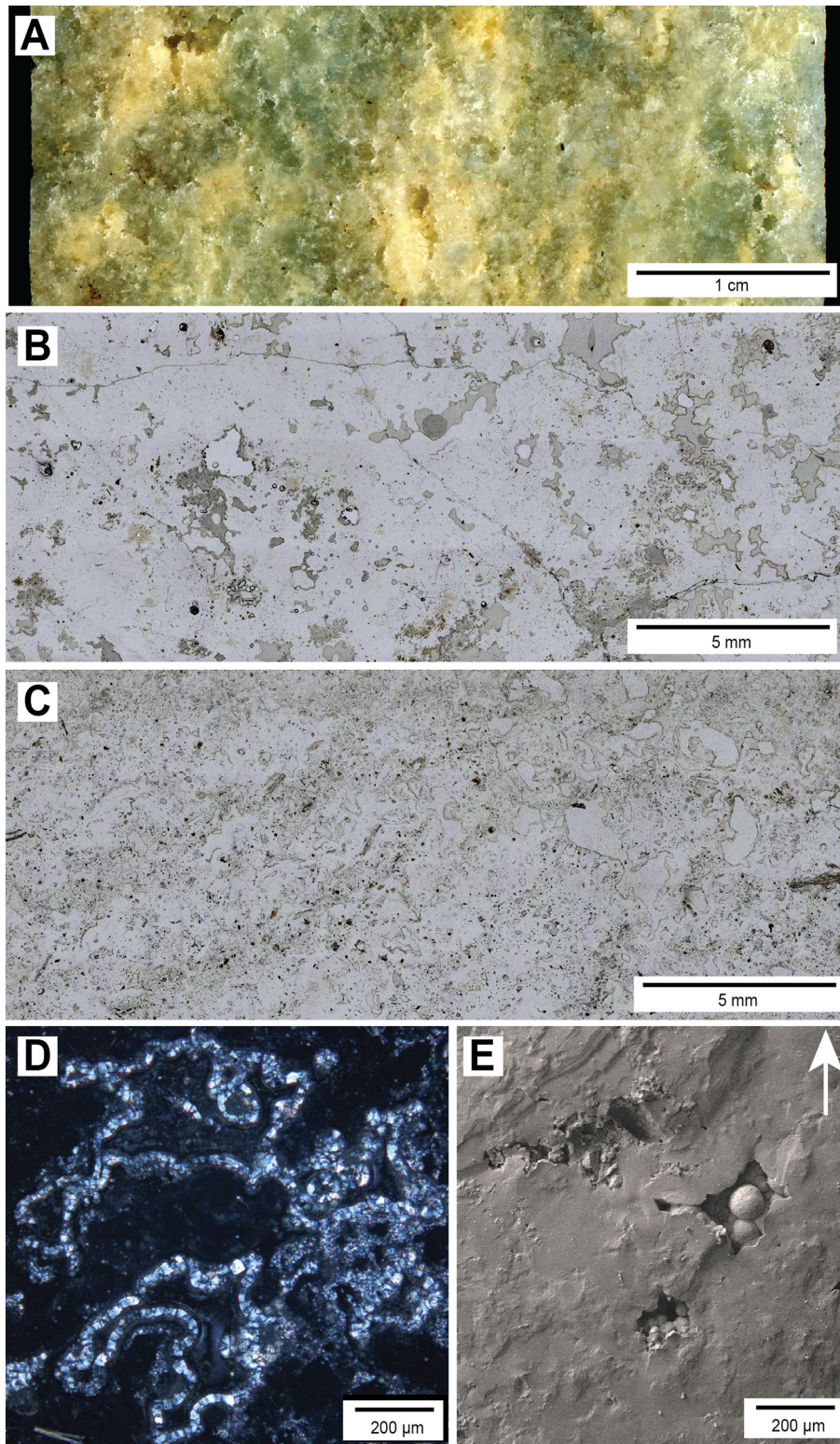


Fig. 12. Massive sinter. A: Hand specimen photograph from Core A, 2.7 m depth. B–D: Photomicrographs of massive sinter in Core A, 2.4 m depth (B); Core D, 0.8 m depth (C); Core E, 1.5 m depth, cross-polarized light (D). Sample comes from an intercalation of massive sinter within dendritic sinter, highlighting extensive white rims of secondary silica precipitation. E: SEM image from Core E, 1.9 m depth.

elevated in individual layers (e.g., P_2O_5 in Core E, 103 cm), larger shifts are consistent between elements in all cores.

Most trace elements exhibit similar stratigraphic trends to major elements in all four cores. For example Li, Cs, Rb, Se, U, Cr, and many other elements are enriched in Core E sandstones below 4 m depth, and

depleted in overlying sinters, with slightly higher concentrations of Li and Cs (Supplementary Information). In rare cases, certain elements are enriched in sinters compared with clastic deposits. For example, Sb concentrations increase in Core E sinters above 4 m, and represent the most abundant trace element in all sinter samples (Supplementary

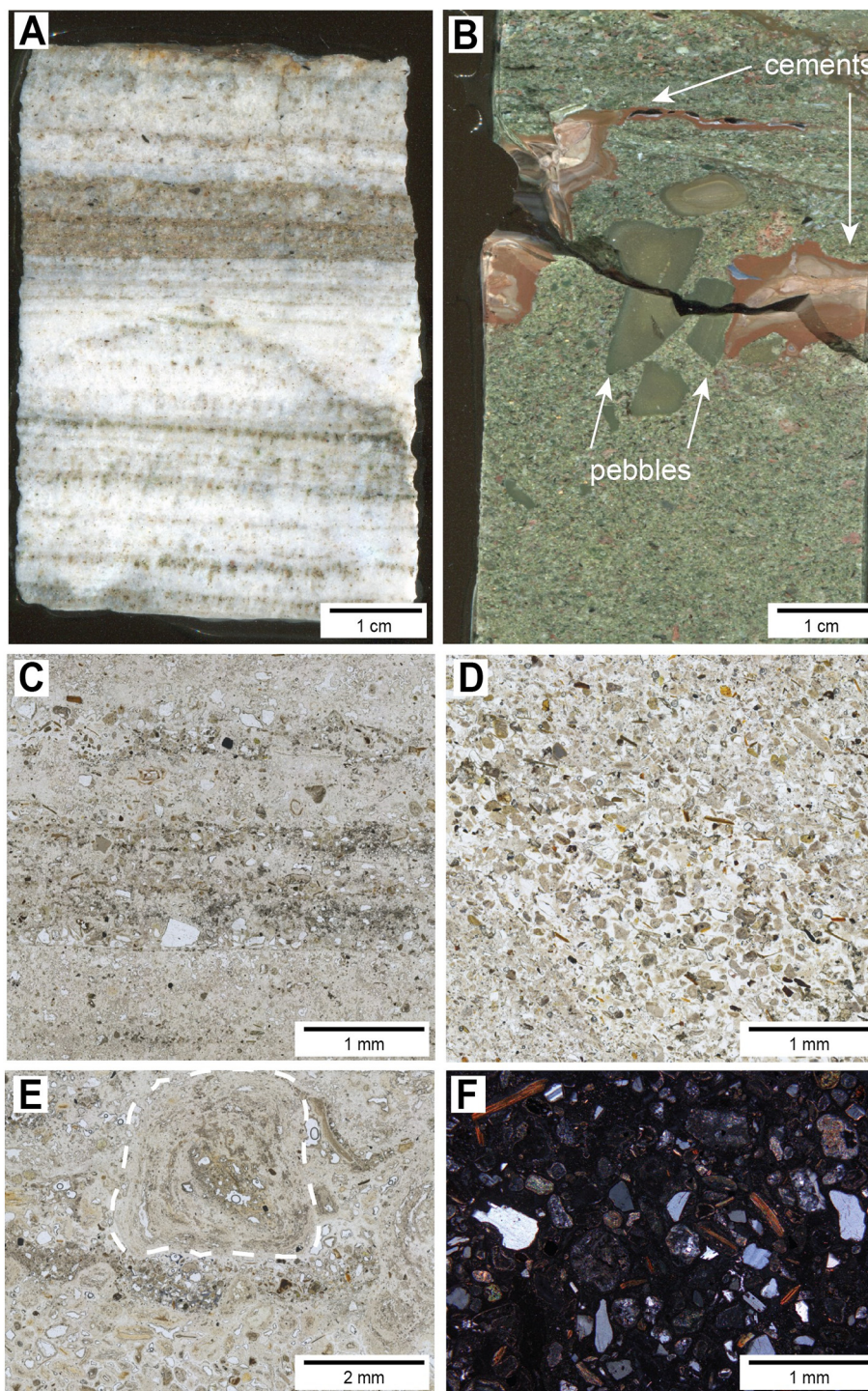


Fig. 13. Sandstone facies. A–B: Hand specimen photographs. A: Laminated sandstone and sinter, Core E, 3.5 m depth. B: Massive sandstone containing matrix-supported pebbles and secondary silica cements propagating along fracture zones, Core E, 5.4 m depth. C–E: Photomicrographs under plane polarized light. C: Laminated sandstone and sinter, Core E, 3.5 m depth. D: Massive sandstone, Core E, 5.2 m depth. E: Laminated sandstone and sinter containing a fragment of columnar or spicular sinter, Core E, 3.5 m depth. F: Massive sandstone, photomicrograph in cross-polarized light, Core E, 5.2 m depth.

Information). As is slightly more abundant in sinter than sandstone facies, with elevated concentrations in the top 0.5 m of all cores (Supplementary Information).

Rare earth element (REE) core profiles are nearly identical to most major and trace elements, with strong anti-correlation to SiO_2 concentration (Figs. 14, 15). When REE concentrations of individual samples are normalized to clastic deposits of Mound 502, neither light nor heavy rare earth elements (LREE and HREE) are enriched (Fig. 15, Supplementary

Information). Slight HREE enrichment occurs when core samples are normalized to chondritic meteorites and post-Archean Australian shale (PAAS) (Supplementary Information).

Total REE abundance increases towards the tops of Cores A and C, with a slight decrease around 1.2 m depth in Core A (Fig. 15). Core D has consistent REE concentrations over a limited sampling distribution. As with major elements, REE concentration in Core E varies greatly based on depth and facies. Sandstones below 4 m depth have concentrations one

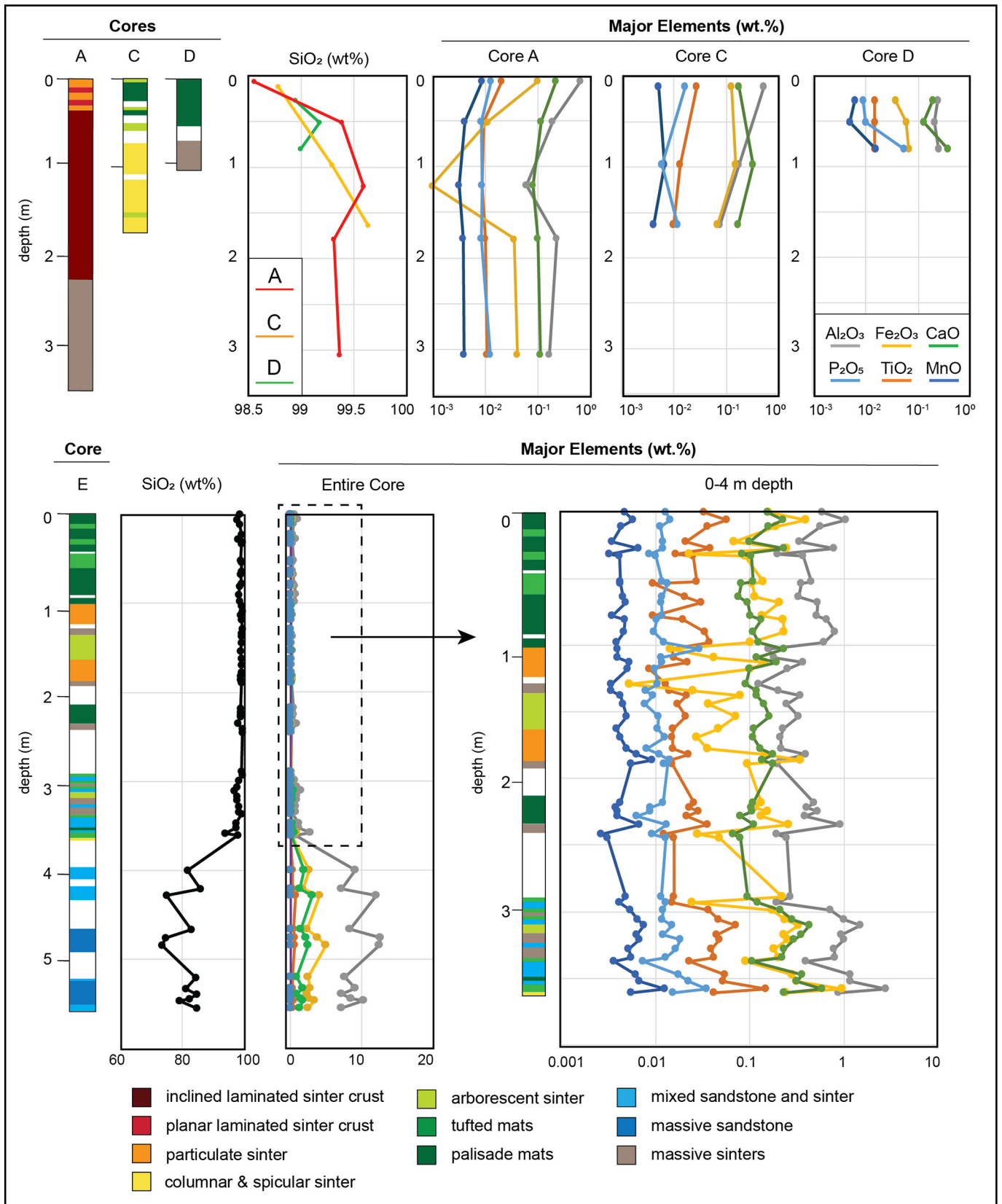


Fig. 14. Major element patterns in all cores. Due to the disparity in elemental concentrations between sandstones and overlying sinters in Core E, elements in the upper four meters are shown separately on different axes. Detailed concentration and depth measurements for all major and trace elements are in the Supplementary Information.

to two orders of magnitude higher than overlying sinters, forming a sample population distinct from facies in any other core (Fig. 15). REE abundance drops drastically by approximately one order of magnitude at 4 m depth, when sinter becomes more abundant relative to sandstone. Between ca. 3.6 and 3.0 m depth, REE abundance decreases steadily by one order of magnitude where sandstone bearing beds become less abundant (Fig. 15). Arborescent and particulate sinters between 1 and 2 m contain the lowest REE concentrations in Core E, with values gradually increasing in overlying mat facies.

Different core facies also vary in REE patterns between individual samples (Fig. 15). When normalized to values of clastic deposits within Mound 502, REE patterns are essentially flat in facies with elevated concentrations, such as LSS and various microbial mat facies. In samples with depleted REE, certain elements are relatively enriched, including La, Eu, Y, and Lu (Fig. 15). Enrichment of such elements typically increases as total REE concentration decreases, and is most prevalent in sinter crust, particulate, and columnar sinter facies. For example, positive Eu anomalies (enrichments in Eu relative to clastic material, see Methods) are highest in sinter crust and columnar facies in Cores A and C, respectively (Figs. 15, 16). The highest positive Eu anomalies in Core E occur in particulate sinters between 1.5 and 2.0 m depth, with all other facies exhibiting slightly negative or no Eu anomalies (Fig. 16).

6. Discussion: core depositional histories

Depositional interpretations based on core sedimentology are well-supported by geochemical data, especially regarding proxies for siliciclastic material relative to mineral precipitation in hydrothermal fluids. For example, Al-concentration in chemical sediments is frequently used as a proxy for siliciclastic components, such as clay minerals and feldspar (Calvert, 1976; Tribouillard et al., 2006). The high concentration of Al_2O_3 and other elements in sandstone beds compared with sinters confirms such interpretations for El Tatio systems (Fig. 14). Therefore, subtle differences in Al_2O_3 and associated elements within sinters can determine relative siliciclastic input and corroborate environmental interpretations based on sedimentary structures. Similarly, positive Eu anomalies are often applied as a proxy to estimate the relative influence of hydrothermal fluids on lithologies (Michard, 1989; Lewis et al., 1997; Feng et al., 2014). On broad lateral scales, positive Eu anomalies in El Tatio cores are larger with proximity to the vent source (Fig. 16). Such trends confirm the utility of Eu anomalies within cores to determine relative fluctuations in hydrothermal activity.

Al and Eu proxies appear to be broadly connected in El Tatio cores, with samples forming a spectrum between two geochemical end-member proxies. Facies with higher Al_2O_3 concentrations such as sandstones and microbial mat sinters have little to no Eu anomaly, while samples with high positive Eu anomalies (sinter crust, particulate, columnar sinters) have relatively low Al_2O_3 abundance (Figs. 14–16). This dichotomy is most likely due to differences in REE abundance between hydrothermal sinters and detrital sandstones. Sandstones have the highest $\sum REE$ in any core facies, with values orders of magnitude above associated sinters (Fig. 15). The abundance of REE in sandstone implies that even a relatively minor siliciclastic component in sinter can overpower the REE signature of depleted sinters. Separating $\sum REE$ into LREE or HREE reveals no enrichment of either group in clastic-normalized samples (Fig. 15), while normalizations to other standards reveal only minor enrichments in HREE (Supplementary Information).

Therefore, in El Tatio cores, positive Eu anomalies are conservatively interpreted as the relative influence of hydrothermal precipitation compared to siliciclastic influx. The dichotomy between Al_2O_3 concentrations and Eu anomalies persists across all four cores, and matches interpretations based on sedimentary and geochemical evidence. Distal environments have higher abundances of siliciclastic material relative to hydrothermal silica precipitation than vent-proximal zones. Microbial mats in particular are noted for trapping detrital material with

filamentous textures and adhesive extracellular polymers (Gebelein, 1969; Riding, 2000; Frantz et al., 2015).

Trace element proxies support previous observations of El Tatio water and sinter chemistry. Two primary types of hydrothermal fluids exist in the El Tatio geyser field: alkali-chloride and acid-sulfate (Giggenbach, 1978; Cortecchi et al., 2005). Alkali-chloride waters in El Tatio are enriched in As, Cs, and Li, while acid-sulfate waters are only enriched in B compared to meteoric sources (Cortecchi et al., 2005). While B was not examined in this study, cored sinters are slightly enriched in Li, Cs, and As compared with most other trace elements (Supplementary Information), indicating the presence of alkali-chloride waters similar to modern Upper Basin environments (Giggenbach, 1978; Cortecchi et al., 2005). In addition, elevated concentrations of Sb in Mound 502 sinters are consistent with previous sinter studies at El Tatio and other Chilean hydrothermal zones (Landrum et al., 2009; Sanchez-Yanez et al., 2017). Combined sedimentary and geochemical data therefore provide depositional histories for each core and form a local model for sinter mound growth (Fig. 17).

6.1. Core A

Core A was drilled on top of Mound 502, along the inner rim of the steep-walled inner pit. Core A is the first sedimentary core described from vent-proximal sinter deposits, and it provides several insights into high-temperature facies which corroborate observations of active modern hydrothermal systems.

The lowermost meter of Core A is massive sinter, showing no primary texture in hand sample or thin section (Fig. 12A, B). Massive facies contain low Al_2O_3 concentrations and a significant positive Eu anomaly (Figs. 14–16), indicating extensive silica precipitation in hydrothermal waters with low siliciclastic input. Such precipitation can occur during primary vent-proximal deposition or secondary subsurface alteration. While specific depositional features are absent, Al_2O_3 concentrations in massive sinters as low as 0.16 wt% indicating very little to no siliciclastic input. Therefore, we interpret massive Core A sinters as vent-proximal hydrothermal deposits secondarily altered by subsurface flow, consistent with previous studies of massive sinter (Walter, 1976b; Walter et al., 1996; Guidry and Chafetz, 2003a).

Inclined sinter crust is only observed in Core A, forming a nearly continuous unit ~2 m thick. Depositional angles and bed thicknesses correspond to the surficial topography of Mound 502's inner pit, which descends ~1.5 m below rim margins (Fig. 1D). Sinters from 121 cm depth contain the lowest measured concentrations of Al_2O_3 and $\sum REE$ in all core samples, as well as the highest percentages of SiO_2 and a strongly pronounced positive Eu anomaly (Figs. 14–16). Geochemistry and sinter topography support the presence of a high-temperature pool sourced by subsurface hydrothermal fluids (Fig. 17), currently represented by the inner pit of the extinct mound. Microscopic surface-normal silica fabrics support a hydrothermal pool interpretation for sinter crusts (Figs. 3, 4), closely resembling fabrics observed in subaqueous conditions over 73 °C in Yellowstone pools (Lowe and Braunstein, 2003). While microbial textures are occasionally observed in SEM, the prevailing surface-normal fabrics more closely resemble ambiguously biogenic "shrub columns" (Jones and Renaut, 2003) or abiogenic "dendritic sinter fabrics" (Lowe and Braunstein, 2003), forming when silica precipitation outpaces microbial growth.

Positive Eu anomalies and SiO_2 percentages decrease further up section while Al_2O_3 concentrations increase, indicating an increase in siliciclastic input relative to sinter precipitation. An angular unconformity separates inclined sinter crusts from overlying planar facies. Planar sinter crusts match the flat-topped topography of Mound 502's inner rims, potentially signifying a shift from silica accretion within steep-sided pools to vertical build-up of pool-side margins (Fig. 17). No textural features in planar crusts indicate the presence of microbial mats or indicate biological mediation of silica precipitation. The top ten centimeters of Core A are particulate sinter with abundant siliciclastic

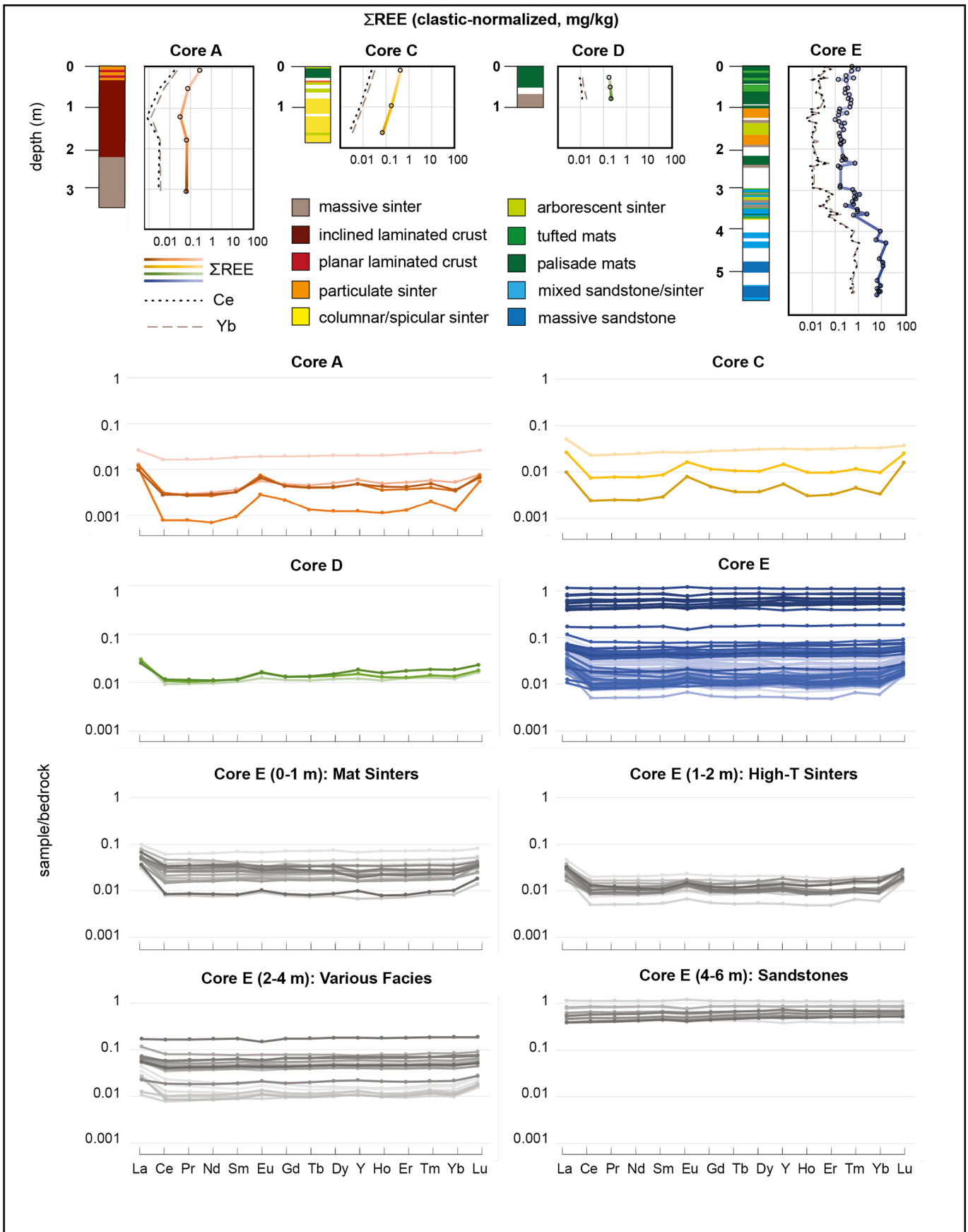
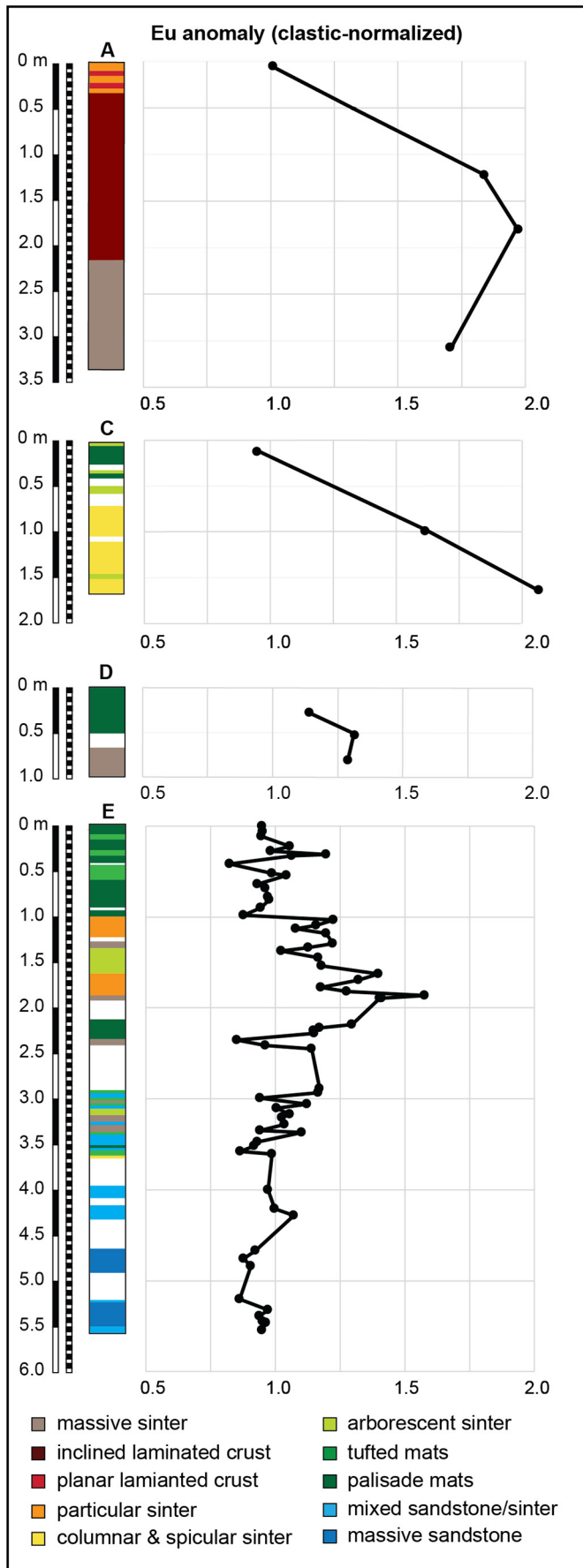


Fig. 15. Rare earth element patterns in all cores, normalized to clastic sediments within Mound 502. Depth profiles show total REE concentrations in each core, as well as profiles for Ce and Yb representing light and heavy REE signatures. Note the nearly identical values for Ce and Yb in all cores. Darker shades in REE patterns represent deeper samples in core, as shown in profiles. Core E is further split into four sub-sections dominated by different facies. Specific values are in the Supplementary Information.



grains visible in hand sample, signifying a decrease in relative hydrothermal activity compared to clastic sedimentation (Fig. 17).

Vent-proximal sinter facies are frequently studied in active hydrothermal systems, exhibiting a diverse range of environments including geysers and pools with varying degrees of boiling, surging, and overflow (Braunstein and Lowe, 2001; Guidry and Chafetz, 2003a, 2003b, 2003c; Lowe and Braunstein, 2003; Hinman and Walter, 2005). However, the stratigraphy of high-temperature vents is less well-understood. The most detailed vent-proximal stratigraphy comes from Devonian sinters in the Drummond Basin of Australia (Walter et al., 1996, 1998). Extensive stratigraphic columns of Drummond exposures revealed several high-temperature facies: massive and brecciated sinters interpreted as sub-surface or altered vent zones, as well as thin flat-bedded and “diffusely layered” sinters interpreted as pool-bottom facies (Walter et al., 1996). No particulate facies or inclined sinter crusts with surface-normal fabrics are described in Drummond sinters. Vent-proximal sinters are spread out in areas over >100 m² in the Drummond Basin, and are frequently intercalated with lower-temperature mat facies, reaching no more than 50 cm thickness. In contrast, inclined sinter crusts and massive facies in Core A are over one meter thick, and do not contain the extensive microbial mat textures observed in Cores C, D, and E. The differences between Core A and Drummond strata highlight the diversity in vent-proximal facies, and the need for further stratigraphic investigation.

6.2. Core C

Core C was drilled five meters to the east and 1.5 m below the top of Core A, on the outer margin of Mound 502. The lower meter of Core C is a nearly continuous unit of distinctive columnar sinter (Figs. 6, 7). Despite the major morphological differences between columnar sinters in Core C and sinter crusts in Core A, both have similar chemical signatures. Al₂O₃, ΣREE, and many other elements increase in roughly equivalent concentrations up-section, while SiO₂ shows a steady decrease by ~1 wt% (Figs. 14, 15). Positive Eu anomalies near the base of Core C are the highest in any core, including sinter crust facies in Core A (Fig. 16). The geochemical signatures indicate a high-temperature depositional environment with little to no siliciclastic input (Fig. 17). Such interpretations are strongly supported by current observations of columnar and spicular sinter formation in splash and spray zones close to hydrothermal vents and pools (Walter, 1976b; Jones et al., 1997, 1998; Braunstein and Lowe, 2001; Lowe and Braunstein, 2003; Jones and Renaut, 2003; Guidry and Chafetz, 2003a).

Despite the general consistency of columnar morphologies in Core C, several hiatuses and depositional changes are present. The transition from mm-scale spicules to cm-scale columns at the base of Core C is separated by a brief section of missing core. The sequence most likely represents a depositional hiatus between splash zones immediately adjacent to a hydrothermal vent, and surge-flow zones forming larger columns further away from hydrothermal activity. At 1.5 m depth, laminated arborescent sinter immediately overlies horizontal columns, with no evidence of intervening erosional activity (Fig. 6E). Overlying columnar sinters maintain similar widths and branching morphologies, but form at increasing depositional angles over the next 70 cm (Fig. 6C, D). The brief interval of arborescent sinter formation indicates an outflow-dominated period with active microbial communities colonizing the sinter (Fig. 6E).

Microbial cells and their growth textures are either extremely altered or absent in columnar sinter facies (Fig. 7F, G), as opposed to abundant and well-preserved textures in palisade mat fabrics overlying

Fig. 16. Europium anomalies in all cores. Values are unit-less, and represent the relative enrichment or depletion of Eu compared to Sm and Gd in relation to Eu concentrations of clastic material (See Section 3.4 for calculations). Specific anomaly values are presented in the Supplementary Information. Values above 1 are enriched in Eu, and are interpreted here as a proxy for the relative influence of high-temperature hydrothermal fluid compared to clastic sedimentation.

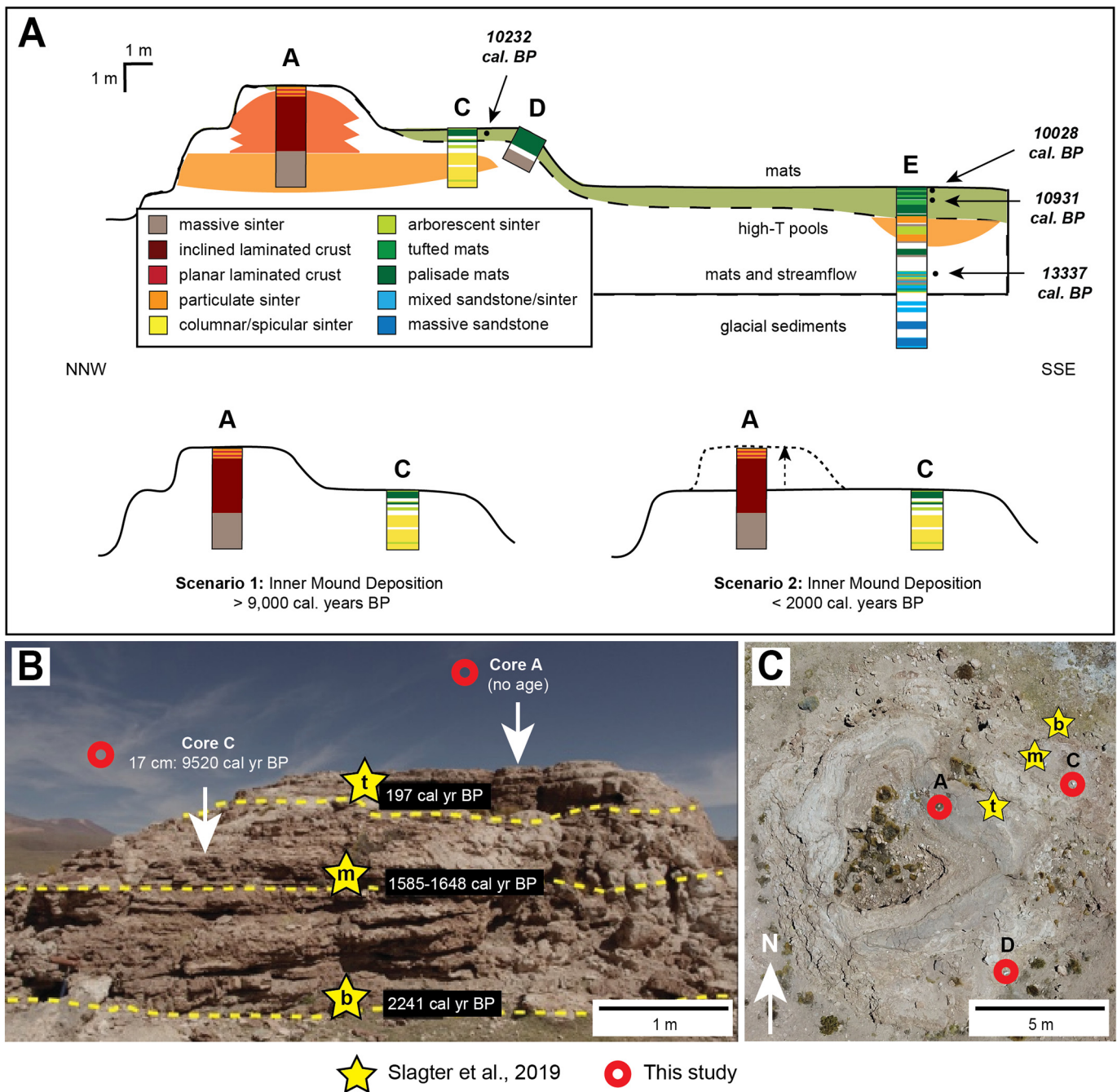


Fig. 17. Depositional history of the cored El Tatio sinter mound. ^{14}C dates interpreted as detrital signatures or secondary alteration are not included. A: Schematic reconstruction of mound formation through time. B: Field photograph representing the sampling sites (yellow stars) from Slagter et al., 2019 compared to the position of drill cores presented in this study labeled with white arrows, modified from Slagter et al., 2019. C: Drone image showing the mound from above, representing the position of the features described in B.

columnar sinters (Figs. 9, 10). Columnar facies in various locations appear to form with or without the presence of microbial communities (Walter, 1976b; Jones et al., 1997, 1998; Braunstein and Lowe, 2001; Jones and Renaut, 2003; Lowe and Braunstein, 2003). As with sinter crusts, the paucity of microbial textures in well-preserved columns does not preclude the earlier presence of microbes, but supports the dominance of abiogenic processes of sinter growth.

Palisade mats in the top meter of Core C contain chemical signatures with no Eu anomalies and elevated siliciclastic signatures (Figs. 14–16). Palisade mats are typically interpreted as forming at water temperatures at or below 40–45 °C (Walter, 1976a; Campbell et al., 2015; Gong et al.,

2019), though the lack of an Eu-anomaly combined with higher concentrations of Al_2O_3 in Core C palisades is more indicative of increased detritus than relative temperature. Arborescent sinter appears as thin interstitial layers between palisade-mat sinters, and separate palisade mat facies from underlying columnar facies at 0.5 m depth. No chemical data was collected from arborescent sinters, but visual observations of detrital grains, and comparisons with “siliceous shrubs” from Yellowstone imply outflow channels with potentially higher discharge than palisade mat facies. The top half meter of Core C is interpreted as a shift from a hot splashing zone to more clastic-dominated outflow environments with occasional pulses of hydrothermal activity (Fig. 17).

While columnar and spicular sinters of Core C are well-described from surface deposits in active and recently inactive hydrothermal settings (Walter, 1976b; Jones et al., 1997, 1998; Braunstein and Lowe, 2001; Lowe and Braunstein, 2003; Jones and Renaut, 2003; Guidry and Chafetz, 2003a), this study is the first to observe columnar sinters in drill core. Similar laminated columns (≤ 20 cm long) were observed in stratigraphic studies of Devonian sinters from the Drummond Basin in Australia (Walter et al., 1996, 1998), but poor exposure prevented correlation to adjacent facies. In contrast, the transition from columnar to palisade facies in Core C records a depositional shift from splash and surge-dominated forces to extensive microbial preservation.

6.3. Core D

Core D was drilled 6 m southeast of Core A, starting at a roughly equivalent elevation to Core C (Fig. 1E). Unlike the vertical cores of A, C, and E, D was drilled at a 27° angle from vertical alignment along the outer edge of Mound 502, with the drilling axis pointed towards the NW. Core D is the shortest core, and contains the lowest diversity in sedimentary facies and geochemical signatures.

Massive sinters at the base of Core D are not visibly associated with high-temperature facies, such as sinter crusts, particulate, or columnar sinters, although such deposits could underlie the core base (Fig. 2). However, the single chemistry data point within massive sinters is nearly identical to overlying palisade mat facies, with a minor positive Eu anomaly and a moderate siliciclastic signature (Figs. 14–16). Massive facies in Core D are therefore interpreted as relatively distal sinters secondarily altered by subsurface fluid flow (Fig. 17).

Fenestral palisade fabrics at the top of Core D are nearly identical to facies observed in Cores C and E (Fig. 9B), preserving microbial communities visible in thin-section and SEM imaging. Chemical analyses reveal slight differences between palisade sinters of different cores, with Core D palisades bearing slightly higher positive Eu anomalies and lower siliciclastic signatures such as Al_2O_3 than Cores C and E (Figs. 14–16). While it is possible that Core D mats were deposited under warmer conditions than other palisade textures, the relative lack of data keeps temperature estimates conservatively around 40–45 °C as described in previous surficial and stratigraphic studies (Walter, 1976a, Walter et al., 1996, 1998; Jones et al., 1998; Lynne et al., 2008; Campbell et al., 2001, 2015, 2020; Gong et al., 2019). In either case, the top of Core D matches broad trends observed in surficial facies of all cores, featuring strata deposited in cooler water temperatures with higher amounts of siliciclastic material before termination of hydrothermal activity (Fig. 17).

6.4. Core E

Core E was drilled into a sinter debris apron 30 m southeast of Core A, and 15 m southeast of Mound 502 itself. The core begins approximately four meters below the top of Core A, and is the deepest of the four cores, reaching 560 cm depth. Core E records the highest diversity of sedimentary facies and geochemical signatures, including higher-temperature columnar sinters, lower-temperature mat facies, and clastic sandstone beds.

Core E is the only core examined to record non-hydrothermal sediments deposited prior to extensive sinter formation, appearing as sandstones below 4 m depth (Fig. 13). Most sandstones present are massive and are likely the result of debris flows from surrounding hillsides into valleys to the south (Fig. 1B). However, minor layers of laminated sinter occur throughout sandstone beds, indicating an influence from hydrothermal activity. The high abundance of SiO_2 throughout the sandstone succession in combination with the lack of detrital quartz (Fig. 13F) indicates that this hydrothermal influence persisted throughout the sandstone deposits. Minor variations in the SiO_2 concentration are most likely due to differences in the amount of silica cement.

Layers between 2.9 and 3.7 m depth in Core E form the most diverse assemblage of facies in any core measured in this study. Six different facies

occur within 80 cm, with no single unit exceeding ten centimeters in thickness (Fig. 2). Such disparate lithologies imply relatively rapid environmental shifts on Mound 502's outer distal apron, including hydrothermal vent sources separate from the mound's central pool. Two sedimentary cycles are noted, each shifting from subaqueous or pool-side facies to outflow environments. The lower cycle (3.4–3.7 m depth) features a thin layer of small columnar sinter (Figs. 6F, 7B) overlain by tufted mat sinters and laminated sandstones. The upper cycle (2.9–3.4 m depth) contains massive and arborescent sinters overlain by mixed tufted mats and sandstones. In other cores, columnar and massive sinters typically contain elevated positive Eu anomalies indicative of extensive hydrothermal silica precipitation. However, between 2.9 and 3.7 cm depth in Core E the relative concentration of Eu is similar to that of the underlying sandstone, but increases only slightly up section (Fig. 15). By contrast, concentrations of Al_2O_3 and other elements decrease by orders of magnitude (Fig. 14). Together, petrographic-, Eu-, and Al_2O_3 -data depict a location experiencing locally rapid depositional shifts, with an underlying trend of increasing hydrothermal sinter precipitation and decreasing siliciclastic input (Fig. 16).

The only section of Core E recovered between 2 and 3 m is a 30-centimeter section (2.2–2.5 cm depth) of palisade mat fabrics underlain by thin beds of massive sinter. The abrupt transition from massive to palisade sinters is similar to Core D, with more detailed geochemical data sampling revealing distinct shifts in temperature and siliciclastic influence. Positive Eu anomalies in massive sinters are equivalent to core facies at 3 m depth (Fig. 16). In contrast, immediately overlying palisade mat sinters contain no Eu anomaly, but quickly return over the subsequent twenty centimeters. Al_2O_3 and other siliciclastic constituents are anticorrelated to relative Eu concentration, increasing sharply in lower palisade sinters and decreasing up-section (Figs. 14, 15). Geochemical trends indicate hydrothermal environments with a low siliciclastic component, succeeded by palisade mats potentially growing at ~40 °C (Walter, 1976a; Campbell et al., 2015; Gong et al., 2019), though potentially persisting in higher temperatures. No change in mat architecture is associated with changes in relative Eu concentrations.

Between 1.0 and 2.0 m depth, Core E is entirely composed of particulate, massive, and arborescent sinters. Particulate and massive facies are frequently interpreted as subaqueous deposits in high-temperature pools (Walter, 1976b; Braunstein and Lowe, 2001; Lowe and Braunstein, 2003; Hinman and Walter, 2005), and Core E geochemistry supports similar conclusions. The highest positive Eu anomalies in Core E occur between 1.5 and 2.0 m depth, similar to values observed in sinter crusts and columnar sinters in Cores A and C (Fig. 16). As in more vent-proximal cores, positive Eu anomalies gradually decrease up-section, eventually approaching similar relative Eu ratios observed in lower Core E sinters. Concentrations of Al_2O_3 , $\sum\text{REE}$ and other siliciclastic proxies reach minimum values in Core E between 1.0 and 2.0 m, and remain consistently low throughout dendritic and associated sinters (Figs. 14, 16). Unlike inclined sinter crusts in Core A and columnar sinter in Core C, high-temperature facies in Core E appear to have precipitated on flat-bottomed pools on distal aprons, separate from the elevated sinter mound (Fig. 17). Such pools are still active several meters away from Core E, supporting their potential presence during Core E deposition. The presence of arborescent sinter between particulate facies most likely represents a shift from pool deposits to outflow channels with microbial communities (Guidry and Chafetz, 2003c).

The top meter of Core E contains the thickest continuous package of microbial facies in any core examined. Palisades comprise the majority of preserved mats, with nearly identical fenestral morphologies to the upper beds of Cores C and D (Fig. 9C). The lower boundary between particulate sinters and overlying palisades is associated with an immediate loss of the positive Eu anomaly, followed by fluctuations around the average for clastic deposition around Mound 502 (Fig. 16). Unlike Cores C and D, palisades in Core E contain distinct interstitial layers of tufted microbial sinters. Tufted sinters are typically assigned to higher-temperature communities (45–60 °C) than palisade mats (<45 °C), based on

morphologies of modern hot spring communities (Walter, 1976a; Campbell et al., 2001; Lynne and Campbell, 2003; Fernandez-Turiel et al., 2005). No clear difference in REE signatures exists between tufted and palisade mat sinters in El Tatio cores, most likely due to the entrapment of siliciclastic material on sticky microbial surfaces.

The diversity of facies observed in Core E resembles previous stratigraphic studies from distal sinter deposits around the world (Trewin, 1993; Walter et al., 1996, 1998; Jones et al., 1998; Campbell et al., 2001, 2020; Guidry and Chafetz, 2003b; Lynne et al., 2008). Palisade and tufted microbial mats are ubiquitous facies in cooler environments (Walter et al., 1996, 1998; Jones et al., 1998; Campbell et al., 2001, 2020), while branching arborescent textures are described less frequently (Walter et al., 1996, 1998; Campbell et al., 2001). The frequent interbedding between microbial facies and more massive deposits in Core E (1–2, 3–3.5 m depth) is also a common feature of distal sinter stratigraphy (Walter et al., 1996; Campbell et al., 2001; Lynne et al., 2008). In contrast, Core E lacks extensive preservation of metazoan communities such as plants or diatoms, which are often observed in distal sinters (Trewin, 1993; Walter et al., 1996, 1998; Campbell et al., 2001, 2020; Guidry and Chafetz, 2003b). While the climate at El Tatio is more extreme than many other sinter localities, scattered areas with plant life are present. However, areas selected for coring in Mound 502 lack extensive vegetation, and the absence of plant remains suggests similar ecological conditions during sinter deposition. Core stratigraphy from Mound 502 therefore presents a closer environmental analogue to early sinters on Earth or Mars than other distal deposits.

6.5. Sinter ages

Five ^{14}C ages were measured from Cores C and E (Table 1, Fig. 2), ranging between 6907 and 13,337 y. cal. BP. Core E contains a consistent progression from 13,337 to 10,028 y. cal. BP, underlain by an age of 6907 y. cal. BP at 347 cm depth (Table 1, Fig. 2). Similar irregularities have been noted in previous sinter cores (Lynne et al., 2008; Lowenstern et al., 2016), and have several potential explanations. The presence of younger dates below a series of consistently older data points can be explained by transport of younger material into deeper sediments by subsurface infiltration through fractures and pores (Lynne et al., 2008; Lynne, 2012). In support of this hypothesis, various core depths contain fracture zones associated with secondary mineral phases, including massive sandstones deeper in Core E (Fig. 13B). While no specific fractures are apparent at 347 cm, the sinter bed is fairly porous, and is ten centimeters below a massive, altered sinter (Fig. 2). We propose that younger material permeated through fissures and pores in older sinters via secondary fluid flow, producing an anomalous radiocarbon date thousands of years younger than three succeeding deposits.

The four remaining ^{14}C ages (one in Core C, three in Core E) record more than three thousand years of sinter deposition in Mound 502 (Figs. 2, 17, Table 1). A transition from clastic sandstones to siliceous sinter occurred more than 13,337 y. cal. BP in distal debris aprons (Core E, 310.5 cm depth). Between 13,337 and 10,931 y. cal. BP (Core E, 33 cm depth), Core E experienced shifts between various sinter facies, including microbial mats and detrital-poor vent proximal zones (Figs. 2, 17). After 10,931 y. cal. BP, palisade mat sinters dominate deposition in Cores C and E (and presumably D) until at least 10,028 y. cal. BP (Core E, 6 cm depth). The ages from Mound 502 supports previous timelines of hydrothermal activity in El Tatio, which initiated at least 27 ka, and persisted until the present day without major hiatuses (Slagter et al., 2019; Munoz-Saez et al., 2020).

The ^{14}C ages from Mound 502 cores are thousands of years older than surficial deposits from the same location (Slagter et al., 2019). Four data points collected on a transect between Cores A and C (Fig. 17B, C) record a period of deposition between 2241 and 197 y. cal. BP (Slagter et al., 2019). The age difference between the two datasets is interpreted as a depositional hiatus separating two phases

of sinter deposition. The first phase formed the majority of deposits in Cores C and E between ~14,000 and 10,000 y. cal. BP. After ~7000 years, surficial hydrothermal activity resumed, forming surficial sinters between ~2500 and 200 y. cal. BP (Slagter et al., 2019). Depositional hiatuses of similar length have previously been reported from hydrothermal zones in Yellowstone and New Zealand (Foley, 2006; Drake et al., 2014; Hurwitz and Lowenstern, 2014), and are most likely due to changes in subsurface hydrothermal systems.

The age of Core A remains uncertain relative to other cores. One unconformity exists in Core A at 35 cm depth, indicating a prolonged period of hydrothermal activity, followed by a hiatus and minor subsequent sinter deposition. The current set of ^{14}C ages from surficial and core samples presents two potential timelines (Fig. 17A). In one scenario, most of Core A was deposited during the initial period of hydrothermal activity, forming an elevated sinter mound more than 10,000 y. cal. BP followed by a resurgence of activity after 2000 y. cal. BP. Alternatively, the inner mound and Core A could have formed after 2000 y. cal. BP, with Cores C, D, and E representing relatively low-relief mound and outflow deposits (Fig. 17A). In either case, depositional interpretations for all cores remain the same, with timing more well-constrained between more distal depositional facies.

7. Conclusions

The four cores examined provide the first complete stratigraphic transect of a recent sinter mound from vent to outflow. Lateral trends of hydrothermal deposits record detailed transitions in chemistry, sedimentology and biology over broad areas, while vertical profiles provide similar records for local environments over geologic time. Initial depositional interpretations from sedimentology and petrography match geochemical data from the same facies. Combining all approaches within a single location provides a detailed environmental history that includes the initiation, accretion, and eventual cessation of sinter deposition within a single mound.

Hydrothermal activity started in the western margins of El Tatio's upper basin prior to 13,337 y. cal. BP. Sinter deposits formed on underlying glacial sandstones, intermittently at first, then forming a wide diversity of biogenic and abiogenic textures. Deposits closest to the original hydrothermal vent are dominated by subaqueous precipitation on the steep margins of a high-temperature pool. Several meters away, extensive columnar sinter formed on outer pool margins experiencing alternate periods of pool overflow and subaerial evaporation. Less extensive pools with subaqueous and columnar facies also formed in distal aprons. Microfossils are rare to absent in high-temperature facies (>70 °C), with silica precipitation most likely driven by physico-chemical factors such as silica concentrations, cooling, and evaporation. On the other hand, extensive microbial deposits are present in cooler, distal environments with more siliciclastic input. Palisade, tufted, and arborescent sinters indicate the presence of multiple distinct microbial communities, potentially fluctuating with water temperature and flow dynamics. Mat deposits and detrital-rich facies eventually replace high-temperature sinters in the upper sections of all cores, signifying cooling and eventual termination of local deposition no more than 10,232 y. cal. BP. In other areas of the same mound, hydrothermal activity persisted for several thousand years (Slagter et al., 2019).

As seen within the El Tatio cores, sinter stratigraphy is complex, and varies both laterally and vertically on relatively fine scales. The deposits examined represent only one type of hydrothermal outflow, a topographically-elevated boiling, surging pool. Similar coring studies performed on extinct structures such as fountain geysers and low-relief, non-surging pools are likely to reveal different facies patterns. Further sinter stratigraphy, especially in the harsh environmental conditions of El Tatio, also provides a comparison for Archean and Martian sinters and their biosignature potential. Microfossils are present in all four cores, but are far more prevalent and well-preserved in outflow and distal deposits. Many vent-proximal sinters are ambiguously

biogenic, but the sparse remains of microbial filaments indicate a biological presence, and such deposits should not be overlooked in future stratigraphic studies.

Declaration of competing interest

The authors declare that they have no known competing financial interests or personal relationships that could have appeared to influence the work reported in this paper.

Acknowledgements

This research was funded by the European Research Council under the European Union's Horizon 2020 Research and Innovation Program (Grant Agreement #646894) to M.V.Z. The authors would like to thank Prisca Grandin for geochemical laboratory assistance (IUEM, Brest, France), Jean-Pierre Oldra (IUEM, Brest, France) and the Thin Section Lab (Toul, France), for petrographic preparation, Stefan Borensztajn (IPGP, Paris, France) and the Toconce and Caspana communities managing the El Tatio Geyser Field tourism and outreach for permission to sample in the area.

Appendix A. Supplementary

Supplementary data to this article can be found online at <https://doi.org/10.1016/j.sedgeo.2020.105726>.

References

- Bargar, K.E., Beeson, M.H., 1981. Hydrothermal alteration in research drill hole Y-2, Lower Geyser basin, Yellowstone National Park, Wyoming. *Am. Mineral.* 66, 473–490.
- Berelson, W.M., Corsetti, F.A., Pepe-Ranney, C., Hammond, D.E., Beaumont, W., Spear, J.R., 2011. Hot spring siliceous stromatolites from Yellowstone National Park: assessing growth rate and laminae formation. *Geobiology* 9, 411–424. <https://doi.org/10.1111/j.1472-4669.2011.00288.x>.
- Bosak, T., Liang, B., Sim, M.S., Petroff, A.P., 2009. Morphological record of oxygenic photosynthesis in conical stromatolites. *Proc. Natl. Acad. Sci.* 106, 10939–10943. <https://doi.org/10.1073/pnas.0900885106>.
- Bosak, T., Bush, J.W.M., Flynn, M.R., Liang, B., Ono, S., Petroff, A.P., Sim, M.S., 2010. Formation and stability of oxygen-rich bubbles that shape photosynthetic mats. *Geobiology* 8, 45–55. <https://doi.org/10.1111/j.1472-4669.2009.00227.x>.
- Bosak, T., Liang, B., Wu, T.D., Templar, S.P., Evans, A., Vali, H., Guerquin-Kern, J.L., Klepac-Ceraj, V., Sim, M.S., Mui, J., 2012. Cyanobacterial diversity and activity in modern conical microbialites. *Geobiology*. <https://doi.org/10.1111/j.1472-4669.2012.00334.x>.
- Boudreau, A.E., Lynne, B.Y., 2012. The growth of siliceous sinter deposits around high-temperature eruptive hot springs. *J. Volcanol. Geotherm. Res.* 247–248, 1–8. <https://doi.org/10.1016/j.jvolgeores.2012.07.008>.
- Bradley, J.A., Daille, L.K., Trivedi, C.B., Bojanowski, C.L., Stamps, B.W., Stevenson, B.S., Nunn, H.S., Johnson, H.A., Loyd, S.J., Berelson, W.M., Corsetti, F.A., Spear, J.R., 2017. Carbonate-rich dendrolitic cones: insights into a modern analog for incipient microbialite formation, Little Hot Creek, Long Valley Caldera, California. *npj Biofilms Microbiomes* 3. <https://doi.org/10.1038/s41522-017-0041-2>.
- Braunstein, D., Lowe, D.R., 2001. Relationship between spring and geyser activity and the deposition and morphology of high temperature (> 73 °C) siliceous sinter, Yellowstone National Park, Wyoming, USA. *J. Sediment. Res.* 71, 747–763.
- Cady, S.L., Farmer, J.D., 1996. Fossilization processes in siliceous thermal springs: trends in preservation along thermal gradients. *CIBA Found. Symp.*, 150–173. <https://doi.org/10.1002/9780470514986.ch9>.
- Calvert, S.E., 1976. The mineralogy and geochemistry of near-shore sediments. *Chemical Oceanography*, pp. 187–280. <https://doi.org/10.1016/b978-0-12-588606-2.50014-x>.
- Campbell, K.A., Sannazzaro, K., Rodgers, K.A., Herdianita, N.R., Browne, P.R.L., 2001. Sedimentary facies and mineralogy of the Late Pleistocene Umukuri Silica Sinter, Taupo Volcanic Zone, New Zealand. *J. Sediment. Res.* 71, 727–746. <https://doi.org/10.1306/2dc40964-0e47-11d7-8643000102c1865d>.
- Campbell, K.A., Lynne, B.Y., Handley, K.M., Jordan, S., Farmer, J.D., Guido, D.M., Foucher, F., Turner, S., Perry, R.S., 2015. Tracing biosignature preservation of geothermally silicified microbial textures into the geological record. *Astrobiology*. <https://doi.org/10.1089/ast.2015.1307>.
- Campbell, K.A., Nicholson, K., Lynne, B.Y., Browne, P.R.L., 2020. 3D Anatomy of a 60-year-old siliceous hot spring deposit at Hipaua-Waihi-Tokaanu geothermal field, Taupo Volcanic Zone, New Zealand. *Sediment. Geol.* <https://doi.org/10.1016/j.sedgeo.2020.105652>.
- Cockell, C.S., 2000. Ultraviolet radiation and the photobiology of earth's early oceans. *Orig. Life Evol. Biosph.* 30, 467–500. <https://doi.org/10.1023/A:1006765405786>.
- Cortecci, G., Boschetti, T., Mussi, M., Lameli, C.H., Mucchio, C., Barbieri, M., 2005. New chemical and original isotopic data on waters from El Tatio geothermal field, northern Chile. *Geochem. J.* 39 (6), 547–571.
- Cotten, J., Le Dez, A., Bau, M., Caroff, M., Maury, R., Dulski, P., Fourcade, S., Bohn, M., Brousse, R., 1995. Origin of rare-earth element and yttrium enrichments in subaerial exposed basalts: evidence from French Polynesia. *Chem. Geol.* 119, 115–138. [https://doi.org/10.1016/0009-2541\(94\)00102-E](https://doi.org/10.1016/0009-2541(94)00102-E).
- De Silva, S.L., 1989. Altiplano-Puna volcanic complex of the Central Andes. *Geology* 17, 1102–1106. [https://doi.org/10.1130/0091-7613\(1989\)017<1102:APVCO>2.3.CO;2](https://doi.org/10.1130/0091-7613(1989)017<1102:APVCO>2.3.CO;2).
- De Silva, S.L., Self, S., Francis, P.W., Drake, R.E., C., Ramirez R., 1994. Effusive silicic volcanism in the Central Andes: the Chao dacite and other young lavas of the Altiplano-Puna volcanic complex. *J. Geophys. Res.* 99. <https://doi.org/10.1029/94jb00652>.
- DGA Direccion general de aguas de chile, 2017. Información Oficial Hidrometeorológica y de Calidad de Aguas en Línea. <https://dga.mop.gob.cl/>. (Accessed March 2017).
- Djokic, T., Van Kranendonk, M.J., Campbel, K.A., Walter, M.R., Ward, C.R., 2017. Earliest signs of life on land preserved in ca. 3.5 Ga hot spring deposits. *Nat. Commun.* 8. <https://doi.org/10.1038/ncomms15263>.
- Drake, B.D., Campbell, K.A., Rowland, J.V., Guido, D.M., Browne, P.R., Rae, A., 2014. Evolution of a dynamic paleo-hydrothermal system at Mangatete, Taupo Volcanic Zone, New Zealand. *J. Volcanol. Geotherm. Res.* 282, 19–35. <https://doi.org/10.1016/j.jvolgeores.2014.06.010>.
- Feng, J.L., Zhao, Z.H., Chen, F., Hu, H.P., 2014. Rare earth elements in sinters from the geothermal waters (hot springs) on the Tibetan Plateau, China. *J. Volcanol. Geotherm. Res.* 287, 1–11. <https://doi.org/10.1016/j.jvolgeores.2014.09.009>.
- Fernandez-Turiel, J.L., Garcia-Valles, M., Gimeno-Torrente, D., Saavedra-Alonso, J., Martinez-Manent, S., 2005. The hot spring and geyser sinters of El Tatio, northern Chile. *Sediment. Geol.* 180, 125–147. <https://doi.org/10.1016/j.sedgeo.2005.07.005>.
- Foley, D., 2006. Dating castle geysers: preliminary results and broad speculations on the geologic development of geysers and hydrothermal systems in Yellowstone national park, Wyoming, USA. *Trans. Geotherm. Res. Council* 30, 413–417.
- Frantz, C.M., Petryshyn, V.A., Corsetti, F.A., 2015. Grain trapping by filamentous cyanobacterial and algal mats: implications for stromatolite microfabrics through time. *Geobiology* 13, 409–423. <https://doi.org/10.1111/gbi.12145>.
- Gebelein, C.D., 1969. Distribution, morphology, and accretion rate of recent subtidal algal stromatolites, Bermuda. *J. Sediment. Petrol.* <https://doi.org/10.1306/74D71BE0-2B21-11D7-8648000102C1865D>.
- Giggenbach, W.F., 1978. The isotopic composition of waters from the El Tatio geothermal field, Northern Chile. *Geochim. Cosmochim. Acta* 42, 979–988. [https://doi.org/10.1016/0016-7037\(78\)90287-9](https://doi.org/10.1016/0016-7037(78)90287-9).
- Glendon, J.A., Pfaff, R.M., 2003. The Extraordinary Thermal Activity of El Tatio Geyser Field, Antofagasta Region, Chile. 8. *GOSA Trans.*, pp. 31–78.
- Gong, J., Myers, K.D., Munoz-Saez, C., Homann, M., Rouillard, J., Wirth, R., Schreiber, A., van Zuilen, M.A., 2019. Formation and preservation of microbial palisade fabric in silica deposits from El Tatio, Chile. *Astrobiology* 20, 1–25. <https://doi.org/10.1089/ast.2019.2025>.
- Govindaraju, K., 1995. 1995 working values with confidence limits for twenty-six CRPG, ANRT AND IWG-GIT geostandards. *Geostand. Newslett.* 19, 1–32. <https://doi.org/10.1111/j.1751-908X.1995.tb00164.x>.
- Guidry, S.A., Chafetz, H.S., 2003a. Anatomy of siliceous hot springs: examples from Yellowstone National Park, Wyoming, USA. *Sediment. Geol.* 157, 71–106. [https://doi.org/10.1016/S0037-0738\(02\)00195-1](https://doi.org/10.1016/S0037-0738(02)00195-1).
- Guidry, S.A., Chafetz, H.S., 2003b. Depositional facies and diagenetic alteration in a relict siliceous hot-spring accumulation: examples from Yellowstone National Park, U.S.A. *J. Sediment. Res.* 73, 806–823. <https://doi.org/10.1306/022803730806>.
- Guidry, S.A., Chafetz, H.S., 2003c. Siliceous shrubs in hot springs from Yellowstone National Park, Wyoming, U.S.A. *Can. J. Earth Sci.* 40, 1571–1583. <https://doi.org/10.1139/e03-069>.
- Handley, K.M., Campbell, K.A., 2011. Character, Analysis, and Preservation of Biogenicity in Terrestrial Siliceous Stromatolites from Geothermal Settings. https://doi.org/10.1007/978-94-007-0397-1_16.
- Handley, K.M., Campbell, K.A., Mountain, B.W., Browne, P.R.L., 2005. Abiotic-biotic controls on the origin and development of spicular sinter: in situ growth experiments, Champagne Pool, Waioatapu, New Zealand. *Geobiology* 3, 93–114. <https://doi.org/10.1111/j.1472-4669.2005.00046.x>.
- Handley, K.M., Turner, S.J., Campbell, K.A., Mountain, B.W., 2008. Silicifying biofilm exopolymers on a hot-spring microstromatolite: templating nanometer-thick laminae. *Astrobiology*. <https://doi.org/10.1089/ast.2007.0172>.
- Healy, J., Hochstein, M.P., 1973. Horizontal flow in hydrothermal systems. *J. Hydrol. NZ* 71–82.
- Hinman, N.W., Walter, M.R., 2005. Textural preservation in siliceous hot spring deposits during early diagenesis: examples from Yellowstone National Park and Nevada, U.S.A. *J. Sediment. Res.* 75, 200–215. <https://doi.org/10.2110/jsr.2005.016>.
- Hogg, A.G., Hua, Q., Blackwell, P.G., Niu, M., Buck, C.E., Guilderson, T.P., Heaton, T.J., Palmer, J.G., Reimer, P.J., Reimer, R.W., Turney, C.S.M., Zimmerman, S.R.H., 2013. SHCal13 southern hemisphere calibration, 0–50,000 years cal BP. *Radiocarbon* 55, 1889–1903. https://doi.org/10.2458/azu_js_rc.55.16783.
- Hurwitz, S., Lowenstern, J.B., 2014. Dynamics of the Yellowstone hydrothermal system. *Rev. Geophys.* 52 (3), 375–411. <https://doi.org/10.1002/2014RG000452>.
- Jones, B., Renaut, R.W., 1996. Influence of thermophilic bacteria on calcite and silica precipitation in hot springs with water temperatures above 90°C: evidence from Kenya and New Zealand. *Can. J. Earth Sci.* <https://doi.org/10.1139/e96-008>.
- Jones, B., Renaut, R.W., 1997. Formation of silica oncoids around geysers and hot springs at El Tatio, northern Chile. *Sedimentology* 44, 287–304. <https://doi.org/10.1111/j.1365-3091.1997.tb01525.x>.
- Jones, B., Renaut, R.W., 2003. Petrography and genesis of spicular and columnar geyserite from the Whakarewarewa and Orakeikorako geothermal areas, North Island, New Zealand. *Can. J. Earth Sci.* 40, 1585–1610. <https://doi.org/10.1139/e03-062>.
- Jones, B., Renaut, R.W., 2006. Growth of siliceous spicules in acidic hot springs, Waioatapu Geothermal Area, North Island, New Zealand. *Palaios* 21, 406–423. <https://doi.org/10.2110/palo.2006.p06-026>.

