

# EXPLORING THE VARIABILITY OF THE VENUSIAN ATMOSPHERE ABOVE THE CLOUDS WITH THE IPSL VENUS GCM

**S. Lebonnois** (*LMD/IPSL, Paris, France*)

G. Gilli, D. Quirino, V. Silva (*IA/FCUL, Lisbon, Portugal*)

T. Navarro (*McGill, Montreal, Canada*)

F. Lefèvre, A. Määttänen (*LATMOS/IPSL, Paris, France*)

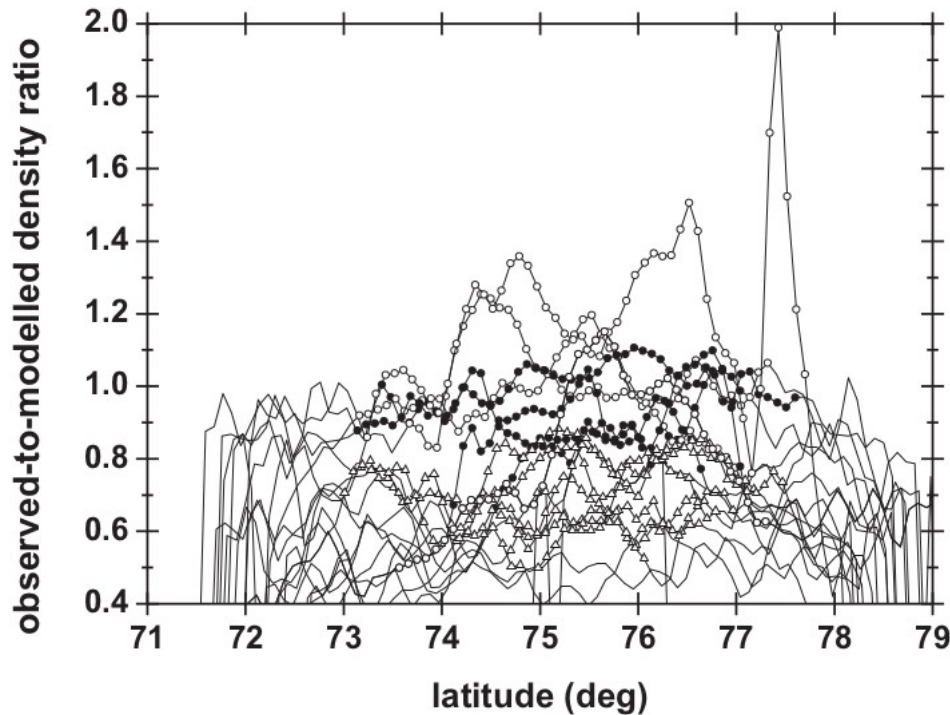
# Observed variability above clouds

## Venus-Express atmospheric drag experiment :

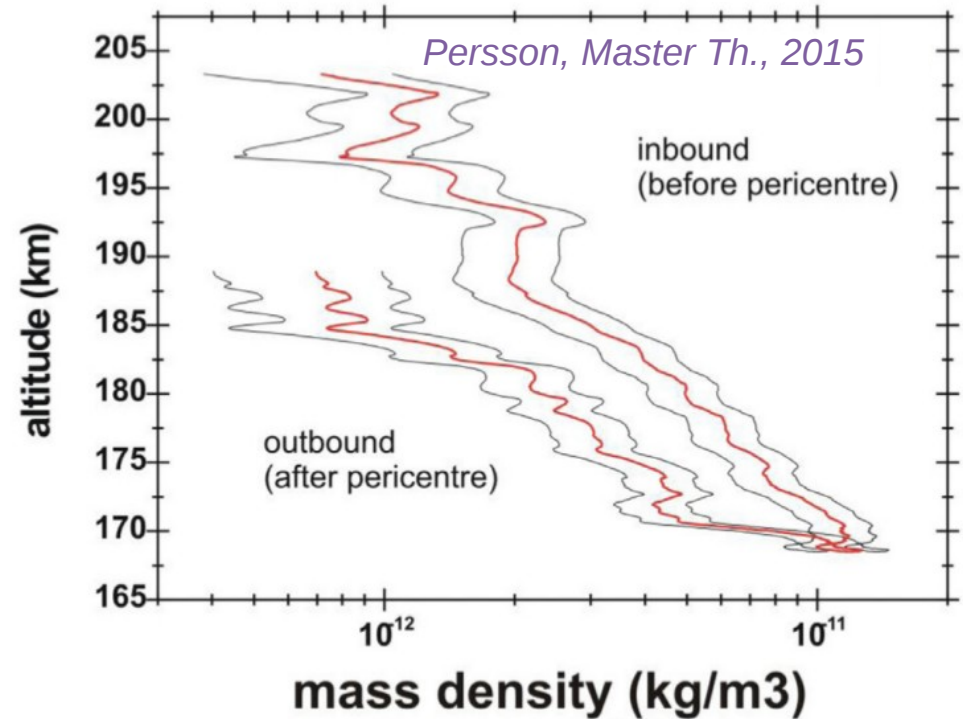
- aerobraking => 130-140 km  
altitude density profiles

- torque => 165-190 km  
altitude density profiles

Gravity waves signatures, horizontal wavelengths in 100-300 km range



*Müller-Wodarg et al., Nature Physics, 2016*

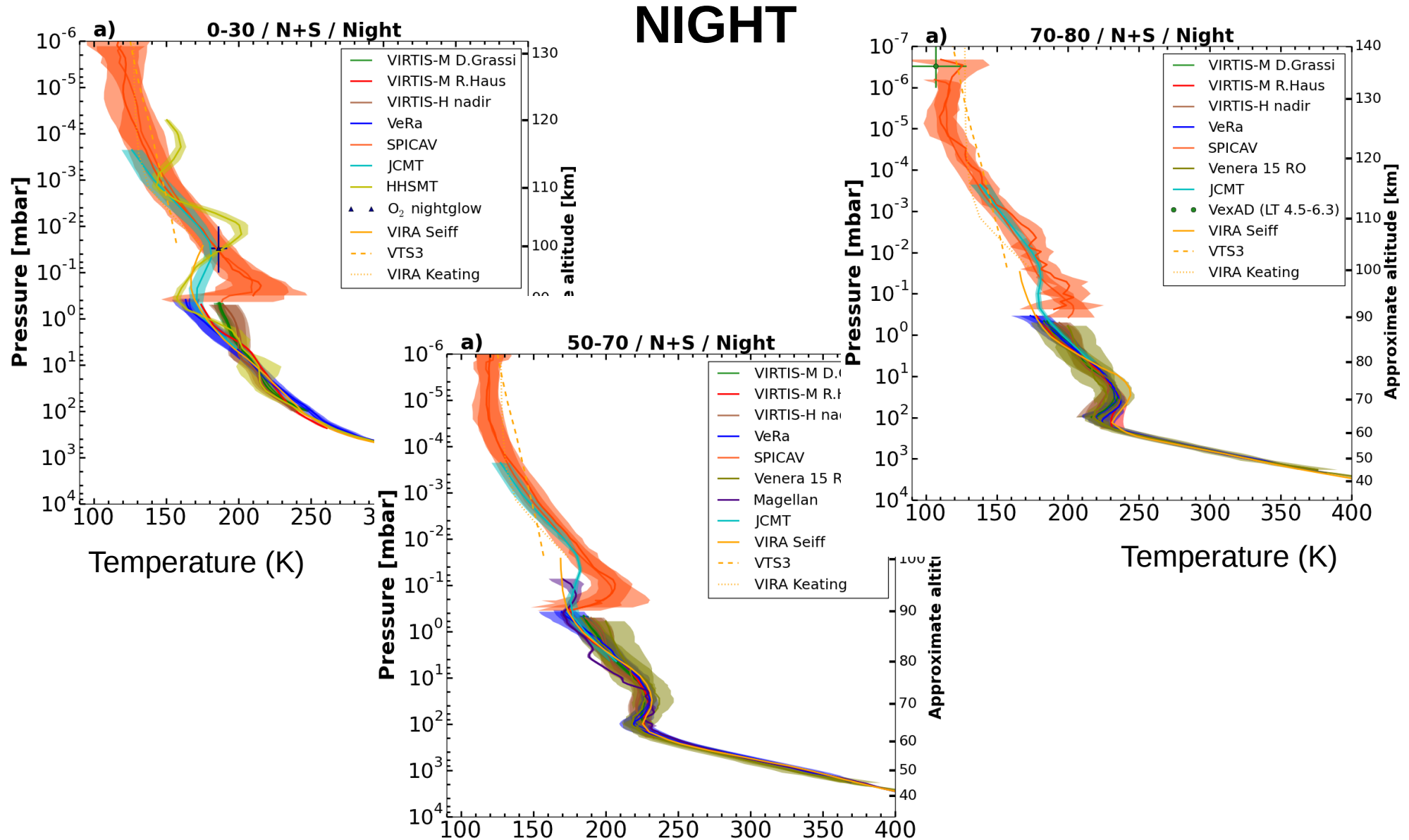


85°N, near terminator  
(inbound on dayside)

# Observed variability above clouds

## Temperature measurements

Limaye et al., *Icarus* 294, 2017

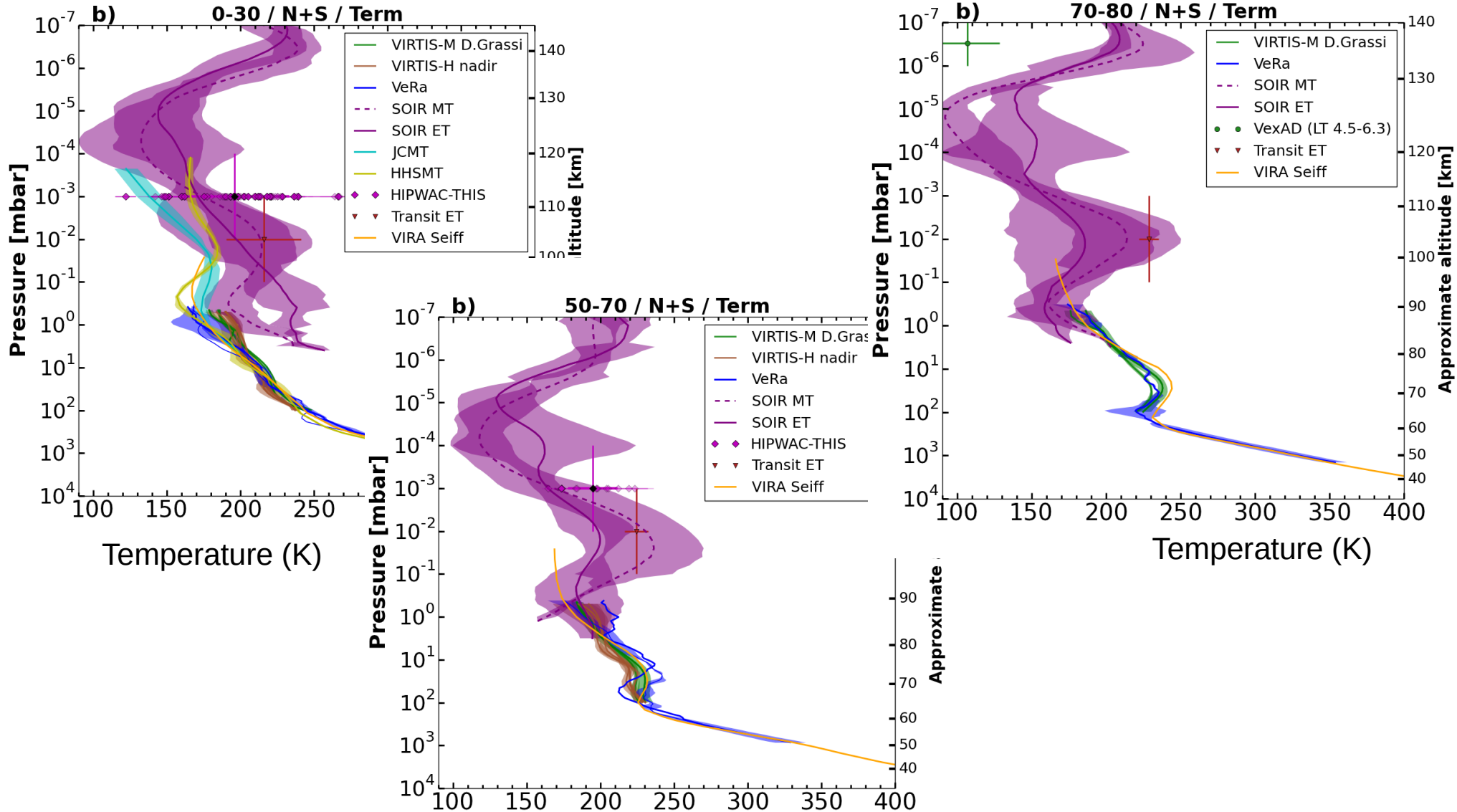


# Observed variability above clouds

## Temperature measurements

Limaye et al., *Icarus* 294, 2017

### TERMINATORS

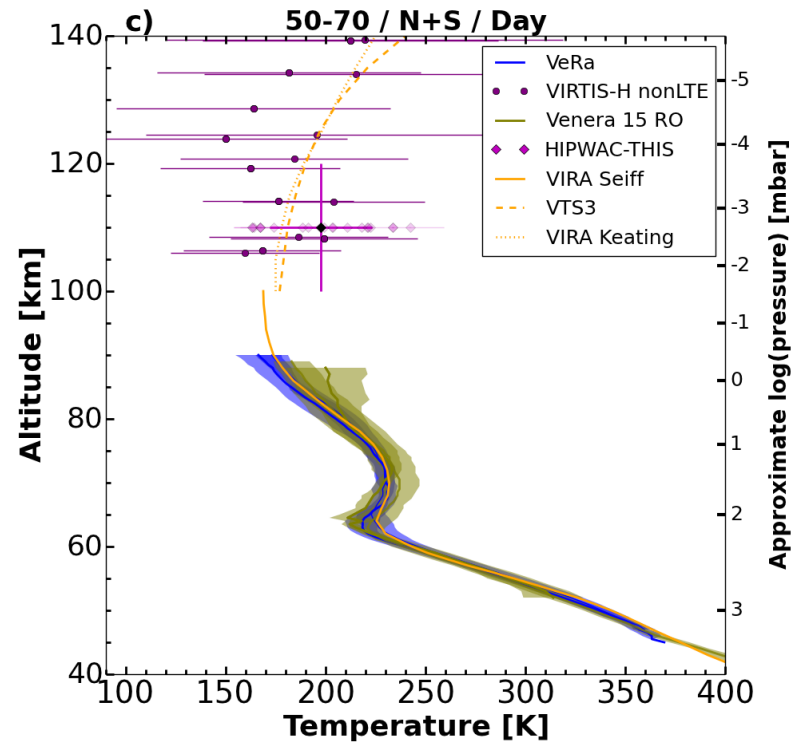
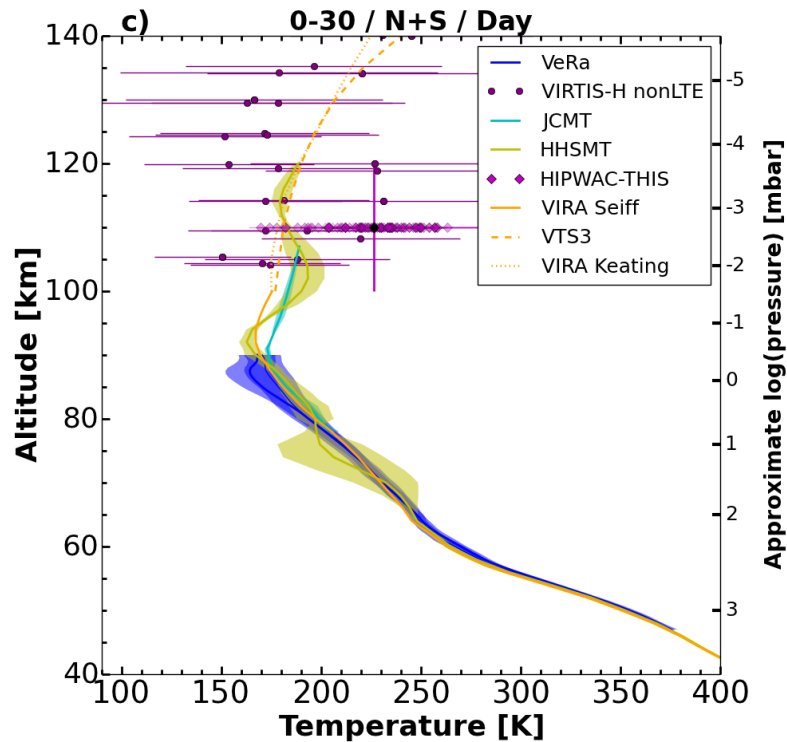


# Observed variability above clouds

## Temperature measurements

Limaye et al., *Icarus* 294, 2017

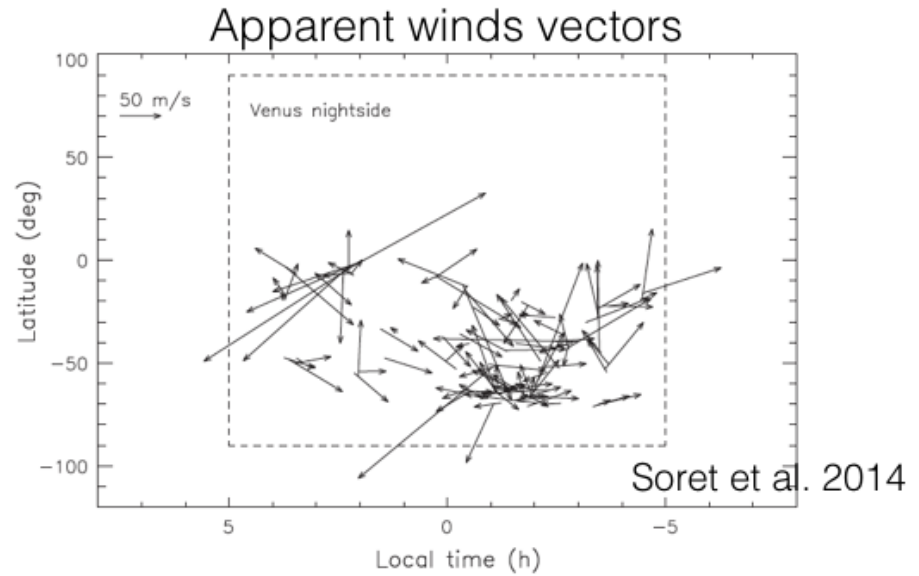
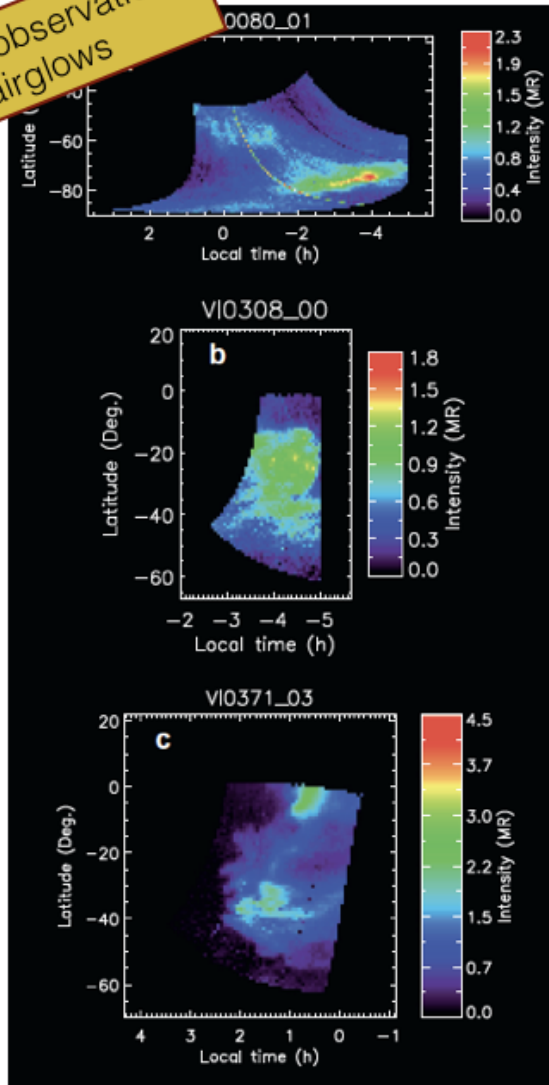
### DAY



# Observed variability above clouds

## Distribution of O<sub>2</sub> nightglow brightness observed by VIRTIS/VEx

Individual observations of airglows



- Bright emission patches also located far from the AS-point
- Spatial and temporal variation of airglow structure

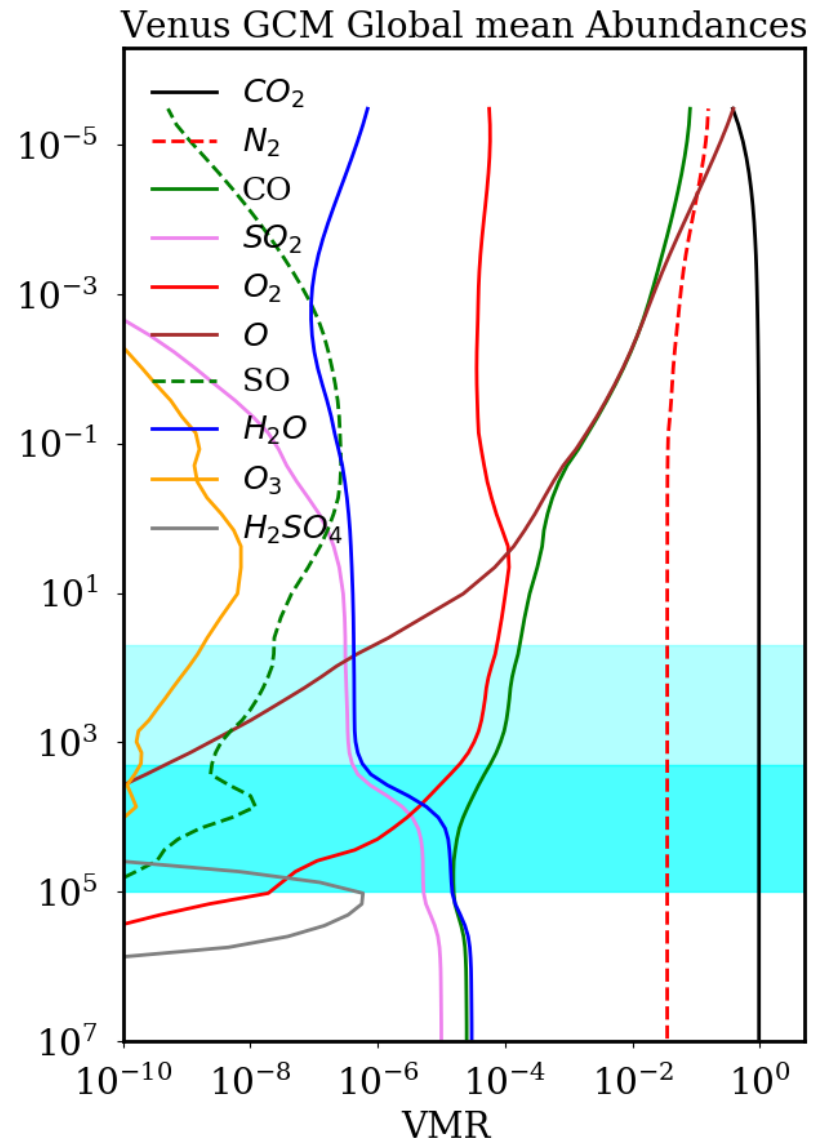
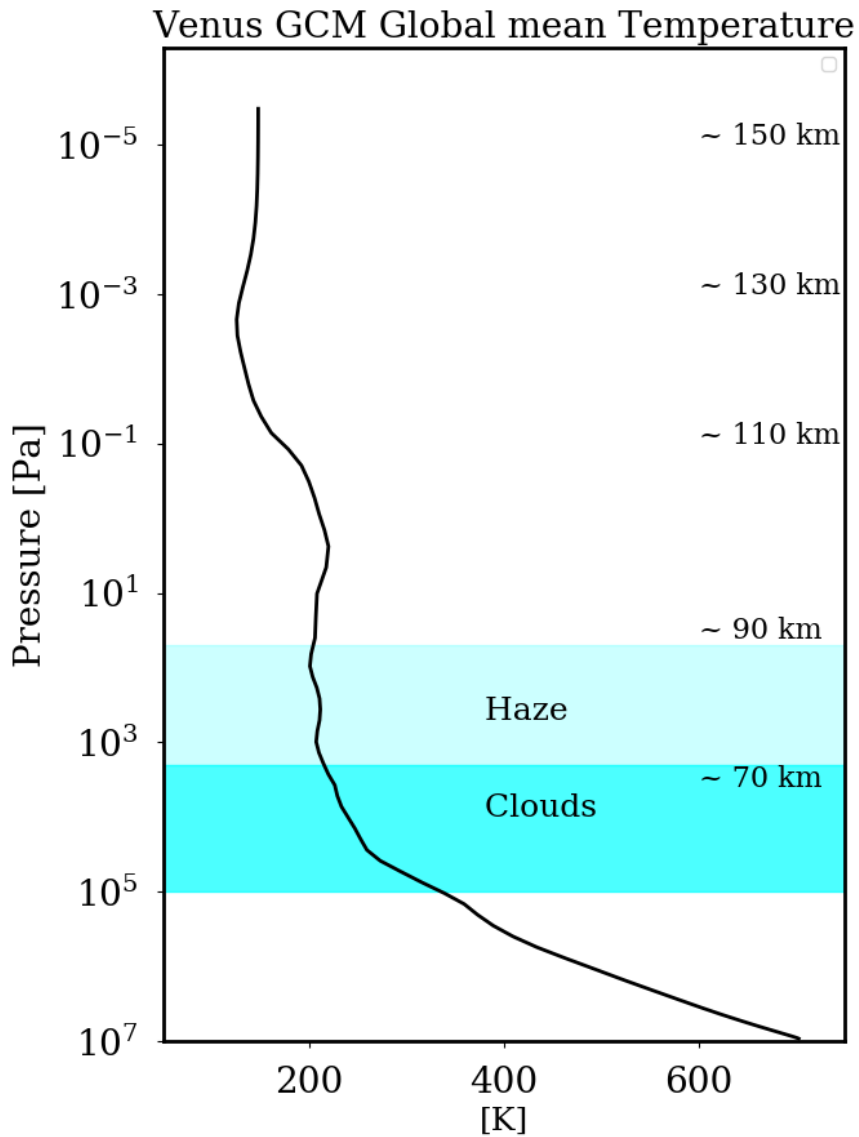
Soret et al. 2014

# The IPSL Venus GCM

- Three-dimensional: 96x96x78 (0~150 km)
- Vertical coordinates: hybrid (sigma/pressure)
- Dynamical core, transport of tracers
- Specific physics:
  - Radiative transfer: Infrared Net Exchange Rates matrix  
Solar heating rates: tables
  - Thermosphere: Non-LTE processes  
EUV heating  
molecular diffusion
  - Parameterizations of sub-grid processes:  
boundary layer (Mellor&Yamada 1982), convection  
non-orographic gravity waves  
orographic gravity waves
  - Topography
- Photochemistry implemented (PhD of Aurélien Stolzenbach)

Gilli et al (2017) ; Garate & Lebonnois (2018) ; Navarro et al (2018)

# The IPSL Venus GCM

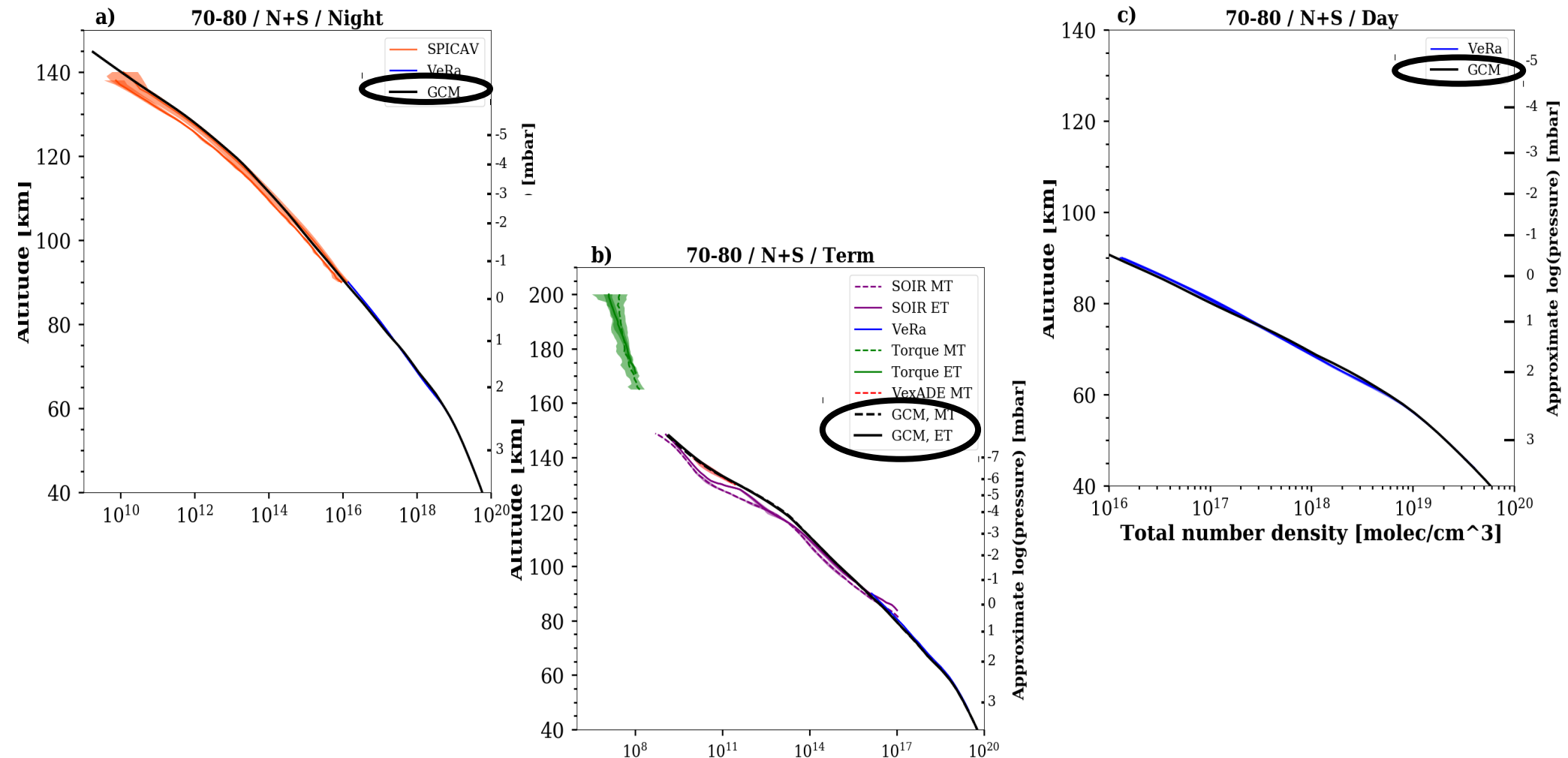




# Modeled densities and temperatures compared to observations

## Density measurements

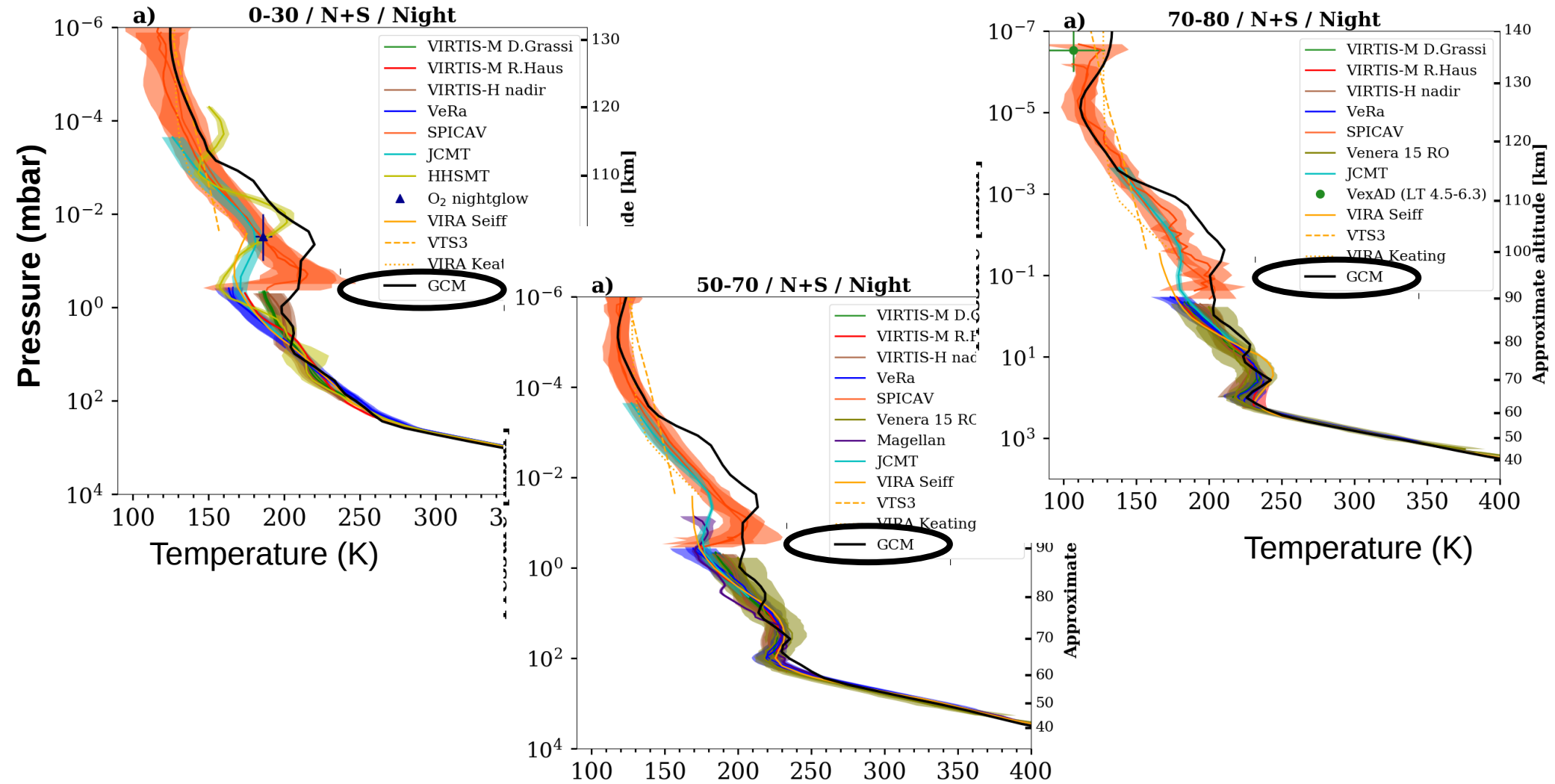
*Limaye et al., Icarus 294, 2017*



# Modeled densities and temperatures compared to observations

## Temperature measurements

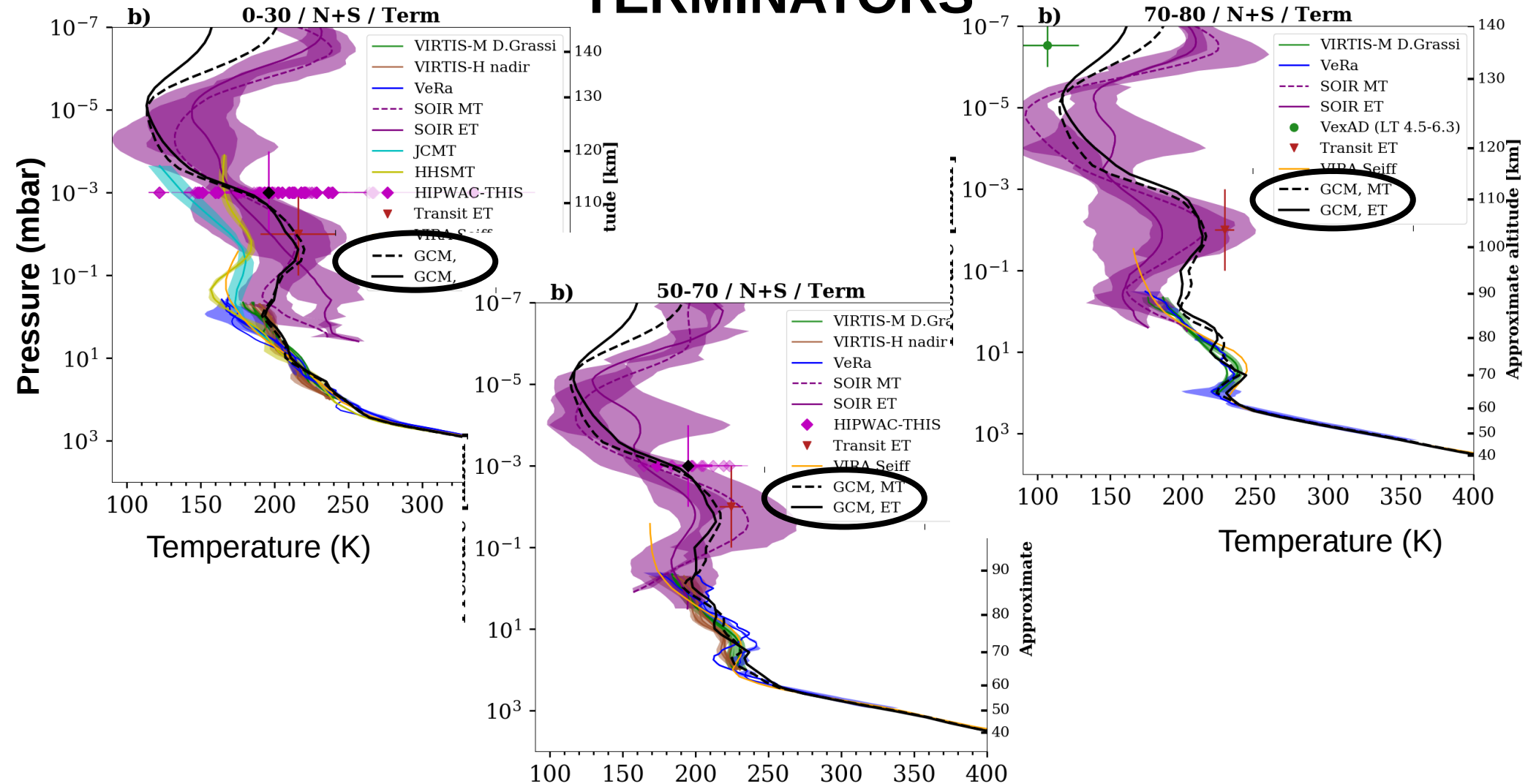
### NIGHT



# Modeled densities and temperatures compared to observations

## Temperature measurements

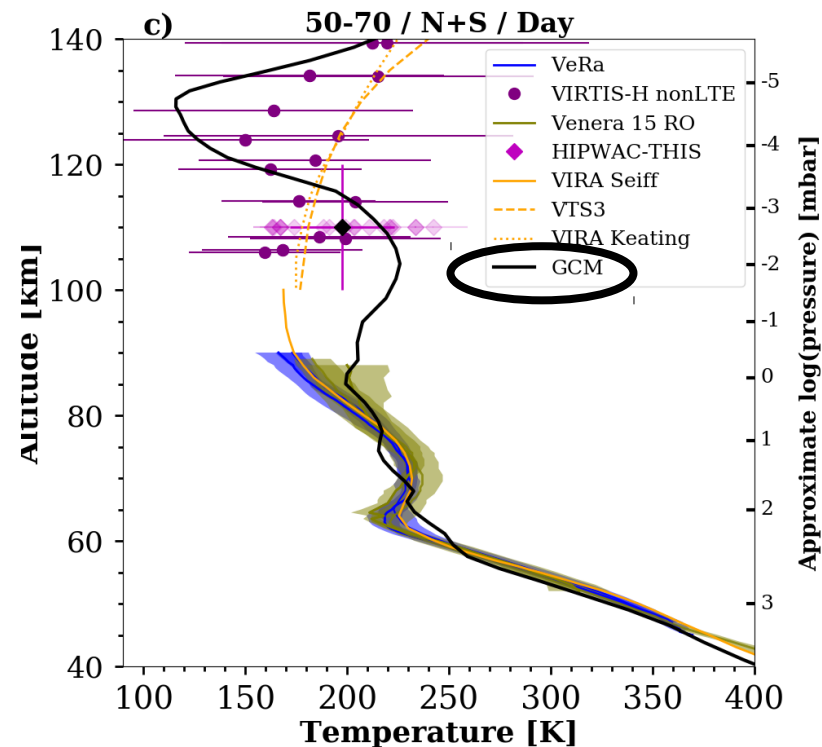
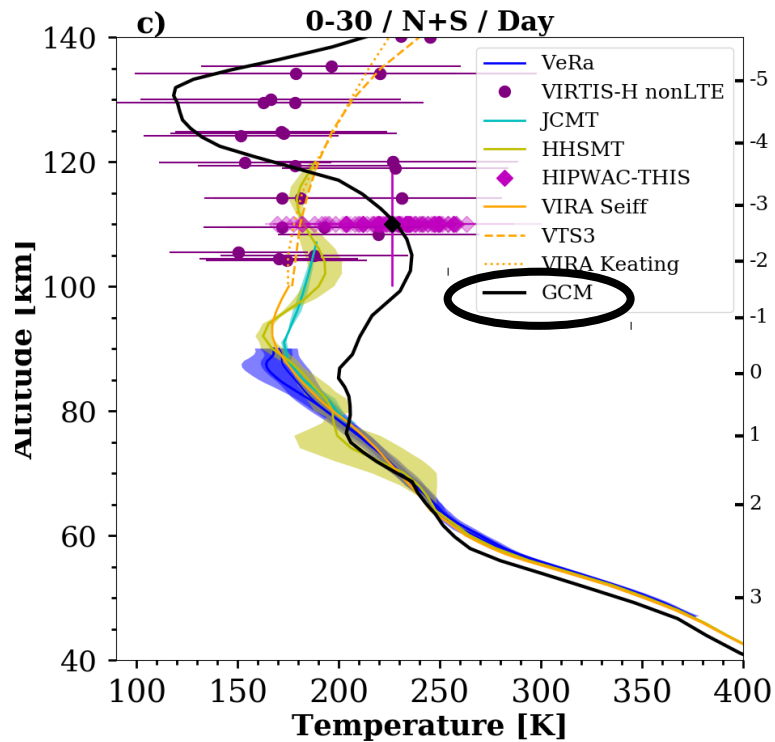
### TERMINATORS



# Modeled densities and temperatures compared to observations

## Temperature measurements

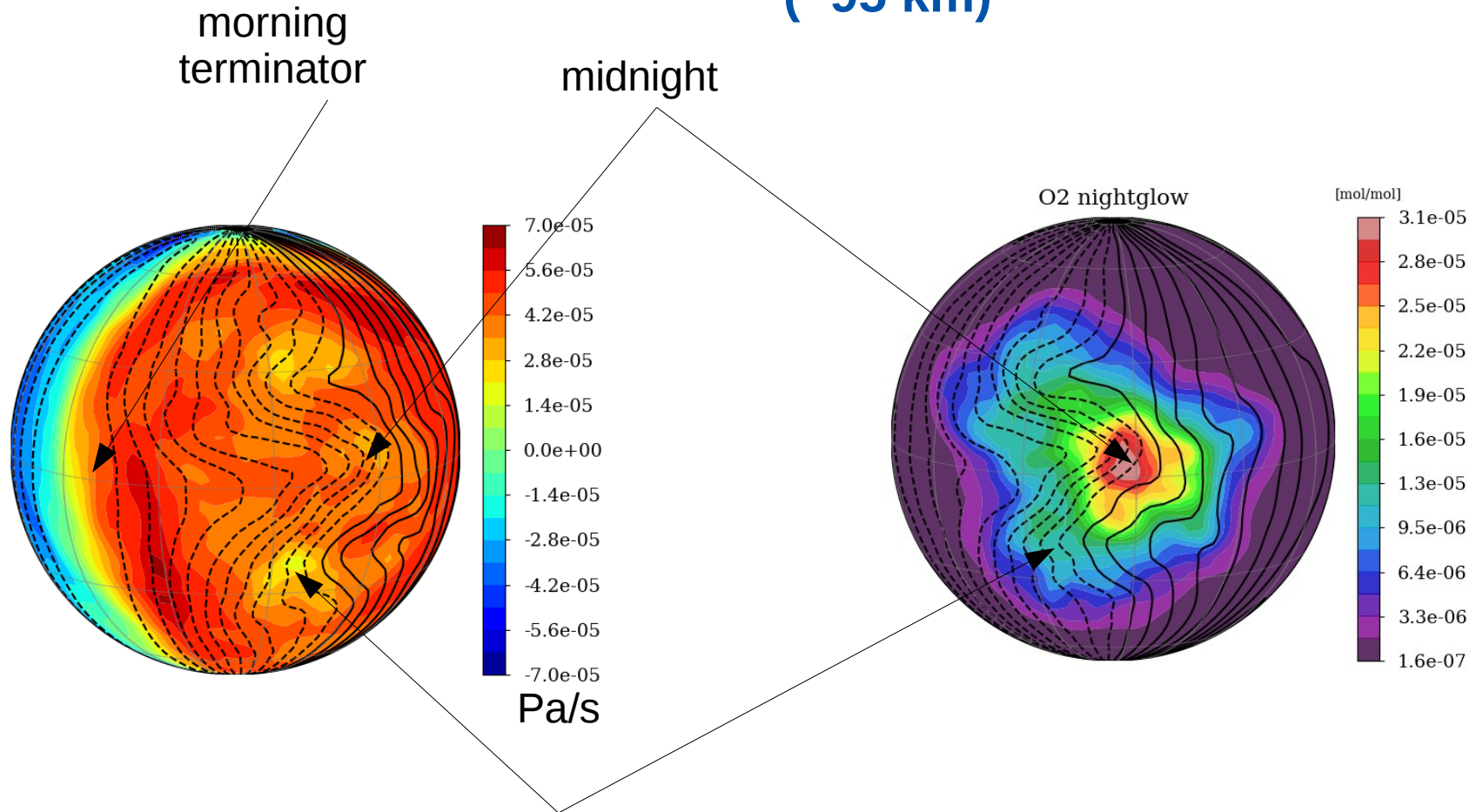
DAY



# Circulation variability

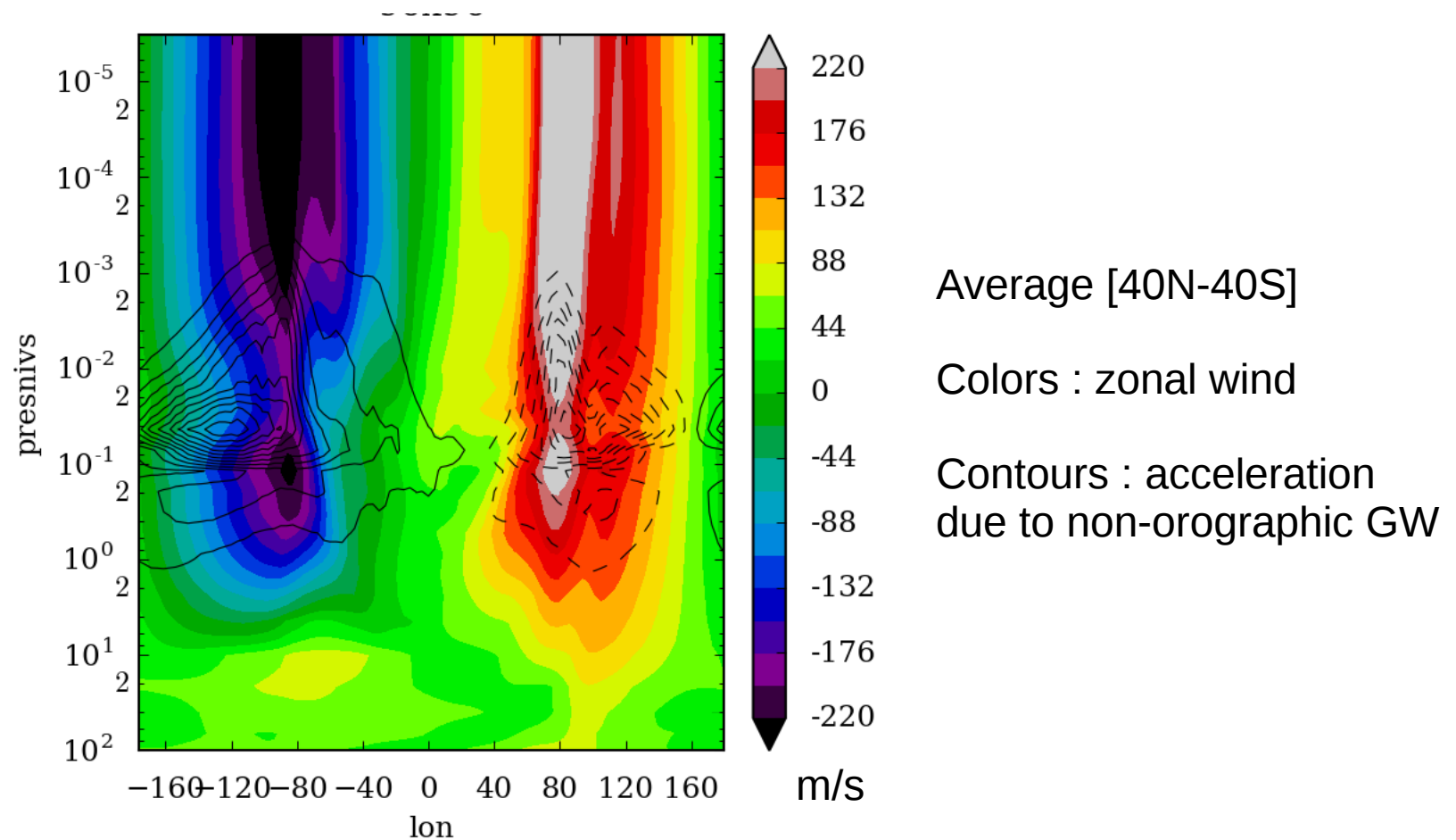
Vertical wind (colors) and zonal wind (contours) at 1 Pa (~105 km)

Oxygen nightglow (colors) and zonal wind (contours) at 10 Pa (~95 km)



Oxygen nightglow occurs in subsidences (positive vertical winds in Pa/s)

# Non-orographic gravity waves

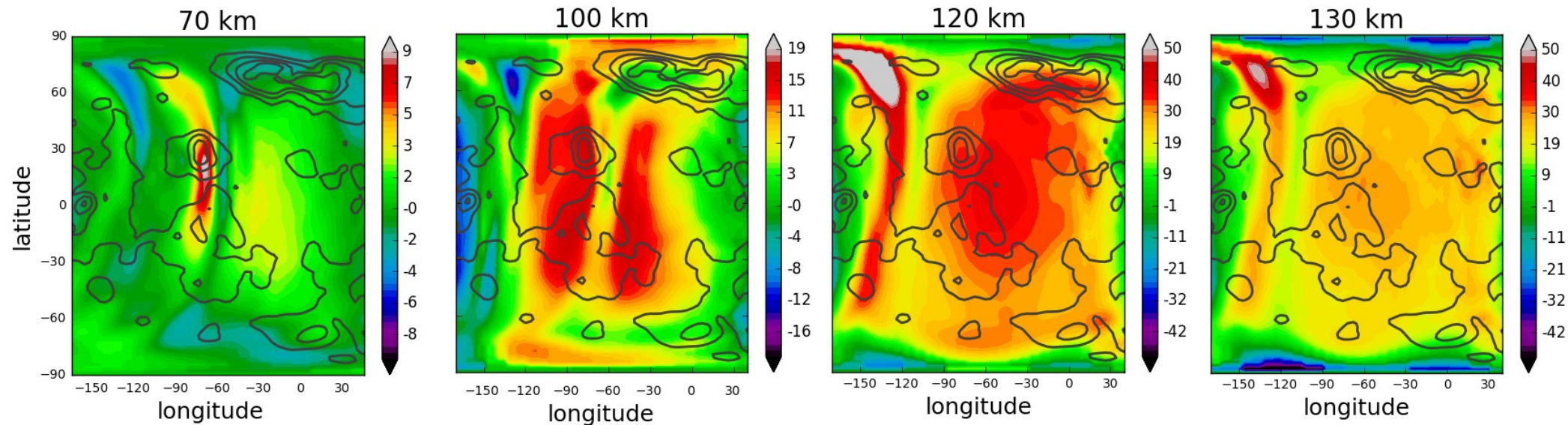


**Acceleration of zonal wind due to non-orographic gravity waves generated at cloud top**

# Stationary waves

## Topographic gravity waves parameterization

=> equatorial mountain waves develop in the afternoon and propagate above the clouds



Vertical wind speeds (cm/s)

# Conclusion

The IPSL Venus GCM is a mature tool to study the upper atmosphere of Venus and its variability.

- Variability of the descending/ascending winds
- Variability due to orographic and non-orographic gravity waves

Sensitivity of temperature and circulation to model parameters and to horizontal resolution still to be fully assessed.

## Open postdoctoral position at LMD

Study of the upper atmosphere of Venus

=> starting in autumn 2020 (for 2 years)

ESA-funded project : **Venus Climate Database** (release : Sept. 2021)

Virtual meeting : **wednesday May 6th, 18h-19h (CEST)**

Presentation of the VCD, **discussion, ideas and needs welcome !**

contact **[sebastien.lebonnois@lmd.jussieu.fr](mailto:sebastien.lebonnois@lmd.jussieu.fr)** for link