



HAL
open science

Photometric magnetic-activity metrics tested with the Sun: application to Kepler M dwarfs

Savita Mathur, David Salabert, Rafael A. García, Tugdual Ceillier

► To cite this version:

Savita Mathur, David Salabert, Rafael A. García, Tugdual Ceillier. Photometric magnetic-activity metrics tested with the Sun: application to Kepler M dwarfs. *Journal of Space Weather and Space Climate*, 2014, 4, pp.A15. 10.1051/swsc/2014011 . insu-03095702

HAL Id: insu-03095702

<https://insu.hal.science/insu-03095702>

Submitted on 4 Jan 2021

HAL is a multi-disciplinary open access archive for the deposit and dissemination of scientific research documents, whether they are published or not. The documents may come from teaching and research institutions in France or abroad, or from public or private research centers.

L'archive ouverte pluridisciplinaire **HAL**, est destinée au dépôt et à la diffusion de documents scientifiques de niveau recherche, publiés ou non, émanant des établissements d'enseignement et de recherche français ou étrangers, des laboratoires publics ou privés.

Photometric magnetic-activity metrics tested with the Sun: application to *Kepler* M dwarfs

Savita Mathur^{1,*}, David Salabert², Rafael A. García², and Tugdual Ceillier²

¹ Space Science Institute, 4750 Walnut Street, Suite #205, Boulder, CO, USA

*Corresponding author: smathur@spacescience.org

² Laboratoire AIM, CEA/DSM – CNRS – Univ. Paris Diderot – IRFU/SAP, Centre de Saclay, 91191 Gif-sur-Yvette Cedex, France

Received 18 September 2013 / Accepted 1 April 2014

ABSTRACT

The *Kepler* mission has been providing high-quality photometric data leading to many breakthroughs in the exoplanet search and in stellar physics. Stellar magnetic activity results from the interaction between rotation, convection, and magnetic field. Constraining these processes is important if we want to better understand stellar magnetic activity. Using the Sun, we want to test a magnetic activity index based on the analysis of the photometric response and then apply it to a sample of M dwarfs observed by *Kepler*. We estimate a global stellar magnetic activity index by measuring the standard deviation of the whole time series, S_{ph} . Because stellar variability can be related to convection, pulsations or magnetism, we need to ensure that this index mostly takes into account magnetic effects. We define another stellar magnetic activity index as the average of the standard deviation of shorter subseries which lengths are determined by the rotation period of the star. This way we can ensure that the measured photometric variability is related to starspots crossing the visible stellar disc. This new index combined with a time-frequency analysis based on the Morlet wavelets allows us to determine the existence of magnetic activity cycles. We measure magnetic indexes for the Sun and for 34 M dwarfs observed by *Kepler*. As expected, we obtain that the sample of M dwarfs studied in this work is much more active than the Sun. Moreover, we find a small correlation between the rotation period and the magnetic index. Finally, by combining a time-frequency analysis with phase diagrams, we discover the presence of long-lived features suggesting the existence of active longitudes on the surface of these stars.

Key words. Stellar activity – Solar activity – Asteroseismology – M dwarfs

1. Introduction

The *Kepler* mission (Borucki et al. 2010) which was designed to search for Earth-like exoplanets, monitored 196,468 stars since its launch in March 2009 (Huber et al. 2014). The mission has already been successful by detecting more than 900 confirmed planets with a variety of parameters and configurations (e.g., Howell et al. 2012; Barclay et al. 2013; Rowe et al. in press) and several thousands of planet candidates that await confirmation from ground-based follow up. In addition to the planet investigation, a second scientific program was part of the mission to study and characterise the stars with asteroseismology.

Seismology is the only tool that allows us to directly probe the internal layers of the Sun and the stars. With the excellent quality of the *Kepler* data, asteroseismic studies were successfully applied to a large amount of solar-like (e.g., Campante et al. 2011; Chaplin et al. 2011; Mathur et al. 2011b, 2012) and red-giant stars (e.g., Huber et al. 2011; Mathur et al. 2011a; Mosser et al. 2012a). Thanks to the detection of mixed modes in subgiants and red giants (Beck et al. 2011), the rotation of their cores could be measured in detail by Deheuvels et al. (2012, in press), Beck et al. (2012), and in an ensemble way by Mosser et al. (2012b). One major breakthrough in stellar physics was made by Bedding et al. (2011) who showed that asteroseismology allows us to distinguish between two different evolutionary stages in the red-giant evolution: giants that are

burning hydrogen in a shell and those that started burning helium in the core.

Seismology can also provide information on stellar magnetic activity. As it is well known for the Sun, magnetic activity impacts the p-mode characteristics: indeed as the magnetic activity increases, the mode frequencies increase while their amplitudes decrease. García et al. (2010) observed the same behaviour in the CoRoT (Convection, Rotation, and planetary Transits; Baglin et al. 2006) data and detected for the first time magnetic activity in a solar-like star with asteroseismic analyses. Further analyses showed that similarly to the Sun, the shift of the frequencies is larger for high-frequency modes (Salabert et al. 2011), suggesting that the change in activity happens in the outer layers of the star rather than in its deeper layers.

So far, the detailed mechanisms generating the solar magnetic activity are not completely understood. For instance, the long minimum between cycles 23 and 24 was not predicted by dynamo models (Dikpati & Gilman 2006). Stellar magnetic activity results from the interaction between differential rotation, convection and magnetic field (e.g., Brun et al. 2011). One way to better grasp the details of the processes in play is to study other stars with different conditions (different ages, rotation periods, masses ...) in order to have a broader vision (e.g., Mathur 2011). Seismology is a powerful tool that can not only detect magnetic activity but also provide the internal structure and dynamics of stars (depth of the convection zone,

rotation profile, convection properties), which are all crucial components in the understanding of the solar and stellar magnetic activity. We also note that the *Kepler* data allow us to measure differential rotation as shown recently by Reinhold et al. (2013).

Large spectroscopic surveys contributed to the study of stellar photospheric and chromospheric activity because magnetic fields affect the electromagnetic spectrum lines (e.g., CaII, H α , Na). Surveys such as the Mount Wilson HK project (Wilson 1978) or the one led at the Solar-Stellar Spectrograph (Hall et al. 2007) collected several decades of time series for hundreds M- to F-type stars (see Hall 2008, for a review). These observations showed that there is a large variety of behaviours in terms of magnetic activity (e.g., Baliunas et al. 1995; Radick et al. 1998) with stars showing regular or irregular cycles or a quite constant magnetic regime. Using the Mount Wilson observations, Saar & Brandenburg (2002) highlighted the relationship between the magnetic cycle period and the rotation period. Hence, fast rotators have shorter magnetic cycles. To understand this variety of behaviours we need to relate them with differences in stellar parameters (mostly with their internal structure and composition). For instance, hot F-type stars seem to have more irregular cycles than G-type stars. Spectropolarimetric observations provide additional constraints by measuring the stellar magnetic field and its topology. For instance, magnetic polarity reversal was observed for tau Boo by Fares et al. (2009). Recently a large spectropolarimetric survey of FGK-type stars was led by the Bcool team (Marsden et al. 2013) with the measurement of the magnetic field in ~ 70 solar-type stars. They found that cool stars have stronger magnetic field than hot ones. Finally, detection of magnetic fields in red giants was also done in several stars (e.g., Konstantinova-Antova et al. 2012).

Photometric observations can also provide information on the magnetic activity of the stars as done for instance by Savanov (2012) with M dwarfs. In the past, several teams performed time-frequency analyses of photometric or spectroscopic datasets either with wavelets (Frick et al. 1997) or with short-term Fourier transforms (Oláh et al. 2009), detecting a variety of cycles evolving with time. Recently, different indexes have been defined by Basri et al. (2010) to characterize the variability of *Kepler* targets using photometric observations. They defined the “range”, R_{var} and considered it in Basri et al. (2013) as a metric of the photometric magnetic activity. However as this metric takes into account values of the stellar flux between 5% and 95% of the brightness span, it can underestimate the activity level of very active stars. Another index defined by Basri et al. (2013) is the median differential variability, MDV, computed on data that are rebinned from 1 hour up to 8 days. But we have to be careful that the variability in the light curves can be due to different phenomena such as pulsations, granulation, rotation or the presence of spots. To specifically study variability induced by magnetic activity and define an indicator that properly measures it, we need to take into account the rotation period of the star as its measurement relies on the presence of spots (thus magnetic field) on the stellar surface. In addition, these indexes are computed on subseries of 30 days, which can bias the results for stars rotating much slower than 15 days. This is the reason why we define and use a different metric in this work.

In Section 2, we describe the solar data and the sample of M dwarfs observed by *Kepler* that are used in this work. These M dwarfs are a subsample of the stars presented in McQuillan et al. (2013). They are fully convective very low-mass stars

($0.3\text{--}0.55 M_{\odot}$), with an effective temperature T_{eff} smaller than 4000 K and a surface gravity $\log g \geq 4$. Even though we haven't detected oscillation modes in these stars, they represent a good benchmark for testing our magnetic indexes due to their high-activity levels. Furthermore, as said above, magnetic activity cycles have already been detected in M dwarfs in the past. We define in Section 3 a magnetic activity index based on the analysis of the light curves and the prior knowledge of the stellar rotation periods. We measure this index in the case of the Sun and a few tens of M dwarfs. Section 4 discusses the magnetic activity of M dwarfs. Finally, Section 5 presents our conclusions.

2. Observations and data analysis

In this work we use data collected by two space missions. On one hand, ~ 3.5 years (quarters 1–15) of continuous observations of the NASA *Kepler* mission allowed us to measure the long-term variability of a sample of stars in the constellation of Cygnus and Lyra. At any time, *Kepler* observed around 120,000 stars, most of them at a cadence of 29.42 min (e.g., Gilliland et al. 2010). Due to the orbital configuration, and to maintain the solar panel properly oriented towards the Sun, *Kepler* experiences a roll every 90 days (a quarter of a year). Data were consequently subdivided into quarters and the observed stars were placed in a different CCD in the focal plane. To downlink these data, *Kepler* pointed to the Earth in a monthly basis, which introduces gaps in the recorded time series, as well as some thermal drifts and other instrumental instabilities (e.g., Jenkins et al. 2010). In this work we used NASA's Simple Aperture Photometry (SAP) light curves (Jenkins et al. 2010) that have been corrected of outliers, jumps and drifts following the methods described in García et al. (2011). Based on the *Kepler* Input Catalog (Brown et al. 2011), the M dwarfs selected for this work have magnitudes between 13 and 16, T_{eff} between 3600 and 4000 K and $\log g$ between 4 and 4.6 dex.

On the other hand, we use 16 years of continuous photometric observations of the Sun recorded by the Variability of solar IRradiance and Gravity Oscillations (VIRGO; Fröhlich et al. 1995) instrument aboard the ESA-NASA Solar and Heliospheric Observatory (SoHO; Domingo et al. 1995). VIRGO is composed of several instruments. In particular, the sum of the green and red channels of the Sun PhotoMeters (SPM) are a good photometric approximation of the *Kepler* bandwidth (Basri et al. 2010). It can be used to study the magnetic activity properties of the Sun and as a reference for other stars observed by *Kepler*. The standard VIRGO/SPM data are high-pass filtered with a cut-off frequency of a few days. In order to monitor the solar variability at the frequencies of the rotation, we used raw VIRGO/SPM data processed with the procedures described in García et al. (2005, 2011) in a similar way to what we do with *Kepler*.

3. Photometric index of magnetic activity

To measure the magnetic activity of a star through the variability observed in its light curve, we can first use a global index as defined by García et al. (2010), which is simply the standard deviation of the whole light curve. Hereafter we call this index S_{ph} . This is based on the presence of starspots on the stellar surface.

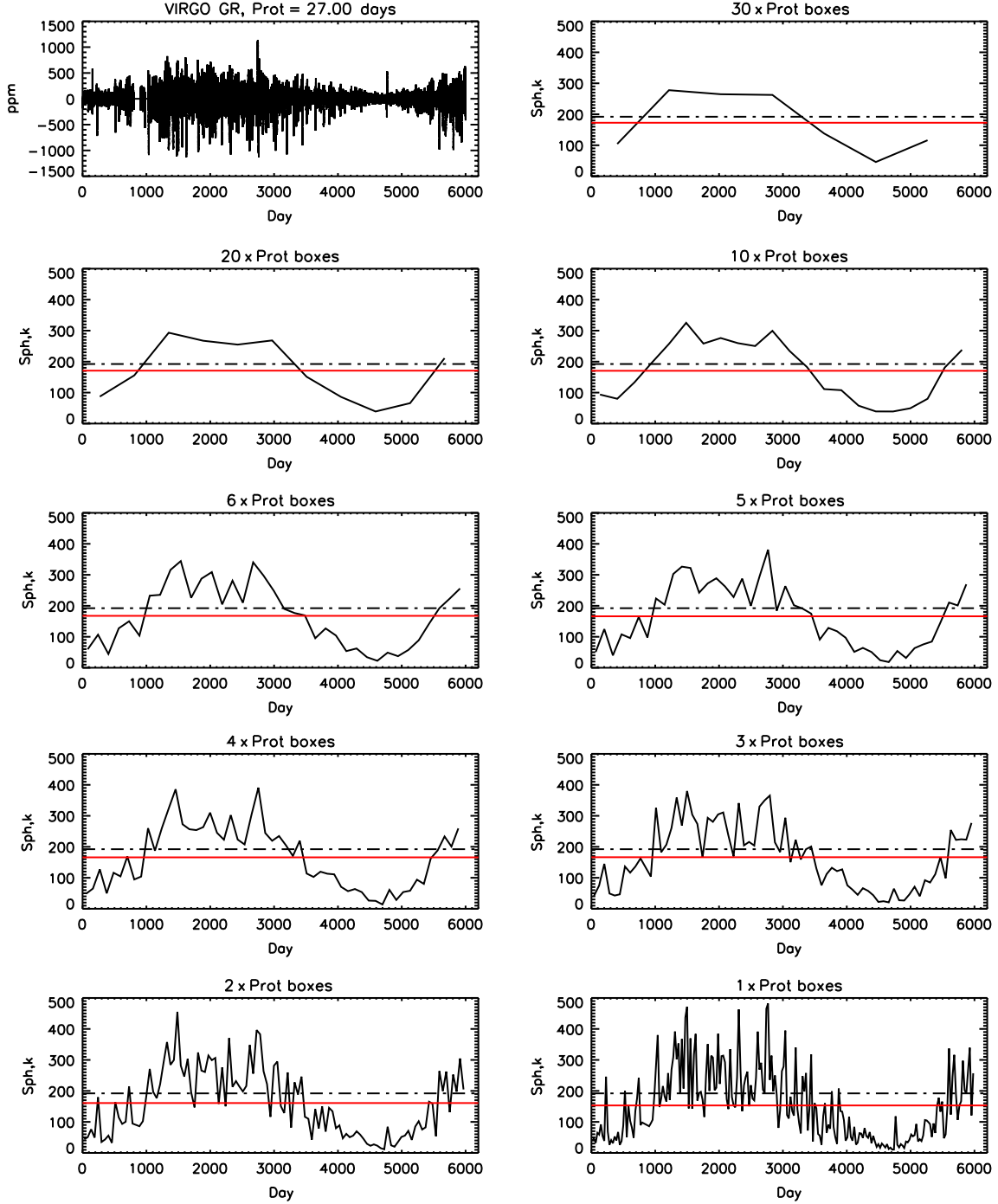


Fig. 1. Time series from the VIRGO/SPM instrument obtained with the green and red channels as described in Section 3.1 (top-left). Standard deviation for VIRGO data using subseries of size $k \times P_{\text{rot}}$ with $k = 1, 2, 3, 4, 5, 6, 10, 20,$ and 30 (from bottom right to top right). The black dot dash line represents the global magnetic index S_{ph} and the red triple dot-dash line corresponds to the mean magnetic index, $\langle S_{\text{ph},k} \rangle$, computed as described in Section 3.

As said above, the surface magnetic activity is related to an inner dynamo process linked to the rotational period of the star. Thus, when defining an index to study stellar magnetic activity on a large sample of stars, as provided by *Kepler*, the stellar rotation is a key parameter, if the rotation period is accurately estimated (García et al. 2013; McQuillan et al. 2013). It is also natural to define an index which takes into account possible temporal variations of the activity level. To do this, a given light curve is divided into subseries of $k \times P_{\text{rot}}$, where P_{rot} is the rotational period of the star. Values of k between 1 and 30 were

tested and the analysis was performed on the Sun and some active stars. For each individual subseries, the standard deviation $S_{\text{ph},k}$ of the non-zero values (i.e., points that are not missing) is calculated, providing the possibility to study any temporal evolution of the star’s activity level (see Fig. 1). The mean value of the standard deviations $\langle S_{\text{ph},k} \rangle$ represents a global magnetic activity index, comparable to S_{ph} , except that it takes into account the rotation of the star. This method also allows us to measure the magnetic index during the minimum (or maximum) period of the magnetic cycle by

Table 1. List of M dwarfs analysed with the rotation periods from [McQuillan et al. \(2013\)](#), the magnetic indexes $\langle S_{\text{ph},k} \rangle$ for $k = 5$ and S_{ph} corrected from the magnitude following [Jenkins et al. \(2010\)](#), the crowding, and a flag for possible pollution from a nearby star.

Ref. #	KIC	P_{rot} (days)	$\langle S_{\text{ph},k=5} \rangle$ (ppm)	S_{ph} (ppm)	Crowding	Flag
1	2157356	12.9	4109.1	4445.1	0.85	OK
2	2302851	12.2	3934.1	4148.9	0.96	OK
3	2570846	10.9	11871.9	12481.5	0.88	OK
4	2574427	13.4	1196.9	1245.5	0.79	NO
5	2692704	14.8	8858.5	9183.6	0.85	OK
6	2832398	15.0	4688.7	4761.5	0.82	OK
7	2834612	13.3	6391.3	6591.1	0.89	OK
8	2835393	15.0	3597.7	3705.4	0.85	OK
9	3102763	14.4	9310.4	9960.1	0.89	OK
10	3232393	14.5	404.9	427.0	0.90	OK
11	3634308	12.9	3708.0	3895.9	0.88	OK
12	3935499	5.2	17429.4	19318.5	0.94	OK
13	4833367	14.2	1135.2	1171.6	0.90	OK
14	5041192	10.8	5483.9	5549.3	0.90	OK
15	5096204	14.8	1272.1	1315.2	0.92	OK
16	5210507	8.8	12345.3	12899.8	0.87	OK
17	5611092	14.4	711.4	738.7	0.94	OK
18	5900600	14.0	2194.3	2307.9	0.92	OK
19	5950024	14.1	2454.5	2587.0	0.96	OK
20	5954552	14.9	7121.1	7314.2	0.95	OK
21	5956957	14.9	3825.4	4027.0	0.94	OK
22	6307686	13.3	3807.7	4029.1	0.94	OK
23	6464396	13.2	4146.5	4694.7	0.90	OK
24	6545415	5.5	9018.6	10233.5	0.57	NO
25	6600771	13.1	6494.6	6845.9	0.92	OK
26	7091787	14.1	1331.6	1523.7	0.92	OK
27	7106306	14.2	3194.6	3260.4	0.95	OK
28	7174385	14.5	2190.2	2229.1	0.94	OK
29	7190459	6.8	2435.6	2631.1	0.95	OK
30	7282705	14.5	1842.5	1891.7	0.83	OK
31	7285617	13.7	1698.3	1746.5	0.69	NO
32	7534455	12.1	2087.3	2198.0	0.94	OK
33	7620399	13.7	1170.5	1202.1	0.92	OK
34	7673428	15.0	7213.6	7703.9	0.91	OK

only taking the mean of the subseries that have a standard deviation smaller (or larger) than the global index. Finally, the returned value is corrected from the photon noise. In the case of the Sun, we use the high-frequency part of the power spectrum to estimate it, while the magnitude correction from [Jenkins et al. \(2010\)](#) is used to estimate the corrections to apply to the *Kepler* stars.

3.1. Sun

[Figure 1](#) illustrates this calculation in the case of the Sun using ~6000 days of the photometric VIRGO/SPM observations (top-left of [Fig. 1](#)), which were rebinned into a 30-min temporal sampling in order to mimic the long-cadence *Kepler* data. The temporal variation of the magnetic index $S_{\text{ph},k}$ was calculated for different values of the factor k : [30, 20, 10, 6, 5, 4, 3, 2, and 1] $\times P_{\text{rot}}$, with a solar P_{rot} taken to be equal to 27.0 days (individual panels on [Fig. 1](#)). The black dot-dashed line represents the value of the standard deviation over the entire time series, S_{ph} , and the red triple dot-dashed line the mean value of the standard deviations, $\langle S_{\text{ph},k} \rangle$, calculated for each k . The well-known 11-yr solar cycle is well reproduced with such activity index, allowing us to track shorter time scaled features, like for instance the double peak observed during solar maxima (between day ~1000 and day ~3000 on

[Fig. 1](#)). Note that the value of $\langle S_{\text{ph},k} \rangle$ is slightly smaller than S_{ph} , and it converges towards S_{ph} as the value of k is increased.

3.2. M dwarfs observed by Kepler

M dwarfs are known to be very active stars presenting a large number of flares. Thus they provide a very good benchmark to test the magnetic indexes described above. In order to determine the optimal value of the factor k , we apply the same analysis to a sample of 34 magnetically active M stars observed by *Kepler* for which ~1300 days (Q1–Q15) of continuous observations are available. These stars were chosen to have a rotation period shorter than 15 days as measured by [McQuillan et al. \(2013\)](#). They obtained the rotation periods by applying the autocorrelation function on 10 months of data. We checked their values with a time-frequency analysis based on wavelets ([Torrence & Compo 1998](#); [Mathur et al. 2010](#)) that we performed on the whole timeseries. The rotation periods for the 34 stars agree between the two methods within the error bars of the wavelets. Since these stars are rather faint, there is a possibility that the light curves can be polluted by a nearby companion. We checked the crowding and the pixel data of all the stars. The crowding values are listed in [Table 1](#) and are above 0.8 for most of the stars except three. The inspection of the pixel data suggests that these three stars (with a “NO” flag in [Table 1](#)) are most likely polluted by a nearby star.

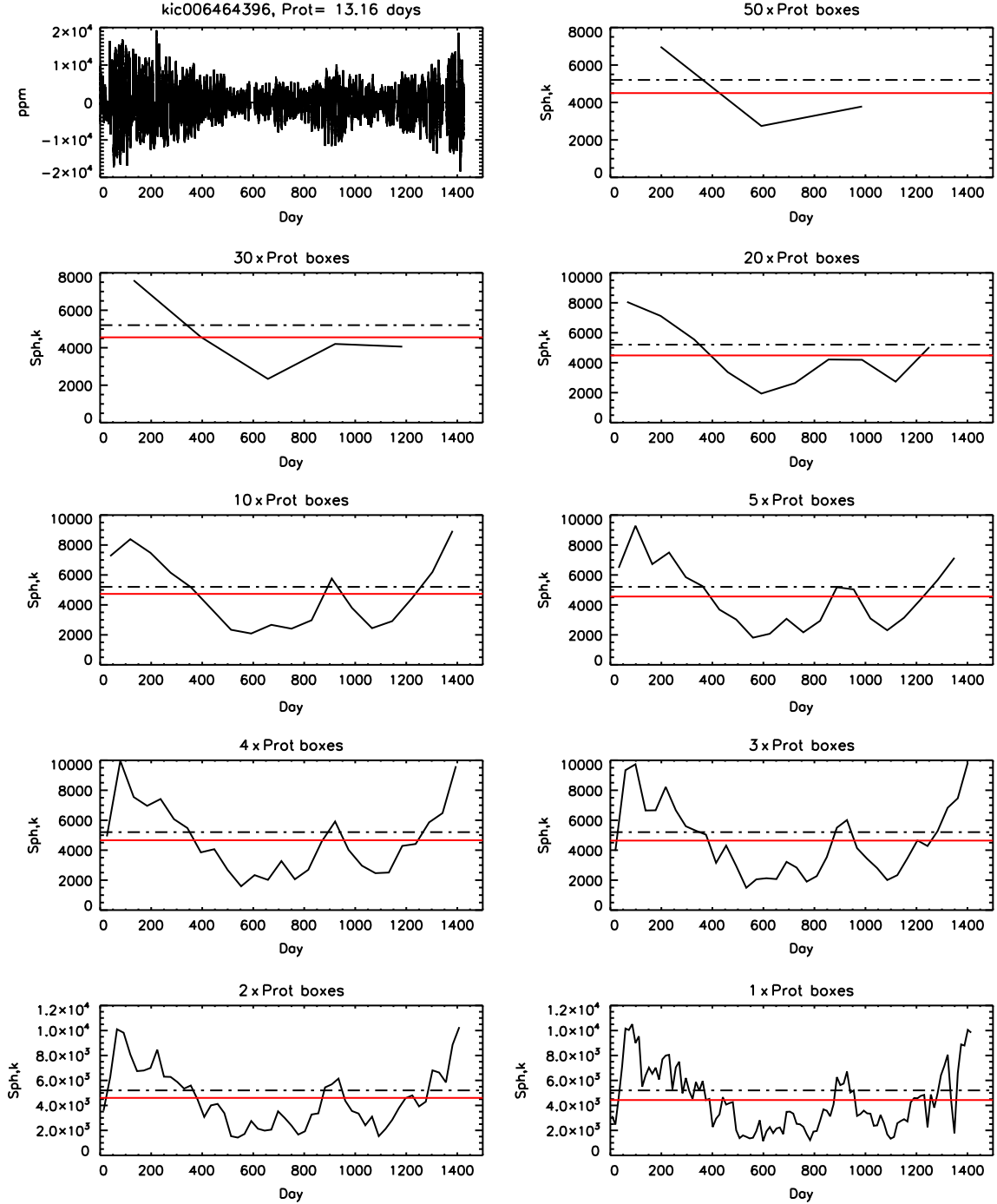


Fig. 2. Temporal variation of the magnetic index $S_{\text{ph},k}$ for the M dwarf KIC 6464396. Same legend as in Figure 1.

The indices $\langle S_{\text{ph},k} \rangle$ are given in Table 1. The calculation for an example star, KIC 464396, is shown in Figure 2 for different values of k . We also corrected the indexes for the photon noise by following the relation established by Jenkins et al. (2010). The left panel of Figure 3 shows $\langle S_{\text{ph},k} \rangle$ normalized by the standard deviation of the whole time series S_{ph} as function of the factor k for the 31 M stars. The values in the case of the Sun are represented in red. The ratio $\langle S_{\text{ph},k} \rangle / S_{\text{ph}}$ tends to become constant and close to 1 for higher k . A value of $5 \times P_{\text{rot}}$ appears to reasonably describe the magnetic temporal evolution of stars as well as to give a correct value of global activity index.

The right panel of Figure 3 shows the mean activity indexes for the 31 non-polluted M stars in the case of $5 \times P_{\text{rot}}$ $\langle S_{\text{ph},k=5} \rangle$, as a function of P_{rot} . It is clear that the M stars present a wide range

of magnetic activity as in the selected sample the most active star is about 20 times more active than the less active star, while $\langle S_{\text{ph},k=5} \rangle$ is 4–80 times greater than the solar value of 166.1 ± 2.6 ppm (Mathur et al. 2014). Noyes et al. (1984) showed that there is a correlation between the Ca II HK flux, R'_{HK} index, and the rotation period. We obtain a slightly similar trend where fast rotators have larger magnetic indexes.

4. Magnetic activity of M dwarfs

When performing the time-frequency analysis, we need to distinguish between different phenomena: pulsation modes, a small differential rotation leading to a beating that mimics a magnetic activity cycle, and a real magnetic activity cycle.

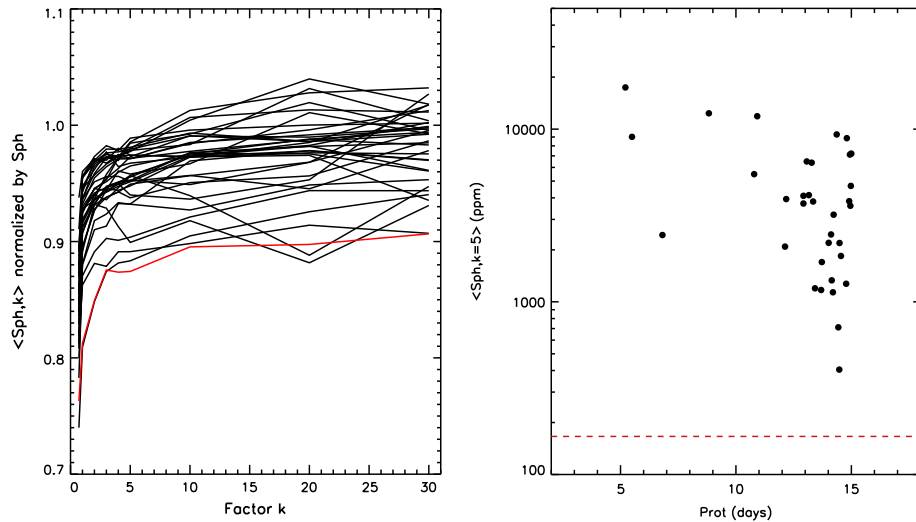


Fig. 3. *Left:* Normalised mean standard deviation as a function of k , which is the multiplicative factor of P_{rot} to determine the size of the subseries, for the 34 M dwarfs of our sample (black curves) and the Sun (red curve). *Right:* Magnetic activity index for the value $k = 5$, $\langle S_{ph,5} \rangle$, corrected from the photon noise, as a function of the rotation period for the 31 non-polluted M dwarfs. The red dashed line corresponds to the solar value.

As pointed out by McQuillan et al. (2013), the autocorrelation function that they use to determine the rotation periods can detect acoustic modes revealing a few red giants in their sample. In all the stars of our sample, the time-frequency analysis based on the wavelets shows a modulation that could be attributed to a magnetic activity cycle. This analysis consists of measuring the correlation between the Morlet wavelet (the product of a sinus wave and a Gaussian function) and the time series by sliding the wavelet along it and by changing the period of the wavelet in a given range. The wavelet power spectrum (WPS) obtained is shown in the middle panel of Figure 4 for the M dwarf KIC 5210507. We detect a rotation period of 8.43 ± 0.69 days. The inspection of the pixel data confirms that there is no pollution from a close companion. The detailed analysis of the power spectrum revealed the presence of several peaks around the inferred rotation period suggesting the existence of latitudinal differential rotation on the surface of this star. We retrieve a relative differential rotation of 20%, which is lower than the value of 30% for the solar case. This is slightly larger than what would be expected theoretically following the work of Küker & Rüdiger (2011). Most of the other stars in our sample show a complicate peak structure around the rotation period that could also be indicative of the presence of surface differential rotation. Unfortunately, in the wavelet power spectrum we do not have enough resolution to measure it. The detailed analysis of the differential rotation is out of the scope of this paper and will be the object of future investigation.

The lower panel of Figure 4 represents the scale-average variance that corresponds to the projection of the WPS on the time axis. This provides a good way to study the temporal evolution of the magnetic activity as shown by García et al. (2013). We notice a modulation in the main activity level of ~ 45 days. Exploring in more details the peak structure around the rotation period of KIC 5210507 we found two main peaks at 9.92 days ($1.167 \mu\text{Hz}$) and 8.33 days ($1.390 \mu\text{Hz}$). The beating between these two periods can produce a modulation of 50 days, very close to what is observed in the light curve. In order to have an efficient beating between the two frequencies, their phases need to be nearly constant during a long period of time. As long as a phenomenon – spot, active longitude or pulsation – lives

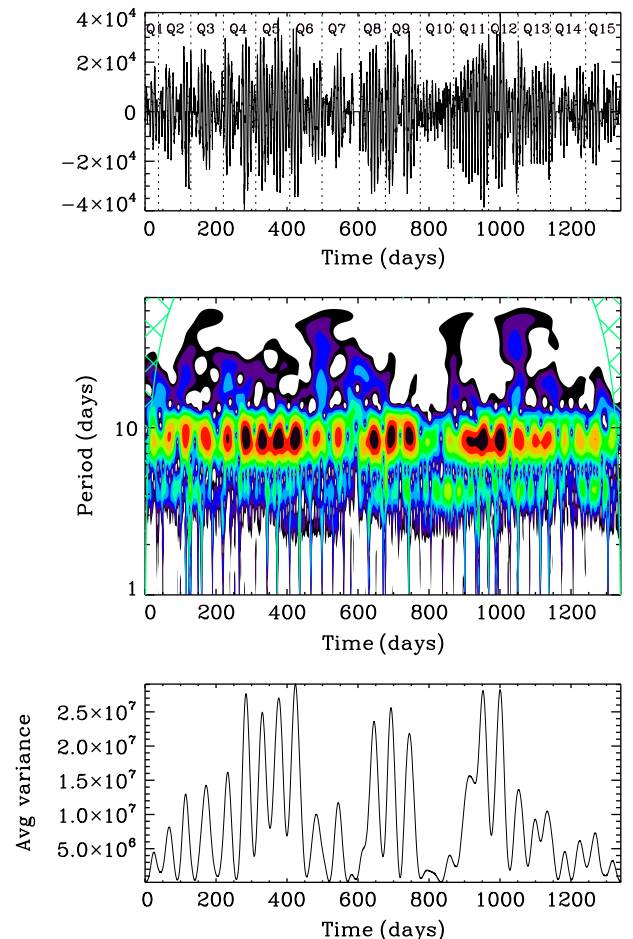


Fig. 4. *Top:* time series of the star KIC 5210507 corrected as described in Section 2. *Middle:* Wavelet Power Spectrum as a function of time and period. Dark and red colours correspond to high power while blue and purple colours correspond to low power. The green grid corresponds to the cone of influence that delimits the reliable regions of the WPS by taking into account edge effects. *Bottom:* Scale-average variance obtained by projecting the WPS on the time axis around the rotation period of the star (8.43 days).

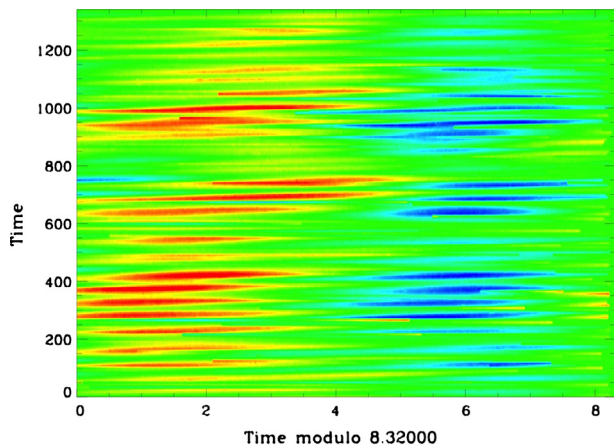


Fig. 5. Phase diagram as described in Section 4 with the time modulo a value close to the rotation period of the star on the x-axis and the time on the y-axis.

and its frequency does not evolve with time, the phase of the modulation must remain the same. We thus follow a similar method to the one used to study TTV (Transit Timing Variations; Torres et al. 2011): we cut the light curve into bits of length equal to the period of the modulation and we stack these bits one on top of the other, in an échelle-like diagram (Grec et al. 1983). The amplitude of each data point is translated into a color magnitude. By doing so, we obtain a figure showing the phase of each occurrence of the modulation through the whole light curve. Every vertical ridge in this figure corresponds to a stable phase, the lifetime of the phenomenon being the vertical extension of the ridge. An example of the phase diagram for KIC 5210507 is shown in Figure 5. We clearly see that the maxima (in red) and the minima (in blue) produce vertical ridges, thus a stable phase during more than 1000 days. In the case of spot migration with a surface differential rotation, we would expect to observe a gradual shift of the phase. What we observe could suggest that there are active longitudes where the spots have a preferred longitude to emerge at the surface of the star (e.g., Berdyugina et al. 2006; Weber et al. 2013).

5. Conclusion

We have defined two magnetic indexes that are measured on photometric observations. The first one, S_{ph} , is calculated as the standard deviation of the full-length time series. It provides a mean activity level during the observation period. The second one, $\langle S_{ph,k} \rangle$, is a magnetic index based on the knowledge of the stellar surface rotation period, P_{rot} , by smoothing the time series over $k \times P_{rot}$. We computed $\langle S_{ph,k} \rangle$ for different values of k and we tested it on solar data collected during ~6000 days by the VIRGO/SPM instrument aboard SoHO. Then we applied it to our sample of M dwarfs observed by *Kepler*. We showed that $k = 5$ is a good choice to keep the information on the global magnetic activity while having short enough subseries to track any cycle-like variations in the mean activity level. For larger values of k , the index reaches saturation. This analysis shows in particular that M dwarfs are more active than the Sun confirming H α observations at the McDonald Observatory (Robertson et al. 2013).

We found a slight anti-correlation between $\langle S_{ph,k} \rangle$ and P_{rot} where fast rotators seem to be more active than the slow rotators. This trend agrees with the findings of Noyes et al. (1984) based on the observations of CaHK for stars with different

spectral type and more recently by Marsden et al. (2013) using a spectropolarimetric survey.

We also performed a time-frequency analysis for all the stars of our sample. We detected the signature of latitudinal differential rotation suggested by the presence of several peaks around the rotation period. In some stars, we demonstrate that the beating of some of these high amplitude peaks leads to a modulation in the mean activity level of the light curve that could be misinterpreted as a magnetic activity cycle. However, we could not detect any sign of spots migration. The computation of the phase diagram shows the existence of long-lived features at their surface and thus of active longitudes which has not been observed in this type of stars. Their existence in M dwarfs and solar-like stars suggest that the outer convective zone plays a role in the mechanism responsible for the development of the surface magnetic features.

Recently, a similar analysis was applied to F-type solar-like stars (see Mathur et al. 2014) ($T_{eff} \geq 6000$ K and more massive than the Sun) for which asteroseismic studies could provide key information on their internal structure and dynamics. By combining all this information for a large number of stars – with different structures and dynamics – it will greatly contribute to a better understanding of the dynamo mechanisms. In addition, by inferring more precise stellar ages (thanks to asteroseismology for instance), we will be able to define a more accurate relationship between age-activity-rotation.

Acknowledgements. This work was partially supported by the NASA Grant NNX12AE17G. SM, TC and RAG acknowledge the support of the European Community’s Seventh Framework Program (FP7/2007-2013) under Grant Agreement No. 269194 (IRSES/ASK) and No. 312844 (SPACEINN). RAG acknowledges the support of the French ANR/IDEE grant. DS acknowledges the support provided by CNES. Guest Editor Alexander Shapiro thanks two anonymous referees for their constructive help in evaluating this paper.

References

- Baglin, A., M. Auvergne, L. Boissard, T. Lam-Trong, P. Barge, et al., CoRoT: a high precision photometer for stellar evolution and exoplanet finding, in: *COSPAR, Plenary Meeting*, Vol. 36, 36th COSPAR Scientific Assembly, 3749, 2006.
- Baliunas, S.L., R.A. Donahue, W.H. Soon, J.H. Horne, J. Frazer, et al., Chromospheric variations in main-sequence stars, *Astrophys. J.*, **438**, 269, 1995.
- Barclay, T., J.F. Rowe, J.J. Lissauer, D. Huber, F. Fressin, et al., A sub-Mercury-sized exoplanet, *Nature*, **494**, 452, 2013.
- Basri, G., L.M. Walkowicz, N. Batalha, R.L. Gilliland, J. Jenkins, et al., Photometric variability in Kepler target stars: the sun among stars – a first look, *Astrophys. J. Lett.*, **713**, L155, 2010.
- Basri, G., L.M. Walkowicz, and A. Reiners, Comparison of Kepler photometric variability with the sun on different timescales, *Astrophys. J.*, **769**, 37, 2013.
- Beck, P.G., T.R. Bedding, B. Mosser, D. Stello, R.A. García, et al., Kepler detected gravity-mode period spacings in a red giant star, *Science*, **332**, 205, 2011.
- Beck, P.G., J. Montalbán, T. Kallinger, J. De Ridder, T. Aerts, et al., Fast core rotation in red-giant stars as revealed by gravity dominated mixed modes, *Nature*, **481**, 55, 2012.
- Bedding, T.R., B. Mosser, D. Huber, J. Montalbán, P. Beck, et al., Gravity modes as a way to distinguish between hydrogen- and helium-burning red giant stars, *Nature*, **471**, 608, 2011.
- Berdyugina, S.V., D. Moss, D. Sokoloff, and I.G. Usoskin, Active longitudes, nonaxisymmetric dynamos and phase mixing, *A&A*, **445**, 703, 2006.

- Borucki, W.J., D. Koch, G. Basri, D. Caldwell, J. Christensen-Dalsgaard, et al., Kepler planet-detection mission: introduction and first results, *Science*, **327**, 977, 2010.
- Brown, T.M., D.W. Latham, M.E. Everett, and G.A. Esquerdo, Kepler input catalog: photometric calibration and stellar classification, *Astron. J.*, **142**, 112, 2011.
- Brun, A.S., M.S. Miesch, and J. Toomre, Modeling the dynamical coupling of solar convection with the radiative interior, *Astrophys. J.*, **742**, 79, 2011.
- Campante, T.L., R. Handberg, S. Mathur, T. Appourchaux, Bedding, et al., Asteroseismology from multi-month Kepler photometry: the evolved Sun-like stars KIC 10273246 and KIC 10920273, *A&A*, **534**, A6, 2011.
- Chaplin, W.J., H. Kjeldsen, J. Christensen-Dalsgaard, S. Basu, A. Miglio, et al., Ensemble asteroseismology of solar-type stars with the NASA Kepler mission, *Science*, **332**, 213, 2011.
- Deheuvels, S., G. Doğan, M.J. Goupil, T. Appourchaux, O. Benomar, et al., Seismic constraints on the radial dependence of the internal rotation profiles of six Kepler subgiants and young red giants, *A&A*, **564**, A27, 2014.
- Deheuvels, S., R.A. García, W.J. Chaplin, S. Basu, H.M. Antia, et al., Seismic evidence for a rapidly rotating core in a lower giant-branch star observed with Kepler, *Astrophys. J.*, **756**, 19, 2012.
- Dikpati, M., and P.A. Gilman, Simulating and predicting solar cycles using a flux-transport dynamo, *Astrophys. J.*, **649**, 498, 2006.
- Domingo, V., B. Fleck, and A.I. Poland, The SOHO mission: an overview, *Sol. Phys.*, **162**, 1, 1995.
- Fares, R., J.-F. Donati, C. Moutou, D. Bohlender, C. Catala, et al., Magnetic cycles of the planet-hosting star τ Bootis – II. A second magnetic polarity reversal, *Mon. Not. R. Astron. Soc.*, **398**, 1383, 2009.
- Frick, P., S.L. Baliunas, D. Galyagin, D. Sokoloff, and W. Soon, Wavelet analysis of stellar chromospheric activity variations, *Astrophys. J.*, **483**, 426, 1997.
- Fröhlich, C., J. Romero, H. Roth, C. Wehrli, B.N. Andersen, et al., VIRGO: experiment for helioseismology and solar irradiance monitoring, *Sol. Phys.*, **162**, 101, 1995.
- García, R.A., S. Hekker, D. Stello, J. Gutierrez-Soto, R. Handberg, et al., Preparation of Kepler light curves for asteroseismic analyses, *Mon. Not. R. Astron. Soc.*, **414**, L6, 2011.
- García, R.A., A. Jiménez, S. Mathur, S. Mathur, S. Mathur, et al., Update on g-mode research, *Astron. Nachr.*, **329**, 476, 2008.
- García, R.A., S. Mathur, D. Salabert, J. Ballot, C. Regulo, et al., CoRoT Reveals a Magnetic Activity Cycle in a Sun-Like Star, *Science*, **329**, 1032, 2010.
- García, R.A., D. Salabert, S. Mathur, C. Regulo, J. Ballot, et al., Towards solar activity maximum 24 as seen by GOLF and VIRGO/SPM instruments, *J. Phys. Conf. Ser.*, **440**, 012020, 2013.
- García, R.A., S. Turck-Chièze, P. Boumier, J.M. Robillot, L. Bertello, et al., Global solar Doppler velocity determination with the GOLF/SoHO instrument, *A&A*, **442**, 385, 2005.
- García, R.A., S. Turck-Chièze, S.J. Jiménez-Reyes, et al., Tracking solar gravity modes: the dynamics of the solar core, *Science*, **316**, 1591, 2007.
- Gilliland, R.L., J.M. Jenkins, W.J. Borucki, S.T. Bryson, D.A. Caldwell, et al., Initial characteristics of Kepler short cadence data, *Astrophys. J. Lett.*, **713**, L160, 2010.
- Grec, G., E. Fossat, and M.A. Pomerantz, Full-disk observations of solar oscillations from the geographic South Pole – Latest results, *Sol. Phys.*, **82**, 55, 1983.
- Hall, J.C., Stellar chromospheric activity, *Liv. Rev. Sol. Phys.*, **5**, 2, 2008.
- Hall, J.C., G.W. Henry, and G.W. Lockwood, The sun-like activity of the Solar Twin 18 Scorpii, *Astron. J.*, **133**, 2206, 2007.
- Howell, S.B., J.F. Rowe, S.T. Bryson, S.T. Quinn, G.W. Marcy, et al., Kepler-21b: A 1.6 R *Earth* planet transiting the bright oscillating F Subgiant Star HD 179070, *Astrophys. J.*, **746**, 123, 2012.
- Huber, D., T.R. Bedding, D. Stello, S. Hekker, S. Mathur, et al., Testing scaling relations for solar-like oscillations from the main sequence to red giants using Kepler data, *Astrophys. J.*, **743**, 143, 2011.
- Huber, D., V. Silva Aguirre, J.M. Matthews, M.H. Pinsonneault, E. Gaidos, et al., Revised stellar properties of Kepler targets for the Quarter 1–16 transit detection run, *Astrophys. J. Suppl. Ser.*, **211**, 2, 2014.
- Jenkins, J.M., D.A. Caldwell, H. Chandrasekaran, J.D. Twicken, S.T. Bryson, et al., Initial characteristics of Kepler long cadence data for detecting transiting planets, *Astrophys. J. Lett.*, **713**, L120, 2010.
- Konstantinova-Antova, R., M. Aurière, P. Petit, C. Charbonnel, S. Tsvetkova, et al., Magnetic field structure in single late-type giants: the effectively single giant V390 Aurigae, *A&A*, **541**, A44, 2012.
- Küker, M., and G. Rüdiger, Differential rotation and meridional flow on the lower zero-age main sequence: Reynolds stress versus baroclinic flow, *Astron. Nachr.*, **332**, 933, 2011.
- Marsden, S.C., P. Petit, S.V. Jeffers, J. Morin, R. Fares, et al., A Bcool magnetic snapshot survey of solar-type stars, *Mon. Not. R. Astron. Soc.*, submitted (arXiv1311.3374), 2013.
- Mathur, S., Stellar activity cycles and contribution of the deep layers knowledge, in *Proceedings of Stellar Pulsation 2011* (arXiv e-prints 1111.2065), 2011.
- Mathur, S., R.A. García, J. Ballot, T. Ceillier, D. Salabert, et al., Magnetic activity of F stars observed 329 by Kepler, *A&A*, **562**, A124, 2014.
- Mathur, S., R.A. García, C. Régulo, O.L. Creevey, J. Ballot, et al., Determining global parameters of the oscillations of solar-like stars, *A&A*, **511**, A46, 2010.
- Mathur, S., S. Hekker, R. Trampedach, J. Ballot, T. Kallinger, et al., Granulation in red giants: observations by the Kepler mission and three-dimensional convection simulations, *Astrophys. J.*, **741**, 119, 2011a.
- Mathur, S., R. Handberg, T. Campante, R.A. García, T. Appourchaux, et al., Solar-like oscillations in KIC 11395018 and KIC 11234888 from 8 months of Kepler data, *Astrophys. J.*, **733**, 95, 2011b.
- Mathur, S., T.S. Metcalfe, M. Woitaszek, H. Bruntt, G.A. Verner, et al., A uniform asteroseismic analysis of 22 solar-type stars observed by Kepler, *Astrophys. J.*, **749**, 152, 2012.
- McQuillan, A., S. Aigrain, and T. Mazeh, Measuring the rotation period distribution of field M dwarfs with Kepler, *Mon. Not. R. Astron. Soc.*, **432**, 1203, 2013.
- Mosser, B., Y. Elsworth, S. Hekker, D. Huber, T. Kallinger, et al., Characterization of the power excess of solar-like oscillations in red giants with Kepler, *A&A*, **537**, A30, 2012a.
- Mosser, B., M.J. Goupil, K. Belkacem, E. Michel, D. Stello, et al., Probing the core structure and evolution of red giants using gravity-dominated mixed modes observed with Kepler, *A&A*, **540**, A143, 2012b.
- Noyes, R.W., L.W. Hartmann, S.L. Baliunas, D.K. Duncan, and A.H. Vaughan, Rotation, convection, and magnetic activity in lower main-sequence stars, *Astrophys. J.*, **279**, 763, 1984.
- Oláh, K., Z. Kolláth, T. Granzer, K.G. Strassmeier, A.F. Lanza, et al., Multiple and changing cycles of active stars. II. Results, *A&A*, **501**, 703, 2009.
- Radick, R.R., G.W. Lockwood, B.A. Skiff, and S.L. Baliunas, Patterns of variation among sun-like stars, *Astrophys. J. Suppl. Ser.*, **118**, 239, 1998.
- Reinhold, T., A. Reiners, and G. Basri, Rotation and differential rotation of active Kepler stars, *A&A*, **560**, A4, 2013.
- Robertson, P., M. Endl, W.D. Cochran, and S.E. Dodson-Robinson, H α activity of old M dwarfs: stellar cycles and mean activity levels for 93 low-mass stars in the solar neighborhood, *Astrophys. J.*, **764**, 3, 2013.
- Rowe, J.F., S.T. Bryson, G.W. Marcy, J.J. Lissauer, D. Jontof-Hutter, et al., Validation of Kepler's Multiple Planet Candidates. III: Light Curve Analysis Announcement of Hundreds of New Multi-planet Systems, *Astrophys. J.*, **784**, 45, 2014.

- Saar, S.H., and A. Brandenburg, A new look at dynamo cycle amplitudes, *Astron. Nachr.*, **323**, 357, 2002.
- Salabert, D., C. Régulo, J. Ballot, R.A. García, and S. Mathur, About the p-mode frequency shifts in HD49933, *A&A*, **530**, A127, 2011.
- Savanov, I.S., Activity cycles of M dwarfs, *Astron. Rep.*, **56**, 716, 2012.
- Torrence, C., and G.P. Compo, A practical guide to wavelet analysis, *Bull. Am. Meteorol. Soc.*, **79**, 61, 1998.
- Torres, G., F. Fressin, N.M. Batalha, W.J. Borucki, T.M. Brown, et al., Modeling Kepler transit light curves as false positives: rejection of blend scenarios for Kepler-9, and validation of Kepler-9 d, a super-earth-size planet in a multiple system, *Astrophys. J.*, **727**, 24, 2011.
- Weber, M.A., Y. Fan, and M.S. Miesch, A theory on the convective origins of active longitudes on solar-like stars, *Astrophys. J.*, **770**, 149, 2013.
- Wilson, O.C., Chromospheric variations in main-sequence stars, *Astrophys. J.*, **226**, 379, 1978.

Cite this article as: Mathur S, Salabert D, García R & Ceillier T: Photometric magnetic-activity metrics tested with the Sun: application to *Kepler* M dwarfs. *J. Space Weather Space Clim.*, 2014, **4**, A15.