



**HAL**  
open science

## Spatial distribution of Pharmaceuticals within the particulate phases of a peri-urban stream

Lauriane Ledieu, Anaëlle Simonneau, Thomas Thiebault, Laëtitia Fougère, Emilie Destandau, O. Cerdan, Fatima Laggoun-Défarage

### ► To cite this version:

Lauriane Ledieu, Anaëlle Simonneau, Thomas Thiebault, Laëtitia Fougère, Emilie Destandau, et al.. Spatial distribution of Pharmaceuticals within the particulate phases of a peri-urban stream. Chemosphere, 2021, 279, pp.130385. 10.1016/j.chemosphere.2021.130385 . insu-03183855

**HAL Id: insu-03183855**

**<https://insu.hal.science/insu-03183855>**

Submitted on 29 Mar 2021

**HAL** is a multi-disciplinary open access archive for the deposit and dissemination of scientific research documents, whether they are published or not. The documents may come from teaching and research institutions in France or abroad, or from public or private research centers.

L'archive ouverte pluridisciplinaire **HAL**, est destinée au dépôt et à la diffusion de documents scientifiques de niveau recherche, publiés ou non, émanant des établissements d'enseignement et de recherche français ou étrangers, des laboratoires publics ou privés.

# Journal Pre-proof

Spatial distribution of Pharmaceuticals within the particulate phases of a peri-urban stream

L. Ledieu, A. Simonneau, T. Thiebault, L. Fougere, E. Destandau, O. Cerdan, F. Laggoun



PII: S0045-6535(21)00855-9

DOI: <https://doi.org/10.1016/j.chemosphere.2021.130385>

Reference: CHEM 130385

To appear in: *ECSN*

Received Date: 23 October 2020

Revised Date: 3 March 2021

Accepted Date: 22 March 2021

Please cite this article as: Ledieu, L., Simonneau, A., Thiebault, T., Fougere, L., Destandau, E., Cerdan, O., Laggoun, F., Spatial distribution of Pharmaceuticals within the particulate phases of a peri-urban stream, *Chemosphere*, <https://doi.org/10.1016/j.chemosphere.2021.130385>.

This is a PDF file of an article that has undergone enhancements after acceptance, such as the addition of a cover page and metadata, and formatting for readability, but it is not yet the definitive version of record. This version will undergo additional copyediting, typesetting and review before it is published in its final form, but we are providing this version to give early visibility of the article. Please note that, during the production process, errors may be discovered which could affect the content, and all legal disclaimers that apply to the journal pertain.

© 2021 Published by Elsevier Ltd.

**Lauriane Ledieu:** Conceptualization, Investigation, Validation, Writing – Original Draft, Visualization. **Anaëlle Simonneau:** Conceptualization, Supervision, Writing – Review & Editing, Project administration, Funding acquisition. **Thomas Thiebault:** Conceptualization, Methodology, Validation, Writing – Review & Editing. **Laëtitia Fougère:** Methodology, Resources, Writing – Review & Editing. **Emilie Destandau:** Methodology, Resources. **Olivier Cerdan:** Conceptualization, Supervision, Writing – Review & Editing. **Fatima Laggoun:** Supervision, Project administration.

Journal Pre-proof

1 SPATIAL DISTRIBUTION OF PHARMACEUTICALS WITHIN THE PARTICULATE PHASES OF A PERI-URBAN  
2 STREAM

3 L. LEDIEU<sup>1</sup>, A. SIMONNEAU<sup>1</sup>, T. THIEBAULT<sup>2</sup>, L. FOUGERE<sup>3</sup>, E. DESTANDAU<sup>3</sup>, O. CERDAN<sup>4</sup>, F. LAGGOUN<sup>1</sup>

4  
5 <sup>1</sup>Univ. Orléans, CNRS, BRGM, ISTO, UMR 7327, F-45071, Orléans, France ([lauriane.ledieu@cnrs-orleans.fr](mailto:lauriane.ledieu@cnrs-orleans.fr),  
6 [anaelle.simonneau@univ-orleans.fr](mailto:anaelle.simonneau@univ-orleans.fr))

7 <sup>2</sup>EPHE, PSL University, UMR 7619 METIS (SU, CNRS, EPHE), 4 Place Jussieu, F-75005, Paris, France

8 <sup>3</sup>Univ Orleans, CNRS, ICOA, UMR 7311, 45067 Orleans, France

9 <sup>4</sup>BRGM, 3 avenue Claude Guillemin, 45060 Orléans, France

10

11 Abstract

12 Pharmaceutical products (PPs) are consumed worldwide and are continuously released into  
13 hydrological environments, but are not efficiently removed by sewage treatment plants. Their  
14 occurrence within the dissolved phase has been extensively studied, but only a few articles concern  
15 solid matrices. The mechanisms and extent of sorption depend on the properties of both the  
16 molecules (degradability, charge, hydrophobicity) and the matrices (clay content, organic matter  
17 content), making the spatio-temporal distribution of PPs in natural environments complex and poorly  
18 elucidated. To improve our understanding of PP distribution at a catchment scale, this study  
19 investigated different groups of molecules with varying solubility and charges, in water, suspended  
20 particulate matter, bed-load and pond sediments. The Egoutier stream, which collects the sewage  
21 effluents from two health institutions sewage effluents, is a good candidate for this investigation.  
22 Results indicate that PP occurrences in the different particulate compartments were mainly  
23 regulated by their wastewater occurrences and charges. Particulate phases all along the Egoutier  
24 stream were characterized by a limited clay content (i.e. less than 1%) and significant organic carbon  
25 content (i.e. between 0.3% and 18.0%) favouring non-specific adsorption. Therefore, neutral PPs,  
26 exhibiting higher discharge rates, persistence and hydrophobicities in comparison with cationic and  
27 anionic molecules, were the most abundant PPs in the particulate phases of this catchment. In bed-  
28 load sediments, global PP spatial distributions reflected discharge sites and sedimentary  
29 accumulation zones, mostly that of organic matter. Spatial distributions of the more hydrophobic and  
30 persistent PP in the particulate phases thus followed the stream sedimentary dynamic.

31

32 **I. Introduction**

33 Environmental and societal concerns about the occurrence of pharmaceutical products (PPs) within  
34 aquatic systems started in the 1970s (Hignite & Azarnoff, 1977). These molecules are consumed  
35 worldwide (Jjemba, 2006; Gracia-Lor et al., 2010) and are continuously released into the  
36 environment (Loos et al., 2009) as chemical cocktails (Petrie et al., 2015; Kaushal et al., 2020). PPs  
37 can be bioaccumulated in aquatic organisms and transferred to the food chain (Sumpter et al., 1996),  
38 with negative effects on animal and human health (Gracia-Lor et al., 2010). Research efforts have  
39 therefore increased since the 1990s (Hughes et al., 2013) and PPs were qualified as an emerging class  
40 of contaminants (Boreen et al., 2003; Da Silva et al., 2011). The long-term ecotoxicological effects of  
41 these micropollutants remain unclear (Gracia-Lor et al., 2010) and thus represent a major  
42 environmental and societal issue. Understanding PP dynamics in hydrosystems is therefore needed in  
43 order to manage environmental contamination (Dobor et al., 2012; Petrie et al., 2015; Thiebault,  
44 2020; Boulard et al., 2020).

45 In the European Union, about 3,000 PPs are approved for medical treatment (Da Silva et al.,  
46 2011), among which psychotropics (Calisto & Esteves, 2009), anti-inflammatory agents,  $\beta$ -blockers  
47 (Petrie et al., 2015) and analgesics (Verlicchi et al., 2010) are the most frequently prescribed. France  
48 has a high drug consumption; for example, in 2018 average spending per inhabitant amounted to  
49 488 € (Leem, 2020). High releases are therefore observed in freshwater aquatic environments  
50 (Fekadu et al., 2019), but only a few studies have been conducted on French rivers (Tamtam et al.,  
51 2008; Munoz, 2009; Hughes et al., 2013). These studies evidenced the presence of PPs in both small  
52 and large basins comprising urban areas (Feitosa-Felizzola & Chiron, 2009; Mompelat et al., 2011).

53 Significant proportions of the consumed PPs can be excreted in an unchanged form (Baranowska  
54 & Kowalski, 2010), and therefore transferred toward wastewater treatment plants (WWTP). The  
55 presence of PPs in hydrosystems is then the consequence of the incomplete removal of PPs in  
56 domestic and hospital sewage in WWTPs (Kümmerer, 2009). These micropollutants are subject to

57 degradation, dilution and sorption processes but can be transported over long distances (Tamtam et  
58 al., 2008; Aminot et al., 2015). PPs are considered to be less persistent than other types of organic  
59 contaminants (such as polycyclic aromatic hydrocarbons and polychlorinated biphenyls), as they  
60 have fewer interactions with particulate phases because of their lower hydrophobicity (Svahn &  
61 Björklund, 2015; Boulard et al., 2020) and are thus less likely to be transported through sediment  
62 transport (Loos et al., 2009). This pathway is consequently often neglected, but some PPs also display  
63 significant affinities with solid organic and mineral matrices (Löffler et al., 2005; Vazquez-Roig et al.,  
64 2010; Da Silva et al., 2011; Martínez-Hernández et al., 2014; Koba et al., 2018).

65 In recent decades, analytical procedures that assist in distinguishing and quantifying PPs in solid  
66 matrices have been developed especially through pressurized liquid extraction (PLE, Jelić et al., 2009)  
67 followed by ultra-high performance liquid chromatography in combination with tandem mass  
68 spectrometry (UHPLC-MS<sup>2</sup>, Gracia-Lor et al., 2010). Studies evaluating PP distribution in sediments  
69 provide useful information as they may integrate larger time scales than the dissolved ones (Zhou &  
70 Broodbank, 2014). Moreover, as the fate of PPs mainly depends on their partitioning between  
71 dissolved and particulate phases, an understanding of the sorption processes is required (Martínez-  
72 Hernández et al., 2014). Several studies conducted through batch experiments therefore evaluated  
73 the type of interactions involved in PP adsorption (Yamamoto et al., 2009), the difference in  
74 molecules' mobility (Scheytt et al., 2005), the role of solid matrix composition and the potential  
75 desorption of PPs (Stein et al., 2008). Predicting the behaviour of PPs is complex because of the  
76 variety of processes and parameters involved in their adsorption (Al-Khazrajy & Boxall, 2016) but  
77 partitioning is mainly driven by both PP (structure, charge, hydrophobicity, persistence) and particle  
78 characteristics (composition, texture; Vazquez-Roig et al., 2012; Martínez-Hernández et al., 2014;  
79 Thiebault et al., 2016).

80 The spatio-temporal evolution of PPs certainly depends on sources, consumption and discharge  
81 rates (Petrie et al., 2015; Wilkinson et al., 2017). In particulate phases, this evolution is also driven by

82 particle composition and texture as well as by the physico-chemical and hydrological conditions of  
83 the hydrosystem (Kim & Carlson, 2007; De Castro-Català et al., 2016). Consequently, PPs may show  
84 high spatial variabilities between different aquatic environments. Wastewaters from medical  
85 institutions display higher emissions than domestic ones (Kümmerer, 2009; Verlicchi et al., 2010;  
86 Huber et al., 2016) and small hydrosystems are more sensitive to these contaminations because of a  
87 lower dilution of anthropogenic inputs (Da Silva et al., 2011). At a basin scale, different spatial  
88 evolutions have already been observed. Schultz et al. (2010) measured increasing concentrations  
89 downstream of the WWTP effluent whereas Aminot et al. (2015) measured the highest accumulation  
90 near sewage discharging sites, where sediments presented a high organic carbon content. The same  
91 observations were made by Da Silva et al. (2011) and Zhou and Broodbank (2014), but variabilities  
92 according to streamflow conditions were also recorded. At the Loire Bretagne basin scale, Amalric et  
93 al. (2011) correlated observed contents with urban pressure levels. Because of the complexity of  
94 these influencing factors, the spatio-temporal evolution of PPs in solid matrices is rarely investigated  
95 (Fairbairn et al., 2015), especially when it comes to integrating different compartments of the aquatic  
96 environment (Wilkinson et al., 2017).

97 In this context, the present study attempts to provide new insights into PP occurrences within  
98 particulate phases of a small peri-urban stream as these sites are often neglected while represent  
99 hotspots of contamination. Their occurrences were also used to study the spatio-temporal  
100 accumulation and/or transportation of this kind of contaminants at catchment scale, in both  
101 suspended particulate matter and sediments (bed-load and pond sediments). The catchment of the  
102 peri-urban Egoutier stream, a tributary of the Loire River, which collects the wastewaters from two  
103 medical institutions, was chosen as the study site. These point sources represent a good opportunity  
104 to improve our understanding of PPs spatio-temporal distribution as well as the impact of these  
105 effluents on stream quality.

106 10 PPs were investigated, based on their consumption in the European Union (e.g. psychotropics,  
107 anti-inflammatory agents,  $\beta$ -blockers and analgesics; Calisto & Esteves, 2009; Verlicchi et al., 2010;  
108 Petrie et al., 2015) as well as their detection frequency in aquatic environments (e.g. anticonvulsants  
109 and opioids; Clara et al., 2004; Campos-Mañas et al., 2018). The occurrence of these PPs was  
110 investigated in the particulate phases at the catchment scale and in the dissolved phase of WWTP  
111 effluents. Environmental physico-chemical conditions, composition and textures of solid matrices  
112 were also characterized. Lastly, based on the analysis of PPs emissions and properties (persistence,  
113 charge state and lipophilicity), different factors driving the accumulation and spatial distribution of  
114 the molecules were identified.

115

## 116 II. Material and Methods

### 117 1. Study site and sampling method

118 The Egoutier catchment is located east of Orléans, in the Loire River basin (Fig. 1). Characterized by a  
119 temperate climate with an average annual rainfall of 650 mm (Soucémariadin & Verbègue, 2007),  
120 this small lowland catchment (27 km<sup>2</sup>) is drained by the Egoutier stream. The mean slope gradient is  
121 0.5% and the geological substrate is composed of Sologne sands and clays, Orleanais sands and  
122 Beauce limestone from upstream to downstream (Berger & Desprez, 1969).

123 To study the spatial evolution of PPs following a source-to-sink logic, the area investigated in  
124 this work was restricted to the upstream part of the catchment, covering 8 km<sup>2</sup> and including the  
125 Beulie pond in its central part (Fig. 1). In this part, the catchment is composed by solely of  
126 hydromorphic soils with clay-rich subsoil layers (Soucémariadin & Verbègue, 2007). The Egoutier  
127 stream is thus supplied by stormwater runoff, but also by effluents from two WWTPs and two  
128 stormwater point sources from urban areas. The two WWTPs treat effluents from a central army  
129 pharmacy (CAP) and a psychiatric hospital (PH, Fig. 1), respectively. CAP effluents are continuously  
130 discharged at a flow rate of 7 m<sup>3</sup>/h, whereas PH effluents, with a treatment capacity of 400 beds, are



131 not continuous and not monitored. Urban storm waters come from runoff processes on both CAP  
132 surfaces and urban areas in the eastern part of the catchment. The latter are collected in a network  
133 and released into a tributary of the stream (BLS-13b, Fig. 1).

134

135 [Figure 1]

136 *Figure 1 : Description of the upstream part of the Egoutier catchment area studied here with land covers (Inglada et al.,*  
137 *2017). Locations of the two sewage water effluents from the central army pharmacy (CAP) and the psychiatric hospital (PH)*  
138 *and of the samples collected in the dissolved phase (W), in suspended particulate matter (SPM), bed-load (BLS) and Beulie*  
139 *pond sediments (EG).*

140

141 In order to observe PP transportation by suspended particulate matter (SPM) at the  
142 catchment scale, SPM (grey dots, Fig. 1) were sampled at three locations. The first samples were  
143 taken downstream the CAP WWTP effluent (SPM-1, Fig. 1) to characterize the SPM geochemical  
144 fingerprint of this medical institution. The second samples were collected downstream the Beulie  
145 pond (SPM-2, Fig. 1) to integrate the PH fingerprint and quantify PP transportation despite the strong  
146 accumulation zone constituted by the pond. Finally, the third samples were taken at the outlet of the  
147 catchment (SPM-3, Fig. 1) to measure the total export of PPs. To collect enough material, SPM were  
148 collected by using GEACOS (GranulomEtric pAssive Capture of dissolved matter & Sediment,  
149 Simonneau et al., 2020) placed in the watercourse during about two months. Four campaigns were  
150 realized: between November 2018 and January 2019; March and June 2019; June and August 2019;  
151 and August and October 2019 (Table S1).

152 In 2018 and 2019, 15 bed-load sediment samples (BLS, brown dots, Fig. 1) were collected all  
153 along the watercourse to assess the PPs' spatial distribution and the impact level of WWTP effluents.  
154 BLS were sampled at each storm- and sewage water discharge, and upstream to downstream  
155 depending on confluence and accumulation zones, during both winters and summers (April 2018 and  
156 2019; August 2018 and 2019, Table S1), using 50 mL polypropylene Falcon tubes. Because of some  
157 dry areas during summer, some replicates were not always sampled in summer (Table S1).

158 Three Beulie pond interface sediments (water/sediment limit) were also collected in April  
159 2018, along a north-south transect using an Ekman Grab (EG, green dots, Fig. 1). All solid samples  
160 were then split into two parts; one was stored wet at 5 °C and the other was dried at 50 °C during 48  
161 h.

162 Finally, two water samples (W, water drops, Fig. 1) were collected at each WWTP discharge  
163 to verify the consistency of the PPs detected in solid matrices. The PH effluent (W-PH, Fig. 1) was  
164 collected in April 2017 and the CAP effluent (W-CAP, Fig. 1) in August 2018 (Table S1), using 10 L  
165 polyethylene bottles that were stored at 5 °C before analysis.

## 166 2. Environmental parameters and sample characteristics

167 Stream pH conditions were measured during each BLS sampling campaign. This parameter was  
168 determined with a portable pH meter MultiLine Multi 3630 IDS.

169 Particle size distributions for SPM samples were already given by the GEACOS technology  
170 (Simonneau et al., 2020). They were quantified by drying each GEACOS sieve from 1 mm to 250, 60,  
171 20 and 5 µm. The grain sizes of all the other sediment samples (moistened fractions sieved under 1.8  
172 mm) were determined using a laser particle sizer Mastersizer 3000 (Malvern) at the GEHCO  
173 laboratory. Results obtained are the relative percentages of four grain-size classes: 0 - 2 µm for clay  
174 grain sizes, 2 - 63 µm for silt grain sizes, 63 - 250 µm for fine sand grain sizes and 250 – 1800 µm for  
175 medium to coarse sand grain sizes.

176 Total organic carbon (TOC) contents were estimated by Rock-Eval pyrolysis (Behar et al.,  
177 2001) using a Rock Eval 6 turbo at the ISTO laboratory. Standards provided by Vinci Technologies  
178 were used to check the reproducibility of the measures. The mean error and mean correction factor  
179 of TOC measurements were 0.14% and 1%, respectively.

180 Finally, the bulk mineralogy of four samples (three BLS samples from the first campaign in  
181 2018 and one EG sample) was analysed by X-Ray Diffraction spectrometry (XRD) at the ISTO

182 laboratory with an INEL diffractometer adjusted with a Debye-Scherrer configuration. ICDD  
183 (International Centre for Diffraction Data) PDF (Powder Diffraction File) characteristic diagrams were  
184 used to identify the minerals (Fig. S1).

### 185 3. Pharmaceutical contents

#### 186 3.1. Chemical reagents

187 Standards for acetaminophen (ACM), atenolol (ATE), carbamazepine (CBZ), codeine (COD), diazepam  
188 (DIA), diclofenac (DIC), oxazepam (OXA), salicylic acid (SCA), tramadol (TRA) and trimethoprim (TRI)  
189 were purchased from Sigma-Aldrich with a purity >98%. The solvents used for PP extraction and  
190 separation, methanol (MeOH), acetonitrile (AcN) and formic acid (HCOOH), were purchased from  
191 Fisher-Scientific, assuming an analytical grade (purity up to 99.95%).

#### 192 3.2. Extraction procedure

193 Extraction procedures were carried out at the ISTO laboratory. For water samples solid phase  
194 extraction (SPE) using a Chromabond HR-X cartridge (6 mL x 500 mg, Macherey-Nagel) was  
195 performed. The cartridge was conditioned with 5 mL of MeOH and 5 mL of ultra-pure water (H<sub>2</sub>O).  
196 The cartridge was then filled with 250 mL of sample before being washed with 5 mL of H<sub>2</sub>O and dried  
197 for 30 minutes. The analytes were finally eluted with 3 x 5 mL of MeOH. Complementarily, between 1  
198 and 7 g of bulk sediments, depending on their composition, were extracted by pressurized liquid  
199 extraction (PLE) using an ASE-200 (Dionex, 100 °C and 1000 psi) and a mixture of MeOH/ H<sub>2</sub>O (1:1,  
200 v/v). For both methods, eluates were then dried under nitrogen flow and reconstituted in 3 mL of  
201 H<sub>2</sub>O. Solutions were filtered with a glass-fiber filter (GF/F, Whatman) prior to being stored at 5 °C  
202 before analysis. The recovery ratios of the investigated PPs (Table 1) during SPE and ASE were taken  
203 as those presented in Thiebault et al. (2017a, b), using the same protocol (Table S2).

204

205 *Table 1 : For each therapeutic molecule, abbreviation (Abb.), CAS-Number, formula, molecular weight (MW), charge state at*  
206 *pH = 7 (Charge), pKa, solubility and logD are specified. <sup>a</sup>: <https://pubchem.ncbi.nlm.nih.gov>; <sup>b</sup>: [www.drugbank.ca](http://www.drugbank.ca), <sup>c</sup>:*  
207 *[www.chemspider.com](http://www.chemspider.com).*

208 [Table 1]

209

### 210 3.3. Quantification procedure

211 Chromatographic separation was performed using an Ultimate 3000 RSLC (Rapid Separation Liquid  
212 Chromatography, Thermo Fisher Scientific) equipped with a Nucleodur C<sub>18</sub> Gravity Column (150 mm x  
213 2 mm; 3 µm, Macherey-Nagel) at the ICOA laboratory. Separation was carried out at 30 °C with two  
214 mobile phases: H<sub>2</sub>O (solvent A) and AcN (solvent B), both acidified with 0.1% of HCOOH. The total  
215 analysis time was 29 min with the elution gradient as follows: 95% to 5% of solvent A during 16 min,  
216 then 100% of B during 3 min, followed by a return to initial conditions (95% of A) during 10 min. The  
217 mass spectrometer was a TSQ Endura triple quadrupole equipment fitted with a heated electrospray  
218 ionization (H-ESI) interface (Thermo Fisher Scientific). The analytical performances of this method  
219 were developed in Thiebault et al. (2017a). For this work, only results with a signal-to-noise ratio  
220 higher than the limit of quantification (S/N > 10, Gracia-Lor et al., 2010; LOQ, Table S2) were used for  
221 interpretation. The sample analysis was systematically validated by a quality procedure comprising a  
222 calibration curve (6 standards), triplicates of 4 samples followed by one standard control and one  
223 blank (pure water), and a final calibration curve. For each PP, the identification parameters and  
224 quantification accuracy are detailed in Table S2. To ensure reproducibility of the quantification, mean  
225 variation coefficients were calculated by analysing triplicates of the standard solutions (Table S2).

226

## 227 III. Results and discussion

### 228 1. PPs occurrence and accumulation in the particulate phases

229 Among the 10 PPs investigated in the dissolved phase, 5 were quantified in W-CAP, whereas all the  
230 10 were quantified in W-PH. The PP diversity found in W-PH was therefore greater than in W-CAP, as  
231 were the PP concentrations (Fig. S2). In the W-CAP sample, SCA was the most abundant PP,

232 exhibiting a concentration of 2170 ng.L<sup>-1</sup>. TRI and CBZ exhibited medium contents with 290 and 120  
233 ng.L<sup>-1</sup>, respectively, and OXA and DIC were the least abundant with concentrations reaching 20 ng.L<sup>-1</sup>  
234 (Fig. S2). In the W-PH sample, TRA and ACM exhibited the highest concentrations, with 7.97 and 6.33  
235 µg.L<sup>-1</sup>, respectively (Fig. S2) and DIC, DIA and TRI were the least concentrated PPs, with 70, 80 and 10  
236 ng.L<sup>-1</sup>, respectively (Fig. S2).

237         The 10 PPs were also quantified at least once in the particulate phases. Quantified in two  
238 solid samples, TRA was the least frequently detected but also the most concentrated PP, ranging  
239 from 41.9 to 5811.9 ng.g<sup>-1</sup> (Fig. 2 and Table S4). Nevertheless, this high concentration appears  
240 surprising and should be considered with caution in view of the mean variations in its standard  
241 solutions (Table S2). ATE and COD exhibited low occurrences and concentrations in solid matrices,  
242 ranging from the limit of detection to 6.6 and 20.3 ng.g<sup>-1</sup>, respectively (Fig. 2 and Table S4). DIC and  
243 ACM were more frequently detected but their concentrations did not exceed 6.7 and 16.9 ng.g<sup>-1</sup>,  
244 respectively (Fig. 2 and Table S4). With high abundance and medium to high contents, TRI, DIA and  
245 OXA ranged from the limit of detection to 27.5, 39.6 and 141.4 ng.g<sup>-1</sup>, respectively (Fig. 2 and Table  
246 S4). CBZ and SCA were detected ubiquitously in the particulate phases, ranging from the limit of  
247 detection to 130.5 and 176.2 ng.g<sup>-1</sup>, respectively (Fig. 2 and Table S4).

248         The different PPs presented various occurrences and accumulation rates depending on their  
249 sensitivity to degradation processes, their solubility and their discharge rates. Consistently with its  
250 high degradability (Table 2) and solubility (Table 1), ACM exhibited low concentrations and was  
251 seldom detected (Fig. 2 and Table S4). Conversely, the low solubility of DIC and DIA (Table 1) allows  
252 their frequent detection in solid matrices (Table S4) in spite of their low concentrations measured in  
253 the dissolved phase (Fig. S2). The high detection frequencies and contents of OXA, TRI and CBZ in  
254 solid matrices were consistent with their moderate to high emissions (Fig. S2) and persistence (Table  
255 2). Moreover, OXA is the main metabolite of DIA (Baker et al., 2014). The ubiquity of SCA may be  
256 explained by its presence in all anthropogenic effluents at high levels, a behaviour already observed

257 in other hydrosystems (Togola et al., 2008; Huber et al., 2016). Nevertheless, despite their moderate  
258 to high concentrations in the sewage effluents (Fig. S2) and persistence (Table 2), ATE, COD and TRA  
259 were the least frequently detected PPs (Fig. 2 and Table S4), suggesting that other parameters  
260 regulate their adsorption.

261

262 *Table 2: Solid-water partition coefficient (K<sub>d</sub>), persistence and major degradation processes (BT: biotransformation; PY:*  
263 *photolysis) of the investigated analgesics, antibiotics, anti-inflammatory agents,  $\beta$ -blockers, opioids and psychotropics.*

264 [Table 2]

265 As PPs are organic molecules, sorption can occur through different types of chemical  
266 interactions with both organic and mineral surfaces, depending on the molecular charges (Martínez-  
267 Hernández et al., 2014; Svahn & Björklund, 2015). This speciation therefore plays a key role in PP  
268 adsorption and depends on the molecular structure and functional groups, varying with the pH value  
269 (Kümmerer, 2009). With pH values ranging from 6.9 to 9.5 (mean value of 7.5) in the Egoutier  
270 stream, ATE, COD and TRA were cationic, ACM, CBZ, DIA and OXA were neutral, and SCA and DIC  
271 were anionic (Table 1). Only the charge state of TRI may be influenced by such a range of pH values  
272 (Table 1), but it was generally mostly found as a neutral molecule (i.e. pK<sub>a</sub> = 7.2). The mineralogical  
273 parts of the Egoutier stream solid matrices were composed of quartz, calcite, albite, orthoclase and  
274 smectite (Table S3, Fig. S1), consistently with the geology of the catchment (Berger and Desprez,  
275 1969). Some exceptions such as the presence of aragonite in BLS collected at the CAP sewage  
276 effluent (BLS-2, Fig. S1) and the absence of smectite in BLS collected downstream the pond (BLS-13)  
277 were also observed (Table S3). All solid samples had sandy-loam textures and TOC levels ranging  
278 from 0.2 to 18.0% (Table S3). As clay minerals and organic matter are negatively charged, several  
279 studies have reported a good affinity of cationic PPs with particles (Ramil et al., 2010; Martínez-  
280 Hernández et al., 2014; Svahn & Björklund, 2015; Boulard et al., 2020). In the present study, cationic,  
281 neutral and anionic PPs exhibited a detection frequency of 10, 65 and 66%, respectively (Table S4).  
282 Their concentrations ranged from 3.8 to 20.3 ng.g<sup>-1</sup> (mean value of 9.9 ng.g<sup>-1</sup>), 1.2 to 141.4 ng.g<sup>-1</sup>

283 (mean value of  $19.6 \text{ ng.g}^{-1}$ ) and 4.4 to  $176.2 \text{ ng.g}^{-1}$  (mean value of  $33.0 \text{ ng.g}^{-1}$ ), respectively (Fig. 2 and  
284 Table S4). The lower occurrences of cationic PPs in this study in comparison with others might be  
285 explained by higher TOC levels (e.g. 33% in Svahn & Björklund (2015)) or by different solid matrix  
286 grain-sizes, resulting in variations in the particles' cation exchange capacity (CEC), not characterized  
287 in Svahn and Björklund (2015) and Boulard et al. (2020). Consequently, the limited clay contents in  
288 Egoutier solid matrices (Table S3) may explain this result. Moreover, as hydrophobic interactions are  
289 known to contribute significantly to PP sorption, PP lipophilicity (logD, Table 1) therefore represents  
290 another characteristic that plays a key role in their accumulation in particulate phases (Yamamoto et  
291 al., 2009). The moderate hydrophobicity (Table 1) of the cationic PPs investigated may also  
292 contribute to their lower adsorption.

293

## 294 2. Distribution of PPs between the different compartments of the aquatic environment

295 Cocktails observed in the particulate phases collected at sewage discharging sites and downstream  
296 were consistent with those quantified in WWTP effluents. All the PPs quantified in the CAP effluent  
297 (CBZ, OXA, TRI, DIC and SCA, Fig. S2) were detected at least once in the BLS and SPM sampled  
298 downstream (Fig. 2 and Table S4). In the PH effluent, all the PPs investigated were quantified (Fig. S2)  
299 and were also detected in SPM and BLS sampled downstream its discharge (Fig. 2 and Table S4).  
300 Therefore, the particulate phases well reflect the sets of PPs released in the dissolved phase.  
301 Surprisingly, CBZ, TRI and SCA were also detected in the first BLS sample collected in the upstream  
302 part of the watercourse (BLS-1, Fig. 2 and Table S4), suggesting another source at the locality present  
303 in the upstream part of the catchment (Fig. 1). All the neutral and anionic PPs were also detected in  
304 the BLS samples collected at stormwater discharge sites (BLS-2 and BLS-13b, Fig. 2 and Table S4). This  
305 observation implies leaks in the sewage networks. Except for ACM, only detected in the CAP  
306 stormwater effluent, the cocktails of PPs observed in the BLS collected at these discharges were  
307 similar (Fig. 2 and Table S4).

308

309 [Figure 2]

310 *Figure 2: Detection and concentrations of atenolol (ATE), codeine (COD), tramadol (TRA), acetaminophen (ACM),*  
311 *carbamazepine (CBZ), diazepam (DIA), oxazepam (OXA), trimethoprim (TRI), diclofenac (DIC) and salicylic acid (SCA) in bed-*  
312 *load sediment samples (BLS 1 to 14, Fig. 1) along the watercourse during the different campaigns. Pharmaceutical mean*  
313 *contents in suspended particulate matter samples (SPM 1 to 3, Fig. 1) and Eckman grabs (EG 1 to 3, Fig. 1) according to*  
314 *sampling period. Dotted lines represent stormwater and sewage water effluents, as well as the Beulie pond location.*

315

316 Despite the consistency between the dissolved and particulate phases, the different solid  
317 matrices demonstrated various rates of PP accumulation. SPM contents in PPs were less diversified  
318 and less concentrated than in BLS samples (Fig. 2 and Table S4). Indeed, the least frequently detected  
319 PPs, ACM, ATE, COD, TRA and DIC, were not quantified in SPM and each quantified PP presented a  
320 lower concentration in SPM than in BLS samples (Fig. 2 and Table S4). SCA was the most abundant  
321 and the most concentrated in both compartments but did not exceed  $32.5 \text{ ng.g}^{-1}$  in SPM, whereas it  
322 reached  $169.4 \text{ ng.g}^{-1}$  in BLS samples (Fig. 2 and Table S4). TRI was also frequently quantified in SPM,  
323 ranging from  $1.2$  to  $12.1 \text{ ng.g}^{-1}$  while reaching  $27.5 \text{ ng.g}^{-1}$  in BLS samples (Fig. 2 and Table S4). OXA,  
324 DIA and CBZ were quantified only once in SPM, in concentrations of  $24.3$ ,  $24.8$  and  $28.0 \text{ ng.g}^{-1}$ ,  
325 respectively, in contrast with BLS samples where they reached  $141.4$ ,  $39.6$  and  $130.5 \text{ ng.g}^{-1}$ ,  
326 respectively (Fig. 2 and Table S4). Total PP concentrations therefore did not exceed  $64 \text{ ng.g}^{-1}$  in SPM,  
327 but reached  $212 \text{ ng.g}^{-1}$  in BLS (without considering the exceptional levels of TRA in one sample, Table  
328 S4). This tendency is not in agreement with other studies, in which higher contents were measured in  
329 SPM than in BLS in both large and small hydrosystems (Da Silva et al., 2011; Aminot et al., 2015;  
330 Comtois-Marotte et al., 2017). These studies designated SPM as a better sorbent because of its  
331 higher levels of TOC and fine particles. However in our case, the sandy-clay soils of the Egoutier  
332 catchment (Soucémariadin & Verbèque, 2007) lead to a coarse texture of SPM (Table S3). SPM  
333 contents in TOC (ranging from  $4.2$  to  $6.6\%$ , Table S3) and fine particles ( $2-63 \mu\text{m}$ , ranging from  $0.7$  to  
334  $7.9\%$ , Table S3) were therefore far lower than those of the BLS samples collected in strong  
335 accumulation zones (reaching  $11.9\%$  of TOC and  $46.4\%$  of  $2-63 \mu\text{m}$  particles, Table S3). This different



336 composition explains the limited occurrence of less hydrophobic (Table 1) and persistent PPs (ACM,  
337 ATE, COD, TRA and DIC, Table 2) which were released in lower quantities (Fig. 2 and Table S4).  
338 Moreover, sorption regulates PP sedimentation or transportation at the catchment scale (Lahti &  
339 Oikari, 2011). This therefore suggests that lower interactions with SPM limit the transportation of  
340 ACM, ATE, COD, TRA and DIC over long distances.

341 As the Beulie pond sediments are mainly supplied by SPM decantation, these two  
342 compartments consequently exhibited similar fingerprints (Fig. 2 and Table S4). Despite the strong  
343 accumulation of organic matter (reaching 14.3%) and fine particles (2-63  $\mu\text{m}$ , reaching 72.1%, Table  
344 S3), only the PPs transported by SPM were also observed in the pond sediments (Fig. 2 and Table S4).  
345 ACM, ATE, COD, TRA and DIC were absent, suggesting lower transportation distances (Fig. 2 and  
346 Table S4) and retention zones within the catchment area. Moreover, lower concentrations in the EG  
347 samples than in BLS ones highlight particle accumulation in specific locations upstream of the pond  
348 (Fig. 2 and Table S4).

349

### 350 3. Spatial evolution of PPs in the particulate phases at the catchment scale

351 PP contents were highly variable in space and time. In order to have a high-resolution visualization of  
352 PPs' spatial evolution in particulate phases, the most persistent (Table 2) neutral and cationic PPs are  
353 represented in Figure 3. CBZ, DIA, OXA, ATE and COD were selected because of their concentrations  
354 in specific locations compared to ubiquitous PPs such as TRI and SCA. Moreover, they have known  
355 specific sources (Fig. S2) and exhibited good affinities with sediments. Total concentrations of these  
356 neutral and cationic PPs were therefore compared to TOC and fine particle levels (Fig. 3), as these  
357 fractions are the best sorbents (Aminot et al., 2015).

358 Thanks to their properties (hydrophobicity and persistence, Table 1 and 2), some of these PPs  
359 have already been used as tracers to qualify anthropogenic impacts on the environment (Warner et  
360 al., 2019). This is mainly the case for CBZ (Clara et al., 2004; Maskaoui & Zhou, 2010) and sometimes

361 OXA (Amalric et al., 2011). These more persistent PPs generally present lower spatio-temporal  
362 variabilities (Vystavna et al., 2013; Klaminder et al., 2015) but this trend was not observed in the  
363 present study (Fig. 3), as the particulate phase contents of every PP were highly variable in space and  
364 time (Fig. 2 and 3).

365

366 [Figure 3]

367 *Figure 3: Spatial evolution of persistent neutral (carbamazepine (CBZ), diazepam (DIA) and oxazepam (OXA)) and cationic*  
368 *molecules (atenolol (ATE) and codeine (COD)) total concentrations ( $\Sigma$ ) compared to the spatial evolution of total organic*  
369 *carbon (TOC) and fine particles (0 – 63  $\mu\text{m}$ ) percentages in suspended particulate matter (SPM 1 to 3, Fig. 1), bed-load (BLS 1*  
370 *to 14, Fig. 1) and Beulie pond sediments (mean contents of EG 1 to 3, Fig. 1).*

371

372 As already observed in other studies (Da Silva et al., 2011; Zhou & Broodbank, 2014; Aminot  
373 et al., 2015), high concentrations are observed at stormwater and WWTP effluent discharge sites  
374 (BLS-2, BLS-3 and BLS-7, Fig. 3). Nevertheless, specific accumulation zones also appeared  
375 downstream the PP sources (Fig. 3). In the upstream part of the catchment, between the CAP and PH  
376 effluents, PPs were always present but sparsely accumulated (Fig. 3), consistently with the low  
377 discharges measured in the CAP sewage waters (Fig. S2). This implies PP transportation, as observed  
378 in SPM samples, but only a small deposition of sediments in this part of the watercourse (Fig. 3).  
379 Indeed, low sediment thicknesses not exceeding 3 centimetres were measured during the sampling  
380 campaigns. Given the higher discharges of the PH effluent (Fig. S2), a stronger accumulation of PPs  
381 was unsurprisingly observed at its discharge (Fig. 3). Large accumulation zones also appeared  
382 between this effluent and the Beulie pond (Fig. 3) suggesting specific deposition zones in this part of  
383 the watercourse. Indeed, the specific PPs released by the PH (ATE and COD) as well as the most  
384 abundant PPs (CBZ, DIA and OXA) exhibited local concentrations downstream the PH (BLS-9 and BLS-  
385 11, Fig. 2 and 3) where sediment layers up to 67 centimetres thick were measured. These zones  
386 stored high proportions of fine particles (more than 46% of silt, Table S3) but PP amounts mainly  
387 followed the large variations in organic matter levels (Fig. 3). This was also observed in the Beulie

388 pond where PP distribution corresponds to that of the TOC (Fig. 3). The main PP-bearing phase also  
389 appeared to be organic matter. Besides, sorption processes for PPs such as CBZ were already  
390 demonstrated to be dominated by organic carbon-partitioning (Fairbairn et al., 2015).

391 Surprisingly, higher concentrations were generally observed in spring (Fig. 2 and 3). This can  
392 be linked to a lower efficiency of degradation processes, which may be limited by a minimal  
393 residence time at higher flow rates (Amalric et al., 2011) and in colder weather (Kim & Carlson,  
394 2007). However, an opposite trend was already observed as higher stormwater supplies in spring can  
395 dilute anthropogenic inputs (Kolpin et al., 2004) and adsorption can be enhanced by longer  
396 incubation times during low flow periods (Fairbairn et al., 2015). In our case, this tendency seems to  
397 be mainly driven by higher supplies in organic matter and fine particles (Fig. 3). It also illustrates  
398 seasonal variations of the sedimentary dynamic, as contaminated particles are transported and  
399 deposited at greater distances from PP sources in spring (Fig. 2 and 3).

400 In BLS collected downstream of the pond, PP concentrations were under the LOQ (Fig. 3;  
401 Table S4). Given the absence of WWTP effluents in the downstream part of the catchment, this  
402 evidences the storage capacity of the pond, which is also demonstrated by the decreasing TRI and  
403 SCA concentrations towards the outlet in SPM samples (Fig. 2, 3 and Table S4). Nevertheless, CBZ,  
404 OXA and COD presented higher concentrations in SPM collected downstream the pond than at the  
405 other sampling locations (Fig. 2, 3 and Table S4), illustrating the transport of some contaminated  
406 particles beyond the pond. This implies that particles are preferentially transported rather than  
407 deposited in this part of the watercourse. Indeed, except for those collected at the stormwater  
408 effluent (BLS-13b), BLS also demonstrated lower fine grain-size particles (2 – 63  $\mu\text{m}$ ) and TOC levels  
409 (Table S3 and Fig. 3). The catchment therefore has two distinct sedimentary dynamics with low  
410 transportation and strong accumulation zones in the upstream part, in contrast to high  
411 transportation and low deposition in the downstream part. At the outlet, SPM therefore represents

412 the highest risk by spreading PPs over long distances but thanks to the pond and the absence of new  
413 sewage water releases, contamination levels remained low.

414

#### 415 **IV. Conclusions**

416 All the PP investigated were quantified in the particulate phases, but in various abundances  
417 and levels. PP discharges and persistence drive their occurrences and the observed concentrations  
418 depend on the properties of both the released molecules (charge, persistence and lipophilicity) and  
419 the receiving environment (physico-chemical conditions, composition, and texture), as it drives the  
420 processes involved in adsorption. In the Egoutier stream, the low contents in clay grain-sizes, the  
421 relatively high persistence and discharges of neutral PPs led to the predominance of hydrophobic  
422 interactions with organic matter.

423 Particulate phases, mostly bed-load sediments, well represent the PP cocktails released into  
424 the aquatic environment. The different particulate compartments accumulate PPs in different ways.  
425 Depending on the composition of the suspended particulate matter, the prevalence of neutral PPs  
426 and their sorption to organic matter in the Egoutier stream, these solid matrices exhibit low  
427 interaction with cationic molecules. The latter are consequently transported over smaller distances  
428 and not stored in the pond sediments. In the same way, the most degradable PPs are sparsely  
429 accumulated in bed-load sediments, but not in suspended solids and pond sediments.

430 In accordance with these conclusions, the spatial distribution of PPs in particulate phases at  
431 the Egoutier scale mainly reflects the discharge sites. In addition, the most abundantly adsorbed and  
432 persistent molecules highlight the sedimentary dynamic of the watercourse, in particular that of  
433 organic matter. Sedimentary deposition areas thus strongly stored the molecules because of large  
434 deposits of organic matter. These accumulation zones are mainly located upstream of the pond,  
435 evidencing the strong storage capacity of the Beulie pond and a preferential transportation over  
436 deposition in the downstream part of the catchment. Seasonal variations also appear to be driven by

437 limited degradation processes and/or higher supplies in organic matter. Moreover, PPs can be  
438 transported over longer distances in periods of high flows.

439 To go further, with such an anthropogenic gradient and point sources of sewage and storm  
440 waters, the Egoutier stream could be a favourable place to investigate the spatial distribution of  
441 other types of contaminants in the different particulate compartments. Moreover, the sediments of  
442 the Beulie pond, which has been in place for centuries, could represent an archive of past  
443 contamination levels.

444

#### 445 **Acknowledgments**

446 This work and the PhD grant of L. Ledieu were funded by the Région Centre Val de Loire (France) and  
447 are part of the Academic Initiative Project MOSAIC led by A. Simonneau. This work was also  
448 supported by a grant overseen by the French National Research Agency (ANR) as part of the  
449 “Investments d’Avenir” Programme LabEx VOLTAIRE, 10-LABX-0100. This study benefited from  
450 collaboration with the GÉHCO laboratory and J-P. Bakyonoo is warmly thanked for his help during  
451 analysis. We are grateful to P. Penhoud and R. Boscardin for analytical and technical support in XRD  
452 analysis and Rock Eval pyrolysis, respectively. L. Baude, H. Alphonse and S. Picault are thanked for the  
453 sampling authorization at the G. Daumézon hospital and in the town of Semoy. We acknowledge M.  
454 Hatton and L. Le Forestier during SPM and BLS sampling as well as A. Foucher for support during the  
455 Beulie pond interface sediments survey.

#### 456 **V. References**

- 457 Agunbiade, F. O., & Moodley, B. (2016). Occurrence and distribution pattern of acidic  
458 pharmaceuticals in surface water, wastewater, and sediment of the Msunduzi River, Kwazulu-Natal,  
459 South Africa. *Environmental Toxicology and Chemistry*, 35(1), 36-46.
- 460 Al-Khazrajy, O. S., & Boxall, A. B. (2016). Impacts of compound properties and sediment  
461 characteristics on the sorption behaviour of pharmaceuticals in aquatic systems. *Journal of*  
462 *hazardous materials*, 317, 198-209.

- 463 Amalric, L., Togola, A., & Lopez, B. (2011). Suivi des résidus de substances pharmaceutiques dans les  
464 systèmes aquatiques du bassin Loire-Bretagne. Rapport final. BRGM/RP-59371-FR.
- 465 Aminot, Y., Litrico, X., Chambolle, M., Arnaud, C., Pardon, P., & Budzinski, H. (2015). Development  
466 and application of a multi-residue method for the determination of 53 pharmaceuticals in water,  
467 sediment, and suspended solids using liquid chromatography-tandem mass spectrometry. *Analytical  
468 and bioanalytical chemistry*, 407(28), 8585-8604.
- 469 Ashton, D., Hilton, M., & Thomas, K. V. (2004). Investigating the environmental transport of human  
470 pharmaceuticals to streams in the United Kingdom. *Science of the total environment*, 333(1-3), 167-  
471 184.
- 472 Baena-Nogueras, R. M., González-Mazo, E., & Lara-Martín, P. A. (2017). Degradation kinetics of  
473 pharmaceuticals and personal care products in surface waters: photolysis vs biodegradation. *Science  
474 of the total environment*, 590, 643-654.
- 475 Baker, D. R., Barron, L., & Kasprzyk-Hordern, B. (2014). Illicit and pharmaceutical drug consumption  
476 estimated via wastewater analysis. Part A: chemical analysis and drug use estimates. *Science of the  
477 total environment*, 487, 629-641.
- 478 Baranowska, I., & Kowalski, B. (2010). The development of SPE procedures and an UHPLC method for  
479 the simultaneous determination of ten drugs in water samples. *Water, Air, & Soil Pollution*, 211(1-4),  
480 417-425.
- 481 Behar, F., Beaumont, V., & Penteadó, H. D. B. (2001). Rock-Eval 6 technology: performances and  
482 developments. *Oil & Gas Science and Technology*, 56(2), 111-134.
- 483 Bendz, D., Paxéus, N. A., Ginn, T. R., & Loge, F. J. (2005). Occurrence and fate of pharmaceutically  
484 active compounds in the environment, a case study: Höje River in Sweden. *Journal of hazardous  
485 materials*, 122(3), 195-204.
- 486 Berger, G., Desprez, N. (1969). Carte de France (1/50 000), "Orléans (363)". BRGM, Orléans.
- 487 Boreen, A. L., Arnold, W. A., & McNeill, K. (2003). Photodegradation of pharmaceuticals in the  
488 aquatic environment: a review. *Aquatic Sciences*, 65(4), 320-341.
- 489 Boulard, L., Dierkes, G., Schlüsener, M. P., Wick, A., Koschorreck, J., & Ternes, T. A. (2020). Spatial  
490 distribution and temporal trends of pharmaceuticals sorbed to suspended particulate matter of  
491 German rivers. *Water Research*, 171, 115366.
- 492 Calisto, V., & Esteves, V. I. (2009). Psychiatric pharmaceuticals in the environment. *Chemosphere*,  
493 77(10), 1257-1274.
- 494 Campos-Mañas, M. C., Ferrer, I., Thurman, E. M., & Agüera, A. (2018). Opioid occurrence in  
495 environmental water samples—a review. *Trends in Environmental Analytical Chemistry*, 20, e00059.
- 496 Clara, M., Strenn, B., & Kreuzinger, N. (2004). Carbamazepine as a possible anthropogenic marker in  
497 the aquatic environment: investigations on the behaviour of carbamazepine in wastewater  
498 treatment and during groundwater infiltration. *Water research*, 38(4), 947-954.
- 499 Comtois-Marotte, S., Chappuis, T., Duy, S. V., Gilbert, N., Lajeunesse, A., Taktek, S., Desrosiers, M.,  
500 Veilleux, E., & Sauvé, S. (2017). Analysis of emerging contaminants in water and solid samples using  
501 high resolution mass spectrometry with a Q Exactive orbital ion trap and estrogenic activity with YES-  
502 assay. *Chemosphere*, 166, 400-411.
- 503 Da Silva, B. F., Jelić, A., López-Serna, R., Mozeto, A. A., Petrovic, M., & Barceló, D. (2011). Occurrence  
504 and distribution of pharmaceuticals in surface water, suspended solids and sediments of the Ebro  
505 river basin, Spain. *Chemosphere*, 85(8), 1331-1339.

- 506 De Castro-Català, N., Kuzmanovic, M., Roig, N., Sierra, J., Ginebreda, A., Barceló, D., Pérez, S.,  
507 Petrovic, M., Picó, Y., Schuhmacher, M., & Muñoz, I. (2016). Ecotoxicity of sediments in rivers:  
508 Invertebrate community, toxicity bioassays and the toxic unit approach as complementary  
509 assessment tools. *Science of the total environment*, 540, 297-306.
- 510 Dobor, J., Varga, M., & Zárny, G. (2012). Biofilm controlled sorption of selected acidic drugs on river  
511 sediments characterized by different organic carbon content. *Chemosphere*, 87(2), 105-110.
- 512 Fairbairn, D. J., Karpuzcu, M. E., Arnold, W. A., Barber, B. L., Kaufenberg, E. F., Koskinen, W. C., Novak,  
513 P. J., Rice, P. J., & Swackhamer, D. L. (2015). Sediment–water distribution of contaminants of  
514 emerging concern in a mixed use watershed. *Science of the total environment*, 505, 896-904.
- 515 Feitosa-Felizzola, J., & Chiron, S. (2009). Occurrence and distribution of selected antibiotics in a small  
516 Mediterranean stream (Arc River, Southern France). *Journal of Hydrology*, 364(1-2), 50-57.
- 517 Fekadu, S., Alemayehu, E., Dewil, R., & Van der Bruggen, B. (2019). Pharmaceuticals in freshwater  
518 aquatic environments: A comparison of the African and European challenge. *Science of the Total  
519 Environment*, 654, 324-337.
- 520 Gracia-Lor, E., Sancho, J. V., & Hernández, F. (2010). Simultaneous determination of acidic, neutral  
521 and basic pharmaceuticals in urban wastewater by ultra high-pressure liquid chromatography-  
522 tandem mass spectrometry. *Journal of Chromatography A*, 1217(5), 622-632.
- 523 Hignite, C., & Azarnoff, D. L. (1977). Drugs and drug metabolites as environmental contaminants:  
524 chlorophenoxyisobutyrate and salicylic acid in sewage water effluent. *Life Sciences*, 20(2), 337-341.
- 525 Huber, S., Remberger, M., Kaj, L., Schlabach, M., Jörundsdóttir, H. Ó., Vester, J., Arnórsson, M.,  
526 Mortensen, I., Swartson R., & Dam, M. (2016). A first screening and risk assessment of  
527 pharmaceuticals and additives in personal care products in waste water, sludge, recipient water and  
528 sediment from Faroe Islands, Iceland and Greenland. *Science of The Total Environment*, 562, 13-25.
- 529 Hughes, S. R., Kay, P., & Brown, L. E. (2013). Global synthesis and critical evaluation of  
530 pharmaceutical data sets collected from river systems. *Environmental science & technology*, 47(2),  
531 661-677.
- 532 Inglada, J., Vincent, A., Thierion, V. (2017). Theia OSO Land Cover Map 2106 [Data set]. Zenodo.
- 533 Jelić, A., Petrović, M., & Barceló, D. (2009). Multi-residue method for trace level determination of  
534 pharmaceuticals in solid samples using pressurized liquid extraction followed by liquid  
535 chromatography/quadrupole-linear ion trap mass spectrometry. *Talanta*, 80(1), 363-371.
- 536 Jjemba, P. K. (2006). Excretion and ecotoxicity of pharmaceutical and personal care products in the  
537 environment. *Ecotoxicology and environmental safety*, 63(1), 113-130.
- 538 Kaushal, S. S., Wood, K. L., Galella, J. G., Gion, A. M., Haq, S., Goodling, P. J., Haviland, K. A., Reimer, J.  
539 E., Morel, C. J., Wessel, B., Nguyen, W., Hollingsworth, J. W., Mei, K., Leal, J., Widmer, J., Sharif, R.,  
540 Mayer, P. M., Newcomer Johnson, T. A., Delaney Newcomb, K., Smith, E. & Belt, K. T. (2020). Making  
541 'chemical cocktails'—Evolution of urban geochemical processes across the Periodic Table of elements.  
542 *Applied Geochemistry*, 119, 104632.
- 543 Kim, S. C., & Carlson, K. (2007). Temporal and spatial trends in the occurrence of human and  
544 veterinary antibiotics in aqueous and river sediment matrices. *Environmental science & technology*,  
545 41(1), 50-57.
- 546 Klaminder, J., Brodin, T., Sundelin, A., Anderson, N. J., Fahlman, J., Jonsson, M., & Fick, J. (2015).  
547 Long-term persistence of an anxiolytic drug (oxazepam) in a large freshwater lake. *Environmental  
548 science & technology*, 49(17), 10406-10412.

- 549 Koba, O., Grabicova, K., Cervený, D., Turek, J., Kolarova, J., Randak, T., Zlabek, V., & Grabic, R. (2018).  
550 Transport of pharmaceuticals and their metabolites between water and sediments as a further  
551 potential exposure for aquatic organisms. *Journal of hazardous materials*, 342, 401-407.
- 552 Kolpin, D. W., Skopec, M., Meyer, M. T., Furlong, E. T., & Zaugg, S. D. (2004). Urban contribution of  
553 pharmaceuticals and other organic wastewater contaminants to streams during differing flow  
554 conditions. *Science of the Total Environment*, 328(1-3), 119-130.
- 555 Koumaki, E., Mamais, D., Noutsopoulos, C., Nika, M. C., Bletsou, A. A., Thomaidis, N. S., Eftaxias, A., &  
556 Stratogianni, G. (2015). Degradation of emerging contaminants from water under natural sunlight:  
557 The effect of season, pH, humic acids and nitrate and identification of photodegradation by-products.  
558 *Chemosphere*, 138, 675-681.
- 559 Kümmerer, K. (2009). The presence of pharmaceuticals in the environment due to human use—  
560 present knowledge and future challenges. *Journal of environmental management*, 90(8), 2354-2366.
- 561 Lahti, M., & Oikari, A. (2011). Pharmaceuticals in settleable particulate material in urban and non-  
562 urban waters. *Chemosphere*, 85(5), 826-831.
- 563 Lam, M. W., Young, C. J., Brain, R. A., Johnson, D. J., Hanson, M. A., Wilson, C. J., Richards, S. M.,  
564 Solomon, K. R., & Mabury, S. A. (2004). Aquatic persistence of eight pharmaceuticals in a microcosm  
565 study. *Environmental Toxicology and Chemistry: An International Journal*, 23(6), 1431-1440.
- 566 Leem (2020). Bilan économique, Edition 2020. Les entreprises du médicament.
- 567 Lin, A. Y. C., Lin, Y. C., & Lee, W. N. (2014). Prevalence and sunlight photolysis of controlled and  
568 chemotherapeutic drugs in aqueous environments. *Environmental pollution*, 187, 170-181.
- 569 Liu, Q. T., & Williams, H. E. (2007). Kinetics and degradation products for direct photolysis of  $\beta$ -  
570 blockers in water. *Environmental science & technology*, 41(3), 803-810.
- 571 Löffler, D., Römbke, J., Meller, M., & Ternes, T. A. (2005). Environmental fate of pharmaceuticals in  
572 water/sediment systems. *Environmental science & technology*, 39(14), 5209-5218.
- 573 Loos, R., Gawlik, B. M., Locoro, G., Rimaviciute, E., Contini, S., & Bidoglio, G. (2009). EU-wide survey  
574 of polar organic persistent pollutants in European river waters. *Environmental pollution*, 157(2), 561-  
575 568.
- 576 Martínez-Hernández, V., Meffe, R., Herrera, S., Arranz, E., & de Bustamante, I. (2014).  
577 Sorption/desorption of non-hydrophobic and ionisable pharmaceutical and personal care products  
578 from reclaimed water onto/from a natural sediment. *Science of the total environment*, 472, 273-281.
- 579 Maskaoui, K., & Zhou, J. L. (2010). Colloids as a sink for certain pharmaceuticals in the aquatic  
580 environment. *Environmental Science and Pollution Research*, 17(4), 898-907.
- 581 Mompelat, S., Thomas, O., & Le Bot, B. (2011). Contamination levels of human pharmaceutical  
582 compounds in French surface and drinking water. *Journal of Environmental Monitoring*, 13(10),  
583 2929-2939.
- 584 Müller, M. E., Escher, B. I., Schwientek, M., Werneburg, M., Zarfl, C., & Zwiener, C. (2018). Combining  
585 in vitro reporter gene bioassays with chemical analysis to assess changes in the water quality along  
586 the Ammer River, Southwestern Germany. *Environmental sciences Europe*, 30(1), 20.
- 587 Muñoz, J. F. (2009). Résidus de médicaments dans les milieux aquatiques: besoins et outils pour la  
588 surveillance, évaluation des risques. Rapport Onema.



- 589 Nunes, C. N., Dos Anjos, V. E., & Quináia, S. P. (2019). Are there pharmaceutical compounds in  
590 sediments or in water? Determination of the distribution coefficient of benzodiazepine drugs in  
591 aquatic environment. *Environmental Pollution*, 251, 522-529.
- 592 Petrie, B., Barden, R., & Kasprzyk-Hordern, B. (2015). A review on emerging contaminants in  
593 wastewaters and the environment: current knowledge, understudied areas and recommendations  
594 for future monitoring. *Water research*, 72, 3-27.
- 595 Ramil, M., El Aref, T., Fink, G., Scheurer, M., & Ternes, T. A. (2010). Fate of beta blockers in aquatic-  
596 sediment systems: sorption and biotransformation. *Environmental science & technology*, 44(3), 962-  
597 970.
- 598 Scheytt, T., Mersmann, P., Lindstädt, R., & Heberer, T. (2005). Determination of sorption coefficients  
599 of pharmaceutically active substances carbamazepine, diclofenac, and ibuprofen, in sandy sediments.  
600 *Chemosphere*, 60(2), 245-253.
- 601 Schultz, M. M., Furlong, E. T., Kolpin, D. W., Werner, S. L., Schoenfuss, H. L., Barber, L. B., Blazer, V. S.,  
602 Norris, D. O., & Vajda, A. M. (2010). Antidepressant pharmaceuticals in two US effluent-impacted  
603 streams: occurrence and fate in water and sediment, and selective uptake in fish neural tissue.  
604 *Environmental science & technology*, 44(6), 1918-1925.
- 605 Simonneau, A., Simonneau, J., Hatton, M. (2020) Granulometric pAssive Capture of dissolved matter  
606 & Sediment (GEACOS), Zenodo.
- 607 Soucémariadin L., Verbèque, B. (2007). Notice explicative de la carte des sols de Orléans (1/50  
608 000). Chambre d'agriculture du Loiret, Orléans.
- 609 Stein, K., Ramil, M., Fink, G., Sander, M., & Ternes, T. A. (2008). Analysis and sorption of psychoactive  
610 drugs onto sediment. *Environmental science & technology*, 42(17), 6415-6423.
- 611 Sumpter, J. P., Jobling, S., & Tyler, C. R. (1996). Oestrogenic substances in the aquatic environment  
612 and their potential impact on animals, particularly fish. *Seminar series-society for experimental*  
613 *biology*, 57, 205-224.
- 614 Svahn, O., & Björklund, E. (2015). Describing sorption of pharmaceuticals to lake and river sediments,  
615 and sewage sludge from UNESCO Biosphere Reserve Kristianstads Vattenrike by chromatographic  
616 asymmetry factors and recovery measurements. *Journal of chromatography A*, 1415, 73-82.
- 617 Tamtam, F., Mercier, F., Le Bot, B., Eurin, J., Dinh, Q. T., Clément, M., & Chevreuil, M. (2008).  
618 Occurrence and fate of antibiotics in the Seine River in various hydrological conditions. *Science of the*  
619 *Total Environment*, 393(1), 84-95.
- 620 Tang, J., Wang, S., Fan, J., Long, S., Wang, L., Tang, C., Tam, N. F., & Yang, Y. (2019). Predicting  
621 distribution coefficients for antibiotics in a river water-sediment using quantitative models based on  
622 their spatiotemporal variations. *Science of the Total Environment*, 655, 1301-1310.
- 623 Thiebault, T., Boussafir, M., Le Forestier, L., Le Milbeau, C., Monnin, L., & Guégan, R. (2016).  
624 Competitive adsorption of a pool of pharmaceuticals onto a raw clay mineral. *RSC advances*, 6(69),  
625 65257-65265.
- 626 Thiebault, T., Fougère, L., Destandau, E., Réty, M., & Jacob, J. (2017a). Temporal dynamics of human-  
627 excreted pollutants in wastewater treatment plant influents: Toward a better knowledge of mass  
628 load fluctuations. *Science of the Total Environment*, 596, 246-255.
- 629 Thiebault, T., Chassiot, L., Fougère, L., Destandau, E., Simonneau, A., Van Beek, P., Souhaut, M., &  
630 Chapron, E. (2017b). Record of pharmaceutical products in river sediments: a powerful tool to assess  
631 the environmental impact of urban management?. *Anthropocene*, 18, 47-56.

- 632 Thiebault, T. (2020). Raw and modified clays and clay minerals for the removal of pharmaceutical  
633 products from aqueous solutions: State of the art and future perspectives. *Critical Reviews in*  
634 *Environmental Science and Technology*, 50, 1451-1514.
- 635 Togola, A., Amalric, L., & Bristeau, S. (2008). Les substances pharmaceutiques dans les eaux  
636 superficielles et souterraines du bassin Loire-Bretagne. Rapport final, BRGM/RP-55578-FR.
- 637 Vazquez-Roig, P., Segarra, R., Blasco, C., Andreu, V., & Picó, Y. (2010). Determination of  
638 pharmaceuticals in soils and sediments by pressurized liquid extraction and liquid chromatography  
639 tandem mass spectrometry. *Journal of Chromatography A*, 1217(16), 2471-2483.
- 640 Vazquez-Roig, P., Andreu, V., Blasco, C., & Picó, Y. (2012). Risk assessment on the presence of  
641 pharmaceuticals in sediments, soils and waters of the Pego–Oliva Marshlands (Valencia, eastern  
642 Spain). *Science of the Total Environment*, 440, 24-32.
- 643 Verlicchi, P., Galletti, A., Petrovic, M., & Barceló, D. (2010). Hospital effluents as a source of emerging  
644 pollutants: an overview of micropollutants and sustainable treatment options. *Journal of Hydrology*,  
645 389(3-4), 416-428.
- 646 Vystavna, Y., Le Coustumer, P., & Huneau, F. (2013). Monitoring of trace metals and pharmaceuticals  
647 as anthropogenic and socio-economic indicators of urban and industrial impact on surface waters.  
648 *Environmental monitoring and assessment*, 185(4), 3581-3601.
- 649 Warner, W., Licha, T., & Nödler, K. (2019). Qualitative and quantitative use of micropollutants as  
650 source and process indicators. A review. *Science of the total environment*, 686, 75-89.
- 651 Wilkinson, J. L., Hooda, P. S., Swinden, J., Barker, J., & Barton, S. (2017). Spatial distribution of organic  
652 contaminants in three rivers of Southern England bound to suspended particulate material and  
653 dissolved in water. *Science of the Total Environment*, 593, 487-497.
- 654 Yamamoto, H., Nakamura, Y., Moriguchi, S., Nakamura, Y., Honda, Y., Tamura, I., Hirate, Y., Hayashi,  
655 A., & Sekizawa, J. (2009). Persistence and partitioning of eight selected pharmaceuticals in the  
656 aquatic environment: laboratory photolysis, biodegradation, and sorption experiments. *Water*  
657 *research*, 43(2), 351-362.
- 658 Yu, J. T., Bouwer, E. J., & Coelhan, M. (2006). Occurrence and biodegradability studies of selected  
659 pharmaceuticals and personal care products in sewage effluent. *Agricultural water management*,  
660 86(1-2), 72-80.
- 661 Zhou, J., & Broodbank, N. (2014). Sediment-water interactions of pharmaceutical residues in the river  
662 environment. *Water research*, 48, 61-70.

## SPATIAL DISTRIBUTION OF PHARMACEUTICALS WITHIN THE PARTICULATE PHASES OF A PERI-URBAN STREAM

L. LEDIEU<sup>1</sup>, A. SIMONNEAU<sup>1</sup>, T. THIEBAULT<sup>2</sup>, L. FOUGERE<sup>3</sup>, E. DESTANDAU<sup>3</sup>, O. CERDAN<sup>4</sup>, F. LAGGOUN<sup>1</sup><sup>1</sup>Univ. Orléans, CNRS, BRGM, ISTO, UMR 7327, F-45071, Orléans, France ([lauriane.ledieu@cnrs-orleans.fr](mailto:lauriane.ledieu@cnrs-orleans.fr), [anaelle.simonneau@univ-orleans.fr](mailto:anaelle.simonneau@univ-orleans.fr))<sup>2</sup>EPHE, PSL University, UMR 7619 METIS (SU, CNRS, EPHE), 4 Place Jussieu, F-75005, Paris, France<sup>3</sup>Univ Orleans, CNRS, ICOA, UMR 7311, 45067 Orleans, France<sup>4</sup>BRGM, 3 avenue Claude Guillemin, 45060 Orléans, France

Table 1 : For each therapeutic molecule, abbreviation (Abb.), CAS-Number, formula, molecular weight (MW), charge state at pH = 7 (Charge), pKa, solubility and logD are specified. <sup>a</sup>: <https://pubchem.ncbi.nlm.nih.gov/>; <sup>b</sup>: [www.drugbank.ca](http://www.drugbank.ca), <sup>c</sup>: [www.chemspider.com](http://www.chemspider.com).

Therapeutic group	Name	Abb.	CAS-Number <sup>a</sup>	Formula <sup>b</sup>	Mw (g.mol <sup>-1</sup> ) <sup>b</sup>	Charge <sup>b</sup>	pKa <sup>b</sup>	Solubility (mg.mL <sup>-1</sup> ) <sup>b</sup>	LogD <sup>c</sup>
Analgesics	Acetaminophen	ACM	103-90-2	C <sub>8</sub> H <sub>9</sub> NO <sub>2</sub>	151.16	0	9.4	4.15	0.40
	Salicylic acid	SCA	69-72-7	C <sub>7</sub> H <sub>6</sub> O <sub>3</sub>	138.12	-	3.5	11.3	-0.77
Antibiotics	Trimethoprim	TRI	738-70-5	C <sub>14</sub> H <sub>18</sub> N <sub>4</sub> O <sub>3</sub>	290.32	0/+	7.2	0.62	-1.15
Non-steroidal anti-inflammatory agents	Diclofenac	DIC	15307-86-5	C <sub>14</sub> H <sub>11</sub> Cl <sub>2</sub> NO <sub>2</sub>	296.15	-	4.2	0.005	1.37
β-blockers	Atenolol	ATE	29122-68-7	C <sub>14</sub> H <sub>22</sub> N <sub>2</sub> O <sub>3</sub>	266.34	+	9.6	0.43	-1.85
Opioids	Codeine	COD	76-57-3	C <sub>18</sub> H <sub>21</sub> NO <sub>3</sub>	299.36	+	8.2	0.58	0.28
	Tramadol	TRA	27203-92-5	C <sub>16</sub> H <sub>25</sub> NO <sub>2</sub>	263.38	+	9.4	0.75	0.52
Anticonvulsants	Carbamazepine	CBZ	298-46-4	C <sub>15</sub> H <sub>12</sub> N <sub>2</sub> O	236.27	0	13.9	0.15	0.29
Psychotropics	Diazepam	DIA	439-14-5	C <sub>16</sub> H <sub>13</sub> ClN <sub>2</sub> O	284.74	0	3.4	0.01	2.92
	Oxazepam	OXA	604-75-1	C <sub>15</sub> H <sub>11</sub> ClN <sub>2</sub> O <sub>2</sub>	286.71	0	1.5	0.088	1.50

Table 2: Solid-water partition coefficient ( $K_d$ ), persistence and major degradation processes (BT: biotransformation; PY: photolysis) of the investigated analgesics, antibiotics, anti-inflammatory agents,  $\beta$ -blockers, opioids and psychotropics.

Therapeutic group	Molecule	$K_d$ (L/kg)	Persistence	Major degradation processes
Analgesics	ACM	0.5 – 7.7 <sup>p,v</sup>	Low <sup>l,w</sup>	BT <sup>l,w</sup>
	SCA	3.6 – 28.2 <sup>a</sup>	Low <sup>c</sup>	Both <sup>c</sup>
Antibiotics	TRI	18.84– 104.6 <sup>u</sup>	High <sup>d,l</sup>	Debated <sup>c,l</sup>
Non-steroidal anti-inflammatory agents	DIC	0.2 – 107.1 <sup>a,f,h</sup>	Low <sup>b</sup>	PY <sup>e,k</sup>
$\beta$ -blockers	ATE	1.3 – 24.6 <sup>f,v</sup>	Moderate <sup>d,s</sup>	BT <sup>n,s,v</sup>
Opioids	COD	2.1 – 14.1 <sup>t</sup>	High <sup>i</sup>	PY <sup>m</sup>
	TRA	23.7 – 63.1 <sup>f,j</sup>	Moderate <sup>q</sup>	PY <sup>q</sup>
Psychotropics	CBZ	0.1 – 23.9 <sup>j,t,v</sup>	High <sup>d,l</sup>	PY <sup>l</sup>
	DIA	2.3 – 12 <sup>r</sup>	High <sup>o</sup>	PY <sup>e,g</sup>
	OXA	2 – 38.5 <sup>f,t</sup>	Moderate <sup>o</sup>	BT <sup>g</sup>

References: <sup>a</sup>Agunbiade and Moodley, 2015; <sup>b</sup>Ashton et al., 2004; <sup>c</sup>Baena-Nogueras et al., 2017; <sup>d</sup>Bendz et al., 2005; <sup>e</sup>Boreen et al., 2003; <sup>f</sup>Boulard et al., 2020; <sup>g</sup>Calisto and Esteves, 2009; <sup>h</sup>Dobor et al., 2012; <sup>i</sup>Fekadu et al., 2019; <sup>j</sup>Koba et al. 2018; <sup>k</sup>Koumaki et al., 2015; <sup>l</sup>Lam et al., 2004; <sup>m</sup>Lin et al., 2014; <sup>n</sup>Liu et Williams, 2007; <sup>o</sup>Löffler et al., 2005; <sup>p</sup>Martinez-Hernández et al., 2014; <sup>q</sup>Müller et al., 2018; <sup>r</sup>Nunes et al., 2019; <sup>s</sup>Ramil et al., 2010; <sup>t</sup>Stein et al., 2008; <sup>u</sup>Tang et al., 2019; <sup>v</sup>Yamamoto et al., 2009; <sup>w</sup>Yu et al., 2006

## SPATIAL DISTRIBUTION OF PHARMACEUTICALS WITHIN THE PARTICULATE PHASES OF A PERI-URBAN STREAM

L. LEDIEU<sup>1</sup>, A. SIMONNEAU<sup>1</sup>, T. THIEBAULT<sup>2</sup>, L. FOUGERE<sup>3</sup>, E. DESTANDAU<sup>3</sup>, O. CERDAN<sup>4</sup>, F. LAGGOUN<sup>1</sup>

<sup>1</sup>Univ. Orléans, CNRS, BRGM, ISTO, UMR 7327, F-45071, Orléans, France (lauriane.ledieu@cnrs-orleans.fr, anaelle.simonneau@univ-orleans.fr)

<sup>2</sup>EPHE, PSL University, UMR 7619 METIS (SU, CNRS, EPHE), 4 Place Jussieu, F-75005, Paris, France

<sup>3</sup>Univ Orléans, CNRS, ICOA, UMR 7311, 45067 Orléans, France

<sup>4</sup>BRGM, 3 avenue Claude Guillemin, 45060 Orléans, France

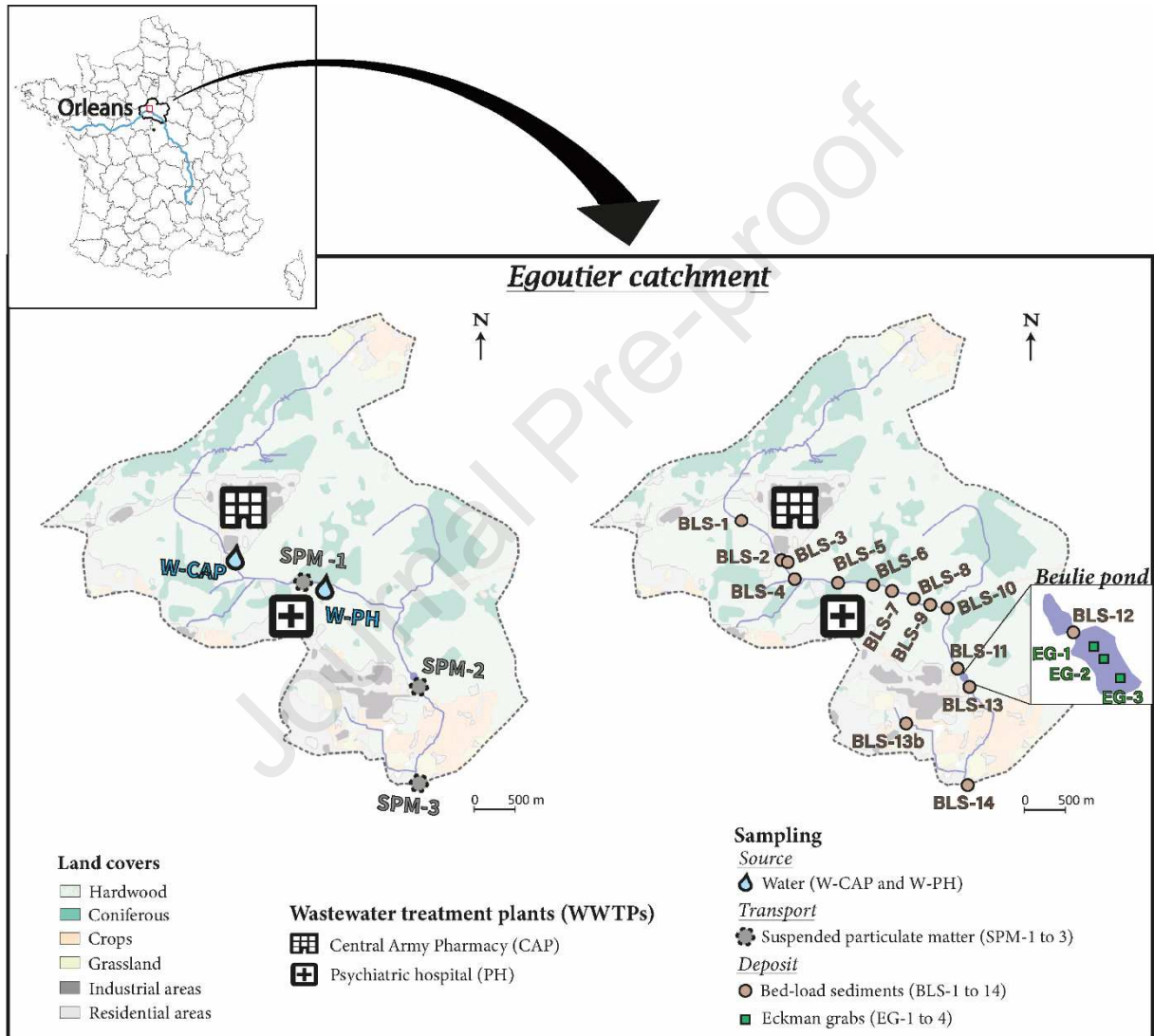


Figure 1 : Description of the upstream part of the Egoutier catchment area studied here with land covers (Inglada et al., 2017). Locations of the two sewage water effluents from the central army pharmacy (CAP) and the psychiatric hospital (PH) and of the samples collected in the dissolved phase (W), in suspended particulate matter (SPM), bed-load (BLS) and Beulie pond sediments (EG).

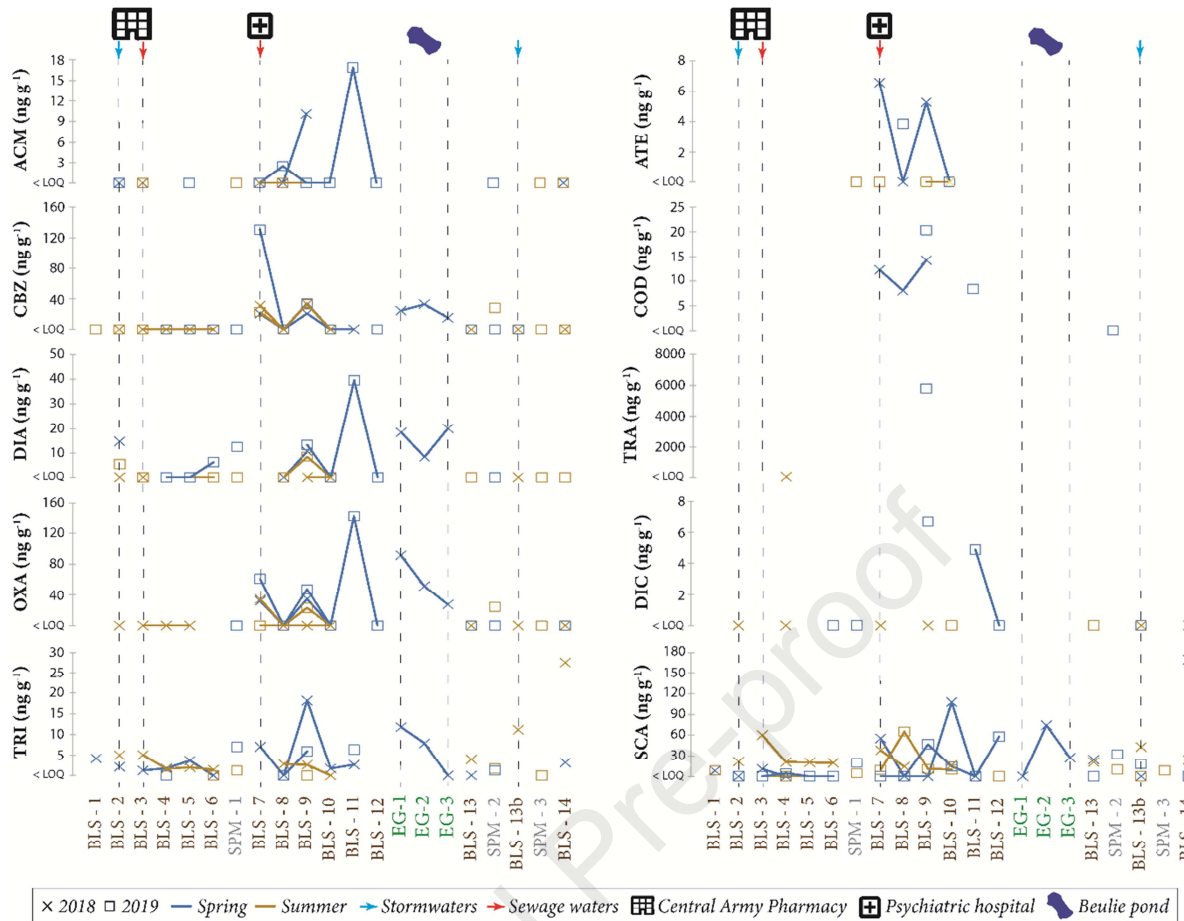


Figure 2: Detection and concentrations of atenolol (ATE), codeine (COD), tramadol (TRA), acetaminophen (ACM), carbamazepine (CBZ), diazepam (DIA), oxazepam (OXA), trimethoprim (TRI), diclofenac (DIC) and salicylic acid (SCA) in bed-load sediment samples (BLS 1 to 14, Fig. 1) along the watercourse during the different campaigns. Pharmaceutical mean contents in suspended particulate matter samples (SPM 1 to 3, Fig. 1) and Eckman grabs (EG 1 to 3, Fig. 1) according to sampling period. Dotted lines represent stormwater and sewage water effluents, as well as the Beulie pond location.

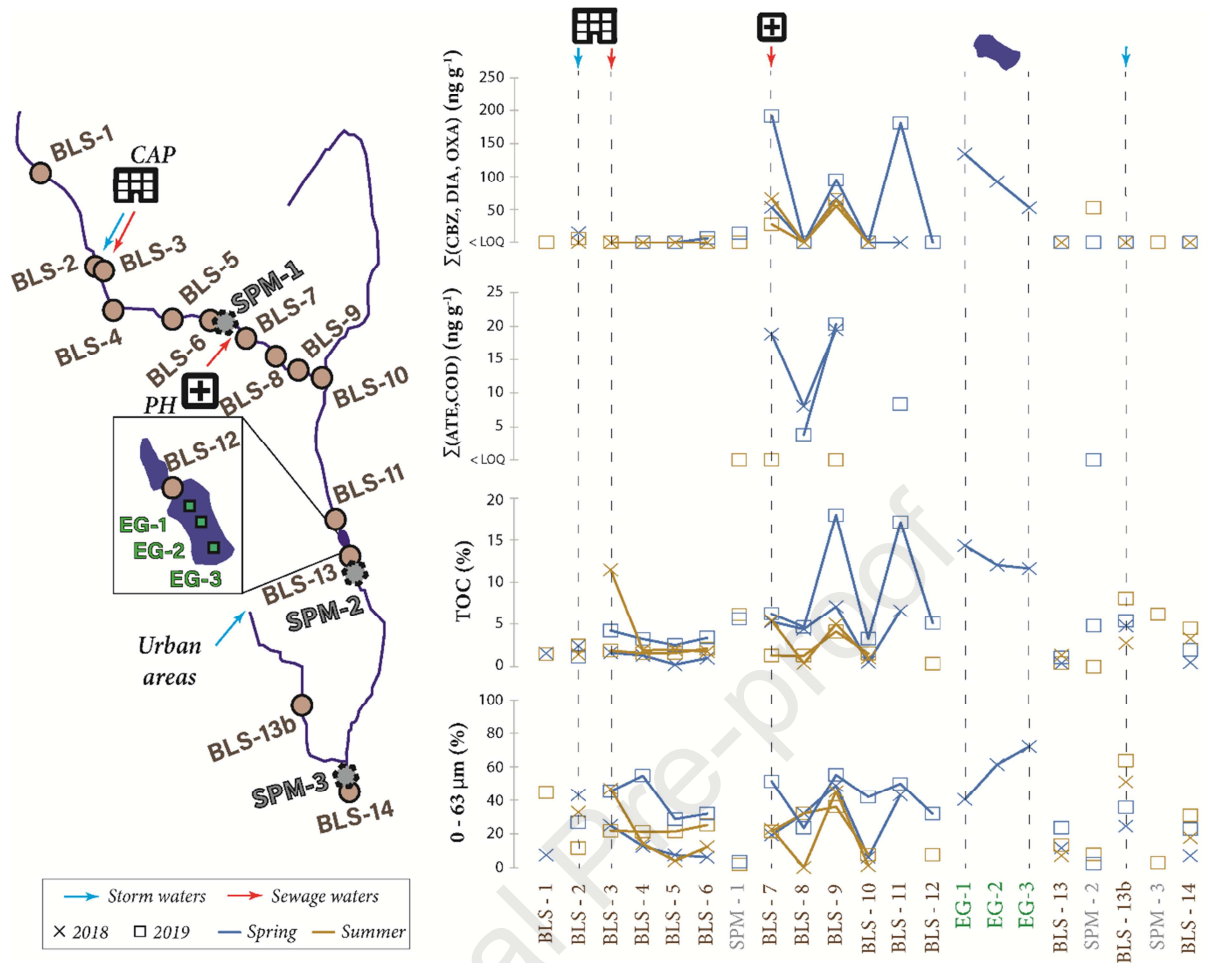


Figure 3: Spatial evolution of persistent neutral (carbamazepine (CBZ), diazepam (DIA) and oxazepam (OXA)) and cationic molecules (atenolol (ATE) and codeine (COD)) total concentrations ( $\Sigma$ ) compared to the spatial evolution of total organic carbon (TOC) and fine particles (0 – 63  $\mu\text{m}$ ) percentages in suspended particulate matter (SPM 1 to 3, Fig. 1), bed-load (BLS 1 to 14, Fig. 1) and Beulie pond sediments (mean contents of EG 1 to 3, Fig. 1).

## Highlights

- Particulate phases well represent the PP diversity found in the dissolved fraction
- Organic matter content is the most important driver impacting the partition of PPs
- Most contaminated areas are discharging sites and sedimentary accumulation zones
- In the urban part of the catchment, transportation of particles is enhanced
- Seasonal variations depend on degradation, bearing phases and transfer distances

Journal Pre-proof



**Declaration of interests**

The authors declare that they have no known competing financial interests or personal relationships that could have appeared to influence the work reported in this paper.

The authors declare the following financial interests/personal relationships which may be considered as potential competing interests:

Journal Pre-proof