



HAL
open science

Impact of the COVID-19 pandemic related to lockdown measures on tropospheric NO₂ columns over Île-de-France

Andrea Pazmino, Matthias Beekmann, Florence Goutail, Dmitry Ionov, Ariane Bazureau, Manuel Nunes-Pinharanda, Alain Hauchecorne, Sophie Godin-Beekmann

► To cite this version:

Andrea Pazmino, Matthias Beekmann, Florence Goutail, Dmitry Ionov, Ariane Bazureau, et al.. Impact of the COVID-19 pandemic related to lockdown measures on tropospheric NO₂ columns over Île-de-France. *Atmospheric Chemistry and Physics*, 2021, 21 (24), pp.18303-18317. 10.5194/acp-21-18303-2021 . insu-03266978v1

HAL Id: insu-03266978

<https://insu.hal.science/insu-03266978v1>

Submitted on 22 Jun 2021 (v1), last revised 18 Dec 2021 (v2)

HAL is a multi-disciplinary open access archive for the deposit and dissemination of scientific research documents, whether they are published or not. The documents may come from teaching and research institutions in France or abroad, or from public or private research centers.

L'archive ouverte pluridisciplinaire **HAL**, est destinée au dépôt et à la diffusion de documents scientifiques de niveau recherche, publiés ou non, émanant des établissements d'enseignement et de recherche français ou étrangers, des laboratoires publics ou privés.



Distributed under a Creative Commons Attribution - NoDerivatives 4.0 International License



Impact of COVID-19 pandemic related to lockdown measures on tropospheric NO₂ columns over Île-de-France

Andrea Pazmiño¹, Matthias Beekmann², Florence Goutail¹, Dmitry Ionov³, Ariane Bazureau¹, Manuel Nunes-Pinharanda¹, Alain Hauchecorne¹, Sophie Godin-Beekmann¹

¹LATMOS/IPSL, UVSQ, Université Paris-Saclay, Sorbonne Université, CNRS, Guyancourt, France

²LISA/IPSL, UMR CNRS 7583, Université Paris Est Créteil, Université de Paris, Créteil, France

³University of Saint Petersburg, Saint Petersburg, Russia

Correspondence to: Andrea Pazmiño (andrea.pazmino@latmos.ipsl.fr)

10 **Abstract.** The evolution of NO₂, considered as proxy for air pollution, was analyzed to evaluate the impact of 1st lockdown (March 17th – May 10th 2020) over Île-de-France region (Paris and surroundings). Tropospheric NO₂ columns measured by two UV-Visible SAOZ spectrometers were analyzed to compare the evolution of NO₂ between urban and suburban sites during the lockdown. The urban site is the observation platform QUALAIR (48°50'N/2°21'E) on the Pierre et Marie Curie Campus of Sorbonne University in the center of Paris. The suburban site is located at Guyancourt (48°46'N/2°03'E),
15 University of Versailles Saint Quentin, 24 km south-west of Paris. Tropospheric NO₂ columns above Paris and Guyancourt have shown similar values during the whole lockdown period from March to May 2020. One decade datasets were filtered to consider air masses at both sites with similar meteorological conditions. The median NO₂ columns, as well as the surface measurements of AIPARIF (Air Quality Observatory in Ile de France) during the lockdown period in 2020 were compared to the extrapolated values estimated from a linear trend analysis for the 2011-2019 period at each station. Negative NO₂ trends
20 of -1.5 Pmolec cm⁻² yr⁻¹ (~-6.3 % yr⁻¹) are observed from the columns and of -2.2 µg m⁻³ yr⁻¹ (~-3.6 % yr⁻¹) from the surface concentration.

The negative anomaly in tropospheric columns in 2020 attributed to lockdown (and related emission reductions) was found to be 56% at Paris and 46% at Guyancourt, respectively. Similar anomaly was found in the data of surface concentrations, amounting for 53% and 28% at the urban and suburban sites, accordingly.

25 1 Introduction

Megacities can be considered as a hot spot of anthropogenic pollution due to the concentration of population and human activities. People living in urban areas are exposed to air quality levels that often exceed the World Health Organization (WHO) recommended limits (WHO, 2006). In 2020, the emergence of a novel coronavirus that causes the COVID-19 disease in many countries around the world has prompted the governments of the affected states to apply restrictive
30 regulations. Most countries implemented lockdown measures (restrictions on people movements) to limit the progression of



the COVID-19 pandemic. As a result, urban areas have become interesting “laboratories” for analyzing the impact of these measures on air quality. Atmospheric concentrations of air pollutants in megacities were expected to decrease as a direct impact of air and road traffic activity drop during the lockdown period. Observations of TROPOMI instrument onboard the Copernicus Sentinel 5-Precursor (S5P) satellite (Veeffkind et al., 2012) were the earliest ones to be presented by the media to show the significant decrease of tropospheric NO₂ columns in the Hubei province in China (20-50% in urban areas, Ding et al., 2020), the first region affected by the COVID-19 in December 2019. Indeed, tropospheric NO₂ is considered as a good proxy for NO_x (NO_x=NO+NO₂) concentrations since NO is rapidly converted into NO₂ by the photochemical cycle involving tropospheric ozone. The NO_x are directly linked to human activities especially with respect to the combustion of fossil fuel (~50%) and the biomass burning (~20%) at global scale (Delmas et al., 1997). Many studies have focused on NO₂ reductions due to lockdowns in 2020 at specific cities in China (Ding et al., 2020, Griffith et al., 2020), and in other affected countries (Bauwens et al., 2020, Prunet et al., 2020) using only satellite observations (Bauwens et al., 2020, Koukouli et al., 2020, Liu et al., 2020) or additionally ground-based instruments (Biswal et al., 2020, Prunet et al., 2020). Other studies analyzed the lockdown period using in situ monitoring networks in the cities (Baldasano, 2020, Biswal et al., 2020, Krecl et al., 2020). Model simulations were also analyzed to assess the respective NO₂ decreases (Koukouli et al., 2020, Liu et al., 2020, Menut et al., 2020).

The objective of this study is to quantify the effect of NO₂ decreases due to lockdown considering long-term variability and meteorological conditions over Ile-de-France region during the last decade. Two complementary sites are used, one in the center of Paris and the other one in the peripheral zone. Ground-based and satellite measurements of tropospheric NO₂ columns are analyzed to characterize these sites. In addition, measurements of surface NO₂ concentration are used to complement the analysis at the lowest altitude layers near pollution sources. The study relies not only on a single reference year before the COVID-19 pandemic, but on a long decadal data set, in order to account for variability as well as long-term trends. Specific data filtering using wind speed and direction is applied in order to isolate data which are affected by local pollution in the Greater Paris area, and to consider the changes in meteorological conditions for the different years.

This paper is organized as follows. Observations of tropospheric and surface amounts of NO₂ by ground-based and satellite measurements are presented in Sect. 2 as well as the wind data from European Reanalysis. The description of the method used to discriminate specific data to calculate NO₂ decrease in 2020 taking into account similar meteorological conditions is presented in Sect. 3. The results of NO₂ decreases in 2020 due to lockdown are shown in Sect. 4 for the different datasets. The results of NO₂ level reductions in respect to literature findings are discussed in Sect. 5. Conclusions are finally presented in Sect. 6.

2 NO₂ Data

Tropospheric NO₂ columns measured by two ground-based SAOZ instruments were analyzed to trace and intercompare the evolution of NO₂ in the urban and suburban regions of Ile-de-France. The analysis was supplemented by a study of NO₂



column satellite measurements using the TROPOMI instrument. In addition, the in-situ measurements of NO₂ surface concentrations from the AIRPARIF air quality network were also considered. In this work, the ten years period 2011-2020, with the first year corresponding to the start of SAOZ measurements at the suburban site of Guyancourt was considered. Table 1 shows the ground-based stations, type of instrument and geographical coordinates.

Table 1: Ground-based stations used in this study: station, place, instrument and geographical coordinates.

Station	Place	Instrument	Lat/Lon
Paris	QUALAIR, Sorbonne-Université, Paris 5 th	SAOZ	48°50'N/2°21'E
Guyancourt	LATMOS, Guyancourt	SAOZ	48°46'N/2°03'E
CELES	Quai des Célestins, Paris 5 th	AIRPARIF	48°51'N/2°21'E
PA13	Parc de Choisy, park in Paris 13 th	AIRPARIF	48°49'N/2°21'E
PA07	Allée des Refuzniks, Paris 7 th	AIRPARIF	48°51'N/2°17'E
EIFF	300 m top of Eiffel Tower, Paris 7 th	AIRPARIF	48°51'N/2°17'E
VERS	Versailles	AIRPARIF	48°48'N/2°08'E

2.1 Tropospheric columns

2.1.1 SAOZ data

The NO₂ tropospheric columns at Ile-de-France region are measured by two ground-based SAOZ (Système d'Analyse par Observation Zénithale) instruments (Pommereau and Goutail, 1988) that are part of French research infrastructure ACTRIS. The first one was installed in 2005 at the observation platform QUALAIR (<http://qualair.aero.jussieu.fr/>) of Sorbonne University in Paris (urban station) and the second one is operational at LATMOS laboratory in Guyancourt (South-West suburban station) since 2011. SAOZ is a UV-Visible spectrometer primary designed for monitoring stratospheric ozone and NO₂ during twilight observations in the frame of NDACC (Network for the Detection of Atmospheric Composition Change) (see Hendrick et al., 2011 for a description of retrieval). The long-term data series of SAOZ instruments were compared with data from most satellite missions to validate or monitor their performance. For example, SAOZ instruments participated in the validation of the latest satellite mission Sentinel 5 Precursor launched on October 2017 for the measurements of ozone (Garane et al., 2019) and stratospheric NO₂ (Verhoelst et al., 2021) columns.

During the day, SAOZ observations are sensitive to increased tropospheric NO₂ amounts in polluted regions (Tack et al., 2015). Every ~2 minutes, the sunlight backscattered by the atmosphere in the zenith direction of SAOZ is acquired and the DOAS (Differential Optical Absorption Spectroscopy) method (Platt and Stutz, 2008) is applied in the NO₂ absorptions bands to obtain the respective slant column densities. The stratospheric NO₂ columns are removed from slant columns to retrieve the tropospheric NO₂ for Solar Zenith Angles (SZA) lower than 80°, see Dieudonné et al. (2013) for a detailed description of the SAOZ tropospheric NO₂ retrieval. The SAOZ dataset of tropospheric NO₂ measurements at Paris was used in different studies to relate NO₂ concentrations at the surface with integrated NO₂ column in the boundary layer (Dieudonné



et al., 2013), to interpret ozone measurements (Klein et al., 2017) and the seasonal cycle of ozone gradient (Ancellet et al.,
90 2020).

SAOZ tropospheric NO₂ columns are available at the SAOZ webpage (http://saoz.obs.uvsq.fr/SAOZ_tropo_Paris.html and
/SAOZ_tropo_Guyancourt.html, last access on 1 January 2021). These data were daily averaged between 6 and 18 UT and
between 11 and 14 UT for comparison with satellite observations.

2.1.2 TROPOMI data

95 Tropospheric NO₂ columns retrieved by TROPospheric Monitoring Instrument (TROPOMI) aboard Sentinel 5 Precursor
(S5P) satellite (Veefkind et al., 2012) launched in October 2017 were also used to discriminate air masses above SAOZ
instruments benefiting from the high spatial resolution of this instrument ($3.5 \times 7 \text{ km}^2$ and $3.5 \times 5.5 \text{ km}^2$ since August 2019).
TROPOMI is a passive-sensing hyperspectral nadir-viewing imager, aboard a near-polar sun synchronous orbit satellite at an
altitude of 817 km, with an overpass at 13:30 local time and practically daily global coverage.

100 Retrieval applied on TROPOMI data allows distinction between tropospheric, stratospheric and total NO₂ columns. The
algorithm was adapted from DOMINO/TEMIS approach for OMI (Boersma et al., 2007, 2011) based on Differential Optical
Absorption Spectroscopy (DOAS) method to obtain slant column densities (SCD) of NO₂ that are assimilated to the TM5-
MP Chemical Transport Model (CTM) to separate the SCD. The CTM runs using 0-12 h forecast meteorological data from
European Centre for Medium-Range Weather Forecasts (ECMWF) correspond to the OFF-line product. Finally, each slant
105 column is converted to vertical column using pre-calculated Air Mass Factor (AMF) look-up-tables. Detailed description can
be found at TROPOMI webpage (<http://www.tropomi.eu/data-products/nitrogen-dioxide>).

Verhoelst et al. (2021) compared NO₂ total, tropospheric and stratospheric columns with the data of ground-based
instruments Pandora, Multi-Axis Differential Optical Absorption Spectroscopy (MAX-DOAS) and Zenith-Scattered-Light
DOAS (ZSL-DOAS or SAOZ) distributed around the world. Observations from MAX-DOAS were used for tropospheric
110 comparisons since they are sensitive to absorbers in the lowest few kilometers of the atmosphere (Hönninger et al., 2004). A
negative bias of 23 to 37% is observed in the cases of clean to slightly polluted conditions. In the case of highly polluted
areas, the bias can reach -51%.

TROPOMI tropospheric NO₂ columns have been widely used to estimate the reduction of NO₂ amounts linked to the
lockdown in 2020 established in different countries to prevent the spread of COVID19 (e.g. Bawens et al., 2020, Biswal et
115 al., 2020, Ding et al; 2020, Koukouli et al.,2020, Lieu et al., 2020).

TROPOMI tropospheric NO₂ columns are available at Copernicus webpage (<https://s5phub.copernicus.eu>). The data have
been filtered using the quality assurance value higher than 0.5.

2.2 Surfaces concentrations

AIRPARIF is a network of standard in situ sensors to monitor air quality over Ile-de-France region. One of the key variables
120 measured by AIRPARIF is NO₂. Hourly NO₂ concentrations are measured at most of the stations. The concentrations are



measured by chemiluminescence (Fontijn et al., 1970) where the NO₂ amount is obtained after reduction to NO on a heated molybdenum converter. This kind of in situ sensor can overestimate ambient NO₂ concentrations due to interferences with non-NO_x fraction of reactive nitrogen (NO₂). As an example, for urban sites in Mexico-city, Dunlea et al., 2007 found an average NO₂ overestimation for this type of sensor by 22%.

125 AIRPARIF network is formed by the 1) so-called “traffic” stations located at the edge of major traffic axes, 2) urban background stations, located in the city but not in the immediate vicinity of emission sources, 3) suburban and rural stations, and finally, a station installed on the top of the Eiffel Tower at an altitude of 300 m.

In this study, two AIRPARIF sites near the SAOZ of Paris were used, one considered as “traffic” site (Quai de Célestins) and the other as “urban” (Paris 13). AIRPARIF data of Versailles, nearest station to the SAOZ of Guyancourt was used to represent suburban site. Finally, two more stations at the foot (Paris 7) and on top of Eiffel Tower were considered to compare evolution of NO₂ concentration at different altitudes in the boundary layer. Data were obtained from Airparif webpage (<https://www.airparif.asso.fr/telechargement/telechargement-station>, last access on 22 January 2021). Daily average data between 0 and 24h UT are used in this study.

2.3 ERA-5 Reanalysis

135 ERA5 is the last reanalysis of the ECMWF (European Centre for Medium-Range Weather Forecasts) generated by Copernicus Climate Change Service. ERA5 is produced by the Integrated Forecast System (IFS) CY41r2 version released in 2016 with a ten-member 4-D-Var assimilation each 12 hours. The horizontal grid resolution is ~31 km with 137 hybrid vertical levels up to 0.01 hPa (Hersbach et al., 2020). In addition to the significant increase of horizontal and vertical resolution of ERA5, as well as the 10 years’ experience of model forecast and assimilation, new and reprocessed observational data records were considered. Further information can be found in online documents at ECMWF webpage (<https://confluence.ecmwf.int/display/CKB/ERA5>).

In this study, wind speed and direction at 950 hPa (mid-altitude of the convective boundary layer) were extracted from 0.25° horizontal resolution in latitude and longitude data over the [48.75N, 49.00N], [2.00E, 2.50E] region at noon. The available quality-checked final product was considered for January 1st 2011 to October 31th 2020 and a provisional product for 145 November-December 2020, the latter is expected to rarely differ from the final product (Hersbach *et al.*, 2020).

3 Methodology

The evaluation of lockdown effects on atmospheric NO₂ amounts is performed by selecting air masses moving from the Parisian agglomeration to the suburban region. The objective is to consider only days when air masses for both sampling sites have a long enough residence time over the Paris area and have been influenced by local pollution. Combined wind speed and direction are considered in this study to identify such days. This procedure aims at selecting datasets with similar meteorological conditions for different years, so reducing the impact of interannual weather variability. The evolution of 150



NO₂ concentrations and tropospheric columns at AIRPARIF and SAOZ stations (Table 1) are considered. The data of NO₂ concentration measurements by in situ instruments and NO₂ tropospheric column measurements by SAOZ were daily averaged between 6 and 18 UT. The measurements data are filtered using wind speed and direction of ERA5 analysis at noon to select weather conditions in which the Guyancourt site receives air masses that have passed the Paris agglomeration. Equation 1 represents the estimated residential time *t* of air masses coming from the center of Paris to Guyancourt.

$$t = \cos(\text{abs}(\text{dir_g} - \theta_{\text{era5}}) * \pi / 180) * D / (v_{\text{era5}}), \quad (1)$$

where *v*_{era5} and θ_{era5} correspond to speed and direction of wind at 12 UT and 950 hPa (altitude level in the middle of the convective boundary layer), *dir_g* is the direction between Guyancourt and Paris (290°) and *D* is the approximate diameter of agglomeration (9.5 km) if we consider it as a circle.

Using this parameter *t*, three types of days were distinguished and for each class a linear fit between urban versus suburban observations was calculated:

1. Air masses of Parisian agglomeration not influencing Guyancourt or Versailles (*t*<0)
2. Air masses of Parisian agglomeration influencing Guyancourt or Versailles (*t*>0)
3. Air masses of Parisian agglomeration in a condition of weak wind influencing Guyancourt or Versailles, a subclass of the precedent one (*t*>30 min).

Figure 1 shows the scatter plot of SAOZ tropospheric NO₂ of Paris and Guyancourt (left panel) and AIRPARIF in situ NO₂ of Paris 13 district and Versailles (right panel) for the 2011-2020 period. Case 1 is represented by light green points, case 2 by grey points and case 3 by dark grey points. Linear robust fit with zero intercept was applied for the three cases to highlight the relationship between urban and suburban stations for the different conditions of wind speed and direction. For each case, higher NO₂ amounts are observed at Paris, and the air masses at the surface present lower linear regression slopes than tropospheric columns. Case 1 presents the largest slopes, 2.19±0.04 (2σ standard error) for SAOZ measurements and 1.54±0.02 for AIRPARIF highlighting the importance of wind direction. In this case, air masses pass over Guyancourt without having “touched” the agglomeration. Those air masses arriving in Paris center have crossed part of the agglomeration and then show larger NO₂ columns. Case 2 and 3 correspond to air masses generally crossing first the Parisian agglomeration and then south-west suburban region. They show slopes closer to unity. In case of SAOZ, the slopes of 1.24±0.02 and 1.17±0.04 were obtained for case 2 and 3, and the slopes of 1.07±0.01 and 1.04±0.02 in case of AIRPARIF, respectively. For our study, the classification of days with air masses associated to *t*>30 minutes will be considered, because in this case air masses pass over both stations with weak wind allowing for pollutant accumulation over the Paris agglomeration.

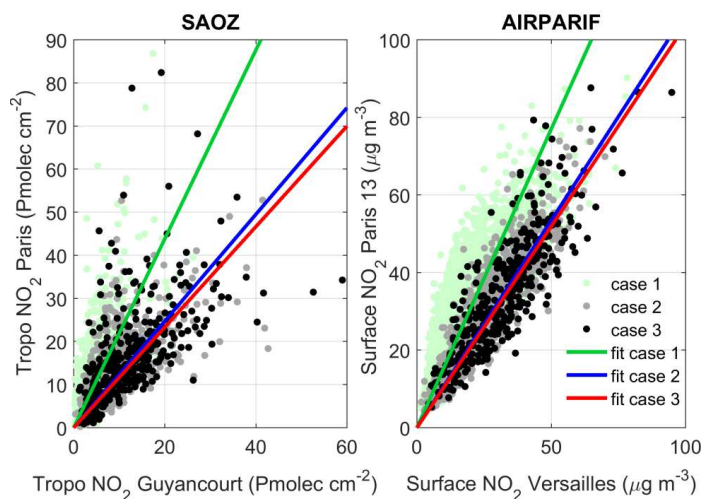
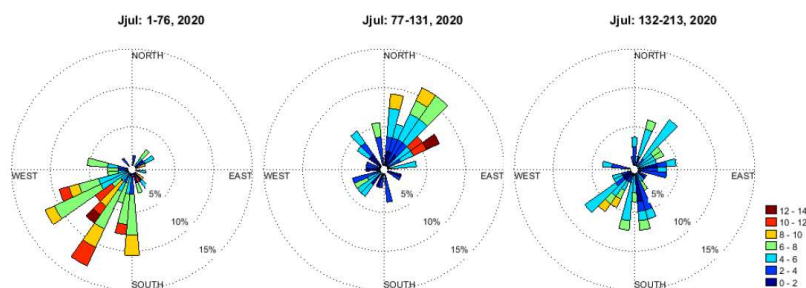


Figure 1: Scatter plots of tropospheric (left panel) and surface (right panel) NO_2 measurements at Paris as a function of measurements at suburban station (Guyancourt and Versailles respectively) for different levels of t (see Eq. 1). Linear fits of the different conditions are represented in green (case 1), blue (case 2) and red (case 3), see the text.

185 4 Results

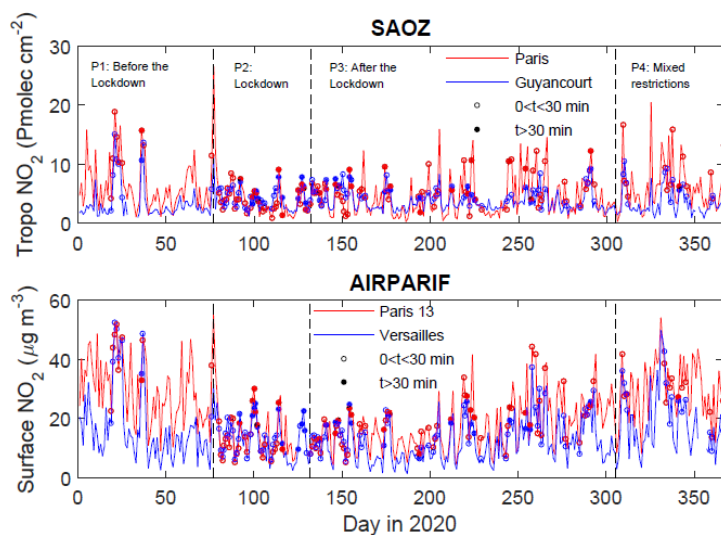
4.1 NO_2 evolution in 2020

The period preceding the lockdown represents meteorological conditions over Ile-the-France mainly characterized by high occurrence of oceanic air masses (see Fig. S3 of Petit et al., 2021) and fairly strong south-westerly winds (Fig. 2, left wind rose) preventing pollution events over this region. Changes in weather conditions three days after the implementation of lockdown on March 17th 2020 (middle wind rose on Fig. 2) were mostly anticyclonic contributed to the stagnation of pollutants in air masses advected from Paris to Guyancourt. Low wind speeds ($<6\text{m/s}$) are predominantly north-easterly in the mid-March-to mid-May period. The period after the end of lockdown (Fig. 2, right wind rose) shows winds from south-westerly and north-easterly directions in the mid May to July period.



195 **Figure 2:** From left to the right: wind rose from 12 UT ERA5 data before (1/1-16/3), during (18/3-10/5) and after (11/5-31/7) the 1st lockdown in France in 2020. The color indicates the wind speed in m s^{-1} .

Figure 3 shows the evolution of tropospheric NO_2 columns in Paris (red curve) and Guyancourt (bleu curve) in 2020 as observed by SAOZ (top panel). Colored points correspond to the filtered data with $\tau > 0$ (open circles) and $\tau > 30$ minutes (solid points). The filtered air masses at Paris and Guyancourt present similar values for most of the cases with coincident daily events of increased tropospheric NO_2 . Similar results are observed from in situ measurements at AIRPARIF stations (bottom panel). Vertical dashed lines are displayed in Figure 3 to separate 4 periods: before, during and after the lockdown and the last period of mixed restrictions (partial activities) since October 31th. The seasonal variability of NO_2 is well pronounced in the surface observations with a minimum in June and a maximum in winter.



205 **Figure 3:** Evolution of tropospheric NO_2 columns (top panel) and surface NO_2 (bottom panel) in 2020 at Paris and south-west suburban stations. Vertical lines correspond to the day of period change: 17/03, 11/5 and 31/10.



During period 1 (before the lockdown) only two particular events with high NO₂ values above both stations are detected at the same time ($t > 0$ min) by SAOZ instruments (Jan. 19-25 and Feb. 5-6). These events are also highlighted in AIRPARIF data. Only one day with $t > 30$ min is observed on Feb. 5th. Frequent occurrence of oceanic air masses with high precipitation and wind speed leads to advection of clean air masses above the Île-de-France region before lockdown period (Viatte et al., 2021) and low NO₂ values are observed, lower than observed during period 2 (lockdown) for suburban stations (Guyancourt and Versailles). A NO₂ peak is observed on March 17th coincident to the start of the lockdown period, which could be linked to the massive departure of Parisian inhabitants. A change of weather conditions in the beginning of period 2 with low north-easterly wind speeds promote the accumulation of polluted air masses over Île-the-France. Most of the days are characterized by a residential time $t > 30$ min. Despite this situation, levels of tropospheric NO₂ remain low; this certainly illustrates the decrease of emissions during the lockdown period. The period 3 (after the lockdown) started on May 11th 2020 and NO₂ values remained low until the second week of July (beginning of scholar holidays) with NO₂ enhancement events comparable to period 2. Since then, higher NO₂ values of pollution events are observed by SAOZ and AIRPARIF instruments showing slight differences between urban and suburban stations for days with $t > 30$ min. A less restrictive lockdown (open schools and less restrictive movement of people)

4.2 Comparison to previous years

4.2.1 Tropospheric NO₂ columns

TROPOMI tropospheric NO₂ measurements in 2020 were widely used to show a decrease of NO₂ amounts in different countries, which was attributed to policies restricting human activities by comparing lockdown and pre-lockdown period or same period in 2019 (e.g. Ding et al., 2020; Koukouli et al., 2020; Prunet et al., 2020; Siddiqui et al., 2020). SAOZ measurements between 11 and 14 hUT were averaged to match overpass time of TROPOMI above the stations. Figure 4 shows the evolution of the monthly mean and two standard error (2σ) of tropospheric NO₂ columns above Paris and Guyancourt stations since January 2019 observed by SAOZ and TROPOMI (left panels). Similar inter-monthly evolution is observed by both instruments with a generally good agreement within $\pm 2\sigma$ and a correlation of 0.80 at Paris and 0.70 at Guyancourt. TROPOMI presents generally lower NO₂ values than SAOZ but within the 2σ uncertainty level. This is not the case in May 2020 (month 17 on Fig. 4) during which TROPOMI NO₂ amounts are significantly larger at 2σ level than SAOZ. Monthly mean values present a seasonal variation reaching values above 10 Pmolec cm⁻² in winter at Paris while they vary between 4 to 7 Pmolec cm⁻² at Guyancourt. The first months of 2020 present lower values compared to 2019, mostly due to weather conditions while March-May NO₂ decrease (month 15-17) is coincident with the lockdown period. A histogram of the differences between TROPOMI and SAOZ is also shown in Figure 4 (right panels). A mean and median difference of -0.2 Pmolec cm⁻² and +0.12 Pmolec cm⁻² respectively is obtained at Paris station and of -0.6 Pmolec cm⁻² and -0.7 Pmolec cm⁻² respectively at Guyancourt. It corresponds to a median relative difference of 2% at Paris and -22% at



240 Guyancourt stations. Dispersion of the difference represented by the half of the 68% interpercentile (IP68/2) is 2.9 and 1.6 Pmolec cm⁻² respectively at Paris and Guyancourt.

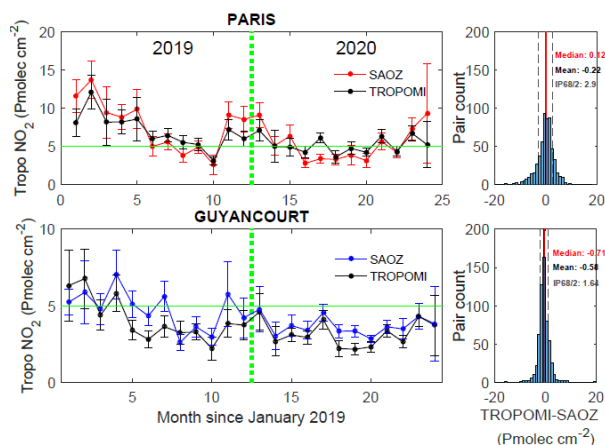
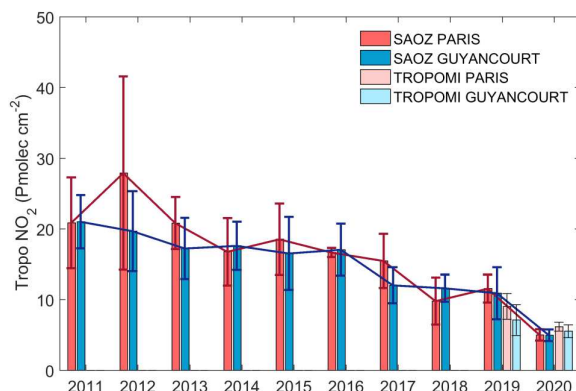


Figure 4: Left panels: Monthly mean tropospheric NO₂ and 2σ standard error above Paris (upper panel) and Guyancourt (bottom panel) measured by ground-based SAOZ instrument (color lines) and TROPOMI satellite instrument (black lines). Right panels: Histogram of TROPOMI-SAOZ differences at Paris (upper panel) and Guyancourt (bottom panel). Vertical lines represent the median, mean and dispersion by the half of the 68% interpercentile (IP68/2).

TROPOMI and SAOZ data selected for days with $t > 30$ min were averaged between 11h and 14h UT for the period of the 2020 lockdown in France (March 17th to May 10) and median values were computed from the SAOZ and TROPOMI data for the 2011-2020 annual range (Figure 5). TROPOMI NO₂ decrease in 2020 compared to 2019 is 35±12% for Paris and 22±27% for Guyancourt. Bauwens et al. (2020) have found a decrease of 28% during the 21st days of lockdown over 50 km region centered at Paris using TROPOMI and OMI data compared to same period in 2019. A larger tropospheric NO₂ decrease of about 47% is found from SAOZ observations between 2019 and 2020 at both studied stations (see Figure 5). Prunet et al. (2020) found an even large decrease of NO₂ values varying from 52% to 86% during the lockdown in a 120 km region around Paris using yearly 2019-2020 TROPOMI data and the city-scale NO₂ plume mass method.

It should be noted that the SAOZ data sets show a long-term negative trend since 2011. Font et al. (2019) have used in situ data to study the impact of policy initiatives in different megacities. They have shown a mean NO₂ decrease on roadside (background) sites of -2.9 (1.7) % yr⁻¹ in Île-de-France for the 2010-2016 period, linked to the introduction of Euro V heavy-duty vehicles regulations since October 2009. Others policies were implemented after then (e.g. Euro VI since 2014). The trend of tropospheric NO₂ amounts needs to be considered to better quantify the effects of lockdown on air pollution, which cannot rely on the comparison with a single reference year as was done in many other studies (e.g. Bauwens et al., 2020; Prunet et al., 2020).



265 **Figure 5: Tropospheric NO₂ median values of March 17th – May 10th period at Paris and Guyancourt from SAOZ observations since 2011 and TROPOMI measurements in 2019 and 2020. Error bars represent 1σ.**

To better account for traffic-related pollution events in the daily averaged NO₂ columns the full daytime data of tropospheric NO₂ measurements by SAOZ (SZA<80°) of the corresponding day were considered. The median value of daily columns with >30 minutes was computed for each year during period 2 and 3 above Paris and Guyancourt. Period 1 and 4 were not considered since only one day with t >30 min was observed above the stations during these periods in 2020. Period 3 was restricted to May 11th - July 15th (period 3') to avoid the effect of NO₂ seasonal variation in the final median value. A robust regression fit (reweighted least squares with the bi-square weighting function) was applied to period 2 and 3' to compute the trend for the 2011-2019 period. We will focus only on the period of lockdown since important NO₂ interannual variability in the period 3' does not present a 2σ significant slope value neither at Paris, nor at Guyancourt. Only the lockdown period presents a significant negative slope of $-1.51 \pm 0.48(1\sigma)$ Pmolec cm⁻² yr⁻¹ at Paris and $-1.42 \pm 0.14(1\sigma)$ Pmolec cm⁻² yr⁻¹ at Guyancourt as shown in Figure 6. These values correspond to a negative trend of -5.86 ± 1.92 % yr⁻¹ at Paris and -6.79 ± 0.66 % yr⁻¹ at Guyancourt relative to 2011. Previous studies have presented similar values over Western Europe. Zhou et al., (2012) found significant negative trends in the 2004-2009 period varying from -4 to -8 % yr⁻¹ using OMI tropospheric NO₂ columns. Curier et al. (2014) computed the trend from the synergistic use of OMI NO₂ tropospheric columns and the chemistry transport model LOTOS-EUROS, finding significant negative trends of 5-6% yr⁻¹. The year 2020 presents the lowest values of NO₂ at both stations (5.4 Pmolec cm⁻² at Paris and 4.4 Pmolec cm⁻² at Guyancourt) that are significantly different at 1σ from previous years (Figure 6). The median value in 2020 is lower than the extrapolated value using the computed 2011-2019 trend by $55.6 \pm 15.7\%$ at Paris and by $45.6 \pm 11.8\%$ at Guyancourt. If the tropospheric median column of NO₂ in 2019 had been used as a reference for comparison, slightly higher declines would have been obtained within ±1σ: $56.7 \pm 9.1\%$ and $52.6 \pm 14.5\%$ at Paris and Guyancourt, respectively. Choosing other reference years would obviously yield



different results, e.g. slightly lower value at Paris ($55 \pm 10.7\%$) and even higher at Guyancourt ($58.9 \pm 12.5\%$) when using year 2018 as a reference (Figure 6). Moreover, choosing earlier years as a reference would pose the problem of NO_2 variability factors associated with both the lockdown and the long-term NO_2 reductions. This confirms the advantage of our method that calculates the reference from a decadal data base and corrects for the long-term trend. It should be noted that the data filtering procedure based on meteorological conditions (wind speed and direction) significantly changes the result of the NO_2 reduction estimate in Guyancourt, making it statistically insignificant ($9.7 \pm 41.6\%$) if filtering is not applied; at the same time the estimate for Paris has not changed much ($58.3 \pm 20.9\%$). Table 2 presents a summary of the NO_2 reductions in 2020 using different datasets described previously in the text. This indicates that results at Paris site located in the center of the agglomeration are not dependent in 2020 on meteorological conditions. On the contrary, for the Guyancourt site at the edge of the agglomeration selecting the days when the site is impacted by emissions within the agglomeration is crucial.

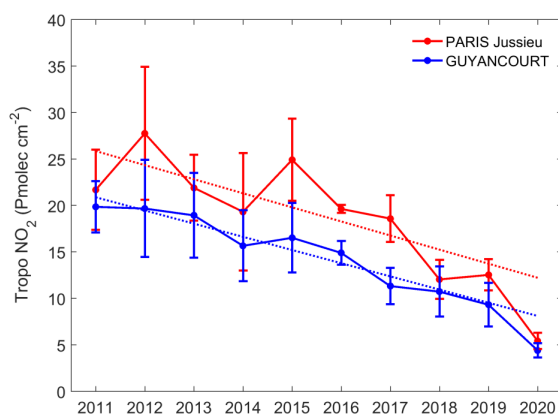


Figure 6: Interannual variability of tropospheric NO_2 median values of March 17th – May 10th period at Paris and Guyancourt computed from SAOZ observations since 2011. Error bars represent 1σ standard error. Computed robust fit is shown by the dotted color lines.

Table 2: Dataset used to compute NO_2 reductions in 2020: instrument, time period in UT to calculate the daily mean value, the reference value and application of the filter of the residential time. The last columns correspond to the corresponding computed reductions in % for Paris and Guyancourt. Significant values at 1σ are in bold.

Dataset	Daily mean (UT)	Reference	Filter	Paris	Guyancourt
TROPOMI	11-14	2019	Yes	35	22
SAOZ	11-14	2019	Yes	47	47
SAOZ	6-18	2019	Yes	56.7	52.8
SAOZ	6-18	2018	Yes	55.0	58.9
SAOZ	6-18	Trend in 2020	Yes	55.6	45.6
SAOZ	6-18	Trend in 2020	Non	59.3	9.7

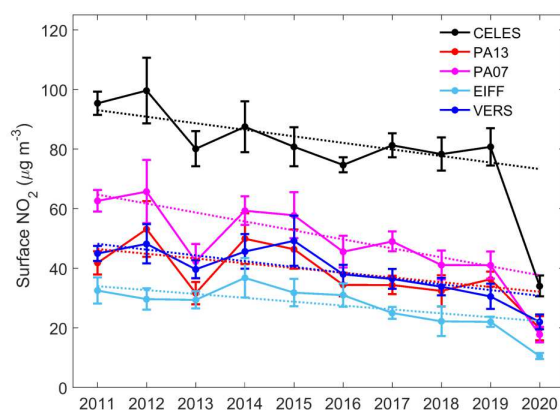
305



4.2.2 Surface NO₂ concentrations

The annual median NO₂ concentration at AIRPARIF stations since 2011 (Table 1) were computed from daily available hourly data during the lockdown period filtered for the wind speed and direction as it has been done for the tropospheric NO₂ column ($t > 30$ minutes). Figure 7 presents the interannual variability of NO₂ concentration at the five AIRPARIF stations. In addition, the calculated robust fit for the decadal evolution at each station is shown. The background or urban stations (Paris 7 and 13) present similar interannual variability with higher values at Paris 7. The station of Quai de Celestins in close proximity to local traffic shows much higher values, which are significantly different from those at other urban sites. The suburban station of Versailles presents similar values to Paris 13 at $\pm 1\sigma$. The observation station located at 300 m of the Eiffel Tower near Paris 7 station shows the lowest values.

310



315

Figure 7: Similar to Figure 6 but with surface NO₂ concentration for different in situ sensors of AIRPARIF network (see Table 1).

The five AIRPARIF stations present negative trends from -3 to -1.3 $\mu\text{g m}^{-3} \text{ yr}^{-1}$ equivalent to -4.6 to 2.4 % yr^{-1} (Table 3). Font et al. (2019) found similar negative trend varying from -3.4 to -2.4 % yr^{-1} for roadside stations at Paris for the 2010-2016 period. These trends appear to be less negative than those obtained from column measurements. Possible reasons for this are an increase of the NO₂ to NO_x emission ratio, and a limitation by the available amount of O₃ for the NO to NO₂ conversion. Both factors affect more strongly the surface concentration than the tropospheric column, which could lead then to the different trend estimates. That is, at the surface, the system is to some extent buffered against changes in NO_x emissions. In 2020 significant decrease compared to the extrapolated value using the above calculated linear trends is observed at all stations and reach similar median values, slightly higher for the traffic station and slightly lower for Eiffel Tower observation station. The relative values of NO₂ reductions are shown in Table 3. Comparable values at 1σ are observed for traffic and urban stations in Paris, with lower values at Paris 13 where standard error is higher. Nevertheless,

320

325



the reduction of NO₂ concentration observed in absolute values is more important at traffic stations (as CELES) compared to urban station (as Paris 7). The observation station installed at 300 m of Eiffel Tower presents 53% of reduction identical to Paris 7, station located at the foot of the tower. The suburban station of Versailles presents the lowest reduction of 28.5%, significantly different to other stations at 1σ except for Paris 13. It should be noted that both stations show an almost twice larger standard deviation of 14%. Reasons for these lower values are not clear. It can be speculated that at this suburban site the relative contribution of residential heating to NO_x sources is stronger than at Paris sites, and probably these sources have increased during the lockdown due to the presence of people at home (Menut et al., 2020).

335

Table 3: AIRPARIF stations, type, NO₂ trend ±1σ in μg m⁻³ yr⁻¹ and NO₂ reduction in 2020 compared to the estimated value as a function of the computed trend.

Station	Type	Trend (2011-2019) ± 1σ (μg m ⁻³ yr ⁻¹) / (% yr ⁻¹)	Reduction in 2020 ± 1σ (%)
CELES	TRAFFIC	-2.19±0.85 / 2.36±0.92	53.6±5.4
PA13	URBAN	-1.59±1.04 / -3.34±2.25	38.3±14.6
PA07	URBAN	-3.01±0.81 / -4.65±1.25	52.9±8.4
EIFF	OBSERVATION	-1.30±0.51 / -3.83±1.49	52.8±9.4
VERS	SUBURBAN	-1.94±0.58 / -4.02±1.18	28.5±13.1

Collivignarelli et al. (2021) compared the NO₂ concentration observed by the traffic and urban stations of AIRPARIF during the lockdown in 2020 to the same period in previous years (2017-2019). They found a decrease of 15% for urban and 33% for traffic stations. However, when considering similar meteorological conditions with respect to rainfall, temperature and wind speed, the authors found a reduction of 51.5% corresponding to traffic stations and approximately 45% for background ones, similar to values obtained in this study.

5 Discussion

345 Various studies have been conducted to assess the impact of recent lockdowns on air quality in many countries around the world due to COVID-19 pandemic. In a number of works, the observed NO₂ contents were compared with respective levels for the same period of previous years using ground-based and/or satellite measurements. Shi and Brasseur (2020) found a decrease of NO₂ concentrations in China by 50% compared to 2019 during the same period of the lockdown and by 60% compared to 2018, highlighting the interannual variability of NO₂ reductions that could depend on meteorological conditions or long-term variability. Others authors compared NO₂ amounts before and during lockdown. For example, Siddiqui et al. (2020) observed 46% reduction of NO₂ tropospheric columns in India using satellite data, Liu et al. (2020) estimated 48% of reduction in China before and during the Lunar New Year, which is 21% more than in previous years 2015-2019 (given that a NO₂ reduction has been observed over the past years even without COVID); Bauwens et al. (2020) deduced 20-38% reduction in Western Europe. Many studies have considered specific techniques to limit the effect of meteorological



355 conditions in their data. In the case of Paris, 45-52% reduction of NO₂ concentration was estimated by Collivignarelli et al.
(2021) using equivalent temperature and wind speed days, ~50% by Barré et al. (2020) using a Gradient Boosting Machine
Learning (GBML) technique. In case of tropospheric NO₂ columns measured by satellite instruments, Prunet et al. (2020)
estimated a 2 weeks averaged reduction of NO₂ varying between 52 and 86% using the city-scale NO₂ plume mass method
for March 16th-April 26th. In the present study, the long-term evolution was considered from one decade of measurements
360 combined to air masses filtering based on slow wind speed and long residence time. The calculated reductions in the
tropospheric NO₂ column and surface concentration are comparable in magnitude to the results of previous studies in
Western Europe: 46-56% and 28-54%, respectively.

Menut et al. (2020) compared the results of two special model calculations performed for the March 2020 lockdown period
in Western Europe. They used the WRF-CHIMERE model for two simulations: one using Business As Usual (BAU)
365 scenario with classical emissions and the other one using realistic scenario taking into account an estimate of lockdown
measures on NO₂ in 2020. The authors found a maximum reduction of 43% of average NO₂ concentration over France. This
simulation was based on a reduction in emissions of about 80% in the transport sector and 40% reduction in the industrial
sector, but an increase for residential emissions during the second half of March, reducing emissions of NO_x probably by
more than 50% (taking into account the distribution of NO_x emissions as given by CITEPA ([https://www.citepa.org/fr/2020-
nox/](https://www.citepa.org/fr/2020-
370 nox/))). Thus, NO₂ concentration reductions are slightly lower than NO_x emissions changes in these simulations, probably due
to an increase in the NO₂/NO ratio for lower NO_x concentrations. This suggests that, at least when spatially averaged, NO_x
emission reductions due to lockdown are similar to those of NO₂ surface concentrations.

6 Conclusions

To assess the impact of France's policy decision to limit the spread of the SARS-CoV-2 virus by establishing a restrictive
375 lockdown between March 17 and May 10, 2020, NO₂ surface concentrations and tropospheric columns over Île-de-France
were analyzed, more specifically in Paris and suburban areas in the south-west of the agglomeration. Possible factors that
can influence NO₂ changes other than NO_x emissions reduction due to lockdown were considered. The data sets were
partitioned to select the conditions of light winds moving air masses from Paris to a suburban area in the southwest. In
addition, the known long-term reduction of NO₂ is also considered using the measurements in the previous decade. The
380 tropospheric NO₂ reduction obtained from the SAOZ data is about 50% (56% at Paris site and 46% at the southwest
suburban site). These values are close to the literature data found for Europe within the estimated error bars (Barré et al.,
2020; Prunet et al., 2020). This work highlights the ability of satellite TROPOMI measurements to distinguish between
urban and suburban sites tropospheric columns, showing higher mean values at an urban station compared to a suburban one.
The latter is also confirmed by the ground-based SAOZ measurement data. The agreement between the evolution of NO₂ in
385 the troposphere observed at urban and suburban sites improves when selecting similar meteorological conditions. Surface
NO₂ concentrations inside Paris are highly influenced by local pollution and differences between the data of traffic and



background urban sites are observed as expected. Surface concentrations were reduced by ~50% at all stations (similar at $\pm 1\sigma$), except the site of Paris 13 in the Choisy Park that shows a lower reduction. The suburban station of Versailles presents NO_2 concentrations similar to Paris 13 and the reduction in 2020 was 10% lower, within the error bars.

390 The reductions at Paris sites during the lockdown are important using or not a filter to remove the effect of different meteorological conditions. On the contrary, selecting data according to air mass residence time over the agglomeration, strongly changes the estimates of NO_2 reductions at the suburban sites. As expected, if filtering is not applied, lower NO_2 reductions are found for suburban sites, since the datasets include also measurements that are less affected by the agglomeration and closer to background conditions. If the long-term evolution is not considered, the computed reductions
395 highly depend on the year of reference. In this study, a negative tropospheric NO_2 trend of $-1.5 \text{ Pmolec cm}^{-2} \text{ yr}^{-1}$ (equivalent to $\sim 6.3 \% \text{ yr}^{-1}$) is observed. Surface NO_2 concentrations also show negative trends with a mean value of $-2.2 \mu\text{g m}^{-3} \text{ yr}^{-1}$ ($\sim 3.6 \% \text{ yr}^{-1}$).

In conclusion, the negative trend estimated during the last decade, indicates the long-term benefits of the environmental measures taken to reduce NO_x emissions. The magnitude of the NO_2 supplementary reduction in 2020, which we calculate to
400 be around 50%, is consistent with the reduction in emissions associated with the lockdown in France, as suggested in a recent modelling study (Menut, 2020).

Data availability. The data used in this study are publicly available: tropospheric NO_2 from SAOZ instruments on <http://saoz.obs.uvsq.fr>, last access: 1st January 2021 and from TROPOMI satellite instrument on
405 <https://s5phub.copernicus.eu>, last access: 3rd January 2021; NO_2 concentrations from AIRPARIF on <https://www.airparif.asso.fr/telechargement/telechargement-station>, last access: 22 January 2021 and wind speed and direction from ERA5 on <https://confluence.ecmwf.int/display/CKB/ERA5>, last access: 20 January 2021.

Author contributions. AP, FG contributed to the processing, analysis and availability of SAOZ data. AB and DI processed
410 the TROPOMI data. AH provided ERA5 data above Paris. MB developed the filter method to account for meteorological conditions. AP and SGB performed the statistical analysis. AP wrote the paper with the assistance from all authors.

Competing interests. The authors declare that they have no conflict of interest.

415 *Acknowledgements.* The authors warmly thank the French Institut National des Sciences de l'Univers (INSU) of the Centre National de la Recherche Scientifique (CNRS) and the Centre National d'Etudes Spatiales (CNES) for supporting observations of SAOZ instruments of the French Research Infrastructure ACTRIS. The SAOZ instrument of Paris is hosted at QUALAIR platform in Sorbonne University and the one of Guyancourt at SAOZ Unit/ACTRIS platform in UVSQ University. We thank the Copernicus Services Data Hub for providing the TROPOMI/S5P data, AIRPARIF for the in situ
420 observations and ECMWF for ERA5 wind data. This project was supported by ValS5PSAOZ project of CNES.



References

- Ancellet G., Ravetta F., Pelon J., Pazmino A., Klein A., Dieudonné E., Augustin P., and Delbarre H.: Ozone Lidar Observations in the City of Paris: Seasonal Variability and Role of The Nocturnal Low Level Jet. EPJ Web of Conferences, EDP Sciences, The 29th International Laser Radar Conference (ILRC 29), 237, pp.03022, 425 <https://doi.org/10.1051/epjconf/202023703022>, 2020.
- Baldasano, J., COVID-19 lockdown effects on air quality by NO₂ in the cities of Barcelona and Madrid (Spain), Science of The Total Environment, Volume 741, 140353, ISSN 0048-9697, <https://doi.org/10.1016/j.scitotenv.2020.140353>, 2020.
- Barré, J., Petetin, H., Colette, A., Guevara, M., Peuch, V.-H., Rouil, L., Engelen, R., Inness, A., Flemming, J., Pérez García-Pando, C., Bowdalo, D., Meleux, F., Geels, C., Christensen, J. H., Gauss, M., Benedictow, A., Tsyro, S., Friese, E., 430 Struzewska, J., Kaminski, J. W., Douros, J., Timmermans, R., Robertson, L., Adani, M., Jorba, O., Joly, M., and Kouznetsov, R.: Estimating lockdown-induced European NO₂ changes using satellite and surface observations and air quality models, Atmos. Chem. Phys., 21, 7373–7394, <https://doi.org/10.5194/acp-21-7373-2021>, 2021.
- Bauwens, M., Compennolle, S., Stavrakou, T., Müller, J.-F., van Gent, J., Eskes, H., et al. Impact of coronavirus outbreak on NO₂ pollution assessed using TROPOMI and OMI observations. Geophysical Research Letters, 47, e2020GL087978. 435 <https://doi.org/10.1029/2020GL087978>, 2020.
- Biswal, A., Singh, V., Singh, S., Kesarkar, A. P., Ravindra, K., Sokhi, R. S., Chipperfield, M. P., Dhomse, S. S., Pope, R. J., Singh, T., and Mor, S.: COVID-19 lockdown-induced changes in NO₂ levels across India observed by multi-satellite and surface observations, Atmos. Chem. Phys., 21, 5235–5251, <https://doi.org/10.5194/acp-21-5235-2021>, 2021.
- Boersma, K. F., Eskes, H. J., Veeffkind, J. P., Brinkma, E. J., van der A, R. J., Sneep, M., van den Oord, G. H. J., Levelt, P. 440 F., Stammes, P., Gleason, J. F., and E. J. Bucsela, Near-real time retrieval of tropospheric NO₂ from OMI, Atmos. Chem. Phys., 7, 2103–2118, <https://doi.org/10.5194/acp-7-2103-2007>, 2007.
- Boersma, K. F., Eskes, H. J., Dirksen, R. J., van der A, R. J., Veeffkind, J. P., Stammes, P., Huijnen, V., Kleipool, Q. L., Sneep, M., Claas, J., Leitão, J., Richter, A., Zhou, Y., and Brunner, D., An improved tropospheric NO₂ column retrieval algorithm for the Ozone Monitoring Instrument, Atmos. Meas. Tech., 4, 1905–1928, [https://doi.org/10.5194/amt-4-1905-](https://doi.org/10.5194/amt-4-1905-445) 2011, 2011.
- Collivignarelli MC, De Rose C, Abbà A, et al. Analysis of lockdown for CoViD-19 impact on NO₂ in London, Milan and Paris: What lesson can be learnt?. Process Saf Environ Prot., 146:952-960. doi:10.1016/j.psep.2020.12.029, 2021.
- Curier, R.L., R. Kranenburg, A.J.S. Segers, R.M.A. Timmermans, M. Schaap, Synergistic use of OMI NO₂ tropospheric columns and LOTOS–EUROS to evaluate the NO_x emission trends across Europe, Remote Sensing of Environment, 149, 450 58-69, ISSN 0034-4257, <https://doi.org/10.1016/j.rse.2014.03.032>, 2014.
- Delmas, R., Serça, D., and Jambert, C.: Global inventory of NO_x sources, Nutrient Cycling in Agroecosystems, 48, 51–60, <https://doi.org/10.1023/A:1009793806086>, 1997.



- Ding, J., van der A, R. J., Eskes, H. J., Mijling, B., Stavrou, T., van Geffen, J. H. G. M., et al. NO_x emissions reduction and rebound in China due to the COVID-19 crisis. *Geophysical Research Letters*, 46, e2020GL089912, 455 <https://doi.org/10.1029/2020GL089912>, 2020.
- Dieudonné, E., Ravetta, F., Pelon, J., Goutail, F. & Pommereau, J.-P. Linking NO₂ surface concentration and integrated content in the urban developed atmospheric boundary layer. *Geophys. Res. Lett.*, 40, 1247–1251, <https://doi.org/10.1002/grl.50242>, 2013.
- Dunlea, E. J., Herndon, S. C., Nelson, D. D., Volkamer, R. M., San Martini, F., Sheehy, P. M., Zahniser, M. S., Shorter, J. 460 H., Wormhoudt, J. C., Lamb, B. K., Allwine, E. J., Gaffney, J. S., Marley, N. A., Grutter, M., Marquez, C., Blanco, S., Cardenas, B., Retama, A., Ramos Villegas, C. R., Kolb, C. E., Molina, L. T., and Molina, M. J.: Evaluation of nitrogen dioxide chemiluminescence monitors in a polluted urban environment, *Atmos. Chem. Phys.*, 7, 2691–2704, <https://doi.org/10.5194/acp-7-2691-2007>, 2007.
- Fontijn, A., A. J. Sabadell, et R. J. Ronco. Homogeneous chemiluminescent measurement of nitric oxide with ozone. 465 implications for continuous selective monitoring of gaseous air pollutants. *Anal. Chem.*, 42(6), pp. 575–579, doi:10.1021/ac60288a034, 1970.
- Garane, K., Koukoulis, M.-E., Verhoelst, T., Lerot, C., Heue, K.-P., Fioletov, V., Balis, D., Bais, A., Bazureau, A., Dehn, A., Goutail, F., Granville, J., Griffin, D., Hubert, D., Keppens, A., Lambert, J.-C., Loyola, D., McLinden, C., Pazmino, A., Pommereau, J.-P., Redondas, A., Romahn, F., Valks, P., Van Roozendaal, M., Xu, J., Zehner, C., Zerefos, C., and Zimmer, 470 W.: TROPOMI/SSP total ozone column data: global ground-based validation and consistency with other satellite missions, *Atmos. Meas. Tech.*, 12, 5263–5287, <https://doi.org/10.5194/amt-12-5263-2019>, 2019.
- Griffith, S., W-S Huang, C-C Lin, Y-C Chen, K-E Chang, T-H Lin, S-Hg Wang, N-H Lin, Long-range air pollution transport in East Asia during the first week of the COVID-19 lockdown in China, *Science of The Total Environment*, Volume 741, 140214, ISSN 0048-9697, <https://doi.org/10.1016/j.scitotenv.2020.140214>, 2020.
- 475 Hendrick, F., J.-P. Pommereau, F. Goutail, R. D. Evans, D. Ionov, A. Pazmino, E. Kyrö, G. Held, P. Eriksen, V. Dorokhov, M. Gil, M. Van Roozendaal, NDACC/SAOZ UV-visible total ozone measurements: improved retrieval and comparison with correlative ground-based and satellite observations. *Atmos. Chem. Phys.*, 11, 5975–5995, doi:10.5194/acp-11-5975-2011, 2011.
- Hersbach, H., Bell, B., Berrisford, P., Hirahara, S., Horányi, A., Muñoz-Sabater, J., Nicolas, J., Peubey, C., Radu, R., 480 Schepers, D., Simmons, A., Soci, C., Abdalla, S., Abellan, X., Balsamo, G., Bechtold, P., Biavati, G., Bidlot, J., Bonavita, M., Chiara, G., Dahlgren, P., Dee, D., Diamantakis, M., Dragani, R., Flemming, J., Forbes, R., Fuentes, M., Geer, A., Haimberger, L., Healy, S., Hogan, R. J., Hólm, E., Janisková, M., Keeley, S., Laloyaux, P., Lopez, P., Lupu, C., Radnoti, G., Rosnay, P., Rozum, I., Vamborg, F., Villaume, S., and Thépaut, J.-N.: The ERA5 Global Reanalysis, *Q J R Meteorol Soc.*, 146, 1999–2049, <https://doi.org/10.1002/qj.3803>, 2020.
- 485 Hönninger, G., von Friedeburg, C., and Platt, U., Multi axis differential optical absorption spectroscopy (MAX-DOAS), *Atmos. Chem. Phys.*, 4, 231–254, <https://doi.org/10.5194/acp-4-231-2004>, 2004.



- Koukouli, M.-E., Skoulidou, I., Karavias, A., Parcharidis, I., Balis, D., Manders, A., Segers, A., Eskes, H., and van Geffen, J.: Sudden changes in nitrogen dioxide emissions over Greece due to lockdown after the outbreak of COVID-19, *Atmos. Chem. Phys.*, 21, 1759–1774, <https://doi.org/10.5194/acp-21-1759-2021>, 2021.
- 490 Krecl, P., A. C. Targino, G. Yoshikazu Oukawa, R. Pacheco Cassino Junior, Drop in urban air pollution from COVID-19 pandemic: Policy implications for the megacity of São Paulo, *Environmental Pollution*, Volume 265, Part B, 114883, ISSN 0269-7491, <https://doi.org/10.1016/j.envpol.2020.114883>, 2020.
- Liu, F., A. Page, S. A. Strode, Y. Yoshida, S. Choi, B. Zheng⁵, L. N. Lamsal, C. Li, N. A. Krotko, H. Eskes, R. van der A, P. Veefkind, P. F. Levelt, O. P. Hauser, and J. Joiner, Abrupt decline in tropospheric nitrogen dioxide over China after the outbreak of COVID-19. *Science Advances*, doi: 10.1126/sciadv.abc2992, 2020.
- 495 Menut, L., Bessagnet, B., Siour, G., Mailler, S. Pennel, R., and Cholakian, A., Impact of lockdown measures to combat Covid-19 on air quality over western Europe, *Science of The Total Environment* 741, <https://doi.org/10.1016/j.scitotenv.2020.140426>, 2020.
- Petit, J.-E., Dupont, J.-C., Favez, O., Gros, V., Zhang, Y., Sciare, J., Simon, L., Truong, F., Bonnaire, N., Amodeo, T., Vautard, R., and Haefelin, M.: Response of atmospheric composition to COVID-19 lockdown measures during Spring in the Paris region (France), *Atmos. Chem. Phys. Discuss.* [preprint], <https://doi.org/10.5194/acp-2021-369>, in review, 2021.
- 500 Platt, U., Stutz, J., 2008. Differential absorption spectroscopy. In: *Differential Optical Absorption Spectroscopy*. Springer, pp. 135e174.
- Pommereau, J.P. and F. Goutail, Stratospheric O₃ and NO₂ Observations at the Southern Polar Circle in Summer and Fall 1988, *Geophys. Res. Lett.*, 895, 1988.
- 505 Prunet, P., O. Lezeaux, C. Camy-Peyret, H. Thevenon, Analysis of the NO₂ tropospheric product from S5P TROPOMI for monitoring pollution at city scale, *City and Environment Interactions*, <https://doi.org/10.1016/j.cacint.2020.100051>, 2020.
- Shi, X., & Basseur, G. P. (2020). The response in air quality to the reduction of Chinese economic activities during the COVID 19 outbreak. *Geophysical Research Letters*, 47, e2020GL088070. <https://doi.org/10.1029/2020GL088070>
- 510 Siddiqui, A., Halder, S., Chauhan, P. *et al.* COVID-19 Pandemic and City-Level Nitrogen Dioxide (NO₂) Reduction for Urban Centres of India. *J Indian Soc Remote Sens* 48, 999–1006, <https://doi.org/10.1007/s12524-020-01130-7>, 2020.
- Veefkind, J. P., I. Aben, K. McMullan, H. Förster, J. de Vries, G. Otter, J. Claas, H.J. Eskes, J.F. de Haan, Q. Kleipool, M. van Weele, O. Hasekamp, R. Hoogeveen, J. Landgraf, R. Snel, P. Tol, P. Ingmann, R. Voors, B. Kruizinga, R. Vink, H. Visser, P.F. Levelt, TROPOMI on the ESA Sentinel-5 Precursor: A GMES mission for global observations of the atmospheric composition for climate, air quality and ozone layer applications. *Rem. Sens. Env.* 120, 70–83, <https://doi.org/10.1016/j.rse.2011.09.027>, 2012.
- 515 Verhoelst, T., Compernelle, S., Pinardi, G., Lambert, J.-C., Eskes, H. J., Eichmann, K.-U., Fjæraa, A. M., Granville, J., Niemeijer, S., Cede, A., Tiefengraber, M., Hendrick, F., Pazmiño, A., Bais, A., Bazureau, A., Boersma, K. F., Bogner, K., Dehn, A., Donner, S., Elokhov, A., Gebetsberger, M., Goutail, F., Grutter de la Mora, M., Gruzdev, A., Gratsea, M., Hansen, G. H., Irie, H., Jepsen, N., Kanaya, Y., Karagkiozidis, D., Kivi, R., Kreher, K., Levelt, P. F., Liu, C., Müller, M., Navarro
- 520



- Comas, M., PETERS, A. J. M., Pommereau, J.-P., Portafaix, T., Prados-Roman, C., Puentedura, O., Querel, R., Remmers, J., Richter, A., Rimmer, J., Rivera Cárdenas, C., Saavedra de Miguel, L., Sinyakov, V. P., Stremme, W., Strong, K., Van Roozendaal, M., Veefkind, J. P., Wagner, T., Wittrock, F., Yela González, M., and Zehner, C., Ground-based validation of the Copernicus Sentinel-5P TROPOMI NO₂ measurements with the NDACC ZSL-DOAS, MAX-DOAS and Pandora global networks, *Atmos. Meas. Tech.*, 14, 481–510, <https://doi.org/10.5194/amt-14-481-2021>, 2021.
- 525
- Viatte, C., Petit, J.-E., Yamanouchi, S., Van Damme, M., Doucerain, C., Germain-Piaulenne, E., Gros, V., Favez, O., Clarisse, L., Coheur, P.-F., K. Strong and Clerbaux, C., Ammonia and PM_{2.5} Air Pollution in Paris during the 2020 COVID Lockdown. *Atmosphere*, 12, 160. <https://doi.org/10.3390/atmos12020160>, 2021
- 530
- WHO Regional Office for Europe. Air quality guidelines: global update 2005 – particulate matter, ozone, nitrogen dioxide and sulfur dioxide. Copenhagen: WHO Regional Office for Europe, 2006. Available on line: https://www.euro.who.int/__data/assets/pdf_file/0005/78638/E90038.pdf (last access: 15 November 2020)
- Zhou, Y., Brunner, D., Hueglin, C., Henne, S., & Staehelin, J. Changes in OMI tropospheric NO₂ columns over Europe from 2004 to 2009 and the influence of meteorological variability. *Atmospheric Environment*, 46, 482–495, ISSN 1352-2310, <https://doi.org/10.1016/j.atmosenv.2011.09.024>, 2012.

535