



HAL
open science

How well can we derive Global Ocean Indicators from Argo data?

Karina von Schuckmann, Pierre-Yves Le Traon

► **To cite this version:**

Karina von Schuckmann, Pierre-Yves Le Traon. How well can we derive Global Ocean Indicators from Argo data?. *Ocean Science*, 2011, 7 (6), pp.783-791. 10.5194/os-7-783-2011 . insu-03325767

HAL Id: insu-03325767

<https://insu.hal.science/insu-03325767v1>

Submitted on 25 Aug 2021

HAL is a multi-disciplinary open access archive for the deposit and dissemination of scientific research documents, whether they are published or not. The documents may come from teaching and research institutions in France or abroad, or from public or private research centers.

L'archive ouverte pluridisciplinaire **HAL**, est destinée au dépôt et à la diffusion de documents scientifiques de niveau recherche, publiés ou non, émanant des établissements d'enseignement et de recherche français ou étrangers, des laboratoires publics ou privés.



Distributed under a Creative Commons Attribution 4.0 International License

How well can we derive Global Ocean Indicators from Argo data?

K. von Schuckmann^{1,2} and P.-Y. Le Traon²

¹Laboratoire d’Océanographie et du Climat: Expérimentations et Approches Numériques (LOCEAN/IPSL), UMR 7159, CNRS/INSU – Université Paris 6, 4 place Jussieu, 75252 Paris, France

²Laboratoire d’Oceanographie Spatiale, IFREMER, B.P. 70 Plouzané, France

Received: 5 April 2011 – Published in Ocean Sci. Discuss.: 4 May 2011

Revised: 27 July 2011 – Accepted: 10 October 2011 – Published: 22 November 2011

Abstract. Argo deployments began in the year 2000 and by November 2007, the array reached its initial goal of 3000 floats operating worldwide. In this study, Argo temperature and salinity measurements during the period 2005 to 2010 are used to estimate Global Ocean Indicators (GOIs) such as global ocean heat content (GOHC), global ocean freshwater content (GOFC) and global steric sea level (GSSL). We developed a method based on a simple box averaging scheme using a weighted mean. Uncertainties due to data processing methods and choice of climatology are estimated. This method is easy to implement and run and can be used to set up a routine monitoring of the global ocean. Over the six year time period, trends of GOHC and GSSL are $0.54 \pm 0.1 \text{ W m}^{-2}$ and $0.75 \pm 0.15 \text{ mm yr}^{-1}$, respectively. The trend of GOFC is barely significant. Results show that there is significant interannual variability at global scale, especially for GOFC. Annual mean GOIs from the today’s Argo sampling can be derived with an accuracy of $\pm 0.11 \text{ cm}$ for GSSL, $\pm 0.22 \times 10^8 \text{ J m}^{-2}$ for GOHC, and $\pm 700 \text{ km}^3$ for GOFC. Long-term trends (15 yr) of GOIs based on the complete Argo sampling for the upper 1500 m depth can be estimated with an accuracy of $\pm 0.04 \text{ mm yr}^{-1}$ for GSSL, $\pm 0.02 \text{ W m}^{-2}$ for GOHC and $\pm 20 \text{ km}^3 \text{ yr}^{-1}$ for GOFC – under the assumption that no systematic errors remain in the observing system.

ity measurements throughout the deep global ocean down to 2000 m depth. The data are both received in real time for operational users and after careful scientific quality control they are used for climate research. Those data undergo greater quality control and validation procedures with strong involvement of scientific experts (e.g. Wong et al., 2010).

One way of observing and understanding the ocean’s role in the Earth’s energy balance is to evaluate the average temperature change from the surface down to the deep ocean. Argo provides the capability to assess global ocean heat content (GOHC) by measuring subsurface temperature. Salinity data allow an estimate of global ocean freshwater content (GOFC). Subsurface temperature and salinity measurements are the only possibility to describe the internal distribution of density. This, in turn, provides the capability to understand important contributions to global sea level change (Cazenave and Llovel, 2010; Church and White, 2011), i.e. global steric sea level (GSSL).

Many attempts have been made to estimate long-term as well as recent GOHC changes. Lyman et al. (2010) compared several GOHC products (for the upper ocean, 700 m) over the time period 1993–2008. Differences have been explained by the uncertainty due to the choice of data processing methods (including corrections of instrumental biases) as well as to effects of interannual variability (Domingues et al., 2008; Lyman et al., 2010; Gouretski and Reseghetti, 2010). Recent estimations of GOHC are mostly based on Argo measurements, which reduces possible errors due to large data gaps in space and time and due to inhomogeneous sampling. Nevertheless, analyses of GOHC during the last decade differ among methods as well (von Schuckmann et al., 2009; Willis et al., 2009; Trenberth and Fasullo, 2010).

The estimation of GOFC from Argo as a salinity anomaly over a depth layer (e.g. Boyer et al., 2007) is an indirect but potentially sensitive indicator for detecting changes in precipitation, evaporation, river runoff and ice melt (sea ice, continental glaciers and ice sheets). Any change in the

1 Introduction

During the past decade, the international Argo programme has revolutionized the distribution of ocean data within the research and operational communities (Roemmich and the A. S. Team, 2009). Argo delivers temperature and salin-



Correspondence to: K. von Schuckmann
(karina.von.schuckmann@ifremer.fr)

hydrological cycle is reflected in the ocean salinity field due to the large-scale balance between the surface freshwater flux (evaporation minus precipitation and continental runoff), salinity variations and the ocean's advective and mixing processes (Durack and Wijffels, 2010). Multi-decadal trends in ocean salinity have been observed on global and regional scales (e.g. Antonov et al., 2002; Boyer et al., 2005; Delcroix et al., 2007). These multi-decadal salinity changes appear to coincide with both broad-scale surface warming and the amplification of the hydrological cycle (Durack and Wijffels, 2010). Results shown in von Schuckmann et al. (2009) document that ocean salinity and, hence, freshwater are changing on gyre and basin scales and GOF is characterized by large interannual changes rather than by a significant trend during the last decade.

Global total sea level derived from satellite altimetry can be partitioned into its steric and mass-related components (e.g. Cazenave et al., 2009; Leuliette and Miller, 2009). Steric sea level is driven by volume changes through ocean salinity (halosteric) and ocean temperature (thermosteric) effects, from which the latter is known to play a dominant role in observed contemporary rise of GSSL. Several GSSL variations from Argo and other in situ observations have been derived over the past couple of years (e.g. Willis et al., 2008; Cazenave et al., 2009; Leuliette and Miller, 2009; von Schuckmann et al., 2009). There are substantial differences in these global statistical analyses, which have been related to instrumental biases, quality control and processing issues, role of salinity and influence of the reference depth for SSL calculation. Sparse global sampling before Argo was 100% complete also limits the statistical significance of some of the observed differences.

Thus, while Argo provides data with unprecedented accuracy and coverage, estimating GOIs remains a major challenge. It requires very careful data quality control and analysis. An estimation of errors is needed for a sound interpretation of results. Estimations of GSSL, GOHC and GOF and their errors are proposed here for the years 2005 to 2010. The paper is organized as follows. Section 2 presents the data set and methods used. A discussion on the error of GOIs due to the data processing is given in Sect. 3. The method is tested using satellite altimetry and these results are presented in Sect. 4. Estimations of GOIs and their trends are shown in Sect. 5. Results are discussed in the final section.

2 Data sets and method assessing GOIs

2.1 Data sets

The basic material for this study encompasses the large in-situ data set provided by the Argo array of profiling floats (www.argo.net). The data (Argo only) were downloaded from the Coriolis data center (www.coriolis.eu.org), i.e. the Coriolis Ocean Database for Re-analyses (CORA2.2, Ca-

banés et al., 2010). The database – from which about 75% of the observations undergo delayed mode quality control procedures (C. Cabanés, personal communication, 2011) – was received in June 2010 for the 2005–2009 period, and in January 2011 for the database during the year 2010. The datasets are processed by the processing tool “ISAS-STD” (Gaillard, 2010), which reads the selected variable, performs a climatological test and interpolates on standard levels (see von Schuckmann et al., 2009 for more details).

To estimate GOIs from the irregularly distributed global Argo data, temperature and salinity profiles from 10 to 1500 m depth are used. This depth layer is a compromise to maximize the number of selected profiles while going deep enough to assess ocean variability (von Schuckmann et al., 2009). Only 40% of Argo floats provided measurements up to 2000 m depth in the year 2005. The data coverage is thus not sufficient for a global estimation of changes between 1500 m and 2000 m depth (the situation has improved and thanks to technological evolutions 60% of Argo floats provided observations up to 2000 m in 2010). We have started our calculation with the year 2005, as before there were major gaps in the global coverage, especially in the southern ocean. The monthly Argo sampling for the northern, tropical and southern oceans is shown in Fig. 1. During the years 2005 and 2006, sampling was mostly reduced in the southern ocean basin and amplified in the summer month in the extra tropical sectors. This rapidly changed in the end of 2006 when Argo sampling was almost complete allowing a more homogenized global distribution of in situ measurements (Fig. 1).

2.2 Data processing method

An Argo climatology (ACLIM hereinafter, 2004–2009, von Schuckmann et al., 2009) is first interpolated on every profile position in order to fill gappy profiles at depth of each temperature and salinity profile. This procedure is necessary to calculate depth-integrated quantities. OHC, OFC and SSL are then calculated at every Argo profile position as described in von Schuckmann et al. (2009). Finally, anomalies of the physical properties at every profile position are calculated relative to ACLIM.

To estimate GOIs from the irregularly distributed profiles, the global ocean is divided into boxes of 5° latitude, 10° longitude and 3 month size. This provides a sufficient number of observations per box. To remove spurious data, measurements which depart from the mean at more than 3 times the standard deviation are excluded. The variance information to build this criterion is derived from ACLIM. This procedure excludes about 1% of data from our analysis. Only data points which are located over bathymetry deeper than 1000 m depth are then kept. Boxes containing less than 10 measurements are considered as a measurement gap.

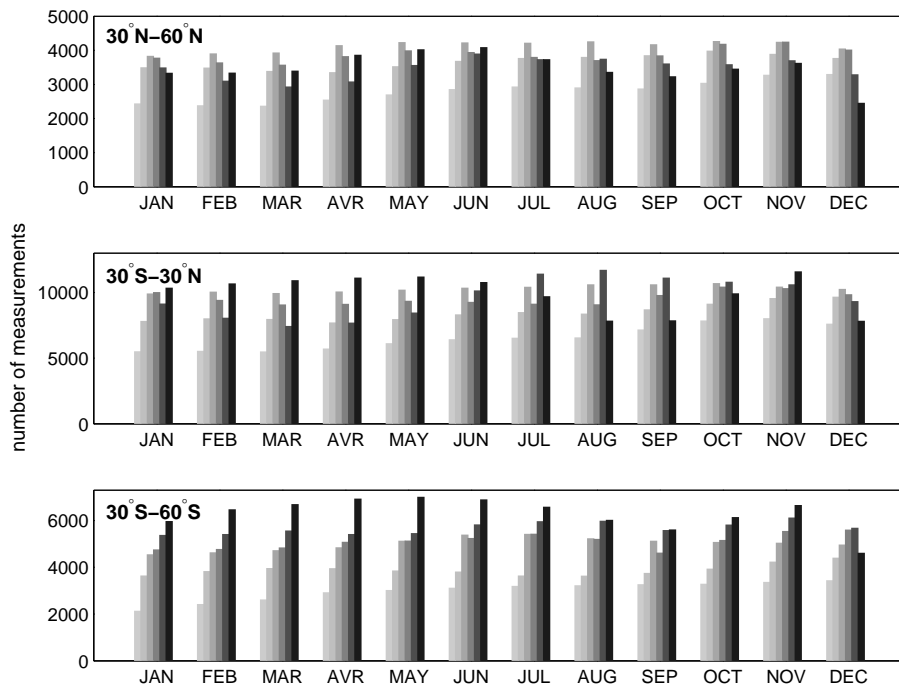


Fig. 1. Number of monthly measurements averaged for different ocean basins, i.e. northern basin 30–60° N (upper), southern basin 30–60° S (middle) and tropical basin 30° S–30° N (lower). Change of years from 2005 to 2010 shown from light to dark gray.

The mean for each $5^\circ \times 10^\circ \times 3$ month box is then estimated using a weighted averaging method based on the analysis of Bretherton et al. (1976). All observations Φ_i within a given box are averaged taking into account the space and time correlation of observations:

$$\bar{\Theta}_{\text{box}} = \frac{\sum_{i,j} \mathbf{A}_{i,j}^{-1} \Phi_i}{\sum_{i,j} \mathbf{A}_{i,j}^{-1}}, \quad (1)$$

where $\mathbf{A}_{i,j} = \overline{\Phi_i \Phi_j}$ is the covariance matrix between all pairs of observations within one box and i, j the spatial coordinates. This calculation provides an optimal estimation of the mean (in a least squares sense), assuming the ocean signal covariance is known. For the sake of simplicity, this covariance matrix is assumed to be the same for all GOIs. We used space and time correlation scales of 150 km and 15 days, respectively, for the correlation matrix. These are typical scales of mesoscale variability (e.g. Le Traon and Morrow, 2001). This calculation reduces the weight of observations that are too close from each other and thus do not provide independent estimations.

Before globally averaging the physical properties, one needs to address how to handle data gaps (i.e. boxes with less than 10 observations). Lyman and Johnson (2008) have assessed the effects of irregular in situ ocean sampling on estimates of GOHC anomalies by comparing two methods: the first one assumes zero anomalies in gaps, and the second one assumes that areas that are not sampled have a mean equal

to the spatial mean of observations. Their results show that warming trends in upper GOHC anomalies are consistently estimated with the second method. The first method (zero in empty boxes) results in an underestimation of the global trend. Consequently, we chose to replace gaps by the spatial mean. We do take into account, however, the impact of gaps on the error estimation (see next section).

Finally, GOIs are calculated within 60° S to 60° N, i.e. the effective coverage of the Argo array (Roemmich and Gilson, 2009). The global mean indicator $\text{GOI}(t)$ is obtained by averaging $\bar{\Theta}_{\text{box}}$ estimations weighted by their surface area $\mathbf{M}_{i,j}$:

$$\text{GOI}(t) = \frac{\sum_{i,j} \bar{\Theta}_{\text{box}} \mathbf{M}_{i,j}}{\sum_{i,j} \mathbf{M}_{i,j}}. \quad (2)$$

We have carried out sensitivity tests of GOI's estimation when using different climatologies (i.e. either ACLIM or WOA05, Locarnini et al., 2006; Antonov et al., 2006) to calculate the anomalies as described above. Results are presented in Fig. 2 for all three parameters. The sensitivity of GOIs with respect to the choice of the climatology is generally small, but it is not negligible. Computations of OFC, in particular, are sensitive to the reference climatology (see Boyer et al., 2007 for more details on the freshwater calculation). Based on this sensitivity test, a climatology uncertainty for each GOI is included in the error estimation as discussed later in Sect. 3.1.

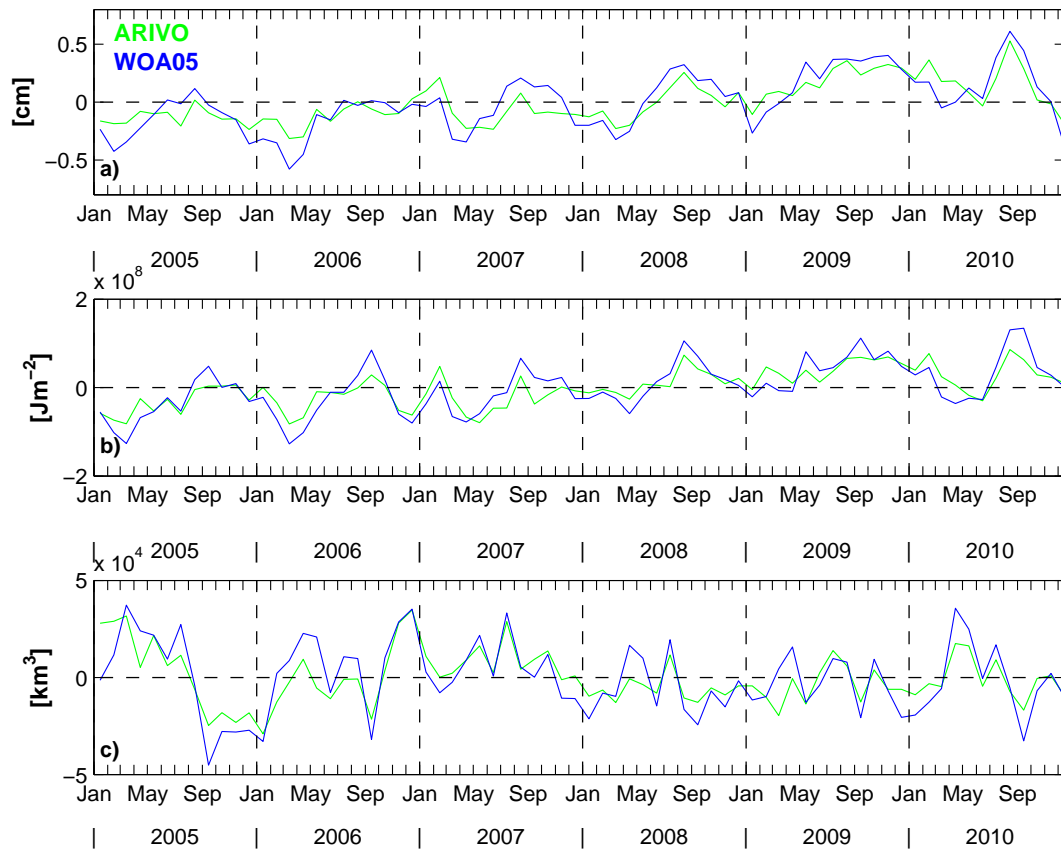


Fig. 2. Sensitivity test to estimate the climatology uncertainty for (a) GSSL, (b) GOHC and (c) GOFC during 2005–2010. To fill gaps at depth as well as to evaluate anomaly fields, two different climatologies are used, i.e. either ACLIM (green) or WOA05 (blue, see text for more details).

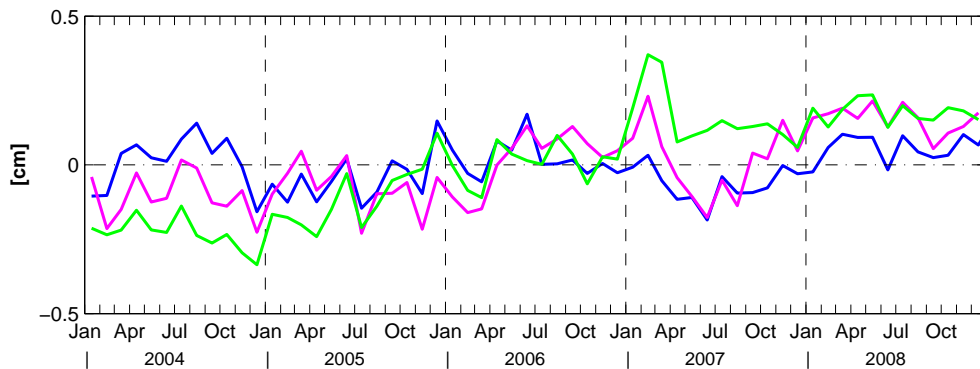


Fig. 3. GSSL anomaly (60° S– 60° N, 10–1500 m) during 2004–2008 based on three different gridded fields, i.e. ARIVO (green, Argo plus other data, Ifremer), from Scripps Institution of Oceanography (blue, Argo only) and MOAA (red, Argo plus other data, Japan Agency for Marine-Earth Science and Technology). The data have been downloaded from the Argo web page (www.argo.ucsd.edu).

3 Error estimation

A sound interpretation of GOIs requires a careful estimation of errors. Errors contain measurement noise, systematic instrumental biases, sampling and data processing errors, including the effect of unresolved ocean variability scales

(e.g. mesoscale variability). Large sensitivities of a GOI like GSSL to different data processing techniques are obvious when comparing different products of gridded Argo fields (Fig. 3). We calculated GSSL from three different products, which are downloaded from the Argo web-page (www.argo.ucsd.edu), i.e. two products based on Argo and

other hydrographic data (ARIVO delivered by Ifremer, and MOAA delivered by JAMSTEC), and one product including Argo-only measurements (delivered by Scripps Institution of Oceanography). Detailed information on the gridded fields can be found on the Argo webpage. We chose to evaluate the comparison during the time period 2004 to 2008 for consistency. Amplitudes of interannual fluctuations differ from one product to another (Fig. 3). Although the evaluation of GSSL in Fig. 3 is more or less based on the same data base, differences are clearly visible. These differences lead to a large spread of the estimation of global steric trends ranging from nearly 0 mm yr^{-1} to about 1 mm yr^{-1} . This simple exercise already shows that a sensitivity study due to the data processing is vital.

3.1 Error bars estimated for global GOIs

The error $\epsilon_{i,j}^2$ on the averaged physical parameter Φ_i in every $5^\circ \times 10^\circ \times 3$ month box using the formulation of Breterthorn et al. (1976) can be written as

$$\epsilon_{i,j}^2 = \frac{1}{\sum_{i,j} \mathbf{A}_{i,j}^{-1}} \sigma_{i,j}^2,$$

where $\sigma_{i,j}^2$ is the variance of Φ_i within each box, respectively. This takes into account the reduced number of degrees of freedom to estimate the error on the mean value for a given box (through the covariance matrix). Note that this effect is not negligible. Assuming independent observations would reduce the error variance by more than 10%. To evaluate the error for the global estimation, we need to take into account errors for all boxes. Boxes that have less than 10 observations are associated with a variance error equal to the total variance of the physical parameter. The global mean errors $E(t)^2$ can be then calculated as follows:

$$E(t)^2 = \frac{\sum_{i,j} \epsilon_{i,j}^2 \mathbf{M}_{i,j}^2}{\sum_{i,j} \mathbf{M}_{i,j}^2}. \quad (3)$$

An additional source of uncertainties arises from the choice of the climatology used to fill vertical gaps and to calculate the anomaly fields. As discussed in Sect. 2 and shown in Fig. 2, the climatological uncertainty E_{clim}^2 is small, but not negligible. This needs to be included in the error bar calculation. To estimate the value for E_{clim}^2 , the standard deviation of the difference between the two time series using either ACLIM or WOA05 (see Fig. 2) has been derived for each GOI. Thus, the total error $E_{\text{total}}(t)^2$ on GOIs can be defined as

$$E_{\text{total}}(t)^2 = E(t)^2 + E_{\text{clim}}^2. \quad (4)$$

This total error includes the uncertainties due to the data processing and the choice of the reference climatology, but

Table 1. Uncertainties of GOIs during 2005 and 2010 (bold) for different time averages, i.e. 3 month, 1 yr and 6 yr. See text for more details. These values do not take into account uncertainties induced by remaining systematic errors in the Argo observing system.

	GSSL [cm]	GOHC [10^8 J m^{-2}]	GOFC [km^3]
3 months (2005/2010)	0.24/ 0.21	0.52/ 0.44	1800/ 1500
1 yr (2005/2010)	0.12/ 0.11	0.26/ 0.22	900/ 700
6 yr	0.08	0.17	560

it does not take into account possible unknown systematic measurement errors not precisely corrected for in the delayed mode Argo quality control (e.g. pressure errors, salinity sensor drift). Our method can be used, however, to discuss sampling issues for the estimation of GOIs and their errors. Table 1 shows the uncertainties due to data processing and the climatology of global mean GOIs during 2005 and 2010 for different time averages. Errors clearly decrease with the growing coverage of Argo. For example, uncertainties of 3-monthly GOHC are $\pm 0.52 \times 10^8 \text{ J m}^{-2}$ during the year 2005 and reduce to $\pm 0.44 \times 10^8 \text{ J m}^{-2}$ during 2010. Estimating annual mean GOIs from the currently complete Argo observing system can be performed with an accuracy of $\pm 0.11 \text{ cm}$ for GSSL, $\pm 0.22 \times 10^8 \text{ J m}^{-2}$ for GOHC, and $\pm 700 \text{ km}^3$ for GOFC.

3.2 Global trend error estimation

The method of weighted least square fit is used to retrieve 2005–2010 GOI trends. The trend of each GOI time series is evaluated using a weighted least square solution where the weights are the error bars of our GOIs given by Eq. (4) (see Appendix A). Note that error bars obtained from Eq. (4) only involve errors due to the sampling, data processing methods and climatology uncertainties. Thus, the uncertainty of global trend estimations might increase in future studies as systematic errors due to unknown instrument biases have not been taken into account.

The error on the trend of GOIs during the 6-yr time series is presented in Table 2. Uncertainties of GOI trends derived from Argo are estimated to $\pm 0.15 \text{ mm yr}^{-1}$ for GSSL, $\pm 0.1 \text{ W m}^{-2}$ for GOHC and $\pm 90 \text{ km}^3 \text{ yr}^{-1}$ for GOFC. A “forecast calculation” of the uncertainties of global trend estimations is given in Table 2, assuming GOI error bars during the year 2010 while applying Eq. (A1) of the Appendix. This simple calculation suggests that long-term trends (here 15 yr) of GOIs based on the complete Argo sampling could be performed with an accuracy of about $\pm 0.04 \text{ mm yr}^{-1}$ for GSSL, $\pm 0.02 \text{ W m}^{-2}$ for GOHC and $\pm 20 \text{ km}^3 \text{ yr}^{-1}$ for GOFC trends – under the major assumption that no systematic errors remain in the observing system.

Table 2. A “forecast calculation” of the uncertainties of global trend estimations assuming GOI error bars during the year 2010 while applying Eq. (A1) (Appendix) for 10 and 15 yr, together with the trend uncertainties of the current GOI estimation during 2005–2010. These values do not take into account uncertainties induced by remaining systematic errors in the Argo observing system.

	GSSL [mm yr ⁻¹]	GOHC [W m ⁻²]	GOFc [km ³ yr ⁻¹]
6 yr	±0.15	±0.10	±90
10 yr	±0.07	±0.04	±40
15 yr	±0.04	±0.02	±20

Note that our estimations provide an estimation of errors on the trend over a given time period. Such trends, even if they are statistically significant, cannot be interpreted as long-term climate trends as they also include the effect of interannual signals. This is clearly the case for the GOFc trend.

4 Testing the method

Altimeter sea level observations are a useful and nearly global observational record over the ice-free oceans that have been shown to be correlated well with in situ SSL and OHC (e.g. Willis et al., 2004; Guinehut et al., 2006). Maps of mean sea level anomalies (MSLA) are ideal to validate our simple box averaging method based on irregular sampling. Using the high-resolution altimeter measurements as a proxy for in situ GOI estimations (SSL and OHC) has already been performed in previous studies (Lyman and Johnson, 2008; Roemmich and Gilson, 2009). Although satellite MSLA fields are not truly global and have possibly undefined errors and also contain mass (bottom pressure) signals (Ponte, 1999; Wunsch et al., 2007), they are a very useful proxy to test our simple box averaging method. We used gridded fields downloaded from the AVISO webpage (merged gridded product, www.aviso.org). Weekly AVISO maps of MSLA on a 1/3° Mercator grid are subsampled at the locations and time of the year of in situ data collected for all years during 2005 to the end of 2010 and compared with actual global MSLA (derived from the MSLA maps). Then global mean sea level anomalies have been calculated as described in Sect. 2. The comparison between the two global averages shows reasonable agreement and their 6 yr trends are consistent (Fig. 4). However, there are differences in annual and lower period variability among the curves. This test shows that our simple box averaging method depicts global mean changes reasonably well and can be used to assess GOIs for monitoring needs of the climate system.

5 Estimation of GOIs

In this section, GSSL, GOHC and GOFc are derived from Argo data using the box averaging method discussed in Sect. 2 (Fig. 5). The 6-yr trend estimations are calculated as described in Sect. 3.2. Generally, the error decreases as the number of measurements increases and hence, the GOI errors decrease with time (Table 1).

A significant increase in GSSL can be observed from 2005 to 2010, with a trend of 0.75 ± 0.15 mm yr⁻¹ (0.53 mm yr⁻¹ for the Earth’s entire surface area, Fig. 5a). For this decade, values for in situ GSSL range from -0.5 to 0.8 mm yr⁻¹ (e.g. Willis et al., 2008; Cazenave et al., 2009; Leuliette and Miller, 2009; von Schuckmann et al., 2009). The GOHC estimation shows a significant 6-yr increase, with a rate of 0.54 ± 0.1 W m⁻² (0.38 W m⁻² for the Earth’s entire surface area, Fig. 5b). Our GOHC estimation is slightly lower compared to the composite evaluated by Lyman et al. (2010) and to what was found in our earlier study (von Schuckmann et al., 2009). This can be due to the fact that the later period is confined to a period when the upper layers did not seem to be gaining much heat (e.g. Levitus et al., 2009; Cazenave and Llovel, 2010; Lyman et al., 2010). However, comparisons of GOHC and GSSL values from different studies are difficult to interpret as differences include the effect of interannual variability, instrumental biases or different data processing methods.

One important source of uncertainties in GOI estimations are due to the fact that patterns of interannual variability differ among estimation methods (Domingues et al., 2008; Lyman et al., 2010). Our results show that interannual fluctuations of GSSL and GOHC exist but are small (Fig. 5a and b). This is different for GOFc (Fig. 5c). Large interannual fluctuations dominate the time series, and the trend is very much dependent of these large interannual fluctuations. This implies that a longer time series is needed to extract a significant long-term trend for GOFc.

6 Conclusions

GSSL, GOHC and GOFc derived from in situ observations are a useful benchmark for ocean and climate models and an important diagnostic for changes in the Earth’s climate system (Hansen et al., 2005; Levitus et al., 2005). Differences among various analyses and inconsistencies with other observations (e.g. altimetry, GRACE, Earth’s energy budget) require particular attention (Hansen et al., 2005; Willis et al., 2008; Domingues et al., 2008; Cazenave and Llovel, 2010; Trenberth, 2010; Lyman et al., 2010). Due to its global coverage, Argo opens up a new scope to observe climate related changes. Our results show that GOIs derived from Argo measurements allows a monitoring of the state of the global ocean.

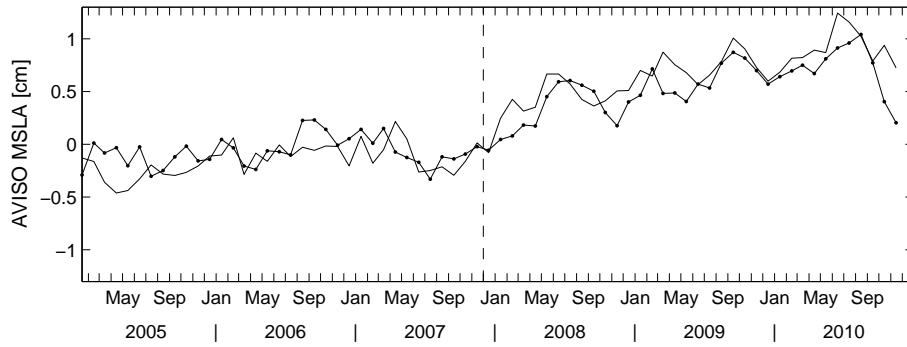


Fig. 4. Testing the method using gridded altimeter MSLA measurements (AVISO): gridded MSLA during 2005–2010 are subsampled to Argo profile positions and the simple box averaging method was applied. Global MSLA derived from the AVISO grid (bold line) is compared to its corresponding subsampled result (bold+ dots). Dashed line marks November 2007, i.e. when initial Argo sampling was almost achieved.

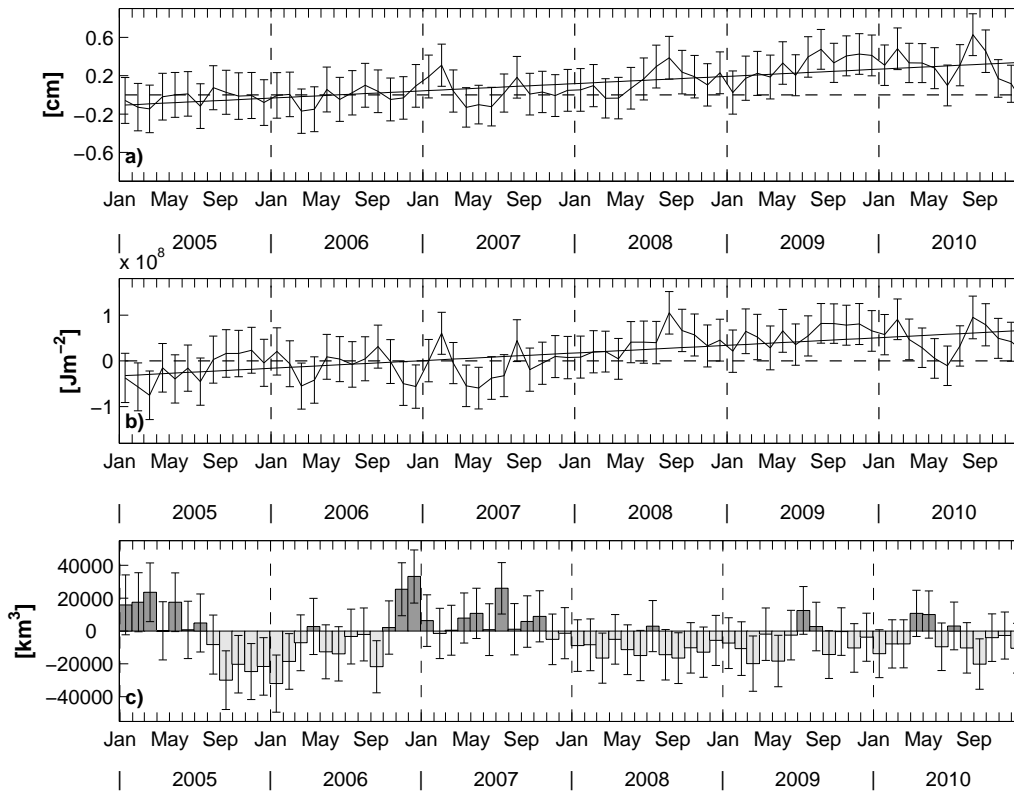


Fig. 5. Estimation of (a) GSSL, (b) GOHC and (c) GOFc. The calculation is based on the simple box averaging method applied to Argo measurements only. The 6-yr trends are of $0.75 \pm 0.15 \text{ mm yr}^{-1}$, $0.54 \pm 0.10 \text{ W m}^{-2}$ and $-80 \pm 90 \text{ km}^3 \text{ yr}^{-1}$, respectively. Error bars and trend uncertainties do not take into account remaining systematic errors in the Argo observing system.

We developed a method of evaluating GOIs that is easy to implement and can be used for a routine monitoring of the global ocean. With this method, a simple estimation of the errors on GOI estimations can be established and thus adequate interpretations and conclusions can be drawn. The estimation of GOIs based on our method are developed as part of the monitoring system in the frame of the Eu-

ropean Commission project MyOcean. The results show a clear increase of GOHC and GSSL. Estimations of uncertainties reveal that this increase is significant during the years 2005–2010. GOHC increases during this period by a rate of $0.54 \pm 0.1 \text{ W m}^{-2}$ and GSSL by $0.75 \pm 0.15 \text{ mm yr}^{-1}$. Estimating annual mean GOIs from the actual complete Argo observing system can be performed with an accuracy

of ± 0.11 cm for GSSL, $\pm 0.22 \times 10^8 \text{ J m}^{-2}$ for GOHC, and $\pm 700 \text{ km}^3$ for GOFC. Assuming that the current Argo sampling is sustained for 15 yr, trends of GOIs could be performed with an accuracy of about $\pm 0.04 \text{ mm yr}^{-1}$ for GSSL, $\pm 0.02 \text{ W m}^{-2}$ for GOHC and $\pm 20 \text{ km}^3 \text{ yr}^{-1}$ for GOFC.

We have defined the error on GOIs based on sampling, data processing and climatology uncertainties only. Our error estimations do not include remaining systematic biases in the Argo observing system (e.g. uncorrected drift of sensors, pressure errors). The sensitivity of GOIs to different proposed instrumental bias corrections (e.g. pressure offsets) needs to be tested now. Moreover, our trend estimations are estimated over a 6-yr time series only and are affected by interannual variability. Hence, an interpretation in terms of long-term climate signals remains questionable.

Appendix A

Weighted least square solution

The global trend estimation and its uncertainty are derived from a conventional weighted least square method:

The set of observations $y_i = \alpha_i t_i + \beta$ can be written as:

$$\mathbf{y} = \mathbf{A}'\mathbf{x}, \quad \mathbf{y} = \begin{pmatrix} y_1 \\ \vdots \\ y_N \end{pmatrix}, \quad \mathbf{x} = \begin{pmatrix} \alpha \\ \beta \end{pmatrix}, \quad \mathbf{A}' = \mathbf{A}\mathbf{W},$$

$$\mathbf{A} = \begin{pmatrix} t_1 & 1 \\ \vdots & \vdots \\ t_N & 1 \end{pmatrix}, \quad \mathbf{W} = \begin{pmatrix} \frac{1}{E_1^2} & \dots & 0 \\ \vdots & \ddots & \vdots \\ 0 & \dots & \frac{1}{E_N^2} \end{pmatrix}.$$

The weighted least square solution where the weights are chosen to be the error bars of our GOIs (Eq. 4) can be written as:

$$\mathbf{X} = (\mathbf{A}'^T \mathbf{A}')^{-1} \mathbf{A}'^T \mathbf{y}.$$

Following Wunsch (1996), the variance of this estimation can be written as:

$$\Pi^2 = (\mathbf{A}'\mathbf{W}^{-1}\mathbf{A}')^{-1}. \quad (\text{A1})$$

Acknowledgements. The research leading to these results has received funding from the European Community's Seventh Framework Programme FP7/2007-2013 under grant agreement no. 218812 (MyOcean). Comments from two anonymous reviewers greatly improved the manuscript. The authors would like to thank Fabienne Gaillard for providing us with the ISAS/ARIVO products and for various discussions improving the results as well as Mathieu Hamon and Cécile Cabanés for useful discussions.

Edited by: T. Suga



The publication of this article is financed by CNRS-INSU.

References

- Antonov, J., Levitus, S., and Boyer, T.: Steric sea level variations during 1957–1994: Importance of salinity, *J. Geophys. Res.*, 107, C12, 8013, doi:10.1029/2001JC000964, 2002.
- Antonov, J., Locarnini, R., Boyer, T., Mishonov, A., and Garcia, H.: World Ocean Atlas 2005, vol. 2, Salinity, NOAA Atlas NESDIS, vol. 62, edited by: Levitus, S., NOAA, Silver Spring, Md., 182 pp., 2006.
- Boyer, T., Levitus, S., Antonov, J., Locarnini, R., and Garcia, H.: Linear trends in salinity for the world ocean, 1955–1998, *Geophys. Res. Lett.*, 32, L01604, doi:10.1029/2004GL021791, 2005.
- Boyer, T., Levitus, S., Antonov, J., Locarnini, R., Mishonov, A., Garcia, H., and Josey, S. A.: Changes in freshwater content in the North Atlantic Ocean 1955–2006, *Geophys. Res. Lett.*, 34, L16603, doi:10.1029/2007GL030126, 2007.
- Bretherton, F., Davis, R., and Fandry, C.: A technique for objective analysis and design of oceanic experiments applied to mode-73, *Deep-Sea Res.*, 23, 559–582, 1976.
- Cabanés, C., de Boyer Montégut, C., Coatanoan, C., Ferry, N., Per-tuisot, C., von Schuckmann, K., Petit de la Villeon, L., Carval, T., Pouliquen, S., and Le Traon, P.-Y.: CORA (Coriolis Ocean Database for Re-analyses), a new comprehensive and qualified ocean in-situ dataset from 1990 to 2008 and its use in GLORYS, *Joint Coriolis-Mercator Ocean Quarterly Newsletter*, 37, 13–17, 2010.
- Cazenave, A. and Llovel, W.: Contemporary sea level rise, *Annual Review of Marine Science*, 2, 145–173, 2010.
- Cazenave, A., Dominh, K., Guinehut, S., Berthier, E., Llovel, W., Ramillien, G., Ablain, M., and Larnicol, G.: Sea level budget over 2003–2008: A reevaluation from GRACE space gravimetry, satellite altimetry and Argo, *Global Planet. Change*, 65, 83–88, 2009.
- Church, J. A. and White, N. J.: Sea-level rise from the late 19th to the early 21st century, *Surv. Geophys.*, 32, 585–602, doi:10.1007/s10712-011-9119-1, 2011.
- Delcroix, T., Cravatte, S., and McPhaden, J.: Decadal variations and trends in tropical Pacific sea surface salinity since 1970, *J. Geophys. Res.*, 112, C03012, doi:10.1029/2006JC003801, 2007.
- Durack, P. J. and Wijffels, S. E.: Fifty-year trends in global ocean salinities and their relationship to brad-scale warming, *J. Climate*, 23, 4342–4362, doi:10.1175/2010JCLI3377.1, 2010.
- Domingues, C. M., Church, J. A., White, N. J., Gleckler, P. J., Wijffels, S. E., Barker, P. M., and Dunn, J. R.: Improved estimates of upper-ocean warming and multi-decadal sea-level rise, *Nature*, 453, 1090–1094, doi:10.1038/nature07080, 2008.
- Gaillard, F.: ISAS Tool Version 5.3: Method and configuration, SO-Argo report, 2010.

- Gouretski, V. and Reseghetti, F.: On depth and temperature biases in bathythermograph data: Development of a new correction scheme based on analysis of a global database, *Deep-Sea Res. Pt. I*, 57, 812–833, 2010.
- Guinehut, S., Le Traon, P.-Y., and Larnicol, G.: What can we learn from global altimetry/hydrography comparisons?, *Geophys. Res. Lett.*, 33, L10604, doi:10.1029/2005GL025551, 2006.
- Hansen, J., Nazarenko, L., Ruedy, R., Sato, M., Willis, J., Del Genio, A., Koch, D., Lacis, A., Lo, K., Menon, S., Novakov, T., Perlwitz, J., Russell, G., Schmidt, G. A., and Tausnev, N.: Earth's energy imbalance: Confirmation and implications, *Science*, 308, 1431–1435, doi:10.1126/science.1110252, 2005.
- Le Traon, P.-Y. and Morrow, R.: Ocean currents and eddies, in: *Satellite Altimetry and Earth Science*, edited by: Fu, L.-L. and Cazenave, A., *International Geophysics Series*, 69, 171–215, 2001.
- Leuliette, E. W. and Miller, L.: Closing the sea level rise budget with altimetry, Argo, and GRACE, *Geophys. Res. Lett.*, 36, L04608, doi:10.1029/2008GL036010, 2009.
- Levitus, S., Antonov, J., and Boyer, T.: Warming of the world ocean, 1955–2003, *Geophys. Res. Lett.*, 32, L02604, doi:10.1029/2004GL021592, 2005.
- Levitus, S., Antonov, J., Boyer, T., Locarnini, R., Garcia, H., and Mishonov, A.: Global ocean heat content 1955–2007 in light of recently revealed instrumentation problems, *Geophys. Res. Lett.*, 36, L07608, doi:10.1029/2008GL037155, 2009.
- Locarnini, R., Mishonov, A., Antonov, J., Boyer, T., and Garcia, H.: *World Ocean Atlas 2005*, vol. 1, Temperature, NOAA Atlas NESDIS, vol. 61, edited by: Levitus, S., NOAA, Silver Spring, Md, 182 pp., 2006.
- Lyman, J. M. and Johnson, G. C.: Estimating Annual Global Upper-Ocean Heat Content Anomalies despite Irregular In Situ Ocean Sampling, *J. Climate*, 21, 5629–5641, doi:10.1175/2008JCLI2259.1, 2008.
- Lyman, J. M., Good, S. A., Gouretski, V. V., Ishii, M., Johnson, G. C., Palmer, M. D., Smith, D. M., and Willis, J.: Robust warming of the global upper ocean, *Nature*, 465, 334–337, doi:10.1038/nature09043, 2010.
- Ponte, R. M.: A preliminary model study of the large-scale seasonal cycle in bottom pressure over the global ocean, *J. Geophys. Res.*, 104, 1289–1300, 1999.
- Roemmich, D. and Gilson, J.: The 2004–2008 mean and annual cycle of temperature, salinity, and steric height in the global ocean from the Argo Program, *Prog. Oceanogr.*, 82, 81–100, doi:10.1016/j.pocean.2009.03.004, 2009.
- Roemmich, D. and the A. S. Team: Argo: The Challenge of Continuing 10 Years of Prog. Oceanogr., 20, 26–35, 2009.
- Trenberth, K.: The ocean is warming, isn't it?, *Nature*, 465, p. 304, 2010.
- Trenberth, K. E. and Fasullo, J. T.: Tracking Earth's energy, *Science*, 328, 316–317, 2010.
- von Schuckmann, K., Gaillard, F., and Le Traon, P.-Y.: Global hydrographic variability patterns during 2003–2008, *J. Geophys. Res.*, 114, C09007, doi:10.1029/2008JC005237, 2009.
- Willis, J., Roemmich, D., and Cornuelle, B.: Interannual variability in upper ocean heat content, temperature, and thermocline expansion on global scales, *J. Geophys. Res.*, 109, C12036, doi:10.1029/2003JC002260, 2004.
- Willis, J., Chambers, D., and Nerem, R.: Assessing the globally averaged sea level budget on seasonal to interannual timescales, *J. Geophys. Res.*, 113, C06015, doi:10.1029/2007JC004517, 2008.
- Willis, J. K., Lyman, J. M., Johnson, G. C., and Gilson, J.: In situ data biases and recent ocean heat content variability, *J. Atmos. Ocean. Tech.*, 26, 846–852, 2009.
- Wong, A., Keeley, R., Carval, T., and the Argo Data Management Team: Argo quality control manual version 2.6, Argo data management, <http://www.argodatamgt.org>, 2010.
- Wunsch, C.: *The ocean circulation problem*, Cambridge University Press, New York, 114–118, 1996.
- Wunsch, C., Ponte, R., and Heimbach, P.: Decadal trends in sea level patterns: 1993–2004, *J. Climate*, 20, 5889–5911, 2007.