



HAL
open science

Seasonal evolution of the effective thermal conductivity of the snow and the soil in high Arctic herb tundra at Bylot Island, Canada

Florent Domine, Mathieu Barrere, Denis Sarrazin

► To cite this version:

Florent Domine, Mathieu Barrere, Denis Sarrazin. Seasonal evolution of the effective thermal conductivity of the snow and the soil in high Arctic herb tundra at Bylot Island, Canada. *The Cryosphere*, 2016, 10 (6), pp.2573-2588. 10.5194/tc-10-2573-2016 . insu-03326274

HAL Id: insu-03326274

<https://insu.hal.science/insu-03326274>

Submitted on 25 Aug 2021

HAL is a multi-disciplinary open access archive for the deposit and dissemination of scientific research documents, whether they are published or not. The documents may come from teaching and research institutions in France or abroad, or from public or private research centers.

L'archive ouverte pluridisciplinaire **HAL**, est destinée au dépôt et à la diffusion de documents scientifiques de niveau recherche, publiés ou non, émanant des établissements d'enseignement et de recherche français ou étrangers, des laboratoires publics ou privés.



Distributed under a Creative Commons Attribution 4.0 International License



Seasonal evolution of the effective thermal conductivity of the snow and the soil in high Arctic herb tundra at Bylot Island, Canada

Florent Domine^{1,2,3,4}, Mathieu Barrere^{1,3,4,5,6}, and Denis Sarrazin³

¹Takuvik Joint International Laboratory, Université Laval (Canada) and CNRS-INSU (France), Pavillon Alexandre Vachon, 1045 Avenue de la Médecine, Québec City, QC, Canada

²Department of Chemistry, Université Laval, Québec City, QC, Canada

³Centre d'Études Nordiques, Université Laval, Québec City, QC, Canada

⁴Department of Geography, Université Laval, Québec City, QC, Canada

⁵Météo-France – CNRS, CNRM UMR 3589, CEN, Grenoble, France

⁶LGGE, CNRS-UJF, Grenoble, France

Correspondence to: Florent Domine (florent.domine@gmail.com)

Received: 3 May 2016 – Published in The Cryosphere Discuss.: 13 May 2016

Revised: 6 October 2016 – Accepted: 12 October 2016 – Published: 2 November 2016

Abstract. The values of the snow and soil thermal conductivity, k_{snow} and k_{soil} , strongly impact the thermal regime of the ground in the Arctic, but very few data are available to test model predictions for these variables. We have monitored k_{snow} and k_{soil} using heated needle probes at Bylot Island in the Canadian High Arctic (73° N, 80° W) between July 2013 and July 2015. Few k_{snow} data were obtained during the 2013–2014 winter, because little snow was present. During the 2014–2015 winter k_{snow} monitoring at 2, 12 and 22 cm heights and field observations show that a depth hoar layer with k_{snow} around $0.02 \text{ W m}^{-1} \text{ K}^{-1}$ rapidly formed. At 12 and 22 cm, wind slabs with k_{snow} around 0.2 to $0.3 \text{ W m}^{-1} \text{ K}^{-1}$ formed. The monitoring of k_{soil} at 10 cm depth shows that in thawed soil k_{soil} was around $0.7 \text{ W m}^{-1} \text{ K}^{-1}$, while in frozen soil it was around $1.9 \text{ W m}^{-1} \text{ K}^{-1}$. The transition between both values took place within a few days, with faster thawing than freezing and a hysteresis effect evidenced in the thermal conductivity–liquid water content relationship. The fast transitions suggest that the use of a bimodal distribution of k_{soil} for modelling may be an interesting option that deserves further testing. Simulations of k_{snow} using the snow physics model Crocus were performed. Contrary to observations, Crocus predicts high k_{snow} values at the base of the snowpack (0.12 – $0.27 \text{ W m}^{-1} \text{ K}^{-1}$) and low ones in its upper parts (0.02 – $0.12 \text{ W m}^{-1} \text{ K}^{-1}$). We diagnose that this is because Crocus does not describe the large upward water vapour fluxes

caused by the temperature gradient in the snow and soil. These fluxes produce mass transfer between the soil and lower snow layers to the upper snow layers and the atmosphere. Finally, we discuss the importance of the structure and properties of the Arctic snowpack on subnivean life, as species such as lemmings live under the snow most of the year and must travel in the lower snow layer in search of food.

1 Introduction

Arctic permafrost contains large amounts of frozen organic matter (Hugelius et al., 2014). Its thawing could lead to the microbial mineralisation of a fraction of this carbon, resulting in the release of yet undetermined but potentially very important amounts of greenhouse gases (CO_2 and CH_4) to the atmosphere (Schneider von Deimling et al., 2012; Elberling et al., 2013; Schuur et al., 2015), resulting in a strong positive climate feedback. Predicting greenhouse gas release from permafrost first requires the prediction of the evolution of the permafrost thermal regime, which depends to a significant extent on snow and soil thermal conductivity. Several recent land surface model developments or improvements have indeed tested that these variables had a critical impact on ground temperature (Chadburn et al., 2015; Ekici et al., 2015; Paquin and Sushama, 2015). Snow in particu-

lar is often mentioned as a key factor in the permafrost thermal regime (Gouttevin et al., 2012; Burke et al., 2013). However, most land surface models which use an elaborate snow scheme often simply parameterise snow thermal conductivity as a non-linear function of its density. Even though the average density of snow may be adequately predicted in land surface models (Brun et al., 2013), the density profile of Arctic or subarctic snow is currently not predicted well by most or all snow schemes (Domine et al., 2013) because the upward water vapour flux generated by the strong temperature gradients present in these cold snowpacks (Sturm and Benson, 1997) is not taken into account. These fluxes lead to a mass transfer from the lower to the upper snow layers, and these transfers can result in density changes of 100 kg m^{-3} , perhaps even more (Sturm and Benson, 1997; Domine et al., 2013). Given the non-linearity between snow thermal conductivity and density used in most snow schemes, errors in the snow density vertical profile inevitably lead to errors in the snowpack thermal properties and therefore in the permafrost thermal regime.

Obviously, soil thermal conductivity is also important in determining vertical heat fluxes. For a given soil composition, this variable depends mainly on temperature and content in liquid water and ice, so that its value may show considerable variations over time (Penner et al., 1975; Overduin et al., 2006). Modellers of the permafrost thermal regime have stressed that “monitoring of this parameter in the active layer all year-round would be useful if a more realistic numerical model is to be developed” (Buteau et al., 2004).

Another important interest of studying snow physical properties such as thermal conductivity and the heat budget of the ground lies in the understanding of the conditions for subnivean life. For example, lemmings live under the snow most of the year at Bylot Island (Bilodeau et al., 2013), and the temperature at the base of the snowpack conditions their energy expenses to maintain body temperature. Furthermore, energy expense for subnivean travel in search of food depends on snow hardness and snow conditions have been invoked to help explain lemming population cycles (Kausrud et al., 2008; Bilodeau et al., 2013), even though no comprehensive snow studies have yet been performed to fully establish links between lemming populations and snow properties. Snow thermal conductivity has been shown to be well correlated with snow mechanical properties (Domine et al., 2011), so that monitoring snow thermal conductivity may help quantify the effort required by lemmings to access food and hence understand their population dynamics.

Given the importance of snow thermal conductivity to simulate the ground thermal regime and to understand the conditions for subnivean life, we have initiated continuous automatic measurements of the snow thermal conductivity vertical profile at several Arctic sites using heated needle probes (NPs). The first instrumented site was in low Arctic shrub tundra (Domine et al., 2015), near Umiujaq on the eastern shore of Hudson Bay. We present here an additional study

with 2 years of snow thermal conductivity monitoring at Bylot Island, a high Arctic herb tundra site (73° N , 80° W). Since lemming populations have been monitored there for over 2 decades (Bilodeau et al., 2013; Fauteux et al., 2015), the snow work undertaken here may indeed also help understand snow–lemming relationships. Additionally, we also placed a heated NP in the soil at a depth of 10 cm to monitor soil thermal conductivity in the active layer over the seasonal freeze–thaw cycles.

2 Methods

2.1 Study site and instrumentation

Our study site is on Bylot Island, just north of Baffin Island in the Canadian high Arctic. The actual site was at the bottom of Qalikturvik valley, in an area of ice-wedge polygons ($73^\circ 09' 01.4'' \text{ N}$, $80^\circ 00' 16.6'' \text{ W}$), in a context of high Arctic thick permafrost. This spot is within 100 m of that described by Fortier and Allard (2005). Our instruments were placed in July 2013 in a fairly well-drained low-centre polygon with peaty silt soil (Fig. 1). Vegetation consists of sedges, graminoids and mosses (Bilodeau et al., 2013). The active layer is about 30 cm deep at our site and permafrost at Bylot Island is thought to be several hundred metres deep (Fortier and Allard, 2005). The site is only accessible with complex logistics, so that field work only takes place in late spring and summer.

Three TP08 heated NPs from Hukseflux were positioned on a polyethylene post at heights above the ground of 7, 17 and 27 cm in July 2013. These heights were chosen somewhat arbitrarily before the snowpack structure could be observed. In July 2014 the TP08 needles were lowered to 2, 12 and 22 cm because we had realised during a field trip in May 2014 that the lowermost depth hoar layer could be thinner than 7 cm. On another nearby post, thermistors were placed at heights of 2, 7, 17, 27 and 37 cm. Heights intermediate between the TP08 heights allow the calculation of heat fluxes, using thermal conductivity and temperature values. Unfortunately, the cables of the thermistors at 7, 27 and 37 cm, although protected, were chewed by a fox in late summer 2014 and could only be replaced the following summer. In the ground, we also placed a TP08 NP at a depth of 10 cm with two thermistors at depths of 4.5 and 13.5 cm. In the immediate vicinity of the thermistors post, we placed 5TM sensors from Decagon to monitor ground temperature and volumetric liquid water content at depths of 2, 5, 10 and 15 cm. Water content sensors used the manufacturer's calibration for mineral soils and were not recalibrated, which may produce an error of up to 3%. At that time, it was not possible to place deeper sensors because of the limited thaw depth. A few metres from these snow and ground instruments, we installed meteorological instruments to measure atmospheric variables including air temperature and rel-

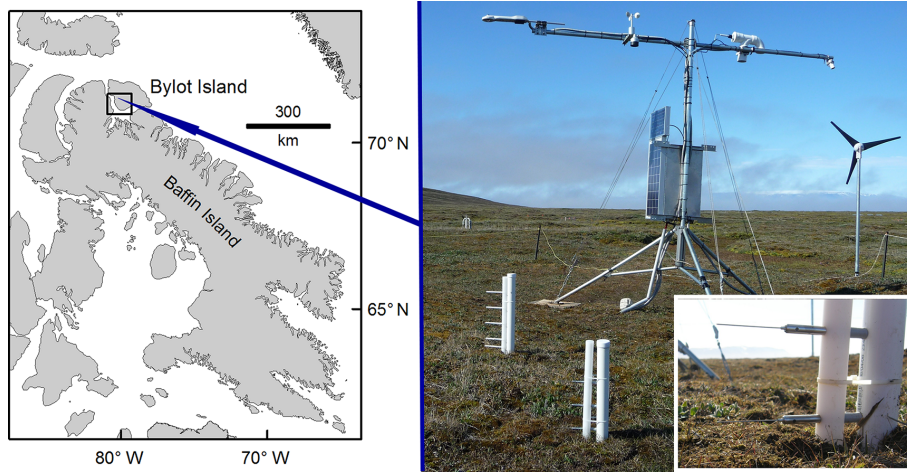


Figure 1. Location of the study site on Bylot Island in the Canadian Arctic archipelago and photograph of the monitoring station deployed. The polyethylene post with the three TP08 heated needle probes is in the foreground. The polyethylene post with the five thermistors is visible behind it. The radiometers, SR50 snow height gauge, cup anemometer, temperature and relative humidity gauge, and surface temperature sensors are visible on the tripod, from left to right. The CR1000 data loggers and batteries are in the metal box on the tripod. Batteries are recharged by solar panels and a wind mill in winter. Inset: detail of the lower two TP08 needles after their positions were lowered in July 2014.

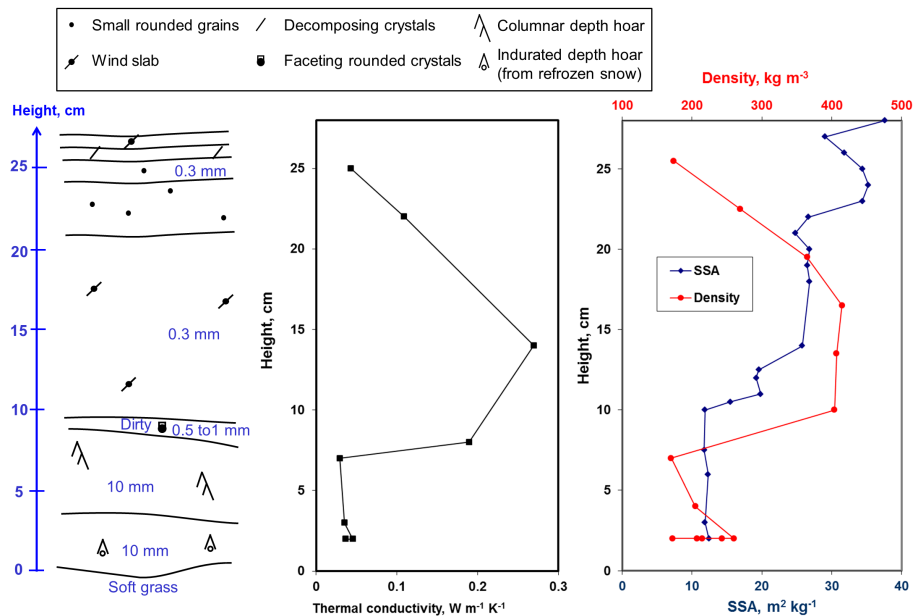


Figure 2. Stratigraphy and vertical profiles of snow physical properties near our study site on 12 May 2015. Visual grain sizes are indicated in the stratigraphy. Density data are for the middle of the 3 cm high sample. Snow type symbols are those of Fierz et al. (2009), except for the basal melt–freeze layer, which transformed into depth hoar to form an indurated layer, as detailed in the text.

ative humidity with a HC2S3 sensor from Rotronic and wind speed with a cup anemometer, both at 2.3 m height, and snow height with an SR50A acoustic snow height gauge (Campbell Scientific), an IR120 infrared surface temperature sensor and a CNR4 radiometer with a CNF4 heating/ventilating system from Kipp & Zonen which measured downwelling and upwelling short-wave and long-wave radiation. Heating and

ventilating radiometers are mandatory to limit snow accumulation and the build-up of frost and freezing rain. Heating and ventilation were performed for 5 min every hour prior to measurements. This protocol of instrumentation and measurement is similar to that employed near Umiujaq (Domine et al., 2015), which was operated in the same manner with a CR1000 data logger (Campbell Scientific). Briefly, hourly

measurements were recorded, except for the TP08 needles, whose operation is described in the next section.

2.2 Thermal conductivity measurements

The NP method has been used extensively for soils for a long time (Devries, 1952). Sturm and Johnson (1992) and Morin et al. (2010) discussed in detail the heated NP method in snow. The automatic operation of the TP08 needles in Arctic snow and the data analysis have been detailed in Domine et al. (2015) and only a brief summary will be given here.

For a measurement cycle, the 10 cm long needles were heated at constant power (0.4 W m^{-1}) for 150 s. The temperature was monitored by a thermocouple at the centre of the heated zone. Heat loss is a function of the thermal conductivity of the medium. A plot of the thermocouple temperature as a function of $\ln(t)$, where t is time, theoretically yields a linear curve after an initiation period of 10 to 20 s. The slope of the linear part is inversely proportional to the thermal conductivity of the medium.

In snow, NPs in fact measure an effective thermal conductivity, k_{snow} , with contributions from conductive heat transfer through the network of interconnected ice crystals and through the interstitial air, as well as heat transfer due to latent heat exchanges caused by water molecules sublimation and condensation generated by the temperature gradient around the heated NP (Sturm et al., 1997; Calonne et al., 2011). The variable k_{snow} is defined as

$$F = -k_{\text{snow}} \frac{dT}{dz}, \quad (1)$$

with dT/dz the vertical temperature gradient through the layer, in K m^{-1} , and F the heat flux in W m^{-2} .

The automatic routine developed by Domine et al. (2015) was used to obtain k_{snow} from the heating curve. Essentially, that routine detects possible non-linearity in the heating curve and selects the most linear curve section to determine k_{snow} . The main cause of non-linearity is the occurrence of convection in the snow, which, by adding an extra heat transfer process, reduces the rate of temperature rise. This readily happens in depth hoar after 50 to 60 s of heating because of its high permeability. Since convective heat transfer is not an intrinsic snow property because it depends, among other things, on the heating power, it has to be detected and data affected by it must be discarded. Therefore, while the 40–100 s heating time range was used to derive k_{snow} for heating curves not perturbed by convection, the range 20–50 s was used when convection was present (Domine et al., 2015). Other causes of non-linearity include non-homogeneous snow and melting due to excessive heating. To avoid melting, automatic measurements were started only if the snow temperature was $< -2^\circ\text{C}$. Factors such as non-homogeneous snow may result in poor-quality heating curves, which were discarded. Thermal conductivity measurements were performed once every 2 days to take into

account the slow evolution of this variable and to minimise thermal perturbation to the snow. Measurements were performed at 05:00 to minimise the risk of having warm snow. The NP heating sequence takes place regardless of whether the NP is covered by snow or not. The k_{snow} data that we determined took place in air were discarded. When an NP is not snow covered, even a slight wind produces an erratic heating curve. Should there be very little wind, snow height measurement, the value of k_{snow} and the presence of convection often allow the detection of a non-covered probe. Incorrect or uncertain determination of NP snow coverage is nevertheless still possible, and this will be discussed when relevant.

Measurements of soil thermal conductivity k_{soil} were not performed by Domine et al. (2015), and details are therefore given here. Since snow and soil NPs are all multiplexed onto the same data logger, the same heating power had to be used in snow and soil. The thermal conductivity of soils, especially when frozen, can be much greater than that of snow (Penner, 1970), so that heating by the NP can be much lower, resulting in more noise in the heating curves. NPs do not induce convection in soils because of their low permeability, so that heating curves were always linear. The 30–90 s heating time range was thus used. A quality threshold based on the determination coefficient of the curve was used and curves with $R^2 < 0.75$ were discarded.

Measuring thermal conductivity in porous granular media such as snow has been suspected of presenting biases and/or systematic errors (Calonne et al., 2011; Riche and Schneebeli, 2013) and these have been discussed by Domine et al. (2015). One concern is that the relevant metric for heat exchanges between the ground and the atmosphere through the snow is the vertical heat flux. Snow is anisotropic (Calonne et al., 2011; Riche and Schneebeli, 2013) and NPs measure a mixture of vertical and horizontal heat fluxes. Anisotropy depends on snow type, with, for example, depth hoar being more conductive in the vertical direction and wind slabs in the horizontal direction. Moreover, a systematic error caused by the granular nature of snow was invoked by Riche and Schneebeli (2013). Domine et al. (2015) discussed the impact of these processes on the accuracy of k_{snow} measurement with NPs and concluded that if the snow type was not known, the maximum error was typically 29%. The largest contributions to error were the systematic error due to the use of the NP (20%) and error due to anisotropy (20%). The total error is the square root of the sum of the squares of all contributions. If the snow type is known, corrections for anisotropy and systematic bias are possible, potentially reducing errors to 10 to 20%. Such corrections were not, however, performed by Domine et al. (2015). Given that k_{snow} varies between 0.025 and $0.7 \text{ W m}^{-1} \text{ K}^{-1}$, errors due to the use of NPs are quite acceptable and measurements using NPs still very useful. Alternative k_{snow} measurement methods, i.e. heat flux plates and calculations based on tomographic images, although potentially more accurate, are clearly impractical for season-long monitoring in remote and inaccessible

high Arctic sites because they require sampling and complex instruments.

For soils, the issues raised by Riche and Schneebeli (2013) are expected to have no impact because soils are much denser with smaller grains and are closer to a homogeneous medium at the scale of a NP. Anisotropy may, however, be an issue in some soil types, but we have not developed this aspect here. Based on the quality of our soil heating curves, we estimate that the error on k_{soil} is 15 % or less when the soil is not frozen and 25 % when it is frozen, because higher k_{soil} means lower heating by the NP and therefore less accurate heating curves.

Field measurements of snow k_{snow} and soil k_{soil} were also performed during field campaigns in spring 2014 and 2015 and summer 2013, 2014 and 2015 with a TP02 NP. Additional spring field measurements included snow density with a 100 cm^3 , 3 cm high box cutter, which has a typical error of 10 %, snow temperature, and snow-specific surface area (SSA) with the DUFISSS instrument based on infrared reflectance at 1310 nm (Gallet et al., 2009). SSA is the surface area per mass and is thus inversely proportional to snow grain size. SSA can be used to evaluate the intensity of metamorphism, as intense metamorphism driven by high temperature gradients lead to rapid grain growth and hence SSA decrease (Taillandier et al., 2007). The error on SSA is 12 % (Gallet et al., 2009). Some of these snow measurements have been detailed by Domine et al. (2016). Additional summer measurement included soil volume water content using an EC5 sensor from Decagon.

2.3 Soil granulometric analysis

Soil grain size distribution is useful to understand its physical properties. Samples were taken from our instrumented site at 10 cm depth in July 2015. Particle size distribution was measured with a Horiba partica LA-950V2 laser scattering particle size analyser, which used a two-wavelength optical system, 405 and 650 nm. Five subsamples were analysed and averaged.

2.4 Snow physics modelling

We used the Crocus model (Vionnet et al., 2012) coupled to the land surface model ISBA within the SURFEX interface (version 7.3) to simulate snow physical properties. We in fact used the simulations already described in Domine et al. (2016) for our Bylot Island site, but we analysed different output data. Very briefly, the model was forced with our meteorological data. When data were missing, ERA-Interim reanalysis data were used (Dee et al., 2011), corrected following the procedure of Vuichard and Papale (2015) to minimise the bias between measured and ERA data. Snow thermal conductivity is calculated from the equation of Yen (1981), based on a correlation between density and thermal conductivity.

3 Results

The winter 2013–2014 was a low snow year so that two out of three NPs were not covered. Data are more complete for the following year and we therefore start with data from the 2014–2015 season.

3.1 2014–2015 season

Describing the structure and physical properties of the snowpack at Bylot Island helps to understand the monitoring data. Observations made on 12 May 2015 close to our monitoring site are shown in Fig. 2. Vegetation was observed to be mostly flattened by snow, with some sedge or graminoids stems still upright, but they did not seem to have impacted snow structure. We observed a basal depth hoar layer 8 to 10 cm thick, overlaid by a wind slab 11 to 12 cm thick, with in-between a thin layer of faceting crystals. Above the wind slab were thin layers of small rounded grains, decomposing precipitation crystals and a thin wind crust. The depth hoar layer was divided into two sublayers. The lower sublayer was slightly indurated and harder, although hardness and other properties appeared spatially very variable. Indurated depth hoar is a snow type seldom mentioned, as it does not form in alpine or temperate snow, and it is not described in the international snow classification (Fierz et al., 2009) despite its widespread presence in the Arctic, where it has been observed without being named for decades. Hall et al. (1991) described “solid-type depth hoar”, presumably indurated depth hoar. Sturm et al. (2002) mentioned “wind slab to depth hoar” layers, presumably also indurated depth hoar. Its most detailed description is probably that of Sturm et al. (2008):

This type of layer is generally not seen outside of the Arctic. It arises in the Arctic because the temperature gradients are so strong that even dense, fine-grained layers of wind slab eventually metamorphose into large, faceted, and striated depth hoar grains. A key characteristic of these slab-to-hoar layers is that they are tough, not fragile like most depth hoar. If comprised of mainly depth hoar crystals, yet still cohesive, we called the layers “indurated”. If a significant number of small wind grains remained, we called them “slab-like”.

Domine et al. (2016) gave complementary details:

Indurated depth hoar ... forms in dense wind slabs under very high temperature gradients not encountered in alpine snow. Its density can exceed 400 kg m^{-3} . Large depth hoar crystals coexist with small grains that have not been subject to fast crystal growth, probably because water vapour vertical transfer has followed preferential paths in the dense snow. This often gives indurated depth hoar a milky aspect. Unlike typical depth hoar (e.g. taiga

depth hoar ...) which has a very low cohesion, indurated depth hoar is reasonably cohesive, although fairly brittle, and large blocks can easily be cut out of it and manipulated.

The indurated depth hoar here showed signs of early season melting in the form of rounded grains that were partially to almost totally transformed into depth hoar, but bonds were stronger than for regular depth hoar. There are therefore two main precursors to indurated depth hoar: wind slabs as detailed by Sturm et al. (2008) and refrozen layers as observed here and to the best of our knowledge only previously described in Domine et al. (2016). The indurated depth hoar that forms in refrozen snow is slightly different from that observed in wind slabs, in that no small grains are present and it does not have a milky aspect. In line with Domine et al. (2016), we represent this type of depth hoar with a symbol that does not exist in the classification of Fierz et al. (2009), as that classification is ideal for alpine snow but is not detailed enough to represent many Arctic snow types. The depth hoar upper sublayer was very soft, appeared more homogeneous and showed no signs of melting. Vertical profiles of density, SSA and thermal conductivity are also shown in Fig. 2. Several density measurements were made in the lower depth hoar layer, yielding values between 172 and 260 kg m⁻³. In comparison, the upper depth hoar layer was at 170 kg m⁻³, a rather low value for depth hoar. The vertical profiles of the three measured physical variables reflect the observed stratigraphy rather well, with higher values of all three variables for the wind slab and lower values for the depth hoar, as already noted by Domine et al. (2016). The basal snow temperature was -17.1 °C. Despite spatial variations in snow height and layer thickness, the profiles of Fig. 2 are fairly typical. We measured 10 such profiles on herb tundra. In particular, the values of k_{snow} and density in the basal depth hoar layer seemed to all be within a fairly narrow range, as detailed in Table 1.

Figure 3 shows time series for k_{snow} , as well as snow temperature, air temperature, wind speed and snow height. Snow height is spatially very variable in the Arctic at the 50 cm scale, mostly because of wind effects and of microtopography. Typically, in May around our site, snow height varied between 22 and 45 cm within 5 m. Measurements using an avalanche probe at 236 spots within 200 m of our site on 12 May 2015 showed a mean snow height of 25.3 cm, with a standard deviation of 13.1 cm (Domine et al., 2016). Therefore, snow height given by our acoustic snow gauge can only be taken as an indication of the actual snow height at the very NP site, about 5 m away. On 12 May 2015, snow height was 27 cm at the pit shown in Fig. 2, 50 cm from the NP post, while the snow gauge indicated 35 cm.

The lowest NP, at 2 cm, was covered by the first snowfall on 12 September 2014. That initial snow partially melted and the first data point that was almost certainly obtained in snow was on 24 September. After initial val-

Table 1. Variations in values of thermal conductivity, k_{snow} , and density of the basal depth hoar layer (lowest 5 cm) based on measurements in 10 pits on herb tundra.

	k_{snow} (W m ⁻¹ K ⁻¹)	Density (kg m ⁻³)
Number of values	23	28
Average	0.036	208
Standard deviation	0.008	35
Minimum	0.028	161
Maximum	0.058	286

ues around 0.04 W m⁻¹ K⁻¹, k_{snow} dropped to values around 0.02 W m⁻¹ K⁻¹ because of rapid depth hoar formation. These values may seem a bit low, especially considering that air has a thermal conductivity of 0.023 W m⁻¹ K⁻¹, but the low value can be attributed to a negative systematic error of about 20 % caused by the NP method and to anisotropy as described in Riche and Schneebeli (2013) and discussed above. Indeed, depth hoar is very anisotropic and its vertical component has the highest value (Riche and Schneebeli, 2013). Our NP measured a mixture of vertical and horizontal components producing another negative artefact. Taking into account all error sources, the actual vertical component is probably 25 to 30 % greater than measured here, i.e. around 0.025 W m⁻¹ K⁻¹.

The NP at 12 cm was probably in fresh snow on 1 November. On 10 to 11 November, the strongest wind storm of the winter, reaching a speed of 12.9 m s⁻¹, appears to have formed a wind slab that buried the 12 cm NP, with $k_{\text{snow}} = 0.28$ W m⁻¹ K⁻¹. k_{snow} remained close to that value until 28 March. Until 1 January, data are noisy, possibly because the NP was close to the snow surface and therefore subject to air advection by wind, which, by adding a heat loss process, produced randomly a slight positive artifact. k_{snow} then dropped to 0.23 W m⁻¹ K⁻¹ on 30 March, while no special meteorological event was recorded. Between 27 and 30 March, the wind remained under 4 m s⁻¹ and the temperature showed regular diurnal cycles between -40 and -20 °C. The value of k_{snow} started rising steadily on 5 May to reach a value of 0.33 W m⁻¹ K⁻¹ on 29 May. Considerations of the evolution of metamorphic conditions in the snowpack, discussed subsequently, are required to explain this process.

The NP at 22 cm was definitely covered by snow on 21 January 2015. k_{snow} remained around 0.06 W m⁻¹ K⁻¹ until 8 February, indicating that it remained as undisturbed precipitation. On that date, a moderate wind storm started, reaching 5.6 m s⁻¹ at 11:00 EST. The resulting wind slab had $k_{\text{snow}} = 0.175$ W m⁻¹ K⁻¹, increasing steadily to 0.25 W m⁻¹ K⁻¹ on 23 April, most likely because of slow sintering. On 25 April, the value rose to 0.309 W m⁻¹ K⁻¹, but this is not related to a wind event, and we explain this by an unsteady heating current that produced a slightly curved heating plot or just noise in the data. Except for this rise,

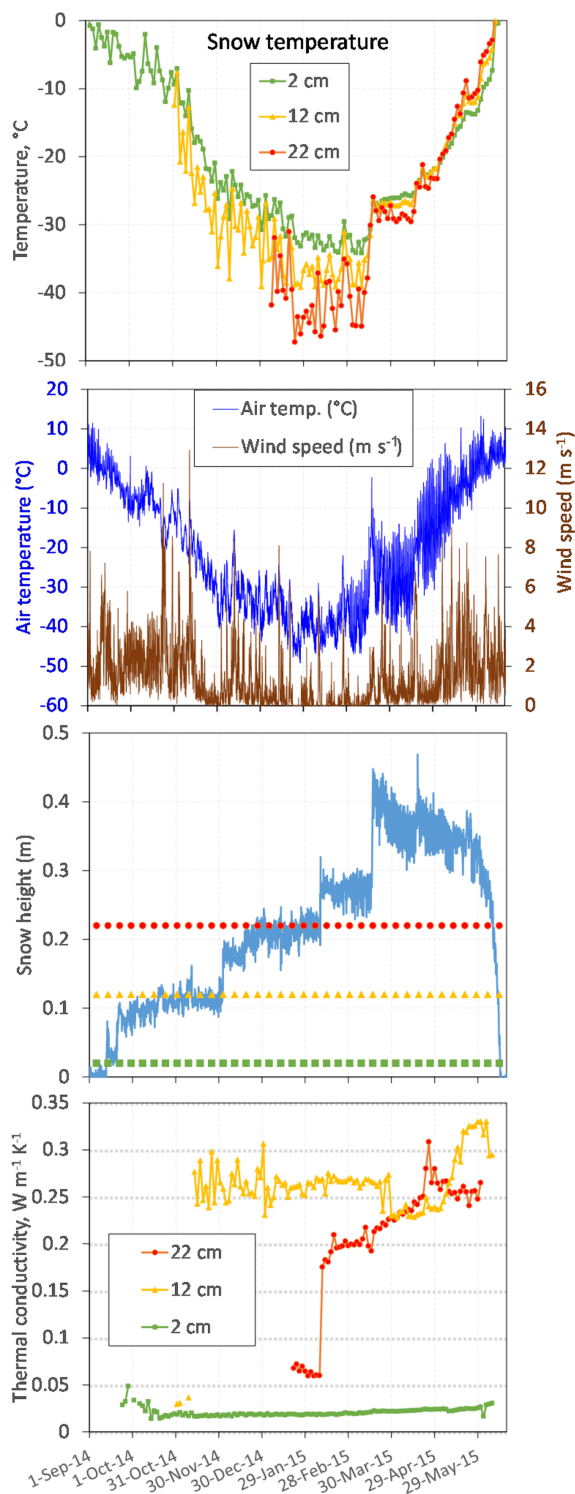


Figure 3. Snow temperature, air temperature, wind speed, snow height and snow thermal conductivity at three heights during the 2014–2015 winter season at Bylot Island. The levels of the three thermal conductivity needle probes (NPs) are indicated in the snow height panel. Note that the snow height gauge and the NPs were about 5 m away, so that snow height between both spots may have been different. Snow temperatures were measured with the NPs every other day at 05:00.

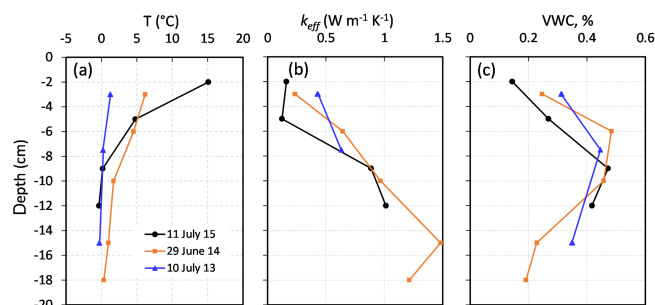


Figure 4. Vertical profiles of soil physical variables in pits dug in the polygon where our instrument station is located, during summers 2013 to 2015. (a) Temperature; (b) thermal conductivity; (c) volumetric liquid water content.

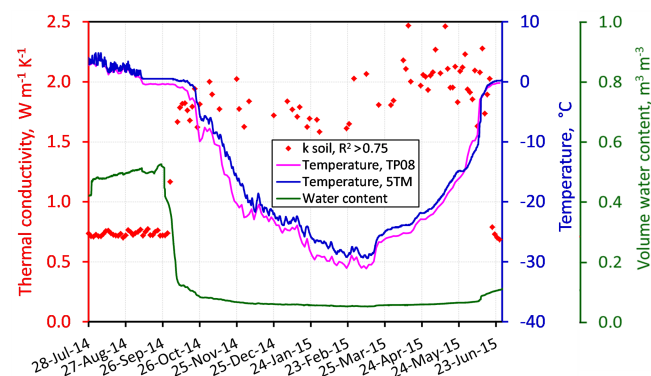


Figure 5. Seasonal evolution of the thermal conductivity, temperature and volume water content of the soil at 10 cm depth for the 2014–2015 season. The 5TM probe which measures both temperature and water content hourly is about 2 m from the TP08 NP, which measures thermal conductivity and temperature every 2 days.

k_{snow} stabilised around $0.26 \text{ W m}^{-1} \text{ K}^{-1}$ until the end of May, which we will discuss subsequently in light of metamorphic conditions.

Three soil pits were dug in the summers 2013 to 2015 down to the thaw front in the polygon where our instruments are located to measure soil physical properties and another two pits were dug just for observations. An organic litter layer 3.5 to 6 cm thick was observed. Lower down was a layer of organic-rich silt-looking material. Figure 4 shows vertical profile of soil temperature, thermal conductivity, k_{soil} , and volume water content fraction. The general trend is an increase of k_{soil} with depth, while temperature expectedly decreases. Soil grain size distribution was obtained from 5 samples taken around 10 cm depth. The average data show a bimodal size distribution with modes centred at 17 and 59 μm . If the standard 50 μm size limit between sand and silt is used, then our sample is 65 % silt and 35 % sand by mass, so that the soil here is a mixture of silt and fine sand.

Figure 5 shows the evolution of the k_{soil} and temperature measured every other day by the NP at 10 cm depth between

28 July 2014 and 26 June 2015. Figure 5 also shows hourly soil temperature and volume water content at 10 cm depth measured by a 5TM probe located about 1 m away. Both temperature measurements show similar variations, but the 5TM is 1 to 2 °C warmer, in part due to a positive 0.5 °C offset on the 5TM. The soil temperature reached 0 °C on 9 September and stayed at that temperature without significant freezing, as indicated by the water content, until 27 September. The soil water freezing continued until 10 October, at which point only water in small pores remained liquid. Until 30 September 2014, the soil thermal conductivity stayed constant with $k_{\text{soil}} = 0.73 \text{ W m}^{-1} \text{ K}^{-1}$, with a standard deviation of $0.02 \text{ W m}^{-1} \text{ K}^{-1}$, while the soil volume water content was $49.5 \pm 1.3 \%$. Except for very low water contents, soil freezing is expected to manifest itself in an increase in k_{soil} , (Penner, 1970; Inaba, 1983) because ice has a much higher thermal conductivity than water (2.22 vs. $0.56 \text{ W m}^{-1} \text{ K}^{-1}$ at 0 °C). Measurements of k_{soil} show detectable soil freezing between 30 September and 2 October, with k_{soil} increasing from 0.76 to $1.16 \text{ W m}^{-1} \text{ K}^{-1}$. The value of k_{soil} then rapidly increased to $1.8 \text{ W m}^{-1} \text{ K}^{-1}$ on 10 October, confirming 5TM data that the soil was then almost essentially frozen at 10 cm depth, except for water in small pores (Penner, 1970; Inaba, 1983). The average and standard deviation of k_{soil} then were $1.95 \pm 0.20 \text{ W m}^{-1} \text{ K}^{-1}$ for the winter season. The large standard deviation only indicates the greater uncertainty of our instrument for high k_{soil} values, because NP heating is less pronounced. The k_{soil} values of both unfrozen and frozen soil are consistent with those expected from a fine grain mineral material mixed with organic matter (Penner, 1970; Kujala et al., 2008). Even as the soil temperature decreases to -30 °C, no further increase in k_{soil} is observed, suggesting that essentially all the water that could was already frozen on 10 October. The value of k_{soil} then decreased in just a few days when thawing took place on 20 June 2015 and k_{soil} returned to its previous thawed value. Figure 5 shows that the increase in k_{soil} upon freezing takes place at the initiation of freezing, i.e. at low ice content. In contrast, in spring the decrease in k_{soil} takes place at the initiation of thawing, i.e. at high ice content. There is therefore a hysteresis loop between k_{soil} and water content.

3.2 2013–2014 season

Figure 6 shows the value of k_{snow} at a height of 7 cm for the 2013–2014 season, as only that NP was sufficiently covered to give reliable data. As previously, we also show snow temperature and height, wind speed and air temperature. That season, the snow height at our snow gauge was noticeably lower than at our NP post. On 14 May 2014, the gauge indicated 13 cm, while there was 18 cm of snow at the NP post. Measurements using an avalanche probe at 314 spots within 200 m of our site on 14 May 2015 showed a mean snow height of 16.2 cm, with a standard deviation of 13.7 cm (Domine et al., 2016).

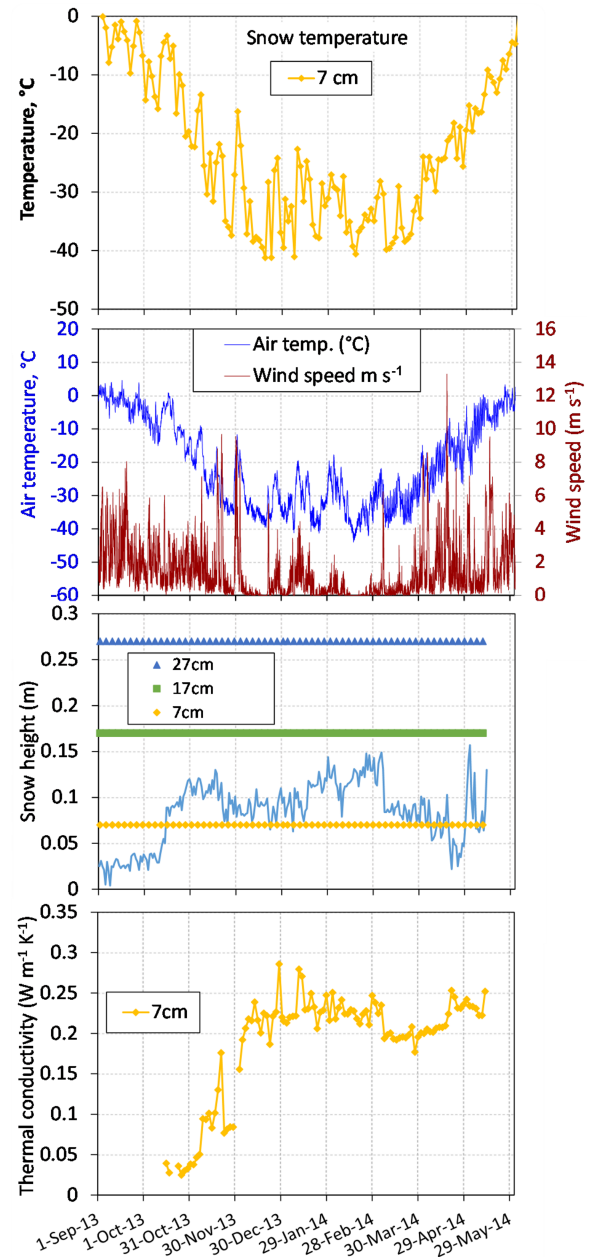


Figure 6. Snow temperature, air temperature, wind speed, snow height and snow thermal conductivity at 7 cm height during the 2013–2014 winter season at Bylot Island. The levels of the three thermal conductivity needle probes (NPs) are indicated in the snow height panel, showing that only the lowermost NP was covered.

The snow stratigraphy was observed on 14 May 2014 about 50 cm from the NP post and vertical profiles of density, specific surface area and thermal conductivity were measured and are shown in Fig. 7. The stratigraphy was spatially extremely variable and complex with frequent alternation of hard and soft layers. The basal layer of columnar depth hoar was very soft and collapsed at the slightest contact so that we were not able to measure its density. By comparison with

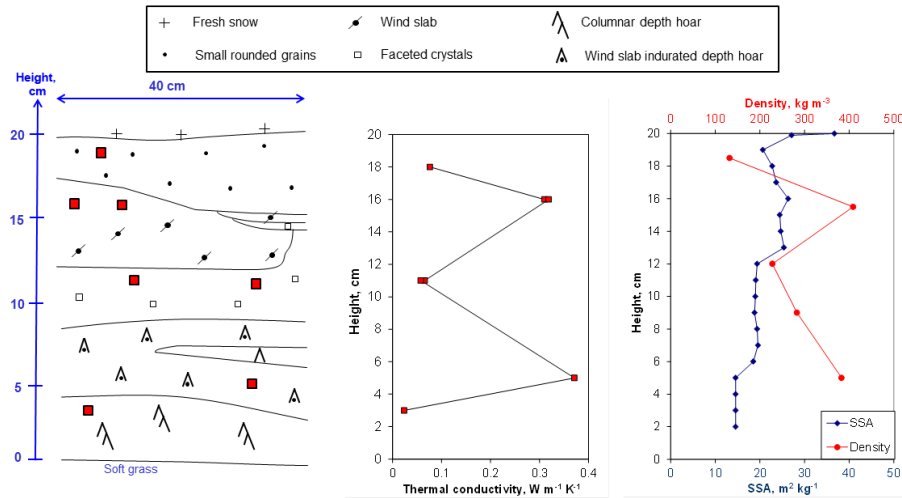


Figure 7. Stratigraphy and vertical profiles of snow physical properties near our study site on 14 May 2014. Fresh snow is just a 2 mm thick sprinkling, also visible in the SSA profile. Density data are for the middle of the 3 cm high sample. Snow type symbols are those of Fierz et al. (2009), except for the lower wind slab, which transformed into depth hoar to form an indurated layer, as detailed in the text. Red-filled black squares in the stratigraphy indicate where thermal conductivity measurements were made.

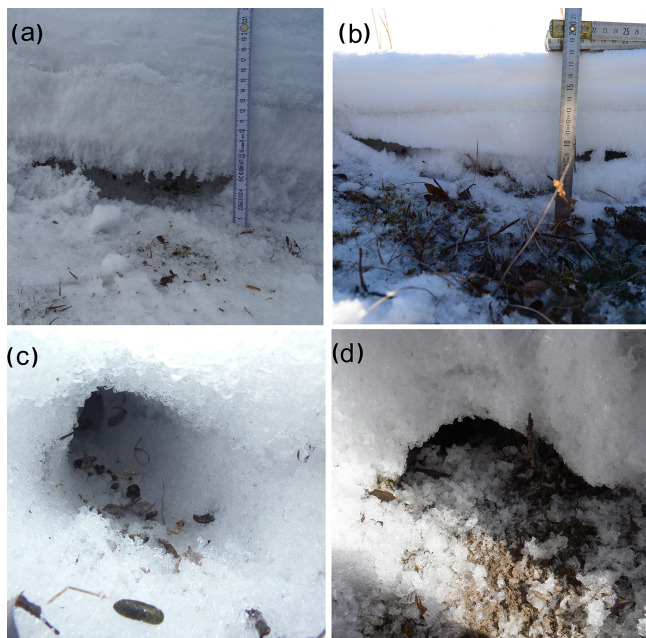


Figure 8. Gaps in the snow in the basal depth hoar layer. (a, b) Gaps due to the spontaneous collapse of the depth hoar, following season-long mass loss because of the upward water vapour flux. (c, d) Lemming burrows, easily identifiable by their regular shape and the presence of characteristic feces (c, foreground).

other observations, it was definitely $< 200 \text{ kg m}^{-3}$ and more likely around 150 kg m^{-3} , perhaps even less. Gaps in the basal layer were frequent, indicating that it had collapsed naturally in many places. These spontaneous collapse features cannot be mistaken for lemming burrows (Fig. 8). This very

soft and fragile structure was most likely due to the loss of matter caused by the upward water vapour flux generated by the temperature gradient in the snowpack. Such basal depth hoar collapse in the low and high Arctic have already been described by Domine et al. (2015, 2016). Above the basal depth hoar was a layer of indurated depth hoar formed by the metamorphism of a hard wind slab into depth hoar, as detailed above. Although brittle, the indurated depth hoar observed was fairly solid and could readily be sampled without damaging its structure. It has a high thermal conductivity ($0.37 \text{ W m}^{-1} \text{ K}^{-1}$), high density (383 kg m^{-3}) and a SSA (14.6 to $19.6 \text{ m}^2 \text{ kg}^{-1}$) slightly lower than most wind slabs but higher than typical depth hoar. No symbol for indurated depth hoar formed in wind slabs exists in the classification of Fierz et al. (2009). Since the symbol we proposed earlier for indurated depth hoar formed in refrozen snow consists of a depth hoar symbol with a large open circle, we propose to use a depth hoar symbol with a dot (the fine grain depth hoar) for indurated symbol formed in wind slabs.

The intermediate layer of faceted crystals around 10 cm indicates an extended period of low wind weather, as visible in Fig. 6 between 21 January and 5 March, during which temperature gradient metamorphism could proceed without perturbation by any wind compaction episode. Few precipitation events took place that winter, as indicated by the small amount of snow observed in May 2014. The snow gauge (Fig. 6) also indicates little precipitation, although many wind-erosion episodes at our gauge spot limit our ability to evaluate precipitation in 2013–2014.

Snow cover in 2013 started late, on 12 October. Our NP at 7 cm recorded a first significant k_{SNOW} increase, from 0.050 to 0.094, between 7 and 9 November, and we attribute this

to a wind event that lasted about 14 hours on 7 November, with wind speed reaching 7 m s^{-1} , and which must have formed a wind slab of moderate density and thermal conductivity around $0.1 \text{ W m}^{-1} \text{ K}^{-1}$, which remained stable for a few days before increasing to $0.178 \text{ W m}^{-1} \text{ K}^{-1}$ between 17 and 21 November. This is well correlated to two consecutive wind events, each lasting over 24 h on 18 and 21 November and, respectively, reaching 8.8 and 9.4 m s^{-1} . We propose that erosion and redeposition of snow took place, leading to the formation of a denser layer that rapidly sintered. On 23 November, k_{snow} decreased to $0.077 \text{ W m}^{-1} \text{ K}^{-1}$, which we attribute to wind erosion and subsequent redeposition of softer snow of low k_{snow} , as the 21 November storm lasted until noon, while the measurement took place at 05:00. The next observed rise in k_{snow} was on 3 December to 0.156 and then to $0.192 \text{ W m}^{-1} \text{ K}^{-1}$ on 5 December. The rise between 29 November and 3 December was caused by a 48 h wind storm that reached 9.3 m s^{-1} , making the 1 December heating plot unreliable. The subsequent rise is attributed to another storm on 2–3 December that reached 8.1 m s^{-1} . Variations in k_{snow} were thereafter small. The NP was certainly buried several centimetres below the surface and little more affected directly by wind. Factors which can affect the value of k_{snow} include temperature, through its effect on the thermal conductivity of ice (which increases as temperature decreases), wind which through wind pumping may add another heat transfer process and produce a positive artefact on k_{snow} , changes in snow structure due to metamorphism and simply noise in the data. Deconvolution of all these effects, given their small impact and the presence of noise in the data, appears of little interest. It is nevertheless noteworthy that the drop from 0.238 to $0.193 \text{ W m}^{-1} \text{ K}^{-1}$ on 8 March coincides with a wind event on 7 March (6.2 m s^{-1}). We speculate that this may have caused wind pumping leading to sublimation, mass loss and a drop in k_{snow} .

On 14 May 2014, we excavated the snow around the NPs, essentially ending our time series. A photograph of the snow profile is shown in Fig. 9. The NP at 7 cm was in an indurated depth hoar layer, but very close to the border with a thin depth hoar layer. Above that was a layer of faceted crystals/depth hoar. Given the stratigraphy, the 7 cm NP had been completely buried for months and changes in k_{snow} for the past few months cannot be interpreted in terms of precipitation/erosion processes.

Figure 10 shows soil data for the 2013–2014 season. Before the initiation of freezing, the soil volume water content at 10 cm depth was $56.6 \pm 0.8 \%$. The soil temperature at 10 cm depth reached 0°C on 6 September. Freezing was very slow until 12 September, when the water content started showing a detectable decrease. Most of the water was frozen on 1 October and the temperature started to drop. Until 20 September, k_{soil} was essentially constant, with $k_{\text{soil}} = 0.71 \pm 0.04 \text{ W m}^{-1} \text{ K}^{-1}$. This is not significantly different from the values measured in September 2014, while the volume water content is slightly larger (56.6 vs. 49.5 %).

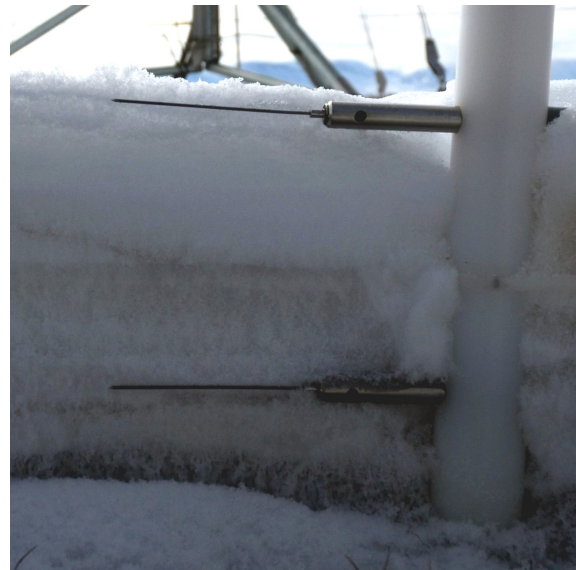


Figure 9. Photograph of the snow stratigraphy taken on 14 May 2014. The NPs are 7 and 17 cm above the ground. The various depth hoar and indurated depth hoar layers between 0 and about 11 cm are clearly visible, as well as the wind slab between 11 and 16 cm.

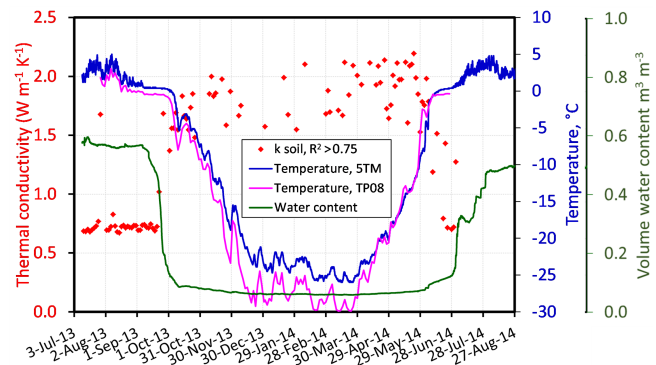


Figure 10. Seasonal evolution of the thermal conductivity, temperature and volume water content of the soil at 10 cm depth for the 2013–2014 season. The 5TM probe which measures both temperature and water content hourly is about 2 m from the TP08 NP, which measures thermal conductivity and temperature every 2 days.

Again, here in autumn the increase in k_{soil} upon freezing takes place at low ice content whereas in spring the decrease in k_{soil} takes place at high ice content, confirming the existence of a hysteresis loop between k_{soil} and water content.

4 Discussion

4.1 Snow metamorphism and water vapour fluxes

The snowpack structure observed at Bylot Island, especially in 2015, is frequently encountered on Arctic tundra (Ben-

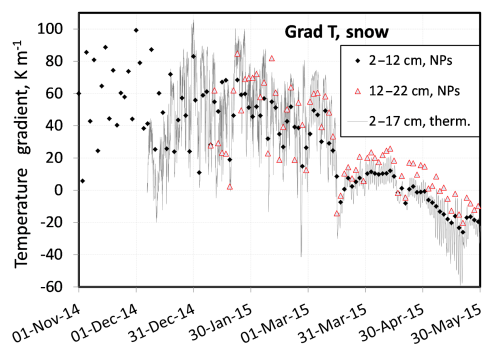


Figure 11. Time series of the temperature gradient in the snow. Values were obtained from the heated needle probes at 2, 12 and 22 cm, with a data point every 2 days. Thermistors at 2 and 17 cm also measured temperature every hour, and the values are shown with an hourly resolution. The different start dates of each curve are determined by the date where the snow height reached the relevant level.

son and Sturm, 1993; Domine et al., 2002; Sturm and Benson, 2004; Sturm et al., 2008), especially in areas of moderate wind, and mostly consists of a lower depth hoar layer and an upper wind slab. The depth hoar layer forms because of the elevated temperature gradient at the beginning of the season. Figure 11 shows the temperature gradients in the 2–12 and 12–22 cm snow height ranges, as obtained from the NPs temperature measurements every other day at 05:00. Higher time resolution measurements would have been desirable, but most of the thermistors that logged temperature every hour were damaged by a fox. Figure 11 nevertheless shows that NP data are similar to the gradient derived from thermistor data at 2 and 17 cm, so that reasoning on NP data is still adequate. Values barely reach 100 K m^{-1} , while other Arctic or subarctic locations showed early season values in the $200\text{--}300 \text{ K m}^{-1}$ range (Sturm and Benson, 1997; Taillandier et al., 2006). Reasons for the lower values reported here are twofold. Firstly, we only obtained values starting on 1 November because our thermistor at 7 cm did not function and we had to wait for the 12 cm NP to be covered to obtain data. Early season values, when the snowpack was thinner and the ground not completely frozen, were almost certainly higher. Secondly, sites with higher gradients were inland sites and atmospheric cooling was faster, reaching -35°C in November (Taillandier et al., 2006). Here, the presence of the sea and the latent heat released by sea water freezing led to a much slower and gradual cooling, as shown in Figs. 3 and 6. Figure 11 shows that the temperature gradient in both height ranges are pretty similar until 17 March. Between 15 and 17 March, the air temperature rose from -37 to -10.5°C (Fig. 3), and that brutal and irreversible warming dramatically changed the thermal regime of the snowpack, as seen in Fig. 11, where the gradient in the upper regions suddenly becomes much greater than in the lower one.

With regards to metamorphism, the actual variable of interest is the water vapour flux rather than just the tem-

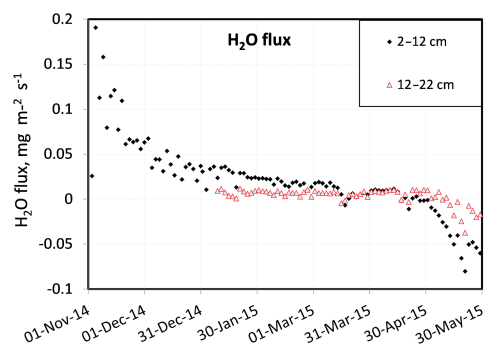


Figure 12. Time series of the water vapour flux at two levels in the snowpack. Positive fluxes are upward.

perature gradient. This flux is the product of the diffusion coefficient of water vapour in snow, D_v , by the water vapour concentration gradient. D_v , as reported by Calonne et al. (2014) depends on snow density and we estimate that it was $2 \times 10^{-5} \text{ m}^2 \text{ s}^{-1}$ below 12 cm height because of the presence of depth hoar and $1 \times 10^{-5} \text{ m}^2 \text{ s}^{-1}$ between 12 and 22 cm, where wind slabs prevail. Using known values of the water vapour pressures over ice (Marti and Mauersberger, 1993), we computed the fluxes shown in Fig. 12. Between 2 and 12 cm, the flux decreases exponentially over time due to snow cooling and the exponential dependence of vapour pressure on temperature. On 1 December, flux values had decreased to less than a quarter of their 1 November values. This is when the snow height increased from 10 to 18 cm (Fig. 3) and, based on Fig. 2 and other pit observations, when deposited snow stopped transforming into depth hoar. The transition from depth hoar to wind slab in Arctic snowpack is almost always very abrupt, so that there is certainly a threshold effect, as already indicated by previous studies (Marbouty, 1980). Given the discontinuous nature of precipitation and snow accumulation (where wind plays a key role), these data suggest that at some point in the season, a snow accumulation episode (whether caused by precipitation or wind) will decrease the temperature gradient and hence the water vapour flux below the threshold, triggering the depth hoar to wind slab abrupt transition.

It is interesting to evaluate whether calculated fluxes can explain the mass loss leading to snow collapse. Assuming all the flux comes from a 5 cm thick depth hoar layer of density 250 kg m^{-3} , this represents 12.5 kg m^{-2} of depth hoar. Assuming early season fluxes reached $0.5 \text{ mg m}^{-2} \text{ s}^{-1}$ by extrapolating the data of Fig. 12, this leads to a mass loss of 2.6 kg m^{-2} of depth hoar over 2 months, insufficient to explain the near-total disappearance of the depth hoar in some places, so that processes other than purely diffusive fluxes must have been operating. Convection-enhanced fluxes are a possibility, as these may have taken place in the highly permeable depth hoar that formed very early in the season, as evidenced by our thermal conductivity measurements (Fig. 3).

Sturm and Johnson (1991) did observe such convection in depth hoar, and the irregular nature of collapse (Fig. 8) is compatible with the presence of convection cells. Another possible factor is wind-induced air advection. Wind pumping was indeed favoured by the rough snow surface, the nearly continuous wind in the early season in both years studied (Figs. 3 and 6) and the shallow and highly permeable snowpack. Finally, these estimates are based on the D_v values measured by Calonne et al. (2011), who, based on details given, do not seem to have studied large-grain depth hoar as found in the Arctic. It cannot be ruled out that vapour diffusion enhancement by the sublimation–condensation cycles (Sturm and Benson, 1997) does not take place in Arctic depth hoar. Sturm and Benson (1997) found an average enhancement factor of 4; if such a factor applied to our case, it would explain the near-complete disappearance of the basal depth hoar. We therefore do not present a final fully quantitative explanation of depth hoar collapse here, but this phenomenon is nevertheless real and has also been observed using automated measurements before (Domine et al., 2015).

Figure 12 shows that in the upper region, the water vapour flux was much lower and apparently insufficient to allow depth hoar formation. For most of the snow season, there was a continuous upward water vapour flux, leading to overall water vapour loss to the atmosphere. The late season reversal of the flux direction in early May lasted only about a month and was insufficient to reverse the overall loss trend. This reversal coincides with the change in the trend of evolution of k_{snow} at 12 and 22 cm. At 12 cm k_{snow} started to rise, and at 22 cm k_{snow} stopped rising at that moment. We propose that at 12 cm the water vapour flux led to a density increase and enhanced sintering caused by the growth of bonds between grains under the low temperature gradient conditions (Colbeck, 1998), resulting in a k_{snow} increase. At 22 cm on the other hand, the snow became warmer than the other layers (Fig. 3), so that the dominant process switched from condensation to sublimation, leading to a density decrease, halting the rise in k_{snow} or perhaps even producing a slight decrease.

There is also a temperature gradient, and hence a water vapour flux, between the soil and the snow, as already mentioned by Sturm and Benson (1997) from observations in interior Alaska. The resulting soil water vapour loss is detectable in Fig. 10. In late summer 2013, the liquid water content in the soil at 10 cm depth was about 58 %. After thawing in early July 2014, the water content only rises back to 31 %, meaning that almost half of the water present in the soil the previous summer has been lost by sublimation during the snow season. If this value applies to the top 10 cm of the soil, then it lost 17 kg m^{-2} of water, the same order of magnitude as observed by Sturm and Benson (1997), 5 kg m^{-2} . Within a few weeks, the water content had risen back to 47 % because of precipitation in July 2014. At 2 and 5 cm depth, the loss appears even greater, but the signal is not as simple, as erratic water percolation due to snowmelt is superimposed onto the thawing signal.

4.2 Snowpack structure and subnivean life

The presence of a soft depth hoar layer clearly facilitates subnivean travel and food search. The softer the layer is, the easier the travel and presumably the better the feeding and reproductive success of subnivean species. Factors that adversely affect the softness of this layer include wind packing and melt–freeze events. The strength of the temperature gradient may allow the transformation of wind slabs and ice crusts into indurated depth hoar, but such depth hoar is much harder than that formed in softer snow (Domine et al., 2009, 2012). This is probably what happened in autumn 2014, as signs of early season melt–freeze cycling were still observable in May 2015 (Fig. 3). Based on these observations, it appears that feeding conditions for subnivean species may have been slightly better in 2013–2014 than in 2014–2015.

The recent work of Fauteux et al. (2016) is consistent with our observations. These authors measured lemming abundance very close to our snow study site right after snow melt in a large 9 ha enclosure to minimise predator impact on populations. The enclosure data are therefore expected to be more likely to be affected mostly by just snow conditions. Their data show counts of 6 lemmings ha^{-1} in June 2014 vs. 2 lemmings ha^{-1} in June 2015, consistent with our field observations. This correlation is of course very preliminary but serves to illustrate the potential impacts of snow conditions on lemming population dynamics.

4.3 Measurements vs. simulations of snow k_{snow}

Our time series of k_{snow} allow us to test the ability of a detailed snow physics model to predict the value of this variable. This test is important, as the water vapour flux is an important process in the shaping of Arctic snowpacks. Given that detailed snow physics models such as Crocus (Vionnet et al., 2012) or SNOWPACK (Fierz and Lehning, 2001) do not take into account these fluxes, their ability to predict k_{snow} needs testing. A paper on SNOWPACK (Bartelt and Lehning, 2002) states that the model does include water vapour fluxes, but the scheme described was never actually implemented in the model (C. Fierz, private communication, 2015). Figure 13 compares our measurements of k_{snow} with those simulated by Crocus. The Crocus runs performed are those detailed in Domine et al. (2016) for herb tundra conditions.

It is clear that simulations and measurements yield very different results. Measurements show low values for the lower depth hoar layers and high values for the upper wind slabs. On the contrary, simulations show a value around $0.26 \text{ W m}^{-1} \text{ K}^{-1}$ for the very basal layer, indicating a melt–freeze crust, values around $0.12 \text{ W m}^{-1} \text{ K}^{-1}$ for the lower depth hoar layers and values always lower than $0.07 \text{ W m}^{-1} \text{ K}^{-1}$ for the upper layers. On 13 May, high simulated values appear around 22 cm.

Our proposed interpretation of these differences, aided by a detailed analysis of Crocus output data, is as follows. Cro-

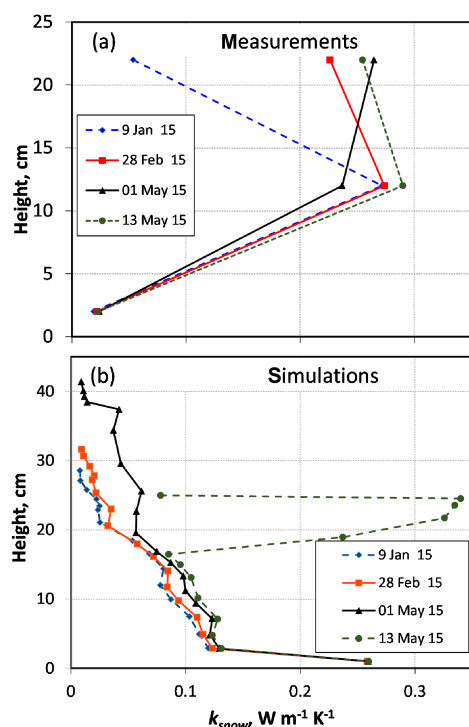


Figure 13. Vertical profiles of k_{snow} : (a) measured by the needle probes; (b) modelled by CROCUS.

cus simulated a melting episode in late September, giving the basal layer a high thermal conductivity. This is consistent with our observations of a melt–freeze relic in the basal depth hoar layer. However, Crocus cannot predict the transformation of a melt–freeze layer into depth hoar because it does not simulate the required vapour fluxes. These fluxes lead to mass loss in the lower layers and mass gain in the upper ones. This is an important process that contributes to the observed inverted density profiles (Fig. 2) (Sturm and Benson, 1997) and hence the inverted thermal conductivity profiles because thermal conductivity is calculated from density only. The differences highlighted in Fig. 13 are not due to specificities of Crocus. Simulations with SNOWPACK version 3.30 driven by North American Regional Reanalysis (NARR) data (<http://www.esrl.noaa.gov/psd/data/gridded/data.narr.html>) for the same dates (not shown) revealed similar inverted density and thermal conductivity profiles (A. Langlois and J.-B. Madore, personal communication, 2016). The other processes that lead to dense upper layers are wind packing and to a smaller extent weight compaction. The Crocus representation of the wind-packing process cannot be evaluated here, as the density increase also has contributions from water vapour deposition due to the upward flux and their respective contributions cannot be observed separately. An appropriate description of the water vapour flux is required to test the representation of wind packing here. In any case, it is clear that omitting vapour fluxes in Arctic snowpacks leads to an in-

adequate simulation of the density and thermal conductivity profile of the snowpack.

A detailed evaluation of the ability of Crocus to reproduce the ground thermal regime is in order. However, ground temperature also depends on soil properties so that coupling to a land surface scheme is required for full testing. Crocus is currently coupled to the land surface scheme ISBA through the SURFEX interface. Improved snow and soil schemes for ISBA are being tested (Decharme et al., 2016) and the evaluation of these new schemes will be the subject of future work.

Lastly, the parameterization of Yen (1981) to calculate thermal conductivity from density may not be suitable for Arctic snow. For a density representative of the depth hoar studied, 200 kg m^{-3} (Yen, 1981) predicts $k_{\text{snow}} = 0.11 \text{ W m}^{-1} \text{ K}^{-1}$, while we consistently measured values in the range 0.025 to $0.035 \text{ W m}^{-1} \text{ K}^{-1}$. The more recent parameterization of Calonne et al. (2011) predicts $0.10 \text{ W m}^{-1} \text{ K}^{-1}$. That of Löwe et al. (2013) predicts $0.12 \text{ W m}^{-1} \text{ K}^{-1}$. These parameterizations are based on a limited number of values (30 for Calonne et al., 2011) obtained on alpine or temperate snows that were sampled for measurement in the laboratory. This means that they could not work (or do so with extreme difficulty) on low-density depth hoar, as this snow often collapses at the slightest contact. Their data sets then exclude one snow type of particular interest to us. Using their data to discuss our work is therefore irrelevant. By contrast, using the parameterization of Sturm et al. (1997) based on over 500 values of Arctic or subarctic snows predicts $k_{\text{snow}} = 0.065 \text{ W m}^{-1} \text{ K}^{-1}$. That of Domine et al. (2011) based on 106 alpine and Arctic snows predicts $0.088 \text{ W m}^{-1} \text{ K}^{-1}$. Both latter studies show values as low as measured here and also indicate that for a given density value, the range of k_{snow} values varies by a factor of 4 to 5, and our measured values are within this range. These correlation-based estimations of k_{snow} show that (i) density–thermal conductivity correlations cannot accurately predict k_{snow} and (ii) using parameterisations based on a data sets consisting mostly of alpine or temperate snow cannot be used for Arctic snow.

4.4 Seasonal variations of k_{soil}

Understanding and predicting the seasonal variations of k_{soil} is essential for modelling the thermal regime of frozen ground. Hysteresis loops have been observed for the freezing and thawing of boreal and Arctic soils. Overduin et al. (2006) monitored k_{soil} in an Alaskan cryaquept and observed such a hysteresis (more commonly shown by plotting water content vs. temperature). Smerdon and Mendoza (2010) also observed a hysteresis in a boreal peatland in northern Alberta. Spaans and Baker (1996) and Smerdon and Mendoza (2010), among others, stressed the importance of using an adequate relationship between soil temperature, liquid water content and thermal conductivity (the freezing function, in their terms) for the accurate modelling of thermal regime of

Nordic soils. Here, we provide such data for the soil at our location and these will be used in future work to test our ability to simulate the permafrost thermal regime using the ISBA code (Decharme et al., 2016).

A tempting approximation would be to use a bimodal distribution of thermal conductivity values, as we find transition periods of less than 10 days. The transition from thawed to frozen k_{soil} values takes 6 days in 2013 and 8 days in 2014 (remember that measurements are made every 2 days only). The transition from frozen to thawed k_{soil} values takes 2 days in 2015. In 2014, the data are not of sufficient quality to determine the transition duration accurately. However, a bimodal distribution, despite its advantage of being simple to implement in models, can lead to errors in soil temperature greater than 2 °C, as shown by Smerdon and Mendoza (2010) for peat. Further work is required to test its interest for our more mineral soil.

5 Conclusion

We feel that the following points are important conclusions of this study:

1. Vertical water vapour fluxes induced by the temperature gradients in the soil and the snowpack strongly determine snow conditions, soil dehydration and the water budget of the surface.
2. Water vapour fluxes also determine the snow thermal conductivity profile and the ground thermal regime. The comparison of observed vs. simulated thermal conductivity profile demonstrates that omitting these fluxes leads to a radically different snow thermal conductivity profile.
3. Major snow models (Crocus, SNOWPACK) do not describe water vapour fluxes. The consequences on the water budget, on the ground thermal regime, on the energy budget of the surface and possibly on climate may be quite significant.
4. For both years studied, a layer of soft depth hoar was present at the base of the snowpack, which seems to be favourable conditions for subnivean life. In the second year, a melt–freeze layer at the very base of the snow pack may have rendered conditions somewhat less favourable for a few weeks, but k_{snow} monitoring indicates that it transformed rapidly into depth hoar. In May 2015, however, we observed that basal depth hoar was harder than in May 2014. We note with interest that lemming populations were also higher in spring 2014 than in spring 2015 (Fauteux et al., 2016).
5. Soil thermal conductivity showed transition periods of just a few days between the thawed and the frozen values. Modelling soil thermal conductivity with a step

function may therefore be tested. A hysteresis process was observed, with the change from thawed to frozen value taking place at low ice content and the change from frozen to thawed values at high ice content. Further work is needed to determine whether these processes need to be taken into account for adequate simulation of the permafrost thermal regime at our study site.

The Supplement related to this article is available online at doi:10.5194/tc-10-2573-2016-supplement.

Author contributions. Florent Domine designed research. Denis Sarrazin built and deployed the instruments with assistance from Florent Domine. Mathieu Barrere and Florent Domine performed the field measurements. Florent Domine and Mathieu Barrere analysed the field data. Mathieu Barrere performed the model simulations. Florent Domine prepared the manuscript with comments from Mathieu Barrere and Denis Sarrazin.

Acknowledgements. This work was supported by the French Polar Institute (IPEV) through grant 1042 to FD and by NSERC through the discovery grant program. We thank Laurent Arnaud for advice in writing the program to run the needle probes. The Polar Continental Shelf Program (PCSP) efficiently provided logistical support for the research at Bylot Island. We are grateful to Gilles Gauthier and Marie-Christine Cadieux for their decades-long efforts to build and maintain the research base of the Centre d'Etudes Nordiques at Bylot Island. Winter field trips were shared with the group of Dominique Berteaux, who helped make this research much more efficient and fun. Bylot Island is located within Sirmilik National Park, and we thank Parks Canada and the Pond Inlet community (Mittimatalik) for permission to work there. The assistance of Matthieu Lafaysse, Samuel Morin and Vincent Vionnet at Centre d'Etudes de la Neige (Météo France-CNRS) for the use of Crocus is gratefully acknowledged. We thank J.-B. Madore and A. Langlois (University of Sherbrooke) for sharing with us their results on SNOWPACK simulations. Constructive comments by Martin Schneebeli, Matthew Sturm, an anonymous reviewer, and the editor Ross Brown are gratefully acknowledged.

Edited by: R. Brown

Reviewed by: M. Sturm, M. Schneebeli and one anonymous referee

References

- Bartelt, P. and Lehning, M.: A physical SNOWPACK model for the Swiss avalanche warning Part I: numerical model, *Cold Reg. Sci. Technol.*, 35, 123–145, 2002.
- Benson, C. S. and Sturm, M.: Structure and wind transport of seasonal snow on the Arctic slope of Alaska, *Ann. Glaciol.*, 18, 261–267, 1993.

- Bilodeau, F., Gauthier, G., and Berteaux, D.: The effect of snow cover on lemming population cycles in the Canadian High Arctic, *Oecologia*, 172, 1007–1016, 2013.
- Brun, E., Vionnet, V., Boone, A., Decharme, B., Peings, Y., Valette, R., Karbou, F., and Morin, S.: Simulation of northern Eurasian local snow depth, mass and density using a detailed snowpack model and meteorological reanalysis, *J. Hydrometeorol.*, 14, 203–214, 2013.
- Burke, E., Dankers, R., Jones, C., and Wiltshire, A.: A retrospective analysis of pan Arctic permafrost using the JULES land surface model, *Clim. Dynam.*, 41, 1025–1038, 2013.
- Buteau, S., Fortier, R., Delisle, G., and Allard, M.: Numerical simulation of the impacts of climate warming on a permafrost mound, *Permafrost Periglac.*, 15, 41–57, 2004.
- Calonne, N., Flin, F., Morin, S., Lesaffre, B., du Roscoat, S. R., and Geindreau, C.: Numerical and experimental investigations of the effective thermal conductivity of snow, *Geophys. Res. Lett.*, 38, L23501, doi:10.1029/2011GL049234, 2011.
- Calonne, N., Geindreau, C., and Flin, F.: Macroscopic Modeling for Heat and Water Vapor Transfer in Dry Snow by Homogenization, *J. Phys. Chem. B*, 118, 13393–13403, 2014.
- Chadburn, S. E., Burke, E. J., Essery, R. L. H., Boike, J., Langer, M., Heikenfeld, M., Cox, P. M., and Friedlingstein, P.: Impact of model developments on present and future simulations of permafrost in a global land-surface model, *The Cryosphere*, 9, 1505–1521, doi:10.5194/tc-9-1505-2015, 2015.
- Colbeck, S. C.: Sintering in a dry snow cover, *J. Appl. Phys.*, 84, 4585–4589, 1998.
- Decharme, B., Brun, E., Boone, A., Delire, C., Le Moigne, P., and Morin, S.: Impacts of snow and organic soils parameterization on northern Eurasian soil temperature profiles simulated by the ISBA land surface model, *The Cryosphere*, 10, 853–877, doi:10.5194/tc-10-853-2016, 2016.
- Dee, D. P., Uppala, S. M., Simmons, A. J., Berrisford, P., Poli, P., Kobayashi, S., Andrae, U., Balmaseda, M. A., Balsamo, G., Bauer, P., Bechtold, P., Beljaars, A. C. M., van de Berg, L., Bidlot, J., Bormann, N., Delsol, C., Dragani, R., Fuentes, M., Geer, A. J., Haimberger, L., Healy, S. B., Hersbach, H., Holm, E. V., Isaksen, I., Kallberg, P., Kohler, M., Matricardi, M., McNally, A. P., Monge-Sanz, B. M., Morcrette, J. J., Park, B. K., Peubey, C., de Rosnay, P., Tavolato, C., Thepaut, J. N., and Vitart, F.: The ERA-Interim reanalysis: configuration and performance of the data assimilation system, *Q. J. Roy. Meteor. Soc.*, 137, 553–597, 2011.
- Devries, D. A.: A nonstationary method for determining thermal conductivity of soil insitu, *Soil Sci.*, 73, 83–89, 1952.
- Domine, F., Cabanes, A., and Legagneux, L.: Structure, microphysics, and surface area of the Arctic snowpack near Alert during the ALERT 2000 campaign, *Atmos. Environ.*, 36, 2753–2765, 2002.
- Domine, F., Bock, J., Morin, S., and Giraud, G.: Linking the effective thermal conductivity of snow to its shear strength and its density, *J. Geophys. Res.*, 116, F04027, doi:10.1029/2011JF002000, 2011.
- Domine, F., Gallet, J.-C., Bock, J., and Morin, S.: Structure, specific surface area and thermal conductivity of the snowpack around Barrow, Alaska, *J. Geophys. Res.*, 117, D00R14, doi:10.1029/2011JD016647, 2012.
- Domine, F., Barrere, M., Sarrazin, D., Morin, S., and Arnaud, L.: Automatic monitoring of the effective thermal conductivity of snow in a low-Arctic shrub tundra, *The Cryosphere*, 9, 1265–1276, doi:10.5194/tc-9-1265-2015, 2015.
- Domine, F., Barrere, M., and Morin, S.: The growth of shrubs on high Arctic tundra at Bylot Island: impact on snow physical properties and permafrost thermal regime, *Biogeosciences Discuss.*, doi:10.5194/bg-2016-3, in review, 2016.
- Domine, F., Morin, S., Brun, E., Lafaysse, M., and Carmagnola, C. M.: Seasonal evolution of snow permeability under equi-temperature and temperature-gradient conditions, *The Cryosphere*, 7, 1915–1929, doi:10.5194/tc-7-1915-2013, 2013.
- Domine, F., Taillandier, A.-S., Cabanes, A., Douglas, T. A., and Sturm, M.: Three examples where the specific surface area of snow increased over time, *The Cryosphere*, 3, 31–39, doi:10.5194/tc-3-31-2009, 2009.
- Ekici, A., Chadburn, S., Chaudhary, N., Hajdu, L. H., Marmy, A., Peng, S., Boike, J., Burke, E., Friend, A. D., Hauck, C., Krinner, G., Langer, M., Miller, P. A., and Beer, C.: Site-level model intercomparison of high latitude and high altitude soil thermal dynamics in tundra and barren landscapes, *The Cryosphere*, 9, 1343–1361, doi:10.5194/tc-9-1343-2015, 2015.
- Elberling, B., Michelsen, A., Schadel, C., Schuur, E. A. G., Christiansen, H. H., Berg, L., Tamstorf, M. P., and Sigsgaard, C.: Long-term CO₂ production following permafrost thaw, *Nature Clim. Change*, 3, 890–894, 2013.
- Fauteux, D., Gauthier, G., and Berteaux, D.: Seasonal demography of a cyclic lemming population in the Canadian Arctic, *J. Anim. Ecol.*, 84, 1412–1422, 2015.
- Fauteux, D., Gauthier, G., and Berteaux, D.: Top-down limitation of lemmings revealed by experimental reduction of predators, *Ecology*, in press, doi:10.1002/ecy.1570, 2016.
- Fierz, C. and Lehning, M.: Assessment of the micro structure-based snow-cover model SNOWPACK: thermal and mechanical properties, *Cold Reg. Sci. Technol.*, 33, 123–131, 2001.
- Fierz, C., Armstrong, R. L., Durand, Y., Etchevers, P., Greene, E., McClung, D. M., Nishimura, K., Satyawali, P. K., and Sokratov, S. A.: The International classification for seasonal snow on the ground UNESCO-IHP, ParisIACS Contribution no. 1, 80 pp., 2009.
- Fortier, D. and Allard, M.: Frost-cracking conditions, Bylot Island, Eastern Canadian Arctic Archipelago, *Permafrost Periglac.*, 16, 145–161, 2005.
- Gallet, J.-C., Domine, F., Zender, C. S., and Picard, G.: Measurement of the specific surface area of snow using infrared reflectance in an integrating sphere at 1310 and 1550 nm, *The Cryosphere*, 3, 167–182, doi:10.5194/tc-9-1343-2015, 2009.
- Gouttevin, I., Menegoz, M., Dominé, F., Krinner, G., Koven, C., Ciais, P., Tarnocai, C., and Boike, J.: How the insulating properties of snow affect soil carbon distribution in the continental pan-Arctic area, *J. Geophys. Res.*, 117, G02020, doi:10.1029/2011JG001916, 2012.
- Hall, D. K., Sturm, M., Benson, C. S., Chang, A. T. C., Foster, J. L., Garbeil, H., and Chacho, E.: Passive microwave remote and insitu measurements of Arctic and sub-arctic snow covers in Alaska, *Remote Sens. Environ.*, 38, 161–172, 1991.
- Hugelius, G., Strauss, J., Zubrzycki, S., Harden, J. W., Schuur, E. A. G., Ping, C. L., Schirmermeister, L., Grosse, G., Michaelson, G. J., Koven, C. D., O'Donnell, J. A., Elberling, B., Mishra, U.,

- Camill, P., Yu, Z., Palmtag, J., and Kuhry, P.: Estimated stocks of circumpolar permafrost carbon with quantified uncertainty ranges and identified data gaps, *Biogeosciences*, 11, 6573–6593, doi:10.5194/bg-11-6573-2014, 2014.
- Inaba, H.: Experimental-study on thermal-properties of frozen soils, *Cold Reg. Sci. Technol.*, 8, 181–187, 1983.
- Kausrud, K. L., Mysterud, A., Steen, H., Vik, J. O., Ostbye, E., Cazelles, B., Framstad, E., Eikeset, A. M., Mysterud, I., Solhoy, T., and Stenseth, N. C.: Linking climate change to lemming cycles, *Nature*, 456, 93–U93, 2008.
- Kujala, K., Seppala, M., and Holappa, T.: Physical properties of peat and palsa formation, *Cold Reg. Sci. Tech.*, 52, 408–414, 2008.
- Löwe, H., Riche, F., and Schneebeli, M.: A general treatment of snow microstructure exemplified by an improved relation for thermal conductivity, *The Cryosphere*, 7, 1473–1480, doi:10.5194/tc-7-1473-2013, 2013.
- Marbouty, D.: An experimental study of temperature-gradient metamorphism, *J. Glaciol.*, 26, 303–312, 1980.
- Marti, J. and Mauersberger, K.: A survey and new measurements of ice vapor-pressure at temperatures between 170 and 250 K, *Geophys. Res. Lett.*, 20, 363–366, 1993.
- Morin, S., Domine, F., Arnaud, L., and Picard, G.: In-situ measurement of the effective thermal conductivity of snow, *Cold Reg. Sci. Technol.*, 64, 73–80, 2010.
- Overduin, P. P., Kane, D. L., and van Loon, W. K. P.: Measuring thermal conductivity in freezing and thawing soil using the soil temperature response to heating, *Cold Reg. Sci. Technol.*, 45, 8–22, 2006.
- Paquin, J. P. and Sushama, L.: On the Arctic near-surface permafrost and climate sensitivities to soil and snow model formulations in climate models, *Clim. Dynam.*, 44, 203–228, 2015.
- Penner, E.: Thermal conductivity of frozen soils, *Can. J. Earth Sci.*, 7, 982–987, 1970.
- Penner, E., Johnston, G. H., and Goodrich, L. E.: Thermal-conductivity laboratory studies of some mackenzie highway soils, *Can. Geotech. J.*, 12, 271–288, 1975.
- Riche, F. and Schneebeli, M.: Thermal conductivity of snow measured by three independent methods and anisotropy considerations, *The Cryosphere*, 7, 217–227, doi:10.5194/tc-7-217-2013, 2013.
- Schneider von Deimling, T., Meinshausen, M., Levermann, A., Huber, V., Frieler, K., Lawrence, D. M., and Brovkin, V.: Estimating the near-surface permafrost-carbon feedback on global warming, *Biogeosciences*, 9, 649–665, doi:10.5194/bg-9-649-2012, 2012.
- Schuur, E. A. G., McGuire, A. D., Schadel, C., Grosse, G., Harden, J. W., Hayes, D. J., Hugelius, G., Koven, C. D., Kuhry, P., Lawrence, D. M., Natali, S. M., Olefeldt, D., Romanovsky, V. E., Schaefer, K., Turetsky, M. R., Treat, C. C., and Vonk, J. E.: Climate change and the permafrost carbon feedback, *Nature*, 520, 171–179, 2015.
- Smerdon, B. D. and Mendoza, C. A.: Hysteretic freezing characteristics of riparian peatlands in the Western Boreal Forest of Canada, *Hydrol. Process.*, 24, 1027–1038, 2010.
- Spaans, E. J. A. and Baker, J. M.: The soil freezing characteristic: Its measurement and similarity to the soil moisture characteristic, *Soil Sci. Soc. Am. J.*, 60, 13–19, 1996.
- Sturm, M. and Benson, C.: Scales of spatial heterogeneity for perennial and seasonal snow layers, *Ann. Glaciol.*, 38, 253–260, 2004.
- Sturm, M. and Benson, C. S.: Vapor transport, grain growth and depth-hoar development in the subarctic snow, *J. Glaciol.*, 43, 42–59, 1997.
- Sturm, M., Derksen, C., Liston, G., Silis, A., Solie, D., Holmgren, J., and Huntington, H.: A reconnaissance snow survey across northwest territories and Nunavut, Canada, April 2007, Cold Regions Research and Engineering laboratory, Hanover, N.H.ERDC/CRREL TR 08-3, 1–80, 2008.
- Sturm, M., Holmgren, J., König, M., and Morris, K.: The thermal conductivity of seasonal snow, *J. Glaciol.*, 43, 26–41, 1997.
- Sturm, M., Holmgren, J., and Perovich, D. K.: Winter snow cover on the sea ice of the Arctic Ocean at the Surface Heat Budget of the Arctic Ocean (SHEBA): Temporal evolution and spatial variability, *J. Geophys. Res.*, 107, 8047, doi:10.1029/2000JC000400, 2002.
- Sturm, M. and Johnson, J. B.: Natural-convection in the sub-arctic snow cover, *J. Geophys. Res.-Earth*, 96, 11657–11671, 1991.
- Sturm, M. and Johnson, J. B.: Thermal-conductivity measurements of depth hoar, *J. Geophys. Res.-Earth*, 97, 2129–2139, 1992.
- Taillandier, A. S., Domine, F., Simpson, W. R., Sturm, M., Douglas, T. A., and Severin, K.: Evolution of the snow area index of the subarctic snowpack in central Alaska over a whole season. Consequences for the air to snow transfer of pollutants, *Environ. Sci. Technol.*, 40, 7521–7527, 2006.
- Taillandier, A. S., Domine, F., Simpson, W. R., Sturm, M., and Douglas, T. A.: Rate of decrease of the specific surface area of dry snow: Isothermal and temperature gradient conditions, *J. Geophys. Res.*, 112, F03003, doi:10.1029/2006JF000514, 2007.
- Vionnet, V., Brun, E., Morin, S., Boone, A., Faroux, S., Le Moigne, P., Martin, E., and Willemet, J.-M.: The detailed snowpack scheme Crocus and its implementation in SURFEX v7.2, *Geosci. Model Dev.*, 5, 773–791, doi:10.5194/gmd-5-773-2012, 2012.
- Vuichard, N. and Papale, D.: Filling the gaps in meteorological continuous data measured at FLUXNET sites with ERA-Interim reanalysis, *Earth Syst. Sci. Data*, 7, 157–171, doi:10.5194/essd-7-157-2015, 2015.
- Yen, Y.-C.: Review of thermal properties of snow, ice, and sea ice, United States Army Corps of Engineers, Hanover, NH, USACRREL Report 81-10, 1–27, 1981.