



HAL
open science

Reactive Transport Modeling of Coupled Processes in Nanoporous Media

Christophe Tournassat, Carl Steefel

► **To cite this version:**

Christophe Tournassat, Carl Steefel. Reactive Transport Modeling of Coupled Processes in Nanoporous Media. *Reviews in Mineralogy and Geochemistry*, 2019, 85 (1), pp.75-109. 10.2138/rmg.2019.85.4 . insu-03335698

HAL Id: insu-03335698

<https://insu.hal.science/insu-03335698v1>

Submitted on 16 Dec 2021

HAL is a multi-disciplinary open access archive for the deposit and dissemination of scientific research documents, whether they are published or not. The documents may come from teaching and research institutions in France or abroad, or from public or private research centers.

L'archive ouverte pluridisciplinaire **HAL**, est destinée au dépôt et à la diffusion de documents scientifiques de niveau recherche, publiés ou non, émanant des établissements d'enseignement et de recherche français ou étrangers, des laboratoires publics ou privés.

Reactive transport modeling of coupled processes in nanoporous media

Christophe Tournassat

Lawrence Berkeley National Laboratory, 1 Cyclotron Road, Berkeley, CA 94720, USA

and

BRGM, 3 avenue Claude Guillemin, 45060 Orléans, France

and

*Université d'Orléans – CNRS/INSU – BRGM, UMR 7327 Institut des Sciences de la Terre
d'Orléans, 45071 Orléans, France*

c.tournassat@brgm.fr; CTournassat@lbl.gov

Carl I. Steefel

*Energy Geosciences Division, Lawrence Berkeley National Laboratory, Berkeley, CA 94720,
USA*

CISteefel@lbl.gov

INTRODUCTION

Nanoporous media consist of homogeneous or heterogeneous porous material in which a significant part of the pore size distribution lies in the nanometer range. Clayey rocks, sediments or soils are natural nanoporous media, and cementitious materials, the most widely used industrial materials in the world, are also nanoporous materials. Nanoporous materials also include compounds present at the interface between non-porous solids and an aqueous solution. For example, hydrous silica gel coatings are interfacial nanoporous media that control the weathering rates of silicate glasses and minerals (Bourg and Steefel, 2012). The understanding of the reactive and transport properties of these interfacial phases is essential to our global understanding of the long-term evolution of natural systems, such as soil formation (Navarre-Sitchler et al., 2011), nutrient cycling in the oceans (Loucaides et al., 2010), and engineered applications, such as the prediction of radionuclides release in high-level radioactive waste disposals (Grambow, 2006; Collin et al., 2018a; b; Frugier et al., 2018). In colloidal suspensions, the aggregation of nanoparticles can also lead to the formation of nanoporous aggregates in which the bulk properties of nanoparticles are strongly influenced by the surrounding nanopores. For example, the dynamics of contaminant retention in ferrihydrite aggregates can be slowed by diffusional processes in the into/out of aggregates (Beinum et al., 2005).

The bulk fluid transport properties and the *in situ* chemical reactivity properties of nanoporous media are notoriously difficult to characterize. Because of their large specific surface area, most

of the fluid volume in nanoporous media is influenced by the close proximity of mineral¹ surfaces, which explains the very low transmissivity of these materials. As a consequence, the experimental characterization of their permeability requires special techniques (Neuzil and Person, 2017). Also, the large specific surface area of nanoporous material provides them with very high adsorption capacity. The strong adsorption and resulting retardation of many contaminants by nanoporous material make them ideal for use in natural or engineered barrier systems or in filtration technologies. A good understanding of their chemical reactivity coupled to their transport properties is necessary to predict the long-term evolution of these properties of interest as a function of a range of physical and chemical conditions and processes. In this regard, reactive transport modeling can help bridging the gap between current process knowledge and predictions of the long term evolution of natural and engineered nanoporous materials in geological and industrial settings. However, nanoporous media exhibit a remarkable array of macro-scale properties with marked departures from those observed in “conventional” porous media such as permeable aquifers, for the study of which reactive transport models and codes have been historically developed. These properties arise from the interactions of charged mineral surfaces with water and solutes present in the nanopores, which leads to coupling between flux terms. These couplings manifest themselves in macroscopic observations that have intrigued geologists for more than one century, such as geologic ultrafiltration, i.e. the accumulation of solutes on the inflow side of clay-rich lithologies (Lynde, 1912; Neuzil and Person, 2017).

The vast majority of published reactive transport studies dealing with clay and cement materials are related to the evaluation of the long-term stability of surface and underground radioactive waste storage systems (Claret et al., 2018 and references therein; Bildstein et al., this volume, and references therein). In these types of simulation, the modeling effort has been focused primarily on the reactivity of the nanoporous materials rather than on their transport properties. Traditionally, Fickian diffusion has been typically considered, *i.e.* without taking into account advection, and without taking into account the anomalous transport properties of nanoporous media. In the last decade, special capabilities have been developed in a limited number of reactive transport codes that make them able to model part of these unconventional properties, with consideration of coupled processes that go beyond the traditional coupling between advective flow, dispersion, diffusion and reactions. The present chapter reviews these recent developments and explores the need to develop additional code capabilities to encompass relevant properties of nanoporous media in a holistic model from the micro-continuum to macro-continuum scales. The micro-continuum scale is restricted here to the definition given by Steefel et al. (2015b), *i.e.* a scale with resolution intermediate between true pore scale models and macro-continuum models, and in which parameters and properties such as permeability or reactive surface area need to be averaged or upscaled in some fashion. This corresponds to the matrix domains in the hybrid micro-continuum scale description defined by Soullaine et al. (2016; 2018), in which flow in true pore scale domains are described with the Navier–Stokes equation, whereas flow in matrix is described

¹ in the following, we will use the term “mineral” as a generic term designing true minerals (e.g. clay minerals), but also other types of solid phases (e.g. cementitious phases).

with Darcy's Law. Clayey materials are, by far, the most studied nanoporous media using reactive transport modeling. Consequently, most of the examples described in this chapter deal with clays. Also, this review is limited to coupled processes in water-saturated nanoporous media.

This chapter begins with a description of nanoporous media and the semi-permeable behavior that arises from the combination of their microstructure and their surface properties. Then, non-coupled and coupled transport processes in porous media are defined. In the next section, a quantitative description of the ion concentration distribution in the porosity of nanoporous materials is given, together with the approximations used in reactive transport codes to calculate it effectively. The reactive transport treatment of coupled transport processes is then described in the two last sections, starting from a description of transport in the diffusive regime, and ending with the challenges associated with the consideration of advective flow in nanoporous media.

NANOPOROUS MEDIA: SMALL PORES, LARGE SURFACES AND MEMBRANE PROPERTIES

Surface and microstructural properties of nanoporous materials

Most nanoporous media found in geological and engineered settings are comprised of an assembly of layered minerals. Bentonite is used in geosynthetic clay liners for isolation of landfills, and is planned as a barrier material in radioactive waste repository sites (Gates et al., 2009; Guyonnet et al., 2009). Bentonite is composed primarily of clay minerals of the smectite group, particularly montmorillonite. Clayey rocks (claystone, mudstone, argillite, shales) are being investigated as cap-rocks for underground gas sequestration technologies, geological barriers for radioactive waste disposal and source rocks for unconventional hydrocarbons (Neuzil, 2013; Bourg, 2015). These rocks usually contain large amounts of illite and illite/smectite mixed-layer minerals (Gaucher et al., 2004). The fundamental structural unit of smectite and illite consists of layers made of a sheet of edge-sharing octahedra fused to two sheets (2:1 or TOT layers) of corner-sharing tetrahedra with a thickness of about 9.5 Å (Fig. 1). The cations in the octahedral sheet of illite and montmorillonite consist predominantly of Al^{3+} . In montmorillonite, isomorphic substitutions take place mostly in the octahedral sheets where Al^{3+} is replaced by Fe^{3+} or a cation of lower charge (Mg^{2+} , Fe^{2+}), whereas in illite isomorphic substitutions take place in the octahedral sheet as in montmorillonite, and in the tetrahedral sheet where Si^{4+} is partially replaced by Al^{3+} . Isomorphic substitutions by cations of lower charge results in a permanent negative layer charge (Brigatti et al., 2013). The permanent negative layer charge of clay minerals is compensated for the most part by the accumulation of compensating cations between the layers. These interlayer cations can be solvated, as in montmorillonite interlayer space, or not, as in the case of K^+ in illitic interlayer space (Fig. 1). In the former case, interlayer cations can be readily exchanged with other cations present in the surrounding pore water, reflecting thus the composition of the pore water. Illite and montmorillonite particles are formed by a stacking of a small number of TOT layers. Illite particles typically consist of 5 to 20 stacked TOT layers, while for smectite the number of layers per particle increases with decreasing water chemical potential and with the valence of the charge-compensating cation (Banin and Lahav, 1968; Shainberg and Otoh, 1968; Schramm and

Kwak, 1982; Saiyouri et al., 2000). The nanometric dimension of a small number of stacked layers must be compared with the basal plane dimensions that range from 50 to 100 nm for illite (Poinsot et al., 1999; Sayed Hassan et al., 2006), and from 50 to 1000 nm for montmorillonite (Zachara et al., 1993; Tournassat et al., 2003; Yokoyama et al., 2005; Le Forestier et al., 2010; Marty et al., 2011). Clay mineral particles are thus highly anisotropic, and their spatial organization in the matrix of a clayey materials can yield a wide distribution of pore sizes, the smallest dimension of which range from less than one nanometer to several micrometers (Fig. 2). Inter-particle and inter-aggregate pores are usually elongated in the bedding direction or perpendicular to the compaction direction in remolded samples (Pusch, 2001; Robinet et al., 2012; Gu et al., 2015; Gaboreau et al., 2016). These pores are usually represented by slit-shaped or cylindrical-shaped pores for modeling purposes. The smallest pores, *i.e.* the interlayer pores in swelling clay minerals, are logically usually described as slit-shaped pores (Birgersson and Karnland, 2009; Appelo et al., 2010; Tournassat and Appelo, 2011; Tournassat et al., 2016b; Appelo, 2017; Wigger and Van Loon, 2017).

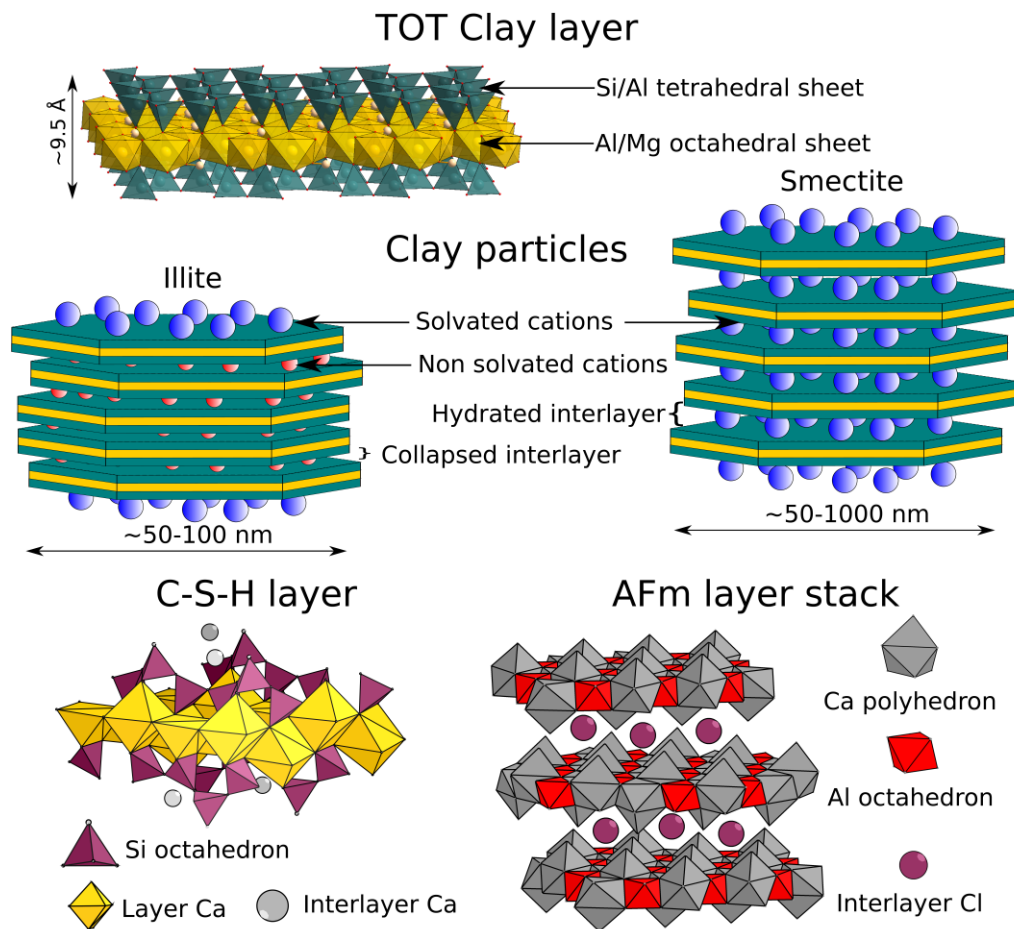


Figure 1. Examples of layered phases in clayey and cementitious materials. Figure modified from Tournassat et al. (2015a), Marty et al. (2018) and Grangeon et al. (2016).

Cementitious materials are complex assemblages of a range of solid phases. Among them, nanocrystalline calcium silicate hydrate (C–S–H) is often the main hydration product (Richardson, 2008), and constitutes the “glue material” of the cement (Pellenq and Van Damme, 2004; Masoero et al., 2012). C-S-H have a complex chemistry, with calcium to silicon (Ca/Si) atomic ratio that vary as a function of pore water chemical conditions, and especially pH. C–S–H have layered structures that can be described as nanocrystalline and defective tobermorite, where the Si chains depolymerize as the Ca/Si atomic ratio increases (Grangeon et al., 2013, 2016, 2017; Richardson, 2014). The depolymerization reaction creates silanol groups at the surface having amphoteric (protonation/deprotonation) properties and surface complexation capabilities (Fig. 1). The resulting surface charge of C-S-H can take positive or negative values as a function of pore water chemistry following layer structure changes and surface site reactivity (Haas and Nonat, 2015). A C-S-H particle is composed of a stack of a small number of layers, which are separated by a hydrated interlayer space that may also contain cations (Grangeon et al., 2016; Roosz et al., 2016). The spatial distribution of C-S-H particles in the cement matrix creates a heterogeneous distribution of inter-particulate pore sizes (Ioannidou et al., 2016). Other major cement phases include the hydrated calcium aluminate phase (AFm), which is a member of the layered double hydroxides (LDHs) group. Its structure consists of stacked positively charged layers of Al and Ca polyhedra separated from each other by hydrated interlayer spaces, which contain charge compensating hydrated anions (Fig. 1). Similarly to interlayer cations in swelling clay minerals, interlayer anions in AFm are exchangeable with the surrounding pore water, making them an important contributor to the retention of anions that enter into contact with cement-based materials (Ma et al., 2017, 2018; Marty et al., 2018).

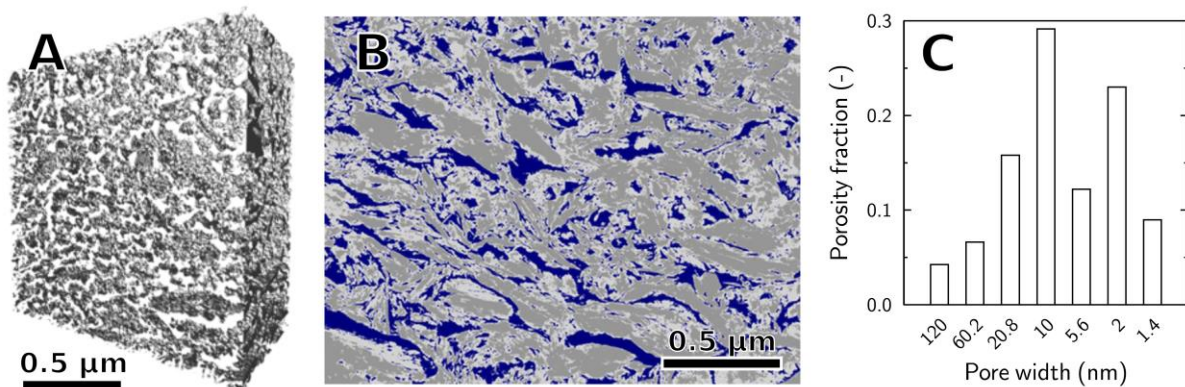


Figure 2. A: 3-D visualization of the microstructure of an illite sample compacted at $1.7 \text{ kg}\cdot\text{dm}^{-3}$ (backscattered electrons focused ion beam nanotomography stack images $350\times 350\times 180$ voxels with voxel resolution size of $5\times 5\times 5 \text{ nm}^3$); B: Segmented image of a TEM micrograph of the same illite sample. The blue color represents pores and light and dark gray are pore/solid mixtures and solids, respectively. C: Pore-width distribution obtained from a combination of bulk and microscopic characterization techniques. Figure modified from Gaboreau et al. (2016) and Tournassat et al. (2016b).

The layered nature of the major components of clayey and cementitious materials confer to these materials very high specific surface area, and, consequently, a large fraction of their porosity

lies within the nanometer range. C-S-H, AFm, illite and smectite layers exhibit surface charges that are compensated in the adjacent porosity. Between the layers, these charges are mostly compensated by counter-ions (ions with charge sign opposite to that of the surface) in the interlayer porosity. The layer charge present at the outer surfaces of the particles (hereafter named basal surfaces), which border the interparticle pores, must also be compensated. This is also true for non-permanent charges present on the border surfaces of other solid phase (e.g. silica) that arise from the cleavage of the grains. The charge compensation mechanisms and their consequences for the water and ion transport in nanoporous media are explored in the next section.

Ion distribution in the vicinity of charged surfaces

The charge of the surfaces bordering the pores is responsible for the presence of a double layer or electrical double layer (EDL), *i.e.* the layers of interfacial water and electrolyte ions that screen the surface charge. The EDL is often conceptually subdivided into two regions, in agreement with spectroscopic results (Lee et al., 2010, 2012b), direct force measurements (Zhao et al., 2008; Siretanu et al., 2014) and molecular dynamics (MD) calculations (Marry et al., 2008; Tournassat et al., 2009a; Rotenberg et al., 2010; Bourg and Sposito, 2011): the Stern layer located within the first water monolayers of the interface in which ions adsorb as inner- and outer-sphere surface complexes (ISSC, OSSC) and a diffuse layer (DL) located beyond the Stern layer in which a diffuse cloud of ions screens the remaining uncompensated surface charge (Fig. 3). The concentrations of ions in this region depend on the distance from the surface considered. At infinite distance from the charged surface, the solution is neutral and is commonly described as bulk or free solution (or water). The exact ionic charge distribution in the EDL is related to the potentials of mean force for the various ions, and those potentials are for the most part related to the local magnitude of the electrostatic potential (Delville, 2000). It is important to note that the ion distribution in the EDL cannot be probed directly by measurements because EDL features are inherently disturbed by direct measurement techniques (Bourg et al., 2017). A range of experimental techniques have been used to characterize indirectly the EDL properties, but the interpretation of their results is always sensitive to an *a priori* choice of an EDL model. Fortunately, in the last two decades, atomistic level models, such as molecular dynamics, have provided a growing set of information on the properties of the EDL. It is now commonly acknowledged that the diffuse layer part of the EDL is well understood, while the characterization of the Stern layer remains a challenging issue (Bourg et al., 2017). In the following, we shall concentrate our attention on the diffuse layer, which has a large influence on transport properties in nanoporous media.

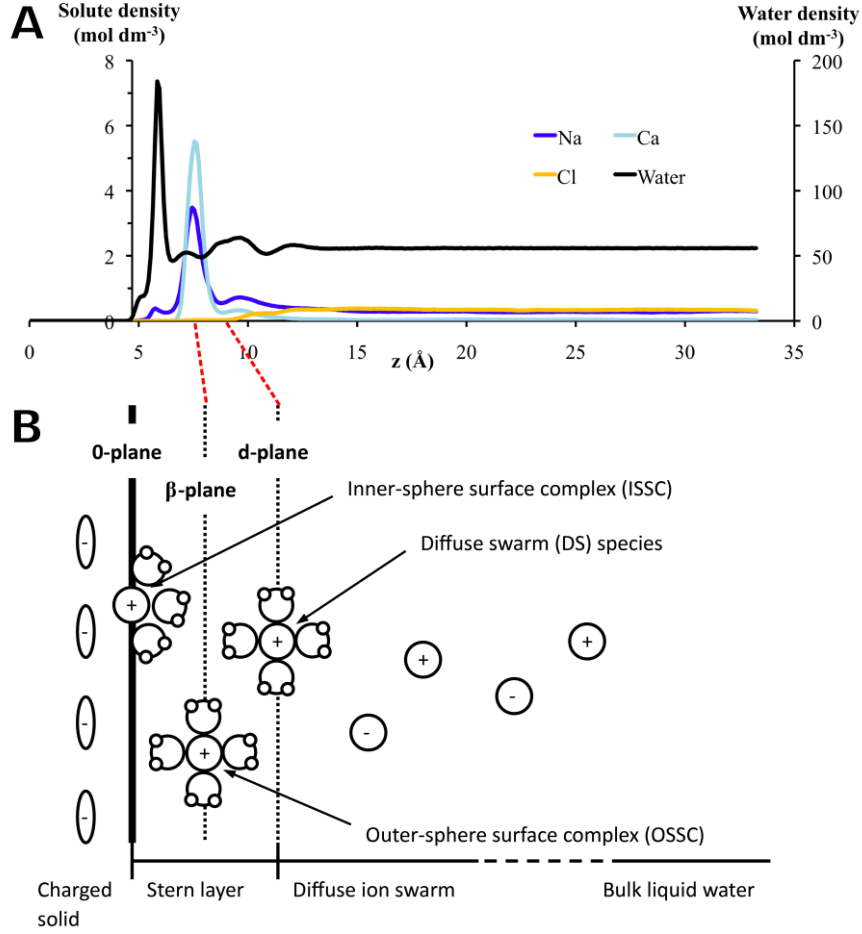


Figure 3. A: Water and ion distribution at the vicinity of a montmorillonite surface according to MD simulations. Average density (mol·dm⁻³) of water (black), Na (dark blue), Ca (light blue) and Cl (orange) are plotted as a function of distance from the mid-plane of the montmorillonite layer at a NaCl/CaCl₂ brine concentration of 0.34 mol·dm⁻³. B: Conceptual model of EDL structure. Modified from Bourq and Sposito (2011).

In the diffuse layer, water is considered to have properties similar to bulk-liquid water and the distribution of ions predicted by molecular dynamic simulations is often in close agreement with predictions made with the Poisson-Boltzmann (PB) equation (Tinnacher et al., 2016). The Poisson equation relates the local charge imbalance at a position y in the direction perpendicular to the charged surface to the second derivative of the electrostatic potential (ψ_{DL} in V) at the same position:

$$\frac{d^2\psi_{DL}(y)}{dy^2} = -\frac{1}{\varepsilon} \sum_i z_i F c_{i,DL} \quad (1)$$

where ε is the water dielectric constant ($78.3 \times 8.85419 \cdot 10^{-12}$ F·m⁻¹ at 298 K), F is the Faraday constant (96 485 C·mol⁻¹), and z_i is the charge of ion i . The concentration of species i in the DL, $c_{i,DL}$, is given by the Boltzmann equation:

$$c_{i,DL} = c_{i,0} \exp\left(\frac{-z_i F \psi_{DL}(y)}{RT}\right) \quad (2)$$

where R is the gas constant ($8.3145 \text{ J}\cdot\text{mol}^{-1}\cdot\text{K}^{-1}$), T is the temperature (K), and $c_{i,0}$ is the concentration of species i in the bulk water at equilibrium with the diffuse layer. At infinite distance from the surface, the electrostatic potential vanishes and the concentration in the diffuse layer is equal to that in the bulk water, where electro-neutrality prevails. However, if pores are not large enough, there will be no regions within the pore that meet this electro-neutrality condition because of the overlap of the diffuse layers. The size of the diffuse layer depends primarily on the concentration of ions, and on the valence of the counter-ions (Carnie and Torrie, 1984; Sposito, 2004). As the ionic strength (I , here in $\text{mol}\cdot\text{L}^{-1}$) increases, the diffuse layer thickness decreases, and, as the valence of the counter-ions increases, the diffuse layer thickness decreases as well. So too does the overlap of the diffuse layers at two neighboring surfaces (Fig. 4, top and middle).

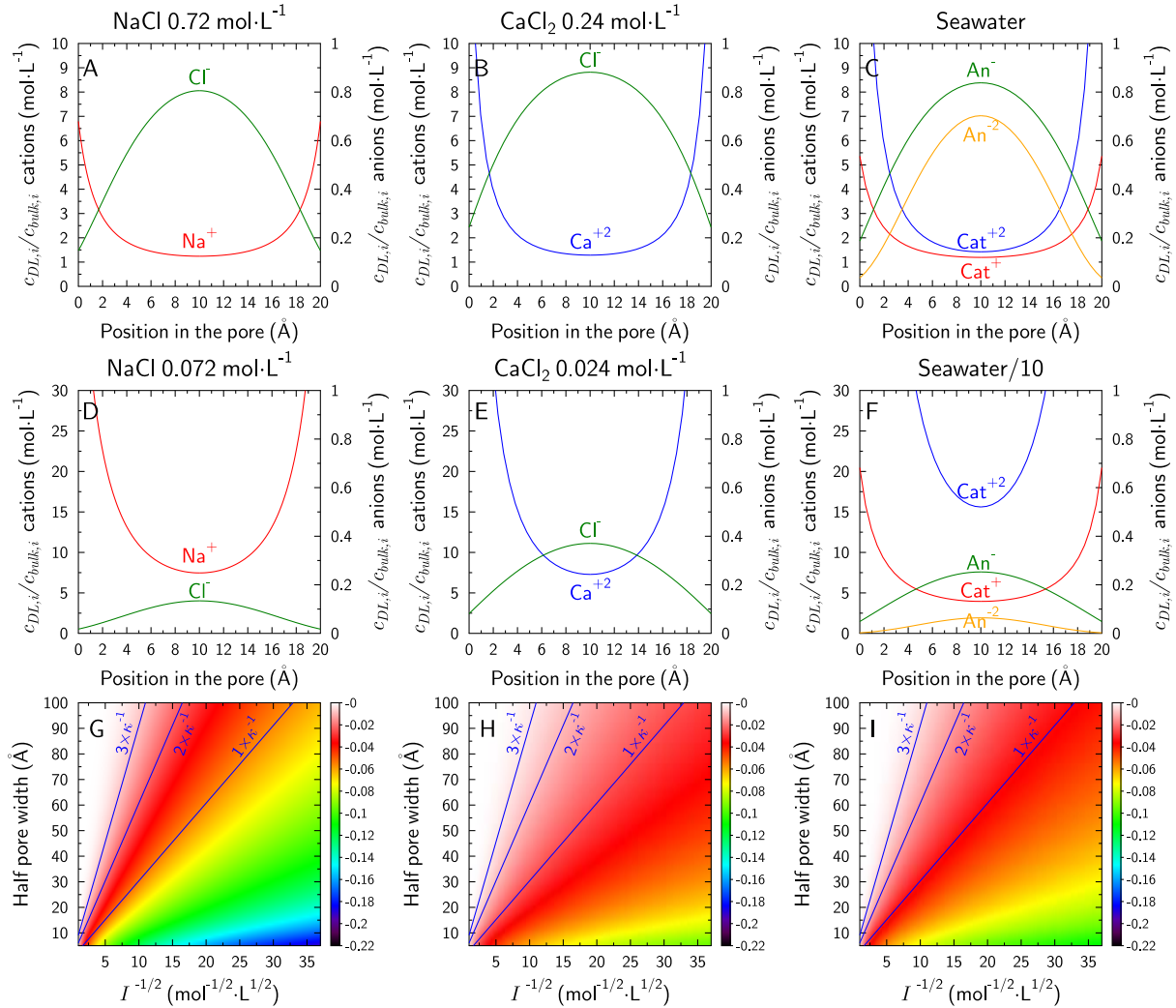


Figure 4. Top and middle figures: Ion enrichment/depletion according to the Poisson-Boltzmann equation in a diffuse layer in contact with negatively charged surfaces ($\sigma_0 = 0.11 \text{ C}\cdot\text{m}^{-2}$) bordering a slit-shaped pore with a distance of 2

nm between the surfaces. A and D: NaCl electrolyte; B and E: CaCl₂ electrolyte; C and F: diluted seawater. A, B and C correspond to an ionic strength of 0.72, while D, E and F correspond to a ionic strength of 0.072. The seawater composition was taken from Holland (1978) and was simplified into Na⁺: 481 mmol·kg⁻¹, Mg²⁺: 55 mmol·kg⁻¹, Ca²⁺: 11 mmol·kg⁻¹; K⁺: 11 mmol·kg⁻¹; Cl⁻: 564 mmol·kg⁻¹; SO₄²⁻: 29 mmol·kg⁻¹; HCO₃⁻: 2 mmol·kg⁻¹. No aqueous complexation in bulk solution was considered for this calculation. In figures C and F, the enrichment/depletion are indicated for monovalent cations (Cat⁺), divalent cations (Cat²⁺), monovalent anions (An⁻) and divalent anions (An²⁻). Calculations were done at 298 K. Bottom figures (G, H and I): Poisson-Boltzmann prediction of the electrostatic potential (in V) at the middle of a slit-shaped pore as a function of the inverse of the square root of ionic strength (x-axis) and half distance between the surfaces (y-axis) ($\sigma_0 = -0.11 \text{ C}\cdot\text{m}^{-2}$). The blue lines indicate 1, 2 and 3 times the inverse of the Debye length (Eq. (21)), which is commonly assumed to be proportional to the thickness of the diffuse layer.

Semi-permeable properties

The presence of overlapping diffuse layers in charged nanoporous media is responsible for a partial or total repulsion of co-ions from the porosity. In the presence of a gradient of bulk electrolyte concentration, co-ion migration through the pores is hindered, as well as the migration of their counter-ion counterparts because of the electro-neutrality constraint. This explains the salt-exclusionary properties of these materials. These properties confer these media with a semi-permeable membrane behavior: neutral aqueous species and water are freely admitted through the membrane while ions are not, giving rise to coupled transport processes. Semi-permeable membrane properties of nanoporous materials have been extensively studied for decades. An overwhelming majority of these studies have dealt with clay materials, in the form of compacted powder samples of purified clay, or natural materials, such as soils or clayey rocks, with a strong emphasis on chemo-osmotic membrane properties (Lynde, 1912; McKelvey and Milne, 1960; Kemper, 1960, 1961a; b; Olsen, 1962; Kemper and Evans, 1963; Young and Low, 1965; Kemper and Rollins, 1966; Bresler, 1973; Hanshaw and Coplen, 1973; Neuzil, 2000; Cey et al., 2001; Garavito et al., 2007; Horseman et al., 2007; Rousseau-Gueutin et al., 2009; Gonçalves et al., 2015; Sun et al., 2016).

NON-COUPLED AND COUPLED TRANSPORT PROCESSES

Transport equations in traditional reactive transport modeling

Single phase numerical reactive transport models aim at describing the fluxes \mathbf{J}_i (mol·m_{medium}⁻²·s⁻¹) of aqueous chemical species i in space and time, as well as the mineralogy and sorbed species evolution. The constitutive equations describing these fluxes at the continuum scale are thermodynamic and kinetic equations for chemical reactions coupled to advection (*adv*), mechanical dispersion (*disp*) and diffusion equations (*diff*) (Steefel and Maher, 2009; Steefel et al., 2015a):

$$\mathbf{J}_i = \mathbf{J}_{adv,i} + \mathbf{J}_{disp,i} + \mathbf{J}_{diff,i} \quad (3)$$

Advection, dispersion and diffusion are non-steady, irreversible processes expressed in the form of partial differential field equations (Bear, 1972). The advective flux is related to the average linear velocity, \mathbf{v} (m·s⁻¹), in the media:

$$\mathbf{J}_{adv,i} = \phi \cdot C_i \cdot \mathbf{v} \quad (4)$$

where ϕ is the porosity (-), C_i ($\text{mol}\cdot\text{m}_{\text{water}}^{-3}$) is the aqueous concentration of species i . The average linear velocity in the porous media is commonly evaluated with Darcy's Law, which relates the volumetric flux of water ($\text{m}_{\text{fluid}}^3\cdot\text{m}_{\text{medium}}^{-2}\cdot\text{s}^{-1}$), \mathbf{q} , to the gradient in the hydraulic head, h (m), and the hydraulic conductivity of the medium, \mathbf{K} ($\text{m}\cdot\text{s}^{-1}$):

$$\mathbf{q} = \phi \cdot \mathbf{v} = -\mathbf{K}\nabla h \quad (5)$$

Molecular diffusion in porous media is usually described in terms of Fick's First Law:

$$\mathbf{J}_{\text{Diff},i} = -\mathbf{D}_{e,i} \nabla C_i \quad (6)$$

where $\mathbf{D}_{e,i}$ is the effective coefficient of species i . The effective diffusion coefficient differs from the diffusion coefficient in water, because diffusion takes place only in the aqueous solution present in the medium. Consequently, the diffusion coefficient must be corrected using the porosity value and from a geometrical factor, τ_i (-), that accounts for the difference of paths lengths that the aqueous species would follow in water alone compared to the tortuous paths lengths it would follow in the porous medium (tortuosity), and for the constrictivity factor of the porous medium (Bear, 1972):

$$\mathbf{D}_{e,i} = \phi \cdot \tau_i \cdot D_{0,i} \quad (7)$$

where $D_{0,i}$ is the diffusion of species i in the solution alone. In the above formulation, the diffusive fluxes depend on the nature of the chemical species. This dependency would result in charge imbalance in conventional numerical reactive transport models if only a Fickian description of diffusion is used, so in practice, Eq. (7) is usually simplified into:

$$\mathbf{J}_{\text{Diff},i} = -\phi \cdot \tau \cdot D_0 \nabla C_i \quad (8)$$

where τ and D_0 are mean representative values.

The coefficient of hydrodynamic dispersion is defined as the sum of molecular diffusion and mechanical dispersion. Mechanical dispersion is a scale-dependent process, with larger dispersivities observed for larger observation scales (Steeffel, 2008). It is usually computed in reactive transport codes as the product of the fluid velocity and dispersivity with longitudinal and transverse components (Steeffel et al., 2015a; Rolle and Leborgne, this volume and references therein). The low permeability of nanoporous media limits mass transport by advection, with the result that hydrodynamic dispersion is dominated in this case by molecular diffusion (Patriarche et al., 2004a; b; Mazurek et al., 2011). Consequently, the contribution of mechanical dispersion to the total flux is usually neglected for the modeling of nanoporous media (Gonçalvès et al., 2015; Neuzil and Person, 2017).

In traditional numerical reactive transport models applied to nanoporous media, transport of solutes is thus described with the above two constitutive equations, Darcy's and Fick's laws. While Fick's and Darcy's Laws constitute a modeling framework that is adequate to deal with a wide range of reactive transport problems for various geological settings and processes such as those

described in chapters 12, 15, and 16 in the present volume, these laws are phenomenological equations rooted in the results of physical experiments carried out on systems involving salts in water and packed sand columns respectively (Fick, 1855; Darcy, 1856). These systems are very different from the nanoporous media we are addressing in the present contribution. Because of the charge imbalance in the solution present in the diffuse layer, the rigorous modeling of transport processes in nanoporous media is not possible by considering the advective flux equation based on the classical Darcy equation and the diffusive flux based on Fick's equations.

Coupled transport processes and thermodynamics of irreversible processes

The thermodynamics of irreversible processes (or non-equilibrium thermodynamics), founded by Onsager (1931a; b), provides the theoretical background for the existence of coupled flows (Kjelstrup and Bedeaux, 2008).

Many observations of fluid and solute transport in geological media cannot be related to the Darcian and Fickian modeling framework because of the existence of coupling of forces of one type and flows of another type (Bear, 1972). For example, chemical osmosis is a flow of water driven by a gradient of water chemical potential, which is usually created by a gradient of electrolyte concentration across a semi-permeable membrane. Water flow can also result from the presence of gradients in the electric potential (electro-osmosis) or temperature (thermo-osmosis). Osmotic processes have been extensively characterized on natural materials ranging from soils to biological membranes (Medved and Cern, 2013).

Non-equilibrium thermodynamics is based on the second law of thermodynamics and the principle of microreversibility. In any system, the rate of entropy production per unit volume, σ , can be written:

$$\sigma = \frac{1}{V} \frac{dS}{dt} = \sum_i J_i X_i \quad (9)$$

where S is the entropy of the system, V its volume, t the time, and J_i is a flux of type i associated with a driving force X_i for that particular flux (Lasaga, 1998). The second law of thermodynamics predicts that:

$$\sum_i J_i X_i \geq 0 \quad (10)$$

With the assumption that all driving forces X_i needed to describe fully the evolution system are taken into account in Eq. (10), each flux J_i is a function f_i of the forces X_i , and takes a value of zero if all X_i are zero. Accordingly, the functions f_i can be expanded in Taylor series of the form (Lasaga, 1998):

$$J_i = f_i(X_1, X_2, \dots, X_n) = 0 + \sum_j \frac{\partial f_i(X_1, X_2, \dots, X_n)}{\partial X_{j, X=0}} X_j + \dots \quad (11)$$

Keeping only the linear terms of the Taylor series expansion, i.e. making the assumption that

higher order terms are negligible, Eq. (11) yields:

$$J_i = \sum_j \frac{\partial f_i(X_1, X_2, \dots, X_n)}{\partial X_{j, X=0}} X_j = \sum_j L_{i,j} X_j \quad (12)$$

where $L_{i,j}$ are termed phenomenological coefficients. Eq. (12) indicates that a driving force X_j not only influences the conjugate flux J_j , but also the other non-conjugate fluxes $J_{i \neq j}$ as in the case of the various osmosis processes. The use of irreversible thermodynamics theory is thus dependent on the identification of a set of extensive independent variable X_j that defines completely the system of interest (de Groot and Mazur, 1984; Kjelstrup and Bedeaux, 2008). Under these conditions, Onsager (1931b) demonstrated that the following reciprocal relations apply:

$$L_{i,j} = L_{j,i} \quad (13)$$

Transport problems investigated in Earth Sciences are focused mostly on the fluxes of fluids, chemical components, and heat. We shall see in the following section that in the case of aqueous solutions present in porous media in general, and in nanoporous media in particular, charge (or electrical) fluxes must also be considered. Ideally, all types of conjugate and coupled flux listed in Table 1 should be considered. However, Eqs. (12) and (13) do not give any information about the way fluxes and conjugate forces must be chosen, and the set of equations is not unique for a given system. Consequently, the problem one wants to describe dictates the form that is most convenient (Kjelstrup and Bedeaux, 2008). Numerical methods for modeling macroscopic transport properties of nanoporous media, and especially clayey materials, with the explicit consideration of the presence of a diffuse ion swarm have received growing interest in diverse research communities in the past years (Revil, 1999; Revil and Leroy, 2004; Leroy et al., 2006; Gonçalvès et al., 2007, 2015; Jougnot et al., 2009; Revil et al., 2011). If we assign the value X_1 , X_2 , and X_3 to the fluid pressure, temperature and electrical potential gradients respectively, and the value X_4 to X_{n+3} to each of the driving forces associated to the presence of n chemical species, then a complete description of coupled flux processes is given by:

$$\begin{aligned} J_1 &= L_{1,1}X_1 + L_{1,2}X_2 + L_{1,3}X_3 + L_{1,4}X_4 + \dots + L_{1,n+3}X_{n+3} \\ J_2 &= L_{2,1}X_1 + L_{2,2}X_2 + L_{2,3}X_3 + L_{2,4}X_4 + \dots + L_{2,n+3}X_{n+3} \\ J_3 &= L_{3,1}X_1 + L_{3,2}X_2 + L_{3,3}X_3 + L_{3,4}X_4 + \dots + L_{3,n+3}X_{n+3} \\ J_4 &= L_{4,1}X_1 + L_{4,2}X_2 + L_{4,3}X_3 + L_{4,4}X_4 + \dots + L_{4,n+3}X_{n+3} \\ &\vdots = \vdots \\ J_{n+3} &= L_{n+3,1}X_1 + L_{n+3,2}X_2 + L_{n+3,3}X_3 + L_{n+3,4}X_4 + \dots + L_{n+3,n+3}X_{n+3} \end{aligned} \quad (14)$$

It is clear that the evaluation of the phenomenological coefficients becomes increasingly more cumbersome as the numbers of fluxes and driving forces increase (Malusis et al., 2012), explaining why most of the effort has been put into predictive models restricted to simple electrolytes conditions (e.g. NaCl). If the electrolyte is not simple, then it is frequently assumed that the mobility of the different ions does not differ significantly from each other (Revil and Linde, 2006).

This approximation simplifies greatly the set of equations, but is a significant departure from reality, especially in systems at low or high pH, because the diffusion coefficient of OH^- and H_3O^+ are five to ten times greater than the diffusion coefficients of other ions (Li and Gregory, 1974). The models and the formulation of the phenomenological coefficients are thus very dependent on the chemical conditions of the systems studied. Reactive transport modeling approaches, with their unique ability to deal with transient stages and chemically complex systems, may be able to overcome some of these limitations if it is possible to define equations linking the values of the phenomenological coefficients to the basic properties of the media of interest and to the chemical composition of the pore water. In the following, we shall explore in detail the sets of general equations that have been or could be implemented in reactive transport codes to deal with coupled transport processes in the presence of a diffuse layer. We have also highlighted that, in certain cases, the hindered mobility of co-ions controls the transport properties of all ions because of the requirement of charge balance at the macro-scale. A quantitatively correct description of ion concentration distribution in the diffuse layer volume is thus required to quantify ionic fluxes in nanoporous media. Consequently, the following section focuses on the methods used to compute the diffuse layer composition.

Table 1. Terminology of coupled fluxes (after de Marsily, 1986)

Flux	Gradients			
	Fluid pressure, ∇p	Temperature, $\nabla T/T$	Electrical potential, $\nabla \psi$	Chemical potential, $\nabla \mu_i$
Fluid	Darcy	Thermo-osmosis	Electro-osmosis	chemical osmosis
Heat	Heat filtration or mechano- caloric effect	Fourier	Peltier effect	Dufour effect
Electrical	Streaming potential (Rouss effect)	Seebeck effect	Ohm	Diffusion current
Aqueous species i (relative to the fluid)	Ultrafiltration	Thermal diffusion (Soret effect)	Electrophoresis	Fick

POISSON-BOLTZMANN EQUATION AND ION CONCENTRATION DISTRIBUTION CALCULATIONS IN REACTIVE TRANSPORT CODES

The mean electrostatic potential model

The Poisson-Boltzmann equation can be solved analytically, without approximations, in a very limited number of cases (Andrietti et al., 1976; Borkovec and Westall, 1983; Chen and Singh, 2002; Sposito, 2004), and its solution for systems having complex electrolyte composition and/or geometries is possible only with numerical approaches (Leroy and Mainault, 2018). In addition, nanoporous materials such as clayey and cementitious materials typically exhibit a range of pore size and shapes. For example, clay mineral particles are often segregated into aggregates delimited

by inter-aggregate spaces, the size of which is usually larger than the inter-particle spaces inside the aggregates. In clayey rocks, the presence of non-clay minerals (*e.g.* quartz, carbonates, pyrite) also influences the structure of the pore network and the pore size distribution. Pores as large as few micrometers are frequently observed (Keller et al., 2011, 2013; Robinet et al., 2012; Philipp et al., 2017) and these co-exist with pores having a width as narrow as the clay interlayer spacing, *i.e.* one nanometer.

In practice, the information about ion concentrations in the diffuse layer must be upscaled so that calculations can be carried out at the continuum scale. A common upscaling approach relies on the use of a mean electrostatic potential model (Revil and Leroy, 2004; Appelo and Wersin, 2007; Appelo et al., 2010; Revil et al., 2011; Tournassat and Steefel, 2015; Tournassat et al., 2016b). This model averages ion concentrations in the diffuse layer ($\overline{c_{i,DL}}$) by scaling them to a mean electrostatic potential (MEP, ψ_M) that applies to the diffuse layer volume (V_{DL}):

$$\overline{c_{i,DL}} = \frac{1}{V_{DL}} \iiint_{DL} z_i c_{i,0} \exp\left(\frac{-z_i F \psi_{DL}(x, y, z)}{RT}\right) dx dy dz \approx c_{i,0} \exp\left(\frac{-z_i F \psi_M}{RT}\right) \quad (15)$$

The mean electrostatic potential value can be deduced from the charge balance in the diffuse layer:

$$\sum_i z_i F \overline{c_{i,DL}} = \sum_i z_i F c_{i,0} \exp\left(\frac{-z_i F \psi_M}{RT}\right) = -Q_{DL} \quad (16)$$

where Q_{DL} (in $C \cdot m^{-3}$) is the volumetric charge that must be balanced in the diffuse layer. The accuracy of this method compared to a full resolution of the Poisson-Boltzmann equation can be appreciated by calculating the difference of average concentrations in the diffuse layer volume computed by the two methods in a simple geometry such as a slit-shaped pore (Fig. 5). When applied to the entire pore volume, the mean electrostatic potential model underestimates the average concentration of co-ions, and the accuracy of its predictions degrades as the size of the pore increases and as the ionic strength of the solution decreases (Fig. 5, A, B, C, D). The prediction of the average concentration of counter-ions is good for the simple NaCl and CaCl₂ electrolytes. It must be noted, however, that the average concentration value is governed primarily by the requirement of charge balance with the surface in the diffuse layer. Because the surface charge is mostly balanced by the increase of concentration of counter-ions in the diffuse layer, it is not surprising to find a good agreement between the two models. In the presence of a more complicated electrolyte composition (seawater dilution), the mean electrostatic potential model overestimates the contribution of the monovalent counter-ions in the diffuse layer, and underestimates the contribution of the divalent counter-ions. The mean electrostatic potential model is often referred as a Donnan model in the literature (Revil and Leroy, 2004; Appelo and Wersin, 2007; Birgersson and Karnland, 2009; Appelo et al., 2010; Tournassat and Appelo, 2011; Alt-Epping et al., 2015, 2018; Gimmi and Alt-Epping, 2018). The Donnan equilibrium model, however, relies on two fundamental assumptions (Babcock, 1960): (1) that chemical equilibrium exists between two distinct aqueous phases, a hydrated clay phase and a bulk aqueous solution

phase, and (2) that Henry’s Law applies at infinite dilution to all of the ions in both phases. The Donnan model gives strictly equivalent results to the mean electrostatic potential model only if two important conditions are met: first, in the mean electrostatic model, the mean electrostatic potential model must be applied to the entire pore volume, and second, in the Donnan equilibrium model, the activity coefficients of chemical species present in the Donnan volume must be set at the same value as those in bulk water (Tournassat et al., 2016a). The consideration of a Donnan equilibrium model in clay media faces two challenges. First, the activity of chemical species in the Donnan volume cannot be measured, and thus the choice to set the activity coefficients of species in the Donnan volume to the same values as in bulk water must be considered as arbitrary. This choice can be relaxed by choosing other relationships for the calculation of the activity coefficients, but experimental data are lacking to calibrate such relationships (Birgersson, 2017). Second and more importantly, a strict application of Henry’s Law (and, hence, of the Donnan equilibrium model) would require that the counterions be dissociated fully from the mineral surface, such that mean ionic concentrations in the hydrated clay phase be unambiguously determined (Babcock, 1963). This second hypothesis is not in agreement with the observation of cations condensation at clay mineral surfaces, using diffraction techniques or molecular dynamics simulations (Marry et al., 2002; Schlegel et al., 2006; Tournassat et al., 2009a; Lee et al., 2010, 2012b; Holmboe and Bourg, 2014; Bourg et al., 2017). The Poisson-Boltzmann model does not rely on the validity of Henry’s Law. Consequently, the mean electrostatic model predictions remain valid within the limits of the underlying molecular-scale hypotheses and approximations of the model, while the Donnan model does not (Tournassat et al., 2016a).

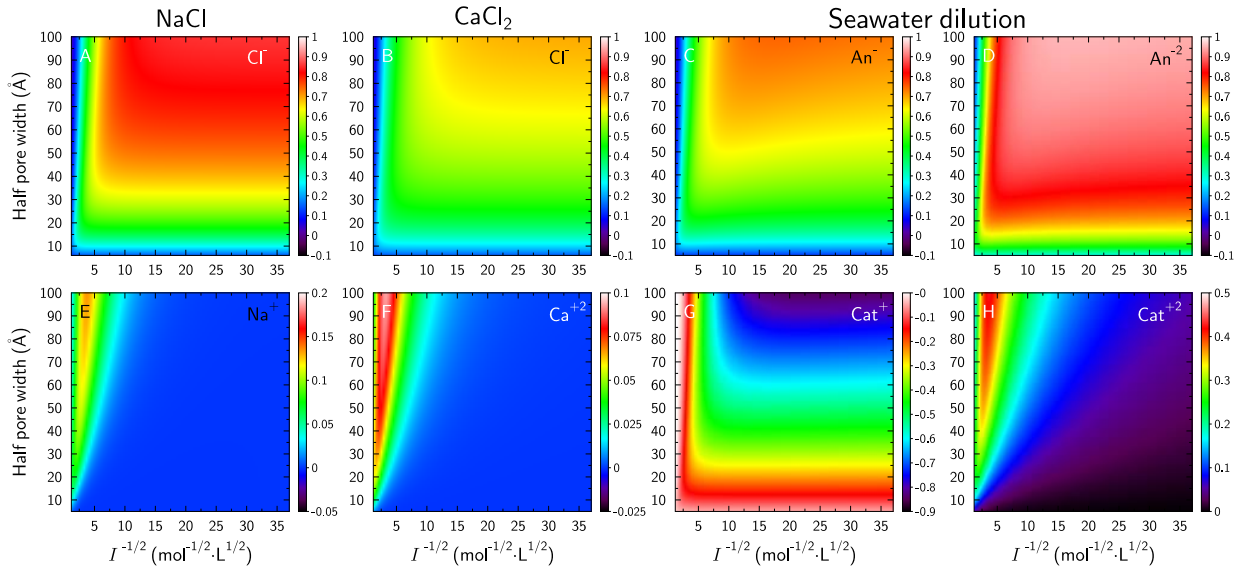


Figure 5. Difference of average diffuse layer concentration values computed with the Poisson-Boltzmann (C_{PB}) equation and the mean electrostatic potential (C_{MEP}) model (Eqs. (15) and (16)). The difference, given by the color scale, is computed with the equation $(C_{PB}-C_{MEP})/C_{PB}$ as a function of the inverse of the square root of ionic strength ($I^{-1/2}$ on x-axis) and as a function of the half pore width (y-axis). The equivalence between the two models corresponds to $(C_{PB}-C_{MEP})/C_{PB}=0$. The geometry consists in a diffuse layer in contact with negatively charged surfaces ($\sigma_0 = 0.11 \text{ C}\cdot\text{m}^{-2}$) bordering a slit-shaped pore. In figure C, D, G and H, the seawater composition was taken from Holland (1978) and was simplified into Na^+ : $481 \text{ mmol}\cdot\text{kg}^{-1}$, Mg^{2+} : $55 \text{ mmol}\cdot\text{kg}^{-1}$, Ca^{2+} : $11 \text{ mmol}\cdot\text{kg}^{-1}$, K^+ : $11 \text{ mmol}\cdot\text{kg}^{-1}$, Cl^- : $564 \text{ mmol}\cdot\text{kg}^{-1}$, SO_4^{2-} : $29 \text{ mmol}\cdot\text{kg}^{-1}$, HCO_3^- : $2 \text{ mmol}\cdot\text{kg}^{-1}$. This composition corresponds to the lowest value if $I^{-1/2}$ on the

figures. Other values of $I^{-1/2}$ correspond to the dilution of this seawater composition with pure water. No aqueous complexation in bulk solution was considered for this calculation. The calculation results are shown for monovalent anions (An^-) in C, divalent anions (An^{2-}) in D, monovalent cations (Cat^+) in G and divalent cations (Cat^{2+}) in H. Calculations were done at 298 K.

Dual continuum representation of the pore space

We have highlighted in a previous paragraph that the semi-permeable membrane properties of nanoporous media originate from the exclusion of co-ions in the diffuse layer. It is thus desirable to build a model that reproduces as well as possible the mean co-ion concentration in the diffuse layer. The mean electrostatic potential model can be adapted to do so, following the basic principle of a subdivision of the pore space into two compartments, one being electroneutral, and the other being influenced by a non-zero mean electrostatic potential value (Fig. 6). This type of representation will be referred to as “Dual Continuum” in the following.

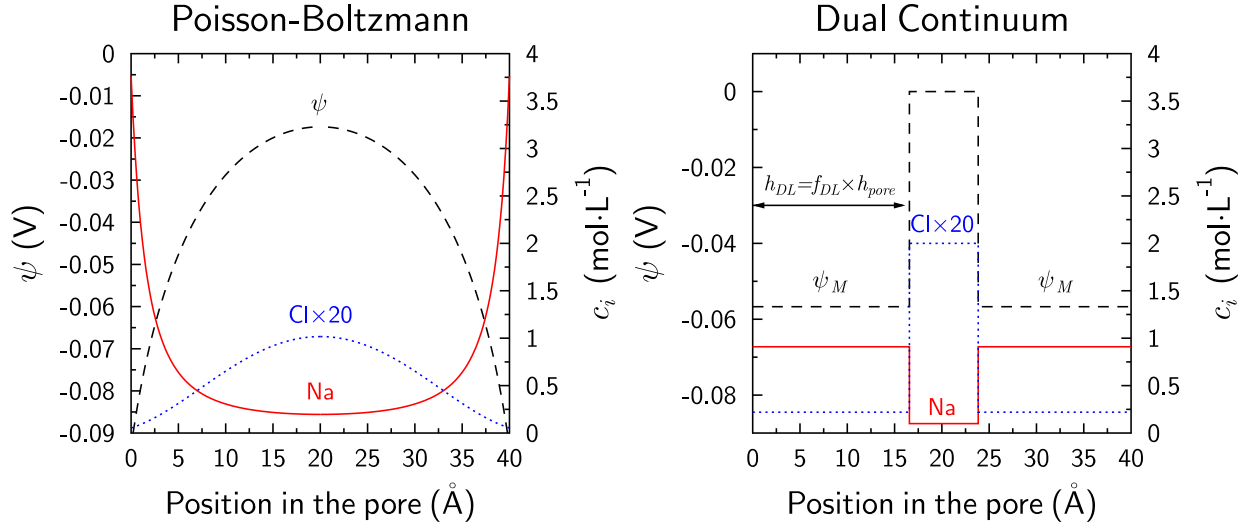


Figure 6. Comparison of the Poisson-Boltzmann (left figure) and MEP (right figure) models in a slit-shaped pore. The specific surface charge is $-0.11 \text{ C}\cdot\text{m}^{-2}$ and the bulk concentration of NaCl electrolyte is $0.1 \text{ mol}\cdot\text{L}^{-1}$. The half pore width (h_{pore}) is 20 \AA . The width of the diffuse layer in the dual continuum model is set to $h_{DL} = f_{DL} \times h_{pore}$, and the value of f_{DL} is adjusted to obtain the same average pore concentrations of Cl^- and Na^+ with the two models. Dashed curves = electrostatic potential, ψ ; plain lines = Na^+ concentration; dotted line = Cl^- concentration.

Using f_{DL} as the volumetric fraction of the porosity to which the mean electrostatic potential is applied, Eqs. (15) and (16) transform into:

$$\overline{c_{i,pore}} = (1 - f_{DL}) \times c_{i,0} + f_{DL} c_{i,0} \exp\left(\frac{-z_i F \psi_M}{RT}\right) \quad (17)$$

$$\sum_i z_i F \overline{c_{i,pore}} = (1 - f_{DL}) F \sum_i z_i c_{i,0} + f_{DL} F \sum_i z_i c_{i,0} \exp\left(\frac{-z_i F \psi_M}{RT}\right) = -Q_{DL} \quad (18)$$

where $\overline{c_{i,pore}}$ is the average concentration of species i in the pore. Note that $(1 - f_{DL})F\sum_i z_i c_{i,0}$ is equal to zero because bulk water is electroneutral. The value of f_{DL} can be adjusted as a function of the conditions (pore volume, surface charge, electrolyte composition) to achieve consistency with the theoretical PB predictions or with experimental constraints. It should be also noted here that this model refinement does not imply necessarily that an electroneutral bulk water is present at the center of the pore in reality. This can be appreciated in Fig. 6, which shows that the Poisson-Boltzmann predicts an overlap of the diffuse layers bordering the two neighboring surfaces, while the dual continuum model divides the same system into a bulk and a diffuse layer water volume in order to obtain an average concentration in the pore that is consistent with the Poisson-Boltzmann model prediction. Consequently, the pore space subdivision into free and DL water must be seen as a convenient representation that makes it possible to calculate accurately the average concentrations of ions, but it must not be taken as evidence of the effective presence of bulk water in a nanoporous medium. This modified MEP model was introduced in PHREEQC to model diffusion properties of Opalinus Clay at the Mont Terri underground research laboratory (URL) and of Callovian-Oxfordian argillite at the Laboratoire Souterrain de Meuse Haute Marne (LSMHM) URL (Appelo and Wersin, 2007; Appelo et al., 2008). The method to calculate f_{DL} on the basis of anion (Cl^-) exclusion experimental data in clay samples was later developed in Appelo et al. (2010). Average Cl^- concentrations in pore water ($\overline{c_{Cl,pore}}$) can be obtained from Cl^- concentration measured in leaching experiments ($c_{Cl,leach}$), in which a mass m_{sample} of clay sample is dispersed in a volume V_{leach} of milli-Q water. As $c_{Cl,leach}$ is proportional to the ratio m_{sample}/V_{leach} in clay samples, it follows that (Tournassat et al., 2015b):

$$\overline{c_{Cl,pore}} = c_{Cl,leach} \frac{V_{leach}}{m_{sample} \times \omega_w} \quad (19)$$

where ω_w is the water content of the sample (in $\text{kg} \cdot \text{kg}^{-1}$). The value of $\overline{c_{Cl,pore}}$ is further compared to the Cl^- concentration value obtained from core squeezing experiments or seepage water composition from in situ equipped borehole, which is assumed to be representative of the bulk concentration $c_{Cl,0}$ (Vinsot et al., 2008a; b; Pearson et al., 2011; Tournassat et al., 2011; Fernández et al., 2014; Mazurek et al., 2015). The value of $\overline{c_{Cl,pore}}$ is always lower than that of $c_{Cl,0}$, demonstrating the depletion of Cl^- in the diffuse layer. From simple mass balance consideration, it follows that:

$$\frac{\overline{c_{Cl,pore}}}{c_{Cl,0}} = (1 - f_{DL}) + f_{DL} \exp\left(\frac{z_{Cl} F \psi_M}{RT}\right) \quad (20)$$

in which the unknown parameters are f_{DL} and ψ_M . If the bulk concentrations of the other species present in solution are also known, *e.g.* from analysis of squeezing or seepage waters or from (bulk) pore water composition modeling (Gaucher et al., 2009; Pearson et al., 2011; Beaucaire et

al., 2012; Gailhanou et al., 2017), Eq. (18) provides the necessary constraints to calculate ψ_M as a function of the volumetric charge that is compensated in the diffuse layer, Q_{DL} . The value of Q_{DL} can be itself estimated on the basis of macroscopic measurements (e.g. cation exchange capacities of clays) or mineralogical considerations. However, not all of the surface charge is usually compensated in the diffuse layer, and it may be necessary to consider the contribution of the Stern layer to the charge compensation (Appelo et al., 2010). Geochemical calculation codes capabilities make the calculation possible with the use of surface complexation models (Steeffel et al., 2015a), although then this surface complexation model must be coupled (loosely or tightly) to the calculation of the diffuse layer charge. In absence of additional constraints, the experimental value of $\overline{c_{Cl,pore}} / c_{Cl,0}$ can thus be fitted by adjusting the values of f_{DL} , Q_{DL} , or both (Leroy and Revil, 2004; Leroy et al., 2007; Appelo et al., 2010; Appelo, 2017). The contribution of the Stern layer to the total charge compensation can be estimated with molecular dynamic simulations, which provides a growing set of independent information that can be used to calibrate models of ion distribution and mobility in nanopores (Rotenberg et al., 2007, 2014; Jardat et al., 2009; Tournassat et al., 2009b; Bourg and Sposito, 2011; Obliger et al., 2014; Tinnacher et al., 2016; Bourg et al., 2017). The dual continuum model was first developed in PHREEQC, but is also now available in CrunchClay (Tournassat and Steefel, 2015; Soler et al., 2019).

Influence of ionic strength on the dual continuum model predictions

Changes in ionic strength influence the ion concentration distribution in the diffuse layers (Fig. 4), and thus f_{DL} changes also as a function of ionic strength. In the absence of overlap, the effective thickness of the diffuse layer is proportional to the Debye length (κ^{-1} in m) (Fig. 4, bottom) (Sposito, 2004; Hunter, 2013):

$$\kappa^{-1} = \sqrt{\frac{\epsilon RT}{2F^2 1000I}} \quad (21)$$

In PHREEQC and CrunchClay, the volume of the diffuse layer (V_{DL} in m^3), and hence the f_{DL} value, can be defined as a multiple of the Debye length in order to capture this effect of ionic strength on f_{DL} :

$$\begin{aligned} V_{DL} &= \alpha_{DL} \kappa^{-1} S \\ f_{DL} &= \frac{V_{DL}}{V_{pore}} \end{aligned} \quad (22)$$

where V_{pore} is the total volume of the pore (m^3), S is the surface area that borders the pore (m^2), and α_{DL} is an empirical multiplying factor. This relationship has, however, severe limitations. The value of f_{DL} is linearly related to the Debye length for a limited range of conditions only. For example, if $\alpha_{DL}=2$, a strict equality between the dual continuum model and the Poisson-Boltzmann equation predictions is observed in slit-shaped pores that are filled with NaCl electrolyte, the width of which is large compared to $4\kappa^{-1}$ (Sposito, 2004; Tournassat and Appelo, 2011; Tournassat et al., 2015a; Appelo, 2017). As the width of these pores decreases, the value of f_{DL} approaches the

limiting value of one, as shown by the good agreement of the original MEP model with the PB model under these conditions (Fig. 5). Also, it is obvious that f_{DL} cannot exceed 1. Eq. (22) must then be seen as an approximation, the validity of which may be limited to small variations of ionic strength compared to the conditions at which f_{DL} is determined experimentally. This can be appreciated by looking at the results obtained with a simple model where:

$$\alpha_{DL} = 2 \text{ if } 4\kappa^{-1} \leq \frac{V_{pore}}{S} \text{ and,} \quad (23)$$

$$f_{DL} = 1 \text{ otherwise.} \quad (24)$$

In a homogeneous nanoporous medium represented by a single slit-shaped pore, these model parameters make it possible to improve estimations of ion concentration distribution compared to the MEP model: concentrations of counter-ions are calculated very accurately (less than 2 % error, except for monovalent cations in the “seawater dilution” case on Fig. 7) while the prediction of co-ion concentrations is notably improved compared to the MEP model applied to the entire pore volume (Fig. 7). Still, some conditions cannot be modeled satisfactorily, especially at low ionic strength (large values of $I^{-1/2}$ on Fig. 7).

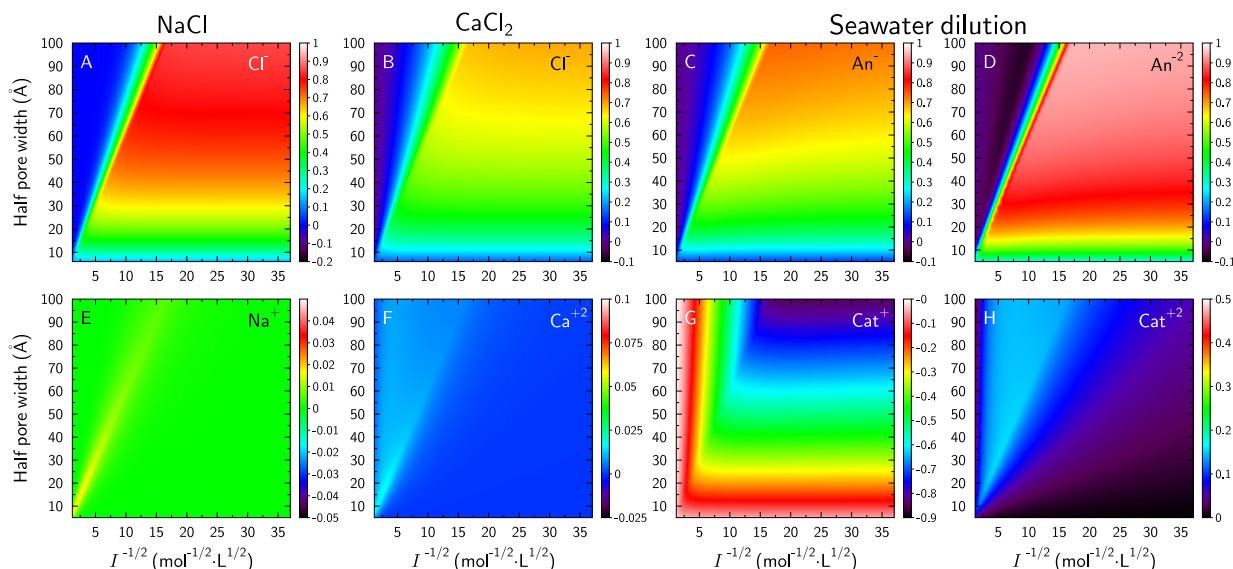


Figure 7. Difference of average diffuse layer concentration values computed with the Poisson-Boltzmann (C_{PB}) equation and the Dual continuum model (C_{Dual}) model described in Fig. 6 and Eqs. (23) and (24). The difference, given by the color scale, is computed with the equation $(C_{PB}-C_{Dual})/C_{PB}$ as a function of the inverse of the square root of ionic strength ($I^{-1/2}$ on x -axis) and as a function of the half pore width (y -axis). The equivalence between the two models corresponds to $(C_{PB}-C_{Dual})/C_{PB}=0$. Same caption as in Fig. 5 otherwise.

It is frequently argued that the Poisson-Boltzmann equation, and hence the mean electrostatic potential model or the dual continuum model, are not always accurate to model the diffuse layer composition, particularly in the presence of complex electrolytes or high surface charges (Torrie and Valleau, 1982; Carnie and Torrie, 1984; Luo et al., 2006; Wang and Chen, 2007; Lima et al., 2008; Lee et al., 2012a). In PHREEQC, corrections can be applied by assigning an enrichment factor in the diffuse layer to each of the chemical species (Appelo et al., 2010). This correction

makes it possible to fit any target ion concentration distribution in the diffuse layer, but it must be in turn calibrated with additional experimental or theoretical inputs.

The dual continuum model introduced in the present section is currently the only model available to calculate the diffuse layer composition in PHREEQC and CrunchClay, *i.e.* the two reactive transport codes that consider explicitly the presence of a diffuse layer in aqueous species transport calculation. Recently, the MEP model has been added to an in-house version of Flotran by Gimmi and Alt-Epping (2018) with the consideration of fixed charges in solution, as opposed to surface charge in PHREEQC and CrunchClay.

In the following section, we focus on the transport equations in the presence of a diffuse layer. Additional work is certainly needed to improve the accuracy of the prediction of average concentration in the diffuse layer. However, the type of method used for this calculation does not influence the concepts and equations used in transport equations, and in the following, the concentration c_i of the species i in bulk or DL water is defined as a function of its concentration in bulk water and of an accumulation (or depletion) factor A_i , which takes the value of 1 in bulk water:

$$c_i = c_{i,0}A_i \quad (25)$$

and with the following charge balance constraints, which is equivalent to Eq. (18):

$$\sum_i z_i F \overline{C_{i,pore}} = F(1 - f_{DL}) \sum_i z_i c_{i,0} + F f_{DL} \sum_i z_i c_{i,0} A_{i,DL} = F f_{DL} \sum_i z_i c_{i,0} A_{i,DL} = -Q_{DL} \quad (26)$$

This notation makes it possible to treat the transport equations without *a priori* choice of a diffuse layer model.

COUPLED TRANSPORT PROCESSES IN REACTIVE TRANSPORT CODES – THE ISOTHERMAL NO-FLOW CONDITION

Nernst-Planck equation in the isothermal, no-flow, and no external electric field condition

Tournassat and Steefel (2015) reviewed the basics of the application of the Nernst-Planck equation to the diffuse layer bordering charged surfaces in reactive transport codes in the isothermal, no-flow and no current condition. The basic hypothesis of this application is that, at each time step, the diffuse layer equilibrates infinitely rapidly with a bulk water composition in each of the grid cells that describe the system. As explained in the previous section, the bulk water present in the grid cell can be real or fictitious, depending on the microstructural meaning of the dual continuum representation (Fig. 6). The size of a grid cell, which is at least a few micrometers for the reactive transport calculations with the highest spatial resolution, is far larger than the size of a diffuse layer, which is usually less than a few nanometers. This difference of length scale justifies the assumption of rapid equilibrium between the bulk water and the diffuse layer. The equilibrium condition is written as:

$$\begin{aligned}\mu_{i,0} &= \mu_{i,DL} \\ \mu_{i,0} &= \mu_i^0 + RT \ln \gamma_i c_{i,0} + z_i F \psi_e\end{aligned}\quad (27)$$

where $\mu_{i,0}$ is the electro-chemical potential of species i in bulk water, $\mu_{i,DL}$ is the electro-chemical potential of species i in the diffuse layer, μ_i^0 is the standard electro-chemical potential of species i (in $\text{J}\cdot\text{mol}^{-1}$), γ_i is its activity coefficient (here in $\text{L}\cdot\text{mol}^{-1}$), and ψ_e is the electrical potential. Note that ψ_e does not correspond to the potential in the diffuse layer, but to a diffusion potential or an external electric potential. According to the Nernst-Planck equation, in the absence of fluid flow, the flux of species i is (in one dimension):

$$J_i = -u_i c_i \frac{\partial \mu_i}{\partial x} = -u_i c_i RT \frac{\partial \ln(\gamma_i c_{i,0})}{\partial x} - u_i z_i F c_i \frac{\partial \psi_e}{\partial x}\quad (28)$$

where u_i is the mobility tensor of species i . Eq. (28) applies to the bulk water and to the diffuse layer, and introducing A_i , the accumulation factor defined in Eq. (25), it follows:

$$J_i = -u_i c_{i,0} A_i RT \frac{\partial \ln(\gamma_i c_{i,0})}{\partial x} - u_i z_i F c_{i,0} A_i \frac{\partial \psi_e}{\partial x}\quad (29)$$

In the absence of an external electric field, there is no electrical current and so:

$$\sum_i z_i J_i = 0 = -\sum_i \left(u_i z_i c_{i,0} A_i RT \frac{\partial \ln(\gamma_i c_{i,0})}{\partial x} + u_i z_i^2 F c_{i,0} A_i \frac{\partial \psi_e}{\partial x} \right)\quad (30)$$

It follows:

$$\frac{\partial \psi_e}{\partial x} = \frac{-\sum_i u_i z_i c_{i,0} A_i RT \frac{\partial \ln(\gamma_i c_{i,0})}{\partial x}}{\sum_i u_i z_i^2 F c_{i,0} A_i}\quad (31)$$

The mobility of ion i in the porosity is:

$$u_i = \frac{\phi \cdot \tau_i \cdot D_{0,i}}{RT},\quad (32)$$

and Eq. (29) becomes:

$$J_i = -\phi \tau_i D_{0,i} c_{i,0} A_i \frac{\partial \ln(\gamma_i c_{i,0})}{\partial x} + \phi \tau_i D_{0,i} z_i c_{i,0} A_i \frac{\sum_j \tau_j D_{0,j} z_j c_{j,0} A_j \frac{\partial \ln(\gamma_j c_{j,0})}{\partial x}}{\sum_k \tau_k D_{0,k} z_k^2 c_{k,0} A_k}\quad (33)$$

Eq. (33) can be further rearranged to yield:

$$\begin{aligned}
J_i = & -\phi \tau_i D_{0,i} c_{i,0} A_i \left(1 - \frac{\tau_i D_{0,i} z_i c_{i,0} z_i^2}{\sum_k \tau_k D_{0,k} z_k^2 c_{k,0} A_k} \right) \frac{\partial \ln(\gamma_i c_{i,0})}{\partial x} \\
& + \sum_{j \neq i} \frac{\phi \tau_i \tau_j D_{0,i} D_{0,j} z_i z_j c_{i,0} c_{j,0} A_i A_j}{\sum_k \tau_k D_{0,k} z_k^2 c_{k,0} A_k} \frac{\partial \ln(\gamma_j c_{j,0})}{\partial x}
\end{aligned} \tag{34}$$

With isothermal, no-flow, and no external electric field conditions assumed here, the only driving forces are chemical potential gradients, and the phenomenological coefficient can be obtained directly from Eq. (34):

$$\begin{aligned}
L_{i,i} = & -\phi \cdot \tau_i \cdot D_{0,i} c_{i,0} A_i \left(1 - \frac{\tau_i \cdot D_{0,i} z_i c_{i,0} z_i^2}{\sum_k \tau_k \cdot D_{0,k} z_k^2 c_{k,0} A_k} \right) , \\
L_{i,j \neq i} = & \frac{\phi \cdot \tau_i \tau_j \cdot D_{0,i} D_{0,j} \cdot z_i z_j \cdot c_{i,0} c_{j,0} \cdot A_i A_j}{\sum_k \tau_k \cdot D_{0,k} z_k^2 c_{k,0} A_k}
\end{aligned} \tag{35}$$

The Onsager relationships $L_{i,j}=L_{j,i}$ are verified for these phenomenological coefficients. These coefficients apply to the bulk water and to the diffuse layer water defined in the dual continuum model. These coefficients can also be used to characterize the entire pore volume by substituting an average accumulation factor \bar{A}_i to the bulk and diffuse layer accumulation factors A_i :

$$\bar{A}_i = 1 - f_{DL} + f_{DL} A_i \quad , \tag{36}$$

This substitution requires however that average geometrical factors $\bar{\tau}_i$ can also be defined in some fashion.

In classical isotopic tracer diffusion experiments (Molera and Eriksen, 2002; Van Loon et al., 2003, 2005, 2007; Descostes et al., 2008; Wersin et al., 2008; Tachi and Yotsuji, 2014; Glaus et al., 2015; Dagnelie et al., 2018), the concentration of the diffusing species i is very low compared to the constant electrolyte background concentration. Under these conditions, Eq. (35) reduces to:

$$\begin{aligned}
L_{i,i} & \approx -\phi \cdot \tau_i \cdot D_{0,i} c_{i,0} A_i \\
L_{i,j \neq i} & \approx 0
\end{aligned} \tag{37}$$

In addition, the activity coefficients are also constant, and thus Eq. (33) reduces to Fick's law, augmented by the accumulation term A_i that accelerate the diffusive flux of counter-ions and decelerate that of co-ions. In the presence of an electrolyte background concentration gradient, *i.e.* a condition that is encountered in salt diffusion experiments (Shackelford, 1991; Shackelford and Daniel, 1991; Malusis et al., 2015), the coupling terms between the ionic species cannot be neglected, explaining thus the need to distinguish inter-diffusion (or counter-diffusion, or mutual-

diffusion) coefficients from salt diffusion coefficients. The experimental observation that effective salt-diffusion coefficients in clay membrane are dependent on both the salt concentration gradient and the effective stress applied to the clay (Malusis et al., 2015) is directly traceable from Eq. (35). The dependence on salt concentration gradient is related to the non-zero values of $L_{i,j}$ terms, while the dependence on effective stress is related to the variations of A_i values as a function of changes in pore size distribution following the compaction of the material. For diffusion processes, it is thus necessary to take into account the electrophoretic processes corresponding to the coupling between the charge imbalance in the diffuse layer, the differences in concentration gradients for each species having different charges and thus also different accumulation factors in the diffuse layer, together with the diffusion coefficient of each individual species (Eq. (31)).

Reactive transport codes such as PHREEQC and CrunchClay are able to solve Eq. (33) (without the consideration of the activity coefficient gradient in CrunchClay) under transient and stationary conditions with a diffuse layer dual continuum model, making it thus possible to calculate diffusion membrane properties from species dependent self-diffusion coefficients and from the intrinsic properties of the material, *i.e.* diffusion pathway geometry and ion concentration distribution. In theory, these last two parameters could be calculated from the exact knowledge of microstructure and mineralogical composition. In practice, the geometrical factor values of diffuse layer and bulk water, as well as the concentration distribution between the bulk porosity and the diffuse layer in the dual continuum model, are fitted on experimental data. Reactive transport calculations have been essential to decipher and quantify the mechanisms explaining the contrasting diffusional behavior of cations, anions and neutral species in clay materials (Appelo and Wersin, 2007; Appelo et al., 2010; Glaus et al., 2013, 2015; Tournassat and Steefel, 2015; Tinnacher et al., 2016; Soler et al., 2019). The fact that the accumulation of cations in the diffuse layer enhances their effective diffusion coefficient according to $D_{e,i} = \phi\tau_i D_{0,i} A_i$, when present at trace concentrations, is an important result for the prediction of the fate of radionuclides such as radioactive Cs^+ or Sr^{2+} migrating from an underground radioactive waste disposal (Altmann et al., 2012). It is therefore surprising that reactive transport codes have not yet been used extensively to interpret experimental data obtained with geosynthetic clay liners used for the isolation of landfills.

Counter-intuitive results obtained with cationic tracer experiments in the presence of a gradient of salinity can also be explained and quantified using the dual-continuum model. In our opinion, the best example of such counter-intuitive results was published by Glaus et al. (2013). The authors carried out a $^{22}\text{Na}^+$ diffusion experiment through a compacted Na-montmorillonite in the presence of a NaClO_4 (stable isotopes) background electrolyte concentration gradient from $0.5 \text{ mol}\cdot\text{L}^{-1}$ to $0.1 \text{ mol}\cdot\text{L}^{-1}$. At time t_0 , after pre-equilibration of the clay with the two background electrolytes at each end of the clay sample, the two reservoirs were spiked with the same $^{22}\text{Na}^+$ concentration. A simple application of Fick's Law would predict that $^{22}\text{Na}^+$ diffuses into the clay and then $^{22}\text{Na}^+$ concentration stabilizes rapidly at the same value in both reservoirs. The actual results evidenced a continuous increase of the $^{22}\text{Na}^+$ concentration in the NaClO_4 $0.5 \text{ mol}\cdot\text{L}^{-1}$ reservoir and a decrease in the NaClO_4 $0.1 \text{ mol}\cdot\text{L}^{-1}$ reservoir. This result can be explained by the

difference of accumulation factor A^{22Na^+} in the porosity at both ends of the sample. The value of A^{22Na^+} was anti-correlated with the concentration of stable Na^+ :

$$A^{22Na^+} = A_{Na^+} \frac{c_{22Na^+}}{c_{Na^+}}, \quad (38)$$

and the gradient in accumulation factor A^{22Na^+} drove the seemingly “up-hill” diffusion of A^{22Na^+} through the clay sample (Glaus et al., 2013) (Fig. 8).

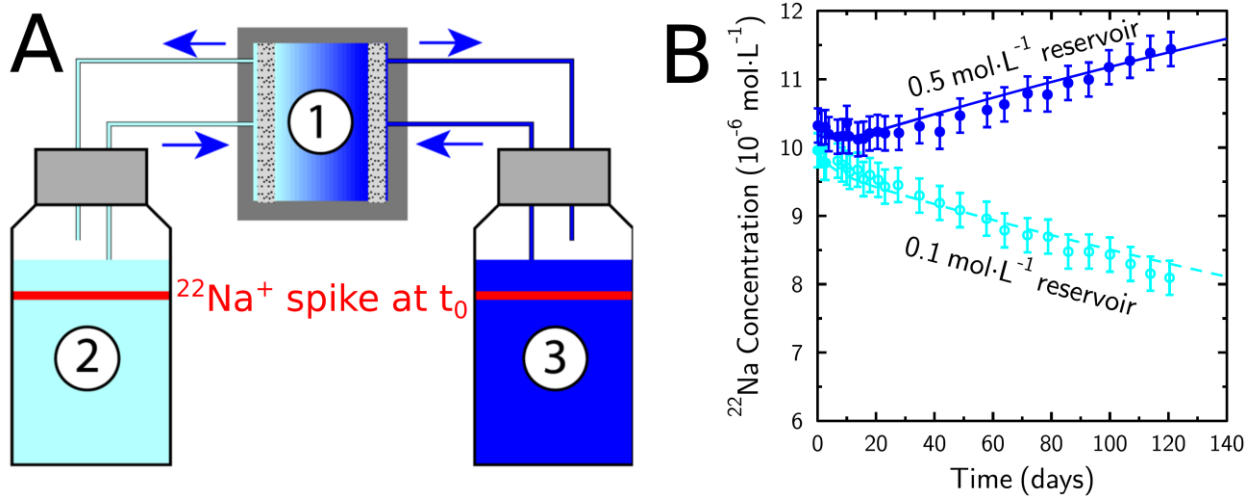


Figure 8. $^{22}Na^+$ “Up-hill” diffusion experiment of Glaus et al. (2013). A: experimental setup. The clay sample (1) is in contact with a low salinity reservoir (2) and high salinity reservoir (3) by liquid lines. Blue colors represent the concentration of the background electrolyte; the red bars indicate that the experiment started with equal initial concentrations of the $^{22}Na^+$ tracer in the two reservoirs. B: Experimental (symbols) and modeling (lines) results obtained with CrunchClay for the experiment carried out with a ~ 5 mm thick clay plug and reservoir volumes of ~ 250 mL (modified after Glaus et al., 2013 and Tournassat and Steefel, 2015).

Nernst-Planck equation in the isothermal and no-flow condition in the presence of an external electric field

Electro-migration experiments consist in applying an external electric potential with two electrodes at both ends of a diffusion cell in order to accelerate the migration of ionic species in very resistive porous media such as cementitious or clayey materials (Goto and Roy, 1981; Maes et al., 1999; Truc et al., 2000a; b; Samson et al., 2003; Friedmann et al., 2004, 2008a; Beauwens et al., 2005; Narsilio et al., 2007; Shi et al., 2011). In cementitious materials, the diffusion coefficient of chloride is the most commonly studied parameter. The interpretation of the results obtained with electro-migration tests is not straightforward, and a vast literature has been dedicated to the modeling of these experimental tests (Krabbenhøft and Krabbenhøft, 2008). When the diffusion parameters of a single species are sought, a common practice consists in applying the so-called single-species model, in which only the transport of the ion of interest is considered, and the electric field is approximated by a constant equal to the electric potential change over the sample divided by the sample length. More elaborate models rely on the solution of the Poisson-

Nernst-Planck equation. According to Krabbenhøft and Krabbenhøft (2008), while the constant field approximation may be a very poor approximation, the effective diffusivities predicted by this model are often in agreement with natural diffusion tests, i.e. diffusion experiments carried out in the absence of an external electric field. The modeling of both the Cl⁻ breakthrough together and the current measured during an electro-migration experiment is however more challenging (Appelo, 2017). Discrepancies between model predictions with the Poisson-Nernst-Planck equation and actual measurements were apparent, and the influence of the diffuse layer on the transport properties was put forward by various authors as a possible explanation of these discrepancies (Goto and Roy, 1981; Friedmann et al., 2004, 2008a; b; Krabbenhøft and Krabbenhøft, 2008). However, no modeling framework other than those based on phenomenological coefficients was available to decipher and quantify the possible mechanisms, until PHREEQC was adapted to consider the application of an external electrical field (Appelo, 2017).

The “no external electric field” condition used to solve Eq. (29) in reactive transport codes can be relaxed to model electro-migration experiments. In the presence of an external electrical field, an electrical flux J_c ($A \cdot m^{-2}$ or $C \cdot m^{-2} \cdot s^{-1}$) of ionic nature appears, which is related to the fluxes of aqueous species. The following method can be used to calculate the electrical flux in 1D (Appelo, 2017):

$$J_c = \sum_j z_j F J_j = J_{c,d} + J_{c,e} \quad (39)$$

$J_{c,d}$ is the current contribution from the chemical activity gradient:

$$J_{c,d} = -\sum_j z_j F \phi \tau_j D_{0,j} c_{j,0} A_j \frac{\partial \ln(\gamma_j c_{j,0})}{\partial x}, \quad (40)$$

and $J_{c,e}$ is the current contribution from the electrical potential gradient:

$$J_{c,e} = -\sum_j \frac{z_j^2 F^2 \phi \tau_j D_{0,j} c_j A_j}{RT} \frac{\partial \psi_e}{\partial x} = -\sum_j \phi \tau_j \Lambda_{m,j} c_j A_j \frac{\partial \psi_e}{\partial x} \quad (41)$$

where:

$$\Lambda_{m,j} = \frac{z_j^2 F^2 D_{0,j}}{RT} \quad (42)$$

is the molar conductivity of species i ($A \cdot V^{-1} \cdot m^2 \cdot mol^{-1}$). If the subscript 1 is attributed to the driving force due to the presence of an electrical potential gradient and to the electrical flux, and the other subscripts are attributed to the driving forces due to the chemical activity gradients and the conjugated ionic fluxes, it follows:

$$L_{1,1} = -\sum_j \phi \tau_j \Lambda_{m,j} c_j A_j \quad (43)$$

$$L_{j \neq 1, j \neq 1} = -\phi \tau_j D_{0,j} c_{j,0} A_j \quad (44)$$

$$L_{1, j \neq 1} = -z_j F \phi \tau_j D_{0,j} c_{j,0} A_j = L_{j \neq 1, 1} \quad (45)$$

$$L_{i \neq 1, j \neq 1 \text{ and } j \neq i} = 0 \quad (46)$$

As a consequence, the model proposed by Appelo (2017) follows Onsager reciprocal relationships for bulk water as well as for diffuse layer water. Eq. (46) means that there is no effect of the activity gradient of chemical species i on the flux of a chemical species j other than the influence mediated by the electrical potential gradient. Appelo (2017) introduced in his model the influence of the ionic strength on the self-diffusion coefficient of ionic species to model the change of molar conductivities with concentration and composition of the solution. This effect can be included in the $D_{0,j}$ terms present in Eqs. (43) to (45).

The numerical resolution of Eq. (29) in the framework of a reactive transport approach requires that the local gradient of electrical potential $\frac{\partial \psi_e}{\partial x}$ is correctly evaluated. This evaluation should rely on the solution of the Nernst-Planck equation together with the Poisson equation (*i.e.* the Poisson-Nernst-Planck equation):

$$\frac{d^2 \psi_e}{dx^2} - \frac{1}{\varepsilon} \sum_i (z_i F c_i + q) = 0 \quad (47)$$

where $q=Q_{DL}$ in the diffuse layer and $q=0$ in bulk water. However, the order of magnitude of F/ε in Eq. (47) is $10^{15} \text{ V} \cdot \text{m} \cdot \text{mol}^{-1}$. Consequently, the second derivative of the potential (first term) in Eq. (47) is negligible in comparison to the charge balance (second term) except for very small length scales or very large electric potentials (Truc et al., 2000b; c; Krabbenhøft and Krabbenhøft, 2008). The length scale that is usually considered in reactive transport calculations, *i.e.* the size of a grid cell, is typically larger than a few micrometers. As a consequence, this approximation must be correct. In addition, Appelo (2017) pointed out that the precision of any numerical model for calculating chemical reactions is usually not better than $10^{-8} \text{ mol} \cdot \text{m}^3$, and a calculation of the second derivative of the potential from charge imbalance could not be more precise than $1.4 \times 10^6 \text{ V} \cdot \text{m}^2$, a value that is usually not reached in electro-migration experiments (Appelo, 2017). Therefore, the Poisson equation reduces to a local electro-neutrality condition, and there is no transient local charge build-up: J_c is thus constant throughout the sample.

Rearranging Eq. (41) yields:

$$\frac{\partial \psi_e}{\partial x} = -\frac{J_{c,e}}{\sum_j \phi \tau_j \Lambda_{m,j} c_j A_j} = -R_c J_{c,e} \quad (48)$$

where R_c is the resistivity of the nanoporous media. After discretization on a grid cell, Eq. (48) becomes:

$$\psi_e(x + \Delta x) - \psi_e(x) = -\Delta x R_c(x) J_{c,e}(x) \quad (49)$$

and:

$$\psi_e(x_{n+1}) - \psi_e(x_0) = -\sum_{k=0}^n \Delta x_k R_c(x_k) J_{c,e}(x_k) \quad (50)$$

where x_0 and x_{n+1} correspond to the positions where the potential is imposed. $\psi_e(x_{n+1}) - \psi_e(x_0)$ and $\Delta x_k R_c(x_k)$ are known quantities. Combining Eqs. (50) and (39), with J_c being constant throughout the sample, yields:

$$\psi_e(x_{n+1}) - \psi_e(x_0) = \sum_{k=0}^n -\Delta x_k R_c(x_k) (J_c - J_{c,d}(x_k)) \quad (51)$$

$J_{c,d}(x_k)$ is a known quantity from Eq. (40) and the value of J_c can thus be computed.

The implementation of these equations in PHREEQC made it possible to unravel some of the diffusion properties of cementitious materials. In particular, the role of the diffuse layer and its average charge in the establishment of the measured current and ion breakthrough during electro-migration experiments was quantified, demonstrating that reactive transport can be used as an essential tool to understand and quantify highly coupled transport processes in nanoporous media (Appelo, 2017).

BEYOND DIFFUSION, COUPLINGS WITH ADVECTIVE FLOW

Advective displacement method and reactive transport calculations

The ‘‘advective displacement’’ method consists in forcing flow through a confined sample by applying an hydraulic gradient in order to collect time series of small aliquots of displaced pore water (Fig. 9). It is usually assumed that early extracts closely resemble the *in situ* composition of the pore water. In addition, injection of tracers and the record of their breakthrough, or the elution of elements present initially in the sample, make it possible to derive a range of parameters for transport, adsorption/desorption, and dissolution/precipitation reactions using a reactive transport approach (Grambow et al., 2014; Montavon et al., 2014; Mäder and Waber, 2017; Mäder, 2018). Reactive transport modeling of advective displacement experiments have been carried out in a handful of studies with the consideration of the presence of a diffuse layer and the dual continuum model described in a previous section (Grambow et al., 2014; Alt-Epping et al., 2015, 2018). In all of these studies, a simplifying approximation was made: the porosity affected by the advective flow was set to the same exact value as the initial bulk porosity defined with the dual continuum model (Fig. 10A). While a significant portion of the diffuse layer porosity may remain indeed unaffected by the advective flow, it is unlikely that this portion is always equal to that of the diffuse layer porosity, which must be seen itself as a convenient simplified representation of the sample microstructure (see previous section and Fig. 6). Because the water density and viscosity in the diffuse layer is similar to that of bulk water, an increase of the diffuse layer porosity from $\phi_{DL,1}$ to

$\phi_{DL,2}$, following *e.g.* a decrease of ionic strength or an increase of the ratio of monovalent counter-ions relative to multi-valent counter-ions in the bulk water, should lead to an advective displacement of a fraction of diffuse layer porosity equivalent to $\phi_{DL,2} - \phi_{DL,1}$. This displacement should result in the appearance of coupled flux because of charge imbalance (Fig. 10B). Yet, modeling results obtained with a fixed value of ϕ_{DL} led to satisfying agreement between experimental data and modeling predictions (Fig. 11). Several explanations can be put forward to explain this good agreement including: the change of the input solution may have been too limited to change significantly the size of the diffuse layer; or the concentrations of the elements of interest were mostly controlled by reaction processes (dissolution/precipitation, cation exchange in the absence of formation of a diffuse layer); or the fitted transport parameters may also lump together several coupled processes. In this last case, the parameters must be seen as being apparent rather than intrinsic to the material studied.

Advective displacement studies can be seen as the adaptation to intact clayey rocks of earlier experiments carried out on compacted bentonite or montmorillonite samples (McKelvey and Milne, 1960; Kemper and Maasland, 1964; Milne et al., 1964; Hanshaw and Coplen, 1973). In the most recent, ultrafiltration processes were clearly evidenced with steady state output solutions having a lower electrolyte concentration than input solutions. It is thus not possible to model these experiments with the model shown in Fig. 10A.

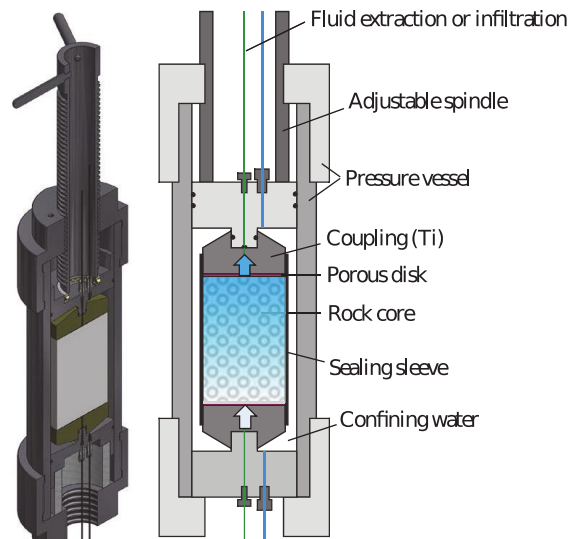


Figure 9. Advective displacement experimental setup. Reproduced from Mäder (2018).

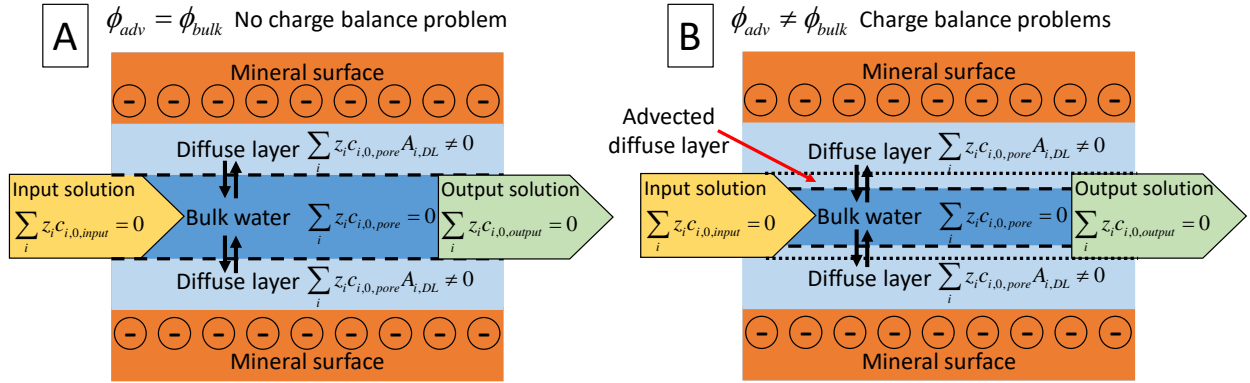


Figure 10. Advective flow in the presence of a diffuse layer and related problematics of charge balance. A: The advective flow is limited to the bulk water porosity. An electro-neutral solution displaces an electro-neutral solution and the charge balance is maintained throughout the sample. B: The advective flow displaces the bulk water porosity as well as a portion of the diffuse layer porosity. An electro-neutral solution displaces a charged solution: coupled processes must occur to maintain the local charge balance in the sample porosity and in the output solution.

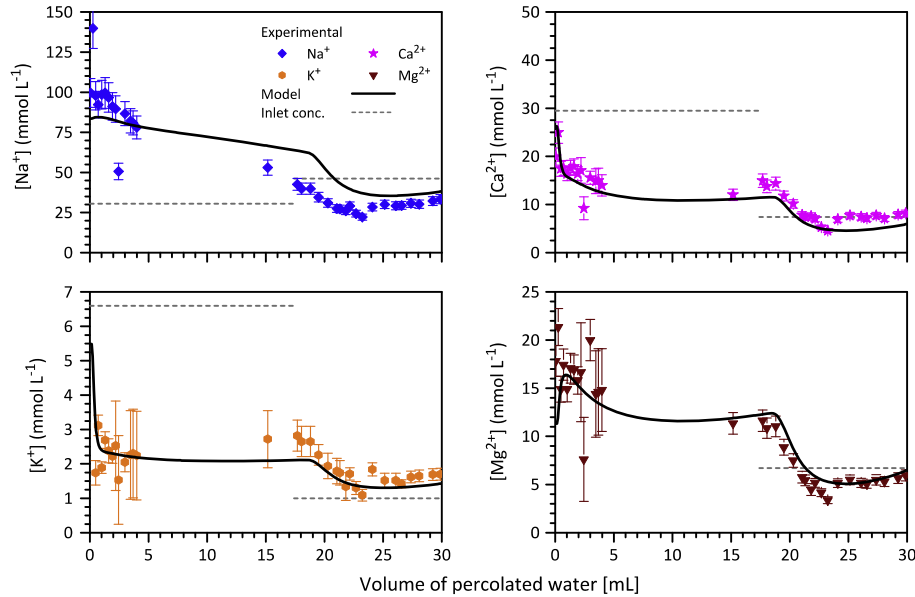


Figure 11. Example of experimental and modeling results obtained with an advective displacement experiment using a Callovian-Oxfordian argillite sample from the underground research laboratory in Bure (Meuse-Haute Marne, France). The type of model used in the study corresponds to the model shown in Fig. 10A. Modified from Grambow et al. (2014), with the permission of the Publisher.

Osmotic membrane efficiency

The influence of the diffuse layer on water and ion water transport processes in nanoporous media is most often taken into account implicitly using empirical phenomenological coefficients (Soler, 2001; Malusis et al., 2012; Neuzil and Person, 2017). As shown in a previous section, this modeling approach is restricted to systems in which a simple electrolyte such as NaCl is considered. In this approach, a key parameter is the coefficient of osmotic efficiency ω (-), which quantifies exclusion of ions from the total pore volume because of the presence of a diffuse layer. In the absence of thermal or electrical potential gradients, the ion flux of a single salt is modeled

as the result of four contributions (Soler, 2001; Sun et al., 2016; Neuzil and Person, 2017):

$$J_i = J_{adv,i} + J_{Diff,i} + J_{CO,i} + J_{HYP,i} \quad (52)$$

where $J_{CO,i}$ and $J_{HYP,i}$ are the chemical osmosis and hyperfiltration fluxes. Chemical osmosis corresponds to the viscous flow of water down the water activity gradient (or up the osmotic pressure gradient), which drags solutes along. The osmotic pressure of an aqueous solution, π , may be expressed in the Raoult-Lewis equation (Lewis, 1908):

$$\pi - \frac{\alpha\pi^2}{2} = -\frac{RT}{V_o} \ln a_w \quad (53)$$

where α is the compressibility coefficient of water, V_o is its molecular volume, and a_w is its activity. Neglecting the water compressibility, the following equation is obtained for the osmotic pressure gradient:

$$\frac{\partial\pi}{\partial x} = \frac{RT}{V_o} \frac{\partial \ln a_w}{\partial x} \quad (54)$$

For aqueous solutions with molar concentration below 1 mol·L⁻¹, the osmotic pressure can be approximated with van't Hoff's Law:

$$\pi = RT \sum_j c_j \quad (55)$$

and the osmotic pressure gradient is:

$$\frac{\partial\pi}{\partial x} = RT \sum_j \frac{\partial c_j}{\partial x} \quad (56)$$

The corresponding chemical osmosis flux is:

$$J_{CO,i} = c_i \omega K \frac{\partial \Pi}{\partial x} \quad (57)$$

where $\Pi = \pi/\rho g$ is the osmotic pressure head (in m; ρ is the density of water and g the acceleration due to gravity in m·s⁻²). The hyperfiltration flux corresponds to a correction to the advective and chemical osmosis flux due to the exclusion of solutes from the diffuse layer:

$$J_{HYP,i} = c_i \omega K \left(\frac{\partial h}{\partial x} - \omega \frac{\partial \Pi}{\partial x} \right) \quad (58)$$

The diffusion coefficient is usually taken at the same value for anions and cations (salt diffusion coefficient) and corrected from the membrane efficiency coefficient. It follows:

$$J_i = -D_i (1 - \omega) \frac{\partial c_i}{\partial x} + (1 - \omega) c_i \left(-K \frac{\partial h}{\partial x} + \omega K \frac{\partial \Pi}{\partial x} \right) \quad (59)$$

A value of $\omega = 1$ means that the membrane is ideal and there is no ionic flux through it. A value of $\omega = 0$ means that the media has no membrane properties.

Eq. (59) or similar equations have been widely used in the literature to characterize membrane properties of clay materials (Soler, 2001; Malusis and Shackelford, 2002, 2004; Malusis et al., 2003, 2012; Neuzil and Person, 2017). The coefficient of membrane efficiency is however dependent on the electrolyte nature and concentration, and as noted by Malusis and Shackelford (2012), the development of concentration gradients within the membrane preclude the calculation of intrinsic ω values from experimental data using Eq. (59).

Nernst-Planck equation in the isothermal, no external electric field, no current condition, and in the presence of advective flow

In the presence of advective flow, the Nernst-Planck equation becomes:

$$J_i = -\phi\tau_i D_{0,i} c_{i,0} A_i \frac{\partial \ln(\gamma_i c_{i,0})}{\partial x} - \frac{z_i F \phi \tau_i D_{0,i} c_{i,0} A_i}{RT} \frac{\partial \psi_e}{\partial x} + c_i A_i \phi v \quad (60)$$

where v again is the average pore fluid linear velocity ($\text{m}\cdot\text{s}^{-1}$). The no current condition imposes:

$$\sum_i z_i J_i = 0 = -\sum_i z_i \phi \tau_i D_{0,i} c_{i,0} A_i \frac{\partial \ln(\gamma_i c_{i,0})}{\partial x} - \sum_i \frac{z_i^2 F \phi \tau_i D_{0,i} c_{i,0} A_i}{RT} \frac{\partial \psi_e}{\partial x} + \sum_i z_i c_{i,0} A_i \phi v \quad (61)$$

By rearranging Eq. (61), it is possible to express the value of $\frac{\partial \psi_e}{\partial x}$ as a function of chemical potential gradients, average linear pore fluid velocity, accumulation factors and concentrations in a multi-component system:

$$\frac{\partial \psi_e}{\partial x} = \frac{-\frac{Q_{DL}}{F} v - \sum_i z_i \tau_i D_{0,i} c_{i,0} A_i \frac{\partial \ln(\gamma_i c_{i,0})}{\partial x}}{\sum_i \frac{z_i^2 F \tau_i D_{0,i} c_{i,0} A_i}{RT}} \quad (62)$$

The first term of the numerator of the right part in Eq. (62) corresponds to a streaming potential, while the second term of the right part corresponds to a diffusion potential. Eq. (62) is then reinserted into Eq. (60):

$$J_i = -\phi\tau_i D_{0,i} c_{i,0} A_i \frac{\partial \ln(\gamma_i c_{i,0})}{\partial x} - z_i \phi \tau_i D_{0,i} c_{i,0} A_i \left(\frac{-\frac{Q_{DL}}{F} v - \sum_j z_j \tau_j D_{0,j} c_{j,0} A_j \frac{\partial \ln(\gamma_j c_{j,0})}{\partial x}}{\sum_k \frac{z_k^2 \tau_k D_{0,k} c_{k,0} A_k}{RT}} \right) + c_{i,0} A_i \phi v \quad (63)$$

Eq. (63) can be further rearranged to yield:

$$\begin{aligned}
J_i = & -\phi \tau_i D_{0,i} c_{i,0} A_i \left(1 - \frac{z_i^2 \tau_i D_{0,i} c_{i,0}}{\sum_k z_k^2 \tau_k D_{0,k} c_{k,0} A_k} \right) \frac{\partial \ln(\gamma_i c_{i,0})}{\partial x} \\
& + \sum_{j \neq i} \frac{\phi \tau_i \tau_j D_{0,i} D_{0,j} z_i z_j c_{i,0} c_{j,0} A_i A_j}{\sum_k z_k^2 \tau_k D_{0,k} c_{k,0} A_k} \frac{\partial \ln(\gamma_j c_{j,0})}{\partial x}, \\
& + c_{i,0} \phi \left(A_i + \frac{z_i \tau_i D_{0,i} A_i \frac{Q_{DL}}{F}}{\sum_k z_k^2 \tau_k D_{0,k} c_{k,0} A_k} \right) v
\end{aligned} \tag{64}$$

which is a generalization of the single salt equation given in Revil and Leroy (2004). The species dependent coefficient of filtration efficiency, ω_i becomes:

$$\omega_i = 1 - A_i - \frac{z_i \tau_i D_{0,i} A_i \frac{Q_{DL}}{F}}{\sum_k z_k^2 \tau_k D_{0,k} c_{k,0} A_k}, \tag{65}$$

Eq. (65) makes clear that, in multicomponent systems, the coefficient of osmotic efficiency is specific to each chemical species. As expected, Eq. (65) indicates that the nanoporous medium is a perfect membrane with regards to the species i ($\omega_i = 1$) if $A_i = 0$, *i.e.* if the species i is completely excluded from the porosity. Eq. (65) also indicates that the coefficient of osmotic efficiency is equal to 0 if $A_i = 1$ for all species, because $\sum_i z_i F c_{i,0} A_i = -Q_{DL} = 0$. In this last case, the porous

media has no membrane properties. Eq. (64) has not been implemented in a reactive transport code yet. To do this, it would be necessary to relate the linear fluid velocity to hydrostatic and osmotic pressure terms in a multi-component model framework.

From dual continuum to multi-continuum

If the entire porosity is affected by the advective fluid flow, the coefficients of osmotic efficiency can be calculated on the basis of the average pore concentrations computed in the previous section. Similarly, the osmotic pressure gradient can be calculated with Eq. (56) combined with one of the models used to estimate the concentration in a charged pore. However, the concentration used for calculating the osmotic pressure may be different from the average concentration in the pore. In smectite osmotic swelling models, the reference concentration for this calculation is usually taken as the mid-pore concentration (Langmuir, 1938; Warkentin and Schofield, 1958; Blackmore and Miller, 1961; Madsen and Müller-Vonmoos, 1989; Liu, 2013; Massat et al., 2016), *i.e.* a parameter the value of which cannot be easily computed from a mean

electrostatic potential modeling approach. It would be surprising in any case if the advective flow affects uniformly the entire porosity, especially in clayey rocks and cementitious materials that exhibit a large range of pore sizes from nanometer size (interlayer porosity) to few micrometers (macropores) (Curtis et al., 2012; Kuila and Prasad, 2013; Hemes et al., 2015, 2016; Gaboreau et al., 2016). It may be thus necessary to subdivide the porosity into different domains, in which specific surface charge and fluid flow are distributed heterogeneously. Multiple-porosity model for fluid flow in shale reservoirs are currently developed to capture the effect of the complexity of the shales pore structure on fluid flow (Yan et al., 2016). The consideration of ionic transport in modeling work adds one more level of complexity because of the presence of charged surfaces that make it necessary to adopt a multi-continuum approach. Even in the absence of fluid flow, a multi-continuum instead of a dual-continuum description may be necessary to model the diffusion behavior of some species such as Cs^+ , where interlayer diffusion may be important compared to diffusion in bulk and diffuse layer water (Appelo et al., 2010).

CONCLUSIONS

The current implementations in reactive transport codes of coupled transport processes in the presence of a diffuse layer are in agreement with the theory of irreversible thermodynamics processes. These implementations available in only two codes – CrunchClay and PHREEQC – are currently limited to the modeling of purely diffusive systems, *i.e.* without advective flow where there is a need to consider flow with that portion of the pore structure affected by the diffuse layer. It is possible to model electro-migration in PHREEQC. The multi-component capability of these codes makes it possible to overcome many limitations encountered with simplified approaches that are limited to single salt transport. In particular, the transport of electrolyte background ions and tracer ions can be simulated simultaneously, demonstrating the existence of highly coupled processes during their transport through nanoporous media. In addition, reactive transport codes are not limited to the simulation of systems with fixed surface charge and fixed diffuse layer dimensions, and can incorporate microstructural information in dual- to multi-continuum descriptions of the porosity. Applications of these capabilities to the simulation of clayey and cementitious material properties highlighted the prominent role of the diffuse layer in the transport properties of ions. This review provides some insights to advance reactive transport modeling in the direction of a full implementation of multi-component advective flux in the presence of a diffuse layer. In particular, the osmotic efficiency parameter must be revisited so that ion and neutral molecule specific properties can be simulated simultaneously. Holistic models of flow and ion transport in nanoporous charged media still face significant but ultimately energizing scientific and computational challenges.

ACKNOWLEDGEMENTS

This work was supported by the Office of Science, Office of Basic Energy Sciences, of the U.S. Department of Energy (BES-DOE) under Contract No. DE-AC02-05CH11231, the TRANSREAC project from the Défi NEEDS – MIPOR, and by the TelluS Program of CNRS/INSU. Carl I. Steefel acknowledges funding from

L'Institut Carnot for his visit to the BRGM. We gratefully acknowledge Thomas Gimmi and Josep Soler for their constructive review of the manuscript.

REFERENCES

- Alt-Epping, P., Gimmi, T., Wersin, P., Jenni, A., 2018. Incorporating electrical double layers into reactive-transport simulations of processes in clays by using the Nernst-Planck equation: A benchmark revisited. *Applied Geochemistry* 89, 1–10.
- Alt-Epping, P., Tournassat, C., Rasouli, P., Steefel, C.I., Mayer, K.U., Jenni, A., Mäder, U., Sengor, S.S., Fernandez, R., 2015. Benchmark reactive transport simulations of a column experiment in compacted bentonite with multispecies diffusion and explicit treatment of electrostatic effects. *Computational Geosciences* 19, 535–550.
- Altmann, S., Tournassat, C., Goutelard, F., Parneix, J.-C., Gimmi, T., Maes, N., 2012. Diffusion-driven transport in clayrock formations. *Applied Geochemistry* 27, 463–478.
- Andrietti, F., Peres, A., Pezzotta, R., 1976. Exact solution of the unidimensional Poisson-Boltzmann equation for a 1: 2 (2: 1) electrolyte. *Biophysical Journal* 16, 1121–1124.
- Appelo, C.A.J., 2017. Solute transport solved with the Nernst-Planck equation for concrete pores with “free” water and a double layer. *Cement and Concrete Research* 101, 102–113.
- Appelo, C.A.J., Van Loon, L.R., Wersin, P., 2010. Multicomponent diffusion of a suite of tracers (HTO, Cl, Br, I, Na, Sr, Cs) in a single sample of Opalinus clay. *Geochimica et Cosmochimica Acta* 74, 1201–1219.
- Appelo, C.A.J., Vinsot, A., Mettler, S., Wechner, S., 2008. Obtaining the porewater composition of a clay rock by modeling the in- and out-diffusion of anions and cations from an in-situ experiment. *Journal of Contaminant Hydrology* 101, 67–76.
- Appelo, C.A.J., Wersin, P., 2007. Multicomponent diffusion modeling in clay systems with application to the diffusion of tritium, iodide, and sodium in Opalinus clay. *Environmental Science & Technology* 41, 5002–5007.
- Babcock, K.L., 1960. Some characteristics of a model Donnan system. *Soil Science* 90, 245–252.
- Babcock, K.L., 1963. Theory of the chemical properties of soil colloidal systems at equilibrium. *Hilgardia* 34, 417–542.
- Banin, A., Lahav, N., 1968. particle size and optical properties of montmorillonite in suspension. *Israel Journal of Chemistry* 6, 235–250.
- Bear, J., 1972. Dynamics of fluids in porous media. Courier Dover Publications.
- Beaucaire, C., Tertre, E., Ferrage, E., Grenut, B., Pronier, S., Madé, B., 2012. A thermodynamic model for the prediction of pore water composition of clayey rock at 25 and 80 °C – Comparison with results from hydrothermal alteration experiments. *Chemical Geology* 334, 62–76.
- Beauwens, T., De Canniere, P., Moors, H., Wang, L., Maes, N., 2005. Studying the migration behaviour of selenate in Boom Clay by electromigration. *Engineering Geology* 77, 285–293.
- Beinum, W. van, Hofmann, A., Meeussen, J.C., Kretzschmar, R., 2005. Sorption kinetics of strontium in porous hydrous ferric oxide aggregates: I. The Donnan diffusion model. *Journal of colloid and interface science* 283, 18–28.
- Birgersson, M., 2017. A general framework for ion equilibrium calculations in compacted bentonite. *Geochimica et Cosmochimica Acta* 200, 186–200.
- Birgersson, M., Karnland, O., 2009. Ion equilibrium between montmorillonite interlayer space and an external solution-Consequences for diffusional transport. *Geochimica et Cosmochimica Acta* 73, 1908–1923.
- Blackmore, A.V., Miller, R.D., 1961. Tactoid size and osmotic swelling in calcium montmorillonite. *Soil Science Society Proceedings* 25, 169–173.
- Borkovec, M., Westall, J., 1983. Solution of the Poisson-Boltzmann equation for surface excesses of ions in the diffuse layer at the oxide electrolyte interface. *Journal of Electroanalytical Chemistry* 150, 325–337.
- Bourg, I.C., 2015. Sealing shales versus brittle shales: A sharp threshold in the material properties and energy technology uses of fine-grained sedimentary rocks. *Environmental Science & Technology Letters* 2, 255–259.
- Bourg, I.C., Lee, S.S., Fenter, P., Tournassat, C., 2017. Stern Layer Structure and Energetics at Mica–Water Interfaces. *The Journal of Physical Chemistry C* 121, 9402–9412.
- Bourg, I.C., Sposito, G., 2011. Molecular dynamics simulations of the electrical double layer on smectite surfaces contacting concentrated mixed electrolyte (NaCl-CaCl₂) solutions. *Journal of Colloid and Interface Science* 360, 701–715.

- Bourg, I.C., Steefel, C.I., 2012. Molecular dynamics simulations of water structure and diffusion in silica nanopores. *Journal of Physical Chemistry C* 116, 11556–11564.
- Bresler, E., 1973. Anion exclusion and coupling effects in nonsteady transport through unsaturated soils: I. Theory. *Soil Science Society of America Journal* 37, 663–669.
- Brigatti, M.F., Galán, E., Theng, B.K.G., 2013. Chapter 2 - Structure and Mineralogy of Clay Minerals. In: Bergaya, F., Lagaly, G. (Eds.), *Handbook of Clay Science, Developments in Clay Science*. Elsevier, pp. 21–81.
- Carnie, S.L., Torrie, G.M., 1984. Advance in Chemical Physics. In: Prigogine, I., A., R.S. (Eds.), *Advances in Chemical Physics*. John Wiley & Sons, Inc., pp. 141–253.
- Cey, B.D., Barbour, S., Hendry, M.J., 2001. Osmotic flow through a Cretaceous clay in southern Saskatchewan, Canada. *Canadian Geotechnical Journal* 38, 1025–1033.
- Chen, Z., Singh, R.K., 2002. General solution for Poisson–Boltzmann equation in semiinfinite planar symmetry. *Journal of Colloid and Interface Science* 245, 301–306.
- Claret, F., Marty, N., Tournassat, C., 2018. Modeling the long-term stability of multi-barrier systems for nuclear waste disposal in geological clay formations. In: Xiao, Y., Whitaker, F., Xu, T., Steefel, C. (Eds.), *Reactive Transport Modeling: Applications in Subsurface Energy and Environmental Problems*. John Wiley & Sons, Ltd Chichester, UK, pp. 395–451.
- Collin, M., Fournier, M., Frugier, P., Charpentier, T., Moskura, M., Deng, L., Ren, M., Du, J., Gin, S., 2018a. Structure of international simple glass and properties of passivating layer formed in circumneutral pH conditions. *npj Materials Degradation* 2, 4.
- Collin, M., Gin, S., Dazas, B., Mahadevan, T., Du, J., Bourg, I.C., 2018b. Molecular dynamics simulations of water structure and diffusion in a 1 nm diameter silica nanopore as a function of surface charge and alkali metal counterion identity. *The Journal of Physical Chemistry C* 122, 17764–17776.
- Curtis, M.E., Sondergeld, C.H., Ambrose, R.J., Rai, C.S., 2012. Microstructural investigation of gas shales in two and three dimensions using nanometer-scale resolution imaging. *AAPG bulletin* 96, 665–677.
- Dagnelie, R., Rasamimanana, S., Blin, V., Radwan, J., Thory, E., Robinet, J.-C., Lefèvre, G., 2018. Diffusion of organic anions in clay-rich media: Retardation and effect of anion exclusion. *Chemosphere* 213, 472–480.
- Darcy, H., 1856. Note II. Observation relative à l'écoulement de l'eau dans l'aqueduc du Rosoir. In: *Les fontaines publiques de la ville de Dijon*. Victor Dalmont, pp. 638–639.
- de Groot, S.R., Mazur, P., 1984. Non-equilibrium thermodynamics. Courier Corporation.
- de Marsily, G., 1986. Quantitative Hydrogeology, Groundwater Hydrology for Engineers. Academic Press, New York.
- Delville, A., 2000. Electrostatic interparticle forces: from swelling to setting. In: *PRO 13: 2nd International RILEM Symposium on Hydration and Setting-Why does cement set? An interdisciplinary approach*. RILEM Publications, p. 37.
- Descostes, M., Blin, V., Bazer-Bachi, F., Meier, P., Grenut, B., Radwan, J., Schlegel, M.L., Buschaert, S., Coelho, D., Tevissen, E., 2008. Diffusion of anionic species in Callovo-Oxfordian argillites and Oxfordian limestones (Meuse/Haute-Marne, France). *Applied Geochemistry* 23, 655–677.
- Fernández, A.M., Sánchez-Ledesma, D.M., Tournassat, C., Melón, A., Gaucher, E.C., Astudillo, J., Vinsot, A., 2014. Applying the squeezing technique to highly consolidated clayrocks for pore water characterisation: Lessons learned from experiments at the Mont Terri Rock Laboratory. *Applied Geochemistry* 49, 2–21.
- Fick, A., 1855. V. On liquid diffusion. *The London, Edinburgh, and Dublin Philosophical Magazine and Journal of Science* 10, 30–39.
- Friedmann, H., Amiri, O., Ait-Mokhtar, A., 2008a. Shortcomings of geometrical approach in multi-species modelling of chloride migration in cement-based materials. *Magazine of Concrete Research* 60, 119–124.
- Friedmann, H., Amiri, O., Ait-Mokhtar, A., 2008b. Physical modeling of the electrical double layer effects on multispecies ions transport in cement-based materials. *Cement and Concrete Research* 38, 1394–1400.
- Friedmann, H., Amiri, O., Ait-Mokhtar, A., Dumargue, P., 2004. A direct method for determining chloride diffusion coefficient by using migration test. *Cement and Concrete Research* 34, 1967–1973.
- Frugier, P., Minet, Y., Rajmohan, N., Godon, N., Gin, S., 2018. Modeling glass corrosion with GRAAL. *npj Materials Degradation* 2, 35.
- Gaboreau, S., Robinet, J.-C., Prêt, D., 2016. Optimization of pore network characterization of compacted clay materials by TEM and FIB/SEM imaging. *Microporous and Mesoporous Materials* 224, 116–128.
- Gailhanou, H., Lerouge, C., Debure, M., Gaboreau, S., Gaucher, E.C., Grangeon, S., Grenèche, J.-M., Kars, M., Madé, B., Marty, N.C.M., Warmont, F., Tournassat, C., 2017. Effects of a thermal perturbation on mineralogy and pore water composition in a clay-rock: an experimental and modeling study. *Geochimica et Cosmochimica Acta* 197, 193–214.

- Garavito, A.M., De Cannière, P., Kooi, H., 2007. In situ chemical osmosis experiment in the Boom Clay at the Mol underground research laboratory. *Physics and Chemistry of the Earth, Parts A/B/C* 32, 421–433.
- Gates, W.P., Bouazza, A., Churchman, G.J., 2009. Bentonite clay keeps pollutants at bay. *Elements* 5, 105–110.
- Gaucher, E., Robelin, C., Matray, J.-M., Negrel, G., Gros, Y., Heitz, J.F., Vinsot, A., Rebours, H., Cassabagnere, A., Bouchet, A., 2004. ANDRA underground research laboratory: Interpretation of the mineralogical and geochemical data acquired in the Callovian-Oxfordian Formation by investigative drilling. *Physics and Chemistry of the Earth, Parts A/B/C* 29, 55–77.
- Gaucher, E.C., Tournassat, C., Pearson, F.J., Blanc, P., Crouzet, C., Lerouge, C., Altmann, S., 2009. A robust model for pore-water chemistry of clayrock. *Geochimica et Cosmochimica Acta* 73, 6470–6487.
- Gimmi, T., Alt-Epping, P., 2018. Simulating Donnan equilibria based on the Nernst-Planck equation. *Geochimica et Cosmochimica Acta* 232, 1–13.
- Glaus, M., Aertsens, M., Appelo, C., Kupcik, T., Maes, N., Van Laer, L., Van Loon, L., 2015. Cation diffusion in the electrical double layer enhances the mass transfer rates for Sr²⁺, Co²⁺ and Zn²⁺ in compacted illite. *Geochimica et Cosmochimica Acta* 165, 376–388.
- Glaus, M.A., Birgersson, M., Karnland, O., Van Loon, L.R., 2013. Seeming steady-state uphill diffusion of ²²Na⁺ in compacted montmorillonite. *Environmental Science & Technology* 47, 11522–11527.
- Gonçalvès, J., Adler, P.M., Cosenza, P., Pazdniakou, A., de Marsily, G., 2015. Chapter 8 - Semipermeable membrane properties and chemomechanical coupling in clay barriers. In: Tournassat, C., Steefel, C.I., Bourg, I.C., Bergaya, F. (Eds.), *Natural and Engineered Clay Barriers, Developments in Clay Science*. Elsevier, pp. 270–327.
- Gonçalvès, J., Rousseau-Gueutin, P., Revil, A., 2007. Introducing interacting diffuse layers in TLM calculations: A reappraisal of the influence of the pore size on the swelling pressure and the osmotic efficiency of compacted bentonites. *Journal of Colloid and Interface Science* 316, 92–99.
- Goto, S., Roy, D.M., 1981. Diffusion of ions through hardened cement pastes. *Cement and Concrete Research* 11, 751–757.
- Grambow, B., 2006. Nuclear waste glasses-How durable? *Elements* 2, 357–364.
- Grambow, B., Landesman, C., Ribet, S., 2014. Nuclear waste disposal: I. Laboratory simulation of repository properties. *Applied Geochemistry* 49, 237–246.
- Grangeon, S., Claret, F., Lerouge, C., Warmont, F., Sato, T., Anraku, S., Numako, C., Linard, Y., Lanson, B., 2013. On the nature of structural disorder in calcium silicate hydrates with a calcium/silicon ratio similar to tobermorite. *Cement and Concrete Research* 52, 31–37.
- Grangeon, S., Claret, F., Roosz, C., Sato, T., Gaboreau, S., Linard, Y., 2016. Structure of nanocrystalline calcium silicate hydrates: insights from X-ray diffraction, synchrotron X-ray absorption and nuclear magnetic resonance. *Journal of Applied Crystallography* 49, 771–783.
- Grangeon, S., Fernandez-Martinez, A., Baronnet, A., Marty, N., Poulain, A., Elkaim, E., Roosz, C., Gaboreau, S., Henocq, P., Claret, F., 2017. Quantitative X-ray pair distribution function analysis of nanocrystalline calcium silicate hydrates: a contribution to the understanding of cement chemistry. *Journal of Applied Crystallography* 50, 14–21.
- Gu, X., Cole, D.R., Rother, G., Mildner, D.F., Brantley, S.L., 2015. Pores in Marcellus shale: a neutron scattering and FIB-SEM study. *Energy & Fuels* 29, 1295–1308.
- Guyonnet, D., Touze-Foltz, N., Norotte, V., Pothier, C., Didier, G., Gailhanou, H., Blanc, P., Warmont, F., 2009. Performance-based indicators for controlling geosynthetic clay liners in landfill applications. *Geotextiles and Geomembranes* 27, 321–331.
- Haas, J., Nonat, A., 2015. From C–S–H to C–A–S–H: Experimental study and thermodynamic modelling. *Cement and Concrete Research* 68, 124–138.
- Hanshaw, B.B., Coplen, T.B., 1973. Ultrafiltration by a compacted clay membrane—II. Sodium ion exclusion at various ionic strengths. *Geochimica et Cosmochimica Acta* 37, 2311–2327.
- Hemes, S., Desbois, G., Klaver, J., Urai, J.L., 2016. Microstructural characterisation of the Ypresian clays (Kallo-1) at nanometre resolution, using broad-ion beam milling and scanning electron microscopy. *Netherlands Journal of geosciences* 95, 293–313.
- Hemes, S., Desbois, G., Urai, J.L., Schröppel, B., Schwarz, J.-O., 2015. Multi-scale characterization of porosity in Boom Clay (HADES-level, Mol, Belgium) using a combination of X-ray μ -CT, 2D BIB-SEM and FIB-SEM tomography. *Microporous and mesoporous materials* 208, 1–20.
- Holland, H.D., 1978. *The chemistry of the atmosphere and oceans*. Wiley-interscience, New York.
- Holmboe, M., Bourg, I.C., 2014. Molecular dynamics simulations of water and sodium diffusion in smectite interlayer nanopores as a function of pore size and temperature. *The Journal of Physical Chemistry C* 118, 1001–1013.

- Horseman, S., Harrington, J., Noy, D., 2007. Swelling and osmotic flow in a potential host rock. *Physics and Chemistry of the Earth, Parts A/B/C* 32, 408–420.
- Hunter, R.J., 2013. Zeta potential in colloid science: principles and applications. Academic press.
- Ioannidou, K., Krakowiak, K.J., Bauchy, M., Hoover, C.G., Masoero, E., Yip, S., Ulm, F.-J., Levitz, P., Pellenq, R.J.-M., Del Gado, E., 2016. Mesoscale texture of cement hydrates. *Proceedings of the National Academy of Sciences* 113, 2029–2034.
- Jardat, M., Dufreche, J.F., Marry, V., Rotenberg, B., Turq, P., 2009. Salt exclusion in charged porous media: a coarse-graining strategy in the case of montmorillonite clays. *Physical Chemistry Chemical Physics* 11, 2023–2033.
- Jougnot, D., Revil, A., Leroy, P., 2009. Diffusion of ionic tracers in the Callovo-Oxfordian clay-rock using the Donnan equilibrium model and the formation factor. *Geochimica et Cosmochimica Acta* 73, 2712–2726.
- Keller, L.M., Holzer, L., Schuetz, P., Gasser, P., 2013. Pore space relevant for gas permeability in Opalinus clay: Statistical analysis of homogeneity, percolation, and representative volume element. *Journal of Geophysical Research* 118, 2799–2812.
- Keller, L.M., Holzer, L., Wepf, R., Gasser, P., 2011. 3D geometry and topology of pore pathways in Opalinus clay: Implications for mass transport. *Applied Clay Science* 52, 85–95.
- Kemper, W., 1961a. Movement of water as effected by free energy and pressure gradients: II. Experimental analysis of porous systems in which free energy and pressure gradients act in opposite directions. *Soil Science Society of America Journal* 25, 260–265.
- Kemper, W., 1961b. Movement of water as effected by free energy and pressure gradients: I. Application of classic equations for viscous and diffusive movements to the liquid phase in finely porous media. *Soil Science Society of America Journal* 25, 255–260.
- Kemper, W., Evans, N., 1963. Movement of water as effected by free energy and pressure gradients III. Restriction of solutes by membranes. *Soil Science Society of America Journal* 27, 485–490.
- Kemper, W.D., 1960. Water and ion movement in thin films as influenced by the electrostatic charge and diffuse layer of cations associated with clay mineral surfaces. *Soil Science Society Proceedings* 10–16.
- Kemper, W.D., Maasland, D.E.L., 1964. Reduction in salt content of solution on passing through thin films adjacent to charged surfaces 1. *Soil Science Society of America Journal* 28, 318–323.
- Kemper, W.D., Rollins, J.B., 1966. Osmotic efficiency coefficients across compacted clays. *Soil Science Society of America Journal* 30, 529–534.
- Kjelstrup, S., Bedeaux, D., 2008. Non-equilibrium thermodynamics of heterogeneous systems. World Scientific.
- Krabbenhøft, K., Krabbenhøft, J., 2008. Application of the Poisson–Nernst–Planck equations to the migration test. *Cement and Concrete Research* 38, 77–88.
- Kuila, U., Prasad, M., 2013. Specific surface area and pore-size distribution in clays and shales. *Geophysical Prospecting* 61, 341–362.
- Langmuir, I., 1938. The role of attractive and repulsive forces in the formation of tactoids, thixotropic gels, protein crystals and coacervates. *The Journal of Chemical Physics* 6, 873–896.
- Lasaga, A.C., 1998. Kinetic theory in the earth sciences. Princeton University Press.
- Le Forestier, L., Muller, F., Villiéras, F., Pelletier, M., 2010. Textural and hydration properties of a synthetic montmorillonite compared with a natural Na-exchanged clay analogue. *Applied Clay Science* 48, 18–25.
- Lee, J.W., Nilson, R.H., Templeton, J.A., Griffiths, S.K., Kung, A., Wong, B.M., 2012a. Comparison of Molecular Dynamics with Classical Density Functional and Poisson–Boltzmann Theories of the Electric Double Layer in Nanochannels. *Journal of Chemical Theory and Computation* 8, 2012–2022.
- Lee, S.S., Fenter, P., Nagy, K.L., Sturchio, N.C., 2012b. Monovalent ion adsorption at the muscovite (001)–solution interface: Relationships among ion coverage and speciation, interfacial water structure, and substrate relaxation. *Langmuir* 28, 8637–8650.
- Lee, S.S., Fenter, P., Park, C., Sturchio, N.C., Nagy, K.L., 2010. Hydrated Cation Speciation at the Muscovite (001)-Water Interface. *Langmuir* 26, 16647–16651.
- Leroy, P., Mainault, A., 2018. Exploring the electrical potential inside cylinders beyond the Debye–Hückel approximation: a computer code to solve the Poisson–Boltzmann equation for multivalent electrolytes. *Geophysical Journal International* 214, 58–69.
- Leroy, P., Revil, A., 2004. A triple-layer model of the surface electrochemical properties of clay minerals. *Journal of Colloid and Interface Science* 270, 371–380.
- Leroy, P., Revil, A., Altmann, S., Tournassat, C., 2007. Modeling the composition of the pore water in a clay-rock geological formation (Callovo-Oxfordian, France). *Geochimica et Cosmochimica Acta* 71, 1087–1097.
- Leroy, P., Revil, A., Coelho, D., 2006. Diffusion of ionic species in bentonite. *Journal of Colloid and Interface Science* 296, 248–255.

- Lewis, G.N., 1908. The osmotic pressure of concentrated solutions, and the laws of the perfect solution. *Journal of the American Chemical Society* 30, 668–683.
- Li, Y.-H., Gregory, S., 1974. Diffusion of ions in sea water and in deep-sea sediments. *Geochimica et Cosmochimica Acta* 38, 703–714.
- Lima, E., Horinek, D., Netz, R., Biscaia, E., Tavares, F., Kunz, W., Boström, M., 2008. Specific ion adsorption and surface forces in colloid science. *The Journal of Physical Chemistry B* 112, 1580–1585.
- Liu, L., 2013. Prediction of swelling pressures of different types of bentonite in dilute solutions. *Colloids and Surfaces A: Physicochemical and Engineering Aspects* 434, 303–318.
- Loucaides, S., Behrends, T., Van Cappellen, P., 2010. Reactivity of biogenic silica: Surface versus bulk charge density. *Geochimica et Cosmochimica Acta* 74, 517–530.
- Luo, G., Malkova, S., Yoon, J., Schultz, D.G., Lin, B., Meron, M., Benjamin, I., Vanssek, P., Schlossman, M.L., 2006. Ion distributions near a liquid-liquid interface. *Science* 311, 216–218.
- Lynde, C., 1912. Osmosis in soils: Soils act as semi-permeable membranes. *Agronomy Journal* 4, 102–108.
- Ma, B., Fernandez-Martinez, A., Grangeon, S., Tournassat, C., Findling, N., Carrero, S., Tisserand, D., Bureau, S., Elkaïm, E., Marini, C., Aquilanti, G., Koishi, A., Marty, N.C.M., Charlet, L., 2018. Selenite uptake by Ca–Al LDH: a description of intercalated anion coordination geometries. *Environmental science & technology* 52, 1624–1632.
- Ma, B., Fernandez-Martinez, A., Grangeon, S., Tournassat, C., Findling, N., Claret, F., Koishi, A., Marty, N.C.M., Tisserand, D., Bureau, S., others, 2017. Evidence of multiple sorption modes in layered double hydroxides using Mo as structural probe. *Environmental Science & Technology* 51, 5531–5540.
- Mäder, U., 2018. Advective Displacement Method for the Characterisation of Pore Water Chemistry and Transport Properties in Claystone. *Geofluids* ID 8198762.
- Mäder, U.K., Waber, H.N., 2017. Characterization of pore water, ion transport and water-rock interaction in claystone by advective displacement experiments. *Procedia earth and planetary science* 17, 917–920.
- Madsen, F.T., Müller-Vonmoos, M., 1989. The swelling behaviour of clays. *Applied Clay Science* 4, 143–156.
- Maes, N., Moors, H., Dierckx, A., De Cannière, P., Put, M., 1999. The assessment of electromigration as a new technique to study diffusion of radionuclides in clayey soils. *Journal of Contaminant Hydrology* 36, 231–247.
- Malusis, M.A., Kang, J.B., Shackelford, C.D., 2015. Restricted salt diffusion in a geosynthetic clay liner. *Environmental Geotechnics* 2, 68.
- Malusis, M.A., Shackelford, C.D., 2002. Theory for reactive solute transport through clay membrane barriers. *Journal of Contaminant Hydrology* 59, 291–316.
- Malusis, M.A., Shackelford, C.D., 2004. Predicting solute flux through a clay membrane barrier. *Journal of geotechnical and geoenvironmental engineering* 130, 477–487.
- Malusis, M.A., Shackelford, C.D., Maneval, J.E., 2012. Critical review of coupled flux formulations for clay membranes based on nonequilibrium thermodynamics. *Journal of Contaminant Hydrology* 138, 40–59.
- Malusis, M.A., Shackelford, C.D., Olsen, H.W., 2003. Flow and transport through clay membrane barriers. *Engineering Geology* 70, 235–248.
- Marry, V., Rotenberg, B., Turq, P., 2008. Structure and dynamics of water at a clay surface from molecular dynamics simulation. *Physical Chemistry Chemical Physics* 10, 4802–4813.
- Marry, V., Turq, P., Cartailier, T., Levesque, D., 2002. Microscopic simulation for structure and dynamics of water and counterions in a monohydrated montmorillonite. *The Journal of chemical physics* 117, 3454–3463.
- Marty, N.C., Grangeon, S., Elkaïm, E., Tournassat, C., Fauchet, C., Claret, F., 2018. Thermodynamic and crystallographic model for anion uptake by hydrated calcium aluminate (AFm): an example of molybdenum. *Scientific reports* 8, 7943.
- Marty, N.C.M., Cama, J., Sato, T., Chino, D., Villiéras, F., Razafitianamaharavo, A., Brendlé, J., Giffaut, E., Soler, J.M., Gaucher, E.C., Tournassat, C., 2011. Dissolution kinetics of synthetic Na-smectite. An integrated experimental approach. *Geochimica et Cosmochimica Acta* 75, 5849–5864.
- Masoero, E., Del Gado, E., Pellenq, R.-M., Ulm, F.-J., Yip, S., 2012. Nanostructure and nanomechanics of cement: polydisperse colloidal packing. *Physical review letters* 109, 155503.
- Massat, L., Cuisinier, O., Bihannic, I., Claret, F., Pelletier, M., Masrouri, F., Gaboreau, S., 2016. Swelling pressure development and inter-aggregate porosity evolution upon hydration of a compacted swelling clay. *Applied Clay Science* 124, 197–210.
- Mazurek, M., Alt-Epping, P., Bath, A., Gimmi, T., Niklaus Waber, H., Buschaert, S., Cannière, P.D., De Craen, M., Gautschi, A., Savoye, S., Vinsot, A., Wemaere, I., Wouters, L., 2011. Natural tracer profiles across argillaceous formations. *Applied Geochemistry* 26, 1035–1064.

- Mazurek, M., Oyama, T., Wersin, P., Alt-Epping, P., 2015. Pore-water squeezing from indurated shales. *Chemical Geology* 400, 106–121.
- McKelvey, J.G., Milne, I.H., 1960. The flow of salt solutions through compacted clay. *Clays and Clay Minerals* 9, 248–259.
- Medved, I., Cern, R., 2013. Osmosis in porous media: A review of recent studies. *Microporous and Mesoporous Materials* 170, 299–317.
- Milne, I., McKelvey, J., Trump, R., 1964. Semi-permeability of bentonite membranes to brines. *AAPG Bulletin* 48, 103–105.
- Molera, M., Eriksen, T., 2002. Diffusion of $^{22}\text{Na}^+$, $^{85}\text{Sr}^{2+}$, $^{134}\text{Cs}^+$ and $^{57}\text{Co}^{2+}$ in bentonite clay compacted to different densities: experiments and modeling. *Radiochimica Acta* 90, 753–760.
- Montavon, G., Sabatié-Gogova, A., Ribet, S., Bailly, C., Bessaguet, N., Durce, D., Giffaut, E., Landesman, C., Grambow, B., 2014. Retention of iodide by the Callovo-Oxfordian formation: An experimental study. *Applied Clay Science* 87, 142–149.
- Narsilio, G., Li, R., Pivonka, P., Smith, D., 2007. Comparative study of methods used to estimate ionic diffusion coefficients using migration tests. *Cement and Concrete Research* 37, 1152–1163.
- Navarre-Sitchler, A., Steefel, C.I., Sak, P.B., Brantley, S.L., 2011. A reactive-transport model for weathering rind formation on basalt. *Geochimica et Cosmochimica Acta* 75, 7644–7667.
- Neuzil, C., 2000. Osmotic generation of “anomalous” fluid pressures in geological environments. *Nature* 403, 182.
- Neuzil, C.E., 2013. Can shale safely host US nuclear waste? *Eos, Transactions American Geophysical Union* 94, 261–262.
- Neuzil, C.E., Person, M., 2017. Reexamining ultrafiltration and solute transport in groundwater. *Water Resources Research* 53, 4922–4941.
- Obliger, A., Jardat, M., Coelho, D., Bekri, S., Rotenberg, B., 2014. Pore network model of electrokinetic transport through charged porous media. *Physical Review E* 89, 043013.
- Olsen, H.W., 1962. Hydraulic flow through saturated clays. *Clays and Clay Minerals* 131–161.
- Onsager, L., 1931a. Reciprocal relations in irreversible processes. I. *Physical review* 37, 405.
- Onsager, L., 1931b. Reciprocal relations in irreversible processes. II. *Physical review* 38, 2265.
- Patriarche, D., Ledoux, E., Michelot, J.-L., Simon-Coinçon, R., Savoye, S., 2004a. Diffusion as the main process for mass transport in very low water content argillites: 2. Fluid flow and mass transport modeling. *Water Resources Research* 40, W01517.
- Patriarche, D., Michelot, J.-L., Ledoux, E., Savoye, S., 2004b. Diffusion as the main process for mass transport in very low water content argillites: 1. Chloride as a natural tracer for mass transport—Diffusion coefficient and concentration measurements in interstitial water. *Water Resources Research* 40, W01516.
- Pearson, F.J., Tournassat, C., Gaucher, E.C., 2011. Biogeochemical processes in a clay formation in situ experiment: Part E - Equilibrium controls on chemistry of pore water from the Opalinus Clay, Mont Terri Underground Research Laboratory, Switzerland. *Applied Geochemistry* 26, 990–1008.
- Pellenq, R.J.-M., Van Damme, H., 2004. Why does concrete set?: The nature of cohesion forces in hardened cement-based materials. *Mrs Bulletin* 29, 319–323.
- Philipp, T., Amann-Hildenbrand, A., Laurich, B., Desbois, G., Littke, R., Urai, J., 2017. The effect of microstructural heterogeneity on pore size distribution and permeability in Opalinus Clay (Mont Terri, Switzerland): insights from an integrated study of laboratory fluid flow and pore morphology from BIB-SEM images. *Geological Society, London, Special Publications* 454, 85–106.
- Poinssot, C., Baeyens, B., Bradbury, M.H., 1999. Experimental and modelling studies of caesium sorption on illite. *Geochimica et Cosmochimica Acta* 63, 3217–3227.
- Pusch, R., 2001. The microstructure of MX-80 clay with respect to its bulk physical properties under different environmental conditions. SKB, TR-01-08.
- Revil, A., 1999. Ionic diffusivity, electrical conductivity, membrane and thermoelectric potentials in colloids and granular porous media: a unified model. *Journal of Colloid and Interface Science* 212, 503–522.
- Revil, A., Leroy, P., 2004. Constitutive equations for ionic transport in porous shales. *Journal of Geophysical Research-Solid Earth* 109.
- Revil, A., Linde, N., 2006. Chemico-electromechanical coupling in microporous media. *Journal of colloid and interface science* 302, 682–694.
- Revil, A., Woodruff, W., Lu, N., 2011. Constitutive equations for coupled flows in clay materials. *Water Resources Research* 47, 1–21.
- Richardson, I., 2008. The calcium silicate hydrates. *Cement and concrete research* 38, 137–158.

- Richardson, I.G., 2014. Model structures for C-(A)-SH (I). *Acta Crystallographica Section B: Structural Science, Crystal Engineering and Materials* 70, 903–923.
- Robinet, J.-C., Sardini, P., Coelho, D., Parneix, J.-C., Prêt, D., Sammartino, S., Boller, E., Altmann, S., 2012. Effects of mineral distribution at mesoscopic scale on solute diffusion in a clay-rich rock: Example of the Callovo-Oxfordian mudstone (Bure, France). *Water Resources Research* 48.
- Roosz, C., Gaboreau, S., Grangeon, S., Prêt, D., Montouillout, V., Maubec, N., Ory, S., Blanc, P., Vieillard, P., Henocq, P., 2016. Distribution of water in synthetic calcium silicate hydrates. *Langmuir* 32, 6794–6805.
- Rotenberg, B., Marry, V., Dufrière, J.-F., Giffaut, E., Turq, P., 2007. A multiscale approach to ion diffusion in clays: Building a two-state diffusion-reaction scheme from microscopic dynamics. *Journal of Colloid and Interface Science* 309, 289–295.
- Rotenberg, B., Marry, V., Malikova, N., Turq, P., 2010. Molecular simulation of aqueous solutions at clay surfaces. *Journal of Physics: Condensed Matter* 22, 284114.
- Rotenberg, B., Marry, V., Salanne, M., Jardat, M., Turq, P., 2014. Multiscale modelling of transport in clays from the molecular to the sample scale. *Comptes Rendus Geoscience* 346, 298–306.
- Rousseau-Gueutin, P., De Greef, V., Gonçalves, J., Violette, S., Chanchole, S., 2009. Experimental device for chemical osmosis measurement on natural clay-rock samples maintained at in situ conditions: Implications for formation pressure interpretations. *Journal of colloid and interface science* 337, 106–116.
- Saiyouri, N., Hicher, P.Y., Tessier, D., 2000. Microstructural approach and transfer water modelling in highly compacted unsaturated swelling clays. *Mechanics of Cohesive-frictional Materials* 5, 41–60.
- Samson, E., Marchand, J., Snyder, K.A., 2003. Calculation of ionic diffusion coefficients on the basis of migration test results. *Materials and structures* 36, 156–165.
- Sayed Hassan, M., Villieras, F., Gaboriaud, F., Razafitianamaharavo, A., 2006. AFM and low-pressure argon adsorption analysis of geometrical properties of phyllosilicates. *Journal of Colloid and Interface Science* 296, 614–623.
- Schlegel, M.L., Nagy, K.L., Fenter, P., Cheng, L., Sturchio, N.C., Jacobsen, S.D., 2006. Cation sorption on the muscovite (0 0 1) surface in chloride solutions using high-resolution X-ray reflectivity. *Geochimica et Cosmochimica Acta* 70, 3549–3565.
- Schramm, L.L., Kwak, J.C.T., 1982. Influence of exchangeable cation composition on the size and shape of montmorillonite particles in dilute suspension. *Clays and Clay Minerals* 30, 40–48.
- Shackelford, C.D., 1991. Laboratory diffusion testing for waste disposal – A review. *Journal of Contaminant Hydrology* 7, 177–217.
- Shackelford, C.D., Daniel, D.E., 1991. Diffusion in saturated soil. I: Background. *Journal of Geotechnical Engineering* 117, 467–484.
- Shainberg, I., Otoh, H., 1968. Size and shape of montmorillonite particles saturated with Na/Ca ions (inferred from viscosity and optical measurements). *Israel Journal of Chemistry* 6, 251–259.
- Shi, X., Yang, Z., Liu, Y., Cross, D., 2011. Strength and corrosion properties of Portland cement mortar and concrete with mineral admixtures. *Construction and Building Materials* 25, 3245–3256.
- Siretanu, I., Ebeling, D., Andersson, M.P., Stipp, S.L.S., Philipse, A., Stuart, M.C., Ende, D. van den, Mugele, F., 2014. Direct observation of ionic structure at solid-liquid interfaces: a deep look into the Stern Layer. *Scientific reports* 4, 4956–4956.
- Soler, J.M., 2001. The effect of coupled transport phenomena in the Opalinus Clay and implications for radionuclide transport. *Journal of Contaminant Hydrology* 53, 63–84.
- Soler, J.M., Steefel, C.I., Gimmi, T., Leupin, O.X., Cloet, V., 2019. Modeling the ionic strength effect on diffusion in clay. The DR-A experiment at Mont Terri. *ACS Earth and Space Chemistry*.
- Soulaine, C., Roman, S., Kovscek, A., Tchelepi, H.A., 2018. Pore-scale modelling of multiphase reactive flow: application to mineral dissolution with production of textCO_2. *Journal of Fluid Mechanics* 855, 616–645.
- Soulaine, C., Tchelepi, H.A., 2016. Micro-continuum approach for pore-scale simulation of subsurface processes. *Transport in Porous Media* 113, 431–456.
- Sposito, G., 2004. The surface chemistry of natural particles. Oxford University Press, New York.
- Steefel, C.I., 2008. Geochemical kinetics and transport. In: *Kinetics of water-rock interaction*. Springer, pp. 545–589.
- Steefel, C.I., Appelo, C.A.J., Arora, B., Jacques, D., Kalbacher, T., Kolditz, O., Lagneau, V., Lichtner, P.C., Mayer, K.U., Meeussen, J.C.L., Molins, S., Moulton, D., Shao, H., Šimunek, J., Spycher, N., Yabusaki, S.B., Yeh, G.T., 2015a. Reactive transport codes for subsurface environmental simulation. *Computational Geosciences* 19, 445–478.
- Steefel, C.I., Beckingham, L.E., Landrot, G., 2015b. Micro-continuum approaches for modeling pore-scale geochemical processes. *Reviews in Mineralogy and Geochemistry* 80, 217–246.

- Steefel, C.I., Maher, K., 2009. Fluid-rock interaction: A reactive transport approach. *Reviews in Mineralogy and Geochemistry* 70, 485–532.
- Sun, X., Wu, J., Shi, X., Wu, J., 2016. Experimental and numerical modeling of chemical osmosis in the clay samples of the aquitard in the North China Plain. *Environmental Earth Sciences* 75, 59.
- Tachi, Y., Yotsuji, K., 2014. Diffusion and sorption of Cs⁺, Na⁺, I⁻ and HTO in compacted sodium montmorillonite as a function of porewater salinity: Integrated sorption and diffusion model. *Geochimica et Cosmochimica Acta* 132, 75–93.
- Tinnacher, R.M., Holmboe, M., Tournassat, C., Bourg, I.C., Davis, J.A., 2016. Ion adsorption and diffusion in smectite: molecular, pore, and continuum scale views. *Geochimica et Cosmochimica Acta* 177, 130–149.
- Torrie, G.M., Valleeau, J.P., 1982. Electrical double layers. 4. Limitations of the Gouy-Chapman theory. *The Journal of Physical Chemistry* 86, 3251–3257.
- Tournassat, C., Alt-Epping, P., Gaucher, E.C., Gimmi, T., Leupin, O.X., Wersin, P., 2011. Biogeochemical processes in a clay formation in situ experiment: Part F - Reactive transport modelling. *Applied Geochemistry* 26, 1009–1022.
- Tournassat, C., Appelo, C.A.J., 2011. Modelling approaches for anion-exclusion in compacted Na-bentonite. *Geochimica et Cosmochimica Acta* 75, 3698–3710.
- Tournassat, C., Bourg, I.C., Holmboe, M., Sposito, G., Steefel, C.I., 2016a. Molecular dynamics simulations of anion exclusion in clay interlayer nanopores. *Clays and Clay Minerals* 64, 374–388.
- Tournassat, C., Bourg, I.C., Steefel, C.I., Bergaya, F., 2015a. Chapter 1 - Surface Properties of Clay Minerals. In: Tournassat, C., Steefel, C.I., Bourg, I.C., Bergaya, F. (Eds.), *Natural and Engineered Clay Barriers, Developments in Clay Science*. Elsevier, pp. 5–31.
- Tournassat, C., Chapron, Y., Leroy, P., Boulahya, F., 2009a. Comparison of molecular dynamics simulations with Triple Layer and modified Gouy-Chapman models in a 0.1 M NaCl - montmorillonite system. *Journal of Colloid and Interface Science* 339, 533–541.
- Tournassat, C., Gaboreau, S., Robinet, J.-C., Bourg, I.C., Steefel, C.I., 2016b. Impact of microstructure on anion exclusion in compacted clay media. *CMS Workshop lecture series* 21, 137–149.
- Tournassat, C., Gailhanou, H., Crouzet, C., Braibant, G., Gautier, A., Gaucher, E.C., 2009b. Cation exchange selectivity coefficient values on smectite and mixed-layer illite/smectite minerals. *Soil Science Society of America Journal* 73, 928–942.
- Tournassat, C., Neaman, A., Villiéras, F., Bosbach, D., Charlet, L., 2003. Nanomorphology of montmorillonite particles: Estimation of the clay edge sorption site density by low-pressure gas adsorption and AFM observations. *American Mineralogist* 88, 1989–1995.
- Tournassat, C., Steefel, C.I., 2015. Ionic transport in nano-porous clays with consideration of electrostatic effects. *Reviews in Mineralogy and Geochemistry* 80, 287–330.
- Tournassat, C., Vinsot, A., Gaucher, E.C., Altmann, S., 2015b. Chapter 3 - Chemical conditions in clay-rocks. In: Tournassat, C., Steefel, C.I., Bourg, I.C., Bergaya, F. (Eds.), *Natural and Engineered Clay Barriers, Developments in Clay Science*. Elsevier, pp. 71–100.
- Truc, O., Ollivier, J., Carcassès, M., 2000a. A new way for determining the chloride diffusion coefficient in concrete from steady state migration test. *Cement and Concrete Research* 30, 217–226.
- Truc, O., Ollivier, J.-P., Nilsson, L.-O., 2000b. Numerical simulation of multi-species transport through saturated concrete during a migration test—MsDiff code. *Cement and Concrete Research* 30, 1581–1592.
- Truc, O., Ollivier, J.-P., Nilsson, L.-O., 2000c. Numerical simulation of multi-species diffusion. *Materials and Structures* 33, 566–573.
- Van Loon, L.R., Baeyens, B., Bradbury, M.H., 2005. Diffusion and retention of sodium and strontium in Opalinus clay: Comparison of sorption data from diffusion and batch sorption measurements, and geochemical calculations. *Applied Geochemistry* 20, 2351–2363.
- Van Loon, L.R., Glaus, M.A., Müller, W., 2007. Anion exclusion effects in compacted bentonites: Towards a better understanding of anion diffusion. *Applied Geochemistry* 22, 2536–2552.
- Van Loon, L.R., Soler, J.M., Bradbury, M.H., 2003. Diffusion of HTO, ³⁶Cl⁻ and ¹²⁵I⁻ in Opalinus Clay samples from Mont Terri: Effect of confining pressure. *Journal of Contaminant Hydrology* 61, 73–83.
- Vinsot, A., Appelo, C.A.J., Cailteau, C., Wechner, S., Pironon, J., De Donato, P., De Cannière, P., Mettler, S., Wersin, P., Gäbler, H.E., 2008a. CO₂ data on gas and pore water sampled in situ in the Opalinus Clay at the Mont Terri rock laboratory. *Physics and Chemistry of the Earth, Parts A/B/C* 33, S54–S60.
- Vinsot, A., Mettler, S., Wechner, S., 2008b. In situ characterization of the Callovo-Oxfordian pore water composition. *Physics and Chemistry of the Earth, Parts A/B/C* 33, S75–S86.

- Wang, M., Chen, S., 2007. Electroosmosis in homogeneously charged micro- and nanoscale random porous media. *Journal of Colloid and Interface Science* 314, 264–273.
- Warkentin, B.P., Schofield, R.K., 1958. Swelling pressures of dilute Na-montmorillonite pastes. *Clays and Clay Minerals* 7.
- Wersin, P., Soler, J.M., Van Loon, L., Eikenberg, J., Baeyens, B., Grolimund, D., Gimmi, T., Dewonck, S., 2008. Diffusion of HTO, Br⁻, I⁻, Cs⁺, ⁸⁵Sr²⁺ and ⁶⁰Co²⁺ in a clay formation: Results and modelling from an in situ experiment in Opalinus Clay. *Applied Geochemistry* 23, 678–691.
- Wigger, C., Van Loon, L.R., 2017. Importance of interlayer equivalent pores for anion diffusion in clay-rich sedimentary rocks. *Environmental science & technology* 51, 1998–2006.
- Yan, B., Wang, Y., Killough, J.E., 2016. Beyond dual-porosity modeling for the simulation of complex flow mechanisms in shale reservoirs. *Computational Geosciences* 20, 69–91.
- Yokoyama, S., Kuroda, M., Sato, T., 2005. Atomic force microscopy study of montmorillonite dissolution under highly alkaline conditions. *Clays and Clay Minerals* 53, 147–154.
- Young, A., Low, P.F., 1965. Osmosis in argillaceous rocks. *AAPG Bulletin* 49, 1004–1007.
- Zachara, J.M., Smith, S.C., McKinley, J.P., Resch, C.T., 1993. Cadmium sorption on specimen and soil smectites in sodium and calcium electrolytes. *Soil Science Society of America Journal* 57, 1491–1501.
- Zhao, H., Bhattacharjee, S., Chow, R., Wallace, D., Masliyah, J.H., Xu, Z., 2008. Probing surface charge potentials of clay basal planes and edges by direct force measurements. *Langmuir* 24, 12899–12910.