



HAL
open science

The termite genus *Glyptotermes* (Isoptera: Kalotermitidae) in Miocene amber from Ethiopia

Valentine Bouju, Corentin Jouault, Vincent Perrichot

► To cite this version:

Valentine Bouju, Corentin Jouault, Vincent Perrichot. The termite genus *Glyptotermes* (Isoptera: Kalotermitidae) in Miocene amber from Ethiopia. *Journal of Paleontology*, 2022, 96 (2), pp.387-393. 10.1017/jpa.2021.106 . insu-03435971

HAL Id: insu-03435971

<https://insu.hal.science/insu-03435971>

Submitted on 19 Nov 2021

HAL is a multi-disciplinary open access archive for the deposit and dissemination of scientific research documents, whether they are published or not. The documents may come from teaching and research institutions in France or abroad, or from public or private research centers.

L'archive ouverte pluridisciplinaire **HAL**, est destinée au dépôt et à la diffusion de documents scientifiques de niveau recherche, publiés ou non, émanant des établissements d'enseignement et de recherche français ou étrangers, des laboratoires publics ou privés.

Journal of Paleontology



CAMBRIDGE
UNIVERSITY PRESS

**The termite genus *Glyptotermes* (Isoptera: Kalotermitidae)
in Miocene amber from Ethiopia**

Journal:	<i>Journal of Paleontology</i>
Manuscript ID	JPA-RA-2021-0060.R2
Manuscript Type:	Regular Article
Date Submitted by the Author:	n/a
Complete List of Authors:	Bouju, Valentine; Université de Rennes 1, Géosciences Jouault, Corentin; Université de Rennes 1, Géosciences; Muséum National d'Histoire Naturelle, Institut de Systématique, Evolution, Biodiversité (ISYEB) Perrichot, Vincent; Université de Rennes 1, Géosciences
Taxonomy:	Insecta, Blattodea < Insecta, Isoptera
Broad Geologic Time:	Neogene < Cenozoic
Detailed Geologic Time:	Miocene < Neogene
Subject area Geographic Location:	Africa, Ethiopia
Abstract:	A new species of drywood termite (Isoptera: Kalotermitidae) is described from a nearly complete alate specimen preserved in early Miocene Ethiopian amber. <i>Glyptotermes abyssinicus</i> n. sp., is distinguished by its U-shaped head with 12-segmented antennae, the ocelli separated from eye margin, the right mandible with obtuse angle between apical and first marginal teeth, the left mandible with obtuse angle between apical and first + second marginal teeth, and its wing venation. This is the first termite reported from Ethiopian amber, and the fourth Miocene species of the extant genus <i>Glyptotermes</i> , together with species previously described from diatomites of China and amber from the Dominican

	Republic. As the oldest report of the genus known from Africa, <i>G. abyssinicus</i> n. sp. constitutes an interesting new record for the biogeographical history of the kalotermitid lineage.

SCHOLARONE™
Manuscripts

1 **The termite genus *Glyptotermes* (Isoptera: Kalotermitidae) in Miocene**
2 **amber from Ethiopia**

3
4 Valentine Bouju¹, Corentin Jouault^{1,2} and Vincent Perrichot^{1*}

5
6 ¹Univ Rennes, CNRS, Géosciences Rennes, UMR 6118, 35000, Rennes, France.

7 ²Muséum national d'Histoire naturelle, Institut de Systématique, Evolution, Biodiversité (ISYEB),
8 CNRS, Sorbonne Université, EPHE, Université des Antilles, CP50, 57 rue Cuvier, 75005 Paris, France.

9 <valentine.bouju@univ-rennes1.fr> ; orcid.org/0000-0003-3185-5047

10 <jouaultc0@gmail.com>; orcid.org/0000-0002-3680-5172

11 <vincent.perrichot@univ-rennes1.fr>; orcid.org/0000-0002-7973-0430

12
13 **Running Header:** New Miocene drywood termite

14
15 **Abstract.**—A new species of drywood termite (Isoptera: Kalotermitidae) is described from a nearly
16 complete alate specimen preserved in early Miocene Ethiopian amber. *Glyptotermes abyssinicus* n. sp.,
17 is distinguished by its U-shaped head with 12-segmented antennae, the ocelli separated from eye
18 margin, the right mandible with obtuse angle between apical and first marginal teeth, the left mandible
19 with obtuse angle between apical and first + second marginal teeth, and its wing venation. This is the
20 first termite reported from Ethiopian amber, and the fourth Miocene species of the extant genus
21 *Glyptotermes*, together with species previously described from diatomites of China and amber from the

22 Dominican Republic. As the oldest report of the genus known from Africa, *G. abyssinicus* n. sp.
23 constitutes an interesting new record for the biogeographical history of the kalotermitid lineage.

24

25 UUID: <http://zoobank.org/7670b045-fb31-4809-8116-4d14c4dd275b>

26

27

28 **Introduction**

29

30 The Kalotermitidae, also named drywood termites for their high tolerance to dry conditions, is a
31 monophyletic family consistently retrieved as sister to the Neoisoptera in recent molecular and
32 morphological phylogenetic analyses (Engel et al., 2009; Bourguignon et al., 2015; Legendre et al.,
33 2015; Bucek et al., 2019; Zhao et al., 2019; Jouault et al., 2021). While some discrepancies are
34 observed regarding the divergence time estimates of several isopteran constitutive families, depending
35 on the method or dataset used, molecular- and morphology-based analyses agree for an Early
36 Cretaceous appearance of the kalotermitids (Bourguignon et al., 2015; Bucek et al., 2019; Jouault et al.,
37 2021).

38 The comprehension of the Kalotermitidae have greatly benefited from the outstanding work of
39 Kumar Krishna who proposed the first phylogenetic hypothesis and described tens of new species and
40 genera, e.g., *Bifiditermes* Krishna, 1961, *Incisitermes* Krishna, 1961, *Postelectrotermes* Krishna, 1961,
41 and the fossil species *Incisitermes peritus* Engel and Krishna, 2007, or *Cryptotermes glaesarius* Engel
42 and Krishna, 2007.

43 The kalotermitids have a rather extensive fossil record, with 74 registered occurrences ranging
44 from the Cretaceous to Quaternary periods (<http://fossilworks.org/>). The oldest representative of the
45 family was described from the Brazilian Crato Formation, as *Cratokalotermes santanensis* Bechly,
46 2007, and the family seems to have diversified during the mid-Cretaceous, with various species

47 reported from Cenomanian Burmese amber (Cockerell, 1916, 1917; Engel et al., 2007; Poinar, 2009;
48 Zhao et al., 2021).

49 *Glyptotermes* Froggatt, 1897 is a cosmopolitan genus principally represented in tropical
50 environments and is the most speciose of kalotermitid genera, with at least 128 living species (Krishna
51 et al., 2013; Scheffrahn, 2021). *Glyptotermes* is commonly found infesting sound or rotting dry wood,
52 as well as wood scars in live trees (Scheffrahn et al., 2001; Engel and Krishna, 2007). Like all
53 kalotermitids, *Glyptotermes* reproductives are likely to be trapped in resin during their swarming flight
54 since they commonly land on tree trunks and rarely reach the ground, and in fact the genus is recorded
55 by the numerous wings and winged specimens mentioned from many deposits worldwide (Cowie et al.,
56 1990; Nel and Paicheler, 1993; Engel and Krishna, 2007; Krishna et al., 2013; Engel and Kaulfuss,
57 2017). As for many extant genera, the fossil record of *Glyptotermes* remains relatively scarce, with
58 only four species described: *G. grimaldii* Engel and Krishna, 2007, and *G. paleoliberatus* Engel and
59 Krishna, 2007, from early Miocene Dominican amber; *G. shandongianus* (Zhang, 1989), from Miocene
60 diatomitic deposits of Shanwang, China (Zhang, 1989; Zhang et al., 1994); and *G. pusillus* (Heer,
61 1849), from Pleistocene or younger East African copal (Heer, 1849; Snyder, 1949; Krishna et al.,
62 2013). The new specimen described herein represents the first fossil record of the genus, and one of the
63 very few fossil kalotermitids, from Africa.

64

65 **Material and methods**

66

67 The studied specimen is preserved in a piece of amber originating from a deposit located in the North
68 Shewa Zone of Ethiopia. The exact locality is unknown but is undoubtedly among the four localities
69 reported by Bouju et al. (2021, fig. 2), as the material was accessed through an amber trader from
70 Addis Ababa who obtains amber exclusively from those four localities. Apparently, the amber is dug

71 from the same geological layer in the four deposits. The amber bed corresponds to a siltstone situated
72 within a series of Pre-Oligocene to Miocene basalts and ignimbrite (Coulié et al., 2003; Kieffer et al.,
73 2004; Belay et al., 2009) that are exposed down the gorges of the Jema and Wenchit Rivers or their
74 tributaries (Bouju and Perrichot, 2020). Unfortunately, no radiometric age could be obtained from the
75 adjacent basaltic rocks sampled by two of us in 2019 from the locality of Woll (see Bouju et al., 2021:
76 fig. 2). However, the geological data, combined with studies of the amber chemistry, organismic
77 inclusions, and palynomorphs of the amber-bearing sediment, support an early Miocene age for the
78 amber (Bouju and Perrichot, 2020; Bouju et al., 2021).

79 The specimen was found preserved in syninclusion with a tiny chalcid wasp (Pteromalidae?) in
80 a piece of greenish amber. The raw amber piece was ground and polished using thin silicon carbide
81 papers for an optimal observation of the insect specimens in frontal, dorsal, and ventral views. The
82 amber piece was ultimately embedded in a block of epoxy resin (Araldite 2020) following the method
83 in Sadowski et al. (2021, fig. 8) for consolidation and long-term conservation. Photographs and
84 examination of the specimen were made using a Leica M205 C stereomicroscope equipped with a
85 Leica DMC4500 digital camera. The series of photographs taken at multiple focal planes were stacked
86 using Helicon Focus 6.7 software. Illustrations were made using Adobe Illustrator and Photoshop CC
87 2019 softwares. We follow the morphological terminology and classification of termites as presented in
88 Krishna et al. (2013), except for the wing venation that follows Schubnel et al. (2019).

89

90 *Repository and institutional abbreviations.*—The type specimen examined in this study is deposited in
91 the amber collection of the Geological Department and Museum of the University of Rennes (IGR),
92 France, under the registration number IGR.ET2020/017.

93

94 **Systematic paleontology**

95 Order Blattodea Brunner von Wattenwyl, 1882

96 Infraorder Isoptera Brullé, 1832

97 Family Kalotermitidae Froggatt, 1897

98 Genus *Glyptotermes* Froggatt, 1897

99
100 *Type species.*—*Glyptotermes tuberculatus* Froggatt, 1897 by subsequent designation in Snyder, 1949:

101 45.

102
103 *Glyptotermes abyssinicus* new species

104 Figures 1–3

105

106 *Holotype.*—One alate specimen, IGR.ET2020/017, in amber from the lower Miocene (16–23 Ma) of
107 the North Shewa Zone, Amhara and Oromia regions, Northwestern Plateau of Ethiopia.

108

109 *Diagnosis.*—Head U-shaped in posterodorsal view; eyes small, sub-circular and feebly protruding from
110 head laterally; ocelli distinctly separated from eye margin, longest obliquely; antenna 12-segmented,
111 AII longer than AIII, AIII subequal to slightly shorter than AIV; left mandible with apical tooth stout,
112 angle between apical and first + second marginal teeth right to nearly obtuse; right mandible with long,
113 stout apical tooth, angle between apical and first marginal teeth obtuse; fore wing scale not fully
114 overlapping hind wing scale; fore wing with Sc and RA short, RP long with two anterior branches, M
115 sclerotized, running very close to and parallel to RP to reach wing apex, with faint cross-veins between
116 M and radial sector, CuA with at least 8–9 posterior branches.

117

118 *Description*.—Body 3.8 mm long (from tip of labrum to abdomen apex), 7.0 mm with wings (Fig. 1).
119 Head (Fig. 2.1, 2.2) prognathous, 1.1 mm long and 0.65 mm wide excluding compound eyes, with
120 straight sides, anterolateral corners slightly angulate, posterolateral corners rounded; compound eye
121 sub-circular, slightly wider than long, ca. 0.25 mm wide, protruding from head, separated from
122 posterior head margin by more than its length; ocelli white, ovoid (about 0.06 mm long and 0.05 mm
123 wide), located above eye mid-length, very close to but not touching eye margin; fontanelle absent;
124 antenna (Fig. 2.2) moniliform, with 12 antennomeres, AII longer than AIII, AIII subequal to slightly
125 shorter than AIV, AIV shorter than AV, following antennomeres progressively increasing in length
126 toward apex; left mandible with slightly obtuse to nearly right angle between apical and first + second
127 marginal teeth, third marginal tooth hidden; right mandible with obtuse angle between apical and first
128 marginal teeth; maxillary palps hidden by labial palps in frontal view; labial palps with 3 segments
129 (Fig. 2.3); labrum about 0.18 mm long and 0.24 mm wide, posterior margin convex, anterior margin
130 straight or nearly so; postclypeus slightly raised medially (Fig. 2.1, 2.3), rectangular and conspicuously
131 wider than long (about 0.24 mm wide and 0.06 mm long).

132 Pronotum (Fig. 2.5) flat to slightly arched in lateral view, anterior margin slightly concave,
133 sides rounded, slightly narrower than head. Legs slender; profemur *ca.* 0.5 mm long, protibia *ca.* 0.4
134 mm long, protarsus at least 0.2 mm long; protibia with three spurs f1, f2, f3; mesofemur *ca.* 0.5 mm
135 long, mesotibia *ca.* 0.5 mm long, mesotarsus at least 0.4 mm long; mesotibia with three spurs m1, m2,
136 m3 (Fig. 2.6); metafemur *ca.* 0.5 mm long, metatibia *ca.* 0.8 mm long, metatarsus at least 0.4 mm long;
137 metatibia with three spurs h1, h2, h3; no additional spine on meso- and metatibiae; tarsi tetramerous,
138 with apical tarsomere as long as or slightly longer than combined length of preceding ones (Fig. 2.7);
139 arolium present (Fig. 2.8).

140 Wings (Fig. 3.1–3.5) 4.75 mm long (measured from suture to apex), membrane reticulate; fore
141 wing scale 0.75 mm long, not covering hind wing scale, with humeral margin nearly straight, claval
142 suture (CuP) straight, slightly curved distally, basal suture straight; fore wing with M and CuA veins

143 arising independently from inside the wing scale; Sc short and simple; RA and RP fused basally, RA
144 short, RP long with 2 anterior branches or fusion point with C; M sclerotized, running to wing apex,
145 close and parallel to RP, with at least 1 anterior, short branch located near wing apex, and maybe two
146 unsclerotized anterior branches located respectively in basal and apical wing third; CuA unsclerotized,
147 with 8–9 posterior branches and maybe two unsclerotized anterior branches; hind wing not describable;
148 anal lobe absent on both wings.

149 Abdomen not fully preserved, ca. 1.4 mm long, with at least 6 to 7 observable segments (Fig.
150 1.1); abdominal segments apparently widest at mid-length. Cerci and styli not visible.

151 *Etymology*.—The specific epithet *abyssinicus* refers to the Abyssinian origin of the amber piece.

152

153 *Remarks*.—The new fossil does not fit in the early diverged termite families, including the extinct
154 Cratomastotermitidae and Termopsidae, since it combines the following series of derived characters: a
155 reduced wing venation (vs. more complete, RP with at least several branches and no costalisation of
156 veins in early diverged families), 4-segmented tarsi (vs. 5-segmented, plesiomorphic character), a
157 reduced tibial spur formula 3-3-3 (vs. enriched with additional spurs along tibiae), and a head wider
158 than pronotum (vs. smaller than pronotum). Compared to most of the other families, the fossil lacks a
159 fontanelle (apomorphic character of the Neoisoptera; Krishna et al. 2013). Following the key to the
160 families based on imago characters by Krishna et al. (2013, p. 69), the new fossil keys out in the
161 Kalotermitidae for its hind wing without anal lobe, tarsi 4-segmented, antenna 12-segmented,
162 fontanelle absent, fore wing scale not overlapping hind wing scale, ocelli present, and pronotum flat.
163 Using the key to the kalotermitid genera of Krishna et al. (2013: p. 75–76), the new fossil species keys
164 out either in *Glyptotermes*, *Calcaritermes* Snyder, 1925, or *Proneotermes* Holmgren, 1911, depending
165 on character states detailed in the sixth and thirteenth couplets but invisible on the fossil, i.e., the left
166 mandibular portion posterior to the first + second marginal tooth. However, the specimen differs from
167 *Calcaritermes* and *Proneotermes* by the 12 antennomeres (vs. 13–14 in *Calcaritermes*, 17–18 in

168 *Proneotermes*). Additionally, it differs from *Proneotermes* but concords with *Glyptotermes* by the
169 small eye diameter (0.25 mm vs. 0.39–0.43 mm in *Proneotermes*) and the fore wing with M as heavily
170 sclerotized as the radial sector, running very close to and parallel to the radial sector to reach apex of
171 wing, with faint branches between M and radial sector, and radial sector very close to costal vein.

172 *Glyptotermes abyssinicus* n. sp. can be distinguished from the extant Neotropical and African
173 *Glyptotermes* species, by the combination of characters stated in the diagnosis. More precisely, *G.*
174 *abyssinicus* n. sp. differs from *G. adamsoni* Krishna and Emerson, 1962, *G. sicki* Krishna and Emerson,
175 1962, or the African *G. sinomalatus* Krishna and Emerson, 1962, by a U-shaped head (vs. circular or
176 semi-circular in the other species). It differs from other species by the 12-segmented antennae (vs. 11-
177 segmented in *G. marlatti* (Snyder, 1926) and *G. planus* (Snyder, 1925); more than 12-segmented in *G.*
178 *amplus* Scheffrahn et al., 2001, *G. kawandae* Wilkinson, 1954, or *G. longisculus* Krishna and
179 Emerson, 1962.

180 *Glyptotermes abyssinicus* n. sp. can also be distinguished from other species by the antennae
181 with AII longer than AIII (vs. AII shorter than AIII in *G. asperatus* (Snyder, 1926), *G. ignotus*
182 Wilkinson, 1959, or *G. tuberifer* Krishna and Emerson, 1962; by measurements such as the body, head
183 and wing length (*G. rotundifrons* Krishna and Emerson, 1962 and *G. suturis* (Snyder, 1925) are larger
184 species with wider head and pronotum, and longer fore wings; *G. contracticornis* (Snyder, 1925) and
185 *G. longipennis* Krishna and Emerson, 1962 are about twice as large as *G. abyssinicus* n. sp.); by the
186 ocelli separated from the eye margin (vs. ocelli touching eye margin in *G. jurioni* Krishna and
187 Emerson, 1962, *G. parki* Krishna and Emerson, 1962, *G. parvoculatus* Krishna and Emerson, 1962 or
188 *G. truncatus* Krishna and Emerson, 1962.

189 Finally, *Glyptotermes abyssinicus* n. sp. differs from the fossil species *G. grimaldii* Engel and
190 Krishna, 2007 and *G. paleoliberatus* Engel and Krishna, 2007 by a smooth head capsule (vs. granulose)
191 and the ocelli separated from the eye margin (vs. touching). The old description of *G. pusillus* (Heer,
192 1849), from East African copal, challenges its comparison with the other *Glyptotermes* species.

193 However, it is clear that our specimen does not belong to *G. pusillus* owing to the differential of
194 temporal range (Pleistocene vs. Early Miocene).

195 **Discussion**

196

197 The genus *Glyptotermes* has a worldwide distribution with a higher diversity in tropical areas
198 (Scheffrahn et al., 2001; Krishna et al., 2013; Debelo and Degaga, 2014; Yashiro et al., 2019;
199 Scheffrahn, 2021). Our current knowledge on the *Glyptotermes* fossil record, and its correlation with
200 the distribution of the extant representatives of the genus, seems to indicate that *Glyptotermes* was also
201 widely distributed in the tropical region during the Miocene period and may have experimented
202 successive dispersal events during older geological periods (Krishna and Emerson, 1962; Emerson,
203 1969; Nel and Paicheler, 1993; Engel and Krishna, 2007).

204 The kalotermitids are generally of particular importance in extant and past ecosystems due to
205 their biology. In fact, they are the only termites that do not need to construct their nest in contact with
206 soil (a direct adaptation from their high tolerance to dryness). The kalotermitids can live exclusively
207 within the wood and participate in its active degradation by consuming the trunk in which they
208 construct their nest. Extant *Glyptotermes* species, however, are very tolerant to environmental
209 conditions and can live in swamp forests or mangroves (Johnson et al., 1980; Tho, 1992). And
210 according to Scheffrahn (2021), extant, Neotropical '*Glyptotermes* species have a rather high wood
211 moisture requirement and, therefore, are not found in arid parts of the Neotropics'. The same was likely
212 true for the Miocene species newly described here, as this accords with indications of a generally
213 humid, tropical, forest environment with freshwater suggested by the palynomorphs associated with
214 Ethiopian amber as well as by other organismal inclusions in amber (Bouju and Perrichot, 2020; Bouju
215 et al., 2021).

216

217 **Conclusion**

218

219 Although Isoptera are relatively well known from the fossil record, numerous fossil species have been
220 described based on compression or imprint fossils of isolated wings, challenging placements and
221 questioning some systematic attributions (Krishna et al., 2013). The present description of a nearly
222 complete, three-dimensional, *Glyptotermes* specimen provides elements for more comprehensive,
223 morphological-based phylogenetic studies. Additionally, *Glyptotermes abyssinicus* n. sp. can be
224 considered as the oldest and first « true » *Glyptotermes* fossil from Africa. This discovery confirms the
225 presence of the genus since the Miocene period and will allow further inference on the biogeographical
226 history of the genus. The genus *Chilgatermes* Engel et al., 2013 (Stolotermitidae), described from an
227 Oligocene imprint fossil, was hitherto the only fossil termite known from Ethiopia. Therefore, the
228 description of *Glyptotermes abyssinicus* n. sp. extends our knowledge of the Isoptera fossil diversity in
229 Ethiopia.

230

231 **Acknowledgments**

232 We are grateful to Yale Goldman, Bloomfield, Connecticut, who provided the Ethiopian amber piece
233 studied here. We thank Amde Zewdalem, Jacksonville, Florida, and Benyam Teferi, Addis Ababa,
234 Ethiopia, for information and access to the amber deposits of the North Shewa Zone, Ethiopia; and the
235 reviewers and editor for their helpful comments. Partial support for this work was provided by the
236 Tellus-INTERRVIE programme of CNRS INSU (project AMBRAFRICA to V. Perrichot, 2019),
237 enabling field work in Ethiopia for V. Bouju and V. Perrichot.

238

239 **References**

- 240 Bechly, G., 2007, Isoptera: termites, *in* Martill, D.M., Bechly, G., and Loveridge, R.F., eds., *The Crato*
241 *Fossil Beds of Brazil: Window into an Ancient World*: Cambridge, Cambridge University Press, p.
242 249–262.
- 243 Belay, T., Tesfay, I., Ayalew, A., Yohannes, G., Zewdie, T., Bekele, H., Tadesse, M., Demisse, T., and
244 Alemu, T., 2009, *Geology of the Were-Illu Area*: Geological Survey of Ethiopia Memoir 25, 56 pp.
- 245 Bouju, V., and Perrichot, V., 2020, A review of amber and copal occurrences in Africa and their
246 paleontological significance: *BSGF-Earth Sciences Bulletin*, v. 191, 17, doi:10.1051/bsgf/2020018
- 247 Bouju, V., Feldberg, K., Kaasalainen, U., Schaefer-Verwimp, A., Hedenäs, L., Buck, W.R., Wang, B.,
248 Perrichot, V., and Schmidt, A.R., 2021, Miocene Ethiopian amber: a new source of fossil
249 cryptogams: *Journal of Systematics and Evolution*, doi:10.1111/jse.12796.
- 250 Bourguignon, T., Lo, N., Cameron, S.L., Šobotník, J., Hayashi, Y., Shigenobu, S., Watanabe, D.,
251 Roisin, Y., Miura, T., and Evans, T.A., 2015, The evolutionary history of termites as inferred from
252 66 mitochondrial genomes: *Molecular Biology and Evolution*, v. 32, p. 406–421.
- 253 Brunner von Wattenwyl, K., 1882, *Prodromus der europäischen Orthopteren*: Leipzig, W. Engelmann,
254 466 pp.
- 255 Brullé, G.A., 1832, *Insectes. Expédition scientifique de Morée. Section des sciences physiques, Tome*
256 *III, Partie 1. Zoologie. Sect. 2. Des animaux articulés*: Paris, F.G. Levrault, p. 1–29 + 64–395.
- 257 Bucek, A., Šobotník, J., He, S., Shi, M., McMahon, D.P., Holmes, E.C., Roisin, Y., Lo, N., and
258 Bourguignon, T., 2019, Evolution of termite symbiosis informed by transcriptome-based: *Current*
259 *Biology*, v. 29, p. 3728–3734.
- 260 Cockerell, T.D.A., 1916, *Insects in Burmese amber*: *American Journal of Science, Series 4*, v. 42, p.
261 135–138.
- 262 Cockerell, T.D.A., 1917, *Insects in Burmese amber*: *Annals of the Entomological Society of America*,
263 v. 10, p. 323–329.

- 264 Coulié, E., Quidelleur, X., Gillot, P.-Y., Courtillot, V., Lefèvre, J.-C., and Chiesa, S., 2003,
265 Comparative K–Ar and Ar/Ar dating of Ethiopian and Yemenite Oligocene volcanism: implications
266 for timing and duration of the Ethiopian traps: *Earth and Planetary Science Letters*, v. 206, p. 477–
267 492.
- 268 Cowie, R.H., Wood, T.G., Barnett, E.A., Sands, W.A., and Black, H.I.J., 1990, A checklist of the
269 termites of Ethiopia with a review of their biology, distribution and pest status: *African Journal of*
270 *Ecology*, v. 28, p. 21–33.
- 271 Debelo, D.G., and Degaga, E.G., 2014, Termite species composition in the central rift valley of
272 Ethiopia: *Agriculture and Biology Journal of North America*, v. 5, no. 3, p. 123–134.
- 273 Emerson, A.E., 1969, A revision of the Tertiary fossil species of the Kalotermitidae (Isoptera):
274 *American Museum Novitates*, v. 2359, p. 1–57.
- 275 Engel, M.S., and Kaulfuss, U., 2017, Diverse, primitive termites (Isoptera: Kalotermitidae, incertae
276 sedis) from the Early Miocene of New Zealand: *Austral Entomology*, v. 56, p. 94–103.
- 277 Engel, M.S., and Krishna, K., 2007, Drywood termites in Dominican amber (Isoptera: Kalotermitidae):
278 *Beiträge zur Entomologie*, v. 57, p. 263–275.
- 279 Engel, M.S., Grimaldi, D.A., and Krishna, K., 2007, Primitive termites from the Early Cretaceous of
280 Asia (Isoptera): *Stuttgarter Beiträge zur Naturkunde B*, v. 371, p. 1–32.
- 281 Engel, M.S., Grimaldi, D.A., and Krishna, K., 2009, Termites (Isoptera): their phylogeny,
282 classification, and rise to ecological dominance: *American Museum Novitates*, v. 3650, p. 1–27.
- 283 Engel, M., Pan, A.D., and Jacobs, B.F., 2013, A termite from the Late Oligocene of northern Ethiopia:
284 *Acta Palaeontologica Polonica*, v. 58, p. 331–334.
- 285 Froggatt, W.W., 1897, Australian Termitidae, Part II: *Proceedings of the Linnean Society of New*
286 *South Wales*, v. 21, p. 510–552.

- 287 Heer, O., 1849, Die Insektenfauna der Tertiärgebilde von Oeningen und von Radoboj in Croatien.
288 Zweiter Teil: Heuschrecken, Florfliegen, Aderflügler, Schmetterlinge und Fliegen. Leipzig, W.
289 Engelmann, iv + 264 p.
- 290 Holmgren, N., 1911, Termitenstudien. 2. Systematik der Termiten. Die Familien Mastotermitidae,
291 Protermitidae und Mesotermitidae: Kungliga Svenska Vetenskaps-Akademiens Handlingar, v. 46,
292 no. 6, p. 1–86 + 6 pl.
- 293 Johnson, R.A., Lamb, R.W., Sands, W.A., Shittu, M.O., Williams, R.M.C., and Wood, T.G., 1980, A
294 checklist of Nigerian termites (Isoptera) with brief notes on their biology and distribution: Nigerian
295 Field, v. 45, p. 50–64.
- 296 Jouault, C., Legendre, F., Grandcolas, P., and Nel, A., 2021, Revising dating estimates and the
297 antiquity of eusociality in termites using the fossilized birth-death process: Systematic Entomology,
298 v. 46, p. 592–610.
- 299 Kieffer, B., Arndt, N., Lapierre, H., Bastien, F., Bosch, D., Pecher, A., Yirgu, G., Ayalew, D., Weis,
300 D., Jerram, D.A., Keller, F., and Meugniot, C., 2004, Flood and shield basalts from Ethiopia:
301 magmas from the African superswell: Journal of Petrology, v. 45, p. 793–834.
- 302 Krishna, K., 1961, A generic revision and phylogenetic study of the family Kalotermitidae (Isoptera):
303 Bulletin of the American Museum of Natural History, v. 122, p. 303–408.
- 304 Krishna, K., and Emerson, A.E., 1962, New species of the genus *Glyptotermes* Froggatt from the
305 Papuan, Oriental, Ethiopian, and Neotropical regions (Isoptera, Kalotermitidae): American Museum
306 Novitates, v. 2089, p. 1–65.
- 307 Krishna, K., Grimaldi, D.A., Krishna, V., and Engel, M.S., 2013, Treatise on the Isoptera of the world:
308 Bulletin of the American Museum of Natural History, v. 377, p. 1–2704.

- 309 Legendre, F., Nel, A., Svenson, G.J., Robillard, T., Pellens, R., and Grandcolas, P., 2015, Phylogeny of
310 Dictyoptera: dating the origin of cockroaches, praying mantises and termites with molecular data
311 and controlled fossil evidence: PLoS ONE, v. 10, e0130127, doi:10.1371/journal.pone.0130127
- 312 Nel, A., and Paicheler, J.C., 1993, Les Isoptera fossiles. Etat actuel des connaissances, implications
313 paléoécologiques et paléoclimatologiques (Insecta, Dictyoptera): Cahiers de Paléontologie, Paris,
314 CNRS Editions, p. 101–179.
- 315 Poinar, G., Jr., 2009, Description of an Early Cretaceous termite (Isoptera: Kalotermitidae) and its
316 associated intestinal protozoa, with comments on their co-evolution: Parasites & Vectors, v. 2, no.
317 12, doi:10.1186/1756-3305-2-12
- 318 Sadowski, E.M., Schmidt, A.R., Seyfullah, L.J., Solórzano-Kraemer, M.M., Neumann, C., Perrichot,
319 V., Hamann, C., Milke, R., and Nascimbene, P.C., 2021, Conservation, preparation and imaging of
320 diverse ambers and their inclusions: Earth-Science Reviews, 103653,
321 doi:10.1016/j.earscirev.2021.103653
- 322 Scheffrahn, R.H., 2021, The termite genus *Glyptotermes* (Isoptera: Kalotermitidae) from Paraguay:
323 ZooKeys, v. 1059, p. 23–33.
- 324 Scheffrahn, R.H., Su N.Y., and Křeček, J., 2001, *Glyptotermes amplus*, a new dampwood termite
325 (Isoptera: Kalotermitidae) from St. Lucia: Florida Entomologist, v. 84, p. 426–430.
- 326 Schubnel, T., Desutter-Grandcolas, L., Legendre, F., Prokop, J., Mazurier, A., Garrouste, R.,
327 Grandcolas, P., and Nel, A., 2019, To be or not to be: postcubital vein in insects revealed by
328 microtomography: Systematic Entomology, v. 45, p. 327–336.
- 329 Snyder, T.E., 1925, New American termites, including a new subgenus: Journal of the Washington
330 Academy of Sciences, v. 15, p. 152–162.
- 331 Snyder, T.E., 1926, New termites from Guatemala, Costa Rica, and Colombia: Journal of the
332 Washington Academy of Sciences, v. 16, p. 18–28.

- 333 Snyder, T.E., 1949, Catalogue of termites (Isoptera) of the world: Smithsonian Miscellaneous
334 Collections, v. 112, p. 1–490.
- 335 Tho, Y.P., 1992, Termites of peninsular Malaysia: Kuala Lumpur, Malaysia, Forest Research Institute
336 Malaysia (Malayan Forest Records, v. 36), 224 p.
- 337 Wilkinson, W., 1954, Three new species of Kalotermitidae (Isoptera) from East Africa: Proceedings of
338 the Royal Entomological Society of London, Series B, Taxonomy, v. 23, p. 75–82.
- 339 Wilkinson, W., 1959, Four new species of Kalotermitidae from East Africa (Isoptera): Proceedings of
340 the Royal Entomological Society of London, Series B, Taxonomy, v. 28, p. 61–72.
- 341 Yashiro, T., Takematsu, Y., Ogawa, N., and Matsuura, K., 2019, Taxonomic assessment of the termite
342 genus *Neotermes* (Isoptera: Kalotermitidae) in the Ryukyu-Taiwan Island arc, with description of a
343 new species: *Zootaxa*, v. 4604, p. 549–561.
- 344 Zhang, J.F., 1989, Fossil Insects from Shanwang, Shandong, China: Jinan, Shandong Science and
345 Technology Publishing House, 459 p. [in Chinese, with English summary]
- 346 Zhang, J.F., Sun, B., and Zhang, X., 1994, Miocene Insects and Spiders from Shanwang, Shandong:
347 Beijing, Science Press, 298 p. [in Chinese, with English summary]
- 348 Zhao, Z., Eggleton, P., Yin, X., Gao, T., Shih, C., and Ren, D., 2019, The oldest known mastotermitids
349 (Blattodea : Termitoidea) and phylogeny of basal termites: *Systematic Entomology*, v. 44, p. 612–
350 623.
- 351 Zhao, Z., Shih, C., Gao, T., and Ren, D., 2021, Termite communities and their early evolution and
352 ecology trapped in Cretaceous amber: *Cretaceous Research*, v. 117, 104612,
353 doi:10.1016/j.cretres.2020.104612
354
355

356 **Figure captions**

357

358 **Figure 1.** *Glyptotermes abyssinicus* n. sp., holotype IGR.ET2020/017, from early Miocene Ethiopian
 359 amber. (1) Habitus in dorsal view; (2) habitus in ventral view. Scale bars = 1 mm.

360

361 **Figure 2.** *Glyptotermes abyssinicus* n. sp., holotype IGR.ET2020/017, from early Miocene Ethiopian
 362 amber. (1) Head in dorsal view; (2) left antenna in dorsal view; (3) mouthparts in frontal view; (4)
 363 line drawing of mandibles in frontal view; (5) pronotum in anterodorsal view; (6) right mesotibia in
 364 ventral view; (7) left mesotarsus in ventral view; (8) right protarsus in ventral view. I–IV =
 365 tarsomeres 1–4; AII–AV = antennomeres 2–5; ar = arolium; la = left mandible apical tooth; lbr =
 366 labrum; lm1+2 = left mandible 1st + 2nd marginal tooth; lp = labial palp; m1, m2, m3 = mesotibial
 367 spurs 1–3; mp = maxillary palp; oc = ocellus; pc = postclypeus; ra = right mandible apical tooth;
 368 rm1 = right mandible 1st marginal tooth. Scale bars = 25 μm (4), or 100 μm (6–8), or 125 μm (1–3,
 369 5).

370

371 **Figure 3.** *Glyptotermes abyssinicus* n. sp., holotype IGR.ET2020/017, from early Miocene Ethiopian
 372 amber. (1) Right hind and fore wing bases in dorsal view; (2) line drawing of right wing scales in
 373 dorsal view; (3) left fore wing scale in dorsal view; (4) left fore wing in dorsal view; (5) explanatory
 374 drawing of fore wing venation. BS = basal suture; CuA = anterior cubital vein; CuP = claval suture;
 375 fsc = fore wing scale; hsc = hind wing scale; M = medial vein; RA = anterior radial vein; RP =
 376 posterior radial vein; Sc = subcostal vein. Scale bars = 250 μm (1–3), or 750 μm (4, 5).

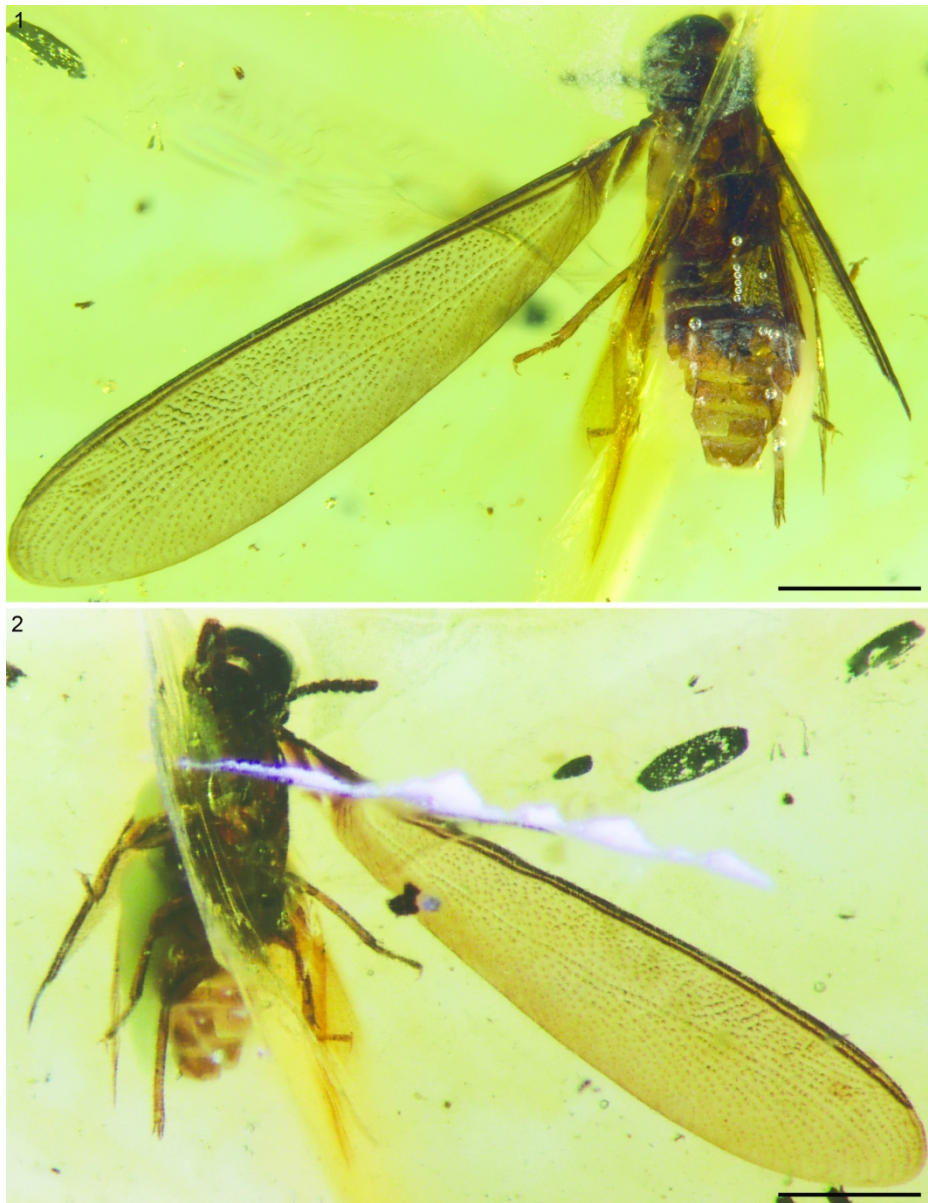


Figure 1. *Glyptotermes abyssinicus* n. sp., holotype IGR.ET2020/017, from early Miocene Ethiopian amber. (1) Habitus in dorsal view; (2) habitus in ventral view. Scale bars = 1 mm.

170x218mm (300 x 300 DPI)

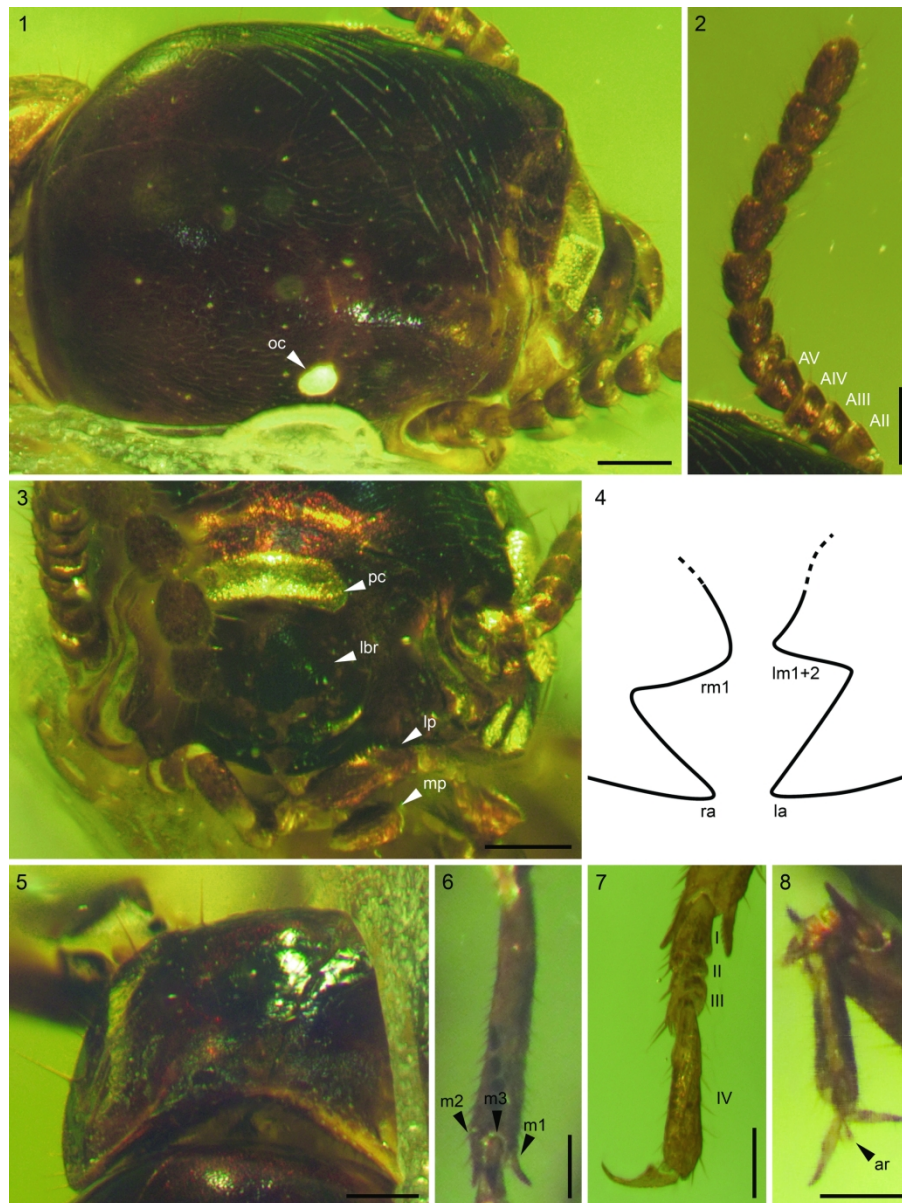


Figure 2. *Glyptotermes abyssinicus* n. sp., holotype IGR.ET2020/017, from early Miocene Ethiopian amber. (1) Head in dorsal view; (2) left antenna in dorsal view; (3) mouthparts in frontal view; (4) line drawing of mandibles in frontal view; (5) pronotum in anterodorsal view; (6) right mesotibia in ventral view; (7) left mesotarsus in ventral view; (8) right protarsus in ventral view. I–IV = tarsomeres 1–4; AII–AV = antennomeres 2–5; ar = arolium; la = left mandible apical tooth; lbr = labrum; lm1+2 = left mandible 1st + 2nd marginal tooth; lp = labial palp; m1, m2, m3 = mesotibial spurs 1–3; mp = maxillary palp; oc = ocellus; pc = postclypeus; ra = right mandible apical tooth; rm1 = right mandible 1st marginal tooth. Scale bars = 125 μ m (1–3, 5), or 100 μ m (6–8).

170x225mm (300 x 300 DPI)

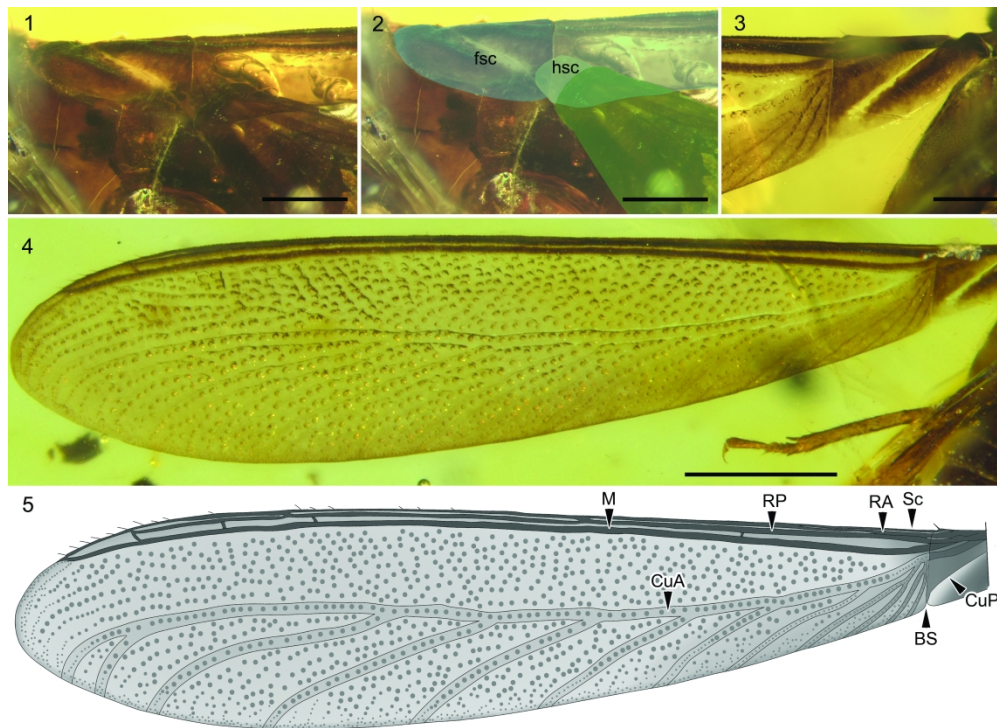


Figure 3. *Glyptotermes abyssinicus* n. sp., holotype IGR.ET2020/017, from early Miocene Ethiopian amber. (1) Right hind and fore wing bases in dorsal view; (2) same as 1, but colour-marked to highlight the wing scales; (3) left fore wing scale in dorsal view; (4) left fore wing in dorsal view; (5) explanatory drawing of fore wing venation. BS = basal suture; CuA = anterior cubital vein; CuP = claval suture; fsc = fore wing scale; hsc = hind wing scale; M = medial vein; RA = anterior radial vein; RP = posterior radial vein; Sc = subcostal vein. Scale bars = 250 μ m (1–3), or 750 μ m (4).

179x133mm (600 x 600 DPI)