



## SeaFlux: harmonization of air–sea CO<sub>2</sub> fluxes from surface *p*CO<sub>2</sub> data products using a standardized approach

Amanda R Fay, Luke Gregor, Peter Landschützer, Galen A Mckinley, Nicolas Gruber, Marion Gehlen, Yosuke Iida, Goulven G Laruelle, Christian Rödenbeck, Alizée Roobaert, et al.

### ► To cite this version:

Amanda R Fay, Luke Gregor, Peter Landschützer, Galen A Mckinley, Nicolas Gruber, et al.. SeaFlux: harmonization of air–sea CO<sub>2</sub> fluxes from surface *p*CO<sub>2</sub> data products using a standardized approach. Earth System Science Data, 2021, 13 (10), pp.4693-4710. 10.5194/essd-13-4693-2021 . insu-03463301

**HAL Id: insu-03463301**

**<https://insu.hal.science/insu-03463301>**

Submitted on 2 Dec 2021

**HAL** is a multi-disciplinary open access archive for the deposit and dissemination of scientific research documents, whether they are published or not. The documents may come from teaching and research institutions in France or abroad, or from public or private research centers.

L'archive ouverte pluridisciplinaire **HAL**, est destinée au dépôt et à la diffusion de documents scientifiques de niveau recherche, publiés ou non, émanant des établissements d'enseignement et de recherche français ou étrangers, des laboratoires publics ou privés.



Distributed under a Creative Commons Attribution 4.0 International License



# SeaFlux: harmonization of air–sea CO<sub>2</sub> fluxes from surface *p*CO<sub>2</sub> data products using a standardized approach

Amanda R. Fay<sup>1,★</sup>, Luke Gregor<sup>2,★</sup>, Peter Landschützer<sup>3</sup>, Galen A. McKinley<sup>1</sup>, Nicolas Gruber<sup>2</sup>, Marion Gehlen<sup>4</sup>, Yosuke Iida<sup>5</sup>, Goulven G. Laruelle<sup>6</sup>, Christian Rödenbeck<sup>7</sup>, Alizée Roobaert<sup>6</sup>, and Jiye Zeng<sup>8</sup>

<sup>1</sup>Department of Earth and Environmental Sciences, Columbia University and Lamont Doherty Earth Observatory, Palisades NY, USA

<sup>2</sup>Institute of Biogeochemistry and Pollutant Dynamics, ETH Zurich, Zurich, Switzerland

<sup>3</sup>The Ocean in the Earth System, Max Planck Institute for Meteorology, 20146 Hamburg, Germany

<sup>4</sup>Laboratoire des Sciences du Climat et de l'Environnement, Institut Pierre Simon Laplace, Gif-Sur-Yvette, France

<sup>5</sup>Atmosphere and Ocean Department, Japan Meteorological Agency, 1-3-4 Otemachi, Chiyoda-Ku, Tokyo 100-8122, Japan

<sup>6</sup>Department of Geosciences, Environment & Society – BGEOSYS, Université Libre de Bruxelles, Brussels, CP160/02, Belgium

<sup>7</sup>Biogeochemical Signals, Max Planck Institute for Biogeochemistry, P.O. Box 600164, Hans-Knöll-Str. 10, 07745 Jena, Germany

<sup>8</sup>National Institute for Environmental Studies (NIES), 16-2 Onogawa, Tsukuba, Ibaraki 305-8506, Japan

★These authors contributed equally to this work.

**Correspondence:** Amanda R. Fay (afay@ldeo.columbia.edu) and Luke Gregor (luke.gregor@usys.ethz.ch)

Received: 16 January 2021 – Discussion started: 29 March 2021

Revised: 2 August 2021 – Accepted: 2 September 2021 – Published: 15 October 2021

**Abstract.** Air–sea flux of carbon dioxide (CO<sub>2</sub>) is a critical component of the global carbon cycle and the climate system with the ocean removing about a quarter of the CO<sub>2</sub> emitted into the atmosphere by human activities over the last decade. A common approach to estimate this net flux of CO<sub>2</sub> across the air–sea interface is the use of surface ocean CO<sub>2</sub> observations and the computation of the flux through a bulk parameterization approach. Yet, the details for how this is done in order to arrive at a global ocean CO<sub>2</sub> uptake estimate vary greatly, enhancing the spread of estimates. Here we introduce the ensemble data product, SeaFlux (Gregor and Fay, 2021, <https://doi.org/10.5281/zenodo.5482547>, <https://github.com/luke-gregor/pySeaFlux>, last access: 9 September 2021); this resource enables users to harmonize an ensemble of products that interpolate surface ocean CO<sub>2</sub> observations to near-global coverage with a common methodology to fill in missing areas in the products. Further, the dataset provides the inputs to calculate fluxes in a consistent manner. Utilizing six global observation-based mapping products (CMEMS-FFNN, CSIR-ML6, JENA-MLS, JMA-MLR, MPI-SOMFFN, NIES-FNN), the SeaFlux ensemble approach adjusts for methodological inconsistencies in flux calculations. We address differences in spatial coverage of the surface ocean CO<sub>2</sub> between the mapping products, which ultimately yields an increase in CO<sub>2</sub> uptake of up to 17 % for some products. Fluxes are calculated using three wind products (CCMPv2, ERA5, and JRA55). Application of a scaled gas exchange coefficient has a greater impact on the resulting flux than solely the choice of wind product. With these adjustments, we present an ensemble of global surface ocean *p*CO<sub>2</sub> and air–sea carbon flux estimates. This work aims to support the community effort to

perform model–data intercomparisons which will help to identify missing fluxes as we strive to close the global carbon budget.

## 1 Introduction

Surface ocean partial pressure of CO<sub>2</sub> ( $p\text{CO}_2$ ) observations plays a key role in constraining the global ocean carbon sink. This is because long-term variation in surface ocean  $p\text{CO}_2$ , ultimately driven by increases in atmospheric  $p\text{CO}_2$  levels, is the driving force governing the exchange of CO<sub>2</sub> across the air–sea interface, which is commonly described through a bulk formula (Garbe et al., 2014; Wanninkhof, 2014):

$$\text{Flux} = k_w \cdot \text{sol} \cdot (p\text{CO}_2 - p\text{CO}_2^{\text{atm}}) \cdot (1 - \text{ice}), \quad (1)$$

where  $k_w$  is the gas transfer velocity, sol is the solubility of CO<sub>2</sub> in seawater (in units of  $\text{mol m}^{-3} \mu\text{atm}^{-1}$ ),  $p\text{CO}_2$  is the partial pressure of surface ocean CO<sub>2</sub> (in  $\mu\text{atm}$ ), and  $p\text{CO}_2^{\text{atm}}$  (in units of  $\mu\text{atm}$ ) represents the partial pressure of atmospheric CO<sub>2</sub> in the marine boundary layer. Finally, to account for the seasonal ice cover in high latitudes, the fluxes are weighted by 1 minus the ice fraction (ice), i.e., the open ocean fraction.

With the increasing number of observations of  $p\text{CO}_2$  available in each new release of the Surface Ocean Carbon Dioxide Atlas (SOCAT; Bakker et al., 2016) and the adoption of various  $p\text{CO}_2$  mapping techniques, multiple observation-based estimates of the  $p\text{CO}_2$  field are now publicly available and updated on an annual basis. Despite these advancements, the intercomparison of the products' global and regional flux values is hindered (1) by different areal coverage and (2) by a lack of a consistent approach to calculate the air–sea CO<sub>2</sub> flux from  $p\text{CO}_2$  (Table A1). These differences in flux calculations, specifically differing spatial coverage, complicate comparisons between the products and global ocean biogeochemistry models (GOBMs). In this work, we harmonize these products' flux estimates, specifically addressing three key differences between product methodologies. The resulting flux estimates can then be more directly compared to models with respect to uncertainty attribution with all sources of discrepancy attributable to the mapping method or flux calculation.

The first step addresses the variable spatial coverage of current  $p\text{CO}_2$  products. Many of the current mapped products only cover roughly 90 % of the ocean surface, missing continental shelves and high-latitude regions. A newly released global  $p\text{CO}_2$  climatology product (Landschützer et al., 2020b) includes coverage in the coastal and Arctic regions. We use this climatology to fill any missing areas in each individual product to create consistent full global ocean coverage.

The second methodological step is the choice of flux parameterization and appropriate scaling of wind speed data.

Roobaert et al. (2018) presented uncertainty in air–sea carbon flux induced by various parameterizations of the gas transfer velocity and wind speed data products. Utilizing the MPI-SOMFFN  $p\text{CO}_2$  product (Landschützer et al., 2020a) and a quadratic parameterization (Wanninkhof, 1992; Ho et al., 2006), they find flux estimates that diverge by 12 % depending on the choice of wind speed products. Additionally, they find regional discrepancies to be much more pronounced than global differences, specifically highlighting the equatorial Pacific, Southern Ocean, and North Atlantic as regions most impacted by the choice of wind product. Roobaert et al. (2018) stress that to minimize the uncertainties associated with the wind speed product chosen, the global coefficient of gas transfer must be individually calculated for each (Wanninkhof, 1992, 2014). In this work, we assess the impact of wind speed product choice and scaling on six  $p\text{CO}_2$  products' calculated air–sea flux estimates. By applying a consistent flux calculation methodology to each  $p\text{CO}_2$  product, we minimize the methodological divergence of fluxes within the ensemble.

Here, we present SeaFlux, a dataset that provides a consistent approach specifically targeting the most commonly used  $p\text{CO}_2$  data products to deliver an end-product for intercomparisons within assessment studies such as the Global Carbon Budget (Friedlingstein et al., 2020) and the Regional Carbon Cycle Assessment and Processes (RECCAP). The SeaFlux dataset is accompanied by a Python package, called *py-SeaFlux* (<https://github.com/lukegre/pySeaFlux>, last access: 9 September 2021), that enables users to calculate fluxes for other configurations, use cases, and resolutions. Specifically, by first addressing differences in spatial coverage between the observation-based products we can better present a true global  $p\text{CO}_2$  estimate for each product. SeaFlux also provides gas transfer velocities scaled to independent estimates of the gas transfer velocity based on the ocean <sup>14</sup>C inventory. Further, the dataset includes estimates of atmospheric  $p\text{CO}_2$  and the solubility of CO<sub>2</sub> in seawater. Finally, by calculating fluxes using multiple scaled gas transfer velocities for different wind products, we present a methodologically consistent database of air–sea CO<sub>2</sub> fluxes calculated from available  $p\text{CO}_2$  products. SeaFlux is thus an ensemble data product with documented code (pySeaFlux) allowing the community to reproduce consistent flux calculations from various data-based  $p\text{CO}_2$  reconstructions now and in the future.

## 2 Methods

SeaFlux is based on six observation-based  $p\text{CO}_2$  products and spans the years 1990–2019 (Table 1). These six products

include three neural-network-derived products (CMEMS-FFNN, MPI-SOMFFN, NIES-FNN), a mixed layer scheme product (JENA-MLS), a multiple linear regression (JMA-MLR), and a machine learning ensemble (CSIR-ML6). These products are included as they have been regularly updated to extend their time period and incorporate additional data that come with each annual release of the SOCAT database.

All of these methods provide three-dimensional fields (latitude, longitude, time) of the sea surface  $p\text{CO}_2$  and the air–sea  $\text{CO}_2$  flux. In their original form, each product may utilize different choices for the inputs to Eq. (1) (Table A1). While the choices made by each product’s creator, listed in Table A1, are not incorrect, by utilizing a uniform methodology in flux calculation, provided by pySeaFlux, the differences in the resulting flux estimate can be attributed to the  $p\text{CO}_2$  mapping method itself. In this work we recompute the fluxes using the following inputs to the bulk parameterization approach Eq. (1):  $k_w$  is the gas transfer velocity (further discussed in Sect. 2.3);  $\text{sol}$  is the solubility of  $\text{CO}_2$  in seawater (in units of  $\text{mol m}^{-3} \mu\text{atm}^{-1}$ ), calculated using the formulation by Weiss (1974), near-surface EN4 salinity (Good et al., 2013), NOAA Optimum Interpolation Sea Surface Temperature V2 (OISSTv2) (Reynolds et al., 2002), and European Centre for Medium-Range Weather Forecasts (ECMWF) ERA5 sea level pressure (Hersbach et al., 2020);  $\text{ice}$  is the sea-ice fraction from NOAA OISSTv2 (Reynolds et al., 2002);  $p\text{CO}_2$  is the partial pressure of oceanic  $\text{CO}_2$  (in  $\mu\text{atm}$ ) for each observation-based product after filling, as discussed in Sect. 2.1; and  $p\text{CO}_2^{\text{atm}}$  is the dry air mixing ratio of atmospheric  $\text{CO}_2$  ( $x\text{CO}_2$ ) from the ESRL surface marine boundary layer  $\text{CO}_2$  product available at <https://www.esrl.noaa.gov/gmd/ccgg/mb/mbldata.php> (last access: 10 October 2020) (Dlugokencky et al., 2019) multiplied by ERA5 sea level pressure (Hersbach et al., 2020) at monthly resolution and applying the water vapor correction according to Dickson et al. (2007). All of the components of Eq. (1) are available in the SeaFlux dataset.

Throughout this study, flux is defined as being positive when  $\text{CO}_2$  is released from the ocean to the atmosphere and negative when  $\text{CO}_2$  is absorbed by the ocean from the atmosphere. In the following sections, we discuss the three steps that have the greatest impact on the inconsistencies between flux calculations in the six  $p\text{CO}_2$  products and the approach that we utilize for the SeaFlux ensemble product.

## 2.1 Step 1: area filling

Machine learning methods aim to maximize the utility of the existing in situ observations by extrapolation using various proxy variables for processes influencing changes in ocean  $p\text{CO}_2$ . Extrapolation with these independently observed variables is possible due to the nonlinear relationship between  $p\text{CO}_2$  in the surface ocean and the proxies that drive these changes. However, not all of the proxy variables

have complete global ocean coverage for all months; therefore, the resulting  $p\text{CO}_2$  products are limited by the extent of the proxy variables (Figs. 1, A1). Additionally, in continental shelf regions, there is the potential that different relationships of  $p\text{CO}_2$  to the proxy variables are expected as opposed to in the open ocean, thus limiting the extrapolations. The mixed layer scheme (utilized by the JENA-MLS product) does not suffer from such missing areas but also does not distinguish between coastal and open ocean; it is stated to be an open ocean product which is extrapolated to the full global coverage (Rödenbeck et al., 2013). For this reason, it is not utilized in SeaFlux as a potential product for filling missing areas in the other  $p\text{CO}_2$  products.

To account for differing area coverage, past studies (Friedlingstein et al., 2019, 2020; Hauck et al., 2020) have adjusted observation-based flux products by simply scaling their global flux based on the percent of the total ocean area represented (Fig. A2). This does not account for the fact that some areas have  $\text{CO}_2$  flux densities that are higher or lower than the global average, and their adjustment would be based on that mean value (Tables 1, 3). Thus, the magnitude of the adjustment by area-scaling is likely an underestimate in some years or products (McKinley et al., 2020). One specific example is the northern high latitudes where coverage by the six products varies substantially. Similarly, three products provide estimates in marginal seas such as the Mediterranean, while the other three products have no reported  $p\text{CO}_2$  values here.

To address the inconsistent spatial coverage in products we utilize a newly released open and coastal merged climatology product (MPI-ULB-SOMFFN; Landschützer et al., 2020b, c) that is a blend of the coastal ocean SOMFFN mapping method (Laruelle et al., 2017) and the open ocean equivalent (MPI-SOMFFN; Landschützer et al., 2020a). The merged product includes full coverage of open ocean  $p\text{CO}_2$  along with coastal ocean regions, marginal seas, and the Arctic Ocean at  $1^\circ$  by  $1^\circ$  or finer spatial resolution. A potential alternative resource for filling the missing regions is the OceanSODA-ETHZ surface  $p\text{CO}_2$  product (Gregor and Gruber, 2021) that maps both the open ocean and marginal seas explicitly for the period 1985–2018 (unlike the JENA-MLS approach). However, as with other products, OceanSODA-ETHZ has limited coverage in the Arctic. A comparison of the overlapping regions between the MPI-ULB-SOMFFN and OceanSODA-ETHZ products shows good agreement (Fig. A3). We have confidence moving forward using solely MPI-ULB-SOMFFN for area-filling, as including OceanSODA-ETHZ would not result in substantially different results and would be constrained by its limited Arctic coverage.

For each observation-based product, we fill missing grid cells with a scaled value based on the global-coverage MPI-ULB-SOMFFN climatology (Fig. 2). The scaling accounts for year-to-year changes in  $p\text{CO}_2$  in the missing areas (given that the extended MPI-ULB-SOMFFN product is a monthly



**Table 1.** Global area coverage and mean  $p\text{CO}_2$  for the six observation-based products. Area coverage listed represents the average annual area covered for 1990–2019 as this value changes monthly for many products (Fig. A1). Change is defined as the filled product minus original product (i.e., a negative change implies the original product had a larger global/regional mean  $p\text{CO}_2$  than the filled product). Global and hemispheric mean  $p\text{CO}_2$  values for filled/original coverage are included in parentheses below the delta value.

Product	Area coverage (% global ocean)	Mean global $p\text{CO}_2$ change ( $\mu\text{atm}$ )	Northern Hem. $p\text{CO}_2$ change ( $\mu\text{atm}$ )	Southern Hem. $p\text{CO}_2$ change ( $\mu\text{atm}$ )
CMEMS-FFNN Denvil-Sommer et al. (2019) Chau et al. (2020)	89 %	−1.50 (364.86/366.36)	−3.96 (362.86/366.81)	0.33 (366.36/366.03)
CSIR-ML6 Gregor et al. (2019)	93 %	−0.75 (364.23/364.98)	−1.72 (362.10/363.82)	0.07 (365.81/365.74)
JENA-MLS Rödenbeck et al. (2013)	100 %	0.00 (362.35/362.35)	0.00 (357.87/357.87)	0.00 (365.70/365.70)
JMA-MLR Iida et al. (2020)	85 %	−0.50 (362.45/362.95)	−1.97 (360.02/361.98)	0.77 (364.26/363.49)
MPI-SOMFFN Landschützer et al. (2014, 2020a)	89 %	−0.90 (364.61/365.50)	−2.18 (362.50/364.68)	0.17 (366.18/366.01)
NIES-FNN Zeng et al. (2014)	91 %	−0.23 (361.56/361.80)	−0.86 (360.75/361.62)	0.25 (362.16/361.91)

climatology centered on the year 2006) and is obtained as follows.

To extend the open and coastal merged climatology (MPI-ULB-SOMFFN) to 1990–2019, we calculate a global scaling factor based on the product-based ensemble mean  $p\text{CO}_2$  for regions that are covered consistently by all six  $p\text{CO}_2$  products. We first mask all  $p\text{CO}_2$  products to a common sea mask before taking an ensemble mean ( $p\text{CO}_2^{\text{ens}}$ ). Next, we divide this ensemble mean by the MPI-ULB-SOMFFN climatology ( $p\text{CO}_2^{\text{clim}}$ ) at monthly  $1^\circ$  by  $1^\circ$  resolution (Eq. 2). The monthly scaling factor ( $\text{sf}_{p\text{CO}_2}$ ) is calculated by taking the mean over the spatial dimensions. An alternative method of calculating the scaling factor individually for each  $p\text{CO}_2$  product yields very similar results; the benefit of the ensemble approach is that it allows for the scaling factor to be quickly utilized for any other  $p\text{CO}_2$  product under development.

The scaling factor calculation can be represented as

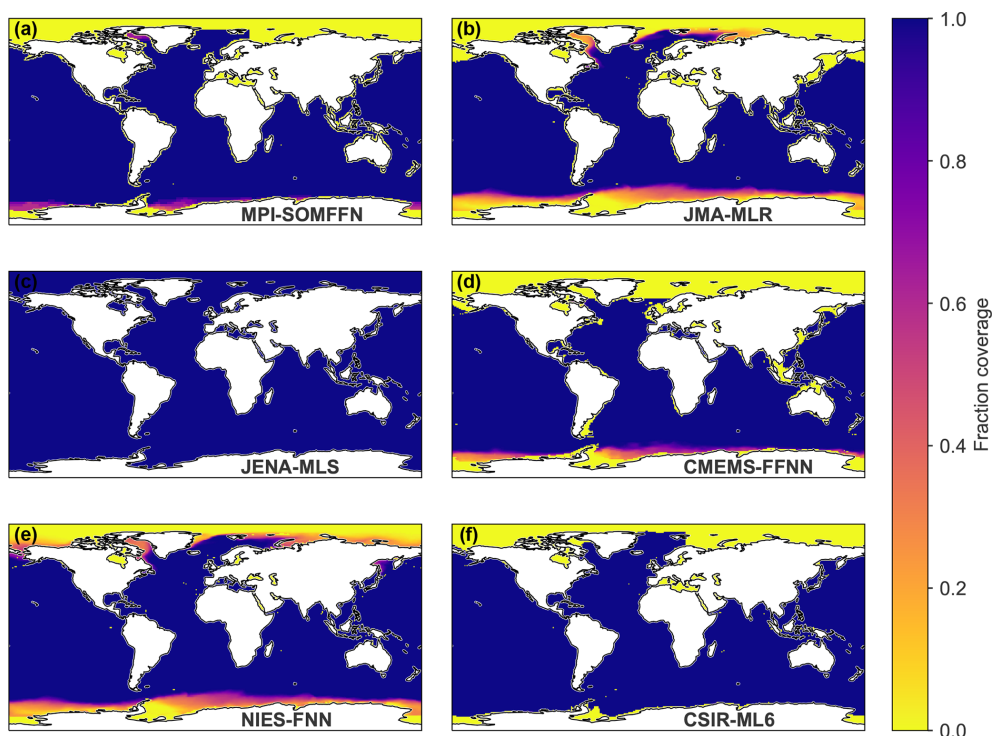
$$\text{sf}_{p\text{CO}_2} = \text{mean}_{x,y} \left( \frac{p\text{CO}_2^{\text{ens}}}{p\text{CO}_2^{\text{clim}}} \right), \quad (2)$$

where  $\text{sf}_{p\text{CO}_2}$  is the one-dimensional scaling factor (time dimension),  $p\text{CO}_2^{\text{ens}}$  is the ensemble mean of all  $p\text{CO}_2$  products at three dimensions, monthly  $1^\circ$  by  $1^\circ$  resolution,  $p\text{CO}_2^{\text{clim}}$  is the MPI-ULB-SOMFFN climatology, also at three dimensions but limited to just one climatological year. The  $x$  and  $y$  indicate that we take the area-weighted average over longitude ( $x$ ) and latitude ( $y$ ) resulting in the monthly one-dimensional scaling value. If a product mean is exactly equal to the climatology mean, the scaling factor is 1. The

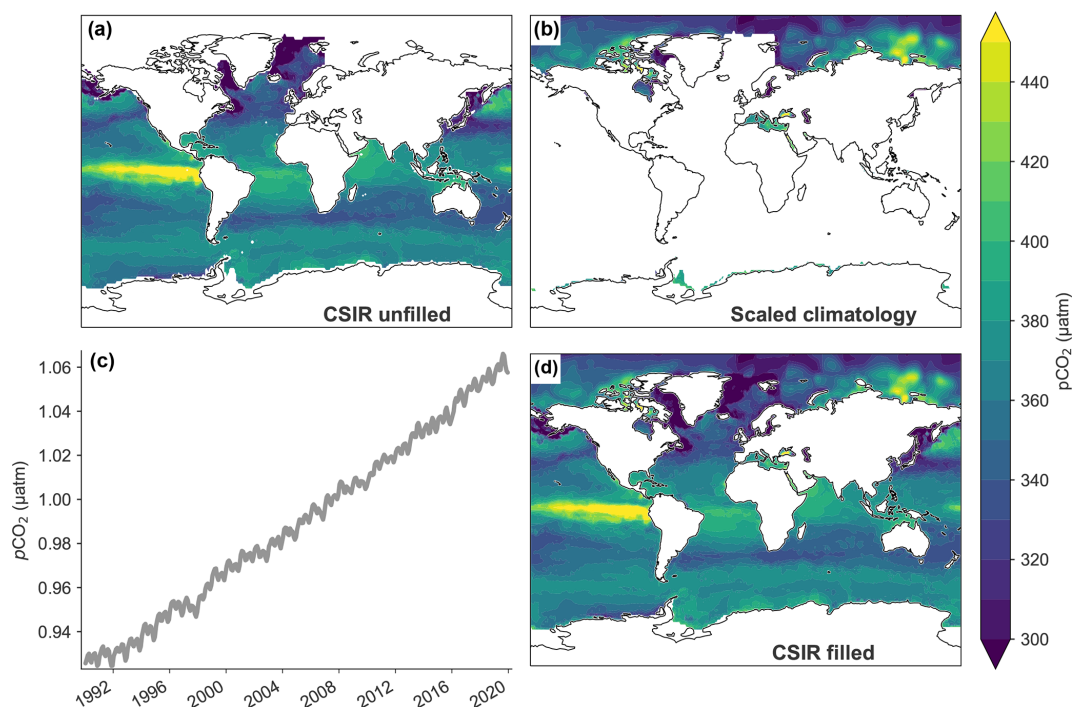
value ranges from 0.91 to 1.06 over the 30-year period. The one-dimensional scaling factor is then multiplied by the MPI-ULB-SOMFFN climatology for each spatial point resulting in a three-dimensional scaled filling map. These values are then used to fill in missing grid cells in each observation-based product.

Globally, the area-filling adjustments result in a difference of less than 17 % of the total flux in all products, with the mean adjustment for the six products at 8 %. In the Northern Hemisphere, however, the filling process can drive adjustments of up to 32 % due to missing coverage in the North Atlantic specifically (Fig. 1, Table 3). As expected, the observation-based products with more complete spatial coverage tend to have smaller flux adjustments. However, the impact on the final  $\text{CO}_2$  flux depends on both the  $\Delta p\text{CO}_2$  and wind speed of the areas being filled (Figs. 2–3, Tables 1, 3). The only product that does not change during this adjustment process is the JENA-MLS mixed-layer scheme-based product (Rödenbeck et al., 2013) which is produced with full spatial coverage and therefore needs no spatial filling; any difference between filled/unfilled for this product is due to the ocean mask applied in SeaFlux.

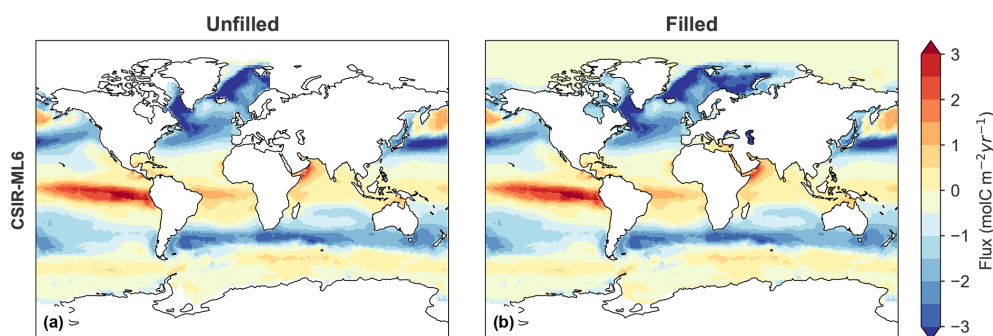
Our approach is not without its own assumptions and limitations. We rely on a single estimate to fill the missing  $p\text{CO}_2$  given that this is the only publicly available coastal-resolution product currently existing. Nevertheless, the fact that common missing areas along coastal regions and marginal seas are reconstructed using specific coastal observations provides a step forward from the linear-scaling approach currently used by the Global Carbon Budget



**Figure 1.** Maps showing the fraction of months (1990–2019) with coverage available for each of the six  $p\text{CO}_2$  data products used in this study. Blue regions represent full temporal coverage of  $p\text{CO}_2$  in the product, while yellow areas show regions with no reported  $p\text{CO}_2$  values for any month of the time series.



**Figure 2.** Maps demonstrating the filling procedure employed in this study using a snapshot of  $p\text{CO}_2$  from May 2013. (a) Map of unfilled CSIR-ML6  $p\text{CO}_2$ . (b) The scaled  $p\text{CO}_2$  climatology of Landschützer et al. (2020b). (c) The mean  $p\text{CO}_2$  for the scaled climatology over time. (d) The CSIR-ML6  $p\text{CO}_2$  product (a) filled using the scaled climatology (b).



**Figure 3.** Mean flux ( $\text{mol m}^{-2} \text{yr}^{-1}$ ) for 1990–2019 for CSIR-ML6 product. **(a)** Map of mean-calculated flux using the original  $p\text{CO}_2$  product and three scaled wind products (CCMPv2, ERA5, JRA55); **(b)** map of mean-calculated flux using the filled  $p\text{CO}_2$  product and three scaled wind products. Similar maps for all other products are available in Fig. A5.

(Friedlingstein et al., 2019, and Fig. A2 in Friedlingstein et al., 2020). Further confidence is provided by previous research showing that climatologically relevant signals, i.e., mean state and seasonality, are well reconstructed by the MPI-SOMFFN method (Gloege et al., 2021).

Furthermore, our scaled filling methodology assumes that  $p\text{CO}_2$  in the missing ocean regions is increasing at the same rate as the common area of open ocean  $p\text{CO}_2$  used to calculate the scaling factor. Research from coastal ocean regions and shelf seas reveal that, in spite of a large spatial heterogeneity, this is a reasonable first-order approximation (Laruelle et al., 2018).

Any method of artificially filling in missing areas introduces additional uncertainty to the flux estimates. However, this introduced uncertainty is necessary for true global intercomparison efforts. A concern is that the filling method would artificially lower the spread of the products in the SeaFlux ensemble. We do not find this to be the case. The standard deviation of the mean flux for a most conservative mask, which includes only those grid cells with values reported for all six  $p\text{CO}_2$  products for all months, is nearly identical to the standard deviation of the final version of the SeaFlux product ensemble. This comparison indicates that our filling method does not in fact artificially lower the uncertainty or decrease the spread of the products.

## 2.2 Step 2: wind product selection

Historical wind speed observations (including measurements from satellites and moored buoys) are aggregated and extrapolated through modeling and data assimilation systems to create global wind reanalyses. These reanalyses are required to compute air–sea gas exchange. Air–sea flux is commonly parameterized as a function of the gradient of  $\text{CO}_2$  between the ocean and the atmosphere with wind speed modulating the rate of the gas exchange (Eq. 1). Each of these wind reanalyses has strengths and weaknesses, specifically on regional and seasonal scales (Chaudhuri et al., 2014; Roobaert et al., 2018; Ramon et al., 2019), but all are considered rea-

sonable options by the community (Roobaert et al., 2018). The pySeaFlux package includes options for the user to select their wind product of choice. For the SeaFlux ensemble product, we use three wind reanalysis products for completeness: the Cross-Calibrated Multi-Platform v2 (CCMP2; Atlas et al., 2011), the Japanese 55-year Reanalysis (JRA55; Kobayashi et al., 2015), and the European Centre for Medium-Range Weather Forecasts (ECMWF) ERA5 (Hersbach et al., 2020). The wind speed ( $U_{10}$ ) is calculated at the native resolution of each wind product from  $u$  and  $v$  components of wind. Details of each wind product are shown in Table A2.

## 2.3 Step 3: calculation of gas transfer

We employ the quadratic wind speed dependence (Wanninkhof, 1992; Ho et al., 2006) and calculate the gas transfer velocity ( $k_w$ ) for each of the wind reanalysis products as

$$k_w = a \cdot \langle U^2 \rangle \cdot \left( \frac{\text{Sc}}{660} \right)^{-0.5}, \quad (3)$$

where the units of  $k_w$  are in centimeters per hour ( $\text{cm h}^{-1}$ ),  $\text{Sc}$  is the dimensionless Schmidt number, and  $\langle U^2 \rangle$  denotes the square of average 10 m high winds ( $\text{m s}^{-1}$ ), also referred to as the second moment of the wind speed. We choose the quadratic dependence of the gas transfer velocity as it is widely accepted and used in the literature (Wanninkhof, 1992; Ho et al., 2006); however, we acknowledge that the actual relationship could vary from less than linear (Krakauer et al., 2006) to cubic (Wanninkhof and McGillis, 1999; Stanley et al., 2009). Observational and modeling studies have often suggested that different parameterizations could be more appropriate under specific conditions such as in regions of high wind speeds (Fairall et al., 2000; Nightingale et al., 2000; McGillis et al., 2001; Krakauer et al., 2006); recent direct carbon dioxide flux measurements made in the high-latitude Southern Ocean confirm that even in this high wind environment, a quadratic parameterization fits the observations best

(Butterworth and Miller, 2016). Future updates of SeaFlux will include  $k_w$  for other parameterizations (e.g., cubic).

We calculate the square of the wind speed at the native resolution of each wind product and then average it to  $1^\circ$  by  $1^\circ$  monthly resolution (see Table A2). The order of this calculation is important as variability is lost when resampling data to lower resolutions because of the concavity of the quadratic function. For example, taking the square of time-averaged wind speeds would result in an underestimate of the gas transfer velocity (Sarmiento and Gruber, 2006; Sweeney et al., 2007). The resulting second moment is equivalent to  $\langle U^2 \rangle = U_{\text{mean}}^2 + U_{\text{std}}^2$ , where  $U_{\text{mean}}$  and  $U_{\text{std}}$  are the temporal mean and standard deviation calculated from the native temporal resolution of  $U$ .

In addition to the choice of wind parameterization (Roobaert et al., 2018), large differences in flux can result due to the scaling of the coefficient of gas transfer ( $a$ ) applied when calculating the global mean gas transfer velocity. This constant originates from the gas exchange process studies (Krakauer et al., 2006; Sweeney et al., 2007; Müller et al., 2008; Naegler, 2009) which utilize observations of radio-carbon data from the GEOSECS and WOCE/JGOFS expeditions (Key et al., 2004). The  $^{14}\text{C}$  released from nuclear bomb testing (hence bomb- $^{14}\text{C}$ ) in the mid-20th century has since been taken up by the ocean. The number of bomb- $^{14}\text{C}$  atoms in the ocean, relative to the pre-bomb  $^{14}\text{C}$ , can thus be used as a constraint on the long-term rate of exchange of carbon between the atmosphere and the ocean. This coefficient,  $a$ , is not consistent for each wind product and must thus be individually calculated via the equation based on equation 39 from Naegler (2009):

$$a = k_w \cdot \langle U^2 \rangle^{-1} \cdot \left( \frac{\text{Sc}}{660} \right)^{0.5}, \quad (4)$$

the parameters of which are defined in Eq. (3). The units of the coefficient  $a$  are  $(\text{cm h}^{-1})(\text{m s}^{-1})^{-2}$ . In the cost function, a global average of  $k_w$  is set for which several estimates exist in the literature (ranging from 15.1 to 18.2  $\text{cm h}^{-1}$ ), introducing another source of uncertainty as shown in Table A1 (Krakauer et al., 2006; Naegler et al., 2006; Sweeney et al., 2007; summarized in Table 2 of Naegler, 2009). Naegler (2009) show that these estimates fall within the  $\sim 20\%$  range of uncertainty of the bomb- $^{14}\text{C}$ -constrained global average  $k_w$ , which they estimate at  $16.5 \pm 3.2 \text{ cm h}^{-1}$ . We scale  $k_w$  to this single value ( $16.5 \text{ cm h}^{-1}$ ) over the three-decade period 1990–2019.

Our scaled coefficients (Table 2) correspond well with the estimate of Wanninkhof (2014) who uses the CCMP wind product to estimate  $a$  as 0.251, whereas our estimate of  $a$  for CCMP is 0.257. Scaling  $k_w$  to a single global value (here,  $16.5 \text{ cm h}^{-1}$ ) for all wind products reduces the spread of flux estimates, but it does not reduce the uncertainty which remains  $\sim 20\%$ . This uncertainty must be accounted for when reporting fluxes (Naegler, 2009; Wanninkhof, 2014). In this

work, we refer to this uncertainty, which is inherent to the formulation and scaling of  $k_w$ , as intrinsic uncertainty, which we do not try to reduce with SeaFlux and include in our reported uncertainty estimate. However, by correctly scaling  $k_w$  for each wind product we reduce the disharmony associated with incorrect scaling by up to 9 %, depending on which  $p\text{CO}_2$  and wind reanalysis products are considered. This is consistent with previous results shown by Roobaert et al. (2018, 2019).

## 2.4 Further parameters for flux calculation

The remaining parameters of Eq. (1) are the solubility of  $\text{CO}_2$  in seawater (sol), the atmospheric partial pressure of  $\text{CO}_2$  ( $p\text{CO}_2^{\text{atm}}$ ), and the area weighting to account for sea-ice cover. While the choices of products used for these parameters can also result in differences in flux estimates, the impacts are much smaller as compared with the parameters discussed above.

Atmospheric  $p\text{CO}_2$  is calculated as the product of surface  $x\text{CO}_2$  and sea level pressure corrected for the contribution of water vapor pressure. The choice of the sea level pressure product or absence of the water vapor correction can have a small, but not insignificant, impact on the calculated fluxes. Additionally, some products utilize the output of an atmospheric  $\text{CO}_2$  inversion product (e.g., CarboScope, Rödenbeck et al., 2013; CAMS  $\text{CO}_2$  inversion, Chevallier, 2013) which can introduce differences in the flux estimate outside of the sources related to a product's surface ocean  $p\text{CO}_2$  mapping method. Importantly, we do not advocate that our estimate of  $p\text{CO}_2^{\text{atm}}$  is an improvement over other estimates thereof; rather we provide an estimate of  $p\text{CO}_2^{\text{atm}}$  that has few assumptions and leads to a methodologically consistent estimate of  $\Delta p\text{CO}_2$ . We maintain the same philosophy in our estimates of the solubility of  $\text{CO}_2$  in seawater and sea-ice area weighting, and therefore we do not elaborate on them here.

## 3 Results and discussion

### 3.1 SeaFlux air–sea $\text{CO}_2$ flux calculation

Following Eq. (1),  $\text{CO}_2$  flux is calculated individually for each of the six observation-based products with three available wind products (CCMPv2, ERA5, JRA55), as discussed in Sect. 2.2 (Table 4). Since we account for spatial coverage differences via our filling method (Sect. 2.1), taking a global mean flux for each of the data products truly follows the definition of “global” for each original product. Figure 4 shows the difference these wind products generate on the resulting global mean flux of the CSIR-ML6 product as one example (other products in Fig. A4). The three wind products show consistent fluxes throughout the time series, with the importance of appropriate scaling of the coefficient of gas transfer ( $a$ ) evident in the significant differences between global



**Table 2.** CSIR-ML6 product flux values. Column 1 lists the scaled coefficient of gas transfer for each of the three wind reanalysis products. Column 2 includes the global mean flux using each wind product. Column 3 shows the difference in resulting flux when using a scaled coefficient of gas transfer versus a set value of 0.26. All flux values reported are from the area-filled product version. All values are computed over the period 1990–2019.

Wind product	Scaled coefficient of gas transfer ( $a$ )	Global flux mean ( $\text{PgC yr}^{-1}$ )	Mean flux difference (scaled–unscaled)
CCMP2	0.257	−1.81	−0.04
ERA5	0.271	−1.81	−0.13
JRA55	0.260	−1.96	−0.07

**Table 3.** Mean air–sea fluxes ( $\text{PgC yr}^{-1}$ ) for 1990–2019 using the mean of three wind products, calculated for the filled global area and the unfilled native “global” area for each  $p\text{CO}_2$  product. The Northern Hemisphere (NH) and Southern Hemisphere (SH) fluxes (unfilled/filled) are included to highlight the imbalanced regional effect of the spatial filling process.

Product	Global flux unfilled/filled	NH flux unfilled/filled	SH flux unfilled/filled
CMEMS-FFNN	−1.50/ −1.82	−0.62/ −0.91	−0.88/ −0.91
CSIR-ML6	−1.74/ −1.86	−0.82/ −0.93	−0.92/ −0.93
JENA-MLS	−1.91/ −1.91	−0.91/ −0.91	−0.99/ −0.99
JMA-MLR	−2.00/ −2.23	−0.94/ −1.15	−1.06/ −1.08
MPI-SOMFFN	−1.61/ −1.81	−0.75/ −0.93	−0.86/ −0.88
NIES-FNN	−2.16/ −2.21	−0.88/ −0.92	−1.28/ −1.28

mean fluxes calculated with unscaled and scaled  $a$  values (Fig. 4, Table 2). It is clear that the impact of applying the appropriate coefficient of gas transfer through proper scaling has an impact on the resulting flux time series.

### 3.2 SeaFlux ensemble flux

By calculating each product’s air–sea  $\text{CO}_2$  flux using consistent inputs described in Sect. 3.1, a more accurate comparison of fluxes with the SeaFlux ensemble is permitted. Combining all fluxes, we derive a mean flux estimate of  $-1.97 \pm 0.45 \text{ PgC yr}^{-1}$  (Tables 4, A3). We discuss the calculation of the uncertainty in the following section. This flux estimate is strengthened by the use of multiple observation-based  $p\text{CO}_2$  products and wind products which we consider to be independent estimates for the purpose of the uncertainty calculation. These flux values are different from those produced by the observation-based  $p\text{CO}_2$  product’s original creator, both spatially and on the mean (Figs. 5, A5, Tables A1, A3). However, by calculating fluxes in such a consistent manner, we on the one hand gain more confidence in the ensemble mean estimate as it considers representations using a variety of  $p\text{CO}_2$  reconstructions, gas transfer parameterizations, and wind products, and on the other hand, we have a more realistic uncertainty representation than previous estimates based on a single  $p\text{CO}_2$  reconstruction.

### 3.3 Uncertainty discussion

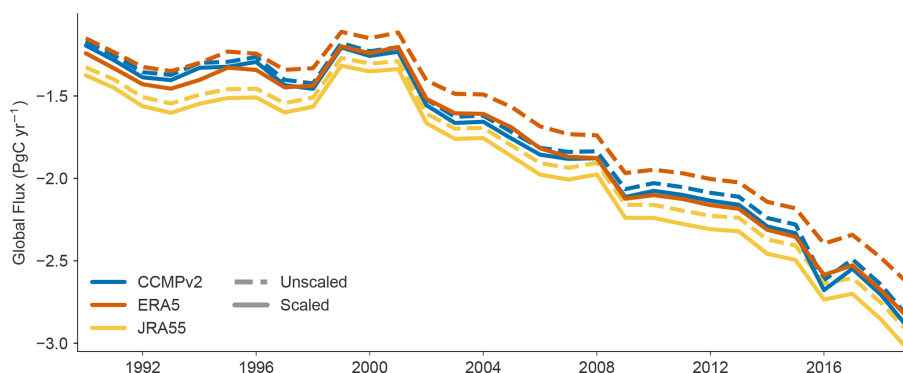
All flux estimates using such parameterizations are not without significant uncertainties, and SeaFlux is no exception. We estimate the uncertainty of the flux estimate to be  $0.45 \text{ PgC yr}^{-1}$ . Here, the stated spread represents  $\sqrt{\sum(\sigma_{\text{wind}}^2, \sigma_{p\text{CO}_2}^2, \sigma_{\text{kw}}^2)}$ , where  $\sigma_{p\text{CO}_2}$  ( $0.19 \text{ PgC yr}^{-1}$ ) is the mean standard deviation over the six filled  $p\text{CO}_2$  products,  $\sigma_{\text{wind}}$  ( $0.09 \text{ PgC yr}^{-1}$ ) is the mean standard deviation over the three wind products included in the SeaFlux product, and  $\sigma_{\text{kw}}^2$  ( $0.39 \text{ PgC yr}^{-1}$ ) is the 20 % uncertainty in the gas transfer velocity and associated scaling flux parameterization (Wanninkhof, 2014). This last estimate shows that there is significant intrinsic uncertainty inherent to the method of calculation, as estimated by Naegler (2009) and Wanninkhof (2014).

Currently, there is only one product available designed to estimate the  $p\text{CO}_2$  of coastal oceans, the Arctic Ocean, and marginal seas, and this has the potential to cause an underestimation of  $\sigma_{p\text{CO}_2}$ . It would be beneficial to likewise have an ensemble of estimates in these regions to better constrain the uncertainty attached to this filling approach. Therefore, while our current analysis shows that the chosen filling method does not itself reduce the spread in the products, we push the community to extend their products to the coastal ocean so as to eliminate the need for this correction in the future.



**Table 4.** Mean fluxes ( $\text{PgC yr}^{-1}$ ) for each observational  $p\text{CO}_2$  product over the period 1990–2019. Mean flux is calculated from filled coverage  $p\text{CO}_2$  map and scaled gas exchange coefficient; global mean flux is for three wind products (CCMP2, ERA5, JRA55) and the average. The time series of the mean flux values for each product (rightmost column) are plotted in Fig. 5.

$p\text{CO}_2$ mapping product	CCMPv2	ERA5	JRA55	Mean
CMEMS-FFNN	−1.77	−1.77	−1.92	$−1.82 \pm 0.09$
CSIR-ML6	−1.81	−1.81	−1.96	$−1.86 \pm 0.08$
JENA-MLS	−1.86	−1.85	−2.01	$−1.91 \pm 0.10$
JMA-MLR	−2.18	−2.18	−2.34	$−2.23 \pm 0.09$
MPI-SOMFFN	−1.77	−1.76	−1.91	$−1.81 \pm 0.09$
NIES-FNN	−2.15	−2.17	−2.30	$−2.21 \pm 0.08$
Mean	$−1.92 \pm 0.19$	$−1.92 \pm 0.20$	$−2.07 \pm 0.19$	$−1.97 \pm 0.21$



**Figure 4.** CSIR-ML6-calculated air–sea  $\text{CO}_2$  flux time series for various wind speed products, scaled (solid) and unscaled (dashed;  $\alpha = 0.251$ ). Time series plots for all  $p\text{CO}_2$  products and including two additional wind products (NCEP1 and NCEP2) are included in Fig. A4.

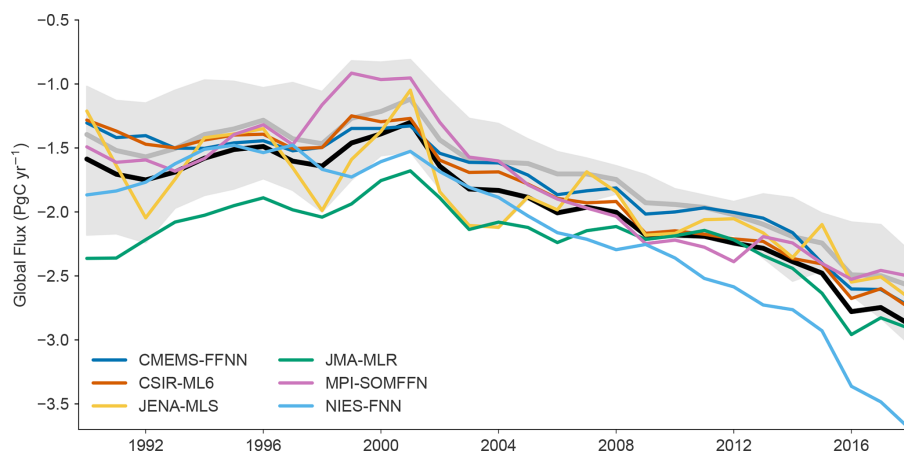
While the SeaFlux product is unable to further reduce these sources of uncertainty, the strength of the product is that it provides an estimated flux with no source of difference that is not implicit in the mapping method or flux calculation.

### 3.4 Issues not addressed by SeaFlux

While SeaFlux presents one approach to standardize the calculation of air–sea carbon flux, there remain issues that the ocean carbon community is still working towards understanding and incorporating. One such issue has been raised by Watson et al. (2020) who contend that a correction should be applied to in situ  $p\text{CO}_2$  observations to account for the vertical temperature gradient between the ship water intake depth and the surface skin layer where gas exchange actually takes place. A further correction should be applied when calculating fluxes to account for the “cool skin” effect caused by evaporation (Woolf et al., 2016; Watson et al., 2020). Applying these corrections results in an increasing  $\text{CO}_2$  sink by up to  $0.9 \text{ PgC yr}^{-1}$  (Watson et al., 2020). Here, we do not take such adjustments into account for two reasons. Firstly, the skin temperature correction to  $p\text{CO}_2$  needs to be applied directly to the measurements and not the final interpolated  $p\text{CO}_2$  from the data products. Hence, it is up to the developers of the SOCAT dataset and the developers of the

$p\text{CO}_2$  mapping products to decide on the inclusion of this correction. It would then be up to the developers of the data products to update their mapped products. Secondly, the cool skin correction would be equally applied to all methods and would not contribute to the inconsistencies in flux calculation that we are trying to address here. As the ocean carbon community moves towards consensus on such issues, SeaFlux will be updated to include revised protocols.

To compare these estimates of contemporary air–sea net flux ( $F_{\text{net}}$ ) from surface ocean  $p\text{CO}_2$  with estimates of the anthropogenic carbon flux from interior data (Mikaloff Fletcher et al., 2006; DeVries, 2014; Gruber et al., 2019) or from global ocean biogeochemical models (Friedlingstein et al., 2020; Hauck et al., 2020), it is necessary to account for the outgassing of natural carbon, which was supplied to the ocean by rivers, as well as the non-steady-state behavior of the natural carbon cycle (Hauck et al., 2020). Work is ongoing to quantify the lateral river carbon flux transported into the coastal and open oceans. Current estimates are  $0.23 \text{ PgC yr}^{-1}$  (Lacroix et al., 2020),  $0.45 \text{ PgC yr}^{-1}$  (Jacobson et al., 2007), and  $0.78 \text{ PgC yr}^{-1}$  (Resplandy et al., 2018), and the regional distribution of the resulting outgassing remains understood only from a few model simulations (Aumont et al., 2001; Lacroix et al., 2020). In addition, quantification of non-steady-state behavior of the natural carbon



**Figure 5.** Global flux time series from six observation-based products. Color lines show fluxes calculated from the standardized approach presented here (spatial filling with flux is calculated from three wind products, and the average flux is then plotted here); the black line shows the mean of six products. The shaded region shows the spread of original flux calculations from product creators with the mean in gray.

cycle has only recently been proposed, and significant uncertainty remains, with a magnitude range of  $0.05\text{--}0.4\text{ PgC yr}^{-1}$  for 1994–2007 (Gruber et al., 2019; McKinley et al., 2020). Similar to the cool skin correction suggested by Watson et al. (2020) discussed above, in this work we have not included these adjustments here as they would not contribute to the inconsistencies between the different products for  $F_{\text{net}}$  itself, which is our focus.

#### 4 Code and data availability

Data (Gregor and Fay, 2021) are available on Zenodo (<https://doi.org/10.5281/zenodo.5482547>), and the software used to generate these data is available on GitHub (<https://github.com/lukegre/pySeaFlux>, last access: 9 September 2021). NOAA\_OI\_SST\_V2 data are provided by the NOAA/OAR/ESRL PSL, Boulder, Colorado, USA (Reynolds et al., 2002, [https://doi.org/10.1175/1520-0442\(2002\)015<1609:AIISAS>2.0.CO;2](https://doi.org/10.1175/1520-0442(2002)015<1609:AIISAS>2.0.CO;2)).

#### 5 Conclusions

We introduce SeaFlux, a dataset that facilitates a standardized approach for flux calculations from observation-based  $p\text{CO}_2$  products. Specifically, we address the two largest sources of divergence in air–sea flux calculation, namely the differences in spatial coverage between the products and the scaling of the gas transfer velocity for available wind speed products based on global  $^{14}\text{C}$ -based constraints. The area adjustment is the largest contributor to the methodological discrepancies, resulting in an increase in  $\text{CO}_2$  uptake of  $0\text{--}17\%$  relative to the original, possibly incomplete coverage (depending on  $p\text{CO}_2$  product). The global scaling of the gas transfer velocity can change the  $\text{CO}_2$  flux on average by  $5\%$  relative to non-standardized flux calculations. The impact of

applying the appropriate gas exchange coefficient through proper scaling has a larger impact on the resulting flux time series than solely the choice of wind product. By accounting for these sources of differences, the global mean-calculated air–sea carbon flux calculated from the six available products is adjusted by up to  $21\%$ . The SeaFlux ensemble mean air–sea carbon flux is estimated to be  $-1.97 \pm 0.45\text{ PgC yr}^{-1}$  with the spread representing  $1\sigma$  as calculated from the 18 realizations.

This work provides an ensemble data product of the air–sea  $\text{CO}_2$  flux predicated on observation-based  $p\text{CO}_2$  products. This ensemble product is meant to facilitate the use of the  $p\text{CO}_2$  observation-based ocean flux estimates in assessment studies of the global carbon cycle, such as the Global Carbon Budget or RECCAP-2. Note that the original  $p\text{CO}_2$  products still offer additional information important in other applications, such as coverage over longer time periods, higher spatial or temporal resolution, or runs incorporating further auxiliary datasets or  $p\text{CO}_2$  data (e.g., SOCCOM float data; Bushinsky et al., 2019).

Along with the ensemble of  $\text{CO}_2$  flux fields, we also provide a public-use coding package (pySeaFlux) allowing users to apply the presented standardized flux calculations to their own data-based  $p\text{CO}_2$  reconstructions.

## Appendix A

**Table A1.** Summary of parameters used to calculate flux.

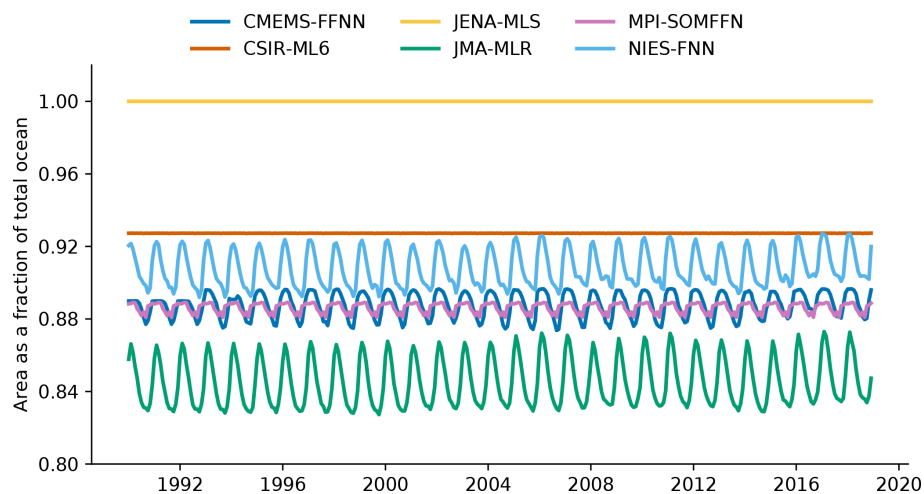
$p\text{CO}_2$ mapping product	Wind speed product	Scaling of gas transfer value	Atmospheric surface pressure	Gas exchange parameterization
This study	Calculated for three products and final result is an average of the resulting fluxes: ERA5, JRA55, CCMP2	Scaled to $16.5 \text{ cm h}^{-1}$	ERA5 Hersbach et al. (2020)	Quadratic Wanninkhof (1992)
CMEMS-FFNN Denvil-Sommer et al. (2019), Chau et al. (2020)	ERA5 Hersbach et al. (2020)	Scaled to $16.0 \text{ cm h}^{-1}$	CAMS inversion Chevallier (2013)	Quadratic Wanninkhof (1992)
CSIR-ML6 Gregor et al. (2019)	ERA5 Hersbach et al. (2020)	Scaled to $16.0 \text{ cm h}^{-1}$	ERA5 Hersbach et al. (2020)	Quadratic Wanninkhof (1992)
JENA-MLS Rödenbeck et al. (2013)	NCEP1 Kalnay et al. (1996)	Scaled to $16.5 \text{ cm h}^{-1}$	NCEP1 Kalnay et al. (1996)	Quadratic Wanninkhof (1992)
JMA-MLR Iida et al. (2020)	JRA55 Kobayashi et al. (2015)	Scaled to $16.5 \text{ cm h}^{-1}$	JRA55 Kobayashi et al. (2015)	Quadratic Wanninkhof (1992)
MPI-SOMFFN Landschützer et al. (2020a)	ERA5 Hersbach et al. (2020)	Scaled to $16.0 \text{ cm h}^{-1}$	NCEP1 Kalnay et al. (1996)	Quadratic Wanninkhof (1992)
NIES-FNN Zeng et al. (2014)	NCEP1 Kalnay et al. (1996)	Utilized $a = 0.26$ Takahashi et al. (2009)	NCEP1 Kalnay et al. (1996)	Quadratic Wanninkhof (1992)

**Table A2.** Summary of wind products used in this study. Note that the date range starts for the first full year of data. We do not use NCEP1/2 in our main results, but these are included for reference. Time units are in hours and space in degrees. Mean wind speed is given for the ice-free ocean for the three-decade period 1990–2019.

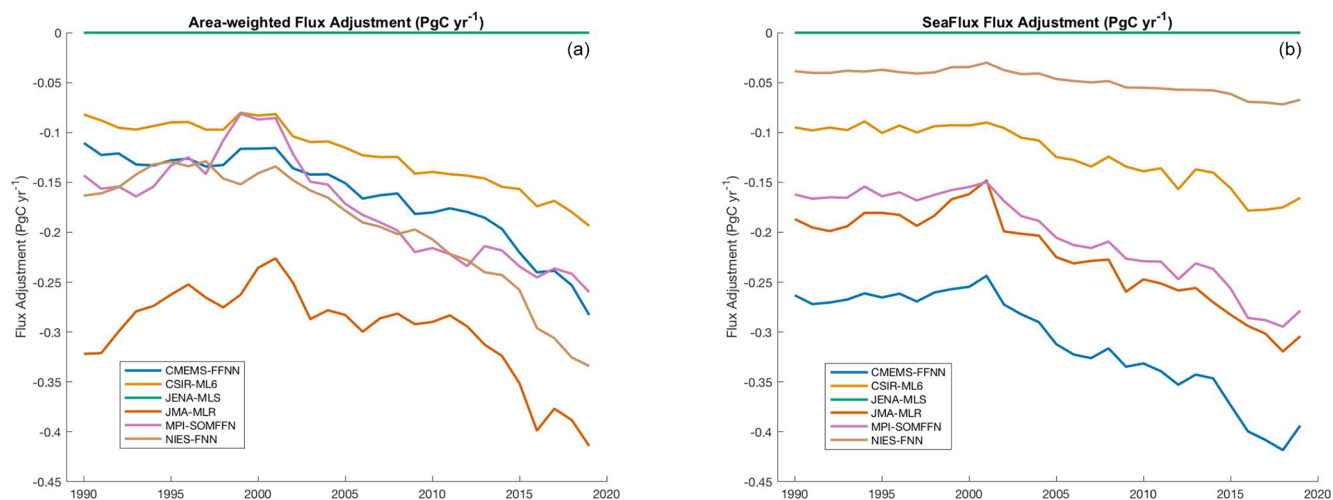
Product name	Resolution		Date range	Mean speed ( $\text{m s}^{-1}$ )	Scaling ( $a$ )	Reference
	Time	Space				
Cross-Calibrated Multi-Platform v2	6	0.25	1988–present	7.7	0.257	Atlas et al. (2011)
ECMWF Reanalysis 5th Generation	1	0.25	1979–present	7.5	0.271	Hersbach et al. (2020)
Japanese 55-year Reanalysis	3	0.50	1958–present	7.6	0.260	Kobayashi et al. (2015)
NCEP-NCAR reanalysis 1	6	2.50	1948–present	7.2	0.287	Kalnay et al. (1996)
NCEP-NCAR reanalysis 2	6	2.50	1979–present	8.3	0.218	Kanamitsu et al. (2002)

**Table A3.** Mean fluxes ( $\text{PgC yr}^{-1}$ ) for 1990–2019 for each observational  $p\text{CO}_2$  product. Mean flux calculated from unfilled (filled) coverage  $p\text{CO}_2$  map and unscaled/scaled coefficient of gas transfer (unscaled = 0.251), calculated for three wind products (CCMP2, ERA5, JRA55) with the average shown here. Percent change is calculated as the difference between the unfilled–unscaled and filled–scaled as a fraction of the filled–scaled; it does not indicate an error in the product’s flux but is a representation of the impact the filling and scaling can have on the end flux estimate. The mean flux as reported in the original  $p\text{CO}_2$  product is included for comparison (Fig. 5).

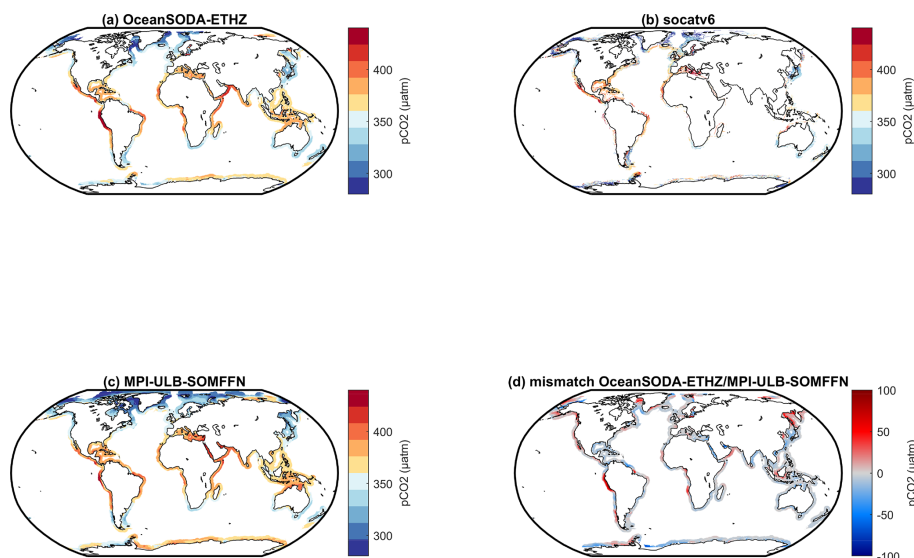
$p\text{CO}_2$ mapping product	Unfilled–unscaled	Filled–scaled	% change	Original product
CMEMS-FFNN	−1.44	−1.82	21 %	−1.75
CSIR-ML6	−1.66	−1.86	11 %	−1.55
JENA-MLS	−1.82	−1.91	5 %	−1.93
JMA-MLR	−1.91	−2.23	15 %	−1.99
MPI-SOMFFN	−1.54	−1.81	16 %	−1.49
NIES-FNN	−2.06	−2.21	7 %	−1.61



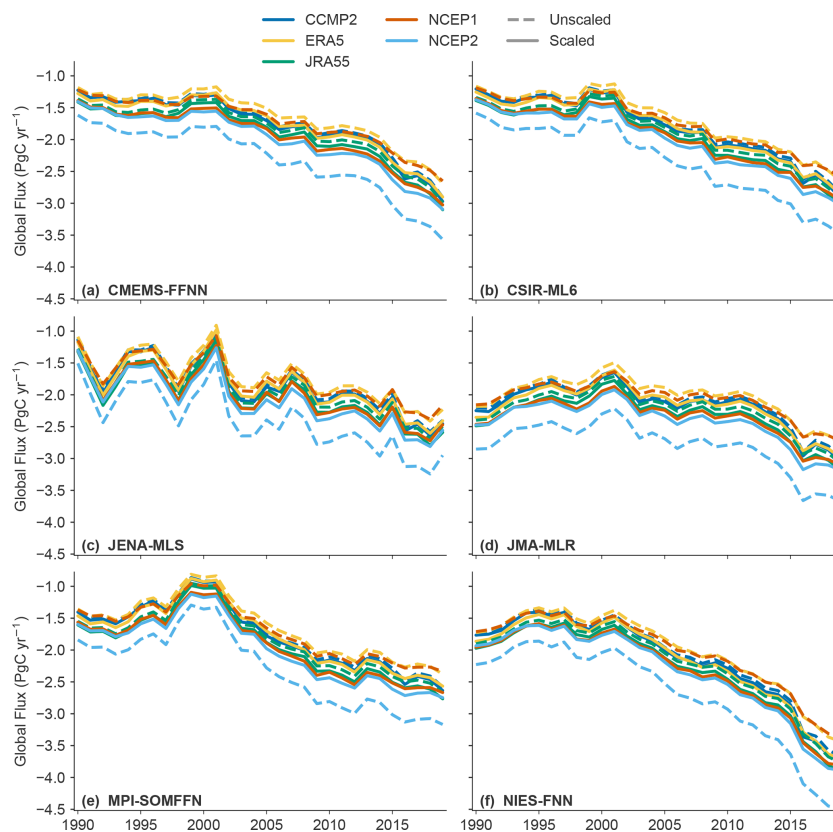
**Figure A1.** Time series showing the fraction of area covered by observations as a function of time (monthly) for the six  $p\text{CO}_2$  data products used in this study.



**Figure A2.** Annual time series of the additional flux amount calculated by the area-weighted method used in the Global Carbon Budget (a) and a similar plot showing the annual additional flux using the SeaFlux methodology (b).

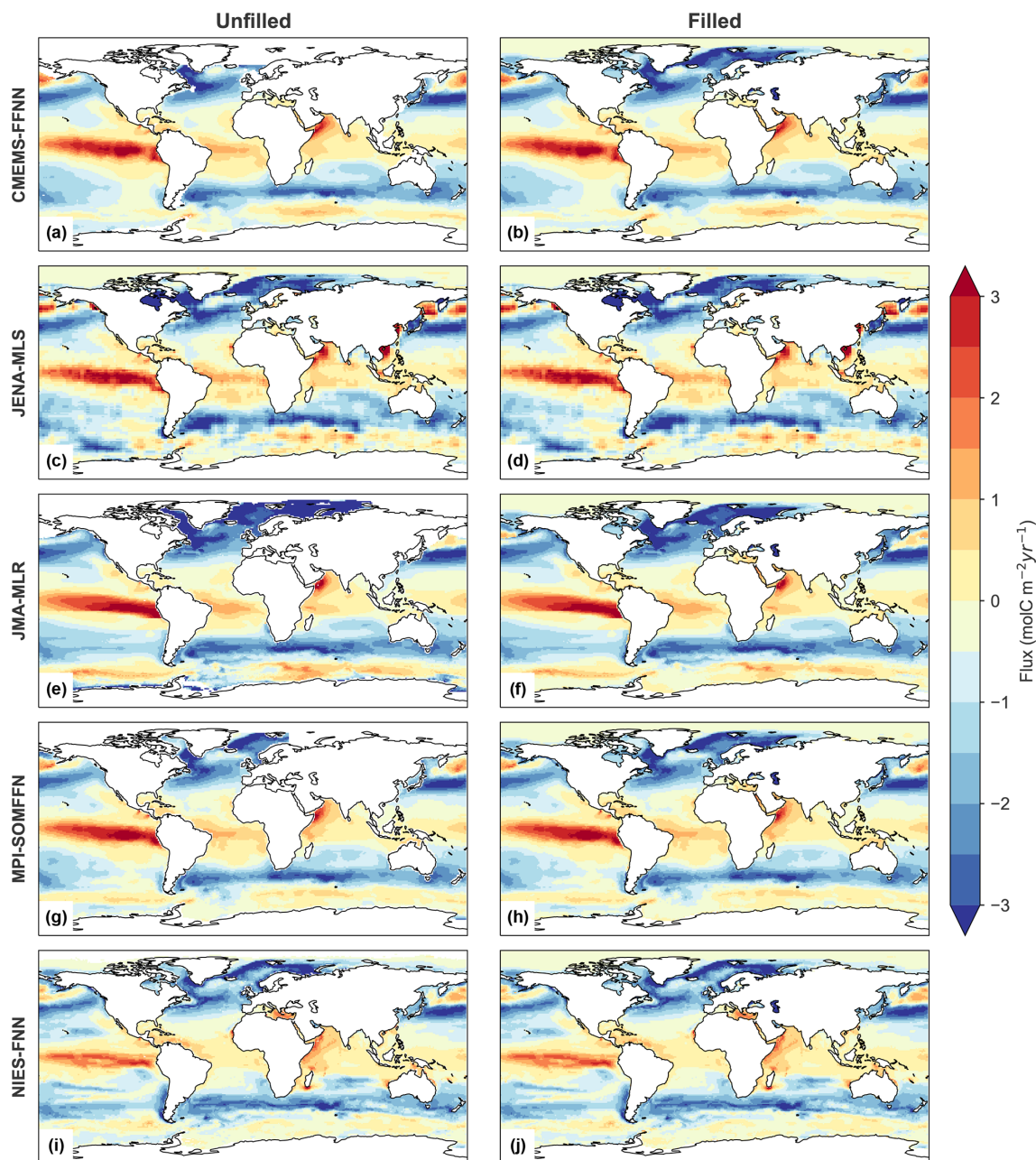


**Figure A3.** Spatial distributions of the annual mean  $p\text{CO}_2$  ( $\mu\text{atm}$ ) generated by (a) ETHZ-OceanSODA, (b) extracted from the SOCATv6 database, and (c) from the MPI-ULB merged product. (d) Bias between panels (a) and (c) (in  $\mu\text{atm}$ ; red colors correspond to regions in which the  $p\text{CO}_2$  from ETHZ-OceanSODA is higher than the MPI-ULB merged product). There is good agreement between the products on a regional scale.



**Figure A4.** Air–sea  $\text{CO}_2$  flux time series ( $\text{PgC yr}^{-1}$ ) calculated using five wind speed products (CCMPv2, ERA5, JRA55, NCEP1, NCEP2), scaled (solid) and unscaled (dashed).





**Figure A5.** Mean flux ( $\text{mol m}^{-2} \text{yr}^{-1}$ ) for 1990–2019. Left-hand column: map of mean-calculated flux using the unfilled  $p\text{CO}_2$  product and three scaled wind products. Right-hand column: map of mean-calculated flux using the filled  $p\text{CO}_2$  product and three scaled wind products.

**Author contributions.** ARF and LG designed the experiment, and LG developed the model code and performed the simulations with ARF focusing on analysis. ARF and LG collectively prepared the manuscript with contributions from all co-authors. LG, PL, MG, YI, GGL, CR, and JZ contributed data products to the ensemble. GAM, NG, AR, PL, MG, GGL, and CR contributed to the development of the manuscript through comments and discussions.

**Competing interests.** The authors declare that they have no conflict of interest.

**Disclaimer.** Publisher's note: Copernicus Publications remains neutral with regard to jurisdictional claims in published maps and institutional affiliations.

**Acknowledgements.** Peter Landschützer, Nicolas Gruber, and Luke Gregor acknowledge the funding support from the European Community. Galen A. McKinley and Amanda R. Fay acknowledge the funding from Columbia University and the National Science Foundation; Galen A. McKinley was also supported by the National Oceanic and Atmospheric Administration. The Surface Ocean CO<sub>2</sub> Atlas (SOCAT) is an international effort, endorsed by the International Ocean Carbon Coordination Project (IOCCP), the Surface Ocean Lower Atmosphere Study (SOLAS), and the Integrated Marine Biosphere Research (IMBeR) program, to deliver a uniformly quality-controlled surface ocean CO<sub>2</sub> database. The many researchers and funding agencies responsible for the collection of data and quality control are thanked for their contributions to SOCAT. Goulven G. Laruelle is research associate of the F.R.S-FNRS at the Université Libre de Bruxelles.

**Financial support.** Peter Landschützer, Nicolas Gruber, and Luke Gregor received funding from the European Community's Horizon 2020 Project under grant agreement no. 821003 (4C). Galen A. McKinley and Amanda R. Fay received funding from Columbia University and the National Science Foundation (grant no. OCE1948624). Galen A. McKinley is also supported by the National Oceanic and Atmospheric Administration (agreement no. NA20OAR4310340). Marion Gehlen received funding from the European Copernicus Marine Environment Monitoring Service (CMEMS) under grant no. 83-CMEMS-TAC-MOB.

**Review statement.** This paper was edited by David Carlson and reviewed by Timothy DeVries, Andrea Fassbender, and Rik Wanninkhof.

## References

Atlas, R., Hoffman, R. N., Ardizzone, J., Leidner, S. M., Jusem, J.C., Smith, D. K., and Gombos, D.: A cross-calibrated, multi-platform ocean surface wind velocity product for meteorological and oceanographic applications, *B. Am. Meteorol. Soc.*, 92, 157–174, <https://doi.org/10.1175/2010BAMS2946.1>, 2011.

- Aumont, O., Orr, J. C., Monfray, P., Ludwig, W., Amiotte-Suchet, P., and Probst, J.-L.: Riverine-driven interhemispheric transport of carbon, *Global Biogeochem. Cy.*, 15, 393–405, <https://doi.org/10.1029/1999GB001238>, 2001.
- Bakker, D. C. E., Pfeil, B., Landa, C. S., Metzl, N., O'Brien, K. M., Olsen, A., Smith, K., Cosca, C., Harasawa, S., Jones, S. D., Nakaoka, S., Nojiri, Y., Schuster, U., Steinhoff, T., Sweeney, C., Takahashi, T., Tilbrook, B., Wada, C., Wanninkhof, R., Alin, S. R., Balestrini, C. F., Barbero, L., Bates, N. R., Bianchi, A. A., Bonou, F., Boutin, J., Bozec, Y., Burger, E. F., Cai, W.-J., Castle, R. D., Chen, L., Chierici, M., Currie, K., Evans, W., Featherstone, C., Feely, R. A., Fransson, A., Goyet, C., Greenwood, N., Gregor, L., Hankin, S., Hardman-Mountford, N. J., Harlay, J., Hauck, J., Hoppema, M., Humphreys, M. P., Hunt, C. W., Huss, B., Ibáñez, J. S. P., Johannessen, T., Keeling, R., Kitidis, V., Körtzinger, A., Kozyr, A., Krasakopoulou, E., Kuwata, A., Landschützer, P., Lauvset, S. K., Lefèvre, N., Lo Monaco, C., Manke, A., Mathis, J. T., Merlivat, L., Millero, F. J., Monteiro, P. M. S., Munro, D. R., Murata, A., Newberger, T., Omar, A. M., Ono, T., Paterson, K., Pearce, D., Pierrot, D., Robbins, L. L., Saito, S., Salisbury, J., Schlitzer, R., Schneider, B., Schweitzer, R., Sieger, R., Skjelvan, I., Sullivan, K. F., Sutherland, S. C., Sutton, A. J., Tadokoro, K., Telszewski, M., Tuma, M., van Heuven, S. M. A. C., Vandemark, D., Ward, B., Watson, A. J., and Xu, S.: A multi-decade record of high-quality *f*CO<sub>2</sub> data in version 3 of the Surface Ocean CO<sub>2</sub> Atlas (SOCAT), *Earth Syst. Sci. Data*, 8, 383–413, <https://doi.org/10.5194/essd-8-383-2016>, 2016.
- Bushinsky, S. M., Landschützer, P., Rödenbeck, C., Gray, A. R., Baker, D., Mazloff, M. R., Resplandy, L., Johnson, K. S., and Sarmiento, J. L.: Reassessing Southern Ocean air-sea CO<sub>2</sub> flux estimates with the addition of biogeochemical float observations, *Global Biogeochem. Cy.*, 33, 1370–1388, <https://doi.org/10.1029/2019GB006176>, 2019.
- Butterworth, B. J. and Miller, S. D.: Air-sea exchange of carbon dioxide in the Southern Ocean and Antarctic marginal ice zone, *Geophys. Res. Lett.*, 43, 7223–7230, <https://doi.org/10.1002/2016GL069581>, 2016.
- Chau, T. T. T., Gehlen, M., and Chevallier, F.: Quality Information Document for Global Ocean Surface Carbon Product MULTIOBS\_GLO\_BIO CARBON\_SURFACE\_REP\_015\_008, PhD dissertation, Le Laboratoire des Sciences du Climat et de l'Environnement, available at: <https://hal.archives-ouvertes.fr/hal-02957656/file/CMEMS-MOB-QUID-015-008.pdf> (last access: 28 July 2021), 2020.
- Chaudhuri, A. H., Ponte, R. M., and Nguyen, A. T.: A comparison of atmospheric reanalysis products for the Arctic Ocean and implications for uncertainties in air–sea fluxes, *J. Climate*, 27, 5411–5421, <https://doi.org/10.1175/JCLI-D-13-00424.1>, 2014.
- Chevallier, F.: On the parallelization of atmospheric inversions of CO<sub>2</sub> surface fluxes within a variational framework, *Geosci. Model Dev.*, 6, 783–790, <https://doi.org/10.5194/gmd-6-783-2013>, 2013.
- Denvil-Sommer, A., Gehlen, M., Vrac, M., and Mejia, C.: LSCE-FFNN-v1: a two-step neural network model for the reconstruction of surface ocean *p*CO<sub>2</sub> over the global ocean, *Geosci. Model Dev.*, 12, 2091–2105, <https://doi.org/10.5194/gmd-12-2091-2019>, 2019.
- DeVries, T.: The oceanic anthropogenic CO<sub>2</sub> sink: Storage, air-sea fluxes, and transports over the indus-

- trial era, *Global Biogeochem. Cy.*, 28, 631–647, <https://doi.org/10.1002/2013GB004739>, 2014.
- Dickson, A. G., Sabine, C. L., and Christian, J. R. (Eds): Guide to best practices for ocean CO<sub>2</sub> measurement. Sidney, British Columbia, North Pacific Marine Science Organization, 191 pp. (PICES Special Publication 3; IOCCP Report 8), <https://doi.org/10.25607/OBP-1342>, 2007.
- Dlugokencky, E. J., Thoning, K. W., Lang, P. M., and Tans, P. P.: NOAA Greenhouse Gas Reference from Atmospheric Carbon Dioxide Dry Air Mole Fractions from the NOAA ESRL Carbon Cycle Cooperative Global Air Sampling Network, 2019 (data available at: <https://www.esrl.noaa.gov/gmd/ccgg/mbl/data.php>, last access: 20 October 2020).
- Fairall, C. W., Hare, J. E., Edson, J. B., and McGillis, W.: Parameterization and micrometeorological measurement of air-sea gas transfer, *Bound.-Lay. Meteorol.*, 96, 63–105, <https://doi.org/10.1023/A:1002662826020>, 2000.
- Friedlingstein, P., Jones, M. W., O’Sullivan, M., Andrew, R. M., Hauck, J., Peters, G. P., Peters, W., Pongratz, J., Sitch, S., Le Quéré, C., Bakker, D. C. E., Canadell, J. G., Ciais, P., Jackson, R. B., Anthoni, P., Barbero, L., Bastos, A., Bastrikov, V., Becker, M., Bopp, L., Buitenhuis, E., Chandra, N., Chevallier, F., Chini, L. P., Currie, K. I., Feely, R. A., Gehlen, M., Gilfillan, D., Gkritzalis, T., Goll, D. S., Gruber, N., Gutekunst, S., Harris, I., Haverd, V., Houghton, R. A., Hurtt, G., Ilyina, T., Jain, A. K., Joetzjer, E., Kaplan, J. O., Kato, E., Klein Goldewijk, K., Korsbakken, J. I., Landschützer, P., Lauvset, S. K., Lefèvre, N., Lenton, A., Lienert, S., Lombardozzi, D., Marland, G., McGuire, P. C., Melton, J. R., Metzl, N., Munro, D. R., Nabel, J. E. M. S., Nakaoka, S.-I., Neill, C., Omar, A. M., Ono, T., Peregon, A., Pierrot, D., Poulter, B., Rehder, G., Resplandy, L., Robertson, E., Rödenbeck, C., Séférian, R., Schwinger, J., Smith, N., Tans, P. P., Tian, H., Tilbrook, B., Tubiello, F. N., van der Werf, G. R., Wiltshire, A. J., and Zaehle, S.: Global Carbon Budget 2019, *Earth Syst. Sci. Data*, 11, 1783–1838, <https://doi.org/10.5194/essd-11-1783-2019>, 2019.
- Friedlingstein, P., O’Sullivan, M., Jones, M. W., Andrew, R. M., Hauck, J., Olsen, A., Peters, G. P., Peters, W., Pongratz, J., Sitch, S., Le Quéré, C., Canadell, J. G., Ciais, P., Jackson, R. B., Alin, S., Aragão, L. E. O. C., Armeth, A., Arora, V., Bates, N. R., Becker, M., Benoit-Cattin, A., Bittig, H. C., Bopp, L., Bultan, S., Chandra, N., Chevallier, F., Chini, L. P., Evans, W., Florentie, L., Forster, P. M., Gasser, T., Gehlen, M., Gilfillan, D., Gkritzalis, T., Gregor, L., Gruber, N., Harris, I., Hartung, K., Haverd, V., Houghton, R. A., Ilyina, T., Jain, A. K., Joetzjer, E., Kadono, K., Kato, E., Kitidis, V., Korsbakken, J. I., Landschützer, P., Lefèvre, N., Lenton, A., Lienert, S., Liu, Z., Lombardozzi, D., Marland, G., Metzl, N., Munro, D. R., Nabel, J. E. M. S., Nakaoka, S.-I., Niwa, Y., O’Brien, K., Ono, T., Palmer, P. I., Pierrot, D., Poulter, B., Resplandy, L., Robertson, E., Rödenbeck, C., Schwinger, J., Séférian, R., Skjelvan, I., Smith, A. J. P., Sutton, A. J., Tanhua, T., Tans, P. P., Tian, H., Tilbrook, B., van der Werf, G., Vuichard, N., Walker, A. P., Wanninkhof, R., Watson, A. J., Willis, D., Wiltshire, A. J., Yuan, W., Yue, X., and Zaehle, S.: Global Carbon Budget 2020, *Earth Syst. Sci. Data*, 12, 3269–3340, <https://doi.org/10.5194/essd-12-3269-2020>, 2020.
- Garbe, C. S., Rutgersson, A., Boutin, J., Leeuw, G. D., Delille, B., Fairall, C. W., Gruber, N., Hare, J., Ho, D. T., Johnson, M. T., Nightingale, P. D., Pettersson, H., Piskozub, J., Sahle, E., Tsai, W.-t., Ward, B., Woolf, D. K., and Zappa, C. J.: Transfer across the air-sea interface, in: *Ocean-Atmosphere Interactions of Gases and Particles*, edited by: Liss, P. S. and Johnson, M. T., Springer, Berlin, Heidelberg, 55–112, 2014.
- Gloeger, L., McKinley, G. A., Landschützer, P., Fay, A. R., Frolicher, T., Fyfe, J., Ilyina, T., Jones, S., Lovenduski, N. S., Rödenbeck, C., Rogers, K., Schlunegger, S., and Takano, Y.: Quantifying errors in observationally-based estimates of ocean carbon sink variability, *Global Biogeochem. Cy.*, 35, e2020GB006788, <https://doi.org/10.1029/2020GB006788>, 2021.
- Good, S. A., Martin, M. J., and Rayner, N. A.: EN4: Quality controlled ocean temperature and salinity profiles and monthly objective analyses with uncertainty estimates, *J. Geophys. Res.-Oceans*, 118, 6704–6716, <https://doi.org/10.1002/2013JC009067>, 2013.
- Gregor, L. and Fay, A. R.: SeaFlux data set: Air-sea CO<sub>2</sub> fluxes for surface pCO<sub>2</sub> data products using a standardised approach, Zenodo [data set], <https://doi.org/10.5281/zenodo.5482547>, 2021.
- Gregor, L. and Gruber, N.: OceanSODA-ETHZ: a global gridded data set of the surface ocean carbonate system for seasonal to decadal studies of ocean acidification, *Earth Syst. Sci. Data*, 13, 777–808, <https://doi.org/10.5194/essd-13-777-2021>, 2021.
- Gregor, L., Lebehot, A. D., Kok, S., and Scheel Monteiro, P. M.: A comparative assessment of the uncertainties of global surface ocean CO<sub>2</sub> estimates using a machine-learning ensemble (CSIR-ML6 version 2019a) – have we hit the wall?, *Geosci. Model Dev.*, 12, 5113–5136, <https://doi.org/10.5194/gmd-12-5113-2019>, 2019.
- Gruber, N., Clement, D., Carter, B. R., Feely, R. A., van Heuven, S., Hoppema, M., Ishii, M., Key, R. M., Kozyr, A., Lauvset, S. K., Lo Monaco, C., Mathis, J. T., Murata, A., Olsen, A., Perez, F. F., Sabine, C. L., Tanhua, T., and Wanninkhof, R.: The oceanic sink for anthropogenic CO<sub>2</sub> from 1994 to 2007, *Science*, 363, 1193–1199, <https://doi.org/10.1126/science.aau5153>, 2019.
- Hauck, J., Zeising, M., Le Quéré, C., Gruber, N., Bakker, D. C. E., Bopp, L., Chau, T. T. T., Gürses, Ö., Ilyina, T., Landschützer, P., Lenton, A., Resplandy, L., Rödenbeck, C., Schwinger, J., and Séférian, R.: Consistency and Challenges in the Ocean Carbon Sink Estimate for the Global Carbon Budget, *Front. Mar. Sci.*, 7, 852–885, <https://doi.org/10.3389/fmars.2020.571720>, 2020.
- Hersbach, H., Bell, B., Berrisford, P., Hirahara, S., Horányi, A., Muñoz-Sabater, J., Nicolas, J., Peubey, C., Radu, R., Schepers, D., Simmons, A., Soci, C., Abdalla, S., Abellan, X., Balsamo, G., Bechtold, P., Biavati, G., Bidlot, J., Bonavita, M., De Chiara, G., Dahlgren, P., Dee, D., Diamantakis, M., Dragani, R., Flemming, J., Forbes, R., Fuentes, M., Geer, A., Haimberger, L., Healy, S., Hogan, R. J., Hólm, E., Janisková, M., Keeley, S., Laloyaux, P., Lopez, P., Lupu, C., Radnoti, G., de Rosnay, P., Rozum, I., Vamborg, F., Villaume, S., and Thépaut, J.: The ERA5 global reanalysis, *Q. J. Roy. Meteor. Soc.* 146, 1999–2049, <https://doi.org/10.1002/qj.3803>, 2020 (data available at: <https://cds.climate.copernicus.eu/cdsapp#!/dataset/reanalysis-era5-single-levels-monthly-means?tab=overview>, last access: 16 October 2020).
- Ho, D. T., Law, C. S., Smith, M. J., Schlosser, P., Harvey, M., and Hill, P.: Measurements of airsea gas exchange at high wind speeds in the Southern Ocean: Implications for global parameterizations, *Geophys. Res. Lett.*, 33, L16611, <https://doi.org/10.1029/2006GL026817>, 2006.



- Iida, Y., Takatani, Y., Kojima, A., and Ishii, M.: Global trends of ocean CO<sub>2</sub> sink and ocean acidification: an observation-based reconstruction of surface ocean inorganic carbon variables, *J. Oceanogr.*, 77, 323–358, <https://doi.org/10.1007/s10872-020-00571-5>, 2020.
- Jacobson, A. R., Mikaloff Fletcher, S. E., Gruber, N., Sarmiento, J. L., and Gloor, M.: A joint atmosphere-ocean inversion for surface fluxes of carbon dioxide: 1. Methods and global-scale fluxes, *Global Biogeochem. Cy.*, 21, GB1019, <https://doi.org/10.1029/2005GB002556>, 2007.
- Kalnay, E., Kanamitsu, M., Kistler, R., Collins, W., Deaven, D., Gandin, L., Iredell, M., Saha, S., White, G., Woollen, J., Zhu, Y., Chelliah, M., Ebisuzaki, W., Higgins, W., Janowiak, J., Mo, K. C., Ropelewski, C., Wang, J., Leetmaa, A., Reynolds, R., Jenne, R., and Joseph, D.: The NCEP/NCAR 40-year reanalysis project, *B. Am. Meteorol. Soc.*, 77, 437–470, 1996.
- Kanamitsu, M., Kumar, A., Juang, H. M. H., Schemm, J. K., Wang, W., Yang, F., Hong, S. Y., Peng, P., Chen, W., Moorthi, S., and Ji, M.: NCEP dynamical seasonal forecast system 2000, *B. Am. Meteorol. Soc.*, 83, 1019–1038, [https://doi.org/10.1175/1520-0477\(2002\)083<1019:NDSFS>2.3.CO;2](https://doi.org/10.1175/1520-0477(2002)083<1019:NDSFS>2.3.CO;2), 2002.
- Key, R. M., Kozyr, A., Sabine, C. L., Lee, K., Wanninkhof, R., Bullister, J. L., Feely, R. A., Millero, F. J., Mordy, C., and Peng, T. H.: A global ocean carbon climatology: Results from Global Data Analysis Project (GLODAP), *Global Biogeochem. Cy.*, 18, GB4031, <https://doi.org/10.1029/2004GB002247>, 2004.
- Kobayashi, S., Ota, Y., Harada, Y., Ebata, A., Moriya, M., Onoda, H., Onogi, K., Kamahori, H., Kobayashi, C., Endo, H., Miyaoka, K., and Takahashi, K.: The JRA-55 Reanalysis: General Specifications and Basic Characteristics, *J. Meteorol. Soc. Jpn.*, 93, 5–48, <https://doi.org/10.2151/jmsj.2015-001>, 2015.
- Krakauer, N. Y., Randerson, J. T., Primeau, F. W., Gruber, N., and Menemenlis, D.: Carbon isotope evidence for the latitudinal distribution and wind speed dependence of the air-sea gas transfer velocity, *Tellus B*, 58, 390–417, <https://doi.org/10.1111/j.1600-0889.2006.00223.x>, 2006.
- Lacroix, F., Ilyina, T., and Hartmann, J.: Oceanic CO<sub>2</sub> outgassing and biological production hotspots induced by pre-industrial river loads of nutrients and carbon in a global modeling approach, *Biogeosciences*, 17, 55–88, <https://doi.org/10.5194/bg-17-55-2020>, 2020.
- Landschützer, P., Gruber, N., Bakker, D. C. E., and Schuster, U.: Recent variability of the global ocean carbon sink, *Global Biogeochem. Cy.*, 28, 927–949, <https://doi.org/10.1002/2014GB004853>, 2014.
- Landschützer, P., Gruber, N., and Bakker, D. C. E.: An observation-based global monthly gridded sea surface pCO<sub>2</sub> product from 1982 onward and its monthly climatology (NCEI Accession 0160558), Version 5.5, NOAA National Centers for Environmental Information [data set], <https://doi.org/10.7289/V5Z899N6>, 2020a.
- Landschützer, P., Laruelle, G., Roobaert, A., and Regnier, P.: A combined global ocean pCO<sub>2</sub> climatology combining open ocean and coastal areas (NCEI Accession 0209633), NOAA National Centers for Environmental Information [data set], <https://doi.org/10.25921/qb25-f418>, 2020b.
- Landschützer, P., Laruelle, G. G., Roobaert, A., and Regnier, P.: A uniform pCO<sub>2</sub> climatology combining open and coastal oceans, *Earth Syst. Sci. Data*, 12, 2537–2553, <https://doi.org/10.5194/essd-12-2537-2020>, 2020c.
- Laruelle, G. G., Landschützer, P., Gruber, N., Tison, J.-L., Delille, B., and Regnier, P.: Global high-resolution monthly pCO<sub>2</sub> climatology for the coastal ocean derived from neural network interpolation, *Biogeosciences*, 14, 4545–4561, <https://doi.org/10.5194/bg-14-4545-2017>, 2017.
- Laruelle, G. G., Cai, W. J., Hu, X., Gruber, N., Mackenzie, F. T., and Regnier, P.: Continental shelves as a variable but increasing global sink for atmospheric carbon dioxide, *Nat. Commun.*, 9, 454, <https://doi.org/10.1038/s41467-017-02738-z>, 2018.
- McGillis, W. R., Edson, J. B., Hare, J. E., and Fairall, C. W.: Direct covariance air-sea CO<sub>2</sub> fluxes, *J. Geophys. Res.*, 106, 16729–16745, <https://doi.org/10.1029/2000JC000506>, 2001.
- McKinley, G. A., Fay, A. R., Eddebbar, Y. A., Gloege, L., and Lovenduski, N. S.: External Forcing Explains Recent Decadal Variability of the Ocean Carbon Sink, *AGU Advances*, 1, e2019AV000149, <https://doi.org/10.1029/2019av000149>, 2020.
- Mikaloff Fletcher, S. E., Gruber, N., Jacobson, A. R., Doney, S. C., Dutkiewicz, S., Gerber, M., Follows, M., Joos, F., Lindsay, K., Menemenlis, D., Mouchet, A., Müller, S. A., and Sarmiento, J. L.: Inverse estimates of anthropogenic CO<sub>2</sub> uptake, transport, and storage by the ocean, *Global Biogeochem. Cy.*, 20, GB2002, <https://doi.org/10.1029/2005GB002530>, 2006.
- Müller, S. A., Joos, F., Plattner, G.-K., Edwards, N. R., and Stocker, T. F.: Modelled natural and excess radiocarbon – sensitivities to the gas exchange formulation and ocean transport strength, *Global Biogeochem. Cy.*, 22, GB3011, <https://doi.org/10.1029/2007GB003065>, 2008.
- Naegler, T.: Reconciliation of excess <sup>14</sup>C-constrained global CO<sub>2</sub> piston velocity estimates, *Tellus B*, 61, 372–384, <https://doi.org/10.1111/j.1600-0889.2008.00408.x>, 2009.
- Naegler, T., Ciais, P., Rodgers, K. B., and Levin, I.: Excess radiocarbon constraints on air-sea gas exchange and the uptake of CO<sub>2</sub> by the oceans, *Geophys. Res. Lett.*, 33, L11802, <https://doi.org/10.1029/2005GL025408>, 2006.
- Nightingale, P. D., Malin, G., Law, C. S., Watson, A. J., Liss, P. S., Liddicoat, M. I., Boutin, J., and Upstill-Goddard, R. C.: In situ evaluation of air-sea gas exchange parameterizations using novel conservative and volatile tracers, *Global Biogeochem. Cy.*, 14, 373–387, <https://doi.org/10.1029/1999GB900091>, 2000.
- Ramon, J., Lledó, L., Torralba, V., Soret, A., and Doblas-Reyes, F. J.: What global reanalysis best represents near-surface winds?, *Q. J. Roy. Meteor. Soc.*, 145, 3236–3251, <https://doi.org/10.1002/qj.3616>, 2019.
- Resplandy, L., Keeling, R. F., Rödenbeck, C., Stephens, B. B., Khatiwala, S., Rodgers, K. B., Long, M. C., Bopp, L., and Tans, P. P.: Revision of global carbon fluxes based on a reassessment of oceanic and riverine carbon transport, *Nat. Geosci.*, 11, 504–509, <https://doi.org/10.1038/s41561-018-0151-3>, 2018.
- Reynolds, R. W., Rayner, N. A., Smith, T. M., Stokes, D. C., and Wang, W.: An improved in situ and satellite SST analysis for climate, *J. Climate*, 15, 1609–1625, [https://doi.org/10.1175/1520-0442\(2002\)015<1609:AISAS>2.0.CO;2](https://doi.org/10.1175/1520-0442(2002)015<1609:AISAS>2.0.CO;2), 2002 (data available at: <https://psl.noaa.gov/data/gridded/data.noaa.oisst.v2.html>, last access: 26 April 2021).
- Rödenbeck, C., Keeling, R. F., Bakker, D. C. E., Metzl, N., Olsen, A., Sabine, C., and Heimann, M.: Global surface-ocean pCO<sub>2</sub> and sea-air CO<sub>2</sub> flux variability from an observation-

- driven ocean mixed-layer scheme, *Ocean Sci.*, 9, 193–216, <https://doi.org/10.5194/os-9-193-2013>, 2013.
- Roobaert, A., Laruelle, G. G., Landschützer, P., and Regnier, P.: Uncertainty in the global oceanic CO<sub>2</sub> uptake induced by wind forcing: quantification and spatial analysis, *Biogeosciences*, 15, 1701–1720, <https://doi.org/10.5194/bg-15-1701-2018>, 2018.
- Roobaert, A., Laruelle, G. G., Landschützer, P., Gruber, N., Chou, L., and Regnier, P.: The spatiotemporal dynamics of the sources and sinks of CO<sub>2</sub> in the global coastal ocean, *Global Biogeochem. Cy.*, 33, 1693–1714, <https://doi.org/10.1029/2019GB006239>, 2019.
- Sarmiento J. L. and Gruber, N.: *Ocean Biogeochemical Dynamics*, Princeton University Press, Princeton, New Jersey, pp. 526, 2006.
- Stanley, R. H. R., Jenkins, W. J., Lott III, D. E., and Doney, S. C.: Noble gas constraints on air-sea gas exchange and bubble fluxes, *J. Geophys. Res.*, 114, C11020, <https://doi.org/10.1029/2009JC005396>, 2009.
- Sweeney, C., Gloor, E., Jacobson, A. R., Key, R. M., McKinley, G. A., Sarmiento, J. L., and Wanninkhof, R.: Constraining global air-sea gas exchange for CO<sub>2</sub> with recent Bomb <sup>14</sup>C measurements, *Global Biogeochem. Cy.*, 21, GB2015, <https://doi.org/10.1029/2006GB002784>, 2007.
- Takahashi, T., Sutherland, S. C., Wanninkhof, R., Sweeney, C., Feely, R. A., Chipman, D. W., Hales, B., Friederich, G., Chavez, F., and Sabine, C.: Climatological mean and decadal change in surface ocean pCO<sub>2</sub>, and net sea–air CO<sub>2</sub> flux over the global oceans, *Deep-Sea Res. Pt. II.*, 56, 554–577, <https://doi.org/10.1016/j.dsr2.2008.12.009>, 2009.
- Wanninkhof, R.: Relationship between wind speed and gas exchange over the ocean, *J. Geophys. Res.*, 97, 7373, <https://doi.org/10.1029/92JC00188>, 1992.
- Wanninkhof, R.: Relationship between wind speed and gas exchange over the ocean revisited, *Limnol. Oceanogr.-Meth.*, 12, 351–362, <https://doi.org/10.4319/lom.2014.12.351>, 2014.
- Wanninkhof, R. and McGillis, W. R.: A cubic relationship between air-sea CO<sub>2</sub> exchange and wind speed, *Geophys. Res. Lett.*, 26, 1889–1892, <https://doi.org/10.1029/1999GL900363>, 1999.
- Watson, A. J., Schuster, U., Shutler, J. D., Holding, T., Ashton, I. G. C., Landschützer, P., Woolf, D. K., and Goddijn-Murphy, L.: Revised estimates of ocean-atmosphere CO<sub>2</sub> flux are consistent with ocean carbon inventory, *Nat. Commun.*, 11, 44222020, <https://doi.org/10.1038/s41467-020-18203-3>, 2020.
- Weiss, R.: Carbon dioxide in water and seawater: the solubility of non-ideal gas, *Mar. Chem.*, 2, 203–215, [https://doi.org/10.1016/0304-4203\(74\)90015-2](https://doi.org/10.1016/0304-4203(74)90015-2), 1974.
- Woolf, D. K., Land, P. E., Shutler, J. D., Goddijn-Murphy, L. M., and Donlon, C. J.: On the calculation of air-sea fluxes of CO<sub>2</sub> in the presence of temperature and salinity gradients, *J. Geophys. Res.-Oceans*, 121, 1229–1248, <https://doi.org/10.1002/2015JC011427>, 2016.
- Zeng, J., Nojiri, Y., Landschützer, P., Telszewski, M., and Nakaoka, S.I.: A global surface ocean *f*CO<sub>2</sub> climatology based on a feed-forward neural network, *J. Atmos. Ocean. Tech.*, 31, 1838–1849, <https://doi.org/10.1175/JTECH-D-13-00137.1>, 2014.