



HAL
open science

Konservat-Lagerstätten from the Upper Jurassic lithographic limestone of the Causse Mejean (Lozere, southern France): palaeontological and palaeoenvironmental synthesis

Jean-David Moreau, Romain Vullo, Sylvain Charbonnier, Romain Jattiot, Vincent Trincal, Didier Neraudeau, Emmanuel Fara, Louis Baret, Alessandro Garassino, Georges Gand, et al.

► **To cite this version:**

Jean-David Moreau, Romain Vullo, Sylvain Charbonnier, Romain Jattiot, Vincent Trincal, et al.. Konservat-Lagerstätten from the Upper Jurassic lithographic limestone of the Causse Mejean (Lozere, southern France): palaeontological and palaeoenvironmental synthesis. *Geological Magazine*, 2022, 159 (5), pp.761-781. 10.1017/S0016756821001382 . insu-03531292

HAL Id: insu-03531292

<https://insu.hal.science/insu-03531292v1>

Submitted on 18 Nov 2022

HAL is a multi-disciplinary open access archive for the deposit and dissemination of scientific research documents, whether they are published or not. The documents may come from teaching and research institutions in France or abroad, or from public or private research centers.

L'archive ouverte pluridisciplinaire **HAL**, est destinée au dépôt et à la diffusion de documents scientifiques de niveau recherche, publiés ou non, émanant des établissements d'enseignement et de recherche français ou étrangers, des laboratoires publics ou privés.

Konservat-Lagerstätten from the Late Jurassic lithographic limestone of the Causse Méjean (Lozère, southern France): palaeontological and palaeoenvironmental synthesis

Jean-David Moreau^{1*}, Romain Vullo², Sylvain Charbonnier³, Romain Jattiot⁴, Vincent Trincal⁵, Didier Néraudeau², Emmanuel Fara¹, Louis Baret⁶, Alessandro Garassino^{7,8}, Georges Gand¹, Gérard Lafaurie⁹

¹ Biogéosciences, UMR CNRS 6282, Université de Bourgogne Franche-Comté, 6 boulevard Gabriel, 21000 Dijon, France.

² Univ Rennes, CNRS, Géosciences Rennes, UMR 6118, 35000 Rennes, France.

³ Muséum national d'Histoire naturelle, Centre de Recherche en Paléontologie – Paris (CR2P, UMR 7207), MHNN, Sorbonne Université, CNRS, 57 rue Cuvier 75005 Paris, France.

⁴ Fachbereich 5 Geowissenschaften, Universität Bremen, Klagenfurter Strasse 4, 28359, Bremen, Germany.

⁵ LMDC, Université de Toulouse, INSA/UPS, 135 avenue de Rangueil, 31077 Toulouse, France.

⁶ Association Paléontologique des Hauts Plateaux du Languedoc, 14 chemin des Ecureuils, 48000 Mende, France.

⁷ Department of Earth and Biological Sciences, Loma Linda University, Loma Linda, California, CA 92350, United States of America.

⁸ Department of Paleontology, North Carolina Museum of Natural Sciences, Raleigh, NC 27601, United States of America.

⁹ 10 rue Léon Baraillé, 46100 Figeac, France.

* Corresponding author; e-mail address: jean.david.moreau@gmail.com

Short title: Late Jurassic Lagerstätten from the Causse Méjean

Abstract:

Since the 1980's, the Late Jurassic lithographic limestone of the Causse Méjean (southern France) has been known by local naturalists to yield fossils. However, until the beginning of the 21st century, this plattenkalk remained largely undersampled and scientifically underestimated. Here, we present the results of two decades of prospection and sampling in the Drigas and the Nivoliers quarries. We provide the first palaeontological inventory of the fossil flora, the fauna, and the ichnofauna for these localities. The fossil assemblages show the co-occurrence of marine and terrestrial organisms. Marine ones include algae, bivalves, brachiopods, cephalopods (ammonites, belemnites and coleoids such as *Trachyteuthis*), echinoderms, decapod crustaceans (ghost shrimps, penaeoid shrimps and glypheoid lobsters) and fishes (including several actinopterygians and a coelacanth). Terrestrial organisms consist of plant remains (conifers, bennettitaleans, pteridosperms) and a single rhynchocephalian (*Kallimodon cerinensis*). Ichnofossils comprise traces of marine invertebrates (e.g. limulid trackways, ammonite touch mark) as well as coprolites and regurgitalites. Given the exquisite preservation of these fossils, the two quarries can be considered as Konservat-Lagerstätten. Both lithological features and fossil content suggest a calm, protected and shallow marine environment such as a lagoon partially or occasionally open to the sea. Most fossils are allochthonous to parautochthonous and document diverse ecological habitats. Similarly to other famous Late Jurassic plattenkalks of Western Europe such as Solnhofen, Cerin or Canjuers, the Causse Méjean is a key landmark for our

understanding of coastal/lagoonal palaeoecosystems during the Kimmeridgian-Tithonian interval.

Keywords: lithographic limestone, Lagerstätten, Late Jurassic, Causses Basin, France.

1. Introduction

Considering the exquisite preservation of the fossils they yield, some Late Jurassic plattenkalks of Western Europe are considered as Konservat-Lagerstätten. Abundant and diverse Late Jurassic floras, faunas and ichnofaunas were discovered in these palaeontological sites. Since they yielded the first *Archaeopteryx* during the 19th century, the plattenkalks of southern Germany have become extremely famous (e.g. Eichstätt-Solnhofen, Nusplingen, Wattendorf; Berry, 1918; Barthel *et al.* 1994; Dietl & Schweigert, 2004; Fürsich *et al.* 2007a; Rauhut *et al.* 2019). In France, rare Late Jurassic palaeontological sites yielding exceptionally preserved fossils are the lithographic limestone of Canjuers in Var (southeastern France; e.g. Ginsburg, 1973; Roman *et al.* 1994; Peyer *et al.* 2014), Cerin and Orbagnoux in Ain (eastern France; e.g. Saporta, 1873; Barale *et al.* 1985; Bernier *et al.* 2014; Nel *et al.* 2014) and Crayssac in Lot (southwestern France; Hantzpergue & Lafaurie, 1994; Mazin *et al.* 1997). Based on the exceptional fossilization conditions of remains, these sites present wider diversities of taxa and better-preserved specimens than those from coeval outcrops showing a more “standard” preservation. All these Konservat-Lagerstätten are crucial for understanding coastal and lagoonal palaeoecosystems during the Kimmeridgian-Tithonian interval.

Herein we report remains of a new fossil ecosystem from the Late Jurassic lithographic limestone of the Causse Méjean plateau (southern France). Since the 1980’s, the

Late Jurassic plattenkalks of this area have been known from local and amateur naturalists to yield rare fossils. However, the plattenkalks of the Causse Méjean remained undersampled and poorly known from a palaeontological point of view until 2003. At that time, we started a project of palaeontological prospection and sampling in order to produce a scientific collection of reference in two quarries of the Hures-La Parade municipality, at Drigas and Nivoliers (Fig. 1a). Following these surveys, Moreau *et al.* (2014, 2016) published the first palaeontological studies of this area, describing abundant limulid trackways from the Drigas quarry, and marine algae as well as terrestrial plants from the Nivoliers quarry. However, the Causse Méjean fossil assemblages represent a diverse ecosystem that yields much more than just ichnofossils and plants. The numerous and exquisitely preserved specimens collected over the last two decades now document a rich and exquisitely preserved vertebrate and invertebrate fauna. We provide herein the first inventory of the fauna, the flora and the ichnofauna of the Drigas and Nivoliers quarries. Based on new biostratigraphic data, we also discuss the age of the deposits. Sedimentological, petrological, mineralogical and palaeontological analyses are used to reconstruct the depositional environment of the Late Jurassic lithographic limestone of the Causse Méjean.

2. Geographical and geological setting

The Causse Méjean is a limestone plateau located in the northern part of the Causses Basin, in the Massif Central (southern France; Fig. 1a). This 1000-m-high plateau is delimited by the Gorges du Tarn in the North and the Gorges de la Jonte in the South. Sedimentary deposits composing the top of the plateau are Middle Jurassic to Upper Jurassic in age (Brouder *et al.* 1977; Gèze *et al.* 1980; Fig. 1b). The material presented herein was collected

from two quarries dug at the top of the plateau, in the Late Jurassic lithographic limestone. They are located at Drigas and Nivoliers, 5 km and 9 km east of La Parade, respectively (Fig. 1a). The Drigas quarry (also called the “Croux quarry”; Fig. 2a–b) was opened in 1979 and is now partially filled in. The Nivoliers quarry was opened in 1986 and is now completely filled in (Fig. 2c–e). In both quarries the Kimmeridgian to Tithonian strata were exploited (Fig. 1a–b). On the Causse Méjean, the lower Kimmeridgian (J7) is 60 to 130 m thick, and consists of limestone and marly limestone, commonly dolomitised. Its base is locally fine-grained (“lithographic”). The upper Kimmeridgian is divided in two units, J8a and J8b (Brouder *et al.* 1977). J8a is 80 to 100 m thick, corresponds to white bioclastic limestone, locally lithographic and partially dolomitised. J8b is 120 m thick, and composed of grey dolostone and rare coral limestone or local white-to-pink sublithographic limestone (Brouder *et al.* 1977). The lower Tithonian (J9) is 120 m thick and consists of white-to-pink lithographic to oolitic limestone (Brouder *et al.* 1977). Locally, the lower Tithonian consists of yellowish clayey limestone and marl yielding charophytes (Brouder *et al.* 1977).

3. Material and methods

3.a. History of the discoveries and palaeontological content

After the discovery of the first fossil fishes during the 1980’s, the Late Jurassic lithographic limestone of the Causse Méjean was regionally known to yield a few fossils. However, information about these first discoveries is very poor and scattered, as contextual data on only two historical specimens collected in the Drigas quarry have reached us. The first one is a pycnodont fish (*Thiollierepycnodus*) and the second one is a small rhynchocephalian (*Kallimodon*). The pycnodont fish was discovered fortuitously in the 1980’s by the quarryman

Guy Bonicel. It is composed of two opposed limestone slabs: one of the slab is housed in a private collection (coll. François Boulot) whereas the other one is housed in the collection of the Association Paléontologique des Hauts Plateaux du Languedoc (A.P.H.P.L., Lozère). The rhynchocephalian specimen was discovered by Jean-Yves Boutin while prospecting a sector of the quarry that is now totally filled. This specimen was figured by Sciau (1993, 1998) and later by Bousquet & Vianey Liaud (2001), but it has never been described. It was temporarily housed in Canada, in a private collection, before it was donated to the public palaeontological collection of the Musée de Millau et des Grands Causses (M.M.G.C.; Aveyron, southern France).

During the 1990's, Gérard Lafaurie assembled a private collection of marine invertebrates and terrestrial plants he had discovered at Drigas and Nivoliers. Pending donation to a public institution, these specimens remain temporarily housed in his private collection. In order to be as exhaustive as possible, the present synoptic study includes one specimen from his private collection (*Cycadopteris* sp.).

In 2003, the growing palaeontological interest of the lithographic limestone of the Causse Méjean led two of us (J.-D.M. and L.B.) to initiate a systematic sampling of fossil specimens in both quarries in order to build the first scientific reference collection for this area (all specimens being housed in the A.P.H.P.L. collections).

Since 2014, fieldwork sessions were organised by the A.P.H.P.L. (Fig. 2c–e). All specimens sampled over the last two decades in the Drigas and Nivoliers quarries are now housed in the A.P.H.P.L. collection. This collection is currently the most important in terms of abundance (more than 200 specimens) and diversity of fossil specimens from the Late Jurassic lithographic limestone of the Causse Méjean.

The present study also includes two specimens of fishes that are housed in the Prehistorama Museum (Rousson, Gard) and one specimen of fish housed in the public collection of the Musée du Gévaudan (Mende, Lozère). In addition, the only known coelacanth specimen reported herein from the Late Jurassic lithographic limestone of the Causses Méjean is currently housed in the private collection of Eric Dupré (see section 5.a.3).

In the Drigas quarry, it was possible to stratigraphically position fossils (Moreau *et al.* 2014), although most samples are from isolated blocks produced by quarry activities. As the Nivoliers quarry had already been filled at the time of this study, specimens from this locality could not be assigned to specific stratigraphic levels. Limestone blocks were split into slabs with hammers and chisels to obtain hand specimens as complete as possible. Fossils are strongly flattened, not abundant, dispersed and isolated, rarely forming dense accumulations. They consist of complete to incomplete and fully disarticulated to articulated organisms. These two quarries yielded very similar palaeontological assemblages. Marine organisms include algae, bivalves, brachiopods, cephalopods, echinoderms, decapod crustaceans and fishes. Terrestrial organisms consist of plant macroremains and a single rynchocephalian. Ichnofossils are represented by dwelling and crawling traces of marine invertebrates, as well as coprolites and regurgitalites. Complete lists of taxa and ichnotaxa are given in Tables 1 to 4.

3.b. Mineralogy and petrology

In order to characterise the depositional environments of the two studied quarries, sedimentological, petrographic and mineralogical analyses were conducted on rock samples from both localities. For 4 samples (three from Nivoliers, one from Drigas) standard polished

thin sections were prepared for both optical microscopy and mineralogical analyses. X-ray diffraction (XRD) analyses were performed on samples previously crushed manually in an agate mortar until a powder with particles $<40\ \mu\text{m}$ (sieve control) was obtained. Analyses were carried out at the LMDC laboratory of Toulouse, with a Bruker D8 Advance diffractometer using a copper X-ray tube, equipped with a vertical theta / theta goniometer and a LynxEye XE-TTM high-speed linear detector. A motorised anti-scattering knife was used. Diffractograms were acquired in approximately 2h40 per sample, at 40 kV and 40 mA, from 4° to $70^\circ 2\theta$ with an interval of $0.02^\circ 2\theta$. Mineral identification and quantification were carried out using both DIFFRACplus Eva v4 and DIFFRACplus Topas v5 (Bruker-AXS softwares) with the 2015 ICDD PDF database. Rietveld mineralogical modelling calculations were used for quantification (e.g. Bish & Post, 1993). The Rietveld refinement parameters used in this study are the same as those described in Trincal *et al.* (2014). Mineralogical quantifications precision was obtained by multiplying the GOF (goodness of fit) with the standard deviation provided by the Topas software, as recommended by Taylor & Hinczak (2003). SEM micrographs were taken using a JSM-IT100 scanning electron microscope at the Biogéosciences laboratory, University of Bourgogne Franche-Comté (Dijon).

3.c. Photogrammetry

In order to produce photogrammetric 3D reconstructions of fossil tracks, the software Agisoft PhotoScan Professional 1.2.4 was used to align and combine multiple digital photographs taken by a Nikon D5200 camera coupled with an AF-S NIKKOR 18–105 mm f/3.5–5.6G ED camera lens. The same software was used to produce 3D-photogrammetric digital elevation models (DEM) in false colours.

4. Sedimentology, petrology and mineralogy

In the Drigas and Nivoliers quarries, the stratigraphic sections are composed of homogeneous, micritic, thinly laminated limestone, with fine-grained texture (mudstone), conchoidal fractures, and sharp edges (Fig. 3a). Mineralogical analyses confirm the abundance of calcite (81.2–97.8 %; Fig. 4; Table 5). Dolomite appears as the second main mineralogical component (2.2–18.0 %; Table 5). SEM analyses reveal that calcite microcrystals are about 1–5 microns in size (Fig. 3b). These features allow the term “lithographic limestone” to be used (Bernier *et al.* 2014). The very fine and homogeneous texture is explained by the extreme scarcity of bioclastic microremains and detrital elements. Locally, in transverse section, the Drigas and Nivoliers limestone displays thin laminites easily distinguishable by their reddish colour, which stands out in contrast to the white/beige colour of the micrite (Fig. 3c). The surface of limestone slabs is flat, commonly undisturbed by ripple marks and bioturbations (except the few layers bearing abundant *Cochlichnus* and *Kouphichnium*). Rare ripple marks are reported at the top of the sedimentary column at Nivoliers. They consist of asymmetric ripple marks bearing small mollusc and echinoderm debris (Fig. 3d). Some surfaces of limestone slabs with evidence of microbial mats have been identified in both quarries (Fig. 3e). They display polygonal shapes reminiscent of analogous structures reported in the plattenkalk of Cerin and interpreted as petee structures (Bernier *et al.* 1991). Such reticulate patterns of microbial filaments result from wind activity and slope gravity leading to undulated and wrinkled surfaces (Bernier *et al.* 1991). There is no evidence of emerged surfaces in any the two quarries.

5. Body fossils

5.a. Marine organisms

5.a.1. Algae

Marine algae are rare and are only represented by the dasycladale genus *Goniolina* at the Nivoliers quarry (Moreau *et al.* 2016). They consist of isolated fragments of thalli. The thallus is longer than wide and consists of a central, well-developed, elongated, peduncle-like axis, up to 7 mm in diameter, bearing a distal head (Fig. 5). This axis is unbranched to twice-branched. The most proximal part of the axis is always absent. The longest - although incomplete- peduncle-like fragment is 80 mm long. The distal head of the thallus is oblong, up to 93 mm long and up to 32 mm in diameter. The surface of the distal head shows isodiametric lodges with a hexagonal pattern. Lodges form horizontal alignments up to 2.5 mm wide. Lodges are isometric along the entire length of the head. In European Kimmeridgian/Tithonian plattenkalks, the genus is uncommon. The gross morphology of the specimens from the Causse Méjean is close to that of *Goniolina janeti* from the uppermost Kimmeridgian of Cerin (Bernier *et al.* 2014).

5.a.2. Echinoderms

Echinoderm remains mainly consist of arm fragments of comatulid crinoids (Fig. 6a–b). The alternation of two kinds of ossicles and their non-parallelepiped shape is well visible on some isolated arms (Fig. 6b). These arms are similar to those of *Solanocrinites* from the Kimmeridgian of Cerin (Bernier *et al.* 2014). Stalked crinoid remains from the Nivoliers quarry include a distal end of an arm showing pinnules and a single and strongly altered calyx (Fig. 6c–d). Asterids are represented by some isolated and indeterminable ossicles, as well as

fragmentary articulated specimens. By contrast with other echinoderm remains, echinoids are rare (Fig. 6e–h). The only known complete test can be referred to ?*Hemicidaris* sp. (Fig. 6e). Some isolated spines of echinoids are also present in the assemblage. The proportions (about 2 cm in length and up to 2.0 mm in diameter) are consistent with an assignment to Hemicidaroida or Salenioida (e.g. *Pseudosalenia*) (Fig. 6g–h). Such regular echinoids were reported from the Late Jurassic lithographic limestone of Canjuers (Roman *et al.* 1991; Roman, 1994) and Cerin (Bourseau *et al.* 1994).

5.a.3. Brachiopods and molluscs

Brachiopods consist of rare terebratulids from the Nivoliens quarry (Fig. 7a). Most specimens are poorly preserved and strongly compressed. Bivalves are commonly found as isolated shells and not abundant. Most specimens are undeterminable. Similarly to bivalves from the Kimmeridgian of Cerin (Bernier *et al.* 2014), the majority of specimens are preserved in butterfly position (Fig. 7b). A single bedding plane from the Drigas quarry shows an accumulation of six shells. Shells are longer than high, 21-31 mm long, 19-24 mm high, very flattened and have a subovoid outline, subcentral and small beaks, and fine and dense rounded radial ribs (Fig. 7c). They are ascribed to *Aulacomyella* sp. (Fig. 7c). *Aulacomyella* is a bivalve whose mode of life remains debated, but this genus could have been either an epibenthic recliner adapted to cope with soft substrate or a pseudoplanktic organism living attached to floating algae that sank to the sea floor after death (Fürsich *et al.* 2007b). A few specimens of *Nanogyra* sp. were collected at Nivoliens, and a single specimen of *Nanogyra virgula* was found in the Drigas quarry (Fig. 7d). At Nivoliens, a single specimen of *Pholadomya* sp. was discovered at the top of the section. Gastropods are rare and consist of

small, narrow turruculate forms reported from the Nivoliers quarry (Fig. 7e). Some of these specimens can be assigned to Nerinellidae indet. (Kollmann, 2014).

The most abundant cephalopod remains are ammonites (Fig. 7f–k). They are very poorly preserved, mostly as crushed external moulds. Specimens are tentatively assigned to *Hybonoticeras* cf. *hybonotum* (Fig. 7j), *Lingulaticeras solenoides* (Fig. 7h–i), cf. *Dorsomorphites* (Fig. 7f), *Neochetoceras* sp. (Fig. 7g) and *Subplanites* sp. Rare and isolated aptychi also occur; they are ascribed to *Lamellaptychus* related to *Neochetoceras*. Belemnites are represented by rare rostra ascribed to the genus *Hibolithes* (Fig. 7l).

The most remarkable cephalopod remain is a coleoid gladius from Nivoliers, here identified as *Trachyteuthis* sp. (Fig. 7m–n, in ventral view). The gladius, preserved on two slabs, was retrieved from a float block. Nevertheless, we were able to identify the better-preserved specimen as the upper slab, based on the morphology of the bioturbations preserved on the surface of the slabs. The gladius was embedded with the dorsal facing up. The upper (outer, dorsal) gladius laminae adhered to the upper slab and the lower (inner, ventral) laminae adhered to the lower slab. Therefore, neither the dorsal gladius surface nor the ventral gladius surface are visible. The total length of the figured, rather compacted specimen is at least 285 mm, as most of the anterior part is not preserved. Due to its relative poor preservation, the outer margins of the gladius could only be imperfectly outlined. Slightly before halfway along the gladius, the maximum width is estimated at about 80 mm (i.e., ~ 28% of the total gladius length). A barely perceptible line in the posterior part of the gladius is tentatively interpreted as the inner asymptote of the hyperbolar zone. Therefore, the ratio of hyperbolar zone length to total gladius length is approximately 0.45. The width continuously decreases anteriorly. Growth increments are not visible. The gladius is distinctly multilayered and exhibits circular depressions close to the median axis. These depressions most certainly

correspond to the negative relief of the granules on the dorsal surface. The granulated area does not reach the lateral gladius margin but presumably reaches the anterior and posterior margins of the gladius. There is no evidence for a median keel, although a spindle-shaped depression accompanied by a marginal elevation is barely detectable.

Based on a hyperbolar zone length/gladius length ratio of ~ 0.45 and a relatively arcuate anterior part, this gladius can be confidently assigned to the genus *Trachyteuthis*. Fuchs *et al.* (2007) thoroughly investigated the gladius morphology of *Trachyteuthis* and proposed an emended diagnosis for this taxon. Among specimens from the Late Jurassic plattenkalks of Germany (Nusplingen and Solnhofen), these authors distinguished three morphospecies (*Trachyteuthis hastiformis*, *T. nusplingensis* and *T. teudopsiformis*). The specimen described here invites a comparison with *T. hastiformis*. Indeed, even though they are imperfectly preserved as negative reliefs, the dorsal granules appear coarse and irregular and are thus reminiscent of those observed in *T. hastiformis*. Another diagnostic feature of *T. hastiformis* is a gladius median field displaying a spindle-shaped elevation on the dorsal side or, vice-versa, a spindle-shaped depression accompanied by a marginal elevation on the ventral side.

Noteworthy, in strongly compacted specimens from Germany, this structure is flattened and difficult to discern (Fuchs *et al.* 2007). Such a structure was only tentatively identified in the specimen figured here in ventral view (Fig. 7m–n). The poor preservation of the latter unfortunately prevents a firm identification of this feature. Furthermore, the hyperbolar zone length/gladius length ratio is close to that documented for *T. hastiformis* by Fuchs *et al.* (2007).

According to Fuchs *et al.* (2007), morphologic differences between *T. nusplingensis* and *T. hastiformis* are small and thus difficult to determine in poorly preserved specimens. *Trachyteuthis nusplingensis* lacks the spindle-shaped elevation and exhibits a fine and

regularly arranged granulation throughout the whole gladius length. In our opinion, such characteristics do not match those of the specimen from Nivoliens. Finally, *T. teudopsiformis* significantly differs from the specimen described here in having a gladius median field with a pronounced median keel, a narrow granulation, posteriorly restricted to the keel, as well as a sharply pointed anterior gladius end (Fuchs *et al.* 2007).

In conclusion, due to its preservation and following the taxonomic recommendations of Fuchs *et al.* (2007: p. 588), we prefer not to assign the present specimen to any of the morphospecies described from the neighbouring Late Jurassic plattenkalks of Germany. Based on the geographic distribution of occurrences provided by Fuchs *et al.* (2007), this appears to be the first record of *Trachyteuthis* in the Jurassic of France.

5.a.4. Crustaceans

The crustacean fauna includes penaeoid shrimps, glypheoid lobsters, and ghost shrimps (Figs 8 and 9) that presents close affinities with those from the Late Jurassic plattenkalks of Germany (Garassino & Schweigert, 2006; Charbonnier & Garassino, 2012; Schweigert *et al.* 2016; Odin *et al.* 2019) and France (Bernier *et al.* 2014).

Although the penaeoid shrimps are represented by several specimens, only two allowed a detailed description (Fig. 8a–d). The carapace is subrectangular, smooth, with a straight dorsal margin bearing one median epigastric tooth, a sinuous, rimmed posterior margin, a curved ventral margin narrowing anteriorly and, a deep ocular incision. The rostrum (distal tip broken) is elongate, straight, with at least five dorsal teeth and one ventral tooth. The pleon is composed of subrectangular somites 1 to 5, equal in length, bearing rounded pleura. The somite 6 is subrectangular but longer than the previous ones. The somites 1 to 6

are smooth and locked to each other by mid-lateral hinges. The telson is not preserved. The cephalic appendages are only preserved on specimen APHPL_NIV78 (Fig. 8a–b) with a short eyestalk bearing a large eye, and fragments of antennae with laminate, slender scaphocerite and the fragment of multi-articulated flagellum. The thoracic appendages (pereiopods 1 to 5) are partially preserved, lacking the distal extremities. The pleonal appendages are not preserved.

Based on Schweigert *et al.* (2016), who revised the rich penaeoid fauna from the Late Jurassic Solnhofen lithographic limestones (Germany), the studied specimens can be assigned to the penaeid shrimp (Penaeidae) *Bylginella hexadon*, having a straight rostrum with 5 to 6 dorsal teeth, one ventral tooth, and one median epigastric tooth. The occurrence in the Kimmeridgian-Tithonian of the Causse Méjean enlarges the palaeobiogeographic distribution of this species, so far restricted to the Solnhofen area, pointing to the similarity between the studied decapod assemblage and the rich decapod fauna of Solnhofen.

The glypheoid lobsters (Glypheoidea) are represented by a single specimen (Fig. 8e–f) with carapace and cephalic appendages very poorly preserved. The pleon has subrectangular somites 1 to 5, equal in length, with a smooth tergal surface. The somite 6 is subrectangular but longer than the previous ones, with smooth tergal surface, as well. The thoracic appendages are composed of subchelate, elongate pereiopods 1, partially preserved pereiopods 2 and achelate pereiopods 3 to 5, almost equal in length. The pereiopod 1 shows an elongate propodus bearing one strong, sharp distal tooth on its ventral margin, and a strong and elongate dactylus. The uropodal endopod and exopod bear a strong median longitudinal carina. The latter also bears a rounded diaeresis. Both uropods are fringed by setae.

The lack of the main morphological characters, such as the carapace, the pleura of somites 1 to 5, and the telson, do not allow us to establish a precise systematic assignment of

the studied specimen. However, its very elongate subchelate first pereopods are characteristic of mecochirid lobsters (Mecochiridae Van Straelen, 1925). This character is not sufficient to establish a generic assignment, being shared by all members of the family. The age of the specimen could point to *Mecochirus*, which is a common genus in the Late Jurassic lithographic limestones in Germany (Garassino & Schweigert, 2006) and in France (Bernier *et al.* 2014).

The achelatan lobsters (Achelata) are represented by a single, poorly preserved specimen (Fig. 9a). Only the long flagella of the antennae and the short flagella of the antennulae help to assign the studied specimen to the Achelata. The shape of the antennae with thick articles and elongate flagellum narrowing distally allows its assignment to spiny lobsters (Palinuridae). It can be compared with the coeval *Palinurina* (Kimmeridgian to Tithonian of Solnhofen lithographic limestones, Germany). The reduced body size and the re-investigation of the fossil species *Palinurina tenera* by Haug & Haug (2016) suggest that the studied specimen could represent a larva or a post-larval juvenile.

The ghost shrimps (Thalassinidea) are represented by two relatively well-preserved specimens (Fig. 9b–f). The first specimen (APHPL_NIV75) is a subcylindrical carapace with a slightly vaulted dorsal margin and a slightly sinuous and rimmed posterior margin (Fig. 9b–c). The rostrum is very short and spineless. The cephalic region shows at least two apparently spiny cephalic carinae. The pleon exhibits subrectangular somites 1 to 5, decreasing in size distally, with rounded pleura. The somite 2 is larger than somite 1 and somites 3 to 5. The somite 6 is subrectangular and longer than the previous ones. All the pleonal somites show smooth terga and pleura. The telson is not preserved. Among the thoracic appendages, the pereopod 1 is subchelate and stronger than the others, which are all poorly preserved. The

pereiopod 1 is composed of (1) a subsquare propodus, with a thin longitudinal lateral carina in the dorsal region and a very short index (fixed finger) at the distal margin; and (2) a strong, thick pointed dactylus (mobile finger), slightly curved downward, and with a thin median longitudinal carina. The uropodal exopod is preserved only by its serrated outer margin.

Based upon the diagnosis provided by Förster (1977) and Garassino & Schweigert (2006), the studied specimen is assigned herein to *Etallonia* (Axiidae) due to its strong subchelate first pereiopod. According to Garassino & Schweigert (2006), Schweigert (2009), and Schweitzer *et al.* (2010), this genus, known to date only from the Late Jurassic (Oxfordian–Tithonian), includes six species, which have been described based upon the shape of the first pereiopod since usually the carapace and pleon are poorly preserved. Based upon the shape of the first pereiopod (index with smooth inner margin), we tentatively assigned the specimen to *Etallonia isochela*, well known in the Kimmeridgian of Battle (Sussex, United Kingdom; Woodward, 1876) and Bure (Lorraine, France; Breton *et al.* 2003; Carpentier *et al.* 2006).

The second specimen (APHPL_NIV77) presents a subcylindrical carapace, laterally flattened, with a rimmed posterior margin. The rostrum is not preserved (Fig. 9d–f). The cervical groove is deep, strongly inclined forward and joined ventrally to a very concave antennal groove, delimiting a short cephalic region and wide cardiac and branchial regions. The cephalic region shows one straight spiny orbital carina and strong orbital and antennal spines. The gastric and cardiac regions are covered by small uniformly arranged granules. The antennal region is smooth. The branchial region is covered by small uniformly arranged granules in the dorsal part, and by small scaly incisions in the ventral part. The pleon has subrectangular somites 1 to 5, equal in length, with rounded pleura. The somite 6 is

subrectangular and longer than the previous ones. The telson is not preserved. The pereopod 1 shows a stocky and short chela, partially preserved.

Based upon the diagnosis provided by Förster (1977) and Garassino & Schweigert (2006), the specimen is assigned to *Magila* (Axiidae) due to its deep cervical groove, strongly inclined forward, and its straight orbital carina (named “antennal carina” by Garassino & Schweigert, 2006). According to Garassino & Schweigert (2006), only two species, *Magila latimana* and *M. desmarestii* from the Late Jurassic Solnhofen lithographic limestones (Germany) are coeval with the studied specimen. We tentatively assign the specimen to *M. latimana* based upon the deep cervical groove strongly inclined forward, the straight antennal carina, and the serrate margin of the uropodal exopod. Hence, this specimen from the Causse Méjean could represent the first report of this species out of Germany, enlarging its palaeogeographic distribution.

5.a.5. Fishes

Fish remains are relatively rare at Drigas and Nivoliers, with more or less complete specimens ranging from fully disarticulated to articulated skeletons. Several groups can be identified among actinopterygians, including pycnodontiforms, a possible amiiform, and basal teleosteans. In addition, a coelacanth (Sarcopterygia: Actinistia) is present in the fish assemblage from Nivoliers. The few fish taxa recognised at Drigas and Nivoliers are all present in the renowned Late Jurassic plattenkalks of Western Europe (e.g. Cerin, Canjuers, Solnhofen area).

Pycnodontiform fishes are represented by three taxa, *Gyrodus hexagonus* (Gyrodontidae), *Thiollierepycnodus wagneri* and *Proscinetes* sp. (Pycnodontidae). *Gyrodus*

hexagonus is known by two specimens from Drigas and Nivoliens. The latter locality yielded the best preserved specimen, which is a nearly complete small fish (standard length: 111 mm) with a sub-hexagonal body outline (Fig. 10a). It shows all the skeletal and dental features of the taxon, such as strongly tuberculated dermal bones, styliform premaxillary and dentary teeth, well-ornamented crushing teeth, complete squamation (imbricate pattern sensu Nursall, 1996) consisting of reticulated rhombic scales, falcate dorsal and anal fins, and deeply forked caudal fin (Lambers, 1991a; Nursall, 1996; Poyato-Ariza & Wenz, 2002; Kriwet & Schmitz, 2005). *Thiollierepynodus wagneri* is represented by a single, nearly complete specimen (part and counterpart) (standard length: ~180 mm) from Drigas (Fig. 10b). This specimen shows a number of features indicating that it unambiguously belongs to this taxon, including the two autapomorphic characters noted by Ebert (2020): 1) ventral extremity of the post-coelomic bone with two well-developed anterior and posterior extensions; and 2) reduced bar-like flank scales extending to the posterior region of the body, near to the caudal peduncle, but not overlying the pterygiophores of the dorsal and anal fins. Other relevant features are: 1) snout prognathous; 2) caudal fin double-emarginated in distal contour, with angle between dorsal and ventral edges being 105°; and 3) complete body scales restricted to the anteroventral region of the body. Interestingly, the occurrence of *Thiollierepynodus wagneri*, so far only known from two localities (Cerin and Wattendorf) (Saint-Seine, 1949; Ebert, 2020), supports a late Kimmeridgian to early Tithonian age for the Causse Méjean plattenkalk series. The third pycnodontiform taxon, *Proscinetes* sp., is known by an incomplete and disarticulated specimen from Nivoliens; only a few cranial elements are preserved, including toothed bones (Fig. 10c–d). The premaxillary/dentary teeth are incisiform and the vomerine dentition shows the typical alternation of one large tooth and two smaller teeth in the main row (Poyato-Ariza & Wenz, 2002).

A fully disarticulated specimen from Drigas may belong to a caturoid amiiform based on the following combination of characters: absence of ossified centra; preural haemal and neural spines near the caudal peduncle region strongly inclined to a nearly horizontal orientation; haemal spines of the caudal region laterally broadened (caturoid synapomorphy); short dorsal fin; small, rounded “amioid” scales without ganoine (Lambers, 1994; Grande & Bemis, 1998; Martín-Abad, 2017).

Basal teleosts are the most common fossil fishes at Drigas and Nivoliens but are often incomplete and partly disarticulated. However, some of the specimens can be assigned to orthogonikleithrids (*Orthogonikleithrus* sp.) and ascalaboids (cf. *Tharsis* sp.). Besides their general morphology and small size (~6 cm in total length), specimens referred to *Orthogonikleithrus* (Fig. 11a) are characterised by the relative position of their dorsal, pelvic and anal fins (Arratia, 1987, 1997; Konwert, 2016). A few larger specimens (~10 cm in total length) are assignable to cf. *Tharsis* sp. (Fig. 11b) based on key features such as the number and arrangement of infraorbital 1 and preopercular sensory canals and the strong inclination of neural and haemal spines of the last caudal vertebrae (Arratia *et al.* 2019).

A single fragmentary articulated specimen from Nivoliens indicates the presence of coelacanths in the Causse Méjean plattenkalk (Fig. 11c). This specimen consists of the dorsal portion of the trunk, with both dorsal fins and about 30 neural spines being preserved. The first and second dorsal fins have 7 and 26 rays, respectively. These rays are segmented transversally, except at their base. Denticles are present on the rays of the first dorsal fin. The basal plate of the second dorsal fin is deeply forked. The scales bear numerous tiny denticles. The high number of second dorsal fin rays suggests that the Nivoliens coelacanth might

belong to the genus *Libys* (up to 25 rays; Lambers, 1991b) rather than to *Coccoderma* (14 rays; Lambers, 1991b) or *Undina* (up to 21 rays; Saint-Seine, 1949; Lambers, 1991b).

5.b. Terrestrial organisms

5.b.1. Land plants

Fossil plants consist of quite rare macro-foliar remains (Fig. 12a–f). Plants are preserved only as impressions on limestone bedding planes. The preservation of details in these impressions is quite variable. Cuticles are never preserved and no cellular details are evident. While terrestrial plants from Nivoliers were described by Moreau *et al.* (2016), those from Drigas are listed here for the first time (Table 3). The terrestrial floras from Drigas and Nivoliers are similar. The land plants include vegetative remains ascribed to bennettitaleans (*Zamites*), conifers (*Brachyphyllum*), and pteridosperms (*Cycadopteris*). Woods are extremely rare in the Nivoliers quarry. They consist of small fragments preserved as impressions.

Cycadopteris sp. is represented only by fragments of pinnae (Fig. 12a–c). The largest pinna fragment is 200 mm long. The pinna consists of a rachis bearing sub-opposite to opposite pinnules that are oval or circular. They display a marginal fold (Fig. 12c) and are attached by a broad base to the rachis, which is up to 9 mm wide. The pinna rachis is rarely visible, and the veins cannot be distinguished. Remains ascribed to *Cycadopteris* sp. are only poorly preserved.

Remains ascribed to *Brachyphyllum* sp. consist of slender, up to 10 cm long, and 12 mm wide leafy axes (Fig. 12d). They bear tiny helically arranged, rhombic leaves that are nearly as broad as long. They are appressed to the stem, abaxially convex, and partially overlapping. The leaf apex forms a small blunt tip, curved inward to the stem axis.

Specimens assigned to *Zamites feneonis* consist of well-developed pinnate leaves (Fig. 12e–f). The longest complete leaf is 25 cm long. The rachis is up to 1 cm wide. Leaflets are elongated and sub-oppositely to alternately arranged in one plane along the rachis. They are inserted at up to 90° to the rachis, and are consistently spaced. Depending of the specimens, leaflets overlap slightly or not. Leaflet length reaches a maximum in the centre of the leaf. Leaflets are lanceolate, up to 75 mm long, up to 10 mm wide, with nearly parallel margins. The base of the leaflets is slightly contracted and seems to be symmetrical. In some specimens, the leaflets have an acute apex, curving slightly distally. Leaflet surfaces show persistent, thin, parallel veins, present along the entire length of the leaflets (Fig. 12f). This bennettitalean represents of the main component of the terrestrial flora of the Causse Méjean.

Brachyphyllum, *Cycadopteris* and *Zamites* were reported in coeval lithographic limestone of western Europe (e.g. Canjuers, Cerin and Solnhofen; Barthel *et al.* 1994; Frickhinger *et al.* 1994; Bernier *et al.* 2014; Peyer *et al.* 2014).

5.b.2. Reptiles

To date, only one tetrapod specimen has been found in the lithographic limestone of the Causse Méjean. This specimen (MMGC 2017.65.133) comes from the Drigas quarry and consists of a nearly complete, slightly disarticulated skeleton of a rhynchocephalian, attributable to *Kallimodon* based on skull shape, dental features, and body and limb proportions (Cocude-Michel, 1963; Fig. 13a–c). The specimen is 215 mm in preserved length (but the distal portion of the tail is missing), with a 30-mm long skull (including lower jaw). The triangular, moderately elongated skull is exposed in ventral aspect, showing the teeth of the premaxillary, maxillary and palatine in occlusal view. Posteriormost maxillary teeth are larger than anterior ones, with a well-developed posterolingual flange. The limbs are

relatively short, especially when compared to *Homoeosaurus*, another sphenodontian well represented in the Late Jurassic plattenkalks of Western Europe (Cocude-Michel, 1963). The shape, orientation and development of the posterior process of the second sacral rib allow us to assign MMGC 2017.65.133 to *Kallimodon cerinensis* rather than to *K. pulchellus* (Cocude-Michel, 1963; Rauhut & López-Arbarelo, 2016).

6. Trace fossils

Whereas surfaces of limestone slabs are flat and commonly undisturbed by bioturbations, some layers show abundant invertebrate tracks (Fig. 14). They mainly consist of trackways of limulids ascribed to *Kouphichnium* isp. (Fig. 14a–e). Ichnofossils also include *Crescentichnus*, *Cochlichnus* (Fig. 14f) and some *Thalassinoides*.

Kouphichnium isp. trackways are mainly composed by tracks of the sixth pair of appendages (pusher limbs or “pushers”) that are used by the animal to propel its body during locomotion. Internal and external trackway widths are up to 188 mm and up to 262 mm respectively. Right and left pusher traces of a same step are opposite (Fig. 14a–b). Pairs form generally a repetitive motif on each step. Strides have a wide range of values (26–334 mm). The anterior part of individual pusher imprints is constituted by the four triangular or digit-like marks of the pusher blades (Fig. 14c–e). The posterior part of the pusher trace is an elongated and thin furrow made by the tarsus. The extremity of the furrow is generally bifid as it corresponds to the imprint of the pretarsus (Fig. 14c–e). The ichnogenus *Kouphichnium* is present in both Drigas and Nivoliers (Table 4). Although they are for the first time mentioned at Nivoliers, Moreau *et al.* (2014) published a detailed study of tracks from the Drigas quarry. *Kouphichnium* is clearly more abundant at the latter locality. Moreau *et al.* (2014) reported a total of 146 pusher traces (including 61 isolated traces) and thirteen

trackways found on various floating limestone slabs. The biometric analysis conducted on *Kouphichnium* from Drigas illustrated the gigantism of the Late Jurassic limulids from Lozère (up to 84 cm in length; Moreau *et al.* 2014).

At Drigas, *Crescentichnus* *isp.* occurs as isolated, simple crescent-shaped shallow mounds (positive hypichnia) that are about 10 cm wide and 6 cm long. One specimen shows some striation along the crescent. These traces exhibit neither transverse lineations in the posterior medial portion, nor associated scratch marks on a median posterior ridge. This type of ichnofossils was usually assigned to *Selenichnites* until this ichnogenus was entirely revised by Romano & Whyte (2015), who erected *Crescentichnus* for the morphology described here. Although the corresponding tracemakers should be considered with caution (Romano & Whyte, 2015; Romano & Taylor, 2019), this type of traces from Drigas is most probably the result of limulid prosomas impinging on the sediment surface.

Cochlichnus *isp.* burrows are rarely isolated (Fig. 14f) and form large accumulations. Burrows are horizontal, thin, unbranched, unlined, unornamented, sinusoidal, cylindrical in cross-section, and up to 3 mm in diameter. Diameter is constant along the total length of the burrow. The longest specimen is 50 mm long. Amplitude is up to 7 mm wide, whereas wavelength is up to 14 mm long. *Cochlichnus* is particularly abundant in the Unit 1 of the Drigas quarry (Moreau *et al.* 2014). *Cochlichnus* is interpreted as grazing trails (pascichnia; Buatois *et al.* 1996). Tracemakers are either annelid worms, nematodes or larvae of dipteran insects (Hasiotis, 2004).

A single ammonite touch mark was reported at Nivoliers (Fig. 14h–i). It consists of an 11 mm long, and 13 mm wide ventral impression of the shell that displays a series of seven straight and parallel rib marks. Such a trace was made by an ammonite shell briefly touching the sediment surface (Lomax *et al.* 2017). Laterally, the mark shows small positive reliefs that

correspond to the sediment which was ejected during the impact of the shell on the sea floor (Fig. 14h–i).

At Nivoliers, surfaces of limestone slabs bear whitish, elongated, convoluted, cylindrical coprolites ascribed to *Lumbricaria* (Fig. 14g). Producers of such faecal strings were tentatively interpreted as cephalopods, fishes, holothurians and worms (Hunt & Lucas, 2012; Knaust & Hoffmann, 2020).

The palaeontological assemblage from Nivoliers also includes fossiliferous heaps composed by a mixture of echinoderm remains, such as ossicles of comatulids, as well as interambulacral plates (some on them showing perforated and crenulated tubercles) and spines of echinoids (Fig. 15a–b). It suggests that they correspond to partially digested food or regurgitation of fishes. Regurgitalites including echinoderm remains (e.g. Peyer *et al.* 2014; Ebert *et al.* 2015) may have been produced by durophagous fishes such as pycnodontiforms. Similar fossils are well known in the Late Jurassic lithographic limestone from Canjuers (Peyer *et al.* 2014), Cerin (Thomas, 2009) and Solnhofen (Frickhinger *et al.* 1994; Ebert *et al.* 2015). Fishes fed on diverse echinoderms (crinoids, echinoids, as well as asterids) then spit out non-digested skeletal remains.

7. Discussion

7.a. Age of the lithographic limestone of the Causse Méjean

Brouder *et al.* (1977) proposed a late Kimmeridgian age for the lithographic limestone from Drigas. Moreau *et al.* (2014) tentatively assigned a late Kimmeridgian to early Tithonian age to the lithographic limestone from this quarry for the following reasons: (i) Brouder *et al.*

(1977) could not justify their proposal with biostratigraphic evidence, (ii) the occurrence of rare ammonites attributed to *Subplanites* sp. at the top of the quarry.

In the area of the Nivoliers quarry, Brouder *et al.* (1977) proposed that the limestone that overlies the late Kimmeridgian dolostone is Tithonian in age. Although the ammonite taxa *Hybonoticeras hybonotum*, *Lingulaticeras solenoides*, *Neochetoceras* and *Dorsomorphites* suggest an early Tithonian age, the dasycladale *Goniolina* suggests a late Kimmeridgian age (Granier & Deloffre, 1994). Accordingly, the age of the Late Jurassic plattenkalk of the Causse Méjean is comprised within the late Kimmeridgian-early Tithonian interval.

7.b. Taphonomic and palaeoenvironmental implications

Lithological features of the limestone from the Causse Méjean (homogeneous, micritic, thinly laminated with a fine-grained mudstone texture), as well as the near absence of ripple marks suggest slow-moving or stagnant waters and therefore very low-energy conditions. Many biostratigraphic arguments support the hypothesis of a low-energy environment: fossil remains are never size-sorted, always isolated, rarely forming accumulations; dasycladale algae and skeletal remains of fishes and reptiles are usually articulated and very well preserved; bivalves remained articulated after death. Transport distance between the main habitats of organisms and the burial site was short and the burial rapid. As observed in several contemporaneous plattenkalks (e.g. Bernier *et al.* 2014; Peyer *et al.* 2014), microbial mats quickly covered dead organisms and prevented remains from being destroyed by oxidation and/or scavenging.

The mixed palaeontological assemblages, showing the co-occurrence of terrestrial remains such as plants (bennettitaleans, conifers, and pteridosperms) and vertebrates

(rhyngocephalians) with numerous marine organisms (all other taxa identified) clearly indicate that the depositional environment was a nearshore marine setting. This is also supported by the co-occurrence of the horizontal invertebrate traces *Kouphichnium* isp. and *Cochlichnus* isp. which are characteristic of environments very proximal to the coastline (Gastaldo *et al.* 1989).

Extant dasycladale algae live in the euphotic zone and mainly grow in habitats protected from storms and ground waves; they live in warm-temperate and tropical seas, with an optimal growth temperature of 25-27°C (Berger & Kaeffer, 1992). The presence of *Goniolina* sp. suggests a very shallow environment (Olivier *et al.*, 2008). The presence of this green alga might also indicate considerable variations in salinity, as some extant dasycladales grow in hypersaline or brackish waters (Flügel, 2013).

Both lithological features and fossil content suggest a calm, protected and shallow marine environment such as a lagoon partially or occasionally open to the sea. The lagoon was probably protected by the local contemporaneous reefs mentioned by Brouder *et al.* (1977) and Gèze *et al.* (1980). As suggested by the rare layers with asymmetric ripple marks (Fig. 3d), the lagoon was probably occasionally impacted by higher energy events such as storms. Fishes from Drigas and Nivoliers illustrate diverse ecological niches, suggesting that most of them are allochthonous to parautochthonous and were transported or trapped away from their habitats. Open-water fishes and reef-dwelling fishes were probably washed in the lagoon during storms or during strong tides and died due to the unsuitable lagoonal conditions (warm temperatures, high salinity, and oxygen-depleted water-mass). Alternatively, some fresh carcasses may also have reached the lagoon. All the echinoids from Drigas and Nivoliers are regular ones. The fine carbonate mud of the original bottom of the Causes

Méjean lagoon was different from the hard substrate on which they commonly lived. They probably lived on the nearest coral reefs and were also carried into the lagoon by currents during high-energy events or by predators (such as pycnodont fishes). Ammonites from the lithographic limestone of the Causse Méjean probably also did not tolerate the rather hostile conditions of lagoonal waters.

Emerged supratidal zones or islands were close. The terrestrial flora suggests that the Late Jurassic coastal area of the Causse Méjean was inhabited by a sub-arborescent to arborescent vegetation of bennettitaleans (e.g. *Zamites*), conifers (e.g. *Brachyphyllum*) and pteridosperms (e.g. *Cycadopteris*). As noted by Moreau *et al.* (2016), similar floras have been described from the Late Jurassic Lagerstätten of Canjuers (*et al.* 2014), Cerin (Bernier *et al.* 2014) and Solnhofen (Barthel *et al.* 1994; Frickhinger, 1994). The late Kimmeridgian to early Tithonian flora from the Causse Méjean displays xerophytic adaptations to hot and dry conditions of the coastal environments. For example, similarly to extant sclerophytes which are adapted to dry environments, the leaflets of *Zamites* were strongly sclerotised in many cases (Barale & Doludenko, 1994). In *Cycadopteris*, the reduction of dry air circulation is insured by the marginal fold along the lobe of the pinnules, protecting internal spaces bearing stomatal apparatuses (Barale, 1997). The latter are protected by hairs (Barale, 1982, 1997), probably forming a barrier to invasion by pathogens and dust, limiting mechanical damage to stomata and water loss. *Cycadopteris* is considered to have been a halophyte, tolerating habitats with a strong marine input, such as salt marshes (Barale & Doludenko, 1994; Van Konijnenburg-van Cittert, 2008). *Brachyphyllum* displays xerophytic adaptations (e.g. fleshy shoots; short and small leaves pressed against the axis; thick cuticle; sunken stomata apparatuses limiting water loss) which are typically those of floras from tropical climates with

cyclically dry seasons (Thévenard *et al.* 2005). The leafy axis of this conifer was adapted to withstand intense sunlight and coastal environments exposed to desiccant conditions.

7.c. Palaeobiogeographic implications

The composition of the fauna, flora and ichnofauna, as well as the depositional environment of the Late Jurassic lithographic limestone of the Causse Méjean show strong similarities with coeval Lagerstätten of Germany, such as Solnhofen (early Tithonian; Barthel *et al.* 1994; Frickhinger *et al.* 1994), Nusplingen (late Kimmeridgian; Dietl & Schweigert, 2004) and Wattendorf (late Kimmeridgian; Fürsich *et al.* 2007a). Such analogies are also observed in the French plattenkalks of Canjuers (early Kimmeridgian; Peyer *et al.* 2014) and Cerin (Kimmeridgian to Tithonian; Bernier *et al.* 2014). During the late Kimmeridgian, the Causse Méjean was located about 300 km east of Canjuers and Cerin at a palaeolatitude of around 30°N, on the southern edge of the Massif Central that constituted a large island (in the southern part of modern France; Enay *et al.* 1980; Dercourt *et al.* 2000). During the early Tithonian, this island became progressively connected to the emerged land of the Armorican Massif (in present-day northwestern France; Enay *et al.* 1980; Dercourt *et al.* 2000). Fossils from Drigas and Nivoliers indicate that coastal biotas of lagoonal palaeoecosystems of the southern Massif Central were similar to those of the southeastern Rhenish Massif and southwestern Bohemian Massif (present-day Central Europe) during the Late Jurassic. Thus, the flora, fauna and ichnofauna from the Causse Méjean extend the palaeogeographical distribution of the Solnhofen-type biota westward. Canjuers, Cerin, the Solnhofen area and the Causse Méjean were all influenced by waters of the Mediterranean Tethys (Dercourt *et al.* 2000; Billon-Bruyat *et al.* 2005). The Crayssac plattenkalk (early Tithonian; Mazin *et al.* 1997) differs from these sites by its peculiar depositional environment (coastal mudflat) and

fossil assemblage (consisting mostly of ichnofossils); furthermore, its position in the Aquitaine Basin suggests an influence by waters from both the opening North Atlantic Ocean and the Mediterranean Tethys (Dercourt *et al.* 2000; Billon-Bruyat *et al.* 2005).

8. Conclusions

-The collecting organised in the late Kimmeridgian to early Tithonian lithographic limestone of the Causse Méjean over the last two decades revealed two exceptional palaeontological sites without any equivalent in the Causses Basin. The fossil assemblages they yield show the co-occurrence of diverse marine and terrestrial organisms.

- Based on ammonites, the limestone excavated at Drigas and Nivolières is considered late Kimmeridgian to early Tithonian in age.

- Based on the exquisite preservation of many fossils, the Drigas and Nivolières quarries can be regarded as Konservat-Lagerstätten. The fine mudstone texture, the low hydrodynamic conditions, the limited transport, the presence of microbial mats preventing remains from oxidation and/or scavenging and the rapid burial contributed to the exceptional preservation of the Late Jurassic biota from the Causse Méjean.

-The palaeontological content and the lithological features demonstrate that the depositional environment was a calm, protected and shallow marine environment such as a lagoon partially or occasionally open to the sea. Evidence suggests that most of the preserved invertebrates and vertebrates were not autochthonous to the lagoon, but were swept in during storm events from the open sea or from nearby reef environments.

Acknowledgements. We address our sincere thanks to Jacques Fages, the owner of the Drigas quarry, who gave permission for palaeontological sampling. We thank André Baret, the mayor of the Hures-La Parade municipality as well as Eric Dupré and Xavier Ory, who gave their agreements for palaeontological sampling in the Nivoliers quarry. We thank Claude Barbini, Benjamin Bourel, Nathalie Coquel Poussy, Simon Courivaud, Alain Jacquet, Ethan Jean, Dorian Meyrueis, Jean-Luc Meyrueis, Alexandre Van Elst, Matthieu Van Elst and Jean-Marie Vayssier, for their help in the excavation during the summer 2020. We are greatly indebted to the Mazel family who kindly gave its specimens for this study. We thank François Boulot for information about the discovery the *Thiollierepynodus* from Drigas. We thank Jean-Yves Boutin for information concerning the discovery of the rhynchocephalian. We thank Pascal Neige and Rober Weis for discussions on belemnites, Gloria Arratia, Martin Konwert and Hugo Martín Abad for discussions on fishes, and Bruno Guy for discussions and information about specimens deposited in the Prehistorama Museum (Gard, southern France). We thank Rachel Almalric and Ghislaine Rabier (Musée de Millau et des Grands Causses) for providing access to the *Kallimodon* specimen. We thank Emilie Steimetz (Biogéosciences laboratory, University of Bourgogne Franche-Comté, Dijon) for her technical contribution during SEM investigations (MorphOptics service of the GISMO platform). We would like to express our gratitude to Günter Schweigert and to an anonymous reviewer for their constructive and thoughtful reviews of the manuscript.

This publication is a contribution to a research project led and funded by the Association Paléontologique des Hauts Plateaux du Languedoc (A.P.H.P.L., Mende, Lozère).

Declaration of interest. The authors have no known conflict of interest.

References

- Arratia G** (1987) *Orthogonikleithrus leichi* n. gen., n. sp. (isces: Teleostei) from the Late Jurassic of Germany. *Paläontologische Zeitschrift* **61**, 309–320.
- Arratia G** (1997) Basal teleosts and teleostean phylogeny. *Palaeo Ichthyologica* **7**, 1–168.
- Arratia G, Schultze H-P and Tischlinger H** (2019) On a remarkable new species of *Tharsis*, a Late Jurassic teleostean fish from southern Germany: its morphology and phylogenetic relationships. *Fossil Record* **22**, 1–23.
- Barale G** (1997) Les stratégies adaptatives de quelques végétaux du Jurassique/Crétacé inférieur de la Province européenne. *Geobios* **30**, 17–22.
- Barale G** (1982) Le genre *Cycadopteris* Zigno au Jurassique dans l'Ouest Européen. *Palaeontographica B* **183**, 8–56.
- Barale G, Bernier P, Bourseau J-P, Buffetaut E, Gaillard C, Gall J-C and Wenz S** (1985) *Cerin, une lagune tropicale au temps des Dinosaurés*. Lyon: Tixier et Fils, 136 pp.

Barale G and Doludenko M (1994) Comparaisons entre les flores des localités célèbres de calcaires lithographiques S. L. du Sud-Ouest de l'Eurasie. *Geobios Mémoire Spéciale* **16**, 251–257.

Barthel KW, Swinburne NHM and Conway Morris S (1994) *Solnhofen, a Study in Mesozoic Palaeontology*. Cambridge: Cambridge University Press, 236 pp.

Berger S and Kaefer MJ (1992) *Dasycladales: an illustrated monograph of a fascinating algal order*. Stuttgart: Thieme, 247 pp.

Bernier P, Gaillard C, Gall J-C, Barale G, Bourseau J-P, Buffetaut E and Wenz S (1991). Morphogenetic impact of microbial mats on surface structures of Kimmeridgian micritic limestones (Cerin, France). *Sedimentology* **38**, 127–136.

Bernier P, Barale G, Bourseau J-P, Buffetaut E, Gaillard C, Gall J-C and Wenz S (2014) The lithographic limestones of Cerin (southern Jura Mountains, France). A synthetic approach and environmental interpretation. *Comptes Rendus Palevol* **13**, 383–402.

Berry EW (1918) The Jurassic lagoons of Solnhofen. *The Scientific Monthly* **7**, 361–378.

Billon-Bruyat J-P, Lécuyer C., Martineau F and Mazin J-M (2005) Oxygen isotope compositions of Late Jurassic vertebrate remains from lithographic limestones of western Europe: implications for the ecology of fish, turtles, and crocodylians. *Palaeogeography, Palaeoclimatology, Palaeoecology* **216**, 359–375.

Bourseau J-P, Bernier P, Barale G, Buffetaut E, Gaillard E, Gall J-P, Roman J and

Wenz S (1994) Taphonomie des échinides du gisement de Cerin (Kimmeridgien supérieur, Jura méridional, France). Implications environnementales. *Geobios Mémoire Spéciale* **16**, 37–47.

Bousquet J-C and Vianey-Liaud M (2001) *Dinosaures et autres reptiles du Languedoc*.

Montpellier: Les Presses du Languedoc, 200 pp.

Breton G, Carpentier C, Huault V and Lathuilière B (2003) Decapod crustaceans from the

Kimmeridgian of Bure (Meuse, France). *Contributions to Zoology* **72**, 91–93.

Brouder P, Gèze B, Macquar J-C and Paloc H (1977) *Notice explicative, carte géologique*

au 1/50 000 de la France, feuille de Meyrueis (910). Orléans: Bureau de Recherches Géologiques et Minières, 29 pp.

Buatois LA, Mángano MG, Wu X and Zhang G (1996). Trace fossils from Jurassic

lacustrine turbidites of the Anyao Formation (central China) and their environmental and evolutionary significance. *Ichnos* **4**, 287–303.

Carpentier C, Breton G, Huault V and Lathuilière B (2006) Crustacés décapodes du

Kimméridgien de Bure (Meuse, France). *Geobios* **39**, 617–629.

- Charbonnier S and Garassino A** (2012) The marine arthropods from the Solnhofen Lithographic Limestones (Late Jurassic, Germany) in the collections of the Muséum national d'Histoire naturelle, Paris. *Geodiversitas* **34**, 857–872.
- Cocude-Michel M** (1963) Les rhynchocéphales et les sauriens des calcaires lithographiques (Jurassique supérieur) d'Europe occidentale. *Nouvelles Archives du Muséum d'Histoire Naturelle de Lyon* **7**, 1–187.
- Dercourt J, Gaetani M, Vrielynck B, Barrier E, Biju-Duval B, Brunet M-F, Cadet J-P, Crasquin S and Sandulescu M** (2000) *Atlas Peri-Tethys Paleogeographical Maps*. Paris CCGM/CGMW, 269 pp.
- Dietl G and Schweigert G** (2004) The Nusplingen lithographic limestone-a" fossil lagerstaette" of late Kimmeridgian age from the Swabian Alb (Germany). *Rivista Italiana di Paleontologia e Stratigrafia* **110**, 303–309.
- Dörfliger N, Le Strat P, Garden M, Blaise M, Izac J-L and Desprats J-F** (2006) *Géologie, tectonique et géomorphologie du Causse de Sauveterre et de ses avant-causses (secteur Est), Rapport du Lot N°1 de l'Etude hydrogéologique du Causse de Sauveterre et de ses avant-causses (secteur Est), BRGM/RP-54967-FR*. Orléans: Bureau de Recherches Géologiques et Minières, 167 pp.

Ebert M (2020) A new genus of Pycnodontidae (Actinopterygii) from the Upper Jurassic of France and Germany, included in a phylogeny of Pycnodontiformes. *Zoological Journal of the Linnean Society* **188**, 434–454.

Ebert M, Kölbl-Ebert M and Lane JA (2015) Fauna and predator-prey relationships of Ettling, an actinopterygian fish-dominated Konservat-Lagerstätte from the Late Jurassic of southern Germany. *PLoS ONE* **10**, e0116140.

Enay R, Mangold C, Cariou E, Contini D, Debrand-Passard S, Donze P, Gabilly J, Lefavrais-Raymond A, Mouterde R and Thierry J (1980) Synthèse paléogéographique du Jurassique français. *Document du Laboratoire de Géologie de la Faculté de Lyon* **5**, 1–280.

Flügel E (2013) *Microfacies of Carbonate Rocks: Analysis, Interpretation and Application*. Berlin: Springer, 976 pp.

Förster R (1977) Untersuchungen an jurassischen Thalassinoidea (Crustacea, Decapoda). *Mitteilungen der Bayerischen Staatssammlung für Paläontologie und historische Geologie* **17**, 137–156.

Frickhinger KA (1994) *Die Fossilien von Solnhofen*. The fossils of Solnhofen. Korb: Goldschneck-Verlag, 336 pp.

Fuchs D, Engeser T and Keupp H (2007) Gladius shape variation in coleoid cephalopod

Trachyteuthis from the Upper Jurassic Nusplingen and Solnhofen Plattenkalks. *Acta Palaeontologica Polonica* **52**, 575–589.

Fürsich FT, Mäuser M, Schneider S and Werner W (2007a) The Wattendorf Plattenkalk

(Upper Kimmeridgian)—a new conservation lagerstätte from the northern Franconian Alb, southern Germany. *Neues Jahrbuch für Geologie und Paläontologie, Abhandlungen* **245**, 45–58.

Fürsich FT, Werner W, Schneider S and Mäuser M (2007b) Sedimentology, taphonomy,

and palaeoecology of a laminated plattenkalk from the Kimmeridgian of the northern Franconian Alb (southern Germany). *Palaeogeography, Palaeoclimatology, Palaeoecology* **243**, 92–117.

Garassino A and Schweigert G (2006). The Upper Jurassic Solnhofen decapod crustacean

fauna: review of the types from old descriptions. Part I. Infraorders Astacidea, Thalassinidea, and Palinura. *Memorie della Società italiana di Scienze naturali e del Museo civico di Storia naturale di Milano* **34**, 3–44.

Gastaldo RA, Gibson MA and Gray TD (1989) An Appalachian deltaic sequence,

northeastern Alabama, U.S.A.: biofacies-lithofacies relationships and interpreted community patterns. *International Journal of Coal Geology* **12**, 1–33.

Gèze B, Pellet J, Paloc H, Bambier A, Roux J and Senaud G (1980) *Notice explicative, carte géologique au 1/50 000 de la France, feuille de Florac (886)*. Orléans: Bureau de Recherches Géologiques et Minières, 52 pp.

Ginsburg L (1973) Paléoécologie des calcaires lithographiques portlandiens du Petit Plan de Canjuers (Var). *Comptes Rendus de l'Académie des Science de Paris* **276**, 933–934.

Grande L and Bemis WE (1998) A comprehensive phylogenetic study of amiid fishes (Amiidae) based on comparative skeletal anatomy. An empirical search for interconnected patterns of Natural History. *Journal of Vertebrate Paleontology* **18**, 1–690.

Granier B and Deloffre R (1994) Inventaire des Algues Dasycladales fossiles. II^o partie- Les Algues Dasycladales du Jurassique et du Crétacé. *Revue de Paléobiologie* **12**, 19–65.

Hantzpergue P and Lafaurie G (1994) Les calcaires lithographiques du Tithonien quercynois : stratigraphie, paléogéographie et contexte biosédimentaire. *Geobios* **16**, 237–243.

Hasiotis ST (2004) Reconnaissance of Upper Jurassic Morrison Formation ichnofossils, Rocky Mountain Region, USA: paleoenvironmental, stratigraphic, and paleoclimatic significance of terrestrial and freshwater ichnocoenoses. *Sedimentary Geology* **167**, 177–268.

- Haug JT and Haug C** (2016) “Intermetamorphic” developmental stages in 150 million-year-old achelatan lobsters – The case of the species *tenera* Oppel, 1862. *Arthropod Structure & Development* **45**, 108–121.
- Hunt AP and Lucas SG** (2012) Classification of vertebrate coprolites and related trace fossils. *New Mexico Museum of Natural History and Science Bulletin* **57**, 137–146.
- Knaust D and Hoffmann R** (2020) The ichnogenus *Lumbricaria* Münster from the Upper Jurassic of Germany interpreted as faecal strings of ammonites. *Papers in Palaeontology* **7**, 807–823.
- Kollmann HA** (2014) The extinct Nerineoidea and Acteonelloidea (Heterobranchia, Gastropoda): a palaeobiological approach. *Geodiversitas* **36**, 349–383.
- Konwert M** (2016) *Orthogonikleithrus francogalliensis*, sp. nov. (Teleostei, Orthogonikleithridae) from the Late Jurassic Plattenkalks of Cerin (France). *Journal of Vertebrate Paleontology*, e1101377.
- Kriwet J and Schmitz L** (2005) New insight into the distribution and palaeobiology of the pycnodont fish *Gyrodus*. *Acta Palaeontologica Polonica* **50**, 49–56.
- Lambers PH** (1991a) The Upper Jurassic actinopterygian fish *Gyrodus dichactinius* Winkler, 1862 (*Gyrodus hexagonus* [Blainville, 1818]) from Solnhofen, Bavaria and anatomy of the genus *Gyrodus* Agassiz. *Proceedings of the Koninklijke Nederlandse Akademie von Wetenschappen* **94**, 489–544.

- Lambers PH** (1991b) The identity of the type specimen of *Coelacanthus harlemensis* Winkler (Pisces, Actinistia) from the lithographic limestone of Solnhofen (Tithonian), Bavaria. *Paläontologische Zeitschrift* **65**, 173–189.
- Lambers PH** (1994) The halecomorph fishes *Caturus* and *Amblysemius* in the lithographic limestone of Solnhofen (Tithonian), Bavaria. *Geobios* **16**, 91–99.
- Lomax DR, Falkingham PL, Schweigert G and Jiménez AP** (2017) An 8.5 m long ammonite drag mark from the Upper Jurassic Solnhofen Lithographic Limestones, Germany. *PloS One* **12**, e0175426.
- Martín-Abad H** (2017) Anatomical differentiation of isolated scales from amiiform fishes (Amiiformes, Actinopterygii) from the Early Cretaceous of Las Hoyas (Cuenca, Spain). *Comptes Rendus Palevol* **16**, 257–265.
- Mazin J-M, Hantzpergue P, Bassoullet J-P, Lafaurie G and Vignaud P** (1997) Le gisement de Crayssac (Tithonien inférieur, Quercy, Lot, France) : découverte de pistes de dinosaures en place et premier bilan ichnologique. *Comptes Rendus de l'Académie des Science de Paris, Sciences de la Terre et des Planètes* **325**, 733–739.
- Moreau J-D, Fara E, Gand G, Lafaurie G and Baret L** (2014) Gigantism among Late Jurassic limulids: new ichnological evidence from the Causses Basin (Lozère, France) and comments on body-size evolution among horseshoe crabs. *Geobios* **47**, 237–253.

- Moreau J-D, Baret L, Lafaurie G and Chateau-Smith C** (2016) Terrestrial plants and marine algae from the Late Jurassic lithographic limestone of the Causse Méjean (Lozère, southern France). *Bulletin de la Société Géologique de France* **47**, 237–253.
- Nel A, Nel P, Krieg-Jacquier R, Pouillon J-M and Garrouste R** (2014) Exceptionally preserved insect fossils in the Late Jurassic lagoon of Orbagnoux (Rhône Valley, France). *PeerJ* **2**, e510.
- Nursall JR** (1996) The phylogeny of pycnodont fishes. In *Mesozoic Fishes – Systematics and Paleoecology* (eds G Arratia and G. Viohl), pp. 125–52. München: Verlag Dr. Friedrich Pfeil.
- Odin GP, Charbonnier S, Devillez J and Schweigert G** (2019) On unreported historical specimens of marine arthropods from the Solnhofen and Nusplingen Lithographic Limestones (Late Jurassic, Germany) housed at the Muséum national d'Histoire naturelle, Paris. *Geodiversitas* **41**, 643–662.
- Olivier N, Pittet B, Werner W, Hantzpergue P and Gaillard C** (2008) Facies distribution and coral-microbialite reef development on a low-energy carbonate ramp (Chay Peninsula, Kimmeridgian, western France). *Sedimentary Geology* **205**, 14–33.

- Peyer K, Charbonnier S, Allain R, Läng É and Vacant R** (2014) A new look at the Late Jurassic Canjuers conservation Lagerstätte (Tithonian, Var, France). *Comptes Rendus Palevol* **13**, 403–420.
- Poyato-Ariza FJ and Wenz S** (2002) A new insight into pycnodontiform fishes. *Geodiversitas* **24**, 139–248.
- Rauhut OWM and López-Arbarello A** (2016) Zur Taxonomie der Brückenechse aus dem oberen Jura von Schamhaupten. *Archaeopteryx* **33**, 1–11.
- Rauhut OWM, Tischlinger H and Foth C** (2019) A non-archaeopterygid avialan theropod from the Late Jurassic of southern Germany. *Elife* **8**, e43789.
- Roman J** (1994) Taphonomie des échinodermes des calcaires lithographiques de Canjuers (Tithonien inférieur, Var, France). *Geobios Mémoire Spéciale* **16**, 147–155.
- Roman J, Vadet A, Bouillier A** (1991) Echinoides et brachiopodes de la limite Jurassique–Crétacé à Canjuers (Var, France). *Revue de Paléobiologie* **10**, 21–27.
- Roman J, Atrops F, Arnaud M, Barale G, Barrat J-M, Boullier A, Debroin F, Gill GA, Michard J-G, Taquet P and Wenz S** (1994) Le gisement tithonien inférieur des calcaires lithographiques de Canjuers (Var, France) : état actuel des connaissances. *Geobios Mémoire Spéciale* **16**, 126–135.

- Romano M and Taylor R** (2019) Two previously unrecorded xiphosurid trace fossils, *Selenichnites rossendalensis* and *Crescentichnus tesiltus*, from the Middle Jurassic of Yorkshire, UK. *Proceedings of the Yorkshire Geological Society* **62**, 254–259.
- Romano M and Whyte MA** (2015) A review of the trace fossil *Selenichnites*. *Proceedings of the Yorkshire Geological Society* **60**, 275–288.
- Saint-Seine P de** (1949) Les poissons des calcaires lithographiques de Cerin (Ain). *Nouvelles Archives du Muséum d'Histoire Naturelle de Lyon* **2**, 1–357.
- Saporta G de** (1873). *Notice sur les plantes fossiles du niveau des lites à poissons de Cerin*. Lyon and Paris: Georg Libraire and Savy Libraire, 60 pp.
- Schweigert G** (2009) New genera and species of “thalassinideans” (Crustacea: Decapoda: Axiidea, Gebiidea) from the Upper Jurassic of Eichstätt and Brunn (S Germany). *Archaeopteryx* **27**, 21–30.
- Schweigert G, Garassino A and Pasini G** (2016) The Upper Jurassic Solnhofen decapod crustacean fauna: Review of the types from old descriptions. Part II. Superfamily Penaeoidea and infraorder Caridea. *Memorie della Societa italiana di Scienze naturali e del Museo civico di Storia naturale di Milano* **49**, 3–26

- Schweitzer CE, Feldmann RM, Garassino A, Karasawa H and Schweigert G** (2010) Systematic list of fossil decapod crustacean species. *Crustaceana Monographs* **10**, 1–222.
- Sciau J** (1993) *Coup d'œil sur les fossiles de causses, II-Jurassique : du Toarcien au Kimméridgien*. Millau: Association des Amis du Musée de Millau, 96 pp.
- Sciau J** (1998) *Dinosaures et reptiles marin des causses*. Millau: Association des Amis du Musée de Millau, 56 pp.
- Taylor JC and Hinczak I** (2003) *Rietveld made easy: a practical guide to the understanding of the method and successful phase quantifications*. Canberra: Sietronics Pty Ltd, 201 pp.
- Thévenard F, Gomez B and Daviero-Gomez V** (2005) Xeromorphic adaptations of some Mesozoic gymnosperms. A review with palaeoclimatological implications. *Comptes Rendus Palevol* **4**, 67–77.
- Thomas P** (2009) Oursins entiers et sous forme de débris dans un déchet alimentaire (type coprolithe), Kimmerdigien, carrière de Cerin (Ain). Available at <https://planet-terre.ens-lyon.fr/image-de-la-semaine/Img290-2009-10-26.xml> (accessed 08 Avril 2021).

Trincal V, Charpentier D, Buatier MD, Grobety B, Lacroix B, Labaume BP and Sizun

J-P (2014) Quantification of mass transfers and mineralogical transformations in a thrust fault (Monte Perdido thrust unit, southern Pyrenees, Spain). *Marine and Petroleum Geology* **55**, 160–175.

Van Konijnenburg-Van Cittert JHA (2008) The Jurassic fossil plant record of the UK area.

Proceedings of the Geologists' Association **119**, 59–72.

Woodward H (1876) On some New Macrurous Crustacea from the Kimmeridge Clay of the

Sub-Wealden Boring, Sussex, and from Boulogne-sur-Mer. *Quarterly Journal of the Geological Society* **32**, 47–50.

Figure captions

Fig. 1. (Colour online) Geological context of the Causse Méjean. (a) Geological map of the Causse Méjean and location of the Drigas and the Nivoliers quarries; modified after Brouder *et al.* (1977) and Gèze *et al.* (1980). (b) Simplified stratigraphic section of the top part of the Causse Méjean and stratigraphic location of the Drigas and the Nivoliers quarries; modified after Dörfliger *et al.* (2006). Form. = Formation; Lith. = lithology; Thi. = thickness (in metres).

Fig. 2. (Colour online) General view of the quarries exposing the Kimmeridgian to Tithonian lithographic limestone from the Causse Méjean. (a–b) Drigas quarry in 2005, view to the North-East (a) and view to the West (b). (c–e) Collecting of *ex-situ* specimens at Nivoliers during the last excavation (2020).

Fig 3. (Colour online) Sedimentological and petrological features of the Kimmeridgian to Tithonian lithographic limestone from the Causse Méjean. (a) Limestone exposed in the Drigas quarry in 2003. (b) SEM micrograph showing micrite microcrystals. (c) Polished section of limestone showing thin, horizontal and parallel laminites. (d) Ripple marks, Nivoliers quarry; length of hammer = 28 cm. (e) Microbial mats showing polygonal shapes, Nivoliers quarry. Scale bars: B = 10 μm ; C = 5 mm; E = 10 cm.

Fig. 4. (Colour online) X-ray diffractograms of the lithographic limestone from Drigas and Nivoliers. Dol., dolomite

Fig. 5. (Colour online) Marine algae (Dasycladales) from the Kimmeridgian to Tithonian lithographic limestone of the Causse Méjean. (a) *Goniolina* sp., thalli with two elongated, peduncle-like axes bearing distal heads; Nivoliens, APHPL_NIV6. (b) *Goniolina* sp., isolated distal head; Nivoliens, APHPL_NIV31. All scale bars = 1 cm.

Fig. 6. (Colour online) Echinoderms from the Kimmeridgian to Tithonian lithographic limestone of the Causse Méjean. (a–b) Arm fragments of the comatulids *Solanocrinites* sp.; Nivoliens, APHPL_NIV33 and APHPL_NIV42 respectively. (c) Distal end of a crinoid arm showing pinnules, ?*Millericrinida* indet.; Nivoliens, APHPL_NIV37. (d) Crinoid calyx, ?*Millericrinida* indet.; Nivoliens, APHPL_NIV43. (e) Echinoid, ?*Hemicidaris* sp.; Nivoliens, APHPL_NIV44. (f) Regular echinoid indet.; Nivoliens, APHPL_NIV46. (g–h) Isolated spines of echinoids, *Hemicidaroida* and/or *Salenioida* indet.; Nivoliens, APHPL_NIV36 and APHPL_NIV39 respectively. All scale bars = 1 cm.

Fig. 7. (Colour online) Brachiopods, bivalves and cephalopods from the Kimmeridgian to Tithonian lithographic limestone of the Causse Méjean. (a) Terebratulida indet.; Nivoliens, APHPL_NIV63. (b) Bivalve preserved in butterfly position; Nivoliens, APHPL_NIV67. (c) *Aulacomyella* sp.; Drigas, APHPL_DRI6. (d) Bivalve, *Nanogyra virgula*; Drigas, APHPL_DRI7. (e) Gastropod, Nerinellid; Nivoliens, APHPL_NIV71. (f) Ammonite, fragment of cf. *Dorsomorphites*, Nivoliens, APHPL_NIV48. (g) Ammonite, *Neochetoceras* sp.; Nivoliens, APHPL_NIV55. (h–i) Ammonite, *Lingulaticeras solenoides*; Nivoliens, APHPL_NIV49 and APHPL_NIV51. (j) Ammonite, *Hybonotoceras* cf. *hybonotum*; Nivoliens, APHPL_NIV53. (k) Aptychus *Lamellaptychus*; Nivoliens, APHPL_NIV50. (l) Belemnite, *Hibolithes* sp.; Drigas, APHPL_DRI5. (m–n), Coleoid, *Trachyteuthis*; photograph taken under

natural light (m) and ultraviolet light (n); Nivoliens, APHPL_NIV60. Scale bars: a–l = 1 cm, m–n = 3 cm.

Fig. 8. (Colour online) Decapod crustaceans from the Kimmeridgian to Tithonian lithographic limestone of the Causse Méjean. (a–d) Penaeid shrimp, *Bylginella hexadon*, subcomplete specimens in lateral views under ultraviolet light (a, c) and interpretative line drawings (b, d); Nivoliens, APHPL_NIV78 (a–b) and APHPL_NIV80 (c–d). (e–f) Mecochirid lobster, *?Mecochirus* sp., subcomplete, ventral view, natural light and interpretative line drawing; Nivoliens, APHPL_NIV79. Abbreviations: a2, antennal, ct = carapace, dt = digestive tract, e = eye, en = uropodal endopod, ex = uropodal exopod, eps = epigastric spine, esk = endophragmal skeleton, P1–P5 = pereopods 1 to 5, r = rostrum, sc = scaphocerite, s1–s6 = pleonal somites 1 to 6. All scale bars = 1 cm. Photographs: Philippe Loubry.

Fig. 9. (Colour online) Decapod crustaceans from the Kimmeridgian to Tithonian lithographic limestone of the Causse Méjean. (a) Achelatan lobster, probable larval stage of Palinuridae (*?Palinurina*) under ultraviolet light; Nivoliens, APHPL_NIV76. (b–c) Axiid ghost shrimp, *Etallonia* aff. *isochela*, left lateral view, ultraviolet light and interpretative line drawing; Nivoliens, APHPL_NIV75. (d–f) Axiid ghost shrimp, *Magila* aff. *latimana*, part and counterpart, natural light, and interpretative line drawing; Nivoliens, APHPL_NIV77. Abbreviations: as, antennal spine, b = antennal groove, ct = carapace, dm = dorsal midline, e₁e = cervical groove, ex = uropodal exopod, oc = orbital carina, os = orbital spine, P1 = pereopod 1, s1–s6 = pleonal somites 1 to 6. All scale bars = 5 mm. Photographs: Philippe Loubry.

Fig. 10. (Colour online) Fishes from the Kimmeridgian to Tithonian lithographic limestone of the Causse Méjean. (a) Pycnodontiform, *Gyrodus hexagonus*, complete specimen, Niveliers, Prehistorama Museum collection. (b) Pycnodontiform, *Thiollierepycnodus wagneri*, nearly complete specimen; Drigas, APHPL_DRI1. (c–d) Pycnodontiform, *Proscinetes* sp., dentition of a disarticulated skull, photograph (c) and interpretative sketch (d); Niveliers, APHPL_NIV26. Abbreviations: dtt = dentary teeth, pad (l) = prearticular dentition (left), pmt = premaxillary teeth, vod = vomerine dentition. Scale bars: a–b = 2 cm, c–d = 1 cm.

Fig. 11. (Colour online) Fishes from the Kimmeridgian to Tithonian lithographic limestone of the Causse Méjean. (a) Basal teleost, *Orthogonikleithrus* sp., complete specimen; Drigas, APHPL_DRI2. (b) Basal teleost, cf. *Tharsis* sp., complete specimen; Niveliers, APHPL_NIV27. (c) Coelacanth, cf. *Libys* sp., incomplete specimen (dorsal portion of the trunk with anterior and posterior dorsal fins); Niveliers, private collection of Eric Dupré. All scale bars = 2 cm.

Fig. 12. (Colour online) Terrestrial plants from the Kimmeridgian to Tithonian lithographic limestone of the Causse Méjean. (a) Pteridosperm, *Cycadopteris* sp., fragment of pinna bearing opposite pinnules; Niveliers, APHPL_NIV4. (b–c) Pteridosperm, *Cycadopteris* sp., fragment of pinna bearing sub-opposite to opposite pinnules that show a marginal fold (black arrows), photograph (b) and interpretative sketch (c); Drigas, private collection of Gérard Lafaurie. (d) Conifer, *Brachyphyllum* sp., leafy stems with helically arranged, scale-like leaves; Niveliers, APHPL_NIV1. (e) Bennettitalean, *Zamites feneonis*, pinnate leaves bearing elongated and alternately arranged leaflets; Drigas, APHPL_DRI8. (f) Bennettitalean, *Zamites feneonis*, detail of the lanceolate leaflets showing a slightly contracted base and an acute apex; leaflets bear thin and parallel veins; Drigas quarry; APHPL_DRI9. All scale bars = 5 mm.

Fig. 13. (Colour online) Terrestrial vertebrate from the Kimmeridgian to Tithonian lithographic limestone of the Causse Méjean. (a–c) Rhynchocephalian, *Kallimodon cerinensis*, nearly complete specimen preserved in ventral view, overview of the limestone slab (a) skull (b) and pelvic region (c); Drigas, MMGC_2017.65.133. All scale bars = 2 cm.

Fig. 14. (Colour online) Invertebrate traces from the Kimmeridgian to Tithonian lithographic limestone of the Causse Méjean. (a–b) Limulid trackways, *Kouphichnium* isp., photographs (a) and interpretative sketch (b); Nivoliens. (c–e) Tracks of the sixth appendage (of “pusher traces”) showing an anterior part consisting of the four triangular or digit-like marks and an elongated posterior part with a bifid extremity; photograph (c) digital elevation model without colour (d) and digital elevation model in false colours (e), Drigas, APHPL_I49. (f) *Cochlichnus* isp.; Drigas, APHPL_I33. (g) *Lumbricaria* isp.; Nivoliens, APHPL_NIV84. (h–i) Touch mark of ammonite; photograph (h) and digital elevation model in false colours (i); Nivoliens, APHPL_NIV87. Scale bars: a–b = 20 cm, c–i = 1 cm.

Fig. 15. (Colour online) Possible regurgitalites from the Kimmeridgian to Tithonian lithographic limestone of the Causse Méjean. (a) Possible regurgitalite, fossiliferous heap composed of echinoid remains (*Hemicidaroida* indet.) including fragments of Aristotle’s lantern (Ar.), plates (Pl.) with perforated and crenulated tubercles (Tu.), spines (Sp.) and micro-spatulate spines (S.sp.); Nivoliens, APHPL_NIV45. (b) Regurgitalite, fossiliferous heap composed of a mix of echinoderm remains including ossicles (Os.) of comatulids as well as plates (Pl.) and spines (Sp.) of echinoids; Nivoliens, APHPL_NIV34. All scale bars = 1 cm.

Table 1. List of fossil invertebrates from the upper Kimmeridgian to lower Tithonian lithographic limestone of the Causse Méjean.

Taxa			Drigas	Nivoliens
Brachiopoda	Terebratulida	Terebratulida indet.		+
Echinodermata	Echinoidea	Regular echinoid indet.	+	+
		Hemicidaroida and/or Salenioida indet.	+	+
		? <i>Hemicidaris</i> sp.		+
	Crinoidea	<i>Solanocrinites</i> sp.	+	+
		? <i>Millericrinida</i> indet.		+
		Asteroidea	Asteroidea indet.	+
Mollusca	Bivalvia	<i>Aulacomyella</i> sp.	+	
		<i>Pholadomya</i> sp.		+
		<i>Nanogyra virgula</i>	+	
		<i>Nanogyra</i> sp.		+
	Cephalopoda	<i>Subplanites</i> sp.	+	+
		<i>Hybonoticeras</i> cf. <i>hybonotum</i>		+
		<i>Lingulaticeras solenoides</i>		+
		<i>Neochetoceras</i> sp.		+
		cf. <i>Dorsomorphites</i>	+	+
		<i>Lamellaptychus</i> sp.		+
	<i>Trachyteuthis</i> sp.		+	
	<i>Hibolithes</i> sp.	+	+	

	Gastropoda	Nerinellidae indet.		+
Crustacea	Decapoda	<i>Bylginella hexadon</i>	+	+
		<i>Etallonia</i> aff. <i>isochela</i>		+
		<i>Magila</i> aff. <i>latimana</i>		+
		<i>Mecochirus</i> sp.	+	+
		Palinuridae indet. (? <i>Palinurina</i> sp.)		+

Table 2. List of fossil vertebrates from the upper Kimmeridgian to lower Tithonian lithographic limestone of the Causse Méjean.

Taxa			Drigas	Nivoliers
Actinopterygii	Amiiformes	Indeterminate Caturioidea	+	
		<i>Thiollierepycnodus wagneri</i>	+	
	Teleostei	<i>Gyrodus hexagonus</i>	+	+
		<i>Proscinetes</i> sp.		+
		<i>Orthogonikleithrus</i> sp.	+	+
		cf. <i>Tharsis</i> sp.		+
		Indeterminate Ascalaboidae		+
Sarcopterygii	Actinistia	cf. <i>Libys</i> sp.		+
Lepidosauria	Rhynchocephalia	<i>Kallimodon cerinensis</i>	+	

Table 3. List of algae and terrestrial plants from the upper Kimmeridgian to lower Tithonian lithographic limestone of the Causse Méjean.

Taxa			Drigas	Nivoliers
Marine algae	Dasycladales	<i>Goniolina</i> sp.		+
Terrestrial plants	Pteridosperms	<i>Cycadopteris</i> sp.	+	+
	Bennettitaleans	<i>Zamites feneonis</i>	+	+
	Conifers	<i>Brachyphyllum</i> sp.	+	+
	Wood	Wood indet.	+	

Table 4. List of invertebrate tracks, coprolites and regurgitalites from the upper Kimmeridgian to lower Tithonian lithographic limestone of the Causse Méjean.

Ichnotaxa	Drigas	Nivoliers
<i>Cochlichnus</i> isp.	+	
<i>Crescentichnus</i> isp.	+	
<i>Kouphichnium</i> isp.	+	+
<i>Lumbricaria</i> isp.	+	+
<i>Thalassinoides</i> isp.	+	+
Touch mark of ammonite		+
Regurgitalites		+

Table 5. Mineralogical estimations. “Niv.” for Niveliers and “Dri.” for Drigas.

Samples	Calcite	Dolomite	Quartz	Rwp	GOF
Sed.Niv.1	97.8 ± 0.6	2.2 ± 0.6	0.0 ± 0.1	9.33	5.57
Sed.Niv.2	97.0 ± 0.6	1.9 ± 0.6	1.1 ± 0.2	8.67	5.23
Sed.Niv.3	97.8 ± 0.6	2,2 ± 0.5	0.0 ± 0.1	8,82	5.26
Sed.Dri.1	81.2 ± 0.9	18.0 ± 0.8	0.8 ± 0.2	9.94	5.98

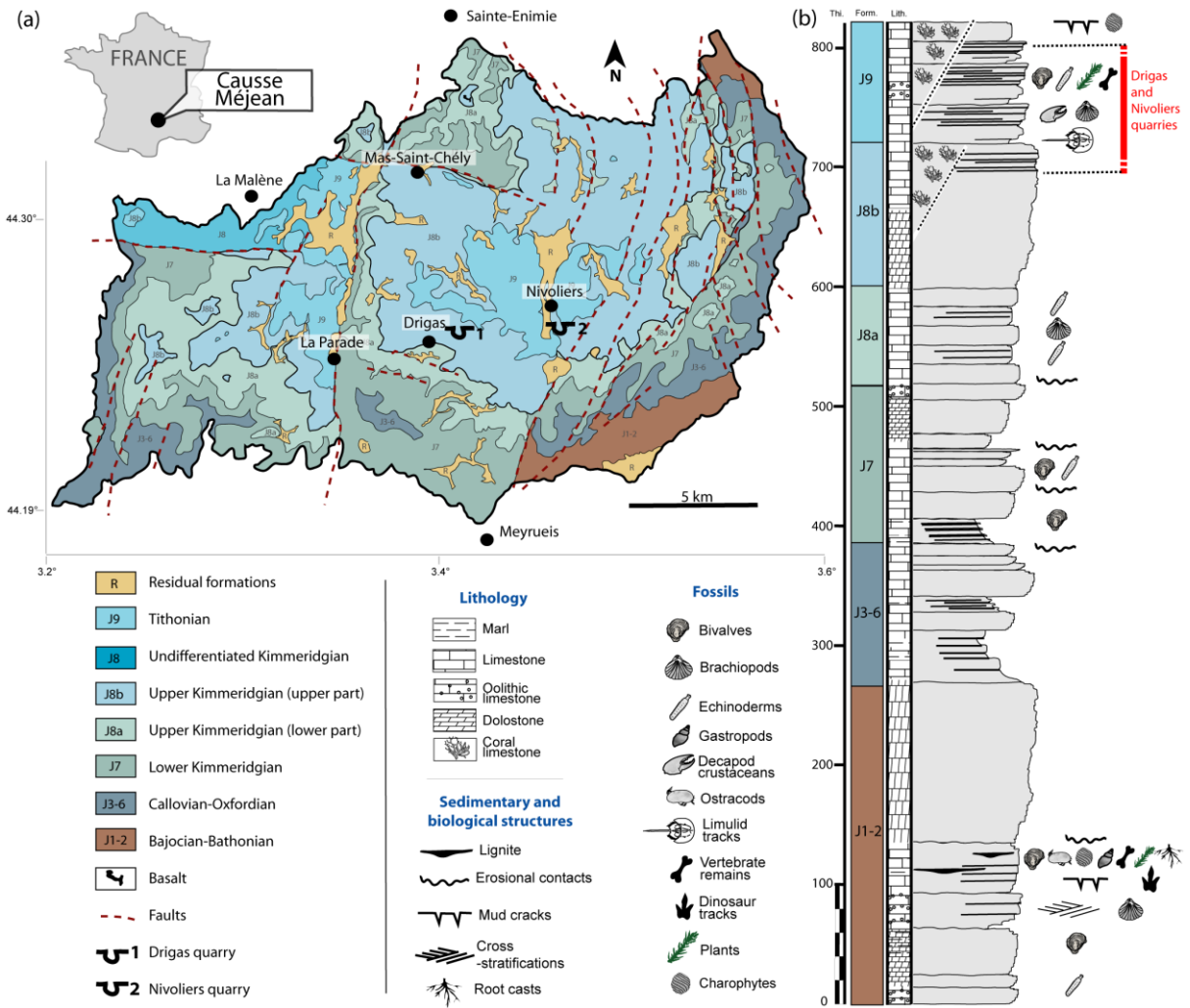


Figure 1



Figure 2

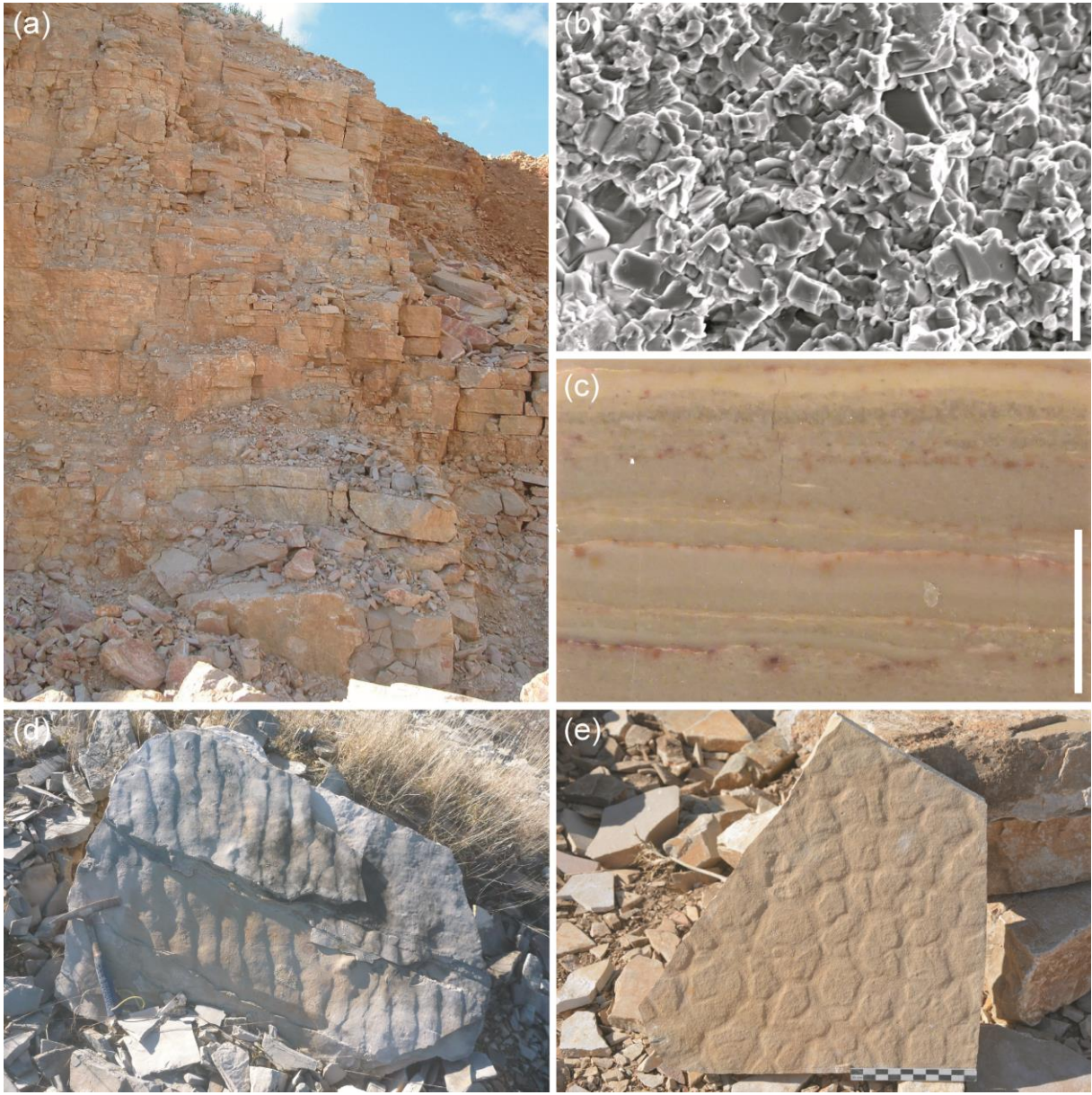


Figure 3

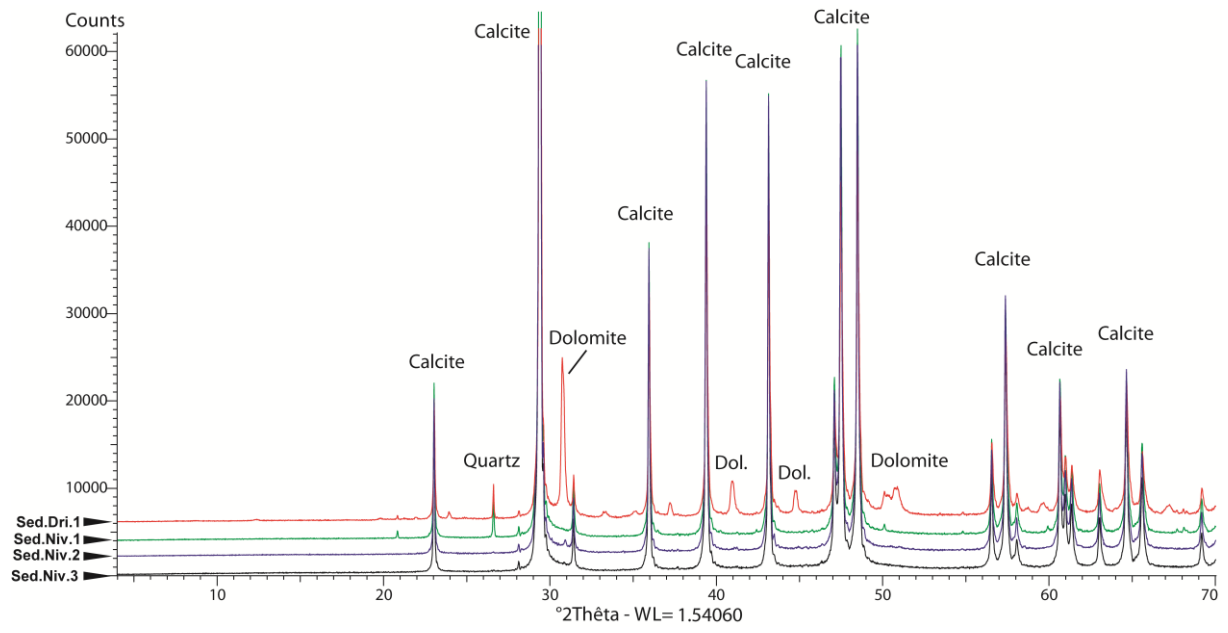


Figure 4



Figure 5

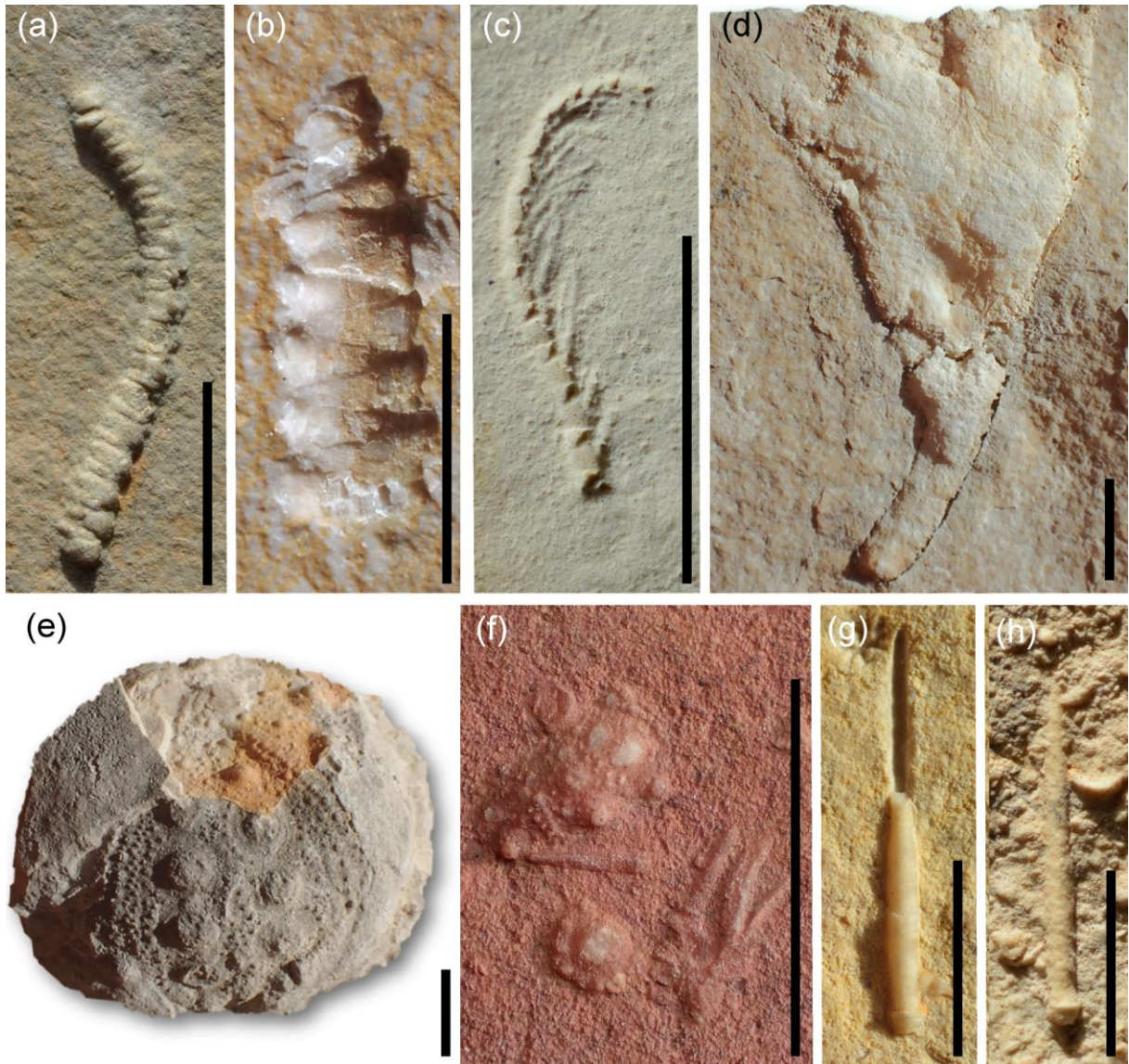


Figure 6

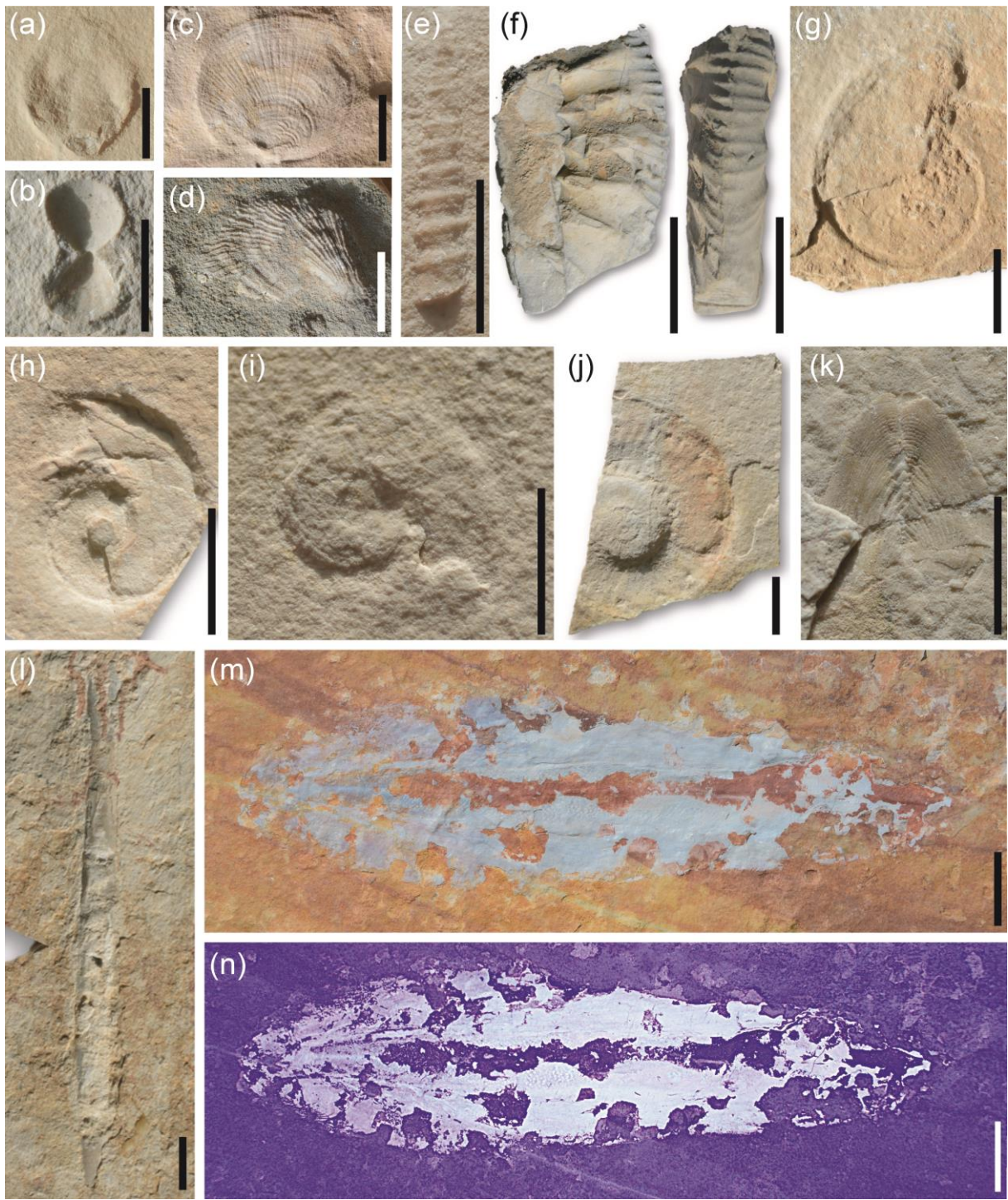


Figure 7

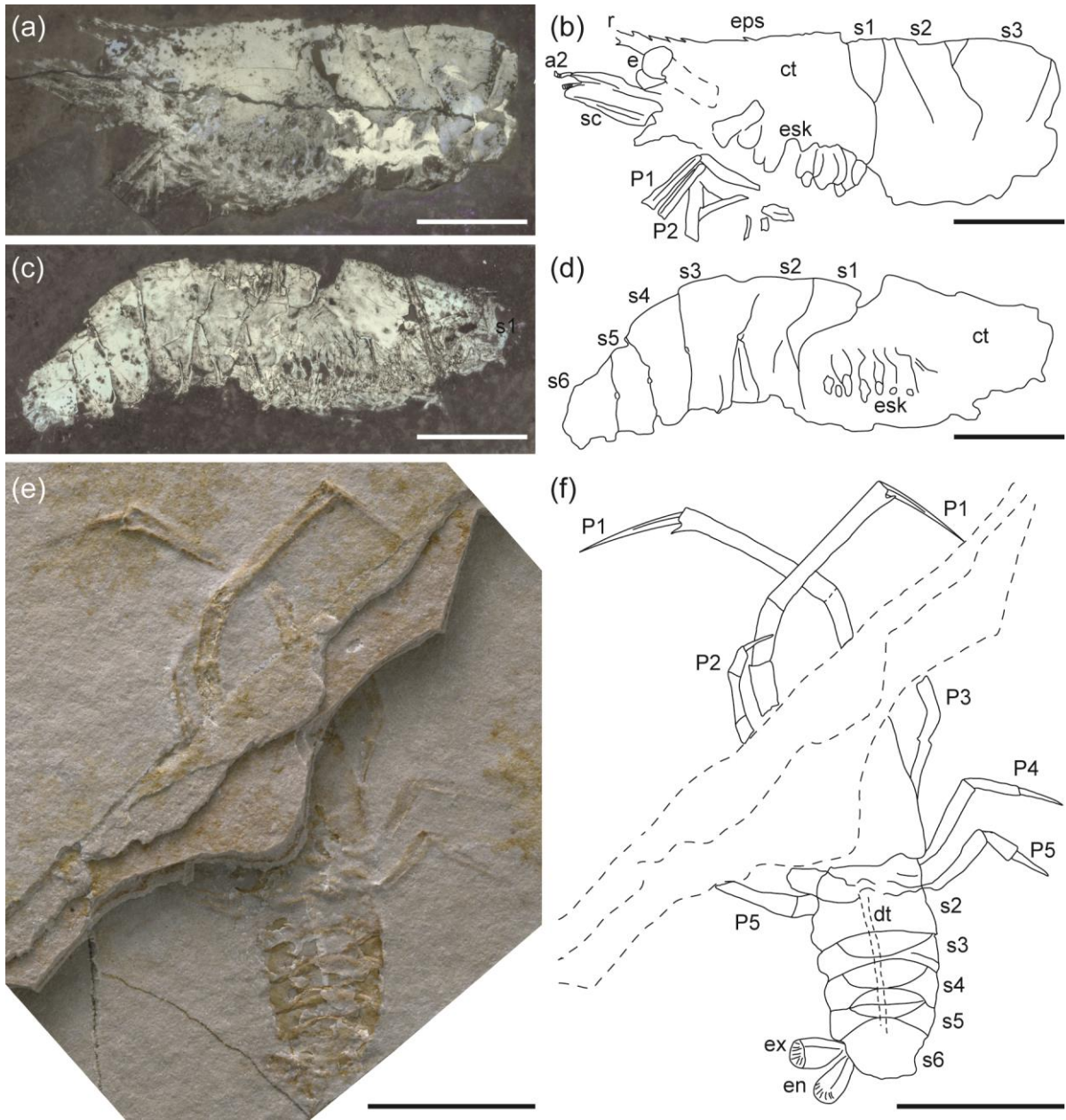


Figure 8

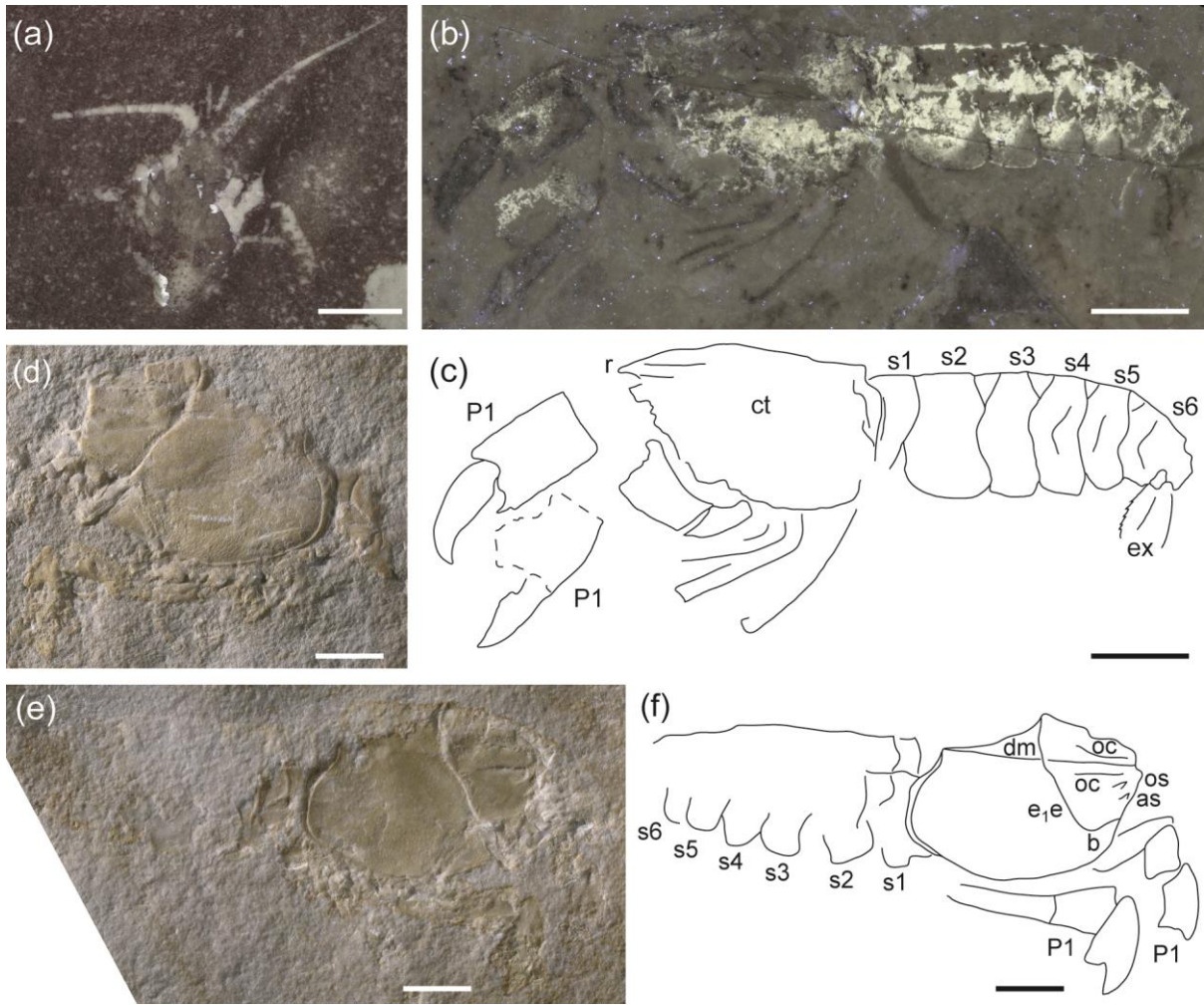


Figure 9

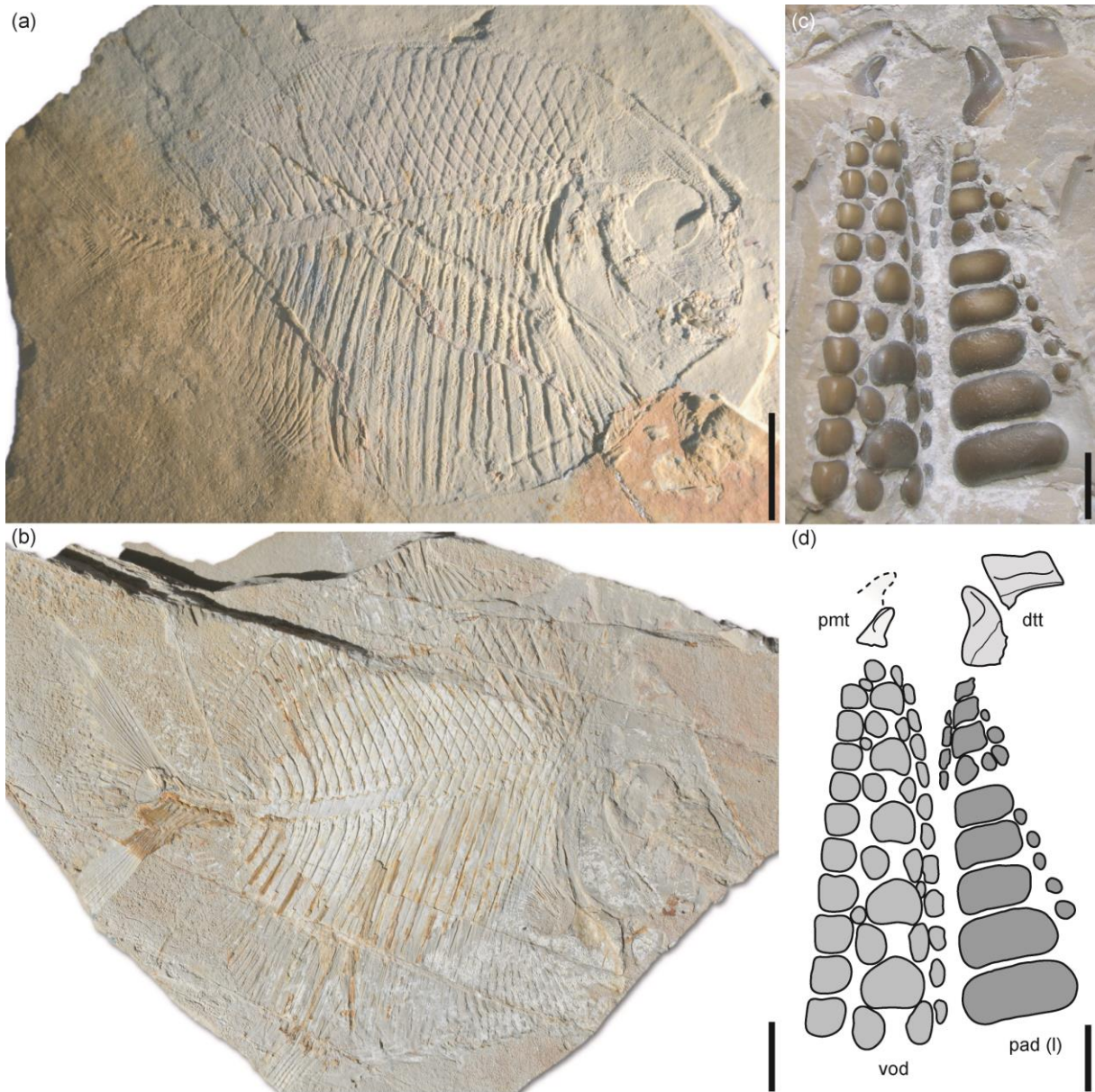


Figure 10

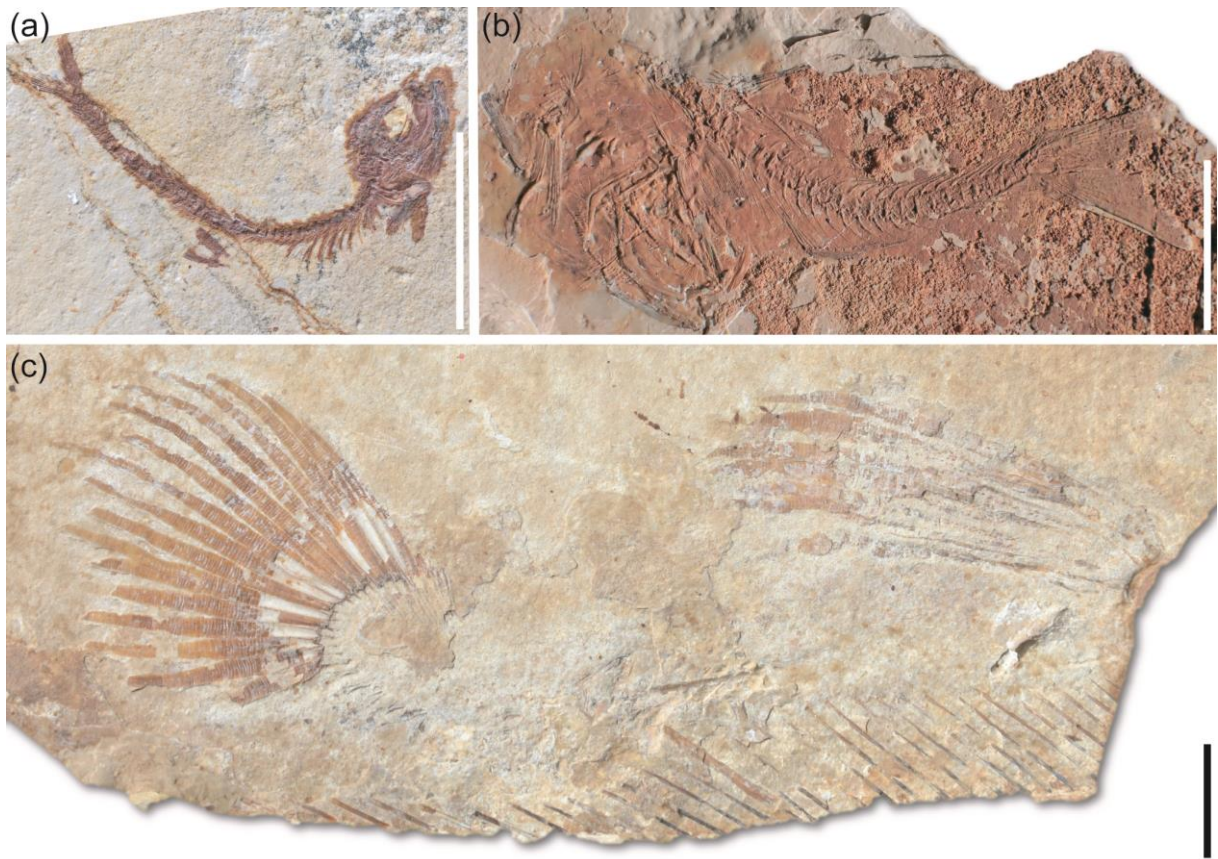


Figure 11

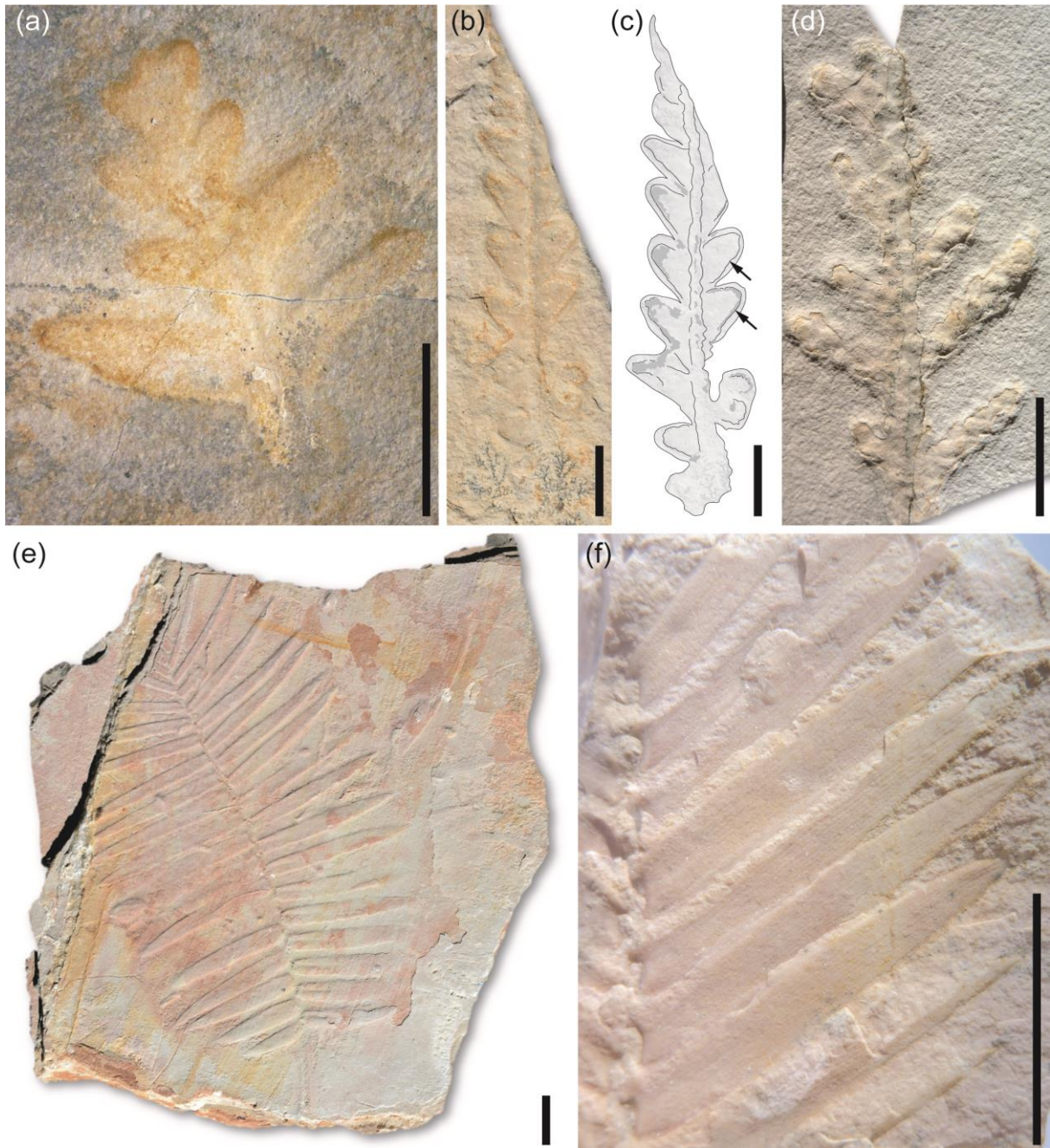


Figure 12

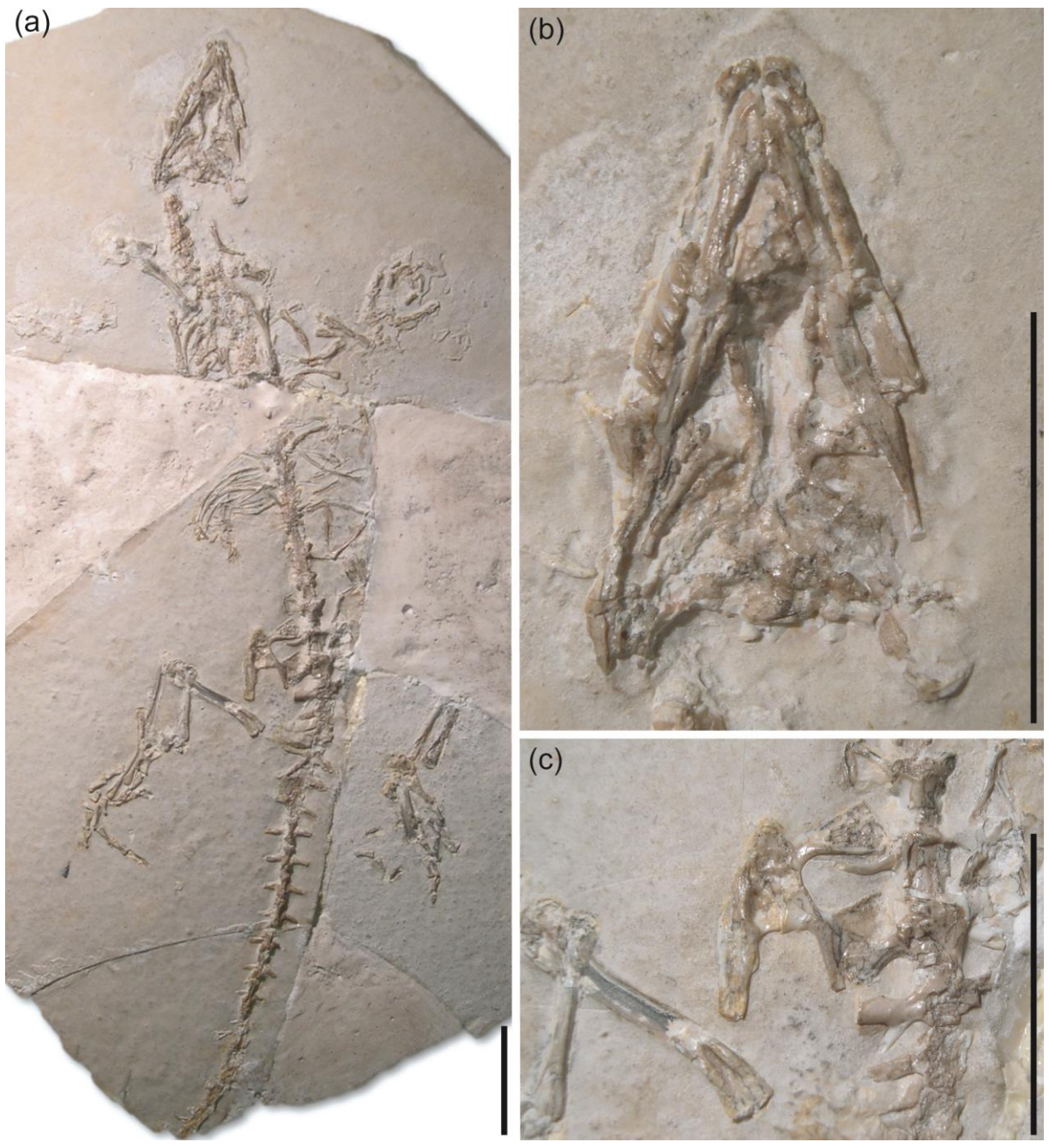


Figure 13

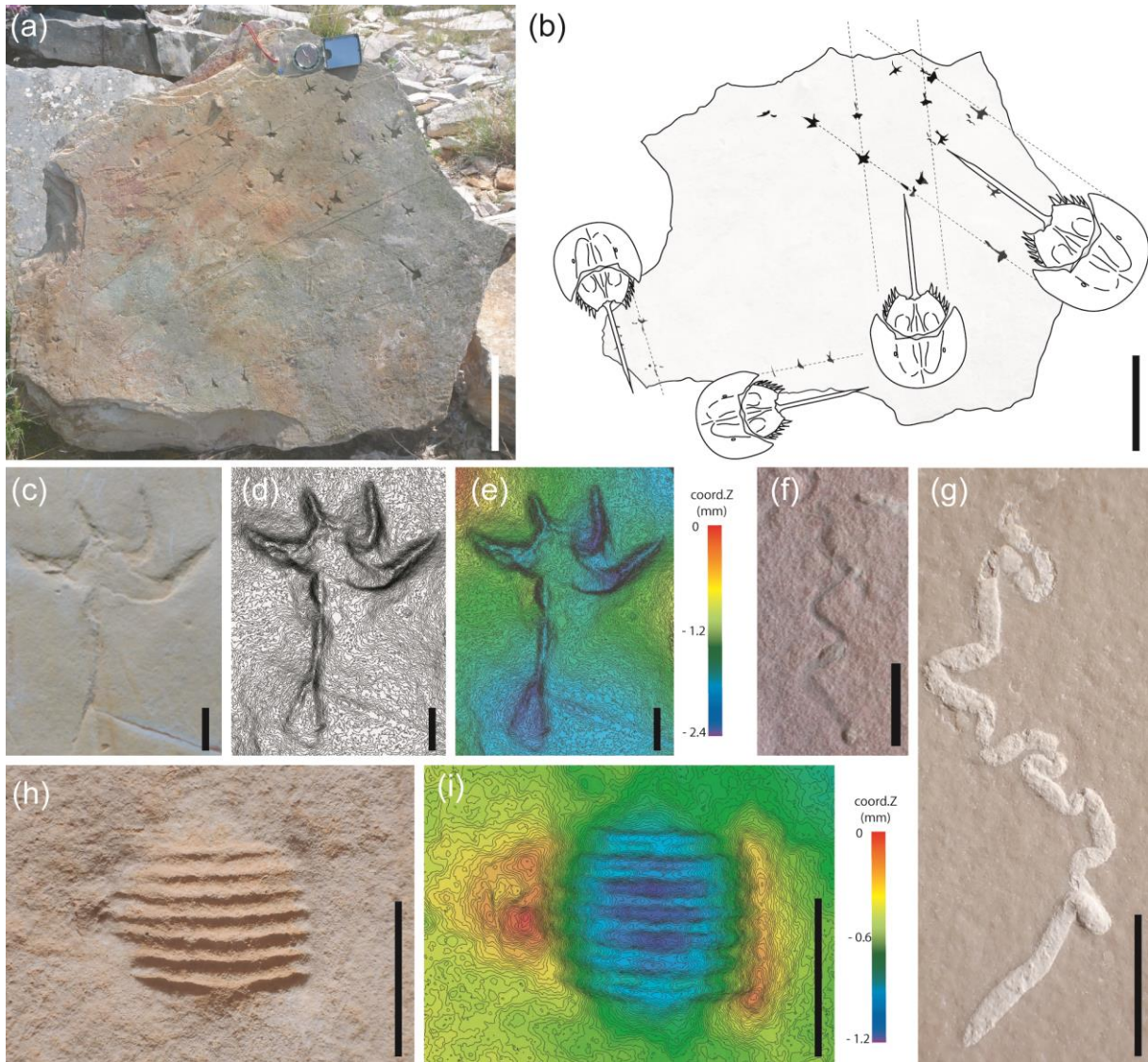


Figure 14

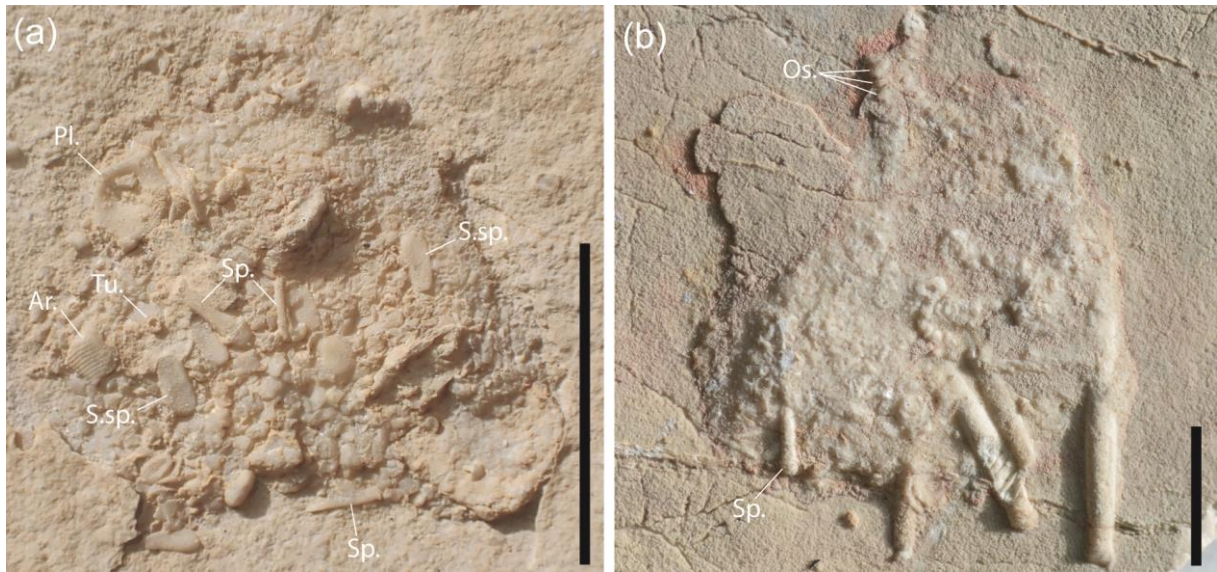


Figure 15