



HAL
open science

Be, V, and Cu in the halo star CS 31082-001 from near-UV spectroscopy

H Ernandes, B Barbuy, A Friaça, Vanessa Hill, M Spite, F Spite, B Castilho,
C Evans

► **To cite this version:**

H Ernandes, B Barbuy, A Friaça, Vanessa Hill, M Spite, et al.. Be, V, and Cu in the halo star CS 31082-001 from near-UV spectroscopy. *Monthly Notices of the Royal Astronomical Society*, 2022, 510 (4), pp.5362-5375. 10.1093/mnras/stab3789 . insu-03576289

HAL Id: insu-03576289

<https://insu.hal.science/insu-03576289v1>

Submitted on 22 Mar 2023

HAL is a multi-disciplinary open access archive for the deposit and dissemination of scientific research documents, whether they are published or not. The documents may come from teaching and research institutions in France or abroad, or from public or private research centers.

L'archive ouverte pluridisciplinaire **HAL**, est destinée au dépôt et à la diffusion de documents scientifiques de niveau recherche, publiés ou non, émanant des établissements d'enseignement et de recherche français ou étrangers, des laboratoires publics ou privés.

Be, V, and Cu in the halo star CS 31082-001 from near-UV spectroscopy

H. Ernandes ¹★, B. Barbuy,¹ A. Friaça,¹ V. Hill,² M. Spite,³ F. Spite,³ B. V. Castilho⁴ and C. J. Evans⁵

¹Universidade de São Paulo, IAG, Rua do Matão 1226, Cidade Universitária, São Paulo 05508-900, Brazil

²Laboratoire Lagrange, Université de Nice Sophia-Antipolis, Observatoire de la Côte d'Azur, Nice 06300, France

³GEPi, Observatoire de Paris, PSL Research University, CNRS, Place Jules Janssen, F-92190 Meudon, France

⁴Laboratório Nacional de Astrofísica, Ministério da Ciência, Tecnologia e Inovações - LNA/MCTI, R. Estados Unidos, 154, Itajubá 37504-364, Brazil

⁵UK Astronomy Technology Centre, Royal Observatory, Blackford Hill, Edinburgh EH9 3HJ, UK

Accepted 2021 December 22. Received 2021 December 22; in original form 2021 September 27

ABSTRACT

The ‘First Stars’ programme revealed the metal-poor halo star CS 31082-001 to be r-process and actinide rich, including the first measurement of a uranium abundance for an old star. To better characterize and understand such rare objects, we present the first abundance estimates of three elements (Be, V, Cu) for CS 31082-001 from analysis of its near-ultraviolet spectrum. Beryllium is rarely measured in giant stars, and we confirm that its abundance in this star is low due to the rather cool effective temperature that causes destruction of both Be and Li in its atmosphere. Vanadium and copper are iron-peak elements that are starting to be used as chemical-tagging indicators to investigate the origin of stellar populations. We find V and Cu abundances for CS 31082-001 that are comparable to other metal-poor stars, and present new chemical evolution models to investigate our results. In the case of V, extra nucleosynthesis due to interaction of neutrinos with matter is included in the models to be able to reproduce the measured abundance. Given the availability of high-quality spectroscopy of CS 31082-001, we also explore other atomic lines in the near-ultraviolet as a template for future studies of metal-poor stars with the planned CUBES instrument in development for the Very Large Telescope.

Key words: stars: abundances – stars: atmospheres – stars: individual: BPS CS 31082-001; Galaxy: halo.

1 INTRODUCTION

Field stars in the Galactic halo are thought to have been formed in an early inner halo or accreted from disrupted dwarf galaxies. Detailed abundance studies (so-called ‘Galactic archaeology’) are a powerful technique to help us understand the origin of these halo populations. To date, the iron-peak elements have been less studied than alpha and neutron-capture elements, but they can be important indicators of both the processes and sources of nucleosynthesis (e.g. Minelli et al. 2021).

In their seminal work, Cayrel et al. (2004) described the ‘First Stars’ Large Programme at the European Southern Observatory (ESO), that included 37 nights of observations of metal-poor stars with the Ultraviolet and Visual Echelle Spectrograph (UVES; Dekker et al. 2000) on the Very Large Telescope (VLT). An important target in this programme was the metal-poor halo star CS 31082-001, with $[Fe/H] = -2.9$ and $V = 11.6$ mag. Its abundances were presented in a series of papers, including the first detection of uranium in a stellar spectrum (enabling an age estimate from the ratio of the U abundance to that of thorium, Cayrel et al. 2001), abundance determinations of lighter (Li to Zn) and heavy (Sr to U) elements (Hill et al. 2002), and further study of C to Zn (Cayrel et al. 2004). Ultraviolet (UV) observations with the Space Telescope Imaging Spectrograph (STIS) on the *Hubble Space Telescope* (HST) opened-up further abundance studies of the star, confirming it to be rich in both r-process elements and actinides (Barbuy et al. 2011; Siqueira-Mello et al. 2013).

A subset of metal-poor stars are found to be actinide rich. Holmbeck et al. (2020) recently redefined the r-II sub-class of r-process enhanced stars as those characterised by $[Eu/Fe] \geq 0.7$, instead of the previous definition of $[Eu/Fe] \geq +1.0$ (Beers & Christlieb 2005), giving a total of 72 stars now classified as r-II. It has only been possible to measure the actinide uranium abundance in six stars (Holmbeck et al. 2018), namely, CS 31082-001 (Hill et al. 2002), BD+17°3248 (Cowan et al. 2002), HE1523-0901 (Frebel et al. 2007), RAVE J203843.2–002333 (Placco et al. 2017), CS 29497-004 (Hill et al. 2017), and 2MASS J09544277+5246414 (Holmbeck et al. 2018). Upper limits were reported for others, including CS 22892-052 (Snedden et al. 2003) and J1538–1804 (Sakari et al. 2018). CS 31082-001 and J09544277+5246414 are clear actinide-boost stars, showing a large enhancement of the actinides relative to any other class of old stars. For this reason, CS 31082-001 is a reference star in this respect (e.g. Sneden et al. 2008).

Given the limited efficiency of current facilities, the ground-UV region (300–400 nm) is less explored in the context of stellar abundances than longer, visible wavelengths. Partly motivated by the development of a new, UV-optimised spectrograph for the VLT, the Cassegrain U-Band Efficient Spectrograph (CUBES), here we revisit the UVES data of CS 31082-001 to investigate its abundances of three elements observed in the near-UV that were not included in previous analyses, namely beryllium, vanadium, and copper.

Be, like Li, is a fragile element. In stellar interiors, it is destroyed as soon as the temperature is higher than 3.5×10^6 K. But, unlike Li, Be is not significantly produced by primordial nucleosynthesis. In very metal-poor stars, it is formed through cosmic ray spallation,

* E-mail: heitor.ernandes@usp.br

Table 1. Stellar parameters adopted for CS 31082-001 (Hill et al. 2002), HD 122563 (Cayrel et al. 2004), and the reference star Arcturus (Meléndez et al. 2003).

Star Name	T_{eff} (K)	$\log g$	[Fe/H]	v_t (km s $^{-1}$)
CS 31082-001	4825 ± 50	1.5 ± 0.3	-2.9 ± 0.1	1.8 ± 0.2
HD 122563	4600 ± 50	1.1 ± 0.4	-2.8 ± 0.1	2.0 ± 0.2
Arcturus	4275 ± 50	1.55 ± 0.1	-0.54 ± 0.06	1.65 ± 0.05

with the latter probably emitted by the first supernovae (Reeves et al. 1970). V and Cu are iron-peak elements, that are gaining importance in their use as indicators of the early nucleosynthesis processes that enriched old stars. We also compare abundances estimated from the near-UV for other iron-peak elements with those published from diagnostic lines at longer optical wavelengths.

This paper is structured as follows. The UVES spectroscopy and previous abundances are summarised in Section 2, with our estimated abundances of Be and iron-peak elements from the near-UV analysis reported in Sections 3 and 4, respectively. In Section 5, we discuss chemical evolution models to account for our results, and in Section 6, we briefly summarise our results.

In addition to providing new constraints on models attempting to reproduce the observed abundance pattern in CS 31082-001, we have used its spectra as a template to investigate future studies of metal-poor stars with CUBES; illustrative results from these tests are presented in the Appendix.

2 OBSERVATIONS AND METHODS

2.1 Near-UV spectroscopy

In our new analysis, we use the mean combined spectrum of the three 1 hr exposures obtained by the First Stars programme (ID 165.N-0276, PI: Cayrel) on 2001 October 19–21, using the bluest setting of UVES (with a central wavelength of 346 nm). These observations were obtained with a relatively narrow slit of 0".45, giving $R \sim 77\,000$ (see Hill et al. 2002), and are the same reduced data analysed by Siqueira-Mello et al. (2013).

The combined UVES data were the primary source spectrum used in our analysis, supported by comparisons with the *HST* data. The latter were obtained with the E230M mode of STIS, giving $R \sim 30\,000$ over the 1575–3100 Å range, with an S/N of ~ 40 from a 45-orbit programme (see Barbuy et al. 2011; Siqueira-Mello et al. 2013).

2.2 Abundance analysis

For our abundance analysis, we adopted the stellar parameters from Hill et al. (2002), as summarised in Table 1. Model atmospheres were interpolated in the MARCS grids (Gustafsson et al. 2008). For the spectral synthesis calculations, we employed the TURBOSPECTRUM code (Alvarez & Plez 1998; Plez 2012), in which the atomic line lists are essentially those from VALD (Ryabchikova et al. 2015) and also including molecular lines of CH, OH, CN, and NH. It is important to note that this code includes scattering in the continuum, that significantly depresses the continuum in the UV region (e.g. Fig. 1 from Barbuy et al. 2011). This effect needs to be taken into account because, when measuring weak lines such as the Be II doublet, the lowered continuum decreases the line depth and the abundance can be underestimated.

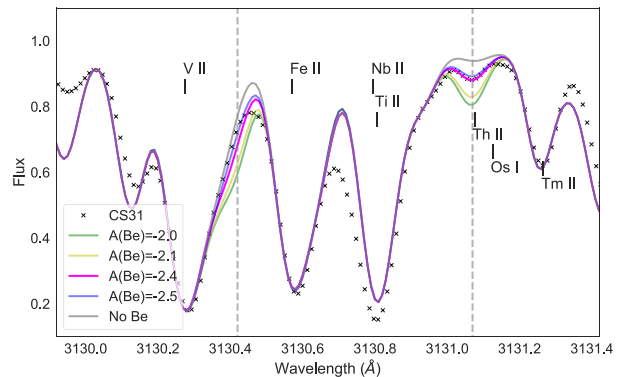


Figure 1. Fits to the Be II 3130.42 and 3131.07 Å doublet. Blue, magenta, yellow, and green model spectra correspond to $A(\text{Be}) = -2.5$, -2.4 , -2.1 , and -2.0 , respectively. The grey line is the model spectrum without Be.

Table 2. Published light-element abundances for CS 31082-001.

Species	Z	$A(X)$	[X/Fe]
Li I	3	$0.85^{a,b,c}$	–
C	6	$5.82^{a,b,c}$	$+0.2^a, +0.21^{b,c}$
N	7	$<5.22^{a,b,c}, 4.90^c,$ 4.57^e	$+0.21^{a,b,c},$ $-0.11^c, -0.49^e$
O I	8	$6.52^a, 6.46^b$	$+0.66^a, +0.6^{b,c}$
Na I	11	$3.70^{a,b}$	$+0.27^a, +0.28^b$
Mg I	12	$5.04^{a,b}$	$+0.36^a, +0.37^b$
Al I	13	$2.83^{a,b}$	$-0.74^a, -0.73^b$
Si I	14	$4.89^{a,b}$	$+0.24^a, +0.25^b$
S	16	4.54^d	$+0.36^d$
K I	19	$2.87^{a,b}$	$+0.65^a, +0.66^b$
Ca I	20	$3.87^{a,b}$	$+0.41^a, +0.42^b$
Sc II	21	$0.28^{a,b}$	$+0.01^a, +0.02^b$
Ti I	22	$2.37^{a,b}$	$+0.25^a, +0.26^b$
Ti II	22	$2.43^{a,b}$	$+0.31^a, +0.32^b$
Cr I	24	$2.43^{a,b}$	$-0.34^a, -0.33^b$
Mn I	25	$2.14^a, 1.98^b$	$-0.35^a, -0.50^b$
Fe I	26	$4.60^{a,b,c,d}$	$0.00^{a,b,c,d}$
Fe II	26	$4.58^{a,b,c,d}$	$0.00^{a,b,c,d}$
Co I	27	$2.28^{a,b}$	$+0.26^a, +0.27^b$
Ni I	28	$3.37^{a,b}$	$+0.02^a, +0.03^b$
Zn I	30	$1.88^{a,b}$	$+0.18^a, +0.19^b$

References: ^aHill et al. (2002); ^bCayrel et al. (2004); ^cSpite et al. (2005); ^dNLTE calculations from Spite et al. (2011); ^ethis work.

Here, we focus on the lines of Be and iron-peak elements in the 300–400 nm region. Prior to our analysis, we compiled the existing results from the First Stars series for light(er) elements (Table 2) and neutron-capture elements (Table 3).¹

The nitrogen abundance was tentatively deduced from the CN band, although noting that this is very weak in CS 31082-001 and that only an upper limit of $A(\text{N}) < 5.22$ was possible (Hill et al. 2002; Cayrel et al. 2004). Spite et al. (2005) later estimated $A(\text{NH}) = 4.90$ using the molecular data of the NH band from Kurucz linelists. In the same paper, it was shown that, in general, there is a systematic difference of ~ 0.4 dex between the abundance deduced from the CN and the NH bands. Therefore, Spite et al. (2005) adopted $A(\text{N}) = 4.50$

¹Small differences of 0.01 dex between the [X/Fe] values from Hill et al. (2002), and Cayrel et al. (2004) or Spite et al. (2005) arise from adopting a metallicity of [Fe I/H] = -2.90 or a mean of [(Fe I + Fe II)/H] = -2.91 .

Table 3. Published heavy-element abundances for CS 31082-001.

Element	Z	A(X) _{VLT}	A(X) _{HST}	[X/Fe]
Ge	32	+0.10 ^d	–	–0.55 ^d
Sr	38	+0.72 ^a	–	+0.65 ^a
Y	39	–0.23 ^a , –0.15 ^d	–	+0.43 ^a , +0.53 ^d
Zr	40	+0.43 ^a	+0.55 ^d	< +0.73 ^a , +0.85 ^d
Nb	41	–0.55 ^a	–0.52 ^d	+0.93 ^a , +0.96 ^d
Mo	42	–	–0.11 ^d	+0.90 ^d
Ru	44	+0.36 ^a	+0.65 ^d	+1.42 ^a , +1.71 ^d
Rh	45	–0.42 ^{a, d}	–	+1.36 ^{a, d}
Pd	46	–0.05 ^a , –0.09 ^d	–	+1.16 ^a , +1.12 ^d
Ag	47	–0.81 ^a , –0.84 ^d	–	+1.15 ^a , +1.12 ^d
Ba	56	+0.40 ^a	–	+1.17 ^a
La	57	–0.60 ^a	–	+1.13 ^a
Ce	58	–0.31 ^{a, d}	–	+1.01 ^{a, d}
Pr	59	–0.86 ^a	–	+1.33 ^a
Nd	60	–0.13 ^a , –0.21 ^d	–	+1.27 ^a , +1.19 ^d
Sm	62	–0.51 ^a , –0.42 ^d	–	+0.00 ^a , +0.11 ^d
Eu	63	–0.76 ^a	–0.75 ^d	+1.63 ^a , +1.64 ^d
Gd	64	–0.27 ^a	–0.22 ^d	+1.51 ^a , +1.46 ^d
Tb	65	–1.26 ^a	–0.50 ^d	+1.74 ^a , +0.98 ^d
Dy	66	–0.21 ^a , –0.12 ^d	–	+1.55 ^a , +1.46 ^d
Er	68	–0.27 ^a	–0.20 ^d	+1.70 ^a , +1.63 ^d
Tm	69	–1.24 ^a , –1.18 ^d	–	+1.66 ^a , +1.60 ^d
Hf	72	–0.59 ^a , –0.73 ^d	–	+1.43 ^a , +1.29 ^d
Os	76	+0.43 ^a	–0.07 ^d	+1.30 ^a , +1.72 ^d
Ir	77	+0.20 ^a	+0.18 ^d	+1.75 ^a , +1.72 ^d
Pt	78	–	+0.30 ^c	+1.46 ^c
Au	79	–	–1.00 ^c	+0.89 ^c
Pb	82	–0.55 ^b	–0.65 ^c	+0.40 ^b , +0.30 ^c
Bi	83	–	–0.40 ^c	+1.83 ^c
Th	90	–0.98 ^a	–	+1.83 ^a
U	92	–1.92 ^a	–	+1.49 ^a

References: ^aHill et al. (2002); ^bPlez et al. (2004); ^cBarbuy et al. (2011); ^dSiqueira-Mello et al. (2013).

after correction. We carried out a new measurement of the NH band based on a recent NH linelist (Fernando et al. 2018) and concluded that $A(\text{N}) = 4.57$.

In Table 3, we also include abundance estimates from Barbuy et al. (2011) and Siqueira-Mello et al. (2013) obtained from the *HST* data alone (i.e. using lines at <300 nm, hence some of the values quoted here are slightly different from the final results from Siqueira-Mello et al. 2013).

3 BERYLLIUM

The derivation of Be abundances for metal-poor stars is challenging because the Be II doublet (see Table 4 for details) is weak and blended with other nearby absorption lines. Lines of Mn, Cr, Ni, Ge, Ta, Gd, Tm, Mo are all present in the region but they do not contribute significantly to the blends. In contrast, weak lines of Fe, V, Ti, Th, Os, and molecular CNO lines (mainly from OH) do contribute as blends to the Be lines. In particular, the longer wavelength Be II line is blended with Th II 3131.07 Å and Os I 3131.12 Å. Fig. 1 shows the spectral synthesis calculation without including Be and with $A(\text{Be}) = -2.5, -2.4, -2.1,$ and -2.0 , suggesting abundances of $A(\text{Be}) = -2.5$ and -2.4 for CS 31082-001 from the Be II 3130.42 and 3131.07 Å lines, respectively.

The Be abundance measured in CS 31082-001 does not, however, indicate its primordial Be abundance. Be is a fragile element destroyed as soon as the temperature reaches 3.5×10^6 K. None the less, Be is less fragile than Li, which is destroyed at 2.5×10^6 K.

All the stars in the Spite’s Li plateau (Spite & Spite 1982) have effective temperatures higher than 5900 K. At lower temperatures, the convective zone is deeper and, as a consequence, Li is brought to deep layers where it is gradually destroyed, and the same process affects also Be. At the metallicity of CS 31082-001, following e.g. Boesgaard et al. (2011), its original abundance should be about $A(\text{Be}) = -2.2$. Destruction of Be in CS 31082-001 is thus confirmed, as might be expected by its low Li abundance ($A(\text{Li}) = 0.85$), which is much below the Spite plateau at $A(\text{Li}) \sim +2.2$.

During their evolution, metal-poor giants undergo a first mixing (1st dredge-up) when they leave the subgiant branch. Later, at the level of the bump, they undergo extra mixing: C is transformed into N and Li practically disappears. It has been shown that CS 31082-001 has not yet undergone this extra mixing (Spite et al. 2005), therefore some Li and Be appear to be still present. In contrast, HD 122563 was another giant star observed by the First Stars programme but located after the bump (see stellar parameters in Table 1). In this star, Li is not measurable ($A(\text{Li}) < 0.6$; Spite et al. 2005), and we verified that the Be line appears also to be absent.

The estimated Be abundance in CS 31082-001 is the first measurement of a Be abundance in a metal-poor giant. Results in the literature are for stars with effective temperatures greater than ~ 5500 K, and with gravities around the turn-off. In Fig. 2, we show literature values for dwarf stars from Boesgaard et al. (2011), Placco et al. (2014), Smiljanic et al. (2009, 2021), and Spite et al. (2019), where it can be seen that the Be abundance increases with $[\text{Fe}/\text{H}]$. In CS 31082-001 with $[\text{Fe}/\text{H}] = -2.9$, we would expect $\log(\text{Be}/\text{H}) \approx -13.8$ for a dwarf star, to be compared with our estimate of $\log(\text{Be}/\text{H}) = -14.5$ for CS 31082-001. In fact, Be (like Li) has been partially destroyed during the first dredge up. This destruction depends mainly on the extension of the convective zone. The combination of the Be and Li depletion in metal-poor giants observed after the first dredge-up, could bring important constraints on the maximum depth of the convective layer.

4 IRON-PEAK ELEMENTS

Table 4 gives the list of near-UV lines of iron-peak elements considered here, together with oscillator strengths from Kurucz (1993),² NIST,³ VALD⁴ (Piskunov et al. 1995, Ryabchikova et al. 2015), and literature values. A more extensive list of the most prominent lines in the near-UV can be found in Ernandes et al. (2020).

We included lines of the elements from Sc to Ge. Note that Germanium is considered the last of the iron-peak elements (Woosley & Weaver 1995, hereafter, **WW95**), but it is sometimes considered as part of the heavy neutron-capture elements, or else as a trans-iron element (e.g. Peterson et al. 2020).

4.1 Calculations

4.1.1 Hyperfine structure

To accurately model the near-UV lines of Sc II, V II, Mn II, Co I, and Cu I, we investigated their hyperfine structure (HFS) using the code from McWilliam et al. (2013). The magnetic dipole A-factor and electronic quadrupole B-factor hyperfine constants used to compute the HFS for each species are given in Table A1 with details as follows:

²<http://kurucz.harvard.edu/atoms.html>

³https://physics.nist.gov/PhysRefData/ASD/lines_form.html

⁴<http://vald.astro.uu.se/>

Table 4. List of near-UV absorption lines considered.

Ion	Wavelength (Å)	χ_{ex}	log gf _{Kur}	log gf _{VALD}	log gf _{NIST}	log gf _{lit}	[X/Fe]	Δ [X/Fe] _{NLTE}	Reference
Be II	3130.42	-0.00	-0.168	-0.168	-0.178	-	-0.98	-	(5)
Be II	3131.07	-0.00	-0.468	-0.468	-0.479	-	-0.98	-	(5)
Sc II*	3576.34	-0.0084	-0.130	-0.007	-0.01	-	+0.03	-	(5)
Sc II*	3590.47	-0.022	-0.500	-0.552	-0.55	-	+0.52	-	(5)
Ti I	3199.914	-0.048	-0.200	-0.310	-0.20	+0.31	+0.35	-	(4)
Ti I	3717.391	-0.000	-1.210	-1.228	-1.20	-1.19	+0.35	-	(4)
Ti I	3729.807	-0.000	-0.340	-0.280	-0.289	-0.28	+0.35	-	(4)
Ti I	3924.526	-0.021	-0.937	-0.870	-0.883	-0.87	+0.35	-	(4)
Ti I	3962.851	-0.000	-1.167	-1.232	-1.110	-1.10	+0.35	-	(4)
Ti I*	3998.64	-0.048	-0.056	-0.02	-0.016	-	+0.02	-	(4)
Ti II*	3321.70	-1.231	-0.320	-0.340	-0.313	-	+0.35	-	(4)
Ti II*	3343.76	-0.151	-1.270	-1.180	-1.149	-	+0.35	-	(4)
Ti II*	3491.05	-0.113	-1.130	-1.100	-1.153	-	+0.35	-	(4)
V II	3517.299	-1.128	-0.310	-	-0.24	-0.24	+0.22	-	(6)
V II	3545.196	-1.096	-0.390	-	-0.32	-0.32	+0.22	-	(6)
V II	3715.464	-1.575	-0.380	-	-0.22	-0.22	+0.22	-	(6)
V II*	3951.96	-1.4764	-0.740	-0.730	-0.73	-0.73	+0.22	-	(1)
Cr I*	3578.68	-0.00	-0.409	-0.42	-0.408	-	-0.31	+0.678	(5)
Mn II*	3441.99	-1.776	-0.270	-0.332	-0.346	-0.346	-0.39	-	(2)
Mn II*	3460.32	-1.809	-0.615	-0.615	-0.632	-0.631	-0.39	-	(2)
Mn II*	3482.90	-1.833	-0.740	-0.826	-0.837	-0.837	-0.39	-	(2)
Mn II*	3488.68	-1.847	-0.860	-0.921	-0.937	-0.937	-0.39	-	(2)
Mn II*	3495.83	-1.855	-1.200	-1.257	-1.282	-1.280	-0.39	-	(2)
Mn II*	3497.53	-1.847	-1.330	-1.397	-1.414	-1.418	-0.39	-	(2)
Co I*	3412.34	-0.5136	-0.030	-0.030	-0.03	-	+0.19	-	(5)
Co I*	3412.63	-0.00	-0.780	-0.780	-0.78	-	+0.19	-	(5)
Co I*	3449.16	-0.5815	-0.090	-0.090	-0.09	-	+0.19	-	(5)
Co I*	3529.03	-0.1744	-0.880	-0.880	-0.88	-	+0.19	-	(5)
Co I*	3842.05	-0.9227	-0.770	-0.770	-0.76	-	+0.19	-	(5)
Co I*	3845.47	-0.9227	-0.010	-0.010	-0.01	-	+0.19	+0.749	(5)
Ni I*	3437.28	-0.00	-1.150	-1.20	-1.15	-	+0.05	-	(5)
Ni I*	3483.77	-0.2748	-1.110	-1.110	-1.12	-	+0.05	-	(5)
Ni I*	3500.85	-0.1652	-1.370	-1.270	-1.37	-	+0.05	-	(5)
Ni I*	3597.71	-0.2124	-1.090	-1.10	-1.09	-	+0.05	-	(5)
Ni I*	3807.14	-0.4228	-1.180	-1.230	-1.18	-	+0.05	-	(5)
Ni I*	3807.14	-3.8983	-	-2.816	-1.18	-	-	-	Blend
Cu I*	3247.53	-0.00	-0.062	-0.008	-0.054	-	-0.79	-	(5)
Cu I*	3273.95	-0.00	-0.359	-0.311	-0.354	-	-0.79	-	(5)
Zn I*	3075.90	-0.00	-3.900	-3.900	-3.80	-	-	-	(5)
Zn I*	3302.58	-4.0297	-0.057	-0.057	-0.01	-	+0.22	-	(5)
Zn I*	3345.01	-4.0778	-0.246	-0.246	-0.30	-	+0.22	-	(5)
Ge I*	3039.07	-0.8834	-	-0.49	-0.07	-0.08	-	-	(3)

References: (1) Wood et al. (2014); (2) Den Hartog et al. (2011); (3) Li et al. (1999); (4) Lawler et al. (2013); (5) VALD3; (6) Ou et al. (2020). Adopted log gf values are indicated in bold face.

Notes. Symbols: * Near-UV iron-peak element lines considered by Ernandes et al. (2020);

The Ge I line is included for completeness, where its abundance was derived by Siqueira-Mello et al. (2013).

(i) Scandium: ^{45}Sc is the only stable nuclide, with nuclear spin $I = 7/2$. Hyperfine constants are from Villemoes et al. (1992) and Kurucz (1993).

(ii) Vanadium: abundances correspond to 99.75 per cent of ^{51}V and only 0.25 per cent of ^{50}V (Asplund et al. 2009). We therefore adopted ^{51}V as a unique isotope, with nuclear spin $I = 7/2$. Hyperfine constants are from Wood et al. (2014). Following Ou et al. (2020), HFS splitting was not applied to the V II 3715.46 Å line.

(iii) Manganese: ^{55}Mn is the only nuclide that contributes to the abundance (Woodgate & Martin 1957), with nuclear spin $I = 5/2$. Hyperfine constants are from Den Hartog et al. (2011).

(iv) Cobalt: ^{59}Co is the only nuclide (Asplund et al. 2009), with nuclear spin $I = 7/2$. Hyperfine constants are from Pickering (1996).

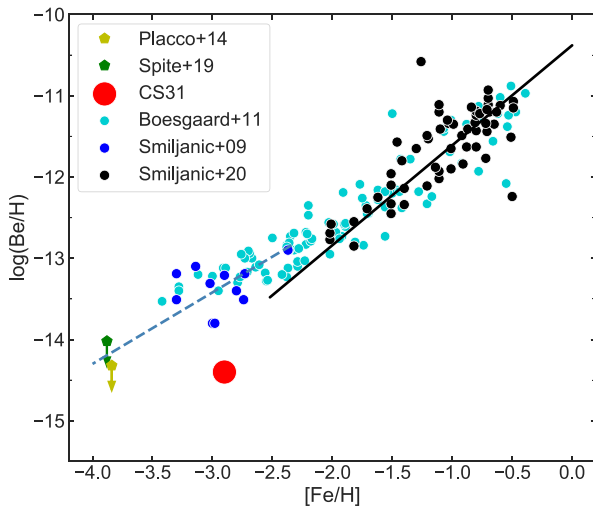
(v) Copper: Isotopic fractions for Cu I are 0.6894 for ^{63}Cu and 0.3106 for ^{65}Cu (Asplund et al. 2009). The nuclear spin is $I = 3/2$. Abundances were derived from the Cu I 3247.53 and 3273.95 Å lines. Hyperfine constants are from Biehl (1976) and Kurucz (1993).

After calculating the line splits and intensities of the HFS lines, we computed synthetic lines for the reference star Arcturus, adopting stellar parameters from Meléndez et al. (2003), and then comparing them with the observed lines in a near-UV UVES spectrum from the ESO archive.⁵ Figs B1 and B2 show the fits to Co and Cu for the Arcturus spectrum. For Sc II and Mn II, the calculations including the HFS are a poorer match to the observations than those without, possibly because some atomic constants cannot be accounted for; we

⁵<http://archive.eso.org/dataset/ADP.2020-08-04T15:12:16.253>

Table 5. Comparison of our derived abundances with results from Hill et al. (2002). Solar abundances are from Grevesse & Sauval (1998).

Species	Z	A(X) _⊙	[X/Fe] _{Hill}	[X/Fe] _{present}	A(X)
Be II	4	1.15	–	–0.90	–2.4
Sc II	21	3.17	+0.02	+0.01	0.28
Ti I	22	5.02	+0.25	+0.28	2.40
Ti II	22	5.02	+0.31	+0.28	2.40
V II	23	4.00	–	+0.15	1.25
Cr I	24	5.67	–0.34	–0.34	2.43
Mn II	25	5.39	–0.35	–0.35	2.14
Co I	27	4.92	+0.27	+0.26	2.28
Ni I	28	6.25	+0.03	+0.02	3.37
Cu I	29	4.21	–	–0.81	0.50
Zn I	30	4.60	+0.19	+0.18	1.88
Ge I	32	3.41	–0.55	–	–

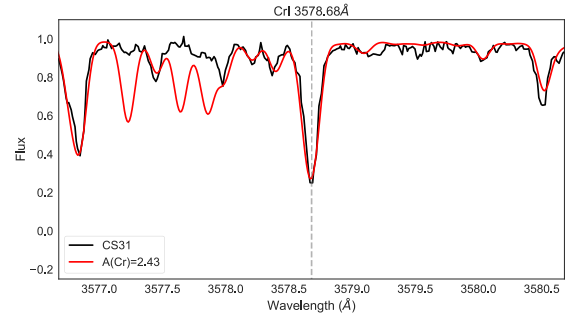
**Figure 2.** $\log(\text{Be}/\text{H})$ versus $[\text{Fe}/\text{H}]$ for CS 31082-001 (red circle) compared with literature data as follows: solid blue circles, Smiljanic et al. (2021); solid black circles, Smiljanic et al. (2009); solid green pentagons, Spite et al. (2019); solid yellow pentagons, Placco et al. (2014); solid cyan circles, Boesgaard et al. (2011). The solid line is a fit to the data by Smiljanic et al. (2009). The dashed line is the locus of dwarf metal-poor stars (Spite et al. 2019).

therefore did not include HFS for these two elements in our analysis of CS 31082-001. We add that for many of the lines studied here, the surrounding lines in the Arcturus spectrum are saturated. The adopted HFS components and corresponding oscillator strengths for the Co I and Cu I lines are reported in Tables A2, A3, and A4.

4.1.2 Non-LTE abundance corrections

As demonstrated by Bergemann & Cescutti (2010) and Bergemann et al. (2010), NLTE corrections are needed for the Cr and Co lines, with corrections available for two of our diagnostic lines.⁶ For the adopted stellar parameters of CS 31082-001, the NLTE corrections for the Cr I 3578.68 Å and Co I 3845.47 Å lines are +0.678 and +0.749 dex, respectively. In particular, Bergemann & Cescutti (2010) analysed the discrepancies between abundances derived from Cr I and Cr II lines, showing that deficiencies of Cr in metal-poor stars are

⁶http://nlte.mpia.de/gui-siuAC_secE.php

**Figure 3.** The best-fitting abundance for the Cr I 3578.68 Å line, computed with $[\text{Cr}/\text{Fe}] = -0.31$, without NLTE correction (see Section 4.1.2).

related to only NLTE effects, and that the Cr/Fe ratio is essentially solar.

4.2 Abundances: Sc, Ti, Cr, Mn, Co, Ni, and Zn

Adopting the published stellar parameters of CS 31082-001 and varying the abundances of each species to fit the relevant diagnostic lines, our fits to Sc, Ti, Mn, Co, Ni, and Zn are shown in Figs B3 to B9, with the fit to the Cr I 3578.68 Å line shown in Fig. 3.

The fits to the Cr I, Mn II, Co I, and Ni I lines are excellent (Figs 3, B6, B7, and B8), while those to Sc II and Ti I (Figs B3 and B4, respectively) both have problems. For Sc II, the two diagnostic lines lead to quite different abundances ($\Delta A(\text{Sc}) = 0.49$); the Sc II 3590.47 Å line appears to be a saturated blend that only has a small dependence on the abundance, so we adopt the value from the Sc II 3576.34 Å line.

A similar discrepancy also arises between the Ti I 3998.64 Å and 3924.526 Å lines (see Fig. B4), where there are blends present in the redward wing. However, the estimated abundance from the Ti I 3924.526 Å line also matched that from the four other Ti I lines in Table 4. These other lines were included from the line list of Lawler et al. (2013); additional Ti I lines at 3725.1 and 3926.3 Å were not strong enough in CS 31082-001 to estimate the abundance. Fig B4 shows the fits to the Ti I lines, giving an abundance of $A(\text{Ti}) = 2.40$. This is similar to the value obtained from the Ti II lines (Fig. B5), so we adopt this value. Compared to the results from optical lines, this result is higher by 0.15 dex for Ti I and 0.05 dex for Ti II, but still in reasonable enough agreement given the uncertainties.

A summary of the present abundance results with previous values is given in Table 5. The values for each species are in general agreement within errors.

4.3 Abundances: V and Cu

Our fits to the V and Cu lines are shown in Figs 4 and 5. From their large sample of metal-poor stars, Ou et al. (2020) found a discrepancy between abundance estimates from V I and V II, with mean values of $[\text{V I}/\text{Fe}] = -0.10$ and $[\text{V II}/\text{Fe}] = +0.13$. The difference is thought to arise from NLTE effects in the V I lines, so for CS 31082-001, we used the V II lines.

For Cu, Bonifacio et al. (2010) found a discrepancy between the abundances for turn-off stars from the multiplet 1 line in the UV at 3247.5 Å and multiplet 2 at 5105.5 Å. To see if the same discrepancy is present in CS 31082-001, we also fitted the Cu I 5105.5 and 5218.2 Å lines (see Fig. 6) taking into account the HFS from Ernandes et al. (2018). In this case, the UV and optical abundances agree.

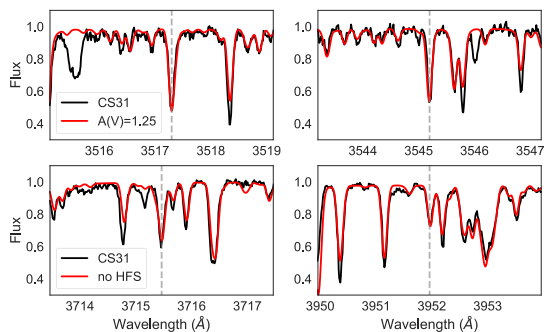


Figure 4. The best-fitting abundance for V II 3517.299, 3545.196, 3715.464, and 3951.96 Å lines, computed with $[V/Fe] = +0.22$. HFS was not applied to the V II 3715.464 Å line.

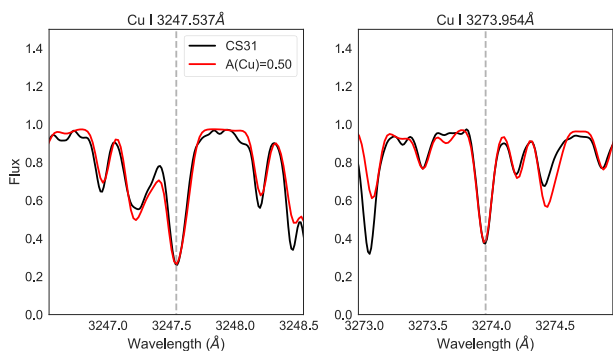


Figure 5. Best fit for the Cu I 3247.537 and 3273.954 Å lines, computed with $[Cu/Fe] = -0.79$ (including HFS).

5 CHEMICAL EVOLUTION MODELS

To investigate our estimated V and Cu abundances in the context of nucleosynthesis, we have employed the disc/halo chemical-evolution model from Lanfranchi & Friaça (2003, hereafter LF03), which has been used to investigate the origin of damped Lyman- α systems in galaxy discs and of Lyman-limit systems in galactic haloes (Viegas et al. 1999). It is assumed that the infall of gas from the halo into the Milky Way disc feeds the disc star formation and that the star formation rate (SFR) follows power laws on mass surface density and gas fraction. The formalism and basic equations of the model can be found in LF03. An exponential mass surface density profile is adopted for the disc, $\sigma \propto e^{-r/r_G}$, with $r_G = 2.6$ kpc (Boissier & Prantzos 2000). In the adopted SFR law, the specific SFR (i.e. the inverse of the local star formation time-scale) depends on the gas density as $\nu \propto \rho^{1/2}$. The normalisations of the SFR are $\bar{\nu}_H = 0.2 \text{ Gyr}^{-1}$ for the initial halo and $\bar{\nu}_D = 0.5 \text{ Gyr}^{-1}$ for the disc at the age of the Galaxy ($t_G = 13.5$ Gyr) and at the solar Galactocentric distance ($r_\odot = 8$ kpc).

The history of gas infall into the Galactic disc presents two phases, in line with scenarios such as the two-infall model (Chiappini et al. 2001). The infall rate into the disc is assumed to decline with time as e^{-t/τ_D} . The first phase of the infall is rapid, with the infall time-scale $\tau_D = 1$ Gyr, from $t = 0$ until $t = 1$ Gyr. In the late infall, τ_D is given by $\tau_D(r) = 1 + 7/6(r-2)$, for $2 \leq r \leq 8$ kpc, and $\tau_D(r) = 8 + 0.5(r-8)$, for $r > 8$ kpc. The inner and the outer boundaries of the disc are set at 2 and 18 kpc. At these radii, $\tau_D = 1$ and 13 Gyr, respectively, and $\tau_D = 8$ at r_\odot . In contrast to Chiappini et al. (2001), we do not consider a threshold for star formation, fixed by adjusting

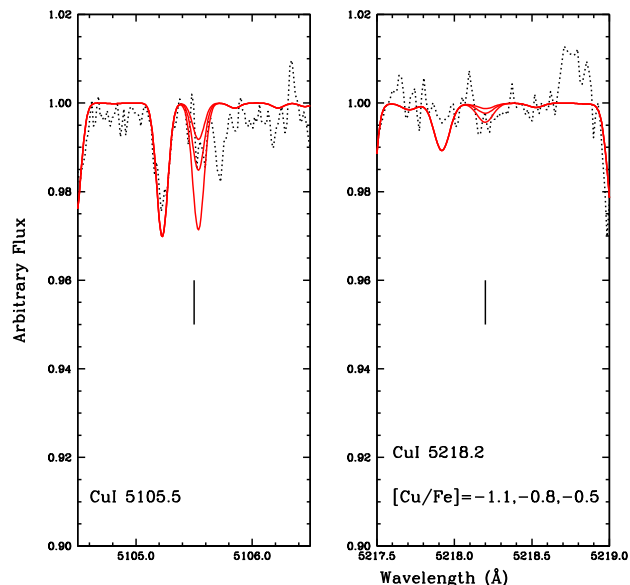


Figure 6. Best fit to the Cu I 5105.5 and 5218.2 Å lines, computed with $[Cu/Fe] = -0.80$.

its value in order to reproduce the observations, but we included inhibition of star formation by considering fundamental processes (see LF03 and Friaça & Terlevich 1998).

With respect to the nucleosynthesis prescriptions of our model, we adopt metallicity-dependent yields from core-collapse supernovae (SNe II), high explosion-energy hypernovae, type Ia supernovae (SNe Ia), and intermediate-mass stars (IMS) (for more details, see Friaça & Barbuy 2017). The SN II yields are adopted from WW95. For low metallicities ($Z < 0.01Z_\odot$), we also considered the yields from hypernovae (Umeda & Nomoto 2002, 2003, 2005; Nomoto et al. 2006, 2013). The yields of SN Ia resulting from Chandrasekhar mass white dwarfs are taken from Iwamoto et al. (1999), specifically models W7 (progenitor star of initial metallicity $Z = Z_\odot$) and W70 (zero initial metallicity). The yields for IMS (0.8–8 M_\odot) with initial $Z = 0.001, 0.004, 0.008, 0.02$, and 0.4 are from van den Hoek & Groenewegen (1997) (variable η_{AGB} case).

5.1 Abundances and chemical-evolution models for V

The upper panel of Fig. 7 shows V abundance estimates derived by Ou et al. (2020) for the sample of halo stars from Roederer et al. (2014), and the results from Ishigaki et al. (2013) for halo and thick disc stars; our best-fitting abundance, derived from the V II 3951.96 Å line in CS 31082-001 is shown by the red circle.

Vanadium is synthesised in explosive Si-burning during core-collapse SNe. Its abundances are known to be underpredicted by chemical evolution models (at all metallicities) when compared to observations (WW95; Kobayashi et al. 2006, 2020), as highlighted by the model from Kobayashi et al. (2020) in the upper panel of Fig. 7 compared to the observational results.

Multidimensional effects could increase the abundances of Sc, Ti, and V (Maeda & Nomoto 2003; Tominaga 2009). To mimic these effects, the K15 model of Kobayashi et al. (2020) considered a 0.3 dex enhancement in the V yields. Indeed, Timmes et al. (1995) pointed out that the V yields of WW95 should be increased by a factor of ~ 3 to reproduce the observational data. Therefore, in our chemical-evolution models, we applied this factor to the V yields of

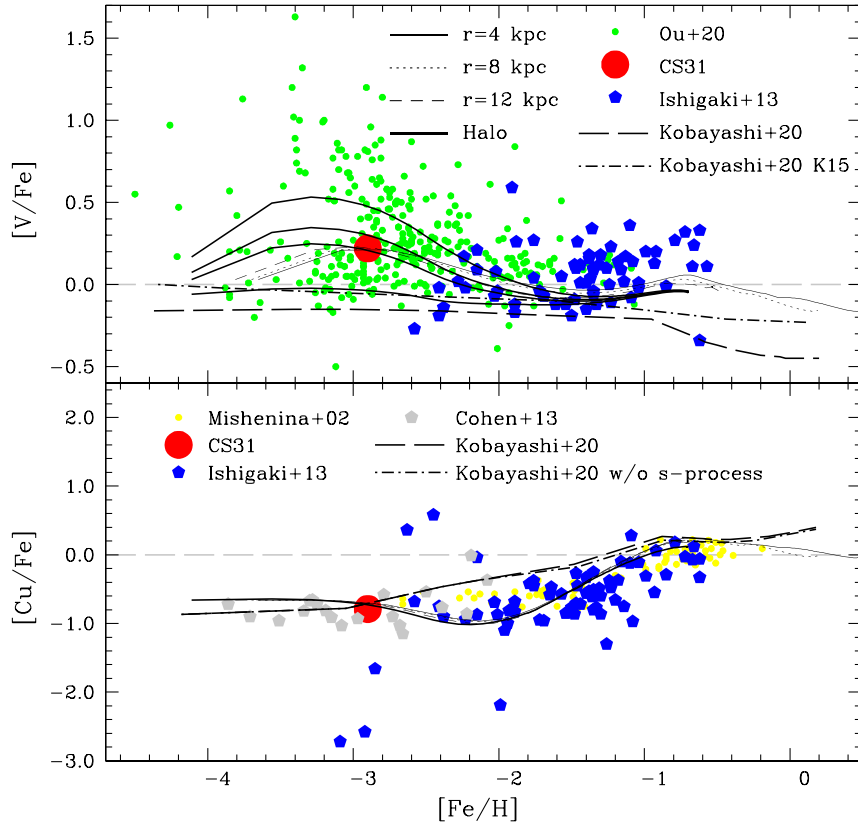


Figure 7. Upper panel: Relation of $[V/Fe]$ versus $[Fe/H]$. Symbols: red dots: this work; green dots: Ou et al. (2020), blue pentagons: Ishigaki et al. (2013). Our chemical evolution model for the halo/disc (LF03) is shown for several Galactocentric radii and for the halo (thick solid lines). Our fiducial model includes neutrino processes with $E_\nu = 3 \times 10^{53}$ erg. The various curves for the halo correspond to different assumptions for the neutrino process. From bottom to top: (1) no neutrino process; (2) the fiducial model ($E_\nu = 3 \times 10^{53}$ erg); (3) $E_\nu = 3 \times 10^{53}$ erg and $T_\nu = 8$ MeV; (4) $E_\nu = 9 \times 10^{53}$ erg. As we can see from the comparison of the LF03 model with the data, inclusion of the neutrino process could account for the high $[V/Fe]$ ratios of extremely metal-poor and very metal-poor stars. The solid long-dashed line refers to the predictions of the fiducial model of Kobayashi et al. (2020), while the K15 model from Kobayashi et al. (2020), which includes a 0.3 dex enhancement of the V yields, is also shown (dot-dashed line). Lower panel: Relation of $[Cu/Fe]$ versus $[Fe/H]$. Symbols: red dots: this work; yellow dots: Mishenina et al. (2002); blue pentagons: Ishigaki et al. (2013); grey pentagons: Cohen et al. (2013). The thick solid line refers to the halo in the LF03 model and the thin lines to the disc in the model at the radii $r = 4, 8,$ and 12 kpc. The neutrino process follows the fiducial case ($E_\nu = 3 \times 10^{53}$ erg). The LF03 model not only reproduces the CS 31082-001 data point but also predicts the wave shape of the $[Cu/Fe]$ versus $[Fe/H]$ curve. The resulting evolution of Cu abundance predicted by the model of Kobayashi et al. (2020) for the solar neighbourhood is given by the black long-dashed line, and the dot-dashed line refers to the model without production of Cu by the s-process in AGB stars.

WW95 from $Z = Z_\odot$ to $0.01 Z_\odot$. Including an enhancement by a constant factor accounts for the flat behaviour of $[V/Fe]$ for $[Fe/H] > -2$. However, as V varies in lockstep with iron, the models do not reproduce the high $[V/Fe]$ ratios seen in extremely metal-poor and very metal-poor stars, including CS 31082-001.

Core-collapse SNe release large amounts of energy as neutrinos ($> 10^{53}$ erg). The interaction of neutrinos with matter represents an additional nucleosynthetic source (WW95, Heger et al. 2005, Yoshida et al. 2008). In very low metallicity stars, neutrino processes contribute significantly to the production of odd-Z elements such as V, Mn, Sc, K, F and B (Yoshida et al. 2008, Kobayashi et al. 2011a). Following the prescriptions of Yoshida et al. (2008), our models therefore also include enhancement of V yields by neutrino processes during the SN explosion. These phenomena can be important at very low metallicities but would be ineffective for the yields of hypernovae. The total neutrino energy E_ν released when the core of a massive star collapses to form a neutron star is a free parameter. In our models we adopted the standard case of $E_\nu = 3 \times 10^{53}$ erg from Yoshida et al. (2008), which corresponds to the gravitational binding energy of a $1.4M_\odot$ neutron star (Lattimer & Prakash 2001).

We also consider the cases of a larger neutrino energy $E_\nu = 9 \times 10^{53}$ erg, and the standard case of $E_\nu = 3 \times 10^{53}$ erg but with a neutrino temperature of $T_\nu = 8$ MeV (as assumed by WW95). As shown by Fig. 7, inclusion of the neutrino processes better reproduces the rising trend of $[V/Fe]$ for $[Fe/H] < -2.0$ in the results from Ou et al. (2020) as well as our result for CS 31082-001.

We have considered neutrino processes as an additional nucleosynthetic source of vanadium. Although this effect reproduces the rise of $[V/Fe]$ for $[Fe/H] \lesssim -2.5$, it falls short of the highest observed values of $[V/Fe]$ around $+1.5$, obtained by Ou et al. (2020). In this context, it is worth considering the possibility of observational errors. Following Ou et al. (2020), the vanadium abundance for CS 31082-001 was derived from the V II lines. The highest value of $[V/Fe]$ derived by Ou et al. (2020) using the V II line is 1.63 for G238-030. If using the V I line instead, the derived $[V/Fe]$ is 1.46. On the theoretical side, it could be that other processes are at work, e.g. the above mentioned multidimensional effects. Even considering the sole neutrino process, our models have been conservative, and higher neutrino energies would increase the $[V/Fe]$ ratio.

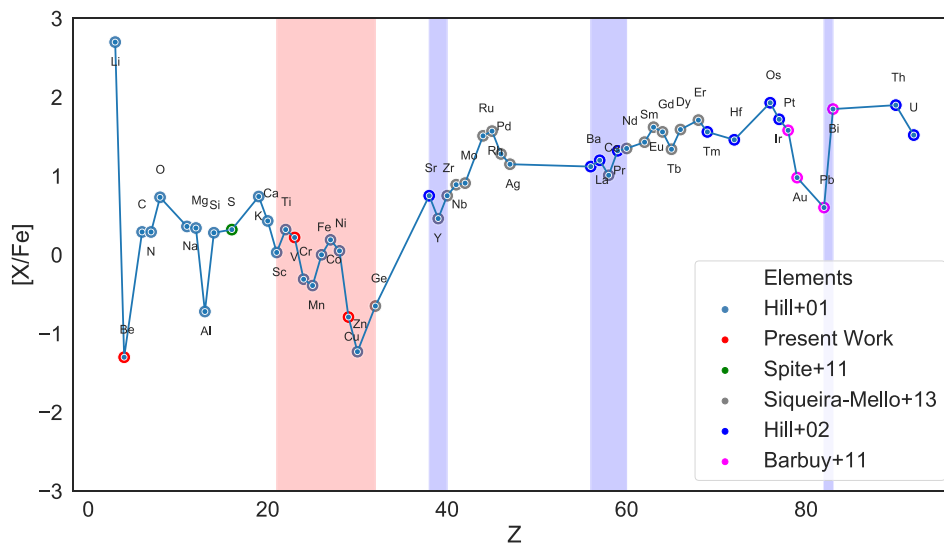


Figure 8. Elemental abundances of CS 31082-001, with the symbol colours showing the source of the result, as indicated in the legend. The red shaded region highlights the iron-peak elements, with the blue regions highlighting the first, second, and third peaks of s-process elements.

5.2 Abundances and chemical evolution models for Cu

Copper is produced both in the alpha-rich freeze-out as a primary element (Sukhbold et al. 2016) and in the weak s-process in massive stars as a secondary element. The iron-peak elements are mainly formed during explosive oxygen and silicon burning in massive supernovae (WW95). For larger values of the neutron fraction, the main products of silicon burning are completed. On the other hand, if the density is low and the supernova envelope expansion is fast, α particles will be frozen and not captured by the heavier elements (Woosley et al. 2002). The trend of Cu abundance with the metallicity [Fe/H] could reveal the relative efficiencies of these two contributions.

The secondary-like behaviour of Cu has led Sneden et al. (1991) to suggest that it could mainly be attributed to the weak s-process. However, as more data has been accumulated and chemical evolution models have been tested, a more complex picture has emerged (Mishenina et al. 2002, Kobayashi et al. 2006, 2011b, 2020). The relation of [Cu/Fe] versus [Fe/H] for $-2 < [\text{Fe}/\text{H}] < -0.5$ is well described by a secondary process, but if we consider a wider range in metallicity, from [Fe/H] ~ -4 to ~ 0 , the behaviour of [Cu/Fe] is more complex than that expected from purely primary or secondary processes. The general curve has a wavy shape, and for [Fe/H] < -2.5 , [Cu/Fe] increases or, at least, reaches a plateau, indicating the presence of a primary process. In fact, the Cu content of extremely metal-poor stars is basically determined by explosive nucleosynthesis in massive stars, and by hypernovae in particular. On the other hand, the form of the trend of [Cu/Fe] with [Fe/H] for higher metallicities, tells us about the role of longer lived sources of Cu enrichment. At [Fe/H] ~ -1 , [Cu/Fe] shows another plateau, which is explained by SNe Ia. In addition to that, besides an origin in massive stars, Cu is also formed through the s-process acting in AGB stars. However, this contribution is negligible at [Fe/H] ~ -2 and amounts to only 0.03 dex at [Fe/H] = 0 (Kobayashi et al. 2020).

In the lower panel of Fig. 7, we show the Cu abundances derived by Mishenina et al. (2002), Cohen et al. (2013), and Ishigaki et al. (2013) for halo and thick disc stars and our best-fitting abundance to the Cu I 3247.54 and 3273.95 Å lines of CS 31082-001 compared to the predictions of the LF03 model used in this work. The data

points from Ishigaki et al. (2013) are systematically below those from Mishenina et al. (2002) and, although their scatter is large, they suggest a sinuous behaviour of [Cu/Fe] with [Fe/H], as predicted by the LF03 model. The abundances we derived for CS 31082-001 (red circle) are well-fitted by our model. The plateau of [Cu/Fe] at [Fe/H] < 2.5 appears to mainly be the result of hypernovae.

The thick solid line in the lower panel of Fig. 7 refers to the halo in our model and the thin lines to the disc at the radii $r = 4, 8$ and 12 kpc. The neutrino process follows the fiducial case ($E_\nu = 3 \times 10^{53}$ erg), but it has little impact on the Cu abundances. The results in Fig. 7 also include the predictions for Cu abundances from Kobayashi et al. (2020), whose models include AGBs, core-collapse SNe, and type Ia SNe. This model accounts for the [Cu/Fe] ratio of CS 31082-001 but overestimates the Cu abundances around [Fe/H] ~ -2.0 . To assess the effect of the s-process in AGB stars on Cu production, their model without the AGB contribution is also plotted (dot-dashed line in Fig. 7). This process contributes with only a very modest increase of Cu near [Fe/H] = 0.0, and removing the AGB contribution does not alleviate the overestimate of [Cu/Fe] at [Fe/H] ~ -2.0 .

5.3 Abundances: summary

The iron-peak abundance pattern of CS 31082-001 is shown in Fig. 8, including results from Hill et al. (2001, 2002), Cayrel et al. (2004), Plez et al. (2004), Spite et al. (2005, 2011), Barbuy et al. (2011), Siqueira-Mello et al. (2013), and our new results for V and Cu.

In the upper panel of Fig. 9, we compare the iron-peak abundances in CS 31082-001 with those for the similarly r-process-rich star CS 22892-052 (Sneden et al. 2003). These two halo metal-poor stars appear to have not only the same abundance patterns for the neutron-capture elements but also have the same pattern for the iron-peak elements, indicating that the same kind of process produced the iron-peak elements in both stars. To confirm the chemical evolution models developed above, in the lower panel of Fig. 9 we show the abundances of iron-peak elements compared with the predicted SNe yields from Nomoto et al. (2013) for a faint supernova (black, dashed line) and a hypernova (green, dashed line). The latter is a better fit to the iron-peak elements (e.g. for Co, Ni, Cu, and Zn), but both models underestimate the production for Sc, Ti, V, Mn, and Ge, and

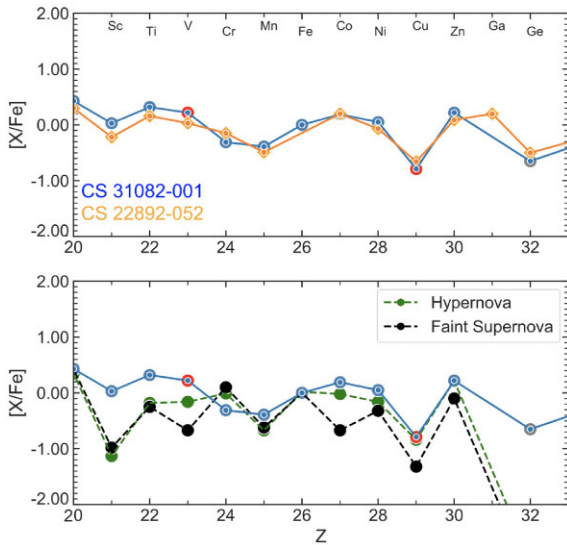


Figure 9. Upper panel: elemental abundances of CS 31082-001. Symbols: red circles are from the this work; blue circles, Hill et al. (2002); grey circles, Siqueira-Mello et al. (2013). The orange diamonds are the elemental abundances of CS 22892-052 from Sneden et al. (2003). Lower panel: Iron-peak abundances of CS 31082-001 with the same symbol colours as the upper panel. The predicted abundance yields from for Nomoto et al. (2013) for faint supernovae and hypernovae are shown by the green and black dashed lines, respectively.

overestimate the yield for Cr. This is the reason why we combined yields from hypernovae and added neutrino processes in our chemical evolution models. In particular for V, it adjusts the lower $[V/Fe] = -0.1$ yield to reach $[V/Fe] = +0.3$.

The underestimates in the production of the Sc, V, Mn, and Co in the hypernovae models can be explained by the ν -process not being included in the model from Nomoto et al. (2013). According to Yoshida et al. (2008), the hypernovae models can be improved by adding the ν -process – especially for the odd-Z elements where the neutrino process plays a significant role. One of these elements is V, which is mainly synthesised in the incomplete Si-burning region as ^{51}Mn . However, in the hypernovae models, it is synthesised in the complete Si-burning region along with the ν -process from ^{52}Fe in the incomplete Si-burning region. The $[\text{Ge}/\text{Fe}]$ abundances are significantly underestimated by the faint SNe and the hypernovae models. However, it is also underproduced in the models from Wanajo (2007), as described by Siqueira-Mello (2013) in a previous analysis of CS 31082-001, where they concluded that the r-process considered by Wanajo (2007) cannot explain the observed Ge abundance. On the other hand, the model of high entropy winds by Farouqi et al. (2010), with an electron abundance of $Y_e = 0.498$, can explain the abundance of the trans-iron elements Ge, As, Se, Mo, and Ru (Peterson et al. 2020).

6 SUMMARY

We have used the near-UV region of high-resolution spectra from VLT-UVES and HST-STIS to estimate Be, V, and Cu abundances in the metal-poor star CS 31082-001 for the first time. Beryllium in CS 31082-001 appears to be low, with $A(\text{Be}) = -2.4$ to -2.5 , and not following the linear trend seen for unmixed, metal-poor stars. This is expected for a cool red giant, due to diffusion effects and consequent destruction of the light elements (Li and Be) in the atmospheric layers.

Our estimated abundances of the iron-peak elements V and Cu agree well with other data in the literature, and we present new chemo-dynamical models for these elements. We can only reproduce the observed V abundance by adding an extra nucleosynthesis source to the models to include the interaction of neutrinos with matter. For Cu, we found that the behaviour of $[\text{Cu}/\text{Fe}]$ for metal-poor stars confirms a decreasing Cu-to-Fe abundance with decreasing metallicity. As pointed out by Sukhbold et al. (2016), Co and Cu are both produced in the alpha-rich freezeout as primary elements, and as well in the weak-s process in massive stars, in the latter case with a secondary element behaviour (see also Barbuy et al. 2018). A dominant weak-s process origin is therefore confirmed for copper.

We have also investigated the abundances estimated for iron-peak elements from near-UV diagnostics compared with published values from longer wavelength lines in the visible, finding good agreement. This validation is important in the context of future near-UV observations of metal-poor stars with the CUBES instrument. In a future paper, we will investigate the detectability of heavy elements in the UV region in CS 31082-001, to further investigate the future opportunities with CUBES in studies of stellar nucleosynthesis.

ACKNOWLEDGEMENTS

HE acknowledges a CAPES PhD fellowship and a CAPES-PRINT fellowship in support of his 1 yr of study at the University of Edinburgh. BB acknowledges partial financial support from FAPESP, CNPq, and CAPES-Financial code 001. HE and CJE also acknowledge support from the Global Challenges Research Fund (GCRF) from UK Research and Innovation.

Based on observations made with the ESO Very Large Telescope at Paranal Observatory, Chile; Programme ID 165.N-0276, with the NASA/ESA *Hubble Space Telescope* (HST) through the Space Telescope Science Institute, operated by the Association of Universities for Research in Astronomy, Inc., under NASA contract NAS5-26555.

DATA AVAILABILITY

Reduced data and relevant models available on request.

REFERENCES

- Alvarez R., Plez B., 1998, *A&A*, 330, 1109
 Asplund M., Grevesse N., Sauval A. J., Scott P., 2009, *ARA&A*, 47, 481
 Barbuy B., Chiappini C., Gerhard O., 2018, *ARA&A*, 56, 223
 Barbuy B., Spite M., Hill V. et al., 2011, *A&A*, 534, A60
 Beers T. C., Christlieb N., 2005, *ARA&A*, 43, 531
 Bergemann M., Cescutti G., 2010, *A&A*, 522, A9
 Bergemann M., Pickering J., Gehren T., 2010, *MNRAS*, 401, 1334
 Biehl D., 1976, PhD thesis., University of Kiel, Kiel, Germany
 Boesgaard A. M., Rich J. A., Levesque E. M., Bowler B. P., 2011, *ApJ*, 743, 140
 Boissier S., Prantzos N., 2000, *MNRAS*, 312, 398
 Bonifacio P., Caffau E., Ludwig H.-G., 2010, *A&A*, 524, A96
 Cayrel R. et al., 2001, *Nature*, 409, 691
 Cayrel R. et al., 2004, *A&A*, 416, 1117
 Cayrel R., 1988, in Cayrel de Strobel G., Spite M., eds, Proc. IAU Symp. 132, The Impact of Very High S/N Spectroscopy on Stellar Physics. Kluwer, Dordrecht, p. 345
 Chiappini C., Matteucci F., Romano D., 2001, *ApJ*, 554, 1044
 Cohen J. G. et al., 2013, *ApJ*, 778, 56
 Cowan J. J., Sneden C., Burles S. et al., 2002, *ApJ*, 572, 861
 Dekker H., D’Odorico S., Kaufer A., Delabre B., Kotzlowski H., 2000, Proc. SPIE, 4008, 534D

- Den Hartog E. A., Lawler J. E., Sobeck J. S., Sneden C., Cowan J. J., 2011, *ApJS*, 194, 35
- Ernandes H. et al., 2020, *Proc. SPIE*, 11447, 1144760
- Ernandes H., Barbuy B., Alves-Brito A., Friaça A., Siqueira-Mello C., Allen D. M., 2018, *A&A*, 616, A18
- Ernandes H., Barbuy B., Castilho B., Evans C. J., Cescutti G., 2022, *ExA*, in press
- Farouqi K., Kratz K.-L., Pfeiffer B., Rauscher T., Thielemann F. -K., Truran J. W., 2010, *ApJ*, 712, 1359
- Fernando A. M., Bernath P. F., Hodges J. N., Masseron Thomas, 2018, *J. Quant. Spec. Radiat. Transf.*, 217, 29
- Frebel A., Christlieb N., Norris J. E., Thom C., Beers T. C., Rhee J., 2007, *ApJ*, 660, L117
- Friaça A. C. S., Barbuy B., 2017, *A&A*, 598, A121
- Friaça A. C. S., Terlevich R. J., 1998, *MNRAS*, 298, 399
- Genoni M., Landoni M., Cupani G. et al., 2022, *ExA*, in press
- Grevesse N., Sauval J. N., 1998, *SSRv*, 35, 161
- Gustafsson B., Edvardsson B., Eriksson K., Jørgensen U. G., Nordlund Å., Plez B., 2008, *A&A*, 486, 951
- Heger A., Kolbe E., Haxton W. C., Langanke K., Martínez-Pinedo G., Woosley S. E., 2005, *Phys. Lett. B*, 606, 258
- Hill V. et al., 2002, *A&A*, 387, 560
- Hill V., Christlieb N., Beers T. C., Barklem P. S., Kratz K. -L., Nordström B., Pfeiffer B., Farouqi K. et al., 2017, *A&A*, 607, A91
- Hill V., Plez B., Cayrel R., Beers T. C., 2001, *ASPC*, 245, 316
- Holmbeck E. M. et al., 2018, *ApJ*, 959, L24
- Holmbeck E. M. et al., 2020, *ApJS*, 249, 30
- Ishigaki M. N., Aoki W., Chiba M., 2013, *ApJ*, 771, 67
- Iwamoto K., Brachwitz F., Nomoto K., Kishimoto N., Umeda H., Hix W. R., Thielemann F.-K., 1999, *ApJS*, 125, 439
- Kobayashi C., Izutani N., Karakas A. I., Yoshida T., Yong D., Umeda H., 2011a, *ApJ*, 739, L57
- Kobayashi C., Karakas A. I., Lugaro M., 2020, *ApJ*, 900, 179
- Kobayashi C., Karakas A. I., Umeda H., 2011b, *MNRAS*, 414, 3231
- Kobayashi C., Umeda H., Nomoto K., Tominaga N., Ohkubo T., 2006, *ApJ*, 653, 1145
- Kurucz R., 1993, CD-ROM 23
- Lanfranchi G. A., Friaça A. C. S., 2003, *MNRAS*, 343, 481
- Lattimer J. M., Prakash M., 2001, *ApJ*, 550, 426
- Lawler J. E., Guzman A., Wood M. P., Sneden C., Cowan J. J., 2013, *ApJS*, 205, 11
- Li Z.-S., Norin J., Persson A., Wahlström C. -G., Svanberg S., Doidge P. S., Biémont E., 1999, *Phys. Rev. A*, 60, 198
- Maeda K., Nomoto K., 2003, *ApJ*, 598, 1163
- McWilliam A., Wallerstein G., Mottini M., 2013, *ApJ*, 778, 149
- Meléndez J., Barbuy B., Bica E., Zoccali M., Ortolani S., Renzini A., Hill V., 2003, *A&A*, 411, 417
- Minelli A., Mucciarelli A., Massari D., Bellazzini M., Romano D., Ferraro F. R., 2021, *ApJ*, 918, L32
- Mishenina T. V., Kovtyukh V. V., Soubiran C., Travaglio C., Busso M., 2002, *A&A*, 396, 189
- Nomoto K., Kobayashi C., Tominaga N., 2013, *ARAA*, 51, 457
- Nomoto K., Tominaga N., Umeda H., Kobayashi, C., Maeda K., 2006, *Nuclear Phys. A*, 777, 424
- Ou X., Roederer I. U., Sneden C., Cowan J. J., Lawler J. E., Shectman S. A., Thompson I. B., 2020, *ApJ*, 900, 106
- Peterson R.C. Barbuy B., Spite M., 2020, *A&A*, 638, A64
- Pickering J. C., 1996, *ApJ*, 811, 822
- Piskunov N., Kupka F., Ryabchikova T., Weiss W., Jeffery C., 1995, *A&AS*, 112, 525
- Placco V. M. et al., 2014, *ApJ*, 790, 34
- Placco V. M. et al., 2017, *ApJ*, 844, 18
- Plez B. et al., 2004, *A&A*, 428, L9
- Plez B., 2012, *Astrophysics Source Code Library*, record ascl: :1205.004
- Reeves H., Fowler W. A., Hoyle F., 1970, *Nature*, 226, 727
- Roederer I. U., Preston G. W., Thompson I. B., Shectman S. A., Sneden C., Burley G. S., Kelson D. D., 2014, *AJ*, 147, 136
- Ryabchikova T., Piskunov N., Kurucz R. L., Stempels H. C., Heiter U., Pakhomov Yu, Barklem P. S., 2015, *PhysJ*, 90, 054005
- Sakari C. M. et al., 2018, *ApJ*, 854, L20
- Siqueira-Mello C. et al., 2013, *A&A*, 550, A122
- Smiljanic R., Pasquini L., Bonifacio P., Galli D., Gratton R. G., Randich S., Wolff B., 2009, *A&A*, 499, 103
- Smiljanic R., Zych M. G., Pasquini L., 2021, *A&A*, 646A, 70S
- Sneden C. et al., 2003, *ApJ*, 591, 936
- Sneden C., Cowan J. J., Gallino R., 2008, *ARA&A*, 46, 241
- Sneden C., Gratton R. G., Crocker D. A., 1991, *A&A*, 246, 354
- Spite F., Spite M., 1982, *A&A*, 115, 357
- Spite M. et al., 2005, *A&A*, 430, 655
- Spite M. et al., 2011, *A&A*, 528, A9
- Spite M. et al., 2019, *A&A*, 624, A44
- Steffen M. et al., 2015, *A&A*, 583, A57
- Sukhbold T., Ertl T., Woosley S. E., Brown J. M., Janka H.-T., 2016, *ApJ*, 828, 38
- Timmes F. X., Woosley S. E., Weaver T. A., 1995, *ApJS*, 98, 617
- Tominaga N., 2009, *ApJ*, 690, 526
- Umeda H., Nomoto K., 2002, *ApJ*, 565, 385
- Umeda H., Nomoto K., 2003, *Nature*, 422, 871
- Umeda H., Nomoto K., 2005, *ApJ*, 619, 427
- van de Hoek L. B., Groenewegen M. A. T., 1997, *A&A*, 123, 305
- Viegas S. M., Friaça A. C. S., Gruenwald R., 1999, *MNRAS*, 309, 355
- Villemoes P., van Leeuwen R., Arnesen A., Heijkenskjold F., Kastberg A., Larsson M. O., Kotochigova S. A., 1992, *PhRvA*, 45, 6241
- Wanajo S., 2007, *ApJ*, 666, L77
- Wood M. P., Lawler J. E., Den Hartog E. A., Sneden C., Cowan J. J., 2014, *ApJS*, 214, 18
- Woodgate G., Martin J., 1957, *Proc. Phys. Soc. A*, 70, 485
- Woosley S. E., Weaver T. A., 1995, *ApJS*, 101, 181 (WW95)
- Woosley S., Heger A., Weaver T. A., 2002, *Rev. Mod. Phys.*, 74, 1015
- Yoshida T., Umeda H., Nomoto K., 2008, *ApJ*, 672, 1043
- Zanutta A. et al., 2022, *ExA*, in press

APPENDIX A: ATOMIC DATA

In Table A1, we summarize the magnetic dipole A-factor and electronic quadrupole B-factor hyperfine constants used to compute the HFS of odd-Z elements. The list of lines from the inclusion of HFS for Co I 3412.34, 3412.63, and 3449.16 Å are given in Table A2, for Co I 3529.03, 3842.05, and 3845.47 Å in Table A3, and for Cu I 3247.53 and 3273.95 Å in Table A4.

Table A1. Hyperfine constants A and B for Sc II (Villemoes et al. 1992; Kurucz, 1993); V II (Wood et al. 2014); Mn II (Den Hartog et al. 2011); Co I (Pickering 1996); Cu I (Biehl 1976; Kurucz 1993). For transitions where the electric quadrupole constants were not available, we adopted the B-factor as zero.

Species	λ (Å)	–Config.–	–J–	Lower level				Config.	J	Upper level			
				A (mK)	A (MHz)	B (mK)	B (MHz)			A (mK)	A (MHz)	B (mK)	B (MHz)
⁴⁵ Sc II	3576.34	3d4s 3D	2.0	507.67	15219.5665	–34.7	–1040.28	3d4p 3D	2.0	125.3	758.475	10.0	299.7925
⁴⁵ Sc II	3590.47	3d4s 3D	3.0	654.8	19630.4141	–63.0	–1888.6929	3d4p 3D	2.0	125.3	758.475	10.0	299.7592
⁵¹ V II	3517.299	(4F)4s a3F	4.0	–2.9	–86.9398	–	–	(4F)4p z5D	3.0	–	–	–	–
⁵¹ V II	3545.196	(4F)4s a3F	3.0	6.0	179.8755	–	–	(4F)4p z3D	2.0	–	–	–	–
⁵¹ V II	3715.464	d4 a3H	6.0	–	–	–	–	(4F)4p z3G	5.0	–	–	–	–
⁵¹ V II	3951.96	d4 a3P	2.0	0.0	0.0	–	–	(4F)4p z3D	3.0	–	–	–	–
⁵⁵ Mn II	3441.99	d6 a5D	4.0	74.0	2218.4646	–	–	(6S)4p z5P	3.0	–150.3	–4505.8818	85.0	2548.2363
⁵⁵ Mn II	3460.32	d6 a5D	3.0	5.8	173.8797	–71.0	–2129.5269	(6S)4p z5P	2.0	–310.7	–9314.5527	–87.0	–2608.1948
⁵⁵ Mn II	3482.90	d6 a5D	2.0	–35.0	–1049.2738	–40.0	–1199.1700	(6S)4p z5P	2.0	–310.7	–9314.5527	–87.0	–2608.1948
⁵⁵ Mn II	3488.68	d6 a5D	1.0	–59.0	–1768.7758	–53.0	–1588.9004	(6S)4p z5P	1.0	–737.0	22094.7090	9.0	269.8133
⁵⁵ Mn II	3495.83	d6 a5D	0.0	0.0	0.0	–	–	(6S)4p z5P	1.0	–737.0	22094.7090	9.0	269.8133
⁵⁵ Mn II	3497.53	d6 a5D	1.0	–59.0	–1768.7758	–53.0	–1588.9004	(6S)4p z5P	2.0	–310.7	–9314.5527	–87.0	–2608.1948
⁵⁹ Co I	3412.34	(3F)4s b4F	3.5	22.3127	668.9181	–2.643	–79.2352	(3F)4p y2G	4.5	14.73	441.5943	0.0	0.0
⁵⁹ Co I	3412.63	d7s2	4.5	15.01984	450.2835	4.644	139.2236	4F)4sp z4D	3.5	25.05	750.9802	3.0	89.9378
⁵⁹ Co I	3449.16	(3F)4s b4F	2.5	18.7524	562.1829	–1.828	–54.8021	(3F)4p y4G	2.5	26.85	804.9429	–4.0	–119.9170
⁵⁹ Co I	3529.03	d7s2 a4F	2.5	20.4591	613.3486	2.253	67.5433	4F)4sp z4G	3.5	14.95	448.1898	5.0	149.8963
⁵⁹ Co I	3842.05	(3F)4s a2F	3.5	13.01	390.0301	–5	–149.8963	4F)4sp z2D	2.5	15.4	461.6805	–	–
⁵⁹ Co I	3845.47	(3F)4s a2F	3.5	13.01	390.0301	–5	–149.8963	(3F)4p y2G	4.5	14.73	441.5943	0.0	0.0
⁶³ Cu I	3247.53	4s 2S	0.5	194	5815.9746	0.0	0.0	4p 2P	1.5	6.5	194.685	–0.96	–28.78
⁶³ Cu I	3273.95	4s 2S	0.5	194	5815.9746	0.0	0.0	4p 2P	0.5	6.5	194.685	–0.96	–28.78
⁶⁵ Cu I	3247.53	4s 2S	0.5	208	6235.6841	0.0	0.0	4p 2P	1.5	6.96	208.66	–0.86	–25.78
⁶⁵ Cu I	3273.95	4s 2S	0.5	208	6235.6841	0.0	0.0	4p 2P	0.5	6.96	208.66	–0.86	–25.78

Table A2. Calculated HFS for the Co I 3412.34, 3412.63, and 3449.16 Å lines.

3412.34 Å; $\chi = 0.5136$ eV log gf(total) = 0.030			3412.63 Å; $\chi = 0.00$ eV log gf(total) = –0.780			3449.16 Å; $\chi = 0.5815$ eV log gf(total) = –0.090		
λ (Å)	log gf	iso	λ (Å)	log gf	iso	λ (Å)	log gf	iso
3412.332	–1.776	59	3412.643	–2.5861	59	3449.171	–1.741	59
3412.334	–1.709	59	3412.640	–2.519	59	3449.164	–1.486	59
3412.331	–1.513	59	3412.634	–3.218	59	3449.176	–1.486	59
3412.340	–2.408	59	3412.643	–2.323	59	3449.169	–3.395	59
3412.336	–1.513	59	3412.637	–2.323	59	3449.159	–1.287	59
3412.331	–1.309	59	3412.629	–3.063		3449.176	–1.287	59
3412.344	–2.25	59	3412.642	–2.119		3449.166	–2.152	59
3412.339	–1.40	59	3412.634	–2.218		3449.153	–1.223	59
3412.332	–1.13	59	3412.622	–3.063		3449.175	–1.223	59
3412.350	–2.25	59	3412.640	–1.949		3449.162	–1.434	59
3412.343	–1.36	59	3412.629	–2.171		3449.146	–1.254	59
3412.334	–0.99	59	3412.614	–3.160		3449.173	–1.254	59
3412.356	–2.35	59	3412.637	–1.803		3449.157	–1.028	59
3412.347	–1.36	59	3412.623	–2.177		3449.139	–1.435	59
3412.363	–2.55	59	3412.633	–1.674		3449.152	–0.737	59
3412.353	–1.44	59	3412.615	–2.250				
3412.341	–0.74	59	3412.594	–3.762				
3412.370	–2.95	59	3412.628	–1.558				
3412.358	–1.65	59	3412.607	–2.461				
3412.345	–0.64	59	3412.622	–1.453				

Table A3. Calculated HFS for the Co I 3529.03, 3842.05, and 3845.47 Å lines.

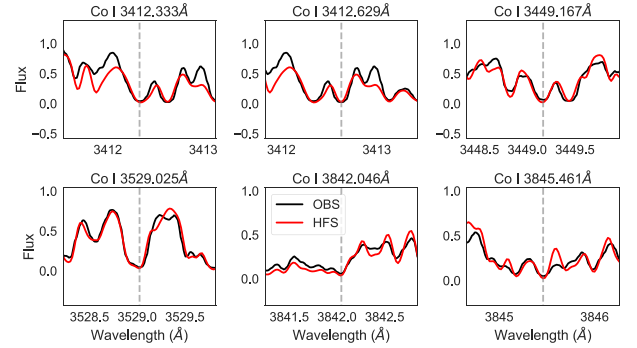
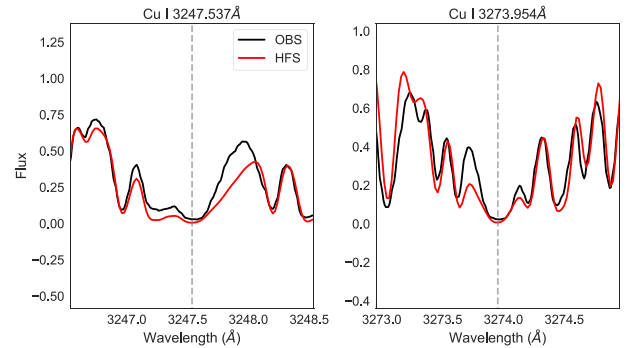
3529.03 Å; $\chi = 0.1744$ eV log gf(total) = -0.880			3842.05 Å; $\chi = 0.9227$ eV log gf(total) = -0.770			3845.47 Å; $\chi = 0.9227$ eV log gf(total) = 0.010		
λ (Å)	log gf	iso	λ (Å)	log gf	iso	λ (Å)	log gf	iso
3529.030	-2.686	59	33842.044	-2.566	59	3845.480	-1.796	59
3529.028	-2.401	59	33842.046	-2.281	59	3845.482	-1.729	59
3529.025	-2.656	59	33842.042	-2.536	59	3845.478	-1.533	59
3529.033	-2.656	59	33842.051	-2.536	59	3845.487	-2.428	59
3529.030	-2.213	59	33842.046	-2.093	59	3845.482	-1.533	59
3529.025	-2.268	59	33842.039	-2.587		3845.476	-1.329	59
3529.037	-2.707	59	33842.052	-2.148		3845.489	-2.273	59
3529.032	-2.122	59	33842.045	-2.002		3845.482	-1.428	59
3529.025	-2.013	59	33842.036	-2.712		3845.473	-1.159	59
3529.042	-2.832	59	33842.054	-1.893		3845.490	-2.273	59
3529.035	-2.100	59	33842.045	-1.980		3845.482	-1.381	59
3529.026	-1.815	59	33842.033	-2.934		3845.471	-1.013	59
3529.048	-3.054	59	33842.054	-1.695		3845.491	-2.370	59
3529.039	-2.154	59	33842.043	-2.034		3845.481	-1.387	59
3529.028	-1.651	59	33842.030	-3.344		3845.468	-0.884	59
3529.054	-3.464	59	33842.054	-1.531		3845.492	-2.574	59
3529.043	-2.350	59	33842.041	-2.230		3845.479	-1.460	
3529.029	-1.510	59	33842.053	-1.390		3845.464	-0.768	
						3845.491	-2.972	
						3845.476	-1.671	
						3845.458	-0.663	

Table A4. Calculated HFS for the Cu I 3247.53 and 3273.95 Å lines.

3247.53 Å; $\chi = 0.00$ eV log gf(total) = -0.062			3273.95 Å; $\chi = 0.00$ eV log gf(total) = -0.359		
λ (Å)	log gf	iso	λ (Å)	log gf	iso
3247.507	-1.420	63	3273.925	-1.720	63
3247.506	-1.022	63	3273.923	-1.021	63
3247.505	-1.022	63	3273.966	-1.021	63
3247.547	-1.721	63	3273.965	-1.021	63
3247.546	-1.022	63	3273.923	-2.066	65
3247.544	-0.575	63	3273.922	-1.367	65
3247.506	-1.766	65	3273.968	-1.367	65
3247.505	-1.368	65	3273.966	-1.367	65
3247.503	-1.368	65			
3247.549	-2.067	65			
3247.547	-1.368	65			
3247.545	-0.921	65			

APPENDIX B: LINE FITS TO ARCTURUS AND CS 31082-001

In support of the analysis in Section 4, here we show the model fits to the reference star Arcturus for Co and Cu, and our fits to Sc, Ti, Mn, Co, Ni, and Zn for CS 31082-001.


Figure B1. Arcturus: fits to the six selected lines of Co I.

Figure B2. Arcturus: fits to Cu I 3247.537 and 3273.954 Å lines.

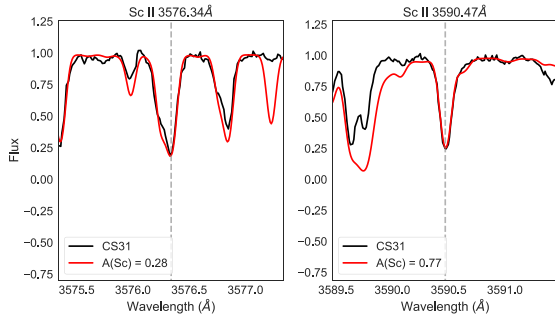


Figure B3. Best-fitting abundances for the Sc II lines computed with $[\text{Sc}/\text{Fe}] = +0.03$ for the Sc II 3576.34 Å line and $[\text{Sc}/\text{Fe}] = +0.52$ for the Sc II 3590.47 Å line (without HFS).

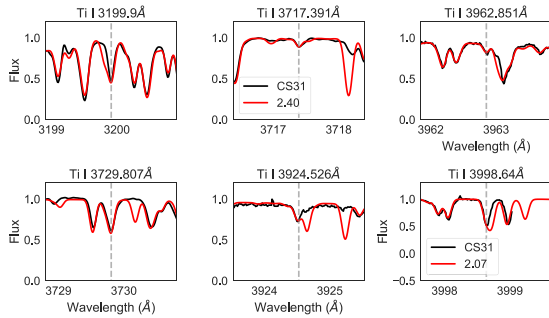


Figure B4. Best-fitting abundances for the Ti I lines, computed with $[\text{Ti}/\text{Fe}] = +0.35$, whereas for the Ti I 3998.64 Å line a best fit is found for $[\text{Ti}/\text{Fe}] = +0.02$.

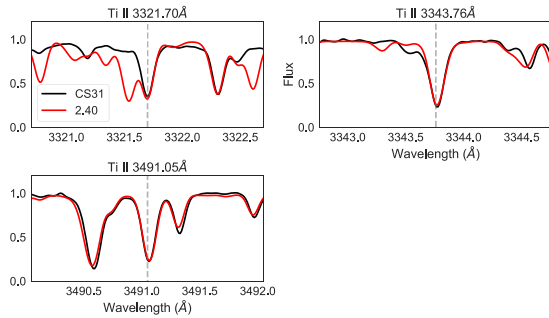


Figure B5. Best-fitting abundance for the Ti II lines, computed with $[\text{Ti}/\text{Fe}] = +0.35$.

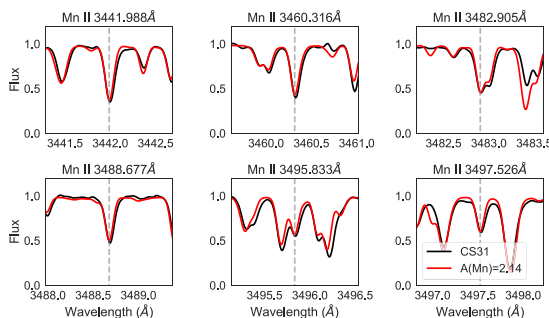


Figure B6. Best-fitting abundance for the Mn II lines, computed with $[\text{Mn}/\text{Fe}] = -0.39$ (without HFS).

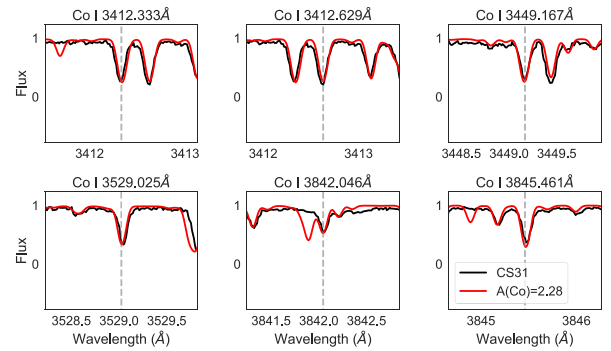


Figure B7. Best-fitting abundance for the Co I lines, computed with $[\text{Co}/\text{Fe}] = +0.19$ (including HFS).

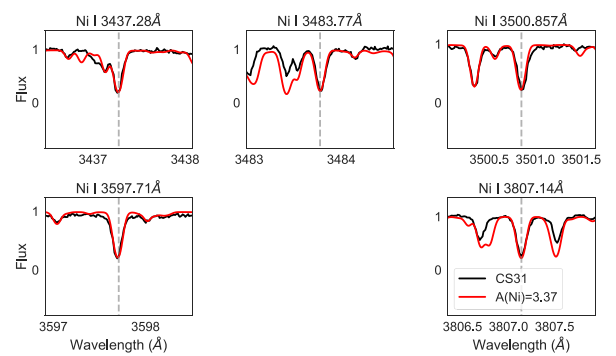


Figure B8. Best-fitting abundance for the Ni I lines, computed with $[\text{Ni}/\text{Fe}] = +0.05$.

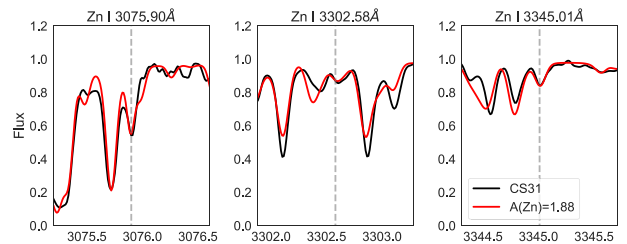


Figure B9. Best-fitting abundance for the Zn I lines, computed with $[\text{Zn}/\text{Fe}] = +0.22$.

APPENDIX C: METAL-POOR STARS WITH CUBES

There are only a small number of extremely metal-poor stars that are sufficiently bright that we can attempt detailed abundance studies such as that presented here for CS 31082-001. The development of the new CUBES instrument for the VLT will offer significantly better sensitivity than current facilities at near-UV wavelengths, opening-up studies of a much larger sample of metal-poor stars for comparison with chemical-evolution models. To quantify this better, we have used the spectrum of CS 31082-001 as a template to explore the future contribution of CUBES to this topic.

The construction of CUBES will start in early 2022, with science operations expected in 2028. It will be installed at the Cassegrain focus of one of the Unit Telescopes of the VLT, and the Phase A

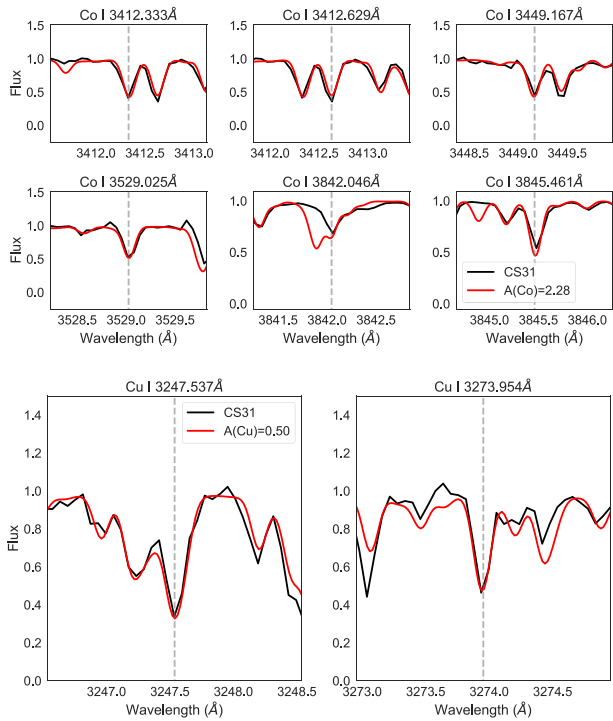


Figure C1. Line fits for the Co and Cu lines from the UVES spectrum degraded to the resolution of CUBES.

design of the instrument was outlined by Zanutta et al. (2022). In brief, a two-channel spectrograph will provide a continuous near-UV spectrum over the 300–405 nm range, with the light split using a dichroic filter into blue and red arms (spanning 300–352 and 346–405 nm, respectively). An image slicer after the fore-optics will reduce the size of the optical image to enable the required high spectral resolution, which ranges from $R = 22\,000$ – $27\,000$ across the coverage of both the blue and red arms. The anticipated resolution at the wavelength of the Be doublet (313 nm) is $R \sim 23\,000$, with a resolution element sampled by 2.3 pixels on the detector. A fibre-link to the UVES instrument has also been studied to potentially allow simultaneous observations at longer visible wavelengths. As discussed by Zanutta et al. (2022), the optimised-design of CUBES for the maximum near-UV sensitivity should deliver at least a factor of 10 better performance in end-to-end efficiency than UVES.

As an example of the limits of observations with UVES, we highlight the recent study of BPS BS 16968-0061 by Smiljanic et al. (2021). This very metal-poor star ($[\text{Fe}/\text{H}] \sim -3.0$) has $V = 13.22$ mag and required a total of 20 h of UVES observations to achieve a $S/N \sim 200$ per pixel in the region of the Be doublet. Using the exposure time calculator (ETC)⁷ developed alongside the CUBES design (see Genoni et al. 2022) and adopting a stellar template with parameters comparable to those of BPS BS 16968-0061 ($T_{\text{eff}} = 6500$ K, $\log g = 4.0$, $[\text{Fe}/\text{H}] = -3.5$) yields a $S/N \sim 200$ in just 1.25 h. While the exact parameters will undoubtedly evolve as the design progresses, this neatly illustrates the potentially large gain of CUBES at these short wavelengths. This means that quantitative analysis will be near trivial for stars with $V = 13$ mag that are

only just feasible today with large, multi-night programmes; equally, $S/N = 200$ will be possible for stars with $V = 15$ mag in one night of observations, and down to $V \gtrsim 16$ mag for individual targets of note.

To highlight the potential performance of CUBES for a fainter star similar to CS 31082-001, we investigated simulations using both model spectra and the observed UVES data.

C1 CUBES simulations with model spectra

In our first tests, we used the same synthetic spectra from TURBOSPECTRUM used in the analysis in Section 4. By using synthetic models as inputs for instrument simulations, we are able to control all of the physical parameters (including abundances) and the noise characteristics of the template. We employed the CUBES end-to-end simulator (Genoni et al. 2022) to generate simulated observations for different exposure times and magnitudes, with a goal of recovering stellar abundances for different species to within 0.1 dex.

A first qualitative study of near-UV diagnostic lines in this context was presented by ErnanDES et al. (2020). A more detailed study of some of the heavy-element lines has recently been presented by ErnanDES et al. (2022). Here, we highlight their results for Ge I 3039 Å, which is observationally challenging given its proximity to the atmospheric cut-off and decline of the flux distribution of CS 31082-001 towards shorter wavelengths due to its low effective temperature. None the less, ErnanDES et al. (2022) concluded that Ge abundances (to ± 0.1 dex) should be possible in a few hours of observations for a star that is two magnitudes fainter than CS 31082-001. For species at longer wavelengths (e.g. Hf), the equivalent gain in depth for targets that are now feasible within observations of a few hours increases to approximately three magnitudes, bringing many more targets within our reach than currently possible.

C2 Convolution of the UVES data to the CUBES resolution

Another approach is to degrade the resolution of the UVES spectrum to that of CUBES, i.e. from $R \sim 77\,000$ to $\sim 24\,000$. Of course, smoothing and then rebinning to a larger pixel scale results in an increase of the S/N per pixel compared to the UVES spectrum. We then added artificial noise to the degraded spectrum to match the S/N of the original UVES data. For most of the lines analysed in the current study, we were able to recover the same abundance as obtained with UVES. The exception is the Be line, where the weaker line in the doublet becomes too blended. Some examples are given in Fig. C1, with the same S/N per pixel as the UVES spectrum.

The error can be estimated using the formula from Cayrel (1988), in its final form as given in by Cayrel et al. (2004): $\sigma = \frac{1.5}{S/N} \sqrt{\text{FWHM} * \delta x}$, where δx is the pixel size. For $R = 24,000$ we have an FWHM = 0.1429 Å and $\delta x = 0.06$ Å in the spectra. Assuming a mean $S/N = 100$, we get an error of $\Delta \text{EW} \sim 1.4$ mÅ. Given that this formula neglects the uncertainty in continuum placement, as well as the uncertainty in the determination of the FWHM of the lines, this argues for $\Delta \text{EW} \sim 3.0$ to 4.5 mÅ for CUBES observations with $S/N \sim 100$. As an example, the EW of the Be II 3131 Å line is 3–5 mÅ, giving $A(\text{Be}) = -2.5$ to -2.8 , i.e. the error is the same order of magnitude as the EW itself. Assuming the result of $A(\text{Be}) = -2.5$ for CS 31082-001, the estimate using CUBES would be in the range $A(\text{Be}) = -2.2$ to -3.0 .

⁷<http://archives.ia2.inaf.it/cubes/#/etc>