



**HAL**  
open science

# Optical method for measuring bed topography and flow depth in an experimental flume

A. Limare, M. Tal, M. D. Reitz, E. Lajeunesse, F. Métivier

## ► To cite this version:

A. Limare, M. Tal, M. D. Reitz, E. Lajeunesse, F. Métivier. Optical method for measuring bed topography and flow depth in an experimental flume. *Solid Earth Discussions*, 2011, 3, pp.187-215. 10.5194/sed-3-187-2011 . insu-03606492

**HAL Id: insu-03606492**

**<https://insu.hal.science/insu-03606492>**

Submitted on 11 Mar 2022

**HAL** is a multi-disciplinary open access archive for the deposit and dissemination of scientific research documents, whether they are published or not. The documents may come from teaching and research institutions in France or abroad, or from public or private research centers.

L'archive ouverte pluridisciplinaire **HAL**, est destinée au dépôt et à la diffusion de documents scientifiques de niveau recherche, publiés ou non, émanant des établissements d'enseignement et de recherche français ou étrangers, des laboratoires publics ou privés.



Distributed under a Creative Commons Attribution 4.0 International License

This discussion paper is/has been under review for the journal Solid Earth (SE).  
Please refer to the corresponding final paper in SE if available.

# Optical method for measuring bed topography and flow depth in an experimental flume

A. Limare<sup>1</sup>, M. Tal<sup>1,\*</sup>, M. D. Reitz<sup>2</sup>, E. Lajeunesse<sup>1</sup>, and F. Métivier<sup>1</sup>

<sup>1</sup>Equipe de Dynamique des Fluides Géologiques, Institut de Physique du Globe de Paris (IPGP, UMR 7154, CNRS, Univ. Paris Diderot), 1 rue Jussieu, 75238 Paris Cedex 05, France

<sup>2</sup>Department of Physics and Astronomy, University of Pennsylvania, 209 S. 33rd St., Philadelphia, PA 19104, USA

\* now at: Université Aix-Marseille, CEREGE UMR 6635, Europôle de l'Arbois, BP 80, 13545 Aix-en-Provence cedex 04, France

Received: 1 March 2011 – Accepted: 4 March 2011 – Published: 15 March 2011

Correspondence to: A. Limare (limare@ipgp.fr)

Published by Copernicus Publications on behalf of the European Geosciences Union.

## Bed topography and flow depth

A. Limare et al.

Title Page

Abstract

Introduction

Conclusions

References

Tables

Figures

⏪

⏩

◀

▶

Back

Close

Full Screen / Esc

Printer-friendly Version

Interactive Discussion



## Abstract

We describe an optical method known as moiré for acquiring quasi-simultaneous measurements of bed topography and flow depth in laboratory experiments. The moiré method is based on projecting a fringe pattern (grating) on the bed and analyzing the deformation of the pattern caused by the topography with respect to a reference plane. The height of the object is encoded in the phase of the pattern and can be retrieved either through Fourier transform or phase shifting algorithms. The methodology enables image-based non-contact measurements over a continuous surface at very high spatial and temporal resolutions. We use a commercial software package of a moiré method called Light3D to map bed topography and flow depth in an experimental braided channel and demonstrate how the method can be used to characterize a full range of statistics not previously possible.

## 1 Introduction

Laboratory experiments are an important tool in the study of morphodynamics and have been used to investigate a wide range of landforms ranging from submarine channels (Metivier et al., 2005) to the response of drainage basins to tectonic uplift (Lague et al., 2003). Analog models offer an opportunity to examine interactions underlying naturally complex systems in a well controlled environment, and to observe how systems evolve over much longer timescales than possible in the field. In fluvial morphodynamics experiments have been used successfully to reproduce and visualize sediment-flow interactions and bed morphology (Lajeunesse et al., 2010a) and have helped improve our understanding of self-formed channels with mobile beds and stable banks (Armstrong, 2003; Malverti et al., 2008), braiding kinematics (Metivier and Meunier, 2003), bedforms (Coleman and Eling, 2000), seepage channels (Ni and Crave, 2006), alluvial fans (Reitz et al., 2010), knickpoints (Malverti et al., 2007), and alluvial bed morphodynamics (Coleman and Eling, 2000; Devauchelle et al., 2010a,b). (For a more complete review, see Lajeunesse et al., 2010b; Paola, 2010).

## Bed topography and flow depth

A. Limare et al.

Title Page

Abstract

Introduction

Conclusions

References

Tables

Figures



Back

Close

Full Screen / Esc

Printer-friendly Version

Interactive Discussion



**Bed topography and  
flow depth**

A. Limare et al.

Title Page

Abstract

Introduction

Conclusions

References

Tables

Figures

◀

▶

◀

▶

Back

Close

Full Screen / Esc

Printer-friendly Version

Interactive Discussion



Several experimental techniques have been developed specifically for data acquisition in experiments with the objective of monitoring both bed topography and flow characteristics. Classical approaches to the measurement of bed topography in these types of experiments include moving point or line probes along the experimental surface such as single beam time-of-flight laser profiler mounted on a controlled carriage (Lague et al., 2003), or scanning a stripe laser over the experimental surface (Rice et al., 1988; Darboux and Huang, 2003; Huang et al., 2007a). These techniques often require interrupting the experiment (i.e., shutting off the flow) at regular intervals and moving the probe, often very slowly, over the temporarily frozen surface. A faster and continuous alternative is based on monitoring the experiment with a camera set to capture time-lapse images of the evolving surfaces. This method allows reconstruction of the topography using stereoscopy (Chandler et al., 2001).

To map flow depths, depth-from-luminosity measurements have been successfully acquired over both fixed and evolving topography. Aureli et al. (2008) mapped the evolving flow depth over a flat, transparent floor, illuminated from below, by adding blue dye to the water and monitoring from above the distribution of light attenuation. Tal and Paola (2007) used rhodamine dye to estimate the distribution of water depth in braided and single-thread channels. Both methods involve using flow with a constant dye concentration and calibrating the depth dependence of the luminosity as recorded by camera images. These methods are closely related to the common use of fluorescent dye to monitor ground- water flow patterns (Weiler and Flüher, 2004; Huang et al., 2007b).

While independent methods for measuring bed topography and flow depth exist, simultaneous measurement of bed topography and flow depth remains a challenge. Huang et al. (2010) proposed a novel method to study the morphodynamics of sediment beds under the action of flowing water. In this method, a stripe laser is scanned back and forth across the experimental surface while a fluorescent dye is mixed with the flowing water, allowing simultaneous mapping of both bed topography and water depth.

**Bed topography and  
flow depth**

A. Limare et al.

Title Page

Abstract

Introduction

Conclusions

References

Tables

Figures

◀

▶

◀

▶

Back

Close

Full Screen / Esc

Printer-friendly Version

Interactive Discussion



In this paper we describe a method for acquiring quasi-simultaneous measurements of bed topography and flow depth at very high resolution using an optical method known as moiré. The moiré method has been successfully applied in metrology studies (Chiang, 1983), industrial inspection (Sansoni et al., 2000), human body mapping for medical diagnosis (Halioua and Liu, 1989; Kozłowski and Serra, 1997) and art inspection (Brémand et al., 2007).

In geomorphology, simplified versions of the moiré method have been previously used in laboratory physical experiments to study granular flows (Pouliquen and Forterre, 2002), incision dynamics of subaqueous channels (Lancien et al., 2005), and micro-scale braided rivers (Meunier, 2004). In these studies the method was implemented by projecting a single grid onto the evolving surface and analyzing how it is deformed (captured by time-lapse images) using a Fourier transform. This approach has the advantage of being low cost (minimum materials required include only a digital camera and an overhead or slide projector) and is relatively simple to implement. However, it offers limited resolution and a limited field of view, and therefore limited object dimensions.

Here we present a more elaborate implementation of the moiré method to two fluvial geomorphology studies. This method was developed at the Laboratory of Solid State Mechanics of the University of Poitiers, France (Breque et al., 2004). It uses a phase shifting method for phase calculation, robust phase unwrapping combined with gray coding and a calibration procedure that allows assessing the geometric parameters. The method proves relatively easy to use and to calibrate. The number of projected images can be varied so one can switch between high resolution and fast acquisition time according to the requirements of the experiments.

This method requires the interrupting of the flow and the acquisition of two sets of topographies with and without flow. We begin by describing the different steps in applying this version of the moiré method to reconstruct the topography of a dry bed. We then discuss the case of an experimental alluvial plain with water flowing over the bed. Finally, we apply this method to a microscale braided channel experiment and

discuss the quality of the results obtained.

## 2 Presentation of the moiré method

### 2.1 General considerations

The moiré phenomenon can be observed when superimposing two (or more) periodic or quasiperiodic structures; the so-called moiré method is not in fact one method, but rather a group of methods. Depending upon how or from what type of geometric patterns the moiré fringes are created they assume different physical meanings. The method of moiré contouring is a well known technique for 3-D shape measurement (Patorski, 1993): the moiré fringes are created by the superposition of two periodic alternating line-space patterns, i.e., linear gratings. One of these gratings is to be distorted by an object whose deformation or shape is represented by the moiré fringes. The main merits of the moiré topography are:

1. Measurements are whole-field, an advantage over point-by-point or line methods.
2. Data acquisition and processing is relatively fast so investigations can be done in quasi real-time and the process automated.
3. The resolution may be varied.
4. Differential as well as absolute measurements are possible so that the influence of system geometry and optical aberrations may be removed.

The output of a moiré fringe technique is a fringe pattern which must be analysed so that the results can be presented in a numerical or graphical form. In the process of fringe pattern analysis, the only measurable quantity is the intensity that has a cosinusoidal profile:

$$I(x,y) = a(x,y) + b(x,y)\cos[\phi(x,y)] \quad (1)$$



where  $I(x,y)$  is the measured intensity,  $\phi(x,y)$  is the phase of the signal,  $a(x,y)$  is the background intensity and  $b(x,y)$  is the local contrast. The phase  $\phi(x,y)$  contains the desired out-of-plane information and should be extracted from Eq. (1). The main problems related to the phase evaluation are:

1. The phase is screened by two other functions: the background intensity  $a(x,y)$  and the local contrast  $b(x,y)$ .
2. Due to the periodicity of sinusoidal intensity profile, the phase is only determined modulo  $2\pi$ .
3. Due to the even character of the cosine function, the sign of  $\phi(x,y)$  cannot be extracted from a single measurement, so that one cannot distinguish between depression and elevation without a priori knowledge.

All these problems can be solved by simple Fourier analysis of the noncontour fringe pattern in the presence of the spatial carrier frequency, for example in the x direction:

$$\phi'(x,y) = 2\pi f_0 x + \phi(x,y) \quad (2)$$

The phase to be measured,  $\phi(x,y)$ , modulates the carrier fringe pattern and this modulation is indicated by changes in the position and spatial frequency of the fringes.

Experimentally, the method consists of projecting a grating of parallel lines onto an object, in our case a stream table (Fig. 1). The topography of the object will deform the grating (Fig. 2b) and this deformation is calculated with respect to a reference plane which in our case is a flat bed (Fig. 2a). The height of the object is encoded in the phase of the pattern and can be retrieved either through the Fourier transform method or phase shifting algorithms.

## 2.2 Fourier Transform demodulation technique

If  $a(x,y)$ ,  $b(x,y)$  and  $\phi(x,y)$  are slowly varying functions compared to the variation introduced by the carrier frequency  $f_0$ , simple Fourier spectrum analysis can be used

### Bed topography and flow depth

A. Limare et al.

Title Page

Abstract

Introduction

Conclusions

References

Tables

Figures

◀

▶

◀

▶

Back

Close

Full Screen / Esc

Printer-friendly Version

Interactive Discussion



to obtain the phase  $\phi(x, y)$  (Takeda et al., 1982). The cosine function in Eq. (1) can be rewritten as a sum of complex exponentials:

$$I(x, y) = a(x, y) + c(x, y)\exp(j2\pi f_0 x) + c^*(x, y)\exp(-j2\pi f_0 x) \quad (3)$$

with

$$c(x, y) = \frac{1}{2}b(x, y)\exp[j\phi(x, y)] \quad (4)$$

After one-dimensional Fourier transform in the x direction, the following holds:

$$F(l) = A(f, y) + C(f - f_0, y) + C^*(f + f_0, y) \quad (5)$$

where  $A$ ,  $C$  and  $C^*$  are complex Fourier amplitudes and  $f$  is the spatial frequency in the x direction. The spectrum term  $C(f - f_0, y)$  can be isolated using a filter centered at  $f_0$  and the carrier frequency can be removed by shifting  $C(f - f_0, y)$  on the frequency axis toward the origin by  $f_0$ . The unwanted background variation  $a(x, y)$  has been filtered out at this stage. Applying the inverse Fourier transform to the  $C(f, y)$ ,  $c(x, y)$  is obtained and the phase function may be calculated:

$$\phi(x, y) = \arctan \frac{Re [c(x, y)]}{Im [c(x, y)]} \quad (6)$$

The main advantage of the FFT method is that phase values are extracted only from a single image. The method is mainly suitable for real-time applications where speed is more important than accuracy. The various sources of error such as the influence of noise, fringe discontinuities, and choice of filtering window are discussed in (Takeda, 1990; Kozłowski and Serra, 1999) and a few tracks are given to minimize them.

## 2.3 Phase-shifting method

The principle of the phase-shifting method consists of generating a series of images where the projected fringe pattern or grating is shifted in its plane (Schmit and Creath,

## Bed topography and flow depth

A. Limare et al.

Title Page

Abstract

Introduction

Conclusions

References

Tables

Figures

◀

▶

◀

▶

Back

Close

Full Screen / Esc

Printer-friendly Version

Interactive Discussion





1995). A minimum of three measurements is necessary to calculate the phase since there are three unknowns in the fringe pattern (1). When the phase shifts are chosen such that N measurements are equally spaced over one period: i.e.,  $\delta_i = i2\pi/N$  where  $i = 1 \dots N$ , the phase is given by the equation:

$$5 \quad \phi(x, y) = \arctan \frac{\sum I_i(x, y) \sin \delta_i}{\sum I_i(x, y) \cos \delta_i} \quad (7)$$

Because the phase is continuously distributed within its range of nonambiguity ( $0-2\pi$ ), the height resolution is limited only by the light level quantization and noise (an important source of noise can come from imperfect phase shifting if the grid pitch is not constant over the surface). On the other hand, due to the nature of arctan calculations, the equations for phase calculations (6) and (7) are determined only modulo  $2\pi$ . This fact strongly reduces the height range, and an unwrapping process is necessary to reconstruct the surface map.

## 2.4 Phase unwrapping

Unwrapping uses an integration technique that sums up the phases to remove jumps between adjacent pixels larger than  $\pi$ . When the phase difference between adjacent pixels is greater than  $\pi$ , a multiple of  $2\pi$  is added or subtracted to make the difference less than  $\pi$ . Unwrapping becomes more difficult when the absolute phase difference between adjacent pixels is greater than  $\pi$ . These discontinuities may be introduced by high-frequency, high-amplitude noise and discontinuous phase jumps. Several algorithms were proposed with different degrees of robustness for phase unwrapping (Brémand, 1994), (Servin et al., 1999) and references therein.

For objects presenting marked discontinuities of the surface, a technique using gray-code structured light can be employed to remove phase unambiguities at the expense of reduced resolution (Sansoni et al., 1997).

In the case of multiple-shot combination of gray-code and phase shifting, both extended measuring range and high resolution can be attained, as in the commercialized

## Bed topography and flow depth

A. Limare et al.

Title Page

Abstract

Introduction

Conclusions

References

Tables

Figures

◀

▶

◀

▶

Back

Close

Full Screen / Esc

Printer-friendly Version

Interactive Discussion



**Bed topography and  
flow depth**

A. Limare et al.

Title Page

Abstract

Introduction

Conclusions

References

Tables

Figures

◀

▶

◀

▶

Back

Close

Full Screen / Esc

Printer-friendly Version

Interactive Discussion



methods described by (Sanson et al., 2003) and (Breque et al., 2004). These methods require the projection of 8 and respectively 16 computer-generated fringe patterns, which is time consuming. The most important drawback of the multiple-shot methods such as gray-code methods, phase shifting methods, and their combination, is their requirement for a series of images to be recorded at different moments of time. This feature ultimately imposes a limit on the speed of data capture and analysis.

For applications requiring real-time or dynamic measurements, a different projection scheme was proposed: two grids at different frequencies are spatially overlapped. This method yields the determination of two phase maps. Robust unwrapping is implemented by compensating the phase ambiguity of the fine grid by means of the continuous phase values evaluated from the coarse one (Sanson and Redaelli, 2005). But phase unwrapping can be avoided, as shown by Kozłowski and Serra (1997). Their technique, called phase locked loop, uses two images with a projected grid shifted in phase by half of its period.

In general, the coding method is a trade-off between the resolution of the measurement, the characteristics of the target shape, the whole dimensions of the surface, and the time available for the projection.

## 2.5 Phase-to-height conversion

Once the phase map has been calculated, the conversion from phase to actual object height needs to be performed. In the case of parallel projected and observed beams, the relief  $Z$  is proportional to the phase difference between the reference grating and the grating deformed by the object (Brémand, 1994):

$$Z = \frac{\rho}{2\pi} \frac{\phi(x, y)}{\tan \alpha} \quad (8)$$

where  $\rho$  is the projected grating spacing. The simplified assumption of parallel beams is valid only if:

1. The projection and observation distances are the same ( $h_p = h_o = h$ );

**Bed topography and  
flow depth**

A. Limare et al.

Title Page

Abstract

Introduction

Conclusions

References

Tables

Figures

◀

▶

◀

▶

Back

Close

Full Screen / Esc

Printer-friendly Version

Interactive Discussion



2. The relief is small compared to the observation distance ( $z \ll h$ );
3. The size of object is small compared to the distance between the light source and the camera ( $x \ll d$ ).

Moiré methods suppose that the projection grid on the reference plane has a constant frequency and that the light projected onto the object is parallel. These requirements hold true for small objects and for a light projector located far from it. In practice, in order to obtain a larger field of view, diverging illumination needs to be used. Also, for large objects the optics of the camera could introduce significant distortion, but this can be corrected through image processing. The limiting requirements of constant frequency grid and parallel beams condition can be overcome by the use of a new method (Breque et al., 2004). The method is based on a pinhole model (Cardenas-Garcia et al., 1995), generally used in the principles of stereovision. Because of the diverging nature of the illumination, this situation requires different, more complicated analysis than Eq. (8). In this general case (Eq. 9), the relief is calculated with the phase  $\phi(x, y)$ , and the geometric parameters ( $h_p, d, h_o, f_p$  and  $P_r$ :  $h_p, d, h_o$ ) are defined in Fig. 1;  $P_r/f_p$  is the projector magnification,  $f_p$  and  $P_r$  are the focal length of the projector and the grating pitch at the output lens of the projector respectively:

$$Z = \frac{h_p h_o [(2\pi h_p - d \phi P_r / f_p) i \gamma_{\text{CCD}} - P_r / f_p (d^2 + h_p^2)]}{h_o [(2\pi h_p - d \phi P_r / f_p) d + P_r / f_p (d^2 + h_p^2) \phi] - h_p (2\pi h_p - d \phi P_r / f_p) i \gamma_{\text{CCD}}} \quad (9)$$

The projected light being non-parallel, the coordinates X, Y of each point need to be corrected as a function of pixel index ( $i, j$ ), where  $\gamma_{\text{CCD}}$  is the magnification of the CCD entrance lens in mm/pixel:

$$X = \frac{(Z + h_o)}{h_o} \gamma_{\text{CCD}} i \quad Y = \frac{(Z + h_o)}{h_o} \gamma_{\text{CCD}} j \quad (10)$$

The determination of these parameters is crucial for the accuracy of the final results.

## 2.6 Calibration

If the simplifying assumptions of parallel illumination and constant frequency apply, Eq. (8) holds true, and relief is proportional to the phase. The proportionality constant is calculated either by measuring the two unknown parameters (the angle between projection and observation axis ( $\alpha$ ) and the grating pitch on the reference surface ( $\rho$ )) or by a simple calibration using an object of known height. As discussed in the previous paragraph, in the general case of diverging illumination the relief depends on five geometrical parameters and a more complex calibration needs to be implemented. Several calibration procedures have been proposed to measure relief by means of triangulation. Guangjun and Liqun (2000) proposed a combination of vertical and horizontal gratings projected onto a reference plane. Sansoni et al. (2000) used a calibration based on an iteration algorithm and the measurement of a rectangular prism shape object of known height. This method is valid in the case of equal projection and observation height ( $h_p = h_o$ ). For the general case (diverging illumination and  $h_p \neq h_o$ ) the method proposed by Breque et al. (2004) uses a rotating reference plane. More details about this method are given in the experimental section (Sect. 3) as this is the method we implemented for our study.

## 2.7 The influence of water on the demodulation

Because of light refraction at the air/water interface, bed topography reconstructed by any method based on grid deformation will be distorted relative to the true topography when water is present above the surface. By measuring bed topography with and without the flow, water depth can thus be calculated. Assuming that the flow is locally uniform (free surface parallel to the bed surface), light coming from the projector bends in the direction normal to the surface. Light produces a bright spot when hitting the surface. From the point of view of the camera, the bright spot is observed in the direction corresponding to the angle  $i_c$  with respect to the normal (Fig. 3):

SED

3, 187–215, 2011

## Bed topography and flow depth

A. Limare et al.

Title Page

Abstract

Introduction

Conclusions

References

Tables

Figures

◀

▶

◀

▶

Back

Close

Full Screen / Esc

Printer-friendly Version

Interactive Discussion



$$\frac{\sin i_p}{\sin r_p} = \frac{\sin i_c}{\sin r_c} = n_{\text{water}} \quad (11)$$

where  $n_{\text{water}}$  is the refractive index of water. The difference in elevation between the apparent location of the bright spot ( $h$ ) and the true depth ( $H$ ) is obtained by trigonometry:

$$H = \frac{\tan i_p + \tan i_c}{\tan r_p + \tan r_c} h \quad (12)$$

The difference between topographies obtained with and without flow will give a distorted bathymetry that is always shallower than the true bathymetry. Incidence angles can be calculated in any point by simple trigonometry:  $i_p, i_c = f(x, y)$ , and the correction factor in Eq. (12) can be applied to any point on the surface. In the particular case of parallel projection and observation beams, the relation between true and distorted bathymetry has a simplified form:  $H = n_{\text{water}} h$ .

### 3 Experimental results

Figure 1 is a schematic of the experimental setup used to reproduce microscale braided channels. Details of experiments similar to the ones described here can be found in (Metivier and Meunier, 2003). The experiments were conducted at the IPGP experimental facility in a microscale flume made of plexiglass (1.5 m long and 0.75 m wide) with a fully adjustable bed (height and tilt). The initial slope of the bed was set to approximately 0.05. The sediment in these experiments is composed of glass beads with a D50 of 250 micron and a density of 2500 kg/m<sup>3</sup>. The initial condition for each experiment is a flat bed with a straight channel (1 cm deep × 2 cm wide) carved down the middle of the bed. The flow is laminar and a fully braided morphology spontaneously develops and reaches steady state (sediment input equals sediment output) after several hours. Sediment and water are fed continuously at a constant rate at the upstream end of the flume. Sediment transport was measured at the outlet using a constant head

## Bed topography and flow depth

A. Limare et al.

Title Page

Abstract

Introduction

Conclusions

References

Tables

Figures

◀

▶

◀

▶

Back

Close

Full Screen / Esc

Printer-friendly Version

Interactive Discussion



tank tank which rests on a balance. Flow discharge was typically  $2.5 \times 10^{-5} \text{ m}^3 \text{ s}^{-1}$  and sediment discharge was typically around  $8 \times 10^{-8} \text{ m}^3 \text{ s}^{-1}$ . Pieces of plexiglass were placed at an angle along the sidewalls in order to deflect the flow and discourage it from sticking to the sidewalls. Glare (specular reflection) produced by the free surface of water was reduced by using two cross axis polarizers placed in front of the projector and the camera respectively

The algorithm we used was developed at the Laboratory of Solid State Mechanics of the University of Poitiers, France (Breque et al., 2004) and is available as a commercial software package called Light3D. The software allows the user to choose the number of phase-shifted projected patterns (3, 8, 16 or 32) and phase unwrapping can be performed with or without 8 gray code images.

The encoded patterns are sent from the computer to a Sanyo PLV-Z5 video-projector. A black and white 1280×1024 pixels  $\mu$ eye Stemmer Imaging CCD camera was used for image acquisition. Since light beams are not parallel, the introduced phase shifting is not constant across the whole image. The algorithm implemented into the software recomputes the true phase shifts using Fast Fourier Transform (FFT). Therefore, the need to have a constant grid pitch over the entire image is also overcome.

For the results shown here the phase field was calculated with 8 phase-shifted images and robust unwrapping using a series of 8 gray code images. Prior to each experiment a calibration procedure was performed to determine the geometric parameters. Two experimental measurements of phase fields were then carried out by means of phase shifting. The first one corresponds to the reference plane  $\phi_{\text{ref}}$  (position 1 of the calibration board in Fig. 1) and the second one to the same reference plane rotated by an angle  $\beta$   $\phi_{\text{cal}}$  (position 2 of the calibration board in Fig. 1). The rotation angle  $\beta$  was measured by using a digital slope meter. To begin the unwrapping process, it is necessary to locate the initial fringe, which allows setting the origin O of the working referential. By projecting a single horizontal line onto the reference plane, the alignment of the projector/camera system is adjusted so that the projected line corresponds to the rotation axis of the reference plane during calibration. The zero

**Bed topography and flow depth**

A. Limare et al.

Title Page

Abstract

Introduction

Conclusions

References

Tables

Figures

◀

▶

◀

▶

Back

Close

Full Screen / Esc

Printer-friendly Version

Interactive Discussion



fringe is therefore the same in the reference and calibration planes. This simple calibration allows the determination of the geometrical parameters ( $h_p$ ,  $d$ ,  $h_o$ , and  $P_r/f_p$ ). These geometrical parameters are difficult to measure manually and accurately. The precision of the calibration depends on the quality of the calculated phase fields:  $\phi_{\text{ref}}$  and  $\phi_{\text{cal}}$ . A flat, light color, highly diffusive board was used in the calibration procedure. The results of the calibration were the following:  $h_p = 2050$  mm,  $d = 1857$  mm,  $h_o = 1957$  mm,  $P_r/f_p = 0.0051$ , for a  $\gamma_{\text{CCD}} = 0.78$  mm/pixel.

Bed topography was measured one minute after the flow was turned off (to ensure the bed was uniformly drained). Water depth was calculated by differencing the topography obtained with the flow on immediately before it was shut off and with the flow off, taking into account the water refraction as described in Sect. 2.7. The impact of stopping and starting the flow on bed topography was negligible.

Bed topography and flow depth measured during an experiment are shown in Fig. 4. Dry bed topography is between  $-4$  and  $4$  mm, while maximum water depth is approximately  $3$  mm (flow depth increases in the negative direction). Figure 4 shows bed topography and flow depth in cross-section at  $530$  mm downstream from the top of the study reach. Several occupied and abandoned channels are visible along this transect.

We excluded data from approximately  $25$  mm on either side of the flume where the roughness elements were located. A PDF of flow depth between  $-2.0$  and  $2.0$  mm was calculated for the study area (red curve in Fig. 6). The average value of the water depth and the standard deviation were  $-0.24$  mm and  $0.43$  respectively. If we consider positive flow depth noise and if we consider noise distribution as being symmetrical with respect to zero, we obtain the green curve in Fig. 6, which has a standard deviation of  $0.28$  mm. The difference between total depth distribution and noise results in the “real” depth distribution shown in blue in Fig. 6. The mean and standard deviation of this distribution are  $-0.49$  and  $0.41$  mm respectively. The area of the flume occupied by flow after correcting for noise is  $49\%$ .

In a separate set of microscale braided river experiments, the focus was on the dynamically evolving topography, and particularly on channel characteristics and

**Bed topography and flow depth**

A. Limare et al.

Title Page

Abstract

Introduction

Conclusions

References

Tables

Figures

◀

▶

◀

▶

Back

Close

Full Screen / Esc

Printer-friendly Version

Interactive Discussion



dynamics (Reitz et al., in preparation). The study demonstrates how a moiré method can be used to characterize a full range of statistics beyond just topography and depth. Calibration proceeded as above, with slightly different camera distances resulting in 0.93 mm/pixel resolution. Data was again collected via a series of 8 phase-shifted images, and deconstructed with Light3D software. Topography data for the measurements shown here were collected after the system had evolved from a flat bed to the dynamic equilibrium condition of equal input/output sediment flux, after one hour of steady water and sediment input. The 60 cm by 60 cm focus region of measurements was located in the downstream half of the system, to avoid potential inlet effects. The bulk relief values of this area are characterized in Fig. 7 a, generally within a range of -5 mm incision and +2 mm accretion. An initial scan with water running was followed by a scan taken two minutes after water flow had been stopped, and water depths were determined following the procedure outlined in Sect. 2.7 (Fig. 7b). Water depth values peak at a value of about 0.5 mm, and vary down to depths of 2–3 mm.

In this study data was also collected on various aspects of the channels. In order to isolate the channelized areas in a systematic manner, small, noisy water depth values were eliminated by setting a threshold on the water depth data set to only include depths up to the third statistical quartile of depth values (see Fig. 8a for a color-depth image of channelized water depths as isolated by this threshold). Having used this method to isolate the channels, channel characteristics such as number, width, length, and spacing were measured. The within-channel slope profiles could also be tracked; see Fig. 7b for profiles of the five longest continuous threads of the study region, where it was possible to resolve sub-millimeter-scale features on the channel floors. Additionally, within-channel slopes at the banks were measured perpendicular to flow, as defined over a given distance inward of channel boundaries (Fig. 7c). Measurements such as these can inform our understanding of channel geometry organization, especially when combined with information about local Shields stress and bank migration rate, both of which can be extracted from a time-sequence of relief and water depth data.

**Bed topography and  
flow depth**

A. Limare et al.

Title Page

Abstract

Introduction

Conclusions

References

Tables

Figures

◀

▶

◀

▶

Back

Close

Full Screen / Esc

Printer-friendly Version

Interactive Discussion





## 4 Conclusions

The moiré method provides a way of characterizing evolving experimental systems at very high spatial and temporal resolutions. This detailed description is especially useful for systems as complex and ephemeral as braided rivers, for which patterns of channel organization and feature migration are sensitive to local topographic conditions that vary widely. With high resolution data, dynamic features can be characterized with respect to local constraints, and in this way we can learn about processes that operate at small scales. With significant statistics, we can also identify bulk system patterns, and either track their evolution through time or test their sensitivity to changing boundary conditions. Then, with information about both scales of activity, we can hopefully connect the evolution driven by small-scale processes to the emergence of observed large-scale patterns. The ease and resolution of this method of data collection will enable us to describe the evolution and organization of braided river systems with more robust statistics than have yet been reported. With this description, we will hopefully be able to parse the relevant processes and timescales that drive braided river evolution.

A certain number of requirements have to be fulfilled in order to obtain the best raw images as input data regardless which method is used for phase measurement. Moiré methods work well for light color, relatively uniform, diffusive substrate. As in any triangulation method shadow zone can appear. In order to image those zones, the projection and observation angles can be changed. The method is relatively insensitive to stray light since information is encoded into the phase. Background light should, if possible, be minimized, in order to take full advantage of the dynamic range of elementary detectors of the CCD camera.

SED

3, 187–215, 2011

### Bed topography and flow depth

A. Limare et al.

Title Page

Abstract

Introduction

Conclusions

References

Tables

Figures

◀

▶

◀

▶

Back

Close

Full Screen / Esc

Printer-friendly Version

Interactive Discussion



*Acknowledgements.* We thank Y. Gamblin and A. Vieira e Silva of the Institut de Physique du Globe de Paris for their technical assistance in designing and realizing the experimental set-up.



5 The publication of this article is financed by CNRS-INSU.

## References

- Armstrong, L.: Bank erosion and sediment transport in a microscale straight river, Ph.D. thesis, Université Paris7-Denis Diderot, France, 2003. 188
- 10 Aureli, F., Maranzoni, A., Mignosa, P., and Ziveri, C.: Dam-break flows: acquisition of experimental data through an imaging technique and 2D numerical modeling, *J. Hydraul. Eng.*, 134, 1089–1101, doi:10.1061/(ASCE)0733-9429(2008)134:8(1089), 2008. 189
- Brémand, F.: A phase unwrapping technique for object relief determination, *Opt. Lasers Eng.*, 21, 49–60, doi:10.1016/0143-8166(94)90059-0, 1994. 194, 195
- 15 Brémand, F., Doumalin, P., Dupré, J., Hesser, F., and Valle, V.: Optical Techniques for Relief Study of Mona Lisas Wooden Support, chap. in *Experimental Analysis of Nano and Engineering Materials and Structures*, Springer, Netherlands, 2007. 190
- Breque, C., Dupré, J., and Brémand, F.: Calibration of a system of projection moiré for relief measuring: biomechanical applications, *Opt. Lasers Eng.*, 41, 241–260, doi:10.1016/S0143-8166(02)00198-7, 2004. 195, 196, 197, 199
- 20 Cardenas-Garcia, J., Yao, H., and Zheng, S.: 3D reconstruction of objects using stereo imaging, *Opt. Lasers Eng.*, 22, 193–213, 1995. 196
- Chandler, J. H., Shiono, K., Rameshwaren, P., and Lane, S. N.: Measuring flume surfaces for hydraulics research using a Kodak DCS460, *Photogramm Rec.*, 17, 39–61, 2001. 189
- Chiang, F.: Moiré Methods of Strain Analysis, chap. 6 in *Manual on Experimental Stress Anal-*

## Bed topography and flow depth

A. Limare et al.

Title Page

Abstract

Introduction

Conclusions

References

Tables

Figures

◀

▶

◀

▶

Back

Close

Full Screen / Esc

Printer-friendly Version

Interactive Discussion



- ysis, 51–69, edited by: Kobayashi, A. S., Soc. for Exp. Stress Anal., Brookfield Center, CT, 1983. 190
- Coleman, S. and Eling, B.: Sand wavelets in laminar open-channel flows, *J. Hydraul. Res.*, 38, 331–338, 2000. 188
- 5 Darboux, F. and Huang, C.: An instantaneous-profile laser scanner to measure soil surface microtopography, *Soil Sci. Soc. Am. J.*, 67, 92–99, 2003. 189
- Devauchelle, O., Malverti, L., Lajeunesse, E., Josserand, C., Lagree, P. Y., and Metivier, F.: Rhomboid beach pattern: A laboratory investigation, *J. Geophys. Res.*, 115, F02017, doi:10.1029/2009JF001471, 2010a. 188
- 10 Devauchelle, O., Malverti, L., Lajeunesse, E., Josserand, C., Lagree, P. Y., and Thu-Lam, K. N.: Stability of bedforms in laminar flows with free-surface: from bars to ripples, *J. Fluid Mech.*, 642, 329–348, 2010b. 188
- Guangjun, Z. and Liqun, M.: Modeling and calibration of grid structured light based 3-D vision inspection, *J. Manuf. Sci. Eng.*, 122, 734–738, 2000. 197
- 15 Halioua, M. and Liu, H.-C.: Optical three-dimensional sensing by phase measuring profilometry, *Opt. Lasers Eng.*, 11, 185–215, doi:10.1016/0143-8166(89)90031-6, 1989. 190
- Huang, A. and Capart, H. and Chen, R. and Huang, M.: Laser scanning technique for the acquisition of digital elevation models of debris flow material, in: Fourth Int Conf on Debris-Flow Hazard Mitigation, Chengdu, China, September 2007, 539–546, 2007a. 189
- 20 Huang, A. and Capart, H. and Chen, R. and Huang, M.: Experimental analysis of the seepage failure of a sand slope, in: Fourth Int Conf on Debris-Flow Hazard Mitigation, Chengdu, China, September 2007, 259–267, 2007b. 189
- Huang, M., Huang, A., and Capart, H.: Joint mapping of bed elevation and flow depth in microscale morphodynamics experiments, *Experiments in Fluids*, 1–14, doi:10.1007/s00348-010-0858-4, 2010. 189
- 25 Kozłowski, J. and Serra, G.: New modified phase locked loop method for fringe pattern demodulation, *Opt. Eng.*, 36, 2025–2030, 1997. 190, 195
- Kozłowski, J. and Serra, G.: Analysis of the complex phase error introduced by the application of the Fourier transform method, *J. Modern Opt.*, 46, 957–971, 1999. 193
- 30 Lague, D., Crave, A., and Davy, P.: Laboratory experiments simulating the geomorphic response to tectonic uplift, *J. Geophys. Res.*, 108, 2008, doi:10.1029/2002JB001785, 2003. 188, 189
- Lajeunesse, E., Malverti, L., and Charru, F.: Bed load transport in turbulent flow

**Bed topography and  
flow depth**

A. Limare et al.

Title Page

Abstract

Introduction

Conclusions

References

Tables

Figures



Back

Close

Full Screen / Esc

Printer-friendly Version

Interactive Discussion



**Bed topography and  
flow depth**

A. Limare et al.

Title Page

Abstract

Introduction

Conclusions

References

Tables

Figures

◀

▶

◀

▶

Back

Close

Full Screen / Esc

Printer-friendly Version

Interactive Discussion



at the grain scale: Experiments and modeling, *J. Geophys. Res.*, 115, F04001, doi:10.1029/2009JF001628, 2010a. 188

Lajeunesse, E., Malverti, L., Lancien, P., Armstrong, L., Metivier, F., Coleman, S., Smith, C., Davies, T., Cantelli, A., and Parker, G.: Fluvial and Submarine Morphodynamics of Laminar and Near-Laminar Flows: a synthesis, *Sedimentology*, 57, 1–26, 2010b. 188

Lancien, P., Metivier, F., Lajeunesse, E., and Cacas, M.: Incision dynamics and shear stress measurements in submarine channels experiments, in: *River, Coastal and Estuarine Morphodynamics 2005*, 527–533, edited by: Parker and Garcia, Taylor and Francis Group, London, 2005. 190

Malverti, L., Lajeunesse, E., and Metivier, F.: Experimental investigation of the response of an alluvial river to a vertical offset of its bed, in: *5th IAHR Symposium on River, Coastal and Estuarine Morphodynamics*, edited by: Dohmen-Janssen, C. and Husche, S., 179–184, 2007. 188

Malverti, L., Lajeunesse, E., and Metivier, F.: Small is beautiful: upscaling microscale experimental results to the size of natural rivers, *J. Geophys. Res.*, 113, F04004, doi:10.1029/2007JF000974, 2008. 188

Metivier, F. and Meunier, P.: Input and Output mass flux correlations in an experimental braided stream. Implications on the dynamics of bed load transport, *J. Hydrol.*, 271, 22–38, 2003. 188, 198

Metivier, F., Lajeunesse, E., and Cacas, M.: Submarine Canyons in the Bathtub, *J. Sediment Res.*, 75, 6–11, 2005. 188

Meunier, P.: Braided rivers dynamics, Ph.D. thesis, Institut de Physique du Globe de Paris, 2004. 190

Ni, W.-J. and Crave, H.: Groundwater drainage and recharge by networks of irregular channels, *J. Geophys. Res.*, 111, F02014, doi:10.1029/2005JF000410, 2006. 188

Paola, C.: Quantitative models of sedimentary basin filling, *Sedimentology*, 47, 121–178, 2010. 188

Patorski, K.: Handbook of the moiré fringe technique, chap. 10 and 13, Elsevier Science Publishers, 1993. 191

Pouliquen, O. and Forterre, Y.: Friction law for dense granular flows: application to the motion of a mass down a rough inclined plane, *J. Fluid Mech.*, 453, 131–151, 2002. 190

Reitz, M. D., Jerolmack, D. J., and Swenson, J. B.: Flooding and flow path selection on alluvial fans and deltas, *Geophys. Res. Lett.*, 37, L06401, doi:10.1029/2009GL041985, 2010. 188

**Bed topography and  
flow depth**

A. Limare et al.

Title Page

Abstract

Introduction

Conclusions

References

Tables

Figures

◀

▶

◀

▶

Back

Close

Full Screen / Esc

Printer-friendly Version

Interactive Discussion



- Reitz, M. D., Lajeunesse, E., Limare, A., and Metivier, F.: Spatiotemporal evolution of experimental braided rivers, *J. Geophys. Res.-Earth*, in prep., 2011. 201
- Rice, C., Wilson, B. N., and Appleman, M.: An instantaneous-profile laser scanner to measure soil surface microtopography, *Comput. Electron. Agric.*, 3, 97–107, 1988. 189
- 5 Sansoni, G. and Redaelli, E.: A 3D vision system based on one-shot projection and phase demodulation for fast profilometry, *Meas. Sci. Technol.*, 16, 1109–1118, 2005. 195
- Sansoni, G., Corini, S., Lazzari, S., Rodella, R., and Docchio, F.: Three-dimensional imaging based on Gray-code light projection: characterization of the measuring algorithm and development of a measuring system for industrial applications, *Appl. Opt.*, 36, 4463–4472, 1997. 194
- 10 Sansoni, G., Carocci, M., and Rodella, R.: Calibration and performance evaluation of a 3D imaging sensor based on the projection of structured light, *IEEE Trans. Instrum. Meas.*, 49, 628–635, 2000. 190, 197
- Sansoni, G., Patrioli, A., and Docchio, F.: OPL-3D: A novel, portable optical digitizer for fast acquisition of free-form surfaces, *Rev. Sci. Instrum.*, 74, 2593–2603, doi:10.1063/1.1561602, 2003. 195
- 15 Schmit, J. and Creath, K.: Extended averaging technique for derivation of error compensating algorithms in phase shifting interferometry, *Appl. Opt.*, 34, 3610–3619, 1995. 193
- Servin, M., Cuevas, F., Malacara, D., Marroquin, J., and Rodriguez-Vera, R.: Phase unwrapping through demodulation by use of the regularized phase-tracking technique, *Appl. Opt.*, 38, 1934–1941, 1999. 194
- 20 Takeda, M.: Spatial-carrier fringe-pattern analysis and its applications to precision interferometry and profilometry: An overview, *Industrial Metrology*, 1, 79–99, 1990. 193
- Takeda, M., Ina, H., and Kobayashi, S.: Fourier-transform method of fringe-pattern analysis for computer based topography and interferometry, *J. Opt. Soc. Am.*, 72, 156–160, 1982. 193
- 25 Tal, M. and Paola, C.: Dynamic single-thread channels maintained by the interaction of flow and vegetation, *Geology*, 35, 347–350, 2007. 189
- Weiler, M. and Flüßler, H.: Inferring flow types from dye patterns in macroporous soils, *Geoderma*, 120, 137–153, 2004. 189

**Table 1.** Symbols and notations used in this paper

Symbol	Description	Units
$I(x, y)$	intensity of fringe pattern	(counts)
$a(x, y)$	background intensity	(counts)
$b(x, y)$	local contrast	(counts)
$c(x, y), c^*(x, y)$	complex contrast coefficients	(counts)
$\phi(x, y)$	phase	(rad)
$\phi'(x, y)$	phase with carrier pattern	(rad)
$f_0$	carrier frequency	(L) <sup>-1</sup>
$j$	$\sqrt{-1}$	(0)
$F(I)$	Fourier transform of intensity	(counts)
$A$	Fourier transform of background intensity	(counts)
$C, C^*$	Fourier transform of contrast coefficients	(counts)
$N$	number of phase shifts	(0)
$\delta_i = i2\pi/N$	phase shift increment	(rad)
$I_i(x, y)$	intensity of fringe pattern for each phase shift	(counts)
$Z$	relief	(L)
$p$	projected grating spacing	(L)
$h_p$	projection distance	(L)
$h_o$	observation distance	(L)
$d$	distance between the light source and camera	(L)
$f_p$	projector focal length	(L)
$P_r$	grating pitch at the output lens	(L)
$\gamma_{\text{CCD}}$	magnification of CCD entrance length	(L) /pixel
$i_p$	projection incidence angle	(rad)
$i_c$	camera incidence angle	(rad)
$r_p$	projection refraction angle	(rad)
$r_c$	camera refraction angle	(rad)
$h$	difference in elevation between dry and wet relief	(L)
$H$	true water depth	(L)
$n_w$	water refraction index	(0)

**Bed topography and  
flow depth**

A. Limare et al.

Title Page

Abstract

Introduction

Conclusions

References

Tables

Figures

◀

▶

◀

▶

Back

Close

Full Screen / Esc

Printer-friendly Version

Interactive Discussion



Bed topography and flow depth

A. Limare et al.

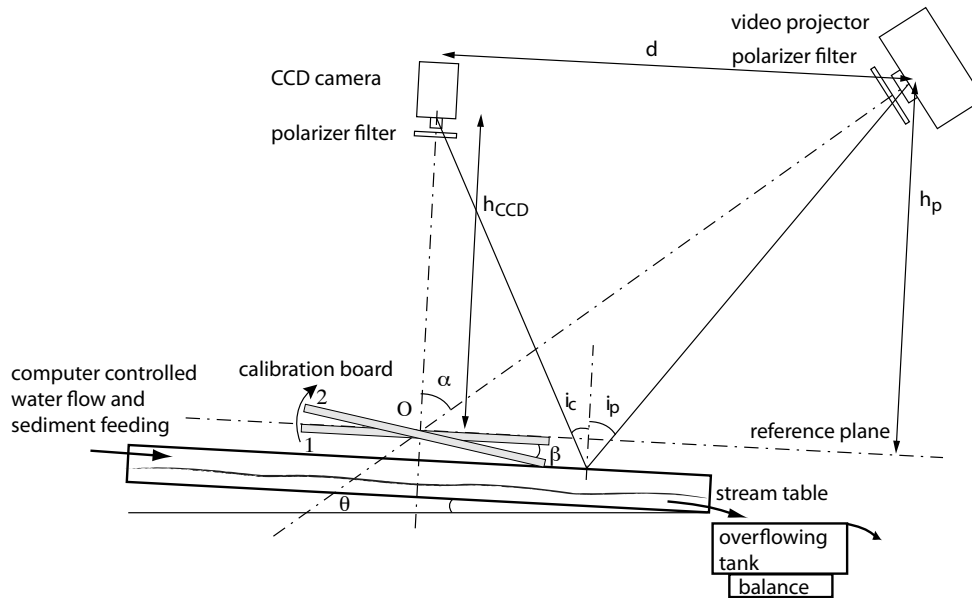


Fig. 1. Experimental setup.

Title Page

Abstract

Introduction

Conclusions

References

Tables

Figures

◀

▶

◀

▶

Back

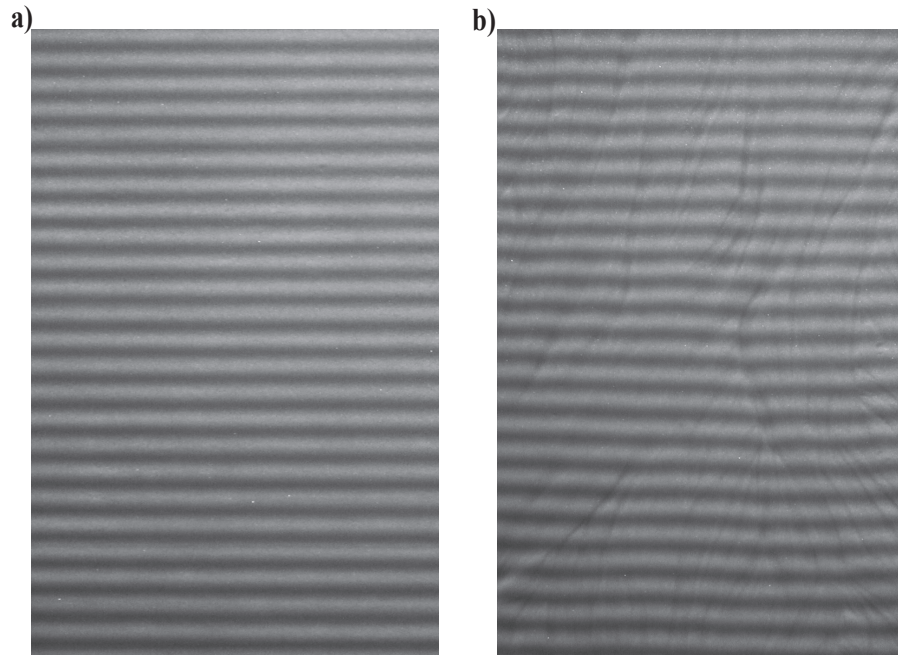
Close

Full Screen / Esc

Printer-friendly Version

Interactive Discussion





**Fig. 2.** Fringe pattern on **(a)** flat surface, **(b)** relief.

**Bed topography and  
flow depth**

A. Limare et al.

Title Page

Abstract

Introduction

Conclusions

References

Tables

Figures

◀

▶

◀

▶

Back

Close

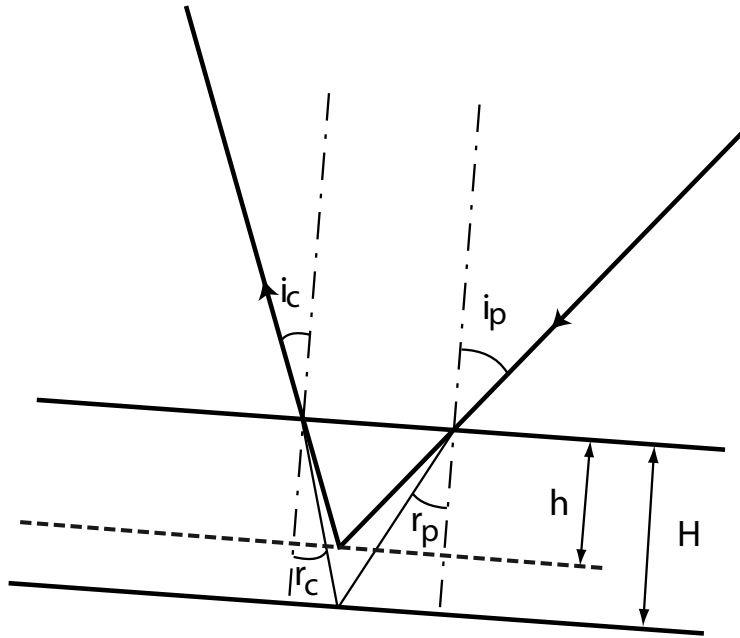
Full Screen / Esc

Printer-friendly Version

Interactive Discussion







**Fig. 3.** Light refraction into a water layer.

**Bed topography and flow depth**

A. Limare et al.

Title Page

Abstract Introduction

Conclusions References

Tables Figures

◀ ▶

◀ ▶

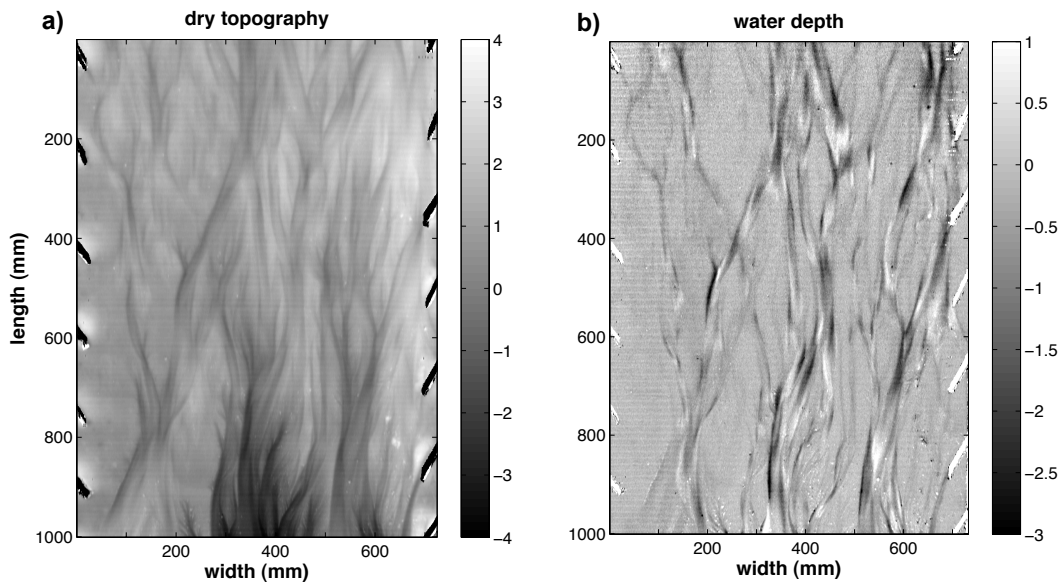
Back Close

Full Screen / Esc

Printer-friendly Version

Interactive Discussion





**Fig. 4.** (a) Bed topography obtained by switching of water flow and (b) water depth.

## Bed topography and flow depth

A. Limare et al.

Title Page

Abstract

Introduction

Conclusions

References

Tables

Figures

◀

▶

◀

▶

Back

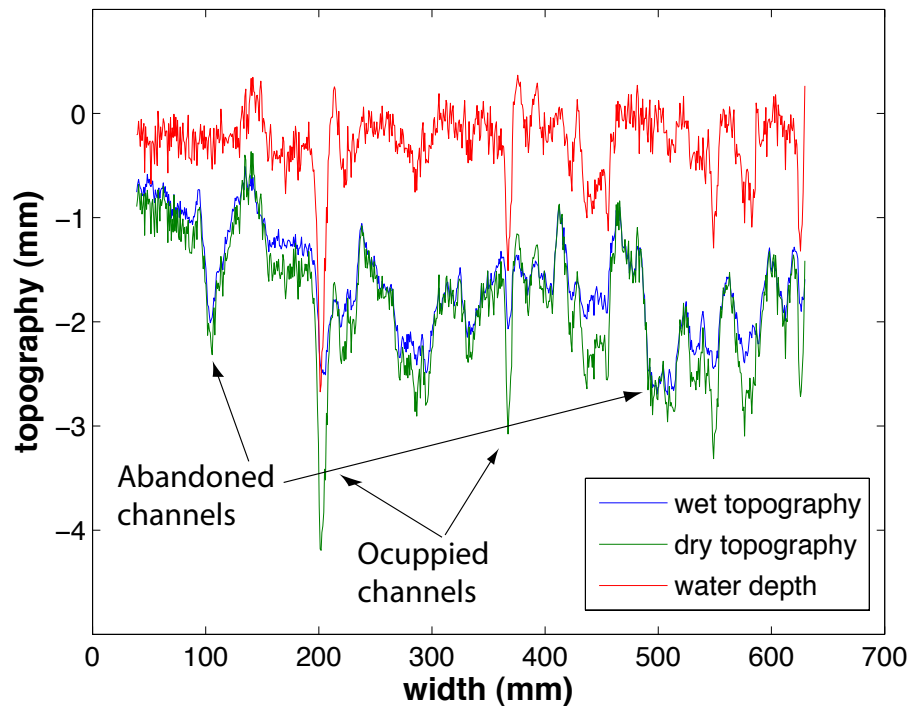
Close

Full Screen / Esc

Printer-friendly Version

Interactive Discussion





**Fig. 5.** Transects into wet, dry and water depth topographies at length value of 530 mm.

**Bed topography and flow depth**

A. Limare et al.

Title Page

Abstract Introduction

Conclusions References

Tables Figures

◀ ▶

◀ ▶

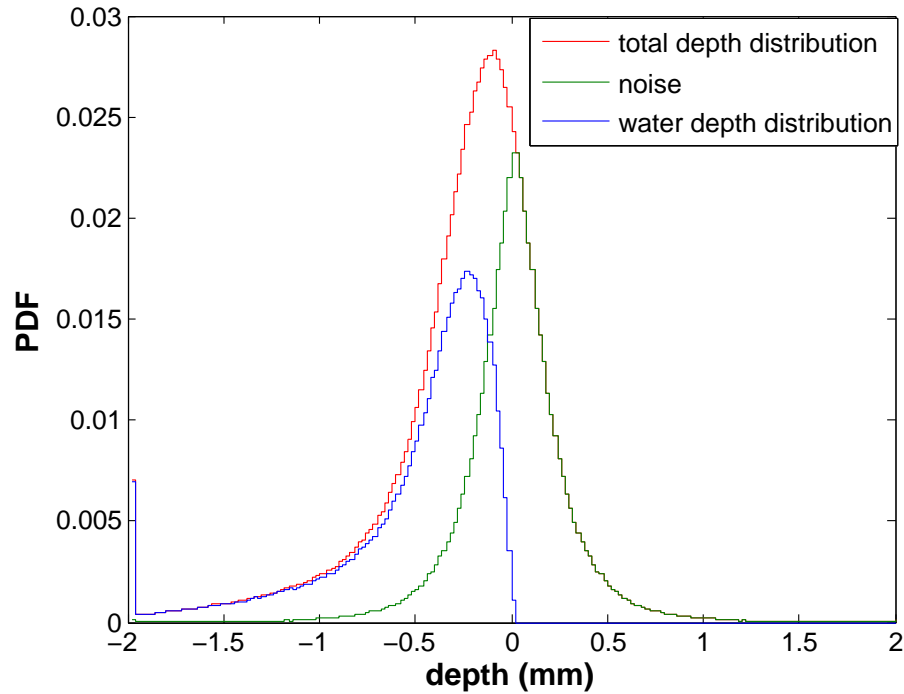
Back Close

Full Screen / Esc

Printer-friendly Version

Interactive Discussion





**Fig. 6.** Light refraction into a water layer.

**Bed topography and flow depth**

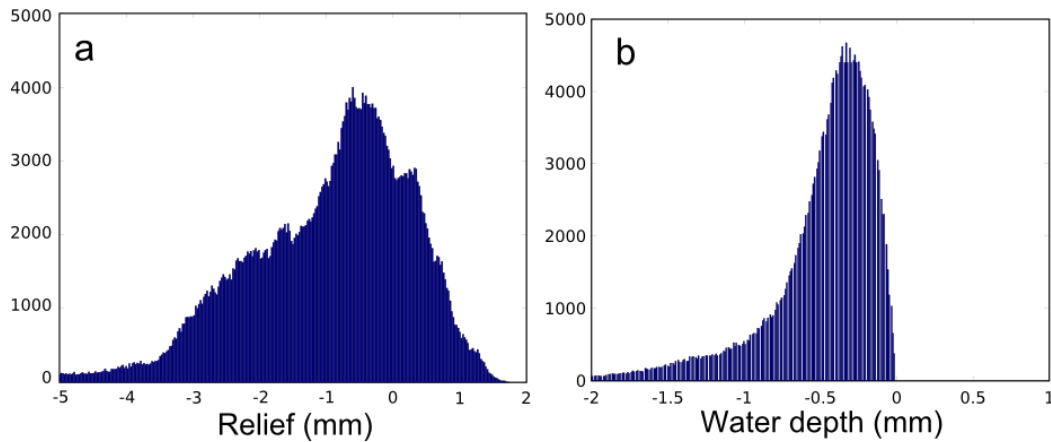
A. Limare et al.

<a href="#">Title Page</a>	
<a href="#">Abstract</a>	<a href="#">Introduction</a>
<a href="#">Conclusions</a>	<a href="#">References</a>
<a href="#">Tables</a>	<a href="#">Figures</a>
<a href="#">◀</a>	<a href="#">▶</a>
<a href="#">◀</a>	<a href="#">▶</a>
<a href="#">Back</a>	<a href="#">Close</a>
<a href="#">Full Screen / Esc</a>	
<a href="#">Printer-friendly Version</a>	
<a href="#">Interactive Discussion</a>	



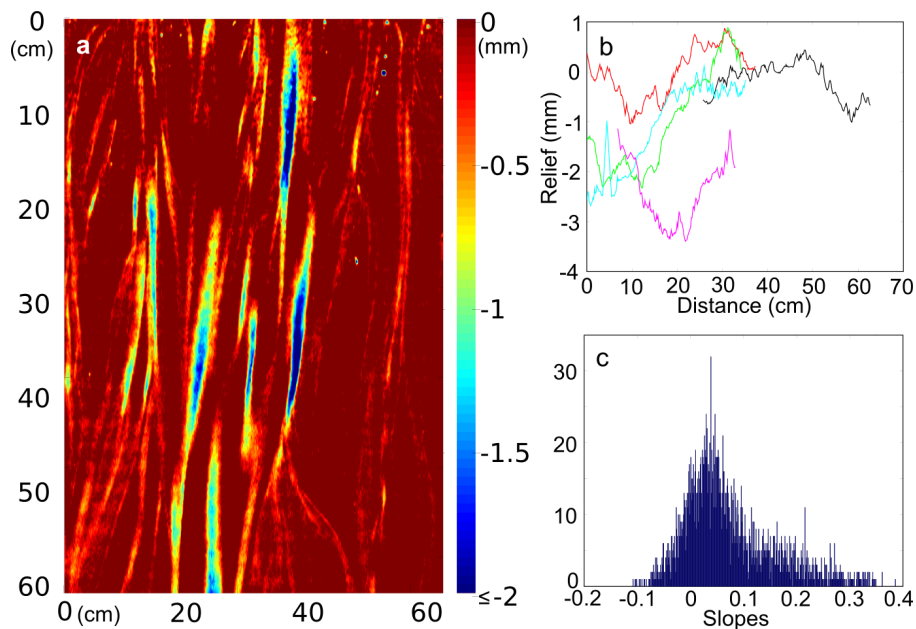
**Bed topography and  
flow depth**

A. Limare et al.



**Fig. 7.** Histograms of **(a)** relief values of developed braided river topography and **(b)** water depth values within channels. Measurements are with respect to an initial flat bed.

[Title Page](#)[Abstract](#)[Introduction](#)[Conclusions](#)[References](#)[Tables](#)[Figures](#)[◀](#)[▶](#)[◀](#)[▶](#)[Back](#)[Close](#)[Full Screen / Esc](#)[Printer-friendly Version](#)[Interactive Discussion](#)



**Fig. 8.** (a) Planview of analyzed section of the braided river system. Colors correspond to water depth values. The direction of water flow is from the top to the bottom of the image; channelized threads are visible as vertical lines. (b) Within-channel slope profiles of the five longest continuous channel threads. Profiles are plotted from an x-value corresponding to the distance down section (a) at which the channel begins. (c) Histogram of slope values at the edges (outer 3 mm) of channels, with channel boundaries defined by the wet fraction 3rd-quartile threshold.

**Bed topography and flow depth**

A. Limare et al.

Title Page

Abstract Introduction

Conclusions References

Tables Figures

◀ ▶

◀ ▶

Back Close

Full Screen / Esc

Printer-friendly Version

Interactive Discussion

