



A late jet rebrightening revealed from multiwavelength monitoring of the black hole candidate XTE J1752-223

D. M. Russell, P. A. Curran, T. Muñoz-Darias, F. Lewis, S. Motta, H. Stiele, T. Belloni, J. C. A. Miller-Jones, P. G. Jonker, K. O'Brien, et al.

► To cite this version:

D. M. Russell, P. A. Curran, T. Muñoz-Darias, F. Lewis, S. Motta, et al.. A late jet rebrightening revealed from multiwavelength monitoring of the black hole candidate XTE J1752-223. *Monthly Notices of the Royal Astronomical Society*, 2012, 419, pp.1740-1751. 10.1111/j.1365-2966.2011.19839.x . insu-03622440

HAL Id: insu-03622440

<https://insu.hal.science/insu-03622440>

Submitted on 29 Mar 2022

HAL is a multi-disciplinary open access archive for the deposit and dissemination of scientific research documents, whether they are published or not. The documents may come from teaching and research institutions in France or abroad, or from public or private research centers.

L'archive ouverte pluridisciplinaire **HAL**, est destinée au dépôt et à la diffusion de documents scientifiques de niveau recherche, publiés ou non, émanant des établissements d'enseignement et de recherche français ou étrangers, des laboratoires publics ou privés.



Distributed under a Creative Commons Attribution 4.0 International License

A late jet rebrightening revealed from multiwavelength monitoring of the black hole candidate XTE J1752–223[★]

D. M. Russell,^{1†} P. A. Curran,² T. Muñoz-Darias,³ F. Lewis,^{4,5} S. Motta,³ H. Stiele,³ T. Belloni,³ J. C. A. Miller-Jones,⁶ P. G. Jonker,^{7,8,9} K. O’Brien,¹⁰ J. Homan,¹¹ P. Casella,¹² P. Gandhi,¹³ P. Soleri,¹⁴ S. Markoff,¹ D. Maitra,¹⁵ E. Gallo¹⁵ and M. Cadolle Bel¹⁶

¹*Astronomical Institute ‘Anton Pannekoek’, University of Amsterdam, PO Box 94249, 1090 GE Amsterdam, the Netherlands*

²*Laboratoire AIM, CEA/IRFU-Université Paris Diderot-CNRS/INSU, CEA DSM/IRFU/SAP, Centre de Saclay, F-91191 Gif-sur-Yvette, France*

³*INAF–Osservatorio Astronomico di Brera, Via E. Bianchi 46, I-23807 Merate (LC), Italy*

⁴*Faulkes Telescope Project, University of Glamorgan, Pontypridd CF37 1DL*

⁵*Department of Physics and Astronomy, The Open University, Walton Hall, Milton Keynes MK7 6AA*

⁶*International Centre for Radio Astronomy Research, Curtin University, GPO Box U1987, Perth, WA 6845, Australia*

⁷*SRON, Netherlands Institute for Space Research, Sorbonnelaan 2, 3584 CA, Utrecht, the Netherlands*

⁸*Harvard–Smithsonian Center for Astrophysics, 60 Garden Street, Cambridge, MA 02138, USA*

⁹*Department of Astrophysics, IMAPP, Radboud University Nijmegen, PO Box 9010, NL-6500 GL Nijmegen, the Netherlands*

¹⁰*Department of Physics, University of California, Santa Barbara, CA 93106-9530, USA*

¹¹*MIT Kavli Institute for Astrophysics and Space Research, 70 Vassar Street, Cambridge, MA 02139, USA*

¹²*School of Physics and Astronomy, University of Southampton, Southampton, Hampshire SO17 1BJ*

¹³*ISAS, Japan Aerospace Exploration Agency, 3-1-1 Yoshinodai, chuo-ku, Sagami-hara, Kanagawa 229-8510, Japan*

¹⁴*Kapteyn Astronomical Institute, University of Groningen, PO Box 800, 9700 AV Groningen, the Netherlands*

¹⁵*Department of Astronomy, University of Michigan, 500 Church Street, Ann Arbor, MI 48109, USA*

¹⁶*ESAC, ISOC, Villanueva de la Cañada, Madrid P. O. Box 78, E-28691, Spain*

Accepted 2011 September 15. Received 2011 September 14; in original form 2011 March 25

ABSTRACT

We present optical monitoring of the black hole candidate XTE J1752–223 during its 2009–10 outburst and decay to quiescence. The optical light curve can be described by an exponential decay followed by a plateau, then a more rapid fade towards quiescence. The plateau appears to be due to an extra component of optical emission that brightens and then fades over ~ 40 days. We show evidence for the origin of this optical ‘flare’ to be the synchrotron jet during the decaying hard state, and we identify and isolate both disc and jet components in the spectral energy distributions. The optical flare has the same morphology and amplitude as a contemporaneous X-ray rebrightening. This suggests a common origin, but no firm conclusions can be made favouring or disfavouring the jet producing the X-ray flare. The quiescent optical magnitudes are $B \geq 20.6$, $V \geq 21.1$, $R \geq 19.5$, $i' \geq 19.2$. From the optical outburst amplitude we estimate a likely orbital period of < 22 h. We also present near-infrared (NIR) photometry and polarimetry and rare mid-IR imaging (8–12 μm) when the source is nearing quiescence. The fading jet component, and possibly the companion star, may contribute to the NIR flux. We derive deep mid-IR flux upper limits and NIR linear polarization upper limits. With the inclusion of radio data, we measure an almost flat jet spectral index between radio and optical; $F_\nu \propto \nu^{\sim +0.05}$. The data favour the jet break to optically thin emission to reside in the IR, but may shift to frequencies as high as the optical or UV during the peak of the flare.

Key words: accretion, accretion discs – black hole physics – ISM: jets and outflows – X-rays: binaries.

[★]Based on observations collected at the European Southern Observatory, Chile, under ESO Programme ID 086.D-0610, the William Herschel Telescope operated on the island of La Palma by the Isaac Newton Group in the Spanish Observatorio del Roque de los Muchachos of the Instituto de Astrofísica de Canarias and the Faulkes Telescopes at Haleakala, Maui, USA and Siding Spring, Australia.

[†]E-mail: d.m.russell@uva.nl

1 INTRODUCTION

Since the first detections of X-ray transients in the 1960s, monitoring the X-ray evolution of their outbursts has been an active field of research (e.g. Evans, Belian & Conner 1970; Chen, Shrader & Livio 1997). Now it is known that multiwavelength studies, from radio to γ -ray, over various time-scales from milliseconds to decades, can help to explain these objects in detail. Contemporaneous X-ray/radio monitoring of black hole X-ray binary (BHXB) outbursts have revealed correlated behaviour which firmly links the properties of the inflowing matter with those of the outflow in the form of jets (e.g. Tananbaum et al. 1972; Hannikainen et al. 1998; Corbel et al. 2000, 2003; Gallo, Fender & Pooley 2003; Kalemci et al. 2006; Körding, Fender & Migliari 2006). The optical–infrared (OIR) emission from the outer accretion disc and the jet are also correlated with the X-ray properties on long (weeks–months) and short (less than seconds) time-scales (e.g. Motch et al. 1985; Eikenberry et al. 1998; Russell et al. 2006; Casella et al. 2010).

In recent years a global picture has been developed (Fender, Belloni & Gallo 2004; Fender, Homan & Belloni 2009) in which the X-ray luminosity, hardness and history are indicative of the radio characteristics. When the X-ray spectrum is hard (the ‘hard state’; historically the ‘low/hard state’), a steady, compact jet is launched, which has a flat-spectrum ($\alpha \approx 0$ where $F_\nu \propto \nu^\alpha$) from radio to IR frequencies produced by optically thick, self-absorbed synchrotron emission. At some higher frequency, possibly in the OIR domain (Markoff, Falcke & Fender 2001; Heinz & Sunyaev 2003; Markoff et al. 2003), this emission breaks to an optically thin spectrum, with $\alpha \approx -0.6$. The break defines the minimum total energy contained in the jet, but its location in the spectrum has only been directly observed or inferred to exist in the IR in a few BHXBs (Corbel & Fender 2002; Coriat et al. 2009; Gandhi et al. 2011; Rahoui et al. 2011) and is uncertain in most sources.

The jet appears to be quenched at both radio and OIR regimes when the X-ray spectrum is soft (the soft, or ‘high/soft’ X-ray state; e.g. Gallo et al. 2003; Homan et al. 2005; Fender et al. 2009). In the last few years it has been shown that as well as the radio behaviour, the OIR properties (flux and colour) of some sources can now also be predicted from the X-ray properties (and vice versa; Coriat et al. 2009; Russell et al. 2011b). These correlations between the different components of the system help us to understand the process of accretion on to compact objects and jet formation in BHXBs.

XTE J1752–223 is an X-ray transient discovered by the *Rossini X-ray Timing Explorer* (RXTE) and *Swift* satellites in 2009 October (Markwardt et al. 2009). The outburst lasted ~ 8 months and was observed by the *Monitor of All-sky X-ray Image* (MAXI) and RXTE satellites (Nakahira et al. 2010; Shaposhnikov et al. 2010) at X-ray energies, *Swift* (Curran et al. 2011, hereafter C11) at X-ray and optical/ultraviolet (UV) (the optical counterpart was discovered by Torres et al. 2009a), Faulkes Telescope and Small and Moderate Aperture Research Telescope System (SMARTS) at OIR (Russell et al. 2010b; Kalemci et al. 2011) and the Australia Telescope Compact Array (ATCA), the European VLBI Network (EVN), the Very Long Baseline Array (VLBA) and the Expanded Very Large Array (EVLA) at radio frequencies (Brocksopp et al. 2009; Yang et al. 2010; Miller-Jones et al. 2011; Jonker et al., in preparation). The source evolved from a hard X-ray state to a soft state and back to a hard state at a lower luminosity before fading towards quiescence; overall showing a behaviour typical for a BHXB outburst (Fender et al. 2004; Belloni 2010). A mildly relativistic radio jet (Yang et al. 2010; Miller-Jones et al. 2011) was also reported. The source was suggested to be a black hole candidate due

to its state evolution and its state dependent X-ray fast timing properties (Muñoz-Darias et al. 2010; Shaposhnikov et al. 2010). Here we present multiwaveband optical monitoring during the decay of the outburst of XTE J1752–223 towards quiescence. Together with X-ray, IR and radio observations, we constrain the contribution and spectrum of the accretion disc and the jet to these wavelengths and follow their evolution throughout the outburst decay. In Section 2 we describe the data and its reduction. The multiwavelength evolution of the outburst is analysed in Section 3, in which we construct spectral energy distributions (SEDs), attempt to isolate disc and jet emission, test for optical–X-ray correlations and discuss the results. We summarize our findings in Section 4.

2 OBSERVATIONS

2.1 Faulkes Telescopes optical monitoring

The outburst decay of XTE J1752–223 was regularly monitored with the 2-m Faulkes Telescopes (FTs) North and South, located at Haleakala on Maui and Siding Spring, Australia, respectively, as part of an ongoing monitoring campaign of ~ 30 low-mass X-ray binaries (Lewis et al. 2008). Images in Bessell *B*, *V*, *R* and Sloan Digital Sky Survey (SDSS) *i'* bands (mostly 100-s exposures each) were made every ~ 3 d from 2010 March 22 to 2010 July 15, continuing less regularly until 2010 October 20, totalling 206 images in 7 months. The cameras EM01 (on FT North) and EM03 (on FT South) were used; both have 2048×2048 pixel binned 2×2 into effectively 1024×1024 pixel. The field of view (FOV) is 4.7×4.7 arcmin² and the pixel scale is 0.278 arcsec pixel^{−1}. Bias subtraction and flat-fielding were performed via the automatic pipelines. We identify the optical counterpart of XTE J1752–223 as a star fading by ≥ 2.6 mag over the observing period, at a position consistent with that reported by C11 and Miller-Jones et al. (2011). The counterpart is detected until 2010 July 15, after which detections become ambiguous due to its faintness and proximity to field stars of similar magnitude. In Fig. 1 we present high-resolution optical and NIR finding charts (for wider field, lower resolution optical finding charts see C11; Miller-Jones et al. 2011).

Photometry was performed on the BHXB and the three field stars using PHOT in IRAF, adopting a 0.83 -arcsec aperture, optimized to contain the maximum flux from XTE J1752–223 while minimizing the contamination from the close field stars. For this reason we discarded all data with poor seeing (> 1.7 arcsec). We calibrated the field using Landolt standard stars observed on a number of dates and adopted the transformation to SDSS *i'* band from *R* and *I* described in Jordi, Grebel & Ammon (2006). The error on the absolute calibration is ~ 0.1 mag for each filter. The light curves are presented in Fig. 2 (upper panel) and discussed in Section 3.

2.2 Swift UVOT optical monitoring

Swift Ultraviolet/Optical Telescope (UVOT; Roming et al. 2005) data have been pre-processed at the Swift Data Center (see Breeveld et al. 2010) and require only minimum user processing. The image data of each filter, from each observation sequence, i.e. with a given observation ID, were summed using `uvot.imsum`. Photometry of the source in individual sequences is derived via `uvotmaghist`, using an extraction region of radius 2.5 arcsec (to minimize contamination from close field stars; see Section 3). Magnitudes are based on the UVOT photometric system, which differs from the Bessell system by $V - v < 0.04$ and $B - b < 0.04$ for all reasonable spectral indices (Poole et al. 2008). *v*- and *b*-band light curves are shown in Fig. 2.

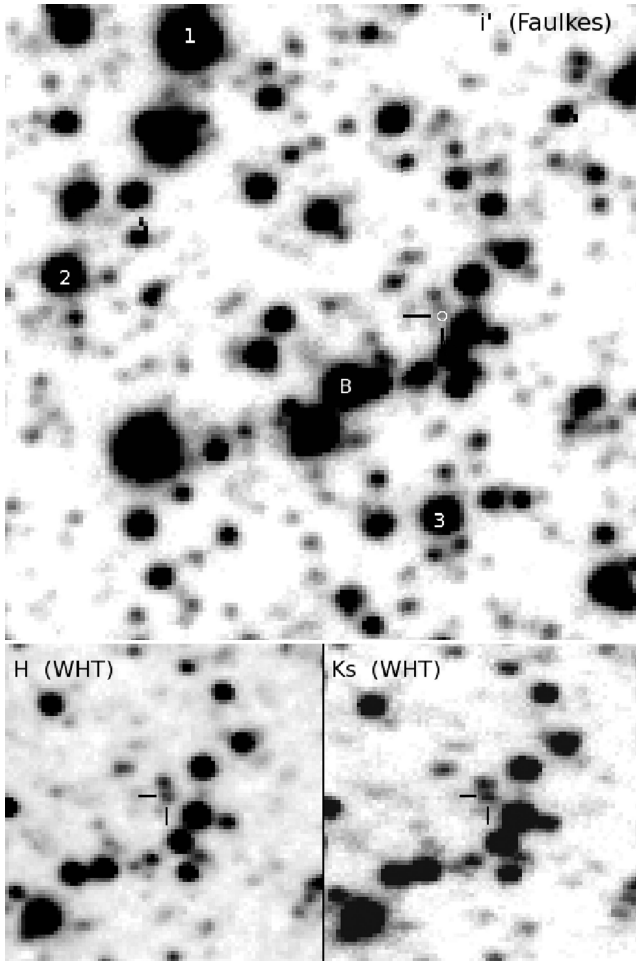


Figure 1. High-resolution optical and NIR finding charts. North is up, east is to the left. Upper: 40×40 arcsec² Faulkes i' -band image from 2010 July 15 (the seeing was 0.9 arcsec). The 0.31 arcsec *Swift* UVOT error circle of XTE J1752–223 (white circle) and star B are marked (C11). Three field stars used for relative photometry are also marked. A faint field star ($R = 19.9 \pm 0.1$; $i' = 19.2 \pm 0.1$) lies 0.8 arcsec to the north of XTE J1752–223. Lower: 20×20 arcsec² WHT/LIRIS images on 2010 July 1 in H and K_S bands (seeing 0.6–0.8 arcsec).

2.3 William Herschel Telescope near-infrared data

On 2010 July 1 (MJD 55378.0) we observed XTE J1752–223 with the Long-slit Intermediate Resolution Infrared Spectrograph (LIRIS) in imaging polarimetry mode on the 4.2-m William Herschel Telescope (WHT) at the Observatorio del Roque de los Muchachos, La Palma, Spain. Conditions were excellent with a seeing of 0.6–0.8 arcsec. The total on-source exposure times were 240 s in near-IR (NIR) H band and 360 s in K_S band. The Wollaston prism splits the incoming light into four simultaneous images, one at each of the four polarization angles: 0° , 45° , 90° and 135° ; the FOV for each angle is 4×1 arcmin². Images were reduced with *THELI* (Erben et al. 2005) using a series of dome flat-fields taken at two dome rotations 90° apart, to minimize polarization introduced from the flat-fields (biases are determined automatically before every exposure and immediately subtracted). Reduced images were aligned and combined in *IRAF*. Both the BHXB and the close star 0.8 arcsec to the north were detected and resolved (see Fig. 1, lower panels). Total fluxes and polarization Stokes parameters were derived (see

Barrena, Acosta-Pulido & Manchado 2008) for XTE J1752–223 and several field stars in the 2MASS catalogue.

Using 2MASS stars for flux calibration, we find $H = 15.6 \pm 0.1$, $K_S = 15.2 \pm 0.1$ mag for XTE J1752–223 (dates are indicated in the light curve; Fig. 2) and $H = 15.5 \pm 0.1$, $K_S = 15.2 \pm 0.1$ for the close star. The level of polarization is $P_H < 30$ per cent in H band and $P_{K_S} < 29$ per cent in K_S band (3σ upper limits). Instrumental polarization is measured to be no greater than ~ 1 per cent (Barrena et al. 2008). These results are discussed in Section 3.7.

2.4 Very Large Telescope mid-infrared data

Mid-IR observations with the Very Large Telescope (VLT) were acquired on 2010 July 10, 11 and 12 (Programme ID 086.D-0610). The VLT Imager and Spectrometer for mid-Infrared (VISIR) instrument on UT3 (Melipal) was used in small-field imaging mode, with a FOV of 19.2×19.2 arcsec² and a pixel scale of 0.075 arcsec pixel^{−1}. Observations were performed in three mid-IR filters: PAH1 (8.2–9.0 μ m), SIV (10.3–10.7 μ m) and J12.2 (11.7–12.2 μ m). The observation log and results are shown in Table 1. With overheads, the total time including chopping/nodding was 65 min on each date. The data were reduced using the VISIR pipeline. Raw images were recombined and sensitivities were estimated based on standard star observations (the calibrators HD 133774, HD 178345 and HD 217902 were observed). The rms we measure in the images agrees (typically to within 10–30 per cent) with the expected sensitivities estimated from the standard stars. XTE J1752–223 was not detected; the deep upper limits given in Table 1 are derived from the rms in a region centred on the position of XTE J1752–223.

2.5 X-ray data

The *RXTE* Proportional Counter Array (PCA) and *Swift* Burst Alert Telescope (BAT) both monitored XTE J1752–223 during its outburst. The *Swift* BAT 15–50 keV count rates from the hard X-ray transient monitor are made publicly available by the *Swift* BAT team. The *RXTE* PCA 3–20 keV X-ray net count rate was extracted with standard procedures (see e.g. Motta, Muñoz-Darias & Belloni 2010; Muñoz-Darias et al. 2010; Stiele et al. 2011). The count rate light curves (3σ detections) are shown in Fig. 2 (lower panel).

In order to perform spectral analysis in the decaying hard state, we fitted PCA spectra between 3 and 40 keV. *XSPEC* V. 11.3.2 was used to fit the spectra. We used the phabs model in *XSPEC* to describe absorption. Following Muñoz-Darias et al. (2010) we used an absorbed (equivalent Hydrogen column value of $n_H = 7.2 \times 10^{21}$ cm^{−2}) broken power law plus a Gaussian component to describe a broad iron emission line.¹ The centroid energy of the line was restricted to 6.4 and 6.7 keV and the linewidth was restricted to 0.01 and 0.5 keV to prevent artificial broadening due to the response of XTE/PCA around 6.4 keV. No additional reflection component is required to obtain a good fit and no high-energy cut-off below 40 keV was needed. Where it was not possible to constrain the energy of the break of the broken power law accurately, we used a simple power law to fit the spectra. Only in some cases the iron line was not necessary to obtain acceptable fits.

Following the method of Belloni & Hasinger (1990), the *RXTE* PCA fractional rms was computed within the frequency bands 0.1–64 and 0.005–1 Hz. The latter, low-frequency band was used to

¹ Using a slightly different absorption of $n_H = 5.13 \times 10^{21}$ cm^{−2} (C11) makes a negligible difference to the resulting fit parameters.

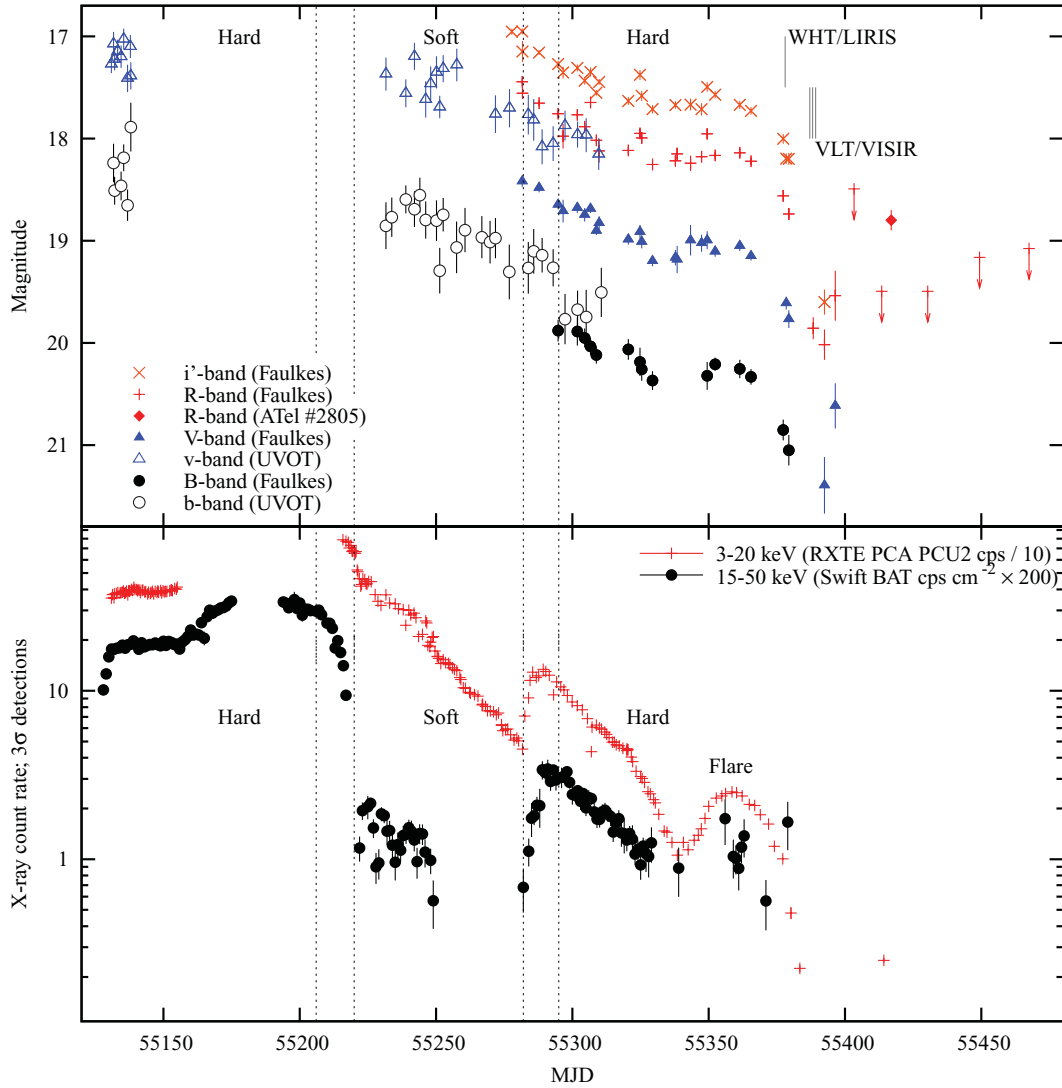


Figure 2. Outburst light curves. The dotted vertical lines are X-ray state transitions as reported by Shaposhnikov et al. (2010). Upper: optical, NIR and mid-IR data. The dates of the mid-IR and NIR observations are marked by vertical black lines. ATel #2805 refers to Corral-Santana, Casares & Rodríguez-Gil (2010). Lower: X-ray data (3σ detections). ‘cps’ means counts per second.

Table 1. VLT/VISIR observation log and flux upper limits.

| Date | MJD | Airmass | Total exposure time on source (s) | | | Derived flux density (mJy; 3σ upper limits) | | |
|---------------|---------|-----------|-----------------------------------|---------------|---------------|--|---------------|---------------|
| | | | 8.59 μ m | 10.49 μ m | 11.96 μ m | 8.59 μ m | 10.49 μ m | 11.96 μ m |
| 2010-07-10 | 55387.1 | 1.02–1.06 | 541 | 707 | 690 | <0.96 | <2.12 | <1.33 |
| 2010-07-11 | 55388.1 | 1.02–1.08 | 541 | 707 | 690 | <1.11 | <1.76 | <1.87 |
| 2010-07-12 | 55389.2 | 1.12–1.24 | 541 | 707 | 690 | <0.71 | <1.75 | <1.88 |
| Combined data | 55387–9 | 1.02–1.24 | 1623 | 2121 | 2070 | <0.46 | <1.10 | <1.04 |

achieve accurate rms estimates even at low PCA count rates. PCA channels 0–35 (2–15 keV) were used for computing the rms.

3 RESULTS

3.1 The outburst decay

The outburst was initially monitored at optical and UV frequencies with *Swift* UVOT (C11). Near the start of the outburst XTE J1752–223 was bright; $V \sim 17$ (at the end of 2009 October).

The Faulkes Telescope optical monitoring began on 2010 March 22 (MJD 55277) when the BHXB was in a soft X-ray state; the source had faded to $V \sim 18.4$ by this time (both UVOT and FT light curves are shown in Fig. 2). The optical outburst morphology can be described by a gradual exponential decay (although there is a gap in the coverage) followed by a plateau, then a faster fade towards quiescence with evidence for reflare. This outburst morphology is similar to outbursts of some other BHXBs. For example, optical exponential decays followed by a plateau and a rapid fade were seen in A0620–00 and XTE J1550–564 (Kuulkers 1998; Jain

et al. 2001), and prominent reflares were seen in GRO J0422+32 and GRS 1009–45 (Callanan et al. 1995; Chen et al. 1997).

XTE J1752–223 made a transition to the intermediate state and finally to the hard state during the period 2010 March 27–April 4 (MJD 55282–55295; Shaposhnikov et al. 2010). The transition is also visible by an increasing X-ray flux, especially in the *Swift* BAT hard X-ray light curve (Fig. 2, lower panel). In most BHXB outbursts this increase of hard X-ray flux is not significant below energies of ~ 10 keV (e.g. Dunn et al. 2010). In a few cases, like here for XTE J1752–223 (and e.g. the outbursts of XTE J1650–500 and XTE J1817–330; Dunn et al. 2010), the soft X-ray flux also increases over the soft to hard transition (see also Shaposhnikov et al. 2010; Stiele et al. 2011), presumably due to a relatively brighter power-law component compared to the disc in these outbursts.

An OIR brightening and reddening is seen after the soft-to-hard transition in some BHXBs, indicative of an increasing synchrotron jet contribution (e.g. Buxton & Bailyn 2004; Coriat et al. 2009; Russell et al. 2010a). No increase in flux is seen in our optical light curves either during the transition (which implies that the X-ray power-law component does not extrapolate and contribute much to the optical flux) or after the transition (as we may expect for a jet). Instead, some time after the transition to the hard state is complete there is a plateau, where the optical flux remained at approximately a constant level. In Section 3.3 we assess whether this plateau could be related to the jet. A NIR brightening was reported around the same time of the state transition itself, which may be due to the jet (Kalemci et al. 2011). On the hard state rise, the jet may have made a strong contribution in the optical (C11).

The optical counterpart continued to fade slowly until around 2010 May 13 (MJD 55329), dropping by ~ 0.8 mag in 2 months, with evidence for variability on day time-scales (changes up to ~ 0.4 mag in a few days). XTE J1752–223 remained at an approximately constant flux level (the plateau) for the next 1.5 months until ~ 2010 June 27, then faded rapidly by ~ 1.5 – 2 mag over the next 14–18 d to $R = 19.9 \pm 0.1$ by 2010 July 11 (MJD 55388) and $R = 20.0 \pm 0.1$, $V = 21.4 \pm 0.3$ by 2010 July 15 (MJD 55392). The NIR detections with WHT/LIRIS, and the mid-IR non-detections with VLT/VISIR, were made just before and at the end of the rapid optical fade, respectively (Fig. 2). An episode of brightening in 2010 August (also plotted in Fig. 2) was reported by Corral-Santana et al. (2010).

The state transitions are clear in the X-ray light curve (see also C11; Shaposhnikov et al. 2010; Stiele et al. 2011) as a prominent fade and subsequent brightening of the *Swift* BAT hard X-ray flux. Near the end of the outburst a reflare is seen in the *RXTE* PCA light curve lasting ~ 30 – 40 d, just before both optical and X-ray rapidly dropped towards quiescence.

For 28 days over the soft-to-hard transition both UVOT and FT were monitoring the optical counterpart. While both light curves show a slight fading during this time, there is a difference of ~ 0.7 mag between FT V band and UVOT v band on the same dates, which is too large to be accounted for by differences between the Bessell and UVOT photometric systems (Poole et al. 2008). There are at least six stars located < 4 arcsec from XTE J1752–223 (Fig. 1), which are unresolved in the UVOT images (C11), so it is very likely that these stars contaminated the UVOT light curve when the source faded, even though we used a 2.5 arcsec extraction radius to minimize such contamination. Contamination from nearby stars within the larger UVOT aperture probably accounts for the discrepancy. Comparing the FT and UVOT magnitudes of star B we find that they differ by only 0.01 mag in B (b) and 0.04 mag in V

(v) when using the same size aperture (4 arcsec), so the discrepancy cannot be due to a systematic calibration issue.

3.2 Spectral energy distributions

In order to assess the disc and jet contributions to the OIR (C11; Kalemci et al. 2011) and mid-IR fluxes, we construct SEDs from various stages of the outburst (Fig. 3). To derive the dereddened fluxes we adopt an interstellar absorption of $n_H = (5.13 \pm 0.03) \times 10^{21} \text{ cm}^{-2}$ (C11) which corresponds to an optical extinction (Predehl & Schmitt 1995) of $A_V \sim 2.87$ (we use the extinction law of Cardelli, Clayton & Mathis 1989).

Radio, NIR and optical observations were taken within 5 days of each other, soon after the discovery of the outburst, when XTE J1752–223 was in a bright, hard state (Brocksopp et al. 2009; Torres et al. 2009b; C11; Miller-Jones et al. 2011). We plot these data in Fig. 3 (SED [1]; black crosses). The OIR emission is consistent with a power law of spectral index $\alpha_{\text{OIR}} \sim +1.0$ from B to K band, a blue spectrum indicative of a blackbody, very likely the outer regions of the (possibly irradiated) accretion disc (e.g. Hynes 2005). The extrapolation of the flat spectrum seen at radio frequencies ($\alpha_{\text{radio}} \sim 0$) is close to the K -band flux density, so the jet is unlikely to contribute much of the emission above this frequency. An optical SED from one date soon after, in the hard state (using data from C11; Miller-Jones et al. 2011), appears slightly bluer (SED [2]; purple open squares). An optical SED from the soft state (FT V , R , i' bands) is also blue; $\alpha_{\text{OIR}} \sim 0.5$ (SED [3]; orange diamonds in Fig. 3).

During the hard state outburst decay, radio data were acquired (Miller-Jones et al. 2011) and two detections were within a few days of FT optical observations. These SEDs are shown as grey open triangles and black open squares in Fig. 3 ([4] and [5]). The observed radio-to-optical (i' -band) spectral index for both is $\alpha = +0.1$, slightly inverted, and typical of hard state BHXBs (Fender 2001; Russell et al. 2006).

The NIR WHT data were acquired within 1.5 days of FT B , V , R , i' data during the hard state decay; this SED ([6]; green solid squares in Fig. 3) is fainter and redder ($\alpha_{\text{OIR}} \sim -0.2$ between B and K_S bands) than the SED on the hard state rise, as may be expected as the outer disc cools and reddens. However, the OIR SED is too flat

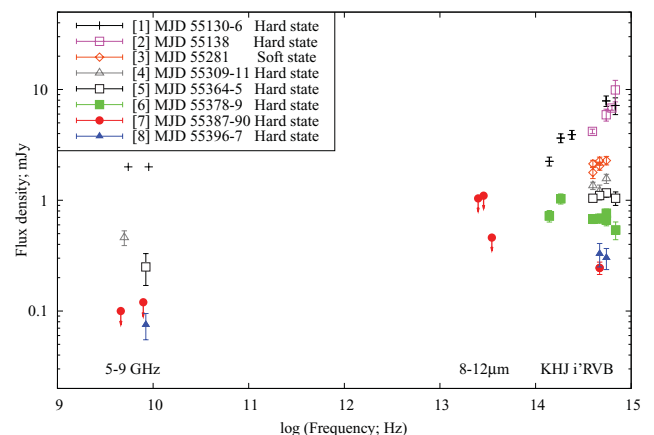


Figure 3. Broad-band, unabsorbed radio-to-optical SEDs at various stages of the outburst (see text for details). The radio data ($\nu < 10^{10}$ Hz) were taken with the ATCA (black crosses; Brocksopp et al. 2009), VLBA (grey open triangles and black open squares; Miller-Jones et al. 2011) and EVLA (red solid circles and blue solid triangles; Jonker et al., in preparation).

for an outer disc, and a peculiar excess in H band is hard to account for. The SED may originate in the jet (as also suggested by Kalemci et al. 2011, from NIR data taken during the soft-to-hard transition) or perhaps partly from the companion star. If the jet is dominating the NIR excess, the H -band flux is too bright for a standard flat or optically thin synchrotron spectrum. However, similar SEDs have been reported (e.g. Lewis et al. 2010) and the spectral shape of the NIR excess could be explained by the jet base (Markoff, Nowak & Wilms 2005) or a cooling feature in the jet (Pe’er & Casella 2009). SED [1] also shows a similar $H - K_S$ colour, but that SED was acquired from a different telescope so it is unlikely to be a common calibration issue (and the effect of an incorrect extinction cannot account for the spectral shape here in the IR). The exposure times of the non-simultaneous H and K_S observations were a few minutes, so short-term variability may dominate the fluxes (OIR variability can be high on these time-scales; Casella et al. 2010; Gandhi et al. 2010) and confuse this SED. If the companion dominates, the K_S , V and B absolute magnitudes (at ~ 3.5 kpc; Shaposhnikov et al. 2010) and $H - K_S$ colour are consistent with an F star (Ruelas-Mayorga 1991). Since the star is suggested to be later than G5V (Section 3.8), and the optical flux continued to fade, the star probably did not dominate the NIR here. This SED is revisited in Sections 3.3 and 3.6.

In a paper in preparation, Jonker et al. report radio monitoring with the EVLA around the time of the VLT/VISIR observations: $<100 \mu\text{Jy}$ at 4.6 GHz and $<120 \mu\text{Jy}$ at 7.9 GHz on 2010 July 13 (MJD 55390.2; 3σ upper limits), and $75 \pm 20 \mu\text{Jy}$ at 8.4 GHz on 2010 July 20 (MJD 55397.2). These are shown in SEDs [7] and [8] in Fig. 3. The array was in its most compact ‘D’ configuration for all observations, and the angular resolution was ~ 7.5 arcsec at 8.4 GHz, which is insufficient to distinguish the core jet from downstream shocks. The whole bandwidth at a single frequency was required to detect XTE J1752–223, so spectral constraints were not possible. Downstream jet shocks (rather than a core jet) like those seen at earlier times in the outburst (Yang et al. 2010; Miller-Jones et al. 2011) therefore cannot be empirically ruled out. However, the deceleration of the jet components was already observed up until MJD 55253 (Yang et al. 2010) and these components continued to fade, and the core jet returned and brightened over the soft to hard transition around MJD 55311, becoming brighter than the previously launched ejecta (Yang et al. 2011). Further external shocks are unlikely since the bulk of the energy had already been dissipated in the first set of decelerating shocks, so it is likely that the radio emission seen by the EVLA is dominated by the re-ignited core jet.

An optical R -band detection with FT was made 0.2 d after the VLT/VISIR observation on 2010 July 11. Although the latter radio detection was 9 days after our mid-IR observations, FT V , R , i' observations within 24 hours of the radio detection confirm the source was at a similar optical flux level on these two dates (SEDs [7] and [8]; this is after the rapid optical fade between MJD 55379 and 55388). In the hard state, the radio and optical luminosities are known to be correlated and powered by the mass accretion rate (e.g. Fender 2001; Gallo et al. 2003; Homan et al. 2005; Russell et al. 2006). Therefore, the radio flux on the date of the VISIR observations is likely to be similar to that measured on 2010 July 20. The radio detection and our mid-IR upper limits infer a jet spectral index from radio to mid-IR of $\alpha_{\text{radio-mid-IR}} < 0.25$. The radio-to-optical (R -band) spectral index is $\alpha_{\text{radio-optical}} = 0.11 \pm 0.04$.

Broad-band spectra of BHXB jets at low luminosities have only been constrained in a few systems, so these measurements pro-

vide a useful addition (the radio to mid-IR 8- μm spectral index of A0620–00 in quiescence is $\alpha \sim 0.22$; Gallo et al. 2007). From our SEDs of XTE J1752–223 we can conclude that either the optically thick jet spectrum is not highly inverted ($\alpha < 0.25$) or the jet break between optically thick and optically thin synchrotron lies at longer wavelengths than 8.6 μm . At a putative distance of 3.5 ± 0.4 kpc (Shaposhnikov et al. 2010), the radio detection would correspond to an X-ray luminosity of $\sim 2 \times 10^{32} \text{ erg s}^{-1}$ (2–10 keV) if it were to follow the X-ray–radio correlation of hard state BHXBs (Gallo et al. 2003). This would correspond to a possible bolometric luminosity (see Migliari & Fender 2006) of $\sim 10^{-6} L_{\text{Edd}}$ at this time (adopting a BH mass of $\sim 10 M_{\odot}$; Shaposhnikov et al. 2010). However, it is worth noting that XTE J1752–223 is a radio-quiet BHXB (a number of radio-quiet BHXBs have now been reported; e.g. Calvelo et al. 2010; Coriat et al. 2011; Soleri & Fender 2011). The 2 mJy radio detection in the initial hard state (Brocksopp et al. 2009) on MJD 55136 is around one order of magnitude too faint at this X-ray flux (which we take from Fig. 2) to lie on the canonical radio–X-ray correlation of BHXBs.

3.3 Separating the disc and jet emission

An additional method to assess a possible synchrotron jet contribution in the hard state decay of the outburst was presented in Russell et al. (2010a). In the BHXB XTE J1550–564 the OIR light curve was described by an exponential decay in the soft state, and the extrapolation of this decay was subtracted from the hard state light curve to estimate the excess light, which was found to be from the jet. We see in Fig. 4(a) that the optical light curves of XTE J1752–223 may also be approximated by an exponential decay and the aforementioned plateau appears to be an excess above this decay.

We fit the optical FT light curves before MJD 55321 with an exponential decay, and estimate the excess in the hard state decline (Fig. 4a). There are fewer data in B band and the flux of the excess in that band is hard to estimate due to the uncertainty in the slope of the fit. In V , R and i' bands there is scatter of ~ 0.2 mJy around the fit before MJD 55321 which appears, in most cases to be uncorrelated between the bands (Fig. 4b). A clear excess above the fit is apparent after MJD ~ 55340 in all three filters, peaking at ~ 0.5 mJy and lasting ~ 30 – 40 d. Near the end of the outburst, after MJD ~ 55384 the data drop below the extrapolation of the fit. The exponential decay is likely to be due to the fading accretion disc, which has a blue SED, as measured in the soft state (see Section 3.2). The excess may be jet emission, which is expected to make a contribution in the hard state but not in the soft state. The disc component eventually fades faster than the extrapolation of the exponential decay since the data at late times appear to lie below this extrapolation. This may result from a decreasing outer disc temperature and/or a lack of irradiating photons ionizing the disc at these low luminosities. The latter is consistent with the X-ray light curve, which drops rapidly at this time (Fig. 1).

Remarkably, the morphology of the optical light curve of the excess is very similar to the simultaneous X-ray 3–20 keV light curve (shown overplotted in Fig. 4b). The X-ray flare is simultaneous with the optical excess, and it is immediately apparent that the two are correlated (see also Section 3.4), the optical excess and the X-ray count rate both brightening then fading together (Fig. 4b). The spectral index of the optical excess seems to be redder than the disc component (see Section 3.2), and could be variable (Fig. 4c). However, the three optical filters only cover 0.14 orders of magnitude in frequency and any short-term variability could

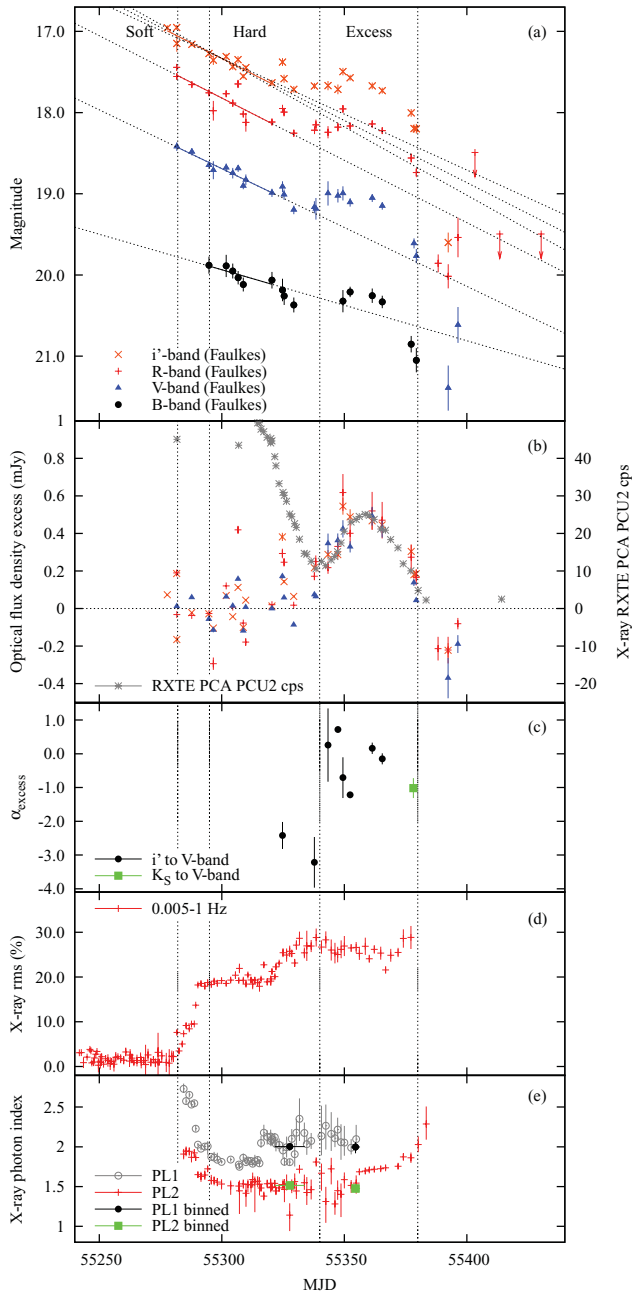


Figure 4. (a) Exponential decays fitted to the optical (FT) light curves up until MJD 55321. The errors on the slope of the fit are shown for i' band. (b) The residuals (data minus fit) assuming an extrapolation of these fits to later times, and the X-ray *RXTE* light curve overplotted. Errors on the residuals are propagated from the fit slope errors and the observed flux errors. The morphology of the observed X-ray light curve is remarkably similar to that of the optical excess light curve (see text). (c) Spectral index α of the optical excess, estimated by fitting the individual V , R , i' SEDs. (d) The X-ray rms variability in the frequency range 0.005–1 Hz. (e) The estimated X-ray power-law photon index $\Gamma = 1 - \alpha$. For most observations a broken power law is fitted; both photon indices are shown. The vertical lines in all panels indicate the soft to hard state transition and the X-ray flare associated with the optical excess.

dominate the individual SEDs since observations in the three wavebands were not strictly simultaneous. The average spectral index of the excess during the main flare, taking into account errors, is $\alpha = -0.16 \pm 0.29$. This slightly favours a flat spectrum, self-absorbed jet

($\alpha \sim 0.0$, as is expected between radio and IR) rather than an optically thin jet ($\alpha \sim -0.6$).

Just before the main flare, when the excess is significant its spectral index is redder; $\alpha = -3 \pm 1$. The spectral index of the OIR jet in XTE J1550–564 was found to start quite red, $\alpha \sim -1.5$, then smoothly increase until it levelled off at $\alpha \sim -0.6$ in the declining hard state (Russell et al. 2010a). We find evidence for this to also be the case for XTE J1752–223 – the spectral index of the excess increases as it brightens. There is also evidence for a change of spectral index of the excess near the end of the flare. On MJD 55378, the NIR detections (Section 2.3) are around ~ 1 mJy (Fig. 3). If the exponentially decaying disc has a spectral index $\alpha \sim +1$ (Section 3.2), we estimate the disc flux would be around ~ 20 –30 per cent of the observed NIR flux. This fraction will be lower if the disc does indeed fade faster than the exponential decay at these late times. Alternatively, this fraction could be higher if the disc reddens as it fades (e.g. Maitra & Bailyn 2008). Since irradiation is unlikely to be important (see above), we may expect a spectral index as low as $\alpha = +1/3$ for a standard disc. As a conservative estimate, we impose a limit $\alpha \geq 0.0$ for the disc and obtain an excess (non-disc) NIR flux of 0.75 ± 0.39 mJy in H band and 0.44 ± 0.37 mJy in K_S band. This yields a power-law fit to the optical and NIR SED near the end of the flare of $\alpha = -1.0 \pm 0.3$ (shown in green in Fig. 4c), which appears to be redder than the average optical spectral index during the flare, $\alpha = -0.16 \pm 0.29$. Instead, the spectral index is more consistent with optically thin synchrotron, so the jet break may shift to lower frequencies near the end of the flare, possibly indicative of the jet losing power. This spectral index is also too red and/or too bright to be explained by an F- or G-type star, so the companion cannot provide a strong contribution.

The optical flare is unlikely to be due to irradiation on the surface of the disc or the companion star. The mean spectral index of the flare is much redder than the Rayleigh–Jeans tail of the blackbody due to irradiation, for which we expect $\alpha = +2$. The peak of the blackbody due to irradiation would have to lie in the optical or at lower frequencies to explain the data. If this were the case, the temperature of such a blackbody would be $T_{\text{irr}} \leq 5300$ K. The optical luminosity ($V + R + i'$) of the excess when it is brightest is $(1.08 \pm 0.08) \times 10^{34}$ erg s $^{-1}$ and the X-ray (3–20 keV) luminosity from *RXTE* PCA at that time is $(3.61 \pm 0.04) \times 10^{35}$ erg s $^{-1}$ (at a distance of 3.5 kpc; Shaposhnikov et al. 2010), so ≥ 3 per cent of the X-ray luminosity would have to be intercepted by the disc and efficiently reprocessed in the optical regime. This fraction is probably unphysically high; in other BHXBs an irradiation fraction has been measured, and is generally ~ 0.3 per cent or less (Gierliński, Done & Page 2009; Chiang et al. 2010; Zurita Heras et al. 2011). Irradiation therefore cannot easily explain the optical flare. The spectral index of the flare, and its appearance in the decaying hard state (similar to other BHXBs, like XTE J1550–564, GX 339–4 and 4U 1543–47; Jain et al. 2001; Buxton & Bailyn 2004; Coriat et al. 2009; Russell et al. 2010a) favour a jet origin. In Section 3.5 we assess the likelihood that the jet also produces the simultaneous X-ray flare.

3.4 Optical–X-ray correlations

It was shown that the jet flare in the decaying hard state has a similar light-curve morphology to a simultaneous X-ray flare (Section 3.3; Fig. 4b). In Fig. 5 we show the optical excess flux (the flare) versus the X-ray count rate. Though the optical excess flux is not significantly correlated with the X-ray count rate (the Spearman rank coefficient of 0.79 ± 0.11 implies a significance

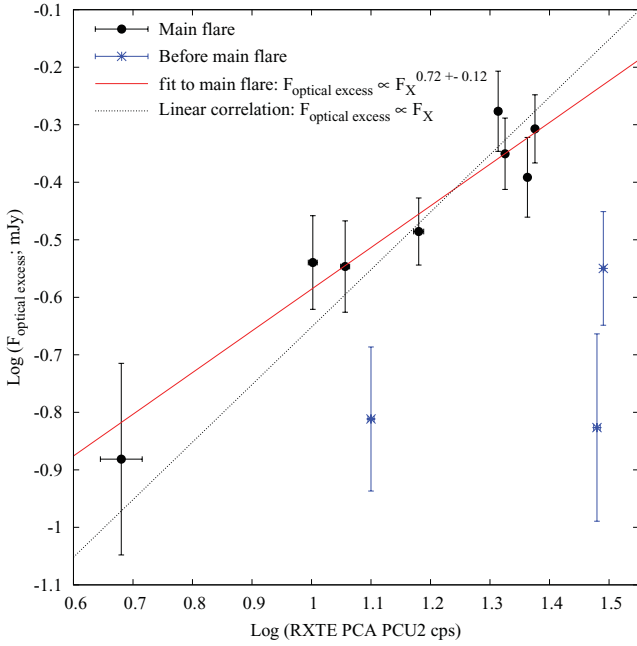


Figure 5. X-ray counts (3–20 keV) versus optical excess jet emission (defined as the excess above the optical exponential decay in the light curve). The average flux density of the excess from V , R and i' bands is used. The power-law fit is to the main flare seen in the optical excess and in the X-ray band, and excludes the data before this flare (before MJD 55340).

of $1.1 \pm 0.3\sigma$ for the eight data points), it can be fitted with the relation $F_{v,\text{optical excess}} \propto F_X^{0.72 \pm 0.12}$ (Fig. 5). The apparent correlation holds in the main flare observed after MJD 55340. Before this date the X-ray is still fading during the main part of the outburst, and the optical excess is not well correlated with X-ray.

If the optical excess originates in jet emission with a flat spectrum (as tentatively suggested above) in the self-absorbed regime that extends to radio frequencies, we would expect it to be correlated with the X-ray flux with a relation $F_{v,\text{optical, jet}} \propto F_X^{0.7}$ (Falcke & Biermann 1995; Fender 2001; Markoff et al. 2003; Gallo et al. 2003, 2006; Heinz & Sunyaev 2003; Körding et al. 2006). This relation is expected both if the X-ray emission originates in the inflow, or if it is synchrotron emission from the outflowing jet. The observed relation of $F_{v,\text{optical excess}} \propto F_X^{0.72 \pm 0.12}$ is closer to this value than two alternatives: $F_{v,\text{optical excess}} \propto F_X$, which is expected in the case of optically thin synchrotron in both optical and X-ray regimes, and $F_{v,\text{optical excess}} \propto F_X^{0.5}$, as may be expected from an accretion disc (both the underlying viscous disc and the irradiated disc; van Paradijs & McClintock 1994; Russell et al. 2006). We caution that the slope of the correlation is sensitive to the flux of the optical excess at low levels at the end of the flare, which assumes the extrapolation of the exponential decay in Fig. 4 is valid.

The total observed optical emission is shown to correlate with the X-ray emission (Fig. 6). Here we extend the optical–X-ray correlations seen by C11 (using *Swift* XRT and UVOT data) to lower luminosities with the FT data. The optical flux in each filter is correlated with the X-ray flux with a relation $F_{v,\text{optical}} \propto F_X^{0.2-0.5}$. There is a discrepancy between the UVOT and FT optical fluxes; see Section 3.1). The shallowest relation is observed in the redder bands; $F_{v,\text{optical}} \propto F_X^{0.24 \pm 0.04}$ in both R and i' bands. The steepest relation from FT data is seen in B band; $F_{v,\text{optical}} \propto F_X^{0.35 \pm 0.03}$ and the V band lies between this and the redder bands. The UVOT relations, which were mainly during the soft state, are steeper; $F_{v,\text{optical}} \propto F_X^{0.4-0.5}$.

These relations are generally shallower than those expected from an irradiated disc; $F_{v,\text{optical}} \propto F_X^{0.5}$ (van Paradijs & McClintock 1994). For a non-irradiated, viscously heated disc we expect correlation slopes on the order of what is observed, and shallower slopes for the redder bands, also as observed (Frank, King & Raine 2002; Russell et al. 2006). However, since the jet likely made a contribution in the fading hard state, this emission increased the optical flux, making the correlation appear shallower than if the disc alone was producing the emission. Subtracting the emission from the excess, we estimate correlations of $F_{v,V} \propto F_X^{0.39 \pm 0.05}$, $F_{v,R} \propto F_X^{0.40 \pm 0.06}$ and $F_{v,i'} \propto F_X^{0.42 \pm 0.06}$ for V , R and i' , respectively. These slopes are now marginally consistent with an irradiated disc, but scatter in the correlations is introduced because while the optical (non-excess) disc was supposedly fading, the X-ray flux was increasing then fading in the aforementioned flare. We can therefore make no firm conclusions from the correlations in Fig. 6, except that the optical emission most likely originates in the accretion disc.

3.5 Constraints on the jet spectral break and the origin of the X-ray flare

The PCA X-ray spectra are well fitted by a broken power law in the fading hard state (Section 2.5; Fig. 4e) except after MJD 55355, when a single power law provides a better approximation (the counts are also low in most of these late observations). The two power laws have photon indices $\Gamma_1 \sim 2.0 \pm 0.2$ ($\alpha_1 \sim -1.0 \pm 0.2$) and $\Gamma_2 \sim 1.5 \pm 0.2$ ($\alpha_2 \sim -0.5 \pm 0.2$) in the majority of the hard state (see also Stiele et al. 2011). The spectral index between the optical excess and the X-ray 3–20 keV flux is $\alpha = -0.51$ at the peak of the flare (around MJD ~ 55360). For optically thin synchrotron emission we expect $-0.8 \lesssim \alpha \lesssim -0.5$ depending on the lepton energy distribution in the jet. If both X-ray flux and optical excess originate in the jet, the measured spectral indices at optical ($\alpha = -0.16 \pm 0.29$) and X-ray energies and between the two ($\alpha = -0.51$) suggest an optically thick-to-thin spectral break in the UV, blueward of V band. The optical spectral index is poorly constrained, however, and appears to be optically thin near the end of the flare (Section 3.3). Alternatively, the X-ray flux may not be dominated by the jet emission, and the high-energy cut-off in the jet spectrum may lie below 3 keV, outside the *RXTE* range.

The synchrotron jet cannot produce the majority of the X-ray flux before MJD ~ 55340 (before the X-ray flare) because the optical jet emission is faint before that date, whereas the X-ray flux is bright (Fig. 4b). Instead, the X-ray power law probably originates in the Compton upscattering of soft photons on hot electrons in the corona before MJD ~ 55340 . After this date, the X-ray flare is contemporaneous with the optical jet flare, and a separate power law from the jet may explain the 40-day flare, becoming brighter than the corona power law.

We see from Figs 4(d) and (e) that no abrupt changes in the X-ray rms variability amplitude, nor the X-ray spectrum are seen around MJD 55340. There is a clear increase in the rms variability over the state transition, well before the jet flare. There is an intriguing jump in the rms, from ~ 20 to 26 per cent around MJD 55325, during the hard state decay but before the flare. There are some apparent variations of the power law indices but no clear change around MJD 55340. There is also no obvious change in the energy of the break between the two power laws, which appears to be fitted well using a break energy of ~ 6 –10 keV before and during the flare.

We also binned the PCA data over a longer time period to gain signal-to-noise ratio and decrease errors in the fit parameters. We combined data in the intervals MJD 55321–55334 (before the flare)

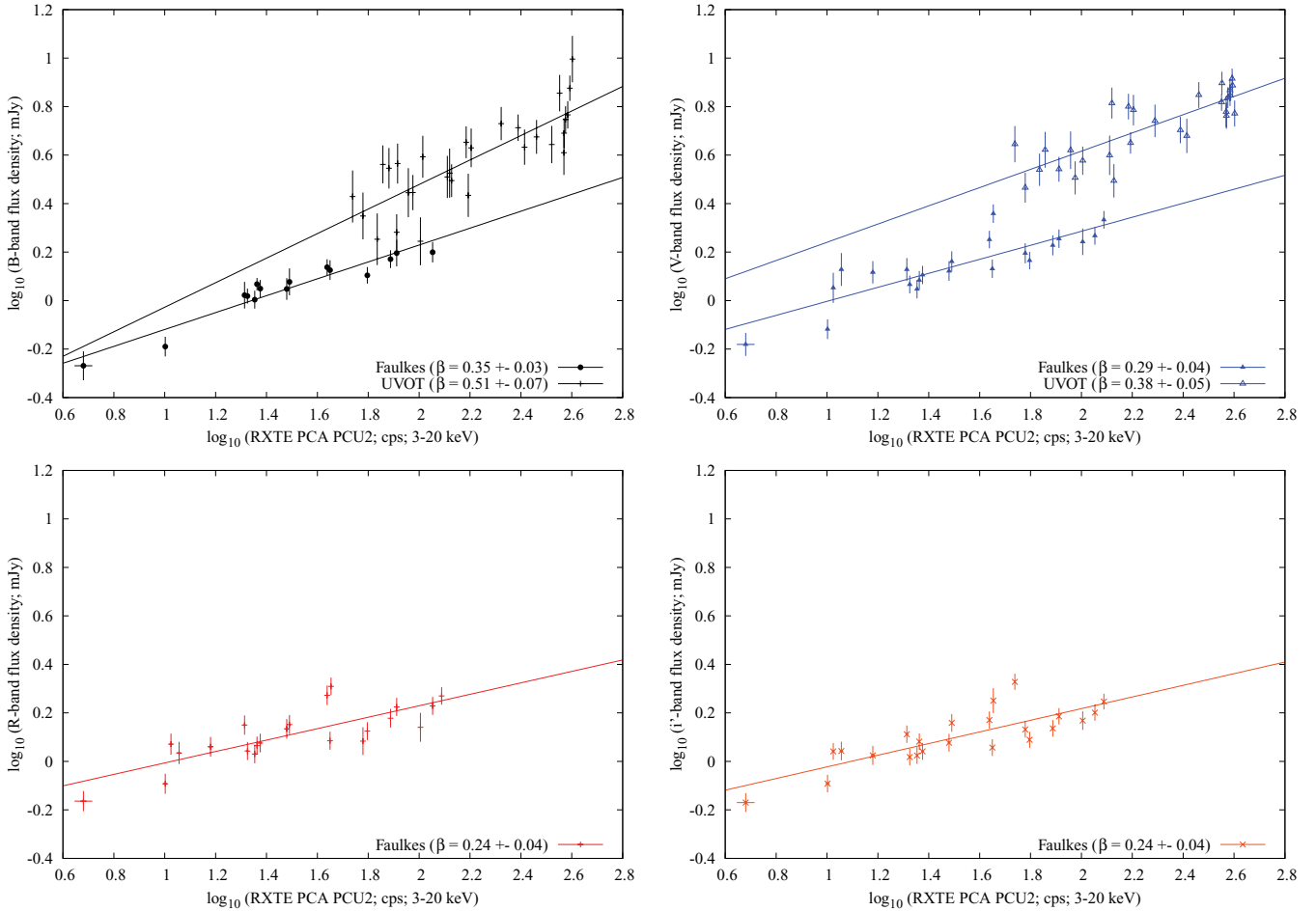


Figure 6. X-ray versus optical (total, disc plus jet) count rates for the four optical wavebands. For comparison the same scale is used for all plots. The UVOT data are from the first half of the outburst, the Faulkes data are from the second half (there is some overlap).

and MJD 55352–55356 (during the flare, at similar flux levels). The resulting power-law fits (shown as black circles and green squares in Fig. 4e) are very similar; $\Gamma_1 = 2.00^{+0.04}_{-0.05}$, $\Gamma_2 = 1.51^{+0.02}_{-0.03}$; break energy ~ 6.5 keV for the first interval, and $\Gamma_1 = 2.00^{+0.06}_{-0.05}$, $\Gamma_2 = 1.48^{+0.06}_{-0.05}$, break energy ~ 6.6 keV for the second interval. Either the corona and jet both have very similar X-ray properties, or the X-ray corona and optical jet brightened and faded simultaneously.

It was shown by Casella et al. (2010) that IR light from the jet of GX 339–4 was positively correlated with the X-ray flux, with an IR lag of 100 ms with respect to X-ray (from simultaneous observations made in the hard state). Perturbations in the accretion flow are likely to affect the jet variability, so it is not surprising that the X-ray properties of the corona (if the X-rays originate in the corona) and jet are similar. If the observational differences between jet and corona are subtle, it is difficult to distinguish between them without multiwavelength data. One way to differentiate between the two may be X-ray polarization. The jet will be strongly polarized if the poloidal magnetic field in the emitting region is fairly ordered (see Section 3.7). Conversely, the corona is likely to be more chaotic, with no strong net magnetic field orientation.

In the X-ray jet scenario, the appearance of the jet in the fading hard state is actually more prominent at X-ray energies than it was for XTE J1550–564 because the X-ray flux is seen as a flare, increasing and decreasing in intensity. With XTE J1550–564, the

flare was visible as an excess above the decaying corona component. However, in XTE J1550–564 the case for the jet dominating the X-ray luminosity was strengthened by the linear correlation between OIR jet and X-ray flux, which favoured a single power law producing the whole OIR–X-ray spectrum. Here, the optical–X-ray data of XTE J1752–223 favour a broken power law. Whatever the origin of the X-ray flare, it correlates well with the jet emitting in the optical.

Any constraint on the position of the optically thick-to-thin jet spectral break would benefit our understanding of jet physics, since the break directly relates to the magnetic field in the flow and the total radiative jet power (Migliari et al. 2006; Chaty, Dubus & Raichoor 2011). A jet spectral break in the UV would imply a stronger jet than commonly assumed in BHXBs; constraints currently place the jet break in the IR (Migliari et al. 2010; Gandhi et al. 2011; Rahoui et al. 2011), however, breaks in the optical are favoured when modelling the broad-band SEDs of some BHXBs (e.g. Migliari et al. 2007). Robust estimates of the total luminosity of the jet are also difficult to achieve due to the uncertain position of the high-energy cooling break in the jet spectrum. Here, the jet break in XTE J1752–223 resides in the IR at the end of the jet flare since we see optically thin emission in the OIR. Before then, the break is unconstrained but weak evidence suggests it moves to spectral regimes as high as optical or UV.

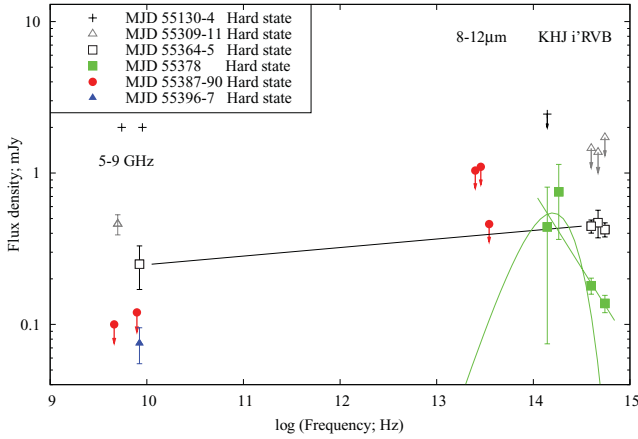


Figure 7. Broad-band, unabsorbed radio-to-optical SEDs of the isolated jet component (see text for details and assumptions). Symbols are the same as those used in Fig. 3.

3.6 Spectral energy distributions of the jet

In Section 3.3 we showed that the optical flare was due to jet emission, and we isolated the jet and disc emission during the hard state outburst decay. Since radio observations were made during this time (Brocksopp et al. 2009; Yang et al. 2010; Miller-Jones et al. 2011), we can construct SEDs of the jet component from radio to optical, which are presented in Fig. 7. The jet was detected at radio frequencies in the hard state rise before the state transitions, but not unambiguously at OIR frequencies (black crosses in Fig. 7); the radio to NIR jet spectral index is $\alpha \leq +0.02$ at this time.

One radio detection of 0.25 ± 0.08 mJy at 8.4 GHz was made near the peak of the optical flare (Miller-Jones et al. 2011), and we constrain the radio-to-optical jet spectral index to be $\alpha = +0.05^{+0.05}_{-0.03}$ during the flare. The optical (i' - to V -band) spectral index of the flare is $\alpha = -0.16 \pm 0.29$ (Section 3.3), consistent with the radio-to-optical spectrum within errors; further evidence that the optically thick (self-absorbed) jet spectrum may extend even into the UV. The extrapolation of the X-ray power law to lower frequencies also favours a jet spectral break in the UV. However, the NIR to optical spectral index of the jet near the end of the flare is $\alpha = -1.0 \pm 0.3$ (green power law in Fig. 7), implying a dramatic change in the jet spectrum as the flare fades. A blackbody with a temperature of 2700 K (if main sequence this would be an M class star) is shown in the SED (green curve in Fig. 7) that may approximate the NIR–optical non-disc emission, but the companion cannot account for a large fraction of the NIR emission (Section 3.3). Instead, the spectral index of $\alpha = -1.0 \pm 0.3$ is consistent with optically thin synchrotron emission.

3.7 Polarization of the jet

Optically thin synchrotron emission from X-ray binary jets can be polarized, depending on the magnetic field configuration in the emitting region. Observationally, radio emission can be linearly polarized by tens of per cent, possibly from the formation of shocks downstream in the jets (e.g. Fender et al. 2002; Brocksopp et al. 2007). The compact, core jet emits optically thin synchrotron emission at OIR frequencies during hard states, and this may be polarized at a level of a few per cent (as found in some XBs; e.g. Shahbaz et al. 2008; Russell & Fender 2008). The SEDs in Fig. 7 suggest this optically thin jet emission dominates the IR emission during a time in the hard state in which we measure a linear polariza-

tion of $P_H < 30$ per cent in both H and K_S bands. This implies the magnetic field near the base of the jet is at least moderately tangled (a highly ordered field would give up to 70 per cent polarization for optically thin synchrotron emission; Rybicki & Lightman 1979; Björnsson & Blumenthal 1982). This is consistent with the fairly tangled (and sometimes variable) magnetic fields reported in other X-ray binaries from OIR linear polarization measurements (Shahbaz et al. 2008; Russell & Fender 2008; Russell et al. 2011a) but differs from the highly ordered magnetic field recently claimed from γ -ray polarization of Cygnus X-1 (Laurent et al. 2011).

3.8 Orbital period constraints

The quiescent magnitudes of XTE J1752–223 are $B \geq 20.6$, $V \geq 21.1$, $R \geq 19.5$, $i' \geq 19.2$. Using the empirical relation between V -band outburst amplitude (which is >4.1 mag) and orbital period P of Shahbaz & Kuulkers (1998; which was found to exist for $P < 1$ d), we estimate the orbital period of XTE J1752–223 is likely to be <22.1 h (unless the system has a high inclination to the line of sight, in which case the projected surface area of the disc may be smaller so the disc would appear fainter). At 3.5 ± 0.4 kpc (as suggested by Shaposhnikov et al. 2010), the quiescent absolute magnitude is $M_V > 5.3$, which implies that the donor star may be later than G5V (Cox 2000), also consistent with a short orbital period. Alternatively the system may harbour a faint subgiant companion, as suggested for other BHXBs (King 1993; Muñoz-Darias, Casares & Martínez-Pais 2008). We caution that the spectral type estimate assumes the distance, orbital period and extinction are all correct within errors. In addition, according to Lasota (2008), the X-ray luminosity of XTE J1752–223 is expected to be low in quiescence ($L_X \leq 3 \times 10^{31}$ erg s $^{-1}$; 0.5–10 keV) given its short orbital period.

We also remark that if the (possibly irradiated) companion star makes any contribution to the optical emission during the outburst decay, it could introduce periodic variability on a time-scale of the orbital period. We cannot test for a period from these data, however, due to the complexity of the long-term variability trends, uncertain rapid variability from the irradiated disc and/or the jet, and signal-to-noise ratio limitations.

4 SUMMARY

We have presented multiwavelength observations of the BHXB XTE J1752–223 during its 2009–10 outburst. Monitoring of the outburst decay in several optical filters revealed a slowly fading optical counterpart, which at late times dropped more rapidly towards quiescence. We are able to separate the disc and jet emission during the hard state decay. A blue optical spectrum, exponentially decaying in four filters can be described by a (possibly irradiated) accretion disc.

A redder 40-day optical flare is found to be most likely associated with synchrotron emission from the jet, and is contemporaneous with an X-ray flare of very similar light-curve morphology, suggesting a common origin. Either the X-ray flare also originates in the jet, or the corona and jet are closely correlated during the flare. If the jet produces the X-ray flare, the jet and corona both have close to identical X-ray timing and spectral properties.

We also present the first mid-IR observations and the first NIR polarimetry of XTE J1752–223, near the end of the jet flare. The NIR flux is not strongly linearly polarized (we measure <30 per cent). If the synchrotron emission is optically thin (as implied by the SEDs), this suggests a magnetic field that is not highly ordered in the inner regions of the jet close to the black hole (in the optically

thick regime the polarization would be reduced). The companion star may make a low-level contribution to the NIR flux. The radio-to-optical jet spectrum is approximately flat. The jet break between optically thick and optically thin synchrotron emission resides in the IR near the end of the flare, but there is some evidence to suggest this break may shift to higher frequencies (optical or UV) at the peak of the jet flare (higher frequencies than usually found). This may result from a changing jet power, that increases then decreases as the jet brightens and fades.

The quiescent magnitudes of the optical counterpart are $B \geq 20.6$, $V \geq 21.1$, $R \geq 19.5$, $i' \geq 19.2$. From the optical outburst amplitude we estimate a likely orbital period of < 22.1 h.

ACKNOWLEDGMENTS

DMR would like to thank Mario van den Ancker at ESO for help with the preparation of VLT/VISIR observations, and Sam Rix, Ovidiu Vaduvescu and ING staff for their support at the WHT, in particular for extensive help with the LIRIS polarimetry mode. We thank the anonymous referee for suggesting additional analysis that proved very useful. *Swift*/BAT transient monitor results are provided by the *Swift*/BAT team. The Faulkes Telescopes (North and South) are maintained and operated by Las Cumbres Observatory Global Telescope Network. DMR and SM acknowledge support from a Netherlands Organization for Scientific Research (NWO) Veni and Vidi Fellowship, respectively. PAC is supported by the Centre National d'Etudes Spatiales (CNES), France through MINE: the Multiwavelength *INTEGRAL* Network. FL acknowledges support from the Dill Faulkes Educational Trust. TB acknowledges support from ASI through contract ASI/INAF I/009/10/0. PC acknowledges funding via a EU Marie Curie Intra-European Fellowship under contract no. 2009-237722. The research leading to these results has received funding from the European Community's Seventh Framework Programme (FP7/2007-2013) under grant agreement number ITN 215212 'Black Hole Universe'.

REFERENCES

- Barrena R., Acosta-Pulido J. A., Manchado A., 2008, in Kaufer A., Kerber F., eds, *ESO Astrophysics Symposia, Proc. 'The 2007 ESO Instrument Calibration Workshop'*. Springer-Verlag, Berlin, p. 511
- Belloni T. M., 2010, in Belloni T., ed., *Lecture Notes in Physics Vol. 794, The Jet Paradigm – From Microquasars to Quasars*. Springer-Verlag, Berlin, p. 53
- Belloni T., Hasinger G., 1990, *A&A*, 230, 103
- Björnsson C. I., Blumenthal G. R., 1982, *ApJ*, 259, 805
- Breeveld A. A. et al., 2010, *MNRAS*, 406, 1687
- Brocksopp C., Miller-Jones J. C. A., Fender R. P., Stappers B. W., 2007, *MNRAS*, 378, 1111
- Brocksopp C., Corbel S., Tzioumis T., Fender R., 2009, *Astron. Telegram*, 2278
- Buxton M. M., Bailyn C. D., 2004, *ApJ*, 615, 880
- Callanan P. J. et al., 1995, *ApJ*, 441, 786
- Calvelo D. E. et al., 2010, *MNRAS*, 409, 839
- Cardelli J. A., Clayton G. C., Mathis J. S., 1989, *ApJ*, 345, 245
- Casella P. et al., 2010, *MNRAS*, 404, L21
- Chaty S., Dubus G., Raichoor A., 2011, *A&A*, 529, 3
- Chen W., Shrader C. R., Livio M., 1997, *ApJ*, 491, 312
- Chiang C. Y., Done C., Still M., Godet O., 2010, *MNRAS*, 403, 1102
- Corbel S., Fender R. P., 2002, *ApJ*, 573, L35
- Corbel S., Fender R. P., Tzioumis A. K., Nowak M., McIntyre V., Durouchoux P., Sood R., 2000, *A&A*, 359, 251
- Corbel S., Nowak M. A., Fender R. P., Tzioumis A. K., Markoff S., 2003, *A&A*, 400, 1007
- Coriat M., Corbel S., Buxton M. M., Bailyn C. D., Tomsick J. A., Körding E., Kalemci E., 2009, *MNRAS*, 400, 123
- Coriat M. et al., 2011, *MNRAS*, 414, 677
- Corral-Santana J. M., Casares J. P., Rodríguez-Gil P., 2010, *Astron. Telegram*, 2805
- Cox A. N., 2000, *Allen's Astrophysical Quantities*, 4th edn. Am. Inst. Phys., New York
- Curran P. A., Maccarone T. J., Casella P., Evans P. A., Landsman W., Krimm H. A., Brocksopp C., Still M., 2011, *MNRAS*, 410, 541 (C11)
- Dunn R. J. H., Fender R. P., Körding E. G., Belloni T., Cabanac C., 2010, *MNRAS*, 403, 61
- Eikenberry S. S., Matthews K., Morgan E. H., Remillard R. A., Nelson R. W., 1998, *ApJ*, 494, L61
- Erben T. et al., 2005, *Astron. Nachr.*, 326, 432
- Evans W. D., Belian R. D., Conner J. P., 1970, *ApJ*, 159, L57
- Falcke H., Biermann P. L., 1995, *A&A*, 293, 665
- Fender R. P., 2001, *MNRAS*, 322, 31
- Fender R. P., Rayner D., McCormick D. G., Muxlow T. W. B., Pooley G. G., Sauls R. J., Spencer R. E., 2002, *MNRAS*, 336, 39
- Fender R. P., Belloni T. M., Gallo E., 2004, *MNRAS*, 355, 1105
- Fender R. P., Homan J., Belloni T. M., 2009, *MNRAS*, 396, 1370
- Frank J., King A., Raine D. J., 2002, *Accretion Power in Astrophysics*, 3rd edn. Cambridge Univ. Press, Cambridge
- Gallo E., Fender R. P., Pooley G. G., 2003, *MNRAS*, 344, 60
- Gallo E. et al., 2006, *MNRAS*, 370, 1351
- Gallo E., Migliari S., Markoff S., Tomsick J. A., Bailyn C. D., Berta S., Fender R., Miller-Jones J. C. A., 2007, *ApJ*, 670, 600
- Gandhi P. et al., 2010, *MNRAS*, 407, 2166
- Gandhi P. et al., 2011, *ApJ*, 740, L13
- Gierliński M., Done C., Page K., 2009, *MNRAS*, 392, 1106
- Hannikainen D. C., Hunstead R. W., Campbell-Wilson D., Sood R. K., 1998, *A&A*, 337, 460
- Heinz S., Sunyaev R. A., 2003, *MNRAS*, 343, L59
- Homan J., Buxton M., Markoff S., Bailyn C. D., Nespoli E., Belloni T., 2005, *ApJ*, 624, 295
- Hynes R. I., 2005, *ApJ*, 623, 1026
- Jain R. K., Bailyn C. D., Orosz J. A., McClintock J. E., Remillard R. A., 2001, *ApJ*, 554, L181
- Jordi K., Grebel E. K., Ammon K., 2006, *A&A*, 460, 339
- Kalemci E., Tomsick J. A., Rothschild R. E., Pottschmidt K., Corbel S., Kaaret P., 2006, *ApJ*, 639, 340
- Kalemci E., Chun Y. Y., Dincer T., Buxton M., Tomsick J. A., Corbel S., Kaaret P., 2011, in Romero G., Sunyaev R., Bellon T., eds, *IAU Symp. 275. Jets at All Scales*. Cambridge Univ. Press, Cambridge, p. 299
- King A. R., 1993, *MNRAS*, 260, L5
- Körding E., Fender R. P., Migliari S., 2006, *MNRAS*, 369, 1451
- Kuulkers E., 1998, *New Astron. Rev.*, 42, 1
- Lasota J. P., 2008, *New Astron. Rev.*, 51, 752
- Laurent P., Rodríguez J., Wilms J., Cadolle Bel M., Pottschmidt K., Grinberg V., 2011, *Sci*, 332, 438
- Lewis F., Russell D. M., Fender R. P., Roche P., Clark S. J., 2008, in Proc. VII Microquasar Workshop: Microquasars and Beyond, Proceedings of Science. SISSA, Trieste, PoS(MQW7)069
- Lewis F. et al., 2010, *A&A*, 517, A72
- Maitra D., Bailyn C. D., 2008, *ApJ*, 688, 537
- Markoff S., Falcke H., Fender R., 2001, *A&A*, 372, L25
- Markoff S., Nowak M., Corbel S., Fender R., Falcke H., 2003, *A&A*, 397, 645
- Markoff S., Nowak M. A., Wilms J., 2005, *ApJ*, 635, 1203
- Markwardt C. B. et al., 2009, *Astron. Telegram*, 2258
- Migliari S., Fender R. P., 2006, *MNRAS*, 366, 79
- Migliari S., Tomsick J. A., Maccarone T. J., Gallo E., Fender R. P., Nelemans G., Russell D. M., 2006, *ApJ*, 643, L41
- Migliari S. et al., 2007, *ApJ*, 670, 610
- Migliari S. et al., 2010, *ApJ*, 710, 117

- Miller-Jones J. C. A., Jonker P. G., Ratti E., Torres M. A. P., Brocksopp C., Yang J., Morrell N., 2011, *MNRAS*, 415, 306
- Motch C., Ilovaisky S. A., Chevalier C., Angebault P., 1985, *Space Sci. Rev.*, 40, 219
- Motta S., Muñoz-Darias T., Belloni T., 2010, *MNRAS*, 408, 1796
- Muñoz-Darias T., Casares J., Martínez-Pais I. G., 2008, *MNRAS*, 385, 2205
- Muñoz-Darias T., Motta S., Pawar D., Belloni T. M., Campana S., Bhat-tacharya D., 2010, *MNRAS*, 404, L94
- Nakahira S. et al., 2010, *PASJ*, 62, L27
- Pe’er A., Casella P., 2009, *ApJ*, 699, 1919
- Poole T. S. et al., 2008, *MNRAS*, 383, 627
- Predehl P., Schmitt J. H. M. M., 1995, *A&A*, 293, 889
- Rahoui F., Lee J. C., Heinz S., Hines D. C., Pottschmidt K., Wilms J., Grinberg V., 2011, *ApJ*, 736, 63
- Roming P. W. A. et al., 2005, *Space Sci. Rev.*, 120, 95
- Ruelas-Mayorga R. A., 1991, *Rev. Mex. Astron. Astrofis.* 22, 27
- Russell D. M., Fender R. P., 2008, *MNRAS*, 387, 713
- Russell D. M., Fender R. P., Hynes R. I., Brocksopp C., Homan J., Jonker P. G., Buxton M. M., 2006, *MNRAS*, 371, 1334
- Russell D. M., Maitra D., Dunn R. J. H., Markoff S., 2010a, *MNRAS*, 405, 1759
- Russell D. M., Muñoz-Darias T., Lewis F., Soleri P., 2010b, *Astron. Telegram*, 2775
- Russell D. M., Casella P., Fender R., Soleri P., Pretorius M. L., Lewis F., van der Klis M., 2011a, in *Proc. ‘High Time Resolution Astrophysics IV – The Era of Extremely Large Telescopes – HTRA IV’*, Proceedings of Science. SISSA, Trieste, PoS (MQW7)002
- Russell D. M., Maitra D., Dunn R. J. H., Fender R. P., 2011b, *MNRAS*, 416, 2311
- Rybicki G. B., Lightman A. P., 1979, *Radiative Processes in Astrophysics*. Wiley, New York
- Shahbaz T., Kuulkers E., 1998, *MNRAS*, 295, L1
- Shahbaz T., Fender R. P., Watson C. A., O’Brien K., 2008, *ApJ*, 672, 510
- Shaposhnikov N., Markwardt C., Swank J., Krimm H., 2010, *ApJ*, 723, 1817
- Soleri P., Fender R., 2011, *MNRAS*, 413, 2269
- Stiele H., Muñoz-Darias T., Motta S., Belloni T., 2011, *Proc. 25th Texas Symposium on Relativistic Astrophysics – TEXAS 2010*. SISSA, Trieste, PoS (Texas2010)032
- Tananbaum H., Gursky H., Kellogg E., Giacconi R., Jones C., 1972, *ApJ*, 177, L5
- Torres M. A. P., Jonker P. G., Steeghs D., Yan H., Huang J., Soderberg A. M., 2009a, *Astron. Telegram*, 2263
- Torres M. A. P., Steeghs D., Jonker P. G., Thompson I., Soderberg A. M., 2009b, *Astron. Telegram*, 2268
- van Paradijs J., McClintock J. E., 1994, *A&A*, 290, 133
- Yang J., Brocksopp C., Corbel S., Paragi Z., Tzioumis T., Fender R. P., 2010, *MNRAS*, 409, L64
- Yang J., Paragi Z., Corbel S., Gurvits L. I., Campbell R. M., Brocksopp C., 2011, *MNRAS*, preprint (arXiv:1108.3492)
- Zurita Heras J. A., Chaty S., Cadolle Bel M., Prat L., 2011, *MNRAS*, 413, 235

This paper has been typeset from a \LaTeX file prepared by the author.