



HAL
open science

Wide-field lensing mass maps from Dark Energy Survey science verification data: Methodology and detailed analysis

V. Vikram, C. Chang, B. Jain, D. Bacon, A. Amara, M. R. Becker, G. Bernstein, C. Bonnett, S. Bridle, D. Brout, et al.

► To cite this version:

V. Vikram, C. Chang, B. Jain, D. Bacon, A. Amara, et al.. Wide-field lensing mass maps from Dark Energy Survey science verification data: Methodology and detailed analysis. *Physical Review D*, 2015, 92, 10.1103/PhysRevD.92.022006 . insu-03644898

HAL Id: insu-03644898

<https://insu.hal.science/insu-03644898>

Submitted on 28 Apr 2022

HAL is a multi-disciplinary open access archive for the deposit and dissemination of scientific research documents, whether they are published or not. The documents may come from teaching and research institutions in France or abroad, or from public or private research centers.

L'archive ouverte pluridisciplinaire **HAL**, est destinée au dépôt et à la diffusion de documents scientifiques de niveau recherche, publiés ou non, émanant des établissements d'enseignement et de recherche français ou étrangers, des laboratoires publics ou privés.

Wide-field lensing mass maps from Dark Energy Survey science verification data: Methodology and detailed analysis

V. Vikram,^{1,2} C. Chang,^{3,*} B. Jain,² D. Bacon,⁴ A. Amara,³ M. R. Becker,^{5,6} G. Bernstein,² C. Bonnett,⁷ S. Bridle,⁸ D. Brout,² M. Busha,^{5,6} J. Frieman,^{9,10} E. Gaztanaga,¹¹ W. Hartley,³ M. Jarvis,² T. Kacprzak,³ A. Kovács,⁷ O. Lahav,¹² B. Leistedt,¹² H. Lin,¹⁰ P. Melchior,^{13,14} H. Peiris,¹² E. Rozo,¹⁵ E. Rykoff,^{6,16} C. Sánchez,⁷ E. Sheldon,¹⁷ M. A. Troxel,⁸ R. Wechsler,^{5,6,16} J. Zuntz,⁸ T. Abbott,¹⁸ F. B. Abdalla,¹² R. Armstrong,² M. Banerji,^{19,20} A. H. Bauer,¹¹ A. Benoit-Lévy,¹² E. Bertin,²¹ D. Brooks,¹² E. Buckley-Geer,¹⁰ D. L. Burke,^{6,16} D. Capozzi,⁴ A. Carnero Rosell,^{22,23} M. Carrasco Kind,^{24,25} F. J. Castander,¹¹ M. Crocce,¹¹ C. E. Cunha,²⁶ C. B. D'Andrea,⁴ L. N. da Costa,^{22,23} D. L. DePoy,²⁷ S. Desai,²⁸ H. T. Diehl,¹⁰ J. P. Dietrich,^{28,29} J. Estrada,¹⁰ A. E. Evrard,³⁰ A. Fausti Neto,²² E. Fernandez,⁷ B. Flaugher,¹⁰ P. Fosalba,¹¹ D. Gerdes,³⁰ D. Gruen,^{31,32} R. A. Gruendl,^{24,25} K. Honscheid,^{24,25} D. James,¹⁸ S. Kent,¹⁰ K. Kuehn,³³ N. Kuropatkin,¹⁰ T. S. Li,²⁷ M. A. G. Maia,^{22,23} M. Makler,³⁴ M. March,² J. Marshall,²⁷ P. Martini,^{13,14} K. W. Merritt,¹⁰ C. J. Miller,^{30,35} R. Miquel,^{7,36} E. Neilsen,¹⁰ R. C. Nichol,⁴ B. Nord,¹⁰ R. Ogando,^{22,23} A. A. Plazas,^{17,37} A. K. Romer,³⁸ A. Roodman,^{6,16} E. Sanchez,³⁹ V. Scarpine,¹⁰ I. Sevilla,^{24,39} R. C. Smith,¹⁸ M. Soares-Santos,¹⁰ F. Sobreira,^{10,22} E. Suchyta,^{28,29,31} M. E. C. Swanson,²⁵ G. Tarle,²⁸ J. Thaler,²⁴ D. Thomas,^{4,40†} A. R. Walker,¹⁸ and J. Weller^{28,29,31}

¹Argonne National Laboratory, 9700 South Cass Avenue, Lemont, Illinois 60439, USA

²Department of Physics and Astronomy, University of Pennsylvania, Philadelphia, Pennsylvania 19104, USA

³Department of Physics, ETH Zurich, Wolfgang-Pauli-Strasse 16, CH-8093 Zurich, Switzerland

⁴Institute of Cosmology and Gravitation, University of Portsmouth, Portsmouth PO1 3FX, United Kingdom

⁵Department of Physics, Stanford University, 382 Via Pueblo Mall, Stanford, California 94305, USA

⁶Kavli Institute for Particle Astrophysics and Cosmology, P. O. Box 2450, Stanford University, Stanford, California 94305, USA

⁷Institut de Física d'Altes Energies, Universitat Autònoma de Barcelona, E-08193 Bellaterra, Barcelona, Spain

⁸Jodrell Bank Center for Astrophysics, School of Physics and Astronomy, University of Manchester, Oxford Road, Manchester M13 9PL, United Kingdom

⁹Kavli Institute for Cosmological Physics, University of Chicago, Chicago, Illinois 60637, USA

¹⁰Fermi National Accelerator Laboratory, P. O. Box 500, Batavia, Illinois 60510, USA

¹¹Institut de Ciències de l'Espai, IEEC-CSIC, Campus UAB, Facultat de Ciències, Torre C5 par-2, 08193 Bellaterra, Barcelona, Spain

¹²Department of Physics and Astronomy, University College London, Gower Street, London WC1E 6BT, United Kingdom

¹³Center for Cosmology and Astro-Particle Physics, The Ohio State University, Columbus, Ohio 43210, USA

¹⁴Department of Physics, The Ohio State University, Columbus, Ohio 43210, USA

¹⁵Department of Physics, University of Arizona, 1118 East Fourth Street, Tucson, Arizona 85721, USA

¹⁶SLAC National Accelerator Laboratory, Menlo Park, California 94025, USA

¹⁷Brookhaven National Laboratory, Building 510, Upton, New York 11973, USA

¹⁸Cerro Tololo Inter-American Observatory, National Optical Astronomy Observatory, Casilla 603, La Serena, Chile

¹⁹Institute of Astronomy, University of Cambridge, Madingley Road, Cambridge CB3 0HA, United Kingdom

²⁰Kavli Institute for Cosmology, University of Cambridge, Madingley Road, Cambridge CB3 0HA, United Kingdom

²¹Institut d'Astrophysique de Paris, University Pierre et Marie Curie & CNRS UMR7095, F-75014 Paris, France

²²Laboratório Interinstitucional de e-Astronomia—LIneA, Rua General José Cristino 77, Rio de Janeiro, RJ 20921-400, Brazil

²³Observatório Nacional, Rua General José Cristino 77, Rio de Janeiro, RJ 20921-400, Brazil

²⁴Department of Physics, University of Illinois, 1110 West Green Steet, Urbana, Illinois 61801, USA

²⁵National Center for Supercomputing Applications, 1205 West Clark Steet, Urbana, Illinois 61801, USA

²⁶Robert Bosch LLC, 4009 Miranda Avenue, Suite 225, Palo Alto, California 94304, USA

²⁷George P. and Cynthia Woods Mitchell Institute for Fundamental Physics and Astronomy, and Department of Physics and Astronomy, Texas A&M University, College Station, Texas 77843, USA

²⁸Department of Physics, Ludwig-Maximilians-Universitaet, Scheinerstrasse 1, 81679 Munich, Germany

²⁹*Excellence Cluster Universe, Boltzmannstrasse 2, 85748 Garching, Germany*³⁰*Department of Physics, University of Michigan, Ann Arbor, Michigan 48109, USA*³¹*Max Planck Institute for Extraterrestrial Physics, Giessenbachstrasse, 85748 Garching, Germany*³²*University Observatory Munich, Scheinerstrasse 1, 81679 Munich, Germany*³³*Australian Astronomical Observatory, North Ryde, New South Wales 2113, Australia*³⁴*ICRA, Centro Brasileiro de Pesquisas Físicas, Rua Drive Xavier Sigaud 150, CEP 22290-180, Rio de Janeiro, RJ, Brazil*³⁵*Department of Astronomy, University of Michigan, Ann Arbor, Michigan 48109, USA*³⁶*Institució Catalana de Recerca i Estudis Avançats, E-08010 Barcelona, Spain*³⁷*Jet Propulsion Laboratory, California Institute of Technology, 4800 Oak Grove Drive, Pasadena, California 91109, USA*³⁸*Department of Physics and Astronomy, Pevensey Building, University of Sussex, Brighton BN1 9QH, United Kingdom*³⁹*Centro de Investigaciones Energéticas, Medioambientales y Tecnológicas (CIEMAT), Madrid 28040, Spain*⁴⁰*SEPnet, South East Physics Network, Southampton SO17 1BJ, United Kingdom*

(Received 7 May 2015; revised manuscript received 2 July 2015; published 29 July 2015)

Weak gravitational lensing allows one to reconstruct the spatial distribution of the projected mass density across the sky. These “mass maps” provide a powerful tool for studying cosmology as they probe both luminous and dark matter. In this paper, we present a weak lensing mass map reconstructed from shear measurements in a 139 deg^2 area from the Dark Energy Survey (DES) science verification data. We compare the distribution of mass with that of the foreground distribution of galaxies and clusters. The overdensities in the reconstructed map correlate well with the distribution of optically detected clusters. We demonstrate that candidate superclusters and voids along the line of sight can be identified, exploiting the tight scatter of the cluster photometric redshifts. We cross-correlate the mass map with a foreground magnitude-limited galaxy sample from the same data. Our measurement gives results consistent with mock catalogs from N -body simulations that include the primary sources of statistical uncertainties in the galaxy, lensing, and photo- z catalogs. The statistical significance of the cross-correlation is at the 6.8σ level with 20 arcminute smoothing. We find that the contribution of systematics to the lensing mass maps is generally within measurement uncertainties. In this work, we analyze less than 3% of the final area that will be mapped by the DES; the tools and analysis techniques developed in this paper can be applied to forthcoming larger data sets from the survey.

DOI: [10.1103/PhysRevD.92.022006](https://doi.org/10.1103/PhysRevD.92.022006)

PACS numbers: 95.80.+p, 95.85.Kr, 98.80.-k

I. INTRODUCTION

Weak gravitational lensing is a powerful tool for cosmological studies [see [1] and [2] for detailed reviews]. As light from distant galaxies passes through the mass distribution in the Universe, its trajectory gets perturbed, causing the apparent galaxy shapes to be distorted. Weak lensing statistically measures this small distortion, or “shear,” for a large number of galaxies to infer the three-dimensional matter distribution. This allows us to constrain cosmological parameters and study the distribution of mass in the Universe.

Since its first discovery, the accuracy and statistical precision of weak lensing measurements have improved significantly [3–8]. Most of these previous studies constrain cosmology through N -point statistics of the shear signal (e.g. [9–14]). In this paper, however, we focus on

generating two-dimensional wide-field projected mass maps from the measured shear [15]. These mass maps are particularly useful for viewing the non-Gaussian distribution of dark matter in a different way than is possible with N -point statistics.

Probing the dark matter distribution in the Universe is particularly important for several reasons. Based on the peak statistics from a mass map it is possible to identify dark matter halos and constrain cosmological parameters (e.g. [16–20]). Mass maps also allow us to study the connection between baryonic matter (both in stellar and gaseous forms) and dark matter [15]. This can be measured by cross-correlating light maps and gas maps with weak lensing mass maps. Correlation with light maps, which can be constructed using observed galaxies, groups and clusters of galaxies etc., can be used to constrain galaxy bias, the mass-to-light ratio, and the dependence of these statistics on redshift and environment [21–24]. However, one needs to take caution when interpreting the weak lensing mass maps, as the completeness and purity of structure

* chihway.chang@phys.ethz.ch† www.sepnet.ac.uk

detection via these maps is not very high due to their noisy nature [25].

One other interesting application of the mass map is that it allows us to identify large scale structures (both super-clusters and voids) which are otherwise difficult to find (e.g. [26]). Characterizing the statistics of large structures can be a sensitive probe of cosmological models. Structures with masses as high or higher than clusters require special attention as the massive end of the halo mass function is very sensitive to the cosmology [27–29]. These rare structures also allows us to constrain different theories of gravity [30,31]. In addition to the study of the largest assemblies of mass, the study of number density of the largest voids allows further tests of the Λ CDM model (e.g. [32]).

Similar mass mapping technique as used in this paper has been previously applied to the Canada-France-Hawaii Telescope Lensing Survey (CFHTLenS) as presented in Van Waerbeke *et al.* [33]. Their work demonstrated the potential scientific value of these wide-field lensing mass maps, including measuring high-order moments of the maps and cross-correlation with galaxy densities. The total area of the mass map in that work is similar to our data set, though it was divided into four separate smaller fields.

The main goal of this paper is to construct a weak lensing mass map from a contiguous 139 deg² area in the Dark Energy Survey (DES) [34–36] science verification (SV) data, which overlaps with the South Pole Telescope survey (the SPT-E field). The SV data were recorded using the newly commissioned wide-field mosaic camera, the Dark Energy Camera (DECam) [37–39] on the 4m Blanco telescope at the Cerro Tololo Inter-American Observatory (CTIO) in Chile. We cross-correlate this reconstructed mass map with optically identified structures such as galaxies and clusters of galaxies. This work opens up several directions for future explorations with these mass maps.

This paper is organized as follows. In Sec. II we describe the theoretical foundation and methodology for constructing the mass maps and galaxy density maps used in this paper. We then describe in Sec. III the DES data set used in this work, together with the simulation used to interpret our results. In Sec. IV we present the reconstructed mass maps. We discuss qualitatively in Sec. V the correlation of these maps with known foreground structures found via independent optical techniques. In Sec. VI, we quantify the wide-field mass-to-light correlation on different spatial scales using the full field. We show that our results are consistent with expectations from simulations. In Sec. VII we estimate the level of contamination by systematics in our results from a wide range of sources. Finally, we conclude in Sec. VIII. For a summary of the main results from this work, see the companion paper in [40].

II. METHODOLOGY

In this section we first briefly review the principles of weak lensing in Sec. II A. Then, we describe the adopted

mass reconstruction method in Sec. II B. Finally in Sec. II C, we describe our method of generating galaxy density maps. The galaxy density maps are used as independent mass tracers in this work to help confirm the signal measured in the weak lensing mass maps.

A. Weak gravitational lensing

When light from galaxies passes through a foreground mass distribution, the resulting bending of light leads to the galaxy images being distorted (e.g., [1]). This phenomenon is called gravitational lensing. The local mapping between the source ($\boldsymbol{\beta}$) and image ($\boldsymbol{\theta}$) plane coordinates (aside from an overall displacement) can be described by the lens equation,

$$\boldsymbol{\beta} - \boldsymbol{\beta}_0 = A(\boldsymbol{\theta})(\boldsymbol{\theta} - \boldsymbol{\theta}_0), \quad (1)$$

where $\boldsymbol{\beta}_0$ and $\boldsymbol{\theta}_0$ is the reference point in the source and the image plane. A is the Jacobian of this mapping, given by

$$A(\boldsymbol{\theta}) = (1 - \kappa) \begin{pmatrix} 1 - g_1 & -g_2 \\ -g_2 & 1 + g_1 \end{pmatrix}, \quad (2)$$

where κ is the convergence, $g_i = \gamma_i/(1 - \kappa)$ is the reduced shear and γ_i is the shear. $i = 1, 2$ refers to the two-dimensional coordinates in the plane. The factor $(1 - \kappa)$ causes galaxy images to be dilated or reduced in size, while the terms in the matrix cause distortion in the image shapes. Under the Born approximation, which assumes that the deflection of the light rays due to the lensing effect is small, A is given by (e.g. [1])

$$A_{ij}(\boldsymbol{\theta}, r) = \delta_{ij} - \psi_{,ij}, \quad (3)$$

where ψ is the lensing deflection potential, or a weighted projection of the gravitational potential along the line of sight. For a spatially flat Universe, it is given by the line-of-sight integral of the three-dimensional gravitational potential Φ [41],

$$\psi(\boldsymbol{\theta}, r) = 2 \int_0^r dr' \frac{r - r'}{rr'} \Phi(\boldsymbol{\theta}, r'), \quad (4)$$

where r is the comoving distance. Comparison of Eq. (3) with Eq. (2) gives

$$\kappa = \frac{1}{2} \nabla^2 \psi; \quad (5)$$

$$\boldsymbol{\gamma} = \boldsymbol{\gamma}_1 + i\boldsymbol{\gamma}_2 = \frac{1}{2} (\psi_{,11} - \psi_{,22}) + i\psi_{,12}. \quad (6)$$

For the purpose of this paper, we use the Limber approximation which lets us use the Poisson equation for the density fluctuation $\delta = (\Delta - \bar{\Delta})/\bar{\Delta}$ (where Δ and $\bar{\Delta}$ are the three-dimensional density and mean density, respectively),

$$\nabla^2 \Phi = \frac{3H_0^2 \Omega_m}{2a} \delta, \quad (7)$$

where a is the cosmological scale factor. Equations (4) and (5) give the convergence measured at a sky coordinate θ from sources at comoving distance r :

$$\kappa(\theta, r) = \frac{3H_0^2 \Omega_m}{2} \int_0^r dr' \frac{r'(r-r')}{r} \frac{\delta(\theta, r')}{a(r')}. \quad (8)$$

We can generalize to sources with a distribution in comoving distance (or redshift) $f(r)$ as: $\kappa(\theta) = \int \kappa(\theta, r) f(r) dr$. That is, a κ map constructed over a region on the sky gives us the integrated mass density fluctuation in the foreground of the κ map weighted by the lensing weight $p(r')$, which is itself an integral over $f(r)$:

$$\kappa(\theta) = \frac{3H_0^2 \Omega_m}{2} \int_0^{r_H} dr' p(r') r' \frac{\delta(\theta, r')}{a(r')}, \quad (9)$$

with

$$p(r') = \int_{r'}^{r_H} dr f(r) \frac{r-r'}{r}, \quad (10)$$

where r_H is the comoving distance to the horizon. For a specified cosmological model and $f(r)$ specified by the redshift distribution of source galaxies, the above equations provide the basis for predicting the statistical properties of κ .

B. Mass maps from Kaiser-Squires reconstruction

In this paper we perform weak lensing mass reconstruction based on the method developed in Kaiser and Squires [42]. The Kaiser-Squires (KS) method is known to work well up to a constant additive factor as long as the structures are in the linear regime [33]. In the nonlinear regime (scales corresponding to clusters or smaller structures) improved methods have been developed to recover the mass distribution (e.g. [43,44]). In this paper we are interested in the mass distribution on large scales; we can therefore restrict ourselves to the KS method. The KS method works as follows. The Fourier transform of the observed shear, $\hat{\gamma}$, relates to the Fourier transform of the convergence, $\hat{\kappa}$ through

$$\hat{\kappa}_\ell = D_\ell^* \hat{\gamma}_\ell, \quad (11)$$

$$D_\ell = \frac{\ell_1^2 - \ell_2^2 + 2i\ell_1 \ell_2}{|\ell|^2}, \quad (12)$$

where ℓ_i are the Fourier counterparts for the angular coordinates θ_i , $i = 1, 2$ represent the two dimensions of sky coordinate. The above equations hold true for $\ell \neq 0$. In practice we apply a sinusoidal projection of sky with a

reference point at RA = 71.0 deg and then pixelize the observed shears with a pixel size of 5 arcmin before Fourier transforming. Given that we mainly focus on scales less than a degree in this paper, the errors due to the projection is small [33].

The inverse Fourier transform of Eq. (11) gives the convergence for the observed field in real space. Ideally, the imaginary part of the inverse Fourier transform will be zero as the convergence is a real quantity. However, noise, systematics and masking causes the reconstruction to be imperfect, with nonzero imaginary convergence as we will quantify in Sec. VI B. The real and imaginary parts of the reconstructed convergence are referred to as the E and B mode of κ , respectively. In our reconstruction procedure we set shears to zero in the masked regions [45]. We later quantify the effect of this step in Sec. VI B.

One of the issues with the KS inversion is that the uncertainty in the reconstructed convergence is formally infinite for a discrete set of noisy shear estimates. This is because the statistically uncorrelated ellipticities of galaxies result in a white noise power spectrum which integrates to infinity for large spatial frequencies. Therefore we need to remove the high frequency components. For a Gaussian filter of size σ the covariance of the statistical noise in the convergence map can be written as [46]

$$\langle \kappa(\theta) \kappa(\theta') \rangle = \frac{\sigma_\epsilon^2}{4\pi\sigma^2 n_g} \exp\left(-\frac{|\theta - \theta'|^2}{2\sigma^2}\right), \quad (13)$$

where σ_ϵ is the standard deviation of the single component ellipticity (which contains the intrinsic shape noise and measurement noise) and n_g is the number density of the source galaxies. Equation (13) implies that the shape noise contribution to the convergence map reduces with increasing size of the Gaussian window and number density of the background source galaxies.

C. Lensing-weighted galaxy density maps

In addition to the mass map generated from weak lensing measurements in Sec. II B, we also generate mass maps based on the assumption that galaxies are linearly biased tracers of mass in the foreground. In particular, we study two galaxy samples: the general field galaxies and the luminous red galaxies (LRGs). Properties of the samples used in this work such as the redshift distribution, magnitude distribution etc. are described in Sec. III B. To compare with the weak lensing mass map, we assume that the bias is constant. However, bias may change with spatial scale, redshift, magnitude and other galaxy properties. This can introduce differences between the weak lensing mass map and foreground map. In this paper we neglect such effects since we mostly focus on large scales ($\gtrsim 5-10$ arcmin at $z \sim 0.35$) where the departures from linear bias are small [47].

Based on a given sample of mass tracer we generate a weighted foreground map (κ_g) after applying an appropriate

lensing weight to each galaxy before pixelation. In principle, the weight increases the signal-to-noise (S/N) of the cross-correlation between the lensing mass map and the foreground density map. The lensing weight [Eq. (10)] depends on the comoving distance to the source and lens, and the distance between them. To generate the weighted galaxy density map, we first generate a three-dimensional grid of the galaxies. We estimate the density contrast in each of these cells as follows:

$$\delta_g^{ijk} = \frac{n_{ijk} - \bar{n}_k}{\bar{n}_k}, \quad (14)$$

where (i, j) is the pixel index in the projected two-dimensional sky and k is the pixel index in the redshift direction. n_{ijk} is the number of galaxies in the ijk^{th} cell and \bar{n}_k is the average number of galaxies per pixel in the k^{th} redshift bin. This three-dimensional grid of galaxy density fluctuations will be used to estimate κ_g according to the discrete version of Eq. (9),

$$\kappa_g^{ij} = \frac{3H_0^2\Omega_m}{2c^2} \sum_k \Delta_z \frac{\delta_k^{3D} d_k}{a_k} \sum_{l>k} \frac{(d_l - d_k) f_l}{d_l}, \quad (15)$$

where κ_g^{ij} is the weighted foreground map at the pixel (i, j) ; k and l represent indices along the redshift direction for lens and source, Δ_z is the physical size of the redshift bin, d_l is the angular diameter distance to source, f_l is the probability density of the source redshift distribution at redshift l and δ_k^{3D} is the foreground density fluctuation at angular diameter distance d_k . In this work, use a single source redshift bin and $\Delta_z = 0.1$ for the lens sample. We adopt the following cosmological parameters: $\Omega_m = 0.3$, $\Omega_\Lambda = 0.7$, $\Omega_k = 0.0$, $h = 0.72$. Our results depend very weakly on the exact values of these cosmological parameters.

III. DATA AND SIMULATIONS

The measurements in this paper are based on 139 deg² of data in the SPT-E field, observed as part of the SV data from DES. The SV data were taken during the period of November 2012–February 2013 before the official start of the science survey. The data were taken shortly after DECam commissioning and were used to test survey operations and assess data quality. Five optical filters (*grizY*) were used throughout the survey, with typical exposure times being 90 sec for *griz* and 45 sec for *Y*. The final median depth estimates of this data set in our region of interest are $g \sim 24.0$, $r \sim 23.9$, $i \sim 23.0$ and $z \sim 22.3$ (10- σ galaxy limiting magnitude).

Below we introduce in Sec. III A the relevant data used in this work. Then we define in Sec. III B two subsamples of the SV data that we identify as “foreground (lens)” and “background (source)” galaxies for the main analysis of the paper. In Sec. III C we introduce the simulations we use to interpret our measurements.

A. The DES SVA1 Gold galaxy catalogs

All galaxies used for foreground catalogs and lensing measurements are drawn from the DES SVA1 Gold Catalog [48] and several extensions to it. The main catalog is a product of the DES Data Management (DESDM) pipeline version “SVA1” [49]. The DESDM pipeline, as described in Ngeow *et al.* [50], Sevilla *et al.* [51], Desai *et al.* [52], Mohr *et al.* [53], begins with initial image processing on single-exposure images and astrometry measurements from the software package SCAMP [54]. The single-exposure images were then stacked to produce co-add images using the software package SWARP [55]. Basic object detection, point-spread-function (PSF) modeling, star-galaxy classification [56] and photometry were done on the individual images as well as the co-add images using software packages SExtractor [57] and PSFEX [58]. The full SVA1 Gold data set consists of 254.4 deg² with *griz*-band coverage, and 223.6 deg² for *Y* band. The main science goal for this work is to reconstruct wide-field mass maps; as a result, we use the largest continuous region in the SV data: 139 deg² in the SPT-E field.

The SVA1 Gold Catalog is augmented by a photometric redshift catalog, two galaxy shape catalogs, and an LRG catalog. These catalogs are described below.

1. Photometric redshift catalog

In this work we use the photometric redshift (photo- z) estimated with the Bayesian Photometric Redshifts (BPZ) code [59,60]. The photo- z 's are used to select the main foreground and background sample (see Sec. III B). The details and capabilities of BPZ on early DES data were already presented in Sánchez *et al.* [61], where it showed good performance among template-based codes. The primary set of templates used contains the Coleman *et al.* [62] templates, two starburst templates from Kinney *et al.* [63] and two younger starburst simple stellar population templates from Bruzual and Charlot [64], added to BPZ in Coe *et al.* [60]. We calibrate the Bayesian prior by fitting the empirical function $\Pi(z, t|m_0)$ proposed in Benítez [59], using a spectroscopic sample matched to DES galaxies and weighted to mimic the photometric properties of the DES SV sample used in this work. As tested in Sánchez *et al.* [61], the bias in the photo- z estimate is ~ 0.02 , with 68% scatter $\sigma_{68} \sim 0.1$ and the 3σ outlier fraction $\sim 2\%$. For this work, we use z_{mean} , the mean of the probability distribution function (PDF) output from BPZ as a single-point estimate of the photo- z to separate our galaxies into the foreground and background samples. Other photo- z codes used in DES have been run on the same data. For this work we have also checked our main results in Sec. VI using an independent Neural Network code (Skynet; [65,66]). We found that BPZ and Skynet gives consistent results (within 1σ) in terms of the cross-correlation between the weak lensing mass maps and the foreground galaxy map.

2. Shape catalogs

Based on the SVA1 data, two shear catalogs were produced and tested extensively in Jarvis *et al.* [67]: the NGMIX [68] (version 011) catalog and the IM3SHAPE [69] (version 9) catalog. The main results shown in our paper are based on the NGMIX catalog, but we also cross-check with the IM3SHAPE catalog to confirm that the results are statistically consistent. These catalogs are slightly earlier version from that described in Jarvis *et al.* [67].

The PSF model for both methods are based on the single-exposure PSF models from PSFEX. PSFEX models the PSF as a linear combination of small images sampled on an *ad hoc* pixel grid, with coefficients that are the terms of a second-order polynomial of pixel coordinates in each DECam CCD.

NGMIX [70] is a general tool for fitting morphological models to images of astronomical objects. For the galaxy model, NGMIX supports various options including exponential disk and de Vaucouleurs' profile [71], all of which are implemented approximately as a sum of Gaussians [72]. Additionally, any number of Gaussians can be fit. These Gaussian fits can either be completely free or constrained to be co-centric and co-elliptical. For the DES SV galaxy images, we used the exponential disk model. For the PSF fitting, an Expectation Maximization [73] approach is used to model the PSF as a sum of three free Gaussians. Shear estimation was carried out using by jointly fitting multiple images in r, i, z bands. The multi-band approach enabled a larger effective galaxy number density compared to the IM3SHAPE catalog, which is based on single-band images in the current version.

The IM3SHAPE [74] implementation in this work estimates shapes by jointly fitting a parametrized galaxy model to all of the different single-exposure r -band images, finding the maximum likelihood solution. Calibration for bias in the shear measurement associated with noise [75,76] is applied. An earlier version of this code (run on the co-add images instead of single exposures) has been run on the SV cluster fields for cluster lensing studies [77].

Details for both shape catalogs and the tests performed on these catalogs can be found in Jarvis *et al.* [67]. Both shear catalogs have been tested and shown to pass the requirements for SV cosmic shear measurement, which is much more stringent than what is required in this paper. As our analysis is insensitive to the overall multiplicative bias in the shear measurements, we adopt the ‘‘conservative additive’’ selection; this results in small additive systematic uncertainties, but possibly some moderate multiplicative systematic uncertainties. For NGMIX, this selection removes galaxies with $S/N < 20$ and very small galaxies (Gaussian sigma smaller than the pixel scale). For IM3SHAPE, it removes galaxies with $S/N < 15$. In both cases, there were many other selections applied to both catalogs to remove stars, spurious detections, poor measurements, and various other

effects that significantly biased shear estimates for both catalogs.

3. The red-sequence Matched filter Galaxy Catalog (Redmagic)

We use the DES SV red-sequence Matched-filter Galaxy Catalog [78] v6.3.3 in this paper as one of the foreground samples. The objects in this catalog are photometrically selected LRGs. We use the terms Redmagic galaxies and LRG interchangeably. Specifically, Redmagic uses the Redmapper-calibrated model for the color of red-sequence galaxies as a function of magnitude and redshift [79]. This model is used to find the best-fit photometric redshift for all galaxies irrespective of type, and the χ^2 goodness-of-fit of the model is computed. For each redshift slice, all galaxies fainter than some minimum luminosity threshold L_{\min} are rejected. In addition, Redmagic applies a χ^2 selection $\chi^2 \leq \chi^2_{\max}$, where the χ^2_{\max} as a function of redshift is chosen to ensure that the resulting galaxy sample has a nearly constant space density \bar{n} . In this work, we set $\bar{n} = 10^{-3} h^3 \text{ Mpc}^{-3}$. We assume flat Λ CDM model with cosmological parameters $\Omega_{\Lambda} = 0.7$, $h = 100$ (varying these parameters does not change the results significantly). The luminosity selection is $L \geq 0.5L_*(z)$, where the value of $L_*(z)$ at $z = 0.1$ is set to match the Redmapper definition for the Sloan Digital Sky Survey (SDSS), and the redshift evolution for $L_*(z)$ is that predicted using a simple passive evolution starburst model at $z = 3$ [64]. We use the Redmagic sample because of the exquisite photometric redshifts of the Redmagic galaxy catalog: Redmagic photometric redshifts are nearly unbiased, with a scatter $\sigma_z/(1+z) \approx 1.7\%$, and a $\approx 1.7\%$ 4σ redshift outlier rate. We refer the reader to Rozo *et al.* [78] for further details of this catalog.

B. Foreground and background galaxy samples selection

As described in Sec. I, the main goal of this paper is to construct a projected mass map at a given redshift via weak lensing and to show that the mass map corresponds to real structures, or mass, in the foreground line of sight. For that purpose, we define two galaxy samples in this study—the background ‘‘source’’ sample which is lensed by foreground mass, and the foreground ‘‘lens’’ sample that traces the foreground mass responsible for the lensing. We wish to construct a weak lensing mass map from the background sample according to Sec. II B and compare it with the mass map generated from the foreground galaxy density map according to Sec. II C.

We choose to have the two samples separated at redshift ~ 0.55 in order to have a sufficient number of galaxies in both samples. Given that the photo- z training sample of our photo- z catalog does not extend to the same redshift and magnitude range as our data, we exclude objects with photo- z outside the range 0.1–1.2. The final foreground and

TABLE I. Catalogs and selection criterion used to construct the foreground and background sample for this work, and the number of galaxies in each sample after all the selections are applied. All catalogs are based on the DES SVA1 data set. We use the Source Extractor MAG_AUTO parameter for the i -band magnitude.

Input catalog	Background		Foreground main	Foreground LRG
	NGMIX	IM3SHAPE	SVA1 Gold	Redmagic
Photometric redshift	$0.6 < z < 1.2$		$0.1 < z < 0.5$	$0.2 < z < 0.5$
Others	"Conservative additive"		$i < 22$	Constant density $10^{-3} (\text{h}^{-1} \text{Mpc})^{-3}$
Number of galaxies	1, 111, 487	1, 013, 317	1, 106, 189	28, 033
Number density (arcmin^{-2})	2.22	2.03	2.21	0.056
Mean redshift	0.826	0.825	0.367	0.385

background sample are separated by the photo- z selection of $0.1 < z < 0.5$ and $0.6 < z < 1.2$. Note that the Redmagic foreground galaxy sample has an additional redshift threshold $z > 0.2$.

The main quantity of interest for the background galaxy sample is the shear measured for each galaxy. Since the background sample only serves as a "backlight" for the foreground structure we are interested in, it need not be complete. Therefore the most important selection criteria for the background sample is to use galaxies with accurate shear measurements. Our source selection criteria are based on extensive tests of shear catalog as described in Jarvis *et al.* [67]. After applying the conservative selection of background galaxies and our background redshift selection we are left with 1,111,487 galaxies ($2.22/\text{arcmin}^2$) for NGMIX and 1,013,317 galaxies ($2.03/\text{arcmin}^2$) for IM3SHAPE.

The foreground sample in this work serves as the tracer of mass. Thus it is important to construct a magnitude-limited sample for which the number density is affected as little as possible by external factors. The main physical factors that contribute to variation in the galaxy number density are the spatial variation in depth and seeing. Both effects can introduce spatial variation in the foreground galaxy number density, which can be wrongly identified as foreground mass fluctuations. We test both effects in Appendix A. Two subsamples are used in this work as foreground samples: the "main" foreground sample and the LRG foreground sample. While the space density of LRGs is significantly lower than that of the main sample, they are better tracers of galaxy clusters and groups, so we use them to check our results. The main foreground sample includes all the galaxies with $i < 22$ and the LRG sample includes the LRGs in the Redmagic LRG catalog with $i < 22$. This magnitude selection is based on tests described in Appendix A 1 to ensure that our sample is shallower than the limiting magnitude for all regions of sky under study. The final main foreground sample contains 1,106,189 galaxies ($2.21/\text{arcmin}^2$), while the LRG sample contains 28,033 galaxies ($0.05/\text{arcmin}^2$). Table I summarizes all the selection criteria applied on the three main samples used in this work.

Figure 1 shows the distributions of the single-point photo- z estimates (z_{mean}) for the final foreground and

background samples overlaid by the lensing efficiency corresponding to the background sample (top panel), and the $n(z)$ (from the BPZ code) for the background and main foreground sample (bottom panel). Note that the background galaxy number density is much lower than the

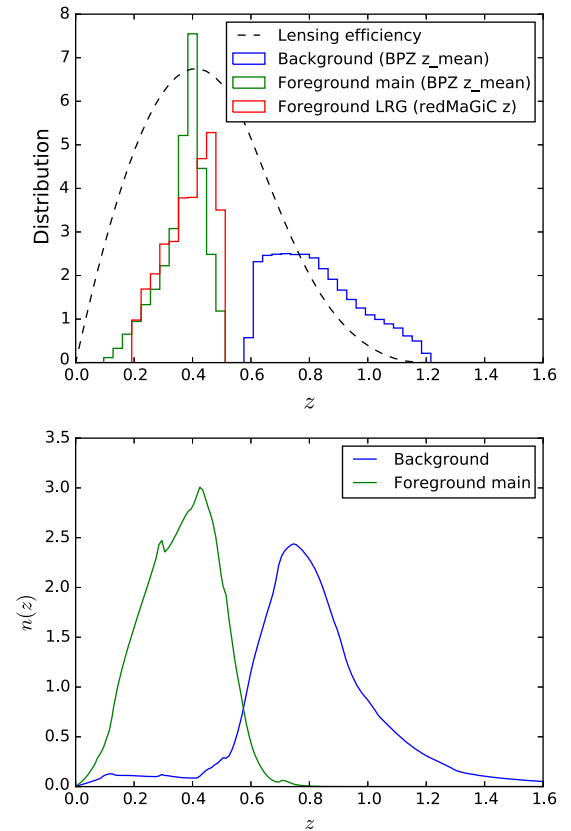


FIG. 1 (color online). Distributions of the single-point photo- z estimates for the background and foreground samples used in this paper are shown in the top panel, overlaid by the lensing efficiency [Eq. (10)] corresponding to the background sample. The background and the foreground main sample uses the mean of the PDF from BPZ for single-point estimates, while the LRG redshift estimate comes independently from Redmagic (see Sec. III A 3). The bottom panel shows the corresponding $n(z)$ of the background and foreground main sample given by BPZ. These come from the sum of the PDF for all galaxies in the samples.

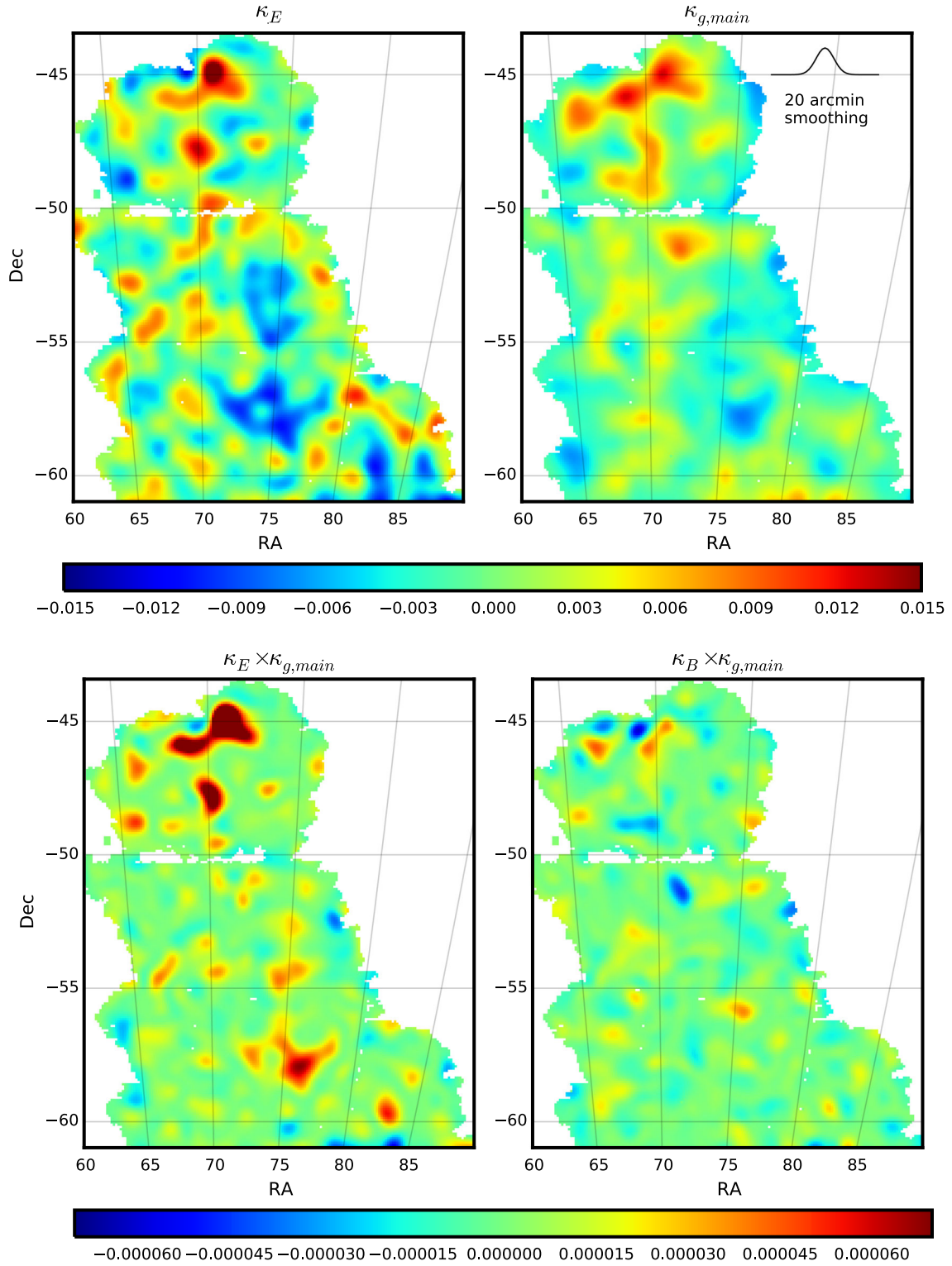


FIG. 2 (color online). The upper left panel shows the E modes of the weak lensing convergence map. The upper right shows the weighted foreground galaxy map from the main sample, or $\kappa_{g,main}$. The lower two panels show the product maps of the E -mode (left) and B -mode (right) convergence map with the $\kappa_{g,main}$ map. All maps are generated with a 5 arcmin pixel scale and 20 arcmin Gaussian smoothing. Red areas corresponds to overdensities and blue areas to underdensities in the upper panels. White regions correspond to the survey mask. The scale of the Gaussian smoothing kernel is indicated by the Gaussian profile on the upper right corner.

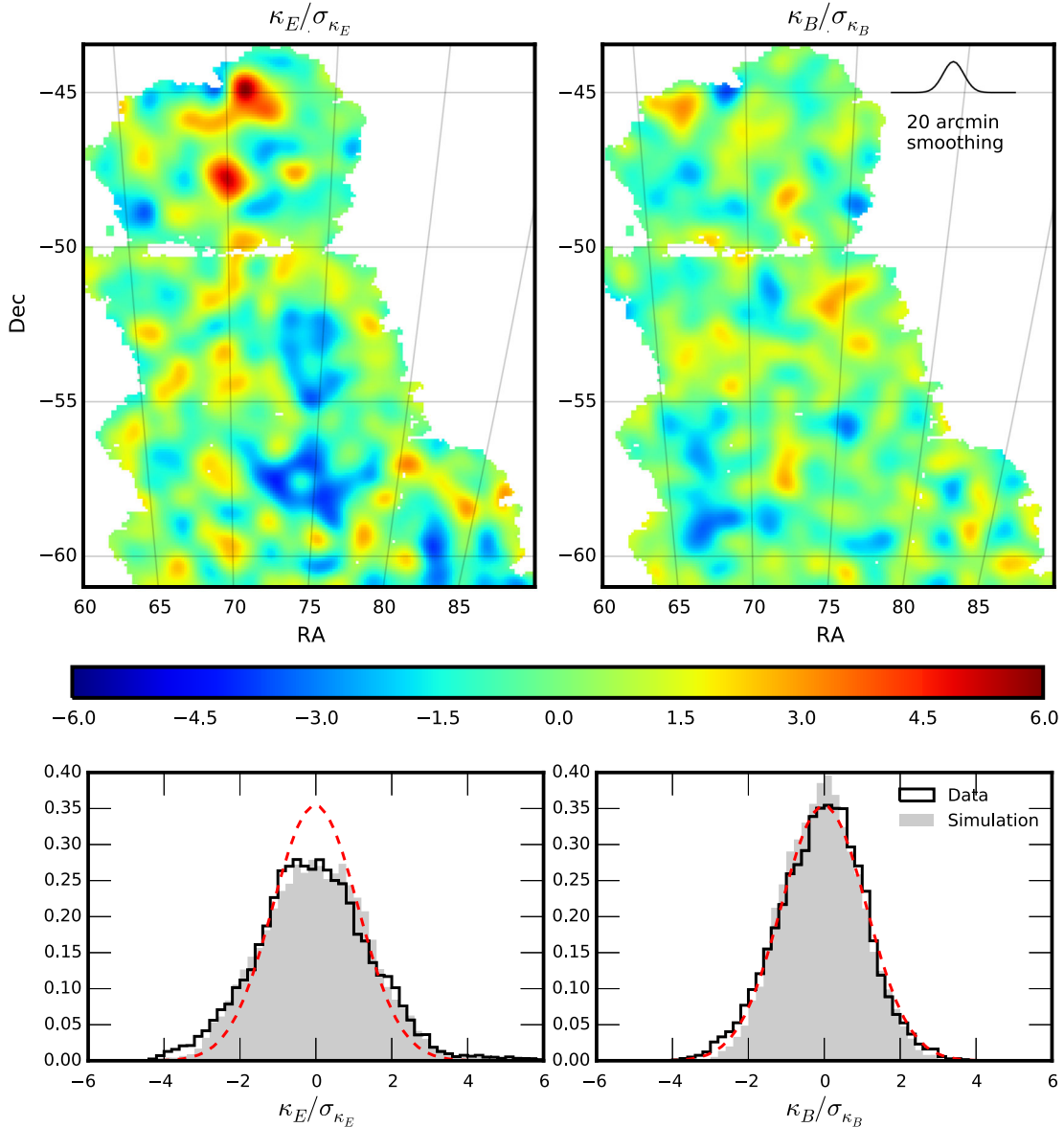


FIG. 3 (color online). The top panel shows the S/N map for the mass map in Fig. 2 estimated via randomized errors. Note that due to the Gaussian smoothing kernel, there is some mixing of scales which leads to higher contrasts in the cores of over- and underdense regions compared to top-hat smoothing. The bottom panel shows the normalized S/N distributions for both maps, overlaid by those measured from simulations described in Sec. VI B. The red dashed lines in both bottom panels show a Gaussian fit to the B -mode S/N.

number density of all galaxies in the NGMIX and IM3SHAPE catalogs, as we have made stringent redshift selections to avoid overlap between the foreground and background samples.

C. Mock catalogs from simulations

We use the simulations primarily as a tool to understand the impact of various effects on the expected signal, and a sanity check to confirm that our measurement method is producing reasonable results. We use a set of simulated galaxy catalogs “Aardvark v1.0c” developed for the DES collaboration [80]. The full catalog covers approximately 1/4 of the sky and is complete to the final expected DES depth.

The heart of the galaxy catalog generation is the algorithm Adding Density Determined Galaxies to Lightcone Simulations (ADDGALS) [80], which aims at generating a galaxy catalog that matches the luminosities, colors, and clustering properties of the observed data. The simulated galaxy catalog is based on three flat Λ CDM dark matter-only N -body simulations, one each of a 1050, 2600 and 4000 Mpc/h boxes with 1400^3 , 2048^3 and 2048^3 particles, respectively. These boxes were run with LGADGET-2 [81] with 2LPTIC initial conditions from [82] and CAMB [83]. From an input luminosity function, galaxies are drawn and then assigned to a position in the dark matter simulation volume according to a statistical

prescription of the relation between the galaxy’s magnitude, redshift and local dark matter density. The prescription is derived from a high-resolution simulation using subhalo abundance matching techniques [80,84,85]. Next, photometric properties are assigned to each galaxy, where the magnitude-color-redshift distribution is designed to reproduce the observed distribution of SDSS DR8 [86] and DEEP2 [87] data. The size distribution of the galaxies is magnitude dependent and modeled from a set of deep ($i \sim 26$) SuprimeCam i -band images, which were taken at with seeing conditions of $0.6''$ [88]. Finally, the weak lensing parameters (κ and γ) in the simulations are based on the ray-tracing algorithm Curved-sky gravitational Lensing for Cosmological Light conE simulationNS (CALCLENS) [89]. The ray-tracing resolution is accurate to ≈ 6.4 arcseconds, sufficient for the usage in this work.

Aside from the intrinsic uncertainties in the modeling in the mock galaxy catalog (related to the input parameters and uncertainty in the galaxy-halo connection), there are also many real-world effects that are not included in these simulations, including as depth variation, seeing variation and shear measurement uncertainties.

IV. MASS MAPS

In Fig. 2 we show our final convergence maps generated using the data described in Sec. III A and the methods described in Sec. II B and Sec. II C. For the purpose of visualization we present maps for 20 arcmin Gaussian smoothing. In the top left panel we show the E -mode convergence map generated from shear. The top right panel shows the weighted foreground galaxy map from the main sample, $\kappa_{g,\text{main}}$ map. In both of these panels, red areas correspond to overdensities and blue areas correspond to under densities. The bottom left and bottom right panels show the product of the κ_E (left) and κ_B (right) maps with the $\kappa_{g,\text{main}}$. Visually we see that there are more positive (correlated) areas for the κ_E map compared to the κ_B map, indicating clear detection of the weak lensing signal in these maps. Note that these positive regions could be either mass over-densities or under-densities. In Sec. VI, we present a quantitative analysis of this correlation.

To estimate the significance of the structures in the mass maps, it is important to understand the noise properties of these maps. Uncertainties in the lensing convergence map include contributions from both shape noise and measurement uncertainties, which is affected by the number density of galaxies across the field and the shear measurement method.

We estimate the uncertainties on each pixel by randomizing the shear measurements on each galaxy. A thousand random background galaxy catalogs were generated by shuffling the shear values between all the galaxies. We then construct κ_E and κ_B maps from these randomized catalogs in the same way as in Fig. 2. The standard deviation map for these 1000 random samples is used as the noise map.

Dividing the signal map (Fig. 2) by the noise map gives an estimate for the S/N of the different structures in the maps, as shown in Fig. 3. These values are broadly consistent with those predicted via Eq. (13) and simulations described in Sec. VI B. The bottom panels of Fig. 3 show the distribution of the S/N values for both E - and B -mode maps for data as well as simulations predicted by Eq. (13). We find that the B -mode distribution is consistent with a Gaussian distribution of standard deviation ~ 1 as expected [90], and the E mode gives more extreme values. The difference between the data and the simulation is consistent with cosmic variance and shape noise.

V. CORRELATION WITH GALAXY CLUSTERS AND POTENTIAL SUPERSTRUCTURES

In this section we compare our mass map with optically identified groups and clusters of galaxies using the Redmapper algorithm [91] on DES data. We overlay in Fig. 4 Redmapper clusters and groups on the mass map as black circles. The size of these circles corresponds to the optical richness of these structures. Only clusters with optical richness λ greater than 20 and redshift between 0.1 and 0.5 are shown in the figure. According to Rykoff *et al.* [91] and Saro *et al.* [92], cluster mass scales approximately linear with λ , with $\lambda = 20$ corresponding to $\sim 1.7 \times 10^{14} M_\odot$ and $\lambda = 80$ corresponding to $\sim 7.6 \times 10^{14} M_\odot$. It is evident from this figure that the structures in the weak lensing mass map have significant correlation with the distribution of optically identified Redmapper clusters. The combination of the lensing mass maps, Redmapper clusters and Redmagic LRGs provides a powerful tool for identifying superstructures in the Universe that would otherwise be hard to spot.

Superclusters are the largest distinct structures in the universe, typically 10 Mpc or larger in extent with fractional overdensities of order 1–10 times the cosmic mean density. Cosmic voids are the corresponding underdensities, typically larger than 10 Mpc in radius with fractional underdensity of order unity. We identify superclusters and voids from the mass and galaxy maps in Fig. 2 and Fig. 4. The large peaks at the positions (RA, Dec) = (71.0, -45.0), (69.9, -47.8), (69.7, -54.5) and (69.1, -57.3) and large voids at (RA, Dec) = (65.6, -49.0), (75.1, -54.6), (75.7, -58.0) and (82.8, -59.5) are selected as shown in Fig. 4. The transverse spatial extent of these superstructures is typically greater than 10 Mpc. We compare in the left panels of Fig. 5 and Fig. 6 the redshift distribution of the foreground clusters within 1 deg radius of these locations with the average redshift distribution of the clusters in the entire SV field. The histograms are weighted by the optical richness λ as well as the lensing efficiency of our source sample (Fig. 1). λ scales roughly linearly with the total mass of the cluster [91]. We find that some of the mass map peaks correspond to superclusterlike structures that are localized in narrow redshift ranges, while others (e.g. field 3) show evidence for

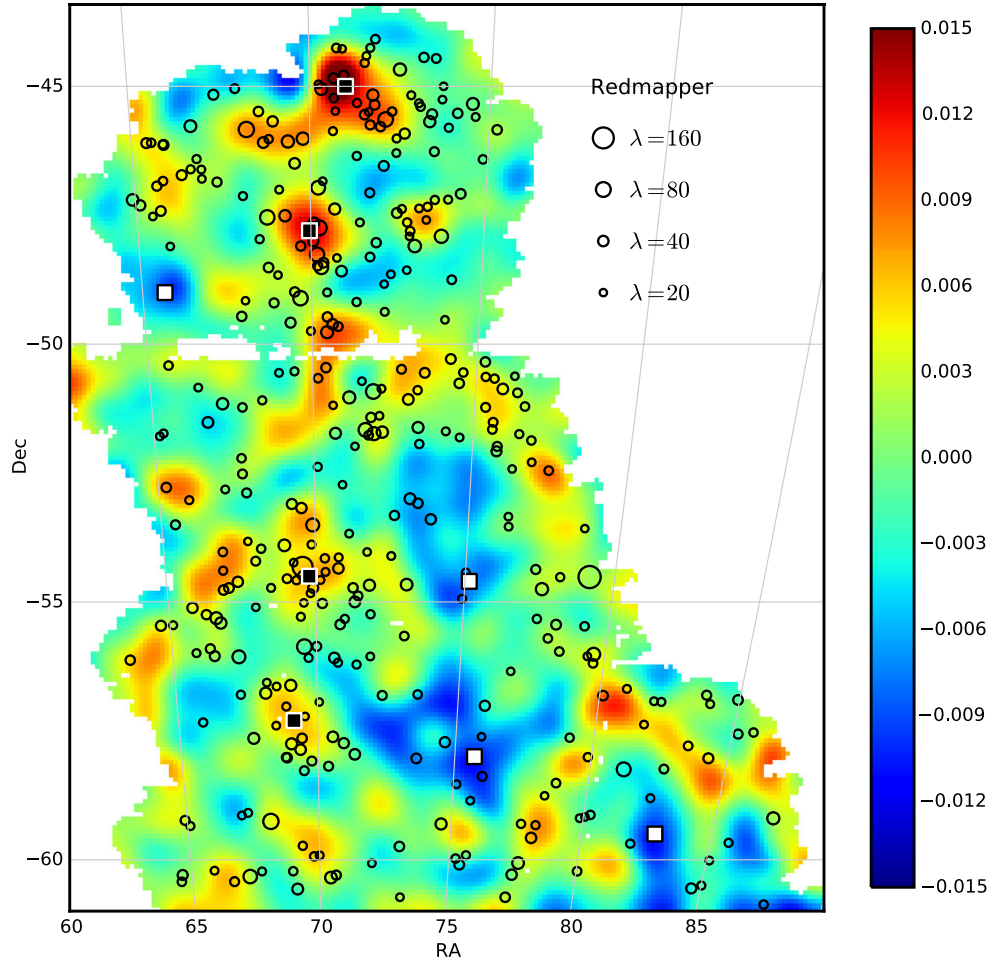


FIG. 4 (color online). The DES SV mass map along with foreground galaxy clusters detected using the Redmapper algorithm. The clusters are overlaid as black circles with the size of the circles indicating the richness of the cluster. Only clusters with richness greater than 20 and redshift between 0.1 and 0.5 are shown in the figure. The upper right corner shows the correspondence of the optical richness to the size of the circle in the plot. It can be seen that there is significant correlation between the mass map and the distribution of galaxy clusters. Several superclusters (black squares) and voids (white squares) can be identified in the joint map.

structures extending over wider redshift range. On the other hand, the large voids typically have fewer clusters than average along the line of sight and some deep underdense regions (candidate three-dimensional voids) at specific redshifts. In some cases there are also above average cluster counts in small ranges in redshift (field 6), as expected from the projected nature of these mass maps. The redshift range above $z = 0.6$ is marked with the shaded grey area, as this range overlaps with the background sample thus complicating the interpretation of the relationship with the mass map. In the future we will carry out more detailed studies of the mass maps using lensing tomography.

We show two cases for further investigations of potential superclusters and voids identified through this method. First, we look at the spatial distribution of the cluster members in thin redshift slices, identical to the analysis in Melchior *et al.* [77], and find structures such as the one shown in the right panel of Fig. 5. The redshift extent $\Delta z = 0.03$ corresponds to a line-of-sight distance of about

90 Mpc/ h , while the transverse size of the structure shown on the right is about 20 Mpc/ h . The line-of-sight scale corresponds to the size of the largest filamentary structures in cosmological simulations [93]. These numbers indicate that this is a good candidate for a three-dimensional supercluster. The tight photo- z accuracy of the Redmapper clusters ($\sigma_z \approx 0.01(1+z)$) gives us confidence in the identification of real three-dimensional structures.

For the voids, we follow the method developed in Szapudi *et al.* [94] and study the radial distribution of the foreground Redmagic LRGs. We use LRGs within 0.5 deg radius of the chosen position and calculate $\delta_{\text{LRG}} = (n_{\text{LRG}} - \bar{n}_{\text{LRG}})/\bar{n}_{\text{LRG}}$ in 100 Mpc/ h radial bins, where n_{LRG} is the number of LRGs in that bin and \bar{n}_{LRG} is the average number of LRGs for the full Redmagic catalog in the same radial bin. The radial profile for one void is shown in the right panel of Fig. 6: it is consistent with two large voids in this line of sight. We use a simple “top-hat” void model [94] with an amplitude $\delta_{\text{LRG}} = -0.7$, an extent of

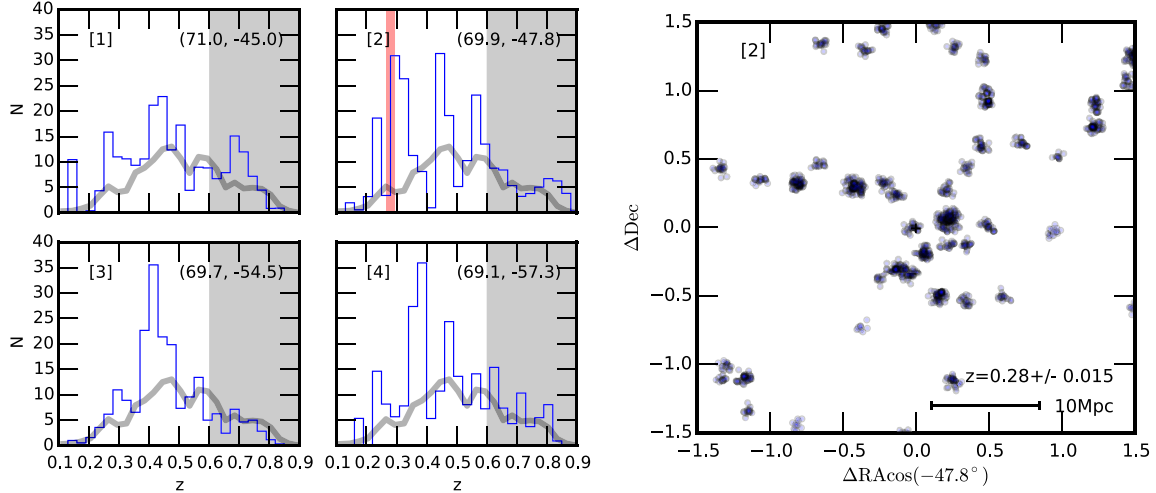


FIG. 5 (color online). Left: the blue curve in each of the 4 panels shows the weighted redshift distribution of galaxy clusters counts with optical richness $\lambda > 5$ at the 4 different locations in the mass map of Fig. 4 corresponding to large convergence peak locations. The RA, Dec coordinates of these pointings are shown in the top right corner of each panel and the field numbers are listed on the top left corner. The counts are calculated for a 1 deg radius area, and the histograms are weighted by λ and the lensing efficiency to properly represent the mass distribution and the lensing probed by the mass map. The thick grey line indicates the corresponding average number count in the full map. The redshift range above $z = 0.6$ is marked with the shaded grey area, as these ranges overlap with the background sample. Right: a candidate supercluster is shown by zooming in on a narrow redshift range of field 2 (red band in upper right panel on the left) where a peak in the cluster counts occurs. Each circle indicates the location of a galaxy belonging to a Redmapper cluster. The large spatial extent (a transverse distance of 10 Mpc is indicated in the panel) and the irregular shape characteristic of three-dimensional superclusters is evident.

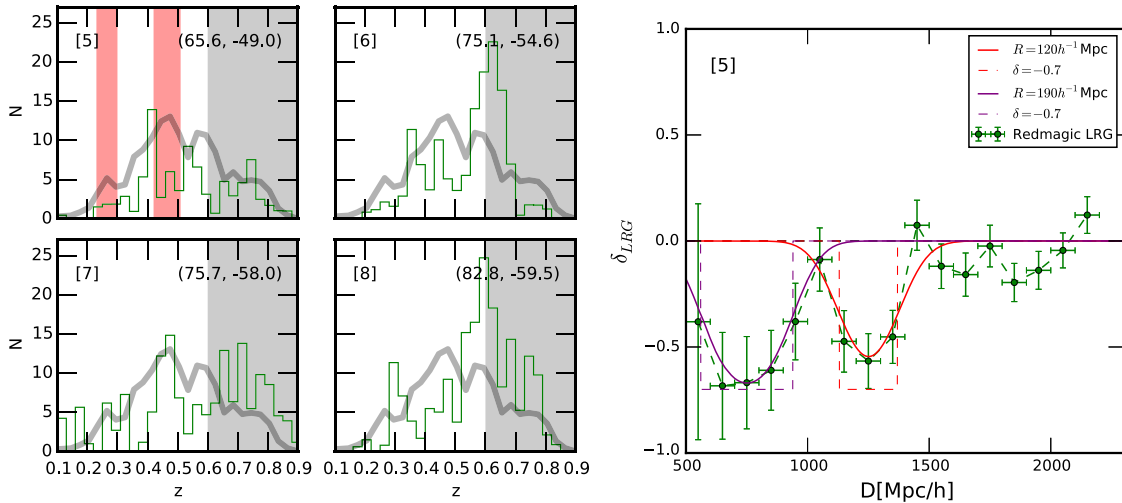


FIG. 6 (color online). Left: same as the left panel of Fig. 5 but plotted for voids identified in the mass map. There are typically fewer than average clusters over much of the line of sight which also contains some deep underdense regions at specific redshifts. At the higher redshifts, there are also above average cluster counts, but since the redshift range overlaps with the source galaxy sample, the interpretation of the structures is more complicated. Right: radial distribution of the Redmagic LRGs for field 5 in the left panel (red bands in upper left panel). The data are consistent with the existence of two voids modeled by the “top-hat” void model of width 190 and 120 Mpc/h, respectively.

190 Mpc/h at a distance of 750 Mpc/h for the first void, and another one with $\delta_{LRG} = -0.7$, an extent of 120 Mpc/h at 1250 Mpc/h. The combination of these two void models, smoothed by the photo- z uncertainty, matches well with the data. We also observe that there

could be a similarly large but shallower void at higher redshift, also contributing to the projected underdensity in the mass map.

The size and mass of the superclusters are of interest for cosmology as they represent the most massive end of the

matter distribution. This is especially interesting as the DES data set allows us to extend our studies to $z \approx 1$. We defer more detailed studies of superclusters and voids to follow-up work.

VI. CORRELATION WITH GALAXY DISTRIBUTION

In this section we quantitatively analyze the extent to which mass follows galaxy density in the data. To do this, we cross-correlate the weak lensing mass map with the weighted foreground galaxy density map. The correlation is quantified via the Pearson cross-correlation coefficient as described in Sec. VI A. We cross-check the results using simulations in Sec. VI B.

A. Quantifying the galaxy-mass correlation

We smooth both the convergence maps generated from weak lensing and from the foreground galaxy density with a Gaussian filter. These smoothed maps are used to estimate the correlation between the foreground structure and the weak lensing convergence maps. We calculate the correlation as a function of the smoothing scale. The correlation is quantified via the Pearson correlation coefficient defined as

$$\rho_{\kappa_E \kappa_g} = \frac{\langle \kappa_E \kappa_g \rangle}{\sigma_{\kappa_E} \sigma_{\kappa_g}}, \quad (16)$$

where $\langle \kappa_E \kappa_g \rangle$ is the covariance between κ_E and κ_g ; σ_{κ_E} and σ_{κ_g} are the standard deviation of the κ_E map, and the κ_g map from either the foreground main galaxy sample or the foreground LRG sample. In this calculation, pixels in the masked region are not used. We also remove pixels within 10 arcmin of the boundaries to avoid significant artifacts from the smoothing.

Figure 7 shows the Pearson correlation coefficient as a function of smoothing scales from 5 to 40 arcmin. We find that there is significant correlation between the weak lensing E -mode convergence and convergence from different foreground samples, with increasing correlation towards large smoothing scale. This trend is expected for noise-dominated maps, because the larger smoothing scales reduce the noise fluctuations in the map significantly. A similar trend is found when using the LRGs as foreground instead of the general magnitude-limited galaxy sample. The lower Pearson correlation between the mass map and LRG sample is because of the larger shot noise due to the lower number density compared to the magnitude-limited foreground sample. The error bar on the correlation coefficient is estimated based on jackknife resampling. We divide the observed sky into jackknife regions of size 10 deg^2 and recalculate the Pearson correlation coefficients, excluding one of the 10 deg^2 regions each time. We found that the estimated uncertainties do not depend significantly on the exact value of patch size.

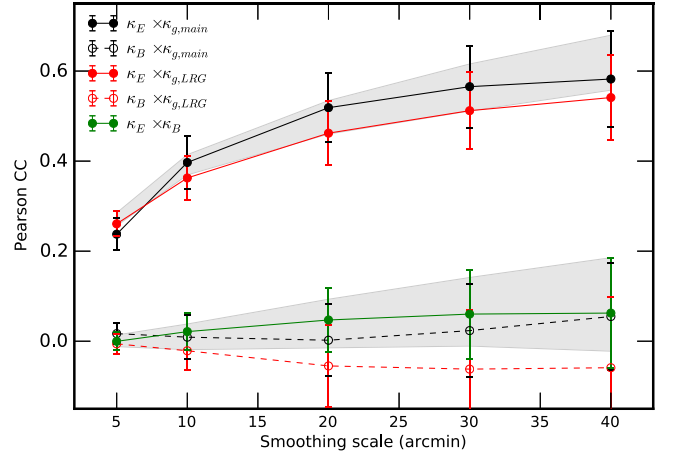


FIG. 7 (color online). This figure shows the Pearson correlation coefficient between foreground galaxies and convergence maps as a function of smoothing scale for the NGMIX galaxy catalog. The solid and open symbols show the E - and B -mode correlation coefficients, respectively. The black circles are for the main foreground sample and the red circles for foreground LRGs. The grey shaded regions show the 1σ bounds for E - and B -mode correlations from simulations for the main foreground sample with the same pixelization and smoothing (see Sec. VI B for details). We do not show the similar simulation results for the LRG sample. The detection significance for the correlation is in the range ~ 5 – 7σ at different smoothing scales. The green points show the correlation between E and B modes of the mass map. The various B -mode correlations are consistent with zero. Uncertainties on all measurements are estimated based on jackknife resampling.

We estimate the correlation coefficient after removing one of those patches from the sample to get jackknife realizations of the cross-correlation coefficient ρ_j . Finally, the variance is estimated as

$$\Delta\rho = \frac{N-1}{N} \sum_j (\rho_j - \bar{\rho})^2, \quad (17)$$

where j runs over all the N jackknife realizations and $\bar{\rho}$ is the average correlation coefficients of all patches.

We find that the Pearson correlation coefficient between κ_g from the main foreground galaxy sample (LRG sample) and weak lensing E -mode convergence is 0.39 ± 0.06 (0.36 ± 0.05) at 10 arcmin smoothing and 0.52 ± 0.08 (0.46 ± 0.07) at 20 arcmin smoothing. This corresponds to a $\sim 6.8\sigma$ (7.5σ) significance at 10 arcmin smoothing and $\sim 6.8\sigma$ (6.4σ) at 20 arcmin smoothing. As a zeroth-order test of systematics we also estimated the correlation between the B -mode weak lensing convergence and the κ_g maps. We find that the correlation between κ_B and the main foreground sample is consistent with zero at all smoothing scales. Similarly, the correlation between E and B modes of κ is consistent with zero. For comparison, we show the same plot calculated for the IM3SHAPE catalog in Fig. 8. We

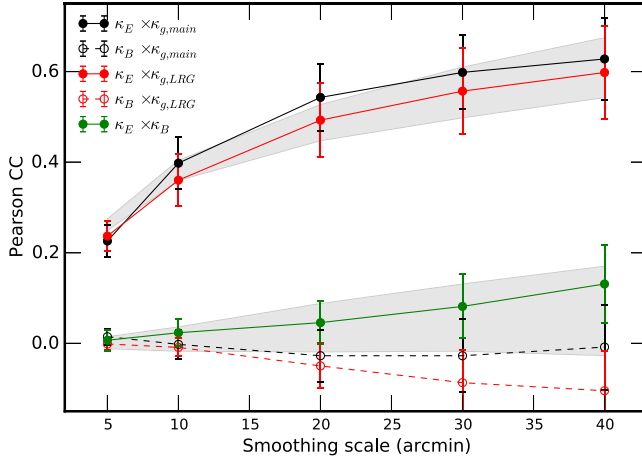


FIG. 8 (color online). Same as Fig. 7 but using the IM3SHAPE galaxy catalog.

find very similar results, with slightly larger correlation between κ_E and κ_B at the 1σ level.

B. Comparison with mock catalogs

At this point, it is important to verify whether our measurements in the data are consistent with what is expected. We investigate this using the simulated catalogs described in Sec. III C. As the simulations lack several realistic systematic effects in the data, these tests mainly serve as guidance for us to understand (1) the origin of the B mode in the κ maps, (2) the approximate expected level of $\rho_{\kappa\kappa_g}$ under pixelization and smoothing, (3) the effect on $\rho_{\kappa\kappa_g}$ from photo- z uncertainties and cosmic variance, and (4) the effect on the maps and $\rho_{\kappa\kappa_g}$ from the survey mask.

We construct a sample similar to the SV data. The same redshift, magnitude, and number density selections in Table I are applied to the simulations to form a foreground and a background sample. We choose to simulate the main foreground sample as the LRG foreground sample selection in the simulations is less controllable. For the background sample, we add Gaussian noise with standard deviation $\sigma = 0.27$ to each component of the true shear in the simulations to generate a model for the ellipticities that matches the data [67]. We then create a κ_g map from the main foreground sample and a κ map from the background sample the same way as is done in the data. The cross-correlation coefficient $\rho_{\kappa\kappa_g}$ is calculated from these simulated maps as in Sec. VI. We consider the same range of smoothing scales for the maps when calculating $\rho_{\kappa\kappa_g}$ as that in Fig. 8.

The simulations provide us a controlled way of separating the different sources of effects. We construct the maps in the following steps, in order of increasing similarities to data: (1) pixelating and smoothing the true κ values; (2) constructing the κ values from the true γ values; (3) constructing the κ values from the galaxy ellipticities which include shape noise (we generate 20 realizations); (4) using a photo- z model for the foreground

and the background galaxies instead of the true redshift; generating four different maps from different regions on the sky; (6) using the SV survey mask. Note that in step (3) we take the galaxy ellipticity to be the sum of a random component (sampled from a Gaussian with standard deviation of 0.27) and the lensing shear, this model is designed to match the data, which includes the intrinsic shape noise and other measurement noise associated with e.g. the PSF modeling. In step (4) we have modeled the photo- z errors from a spectroscopic sample that ran through the same photo- z code, taking the spectroscopic redshift to be the “true” redshift.

The difference between step (1) and step (2) measures the quality of the KS reconstruction method. The difference between step (2) and step (3) shows the effect of shape noise and measurement noise. Steps (4), (5) and (6) then show the effect of photo- z uncertainties, cosmic variance and masking. For each SV-size maps, we generate 20 (shape noise) \times 4 (cosmic variance) \times 2 (photo- z) \times 2 (mask) = 320 corresponding simulations.

1. Maps from simulations

Figure 9 shows the various maps generated from one particular patch of the simulations in this procedure for 5 arcmin pixels and 20 arcmin smoothing scales (consistent with that in Fig. 2). The amplitude of κ_E and κ_B both become larger than in the true maps when shape noise is added, and the resulting κ_E map has only slightly higher contrast than the κ_B map. When photo- z uncertainties are included, we see that the peaks and voids in the κ_E maps visibly move around. Applying the mask mainly changes the morphology of the structures in the maps around the edges. Comparing the last κ_E panel in Fig. 9 and Fig. 2, we see that the amplitude and qualitative scales of the variation in the κ_E maps are similar. On the other hand, if we compare the κ_g maps in the simulations with the κ_g maps in Fig. 2, we find some qualitative differences between the simulations and the data. The simulation contains more small scale structure and low- κ_g regions compared to the data. We do not investigate this issue further here, as the level of agreement in the simulations and the data is sufficient for our purpose.

2. Correlation coefficients from simulations

Figure 10 shows the mean Pearson correlation coefficient between the different maps as a function of smoothing scales for the 80 sets of simulated maps (four different areas in the sky and 20 realizations of shape noise each). The error bars indicate the standard deviation of these 80 simulations.

We find $\rho_{\kappa_{\text{true}}\kappa_g} \approx 0.8-0.9$. Several factors contribute to this. First, the foreground galaxy sample only includes a finite redshift range, and not all galaxies that contribute to the κ_{true} map. Second, the presence of a redshift-dependent galaxy bias adds further complication to the correlation coefficient. The effect of converting from the true shear γ to

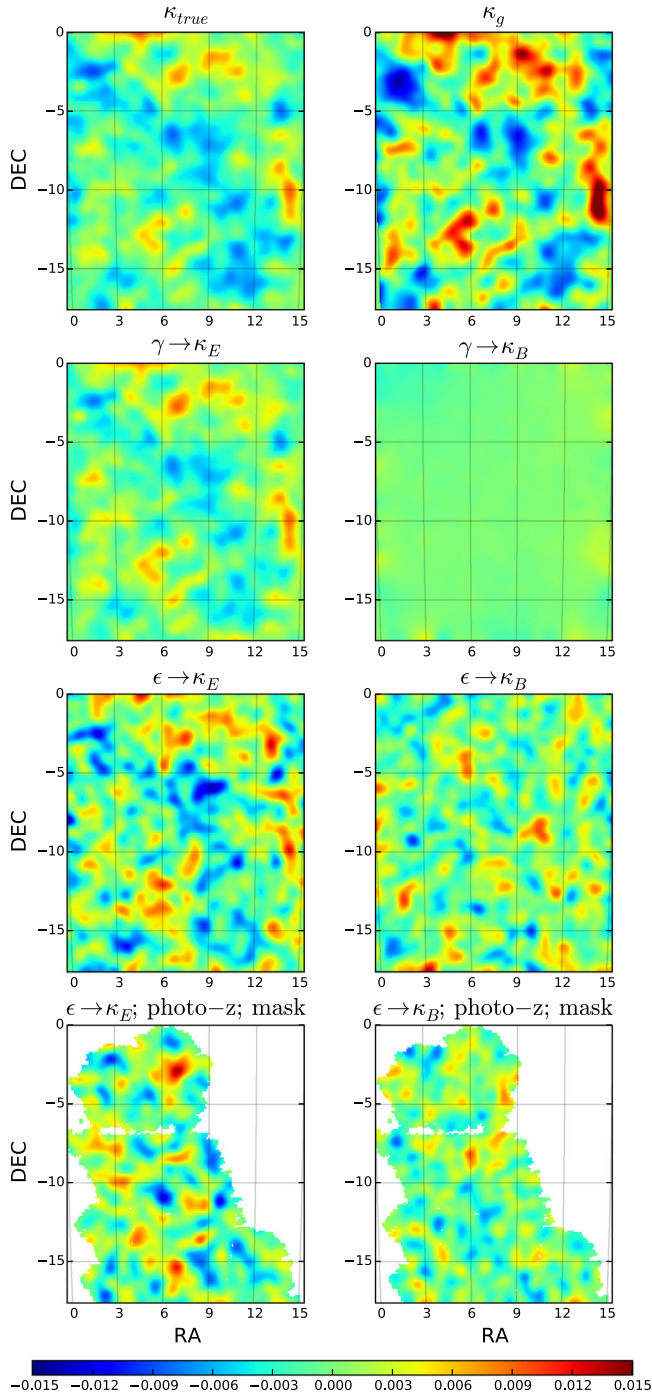


FIG. 9 (color online). Maps from simulations that are designed to mimic the data in our analysis. The simulations are generated for a field of size $15 \times 17.6 \text{ deg}^2$ with similar redshift and magnitude selections for the foreground and the background sample as the data. The true κ and κ_g maps are shown in the first row, where κ_g is modeled for the main foreground sample. The reconstructed κ_E and κ_B maps from the true γ are shown in the first two panels of the second row, followed by the κ_E and κ_B maps reconstructed from the ellipticity (ϵ) values. The last row first shows the κ_E and κ_B constructed from ϵ with photo- z uncertainties, then the same maps with an SV survey mask applied. The last two panels on the bottom most closely match the data.

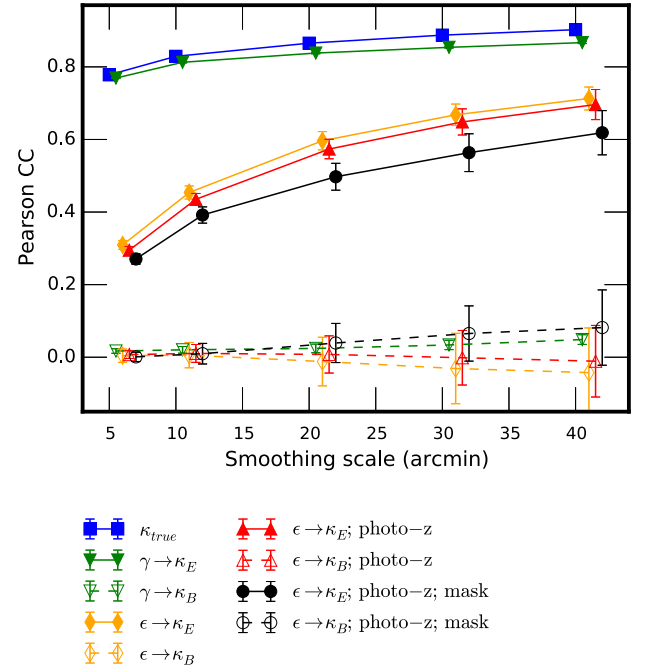


FIG. 10 (color online). Pearson correlation coefficient $\rho_{X\kappa_g}$ between the different simulated maps shown in Fig. 9 as a function of smoothing scale. X represents the different κ maps as listed in the legend. This plot is the simulation version of Fig. 7, where one can see how the measured values in the data could have been degraded due to various effects. The qualitative trend of the correlation coefficients as a function of smoothing scale is consistent with that observed in data. When reconstructing κ_E from the true γ small errors are introduced due to the nonlocal reconstruction, lowering the correlation coefficient by a few percent. Adding shape noise to the shear measurement lowers the signal significantly, with the level of degradation dependent on the smoothing scale. Adding photo- z uncertainties changes the signal by a few percent. Finally, placing an SV-like survey mask changes the signal by $\sim 10\%$. The black curve with its error bars corresponds to the shaded region in Fig. 7.

convergence lowers the correlation coefficient by about 3%. This is a measure of the error in the KS conversion under finite area and resolution of the shear fields. The main degradation of the signal comes when shape noise and measurement noise is included. Photo- z uncertainties in both the foreground and the background sample changes the correlation coefficient slightly. Finally, the survey mask lowers the correlation coefficient by $\sim 10\%$.

The final correlation coefficient after considering all the effects discussed above is shown by the black curve in Fig. 10 and overplotted as the shaded region in Fig. 7. We find that the dependence of $\rho_{\kappa\kappa_g}$ on the smoothing scale in the simulation is qualitatively and quantitatively very similar to that seen in Fig. 7.

VII. SYSTEMATIC EFFECTS

In this section we examine the possible systematic uncertainties in our measurement. We focus on the

cross-correlation between our weak lensing mass map κ_E and the main foreground density map $\kappa_{g,\text{main}}$. To simplify the notation, we omit the “main” in the subscript and use κ_g to represent the main foreground map in this section. We investigate the potential contamination from systematic effects on the cross-correlation coefficient $\rho_{\kappa_E\kappa_g}$ by looking at the spatial correlation of various quantities with the κ_E map and the κ_g map.

As discussed in Appendix A, there are several factors that can contaminate the δ_g maps. For example, depth and PSF variations in the observed field can introduce artificial clustering in the foreground galaxy density map. Although we use magnitude and redshift selections according to the tests in Appendix A, one can expect some level of residual effects on the κ_g maps. The κ_E map is constructed from shear catalogs of the background sample, thus systematics in the shear measurement will propagate into the κ_E map. In Jarvis *et al.* [67], extensive tests of systematics have been carried out on the shear catalog. Therefore here we focus on the systematics that are specifically relevant for mass mapping and the correlation coefficient Eq. (16).

We identify several possible sources of systematics for the background and foreground sample as listed in Table II. We generate maps of these quantities that are pixelated and smoothed on the same scale as the κ_E and κ_g maps. We then evaluate the contribution of these effects to the correlation coefficient [Eq. (16)] based on the following diagnostic quantity:

TABLE II. Quantities examined in our systematics tests.

Map name	Description
kE (signal)	κ_E from γ_1, γ_2 for background sample
kg (signal)	κ_g from main foreground sample
kB	κ_B from γ_1, γ_2 for background sample
ns_f	Star number per pixel
ng_b	Galaxy number per pixel for background sample
snr	Signal-to-noise of galaxies in IM3SHAPE
mask	Fraction of area masked in galaxy postage stamp
g1	Average γ_1 for background sample
g2	Average γ_2 for background sample
psf_e1	Average PSF ellipticity
psf_e2	Average PSF ellipticity
psf_T	Average PSF size (NGMIX only)
psf_fwhm	Average PSF size (IM3SHAPE only)
psf_kE	κ_E generated from average PSF ellipticity
psf_kB	κ_B generated from average PSF ellipticity
zp_b	Mean photo- z for background sample
zp_f	Mean photo- z for foreground sample
ebv	Mean extinction
skysigma	Standard deviation of sky brightness in ADU
sky	Mean sky brightness in ADU
maglim	Mean limiting i -band AB magnitude
exptime	Mean exposure time in seconds
airmass	Mean airmass

$$\hat{\rho}_{\kappa_E\kappa_g;\Theta} = \frac{\hat{\rho}_{\kappa_E\Theta}\hat{\rho}_{\kappa_g\Theta}}{\hat{\rho}_{\Theta\Theta}}, \quad (18)$$

with $\hat{\rho}_{XY}$ being the cross-correlation function, which is effectively the unnormalized Pearson correlation coefficient between X and Y , or

$$\hat{\rho}_{XY} = \langle XY \rangle. \quad (19)$$

Equation (18) measures the contribution from some systematics field Θ to $\hat{\rho}_{\kappa_E\kappa_g}$. We calculate $\hat{\rho}_{\kappa_E\kappa_g;\Theta}$ with Θ being any of the 20 quantities in Table II (excluding the signal). Figure 11 shows the normalized cross-correlation coefficient $\hat{\rho}_{\kappa_E\kappa_g;\Theta}/\hat{\rho}_{\kappa_E\kappa_g}$ values for all the quantities considered for 10 and 20 arcmin smoothing, with the red dashed line at 5%. The error bars are estimated by jackknife resampling similar to that described in Sec. VI A, and the two panels show the results for NGMIX and IM3SHAPE, respectively. The normalized cross-correlation coefficient is a measure of the fractional contamination in the Pearson coefficient [Eq. (16)] from each of the systematics maps Θ .

We find that for NGMIX all quantities show contributions to the systematic uncertainties at 10 arcmin smoothing to be at the level of 5% or lower, while the systematics increase to up to 15% when smoothing at the 20 arcmin scale (though with large error bars on the systematics estimation). For IM3SHAPE, most of the values stay below 5% for both smoothing scales. The largest contribution in both cases come from the variation in the PSF properties (psf_e1, psf_e2, psf_kB). This is expected, as the modeling of the PSF is known to be a significant challenge in weak lensing. Since all these PSF quantities are correlated with each other, and many other parameters (g1, g2, snr, maglim) are correlated with the PSF properties, we do not expect the total systematics contamination to be a direct sum of all these parameters. Instead, we discuss in Appendix B how one can isolate the independent contributions of the systematics via a principal component analysis approach and correct for them. We find that the correction changes the final Pearson correlation coefficient by 3.5% relative to the original $\rho_{\kappa_E\kappa_g}$ measured in Sec. VI.

Finally, to check the level of systematic contamination in our κ_E map itself, we also calculate the Pearson correlation coefficient [Eq. (16)] between the various maps in Table II and our κ_E map. Note that this contamination may or may not be pronounced in Fig. 11 since the statistics plotted there also take into account the correlation of κ_g with the various quantities. This test is independent of the foreground map, therefore is important for applications of the κ_E map that do not also use the foreground maps. Figure 12 shows the resulting 21 Pearson correlation coefficients. We find that the signal shown in the right-most points in the plot ($\rho_{\kappa_E\kappa_g}$) is larger than all other correlations by at least a factor of ~ 3 .

We also note that in both of these tests, the area of the map is not big enough to ignore the fact that some of these

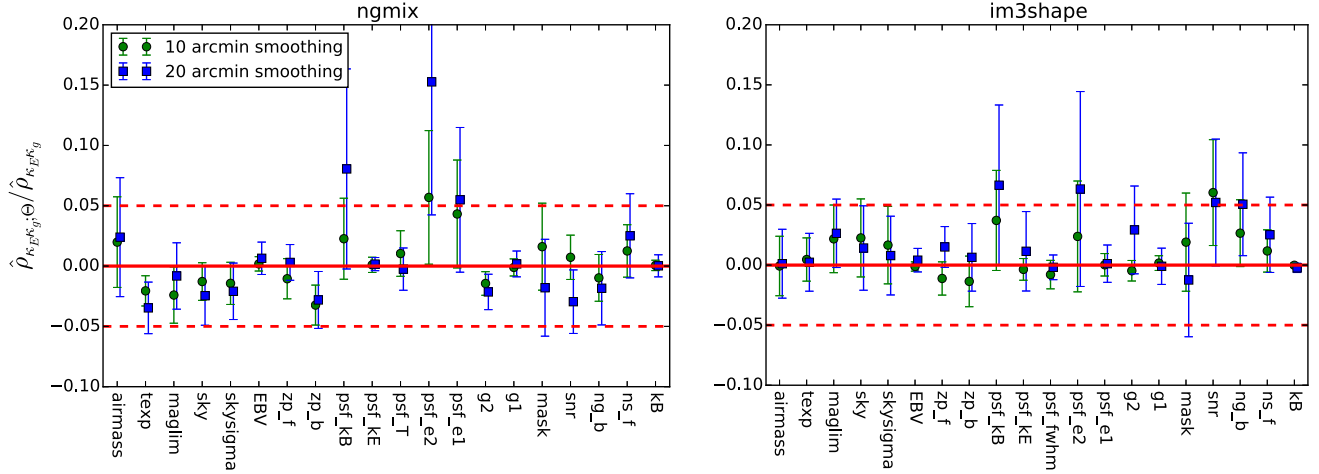


FIG. 11 (color online). The normalized cross-correlation coefficient $\hat{\rho}_{\kappa_E \kappa_g; \Theta}$ is shown for 20 different systematic uncertainty parameters. The systematic parameters, represented by Θ , are listed in Table II and shown for two smoothing scales. The $\hat{\rho}_{\kappa_E \kappa_g; \Theta}$ values are normalized by $\hat{\rho}_{\kappa_E \kappa_g}$ to show the relative magnitude of the systematic and the signal. The red dashed line indicates where the systematic is 5% of $\hat{\rho}_{\kappa_E \kappa_g}$. The error bars are estimated from resampling the foreground and background galaxy sample in patches of size 10 deg^2 . The left panel is calculated for NGMIX while the right panel is for IM3SHAPE.

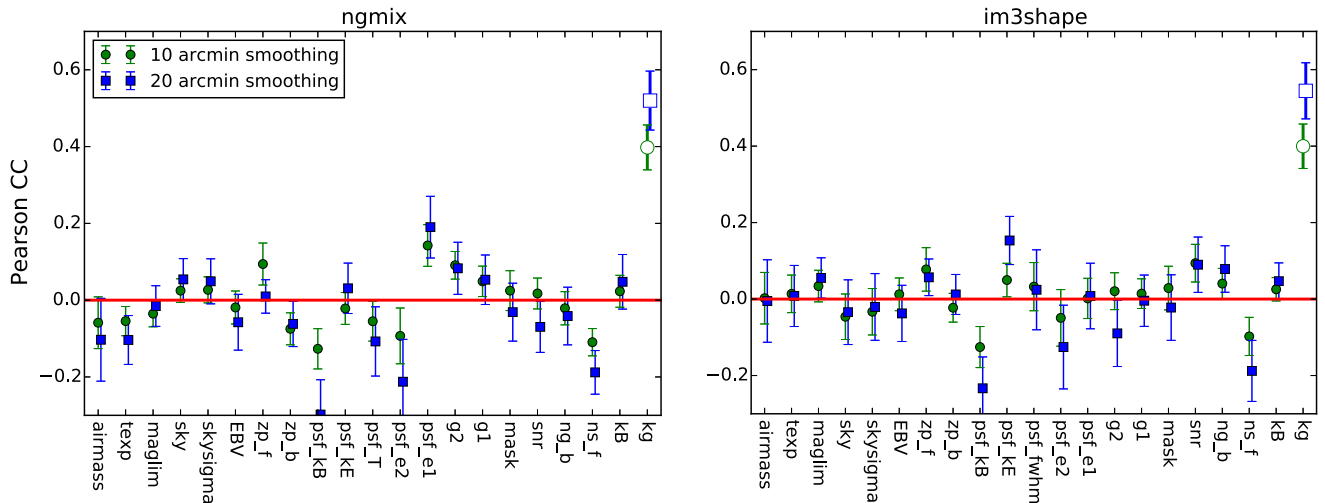


FIG. 12 (color online). Pearson correlation coefficient $\rho_{\kappa_E \Theta}$ where Θ represents the quantities listed in Table II. We show the statistics for two smoothing scales and for both NGMIX (left) and IM3SHAPE (right). The right-most points in both panel correspond to the detection signal in Fig. 7 and Fig. 8. The error bars are estimated from resampling the foreground and background galaxy sample in patches of size 10 deg^2 . Note that this is a different statistic from that in Fig. 11, thus the y-axis values are not directly comparable.

correlations can be intrinsically nonzero, even if there were no systematics contamination in the maps.

VIII. CONCLUSIONS

In this work, we present a weak lensing mass map based on galaxy shape measurements in the 139 deg^2 SPT-E field from the Dark Energy Survey science verification data. We have cross-correlated the mass map with maps of galaxy and cluster samples in the same data set. We demonstrate that candidate superclusters and voids along the line of

sight can be identified exploiting the tight scatter of the cluster photo- z 's.

We constructed mass maps from the foreground Redmagic LRG and general magnitude-limited galaxy samples under the assumption that mass traces light. We find that the E mode of the convergence map correlates with the galaxy-based maps with high statistical significance. We repeated this analysis at various smoothing scales and compared the results to measurements from mock catalogs that reproduce the galaxy distribution and lensing shape noise properties of the data. The Pearson cross-correlation coefficient is

0.39 ± 0.06 (0.36 ± 0.05) at 10 arcmin smoothing and 0.52 ± 0.08 (0.46 ± 0.07) at 20 arcmin smoothing for the main (LRG) foreground sample. This corresponds to a $\sim 6.8\sigma$ (7.5σ) significance at 10 arcmin smoothing and $\sim 6.8\sigma$ (6.4σ) at 20 arcmin smoothing. We get comparable values from the mock catalogs, indicating that statistical uncertainties, not systematics, dominate the noise in the data. The B mode of the mass map is consistent with noise and its correlations with the foreground maps are consistent with zero at the 1σ level.

To examine potential systematic uncertainties in the convergence map, we identified 20 possible systematic tracers such as seeing, depth, PSF ellipticity and photo- z uncertainties. We show that the systematics effects are consistent with zero at the 1 or 2σ level. In Appendix B, we present a simple scheme for the estimation of systematic uncertainties using principal component analysis. We discuss how these contributions can be subtracted from the mass maps if they are found to be significant.

The results from this work open several new directions of study. Potential areas include the study of the relative distribution of hot gas with respect to the total mass based on X-ray or Sunyaev-Zeldovich observations, estimation of galaxy bias, constraining cosmology using peak statistics, and finding filaments in the cosmic web. The tools that we have developed in this paper are useful both for identifying potential systematic errors and for cosmological applications. The observing seasons for the first two years of DES are now complete [95] and survey an area well over 10 times that of the SV data, though shallower by about half a magnitude. The full DES survey area will be ~ 35 times larger than that presented here, at roughly the same depth. The techniques and tools developed in this work will be applied to this new survey data, allowing significant expansion of the work presented here.

ACKNOWLEDGMENTS

We are grateful for the extraordinary contributions of our CTIO colleagues and the DECam Construction, Commissioning and science verification teams in achieving the excellent instrument and telescope conditions that have made this work possible. The success of this project also relies critically on the expertise and dedication of the DES Data Management group. We thank Jake VanderPlas, Andy Connolly, Phil Marshall, Ludo van Waerbeke, and Rafal Szepletowski for discussions and collaborative work on mass mapping methodology. C. C and A. A. are supported by the Swiss National Science Foundation Grants No. 200021-149442 and No. 200021-143906. S. B. and J. Z. acknowledge support from European Research Council Starting Grant No. 240672. D. G. was supported by SFB-Transregio 33 “The Dark Universe” by the Deutsche Forschungsgemeinschaft (DFG) and the DFG cluster of excellence “Origin and Structure of the Universe.” F. S. acknowledges financial support provided

by CAPES under Contract No. 3171-13-2. O. L. acknowledges support from a European Research Council Advanced Grant No. FP7/291329. Funding for the DES Projects has been provided by the U.S. Department of Energy, the U.S. National Science Foundation, the Ministry of Science and Education of Spain, the Science and Technology Facilities Council of the United Kingdom, the Higher Education Funding Council for England, the National Center for Supercomputing Applications at the University of Illinois at Urbana-Champaign, the Kavli Institute of Cosmological Physics at the University of Chicago, the Center for Cosmology and Astro-Particle Physics at the Ohio State University, the Mitchell Institute for Fundamental Physics and Astronomy at Texas A&M University, Financiadora de Estudos e Projetos, Fundação Carlos Chagas Filho de Amparo à Pesquisa do Estado do Rio de Janeiro, Conselho Nacional de Desenvolvimento Científico e Tecnológico and the Ministério da Ciência e Tecnologia, the Deutsche Forschungsgemeinschaft and the collaborating institutions in the Dark Energy Survey. The DES data management system is supported by the National Science Foundation under Grant No. AST-1138766. The DES participants from Spanish institutions are partially supported by MINECO under Grants No. AYA2012-39559, No. ESP2013-48274, No. FPA2013-47986, and Centro de Excelencia Severo Ochoa No. SEV-2012-0234, some of which include ERDF funds from the European Union. The collaborating institutions are Argonne National Laboratory, the University of California at Santa Cruz, the University of Cambridge, Centro de Investigaciones Energeticas, Medioambientales y Tecnologicas-Madrid, the University of Chicago, University College London, the DES-Brazil Consortium, the Eidgenössische Technische Hochschule (ETH) Zürich, Fermi National Accelerator Laboratory, the University of Edinburgh, the University of Illinois at Urbana-Champaign, the Institut de Ciències de l’Espai (IEEC/CSIC), the Institut de Física d’Altes Energies, Lawrence Berkeley National Laboratory, the Ludwig-Maximilians Universität and the associated Excellence Cluster Universe, the University of Michigan, the National Optical Astronomy Observatory, the University of Nottingham, The Ohio State University, the University of Pennsylvania, the University of Portsmouth, SLAC National Accelerator Laboratory, Stanford University, the University of Sussex, and Texas A&M University. This paper has gone through internal review by the DES Collaboration.

APPENDIX A: FOREGROUND SAMPLE SELECTION

As discussed in Sec. III B, we consider two factors that can affect the selection of our foreground sample—spatial variation in depth and spatial variation in seeing. If not taken care of, these effects will result in apparent spatial variation of the foreground galaxy number density that is

not due to the cosmological clustering of galaxies. Below we describe tests for each of these and determine a set of selection criteria based on the analysis.

1. Depth variation

Spatial variation in the depth of the images can cause the apparent galaxy number density to vary, as more or less galaxies survive the detection threshold. We would like to construct a foreground galaxy sample which minimizes this varying depth effect. A simple solution is to place a magnitude selection slightly shallower than the limiting magnitude in all of the areas considered, so that the sample is close to complete in that magnitude range.

We find that in our area of interest, with a magnitude selection at $i < 22$, we have 97.5% of the area that is complete to this magnitude limit. We use the 10σ galaxy limiting magnitude to define depth, which is a conservative measure for the completeness, as we detect many more galaxies below 10σ . The detail methodology of estimating the limiting magnitude of the data is described in Rykoff *et al.* [48]. The 2.5% slightly shallower is not expected to yield significant change in our results.

2. Seeing variation

Spatial variation in seeing can lead to spatial variation in apparent galaxy number density, as large seeing leads to less effective star-galaxy separation as well as higher probability of blending in crowded fields. To test this, we first select a foreground sample with $i < 22$ and $0.1 < z < 0.5$ according to Sec. III B. Then we look at the correlation between the galaxy number density in this foreground sample and the average seeing values at these locations, both calculated on a grid of 5×5 arcmin² pixels without smoothing. Figure 13 shows the galaxy number

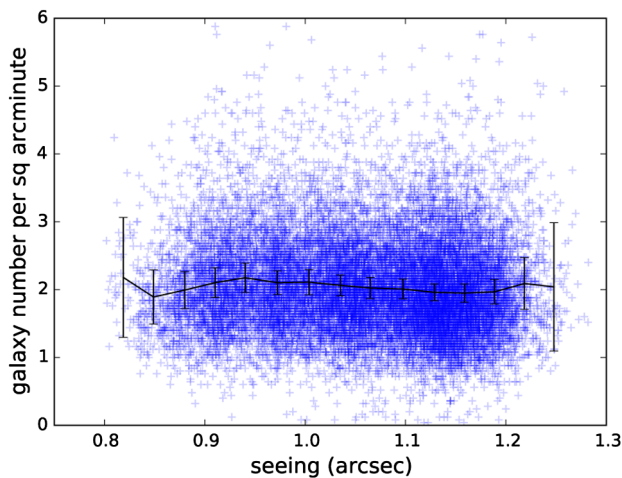


FIG. 13 (color online). Galaxy number density as a function of the seeing in the area of consideration. The black line shows the mean and standard deviation (multiplied by 10 for easy visualization) of the scatter plot in 15 seeing bins.

density versus seeing. The black data points show the mean and standard deviation (multiplied by 10 for easy visualization) of the scatter plot in 15 seeing bins. There is a small anticorrelation between these two values at the 6% level. This is at an acceptable level for us to continue the analysis without masking out the extreme high/low seeing regions.

APPENDIX B: CORRECTING FOR SYSTEMATIC CONTAMINATION USING PCA

As shown in Sec. VII, we can use Eq. (18) to check for any outstanding systematic contamination in our κ_E map and its correlation with the κ_g map. Here we present a general treatment to correct for these systematic contaminations, similar to that used in Ross *et al.* [96] and Ho *et al.* [97].

Assume that our measured κ_E map is a linear combination of the true $\kappa_{E,\text{true}}$ map and some small coefficient α_i times the systematics maps $\{M_i\}$ that can potentially contaminate the κ_E maps (e.g. seeing, PSF ellipticity). That is

$$\kappa_E = \kappa_{E,\text{true}} + \sum_i^N \alpha_i M_i, \quad (\text{B1})$$

where we have a total of N systematics maps. Similarly, we have the expression for the measured κ_g in the same way

$$\kappa_g = \kappa_{g,\text{true}} + \sum_i^N \beta_i M_i, \quad (\text{B2})$$

where β_i is the linear coefficient in this case.

Assuming the true maps are uncorrelated with the systematics maps, we have

$$\langle \kappa_{E,\text{true}} M_i \rangle = 0; \quad (\text{B3})$$

$$\langle \kappa_{g,\text{true}} M_i \rangle = 0. \quad (\text{B4})$$

Correlating the measured κ_E with a single systematics map gives

$$\langle \kappa_E M_j \rangle = \left\langle \left(\sum_i^N \alpha_i M_i \right) M_j \right\rangle. \quad (\text{B5})$$

We can construct a set of systematics maps that are uncorrelated between each other, or $\langle M_i M_{j \neq i} \rangle = 0$, and then extract all the coefficients α_i from the observables as follows:

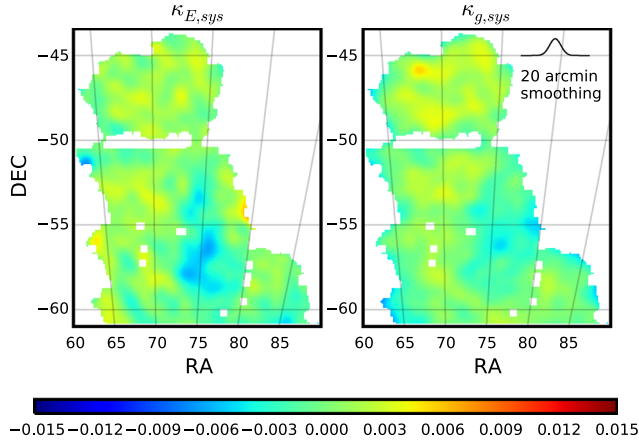


FIG. 14 (color online). The systematics map for κ_E (left) and κ_g (right) shown is compiled using a linear combination of 20 principal components extracted from the systematics maps listed in Table II.

$$\begin{aligned} \langle \kappa_E M_j \rangle &= \alpha_j \langle M_j M_j \rangle; \\ \alpha_j &= \frac{\langle \kappa_E M_j \rangle}{\langle M_j M_j \rangle}; \\ \kappa_{E,\text{true}} &= \kappa_E - \sum_i^N \frac{\langle \kappa_E M_i \rangle}{\langle M_i M_i \rangle} M_i. \end{aligned} \quad (\text{B6})$$

And similarly for κ_g , we have

$$\kappa_{g,\text{true}} = \kappa_g - \sum_i^N \frac{\langle \kappa_g M_i \rangle}{\langle M_i M_i \rangle} M_i. \quad (\text{B7})$$

To construct a set of systematics maps $\{M_i\}$ uncorrelated between each other from a set of systematics maps correlated with each other $\{M'_i\}$ (i.e. those listed in

Table II), we invoke the Principal Component Analysis (PCA) method. In this case, each of the pixelated maps, after normalizing by its scatter, $\{M'_i\}$ form a data vector, and the extracted eigenvectors form an orthogonal basis set, which we can use as $\{M_i\}$. We find that the principal component maps correspond strikingly to physical properties of the data. Figure 14 shows the systematics maps corresponding to κ_E and main sample κ_g extracted using this PCA method, or the second terms on the right-hand side of Eq. (B6) and Eq. (B7). We find that the main contributions come from large-scale structures and are at a very low level compared to the original maps (see Fig. 1). We subtract these systematics maps from the original κ_E and κ_g maps according to Eq. (B6) and Eq. (B7). The Pearson correlation coefficient changes by 3.5% relative to the original $\rho_{\kappa_E \kappa_g}$ measured in Sec. VI, suggesting the contamination to the cross-correlation coefficient is not significant.

It is worth noting that there are a few assumptions that go into the calculation above, which need to be accounted for when interpreting these results. First, we have assumed that the systematic maps have no correlation with the true κ_E and κ_g maps. For a large enough area, this should be true, but for small maps we can expect some correlation just by chance. Hence the quantitative “improvement” we get in the Pearson correlation coefficient must be carefully checked with simulations with larger area than used here. Second, since the method is based on PCA, the effectiveness of the correction depends on finding the important systematics maps that can contribute *linearly* to the contamination. That is, if the systematics come from a non-linear combination of the various maps (e.g. multiplication of two maps), then one would not automatically correct for it without putting in this correct non-linear combination of maps in the first place.

-
- [1] M. Bartelmann and P. Schneider, *Phys. Rep.* **340**, 291 (2001).
 [2] H. Hoekstra and B. Jain, *Annu. Rev. Nucl. Part. Sci.* **58**, 99 (2008).
 [3] L. Van Waerbeke, Y. Mellier, T. Erben, J. C. Cuillandre, F. Bernardeau, R. Maoli, E. Bertin, H. J. McCracken, O. Le Fèvre, B. Fort *et al.*, *Astron. Astrophys.* **358**, 30 (2000).
 [4] N. Kaiser, G. Wilson, and G. A. Luppino, *arXiv:astro-ph/0003338*.
 [5] D. J. Bacon, A. R. Refregier, and R. S. Ellis, *Mon. Not. R. Astron. Soc.* **318**, 625 (2000).
 [6] H. Hoekstra, Y. Mellier, L. van Waerbeke, E. Semboloni, L. Fu, M. J. Hudson, L. C. Parker, I. Tereno, and K. Benabed, *Astrophys. J.* **647**, 116 (2006).
 [7] H. Lin, S. Dodelson, H.-J. Seo, M. Soares-Santos, J. Annis, J. Hao, D. Johnston, J. M. Kubo, R. R. R. Reis, and M. Simet, *Astrophys. J.* **761**, 15 (2012).
 [8] C. Heymans, L. van Waerbeke, L. Miller, T. Erben, H. Hildebrandt, H. Hoekstra, T. D. Kitching, Y. Mellier, P. Simon, C. Bonnett *et al.*, *Mon. Not. R. Astron. Soc.* **427**, 146 (2012).
 [9] D. J. Bacon, R. J. Massey, A. R. Refregier, and R. S. Ellis, *Mon. Not. R. Astron. Soc.* **344**, 673 (2003).
 [10] M. Jarvis, B. Jain, G. Bernstein, and D. Dolney, *Astrophys. J.* **644**, 71 (2006).
 [11] E. Semboloni, Y. Mellier, L. van Waerbeke, H. Hoekstra, I. Tereno, K. Benabed, S. D. J. Gwyn, L. Fu, M. J. Hudson, R. Maoli *et al.*, *Astron. Astrophys.* **452**, 51 (2006).

- [12] L. Fu, M. Kilbinger, T. Erben, C. Heymans, H. Hildebrandt, H. Hoekstra, T.D. Kitching, Y. Mellier, L. Miller, E. Semboloni *et al.*, *Mon. Not. R. Astron. Soc.* **441**, 2725 (2014).
- [13] M. J. Jee, J. A. Tyson, M. D. Schneider, D. Wittman, S. Schmidt, and S. Hilbert, *Astrophys. J.* **765**, 74 (2013).
- [14] M. Kilbinger, L. Fu, C. Heymans, F. Simpson, J. Benjamin, T. Erben, J. Harnois-Déraps, H. Hoekstra, H. Hildebrandt, T.D. Kitching *et al.*, *Mon. Not. R. Astron. Soc.* **430**, 2200 (2013).
- [15] L. Van Waerbeke, G. Hinshaw, and N. Murray, *Phys. Rev. D* **89**, 023508 (2014).
- [16] B. Jain and L. Van Waerbeke, *Astrophys. J.* **530**, L1 (2000).
- [17] P. Fosalba, E. Gaztañaga, F. J. Castander, and M. Manera, *Mon. Not. R. Astron. Soc.* **391**, 435 (2008).
- [18] J. P. Dietrich and J. Hartlap, *Mon. Not. R. Astron. Soc.* **402**, 1049 (2010).
- [19] J. M. Kratochvil, Z. Haiman, and M. May, *Phys. Rev. D* **81**, 043519 (2010).
- [20] J. Bergé, A. Amara, and A. Réfrégier, *Astrophys. J.* **712**, 992 (2010).
- [21] A. Amara, S. Lilly, K. Kovač, J. Rhodes, R. Massey, G. Zamorani, C. M. Carollo, T. Contini, J.-P. Kneib, O. Le Fevre *et al.*, *Mon. Not. R. Astron. Soc.* **424**, 553 (2012).
- [22] M. Jauzac, E. Jullo, J.-P. Kneib, H. Ebeling, A. Leauthaud, C.-J. Ma, M. Limousin, R. Massey, and J. Richard, *Mon. Not. R. Astron. Soc.* **426**, 3369 (2012).
- [23] H. Y. Shan, J.-P. Kneib, J. Comparat, E. Jullo, A. Charbonnier, T. Erben, M. Makler, B. Moraes, L. Van Waerbeke, F. Courbin *et al.*, *Mon. Not. R. Astron. Soc.* **442**, 2534 (2014).
- [24] H. S. Hwang, M. J. Geller, A. Diaferio, K. J. Rines, and H. J. Zahid, *Astrophys. J.* **797**, 106 (2014).
- [25] M. White, L. van Waerbeke, and J. Mackey, *Astrophys. J.* **575**, 640 (2002).
- [26] C. Heymans, M. E. Gray, C. Y. Peng, L. van Waerbeke, E. F. Bell, C. Wolf, D. Bacon, M. Balogh, F.D. Barazza, M. Barden *et al.*, *Mon. Not. R. Astron. Soc.* **385**, 1431 (2008).
- [27] N. A. Bahcall and X. Fan, *Astrophys. J.* **504**, 1 (1998).
- [28] Z. Haiman, J. J. Mohr, and G. P. Holder, *Astrophys. J.* **553**, 545 (2001).
- [29] G. Holder, Z. Haiman, and J. J. Mohr, *Astrophys. J.* **560**, L111 (2001).
- [30] L. Knox, Y.-S. Song, and J. A. Tyson, *Phys. Rev. D* **74**, 023512 (2006).
- [31] B. Jain and J. Khoury, *Ann. Phys. (Amsterdam)* **325**, 1479 (2010).
- [32] M. Plionis and S. Basilakos, *Mon. Not. R. Astron. Soc.* **330**, 399 (2002).
- [33] L. Van Waerbeke, J. Benjamin, T. Erben, C. Heymans, H. Hildebrandt, H. Hoekstra, T.D. Kitching, Y. Mellier, L. Miller, J. Coupon *et al.*, *Mon. Not. R. Astron. Soc.* **433**, 3373 (2013).
- [34] The Dark Energy Survey Collaboration, [arXiv:astro-ph/0510346](https://arxiv.org/abs/astro-ph/0510346).
- [35] B. Flaugher, *Int. J. Mod. Phys. A* **20**, 3121 (2005).
- [36] <http://www.darkenergysurvey.org>.
- [37] H. T. Diehl (Dark Energy Survey Collaboration), *Phys. Procedia* **37**, 1332 (2012).
- [38] B. L. Flaugher, T. M. C. Abbott, R. Angstadt, J. Annis, M. L. Antonik, J. Bailey, O. Ballester, J. P. Bernstein, R. A. Bernstein, M. Bonati *et al.*, *Proc. SPIE Int. Soc. Opt. Eng.* **8446**, 11 (2012).
- [39] B. Flaugher, H. T. Diehl, K. Honscheid, T. M. C. Abbott, O. Alvarez, R. Angstadt, J. T. Annis, M. Antonik, O. Ballester, L. Beaufore *et al.*, [arXiv:1504.02900](https://arxiv.org/abs/1504.02900).
- [40] C. Chang, V. Vikram, B. Jain, D. Bacon, A. Amara, M. R. Becker, G. Bernstein, C. Bonnett, S. Bridle, D. Brout *et al.*, preceding letter, *Phys. Rev. Lett.* **115**, 051301 (2015).
- [41] A. Joyce, B. Jain, J. Khoury, and M. Trodden, *Phys. Rep.* **568**, 1 (2015).
- [42] N. Kaiser and G. Squires, *Astrophys. J.* **404**, 441 (1993).
- [43] M. Bartelmann, R. Narayan, S. Seitz, and P. Schneider, *Astrophys. J.* **464**, L115 (1996).
- [44] S. L. Bridle, M. P. Hobson, A. N. Lasenby, and R. Saunders, *Mon. Not. R. Astron. Soc.* **299**, 895 (1998).
- [45] J. Liu, A. Petri, Z. Haiman, L. Hui, J. M. Kratochvil, and M. May, *Phys. Rev. D* **91**, 063507 (2015).
- [46] L. Van Waerbeke, *Mon. Not. R. Astron. Soc.* **313**, 524 (2000).
- [47] P. Simon, M. Hettterscheidt, M. Schirmer, T. Erben, P. Schneider, C. Wolf, and K. Meisenheimer, *Astron. Astrophys.* **461**, 861 (2007).
- [48] E. S. Rykoff *et al.* (to be published).
- [49] B. Yanny *et al.* (to be published).
- [50] C. Ngeow, J. J. Mohr, T. Alam, W. A. Barkhouse, C. Beldica, D. Cai, G. Daues, R. Plante, J. Annis, H. Lin *et al.*, *Proc. SPIE Int. Soc. Opt. Eng.* **6270**, 23 (2006).
- [51] I. Sevilla, R. Armstrong, E. Bertin, A. Carlson, G. Daues, S. Desai, M. Gower, R. Gruendl, W. Hanlon, M. Jarvis *et al.*, [arXiv:1109.6741](https://arxiv.org/abs/1109.6741).
- [52] S. Desai, R. Armstrong, J. J. Mohr, D. R. Semler, J. Liu, E. Bertin, S. S. Allam, W. A. Barkhouse, G. Bazin, E. J. Buckley-Geer *et al.*, *Astrophys. J.* **757**, 83 (2012).
- [53] J. J. Mohr, R. Armstrong, E. Bertin, G. Daues, S. Desai, M. Gower, R. Gruendl, W. Hanlon, N. Kuropatkin, H. Lin *et al.*, *Proc. SPIE Int. Soc. Opt. Eng.* **8451**, 84510D (2012).
- [54] E. Bertin, in *Astronomical Data Analysis Software and Systems XV*, Astronomical Society of the Pacific Conference Series, Vol. 351, edited by C. Gabriel, C. Arviset, D. Ponz, and S. Enrique (Astronomical Society of the Pacific, San Francisco, 2006), p. 112.
- [55] E. Bertin, Y. Mellier, M. Radovich, G. Missonnier, P. Didelon, and B. Morin, in *Astronomical Data Analysis Software and Systems XI*, Astronomical Society of the Pacific Conference Series, Vol. 281, edited by D. A. Bohlender, D. Durand, and T. H. Handley (Astronomical Society of the Pacific, San Francisco, 2002), p. 228.
- [56] We adopt the “MODEST_CLASS” classifier, which is a new classifier used for SVA1 Gold that has been developed empirically and tested on DES imaging of COSMOS fields with Hubble Space Telescope ACS imaging.
- [57] E. Bertin and S. Arnouts, *Astron. Astrophys.* **117**, 393 (1996).
- [58] E. Bertin, in *Astronomical Data Analysis Software and Systems XX*, Astronomical Society of the Pacific Conference Series, Vol. 442, edited by I. N. Evans, A. Accomazzi, D. J. Mink, and A. H. Rots (Astronomical Society of the Pacific, San Francisco, 2011), p. 435.
- [59] N. Benítez, *Astrophys. J.* **536**, 571 (2000).
- [60] D. Coe, N. Benítez, S. F. Sánchez, M. Jee, R. Bouwens, and H. Ford, *Astrophys. J.* **132**, 926 (2006).

- [61] C. Sánchez, M. Carrasco Kind, H. Lin, R. Miquel, F. B. Abdalla, A. Amara, M. Banerji, C. Bonnett, R. Brunner, D. Capozzi *et al.*, *Mon. Not. R. Astron. Soc.* **445**, 1482 (2014).
- [62] G. D. Coleman, C.-C. Wu, and D. W. Weedman, *Astrophys. J. Suppl. Ser.* **43**, 393 (1980).
- [63] A. L. Kinney, D. Calzetti, R. C. Bohlin, K. McQuade, T. Storchi-Bergmann, and H. R. Schmitt, *Astrophys. J.* **467**, 38 (1996).
- [64] G. Bruzual and S. Charlot, *Mon. Not. R. Astron. Soc.* **344**, 1000 (2003).
- [65] C. Bonnett, *Mon. Not. R. Astron. Soc.* **449**, 1043 (2015).
- [66] P. Graff and F. Feroz, *Mon. Not. R. Astron. Soc.* **441**, 1093 (2013).
- [67] M. Jarvis *et al.*, [arXiv:1507.05603](https://arxiv.org/abs/1507.05603).
- [68] The open source code can be downloaded at <https://github.com/esheldon/ngmix>.
- [69] The open source code can be downloaded at <https://bitbucket.org/joezuntz/im3shape/>.
- [70] E. S. Sheldon, *Mon. Not. R. Astron. Soc.* **444**, L25 (2014).
- [71] G. de Vaucouleurs, *Ann. Astrophys.* **11**, 247 (1948).
- [72] D. W. Hogg and D. Lang, *Publ. Astron. Soc. Pac.* **125**, 719 (2013).
- [73] A. P. Dempster, N. M. Laird, and D. B. Rubin, *J. R. Stat. Soc. Ser. B* **39**, 1 (1977).
- [74] J. Zuntz, T. Kacprzak, L. Voigt, M. Hirsch, B. Rowe, and S. Bridle, *Mon. Not. R. Astron. Soc.* **434**, 1604 (2013).
- [75] A. Refregier, T. Kacprzak, A. Amara, S. Bridle, and B. Rowe, *Mon. Not. R. Astron. Soc.* **425**, 1951 (2012).
- [76] T. Kacprzak, J. Zuntz, B. Rowe, S. Bridle, A. Refregier, A. Amara, L. Voigt, and M. Hirsch, *Mon. Not. R. Astron. Soc.* **427**, 2711 (2012).
- [77] P. Melchior, E. Suchyta, E. Huff, M. Hirsch, T. Kacprzak, E. Rykoff, D. Gruen, R. Armstrong, D. Bacon, K. Bechtol *et al.*, *Mon. Not. R. Astron. Soc.* **449**, 2219 (2015).
- [78] E. Rozo *et al.*, [arXiv:1507.05460](https://arxiv.org/abs/1507.05460).
- [79] E. S. Rykoff, E. Rozo, M. T. Busha, C. E. Cunha, A. Finoguenov, A. Evrard, J. Hao, B. P. Koester, A. Leauthaud, B. Nord *et al.*, *Astrophys. J.* **785**, 104 (2014).
- [80] M. T. Busha, R. H. Wechsler, M. R. Becker, B. Erickson, and A. E. Evrard, in *American Astronomical Society Meeting Abstracts* (The American Astronomical Society, Washington, 2013), Vol. 221, p. 341.07.
- [81] V. Springel, *Mon. Not. R. Astron. Soc.* **364**, 1105 (2005).
- [82] M. Crocce, S. Pueblas, and R. Scoccimarro, *Mon. Not. R. Astron. Soc.* **373**, 369 (2006).
- [83] A. Lewis and S. Bridle, *Phys. Rev. D* **66**, 103511 (2002).
- [84] C. Conroy, R. H. Wechsler, and A. V. Kravtsov, *Astrophys. J.* **647**, 201 (2006).
- [85] R. M. Reddick, R. H. Wechsler, J. L. Tinker, and P. S. Behroozi, *Astrophys. J.* **771**, 30 (2013).
- [86] H. Aihara, C. Allende Prieto, D. An, S. F. Anderson, É. Aubourg, E. Balbinot, T. C. Beers, A. A. Berlind, S. J. Bickerton, D. Bizyaev *et al.*, *Astrophys. J. Suppl. Ser.* **193**, 29 (2011).
- [87] J. A. Newman, M. C. Cooper, M. Davis, S. M. Faber, A. L. Coil, P. Guhathakurta, D. C. Koo, A. C. Phillips, C. Conroy, A. A. Dutton *et al.*, *Astrophys. J. Suppl. Ser.* **208**, 5 (2013).
- [88] R. M. Szeplietowski, D. J. Bacon, J. P. Dietrich, M. Busha, R. Wechsler, and P. Melchior, *Mon. Not. R. Astron. Soc.* **440**, 2191 (2014).
- [89] M. R. Becker, *Mon. Not. R. Astron. Soc.* **435**, 115 (2013).
- [90] Y. Utsumi, S. Miyazaki, M. J. Geller, I. P. Dell'Antonio, M. Oguri, M. J. Kurtz, T. Hamana, and D. G. Fabricant, *Astrophys. J.* **786**, 93 (2014).
- [91] E. S. Rykoff, B. P. Koester, E. Rozo, J. Annis, A. E. Evrard, S. M. Hansen, J. Hao, D. E. Johnston, T. A. McKay, and R. H. Wechsler, *Astrophys. J.* **746**, 178 (2012).
- [92] A. Saro *et al.*, [arXiv:1506.07814](https://arxiv.org/abs/1506.07814).
- [93] M. Cautun, R. van de Weygaert, B. J. T. Jones, and C. S. Frenk, *Mon. Not. R. Astron. Soc.* **441**, 2923 (2014).
- [94] I. Szapudi, A. Kovács, B. R. Granett, Z. Frei, J. Silk, W. Burgett, S. Cole, P. W. Draper, D. J. Farrow, N. Kaiser *et al.*, *Mon. Not. R. Astron. Soc.* **450**, 288 (2015).
- [95] H. T. Diehl, T. M. C. Abbott, J. Annis, R. Armstrong, L. Baruah, A. Bermeo, G. Bernstein, E. Beynon, C. Bruderer, E. J. Buckley-Geer *et al.*, *Proc. SPIE Int. Soc. Opt. Eng.* **9149** (2014).
- [96] A. J. Ross, W. J. Percival, A. G. Sánchez, L. Samushia, S. Ho, E. Kazin, M. Manera, B. Reid, M. White, R. Tojeiro *et al.*, *Mon. Not. R. Astron. Soc.* **424**, 564 (2012).
- [97] S. Ho, A. Cuesta, H.-J. Seo, R. de Putter, A. J. Ross, M. White, N. Padmanabhan, S. Saito, D. J. Schlegel, E. Schlafly *et al.*, *Astrophys. J.* **761**, 14 (2012).