



**HAL**  
open science

# Reconciling observed gamma-ray burst prompt spectra with synchrotron radiation?

F. Daigne, Ž. Bošnjak, G. Dubus

► **To cite this version:**

F. Daigne, Ž. Bošnjak, G. Dubus. Reconciling observed gamma-ray burst prompt spectra with synchrotron radiation?. *Astronomy and Astrophysics - A&A*, 2011, 526, 10.1051/0004-6361/201015457 . insu-03646078

**HAL Id: insu-03646078**

**<https://insu.hal.science/insu-03646078v1>**

Submitted on 21 Apr 2022

**HAL** is a multi-disciplinary open access archive for the deposit and dissemination of scientific research documents, whether they are published or not. The documents may come from teaching and research institutions in France or abroad, or from public or private research centers.

L'archive ouverte pluridisciplinaire **HAL**, est destinée au dépôt et à la diffusion de documents scientifiques de niveau recherche, publiés ou non, émanant des établissements d'enseignement et de recherche français ou étrangers, des laboratoires publics ou privés.



Distributed under a Creative Commons Attribution 4.0 International License

# Reconciling observed gamma-ray burst prompt spectra with synchrotron radiation?

F. Daigne<sup>1,\*</sup>, Ž. Bošnjak<sup>2,1</sup>, and G. Dubus<sup>3,1</sup>

<sup>1</sup> Institut d'Astrophysique de Paris, UMR 7095 Université Pierre et Marie Curie – CNRS, 98bis boulevard Arago, 75014 Paris, France  
e-mail: daigne@iap.fr

<sup>2</sup> AIM (UMR 7158 CEA/DSM-CNRS-Université Paris Diderot) Irfu/Service d'Astrophysique, Saclay, 91191 Gif-sur-Yvette Cedex, France

<sup>3</sup> Laboratoire d'Astrophysique de Grenoble, UMR 5571 Université Joseph Fourier – CNRS, BP 53, 38041 Grenoble, France

Received 22 July 2010 / Accepted 10 October 2010

## ABSTRACT

**Context.** Gamma-ray burst emission in the prompt phase is often interpreted as synchrotron radiation from high-energy electrons accelerated in internal shocks. Fast synchrotron cooling of a power-law distribution of electrons leads to the prediction that the slope below the spectral peak has a photon index  $\alpha = -3/2$  ( $N(E) \propto E^\alpha$ ). However, this differs significantly from the observed median value  $\alpha \approx -1$ . This discrepancy has been used to argue against this scenario.

**Aims.** We quantify the influence of inverse Compton (IC) and adiabatic cooling on the low energy slope to understand whether these processes can reconcile the observed slopes with a synchrotron origin.

**Methods.** We use a time-dependent code developed to calculate the GRB prompt emission within the internal shock model. The code follows both the shock dynamics and electron energy losses and can be used to generate lightcurves and spectra. We investigate the dependence of the low-energy slope on the parameters of the model and identify parameter regions that lead to values  $\alpha > -3/2$ .

**Results.** Values of  $\alpha$  between  $-3/2$  and  $-1$  are reached when electrons suffer IC losses in the Klein-Nishina regime. This does not necessarily imply a strong IC component in the *Fermi*/LAT range (GeV) because scatterings are only moderately efficient. Steep slopes require that a large fraction (10–30%) of the dissipated energy is given to a small fraction ( $\leq 1\%$ ) of the electrons and that the magnetic field energy density fraction remains low ( $\leq 0.1\%$ ). Values of  $\alpha$  up to  $-2/3$  can be obtained with relatively high radiative efficiencies ( $> 50\%$ ) when adiabatic cooling is comparable with radiative cooling (marginally fast cooling). This requires collisions at small radii and/or with low magnetic fields.

**Conclusions.** Amending the standard fast cooling scenario to account for IC cooling naturally leads to values  $\alpha$  up to  $-1$ . Marginally fast cooling may also account for values of  $\alpha$  up to  $-2/3$ , although the conditions required are more difficult to reach. About 20% of GRBs show spectra with slopes  $\alpha > -2/3$ . Other effects, not investigated here, such as a thermal component in the electron distribution or pair production by high-energy gamma-ray photons may further affect  $\alpha$ . Still, the majority of observed GRB prompt spectra can be reconciled with a synchrotron origin, constraining the microphysics of mildly relativistic internal shocks.

**Key words.** gamma-ray burst: general – shock waves – radiation mechanisms: non-thermal

## 1. Introduction

The physical origin of the prompt emission in gamma-ray bursts (hereafter GRBs) is still uncertain. The identification of the dominant energy reservoir in the relativistic outflow, of the mechanism responsible for its extraction and of the processes by which the dissipated energy is eventually radiated remains a major unresolved issue. There are three potential energy reservoirs: (i) thermal energy that can be radiated at the photosphere (Mészáros & Rees 2000; Daigne & Mochkovitch 2002; Giannios & Spruit 2007; Pe'er 2008; Beloborodov 2010); (ii) kinetic energy that can be extracted by shock waves propagating within the outflow and then radiated by shock-accelerated electrons (internal shocks, Rees & Mészáros 1994; Kobayashi et al. 1997; Daigne & Mochkovitch 1998); or (iii) magnetic energy that can be dissipated via the reconnection of field lines (Thompson 1994; Meszaros & Rees 1997; Spruit et al. 2001; Drenkhahn & Spruit 2002; Lyutikov & Blandford 2003; Giannios & Spruit 2005) and then radiated by accelerated particles. In the two last cases, the expected dominant radiative processes are synchrotron radiation and inverse Compton scattering.

Observed GRB spectra can provide reliable constraints on the extraction mechanism and dominant radiative process. A typical GRB prompt emission spectrum is usually well described by a phenomenological model (Band et al. 1993) where the photon flux follows  $N(E) \propto E^\alpha$  at low energies and  $N(E) \propto E^\beta$  at high energies, with a smooth transition around  $E_p$ , which is the peak energy of the  $\nu F_\nu$  spectrum. Typical values in GRBs observed by BATSE are  $\alpha \sim -1$  and  $\beta \sim -2.3$  for the low- and high-energy photon index and  $E_p \sim 250$  keV for the peak energy (Preece et al. 2000). It is well known that the observed value  $\alpha \sim -1$  is in clear contradiction with the predicted value for the synchrotron radiation from relativistic electrons (Preece et al. 1998; Ghisellini et al. 2000). One expects  $\alpha = -2/3$  in slow cooling regime and  $\alpha = -3/2$  in fast cooling regime (Sari et al. 1998), the latter case being favored in the prompt GRB phase as the slow cooling regime would lead both to an energy crisis and a difficulty to reproduce the shortest timescale variability (Rees & Mészáros 1994; Sari et al. 1996; Kobayashi et al. 1997).

On the other hand, synchrotron radiation is a very natural expectation for the emission from shock-accelerated electrons. In GRBs especially, it is most probably at work in afterglows. Observations of prompt GRBs by the LAT instrument on board

\* Institut Universitaire de France.

*Fermi* indicate that most GRBs do not show an additional component at high energy ( $>100$  MeV) brighter or as bright as in the soft gamma-ray range (Abdo et al. 2009; Omodei et al. 2009). Prompt observations in the optical domain remain difficult but do not show strong evidence in favor of a bright additional component at low energy, with some notable exceptions like GRB 080319B (Racusin et al. 2008). This strongly favors synchrotron radiation compared to the synchrotron self-Compton (SSC) process for the emission observed in the soft gamma-ray domain (keV–MeV). Indeed, the latter requires some fine tuning to avoid a strong component either in the optical–UV–soft X-rays domain, or in the GeV range (Bošnjak et al. 2009; Zou et al. 2009; Piran et al. 2009). Compared to SSC, synchrotron radiation has also a better ability – at least in the internal shock framework – to reproduce the observed spectral evolution: e.g. hardness-intensity and hardness-fluence correlations, evolution of the pulse width with energy channel, time lags (Daigne & Mochkovitch 1998, 2003; Ramirez-Ruiz & Fenimore 2000; Bošnjak 2010, in preparation)

In this paper, we investigate a solution to steepen the low-energy slope of the synchrotron component and possibly reconcile the synchrotron process with observed GRB prompt spectra. This solution is related to the steepening of the low-energy synchrotron slope by moderately efficient inverse Compton scatterings in Klein-Nishina regime, as suggested by Derishev et al. (2001); Bošnjak et al. (2009); Nakar et al. (2009); see also Rees (1967) where this is mentioned in the general context of SSC radiation. It is an alternative to the SSC scenario (see e.g. Panaitescu & Mészáros 2000; Baring & Braby 2004; Kumar & McMahon 2008), to the comptonization scenario (Liang et al. 1997; Ghisellini & Celotti 1999), or to other propositions to modify the standard synchrotron radiation, related to the timescale of the acceleration process (Stern & Poutanen 2004; Asano & Terasawa 2009), the pitch-angle distribution of electrons (Lloyd-Ronning & Petrosian 2002) or the small scale structure of the magnetic field (Medvedev 2000; Pe’er & Zhang 2006). A summary of the measurements of the low-energy photon index  $\alpha$  and its distribution in GRBs is given in Sect. 2. Then Sect. 3 describes how the standard synchrotron spectrum is affected by additional processes such as inverse Compton scatterings or adiabatic cooling. It allows to identify physical conditions – in terms of intensity of the magnetic field, distribution of relativistic electrons, etc. – that lead to low-energy slopes steeper than the standard prediction  $\alpha = -3/2$ . We discuss in Sect. 4 how such conditions could be found in GRB outflows. We compute expected pulse lightcurves and spectral evolution in the framework of the internal shock model and show that steep slopes are indeed expected in a large region of the parameter space. We summarize our conclusions and discuss future possible developments in Sect. 5.

## 2. A critical view on the observed distribution of GRB prompt spectral properties

We examine here in detail the observed distribution of the low energy photon spectrum index  $\alpha$ , as it provides a relevant criterion for the goodness of the emission model for GRB emission. To date the largest database of gamma-ray burst high time and energy resolution data was provided by the Burst And Transient Source Experiment (BATSE) ( $\sim 20$  keV–2 MeV) on board the Compton Gamma Ray Observatory. Kaneko et al. (2006) presented a systematic spectral analysis of 8459 time-resolved spectra from 350 GRBs (including 17 short events) observed by BATSE; this sample includes also gamma-ray bursts that were

examined in previously published catalogs of BATSE GRBs (e.g. Preece et al. 1998, 2000). The reported distribution of  $\alpha$  is apparently not consistent with the predictions of the simple synchrotron model: Kaneko et al. (2006) showed that the median value for the time resolved spectra  $\alpha = -1.02^{+0.26}_{-0.28}$  (long GRBs) and  $-0.87^{+0.16}_{-0.39}$  (short GRBs). The values obtained for the time integrated spectra indicate somewhat softer spectra, with the respective median indices  $-1.15^{+0.20}_{-0.22}$  and  $-0.99^{+0.21}_{-0.24}$  for long and short events respectively. The slope  $\alpha$  is distributed roughly symmetrically around the median value.

The results obtained by other instruments are consistent with BATSE observations: Krimm et al. (2009) combined the *Swift* Burst Alert Telescope (BAT) and *Suzaku* Wide band All-sky Monitor (WAM) data covering the broad energy band 15 to 5000 keV and report the distribution of  $\alpha$  skewed toward slightly lower values,  $-1.23 \pm 0.28$  (for time-integrated spectra), while Pélangeon et al. (2008) for time integrated spectra of GRBs observed by High Energy Transient Explorer 2 (HETE-2) in the energy band 2–400 keV find  $\alpha = -1.08 \pm 0.20$ . Similar results have been found recently by the *Fermi* Gamma-ray Space Telescope GBM and LAT in the broad energy range  $\sim 8$  keV to  $>100$  GeV, e.g. the sample studied by Ghirlanda et al. (2010) of 12 GRBs observed by *Fermi* displays various values for  $\alpha$ , ranging from  $-1.26 \pm 0.04$  (GRB 090618) to  $-0.55 \pm 0.07$  (GRB 081222) for time-integrated spectra with determined peak energy.

The observed distributions of GRB spectral parameters should however be considered with precaution. We point out the possible caveats for interpreting the results of spectral analysis:

1. the spectral analysis are commonly performed on bright GRBs (with higher photon flux), which tend to have higher peak energies in general than dim GRBs (Mallozzi et al. 1995; Borgonovo & Ryde 2001). For that reason the spectra with higher  $E_{\text{peak}}$  may be oversampled. The results of the time-resolved spectral analysis may be biased in the similar way: as the data were sampled more frequently during the intense episodes, the brighter portions of each burst may have more impact in the final distribution of spectral parameters (Kaneko et al. 2006);
2. the low-energy photon spectra indices tend to correlate with the peak energy of the  $\nu F_{\nu}$  spectrum, the slope  $\alpha$  becoming softer when the peak energy is decreasing (Kaneko et al. 2006; Crider et al. 1997; Lloyd-Ronning & Petrosian 2002; Ford et al. 1995; Preece et al. 1998). This effect might be due to a combination of the curvature of the spectrum around the peak energy and the limited spectral energy range sampled by the instruments;
3. as discussed by Preece et al. (1998) and Lloyd & Petrosian (2000) for the BATSE spectra, the data don’t always approach the GRB spectral low energy power law within the instrument energy range. If peak energy is close to the edge of the instrumental energy window, the low energy spectral power law may not have reached yet its asymptotic value. In that case lower values of  $\alpha$  are determined (i.e. softer spectra). Kaneko et al. (2006) attempted to account for this effect and applied as a better measure of the actual low energy behavior the effective index  $\alpha_{\text{eff}}$  for BATSE data, defined as the tangential slope of the spectrum at 25 keV (the lower energy limit of the BATSE window);
4. the low-energy spectral index distributions of time-integrated and of time-resolved spectra are slightly different; it is expected due to the evolution of the spectral parameters during the integration time. The sharp spectral breaks are smeared over and the indices of time integrated spectra

appear softer than in the case of the time-resolved spectra (Kaneko et al. 2006). These two last points could imply that the true low-energy spectral slopes in prompt GRBs are even steeper than the observed median value.

Another important aspect to examine in the observed distributions of spectral indices concerns the contribution of an individual GRB to the overall distribution. Since the brighter and longer events in general contribute with larger number of spectra in the BATSE spectroscopic catalog, we have computed distributions of spectral parameters where each time bin of a given GRB is weighted by the corresponding fraction of the total fluence of the burst. In this way GRBs with different number of time resolved spectra in their time histories have the same impact on the overall distribution. Using the data by Kaneko et al. (2006), we find that:

- only 5% of GRBs have more than 50% of their spectra with very soft low energy slope,  $\alpha < -1.5$ . Such slopes are probably related to the spectral curvature around the peak energy and do not raise a problem for the standard synchrotron scenario;
- 70% of GRBs in the sample have more than 50% of their spectra with a low energy photon index within the limits of the synchrotron model,  $-3/2 \leq \alpha \leq -2/3$  and 35% of GRBs have more than 50% of their spectra with  $\alpha$  in the range  $-3/2 \leq \alpha \leq -1$ ;
- only 20% of GRBs in the sample have more than 50% of their spectra with  $\alpha > -2/3$ . However most of these spectra have  $\alpha$  close to  $-2/3$ . For instance, only 5% of GRBs in the sample have more than 50% of spectra with  $\alpha > -0.3$ .

From these values, it appears that the synchrotron radiation should in principle be compatible with most observed prompt GRB spectra. One should however understand why the mean value of  $\alpha$  is steeper than the expected slope for the fast cooling regime,  $\alpha = -3/2$ .

### 3. Synchrotron radiation in radiatively efficient regime

In this section, all quantities are given in the comoving frame of the emitting region.

#### 3.1. The standard prediction in fast cooling regime

The synchrotron power of an electron with Lorentz factor  $\gamma$  is given by

$$P_{\text{syn}}(\gamma) = \frac{\sigma_{\text{T}} c}{6\pi} B^2 \gamma^2 \quad (1)$$

where  $B$  is the magnetic field. If the source is relativistically expanding, as expected in gamma-ray bursts, adiabatic cooling competes with radiation. This cooling process occurs on a typical dynamical timescale  $t_{\text{ex}}$ . It is then convenient to define  $\Gamma_{\text{c}}$  as the Lorentz factor of electrons whose synchrotron radiative timescale equals  $t_{\text{ex}}$  (Sari et al. 1998):

$$\Gamma_{\text{c}} = \frac{6\pi m_{\text{e}} c}{\sigma_{\text{T}} B^2 t_{\text{ex}}} \quad (2)$$

If the GRB prompt emission comes from the radiation of relativistic electrons, it is necessary, both to allow for the shortest timescales observed in GRB lightcurves and to minimize the constraint on the energy budget, that these electrons are radiatively efficient, i.e. that their radiative timescale is shorter than  $t_{\text{ex}}$

(Rees & Mészáros 1994; Sari et al. 1996; Kobayashi et al. 1997). When only synchrotron radiation is considered, this is equivalent to the condition that most injected electrons by the acceleration process must have  $\gamma > \Gamma_{\text{c}}$ . The resulting synchrotron spectrum has been described by Sari et al. (1998) when the initial distribution of relativistic electrons is a power-law of slope  $-p$  above a minimum Lorentz factor  $\Gamma_{\text{m}}$ . If synchrotron self-absorption is neglected, three asymptotic branches are predicted

$$\frac{\nu u_{\nu}|_{\text{syn}}}{n_{\text{e}}^{\text{acc}} \Gamma_{\text{m}} m_{\text{e}} c^2} \simeq \begin{cases} \left(\frac{\nu_{\text{c}}}{\nu_{\text{m}}}\right)^{1/2} \left(\frac{\nu}{\nu_{\text{c}}}\right)^{4/3} & \text{if } \nu < \nu_{\text{c}} \\ \left(\frac{\nu}{\nu_{\text{m}}}\right)^{1/2} & \text{if } \nu_{\text{c}} \leq \nu \leq \nu_{\text{m}} \\ \left(\frac{\nu}{\nu_{\text{m}}}\right)^{-\frac{p-2}{2}} & \text{if } \nu > \nu_{\text{m}}, \end{cases} \quad (3)$$

where  $u_{\nu}$  is the final photon energy density at frequency  $\nu$  and  $n_{\text{e}}^{\text{acc}}$  is the initial density of relativistic electrons. The break frequency  $\nu_{\text{m}}$  (resp.  $\nu_{\text{c}}$ ) is defined as the synchrotron frequency for an electron with Lorentz factor  $\Gamma_{\text{m}}$  (resp.  $\Gamma_{\text{c}}$ ). This asymptotic spectrum shows clearly that the predicted photon spectral slope  $\alpha$  below the peak of  $\nu F_{\nu}$  is  $-3/2$ , in apparent contradiction with observations.

#### 3.2. The effect of inverse Compton scatterings in Klein-Nishina regime

The mean value of  $\alpha$  observed in the BATSE spectroscopic catalog (see Sect. 2) is close to  $-1$ . As seen in Fig. 1, for typical values of the high-energy photon index  $\beta$  between  $-2$  and  $-3$ , a change of the low-energy slope of the Band function from  $\alpha = -1.5$  to  $-1$  requires only a sub-dominant radiative process that can transfer about 20–40% of the energy from the synchrotron component into another component. A natural candidate is inverse Compton scattering of synchrotron photons by relativistic electrons. Indeed, this process necessarily takes place in the emitting region. Two parameters can be introduced to evaluate the importance of inverse Compton scatterings. The first parameter,  $w_{\text{m}}$ , measures if scatterings occur mostly in Thomson regime ( $w_{\text{m}} \ll 1$ ) or if Klein-Nishina corrections are important. It is defined by

$$w_{\text{m}} = \Gamma_{\text{m}} \epsilon_{\text{m}}, \quad (4)$$

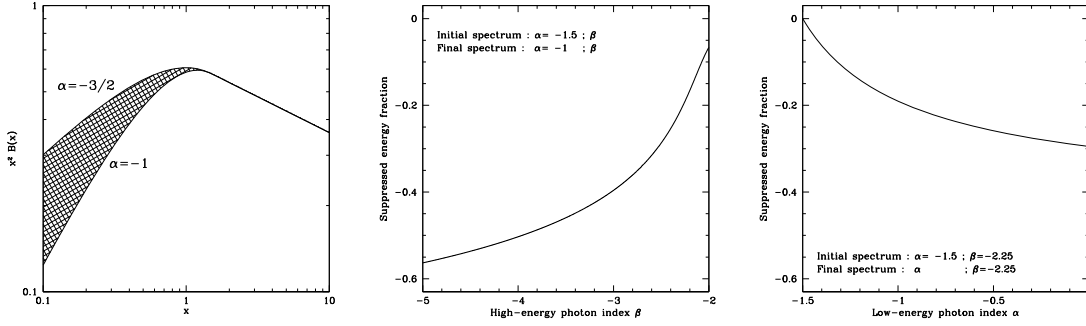
where we use the notation  $\epsilon = hv/m_{\text{e}} c^2$ . The second parameter,  $Y_{\text{Th}}$ , measures the intensity of the inverse Compton process in the Thomson regime and is defined by

$$Y_{\text{Th}} = \sigma_{\text{T}} n_{\text{e}}^{\text{acc}} c t_{\text{syn}} (\Gamma_{\text{m}}) \times \frac{4}{3} \Gamma_{\text{m}}^2, \quad (5)$$

where

$$t_{\text{syn}}(\gamma) = \frac{\gamma m_{\text{e}} c^2}{P_{\text{syn}}(\gamma)} = t_{\text{ex}} \frac{\Gamma_{\text{c}}}{\gamma} \quad (6)$$

is the synchrotron timescale of an electron with Lorentz factor  $\gamma$ . In Eq. (5) the first term,  $\sigma_{\text{T}} n_{\text{e}}^{\text{acc}} c t_{\text{syn}}$ , is the Thomson optical depth associated with relativistic electrons in fast cooling regime, and the second term,  $\frac{4}{3} \Gamma_{\text{m}}^2$ , corresponds to the typical boost of a photon scattered by an electron at Lorentz factor  $\Gamma_{\text{m}}$ , if the scattering occurs in Thomson regime ( $w_{\text{m}} \ll 1$ ). Therefore, if  $w_{\text{m}} \ll 1$  and  $Y_{\text{Th}} \ll 1$ , the ratio of the total energy  $\mathcal{E}_{\text{ic}}$  radiated in the inverse Compton component over the total energy  $\mathcal{E}_{\text{syn}}$  radiated in the synchrotron component is simply given by  $\mathcal{E}_{\text{ic}}/\mathcal{E}_{\text{syn}} \simeq Y_{\text{Th}}$ . Still in the Thomson regime ( $w_{\text{m}} \ll 1$ ), if  $Y_{\text{Th}}$  is large, the effective radiative timescale becomes  $\sim t_{\text{syn}}/Y_{\text{Th}}$  and  $\mathcal{E}_{\text{ic}}/\mathcal{E}_{\text{syn}} \simeq \sqrt{Y_{\text{Th}}}$ . Finally, when Klein-Nishina corrections are important ( $w_{\text{m}} \gtrsim 1$ ),



**Fig. 1.** Consequences on energetics of a steepening of the low-energy slope in the “Band” function. *Left:* the normalized “Band” function is plotted for  $\beta = -2.25$  and  $\alpha = -1.5$  (standard value for synchrotron radiation in fast cooling regime) or  $\alpha = -1$  (mean value observed in GRB spectra). The dashed area corresponds to the fraction  $f_e$  of the energy that should be removed by any process leading to such a change of the low-energy photon index. Here  $f_e \approx 19\%$ . *Center:* the fraction  $f_e$  is now plotted as a function of  $\beta$ , assuming a low-energy photon index changing from  $\alpha = -1.5$  to  $-1$ . *Right:* the fraction  $f_e$  is now plotted as a function of  $\alpha$ , when the photon index is changing from  $\alpha = -1.5$  to  $\alpha$ . We assume  $\beta = -2.25$ . These three figures are plotted assuming that the process responsible for the change of the slope  $\alpha$  does not affect the value of the break energy  $E_b$  nor the high-energy tail of the spectrum.

both the cross section and the boost in frequency are significantly reduced so that  $\mathcal{E}_{ic}/\mathcal{E}_{syn} \ll Y_{Th}$  (see Bošnjak et al. 2009, for details).

If the magnetic energy density represents a fraction  $\epsilon_B$  of the local energy density in the emitting region, and if the energy injected into accelerated relativistic electrons represents a fraction  $\epsilon_e$  of the same energy reservoir, Eq. (5) can be simplified to give

$$Y_{Th} = \frac{p-2}{p-1} \frac{\epsilon_e}{\epsilon_B}. \quad (7)$$

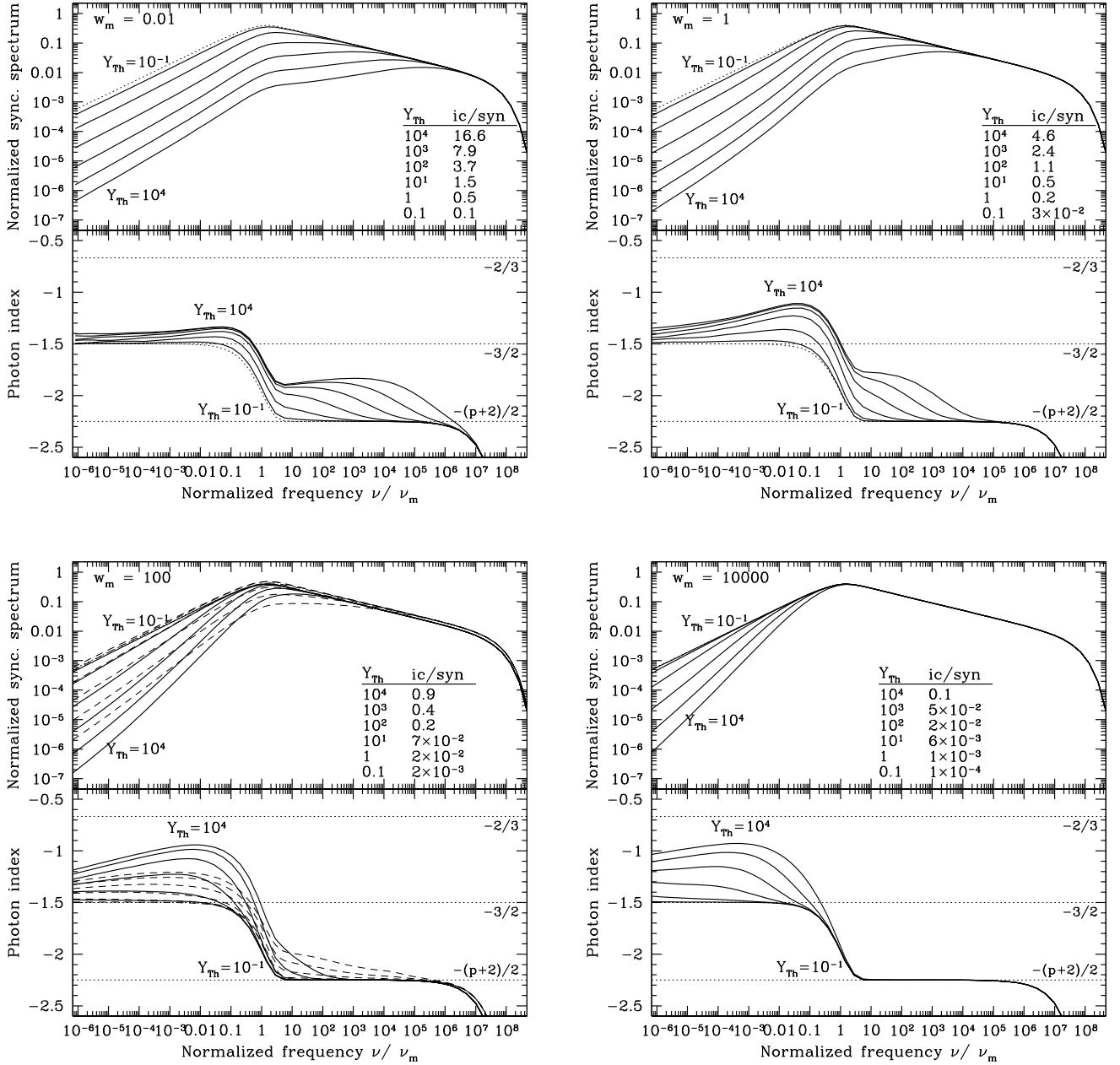
When considering only synchrotron radiation and inverse Compton scatterings, the spectral shape of the synchrotron component, i.e.  $\nu u_\nu|_{syn}/n_e^{acc}\Gamma_m m_e c^2$  as a function of  $\nu/\nu_m$ , depends only on these two parameters  $w_m$  and  $Y_{Th}$ , in the limit of extreme fast cooling ( $\Gamma_c \ll \Gamma_m$ ). It is well known that in Thomson regime ( $w_m \ll 1$ ), as the electron cooling rate due to inverse Compton scatterings remains proportional to  $\gamma^2$  like for the synchrotron power, the spectral shape of the synchrotron component is un-affected by the scatterings (see e.g. Sari & Esin 2001; Bošnjak et al. 2009). To change the value of  $\alpha$ , the physical conditions in the emitting regions must necessarily be such that  $w_m \gtrsim 1$ . Then, Klein-Nishina corrections become important for most of the scatterings and the dependence of the electron cooling rate on  $\gamma$  differs from  $\gamma^2$ . Derishev et al. (2001) have shown that it results in a steeper slope  $\alpha$ , that can potentially reach the value  $\alpha = -1$ . We have shown in a previous paper that this change of the synchrotron slope due to inverse Compton scatterings in Klein-Nishina regime was indeed observed in detailed radiative calculations (Bošnjak et al. 2009). More recently, Nakar et al. (2009) have presented a complete analytical estimate of the asymptotic synchrotron spectrum in the presence of inverse Compton scatterings, and have shown that the asymptotic slope  $\alpha = -1$  is expected in the synchrotron component below the peak of  $\nu F_\nu$  when<sup>1</sup>  $\Gamma_c \ll \Gamma_m$  (fast cooling),  $w_m \gg 1$  (Klein-Nishina regime) and

$$w_m^{1/3} \leq Y \leq w_m^3. \quad (8)$$

<sup>1</sup> In Nakar et al. (2009), the situation where the slope  $\alpha = -1$  is possible corresponds to cases IIb and IIc, which – in addition to fast cooling – are limited by  $(\Gamma_m/\hat{\Gamma}_m)^{1/3} < \epsilon_e/\epsilon_B < (\Gamma_m/\hat{\Gamma}_m)^3$ , where the authors define  $\hat{\gamma} = m_e c^2/h\nu_{syn}(\gamma)$  so that  $w_m = \Gamma_m/\hat{\Gamma}_m$ , leading to the conditions given in Eq. (8).

Therefore the analytical work of Derishev et al. (2001) and Nakar et al. (2009) and the numerical study of Bošnjak et al. (2009) indicate that the effect of inverse Compton scatterings in Klein-Nishina regime on the synchrotron component seems to be a promising possibility to explain observed values of  $\alpha$  in the range  $[-3/2; -1]$ . However, as all possible values in this interval can be observed, it is necessary to go a step further than analytical estimates based on asymptotic behaviours. In Fig. 2, we show the evolution of the synchrotron spectrum when  $Y_{Th}$  is increasing, for different values of  $w_m$  (and for  $\Gamma_c \ll \Gamma_m$ ). The spectra are computed using the radiative code described in Bošnjak et al. (2009) that solves simultaneously the equations of the time-evolution of the electron and photon distributions and that includes most relevant processes (adiabatic cooling, synchrotron radiation and self-absorption, inverse Compton scatterings and photon-photon annihilation). To focus on the effect described in this subsection, the spectra in Fig. 2 are computed including only synchrotron radiation and inverse Compton scatterings and do not take into account the other processes, whose impact is discussed later in the paper. The slope  $\alpha$  is clearly steepening continuously from  $-3/2$  to  $-1$ . In Fig. 3, we have color-coded in the diagram  $w_m - Y_{Th}$  the value of the low-energy photon index of the synchrotron spectrum. This slope is only a representative value as the synchrotron spectrum below the peak shows some curvature with an evolving slope (see Fig. 2). In practice, we adopt for  $\alpha$  the clear maximum of the slope below  $\nu_m$ . If  $\alpha = -3/2$  appears indeed universal when inverse Compton scatterings are negligible ( $Y_{Th} \ll 1$ ) or Klein-Nishina corrections unimportant ( $w_m \ll 1$ ), the situation is rather different in the quarter of the diagram where  $w_m \geq 1$  and  $Y_{Th} \geq 1$ . In particular, a region where  $\alpha$  evolves from  $-3/2$  to  $-1$  is well defined, whose boundaries agree reasonably well with the condition given by Eq. (8). In the same figure, lines of constant ratio  $\mathcal{E}_{ic}/\mathcal{E}_{syn}$  are also plotted. In agreement with the analysis made at the beginning of this subsection, this ratio is typically in the range 0.1–1 in the region of interest (it is of course much smaller than  $Y_{Th}$  due to Klein-Nishina corrections to the cross section and the boost in frequency). It is important to note that  $\alpha \approx -1$  can be reached in practice for not too extreme values of the parameters, typically  $w_m = 100-10^4$  and  $Y \gtrsim w_m$ .

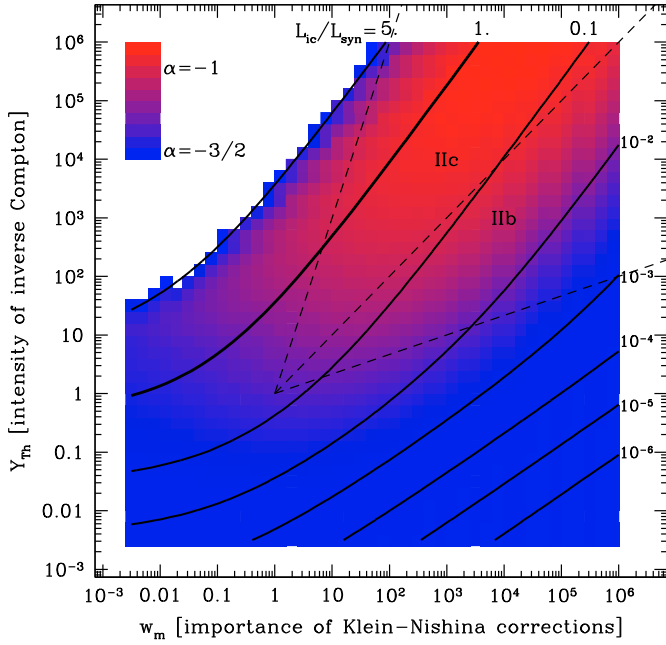
The maximum value of  $\alpha$  that can be reached depends on the assumptions about the electron acceleration process. In principle, one would wish to follow the full “magneto-hydrodynamical” evolution of the shocked region at



**Fig. 2.** The effect of inverse Compton scatterings in Klein-Nishina regime on the fast cooling synchrotron spectrum. The normalized synchrotron spectrum defined by  $\nu u_{\nu|syn}/n_e^{acc}\Gamma_m m_e c^2$  is plotted as a function of the normalized frequency  $\nu/\nu_m$ , as well as the corresponding photon index  $d \ln u_{\nu}/d \ln \nu - 1$ . All spectra in thick solid line are computed numerically using a detailed radiative code including synchrotron radiation and inverse Compton scatterings (see text). Spectra in thin dotted line are computed with synchrotron radiation only. For clarity purposes, all other processes (adiabatic cooling, synchrotron self-absorption,  $\gamma\gamma$  annihilation) are neglected. A ratio  $\Gamma_c/\Gamma_m = 10^{-6}$  is assumed to ensure that all electrons are in fast cooling regime. The maximum Lorentz factor of electrons is fixed to  $\Gamma_{max} = 10^4 \Gamma_{min}$  so the high energy cutoff in the synchrotron spectrum appears at the same frequency in all cases plotted here. The four panels correspond to increasing values of the  $w_m$  parameter,  $w_m = 0.01, 1, 100$  and  $10^4$  from the top-left to the bottom-right panel, i.e. to a growing importance of Klein-Nishina corrections for inverse Compton scatterings. In each panel, the six curves in solid line correspond to increasing values of the  $Y_{Th}$  parameter,  $Y_{Th} = 0.1, 1, 10, 10^2, 10^3$  and  $10^4$ , i.e. to a growing efficiency of inverse Compton scatterings. The table inserted in each panel lists the values of the ratio  $\mathcal{E}_{ic}/\mathcal{E}_{syn}$  of the inverse Compton component (not plotted here) over the synchrotron component. In the bottom-left panel ( $w_m = 100$ ), the synchrotron spectrum obtained assuming a slow injection over  $t_{ex}$  (see text) is also plotted in dashed line for comparison.

the plasma scale. The framework used in the present study to follow the dynamics of shocks in a relativistic outflow limits us to make simple assumptions on the electron injection timescale. Two extreme cases are possible. If electrons are injected regularly over a timescale  $t_{injec}$  comparable to  $t_{ex}$  (as

assumed in Nakar et al. 2009), the slope will never be steeper than  $\alpha = -1$  and in practice will be a little less steep than this absolute limit for reasonable choice of parameters (not too extreme  $w_m$  and  $Y$  parameters, see Nakar et al. 2009, and bottom-left panel in Fig. 2). If the injection occurs faster, the limit



**Fig. 3.** The low-energy slope  $\alpha$  of the fast cooling synchrotron spectrum in the presence of inverse Compton scatterings in Klein-Nishina regime. In the  $w_m$ - $Y_{\text{Th}}$  plane, the value of the photon index  $\alpha$  of the synchrotron spectrum below the peak of  $\nu F_\nu$  is color-coded. All spectra have been computed numerically using a detailed radiative code including synchrotron radiation and inverse Compton scatterings (see text). Black thick lines of constant ratio  $L_{\text{ic}}/L_{\text{syn}}$  are plotted on top of this diagram. Cases where  $L_{\text{ic}}/L_{\text{syn}} > 5$  in the top-left corner are not plotted as we focus in this paper on situations where the synchrotron component is dominant. In addition, thin dashed lines show the location of regions IIb and IIc from Nakar et al. (2009), where a slope  $\alpha \rightarrow -1$  is predicted.

$\alpha = -1$  is more easily reached and even steeper values can be obtained for extreme sets of parameters (see the maximum slopes obtained for  $Y_{\text{th}} = 10^4$  and  $w_m = 100$  or  $10\,000$  in Fig. 2). Calculations presented in this paper corresponds to the regime where  $t_{\text{injec}} \ll t_{\text{ex}}$ .

### 3.3. Additional effects

#### 3.3.1. Adiabatic cooling

The process described in the previous subsection offers a physical interpretation of the observed values of the low-energy photon index in the range  $[-3/2; -1]$ . However the value  $\alpha = -1$  does not appear as a limit in the observed distribution of  $\alpha$  and an additional explanation has to be found for the steeper slopes. When electrons are in slow cooling regime ( $\Gamma_c \gg \Gamma_m$ ), the predicted value of the photon index below the peak of  $\nu F_\nu$  is  $\alpha = -2/3$  (Sari et al. 1998). Therefore, it is now tempting to associate spectra with  $-1 \leq \alpha \leq -2/3$  to this regime. There is however a problem due to the radiative efficiency  $f_{\text{rad}} = u_\gamma/u_e^{\text{acc}}$ , where  $u_e^{\text{acc}}$  is the initial energy density injected in relativistic electrons and  $u_\gamma$  the final energy density of the radiated photons. In the slow cooling regime  $f_{\text{rad}}$  is low, which increases the required energy budget to an uncomfortable level. Here, we rather consider the situation where electrons are in fast cooling regime but not deeply in this regime, i.e.  $\Gamma_c \lesssim \Gamma_m$  rather than  $\Gamma_c \ll \Gamma_m$  (“marginally fast cooling regime”).

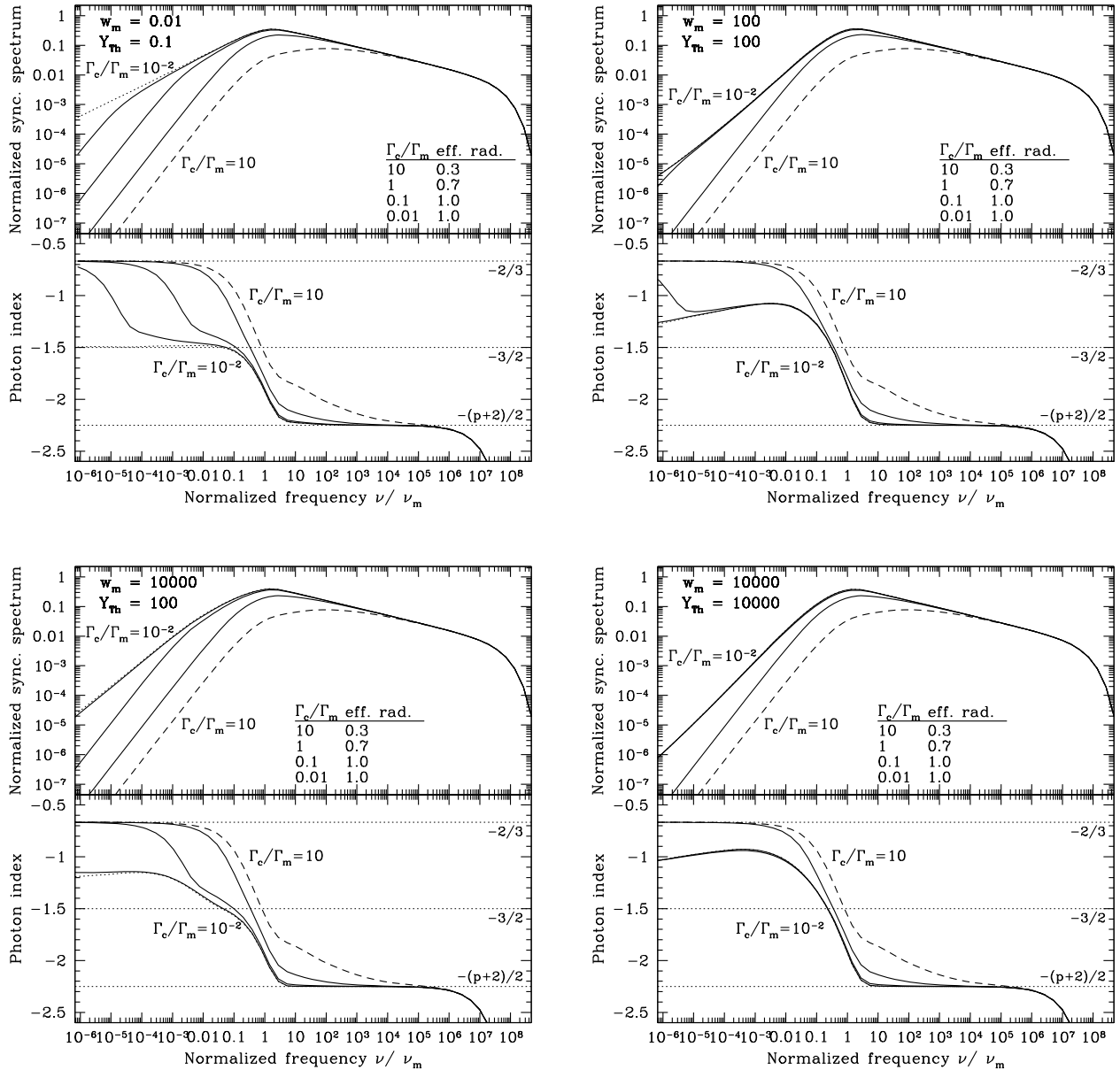
To illustrate this situation we plot in Fig. 4 the evolution of the synchrotron spectrum for an increasing ratio  $\Gamma_c/\Gamma_m$  and for different values of  $(w_m; Y_{\text{Th}})$  representative of the different regions in the diagram of Fig. 3. As expected a break in the spectrum appears at frequency  $\nu_{c,\text{eff}}$ , i.e. at the synchrotron frequency of electrons with Lorentz factor  $\Gamma_{c,\text{eff}}$ , whose radiative timescale is equal to the dynamical timescale  $t_{\text{ex}}$ . We have  $\Gamma_{c,\text{eff}} \leq \Gamma_c$  due to inverse Compton scatterings. The photon index below  $\nu_{c,\text{eff}}$  is  $-2/3$ . Therefore, when  $\nu_{c,\text{eff}}$  is close to  $\nu_m$  the observed photon index can be very close to this asymptotic value, even in fast cooling regime. This is well seen in Fig. 4 for  $w_m = 100$  and  $Y_{\text{Th}} = 100$  (top-right panel) or  $w_m = 10^4$  and  $Y_{\text{Th}} = 10^4$  (bottom-right panel) and for  $\Gamma_c/\Gamma_m = 1$  ( $f_{\text{rad}} \approx 0.6-0.7$  in this case). When the efficiency of inverse Compton scatterings is reduced,  $\nu_{c,\text{eff}}$  is closer to  $\nu_c$  and the same effect can be seen for lower values of the ratio  $\Gamma_c/\Gamma_m$ . This is the case for instance for  $w_m = 0.01$  and  $Y_{\text{Th}} = 0.1$  (top-left panel) or for  $w_m = 10^4$  and  $Y_{\text{Th}} = 100$  (bottom-left panel) and for  $\Gamma_c/\Gamma_m = 0.1-1$  ( $f_{\text{rad}} \approx 0.6-0.7 \rightarrow 1$  in this case).

We have plotted in Fig. 5 the same diagram as in Fig. 3, now including the effect of adiabatic cooling for different values of the ratio  $\Gamma_c/\Gamma_m$ . The representative value of  $\alpha$  is selected in the same way as in Fig. 3, but the maximum is not always as clearly defined as in the  $\Gamma_c/\Gamma_m = 0$  case (see for instance the curves for  $\Gamma_c/\Gamma_m = 0.1$  in the four panels of Fig. 4). Clearly, when the intermediate maximum of the spectral slope below  $\nu_m$  disappears and  $\alpha$  is given the asymptotic value  $-2/3$  (green region in Fig. 5), the comparison with observations of the low-energy photon index becomes difficult: depending on the location of the peak energy  $E_p$ , and of the low-energy threshold of the instrument, any value of  $\alpha$  between  $-2$  and  $-2/3$  can be measured.

The diagrams in Fig. 5 show that already for  $\Gamma_c/\Gamma_m = 0.1$ , the asymptotic slope  $\alpha = -2/3$  is reached in a large region of the  $w_m - Y_{\text{Th}}$  plane, together with a large radiative efficiency. Even for  $\Gamma_c/\Gamma_m = 1$ ,  $\alpha = -2/3$  is observed in a large region where the radiative efficiency is still larger than 66%. It is only for  $\Gamma_c/\Gamma_m = 10$  that the slow cooling regime dominates the diagram, high radiative efficiency being found together with  $\alpha = -2/3$  in only a very small area.

#### 3.3.2. Other effects

Other processes may influence the final spectral shape. Photon-photon annihilation produces a cutoff at high energy (Granot et al. 2008; Bošnjak et al. 2009). For all cases presented in this paper, we have checked that the opacity for this process was extremely low below  $\sim 100$  MeV. Photon-photon annihilation can affect the tail of the inverse Compton component at high-energies. The fraction of the radiated energy which is reinjected in pairs via  $\gamma\gamma \rightarrow e^+e^-$  is usually, but not always, small in the examples shown in Sect. 4. For example, in the three cases defined in Sect. 4, it is typically less than  $10^{-3}$  in case C, less than 0.05 in case A and between 0.1 and 0.3 in case B. For collisions occurring at low radius or with low Lorentz factors,  $\gamma\gamma$  annihilation could be even more important. When the fraction of the energy in annihilated photons is non negligible, the resulting radiation of the created pairs could affect the spectral shape even at low energy, and modify the results presented here. Despite its potentially interesting impact, we defer to future work the investigation of such cases, due to the additional complexity it involves for the computation of the radiated spectrum. Numerical



**Fig. 4.** The effect of adiabatic cooling on the fast cooling synchrotron spectrum in presence of inverse Compton scatterings. The normalized synchrotron spectrum defined by  $\nu u_{\nu} / n_e^{\text{acc}} \Gamma_m m_e c^2$  is plotted as a function of the normalized frequency  $\nu / \nu_m$ , as well as the corresponding photon index  $d \ln u_{\nu} / d \ln \nu - 1$ . All spectra in thick solid line are computed numerically using a detailed radiative code including synchrotron radiation, inverse Compton scatterings and adiabatic cooling (see text). Spectra in thin dotted line are computed without inverse Compton scatterings. All other processes (synchrotron self-absorption,  $\gamma\gamma$  annihilation) are neglected. Each panel corresponds to a different set of parameters ( $w_m, Y_{\text{Th}}$ ) indicated in the top-left corner. In each panel, spectra are plotted for increasing ratios  $\Gamma_c / \Gamma_m = 0.01, 0.1, 1$  and  $10$ . As in Fig. 2, the maximum Lorentz factor of electrons is computed with a fixed ratio  $\Gamma_{\text{max}} / \Gamma_{\text{min}} = 10^4$ . Spectra in dashed lines are radiatively inefficient (slow cooling regime). The table inserted in each panel lists the values of the radiative efficiency  $f_{\text{rad}}$  of the electrons.

s

approaches to solve such a highly non linear problem including thermalization effects have been proposed by Pe'er & Waxman (2005); Asano & Inoue (2007); Belmont et al. (2008); Vurm & Poutanen (2009).

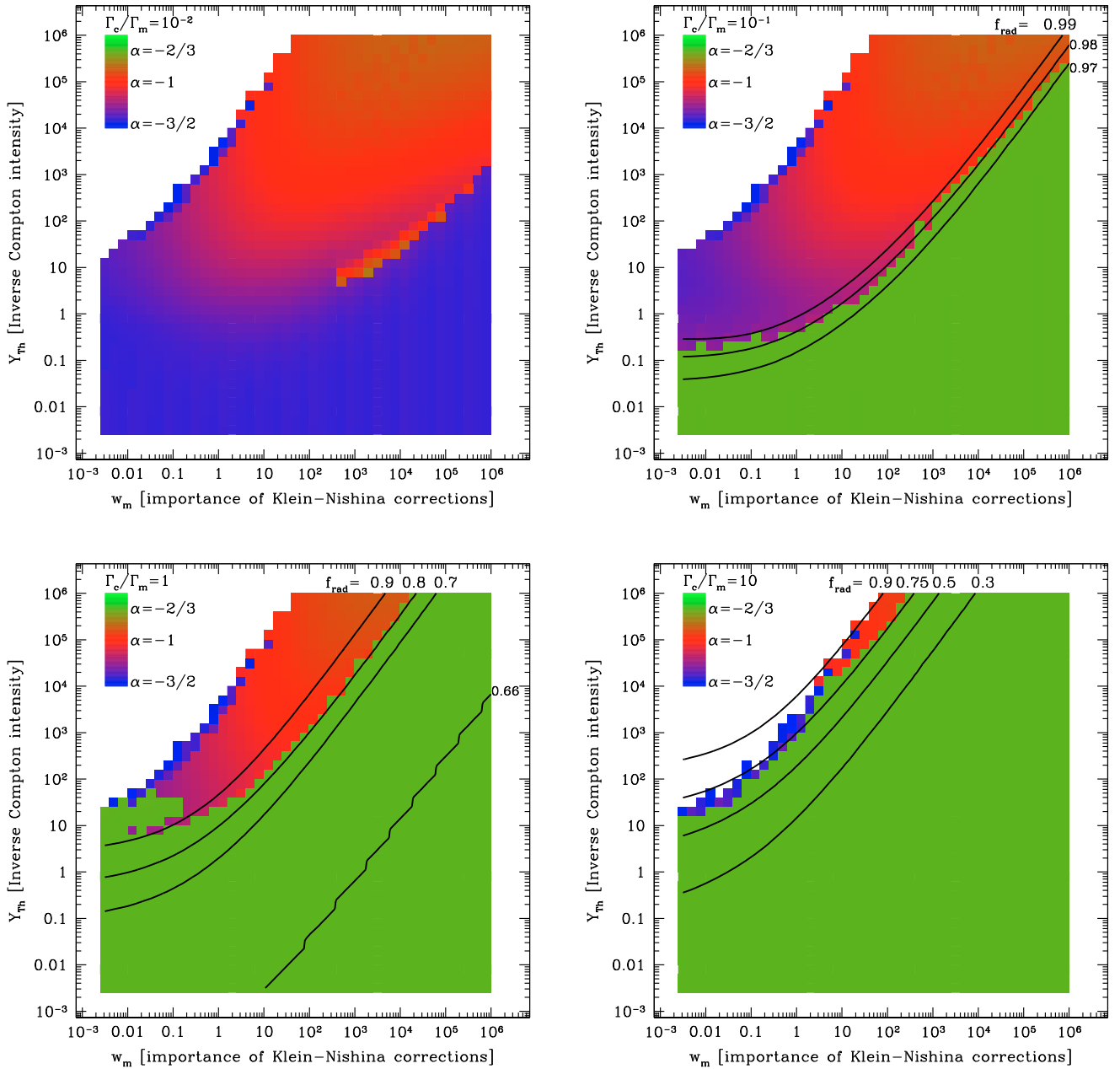
At low energy, the synchrotron self-absorption can also steepen the spectrum. This effect is included in simulations presented in Sect. 4 and is always negligible in the soft gamma-ray domain, in agreement with the standard predictions for the synchrotron fast cooling regime. Indeed the timescale for

self-absorption at  $\nu_m$  is given by (see e.g. Eq. (28) in Bošnjak et al. 2009):

$$\frac{t_a(\nu_m)}{t_{\text{ex}}} \simeq \frac{4\pi\nu_m^3}{n_e^{\text{acc}} c^3} \simeq 1.3 \times 10^{14} \left( \frac{\nu_m}{1 \text{ keV}} \right)^3 \left( \frac{t_{\text{ex}}}{1 \text{ s}} \right) \left( \frac{\tau_e^{\text{acc}}}{10^{-6}} \right)^{-1}, \quad (9)$$

where 1 keV is taken for a typical value of the peak energy in the comoving frame and other parameters are given representative values for internal shocks. The timescale for self-absorption around  $\nu_m$  is therefore always much larger than all





**Fig. 5.** The low-energy slope  $\alpha$  of the synchrotron spectrum in the presence of inverse Compton scatterings in Klein-Nishina regime, including the effect of adiabatic cooling. Same as Fig. 3, now including adiabatic cooling for  $\Gamma_c/\Gamma_m = 10^{-2}$ ,  $10^{-1}$ , 1 and 10. Black solid lines of constant radiative efficiency  $f_{\text{rad}}$  are plotted on top of the three last diagrams. In the first panel, the radiative efficiency is always close to 100%. For larger ratio  $\Gamma_c/\Gamma_m$ , the radiative efficiency remains larger than respectively 96% ( $\Gamma_c/\Gamma_m = 10^{-1}$ ), 65% ( $\Gamma_c/\Gamma_m = 1$ ) and 28% ( $\Gamma_c/\Gamma_m = 10$ ).

other timescales (dynamical or radiative) and the self-absorption process is negligible in the soft gamma-ray range.

In addition to the details of the radiative processes, the precise shape of the electron distribution can also have an impact on the final spectrum. Here, we assume a power-law distribution. More complex distributions showing several components (e.g. Maxwellian distribution + non-thermal tail) are observed in some simulations of particle acceleration in ultra-relativistic shocks (Spitkovsky 2008b,a; Martins et al. 2009). Such results would need to be confirmed for the mildly relativistic regime of interest for the prompt GRB emission. In the ultra-relativistic regime relevant for the afterglow, Giannios & Spitkovsky (2009) have shown that the Maxwellian component could have an observable signature. However Baring & Braby (2004) find that the

non-thermal electron population should dominate in the prompt phase. We leave to a future work the study of the consequences of more complex electron distributions on the observed GRB prompt spectra.

## 4. Constraints on the internal shock model

### 4.1. General constraints on the physical conditions in the emitting regions

We have shown in Sect. 3 that the spectrum resulting from synchrotron radiation in the presence of inverse Compton scatterings in Klein-Nishina regime can account for observed low-energy photon index  $\alpha = -3/2$  to  $-1$ , and that the additional

effect of adiabatic cooling with  $\Gamma_c \lesssim \Gamma_m$  can lead to steeper slopes up to  $\alpha = -2/3$  in a regime where the radiative efficiency is still reasonably high ( $f_{\text{rad}} \gtrsim 50\%$ ). In principle, this allows to reconcile the synchrotron process with the observed spectral parameters in most GRB spectra (see Sect. 2). However it is still necessary to demonstrate that the physical conditions identified in Sect. 3 can be reached in the emitting regions within GRB outflows. These conditions are approximatively  $w_m \gtrsim 1$  and  $w_m^{1/3} \leq Y_{\text{Th}} \lesssim w_m^3$  for changing the slope from  $\alpha = -3/2$  to  $-1$  with the effect of IC scatterings in Klein-Nishina regime, and  $\Gamma_m/\Gamma_c \approx 0.1$ – $1$  to get steeper slopes up to  $\alpha = -2/3$  with the effect of adiabatic cooling.

We assume that the prompt gamma-ray emission is produced in a relativistic outflow ejected by a source at redshift  $z$ . We consider an emitting region at radius  $R$  within the outflow, with a Lorentz factor  $\Gamma_*$ . We do not specify at this stage the physical mechanism responsible for the energy dissipation in this region, leading to the presence of a magnetic field  $B$  and a population of relativistic electrons with a minimum Lorentz factor  $\Gamma_m$ . We assume that the medium is optically thin, i.e.  $\tau_{\text{T}} = \sigma_{\text{T}} n_{\text{e}}^{\text{acc}} c t_{\text{ex}} \leq 1$ . The observed peak of the synchrotron spectrum is given by

$$(1+z)h\nu_{\text{m,obs}} \approx 380 \text{ keV} \left( \frac{\Gamma_*}{300} \right) \left( \frac{\Gamma_m}{10^4} \right)^2 \left( \frac{B}{3000 \text{ G}} \right). \quad (10)$$

The dynamical timescale relevant for adiabatic cooling can be estimated by

$$t_{\text{ex}} = 1.1 \text{ s} \left( \frac{R}{10^{13} \text{ cm}} \right) \left( \frac{\Gamma_*}{300} \right)^{-1}. \quad (11)$$

From Eq. (2), this leads to

$$\frac{\Gamma_c}{\Gamma_m} \approx 0.78 \left( \frac{R}{10^{13} \text{ cm}} \right)^{-1} \left( \frac{\Gamma_*}{300} \right) \left( \frac{B}{3000 \text{ G}} \right)^{-2} \left( \frac{\Gamma_m}{10^4} \right)^{-1}. \quad (12)$$

The two parameters governing inverse Compton scatterings are given by Eq. (4) and Eq. (5):

$$w_m \approx 100 \left( \frac{\Gamma_m}{10^4} \right)^3 \left( \frac{B}{3000 \text{ G}} \right) \quad (13)$$

and

$$Y_{\text{Th}} \approx 100 \left( \frac{\tau_{\text{T}}}{10^{-6}} \right) \left( \frac{R}{10^{13} \text{ cm}} \right)^{-1} \left( \frac{\Gamma_*}{300} \right) \left( \frac{B}{3000 \text{ G}} \right)^{-2} \left( \frac{\Gamma_m}{10^4} \right). \quad (14)$$

Lorentz factors  $\Gamma_*$  above 100 are necessary to avoid the presence of a high-energy cutoff in the spectrum due to  $\gamma\gamma$  annihilation (see e.g. Lithwick & Sari 2001). Higher values are even required in some bursts detected by *Fermi*/LAT. For instance  $\Gamma \gtrsim 600$ – $900$  has been derived by the *Fermi*/LAT collaboration for GRB 080916C (Abdo et al. 2009). Radii in the range  $10^{13}$ – $10^{15}$  cm are expected as the prompt GRB emission should mainly occur above the photospheric radius and below the deceleration radius. Then, the main constraint comes from the fact that in the proposed scenario gamma-ray photons must be produced directly by synchrotron emission. From Eq. (10), this is always possible if electrons can be accelerated to very high Lorentz factors. Then Eq. (13) and (14) show that the physical conditions listed above and leading to  $-3/2 \leq \alpha \leq -1$  can indeed be reached in GRBs. In addition Eq. (12) indicates that the “marginally fast cooling regime” leading to  $\alpha \rightarrow -2/3$  can in principle also be reached, especially for emission at larger radii, where the magnetic field could be lower.

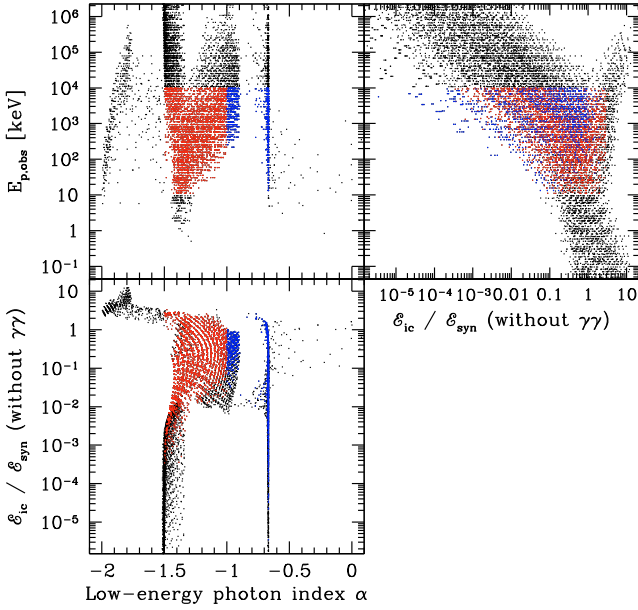
#### 4.2. Impact on the microphysics parameters in internal shocks

The internal shock model allows a self-consistent evaluation of the physical conditions (i.e.  $\Gamma_*$ ,  $R$ ,  $B$ ,  $\Gamma_m$ , etc.) for each emitting region. It is then possible to identify the pertinent range of the parameters leading to steep low-energy slopes: the properties of the relativistic outflow (Lorentz factor, kinetic energy) and the parameters describing the microphysics at work in shocked regions (particle acceleration, magnetic field amplification).

We consider first collisions between two equal-mass shells (Barraud et al. 2005; Bošnjak et al. 2009). More realistic outflows are considered in the next subsection. The parameters defining the dynamical properties of a collision are the mean Lorentz factor in the outflow  $\bar{\Gamma}$ , the ratio  $\kappa$  of the Lorentz factor of the faster shell over the Lorentz factor of the slower shell, the time separation  $\tau$  between the ejection of the two shells and the kinetic energy flux  $\dot{E}$  injected in the outflow. These 4 parameters allow to estimate the radius of the collision, as well as the physical conditions in the shocked region (Lorentz factor  $\Gamma_*$ , comoving density  $\rho_*$  and comoving specific energy density  $\epsilon_*$ ). In addition, four microphysics parameters are necessary to estimate the distribution of relativistic electrons and the magnetic field:  $\epsilon_{\text{B}}$  and  $\epsilon_{\text{e}}$  are the fraction of the energy density  $\rho_* \epsilon_*$  that is injected in the magnetic field and the relativistic electrons, respectively. We assume that only a fraction  $\zeta$  of the available electrons are accelerated in a non-thermal distribution and that this distribution is a power-law with index  $-p$ . The full description of this model can be found in Bošnjak et al. (2009).

We explore the parameter space of this model, assuming a constant value  $\epsilon_{\text{e}} = 1/3$  and a constant electron slope  $p = 2.5$ . A high value of  $\epsilon_{\text{e}}$  seems unavoidable in internal shocks to maintain a reasonable efficiency of the process. We have checked that our results are not affected much by taking  $\epsilon_{\text{e}} = 0.1$ . As we are mainly interested in the low-energy photon index  $\alpha$ , the choice of  $p$  is not very important. The present value  $p = 2.5$ , leads to a high-energy photon index  $\beta \approx -2.25$  close to the mean value observed in BATSE spectroscopic catalog (Preece et al. 2000). We then compute the observed spectrum of 50 400 collisions for  $\log \bar{\Gamma} = 1.5, 2, 2.5$  and  $3$ ;  $\kappa = 2.5, 5, 7.5$  and  $10$ ;  $\log \tau = -2, -1, 0, 1$  and  $2$ ;  $\log \dot{E} = 50, 51, 52, 53, 54$  and  $55$ ;  $\log \zeta = -4, -3, -2, -1$  and  $0$ ;  $\log \epsilon_{\text{B}} = -5.5 \rightarrow -0.5$  every  $0.25$ . These spectra are computed with the radiative code developed by Bošnjak et al. (2009), including all relevant processes: synchrotron radiation, inverse Compton scatterings and adiabatic cooling, as considered in the previous section, but also synchrotron self-absorption and  $\gamma\gamma$  annihilation.

We keep only cases which fulfill the following conditions: (i) the shocked region is transparent ( $\sigma_{\text{T}} n_{\pm} c t_{\text{ex}} < 0.1$ , where  $n_{\pm}$  is the final lepton density in the shocked region, taking into account pairs that were created by  $\gamma\gamma$  annihilation but neglecting pair annihilation, see Bošnjak et al. 2009); (ii) electrons are radiatively efficient ( $f_{\text{rad}} > 0.5$ ); (iii) synchrotron radiation is dominant at low-energy ( $u_{\nu|\text{syn}} > 10 u_{\nu|\text{ic}}$  at the frequency of the synchrotron peak). This last condition eliminates a few cases where inverse Compton scatterings are so efficient that the synchrotron component is hardly observed. After this selection,  $\sim 75\%$  of cases are suppressed, because of a too large optical depth (condition (i)):  $\sim 50\%$  of cases, a too low radiative efficiency (condition (ii)):  $\sim 20\%$  of cases) or a negligible synchrotron emission (condition (iii)):  $\sim 10\%$  of cases). For each spectrum, assuming a source redshift  $z = 1$ , we compute the observed peak energy of the synchrotron component  $E_{\text{p,obs}}$ , the low-energy photon index  $\alpha$  below the peak, and the ratio  $\mathcal{E}_{\text{ic}}/\mathcal{E}_{\text{syn}}$



**Fig. 6.** Exploration of the internal shock parameter space (1). All cases fulfilling the conditions of (i) transparency; (ii) radiative efficiency; and (iii) synchrotron dominance at low-energy (see text) are plotted with black dots in three planes:  $E_{p,obs}$  vs.  $\alpha$  (top-left panel);  $\mathcal{E}_{ic}/\mathcal{E}_{syn}$  vs.  $\alpha$  (bottom-left panel);  $E_{p,obs}$  vs.  $\mathcal{E}_{ic}/\mathcal{E}_{syn}$  (top-right panel). The ratio  $\mathcal{E}_{ic}/\mathcal{E}_{syn}$  does not take into account the fraction of high energy photons that are suppressed by  $\gamma\gamma$  annihilation. In addition, the cases where the synchrotron spectrum peaks in the gamma-ray range ( $10 \text{ keV} \leq E_{p,obs} \leq 10 \text{ MeV}$ ) and the low-energy photon index is in the range  $-3/2 \leq \alpha \leq -1$  (resp.  $-1 \leq \alpha \leq -2/3$ ) are plotted in red (resp. blue).

of the inverse Compton component over the synchrotron component. All models fulfilling the three conditions listed above are plotted in Fig. 6. This figure illustrates that the internal shock model with a dominant synchrotron process in the soft gamma-ray range (BATSE, *Fermi*/GBM) allows a large range of low-energy photon index between  $-3/2$  and  $-2/3$  and a large range of peak energies (including very high peak energies as observed in some bright bursts such as GRB 080916C, *Abdo et al. 2009*; for which *Wang et al. 2009*, have recently shown that the slope  $\alpha \simeq -1$  can be explained by the effect of IC scatterings in KN regime on the synchrotron spectrum; and very low peak energies as expected in X-ray rich gamma-ray bursts or X-ray flashes, *Heise et al. 2001*; *Sakamoto et al. 2005, 2008*). All these cases have  $f_{rad} > 0.5$  and even  $f_{rad} > 0.9$  in half of the cases. For cases with  $10 \text{ keV} \leq E_{p,obs} \leq 10 \text{ MeV}$ , the ratio  $\mathcal{E}_{ic}/\mathcal{E}_{syn}$  is typically in the range  $10^{-3}$ – $1$ . This is in agreement with the indication from the *Fermi*/LAT GRB detection rate that most GRBs do not have a strong additional component between 100 MeV and 10 GeV (*Granot et al. 2010a*). Note that the density of points in Fig. 6 has no physical meaning as the distribution of the physical parameters in GRB outflows is unknown. This figure only illustrates the range of observed values that can be expected in the internal shock model.

We plot in Fig. 7 the distributions of  $w_m$ ,  $Y_{Th}$  and  $\Gamma_c/\Gamma_m$  for the same models. The values of the low-energy photon index  $\alpha$  are in full agreement with the analysis made in Sect. 3. How are such values obtained? The distributions of dynamical ( $\bar{\Gamma}$ ,  $\kappa$ ,  $\tau$  and  $\dot{E}$ ) and microphysics ( $\zeta$  and  $\epsilon_B$ ) parameters for all models

that fulfill the three conditions listed above and have in addition a synchrotron spectrum that peaks in gamma-rays with a low-energy index in the expected range ( $-3/2 \leq \alpha \leq -2/3$ ) show that low-values of  $\zeta$  are needed to produce gamma-rays (typically  $\zeta = 10^{-3}$ – $10^{-2}$ ), and that low values of  $\epsilon_B$  favor steeper low-energy photon indices.

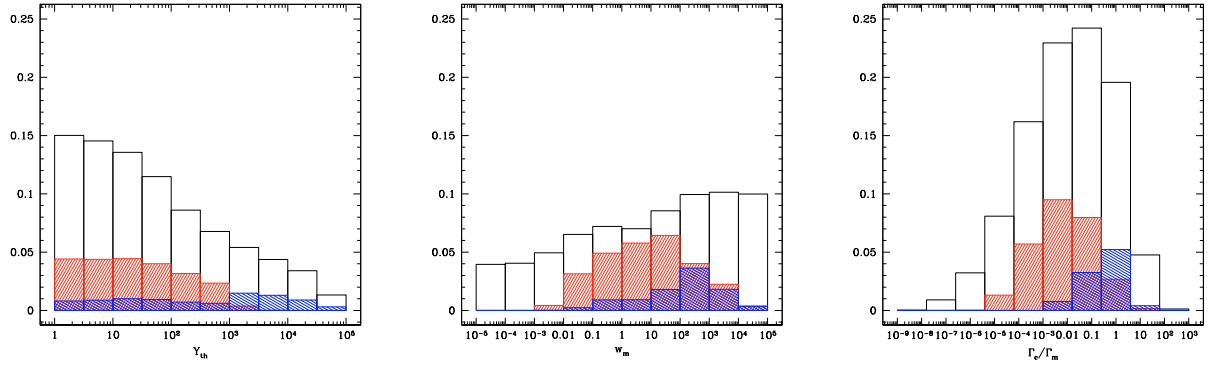
#### 4.3. A few examples of synthetic GRBs

In a more realistic description of the internal shock model, each pulse in GRBs with complex multi-pulses lightcurves is associated with the propagation of a shock wave within the relativistic outflow (*Daigne & Mochkovitch 2000*; *Mimica et al. 2007*; *Mimica & Aloy 2010*). This propagation implies an evolution of the physical quantities in the shocked region, especially the density and therefore the magnetic field. This leads to a spectral evolution within each pulse that has already been partially described in *Daigne & Mochkovitch (1998, 2003)*; *Bošnjak et al. (2009)*. The model developed by *Bošnjak et al. (2009)* couples a dynamical simulation of internal shock propagation within a relativistic outflow, and a detailed radiative code. This allows to predict the lightcurves and spectral evolution in pulses for different assumptions regarding the physical conditions in the outflow. In order to compare the results with observed distributions of spectral parameters, we face difficulties due to several possible biases, as described in Sect. 2. To make a full comparison, one should generate noise in our synthetic bursts and take into account the response function of a given instrument before fitting the resulting spectrum by a Band function. We did not follow this procedure as our primary goal is to identify the theoretical limits for the prediction of the low-energy slope. We computed theoretical spectra over time bins of duration 0.25 s and measure the slope below the peak energy in the same way as in Sect. 3.

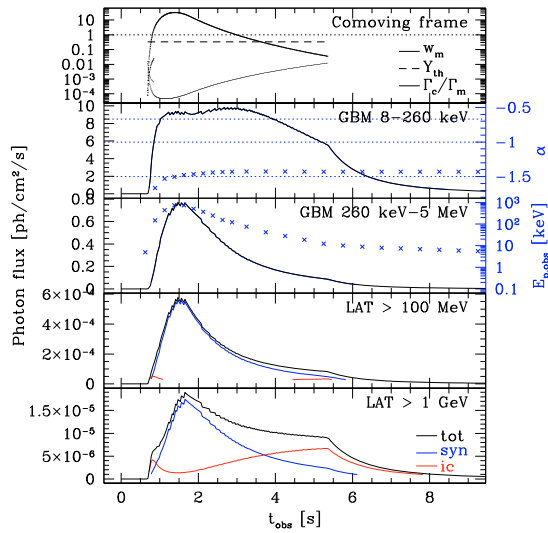
In the examples below, we adopt the same reference case as in *Bošnjak et al. (2009)*: a single pulse burst is generated by a relativistic ejection lasting for  $t_w = 2$  s with a constant  $\dot{E}$  and a Lorentz factor increasing from 100 to 400 (see Fig. 1 in *Bošnjak et al. 2009*). Constant microphysics parameters are assumed during the whole evolution. This is a simplifying assumption due to our poor knowledge of the physical processes at work in mildly relativistic shocks. However, as the diversity of GRBs and their afterglows seem to indicate that these parameters are not universal, they are most probably evolving with shock conditions, which could impact the spectral evolution within a pulse (*Daigne & Mochkovitch 2003*). We adopt here  $\epsilon_e = 1/3$  and  $p = 2.5$  and adjust  $\zeta$  and  $\epsilon_B$  to have the peak energy of the pulse well within the GBM range. We consider the following examples to illustrate the possible range of  $\alpha$ :

- Case A:  $\dot{E} = 10^{54}$  erg/s,  $\epsilon_B = 1/3$  and  $\zeta = 3 \times 10^{-3}$ . This case is plotted in Fig. 8 and shows the standard slope  $\alpha = -3/2$ . The peak energy is  $E_{p,obs} \simeq 800$  keV at the peak of the pulse.
- Case B:  $\dot{E} = 10^{54}$  erg/s,  $\epsilon_B = 10^{-3}$  and  $\zeta = 10^{-3}$ . This case is plotted in Fig. 9 and shows a steeper  $\alpha \simeq -1$ . The peak energy is  $E_{p,obs} \simeq 700$  keV at the peak of the pulse.

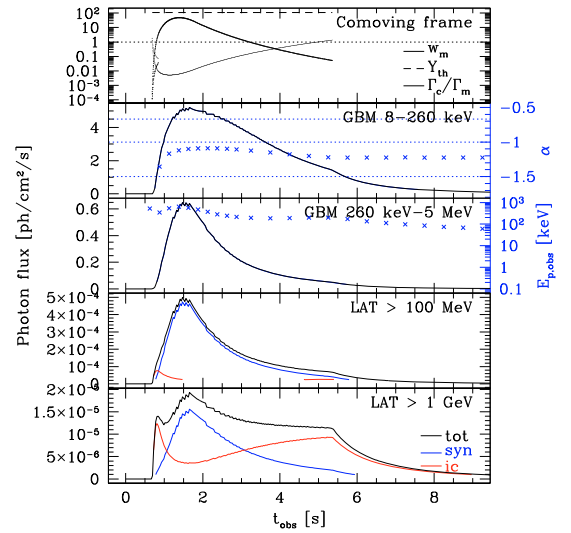
Intermediate values of  $\epsilon_B$  between case A and B would lead to intermediate values of  $\alpha$  between  $-3/2$  and  $-1$ . In both examples, it appears clearly that all spectral parameters are evolving during a given pulse. The evolution for the peak energy is stronger in case A than in case B, whereas the low-energy photon index  $\alpha$  evolves more strongly in the second case. Note that in these examples, the direct emission from pulse ends at  $t_{obs} \sim 5.5$  s. The flux observed after this time is due to the high latitude emission. In more complex bursts with multi-pulses lightcurves, the



**Fig. 7.** Exploration of the internal shock parameter space (2). The distribution of the three parameters defining the relative importance of inverse Compton scatterings, Klein-Nishina corrections and adiabatic cooling,  $Y_{\text{th}}$ ,  $w_m$  and  $\Gamma_c/\Gamma_m$  are plotted for all cases presented in Fig. 6. In addition the distributions of the same parameters for cases where the synchrotron spectrum peaks in the gamma-ray range ( $10 \text{ keV} \leq E_{\text{p,obs}} \leq 10 \text{ MeV}$ ) and the low-energy photon index is in the correct range are also plotted ( $-3/2 \leq \alpha \leq -1$ ; red;  $-1 \leq \alpha \leq -2/3$ ; blue).



**Fig. 8.** Case A: an example of a pulse generated by an internal shock with synchrotron radiation in pure fast cooling. The *top panel* plots the evolution of the three main parameters shaping the radiated spectrum (see Sect. 3):  $w_m$ ,  $Y_{\text{th}}$  and  $\Gamma_c/\Gamma_m$ . The *four other panels* show the lightcurves in different energy channels corresponding to the GBM and the LAT on board *Fermi*. The respective contributions of synchrotron and inverse Compton are also indicated. In the two GBM panels, the evolution of the low-energy slope and peak energy of the soft gamma-ray component is also plotted. In this case, the standard fast cooling synchrotron slope  $\alpha = -3/2$  is found for the whole duration.



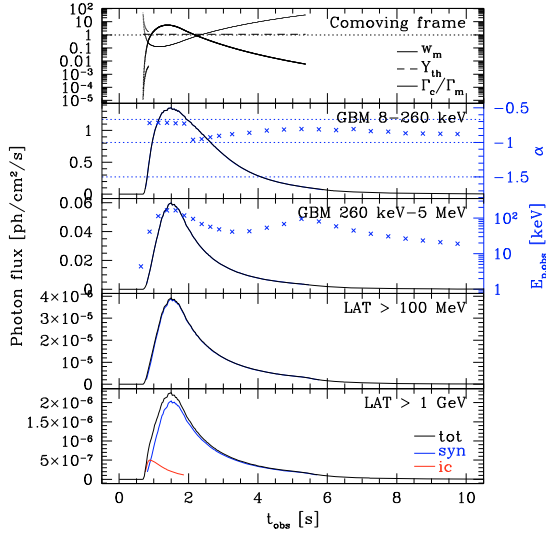
**Fig. 9.** Case B: an example of a pulse generated by an internal shock with synchrotron radiation in fast cooling regime affected by non negligible inverse Compton scatterings in Klein-Nishina regime. Same as in Fig. 8. The slope  $\alpha$  is steeper ( $-3/2 < \alpha < -1$  for the whole duration) than in case A, due to comparable values of  $w_m$  but higher values of  $Y_{\text{th}}$  (see the theoretical interpretation in Sect. 3).

spectral properties should in principle be governed by the dominant pulse at a given time. The tail and high-latitude emission of a pulse can be observed only if it is followed by a period of inactivity.

Examples A and B are very encouraging as they illustrate that low-energy slopes  $\alpha$  can be expected in the range  $-3/2 \leq \alpha \leq -1$  in the internal shock model with dominant synchrotron radiation. On the other hand, keeping the same assumption for the dynamics of the internal shocks as in case A and B, it seems difficult to find microphysics parameters leading to even steeper slopes  $-1 \leq \alpha \leq -2/3$ . This can be understood from the two shell model presented in the previous subsection. To reach the necessary condition  $\Gamma_c/\Gamma_m \sim 0.1-1$ , it is necessary to have collisions at lower radii, and/or with larger bulk Lorentz factor,

and/or to reduce the magnetic field (see Eq. (12)). This can be achieved in different ways: decreasing the contrast  $\kappa$ , increasing the variability timescale  $\tau$ , increasing the Lorentz factor  $\bar{\Gamma}$ , or reducing the kinetic energy flux  $\dot{E}$ . In the following example, both the Lorentz factor and the kinetic energy flux have been changed:

- Case C: the dynamics is the same as in case A and B except that the Lorentz factor has been multiplied by 3 and the kinetic energy flux reduced to  $\dot{E} = 5 \times 10^{52} \text{ erg/s}$ . The microphysics parameters are  $\epsilon_B = 0.1$  and  $\zeta = 10^{-3}$ . This case is plotted in Fig. 10 and shows low-energy slopes  $\alpha$  steeper than  $-1$  during the whole duration of the pulse. The peak energy is  $E_{\text{p,obs}} \sim 170 \text{ keV}$  at the peak of the pulse. The radiative efficiency is still reasonably high ( $\sim 60\%$ ) however the end of the evolution occurs in slow cooling regime which results in a more complex evolution of the peak energy in the tail of the pulse than in the two previous examples.



**Fig. 10.** Case C: an example of a pulse generated by an internal shock with synchrotron radiation in “marginally fast cooling”. Same as in Figs. 8 and 9. The slope  $\alpha$  is steeper ( $-1 < \alpha < -2/3$  for the whole duration) than in case A and B, due to a higher ratio  $\Gamma_c/\Gamma_m$ . This ratio is of the order of 0.1–1 at the peak of the pulse (“marginally fast cooling”), and even larger in the tail (slow cooling).

This example illustrates that the “marginally fast cooling regime” does provide low-energy slopes  $\alpha > -1$ . However, following Fig. 6, the conditions require a smaller radius and/or a low magnetic field. This tends to favor less energetic internal shocks.

#### 4.4. High-energy emission

Interestingly, as already pointed out in Bošnjak et al. (2009), the scenario presented in this section – internal shocks with dominant synchrotron radiation in the soft gamma-ray range – require high Lorentz factors for electrons, which, because of Klein-Nishina corrections, always limits the efficiency of inverse Compton scatterings. So the high-energy spectrum (*Fermi*/LAT range) does not show any bright additional component simultaneously with the peak of the pulse in the GBM range, which seems in agreement with the GRB detection rate of *Fermi*/LAT. However, as described in details in Bošnjak et al. (2009), the physical conditions in the shocked region evolve during the internal shock propagation in such a way that the  $w_m$  parameter decreases in the tail of the pulse (see top panel in Figs. 8–10). Inverse Compton scattering progressively enters the Thomson regime and becomes more efficient, especially in the low  $\epsilon_B$  (high  $Y_{Th}$ ) case favored for steep low-energy slopes (see case B in Fig. 9). This leads to the delayed emergence of an additional component in the high-energy spectrum. We will investigate in the future if this effect could explain the behaviour observed in *Fermi*/LAT GRB lightcurves where delays between the GeV and the keV–MeV emission are indeed observed (see for instance GRB 080916C, Abdo et al. 2009).

## 5. Discussion and conclusions

We present here a detailed discussion of the expected value for the low-energy slope  $\alpha$  of the soft gamma-ray component (BATSE – *Fermi*/GBM range) in prompt GRBs, in the theoretical framework where the kinetic energy of the outflow is

extracted by internal shocks, and eventually injected in shock-accelerated electrons that radiate dominantly by synchrotron radiation. Our approach is based on the model developed in Bošnjak et al. (2009), which takes into account both a full treatment of the dynamics of internal shocks and a detailed radiative calculation.

1. We show that in a large region of the parameters space of the internal shock model, the physical conditions in the emitting regions allow a combination of synchrotron radiation peaking in the soft gamma-ray range, and moderately efficient inverse Compton scatterings in Klein-Nishina regime. Interestingly, these scatterings affect the spectral shape of the synchrotron component, due to a better efficiency for low frequency photons. This results in a steepening of the low-energy photon index  $\alpha$ , with  $\alpha \rightarrow -1$  (Derishev et al. 2001; Bošnjak et al. 2009; Nakar et al. 2009). For a large range of parameters regarding the dynamics of internal shocks (variability timescale, bulk Lorentz factor, amplitude of fluctuations of the Lorentz factor, kinetic energy flux), we produce synthetic pulses with peak energies of a few hundred keV in the observer frame, and steep slopes in the range  $-3/2 \leq \alpha \leq -1$ , at the peak of the lightcurve. The examples presented in the paper not only show high peak energies and steep slopes at the peak of the lightcurve, but also a general hard-to-soft spectral evolution, in agreement with observations. This scenario constrains the microphysics in mildly relativistic shocks (shock acceleration and magnetic field amplification): a large ( $\epsilon_e \sim 0.1$ – $1/3$ ) fraction of the dissipated energy should be preferentially injected into a small ( $\zeta \lesssim 0.01$ ) fraction of electrons to produce a non-thermal population with high Lorentz factors, and the fraction of the energy which is injected in the magnetic field should remain low ( $\epsilon_B \lesssim 10^{-3}$ ) to favor inverse Compton scatterings. The current knowledge of the microphysics in mildly relativistic shocks is unfortunately still rather poor and does not allow a comparison of these constraints with some theoretical expectations. The prediction that only a small fraction  $\zeta$  of electrons are injected into a non-thermal power-law distribution leads naturally to a new question that we plan to investigate in the future: does the remaining quasi-thermal population of electrons contribute to the emission?
2. We also identify a regime of marginally fast-cooling synchrotron radiation with  $\Gamma_c \lesssim \Gamma_m$  which leads to even steeper slopes  $\alpha \rightarrow -2/3$  without reducing significantly the radiative efficiency of the process ( $f_{rad} \gtrsim 0.5$ ). We present an example of a synthetic pulse in this regime, with a slope  $\alpha > -1$  for its whole duration. This requires low radii, and/or large bulk Lorentz factors, and/or weak magnetic fields.

The present study shows that for a large region of the parameter space, internal shocks lead to spectra dominated by a bright synchrotron component in the soft gamma-ray range, with a steep slope low-energy photon-index  $-3/2 \leq \alpha \leq -1$ , as observed in most prompt GRB spectra. In this scenario, the additional Inverse Compton component at high energy is only sub-dominant and its intensity is not correlated to the intensity of the soft gamma-ray component. This seems in better agreement with *Fermi*/LAT observations and GRB detection rate than other scenario, such as standard SSC in Thomson regime, where bright components are predicted at high energy.

On the other hand, even if steeper slopes in the range  $-1 \leq \alpha \leq -2/3$  can be achieved in the “fast marginally fast cooling regime”, the corresponding constraints on the parameters of internal shocks are very strict. This regime could work if these

steep slopes are associated, on average, with weaker intensities in the light curve. Indeed, the marginally fast cooling regime leads not only to a moderate radiative efficiency  $f_{\text{rad}} \approx 0.5\text{--}0.7$  (compared to  $f_{\text{rad}} \rightarrow 1$  in the standard case), but also tends to occur in less energetic collisions. This limitation implies that this regime is probably not a robust explanation for all spectra with such steep slopes.

The scenario proposed in this paper can never produce low-energy slopes  $\alpha$  steeper than  $-2/3$ , whereas such slopes are measured in a non negligible fraction of GRB spectra (Ryde 2004; Ghirlanda et al. 2003). About 20% of GRBs have more than 50% of their spectra with such very steep slopes. One possibility in such cases would be the appearance of a quasi-thermal component of photospheric origin (Mészáros & Rees 2000; Daigne & Mochkovitch 2002; Pe'er 2008; Beloborodov 2010; Pe'er et al. 2010). The emission from both the photosphere and internal shocks have a similar duration, the latter having only a very short lag behind the first. The intensity of the photospheric emission depends strongly on the unknown mechanism responsible for the acceleration of the relativistic outflow. A pure fireball would lead to a dominant thermal emission, whereas mechanisms such as the “magnetic rocket” recently suggested by Granot et al. (2010b) would on the other hand correspond to much colder jets with only a faint photospheric emission. In addition, the way it will superimpose on the non-thermal emission from internal shocks depends on the details of the initial distribution of the Lorentz factor in the flow (see Daigne & Mochkovitch 2002). Very steep slopes could be observed in the time bins where the photospheric emission is dominant.

Other effects could be a source of additional complexity in the prompt GRB spectrum within the scenario proposed in this paper. As it is required that only a fraction of available electrons are shock accelerated into a non-thermal power-law distribution, possible extra components in the spectrum could be associated with the remaining thermal population of electrons. Preliminary investigations show that the synchrotron radiation from these electrons is easily self-absorbed, in agreement with Zou et al. (2009). On the other hand, due to lower electron Lorentz factors, inverse Compton scatterings by these electrons usually occur in Thomson regime, which is efficient. This could lead to additional components at low and/or high energy that offer interesting perspectives for the interpretation of the complex behaviour observed in GRBs detected by *Fermi*/LAT. We also find that in some cases, a non negligible fraction of the radiated energy is re-injected in pairs due to  $\gamma\gamma$  annihilation. These pairs can radiate and scatter photons as well. These second order effects are not included in the present version of the model and could impact the final spectra shape.

*Acknowledgements.* The authors thank R. Mochkovitch, A. Pe'er, P. Kumar and E. Nakar for valuable discussions on this work. The authors thank Y. Kaneko for her help regarding BATSE GRB spectral results. The authors acknowledge support from the Agence Nationale de la Recherche via contract ANR-JC05-44822. Z.B. and F.D. acknowledge the French Space Agency (CNES) for financial support. G.D. acknowledges support from the European Community via contract ERC-StG-200911.

## References

Abdo, A. A., Ackermann, M., Arimoto, M., et al. 2009, *Science*, 323, 1688  
 Asano, K., & Inoue, S. 2007, *ApJ*, 671, 645  
 Asano, K., & Terasawa, T. 2009, *ApJ*, 705, 1714  
 Band, D., Matteson, J., Ford, L., et al. 1993, *ApJ*, 413, 281

Baring, M. G., & Braby, M. L. 2004, *ApJ*, 613, 460  
 Barraud, C., Daigne, F., Mochkovitch, R., & Atteia, J. L. 2005, *A&A*, 440, 809  
 Belmont, R., Malzac, J., & Marcowith, A. 2008, *A&A*, 491, 617  
 Beloborodov, A. M. 2010, *MNRAS*, 407, 1033  
 Borgonovo, L., & Ryde, F. 2001, *ApJ*, 548, 770  
 Bošnjak, Ž., Daigne, F., & Dubus, G. 2009, *A&A*, 498, 677  
 Crider, A., Liang, E. P., Smith, I. A., et al. 1997, *ApJ*, 479, L39  
 Daigne, F., & Mochkovitch, R. 1998, *MNRAS*, 296, 275  
 Daigne, F., & Mochkovitch, R. 2000, *A&A*, 358, 1157  
 Daigne, F., & Mochkovitch, R. 2002, *MNRAS*, 336, 1271  
 Daigne, F., & Mochkovitch, R. 2003, *MNRAS*, 342, 587  
 Derishev, E. V., Kocharovsky, V. V., & Kocharovsky, V. V. 2001, *A&A*, 372, 1071  
 Drenkhahn, G., & Spruit, H. C. 2002, *A&A*, 391, 1141  
 Ford, L. A., Band, D. L., Matteson, J. L., et al. 1995, *ApJ*, 439, 307  
 Ghirlanda, G., Celotti, A., & Ghisellini, G. 2003, *A&A*, 406, 879  
 Ghirlanda, G., Nava, L., & Ghisellini, G. 2010, *A&A*, 511, A43  
 Ghisellini, G., & Celotti, A. 1999, *A&AS*, 138, 527  
 Ghisellini, G., Celotti, A., & Lazzati, D. 2000, *MNRAS*, 313, L1  
 Giannios, D., & Spitkovsky, A. 2009, *MNRAS*, 400, 330  
 Giannios, D., & Spruit, H. C. 2005, *A&A*, 430, 1  
 Giannios, D., & Spruit, H. C. 2007, *A&A*, 469, 1  
 Granot, J., Cohen-Tanugi, J., & do Couto e Silva, E. 2008, *ApJ*, 677, 92  
 Granot, J., for the Fermi LAT Collaboration, & the GBM Collaboration 2010a, in *The Shocking Universe - Gamma-Ray Bursts and High Energy Shock phenomena*, ed. G. Chincarini, P. d’Avanzo, R. Margutti, & R. Salvaterra, *Ital. Phys. Soc.*, 102, 177  
 Granot, J., Komissarov, S., & Spitkovsky, A. 2010b, *MNRAS*, accepted, [arXiv:1004.0959]  
 Heise, J., in’t Zand, J., Kippen, R. M., & Woods, P. M. 2001, in *Gamma-ray Bursts in the Afterglow Era*, ed. E. Costa, F. Frontera, & J. Hjorth, 16  
 Kaneko, Y., Preece, R. D., Briggs, M. S., et al. 2006, *ApJS*, 166, 298  
 Kobayashi, S., Piran, T., & Sari, R. 1997, *ApJ*, 490, 92  
 Krimm, H. A., Yamaoka, K., Sugita, S., et al. 2009, *ApJ*, 704, 1405  
 Kumar, P., & McMahon, E. 2008, *MNRAS*, 384, 33  
 Liang, E., Kusunose, M., Smith, I. A., & Crider, A. 1997, *ApJ*, 479, L35  
 Lithwick, Y., & Sari, R. 2001, *ApJ*, 555, 540  
 Lloyd, N. M., & Petrosian, V. 2000, *ApJ*, 543, 722  
 Lloyd-Ronning, N. M., & Petrosian, V. 2002, *ApJ*, 565, 182  
 Lyutikov, M., & Blandford, R. 2003, unpublished [arXiv:astro-ph/0312347]  
 Mallozzi, R. S., Paciesas, W. S., Pendleton, G. N., et al. 1995, *ApJ*, 454, 597  
 Martins, S. F., Fonseca, R. A., Silva, L. O., & Mori, W. B. 2009, *ApJ*, 695, L189  
 Medvedev, M. V. 2000, *ApJ*, 540, 704  
 Mészáros, P., & Rees, M. J. 1997, *ApJ*, 482, L29  
 Mészáros, P., & Rees, M. J. 2000, *ApJ*, 530, 292  
 Mimica, P., & Aloy, M. A. 2010, *MNRAS*, 401, 525  
 Mimica, P., Aloy, M. A., & Müller, E. 2007, *A&A*, 466, 93  
 Nakar, E., Ando, S., & Sari, R. 2009, *ApJ*, 703, 675  
 Omodei, N., for the Fermi LAT, & Fermi GBM collaborations 2009 [arXiv:0907.0715]  
 Panaitescu, A., & Mészáros, P. 2000, *ApJ*, 544, L17  
 Pe'er, A. 2008, *ApJ*, 682, 463  
 Pe'er, A., & Waxman, E. 2005, *ApJ*, 628, 857  
 Pe'er, A., & Zhang, B. 2006, *ApJ*, 653, 454  
 Pe'er, A., Zhang, B., Ryde, F., et al. 2010 [arXiv:1007.2228]  
 Pélangéon, A., Atteia, J., Nakagawa, Y. E., et al. 2008, *A&A*, 491, 157  
 Piran, T., Sari, R., & Zou, Y. 2009, *MNRAS*, 393, 1107  
 Preece, R. D., Briggs, M. S., Mallozzi, R. S., et al. 1998, *ApJ*, 506, L23  
 Preece, R. D., Briggs, M. S., Mallozzi, R. S., et al. 2000, *ApJS*, 126, 19  
 Racusin, J. L., Karpov, S. V., Sokolowski, M., et al. 2008, *Nature*, 455, 183  
 Ramirez-Ruiz, E., & Fenimore, E. E. 2000, *ApJ*, 539, 712  
 Rees, M. J. 1967, *MNRAS*, 137, 429  
 Rees, M. J., & Mészáros, P. 1994, *ApJ*, 430, L93  
 Ryde, F. 2004, *ApJ*, 614, 827  
 Sakamoto, T., Lamb, D. Q., Kawai, N., et al. 2005, *ApJ*, 629, 311  
 Sakamoto, T., Hullinger, D., Sato, G., et al. 2008, *ApJ*, 679, 570  
 Sari, R., & Esin, A. A. 2001, *ApJ*, 548, 787  
 Sari, R., Narayan, R., & Piran, T. 1996, *ApJ*, 473, 204  
 Sari, R., Piran, T., & Narayan, R. 1998, *ApJ*, 497, L17  
 Spitkovsky, A. 2008a, *ApJ*, 673, L39  
 Spitkovsky, A. 2008b, *ApJ*, 682, L5  
 Spruit, H. C., Daigne, F., & Drenkhahn, G. 2001, *A&A*, 369, 694  
 Stern, B. E., & Poutanen, J. 2004, *MNRAS*, 352, L35  
 Thompson, C. 1994, *MNRAS*, 270, 480  
 Vurm, I., & Poutanen, J. 2009, *ApJ*, 698, 293  
 Wang, X., Li, Z., Dai, Z., & Mészáros, P. 2009, *ApJ*, 698, L98  
 Zou, Y., Piran, T., & Sari, R. 2009, *ApJ*, 692, L92