



HAL
open science

On a numerical model for extracting TKE dissipation rate from very high frequency (VHF) radar spectral width

Lakshmi Kantha, Hubert Luce, Hiroyuki Hashiguchi

► To cite this version:

Lakshmi Kantha, Hubert Luce, Hiroyuki Hashiguchi. On a numerical model for extracting TKE dissipation rate from very high frequency (VHF) radar spectral width. *Earth Planets and Space*, 2018, 70, <10.1186/s40623-018-0957-7>. <insu-03668087>

HAL Id: insu-03668087

<https://insu.hal.science/insu-03668087v1>

Submitted on 14 May 2022

HAL is a multi-disciplinary open access archive for the deposit and dissemination of scientific research documents, whether they are published or not. The documents may come from teaching and research institutions in France or abroad, or from public or private research centers.

L'archive ouverte pluridisciplinaire HAL, est destinée au dépôt et à la diffusion de documents scientifiques de niveau recherche, publiés ou non, émanant des établissements d'enseignement et de recherche français ou étrangers, des laboratoires publics ou privés.




Distributed under a Creative Commons CC BY 4.0 - Attribution - International License

FULL PAPER

Open Access



On a numerical model for extracting TKE dissipation rate from very high frequency (VHF) radar spectral width

Lakshmi Kantha¹, Hubert Luce² and Hiroyuki Hashiguchi^{3*} 

Abstract

The standard model (e.g., Hocking in *Earth Planets Space* 51:525–541, 1999), $\varepsilon = c_0 \sigma^2 N$, (where σ is the radar spectral width assumed to be equal to vertical turbulence velocity fluctuation $\sqrt{w^2}$, N is the buoyancy frequency, and c_0 is a constant), derived from Weinstock (*J Atmos Sci* 35:1022–1027, 1978; *J Atmos Sci* 38:880–883, 1981) formulation, has been used extensively for estimating the turbulence kinetic energy (TKE) dissipation rate ε under stable stratification from VHF radar Doppler spectral width σ . The Weinstock model can be derived by simply integrating the TKE spectrum in the wavenumber space from the buoyancy wavenumber $k_B = \frac{N}{\sigma}$ to ∞ . However, it ignores the radar volume dimensions and hence its spatial weighting characteristics. Labitt (Some basic relations concerning the radar measurements of air turbulence, MIT Lincoln Laboratory, ATC Working Paper NO 46WP-5001, 1979) and White et al. (*J Atmos Ocean Technol* 16:1967–1972, 1999) formulations do take into account the radar spatial weighting characteristics, but assume that the wavenumber range in the integration of TKE spectrum extends from 0 to ∞ . The White et al. model accounts for wind speed effects, whereas the other two do not. More importantly, all three formulations make the assumption that $k^{-5/3}$ spectral shape of TKE spectrum extends across the entire wavenumber range of integration. It is traditional to use Weinstock formulation for $k_B^{-1} < 2a, 2b$ (where a and b are radar volume dimensions in the horizontal and vertical directions) and White et al. formulation (without wind advection) for $k_B^{-1} > 2a, 2b$. However, there is no need to invoke these asymptotic limits. We present here a numerical model, which is valid for all values of buoyancy wavenumber k_B and transitions from $\varepsilon \sim \sigma^2$ behavior at lower values of σ in accordance with Weinstock's model, to $\varepsilon \sim \sigma^3$ at higher values of σ , in agreement with Chen (*J Atmos Sci* 31:2222–2225, 1974) and Bertin et al. (*Radio Sci* 32:791–804, 1997). It can also account for the effects of wind speed, as well the beam width and altitude. Following Hocking (*J Atmos Terr Phys* 48:655–670, 1986, *Earth Planets Space* 51:525–541, 1999), the model also takes into account contributions of velocity fluctuations beyond the inertial subrange. The model has universal applicability and can also be applied to convective turbulence in the atmospheric column. It can also be used to explore the parameter space and hence the influence of various parameters and assumptions on the extracted ε values. In this note, we demonstrate the utility of the numerical model and make available a MATLAB code of the model for potential use by the radar community. The model results are also compared against in situ turbulence measurements using an unmanned aerial vehicle (UAV) flown in the vicinity of the MU radar in Shigaraki, Japan, during the ShUREX 2016 campaign.

Keywords: VHF radar, MU radar, Unmanned aerial vehicles (UAV), Turbulence kinetic energy (TKE), TKE dissipation rate, Radar model, Stably stratified flows, Inertial subrange, Buoyancy subrange, Viscous subrange, Troposphere, Buoyancy scale, Ozmidov scale, Viscous scale, Convective turbulence, Convection, Numerical model

*Correspondence: hasiguti@rish.kyoto-u.ac.jp

³ Research Institute for Sustainable Humanosphere, Kyoto University, Uji, Kyoto, Japan

Full list of author information is available at the end of the article

Introduction

The dissipation rate ε of turbulence kinetic energy (TKE) is a fundamental parameter indicative of the strength of turbulence. With suitable assumptions, knowledge of ε allows the turbulent diffusion coefficient K , of great importance to mixing in the fluid column, to be determined. As such there is considerable interest in determining ε in both the atmosphere and the oceans. While the principal application of VHF wind profiling Doppler radars is for measuring the three components of wind velocity in the atmospheric column, they also have the capability to measure velocity fluctuations in the beam direction. The intensity of velocity fluctuations can be determined from the spectral width σ of the backscattered signal, after suitable corrections are applied to effects such as beam broadening and wind shear. The task then is to infer the dissipation rate from the spectral width. But first, the dissipation rate has to be related to turbulent velocity fluctuations. Considerable effort has been expended over the past four decades on the problem of extracting ε from σ . A very useful summary of these efforts and the issues involved can be found in an excellent review by Hocking (1999).

Simultaneous measurements of ε by the radar and in situ turbulence sensors, both measuring the same volume, have been costly and hence infrequent (but see Bertin et al. 1997; Dehghan and Hocking 2011; Dehghan et al. 2014 and the references cited therein). As such, there are still some unresolved issues. However, quite recently, routine and inexpensive in situ measurements have been made possible through turbulence sensors deployed on small, unmanned aerial vehicles (UAVs, e.g., Scipion et al. 2016) flown near and above the MU radar in Shigaraki, Japan (Kantha et al. 2017; Luce et al. 2018). This has enabled us to revisit the problem of extracting ε from σ . A brief summary of past work is also provided for completeness and context.

Weinstock (1978, 1981) was one of the first to propose a model that enables extraction of ε from measurements of vertical turbulence velocity fluctuations $\overline{w^2} = \sigma_w^2$ and the local buoyancy frequency N :

$$\varepsilon = c_0 \overline{w^2} N \quad (1)$$

where c_0 is an empirical constant and N , the buoyancy frequency indicative of the degree of stability of the fluid column, is given by:

$$N = \left(\frac{g}{\Theta} \frac{\partial \Theta}{\partial z} \right)^{1/2} \quad (2)$$

where g is the gravitational acceleration, z is the vertical coordinate, and Θ is the potential temperature (assuming

dry air, although water vapor effects can be easily incorporated through virtual potential temperature).

The Weinstock model was subsequently applied to Doppler MST radars operating in the VHF-band (e.g., Hocking 1983, 1985, 1986, 1999; Fukao et al. 1994) to extract ε from measurements of turbulence-produced radar spectral width σ , with the assumption

$$\sigma = \sigma_w = \left(\overline{w^2} \right)^{1/2} \quad (3)$$

so that

$$\varepsilon = c_0 \sigma^2 N \quad (4)$$

The extraction of the Doppler variance due to turbulence after correcting for beam-broadening and shear-broadening effects is outside the scope of the present work. Here, we assume that σ is correctly evaluated but can be affected by wave contributions. Equation (4) has been used extensively since, for estimating the turbulence kinetic energy (TKE) dissipation rates under stable stratification from VHF radar Doppler spectra, although there is still considerable debate as to the exact value of c_0 . In a nice summary, Hocking et al. (2016) show that its empirical value appears to vary between 0.27 and 0.6, but recommend that 0.5 ± 0.25 be used (their Eq. 7.55). However, as shown below, c_0 depends on the Kolmogorov universal constant α as well as the lower limit of integration of the turbulence wavenumber spectrum.

The primary dependence of ε is on σ_w (or equivalently σ when applied to radar data), since the dependence on N is much weaker. As such, Weinstock model yields $\varepsilon \sim \sigma_w^2$ (or equivalently σ^2) behavior, whereas $\varepsilon \sim \sigma_w^3$ (or equivalently σ^3) dependence based on some stratospheric measurements of turbulence is also evident in some cases (Chen 1974; Bertin et al. 1997). The latter behavior suggests $\varepsilon \sim \frac{\sigma^3}{L}$, where L is a turbulence length scale (independent of N). It is possible that under certain conditions (Hocking 1999), L could remain constant giving rise to $\varepsilon \sim \sigma^3$ behavior. Labitt (1979) proposed a model that yields $\varepsilon \sim \sigma^3$ behavior.

But first, it is useful to define the various wavenumbers (and length scales) involved in the above models and derivations, since there appears to be some confusion about exact definitions that complicate the debate (see Section 3 of Hocking 1999) and introduce uncertainties into the estimation of some constants. The Kolmogorov viscous wavenumber of importance in turbulence studies defined as

$$k_K = \left(\frac{\varepsilon}{\nu^3} \right)^{1/4} \quad (5)$$

corresponds to the Kolmogorov viscous scale, indicative of the scales at which dissipation of TKE cascading down

the spectrum from large energy-containing scales to viscous dissipative scales, takes place. (ν is the kinematic viscosity.) This Kolmogorov viscous scale is traditionally defined (without the factor 2π) as:

$$\eta = \frac{1}{k_K} = \left(\frac{\nu^3}{\varepsilon} \right)^{1/4} \quad (6)$$

If the turbulence Reynolds number is large enough, sufficiently far away from anisotropic energy-containing wavenumbers (equivalently scales), the turbulence kinetic energy spectrum contains the Kolmogorov universal range, where the spectral shape depends only on the wavenumber k , the TKE dissipation rate ε and the Kolmogorov viscous scale η :

$$E(k) = f(\varepsilon, k, \eta) = \alpha \varepsilon^{2/3} k^{-5/3} f(k\eta) \quad (7)$$

where the proportionality constant α is known as the Kolmogorov universal constant and f stands for function. One frequently used form for the spectrum in the universal range (e.g., Ogura 1958) is

$$E(k) = \alpha \varepsilon^{2/3} k^{-5/3} \left[1 + \left(\frac{8}{3\kappa^2} \right) (k\eta)^4 \right]^{-4/3} \quad (8)$$

where $\kappa = 0.4$ is the von-Karman constant. Turbulent eddies are expected to be isotropic in the Kolmogorov universal range of the energy spectrum, the idea being that while the large energy-containing scales are necessarily anisotropic (especially under the influence of buoyancy or other directional forces), as the energy cascades down the spectrum to higher wavenumbers by nonlinear interactions, the turbulent eddies lose memory of directionality and become increasingly isotropic.

For $k\eta \gg 1$, viscous subrange (VSR) results and the spectrum take the form:

$$E(k) = \beta \nu^2 \eta^{-8} k^{-7} \quad (9)$$

where $\beta \sim 0.041$.

Far away from both isotropic viscous and anisotropic energy-containing scales, if the turbulence Reynolds number is high enough, lies the inertial subrange (ISR) of the Kolmogorov universal spectrum, whose shape depends only on the wavenumber k and the dissipation rate ε , and not on the Kolmogorov viscous scale η :

$$E(k) = f(\varepsilon, k) = \alpha \varepsilon^{2/3} k^{-5/3} \quad (10)$$

There has been an enormous amount of work done over the years to determine the precise value of α and as a result, it is known to range between 1.53 and 1.65 (e.g., Gossard et al. 1984). The best-known empirical value at present is 1.65 (although 1.53 has also been used, e.g., Weinstock 1981; Hocking 1999). This value is very close

to the often-cited (e.g., Ogura 1958) value of $\left(\frac{8}{9\kappa} \right)^{2/3} \sim 1.675$. Note that the Kolmogorov universal range consists of the inertial and viscous subranges and the transition between the two.

It is also important to keep in mind the fact that when the upper limit on the wavenumber in the integration of energy spectrum is taken as infinity, strictly speaking, Eq. (8) should be used instead of Eq. (10).

Empirically, the inner scale of turbulence corresponding to the inner edge of the ISR is taken to correspond to the upper wavenumber limit of the ISR and is related to the Kolmogorov viscous wavenumber (e.g., Wilson 2004):

$$k_{\text{upper}} \sim \frac{k_K}{12.8} \quad (11)$$

where k_K is the Kolmogorov wavenumber (Eq. 5). Note that the proportionality constant in Eq. (11) is not far from the value 4π . The inner scale is therefore

$$L_{\text{IN}} \sim 12.8\eta \quad (12)$$

In stably stratified flows, buoyancy forces tend to flatten large turbulent eddies and make them anisotropic, so that vertical velocity fluctuations become less than the horizontal ones, the degree of reduction depending on the stability of the fluid column. The lower wavenumber limit of the ISR is therefore determined by the Ozmidov wavenumber

$$k_O = \left(\frac{N^3}{\varepsilon} \right)^{1/2} \quad (13)$$

The wavenumber corresponding to the outer scale of turbulence denoting the outer edge of the ISR is proportional to the Ozmidov wavenumber so that the outer scale is

$$L_{\text{OUT}} = \frac{1}{f_k k_O} = \frac{1}{f_k} \left(\frac{\varepsilon}{N^3} \right)^{1/2} \quad (14)$$

where $f_k = \frac{k_{\text{OUT}}}{k_O}$ is the ratio of the outer and Ozmidov wavenumbers. While theoretical studies such as Sukorianski and Galperin (2017) assert that the transition between the inertial and buoyancy subranges lies close to the Ozmidov scale $1/k_O$, thus suggesting the value of this ratio is close to 1.0, its precise value remains uncertain at present and should perhaps be determined by dedicated experiments in the future (personal communication by W. Hocking). The code allows for the user to prescribe the value of the proportionality constant f_k .

The outer and inner scales of turbulence denote the edges of the ISR. The ratio of the two is

$$R = \frac{L_{\text{OUT}}}{L_{\text{IN}}} \sim \left(\frac{1}{12.8 f_k} \right) Re_b^{3/4} \quad (15)$$

where

$$Re_b = \frac{\varepsilon}{\nu N^2} \tag{16}$$

is the so-called buoyancy Reynolds number, used routinely by oceanographers as a measure of “turbulence activity,” indicative of the “strength” of turbulence as measured by microstructure profilers in the ocean (e.g., Gregg et al. 2018). The ratio R itself is indicative of the extent of the ISR in the turbulence energy spectrum. Assuming $f_k=1$, for $Re_b \sim 645$, the ISR extends over a decade of wavenumbers ($R=10$) and for $Re_b \sim 13,900$, over 2 decades ($R=100$). In the stably stratified regions of both the oceans and the atmosphere, the value of R lies mostly but not entirely between 10 and 100.

At wavenumbers less than the Ozmidov wavenumber k_O (or equivalently scales larger than the Ozmidov length scale L_O), buoyancy forces begin to affect turbulence by tending to inhibit vertical motions. The turbulence spectral shape may deviate from that in the ISR. This buoyancy subrange (BSR) is thought to extend from the outer wavenumber k_{OUT} to the buoyancy wavenumber k_B defined as

$$k_B = \frac{N}{(\overline{w^2})^{1/2}} = \frac{N}{\sigma_w} \tag{17}$$

The length scales corresponding to the Ozmidov and buoyancy wavenumbers are known as Ozmidov and buoyancy length scales and can be defined as the reciprocal of k_O and k_B , respectively (without the factor 2π)

$$L_O = \frac{1}{k_O} = \left(\frac{\varepsilon}{N^3}\right)^{1/2}; L_B = \frac{1}{k_B} = \frac{(\overline{w^2})^{1/2}}{N} = \frac{\sigma_w}{N} \tag{18}$$

This is the definition that atmospheric scientists use (e.g., American Meteorological Society), although some studies (e.g., Weinstock 1981; Hocking 1999) define the buoyancy scale as $2\pi/k_B$. The Ozmidov length scale is also often defined as $2\pi/k_O$. There has been considerable and needless confusion regarding length scales we use in turbulence studies (see also comments in Section 3 of the review of the topic by Hocking 1999) because of the factor 2π , which can lead to serious discrepancies in the magnitudes of ε extracted from σ .

However, there is a simple solution. The wavenumber spectrum is more fundamental to turbulence studies and as long as we deal with just wavenumbers, which involve no ambiguity whatsoever, and not arbitrarily defined length scales, there is no inconsistency in the derivations of the expressions for the dissipation rate (in terms of wavenumbers). Once that is done, wavenumbers can be

converted to corresponding scales, whichever way they are defined. We do so and suggest that the radar community do the same, since there is usually some ambiguity as to how to define the corresponding length scales, i.e., with or without the factor 2π . This has to do with the confusion between length scales and wavelengths in turbulence studies as we transition from the wavenumber space (see the excellent discussion in Hocking 1999, also personal communication by Hocking). Our own preference is to define turbulence length scales as inverse of wavenumbers.

The spectrum in the BSR ($k_{OUT} < k < k_B$), where buoyancy forces affect turbulence, is thought to follow the law

$$E(k) \sim k^{-n_b} \tag{19}$$

although the precise value of n_b is uncertain. Weinstock (1978) suggests that the value of n_b depends on the flux Richardson number, but is close to the ISR value of $5/3$, while Lumley (1964; see also Sukoriansky and Galperin 2017) suggests $n_b=3$. In any case, the Ozmidov wavenumber k_O (often called the buoyancy wavenumber in meteorology leading to needless confusion once again) is indicative of the transition from ISR to BSR in the spectrum (while buoyancy wavenumber k_B is indicative of the transition from turbulent motions to wave motions), and the spectrum in the wavenumber range comprising of both ISR and BSR can be modeled as:

$$E(k) = \alpha \varepsilon^{2/3} k^{-5/3} \left[1 + \gamma \left(\frac{k}{k_{OUT}} \right)^{-n_b+(5/3)} \right] \tag{20}$$

so that for $k \gg k_{OUT}$, the ISR results: $E \rightarrow \alpha \varepsilon^{2/3} k^{-5/3}$ and for $k \ll k_{OUT}$, we get the BSR

$$E \rightarrow \alpha \gamma \varepsilon^{2/3} k_{OUT}^{-n_b+(5/3)} k^{-n_b} \tag{21}$$

Note that the computer code has been written so that the user can input any values for f_k and n_b , although in the illustrative plots, we have used $f_k=1$ and $n_b = -5/3$.

Now, fluctuations below the wavenumber k_B (equivalently above the buoyancy length scale L_B) are due to wave motions and not turbulence. This must be taken into account in the derivations of ε , since the radar does not discriminate between velocity fluctuations due to turbulence and wave motions. Keeping in mind the fact that wave motions can exist below the buoyancy wavenumber k_B , the integration of the turbulence energy spectrum $E(k)$ over the wavenumber space k_B to ∞ yields the energy resident in turbulent fluctuations and only turbulent fluctuations, i.e., the TKE:

$$\frac{q^2}{2} = \int_{k_B}^{\infty} E(k) dk \tag{22}$$

where

$$q^2 = \overline{u^2} + \overline{v^2} + \overline{w^2} \quad (23)$$

is twice the turbulence kinetic energy. The lower limit in Eq. (22) assures that all motions considered are due to turbulence and not from wave motions possible under stable stratification. The major portion of the contribution to TKE comes from low wavenumbers corresponding to energy-containing scales. The high wavenumbers close to viscous dissipation scales contribute very little.

Only wavenumbers (scales) smaller (larger) than the Bragg backscatter wavenumber (scale) contribute to broadening of the spectrum of the backscattered radar signal, and therefore, the upper limit of integration in Eq. (22) should be taken as

$$k_{\text{Bragg}} = \frac{4\pi}{\lambda} \quad (24)$$

where λ is the wavelength of the radar, so that the TKE

$$\frac{q^2}{2} = \int_{k_B}^{k_{\text{Bragg}}} E(k) dk \quad (25)$$

It is traditional to assume that the $-5/3$ shape of the spectrum representative of the ISR (shape is uncertain in the BSR) extends across the entire integration range from k_B to k_{Bragg} so that using

$$E(k) = \alpha \varepsilon^{3/2} k^{-5/3} \quad (26)$$

yields

$$q^2 = 3\alpha \varepsilon^{2/3} \left[k_B^{-2/3} - (k_{\text{Bragg}})^{-2/3} \right] \quad (27)$$

However, the radar spectral width depends only on $\overline{w^2}$ and so further assumptions are necessary. It is usual to assume equal contributions to TKE from velocity fluctuations in the three directions ($\overline{u^2} = \overline{v^2} = \overline{w^2}$) so that

$$q^2 = 3\overline{w^2} \quad (28)$$

Then, Eq. (27) can be written as

$$\overline{w^2} = \alpha \varepsilon^{2/3} \left[k_B^{-2/3} - (k_{\text{Bragg}})^{-2/3} \right] \quad (29)$$

If non-isotropy of the components of TKE is acknowledged, there would be an appropriate factor multiplying α on the right hand side of Eq. (29) (see Appendix B).

Finally, for analytical convenience, it is usual to ignore the second term in the square brackets and implicitly assume $k_B \ll k_{\text{Bragg}}$ so that

$$\overline{w^2} = \alpha \varepsilon^{2/3} k_B^{-2/3} \quad (30)$$

which yields:

$$\varepsilon = c_0 \left(\overline{w^2} \right)^{3/2} k_B \quad (31)$$

where

$$c_0 = \alpha^{-3/2} \quad (32)$$

as indicated by Weinstock (1978, 1981). Substituting for k_B from Eq. (17) yields

$$\varepsilon = c_0 \overline{w^2} N \quad (33)$$

which is the Weinstock (1981) model. For $\alpha = 1.65$, $c_0 \sim 0.47$. As such, there is no ambiguity in the value of c_0 , since it is tied to the Kolmogorov universal constant, if and only if the lower limit on integration is strictly enforced as equal to the buoyancy wavenumber, which delineates wave motions from turbulent motions. Application to radar spectral width data gives Eq. (4), the widely used form of Weinstock (1981) model.

The Weinstock model can also be derived as follows (e.g., Hocking 1999). Define a ‘‘buoyancy scale’’ as he did (recall we define the buoyancy scale differently: $L_B = 1/k_B$):

$$\overline{L}_B = \frac{2\pi}{0.62} \varepsilon^{1/2} N^{-3/2} \quad (34)$$

and integrate the energy spectrum from $\frac{2\pi}{\overline{L}_B}$ to ∞ . But from Eq. (34),

$$\frac{2\pi}{\overline{L}_B} = 0.62 k_O \quad (35)$$

Therefore,

$$\frac{q^2}{2} = \int_{0.62 k_O}^{\infty} E(k) dk \quad (36)$$

Using Eq. (26), we get

$$q^2 = 3\alpha \varepsilon^{2/3} (0.62 k_O)^{-2/3} = 3\alpha (0.62)^{-2/3} \varepsilon^{2/3} k_O^{-2/3} \quad (37)$$

which can be written as (using Eqs. 13, 28):

$$\overline{w^2} = \frac{q^2}{3} = \alpha (0.62)^{-2/3} \varepsilon N^{-1} \quad (38)$$

so that

$$\varepsilon = \frac{1}{\alpha} (0.62)^{2/3} \overline{w^2} N = c_0 \overline{w^2} N \quad (39)$$

where $c_0 \sim 0.44$ if $\alpha = 1.65$, but 0.47 if $\alpha = 1.53$ as in Hocking (1999). Invoking Eq. (3), we get the Weinstock model (Eq. 4). If we had used k_O as the lower limit of integration, c_0 would have been 0.61.

The closeness of Eqs. (39) and (33) is merely a happenstance.

It is interesting to note that Eqs. (13) and (39) yield

$$k_O = \frac{k_B}{\sqrt{c_0}} \sim 1.46k_B \tag{40}$$

for $c_0=0.47$. The relative closeness of the two wavenumbers tends to downplay the influence of the exact spectral shape in the BSR portion of the spectrum.

However, the radar measurement volume is finite, and the Weinstock formulation does not take into account the resulting radar spatial weighting characteristics. On the other hand, Labitt (1979) and White et al. (1999) formulations do (see “Radar epsilon model” section), but provide numerical and not analytical solutions. However, both integrate the wavenumber spectrum of the back-scattered radar signal from 0 to ∞ , whereas the Weinstock model integrates the turbulence spectrum from the buoyancy wavenumber k_B to ∞ . As summarized by Hocking (1999), these three Doppler methods lead to different formulas and results, which has been a source of some confusion. Also, all three formulations make the assumption that the $k^{-5/3}$ spectral shape representative of the inertial subrange (ISR) of the turbulence kinetic energy spectrum extends across the entire wavenumber integration range. This ignores the potential presence of the buoyancy subrange (BSR) within the integration range. Also, strictly speaking, the upper limit on wavenumber should be k_{Bragg} and not ∞ , although the difference is quite small. Finally, the observed spectral width due to velocity fluctuations in the beam direction may have contributions from wave motions and not just turbulence. We address these issues in the next section.

Radar epsilon model

The original Labitt (1979; see also Hocking 1986, 1999) formulation takes into account the radar spatial weighting function:

$$\sigma^2 = C_K \int_{-\infty}^{\infty} \int_{-\infty}^{\infty} \int_{-\infty}^{\infty} \Phi_{ll}(k) \left[1 - \exp \left(-k_z^2 b^2 - k_x^2 a^2 - k_y^2 a^2 \right) \right] dk_x dk_y dk_z \tag{41}$$

$$\Upsilon = C_K \int_{\theta=0}^{\pi} \int_{k=0}^{\infty} k^{-5/3} \sin^3 \theta \left[1 - \exp \left(-k^2 b^2 \cos^2 \theta - k^2 a^2 \sin^2 \theta \right) \right] dk d\theta \tag{46}$$

where a and b are radar volume dimensions in the horizontal and vertical. Because the radar beam measures velocity fluctuations transverse to the horizontal wind advecting turbulence past it, the value of C_K can be less than 1 (see Appendix A of Hocking 1999), the exact value of depending on the type of turbulence (see Appendix B). However, this issue has been ignored thus far and all previous derivations in radar literature, including Labitt (1979), have assumed $C_K=1$. We have used $C_K=0.873$, appropriate to shear-generated turbulence, in this paper, keeping the transverse nature of radar measurements (for more details see Appendix B). The precise value of C_K is still uncertain and requires further studies.

Note the wavenumber integration limits. Using the spectrum of vertical velocities:

$$\Phi_{ll}(k) = \frac{E(k)}{4\pi k^2} \left(1 - \frac{k_z^2}{k^2} \right) \tag{42}$$

where $E(k)$ is the turbulence energy spectrum and

$$k^2 = k_z^2 + k_x^2 + k_y^2 \tag{43}$$

Integration in Eq. (41) can be carried out using Eq. (26) for $E(k)$ appropriate to the ISR, which yields

$$\sigma^2 = \frac{\alpha}{2} \varepsilon^{2/3} \Upsilon \tag{44}$$

or equivalently

$$\varepsilon = \left(\frac{2}{\alpha \Upsilon} \right)^{3/2} \sigma^3 \tag{45}$$

where

This is what we will call the original Labitt method, which assumed $k^{-5/3}$ spectral shape to exist over the entire wavenumber range of interest, from $k=0$ to ∞ , and ignored the effect of wind advection (see Hocking 1999).

Now, Eq. (41) can be modified to take into account wind advection as indicated by Hocking (1983) and White et al. (1999). Following White et al. (1999):

$$\sigma^2 = C_K \int_{-\infty}^{\infty} \int_{-\infty}^{\infty} \int_{-\infty}^{\infty} \Phi_{ll}(k) \left\{ 1 - \left[\frac{\sin^2 \left(\frac{k_x L}{2} \right)}{\left(\frac{k_x L}{2} \right)^2} \right] \exp \left(-k_z^2 b^2 - k_x^2 a^2 - k_y^2 a^2 \right) \right\} dk_x dk_y dk_z \quad (47)$$

assuming the wind is in the x -direction. Note that $L = V_H \Delta t$, where V_H is the wind speed in the horizontal direction and Δt is the dwell duration (duration for collecting the time series), which is 24.57 s for MU radar during the ShUREX campaigns. Using Eqs. (42)–(43) in Eq. (47), we get Eq. (2.14) of White et al. (1999):

$$\sigma^2 = C_K \alpha \varepsilon^{2/3} \int_{-\infty}^{\infty} \int_{-\infty}^{\infty} \int_{-\infty}^{\infty} \frac{k^{-5/3}}{4\pi k^2} \left(1 - \frac{k_z^2}{k^2} \right) \left\{ 1 - \left[\frac{\sin^2 \left(\frac{k_x L}{2} \right)}{\left(\frac{k_x L}{2} \right)^2} \right] \exp \left(-k_z^2 b^2 - k_x^2 a^2 - k_y^2 a^2 \right) \right\} dk_x dk_y dk_z \quad (48)$$

This is what we call generalized Labitt formulation. Substituting

$$k_z = k \cos \theta, k_x = k \sin \theta \cos \varphi, k_y = k \sin \theta \sin \varphi, dk_x \cdot dk_y \cdot dk_z = dk \cdot k d\theta \cdot k \sin \theta d\varphi \quad (49)$$

and expressing the integral in terms of $x=kb$, θ and φ , we get

$$\Upsilon = C_K \left(\frac{b^{2/3}}{2\pi} \right) \int_{x=x_L}^{x=x_U} x^{-5/3} dx \int_{\theta=0}^{\pi} d\theta \int_{\varphi=-\pi}^{\pi} d\varphi \sin^3 \theta \left\{ 1 - \left[\frac{\sin^2 \left(\frac{L}{2b} x \sin \theta \cos \varphi \right)}{\left(\frac{L}{2b} x \sin \theta \cos \varphi \right)^2} \right] \exp \left(-x^2 \cos^2 \theta - x^2 \frac{a^2}{b^2} \sin^2 \theta \right) \right\} \quad (50)$$

White et al. (1999) showed that Eq. (50) can be approximated to within 2% by

$$\Upsilon = C_K \left(\frac{12}{2\pi} \right) \Gamma \left(\frac{2}{3} \right) \int_{\theta=0}^{\pi/2} d\varphi \int_{\varphi=0}^{\pi/2} d\theta \sin^3 \theta \left[b^2 \cos^2 \theta + a^2 \sin^2 \theta + \frac{L^2}{12} \sin^2 \theta \cos^2 \varphi \right]^{1/3} \quad (51)$$

Henceforth, we will not present results from White et al. formulation (Eq. 51), since they are very close to the generalized Labitt formulation (Eq. 50) and it is hard to discern any difference between the two in the plots. Note that $C_K=1$ in original Labitt and White et al. derivations.

Note that both White et al. (1999) and Labitt (1979) formulations integrate right through the wavenumber k_B and therefore are accounting for velocity fluctuations due to wave motions below k_B (albeit with spectral shape corresponding to ISR). A related minor issue with both formulations is that the upper limit should be k_{Bragg} , but this is not important since it makes little difference. On the other hand, since the lower limit is not k_B , the wave-

number delineating turbulent and wave motions, integration is carried out right through k_B and so the results, not surprisingly do not involve the buoyancy scale $1/k_B$ (or equivalently the buoyancy frequency N), whereas Weinstock formulation integrates down to k_B only and so its results involve N explicitly.

It is traditional to use Weinstock formulation for $k_B^{-1} < 2a, 2b$ and White et al. formulation (without wind

advection and therefore $L=0$) for $k_B^{-1} > 2a, 2b$, where the buoyancy length scale given by k_B^{-1} is taken to be the

size of the largest eddies permitted under stable stratification (e.g., Fukao et al. 1994; Kantha and Hocking 2011;

Luce et al. 2018). However, these are the two asymptotic limits. Since White et al. formulation requires numerical integration anyway, it is not any more difficult to use numerical integration of the generalized Labitt formulation, but with proper integration limits. A major advantage is that the numerical model allows for inclusion of

wind advection and radar weighting characteristics, with no need for approximations whatsoever.

Since the original Labitt formulation (Eq. 46) does not account for wind advection, we use the generalized Labitt formulation (Eq. 48) instead or equivalently Eq. (50). However, we replace the spectrum used in Eq. (48), which is valid only in the ISR (Eq. 26) by one that extends from the viscous range to well beyond the ISR:

$$E(k) = \alpha \varepsilon^{2/3} k^{-5/3} \left[1 + \gamma_K \left(\frac{f_K k_O}{k} \right)^{-n_b - (5/3)} \right] \left[1 + \left(\frac{8}{3\kappa^2} \right) (k\eta)^4 \right]^{-4/3} \quad (52)$$

where $n_b = 4/3$ is the spectral slope in the wave region ($f_K = 0.6 - 1$, $\gamma_K = 1$). This form is used for completeness, although there is rarely any need to invoke VSR and so for all practical purposes

$$E(k) = \alpha \varepsilon^{2/3} k^{-5/3} \left[1 + \gamma_K \left(\frac{f_K k_O}{k} \right)^{-n_b - (5/3)} \right] \quad (53)$$

is quite close to Eq. (52). Thus, we get

$$\begin{aligned} \gamma = C_K \left(\frac{b^{2/3}}{2\pi} \right) \int_{x_L}^{x_U} x^{-5/3} \left\{ \left[1 + \gamma_K \left(\frac{f_K k_O}{k} \right)^{-n_b - (5/3)} \right] \left[1 + \left(\frac{8}{3\kappa^2} \right) (k\eta)^4 \right]^{-4/3} \right\} dx \int_{\theta=0}^{\pi} d\theta \int_{\varphi=-\pi}^{\pi} d\varphi \sin^3 \theta \\ \left\{ 1 - \left[\frac{\sin^2 \left(\frac{L}{2b} x \sin \theta \cos \varphi \right)}{\left(\frac{L}{2b} x \sin \theta \cos \varphi \right)^2} \right] \exp \left(-x^2 \cos^2 \theta - x^2 \frac{a^2}{b^2} \sin^2 \theta \right) \right\} \end{aligned} \quad (54)$$

This form has general applicability. If we put terms in the first curly bracket in Eq. (54) equal to 1 and take limits $x_L = 0$ and $x_U = \infty$, we get the generalized Labitt formulation (Eq. 50). In addition, if we put terms in the third square bracket equal to 1 (equivalently $L = 0$), the influence of wind advection is ignored. On the other hand, putting terms in the second curly bracket equal to 1 (equivalent to putting $a, b = \infty$) yields the Weinstock model, for which the lower limit must be $x_L = k_B b$. (Using $x_L = 0$ as the lower limit makes the integral go to ∞ thus giving $\varepsilon = 0$.)

The numerical model presented in this paper integrates Eq. (54) in 3 segments: 1) universal range (VSR and ISR) ($k = k_O$ to $k = k_{\text{Bragg}}$), 2) BSR ($k = k_B$ to $k = k_O$) and 3) Beyond BSR when wave contributions are included ($k = 0$ to $k = k_B$), so that $x_L = 0$ and $x_U = k_{\text{Bragg}} b$. However, the principal problem is that the Ozmidov wavenumber k_O is not known *a priori*, since it depends on the yet to be determined ε . So an iterative procedure is necessary, using an initial guess value for ε from one of the standard formulations (e.g., White et al. 1999).

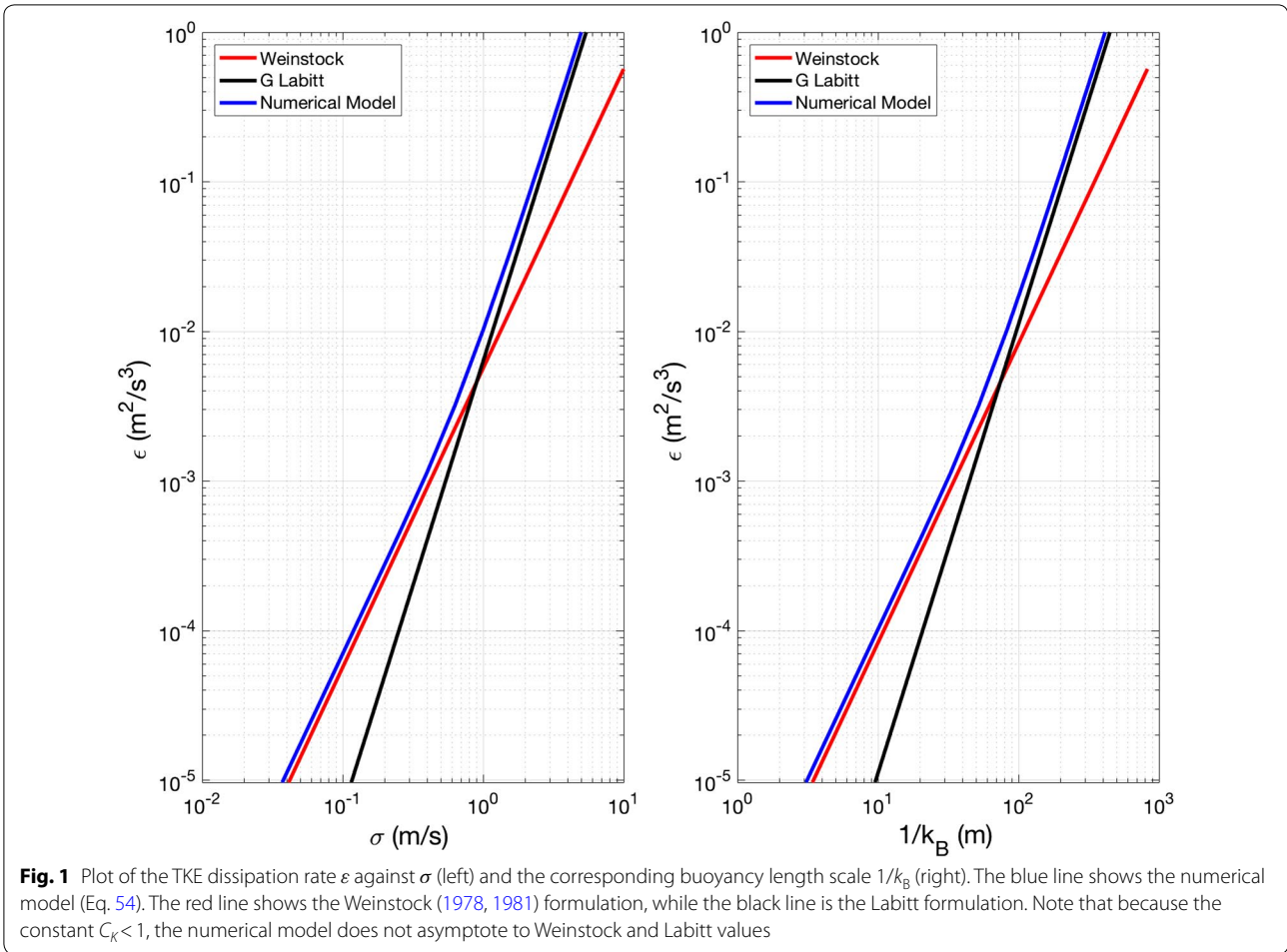
We illustrate the various model results in Fig. 1. The numerical model simulation is specifically for the 46.5 MHz MU radar in Shigaraki, Japan, with $b = 75$ m, and $\lambda = 6.4516$ m (but can be done for any radar). The two-way half-power beam half-width is 1.32° , which determines the parameter a as a function of altitude above ground level (AGL). For the results in Fig. 1, the altitude has been set to 2 km, the average altitude of UAV

measurements. The buoyancy frequency N is kept fixed at 0.0121 s^{-1} , a value appropriate to the troposphere. The wind speed V_H is put to zero, for simplicity.

The left panel shows ε plotted against σ , while the right panel shows ε plotted against the buoyancy scale $1/k_B$ (The two plots have equivalent information.) The red line shows the Weinstock formulation (Eq. 1 with $N = 0.0121 \text{ s}^{-1}$), and the black line shows the general Labitt formulation denoted as G Labitt. Note that

because wind = 0, the general Labitt formulation reduces to the original Labitt formulation. These two form the two asymptotic limits discussed earlier and the numerical model (blue line) transitions from one to the other quite nicely. The blue line parallels the red line for low values of σ and therefore $1/k_B$, but transitions toward the red line at high values of σ and $1/k_B$. This is simply because when $1/k_B < 2a, 2b$, the dissipation rate $\varepsilon \sim \sigma^2$ (Weinstock 1981, but with $N \sim \text{constant}$), but transitions to $\varepsilon \sim \sigma^3$ behavior when $1/k_B > 2a, 2b$ (Chen 1974). Therefore, when the radar volume spatial characteristics are taken into account, both behaviors become feasible. Note that the value of C_K has been put equal to 0.873. This is the reason the numerical model values do not asymptote to Weinstock and Labitt values. They would have if C_K were to have been chosen equal to 1.0 (see Appendix B for details).

Figure 2 compares the numerical model results (blue line) to in situ measurements of ε made using UAV-borne turbulence sensors for all 16 flights during the ShUREX (Shigaraki UAV Radar Experiment) 2016 campaign, as



detailed in Luce et al. (2018) and explained in Kantha et al. (2017). Only radar data from the vertical beam are considered. Radar data with values of $\sigma < 0.1$ m/s (the radar noise threshold, equivalently $L_B < 8$ m) and UAV data with $\epsilon < 1.1 \times 10^{-5} \text{ m}^3 \text{ s}^{-2}$ (UAV sensor noise threshold) are omitted. The models mentioned in Fig. 1 are also shown. The magenta line is given by

$$\epsilon = 0.47 \left(\frac{\sigma^3}{L} \right) \tag{55}$$

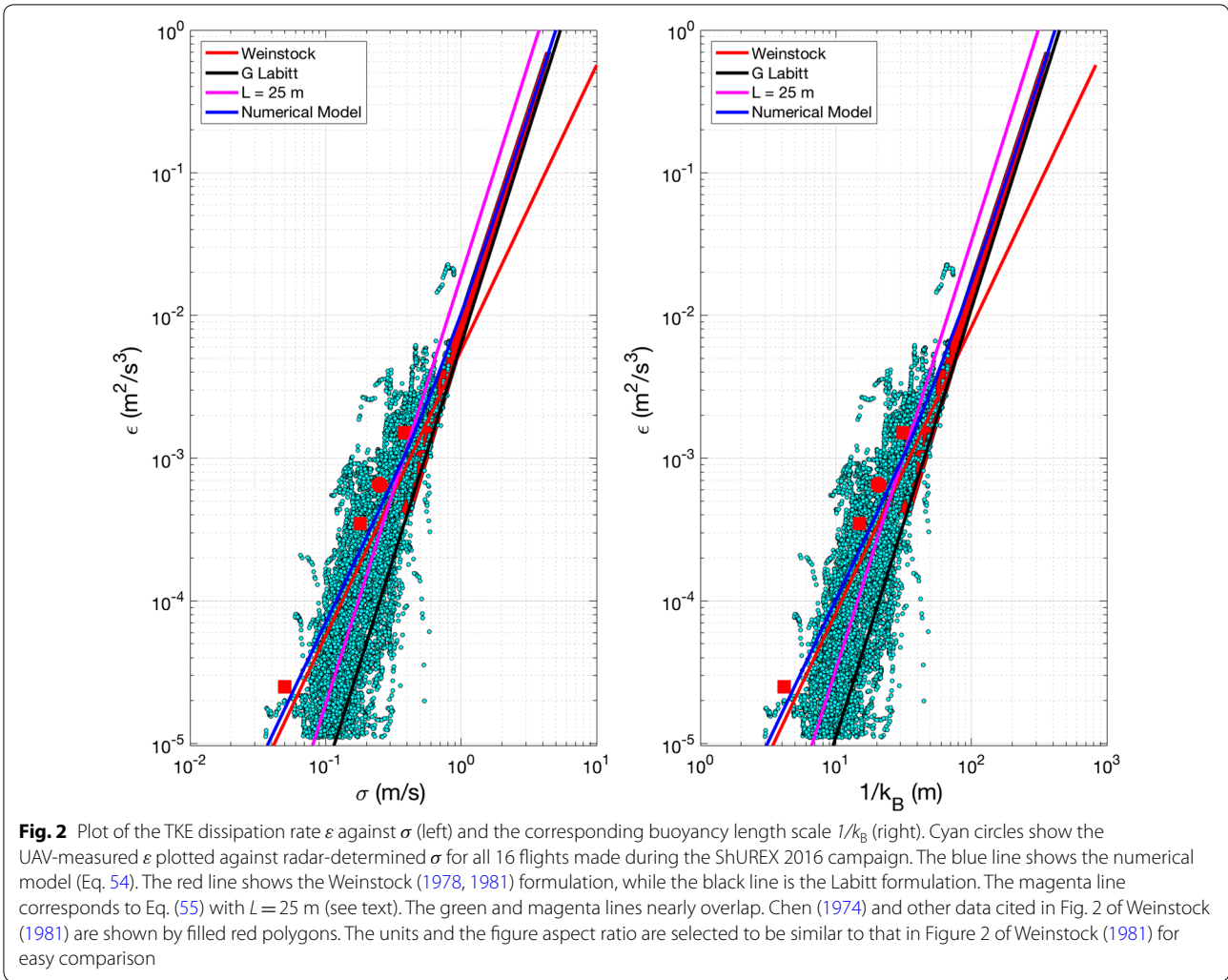
where $L = 25$ m, and is in better agreement with UAV data than both the Weinstock and Labitt models. Luce et al. (2018) also suggest that Eq. (55) with $L = 25$ m, best fits the ShuREX 2016 UAV data. The Labitt (1979) formulation (and White et al. 1999) yields $\epsilon \sim \sigma^3$ behavior for ALL values of σ , simply because the lower limit on integration in these formulations is zero and not k_B . Note that, like in Fig. 1, because wind = 0, the general Labitt formulation reduces to the original Labitt formulation.

The upper wavenumber limit has some impact. If k_{Bragg} and not ∞ is imposed as the upper limit, the blue line (model), instead of overlapping the red line (Weinstock) at low values of σ , would deviate increasingly from it as σ decreases, with ϵ values somewhat higher (not shown) than those given by Weinstock formulation.

Now, the dissipation rate in turbulent flows can be written as

$$\epsilon = \frac{q^3}{B_1 \ell} \tag{56}$$

where ℓ is the turbulence length scale, a measure of the size of energy-containing large eddies and hence proportional to it. $B_1 \sim 16.6$ (Kantha and Carniel 2009). For stably stratified conditions, $\frac{w^2}{q^2}$ becomes a function of the gradient Richardson number $Ri = \frac{N^2}{S^2}$ (S is the mean shear) (e.g., Kantha and Carniel 2009). Observational data suggest that $\frac{w^2}{q^2} \sim 0.13-0.15$ in the Ri range 0–0.25 of interest in stably stratified flows (Kantha and Carniel



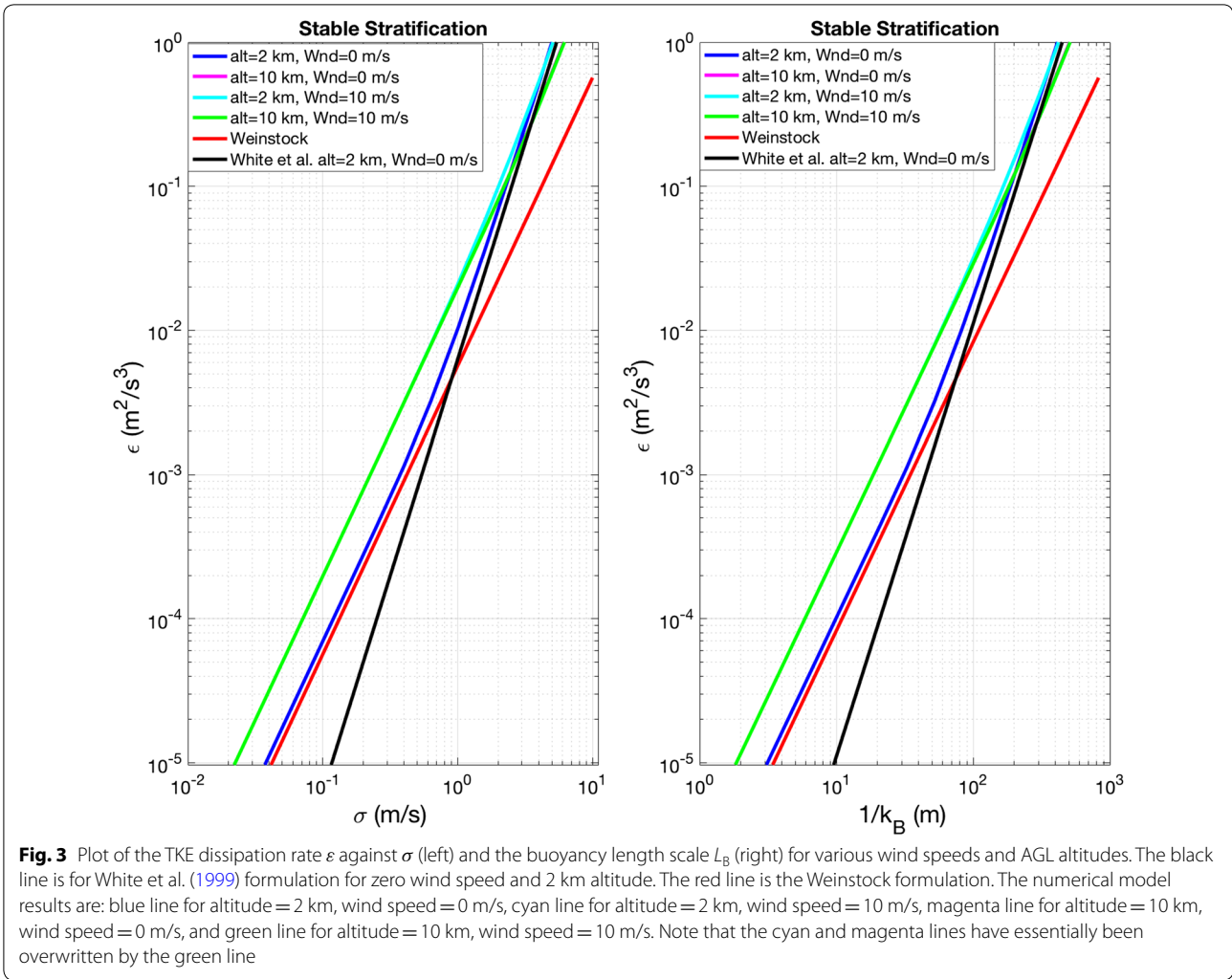
2009, their Fig. 5). Taking an average value of 0.14, Eq. (56) becomes

$$\epsilon = 1.15 \frac{\sigma^3}{\ell} \tag{57}$$

Equating (55) and (57), it is seen that $L = 0.4\ell$, and therefore, the turbulence length scale is around 60 m, on the average, in ShUREX 2016 measurements.

The advantage of the numerical model is that it can account for the effects of altitude and beam angle, the influence of wind advection, as well as allow imposing the upper wavenumber limit of k_{Bragg} . Figure 3 shows the effect of wind speed and altitude at the MU radar site. The acquisition time DT is ~ 30 s. Weinstock (red line) and original Labitt model (black line) for AGL (above ground level) altitude 2 km and zero wind speed are also

shown for comparison. Results for 4 cases are shown. The blue line is the model result for AGL altitude of 2 km and zero wind speed, the same as the blue line in Fig. 1. The magenta line is for AGL altitude of 10 km and zero wind speed. The cyan line is for AGL altitude of 2 km and 10 m/s wind speed. The green line for AGL altitude of 10 km and wind speed of 10 m/s is nearly indistinguishable from and hence overwrites the cyan and magenta lines. It is interesting to note that all these values fall above the Weinstock values. These simulations therefore demonstrate the importance of not only imposing proper integration limits, but also accounting for the altitude AGL and wind speed for a particular radar, when deriving ϵ from σ . The use of the two asymptotic limits (Weinstock and White et al.) is therefore not always justified.



We have provided model results only for the MU radar, since that was where in situ UAV measurements were made. It is also not possible to explore here the large parameter space that governs the ϵ estimates of the numerical model. Instead, the Appendix provides a MATLAB code suited to exploring the parameter space for any radar.

Correcting radar spectral width for wave contributions

Figures 1, 2, 3 assume that the spectral radar width σ results from velocity fluctuations due to turbulent motions only. In reality, wave motions also cause velocity fluctuations in the beam direction that contribute to σ . For comparisons with measurements of ϵ by in situ turbulence sensors, it may be necessary to correct for wave motions (see Hocking 1988). This can be done as follows. If we recall

$$\gamma_t = C_K \left(\frac{b^{2/3}}{2\pi} \right) \int_{x=k_B b}^{x=k_{\text{Bragg}} b} x^{-5/3} \left\{ \left[1 + \gamma_K \left(\frac{f_K k_O}{k} \right)^{-n_b - (5/3)} \right] \left[1 + \left(\frac{8}{3\kappa^2} \right) (k\eta)^4 \right]^{-4/3} \right\} dx \int_{\theta=0}^{\pi} d\theta \int_{\varphi=-\pi}^{\pi} d\varphi \sin^3 \theta \quad (58)$$

$$\left\{ 1 - \left[\frac{\sin^2 \left(\frac{L}{2b} x \sin \theta \cos \varphi \right)}{\left(\frac{L}{2b} x \sin \theta \cos \varphi \right)^2} \right] \exp \left(-x^2 \cos^2 \theta - x^2 \frac{a^2}{b^2} \sin^2 \theta \right) \right\}$$

contains contributions from turbulent motions only, whereas

$$\begin{aligned} \Upsilon = C_K \left(\frac{b^{2/3}}{2\pi} \right) \int_{x=0}^{x=k_{\text{Bragg}}b} x^{-5/3} \left\{ \left[1 + \gamma_K \left(\frac{f_K k_O}{k} \right)^{-n_b - (5/3)} \right] \left[1 + \left(\frac{8}{3\kappa^2} \right) (k\eta)^4 \right]^{-4/3} \right\} dx \int_{\theta=0}^{\pi} d\theta \int_{\varphi=-\pi}^{\pi} d\varphi \sin^3 \theta \\ \left\{ 1 - \left[\frac{\sin^2 \left(\frac{L}{2b} x \sin \theta \cos \varphi \right)}{\left(\frac{L}{2b} x \sin \theta \cos \varphi \right)^2} \right] \exp \left(-x^2 \cos^2 \theta - x^2 \frac{a^2}{b^2} \sin^2 \theta \right) \right\} \end{aligned} \quad (59)$$

contains contributions from wave motions as well (because of the lower limit of integration), using Eq. (44),

$$\sigma_t = \sigma \sqrt{\frac{\Upsilon_t}{\Upsilon}} \quad (60)$$

is the required correction of radar measured spectral width for wave motions.

Extension to convective mixing

While we focused on turbulence in stably stratified flows so far, the general Labitt formulation can also be extended to convective mixing of any type seen in the atmospheric column, by recognizing that in this case, the ISR extends over the entire wavenumber range of interest. Neither the Ozmidov wavenumber k_O nor the buoyancy wavenumber k_B is relevant. The stratification is unstable ($N^2 < 0$), and these wavenumbers are undefined. Thus, the lower integration limit in Eq. (50) can be taken as $k_D b$, (where $k_D = 1/D$, D being the depth of the convective layer), since no wave motions are feasible in unstably stratified fluid column. Equations (44) and (50) constitute the proposed spectral model for convective mixing. The resulting TKE dissipation rate ε exhibits σ^3 behavior (Eq. 55), with the length scale L dependent on a variety of factors including the depth of the layer D and parameters $2a$ and $2b$. More details can be found in the Appendix. The model is applicable to the convective boundary layer (CBL) and mid-level cloud-base turbulence (MCT, e.g., Kudo et al. 2015), as well as convective mixing produced by cloud-top radiative cooling.

Concluding remarks

The TKE dissipation rate, regardless of the source of turbulence, can be written as (e.g., Kantha 2003):

$$\varepsilon = \frac{q^3}{B_1 \ell} \sim \frac{(\overline{w^2})^{3/2}}{L} \quad (61)$$

where $B_1 \sim 16.6$ and ℓ is the turbulence macroscale indicative of the scale of the energy-containing eddies and corresponds roughly to the wavenumber of the peak of the spectrum (and NOT necessarily the largest eddy

size). This is simply the Taylor–Prandtl hypothesis, where it is assumed that while TKE dissipation occurs at viscous

scales, the dissipation rate itself is independent of viscosity and depends instead only on the energy in the energy-containing large scales ($\sim q^2$) and the energy-containing eddy turnover timescale ($\sim \ell/q$). Therefore, the scale L is proportional to the turbulence macroscale ℓ , irrespective of the source of turbulence, but the proportionality constant depends on the ratio of $\frac{w^2}{q^2}$, which is 1/3 for isotropic turbulence, roughly 1/2 for convective turbulence and less than 1/4 for stable stratification (e.g., Kantha 2003).

Comparing Eq. (61) to Weinstock (1978, 1981) formulation $\varepsilon = 0.47 \frac{(\overline{w^2})^{3/2}}{L_B}$ for stable stratification, it is clear that formulations of that type are essentially equivalent to assuming that the turbulence macroscale ℓ is proportional to the buoyancy scale L_B . This of course is not always true.

In situ measurements of TKE dissipation rates during the ShUREX 2016 campaign by UAV-borne turbulence sensors deployed in the immediate vicinity of the MU radar (Kantha et al. 2017; Luce et al. 2018) suggest that Eq. (61), with $L \sim 25$ m and therefore $\ell \sim 60$ m, is in better agreement with observed data than the Weinstock model (Eq. 4, with $N = 0.0121 \text{ s}^{-1}$) or the conventional Labitt (Eq. 50) and White et al. (Eq. 51) models. The reason and significance of this result is not clear at this point and requires further study (see the companion paper Luce et al. 2018, this special issue, for details and discussion of this issue).

Finally, we note that the numerical model can also be applied to any turbulence measurements in stably stratified flows, where $\overline{w^2}$ is available (e.g., Weinstock 1981 or Chen 1974), along with N , not just radar data. Conversely, if the TKE dissipation rate is known, it is possible to infer TKE. This is of particular interest in the oceans, where it is relatively simple to measure ε using microstructure probes, but TKE measurements are much harder. To some extent, this applies to UAV measurements in the atmosphere also, since once again, ε measurements are straightforward (e.g., Kantha et al. 2017; Luce et al. 2018), but TKE measurements are more difficult, because of the problems in inferring ambient wind velocity accurately

enough from measurements of UAV velocity relative to the wind and relative to the ground.

Abbreviations

ASL: above sea level; CBL: convective boundary layer; CU: Colorado University; MCT: mid-level cloud-base turbulence; MST: mesosphere stratosphere troposphere; MU: middle and upper atmosphere; ShUREX: Shigaraki UAV Radar Experiment; TKE: turbulence kinetic energy; VHF: very high frequency; UAV: unmanned aerial vehicle.

Authors' contributions

LK was responsible for the formulation of the modified radar model. HL collected and analyzed the MU radar and UAV data and assisted LK in the numerical model formulation. HH oversaw the ShUREX campaign. All authors have read and approved the final manuscript.

Author details

¹ Department of Aerospace Engineering Sciences, University of Colorado, Boulder, CO, USA. ² Mediterranean Institute of Oceanography (MIO), UMR 110, UMR 7294, Université de Toulon, La Garde, Toulon, France. ³ Research Institute for Sustainable Humanosphere, Kyoto University, Uji, Kyoto, Japan.

Acknowledgements

LK thanks the Japanese Society for Promotion of Science (JSPS) for providing partial funding for the ShUREX 2016 campaign. LK's interest in the topic and motivation for this work was triggered by the excellent review by Hocking (1999), who is widely regarded as an authority on the topic. The authors thank Prof. Hocking for drawing our attention to the fact that the radar measures velocity fluctuations in the radial direction, which are measurements transverse to the wind advecting turbulence past the radar beam, and therefore, the variance of the vertical velocities measured by the radar is not the same as that obtained from integrating the conventional TKE spectrum. The hospitality of RISH personnel and director Prof. Tsuda to their visitors is exemplary.

Competing interests

The authors declare that they have no competing interests.

Availability of data and materials

Data are not yet available because they are still being analyzed for follow-on studies and papers.

Funding

This study was supported by JSPS KAKENHI Grant Number JP15K13568 and the research grant for Mission Research on Sustainable Humanosphere from Research Institute for Sustainable Humanosphere (RISH), Kyoto University. The MU radar belongs to and is operated by RISH, Kyoto University.

Appendix A: Numerical model

As seen above, it is traditional in the radar community to use Weinstock formulation for $k_B^{-1} < 2a, 2b$ and White et al. formulation (usually without wind advection and therefore $L=0$) for $k_B^{-1} > 2a, 2b$ for extracting the TKE dissipation rate ε from observed radar Doppler variance σ (e.g., Hocking 1983, 1985, 1986, 1999; Fukao et al. 1994; Kantha and Hocking 2011; Luce et al. 2018). The buoyancy length scale given by k_B^{-1} is taken to be the size of the largest eddies permitted under stable stratification. However, there is no need to restrict ourselves to these two asymptotic limits. Since White et al. formulation requires numerical integration anyway, it is not any more difficult to numerically integrate the generalized Labitt formulation (Eq. 50) for the general case, but with proper integration limits. This also allows for inclusion of wind advection and radar weighting characteristics, with no approximations whatsoever. The model can also be applied to convective layers.

Also, we focused entirely on the MU radar. To be generally useful, we must allow for other radars and other points in the altitude, wind, beam angle and frequency parameter space to be considered. In dimensional parameter space, the number of variables is too many. However, major simplification is possible, if we consider the non-dimensional parameter space. With this in mind, we rewrite Eqs. (44) and (54) in terms of non-dimensional TKE dissipation rate:

$$\bar{\varepsilon} = \frac{\varepsilon}{\left(\frac{\sigma^3}{2b}\right)} = 2 \left(\frac{2}{\alpha \bar{\gamma}}\right)^{3/2}$$

$$\bar{\gamma} = C_K \left(\frac{1}{2\pi}\right) \int_{x=x_L}^{x=x_U} \bar{E} dx \int_{\theta=0}^{\pi} d\theta \int_{\varphi=-\pi}^{\pi} d\varphi \sin^3 \theta \left\{ 1 - \left[\frac{\sin^2 \left(\frac{L}{2b} x \sin \theta \cos \varphi\right)}{\left(\frac{L}{2b} x \sin \theta \cos \varphi\right)^2} \right] \exp \left(-x^2 \cos^2 \theta - x^2 \frac{a^2}{b^2} \sin^2 \theta \right) \right\} \tag{62}$$

Equation (51) corresponding to the White et al. formulation can also be written in non-dimensional form:

$$\bar{\gamma} = C_K \left(\frac{12}{2\pi}\right) \Gamma \left(\frac{2}{3}\right) \int_{\theta=0}^{\pi/2} d\varphi \int_{\varphi=0}^{\pi/2} d\theta \sin^3 \theta \left[\cos^2 \theta + \frac{a^2}{b^2} \sin^2 \theta + \frac{1}{3} \left(\frac{L}{2b}\right)^2 \sin^2 \theta \cos^2 \varphi \right]^{1/3} \tag{63}$$

There are 7 dimensional quantities involved in the problem, $\varepsilon, k_B, 2a, 2b, L, \lambda$ and σ , and from the Buckingham Pi theorem, 5 non-dimensional parameters can be formed. The only dependent non-dimensional parameter is $\bar{\varepsilon} = \frac{\varepsilon}{(\frac{\sigma^3}{2b})}$, and the four independent non-dimensional parameters are $k_B(2b), \frac{2a}{2b}, \frac{L}{2b}$ and $\frac{\lambda}{4b}$. It is possible to ignore the last one related to the Bragg scattering wavelength, since its influence is generally small enough to be neglected. For convective case, parameter $k_B(2b)$ is irrelevant.

The non-dimensional form of the spectral shape across the entire wavenumber range, from viscous subrange (VSR) to beyond the inertial subrange (ISR), is taken as (from Eq. 52):

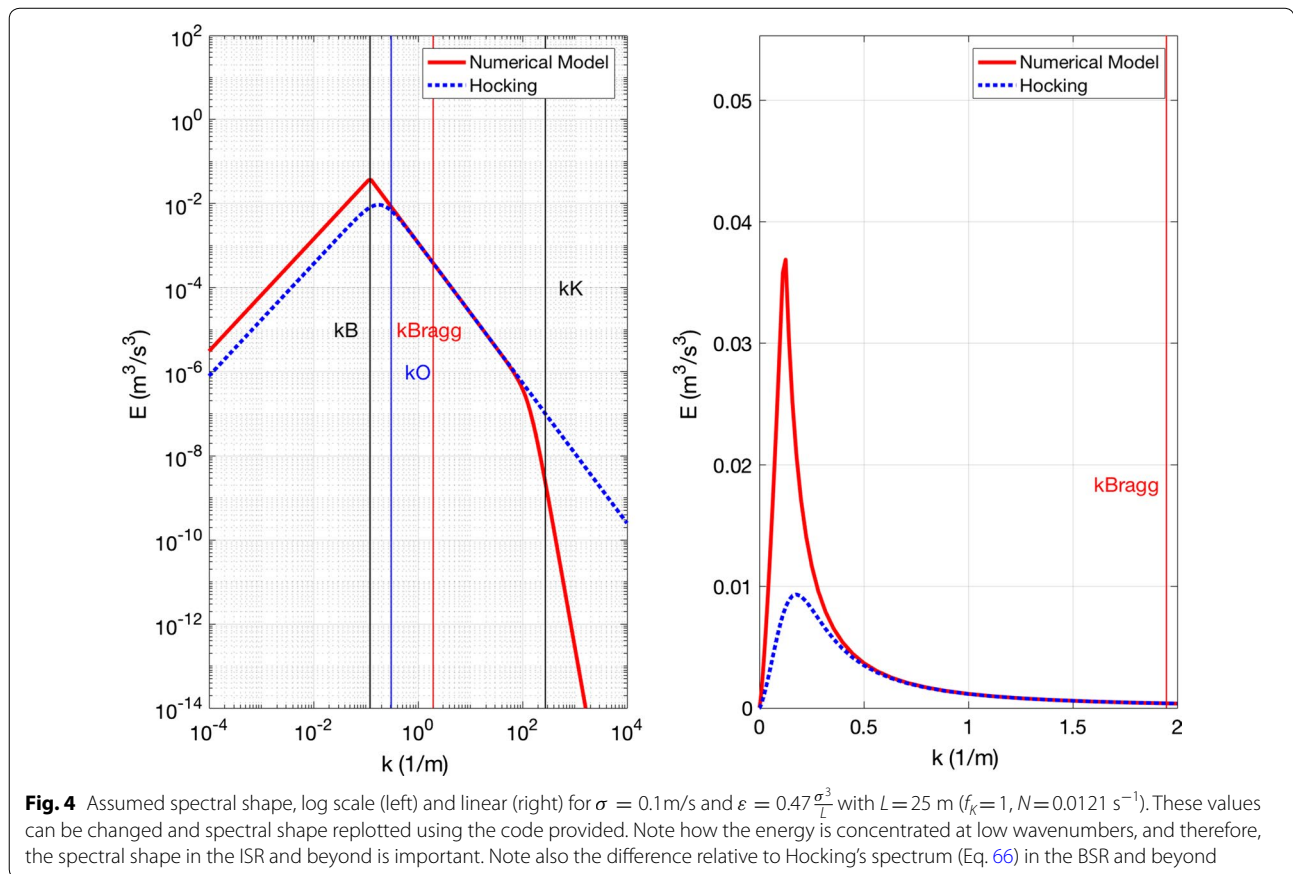
$$\bar{E}(x) = \frac{E(k)}{\alpha \varepsilon^{2/3} b^{5/3}} = x^{-5/3} \left[1 + \gamma_K \left(\frac{f_K x_O}{x} \right)^{-n_b - (5/3)} \right] \left[1 + \left(\frac{8}{3\kappa^2} \right) \left(\frac{x\eta}{b} \right)^4 \right]^{-4/3} \quad (64)$$

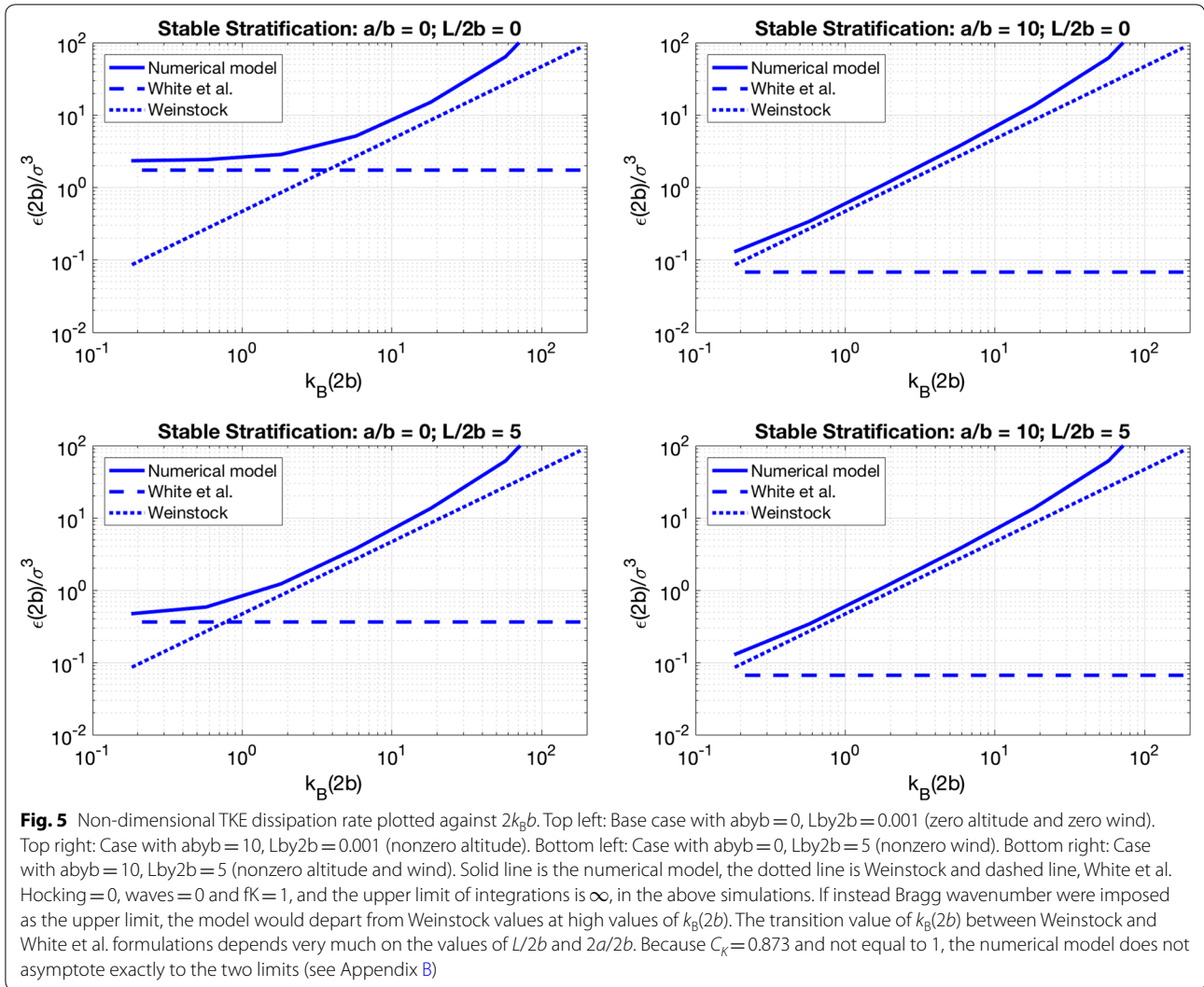
where n_b , the slope in the wave region, can be prescribed suitably. The default value is $n_b = 4/3$. The parameter f_K can be put to 0.62 as in Hocking (1999, Eq. 65 below) or to 1.0. $\gamma_K = 1$. This form is used in the code for completeness, although there is rarely any need to invoke VSR and so for all practical purposes

$$\bar{E}(x) = x^{-5/3} \left[1 + \gamma_K \left(\frac{f_K x_O}{x} \right)^{-n_b - (5/3)} \right] \quad (65)$$

relevant to ISR prevails.

Hocking (1999) used instead the spectral shape given by Eq. (54), whose non-dimensional form is:





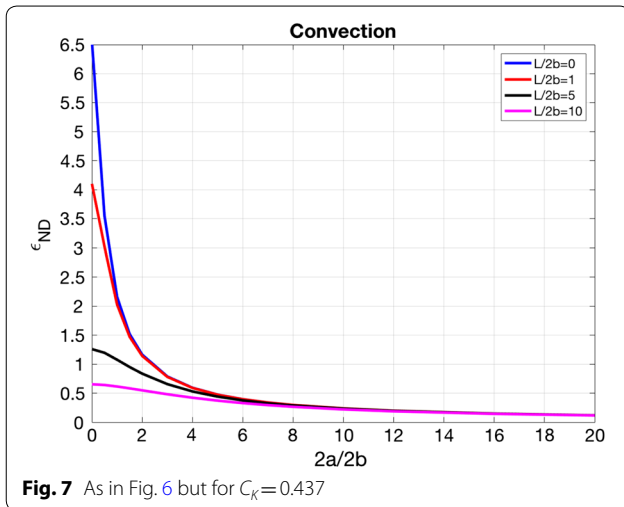
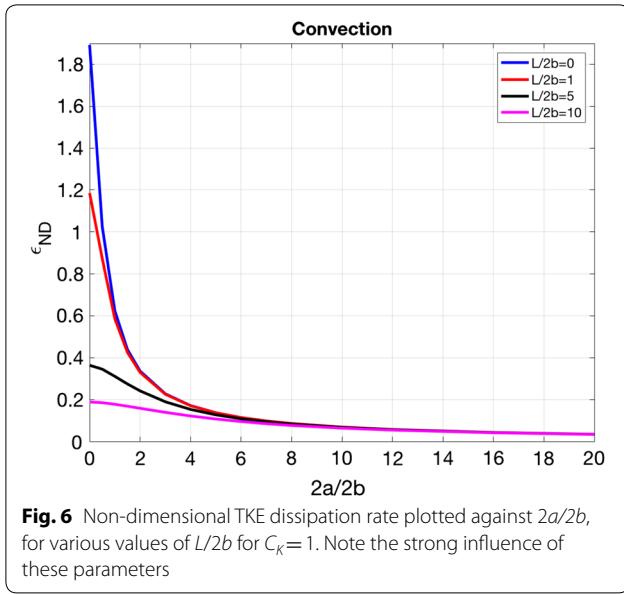
$$\bar{E}(x) = \frac{x^{-5/3}}{\left[1 + \gamma_H \left(\frac{x}{f_H x_O} \right)^{-nH-5/3} \right]} \quad (66)$$

where nH is the slope of the spectrum beyond ISR, with $nH = -3$ corresponding to $E \sim k^{4/3}$ behavior. $\gamma_H = 1$ and $f_H = 0.62$.

We have included the MATLAB code that can be used to compute $\bar{\epsilon}$ numerically for both the stably stratified and convective turbulence. The code allows not only the exploration of the 3-dimensional parameter space, but also specification of any radar and environmental parameters. There are also options for including the viscous subrange and different spectral slopes in the BSR and beyond. The integration is carried out in 3 segments: ISR, BSR and beyond. The wavenumber $f_K k_O$ is considered

to denote the end of the ISR and the beginning of the BSR, whereas the buoyancy wavenumber k_B denotes the boundary between turbulence and waves. Since k_O is not known *a priori*, an iterative procedure is used, utilizing the White et al. (1999) model as the first guess.

1. Option “waves”: takes values 0 or 1. Value of 0 corresponds to turbulence only, so that the lower limit of integration is k_B ; value of 1 includes wave contributions, since the wavenumber limit of integration is zero (as in White et al. and Labitt formulations).
2. Option “Hocking”: allows the use of spectral shape proposed by Hocking (1999). The option “Hocking” can be put to 0 or 1, depending on which spectral shape is considered. The spectral shapes for the 2 cases are shown in Fig. 4.



3. Option “vsr”: can be put to 1, if viscous subrange is to be considered. This is seldom necessary.
4. Option “wind”: value of 1 considers wind advection, although the wind velocity itself can be prescribed to be nearly zero (zero value is not permitted by the code. Use 0.0001 instead). However, wind=0 makes integration quicker for the zero wind case.
5. Option fK : the ratio between Ozmidov wavenumber and the outer scale wavenumber. It can be put equal to 1 or whatever value is found appropriate by future studies.
6. Option CK: This is the constant introduced because of the nearly transverse nature of radar measurements (vertical beam in particular). See Appendix B for details.

Figure 5 shows numerical results for 4 cases (for $C_K=0.873$):

1. Base case with $abyb=0$, $Lby2b=0.001$ (zero altitude and zero wind).
2. Case with $abyb=10$, $Lby2b=0.001$ (altitude/beam angle dependence)
3. Case with $abyb=0$, $Lby2b=5$ (Nonzero wind)
4. Case with $abyb=10$, $Lby2b=5$ (Nonzero wind)

Note that White et al. formulation leads to σ^3 dependence of ϵ , and therefore, there is no dependence on k_B . On the other hand, Weinstock formulation depends on N and hence $k_B(2b)$. The numerical model provides values between these two asymptotic limits and hence is useful for general use. Through suitable changes, the parameter space can be more fully explored and/or specific radar and ambient conditions explored.

Finally, the code can also compute $\bar{\epsilon}$ for convective conditions, where ISR is presumed to exist throughout the range of integration.

$$\bar{E}(x) = x^{-5/3} \left[1 + \left(\frac{8}{3\kappa^2} \right) \left(\frac{x\eta}{b} \right)^4 \right]^{-4/3} \quad (67)$$

The depth of the convective layer is an independent parameter. Values for b and σ need to be provided to do the computation. Precise values are not important since the non-dimensional dissipation rate is not a function of these parameters. Figures 6 and 7 show results for a convective layer 500 m deep, for various values of $2a/2b$ and $L/2b$. The strong influence of these parameters suggests that the base case of zero altitude and zero winds is not the best approximation in general. Figure 6 shows results for $C_K=1$ and Fig. 7, for $C_K=0.437$.

For the convective case,

1. Option “vsr”: can be put to 1, if viscous subrange is to be considered. This is seldom necessary.
2. Option “wind”: value of 1 considers wind advection, although the wind velocity itself can be prescribed to be nearly zero (zero value is not permitted by the code. Use 0.0001 instead). However, wind=0 makes integration quicker for the zero wind case.
3. Option CK: This is the constant introduced because of the nearly transverse nature of radar measurements (vertical beam in particular). See Appendix B for details.

Appendix B: Transverse nature of radar measurements of velocity fluctuations

The vertical radar beam is transverse to the horizontal wind advecting turbulence past the radar beam, and hence, the variance of the radial velocity fluctuations measured by the radar may not be the same as the variance of vertical velocity fluctuations derived by integrating the theoretical spectrum (e.g., Eq. 41). The difference between the “parallel” spectrum (for example, spectrum measured in the direction of traverse by a sensor carried by an aircraft traversing the turbulence field), “transverse” spectrum (spectrum measured perpendicular to the direction of traverse) and the theoretical spectrum was first mentioned by Hocking (1983) and is well explained in Appendix A of Hocking (1999). Accordingly, the spectrum of velocity fluctuations parallel and transverse to the horizontal wind (in the inertial subrange) is given by:

$$S_{\parallel} = \frac{18}{55} \alpha \varepsilon^{2/3} k^{-5/3}; S_{\perp} = \left(\frac{4}{3}\right) \frac{18}{55} \alpha \varepsilon^{2/3} k^{-5/3} \quad (68)$$

Integrating these spectra yields

$$\begin{aligned} \overline{u^2} &= \int_{k_{out}}^{\infty} S_{\parallel} dk = 0.491 \alpha \varepsilon^{2/3} k_{out}^{-2/3}; \\ \overline{v^2} = \overline{w^2} &= \int_{k_{out}}^{\infty} S_{\perp} dk = 0.655 \alpha \varepsilon^{2/3} k_{out}^{-2/3} \end{aligned} \quad (69)$$

for the parallel and transverse components with respect to the horizontal wind. However, integration of conventional spectrum (Eq. 26) from k_{out} to ∞ yields

$$\overline{w^2} = C_1 \alpha \varepsilon^{2/3} k_{out}^{-2/3} \quad (70)$$

If we invoke isotropy, $q^2 = 3\overline{w^2}$, $C_1 = 1$ and we get Eq. (30). Therefore,

$$\sigma^2 = \overline{w^2}_{radar} = 0.655 \overline{w^2} \quad (71)$$

On the other hand, if we recognize that in shear-generated turbulence, the energy is deposited by shear into the turbulence component in the direction of mean velocity and then distributed to the other two components by pressure covariance terms (see for example, Kantha and Clayson 1994, 2004), $q^2 \sim 4\overline{w^2}$ and $C_1 \sim 0.75$ so that

$$\sigma^2 = \overline{w^2}_{radar} = 0.873 \overline{w^2} \quad (72)$$

Similarly, for convective turbulence, where energy is deposited into the vertical component and then distributed to horizontal components, $q^2 \sim 2\overline{w^2}$ and $C_1 \sim 1.5$ so that

$$\sigma^2 = \overline{w^2}_{radar} = 0.437 \overline{w^2} \quad (73)$$

This means that the integrals on the right hand side of Eqs. (41), (44), (47) and (48) should include factor C_K , whose value depends on the nature of turbulence and is equal to 0.873 for turbulence in stably stratified flows, and 0.437 for convective turbulence. The expressions for Υ in Eqs. (46), (50), (51), (54), (58) and $\overline{\Upsilon}$ in Eqs. (62) and (63) should also include the same factor as well. The corresponding estimates of TKE dissipation rate ε and $\overline{\varepsilon}$ would increase by a factor of $(1/0.873)^{3/2} \sim 1.23$, and $(1/0.437)^{3/2} \sim 3.46$, respectively.

Remarkably, the fact that the radar beam is transverse to the wind, and hence, σ^2 may not be equal to $\overline{w^2}$ obtained by integrating the TKE spectrum appears to have been unrecognized so far (to our knowledge anyway) in the derivations of expressions for σ^2 in radar literature. However, it is important to note that the transverse nature of vertical radar beam measurements may be diluted by the fact that the radar averages vertical fluctuations over the measurement volume (personal communication from Prof. Wayne Hocking). While the horizontal dimension of the radar beam introduces some averaging in the horizontal direction, the vertical beam still makes essentially a transverse measurement, since it is taking averages of a bunch of transverse measurements adjacent to one another. The value of C_K may be closer to 0.873 (and 0.437 for convection) than 1.0, but because of many other uncertainties involved, the precise value is not that easy to ascertain at present. Further calibration measurements are essential to pin down the value of C_K (personal communication from Prof. Wayne Hocking). The code has provisions to prescribe the appropriate multiplication factor C_K , whether by invoking conventional approach or by allowing for the transverse nature. However, the precise value awaits further research and confirmation of the transverse nature of radar measurements.

The numerical code will be submitted as Additional file 1.

Publisher’s Note

Springer Nature remains neutral with regard to jurisdictional claims in published maps and institutional affiliations.

Additional file

Additional file 1. Numerical Code.

Received: 26 June 2018 Accepted: 13 November 2018

Published online: 24 December 2018

References

- Bertin F, Barat J, Wilson R (1997) Energy dissipation rates, eddy diffusivity, and the Prandtl number: an in situ experimental approach and its consequences on radar estimate of turbulent parameters. *Radio Sci* 32:791–804
- Chen WY (1974) Energy dissipation rates of free atmospheric turbulence. *J Atmos Sci* 31:2222–2225
- Dehghan A, Hocking WK (2011) Instrumental errors in spectral-width turbulence measurements by radars. *J Atmos Sol Terr Phys* 73:1052–1068
- Dehghan A, Hocking WK, Srinivasan R (2014) Comparisons between multiple in situ aircraft turbulence measurements and radar in the troposphere. *J Atmos Sol Terr Phys* 118:64–77
- Fukao S, Yamanaka MD, Ao N, Hocking WK, Sato T, Yamamoto M, Nakamura T, Tsuda T, Kato S (1994) Seasonal variability of vertical eddy diffusivity in the middle atmosphere. 1. Three-year observations by the middle and upper atmosphere radar. *J Geophys Res Atmos* 99:18973–18987
- Gossard EE, Chadwick RB, Detman TR, Gaynor J (1984) Capability of surface-based clear-air Doppler radar for monitoring meteorological structure of elevated layers. *J Clim Appl Meteorol* 23:474–485
- Gregg MC, D'Asario EA, Riley JJ, Kunze E (2018) Mixing efficiency in the ocean. *Annu Rev Mar Sci* 10:475–501
- Hocking WK (1983) On the extraction of atmospheric turbulence parameters from radar backscatter Doppler spectra. I. Theory. *J Atmos Terr Phys* 45:89–102
- Hocking WK (1985) Measurement of turbulent energy dissipation rates in the middle atmosphere by radar techniques: a review. *Radio Sci* 20:1403–1422
- Hocking WK (1986) Observations and measurements of turbulence in the middle atmosphere with a VHF radar. *J Atmos Terr Phys* 48:655–670
- Hocking WK (1988) Two years of continuous measurements of turbulence parameters in the upper mesosphere and lower thermosphere made with a 2 MHz radar. *J Geophys Res* 93:2475–2491
- Hocking WK (1999) The dynamical parameters of turbulence theory as they apply to middle atmosphere studies. *Earth Planets Space* 51:525–541. <https://doi.org/10.1186/BF03353213>
- Hocking WK, Jurgen R, Palmer RD, Sato T, Chilson PB (2016) *Atmospheric radar*. Cambridge University Press, Cambridge, p 838
- Kantha L (2003) On an improved model for the turbulent PBL. *J Atmos Sci* 60:2239–2246
- Kantha L, Carniel S (2009) A note on modeling mixing in stably stratified flows. *J Atmos Sci* 66:2501–2505
- Kantha L, Clayson CA (1994) An improved mixed layer model for geophysical applications. *J Geophys Res* 99(C12):25235–25266
- Kantha L, Clayson CA (2004) On the effect of surface gravity waves on mixing in the oceanic mixed layer. *Ocean Model* 6:101–124
- Kantha L, Hocking WK (2011) Dissipation rates of turbulence kinetic energy in the free atmosphere: MST radar and radiosondes. *J Atmos Sol Terr Phys* 73:1043–1051
- Kantha L, Lawrence D, Luce H, Hashiguchi H, Tsuda T, Wilson R, Mixa T, Yabuki M (2017) Shigaraki UAV-Radar Experiment (ShUREX 2015): an overview of the campaign with some preliminary results. *Prog Earth Planet Sci* 4:19. <https://doi.org/10.1186/s40645-017-0133-x>
- Kudo A, Luce H, Hashiguchi H, Wilson R (2015) Convective instability underneath midlevel clouds: comparisons between numerical simulations and VHF radar observations. *J Appl Meteorol Climatol* 54:2217–2227
- Labitt M (1979) Some basic relations concerning the radar measurements of air turbulence. MIT Lincoln Laboratory, ATC Working Paper NO 46WP-5001
- Luce H, Kantha L, Lawrence D, Hashiguchi H (2018) Turbulence kinetic energy dissipation rates estimated from concurrent UAV and MU radar measurements. *Earth Planets Space*. <https://doi.org/10.1186/s40623-018-0979-1>
- Lumley JL (1964) The spectrum of nearly inertial turbulence in a stably stratified fluid. *J Atmos Sci* 21:99–102
- Ogura Y (1958) Temperature fluctuations in the isotropic turbulent flow. *J Meteorol* 15:539–546
- Scipion DE, Lawrence DA, Milla MA, Woodman RF, Lume DA, Balsley BB (2016) Simultaneous observations of structure function parameter of refractive index using a high resolution radar and DataHawk small airborne measurement system. *Ann Geophys* 34:767–780
- Sukoriansky S, Galperin B (2017) An analytical theory of the buoyancy–Kolmogorov subrange transition in turbulent flows with stable stratification. *Philos Trans R Soc A* 371:20120212. <https://doi.org/10.1098/rsta.2012.0212>
- Weinstock J (1978) Vertical turbulence diffusion in a stably stratified fluid. *J Atmos Sci* 35:1022–1027
- Weinstock J (1981) Energy dissipation rates of turbulence in the stable free atmosphere. *J Atmos Sci* 38:880–883
- White A, Lataitis R, Lawrence R (1999) Space and time filtering of remotely sensed velocity turbulence. *J Atmos Ocean Technol* 16:1967–1972
- Wilson R (2004) Turbulent diffusivity in the free atmosphere inferred from MST radar measurements: a review. *Ann Geophys* 22:3869–3887

Submit your manuscript to a SpringerOpen® journal and benefit from:

- Convenient online submission
- Rigorous peer review
- Open access: articles freely available online
- High visibility within the field
- Retaining the copyright to your article

Submit your next manuscript at ► springeropen.com