



HAL
open science

Evaluating a prediction system for snow management

Pirmin Philipp Ebner, Franziska Koch, Valentina Premier, Carlo Marin, Florian Hanzer, Carlo Maria Carmagnola, Hugues François, Daniel Günther, Fabiano Monti, Olivier Hargoa, et al.

► **To cite this version:**

Pirmin Philipp Ebner, Franziska Koch, Valentina Premier, Carlo Marin, Florian Hanzer, et al.. Evaluating a prediction system for snow management. *The Cryosphere*, 2021, 15, pp.1-26. 10.5194/tc-15-3949-2021 . insu-03668376

HAL Id: insu-03668376

<https://insu.hal.science/insu-03668376>

Submitted on 15 May 2022

HAL is a multi-disciplinary open access archive for the deposit and dissemination of scientific research documents, whether they are published or not. The documents may come from teaching and research institutions in France or abroad, or from public or private research centers.

L'archive ouverte pluridisciplinaire **HAL**, est destinée au dépôt et à la diffusion de documents scientifiques de niveau recherche, publiés ou non, émanant des établissements d'enseignement et de recherche français ou étrangers, des laboratoires publics ou privés.



Distributed under a Creative Commons Attribution 4.0 International License



Evaluating a prediction system for snow management

Pirmin Philipp Ebner¹, Franziska Koch², Valentina Premier³, Carlo Marin³, Florian Hanzer^{4,5}, Carlo Maria Carmagnola^{6,11}, Hugues François⁷, Daniel Günther⁴, Fabiano Monti⁸, Olivier Hargoa⁹, Ulrich Strasser⁴, Samuel Morin⁶, and Michael Lehning^{1,10}

¹WSL Institute for Snow and Avalanche Research SLF, Davos, Switzerland

²Institute for Hydrology and Water Management, University of Natural Resources and Life Sciences (BOKU), Vienna, Austria

³Institute for Earth Observation, EURAC, Bolzano, Italy

⁴Department of Geography, University of Innsbruck, Austria

⁵Wegener Center for Climate and Global Change, University of Graz, Austria

⁶University of Grenoble Alpes, Université de Toulouse, Météo-France, CNRS, CNRM, Centre d'Etudes de la Neige, 38000 Grenoble, France

⁷LESSEM, Université Grenoble Alpes, Irstea, Grenoble, France

⁸ALPsolut S. r. l., Livigno, Italy

⁹SnowSat, Grenoble, France

¹⁰School of Architecture, Civil and Environmental Engineering, École Polytechnique Fédérale de Lausanne, Lausanne, Switzerland

¹¹Dianeige, Meylan, France

Correspondence: Michael Lehning (lehning@slf.ch) and Franziska Koch (franziska.koch@boku.ac.at)

Received: 15 February 2021 – Discussion started: 24 February 2021

Revised: 15 July 2021 – Accepted: 19 July 2021 – Published: 20 August 2021

Abstract. The evaluation of snowpack models capable of accounting for snow management in ski resorts is a major step towards acceptance of such models in supporting the daily decision-making process of snow production managers. In the framework of the EU Horizon 2020 (H2020) project PROSNOW, a service to enable real-time optimization of grooming and snow-making in ski resorts was developed. We applied snow management strategies integrated in the snowpack simulations of AMUNDSEN, Crocus, and SNOWPACK–Alpine3D for nine PROSNOW ski resorts located in the European Alps. We assessed the performance of the snow simulations for five winter seasons (2015–2020) using both ground-based data (GNSS-measured snow depth) and spaceborne snow maps (Copernicus Sentinel-2). Particular attention has been devoted to characterizing the spatial performance of the simulated piste snow management at a resolution of 10 m. The simulated results showed a high overall accuracy of more than 80 % for snow-covered areas compared to the Sentinel-2 data. Moreover, the correlation to the ground observation data was high. Potential sources for lo-

cal differences in the snow depth between the simulations and the measurements are mainly the impact of snow redistribution by skiers; compensation of uneven terrain when grooming; or spontaneous local adaptations of the snow management, which were not reflected in the simulations. Subdividing each individual ski resort into differently sized ski resort reference units (SRUs) based on topography showed a slight decrease in mean deviation. Although this work shows plausible and robust results on the ski slope scale by all three snowpack models, the accuracy of the results is mainly dependent on the detailed representation of the real-world snow management practices in the models. As snow management assessment and prediction systems get integrated into the workflow of resort managers, the formulation of snow management can be refined in the future.

1 Introduction

The Alpine ski industry plays a central economic role in many mountain regions and is important for regional development. About 13.6 million people live in the European Alpine region, with around 60 to 80 million tourists visiting every year. The ski resorts generate a high turnover in the winter tourism destinations (Vanat, 2020). However, a multi-annual perspective shows a stagnation of skier visits and the growing economic pressure on resorts, aggravated by the threat of climate change and decrease in average snow conditions as well as the consequences of the Covid-19 pandemic since February 2020. The trend to early winter (October–December) demand for perfect ski slopes is still increasing, but climate change renders a reliable early ski slope preparation more and more challenging. This was particularly visible throughout most of the European Alps at the beginning of the snow seasons 2014/2015 and 2015/2016, with strong deficits in natural snow amounts and elevated temperature conditions (NOAA, 2014, 2015) hampering the possibility of producing machine-made snow. Ski resorts throughout the world have become increasingly reliant on snow-making facilities to complement the natural snow cover. Over 90 % of all large ski areas in the Alpine region use snow-making facilities. Regarding pistes covered with snow originating from snow production, Italy (90 %) is in the lead, followed by Austria (70 %), Switzerland (45 %), France (35 %), and Germany (25 %) (Lalli et al., 2019). The whole workflow of ski resort management with modern slope preparation and maintenance, snow storage, and machine-made snow, however, could increase in efficiency. Examples of potential savings are related to both (i) an overproduction, which leads to a delayed melt-out in spring well after the closing of the season, and (ii) too early snow-making production in autumn, when the conditions can rapidly change and lead to the complete melt of the produced snow, e.g., due to an early-season warm spell. Based on a study by Köberl et al. (2021) the “uncertainty surcharge” of snow produced due to imperfect knowledge about upcoming weather and snow conditions paired with high risk aversion is likely to represent a noticeable share of total snow production and related water consumption as well as of total snow management operating costs. Depending on the ski resort, operating managers expect that perfect knowledge would reduce the amount of technical snow needed by 10 % to 45 %, the amount of water needed by 10 % to 40 %, and total snow management operating costs by 5 % to 20 %. Hence, there seems to be room for services that are able to improve the ski resorts’ current ability to anticipate weather and snow conditions.

Beyond the timescale of weather forecasts, which are generally reliable for a time frame of a few days, ski resort managers have to rely on various and scattered sources of information, hampering their ability to cope with highly variable meteorological conditions. In the framework of the funded European Union’s Horizon 2020 (H2020) project PROS-

NOW (Morin et al., 2018), a demonstrator of a meteorological and climate prediction and snow management system from a short-term forecast covering the first 4 d to several months ahead, specifically tailored to the needs of the ski industry, was developed. Besides and within this project, approaches for representing snow management in numerical snow cover models were developed (Hanzer et al., 2020; Spandre et al., 2016) and integrated in the existing snow cover models AMUNDSEN (Strasser, 2008; Strasser et al., 2011; Hanzer et al., 2016), SNOWPACK–Alpine3D (Lehning et al., 2006; Bartelt and Lehning, 2002), and Crocus (Vionnet et al., 2012; Lafaysse et al., 2017). Applying these snowpack models capable of representing the effects of snow management (grooming and snow-making), snow depth on the slopes could be predicted in real time for short-term and seasonal forecast mode for various ski resorts.

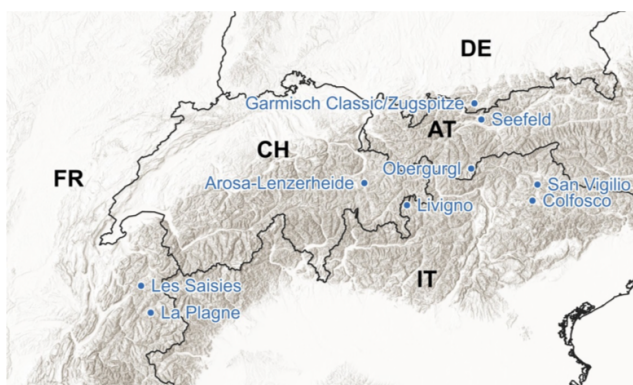
To increase the adaptation capacity of the skiing industry, there is a great need to combine weather and climate forecasting, snow modeling, and observations and to promote existing products to demonstrate their value for professional decision-making. In this context, in situ observations as well as optical and microwave remote sensing have proven to be mature technologies (Sirguey et al., 2009; Dumont et al., 2012; Bühler et al., 2015). For example, in terms of snow coverage, remotely sensed data can provide twofold key information to the models. On the one hand, they can be used to correctly initialize the state variables of the models. On the other hand, they can be used to cross-compare the results of the simulations and evaluate them (Mary et al., 2013; Notarnicola et al., 2013a, b). Since remotely sensed data mainly provide binary information on snow presence or absence, a complete model evaluation needs an additional comparison with measured in situ observations (Hanzer et al., 2016). Nowadays it is increasingly common to employ advanced snow depth monitoring systems such as the Global Navigation Satellite System (GNSS) equipped with grooming machines to track the snow depth on the ski slopes. Thereby, the performances of the models can be evaluated by comparing model outputs with the measured snow depth values. This evaluation strategy has been shown by Hanzer et al. (2020) for a single point on a slope for various ski resorts. In this work, the performance of the snowpack models were cross-compared with several snow depth measurements spatially distributed with a resolution of 10 m over different ski slopes for two winter seasons, i.e., 2016/17 (driest winter in recent years) and 2017/18 (snow-rich winter throughout the entire Alps).

The objective of this paper is to evaluate the accuracy of the piste snow management module refined and implemented in the framework of the H2020 PROSNOW project embedded within several snowpack models to simulate snow management in general and for each individual PROSNOW ski resort in high spatial resolution. In a first step, the results of the snowpack simulations were compared both with remotely sensed satellite snow cover maps and with snow depth mea-

Table 1. Overview of the nine PROSNOW ski resorts, the period of available Sentinel-2 and measured GNSS snow depth data, and the used snow management configurations for the simulations based on the paper by Hanzer et al. (2020).

Resort	Country	Elevation range (m a.s.l.)	Slope area (ha)	Sentinel-2	GNSS	Configurations*
Arosa Lenzerheide	CH	1200–2865	384	2015–2020	2017–2020	2, 23, 31
Colfosco	IT	1531–2218	64	2015–2020	2016–2020	2, 23
Garmisch Classic	DE	708–2100	66	2015–2020	2017–2020	2, 7
La Plagne	FR	1250–3250	528	2015–2020	-	2, 11
Les Saisies	FR	1150–2069	214	2015–2020	2017–2020	2, 11
Livigno	IT	1816–2797	448	2015–2020	2017–2020	2, 23, 31
Obergurgl	AT	1930–2898	107	2015–2020	2017–2020	2, 23
San Vigilio	IT	1087–2274	119	2015–2020	2017–2020	2, 23
Seefeld	AT	1179–1251	79	2015–2020	2017–2018	2, 23

* Hanzer et al. (2020)

**Figure 1.** Locations of the PROSNOW ski resorts.

measurements spatially distributed along the ski slopes acquired with specific GNSS systems. The impact of elevation, slope, and aspect as well as temporal aspects within a season or amongst different years was evaluated. In the second step, the simulation domain was spatially discretized into defined ski resort reference units (SRUs) (Hanzer et al., 2020) to reduce computational effort but still be able to achieve meaningful results. In this case, each ski resort was divided into a number of elevation bands with widths ranging from 50 to 400 m.

2 Study sites, models, and data

2.1 Ski resorts

Within the PROSNOW project we focused on the following nine ski resorts, which are also all part of this study: Seefeld (cross-country part) and Obergurgl in Austria; La Plagne and Les Saisies in France; Garmisch Classic in Germany; Colfosco, San Vigilio, and Livigno in Italy; and Arosa Lenzerheide in Switzerland. This selection of ski resorts represents a large diversity of geographical, climatological, and snow-making

practices and equipment. Figure 1 and Table 1 show the locations and key characteristics of the resorts.

2.2 Snowpack models

Snowpack simulations are performed with AMUNDSEN for the Austrian and the Italian resorts (Colfosco, Obergurgl, San Vigilio, and Seefeld), with Crocus for the French resorts (La Plagne and Les Saisies) and with SNOWPACK–Alpine3D for the remaining resorts in Switzerland, Germany, and Italy (Arosa Lenzerheide, Garmisch Classic, and Livigno). We used for each ski resort different settings for the parameters concerning wet-bulb temperature, snow depth threshold, timing, and density of grooming. A detailed description of the functionality and parameters of the snow-making and grooming modules, which are used in all of the snowpack models, is shown in the study by Hanzer et al. (2020) and the applied configuration for each ski resort in Table 1. The three snowpack models, AMUNDSEN, Crocus, and SNOWPACK–Alpine3D, are well established and have been widely applied in numerous studies throughout the past decades (Essery et al., 2020; Krinner et al., 2018).

All three models require spatial input data for the snow management simulations consisting of a digital elevation model (DEM) covering the study sites, the locations of the ski slopes, and the locations and types of the snow guns (snow lances or snow fans – corresponding to different production rates for given ambient conditions as defined in Table 5 in Hanzer et al., 2020). The snow management configurations employed for each ski resort are shown in Table 1 and are selected to be representative of the snow management configuration of each ski resort based on individual discussions with the ski resort managers. In general, the basis for snow production relies on resource saving assumptions, the features of the locally installed snow-making system, and the opening and closing of each ski resort. The configurations were selected for each ski resort as follows and are described in more detail in Hanzer et al. (2020):

- configuration 2: no snow production; simulations based on a natural snow-only configuration, however with grooming activity
- configuration 7: snow production with a minimum required snow water equivalent (SWE) of 150 kg m^{-2} using snow fans and a wet-bulb temperature of maximum -4°C
- configuration 11: snow production with a minimum required SWE of 150 kg m^{-2} using snow lances and a wet-bulb temperature of maximum -4°C
- configuration 23: snow production with a minimum required SWE of 250 kg m^{-2} using snow fans and a wet-bulb temperature of maximum -4°C
- configuration 31: snow production with a minimum required SWE of 250 kg m^{-2} using snow lances and a wet-bulb temperature of maximum -6°C

Meteorological forcing data for the simulations are based on measurements from automatic weather stations close to or within the study sites and from the SAFRAN analysis for Crocus model runs (Vernay et al., 2019), consisting of at least hourly measurements of air temperature, precipitation, relative humidity, wind speed, and radiation. The generated output data are rasterized snow depth files with a resolution of 10 m.

The models are equipped with a machine-made snow production and grooming module, which can be used for the operational applications. A set of core parameters can be used for very detailed simulations of snow management practices in single ski resorts. They take into account snow demand, the meteorological conditions including information on wet-bulb temperature and wind speed, and the ski resort infrastructure in terms of the amount of snow that can be produced in a given time step at a certain location within the resort. For the simulations it is assumed that for a given snow gun, all of the produced snow is distributed immediately and evenly over a predefined slope section. Additionally, the grooming module allows the distinct properties of groomed snow on ski slopes to be accounted for depending on the amount of snow present and a defined grooming schedule. It assumes that grooming has no effect on the distribution of snow, e.g., shifting of snow from one place to another, but rather only compacts it (Hanzer et al., 2020).

2.3 Ski resort reference unit – SRU

Real-time simulations with a very fine spatial resolution (i.e., 10 m) require a very high computational demand, and such fine spatial resolutions are also often not necessary for the overall day-to-day resort management. Spatial clustering of slopes and slope sections is often sufficient for the snow managers working in an operational mode. Therefore,

we additionally discretized each ski resort in ski resort reference units (SRUs). In a post-processing step, we aggregated the initial 10 m pixel size to larger areas. We defined different SRU sizes of the individual pistes by slicing them into the following elevation step ranges: 50, 100, 200, 300, and 400 m. Local snow management plays a major role in the SRU sizes as explained in more detail in Appendix A1. This aggregation results in different numbers of SRUs for each considered elevation range. Figure 2 exemplarily shows a map for the western part of Arosa Lenzerheide with the resulting elevation classes for the different SRU sizes. In addition, we evaluated the sensitivity of SRU size to the final accuracy. More details about the SRU definition can be found in Appendix A1 and Table A2.

2.4 Sentinel-2 data

The model results for all ski resorts were compared with remote sensing images; for this study, Sentinel-2 (S2) data were used. The processing of the S2 snow-covered maps was done in three main stages: (i) calibration to top-of-the-atmosphere (ToA) reflectances; (ii) re-projection, resampling, and co-registration with the model grid with a final resolution of 10 m; and (iii) classification with a support vector machine (SVM) classifier trained with an active learning procedure (Tuia et al., 2016). In particular, the classification was devoted to both (i) detecting the clouds and (ii) detecting the snow presence. This was done by exploiting the most representative features for each of the two classification problems. In detail, we used all the spectral bands, the normalized difference snow index (NDSI), and the normalized difference vegetation index (NDVI) for the cloud classification. NDVI was calculated as the normalized difference between near-infrared (NIR) and red bands, whereas NDSI was calculated between green and shortwave infrared (SWIR) bands. Regarding the snow detection, we used the spectral bands, NDSI, NDVI, and the illumination angle calculated from the solar zenith and the solar azimuth angle (Riaño et al., 2003).

Since the S2 snow maps are compared to the snow simulations, particular attention was devoted to obtain accurate results. For this purpose, three main steps were performed to address the main problems related to snow classification from optical images, which are the detection of (i) particular cloud conditions; (ii) the mixed snow pixels, i.e., pixels in which classes other than the snow contribute to the observed spectral response; and (iii) the snow under the canopy of the forests.

First, we performed a visual analysis of all the S2 images for excluding the scenes presenting complex cloud conditions. In particular, semitransparent clouds, which are thin, high-altitude clouds composed of ice crystals, were detected from the S2 band acquired at $1.375 \mu\text{m}$. Interestingly, semitransparent clouds might not be visible in other spectral bands, but they alter the spectral signatures, leading to unreliable results.

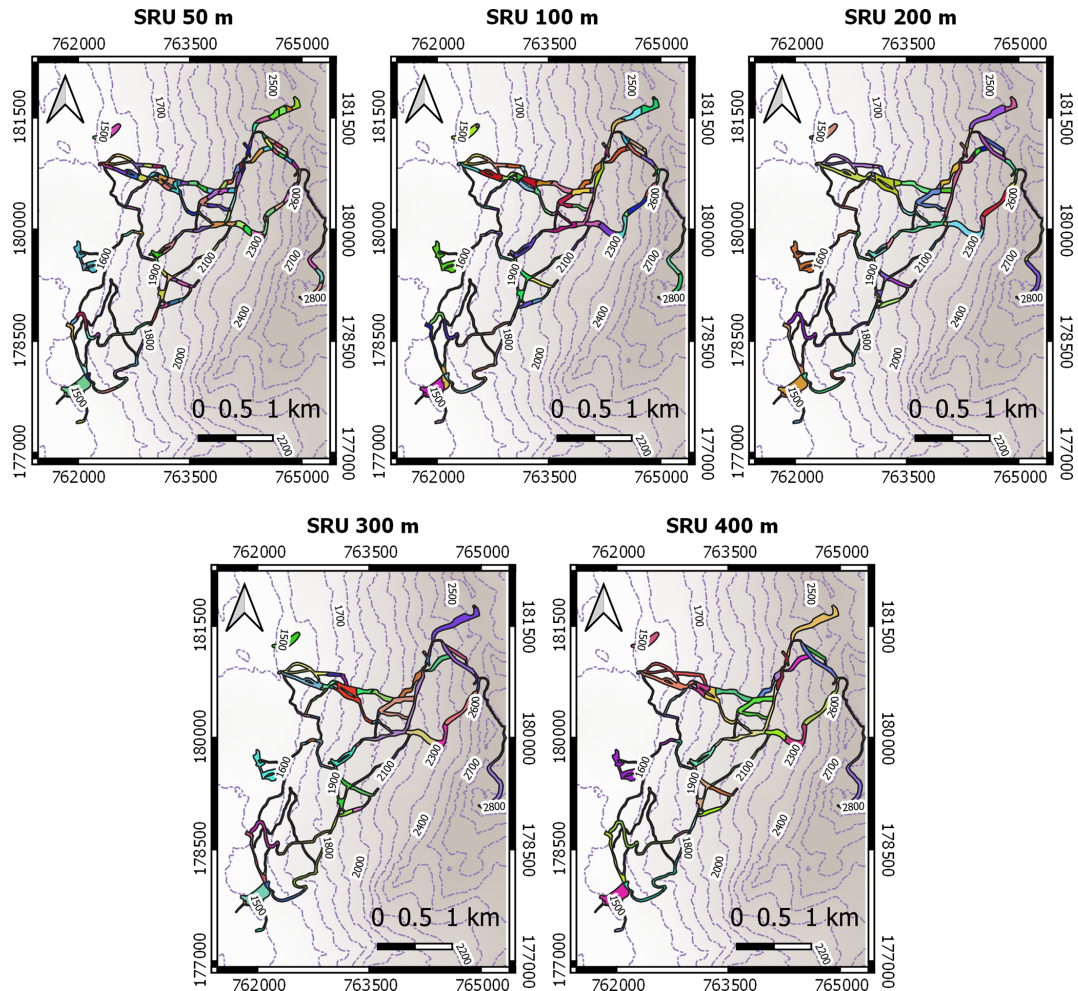


Figure 2. An example of a ski resort discretization into different SRU elevation bands: 50, 100, 200, 300, and 400 m. The figure shows the western part of Arosa Lenzerheide. The different colors represent the different SRU areas.

The SVM classifier was trained in a way that a pixel with at least 50 % snow coverage is classified as snow. This means that, for example, during the snow-making production at the beginning of the season, a pixel in which significant snow production is ongoing is classified as snow even though not all of the pixel area is covered with snow. Additionally, we identify the shadowed areas from where the multispectral sensor on board S2 is not able to record sufficient energy for distinguishing between snow and snow-free areas. This happens when the sun is low at the horizon approximately from mid-November to mid-February, and the terrain is extremely steep. In all the other shadow cases, the SVM classifier was trained to detect the snow presence. Hence, the output of the procedure was a classified map with four classes, i.e., snow, snow-free, shadows and clouds.

Since the detection of snow under forest canopy is a challenging research topic from both the remote sensing and modeling point of view, we conservatively masked out forested areas for all the ski resorts based on the land cover

classification provided by OpenStreetMap (OSM) (resolution of 30 m) (Schultz et al., 2017), rasterized to a resolution of 10 m and manually refined for all ski resorts in such a way that the ski slopes that were passing through forest but were visible at the resolution of S2 were considered for the evaluation. The masked layers include coniferous, deciduous, and mixed forests and in some particular cases also scrubs and heath. After this screening all the snow maps were considered reliable, and the scenes with a percentage lower than 50 % cloud were retained as sufficient information for the cross-comparison.

A detailed overview of the number of available S2 scenes for each year and ski resort is presented in Table A1 and Figs. A1 and A2 in the Appendix. The number of S2 scenes which were available for each ski resort within the winter periods of 2015 to 2020 is in general high and ranges between 62 and 190 per ski resort. The differences in numbers of available scenes were mainly affected by cloud coverage

and the atmospheric condition to perform accurate classification.

2.5 GNSS snow depth data

More and more ski resorts are relying on spatially distributed snow depth measurements performed with modern Global Navigation Satellite System (GNSS) technology for an efficient management of their slopes. This technique relies on differential GNSS signals, comparing the snow-free (i.e., zero snow depth) reference signal with those obtained during the snow season to obtain snow depth. The sensors are installed on top of the groomers, and thereafter snow depth can be tracked as a positive side effect whilst grooming the pistes. This technology ensures a snow depth measurement accuracy down to the centimeter level and at a spatial resolution of 1 m, which also allows the tracking of snow redistribution with the groomers.

For our study, rasterized data were provided by the companies SNOWsat and Leica Geosystems AG and were resampled to a resolution of 10 m using the average value in order to be directly comparable with the model outputs. The GNSS snow depth data were available for all ski resorts except La Plagne. We considered for the analysis the measurements spanning from 1 December to 31 March with a daily temporal resolution when GNSS data were available. The data have been preprocessed to eliminate outliers and to check their consistency. Table 1 shows the available seasons of GNSS snow depth measurements for all ski resorts.

3 Evaluation

In this section, we describe how we evaluate the snowpack simulations carried out for the PROSNOW ski resorts. This includes (i) the evaluation of snow-covered area and (ii) the evaluation of simulated snow depth. In detail, the simulated snow depth was compared with the GNSS-derived measurements over a number of ski slopes, whereas the snow-covered area is evaluated by comparing the model snow-covered area with the S2 snow maps. The metrics used for assessing the agreement between the simulations and S2 snow maps are the confusion matrix and the snow persistence index defined below.

The evaluation analysis for both snow depth and snow-covered area was conducted by stratifying the data according to temporal and topographical constraints. Moreover, a differentiation was made between natural snow, i.e., snow outside the pistes, and managed snow, i.e., snow inside the pistes. In the following subsections more details on how the evaluation metrics were calculated are presented.

Table 2. Example of the confusion matrix used in the “Results” section. The analysis was split into three periods: beginning (B: October–November–December), middle (M: January–February), and end (E: March–April–May) of the season. TP: true positive; FP: false positive; FN: false negative; TN: true negative; OA: overall agreement.

		Simulation		
		Snow	Snow-free	OA (%)
Sentinel-2	Snow	TP (B, M, E)	FP (B, M, E)	OA (%)
	Snow-free	FN (B, M, E)	TN (B, M, E)	(B, M, E)

3.1 Snow coverage – snow persistence (SP) and confusion matrix (CM)

The latitude, longitude, and elevation of a ski resort have a big impact on the timing of snow accumulation and melt. Therefore, comparing snow patterns between regions is challenging despite the widespread application of remotely sensed methods for snow research. The snow persistence (SP) is a snow metric that can be used to map snow zones globally (Macander et al., 2015; Wayand et al., 2018; Vionnet et al., 2020). It is calculated in this work as the number of snow-covered days divided by the number of valid Sentinel-2 observations for the whole period (5 years). The number of total observations can vary for each pixel since cloudy or masked pixels are not considered for the computation. Hence, the same valid dates are considered for the model. This approach has been used in a wide range of climates (Richer et al., 2013; Moore et al., 2015; Saavedra et al., 2017) to identify transitions between rainfall and snowmelt peak streamflow source regimes (Kampf and Lefsky, 2016) and for predicting water yield (Saavedra et al., 2017; Hammond et al., 2018).

Two SP indices were extracted considering both S2 snow maps and model simulation. They were calculated pixel-wise as the ratio between the number of snow-covered days derived by S2 or from the model, divided by the total number of S2 observations (snow or snow-free). The values of SP were always between 0, i.e., always snow-free dates, and 1, i.e., always snow-covered dates. If an S2 snow map pixel is classified as a cloud the corresponding snow model output is masked out, preserving the one-to-one correspondence between the two SP indices.

In addition to the SP index, for each ski resort a confusion matrix was computed to assess the quality of the S2 and snowpack simulations. We refer to the confusion matrix as modeled vs. observed variables. The confusion matrix has the form indicated in Table 2 (TP: true positive, i.e., both model and S2 labeled as snow; FP: false positive, i.e., model labeled as snow, S2 as snow-free; FN: false neg-

ative, i.e., model labeled as snow-free, S2 as snow; and TN: true negative, i.e., both model and S2 labeled as snow-free). Therefore, TP and TN indicate that model and S2 data match with each other, whereas FP and FN indicate that they do not match.

We distinguish between natural snow and snow on the slopes. Furthermore, the analysis was split into three periods: beginning (B: October–November–December), middle (M: January–February), and end (E: March–April–May) of the season. A pixel can be either true (snow in S2 data and model, no snow in S2 data and model) or false (snow in S2 data and no snow in model, snow in model and no snow in S2 data). With the accumulation of all pixels assigned to be true, an overall agreement OA (%) was calculated for each period and catchment:

$$OA = \frac{TP + TN}{TP + FP + TN + FN}, \quad (1)$$

which describes how often the agreement between S2 and the simulations was correct.

3.2 Snow depth – root mean square deviation (RMSD) and mean deviation (MD)

The metrics used for this assessment are the mean deviation (MD) and the root mean square deviation (RMSD) over time for each ski resort. Regarding the snow-covered area evaluation, the binarization of the simulated snow depth to the snow-covered map was done by imposing a threshold of 0.05 m; i.e., every value above this threshold was identified as snow, while in contrast all the values below 0.05 m were identified as snow-free. This threshold is in line with previous works (Notarnicola, 2020). In each defined SRU we analyzed the variations in terms of snow depth MD and RMSD. The MD was used to relate between the modeled and measured snow depth on the slopes among years for the period October to May. Measured snow depth data from all available years of observations (see Table 1) were used in order to analyze the quality of the simulated snow management configuration for each ski resort. This allowed better projection of the uncertainty in the simulated snow management configuration based upon the measured snow depth. RMSD and MD per one time point are defined as

$$\begin{aligned} \text{RMSD} &= \sqrt{\frac{1}{N} \sum_{i=1}^N (\text{SD}_m(i) - \text{SD}_s(i))^2} \\ \text{MD} &= \frac{1}{N} \sum_{i=1}^N (\text{SD}_m(i) - \text{SD}_s(i)), \end{aligned} \quad (2)$$

where N is the number of valid pixels for a given date, SD_m is the GNSS snow depth measured, and SD_s is the snow depth simulated by the model. Hence, the metrics were calculated based on pixels and only on those pixels where GNSS measurements were present; i.e., the number of considered pixels

N can vary for each date. A negative MD value indicates an overestimation, and a positive MD value indicates an underestimation of the snow persistence of the PROSNOW models.

4 Results

In this section, the simulated results for all ski resorts were compared with the S2-measured snow cover and with the GNSS-measured snow depth data on the ski slopes. Model runs were performed for five winter seasons (2015–2020) from 1 October until the end of May. The simulations were carried out for all ski resorts using the default snow management configurations accounting for both fan guns and lance guns as well as different temperature thresholds and base-layer production targets, given in Table 1. The configurations were either assumed or provided by the person responsible for snow-making at each ski resort.

4.1 Snow coverage

The S2 algorithm produced accurate snow maps with an overall accuracy above 80%, for both high-Alpine and lower-lying mountainous regions and different stages of the season like season start, mid-season, and end of season. A first approach to assess the skills of the models using S2 maps as a reference was a confusion matrix. Table 3 presents the results for each ski resort. Analyses were carried out for solely regarding snow on the pistes and additionally also for the complete ski resorts, including the off-piste areas. The overall accuracy for natural snow (off-piste) is around 80%. Regarding the pistes, where we applied the snow management, we could further increase the overall accuracy up to 85%. Based on this we can conclude that the integration of the snow management module in the snowpack models increases the performance within the ski resorts, which is also obvious in the early and late season, shown in the Appendix (Figs. A2 and A1). The snow distribution was well simulated at the beginning and end of the season, with an agreement of over 79%. However, a larger mismatch was observed for San Vigilio with 69% at the end of the season because of the overestimation caused mainly by the ablation process in the snow model. A higher agreement between the simulation and the S2 data was observed when regarding the pistes only. Compared to the analysis of the entire resort, including natural snow, the overall accuracy of pistes only was up to 8% higher. Only one resort (Garmisch Classic) showed a slightly lower accuracy of 8% on pistes as the majority of pistes are situated in forested areas, where it is difficult to capture the pistes via satellite images.

The snow coverage quality of the snowpack simulations using the snow management modules was further assessed using the S2 data and SP indices. The SP indices were calculated for the simulations and S2 data, and the relative dif-

Table 3. Confusion matrix for all ski resorts referring to snow on the pistes. The values in the parentheses are referring to natural snow. The metrics in the square brackets also refer only to snow at the beginning, middle, and end of the season.

		Model		
		Snow	Snow-free	OA (%)
Arosa Lenzerheide				
Sentinel-2	Snow	82 (77) [71 (67); 99 (96); 76 (68)]	3 (1) [2 (2); 0 (0); 5 (3)]	92 (90)
	Snow-free	5 (9) [13 (15); 1 (4); 2 (8)]	10 (13) [14 (16); 0 (0); 17 (21)]	[85 (83); 99 (96); 93 (89)]
Colfosco				
Sentinel-2	Snow	71 (63) [46 (41); 100 (89); 71 (63)]	5 (5) [1 (5); 0 (4); 14 (8)]	94 (91)
	Snow-free	1 (4) [1 (2); 0 (4); 1 (5)]	23 (28) [52 (52); 0 (3); 14 (24)]	[98 (93); 100 (92); 85 (87)]
Garmisch Classic				
Sentinel-2	Snow	71 (45) [78 (44); 87 (73); 59 (29)]	1 (6) [2 (16); 0 (8); 1 (2)]	82 (84)
	Snow-free	16 (10) [11 (7); 13 (9); 20 (11)]	12 (39) [9 (33); 0 (10); 20 (58)]	[87 (77); 87 (83); 79 (87)]
La Plagne				
Sentinel-2	Snow	89 (68) [87 (67); 97 (85); 88 (61)]	1 (3) [1 (5); 0 (2); 0 (3)]	93 (89)
	Snow-free	6 (8) [7 (6); 3 (8); 7 (9)]	4 (21) [5 (22); 0 (5); 5 (27)]	[92 (89); 97 (90); 93 (88)]
Les Saisies				
Sentinel-2	Snow	83 (60) [76 (55); 100 (94); 81 (50)]	3 (6) [6 (10); 0 (1); 1 (5)]	91 (88)
	Snow-free	6 (6) [7 (4); 0 (5); 8 (8)]	8 (28) [11 (31); 0 (0); 10 (37)]	[88 (86); 100 (94); 91 (87)]
Livigno				
Sentinel-2	Snow	81 (79) [78 (78); 88 (86); 79 (73)]	11 (11) [8 (7); 12 (13); 14 (14)]	87 (86)
	Snow-free	2 (3) [4 (6); 0 (1); 1 (2)]	6 (7) [10 (9); 0 (0); 6 (11)]	[88 (88); 88 (86); 85 (84)]
Oberurgl				
Sentinel-2	Snow	80 (72) [51 (42); 100 (99); 92 (84)]	6 (6) [9 (10); 0 (0); 6 (6)]	94 (93)
	Snow-free	0 (1) [1 (2); 0 (1); 0 (2)]	14 (21) [39 (46); 0 (0); 2 (8)]	[90 (88); 100 (99); 94 (92)]
San Vigilio				
Sentinel-2	Snow	61 (34) [48 (26); 93 (61); 47 (21)]	12 (6) [4 (4); 5 (5); 30 (10)]	85 (83)
	Snow-free	3 (11) [6 (8); 2 (21); 1 (6)]	24 (49) [42 (62); 0 (13); 22 (63)]	[90 (88); 93 (74); 69 (84)]
Seefeld				
Sentinel-2	Snow	51 (42) [33 (24); 97 (91); 42 (31)]	3 (6) [0 (5); 0 (1); 8 (9)]	91 (89)
	Snow-free	6 (5) [8 (3); 3 (8); 5 (5)]	40 (47) [59 (68); 0 (0); 45 (55)]	[92 (92); 97 (91); 87 (86)]

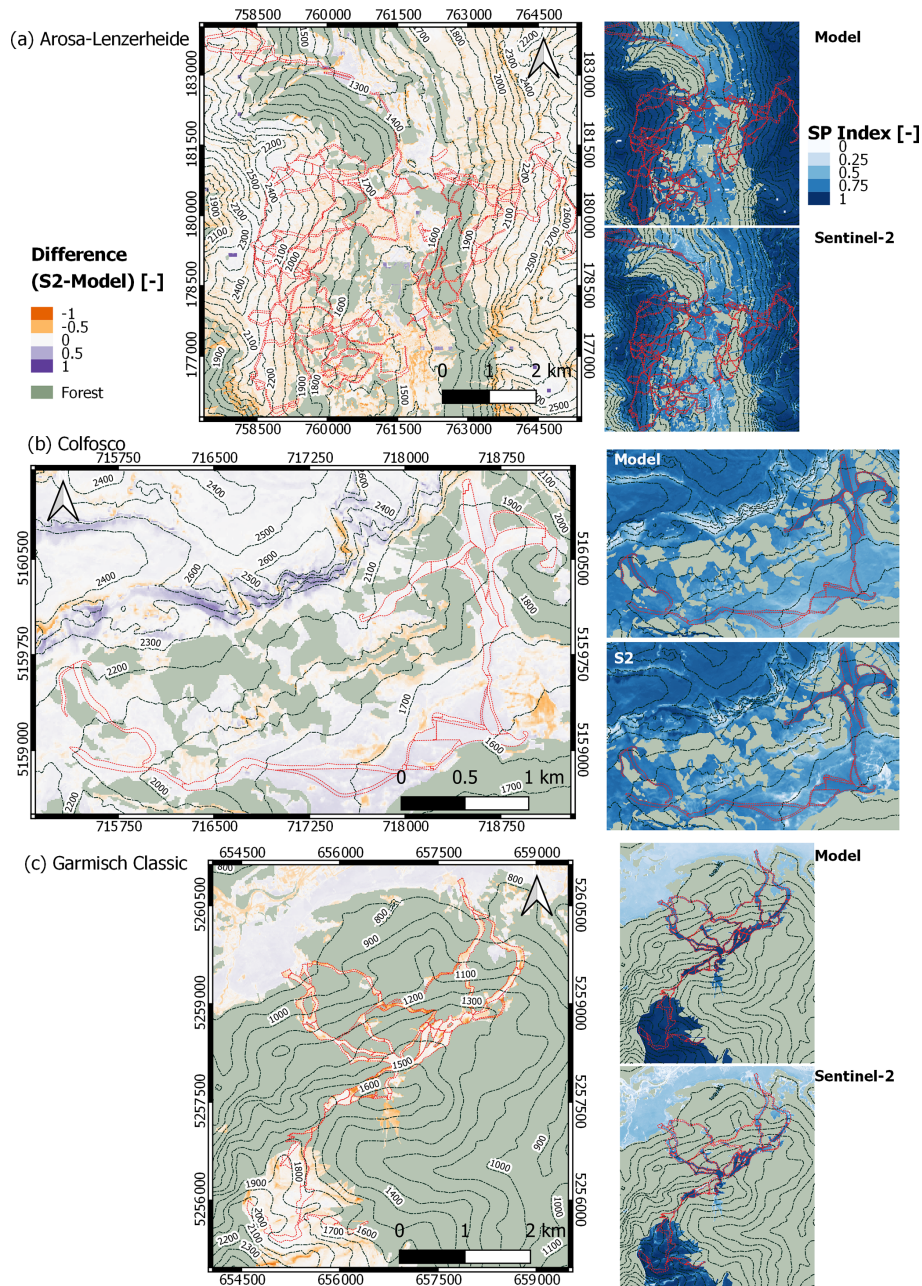


Figure 3.

ferences are shown in Fig. 3. The green pixels indicated the applied forest mask to minimize the underestimation of snow detection by the S2 algorithm. Observed SP presented similar patterns for each ski resort, showing that snow persistence patterns were primarily controlled by the elevation. High elevation corresponds to high SP values, whereas low SP values were found near the tree line and at lower elevations. In addition, low SP values were also found near ridge lines, exposed to wind, and influenced by lateral snow redistribution and snow accumulation. These effects were not captured by the simulations. Further, the derived SP values were de-

pendent upon the elevation and slope orientation, primarily due to the impact of solar radiation on simulated snow ablation. The biggest difference in the SP index between the S2 data and model was found in steep slopes, where the effect of snow gliding (e.g., avalanches) is stronger.

The overall accuracy was mainly impacted by the elevation and slope. An interesting analysis was represented by the trend of the overall accuracy over 100 m elevation classes, 5° slope classes, and 45° aspect classes (i.e., north, northeast, east, southeast, south, southwest, west, northwest). This analysis was carried out taking specifically only the snow on

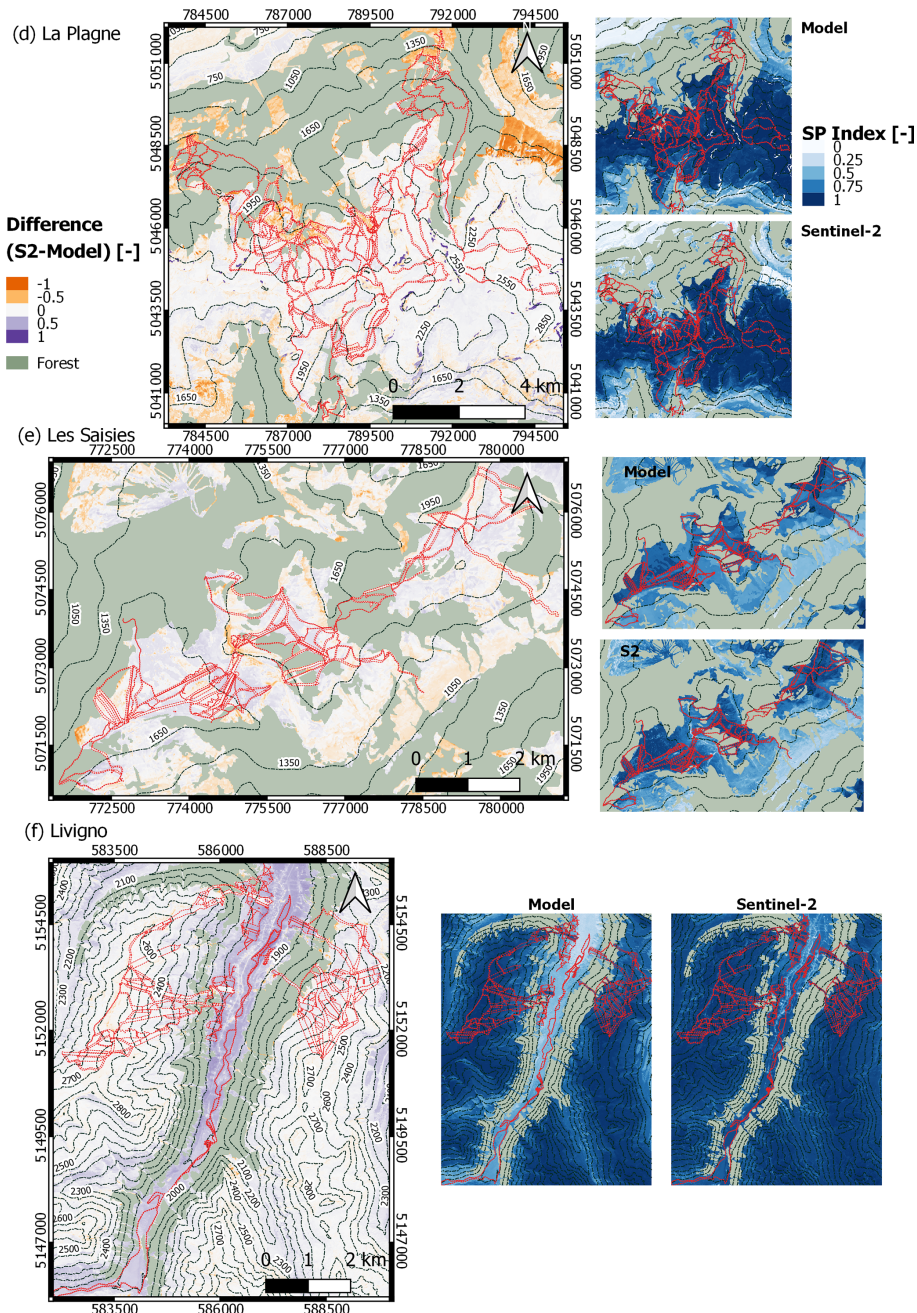


Figure 3.

the pistes into account and is presented in Fig. 4 (left). The agreement of the simulations with the S2 data increased with increasing elevation by around 1 % per 100 m elevation class. The overall accuracy over 5° slope classes is not affected by the slope steepness, and the orientation of the slope towards the sun showed no influence on the accuracy.

A closer look at the SP index showed an elevation dependency, but a clear slope or aspect dependency is hard to detect. A better accuracy is obtained at high altitudes due to the fact that the ratio of snow cover area is near 1. Figure 4 (mid-

dle) shows the difference between S2 and model SP index, similar to Fig. 4 (left). Positive values indicated an underestimation of the model with respect to S2. Above 2000 m, the MD SP index is close to zero, and the model results are consistent with the S2 data. However, below 2000 m the MD increases as most of the slopes are equipped with snow-making facilities and are affected by local snow management adjustments due to local snow and weather conditions.

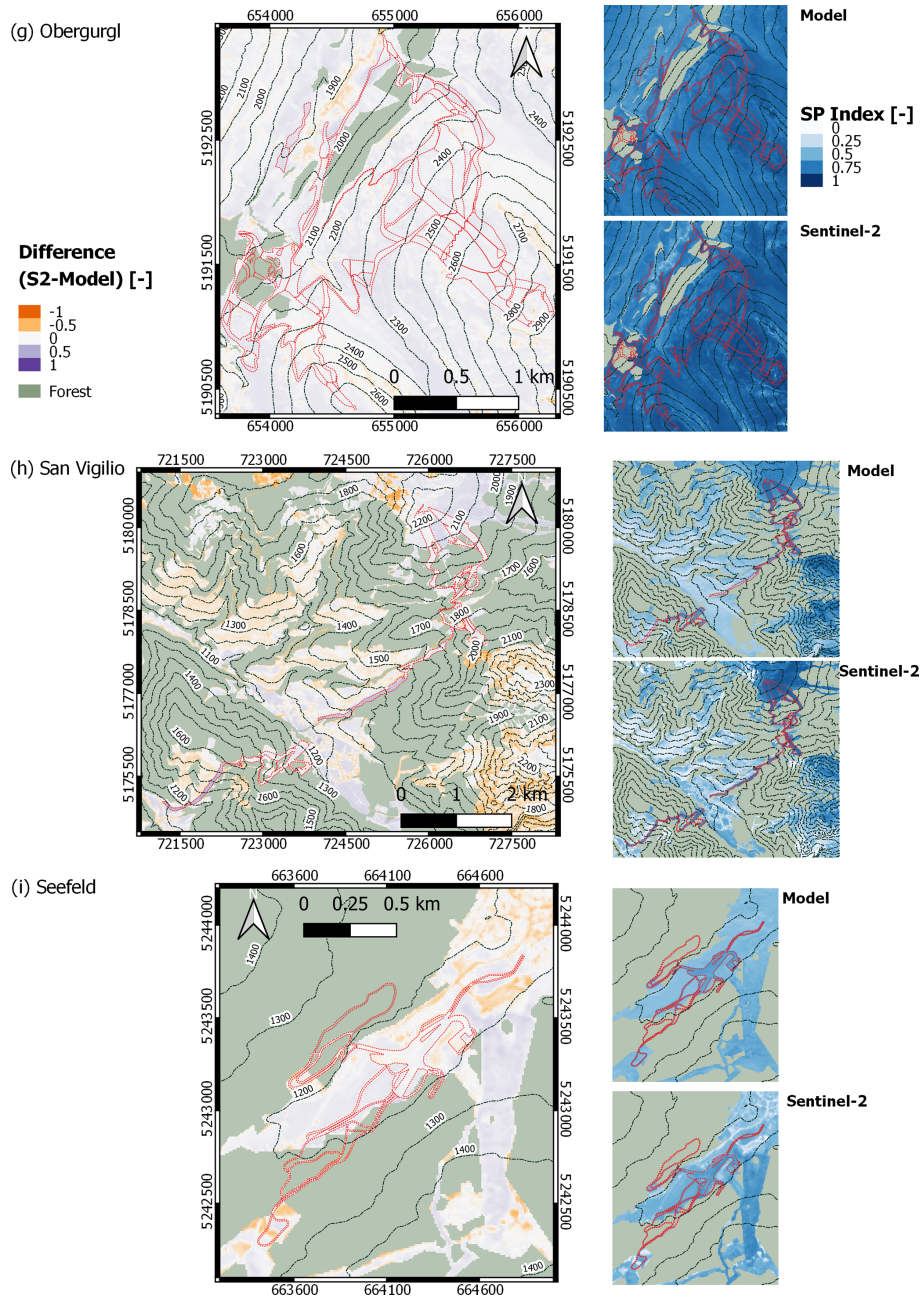


Figure 3. Snow persistence index difference between Sentinel-2 data and the model data (on the left) and SP indices for the simulation and Sentinel-2 (on the right) for each ski resort: (a) Arosa Lenzerheide, (b) Colfosco, (c) Garmisch Classic, (d) La Plagne, (e) Les Saisies, (f) Livigno, (g) Obergurgl, (h) San Vigilio, and (i) Seefeld. The period 2015–2020 was considered, when valid Sentinel-2 data are available.

4.2 Snow depth

The simulated default snow management configurations reproduced the actual conditions well at all ski resorts. Figure 5 shows the RMSD and the MD between the modeled and GNSS-measured snow depth over time for each ski resort and each season. Especially at the beginning of the season, the RMSD values between the simulated and the GNSS-measured snow depth on the pistes were below 0.4 m on aver-

age. However, the RMSD values slightly increased during the season affected by daily adaption of the snow management configurations due to the actual weather conditions. The complexity of the snow management configuration increased during the season, leading to an increase in the RMSD values at the end of the season. In general, the temporal evolution of the RMSD values shows almost no large peaks. The large peak at Lenzerheide on 15 January 2019, occurred due

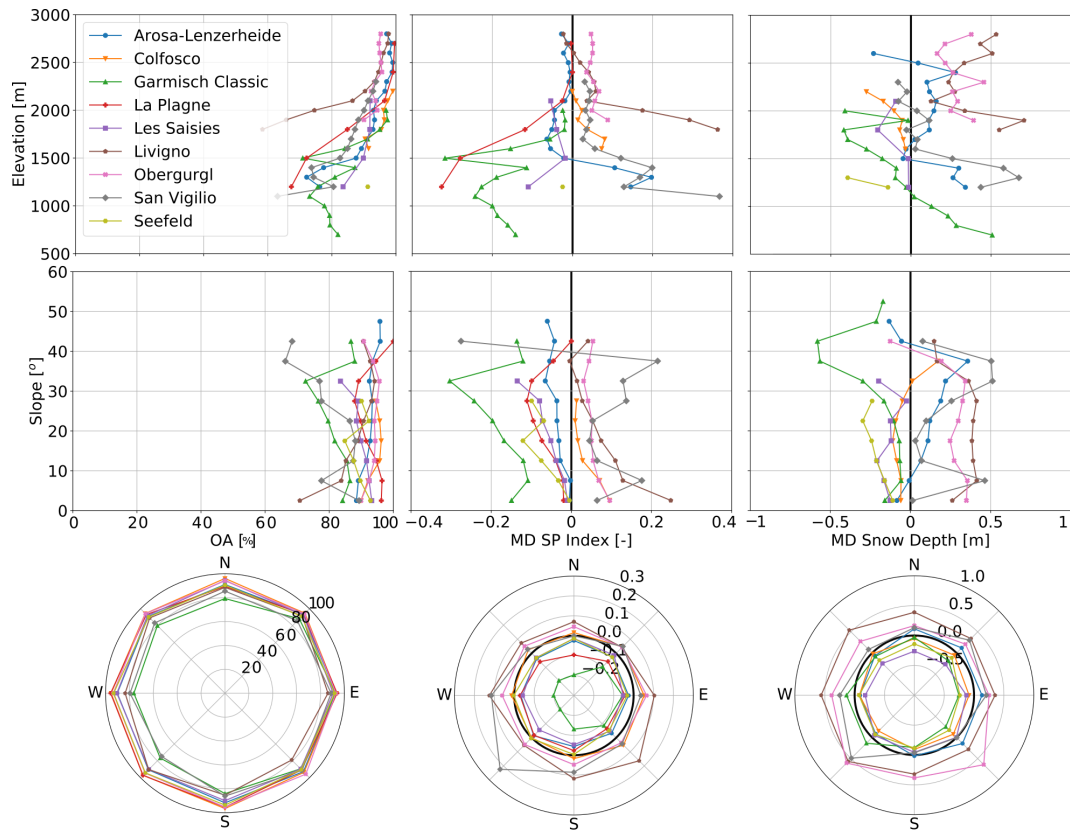


Figure 4. Comparison for 100 m elevation bands, 5° slope bands, and 45° aspect bands for (left) overall accuracy (OA) between simulation and S2 data, (middle) mean deviation (MD) in snow persistence index between S2 data and simulation, and (right) mean deviation (MD) value between the simulated and GNSS-measured snow depth data. All metrics are computed for snow on the pistes only.

to a heavy snowfall period, which led to an extraordinary avalanche situation. As a result, a large part of the ski area was closed, and many slopes were no longer groomed at this date. This led to the strong increase in the RMSD values in this season. In general, our models mainly overestimated the snow depth, and the fluctuations increased during the season. Regarding the degree of linear dependency of the simulated and measured data, the MD as shown in Fig. 5 reaches more than 0.5 m at some resorts, suggesting that more snow was produced compared to the model. For several resorts an increase in MD can be observed especially at the end of the seasons.

Figure 4 (right) represents the MD trends between the simulated and GNSS snow depth data for 100 m altitudinal classes, 5° slope classes, and 45° aspect classes. For this analysis, we considered RMSD values which refer to all the pixels corresponding to a fixed elevation class, degree slope, or degree aspect class, respectively, calculated over all the available days. Overall, the MD values vary between -0.6 and 0.6 m. No systematic relationship can be seen between the elevation and steepness of the pistes; the curves are highly specific for each resort. However, regarding the elevation discretization, the MD values increase on average with increas-

ing elevation. An overall average MD trend on the 5° slope classes is not found. Only for Arosa Lenzerheide, Garmisch Classic, and Les Saisies was a decrease in MD values for steeper slopes observed. The analysis of the 45° slope aspect bands on the MD values shows that the accuracy decreases for slopes oriented mainly towards the southwest. This is primarily due to the impact of solar radiation on the snow ablation.

4.3 SRU discretization

Discretizing the ski resorts in coarser clusters tends to mask the variability in the error in terms of RMSD due to averaging effects between the simulations and GNSS-measured snow depth between 8 % and 45 % independent of the season and cluster size (see Table A2). Therefore, it was not possible to find an overall optimal SRU size regarding the RMSD values. We also computed the MD of the errors calculated as the difference between the measured snow depth and the modeled snow depth, shown in Fig. 6. The original pixel snow depth is kept for the 10 m resolution, while a mean snow depth for each SRU is calculated for the different SRU altitudinal band classes. For the computation of the SRU snow depth, only those pixels with valid GNSS measurements were considered

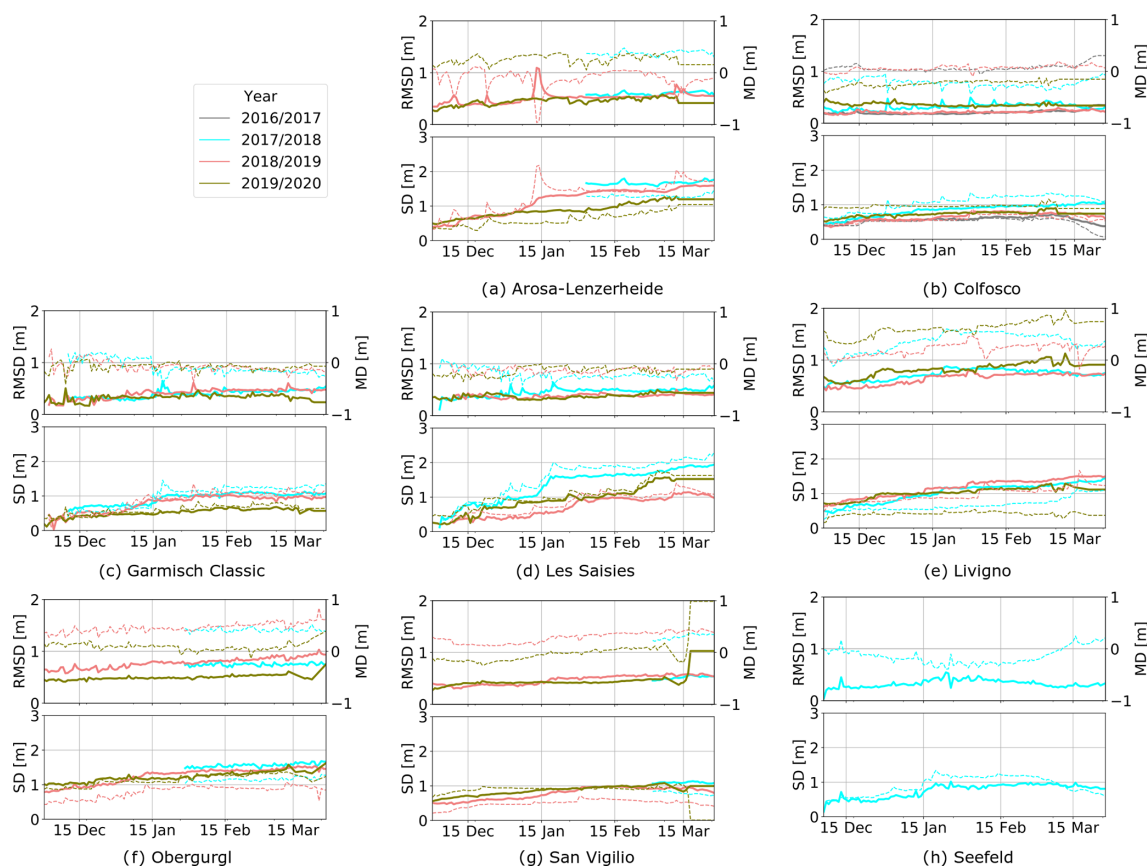


Figure 5. Root mean square deviation (RMSD) (upper subplots: solid line, left axis) and mean deviation (MD) (upper subplots: dashed line, right axis) averaged over space between GNSS-measured snow depth (SD) (lower subplots: solid line, left axis) and simulated SD (lower subplots: dashed line, right axis) over time for the ski resorts. Within the period 2016–2020 we considered all valid GNSS-measured snow depth data which were available.

and taken into account (between 0 and 3.5 m). The MD and the standard deviation of the error are then calculated by considering all the available measurements over time and space. We propose here a differentiation for the 4 months December, January, February, and March in Fig. 6. Interestingly, the mean and the deviation of the MD values widely differ for single resorts.

In addition, we tested the spatial variability within the pistes. For a visualization example presented in Fig. 7, we chose a long piste ranging between 700 and 1700 m a.s.l. within the Garmisch Classic ski resort for a date with maximal piste coverage. Figure 7 reports the simulated snow depth and the GNSS measurements as well as the pixel-wise difference for the original resolution at 10 m (on the left). The same variables averaged over a possible SRU discretization, in this specific case considering 100 m elevation bands, are also reported in the same figure on the right. Regarding the fine resolution of 10 m, it is obvious that the GNSS snow depth data are much more variable in general and are especially available in the upper part of this piste due to the more highly localized snow management than the simulations with

the default configuration can provide and due to small-scale topographic differences in some regions of the pistes. A good agreement was found especially in the lower and middle parts of this example slope, with slight under- and overestimations of the simulated snow height. The picture would look similar for all other pistes and resorts (not shown).

5 Discussion

This study presents a new high-resolution evaluation of snowpack simulations including snow management modules for mountain ski resorts to assess the quality of the simulations. The simulated results showed a high overall accuracy of more than 80 % compared to the Sentinel-2 data and a root mean square error in the GNSS-measured snow depth of below 0.6 m. The simulated results for all ski resorts are plausible and robust on the ski slope scale.

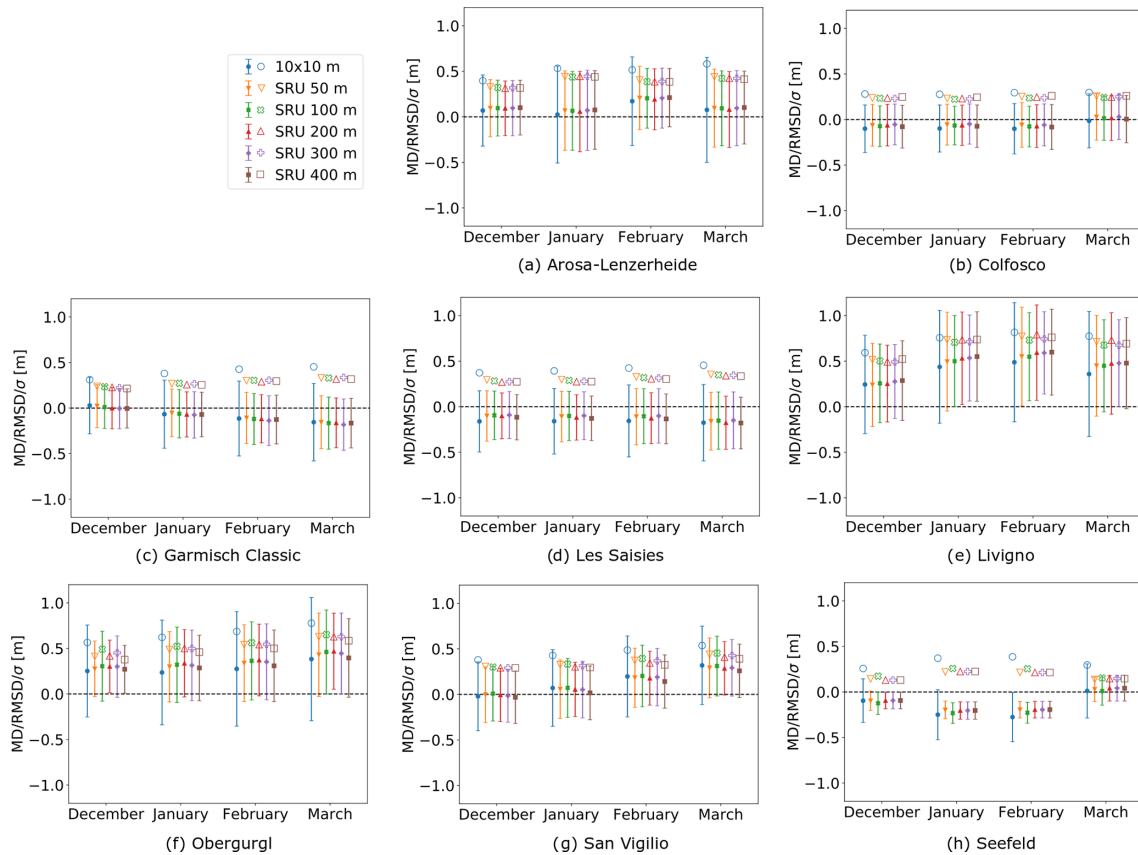


Figure 6. Overview of the root mean square deviation (RMSD; hollow symbols), mean deviation (MD; filled symbols), and standard deviation (σ ; extent of error bars) between simulated and GNSS-measured snow depth considering all the time steps and displayed for each different SRU resolution for the entire ski resort. The presented data are analyzed for the 4 months December, January, February, and March, when GNSS data were available.

5.1 Snow coverage

For every ski resort, a large number of S2 images classified with high accuracy were available to assess the quality of the simulations in terms of snow coverage. More than 62 S2 images at each ski resort and even more than 150 for two resorts were analyzed. The specific machine learning algorithm to derive information with low uncertainty about the presence or absence of snow from the Copernicus Sentinel-2 images allows the generation of snow maps across the Alps with relatively low manual effort. Additionally, the very detailed forest mask applied to the evaluation allowed us to simultaneously (i) avoid situations for which the information provided by S2 is insufficient to produce accurate results and (ii) be able to extract information about the snow cover for the pistes crossing dense forests, as is often the case for Garmisch. This allowed us to minimize the pixel loss due to canopy shading. The highest pixel losses with respect to the total piste area were in Arosa Lenzerheide (5.7 %) and Seefeld (5.5 %), followed by Obergurgl (2.4 %), Livigno (0.2 %), and Colfosco (0.2 %). For the other ski resorts it was zero.

The underestimation of the overall accuracy at the beginning and the end of the seasons was due to the fact that sometimes the exact snowline in the S2 data was hard to detect. Some snow lines were obscured by shadows, and they often did not appear as continuous lines, which may slightly bias our regional estimates, especially in areas which span different land uses. Also white rock types or illuminated wet rocks can lead to brighter pixels in the S2 data and to an underestimation of the overall accuracy. Because the spectral signal of these pixels is similar to that of snow, the algorithm detects an ice–snow boundary and classifies these pixels as part of the snow lines. Since these patches were situated in ski resorts in rocky areas, these misclassified pixels introduced negative biases in the overall accuracy estimates, and they were filtered out manually.

By inter-comparing the model simulations and the S2 images we encountered some recurrent errors. As described in the previous section, on average the accuracy of the simulations is high, and the snow coverage simulated by the PROSNOW models is consistent with observations. However, wrong discretization and/or missing meteorological input and lack of snow managing or land use information were

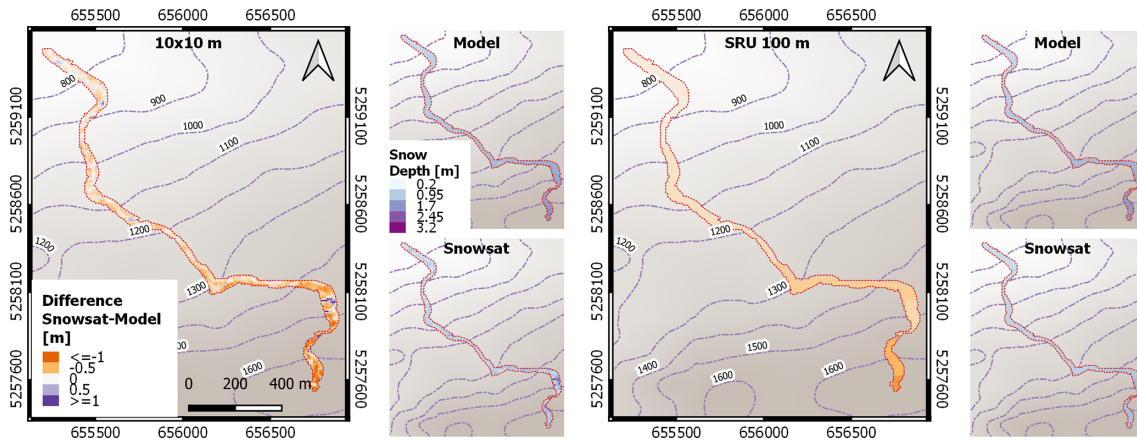


Figure 7. Example of spatial variability within a piste in Garmisch Classic (22 January 2018). On the left, RMSD represented as pixel-wise difference between measured and modeled snow depth for a 10 m pixel resolution. The smaller figures represent the original modeled and measured snow depth. On the right, RMSD represented as averaged difference between measured and modeled snow depth for a 100 m band SRU resolution. The nature of the large measured snow depth by GNSS at around 1400 m elevation is due to a dip in the ground surface, which was filled with snow to level the piste. This led to a higher GNSS-measured snow depth compared to the simulations.

the main sources of errors. In particular, (1) ephemeral snow (i.e., snow that lasts a few days either at the beginning or at the end of the season) is difficult for the models to simulate correctly; (2) rain–snow transition (e.g., ensuing rapid snowmelt inside the catchment) is difficult to simulate accurately; (3) due to unknown snow-making strategies, which are then not incorporated into the PROSNOW models, snow-making at the beginning of the season and delayed and anticipated snow melting at the end of the seasons are not correctly modeled over managed slopes; and (4) the heterogeneous landscape at 10 m resolution plays a role in the snow accumulation and melting dynamics (e.g., towns, lakes, and roads are visible and change the snow distribution). This information is generally not addressed by the PROSNOW models. These are just confirmations of the expected limitations of the state-of-the-art snow cover models. However, for the first time a systematic and extensive evaluation at high model resolution was performed. The details of the analysis with all the different recurrent errors encountered for each ski resort are shown in Table A3 and can be used for future studies. Note that the simulations presented here do not benefit from snow depth measurements and water consumption of snow-making, which are used, upon availability of the relevant data, for real-time applications of the models for operating the PROSNOW service provision, thereby limiting the impacts of some of the caveats identified above.

5.2 Snow depth

The GNSS data can only be used as ground observations with some restrictions. There are several problems which might affect the quality of the GNSS data: (i) the digital elevation model (DEM) profile of all ski resorts is prone to change every year due to earthwork and adaption of the slopes and

is always considered correctly in the extraction of the snow depth, and (ii) the inclination of the groomer has a large impact on the GNSS-measured snow depth. For example if the calculated snow depth is 0.5 m, the effect of 30 % inclination would be 6 cm, which means that the calculated snow depth would be 12 % higher than in reality. Furthermore, the work of the groomers is not only to measure the local snow depth but also to fill sinks, compensate humps, or level out the snow production or redistribution by the skiers. This might lead to very small-scale variances in the GNSS-derived snow depth for pistes both with and without technical snow production, whereas the model shows less pronounced variability. Therefore, especially the small-scale deviations between the simulated and GNSS-measured snow depth are not well applicable to reflect the model accuracy. The comparison rather shows the degree to which the default snow management configuration was applicable for the individual ski resorts. As each ski resort spontaneously adapts its snow management production due to changing weather and snow height conditions, it is not possible to consider the spontaneous snow management adjustments during the season in the simulations. It does not make a big difference between pistes with and without technical snow production even though the models do not explicitly simulate the snow redistribution. However, the RMSD between the modeled snow depth and GNSS measurements over time for the ski resorts is in the uncertainty range of the simulated configuration. Hanzer et al. (2020) analyzed 10 different snow management configurations, and an uncertainty range in snow depth of 20–50 cm was observed. This shows that the default snow management configuration leads, in general, to satisfactory simulation results for the individual ski resorts.

Some recurrent errors are encountered by inter-comparing the model simulations and the GNSS-measured snow depth.

The quality of the simulations is high, and they showed plausible and robust results on the ski slope scale. However, there are still sources of errors: (1) extreme snowfall situations, (2) snow redistribution by the groomers, (3) rapid ablation (e.g., south-, southwest-exposed pistes) due to high solar radiation, (4) leveraging of the pistes to reduce the accident risk of the skiers, (5) snow redistribution by the skiers, and (6) systematic errors due to the wrong snow-making strategy. These errors are already known, but it is too complex and not straightforward to consider this in the simulations in the current state. In detail, slightly different recurrent errors are encountered for each ski resort by inter-comparing the model simulations with GNSS-measured snow depth, which is shown in Table A3.

5.3 SRU discretization

Scale and data aggregation has important effects on the simulations and interpretation of snow depth data, which is also true for snow on pistes. Studies in different research fields clearly demonstrate that spatial variability and statistics are dependent on scale (Marceau, 1999; Wu, 1999; Wu et al., 2000; Perveen and James, 2010). Our evaluation showed that these scale dependencies in spatial variability and statistics appear complex with nonlinear increases with increasing grid-cell size. However a simple relationship between variability and scale emerges upon closer inspection: aggregating the 10 m simulated pixels to different SRU sizes led to a decrease in the error compared to the GNSS measurements due to averaging effects of the high spatial variability in the GNSS snow depth data. The RMSD values decreased between 8 % to 45 % regarding the SRU size using an altitudinal band of 50 m; however this effect diminished by further coarsening.

Nevertheless, the identification of guiding principles for researchers to combine data and models at different spatial and temporal scales and to extrapolate information between scales still remains a challenge. By going from fine to coarse scales, aggregation and generalization set in. The rate of information loss is influenced by small-scale spatial snow production and grooming patterns. Heterogeneous snow production for instance leads to more information loss than aggregations at coarser scales. The small-scale spatial effects of moving snow by the groomers or skiers, for instance, disappears slowly with decreasing resolution, and those that are dispersed are lost rapidly. This leads to an under- or overestimation of the simulated snow height. Therefore, a methodology needs to be developed to find out how much the loss of information takes place. Multiscale analysis was necessary to show that variability for different aggregation types of the snow height is inherently different and that for each SRU this can be different, as shown in Fig. 4.

However, we demonstrated a consistent evaluation procedure for all the PROSNOW ski resorts that can be useful for snowpack modelers and ski resort managers. An understand-

ing of the nature of scaling effects is needed when spatial or temporal scale is an independent variable. In landscapes with homogeneous snow depths, where snow measurements can be summed directly, such scale problems may not occur. However, in snow-distributed landscapes like at ski resorts, snow measurements obtained at fine scales often cannot be summed directly to produce regional estimates. Therefore, reasonable measures are not always given by weighted averages because heterogeneity in snow production and distribution may influence scaling processes in nonlinear ways. In such cases, increasing the level of spatial heterogeneity may also increase the difficulty of extrapolating information across scales (Perveen and James, 2010).

5.4 Remote sensing and GNSS snow depth

The use of remote sensing and GNSS data allows an evaluation procedure to be defined for the snowpack models and helps to improve the resource management of the ski resorts. The GNSS data provide means to collect accurate snow depth points in the field for precise correction of the simulated snow depths. Further, using snow depth measurements over an entire season together with snowpack simulations is a powerful tool in the long term. It allows the estimation of the minimum snow depth required at various slope sections. This ensures that slopes are optimally prepared and groomed right up to the end of the season. The spatial remote sensing images are needed to improve the simulated snow-covered area, especially at the beginning or end of the season or for lower-situated ski resorts, where natural snow precipitation is low. Further, it allows the correction of the simulated ablation process at the end of the season and the snow produced at the beginning of the season. However, further studies to determine whether the models can simulate snow depth with sufficient accuracy to enable the resort managers to maintain the optimum and minimum viable snow depth in a more efficient way are needed and will be attempted in the future (Köberl et al., 2021).

The combination of both techniques allows the evaluation and initialization of the simulations: imagery can be used for primary digitization of the snow cover where GNSS can be used for in situ observation of the snow height for the simulations. A detailed analysis of the differences between the two methods will allow us to make better decisions about when and how much snow is distributed by both groomers and skiers. Further, the effect of snow melting and snow redistribution by wind on the slopes can be extracted. This allows us to improve the models. However, this is not easy to extract and was not within the scope of this paper but should be considered for further studies.

6 Conclusions and outlook

The initiative for this study emerged within the H2020 PROSNOW project to evaluate the snow simulations over the nine PROSNOW ski resorts by comparing model outputs with local and remotely sensed measurements in terms of snow coverage, persistence, and snow depth. The three snowpack models AMUNDSEN, Crocus, and SNOWPACK–Alpine3D include all piste management modules and were evaluated using both ground-based data (GNSS-measured snow depth) and spaceborne Copernicus Sentinel-2-derived snow maps. We evaluated five winter seasons (2015–2020) from 1 October until the end of May and performed this evaluation in a stratified manner in order to assess the performance of the snow simulations under different conditions. Particular attention has been devoted to characterizing the spatial performance of the snowpack models with integrated snow management modules. Our presented results show high accuracy of the simulations, representing the “reality” well.

An inter-comparison of the three snowpack models applied to the same resort would be a logical next step from the model development perspective. Differences in the simulated results of the three models for a given ski resort would be mainly due to the different implementations of the snow management configurations into each model and due to the different snowpack energy and mass balance approaches. Such effects should have to be disentangled and discussed accordingly to have a reasonable comparison. However, this is not straightforward and is out of the scope of this paper but should be considered for the future. Nevertheless, this work showed that all three snowpack models applied for piste management reproduced plausible and robust results on the ski slope scale, and the overall accuracy of the results is mainly dependent on the degree to which the real-world snow management practices are integrated. Additionally, a detailed analysis to show the accuracy of the GNSS system installed on groomers to measure the snow depth is needed to validate the system. Moreover, integrating a snow redistribution model and an avalanche dynamics model into this system would help to point out where the biggest differences due to snow gliding or avalanches are between the Sentinel-2 data and the simulations. Further studies on the topographic complexity of the snow-free terrain and the rather smooth piste surface are needed to, for example, implement an index of surface smoothing compared to the bare ground. Future studies investigating how skiers redistribute snow under certain meteorological conditions in combination with topographic conditions (e.g., aspect, slope angle) would also help to overcome further potential errors.

Appendix A

A1 Further information on ski resort reference unit – SRU

In our approach, the spatial representations of ski areas and of the interpolated meteorological fields as well as the simulated snowpack information differ in their spatial representation: the geometry type used for the ski slope is a vector-based polygon, whereas the input and output of the snowpack models are based on a discrete approach, using regular grids of points. The challenge for PROSNOW was to define an intermediary spatial object. This should be consistent with representations balanced between the heterogeneity of meteorological conditions within ski slopes, the accuracy of snowpack models, and the computation resources and data volume required for a daily update. Also it should take into account the localization of the snowmaking facilities. The SRU, standing for ski resort reference unit, aims at fulfilling all of these requirements. It can be end-user-defined, including specific needs of the ski resort, but it can also be processed automatically by chaining several operations. We stored the vectorial geographic information system (GIS) and attribute data of all nine ski resorts in a PostgreSQL 10.7 database management system (DBMS), and the crossing operations between rasters and vectors were performed with Python 2.7 with the packages GDAL/OGR along with NumPy. For automatic processing of the SRUs we considered the following steps:

1. The association of each snow gun with a single ski slope is based on the spatial relation of the nearest neighbor to the ski slope.
2. The slope area covered by snowmaking is calculated by determination of the upper- and lower-altitude bounds for each snow gun. Considering that the mean surface covered by a single snow gun is approximately 1/3 ha, we applied a procedural language (PL)/PostgreSQL function to calculate the intersection between a slope and incremental 5 m buffer around the snow gun point until it reached at least 3000 m². This buffer was then crossed with the combined ASTER–SRTM DEM v1.1 made available by the European Copernicus organization, and we kept the buffer's altitude bounds, which were then aggregated at the slope level to cover a continuous surface.
3. Once the snow type attribute (“grooming only” or “with snowmaking”) is defined for every slope, the according areas were then divided into smaller parts based on the elevation resolution. The initial DEM topography was reclassified with respect to the targeted SRU resolution. A value in the according numeric series was assigned to a pixel whose value is in the range of the target value of approximately half the resolution (i.e., for 50 m resolution, the value 300 will be assigned for all DEM pixels

Table A1. Total number of available Sentinel-2 data for each ski resort.

Resort	Sentinel-2
Arosa Lenzerheide	63
Colfosco	93
Garmisch Classic	97
La Plagne	72
Les Saisies	65
Livigno	62
Obergurgl	190
San Vigilio	104
Seefeld	164

whose value is more than or equal to 275 m and less than 325 m and between 150 and 450 m for 300 m resolution). Contiguous pixels with the same values were merged and polygonized.

4. As small SRUs might occur by applying the abovementioned steps, e.g., at the beginning or ending of single pistes, we merged them in a post-processing step with other small adjacent piste fragments having the same snow type attribute. The final operation consisted of filling the missing snow type attributes by calculating the average area value for each polygon from the DEM and its derivatives (slopes and aspects) and matching the output from snow models (the snow type attributes of value, average altitudes (min and max altitude too), slopes, and aspects are also stored).

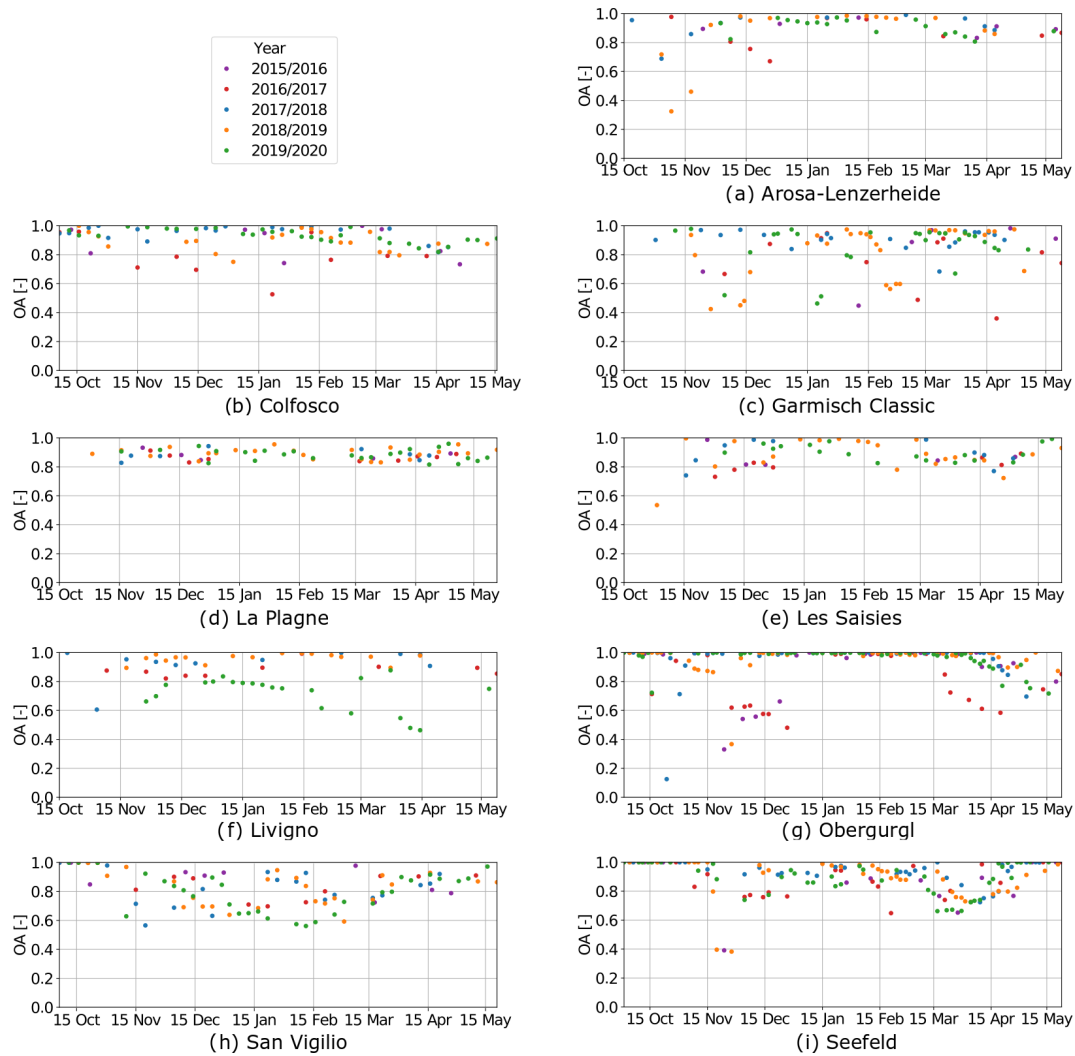


Figure A1. Overall agreement over time between simulation and S2 data for each ski resort for natural snow outside of the pistes. We considered images ranging from the winter season 2015/16 to the winter season 2019/20, except for Livigno, where simulations are not available for the first season 2015/16 due to gaps in the meteorological forcing data.

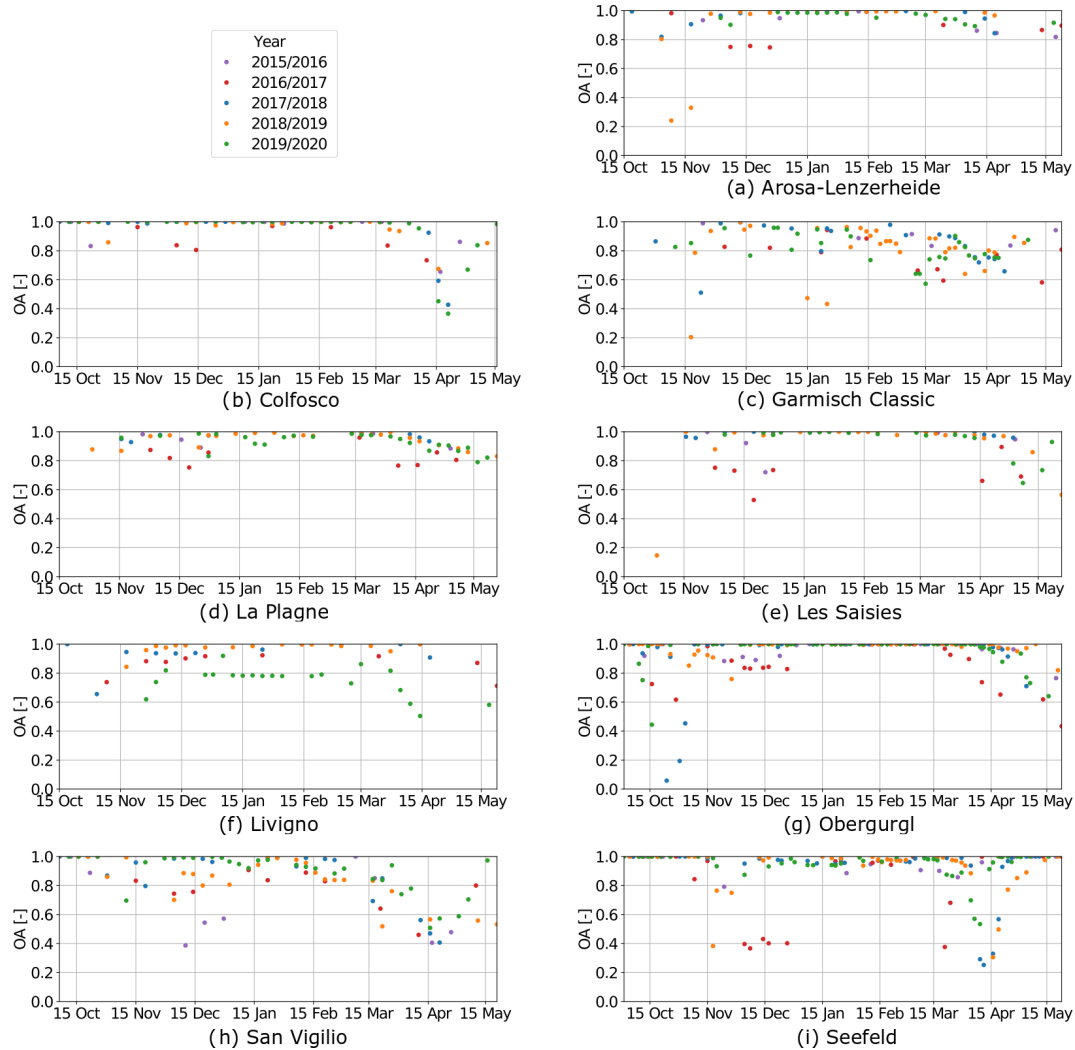


Figure A2. Overall accuracy trends over time between simulation and S2 data for each ski resort for machine-made snow on the pistes. We considered images ranging from the winter season 2015/16 to the winter season 2019/20, except for Livigno, where simulations are not available for the first season 2015/16 due to gaps in the meteorological forcing data.

Table A2. Effect of discretization of the simulated results (10 m × 10 m) into different SRU elevation bands: 50, 100, 200, 300, and 400 m. The first line indicates the number of 10 m × 10 m raster points for each ski resort. The calculated root mean square error (RMSD), mean deviation (MD), and the standard deviation (SD) are between the GNSS-measured and simulated snow depth. GNSS data were not available for La Plagne.

Resort	SRU	Amount SRUs	Mean SRU size (m ²)	Slope average (°)	MD	RMSD	SD
Arosa Lenzerheide	–	38 394	100	10.7	0.086	0.507	0.496
	50	533	7215	17.8	0.117	0.403	0.382
	100	312	12 325	17.4	0.115	0.392	0.370
	200	215	17 878	16.9	0.107	0.392	0.373
	300	175	21 968	17.3	0.117	0.394	0.371
	400	151	25 456	16.7	0.123	0.388	0.363
Colfosco	–	6378	100	12.5	−0.079	0.287	0.273
	50	65	9832	14.3	−0.038	0.244	0.238
	100	36	17 731	13.7	−0.050	0.234	0.225
	200	26	24 551	13.5	−0.045	0.233	0.240
	300	22	29 015	13.3	−0.033	0.236	0.231
	400	19	33 597	14.0	−0.057	0.253	0.244
Garmisch Classic	–	15 874	100	16.4	−0.077	0.380	0.393
	50	172	9443	18.6	−0.074	0.284	0.268
	100	90	18 046	18.3	−0.084	0.285	0.266
	200	58	28 003	17.9	−0.088	0.273	0.253
	300	45	36 093	16.3	−0.100	0.282	0.258
	400	39	41 645	16.0	−0.092	0.271	0.250
La Plagne	–	52 831	100	15.3	–	–	–
	50	994	5376	16.9	–	–	–
	100	644	8297	16.6	–	–	–
	200	437	12 228	15.9	–	–	–
	300	366	14 598	15.3	–	–	–
	400	322	16 592	14.8	–	–	–
Les Saisies	–	17 772	100	12.8	−0.163	0.411	0.378
	50	487	3647	12.6	−0.120	0.319	0.295
	100	316	5617	12.7	−0.113	0.310	0.288
	200	240	7394	12.4	−0.130	0.298	0.268
	300	213	8329	11.9	−0.110	0.304	0.283
	400	213	8336	11.4	−0.139	0.297	0.263
Livigno	–	47 947	100	13.1	0.382	0.736	0.625
	50	493	9756	17.3	0.434	0.684	0.523
	100	308	15 595	16.6	0.439	0.654	0.480
	200	216	22 230	15.9	0.464	0.688	0.502
	300	164	29 263	16.2	0.470	0.656	0.452
	400	143	33 568	16.3	0.479	0.679	0.475
Oberurgl	–	10 647	100	18.3	0.287	0.663	0.596
	50	163	6551	21.5	0.336	0.517	0.392
	100	102	10 453	21.1	0.363	0.557	0.422
	200	66	16 161	21.2	0.370	0.522	0.367
	300	58	18 422	20.5	0.353	0.531	0.396
	400	48	22 151	20.7	0.315	0.480	0.362
San Vigilio	–	12 571	100	16.0	0.141	0.457	0.419
	50	121	10 944	16.9	0.132	0.361	0.320
	100	78	16 968	16.4	0.149	0.370	0.323
	200	50	26 460	16.1	0.128	0.337	0.295
	300	44	30 079	16.1	0.130	0.350	0.307
	400	49	27 000	15.4	0.096	0.325	0.292
Seefeld	–	1427	100	5.8	−0.152	0.328	0.270
	50	7	20 537	10.4	−0.115	0.179	0.107
	100	5	28 918	9.8	−0.143	0.210	0.126
	200	4	36 147	8.3	−0.112	0.179	0.105
	300	4	36 147	8.3	−0.112	0.179	0.105
	400	4	36 147	8.3	−0.112	0.179	0.105

Table A3. Inter-comparing the model simulations with Sentinel-2 data and GNSS-measured snow depth for each ski resort.

Resort	Sentinel-2	GNSS
Arosa Lenzerheide	Slight overestimation of the snow line at the beginning of the season.	Short intensive snowfall generated high disagreement. Increasing error throughout the season, with an overestimation of the simulation.
Colfosco	Systematic error at the end of the seasons, leading to an overestimation of the snow-covered area.	Good agreement throughout the winter, with slight overestimation of the simulation. Southwest-exposed slopes especially encountered an overestimation of snow.
Garmisch Classic	Systematic errors at the beginning and end of the seasons lead to an overestimation of the snow coverage in these periods. However, it has to be noted that the snow season is shorter than at the other ski resorts, and large parts of the ski resort are covered by forest.	Good agreement throughout the winter, with underestimation of the simulations at the beginning and overestimation at the end of the season. Northeast-exposed slopes especially encountered an overestimation of snow in general.
La Plagne	Systematic error at the end of the seasons, leading to an overestimation of the results. North-exposed slopes especially encountered an overestimation of the snow-covered area.	Good agreement throughout the winter, with slight overestimation of the simulation.
Les Saisies	Systematic error at the end of the seasons, leading to an overestimation of the snow-covered area. South-exposed slopes especially encountered an overestimation of the snow.	No data available.
Livigno	Underestimation and overestimation of the snow-covered area at the beginning and end of the season. In addition, an underestimation of snow presence at the valley floor was encountered.	Good agreement at the beginning but increasing error during the season. Overestimation of the snow depth throughout the winter for the simulations. Southwest-exposed slopes especially encountered an overestimation of the snow.
Obergurgl	Short intensive snowfall misclassification generated high disagreement.	Good agreement at the beginning but increasing error during the season. Overestimation at the beginning and slight underestimation of the snow depth at the end of the season for the simulations. Southwest-exposed slopes especially encountered an overestimation of the snow.
San Vigilio	Systematic error at the end of the seasons, leading to an underestimation of the snow-covered area. As it is a low-altitude ski resort, there are also some errors in the middle of the seasons.	Good agreement throughout the winter, with slight underestimation of the simulation in the middle of the season.
Seefeld	Systematic error at the beginning and end of the seasons, leading to overestimation and underestimation of the snow-covered area.	Good agreement throughout the winter, with slight underestimation of the simulation in the middle of the season.

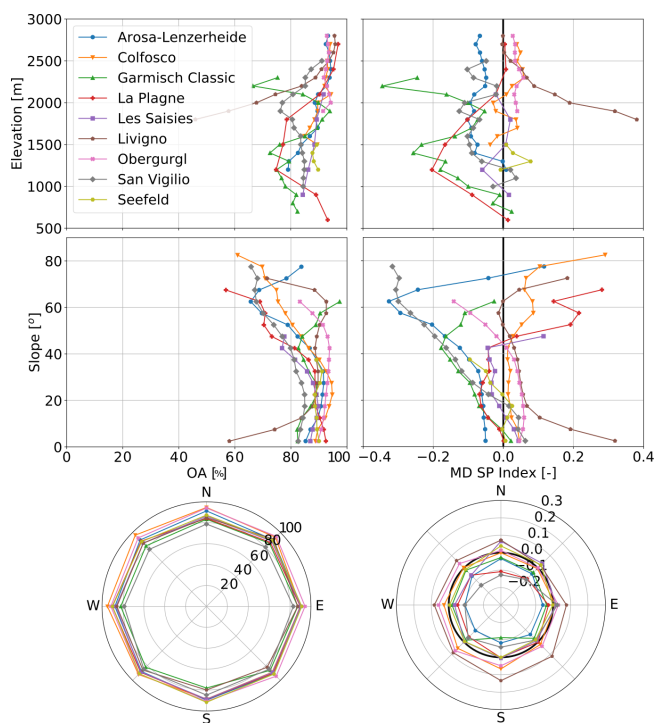


Figure A3. Comparison for 100 m elevation bands, 5° slope bands, and 45° aspect bands for (left) overall accuracy between simulation and S2 data and (right) mean deviation (MD) SP index between simulation and S2 data. All the metrics are computed for natural snow only.

Code and data availability. Datasets related to this article can be obtained at <https://doi.org/10.5281/zenodo.4541353> (Ebner et al., 2021) or by asking the authors directly.

We used SNOWPACK version 20181109.1697, Alpine 3D version 20181116.472, SURFEX/Crocus version 8.1, and AMUNDSEN version 1.2.

Author contributions. PPE, FK, VP, CM, and ML developed the paper concept and methodology. PPE, FK, VP, CM, FH, CMC, HF, FM, and OH contributed to the data collection, and VP, CM, and HF processed these data with input from PPE and FK. The final figures were produced by VP, and snowpack simulations were performed by PPE, FK, FH, and CMC. US, SM, and ML supervised this work, and SM acquired the funding. The draft was written by PPE, FK, VP, CM, and ML, and all authors contributed to the refinement of the paper scope and revised the paper.

Competing interests. The authors declare that they have no conflict of interest.

Disclaimer. PROSNOW is a project aiming at producing an operational climate service in order to transfer it as a commercial service.

Publisher's note: Copernicus Publications remains neutral with regard to jurisdictional claims in published maps and institutional affiliations.

Acknowledgements. We thank our project partners and ski resorts for many constructive discussions and providing data to improve the manuscript.

Financial support. This project has received funding from the European Union's Horizon 2020 research and innovation program under grant agreement no. 730203.

Review statement. This paper was edited by Masashi Niwano and reviewed by Richard L. H. Essery, Paul A. B. Bartlett, and one anonymous referee.

References

- Bartelt, P. and Lehning, M.: A physical SNOWPACK model for the Swiss avalanche warning, *Cold Reg. Sci. Technol.*, 35, 3135–3151, 2002.
- Bühler, Y., Marty, M., Egli, L., Veitinger, J., Jonas, T., Thee, P., and Ginzler, C.: Snow depth mapping in high-alpine catchments using digital photogrammetry, *The Cryosphere*, 9, 229–243, <https://doi.org/10.5194/tc-9-229-2015>, 2015.
- Dumont, M., Gardelle, J., Sirguey, P., Guillot, A., Six, D., Rabatel, A., and Arnaud, Y.: Linking glacier annual mass balance and

glacier albedo retrieved from MODIS data, *The Cryosphere*, 6, 1527–1539, <https://doi.org/10.5194/tc-6-1527-2012>, 2012.

- Ebner, P. P., Koch, F., Premier, V., Marin, C., Hanzer, F., Carmagnola, C. M., François, H., Günther, D., Monti, F., Hargoa, O., Strasser, U., Morin, S., and Lehning, M.: Datasets for the publication “Evaluating a prediction system for snow management”, Zenodo, <https://doi.org/10.5281/zenodo.4541353>, 2021.
- Essery, R., Kim, H., Wang, L., Bartlett, P., Boone, A., Brutel-Vuilmet, C., Burke, E., Cuntz, M., Decharme, B., Dutra, E., Fang, X., Gusev, Y., Hagemann, S., Haverd, V., Kontu, A., Krinner, G., Lafaysse, M., Lejeune, Y., Marke, T., Marks, D., Marty, C., Menard, C. B., Nasonova, O., Nitta, T., Pomeroy, J., Schädler, G., Semenov, V., Smirnova, T., Swenson, S., Turkov, D., Wever, N., and Yuan, H.: Snow cover duration trends observed at sites and predicted by multiple models, *The Cryosphere*, 14, 4687–4698, <https://doi.org/10.5194/tc-14-4687-2020>, 2020.
- Hammond, J., Saavedra, F., and Kampf, S.: How does snow persistence relate to annual streamflow in mountain watersheds of the Western U.S. with wet maritime and dry continental climates?, *Water Resour. Res.*, 54, 2605–2623, 2018.
- Hanzer, F., Helfricht, K., Marke, T., and Strasser, U.: Multilevel spatiotemporal validation of snow/ice mass balance and runoff modeling in glacierized catchments, *The Cryosphere*, 10, 1859–1881, <https://doi.org/10.5194/tc-10-1859-2016>, 2016.
- Hanzer, F., Carmagnola, C. M., Ebner, P. P., Koch, F., Monti, F., Bavay, M., Bernhardt, M., Lafaysse, M., Lehning, M., Strasser, U., François, H., and Morin, S.: Simulation of snow management in Alpine ski resorts using three different snow models, *Cold Reg. Sci. Technol.*, 172, 1–17, 2020.
- Kampf, S. and Lefsky, M.: Transition of dominant peak flow source from snowmelt to rainfall along the Colorado front range, historical patterns, trends, and lessons from the 2013 Colorado front range floods, *Water Resour. Res.*, 52, 407–422, 2016.
- Krinner, G., Derksen, C., Essery, R., Flanner, M., Hagemann, S., Clark, M., Hall, A., Rott, H., Brutel-Vuilmet, C., Kim, H., Ménard, C. B., Mudryk, L., Thackeray, C., Wang, L., Arduini, G., Balsamo, G., Bartlett, P., Boike, J., Boone, A., Chérut, F., Colin, J., Cuntz, M., Dai, Y., Decharme, B., Derry, J., Ducharme, A., Dutra, E., Fang, X., Fierz, C., Ghattas, J., Gusev, Y., Haverd, V., Kontu, A., Lafaysse, M., Law, R., Lawrence, D., Li, W., Marke, T., Marks, D., Ménégoz, M., Nasonova, O., Nitta, T., Niwano, M., Pomeroy, J., Raleigh, M. S., Schaedler, G., Semenov, V., Smirnova, T. G., Stacke, T., Strasser, U., Svenson, S., Turkov, D., Wang, T., Wever, N., Yuan, H., Zhou, W., and Zhu, D.: ESM-SnowMIP: assessing snow models and quantifying snow-related climate feedbacks, *Geosci. Model Dev.*, 11, 5027–5049, <https://doi.org/10.5194/gmd-11-5027-2018>, 2018.
- Köberl, J., François, H., Cognard, J., Carmagnola, C., Pretenthaler, F., Damm, A., and Morin, S.: The demand side of climate services for real-time snow management in Alpine ski resorts: some empirical insights and implications for climate services development, *Climate Services*, 22, 1–11, 2021.
- Lafaysse, M., Cluzet, B., Dumont, M., Lejeune, Y., Vionnet, V., and Morin, S.: A multiphysical ensemble system of numerical snow modelling, *The Cryosphere*, 11, 1173–1198, <https://doi.org/10.5194/tc-11-1173-2017>, 2017.
- Lalli, N., Mueller, B., Trechsel, R., Remund, A., Lädach, P., Moerch, F., and Galliker, B.: Fakten und Zahlen zur Schweizer Seilbahnbranche, *Seilbahnen Schweiz (SBS)*, 22 pp.,

- available at: <https://www.seilbahnen.org/de/Branche/Statistiken/Fakten-Zahlen> (last access: 15 July 2021), 2019.
- Lehning, M., Völksch, I., Gustafsson, D., Nguyen, T., Stähli, M., and Zappa, M.: ALPINE3D: A detailed model of mountain surface processes and its application to snow hydrology, *Hydrol. Process.*, 20, 2111–2128, 2006.
- Macander, M. J., Swingley, C. S., Joly, K., and Reynolds, M. K.: Landsat-based snow persistence map for northwest Alaska, *Remote Sens. Environ.*, 163, 23–31, 2015.
- Marceau, D.: The scale issue in social and natural sciences., *Canadian J. Remote Sens.*, 25, 347–356, 1999.
- Mary, A., Dumont, M., Dedieu, J.-P., Durand, Y., Sirguey, P., Milhem, H., Mestre, O., Negi, H. S., Kokhanovsky, A. A., Lafaysse, M., and Morin, S.: Intercomparison of retrieval algorithms for the specific surface area of snow from near-infrared satellite data in mountainous terrain, and comparison with the output of a semi-distributed snowpack model, *The Cryosphere*, 7, 741–761, <https://doi.org/10.5194/tc-7-741-2013>, 2013.
- Moore, C., Kampf, S., Stone, B., and Richer, E.: A GIS-based method for defining snow zones, application to the western United States, *Geocarto Int.*, 30, 62–81, 2015.
- Morin, S., Dubois, G., and the PROSNOW Consortium: PROSNOW-Provision of a prediction system allowing for management and optimization of snow in Alpine ski resorts, *International Snow Science Workshop Proceedings 2018*, Innsbruck, Austria, 571–576, 2018.
- NOAA: National Centers for Environmental Information, State of the Climate: Global Climate Report for November 2014, available at: <https://www.ncdc.noaa.gov/sotc/global/201411> (last access: 20 January 2021), 2014.
- NOAA: National Centers for Environmental Information, State of the Climate: Global Climate Report for November 2015, available at: <https://www.ncdc.noaa.gov/sotc/global/201511> (last access: 20 January 2021), 2015.
- Notarnicola, C.: Hotspots of snow cover changes in global mountain regions over 2000–2018, *Remote Sens. Environ.*, 243, 111781, <https://doi.org/10.1016/j.rse.2020.111781>, 2020.
- Notarnicola, C., Duguay, M., Moelg, B., Schellenberger, T., Tetzlaff, A., Monsorno, R., Costa, A., Steurer, C., and Zebisch, M.: Snow cover maps from MODIS images at 250 m resolution. Part 1: Algorithm description, *Remote Sens.*, 5, 110–126, 2013a.
- Notarnicola, C., Duguay, M., Moelg, B., Schellenberger, T., Tetzlaff, A., Monsorno, R., Costa, A., Steurer, C., and Zebisch, M.: Snow cover maps from MODIS images at 250 m resolution. Part 2: Validation, *Remote Sens.*, 5, 1568–1587, 2013b.
- Perveen, S. and James, L. A.: Multiscale Effects on Spatial Variability Metrics in Global Water Resources Data, *Water Resour. Manage.*, 24, 1903–1924, 2010.
- Riaño, D., Chuvieco, E., Salas, J., and Aguado, I.: Assessment of different topographic corrections in Landsat-TM data for mapping vegetation types (2003), *IEEE T. Geosci. Remote*, 41, 1056–1061, 2003.
- Richer, E., Kampf, S., Fassnacht, S., and Moore, C.: Spatiotemporal index for analyzing controls on snow climatology: application in the Colorado front range, *Phys. Geogr.*, 34, 85–107, 2013.
- Saavedra, F., Kampf, S., Fassnacht, S., and Sibold, J.: A snow climatology of the Andes Mountains from MODIS snow cover data, *Int. J. Climatol.*, 37, 1526–1539, 2017.
- Schultz, M., Voss, J., Auer, M., Carter, S., and Zipf, A.: Open land cover from OpenStreetMap and remote sensing, *Int. J. Appl. Earth Obs.*, 63, 206–213, 2017.
- Sirguey, P., Mathieu, R., and Arnaud, Y.: Subpixel monitoring of the seasonal snow cover with MODIS at 250 m spatial resolution in the Southern Alps of New Zealand: methodology and accuracy assessment, *Remote Sens. Environ.*, 113, 160–181, 2009.
- Spandre, P., Morin, S., Lafaysse, M., Lejeune, Y., François, H., and George-Marcelpoil, E.: Integration of snow management processes into a detailed snowpack model, *Cold Reg. Sci. Technol.*, 125, 48–64, 2016.
- Strasser, U.: Modelling of the Mountain Snow Cover in the Berchtesgaden National Park, Technical Report Berchtesgaden National Park, 2008.
- Strasser, U., Warscher, M., and Liston, G.: Modeling snow-canopy processes on an idealized mountain, *J. Hydrometeorol.*, 12, 663–677, 2011.
- Tuia, D., Persello, C., and Bruzzone, L.: Domain adaptation for the classification of remote sensing data: An overview of recent advances, *IEEE Geosci. Remote Sens. Mag.*, 4, 41–57, 2016.
- Vanat, L.: International Report on Snow & Mountain Tourism-Overview of the key industry figures for ski resorts, Geneva, Switzerland, 2020.
- Vernay, M., Lafaysse, M., Hagenmuller, P., Nheili, R., Verfaille, D., and Morin, S.: The S2M meteorological and snow cover reanalysis in the French mountainous areas (1958–present) [Data set], AERIS, <https://doi.org/10.25326/37>, 2019.
- Vionnet, V., Brun, E., Morin, S., Boone, A., Faroux, S., Le Moigne, P., Martin, E., and Willemet, J.-M.: The detailed snowpack scheme Crocus and its implementation in SURFEX v7.2, *Geosci. Model Dev.*, 5, 773–791, <https://doi.org/10.5194/gmd-5-773-2012>, 2012.
- Vionnet, V., Marsh, C. B., Menounos, B., Gascoin, S., Wayand, N. E., Shea, J., Mukherjee, K., and Pomeroy, J. W.: Multi-scale snowdrift-permitting modelling of mountain snowpack, *The Cryosphere*, 15, 743–769, <https://doi.org/10.5194/tc-15-743-2021>, 2021.
- Wayand, N. E., Marsh, C. B., Shea, J. M., and Pomeroy, J. W.: Globally scalable alpine snow metrics, *Remote Sens. Environ.*, 213, 61–72, 2018.
- Wu, J.: Hierarchy and scaling: extrapolating information along a scaling ladder, *Can. J. Remote Sens.*, 25, 367–380, 1999.
- Wu, J., Jelinski, D., Luck, M., and Tueller, P.: Multiscale analysis of landscape heterogeneity: scale variance and pattern metrics, *Geogr. Inf. Sci.*, 6, 6–19, 2000.