



HAL
open science

A new phase in the production of quality-controlled sea level data

Graham D. Quartly, Jean-François Legeais, Michaël Ablain, Lionel Zawadzki, M. Joana Fernandes, Sergei Rudenko, Loren Carrère, Pablo Nilo García, Paolo Cipollini, Ole B. Andersen, et al.

► To cite this version:

Graham D. Quartly, Jean-François Legeais, Michaël Ablain, Lionel Zawadzki, M. Joana Fernandes, et al.. A new phase in the production of quality-controlled sea level data. *Earth System Science Data*, 2017, 9, pp.557-572. 10.5194/essd-9-557-2017. insu-03670730

HAL Id: insu-03670730

<https://insu.hal.science/insu-03670730v1>

Submitted on 17 May 2022

HAL is a multi-disciplinary open access archive for the deposit and dissemination of scientific research documents, whether they are published or not. The documents may come from teaching and research institutions in France or abroad, or from public or private research centers.

L'archive ouverte pluridisciplinaire **HAL**, est destinée au dépôt et à la diffusion de documents scientifiques de niveau recherche, publiés ou non, émanant des établissements d'enseignement et de recherche français ou étrangers, des laboratoires publics ou privés.



Distributed under a Creative Commons Attribution 4.0 International License



A new phase in the production of quality-controlled sea level data

Graham D. Quartly¹, Jean-François Legeais², Michaël Ablain², Lionel Zawadzki²,
M. Joana Fernandes^{3,4}, Sergei Rudenko^{5,6}, Loren Carrère², Pablo Nilo García⁷, Paolo Cipollini⁸,
Ole B. Andersen⁹, Jean-Christophe Poisson², Sabrina Mbajon Njiche¹⁰, Anny Cazenave^{11,12}, and
Jérôme Benveniste¹³

¹Plymouth Marine Laboratory, Plymouth, PL1 3DH, UK

²CLS, 31520 Ramonville-Saint-Agne, France

³Faculdade de Ciências, Universidade do Porto, 4169-007, Porto, Portugal

⁴Centro Interdisciplinar de Investigação Marinha e Ambiental (CIIMAR), 4450-208 Matosinhos, Portugal

⁵Deutsches Geodätisches Forschungsinstitut, Technische Universität München, 80333 Munich, Germany

⁶Helmholtz Centre Potsdam GFZ German Research Centre for Geosciences,

Telegrafenberg 14473 Potsdam, Germany

⁷isardSAT, 08042 Barcelona, Spain

⁸National Oceanography Centre, Southampton, SO14 3ZH, UK

⁹DTU Space, 2800 Kongens Lyngby, Denmark

¹⁰CGI, Leatherhead, KT22 7LP, UK

¹¹LEGOS, 31400 Toulouse, France

¹²ISSI, 3912 Bern, Switzerland

¹³ESA/ESRIN, 00044 Frascati, Italy

Correspondence to: Graham D. Quartly (gqu@pml.ac.uk)

Received: 27 March 2017 – Discussion started: 13 April 2017

Revised: 3 July 2017 – Accepted: 14 July 2017 – Published: 14 August 2017

Abstract. Sea level is an essential climate variable (ECV) that has a direct effect on many people through inundations of coastal areas, and it is also a clear indicator of climate changes due to external forcing factors and internal climate variability. Regional patterns of sea level change inform us on ocean circulation variations in response to natural climate modes such as El Niño and the Pacific Decadal Oscillation, and anthropogenic forcing. Comparing numerical climate models to a consistent set of observations enables us to assess the performance of these models and help us to understand and predict these phenomena, and thereby alleviate some of the environmental conditions associated with them. All such studies rely on the existence of long-term consistent high-accuracy datasets of sea level. The Climate Change Initiative (CCI) of the European Space Agency was established in 2010 to provide improved time series of some ECVs, including sea level, with the purpose of providing such data openly to all to enable the widest possible utilisation of such data. Now in its second phase, the Sea Level CCI project (SL_cci) merges data from nine different altimeter missions in a clear, consistent and well-documented manner, selecting the most appropriate satellite orbits and geophysical corrections in order to further reduce the error budget. This paper summarises the corrections required, the provenance of corrections and the evaluation of options that have been adopted for the recently released v2.0 dataset (https://doi.org/10.5270/esa-sea_level_cci-1993_2015-v_2.0-201612). This information enables scientists and other users to clearly understand which corrections have been applied and their effects on the sea level dataset. The overall result of these changes is that the rate of rise of global mean sea level (GMSL) still equates to $\sim 3.2 \text{ mm yr}^{-1}$ during 1992–2015, but there is now greater confidence in this result as the errors associated with several of the corrections have been reduced. Compared with v1.1 of the SL_cci dataset, the new rate of

change is 0.2 mm yr^{-1} less during 1993 to 2001 and 0.2 mm yr^{-1} higher during 2002 to 2014. Application of new correction models brought a reduction of altimeter crossover variances for most corrections.

1 Introduction

Sea level is widely recognised as an essential climate variable (ECV) that has a significant impact on mankind. An accelerated rise in global mean sea level (GMSL) shows the integrated effect of increased ocean heat content and the enhanced melting of glaciers and ice sheets. Many major conurbations are sited on the coast and vulnerable to long-term sea level rise. This is also critical for low-lying islands (such as the Maldives) and highly populated river deltas (such as the Brahmaputra in Bangladesh) where continued sea level rise threatens the lives of many.

The issue of sea level rise thus has aspects that are global, regional and local. Global mean sea level rise is related to increased forcing within the global climate through increased ocean warming and land ice loss. Satellite altimetry also reveals significant regional variability, with some regions experiencing greater rates of sea level rise. The sea level in a region also responds to ocean circulation changes associated with various modes of climatic variability, which may temporally ameliorate or exacerbate the effects of global change; such regional climatic oscillations need to be better measured, modelled and understood. An accurate robust record of regional changes can help to provide the “fingerprint” to distinguish between different models of the Earth’s response to enhanced climate forcing (Hasselmann, 1997). At the coast what is important to the population is the combined effects of large-scale climate variations, local changes in waves and currents, and vertical land motion. In many regions the ground is subsiding in response to increased sediment load in deltas or ground water depletion near megacities. Also, the land masses are still undergoing a delayed response to the removal of their burden from the last ice age (a phenomenon known as “glacial isostatic adjustment”). Together these effects and sea level rise amplify the vulnerability of coastal regions, producing major societal impacts. Finally, sea level variations need to be precisely monitored at the mesoscale (50–200 km) as the variability associated with eddies and current fluctuations provides many of the mechanisms for transporting and mixing water masses, with attendant effects on primary productivity.

The European Space Agency (ESA) set up the Climate Change Initiative (CCI) in 2010 to develop consistent long-term datasets of many of the recognised essential climate variables (ECVs), with one using satellite altimetry to provide sea level data over most of the open ocean, with the aim of addressing part of the aforementioned wide range of scientific and societal needs. The initial (v1.0) dataset spanned 1993–2010 (Ablain et al., 2015, 2016); the second phase of

the CCI (2014–2016) has not only extended the data duration (up to end of 2015) but also revisited many aspects of the data processing and corrections to improve the quality of the dataset for global, regional and mesoscale applications. This paper details the processing options selected for the production of the v2.0 dataset.

The whole dataset is based on the concept of altimetry, i.e. that a satellite flying in a near-polar orbit measures the ocean surface topography by recording the time taken for radar pulses emitted by the satellite to reflect off the surface and be recorded on the satellite. There are many technical details to the measurement of this distance to within a few centimetres from a satellite ~ 720 – 1350 km above the Earth’s surface, which are described in Chelton et al. (1989), Fu and Cazenave (2001) and Escudier et al. (2017). Range is then computed by multiplying half the time delay by the speed of light in vacuo, and then applying corrections for the components of the return path where speed is slightly less – these are the dry tropospheric correction (DTC), wet tropospheric correction (WTC), and the ionospheric correction (Iono). Subtracting this altimetric range from a well-modelled orbit height then gives a value for the sea surface height relative to some reference surface. To give a measure that is useful for oceanographic applications, the value needs to be adjusted for the effect of changes in atmospheric conditions (dynamic atmosphere correction, DAC) and tides. Finally there is an empirical correction, sea state bias (SSB), accounting for various effects related to the wind and wave conditions. Thus the required oceanographic parameter, the sea level anomaly (SLA), is defined as

$$\text{SLA} = \text{Orbit} - (\text{Range} + \text{DTC} + \text{WTC} + \text{Iono}) - \text{DAC} \\ - \text{Tides} - \text{SSB} - \text{MSS}, \quad (1)$$

where the mean sea surface (MSS) is the sum of the geoid (the geopotential surface indicating the level that would be recorded for a motionless ocean) and the mean dynamic topography (MDT), which corresponds to the topographic variations associated with the mean circulation of the ocean. Values for these corrections are supplied in the geophysical data records (GDRs) provided by the space and meteorological agencies; however, there is a need to review whether new ones are more accurate, and also to establish a consistent selection across all missions used.

Gridded altimeter products combine information from two sets of altimeters – the “reference missions” (TOPEX/Poseidon, Jason-1, Jason-2 etc.) in a high-altitude (~ 1336 km) orbit, with a 9.92-day repeat cycle, and the “complementary missions”, which are in a lower orbit,

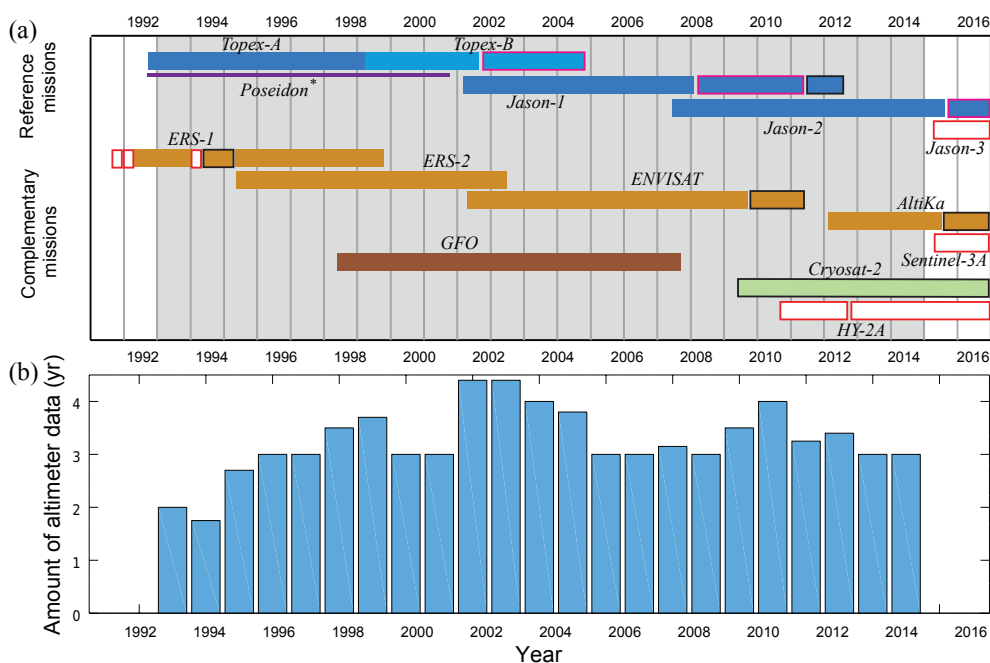


Figure 1. (a) Gantt chart of the available altimetry missions. (Full names of satellites and other commonly used abbreviations are given in Appendix A.) * The spacecraft TOPEX/Poseidon had two separate altimeters, with the experimental Poseidon instrument on for $\sim 10\%$ of the time, during which TOPEX did not operate. The “reference missions” all commenced in the same orbit, with 66° orbit inclination and a repeat period of 9.92 days; subsequent phases of those missions were then in a 9.92-day interleaved orbit (pink outline) or a long-repeat (geodetic) orbit (black outline). The missions highlighted in orange were principally in another common orbit (98.5° inclination and 35-day repeat), except for geodetic phases (black outline) and short periods in a 3-day repeat (ERS-1). The other complementary missions are GFO (72° inclination, 17.05-day) and CryoSat-2 (88° inclination, geodetic orbit). The periods indicated by white bars with red outlines are not used in the production of CCI v2.0 product. (b) Annual amount of independent altimeter data used in the production of the v2.0 dataset. (Note, for example, that during the 6-month “tandem” phases between successive “reference missions” the contribution of one of the pair to the sea level record is redundant.)

several of which (ERS-1, ERS-2, Envisat) have been in a 35-day repeat orbit. In progressing from the Sea Level CCI (SL_cci) v1.1 product to the v2.0 product, the length of the dataset has been extended and two new sources of altimeter data have been included (SARAL/AltiKa and CryoSat-2; see Fig. 1), and all the corrections have been reappraised to ensure that they are the most appropriate for establishing a consistent and stable long-term record for use at global, regional and mesoscale. Note that the SL_cci Algorithms Theoretical Basis Document (Ablain et al., 2016) provides the details on all algorithms used to compute the 1 Hz along-track measurements. This paper deals with each of these correction terms, documenting the selections made and their justification; subsequent papers will exploit the SL_cci v2.0 data to improve our understanding of present-day sea level variations at global and regional scales, and their causes.

The assessment of new corrections has been carried out by a formal validation protocol using a common set of diagnoses defined to fulfil the sea level accuracy and precision requirements, as defined by the Global Climate Observing System (GCOS, 2011). This protocol consists of comparing new al-

timeter corrections with previous ones through their impact on the sea level calculation. The validation diagnoses are distributed into three distinct families allowing the assessment of altimetry data with complementary objectives.

1. “Global internal analyses”, which check the internal consistency of a specific mission-related altimetry system by analysing the computed sea level, its instrumental parameters (from altimeter and radiometer) and associated geophysical corrections,
2. “Global multi-mission comparisons”, which evaluate the coherence between two different altimetry systems through comparison of SLA data,
3. “Altimetry comparison with in situ data”, which computes differences between altimeter SLA data and those from in situ sea level measurements, e.g. tide gauges or Argo-based steric sea level data (Legeais et al., 2016a); this third approach allows for the detection of potential drifts or jumps in the long-term sea level time series.

2 Orbits and range

Orbital height and altimeter range are the two large terms that are differenced in the calculation of SLA. The former term refers to the height of the satellite above the reference ellipsoid, whilst the range is the measurement from the radar altimeter to the ocean surface. The orbit is not measured everywhere but rather calculated from a sophisticated numerical theory of satellite motion using a well-defined reference frame and taking into account various forces acting on a satellite, such as gravitational fields of the Earth, Moon, Sun and major planets of the Solar System; drag in the Earth's atmosphere; and radiation from the Sun and the Earth. The orbit computation for the various altimetry satellites uses a variety of data – precise satellite laser ranging from ground stations, GNSS locations from navigation satellites that are in a much higher orbit, and radio-positioning information from DORIS and PRARE – although not all sources are available for every satellite. The calculation of altimeter range includes waveform retracking (i.e. fitting a model to the shape of the radar echo) and compensation for an altimeter bias specific to the instrument (Ablain et al., 2017; Escudier et al., 2017).

2.1 Modelled orbits

As the orbital height of the satellites needs to be known to centimetric accuracy (i.e. one part in 10^8), the Earth's gravity field requires a detailed representation usually expressed in spherical harmonic coefficients, typically to degree and order 90–120 for satellites at altitudes between 700 and 1400 km. Terrestrial gravimeters and geodetic satellites, such as LAGEOS, and more recently the space gravimetry mission GRACE (Tapley et al., 2004) revealed that the Earth's gravity field changes with time. Detailed analysis of the observations of satellites in low Earth orbit, in particular, from the missions designed to observe the Earth's gravity field, such as CHAMP (2000–2010), GRACE (2002–present) and GOCE (2009–2013) has significantly improved knowledge about the Earth's static and time-variable gravity. Time variations in the gravity field include the mass redistribution within and between the Earth's atmosphere, hydrosphere, ocean and cryosphere, on a variety of timescales, from subseasonal to multidecadal. Ollivier et al. (2012) and Rudenko et al. (2014) showed that ignoring a time-variable (secular) part of the geopotential causes up to 3 mm yr^{-1} east–west errors in the regional sea level trends. Additionally, ignoring non-tidal high-frequency atmospheric and oceanic mass variations can lead to errors of up to 7 mm in sea level and up to 0.25 mm yr^{-1} in the regional trend (Rudenko et al., 2016). Achieving precise orbits also requires an accurate model of the spacecraft itself in order to understand the drag terms from a very tenuous atmosphere, the effects of solar radiation pressure and relativistic effects.

New VER11 orbit solutions of ERS-1, ERS-2, Envisat, TOPEX/Poseidon, Jason-1 and Jason-2 have been gener-

ated at GFZ (Rudenko et al., 2017). Additionally, a new orbit version (POE-E) has been computed at CNES for Jason-1, Jason-2, AltiKa and CryoSat-2, and finally, a new orbit version (GSFC std1504) has been derived at GSFC for TOPEX/Poseidon, Jason-1 and Jason-2 (Lemoine et al., 2017). All these orbit solutions have been derived in the extended ITRF2008 reference frame (Altamimi et al., 2011) by using SLRF2008 (Pavlis, 2009), DPOD2008 (Willis et al., 2016) and IGS08 (Rebischung et al., 2012) station solutions and are based on the GDR-E orbit standards (Dumont et al., 2017) or similar standards. The main differences of these standards with respect to the previous GDR-D (Dumont et al., 2017) orbit standards consist of (i) using a more refined Earth time-variable gravity field model EIGEN-GRGS.RL03-v2.MEAN-FIELD including time-variable geopotential terms up to degree and order 80 (instead of 50 in the previous standards), (ii) increased expansion of the atmospheric gravity model (from degree and order 20 to 70), (iii) modelling of tidal and non-tidal geocentre variations, (iv) improved modelling of non-gravitational forces for some satellites, (v) improvements in the troposphere correction model for DORIS observations, and (vi) using Earth orientation parameters consistent with the ITRF2008 reference frame.

A validation of these new orbit solutions has been performed with respect to those selected for the SL_cci v1.0 product (Table 1 of Ablain et al., 2015). The main criteria for the selection are a reduction of the SLA crossover variance differences and minimum absolute difference of the mean sea level computed using ascending and descending passes. As a result of this validation, the following orbit solutions have been selected: GFZ VER11 orbits for ERS-1, ERS-2 and Envisat; CNES POE-E orbits for Jason-1, Jason-2, AltiKa and CryoSat-2; and GSFC std1504 orbit for TOPEX/Poseidon. Consequently, using the GSFC std1504 orbit for TOPEX/Poseidon instead of the GSFC std1204 orbit (used for the SL_cci v1.0 product) reduces the mean of sea surface height (SSH) crossovers from 0.34 to 0.24 cm. The standard deviation of these crossovers shows an improvement from 4.99 to 4.96 cm for Jason-1, from 4.91 to 4.87 cm for Jason-2, and, from 5.55 to 5.51 cm for Cryosat-2, when using the CNES POE-E orbit instead of the CNES POE-D orbit. Since no new orbit solution has become available for GFO, the same (GSFC std08; Lemoine et al., 2006) orbit was used for the generation of the SL_cci v2.0 product, as for its predecessor. Couhert et al. (2015) showed that using Jason-1/2 orbits derived with SLR and DORIS measurements may cause up to 0.3 mm yr^{-1} decadal and 1 mm yr^{-1} interannual regional errors when employing ITRF2005 reference frame instead of ITRF2008 one for orbit computations. Since no DORIS data were used to derive GFO GSFC std08 orbit, the impact of using this orbit on the regional sea level may be larger, when using just one mission. However, since regional sea level is derived in the SL_cci v2.0 product using data from nine altimetry missions over the time span 1993–2015,

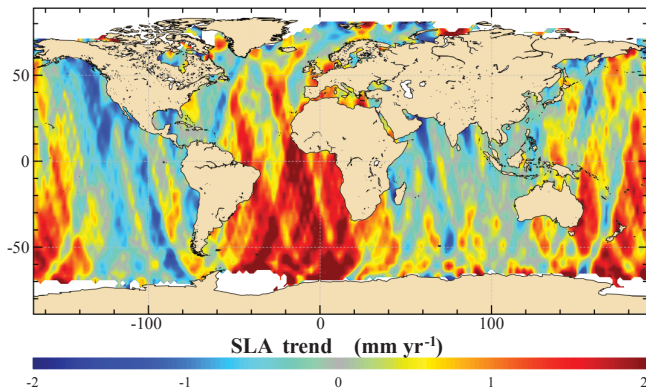


Figure 2. Difference in sea level trends for ERS-1 data (October 1992 to June 1996) computed using GFZ VER11 orbit and the REAPER combined orbit (which was used in an earlier CCI sea level product; Ablain et al., 2015).

the impact of using GFO orbit derived in ITRF2005, while the orbits of the other eight missions are in the ITRF2008, is rather small. There is no impact of the GFO orbit on the global mean sea level (GMSL), since GFO is not included in the reference missions used to derive that in the SL_cci v2.0 product.

The SL_cci v1.1 product used the REAPER combined orbit for ERS-1 and ERS-2 (Rudenko et al., 2012), whilst GFZ VER11 orbit was used for the new (v2.0) product detailed here. The differences in the regional sea level trends computed using these two different orbits reach $\pm 2.0 \text{ mm yr}^{-1}$ (Fig. 2). A switch from CNES POE-D orbit to POE-E orbit for Jason-1 caused changes in the SLA trend of up to $\pm 1.5 \text{ mm yr}^{-1}$ (Fig. 3). The broad dipole pattern corresponds to errors in the modelling of geocentre motion, whilst individual tracks are prominent where changes to the gravity field have a more local effect.

2.2 Precise determination of the altimeter range

A waveform, i.e. the full radar echo recorded on board the altimeter, corresponds to the radar return from a disc a few kilometres across on the sea surface. Provided the surface is homogeneous, the shape of the waveform will conform to the Brown model (Brown, 1977; Hayne, 1980). In such circumstances, the position of the waveform (and thus the range) may be very accurately extracted; these values are stored in the GDR provided by the space agencies. In general, the sea level CCI project has not attempted to perform its own retracking of all the different missions but has assessed the quality of those available. In particular, the v2.0 product makes use of the latest ERS-1 and ERS-2 reprocessings from the REAPER project (Brockley et al., 2017), and incorporates the new GDR (version E) for Jason-1, which includes improved estimates of internal errors. The TOPEX waveform data show a sawtooth effect plus various data spikes associ-

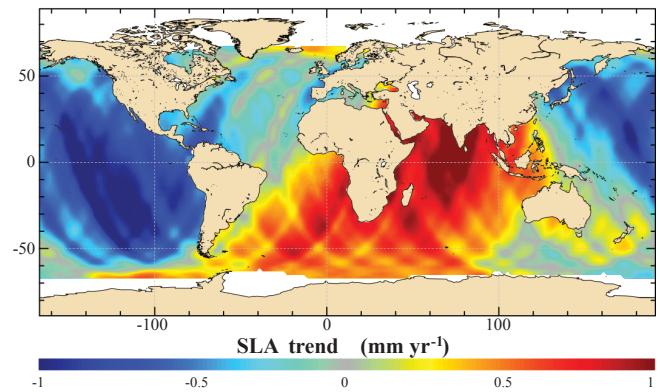


Figure 3. Change in SLA trend for Jason-1 sea level upon a switch from CNES orbit POE-D to POE-E.

ated with specific waveform bins (Hayne et al., 1994) and some of the waveform bins are averaged in pairs or groups of four, making the variability statistics complicated (Quartly et al., 2001). There has also been a degradation of the point target response of the “side A” instrument, heading to significant changes in wave height (Queffeuilou, 2004), signal amplitude (Quartly, 2000) and derived range (Chambers et al., 2003). No new product for that mission was available in time for the reprocessed SL_cci v2.0 product, although Dieng et al. (2017) have recently suggested that a new correction for that period would yield a slightly smaller rate of sea level rise (see also Watson et al., 2015; Chen et al., 2017).

As part of the Level 1b processing, corrections are applied to the range for changes in the point target response (PTR) in response to ageing of the instrument, and also any drift in the ultra-stable oscillator (USO) that controls the on-board timing of pulses. Within the early years of the SL_cci project it had been found that Envisat’s PTR waveform needed to be reversed in the Level 1b processing at Ku band (García and Roca, 2010); this change caused a notable impact on range, leading to better agreement of the long-term trends between Envisat and the reference missions. During the second phase, the S-band signal (used to compute the ionospheric correction) was assessed, but no change was made because there was no discernible benefit.

During the first phase of the SL_cci project, the coastal zone and the Arctic had been recognised as two areas requiring special effort because the waveforms were not “Brown-like” due to inhomogeneities within the full instrument footprint. Waveforms in coastal regions may contain early contributions from land or “bright target” responses from glassy seas in sheltered regions (Gómez-Enrí et al., 2010; Cipollini et al., 2017). The SL_cci project has been assessing two methodologies to overcome such anomalous waveforms: including a Gaussian peak within the shape model (Halimi et al., 2013) or focussing the shape-fitting mainly on the leading edge (Passaro et al., 2014). In the Arctic, the inhomogeneities are due to a mix of ice floes and thin leads (gaps within the ice

exposing very calm waters). Poisson et al. (2017) have developed a processing scheme for classifying the data according to reflecting surface and retracking the waveforms from leads using an extended Brown model. So far, only data from the Envisat and SARAL/AltiKa missions have been processed, which has led to the production of a promising Arctic sea level product now available for the users. However, both the coastal and Arctic work are part of ongoing research, and additional efforts are required so that these retracked data could be included in a future SL_cci product.

3 Corrections to atmospheric propagation

The main atmospheric retardation of the radar signal, the dry tropospheric correction (DTC), is simply due to the mass of neutral dry air that it propagates through, and that can be retrieved from atmospheric pressure at sea level. As that cannot be measured from space, what is required is a good atmospheric model that incorporates measurements, i.e. a reanalysis product. The wet tropospheric component (WTC), representing the extra delay from atmospheric water vapour and liquid water, can also be extracted from an assimilating model, but the scales of temporal and spatial variations of the water vapour are usually not adequately resolved by global reanalyses, so some direct measurements of water vapour and liquid water are beneficial. Most altimetric satellites carry a nadir-viewing microwave radiometer (MWR) to record relevant emissions for WTC retrieval; however, CryoSat-2 has no such package, as its focus is on polar latitudes, where the WTC may largely be neglected. However, microwave radiometers are not reliable in the coastal zone due to their large footprint (typically 20–40 km) and global atmospheric models lack the resolution to incorporate coastal processes. An alternative data source is provided by shore-based GNSS stations, as the WTC derived from their L-band measurements is also valid at Ku and Ka band, since the troposphere is a non-dispersive medium at these frequencies.

The ionospheric delay is a retardation of the passage of radio waves by free electrons, which get accelerated. Such an effect predominantly occurs on the Sun-facing side of the Earth, and is strongest in two bands near the tropics. It is proportional to the columnar total electron content (TEC) divided by the square of the radar frequency. The TOPEX, Jason and Envisat spacecraft were designed with dual-frequency altimeters specifically to allow an estimation of the pertinent ionospheric correction from the difference in range delay recorded at the two frequencies. This was because the early ionospheric models were not deemed to be accurate enough to support the high precision required from the reference missions, and indeed the measuring and modelling of the ionospheric correction is a topic that still needs further development. However, there have been marked improvements in the ionospheric models in the past decade. Since AltiKa operates at Ka band, the size of this correction

is only one-seventh of that for the other instruments (which operate at Ku) and so operation at multiple frequencies was not justified.

3.1 Dry tropospheric correction

Dry tropospheric corrections (DTC) were calculated (Ablain et al., 2016) according to three different numerical models: ECMWF operational, ERA-Interim and JRA-55. Analysis of the sea level variance at crossovers and investigation of trends were performed for sea level data computed with each correction (ASM, 2015b). Although the operational version of the ECMWF model has the highest spatial resolution for recent years, giving it a superior performance to the others, it is not consistent for the whole 20+ year period; thus, the atmospheric model reanalyses are better suited for the present climate purpose. The ERA-Interim correction led to a smaller variance of crossover differences than when using the JRA-55 model, especially at southern latitudes, where the pressure variability is higher, which indicates a better performance for the ERA-Interim model. Thus, considering the long-period reanalyses for climate purposes, the ERA-Interim corrections were the ones adopted for SL_cci v2.0 for all altimeter instruments.

3.2 Wet tropospheric correction

The University of Porto has developed a robust method for determining the WTC by data combination through space-time objective analysis of various data types: valid measurements from the on-board MWR (whenever available) and third-party observations from GNSS and scanning imaging MWR. The latest version of these corrections, designated GNSS-derived Path Delay Plus (GPD+; see Fernandes and Lázaro, 2016), includes improved calibration of all radiometers on altimetric satellites by comparing them with the known stable performance of the SSM/I and SSMIS. In addition to the calibration with respect to SSM/I and SSMIS, the original GPD solution (Fernandes et al., 2015) has been augmented by adding new datasets (from scanning imaging radiometers) and improved selection criteria for selecting valid MWR observations. The GPD+ correction is implemented in SL_cci v2.0 for all missions except GFO, although similar corrections have subsequently become available for this satellite (Fernandes and Lázaro, 2016). In SL_cci v2.0, the WTC for GFO is calculated from its MWR for observations located > 50 km from the coast, and from the ECMWF operational model for data between 10 and 50 km from coast. There were problems with the radiometer during GFO cycles 135–137, 166, 181, 189 and after 201; in such cases ECMWF values were used for all observations.

The GPD+ correction allows the recovery of a significant number of altimeter measurements, ensuring the continuity and consistency of the correction in the transition region between the open ocean and coastal zone, and also at high lat-

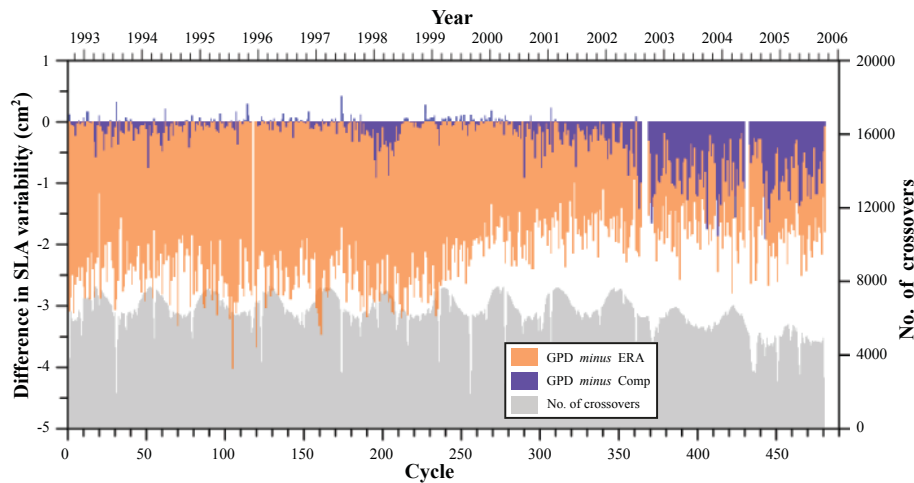


Figure 4. Difference in variance at TOPEX/Poseidon crossovers for SLA calculated with different WTC. Orange compares GPD+ with ERA-Interim and purple with the composite WTC. Negative values indicate an improvement (i.e. reduction) in crossovers for GPD+.

itudes. Figure 4 illustrates the improved performance of the GPD+ correction over that from ERA-Interim and the composite correction present in the AVISO products.

3.3 Ionospheric correction

Within the SLOOP project (Faugere et al., 2010), there has been considerable effort to develop an improved ionospheric correction using an iterative filtering scheme applied to the dual-frequency altimeter missions (TOPEX, Jason-1, Jason-2 and Envisat). This has been independently evaluated by a round-robin comparison with previous ionospheric corrections, and it was found that the SLOOP set of corrections led to an improvement in the recovery of mesoscale signals and increased data gain (due to less flagging of suspect data).

For the missions that do not have a second frequency (including Envisat after the loss of S-band data), a model is required. The one used in SL_cci v2.0 is GIM (Iijima et al., 1999), which is based on measurements from GPS satellites. However, prior to 1998 there were relatively few GPS data, so for ERS-1 and ERS-2 we use an interpretation based on the NIC09 climatology (Scharroo and Smith, 2010) modified by contemporaneous TOPEX records of global mean TEC. The corrections for Poseidon are based on the measurements from the DORIS system on board its satellite.

4 Corrections for sea state bias

Sea state bias (SSB) is a correction term encompassing three different effects: electro-magnetic (EM) bias, skewness and tracker bias. A wave field is not usually uniformly covered with identical reflecting facets – the surface tends to be smoother in the troughs of waves than at the crests, so there will be a proportionately stronger response from the lower-lying facets. This effect, the EM bias, will depend upon the

radar frequency. Most altimetric retracker are designed to locate the mid-power point of the leading edge of the waveform; this equates to the median height of reflecting surfaces, rather than the mean. Thus a second effect, the skewness, relates to the difference between the heights of mean and median surfaces, which is a property of the ocean, independent of the radar frequency used for the sensing. The third effect relates to the algorithms used to find the range – this effect will vary with each retracker implemented, but should be the same for identical instruments. However, there are always slight differences between sister instruments, e.g. ERS-1 and ERS-2, so the overall sea state bias model is usually determined independently for each altimeter plus retracker. In practice, all three of these effects scale roughly with wave height, so the overall sea state bias is expressed as a multiplier of wave height that is a weakly varying function of sea state conditions.

Although the first two components of SSB should be the same for all Ku-band observing systems, a separate total SSB solution has to be derived for each individual altimeter. For each dataset, minimisation procedures are used to express SSB in terms of wave height and wind speed, leading to the least variance at crossovers. Many of these solutions remain as defined at the end of their respective missions, i.e. once all available data have been analysed. However, as these are optimisations based on observational data, improvements to the orbits or a change in the modelled PTR or the retracker applied could necessitate a revision to the SSB model.

Early solutions for SSB expressed the SSB coefficient in terms of two key parameters: wave height and wind speed. Those parametric forms are still used for ERS-1 (Gaspar and Ogor, 1994) and Poseidon (Gaspar et al., 1996). A non-parametric form, offering a better fit to the data, can be achieved for later missions for which there are greater volumes of more precise data. The non-parametric models

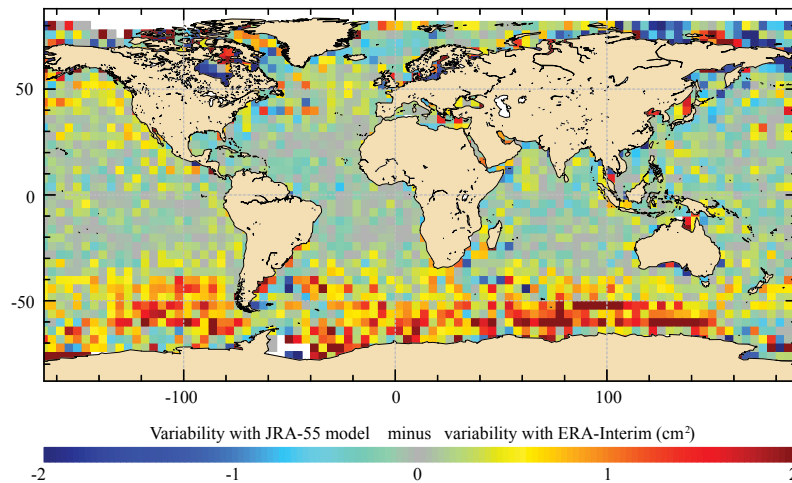


Figure 5. Change in crossover differences between processing TOPEX/Poseidon mission with IB calculated using JRA-55 or ERA-Interim. Positive values indicate greater variance with corrections from JRA-55.

adopted within SL_cci v2 are for ERS-2 (Mertz et al., 2005), TOPEX (Tran et al., 2010), Jason-1 & 2 (Tran et al., 2012), Envisat (Tran, 2015), GFO (N. Tran and S. Labroue, personal communication, 2009) and AltiKa (from the PEACHI project). The Cryosat-2 data used in this product are solely those in low-resolution mode; at the time that algorithm selection was completed, the most appropriate choice was that derived from Jason-1 GDR-C products, although ones based on CryoSat-2 data have subsequently become available. The changes from the previous product, slcci_v1.1, are the use of the Tran et al. (2012) for the Jason instruments and Tran (2015) for Envisat to replace the versions on their GDRs.

5 Corrections for short-term atmospheric and oceanographic phenomena

Our concern within the sea level CCI project is to provide the best dataset for observing climate scale variations in sea level and changes associated with geostrophic currents. The temporal sampling by altimeters is insufficient to resolve all timescales, so high-frequency ocean variability is aliased to longer timescales, thus polluting climate estimations if not adequately corrected. Thus, short-term effects have to be removed using accurate physical ocean models, which are expected to be independent of satellite missions.

5.1 Atmospheric pressure correction

Early altimeter processing included an “inverse barometer effect” (IB; see Fu and Pihos, 1994) whereby the sea surface was deemed to be depressed by 1 cm for each increase in atmospheric pressure by 1 mbar, with this computed effect being removed from the data to give the sea level expected in the absence of atmospheric effects. Instead a dy-

namic atmospheric correction (DAC) was introduced, based on a barotropic global ocean model forced by instantaneous atmospheric pressure and winds fields, and taking into account the ocean dynamic response to atmospheric forcing at high frequencies (Carrère and Lyard, 2003) and keeping the IB for low frequencies.

Several atmospheric models have been used to compute the IB and the DAC corrections (ECMWF, ERA-Interim, NCEP, JRA-55) in order to find the atmospheric reanalysis most suitable for the present climate analysis. The comparison of input weather models is another exercise of finding which correction (here, IB and DAC), when applied to altimeter measurements, leads to the greatest consistency between ascending and descending passes and thus reduces the altimeter crossover variance. Figure 5 shows that, for TOPEX/Poseidon data, the sea level anomalies calculated using the JRA-55 model produces greater crossover differences than the SLA using ERA-Interim, with much greater variance in the high southern latitudes, where the variability in the atmospheric forcing is strong. Moreover, using a DAC forced by ERA-Interim significantly reduced the crossover variance compared with the operational DAC forced by ECMWF analysis (Carrère et al., 2016). Based on such crossover variance analysis, ERA-Interim is the preferred model to force the DAC for all missions (ASM, 2015b).

5.2 Tides

There are five separate phenomena linked under the label “tides”: ocean tide, ocean loading tide, solid Earth tide, pole tide and internal tides. The ocean tide is usually by far the largest, but all aspects need to be included in order to discern correctly regional variations and long-term trends. An ocean tide model will include many harmonics (not just M2 and S2) and may be an empirical fit to altimetric sea level data or pro-

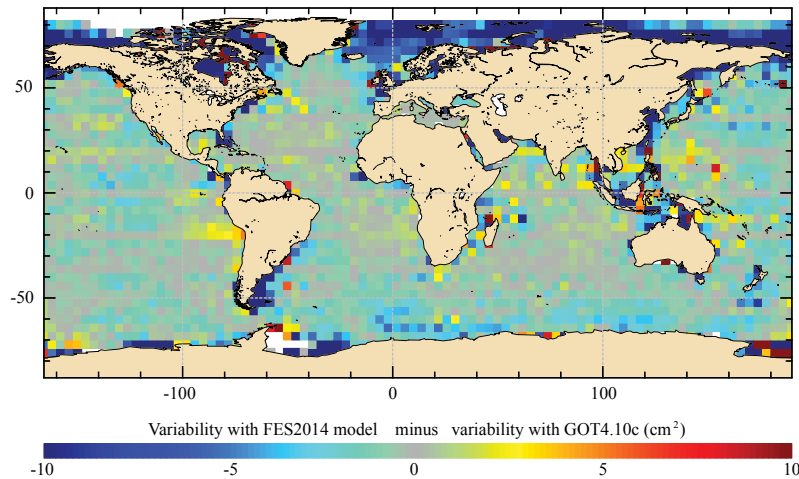


Figure 6. Change in crossover differences between processing Envisat mission with FES2014 tides or GOT4.10. Negative values indicate reduced variance with FES2014.

duced by a high-resolution fluid flow model or a combination of both. Early in the altimetry era there could be as many as 12 independent models to be assessed (Andersen et al., 1995), with, more recently, Stammer et al. (2014) evaluating seven data-constrained models. However, there are presently two main families of solutions to be compared, termed GOT (Ray, 2013) and FES (Carrère et al., 2012; Lyard et al., 2017). The GOT4.10 solution is mostly based on Jason data, excluding those from TOPEX/Poseidon because of poorly understood effects occurring at the S2 alias period (59 days). Figure 6 shows that the variance for Envisat data is reduced with the FES2014 model, especially in the Arctic. This model is also very effective in reducing the 59-day signal noted with some of the reference missions (Zawadzki et al., 2017).

The second aspect is the loading tide, which corresponds to the flexing of the Earth in response to the weight of water lying on it. For this we adopt the solution of Ray (2013), which, at the time of algorithm selection, was the only one consistent with the FES2014 ocean tide. The third aspect is the Earth tide, i.e. the changes in the Earth's topography due to the changing gravitational attraction of the moon and sun – here the long established solutions by Cartwright and Tayler (1971), modified by Cartwright and Edden (1973), continue to be applied.

Next, there is the “pole tide”, a term describing the small long-period oscillations associated with the movement of the Earth's rotational axis. The recent advance by Desai et al. (2015) takes into account self-gravitation, loading, conservation of mass, and geocentre motion. Moreover, this new model includes a bias and a drift, which means that the new computed pole tide does not include the effects of the Earth's displacement response to that mean pole drift. Removing the long-term mean pole drift has a significant impact on the regional MSL trend estimation; this impact has been validated by comparisons with an Argo database over the time span

of the Envisat mission (ASM, 2015a; Legeais et al., 2017). Thus the recent model of Desai et al. (2015) is the one implemented in SL_cci v2.0. At present, there is no satisfactory model of the internal tides, so there is no correction for the effect of this phenomenon.

6 Reference surfaces

For some applications, it is useful to estimate sea level anomalies with respect to the mean sea surface (MSS), which is the sum of the geoid and mean dynamic topography (see Eq. 1). Frequent updates of the MSS are provided as new data become available, in particular from CryoSat-2 at high latitudes, and from the “end of life” geodetic phases of recent missions.

The SL_cci v2.0 is referenced to the DTU15 MSS (ASM, 2015e), and corresponds to a mean over the period 1993–2012. The DTU datasets provide a complete global coverage (including the high-latitude Arctic). This version is an improvement on earlier versions (DTU10 & DTU13, see Andersen et al., 2015) in that it makes use of 4 years of CryoSat-2 data but gives less weighting to data from IceSat (whose large errors gave an unrealistic stripiness to derived MSS fields). Thus the major improvements within DTU15 are the increased data coverage in the high latitudes (both Arctic and Antarctic) and the Mediterranean, and the finer scales resolved due to the use of shorter correlation scales in the interpolation. The inter-annual content of the reprocessed v2.0 product will change compared with the previous version due to the evolution of the reference period (1993–2008 for DTU10 in the SL_cci v1.1 product). This will affect assimilating models since these systems are sensitive to the reference period used.

CryoSat-2 has contributed significantly in the band 82–88° N not sampled by the other radar altimeters and, due to

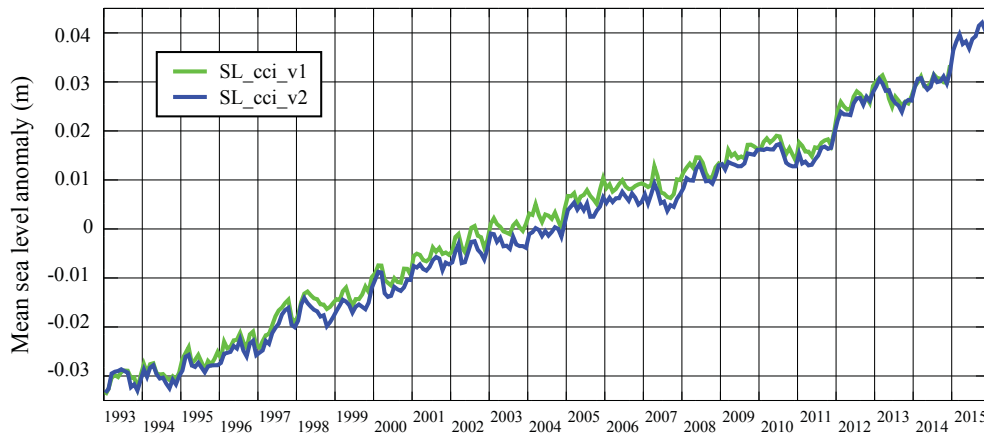


Figure 7. Comparison of time series of global mean sea level (seasonal signal removed). The v1.1 dataset had been updated until the end of 2014 and has a mean trend of 3.18 mm yr^{-1} ; v2.0, described in this paper, now extends to end of 2015 and has a trend of 3.21 mm yr^{-1} over the same period as v1.1.

its long repeat orbit, provides finer longitudinal resolution than the ERS-1, ERS-2 and Envisat instruments for latitudes south of 82° N . (The DTU15 MSS no longer utilises data from the geodetic phases of ERS-1 and Geosat, as those measurements were noisy; consequently less spatial filtering is required leading to a higher resolution product.) The delay-Doppler mode of CryoSat-2 makes its measurements more resilient to stray reflections from nearby land; thus CryoSat-2 data have led to marked improvements in the MSS in many coastal areas, particularly those around the Mediterranean and the Bay of Fundy.

7 Editing and gridding

The production of the SL_cci v2.0 product uses the same procedures as for the previous version v1 (Ablain et al., 2015). An overview of the different processing steps to produce the Sea Level CCI products can be found in Ablain and Legeais (2014). In brief, these are to acquire and pre-process data, perform input checks and quality control (data are discarded if flagged for rain, land or ice), inter-calibrate and unify the multi-satellite measurements, and generate along-track and gridded merged products.

In addition to the reduction of the global and regional biases between two successive altimeter missions (thanks to the calibration phase during which both satellites observe the same ocean), the unification also involves a further orbit error reduction. This is first carried out for the “reference missions” (TOPEX/Poseidon, Jason-1 and Jason-2) by minimising the crossover differences between ascending and descending tracks. These missions have all been in the same 9.92-day orbital cycle and have a high altitude (1336 km), making their trajectories less sensitive to higher-order terms of the Earth’s gravity field and to the drag effects. Then the “complementary missions” are adjusted to

minimise crossovers with data from the reference missions (Le Traon and Ogor, 1998). Thus, the reference missions are used to ensure the stability of the ECV. The global MSL estimation and large-scale changes rely on these reference missions. The complementary missions (adjusted on the reference missions) contribute to increase the spatial resolution of the grids and to increase their accuracy. This adjustment towards the orbits of the reference missions also overcomes a spurious SLA drift during Envisat’s first year of operation.

Finally, output checks and quality control are performed and the multi-satellite along-track data are mapped to generate gridded sea level products. The sensitivity of the gridded products to the mapping algorithms is described in detail in Pujol (2012). Different mapping methods were tested in order to assess their ability to accurately reproduce climate signals. This evaluation has been carried out separating the different temporal and spatial scales related to climate applications. A monthly optimal interpolation is applied (including additional weighted information from part of the previous and following months) to produce maps of sea level on a 0.25° grid for the middle of each month. Note that this approach differs from the one used in the production of the DUACS dataset (Pujol et al., 2016) (daily optimal interpolation with different parameters) as the SL_cci approach has been designed to better answer the needs of climate users.

8 Data availability

The gridded monthly files of sea level anomaly at 0.25° resolution (https://doi.org/10.5270/esa-sea_level_cci-MSLA-1993_2015-v_2.0-201612; Legeais et al., 2016b) are freely available (upon email application to info-sealevel@esa-sealevel-cci.org). The Sea Level CCI website (<http://www.esa-sealevel-cci.org/products>) also contains derived products suitable for some climate studies:

Table 1. Summary of the data sources and the corrections applied to each altimeter instrument.

	TOPEX	Poseidon	Jason-1	Jason-2	ERS-1	ERS-2	Envisat	AltiKa	GFO	CryoSat-2
Orbit	GSFC std1504		CNES POE-E		GFZv11 (Rudenko et al., 2017)			CNES POE-E	GSFC std08	CNES POE-E
Data source (Retracker)	RGDR (least squares)	MLE-3	GDR-E (MLE-4)		REAPER		GDR (Ocean-1)	GDR (Ocean-3)	on-board α - β	GDR (SAMOSA 2.5.0)
Dry trop.	ERA-Interim									
Wet trop.	GPD+							MWR/ECMWF		GPD+
Iono	SLOOP	DORIS	SLOOP	NIC09	NIC09/GIM	SLOOP/GIM	GIM			
SSB	Tran et al. (2010)	Gaspar et al. (1996)	Tran et al. (2012)	Gaspar and Ogor (1994)	Mertz et al. (2005)	Tran (2015)	PEACHI	N. Tran and S. Labroue (personal communication, 2009)		Tran et al. (2012)
DAC	ERA-Interim									
Ocean tide	FES2014									
Loading tide	GOT4v8AC									
Earth tide	Cartwright–Tayler–Edden									
Pole tide	Desai et al. (2015)									
MSS	DTU MSS 2015									

GDR is the geophysical data record, which is the standard product providing altimeter data, with some recommended corrections.

- Global Mean Sea Level temporal evolution (https://doi.org/10.5270/esa-sea_level_cci-IND_MSL_MERGED-1993_2015-v_2.0-201612).
- Regional Mean Sea Level trend (https://doi.org/10.5270/esa-sea_level_cci-IND_MSLTR_MERGED-1993_2015-v_2.0-201612).
- Amplitude and Phase of annual cycle (https://doi.org/10.5270/esa-sea_level_cci-IND_MSLAMPH_MERGED-1993_2015-v_2.0-201612).

9 Conclusions

During phase 2 of the ESA Sea Level CCI project, the consortium has reappraised all the corrections to be used in the production of the v2.0 dataset. In some cases, e.g. Earth tide, there has been no change in the recommended correction; in others, such as the pole tide, a new model has become available that is readily endorsed since it significantly improves the accuracy. For many other terms, there was a choice of two or three corrections: the project evaluated these through a variety of techniques including minimisation of mono-mission crossovers, comparison between different altimeter missions, and validation with in situ data. This paper has documented the choices made (Table 1).

The v2.0 dataset was released in December 2016, with details provided at <http://www.esa-sealevel-cci.org/products>. This will provide a consistent unbiased estimate of sea level spanning 1993–2015, which should greatly enhance the potential for climatic studies of sea level. The SL_cci ECV v2.0 products and their validation results are described in Legeais et al. (2017). In terms of the GMSL, the change from v1.1 to v2.0 products has led to changes of the order of 0.1 mm that persist for many months to years, but has not led to a significantly different long-term trend ($\sim 3.2 \text{ mm yr}^{-1}$; see Fig. 7). The changes that have had the most impact on derived trends are those for orbits and for wet tropospheric correction. Improvements to the Earth's time-variable gravity field model have led to major changes in the regional mean sea level trends ($> 0.5 \text{ mm yr}^{-1}$; ASM, 2015c). Through its revision of the calibration of the MWR on altimetric satellites, the GPD+ solution has a significant impact on the trend of GMSL during the first and second decades of continuous altimetry: -0.2 mm yr^{-1} during 1993–2001 and $+0.2 \text{ mm yr}^{-1}$ during 2002–2014 (ASM, 2015d).

Appendix A: Abbreviations used

This appendix provides details of the abbreviations not expanded in the main text, because doing so would adversely affect the readability.

CHAMP	CHALLENGING Minisatellite Payload
CNES	Centre National d'Etudes Spatiales
DORIS	Doppler Orbitography and Radiopositioning Integrated by Satellite
DPOD	DORIS terrestrial reference frame for precise orbit determination
DTU	Danish Technical University
ECMWF	European Centre for Medium-Range Weather Forecasts
Envisat	Environmental Satellite
ERA	ECMWF Reanalysis
ERS	European Remote-sensing Satellite
GFO	GEOSAT Follow-On (satellite)
GNSS	Global Navigation Satellite System
GOCE	Gravity field and steady-state Ocean Circulation Explorer
GPS	Global positioning by satellite
GRACE	Gravity Recovery and Climate Experiment
GSFC	Goddard Space Flight Center
IGS	International GNSS Service
ITRF	International Terrestrial Reference Frame
JRA	Japanese Meteorological Agency Reanalysis
LAGEOS	Laser Geodynamics Satellite
NCEP	National Centers for Environmental Prediction
POE	precise orbit ephemeris
PRARE	Precise Range And Range-Rate Equipment
REAPER	REprocessing of Altimeter Products for ERS
SARAL	Satellite with ARGos and ALtiKa
SLOOP	a Step forward aLtimetry Open Ocean Products
SLR	satellite laser ranging
SLRF	satellite laser ranging frame
SSMI	Special Sensor Microwave Imager
SSMIS	Special Sensor Microwave Imager/Sounder
TOPEX	Ocean Topography Experiment
VER11	version 11

Author contributions. Phase 2 of the Sea Level CCI project was managed by JFL, who oversaw the evaluation and selection of corrections. The initial draft of the paper was written by GQ. All other authors contributed through their derivation and evaluation of the suite of possible corrections, provision of figures and revision of the text.

Competing interests. The authors declare that they have no conflict of interest.

Acknowledgements. The authors acknowledge the support of ESA in the frame of the Sea Level CCI project, launched and co-ordinated by technical officer Jérôme Benveniste.

Edited by: Robert Key

Reviewed by: Nicolas Picot and one anonymous referee

References

- Ablain, M. and Legeais, J.-F.: Detailed Processing Model for Sea-Level CCI system, Ref. CLS-DOS-NT-13-248, nomenclature SLCCI-DPM-33, Issue 1.1, available at: http://www.esa-sealevel-cci.org/webfm_send/239 (last access: 10 August 2017), 2014.
- Ablain, M., Cazenave, A., Larnicol, G., Balmaseda, M., Cipollini, P., Faugère, Y., Fernandes, M. J., Henry, O., Johannessen, J. A., Knudsen, P., Andersen, O., Legeais, J., Meyssignac, B., Picot, N., Roca, M., Rudenko, S., Scharffenberg, M. G., Stammer, D., Timms, G., and Benveniste, J.: Improved sea level record over the satellite altimetry era (1993–2010) from the Climate Change Initiative project, *Ocean Sci.*, 11, 67–82, <https://doi.org/10.5194/os-11-67-2015>, 2015.
- Ablain, M., Zawadzki, L., and Legeais, J.-F.: ATBD v3.3: SL_cci Algorithm Theoretical Basis Document, Ref. CLS-SLCCI-16-0008, Nomenclature SLCCI-ATBDv1-016, Issue 3.3, available at: http://www.esa-sealevel-cci.org/webfm_send/538 (last access: 10 August 2017), 2016.
- Ablain, M., Legeais, J.-F., Prandi, P., Marcos, M., Fenoglio-Marc, L., Dieng, H.-B., Benveniste, J., and Cazenave, A.: Satellite altimetry-based sea level at global and regional scales, *Surv Geophys.*, 38, 7–31, <https://doi.org/10.1007/s10712-016-9389-8>, 2017.
- Altamimi, Z., Collilieux, X., and Metivier, L.: ITRF2008: An improved solution of the International Terrestrial Reference Frame, *J. Geodesy*, 85, 457–473, <https://doi.org/10.1007/s00190-011-0444-4>, 2011.
- Andersen, O. B., Woodworth, P. L., and Flather, R. A.: Intercomparison of recent ocean tide models, *J. Geophys. Res.*, 100, 25261–25282, <https://doi.org/10.1029/95JC02642>, 1995.
- Andersen, O. B., Knudsen, P., and Stenseng, L.: The DTU13 MSS (mean sea surface) and MDT (mean dynamic topography) from 20 years of satellite altimetry, *International Association of Geodesy Symposia*, Springer, 111–121, https://doi.org/10.1007/1345_2015_182, 2015.
- ASM: SL_cci phase 2 Algorithm Selection Meeting. Tides Selection, Toulouse, 26 November 2015, available at: http://www.esa-sealevel-cci.org/webfm_send/389 (last access: 10 August 2017), 2015a.
- ASM: SL_cci phase 2 Algorithm Selection Meeting. Atmospheric Corrections Selection, Toulouse, 26 November 2015, available at: http://www.esa-sealevel-cci.org/webfm_send/384 (last access: 10 August 2017), 2015b.
- ASM: SL_cci phase 2 Algorithm Selection Meeting. Selection of new Orbit Solutions, Toulouse, 26 November 2015, available at: http://www.esa-sealevel-cci.org/webfm_send/382 (last access: 10 August 2017), 2015c.
- ASM: SL_cci phase 2 Algorithm Selection Meeting. Wet Troposphere correction Selection, Toulouse, 26 November 2015, available at: http://www.esa-sealevel-cci.org/webfm_send/385 (last access: 10 August 2017), 2015d.
- ASM: SL_cci phase 2 Algorithm Selection Meeting. MSS Model Selection, Toulouse, 26 November 2015, available at: http://www.esa-sealevel-cci.org/webfm_send/390 (last access: 10 August 2017), 2015e.
- Brockley, D., Baker, S., Féménias, P., Martinez, B., Massmann, F.-H., Otten, M., Paul, F., Picard, B., Prandi, P., Roca, M., Rudenko, S., Scharroo, R., and Visser, P.: REAPER: Reprocessing 12 years of ERS-1 and ERS-2 altimeter and microwave radiometer data, *IEEE T. Geosci. Remote. Sens.*, <https://doi.org/10.1109/TGRS.2017.2709343>, in press, 2017.
- Brown, G.: The average impulse response of a rough surface and its applications, *IEEE T. Antennas Propag.*, 25, 67–74, <https://doi.org/10.1109/JOE.1977.1145328>, 1977.
- Carrère, L. and Lyard, F.: Modeling the barotropic response of the global ocean to atmospheric wind and pressure forcing – comparisons with observations, *Geophys. Res. Lett.*, 30, 1275, <https://doi.org/10.1029/2002GL016473>, 2003.
- Carrère, L., Lyard, F., Cancet, M., Guillot, A., and Roblou, L.: FES2012: A new global tidal model taking advantage of nearly twenty years of altimetry, *Proceedings of the 20 Years of Progress in Radar Altimetry Symposium (Venice, Italy)*, 1–20, 2012.
- Carrère, L., Faugère, Y., and Ablain, M.: Major improvement of altimetry sea level estimations using pressure-derived corrections based on ERA-Interim atmospheric reanalysis, *Ocean Sci.*, 12, 825–842, <https://doi.org/10.5194/os-12-825-2016>, 2016.
- Cartwright, D. E. and Edden, A. C.: Corrected tables of tidal harmonics, *Geophys. J. Internat.*, 33, 253–264, <https://doi.org/10.1111/j.1365-246X.1973.tb03420.x>, 1973.
- Cartwright, D. E. and Tayler, R. J.: New computations of the tide-generating potential, *Geophys. J. Internat.*, 23, 45–73, <https://doi.org/10.1111/j.1365-246X.1971.tb01803.x>, 1971.
- Chambers, D. P., Hayes, S. A., Ries, J. C., and Urban, T. J.: New TOPEX sea state bias models and their effect on global mean sea level, *J. Geophys. Res.*, 108, 3305, <https://doi.org/10.1029/2003JC001839>, 2003.
- Chelton, D. B., Walsh, E. J., and MacArthur, J. L.: Pulse compression and sea level tracking in satellite altimetry, *J. Atmos. Ocean. Tech.*, 6, 407–438, [https://doi.org/10.1175/1520-0426\(1989\)006<0407:PCASLT>2.0.CO;2](https://doi.org/10.1175/1520-0426(1989)006<0407:PCASLT>2.0.CO;2), 1989.
- Chen, X., Zhang, X., Church, J. A., Watson, C. S., King, M. A., Monselesan, D., Legresy, B., and Harig, C.: The increasing rate of global mean sea-level rise during 1993–2014, *Nat. Clim.*

- Change, 7, 492–495, <https://doi.org/10.1038/nclimate3325>, 2017.
- Cipollini, P., Calafat, F. M., Jevrejeva, S., Melet, A., and Prandi, P.: Monitoring sea level in the coastal zone with satellite altimetry and tide gauges, *Surv. Geophys.*, 38, 35–59, <https://doi.org/10.1007/s10712-016-9392-0>, 2017.
- Couhert, A., Cerri, L., Legeais, J. F., Ablain, M., Zelensky, N. P., Haines, B. J., Lemoine, F. G., Bertiger, W. I., Desai, S. D., and Otten, M.: Towards the 1 mm/y stability of the radial orbit error at regional scales, *Adv. Space Res.*, 55, 2–23, <https://doi.org/10.1016/j.asr.2014.06.041>, 2015.
- Desai, S., Wahr, J., and Beckley, B.: Revisiting the pole tide for and from satellite altimetry, *J. Geodesy*, 89, 1233–1243, <https://doi.org/10.1007/s00190-015-0848-7>, 2015.
- Dieng, H. B., Cazenave, A., Meyssignac, B., and Ablain, M.: New estimate of the current rate of sea level rise from a sea level budget approach, *Geophys. Res. Lett.*, 44, 3744–3751, <https://doi.org/10.1002/2017GL073308>, 2017.
- Dumont, J. P., Rosmorduc, V., Carrère, L., Picot, N., Bronner, E., Couhert, A., Desai, S., Bonekamp, H., Scharroo, R., and Leuliette, E.: OSTM/Jason-2 Products Handbook, rev. 11, available at: https://www.aviso.altimetry.fr/fileadmin/documents/data/tools/hdbk_j2.pdf (last access: 10 August 2017), 2017.
- Escudier, P., Ablain, M., Amarouche, L., Carrère, L., Couhert, A., Dibarbouré, G., Dorandeu, J., Dubois, P., Mallet, A., Mercier, F., Picard, B., Richard, J., Steunou, N., Thibaut, P., Rio, M.-H., and Tran, N.: Satellite radar altimetry: principle, accuracy & precision, in: *Satellite Altimetry Over Oceans and Land Surfaces*, edited by: Stammer, D. and Cazenave, A., CRC Press, in press, 2017.
- Faugere, Y., Rio, M.-H., Labroue, S., Rosmorduc, V., Thibaut, P., Amarouche, L., Obligis, E., Ablain, M., Legeais, J.-F., Carrere, L., Schaeffer, P., Tran, N., Pujol, I., Dufau, C., Dibarbouré, G., Lux, M., Bronner, E., and Picot, N.: The SLOOP project: Preparing the next generation of altimetry products for open ocean, OSTST meeting 2010, Lisbon, Portugal, available at: http://www.aviso.altimetry.fr/fileadmin/documents/OSTST/2010/Faugere_SLOOP.pdf (last access: 10 August 2017), 2010.
- Fernandes, M. J., Lázaro, C., Ablain, M., and Pires, N.: Improved wet path delays for all ESA and reference altimetric missions, *Remote Sens. Environ.*, 169, 50–74, <https://doi.org/10.1016/j.rse.2015.07.023>, 2015.
- Fernandes, M. J. and Lázaro, C.: GPD+ wet tropospheric corrections for CryoSat-2 and GFO altimetry missions, *Remote Sens.*, 8, 851, <https://doi.org/10.3390/rs8100851>, 2016.
- Fu, L.-L. and Cazenave, A. (Eds.): *Satellite altimetry and Earth sciences: A handbook of techniques and applications*, Academic Press, San Diego, 463 pp., 2001.
- Fu, L.-L. and Pihos, G.: Determining the response of sea level to atmospheric pressure using TOPEX/POSEIDON data, *J. Geophys. Res.*, 99, 24633–24642, <https://doi.org/10.1029/94JC01647>, 1994.
- García, P. and Roca, M.: On-board PTR processing analysis: MSL drift differences, Technical Note, IS-ARD_ESA_L1B_ESL_CCN_PRO_064, isardSAT under ESA Contract (RA-2 L1b ESL), 2010.
- Gaspar, P., Ogor, F., and Escoubes, C.: Nouvelles calibration et analyse du biais d'état de mer des altimètres TOPEX et POSEIDON, Technical note 96/018 of CNES Contract 95/1523, 1996.
- Gaspar, P. and Ogor, F.: Estimation and analysis of the sea state bias of the ERS-1 altimeter, Rapport technique, Report of task B1-B2 of IFREMER Contract no. 94/2.426 016/C.84, 1994.
- GCOS: Systematic observation requirements for satellite-based data products for climate (2011 update) – supplemental details to the satellite-based component of the “Implementation plan for the global observing system for climate in support of the UN-FCCC (2010 update)”, GCOS-154 (WMO), available at: https://library.wmo.int/opac/doc_num.php?explnum_id=3710 (last access: 10 August 2017), 2011.
- Gómez-Enrí, J., Vignudelli, S., Quartly, G. D., Gommenginger, C. P., Cipollini, P., Challenor, P. G., and Benveniste, J.: Modeling Envisat RA-2 waveforms in the coastal zone: Case-study of calm water contamination, *IEEE Geosci. Remote Sens. Lett.*, 7, 474–478, <https://doi.org/10.1109/LGRS.2009.2039193>, 2010.
- Halimi, A., Mailhes, C., Tourneret, J.-Y., Thibaut, P., and Boy, F.: Parameter estimation for peaky altimetric waveforms, *IEEE T. Geosci. Remote Sens.*, 51, 1568–1577, <https://doi.org/10.1109/TGRS.2012.2205697>, 2013.
- Hasselmann, K.: Multi-pattern fingerprint method for detection and attribution of climate change, *Clim Dynam.*, 13, 601–611, <https://doi.org/10.1007/s003820050185>, 1997.
- Hayne, G. S.: Radar altimeter mean return waveforms from near-normal-incidence ocean surface scattering, *IEEE T. Antennas Propag.*, 28, 687–692, <https://doi.org/10.1109/TAP.1980.1142398>, 1980.
- Hayne, G. S., Hancock, D. W., Purdy, C. L., and Callahan, P. S.: The corrections for significant wave height and attitude effects in the TOPEX radar altimeter, *J. Geophys. Res.*, 99, 24941–24955, <https://doi.org/10.1029/94JC01777>, 1994.
- Iijima, B. A., Harris, I. L., Ho, C. M., Lindqwister, U. J., Mannucci, A. J., Pi, X., Reyes, M. J., Sparks, L. C., and Wilson, B. D.: Automated daily process for global ionospheric total electron content maps and satellite ocean altimeter ionospheric calibration based on Global Positioning System data, *J. Atmos. Sol.-Terr. Phys.*, 61, 1205–1218, [https://doi.org/10.1016/S1364-6826\(99\)00067-X](https://doi.org/10.1016/S1364-6826(99)00067-X), 1999.
- Legeais, J.-F., Prandi, P., and Guinehut, S.: Analyses of altimetry errors using Argo and GRACE data, *Ocean Sci.*, 12, 647–662, <https://doi.org/10.5194/os-12-647-2016>, 2016a.
- Legeais, J.-F., et al.: Sea Level CCI Phase 2. Time series of gridded Sea Level Anomalies (SLA), https://doi.org/10.5270/esa-sea_level_cci-1993_2015-v_2.0-201612, 2016b.
- Legeais, J.-F., Cazenave, A., Ablain, M., Zawadzki, L., Zuo, H., Johannessen, J. A., Scharffenberg, M. G., Fenoglio-Marc, L., Fernandes, M. J., Andersen, O., Rudenko, S., Cipollini, P., Quartly, G., Passaro, M., and Benveniste, J.: An accurate and homogeneous altimeter sea level record: The reprocessed ESA Essential Climate Variable, Nature Scientific Data, in preparation, 2017.
- Lemoine, F. G., Zelensky, N. P., Chinn, D. S., Beckley, B. D., and Lillibridge, J. L.: Towards the GEOSAT Follow-On precise orbit determination goals of high accuracy and near-real-time processing, AIAA/AAS Astrodynamics Specialist Conference and Exhibit, 21–24 August 2006, Keystone, Colorado, available at: <https://arc.aiaa.org/doi/pdfplus/10.2514/6.2006-6402> (last access: 10 August 2017), 2006.

- Lemoine, F. G., Zelensky, N. P., Chinn, D. S., Beckley, B. D., Rowlands, D. D., and Pavlis, D. E.: A new time series of orbits (std1504) for TOPEX/Poseidon, Jason-1, and Jason-2 (OSTM), Ocean Surface Topography Science Team Meeting, Reston, available at: http://meetings.aviso.altimetry.fr/fileadmin/user_upload/tx_ausyclsseminar/files/OSTST2015/POD-02-Lemoine.pdf_01.pdf, last access: 18 May 2017.
- Le Traon, P.-Y. and Ogor, F.: ERS-1/2 orbit improvement using TOPEX/POSEIDON: The 2 cm challenge, *J. Geophys. Res.*, 103, 8045–8057, <https://doi.org/10.1029/97JC01917>, 1998.
- Lyard, F., Carrère, L., Cancet, M., Guillot, A., and Picot, N.: FES2014, a new finite elements tidal model for global ocean, *Ocean Dynam.*, in preparation, 2017.
- Mertz, F., Mercier, F., Labroue, S., Tran, N., and Dorandeu, J.: ERS-2 OPR data quality assessment; Long-term monitoring – particular investigation, CLS.DOS.NT-06.001, available at: http://www.aviso.altimetry.fr/fileadmin/documents/calval/validation_report/E2/annual_report_e2_2005.pdf (last access: 10 August 2017), 2005.
- Ollivier, A., Faugere, Y., Picot, N., Ablain, M., Féménias, P., and Benveniste, J.: Envisat ocean altimeter becoming relevant for mean sea level trend studies, *Mar. Geodesy*, 35, 118–136, <https://doi.org/10.1080/01490419.2012.721632>, 2012.
- Pavlis, E. C.: SLRF2008: The ILRS reference frame for SLR POD contributed to ITRF2008, Ocean Surface Topography Science Team 2009, Seattle, Washington, available at: http://www.aviso.oceanobs.com/fileadmin/documents/OSTST/2009/poster/Pavlis_2.pdf (last access: 10 August 2017), 2009.
- Passaro, M., Cipollini, P., Vignudelli, S., Quartly, G. D., and Snaith, H. M.: ALES: A multi-mission adaptive subwaveform retracker for coastal and open ocean altimetry, *Remote Sens. Environ.*, 145, 173–189, <https://doi.org/10.1016/j.rse.2014.02.008>, 2014.
- Poisson, J.-C., Quartly, G. D., Kurekin, A., Thibaut, P., Hoang, D., and Nencioli, F.: Development of an ENVISAT altimetry processor ensuring sea level continuity between open ocean and Arctic leads, *IEEE T. Geosci. Remote Sens.*, submitted, 2017.
- Pujol I.: WP2500 mapping methods. CLS-DOS-NT-11-229, SALP-NT-MA-EA-22007-CLS, Issue 1.1, SL_cci validation report, available at: www.esa-sealevel-cci.org/webfm_send/184 (last access: 10 August 2017), 2012.
- Pujol, M.-I., Faugère, Y., Taburet, G., Dupuy, S., Pelloquin, C., Ablain, M., and Picot, N.: DUACS DT2014: the new multi-mission altimeter data set reprocessed over 20 years, *Ocean Sci.*, 12, 1067–1090, <https://doi.org/10.5194/os-12-1067-2016>, 2016.
- Quartly, G. D.: Monitoring and cross-calibration of altimeter σ^0 through dual-frequency backscatter measurements, *J. Atmos. Ocean. Tech.*, 17, 1252–1258, [https://doi.org/10.1175/1520-0426\(2000\)017<1252:MACCOA>2.0.CO;2](https://doi.org/10.1175/1520-0426(2000)017<1252:MACCOA>2.0.CO;2), 2000.
- Quartly, G. D., Srokosz, M. A., and McMillan, A. C.: Analyzing altimeter artifacts: Statistical properties of ocean waveforms, *J. Atmos. Ocean. Tech.*, 18, 2074–2091, [https://doi.org/10.1175/1520-0426\(2001\)018<2074:AAASPO>2.0.CO;2](https://doi.org/10.1175/1520-0426(2001)018<2074:AAASPO>2.0.CO;2), 2001.
- Queffeuilou, P.: Long-term variation of wave height measurements from altimeters, *Mar. Geodesy*, 27, 495–510, <https://doi.org/10.1080/01490410490883478>, 2004.
- Ray, R. D.: Precise comparisons of bottom-pressure and altimetric ocean tides, *J. Geophys. Res.*, 118, 4570–4584, <https://doi.org/10.1002/jgrc.20336>, 2013.
- Rebischung, P., Griffiths, J., Ray, J., Schmid, R., Collilieux, X., and Garayt, B.: IGS08: the IGS realization of ITRF2008, *GPS Solut.*, 16, 483, <https://doi.org/10.1007/s10291-011-0248-2>, 2012.
- Rudenko, S., Otten, M., Visser, P., Scharroo, R., Schöne, T., and Esselborn, S.: New improved orbit solutions for the ERS-1 and ERS-2 satellites, *Adv. Space Res.*, 49, 1229–1244, <https://doi.org/10.1016/j.asr.2012.01.021>, 2012.
- Rudenko, S., Dettmering, D., Esselborn, S., Schöne, T., Förste, Ch., Lemoine, J.-M., Ablain, M., Alexandre, D., and Neumayer, K.-H.: Influence of time variable geopotential models on precise orbits of altimetry satellites, global and regional mean sea level trends, *Adv. Space Res.*, 54, 92–118, <https://doi.org/10.1016/j.asr.2014.03.010>, 2014.
- Rudenko, S., Dettmering, D., Esselborn, S., Fagiolini, E., and Schöne, T.: Impact of atmospheric and oceanic de-aliasing Level-1B (AOD1B) products on precise orbits of altimetry satellites and altimetry results, *Geophys. J. Int.*, 204, 1695–1702, <https://doi.org/10.1093/gji/ggv545>, 2016.
- Rudenko, S., Neumayer, K.-H., Dettmering, D., Esselborn, S., Schöne, T., and Raimondo, J.-C.: Improvements in precise orbits of altimetry satellites and their impact on mean sea level monitoring, *IEEE T. Geosci. Remote Sens.*, 55, 3382–3395, <https://doi.org/10.1109/TGRS.2017.2670061>, 2017.
- Scharroo, R. and Smith, W. H. F.: A global positioning system-based climatology for the total electron content in the ionosphere, *J. Geophys. Res.*, 115, A10318, <https://doi.org/10.1029/2009JA014719>, 2010.
- Stammer, D., Ray, R. D., Andersen, O. B., Arbic, B. K., Bosch, W., Carrère, L., Cheng, Y., Chinn, D. S., Dushaw, B. D., Egbert, G. D., Erofeeva, S. Y., Fok, H. S., Green, J. A. M., Griffiths, S., King, M. A., Lapin, V., Lemoine, F. G., Luthcke, S. B., Lyard, F., Morison, J., Muller, M., Padman, L., Richman, J. G., Shriver, J. F., Shum, C. K., Taguchi, E., and Yi, Y.: Accuracy assessment of global barotropic ocean tide models, *Rev. Geophys.*, 52, 243–282, <https://doi.org/10.1002/2014RG000450>, 2014.
- Tapley, B., Bettadpur, S., Watkins, M., and Reigber, C.: The gravity recovery and climate experiment: Mission overview and early results, *Geophys. Res. Lett.*, 31, L09607, <https://doi.org/10.1029/2004GL019920>, 2004.
- Tran, N.: Envisat Phase-F: Sea State Bias, Technical Report CLS-DOS-NT-15-031, ESA Contract, ENVISAT RA-2 and MWR ESL and prototypes maintenance support (level 1b and level 2), 2015.
- Tran, N., Labroue, S., Philipps, S., Bronner, E., and Picot, N.: Overview and update of the sea state bias corrections for the Jason-2, Jason-1 and TOPEX Missions, *Mar. Geodesy*, 33, 348–362, <https://doi.org/10.1080/01490419.2010.487788>, 2010.
- Tran, N., Philipps, S., Poisson, J.-C., Urien, S., Bronner, E., and Picot, N.: Impact of GDR-D standards on SSB corrections, Aviso, OSTST, available at: http://www.aviso.altimetry.fr/fileadmin/documents/OSTST/2012/oral/02_friday_28/01_instr_processing_I/01_IP1_Tran.pdf (last access: 10 August 2017), 2012.

- Watson, C. S., White, N. J., Church, J. A., King, M. A., Burgette, R. J., and Legresy, B.: Unabated global mean sea-level rise over the satellite altimeter era, *Nat. Clim. Change*, 5, 565–568, <https://doi.org/10.1038/NCLIMATE2635>, 2015.
- Willis, P., Zelensky, N. P., Ries, J., Soudarin, L., Cerri, L., Moreaux, G., Lemoine, F. G., Otten, M., Argus, D. F., and Heflin, M. B.: DPOD2008, a DORIS-oriented terrestrial reference frame for precise orbit determination, *IAG Symposia series*, 143, 175–181, https://doi.org/10.1007/1345_2015_125, 2016.
- Zawadzki, L., Ablain, M., Carrère, L., Ray, R. D., Zelensky, N. P., Lyard, F., Guillot, A., and Picot, N.: Reduction of the 59-day error signal in the Mean Sea Level derived from TOPEX/Poseidon, Jason-1 and Jason-2 data with the latest FES and GOT ocean tide models, *IEEE T. Geosci. Remote Sens.*, submitted, 2017.