



HAL
open science

On the influence of reflection over a rhythmic swash zone on surf zone dynamics

Rafael Almar, Alexandre Nicolae Lerma, Bruno Castelle, Timothy Scott

► **To cite this version:**

Rafael Almar, Alexandre Nicolae Lerma, Bruno Castelle, Timothy Scott. On the influence of reflection over a rhythmic swash zone on surf zone dynamics. *Ocean Dynamics*, 2018, 68, pp.899-909. 10.1007/s10236-018-1165-5 . insu-03670738

HAL Id: insu-03670738

<https://insu.hal.science/insu-03670738>

Submitted on 7 Mar 2024

HAL is a multi-disciplinary open access archive for the deposit and dissemination of scientific research documents, whether they are published or not. The documents may come from teaching and research institutions in France or abroad, or from public or private research centers.

L'archive ouverte pluridisciplinaire **HAL**, est destinée au dépôt et à la diffusion de documents scientifiques de niveau recherche, publiés ou non, émanant des établissements d'enseignement et de recherche français ou étrangers, des laboratoires publics ou privés.

2018-07

On the influence of reflection over a rhythmic swash zone on surf zone dynamics

Almar, R

<http://hdl.handle.net/10026.1/11994>

10.1007/s10236-018-1165-5

Ocean Dynamics

Springer Science and Business Media LLC

All content in PEARL is protected by copyright law. Author manuscripts are made available in accordance with publisher policies. Please cite only the published version using the details provided on the item record or document. In the absence of an open licence (e.g. Creative Commons), permissions for further reuse of content should be sought from the publisher or author.

[Click here to view linked References](#)

On the influence of reflection over a rhythmic swash zone on surf zone dynamics

Rafael Almar¹, Alexandre Nicolae Lerma², Bruno Castelle³ and Timothy Scott⁴

Abstract

The reflection of incident gravity waves over an irregular swash zone morphology and the resulting influence on surf zone dynamics remains mostly unexplored. The wave-phase resolving SWASH model is applied to investigate this feedback using realistic low-tide terraced beach morphology with well-developed beach cusps. The rhythmic reflection generates a standing wave that mimics a subharmonic edge wave, from the superimposition of incident and two-dimensional reflected waves. This mechanism is enhanced by shore-normal, narrow-banded waves in both direction and frequency. Our study suggests that wave reflection over steep beaches could be a mechanism for the development of rhythmic morphological features such as beach cusps and rip currents.

Keywords: Nearshore, beach cusps, reflection, edge wave, surf-swash interactions, low-tide terraced beach, SWASH model, Radon Transform, rip current

Highlights

- Reflection over a non-uniform shoreline generates an irregular wave pattern
- A single beach cusp is able to generate a standing wave, even at open beaches
- Mechanism more efficient for shore-normal narrow-banded incident waves

¹IRD-LEGOS (Toulouse University /CNRS/CNES/IRD), Toulouse, France,

²BRGM (French Geological Survey), Risks and Prevention Division - Coastal Risks and Climate Change Unit, Orléans, France,

³CNRS, Université Bordeaux 1, UMR 5805-EPOC, 33405, Talence, France,

⁴University of Plymouth, Drake Circus, Plymouth, PL4 8AA, UK

1
2
3
4
5
6
7
8
9 1. Introduction

10 Wave reflection up to 60-80% has been observed on very steep beaches in long period
11 waves (Battjes, 1974; Elgar et al., 1994). This reflection was recently observed to have a
12 profound influence on surf zone hydrodynamics, such as incident waves (Rocha et al.,
13 2017) and return flow or undertow (Martins et al., 2017). While infragravity standing
14 waves have attracted most of the interest on dissipative to intermediate barred beaches
15 (Suhayda, 1974; Guza & Bowen 1976; Mizuguchi, 1984; Contardo and Symonds, 2013; Inch
16 et al., 2016), gravity standing waves on reflective beaches have received less attention (e.g.
17 Guza and Chapman, 1979; Almar et al., 2016). Bryan and Bowen (1996) showed evidence
18 of bar-trapped gravity edge waves, but they were not observed at the shoreline. Due to
19 their short alongshore wavelength and small incident wave angle, gravity waves were
20 discarded from edge wave theory as they cannot be trapped by refraction and reflection
21 (Gallagher et al., 1971). Although the mechanism was not unraveled, Herbers et al., (1999)
22 observed an increase of wave directional spreading in the surf zone close to the shoreline,
23 with shore-based wave reflection as a potential causing factor. A two-dimensional pattern
24 can arise from the superimposition of incident and reflected waves from an irregular
25 shoreline. The literature is extremely limited on this topic despite it has the potential to
26 impact surf zone currents and, in turn, nearshore morphology.

27
28
29
30
31
32
33
34
35
36
37
38
39
40
41
42
43
44
45 The striking regularity of beach cusps (see Coco et al., 1999 for a review of existing
46 observations) has attracted a concentrated effort mostly focused on predicting the spacing
47 of the features as a function of the incoming wave conditions and morphology. The mode-
48 zero subharmonic or synchronous standing edge wave approach was initially proposed for
49 their formation (Guza and Inman, 1975; Huntley and Bowen, 1978; Guza and Bowen, 1981;
50 Inman and Guza, 1982). However, this was challenged by field observations of concurrent
51 cusp evolution and infragravity flow motions (among others, Ciriano et al., 2005) and it was
52
53
54
55
56
57
58
59
60
61
62
63
64
65

1
2
3
4
5
6
7
8
9 concluded that edge waves cannot maintain their spatio-temporal characteristics over
10 durations that match that of cusp formation. Bryan and Coco (2010) observe that beach
11 cusps can cause irregular hydrodynamic patterns occurring at the gravity wave frequency.
12 We propose here that beach cusp morphology can act as a template impacting gravity
13 waves and surf zone hydrodynamic patterns.
14
15
16
17
18

19 At dissipative to intermediate beaches with an alongshore-uniform surf zone, the
20 observed transient circulation is the result of either shear instabilities of the longshore
21 current for oblique waves (Bowen and Holman, 1989) or more commonly from alongshore
22 variations of wave breaking (Clark et al., 2012) in nearly shore-normal waves. In the latter
23 case, this irregular breaking can be forced by random short-crested incident waves
24 (Johnson and Pattiaratchi, 2004; Feddersen, 2014). Dalrymple (1975) and Fowler and
25 Dalrymple et al., (1990) also demonstrated that rip currents (see review by Castelle et al.,
26 2016) can theoretically result from a quasi-standing wave pattern that can be caused by
27 two wave trains of different incidences, though this has not been observed in the field.
28 Where there is a reflective upper beach, the feedback of reflection over irregular
29 morphological swash zone, such as a cusped pattern, on waves and surf zone circulation
30 remains largely undocumented. Existing studies only mention the short spatio-temporal
31 scaled offshore-oriented jets with a 1-10 m extension and lifetime from 30 s to minutes
32 resulting from two-dimensional swash flow (Masselink and Pattiaratchi, 1998; Dalrymple
33 et al., 2011; Murray et al. 2013; Castelle et al., 2014). However, considering only one
34 dimension, recent works (Almar et al., 2016; Rocha et al., 2017; Martins et al., 2017) suggest
35 that reflection has the potential to influence waves and currents within and beyond the surf
36 zone. On steep beaches, reflection over such a cusped pattern could be a missing
37 mechanism influencing surf zone circulation.
38
39
40
41
42
43
44
45
46
47
48
49
50
51
52
53
54
55
56
57
58
59
60
61
62
63
64
65

1
2
3
4
5
6
7
8
9 This paper aims to provide new insight into the mechanism influence of incident wave
10 reflection from a rhythmic shoreline on surf zone hydrodynamics. This is done using the
11 wave-phase resolving numerical model SWASH, scaled to a realistic reflective low-tide
12 terraced beach exhibiting well-developed beach cusps. The model is also applied to
13 different idealized morphologies (with or without cusps, terrace or no terrace, gentle or
14 steep beach) and wave forcing (incidence angle, angular and frequency spread) to
15 determine the optimal conditions for this two-dimensional reflection mechanism.
16
17
18
19
20
21
22
23
24

25 2. Data and methods

26 2.1 SWASH numerical simulations

27 The SWASH model (Zijlema et al., 2011) is a vertical multi-layered model based on
28 non-linear shallow water equations (NLSW) including non-hydrostatic pressure. The
29 SWASH model is now currently used in studies focusing on runup, infragravity wave
30 dissipation and energy transfer (Rijnsdrop et al., 2015, De Bakker et al., 2014, 2016), wave-
31 driven circulation and dissipation due to wave breaking in the nearshore area (Guimarães
32 et al., 2015, Medellin et al., 2016, Nicolae Lerma et al., 2017). Model performances has been
33 demonstrated reproducing controlled and idealized conditions (Smit et al., 2013, 2014;
34 Ruju et al., 2014; Rijnsdorp et al., 2014, 2015, 2017; Suzuki et al., 2017) and for schematic
35 1D profile configurations (Torres-Freyermuth et al., 2012; De Bakker et al., 2014). Only
36 recently was the model applied and demonstrated good skills in 2D or 3D (multilayered
37 mode) simulating complex real cases (e.g. Guimarães et al. 2015; Gomes et al., 2016; Nicolae
38 Lerma et al., 2017).
39
40
41
42
43
44
45
46
47
48
49
50
51
52

53 In this study, the SWASH model is used in a 2 vertical layers 2D mode configuration
54 using the Keller box scheme (Lam and Simpson, 1976) for approximation of the pressure
55 gradients in the vertical momentum equations (Stelling and Zijlema, 2003). This model
56
57
58
59
60
61
62
63
64
65

1
2
3
4
5
6
7
8
9 setup gives good dispersive properties even for low vertical resolution (Zijlema et al.,
10 2011). It was reported to provide an accurate description of wave height, wave shape and
11 flow (Smit et al., 2013), while still maintaining reasonable computing time for 2D domains.
12 In this study, the total duration of a given simulation was set to 15 min for each simulation,
13 with 10 min used for analysis. Based on preliminary simulations showing that the
14 hydrodynamics systematically stabilizes (dynamic equilibrium) within less than 5 minutes,
15 the first 5 minutes were disregarded in the analysis as they correspond to the model spin
16 up. The time step was 0.01 s and simulation outputs were stored every second, which is
17 enough to robustly analyze reflection effects. Wave breaking was parametrized using HFA
18 (Hydrostatic Front Approximation; see e.g., Kennedy et al., 2000; Tonnelli and Petti, 2012)
19 using default parameters as recommended by Smit et al. (2013).
20
21
22
23
24
25
26
27
28
29
30

31 This SWASH model is used here to investigate the influence of incident wave
32 reflection over a cusped morphological pattern at very reflective beaches, which are the
33 conditions under which this mechanism is hypothesized to be most significant. Hydro-
34 morphological conditions are scaled to the Grand Popo beach (Benin, West Africa) during
35 the March 2014 experiment (Almar et al., 2014; Figure 1). Grand Popo is located on a micro-
36 tidal open coast exposed to South Atlantic long swells with a small incident wave angle
37 (Almar et al., 2015). The beach has an alongshore-uniform terraced surf zone morphology
38 (Laibi et al., 2014; Abessolo Ondo et al., 2017) and a reflective upper beach exhibiting a
39 well-developed cusped pattern with a typical wavelength of about 30-40 m (Senechal et
40 al., 2014). The reference simulation (R0, see Table1) was conducted using surveyed
41 morphology with the measured rhythmic upper beach morphology and an alongshore-
42 averaged terrace and offshore zone. (Figure 1.b). A control simulation with an alongshore-
43 uniform morphology (average profile replicated alongshore, R1), where cusps have been
44 smoothed out, was also run to isolate their influence on wave reflection. For these two
45
46
47
48
49
50
51
52
53
54
55
56
57
58
59
60
61
62
63
64
65

1
2
3
4
5
6
7
8
9 simulations, high tide conditions were used, when beach cusps are the most active. Waves
10 measured by an ADCP in 10-m depth were imposed along the offshore boundary. This
11 forcing corresponds to parametric conditions $H_s = 1.2$ m $T_p = 10$ s, $Dir=0^\circ$. An analysis of
12 the influence of wave forcing was conducted by varying: incident wave angle (W1
13 simulations), directional spreading (W2 simulations) and frequency spreading (W3
14 simulations). Lateral boundary conditions with this realistic morphology were set periodic
15 considering that wave and flow exiting at one boundary enter from the other.
16
17
18
19
20
21
22

23 In order to better investigate the reflection mechanism, more controlled simulations
24 were conducted using parametric wave conditions and idealized morphology (C series,
25 Table 1, see Figure 1). The beach profile was generated using the formula proposed by Dean
26 (1991) $Z=aX^b$, with $a=0.15$, $b=2/3$. A single cusp of sinusoidal shape is placed on the upper
27 beach, with a wavelength of 30 m and a 0.4 m amplitude. A 30-m wide terrace is added in
28 the C0 simulation, and removed in the C1 simulation. Upper beach slope was steepened
29 from 0.1 to 0.15 in simulation C2. In these idealized cases, lateral boundaries were
30 parametrized with 200-m sponge width to focus on reflection generation on cusped
31 morphology at the center of the domain and to avoid generation of potential alongshore
32 variability enforced by lateral boundary conditions. The computation domain extends 1.2
33 km and 0.75 km in the cross-shore and longshore, respectively, with a 1-m spatial
34 resolution. Conditions for the different simulations conducted are summarized in Table 1.
35
36
37
38
39
40
41
42
43
44
45
46
47
48
49
50
51
52
53
54
55
56
57
58
59
60
61
62
63
64
65

1
2
3
4
5
6
7
8
9
10
11
12
13
14
15
16
17
18
19
20
21
22
23
24
25
26
27
28
29
30
31
32
33
34
35
36
37
38
39
40
41
42
43
44
45
46
47
48
49
50
51
52
53
54
55
56
57
58
59
60
61
62
63
64
65

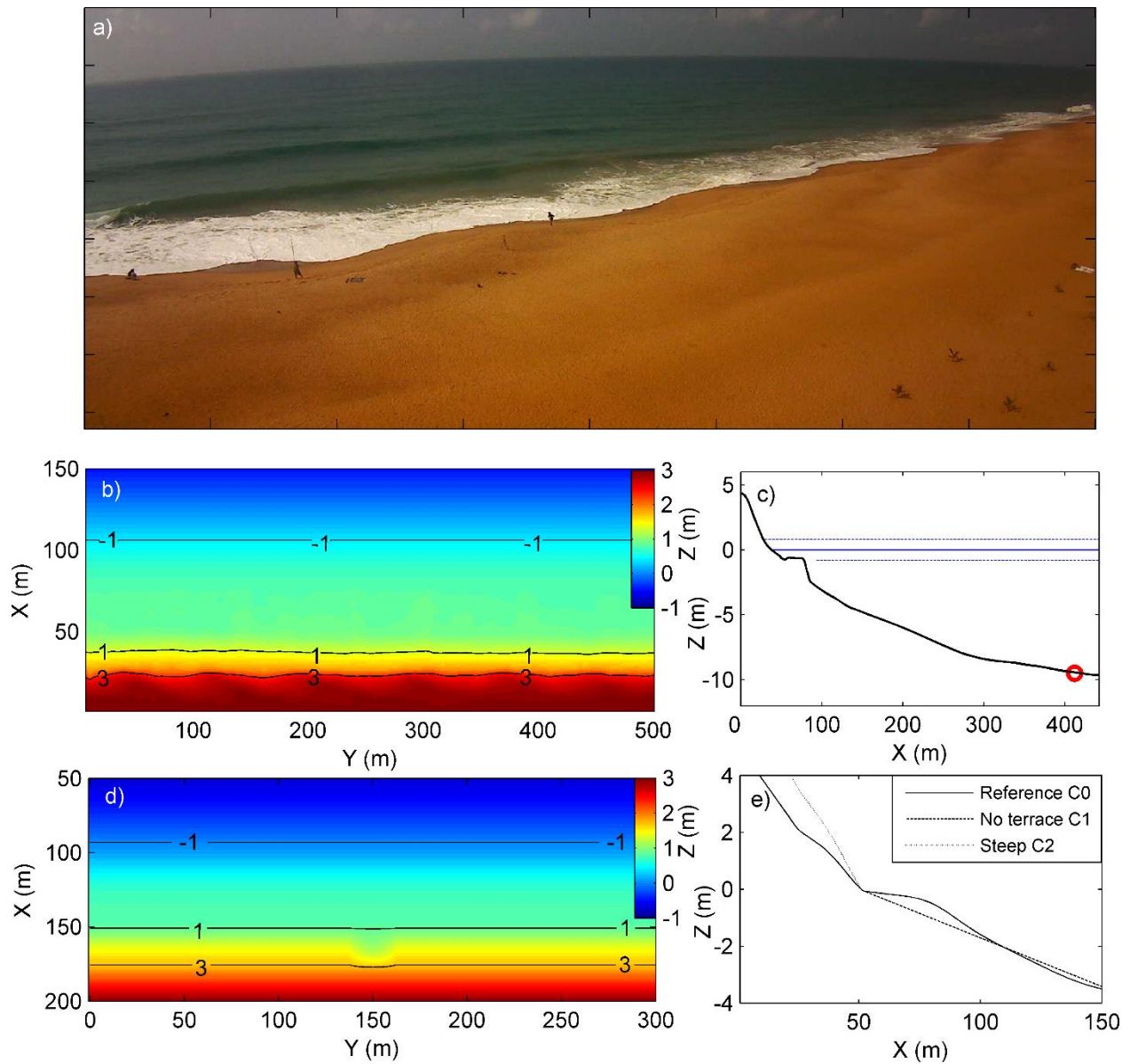


Figure 1: a) Illustration of a low-tide terraced beach with very steep and rhythmic upper beach exposed to long swells, Grand Popo field site (Benin, West Africa). b) Surveyed bathymetry (R0 simulation) with superimposed isobaths as black lines. Surf zone morphology is set alongshore uniform with its c) alongshore-averaged cross-shore profile. Red circle indicates the location of the ADCP, with solid and dashed blue lines indicating

mean sea level and high and low tide levels respectively. In d) and e) is shown the idealized single cusp morphology (C0 simulation).

Table 1: Simulations conducted. Frequency spread is expressed through the JONSWASP enhancement factor γ . Simulations duration was 15 min. Water level was set constant over all simulations corresponding to high tide conditions (1.8 m above terrace level).

Realistic conditions	R0	Waves measured at ADCP, surveyed bathymetry (cusps)
	R1	Waves measured at ADCP, uniform bathymetry (no cusps)
Test on incoming waves	W1	Direction: $H_s=1.2\text{m}$ and $T_p=10\text{s}$, $\text{Dir}=0, 5, 15^\circ$, $\text{DirSpread}=15^\circ$, JONSWASP $\gamma = 3.3$
	W2	Directional spreading: $H_s=1.2\text{m}$ and $T_p=10\text{s}$, $\text{Dir}=5^\circ$, $\text{DirSpread}=5, 15, 40^\circ$, JONSWASP $\gamma = 3.3$
	W3	Spectral spreading: $H_s=1.2\text{m}$ and $T_p=10\text{s}$, $\text{Dir}=5^\circ$, $\text{DirSpread}=15^\circ$, JONSWASP $\gamma = 1, 3.3, 10$
Test on idealized single cusp	C0	$H_s=1.2\text{m}$, $T_p=10\text{s}$, $\text{Dir}=0^\circ$, Terrace
	C1	$H_s=1.2\text{m}$, $T_p=10\text{s}$, $\text{Dir}=0^\circ$, No terrace
	C2	$H_s=1.2\text{m}$, $T_p=10\text{s}$, $\text{Dir}=0^\circ$, upper beach slope 0.15 instead of 0.1
	C3	$H_s=1.2\text{m}$, $T_p=10\text{s}$, $\text{Dir}=0$, 20 m cusp, instead of 30 m

2.2 Generation of wave forcing at the boundary

The role of incident wave characteristics was also addressed. For a better control, the SWASH built-in tool was not used to generate incident wave conditions from measured spectrum. Instead, this was done by generating surface elevation timeseries representing a JONSWAP spectrum (Eq. 1), which allowed us to modify wave characteristics such as directional and spectral spreading.

$$S(f) = \frac{\alpha g^2}{f^5} \exp \left[-\beta \frac{f_p^4}{f^4} \right] \gamma^\alpha \quad (1)$$

where $\alpha = \exp \left[-\frac{(f-f_p)^2}{2f_p^2\sigma^2} \right]$, $\sigma = \begin{cases} 0.07 & \text{if } f \leq f_p \\ 0.09 & \text{if } f > f_p \end{cases}$, $\beta = 5/4$, γ is the enhancement factor and stands for the frequency spread, with a typical value of 3.3, α is related to wind speed and fetch length with typical value of 0.01 and f and f_p are wave and peak wave frequencies. The amplitude $A_{Jonswap}(f)$ of the wave components (200 here) is reconstructed from the JONSWAP spectrum, considering a random phase φ , and wave angle is reconstructed using a phase lag along the offshore boundary. A directional spread is created using a random angle $dir_{Gaussian}(f)$ with Gaussian distribution around the peak direction.

$$Eta(y, t) = A_{Jonswap}(f) \cos(2\pi t f + \varphi - 2\pi f \sin(\frac{dir_{Gaussian}(f)y}{c_f})) \quad (2)$$

with c_f being the linear phase celerity which depends on local depth, and y the distance alongshore from the reference point.

2.3 Separation of incoming and outgoing waves

The skill of the Radon Transform (RT) to separate incoming and outgoing waves was shown recently using numerical modelling and remotely sensed video and LiDAR data (Almar et al., 2014, 2016; Martins et al., 2017). The RT $R(\rho, \theta)$ of a two-dimensional field $\eta(x, y)$ (Radon, 1917; Deans, 1983; Duda and Hart, 1972) corresponds to a polar projection and can be defined as:

$$R(\rho, \theta) = \iint \eta(x, t) \delta(x \cos \theta + t \sin \theta - \rho) dx dt \quad (3)$$

where δ is the Dirac delta function, θ and ρ are the angle and distance from origin of the integration line defined as $\rho = x \cos \theta + y \sin \theta$. The origin is the center of the two-dimensional field. The Radon transform $R(\rho, \theta)$ is defined for all possible values of θ from $[0$ to $180^\circ]$ and ρ from 0 to the diagonal length. The original field $\eta(x, y)$ can be back projected using the Inverse Radon Transform at selected range of θ values including incoming $\eta_{In}(x, t)$ $[1^\circ, 89^\circ]$ and outgoing $\eta_{Out}(x, t)$ angles:

$$\eta_{In}(x, t) = \int_{-\infty}^{+\infty} \int_1^{89} R(\rho, \theta) d\theta d\rho \quad (4)$$

$$\eta_{Out}(x, t) = \int_{-\infty}^{+\infty} \int_{91}^{179} R(\rho, \theta) d\theta d\rho \quad (5)$$

This is illustrated in Figure 2 where incoming and outgoing waves are separated from a complex surface elevation field (Figure 2.a). Reflected waves in Figure 2.c are substantially more variable alongshore than the incident waves which are rather uniform (Figure 2.b).

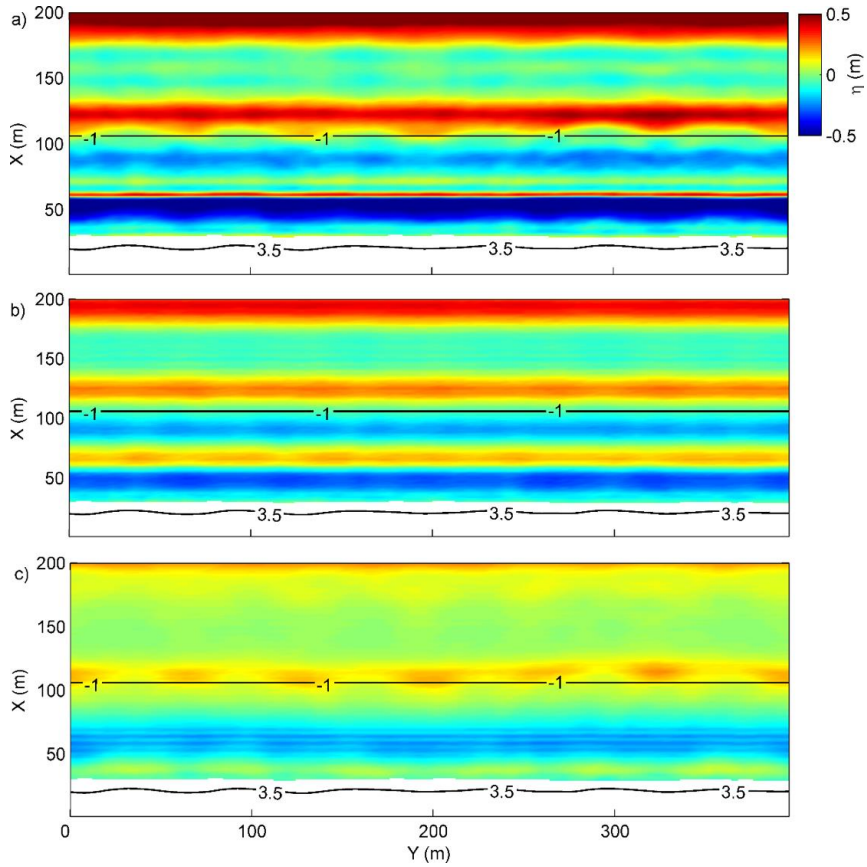


Figure 2: Illustration of the RT method for the separation of b) incoming and c) outgoing waves from a) total surface elevation. Black lines are isobaths, showing the outer limit of the terrace (-1 m) and the upper beach morphology (+3.5 m).

3. Results

3.1 Realistic simulations

To illustrate the influence of reflection over an irregular swash zone, two simulations with realistic wave and morphological conditions were conducted, with and without cusps. The first column of Figure 3 shows the reflection of shore-normal waves over the realistic morphology where alongshore irregularities have been removed (R1 simulation, Table 1). Reflection is purely shore-normal with no directional spread of reflected waves. In the

second column of Figure 3, the realistic morphology (Figure 1.b) with beach cusps is considered (R0). The reflection of incoming waves over the cusped pattern generates an irregular reflected wave. An anomaly on the total wave field is observed both in the longshore and cross-shore directions and extends offshore of the breaking zone which is located over the terrace. Regular nodes and anti-nodes highlight the presence of standing waves.

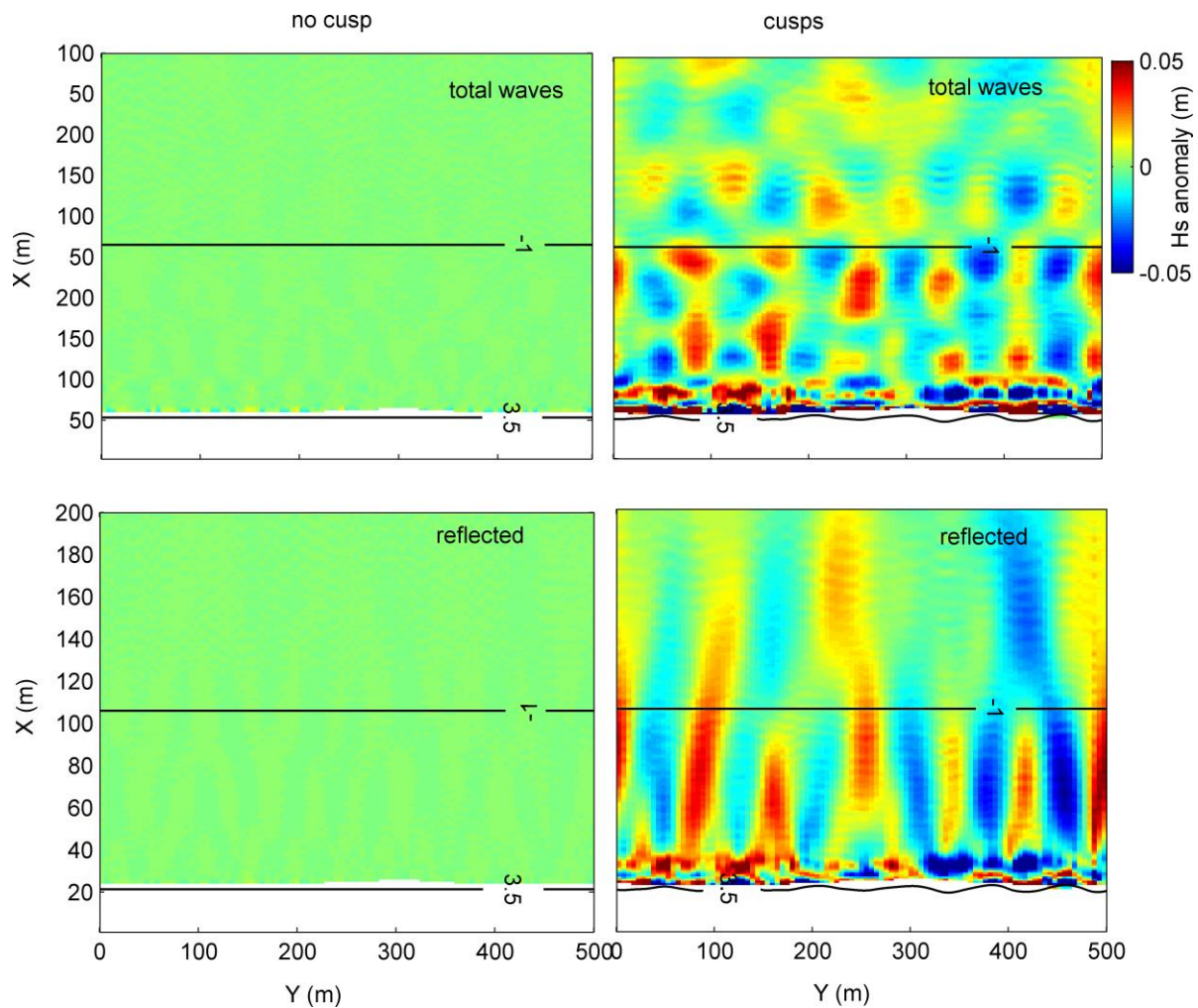


Figure 3. 10-min averaged H_s alongshore anomaly (H_s minus alongshore-averaged H_s) with no cusp (left) and realistic (right) morphologies (R1 and R0 simulations, Table 1), for total

1
2
3
4
5
6
7
8
9 waves (incoming and reflected) in the upper panels and reflected waves only (using Eq. 5)
10 in the lower panels. Black lines show isobaths.
11
12
13

14 3.2 Influence of morphology 15

16 To investigate the influence of different morphologies on wave reflection, more
17 controlled simulations were conducted with synthetic waves and bathymetry. Shore-
18 normal waves were propagated over an alongshore-uniform low-tide terrace and a single
19 cusp (C0 simulation in Table 1), to better isolate the two-dimensional reflection
20 mechanism. Figure 4 shows a sequence of incoming, outgoing, and total surface alongshore
21 anomaly every 5 s during the reflection of an individual wave. While incoming waves are
22 rather uniform alongshore, reflected waves propagate in all direction, making a half circle.
23 The differences of celerity values of these reflected waves induce a deformation of the wave
24 propagation circle; the wave going slower on the terrace than offshore. It is noteworthy
25 that the reflected wave wavelength is longer than the incident wave length, with the beach
26 acting as a low pass-filter (Battjes, 1974). Over a wave period, superposition of the next
27 wave with the reflected one generates a surface elevation anomaly.
28
29
30
31
32
33
34
35
36
37
38
39
40

41 The influence of different morphological parameters was tested using averaged
42 anomalies of H_s , with the previous configuration (C0) as a baseline. The influence of
43 reflection clearly appears in Figure 5.a with the presence of nodes and antinodes from the
44 interaction between incoming and outgoing waves. Most of the standing wave energy is
45 localized off the cusp, though another part spreads and is distributed alongshore.
46 Antinodes and nodes also appears at the shoreline, which induces an alongshore anomaly
47 in the runup (see Figure 5.b). If the terrace is removed (C1), no substantial change is
48 observed in Figure 5.b and the alongshore anomaly is still there. Almar et al. (2016) found
49 that the main differences arise from the increase in the upper beach slope from 0.1 to 0.1.
50
51
52
53
54
55
56
57
58
59
60
61
62
63
64
65

1
2
3
4
5
6
7
8
9 The runup wavelength can be visually identified as the alongshore distance between two
10 maxima or minima of the runup amplitude anomaly. It can be seen that the increase of the
11 upper beach slope reduces the wavelength from ~ 70 m to 30-40 m. Interestingly, this
12 upper beach slope reduces the wavelength from ~ 70 m to 30-40 m. Interestingly, this
13 wavelength does not depend on the cusp alongshore dimension, which can change from 30
14 to 20 m (C3) with little impact.
15
16
17
18
19
20

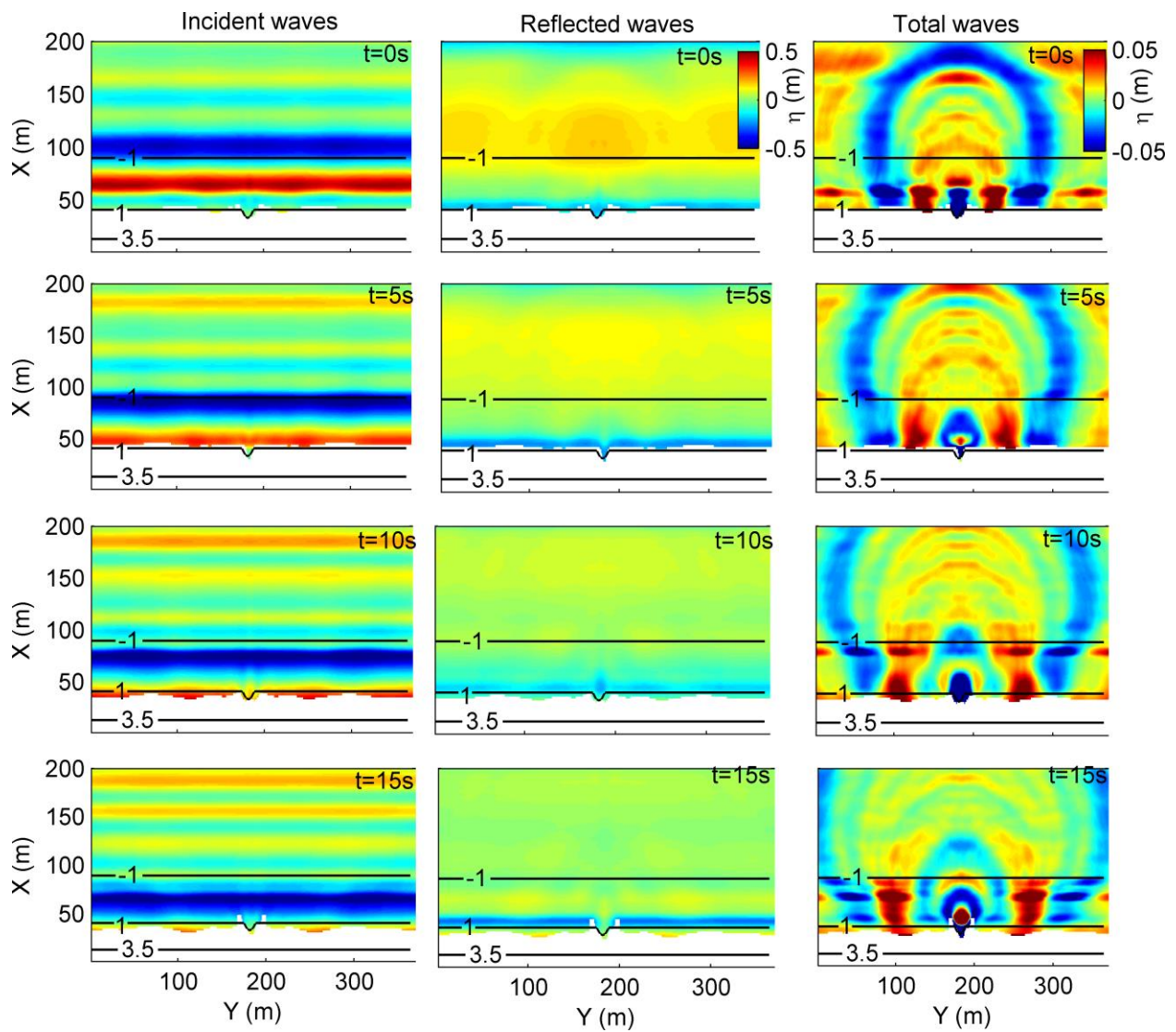


Figure 4: Sequence of surface elevation fields for incoming waves (left), reflected waves (center) and total anomaly (right), for random waves ($H_s=1.2\text{m}$, $T_p=10\text{m}$, $\text{Dir}=0^\circ$) and single cusp morphology (C0 simulation, see Table 1). Black lines show isobaths.

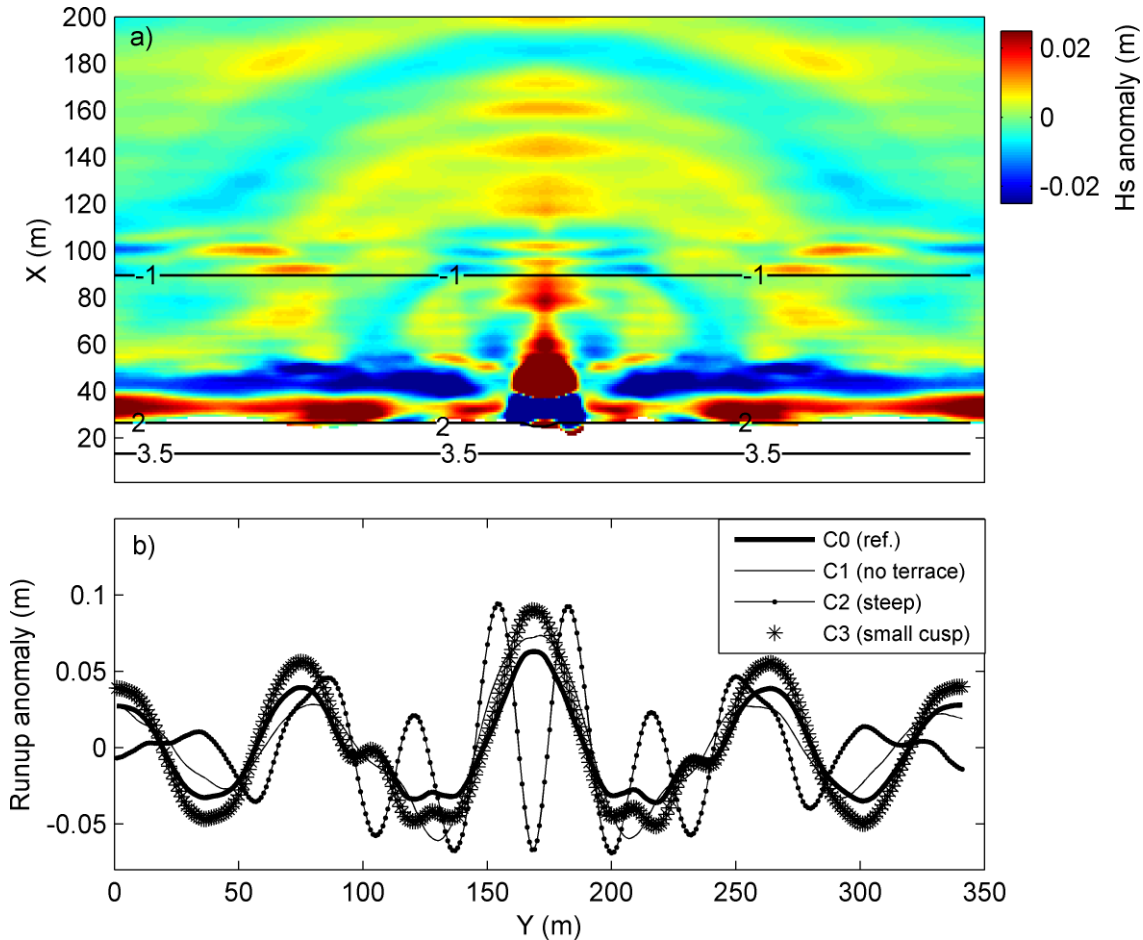


Figure 5: a) Average H_s anomaly for the single 30-m cusp morphology (C0 simulation, see Table 1) and b) runup anomaly for different morphologies: C0 (solid thick), C1(no terrace, solid thin), C2 (steeper slope, solid with dots) and C3 (shorter cusp, stars). In a), black lines show isobaths.

3.3 Influence of incident waves

1
2
3
4
5
6
7
8
9 Longer wave period increases unidirectional reflection (Battjes, 1974). But how the
10 efficiency of the two-dimension reflection mechanism evolves with wave incidence angle
11 and spectrum width (frequency and angle) is not documented. To investigate this, the angle
12 of incidence was varied from shore normal 0° to 5° and 15° (W1 series), directional
13 spreading varied from narrow 5° , to wide 40° (W2 series), and spectral spreading changed
14 through the JONSWAP γ factor from 1 (wide), 3.3 to 10 (narrow) (W3 series). This was done
15 by forcing at the offshore boundary with the time series of surface elevation from the
16 method described in Section 2.2. Instantaneous surface elevation fields are illustrated in
17 Figure 6. The realistic upper beach topography is used here. The amplitude of resulting
18 standing waves is computed as the cross-shore averaged alongshore anomalies. Figure 6
19 shows that the standing wave amplitude increases when incident waves are shore-normal.
20 This is due to the two-dimensional reflection only, as previous studies from a uniform
21 swash zone on a natural beach (Taira and Nagata, 1968; Suhayda, 1974) and sea wall
22 (Sutherland and O'Donoghue, 1998) indicate that incident angle induces a phase shift on
23 the reflected waves without changing standing wave amplitude. Figure 6 also shows that
24 amplitude increases with narrow banded spectra and angular incident waves, which
25 ensure more coherency between incident and reflected wave phases.
26
27
28
29
30
31
32
33
34
35
36
37
38
39
40
41
42
43
44
45
46
47
48
49
50
51
52
53
54
55
56
57
58
59
60
61
62
63
64
65

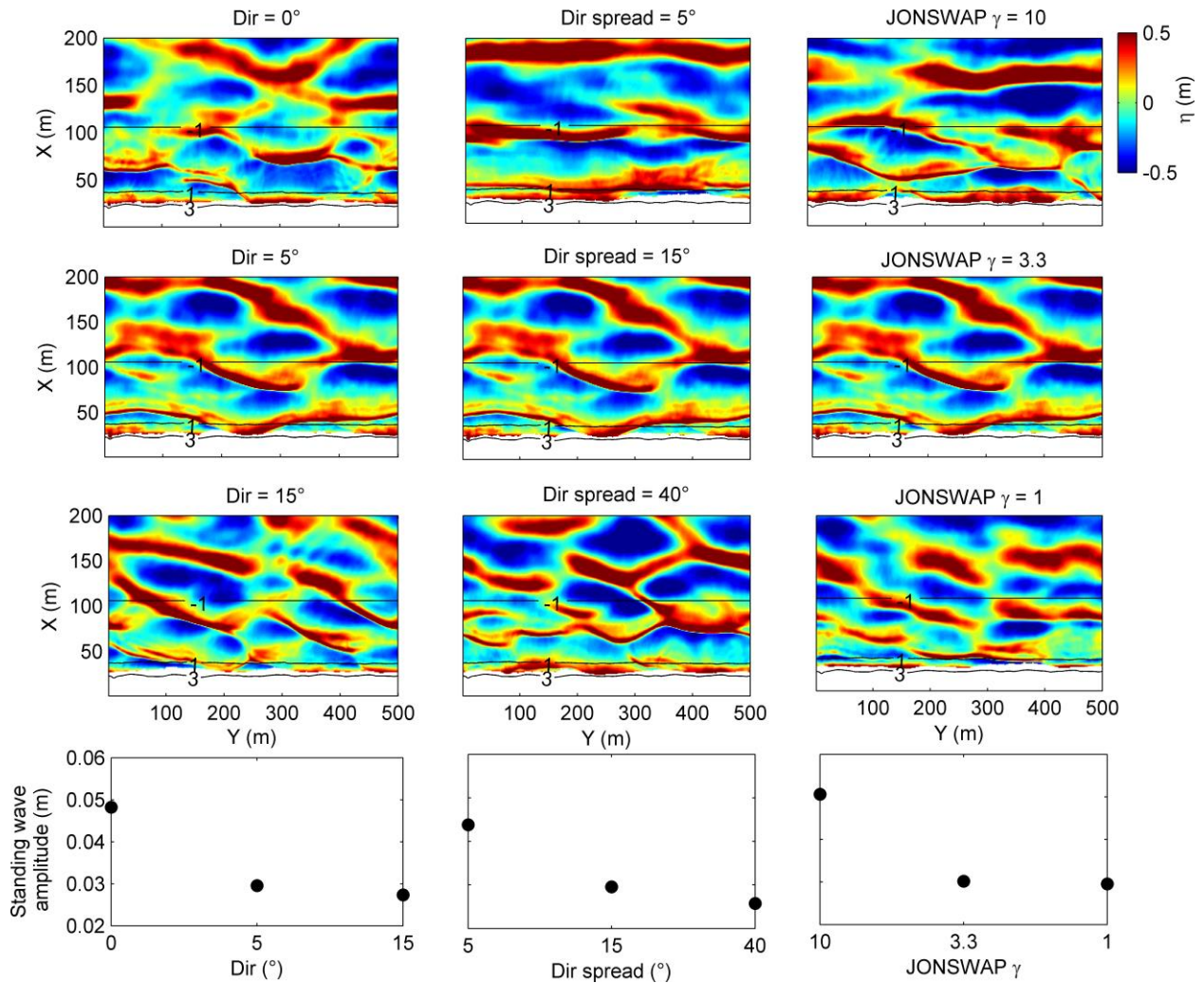


Figure 6: Influence of wave forcing on standing wave amplitude. Instant surface elevation fields in upper panels illustrate different incident waves, and the resulting amplitude of standing waves are shown in lower panels. In the first column, incident direction is changed from 0 to 5 to 15° (W1 simulations, see Table 1). In the second column the directional spread is changed from 5 to 15 to 40° (W2 simulations). In third column frequency spread (enhancement factor γ in the JONSWAP formula) is changed from 10 (narrow) to 3.3 to 1 (wide) (W3 simulations). Black lines show isobaths. See W series in Table 1 for more detail on simulations.

1
2
3
4
5
6
7
8
9
10
11
12
13
14
15
16
17
18
19
20
21
22
23
24
25
26
27
28
29
30
31
32
33
34
35
36
37
38
39
40
41
42
43
44
45
46
47
48
49
50
51
52
53
54
55
56
57
58
59
60
61
62
63
64
65

4. Discussion

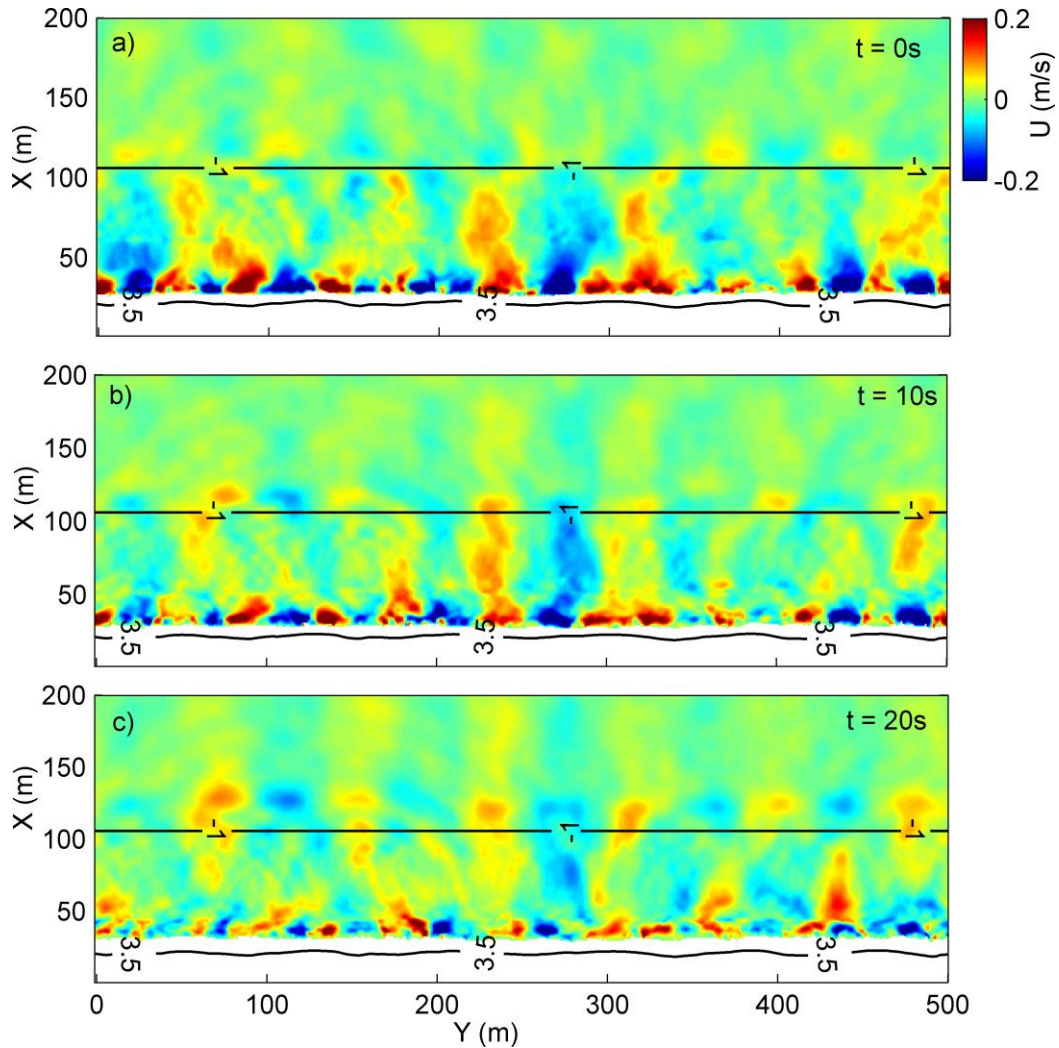
On steep beaches, resonance of the underlying morphology with particular frequencies can excite progressive subharmonic edge waves resulting in a quasi-standing edge wave (Guza & Inman, 1975, Guza & Bowen, 1976; extended for oblique waves in Guza and Chapman, 1979). This subharmonic resonance does not occur with weakly reflected incident waves (Guza & Bowen, 1976). Our numerical simulations show that standing waves can also form from the mechanism of reflection over an irregular swash zone, even for shore-normal waves. This is due to the linear superimposition of incoming and two-dimensional reflected gravity waves, and not the combination of opposite progressive infragravity waves. The mechanism is different but the resulting standing wave mimics the spatio-temporal characteristics of a standing subharmonic edge wave. Our results show that this reflection-induced standing pattern is controlled, similarly to subharmonic edge waves, by the upper beach slope and incoming wave characteristics, rather than by the perturbation dimension.

A number of studies have suggested that edge waves are responsible for the initiation of cusps (Huntley and Bowen, 1978; Sallenger, 1979) but many have failed to establish this link (Holland and Holman, 1996; Masselink et al., 1997; Almar et al., 2008). Some limitations of the edge wave model are that once the cusps develop they tend to suppress edge wave motion and the evolution of their spatio-temporal characteristics are not compatible with cusp lifetime (Guza and Bowen, 1981; Ciriano et al., 2005). This is not the case with reflection-induced standing gravity waves whose characteristics would grow with the development of the cusps amplitude, which triggers and spreads energy in two dimensions, through a supposed positive feedback. Coco et al., (2001) noticed that beach cusps form most readily when narrow-banded waves are normally incident (Longuet-

1
2
3
4
5
6
7
8
9 Higgins and Parkin, 1962; Sallenger, 1979; Guza and Bowen, 1981) which are the optimal
10 conditions found in our sensitivity analysis for the reflection-based mechanism. Swash-
11 induced reflection can be a new mechanism for the initiation of a cusped pattern around a
12 morphological perturbation, in a similar way to that which Reniers et al. (2004) suggest for
13 the surf zone where wave group patterns could be sufficiently long lasting to perturb an
14 initially alongshore uniform beach in a quasi-periodic way, with appropriate scales.
15
16
17
18
19
20

21 To the authors' knowledge, the feedback of irregular reflected waves on surf zone
22 dynamics was not accounted for by studies dealing with surf zone circulation and rip
23 current occurrence (e.g. Johnson and Pattiaratchi, 2004; Feddersen, 2014; see also a review
24 by Castelle et al., 2016). Recently, unidirectional studies of Almar et al., (2016) and Martins
25 et al. (2017) demonstrated the role played by reflection on waves breaking and the
26 intensification of the undertow. When considering reflection over an irregular swash zone
27 this mechanism has the potential to influence a two-dimensional circulation. A regular
28 pattern of pulsating rip currents can be forced, similarly to that shown theoretically by
29 Dalrymple (1975) with two trains of incident waves of different incidence. Figure 7
30 illustrates the generation of offshore-oriented currents jets for realistic conditions (R0
31 simulation, Table 1). These current anomalies propagate off the surf zone where they can
32 even be reinforced by the interaction with following wave breaking (Figure 7.c). Figure 8
33 shows the amplitude of vorticity generated by the reflection over a single cusp morphology
34 with shore-normal waves (C0 simulation, Table 1). It is noteworthy that this estimates the
35 amplitude of the pulses and not the average intensity of the circulation. The resulting
36 regular pattern is striking, with maxima every ~30-40 m. More analyses are needed with
37 concurrent synoptic observations of surf zone currents across both reflective and
38 intermediate surf zones (e.g. Haller et al., 2016; Derian and Almar, 2017). However, this
39 study suggests that wave reflection over a morphologically irregular swash zone provide a
40
41
42
43
44
45
46
47
48
49
50
51
52
53
54
55
56
57
58
59
60
61
62
63
64
65

1
2
3
4
5
6
7
8
9 mechanism for affecting surf zone circulation variability, such as rip currents, particularly
10
11 at sites with a steep upper beach.
12
13
14



50
51
52
53
54
55
56
57
58
59
60
61
62
63
64
65

Figure 7: Sequence of the alongshore anomaly of cross-shore current fields for measured shore-normal waves over a realistic bathymetry (R0 simulation, Table 1). Black lines show isobaths.

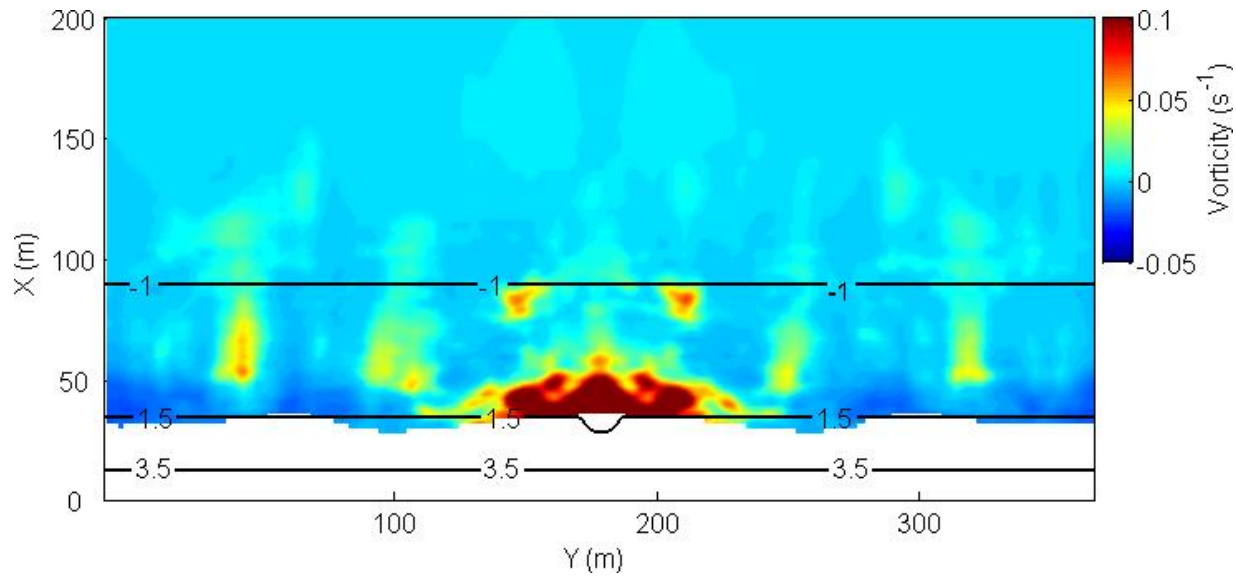


Figure 8: Alongshore anomaly of vorticity variability (4σ) field for the single idealized cusp case, shore-normal waves (C0 simulation, Table 1). Black lines show isobaths.

5. Conclusions

The impact of alongshore-variable incident wave reflection over a rhythmic swash zone morphology on the surf zone was explored. Simulations were conducted using the wave-phase resolving SWASH model scaled on realistic reflective conditions of a low-tide terraced beach exhibiting beach cusps. Results show that this reflection mechanism drives a significant surf zone variability. A standing wave pattern is generated with characteristics mimicking a subharmonic edge wave. The morphological control of this standing wave wavelength is dominated by upper beach slope rather than by cusp dimensions. The efficiency of this mechanism increases with shore-normal, narrow-banded waves. Our study suggests that wave reflection over steep beaches could be a mechanism for the development of rhythmic morphological features such as beach cusps and rip current occurrence.

1
2
3
4
5
6
7
8
9
10
11 **Acknowledgements**

12
13 The Grand Popo experiment was supported by French INSU/CNRS EC2CO-LEFE/IRD,
14 UNESCO co-chair ICPMA/IPB. We are indebted to the naval services of Benin at Grand Popo
15 for their logistic support during the field experiment and for allowing the installation of the
16 permanent video system on their semaphore. This research has received support from
17 French grants through ANR (COASTVAR: ANR-14-ASTR-0019). We thank Giovanni Coco for
18 his thorough reading of this manuscript.
19
20
21
22
23
24
25

26
27 **References**

- 28
29 Abessolo Ondo, G., Bonou, F., Tomety, F.S., Du Penhoat, Y., Perret, C., Degbe, C.G.E, Almar,
30 R., 2017. Event to seasonal and inter-annual coastal evolution at Grand Popo, Benin.
31 Water, 9(6), 447; doi:10.3390/w9060447
32
33 Almar, R., Almeida, P., Blenkinsopp, C., Catalan, P., 2016. Surf-swash interactions on a low-
34 tide terraced beach. Journal of Coastal Research , SI 75: 348-352
35
36 Almar, R., Kestenare, E., Reyns, J., Jouanno, J., Anthony, E.J., Laibi, R., Hemer, M., Du Penhoat,
37 Y., Ranasinghe, R., 2015. Response of the Bight of Benin (Gulf of Guinea, West Africa)
38 coastline to anthropogenic and natural forcing, Part1: Wave climate variability and
39 impacts on the longshore sediment transport, Continental Shelf Research, 110, 48-59
40
41 Almar, R., Michallet, H., Cienfuegos, R., Bonneton, P., Ruessink, B.G. and Tissier, M., 2014. On
42 the use of the Radon Transform in studying nearshore wave dynamics, Coastal
43 Engineering, 92, 24-30
44
45 Almar, R., Du Penhoat, Y., Honkonnou, N., Castelle, B., Laibi, R., Anthony, E., Senechal, N.,
46 Degbe, G., Chuchla, R., Sohoun, Z., Dorel, M., 2014. The Grand Popo experiment, Benin,
47 Journal of Coastal Research, SI 70, 651-656, ISSN 0749-0208
48
49
50
51
52
53
54
55
56
57
58
59
60
61
62
63
64
65

- 1
2
3
4
5
6
7
8
9 Almar, R., Coco, G., Bryan, K.R., Huntley, D.A., Short, A.D., Senechal, N., 2008. Video
10 observations of beach cusp morphodynamics, *Marine Geology*. 254, 216-223
11
12 Battjes, J.A., 1974. "Surf similarity", *Proceedings 14th International Conference on Coastal*
13 *Engineering*, pp. 466–480, doi:10.9753/icce.v14
14
15 Bowen, A.J., Holman, R.A., 1989. Shear instabilities of the mean longshore current, 1,
16 *Theory*, 3. *Geophys. Res.*, 94, 18,023-18,030
17
18 Bryan, K.R., Bowen, A.J., 1996. Edge wave trapping and amplification on barred beaches.
19 *Journal of Geophysical Research*, 101, C3, 6543-6552
20
21 Bryan, K.R., Coco, G., 2010. Observations of nonlinear runup patterns on plane and rhythmic
22 beach morphology. *Journal of Geophysical Research*, 115, C9, DOI:
23 10.1029/2009JC005721
24
25 Castelle, B., du Penhoat, Y., Almar, R., Anthony, E., Lefebvre, J-P., Laibi, R., Chuchla, R., Dorel,
26 M., Senechal, N., 2014. Flash rip dynamics on a high-energy low-tide-terraced beach
27 (Grand Popo, Benin, West Africa), *Journal of Coastal Research*, SI 70, 633-638, ISSN
28 0749-0208
29
30 Castelle, B., Scott, T., Brander, R.W., McCarroll, R.J., 2016. Rip current types, circulation and
31 hazard *Earth-Science Reviews*, 163, 1-21.
32
33 Ciriano, Y., Coco, G., Bryan, K.R., Elgar, S., 2005. Field observations of swash zone
34 infragravity motions and beach cusp evolution, *J. Geophys. Res.*, 110, C02018,
35 doi:10.1029/2004JC002485
36
37 Clark, D.B., Elgar, S., Raubenheimer, B., 2012. Vorticity generation by short-crested wave
38 breaking, *Geophys. Res. Lett.*, 39, L24604, doi:10.1029/2012GL054034
39
40 Coco, G., Huntley, D.A., O'Hare, T.J., 2001. Regularity and randomness in the formation of
41 beach cusps, *Mar. Geol.*, 178, 1–9.
42
43
44
45
46
47
48
49
50
51
52
53
54
55
56
57
58
59
60
61
62
63
64
65

- 1
2
3
4
5
6
7
8
9 Coco, G., O'Hare, T.J., Huntley, D.A., 1999. Beach cusps: A comparison of data and their
10 formation. *Journal of Coastal Research*, 15(3), 741-749
11
12 Contardo, S., and Symonds, G., 2013. Infragravity response to variable wave forcing in the
13 nearshore, *J. Geophys. Res. Oceans*, 118, 7095–7106, doi:10.1002/2013JC009430
14
15 Dalrymple, R.A., 1975. A mechanism for rip current generation on an open coast, *J. Geophys.*
16
17 *Res.*, 80(24), 3485–3487, doi:10.1029/JC080i024p03485.
18
19 Dalrymple, R.A., MacMahan, J.H., Reniers, A.J.H.M., Nelko, V., 2011. Rip currents, *Annu. Rev.*
20
21 *Fluid Mech.*, 43, pp. 551-581
22
23 De Bakker, A.T.M., Tissier, M.F.S, Ruessink, B.G., 2014. Shoreline dissipation of infragravity
24
25 waves, *Continental Shelf Research*, 72 73–82.
26
27
28 Dean, R.G., 1991. Equilibrium beach profiles: characteristics and applications. *Journal of*
29
30 *Coastal Research* 7(1), 53–84
31
32 Deans, S., 1983. *The Radon transform and some of its applications*, 1st Edition. John Wiley
33
34 & Sons, New York, 289 p, ISBN 13: 9780471898047
35
36 Derian, P., Almar, R., 2016. Wavelet-based Optical Flow Estimation of Instant Surface
37
38 Currents from Shore-based and UAV Video. *IEEE Transactions on Geoscience and*
39
40 *Remote Sensing* 55 (10), 5790-5797
41
42 Duda, R.O., Hart, P.E., 1972. Use of the Hough Transformation to Detect Lines and Curves in
43
44 Pictures, *Comm. ACM*, 15, 11-15.
45
46 Elgar, S., Herbers, T., Guza, R., 1994. Reflection of ocean surface gravity waves from a
47
48 natural beach. *J. Physical. Oceanogr.*, 24(7), 1503–1511.
49
50 Fowler, R.E., Dalrymple, R.A., 1990. Wave-group forced nearshore circulation, in
51
52 *Proceedings of the 22nd International Conference on Coastal Engineering*, pp. 729–
53
54 742, Am. Soc. of Civ. Eng., Delft, Netherlands.
55
56
57
58
59
60
61
62
63
64
65

- 1
2
3
4
5
6
7
8
9 Gallagher, B., 1971. Generation of surf beat by non-linear wave interactions. *J. Fluid Mech*,
10 49, 1–20
11
12
13 Gomes, E.R., Mulligan, R.P., Brodie, K.L., McNinch, J.E., 2016. Bathymetric control on the
14 spatial distribution of wave breaking in the surf zone of a natural beach. *Coastal*
15 *Engineering*, 116, 180-194.
16
17
18
19 Guimarães, P.V., Farina, L., Toldo, E., Diaz-Hernandez, G., Akhmatskaya, E., 2015. Numerical
20 simulation of extreme wave runup during storm events in Tramandaí Beach, Rio
21 Grande do Sul, Brazil, *Coastal Engineering* 95, 171–180.
22
23
24
25 Huntley, D.A., Bowen, A.J., 1978. Beach Cusps and Edge Waves. *Proceedings of the Sixteenth*
26 *International Conference on Coastal Engineering*. ASCE, Long Island NY, pp. 1378–1393
27
28
29 Feddersen, F., 2014. The generation of surfzone eddies in a strong alongshore current. *J.*
30 *Phys. Oceanogr.*, 44, 600–617
31
32
33 Guza, R.T., Inman, D.L., 1975. Edge Waves and Beach Cusps. *Journal of Geophysical*
34 *Research-Oceans and Atmospheres*. 80:2997-3012. 10.1029/JC080i021p02997
35
36
37 Guza, R.T., Bowen, A.J., 1976. Finite-Amplitude Edge Waves. *Journal of Marine Research*.
38 34:269-293.
39
40
41 Guza, R.T., Chapman, D.C., 1979. Experimental-Study of the Instabilities of Waves Obliquely
42 Incident on a Beach. *Journal of Fluid Mechanics*. 95:199-208.
43 10.1017/s0022112079001427
44
45
46
47 Guza, R.T., Bowen, A.J., 1981. On the Amplitude of Beach Cusps. *Journal of Geophysical*
48 *Research-Oceans and Atmospheres*. 86:4125-4132. 10.1029/JC086iC05p04125
49
50
51 Herbers, T.H.C., Elgar, S., Guza, R.T., 1999. Directional spreading of waves in the nearshore,
52 *Journal of Geophysical Research*, 104, C4, 7683-7693
53
54
55
56 Haller, M.C., Kloster, R., O'Dea, A., 2016. On the imaging of rip currents in X-band radar.
57 *American Geophysical Union, Ocean Sciences Meeting 2016, EC11A-01*
58
59
60
61
62
63
64
65

- 1
2
3
4
5
6
7
8
9 Holland, K.T., Holman, R.A., 1996. Field observations of beach cusps and swash motions.
10 Mar. Geol. 134, 77–93
11
12 Inch, K., Davidson, M., Masselink, G., Russell, P., 2016. Accurate estimation of wave
13 reflection on a high energy, dissipative beach. J. Coast. Res. SI, 75, 877-881
14
15 Inman, D.L., Guza, R.T., 1982. The Origin of Swash Cusps on Beaches. Marine Geology.
16 49:133-148. 10.1016/0025-3227(82)90033-0
17
18 Johnson, D., Pattiaratchi, C., 2004. Transient rip currents and nearshore circulation on a
19 swell-dominated beach, J. Geophys. Res., 109, Article C02026
20
21 Kennedy, A.B., Chen, Q., Kirby, J.T., Dalrymple, R.A., 2000. Boussinesq modeling of wave
22 transformation, breaking, and runup. I: 1D, Journal of Waterway, Port, Coastal, and
23 Ocean Engineering 1260 (1) 39–47.
24
25 Laibi, R., Anthony, E., Almar, R., Castelle, B., Senechal, N., 2014. Morphodynamic
26 characterisation of the human-impacted Bight of Benin sand barrier coast, West Africa,
27 Journal of Coastal Research, SI 70, 079-083, ISSN 0749-0208
28
29 Lam, D.C.L., Simpson, R.B., 1976. Centered differencing and the box scheme for diffusion
30 convection problems. Journal of computational physics, 22(4), 486-500.
31
32 Longuet-Higgins, M.S., Parkin, D.W., 1962. Sea waves and beach cusps. Geographical Journal
33 128, 194–201
34
35 Martins, K., Blenkinsopp, C.E., Almar, R., Zang, J., 2017. The influence of swash-based
36 reflection on surf zone hydrodynamics: a wave-by-wave approach. Coastal
37 Engineering, 122, pp. 27-43.
38
39 Masselink, G., Pattiaratchi, C., 1998. Journal of Coastal Research, Vol. 14, No. 2, pp. 393-406
40
41 Masselink, G., Hegge, B.J., Pattiaratchi, C., 1997. Beach cusp morphodynamic. EarthSurf.
42 Processes Landf. 22, 1139–1155
43
44
45
46
47
48
49
50
51
52
53
54
55
56
57
58
59
60
61
62
63
64
65

- 1
2
3
4
5
6
7
8
9 Medellín, G., Brinkkemper, J.A., Torres-Freyermuth, A., Appendini, C.M., Mendoza, E.T.,
10 Salles, P., 2016. Run-up parameterization and beach vulnerability assessment on a
11 barrier island: a downscaling approach, *Nat. Hazards Earth Syst. Sci.*, 16 167–180.
12
13 Mizuguhi, M., 1984. Swash on a natural beach. *Coastal Engineering Proceedings*, 19, 2156–
14 1028.
15
16 Murray, T., Cartwright, N., Tomlinson, R., 2013. Video-imaging of transient rip currents on
17 the Gold Coast open beaches, *J. Coast. Res. SI*, 65, pp. 1809-1814
18
19 Nicolae Lerma, A., Pedreros, R., Robinet, A., Sénéchal, N., 2017. Simulating wave setup and
20 run-up during storm conditions on a complex barred beach, *Coastal Engineering*, 123,
21 29-41, DOI:10.1016/j.coastaleng.2017.01.011
22
23 Radon, J., 1917. Uber die bestimmung von funktionen durch ihre integralwerte l'angs
24 gewisser mannigfaltigkeiten. *Akad. Wiss.*, 69, 262–277
25
26 Reniers, A.J.H.M., Roelvink, J.A., Thornton, E.B., 2004. Morphodynamic modeling of an
27 embayed beach under wave group forcing, *J. Geophys. Res.*, 109, C01030,
28 doi:10.1029/2002JC001586
29
30 Rijnsdorp, D., Smit, P.B., Zijlema, M., Reniers, A.J.H.M., 2017. Efficient non-hydrostatic
31 modelling of 3D wave-induced currents using a subgrid approach, *Ocean Modelling*,
32 Volume 116, pp 118-133.
33
34 Rijnsdorp, D.P., Ruessink, G., Zijlema, M., 2015. Infragravity-wave dynamics in a barred
35 coastal region, a numerical study. *Journal of Geophysical Research: Oceans* 120, 4068-
36 4089.
37
38 Rijnsdorp, D.P., Smit, P.B., Zijlema, M., 2014. Non-hydrostatic modelling of infragravity
39 waves under laboratory conditions. *Coastal Engineering* 85, 30- 42.
40
41
42
43
44
45
46
47
48
49
50
51
52
53
54
55
56
57
58
59
60
61
62
63
64
65

- 1
2
3
4
5
6
7
8
9 Rocha, M.V.L.M., Michallet, H., Silva, P.A., 2017. Improving the parameterization of wave
10 nonlinearities ? The importance of wave steepness, spectral bandwidth and beach
11 slope. *Coastal Engineering*, 121, 77–89.
12
13
14
15 Ruju, A., Lara, J.L., Losada, I.J., 2014. Numerical analysis of run-up oscillations under
16 dissipative conditions, *Coast. Eng.*, 86 45–56.
17
18
19 Sallenger, A.H., 1979. Beach cusp formation. *Mar. Geol.* 29, 23–37
20
21 Senechal, N., Laibi, R., Almar, R., Castelle, B., Degbe, G., Du Penhoat, Y., Chuchla, R.,
22 Honkonnou, N., 2014. Beach cusp dynamics on a reflective beach, *Journal of Coastal*
23 *Research*, SI 70, 669-674, ISSN 0749-0208
24
25
26
27 Smit, P.B., Zijlema, M., Stelling, G.S., 2013. Depth-induced wave breaking in a
28 nonhydrostatic, near-shore wave model. *Coast. Eng.*, 76 1–16.
29
30
31 Smit, P., Janssen, T., Holthuijsen, L., Smith, J., 2014. Non-hydrostatic modeling of surf zone
32 wave dynamics. *Coastal Engineering*, 83, 36-48.
33
34
35 Stelling, G., Zijlema, M., 2003. An accurate and efficient finite-difference algorithm for non-
36 hydrostatic free-surface flow with application to wave propagation. *International*
37 *Journal for Numerical Methods in Fluids*, 43(1), 1-23.
38
39
40
41 Suhayda, J.N., 1974. *Journal of Geophysical Research Atmospheres* 79(21):3065-3071, DOI:
42 10.1029/JC079i021p03065
43
44
45 Sutherland, J., O'Donoghue, T., 1998. Characteristics of wave reflection spectra. *J. Waterw.*
46 *Port Coastal Ocean Eng.*, 124(6), 303–311.
47
48
49 Taira, K., Nagata, Y., 1968. Experimental study of wave reflection by a sloping beach. *Journal*
50 *of Oceanographical Soc. Japan*, 24(5), 242–252
51
52
53 Tonelli, M., Petti, M., 2012. Shock-capturing Boussinesq model for irregular wave
54 propagation. *Coastal Engineering*, 610 8–19.
55
56
57
58
59
60
61
62
63
64
65

1
2
3
4
5
6
7
8
9
10
11
12
13
14
15
16
17
18
19
20
21
22
23
24
25
26
27
28
29
30
31
32
33
34
35
36
37
38
39
40
41
42
43
44
45
46
47
48
49
50
51
52
53
54
55
56
57
58
59
60
61
62
63
64
65

Torres-Freyermuth, A., Mariño Tapia, I., Coronado, C., Salles, P., Medellín, G., Pedrozo-Acuña, A., Silva, R., Candela, J., Iglesias-Prieto, R., 2012. Wave-induced extreme water levels in the Puerto Morelos fringing reef lagoon, Nat. Hazards Earth Syst. Sci., 12 3765–3773.

Zijlema, M., Stelling, G.S., Smit, P.B., 2011. SWASH: an operational public domain code for simulating wave fields and rapidly varied flows in coastal waters, Coastal Engineering. 58 992–1012.



Click here to access/download

Electronic Supplementary Material
OD_20180314.pdf

