



HAL
open science

First near-relativistic solar electron events observed by EPD onboard Solar Orbiter

R. Gómez-Herrero, D. Pacheco, A. Kollhoff, F. Espinosa Lara, J. L. Freiherr
von Forstner, N. Dresing, D. Lario, L. Balmaceda, V. Krupar, O. E.
Malandraki, et al.

► To cite this version:

R. Gómez-Herrero, D. Pacheco, A. Kollhoff, F. Espinosa Lara, J. L. Freiherr von Forstner, et al..
First near-relativistic solar electron events observed by EPD onboard Solar Orbiter. *Astronomy and
Astrophysics - A&A*, 2021, 656, 10.1051/0004-6361/202039883 . insu-03672343

HAL Id: insu-03672343

<https://insu.hal.science/insu-03672343v1>

Submitted on 19 May 2022

HAL is a multi-disciplinary open access archive for the deposit and dissemination of scientific research documents, whether they are published or not. The documents may come from teaching and research institutions in France or abroad, or from public or private research centers.

L'archive ouverte pluridisciplinaire **HAL**, est destinée au dépôt et à la diffusion de documents scientifiques de niveau recherche, publiés ou non, émanant des établissements d'enseignement et de recherche français ou étrangers, des laboratoires publics ou privés.

LETTER TO THE EDITOR

First near-relativistic solar electron events observed by EPD onboard Solar Orbiter

R. Gómez-Herrero¹, D. Pacheco², A. Kollhoff², F. Espinosa Lara¹, J. L. Freiherr von Forstner², N. Dresing^{2,3}, D. Lario⁴, L. Balmaceda^{4,5}, V. Krupar^{4,6}, O. E. Malandraki⁷, A. Aran⁸, R. Bučík⁹, A. Klassen², K.-L. Klein¹⁰, I. Cernuda¹, S. Eldrum², H. Reid¹¹, J. G. Mitchell^{12,13}, G. M. Mason¹⁴, G. C. Ho¹⁴, J. Rodríguez-Pacheco¹, R. F. Wimmer-Schweingruber², B. Heber², L. Berger², R. C. Allen¹⁴, N. P. Janitzek¹⁵, M. Laurenza¹⁶, R. De Marco¹⁶, N. Wijsen¹⁷, Y. Y. Kartavykh^{18,19}, W. Dröge¹⁹, T. S. Horbury²⁰, M. Maksimovic¹⁰, C. J. Owen¹¹, A. Vecchio^{10,21}, X. Bonnin¹⁰, O. Kruparova²², D. Piša²², J. Souček²², P. Louarn²³, A. Fedorov²³, H. O'Brien²⁰, V. Evans²⁰, V. Angelini²⁰, P. Zucca²⁴, M. Prieto¹, S. Sánchez-Prieto¹, A. Carrasco¹, J. J. Blanco¹, P. Parra¹, O. Rodríguez-Polo¹, C. Martín^{2,25}, J. C. Terasa², S. Boden^{2,26}, S. R. Kulkarni^{2,27}, A. Ravanbakhsh^{2,28}, M. Yedla^{2,28}, Z. Xu², G. B. Andrews¹⁴, C. E. Schlemm¹⁴, H. Seifert¹⁴, K. Tyagi^{14,29}, W. J. Lees¹⁴, and J. Hayes¹⁴

(Affiliations can be found after the references)

Received 10 November 2020 / Accepted 4 January 2021

ABSTRACT

Context. Solar Orbiter, launched in February 2020, started its cruise phase in June 2020, in coincidence with its first perihelion at 0.51 au from the Sun. The in situ instruments onboard, including the Energetic Particle Detector (EPD), operate continuously during the cruise phase enabling the observation of solar energetic particles.

Aims. In situ measurements of the first near-relativistic solar electron events observed in July 2020 by EPD are analyzed and the solar origins and the conditions for the interplanetary transport of these particles investigated.

Methods. Electron observations from keV energies to the near-relativistic range were combined with the detection of type III radio bursts and extreme ultraviolet (EUV) observations from multiple spacecraft in order to identify the solar origin of the electron events. Electron anisotropies and timing as well as the plasma and magnetic field environment were evaluated to characterize the interplanetary transport conditions.

Results. All electron events were clearly associated with type III radio bursts. EUV jets were also found in association with all of them except one. A diversity of time profiles and pitch-angle distributions was observed. Different source locations and different magnetic connectivity and transport conditions were likely involved. The July 11 event was also detected by Wind, separated 107 degrees in longitude from Solar Orbiter. For the July 22 event, the Suprathermal Electron and Proton sensor of EPD allowed for us to not only resolve multiple electron injections at low energies, but it also provided an exceptionally high pitch-angle resolution of a very anisotropic beam. This, together with radio observations of local Langmuir waves suggest a very good magnetic connection during the July 22 event. This scenario is challenged by a high-frequency occultation of the type III radio burst and a nominally non-direct connection to the source; therefore, magnetic connectivity requires further investigation.

Key words. acceleration of particles – Sun: particle emission – Sun: activity

1. Introduction

One of the science goals of the Solar Orbiter (SolO) mission is the analysis of the mechanisms by which solar eruptions produce energetic particle radiation that fills the heliosphere (Müller et al. 2020). This entails a deep understanding of how and where solar energetic particles (SEPs) are accelerated and how these particles are released and distributed into the interplanetary medium. SolO, which was launched on 2020 February 10, enables in situ observations of SEPs from heliocentric distances <1 au, hence minimizing the transport effects undergone by the particles that often hinder the identification of their solar sources.

Solar electrons are closely associated with type III radio bursts and often with ³He-rich ion emissions (e.g., Wang et al. 2012). Due to their fast propagation, near-relativistic (NR) electrons are particularly useful for the identification of SEP sources at the Sun. There is a rich literature on the relationship between NR electron events and solar activity, with

diverging results. While the early onset of electron events was reported to be closely related in time with the onset of radio emission and especially type III bursts produced by electron beams (Kallenrode & Wibberenz 1991), later work from 1 au frequently found significant delays in the electrons observed in space (Krucker et al. 1999; Haggerty & Roelof 2002; Wang et al. 2016). There is also no simple relationship between energy spectra of electrons observed in space and thick-target energy spectra derived from solar hard X-ray emission (Dröge et al. 1996; Krucker et al. 2007). The frequent detection of electrons at widely separated spacecraft (s/c) is a third issue that is not adequately understood, and it involves various transport processes in the corona and/or the heliosphere (Kallenrode et al. 1992; Wibberenz & Cane 2006; Dresing et al. 2014; Gómez-Herrero et al. 2015; Xu et al. 2020; Zhang et al. 2021).

While HELIOS observations from the inner heliosphere addressed some of these questions (see Pacheco et al. 2019, and references therein), SolO provides a new view due to the better

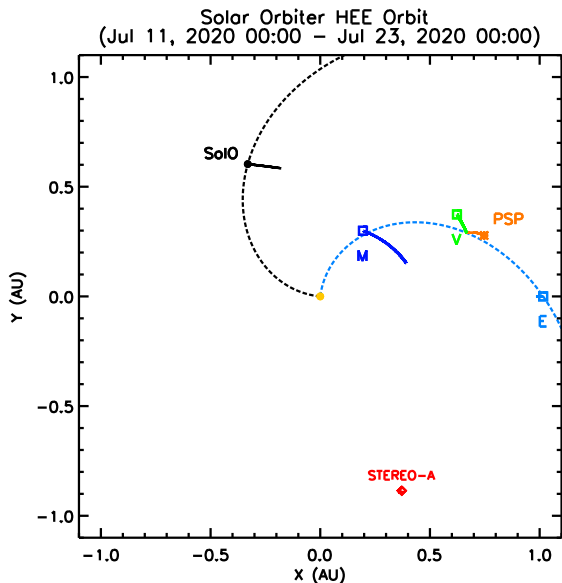


Fig. 1. Trajectories of SolO, the inner planets, STEREO-A, and Parker Solar Probe (PSP) during the period from 2020 July 11–23 (ecliptic plane projection, HEE frame). Nominal Parker spirals corresponding to a 300 km s^{-1} solar wind speed are shown for July 23.

coverage of the energy spectrum of the electrons and the existing complementary electromagnetic observations. The present Letter illustrates these potentialities with the first NR solar electron events observed by the Energetic Particle Detector suite (EPD, Rodríguez-Pacheco et al. 2020) from 2020 July 11–23, when SolO was at heliocentric distances between 0.61 and 0.69 au. Figure 1 shows the trajectory of SolO (black trace) in heliographic Earth ecliptic (HEE) coordinates. As shown by the idealized Parker spiral, SolO was magnetically connected to the solar backside (from Earth’s point of view). We combined EPD electron observations, from keV energies to the NR range, with type III radio bursts observations by the Radio and Plasma Waves instrument (RPW, Maksimovic et al. 2020) and extreme ultraviolet (EUV) observations from STEREO-A and the near-Earth Solar Dynamics Observatory (SDO) to identify the solar origin of the in situ NR electron events.

2. Observations and data analysis

2.1. NR electron events during the SolO cruise phase

Although SolO started its cruise phase during the solar minimum between solar cycles 24 and 25, a number of NR electron events were observed in July 2020. Out of the four sensors of the EPD suite, this work uses measurements from the SupraThermal Electrons and Protons sensor (STEP) and the Electron Proton Telescope (EPT). STEP measures 4–80 keV electrons and ions in a $28^\circ \times 54^\circ$ rectangular field of view (FOV) divided into 15 pixels. We note that STEP only provides reliable electron observations when the electron flux is significantly larger than the ion flux. EPT measures 20–400 keV electrons and 20 keV–15 MeV ions using four telescopes in four different viewing directions, each with a 30° conical FOV.

The first two panels of Fig. 2 show electron and ion intensity time profiles observed by the sunward-looking telescope of EPT and the fifteen-pixel-averaged electron and ion intensity time profiles measured by STEP at the lower energy range, from July 8–25. The bottom panel shows the heliocentric distance and

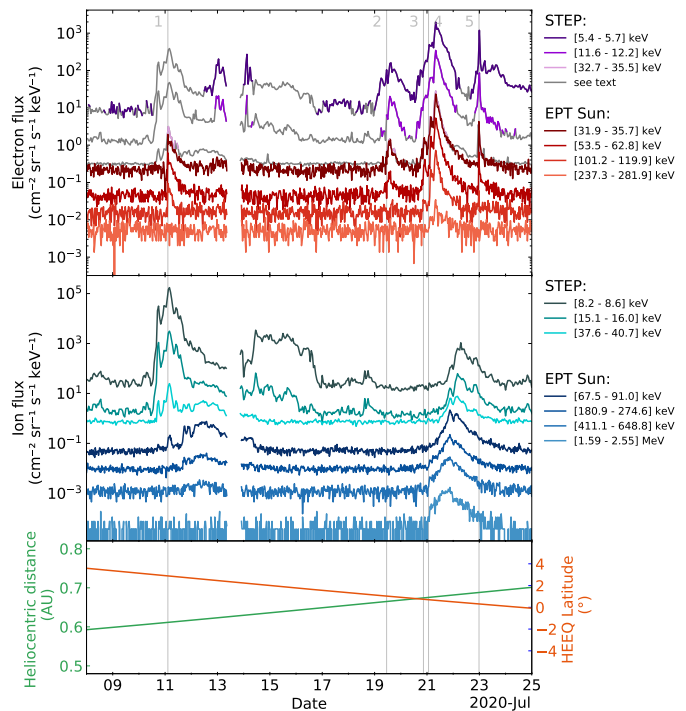


Fig. 2. Summary of electron and ion observations by the EPD/EPT and EPD/STEP instruments during July 2020. *From top to bottom:* (1) electron time profiles at seven different energy channels; (2) ion time profiles at seven different energy channels; and (3) heliographic latitude and radial distance. Gray lines indicate time periods without clear electron measurements and should be interpreted as an upper limit for the electron flux. The STEP electron fluxes can have large uncertainties if an increased ion flux was observed at the same time. Vertical lines mark the onset times of the five NR-electron enhancements listed in Table 1.

heliographic latitude of SolO. EPD observed five NR electron increases, some of them comprising several injections:

2020 July 11. The 58 keV electron flux observed by EPT started to rise at $02:33 \text{ UT} \pm 5 \text{ min}$. The electrons showed velocity dispersion in the energy range covered by EPT, but there was no significant increase above $\sim 170 \text{ keV}$. A low energy counterpart below 30 keV could not be confirmed for this event because STEP measurements were dominated by ions (see second panel in Fig. 2). The event was observed by all the EPT telescopes; however, a moderate anisotropy was present during the rising phase, with higher fluxes observed by the EPT-Sun aperture, pointing sunward along the nominal Parker spiral direction (Fig. A.1). The electron increase was also observed near Earth by the 3DP instrument onboard Wind (Lin et al. 1995), located 107 degrees eastward from SolO. In spite of the significant difference in connectivity, Wind/3DP also observed moderate electron anisotropies (Fig. A.4).

2020 July 19. The 58 keV electron flux showed a gradual rise starting at $11:00 \text{ UT} \pm 1 \text{ h}$. This event measured by STEP and EPT was not visible above 70 keV. No significant anisotropies nor velocity dispersion were observed, but the observational statistics were limited by the small size of the event.

2020 July 20. The 58 keV electron flux started to rise at $20:40 \text{ UT} \pm 10 \text{ min}$. The highest intensity and earliest onset were observed by the northward-looking EPT telescope, pointing closer to pitch-angle 0° (Fig. A.2). No significant increase was observed above $\sim 100 \text{ keV}$.

Table 1. Electron events observed by EPD during July 2020.

Event	1	2	3	4	5
Date	July 11	July 19	July 20	July 21	July 22
Onset (UT) ^(a)	02:33 ± 5 min	11:00 ± 1 h	20:40 ± 10 min	01:25 ± 10 min	23:40 UT ± 10 min
Type III (UT) ^(b)	02:21	10:27	20:13	01:01 ^(c)	23:32
EUV jet (UT)	02:21	no	20:20–20:56 ^(d)	01:16–01:36 ^(d)	23:33
EUV jet observer	SDO/AIA	N/A	STA/EUVI	STA/EUVI	STA/EUVI
EUV jet PA ^(e) ^(e)	~302	N/A	~70	~70	~70
V_{sw} (km/s)	No data	264	284	275	320
ϕ_{Parker} (CL)	204 ^(f)	121	100	100	69
Remarks				Multiple injections	Multiple injections

Notes. ^(a)Determined at 58 keV using the telescope showing earliest onset. For multiple injections, the first onset is listed. ^(b)Onset at 2 MHz on SolO/RPW data for events 1, 3, 4, and 5 and Wind/Waves for event 2. ^(c)Series of type III bursts along the day. ^(d)Series of jets. ^(e)Position angle of the jet(s) observed over the solar limb, counter-clockwise from the solar north pole. ^(f)No SWA data are available, footpoint was obtained assuming $V_{sw} = 350 \text{ km s}^{-1}$.

2020 July 21. This event comprises at least three consecutive, partly overlapping electron injections, with electron onsets at 01:25, 03:05, and 06:25 UT ± 10 min (determined at 58 keV). The increases were progressively more intense and energetic, reaching ~1 MeV (observed by the High Energy Telescope (HET) of EPD, not shown). The peak flux was reached at ~08:30 UT on July 21 and the decay phase lasted until mid-July 22. EPT directional intensities revealed measurable anisotropies, but smaller than during the previous event (Fig. A.2).

2020 July 22. EPT observed a very anisotropic electron event reaching energies slightly above 100 keV. The spike-like time profile, similar to the events described by Klassen et al. (2011), showed a sharp onset with clear velocity dispersion, starting at 23:40 UT ± 10 min at 58 keV. This period was cleanly observed by STEP at lower energies, which revealed additional spike-like injections preceding and following the event observed by EPT. The EPD pitch-angle coverage for this event was nearly optimal (Figs. A.3 and A.5).

The events on July 19, 20, 21, and probably July 22 resulted in an extended period with observable ^3He fluxes and enhanced $^3\text{He}/^4\text{He}$ ratios measured by the Suprathermal Ion Spectrograph (EPD/SIS), which spanned from mid-July 19 to July 25 (cf. Fig. 3 in Mason et al. 2021). Anisotropies during the events are discussed in further detail in Appendix A. In situ magnetic field and plasma observations by the Magnetometer (MAG, Horbury et al. 2020) and the Solar Wind Analyser suite (SWA, Owen et al. 2020) onboard SolO are presented and discussed in Appendix B.

The main observational characteristics of the NR electron events are summarized in Table 1. The first row numbers the events in sequential order. The event date and the observed onset time at 58 keV are listed in the second and third row, respectively. The timing of type III radio bursts and coronal EUV jets likely associated with each event are listed in the fourth and fifth row, respectively (see Sects. 2.2 and 2.3 for further details). The sixth and seventh row describe the s/c observing the EUV jet and its approximate position angle (PA, counter-clockwise from the solar north), respectively. The times listed for the type III radio bursts and the EUV jets are the times at which these phenomena were observed locally by the listed s/c. The eighth row shows the 1-hour averaged solar wind speed at the onset of the NR electron event (see Appendix B). This value was used to estimate the Carrington Longitude (CL) of the footpoint of the s/c along an ideal

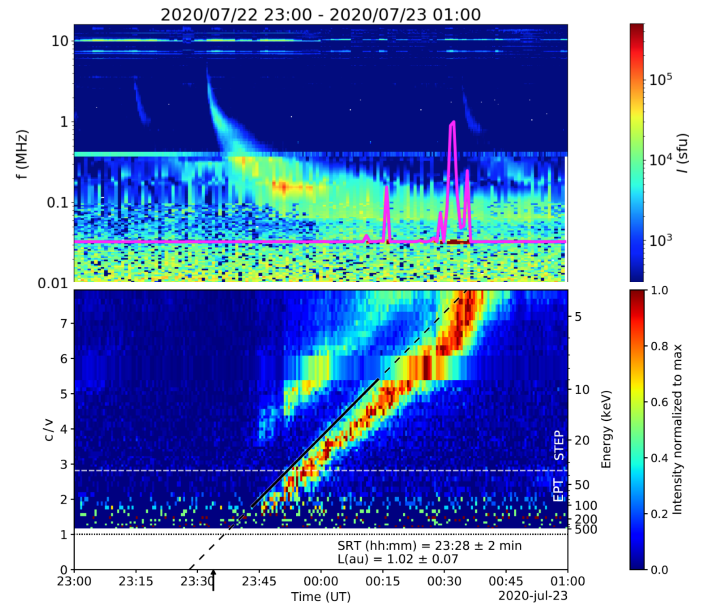


Fig. 3. *Top:* SolO/RPW radio dynamic spectrum observed in association with the electron event with an onset in late July 22. The magenta line is the spectral flux at the local plasma frequency, where the peaks indicate locally generated Langmuir waves. *Bottom:* electron c/v versus time plot. The color scale corresponds to the particle intensity, normalized to the maximum value for each energy (speed) channel. The black line is a linear fit to electron arrival times, indicating the solar particle release time. The energy interval used for the fit is marked with a solid line (see text for details).

Parker spiral (ninth row). Some additional remarks are described in the last row.

The bottom panel in Fig. 3 shows an inverse-speed versus time plot (typically used for velocity dispersion analysis) for the July 22 event, combining STEP and EPT electron data. The color scale represents the intensity, normalized to the maximum value for each energy channel. The dashed white line separates STEP and EPT observations. Two different injections were resolved at low energies, both of them showing clear velocity dispersion and very narrow time profiles over the whole energy range.

The black slanted line corresponds to a linear fit of the onset times at each energy bin above 9 keV for the second injection. The onset times are defined as the first time when the flux, at 30 s resolution, is higher than the pre-event average plus 2.5

standard deviations and stays above that threshold for at least two consecutive points. The linear fit provides an estimation of the effective path length L and the solar release time (SRT) at the Sun. Two-sigma errors on the fit parameters were estimated repeating the fit with random samples of half of the data points. The lowest energy electrons excluded from the fit are probably influenced by instrumental effects (Gómez-Herrero et al. 2017, and references therein) or have modified distributions due to wave-particle interactions with the Langmuir waves detected co-temporally (e.g., Reid & Kontar 2018) and they would arrive at Solar Orbiter early (Kontar & Reid 2009).

The theoretical Parker spiral length connecting to SoLO for a solar wind speed of 320 km s^{-1} is 0.77 au, which is substantially shorter than the value obtained from the fit ($L = 1.02 \text{ au}$). The black arrow at 23:34 UT marks the SRT shifted by the light propagation time to SoLO in order to allow a direct comparison with electromagnetic observations from 0.69 au. The top panel in Fig. 3 shows the radio dynamic spectrum observed by SoLO/RPW during the same time interval. A type III radio burst was observed by RPW, with a start time at 23:32 UT (value determined at 2 MHz), meaning that the inferred electron release time and the type III radio burst differ only by 2 min (see Sect. 2.2).

2.2. Radio observations

Radio dynamic spectra from STEREO/SWAVES (Bougeret et al. 2008), Wind/Waves (Bougeret et al. 1995), and SoLO/RPW were examined for the period under analysis. Type III radio bursts were found in association with all the electron events presented here (Table 1). None of the electron events were accompanied by type II radio bursts.

The top panel of Fig. 3 shows the dynamic spectrum observed by SoLO/RPW during the electron event starting in late July 22. The magenta line shows the spectral flux around the local plasma frequency. The distinct peaks are due to Langmuir waves locally generated when the electron beam causing the type III radio emission reached the s/c location. We note the coincidence of the intensity increase with the detection of few keV electrons by STEP. These observations support the existence of a direct magnetic connection to the solar source of the electrons (e.g., Lin 1990) in this event, also observed in the events on July 20 and 21 (see details in Krupař et al., in prep.).

The attenuation of the type III burst observed at high frequencies suggests the source was partially occulted as viewed from SoLO, while STEREO-A saw it entirely (not shown). Furthermore, the lack of a clear type III detection from PSP (not shown) places the most probable location near the east limb from STEREO-A and behind the west limb from SoLO (for reference, see Fig. 1).

The type III burst seen by STEREO-A/SWAVES corresponds to fundamental emission, while SoLO/RPW observed harmonic emission. According to Thejappa et al. (2012), fundamental emission in type III radio bursts is more directive than the second harmonic, which explains why SoLO observed the weaker second harmonic emission, while STEREO-A, with direct visibility of the source, observed the fundamental emission.

2.3. Associated solar activity and source locations

During the period under analysis, remote-sensing instruments onboard SoLO were not active. EUV and coronagraph observations from SDO/AIA (Lemen et al. 2012), SOHO/LASCO (Brueckner et al. 1995), and STEREO-A/SECCHI

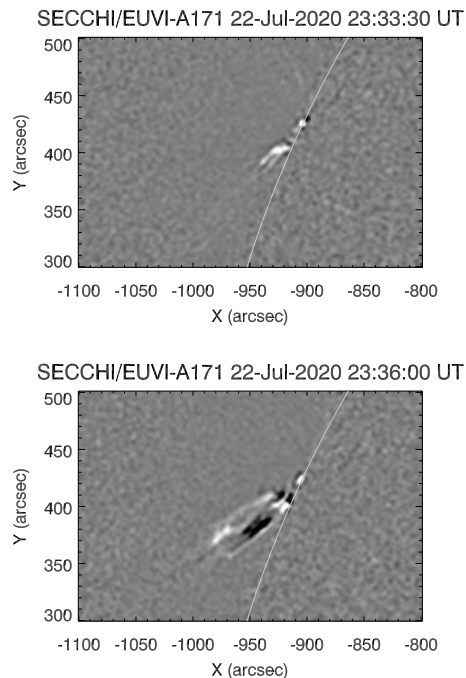


Fig. 4. STEREO/SECCHI EUVI 171 Å running difference images showing a jet over the NE limb in coincidence with the type III radio burst observed on July 22 23:33 UT.

(Howard et al. 2008) have been examined in order to explore solar activity phenomena and source regions potentially associated with the electron events observed by EPD.

For all the events except the weak event on July 19, sequences of multiple narrow ejections were found in 171, 195, and 304 Å EUV images, with appearance times very close to the in situ electron onsets. None of the events were associated with large CMEs. Some small flux-rope ejections were seen, but there was no time coincidence with the electron events analyzed here.

The times, locations, and observing s/c of the jets are listed in Table 1. They were observed above the west limb on SDO (July 11) and the east limb from STEREO-A (July 20, 21, and 22). When comparing the observation times of these EUV jets at 1 au and the type III radio bursts at SoLO, it should be taken into account that the light travel time to STEREO-A and SDO is 2–3 min longer than to SoLO.

Figure 4 shows two STEREO-A/EUVI running difference images at 171 Å, around the time of the type III radio burst associated with the July 22 event. We note the agreement with the timing of the type III radio burst and the electron release time inferred from a velocity dispersion analysis (Fig. 3). The jet showed a strongly non-radial propagation trajectory toward the equator (projected onto the plane of the sky), likely reflecting the non-radial magnetic field configuration around the source region, as described by Klassen et al. (2018) and Bučik et al. (2018).

3. Summary and conclusions

In spite of the solar minimum conditions, after its first perihelion, SoLO detected several NR electron events during 2020 July 11–24. All of them were clearly associated with type III radio bursts observed by multiple s/c. EUV jets were observed above the east limb from STEREO-A for the July 20, 21, and 22 events and above the west limb from SDO for the July 11 event,

with good time coincidence with the type III radio bursts. While velocity dispersion analysis results should always be treated with caution (e.g., Lintunen & Vainio 2004; Sáiz et al. 2005; Kahler & Ragot 2006), the results presented here suggest that this method provides a reasonable estimation of the solar release time for SEP events in the inner heliosphere under low-scattering conditions. As commonly happens for impulsive SEP events, EPD/SIS detected several ^3He and heavy ion enhancements during the same time interval (Mason et al. 2021). The period was not disturbed by major CMEs nor shocks (Appendix B).

Examination of NR electron observations from instruments onboard STEREO, near-Earth s/c, and PSP for all the events revealed that only the July 11 event (Fig. A.1) was clearly observed by Wind/3DP (Fig. A.4), separated 107 degrees in longitude from SoLo. Electron fluxes observed at Wind and SoLo showed significant anisotropies, providing an interesting candidate for further investigation of the interplanetary transport conditions causing the wide electron spread during some impulsive events (e.g., the possible role of the field line spread in the corona, interplanetary field-line meandering, and cross-field diffusion). On the other hand, while SoLo detected ^3He for this event, this was not the case near Earth (Mason et al. 2021). This may reflect that ^3He was below the detection limit at Earth or be an indication of a narrowed spread of energetic ions compared to electrons.

At the end of July 22, EPT detected a very anisotropic and short duration event with clear velocity dispersion (Figs. 3 and A.3). At low energies, additional injections showing similar characteristics were revealed by STEP. The spike-like time profiles, prompt onsets, and beamed pitch-angle distributions (PADs), together with the in situ detection of Langmuir waves by RPW support a very good magnetic connection to the source. However, although STEREO-A observed a jet at the east solar limb, the nominal magnetic footpoint of SoLo along the ideal Parker spiral was located more than 30 degrees behind the east limb from the STEREO-A point of view. There was good time coincidence of the type III radio burst, the jet, and the inferred electron release time. The southward trajectory of the jet suggests non-radial coronal magnetic field lines which may help to explain how the narrow beam of energetic electrons reached IMF lines connecting to SoLo at 0.69 au. However, further investigation is required to clarify the magnetic connectivity and interplanetary propagation for this electron event.

The series of impulsive electron events presented here shows a rich variety of behavior regarding time profiles and PADs, which range from almost isotropic to beam-like, suggesting changing interplanetary transport conditions and/or magnetic connectivity in the course of a few days. The high quality of the near-relativistic electron data provided by EPT, the good directional resolution of STEP down to few keV energies, the broad spectral range obtained combining both sensors, with excellent energy resolution, and the high time cadence ensure that future observations close to the Sun will contribute to the understanding of the acceleration, release, and transport processes of energetic particles. EPD observations will play a key role in the identification of the sources of impulsive events and the links between the NR electrons and the ion populations enriched in ^3He and heavy ions, which often, but not always, concur during impulsive SEP events.

German Space Agency (Deutsches Zentrum für Luft- und Raumfahrt e.V., DLR) under grants 50OT0901, 50OT1202, 50OT1702, 50OT2002, and 50OC1702. A. Aran acknowledges the support by the Spanish Ministerio de Ciencia e Innovación (MICINN) under grant PID2019-105510GB-C31 and through the “Center of Excellence María de Maeztu 2020-2023” award to the ICCUB (CEX2019-000918-M). The RPW team thanks the French space agency CNES, the Center National de Recherches Scientifiques, the Paris Observatory, the Swedish National Space agency, ESA-PRODEX and the Czech Science Foundation (17-08772S) for the funding provided. V. Krupar acknowledges the support by NASA under grants 18-2HSWO218_2-0010 and 19-HSR-19_2-0143. The Solar Orbiter magnetometer was funded by the UK Space Agency (grant ST/T001062/1). Solar Orbiter Solar Wind Analyser (SWA) data are derived from scientific sensors which have been designed and created, and are operated under funding provided in numerous contracts from the UK Space Agency (UKSA, most recently grant ST/T001356/1), the UK Science and Technology Facilities Council (STFC), the Agenzia Spaziale Italiana (ASI), the Centre National d’Etudes Spatiales (CNES, France), the Centre National de la Recherche Scientifique (CNRS, France), the Czech contribution to the ESA PRODEX programme and NASA.

References

- Bougeret, J.-L., Kaiser, M. L., Kellogg, P. J., et al. 1995, *Space Sci. Rev.*, **71**, 231
 Bougeret, J. L., Goetz, K., Kaiser, M. L., et al. 2008, *Space Sci. Rev.*, **136**, 487
 Brueckner, G. E., Howard, R. A., Koomen, M. J., et al. 1995, *Sol. Phys.*, **162**, 357
 Bučík, R., Innes, D. E., Mason, G. M., et al. 2018, *ApJ*, **852**, 76
 Diego, P., Piersanti, M., Laurenza, M., & Villante, U. 2020, *J. Geophys. Res. (Space Phys.)*, **125**, e28281
 Dresing, N., Gómez-Herrero, R., Heber, B., et al. 2014, *A&A*, **567**, A27
 Dröge, W. 1996, in *High Energy Solar Physics*, eds. R. Ramaty, N. Mandzhavidze, *AIP Conf. Ser.*, **374**, 78
 Gómez-Herrero, R., Dresing, N., Klassen, A., et al. 2015, *ApJ*, **799**, 55
 Gómez-Herrero, R., Dresing, N., Klassen, A., et al. 2017, *ApJ*, **840**, 85
 Gosling, J. T., Hildner, E., Asbridge, J. R., Bame, S. J., & Feldman, W. C. 1977, *J. Geophys. Res.*, **82**, 5005
 Haggerty, D. K., & Roelof, E. C. 2002, *ApJ*, **579**, 841
 Horbury, T. S., O’Brien, H., Carrasco Blazquez, I., et al. 2020, *A&A*, **642**, A9
 Howard, R. A., Moses, J. D., Vourlidas, A., et al. 2008, *Space Sci. Rev.*, **136**, 67
 Kahler, S., & Ragot, E. P. 2006, *ApJ*, **646**, 634
 Kallenrode, M. B., & Wibberenz, G. 1991, *ApJ*, **376**, 787
 Kallenrode, M. B., Cliver, E. W., & Wibberenz, G. 1992, *ApJ*, **391**, 370
 Klassen, A., Gómez-Herrero, R., & Heber, B. 2011, *Sol. Phys.*, **273**, 413
 Klassen, A., Dresing, N., Gómez-Herrero, R., Heber, B., & Veronig, A. 2018, *A&A*, **614**, A61
 Kontar, E. P., & Reid, H. A. S. 2009, *ApJ*, **695**, L140
 Krucker, S., Larson, D. E., Lin, R. P., & Thompson, B. J. 1999, *ApJ*, **519**, 864
 Krucker, S., Kontar, E. P., Christe, S., & Lin, R. P. 2007, *ApJ*, **663**, L109
 Lemen, J. R., Title, A. M., Akin, D. J., et al. 2012, *Sol. Phys.*, **275**, 17
 Lin, R. P. 1990, in *Basic Plasma Processes on the Sun*, eds. E. R. Priest, & V. Krishan, *IAU Symp.*, **142**, 467
 Lin, R. P., Anderson, K. A., Ashford, S., et al. 1995, *Space Sci. Rev.*, **71**, 125
 Lintunen, J., & Vainio, R. 2004, *A&A*, **420**, 343
 Maksimovic, M., Bale, S. D., Chust, T., et al. 2020, *A&A*, **642**, A12
 Mason, G. M., Ho, G. C., Allen, R. C., et al. 2021, *A&A*, **656**, L1 (SO Cruise Phase SI)
 Müller, D., St. Cyr, O. C., Zouganelis, I., et al. 2020, *A&A*, **642**, A1
 Owen, C. J., Bruno, R., Livi, S., et al. 2020, *A&A*, **642**, A16
 Pacheco, D., Agueda, N., Aran, A., Heber, B., & Lario, D. 2019, *A&A*, **624**, A3
 Reid, H. A. S., & Kontar, E. P. 2018, *ApJ*, **867**, 158
 Rodríguez-Pacheco, J., Wimmer-Schweingruber, R. F., Mason, G. M., et al. 2020, *A&A*, **642**, A7
 Sáiz, A., Evenson, P., Ruffolo, D., & Bieber, J. W. 2005, *ApJ*, **626**, 1131
 Thejappa, G., MacDowall, R. J., & Bergamo, M. 2012, *ApJ*, **745**, 187
 Wang, L., Lin, R. P., Krucker, S., & Mason, G. M. 2012, *ApJ*, **759**, 69
 Wang, L., Krucker, S., Mason, G. M., Lin, R. P., & Li, G. 2016, *A&A*, **585**, A119
 Wibberenz, G., & Cane, H. V. 2006, *ApJ*, **650**, 1199
 Xu, Z., Guo, J., Wimmer-Schweingruber, R. F., et al. 2020, *ApJ*, **902**, L30
 Zhang, J., Temmer, M., Gopalswamy, N., et al. 2021, *Prog. Earth Planet. Sci.*, **8**, 56

Acknowledgements. The UAH team acknowledges the financial support by the Spanish MICIU under projects ESP2017-88436-R and PID2019-104863RB-I00/AEI/10.13039/501100011033. The CAU Kiel team acknowledges support by the German Federal Ministry for Economic Affairs and Energy, the

¹ Universidad de Alcalá, Space Research Group, 28805 Alcalá de Henares, Spain

e-mail: raul.gomezh@uah.es

² Institut für Experimentelle und Angewandte Physik, Christian-Albrechts-Universität zu Kiel, Kiel, Germany

- ³ Now at Department of Physics and Astronomy, University of Turku, 20014 Turku, Finland
- ⁴ Heliophysics Science Division, NASA Goddard Space Flight Center, Greenbelt, MD, USA
- ⁵ George Mason University, Fairfax, VA, USA
- ⁶ Goddard Planetary Heliophysics Institute, University of Maryland, Baltimore County, Baltimore, MD 21250, USA
- ⁷ National Observatory of Athens, Institute for Astronomy, Astrophysics, Space Applications and Remote Sensing, Athens, Greece
- ⁸ Departament de Física Quàntica i Astrofísica, Institut de Ciències del Cosmos (ICCUB), Universitat de Barcelona (UB-IEEC), Barcelona, Spain
- ⁹ Southwest Research Institute, 6220 Culebra Rd, San Antonio, TX 78238, USA
- ¹⁰ LESIA, Observatoire de Paris, Université PSL, CNRS, Sorbonne Université, Université de Paris, 5 place Jules Janssen, 92195 Meudon, France
- ¹¹ Department of Space and Climate Physics, University College London, Holmbury St Mary, Dorking, RH5 6NT, UK
- ¹² Department of Physics, George Washington University, Washington, DC 20052, USA
- ¹³ NASA Goddard Space Flight Center, Greenbelt, MD 20771, USA
- ¹⁴ Johns Hopkins University Applied Physics Laboratory, Laurel, MD, USA
- ¹⁵ ESA-ESAC, Madrid, Spain European Space Agency (ESA/ESAC), Villafranca del Castillo, 28692 Madrid, Spain
- ¹⁶ INAF Istituto di Astrofisica e Planetologia Spaziale, Via Fosso del Cavaliere 100, 00133 Roma, Italy
- ¹⁷ Department of Mathematics/Centre for mathematical Plasma Astrophysics, KU Leuven, Belgium
- ¹⁸ Ioffe Physical-Technical Institute, St. Petersburg 194021, Russia
- ¹⁹ Institute for Theoretical Physics and Astrophysics, University of Würzburg, Würzburg, Germany
- ²⁰ Department of Physics, Imperial College London, London SW7 2AZ, UK
- ²¹ Radboud Radio Lab, Department of Astrophysics/IMAPP-Radboud University, PO Box 9010, 6500 GL Nijmegen, The Netherlands
- ²² Institute of Atmospheric Physics of the Czech Academy of Sciences, Prague, Czech Republic
- ²³ Institut de Recherche en Astrophysique et Planétologie, 9, Avenue du Colonel ROCHE, BP 4346, 31028 Toulouse Cedex 4, France
- ²⁴ ASTRON–The Netherlands Institute for Radio Astronomy, Oude Hoogeveensedijk 4, 7991 PD Dwingeloo, The Netherlands
- ²⁵ Now at German Aerospace Center (DLR), Department of Extrasolar Planets and Atmospheres, Berlin, Germany
- ²⁶ Now at DSI Datensicherheit GmbH, Rodendamm 34, 28816 Stuhr, Germany
- ²⁷ Now at Deutsches Elektronen-Synchrotron (DESY), Platanenallee 6, 15738 Zeuthen, Germany
- ²⁸ Now at Max-Planck-Institute for Solar System Research, Justus-von-Liebig-Weg 3, 37077 Göttingen, Germany
- ²⁹ Now at University of Colorado/LASP, Boulder, CO, USA

Appendix A: Electron anisotropies

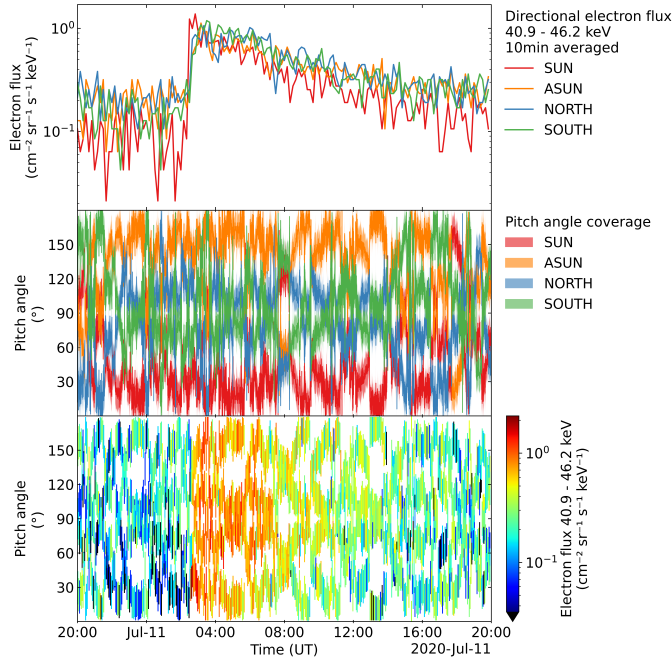


Fig. A.1. Time evolution of directional electron intensity measurements during the July 11 event. *From top to bottom:* (1) 40.9–46.2 keV electron intensities observed by the four EPD apertures; (2) pitch-angle coverage corresponding to each aperture; and (3) pitch angle distribution with color-coded intensity for the same energy range shown in the first panel.

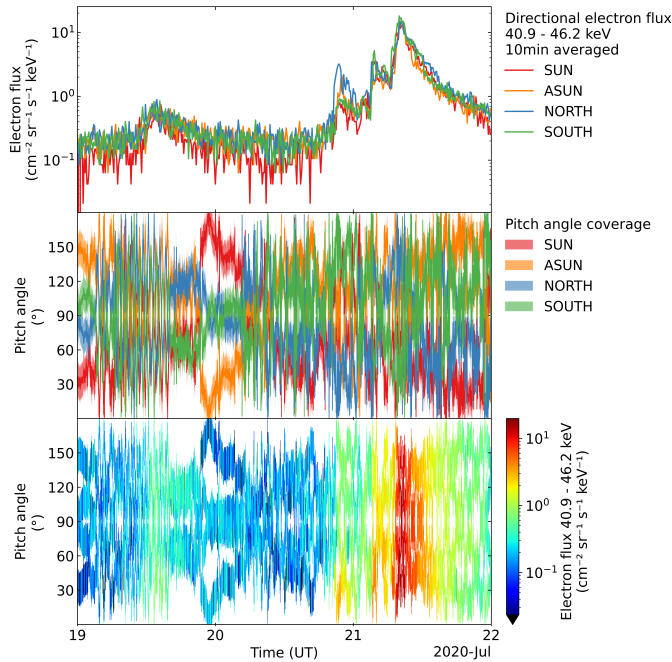


Fig. A.2. Time evolution of directional electron intensity measurements during the July 19–21 event series. The panels are the same as in Fig. A.1.

Directional intensities from EPT telescopes can be combined with the magnetic field vector data in order to produce electron PADs. The PAD quality for a particular event (i.e., the coverage of the pitch-angle space) is conditioned by the relative

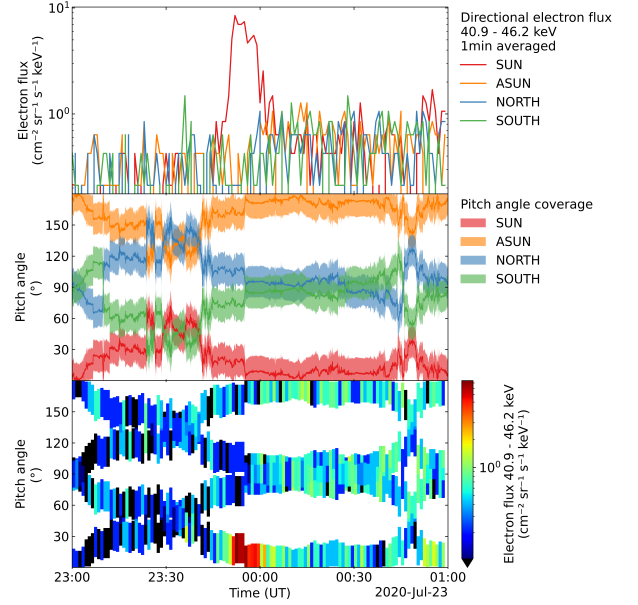


Fig. A.3. Time evolution of directional electron intensity measurements during the July 22 event. The panels are the same as in Fig. A.1.

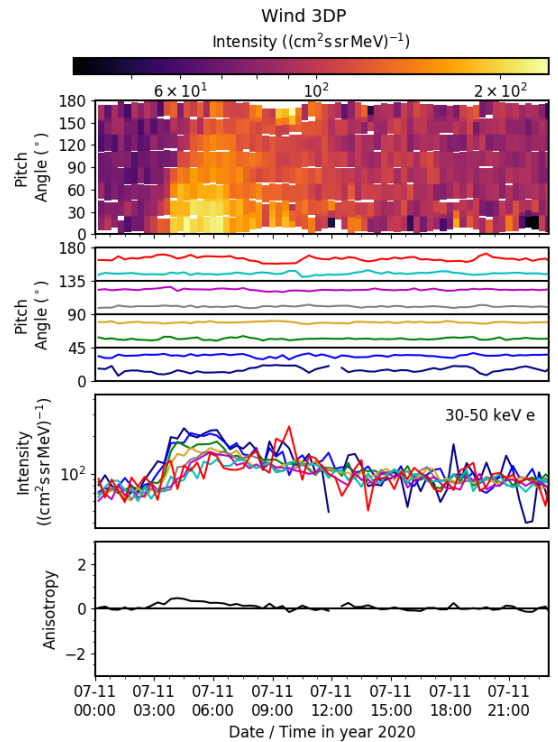


Fig. A.4. Summary of Wind/3DP observations of 30–50 keV electrons during the electron event on July 11. *From top to bottom:* electron PAD, pointing for each pitch-angle bin, intensities observed by each pitch-angle bin, and anisotropy index (calculated as described in Dresing et al. 2014).

orientation of the magnetic field vector and the sensor apertures. Figures A.1–A.3 summarize the 40.9–46.2 keV electron anisotropy information provided by EPT for the July 11, July 19–21, and July 22 events, respectively. We note that on July 19, EPT pitch-angle coverage goes through sharp and periodic changes, coinciding with most of event 2 due to s/c rotations.

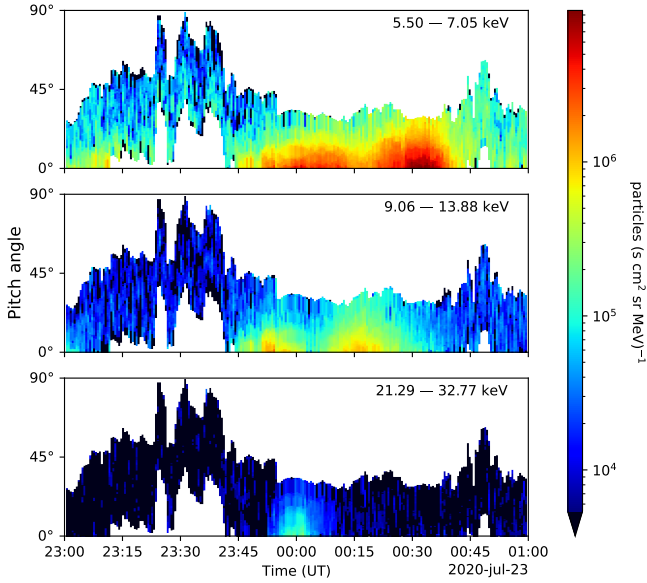


Fig. A.5. Electron PAD observed by STEP at three different energy bands during the July 22 event. The time scale is the same as the one used in Figs. 3 and A.1. We note that in this case, the Y -axis covers the interval 0 – 90° .

Figure A.4 shows the evolution of the PAD, directional intensities, and anisotropy index of 30–50 keV electrons observed by Wind/3DP during the July 11 event.

Moreover, the pixelated FOV of STEP can provide improved angular resolution for a limited range of pitch angles. Fig. A.5 shows the electron pitch-angle distribution obtained from STEP data for three different energy ranges during the July 22 event. For this event, EPT and STEP observed very anisotropic fluxes, which were resolved in two different beams at low energies (Fig. 3). The interplanetary magnetic field and solar wind observations showed very stable conditions during the whole interval and during most of the event the magnetic field vector was almost aligned with the STEP and the EPT-Sun sensor apertures, providing a nearly optimal pitch-angle coverage of the two narrow field-aligned electron beams observed by STEP below 30 keV. We note that before 23:40 UT, the electron beam was not aligned with the FOVs, which is probably the cause of the abrupt start of the first electron beam, and hinders the detection of the higher energy electrons by EPT, in case they were present.

Appendix B: Interplanetary context

For the same period shown in Fig. 2 and B.1 shows from top to bottom the solar wind proton speed (V_p), density (n_p), and temperature (T_p) as measured by SWA and the interplanetary magnetic field (IMF) magnitude (B_{IMF}) and direction in the s/c centered radial tangential normal (RTN) coordinates (polar angle θ_{IMF} and azimuthal angle ϕ_{IMF}) as measured by MAG. The vertical lines indicate the onset time of the NR electron events listed in Table 1. SWA observations were only available for the last part of the period, showing predominantly slow solar wind conditions.

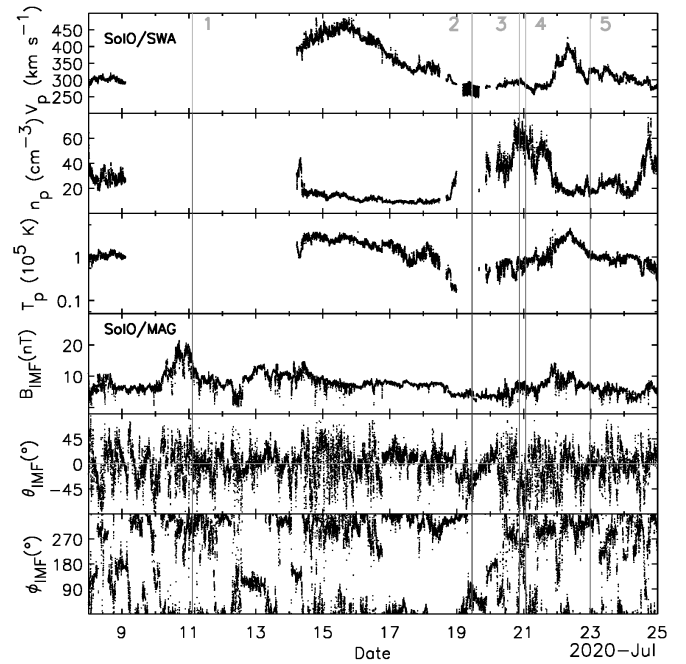


Fig. B.1. Summary of the solar wind and interplanetary magnetic field measurements by the SWA/PAS and MAG instruments in July 2020. *From top to bottom:* solar wind speed, density, and temperature as well as IMF intensity, and IMF polar and azimuthal angles in RTN coordinates. Vertical lines mark the onset times of the five NR-electron enhancements listed in Table 1.

The onset of event 1 occurred after the passage of a compressed magnetic field without clear shock discontinuities at its boundaries. The occurrence of a low-energy ion intensity enhancement in coincidence with this IMF structure as observed by both STEP and EPT (Fig. 2), with the suprathermal proton enhancement seen earlier than the more energetic ions detected by EPT, suggests that this IMF enhancement is most likely the signature of a stream interaction region (SIR).

The onset of event 2 occurred during s/c rolling maneuvers (from 4:00 UT to 16:00 UT on July 19) that affected SWA data, exhibiting large oscillations in density and temperature, which were removed from Fig. B.1. Nevertheless, event 2 developed during a period characterized by low T_p and low V_p (<270 km s^{-1}) embedded between the decay of the fast (~ 450 km s^{-1}) stream (observed earlier on July 15) and an approaching solar wind stream characterized by enhanced values of n_p and low values of V_p , T_p , and B_{IMF} . The onset of events 3 and 4 occurred during this period and in coincidence with IMF rotations. These conditions suggest that a non-compressive density enhancement reached SolO, indicating a possible small eruption from the Sun (Gosling et al. 1977; Diego et al. 2020). The passage of a SIR-like magnetic structure started on July 21 and coincides with the observed low-energy ion event (middle panel in Fig. 2). Finally, event 5 occurred in a period with more stable plasma and IMF parameters, which may facilitate the scatter-free propagation of NR electrons toward SolO.