



**HAL**  
open science

## ALMA Lensing Cluster Survey: A spectral stacking analysis of [C II] in lensed $z \sim 6$ galaxies

Jean-Baptiste Jolly, Kirsten Knudsen, Nicolas Laporte, Johan Richard, Seiji Fujimoto, Kotaro Kohno, Yiping Ao, Franz E. Bauer, Eiichi Egami, Daniel Espada, et al.

► **To cite this version:**

Jean-Baptiste Jolly, Kirsten Knudsen, Nicolas Laporte, Johan Richard, Seiji Fujimoto, et al.. ALMA Lensing Cluster Survey: A spectral stacking analysis of [C II] in lensed  $z \sim 6$  galaxies. *Astronomy and Astrophysics - A&A*, 2021, 652, 10.1051/0004-6361/202140878 . insu-03672415

**HAL Id: insu-03672415**

**<https://insu.hal.science/insu-03672415>**

Submitted on 19 May 2022

**HAL** is a multi-disciplinary open access archive for the deposit and dissemination of scientific research documents, whether they are published or not. The documents may come from teaching and research institutions in France or abroad, or from public or private research centers.

L'archive ouverte pluridisciplinaire **HAL**, est destinée au dépôt et à la diffusion de documents scientifiques de niveau recherche, publiés ou non, émanant des établissements d'enseignement et de recherche français ou étrangers, des laboratoires publics ou privés.

# ALMA Lensing Cluster Survey: A spectral stacking analysis of [C II] in lensed $z \sim 6$ galaxies

Jean-Baptiste Jolly<sup>1</sup>, Kirsten Knudsen<sup>1</sup>, Nicolas Laporte<sup>2,3</sup>, Johan Richard<sup>4</sup>, Seiji Fujimoto<sup>5,6</sup>, Kotaro Kohno<sup>7,8</sup>, Yiping Ao<sup>9,10</sup>, Franz E. Bauer<sup>11,12</sup>, Eiichi Egami<sup>13</sup>, Daniel Espada<sup>14,15</sup>, Miroslava Dessauges-Zavadsky<sup>16</sup>, Georgios Magdis<sup>5,6,17</sup>, Daniel Schaerer<sup>16,18</sup>, Fengwu Sun<sup>13</sup>, Francesco Valentino<sup>5,6</sup>, Wei-Hao Wang<sup>19</sup>, and Adi Zitrin<sup>20</sup>

<sup>1</sup> Department of Space, Earth and Environment, Chalmers University of Technology, Onsala Space Observatory, 439 92 Onsala, Sweden  
e-mail: [jean.jolly@chalmers.se](mailto:jean.jolly@chalmers.se)

<sup>2</sup> Kavli Institute for Cosmology, University of Cambridge, Madingley Road, Cambridge CB3 0HA, UK

<sup>3</sup> Cavendish Laboratory, University of Cambridge, 19 JJ Thomson Avenue, Cambridge CB3 0HE, UK

<sup>4</sup> CRAL, Observatoire de Lyon, Université Lyon 1, 9 Avenue Ch. André, 69561 Saint Genis Laval Cedex, France

<sup>5</sup> Cosmic Dawn Center (DAWN), Copenhagen, Denmark

<sup>6</sup> Niels Bohr Institute, University of Copenhagen, Jagtvej 128, 2200 Copenhagen N, Denmark

<sup>7</sup> Institute of Astronomy, Graduate School of Science, The University of Tokyo, 2-21-1 Osawa, Mitaka, Tokyo 181-0015, Japan

<sup>8</sup> Research Center for the Early Universe, Graduate School of Science, The University of Tokyo, 7-3-1 Hongo, Bunkyo-ku, Tokyo 113-0033, Japan

<sup>9</sup> Purple Mountain Observatory & Key Laboratory for Radio Astronomy, Chinese Academy of Sciences, Nanjing, PR China

<sup>10</sup> School of Astronomy and Space Science, University of Science and Technology of China, Hefei, Anhui, PR China

<sup>11</sup> Instituto de Astrofísica, Facultad de Física, Pontificia Universidad Católica de Chile Av. Vicuña Mackenna 4860, 782-0436 Macul, Santiago, Chile

<sup>12</sup> Millennium Institute of Astrophysics (MAS), Nuncio Monseñor Santero Sanz 100, Providencia, Santiago, Chile

<sup>13</sup> Steward Observatory, University of Arizona, 933 N. Cherry Avenue, Tucson 85721, USA

<sup>14</sup> SKA Organisation, Lower Withington, Macclesfield, Cheshire SK11 9DL, UK

<sup>15</sup> Departamento de Física Teórica y del Cosmos, Campus de Fuentenueva, Universidad de Granada, E18071 Granada, Spain

<sup>16</sup> Observatoire de Genève, Université de Genève, 51 Ch. des Maillettes, 1290 Versoix, Switzerland

<sup>17</sup> DTU-Space, Technical University of Denmark, Elektrovej 327, 2800 Kgs. Lyngby, Denmark

<sup>18</sup> CNRS, IRAP, 14 Avenue E. Belin, 31400 Toulouse, France

<sup>19</sup> Institute of Astronomy and Astrophysics, Academia Sinica, Taipei 10617, Taiwan

<sup>20</sup> Physics Department, Ben-Gurion University of the Negev, PO Box 653, Be'er-Sheva 84105, Israel

Received 25 March 2021 / Accepted 7 June 2021

## ABSTRACT

**Context.** The properties of galaxies at redshift  $z > 6$  hold the key to our understanding of the early stages of galaxy evolution and can potentially identify the sources of the ultraviolet radiation that give rise to the epoch of reionisation. The far-infrared cooling line of [C II] at  $158 \mu\text{m}$  is known to be bright and correlate with the star formation rate (SFR) of low-redshift galaxies, and hence is also suggested to be an important tracer of star formation and interstellar medium properties for very high-redshift galaxies.

**Aims.** With the aim to study the interstellar medium properties of gravitationally lensed galaxies at  $z > 6$ , we search for [C II] and thermal dust emission in a sample of 52  $z \sim 6$  galaxies observed by the ALMA Lensing Cluster Survey.

**Methods.** We perform our analysis using LINESTACKER, stacking both [C II] and continuum emission. The target sample is selected from multiple catalogues, and the sample galaxies have spectroscopic redshift or low-uncertainty photometric redshifts ( $\sigma_z < 0.02$ ) in nine galaxy clusters. Source properties of the target galaxies are either extracted from the literature or computed using spectral energy distribution fitting. Both weighted-average and median stacking are used, on both the full sample and three sub-samples.

**Results.** Our analyses find no detection of either [C II] or continuum. An upper limit on  $L_{[\text{C II}]}$  is derived, implying that [C II] remains marginally consistent for low-SFR  $z > 6$  galaxies but likely is under-luminous compared to the local  $L_{[\text{C II}]}$ -SFR relationship. We discuss potential biases and possible physical effects that may be the cause of the non-detection. Further, the upper limit on the dust continuum implies that less than half of the star formation is obscured.

**Key words.** galaxies: formation – galaxies: statistics – galaxies: high-redshift – radio lines: galaxies – galaxies: evolution – galaxies: star formation

## 1. Introduction

The first billion years after the Big Bang mark the epoch of early galaxy formation and evolution. The ultraviolet (UV) photons from the early galaxies ionised the hydrogen of the intergalactic

medium, a period also known as the epoch of reionisation (EoR; see Stark 2016 for a complete review).

Dedicated efforts to search for  $z > 6$  galaxies employing a variety of multi-wavelength data have resulted in thousands of viable candidates. The primary methods for discovering

these early galaxies are photometric drop-out techniques and narrow-band Lyman-alpha emitter selection (e.g., Steidel et al. 1996; Ono et al. 2012, 2018; Schenker et al. 2012; Oesch et al. 2015; Zitrin et al. 2015b; Song et al. 2016; Shibuya et al. 2018; Higuchi et al. 2019). The evolution of the derived luminosity function as a function of redshift for rest-frame UV-selected galaxies shows an increasing contribution to the total ionising UV light produced by sub- $L^*$  galaxies (Bouwens & Illingworth 2006; Bouwens et al. 2015; McLure et al. 2013). This has implications for understanding which sources might be responsible for the largest fraction of the reionisation of the intergalactic medium during the EoR (Bouwens et al. 2007, 2012; Ouchi et al. 2009; Bunker et al. 2010; McLure et al. 2010; Oesch et al. 2010; Robertson et al. 2013; Atek et al. 2015).

Spectroscopic redshift surveys have primarily targeted galaxies brighter than  $L^*$  (e.g., Lilly et al. 2009; Kochanek et al. 2012; Newman et al. 2013; Stark et al. 2013); however, the number of systematic spectroscopic redshift measurements for fainter galaxies is growing (e.g., Le Fèvre et al. 2013; Bacon et al. 2017; Hasinger et al. 2018; Coe et al. 2019; Richard et al. 2021). Spectroscopic redshifts are essential for detailed investigations of the interstellar medium (ISM) and thus for understanding the physical conditions of the gas and dust. In the local universe the far-infrared fine-structure line of [C II] at  $158\ \mu\text{m}$  from the  $^2P_{3/2} \rightarrow ^2P_{1/2}$  transition is known to be one of the brightest gas-cooling lines in star forming galaxies (De Looze et al. 2014; Sargsyan et al. 2014; Cormier et al. 2015). As carbon has an ionisation potential of 11.2 eV, below that of hydrogen, [C II] is detected in regions of both predominantly neutral and ionised gas. The line luminosity has been found to correlate with the star formation rate (SFR) in normal, star-forming galaxies (Stacey et al. 2010; De Looze et al. 2011, 2014; Herrera-Camus et al. 2015; Schaerer et al. 2020) and has also been proposed as a gas mass tracer (e.g., Zanella et al. 2018; Madden et al. 2020). As the emission wavelength is redshifted into the submillimetre and millimetre bands, the [C II] is recognised as an important probe of the ISM of high- $z$  galaxies. With an excitation temperature of  $T = 91.2\ \text{K}$ , the line is less sensitive to the effects of the cosmic microwave background radiation compared to, for example, CO lines, which are otherwise common tracers of molecular gas and the ISM of high- $z$  galaxies. Notably, several studies have observed [C II] in  $z > 6$  galaxies (e.g., Riechers et al. 2013; Knudsen et al. 2016; Venemans et al. 2016, 2020; Decarli et al. 2017; Stanley et al. 2019) as the line has the potential to characterise the ISM at this early epoch. A large number of detections have been discovered across a range broad of SFRs (e.g., Capak et al. 2015; Willott et al. 2015; Knudsen et al. 2016; Pentericci et al. 2016; Bradač et al. 2017; Decarli et al. 2017; Matthee et al. 2017; Carniani et al. 2018; Smit et al. 2018; Hashimoto et al. 2019; Bakx et al. 2020; Béthermin et al. 2020; Harikane et al. 2020; Le Fèvre et al. 2020; Fujimoto et al. 2021; Laporte et al. 2021), but interestingly also a number of non-detections (e.g., Ouchi et al. 2013; González-López et al. 2014; Ota et al. 2014; Maiolino et al. 2015; Schaerer et al. 2015; Knudsen et al. 2016).

Because of the faint absolute UV magnitude of sub- $L^*$  galaxies at  $z > 6$  (e.g., Ono et al. 2018), one would need at least 10 hours of ALMA observing time to detect them in [C II]. In this context, and to establish a large sample of sub- $L^*$  galaxies at  $z > 6$ , observations can be done more efficiently by targeting galaxy cluster fields as gravitational lensing will amplify the light from such distant galaxies (e.g., Richard et al. 2011; Knudsen et al. 2016; Fujimoto et al. 2021; Laporte et al. 2021). Even then many galaxies remain undetected, the stacking of

the data can enable a significant statistical improvement in the sensitivity (e.g., Fujimoto et al. 2018, 2019; Stanley et al. 2019; Béthermin et al. 2020; Carvajal et al. 2020; Uzgil et al. 2021).

In this paper we present a spectral line stacking analysis of the [C II] line for a sample of 52 gravitationally lensed galaxies from the ALMA Lensing Cluster Survey (ALCS; Kohno et al., in prep). The ALCS is a large project observing 33 galaxy clusters using the Atacama Large millimetre/sub-millimetre Array (ALMA). The target sources of this study are in the redshift range  $5.9 \lesssim z \lesssim 6.6$  and have not been individually detected with [C II] in the ALCS data.

The structure of this paper is as follows. In Sect. 2 we describe in detail the data as well as the studied sample. Section 3 outlines the method and the different tools used to carry out this analysis. In Sect. 4 we present the results before discussing their implications, biases, and newly raised questions in Sect. 5. Throughout the paper we assume  $H_0 = 70\ \text{km s}^{-1}$ ,  $\Omega_M = 0.3$ , and  $\Omega_\Lambda = 0.7$ .

## 2. Data and sample

### 2.1. ALMA Lensing Cluster Survey

The ALCS is an large ALMA programme accepted in cycle 6 (Project ID: 2018.1.00035.L; PI: K. Kohno). The programme observed 33 massive galaxy clusters, 16 from RELICS (Coe et al. 2019), 12 from CLASH (Postman et al. 2012), and 5 from the Frontier Fields survey (Lotz et al. 2017), for a total of  $88\ \text{arcmin}^2$  observed in band 6 (i.e. at a wavelength of  $\sim 1.2\ \text{mm}$ ). Observations were carried out between December 2018 and December 2019 (cycles 6 and 7) in compact array configurations C43-1 and C43-2. The entire bandwidth of the survey spans a total of 15 GHz split over two spectral ranges: 250.0–257.5 GHz (tuning 1) and 265.0–272.5 GHz (tuning 2)<sup>1</sup>. As ALCS utilises two spectral frequency setups, the survey provides a frequency coverage twice the size of a single setup, and this means a wider redshift coverage. The data were reduced and calibrated using the Common Astronomy Software Applications (CASA) package version 5.4.0 (McMullin et al. 2007). Data cubes were imaged using the CASA task TCLEAN down to a level of  $3\sigma$  with a channel size of  $60\ \text{km s}^{-1}$ . Throughout this paper, we use natural-weighted, primary-beam-corrected, and  $uv$ -tapered maps, with a tapering parameter of 2 arcsec (pixel size of 0.16 arcsec). We use  $uv$ -tapered maps so that all the stacked sources share a similar beam size, and hence a similar spatial resolution, which is essential for stacking homogeneity. However, because high-redshift sources may be small compared to the tapered beam size and for completeness, we also performed our stacking analyses on cubes in their native resolution ( $\sim 1\ \text{arcsec}$ ; see Fig. A.4). A full description of the survey and of its main objectives will be presented in a separate paper (Kohno et al., in prep). The main characteristics of the data cubes used in this analysis can be seen in Table 1.

### 2.2. Sample

#### 2.2.1. Sample selection

To perform our spectral stacking analysis we select sources with redshift  $5.97 \lesssim z \lesssim 6.17$  or  $6.38 \lesssim z \lesssim 6.60$ , that is sources whose potential [C II] emission lines would fall in

<sup>1</sup> ALCS data are combined with existing ALMA data when available, notably the ALMA Frontier Fields Survey used in this analysis: Project ID: 2013.1.00999.S, PI: Bauer and Project ID: 2015.1.01425.S: PI: Bauer.

**Table 1.** General information on the ALMA data.

ID <sup>(a)</sup>	RMS tune 1 <sup>(b)</sup> [mJy beam <sup>-1</sup> ]	RMS tune 2 <sup>(c)</sup> [mJy beam <sup>-1</sup> ]	RMS continuum image <sup>(d)</sup> [mJy beam <sup>-1</sup> ]
Abell2744	2.6	2.1	0.17
MACSJ0416.1–2403	2.8	3.5	0.14
AbellS1063	2.1	2.6	0.17
MACSJ1149.5+2223	2.0	2.4	0.16
MACS1206.2–0847	2.4	3.0	0.15
RXJ1347–1145	2.4	3.0	0.15
MACS0329.7–0211	2.6	3.3	0.18
MACS1115.9+0129	2.9	3.6	0.20
Abell383	2.8	3.5	0.19

**Notes.** <sup>(a)</sup>Cluster name; <sup>(b)</sup>RMS in 60 km s<sup>-1</sup> channels in the first tuning (250.0–257.5 GHz, unit: mJy beam<sup>-1</sup>, 147 channels in total); <sup>(c)</sup>RMS in 60 km s<sup>-1</sup> channels in the second tuning (265.0–272.5 GHz, unit: mJy beam<sup>-1</sup>, 139 channels in total); <sup>(d)</sup>RMS in continuum image (mJy beam<sup>-1</sup>).

the observed bandwidth. Because redshift uncertainties have a drastic impact on the performance of spectral stacking analyses (Jolly et al. 2020), only sources with spectroscopic redshifts or high precision photometric redshifts ( $\sigma_z < 0.02$ , corresponding to  $\sigma_v \sim 800$  km s<sup>-1</sup>) were selected. This ensures that line peaks are well known and lines are stacked aligned. Sources are extracted from (ordered by number of sources): The MUSE GTO (MGTO) programme catalogue (Richard et al. 2021), the ASTRODEEP catalogue (Merlin et al. 2016; Castellano et al. 2016; Di Criscienzo et al. 2017), the *Hubble* Frontier Field Deep Space (HFFDS) catalogue (Shiple et al. 2018), and the VLT/MUSE observations catalogue (Caminha et al. 2019).

In addition, the regions of interest were queried using AstroQuery (Ginsburg et al. 2019), leading to the addition of two sources from the NASA/IPAC Extragalactic Database (NED<sup>2</sup>). We also manually added the two images of a lensed source in Abell 383 (Richard et al. 2011; Knudsen et al. 2016). HST catalogues are corrected for astrometry offset with respect to ALMA maps following Franco et al. (2018).

To avoid duplicates between different catalogues, sources are removed if they are closer than 1 arcsec from one another. Priority is given to catalogues with higher redshift precision.

For homogeneity, and to push the limit of observability towards fainter sources, we only select sources that are not individually detected in our ALMA data. After these considerations we selected a total of 52 sources (of which 23 are multiple images of same sources): 32 from MGTO, 10 from ASTRODEEP, four from HFFDS, two from VLT/MUSE, two from Richard et al. (2011), Knudsen et al. (2016), and two from our AstroQuery query. The main characteristics of the sample are presented in Tables B.1 and B.2.

From this sample, we assemble four different sub-samples as follows. As shown in Jolly et al. (2020) redshift uncertainty lead to a reduced efficiency of spectral stacking analyses. We hence perform our analysis concurrently on one sub-sample composed of only 36 sources with secure, spectroscopically determined redshifts; that is all sources with photometric redshifts, or sources with low spectroscopic redshift confidence are removed from this sub-sample (see Table B.1).

We also split sources by their SFR, creating a sub-sample consisting solely of sources whose SFRs are greater than the median SFR of the full sample ( $2.05 M_{\odot} \text{ yr}^{-1}$ ). Finally, we create a sub-sample composed of the sources present in both the high redshift precision and high-SFR sub-samples.

In the rest of this paper, the different samples are referred to as: ‘full sample’, ‘good- $z$  sub-sample’, ‘high-SFR sub-sample’, and ‘SFR- $z$  sub-sample’.

## 2.2.2. Sample properties and spectral energy distribution (SED) fitting

The  $z \sim 6$  galaxies used in this study are located behind nine clusters from the Frontier Fields and CLASH surveys, for which deep public NIR data are available<sup>3,4</sup>. Data from three clusters have been analysed as part of the ASTRODEEP project (Merlin et al. 2016), namely Abell2744, MACSJ0416.1-2403 and MACSJ1149.5+2223, and robust catalogues have been released. In addition, Abell2744 and MACSJ0416.1-2403 as well as MACS1206.2-0847, MACS0329.7-0211 and RXJ1347-1145 were analysed as part of the MUSE GTO programme, and complete catalogues were made available through their latest data-release (Richard et al. 2021). In the following, we use the catalogues from the ASTRODEEP project and the MUSE-GTO data release for these six clusters, and we use our own catalogues for the remaining.

We built our catalogues using SExtractor v2.19.5 (Bertin & Arnouts 1996) in double image mode, using a sum of WFC3 data as a detection picture. We extracted sources on PSF-matched data, obtained after running TinyTim (Krist et al. 2011), using extraction parameters adapted to identify faint sources: DETECT\_MINAREA = 5 pixels, -DETECT\_THRESH =  $1.5\sigma$  and -DEBLEND\_MINCOUNT = 0.00001. The number of extracted sources per cluster ranges from 4,942 (MACS1115.9+0129) to 9,079 (RXJ1347-1145) for the CLASH clusters and goes up to 20,996 for the Frontier Field cluster AS1063 because of the depth difference between the surveys (F105W~27.5AB vs. ~30.3 AB at  $2\sigma$  for the CLASH and Frontier Fields data, respectively). We extracted the photometry on IRAC 3.6  $\mu\text{m}$  and 4.5  $\mu\text{m}$  images in a 1.2'' radius aperture centred at the F160W position for isolated objects. Three objects in our sample required more careful IRAC photometry extraction (namely A383-19, RXJ1347-6, RXJ1347-8). For those objects, we used GALFIT (Peng et al. 2010) with the following assumptions for the input parameters: We fixed the candidate (and the neighbouring object) positions to the centroids of the F160W/HST

<sup>2</sup> <http://nedwww.ipac.caltech.edu/>

<sup>3</sup> HST Frontier Fields: <https://archive.stsci.edu/prepds/frontier/>

<sup>4</sup> CLASH: <https://www.stsci.edu/~postman/CLASH/>

image; we adopted Serfic galaxy profiles; the flux, the axes' ratio, and the half-light radius were left as free parameters. The error bars were computed from the noise measured directly on the original IRAC images. In case of non-detection we used the  $2\sigma$  upper limits in the following. Among the 52 galaxies in our sample, 33 are identified in our catalogues. A visual inspection at the position of the remaining objects show no UV counterpart, suggesting they have a high Ly- $\alpha$  equivalent width (EW).

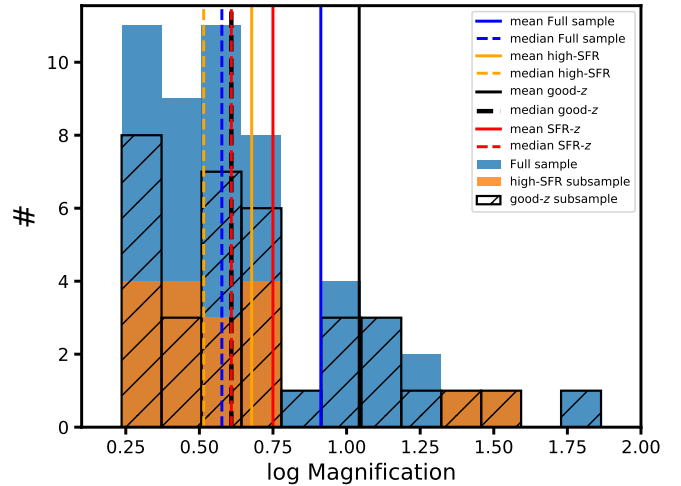
Because all galaxies in this sample are located behind lensing clusters, one needs to correct the photometry for lensing magnification. For targets in the Frontier Fields data, we used the online magnification calculator<sup>5</sup>, and chose the magnification factors computed with the CATS group models (Jauzac et al. 2014; Richard et al. 2014). For the CLASH clusters, we used the updated models from Zitrin et al. (2015a).

To estimate the physical properties, such as the stellar mass, age, and SFR, of the galaxies discussed in this paper, we ran BAGPIPES (Carnall et al. 2018) with four different star formation histories (SFHs): a burst, a constant, an exponential, and a combination of a young burst with a constant SFH. The IMF used in BAGPIPES is from Kroupa & Boily (2002). For all models, the parameter spaces allowed for the age of the component, defined as the beginning of the star formation, was between 0 and 1.0 Gyr, for the mass formed between  $10^6$  and  $10^{12} M_{\odot}$ , for the reddening between  $A_V = 0.0$ , and 1.0 mag and we fixed the ionisation parameter at  $\log U = -2$  (see for example Stark et al. 2015). To determine the SFH that gives the best fit of the lensed-corrected SED, we applied the Bayesian information criterion (BIC) accounting for the difference in the number of parameters used in each SFH. For most of the objects, the best fit is obtained either with a constant or burst SFH, with a similar fit quality in most cases.

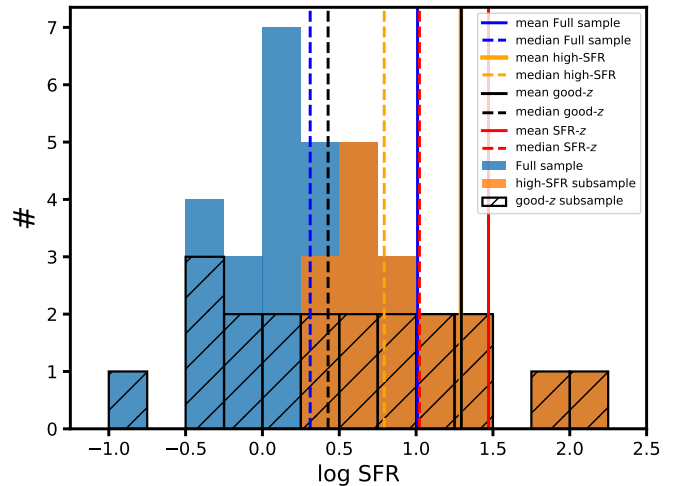
Among our sample,  $\approx 80\%$  of our targets show consistent stellar masses for either a burst or constant SFH, for the remaining  $\approx 20\%$ , we used the stellar mass obtained from the best fit. The SFR is computed using three methods: (i) taking the stellar mass and average age of the source, which reflects the mean SFR over the age of the galaxy, (ii) using the UV luminosity (Kennicutt 1998) and corrected for dust attenuation, and (iii) taking the instantaneous SFR obtained from the SFH, which gives the SFR at the observed redshift. The last method is inconsistent with the two first methods and strongly depends on the age of the burst and even more strongly on the current star formation. For the majority of sources in our sample, the SFR averaged over the age of the galaxy is  $< 10 M_{\odot} \text{ yr}^{-1}$ . The SFRs quoted in the rest of this paper were computed using the UV luminosity and corrected for dust attenuation (method (ii)). The attenuation of the UV light by the dust is relatively modest, with an averaged value of  $A_V = 0.20 \pm 0.11$  mag.

For sources not detected we used the information from the literature when available. 19 sources, mostly Lyman-alpha emitters from the MUSE GTO catalogues, are not detected in any of the HST bands and we could hence not derive reliable SFRs. This should not impact our results much since the SFRs of the rest of the sample are homogeneously distributed and that we only use the mean and median SFR of the sample, and not individual values.

The magnification factors of the sources in the full sample range from 1.77 to 72.9 with a median of 3.77 and a



**Fig. 1.** Distribution of the magnifications of the sources across the full-sample (blue), high-SFR sub-sample (orange), and good-z sub-sample (black striped). Plain and dashed straight lines indicate the corresponding mean and median values, respectively, for each sample.



**Fig. 2.** Distribution of the SFR of the sources across the full-sample (blue), high-SFR sub-sample (orange), and good-z sub-sample (black striped). Plain and dashed straight lines indicate the corresponding mean and median values, respectively, for each sample.

weighted-mean<sup>6</sup> of 8.175 (see Fig. 1 and Table 2. The magnification corrected SFRs range from  $0.17 M_{\odot} \text{ yr}^{-1}$  to  $\sim 125 M_{\odot} \text{ yr}^{-1}$ , with a weighted-mean<sup>6</sup> of  $\sim 10.2 M_{\odot} \text{ yr}^{-1}$  and a median of  $\sim 2.0 M_{\odot} \text{ yr}^{-1}$ , SFR distribution can be seen in Fig. 2 and Table 2. The redshift distribution across the samples is shown in Fig. 3.

In addition to the individual SED fittings described above, we stacked all the best-fit SEDs of the sources obtained with BAGPIPES together (both using mean and median stacking) to recover the  $\text{SFR}_{\text{UV}}$ . Using these methods we find  $\text{SFR}_{\text{UV,mean}} = 7.73 \pm 0.77 M_{\odot}$  and  $\text{SFR}_{\text{UV,median}} = 2.32 \pm 0.56 M_{\odot}$ .

### 3. Stacking method

The spectral stacking analysis is performed using LINESTACKER (Jolly et al. 2020). LINESTACKER is an open access stacking

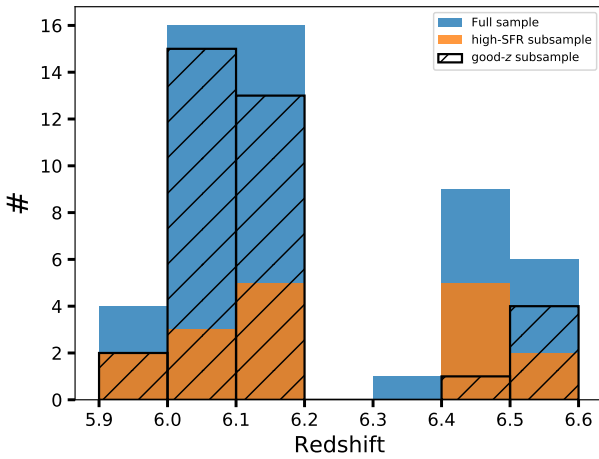
<sup>5</sup> <https://archive.stsci.edu/prepds/frontier/lensmodels/#magcalc>

<sup>6</sup> The weights used to compute the weighted-average magnification and weighted-average SFR are the same weights used in the weighted-average stacking analysis (see Sect. 3).

**Table 2.** Spectral stacking results.

Sample name	rms <sup>(a)</sup> [mJy beam <sup>-1</sup> km s <sup>-1</sup> ]	$L_{[\text{CII}]}$ <sup>(b)</sup> [10 <sup>7</sup> $L_{\odot}$ ]	$\langle \text{SFR} \rangle$ <sup>(c)</sup> [ $M_{\odot}$ yr <sup>-1</sup> ]	$\langle \mu \rangle$ <sup>(d)</sup>
Full sample, mean	44.2	<1.65	10.22 <sup>+55.12</sup> <sub>-7.89</sub>	8.17
Full sample, median	47.7	<3.85	2.05 <sup>+4.16</sup> <sub>-0.98</sub>	3.77
Good $z$ sub-sample, mean	45.9	<1.27	19.70 <sup>+63.46</sup> <sub>-12.37</sub>	11.04
Good $z$ sub-sample, median	50.3	<3.77	2.68 <sup>+8.75</sup> <sub>-1.82</sub>	4.06
High-SFR sub-sample, mean	76.7	<4.91	19.57 <sup>+60.78</sup> <sub>-13.72</sub>	4.76
High-SFR sub-sample, median	81.9	<7.63	6.2 <sup>+11.69</sup> <sub>-2.44</sub>	3.27
SFR+ $z$ sub-sample, mean	96.9	<5.25	29.59 <sup>+78.10</sup> <sub>-18.15</sub>	5.62
SFR+ $z$ sub-sample, median	115.8	<8.69	10.51 <sup>+13.52</sup> <sub>-5.13</sub>	4.06

**Notes.** <sup>(a)</sup>Rms value in the velocity integrated flux map, obtained by collapsing a channel width of 540 km s<sup>-1</sup> (nine 60 km s<sup>-1</sup> channels); <sup>(b)</sup>Magnification corrected [C II] line luminosity computed as discussed in Sect. 4; <sup>(c)</sup>Magnification corrected SFR of the sample (see Table B.2): weighted-average SFR of the sources in the sample for weighted-average stacking analyses and median SFR for the median stacking analyses. The errors represent the positive and negative standard deviations for the mean stacking analyses, and the positive and negative median absolute deviations for the median stacking analyses; <sup>(d)</sup>Magnification of the sample, weighted-average magnification of the sources in the sample for the weighted-average stacking analyses, median magnification for the median stacking analyses.



**Fig. 3.** Distribution of the redshift of the sources across the full-sample (blue), high-SFR sub-sample (orange), and good- $z$  sub-sample (black striped).

software developed for stacking interferometric data. It is an ensemble of CASA tasks that allow the stacking of either spectral cubes or extracted spectra. LINESTACKER comes with a suite of tools, among which are automated weighting routines, which we use in our analysis.

Sources were stacked pixel to pixel and spectral channel to spectral channel. Both weighted average and median stacking were used. Some sources are located close to the edge of the cubes<sup>7</sup>, making the noise levels of these sources much higher than others. For this reason, we weighted each source proportionally to the inverse of the square of the local RMS. To do so, LINESTACKER’s automated weighting schemes were used, and local noise was estimated in an area of 12.96 arcsec<sup>2</sup> (81 × 81 pixels<sup>2</sup>) around the source. Sources were not masked while computing noise as they were not individually detected in the first place.

<sup>7</sup> The edges are defined according to the maps compiled in the data (see Kohno et al., in prep).

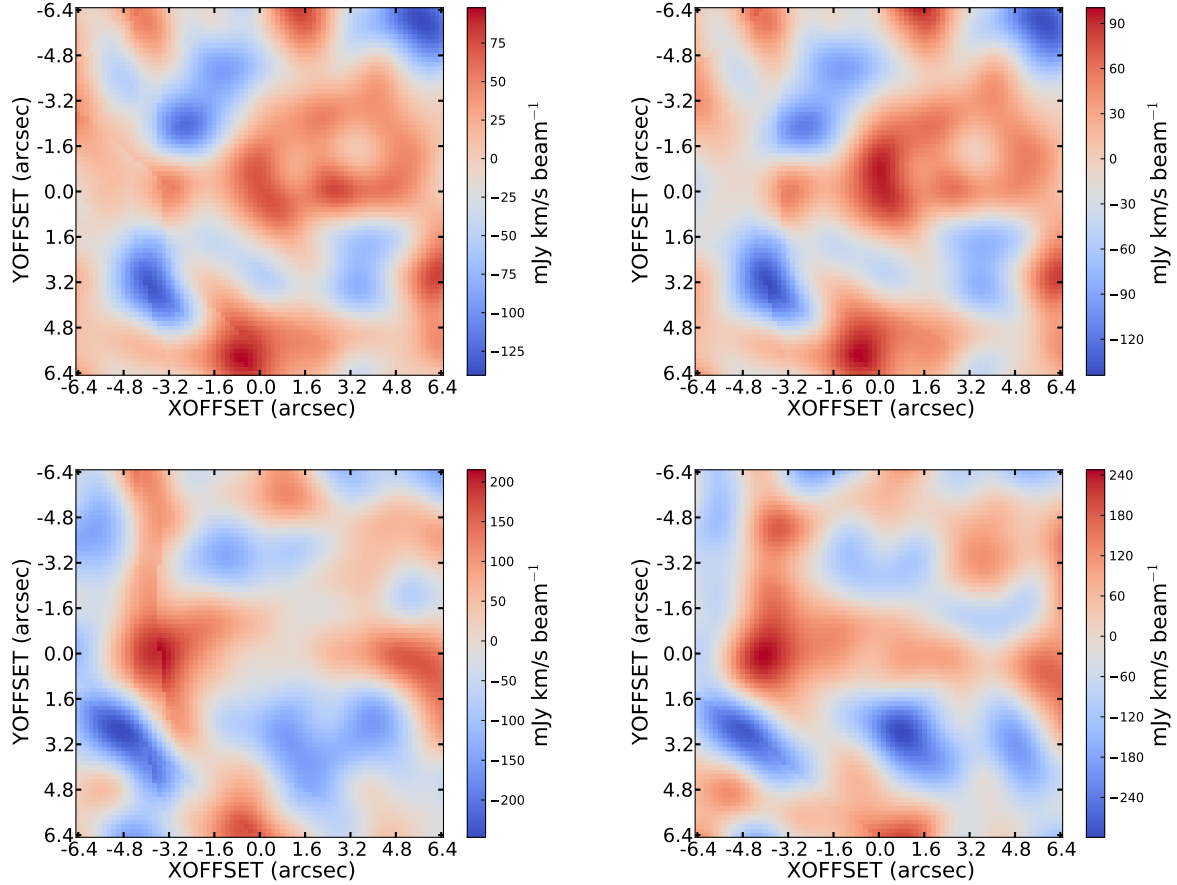
All candidate spectral regions where the corresponding lines would be located for each source were aligned using their redshift and the emission frequency of [C II] (1900.5369 GHz; see Sect. 5.1 for a discussion about the impact of the redshift offsets on the stack results). Spatially, sources were stacked using their physical coordinate extracted from the corresponding catalogue. In addition to the spectral stacking analysis, we performed continuum stacking of the same sources in the same way.

## 4. Results

### 4.1. [C II] stack results

The stacking analyses yielded non-detections for the full sample and all sub-samples. The stacking results are presented as moment-0 maps, integrated over 540 km s<sup>-1</sup> (−270 km s<sup>-1</sup> to +270 km s<sup>-1</sup>) centred on the expected [C II] line. Béthermin et al. (2020) and Schaerer et al. (2020) studied a large sample of non-lensed sources through the ALPINE project (Béthermin et al. 2020; Faisst et al. 2020; Le Fèvre et al. 2020). Their sample at  $z > 5$  shows an average SFR of  $\sim 13 M_{\odot} \text{ yr}^{-1}$  for the undetected sources and  $\sim 82 M_{\odot} \text{ yr}^{-1}$  for sources with  $9.00 < \log(L_{[\text{CII}]} / L_{\odot}) < 9.33$ , which is either of the order of, or greater than, our sample. Their sample shows a [C II] linewidth distribution with a median FWHM of  $\sim 252 \text{ km s}^{-1}$ . We decided to integrate over roughly two times their median linewidth in the moment-0 maps, to include lines with potentially larger width as well as to account for artificial increase in the line width that would arise from stacking lines slightly off-centre. Indeed, high uncertainty on the redshift as well as systematic offsets between redshifts derived from Lyman- $\alpha$  or [C II], may result in line emission being stacked with a small velocity shift (the ALPINE survey identified a median offset of  $184^{+201}_{-215} \text{ km s}^{-1}$  between Lyman- $\alpha$  and [C II] redshift measurement (Faisst et al. 2020); this is discussed further in Sect. 5.1).

Integrated moment-0 weighted-average stacked maps of the samples can be seen in Fig. 4. Similarly moment-0 median stacked maps of the same samples can be seen in Fig. A.2. In addition to the moment maps we show continuum stack counterpart maps in Fig. 5 for the weighted-average stacks and Fig. A.3 for the median stack. Spectra, extracted from a circular region of



**Fig. 4.** Velocity integrated flux maps of the weighted-average spectral stacks, obtained by collapsing a channel width of  $540 \text{ km s}^{-1}$  centred on the stack centre. The artificial arcs featured on the sides of the figure are due to stacked sources located close to the edge of the cubes. *From left to right and top to bottom*, full-sample, good- $z$  sub-sample, high-SFR sub-sample and SFR+ $z$  sub-sample.

radius  $1.12 \text{ arcsec}$  (7 pixels) corresponding to the stacked beam of the tapered data, and centred on the stacked cube centre, of both the weighted-average and median stacking analyses of the full sample are shown in Figs. 6 and A.1.

From the absence of detection we derive a  $3\text{-}\sigma$  upper limit on  $L_{[\text{CII}]}$  similarly to Schaerer et al. (2020) and Béthermin et al. (2020).  $L_{[\text{CII}]}$  is computed using the formula provided in Solomon & Vanden Bout (2005):

$$L_{[\text{CII}]} = 1.04 \times 10^{-3} \times I_{[\text{CII}]} D_L^2 \nu_{\text{obs}} L_{\odot}, \quad (1)$$

where  $I_{[\text{CII}]}$  is the velocity integrated line intensity for [C II] in  $\text{Jy km s}^{-1}$  (corresponding here to  $3\sigma$  of the stacked moment-0 map),  $D_L$  is the luminosity distance in Mpc, and  $\nu_{\text{obs}}$  is the observed frequency in GHz. The derived [C II] line luminosity is then corrected for the weighted mean magnification of the studied sample when performing weighted-mean stacking, or the median magnification when performing median stacking.

The  $L_{[\text{CII}]}$  upper-limits are reported in Table 2. The rms obtained from the mean and median stacking methods being comparable, the main difference between the corresponding estimated upper limits on  $L_{[\text{CII}]}$  come from the difference between the weighted-average and the median magnification of the samples. Figure 7 shows the relationship between the derived  $L_{[\text{CII}]}$  upper limit and SFR of each sample, obtained through both weighted-average and median stacking. Results from mean stacking analyses are shown with the corresponding mean SFR, results from median stacking analyses with the corresponding median SFR. While upper limits from the median stacking anal-

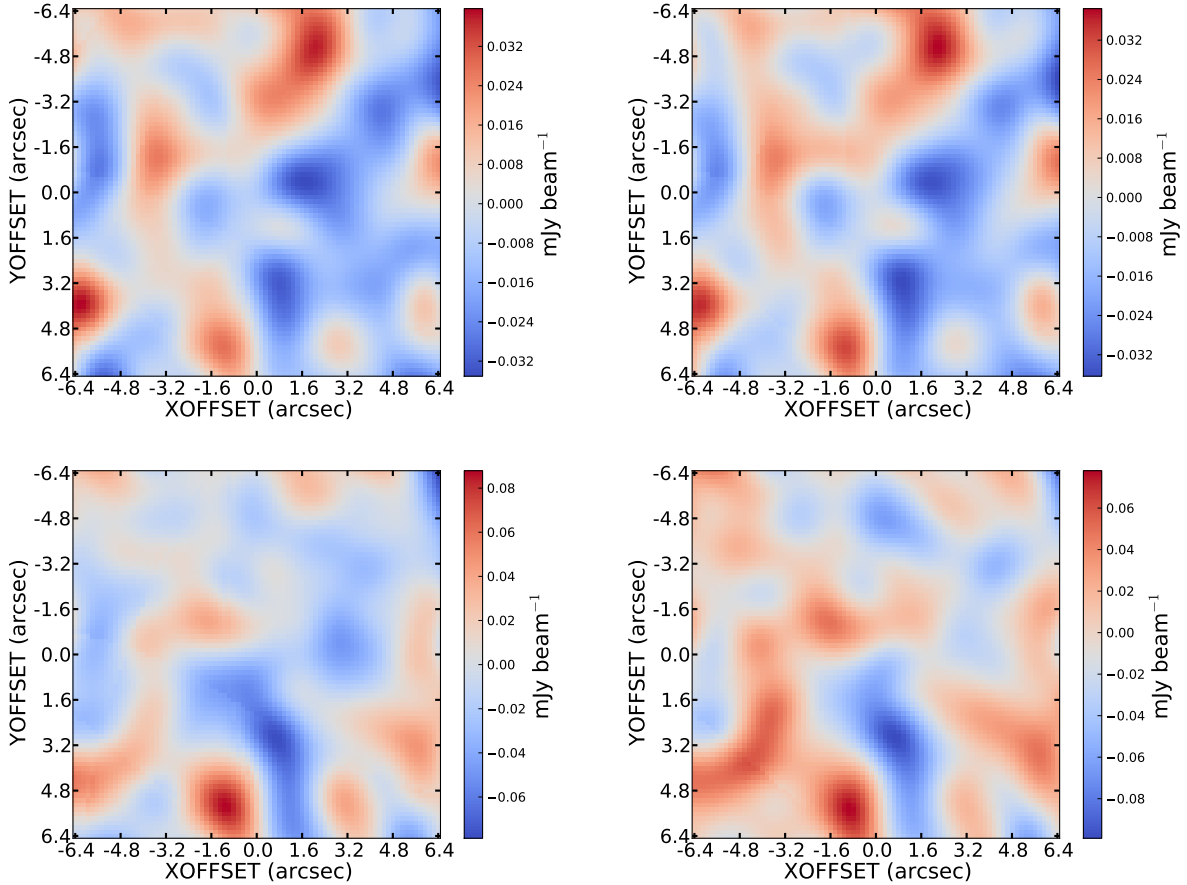
yses are still compatible with the local relationship, upper limits derived from the mean stacking analyses seem to indicate a lower value of  $L_{[\text{CII}]}$  compared to the local relation.

Because none of the stacking analyses lead to a detection we do not perform the usual statistical tests designed to probe the significance of the stacking result. Indeed, bootstrapping tests, for example, probe the distribution of the stacked line flux; however, such tests would not serve much purpose if the stacked source is undetected.

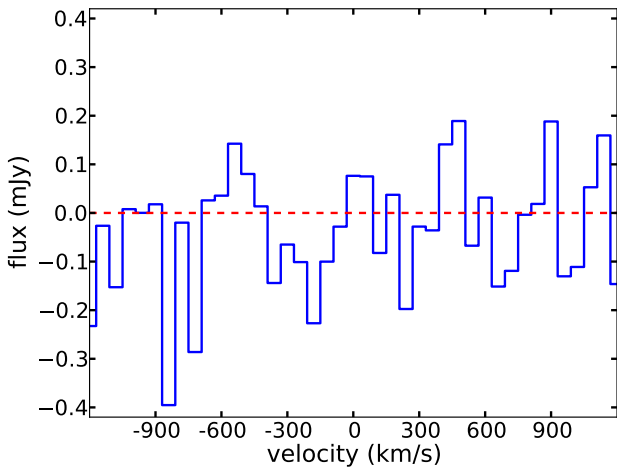
We have studied the full sample and the defined sub-samples. It would be possible to subdivide the full sample based on other criteria (e.g., on Lyman- $\alpha$  equivalent width); however, given the clear non-detection we do not pursue further sub-samples.

One can notice the presence of a stripe pattern on the side of the moment maps in Fig. 4. These are due to a few sources being close to the edge and some outer pixels of the stacking stamps being empty. Sources are discarded if the cube edge is closer than one beam from the stack centre. It should be noted that sources close to the edge will have intrinsically higher noise levels and will hence carry a lesser weight in the weighted-average stacks.

Extensive photo-dissociation region modelling from Madden et al. (2020) provides a recipe for utilising  $L_{[\text{CII}]}$  to estimate the total molecular gas mass of low-metallicity dwarf galaxies,  $M_{\text{H}_2} = 10^{2.12} \times [L_{[\text{CII}]}]^{0.97}$ . Applying this to our results, and with the assumption that the sample sources have sub-solar metallicity (see Sect. 5.3), we estimate an upper limit on the molecular gas mass,  $M_{\text{H}_2}$ , in the range  $< 1.3 \times 10^9 - 7.0 \times 10^9 M_{\odot}$ . This range was derived using the two sample extremes: the  $3\sigma$



**Fig. 5.** Continuum maps of the weighted-average continuum stacks. The artificial arcs featured on the sides of the figure are due to stacked sources located close to the edge of the cubes. *From left to right and top to bottom*, full-sample, Good- $z$  sub-sample, High-SFR sub-sample and SFR+ $z$  sub-sample.

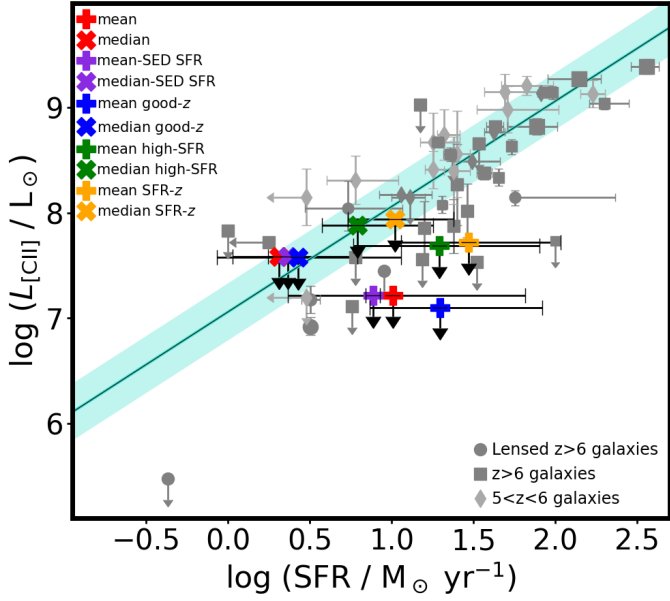


**Fig. 6.** Spectrum extracted from a circular region of radius = 1.12 arcsec (7 pixels) centred on the weighted-average stacked cube of the entire sample.

upper limits derived for (i) the good- $z$  sub-sample, mean stacking analysis and (ii) the SFR+ $z$  sub-sample median stacking analysis. Compared to the mean and median stellar masses of  $M_{\text{stellar}} \sim 1 \times 10^9$  and  $2 \times 10^8 M_{\odot}$ , respectively, these suggest that  $M_{\text{H}_2}$  is of the order of or higher than  $M_{\text{stellar}}$ , which is in agreement with the molecular gas-to-stellar mass fraction extrapolated from [Walter et al. \(2020\)](#).

[Dessauges-Zavadsky et al. \(2020\)](#) find an average molecular gas fraction,  $f_{\text{molgas}} = M_{\text{molgas}} / (M_{\text{stellar}} + M_{\text{molgas}})$ , of order  $\sim 0.6$  at redshift  $4.4 < z < 5.9$  using a sample of 44 [CII] detected non-merger galaxies in the ALPINE survey with a median stellar mass of  $\sim 10^{9.7}$ , indicating a possible flattening of the gas fraction evolution with redshift. To compare to our results, we estimated the mean and median molecular gas fraction for the (sub-)samples using the stellar mass estimate from our SED fitting analysis (we note that stellar masses estimates could not be derived for all sources (see Sect. 2.2.2), leading to mean/median masses not exactly representative of the samples as we could only extract  $M_{\text{stellar}}$  for  $\sim 2/3$  of the sources). Our mean results are mostly in good accordance with the average molecular gas fraction derived by [Dessauges-Zavadsky et al. \(2020\)](#) as our upper limits indicate  $f_{\text{molgas}} \lesssim 0.5$  (see Table 3). The median results however present higher ratios, of order  $\lesssim 0.9$ . The large spread between the mean and median results is mainly explained by the difference between the mean and median stellar masses (see Table 3). Indeed, the mean stellar masses are sensible to high-mass outliers, while these have no impact on the median results. As shown in [Dessauges-Zavadsky et al. \(2020\)](#), a dependence is seen between  $f_{\text{molgas}}$  and  $M_{\text{stellar}}$ , and the deviation between our own results and the molecular gas fraction cited above can be explained by the difference between the stellar masses probed. In addition, one should note that the  $f_{\text{molgas}}$  extracted from both our mean and median analyses are mostly consistent with the  $f_{\text{molgas}} - M_{\text{stellar}}$  relationship at  $z \sim 6$  presented in [Dessauges-Zavadsky et al. \(2020\)](#).





**Fig. 7.** Stacking results, upper limit  $L_{[\text{CII}]}$  vs. SFR. The error bars of the data obtained in this study are the standard deviation in the case of the mean stacking analyses, and the median absolute deviation for 8. The median stacking analyses (for the SFR obtained from mean and median SED the errors are the errors extracted from the SED fitting). Other data points are extracted from the following studies: Ouchi et al. (2013), Ota et al. (2014), González-López et al. (2014), Capak et al. (2015), Maiolino et al. (2015), Schaerer et al. (2015), Willott et al. (2015), Knudsen et al. (2016), Pentericci et al. (2016), Bradač et al. (2017), Decarli et al. (2017), Matthee et al. (2017), Carniani et al. (2018), Smit et al. (2018), Hashimoto et al. (2019), Béthermin et al. (2020), Bakx et al. (2020), Harikane et al. (2020), Fujimoto et al. (2021). The cyan line is the relation extracted for low- $z$  starburst galaxies from the De Looze et al. (2014) study including its  $1\sigma$  dispersion.

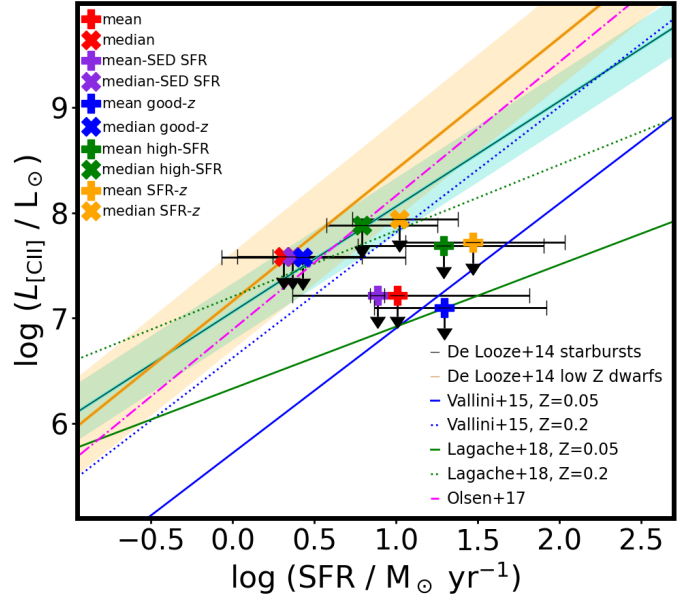
**Table 3.** Upper limit on the molecular gas fraction and corresponding stellar mass for the different sub-samples.

Sample name	$f_{\text{molgas}}^{(a)}$	$M_{\text{stellar}}^{(b)}$ ( $M_{\odot}$ )
Full sample, mean	<0.55	$10^{9.03}$
Full sample, median	<0.93	$10^{8.38}$
Good- $z$ sub-sample, mean	<0.38	$10^{9.22}$
Good- $z$ sub-sample, median	<0.92	$10^{8.40}$
High-SFR sub-sample, mean	<0.65	$10^{9.31}$
High-SFR sub-sample, median	<0.95	$10^{8.53}$
SFR+z sub-sample, mean	<0.59	$10^{9.45}$
SFR+z sub-sample, median	<40.95	$10^{8.56}$

**Notes.** <sup>(a)</sup>Upper limit on the molecular gas fraction,  $f_{\text{molgas}} = M_{\text{molgas}} / (M_{\text{stellar}} + M_{\text{molgas}})$ , derived using the  $L_{[\text{CII}]}$  upper limits from the different (sub-)samples; <sup>(b)</sup>Mean/median stellar mass of each (sub-)sample, extracted from our SED fitting analyses.

#### 4.2. Continuum

The stacking analyses of the continuum data yielded non-detections, consistent with the results from the spectral line stacking for [CII]. The resulting rms for continuum stack of the full sample and the sub-samples are given in Table 4. We estimate a  $3\sigma$  upper limit on the far-infrared luminosity assuming that the far-infrared spectral energy distribution (SED) is



**Fig. 8.** Stacking results, upper limit  $L_{[\text{CII}]}$  vs. SFR compared to several models in the literature. The error bars are the standard deviation in the case of the mean stacking analyses, and the median absolute deviation for the median stacking analyses (for the SFR obtained from mean and median SED the errors are the errors extracted from the SED fitting). Models are extracted from the following studies: Vallini et al. (2015), Olsen et al. (2017), Lagache et al. (2018). Relations derived from low- $z$  data come from De Looze et al. (2014), shown in cyan and orange, including their  $1\sigma$  dispersion.

well described by a modified blackbody with a temperature of  $T = 35$  K and  $T = 45$  K, both with dust emissivity  $\beta = 1.5$ . At the high redshift of the sample, the CMB temperature is  $T_{\text{CMB}} \sim 20$  K, and we adopt the prescription from da Cunha et al. (2013) to correct for the effect of the CMB. We note that single photometric upper limit only provides a rough estimate on  $L_{\text{FIR}}$ , which is subject to a large systematic uncertainty depending on, for example, the choice of temperature or  $\beta$ . The far-infrared luminosity upper limits are used to estimate the dust-obscured SFR, and we assume  $\text{SFR}(L_{\text{FIR}})[M_{\odot} \text{yr}^{-1}] \sim 1.1 \times 10^{-10} L_{\text{FIR}}[L_{\odot}]$  (for a Kroupa IMF,  $0.1-100 M_{\odot}$ , and constant star formation over a timescale of 100 Myr; Calzetti 2013). We note that different assumptions on the IMF and SFH could lead to a factor of two, or more, change in the estimated values (e.g., Rieke et al. 2009; Calzetti 2013). The estimated upper limit on the  $\text{SFR}_{\text{IR}}$  is  $\sim 1-6 M_{\odot} \text{yr}^{-1}$  after correcting for magnification, which is either similar to or below the average rest-frame UV derived SFRs of the samples (see Table 2). This implies that less than half of the star formation is obscured by dust. It is worth noting that the correction for dust extinction on the UV derived SFR presented in Table 2, leads to a reduction of the SFR of  $\sim 3-6 M_{\odot} \text{yr}^{-1}$ . While these numbers are not fully representative of the sample (since they are only available for the sources that we could analyse ourselves through SED fitting), the sum of  $\text{SFR}_{\text{UV}}$ , not corrected for dust attenuation, and  $\text{SFR}_{\text{IR}}$  is comparable to the original  $\text{SFR}_{\text{UV}}$ , after correcting for dust attenuation. Similarly, using the continuum upper limit we estimate an upper limit on the dust mass. We assume a dust opacity of  $\kappa_{\nu} = \kappa_0(\nu/\nu_0)^{\beta}$ , using  $\kappa_0 = 5.1 \text{ cm}^2 \text{ g}^{-1}$  for  $\nu_0 = 1.2 \text{ THz}$  (e.g., Draine & Li 2007), and  $\beta = 1.5$ . This results in upper limits in the range  $(0.6-8.1) \times 10^6 M_{\odot}$ . However, we note that there are significant systematic uncertainties associated with this, and the

**Table 4.** Continuum stacking results, using  $3\sigma$  upper limits corrected for magnification.

Sample name	rms <sup>(a)</sup> [ $\mu\text{Jy beam}^{-1}$ ]	$T = 35 \text{ K}$			$T = 45 \text{ K}$		
		$L_{\text{FIR}}^{(b)}$ [ $10^{10} L_{\odot}$ ]	SFR <sup>(c)</sup> [ $M_{\odot} \text{ yr}^{-1}$ ]	$M_{\text{dust}}^{(d)}$ [ $10^6 M_{\odot}$ ]	$L_{\text{FIR}}^{(b)}$ [ $10^{10} L_{\odot}$ ]	SFR <sup>(c)</sup> [ $M_{\odot} \text{ yr}^{-1}$ ]	$M_{\text{dust}}^{(d)}$ [ $10^6 M_{\odot}$ ]
Full sample, mean	15	<0.5	<0.5	<1.7	<1.1	<1.2	<0.9
Full sample, median	17	<1.3	<1.4	<4.2	<2.8	<3.0	<2.2
Good $z$ sub-sample, mean	14	<0.4	<0.4	<1.2	<0.8	<0.9	<0.6
Good $z$ sub-sample, median	16	<1.1	<1.2	<3.7	< 2.5	<2.7	<2.0
High-SFR sub-sample, mean	25	<1.5	<1.6	<4.8	<3.3	<3.5	<2.5
High-SFR sub-sample, median	26	<2.3	<2.4	<7.6	<5.1	<5.5	<4.0
SFR+ $z$ sub-sample, mean	28	<1.4	<1.5	<4.8	<3.2	<3.4	<2.5
SFR+ $z$ sub-sample, median	35	<2.4	<2.6	<8.1	<5.5	<5.9	<4.3

**Notes.** <sup>(a)</sup>rms value in the continuum map; <sup>(b)</sup>Upper limit on far-infrared luminosity corrected for the magnification and the effect of the CMB; <sup>(c)</sup>Upper limit on SFR estimated from the  $L_{\text{FIR}}$ ; <sup>(d)</sup>Upper limit on molecular gas mass estimated from the  $L_{[\text{CII}]}$ .

values could be a factor of five higher depending on the assumptions (e.g., Li & Draine 2001; Draine & Li 2007; Magdis et al. 2012; Casey et al. 2014; Planck Collaboration Int. XVII 2014). If we assume  $\kappa_0 = 0.43 \text{ cm}^2 \text{ g}^{-1}$  for  $\nu_0 = 350 \text{ GHz}$  (e.g., Planck Collaboration Int. XVII 2014), the upper limits are in the range  $(1.2\text{--}14.7) \times 10^6 M_{\odot}$ . With the large systematic uncertainties, this is consistent with the upper limits on the molecular gas mass, and the factor of  $\sim 100$  between the two upper limits is consistent with our assumption that the studied galaxies have low metallicity (e.g., Leroy et al. 2011). We note that the continuum emission around rest-frame  $158 \mu\text{m}$  is close to the peak of the dust emission, and it is thus more sensitive to the temperature and total luminosity (probing the SFR) rather than the total dust mass, which is better measured by the emission at the Rayleigh-Jeans tail (e.g., Magdis et al. 2012; Scoville et al. 2016).

As mentioned in Sect. 4.1, one can see the presence of stripe patterns on the continuum stacked maps, even more obvious than on the [C II] moment-0 maps (see Fig. 5). While only sources further than one beam from the edge of the cubes are selected in the [C II] stacked maps, this edge can be positioned at a slightly different position on the continuum maps. This is due to both the frequency dependency of the primary and synthesized beam and to the two spectral windows used to construct the continuum maps, which sometimes have different spatial coverage. We however decided to construct the continuum stacked maps as pure counterparts of the [C II] stacked maps, and hence included strictly the same sources in both analyses, regardless of whether sources were closer to edge in the continuum maps.

## 5. Discussion

### 5.1. Potential biases

While our derived  $L_{[\text{CII}]}$  upper limit measurements indicates a possible different behaviour for high- $z$  galaxies in the low-SFR regime compared to their equivalent at low- $z$ , we caution that our upper limit could be underestimated.

The first and probably main bias could come from systematic redshift uncertainties. The redshifts of most of the galaxies in our samples are based on the Ly- $\alpha$  lines, which have been shown to exhibit possible systematic offsets compared to the redshift of the [C II] line (Capak et al. 2015; Faisst et al. 2016; Matthee et al. 2017; Béthermin et al. 2020; Cassata et al. 2020; Pahl et al. 2020). Faisst et al. (2020) show a median offset of

$184_{-215}^{+201} \text{ km s}^{-1}$  between the [C II] measured redshift and redshift measured from Ly- $\alpha$  in the ALPINE survey. Because the offset redshift is not constant, there is no straightforward way to correct for it while stacking, especially since our stacking analysis leads to no detection<sup>8</sup>. However, as shown in Jolly et al. (2020), redshift uncertainties of  $\sim 180 \text{ km s}^{-1}$  lead to an average stacked line amplitude of  $\sim 70\%$  of its maximum value, and an average flux of  $\sim 90\%$  of its maximum value (stacking 30 lines of  $400 \text{ km s}^{-1}$  with an  $S/N \sim 1$  pre stacking). Such systematic uncertainties would hence only lead to a modest underestimate of the upper limits derived in our analysis.

Similarly, stacking positions could also be a source of systematic uncertainties. Systematic astrometric shifts in the source catalogues compared to the ALCS data would lead to a poor overlap of stacking positions. This impact could be significant if uncertainties are high compared to the [C II] size of the sources. This is, however, unlikely as offsets between HST catalogues and ALMA are well known (e.g., Dunlop et al. 2017; Franco et al. 2018, 2020; Fujimoto et al. 2019) and accounted for, and MUSE catalogues are properly aligned (Richard et al. 2021). Nonetheless, a similar effect would be expected from systematic offsets between the [C II] regions and the optical regions that are the stacking targets.

As suggested by Carniani et al. (2020) [C II] extended emission could also lead to reduced emission and an underestimate of the upper limit. Such an effect could be made more probable from stacking objects elongated by gravitational lensing effects. However, from the average low magnifications (most under 10) as well as the absence of evidence of elongated objects from the HST NIR images in our sample, we do not expect elongated [C II] nor continuum emission.

Normally a basic assumption for a stacking analysis, is that the sample sources are drawn from the same parent population, thus providing a meaningful sample homogeneity. For this particular study, the sample is constructed from several catalogues of different sensitivity and different selection criteria at optical and near-infrared wavelengths, leading to a heterogeneous sample. The primary selection criteria applied here are position, redshift, and luminosity (i.e.  $L_{[\text{CII}]}$  below the threshold for individual detection). Our sample consists mostly of Ly- $\alpha$  emitters

<sup>8</sup> One could otherwise try to maximise the stacked line flux by randomising redshift offsets as a Monte Carlo process. But with a non detection this would most probably lead to maximising noise peaks.

(all spectroscopically identified sources show Ly- $\alpha$  emission), some of which are also Lyman-break galaxies (12 sources in our sample classify as Lyman-break galaxies based on their SED). While it is expected that all normal star-forming galaxies have a [C II] line, the strength of this line could be affected by different conditions and properties of each galaxy and its environment (see Sect. 5.3). We note that Ly- $\alpha$  emitters are not necessarily representative of the entire population of normal star-forming galaxies at  $z \sim 6$  (e.g., Stark et al. 2011; Tilvi et al. 2014; De Barros et al. 2017; Harikane et al. 2018; Pentericci et al. 2018; Kusakabe et al. 2020). It should be noted however, that in the good- $z$  sub-sample nearly all galaxies are selected based on a high Ly- $\alpha$  EW, which is a fairly uniform selection.

However, because our sample is biased towards Ly- $\alpha$  emitters, one can expect the studied galaxies to be dust poor. Indeed, if the observed galaxies were dust rich one would expect scattering in the ISM, leading to lower Ly- $\alpha$  emission. Therefore, one can expect to see a lower far-infrared continuum, as well as lower [C II] emission.

When looking at the results presented in Fig. 7 one can see a significant difference between the mean and median analyses. This is not due to a drastic difference in the resulting stacked cubes, but comes essentially from the difference between the mean and median magnification of our sample. It is hence obvious that the individually derived magnifications will have a significant impact on the  $L_{[\text{C II}]}$ -SFR limits derived through our analysis. Many lensing models exist to derive magnification values (e.g., Keeton 2011; Jauzac et al. 2014; Johnson et al. 2014; Ishigaki et al. 2015; Merten et al. 2015; Zitrin et al. 2015a; Diego et al. 2016; Bradač et al. 2017) and our model choices (see Sect. 2.2.2) have a sizable impact on our result. However, and unless big systematic differences exist between models, selecting a high number of sources should, on average, reduce the impact of choosing one set of models in place of another.

Similarly, the uncertainties on the SFR –while depicting the SFR spread over the studied sample– highlight the importance of the precision of this value. One can indeed see that the spread of the SFR is quite large in our samples and, because of this, the derived  $L_{[\text{C II}]}$ -SFR limits may end up mostly in accordance with De Looze et al. (2014) local value, or in total disagreement with it. It is hence important to highlight the impact of SFR derivation as well as its uncertainty. Due to the limited amount of data, and the existence of different models, derived SFR can vary by factors of several for the same source. However, and similar to the uncertainties on magnification, uncertainties on the SFR should tend to even out on average if the number of sources is high enough. Our study should hence be less impacted by SFR uncertainties than single objects studies, but these numbers should still be evaluated with caution.

Finally it should be noted that some stacked sources are multiple images of the same source, this intrinsically reduces the statistical significance of our results as it diminishes the number of independent objects observed.

## 5.2. Comparison to individual detections in high- $z$ , low-SFR galaxies

To probe how much our results may differ from analyses on similar objects we compare it to individual detections in high- $z$ , low-SFR galaxies. [C II] has been detected in  $z > 6$  lensed galaxies (Knudsen et al. 2016; Bradač et al. 2017; Bakx et al. 2020; Fujimoto et al. 2021; Laporte et al. 2021), and non-detections

have been reported for two  $z > 8$  galaxies (Laporte et al. 2019). The estimated magnification-corrected line luminosities are in the range  $L_{[\text{C II}]} \sim 10^{7-9} L_{\odot}$  for SFRs  $\sim 3-60 M_{\odot} \text{ yr}^{-1}$ , which partially overlap the SFR distribution of our sample. The lowest-SFR, non-lensed detection of [C II] is seen towards BDF-3299 ( $z \sim 7.1$ , SFR  $\sim 6 M_{\odot} \text{ yr}^{-1}$  Carniani et al. 2017). The reported detections, along with the two non-detections, are either consistent or below the  $L_{[\text{C II}]}$ -SFR relation found in low- $z$  starburst galaxies (De Looze et al. 2014), as shown in Fig. 7.

The rms of the stacked maps in this study are comparable to the reported observed rms values for [C II] detections in the literature. This suggests that if all sources in our sample were to share the properties of the individual detected sources, we would have expected at least a tentative detection in our stacked results.

The  $L_{[\text{C II}]}$ -SFR relation has a known scatter. However, given the large number of detections (and non-detections) of  $z > 6$  sources distant from the local  $L_{[\text{C II}]}$ -SFR relation, this would either imply that at  $z > 6$  this scatter is larger, or that the relation for high-redshift galaxies is offset from the local relation.

The ALPINE survey (e.g., Béthermin et al. 2020; Schaerer et al. 2020) is another ALMA Large programme presenting [C II] observations of 118 individually selected sources in the redshift range  $4.4 < z < 5.9$ . The ALCS [C II] redshift coverage is effectively continuing to a higher redshift beyond the ALPINE survey. The SFR range of the ALPINE sample is  $\sim 10-300 M_{\odot} \text{ yr}^{-1}$ , which partly overlaps with the upper range of our sample (Béthermin et al. 2020). A comparison between these two sets of results depends on whether we focus on the results from the median or mean stacking. The mean SFR of the mean stacking has a wide scatter because it is dominated by a few high-SFR estimates. The resulting stacked [C II] upper limit is lower than that of the ALPINE survey at a similar SFR. Focusing on the median distribution, we note that our stacked results probe a complementary region of the  $L_{[\text{C II}]}$ -SFR plane and remains mostly compatible with the local relationship.

## 5.3. Is a low $L_{[\text{C II}]}$ expected for low-SFR, $z > 6$ galaxies?

The comparison of the  $L_{[\text{C II}]}$ -SFR relation from local galaxies to  $z > 6$  galaxies is challenging. A fraction of  $z > 6$  galaxies lying below the relation, including the upper limits derived from the stacked results, might be explained by the physical conditions combined with the early evolutionary stage. Metallicity, the hardness and intensity of the UV radiation field, the gas density distribution, and the star formation history are all aspects to be considered.

Given the relatively short time after the Big Bang, it is possible that the galaxies targeted in our study will not have had sufficient time to reach a solar level metallicity (Stark 2016). In the local universe, dwarf galaxies are known to have on average lower metallicity (e.g., Cormier et al. 2015), and given the comparable stellar masses of dwarf galaxies and the target sources, it is reasonable to assume that the studied sample have sub-solar metallicity. The metallicity has been estimated only for a small number of gravitationally lensed  $z > 6$  galaxies (e.g., Stark et al. 2015); however, the detections or non-detections of dust also give an indication of the metallicity (e.g., Watson et al. 2015; Bakx et al. 2020). Previous modelling of photo-dissociation regions suggest that in lower metallicity-environments the [C II] luminosity will be reduced (e.g., Röellig et al. 2006). Modelling of the [C II] luminosity for  $z > 6$  galaxies also shows that the low-metallicity regions have a lower  $L_{[\text{C II}]}$  (e.g., Vallini et al. 2015; Olsen et al. 2017;

Lagache et al. 2018; Ferrara et al. 2019). In addition, as shown in Vallini et al. (2015), at  $z > 4.5$  the CMB temperature becomes comparable to the temperature of the cold neutral medium, strongly attenuating [C II] emission from these regions and reducing the overall [C II] emission from high-redshift galaxies.

For a lower metallicity, and thus likely also lower dust content, UV photons have a longer mean free path. Also, it has been suggested that the binary stellar populations might yield an increased production of UV-photons (e.g., Ma et al. 2016; Stanway et al. 2016; Götzberg et al. 2020; however, see recent results from Ma et al. 2020). An increased intensity of the UV-radiation field would also impact the ionisation state of carbon, for example resulting in an increased fraction of double- or triple-ionised carbon (the ionisation potential for double ionisation is 24.4 eV). Examples of double-ionised, and triple-ionised carbon have been found (e.g., Stark et al. 2015; Smit et al. 2017) for  $z > 5$  galaxies. We note that our continuum non-detection could rule out a dust-rich ISM scenario.

Short-term variations in the star formation have also been suggested to impact the [C II] luminosity relative to the estimated SFR (e.g., Vallini et al. 2015; Ferrara et al. 2019). For example, upward deviations from the Kennicutt-Schmidt star formation relation could be seen as a starburst-like phase, and that in turn can suppress the [C II] emission (Ferrara et al. 2019).

In addition, according to the CLOUDY simulations ran by Harikane et al. (2020), the ionisation parameter may be the most important driver for a possible low [C II] content at a given SFR.

For a further understanding of the non-detections from our stacking analysis, either deeper data for individual sources of the sample or a multiple-line analysis would be needed. In terms of the latter, observations of the [O III] and C III] lines specifically would help break the degeneracy (e.g., Ferrara et al. 2019; Vallini et al. 2020).

## 6. Summary

Through our analysis we performed a spectral stacking analysis of [C II], in 52 gravitationally lensed galaxies at  $z \sim 6$  using data from the ALCS.

We analysed both the full sample as well as three sub-samples, one containing only the sources with good spectroscopic redshifts, one with only sources with the higher SFR, and the last one with only sources present in both sub-samples. For each (sub-)sample we also performed a continuum stacking analysis. We performed both weighted-average and median stacking analyses and none yielded a detection. We derive  $3\sigma$  upper limits on the  $L_{[\text{C II}]}$  of  $(1-9) \times 10^7 L_{\odot}$ . Compared to the local  $L_{[\text{C II}]}$ -SFR relation, this implies a deviation towards lower  $L_{[\text{C II}]}$ , similar to previous results for individual detections of  $z > 6$  lensed galaxies.

The continuum stacking analyses also yielded non-detections and we derived upper limits on the far-infrared luminosity for two different modified blackbody temperatures of 35 and 45 K. The resulting upper limits vary between  $0.4 \times 10^{10} L_{\odot}$  and  $2.6 \times 10^{10} L_{\odot}$  depending on the temperature and sub-sample. From these we estimated upper limits on the SFR, which suggest that less than half of the star formation is dust obscured.

We discuss potential source of bias in our analysis. A spectral stacking analysis relies on good knowledge of the redshift, and for example possible systematic offsets between [C II] and Ly- $\alpha$  redshifts, could reduce the performance of the stacking analysis. Sample inhomogeneity could also lead to a biased result if not all objects follow the same relationship. Systematic uncertainties on derived magnification and SFR of the sample sources can

impact the interpretation of our results and the comparison to the  $L_{[\text{C II}]}$ -SFR relation. Finally, as suggested by modelling (e.g., Ferrara et al. 2019; Vallini et al. 2020), several physical parameters could affect the  $L_{[\text{C II}]}$ . For example, metallicity or gas density distribution could result in lower [C II] excitation, and hence lower  $L_{[\text{C II}]}$ .

Despite these potential biases, our analysis is the first large-scale analysis of [C II] in faint lensed galaxies at the end of the EoR. Our stacking analysis allows us to reach very low RMS (of order of  $1 \text{ mJy beam}^{-1}$  in  $60 \text{ km s}^{-1}$  channels) and, being based on an analysis of 52 objects, our non-detection has a high statistical significance.

*Acknowledgements.* We thank the anonymous referee for their helpful comments. This paper makes use of the ALMA data: ALMA #2018.1.00035.L, #2013.1.00999.S, and #2015.1.01425.S. ALMA is a partnership of the ESO (representing its member states), NSF (USA) and NINS (Japan), together with NRC (Canada), MOST and ASIAA (Taiwan), and KASI (Republic of Korea), in cooperation with the Republic of Chile. The Joint ALMA Observatory is operated by the ESO, AUI/NRAO, and NAOJ. K. K. acknowledges support from the Swedish Research Council (2015-05580), and the Knut and Alice Wallenberg Foundation. K. Kohno acknowledges the JSPS KAKENHI Grant Number JP17H06130 and the NAOJ ALMA Scientific Research Grant Number 2017-06B. F.E.B. acknowledges support from ANID grants CATA-Basal AFB-170002, FONDECYT Regular 1190818, 1200495 and Millennium Science Initiative ICN12\_009. D. E. acknowledges support from a Beatriz Galindo senior fellowship (BG20/00224) from the Ministry of Science and Innovation. G. E. M. and F. V. acknowledge the Villum Fonden research grant 13160 “Gas to stars, stars to dust: tracing star formation across cosmic time” and the Cosmic Dawn Center of Excellence funded by the Danish National Research Foundation under then grant No. 140. F. V. acknowledges support from the Carlsberg Foundation Research Grant CF18-0388 “Galaxies: Rise and Death”. A.Z. acknowledges support from the Ministry of Science and Technology, Israel.

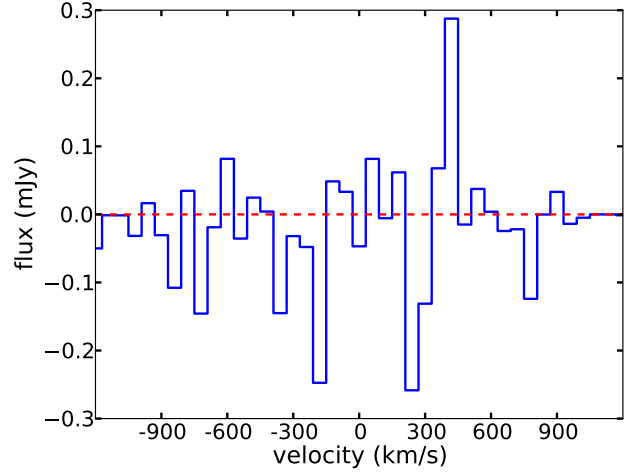
## References

- Atek, H., Richard, J., Jauzac, M., et al. 2015, *ApJ*, 814, 69  
 Bacon, R., Conseil, S., Mary, D., et al. 2017, *A&A*, 608, A1  
 Bakx, T. J. L. C., Tamura, Y., Hashimoto, T., et al. 2020, *MNRAS*, 493, 4294  
 Bertin, E., & Arnouts, S. 1996, *A&AS*, 117, 393  
 Béthermin, M., Fudamoto, Y., Ginolfi, M., et al. 2020, *A&A*, 643, A2  
 Bouwens, R., & Illingworth, G. 2006, *New Astron. Rev.*, 50, 152  
 Bouwens, R. J., Illingworth, G. D., Franx, M., & Ford, H. 2007, *ApJ*, 670, 928  
 Bouwens, R. J., Illingworth, G. D., Oesch, P. A., et al. 2012, *ApJ*, 752, L5  
 Bouwens, R. J., Illingworth, G. D., Oesch, P. A., et al. 2015, *ApJ*, 803, 34  
 Bradač, M., García-Appadoo, D., Huang, K.-H., et al. 2017, *ApJ*, 836, L2  
 Bunker, A. J., Wilkins, S., Ellis, R. S., et al. 2010, *MNRAS*, 409, 855  
 Calzetti, D. 2013, in *Star Formation Rate Indicators*, eds. J. Falcón-Barroso, & J. H. Knapen, 419  
 Caminha, G. B., Rosati, P., Grillo, C., et al. 2019, *A&A*, 632, A36  
 Capak, P. L., Carilli, C., Jones, G., et al. 2015, *Nature*, 522, 455  
 Carnall, A. C., McLure, R. J., Dunlop, J. S., & Davé, R. 2018, *MNRAS*, 480, 4379  
 Carniani, S., Maiolino, R., Pallottini, A., et al. 2017, *A&A*, 605, A42  
 Carniani, S., Maiolino, R., Smit, R., & Amorín, R. 2018, *ApJ*, 854, L7  
 Carniani, S., Ferrara, A., Maiolino, R., et al. 2020, *MNRAS*, 499, 5136  
 Carvajal, R., Bauer, F. E., Bouwens, R. J., et al. 2020, *A&A*, 633, A160  
 Casey, C. M., Narayanan, D., & Cooray, A. 2014, *Phys. Rep.*, 541, 45  
 Cassata, P., Morselli, L., Faisst, A., et al. 2020, *A&A*, 643, A6  
 Castellano, M., Amorín, R., Merlin, E., et al. 2016, *A&A*, 590, A31  
 Coe, D., Salmon, B., Bradač, M., et al. 2019, *ApJ*, 884, 85  
 Cormier, D., Madden, S. C., Lebouteiller, V., et al. 2015, *A&A*, 578, A53  
 da Cunha, E., Groves, B., Walter, F., et al. 2013, *ApJ*, 766, 13  
 De Barros, S., Pentericci, L., Vanzella, E., et al. 2017, *A&A*, 608, A123  
 Decarli, R., Walter, F., Venemans, B. P., et al. 2017, *Nature*, 545, 457  
 De Looze, I., Baes, M., Bendo, G. J., Cortese, L., & Fritz, J. 2011, *MNRAS*, 416, 2712  
 De Looze, I., Cormier, D., Lebouteiller, V., et al. 2014, *A&A*, 568, A62  
 Dessauges-Zavadsky, M., Ginolfi, M., Pozzi, F., et al. 2020, *A&A*, 643, A5  
 Di Criscienzo, M., Merlin, E., Castellano, M., et al. 2017, *A&A*, 607, A30  
 Diego, J. M., Broadhurst, T., Wong, J., et al. 2016, *MNRAS*, 459, 3447  
 Draine, B. T., & Li, A. 2007, *ApJ*, 657, 810  
 Dunlop, J. S., McLure, R. J., Biggs, A. D., et al. 2017, *MNRAS*, 466, 861  
 Faisst, A. L., Capak, P. L., Davidzon, I., et al. 2016, *ApJ*, 822, 29

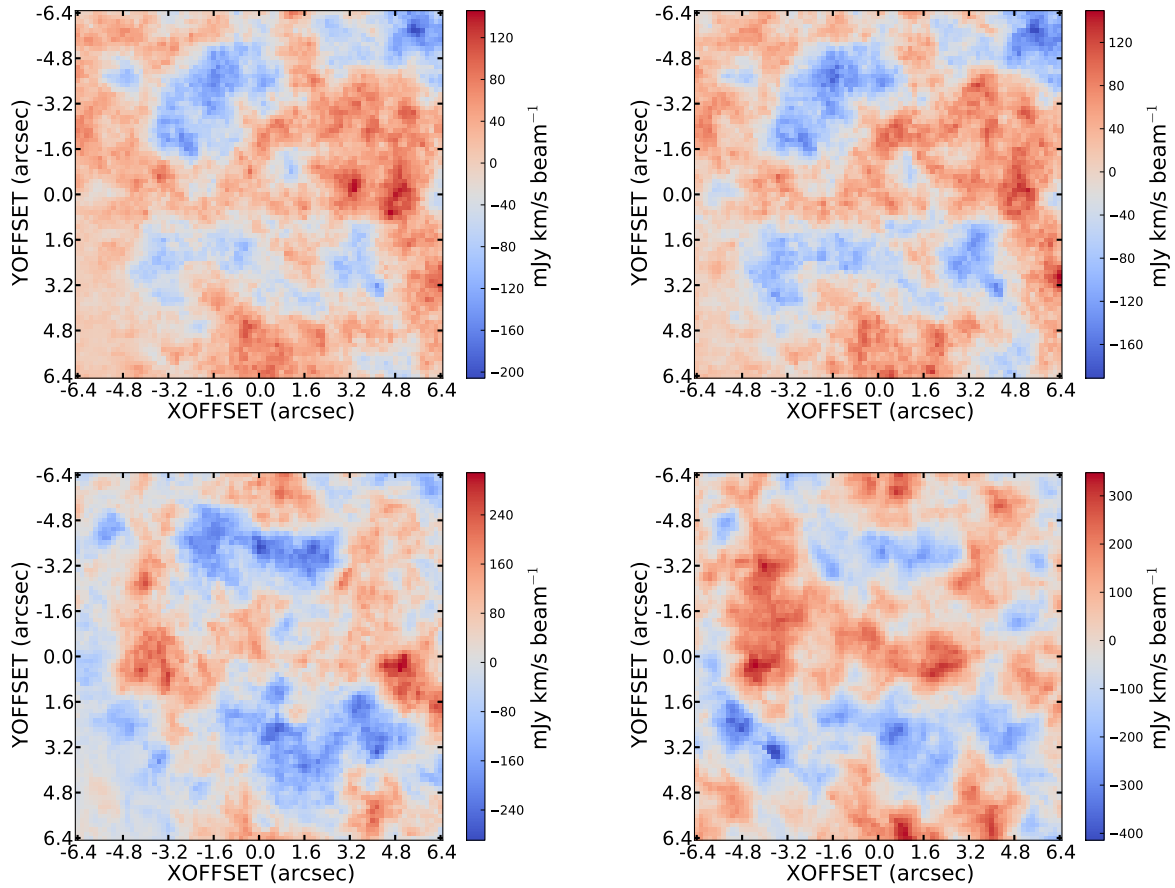
- Faisst, A. L., Schaerer, D., Lemaux, B. C., et al. 2020, *ApJS*, 247, 61
- Ferrara, A., Vallini, L., Pallottini, A., et al. 2019, *MNRAS*, 489, 1
- Franco, M., Elbaz, D., Béthermin, M., et al. 2018, *A&A*, 620, A152
- Franco, M., Elbaz, D., Zhou, L., et al. 2020, *A&A*, 643, A53
- Fujimoto, S., Ouchi, M., Kohno, K., et al. 2018, *ApJ*, 861, 7
- Fujimoto, S., Ouchi, M., Ferrara, A., et al. 2019, *ApJ*, 887, 107
- Fujimoto, S., Oguri, M., Brammer, G., et al. 2021, *ApJ*, 911, 99
- Ginsburg, A., Sipőcz, B. M., Brasseur, C. E., et al. 2019, *AJ*, 157, 98
- González-López, J., Riechers, D. A., Decarli, R., et al. 2014, *ApJ*, 784, 99
- Götberg, Y., de Mink, S. E., McQuinn, M., et al. 2020, *A&A*, 634, A134
- Harikane, Y., Ouchi, M., Shibuya, T., et al. 2018, *ApJ*, 859, 84
- Harikane, Y., Ouchi, M., Inoue, A. K., et al. 2020, *ApJ*, 896, 93
- Hashimoto, T., Inoue, A. K., Mawatari, K., et al. 2019, *PASJ*, 71, 71
- Hasinger, G., Capak, P., Salvato, M., et al. 2018, *ApJ*, 858, 77
- Herrera-Camus, R., Bolatto, A. D., Wolfire, M. G., et al. 2015, *ApJ*, 800, 1
- Higuchi, R., Ouchi, M., Ono, Y., et al. 2019, *ApJ*, 879, 28
- Ishigaki, M., Kawamata, R., Ouchi, M., et al. 2015, *ApJ*, 799, 12
- Jauzac, M., Clément, B., Limousin, M., et al. 2014, *MNRAS*, 443, 1549
- Johnson, T. L., Sharon, K., Bayliss, M. B., et al. 2014, *ApJ*, 797, 48
- Jolly, J.-B., Knudsen, K. K., & Stanley, F. 2020, *MNRAS*, 499, 3992
- Karman, W., Caputi, K. I., Caminha, G. B., et al. 2017, *A&A*, 599, A28
- Keeton, C. R. 2011, *GRAVLENS: Computational Methods for Gravitational Lensing*
- Kennicutt, R. C., Jr 1998, *ARA&A*, 36, 189
- Knudsen, K. K., Richard, J., Kneib, J.-P., et al. 2016, *MNRAS*, 462, L6
- Kochanek, C. S., Eisenstein, D. J., Cool, R. J., et al. 2012, *ApJS*, 200, 8
- Krist, J. E., Hook, R. N., & Stoehr, F. 2011, in *Optical Modeling and Performance Predictions V*, ed. M. A. Kahan, *SPIE Conf. Ser.*, 8127, 81270J
- Kroupa, P., & Boily, C. M. 2002, *MNRAS*, 336, 1188
- Kusakabe, H., Blaizot, J., Garel, T., et al. 2020, *A&A*, 638, A12
- Lagache, G., Cousin, M., & Chatzikos, M. 2018, *A&A*, 609, A130
- Laporte, N., Katz, H., Ellis, R. S., et al. 2019, *MNRAS*, 487, L81
- Laporte, N., Zitrin, A., Ellis, R. S., et al. 2021, *MNRAS*, 505, 4838
- Le Fèvre, O., Cassata, P., Cucciati, O., et al. 2013, *A&A*, 559, A14
- Le Fèvre, O., Béthermin, M., Faisst, A., et al. 2020, *A&A*, 643, A1
- Leroy, A. K., Bolatto, A., Gordon, K., et al. 2011, *ApJ*, 737, 12
- Li, A., & Draine, B. T. 2001, *ApJ*, 554, 778
- Lilly, S. J., Le Brun, V., Maier, C., et al. 2009, *ApJS*, 184, 218
- Lotz, J. M., Koekemoer, A., Coe, D., et al. 2017, *ApJ*, 837, 97
- Ma, X., Hopkins, P. F., Kasen, D., et al. 2016, *MNRAS*, 459, 3614
- Ma, X., Quataert, E., Wetzel, A., et al. 2020, *MNRAS*, 498, 2001
- Madden, S. C., Cormier, D., Hony, S., et al. 2020, *A&A*, 643, A141
- Magdis, G. E., Daddi, E., Béthermin, M., et al. 2012, *ApJ*, 760, 6
- Maiolino, R., Carniani, S., Fontana, A., et al. 2015, *MNRAS*, 452, 54
- Matthee, J., Sobral, D., Darvish, B., et al. 2017, *MNRAS*, 472, 772
- McLure, R. J., Dunlop, J. S., Cirasuolo, M., et al. 2010, *MNRAS*, 403, 960
- McLure, R. J., Dunlop, J. S., Bowler, R. A. A., et al. 2013, *MNRAS*, 432, 2696
- McMullin, J. P., Waters, B., Schiebel, D., Young, W., & Golap, K. 2007, in *Astronomical Data Analysis Software and Systems XVI*, eds. R. A. Shaw, F. Hill, & D. J. Bell, *ASP Conf. Ser.*, 376, 127
- Merlin, E., Amorín, R., Castellano, M., et al. 2016, *A&A*, 590, A30
- Merten, J., Meneghetti, M., Postman, M., et al. 2015, *ApJ*, 806, 4
- Newman, J. A., Cooper, M. C., Davis, M., et al. 2013, *ApJS*, 208, 5
- Oesch, P. A., Bouwens, R. J., Illingworth, G. D., et al. 2010, *ApJ*, 709, L16
- Oesch, P. A., van Dokkum, P. G., Illingworth, G. D., et al. 2015, *ApJ*, 804, L30
- Olsen, K., Greve, T. R., Narayanan, D., et al. 2017, *ApJ*, 846, 105
- Ono, Y., Ouchi, M., Mobasher, B., et al. 2012, *ApJ*, 744, 83
- Ono, Y., Ouchi, M., Harikane, Y., et al. 2018, *PASJ*, 70, S10
- Ota, K., Walter, F., Ohta, K., et al. 2014, *ApJ*, 792, 34
- Ouchi, M., Mobasher, B., Shimasaku, K., et al. 2009, *ApJ*, 706, 1136
- Ouchi, M., Ellis, R., Ono, Y., et al. 2013, *ApJ*, 778, 102
- Pahl, A. J., Shapley, A., Faisst, A. L., et al. 2020, *MNRAS*, 493, 3194
- Peng, C. Y., Ho, L. C., Impey, C. D., & Rix, H.-W. 2010, *AJ*, 139, 2097
- Pentericci, L., Carniani, S., Castellano, M., et al. 2016, *ApJ*, 829, L11
- Pentericci, L., Vanzella, E., Castellano, M., et al. 2018, *A&A*, 619, A147
- Planck Collaboration Int. XVII. 2014, *A&A*, 566, A55
- Postman, M., Coe, D., Benítez, N., et al. 2012, *ApJS*, 199, 25
- Richard, J., Kneib, J.-P., Ebeling, H., et al. 2011, *MNRAS*, 414, L31
- Richard, J., Jauzac, M., Limousin, M., et al. 2014, *MNRAS*, 444, 268
- Richard, J., Claeysens, A., Lagattuta, D., et al. 2021, *A&A*, 646, A83
- Riechers, D. A., Bradford, C. M., Clements, D. L., et al. 2013, *Nature*, 496, 329
- Rieke, G. H., Alonso-Herrero, A., Weiner, B. J., et al. 2009, *ApJ*, 692, 556
- Robertson, B. E., Furlanetto, S. R., Schneider, E., et al. 2013, *ApJ*, 768, 71
- Röllig, M., Ossenkopf, V., Jeyakumar, S., Stutzki, J., & Sternberg, A. 2006, *A&A*, 451, 917
- Sargsyan, L., Samsonyan, A., Leboutteiller, V., et al. 2014, *ApJ*, 790, 15
- Schaerer, D., Boone, F., Zamojski, M., et al. 2015, *A&A*, 574, A19
- Schaerer, D., Ginolfi, M., Béthermin, M., et al. 2020, *A&A*, 643, A3
- Schenker, M. A., Stark, D. P., Ellis, R. S., et al. 2012, *ApJ*, 744, 179
- Scoville, N., Sheth, K., Aussel, H., et al. 2016, *ApJ*, 820, 83
- Shibuya, T., Ouchi, M., Harikane, Y., et al. 2018, *PASJ*, 70, S15
- Shipley, H. V., Lange-Vagle, D., Marchesini, D., et al. 2018, *ApJS*, 235, 14
- Smit, R., Swinbank, A. M., Massey, R., et al. 2017, *MNRAS*, 467, 3306
- Smit, R., Bouwens, R. J., Carniani, S., et al. 2018, *Nature*, 553, 178
- Solomon, P. M., & Vanden Bout, P. A. 2005, *ARA&A*, 43, 677
- Song, M., Finkelstein, S. L., Livermore, R. C., et al. 2016, *ApJ*, 826, 113
- Stacey, G. J., Hailey-Dunsheath, S., Ferkinhoff, C., et al. 2010, *ApJ*, 724, 957
- Stanley, F., Jolly, J. B., König, S., & Knudsen, K. K. 2019, *A&A*, 631, A78
- Stanway, E. R., Eldridge, J. J., & Becker, G. D. 2016, *MNRAS*, 456, 485
- Stark, D. P. 2016, *ARA&A*, 54, 761
- Stark, D. P., Ellis, R. S., & Ouchi, M. 2011, *ApJ*, 728, L2
- Stark, D. P., Auger, M., Belokurov, V., et al. 2013, *MNRAS*, 436, 1040
- Stark, D. P., Walth, G., Charlot, S., et al. 2015, *MNRAS*, 454, 1393
- Steidel, C. C., Giavalisco, M., Pettini, M., Dickinson, M., & Adelberger, K. L. 1996, *ApJ*, 462, L17
- Tilvi, V., Papovich, C., Finkelstein, S. L., et al. 2014, *ApJ*, 794, 5
- Uzgil, B. D., Oesch, P. A., Walter, F., et al. 2021, *ApJ*, 912, 67
- Vallini, L., Gallerani, S., Ferrara, A., Pallottini, A., & Yue, B. 2015, *ApJ*, 813, 36
- Vallini, L., Ferrara, A., Pallottini, A., Carniani, S., & Gallerani, S. 2020, *MNRAS*, 495, L22
- Venemans, B. P., Walter, F., Zschaechner, L., et al. 2016, *ApJ*, 816, 37
- Venemans, B. P., Walter, F., Neeleman, M., et al. 2020, *ApJ*, 904, 130
- Walter, F., Carilli, C., Neeleman, M., et al. 2020, *ApJ*, 902, 111
- Watson, D., Christensen, L., Knudsen, K. K., et al. 2015, *Nature*, 519, 327
- Willott, C. J., Carilli, C. L., Wagg, J., & Wang, R. 2015, *ApJ*, 807, 180
- Zanella, A., Daddi, E., Magdis, G., et al. 2018, *MNRAS*, 481, 1976
- Zitrin, A., Labbé, I., Belli, S., et al. 2015a, *ApJ*, 810, L12
- Zitrin, A., Fabris, A., Merten, J., et al. 2015b, *ApJ*, 801, 44

### Appendix A: Median stacks velocity integrated maps

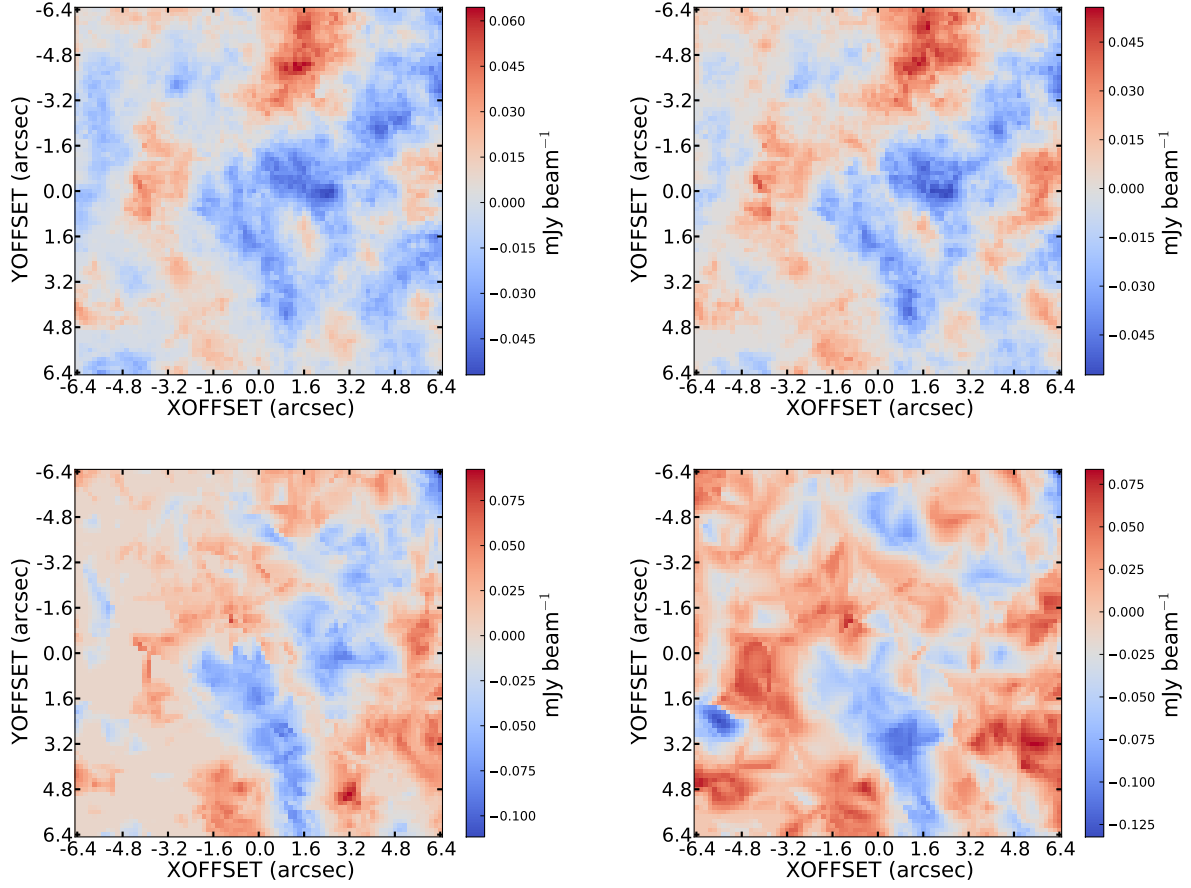
Because the results from the median stacks are qualitatively the same results as the mean stacking results –the main difference between mean and median in Fig. 7 being mostly due to the different magnifications and SFR– we decided to put here the velocity integrated maps from our median stacking analyses.



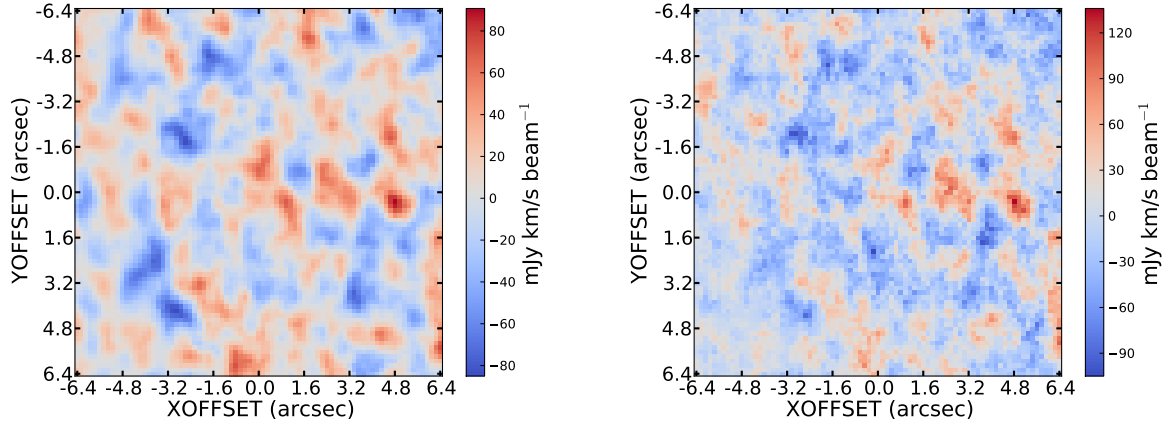
**Fig. A.1.** Spectrum extracted from a circular region of radius = 1.12 (7 pixels) arcsec centred on the median stacked cube of the entire sample.



**Fig. A.2.** Velocity integrated flux maps of the median spectral stacks, obtained by collapsing a channel width of  $540 \text{ km s}^{-1}$  centred on the stack centre. The artificial arcs featured on the sides of the figure are due to stacked sources located close to the edge of the cubes. From left to right and top to bottom, full-sample, good- $z$  sub-sample, high-SFR sub-sample and SFR+ $z$  sub-sample.



**Fig. A.3.** Continuum maps of the median continuum stacks. The artificial arcs featured on the sides of the figure are due to stacked sources located close to the edge of the cubes. From left to right and top to bottom, full-sample, good- $z$  sub-sample, high-SFR sub-sample and SFR+ $z$  sub-sample.



**Fig. A.4.** Velocity integrated flux maps of the mean (left) and median (right) spectral stacks of the cubes in their native resolution (not tapered), obtained by collapsing a channel width of  $540 \text{ km s}^{-1}$  centred on the stack centre. The artificial arcs featured on the sides of the figure are due to stacked sources located close to the edge of the cubes. Both stacks are of the full-sample.

## Appendix B: Samples source descriptions and properties

**Table B.1.** Sample source description.

RA <sup>(a)</sup> (deg)	Dec. <sup>(b)</sup> (deg)	Redshift <sup>(c)</sup>	Redshift Flag <sup>(d)</sup> /precision	Catalogue <sup>(e)</sup>	Weight <sup>(f)</sup>	Multiple <sup>(g)</sup>	Sub-sample <sup>(h)</sup>
Abell_2744							
3.5938	-30.4154	6.588	2	R	0.445	–	3
3.5801	-30.4079	6.556	1	R	0.102	–	0
3.5831	-30.4119	6.519	1	R	0.092	–	0
3.5769	-30.3863	6.457	0.01715	AD	0.482	–	0
3.5983	-30.4178	6.400	0.01555	AD	0.049	–	2
3.5728	-30.4145	6.477	0.0185	AD	0.08	–	2
MACS_J0416.1–2403							
64.0508	-24.0664	6.148	3	R	0.097	96.3, 97.3	1
64.0482	-24.0624	6.147	3	R	0.122	96.2	3
64.0429	-24.0572	6.145	3	R	0.098	–	1
64.0435	-24.0590	6.147	3	R	0.106	96.1, 97.1	1
64.0478	-24.0621	6.147	3	R	0.121	97.2	3
64.0260	-24.0891	6.15	3	R	0.126	–	1
64.0318	-24.0889	6.405	0.01555	AD	0.76	–	0
64.0325	-24.0557	5.996	0.0195	AD	0.43	–	2
64.0459	-24.0742	6.457	0.01	AD	0.867	–	0
64.0537	-24.0711	6.385	0.01	AD	0.833	–	0
64.0330	-24.0662	6.455	0.0065	AD	1.0	–	2
64.0439	-24.0563	6.161	0.011	AD	0.079	–	0
64.0493	-24.0710	6.147	2	R	0.044	71.3	1
64.0398	-24.0669	5.998	2	R	0.569	77.2	1
64.0364	-24.0622	6.066	2	R	0.169	78.2	1
64.0484	-24.0736	6.066	2	R	0.057	78.3	1
64.0458	-24.0741	5.998	2	R	0.496	77.1	1
64.0517	-24.0695	6.561	2	R	0.047	–	1
64.0556	-24.0638	6.074	2	R	0.06	–	1
64.0520	-24.0705	6.067	2	R	0.043	–	1
64.0460	-24.0582	6.498	1	R	0.161	–	0
64.0410	-24.0641	6.066	3	R	0.196	78.1	1
64.0433	-24.0629	6.147	2	R	0.12	71.2	1
64.0389	-24.0606	6.147	1	R	0.106	71.1	0
Abell_S1063							
342.1841	-44.5353	6.107	1LIN	NED	0.463	14.4	1
342.1924	-44.5157	6.50	SPEC	NED	0.417	–	3
342.1909	-44.5375	6.107	SPEC	HFFDS	0.202	14.1	3
342.1811	-44.5346	6.107	SPEC	HFFDS	0.458	14.2	1
342.1841	-44.5317	6.107	SPEC	HFFDS	0.451	14.5	3
342.1890	-44.5300	6.107	SPEC	HFFDS	0.455	14.3	3
MACS_J1149.5+2223							
177.3793	22.4033	6.478	0.0185	AD	0.081	–	2
MACS1206.2–0847							
181.5511	-8.8037	6.014	3	R	0.591	–	1
181.5533	-8.7988	6.063	2	R	0.347	27.1	1
181.5517	-8.7992	6.06	2	R	0.37	27.2	1
RXJ_1347–1145							
206.8921	-11.7483	5.980	1	R	0.324	–	2
206.8762	-11.7386	6.457	3	R	0.344	–	3
206.8832	-11.7563	6.566	3	R	0.341	–	1
MACS0329.7–0211							
52.4258	-2.1898	6.011	2	R	0.216	–	1
52.4312	-2.1914	6.026	2	R	0.103	9.1	1
52.4202	-2.1945	6.026	2	R	0.248	9.2	1
52.4169	-2.1977	6.1	2	C	0.259	–	0
52.4281	-2.1964	6.011	2	R	0.246	–	1
52.4310	-2.2044	6.075	1	R	0.06	–	0
MACS1115.9+0129							
168.9553	1.4993	6.057	9	C	0.054	–	3
Abell 383							
42.0136	-3.5263	6.027	Abell383	R11+KK	0.263	5.1	3
42.0192	-3.5329	6.027	Abell383	R11	0.218	5.2	3

**Notes.** <sup>(a)</sup>Right Ascension coordinate of the source (degrees); <sup>(b)</sup>Declination coordinate of the source (degrees); <sup>(c)</sup>Redshift of the source; <sup>(d)</sup>Redshift confidence flag, sources from Richard: 3= highly certain, no doubts, 2= very good, usually one very bright emission line or multiple faint features but matching in redshift, 1= uncertain redshift. Caminha: (2) likely; (3) secure measurement; (9) single line measurement. NED: (SPEC) secure spectroscopic redshift [ $\sim 100\%$  reliability], (1LIN) single-line [ $>90\%$  reliability]. ASTRODEEP: Photometric redshift precision ( $\Delta z < 0.02$ ); <sup>(e)</sup>Source catalogue provider. R stands for Richard et al. (2021), AD for ASTRODEEP, HFFDS for *Hubble* Frontier Field DeepSpace, C for Caminha et al. (2019), R11 for Richard et al. (2011) and K for Knudsen et al. (2016); <sup>(f)</sup>Source weight (normalised,  $1/\sigma^2$ ); <sup>(g)</sup>Image multiplicity, multiple images of the same source are indicated as  $x.y$  where  $x$  is the source number and  $y$  is the image number (from Karman et al. (2017), Richard et al. (2021)); <sup>(h)</sup>Sub-sample: 0 if the source does not belong to any sub-sample, 1 if it belongs to the good- $z$  sub-sample, 2 if it belongs to the high-SFR sub-sample, 3 if it belongs to both the good- $z$  and high-SFR sub-sample.



**Table B.2.** Physical properties of the sources.

RA <sup>(a)</sup> (deg)	Dec. <sup>(b)</sup> (deg)	Redshift <sup>(c)</sup>	Magnification <sup>(d)</sup>	Star Formation Rate <sup>(e)</sup> ( $M_{\odot} \text{ yr}^{-1}$ )
Abell_2744				
3.5938	-30.4154	6.588	4.06 <sup>+0.06</sup> <sub>-0.06</sub>	6.2 <sup>+6.0</sup> <sub>-2.4</sub>
3.5801	-30.4079	6.556	2.70 R	-
3.5831	-30.4119	6.519	3.00 R	-
3.5769	-30.3863	6.457	4.50 <sup>+0.10</sup> <sub>-0.10</sub>	1.4 <sup>+1.3</sup> <sub>-0.7</sub>
3.5983	-30.4178	6.4	2.80 <sup>+0.05</sup> <sub>-0.06</sub>	2.2 <sup>+2.4</sup> <sub>-1.3</sub>
3.5728	-30.4145	6.477	1.81 <sup>+0.14</sup> <sub>-0.13</sub>	5.3 <sup>+9.6</sup> <sub>-4.1</sub>
MACS_J0416.1-2403				
64.0508	-24.0664	6.148	8.47 <sup>+0.61</sup> <sub>-0.45</sub>	0.4 R
64.0482	-24.0624	6.147	31.85 <sup>+0.91</sup> <sub>-1.11</sub>	2.1 <sup>+5.0</sup> <sub>-1.6</sub>
64.0429	-24.0572	6.145	4.04 <sup>+0.17</sup> <sub>-0.10</sub>	0.6 <sup>+0.4</sup> <sub>-0.3</sub>
64.0435	-24.0590	6.147	4.81 R	0.6 R
64.0478	-24.0621	6.147	23.82 <sup>+0.55</sup> <sub>-0.59</sub>	3.3 <sup>+3.1</sup> <sub>-1.5</sub>
64.0260	-24.0891	6.15	9.63 R	-
64.0318	-24.0889	6.405	2.83 <sup>+0.06</sup> <sub>-0.08</sub>	1.3 <sup>+1.8</sup> <sub>-0.9</sub>
64.0325	-24.0557	5.996	1.79 <sup>+0.02</sup> <sub>-0.03</sub>	4.9 <sup>+4.2</sup> <sub>-2.8</sub>
64.0459	-24.0742	6.457	3.27 <sup>+0.04</sup> <sub>-0.05</sub>	1.4 <sup>+1.7</sup> <sub>-0.8</sub>
64.0537	-24.0711	6.385	1.81 AD	0.7 AD
64.0330	-24.0662	6.455	4.49 <sup>+0.18</sup> <sub>-0.15</sub>	2.4 <sup>+4.5</sup> <sub>-1.6</sub>
64.0439	-24.0563	6.161	3.82 <sup>+0.16</sup> <sub>-0.08</sub>	2.0 <sup>+4.3</sup> <sub>-1.5</sub>
64.0493	-24.0710	6.147	2.23 R	-
64.0398	-24.0669	5.998	2.21 R	-
64.0364	-24.0622	6.066	3.37 R	1.1 <sup>+0.4</sup> <sub>-0.3</sub>
64.0484	-24.0736	6.066	2.08 R	-
64.0458	-24.0741	5.998	3.20 R	-
64.0517	-24.0695	6.561	2.01 R	-
64.0556	-24.0638	6.074	2.12 R	-
64.0520	-24.0705	6.067	1.85 R	0.5 <sup>+0.7</sup> <sub>-0.2</sub>
64.0460	-24.0582	6.498	8.34 R	1.3 <sup>+2.2</sup> <sub>-0.6</sub>
64.0410	-24.0641	6.066	2.82 R	0.9 <sup>+1.8</sup> <sub>-0.5</sub>
64.0433	-24.0629	6.147	3.69 R	1.3 R
64.0389	-24.0606	6.147	4.05 R	1.5 <sup>+0.8</sup> <sub>-0.4</sub>
Abell_S1063				
342.1841	-44.5353	6.107	16.73	-
342.1924	-44.5157	6.5	3.96 <sup>+0.10</sup> <sub>-0.08</sub>	5.4 <sup>+0.8</sup> <sub>-0.7</sub>
342.1909	-44.5375	6.107	4.70 <sup>+0.23</sup> <sub>-0.18</sub>	12.3 <sup>+2.0</sup> <sub>-1.2</sub>
342.1811	-44.5346	6.107	4.41 <sup>+0.24</sup> <sub>-0.19</sub>	1.8 <sup>+212.9</sup> <sub>-1.8</sub>
342.1841	-44.5317	6.107	1.77 HFFDS	125.9 HFFDS
342.1890	-44.5300	6.107	5.35 HFFDS	23.4 HFFDS
MACS_J1149.5+2223				
177.3793	22.4033	6.478	2.55 <sup>+0.13</sup> <sub>-0.10</sub>	4.7 <sup>+2.4</sup> <sub>-1.9</sub>
MACS1206.2-0847				
181.5511	-8.8037	6.014	72.90 R	-
181.5533	-8.7988	6.063	13.00 <sup>+12.82</sup> <sub>-13.20</sub>	0.2 <sup>+1.0</sup> <sub>-0.2</sub>
181.5517	-8.7992	6.06	6.88 R	-
RXJ_1347-1145				
206.8921	-11.7483	5.98	2.89 <sup>+2.85</sup> <sub>-2.94</sub>	6.5 <sup>+3.4</sup> <sub>-3.2</sub>
206.8762	-11.7386	6.457	2.19 <sup>+2.23</sup> <sub>-2.33</sub>	10.5 <sup>+2.7</sup> <sub>-1.1</sub>
206.8832	-11.7563	6.566	12.29 R	-
MACS0329.7-0211				
52.4258	-2.1898	6.011	11.52 R	-
52.4312	-2.1914	6.026	3.51 R	-
52.4202	-2.1945	6.026	4.93 R	-
52.4169	-2.1977	6.1	15.51 <sup>+13.82</sup> <sub>-15.55</sub>	0.4 <sup>+0.6</sup> <sub>-0.2</sub>
52.4281	-2.1964	6.011	10.71 R	-
52.4310	-2.2044	6.075	3.72 R	-
MACS1115.9+0129				
168.9553	1.4993	6.057	2.86 <sup>+2.74</sup> <sub>-2.89</sub>	76.5 <sup>+43.6</sup> <sub>-31.8</sub>
Abell 383				
42.0136	-3.5263	6.027	5.15 <sup>+4.59</sup> <sub>-5.09</sub>	24.0 <sup>+15.1</sup> <sub>-11.2</sub>
42.0192	-3.5329	6.027	3.27 <sup>+3.13</sup> <sub>-3.40</sub>	8.4 <sup>+13.3</sup> <sub>-5.1</sub>

**Notes.** IDs are placed next to values when they are extracted from the literature, R stands for [Richard et al. \(2021\)](#), AD for ASTRODEEP and HFFDS for Hubble Frontier Field DeepSpace. Values with no mention have been computed through our own analysis presented in Sect. 2.2.2. <sup>(a)</sup>Right Ascension coordinate of the source (degrees); <sup>(b)</sup>Declination coordinate of the source (degrees); <sup>(c)</sup>Redshift of the source; <sup>(d)</sup>Source lensing magnification; <sup>(e)</sup>Source SFR. When not derived from the literature, SFR were derived using the UV luminosity and corrected for dust attenuation (see Sect. 2.2.2).