



HAL
open science

Demons in the North Atlantic: Variability of Deep Ocean Ventilation

G. A. Macgilchrist, H. L. Johnson, C. Lique, D. P. Marshall

► **To cite this version:**

G. A. Macgilchrist, H. L. Johnson, C. Lique, D. P. Marshall. Demons in the North Atlantic: Variability of Deep Ocean Ventilation. *Geophysical Research Letters*, 2021, 48, 10.1029/2020GL092340 . insu-03683267

HAL Id: insu-03683267

<https://insu.hal.science/insu-03683267>

Submitted on 31 May 2022

HAL is a multi-disciplinary open access archive for the deposit and dissemination of scientific research documents, whether they are published or not. The documents may come from teaching and research institutions in France or abroad, or from public or private research centers.

L'archive ouverte pluridisciplinaire **HAL**, est destinée au dépôt et à la diffusion de documents scientifiques de niveau recherche, publiés ou non, émanant des établissements d'enseignement et de recherche français ou étrangers, des laboratoires publics ou privés.

Copyright

Geophysical Research Letters

RESEARCH LETTER

10.1029/2020GL092340

Key Points:

- Temporal variability of high-latitude ocean ventilation is investigated using Lagrangian trajectories in an eddy-permitting ocean model
- High-latitude ocean ventilation adheres to “Stommel’s Demon,” such that only water subducted in late-winter is retained in the subsurface
- An interannual Demon also operates to mediate exchange between the atmosphere and subsurface ocean on longer timescales

Correspondence to:

G. A. MacGilchrist,
graemem@princeton.edu

Citation:

MacGilchrist, G. A., Johnson, H. L., Lique, C., & Marshall, D. P. (2021). Demons in the North Atlantic: Variability of deep ocean ventilation. *Geophysical Research Letters*, *48*, e2020GL092340. <https://doi.org/10.1029/2020GL092340>

Received 30 DEC 2020
Accepted 1 APR 2021

Demons in the North Atlantic: Variability of Deep Ocean Ventilation

G. A. MacGilchrist¹ , H. L. Johnson² , C. Lique³ , and D. P. Marshall⁴ 

¹Program in Atmospheric and Oceanic Science, Princeton University, Princeton, NJ, USA, ²Department of Earth Sciences, University of Oxford, Oxford, UK, ³University of Brest, CNRS, IRD, Ifremer, Laboratoire d’Océanographie Physique et Spatiale (LOPS), IUEM, Brest, France, ⁴Department of Physics, University of Oxford, Oxford, UK

Abstract Translation of atmospheric forcing variability into the ocean interior via ocean ventilation is an important aspect of transient climate change. On a seasonal timescale in the subtropics, this translation is mediated by a so-called “Demon” that prevents access to all except late-winter mixed-layer water. Here, we use an eddy-permitting numerical circulation model to investigate a similar process operating on longer (interannual) timescales in the subpolar North Atlantic. We find that variations in atmospheric forcing are mediated in their translation to the ocean interior, with year-to-year changes in the late-winter mixed layer depth being the critical factor. The signature of persistent strong atmospheric forcing driving deep mixed layers is preferentially ventilated to the interior when the forcing is ceased. Susceptibility to this effect depends on the location and density of subduction—with the rate at which newly ventilated water escapes its region of subduction being the crucial factor.

Plain Language Summary Water that leaves the ocean’s surface boundary layer—where water is in direct contact with the overlying atmosphere—to be transported into the subsurface, is said to be “ventilated” (the name arising from the abundance of oxygen in newly ventilated water). The ventilation process, which carries implications for the ocean storage of climate-relevant substances such as carbon dioxide, occurs only at certain times and under certain conditions. In describing a mechanism for the selective nature of ventilation over the seasonal cycle, Henry Stommel imagined a Demon sitting at the base of the surface boundary layer, granting access only to parcels of water that meet certain characteristics (namely their speed of “escape”). Thus, “Stommel’s Demon” was born. Here, we investigate this same process as it operates in more northerly regions and on longer timescales. In so doing we give birth to a new “interannual Demon,” and describe its characteristics.

1. Introduction

In 1939, Iselin noted that the properties of the ocean thermocline match those of the late-winter mixed layer, as opposed to a year-round average (Iselin, 1939). Some 40 years later, Stommel (1979) suggested that this arises from the seasonality of the mixed layer depth, which effectively re-entrains water subducted at any time except late-winter. Stommel likened the process to that of “Maxwell’s Demon” in thermodynamics, with the Demon here operating a trapdoor at the base of the mixed layer, allowing access to the ocean interior only for water moving away fast enough to escape re-entrainment. Williams et al. (1995) subsequently used tracers in a numerical simulation to show that this process does indeed operate as Stommel described. The process, which has since become known as “Stommel’s Demon,” simplifies models of the ocean thermocline, whereby the late-winter mixed layer base can be adopted as the upper boundary and mixed layer seasonality effectively ignored (Luyten et al., 1983; D. Marshall, 1997; D. Marshall & Marshall, 1995; J. C. Marshall, Williams, & Nurser, 1993; Qiu & Huang, 1995; Sarmiento, 1983; Williams, 1991).

Here, we continue in the Demonic tradition by considering whether a similar process operates on an interannual timescale in the ventilation of deep ocean water masses, and mediates the translation of atmospheric forcing variability into the ocean subsurface. We focus on the North Atlantic, and in particular on the Labrador Sea, a critical region for the ventilation of deep ocean waters (MacGilchrist et al., 2020; Rhein et al., 2017). Water subducted here flows southward as part of the Atlantic Meridional Overturning Circulation, returning to the surface predominantly in the Southern Ocean, after a timescale on the order of centuries (DeVries & Primeau, 2011; Gebbie & Huybers, 2012). Consequently, the region has been shown to play

a crucial role in transient climate change through the uptake of anthropogenic carbon dioxide (Khatiwala et al., 2009), oxygen (Koelling et al., 2017), and heat (Zanna et al., 2019). Understanding the sensitivity of deep ocean ventilation to changes in surface forcing is thus an important step toward accurately projecting its future evolution (Boer et al., 2007; Katavouta et al., 2019).

The North Atlantic Oscillation (NAO) is the dominant mode of atmospheric variability over the North Atlantic Ocean (Hurrell, 1995; J. Marshall, Johnson, & Goodman, 2001). Identified as an oscillation in the pressure systems over Iceland and the Azores, the system swings between positive and negative phases on an ~ 3 –7 year timescale (Hurrell & Deser, 2010). In its positive phase, the atmospheric circulation is anomalously strong and stormy, driving enhanced heat loss from the ocean surface across the subpolar gyre (Visbeck et al., 2003) and resulting in deeper winter mixed layers, particularly in the Labrador Sea (Kieke et al., 2007; Sarafanov, 2009).

In this study, we consider how NAO-mediated forcing of the ocean surface impacts the ventilation of the deep Atlantic Ocean. In particular, we explore how the interplay of atmospheric forcing and ocean circulation imparts interannual variability to the transport of mixed layer properties into the ocean subsurface.

2. Numerical Simulation and Lagrangian Trajectory Analysis

We tackle this problem using trajectory analysis in an eddy-permitting, forced ocean-sea-ice model. The numerical simulation and Lagrangian trajectory experiments are described in MacGilchrist et al. (2020). Here, we summarize the key points and refer the reader to that work for more details, as well as for comparison of the model with observations in the high-latitude North Atlantic.

The numerical simulation is a global implementation of the Nucleus for European Modeling of the Ocean (NEMO) model (Madec, 2014). The ORCA025 configuration is used, which has a grid resolution of $1/4^\circ$ (~ 27.75 km at the equator, refined at high-latitudes) and 75 uneven vertical levels. The ocean model is coupled to a sea-ice model, LIM2 (Bouillon et al., 2009).

The simulation runs from 1958 to 2015, and is forced with the historical atmospheric reanalysis: “Drakkar Forcing Set 5,” which is an updated version of the fields described in Brodeau et al. (2010). The simulation is initialized from rest with temperature and salinity from the Levitus climatological hydrography (Levitus et al., 1998). We do not include the first 18 year of the simulation in our analysis, when the adjustment of the ocean state to the initial conditions is the largest.

Trajectories are evaluated “offline” using the Lagrangian analysis tool, Ariane (Blanke & Raynaud, 1997). The model velocity and hydrographic fields (output as 5 days means) are assumed to be piece-wise stationary, changing discretely every 5 days. No attempt is made to parameterize sub-grid scale physics in the trajectories (Van Sebille et al., 2018). Although the simulation is global, we restrict our Lagrangian experiments to the Atlantic sector.

We evaluate backwards-in-time trajectories from a model-defined North Atlantic Deep Water (NADW) with γ^{θ} between 27.7 and 28.0 (see details in MacGilchrist et al., 2020), where γ^{θ} is calculated according to the empirical formulation of McDougall and Jackett (2005). Particles are initialized at each model tracer point (located in the center of the grid cell) at the end of September every year between 1976 and 2015. Each particle is assumed to be representative of the grid cell volume in which it is initialized. Trajectories are evaluated backwards in time until reaching the base of the mixed layer, defined as being within 0.01 of the density at 10 m, following Thomas et al. (2015). Our primary results are insensitive to this definition of mixed layer depth.

To determine the interannual variability of ventilation, we calculate the time-mean age distribution of the model NADW, achieved by averaging the distribution determined for each of the initialization years between 1976 and 2015. Then, we subtract that mean distribution from the age distribution in 2015, leaving age distribution anomaly at the end of the simulation. An anomalously large amount of 20-year-old water in 2015 signals an anomalously large amount of water retained in the subsurface due to ventilation in 1995. We normalize by the mean age distribution to account for re-entrainment of the water mass over time.

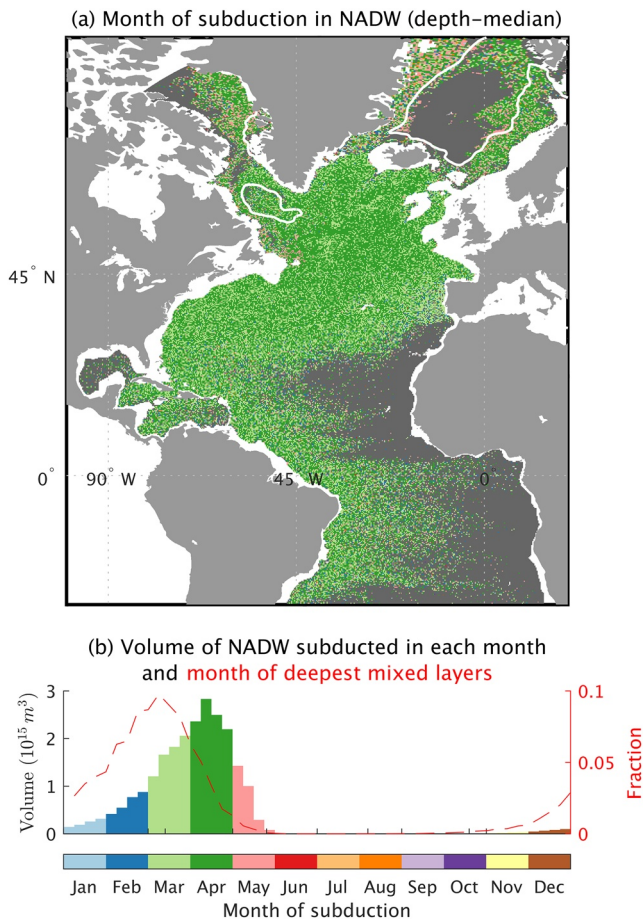


Figure 1. (a) Depth-median month of subduction for ventilated NADW (γ^{θ} between 27.7 and 28.0) in 2015. Dark gray indicates regions unventilated during the simulation. White contour corresponds to $\gamma^{\theta} = 27.85$ at a depth of 10 m for the late-winter (March to April) time-mean density. (b) Distribution of the month of subduction (colored bars; volumetric distribution derived from trajectories) and the month of deepest mixed layers (red dashed line; distribution of surface area fraction derived from the Eulerian fields). The dashed curve represents the probability that, for a given location and a given year, the deepest mixed layer occurred during that month.

3. Results

3.1. Stommel's Demon in NADW

Stommel's Demon was shown to operate in the ventilation of the subtropical thermocline (Williams et al., 1995). However, it is not immediately intuitive that such a process operates in the subpolar gyres. In these regions, the time-mean, depth-integrated flow in the basin interior, away from lateral boundaries, moves water poleward—back toward the region of deep mixed layers—narrowing both the region and period over which subducted water might hope to escape (J. C. Marshall, Williams, & Nurser, 1993). Furthermore, substantial freshwater input (from glacial and sea-ice melt, and river run-off) and deep convective events mean that isopycnal outcrop migration does not occur in a strictly meridional fashion. Consequently, water subducted into NADW in summer could feasibly evade re-entrainment, dependent on its subsurface pathway (e.g., transported southward in the western boundary current).

Despite these confounding factors, we find here that the timing of ventilation in the subpolar gyre displays striking consistency with that in the subtropics (Williams et al., 1995). In Figure 1a, we show the month of subduction in each grid cell, averaged over the depth of NADW. The dominance of light and dark green illustrates that the majority of ventilation arises from subduction occurring in March and April, confirmed by the volumetric histogram in panel (b). Although the peak is in late-winter, ventilation of NADW takes place over a broad range of winter months, from December through May.

The dashed line in Figure 1b shows a probability distribution for the timing of the deepest mixed layers across the high-latitude North Atlantic domain. Throughout the year there is a strikingly consistent lag of ~ 1 month between the timing of deepest mixed layers and that of subduction. MacGilchrist et al. (2020) noted that the majority of NADW ventilation occurs via subduction over a relatively narrow region in the Labrador Sea boundary current. In this region, the deepest mixed layers occur slightly later in the year than they do in the open ocean subpolar gyre, perhaps explaining part of the shift between the two curves in Figure 1b and emphasizing that the *location* of subduction is a crucial component of ventilation, in addition to the timing.

3.2. An Interannual Demon

The normalized anomaly in the age distribution of NADW, which we adopt as a proxy for ventilation variability, is shown in Figure 2a. The time-mean age distribution is also shown, for which we can note the long-timescale decline in volume with increasing age, indicative of a slow erosion of the water mass as it is mixed diabatically or returned to the mixed layer. The interannual signal is strong, varying by as much as 100% of the mean (a normalized anomaly value of 1).

We wish to understand how variability in ventilation is related to atmospheric forcing of the upper ocean. In panel (b), we show the NAO index as well as the anomaly in the integrated volume of the mixed layer. As expected (Visbeck et al., 2003), these two are well-correlated, indicating that changes in the atmospheric state impact the depth of the upper ocean mixed layer.

Atmospheric forcing variability (Figure 2b) is translated to the ventilation anomalies (Figure 2a), at least in the sense that broad periods of positive NAO match times of anomalously high ventilation (e.g., the

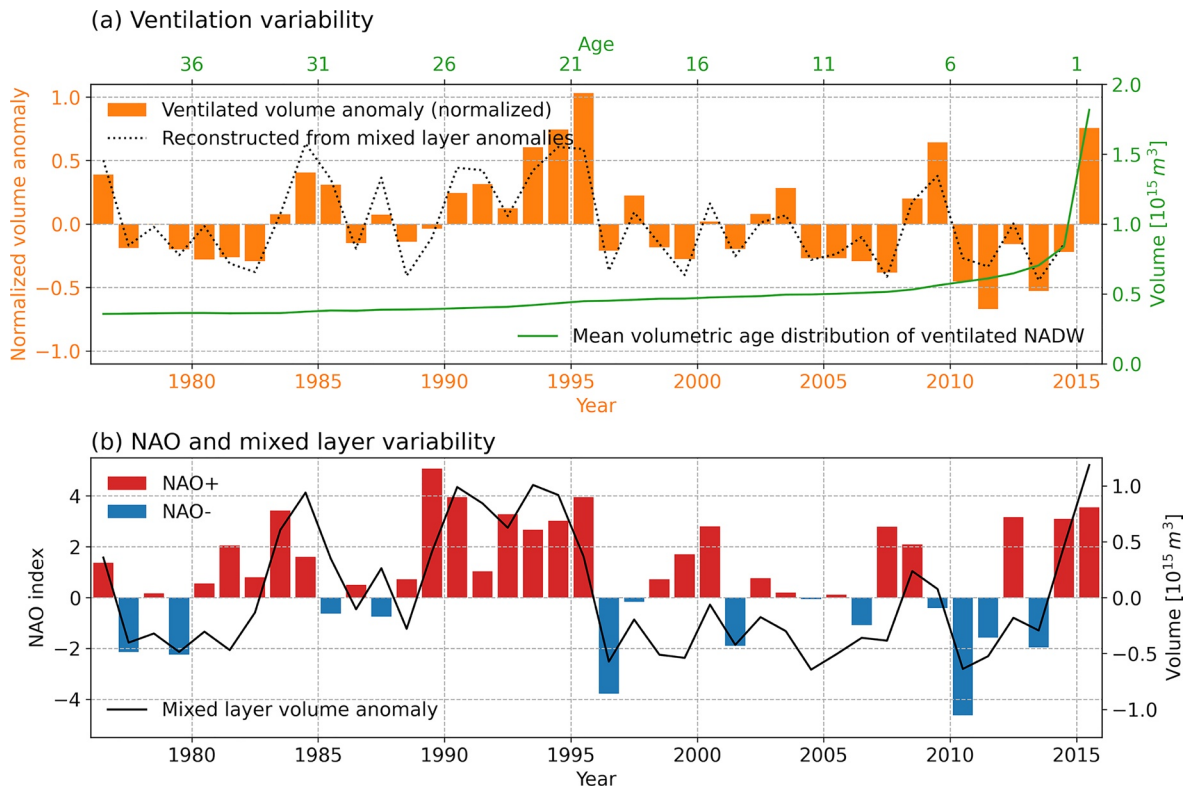


Figure 2. (a) Ventilation variability derived from the Lagrangian experiments. Green line is the mean age distribution of NADW from different initialization years (see Section 2). Orange bars are the normalized anomaly around this mean age distribution for the initialization in 2015: a proxy for the ventilation anomaly in each year (e.g., + anomaly in 20-year-old water implies + anomaly in 1995 ventilation, etc.). Dotted line is a reconstruction of the ventilation anomaly using multi-linear regression of mixed layer anomalies in the year itself and in the following year. (b) NAO index from Hurrell (1995, DJFM mean) and the anomaly in the volume of the late-winter mean mixed layer (i.e., volume within 0.01 of the surface density above it).

1990s). However, it is evident that the ventilation anomalies do not entirely match up with anomalies in the atmospheric state or upper ocean, suggesting that ventilation variability is also mediated by upper ocean dynamics.

Linear regression reveals that, as anticipated from Figure 2b, the volume of water present in the mixed layer in each year is well-correlated with the NAO ($R^2 = 0.41$). However, that correlation is eroded (to $R^2 = 0.14$) when considering only the water left in the subsurface following re-entrainment in the subsequent winter. In contrast, correlation between the final ventilation anomaly (Figure 2a) and the volume subducted each year is *improved* following re-entrainment (from $R^2 = 0.61$ to $R^2 = 0.85$). Such correlations show that while ventilation anomalies are initially established by atmospheric forcing variability, they are confounded by variations in the re-entrainment of water from year-to-year. In other words, changes in the depth of the late-winter mixed layer—from one winter to the next—play an integral role in translating surface forcing variability to the ocean interior.

Of course, deep mixed layers in any given year and re-entrainment in the following year are *both* a result of atmospheric forcing, since re-entrainment itself is dependent on the subsequent year's mixed layer depth (with deeper mixed layers entraining more water). What is apparent here is that ventilation anomalies have a *memory* of at least 2-year of atmospheric forcing, manifest in the varying depth of the winter mixed layer. The dotted line in Figure 2a is a reconstruction of the ventilation anomaly based on mixed layer depth anomalies in each year and in the subsequent year (a forwards-in-time auto-regressive model of order 1: AR1). The reconstruction does a good job in most years, and we find that the cumulative error is approximately halved compared to an equivalent reconstruction with an AR0 model (ventilation anomaly dependent only on the mixed layer depth anomaly in that year). Failing to account for the time-varying deep winter mixed layer results in the accumulation of errors in estimating ventilation to the ocean interior.

Two time periods (the early 1990s and late 2000s) provide particularly clear examples of the mediation of ventilation by atmospheric forcing variability. During the 1990s, there was a consistently strong, positive NAO, accompanied by deep winter mixed layers (Figure 2b). However, substantial positive ventilation anomalies are only present in the later years (Figure 2a), after 1993, and largest in the final year (1995), just before the NAO moved back into a negative phase. Likewise in 2008 and 2009, the ventilation anomaly peaks in the year following the transition to a negative NAO.

3.3. Deep Convection and the Open-Ocean Demon

MacGilchrist et al. (2020) note that almost all of the ventilation in this simulation occurs in the boundary current of the Labrador Sea. We consider whether it is also in this region that the Demon operates, or whether the signal arises from deep convection in the central Labrador Sea.

Figure 3a shows the ventilation anomaly (as in Figure 2a) now separated by the bathymetric depth in the region where the particles left the mixed layer. Anomalies associated with subduction in the boundary current (shallower than 3,000 m) make a broadly consistent contribution over time. On the other hand, major excursions are the result of anomalies in the open ocean (deeper than 3,000 m), particularly forming the dominant contribution in the 1990s.

A similar picture emerges when we consider the density class in which the ventilation anomalies appear (Figure 3b). Anomalies in the densest water masses are crucial in establishing the large positive deviations in the early part of the time-series and negative anomalies thereafter, interspersed with large positive anomalies in the intermediate classes. As noted in MacGilchrist et al. (2020), denser waters are preferentially subducted in the central Labrador Sea. This apparent shift is consistent with observed changes in that region, for which the mid-1990s marked a shift in the formation of Labrador Sea Water (Kieke et al., 2007).

Returning again to the relation between ventilation and surface forcing variability, we consider the surface-forced water mass transformation (Groeskamp et al., 2019; Walin, 1982). This is evaluated as the divergence of the integrated surface density flux within density bins of width $\Delta\gamma^{\rho} = 0.01$ across the North Atlantic domain, and reveals the transport of water across each density contour due to surface buoyancy forcing. We see in Figure 3c that the surface-forced transformation exhibits variability that is broadly consistent with that of ventilation, particularly on a timescale consistent with the NAO (Figure 2). It is striking that the trajectory-derived ventilation anomalies exhibit such clear memory of the surface forcing even to the end of the simulation and in the presence of substantial subsurface mixing (MacGilchrist et al., 2020). Closer consideration of Figure 3 reveals that ventilation anomalies exhibit deviations from surface forcing variability, consistent with our impression from Figure 2. Maxima in ventilation in each density class arise *after* periods of sustained transformation anomalies (see, for example, the mid-1980s, mid-1990s, and late 2000s).

A complementary view of the controls on ventilation timing emphasizes the difference between the advective displacement of a water parcel in the subsurface and the displacement of the density surface outcrop in the mixed layer. Over a seasonal cycle, Williams et al. (1995) note that the former is roughly an order of magnitude smaller than the latter, revealing the challenge faced by a water parcel in escaping the seasonal movement of the outcrop. Likewise, we can consider year-to-year changes in the late-winter outcrop location relative to the displacement of water parcels. Figure 3d shows the displacement of the late-winter NADW outcrop between successive years with a strongly positive (1995) and negative (1996) NAO index (Figure 2b), together with representative year-long trajectories starting in the open ocean and boundary current. In the boundary current, the outcrop location changes very little between years, and is far exceeded by the displacement of the trajectories. In the open ocean however, the outcrop displacement is large—spanning tens of degrees of longitude, particularly for the inner outcrop boundary (corresponding to greater densities)—and is of comparable magnitude to the trajectory displacements. Through this example, it can be seen that subduction in the open ocean is likely to be more significantly impacted by interannual variability in atmospheric forcing than that in the boundary current, consistent with panels (a) and (b).

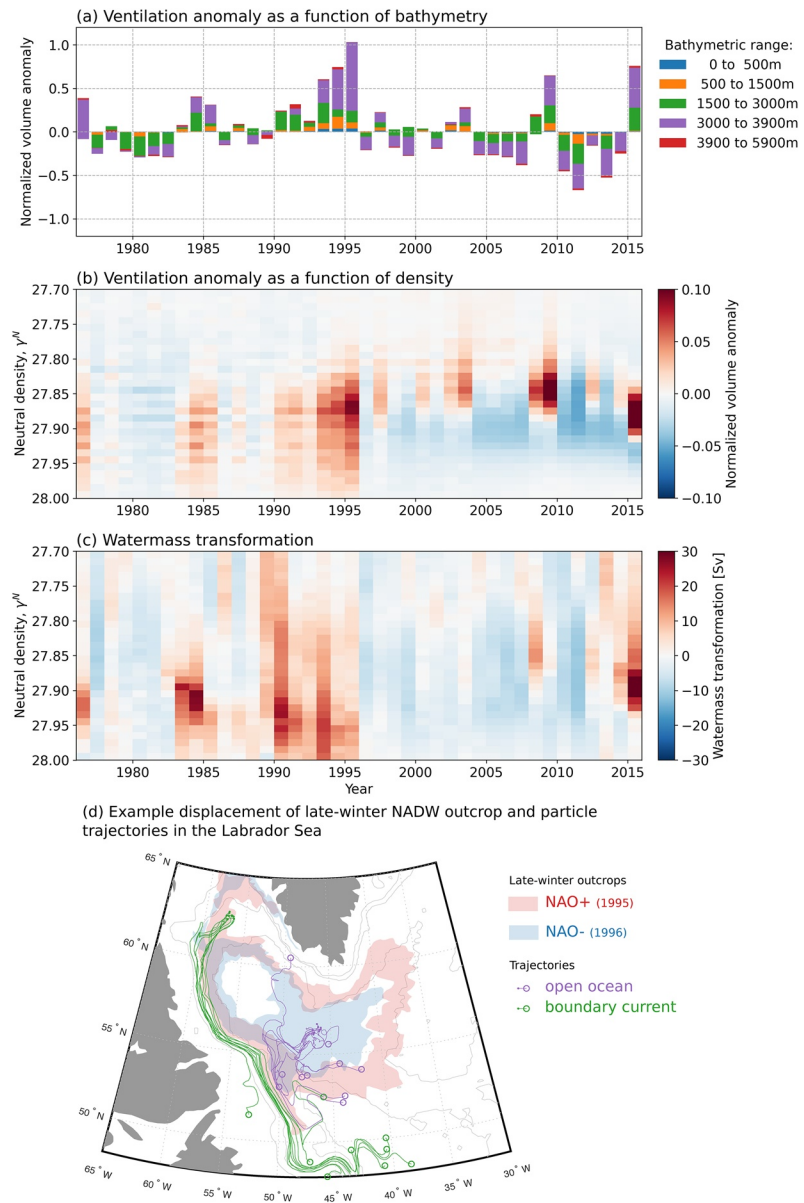


Figure 3. (a) Normalized ventilation anomaly (as in Figure 2a) separated according to the bathymetric contour over which subduction took place. (b) Normalized ventilation anomaly as a function of the neutral density of the water in September 2015 (simulation end). (c) Surface water mass transformation anomaly as a function of neutral density. (d) Outcrop locations (shaded patches) in the Labrador Sea for densities between $\gamma^{\theta} = 27.8$ and 27.9 (corresponding to central densities of NADW in years 1995 (red) and 1996 (blue)). Also shown are example trajectories for particles initialized in the boundary current (green) and open ocean (purple).

4. Conclusions

Ventilation of the deep Atlantic occurs in late-winter (Figure 1) and exhibits substantial variability on interannual and longer timescales (Figure 2). Variability in atmospheric forcing associated with the NAO imparts a multi-annual (3–7 year) timescale on ocean ventilation through its impact on mixed layer depth. However, variations in the fraction of water that is re-entrained each year—by virtue of changes in the late-winter mixed layer depth—imparts an additional signature on the subsurface ocean (Figures 2 and 3). That is, water from particular years, selected for by changes in the depth of the late-winter mixed-layer and the pace of escape from the subduction location, preferentially ventilates the deep Atlantic: a process we call the “interannual Demon” by analogy with Stommel’s (1979) paper on the seasonal Demon.

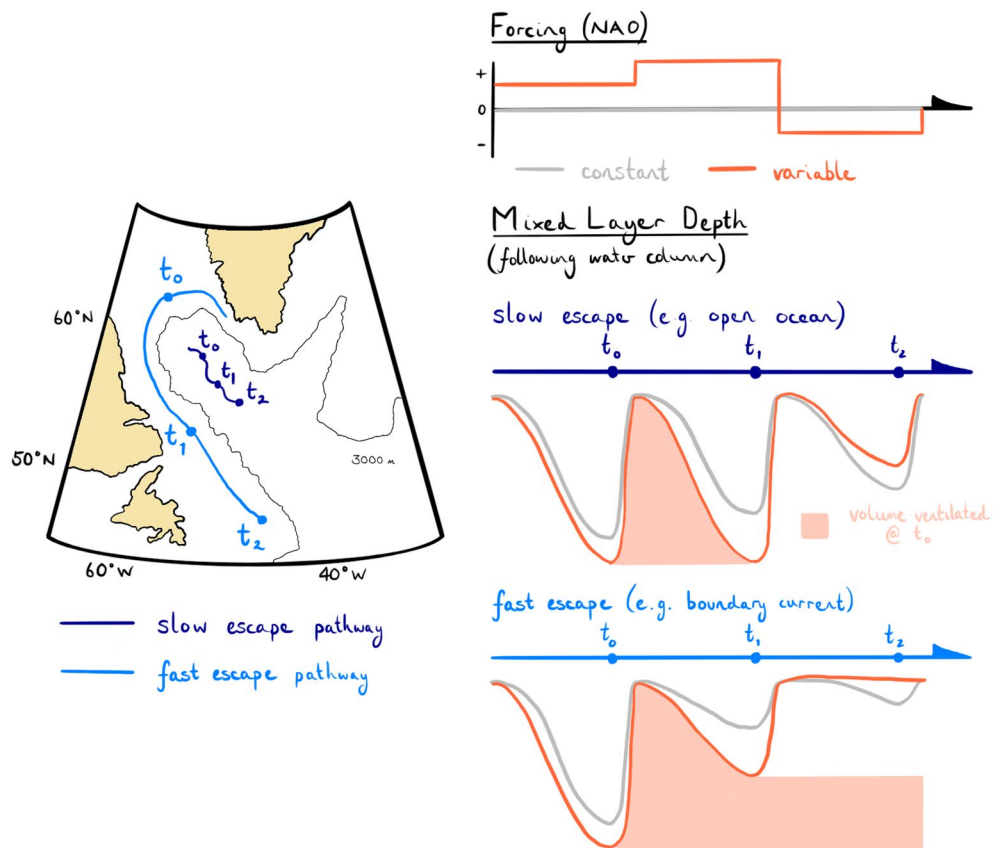


Figure 4. Schematic illustration of the operation of an interannual Demon, and the dependence on the speed at which newly subducted water moves away from the region of deep mixed layers and hence evades re-entrainment. On the left, we show two idealized pathways of water columns exiting the Labrador Sea: (dark blue) transport in the open-ocean region, and (light blue) transport via the boundary current (light blue). The positions of the columns in late-winter of successive years are labeled t_i . On the right, we show the corresponding evolution of the mixed layer depth following these two water columns under constant forcing (gray lines) and variable forcing (red lines). The pattern of these forcings is shown on the top right, represented as idealized variations of the NAO. For the variable forcing case, we keep track of the water ventilated during the first winter (t_0), represented by the pink patch.

We illustrate the operation of the interannual Demon in Figure 4. Borrowing from schematic representations of Williams et al. (1995), we follow the Lagrangian evolution of water columns as they move progressively away from, or “escape,” regions of deepest mixed layers. We consider two regimes: one in which escape is slow and one in which it is fast; manifest in the extent to which the winter mixed layer shallows year-on-year under constant forcing conditions (gray lines). As an illustrative example, we consider variable interannual forcing (red lines) consisting of two years of progressively more positive NAO followed by a year of negative NAO. Along the slow escape pathway, the deepening of the mixed layer associated with the second year of positive NAO exceeds the natural shoaling of the mixed layer due to the water column’s lateral displacement. Consequently, all of the water that leaves the mixed layer after the first winter is re-entrained the following year. No signature of ventilation from the first year is retained in the ocean subsurface, despite the positive NAO anomaly and deeper-than-normal mixed layer in that year. In this way, interannual variability mediates the passage of water into the subsurface ocean. By contrast, along the fast escape pathway, the natural shoaling of the mixed layer far exceeds the forcing-derived deepening of the winter mixed layer in the second year, allowing water subducted in the first year to remain in the subsurface. Thus, the pathway of newly ventilated water is a critical determinant for the influence of atmospheric variability and the operation of an interannual Demon.

As well as illustrating the impact of a time-varying mixed layer depth on ocean ventilation, the interannual Demon has important practical implications. In particular, it is common to adopt the late-winter mixed

layer depth and its year-to-year variation as a proxy for ocean ventilation and its variability (Boé et al., 2009; Heuzé, 2017; Li et al., 2016). That perspective ignores the impact of an interannual Demon mediating the translation of surface variability into the subsurface ocean. We noted in Section 3.2 that this leads to a cumulative error in the estimation of ventilated volume. More appropriate, at least in this case for the North Atlantic, is to construct a model for ventilation that incorporates interannual changes in late-winter mixed layer depth (Figure 2a).

Although we have focused our analysis on the high-latitude North Atlantic, the interannual Demon could be operating across the global ocean. Based on our analysis, it is likely to be operating where the year-on-year changes in winter mixed layer depth exceed, or come close to, the change of the mean winter mixed layer depth over the lateral annual displacement of the fluid column (Figure 4). In the case of the North Atlantic, this is intricately connected to the occurrence of deep convection and the cyclonic circulation within the open-ocean Labrador Sea. Other potential locations then include the high-latitude Southern Ocean where convective events are thought to occur sporadically (Bernardello et al., 2014; Killworth, 1983), or mode and intermediate waters in the Southern Ocean, whose formation regions display substantial year-on-year variability in mixed layer depth and formation volume (Kolodziejczyk et al., 2019; Qu et al., 2020).

Finally, we have noted that the interannual Demon operates effectively in the open-ocean Labrador Sea because water there escapes only slowly and thus is frequently returned to the mixed layer. Such persistent re-ventilation, however, could increase the uptake and sequestration of certain atmospheric tracers. Carbon dioxide has a long equilibration timescale (between 6 and 18 months Jones et al., 2014) meaning that maximal atmosphere-ocean exchange requires water to be exposed to the atmosphere for more than a year. The interannual Demon might thus enhance the uptake of carbon in the open-ocean Labrador Sea, since waters that eventually permanently subduct are likely to have had more time to reach equilibrium. It could thus be the case that the Demon is partly responsible for establishing the location and efficiency of anthropogenic carbon uptake.

Data Availability Statement

Code for reproducing the figures presented here is available on GitHub (github.com/gmacgilchrist; in repositories “nadw” for Figure 1 and “draw_figs_nadw” for Figures 2 and 3). The NEMO Ocean Model configuration, together with details on running and access to forcing files, is available on GitHub (<https://github.com/meom-configurations/ORCA025.L75-GJM189.git>), and has been released with an associated DOI <https://doi.org/10.5281/zenodo.4626012>. The Lagrangian trajectory calculation software, Ariane, is available at <https://stockage.univ-brest.fr/grima/Ariane/>.

Acknowledgments

G. A. MacGilchrist is supported through NSF's Southern Ocean Carbon and Climate Observations and Modeling (SOCCOM) Project under the NSF Award PLR-1425989, with additional support from NOAA and NASA. HJ and DM were supported by the UK Natural Environment Research Council OSNAP project (NE/K010948/1). C. Lique was supported by the project MEDLEY funded by JPI Climate and JPI Oceans, under the agreement ANR-19-JPOC-0001. The hindcast was carried out within the European Drakkar project, and the model outputs were kindly provided by J. M. Molines and C. Talandier. We used the computational tool Ariane developed by B. Blanke and N. Grima, who also provided support and advice on its use. We are grateful to R. Williams for a very constructive review.

References

- Bernardello, R., Marinov, I., Palter, J. B., Galbraith, E. D., & Sarmiento, J. L. (2014). Impact of Weddell sea deep convection on natural and anthropogenic carbon in a climate model. *Geophysical Research Letters*, 41(20), 7262–7269. <https://doi.org/10.1002/2014gl061313>
- Blanke, B., & Raynaud, S. (1997). Kinematics of the Pacific equatorial undercurrent: An Eulerian and Lagrangian approach from GCM results. *Journal of Physical Oceanography*, 27(6), 1038–1053. [https://doi.org/10.1175/1520-0485\(1997\)027<1038:kotpeu>2.0.co;2](https://doi.org/10.1175/1520-0485(1997)027<1038:kotpeu>2.0.co;2)
- Boé, J., Hall, A., & Qu, X. (2009). Deep ocean heat uptake as a major source of spread in transient climate change simulations. *Geophysical Research Letters*, 36(22), 1–5. <https://doi.org/10.1029/2009gl040845>
- Boer, A. D., Sigman, D. T., Jr., & Russell, J. L. (2007). Effect of global ocean temperature change on deep ocean ventilation. *Paleoceanography*, 22, PA2210.
- Bouillon, S., Morales Maqueda, M. A., Legat, V., & Fichefet, T. (2009). An elastic-viscous-plastic sea ice model formulated on Arakawa b and c grids. *Ocean Modelling*, 27(3–4), 174–184. <https://doi.org/10.1016/j.ocemod.2009.01.004>
- Brodeau, L., Barnier, B., Treguier, A. M., Penduff, T., & Gulev, S. (2010). An Era40-based atmospheric forcing for global ocean circulation models. *Ocean Modelling*, 31(3–4), 88–104. <https://doi.org/10.1016/j.ocemod.2009.10.005>
- DeVries, T., & Primeau, F. (2011). Dynamically and observationally constrained estimates of water mass distributions and ages in the global ocean. *Journal of Physical Oceanography*, 41(12), 2381–2401. <https://doi.org/10.1175/jpo-d-10-05011.1>
- Gebbie, G., & Huybers, P. (2012). The mean age of ocean waters inferred from radiocarbon observations: Sensitivity to surface sources and accounting for mixing histories. *Journal of Physical Oceanography*, 42(2), 291–305. <https://doi.org/10.1175/jpo-d-11-043.1>
- Groeskamp, S., Griffies, S. M., Iudicone, D., Marsh, R., Nurser, A. J. G., & Zika, J. D. (2019). The water mass transformation framework for ocean physics and biogeochemistry. *Annual Review of Marine Science*, 11(1), 271–305. <https://doi.org/10.1146/annurev-marine-010318-095421>
- Heuzé, C. (2017). North Atlantic deep water formation and AMOC in CMIP5 models. *Ocean Science*, 13(4), 609–622.
- Hurrell, J. W. (1995). Decadal trends in the North Atlantic oscillation: Regional temperatures and precipitation. *Science*, 269(5224), 676–679. <https://doi.org/10.1126/science.269.5224.676>

- Hurrell, J. W., & Deser, C. (2010). North Atlantic climate variability: The role of the North Atlantic oscillation. *Journal of Marine Systems*, 79(3–4), 231–244. <https://doi.org/10.1016/j.jmarsys.2009.11.002>
- Iselin, C. O. D. (1939). The influence of vertical and lateral turbulence on the characteristics of the waters at mid-depths. *Transactions American Geophysical Union*, 20(3), 414–417. <https://doi.org/10.1029/tr0201003p00414>
- Jones, D. C., Ito, T., Takano, Y., & Hsu, W.-C. (2014). Spatial and seasonal variability of the air-sea equilibration timescale of carbon dioxide. *Global Biogeochemical Cycles*, 28(11), 1163–1178. <https://doi.org/10.1002/2014gb004813>
- Katavouta, A., Williams, R., & Goodwin, P. (2019). The effect of ocean ventilation on the transient climate response to emissions. *Journal of Climate*, 32(16), 5085–5105.
- Khatriwala, S., Primeau, F., & Hall, T. (2009). Reconstruction of the history of anthropogenic CO₂ concentrations in the ocean. *Nature*, 462(7271), 346–349. <https://doi.org/10.1038/nature08526>
- Kieke, D., Rhein, M., Stramma, L., Smethie, W. M., Bullister, J. L., & LeBel, D. A. (2007). Changes in the pool of Labrador sea water in the subpolar North Atlantic. *Geophysical Research Letters*, 34(6). <https://doi.org/10.1029/2006gl028959>
- Killworth, P. (1983). Deep convection in the world ocean. *Reviews of Geophysics*.
- Koelling, J., Wallace, D. W. R., Send, U., & Karstensen, J. (2017). Intense oceanic uptake of oxygen during 2014–2015 winter convection in the Labrador Sea. *Geophysical Research Letters*, 44(15), 7855–7864. <https://doi.org/10.1002/2017gl073933>
- Kolodziejczyk, N., Llovel, W., & Portela, E. (2019). Interannual variability of upper ocean water masses as inferred from argo array. *Journal of Geophysical Research : Oceans*.
- Levitus, S., Boyer, T., Conkright, M., Brien, T. O., Antonov, J., Stephens, C., et al. (1998). *Noaa atlas nesdis 18, world ocean database 1998*. Washington DC: U.S. Government Printing Office.
- Li, H., Ilyina, T., Müller, W., & Sienz, F. (2016). Decadal predictions of the North Atlantic CO₂ uptake. *Nature Communications*, 7(1).
- Luyten, J. R., Pedlosky, J., & Stommel, H. (1983). The ventilated thermocline. *Journal of Physical Oceanography*, 13(2), 292–309. [https://doi.org/10.1175/1520-0485\(1983\)013<0292:vtv>2.0.co;2](https://doi.org/10.1175/1520-0485(1983)013<0292:vtv>2.0.co;2)
- MacGilchrist, G. A., Johnson, H. L., Marshall, D. P., Lique, C., Thomas, M., Jackson, L. C., & Wood, R. A. (2020). Locations and mechanisms of ocean ventilation in the high-latitude North Atlantic in an eddy-permitting ocean model. *Journal of Climate*, 33(23), 10113–10131. <https://doi.org/10.1175/jcli-d-20-0191.1>
- Madec, G. (2014). *Nemo ocean engine*. Note du Pole de modelisation de l'Institut Pierre-Simon Laplace No 27.
- Marshall, D. (1997). Subduction of water masses in an eddying ocean. *Journal of Marine Research*, 55(2), 201–222. <https://doi.org/10.1357/0022240973224373>
- Marshall, D., & Marshall, J. (1995). On the thermodynamics of subduction. *Journal of Physical Oceanography*, 25(1), 138–151. [https://doi.org/10.1175/1520-0485\(1995\)025<0138:ottos>2.0.co;2](https://doi.org/10.1175/1520-0485(1995)025<0138:ottos>2.0.co;2)
- Marshall, J., Johnson, H., & Goodman, J. (2001). A study of the interaction of the north Atlantic oscillation with ocean circulation. *Journal of Climate*, 14(7), 1399–1421. [https://doi.org/10.1175/1520-0442\(2001\)014<1399:asotio>2.0.co;2](https://doi.org/10.1175/1520-0442(2001)014<1399:asotio>2.0.co;2)
- Marshall, J. C., Williams, R. G., & Nurser, A. J. G. (1993). Inferring the subduction rate and period over the north Atlantic. *Journal of Physical Oceanography*, 23(7), 1315–1329. [https://doi.org/10.1175/1520-0485\(1993\)023<1315:itsrap>2.0.co;2](https://doi.org/10.1175/1520-0485(1993)023<1315:itsrap>2.0.co;2)
- McDougall, T. J., & Jackett, D. R. (2005). The material derivative of neutral density. *Journal of Marine Research*, 63, 159–185. <https://doi.org/10.1357/0022240053693734>
- Qiu, B., & Huang, R. X. (1995). Ventilation of the North Atlantic and North Pacific: Subduction versus obduction. *Journal of Physical Oceanography*, 25(10), 2374–2390. [https://doi.org/10.1175/1520-0485\(1995\)025<2374:votnaa>2.0.co;2](https://doi.org/10.1175/1520-0485(1995)025<2374:votnaa>2.0.co;2)
- Qu, T., Gao, S., & Fine, R. (2020). Variability of the sub-Antarctic mode water subduction rate during the Argo period. *Geophysical Research Letters*.
- Rhein, M., Steinfeldt, R., Kieke, D., Stendero, I., & Yashayev, I. (2017). Ventilation variability of Labrador sea water and its impact on oxygen and anthropogenic carbon: A review. *Philosophical Transactions of the Royal Society A: Mathematical, Physical and Engineering Sciences*, 375(2102), 20160321. <https://doi.org/10.1098/rsta.2016.0321>
- Sarafanov, A. (2009). On the effect of the North Atlantic oscillation on temperature and salinity of the subpolar North Atlantic intermediate and deep waters. *ICES Journal of Marine Science*, 66(7), 1448–1454. <https://doi.org/10.1093/icesjms/fsp094>
- Sarmiento, J. L. (1983). A tritium box model of the north Atlantic thermocline. *Journal of Physical Oceanography*, 13(7), 1269–1274. [https://doi.org/10.1175/1520-0485\(1983\)013<1269:atbmot>2.0.co;2](https://doi.org/10.1175/1520-0485(1983)013<1269:atbmot>2.0.co;2)
- Stommel, H. (1979). Determination of water mass properties of water pumped down from the Ekman layer to the geostrophic flow below. *Proceedings of the National Academy of Sciences*, 76(7), 3051–3055. <https://doi.org/10.1073/pnas.76.7.3051>
- Thomas, M. D., Tréguier, A.-m., Blanke, B., Deshayes, J., & Voldoire, A. (2015). A Lagrangian method to isolate the impacts of mixed layer subduction on the meridional overturning circulation in a numerical model. *Journal of Climate*, 28, 7503–7517. <https://doi.org/10.1175/jcli-d-14-00631.1>
- Van Sebille, E., Griffies, S. M., Abernathey, R., Adams, T. P., Berloff, P., Biastoch, A., et al. (2018). Lagrangian ocean analysis: Fundamentals and practices. *Ocean Modelling*, 121, 49–75. <https://doi.org/10.1016/j.ocemod.2017.11.008>
- Visbeck, M., Chassignet, E. P., Curry, R. G., Delworth, T. L., Dickson, R. R., & Krahnmann, G. (2003). The ocean's response to North Atlantic Oscillation variability. In *The North Atlantic oscillation: Climatic significance and environmental impact* (pp. 113–145). American Geophysical Union. <https://doi.org/10.1029/134gm06>
- Walín, G. (1982). On the relation between sea-surface heat flow and thermal circulation in the ocean. *Tellus*, 34(2), 187–195. <https://doi.org/10.3402/tellusa.v34i2.10801>
- Williams, R. G. (1991). The role of the mixed layer in setting the potential vorticity of the main thermocline. *Journal of Physical Oceanography*, 21(12), 1803–1814. [https://doi.org/10.1175/1520-0485\(1991\)021<1803:trotml>2.0.co;2](https://doi.org/10.1175/1520-0485(1991)021<1803:trotml>2.0.co;2)
- Williams, R. G., Marshall, J. C., & Spall, M. A. (1995). Does Stommel's Mixed Layer "Demon" Work? *Journal of Physical Oceanography*, 25(12), 3089–3102. [https://doi.org/10.1175/1520-0485\(1995\)025<3089:dsmllw>2.0.co;2](https://doi.org/10.1175/1520-0485(1995)025<3089:dsmllw>2.0.co;2)
- Zanna, L., Khatriwala, S., Gregory, J. M., Ison, J., & Heimbach, P. (2019). Global reconstruction of historical ocean heat storage and transport. *Proceedings of the National Academy of Sciences of the United States of America*, 116(4), 1126–1131. <https://doi.org/10.1073/pnas.1808838115>