



**HAL**  
open science

## Skin temperature from IASI: agriculture and urban heat islands monitoring

Sarah Safieddine, Maya George, Lieven Clarisse, Simon Whitburn, Cathy Clerbaux

### ► To cite this version:

Sarah Safieddine, Maya George, Lieven Clarisse, Simon Whitburn, Cathy Clerbaux. Skin temperature from IASI: agriculture and urban heat islands monitoring. 5th IASI International Conference, Dec 2021, Evian, France. 2021. insu-03685821

**HAL Id: insu-03685821**

**<https://insu.hal.science/insu-03685821v1>**

Submitted on 2 Jun 2022

**HAL** is a multi-disciplinary open access archive for the deposit and dissemination of scientific research documents, whether they are published or not. The documents may come from teaching and research institutions in France or abroad, or from public or private research centers.

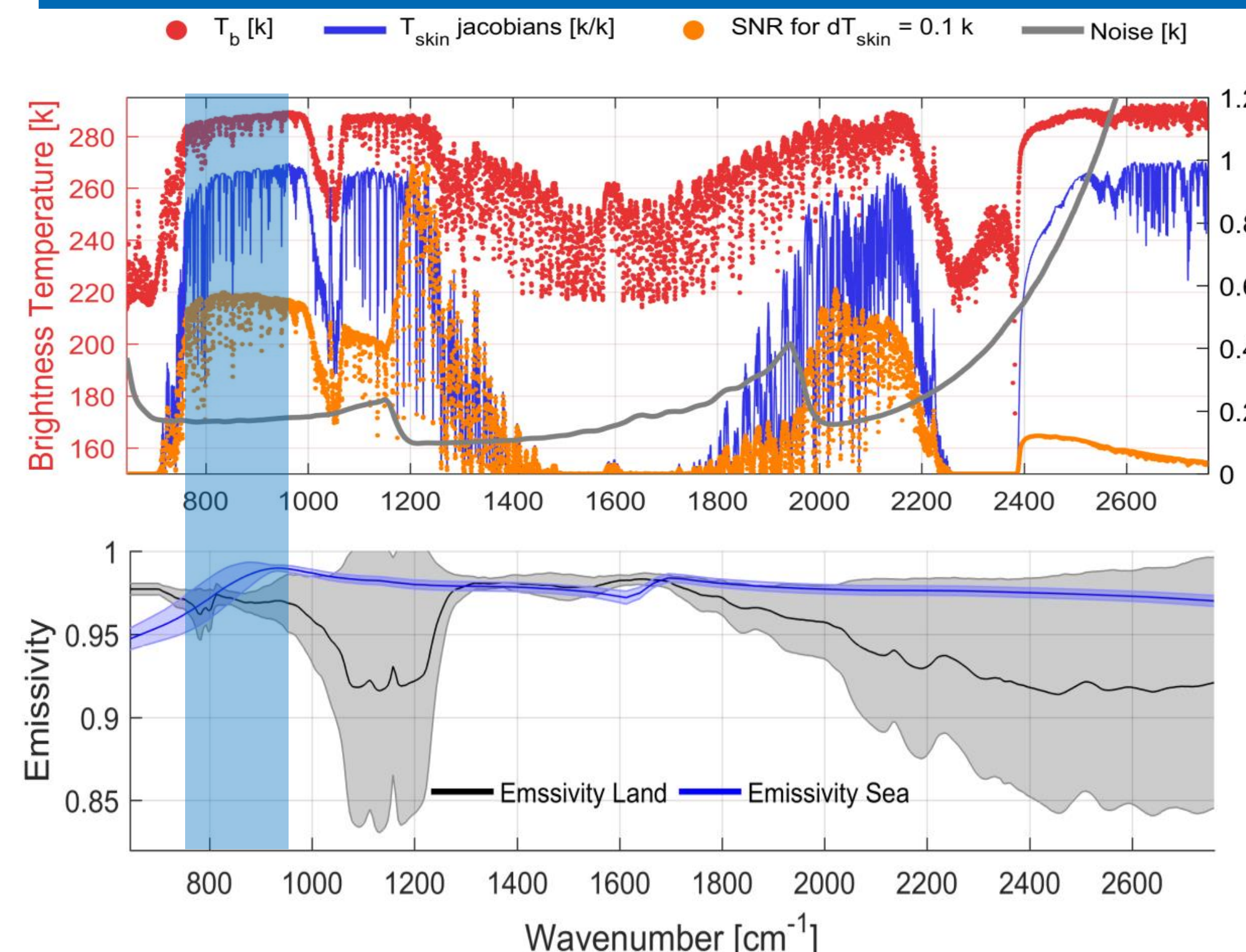
L'archive ouverte pluridisciplinaire **HAL**, est destinée au dépôt et à la diffusion de documents scientifiques de niveau recherche, publiés ou non, émanant des établissements d'enseignement et de recherche français ou étrangers, des laboratoires publics ou privés.

## Introduction

Skin temperature, ( $T_{skin}$ ), also known as Land Surface Temperature is derived from infrared sensors and provides a continuous view of Earth's surface and allows for the monitoring of surface temperature changes relevant for climate trends.  $T_{skin}$  from the Infrared Atmospheric Sounding Interferometer (IASI) has not been properly exploited to date to assess its long-term spatio-temporal variability. In this study, we present a fast retrieval method of  $T_{skin}$  based on an artificial neural network from a set of IASI channels selected using entropy reduction technique.

We show the extent to which  $T_{skin}$  can be used to monitor land use in the past decade. We focus in particular on heatwaves and on agricultural and urban expansion with a focus on the Arabian Peninsula where extreme heat is recorded.

## Methods



Up: IASI typical spectrum with brightness temperature in red,  $T_{skin}$  jacobians in blue, SNR in orange, and noise in grey. Bottom: surface emissivity over land and sea

### CHANNEL SELECTION

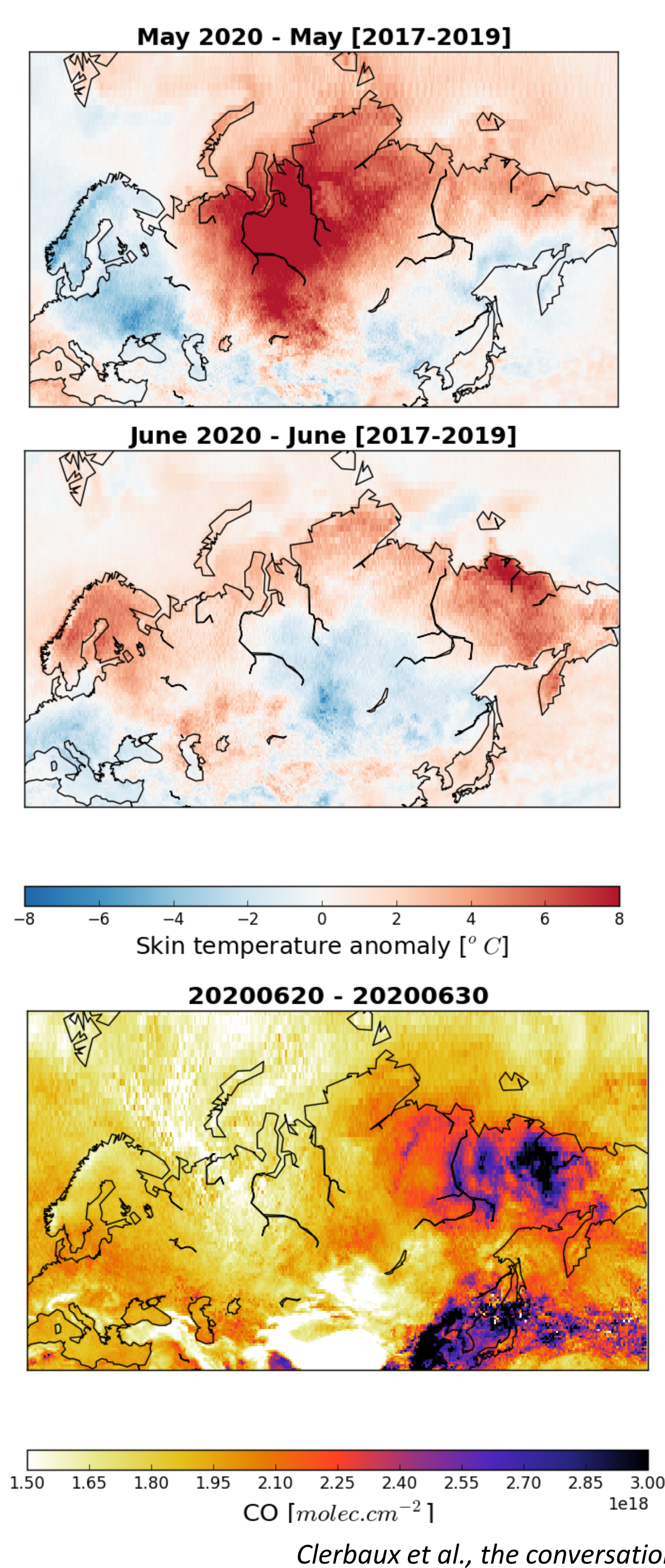
Channels are selected in the shaded region after an analysis of the spectrum. This spectral region [780-980]  $cm^{-1}$  is optimal in terms of SNR, radiometric noise, and emissivity effect and have the best information on skin temperature.

### NEURAL NETWORKS FOR $T_{SKIN}$ RETRIEVAL

Artificial neural networks (ANN) method is used to approximate the complex radiative transfer function that maps the radiances to skin temperature. The training dataset is constructed out of clear-sky (cloud cover <10%) Level 1C (L1C) IASI radiances over 100 channels selected using Entropy Reduction. We train our ANN with these IASI radiances as input, and we use the  $T_{skin}$  from the ERA5 reanalysis as output/target (Safieddine et al., 2020).

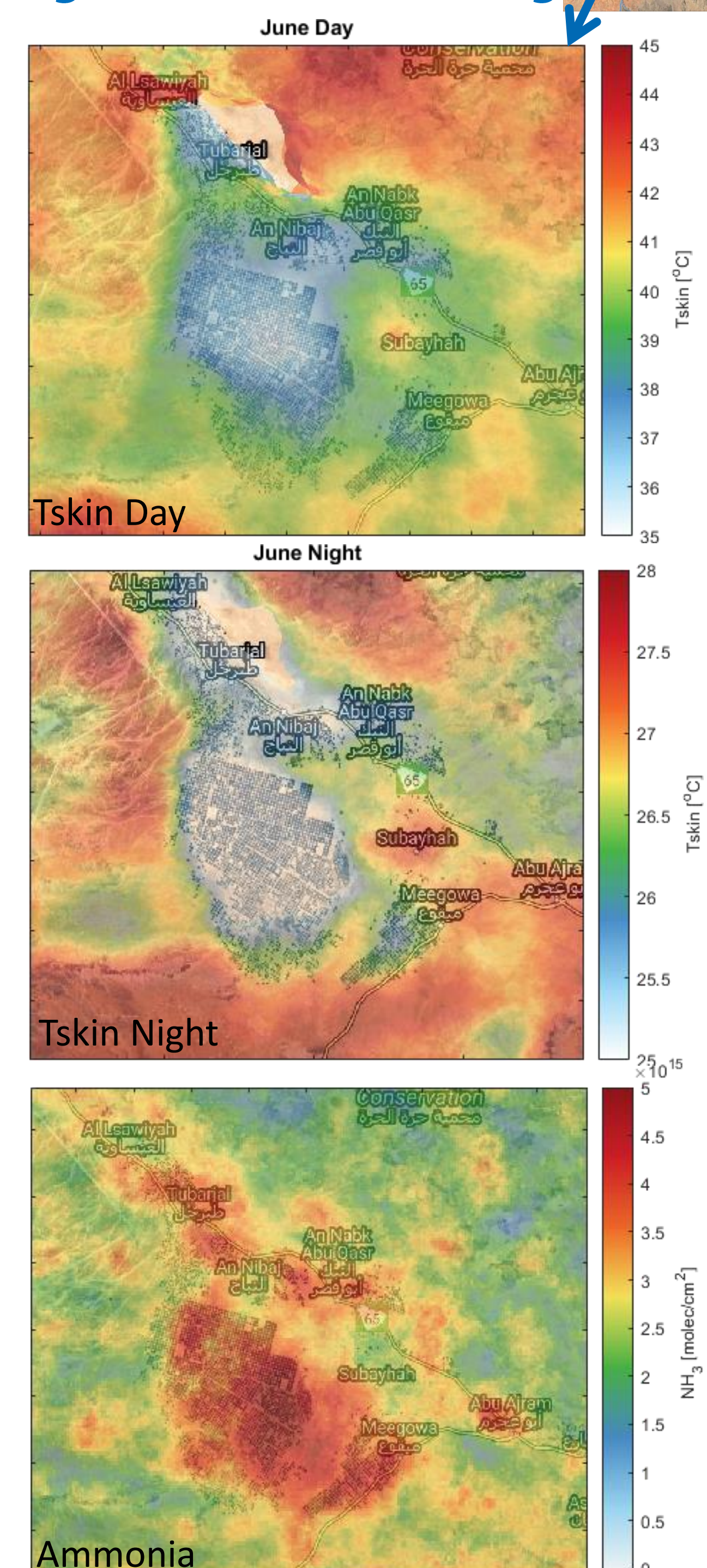
## Applications

### Heatwaves and Fires



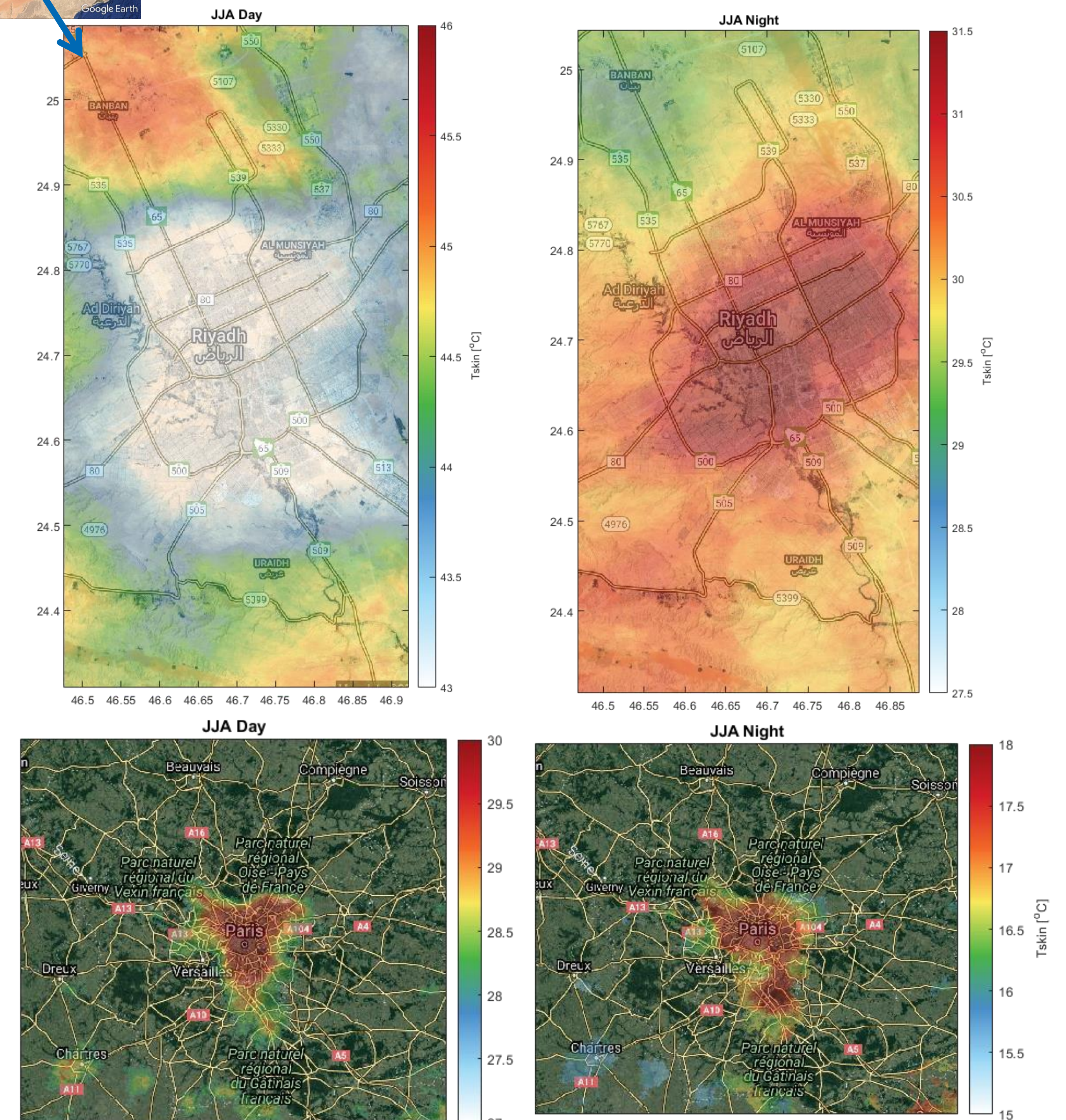
Large positive anomalies in IASI  $T_{skin}$  during a heatwave in Russia and Siberia that caused large fires

### Agriculture Monitoring



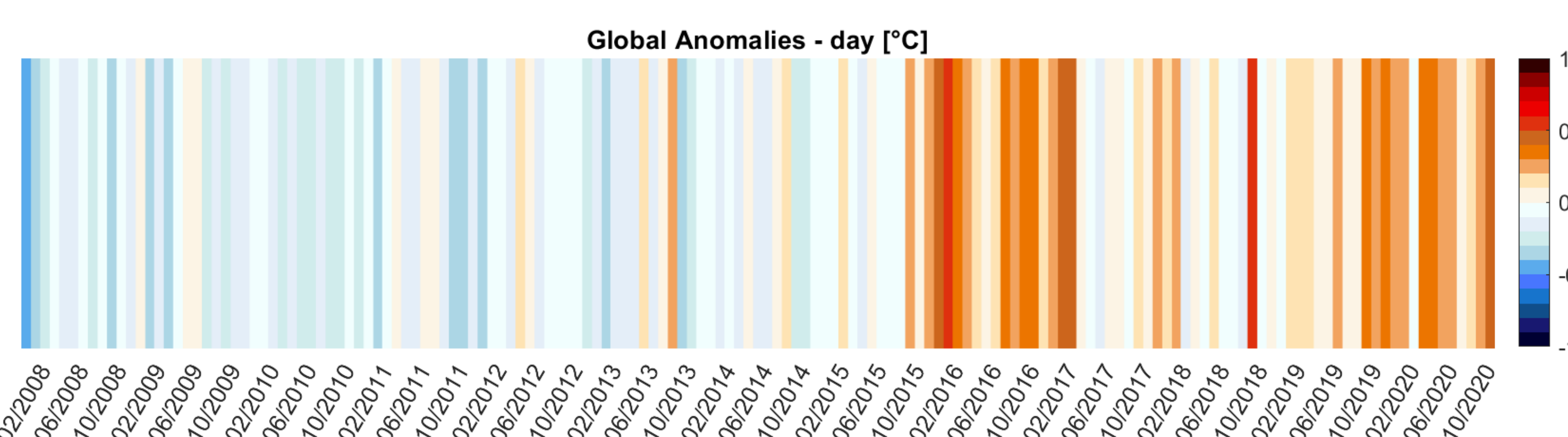
Lower IASI  $T_{skin}$  over agriculturally irrigated fields during day and night

### Urban Heat/Cool Islands



IASI  $T_{skin}$  day and night observations during summer (June, July and August) for Riyadh and Paris. Paris, during the day and the night is warmer than the suburbs. In Riyadh, the city exhibits the opposite effect during the day and acts as an urban cool island

### Climate change monitoring



$T_{skin}$  is a climate essential variable (ECV) that can be used to assess and detect the warming of the atmosphere and its effect on land and sea

## Conclusions

This study shows the various applications of the IASI-skin temperature product which is a valuable tracer for land use change and could be used to assess heatwaves and fires, urban heat/cool islands, agriculture and irrigation, and climate change.

## REFERENCES

- Clerbaux C., George M., Safieddine S., Réchauffement climatique et phénomène météo exceptionnel : décryptage de la canicule en Sibérie, The Conversation France, 2020 - insu-03018406
- Safieddine, S.; Parracho, A.C.; George, M.; Aires, F.; Pellet, V.; Clarisse, L.; Whitburn, S.; Lezeaux, O.; Thépaut, J.-N.; Hersbach, H.; Radnoti, G.; Goettsche, F.; Martin, M.; Doutraux-Boucher, M.; Coppens, D.; August, T.; Zhou, D.K.; Clerbaux, C. Artificial Neural Networks to Retrieve Land and Sea Skin Temperature from IASI. *Remote Sens.* 2020, 12, 2777. <https://doi.org/10.3390/rs12172777>

## ACKNOWLEDGEMENTS

This project has received funding from the European Research Council (ERC) under the European Union's Horizon 2020 research and innovation programme (grant agreement No 742909)