



**HAL**  
open science

# Non-Keplerian spirals, a gas-pressure dust trap, and an eccentric gas cavity in the circumbinary disc around HD 142527

H. Garg, C. Pinte, V. Christiaens, D. J. Price, J. S. Lazendic, Y. Boehler, S. Casassus, S. Marino, S. Perez, A. Zuleta

► **To cite this version:**

H. Garg, C. Pinte, V. Christiaens, D. J. Price, J. S. Lazendic, et al.. Non-Keplerian spirals, a gas-pressure dust trap, and an eccentric gas cavity in the circumbinary disc around HD 142527. *Monthly Notices of the Royal Astronomical Society*, 2021, 504, pp.782-791. 10.1093/mnras/stab800 . insu-03705304

**HAL Id: insu-03705304**

**<https://insu.hal.science/insu-03705304>**

Submitted on 14 Apr 2023

**HAL** is a multi-disciplinary open access archive for the deposit and dissemination of scientific research documents, whether they are published or not. The documents may come from teaching and research institutions in France or abroad, or from public or private research centers.

L'archive ouverte pluridisciplinaire **HAL**, est destinée au dépôt et à la diffusion de documents scientifiques de niveau recherche, publiés ou non, émanant des établissements d'enseignement et de recherche français ou étrangers, des laboratoires publics ou privés.

# Non-Keplerian spirals, a gas-pressure dust trap, and an eccentric gas cavity in the circumbinary disc around HD 142527

H. Garg,<sup>1</sup>★ C. Pinte<sup>1,2</sup>, V. Christiaens,<sup>1</sup> D. J. Price<sup>1</sup>, J. S. Lazendic,<sup>1</sup> Y. Boehler,<sup>2</sup> S. Casassus,<sup>3</sup> S. Marino<sup>4</sup>, S. Perez<sup>5</sup> and A. Zuleta<sup>3</sup>

<sup>1</sup>*School of Physics and Astronomy, Monash University, Clayton, VIC 3800, Australia*

<sup>2</sup>*CNRS, IPAG, University Grenoble Alpes, F-38000 Grenoble, France*

<sup>3</sup>*Departamento de Astronomía, Universidad de Chile, Casilla 36-D, Santiago, Chile*

<sup>4</sup>*Institute of Astronomy, University of Cambridge, Madingley Road, Cambridge CB3 0HA, UK*

<sup>5</sup>*Universidad de Santiago de Chile, Av. Libertador Bernardo O'Higgins 3363, Estación Central, Santiago, Chile*

Accepted 2021 March 12. Received 2021 January 25; in original form 2020 October 25

## ABSTRACT

We present ALMA observations of the  $^{12}\text{CO}$ ,  $^{13}\text{CO}$ ,  $\text{C}^{18}\text{O}$   $J = 2-1$  transitions and the 1.3 mm continuum emission for the circumbinary disc around HD 142527, at an angular resolution of  $\approx 0''.3$ . We observe multiple spiral structures in intensity, velocity, and velocity dispersion for the  $^{12}\text{CO}$  and  $^{13}\text{CO}$  gas tracers. A newly detected  $^{12}\text{CO}$  spiral originates from the dust horseshoe, and is rotating at super-Keplerian velocity or vertically ascending, whilst the interspiral gas is rotating at sub-Keplerian velocities. This new spiral possibly connects to a previously identified spiral, thus spanning  $>360^\circ$ . A spatial offset of  $\sim 30$  au is observed between the  $^{12}\text{CO}$  and  $^{13}\text{CO}$  spirals, to which we hypothesize that the gas layers are propagating at different speeds (surfing) due to a non-zero vertical temperature gradient. Leveraging the varying optical depths between the CO isotopologues, we reconstruct temperature and column density maps of the outer disc. Gas surface density peaks at  $r \approx 180$  au, coincident with the peak of continuum emission. Here, the dust grains have a Stokes number of  $\approx 1$ , confirming radial and azimuthal trapping in the horseshoe. We measure a cavity radius at half-maximum surface density of  $\approx 100$  au, and a cavity eccentricity between 0.3 and 0.45.

**Key words:** circumstellar matter – stars: individual: HD142527 – submillimetre: planetary systems – accretion, accretion discs.

## 1 INTRODUCTION

Protoplanetary discs with large central cavities are believed to be the result of interactions with internal companion(s). The circumbinary disc around HD 142527, a Herbig Fe pre-main-sequence star, is one such example. The outer disc is oriented nearly face-on, with estimated inclinations ranging from  $20^\circ$  to  $28^\circ$  about a position angle of  $-20^\circ$  (Verhoeff et al. 2011; Avenhaus et al. 2014; Perez et al. 2015), and located at a distance of  $157.3 \pm 1.2$  pc (Gaia Collaboration 2018). The system hosts a large ( $r \approx 140$  au) central dust cavity (Casassus et al. 2013a; Avenhaus et al. 2017); a distinct dust horseshoe (Ohashi 2008; Casassus et al. 2013a); large scale spiral arm structures seen in both near-infrared (Fukagawa et al. 2006; Casassus et al. 2012) and millimetre-wavelength observations (Christiaens et al. 2014); and an inclined inner disc casting shadows on the outer disc (Marino, Perez & Casassus 2015), revealed by non-Keplerian kinematics inside the cavity (Rosenfeld, Chiang & Andrews 2014; Casassus et al. 2015a).

Fukagawa et al. (2006) first speculated the presence of a companion as the explanation for the observed large scale spiral arm structures. Biller et al. (2012) provided the first direct evidence for a possible low-mass companion in the inner part of the cavity.

Later works refined the companion properties and orbital parameters (Close et al. 2014; Lacour et al. 2016; Christiaens et al. 2018), in particular the semimajor axis ranging from 12 to 31 au (Claudi et al. 2019).

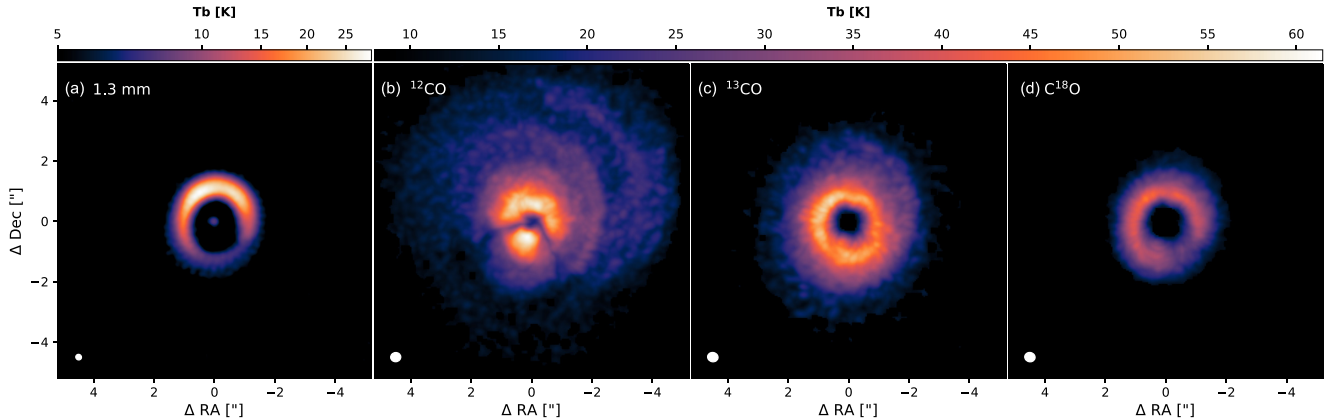
Millimetre-emitting dust grains are seen to be depleted inside the cavity whilst up to centimetre-sized grains are detected within the radial and azimuthal dust trap surrounding the cavity (Casassus et al. 2015b). Perez et al. (2015) reported a shallower gas depletion inside the central cavity with  $^{12}\text{CO}$  found to be optically thick throughout. Price et al. (2018) demonstrated that the interplay between the binary and enclosing outer disc can explain most of the observed peculiar features in this disc: dust asymmetry as a result of an eccentric binary, spirals along the edge of the dust cavity, a central cavity due to dynamical clearing, and shadows.

In an effort to characterize the large scale physical and kinematic structure of the outer disc, we present deep high spectral ( $\approx 85 \text{ m s}^{-1}$ ) and intermediate spatial ( $\approx 0''.3$ ) resolution ALMA observations of the 1.3 mm continuum emission and the  $^{12}\text{CO}$ ,  $^{13}\text{CO}$ , and  $\text{C}^{18}\text{O}$   $J = 2-1$  lines.

## 2 OBSERVATION AND CALIBRATION

HD 142527 was observed using the Atacama Large Millimetre/submillimetre Array (ALMA) as part of Project 2015.1.01353.S. Executions were made on 2016 March 2 (using 38 antennas) and 2016 July

\* E-mail: himanshi.garg@monash.edu



**Figure 1. Spirals in  $^{12}\text{CO}$  and  $^{13}\text{CO}$ .** 1.3 mm continuum and non-continuum subtracted peak brightness temperature maps for  $^{12}\text{CO}$ ,  $^{13}\text{CO}$ , and  $\text{C}^{18}\text{O}$ . The disc is inclined about a position angle of  $-20^\circ$  such that the NE side is the far side and SW is the near side. The sharp drop in  $^{12}\text{CO}$  emission along an inverted V-shaped feature (e.g. at PAs  $\approx 100^\circ$  and  $200^\circ$ ) is due to the intervening foreground cloud (Casassus et al. 2013b). The continuum map is shown with a square root colour stretch, while the CO maps are shown with the same linear colour scale. Respective beams are shown on the bottom left of each panel.

26 (using 40 antennas) in Band 6, with on source integration times of  $\approx 35$  and 58 min, respectively. The continuum spectral window (spw) centred at 231.9 GHz with a total bandwidth of 2GHz.  $^{12}\text{CO}$ ,  $^{13}\text{CO}$ , and  $\text{C}^{18}\text{O}$  spectral windows centred at 230.503, 220.479, and 219.641 GHz, respectively; all covering a total bandwidth of 117.187 MHz with 1920 channels of 61.035 kHz channel width each ( $\sim 84 \text{ m s}^{-1}$ ). J1427-4206 was used as the flux and bandpass calibrator, J1604-4441 as the phase calibrator, and J1604-4228 as the gain calibrator.

We applied the standard ALMA pipeline calibration using CASA 4.5.3 to both executions. At first, only the short-baseline data sets were self-calibrated. Prior to merging the self-calibrated short-baseline data with the non-self-calibrated long-baseline data (using `concat`), both data sets were phase centred to a common pointing direction. We then self-calibrated the combined data sets. We performed a series of phase-only self-calibrations on continuum for solutions intervals of [ $\sim 7$  min, 60, 30, 15, and 6 s]; stepping down sequentially and where the first solution interval is equal to the length of an entire scan. Following each iteration, we imaged the short baseline data to ensure peak signal-to-noise ratio (SNR) increased by  $>5$  per cent from the previous iteration. An additional amplitude + phase self-calibration was applied for a solution interval of  $\sim 7$  min. The peak SNR increased by a factor of 11. The outlined self-calibration process was repeated on the continuum combined data set, where peak SNR increased by a factor of 9. We applied the generated phase and amplitude calibration tables to each line emission. The resulting noise for  $^{12}\text{CO}$ ,  $^{13}\text{CO}$ , and  $\text{C}^{18}\text{O}$  is  $5.9 \text{ mJy beam}^{-1}$  for a  $0''.33 \times 0''.30$  beam;  $6.3 \text{ mJy beam}^{-1}$  for a  $0''.35 \times 0''.31$  beam; and  $4.1 \text{ mJy beam}^{-1}$  for a  $0''.34 \times 0''.31$  beam, respectively. Peak SNR:  $^{12}\text{CO} \approx 40$ ,  $^{13}\text{CO} \approx 33$ , and  $\text{C}^{18}\text{O} \approx 39$ . We imaged the spectral cubes with velocity channel widths of  $84 \text{ m s}^{-1}$ , i.e. at the native spectral resolution of the data.

All imaging was performed using the CASA task `tclean` with the multiscale deconvolver and Briggs weighting, `robust = 0.5`. We used `automultithresh` masking for both continuum and line cube data with a minimal buffer (`smoothFactor = 0.05` and `cutThreshold = 0.01`) to avoid capturing noise in the model. The resulting continuum noise is  $51 \mu\text{Jy beam}^{-1}$  for a beam size of  $0''.30 \times 0''.27$ ; corresponding to a peak SNR  $\approx 1300$ . Additionally, we also imaged the continuum using `superuniform` weighting, for placing constraints on the inner disc size, with a resultant noise of

$66 \mu\text{Jy beam}^{-1}$  for a beam size of  $0''.19 \times 0''.18$  and peak SNR  $\approx 500$  (Fig. 1). Furthermore, we imaged the  $^{12}\text{CO}$  emission with uniform weighting for analysing the twisted gas kinematics within the cavity. The uniform weighted  $^{12}\text{CO}$  cube has a beam size of  $0''.23 \times 0''.25$ , with a noise level of  $10 \text{ mJy beam}^{-1}$  and peak SNR  $\approx 15$ . All moment maps are integrated using the CASA task `immoments` over a velocity range of  $-1.00$  to  $8.24 \text{ km s}^{-1}$ . Non-continuum-subtracted integrated flux (moment 0) maps for  $^{12}\text{CO}$ ,  $^{13}\text{CO}$ , and  $\text{C}^{18}\text{O}$  have a noise level of 1.74, 2.19, and  $1.28 \text{ mJy beam}^{-1}$  with peak SNRs of 460, 332, and 483, respectively.

### 3 RESULTS AND DISCUSSION

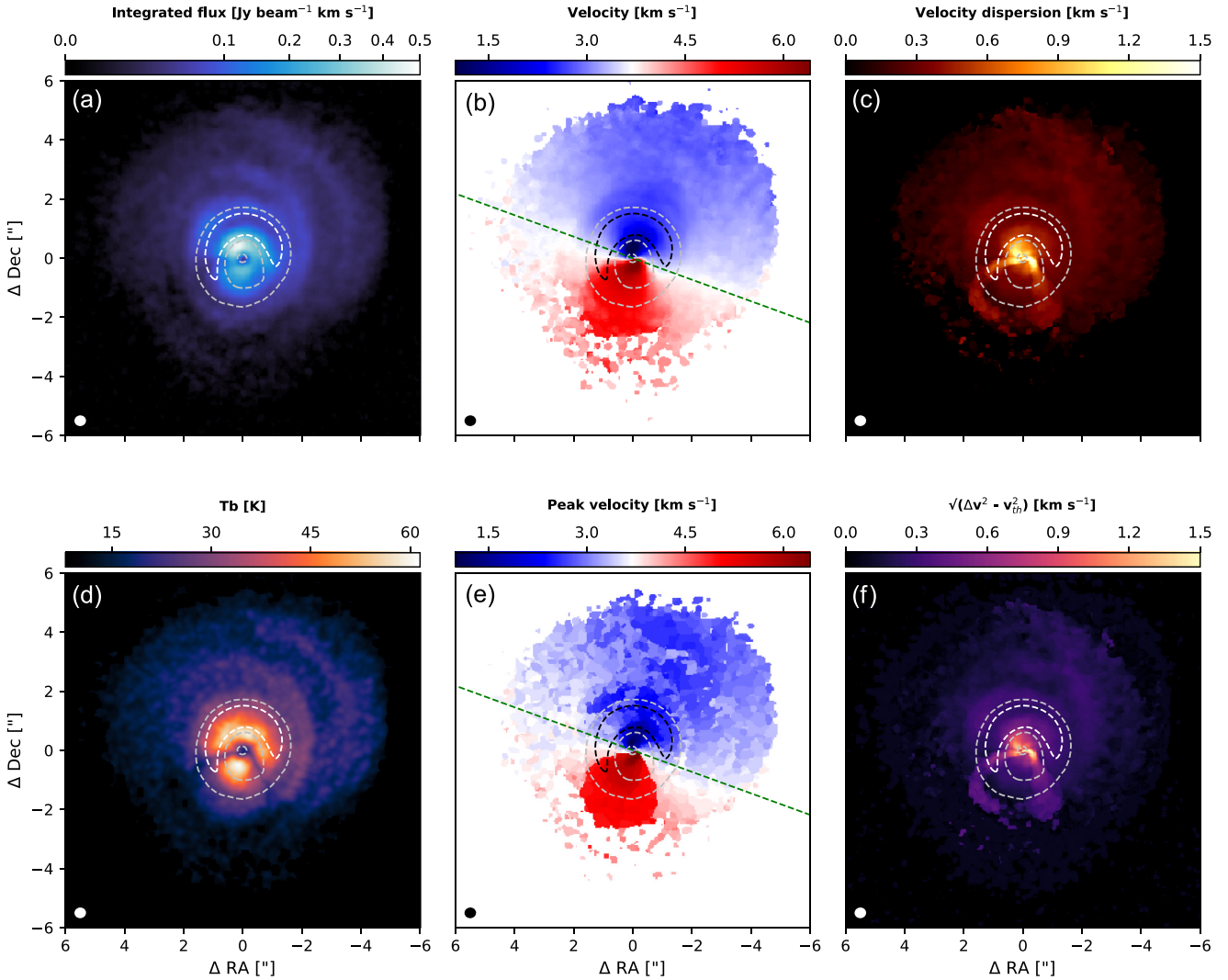
#### 3.1 Twisted kinematics near the inner disc

The inner disc remains unresolved in our superuniform weighted continuum map (Fig. 1a), which has a resolution of  $0''.19 \times 0''.18$ . At this resolution, we can place an upper limit of  $\sim 30 \text{ au}$  for the diameter of the dust component of the inner disc, along with a total flux of  $2.0 \pm 0.2 \text{ mJy}$ . The disc centre was located by fitting a Gaussian to this unresolved inner disc's continuum emission.

Fig. 2 displays the different moment maps calculated from our observations. A warp in the central gas cavity is connecting to the inner disc in our moment 1 (b), moment 2 (c), and peak velocity (e) maps; confirming the twisted gas kinematics first reported by Casassus et al. (2015a). We also observe this feature in Fig. 3, where we show high-velocity channels of the  $^{12}\text{CO}$  cube imaged using uniform weighting (resulting in a beam size of  $0''.23 \times 0''.25$ ), to highlight the velocity field near the inner disc. A change in the position angle of the rotation axis for gas at high velocity is detected (PA  $\approx -55^\circ$ ) in comparison to the average rotation axis of the outer disc (PA  $\approx 70^\circ$ ), i.e. at extreme velocities, the rotation axis of the gas is offset by  $\approx 125^\circ$  clockwise. The measured velocities are consistent with Keplerian rotation around a  $2.36 \pm 0.3 M_\odot$  (Boehler et al. 2021) star, but could also be tracing infalling material on to the inner disc (Casassus et al. 2013a; Rosenfeld et al. 2014).

#### 3.2 Spiral arms in $^{12}\text{CO}$ and $^{13}\text{CO}$

Figs 1, 2, 4, and 5 reveal up to four large scale spiral structures in both  $^{12}\text{CO}$  and  $^{13}\text{CO}$  past the dust crescent. We trace these spirals in

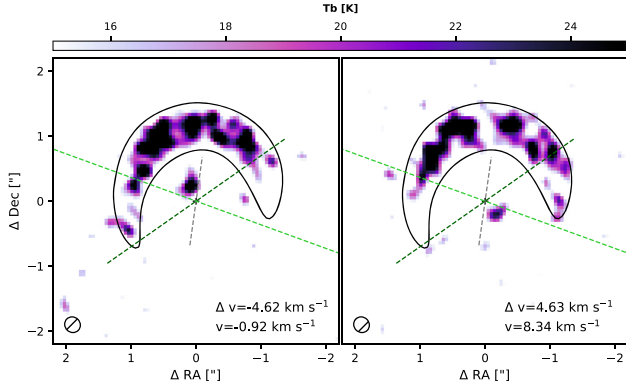


**Figure 2. Moment maps.** (a)–(f) moment 0, moment 1, moment 2, peak brightness temperature, peak velocity, and velocity dispersion minus thermal component for  $^{12}\text{CO}$ , respectively. All integrated maps, with the exception of peak brightness temperature, are continuum subtracted. The continuum contour at  $13.6 \text{ mJy beam}^{-1}$  ( $0.2 \times$  maximum) is given in *white* [in panels (a), (c), (d), (f)] and *black* [in panels (b) and (e)]. A secondary continuum contour at  $1 \text{ mJy beam}^{-1}$  ( $\sim 20\sigma$ ) is given in *silver*. The *green-dashed* lines in panels (b) and (e) represent the rotation axis of the outer disc. Beam is given on the bottom left corner. The features seen towards the SE and SW directions (PAs  $\approx 110^\circ$  and  $190^\circ$ ) in panels (c), (d), (e), and (f) are due to the intervening cloud (Casassus et al. 2013b); an attempt at cloud correction is shown in Appendix A along with a description on the procedure.

the peak intensity maps (Fig. 6) and channel maps by finding local maxima ( $>T_b = 8\text{K}$  for channel map traces and  $>0.3 \times$  maximum brightness temperature for intensity map traces of  $^{12}\text{CO}$  and  $^{13}\text{CO}$ ) along radial cuts performed at  $1^\circ$  increments, for  $r > 210 \text{ au}$ . The spirals labelled as S1, S2, and S3 in  $^{12}\text{CO}$  (e.g. Figs 4 and 6), match their previous reported detection by Christiaens et al. (2014). We detect a new spiral (labelled S4) in  $^{12}\text{CO}$  originating from the dust crescent and potentially connecting up to S1, thus spanning more than  $360^\circ$ . Furthermore, S1 may connect to S3, but low SNR between PA range  $\sim 50^\circ$ – $100^\circ$  prevents a definitive conclusion. Similarly, it remains unclear whether S3 connects to S2 due to loss of emission towards SE caused by the foreground cloud (Fig. 4, bottom panel of the  $^{12}\text{CO}$  maps). Counterparts to two of the  $^{12}\text{CO}$  spirals (S1 and S4) are also observed in  $^{13}\text{CO}$  (Fig. 5).

Channel maps (Figs 4 and 5) reveal the spirals not only in intensity, but also in velocity; as also reflected in velocity dispersion (Fig. 2c).

The spirals extend to regions in the maps that correspond to either higher or lower velocities than the expected Keplerian rotation. For instance, S4 (cyan) at  $\Delta v = -1.10 \text{ km s}^{-1}$  (Fig. 4) is seen to extend towards the outer disc’s semiminor axis, i.e. we detect emission in a region of the map where the velocity would be smaller if the disc was in Keplerian rotation. Conversely, both S4 and S3 in channel maps  $\Delta v = 0.08$ – $0.25 \text{ km s}^{-1}$  are seen to extend towards the outer disc’s semimajor axis, i.e. into regions that would be at higher velocity if Keplerian. From this, S4 appears to be super-Keplerian in the blueshifted regions of the map and sub-Keplerian in the redshifted regions. Similarly, S3 appears to be sub-Keplerian. This trend is less clear for the S1 and S2 spirals. A possible explanation for the variation from super- to sub-Keplerian for S4 could alternatively be attributed to the spirals vertically ascending, whereby the Doppler shift is attenuated in the redshifted regions of the map whilst being amplified in the blueshifted regions.



**Figure 3. Central gas twist and misalignment of the inner and outer discs.** High-velocity channels (left: blueshifted, right: redshifted) of  $^{12}\text{CO}$  imaged using uniform weighting with emission above  $T_b = 15\text{K}$ , and without continuum subtraction. The systemic velocity is  $3.70\text{ km s}^{-1}$ . The cross marks the peak of the continuum for the inner disc. The *black solid line* contour represents the  $13.6\text{ mJy beam}^{-1}$  ( $0.2 \times$  maximum) continuum emission level. The *dark green dashed line* represents the rotation axis of the central gas cavity at these high velocities, i.e. the axis perpendicular to the imaginary line connecting the two ‘blobs’ of gas emission at these high velocities; the *light green line* represent the average rotation axis of the outer disc; and the *grey-dashed line* represents the position angle of the inner disc as deduced from shadows in scattered light (Marino et al. 2015). Beam is given on the bottom left.

In contrast, the interspiral gas appears to be sub-Keplerian or vertically descending, i.e. at  $\Delta v = -0.08\text{ km s}^{-1}$ , we detect emission arcs between the traced spirals towards the semimajor axis, indicating that the interspiral gas is rotating at velocities smaller than the expected Keplerian velocity. These deviations in velocity are also apparent in the moment maps [in particular Fig. 2(e); despite the cloud extinction that skews all integrated maps].

This is confirmed by a radial cut-off the moment one map along the disc semimajor axis (Fig. 7). The disc shows large non-Keplerian motions; oscillating between sub- to super-Keplerian motions. We compare the rotation curve of all three isotopologues ( $^{12}\text{CO}$ ,  $^{13}\text{CO}$ , and  $\text{C}^{18}\text{O}$ ) to the expected mid-plane Keplerian rotation,

$$v_{\text{Kep}} = \sqrt{\frac{GM_{\text{star}}}{r}} \sin(\text{inc}). \quad (1)$$

with  $M_{\text{star}} = 2.36 \pm 0.3 M_{\odot}$  (Boehler et al. 2021),  $G$  is the gravitational constant,  $r$  is the radial distance, and  $\text{inc} = 24^\circ$ . Interestingly, we do not notice any significant variation of velocities between the isotopologues, as was, for instance, measured in IM Lupi (Pinte et al. 2018). Outside 600 au, the disc velocity deviates strongly from Keplerian rotation, suggesting the presence of a possible disc wind (e.g. Teague, Bae & Bergin 2019). Huang et al. (2020) have also recently reported non-Keplerian motion in the enclosing gaseous disc of RU Lup.

In Fig. 2(f), we quadratically subtract the thermal velocity component ( $\sqrt{2kT/m}$ ) from the local line width (integrated moment 2 map). For regions where  $^{12}\text{CO}$  is optically thick ( $\tau > 3$ ), the brightness temperature profile corresponds to the true gas kinematic temperature. However, in the outskirts of the disc, along with the central  $< 35$  au radial distance, where  $^{12}\text{CO}$  becomes optically thin the thermal velocity component is underestimated. The overall spiral structures seen in velocity dispersion, remain present post thermal component subtraction, and in combination with the non-Keplerian motion of both the spirals and the interspiral gas, imply that the

observed spirals are not solely the result of local gas thermal motion but velocity perturbations likely caused by disc–binary interaction.

The shape of the spirals is subject to projection effects, which remain partially unknown due to uncertainty on the outer disc inclination (see Section 1). To remedy this, we measure the distance to each spiral along the disc’s semimajor axis, where projection effects are minimal, with a buffer of  $10^\circ$  on either side to minimize scatter, i.e. average distance in the wedge (Fig. 6 a–b). The S4, S1, and S2  $^{12}\text{CO}$  spirals are detected at a radial distance of  $\sim 255$ , 415, and 645 au in the NW direction, whilst towards the SE direction, the S4 and S3  $^{12}\text{CO}$  spirals are located at  $\sim 330$  and 570 au, respectively.

The S1  $^{13}\text{CO}$  spiral is detected at  $\sim 385$  au towards NW and the S4  $^{13}\text{CO}$  spiral at  $\sim 295$  au towards SE. From these measurements, the  $^{12}\text{CO}$  and  $^{13}\text{CO}$  spirals are radially offset by approximately half-beam size ( $\sim 30$  au), with the  $^{12}\text{CO}$  spirals further out. In the NW quadrant this offset is approximately constant (Fig. 6 b). We measure brightness temperatures of  $\sim 25$  and  $23\text{ K}$  for the  $^{12}\text{CO}$  and  $^{13}\text{CO}$  S1 spiral within the wedge. The spirals are detected outwards of the horseshoe where optically thick dust prevents stellar radiation from reaching the disc mid-plane, while the surface layers remain illuminated, as observed in scattered light (e.g. Avenhaus et al. 2014). This will result in a vertical temperature gradient and thus a variation in the speed of propagation of the gas density wave, since  $c_s \propto \sqrt{T}$ . We hypothesize that the measured constant half-beam size radial offset between the two isotopologues may be due to the spirals *surfing* along this vertical temperature gradient, whereby the spiral wave is propagating faster in the upper layers than at lower disc scale heights. Rosotti et al. (2020) detected a similar offset and variation of pitch angles between the spirals observed in scattered light and at sub-mm wavelengths in the disc surrounding HD 100453.

### 3.3 Measuring the surface density inside the cavity

A progressive increase in the radial extent of central gas depletion is observed from  $^{12}\text{CO} \rightarrow ^{13}\text{CO} \rightarrow \text{C}^{18}\text{O}$ , as higher surface densities are required to reach the  $\tau = 1$  surface with decreasing isotopic abundance. We use this variation in optical depth to reconstruct a gas column density map from observations, where we require one optically thin tracer to compute column density, and one optically thick tracer to estimate local gas excitation temperature ( $T_{\text{ex}}$ ). Therefore, both tracers need to share the same  $T_{\text{ex}}$ . Inside the scattered light cavity, near-infrared opacity is low, there is no vertical temperature gradient and the uniform slab approximation is valid. However, as dust becomes optically thick, this criteria is no longer satisfied. In this instance, we assume the  $^{13}\text{CO}$  and  $\text{C}^{18}\text{O}$  molecular surfaces are close in altitude (similar to the case with IM Lupi in Pinte et al. 2018) and thus share approximately the same excitation temperature.

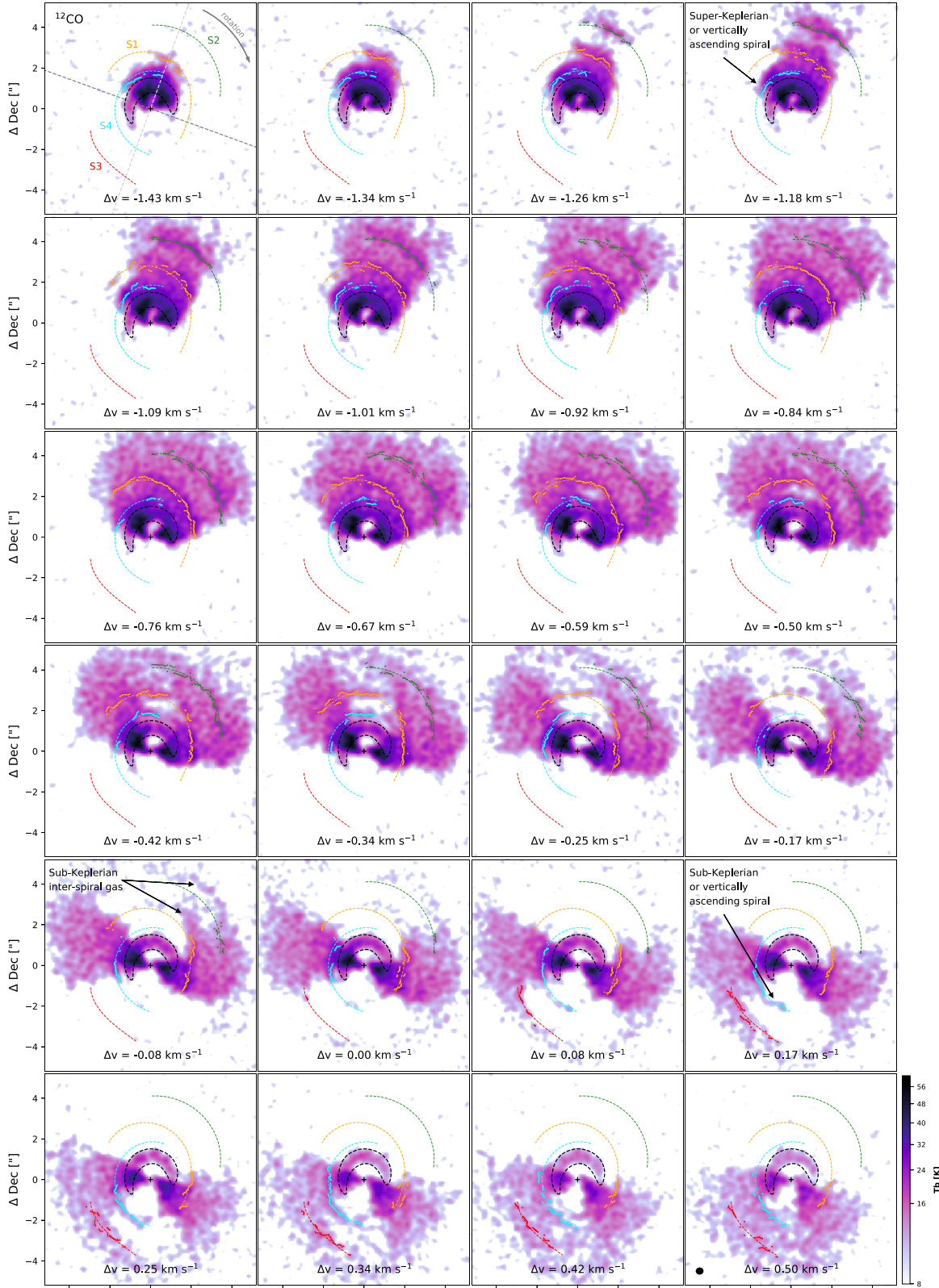
The total molecular column density for an optically thin uniform slab is given by

$$N_{\text{mol}} = N_{\text{u}} \frac{Z}{2J+1} \exp\left[\frac{E_{\text{u}}}{kT_{\text{ex}}}\right], \quad (2)$$

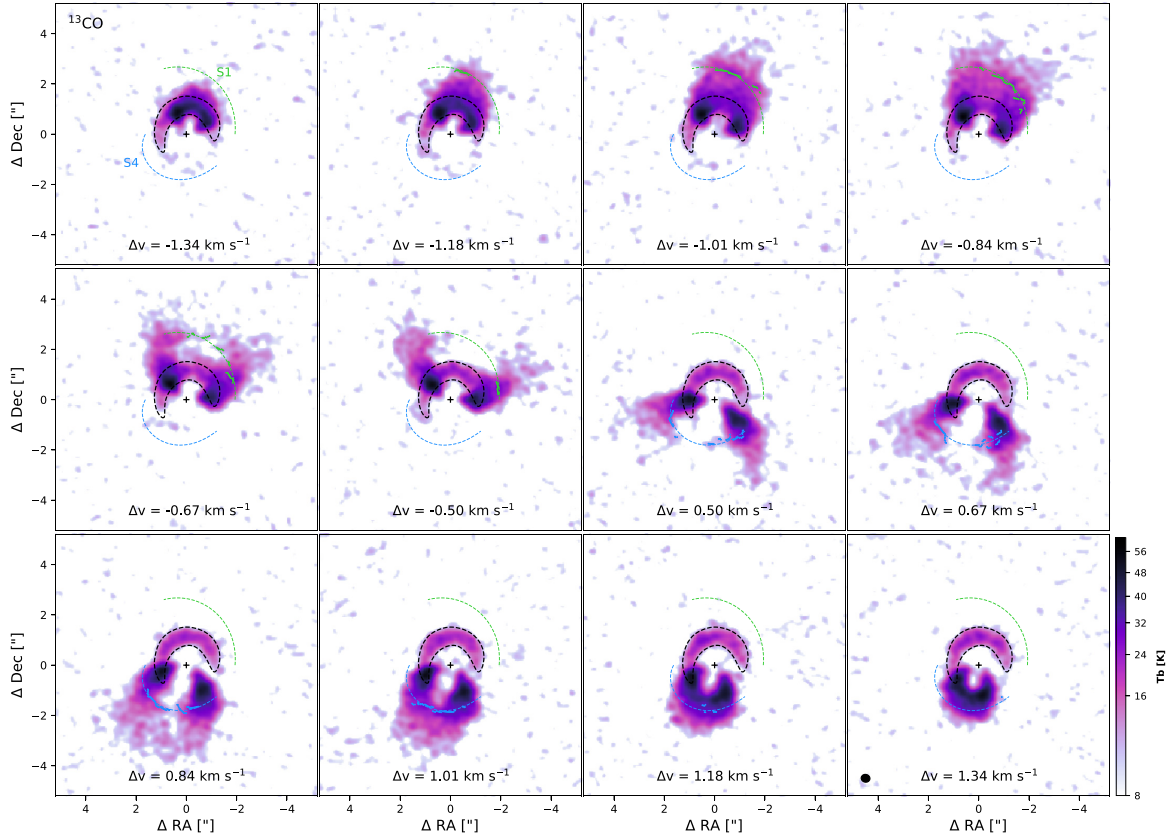
where  $J = 2$ ,  $k$  is the Boltzmann constant,  $E_{\text{u}}$  is the energy of the upper state, and  $Z$  is the partition function of a linear molecule. Assuming emission fills the beam, the column density in the upper level,  $N_{\text{u}}$ , is given by

$$N_{\text{u}} = \frac{4\pi}{h\nu A_{\text{ul}}} \frac{B_{\nu}(T_{\text{ex}})}{B_{\nu}(T_{\text{ex}}) - B_{\nu}(T_{\text{bg}})} \int (I_{\nu} - I_{\nu,\text{bg}}) d\nu, \quad (3)$$

(equations 23 and 32 in Mangum & Shirley 2015) where  $A_{\text{ul}}$  is the Einstein coefficient for spontaneous emission,  $h$  is the Planck’s



**Figure 4.** Super-Keplerian spirals + sub-Keplerian interspiral gas in the outer disc. Selected channel maps of  $^{12}\text{CO}$  without continuum subtraction. Each channel is  $84 \text{ m s}^{-1}$  wide. The systemic velocity is  $3.70 \text{ km s}^{-1}$ . The light and dark grey dashed lines in the first panel represent the semimajor and semiminor axis, respectively. The outer disc is inclined along  $\text{PA} = -20^\circ$  such that NE is the far side whilst SW is the near side. The black-dashed contour represents the  $13.6 \text{ mJy beam}^{-1}$  ( $0.2 \times$  maximum) continuum emission. The coloured dots represent components of the traced spirals. The coloured dashed lines are the polynomial fits, of the form  $r(\theta) = \sum_{i=0}^3 a_i \theta^i$ , determined using a least-squares fit on the spiral traces. The polynomial parameters are given in Table B1. Beam is given on the bottom right-hand panels.



**Figure 5.** Selection of  $^{13}\text{CO}$  channel maps. The annotations are the same as in Fig. 4.

constant,  $\nu$  is the rest frequency,  $T_{\text{ex}}$  is the excitation temperature and  $I_{\nu} - I_{\nu, \text{bg}}$  is the specific intensity minus the background, e.g. the quantity directly measured by the interferometer due to spatial filtering. Quantities for  $E_u$  ( $^{13}\text{CO} = 15.87$  K and  $\text{C}^{18}\text{O} = 15.81$  K) and  $A_{\text{ul}}$  ( $^{13}\text{CO} = 6.038 \times 10^{-7}\text{s}^{-1}$  and  $\text{C}^{18}\text{O} = 6.011 \times 10^{-7}\text{s}^{-1}$ ) are taken from the Leiden Atomic and Molecular Database (LAMDA; Schöier et al. 2005, accessed in July 2020).

The optical depth ( $\tau$ ) for each isotopologue can be computed from the peak brightness temperature line ratio  $R$  (e.g. Lyo et al. 2011),

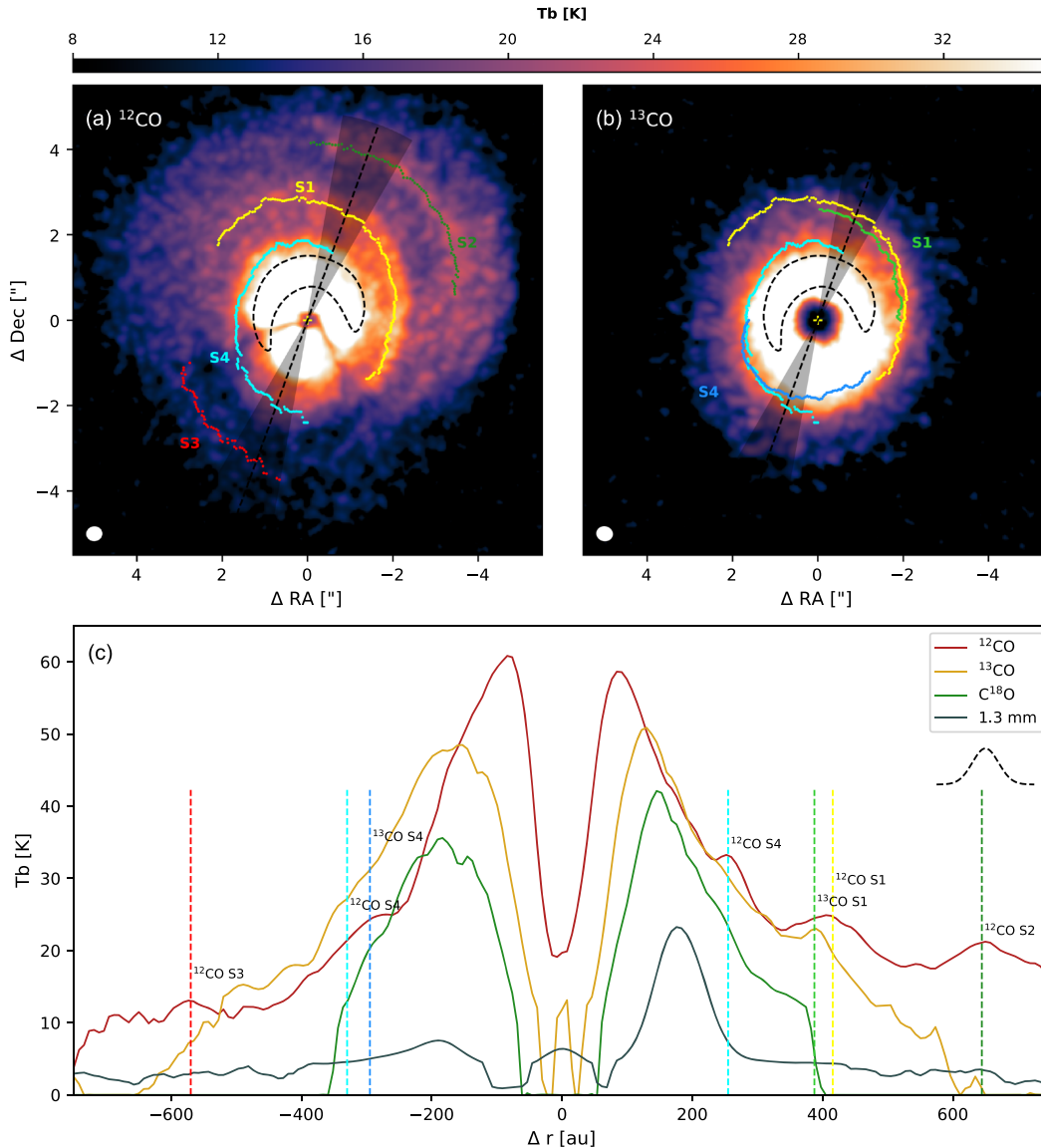
$$R = \frac{T_B(\nu_1)}{T_B(\nu_2)} = \frac{1 - e^{-\tau\nu_1}}{1 - e^{-\tau\nu_2}} = \frac{1 - e^{-\tau\nu_1}}{1 - e^{-\tau\nu_1/X}}, \quad (4)$$

where  $\nu_{i=1,2}$  are the rest frequencies of either  $^{12}\text{CO}$  and  $^{13}\text{CO}$  or  $^{13}\text{CO}$  and  $\text{C}^{18}\text{O}$  pairs.  $X$  is the isotopic abundance ratio, which we assume to be ISM:  $[^{12}\text{C}]/[^{13}\text{C}] \approx 70$  (Stahl, Casassus & Wilson 2008) and  $[^{16}\text{O}]/[^{18}\text{O}] \approx 500$  (Wilson & Rood 1994). We compute the various optical depths at each pixel in the map and find all three isotopologues to be optically thin  $< 35$  au from disc centre therefore we mask this region. In regions where the three isotopologues are detected (and not contaminated by the cloud), we find a similar  $^{13}\text{CO}$  optical depth when using the pairs  $^{12}\text{CO}/^{13}\text{CO}$  and  $^{13}\text{CO}/\text{C}^{18}\text{O}$ . Due to foreground cloud contamination of  $^{12}\text{CO}$ , we use  $^{13}\text{CO}$  to determine  $T_{\text{ex}}$  when  $\tau_{^{13}\text{CO}} > 3$ , but  $^{12}\text{CO}$  otherwise. Similarly,  $^{13}\text{CO}$  is used to estimate column density when  $\tau_{^{13}\text{CO}} < 0.1$ , but  $\text{C}^{18}\text{O}$  otherwise, as it remains optically thin throughout the disc. Gas emission within the horseshoe suffers from dust contamination, and vice versa; continuum emission close to line centre is absorbed by the gas and performing continuum subtraction largely underestimates line flux due to overestimating dust emission contribution (Boehler

et al. 2017). Therefore, we use integrated flux ( $I_{\text{int}}$ ) maps with and without continuum subtraction to place a lower and upper limit, respectively, on the gas column density inside the horseshoe (refer to Fig. 8). The gas column densities are scaled by assuming a constant ISM abundance ratio of  $[^{12}\text{CO}]/[\text{H}_2] \approx 10^{-4}$ , and the isotopic ratios above. This is assuming no isotopologue-selective photodissociation, freeze-out, or chemical evolution is altering the CO isotopologue’s abundance levels, the implications of which are discussed in Section 3.4.

Towards the SE direction along the disc’s semimajor axis (refer to Fig. 8c), where emission is not heavily contaminated by dust grains, we measure a gas cavity size at half-maximum surface density of  $\sim 100$  au ( $\sim 0.760$  g cm $^{-2}$ ). We find a steep surface density profile at the edge of the cavity with the one-quarter and three-quarter maximum gas surface densities reached at  $\sim 85$  ( $\sim 0.380$  g cm $^{-2}$ ) and  $\sim 130$  ( $\sim 1.140$  g cm $^{-2}$ ) au, respectively. Our measured gas cavity size is  $\sim 3$ – $8$  times larger than the semimajor axis of the companion ranging between  $12$  and  $31$  au (Claudi et al. 2019). Deprojecting the generated column density map at estimated disc inclinations of  $20^\circ$ ,  $24^\circ$ , and  $28^\circ$ , we measure an eccentricity of  $0.32$  (PA  $\sim -43^\circ$ ),  $0.35$  (PA  $\sim -53^\circ$ ), and  $0.44$  (PA  $\sim -59^\circ$ ), respectively, for the gas cavity by fitting an Ellipse to the half-maximum surface density contour (the black-dashed contour) shown in Fig. 8. An eccentric gas cavity is suggestive of dynamical clearing by the binary.

Hydrodynamical simulations predict cavity sizes of  $2$ – $3$  times the binary semimajor axis for co-planar orbits (Artymowicz & Lubow 1994), up to a factor of  $5$  for integration times reaching a few viscous spreading times (e.g. Hirsh et al. 2020) and potentially up to seven times (Thun, Kley & Picogna 2017). Highly inclined binary



**Figure 6. Surfing spirals.** (a)–(b) Peak intensity maps for  $^{12}\text{CO}$  and  $^{13}\text{CO}$ , respectively, overlaid with spiral traces. The spirals labelled S1, S2, and S3 in  $^{12}\text{CO}$  are in agreement with their first reported detection by Christiaens et al. (2014). Counterparts to the aforementioned spirals are detected in  $^{13}\text{CO}$ , along with the new spiral: S4. Central emission has been saturated to highlight the spiral structures, i.e. a maximum  $T_b$  value of 35K has been applied on the colour bar. The transparent *black* wedge between PAs  $-10^\circ$  to  $-30^\circ$  is used to compute a radial brightness temperature profile, with the diagonal line representing the outer disc’s semimajor axis (PA =  $-20^\circ$ ). The *black-dashed* contour represents the  $13.6 \text{ mJy beam}^{-1}$  ( $0.2 \times$  maximum) continuum emission. (c) Radial brightness temperature profiles measured in the wedges. The vertical dashed lines represent the location of the spirals (with corresponding colours) as shown in panels (a) and (b). The *black-dashed* Gaussian represents the beam along the disc’s semimajor axis.

orbits respective to the disc, as in HD 142527, result in smaller cavities however, typically twice the binary semimajor axis (Price et al. 2018; Hirsh et al. 2020). Our measured cavity size suggests potential tension with current models of binary–disc interaction, although this can only be confirmed with more precise orbital constraints.

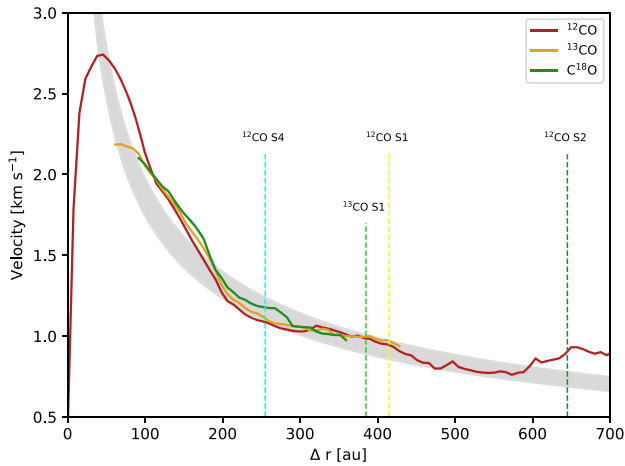
### 3.4 Origin of the dust horseshoe

Three hypotheses have been proposed to explain asymmetric dust emission: (i) dust trapping in a vortex due to a planet on a circular orbit (Birnstiel, Dullemond & Pinilla 2013; Lyra & Lin 2013), (ii) a traffic jam caused by eccentric orbital motion (Ataiee et al. 2013),

and (iii) dust trapping in an horseshoe/‘overdense lump’ caused by a massive companion (Farris et al. 2014; Ragusa et al. 2017, 2020; Calcino et al. 2019).

Our reconstructed column density profiles demonstrate that regardless of continuum subtraction, gas column density peaks  $\sim 2$ – $10$  times higher within the dust horseshoe than on the opposite side, consistent with the modelling results of Muto et al. (2015). This is lower than the contrast in dust emission of  $\sim 30$ , as measured from our continuum data, to  $\sim 40$  derived by modelling the continuum emission by Soon et al. (2017). Here, we assume a continuous dust distribution in the horseshoe, where sub-millimetre dust grains have been shown to be optically thick (Casassus et al. 2015b) therefore the 1.3 mm emission is expected to be dominated by grains of  $\approx 200 \mu\text{m}$





**Figure 7.** Measured velocity profiles for  $^{12}\text{CO}$ ,  $^{13}\text{CO}$ , and  $\text{C}^{18}\text{O}$  along the outer disc's semimajor axis, starting from disc centre and extending outwards in the NW direction. Systemic velocity of  $3.70 \text{ km s}^{-1}$  is subtracted from all velocity profiles. Velocities were extracted from the moment 1 maps. The light grey curve represents Keplerian rotation at the disc midplane, where  $M_{\text{star}} = 2.36 \pm 0.3 M_{\odot}$  and outer disc inclination =  $24^{\circ}$ .

radius (i.e.  $2\pi a \approx \lambda$ ). For our lower and upper estimates of gas surface density within the horseshoe ( $0.2$  and  $1.5 \text{ g cm}^{-2}$ , refer to Fig. 8), the resulting Stokes number for the dust grains ranges between  $0.2$  and  $2$  (e.g. Dipierro et al. 2015), assuming spherical grains and a typical grain density of  $3.5 \text{ g cm}^{-3}$ . This means that the dust grains dominating the emission in the crescent are the ones experiencing the most efficient gas drag. Several factors, such as isotope-selective photodissociation, freeze-out, and/or chemical evolution in PPDs (Proto-planetary discs), can drive CO isotopologue abundance levels away from interstellar medium values (Miotello, Bruderer & van Dishoeck 2014; Miotello et al. 2016). Here, we have made no assumption on the extent of such depletion by

the aforementioned processes, as the exact level of carbon/oxygen depletion in the disc is unknown. The corresponding Stokes number would scale inversely with the depletion factor.

Based on our upper and lower limits on the Stokes number, the horseshoe is likely the result of radial and azimuthal trapping of dust grains, ruling out the traffic jam scenario which predicts no dust trapping (Ataiee et al. 2013). Our measurement of an eccentric gas cavity rules out the scenario of a planet on a circular orbit in the outer disc. The only remaining possibility is that a dust-trapping vortex might be created by an additional planetary-mass companion on a stable eccentric orbit. This leaves model (iii) as the most likely scenario, namely dust trapping in a gas overdensity created by the binary (as already demonstrated by Price et al. 2018).

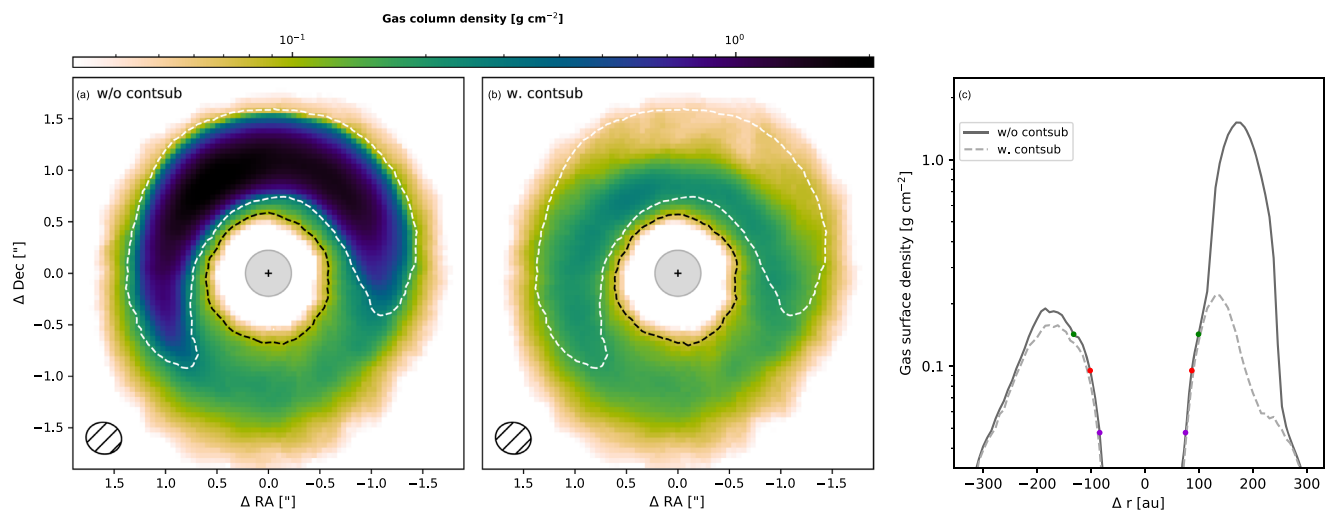
## 4 CONCLUSIONS

Our ALMA Band 6 observations of HD 142527 show

(i) four spiral arms extending as far as  $650 \text{ au}$  in  $^{12}\text{CO}$  and two counterparts to these spirals in  $^{13}\text{CO}$  up to  $400 \text{ au}$ . Three of the four  $^{12}\text{CO}$  spirals had been previously reported by Christiaens et al. (2014), here we report a new  $^{12}\text{CO}$  spiral originating from the horseshoe along with detections in  $^{13}\text{CO}$ . These spirals are non-Keplerian in nature (either super/sub-Keplerian, vertically ascending or a combination of both) and display a locally larger linewidth (Fig. 2c);

(ii) a radial offset of approximately half-beam size ( $\sim 30 \text{ au}$ ) for the S1 and S4 spiral arms traced between  $^{12}\text{CO}$  and  $^{13}\text{CO}$  (where  $^{12}\text{CO}$  is further out), similar to the offsets seen in HD 100453 by Rosotti et al. (2020). We hypothesize this spatial offset as the result of a variation in propagation, at sound speed, due to a vertical temperature differential in the outer regions;

(iii) spatially resolved central gas depleted emission and varying optical depths in all three gas tracers, allowing us to reconstruct a 2D gas column density map. From this, a gas cavity size at half-maximum surface density of  $\sim 100 \text{ au}$  is measured with a steep radial



**Figure 8.** Gas column density. (a)–(b) 2D gas column density maps without and with continuum subtraction, respectively. The black-dashed contour represents the inner half-maximum gas surface density. The white-dashed contours map the region where gas column densities computed with and without continuum subtraction differ by more than 50 per cent. The grey circle represents the masked region, where all three isotopologues are optically thin. Beam is presented on the bottom-left corner. (c) Gas surface density profiles with and without continuum subtraction along  $\text{PA} = -20^{\circ}$  (outer disc's semimajor axis). A positive radial offset is directed towards NW and negative offset towards SE. The dots represent  $1/2$  max ( $\sim 0.760 \text{ g cm}^{-2}$ ),  $1/4$  max ( $\sim 0.380 \text{ g cm}^{-2}$ ), and  $3/4$  max ( $\sim 1.140 \text{ g cm}^{-2}$ ) surface densities (red, purple, and green, respectively) of the profile along the SE direction, without continuum subtraction.

profile. The shape of the gas cavity edge has eccentricity ranging from 0.3 to 0.45; and

(iv) a gas density concentration in the horseshoe, where we derive a Stokes number of  $\sim 1$  for sub-mm sized dust grains. The contrast in gas and dust density distribution is in agreement with previous modelling efforts by Muto et al. (2015) and Soon et al. (2017), respectively. This supports the hypothesis of dust trapping being the origin of the unique horseshoe morphology (Ragusa et al. 2017, 2020) and with the most likely origin being a gas pressure maximum created by the binary companion (Price et al. 2018).

The current spatial resolution prevents reaching a definitive conclusion on the connection between the various spirals. Observations at  $0''.1$  with  $\approx 8$ h of ALMA time would achieve a similar SNR but allow to pinpoint the complex structure of the spiral pattern in the disc.

## ACKNOWLEDGEMENTS

This paper uses the following ALMA data and ADS/JAO.ALMA#2015.1.01353. ALMA is a partnership of ESO (representing its member states), NSF (USA), and NINS (Japan), together with NRC (Canada), MOST and ASIAA (Taiwan), and KASI (Republic of Korea), in cooperation with the Republic of Chile. The Joint ALMA Observatory is operated by ESO, AUI/NRAO, and NAOJ. The National Radio Astronomy Observatory is a facility of the National Science Foundation operated under cooperative agreement by Associated Universities, Inc. CP, DJP, and VC acknowledge funding from the Australian Research Council via FT170100040, FT130100034, and DP180104235. SM is supported by a Research Fellowship from Jesus College, University of Cambridge. YB acknowledges funding from Agence Nationale de la Recherche (ANR) of France under contract number ANR-16-CE31-0013 (Planet-Forming-Discs). SC and SP acknowledge Fondo Nacional de Desarrollo Científico y Tecnológico (FONDECYT) grants 1171642 and 1191934.

## DATA AVAILABILITY

Reduced and calibrated data cubes are available at <https://doi.org/10.6084/m9.figshare.13625144.v1>. The original raw data are publicly available via the ALMA archive under Project code: 2015.1.01353.S.

## REFERENCES

- Artymowicz P., Lubow S. H., 1994, *ApJ*, 421, 651  
 Ataiee S., Pinilla P., Zsom A., Dullemond C. P., Dominik C., Ghanbari J., 2013, *A&A*, 553, L3  
 Avenhaus H., Quanz S. P., Schmid H. M., Meyer M. R., Garufi A., Wolf S., Dominik C., 2014, *ApJ*, 781, 87  
 Avenhaus H. et al., 2017, *AJ*, 154, 33  
 Biller B. et al., 2012, *ApJ*, 753, L38  
 Birnstiel T., Dullemond C. P., Pinilla P., 2013, *A&A*, 550, L8  
 Boehler Y., Weaver E., Isella A., Ricci L., Grady C., Carpenter J., Perez L., 2017, *ApJ*, 840, 60  
 Boehler Y. et al., 2021, Vortex-Like Kinematic Signal, Spirals, and Beam Smearing Effect in HD 142527 disk. submitted  
 Calcinò J., Price D. J., Pinte C., van der Marel N., Ragusa E., Dipierro G., Cuello N., Christiaens V., 2019, *MNRAS*, 490, 2579  
 Casassus S., Perez M. S., Jordán A., Ménard F., Cuadra J., Schreiber M. R., Hales A. S., Ercolano B., 2012, *ApJ*, 754, L31  
 Casassus S. et al., 2013a, *Nature*, 493, 191  
 Casassus S. et al., 2013b, *A&A*, 553, A64  
 Casassus S. et al., 2015a, *ApJ*, 811, 92

- Casassus S. et al., 2015b, *ApJ*, 812, 126  
 Christiaens V., Casassus S., Perez S., van der Plas G., Ménard F., 2014, *ApJ*, 785, L12  
 Christiaens V. et al., 2018, *A&A*, 617, A37  
 Claudi R. et al., 2019, *A&A*, 622, A96  
 Close L. M. et al., 2014, *ApJ*, 781, L30  
 Dipierro G., Price D., Laibe G., Hirsh K., Cerioli A., Lodato G., 2015, *MNRAS*, 453, L73  
 Farris B. D., Duffell P., MacFadyen A. I., Haiman Z., 2014, *ApJ*, 783, 134  
 Fukagawa M., Tamura M., Itoh Y., Kudo T., Imaeda Y., Oasa Y., Hayashi S. S., Hayashi M., 2006, *ApJ*, 636, L153  
 Gaia Collaboration, 2018, *A&A*, 616, A1  
 Hirsh K., Price D. J., Gonzalez J.-F., Ubeira-Gabellini M. G., Ragusa E., 2020, *MNRAS*, 498, 2936  
 Huang J. et al., 2020, *ApJ*, 898, 140  
 Lacour S. et al., 2016, *A&A*, 590, A90  
 Lyo A. R., Ohashi N., Qi C., Wilner D. J., Su Y.-N., 2011, *AJ*, 142, 151  
 Lyra W., Lin M.-K., 2013, *ApJ*, 775, 17  
 Mangum J. G., Shirley Y. L., 2015, *PASP*, 127, 266  
 Marino S., Perez S., Casassus S., 2015, *ApJ*, 798, L44  
 Miotello A., Bruderer S., van Dishoeck E. F., 2014, *A&A*, 572, A96  
 Miotello A., van Dishoeck E. F., Kama M., Bruderer S., 2016, *A&A*, 594, A85  
 Muto T. et al., 2015, *PASJ*, 67, 122  
 Ohashi N., 2008, *Ap&SS*, 313, 101  
 Perez S. et al., 2015, *ApJ*, 798, 85  
 Pinte C. et al., 2018, *A&A*, 609, A47  
 Price D. J. et al., 2018, *MNRAS*, 477, 1270  
 Ragusa E., Dipierro G., Lodato G., Laibe G., Price D. J., 2017, *MNRAS*, 464, 1449  
 Ragusa E., Alexander R., Calcinò J., Hirsh K., Price D. J., 2020, *MNRAS*, 499, 3362  
 Rosenfeld K. A., Chiang E., Andrews S. M., 2014, *ApJ*, 782, 62  
 Rosotti G. P. et al., 2020, *MNRAS*, 491, 1335  
 Schöier F. L., van der Tak F. F. S., van Dishoeck E. F., Black J. H., 2005, *A&A*, 432, 369  
 Soon K.-L., Hanawa T., Muto T., Tsukagoshi T., Momose M., 2017, *PASJ*, 69, 34  
 Stahl O., Casassus S., Wilson T., 2008, *A&A*, 477, 865  
 Teague R., Bae J., Bergin E. A., 2019, *Nature*, 574, 378  
 Thun D., Kley W., Picogna G., 2017, *A&A*, 604, A102  
 Verhoeff A. P. et al., 2011, *A&A*, 528, A91  
 Wilson T. L., Rood R., 1994, *ARA&A*, 32, 191

## SUPPORTING INFORMATION

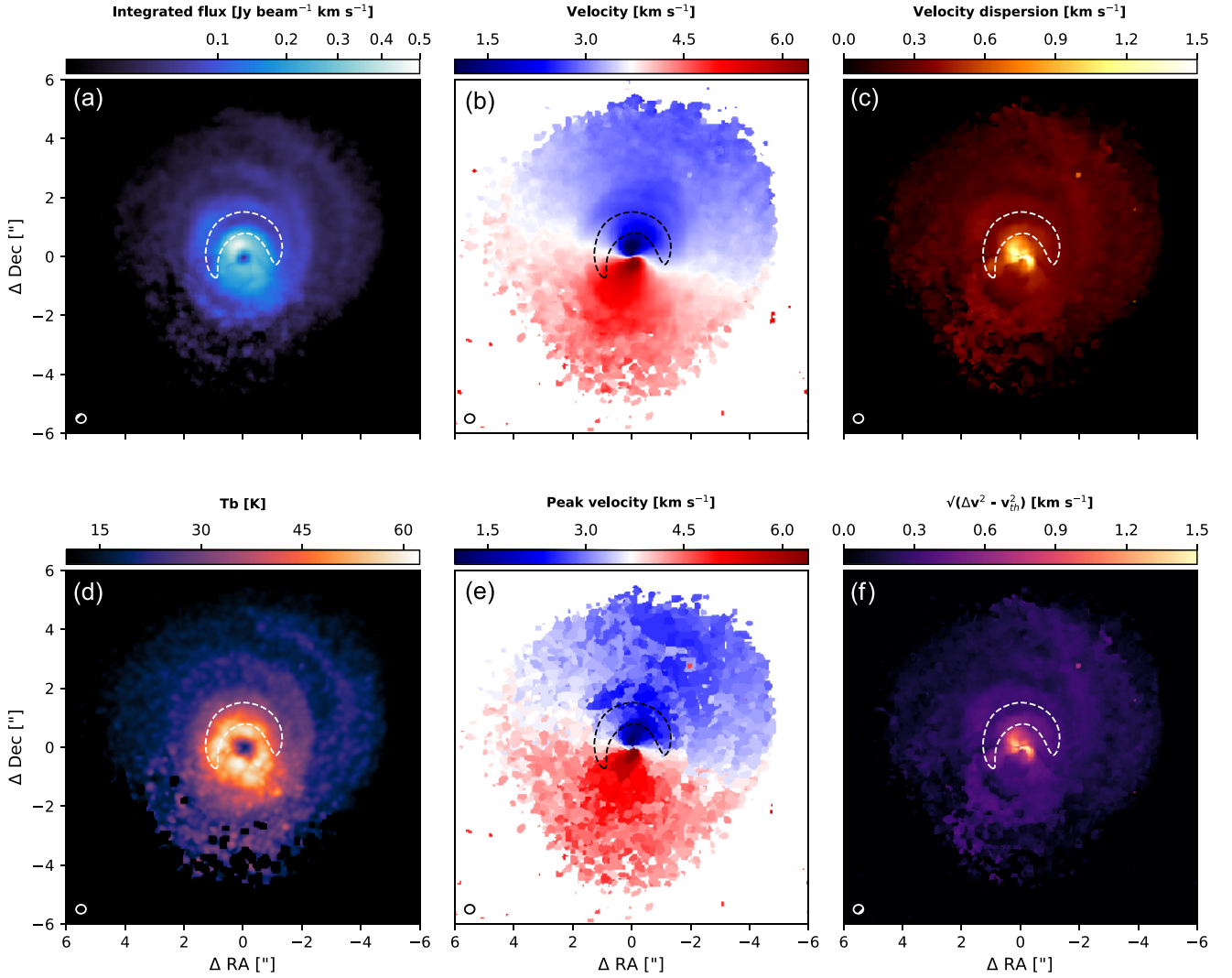
Supplementary data are available at *MNRAS* online.

Please note: Oxford University Press is not responsible for the content or functionality of any supporting materials supplied by the authors. Any queries (other than missing material) should be directed to the corresponding author for the article.

## APPENDIX A: CLOUD CONTAMINATION AND CORRECTION

$^{12}\text{CO}$  emission in the southern region is partially filtered out by the interferometer due to the presence of the molecular cloud at velocities between 3.0 and 5.7  $\text{km s}^{-1}$  (Casassus et al. 2013b). As a result, signal is attenuated at the aforementioned velocities. This, however, does not affect the shape of the emission in individual channels, but only the flux. A caveat of this spatial filtering is the skewing of moment maps, such as in Figs 1 and 2, which complicates their interpretation.

We attempt to correct the extinct channels, by matching the  $^{12}\text{CO}$   $J = 2-1$  line profile to the  $J = 6-5$  profile observed by (Casassus et al. 2015a, fig. 3). We correct the  $J = 2-1$  with a Gaussian profile centred at  $v = 4.54 \text{ km s}^{-1}$ , with a full width at half-maximum of  $1.1 \text{ km s}^{-1}$



**Figure A1. Cloud corrected moment maps.** (a)–(f), moment 0, moment 1, moment 2, peak brightness temperature, peak velocity, and velocity dispersion minus thermal component for  $^{12}\text{CO}$ . Emission between 3.0 and 5.7  $\text{km s}^{-1}$  have been corrected for extinction from the intervening cloud. All integrated maps, with the exception of peak brightness temperature, are continuum subtracted. The dashed contours represents the  $13.6 \text{ mJy beam}^{-1}$  ( $0.2 \times$  maximum) continuum emission. Beam is given on the bottom left.

and an optical depth of 2.3 at line centre. In turn, this confirms that the cloud contamination for the  $^{13}\text{CO}$  and  $\text{C}^{18}\text{O}$  isotopologues is negligible. This correction is of course highly uncertain, but allows us to produce moment maps that highlight, at a higher signal to noise, the spiral structures we detect in individual channel maps towards the SE region (Fig. A1).

**Table B1. Spiral arm fit parameters.** Coefficients for the polynomial, of the form  $r(\theta) = \sum_{i=0}^3 a_i \theta^i$ , fit to the spiral structures (S1, S2, S3, and S4) traced in  $^{12}\text{CO}$  and  $^{13}\text{CO}$  using a least-squares fit.

$^{12}\text{CO}$				
	S1	S2	S3	S4
$a_0$	546	−134	−277	37.9
$a_1$	−294	36.8	435	−2.31
$a_2$	55.2	5.95	−185	−0.42
$a_3$	−3.31	−0.99	26.5	0.64
$^{13}\text{CO}$				
	S1	S2	S3	S4
$a_0$	496	−	−	−50.5
$a_1$	−258	−	−	97.6
$a_2$	47.2	−	−	−34.1
$a_3$	−2.75	−	−	3.78

## APPENDIX B: BEST-FITTING PARAMETERS TO SPIRAL ARM TRACES

This paper has been typeset from a  $\text{\LaTeX}$  file prepared by the author.